

SCS ENGINEERS

Environmental Consultants & Contractors

May 31, 2023
File No. 01222034.02

New Mexico Energy, Minerals, and Natural Resources Department
Oil Conservation Division
1220 South St. Francis Drive
Santa Fe, NM 87505

Subject: North Ranch Surface Waste Management Facility, Cell E-2 Construction Completion
Notification (Permit #NM1-66)

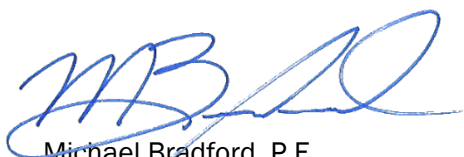
To whom it may concern;

SCS Engineers (SCS) is submitting this letter notification on behalf of NGL Waste Services, LLC (NGL). The purpose of this letter is to provide the New Mexico Energy, Minerals, and Natural Resources Department – Oil Conservation Division (OCD) with the as-built drawing for the base grading liner system for Cell E-2 of the North Ranch Surface Waste Management Facility (Permit #NM1-66).

Construction of Cell E-2 was completed on May 8, 2023 and in substantial compliance with the Construction Plans, Technical Specifications, and Construction Quality Assurance Plan. The attached drawing represents the as-built base grading contours/elevations and top of 2-ft thick protective cover layer elevations for Cell E-2 certification grid as surveyed and certified by Charles Jurica, a licensed New Mexico Professional Land Survey for Transglobal Services, LLC.

This submittal completes the disposal cell construction completion requirements as stated in NM1-66 Surface Waste Management Permit Conditions #6.P. The operator intends to commence operation of Cell E-2 as of the date of this letter.

Sincerely,



Michael Bradford, P.E.
Project Director
SCS Engineers

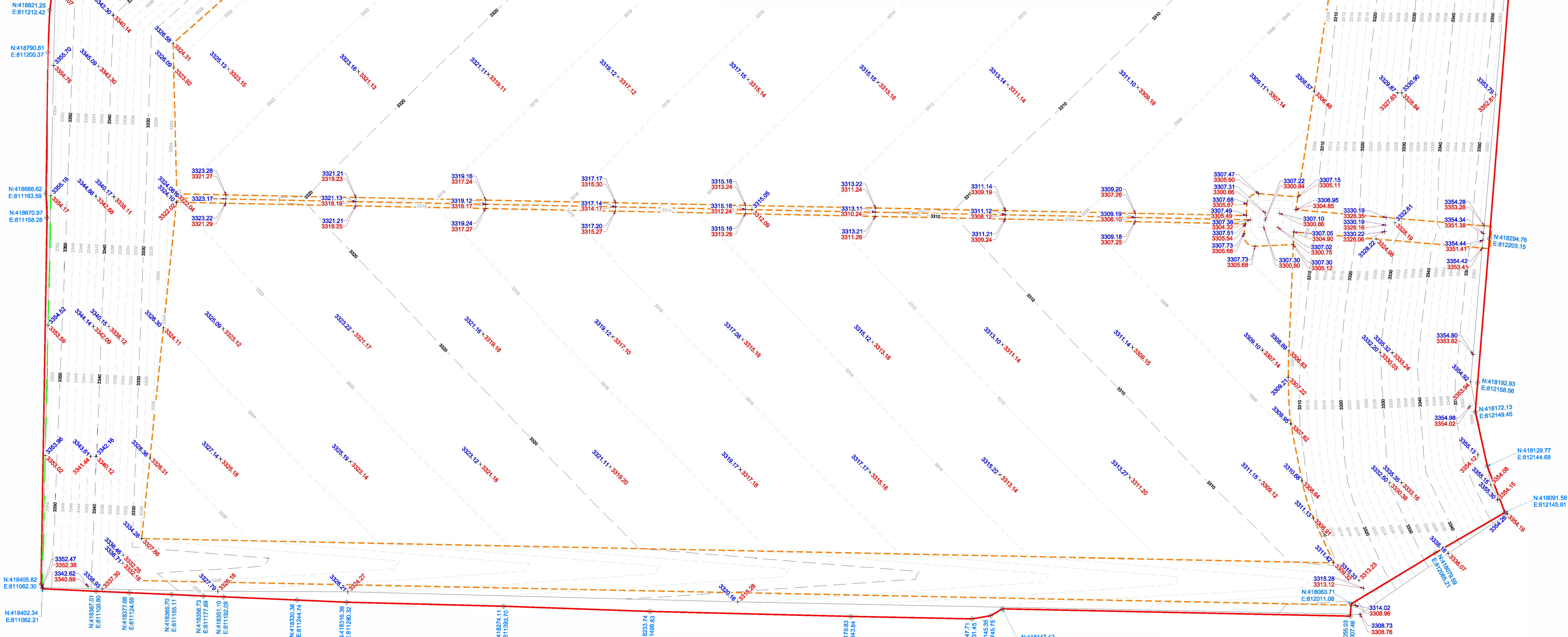


Ali Sarwari
Senior Project Professional
SCS Engineers

MPB/AAS

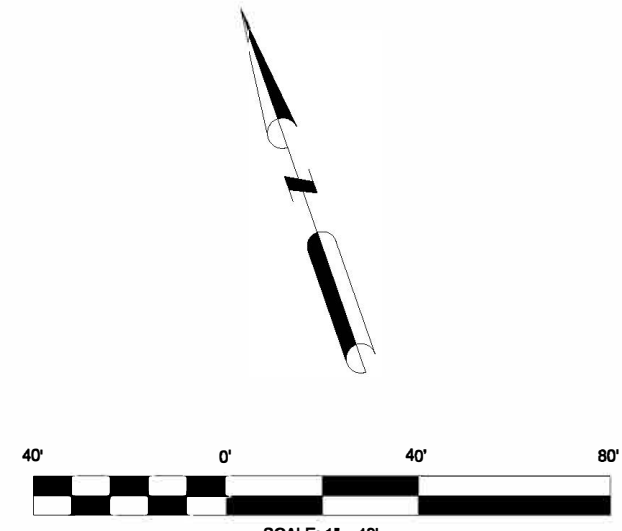
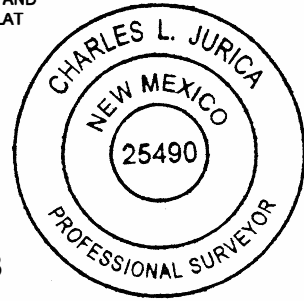
Enclosures: Transglobal Services LLC, North Ranch Landfill Cell E-2 Subgrade Exhibit





1. BEARINGS, DISTANCES, AREA AND COORDINATES SHOWN HEREON ARE CORRELATED TO THE NEW MEXICO STATE PLANE COORDINATE SYSTEM OF 1983, EAST ZONE, AS DETERMINED BY GPS OPUS OBSERVATIONS. ALL BEARINGS AND DISTANCES SHOWN ARE GRID.
2. LATITUDE & LONGITUDE ARE NAD 83 DECIMAL GEOGRAPHIC.
3. THIS SURVEY WAS PERFORMED WITHOUT THE BENEFIT OF A TITLE REVIEW OR A RECORD OF TITLE. THERE MAY BE EASEMENTS AND/OR COVENANTS AFFECTING THIS PROPERTY NOT SHOWN HEREON. LOCATION OF ALL IMPROVEMENTS WAS BEYOND COMMISSIONED SCOPE OF THIS PROJECT AND HAS BEEN SPECIFICALLY OMITTED. VESTING DOCUMENTS NOT FURNISHED FOR THIS SURVEY.

 05/26/2023
CHARLES L. JURICA NEW MEXICO PS #25490 DATE



LEGEND

- EDGE OF LINER
- SUBGRADE CONTOUR - 2'
- SUBGRADE CONTOUR - 10'
- TOE OF SLOPE
- TOP OF SLOPE
- PSL ELEVATION
- SUBGRADE ELEVATION
- EDGE OF LINER COORDINATES

					DRAWN BY: RRG	DATE: 05/19/22	DWG. NO. 8412 NORTH RANCH LANDFILL_CELL E-2 PSL SUBGRADE	REV. 0
#	DATE	BY:	DESCRIPTION	CHK	CHECKED BY: CLJ	DATE: 05/19/22		
PROJECT NO. 8412					SCALE: 1"=40'	PAGE 1 OF 1		

HIGH ROLLER EPC
NORTH RANCH LANDFILL
CELL E-2 PSL/SUBGRADE EXHIBIT

SITUATED IN
SECTION 10
TOWNSHIP 25 SOUTH, RANGE 34 EAST
NEW MEXICO PRINCIPAL MERIDIAN
LEA COUNTY, NEW MEXICO

Application C+A1:B22-137 Form Preface

19.15.36 NMAC - Surface Waste Management Facilities

New Mexico Energy, Minerals, and Natural Resources Department

Oil Conservation Division

19.15.36.8.C NMAC states the application requirements for new facilities, major modifications, and permit renewals. An applicant or operator shall file an application, Form C-137, for a permit for a new surface waste management facility (SWMF) or for permit renewal with the Oil Conservation Division’s (OCDs) Environmental Bureau.

[The OCD will only process applications that provide the information required by the C-137 Form and in the order specified by form. The application must be submitted via OCD’s Online Permitting System at https://wwwapps.emnrd.nm.gov/OCD/OCDPermitting/Default.aspx along with the associated permit fee.](https://wwwapps.emnrd.nm.gov/OCD/OCDPermitting/Default.aspx)

Provide engineering designs, certified by a registered New Mexico Professional Engineer (NMPE), including technical data on the design elements of each applicable treatment, remediation and disposal method and detailed designs of surface impoundments.

Application Purpose:

Subsequent information submission

Type of SWMF:

Landfill

***Engineering designs and drawings, certified by a registered NMPE, must take into account the specific requirements applicable to the SWMF type. The following must be included as applicable:**

[· The specific requirements applicable to landfills as specified in 19.15.36.14 NMAC; see Attachment A.](#)

[· The specific requirements applicable to land farms as specified in 19.15.36.15 NMAC; see Attachment B.](#)

[· The specific requirements applicable to evaporation, storage, treatment, and skimmer ponds as specified in 19.15.36.17 NMAC; see Attachment C.](#)

Facility Status

Commercial

Location

Lat/Long:

32.144696, -103.462574

Quarter Sections:

Multiple

Section:

9 & 10

Township:

25S

Range:

34E

Operator Name:

NGL Waste Services LLC

Email:

gfisher@popmidstream.com

Phone:

720-315-8035

Address:

1008 Southview Circle

Center, TX 75935

Facility Contact Name:

Daniel Schindler

Email:

dschindler@nglwasteservices.com

Phone:

575-631-8309

Address:

476 Battle Axe Rd

Jal, NM 88252

Submission of Cell E-2 final construcion plat.

District I
1625 N. French Dr., Hobbs, NM 88240
Phone:(575) 393-6161 Fax:(575) 393-0720
District II
811 S. First St., Artesia, NM 88210
Phone:(575) 748-1283 Fax:(575) 748-9720
District III
1000 Rio Brazos Rd., Aztec, NM 87410
Phone:(505) 334-6178 Fax:(505) 334-6170
District IV
1220 S. St Francis Dr., Santa Fe, NM 87505
Phone:(505) 476-3470 Fax:(505) 476-3462

State of New Mexico
Energy, Minerals and Natural Resources
Oil Conservation Division
1220 S. St Francis Dr.
Santa Fe, NM 87505

CONDITIONS

Action 233016

CONDITIONS

Operator: NGL Waste Services, LLC 1008 Southview Circle Center, TX 75935	OGRID: 329268
	Action Number: 233016
	Action Type: [C-137] Non-Fee SWMF Submittal (SWMF NON-FEE SUBMITTAL)

CONDITIONS

Created By	Condition	Condition Date
bjones	None	6/13/2024