



Kristen Houston
Regulatory Analyst
XTO Permian Operating, LLC
6401 Holiday Hill Road, Bldg 5
Midland, TX 79707

August 2, 2024

ENMRD–Oil Conservation Division
Environmental Bureau
506 W. Texas Ave.
Artesia, NM 88210

Re: Administrative Order 2RF-123
PLU Central 1 Recycling Facility Containment Upgrade
Facility ID (fAB1805932167)

Victoria,

XTO Permian Operating, LLC. respectfully requests permission to perform upgrades to the PLU Central 1 Recycling Facility Containment Permit 2RF-123 Recycling Facility ID (fAB1805932167).

The scope of the work to be done on the PLU Central 1 frac pond is as follows: installation of mechanical and electrical infrastructure (i.e., electric submersible pumps, transformers, switchboards, etc.) to support upcoming developments and eliminate the use of temporary diesel pumps. The following equipment will be added as part of the upgrade:

Quantity	Description	Temporary	Permanent
1	2.6MVA Transformer		X
1	3000A Switchboard		X
1	Programmable Logic Controller (PLC)		X
4	1200A Generator Tap Boxes		X

During full operation when modular electric submersible pumps are installed on site, the equipment list will be as follows:

Quantity	Description	Temporary	Permanent
9	250HP Electric Submersible Pump	X	
1	2.6MVA Transformer		X
1	3000A Switchboard		X
1	Programmable Logic Controller (PLC)		X
4	1200A Generator Tap Boxes		X
9	300HP Variable Frequency Drive (VFD)	X	
1	2000A Switchboard	X	
2	1200A Switchboard	X	

Construction duration will be 1-Sep-2024–13-Dec-2024 upon your approval, if all goes according to plan. The pond will continue to operate during the construction duration with minimal downtime for installation of pumping infrastructure.

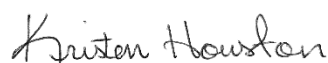
An updated engineered drawing of the frac pond layout can be viewed in drawing "DN-PLXC1-FP-PF-MP-LAY-0001_3.pdf" (attached).

A process flow diagram can be viewed in "Delaware Frac Pond Process Flow.pdf" (attached).

The outlined changes will not affect the Operations & Maintenance Plan nor the Closure Plan. Both will remain the same as the original permit submission.

If you have any questions or need any additional information, please feel free to contact me at (432) 894-1588.

Sincerely,



Kristen Houston
Regulatory Analyst

State of New Mexico
Energy Minerals and Natural Resources
Department Oil Conservation Division
1220 South St. Francis Dr.
Santa Fe, NM 87505

Form C-147
Revised October 11, 2022

<https://www.emnrd.nm.gov/ocd/ocd-e-permitting/>

Recycling Facility and/or Recycling Containment

Type of Facility: ☒ Recycling Facility

☒ Recycling Containment*

Type of action: ☒ Permit
☐ Modification
☐ Closure

☐ Registration
☐ Extension
☒ Other (explain) _____

Installation of mechanical and electrical
infrastructure. VV. 08.12.2024

* At the time C-147 is submitted to the division for a Recycling Containment, a copy shall be provided to the surface owner.

Be advised that approval of this request does not relieve the operator of liability should operations result in pollution of surface water, ground water or the environment. Nor does approval relieve the operator of its responsibility to comply with any other applicable governmental authority's rules, regulations or ordinances.

1.

Operator: XTO Permian Operating LLC (For multiple operators attach page with information) OGRID #: 373075

Address: 6401 Holiday Hill Rd Bldg 5 Midland Tx 79707

Facility or well name (include API# if associated with a well): PLU Central 1 Recycling Facility

OCD Permit Number: 2RF-123/fAB1805932167 (For new facilities the permit number will be assigned by the district office)

U/L or Qtr/Qtr G/J Section 24 Township 24S Range 30E County: Eddy

Surface Owner: ☒ Federal ☐ State ☐ Private ☐ Tribal Trust or Indian Allotment

2.

☒ **Recycling Facility:**

Location of recycling facility (if applicable): Latitude 32.244969 Longitude -103.83298 NAD83

Proposed Use: ☒ Drilling* ☒ Completion* ☒ Production* ☒ Plugging *

**The re-use of produced water may NOT be used until fresh water zones are cased and cemented*

☐ Other, *requires permit for other uses. Describe use, process, testing, volume of produced water and ensure there will be no adverse impact on groundwater or surface water.*

☒ Fluid Storage

☐ Above ground tanks ☒ Recycling containment Activity permitted under 19.15.17 NMAC explain type _____

☐ Activity permitted under 19.15.36 NMAC explain type: _____ ☒ Other explain _____

☐ For multiple or additional recycling containments, attach design and location information of each containment

☐ **Closure Report (required within 60 days of closure completion):** ☐ Recycling Facility Closure Completion Date: _____

3.

☒ **Recycling Containment:**

☒ Annual Extension after initial 5 years (attach summary of monthly leak detection inspections for previous year)

Center of Recycling Containment (if applicable): Latitude 32.204024 Longitude -103.832971 NAD83

☐ For multiple or additional recycling containments, attach design and location information of each containment

☒ Lined ☐ Liner type: Thickness _____ mil ☒ LLDPE ☒ HDPE ☐ PVC ☐ Other _____

☐ String-Reinforced

Liner Seams: ☒ Welded ☐ Factory ☐ Other _____ Volume: 500,000 x 2 bbl Dimensions: L 1500' x W 800' x D 16'

☐ Recycling Containment Closure Completion Date: _____

4.

Bonding:

- ☒ Covered under bonding pursuant to 19.15.8 NMAC per 19.15.34.15(A)(2) NMAC (These containments are limited to only the wells owned or operated by the owners of the containment.)
- ☐ Bonding in accordance with 19.15.34.15(A)(1). Amount of bond \$ _____ (work on these facilities cannot commence until bonding amounts are approved)
- ☐ Attach closure cost estimate and documentation on how the closure cost was calculated.

5.

Fencing:

- ☐ Four foot height, four strands of barbed wire evenly spaced between one and four feet
- ☒ Alternate. Please specify 8' game fence w/ 3 strands barbed wire

6.

Signs:

- ☒ 12"x 24", 2" lettering, providing Operator's name, site location, and emergency telephone numbers
- ☐ Signed in compliance with 19.15.16.8 NMAC

7.

Variances:

Justifications and/or demonstrations that the proposed variance will afford reasonable protection against contamination of fresh water, human health, and the environment.

Check the below box only if a variance is requested:

- ☒ Variance(s): Requests must be submitted to the appropriate division district for consideration of approval. If a Variance is requested, include the variance information on a separate page and attach it to the C-147 as part of the application.

If a Variance is requested, it must be approved prior to implementation.

8.

Siting Criteria for Recycling Containment

Instructions: The applicant must provide attachments that demonstrate compliance for each siting criteria below as part of the application. Potential examples of the siting attachment source material are provided below under each criteria.

General siting**Ground water is less than 50 feet below the bottom of the Recycling Containment.**

NM Office of the State Engineer - iWATERS database search; USGS; Data obtained from nearby wells

☐ Yes ☒ No
☐ NA

Within incorporated municipal boundaries or within a defined municipal fresh water well field covered under a municipal ordinance adopted pursuant to NMSA 1978, Section 3-27-3, as amended.

- Written confirmation or verification from the municipality; written approval obtained from the municipality

☐ Yes ☒ No
☐ NA

Within the area overlying a subsurface mine.

- Written confirmation or verification or map from the NM EMNRD-Mining and Minerals Division

☐ Yes ☒ No

Within an unstable area.

- Engineering measures incorporated into the design; NM Bureau of Geology & Mineral Resources; USGS; NM Geological Society; topographic map

☐ Yes ☒ No

Within a 100-year floodplain. FEMA map

☐ Yes ☒ No

Within 300 feet of a continuously flowing watercourse, or 200 feet of any other significant watercourse, or lakebed, sinkhole, or playa lake (measured from the ordinary high-water mark).

- Topographic map; visual inspection (certification) of the proposed site

☐ Yes ☒ No

Within 1000 feet from a permanent residence, school, hospital, institution, or church in existence at the time of initial application.

- Visual inspection (certification) of the proposed site; aerial photo; satellite image

☐ Yes ☒ No

Within 500 horizontal feet of a spring or a fresh water well used for domestic or stock watering purposes, in existence at the time of initial application.

- NM Office of the State Engineer - iWATERS database search; visual inspection (certification) of the proposed site

☐ Yes ☒ No

Within 500 feet of a wetland.

- US Fish and Wildlife Wetland Identification map; topographic map; visual inspection (certification) of the proposed site

☐ Yes ☒ No

9.

Recycling Facility and/or Containment Checklist:**Instructions:** Each of the following items must be attached to the application. Indicate, by a check mark in the box, that the documents are attached.

- ☐ Design Plan - based upon the appropriate requirements.
☐ Operating and Maintenance Plan - based upon the appropriate requirements.
☐ Closure Plan - based upon the appropriate requirements.
☐ Site Specific Groundwater Data -
☐ Siting Criteria Compliance Demonstrations –
☒ **Certify that notice of the C-147 (only) has been sent to the surface owner(s)**

10.

Operator Application Certification:

I hereby certify that the information and attachments submitted with this application are true, accurate and complete to the best of my knowledge and belief.

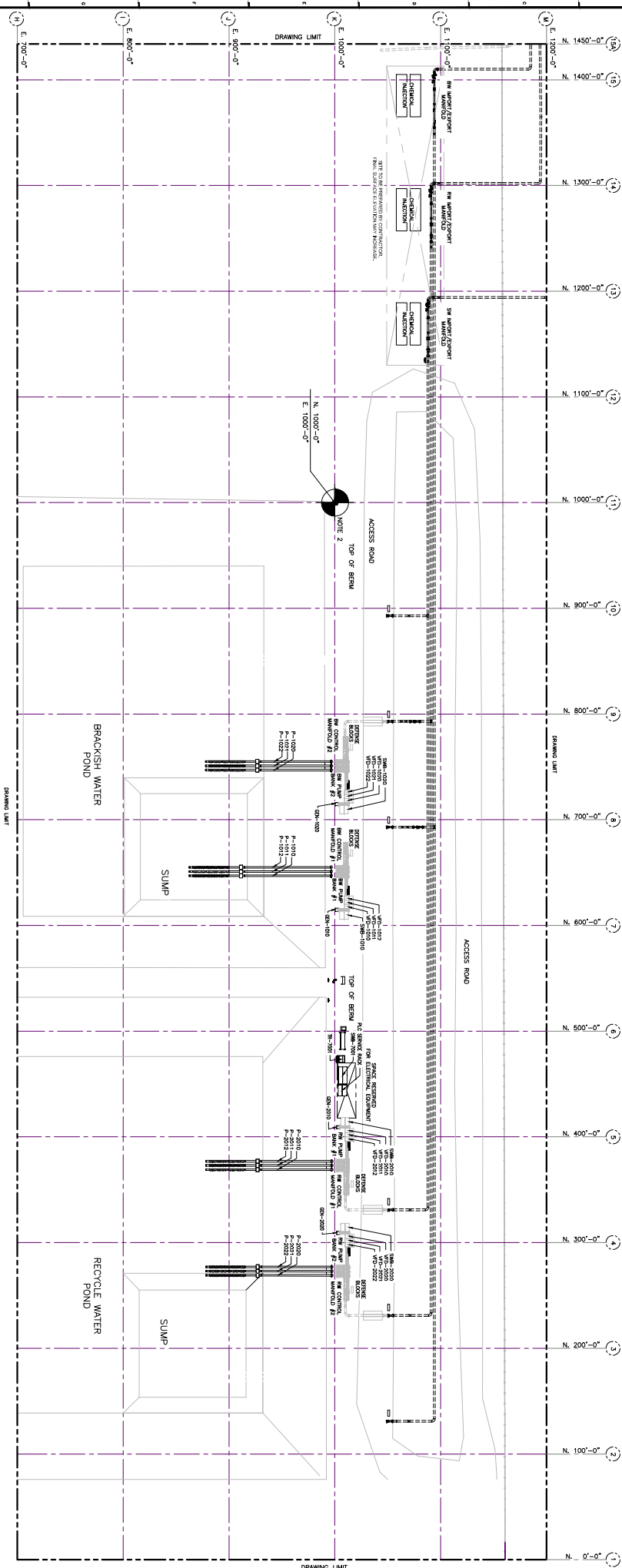
Name (Print): Kristen Houston Title: Regulatory Analyst
 Signature: *Kristen Houston* Date: 8/2/24
 e-mail address: kristen.houston@exxonmobil.com Telephone: (432)894-1588

11.

OCD Representative Signature: *Victoria Venegas* Approval Date: 08/12/2024

Title: Environmental Specialist OCD Permit Number: 2RF-12

- ☒ OCD Conditions _____
☒ Additional OCD Conditions on Attachment



LEGEND

_____	PERMANENT FACILITIES
_____	PERMANENT HOPE
_____	MODULAR FACILITIES (FUTURE)
_____	MODULAR HOPE (FUTURE)
_____	EXISTING FENCE
○	EXISTING LIGHT POLE
✱	REFERENCE POINT

SCALE 1':1/32"

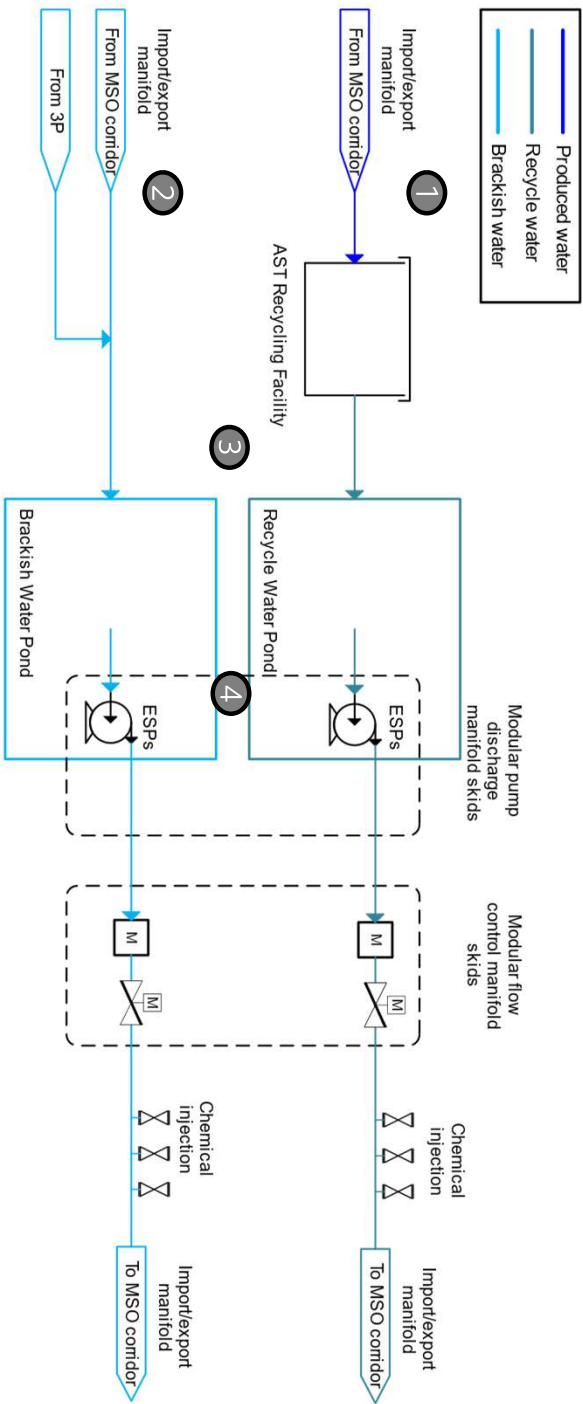
NEW MEXICO
DELAWARE BASIN
FRAC POND GEN 2 - PLU C1
OVERALL SITE LAYOUT



Petrofac

NEW MEXICO
DELAWARE BASIN
FRAC POND GEN 2 - PLU C1
OVERALL SITE LAYOUT

Delaware Frac Pond Process Flow (1 of 2)



1 Produced water arrives at the facility from the MSO corridor. Produced water is routed to the AST recycling facility. At the AST facility, produced water is treated through flocculation to become recycle water used for frac.

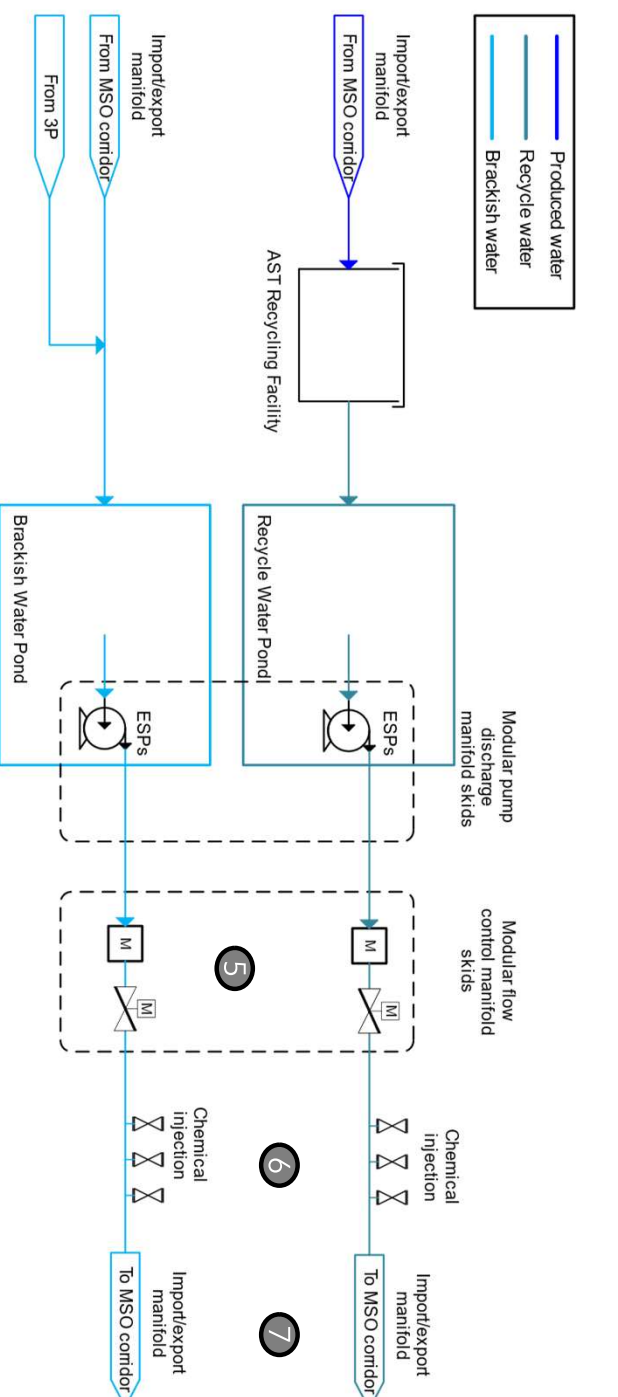
2 Brackish water enters the facility through the import/export manifold connected to the MSO corridor. Brackish water can also be supplemented from 3P transfers.

3 Recycle water and brackish water streams are routed to their respective pits.

4 Electric submersible pumps remove water from each pond and send flow through the modular discharge skids. VFDs drive the ESPs to ensure pump speeds meet needed flow requirements. The pumps and manifold skids can be disconnected and moved from pond to pond to meet frac needs.

ExxonMobil

Delaware Frac Pond Process Flow (2 of 2)



5 Recycle and brackish water streams continue flow separately through the modular flow control skids. The skids include flow meters to measure pump flow rates, flow control valves to support startup and operations at low flow rates, and pressure transmitters.

6 Water streams flow through the chemical injection points where a 3rd party injects chemicals for frac support.

7 At the import/export manifolds, water flows from the facility into the MSO corridor. The streams can be sent separately or blended. Manifolds include flow meters and SDV's to isolate the facility from the corridor. Flow can also be reversed at the manifold to bring water from the corridor into the facility.

Venegas, Victoria, EMNRD

From: Venegas, Victoria, EMNRD
Sent: Monday, August 12, 2024 3:00 PM
To: Houston, Kristen /C
Subject: 2RF-123 - PLU Central 1 Recycling FACILITY ID [fAB1805932167]
Attachments: 2RF-123 - PLU Central 1 Recycling FACILITY ID [fAB1805932167] 08.12.2024.pdf

2RF-123 - PLU Central 1 Recycling FACILITY ID [fAB1805932167]

Good afternoon Ms. Houston.

NMOCD has reviewed the proposed recycling facility updates submitted by [373075] XTO PERMIAN OPERATING LLC on 08/02/2024, for 2RF-123 - PLU Central 1 Recycling FACILITY ID [fAB1805932167], Application ID: 369981. The proposed update to be done on the 2RF-123 - PLU Central 1 Recycling FACILITY ID [fAB1805932167] is as follows: installation of mechanical and electrical infrastructure (i.e., electric submersible pumps, transformers, switchboards, etc.) to support upcoming developments and eliminate the use of temporary diesel pumps. The proposed recycling facility updates have been approved with the following conditions of approval:

- 2RF-123 - PLU Central 1 Recycling FACILITY ID [fAB1805932167] registration expires on February 27, 2025.
- [373075] XTO PERMIAN OPERATING LLC will, operate, maintain, and close 2RF-123 - PLU Central 1 Recycling FACILITY ID [fAB1805932167] in compliance with 19.15.34 NMAC. No changes to the operations procedures, maintenance, monitoring procedures, or closure procedures will be made aside from the requested updates.
- Water reuse and recycling from 2RF-123 - PLU Central 1 Recycling FACILITY ID [fAB1805932167] is limited to wells owned and operated by [373075] XTO PERMIAN OPERATING LLC.
- [373075] XTO PERMIAN OPERATING LLC shall submit monthly reports of recycling and reuse of produced water, drilling fluids, and liquid oil field waste on NMOCD form C-148 through OD Permitting even if there is zero activity.
- [373075] XTO PERMIAN OPERATING LLC must comply with 19.15.29 NMAC Releases in the event of any release of produced water or other oil field wastes at 2RF-123 - PLU Central 1 Recycling FACILITY ID [fAB1805932167].

Please let me know if you have any further questions.

Regards,

Victoria Venegas • Environmental Specialist
Environmental Bureau
EMNRD - Oil Conservation Division
506 W. Texas Ave. Artesia, NM 88210
(575) 909-0269 | Victoria.Venegas@emnrd.nm.gov
<https://www.emnrd.nm.gov/oecd/>



District I
1625 N. French Dr., Hobbs, NM 88240
Phone:(575) 393-6161 Fax:(575) 393-0720
District II
811 S. First St., Artesia, NM 88210
Phone:(575) 748-1283 Fax:(575) 748-9720
District III
1000 Rio Brazos Rd., Aztec, NM 87410
Phone:(505) 334-6178 Fax:(505) 334-6170
District IV
1220 S. St Francis Dr., Santa Fe, NM 87505
Phone:(505) 476-3470 Fax:(505) 476-3462

State of New Mexico
Energy, Minerals and Natural Resources
Oil Conservation Division
1220 S. St Francis Dr.
Santa Fe, NM 87505

CONDITIONS

Action 369981

CONDITIONS

Operator: XTO ENERGY, INC 6401 Holiday Hill Road Midland, TX 79707	OGRID: 5380
	Action Number: 369981
	Action Type: [C-147] Water Recycle Long (C-147L)

CONDITIONS

Created By	Condition	Condition Date
vvenegas	NMOCD has reviewed the proposed recycling facility updates submitted by [373075] XTO PERMIAN OPERATING LLC on 08/02/2024, for 2RF-123 - PLU Central 1 Recycling FACILITY ID [fAB1805932167], Application ID: 369981. The proposed update to be done on the 2RF-123 - PLU Central 1 Recycling FACILITY ID [fAB1805932167] is as follows: installation of mechanical and electrical infrastructure (i.e., electric submersible pumps, transformers, switchboards, etc.) to support upcoming developments and eliminate the use of temporary diesel pumps. The proposed recycling facility updates have been approved.	8/12/2024