

Drone Imagery Date: Sept. 18, 2023



U.S. Feet
Scale 1"=70'

Rev. 9 - Issued for Information Updated Plan	Oct. 27, 2023	Drafted by: Marcos Barriga (Elite Optz.)
Preliminary Version 0		Reviewed by: (Elite Optz.)
Rev. 10 - Issued for Information Updated Plan	Feb. 18, 2024	Drafted by: Marcos Barriga (Elite Optz.)
Preliminary Version 0		Reviewed by: (Elite Optz.)
Rev. 11 - Issued for Information Updated Plan	May 2, 2024	Drafted by: Marcos Barriga (Elite Optz.)
Preliminary Version 0		Reviewed by: (Elite Optz.)
		Approved by: (Caza Petro.)

Job. #: 21-EliteOptz-0010-Rev11

Page 1 of 5

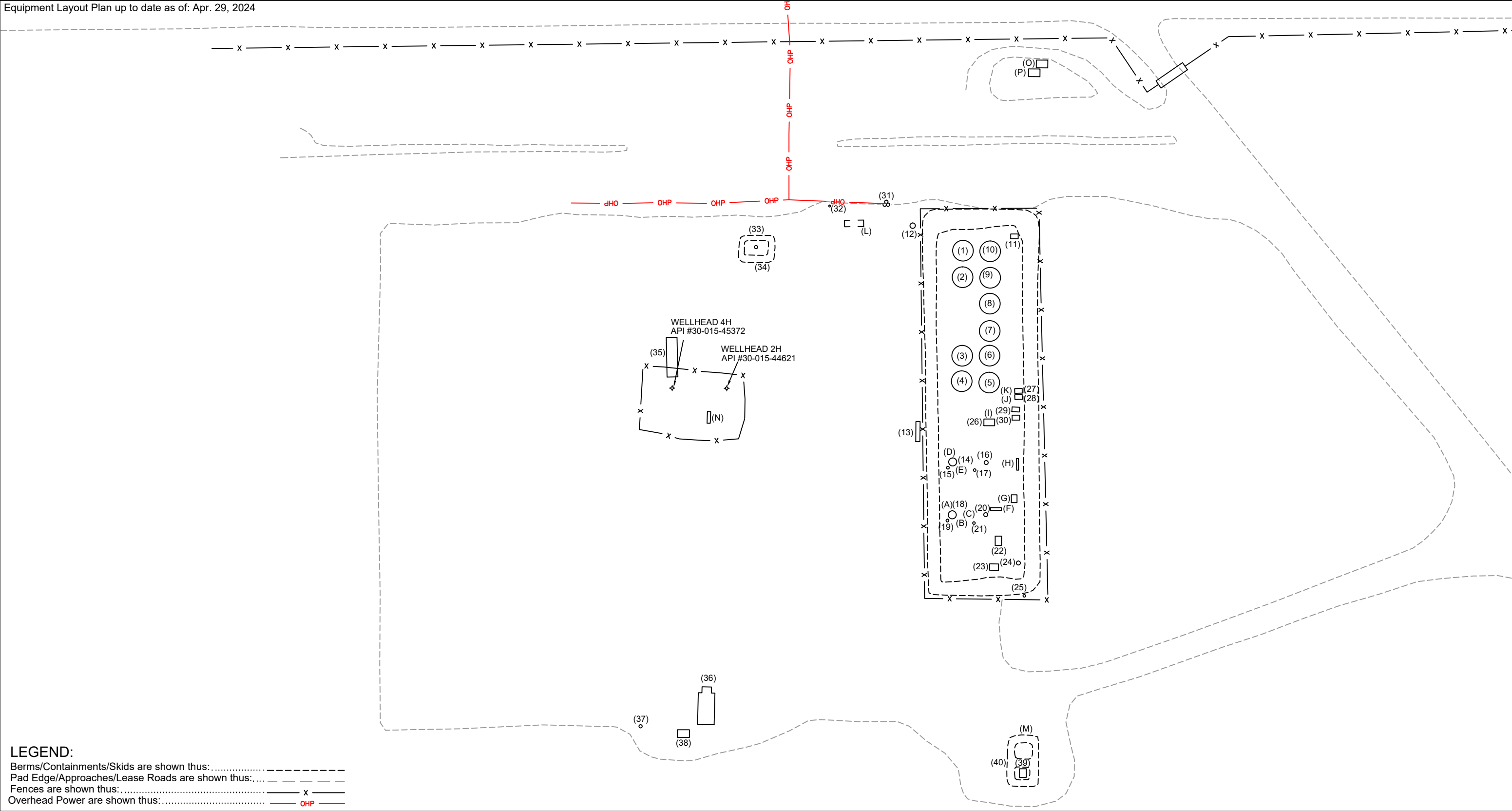
Aerial As-Built Overview of
Caza Petroleum, LLC.
Forehand Ranch North 22-21 State Com.
Unit H. Sec. 22-23S-27E
1480' FNL & 250' FEL
2H (API #30-015-44621) & 4H (API #30-015-45372)



Disclaimer: This drawing is intended for Caza Petroleum, LLC. internal purposes only and is not to be relied upon as a boundary survey or to establish real property interests. Survey information shown on this drawing was gathered between the dates of: Jan. 23, 2021 and Apr. 29, 2024. Survey information was collected using a combination of GNSS observations and geo-referenced aerial drone imagery when required. Observations refer to: NAD83 (2011) Datum, New Mexico State Plane Coordinate System, East Zone (3001), US Survey Feet, CSF=0.99990909. This drawing includes additional information that was collected from various sources including first hand observations, walk-through photos when applicable and third party information as well as information provided by Caza Petroleum, LLC. Caza Petroleum, LLC. is to verify the accuracy of all information as presented on this drawing. Elite Optimization, LP. is not responsible for design by engineer of records, erection or operation of any facilities represented by this drawing. This drawing is not an official engineering drawing or land survey drawing; this drawing is not to be used for construction.



Equipment Layout Plan up to date as of: Apr. 29, 2024

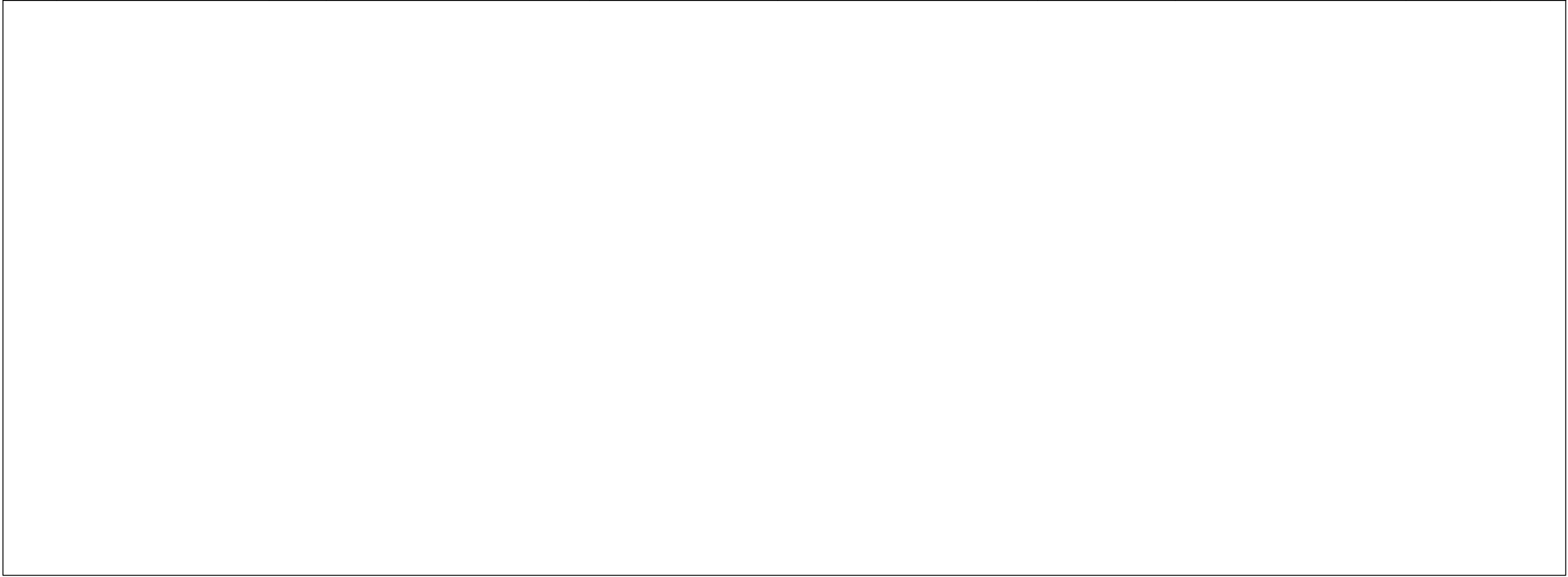


LEGEND:
Berms/Containments/Skids are shown thus:
Pad Edge/Approaches/Lease Roads are shown thus:
Fences are shown thus: x
Overhead Power are shown thus: OHP

U.S. Feet
Scale 1"=70'

Rev. 9 - Issued for Information Updated Plan	Oct. 27, 2023	Drafted by: Marcos Barriga (Elite Optz.)	As-Built Equipment Layout Plan for Caza Petroleum, LLC. Forehand Ranch North 22-21 State Com. Unit H. Sec. 22-23S-27E 1480' FNL & 250' FEL 2H (API #30-015-44621) & 4H (API #30-015-45372)		<p>Disclaimer: This drawing is intended for Caza Petroleum, LLC. internal purposes only and is not to be relied upon as a boundary survey or to establish real property interests. Survey information shown on this drawing was gathered between the dates of: Jan. 23, 2021 and Apr. 29, 2024.</p> <p>Survey information was collected using a combination of GNSS observations and geo-referenced aerial drone imagery when required. Observations refer to: NAD83 (2011) Datum, New Mexico State Plane Coordinate System, East Zone (3001), US Survey Feet, CSF=0.99990909</p> <p>This drawing includes additional information that was collected from various sources including first hand observations, walk-through photos when applicable and third party information as well as information provided by Caza Petroleum, LLC.</p> <p>Caza Petroleum, LLC. is to verify the accuracy of all information as presented on this drawing. Elite Optimization, LP. is not responsible for design by engineer of records, erection or operation of any facilities represented by this drawing.</p> <p>This drawing is not an official engineering drawing or land survey drawing; this drawing is not to be used for construction.</p>
Preliminary Version 0		Reviewed by: (Elite Optz.)			
Rev. 10 - Issued for Information Updated Plan	Feb. 18, 2024	Drafted by: Marcos Barriga (Elite Optz.)			
Preliminary Version 0		Reviewed by: (Elite Optz.)			
Rev. 11 - Issued for Information Updated Plan	May 2, 2024	Drafted by: Marcos Barriga (Elite Optz.)			
Preliminary Version 0		Reviewed by: (Elite Optz.)			
Job. #: 21-EliteOptz-0010-Rev11		Page 2 of 5			

ELP Ref.	Piece	Year	Manufacturer	Serial No.	Model No.	Dimensions	Additional Info.	Lat.	Long.
A	Meter - Oil	2016	Micromotion	12137918	5700R12ABMAZZZ	--	(Label off as of 8/10/23)	32.293461	-104.170588
B	Meter - Water	2019	Rosemount	14950980	8750WDMT2M1FTSA020CA1/Z5M4G1	--	--	32.293442	-104.170632
C	Meter	--	Turbines Inc	1902194	--	--	--	32.293432	-104.170586
D	Meter - Oil	2019	Micromotion	3443350	1700R12ABAEZZZ	--	--	32.293460	-104.170457
E	Meter - Water	2019	Rosemount	14950994	--	--	--	32.293445	-104.170498
F	Meter - Gas	--	Daniel	1904142	--	--	ABB T191663796	32.293367	-104.170592
G	Meter - Gas	--	Daniel	4420826	--	--	ABB T170469994	32.293329	-104.170565
H	Meter - Gas	--	Canalta	S0312987	--	--	ABB T200701937	32.293321	-104.170485
I	Meter - VRU	--	Turbines Inc.	F16493	--	--	--	32.293368	-104.170397
J	Meter - Water	--	Turbines Inc.	1910197	--	--	Pump 108269	32.293328	-104.170322
K	Meter - Water	--	Turbines Inc.	1816212	--	--	Pump 124467	32.293328	-104.170308
L	Meter - Gas	--	Daniel	150047074	--	--	ABB T164664056	32.293657	-104.169901
M	Meter - Flare	--	Turbines Inc.	2137402	F103-P-AH-CH-HGI-IB-IG-OG-PB-PX-XN-ZU-1TO	--	--	32.293306	-104.171128
N	Meter - Gas	--	Precision Flow	SF21115	14.3	--	ABB T194894847	32.293956	-104.170368
O	Meter - Gas	--	Canalta	S0313954	Model: 6213Y	--	ABB T191865756	32.293269	-104.169516
P	Meter - Gas	--	Daniel	150036548	--	--	ABB T165066146	32.293284	-104.169537



Rev. 9 - Issued for Information Updated Plan
Preliminary Version 0

Oct. 27, 2023

Drafted by: Marcos Barriga (Elite Optz.)
Reviewed by: (Elite Optz.)
Approved by: (Caza Petro.)

Rev. 10 - Issued for Information Updated Plan
Preliminary Version 0

Feb. 18, 2024

Drafted by: Marcos Barriga (Elite Optz.)
Reviewed by: (Elite Optz.)
Approved by: (Caza Petro.)

Rev. 11 - Issued for Information Updated Plan
Preliminary Version 0

May 2, 2024

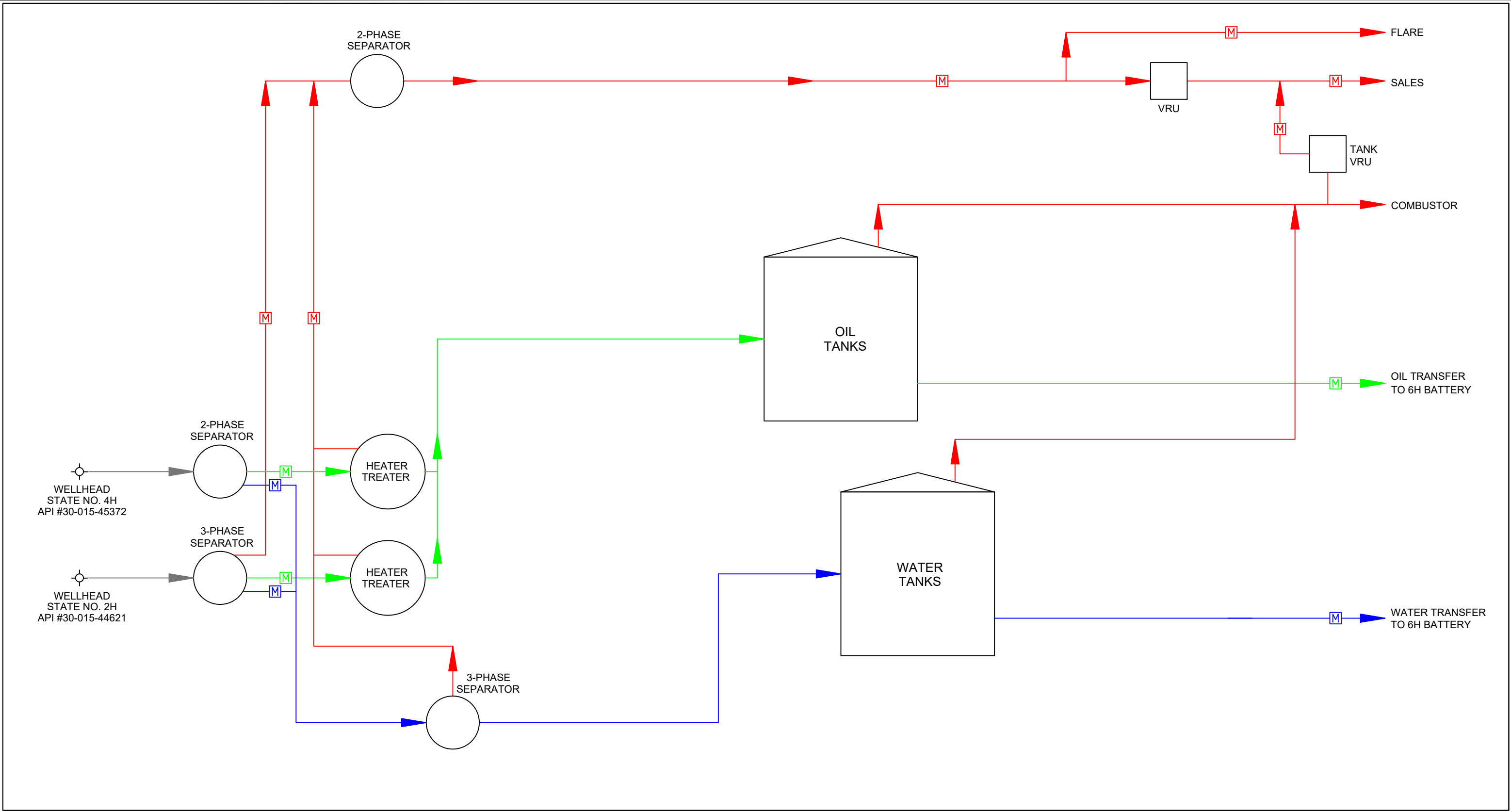
Drafted by: Marcos Barriga (Elite Optz.)
Reviewed by: (Elite Optz.)
Approved by: (Caza Petro.)

Job. #: 21-EliteOptz-0010-Rev11

Page 4 of 5

As-Built Meter List for
Caza Petroleum, LLC.
Forehand Ranch North 22-21 State Com.
Unit H. Sec. 22-23S-27E
1480' FNL & 250' FEL
2H (API #30-015-44621) & 4H (API #30-015-45372)

Disclaimer: This drawing is intended for Caza Petroleum, LLC. internal purposes only and is not to be relied upon as a boundary survey or to establish real property interests. Survey information shown on this drawing was gathered between the dates of: Jan. 23, 2021 and Apr. 29, 2024. Survey information was collected using a combination of GNSS observations and geo-referenced aerial drone imagery when required. Observations refer to: NAD83 (2011) Datum, New Mexico State Plane Coordinate System, East Zone (3001), US Survey Feet, CSF=0.99990909. This drawing includes additional information that was collected from various sources including first hand observations, walk-through photos when applicable and third party information as well as information provided by Caza Petroleum, LLC. Caza Petroleum, LLC. is to verify the accuracy of all information as presented on this drawing. Elite Optimization, LP. is not responsible for design by engineer of records, erection or operation of any facilities represented by this drawing. This drawing is not an official engineering drawing or land survey drawing; this drawing is not to be used for construction.



LEGEND:

Wellstream is shown thus:.....

Gas is shown thus:.....

Oil is shown thus:.....

Water is shown thus:.....

Oil & Water / Bad Oil is shown thus:.....

Gas Meter is shown thus:.....

Oil Meter is shown thus:.....

Water Meter is shown thus:.....

Rev. 9 - Issued for Information Updated Plan	Oct. 27, 2023	Drafted by: Marcos Barriga (Elite Optz.)	Reviewed by: (Elite Optz.)
Preliminary Version 0		Approved by: (Caza Petro.)	
Rev. 10 - Issued for Information Updated Plan	Feb. 18, 2024	Drafted by: Marcos Barriga (Elite Optz.)	Reviewed by: (Elite Optz.)
Preliminary Version 0		Approved by: (Caza Petro.)	
Rev. 11 - Issued for Information Updated Plan	May 2, 2024	Drafted by: Marcos Barriga (Elite Optz.)	Reviewed by: (Elite Optz.)
Preliminary Version 0		Approved by: (Caza Petro.)	

Job. #: 21-EliteOptz-0010-Rev11

Page 5 of 5

As-Built Process Flow Diagram for

Caza Petroleum, LLC.

Forehand Ranch North 22-21 State Com.

Unit H. Sec. 22-23S-27E

1480' FNL & 250' FEL

2H (API #30-015-44621) & 4H (API #30-015-45372)

Caza Petroleum, LLC

Disclaimer: This drawing is intended for Caza Petroleum, LLC. internal purposes only and is not to be relied upon as a boundary survey or to establish real property interests. Survey information shown on this drawing was gathered between the dates of: Jan. 23, 2021 and Apr. 29, 2024. Survey information was collected using a combination of GNSS observations and geo-referenced aerial drone imagery when required. Observations refer to: NAD83 (2011) Datum, New Mexico State Plane Coordinate System, East Zone (3001), US Survey Feet, CSF=0.99990909. This drawing includes additional information that was collected from various sources including first hand observations, walk-through photos when applicable and third party information as well as information provided by Caza Petroleum, LLC. Caza Petroleum, LLC. is to verify the accuracy of all information as presented on this drawing. Elite Optimization, LP. is not responsible for design by engineer of records, erection or operation of any facilities represented by this drawing. This drawing is not an official engineering drawing or land survey drawing; this drawing is not to be used for construction.

ELITE OPTIMIZATION

District I
1625 N. French Dr., Hobbs, NM 88240
Phone:(575) 393-6161 Fax:(575) 393-0720
District II
811 S. First St., Artesia, NM 88210
Phone:(575) 748-1283 Fax:(575) 748-9720
District III
1000 Rio Brazos Rd., Aztec, NM 87410
Phone:(505) 334-6178 Fax:(505) 334-6170
District IV
1220 S. St Francis Dr., Santa Fe, NM 87505
Phone:(505) 476-3470 Fax:(505) 476-3462

State of New Mexico
Energy, Minerals and Natural Resources
Oil Conservation Division
1220 S. St Francis Dr.
Santa Fe, NM 87505

QUESTIONS

Action 392447

QUESTIONS

Operator: CAZA OPERATING, LLC 200 N Loraine St Midland, TX 79701	OGRID: 249099
	Action Number: 392447
	Action Type: [UF-FAC] TB Registration (TB-REG)

QUESTIONS

Facility Details <i>Please answer all the questions in this group.</i>	
Name of the facility	Forehand Ranch North 22-21 State Com Nos. 2H-4H Production Facility
Date the facility was opened	10/14/2019
Depth to ground water, if known	Not answered.

Verification	
Does the operator have other facilities with a matching name	No
Are there other facilites located within approximately 50 feet	No

District I
1625 N. French Dr., Hobbs, NM 88240
Phone:(575) 393-6161 Fax:(575) 393-0720
District II
811 S. First St., Artesia, NM 88210
Phone:(575) 748-1283 Fax:(575) 748-9720
District III
1000 Rio Brazos Rd., Aztec, NM 87410
Phone:(505) 334-6178 Fax:(505) 334-6170
District IV
1220 S. St Francis Dr., Santa Fe, NM 87505
Phone:(505) 476-3470 Fax:(505) 476-3462

State of New Mexico
Energy, Minerals and Natural Resources
Oil Conservation Division
1220 S. St Francis Dr.
Santa Fe, NM 87505

ACKNOWLEDGMENTS

Action 392447

ACKNOWLEDGMENTS

Operator: CAZA OPERATING, LLC 200 N Loraine St Midland, TX 79701	OGRID: 249099
	Action Number: 392447
	Action Type: [UF-FAC] TB Registration (TB-REG)

ACKNOWLEDGMENTS

<input checked="" type="checkbox"/>	I certify that I am authorized to register a facility on behalf of the responsible operator.
<input checked="" type="checkbox"/>	I certify that I will notify OCD of any changes of ownership for this facility.
<input checked="" type="checkbox"/>	I certify that I will notify OCD when this facility is closed.