

Drone Imagery Date: Apr. 17, 2023



U.S. Feet  
Scale 1"=60'

Rev. 8 - Issued for Information Updated Plan	Oct. 27, 2023	Drafted by: Marcos Barriga (Elite Optz.)	Reviewed by: (Elite Optz.)
Preliminary Version 0		Approved by: (Caza Petro.)	
Rev. 9 - Issued for Information Updated Plan	Feb. 18, 2024	Drafted by: Marcos Barriga (Elite Optz.)	Reviewed by: (Elite Optz.)
Preliminary Version 0		Approved by: (Caza Petro.)	
Rev. 10 - Issued for Information Updated Plan	May 2, 2024	Drafted by: Marcos Barriga (Elite Optz.)	Reviewed by: (Elite Optz.)
Preliminary Version 0		Approved by: (Caza Petro.)	

Job. #: 21-EliteOptz-0011-Rev10

Page 1 of 4

Aerial As-Built Overview of  
**Caza Petroleum, LLC.**  
ALISA OGDEN  
UNIT P. SEC. 15-23S-27E  
1H (API #30-015-45349) & 4H (API #30-015-45363)

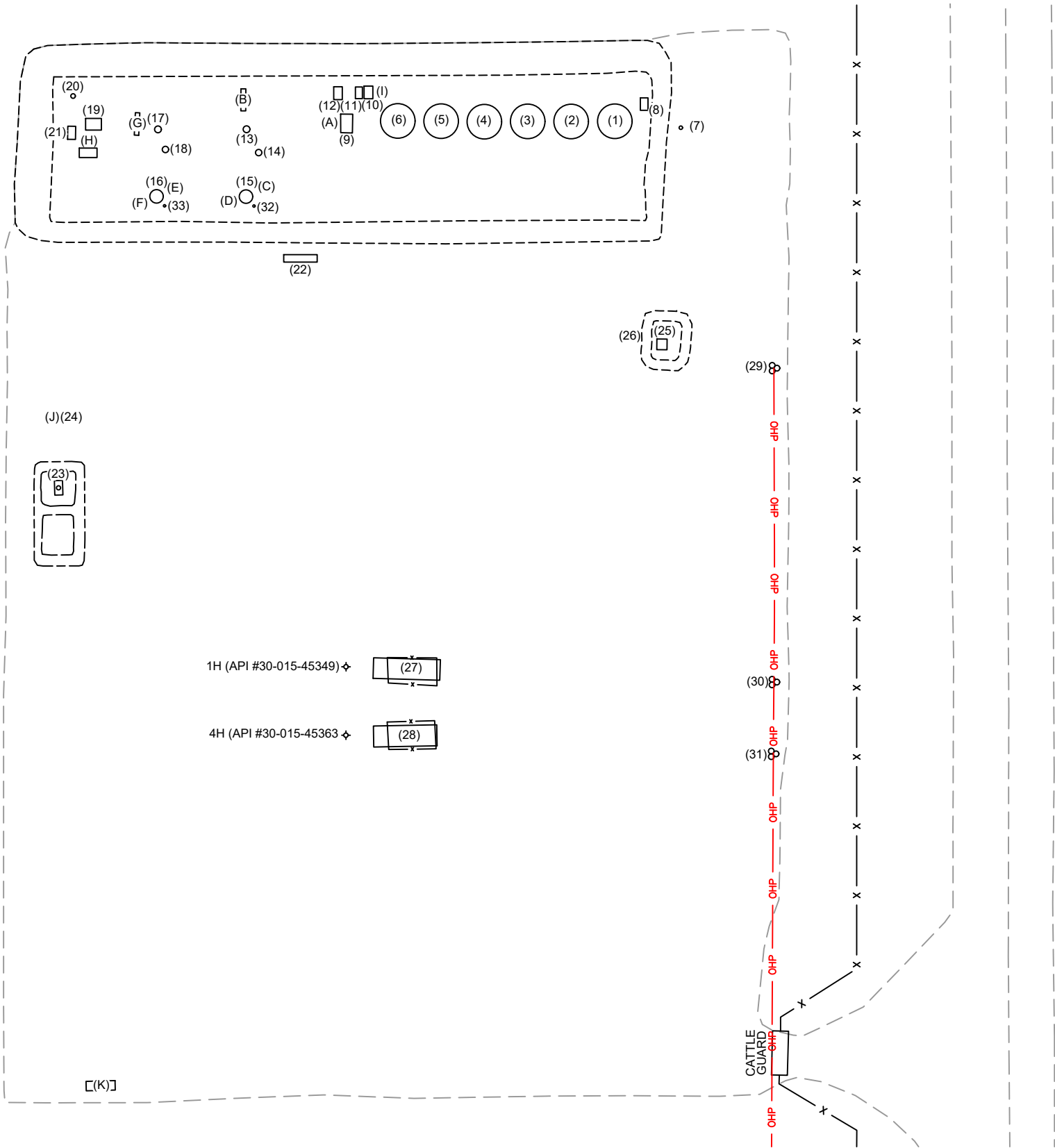


Disclaimer: This drawing is intended for Caza Petroleum, LLC. internal purposes only and is not to be relied upon as a boundary survey or to establish real property interests. Survey information shown on this drawing was gathered between the dates of: Jan. 23, 2021 and Apr. 29, 2024. Survey information was collected using a combination of GNSS observations and geo-referenced aerial drone imagery when required. Observations refer to: NAD83 (2011) Datum, New Mexico State Plane Coordinate System, East Zone (3001), US Survey Feet, CSF=0.99990909. This drawing includes additional information that was collected from various sources including first hand observations, walk-through photos when applicable and third party information as well as information provided by Caza Petroleum, LLC. Caza Petroleum, LLC. is to verify the accuracy of all information as presented on this drawing. Elite Optimization, LP. is not responsible for design by engineer of records, erection or operation of any facilities represented by this drawing. This drawing is not an official engineering drawing or land survey drawing; this drawing is not to be used for construction.





Equipment Layout Plan up to date as of: Apr. 29, 2024



LEGEND:

Berms/Containments/Skids are shown thus: .....  
Pad Edge/Approaches/Lease Roads are shown thus: .....  
Fences are shown thus: ..... x .....  
Overhead Power are shown thus: ..... OHP .....



U.S. Feet  
Scale 1"=60'

Rev. 8 - Issued for Information Updated Plan	Oct. 27, 2023	Drafted by: Marcos Barriga (Elite Optz.)	Reviewed by: (Elite Optz.)
Preliminary Version 0		Approved by: (Caza Petro.)	
Rev. 9 - Issued for Information Updated Plan	Feb. 18, 2024	Drafted by: Marcos Barriga (Elite Optz.)	Reviewed by: (Elite Optz.)
Preliminary Version 0		Approved by: (Caza Petro.)	
Rev. 10 - Issued for Information Updated Plan	May 2, 2024	Drafted by: Marcos Barriga (Elite Optz.)	Reviewed by: (Elite Optz.)
Preliminary Version 0		Approved by: (Caza Petro.)	
Job. #: 21-EliteOptz-0011-Rev10		Page 2 of 4	

As-Built Equipment Layout Plan for  
**Caza Petroleum, LLC.**  
ALISA OGDEN  
UNIT P. SEC. 15-23S-27E  
1H (API #30-015-45349) & 4H (API #30-015-45363)



Disclaimer: This drawing is intended for Caza Petroleum, LLC. internal purposes only and is not to be relied upon as a boundary survey or to establish real property interests. Survey information shown on this drawing was gathered between the dates of: Jan. 23, 2021 and Apr. 29, 2024. Survey information was collected using a combination of GNSS observations and geo-referenced aerial drone imagery when required. Observations refer to: NAD83 (2011) Datum, New Mexico State Plane Coordinate System, East Zone (3001), US Survey Feet, CSF=0.99990909. This drawing includes additional information that was collected from various sources including first hand observations, walk-through photos when applicable and third party information as well as information provided by Caza Petroleum, LLC. Caza Petroleum, LLC. is to verify the accuracy of all information as presented on this drawing. Elite Optimization, LP. is not responsible for design by engineer of records, erection or operation of any facilities represented by this drawing. This drawing is not an official engineering drawing or land survey drawing; this drawing is not to be used for construction.



ELP Ref.	Piece	Year	Manufacturer	Serial No.	Model No.	Dimensions	Additional Info.	Lat.	Long.
1	Tank	2019	Fox Tank	4726	--	15.5 x 16 - 500 BBL	--	32.302234	-104.169912
2	Tank	2019	Fox Tank	4730	--	15.5 x 16 - 500 BBL	--	32.302237	-104.169977
3	Tank	2019	Fox Tank	4729	--	15.5 x 16 - 500 BBL	--	32.302236	-104.170042
4	Tank	2019	Fox Tank	4725	--	15.5 x 16 - 500 BBL	--	32.302235	-104.170102
5	Tank	2019	Fox Tank	4733	--	15.5 x 16 - 500 BBL	--	32.302237	-104.170167
6	Tank	2019	Fox Tank	4734	--	15.5 x 16 - 500 BBL	--	32.302237	-104.170229
7	Fuel Pot	--	--	--	--	--	--	32.302231	-104.169821
8	Transfer Pump	--	Summit	02003819-5	2196ST0	--	1.5x3-6, 10HP	32.302257	-104.169872
9	VRU	--	Platinum	PVR 1981	--	--	16-48-V2PH-300-PLT	32.302235	-104.170305
10	Pump - Transfer	--	Eunice Pump	124467	Oct-00	--	1.5x3-6, 10HP	32.302272	-104.170271
11	Container - No Pump	--	--	N/A	--	--	--	32.302272	-104.170288
12	Pump - Recycle	--	Knighten Industries	KMS-188	--	--	1.5HP	32.302274	-104.170316
13	Scrubber	2010	Energy WeldFab	21011-083	--	--	--	32.302227	-104.170450
14	Fuel Pot	--	--	--	--	--	--	32.302200	-104.170438
15	Vert. Heater Treater	2022	Pessco	2490	--	6 x 20	WP 125 psi, TP 200 psi	32.302144	-104.170452
16	Vert. Heater Treater	2019	Fox Tank	61799	--	6 x 20	DP 125 psi, 1H Well	32.302145	-104.170582
17	Scrubber	2012	Energy Weldfab	12-1858	--	--	MAWP 1440 psi @ 125 F	32.302228	-104.170579
18	Fuel Pot	--	--	--	--	--	--	32.302202	-104.170564
19	VRU	--	Platinum	Skid #1595	--	--	--	32.302235	-104.170673
20	Vert. Separator	2019	Fox Tank	1125	--	30 x 10	--	32.302268	-104.170703
21	Inlet Header	--	--	N/A	--	--	--	32.302226	-104.170704
22	Elec. Panel	--	--	N/A	--	--	--	32.302068	-104.170371
23	Flare - LP	--	--	Unknown	--	--	--	32.301784	-104.170717
24	Flare Control	--	Ignition Management System / Platinum Control	2019052800034	Edge-600	--	--	32.301874	-104.170713
25	Combustor	--	--	N/A	--	--	--	32.301959	-104.169846
26	Combustor Ignition Controller	--	Ignition Management System / Platinum Control	2019082600023	Edge-600	--	--	32.301969	-104.169880
27	Pumping Unit	2019	Jack Artificial Lift	SLS19-1519	C1280D-365-240TH	--	#1H Well, API #30-015-45349	32.301560	-104.170230
28	Pumping Unit	2019	Jack Artificial Lift	SLS19-1651	C1280D-365-240TH	--	#4H Well, API #30-015-45363	32.301478	-104.170246
29	Transformer & Meter	--	--	Meter #324637938	--	--	(3) 37.5 kVa	32.301928	-104.169682
30	Transformer & Meter	--	--	Meter #30193870	--	--	(3) 37.5 kVa	32.301544	-104.169680
31	Transformer & Meter	--	--	Meter #70056646	--	--	(3) 37.5 kVa	32.301452	-104.169678
32	Fuel Gas Filter	2019	Manchester	2068168	--	--	Heater Treater 2490	32.302134	-104.170438
33	Fuel Gas Filter	2019	Manchester	2068255	--	--	Heater Treater 61799	32.302134	-104.170571
A	Meter - VRU	2019	Turbines Inc.	F13580	--	--	Label off as of 4-29-24	32.302240	-104.170332
B	Meter - Gas	--	Precision Flow	SF20899	--	--	ABB T185049231	32.302265	-104.170457
C	Meter - Water	--	NuFlo	12185950714	--	--	--	32.302145	-104.170425
D	Meter - Oil	--	Endress + Hauser	T80C1816000	Promass 300	--	Heater Treater 2490, Disconnected and off to the side	32.302140	-104.170473
E	Meter - Water	2019	Nuflo	1220543080923	9A-50179076	--	--	32.302154	-104.170560
F	Meter - Oil	--	Endress + Hauser	T80C1116000	Promass 300	--	Heater Treater 61799 (Disconnected)	32.302134	-104.170604
G	Meter - Gas	--	Precision Flow	SF 20905	Precision 14.3	--	ABB T191462242	32.302236	-104.170610
H	Meter - Gas	--	Daniel	6190353	--	--	ABB T200197749	32.302198	-104.170681
I	Meter - Water	--	Turbines Inc.	1914044	F0xx-P-HF-PC-PX-XI-ZX-1TU	--	--	32.302275	-104.170275
J	Meter - Flare	--	Turbines Inc.	2216198	F103-P-AH-CH-HGL-IB-IG-OG-PB-PX-XN-ZU-1TO	--	--	32.301878	-104.170736
K	Meter - Gas	--	Daniel	160046329	--	--	ABB T191563028	32.301042	-104.170651

--

Rev. 8 - Issued for Information Updated Plan

Preliminary Version 0

Oct. 27, 2023

Drafted by: Marcos Barriga

Reviewed by:

Approved by:

(Elite Optz.)

(Elite Optz.)

(Caza Petro.)

Rev. 9 - Issued for Information Updated Plan

Preliminary Version 0

Feb. 18, 2024

Drafted by: Marcos Barriga

Reviewed by:

Approved by:

(Elite Optz.)

(Elite Optz.)

(Caza Petro.)

Rev. 10 - Issued for Information Updated Plan

Preliminary Version 0

May 2, 2024

Drafted by: Marcos Barriga

Reviewed by:

Approved by:

(Elite Optz.)

(Elite Optz.)

(Caza Petro.)

Job. #: 21-EliteOptz-0011-Rev10

Page 3 of 4

As-Built Equipment & Meter List for

Caza Petroleum, LLC.

ALISA OGDEN

UNIT P. SEC. 15-23S-27E

1H (API #30-015-45349) & 4H (API #30-015-45363)

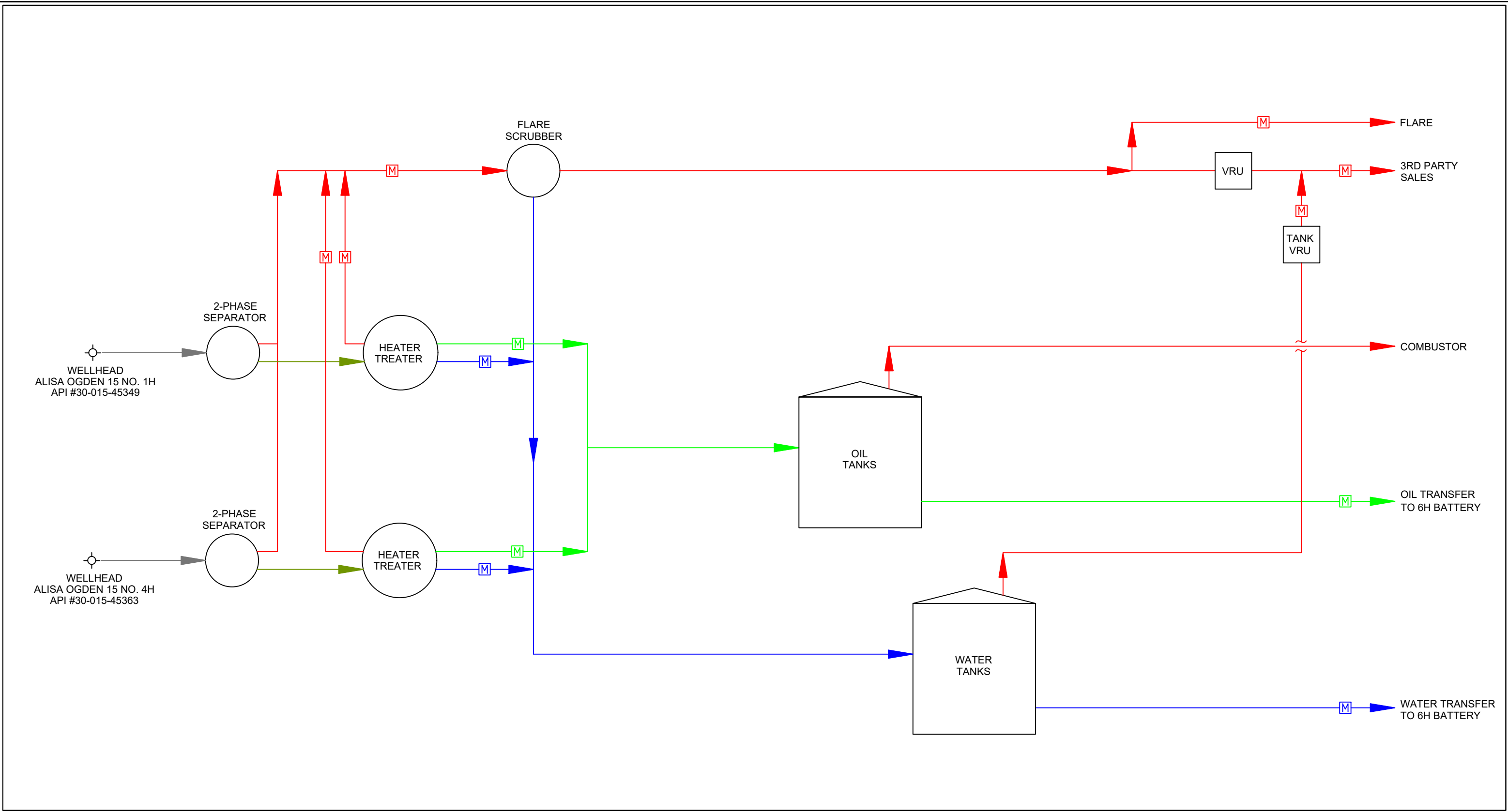
Caza

Petroleum, LLC

Disclaimer: This drawing is intended for Caza Petroleum, LLC. internal purposes only and is not to be relied upon as a boundary survey or to establish real property interests. Survey information shown on this drawing was gathered between the dates of: Jan. 23, 2021 and Apr. 29, 2024. Survey information was collected using a combination of GNSS observations and geo-referenced aerial drone imagery when required. Observations refer to: NAD83 (2011) Datum, New Mexico State Plane Coordinate System, East Zone (3001), US Survey Feet, CSF=0.99990909 This drawing includes additional information that was collected from various sources including first hand observations, walk-through photos when applicable and third party information as well as information provided by Caza Petroleum, LLC. Caza Petroleum, LLC. is to verify the accuracy of all information as presented on this drawing. Elite Optimization, LP. is not responsible for design by engineer of records, erection or operation of any facilities represented by this drawing. This drawing is not an official engineering drawing or land survey drawing; this drawing is not to be used for construction.

ELITE

OPTIMIZATION



**LEGEND:**

Wellstream is shown thus:.....

Gas is shown thus:.....

Oil is shown thus:.....

Water is shown thus:.....

Oil & Water / Bad Oil is shown thus:.....

Gas Meter is shown thus:.....

Oil Meter is shown thus:.....

Water Meter is shown thus:.....

Rev. 8 - Issued for Information	Oct. 27, 2023	Drafted by: Marcos Barriga	(Elite Optz.)
Updated Plan		Reviewed by:	(Elite Optz.)
Preliminary Version 0		Approved by:	(Caza Petro.)
Rev. 9 - Issued for Information	Feb. 18, 2024	Drafted by: Marcos Barriga	(Elite Optz.)
Updated Plan		Reviewed by:	(Elite Optz.)
Preliminary Version 0		Approved by:	(Caza Petro.)
Rev. 10 - Issued for Information	May 2, 2024	Drafted by: Marcos Barriga	(Elite Optz.)
Updated Plan		Reviewed by:	(Elite Optz.)
Preliminary Version 0		Approved by:	(Caza Petro.)

Job. #: 21-EliteOptz-0011-Rev10

**As-Built Process Flow Diagram for**  
**Caza Petroleum, LLC.**  
**ALISA OGDEN**  
**UNIT P. SEC. 15-23S-27E**  
**1H (API #30-015-45349) & 4H (API #30-015-45363)**

Disclaimer: This drawing is intended for Caza Petroleum, LLC. internal purposes only and is not to be relied upon as a boundary survey or to establish real property interests. Survey information shown on this drawing was gathered between the dates of: Jan. 23, 2021 and Apr. 29, 2024. Survey information was collected using a combination of GNSS observations and geo-referenced aerial drone imagery when required. Observations refer to: NAD83 (2011) Datum, New Mexico State Plane Coordinate System, East Zone (3001), US Survey Feet, CSF=0.99990909. This drawing includes additional information that was collected from various sources including first hand observations, walk-through photos when applicable and third party information as well as information provided by Caza Petroleum, LLC. Caza Petroleum, LLC. is to verify the accuracy of all information as presented on this drawing. Elite Optimization, LP. is not responsible for design by engineer of records, erection or operation of any facilities represented by this drawing. This drawing is not an official engineering drawing or land survey drawing; this drawing is not to be used for construction.

**District I**  
1625 N. French Dr., Hobbs, NM 88240  
Phone:(575) 393-6161 Fax:(575) 393-0720  
**District II**  
811 S. First St., Artesia, NM 88210  
Phone:(575) 748-1283 Fax:(575) 748-9720  
**District III**  
1000 Rio Brazos Rd., Aztec, NM 87410  
Phone:(505) 334-6178 Fax:(505) 334-6170  
**District IV**  
1220 S. St Francis Dr., Santa Fe, NM 87505  
Phone:(505) 476-3470 Fax:(505) 476-3462

**State of New Mexico**  
**Energy, Minerals and Natural Resources**  
**Oil Conservation Division**  
**1220 S. St Francis Dr.**  
**Santa Fe, NM 87505**

QUESTIONS  
  
Action 392462

QUESTIONS

Operator: CAZA OPERATING, LLC 200 N Loraine St Midland, TX 79701	OGRID: 249099
	Action Number: 392462
	Action Type: [UF-FAC] TB Registration (TB-REG)

QUESTIONS

<b>Facility Details</b> <i>Please answer all the questions in this group.</i>	
Name of the facility	Alisa Ogden 15 Nos. 1H-4H Production Facility
Date the facility was opened	07/01/2019
Depth to ground water, if known	Not answered.

<b>Verification</b>	
Does the operator have other facilities with a matching name	No
Are there other facilites located within approximately 50 feet	No

**District I**  
1625 N. French Dr., Hobbs, NM 88240  
Phone:(575) 393-6161 Fax:(575) 393-0720  
**District II**  
811 S. First St., Artesia, NM 88210  
Phone:(575) 748-1283 Fax:(575) 748-9720  
**District III**  
1000 Rio Brazos Rd., Aztec, NM 87410  
Phone:(505) 334-6178 Fax:(505) 334-6170  
**District IV**  
1220 S. St Francis Dr., Santa Fe, NM 87505  
Phone:(505) 476-3470 Fax:(505) 476-3462

**State of New Mexico**  
**Energy, Minerals and Natural Resources**  
**Oil Conservation Division**  
**1220 S. St Francis Dr.**  
**Santa Fe, NM 87505**

ACKNOWLEDGMENTS  
  
Action 392462

ACKNOWLEDGMENTS

Operator: CAZA OPERATING, LLC 200 N Loraine St Midland, TX 79701	OGRID: 249099
	Action Number: 392462
	Action Type: [UF-FAC] TB Registration (TB-REG)

ACKNOWLEDGMENTS

<input checked="" type="checkbox"/>	I certify that I am authorized to register a facility on behalf of the responsible operator.
<input checked="" type="checkbox"/>	I certify that I will notify OCD of any changes of ownership for this facility.
<input checked="" type="checkbox"/>	I certify that I will notify OCD when this facility is closed.