


Drone Imagery Date: Feb. 7, 2024



  
U.S. Feet  
Scale 1"=60'

Rev. 8 - Issued for Information Updated Plan	Oct. 27, 2023	Drafted by: Marcos Barriga (Elite Optz.)	Reviewed by: (Elite Optz.)
Preliminary Version 0		Approved by: (Caza Petro.)	
Rev. 9 - Issued for Information Updated Plan	Mar. 20, 2024	Drafted by: Marcos Barriga (Elite Optz.)	Reviewed by: (Elite Optz.)
Preliminary Version 0		Approved by: (Caza Petro.)	
Rev. 10 - Issued for Information Updated Plan	May 2, 2024	Drafted by: Marcos Barriga (Elite Optz.)	Reviewed by: (Elite Optz.)
Preliminary Version 0		Approved by: (Caza Petro.)	

Job. #: 21-EliteOptz-0006-2-Rev10

Page 1 of 4

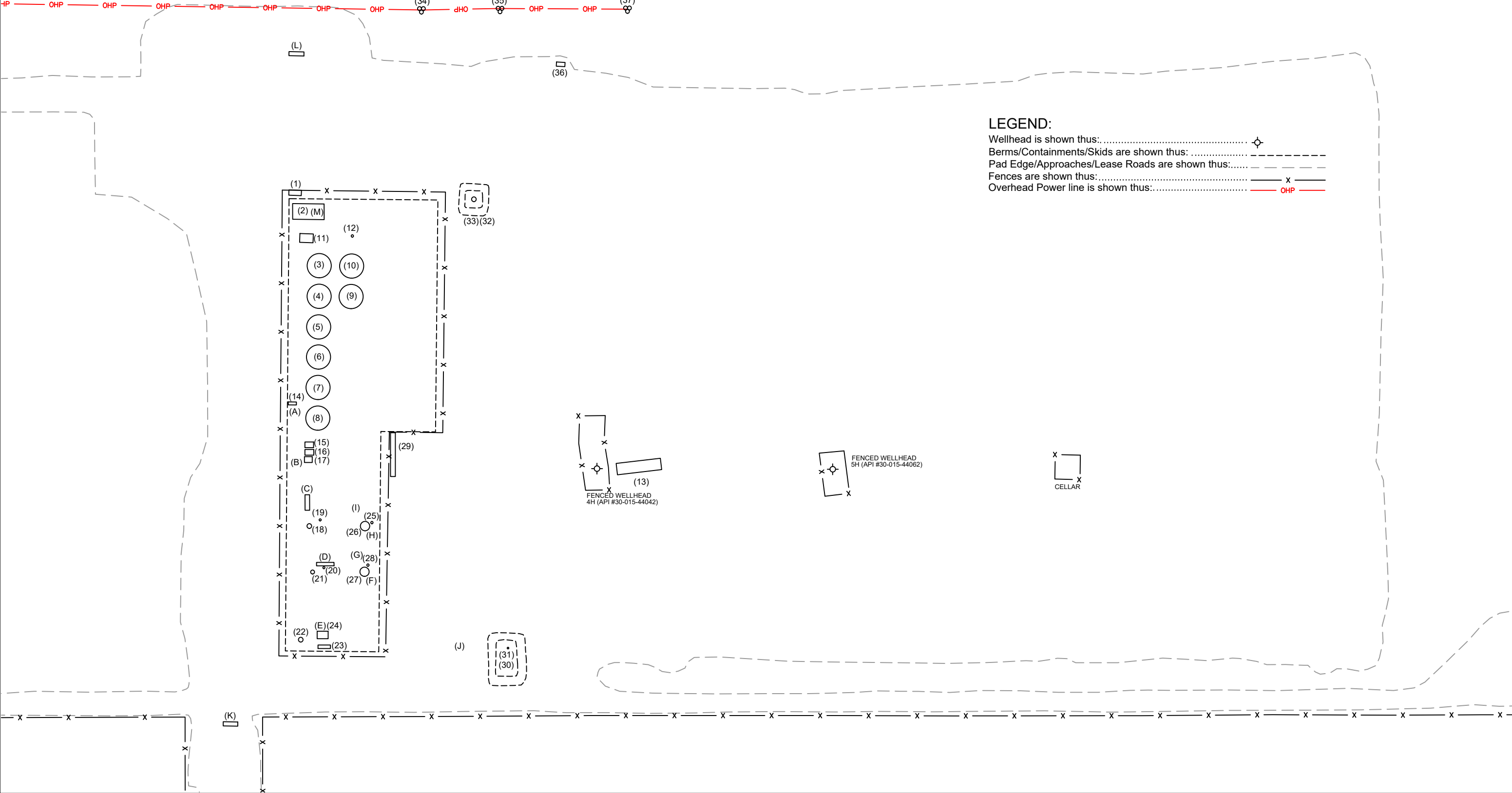
Aerial As-Built Overview of  
**Caza Petroleum, LLC.**  
MAD RIVER 13 STATE COM 4H & 5H  
UNIT 1, SEC. 13, T24S, R27E  
4H (API #30-015-44042) & 5H (API #30-015-44062)



Disclaimer: This drawing is intended for Caza Petroleum, LLC. internal purposes only and is not to be relied upon as a boundary survey or to establish real property interests. Survey information shown on this drawing was gathered between the dates of: Feb. 5, 2021 and Apr. 29, 2024. Survey information was collected using a combination of GNSS observations and geo-referenced aerial drone imagery when required. Observations refer to: NAD83 (2011) Datum, New Mexico State Plane Coordinate System, East Zone (3001), US Survey Feet, CSF=0.99990909. This drawing includes additional information that was collected from various sources including first hand observations, walk-through photos when applicable and third party information as well as information provided by Caza Petroleum, LLC. Caza Petroleum, LLC. is to verify the accuracy of all information as presented on this drawing. Elite Optimization, LP. is not responsible for design by engineer of records, erection or operation of any facilities represented by this drawing. This drawing is not an official engineering drawing or land survey drawing; this drawing is not to be used for construction.



Equipment Layout Plan up to date as of: Apr. 29, 2024



Ref	Piece	Year	Manufacturer	Serial No.	Model No.	Dimensions	Additional Information	Lat	Long
1	LACT Panel	--	--	N/A	--	--	--	32.215314	-104.136600
2	LACT	--	Angus Measurement	Skid #25674-20	--	--	--	32.215335	-104.136562
3	Tank	2013	Entertech Industries	20358	--	15.5 x 16 - 500 BBL	DP 16 oz	32.215355	-104.136453
4	Tank	2009	Enertech Industries	13866	--	15.5 x 16 - 500 BBL	DP 16 oz	32.215354	-104.136387
5	Tank	2017	Azteca Fabrication	CA1882	--	15.5 x 16 - 500 BBL	Diverter Tank	32.215356	-104.136319
6	Tank	2017	Azteca Fabrication	CA1887	--	15.5 x 16 - 500 BBL	--	32.215355	-104.136262
7	Tank	2017	Azteca Fabrication	CA1880	--	15.5 x 16 - 500 BBL	--	32.215351	-104.136198
8	Tank	2009	Enertech Industries	13760	--	15.5 x 16 - 500 BBL	DP 16 oz	32.215354	-104.136135
9	Tank	2010	Entertech Industries	14914	--	15.5 x 16 - 500 BBL	DP 16 oz	32.215410	-104.136388
10	Tank	2009	Entertech Industries	13005	--	15.5 x 16 - 500 BBL	DP 16 oz	32.215413	-104.136450
11	VRU	--	Platinum	PVR-2402	--	--	--	32.215332	-104.136507
12	Fuel Pot	--	--	--	--	--	--	32.215412	-104.136509
13	Pumping Unit	2014	Shores Lift	SLS14-1271	TM912D-365-168TH	--	--	32.215910	-104.136027
14	Transfer Pump	--	Centripump	12375	MTX	--	1.5x3-13, 100HP	32.215314	-104.136164
15	Recycle Pump	--	Roper Pumps	G-1023758	--	--	2HP	32.215341	-104.136079
16	Recycle Pump	--	Roper Pumps	G-954230	--	--	2HP	32.215340	-104.136064
17	Recycle Pump	--	Apergy	No Tag	--	--	2HP, Decommissioned	32.215338	-104.136047
18	Vert. Separator	2017	Azteca Fabrication	CA1894	--	--	MAWP 1440 psi @ 150 F	32.215336	-104.135910
19	Fuel Pot	--	--	--	--	--	Test Separator CA1894	32.215356	-104.135924
20	Fuel Pot	--	--	--	--	--	Test Separator EMT-C-008	32.215361	-104.135824
21	Vert. Separator	2014	Edge Manufacturing	EMT-C-008	--	30 x 10	MAWP 1440 psi @ 120 F	32.215341	-104.135815
22	Scrubber	2017	Azteca Fabrication	CA1893	--	--	MAWP 125 psi @ 120 F	32.215321	-104.135674
23	Inlet Header	--	--	N/A	--	--	--	32.215364	-104.135658
24	VRU	--	Platinum	Skid #1577	--	--	--	32.215360	-104.135685
25	Fuel Pot	--	--	--	--	--	Vert. Heater Treater CA1892	32.215447	-104.135918
26	Vert. Heater Treater	2017	Azteca Fabrication	CA1892	--	--	MAWP 125 psi @ 120 F, 4H Well	32.215434	-104.135908
27	Vert. Heater Treater	2018	Production Equipment	1575	--	6 x 20	WP 125 psi, TP 200 psi, 5H Well	32.215432	-104.135814
28	Fuel Pot	--	--	--	--	--	Vert. Heater Treater 1575	32.215441	-104.135828
29	Elec. - Panel	--	--	N/A	--	--	--	32.215483	-104.136063
30	Flare - HP	--	--	Not Available	--	--	--	32.215683	-104.135656
31	Flare Control	2019	Ignition Management System / Platinum Control	2019082600001	Edge-600	--	--	32.215687	-104.135693
32	Combustor Ignition Controller	2019	Ignition Management System / Platinum Control	2019082600011	Edge-600	--	--	32.215625	-104.136573
33	Combustor	--	FlameCo	N/A	--	--	--	32.215619	-104.136592
34	Transformer & Meter	--	--	Meter #19690337	--	--	(3) 37.5 kVa	32.215534	-104.136989
35	Transformer & Meter	--	Excel	Meter #69932452	--	--	(3) 25 kVa	32.215711	-104.136983
36	Elec. - Panel	--	--	N/A	--	--	--	32.215780	-104.136864
37	Transformer & Meter	--	Excel	Meter #30193848	--	--	(3) 37.5 kVa	32.215906	-104.136979
A	Meter - Water	2017	Rosemount	14723667	8732EMT2M1N5DA1M4	--	--	32.215295	-104.136166
B	Meter - Water	--	Rosemount	1104	--	--	--	32.215307	-104.136028
C	Meter - Gas	--	Daniel	5240824	--	--	ABB T200701936	32.215332	-104.135956
D	Meter - Gas	--	Canalta	S0312988	--	--	ABB T182224387	32.215368	-104.135834
E	Meter - VRU	2021	Turbines Inc.	F16881	--	--	Broken at the Jan 24th check	32.215346	-104.135694
F	Meter - Oil	--	Endress Hauser	T80C1216000	--	--	Vert. Heater Treater 1575 (Disconnected)	32.215445	-104.135798
G	Meter - Water	2020	Rosemount	14991791	8732EMT2M1N5DA1M4	--	Vert. Heater Treater 1575	32.215423	-104.135841
H	Meter - Oil	--	Micromotion	3455701	--	--	Vert. Heater Treater CA1892 (Disconnected)	32.215443	-104.135892
I	Meter - Water	2020	Rosemount	14988497	8732EMT2M1N5DA1M4	--	Vert. Heater Treater CA1892	32.215413	-104.135936
J	Meter - Flare	--	Turbines Inc	2137386	F103-P-AH-CH-HGL-IB-IG-OG-PB-PX-XN-ZU-1TO	--	--	32.215601	-104.135657
K	Meter - Water	--	Endress + Hauser	PA020616000	Promag300	--	ABB T181619158	32.215212	-104.135456
L	Meter - Gas	--	Daniel	150043635	--	--	ABB T170670790	32.215321	-104.136886
M	Meter - LACT	--	Endress + Hauser	NA070816000	Promass 300	--	--	32.215356	-104.136566

Rev. 8 - Issued for Information  
Updated Plan  
Preliminary Version 0

Oct. 27, 2023

Drafted by: Marcos Barriga (Elite Optz.)  
Reviewed by: (Elite Optz.)  
Approved by: (Caza Petro.)

Rev. 9 - Issued for Information  
Updated Plan  
Preliminary Version 0

Mar. 20, 2024

Drafted by: Marcos Barriga (Elite Optz.)  
Reviewed by: (Elite Optz.)  
Approved by: (Caza Petro.)

Rev. 10 - Issued for Information  
Updated Plan  
Preliminary Version 0

May 2, 2024

Drafted by: Marcos Barriga (Elite Optz.)  
Reviewed by: (Elite Optz.)  
Approved by: (Caza Petro.)

Job. #: 21-EliteOptz-0006-2-Rev10

Page 3 of 4

As-Built Equipment and Meter List for  
Caza Petroleum, LLC.  
MAD RIVER 13 STATE COM 4H & 5H  
UNIT 1, SEC. 13, T24S, R27E  
4H (API #30-015-44042) & 5H (API #30-015-44062)



Disclaimer: This drawing is intended for Caza Petroleum, LLC. internal purposes only and is not to be relied upon as a boundary survey or to establish real property interests. Survey information shown on this drawing was gathered between the dates of: Feb. 5, 2021 and Apr. 29, 2024. Survey information was collected using a combination of GNSS observations and geo-referenced aerial drone imagery when required. Observations refer to: NAD83 (2011) Datum, New Mexico State Plane Coordinate System, East Zone (3001), US Survey Feet, CSF=0.99990909. This drawing includes additional information that was collected from various sources including first hand observations, walk-through photos when applicable and third party information as well as information provided by Caza Petroleum, LLC. Caza Petroleum, LLC. is to verify the accuracy of all information as presented on this drawing. Elite Optimization, LP. is not responsible for design by engineer of records, erection or operation of any facilities represented by this drawing. This drawing is not an official engineering drawing or land survey drawing; this drawing is not to be used for construction.



(Paper: 11 x 17)

Received by OCD: 10/16/2024 8:04:13 AM

Released to Imaging: 10/16/2024 8:11:47 AM



**District I**  
1625 N. French Dr., Hobbs, NM 88240  
Phone:(575) 393-6161 Fax:(575) 393-0720  
**District II**  
811 S. First St., Artesia, NM 88210  
Phone:(575) 748-1283 Fax:(575) 748-9720  
**District III**  
1000 Rio Brazos Rd., Aztec, NM 87410  
Phone:(505) 334-6178 Fax:(505) 334-6170  
**District IV**  
1220 S. St Francis Dr., Santa Fe, NM 87505  
Phone:(505) 476-3470 Fax:(505) 476-3462

State of New Mexico  
Energy, Minerals and Natural Resources  
Oil Conservation Division  
1220 S. St Francis Dr.  
Santa Fe, NM 87505

QUESTIONS  
  
Action 392961

QUESTIONS

Operator: CAZA OPERATING, LLC 200 N Loraine St Midland, TX 79701	OGRID: 249099
	Action Number: 392961
	Action Type: [UF-FAC] TB Registration (TB-REG)

QUESTIONS

<b>Facility Details</b>	
<i>Please answer all the questions in this group.</i>	
Name of the facility	Mad River 13 State Nos. 4H-5H Production Facility
Date the facility was opened	04/27/2017
Depth to ground water, if known	Not answered.

<b>Verification</b>	
Does the operator have other facilities with a matching name	No
Are there other facilites located within approximately 50 feet	No

**District I**  
1625 N. French Dr., Hobbs, NM 88240  
Phone:(575) 393-6161 Fax:(575) 393-0720  
**District II**  
811 S. First St., Artesia, NM 88210  
Phone:(575) 748-1283 Fax:(575) 748-9720  
**District III**  
1000 Rio Brazos Rd., Aztec, NM 87410  
Phone:(505) 334-6178 Fax:(505) 334-6170  
**District IV**  
1220 S. St Francis Dr., Santa Fe, NM 87505  
Phone:(505) 476-3470 Fax:(505) 476-3462

**State of New Mexico**  
**Energy, Minerals and Natural Resources**  
**Oil Conservation Division**  
**1220 S. St Francis Dr.**  
**Santa Fe, NM 87505**

ACKNOWLEDGMENTS  
  
Action 392961

ACKNOWLEDGMENTS

Operator: CAZA OPERATING, LLC 200 N Loraine St Midland, TX 79701	OGRID: 249099
	Action Number: 392961
	Action Type: [UF-FAC] TB Registration (TB-REG)

ACKNOWLEDGMENTS

<input checked="" type="checkbox"/>	I certify that I am authorized to register a facility on behalf of the responsible operator.
<input checked="" type="checkbox"/>	I certify that I will notify OCD of any changes of ownership for this facility.
<input checked="" type="checkbox"/>	I certify that I will notify OCD when this facility is closed.