

Drone Imagery Date: May 30, 2022



U.S. Feet
Scale 1"=70'

Rev. 2 - Issued for Information Updated Plan	Dec. 4, 2022	Drafted by: Marcos Barriga (Elite Optz.)
Preliminary Version 2	Feb. 27, 2023	Reviewed by: LaVerne Woroschuk (Elite Optz.)
Rev. 3 - Issued for Information Updated Plan	June 6, 2023	Approved by: (Caza Petro.)
Preliminary Version 0		Drafted by: Marcos Barriga (Elite Optz.)
Rev. 4 - Issued for Information Updated Plan	Nov. 9, 2023	Reviewed by: (Elite Optz.)
Preliminary Version 4		Approved by: (Caza Petro.)
Job. #: 21-EliteOptz-0007-Rev4		Page 1 of 4

Aerial As-Built Overview of
Caza Petroleum, LLC.
Forehand Ranch 27 State Com
Sec. 27-T23S-R27E
Wells 1H & 5
API #30-015-39844 / API #30-025-41530

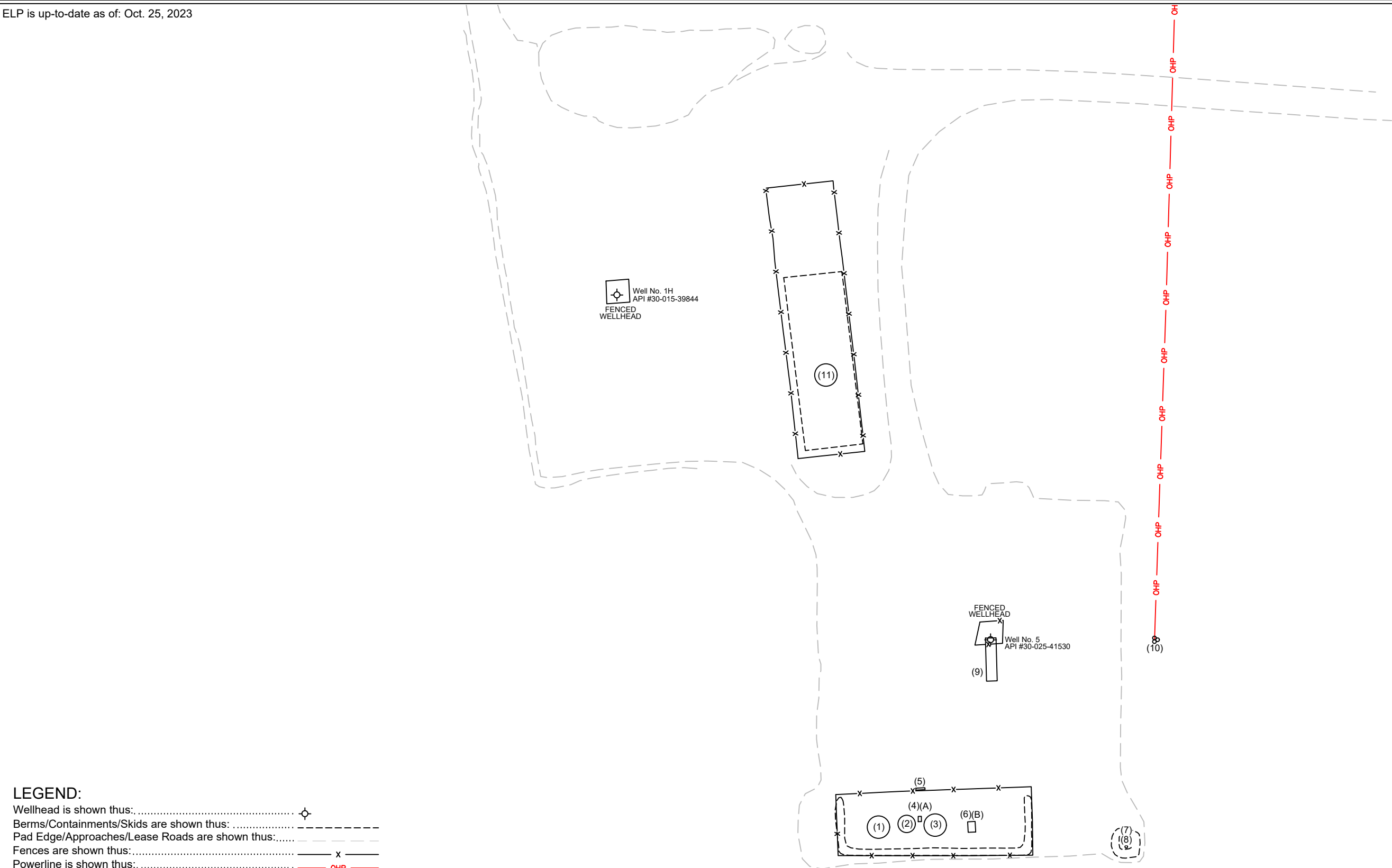


Disclaimer: This drawing is intended for Caza Petroleum, LLC. internal purposes only and is not to be relied upon as a boundary survey or to establish real property interests. Survey information shown on this drawing was gathered between the dates of: Jan. 29, 2021 and Oct. 25, 2023. Survey information was collected using a combination of GNSS observations and geo-referenced aerial drone imagery when required. Observations refer to: NAD83 (2011) Datum, New Mexico State Plane Coordinate System, East Zone (3001), US Survey Feet, CSF=0.99990909. This drawing includes additional information that was collected from various sources including first hand observations, walk-through photos when applicable and third party information as well as information provided by Caza Petroleum, LLC. Caza Petroleum, LLC. is to verify the accuracy of all information as presented on this drawing. Elite Optimization, LP. is not responsible for design by engineer of records, erection or operation of any facilities represented by this drawing. This drawing is not an official engineering drawing or land survey drawing; this drawing is not to be used for construction.



Page 2 of 6
Received by OCD: 10/18/2024 9:15:36 AM
Released to Imaging: 10/18/2024 9:26:14 AM

ELP is up-to-date as of: Oct. 25, 2023



LEGEND:
Wellhead is shown thus: ⬤
Berms/Containments/Skids are shown thus: - - - - -
Pad Edge/Approaches/Lease Roads are shown thus:.....
Fences are shown thus:..... x
Powerline is shown thus:..... — OHP —

N

U.S. Feet
Scale 1"=70'

Rev. 2 - Issued for Information Updated Plan	Dec. 4, 2022	Drafted by: Marcos Barriga	(Elite Optz.)
Preliminary Version 2	Feb. 27, 2023	Reviewed by: LaVerne Woroschuk	(Elite Optz.)
Rev. 3 - Issued for Information Updated Plan	June 6, 2023	Drafted by: Marcos Barriga	(Elite Optz.)
Preliminary Version 0		Reviewed by:	(Elite Optz.)
Rev. 4 - Issued for Information Updated Plan	Nov. 9, 2023	Drafted by: Marcos Barriga	(Elite Optz.)
Preliminary Version 4		Reviewed by:	(Elite Optz.)
Job. #: 21-EliteOptz-0007-Rev4		Page 2 of 4	

As-Built Equipment Layout Plan for
Caza Petroleum, LLC.
Forehand Ranch 27 State Com
Sec. 27-T23S-R27E
Wells 1H & 5
API #30-015-39844 / API #30-025-41530



Disclaimer: This drawing is intended for Caza Petroleum, LLC. internal purposes only and is not to be relied upon as a boundary survey or to establish real property interests. Survey information shown on this drawing was gathered between the dates of: Jan. 29, 2021 and Oct. 25, 2023. Survey information was collected using a combination of GNSS observations and geo-referenced aerial drone imagery when required. Observations refer to: NAD83 (2011) Datum, New Mexico State Plane Coordinate System, East Zone (3001), US Survey Feet, CSF=0.99990909. This drawing includes additional information that was collected from various sources including first hand observations, walk-through photos when applicable and third party information as well as information provided by Caza Petroleum, LLC. Caza Petroleum, LLC. is to verify the accuracy of all information as presented on this drawing. Elite Optimization, LP. is not responsible for design by engineer of records, erection or operation of any facilities represented by this drawing. This drawing is not an official engineering drawing or land survey drawing; this drawing is not to be used for construction.

ELP Ref.	Piece	Year	Manufacturer	Serial No.	Model No.	Dimensions	Details	Long.	Lat.
1	Tank	2014	Edge Manufacturing	API-8722	--	15.5 x 16 - 500 BBL	DP 8 oz	-104.175063	32.281509
2	Gunbarrel	2013	Unavailable	G-9115-13	--	400 BBL	400 BBL	-104.175001	32.281515
3	Tank	2014	Edge Manufacturing	ST.1863	--	15.5 x 16 - 500 BBL	DP 8 oz	-104.174935	32.281511
4	Transfer Pump	--	Centripump	3165SS	STX	--	1x1.5x6, 5HP	-104.174974	32.281532
5	Elec. - Panel	--	--	N/A	--	--	--	-104.174973	32.281584
6	VRU	--	Platinum	Skid #1728	--	--	--	-104.174853	32.281509
7	Flare Control	--	Ignition Management System / Platinum Controls	2.0191E+12	Edge-600	--	--	-104.174516	32.281484
8	Flare - LP	--	Edge Manufacturing	FL0172	25x4	--	---	-104.174506	32.281481
9	Pumping Unit	2013	Shores Lift	LH13-6084	C-228D-246-86TH	--	--	-104.174809	32.281800
10	Transformer & Meter	--	--	Meter #70047035	--	--	(3) 25 kVa	-104.174446	32.281863
11	Tank	2012	Smith Industries	39615	--	15.5 x 16 - 500 BBL	--	-104.175177	32.282362
A	Meter - Water	--	Turbines Inc.	1447115	F0xx-P-XI	--	--	-104.174974	32.281530
B	Meter - VRU	2019	Turbines Inc	F14007	--	--	--	-104.174842	32.281512



Rev. 2 - Issued for Information Updated Plan

Preliminary Version 2

Dec. 4, 2022

Feb. 27, 2023

Drafted by: Marcos Barriga (Elite Optz.)

Reviewed by: LaVerne Woroschuk (Elite Optz.)

Approved by: (Caza Petro.)

Rev. 3 - Issued for Information Updated Plan

Preliminary Version 0

June 6, 2023

Drafted by: Marcos Barriga (Elite Optz.)

Reviewed by: (Elite Optz.)

Approved by: (Caza Petro.)

Rev. 4 - Issued for Information Updated Plan

Preliminary Version 4

Nov. 9, 2023

Drafted by: Marcos Barriga (Elite Optz.)

Reviewed by: (Elite Optz.)

Approved by: (Caza Petro.)

Job. #: 21-EliteOptz-0007-Rev4

Page 3 of 4

As-Built Equipment & Meter List for

Caza Petroleum, LLC.

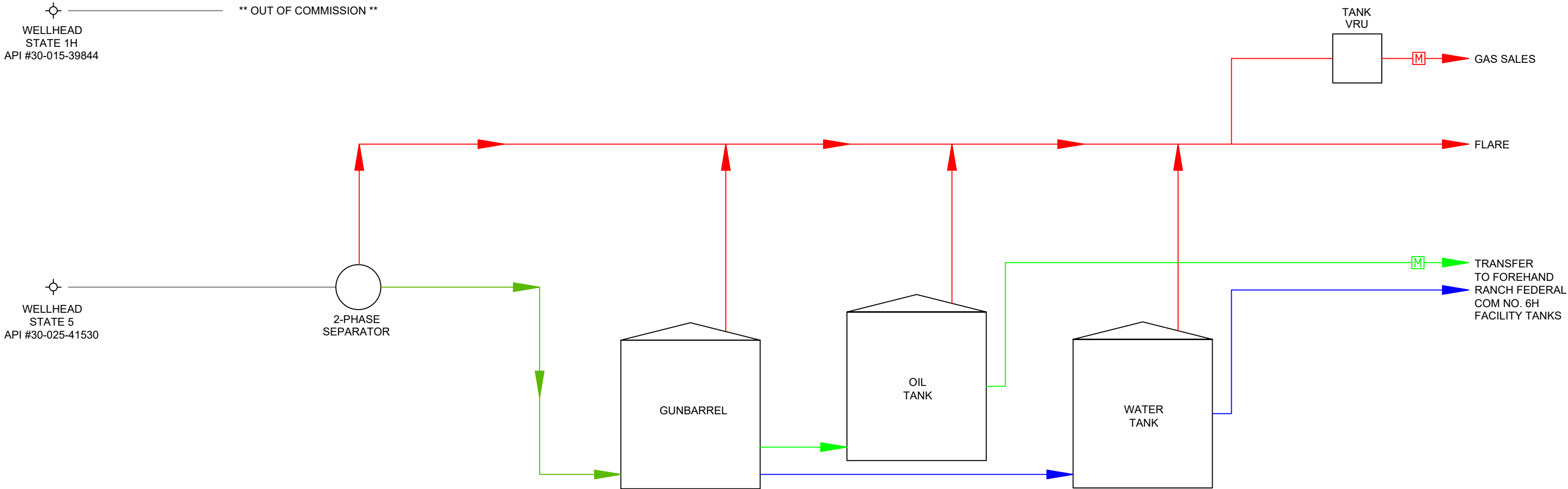
Forehand Ranch 27 State Com

Sec. 27-T23S-R27E

Wells 1H & 5

API #30-015-39844 / API #30-025-41530

Disclaimer: This drawing is intended for Caza Petroleum, LLC. internal purposes only and is not to be relied upon as a boundary survey or to establish real property interests. Survey information shown on this drawing was gathered between the dates of: Jan. 29, 2021 and Oct. 25, 2023. Survey information was collected using a combination of GNSS observations and geo-referenced aerial drone imagery when required. Observations refer to: NAD83 (2011) Datum, New Mexico State Plane Coordinate System, East Zone (3001), US Survey Feet, CSF=0.99990909. This drawing includes additional information that was collected from various sources including first hand observations, walk-through photos when applicable and third party information as well as information provided by Caza Petroleum, LLC. Caza Petroleum, LLC. is to verify the accuracy of all information as presented on this drawing. Elite Optimization, LP. is not responsible for design by engineer of records, erection or operation of any facilities represented by this drawing. This drawing is not an official engineering drawing or land survey drawing; this drawing is not to be used for construction.



LEGEND:

Wellstream is shown thus:.....	—————
Gas is shown thus:.....	—————
Oil is shown thus:.....	—————
Water is shown thus:.....	—————
Oil & Water / Bad Oil is shown thus:.....	—————
Gas Meter is shown thus:.....	
Oil Meter is shown thus:.....	
Water Meter is shown thus:.....	

Rev. 2 - Issued for Information Updated Plan	Dec. 4, 2022	Drafted by: Marcos Barriga (Elite Optz.)
Preliminary Version 2	Feb. 27, 2023	Reviewed by: LaVerne Woroschuk (Elite Optz.)
Rev. 3 - Issued for Information Updated Plan	June 6, 2023	Drafted by: Marcos Barriga (Elite Optz.)
Preliminary Version 0		Reviewed by: (Elite Optz.)
Rev. 4 - Issued for Information Updated Plan	Nov. 9, 2023	Drafted by: Marcos Barriga (Elite Optz.)
Preliminary Version 4		Reviewed by: (Elite Optz.)
Job. #: 21-EliteOptz-0007-Rev4		Approved by: (Caza Petro.)

Page 4 of 4

As-Built Process Flow Diagram for
Caza Petroleum, LLC.
Forehand Ranch 27 State Com
Sec. 27-T23S-R27E
Wells 1H & 5
API #30-015-39844 / API #30-025-41530



Disclaimer: This drawing is intended for Caza Petroleum, LLC. internal purposes only and is not to be relied upon as a boundary survey or to establish real property interests. Survey information shown on this drawing was gathered between the dates of: Jan. 29, 2021 and Oct. 25, 2023. Survey information was collected using a combination of GNSS observations and geo-referenced aerial drone imagery when required. Observations refer to: NAD83 (2011) Datum, New Mexico State Plane Coordinate System, East Zone (3001), US Survey Feet, CSF=0.99990909. This drawing includes additional information that was collected from various sources including first hand observations, walk-through photos when applicable and third party information as well as information provided by Caza Petroleum, LLC. Caza Petroleum, LLC. is to verify the accuracy of all information as presented on this drawing. Elite Optimization, LP. is not responsible for design by engineer of records, erection or operation of any facilities represented by this drawing. This drawing is not an official engineering drawing or land survey drawing; this drawing is not to be used for construction.

District I
1625 N. French Dr., Hobbs, NM 88240
Phone:(575) 393-6161 Fax:(575) 393-0720
District II
811 S. First St., Artesia, NM 88210
Phone:(575) 748-1283 Fax:(575) 748-9720
District III
1000 Rio Brazos Rd., Aztec, NM 87410
Phone:(505) 334-6178 Fax:(505) 334-6170
District IV
1220 S. St Francis Dr., Santa Fe, NM 87505
Phone:(505) 476-3470 Fax:(505) 476-3462

State of New Mexico
Energy, Minerals and Natural Resources
Oil Conservation Division
1220 S. St Francis Dr.
Santa Fe, NM 87505

QUESTIONS

Action 393729

QUESTIONS

Operator: CAZA OPERATING, LLC 200 N Loraine St Midland, TX 79701	OGRID: 249099
	Action Number: 393729
	Action Type: [UF-FAC] TB Registration (TB-REG)

QUESTIONS

Facility Details	
Please answer all the questions in this group.	
Name of the facility	Forehand Ranch 27 State Com No. 5H Production Facility
Date the facility was opened	12/12/2013
Depth to ground water, if known	Not answered.

Verification	
Does the operator have other facilities with a matching name	No
Are there other facilites located within approximately 50 feet	No

District I
1625 N. French Dr., Hobbs, NM 88240
Phone:(575) 393-6161 Fax:(575) 393-0720
District II
811 S. First St., Artesia, NM 88210
Phone:(575) 748-1283 Fax:(575) 748-9720
District III
1000 Rio Brazos Rd., Aztec, NM 87410
Phone:(505) 334-6178 Fax:(505) 334-6170
District IV
1220 S. St Francis Dr., Santa Fe, NM 87505
Phone:(505) 476-3470 Fax:(505) 476-3462

State of New Mexico
Energy, Minerals and Natural Resources
Oil Conservation Division
1220 S. St Francis Dr.
Santa Fe, NM 87505

ACKNOWLEDGMENTS

Action 393729

ACKNOWLEDGMENTS

Operator: CAZA OPERATING, LLC 200 N Loraine St Midland, TX 79701	OGRID: 249099
	Action Number: 393729
	Action Type: [UF-FAC] TB Registration (TB-REG)

ACKNOWLEDGMENTS

<input checked="" type="checkbox"/>	I certify that I am authorized to register a facility on behalf of the responsible operator.
<input checked="" type="checkbox"/>	I certify that I will notify OCD of any changes of ownership for this facility.
<input checked="" type="checkbox"/>	I certify that I will notify OCD when this facility is closed.