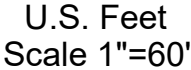


An aerial photograph of a large industrial complex, possibly a refinery or chemical processing plant, located in a vast, arid desert landscape. The facility is characterized by a dense arrangement of large, cylindrical storage tanks, some of which are grouped together. A complex network of pipes, walkways, and structural steel frameworks connects these tanks and other processing units. In the foreground, a long, straight road or railway track runs horizontally across the frame. Several vehicles are visible on this infrastructure, including a white truck, a dark-colored truck, and a train consisting of multiple white and dark-colored railcars. The surrounding terrain is flat and sandy, with sparse, low-lying desert vegetation. The overall scene depicts a major industrial operation in a remote, desert environment.



Rev. 6 - Issued for Information	Mar. 25, 2024	Drafted by: Marcos Barriga	(Elite Optz.)
Updated Plan		Reviewed by:	(Elite Optz.)
Preliminary Version 0		Approved by:	(Caza Petro.)
Rev. 7 - Issued for Information	May 13, 2024	Drafted by: Marcos Barriga	(Elite Optz.)
Updated Plan		Reviewed by:	(Elite Optz.)
Preliminary Version 0		Approved by:	(Caza Petro.)
Rev. 8 - Issued for Information	Oct. 17, 2024	Drafted by: Marcos Barriga	(Elite Optz.)
Revised Drawing Name		Reviewed by:	(Elite Optz.)
Preliminary Version 0		Approved by:	(Caza Petro.)

Job. #: 21-EliteOptz-0005-Rev8
Page 1 of 9

Aerial As-Built Overview of
Caza Petroleum, LLC.
Sioux 25 CTB
Unit B, Sec. 25-T25S-R35E
BLM Lease Number: NMNM114998




Disclaimer: This drawing is intended for Caza Petroleum, LLC. internal purposes only and is not to be relied upon as a boundary survey or to establish real property interests. Survey information shown on this drawing was gathered between the dates of: May 26, 2022 and Apr. 29, 2024.

Survey information was collected using a combination of GNSS observations and geo-referenced aerial drone imagery when required. Observations refer to: NAD83 (2011) Datum, New Mexico State Plane Coordinate System, East Zone (3001), US Survey Feet, CSF=0.99990309

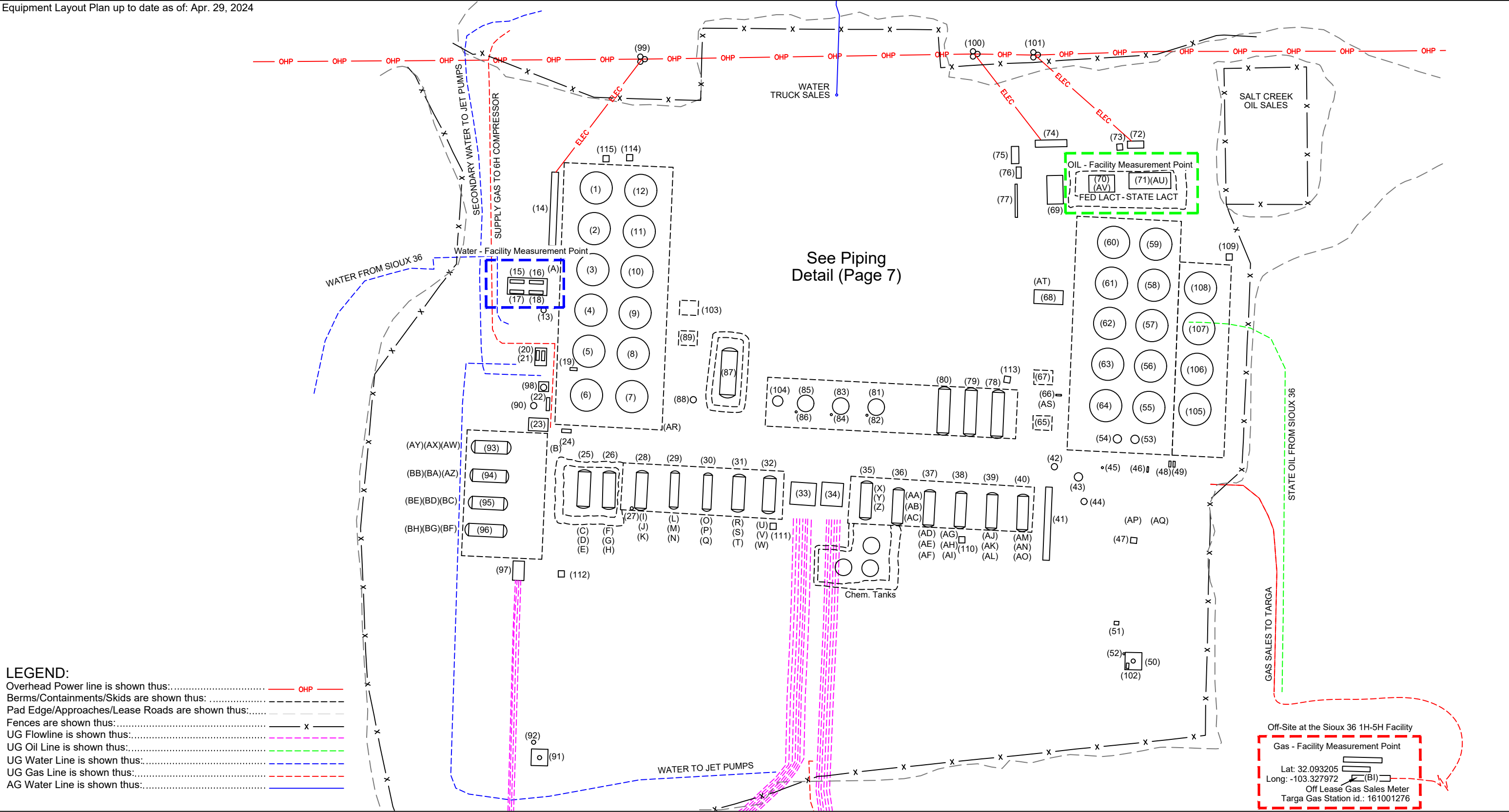
This drawing includes additional information that was collected from various sources including first hand observations, walk-through photos when applicable and third party information as well as information provided by Caza Petroleum, LLC.

Caza Petroleum, LLC. is to verify the accuracy of all information as presented on this drawing. Elite Optimization, LP, is not responsible for design by engineer of records, erection or operation of any facilities represented by this drawing.

This drawing is not an official engineering drawing or land survey drawing; this drawing is not to be used for construction.

 ELITE
OPTIMIZATION

Equipment Layout Plan up to date as of: Apr. 29, 2024



LEGEND:
Overhead Power line is shown thus:..... OHP
Berms/Containments/Skids are shown thus:
Pad Edge/Approaches/Lease Roads are shown thus:.....
Fences are shown thus:..... X
UG Flowline is shown thus:.....
UG Oil Line is shown thus:.....
UG Water Line is shown thus:.....
UG Gas Line is shown thus:.....
AG Water Line is shown thus:.....

N

U.S. Feet
Scale 1"=45'

Rev. 6 - Issued for Information Updated Plan	Mar. 25, 2024	Drafted by: Marcos Barriga	(Elite Optz.)
Preliminary Version 0		Reviewed by:	(Elite Optz.)
Rev. 7 - Issued for Information Updated Plan	May 13, 2024	Drafted by: Marcos Barriga	(Elite Optz.)
Preliminary Version 0		Reviewed by:	(Elite Optz.)
Rev. 8 - Issued for Information Revised Drawing Name	Oct. 17, 2024	Drafted by: Marcos Barriga	(Elite Optz.)
Preliminary Version 0		Reviewed by:	(Elite Optz.)
Job. #: 21-EliteOptz-0005-Rev8		Page 2 of 9	

As-Built Equipment Layout Plan for
Caza Petroleum, LLC.
Sioux 25 CTB
Unit B, Sec. 25-T25S-R35E
BLM Lease Number: NMNM114998



Disclaimer: This drawing is intended for Caza Petroleum, LLC. internal purposes only and is not to be relied upon as a boundary survey or to establish real property interests. Survey information shown on this drawing was gathered between the dates of: May 26, 2022 and Apr. 29, 2024. Survey information was collected using a combination of GNSS observations and geo-referenced aerial drone imagery when required. Observations refer to: NAD83 (2011) Datum, New Mexico State Plane Coordinate System, East Zone (3001), US Survey Feet, CSF=0.99990909. This drawing includes additional information that was collected from various sources including first hand observations, walk-through photos when applicable and third party information as well as information provided by Caza Petroleum, LLC. Caza Petroleum, LLC. is to verify the accuracy of all information as presented on this drawing. Elite Optimization, LP. is not responsible for design by engineer of records, erection or operation of any facilities represented by this drawing. This drawing is not an official engineering drawing or land survey drawing; this drawing is not to be used for construction.



Ref.	Piece	Year	Manufacturer	Serial No.	Model No.	Dimensions	Additional Info.	Lat.	Long.
1	Water Tank	2019	Fox Tank	4732	--	15.5 x 16 - 500 BBL	--	32.108438	-103.320783
2	Water Tank	2014	Edge Manufacturing	T1057	--	15.5 x 16 - 500 BBL	DP 8 oz	32.108394	-103.320787
3	Water Tank	2018	Fox Tank	4495	--	15.5 x 16 - 500 BBL	--	32.108341	-103.320790
4	Water Tank	2017	Azteca Fabrication	CA1881	--	15.5 x 16 - 500 BBL	--	32.108286	-103.320794
5	Water Tank	2017	Azteca Fabrication	CA1878	--	15.5 x 16 - 500 BBL	--	32.108231	-103.320797
6	Water Tank	2020	PermianLide	0S242513	--	15.5 x 24 - 750 BBL	DP 8 oz	32.108172	-103.320802
7	Gunbarrel	2012	Smith Industries	40176	--	15.5 x 24 - 750 BBL	DP 16 oz	32.108168	-103.320731
8	Water Tank	2013	Enertech Industries	20359	--	15.5 x 16 - 500 BBL	DP 16 oz	32.108230	-103.320725
9	Water Tank	2010	Smith Industries	25916	--	15.5 x 16 - 500 BBL	DP 16 oz	32.108283	-103.320724
10	Water Tank	2017	Azteca Fabrication	CA1888	--	15.5 x 16 - 500 BBL	--	32.108338	-103.320720
11	Water Tank	2018	Fox Tank	4474	--	15.5 x 16 - 500 BBL	--	32.108391	-103.320718
12	Water Tank	2019	Fox Tank	4735	--	15.5 x 16 - 500 BBL	--	32.108443	-103.320713
13	Filter Separator	2021	Global Filter	GL-47005	--	--	Sock Filter - Currently Not Plumbed in	32.108285	-103.320867
14	Panel Rack	--	--	N/A	--	--	--	32.108421	-103.320849
15	Booster Pump #1	--	Centripump	No Tag	--	--	40HP	32.108325	-103.320902
16	Charge Pump #1	--	Centripump	No Tag	--	--	10HP	32.108323	-103.320873
17	Booster Pump #2	--	Centripump	No Tag	--	--	75HP	32.108309	-103.320903
18	Charge Pump #2	--	Centripump	No Tag	--	--	15HP	32.108307	-103.320874
19	Transfer Pump	--	Peerless Pump	9927187200-10B	--	--	3x4-13, 50HP	32.108207	-103.320825
20	Transfer Pump	2021	Odessa Pumps	670645	--	--	4x3-13, 30HP	32.108225	-103.320876
21	Transfer Pump	2021	Odessa Pumps	668424	--	--	4x3-13, 30HP	32.108224	-103.320866
22	Flare Control	--	Energy Solutions	N/A	--	--	Flare VFD and PLC	32.108159	-103.320855
23	IA Unit	--	VanZandt	CBV704025	--	--	--	32.108134	-103.320874
24	Transfer Pump	--	Centripump	21220-DR	STX	--	1x1.5-8, 7.5HP	32.108126	-103.320836
25	Horz. Test Separator	2021	Petrosmith	V5583	--	6 x 15	TP 250, DP 250	32.108070	-103.320799
26	Horz. Test Separator	2021	Petrosmith	V5582	--	6 x 15	TP 250, DP 250	32.108067	-103.320767
27	Fuel Pot	--	--	--	--	--	Test Separator E-0447	32.108022	-103.320733
28	Horz. Test Separator	2022	Edge Manufacturing	E-0447	--	6 x 15	--	32.108065	-103.320715
29	Horz. Test Separator	2021	NRG Process Solutions	V-201450	--	48 x 16	--	32.108068	-103.320665
30	Horz. Test Separator	2021	NRG Process Solutions	V-201449	--	48 x 16	--	32.108066	-103.320614
31	Horz. Test Separator	--	N/A	No Tag	--	--	--	32.108063	-103.320566
32	Horz. Test Separator	--	Production Equipment	2191	--	6 x 15	--	32.108061	-103.320517
33	Inlet Header	--	--	N/A	--	--	West Side	32.108032	-103.320460
34	Inlet Header	--	--	N/A	--	--	East Side	32.108032	-103.320414
35	Horz. Test Separator	--	Production Equipment	2162	--	60 x 15	--	32.108053	-103.320367
36	Horz. Test Separator	2020	Permian Tank	F37111	--	60 x 15	--	32.108040	-103.320318
37	Horz. Test Separator	2020	Permian Tank	F37108	--	60 x 15	--	32.108038	-103.320269
38	Horz. Test Separator	2020	Permian Tank	F37109	--	60 x 15	--	32.108036	-103.320220
39	Horz. Test Separator	2020	Permian Tank	F37107	--	60 x 15	--	32.108034	-103.320171
40	Horz. Test Separator	2020	Permian Tank	F37110	--	60 x 15	--	32.108032	-103.320125
41	Panel Rack	--	--	N/A	--	--	--	32.108002	-103.320088
42	Vert. Scrubber	2000	Enertech Industries	1442	--	30 x 10	--	32.108072	-103.320077
43	Vert. Scrubber	2015	Production Equipment	1172	--	4 x 10	2-PH	32.108058	-103.320039
44	Vert. Scrubber	2021	Permian Tank	F-37155	--	30 x 10	--	32.108026	-103.320033
45	Fuel Gas Filter	2020	ACI / Bailey's Welding	1753-4	--	--	MAWP 250 PSI @ 120 F	32.108071	-103.320001
46	Skid Dump	--	ACI / Bailey's Welding	N/A	10-120 KPFS	--	MAWP 125 psi @ 120 F	32.108068	-103.319926
47	Oxygen Tank	--	--	N/A	--	--	--	32.107973	-103.319956
48	Recycle Pump	--	Centripump	Not Available	STX	--	Recycle pump #1, 1x1.5-8, 7.5HP	32.108075	-103.319898
49	Recycle Pump	--	Centripump	Not Available	STX	--	Recycle Pump #2, 1x1.5-8, 7.5HP	32.108074	-103.319890
50	Dual Flare	2020	CTJ Energy Solutions	11346	--	--	15 MMSCFD	32.107814	-103.319955
51	Flare Control	--	Ignition Management System / Platinum Control	2014120200085	--	--	--	32.107865	-103.319982
52	Fuel Pot	--	--	--	--	--	--	32.107824	-103.319971
53	VRT	2020	Permian Tank	F37114	--	48 x 30	WP 125, TP 163	32.108107	-103.319951
54	VRT	2020	Permian Tank	F37113	--	48 x 30	WP 125, TP 163	32.108109	-103.319978

Rev. 6 - Issued for Information Updated Plan

Preliminary Version 0

Mar. 25, 2024

Drafted by: Marcos Barriga (Elite Optz.)

Reviewed by: (Elite Optz.)

Rev. 7 - Issued for Information Updated Plan

Preliminary Version 0

May 13, 2024

Drafted by: Marcos Barriga (Elite Optz.)

Reviewed by: (Elite Optz.)

Rev. 8 - Issued for Information Revised Drawing Name

Preliminary Version 0

Oct. 17, 2024

Drafted by: Marcos Barriga (Elite Optz.)

Reviewed by: (Elite Optz.)

Approved by: (Caza Petro.)

Job. #: 21-EliteOptz-0005-Rev8

Page 3 of 9

As-Built Equipment List for

Caza Petroleum, LLC.

Sioux 25 CTB

Unit B, Sec. 25-T25S-R35E

BLM Lease Number: NMNM114998

Caza

Petroleum, LLC

Disclaimer: This drawing is intended for Caza Petroleum, LLC. internal purposes only and is not to be relied upon as a boundary survey or to establish real property interests. Survey information shown on this drawing was gathered between the dates of: May 26, 2022 and Apr. 29, 2024. Survey information was collected using a combination of GNSS observations and geo-referenced aerial drone imagery when required. Observations refer to: NAD83 (2011) Datum, New Mexico State Plane Coordinate System, East Zone (3001), US Survey Feet, CSF=0.99990909 This drawing includes additional information that was collected from various sources including first hand observations, walk-through photos when applicable and third party information as well as information provided by Caza Petroleum, LLC. Caza Petroleum, LLC. is to verify the accuracy of all information as presented on this drawing. Elite Optimization, LP. is not responsible for design by engineer of records, erection or operation of any facilities represented by this drawing. This drawing is not an official engineering drawing or land survey drawing; this drawing is not to be used for construction.

ELITE

OPTIMIZATION

Ref.	Piece	Year	Manufacturer	Serial No.	Model No.	Dimensions	Additional Info.	Lat.	Long.
55	Oil Tank	2019	Fox Tank	4728	--	15.5 x 16 - 500 BBL	--	32.108151	-103.319929
56	Oil Tank	--	--	No Tag	--	--	--	32.108205	-103.319924
57	Oil Tank	2013	Edge Manufacturing	ST1473	--	15.5 x 16 - 500 BBL	DP 8 oz	32.108258	-103.319923
58	Oil Tank	2012	Smith Industries	39554	--	15.5 x 16 - 500 BBL	DP 8 oz	32.108313	-103.319920
59	Oil Tank	2018	Alexander Tank Co.	15419	--	15.5 x 16 - 500 BBL	DP 16 oz	32.108367	-103.319916
60	Oil Tank	2013	Smith Industries	API-5814	--	15.5 x 16 - 500 BBL	DP 8 oz	32.108369	-103.319982
61	Oil Tank	--	Smith Industries	API-5817	--	15.5 x 16 - 500 BBL	DP 8 oz	32.108317	-103.319984
62	Oil Tank	2009	Enertech Industries	12975	--	15.5 x 16 - 500 BBL	DP 16 oz	32.108262	-103.319988
63	Oil Tank	2013	Edge Manufacturing	ST1285	--	15.5 x 16 - 500 BBL	DP 8 oz	32.108206	-103.319992
64	Oil Tank	1996	Permian Tank	27949	--	15.5 x 16 - 500 BBL	--	32.108152	-103.319996
65	VRU	--	JESSCO	J757	--	--	75 HP	32.108131	-103.320099
66	Blowcase / Skid Dump	--	ACI	OS246540	19-120 RPFS	--	--	32.108166	-103.320064
67	VRU	--	JESSCO	J723	--	--	125 HP	32.108190	-103.320083
68	Truck LACT	--	--	530094-2-2	403-04-015	--	Ametek	32.108295	-103.320080
69	PD Pump	2020	Odessa Pumps	634475	200T-5L	--	200HP	32.108436	-103.320072
70	LACT	2019	Angus Measurement	25674-23	--	--	Federal	32.108451	-103.319985
71	LACT	2020	Angus Measurement	25674-7	--	--	State	32.108453	-103.319921
72	LACT Panel	--	--	N/A	--	--	State	32.108496	-103.319944
73	Oxygen Tank	--	--	--	--	--	--	32.108493	-103.319969
74	Panel Rack	--	--	N/A	--	--	--	32.108499	-103.320075
75	LACT Panel	--	--	N/A	--	--	Federal	32.108484	-103.320133
76	Pump Control Box	--	Odessa Pumps	--	--	--	--	32.108465	-103.320128
77	Elec. - Panel	--	--	N/A	--	--	VRU, Truck Lact, and facility Disconnects and PLC	32.108424	-103.320131
78	FWKO	2019	Production Equipment	1938	--	6 x 20	WP 125, TP 200	32.108145	-103.320164
79	FWKO	2019	Production Equipment	1939	--	6 x 20	WP 125, TP 200	32.108147	-103.320207
80	FWKO	2019	Production Equipment	1971	--	6 x 20	WP 125, TP 200	32.108147	-103.320248
81	Heater Treater	2020	Permian Tank	F37106	--	96 x 20	WP 125, TP 163	32.108153	-103.320352
82	Fuel Pot	--	--	--	--	--	Vertial Heater Treater F37106	32.108142	-103.320370
83	Heater Treater	2020	Permian Tank	F37105	--	96 x 20	WP 125, TP 163	32.108156	-103.320407
84	Fuel Pot	--	--	--	--	--	Heater Treater F37105	32.108146	-103.320424
85	Heater Treater	2020	Pessco	2042	--	8 x 20	WP 125, TP 200	32.108159	-103.320462
86	Fuel Pot	--	--	--	--	--	Heater Treater 2042	32.108147	-103.320479
87	FWKO	2018	Dragon	150863	--	96 x 20	MAWP 75 psi, @ 180 F	32.108201	-103.320580
88	Vert. Scrubber	2019	Fox Tank	1120	--	36 x 10	DP 125 psi	32.108165	-103.320636
89	VRU	--	JESSCO	J731	--	--	75 HP	32.108239	-103.320644
90	Flare Scrubber	2022	Lagrange Products	664130	1668-6223	--	MAWP 250 psi @ 225 F	32.108161	-103.320879
91	Dual Flare	2020	CTJ Energy Solutions	11347	--	--	--	32.107693	-103.320878
92	Fuel Pot	--	--	--	--	--	--	32.107715	-103.320889
93	Horz. Test Separator	2022	Pessco	O2346	--	72 x 15	WP 250 psi, TP 325 psi	32.108105	-103.320931
94	Horz. Test Separator	2022	Pessco	O2348	--	72 x 15	WP 250 psi, TP 325 psi	32.108066	-103.320932
95	Horz. Test Separator	2021	Pitts	NC 230	--	72 x 15	MAWP 250 psi	32.108030	-103.320932
96	Horz. Test Separator	2023	Pessco	O2415	--	72 x 15	WP 250 psi, TP 375 psi	32.107994	-103.320935
97	Inlet Header	--	--	--	--	--	--	32.107944	-103.320909
98	IA - Tank	2021	VanZandt	974523	--	--	MAWP 200 psi @ 400 F	32.108184	-103.320867
99	Transformer (No Meter)	--	--	No Meter	--	--	(3) 100 kVa	32.108617	-103.320710
100	Transformer (No Meter)	--	--	No Meter	--	--	(3) 167 kVa	32.108618	-103.320194
101	Transformer (No Meter)	--	--	No Meter	--	--	(3) 100 kVa	32.108619	-103.320100
102	Charge Pump	--	Roper Pumps	H-110761	--	--	2 HP	32.107807	-103.319965
103	VRU	--	JESSCO	J732	--	--	75 HP	32.108282	-103.320646
104	Vert. Heater Treater	2022	Pessco	2096	--	6' x 20'	WP 125 psi, TP 200 psi	32.108162	-103.320504
105	Tank	2012	Smith Industries	39888	--	15.5' x 16' - 500 BBL	DP 16 oz	32.108146	-103.319857
106	Tank	2014	Edge Manufacturing	1212-30	--	15.5' x 16' - 500 BBL	DP 8 oz	32.108200	-103.319855
107	Tank	2010	Conner Steel Products	28814	--	15.5' x 16' - 500 BBL	DP 8 oz	32.108253	-103.319849
108	Tank	2007	Conner Steel Products	19044	--	15.5' x 16' - 500 BBL	DP 16 oz	32.108308	-103.319845

Rev. 6 - Issued for Information Updated Plan

Preliminary Version 0

Mar. 25, 2024

Drafted by: Marcos Barriga (Elite Optz.)

Reviewed by: (Elite Optz.)

Rev. 7 - Issued for Information Updated Plan

Preliminary Version 0

May 13, 2024

Drafted by: Marcos Barriga (Elite Optz.)

Reviewed by: (Elite Optz.)

Rev. 8 - Issued for Information Revised Drawing Name

Preliminary Version 0

Oct. 17, 2024

Drafted by: Marcos Barriga (Elite Optz.)

Reviewed by: (Elite Optz.)

Approved by: (Caza Petro.)

Job. #: 21-EliteOptz-0005-Rev8

Page 4 of 9

As-Built Equipment List (cont.) for Caza Petroleum, LLC.

Sioux 25 CTB

Unit B, Sec. 25-T25S-R35E

BLM Lease Number: NMNM114998



Disclaimer: This drawing is intended for Caza Petroleum, LLC. internal purposes only and is not to be relied upon as a boundary survey or to establish real property interests. Survey information shown on this drawing was gathered between the dates of: May 26, 2022 and Apr. 29, 2024.

Survey information was collected using a combination of GNSS observations and geo-referenced aerial drone imagery when required. Observations refer to: NAD83 (2011) Datum, New Mexico State Plane Coordinate System, East Zone (3001), US Survey Feet, CSF=0.99990909

This drawing includes additional information that was collected from various sources including first hand observations, walk-through photos when applicable and third party information as well as information provided by Caza Petroleum, LLC.

Caza Petroleum, LLC. is to verify the accuracy of all information as presented on this drawing. Elite Optimization, LP. is not responsible for design by engineer of records, erection or operation of any facilities represented by this drawing.

This drawing is not an official engineering drawing or land survey drawing; this drawing is not to be used for construction.



Ref.	Piece	Year	Manufacturer	Serial No.	Model No.	Dimensions	Additional Info.	Lat.	Long.
109	Oxygen Tank	--	--	--	--	--	--	32.108347	-103.319802
110	Oxygen Tanks	--	--	--	--	--	--	32.107976	-103.320221
111	Oxygen Tank	--	--	--	--	--	--	32.107997	-103.320513
112	Oxygen Tank	--	--	--	--	--	--	32.107940	-103.320849
113	Oxygen Tank	--	--	--	--	--	--	32.108188	-103.320146
114	Oxygen Tank	--	--	--	--	--	--	32.108483	-103.320735
115	Oxygen Tank	--	--	--	--	--	--	32.108483	-103.320765
A	Meter - Water	--	NuFlo	12179465612	M-Series/M3000	--	--	32.108336	-103.320860
B	Meter - Flare	--	Sierra	235465	640i-VT-2-L13-M0-E2-P2-V4-DD-0-8-99-MB-OMIX	--	--	32.108099	-103.320849
C	Meter - Oil	--	Endress + Hauser	T4015716000	Promass 300	--	Test Sep. V5583	32.108058	-103.320800
D	Meter - Water	--	NuFlo	12183109918	--	--	Test Sep. V5583	32.108052	-103.320800
E	Meter - Gas	--	RJ Single	133255	--	--	ABB SN T205017568, Test Sep. V5583	32.108048	-103.320801
F	Meter - Oil	--	Endress + Hauser	T50A2A16000	Promass 300	--	Test Sep. V5582	32.108057	-103.320767
G	Meter - Water	--	NuFlo	1218310997	--	--	Test Sep. V5582	32.108053	-103.320767
H	Meter - Gas	--	RJ Single	133255-25	--	--	ABB SN T220150721, Test Sep. V5582	32.108049	-103.320767
I	Meter - Oil	--	Endress + Hauser	R3046516000	Promass 300	--	Test Sep. E-0447	32.108060	-103.320715
J	Meter - Water	--	NuFlo	12103660118	--	--	Test Sep. E-0447	32.108055	-103.320716
K	Meter - Gas	--	RJ Single	8938	--	--	ABB T220150720, Test Sep. E-0447	32.108051	-103.320716
L	Meter - Oil	--	Endress + Hauser	T4008916000	Promass 300	--	Test Sep. V-201450	32.108055	-103.320666
M	Meter - Water	--	NuFlo	12175450738	--	--	Test Sep. V-201450	32.108051	-103.320666
N	Meter - Gas	--	Daniel	160167027	--	--	ABB SN T210520675, Test Sep. V-201450	32.108048	-103.320666
O	Meter - Oil	--	Endress + Hauser	T308441600	--	--	Test Sep. V-201449	32.108053	-103.320614
P	Meter - Water	--	NuFlo	12175450740	--	--	Test Sep. V-201449	32.108049	-103.320615
Q	Meter - Gas	--	Daniel	160167027	--	--	ABB SN T210821856, Test Sep. V-201449	32.108046	-103.320615
R	Meter - Oil	--	Endress + Hauser	SA08C016000	--	--	Test Sep. No Tag	32.108051	-103.320566
S	Meter - Water	--	NuFlo	12180401910	--	--	Test Sep. No Tag	32.108047	-103.320566
T	Meter - Gas	--	Canalta	D0201290	--	--	ABB SN T214948327, Test Sep. No Tag	32.108043	-103.320567
U	Meter - Oil	--	Endress + Hauser	T50A2816000	Promass 300	--	Test Sep. 2191	32.108046	-103.320519
V	Meter - Water	--	NuFlo	12175696405	--	--	Test Sep. 2191	32.108043	-103.320519
W	Meter - Gas	--	Canalta	D0201305	--	--	ABB SN T214647106, Test Sep. 2191	32.108040	-103.320519
X	Meter - Oil	--	Endress + Hauser	S9071F16000	--	--	Test Separator 2162 (Decommissioned)	32.108043	-103.320367
Y	Meter - Water	--	NuFlo	12180499909	--	--	Test Sep. 2162	32.108040	-103.320367
Z	Meter - Gas	--	Canalta	D0405823	--	--	ABB SN T192774523, Test Sep. 2162	32.108036	-103.320367
AA	Meter - Oil	--	Endress + Hauser	R8071616000	Promass 300	--	Test Sep. F37111	32.108029	-103.320319
AB	Meter - Water	--	NuFlo	12169342649	--	--	Test Sep. F37111	32.108026	-103.320319
AC	Meter - Gas	--	Sureshot	147890	--	--	ABB SN T203813854, Test Sep. F37111	32.108022	-103.320319
AD	Meter - Oil	--	Endress + Hauser	R8071516000	Promass 300	--	Test Sep. F37108	32.108026	-103.320270
AE	Meter - Water	--	NuFlo	12113628849	--	--	Test Sep. F37108	32.108023	-103.320270
AF	Meter - Gas	--	Sureshot	147892	--	--	ABB SN T203813855, Test Sep. F37108	32.108019	-103.320270
AG	Meter - Oil	--	Endress + Hauser	R605F716000	Promass 300	--	Test Sep. F37109	32.108024	-103.320222
AH	Meter - Water	--	NuFlo	12104333005	--	--	Test Sep. F37109	32.108021	-103.320222
AI	Meter - Gas	--	Sureshot	147891	--	--	ABB SN T203813856, Test Sep. F37109	32.108017	-103.320223
AJ	Meter - Oil	--	Endress + Hauser	R8071916000	Promass 300	--	Test Sep. F37107	32.108021	-103.320173
AK	Meter - Water	--	NuFlo	12106546232	--	--	Test Sep. F37107	32.108018	-103.320173
AL	Meter - Gas	--	Sureshot	147888	--	--	ABB SN T203813852, Test Sep. F37107	32.108015	-103.320173
AM	Meter - Oil	--	Endress + Hauser	P4044116000	Promass 300	--	Test Sep. F37110	32.108019	-103.320126
AN	Meter - Water	--	NuFlo	12114249422	--	--	Test Sep. F37110	32.108016	-103.320126
AO	Meter - Gas	--	Sureshot	147889	--	--	ABB SN T203813860, Test Sep. F37110	32.108012	-103.320126
AP	Meter - Flare	2019	Sierra	231281	640i-VT-2-L13-M0-E2-P2-V4-DD-0-8-99-MB-OMIX	--	West Meter	32.107998	-103.319939
AQ	Meter - Flare	2019	Sierra	231259	640i-VT-2-L13-M0-E2-P2-V4-DD-0-8-99-MB-OMIX	--	East Meter	32.107997	-103.319933
AR	Meter - Gas	--	Turbines Inc.	F08856	--	--	--	32.108117	-103.320682
AS	Meter - VRU	2021	Turbines Inc	F17043	--	--	--	32.108161	-103.320089
AT	Meter - LACT	2018	Micromotion	3399722	--	--	--	32.108308	-103.320092
AU	Meter- LACT	--	Endress + Hauser	NA006A16000	--	--	--	32.108453	-103.319917

Rev. 6 - Issued for Information Updated Plan

Preliminary Version 0

Mar. 25, 2024

Drafted by: Marcos Barriga

Reviewed by:

(Elite Optz.)

(Elite Optz.)

Rev. 7 - Issued for Information Updated Plan

Preliminary Version 0

May 13, 2024

Drafted by: Marcos Barriga

Reviewed by:

(Elite Optz.)

(Caza Petro.)

Rev. 8 - Issued for Information Revised Drawing Name

Preliminary Version 0

Oct. 17, 2024

Drafted by: Marcos Barriga

Reviewed by:

(Elite Optz.)

(Elite Optz.)

Approved by:

(Caza Petro.)

Job. #: 21-EliteOptz-0005-Rev8

Page 5 of 9

As-Built Equipment & Meter List for Caza Petroleum, LLC.

Sioux 25 CTB

Unit B, Sec. 25-T25S-R35E

BLM Lease Number: NMNM114998



Disclaimer: This drawing is intended for Caza Petroleum, LLC. internal purposes only and is not to be relied upon as a boundary survey or to establish real property interests. Survey information shown on this drawing was gathered between the dates of: May 26, 2022 and Apr. 29, 2024. Survey information was collected using a combination of GNSS observations and geo-referenced aerial drone imagery when required. Observations refer to: NAD83 (2011) Datum, New Mexico State Plane Coordinate System, East Zone (3001), US Survey Feet, CSF=0.99990909 This drawing includes additional information that was collected from various sources including first hand observations, walk-through photos when applicable and third party information as well as information provided by Caza Petroleum, LLC. Caza Petroleum, LLC. is to verify the accuracy of all information as presented on this drawing. Elite Optimization, LP. is not responsible for design by engineer of records, erection or operation of any facilities represented by this drawing. This drawing is not an official engineering drawing or land survey drawing; this drawing is not to be used for construction.



Ref.	Piece	Year	Manufacturer	Serial No.	Model No.	Dimensions	Additional Info.	Lat.	Long.
AV	Meter - LACT	--	Endress + Hauser	NCOA2B02000	Promass 300	--	--	32.108451	-103.319990
AW	Meter - Oil	--	Endress + Hauser	T707416000	Promass 300	--	Test Separator 02346	32.108103	-103.320948
AX	Meter - Water	--	NuFlo	12185401002	--	--	Test Separator 02346	32.108104	-103.320956
AY	Meter - Gas	--	RJ Machine Single Axis	8261	--	--	Test Separator 02346, ABB T224989394	32.108105	-103.320965
AZ	Meter - Oil	--	Endress + Hauser	T70AC16000	Promass 300	--	Test Separator 02348	32.108067	-103.320953
BA	Meter - Water	--	NuFlo	12184984610	--	--	Test Separator 02348	32.108068	-103.320960
BB	Meter - Gas	--	RJ Machine Single Axis	8276	--	--	Test Separator 02348, ABB T224989396	32.108068	-103.320972
BC	Meter - Oil	--	Endress + Hauser	T70A4D16000	Promass 300	--	Test Separator NC230	32.108031	-103.320956
BD	Meter - Water	--	NuFlo	12190958839	--	--	Test Separator NC230	32.108031	-103.320963
BE	Meter - Gas	--	RJ Machine Single Axis	138477-10	--	--	ABB T224989395, Test Separator NC230	32.108032	-103.320972
BF	Meter - Oil	--	Endress + Hauser	T6091516000	Promass 300	--	Test Seperator 02415	32.107995	-103.320961
BG	Meter - Water	--	NuFlo	12185401026	--	--	Test Separator 02415	32.107996	-103.320970
BH	Meter - Gas	--	RJ Machine Single Axis	8017	--	--	ABB T224989391, Test Separator 02415	32.107996	-103.320978



Rev. 6 - Issued for Information Updated Plan

Preliminary Version 0

Rev. 7 - Issued for Information Updated Plan

Preliminary Version 0

Rev. 8 - Issued for Information Revised Drawing Name

Preliminary Version 0

Mar. 25, 2024

May 13, 2024

Oct. 17, 2024

Drafted by: Marcos Barriga (Elite Optz.)

Reviewed by: (Elite Optz.)

Approved by: (Caza Petro.)

Drafted by: Marcos Barriga (Elite Optz.)

Reviewed by: (Elite Optz.)

Approved by: (Caza Petro.)

Drafted by: Marcos Barriga (Elite Optz.)

Reviewed by: (Elite Optz.)

Approved by: (Caza Petro.)

Job. #: 21-EliteOptz-0005-Rev8

Page 6 of 9

As-Built Meter List (cont.) for Caza Petroleum, LLC.

Sioux 25 CTB

Unit B, Sec. 25-T25S-R35E

BLM Lease Number: NMNM114998

Disclaimer: This drawing is intended for Caza Petroleum, LLC. internal purposes only and is not to be relied upon as a boundary survey or to establish real property interests. Survey information shown on this drawing was gathered between the dates of: May 26, 2022 and Apr. 29, 2024.

Survey information was collected using a combination of GNSS observations and geo-referenced aerial drone imagery when required. Observations refer to: NAD83 (2011) Datum, New Mexico State Plane Coordinate System, East Zone (3001), US Survey Feet, CSF=0.99990909

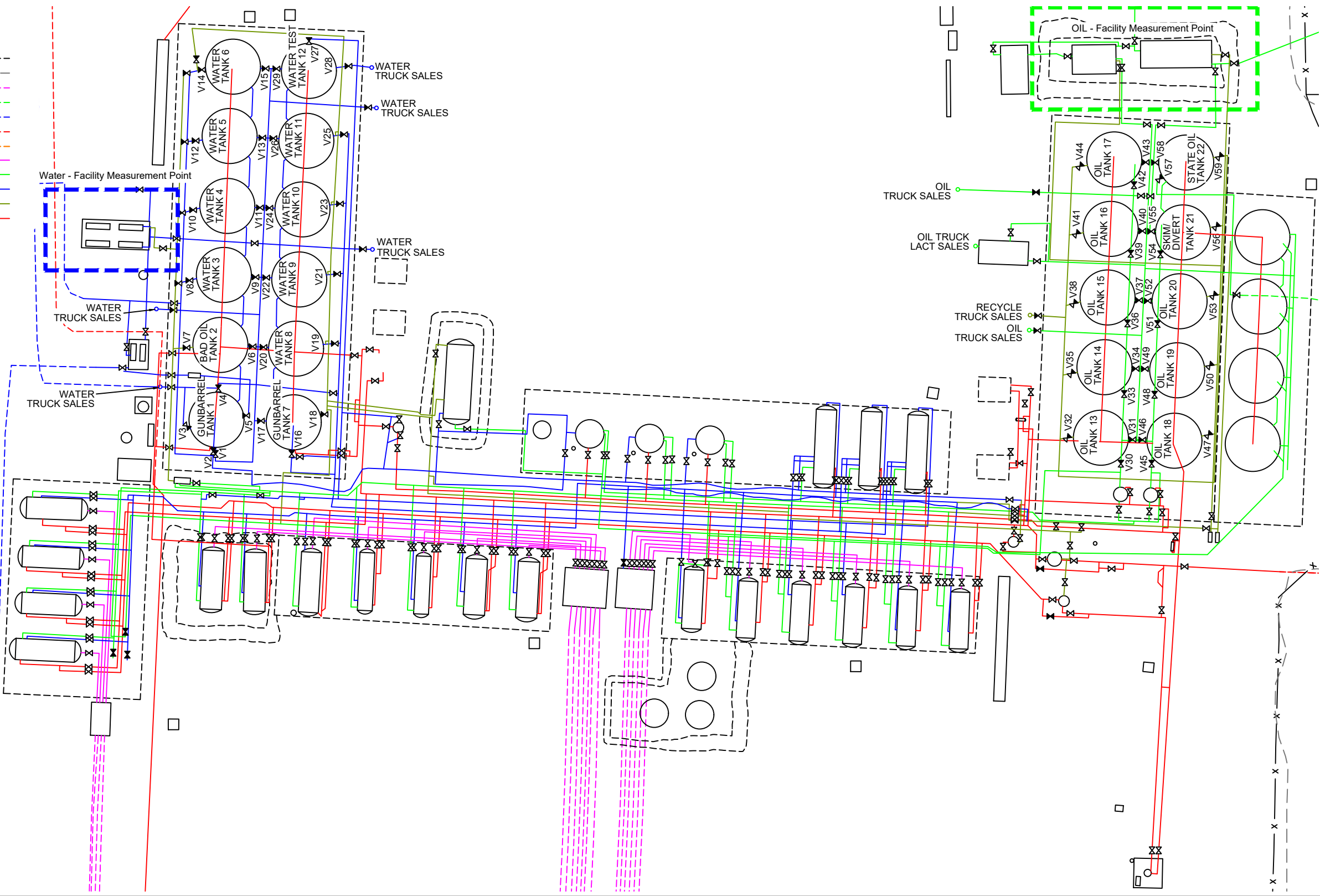
This drawing includes additional information that was collected from various sources including first hand observations, walk-through photos when applicable and third party information as well as information provided by Caza Petroleum, LLC.

Caza Petroleum, LLC. is to verify the accuracy of all information as presented on this drawing. Elite Optimization, LP. is not responsible for design by engineer of records, erection or operation of any facilities represented by this drawing.

This drawing is not an official engineering drawing or land survey drawing; this drawing is not to be used for construction.

Equipment Layout Plan up to date as of: Apr. 29, 2024

- LEGEND:**
- Berms/Containments/Skids are shown thus:
 - Pad Edge is shown thus:
 - As-built UG Flowline is shown thus:
 - As-built UG Oil Line is shown thus:
 - As-built UG Water Line is shown thus:
 - As-built UG Gas Line is shown thus:
 - As-built UG Air Line is shown thus:
 - As-built AG Flowline is shown thus:
 - As-built AG Oil Line is shown thus:
 - As-built AG Water Line is shown thus:
 - As-built AG Oil & Water Line is shown thus:
 - As-built AG Gas Line is shown thus:
 - Valve Open is shown thus:
 - Valve Closed is shown thus:
 - Valve that varies Open/Closed is shown thus:



N

U.S. Feet
Scale 1"=30'

Rev. 6 - Issued for Information Updated Plan Preliminary Version 0	Mar. 25, 2024	Drafted by: Marcos Barriga (Elite Optz.)	Reviewed by: (Elite Optz.)
Rev. 7 - Issued for Information Updated Plan Preliminary Version 0	May 13, 2024	Drafted by: Marcos Barriga (Elite Optz.)	Reviewed by: (Elite Optz.)
Rev. 8 - Issued for Information Revised Drawing Name Preliminary Version 0	Oct. 17, 2024	Drafted by: Marcos Barriga (Elite Optz.)	Reviewed by: (Elite Optz.)
Job. #: 21-EliteOptz-0005-Rev8		Page 7 of 9	

As-Built Piping & Valve Position Detail for
Caza Petroleum, LLC.
Sioux 25 CTB
Unit B, Sec. 25-T25S-R35E
BLM Lease Number: NMNM114998



Disclaimer: This drawing is intended for Caza Petroleum, LLC. internal purposes only and is not to be relied upon as a boundary survey or to establish real property interests. Survey information shown on this drawing was gathered between the dates of: May 26, 2022 and Apr. 29, 2024. Survey information was collected using a combination of GNSS observations and geo-referenced aerial drone imagery when required. Observations refer to: NAD83 (2011) Datum, New Mexico State Plane Coordinate System, East Zone (3001), US Survey Feet, CSF=0.99990909. This drawing includes additional information that was collected from various sources including first hand observations, walk-through photos when applicable and third party information as well as information provided by Caza Petroleum, LLC. Caza Petroleum, LLC. is to verify the accuracy of all information as presented on this drawing. Elite Optimization, LP. is not responsible for design by engineer of records, erection or operation of any facilities represented by this drawing. This drawing is not an official engineering drawing or land survey drawing; this drawing is not to be used for construction.

Valve Position Table (Water Tanks)							Valve Position Table (Oil Tanks)						
	Production Phase		Sales Phase		Circulation Phase			Production Phase		Sales Phase		Circulation Phase	
Ref.	Sealed	Open	Sealed	Open	Sealed	Open	Ref.	Sealed	Open	Sealed	Open	Sealed	Open
Gunbarrel Tank 1							Oil Tank 13						
V1 (Fill)	N	Y	N	Y	Y	N	V30 (Fill)	N	Y	N	Y	Y	N
V2 (Fill)	N	Y	N	Y	Y	N	V31 (Sales)	N	Y	N	Y	Y	N
V3 (Truck/Recycle)	Y	N	N	Y	N	Y	V32 (Recycle)	Y	N	N	Y	N	Y
V4 (Sales)	N	Y	N	Y	Y	N	Oil Tank 14						
V5 (Bypass)	N	Y	N	Y	Y	N	V33 (Fill)	N	Y	N	Y	Y	N
Bad Oil Tank 2							V34 (Sales)	N	Y	N	Y	Y	N
V6 (Sales)	Y	N	N	Y	N	Y	V35 (Recycle)	Y	N	N	Y	N	Y
V7 (Recycle)	N	Y	Y	N	Y	N	Oil Tank 15						
Water Tank 3							V36 (Fill)	N	Y	N	Y	Y	N
V8 (Fill)	N	Y	N	Y	N/A	N/A	V37 (Sales)	N	Y	N	Y	Y	N
V9 (Sales)	N	Y	N	Y	N/A	N/A	V38 (Recycle)	Y	N	N	Y	N	Y
Water Tank 4							Oil Tank 16						
V10 (Fill)	N	Y	N	Y	N/A	N/A	V39 (Fill)	N	Y	N	Y	Y	N
V11 (Sales)	N	Y	N	Y	N/A	N/A	V40 (Sales)	N	Y	N	Y	Y	N
Water Tank 5							V41 (Recycle)	Y	N	N	Y	N	Y
V12 (Fill)	N	Y	N	Y	N/A	N/A	Oil Tank 17						
V13 (Sales)	N	Y	N	Y	N/A	N/A	V42 (Fill)	N	Y	N	Y	Y	N
Water Tank 6							V43 (Sales)	N	Y	N	Y	Y	N
V14 (Fill)	N	Y	N	Y	N/A	N/A	V44 (Recycle)	Y	N	N	Y	N	Y
V15 (Sales)	N	Y	N	Y	N/A	N/A	Oil Tank 18						
Gunbarrel Tank 7							V45 (Fill)	N	Y	N	Y	Y	N
V16 (Fill)	N	Y	N	Y	Y	N	V46 (Sales)	N	Y	N	Y	Y	N
V17 (Sales)	N	Y	N	Y	Y	N	V47 (Recycle)	Y	N	N	Y	N	Y
V18 (Recycle)	Y	N	N	Y	N	Y	Oil Tank 19						
Water Tank 8							V48 (Fill)	N	Y	N	Y	Y	N
V19 (Fill)	N	Y	N	Y	N/A	N/A	V49 (Sales)	N	Y	N	Y	Y	N
V20 (Sales)	N	Y	N	Y	N/A	N/A	V50 (Recycle)	Y	N	N	Y	N	Y
Water Tank 9							Oil Tank 20						
V21 (Fill)	N	Y	N	Y	N/A	N/A	V51 (Fill)	N	Y	N	Y	Y	N
V22 (Sales)	N	Y	N	Y	N/A	N/A	V52 (Sales)	N	Y	N	Y	Y	N
Water Tank 10							V53 (Recycle)	Y	N	N	Y	N	Y
V23 (Fill)	N	Y	N	Y	N/A	N/A	Skim/Divert Tank 21						
V24 (Sales)	N	Y	N	Y	N/A	N/A	V54 (Fill)	N	Y	N	Y	Y	N
Water Tank 11							V55 (Sales)	N	Y	N	Y	Y	N
V25 (Fill)	N	Y	N	Y	N/A	N/A	V56 (Recycle)	Y	N	N	Y	N	Y
V26 (Sales)	N	Y	N	Y	N/A	N/A	State Oil Tank 22						
Water Test Tank 12							V57 (Fill)	N	Y	N	Y	Y	N
V27 (Fill)	N	Y	Y	N	N/A	N/A	V58 (Sales)	N	Y	N	Y	Y	N
V28 (Truck Sales)	Y	N	N	Y	N/A	N/A	V59 (Recycle)	Y	N	N	Y	N	Y
V29 (Sales)	Y	N	N	Y	N/A	N/A							



Rev. 6 - Issued for Information Updated Plan

Preliminary Version 0

Rev. 7 - Issued for Information Updated Plan

Preliminary Version 0

Rev. 8 - Issued for Information Revised Drawing Name

Preliminary Version 0

Mar. 25, 2024

May 13, 2024

Oct. 17, 2024

Drafted by: Marcos Barriga (Elite Optz.)

Reviewed by: (Elite Optz.)

Approved by: (Caza Petro.)

Drafted by: Marcos Barriga (Elite Optz.)

Reviewed by: (Elite Optz.)

Approved by: (Caza Petro.)

Drafted by: Marcos Barriga (Elite Optz.)

Reviewed by: (Elite Optz.)

Approved by: (Caza Petro.)

Job. #: 21-EliteOptz-0005-Rev8

Page 8 of 9

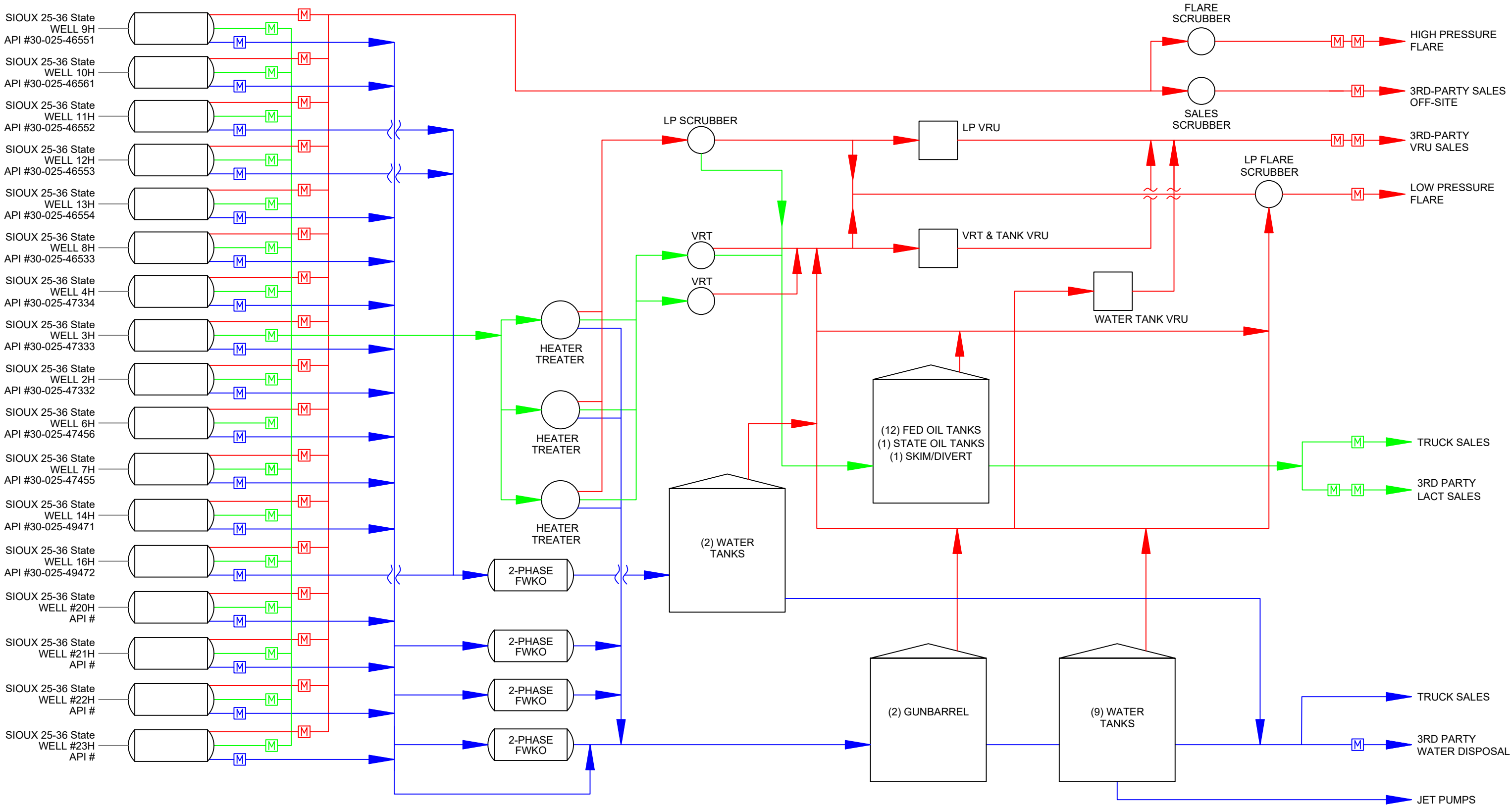
As-Built Valve Position List for Caza Petroleum, LLC.

Sioux 25 CTB

Unit B, Sec. 25-T25S-R35E

BLM Lease Number: NMNM114998

Disclaimer: This drawing is intended for Caza Petroleum, LLC. internal purposes only and is not to be relied upon as a boundary survey or to establish real property interests. Survey information shown on this drawing was gathered between the dates of: May 26, 2022 and Apr. 29, 2024. Survey information was collected using a combination of GNSS observations and geo-referenced aerial drone imagery when required. Observations refer to: NAD83 (2011) Datum, New Mexico State Plane Coordinate System, East Zone (3001), US Survey Feet, CSF=0.99990909 This drawing includes additional information that was collected from various sources including first hand observations, walk-through photos when applicable and third party information as well as information provided by Caza Petroleum, LLC. Caza Petroleum, LLC. is to verify the accuracy of all information as presented on this drawing. Elite Optimization, LP. is not responsible for design by engineer of records, erection or operation of any facilities represented by this drawing. This drawing is not an official engineering drawing or land survey drawing; this drawing is not to be used for construction.



LEGEND:
Wellstream is shown thus:
Gas is shown thus:
Oil is shown thus:
Water is shown thus:
Oil & Water / Bad Oil is shown thus:
Gas Meter is shown thus:
Oil Meter is shown thus:
Water Meter is shown thus:

Rev. 6 - Issued for Information Updated Plan Preliminary Version 0	Mar. 25, 2024	Drafted by: Marcos Barriga (Elite Optz.)	Reviewed by: (Elite Optz.)
Rev. 7 - Issued for Information Updated Plan Preliminary Version 0	May 13, 2024	Drafted by: Marcos Barriga (Elite Optz.)	Approved by: (Caza Petro.)
Rev. 8 - Issued for Information Revised Drawing Name Preliminary Version 0	Oct. 17, 2024	Drafted by: Marcos Barriga (Elite Optz.)	Reviewed by: (Elite Optz.) Approved by: (Caza Petro.)
Job. #: 21-EliteOptz-0005-Rev8			

As-Built Process Flow Diagram for
Caza Petroleum, LLC.
Sioux 25 CTB
Unit B, Sec. 25-T25S-R35E
BLM Lease Number: NMNM114998



Disclaimer: This drawing is intended for Caza Petroleum, LLC. internal purposes only and is not to be relied upon as a boundary survey or to establish real property interests. Survey information shown on this drawing was gathered between the dates of: May 26, 2022 and Apr. 29, 2024. Survey information was collected using a combination of GNSS observations and geo-referenced aerial drone imagery when required. Observations refer to: NAD83 (2011) Datum, New Mexico State Plane Coordinate System, East Zone (3001), US Survey Feet, CSF=0.99990909. This drawing includes additional information that was collected from various sources including first hand observations, walk-through photos when applicable and third party information as well as information provided by Caza Petroleum, LLC. Caza Petroleum, LLC. is to verify the accuracy of all information as presented on this drawing. Elite Optimization, LP. is not responsible for design by engineer of records, erection or operation of any facilities represented by this drawing. This drawing is not an official engineering drawing or land survey drawing; this drawing is not to be used for construction.



District I
1625 N. French Dr., Hobbs, NM 88240
Phone:(575) 393-6161 Fax:(575) 393-0720
District II
811 S. First St., Artesia, NM 88210
Phone:(575) 748-1283 Fax:(575) 748-9720
District III
1000 Rio Brazos Rd., Aztec, NM 87410
Phone:(505) 334-6178 Fax:(505) 334-6170
District IV
1220 S. St Francis Dr., Santa Fe, NM 87505
Phone:(505) 476-3470 Fax:(505) 476-3462

State of New Mexico
Energy, Minerals and Natural Resources
Oil Conservation Division
1220 S. St Francis Dr.
Santa Fe, NM 87505

QUESTIONS

Action 393741

QUESTIONS

Operator: CAZA OPERATING, LLC 200 N Loraine St Midland, TX 79701	OGRID: 249099
	Action Number: 393741
	Action Type: [UF-FAC] TB Registration (TB-REG)

QUESTIONS

Facility Details	
<i>Please answer all the questions in this group.</i>	
Name of the facility	Sioux 25 Production Facility
Date the facility was opened	01/11/2021
Depth to ground water, if known	Not answered.

Verification	
Does the operator have other facilities with a matching name	No
Are there other facilites located within approximately 50 feet	No

District I
1625 N. French Dr., Hobbs, NM 88240
Phone:(575) 393-6161 Fax:(575) 393-0720
District II
811 S. First St., Artesia, NM 88210
Phone:(575) 748-1283 Fax:(575) 748-9720
District III
1000 Rio Brazos Rd., Aztec, NM 87410
Phone:(505) 334-6178 Fax:(505) 334-6170
District IV
1220 S. St Francis Dr., Santa Fe, NM 87505
Phone:(505) 476-3470 Fax:(505) 476-3462

State of New Mexico
Energy, Minerals and Natural Resources
Oil Conservation Division
1220 S. St Francis Dr.
Santa Fe, NM 87505

ACKNOWLEDGMENTS

Action 393741

ACKNOWLEDGMENTS

Operator: CAZA OPERATING, LLC 200 N Loraine St Midland, TX 79701	OGRID: 249099
	Action Number: 393741
	Action Type: [UF-FAC] TB Registration (TB-REG)

ACKNOWLEDGMENTS

<input checked="" type="checkbox"/>	I certify that I am authorized to register a facility on behalf of the responsible operator.
<input checked="" type="checkbox"/>	I certify that I will notify OCD of any changes of ownership for this facility.
<input checked="" type="checkbox"/>	I certify that I will notify OCD when this facility is closed.