

Drone Imagery Date: Aug. 24, 2023



U.S. Feet
Scale 1"=60'

Rev. 5 - Issued for Information Updated Plan	August 3, 2023	Drafted by: Marcos Barriga (Elite Optz.)
Preliminary Version 0		Reviewed by: LaVerne Woroschuk (Elite Optz.)
Rev. 6 - Issued for Information Updated Plan	Sept. 28, 2023	Drafted by: Marcos Barriga (Elite Optz.)
Preliminary Version 0		Reviewed by: (Elite Optz.)
Rev. 7 - Issued for Information Updated Plan	Oct. 12, 2023	Drafted by: Marcos Barriga (Elite Optz.)
Preliminary Version 0		Reviewed by: (Elite Optz.)
		Approved by: (Caza Petro.)

Job. #: 21-EliteOptz-0028-Rev7

Page 1 of 4

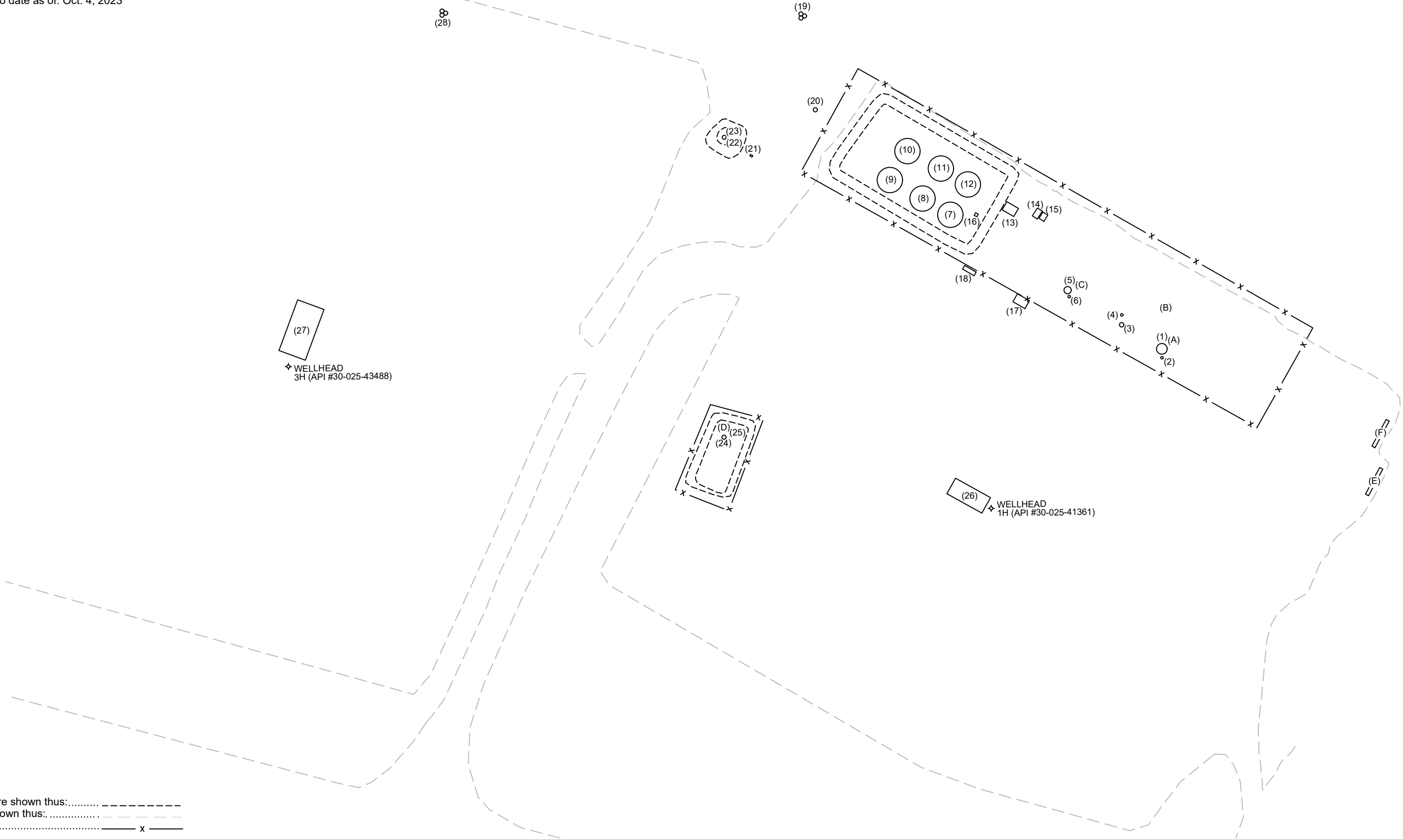
Aerial As-Built Overview of
Caza Petroleum, LLC.
Gramma 27 State 1H & 3H
UNIT O, SEC. 27, T21S, R34E
1H (API #30-025-41361) & 3H (API #30-025-43488)



Disclaimer: This drawing is intended for Caza Petroleum, LLC. internal purposes only and is not to be relied upon as a boundary survey or to establish real property interests. Survey information shown on this drawing was gathered between the dates of: Feb. 9, 2021 and Oct. 4, 2023. Survey information was collected using a combination of GNSS observations and geo-referenced aerial drone imagery when required. Observations refer to: NAD83 (2011) Datum, New Mexico State Plane Coordinate System, East Zone (3001), US Survey Feet, CSF=0.99990909. This drawing includes additional information that was collected from various sources including first hand observations, walk-through photos when applicable and third party information as well as information provided by Caza Petroleum, LLC. Caza Petroleum, LLC. is to verify the accuracy of all information as presented on this drawing. Elite Optimization, LP. is not responsible for design by engineer of records, erection or operation of any facilities represented by this drawing. This drawing is not an official engineering drawing or land survey drawing; this drawing is not to be used for construction.



Equipment Layout Plan is up to date as of: Oct. 4, 2023



LEGEND:
Berms/Containments/Skids are shown thus:.....
Pad Edge/Approaches are shown thus:.....
Fences are shown thus:..... x

N

U.S. Feet
Scale 1"=60'

Rev. 5 - Issued for Information Updated Plan	August 3, 2023	Drafted by: Marcos Barriga (Elite Optz.)
Preliminary Version 0		Reviewed by: LaVerne Woroschuk (Elite Optz.)
Rev. 6 - Issued for Information Updated Plan	Sept. 28, 2023	Drafted by: Marcos Barriga (Elite Optz.)
Preliminary Version 0		Reviewed by: (Elite Optz.)
Rev. 7 - Issued for Information Updated Plan	Oct. 12, 2023	Drafted by: Marcos Barriga (Elite Optz.)
Preliminary Version 0		Reviewed by: (Elite Optz.)
Job. #: 21-EliteOptz-0028-Rev7		Page 2 of 4

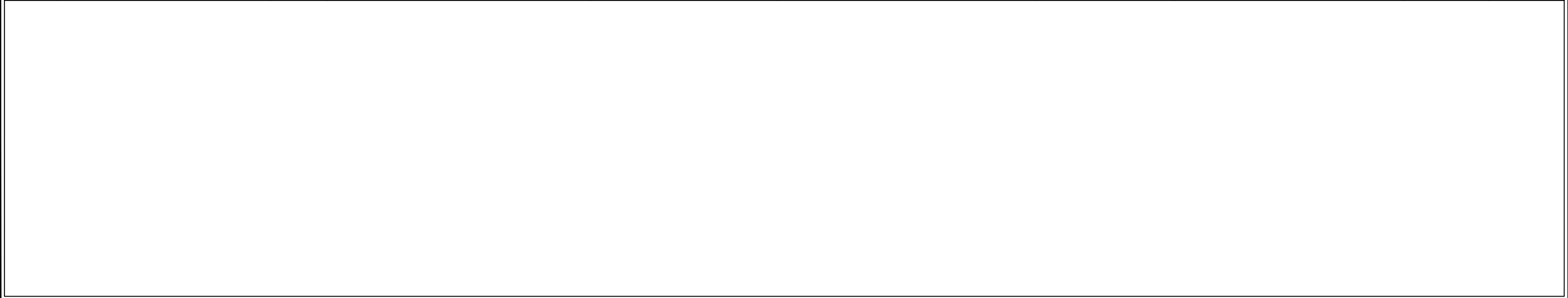
As-Built Equipment Layout Plan for
Caza Petroleum, LLC.
Gramma 27 State 1H & 3H
UNIT O, SEC. 27, T21S, R34E
1H (API #30-025-41361) & 3H (API #30-025-43488)



Disclaimer: This drawing is intended for Caza Petroleum, LLC. internal purposes only and is not to be relied upon as a boundary survey or to establish real property interests. Survey information shown on this drawing was gathered between the dates of: Feb. 9, 2021 and Oct. 4, 2023. Survey information was collected using a combination of GNSS observations and geo-referenced aerial drone imagery when required. Observations refer to: NAD83 (2011) Datum, New Mexico State Plane Coordinate System, East Zone (3001), US Survey Feet, CSF=0.99990909. This drawing includes additional information that was collected from various sources including first hand observations, walk-through photos when applicable and third party information as well as information provided by Caza Petroleum, LLC. Caza Petroleum, LLC. is to verify the accuracy of all information as presented on this drawing. Elite Optimization, LP. is not responsible for design by engineer of records, erection or operation of any facilities represented by this drawing. This drawing is not an official engineering drawing or land survey drawing; this drawing is not to be used for construction.



Ref	Piece	Year	Manufacturer	Serial No.	Model No.	Dimensions	Additional Information	Long.	Lat.
1	Vert. Heater Treater	2016	Azteca Fabrication	CA1833	--	--	MAWP 125 psi @ 120F	-103.455270	32.443860
2	Fuel Pot	--	--	--	--	--	Heater Treater CA1833	-103.455271	32.443846
3	Vert. Separator	2014	Edge Manufacturing	EVS.26	--	36 x 10	2-PH	-103.455351	32.443901
4	Fuel Pot	--	--	--	--	--	Seperator EVS.26	-103.455351	32.443918
5	Vert. Heater Treater	2008	Permian Tank	29397	--	4 x 20	--	-103.455457	32.443960
6	Fuel Pot	--	--	--	--	--	Heater Treater 29397	-103.455453	32.443943
7	Tank	2014	Edge Manufacturing	1212-37	--	15.5 x 16 - 500 BBL	DP 8 oz	-103.455688	32.444088
8	Tank	2014	Edge Manufacturing	1212-34	--	15.5 x 16 - 500 BBL	DP 8 oz	-103.455747	32.444115
9	Tank	2016	Azteca Fabrication	CA1805	--	15.5 x 16 - 500 BBL	--	-103.455809	32.444147
10	Tank	2016	Azteca Fabrication	CA1784	--	15.5 x 16 - 500 BBL	--	-103.455772	32.444197
11	Tank	2014	Edge Manufacturing	API-9137	--	15.5 x 16 - 500 BBL	DP 8 oz	-103.455709	32.444165
12	Tank	2014	Edge Manufacturing	API-9132	--	15.5 x 16 - 500 BBL	DP 8 oz	-103.455653	32.444138
13	VRU	--	N/A	Skid# 18484	--	--	--	-103.455567	32.444104
14	Recycle Pump	--	Roper Pumps	G-938461	--	--	2HP	-103.455516	32.444089
15	Recycle Pump	--	Roper Pumps	G-792814	--	--	1.5HP Basin Pump tag GP1702	-103.455503	32.444084
16	Control Box	--	Tank Logix	N/A	--	--	--	-103.455638	32.444089
17	Elec. Panel	--	--	N/A	--	--	--	-103.455554	32.443942
18	Elec. Panel	--	--	N/A	--	--	--	-103.455652	32.443995
19	Transformer & Meter	--	--	Meter No. 70 057 280	--	--	(3) 75 kVa	-103.455979	32.444424
20	Slack Power Pole & Meter	--	--	Meter No. 70 057 279	--	--	(3) 75 kVa	-103.455954	32.444327
21	Jatco Pot	--	Jatco Inc.	N/A	J-5000CX	--	--	-103.456079	32.444198
22	Combustor Ignition Control	--	Ignition Management / Platinum Control	2019022000083	Edge-600	--	--	-103.456134	32.444210
23	Combustor	--	--	N/A	--	--	--	-103.456136	32.444223
24	Flare Control	--	Ignition Management / Platinum Control	2019022000100	Edge-600	--	--	-103.456107	32.443727
25	Flare - HP	--	Edge Manufacturing	FLO.257	25X4	--	--	-103.456143	32.443717
26	Pumping Unit	--	Lufkin Foundry & Machine	F31794D 318329	M-456D-253-144	--	--	-103.455653	32.443616
27	Pumping Unit	--	--	2CC8-695	--	--	--	-103.456978	32.443902
28	Transformer & Meter	--	--	Meter No. 82 361 050	--	--	(3) 37.5 kVa	-103.456713	32.444427
A	Meter - Water	2020	Rosemount	21000945	8732EMT2M1N5DA1M4	--	--	-103.455244	32.443875
B	Meter - Gas	--	NuFlo	D-280408	--	--	--	-103.455264	32.443928
C	Meter - Water	--	NuFlo	12175696514	--	--	--	-103.455440	32.443962
D	Meter - Flare	--	NuFlo	12180401902	--	--	--	-103.456136	32.443728
E	Meter - Gas	--	Daniel	150008705	--	--	ABB S/N T141265427	-103.454852	32.443631
F	Meter - Gas	--	Daniel	150036383	--	--	ABB S/N T150515828	-103.454835	32.443721



Rev. 5 - Issued for Information Updated Plan Preliminary Version 0

August 3, 2023

Drafted by: Marcos Barriga (Elite Optz.)
Reviewed by: LaVerne Woroschuk (Elite Optz.)
Approved by: (Caza Petro.)

Rev. 6 - Issued for Information Updated Plan Preliminary Version 0

Sept. 28, 2023

Drafted by: Marcos Barriga (Elite Optz.)
Reviewed by: (Elite Optz.)
Approved by: (Caza Petro.)

Rev. 7 - Issued for Information Updated Plan Preliminary Version 0

Oct. 12, 2023

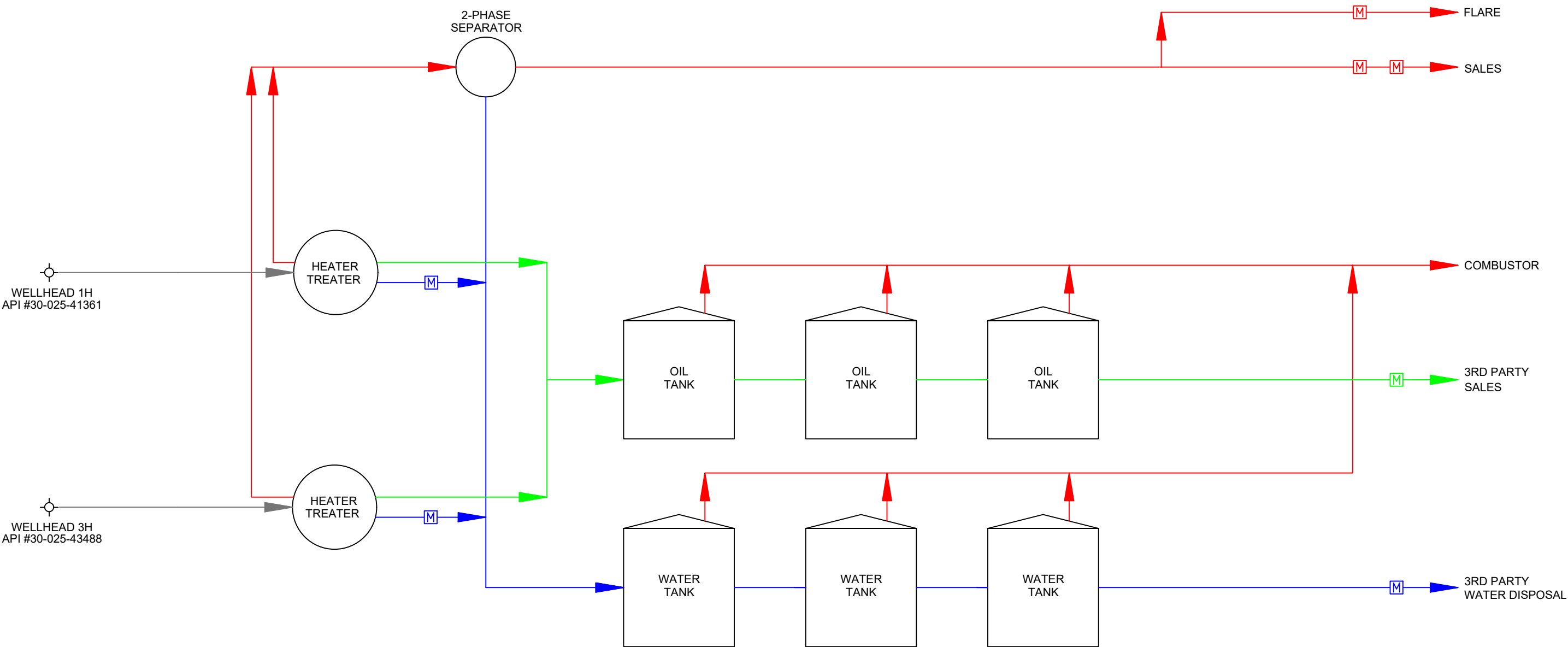
Drafted by: Marcos Barriga (Elite Optz.)
Reviewed by: (Elite Optz.)
Approved by: (Caza Petro.)

Job. #: 21-EliteOptz-0028-Rev7

Page 3 of 4

As-Built Equipment & Meter List for
Caza Petroleum, LLC.
Gramma 27 State 1H & 3H
UNIT O, SEC. 27, T21S, R34E
1H (API #30-025-41361) & 3H (API #30-025-43488)

Disclaimer: This drawing is intended for Caza Petroleum, LLC. internal purposes only and is not to be relied upon as a boundary survey or to establish real property interests. Survey information shown on this drawing was gathered between the dates of: Feb. 9, 2021 and Oct. 4, 2023. Survey information was collected using a combination of GNSS observations and geo-referenced aerial drone imagery when required. Observations refer to: NAD83 (2011) Datum, New Mexico State Plane Coordinate System, East Zone (3001), US Survey Feet, CSF=0.99990909 This drawing includes additional information that was collected from various sources including first hand observations, walk-through photos when applicable and third party information as well as information provided by Caza Petroleum, LLC. Caza Petroleum, LLC. is to verify the accuracy of all information as presented on this drawing. Elite Optimization, LP. is not responsible for design by engineer of records, erection or operation of any facilities represented by this drawing. This drawing is not an official engineering drawing or land survey drawing; this drawing is not to be used for construction.



LEGEND:

Wellstream is shown thus:.....	—
Gas is shown thus:.....	—
Oil is shown thus:.....	—
Water is shown thus:.....	—
Oil & Water / Bad Oil is shown thus:.....	—
Gas Meter is shown thus:.....	[M]
Oil Meter is shown thus:.....	[M]
Water Meter is shown thus:.....	[M]

Rev. 5 - Issued for Information	August 3, 2023	Drafted by: Marcos Barriga	(Elite Optz.)
Updated Plan		Reviewed by: LaVerne Woroschuk	(Elite Optz.)
Preliminary Version 0		Approved by:	(Caza Petro.)
Rev. 6 - Issued for Information	Sept. 28, 2023	Drafted by: Marcos Barriga	(Elite Optz.)
Updated Plan		Reviewed by:	(Elite Optz.)
Preliminary Version 0		Approved by:	(Caza Petro.)
Rev. 7 - Issued for Information	Oct. 12, 2023	Drafted by: Marcos Barriga	(Elite Optz.)
Updated Plan		Reviewed by:	(Elite Optz.)
Preliminary Version 0		Approved by:	(Caza Petro.)
Job. #: 21-EliteOptz-0028-Rev7		Page 4 of 4	

As-Built Process Flow Diagram for
Caza Petroleum, LLC.
Gramma 27 State 1H & 3H
UNIT O, SEC. 27, T21S, R34E
1H (API #30-025-41361) & 3H (API #30-025-43488)



Disclaimer: This drawing is intended for Caza Petroleum, LLC. internal purposes only and is not to be relied upon as a boundary survey or to establish real property interests. Survey information shown on this drawing was gathered between the dates of: Feb. 9, 2021 and Oct. 4, 2023. Survey information was collected using a combination of GNSS observations and geo-referenced aerial drone imagery when required. Observations refer to: NAD83 (2011) Datum, New Mexico State Plane Coordinate System, East Zone (3001), US Survey Feet, CSF=0.99990909. This drawing includes additional information that was collected from various sources including first hand observations, walk-through photos when applicable and third party information as well as information provided by Caza Petroleum, LLC. Caza Petroleum, LLC. is to verify the accuracy of all information as presented on this drawing. Elite Optimization, LP. is not responsible for design by engineer of records, erection or operation of any facilities represented by this drawing. This drawing is not an official engineering drawing or land survey drawing; this drawing is not to be used for construction.



District I
1625 N. French Dr., Hobbs, NM 88240
Phone:(575) 393-6161 Fax:(575) 393-0720
District II
811 S. First St., Artesia, NM 88210
Phone:(575) 748-1283 Fax:(575) 748-9720
District III
1000 Rio Brazos Rd., Aztec, NM 87410
Phone:(505) 334-6178 Fax:(505) 334-6170
District IV
1220 S. St Francis Dr., Santa Fe, NM 87505
Phone:(505) 476-3470 Fax:(505) 476-3462

State of New Mexico
Energy, Minerals and Natural Resources
Oil Conservation Division
1220 S. St Francis Dr.
Santa Fe, NM 87505

QUESTIONS

Action 393750

QUESTIONS

Operator: CAZA OPERATING, LLC 200 N Loraine St Midland, TX 79701	OGRID: 249099
	Action Number: 393750
	Action Type: [UF-FAC] TB Registration (TB-REG)

QUESTIONS

Facility Details	
Please answer all the questions in this group.	
Name of the facility	Gamma 27 State 1H-3H Production Facility
Date the facility was opened	05/20/2014
Depth to ground water, if known	Not answered.

Verification	
Does the operator have other facilities with a matching name	No
Are there other facilites located within approximately 50 feet	No

District I
1625 N. French Dr., Hobbs, NM 88240
Phone:(575) 393-6161 Fax:(575) 393-0720
District II
811 S. First St., Artesia, NM 88210
Phone:(575) 748-1283 Fax:(575) 748-9720
District III
1000 Rio Brazos Rd., Aztec, NM 87410
Phone:(505) 334-6178 Fax:(505) 334-6170
District IV
1220 S. St Francis Dr., Santa Fe, NM 87505
Phone:(505) 476-3470 Fax:(505) 476-3462

State of New Mexico
Energy, Minerals and Natural Resources
Oil Conservation Division
1220 S. St Francis Dr.
Santa Fe, NM 87505

ACKNOWLEDGMENTS

Action 393750

ACKNOWLEDGMENTS

Operator: CAZA OPERATING, LLC 200 N Loraine St Midland, TX 79701	OGRID: 249099
	Action Number: 393750
	Action Type: [UF-FAC] TB Registration (TB-REG)

ACKNOWLEDGMENTS

<input checked="" type="checkbox"/>	I certify that I am authorized to register a facility on behalf of the responsible operator.
<input checked="" type="checkbox"/>	I certify that I will notify OCD of any changes of ownership for this facility.
<input checked="" type="checkbox"/>	I certify that I will notify OCD when this facility is closed.