

**2RF-212 -
TSW SAM HOUSTON
RF & CONTAINMENTS
[fVV2434052813]
C-147/Closure Cost/
Location Map.**

**[330307] Vaughan Operating
LLC
May 13, 2025.**

R. T. HICKS CONSULTANTS, LTD.

901 Rio Grande Blvd NW ▲ Suite F-142 ▲ Albuquerque, NM 87104 ▲ 505.266.5004 ▲ Since 1996

Sam Houston RF & Containments

TSW MOD W (Nolan Ryan East and West Containments) is	\$972,113.60
TSW MOD E (Sam Houston Containment)	\$637,605.00
Tall Texan RF (Recycling Facility and North and South Containments)	\$115,793.20.
The total bonding for the TSW Sam Houston facility is	\$1,725,511.80

R. T. HICKS CONSULTANTS, LTD.

901 Rio Grande Blvd NW ▲ Suite F-142 ▲ Albuquerque, NM 87104 ▲ 505.266.5004 ▲ Since 1996

TWS MODIFICATION IN-GROUND CONTAINMENT

Financial Assurance Cost Estimate

Attached is the cost estimate for reclamation of the TSW Sam Houston recycling in-ground containment.

The cost of closure sampling and analysis is estimated at \$1725 (sampling) plus \$2,700 (laboratory cost) to “test the soils beneath the containment for contamination with a five-point composite sample which includes stained or wet soils, if any, and that sample shall be analyzed for the constituents listed in Table I” of Rule 34.

RT Hicks Consultants will assist with the sampling as necessary and prepare the Closure Report for the site. Total closure costs associated with the sampling are estimated at \$7500. The cost estimates from Cascade Services (attached) and from RT Hicks Consultants are presented below.

Cascade Services

All work elements required by Rule 34	\$630,105.00
---------------------------------------	--------------

RT Hicks Consultants

Preparation of sampling results and closure report	7500.00
--	---------

Total for all Closure Activities	\$637,605.00
----------------------------------	--------------

The reclamation must meet terms set forth in the surface lease agreement with the landowner, who received a copy of the registration.

Please contact Randall Hicks if you have any questions concerning this closure cost estimate.

Cascade Services, LLC

3403B E County Road 44
Midland, TX 79705
www.cascadeservicesllc.com



Estimate

ADDRESS	SHIP TO	ESTIMATE	1814
Steven McCutcheon	Steven McCutcheon	DATE	11/21/2024
Vaughn Operating, LLC	Vaughn Operating, LLC	EXPIRATION	12/21/2024
3021 Hepler Rd	3021 Hepler Rd	DATE	
Carlsbad, NM 88220	Carlsbad, NM 88220		

CUSTOMER PROJECT NAME	PROJECT LOCATION COORDINATES
TWS Closure	32.4338144861, -104.159455045

DESCRIPTION	QTY	UNIT	RATE	AMOUNT
This is pricing a package to reclaim the single 1mm bbl pond cell Mobilize equipment to site. Dirt reclaim of pond consist of- Bury all material (Caliche, Gypsum, Sand, ect.) below ground level, backfill pond area with uncontaminated soil from pond walls. Pond area will be reclaimed to natural elevations and water flow patterns. All stockpiled strippings will be put down last to ensure ground has been completely returned to native design.	1		352,000.00	352,000.00
Environmental soil sampling This will include digging 6 sample locations for each containment. One composite sample from 0-4 feet below surface and one discrete sample from each location at 4.25 feet Cost include trip, labor, materials, and laboratory testing	1		1,725.00	1,725.00
Environmental Soil testing Before earthwork can begin the soil must be tested for contamination in case of liner leakage. Cost include trip, labor, materials, and laboratory testing of 18 tests.	1		2,700.00	2,700.00
Broadcast seeding of pond area Seed will be a native mix for Eddy County NM Includes purchase of seed mix and placement	1		3,000.00	3,000.00

Fence removal and disposal Fence estimated at 3020 ft This includes removal of all posts, braces, wire, fabric, gates, and hardware.	3,020	4.00	12,080.00
Remove and dispose of all four layers. Textile, 40 mil, net, and 60 mil	1,724,000	0.15	258,600.00

Preferred payment method: ACH/Wire Email AR@cascadeservicesllc.com for ACH/Wire details.	SUBTOTAL	630,105.00
	TAX	0.00
Remit Checks To: Cascade Services LLC PO Box 200954 Dallas, TX 75320-0954 **THIS ESTIMATE IS SUBJECT TO THE TERMS & CONDITIONS ATTACHED.	TOTAL	\$630,105.00

**If pumping is needed due to weather conditions, a \$350 daily fee will be charged on final invoice.

**Materials will be invoiced upon receipt of customer purchase order or job approval.

**This estimate may not include tax and may be added on invoice unless customer provides a valid tax exemption document.

Questions? Email AR@Cascadeservicesllc.com

Accepted By

Accepted Date

R. T. HICKS CONSULTANTS, LTD.

901 Rio Grande Blvd NW ▲ Suite F-142 ▲ Albuquerque, NM 87104 ▲ 505.266.5004 ▲ Since 1996

NOLAN RYAN IN-GROUND CONTAINMENTS

Financial Assurance Cost Estimate

Attached is the cost estimate for reclamation of the Nolan Ryan East recycling in-ground containment.

The cost of closure sampling and analysis is estimated at \$1725 (sampling) plus \$2,700 (laboratory cost) to “test the soils beneath the containment for contamination with a five-point composite sample which includes stained or wet soils, if any, and that sample shall be analyzed for the constituents listed in Table I” of Rule 34.

RT Hicks Consultants will assist with the sampling as necessary and prepare the Closure Report for the site. Total closure costs associated with the sampling are estimated at \$7500. The cost estimates from Cascade Services (attached) and from RT Hicks Consultants are presented below.

Cascade Services	
All work elements required by Rule 34	\$964,613.60
RT Hicks Consultants	
Preparation of sampling results and closure report	7500.00
Total for all Closure Activities	\$972,113.60

The reclamation must meet terms set forth in the surface lease agreement with the landowner, who received a copy of the registration.

Please contact Randall Hicks if you have any questions concerning this closure cost estimate.

Cascade Services, LLC

952 Echo Ln
Ste 375
Houston, TX 77024-2814
www.cascadeservicesllc.com



Estimate

ADDRESS	SHIP TO	ESTIMATE	2035
Steven McCutcheon	Steven McCutcheon	DATE	04/24/2025
Vaughn Operating, LLC	Vaughn Operating, LLC		
3021 Hepler Rd	3021 Hepler Rd		
Carlsbad, NM 88220	Carlsbad, NM 88220		

PROJECT LOCATION COORDINATES
32.430874383, -104.170456507

DESCRIPTION	QTY	UNIT	RATE	AMOUNT
This is pricing a package to reclaim the 819,663 BBL & 1,157,895 BBL produced water ponds Mobilize equipment to site. Dirt reclaim of pond consist of- Bury all material (Caliche, Gypsum, Sand, ect.) below ground level, backfill pond area with uncontaminated soil from pond walls. Pond area will be reclaimed to natural elevations and water flow patterns. All stockpiled strippings will be put down last to ensure ground has been completely returned to native design.	201,958		2.00	403,916.00
Environmental soil sampling This will include digging 6 sample locations for each containment. One composite sample from 0-4 feet below surface and one discrete sample from each location at 4.25 feet Cost include trip, labor, materials, and laboratory testing	1		1,725.00	1,725.00
Environmental Soil testing Before earthwork can begin the soil must be tested for contamination in case of liner leakage. Cost include trip, labor, materials, and laboratory testing of 18 tests.	1		2,700.00	2,700.00
Broadcast seeding of pond area Seed will be a native mix for Eddy	1		3,000.00	3,000.00

County NM Includes purchase of seed mix and placement			
Fence removal and disposal	4,782	4.00	19,128.00
Fence estimated at 4,782 ft			
This includes removal of all posts, braces, wire, fabric, gates, and hardware.			
Remove and dispose of all four layers. Textile, 40 mil, net, and 60 mil	3,560,964	0.15	534,144.60

Preferred payment method: ACH/Wire	SUBTOTAL	964,613.60
Email AR@cascadeservicesllc.com for ACH/Wire details.	TAX	0.00
Remit Checks To:	-----	
Cascade Services LLC	TOTAL	\$964,613.60
PO Box 200954		
Dallas, TX 75320-0954		

**THIS ESTIMATE IS SUBJECT TO THE TERMS & CONDITIONS ATTACHED.

**If pumping is needed due to weather conditions, a \$350 daily fee will be charged on final invoice.

**Materials will be invoiced upon receipt of customer purchase order or job approval.

**This estimate may not include tax and may be added on invoice unless customer provides a valid tax exemption document.

Questions? Email AR@Cascadeservicesllc.com

Accepted By

Accepted Date

R. T. HICKS CONSULTANTS, LTD.

901 Rio Grande Blvd NW ▲ Suite F-142 ▲ Albuquerque, NM 87104 ▲ 505.266.5004 ▲ Since 1996

TALL TEXAN IN-GROUND CONTAINMENTS

Financial Assurance Cost Estimate

Attached is the cost estimate for reclamation of the Tall Texan recycling in-ground containments.

The cost of closure sampling and analysis is estimated at \$1725 (sampling) plus \$2,700 (laboratory cost) to “test the soils beneath the containment for contamination with a five-point composite sample which includes stained or wet soils, if any, and that sample shall be analyzed for the constituents listed in Table I” of Rule 34.

RT Hicks Consultants will assist with the sampling as necessary and prepare the Closure Report for the site. Total closure costs associated with the sampling are estimated at \$7500. The cost estimates from Cascade Services (attached) and from RT Hicks Consultants are presented below.

Cascade Services	
All work elements required by Rule 34	\$108,293.20
RT Hicks Consultants	
Preparation of sampling results and closure report	7500.00
Total for all Closure Activities	\$115,793.20

The reclamation must meet terms set forth in the surface lease agreement with the landowner, who received a copy of the registration.

Please contact Randall Hicks if you have any questions concerning this closure cost estimate.

Cascade Services, LLC

952 Echo Ln
 Ste 375
 Houston, TX 77024-2814
 www.cascadeservicesllc.com

**Estimate**

ADDRESS Steven McCutcheon Vaughn Operating, LLC 3021 Hepler Rd Carlsbad, NM 88220	SHIP TO Steven McCutcheon Vaughn Operating, LLC 3021 Hepler Rd Carlsbad, NM 88220	ESTIMATE 2041 DATE 04/29/2025
--	--	--

CUSTOMER PROJECT NAME TSW Tall Texan Closure	PROJECT LOCATION COORDINATES 32.4338144861, -104.159455045
--	--

DESCRIPTION	QTY	UNIT	RATE	AMOUNT
This is pricing a package to reclaim the 51,537 BBL & 45,657 BBL recycle water ponds Mobilize equipment to site. Dirt reclaim of pond consist of- Bury all material (Caliche, Gypsum, Sand, ect.) below ground level, backfill pond area with uncontaminated soil from pond walls. Pond area will be reclaimed to natural elevations and water flow patterns. All stockpiled strippings will be put down last to ensure ground has been completely returned to native design.	17,201		2.00	34,402.00
Environmental soil sampling This will include digging 6 sample locations for each containment. One composite sample from 0-4 feet below surface and one discrete sample from each location at 4.25 feet Cost include trip, labor, materials, and laboratory testing	1		1,725.00	1,725.00
Environmental Soil testing Before earthwork can begin the soil must be tested for contamination in case of liner leakage. Cost include trip, labor, materials, and laboratory testing of 18 tests.	1		2,700.00	2,700.00
Broadcast seeding of pond area Seed will be a native mix for Eddy County NM Includes purchase of seed mix and placement	1		3,000.00	3,000.00

Fence removal and disposal Fence estimated at 2,400 ft This includes removal of all posts, braces, wire, fabric, gates, and hardware.	2,400	4.00	9,600.00
Remove and dispose of all four layers. Textile, 40 mil, net, and 60 mil	379,108	0.15	56,866.20

Preferred payment method: ACH/Wire
Email AR@cascadeservicesllc.com for ACH/Wire details.

SUBTOTAL 108,293.20

TAX 0.00

Remit Checks To:
Cascade Services LLC
PO Box 200954
Dallas, TX 75320-0954

TOTAL \$108,293.20

**THIS ESTIMATE IS SUBJECT TO THE TERMS & CONDITIONS ATTACHED.

**If pumping is needed due to weather conditions, a \$350 daily fee will be charged on final invoice.

**Materials will be invoiced upon receipt of customer purchase order or job approval.

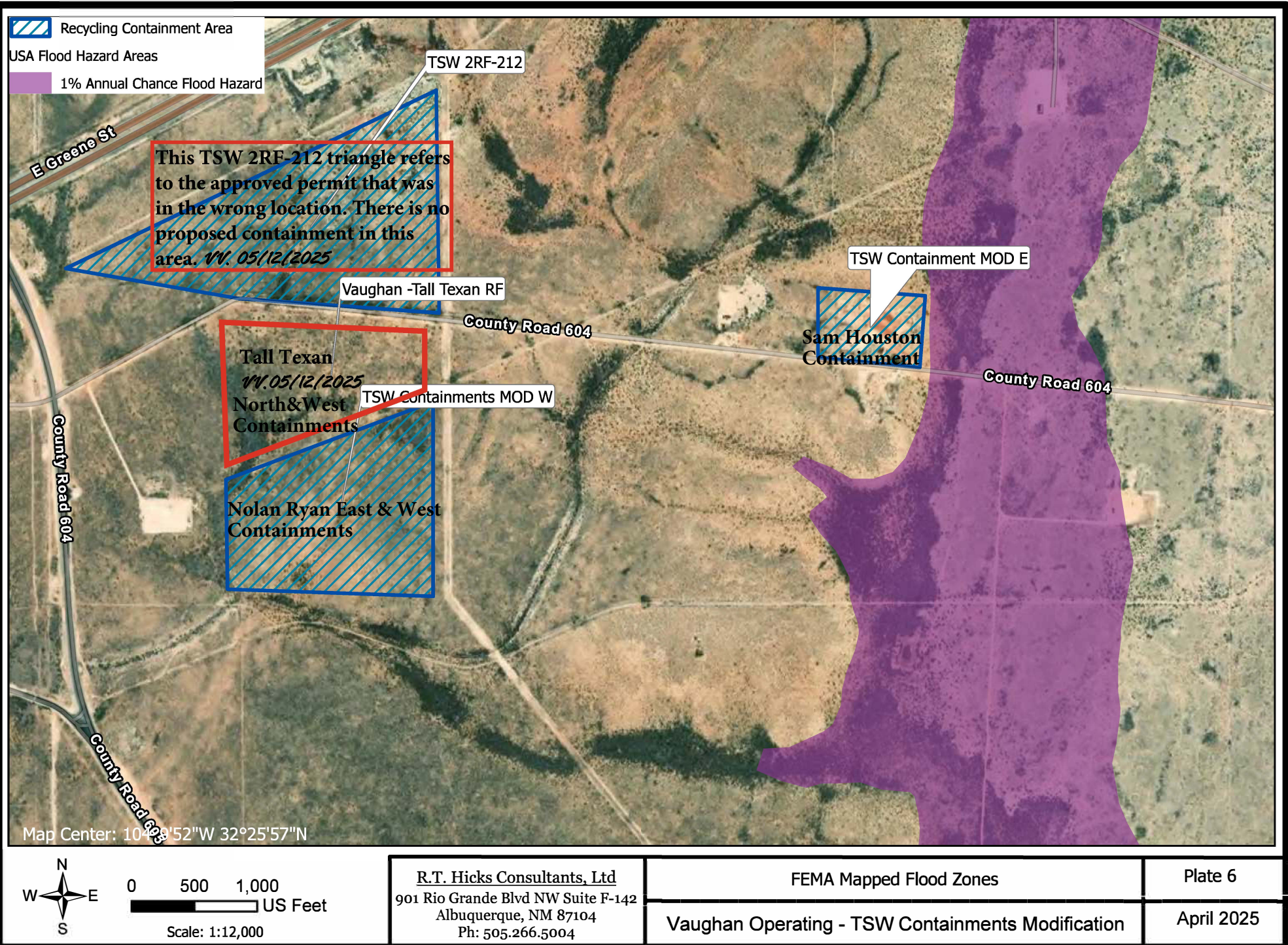
**This estimate may not include tax and may be added on invoice unless customer provides a valid tax exemption document.

Questions? Email AR@Cascadeservicesllc.com

Accepted By

Accepted Date

P:\Cascade-Vaughn-TWS2\ProjectTemplate\Vaughan-TWS_Containments-MOD.aprx



Sante Fe Main Office
Phone: (505) 476-3441

General Information
Phone: (505) 629-6116

Online Phone Directory
<https://www.emnrd.nm.gov/ocd/contact-us>

State of New Mexico
Energy, Minerals and Natural Resources
Oil Conservation Division
1220 S. St Francis Dr.
Santa Fe, NM 87505

CONDITIONS

Action 462212

CONDITIONS

Operator: Vaughan Operating LLC 3021 Hepler Rd. Carlsbad, NM 88220	OGRID: 330307
	Action Number: 462212
	Action Type: [C-147] Water Recycle Long (C-147L)

CONDITIONS

Created By	Condition	Condition Date
vvenegas	None	5/14/2025