

Lester Wayne Price, Jr.
Price LLC
7 Sycamore Ln
Glenwood, NM 88039
505-503-3575

December 1, 2025

RE: Wasserhund – Eidson State #001 (BW-004)
Subsidence Report

SUBSIDENCE MONUMENT MONITORING

On November 18, 2025 a field survey was conducted to check for changes in monitoring location elevations at the Western Refining Facility located on NM238 and about 9 miles southwest of Lovington Airport, near Lovington, NM.

This survey was conducted using a Trimble R10 & R12i GPS receivers and a Leica NAK 2 automatic level, to determine difference in elevation from a known control point.

Asel Base Point (elevation 4025.64 above mean sea level (MSL)) was used as the Reference Primary Elevation Point for determining elevations on this project. Using an R10 GPS receiver, we logged static data on this point and processed using the Data using OPUS to establish a Latitude & Longitude on Asel Base Point. Additionally, the OPUS processing on the logged static file confirmed the elevation of 4025.64 on Asel Base Point. This coordinate was then transferred to the other reported & surveyed points, a level loop was run through the project with side shots as needed to check the different monuments, benchmarks, and control points at this site. Asel Base Point was also tied directly to USCGS monument 'RYCADE' by RTK observations.

Observations were made on all available points and tabulated to compare the elevations to the base elevations established on April 10, 2024. See Table A for these results.

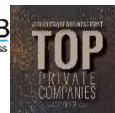
See site map attached.



Table A

The surveyed elevations along with deltas from established values are as follows:

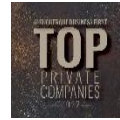
Name	Elevation (4/10/24)*	Elevation (10/09/24)*	Elevation (5/06/25)*	Elevation (11/18/25)	Change in Elevation from Previous Site Visit	Change in Elevation from Base Reading
MON SM-1	4030.31	4030.32	4030.32	4030.31	-0.01	0.00
MON SM-2	4032.22	4032,21	4032.21	4032.17	-0.04	-0.05
MON SM-3	4033.66	4033.66	4033.66	4033.64	-0.02	-0.02
MON SM-4	4033.54	4033.54	4033.54	4033.52	-0.02	-0.02
LOWER FLANGE BW-04	4034.33	4034.32	4034.32	4034.30	-0.02	-0.03
ASEL BASE POINT	4025.64	4025.64	4025.64	4025.64	0.00	0.00
RYCADE				4020.08	N/A	N/A



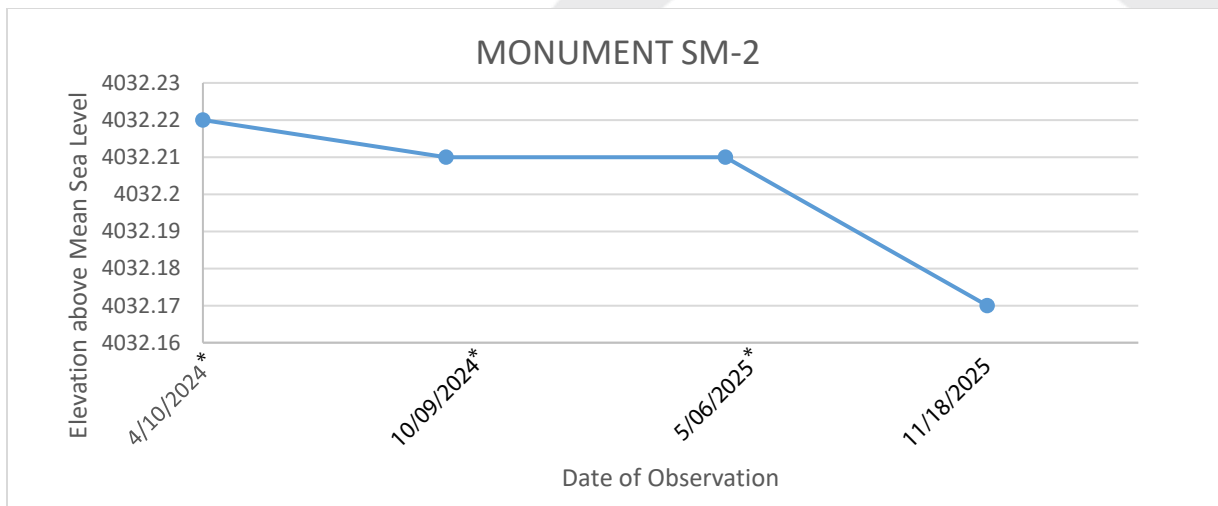
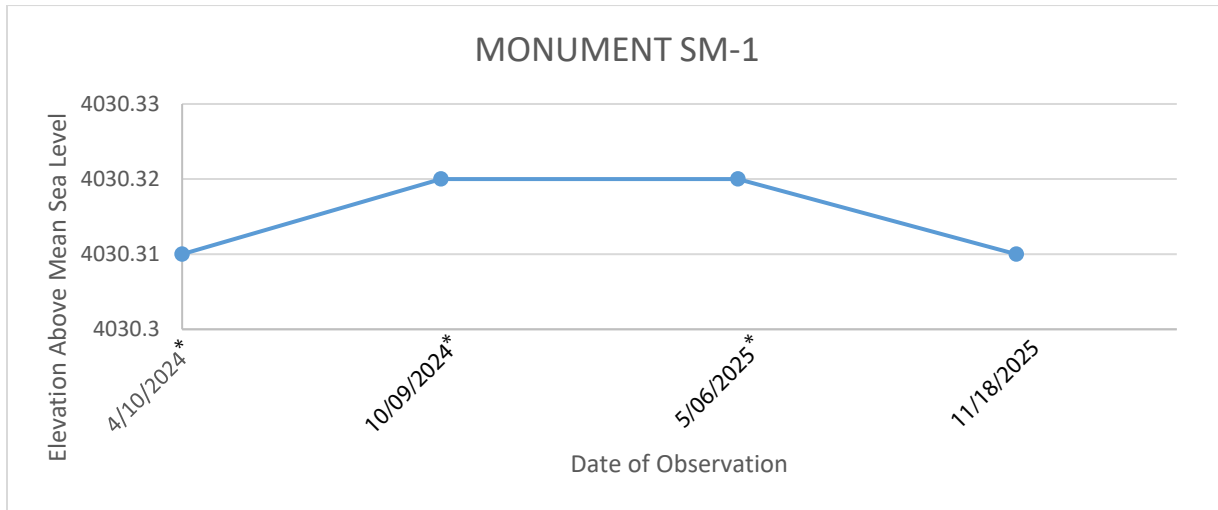
Conclusions

The survey was conducted and results analyzed, using the elevations originally established on April 10, 2024 as the base elevations for each point. The readings were consistent with a stable surface as there was little to no difference in elevations of any monitoring point, the most being on SMF-2, with a change of 0.05 feet downward. The rest of the points were within tolerance of the readings for the NAK 2 level, showing 0.03 feet of difference or less, which is an unremarkable elevation change.

The area appears stable with little movement either up or downward over the past 18 months of monitoring. The greatest deviations in elevation at the SM-2 location is around 0.05 feet, or about 1/2 inch from observed low elevation to observed high elevation, some of which was likely due to instrument, operator reading error, and procedural preferences. Most differences were 0.02 feet (about 3/8 inch) or less over the 18 month monitoring period.



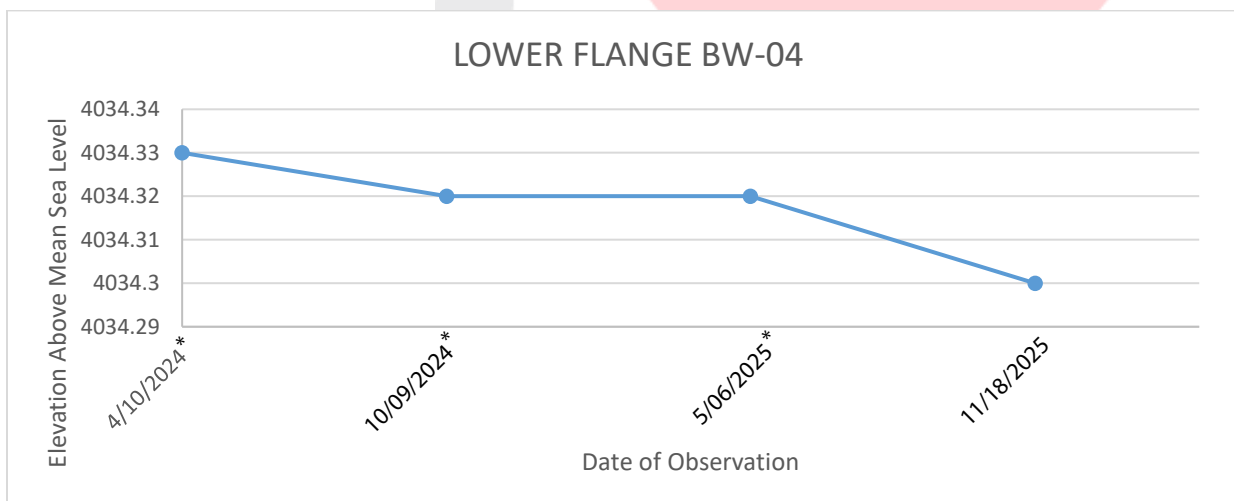
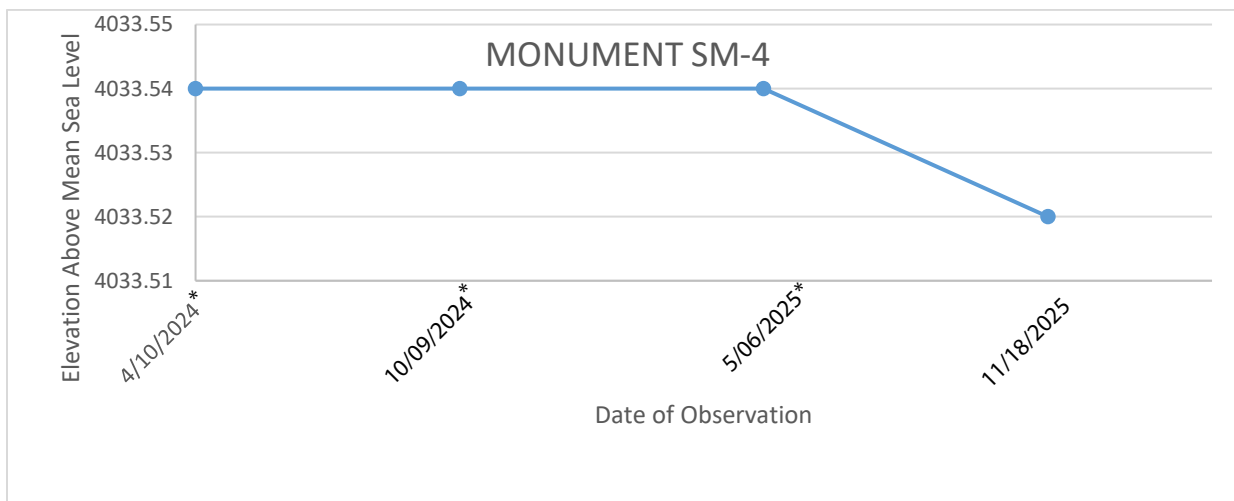
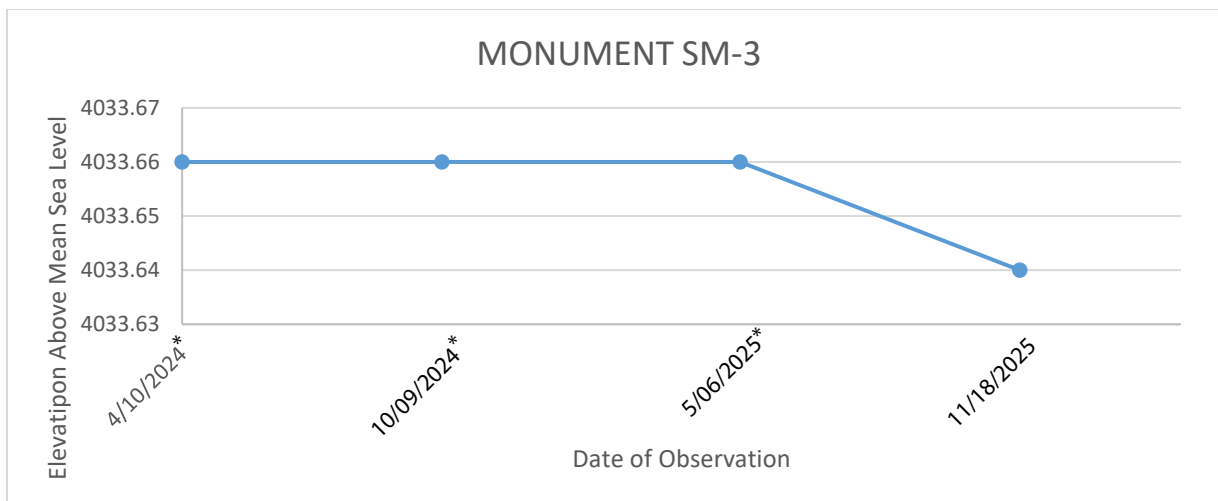
WASSERHUND BRINE WELL BW-04 SUBSIDENCE MONITORING



Note: '*' indicates that the first three (3) observations were conducted by others and were not verified by this surveyor



100 E. Navajo Drive Suite 100 Hobbs NM 88240 T 575 393 9827 F 575 393 1542 <http://www.Pettigrew.us>

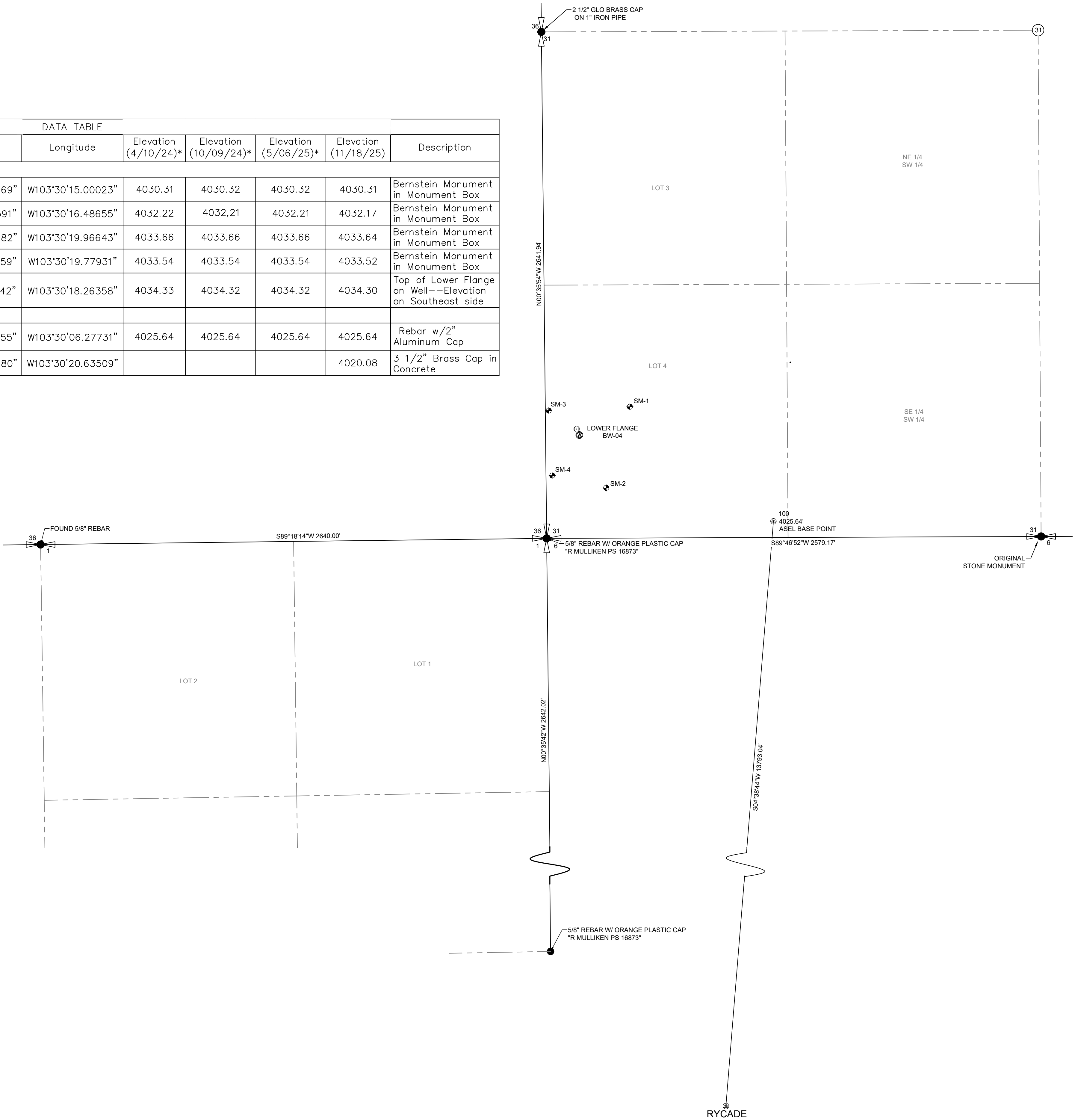


Note: '*' indicates that the first three (3) observations were conducted by others and were not verified by this surveyor

BRINE WELL BW-04 SUBSIDENCE MONITORING SURVEY

LOCATED IN LOT 4, SECTION 31, T16S, R35E, N.M.P.M., LEA COUNTY, NEW MEXICO

DATA TABLE									
Name	Northing	Easting	Latitude	Longitude	Elevation (4/10/24)*	Elevation (10/09/24)*	Elevation (5/06/25)*	Elevation (11/18/25)	Description
MON SM-1	682475.512	795906.488	N32°52'24.22969"	W103°30'15.00023"	4030.31	4030.32	4030.32	4030.31	Bernstein Monument in Monument Box
MON SM-2	682052.606	795783.014	N32°52'20.05591"	W103°30'16.48655"	4032.22	4032.21	4032.21	4032.17	Bernstein Monument in Monument Box
MON SM-3	682455.925	795482.985	N32°52'24.06882"	W103°30'19.96643"	4033.66	4033.66	4033.66	4033.64	Bernstein Monument in Monument Box
MON SM-4	682116.883	795501.607	N32°52'20.71359"	W103°30'19.77931"	4033.54	4033.54	4033.54	4033.52	Bernstein Monument in Monument Box
LOWER FLANGE BW-04	682359.274	795629.011	N32°52'23.10142"	W103°30'18.26358"	4034.33	4034.32	4034.32	4034.30	Top of Lower Flange on Well--Elevation on Southeast side
ASEL BASE POINT	681878.475	796655.328	N32°52'18.26555"	W103°30'06.27731"	4025.64	4025.64	4025.64	4025.64	Rebar w/2" Aluminum Cap
RYCADE	668130.746	795538.203	N32°50'02.35980"	W103°30'20.63509"				4020.08	3 1/2" Brass Cap in Concrete



CERTIFICATE OF SURVEY

I, Richard L. Mulliken, New Mexico Professional Surveyor No. 16873, do hereby certify that this Subsidence Survey Plat was prepared from an actual ground survey performed by me or under my supervision, that this survey is true and correct to the best of my knowledge and belief. I further certify that this Subsidence Survey Plat and the field survey upon which it is based meet the Minimum Standards for Surveying in New Mexico.

Richard L. Mulliken
Richard L. Mulliken, NMPS #16873

12/01/2025
Date

BASIS OF BEARING

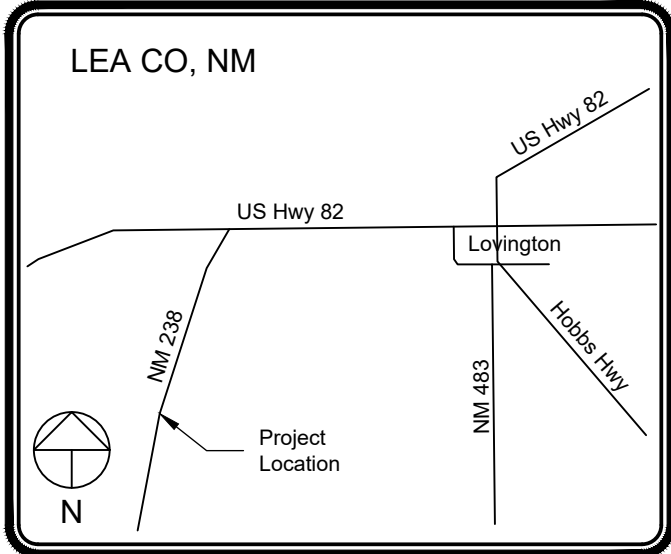
The basis of bearing for this survey is Grid North based on the New Mexico State Plane Coordinate System, East Zone, as determined by GPS/GNSS observations. Ground coordinates were obtained by applying a combined grid to ground scale factor of 1.0002054755 at control point located at N32°52'18.26555", W103°30'06.27731". True North can be obtained by applying a convergence angle of 0°27'05.0" at this point.

BASIS OF ELEVATION

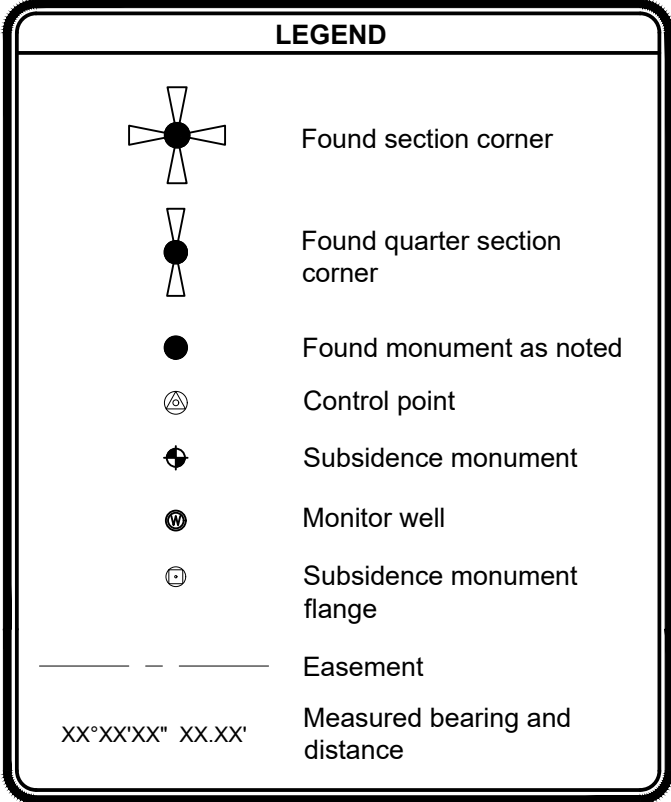
Elevations are based on 'Asel Base Point' elevation 4025.64, locally observed using Geoid18, and verified with OPUS Post Processing.

SURVEY NOTES:

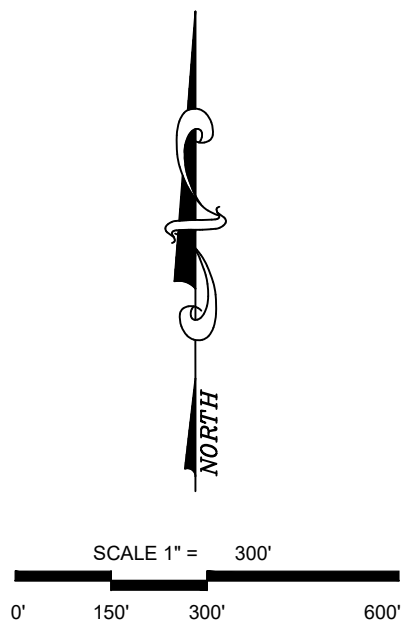
- Field observations were conducted on 11/18/2025.
- Elevations marked with "*" are from previous survey data form Asel Surveying, not by this Surveyor. They are shown only for comparison



VICINITY MAP
N.T.S.



PROJECT SURVEYOR:
RICHARD L. MULLIKEN
DRAWN BY:
C. ORTIZ



INDEXING INFORMATION FOR COUNTY CLERK

OWNER:

LOCATION:
SECTION 31, T16S, R35E, N.M.P.M.,
LEA COUNTY, NEW MEXICO

REVISIONS

No.	DATE	DESCRIPTION

SUBSIDENCE MONITORING SURVEY OF

BRINE WELL BW-04

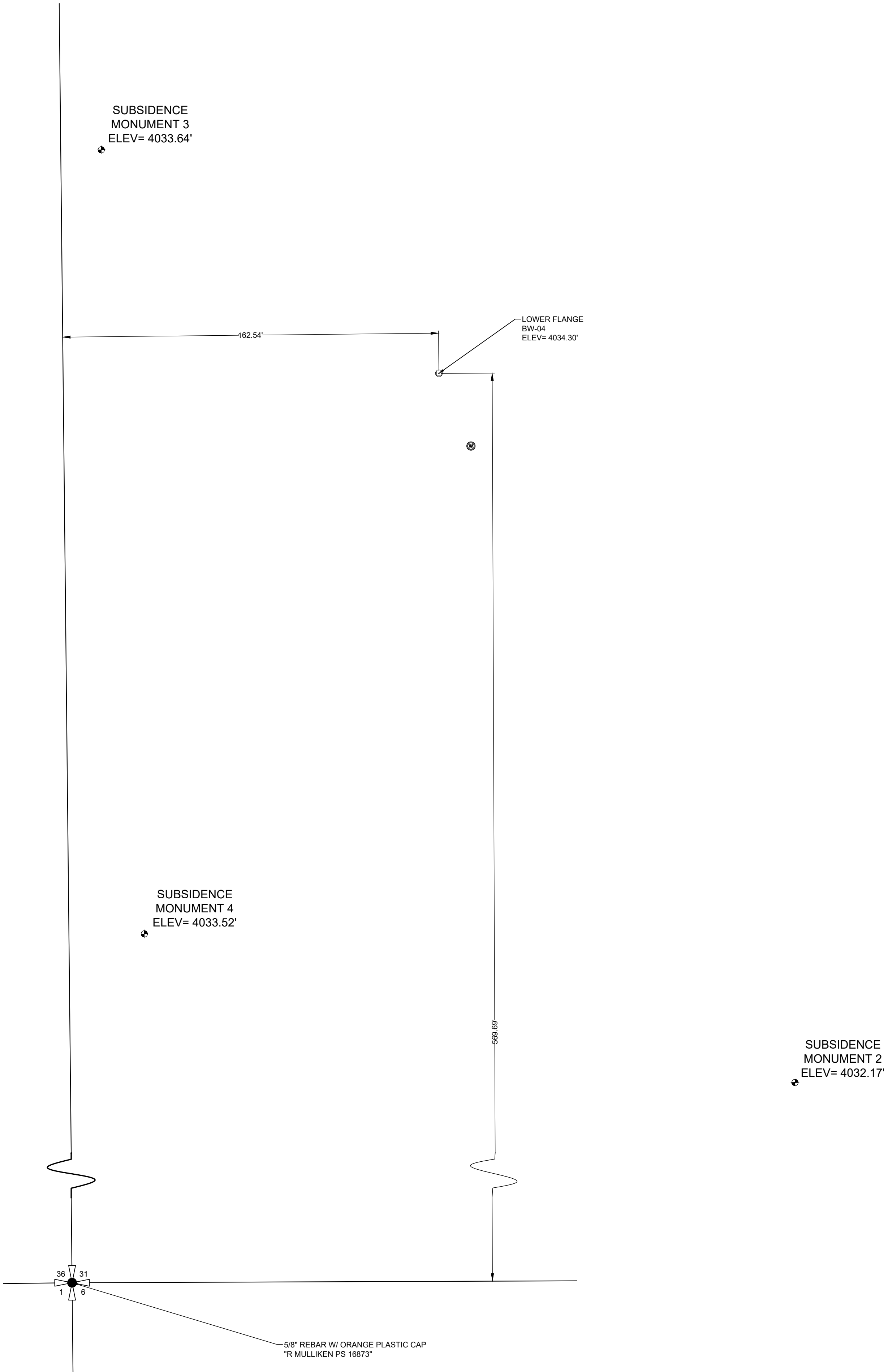
FOR
LESTER WAYNE PRICE JR.

PROJECT NUMBER:
2025.1276

SHEET:
1 of 2
SU - 101

BRINE WELL BW-04 SUBSIDENCE MONITORING SURVEY (DETAIL SHEET)

LOCATED IN LOT 4, SECTION 31, T16S, R35E, N.M.P.M., LEA COUNTY, NEW MEXICO



SUBSIDENCE
MONUMENT 1
ELEV= 4030.31'

SUBSIDENCE
MONUMENT 3
ELEV= 4033.64'

SUBSIDENCE
MONUMENT 4
ELEV= 4033.52'

SUBSIDENCE
MONUMENT 2
ELEV= 4032.17'

CERTIFICATE OF SURVEY

I, Richard L. Mulliken, New Mexico Professional Surveyor No. 16873, do hereby certify that this Subsidence Survey Plat was prepared from an actual ground survey performed by me or under my supervision, that this survey is true and correct to the best of my knowledge and belief. I further certify that this Subsidence Survey Plat and the field survey upon which it is based meet the Minimum Standards for Surveying in New Mexico.

[Signature]
Richard L. Mulliken, NMPS #16873

12/01/2025
Date

BASIS OF BEARING

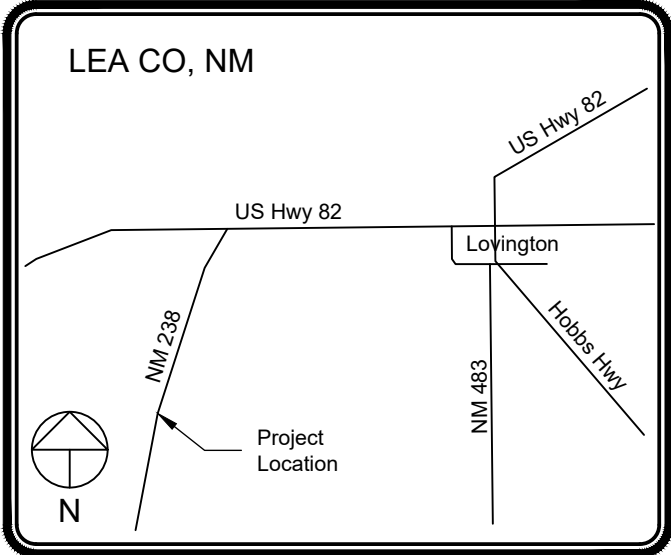
The basis of bearing for this survey is Grid North based on the New Mexico State Plane Coordinate System, East Zone, as determined by GPS/GNSS observations. Ground coordinates were obtained by applying a combined grid to ground scale factor of 1.0002054755 at control point located at N32°52'18.26555", W103°30'06.27731". True North can be obtained by applying a convergence angle of 0°27'05.0" at this point.

BASIS OF ELEVATION

Elevations are based on 'Asel Base Point' elevation 4025.64, locally observed using Geoid18, and verified with OPUS Post Processing.

SURVEY NOTES:

- Field observations were conducted on 11/18/2025.
- Elevations marked with "*" are from previous survey data form Asel Surveying, not by this Surveyor. They are shown only for comparison

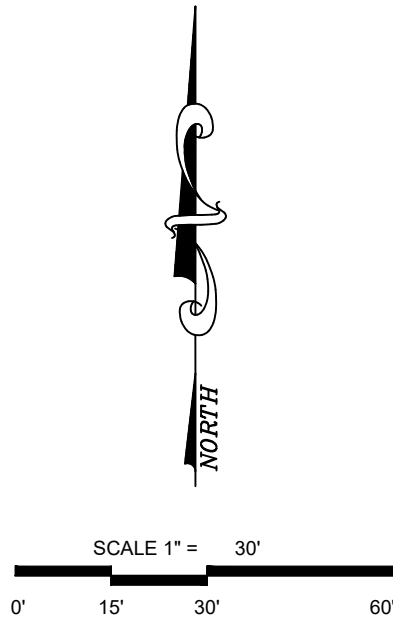


VICINITY MAP
N.T.S.

LEGEND	
	Found section corner
	Found monument as noted
	Subsidence monument
	Monitor well
	Subsidence monument flange
	Section line



PROJECT SURVEYOR:
RICHARD L. MULLIKEN
DRAWN BY:
C. ORTIZ



INDEXING INFORMATION
FOR COUNTY CLERK

OWNER:

LOCATION:
SECTION 31, T16S, R35E, N.M.P.M.,
LEA COUNTY, NEW MEXICO

REVISIONS		
No.	DATE	DESCRIPTION

SUBSIDENCE MONITORING
SURVEY
OF

BRINE WELL BW-04

FOR
LESTER WAYNE PRICE JR.

PROJECT NUMBER:
2025.1276

SHEET:
2 of 2
SU - 101

Sante Fe Main Office
Phone: (505) 476-3441

General Information
Phone: (505) 629-6116

Online Phone Directory
<https://www.emnrd.nm.gov/oecd/contact-us>

State of New Mexico
Energy, Minerals and Natural Resources
Oil Conservation Division
1220 S. St Francis Dr.
Santa Fe, NM 87505

COMMENTS

Action 532521

COMMENTS

Operator: WASSERHUND INC P.O. Box 2140 Lovington, NM 88260	OGRID: 130851
	Action Number: 532521
	Action Type: [UF-DP] Brine Facility Discharge Plan (DISCHARGE PLAN BRINE EXTRACTION)

COMMENTS

Created By	Comment	Comment Date
cchavez	Monument Survey 11/18/2025 (Survey within permit limits)	12/11/2025

Sante Fe Main Office
Phone: (505) 476-3441

General Information
Phone: (505) 629-6116

Online Phone Directory
<https://www.emnrd.nm.gov/oed/contact-us>

State of New Mexico
Energy, Minerals and Natural Resources
Oil Conservation Division
1220 S. St Francis Dr.
Santa Fe, NM 87505

CONDITIONS

Action 532521

CONDITIONS

Operator: WASSERHUND INC P.O. Box 2140 Lovington, NM 88260	OGRID: 130851
	Action Number: 532521
	Action Type: [UF-DP] Brine Facility Discharge Plan (DISCHARGE PLAN BRINE EXTRACTION)

CONDITIONS

Created By	Condition	Condition Date
cchavez	None	12/11/2025