



December 24, 2025

Mr. Joel Stone
New Mexico Oil Conservation Division
Energy Minerals and Natural Resources Division
1220 South St. Francis Drive
Santa Fe, NM 87505

RE: DCP OPERATING COMPANY, LP GROUNDWATER DISCHARGE PLAN, ARTESIA GAS PLANT (NMOCD ACTION ID #526065)

Mr. Stone,

On behalf of DCP Operating Company, LP ("DCP", OGRID #36785), we (Geolex, Inc.) are providing the enclosed supplemental materials to support DCP's discharge permit application for the existing Artesia Gas Plant (Facility ID: FAB1815849907), which was determined to be administratively complete, on November 26, 2025. In accordance with the requirements of 10.6.2.3108(B), these supplemental materials include relevant proof of public notice of the discharge permit application, including the following items:

Attachment 1 – Copy of Public Notice (English and Spanish) and photographic documentation of 2 ft. by 3 ft. public notice posted at the Artesia Gas Plant entrance and the Post Office in Artesia, New Mexico.

Attachment 2 – Identification of all surface owners within 1/3-mile distance of the Artesia Gas Plant Property, signed notifications letters to all surface owners, and U.S. Postal Service proof-of-delivery documents.

Attachment 3 – Copy of ad print published in Hobbs News Sun, on Thursday, December 11, 2025, and notarized Affidavit of Publication.

If you have any questions or comments regarding this Plan, would like to be placed on a facility-specific mailing list for future notices, please contact:

Sincerely,
Geolex, Inc.®

A handwritten signature in black ink, appearing to read "David A. White".

David A. White, P.G.
Vice President – Consultant to DCP Operating Co. LP

P:\25-026 P66 Discharge Plan\Notice Documents (Artesia)\Cover_Letter_Artesia.docx

phone: 505-842-8000
fax: 505-842-7380

500 Marquette Avenue NW, Suite 1350
Albuquerque, New Mexico 87102

email: dwhite@geolex.com
web: www.geolex.com

ATTACHMENT 1

**COPY OF PUBLIC NOTICE (ENGLISH & SPANISH)
AND PHOTOGRAPHIC DOCUMENTATION OF POSTING AT
THE ARTESIA GAS PLANT AND ARTESIA, NEW MEXICO POST
OFFICE**

NOTICE OF PUBLICATION

Notice is hereby given that pursuant to New Mexico Water Quality Control Commission Regulations (NMAC 20.6.2.3108(B)), the following discharge permit application has been submitted to the Director of the New Mexico Oil Conservation Division (NMOCD), 1220 South Saint Francis Drive, Santa Fe, New Mexico 87505; (505) 476-3441:

NMOCD Discharge Permit Number GW-XXX
Artesia Gas Processing Plant
DCP Operating Company, LP (DCP)
Lat/Long. (NAD83): 32.75638, -104.21075
Illinois Camp Rd, Artesia, NM 88210
Nikunj Khelurkar (432-241-5848) Nikunj.Khelurkar@p66.com

DCP announces the submittal of an application for potential unintended discharges at the Artesia Gas Processing Plant. The facility stores over 420,000 gallons of oil, wastewater, condensates, glycol, amine, lube oil, synthetic oil, hot surge oil, and transformer oil in above ground storage tanks and vessels and is designed to process 100 million standard cubic feet per day (MMSCFD) of natural gas. The facility is a cryogenic gas plant through which natural gas and condensate from nearby oil and gas production facilities is transported by pipeline for treatment and processing. Once gathered at the Facility, the produced natural gas is dehydrated to remove the water content and compressed through cryogenic processing. The discharge permit includes a description of materials stored and used at the Facility and any waste generated. Groundwater occurs less than 300 feet below ground surface and contains total dissolved solid (TDS) concentrations typically less than 4,740 milligrams per liter (mg/L). The discharge permit addresses how liquids and solid waste will be handled, stored, and disposed of, including procedures to prevent unintended discharge. Response action and abatement requirements for spills and leaks are addressed.

The NMOCD has determined that the application is administratively complete and is in the process of preparing a draft permit. The NMOCD shall post notice on its website and distribute notice of the submittal of the application to affected local, state, federal, tribal, or pueblo government agency, political subdivisions, ditch associations, and land grants as identified by the department, and persons on a general and facility-specific list maintained by the department who have requested notice of discharge permit applications. Interested persons may obtain information, submit comments, and request to be placed on a facility-specific mailing list for future notices. The NMOCD will also accept comments and statements of interest regarding the draft permit and will create a facility-specific mailing list for persons who wish to receive future notices. Prior to ruling on any proposed permit, the Director shall allow a period of at least 30 days after the draft permit is posted, during which time interested persons may submit comments.

Persons interested in obtaining further information, submitting comments, or requesting to be on a facility-specific mailing list for future notices may contact the Oil Conservation Division contact listed below:

Mr. Joel Stone
New Mexico Oil Conservation Division
Energy Minerals and Natural Resources Division
1220 South St. Francis Drive
Santa Fe, NM 87505
(505) 709-5149

AVISO DE PUBLICACIÓN

Se notifica que, conforme al Reglamento de la Comisión de Control de Calidad del Agua de Nuevo México (NMAC 20.6.2.3108(B)), se ha presentado la siguiente solicitud de permiso de descarga al Director de la División de Conservación de Petróleo de Nuevo México (NMOCD), 1220 South Saint Francis Drive, Santa Fe, Nuevo México 87505; (505) 476-3441:

NMOCD Discharge Permit Number GW-XXX
Artesia Gas Processing Plant
DCP Operating Company, LP (DCP)
Lat/Long. (NAD83): 32.75638, -104.21075
Illinois Camp Rd, Artesia, NM 88210
Nikunj Khelurkar (432-241-5848) Nikunj.Khelurkar@p66.com

DCP anuncia la presentación de una solicitud para posibles descargas no intencionales para la planta de procesamiento de gas Artesia. La instalación almacena más de 420.000 galones de petróleo, aguas residuales, condensados, glicol, amina, aceite lubricante, aceite sintético, aceite de sobrecarga caliente y aceite de transformador en tanques sobre la tierra, y está diseñada para procesar 100 millones de pies cúbico estándar al día (MMSCFD) de gas natural. La instalación es una planta de gas criogénica a través de la cual el gas natural y los líquidos asociados de pozos cercanos de producción de petróleo y gas que se transportan por oleoducto para su tratamiento y procesamiento. Una vez llegando a la instalación, el gas natural producido se deshidrata para eliminar el contenido de agua y se comprime mediante procesamiento criogénico. El permiso de descarga incluye una descripción de los materiales almacenados y utilizados en la instalación y cualquier residuos generados. El agua subterránea se encuentra a menos de 300 pies bajo la superficie del suelo y contiene concentraciones totales sólidos disueltas (TDS) típicamente menos de 4.740 miligramos por litro (mg/L). El permiso de descarga explica cómo se manejarán, almacenarán y eliminarán los líquidos y residuos sólidos, incluyendo procedimientos para prevenir descargas no intencionales. Se explican los requisitos de acción de respuesta y reducción de derrames y fugas.

El NMOCD ha determinado que la solicitud está administrativamente completa y está en proceso de preparar un borrador de permiso. El NMOCD publicará un aviso en su sitio web y distribuirá aviso de la presentación de la solicitud a agencias gubernamentales locales, estatales, federales, tribus o pueblos afectados, subdivisiones políticas, asociaciones de zanjas y concesiones de tierras según lo identifique por el departamento, así como a las personas en una lista general y específica de instalaciones mantenida por el departamento que hayan solicitado notificación de solicitudes de permiso de descarga. Las personas interesadas pueden obtener información, enviar comentarios y solicitar ser incluidas en una lista de correo específica de cada centro para avisos futuros. El NMOCD también aceptará comentarios y declaraciones de interés respecto al permiso borrador y creará una lista de correo específica para cada instalación para las personas que deseen recibir avisos futuros. Antes de tomar acción sobre permiso propuesto, el Director deberá conceder un periodo de a lo menos 30 días después de tras la publicación del permiso borrador, durante cual tiempo las personas interesadas pueden someter comentarios.

Las personas interesadas en obtener más información, enviar comentarios o solicitar inscribirse en una lista de correo específica de la instalación para avisos futuros pueden ponerse en contacto con la División de Conservación de Petróleo que se indica en la dirección siguiente:

Mr. Joel Stone
New Mexico Oil Conservation Division
Energy Minerals and Natural Resources Division
1220 South St. Francis Drive
Santa Fe, NM 87505
(505) 709-5149

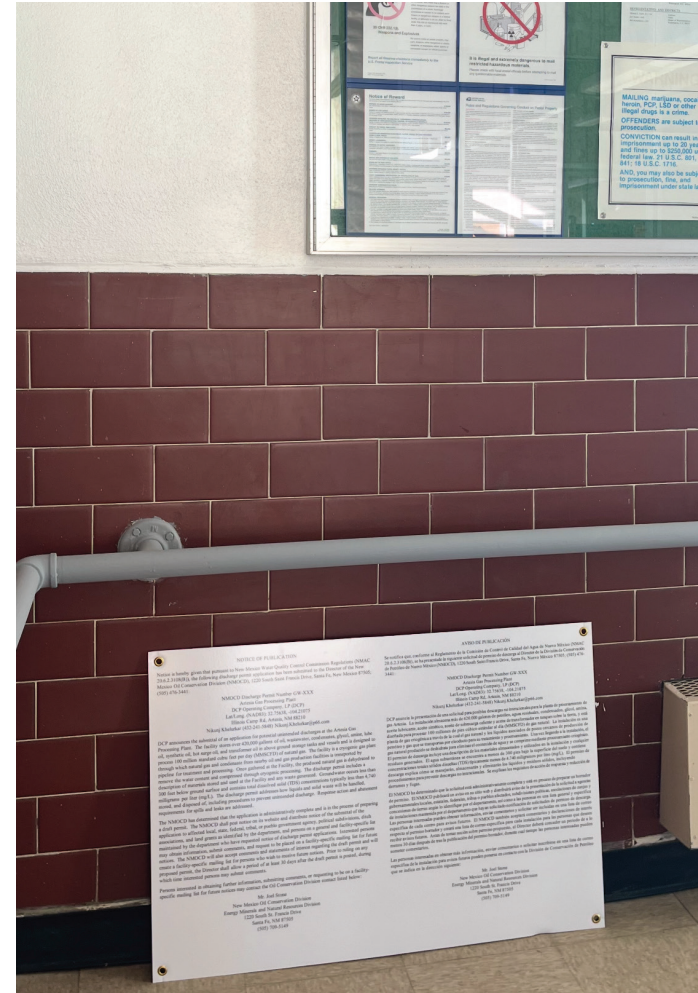
PUBLIC POSTING AND NOTICE OF DISCHARGE PERMIT APPLICATION
(DCP Operating Company -- Artesia Gas Plant)

Artesia Gas Plant Entrance



Photograph showing 2 ft. by 3 ft. public notice posted at the entrance to the Artesia Gas Plant on December 12, 2025.

Post Office - Artesia, NM

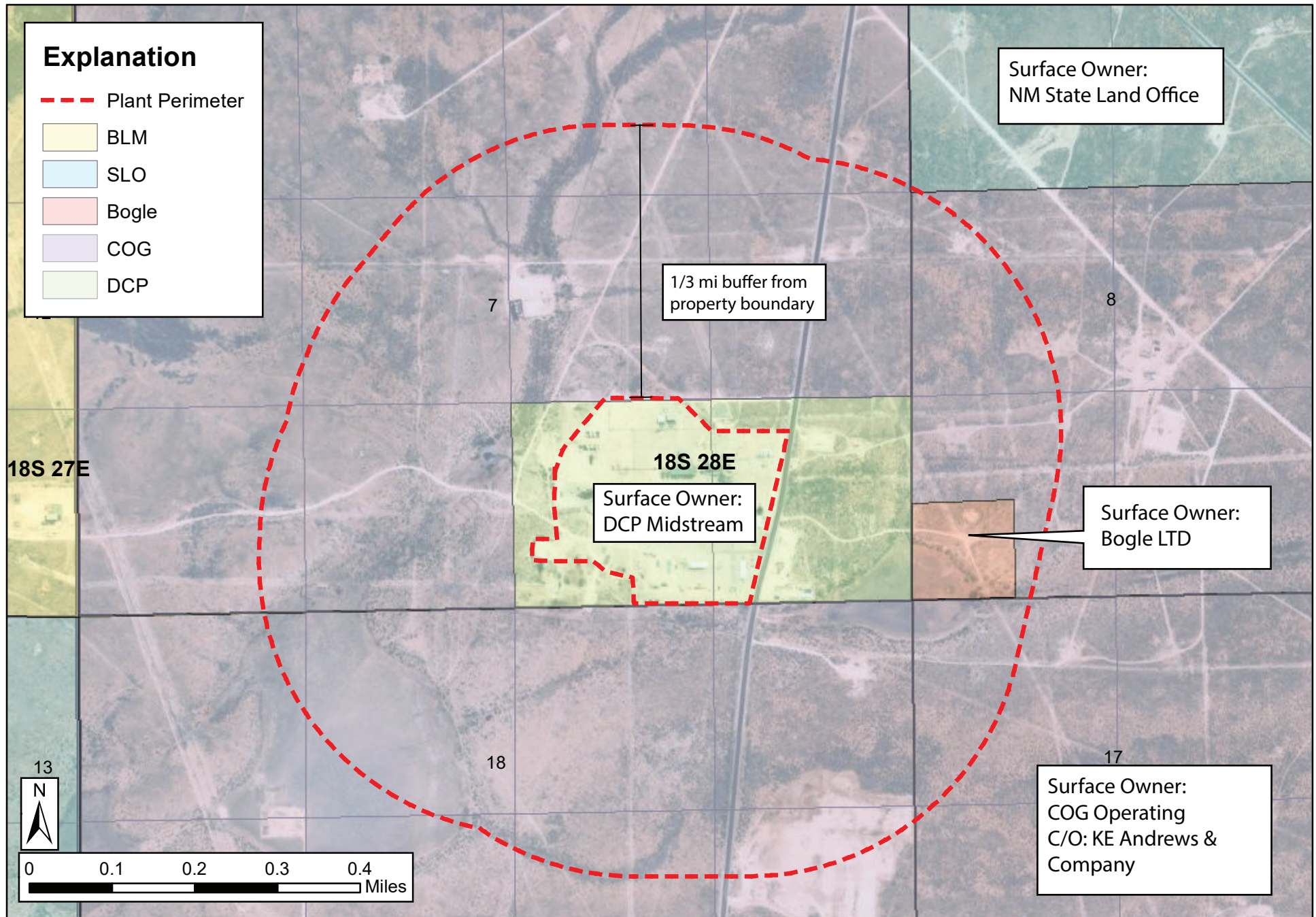


Photograph showing 2 ft. by 3 ft. public notice posted at the Artesia, New Mexico Post Office, on December 12, 2025.

ATTACHMENT 2

**IDENTIFICATION OF ALL SURFACE OWNERS WITHIN 1/3-MILE
DISTANCE OF THE ARTESIA GAS PLANT PROPERTY**

**COPIES OF SIGNED NOTIFICATION LETTERS TO SURFACE OWNERS
AND U.S. POSTAL SERVICE PROOF OF DELIVERY DOCUMENTS**



LOCATION MAP SHOWING A 1/3-MILE AREA AROUND THE ARTESIA GAS PLANT AND ADJACENT SURFACE OWNERSHIP. ADJACENT SURFACE OWNERS INCLUDE NM SLO, DCP MIDSTREAM LP, COG OPERATING, AND BOGLE LTD.



David A. White, P.G.

December 4, 2025

Bogle LTD Company
7331 Cherokee Rd
Dexter, NM 88230

RE: DCP OPERATING COMPANY, LP GROUNDWATER DISCHARGE PLAN

To Whom it May Concern:

This letter is to advise you that DCP Operating Company, LP ("DCP", OGRID #36785), located at 2331 Citywest Blvd N762, Houston, TX 77042, has filed an approved Groundwater Discharge Plan with the New Mexico Oil Conservation Division for the Artesia Gas Processing Plant, located at Illinois Camp Rd, Artesia, NM 88210, approximately 12 miles southeast of Artesia, NM. Pursuant to the requirements of NMAC 20.6.2.3108(B), landowners within one-third of a mile of the facility must be notified of the approved application. The discharge plan describes any potential for the release of contaminants to groundwater.

Operations at the Artesia Gas Processing Plant include compression, treatment, and processing of natural gas liquids, and permanent disposal of associated waste carbon dioxide and hydrogen sulfide via one acid gas injection well and produced water via one saltwater disposal well. Any associated contaminants are low-volume liquids utilized or produced during Plant operations and are not intentionally released, therefore potential for groundwater release is generally low. The Facility stores over 420,000 gallons of oil, wastewater, condensates, glycol, amine, lube oil, synthetic oil, hot oil surge, and transformer oil in aboveground storage tanks and vessels and is designed to process 230 million standard cubic feet per day of natural gas. These materials are stored in enclosed tanks with secondary containment structures or double-walled sumps with high level alarms.

There are no bodies of surface water or groundwater discharge sites within one mile of the Plant. Nearby groundwater wells indicated that the depth to groundwater ranges from approximately 95 to 300 feet below the surface, with a total dissolved solid (TDS) concentration between 1,730 to 4,740 ppm, in agreement with an average TDS of 2,690 ppm for shallow groundwater resources in the area.

If you have any questions or comments regarding this Plan, would like to be placed on a facility-specific mailing list for future notices, please contact:

Mr. Joel Stone (joel.stone@emnrd.nm.gov)
New Mexico Oil Conservation Division
Energy Minerals and Natural Resources Division
1220 South St. Francis Drive
Santa Fe, NM 87505
(505) 709-5149

Sincerely,
Geolex, Inc.®

A handwritten signature in blue ink, appearing to read "David A. White".

David A. White, P.G.
Vice President – Consultant to DCP Operating Co. LP

phone: 505-842-8000

• 500 Marquette Avenue NW, Suite 1350
Albuquerque, New Mexico 87102
web: www.geolex.com

• email: dwhite@geolex.com



David A. White, P.G.

December 4, 2025

COG Operating LLC
600 W Illinois Ave
Midland, TX 79701

RE: DCP OPERATING COMPANY, LP GROUNDWATER DISCHARGE PLAN

To Whom it May Concern:

This letter is to advise you that DCP Operating Company, LP ("DCP", OGRID #36785), located at 2331 Citywest Blvd N762, Houston, TX 77042, has filed an approved Groundwater Discharge Plan with the New Mexico Oil Conservation Division for the Artesia Gas Processing Plant, located at Illinois Camp Rd, Artesia, NM 88210, approximately 12 miles southeast of Artesia, NM. Pursuant to the requirements of NMAC 20.6.2.3108(B), landowners within one-third of a mile of the facility must be notified of the approved application. The discharge plan describes any potential for the release of contaminants to groundwater.

Operations at the Artesia Gas Processing Plant include compression, treatment, and processing of natural gas liquids, and permanent disposal of associated waste carbon dioxide and hydrogen sulfide via one acid gas injection well and produced water via one saltwater disposal well. Any associated contaminants are low-volume liquids utilized or produced during Plant operations and are not intentionally released, therefore potential for groundwater release is generally low. The Facility stores over 420,000 gallons of oil, wastewater, condensates, glycol, amine, lube oil, synthetic oil, hot oil surge, and transformer oil in aboveground storage tanks and vessels and is designed to process 230 million standard cubic feet per day of natural gas. These materials are stored in enclosed tanks with secondary containment structures or double-walled sumps with high level alarms.

There are no bodies of surface water or groundwater discharge sites within one mile of the Plant. Nearby groundwater wells indicated that the depth to groundwater ranges from approximately 95 to 300 feet below the surface, with a total dissolved solid (TDS) concentration between 1,730 to 4,740 ppm, in agreement with an average TDS of 2,690 ppm for shallow groundwater resources in the area.

If you have any questions or comments regarding this Plan, would like to be placed on a facility-specific mailing list for future notices, please contact:

Mr. Joel Stone (joel.stone@emnrd.nm.gov)
New Mexico Oil Conservation Division
Energy Minerals and Natural Resources Division
1220 South St. Francis Drive
Santa Fe, NM 87505
(505) 709-5149

Sincerely,
Geolex, Inc.®

A handwritten signature in blue ink, appearing to read "David A. White".

David A. White, P.G.
Vice President – Consultant to DCP Operating Co. LP

phone: 505-842-8000

• 500 Marquette Avenue NW, Suite 1350
Albuquerque, New Mexico 87102
web: www.geolex.com

• email: dwhite@geolex.com



David A. White, P.G.

December 4, 2025

COG Operating LLC
C/O KE Andrews & Company
2424 Ridge Rd
Rockwall, TX 75087

RE: DCP OPERATING COMPANY, LP GROUNDWATER DISCHARGE PLAN

To Whom it May Concern:

This letter is to advise you that DCP Operating Company, LP ("DCP", OGRID #36785), located at 2331 Citywest Blvd N762, Houston, TX 77042, has filed an approved Groundwater Discharge Plan with the New Mexico Oil Conservation Division for the Artesia Gas Processing Plant, located at Illinois Camp Rd, Artesia, NM 88210, approximately 12 miles southeast of Artesia, NM. Pursuant to the requirements of NMAC 20.6.2.3108(B), landowners within one-third of a mile of the facility must be notified of the approved application. The discharge plan describes any potential for the release of contaminants to groundwater.

Operations at the Artesia Gas Processing Plant include compression, treatment, and processing of natural gas liquids, and permanent disposal of associated waste carbon dioxide and hydrogen sulfide via one acid gas injection well and produced water via one saltwater disposal well. Any associated contaminants are low-volume liquids utilized or produced during Plant operations and are not intentionally released, therefore potential for groundwater release is generally low. The Facility stores over 420,000 gallons of oil, wastewater, condensates, glycol, amine, lube oil, synthetic oil, hot oil surge, and transformer oil in aboveground storage tanks and vessels and is designed to process 230 million standard cubic feet per day of natural gas. These materials are stored in enclosed tanks with secondary containment structures or double-walled sumps with high level alarms.

There are no bodies of surface water or groundwater discharge sites within one mile of the Plant. Nearby groundwater wells indicated that the depth to groundwater ranges from approximately 95 to 300 feet below the surface, with a total dissolved solid (TDS) concentration between 1,730 to 4,740 ppm, in agreement with an average TDS of 2,690 ppm for shallow groundwater resources in the area.

If you have any questions or comments regarding this Plan, would like to be placed on a facility-specific mailing list for future notices, please contact:

Mr. Joel Stone (joel.stone@emnrd.nm.gov)
New Mexico Oil Conservation Division
Energy Minerals and Natural Resources Division
1220 South St. Francis Drive
Santa Fe, NM 87505
(505) 709-5149

Sincerely,
Geolex, Inc.®

A handwritten signature in blue ink, appearing to read "David A. White", written over a horizontal line.

David A. White, P.G.
Vice President – Consultant to DCP Operating Co. LP

phone: 505-842-8000

• 500 Marquette Avenue NW, Suite 1350
Albuquerque, New Mexico 87102
web: www.geolex.com

• email: dwhite@geolex.com



David A. White, P.G.

December 4, 2025

State Land Office
310 Old Santa Fe Trail
Santa Fe, NM 87501

RE: DCP OPERATING COMPANY, LP GROUNDWATER DISCHARGE PLAN

To Whom it May Concern:

This letter is to advise you that DCP Operating Company, LP ("DCP", OGRID #36785), located at 2331 Citywest Blvd N762, Houston, TX 77042, has filed an approved Groundwater Discharge Plan with the New Mexico Oil Conservation Division for the Artesia Gas Processing Plant, located at Illinois Camp Rd, Artesia, NM 88210, approximately 12 miles southeast of Artesia, NM. Pursuant to the requirements of NMAC 20.6.2.3108(B), landowners within one-third of a mile of the facility must be notified of the approved application. The discharge plan describes any potential for the release of contaminants to groundwater.

Operations at the Artesia Gas Processing Plant include compression, treatment, and processing of natural gas liquids, and permanent disposal of associated waste carbon dioxide and hydrogen sulfide via one acid gas injection well and produced water via one saltwater disposal well. Any associated contaminants are low-volume liquids utilized or produced during Plant operations and are not intentionally released, therefore potential for groundwater release is generally low. The Facility stores over 420,000 gallons of oil, wastewater, condensates, glycol, amine, lube oil, synthetic oil, hot oil surge, and transformer oil in aboveground storage tanks and vessels and is designed to process 230 million standard cubic feet per day of natural gas. These materials are stored in enclosed tanks with secondary containment structures or double-walled sumps with high level alarms.

There are no bodies of surface water or groundwater discharge sites within one mile of the Plant. Nearby groundwater wells indicated that the depth to groundwater ranges from approximately 95 to 300 feet below the surface, with a total dissolved solid (TDS) concentration between 1,730 to 4,740 ppm, in agreement with an average TDS of 2,690 ppm for shallow groundwater resources in the area.

If you have any questions or comments regarding this Plan, would like to be placed on a facility-specific mailing list for future notices, please contact:

Mr. Joel Stone (joel.stone@emnrd.nm.gov)
New Mexico Oil Conservation Division
Energy Minerals and Natural Resources Division
1220 South St. Francis Drive
Santa Fe, NM 87505
(505) 709-5149

Sincerely,
Geolex, Inc.®

A handwritten signature in blue ink, appearing to read "David A. White".

David A. White, P.G.
Vice President – Consultant to DCP Operating Co. LP

phone: 505-842-8000

• 500 Marquette Avenue NW, Suite 1350
Albuquerque, New Mexico 87102
web: www.geolex.com

• email: dwhite@geolex.com

PROOF OF DELIVERY DOCUMENTS

**USPS CERTIFIED MAIL RECEIPTS
(WHITE CARDS & GREEN CARDS)**

7021 0350 0001 6494 3254

U.S. Postal Service™ CERTIFIED MAIL® RECEIPT Domestic Mail Only	
For delivery information, visit our website at www.usps.com ®.	
Santa Fe, NM 87501	
Certified Mail Fee	\$5.30
Extra Services & Fees (check box, add fee as appropriate)	
<input type="checkbox"/> Return Receipt (hardcopy)	\$
<input type="checkbox"/> Return Receipt (electronic)	\$
<input type="checkbox"/> Certified Mail Restricted Delivery	\$
<input type="checkbox"/> Adult Signature Required	\$
<input type="checkbox"/> Adult Signature Restricted Delivery	\$
Postage	\$0.78
Total Postage and Fees	\$10.48
Sent To	State Land Office
Street and	310 Old Santa Fe Trail
City, State	Santa Fe, NM 87501
PS Form 3800, April 2015 PSN 7530-02-000-9047 See Reverse for Instructions	

7021 0350 0001 6494 3247

U.S. Postal Service™ CERTIFIED MAIL® RECEIPT Domestic Mail Only	
For delivery information, visit our website at www.usps.com ®.	
Rockwall, TX 75087	
Certified Mail Fee	\$5.30
Extra Services & Fees (check box, add fee as appropriate)	
<input type="checkbox"/> Return Receipt (hardcopy)	\$
<input type="checkbox"/> Return Receipt (electronic)	\$
<input type="checkbox"/> Certified Mail Restricted Delivery	\$
<input type="checkbox"/> Adult Signature Required	\$
<input type="checkbox"/> Adult Signature Restricted Delivery	\$
Postage	\$0.78
Total Postage and Fees	\$10.48
Sent To	COG Operating, LLC
Street and	c/o KE Andrews & Company
City, State	2424 Ridge Rd Rockwall, TX 75087
PS Form 3800, April 2015 PSN 7530-02-000-9047 See Reverse for Instructions	

7021 0950 0002 0430 9662

U.S. Postal Service™ CERTIFIED MAIL® RECEIPT Domestic Mail Only	
For delivery information, visit our website at www.usps.com ®.	
Midland, TX 79701	
Certified Mail Fee	\$5.30
Extra Services & Fees (check box, add fee as appropriate)	
<input type="checkbox"/> Return Receipt (hardcopy)	\$
<input type="checkbox"/> Return Receipt (electronic)	\$
<input type="checkbox"/> Certified Mail Restricted Delivery	\$
<input type="checkbox"/> Adult Signature Required	\$
<input type="checkbox"/> Adult Signature Restricted Delivery	\$
Postage	\$0.78
Total Postage and Fees	\$10.48
Sent To	COG Operating, LLC
Street	600 W Illinois Ave
City, State	Midland, TX 79701
PS Form 3800, April 2015 PSN 7530-02-000-9047 See Reverse for Instructions	

7016 1970 0000 8251 0333

U.S. Postal Service™ CERTIFIED MAIL® RECEIPT Domestic Mail Only	
For delivery information, visit our website at www.usps.com ®.	
Dexter, NM 88230	
Certified Mail Fee	\$5.30
Extra Services & Fees (check box, add fee as appropriate)	
<input type="checkbox"/> Return Receipt (hardcopy)	\$
<input type="checkbox"/> Return Receipt (electronic)	\$
<input type="checkbox"/> Certified Mail Restricted Delivery	\$
<input type="checkbox"/> Adult Signature Required	\$
<input type="checkbox"/> Adult Signature Restricted Delivery	\$
Postage	\$0.78
Total Postage and Fees	\$10.48
Sent To	Bogle LTD
Street and	7331 Cherokee Rd.
City, State	Dexter, NM 88230
PS Form 3800, April 2015 PSN 7530-02-000-9047 See Reverse for Instructions	

PURCHASE DETAILS

Product	Qty	Unit Price	Price
First-Class Mail® Letter	1		\$0.78
Midland, TX 79701			
Weight: 0 lb 0.50 oz			
Estimated Delivery Date			
Tue 12/09/2025			
Certified Mail®			\$5.30
Tracking #:			
70210950000204309662			
Return Receipt			\$4.40
Tracking #:			
9590 9402 8897 4064 7739 95			
Total			\$10.48
First-Class Mail® Letter	1		\$0.78
Dexter, NM 88230			
Weight: 0 lb 0.50 oz			
Estimated Delivery Date			
Tue 12/09/2025			
Certified Mail®			\$5.30
Tracking #:			
70161970000082510333			
Return Receipt			\$4.40
Tracking #:			
9590 9402 7415 2055 4142 33			
Total			\$10.48
First-Class Mail® Letter	1		\$0.78
Rockwall, TX 75087			
Weight: 0 lb 0.50 oz			
Estimated Delivery Date			
Tue 12/09/2025			
Certified Mail®			\$5.30
Tracking #:			
70210350000164943247			
Return Receipt			\$4.40
Tracking #:			
9590 9402 7415 2055 4142 26			
Total			\$10.48
First-Class Mail® Letter	1		\$0.78
Santa Fe, NM 87501			
Weight: 0 lb 0.50 oz			
Estimated Delivery Date			
Mon 12/08/2025			
Certified Mail®			\$5.30
Tracking #:			
70210350000164943254			
Return Receipt			\$4.40
Tracking #:			
9590 9402 7415 2055 4142 40			
Total			\$10.48
First-Class Mail® Letter	1		\$0.78
Santa Fe, NM 87501			

SENDER: COMPLETE THIS SECTION

- Complete items 1, 2, and 3.
- Print your name and address on the reverse so that we can return the card to you.
- Attach this card to the back of the mailpiece, or on the front if space permits.

Article Addressed to: (25-026)

State Land Office
310 Old Santa Fe Trail
Santa Fe, NM 87501



9590 9402 7415 2055 4142 40

Article Number (Transfer from service label)

7021 0350 0001 6494 3254

PS Form 3811, July 2020 PSN 7530-02-000-9053

87501-270810

Domestic Return Receipt

COMPLETE THIS SECTION ON DELIVERY

A. Signature

X

☐ Agent☐ Addressee

B. Received by (Printed Name)

Luis Saher

C. Date of Delivery

12.10.25

D. Is delivery address different from item 1? ☐ Yes
If YES, enter delivery address below: ☐ No

3. Service Type

- ☐ Adult Signature
- ☐ Adult Signature Restricted Delivery
- ☒ Certified Mail®
- ☐ Certified Mail Restricted Delivery
- ☐ Collect on Delivery
- ☐ Collect on Delivery Restricted Delivery
- ☐ Insured Mail
- ☐ Insured Mail Restricted Delivery (over \$500)

- ☐ Priority Mail Express®
- ☐ Registered Mail™
- ☐ Registered Mail Restricted Delivery
- ☐ Signature Confirmation™
- ☐ Signature Confirmation Restricted Delivery

SENDER: COMPLETE THIS SECTION

- Complete items 1, 2, and 3.
- Print your name and address on the reverse so that we can return the card to you.
- Attach this card to the back of the mailpiece, or on the front if space permits.

1. Article Addressed to: (25-026)

COG Operating, LLC
c/o KE Andrews & Company
2424 Ridge Rd
Rockwall, TX 75087



9590 9402 7415 2055 4142 26

2. Article Number (Transfer from service label)

7021 0350 0001 6494 3247

PS Form 3811, July 2020 PSN 7530-02-000-9053

COMPLETE THIS SECTION ON DELIVERY

A. Signature

X

KE Andrews

☐ Agent☐ Addressee

B. Received by (Printed Name)

2424 Ridge Rd.
Rockwall, TX 75087

C. Date of Delivery

D. Is delivery address different from item 1? ☐ Yes
If YES, enter delivery address below: ☐ No

3. Service Type

- ☐ Adult Signature
- ☐ Adult Signature Restricted Delivery
- ☒ Certified Mail®
- ☐ Certified Mail Restricted Delivery
- ☐ Collect on Delivery
- ☐ Collect on Delivery Restricted Delivery
- ☐ Insured Mail
- ☐ Insured Mail Restricted Delivery (over \$500)

- ☐ Priority Mail Express®
- ☐ Registered Mail™
- ☐ Registered Mail Restricted Delivery
- ☐ Signature Confirmation™
- ☐ Signature Confirmation Restricted Delivery

Domestic Return Receipt

ALBUQUERQUE NM 870

SENDER: COMPLETE THIS SECTION

- Complete items 1, 2, and 3.
- Print your name and address on the reverse so that we can return the card to you.
- Attach this card to the back of the mailpiece, or on the front if space permits.

1. Article Addressed to: (25-026)

Bogle LTD
7331 Cherokee Rd.
Dexter, NM 88230



9590 9402 7415 2055 4142 33

2. Article Number (Transfer from service label)

7016 1970 0000 8251 0333

PS Form 3811, July 2020 PSN 7530-02-000-9053

COMPLETE THIS SECTION ON DELIVERY

A. Signature

[Handwritten Signature]

- ☐ Agent
- ☐ Addressee

B. Received by (Printed Name)

C. Date of Delivery

D. Is delivery address different from item 1? ☐ Yes
If YES, enter delivery address below: ☐ No

3. Service Type

- ☐ Adult Signature
- ☐ Adult Signature Restricted Delivery
- ☐ Certified Mail®
- ☐ Certified Mail Restricted Delivery
- ☐ Collect on Delivery
- ☐ Collect on Delivery Restricted Delivery
- ☐ Insured Mail
- ☐ Insured Mail Restricted Delivery (over \$500)
- ☐ Priority Mail Express®
- ☐ Registered Mail™
- ☐ Registered Mail Restricted Delivery
- ☐ Signature Confirmation™
- ☐ Signature Confirmation Restricted Delivery

Domestic Return Receipt

ALERT: WINTER WEATHER IN THE NORTHERN PLAINS, GREAT LAKES, AND NORTHEASTERN US, FLOODING IN THE PACIFIC NORTHWEST, AND WINDS CAUSING POWER OUTAGES STRETCHING FROM THE PACIFIC NORTHWEST TO THE NORTHEAST US MAY DELAY FINAL DELIVERY OF YOUR MAIL AND PACKAGES. [READ MORE](https://about.usps.com/newsroom/service-alerts/) › (HTTPS://ABOUT.USPS.COM/NEWSROOM/SERVICE-ALERTS/)

USPS Tracking®

FAQs >

Track Packages
Anytime, Anywhere

Get the free Informed Delivery® feature to receive automated notifications on your packages

Learn More

(https://reg.usps.com/xsell?

app=UspsTools&ref=homepageBanner&appURL=https%3A%2F%2Finformeddelivery.usps.com/box/pages/intro/startAction)

Tracking Number:

Remove X

70210950000204309662

Copy

Add to Informed Delivery (https://informedelivery.usps.com/)

Latest Update

We were unable to deliver your package at 9:12 am on December 11, 2025 in MIDLAND, TX 79701 because the business was closed. We will redeliver on the next business day. No action needed.

Get More Out of USPS Tracking:

USPS Tracking Plus®

Delivery Attempt

Redelivery Scheduled for Next Business Day

MIDLAND, TX 79701
December 11, 2025, 9:12 am

Arrived at USPS Regional Destination Facility

MIDLAND TX DISTRIBUTION CENTER
December 10, 2025, 11:52 am

See All Tracking History

What Do USPS Tracking Statuses Mean?

(https://faq.usps.com/s/article/Where-is-my-package)

Text & Email Updates



USPS Tracking Plus®



Product Information



See Less ^

Track Another Package

Enter tracking or barcode numbers

Need More Help?

Contact USPS Tracking support for further assistance.

FAQs

Feedback

ATTACHMENT 3

**COPY OF ARTESIA DAILY PRESS
PUBLICATION (PUBLISHED DECEMBER 2025)**

**NOTARIZED AFFIDAVIT OF PUBLICATION IN
NEWSPAPER OF GENERAL CIRCULATION**

NOTICE OF PUBLICATION

Notice is hereby given that pursuant to New Mexico Water Quality Control Commission Regulations (NMAC 20.6.2.3108(B)), the following discharge permit application has been submitted to the Director of the New Mexico Oil Conservation Division (NMOCD), 1220 South Saint Francis Drive, Santa Fe, New Mexico 87505; (505) 476-3441:

NMOCD Discharge Permit Number GW-Pending
 Artesia Gas Processing Plant
 DCP Operating Company, LP (DCP)
 Lat/Long. (NAD83): 32.75638, -104.21075
 Illinois Camp Rd, Artesia, NM 88210
 Nikunj Khelurkar (432-241-5848) Nikunj.Khelurkar@p66.com

DCP announces the submittal of an application for potential unintended discharges at the Artesia Gas Processing Plant. The facility stores over 420,000 gallons of oil, wastewater, condensates, glycol, amine, lube oil, synthetic oil, hot surge oil, and transformer oil in above ground storage tanks and vessels and is designed to process 100 million standard cubic feet per day (MMSCFD) of natural gas. The facility is a cryogenic gas plant through which natural gas and condensate from nearby oil and gas production facilities is transported by pipeline for treatment and processing. Once gathered at the Facility, the produced natural gas is dehydrated to remove the water content and compressed through cryogenic processing. The discharge permit includes a description of materials stored and used at the Facility and any waste generated. Groundwater occurs less than 300 feet below ground surface and contains total dissolved solid (TDS) concentrations typically less than 4,740 milligrams per liter (mg/L). The discharge permit addresses how liquids and solid waste will be handled, stored, and disposed of, including procedures to prevent unintended discharge.

Response action and abatement requirements for spills and leaks are addressed.

The NMOCD has determined that the application is administratively complete and is in the process of preparing a draft permit. The NMOCD shall post notice on its website and distribute notice of the submittal of the application to affected local, state, federal, tribal, or pueblo government agency, political subdivisions, ditch associations, and land grants as identified by the department, and persons on a general and facility-specific list maintained by the department who have requested notice of discharge permit applications. Interested persons may obtain information, submit comments, and request to be placed on a facility-specific mailing list for future notices. The NMOCD will also accept comments and statements of interest regarding the draft permit and will create a facility-specific mailing list for persons who wish to receive future notices. Prior to ruling on any proposed permit, the Director shall allow a period of at least 30 days after the draft permit is posted, during which time interested persons may submit comments.

Persons interested in obtaining further information, submitting comments, or requesting to be on a facility-specific mailing list for future notices may contact the Oil Conservation Division contact listed below:

Mr. Joel Stone
 New Mexico Oil Conservation Division
 Energy Minerals and Natural Resources Division
 1220 South St. Francis Drive
 Santa Fe, NM 87505
 (505) 709-5149

AVISO DE PUBLICACIÓN

Se notifica que, conforme al Reglamento de la Comisión de Control de Calidad del Agua de Nuevo México (NMAC 20.6.2.3108(B)), se ha presentado la siguiente solicitud de permiso de descarga al Director de la División de Conservación de Petróleo de Nuevo México (NMOCD), 1220 South Saint Francis Drive, Santa Fe, Nuevo México 87505; (505) 476-3441:

NMOCD Discharge Permit Number GW-Pending
 Artesia Gas Processing Plant
 DCP Operating Company, LP (DCP)
 Lat/Long. (NAD83): 32.75638, -104.21075
 Illinois Camp Rd, Artesia, NM 88210
 Nikunj Khelurkar (432-241-5848) Nikunj.Khelurkar@p66.com

DCP anuncia la presentación de una solicitud para posibles descargas no intencionales para la planta de procesamiento de gas Artesia. La instalación almacena más de 420.000 galones de petróleo, aguas residuales, condensados, glicol, amina, aceite lubricante, aceite sintético, aceite de sobrecarga caliente y aceite de transformador en tanques sobre la tierra, y está diseñada para procesar 100 millones de pies cúbico estándar al día (MMSCFD) de gas natural. La instalación es una planta de gas criogénica a través de la cual el gas natural y los líquidos asociados de pozos cercanos de producción de petróleo y gas que se transportan por oleoducto para su tratamiento y procesamiento. Una vez llegando a la instalación, el gas natural producido se deshidrata para eliminar el contenido de agua y se comprime mediante procesamiento criogénico. El permiso de descarga incluye una descripción de los materiales almacenados y utilizados en la instalación y cualquier residuos generados. El agua subterránea se encuentra a menos de 300 pies bajo la superficie del suelo y contiene concentraciones totales sólidos disueltos (TDS) típicamente menos de 4.740 miligramos por litro (mg/L). El permiso de descarga explica cómo se manejarán, almacenarán y eliminarán los líquidos y residuos sólidos, incluyendo procedimientos para prevenir descargas no intencionales. Se explican los requisitos de acción de respuesta y reducción de derrames y fugas.

El NMOCD ha determinado que la solicitud está administrativamente completa y está en proceso de preparar un borrador de permiso. El NMOCD publicará un aviso en su sitio web y distribuirá aviso de la presentación de la solicitud a agencias gubernamentales locales, estatales, federales, tribus o pueblos afectados, subdivisiones políticas, asociaciones de zanjas y concesiones de tierras según lo identifique por el departamento, así como a las personas en una lista general y específica de instalaciones mantenida por el departamento que hayan solicitado notificación de solicitudes de permiso de descarga. Las personas interesadas pueden obtener información, enviar comentarios y solicitar ser incluidas en una lista de correo específica de cada centro para avisos futuros. El NMOCD también aceptará comentarios y declaraciones de interés respecto al permiso borrador y creará una lista de correo específica para cada instalación para las personas que deseen recibir avisos futuros. Antes de tomar acción sobre permiso propuesto, el Director deberá conceder un periodo de a lo menos 30 días después de tras la publicación del permiso borrador, durante cual tiempo las personas interesadas pueden someter comentarios.

Las personas interesadas en obtener más información, enviar comentarios o solicitar inscribirse en una lista de correo específica de la instalación para avisos futuros pueden ponerse en contacto con la División de Conservación de Petróleo que se indica en la dirección siguiente:

Mr. Joel Stone
 New Mexico Oil Conservation Division
 Energy Minerals and Natural Resources Division
 1220 South St. Francis Drive
 Santa Fe, NM 87505
 (505) 709-5149

PASTOR’S SERMON

The Candle of Joy

David Grousnick



This Sunday is the third Sunday of Advent and we will be lighting the pink candle, the Candle of Joy!

In his book Horns and Halos, Dr. J. Wallace Hamilton tells about one of the weirdest auction sales in history; and it was held in Washington, D.C., in 1926, where 150,000 patented models of old inventions were declared obsolete and placed on the auction block for public auction.

Prospective buyers and on-lookers chuckled as item after item was put up for bid; such as a “bed-bug buster” or an “illuminated cat” that was designed to scare away mice. There was a device to prevent snoring. It consisted of a trumpet that reached from the mouth to the ear; and was designed to awaken the snorer and not the neighbors.

then there was the adjustable pulpit that could be raised or lowered according to the height of the preacher.

Needless to say, this auction of old patent models may have been worth at least 150,000 laughs; but looking deeper, we would discover that these 150,000 old patent models also represent 150,000 broken dreams.

They represented a mountain of disappointments. Not joy!

It may seem inappropriate to talk about broken dreams and disappointments this close to Christmas. After all, this is the season to be jolly.

But it’s not jolly for everybody, is it? For those who have lost loved ones this is the loneliest time of the year. And in a world that glorifies materialism, those who are struggling financially may find it to be most disappointing.

John the Baptist knew about disappointment. In Matthew 2:1-11, John is in prison and he’s looking for a sign that the long-awaited Messiah has really arrived. That’s ironic, don’t you think?

John the Baptist is the one who first proclaimed his coming. But much has happened to John since we last saw him preaching and baptizing people in the wilderness, and now his heart is down cast.

Remember John’s message? “Repent, for the kingdom of heaven has come near.”

I recently read about steamships. The dream of a self-propelled ship had been a dream of humankind for hundreds of years. Then one day the time came when it was theoretically possible, but it was still practically not possible.

The dream was kept alive for another hundred years or so by inventors and experimenters, some of whom were considered eccentric. Later, people said of them, they were just ahead of their time.

Then the times changed. Along came Robert Fulton. Fulton didn’t invent the

steamboat. He just happened to be there when the time was right.

As the author wrote, “The inventor’s eminence may be more a trick of chronology than anything else, due to being active at the very moment when fruition was possible.”

It’s a wonderful statement. It tells you that timing is everything. That is what we learn from the Bible. Look at John in prison.

He sends his disciples to ask Jesus, “Are you the one, or do we look for another?” It is a critical question for John. John has preached that the time has come. Messiah is about to appear, so repent, get ready, put your lives in order. But now in prison, he is about to lose his head.

So his disciples to ask Jesus, “Are you the one that we have been waiting for, or do we still look for somebody else?”

Joy! Or disappointment? Advent is an intentional season of “preparedness.” Preparing. Making plans. Charting a way. Scouting and scoping the landscape. Assessing and overcoming obstacles to avoid or override.

Sounds like life as usual. Sounds like something we can get our heads and hands and hearts around. Sounds like something we can get down and get done.

But hold up! Advent is not our journey. We are NOT in charge. Advent is not a journey we make, a journey we prepare for, a road that we navigate.

No, Advent is the journey GOD makes. Advent isn’t a trip we prepare to go on. Advent is the time we prepare for God’s trip to us. Advent is the time we ready ourselves to RECEIVE God. The God who, against all reason and for our redemption, is making a journey TOWARDS us.

Matthew reminds us just how long God had been preparing for this journey. Before the baby Jesus was even born, God had arranged for the ideal advance man, the perfect prophet to be conceived and born and nurtured to adulthood.

Generations before John the Baptist there were other prophets whom God provided with selected slices of insight, like a freeze-framed GPS map. Moses and Isaiah, Malachi and Daniel: all provided peeks at the pathway God was paving.

Come and join together in worship with us as God journeys toward us this Advent season. We worship together at 10:30 and we gather at 11th and Bullock, across the street from Zia Intermediate School.

Come and experience the joy of the season!

PASTOR’S SERMON

Christmas to the glory of God

Rick Smith



As Christians we should make it our goal to glorify God in everything. That includes how we celebrate Christmas. Far too long Christians have surrendered the celebration of Christmas and Resurrection Day (Easter) to secular society. We are commanded to glorify God in every area of our lives. “Whether therefore ye eat, or drink, or whatsoever ye do, do all to the glory of God.” (1 Corinthians 10:31). When we leave Jesus out or move Jesus to the background of our celebration of His incarnation and birth, we are dishonoring God the Father that sent Him. Philippians 2:5-11 can be our guide in glorifying God in Christ during Christmas.

First, we need to humble ourselves like Jesus did when He came into this world. “Let this mind be in you, which was also in Christ Jesus.” (Philippians 2:11). How did Jesus humble Himself when He came? Jesus emptied Himself of His divine rights and glory. Anything that you feel that is your right, do as Jesus did and lay that aside and become a servant like Jesus did. Give your life to bring salvation to those who are dying and going to hell. Rescue them, snatch them from death and hell and proclaim the gospel to them

in word and deed. “And being found in fashion as a man, he humbled himself, and became obedient unto death, even the death of the cross.” (Philippians 2:8). Make any sacrifice to bring Jesus to those who are perishing.

Also, if God exalted Jesus, then to glorify God at Christmas time means that we must exalt Jesus. “Wherefore God also hath highly exalted him, and given him a name which is above every name:” (Philippians 2:9). God, the Creator and Sustainer of all that is, has “highly” exalted Jesus. The angel told Mary, and then Joseph, to call the Baby in the manger “Jesus”. Why did God do this? Why this Name? “And she shall bring forth a son, and thou shalt call his name JESUS: for he shall save his people from their sins.” (Matthew 1:21). If Jesus has saved us, then His Name should be exalted and never used as profanity. Do everything that you can to exalt – to lift up the Name of Jesus in honor. Give Jesus the glory that is due His Name.

We should worship and

honor Jesus every day of our lives, but during the Christmas season we can do it with a renewed purpose. “That at the name of Jesus every knee should bow, of things in heaven, and things in earth, and things under the earth...” (Philippians 2:10). I think that we should renew our worship of our Lord Jesus Christ during the Christmas season. It is a time that we focus our attention of Christ’s coming into the world to save sinners like you and me. As we worship of our Savior we will also point the world to Jesus. Our goal should be that God would save our lost loved ones and friends to the glory of our Lord Jesus Christ. During this time we should pray more, sing more, read the Bible and meditate on God’s word more, and tell others about Jesus more. Perhaps along with “Merry Christmas” we should say, “God loved the world so much that He gave His Only Son that whosoever believes in Him should not perish, but have everlasting life.”

We should glorify God the Father by confessing and proclaiming Jesus Christ the Lord.

“And that every tongue should confess that Jesus Christ is Lord, to the glory of God the Father.” (Philippians 2:11). If every tongue that confesses Jesus Christ is Lord glorifies God the Father,

then shouldn’t you and I confess Jesus before men. “Whosoever therefore shall confess me before men, him will I confess also before my Father which is in heaven.” (Matthew 10:32). How hard is it to let people know that you are a Christian and the Jesus is your Lord and Savior? When was the last time you told someone that you belong to Jesus?

Under normal circumstances when we celebrate the birth of someone we focus more on their life and the impact he has had on others. When we speak of Jesus birth, too often He is just the Baby in the manger. I think that it would glorify Jesus more if we focused on His life, death, burial, and resurrection. If we want to bring glory to God and our Lord Jesus Christ, then glorify Jesus in all that He is and has done for us. Let everyone know that they need to repent and believe on the Lord Jesus Christ this Christmas season. “Thanks be unto God for his unspeakable gift.” (2 Corinthians 9:15).

If you have any questions, we invite you to visit with us this Sunday. Worship at 10:50 A.M. We are located at 711 West Washington Ave. Check our sermon videos on Youtube @rick-smith2541. Send comments and prayer requests to prayerlinecmbc@gmail.com.

PASTOR’S SERMON

Advent, week 5

Ty Houghtaling



In the fifth week, the Church focuses on the journey of faith undertaken by all those who awaited the Messiah. The journey of Mary and Joseph from Nazareth to Bethlehem was about 90 miles. In those days, it could have easily taken four days to travel that distance. Some biblical scholars suggest the trip may have taken as much as a full week, especially since Mary was pregnant. While the distance was around 90 miles, there were different routes that could be traveled. Have you ever taken the long way? Perhaps your own faith journey in life could be described as taking the long way. Many of us started out well, but along the way got off track.

Our faith journeys have become ones of doubts and fears, or disappointments and regrets. It can be hard to be patient in this life, and sometimes it seems God requires us to learn patience one way or another.

This week, let’s focus on our own journeys of faith,

all the while reflecting on God’s patience in sending Jesus to us. Galatians 4:4-5 says, “But when the fullness of the time had come, God sent forth His Son, born of a woman, born under the law, to redeem those who were under the law, that we might receive the adoption as sons.” God is patient, He is gracious, He is slow to anger and full of lovingkindness. He has a plan for you and me. He knows our days—all of them, from beginning to end. He shows us the right paths to take in our marriages, our finances, our health, and our relationships. We don’t have to choose His ways, but when we do, there is joy and contentment. As we prepare for the upcoming Christmas season, let’s be mindful of

the paths we choose. Are you journeying toward Jesus? If He is the destination, we will always be on the right path.

Hebrews 12 is a wonderful chapter of scripture to reflect on. It speaks to our own “race” in life and how, by faith, we can pursue God’s good design in every area of our lives. Run your race—run it with confidence, with endurance, and with a hope that begins and ends with Jesus.

Just a reminder: First Baptist will have a Christmas event on December 12th and 13th. Come by and experience a recreation of the night when Jesus was born. Be on the lookout around town for more specific info—this event promises to be a lot of fun.

NOTICE OF PUBLICATION	AVISO DE PUBLICACIÓN
Notice is hereby given that pursuant to New Mexico Water Quality Control Commission Regulations (NMAC 20.6.2.3108(B)), the following discharge permit application has been submitted to the Director of the New Mexico Oil Conservation Division (NMOCD), 1220 South Santa Francis Drive, Santa Fe, New Mexico 87505; (505) 476-3441:	Se notifica que, conforme al Reglamento de la Comisión de Control de Calidad del Agua de Nuevo México (NMAC 20.6.2.3108(B)), se ha presentado la siguiente solicitud de permiso de descarga al Director de la División de Conservación de Petróleo de Nuevo México (NMOCD), 1220 South Saint Francis Drive, Santa Fe, Nuevo México 87505; (505) 476-3441:
NMOCD Discharge Permit Number GW-Pending Artesia Gas Processing Plant DCP Operating Company, LP (DCP) Lau/Long. (NAD83): 32.75638, -104.21075 Illinois Camp Rd, Artesia, NM 88210 Nikunj Khelurkar (432-241-5848) Nikunj.Khelurkar@gp66.com	NMOCD Discharge Permit Number GW-Pending Artesia Gas Processing Plant DCP Operating Company, LP (DCP) Lau/Long. (NAD83): 32.75638, -104.21075 Illinois Camp Rd, Artesia, NM 88210 Nikunj Khelurkar (432-241-5848) Nikunj.Khelurkar@gp66.com
DCP announces the submittal of an application for potential unintended discharges at the Artesia Gas Processing Plant. The facility stores over 420,000 gallons of oil, wastewater, condensates, glycol, amine, lube oil, synthetic oil, hot surge oil, and transformer oil in above ground storage tanks and vessels and is designed to process 100 million standard cubic feet per day (MMSCFD) of natural gas. The facility is a cryogenic gas plant through which natural gas and condensate from nearby oil and gas production facilities is transported by pipeline for treatment and processing. Once gathered at the Facility, the produced natural gas is dehydrated to remove the water content and compressed through cryogenic processing. The discharge permit includes a description of materials stored and used at the Facility and any waste generated. Groundwater occurs less than 300 feet below ground surface and contains total dissolved solid (TDS) concentrations typically less than 4,740 milligrams per liter (mg/L). The discharge permit addresses how liquids and solid waste will be handled, stored, and disposed of, including procedures to prevent unintended discharge. Response action and abatement requirements for spills and leaks are addressed.	DCP anuncia la presentación de una solicitud para posibles descargas no intencionales para la planta de procesamiento de gas Artesia. La instalación almacena más de 420,000 galones de petróleo, aguas residuales, condensados, glicol, amina, aceite lubricante, aceite sintético, aceite de sobrecarga caliente y aceite de transformador en tanques sobre la tierra, y está diseñada para procesar 100 millones de pies cúbicos estándar al día (MMSCFD) de gas natural. La instalación es una planta de gas criogénica a través de la cual el gas natural y los líquidos asociados de pozos cercanos de producción de petróleo y gas que se transportan por oleoducto para su tratamiento y procesamiento. Una vez llegando a la instalación, el gas natural producido se deshidrata para eliminar el contenido de agua y se comprime mediante procesamiento criogénico. El permiso de descarga incluye una descripción de los materiales almacenados y utilizados en la instalación y cualquier residuo generado. El agua subterránea se encuentra a menos de 300 pies bajo la superficie del suelo y contiene concentraciones totales sólidos disueltos (TDS) típicamente menos de 4,740 miligramos por litro (mg/L). El permiso de descarga explica cómo se manejarán, almacenarán y eliminarán los líquidos y residuos sólidos, incluyendo procedimientos para prevenir descargas no intencionales. Se explican los requisitos de acción de respuesta y reducción de derrames y fugas.
The NMOCD has determined that the application is administratively complete and is in the process of preparing a draft permit. The NMOCD shall post notice on its website and distribute notice of the submittal of the application to affected local, state, federal, tribal, or pueblo government agency, political subdivisions, ditch associations, and land grants as identified by the department, and persons on a general and facility-specific list maintained by the department who have requested notice of discharge permit applications. Interested persons may obtain information, submit comments, and request to be placed on a facility-specific mailing list for future notices. The NMOCD will also accept comments and statements of interest regarding the draft permit and will create a facility-specific mailing list for persons who wish to receive future notices. Prior to ruling on any proposed permit, the Director shall allow a period of at least 30 days after the draft permit is posted, during which time interested persons may submit comments.	El NMOCD ha determinado que la solicitud está administrativamente completa y está en proceso de preparar un borrador de permiso. El NMOCD publicará un aviso en su sitio web y distribuirá aviso de la presentación de la solicitud a agencias gubernamentales locales, estatales, federales, tribus o pueblos afectados, subdivisiones políticas, asociaciones de zanjas y concesiones de tierras según lo identifique por el departamento, así como a las personas en una lista general y específica de instalaciones mantenida por el departamento que hayan solicitado notificación de solicitudes de permiso de descarga. Las personas interesadas pueden obtener información, enviar comentarios y solicitar ser incluidas en una lista de correo específica de cada centro para avisos futuros. El NMOCD también aceptará comentarios y declaraciones de interés respecto al permiso borrador y creará una lista de correo específica para cada instalación para las personas que deseen recibir avisos futuros. Antes de tomar acción sobre permiso propuesto, el Director deberá conceder un periodo de a lo menos 30 días después de tras la publicación del permiso borrador, durante cual tiempo las personas interesadas pueden someter comentarios.
Persons interested in obtaining further information, submitting comments, or requesting to be on a facility-specific mailing list for future notices may contact the Oil Conservation Division contact listed below:	Las personas interesadas en obtener más información, enviar comentarios o solicitar inscribirse en una lista de correo específica de la instalación para avisos futuros pueden ponerse en contacto con la División de Conservación de Petróleo que se indica en la dirección siguiente:
Mr. Joel Stone New Mexico Oil Conservation Division Energy Minerals and Natural Resources Division 1220 South St. Francis Drive Santa Fe, NM 87505 (505) 709-5149	Mr. Joel Stone New Mexico Oil Conservation Division Energy Minerals and Natural Resources Division 1220 South St. Francis Drive Santa Fe, NM 87505 (505) 709-5149

Air center structure fire a total loss

El Rito Media News Services

ROSWELL — A blaze continued to smolder midmorning Dec. 5 within the mostly charred structural remains of a major commercial building fire at the Roswell Air Center.

Shortly before 8 p.m. on Dec. 4, a passerby called 911 to report the roof of a structure burning. The building and its contents are considered to have been a total loss, and the city of Roswell stated in a Dec. 5 news release.

There were no injuries from the fire and no employees were inside the AerSale building when the blaze broke out. There were no evacuations of other occupied buildings in that area.

Affidavit of Publication**Copy of Publication:**No. 75580

State of New Mexico

County of Eddy:

Adrian Heddenbeing duly sworn, says that he is the **Publisher**

of the Artesia Daily Press, a weekly newspaper of General
circulation, published in English at Artesia,
said county and state, and that the hereto attached

Display Ad

was published in a regular and entire issue of the said
Artesia Daily Press, a weekly newspaper duly qualified
for that purpose within the meaning of Chapter 167 of
the 1937 Session Laws of the state of New Mexico for
1 Consecutive weeks/day on the same

day as follows:

First Publication December 11, 2025

Second Publication _____

Third Publication _____

Fourth Publication _____

Fifth Publication _____

Sixth Publication _____

Seventh Publication _____

Eighth Publication _____

Subscribed and sworn before me this

11th day of December 2025

LATISHA ROMINE
Notary Public, State of New Mexico
Commission No. 1076338
My Commission Expires
05-12-2027


Latisha Romine

Notary Public, Eddy County, New Mexico

Sante Fe Main Office
Phone: (505) 476-3441

General Information
Phone: (505) 629-6116

Online Phone Directory
<https://www.emnrd.nm.gov/oed/contact-us>

State of New Mexico
Energy, Minerals and Natural Resources
Oil Conservation Division
1220 S. St Francis Dr.
Santa Fe, NM 87505

CONDITIONS

Action 537598

CONDITIONS

Operator: DCP OPERATING COMPANY, LP 2331 Citywest Blvd Houston, TX 77042	OGRID: 36785
	Action Number: 537598
	Action Type: [UF-DP] Discharge Permit (DISCHARGE PERMIT)

CONDITIONS

Created By	Condition	Condition Date
joel.stone	None	12/26/2025