

District I  
1625 N. French Dr., Hobbs, NM 88240  
District II  
811 S. First St., Artesia, NM 88210  
District III  
1000 Rio Brazos Road, Aztec, NM 87410  
District IV  
1220 S. St. Francis Dr., Santa Fe, NM 87505

State of New Mexico  
Energy Minerals and Natural  
Resources Department  
  
Oil Conservation Division  
1220 South St. Francis Dr.  
Santa Fe, NM 87505

Form C-141  
Revised August 24, 2018  
Submit to appropriate OCD District office

Incident ID	nAPP2114534777
District RP	
Facility ID	
Application ID	

## Closure

The responsible party must attach information demonstrating they have complied with all applicable closure requirements and any conditions or directives of the OCD. This demonstration should be in the form of a comprehensive report (electronic submittals in .pdf format are preferred) including a scaled site map, sampling diagrams, relevant field notes, photographs of any excavation prior to backfilling, laboratory data including chain of custody documents of final sampling, and a narrative of the remedial activities. Refer to 19.15.29.12 NMAC.

**Closure Report Attachment Checklist:** *Each of the following items must be included in the closure report.*

- ☒ A scaled site and sampling diagram as described in 19.15.29.11 NMAC
- ☒ Photographs of the remediated site prior to backfill or photos of the liner integrity if applicable (Note: appropriate OCD District office must be notified 2 days prior to liner inspection)
- ☒ Laboratory analyses of final sampling (Note: appropriate ODC District office must be notified 2 days prior to final sampling)
- ☒ Description of remediation activities

I hereby certify that the information given above is true and complete to the best of my knowledge and understand that pursuant to OCD rules and regulations all operators are required to report and/or file certain release notifications and perform corrective actions for releases which may endanger public health or the environment. The acceptance of a C-141 report by the OCD does not relieve the operator of liability should their operations have failed to adequately investigate and remediate contamination that pose a threat to groundwater, surface water, human health or the environment. In addition, OCD acceptance of a C-141 report does not relieve the operator of responsibility for compliance with any other federal, state, or local laws and/or regulations. The responsible party acknowledges they must substantially restore, reclaim, and re-vegetate the impacted surface area to the conditions that existed prior to the release or their final land use in accordance with 19.15.29.13 NMAC including notification to the OCD when reclamation and re-vegetation are complete.

Printed Name: Robert Dunaway Title: Senior Env. Engineer

Signature:  Date: 8-2-21

email: rhodunaway@eprod.com Telephone: 575-628-6802

State of New Mexico  
Oil Conservation Division

Incident ID	nAPP2114534777
District RP	
Facility ID	
Application ID	

**OCD Only**

Received by: \_\_\_\_\_ Date: \_\_\_\_\_

Closure approval by the OCD does not relieve the responsible party of liability should their operations have failed to adequately investigate and remediate contamination that poses a threat to groundwater, surface water, human health, or the environment nor does not relieve the responsible party of compliance with any other federal, state, or local laws and/or regulations.

Closure Approved by: \_\_\_\_\_ Date: \_\_\_\_\_

Printed Name: \_\_\_\_\_ Title: \_\_\_\_\_

District I  
1625 N. French Dr., Hobbs, NM 88240  
District II  
811 S. First St., Artesia, NM 88210  
District III  
1000 Rio Brazos Road, Aztec, NM 87410  
District IV  
1220 S. St. Francis Dr., Santa Fe, NM 87505

State of New Mexico  
Energy Minerals and Natural  
Resources Department  
  
Oil Conservation Division  
1220 South St. Francis Dr.  
Santa Fe, NM 87505

Form C-141  
Revised August 24, 2018  
Submit to appropriate OCD District office

Incident ID	nAPP2114534777
District RP	
Facility ID	
Application ID	

## Closure

The responsible party must attach information demonstrating they have complied with all applicable closure requirements and any conditions or directives of the OCD. This demonstration should be in the form of a comprehensive report (electronic submittals in .pdf format are preferred) including a scaled site map, sampling diagrams, relevant field notes, photographs of any excavation prior to backfilling, laboratory data including chain of custody documents of final sampling, and a narrative of the remedial activities. Refer to 19.15.29.12 NMAC.

**Closure Report Attachment Checklist:** *Each of the following items must be included in the closure report.*

- ☒ A scaled site and sampling diagram as described in 19.15.29.11 NMAC
- ☒ Photographs of the remediated site prior to backfill or photos of the liner integrity if applicable (Note: appropriate OCD District office must be notified 2 days prior to liner inspection)
- ☒ Laboratory analyses of final sampling (Note: appropriate ODC District office must be notified 2 days prior to final sampling)
- ☒ Description of remediation activities

I hereby certify that the information given above is true and complete to the best of my knowledge and understand that pursuant to OCD rules and regulations all operators are required to report and/or file certain release notifications and perform corrective actions for releases which may endanger public health or the environment. The acceptance of a C-141 report by the OCD does not relieve the operator of liability should their operations have failed to adequately investigate and remediate contamination that pose a threat to groundwater, surface water, human health or the environment. In addition, OCD acceptance of a C-141 report does not relieve the operator of responsibility for compliance with any other federal, state, or local laws and/or regulations. The responsible party acknowledges they must substantially restore, reclaim, and re-vegetate the impacted surface area to the conditions that existed prior to the release or their final land use in accordance with 19.15.29.13 NMAC including notification to the OCD when reclamation and re-vegetation are complete.

Printed Name: Robert Dunaway Title: Senior Env. Engineer

Signature:  Date: 8-2-21

email: rhodunaway@eprod.com Telephone: 575-628-6802

State of New Mexico  
Oil Conservation Division

Incident ID	nAPP2114534777
District RP	
Facility ID	
Application ID	

**OCD Only**Received by: Robert HamletDate: 11/3/2021

Closure approval by the OCD does not relieve the responsible party of liability should their operations have failed to adequately investigate and remediate contamination that poses a threat to groundwater, surface water, human health, or the environment nor does not relieve the responsible party of compliance with any other federal, state, or local laws and/or regulations.

Closure Approved by: Robert Hamlet Date: 11/3/2021Printed Name: Robert HamletTitle: Environmental Specialist - Advanced





Souder, Miller & Associates ♦ 201 S. Halagueno St. ♦ Carlsbad, NM 88220  
(575) 689-8801

July 29, 2021

#5E29921-BG4

NMOCD District 2  
811 S. First St.  
Artesia, New Mexico 88210

SUBJECT: Remediation Closure Report for the Line A-9 Release (NAPP2114534777), Eddy County, New Mexico

## **1.0 Executive Summary**

On behalf of Enterprise Field Services LLC (Enterprise), Souder, Miller & Associates (SMA) has prepared this Remediation Closure Report that describes the remediation of a natural gas release related to oil and gas production activities at the Line A-9. The pipeline is in Unit C, Section 16, Township 24S, Range 24E, Eddy County, New Mexico, on State land. Figure 1 illustrates the vicinity and site location on a United States Geological Survey (USGS) 7.5 minute quadrangle map.

This report demonstrates that the release area has been remediated to meet the standards of Table I of 19.15.29.12 New Mexico Administrative Code (NMAC). In addition to meeting the Closure Criteria, the top four feet of impacted areas meet the reclamation requirement of Paragraph (1) of Subsection (D) of 19.15.29.13. The information provided in this report is intended to fulfill final New Mexico Oil Conservation Division (NMOCD) closure requirements.

**SMA recommends no further actions and requests that the release associated with the Line A-9 (NAPP2114534777) be closed.**

Table 1 summarizes release information and Closure Criteria.

<b>Table 1: Release Information and Closure Criteria</b>			
Name	Line A-9	Company	Enterprise Field Services LLC
API Number	N/A	Location	32.222775, -104.506439
Tracking Number	NAPP2114534777		
Estimated Date of Release	May 24, 2021	Date Reported to NMOCD	Initially reported via C141 on 5/25/2021, amended on 7/29/2021.
Land Owner	State	Reported To	NMOCD District II
Source of Release	Leak on a gathering pipeline		
Released Volume	51.2 Mcf, 0.1 bbl	Released Material	Natural Gas, Condensate
Recovered Volume	0 Mcf	Net Release	51.2 Mcf, 0.1 bbl
NMOCD Closure Criteria	<50 feet bgs		
SMA Response Dates	June 16, 2021 and June 25, 2021		

Line A-9 Closure Report  
July 29, 2021

Page 2 of 4

## **2.0 Background**

On May 24, 2021, a natural gas and condensate release was discovered at the Line A-9 site. Initial response activities were conducted by Enterprise, and included source elimination and site security, containment, and site stabilization activities. This release was discovered during excavation activities associated with the A-9 Trunk A West (NAPP2112342981) release. Figure 1 illustrates the vicinity and pipeline location; Figure 2 illustrates the release location. The initial C-141 form is included in Appendix A.

## **3.0 Site Information and Closure Criteria**

The Line A-9 site is located approximately 21 miles southwest of Carlsbad, New Mexico on State land at an elevation of approximately 4,048 feet above mean sea level (amsl).

### **Depth to Groundwater**

Due to the lack of water well data (Appendix B), depth to groundwater in the area reverts to the most conservative Closure Criteria category of less than 50 feet below grade surface (bgs).

### **Wellhead Protection Area**

There are no known water sources within ½-mile of the location, according to the Office of the State Engineer (OSE) New Mexico Water Rights Reporting System (NMWRRS). Registered wells in the vicinity are shown on Figure 1.

### **Distance to Nearest Significant Watercourse**

The nearest significant watercourse is the ephemeral wash of Dark Canyon, located approximately 100 feet to the southeast.

Table 2 demonstrates the Closure Criteria applicable to this location. Figures 1 and 2 illustrate the 200 and 300-foot radii which indicate that the site does lie within a sensitive area as described in Paragraph (4) of Subsection (C) 19.15.29.12 NMAC.

Based on the information presented herein, the applicable NMOCD Closure Criteria for this site is for a groundwater depth of less than 50 feet bgs in addition to the requirements of reclamation for the upper four feet of impacted soil.

## **4.0 Release Characterization and Remediation Activities**

Prior to the Line A-9 (NAPP211453477) release, excavation activities were on going in the same location for the A-9 Trunk A West (NAPP2112342981). As a result, on May 14, 2021, SMA personnel performed closure confirmation sampling activities for the A-9 Trunk A West (NAPP211342981) release. SMA collected soil samples around the release site and throughout the visibly stained area. The area of visual impact was located entirely within the Enterprise right-of-way (ROW). Prior to the A-9 (NAPP211234981) release, excavation activities were on going in the same location for the A-9 Trunk A West (NAPP2112342981)

Five (5) composite confirmation samples were collected from the partially completed excavation as well as a sample from the spoils stockpile for laboratory analysis for total chloride using United State Environmental Protection Agency USEPA Method 300.0; benzene, toluene, ethylbenzene and total xylenes (BTEX) using USEPA Method 8021B; and motor, diesel and gasoline range organics (MRO, DRO, and GRO) by USEPA Method 8015D. Additionally, a background sample collected from an undisturbed area was analyzed for total chloride using USEPA Method 300.0.

Line A-9 Closure Report  
July 29, 2021

Page 3 of 4

Soil samples were field screened for chloride using an electrical conductivity (EC) meter and for hydrocarbon impacts using a calibrated MiniRAE 3000 photoionization detector (PID) equipped with a 10.6 eV lamp. Field Notes are included in Appendix D.

As summarized in Table 3, results indicated that samples CS1, CSW1, and CSW3 exceeded NMOCD Closure Criteria and required further excavation.

The release on May 24, 2021, included 0.1 bbls of condensate which impacted the area of the excavation the required additional excavation.

On June 11, 2021, SMA returned to the site to provide excavation guidance and collect five (5) additional closure confirmation samples for laboratory analysis. Results indicated that CS1 and CSW1 exceed NMOCD Closure Criteria and required further excavation.

On June 25, 2021, SMA returned to the site to provide excavation guidance and collect two (2) additional closure confirmation samples for laboratory analysis.

Final excavation dimensions, for releases NAPP211453477 and NAPP2112342981, and measured 40 feet by 12 feet with depths varying from 5.5 to 16 feet bgs. Excavation extents and closure confirmation sample locations are depicted in Figure 3. A photo log is included in Appendix D. Confirmation laboratory results are summarized in Table 3. Laboratory reports are included in Appendix E.

## **5.0 Recommendations**

As demonstrated in Table 3, all closure confirmation samples meet NMOCD Closure Criteria. The site has been remediated to meet the standards of Table I of 19.15.29.12 NMAC. In addition to meeting the Closure Criteria, the top four (4) feet of impacted areas meet the reclamation requirement of Paragraph (1) of Subsection (D) of 19.15.29.13 NMAC.

Contaminated soils were removed and replaced with clean backfill material to return the surface to previous contours. The contaminated soil was transported and disposed of at Lea Land LLC, Hobbs, New Mexico, an NMOCD-permitted disposal facility.

SMA recommends no further action and requests closure of Incident Number NAPP2114534777.

## **6.0 Scope and Limitations**

The scope of our services included: assessment sampling; verifying release stabilization; regulatory liaison; remediation guidance; and preparing this report. All work has been performed in accordance with generally accepted professional environmental consulting practices for oil and gas releases in the Permian Basin in New Mexico.

Line A-9 Closure Report  
July 29, 2021

Page 4 of 4

If there are any questions regarding this report, please contact either Ashley Maxwell at 505-320-8975 or Shawna Chubbuck at 505-325-7535.

Submitted by:  
SOUDER, MILLER & ASSOCIATES

Reviewed by:



Ashley Maxwell  
Project Scientist



Shawna Chubbuck  
Senior Scientist

**REFERENCES:**

New Mexico Office of the State Engineer (NMOSE) online water well database  
[https://gis.ose.state.nm.us/gisapps/ose\\_pod\\_locations/](https://gis.ose.state.nm.us/gisapps/ose_pod_locations/); accessed 4/8/2021

**ATTACHMENTS:**

**Figures:**

Figure 1: Vicinity and Well Head Protection Map  
Figure 2: Surface Water Radius Map  
Figure 3: Site and Sample Location Map

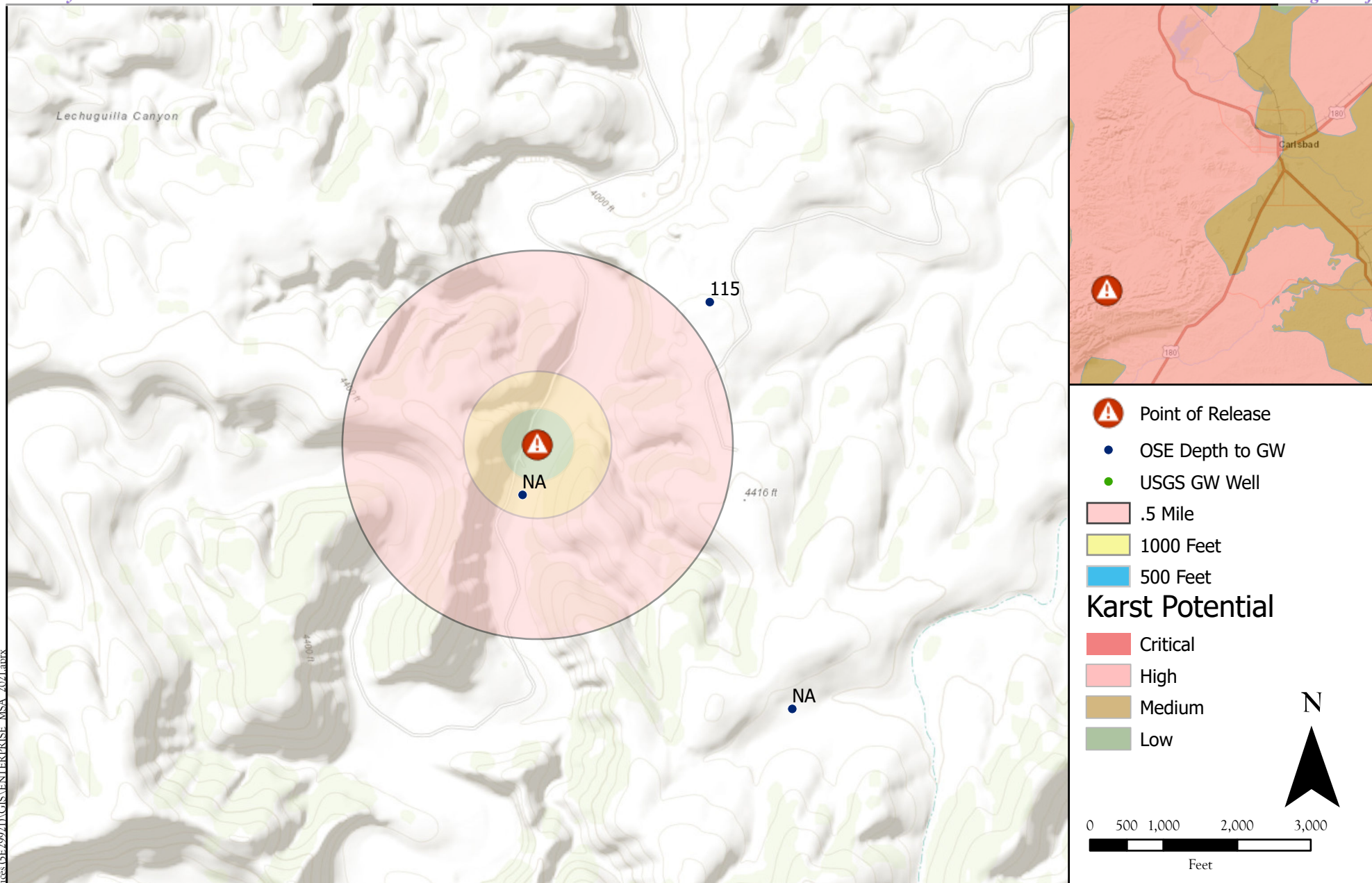
**Tables:**

Table 2: NMOCD Closure Criteria Justification  
Table 3: Summary of Sample Results

**Appendices:**

Appendix A: Form C-141  
Appendix B: NMOSE Wells Report  
Appendix C: Sampling Protocol  
Appendix D: Field Notes and Photo Log  
Appendix E: Laboratory Analytical Reports

## FIGURES



Site Map  
 Line A-9 - Enterprise Field Services LLC  
 32.222775 -104.506439, Eddy County, New Mexico

Figure 1

## Revisions

By: \_\_\_\_\_ Date: \_\_\_\_\_ Descr: \_\_\_\_\_  
 By: \_\_\_\_\_ Date: \_\_\_\_\_ Descr: \_\_\_\_\_

© Souder, Miller &amp; Associates, 2021, All Rights Reserved

Drawn  
 Date  
 Checked  
 Approved

PR Smith








5/17/2021

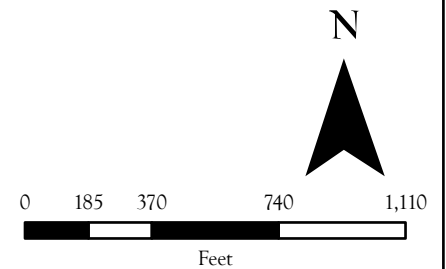


201 South Halaguena Street  
 Carlsbad, New Mexico 88221  
 (575) 689-7040  
 Serving the Southwest & Rocky Mountains





-  Point of Release
-  100 Feet
-  200 Feet
-  300 Feet
-  Streams & Canals
-  Flowlines SENM
-  Lakes & Playas



Surface Water Protection Map  
 Line A-9 - Enterprise Field Services LLC  
 32.222775, -104.506439, Eddy County, New Mexico

Figure 2

Revisions

By: \_\_\_\_\_ Date: \_\_\_\_\_ Descr: \_\_\_\_\_  
 By: \_\_\_\_\_ Date: \_\_\_\_\_ Descr: \_\_\_\_\_

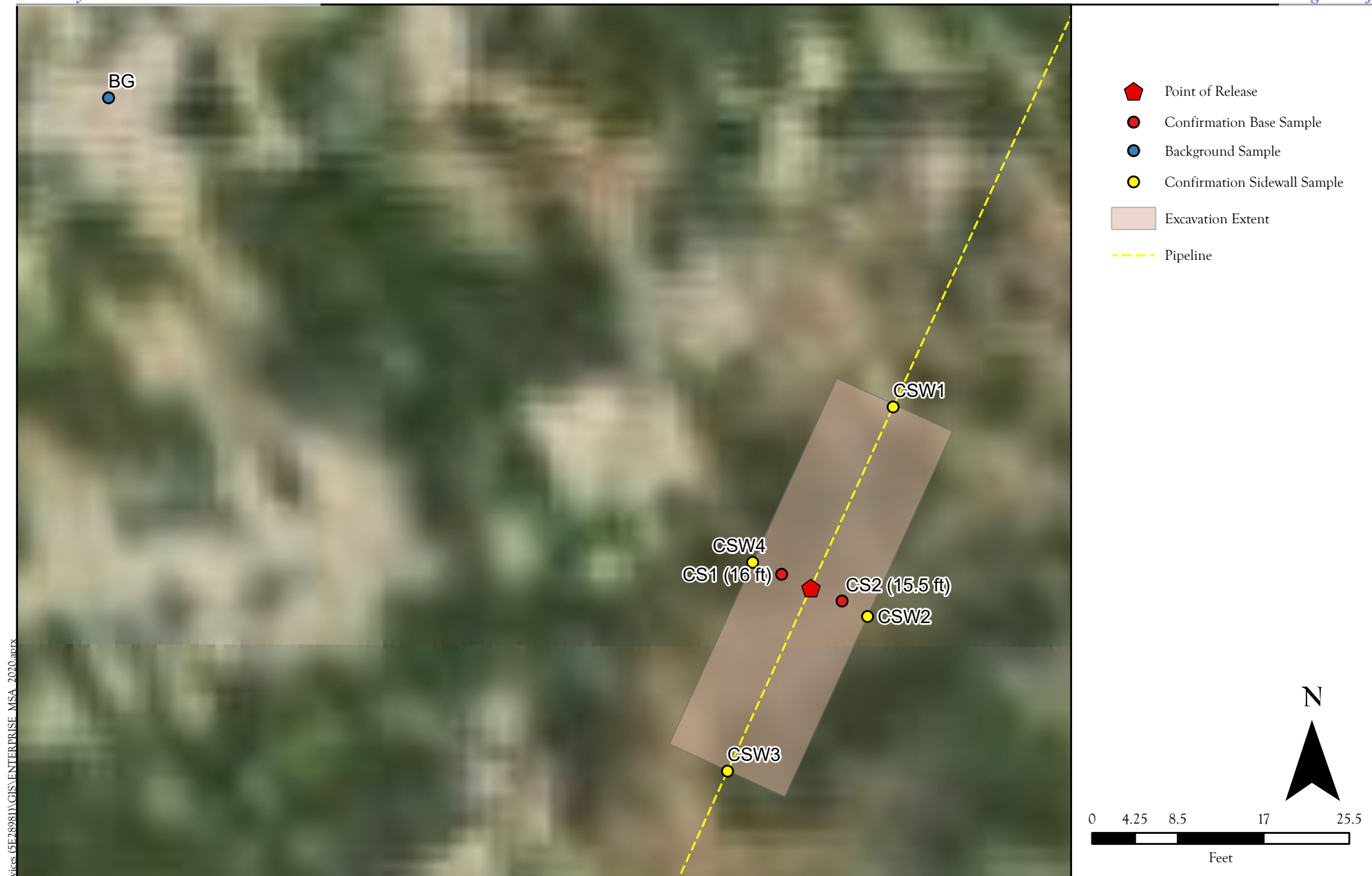
Drawn PR Smith  
 Date 5/17/2021  
 Checked \_\_\_\_\_  
 Approved \_\_\_\_\_



201 South Halaguena Street  
 Carlsbad, New Mexico 88221  
 (575) 689-7040  
 Serving the Southwest & Rocky Mountains

© Souder, Miller & Associates, 2021, All Rights Reserved





Site and Confirmation Sample Location Map  
 Line A-9 - Enterprise Field Services LLC  
 32.222775, -104.506439

Figure 3

P:\5 Enterprise 2020\MSA On Call Services (5F28081)\GIS\ENTERPRISE MSA 2020.aprx  
 Date Saved:  
 7/16/2021

Revisions		
By: _____	Date: _____	Descr: _____
By: _____	Date: _____	Descr: _____

© Souder, Miller & Associates, 2020, All Rights Reserved

Drawn	PR Smith
Date	7/23/2021
Checked	_____
Approved	_____



201 South Halaguena Street  
 Carlsbad, New Mexico 88221  
 (575) 689-7040  
 Serving the Southwest & Rocky Mountains

# TABLES

Table 2:  
NMOCD Closure CriteriaEnterprise Field Services LLC  
Line A-9 (NAPP2114534777)

Site Information (19.15.29.11.A(2, 3, and 4) NMAC)		Source/Notes
Depth to Groundwater (feet bgs)	<50	NMOSE, Figure 1
Horizontal Distance From All Water Sources Within 1/2 Mile (ft)	>2,840	Figure 1
Horizontal Distance to Nearest Significant Watercourse (ft)	100	7.5 minute quadrangle map

Closure Criteria (19.15.29.12.B(4) and Table 1 NMAC)						
Depth to Groundwater		Closure Criteria (units in mg/kg)				
		Chloride    *numerical limit or background, whichever is greater	TPH	GRO + DRO	BTEX	Benzene
< 50' BGS	X	600	100		50	10
51' to 100'		10000	2500	1000	50	10
>100'		20000	2500	1000	50	10
Surface Water	yes or no	if yes, then				
<300' from continuously flowing watercourse or other significant watercourse?	No	600	100		50	10
<200' from lakebed, sinkhole or playa lake?	No					
Water Well or Water Source						
<500 feet from spring or a private, domestic fresh water well used by less than 5 households for domestic or stock watering purposes?	No					
<1000' from fresh water well or spring?	No					
Human and Other Areas						
<300' from an occupied permanent residence, school, hospital, institution or church?	No					
within incorporated municipal boundaries or within a defined municipal fresh water well field?	No					
<100' from wetland?	No					
within area overlying a subsurface mine	No					
within an unstable area?	Yes					
within a 100-year floodplain?	No					



Table 3:  
Sample Results

Enterprise Field Services LLC

Sample ID	Sample Date	Depth of Sample (feet bgs)	Action Taken	Method 8021B		Method 8015D				Method 300.0
				BTEX	Benzene	GRO	DRO	MRO	Total TPH	CI-
				mg/Kg	mg/Kg	mg/Kg	mg/Kg	mg/Kg	mg/Kg	mg/Kg
NMOCD Closure Criteria				50	10				100	600
CS1	5/14/2021	5.5	Excavated	8.29	<0.079	280	2,800	<470	3,080	240
	6/11/2021	15.5	Excavated	0.39	<0.024	<4.8	120	<47	120	<60
	6/25/2021	16	In Situ	<0.207	<0.023	<4.6	<9.8	<49	<63.4	<60
CS2	6/11/2021	5.5	In Situ	<0.216	<0.024	<4.8	<10	<50	<64.8	<61
CSW1	5/14/2021	0-5.5	Excavated	3.82	<0.10	160	2,200	<480	2,360	390
	6/11/2021	0-15.5	Excavated	<0.221	<0.025	<4.9	48	57	105	<60
	6/25/2021	0-16	In Situ	<0.210	<0.023	<4.7	<8.9	<44	<57.6	<60
CSW2	5/14/2021	0-5.5	In Situ	1.307	<0.023	19	75	<48	94	<60
CSW3	5/14/2021	0-5.5	Excavated	0.581	<0.021	27	160	<50	187	<60
	6/11/2021	0-15.5	In Situ	<0.224	<0.025	<5.0	<9.5	<48	<62.5	<60
CSW4	5/14/2021	0-5.5	Excavated	4.91	<0.022	52	200	<47	252	84
	6/11/2021	0-15.5	In Situ	<0.221	<0.025	<4.9	14	<48	14	<60
BG	5/14/2021	--	--	--	--	--	--	--	--	<60
Spoils	5/14/2021	--	Disposed	5.78	<0.099	200	3,200	<480	3,400	500

"--" = Not Analyzed

BG: Background sample



# APPENDIX A

## FORM C141

**District I**  
1625 N. French Dr., Hobbs, NM 88240  
**District II**  
811 S. First St., Artesia, NM 88210  
**District III**  
1000 Rio Brazos Road, Aztec, NM 87410  
**District IV**  
1220 S. St. Francis Dr., Santa Fe, NM 87505

State of New Mexico  
Energy Minerals and Natural  
Resources Department

Oil Conservation Division  
1220 South St. Francis Dr.  
Santa Fe, NM 87505

Form C-141  
Revised August 24, 2018  
Submit to appropriate OCD District office

Incident ID	
District RP	
Facility ID	
Application ID	

## Release Notification

### Responsible Party

Responsible Party	Enterprise Field Services LLC	OGRID	241602
Contact Name	Robert Dunaway	Contact Telephone	575-628-6802
Contact email	rhunaway@eprod.com	Incident # (assigned by OCD)	nAPP2114534777
Contact mailing address	PO Box 4324, Houston, TX 77210		

### Location of Release Source

Latitude 32.222775 Longitude -104.506439  
(NAD 83 in decimal degrees to 5 decimal places)

Site Name	Line A-9	Site Type	Gathering Pipeline
Date Release Discovered	May 24, 2021	API# (if applicable)	

Unit Letter	Section	Township	Range	County
C	16	24S	24E	Eddy

Surface Owner: ☒ State ☐ Federal ☐ Tribal ☐ Private (Name: \_\_\_\_\_)

### Nature and Volume of Release

Material(s) Released (Select all that apply and attach calculations or specific justification for the volumes provided below)

<input type="checkbox"/> Crude Oil	Volume Released (bbls)	Volume Recovered (bbls)
<input type="checkbox"/> Produced Water	Volume Released (bbls)	Volume Recovered (bbls)
	Is the concentration of dissolved chloride in the produced water >10,000 mg/l?	<input type="checkbox"/> Yes <input type="checkbox"/> No
<input checked="" type="checkbox"/> Condensate	Volume Released (bbls) 0.1	Volume Recovered (bbls) - 0
<input checked="" type="checkbox"/> Natural Gas	Volume Released (Mcf) 51.2	Volume Recovered (Mcf) - 0
<input type="checkbox"/> Other (describe)	Volume/Weight Released (provide units)	Volume/Weight Recovered (provide units)

#### Cause of Release

Found a leak on a gathering pipeline, cause is to be determined.

State of New Mexico  
Oil Conservation Division

Incident ID	
District RP	
Facility ID	
Application ID	

Was this a major release as defined by 19.15.29.7(A) NMAC?

☐ Yes ☒ No

If YES, for what reason(s) does the responsible party consider this a major release?

If YES, was immediate notice given to the OCD? By whom? To whom? When and by what means (phone, email, etc)?

### Initial Response

*The responsible party must undertake the following actions immediately unless they could create a safety hazard that would result in injury*

- ☒ The source of the release has been stopped.
- ☒ The impacted area has been secured to protect human health and the environment.
- ☒ Released materials have been contained via the use of berms or dikes, absorbent pads, or other containment devices.
- ☒ All free liquids and recoverable materials have been removed and managed appropriately.


If all the actions described above have not been undertaken, explain why:

Per 19.15.29.8 B. (4) NMAC the responsible party may commence remediation immediately after discovery of a release. If remediation has begun, please attach a narrative of actions to date. If remedial efforts have been successfully completed or if the release occurred within a lined containment area (see 19.15.29.11(A)(5)(a) NMAC), please attach all information needed for closure evaluation.

I hereby certify that the information given above is true and complete to the best of my knowledge and understand that pursuant to OCD rules and regulations all operators are required to report and/or file certain release notifications and perform corrective actions for releases which may endanger public health or the environment. The acceptance of a C-141 report by the OCD does not relieve the operator of liability should their operations have failed to adequately investigate and remediate contamination that pose a threat to groundwater, surface water, human health or the environment. In addition, OCD acceptance of a C-141 report does not relieve the operator of responsibility for compliance with any other federal, state, or local laws and/or regulations.

Printed Name: Robert Dunaway

Title: Senior Environmental Engineer

Signature: 

Date: 5-25-21 (7-29-21)

email: rhunaway@eprod.com

Telephone: 575-628-6802

#### OCD Only

Received by: \_\_\_\_\_ Date: \_\_\_\_\_



# APPENDIX B

## WATER WELL DATA



# New Mexico Office of the State Engineer

## Water Column/Average Depth to Water

(A CLW##### in the POD suffix indicates the POD has been replaced & no longer serves a water right file.)

(R=POD has been replaced,  
O=orphaned,  
C=the file is closed)

(quarters are 1=NW 2=NE 3=SW 4=SE)

(quarters are smallest to largest)

(NAD83 UTM in meters)

(In feet)

POD Number	POD Sub-Code	basin	County	Q 64	Q 16	Q 4	Sec	Tws	Rng	X	Y	Distance	Depth Well	Depth Water	Water Column
<a href="#">C 02247</a>	C		ED	4	09	24S		24E		547215	3565831*	925	300	115	185

Average Depth to Water: **115 feet**

Minimum Depth: **115 feet**

Maximum Depth: **115 feet**

Record Count: 1

### UTM NAD83 Radius Search (in meters):

**Easting (X):** 546506.65

**Northing (Y):** 3565235.87

**Radius:** 1608

\*UTM location was derived from PLSS - see Help

The data is furnished by the NMOSE/ISC and is accepted by the recipient with the expressed understanding that the OSE/ISC make no warranties, expressed or implied, concerning the accuracy, completeness, reliability, usability, or suitability for any particular purpose of the data.

5/17/21 1:24 PM

Page 1 of 1

WATER COLUMN/ AVERAGE  
DEPTH TO WATER

# APPENDIX C

## SAMPLING PROTOCOL



## Sampling Protocol

The soil samples were collected in laboratory supplied containers in accordance with this sampling protocol, immediately placed on ice and sent under standard chain-of-custody protocols to Hall Environmental Analysis Laboratory (HEAL) in Albuquerque, New Mexico for analysis. A total of fourteen (14) samples were collected for laboratory analysis for total chloride using EPA Method 300.0; benzene, toluene, ethylbenzene and total xylenes (BTEX) using EPA Method 8021B; and motor, diesel and gasoline range organics (MRO, DRO, and GRO) by EPA Method 8015D.

## Sampling Analysis Field Quality Assurance Procedures

A unique sample numbering was used to identify each sample collected and designated for on-site and off-site laboratory analysis. The purpose of this numbering scheme was to provide a tracking system for the retrieval of analytical and field data on each sample. Sample identification numbers were recorded on sample labels or tags, field notes, chain-of-custody records (COC) and all other applicable documentation used during the project. Sample labels were affixed to all sample containers during sampling activities. Information was recorded on each sample container label at the time of sample collection. The information recorded on the labels were as follows: sample identification number; sample type (discrete or composite); site name and area/location number; analysis to be performed; type of chemical preservative present in container; date and time of sample collection; and sample collector's name and initials. All samples were packed in ice in an approved rigid body container, custody sealed signed and shipped to the appropriate laboratory via insured carrier service.

COC procedures implemented for the project provided documentation of the handling of each sample from the time of collection until completion of laboratory analysis. A COC form serves as a legal record of possession of the sample. A sample is considered to be under custody if one or more of the following criteria are met: the sample is in the sampler's possession; the sample is in the sampler's view after being in possession; the sample was in the sampler's possession and then was placed into a locked area to prevent tampering; and/or the sample is in a designated secure area. Custody was documented throughout the project field sampling activities by a chain-of custody form initiated each day during which samples are collected. Container custody seals placed on either individual samples or on the rigid body container were used to ensure that no sample tampering occurs between the time the samples are placed into the containers and the time the containers are opened for analysis at the laboratory. Container custody seals were signed and dated by the individual responsible for completing the COC form contained within the container.

# APPENDIX D FIELD NOTES & PHOTO LOG



5/14/21

one base and four Sidewall Samples  
were collected and Field-Screened. Further  
excavation required.

Initial Excavation measurements: 20 x 10 x 5.5

5/21/21

Base had been excavated down  
to 15.5'. Dig area contains  
barrier-sized debris. Sidewalls  
1, 3 and 4 were extended.

5/24/21

New release near Sidewall 1 was  
discovered. David Seelhoff and Robert Deraney  
with Enterprise were notified of release  
following discovery.

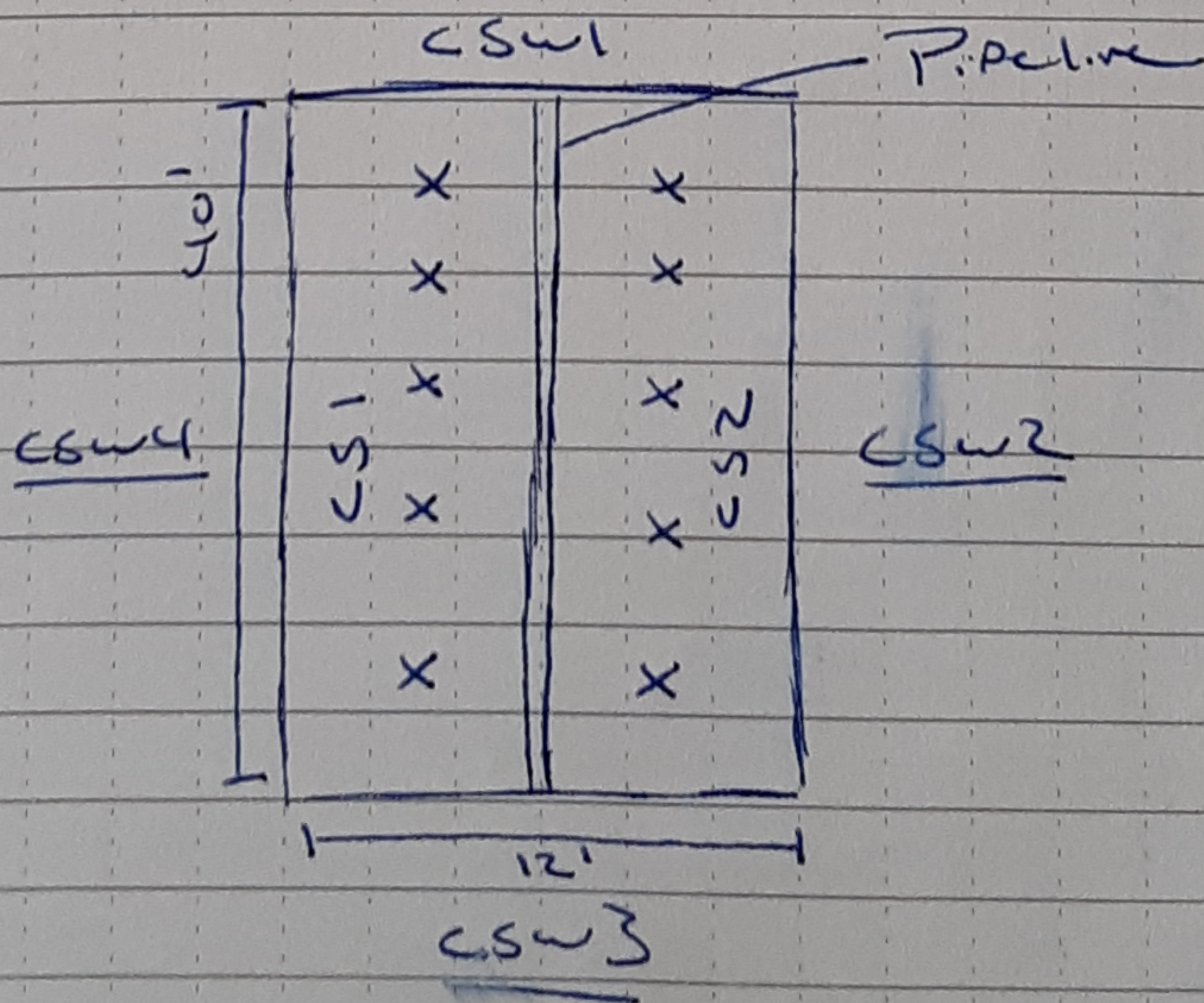
6/11/21

Collected two base Samples (CS1, CS2)  
and three Sidewall Samples (CSW1, CSW2, CSW3)  
and Field-Screened for contaminants.

6/25/21

Collected two Confirmation Samples  
CS1 and CSW1 and Field-Screened for  
contaminates.

Final Excavation measurements: 40 x 12 x 16





# APPENDIX E

## LABORATORY ANALYTICAL REPORTS





Hall Environmental Analysis Laboratory  
4901 Hawkins NE  
Albuquerque, NM 87109  
TEL: 505-345-3975 FAX: 505-345-4107  
Website: [clients.hallenvironmental.com](http://clients.hallenvironmental.com)

May 19, 2021

Ashley Maxwell  
Souder, Miller & Associates  
201 S Halagueno  
Carlsbad, NM 88221  
TEL: (575) 689-8801  
FAX

RE: A9

OrderNo.: 2105697

Dear Ashley Maxwell:

Hall Environmental Analysis Laboratory received 8 sample(s) on 5/15/2021 for the analyses presented in the following report.

These were analyzed according to EPA procedures or equivalent. To access our accredited tests please go to [www.hallenvironmental.com](http://www.hallenvironmental.com) or the state specific web sites. In order to properly interpret your results, it is imperative that you review this report in its entirety. See the sample checklist and/or the Chain of Custody for information regarding the sample receipt temperature and preservation. Data qualifiers or a narrative will be provided if the sample analysis or analytical quality control parameters require a flag. When necessary, data qualifiers are provided on both the sample analysis report and the QC summary report, both sections should be reviewed. All samples are reported, as received, unless otherwise indicated. Lab measurement of analytes considered field parameters that require analysis within 15 minutes of sampling such as pH and residual chlorine are qualified as being analyzed outside of the recommended holding time.

Please don't hesitate to contact HEAL for any additional information or clarifications.

ADHS Cert #AZ0682 -- NMED-DWB Cert #NM9425 -- NMED-Micro Cert #NM0901

Sincerely,

A handwritten signature in black ink, appearing to read "Andy Freeman", is written over a horizontal line.

Andy Freeman  
Laboratory Manager  
4901 Hawkins NE  
Albuquerque, NM 87109

## Analytical Report

Lab Order 2105697

Date Reported: 5/19/2021

## Hall Environmental Analysis Laboratory, Inc.

CLIENT: Souder, Miller &amp; Associates

Client Sample ID: CS1

Project: A9

Collection Date: 5/14/2021 11:30:00 AM

Lab ID: 2105697-001

Matrix: MEOH (SOIL)

Received Date: 5/15/2021 9:00:00 AM

Analyses	Result	RL	Qual	Units	DF	Date Analyzed	Batch
<b>EPA METHOD 300.0: ANIONS</b>							Analyst: <b>VP</b>
Chloride	240	60		mg/Kg	20	5/15/2021 10:18:12 PM	60057
<b>EPA METHOD 8015M/D: DIESEL RANGE ORGANICS</b>							Analyst: <b>TOM</b>
Diesel Range Organics (DRO)	2800	94		mg/Kg	10	5/15/2021 4:50:34 PM	60064
Motor Oil Range Organics (MRO)	ND	470	D	mg/Kg	10	5/15/2021 4:50:34 PM	60064
Surr: DNOP	0	70-130	S	%Rec	10	5/15/2021 4:50:34 PM	60064
<b>EPA METHOD 8015D: GASOLINE RANGE</b>							Analyst: <b>CCM</b>
Gasoline Range Organics (GRO)	280	16		mg/Kg	5	5/15/2021 2:57:00 PM	G77415
Surr: BFB	196	70-130	S	%Rec	5	5/15/2021 2:57:00 PM	G77415
<b>EPA METHOD 8021B: VOLATILES</b>							Analyst: <b>CCM</b>
Benzene	ND	0.079		mg/Kg	5	5/15/2021 2:57:00 PM	R77415
Toluene	0.49	0.16		mg/Kg	5	5/15/2021 2:57:00 PM	R77415
Ethylbenzene	0.90	0.16		mg/Kg	5	5/15/2021 2:57:00 PM	R77415
Xylenes, Total	6.9	0.31		mg/Kg	5	5/15/2021 2:57:00 PM	R77415
Surr: 4-Bromofluorobenzene	114	70-130		%Rec	5	5/15/2021 2:57:00 PM	R77415

Refer to the QC Summary report and sample login checklist for flagged QC data and preservation information.

<b>Qualifiers:</b>	*	Value exceeds Maximum Contaminant Level.	B	Analyte detected in the associated Method Blank
	D	Sample Diluted Due to Matrix	E	Value above quantitation range
	H	Holding times for preparation or analysis exceeded	J	Analyte detected below quantitation limits
	ND	Not Detected at the Reporting Limit	P	Sample pH Not In Range
	PQL	Practical Quantitative Limit	RL	Reporting Limit
	S	% Recovery outside of range due to dilution or matrix		

Page 1 of 9

## Analytical Report

Lab Order 2105697

Date Reported: 5/19/2021

## Hall Environmental Analysis Laboratory, Inc.

CLIENT: Souder, Miller &amp; Associates

Client Sample ID: CSW1

Project: A9

Collection Date: 5/14/2021 11:35:00 AM

Lab ID: 2105697-002

Matrix: MEOH (SOIL)

Received Date: 5/15/2021 9:00:00 AM

Analyses	Result	RL	Qual	Units	DF	Date Analyzed	Batch
<b>EPA METHOD 300.0: ANIONS</b>							Analyst: <b>VP</b>
Chloride	390	60		mg/Kg	20	5/15/2021 10:30:36 PM	60057
<b>EPA METHOD 8015M/D: DIESEL RANGE ORGANICS</b>							Analyst: <b>TOM</b>
Diesel Range Organics (DRO)	2200	96		mg/Kg	10	5/15/2021 5:03:56 PM	60064
Motor Oil Range Organics (MRO)	ND	480		mg/Kg	10	5/15/2021 5:03:56 PM	60064
Surr: DNOP	0	70-130	S	%Rec	10	5/15/2021 5:03:56 PM	60064
<b>EPA METHOD 8015D: GASOLINE RANGE</b>							Analyst: <b>CCM</b>
Gasoline Range Organics (GRO)	160	20		mg/Kg	5	5/15/2021 3:17:00 PM	G77415
Surr: BFB	151	70-130	S	%Rec	5	5/15/2021 3:17:00 PM	G77415
<b>EPA METHOD 8021B: VOLATILES</b>							Analyst: <b>CCM</b>
Benzene	ND	0.10		mg/Kg	5	5/15/2021 3:17:00 PM	R77415
Toluene	0.24	0.20		mg/Kg	5	5/15/2021 3:17:00 PM	R77415
Ethylbenzene	0.48	0.20		mg/Kg	5	5/15/2021 3:17:00 PM	R77415
Xylenes, Total	3.1	0.40		mg/Kg	5	5/15/2021 3:17:00 PM	R77415
Surr: 4-Bromofluorobenzene	125	70-130		%Rec	5	5/15/2021 3:17:00 PM	R77415

Refer to the QC Summary report and sample login checklist for flagged QC data and preservation information.

<b>Qualifiers:</b>	*	Value exceeds Maximum Contaminant Level.	B	Analyte detected in the associated Method Blank
	D	Sample Diluted Due to Matrix	E	Value above quantitation range
	H	Holding times for preparation or analysis exceeded	J	Analyte detected below quantitation limits
	ND	Not Detected at the Reporting Limit	P	Sample pH Not In Range
	PQL	Practical Quantitative Limit	RL	Reporting Limit
	S	% Recovery outside of range due to dilution or matrix		

Page 2 of 9

## Analytical Report

Lab Order 2105697

Date Reported: 5/19/2021

## Hall Environmental Analysis Laboratory, Inc.

CLIENT: Souder, Miller &amp; Associates

Client Sample ID: CSW2

Project: A9

Collection Date: 5/14/2021 11:40:00 AM

Lab ID: 2105697-003

Matrix: MEOH (SOIL)

Received Date: 5/15/2021 9:00:00 AM

Analyses	Result	RL	Qual	Units	DF	Date Analyzed	Batch
<b>EPA METHOD 300.0: ANIONS</b>							Analyst: <b>VP</b>
Chloride	ND	60		mg/Kg	20	5/15/2021 11:07:50 PM	60057
<b>EPA METHOD 8015M/D: DIESEL RANGE ORGANICS</b>							Analyst: <b>TOM</b>
Diesel Range Organics (DRO)	75	9.6		mg/Kg	1	5/15/2021 5:30:46 PM	60064
Motor Oil Range Organics (MRO)	ND	48		mg/Kg	1	5/15/2021 5:30:46 PM	60064
Surr: DNOP	104	70-130		%Rec	1	5/15/2021 5:30:46 PM	60064
<b>EPA METHOD 8015D: GASOLINE RANGE</b>							Analyst: <b>CCM</b>
Gasoline Range Organics (GRO)	19	4.6		mg/Kg	1	5/15/2021 4:36:00 PM	G77415
Surr: BFB	147	70-130	S	%Rec	1	5/15/2021 4:36:00 PM	G77415
<b>EPA METHOD 8021B: VOLATILES</b>							Analyst: <b>CCM</b>
Benzene	ND	0.023		mg/Kg	1	5/15/2021 4:36:00 PM	R77415
Toluene	0.28	0.046		mg/Kg	1	5/15/2021 4:36:00 PM	R77415
Ethylbenzene	0.097	0.046		mg/Kg	1	5/15/2021 4:36:00 PM	R77415
Xylenes, Total	0.93	0.093		mg/Kg	1	5/15/2021 4:36:00 PM	R77415
Surr: 4-Bromofluorobenzene	108	70-130		%Rec	1	5/15/2021 4:36:00 PM	R77415

Refer to the QC Summary report and sample login checklist for flagged QC data and preservation information.

<b>Qualifiers:</b>	*	Value exceeds Maximum Contaminant Level.	B	Analyte detected in the associated Method Blank
	D	Sample Diluted Due to Matrix	E	Value above quantitation range
	H	Holding times for preparation or analysis exceeded	J	Analyte detected below quantitation limits
	ND	Not Detected at the Reporting Limit	P	Sample pH Not In Range
	PQL	Practical Quantitative Limit	RL	Reporting Limit
	S	% Recovery outside of range due to dilution or matrix		

Page 3 of 9

## Analytical Report

Lab Order 2105697

Date Reported: 5/19/2021

## Hall Environmental Analysis Laboratory, Inc.

CLIENT: Souder, Miller &amp; Associates

Client Sample ID: CSW3

Project: A9

Collection Date: 5/14/2021 11:45:00 AM

Lab ID: 2105697-004

Matrix: MEOH (SOIL)

Received Date: 5/15/2021 9:00:00 AM

Analyses	Result	RL	Qual	Units	DF	Date Analyzed	Batch
<b>EPA METHOD 300.0: ANIONS</b>							Analyst: <b>VP</b>
Chloride	ND	60		mg/Kg	20	5/15/2021 11:20:15 PM	60057
<b>EPA METHOD 8015M/D: DIESEL RANGE ORGANICS</b>							Analyst: <b>TOM</b>
Diesel Range Organics (DRO)	160	9.9		mg/Kg	1	5/17/2021 8:40:54 AM	60064
Motor Oil Range Organics (MRO)	ND	50		mg/Kg	1	5/17/2021 8:40:54 AM	60064
Surr: DNOP	105	70-130		%Rec	1	5/17/2021 8:40:54 AM	60064
<b>EPA METHOD 8015D: GASOLINE RANGE</b>							Analyst: <b>CCM</b>
Gasoline Range Organics (GRO)	27	4.2		mg/Kg	1	5/15/2021 4:56:00 PM	G77415
Surr: BFB	156	70-130	S	%Rec	1	5/15/2021 4:56:00 PM	G77415
<b>EPA METHOD 8021B: VOLATILES</b>							Analyst: <b>CCM</b>
Benzene	ND	0.021		mg/Kg	1	5/15/2021 4:56:00 PM	R77415
Toluene	ND	0.042		mg/Kg	1	5/15/2021 4:56:00 PM	R77415
Ethylbenzene	0.081	0.042		mg/Kg	1	5/15/2021 4:56:00 PM	R77415
Xylenes, Total	0.50	0.085		mg/Kg	1	5/15/2021 4:56:00 PM	R77415
Surr: 4-Bromofluorobenzene	114	70-130		%Rec	1	5/15/2021 4:56:00 PM	R77415

Refer to the QC Summary report and sample login checklist for flagged QC data and preservation information.

<b>Qualifiers:</b>	*	Value exceeds Maximum Contaminant Level.	B	Analyte detected in the associated Method Blank
	D	Sample Diluted Due to Matrix	E	Value above quantitation range
	H	Holding times for preparation or analysis exceeded	J	Analyte detected below quantitation limits
	ND	Not Detected at the Reporting Limit	P	Sample pH Not In Range
	PQL	Practical Quantitative Limit	RL	Reporting Limit
	S	% Recovery outside of range due to dilution or matrix		

Page 4 of 9

## Analytical Report

Lab Order 2105697

Date Reported: 5/19/2021

## Hall Environmental Analysis Laboratory, Inc.

CLIENT: Souder, Miller &amp; Associates

Client Sample ID: CSW4

Project: A9

Collection Date: 5/14/2021 11:50:00 AM

Lab ID: 2105697-005

Matrix: MEOH (SOIL)

Received Date: 5/15/2021 9:00:00 AM

Analyses	Result	RL	Qual	Units	DF	Date Analyzed	Batch
<b>EPA METHOD 300.0: ANIONS</b>							Analyst: <b>VP</b>
Chloride	84	60		mg/Kg	20	5/15/2021 11:32:40 PM	60057
<b>EPA METHOD 8015M/D: DIESEL RANGE ORGANICS</b>							Analyst: <b>TOM</b>
Diesel Range Organics (DRO)	200	9.4		mg/Kg	1	5/15/2021 6:10:23 PM	60064
Motor Oil Range Organics (MRO)	ND	47		mg/Kg	1	5/15/2021 6:10:23 PM	60064
Surr: DNOP	103	70-130		%Rec	1	5/15/2021 6:10:23 PM	60064
<b>EPA METHOD 8015D: GASOLINE RANGE</b>							Analyst: <b>CCM</b>
Gasoline Range Organics (GRO)	52	4.5		mg/Kg	1	5/15/2021 5:16:00 PM	G77415
Surr: BFB	252	70-130	S	%Rec	1	5/15/2021 5:16:00 PM	G77415
<b>EPA METHOD 8021B: VOLATILES</b>							Analyst: <b>CCM</b>
Benzene	ND	0.022		mg/Kg	1	5/15/2021 5:16:00 PM	R77415
Toluene	0.52	0.045		mg/Kg	1	5/15/2021 5:16:00 PM	R77415
Ethylbenzene	0.39	0.045		mg/Kg	1	5/15/2021 5:16:00 PM	R77415
Xylenes, Total	4.0	0.090		mg/Kg	1	5/15/2021 5:16:00 PM	R77415
Surr: 4-Bromofluorobenzene	149	70-130	S	%Rec	1	5/15/2021 5:16:00 PM	R77415

Refer to the QC Summary report and sample login checklist for flagged QC data and preservation information.

<b>Qualifiers:</b>	*	Value exceeds Maximum Contaminant Level.	B	Analyte detected in the associated Method Blank
	D	Sample Diluted Due to Matrix	E	Value above quantitation range
	H	Holding times for preparation or analysis exceeded	J	Analyte detected below quantitation limits
	ND	Not Detected at the Reporting Limit	P	Sample pH Not In Range
	PQL	Practical Quantitative Limit	RL	Reporting Limit
	S	% Recovery outside of range due to dilution or matrix		

Page 5 of 9

## Analytical Report

Lab Order 2105697

Date Reported: 5/19/2021

## Hall Environmental Analysis Laboratory, Inc.

CLIENT: Souder, Miller &amp; Associates

Client Sample ID: Spoils

Project: A9

Collection Date: 5/14/2021 11:55:00 AM

Lab ID: 2105697-006

Matrix: MEOH (SOIL)

Received Date: 5/15/2021 9:00:00 AM

Analyses	Result	RL	Qual	Units	DF	Date Analyzed	Batch
<b>EPA METHOD 300.0: ANIONS</b>							Analyst: <b>VP</b>
Chloride	500	61		mg/Kg	20	5/15/2021 11:45:04 PM	60057
<b>EPA METHOD 8015M/D: DIESEL RANGE ORGANICS</b>							Analyst: <b>TOM</b>
Diesel Range Organics (DRO)	3200	97		mg/Kg	10	5/15/2021 6:36:19 PM	60064
Motor Oil Range Organics (MRO)	ND	480	D	mg/Kg	10	5/15/2021 6:36:19 PM	60064
Surr: DNOP	0	70-130	S	%Rec	10	5/15/2021 6:36:19 PM	60064
<b>EPA METHOD 8015D: GASOLINE RANGE</b>							Analyst: <b>CCM</b>
Gasoline Range Organics (GRO)	200	20		mg/Kg	5	5/15/2021 5:36:00 PM	G77415
Surr: BFB	152	70-130	S	%Rec	5	5/15/2021 5:36:00 PM	G77415
<b>EPA METHOD 8021B: VOLATILES</b>							Analyst: <b>CCM</b>
Benzene	ND	0.099		mg/Kg	5	5/15/2021 5:36:00 PM	R77415
Toluene	0.52	0.20		mg/Kg	5	5/15/2021 5:36:00 PM	R77415
Ethylbenzene	0.56	0.20		mg/Kg	5	5/15/2021 5:36:00 PM	R77415
Xylenes, Total	4.7	0.39		mg/Kg	5	5/15/2021 5:36:00 PM	R77415
Surr: 4-Bromofluorobenzene	134	70-130	S	%Rec	5	5/15/2021 5:36:00 PM	R77415

Refer to the QC Summary report and sample login checklist for flagged QC data and preservation information.

<b>Qualifiers:</b>	*	Value exceeds Maximum Contaminant Level.	B	Analyte detected in the associated Method Blank
	D	Sample Diluted Due to Matrix	E	Value above quantitation range
	H	Holding times for preparation or analysis exceeded	J	Analyte detected below quantitation limits
	ND	Not Detected at the Reporting Limit	P	Sample pH Not In Range
	PQL	Practical Quantitative Limit	RL	Reporting Limit
	S	% Recovery outside of range due to dilution or matrix		

Page 6 of 9



## Analytical Report

Lab Order 2105697

Date Reported: 5/19/2021

## Hall Environmental Analysis Laboratory, Inc.

CLIENT: Souder, Miller &amp; Associates

Client Sample ID: BG

Project: A9

Collection Date: 5/14/2021 12:00:00 PM

Lab ID: 2105697-007

Matrix: MEOH (SOIL)

Received Date: 5/15/2021 9:00:00 AM

Analyses	Result	RL	Qual	Units	DF	Date Analyzed	Batch
<b>EPA METHOD 300.0: ANIONS</b>							Analyst: VP
Chloride	ND	60		mg/Kg	20	5/15/2021 11:57:29 PM	60057

Refer to the QC Summary report and sample login checklist for flagged QC data and preservation information.

<b>Qualifiers:</b>	*	Value exceeds Maximum Contaminant Level.	B	Analyte detected in the associated Method Blank
	D	Sample Diluted Due to Matrix	E	Value above quantitation range
	H	Holding times for preparation or analysis exceeded	J	Analyte detected below quantitation limits
	ND	Not Detected at the Reporting Limit	P	Sample pH Not In Range
	PQL	Practical Quantitative Limit	RL	Reporting Limit
	S	% Recovery outside of range due to dilution or matrix		

Page 7 of 9

# QC SUMMARY REPORT

## Hall Environmental Analysis Laboratory, Inc.

WO#: 2105697  
19-May-21

Client: Souder, Miller & Associates  
Project: A9

Sample ID: MB-60057	SampType: MBLK	TestCode: EPA Method 300.0: Anions
Client ID: PBS	Batch ID: 60057	RunNo: 77418
Prep Date: 5/15/2021	Analysis Date: 5/15/2021	SeqNo: 2747487 Units: mg/Kg
Analyte	Result	PQL SPK value SPK Ref Val %REC LowLimit HighLimit %RPD RPDLimit Qual
Chloride	ND	1.5

Sample ID: LCS-60057	SampType: LCS	TestCode: EPA Method 300.0: Anions
Client ID: LCSS	Batch ID: 60057	RunNo: 77418
Prep Date: 5/15/2021	Analysis Date: 5/15/2021	SeqNo: 2747488 Units: mg/Kg
Analyte	Result	PQL SPK value SPK Ref Val %REC LowLimit HighLimit %RPD RPDLimit Qual
Chloride	14	1.5 15.00 0 95.5 90 110

Qualifiers:

- \*

Value exceeds Maximum Contaminant Level.
- D

Sample Diluted Due to Matrix
- H

Holding times for preparation or analysis exceeded
- ND

Not Detected at the Reporting Limit
- PQL

Practical Quantitative Limit
- S

% Recovery outside of range due to dilution or matrix
- B

Analyte detected in the associated Method Blank
- E

Value above quantitation range
- J

Analyte detected below quantitation limits
- P

Sample pH Not In Range
- RL

Reporting Limit

**QC SUMMARY REPORT****Hall Environmental Analysis Laboratory, Inc.**

WO#: 2105697

19-May-21

**Client:** Souder, Miller & Associates**Project:** A9

Sample ID: <b>MB-60064</b>	SampType: <b>MBLK</b>	TestCode: <b>EPA Method 8015M/D: Diesel Range Organics</b>								
Client ID: <b>PBS</b>	Batch ID: <b>60064</b>	RunNo: <b>77423</b>								
Prep Date: <b>5/15/2021</b>	Analysis Date: <b>5/15/2021</b>	SeqNo: <b>2747821</b> Units: <b>mg/Kg</b>								
Analyte	Result	PQL	SPK value	SPK Ref Val	%REC	LowLimit	HighLimit	%RPD	RPDLimit	Qual
Diesel Range Organics (DRO)	ND	10								
Motor Oil Range Organics (MRO)	ND	50								
Surr: DNOP	11		10.00		105	70	130			

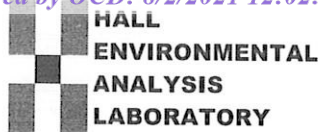
Sample ID: <b>LCS-60064</b>	SampType: <b>LCS</b>	TestCode: <b>EPA Method 8015M/D: Diesel Range Organics</b>								
Client ID: <b>LCSS</b>	Batch ID: <b>60064</b>	RunNo: <b>77423</b>								
Prep Date: <b>5/15/2021</b>	Analysis Date: <b>5/15/2021</b>	SeqNo: <b>2747822</b> Units: <b>mg/Kg</b>								
Analyte	Result	PQL	SPK value	SPK Ref Val	%REC	LowLimit	HighLimit	%RPD	RPDLimit	Qual
Diesel Range Organics (DRO)	51	10	50.00	0	102	68.9	141			
Surr: DNOP	5.0		5.000		99.6	70	130			

**Qualifiers:**

\* Value exceeds Maximum Contaminant Level.  
D Sample Diluted Due to Matrix  
H Holding times for preparation or analysis exceeded  
ND Not Detected at the Reporting Limit  
PQL Practical Quantitative Limit  
S % Recovery outside of range due to dilution or matrix

B Analyte detected in the associated Method Blank  
E Value above quantitation range  
J Analyte detected below quantitation limits  
P Sample pH Not In Range  
RL Reporting Limit

Page 9 of 9



Hall Environmental Analysis Laboratory  
4901 Hawkins NE  
Albuquerque, NM 87109  
TEL: 505-345-3975 FAX: 505-345-4107  
Website: clients.hallenvironmental.com

## Sample Log-In Check List

Client Name: **Souder, Miller & Associates**

Work Order Number: **2105697**

RcptNo: 1

Received By: **Sean Livingston**

5/15/2021 9:00:00 AM

*Sean Livingston*

Completed By: **Sean Livingston**

5/15/2021 9:11:22 AM

*Sean Livingston*

Reviewed By: *@ 05/15/2021*

Chain of Custody

1. Is Chain of Custody complete? Yes ☒ No ☐ Not Present ☐  
2. How was the sample delivered? Courier

Log In

3. Was an attempt made to cool the samples? Yes ☒ No ☐ NA ☐  
4. Were all samples received at a temperature of  $>0^{\circ}\text{C}$  to  $6.0^{\circ}\text{C}$ ? Yes ☒ No ☐ NA ☐  
5. Sample(s) in proper container(s)? Yes ☒ No ☐  
6. Sufficient sample volume for indicated test(s)? Yes ☒ No ☐  
7. Are samples (except VOA and ONG) properly preserved? Yes ☒ No ☐  
8. Was preservative added to bottles? Yes ☐ No ☒ NA ☐  
9. Received at least 1 vial with headspace  $<1/4"$  for AQ VOA? Yes ☐ No ☐ NA ☒  
10. Were any sample containers received broken? Yes ☐ No ☒  
11. Does paperwork match bottle labels?  
(Note discrepancies on chain of custody) Yes ☒ No ☐  
12. Are matrices correctly identified on Chain of Custody? Yes ☒ No ☐  
13. Is it clear what analyses were requested? Yes ☒ No ☐  
14. Were all holding times able to be met?  
(If no, notify customer for authorization.) Yes ☒ No ☐

# of preserved bottles checked for pH:  
( $<2$  or  $>12$  unless noted)

Adjusted?

Checked by: *SL 5/15/21*

Special Handling (if applicable)

15. Was client notified of all discrepancies with this order? Yes ☐ No ☐ NA ☒

Person Notified: \_\_\_\_\_

Date: \_\_\_\_\_

By Whom: \_\_\_\_\_

Via: ☐ eMail ☐ Phone ☐ Fax ☐ In Person

Regarding: \_\_\_\_\_

Client Instructions: \_\_\_\_\_

16. Additional remarks:

17. Cooler Information

Cooler No	Temp $^{\circ}\text{C}$	Condition	Seal Intact	Seal No	Seal Date	Signed By
1	2.0	Good				





Hall Environmental Analysis Laboratory  
4901 Hawkins NE  
Albuquerque, NM 87109  
TEL: 505-345-3975 FAX: 505-345-4107  
Website: [clients.hallenvironmental.com](http://clients.hallenvironmental.com)

June 25, 2021

Ashley Maxwell  
Souder, Miller & Associates  
201 S Halagueno  
Carlsbad, NM 88221  
TEL:  
FAX

RE: A9

OrderNo.: 2106762

Dear Ashley Maxwell:

Hall Environmental Analysis Laboratory received 5 sample(s) on 6/15/2021 for the analyses presented in the following report.

These were analyzed according to EPA procedures or equivalent. To access our accredited tests please go to [www.hallenvironmental.com](http://www.hallenvironmental.com) or the state specific web sites. In order to properly interpret your results, it is imperative that you review this report in its entirety. See the sample checklist and/or the Chain of Custody for information regarding the sample receipt temperature and preservation. Data qualifiers or a narrative will be provided if the sample analysis or analytical quality control parameters require a flag. When necessary, data qualifiers are provided on both the sample analysis report and the QC summary report, both sections should be reviewed. All samples are reported, as received, unless otherwise indicated. Lab measurement of analytes considered field parameters that require analysis within 15 minutes of sampling such as pH and residual chlorine are qualified as being analyzed outside of the recommended holding time.

Please don't hesitate to contact HEAL for any additional information or clarifications.

ADHS Cert #AZ0682 -- NMED-DWB Cert #NM9425 -- NMED-Micro Cert #NM0901

Sincerely,

A handwritten signature in black ink, appearing to read "Andy Freeman", is written over a white background.

Andy Freeman  
Laboratory Manager  
4901 Hawkins NE  
Albuquerque, NM 87109



## Analytical Report

Lab Order 2106762

Date Reported: 6/25/2021

## Hall Environmental Analysis Laboratory, Inc.

CLIENT: Souder, Miller &amp; Associates

Client Sample ID: CS1

Project: A9

Collection Date: 6/11/2021 10:15:00 AM

Lab ID: 2106762-001

Matrix: SOIL

Received Date: 6/15/2021 7:30:00 AM

Analyses	Result	RL	Qual	Units	DF	Date Analyzed	Batch
<b>EPA METHOD 300.0: ANIONS</b>							Analyst: <b>VP</b>
Chloride	ND	60		mg/Kg	20	6/17/2021 5:28:51 AM	60678
<b>EPA METHOD 8015M/D: DIESEL RANGE ORGANICS</b>							Analyst: <b>SB</b>
Diesel Range Organics (DRO)	120	9.4		mg/Kg	1	6/24/2021 1:06:51 PM	60895
Motor Oil Range Organics (MRO)	ND	47		mg/Kg	1	6/24/2021 1:06:51 PM	60895
Surr: DNOP	87.7	70-130		%Rec	1	6/24/2021 1:06:51 PM	60895
<b>EPA METHOD 8015D: GASOLINE RANGE</b>							Analyst: <b>CCM</b>
Gasoline Range Organics (GRO)	ND	4.8		mg/Kg	1	6/17/2021 2:18:00 PM	60640
Surr: BFB	120	70-130		%Rec	1	6/17/2021 2:18:00 PM	60640
<b>EPA METHOD 8021B: VOLATILES</b>							Analyst: <b>CCM</b>
Benzene	ND	0.024		mg/Kg	1	6/17/2021 2:18:00 PM	60640
Toluene	0.13	0.048		mg/Kg	1	6/17/2021 2:18:00 PM	60640
Ethylbenzene	ND	0.048		mg/Kg	1	6/17/2021 2:18:00 PM	60640
Xylenes, Total	0.26	0.095		mg/Kg	1	6/17/2021 2:18:00 PM	60640
Surr: 4-Bromofluorobenzene	89.7	70-130		%Rec	1	6/17/2021 2:18:00 PM	60640

Refer to the QC Summary report and sample login checklist for flagged QC data and preservation information.

<b>Qualifiers:</b>	*	Value exceeds Maximum Contaminant Level.	B	Analyte detected in the associated Method Blank
	D	Sample Diluted Due to Matrix	E	Value above quantitation range
	H	Holding times for preparation or analysis exceeded	J	Analyte detected below quantitation limits
	ND	Not Detected at the Reporting Limit	P	Sample pH Not In Range
	PQL	Practical Quantitative Limit	RL	Reporting Limit
	S	% Recovery outside of range due to dilution or matrix		

Page 1 of 9

## Analytical Report

Lab Order 2106762

Date Reported: 6/25/2021

## Hall Environmental Analysis Laboratory, Inc.

CLIENT: Souder, Miller &amp; Associates

Client Sample ID: CS2

Project: A9

Collection Date: 6/11/2021 10:30:00 AM

Lab ID: 2106762-002

Matrix: SOIL

Received Date: 6/15/2021 7:30:00 AM

Analyses	Result	RL	Qual	Units	DF	Date Analyzed	Batch
<b>EPA METHOD 300.0: ANIONS</b>							Analyst: <b>VP</b>
Chloride	ND	61		mg/Kg	20	6/17/2021 6:06:04 AM	60678
<b>EPA METHOD 8015M/D: DIESEL RANGE ORGANICS</b>							Analyst: <b>SB</b>
Diesel Range Organics (DRO)	ND	10		mg/Kg	1	6/18/2021 7:55:00 PM	60649
Motor Oil Range Organics (MRO)	ND	50		mg/Kg	1	6/18/2021 7:55:00 PM	60649
Surr: DNOP	96.8	70-130		%Rec	1	6/18/2021 7:55:00 PM	60649
<b>EPA METHOD 8015D: GASOLINE RANGE</b>							Analyst: <b>CCM</b>
Gasoline Range Organics (GRO)	ND	4.8		mg/Kg	1	6/17/2021 2:38:00 PM	60640
Surr: BFB	103	70-130		%Rec	1	6/17/2021 2:38:00 PM	60640
<b>EPA METHOD 8021B: VOLATILES</b>							Analyst: <b>CCM</b>
Benzene	ND	0.024		mg/Kg	1	6/17/2021 2:38:00 PM	60640
Toluene	ND	0.048		mg/Kg	1	6/17/2021 2:38:00 PM	60640
Ethylbenzene	ND	0.048		mg/Kg	1	6/17/2021 2:38:00 PM	60640
Xylenes, Total	ND	0.096		mg/Kg	1	6/17/2021 2:38:00 PM	60640
Surr: 4-Bromofluorobenzene	89.0	70-130		%Rec	1	6/17/2021 2:38:00 PM	60640

Refer to the QC Summary report and sample login checklist for flagged QC data and preservation information.

<b>Qualifiers:</b>	*	Value exceeds Maximum Contaminant Level.	B	Analyte detected in the associated Method Blank
	D	Sample Diluted Due to Matrix	E	Value above quantitation range
	H	Holding times for preparation or analysis exceeded	J	Analyte detected below quantitation limits
	ND	Not Detected at the Reporting Limit	P	Sample pH Not In Range
	PQL	Practical Quantitative Limit	RL	Reporting Limit
	S	% Recovery outside of range due to dilution or matrix		



## Analytical Report

Lab Order 2106762

Date Reported: 6/25/2021

## Hall Environmental Analysis Laboratory, Inc.

CLIENT: Souder, Miller &amp; Associates

Client Sample ID: CSW1

Project: A9

Collection Date: 6/11/2021 10:45:00 AM

Lab ID: 2106762-003

Matrix: SOIL

Received Date: 6/15/2021 7:30:00 AM

Analyses	Result	RL	Qual	Units	DF	Date Analyzed	Batch
<b>EPA METHOD 300.0: ANIONS</b>							Analyst: <b>VP</b>
Chloride	ND	60		mg/Kg	20	6/17/2021 6:43:18 AM	60678
<b>EPA METHOD 8015M/D: DIESEL RANGE ORGANICS</b>							Analyst: <b>SB</b>
Diesel Range Organics (DRO)	48	9.9		mg/Kg	1	6/18/2021 8:24:15 PM	60649
Motor Oil Range Organics (MRO)	57	50		mg/Kg	1	6/18/2021 8:24:15 PM	60649
Surr: DNOP	85.1	70-130		%Rec	1	6/18/2021 8:24:15 PM	60649
<b>EPA METHOD 8015D: GASOLINE RANGE</b>							Analyst: <b>CCM</b>
Gasoline Range Organics (GRO)	ND	4.9		mg/Kg	1	6/17/2021 2:58:00 PM	60640
Surr: BFB	107	70-130		%Rec	1	6/17/2021 2:58:00 PM	60640
<b>EPA METHOD 8021B: VOLATILES</b>							Analyst: <b>CCM</b>
Benzene	ND	0.025		mg/Kg	1	6/17/2021 2:58:00 PM	60640
Toluene	ND	0.049		mg/Kg	1	6/17/2021 2:58:00 PM	60640
Ethylbenzene	ND	0.049		mg/Kg	1	6/17/2021 2:58:00 PM	60640
Xylenes, Total	ND	0.098		mg/Kg	1	6/17/2021 2:58:00 PM	60640
Surr: 4-Bromofluorobenzene	88.8	70-130		%Rec	1	6/17/2021 2:58:00 PM	60640

Refer to the QC Summary report and sample login checklist for flagged QC data and preservation information.

<b>Qualifiers:</b>	*	Value exceeds Maximum Contaminant Level.	B	Analyte detected in the associated Method Blank
	D	Sample Diluted Due to Matrix	E	Value above quantitation range
	H	Holding times for preparation or analysis exceeded	J	Analyte detected below quantitation limits
	ND	Not Detected at the Reporting Limit	P	Sample pH Not In Range
	PQL	Practical Quantitative Limit	RL	Reporting Limit
	S	% Recovery outside of range due to dilution or matrix		

Page 3 of 9

## Analytical Report

Lab Order 2106762

Date Reported: 6/25/2021

## Hall Environmental Analysis Laboratory, Inc.

CLIENT: Souder, Miller &amp; Associates

Client Sample ID: CSW3

Project: A9

Collection Date: 6/11/2021 11:00:00 AM

Lab ID: 2106762-004

Matrix: SOIL

Received Date: 6/15/2021 7:30:00 AM

Analyses	Result	RL	Qual	Units	DF	Date Analyzed	Batch
<b>EPA METHOD 300.0: ANIONS</b>							Analyst: <b>VP</b>
Chloride	ND	60		mg/Kg	20	6/17/2021 6:55:42 AM	60678
<b>EPA METHOD 8015M/D: DIESEL RANGE ORGANICS</b>							Analyst: <b>SB</b>
Diesel Range Organics (DRO)	ND	9.5		mg/Kg	1	6/18/2021 8:52:25 PM	60649
Motor Oil Range Organics (MRO)	ND	48		mg/Kg	1	6/18/2021 8:52:25 PM	60649
Surr: DNOP	96.8	70-130		%Rec	1	6/18/2021 8:52:25 PM	60649
<b>EPA METHOD 8015D: GASOLINE RANGE</b>							Analyst: <b>CCM</b>
Gasoline Range Organics (GRO)	ND	5.0		mg/Kg	1	6/17/2021 4:19:00 PM	60640
Surr: BFB	102	70-130		%Rec	1	6/17/2021 4:19:00 PM	60640
<b>EPA METHOD 8021B: VOLATILES</b>							Analyst: <b>CCM</b>
Benzene	ND	0.025		mg/Kg	1	6/17/2021 4:19:00 PM	60640
Toluene	ND	0.050		mg/Kg	1	6/17/2021 4:19:00 PM	60640
Ethylbenzene	ND	0.050		mg/Kg	1	6/17/2021 4:19:00 PM	60640
Xylenes, Total	ND	0.099		mg/Kg	1	6/17/2021 4:19:00 PM	60640
Surr: 4-Bromofluorobenzene	84.5	70-130		%Rec	1	6/17/2021 4:19:00 PM	60640

Refer to the QC Summary report and sample login checklist for flagged QC data and preservation information.

<b>Qualifiers:</b>	*	Value exceeds Maximum Contaminant Level.	B	Analyte detected in the associated Method Blank
	D	Sample Diluted Due to Matrix	E	Value above quantitation range
	H	Holding times for preparation or analysis exceeded	J	Analyte detected below quantitation limits
	ND	Not Detected at the Reporting Limit	P	Sample pH Not In Range
	PQL	Practical Quantitative Limit	RL	Reporting Limit
	S	% Recovery outside of range due to dilution or matrix		

Page 4 of 9

## Analytical Report

Lab Order 2106762

Date Reported: 6/25/2021

## Hall Environmental Analysis Laboratory, Inc.

CLIENT: Souder, Miller &amp; Associates

Client Sample ID: CSW4

Project: A9

Collection Date: 6/11/2021 11:15:00 AM

Lab ID: 2106762-005

Matrix: SOIL

Received Date: 6/15/2021 7:30:00 AM

Analyses	Result	RL	Qual	Units	DF	Date Analyzed	Batch
<b>EPA METHOD 300.0: ANIONS</b>							Analyst: <b>VP</b>
Chloride	ND	60		mg/Kg	20	6/17/2021 7:08:06 AM	60678
<b>EPA METHOD 8015M/D: DIESEL RANGE ORGANICS</b>							Analyst: <b>SB</b>
Diesel Range Organics (DRO)	14	9.6		mg/Kg	1	6/18/2021 9:19:04 PM	60649
Motor Oil Range Organics (MRO)	ND	48		mg/Kg	1	6/18/2021 9:19:04 PM	60649
Surr: DNOP	73.7	70-130		%Rec	1	6/18/2021 9:19:04 PM	60649
<b>EPA METHOD 8015D: GASOLINE RANGE</b>							Analyst: <b>CCM</b>
Gasoline Range Organics (GRO)	ND	4.9		mg/Kg	1	6/17/2021 4:39:00 PM	60640
Surr: BFB	102	70-130		%Rec	1	6/17/2021 4:39:00 PM	60640
<b>EPA METHOD 8021B: VOLATILES</b>							Analyst: <b>CCM</b>
Benzene	ND	0.025		mg/Kg	1	6/17/2021 4:39:00 PM	60640
Toluene	ND	0.049		mg/Kg	1	6/17/2021 4:39:00 PM	60640
Ethylbenzene	ND	0.049		mg/Kg	1	6/17/2021 4:39:00 PM	60640
Xylenes, Total	ND	0.098		mg/Kg	1	6/17/2021 4:39:00 PM	60640
Surr: 4-Bromofluorobenzene	84.3	70-130		%Rec	1	6/17/2021 4:39:00 PM	60640

Refer to the QC Summary report and sample login checklist for flagged QC data and preservation information.

<b>Qualifiers:</b>	*	Value exceeds Maximum Contaminant Level.	B	Analyte detected in the associated Method Blank
	D	Sample Diluted Due to Matrix	E	Value above quantitation range
	H	Holding times for preparation or analysis exceeded	J	Analyte detected below quantitation limits
	ND	Not Detected at the Reporting Limit	P	Sample pH Not In Range
	PQL	Practical Quantitative Limit	RL	Reporting Limit
	S	% Recovery outside of range due to dilution or matrix		

**QC SUMMARY REPORT****Hall Environmental Analysis Laboratory, Inc.**

WO#: 2106762

25-Jun-21

**Client:** Souder, Miller & Associates**Project:** A9

Sample ID: <b>MB-60678</b>	SampType: <b>MBLK</b>	TestCode: <b>EPA Method 300.0: Anions</b>								
Client ID: <b>PBS</b>	Batch ID: <b>60678</b>	RunNo: <b>79104</b>								
Prep Date: <b>6/16/2021</b>	Analysis Date: <b>6/17/2021</b>	SeqNo: <b>2777668</b>	Units: <b>mg/Kg</b>							
Analyte	Result	PQL	SPK value	SPK Ref Val	%REC	LowLimit	HighLimit	%RPD	RPDLimit	Qual
Chloride	ND	1.5								

Sample ID: <b>LCS-60678</b>	SampType: <b>LCS</b>	TestCode: <b>EPA Method 300.0: Anions</b>								
Client ID: <b>LCSS</b>	Batch ID: <b>60678</b>	RunNo: <b>79104</b>								
Prep Date: <b>6/16/2021</b>	Analysis Date: <b>6/17/2021</b>	SeqNo: <b>2777669</b>	Units: <b>mg/Kg</b>							
Analyte	Result	PQL	SPK value	SPK Ref Val	%REC	LowLimit	HighLimit	%RPD	RPDLimit	Qual
Chloride	15	1.5	15.00	0	97.8	90	110			

**Qualifiers:**

\* Value exceeds Maximum Contaminant Level.  
D Sample Diluted Due to Matrix  
H Holding times for preparation or analysis exceeded  
ND Not Detected at the Reporting Limit  
PQL Practical Quantitative Limit  
S % Recovery outside of range due to dilution or matrix

B Analyte detected in the associated Method Blank  
E Value above quantitation range  
J Analyte detected below quantitation limits  
P Sample pH Not In Range  
RL Reporting Limit

Page 6 of 9

**QC SUMMARY REPORT****Hall Environmental Analysis Laboratory, Inc.**

WO#: 2106762

25-Jun-21

**Client:** Souder, Miller & Associates**Project:** A9

Sample ID: <b>MB-60649</b>	SampType: <b>MBLK</b>	TestCode: <b>EPA Method 8015M/D: Diesel Range Organics</b>								
Client ID: <b>PBS</b>	Batch ID: <b>60649</b>	RunNo: <b>79147</b>								
Prep Date: <b>6/15/2021</b>	Analysis Date: <b>6/16/2021</b>	SeqNo: <b>2778217</b> Units: <b>mg/Kg</b>								
Analyte	Result	PQL	SPK value	SPK Ref Val	%REC	LowLimit	HighLimit	%RPD	RPDLimit	Qual
Diesel Range Organics (DRO)	ND	10								
Motor Oil Range Organics (MRO)	ND	50								
Surr: DNOP	11		10.00		114	70	130			

Sample ID: <b>LCS-60649</b>	SampType: <b>LCS</b>	TestCode: <b>EPA Method 8015M/D: Diesel Range Organics</b>								
Client ID: <b>LCSS</b>	Batch ID: <b>60649</b>	RunNo: <b>79147</b>								
Prep Date: <b>6/15/2021</b>	Analysis Date: <b>6/16/2021</b>	SeqNo: <b>2778218</b> Units: <b>mg/Kg</b>								
Analyte	Result	PQL	SPK value	SPK Ref Val	%REC	LowLimit	HighLimit	%RPD	RPDLimit	Qual
Diesel Range Organics (DRO)	55	10	50.00	0	109	68.9	141			
Surr: DNOP	5.4		5.000		108	70	130			

Sample ID: <b>MB-60739</b>	SampType: <b>MBLK</b>	TestCode: <b>EPA Method 8015M/D: Diesel Range Organics</b>								
Client ID: <b>PBS</b>	Batch ID: <b>60739</b>	RunNo: <b>79195</b>								
Prep Date: <b>6/18/2021</b>	Analysis Date: <b>6/19/2021</b>	SeqNo: <b>2782641</b> Units: <b>%Rec</b>								
Analyte	Result	PQL	SPK value	SPK Ref Val	%REC	LowLimit	HighLimit	%RPD	RPDLimit	Qual
Surr: DNOP	8.6		10.00		85.8	70	130			

Sample ID: <b>LCS-60739</b>	SampType: <b>LCS</b>	TestCode: <b>EPA Method 8015M/D: Diesel Range Organics</b>								
Client ID: <b>LCSS</b>	Batch ID: <b>60739</b>	RunNo: <b>79195</b>								
Prep Date: <b>6/18/2021</b>	Analysis Date: <b>6/19/2021</b>	SeqNo: <b>2782668</b> Units: <b>%Rec</b>								
Analyte	Result	PQL	SPK value	SPK Ref Val	%REC	LowLimit	HighLimit	%RPD	RPDLimit	Qual
Surr: DNOP	4.5		5.000		89.4	70	130			

Sample ID: <b>MB-60742</b>	SampType: <b>MBLK</b>	TestCode: <b>EPA Method 8015M/D: Diesel Range Organics</b>								
Client ID: <b>PBS</b>	Batch ID: <b>60742</b>	RunNo: <b>79227</b>								
Prep Date: <b>6/18/2021</b>	Analysis Date: <b>6/20/2021</b>	SeqNo: <b>2783470</b> Units: <b>%Rec</b>								
Analyte	Result	PQL	SPK value	SPK Ref Val	%REC	LowLimit	HighLimit	%RPD	RPDLimit	Qual
Surr: DNOP	9.9		10.00		98.7	70	130			

Sample ID: <b>LCS-60742</b>	SampType: <b>LCS</b>	TestCode: <b>EPA Method 8015M/D: Diesel Range Organics</b>								
Client ID: <b>LCSS</b>	Batch ID: <b>60742</b>	RunNo: <b>79227</b>								
Prep Date: <b>6/18/2021</b>	Analysis Date: <b>6/20/2021</b>	SeqNo: <b>2783473</b> Units: <b>%Rec</b>								
Analyte	Result	PQL	SPK value	SPK Ref Val	%REC	LowLimit	HighLimit	%RPD	RPDLimit	Qual
Surr: DNOP	5.1		5.000		102	70	130			

**Qualifiers:**

\* Value exceeds Maximum Contaminant Level.  
D Sample Diluted Due to Matrix  
H Holding times for preparation or analysis exceeded  
ND Not Detected at the Reporting Limit  
PQL Practical Quantitative Limit  
S % Recovery outside of range due to dilution or matrix

B Analyte detected in the associated Method Blank  
E Value above quantitation range  
J Analyte detected below quantitation limits  
P Sample pH Not In Range  
RL Reporting Limit

**QC SUMMARY REPORT****Hall Environmental Analysis Laboratory, Inc.**

WO#: 2106762

25-Jun-21

**Client:** Souder, Miller & Associates**Project:** A9

Sample ID: <b>MB-60640</b>	SampType: <b>MBLK</b>	TestCode: <b>EPA Method 8015D: Gasoline Range</b>								
Client ID: <b>PBS</b>	Batch ID: <b>60640</b>	RunNo: <b>79145</b>								
Prep Date: <b>6/15/2021</b>	Analysis Date: <b>6/17/2021</b>	SeqNo: <b>2778274</b>	Units: <b>mg/Kg</b>							
Analyte	Result	PQL	SPK value	SPK Ref Val	%REC	LowLimit	HighLimit	%RPD	RPDLimit	Qual
Gasoline Range Organics (GRO)	ND	5.0								
Surr: BFB	1000		1000		105	70	130			

Sample ID: <b>LCS-60640</b>	SampType: <b>LCS</b>	TestCode: <b>EPA Method 8015D: Gasoline Range</b>								
Client ID: <b>LCSS</b>	Batch ID: <b>60640</b>	RunNo: <b>79145</b>								
Prep Date: <b>6/15/2021</b>	Analysis Date: <b>6/17/2021</b>	SeqNo: <b>2778275</b>	Units: <b>mg/Kg</b>							
Analyte	Result	PQL	SPK value	SPK Ref Val	%REC	LowLimit	HighLimit	%RPD	RPDLimit	Qual
Gasoline Range Organics (GRO)	26	5.0	25.00	0	105	78.6	131			
Surr: BFB	1200		1000		116	70	130			

**Qualifiers:**

\* Value exceeds Maximum Contaminant Level.  
D Sample Diluted Due to Matrix  
H Holding times for preparation or analysis exceeded  
ND Not Detected at the Reporting Limit  
PQL Practical Quantitative Limit  
S % Recovery outside of range due to dilution or matrix

B Analyte detected in the associated Method Blank  
E Value above quantitation range  
J Analyte detected below quantitation limits  
P Sample pH Not In Range  
RL Reporting Limit

**QC SUMMARY REPORT****Hall Environmental Analysis Laboratory, Inc.**

WO#: 2106762

25-Jun-21

**Client:** Souder, Miller & Associates**Project:** A9

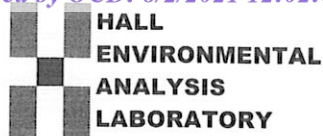
Sample ID: <b>MB-60640</b>	SampType: <b>MBLK</b>	TestCode: <b>EPA Method 8021B: Volatiles</b>								
Client ID: <b>PBS</b>	Batch ID: <b>60640</b>	RunNo: <b>79145</b>								
Prep Date: <b>6/15/2021</b>	Analysis Date: <b>6/17/2021</b>	SeqNo: <b>2778273</b>	Units: <b>mg/Kg</b>							
Analyte	Result	PQL	SPK value	SPK Ref Val	%REC	LowLimit	HighLimit	%RPD	RPDLimit	Qual
Benzene	ND	0.025								
Toluene	ND	0.050								
Ethylbenzene	ND	0.050								
Xylenes, Total	ND	0.10								
Surr: 4-Bromofluorobenzene	0.88		1.000		87.9	70	130			

Sample ID: <b>LCS-60640</b>	SampType: <b>LCS</b>	TestCode: <b>EPA Method 8021B: Volatiles</b>								
Client ID: <b>LCSS</b>	Batch ID: <b>60640</b>	RunNo: <b>79145</b>								
Prep Date: <b>6/15/2021</b>	Analysis Date: <b>6/17/2021</b>	SeqNo: <b>2778276</b>	Units: <b>mg/Kg</b>							
Analyte	Result	PQL	SPK value	SPK Ref Val	%REC	LowLimit	HighLimit	%RPD	RPDLimit	Qual
Benzene	0.98	0.025	1.000	0	97.7	80	120			
Toluene	0.96	0.050	1.000	0	96.1	80	120			
Ethylbenzene	0.99	0.050	1.000	0	98.9	80	120			
Xylenes, Total	2.9	0.10	3.000	0	97.4	80	120			
Surr: 4-Bromofluorobenzene	0.89		1.000		88.7	70	130			

**Qualifiers:**

\* Value exceeds Maximum Contaminant Level.  
D Sample Diluted Due to Matrix  
H Holding times for preparation or analysis exceeded  
ND Not Detected at the Reporting Limit  
PQL Practical Quantitative Limit  
S % Recovery outside of range due to dilution or matrix

B Analyte detected in the associated Method Blank  
E Value above quantitation range  
J Analyte detected below quantitation limits  
P Sample pH Not In Range  
RL Reporting Limit



Hall Environmental Analysis Laboratory  
4901 Hawkins NE  
Albuquerque, NM 87109  
TEL: 505-345-3975 FAX: 505-345-4107  
Website: clients.hallenvironmental.com

## Sample Log-In Check List

Client Name: **Souder, Miller & Associates**

Work Order Number: **2106762**

RcptNo: 1

Received By: **Juan Rojas**

6/15/2021 7:30:00 AM

*Juan Rojas*

Completed By: **Isaiah Ortiz**

6/15/2021 7:54:05 AM

*Isaiah Ortiz*

Reviewed By: *cu*

6/15/21

Chain of Custody

1. Is Chain of Custody complete? Yes ☒ No ☐ Not Present ☐
2. How was the sample delivered? Courier

Log In

3. Was an attempt made to cool the samples? Yes ☒ No ☐ NA ☐
4. Were all samples received at a temperature of >0° C to 6.0°C Yes ☒ No ☐ NA ☐
5. Sample(s) in proper container(s)? Yes ☒ No ☐
6. Sufficient sample volume for indicated test(s)? Yes ☒ No ☐
7. Are samples (except VOA and ONG) properly preserved? Yes ☒ No ☐
8. Was preservative added to bottles? Yes ☐ No ☒ NA ☐
9. Received at least 1 vial with headspace <1/4" for AQ VOA? Yes ☐ No ☐ NA ☒
10. Were any sample containers received broken? Yes ☐ No ☒
11. Does paperwork match bottle labels?  
(Note discrepancies on chain of custody) Yes ☒ No ☐
12. Are matrices correctly identified on Chain of Custody? Yes ☒ No ☐
13. Is it clear what analyses were requested? Yes ☒ No ☐
14. Were all holding times able to be met?  
(If no, notify customer for authorization.) Yes ☒ No ☐

# of preserved  
bottles checked  
for pH:

(<2 or >12 unless noted)

Adjusted? ☐

Checked by: *SPA 6.15.21*

Special Handling (if applicable)

15. Was client notified of all discrepancies with this order? Yes ☐ No ☐ NA ☒

Person Notified: \_\_\_\_\_

Date: \_\_\_\_\_

By Whom: \_\_\_\_\_

Via: ☐ eMail ☐ Phone ☐ Fax ☐ In Person

Regarding: \_\_\_\_\_

Client Instructions: \_\_\_\_\_

16. Additional remarks:

17. Cooler Information

Cooler No	Temp °C	Condition	Seal Intact	Seal No	Seal Date	Signed By
1	0.1	Good	Not Present			



## Chain-of-Custody Record

Client: SMA Carlsbad

Turn-Around Time: 5 days ☒ Standard ☐ Rush

Project Name: A9

Project #: \_\_\_\_\_

Project Manager: Ashley Maxwell

Sampler: \_\_\_\_\_

On Ice: ☐ Yes ☐ No

# of Coolers: 1

Cooler Temp (including CF): 0.3-0.2-0.1 (°C)

Container Type and # 4102 Preservative Type COOL HEAL No. 21067162

Date Time Matrix Sample Name

6/11 10:15 Soil CS1

10:30 CS2

10:45 CSW1

11:00 CSW3

11:15 CSW4



# HALL ENVIRONMENTAL ANALYSIS LABORATORY

www.hallenvironmental.com

4901 Hawkins NE - Albuquerque, NM 87109

Tel. 505-345-3975 Fax 505-345-4107

## Analysis Request

TPH:8015D(GRO / DRO / MRO)

8081 Pesticides/8082 PCB's

EDB (Method 504.1)

PAHs by 8310 or 8270SIMS

RCRA 8 Metals

(C) F, Br, NO<sub>3</sub>, NO<sub>2</sub>, PO<sub>4</sub>, SO<sub>4</sub>

8260 (VOA)

8270 (Semi-VOA)

Total Coliform (Present/Absent)

Relinquished by: TRC Smith Date: 6/14/21 Time: 1130

Relinquished by: [Signature] Date: 6/14/21 Time: 1900

Received by: [Signature] Date: 6/14/21 Time: 1130

Received by: [Signature] Date: 6/15/21 Time: 7:30

Remarks: Direct invoice Enterprise



Hall Environmental Analysis Laboratory  
4901 Hawkins NE  
Albuquerque, NM 87109  
TEL: 505-345-3975 FAX: 505-345-4107  
Website: [clients.hallenvironmental.com](http://clients.hallenvironmental.com)

July 08, 2021

Ashley Maxwell  
Souder, Miller & Associates  
201 S Halagueno  
Carlsbad, NM 88221  
TEL: (575) 689-8801  
FAX

RE: A9

OrderNo.: 2106F51

Dear Ashley Maxwell:

Hall Environmental Analysis Laboratory received 2 sample(s) on 6/30/2021 for the analyses presented in the following report.

These were analyzed according to EPA procedures or equivalent. To access our accredited tests please go to [www.hallenvironmental.com](http://www.hallenvironmental.com) or the state specific web sites. In order to properly interpret your results, it is imperative that you review this report in its entirety. See the sample checklist and/or the Chain of Custody for information regarding the sample receipt temperature and preservation. Data qualifiers or a narrative will be provided if the sample analysis or analytical quality control parameters require a flag. When necessary, data qualifiers are provided on both the sample analysis report and the QC summary report, both sections should be reviewed. All samples are reported, as received, unless otherwise indicated. Lab measurement of analytes considered field parameters that require analysis within 15 minutes of sampling such as pH and residual chlorine are qualified as being analyzed outside of the recommended holding time.

Please don't hesitate to contact HEAL for any additional information or clarifications.

ADHS Cert #AZ0682 -- NMED-DWB Cert #NM9425 -- NMED-Micro Cert #NM0901

Sincerely,

A handwritten signature in black ink, appearing to read "Andy Freeman", is written over a light blue horizontal line.

Andy Freeman  
Laboratory Manager  
4901 Hawkins NE  
Albuquerque, NM 87109

## Analytical Report

Lab Order 2106F51

Date Reported: 7/8/2021

## Hall Environmental Analysis Laboratory, Inc.

CLIENT: Souder, Miller &amp; Associates

Client Sample ID: CS1

Project: A9

Collection Date: 6/25/2021 10:30:00 AM

Lab ID: 2106F51-001

Matrix: SOIL

Received Date: 6/30/2021 7:40:00 AM

Analyses	Result	RL	Qual	Units	DF	Date Analyzed	Batch
<b>EPA METHOD 300.0: ANIONS</b>							Analyst: <b>VP</b>
Chloride	ND	60		mg/Kg	20	7/6/2021 4:51:53 PM	61134
<b>EPA METHOD 8015D MOD: GASOLINE RANGE</b>							Analyst: <b>JMR</b>
Gasoline Range Organics (GRO)	ND	4.6		mg/Kg	1	7/2/2021 6:01:10 PM	61051
Surr: BFB	97.6	70-130		%Rec	1	7/2/2021 6:01:10 PM	61051
<b>EPA METHOD 8015M/D: DIESEL RANGE ORGANICS</b>							Analyst: <b>SB</b>
Diesel Range Organics (DRO)	ND	9.8		mg/Kg	1	7/4/2021 6:56:16 AM	61070
Motor Oil Range Organics (MRO)	ND	49		mg/Kg	1	7/4/2021 6:56:16 AM	61070
Surr: DNOP	103	70-130		%Rec	1	7/4/2021 6:56:16 AM	61070
<b>EPA METHOD 8260B: VOLATILES SHORT LIST</b>							Analyst: <b>JMR</b>
Benzene	ND	0.023		mg/Kg	1	7/2/2021 6:01:10 PM	61051
Toluene	ND	0.046		mg/Kg	1	7/2/2021 6:01:10 PM	61051
Ethylbenzene	ND	0.046		mg/Kg	1	7/2/2021 6:01:10 PM	61051
Xylenes, Total	ND	0.092		mg/Kg	1	7/2/2021 6:01:10 PM	61051
Surr: 1,2-Dichloroethane-d4	103	70-130		%Rec	1	7/2/2021 6:01:10 PM	61051
Surr: 4-Bromofluorobenzene	103	70-130		%Rec	1	7/2/2021 6:01:10 PM	61051
Surr: Dibromofluoromethane	100	70-130		%Rec	1	7/2/2021 6:01:10 PM	61051
Surr: Toluene-d8	95.0	70-130		%Rec	1	7/2/2021 6:01:10 PM	61051

Refer to the QC Summary report and sample login checklist for flagged QC data and preservation information.

<b>Qualifiers:</b>	*	Value exceeds Maximum Contaminant Level.	B	Analyte detected in the associated Method Blank
	D	Sample Diluted Due to Matrix	E	Value above quantitation range
	H	Holding times for preparation or analysis exceeded	J	Analyte detected below quantitation limits
	ND	Not Detected at the Reporting Limit	P	Sample pH Not In Range
	PQL	Practical Quantitative Limit	RL	Reporting Limit
	S	% Recovery outside of range due to dilution or matrix		

Page 1 of 7

## Analytical Report

Lab Order 2106F51

Date Reported: 7/8/2021

## Hall Environmental Analysis Laboratory, Inc.

CLIENT: Souder, Miller &amp; Associates

Client Sample ID: CSW1

Project: A9

Collection Date: 6/25/2021 10:45:00 AM

Lab ID: 2106F51-002

Matrix: SOIL

Received Date: 6/30/2021 7:40:00 AM

Analyses	Result	RL	Qual	Units	DF	Date Analyzed	Batch
<b>EPA METHOD 300.0: ANIONS</b>							Analyst: <b>VP</b>
Chloride	ND	60		mg/Kg	20	7/6/2021 5:04:17 PM	61134
<b>EPA METHOD 8015D MOD: GASOLINE RANGE</b>							Analyst: <b>JMR</b>
Gasoline Range Organics (GRO)	ND	4.7		mg/Kg	1	7/2/2021 7:27:04 PM	61051
Surr: BFB	101	70-130		%Rec	1	7/2/2021 7:27:04 PM	61051
<b>EPA METHOD 8015M/D: DIESEL RANGE ORGANICS</b>							Analyst: <b>SB</b>
Diesel Range Organics (DRO)	ND	8.9		mg/Kg	1	7/4/2021 7:43:52 AM	61070
Motor Oil Range Organics (MRO)	ND	44		mg/Kg	1	7/4/2021 7:43:52 AM	61070
Surr: DNOP	99.2	70-130		%Rec	1	7/4/2021 7:43:52 AM	61070
<b>EPA METHOD 8260B: VOLATILES SHORT LIST</b>							Analyst: <b>JMR</b>
Benzene	ND	0.023		mg/Kg	1	7/2/2021 7:27:04 PM	61051
Toluene	ND	0.047		mg/Kg	1	7/2/2021 7:27:04 PM	61051
Ethylbenzene	ND	0.047		mg/Kg	1	7/2/2021 7:27:04 PM	61051
Xylenes, Total	ND	0.093		mg/Kg	1	7/2/2021 7:27:04 PM	61051
Surr: 1,2-Dichloroethane-d4	107	70-130		%Rec	1	7/2/2021 7:27:04 PM	61051
Surr: 4-Bromofluorobenzene	97.6	70-130		%Rec	1	7/2/2021 7:27:04 PM	61051
Surr: Dibromofluoromethane	106	70-130		%Rec	1	7/2/2021 7:27:04 PM	61051
Surr: Toluene-d8	96.1	70-130		%Rec	1	7/2/2021 7:27:04 PM	61051

Refer to the QC Summary report and sample login checklist for flagged QC data and preservation information.

<b>Qualifiers:</b>	*	Value exceeds Maximum Contaminant Level.	B	Analyte detected in the associated Method Blank
	D	Sample Diluted Due to Matrix	E	Value above quantitation range
	H	Holding times for preparation or analysis exceeded	J	Analyte detected below quantitation limits
	ND	Not Detected at the Reporting Limit	P	Sample pH Not In Range
	PQL	Practical Quantitative Limit	RL	Reporting Limit
	S	% Recovery outside of range due to dilution or matrix		

Page 2 of 7

**QC SUMMARY REPORT****Hall Environmental Analysis Laboratory, Inc.**

WO#: 2106F51

08-Jul-21

**Client:** Souder, Miller & Associates**Project:** A9

Sample ID: <b>MB-61134</b>	SampType: <b>MBLK</b>	TestCode: <b>EPA Method 300.0: Anions</b>								
Client ID: <b>PBS</b>	Batch ID: <b>61134</b>	RunNo: <b>79587</b>								
Prep Date: <b>7/6/2021</b>	Analysis Date: <b>7/6/2021</b>	SeqNo: <b>2799423</b>	Units: <b>mg/Kg</b>							
Analyte	Result	PQL	SPK value	SPK Ref Val	%REC	LowLimit	HighLimit	%RPD	RPDLimit	Qual
Chloride	ND	1.5								

Sample ID: <b>LCS-61134</b>	SampType: <b>LCS</b>	TestCode: <b>EPA Method 300.0: Anions</b>								
Client ID: <b>LCSS</b>	Batch ID: <b>61134</b>	RunNo: <b>79587</b>								
Prep Date: <b>7/6/2021</b>	Analysis Date: <b>7/6/2021</b>	SeqNo: <b>2799424</b>	Units: <b>mg/Kg</b>							
Analyte	Result	PQL	SPK value	SPK Ref Val	%REC	LowLimit	HighLimit	%RPD	RPDLimit	Qual
Chloride	15	1.5	15.00	0	99.0	90	110			

**Qualifiers:**

\* Value exceeds Maximum Contaminant Level.  
D Sample Diluted Due to Matrix  
H Holding times for preparation or analysis exceeded  
ND Not Detected at the Reporting Limit  
PQL Practical Quantitative Limit  
S % Recovery outside of range due to dilution or matrix

B Analyte detected in the associated Method Blank  
E Value above quantitation range  
J Analyte detected below quantitation limits  
P Sample pH Not In Range  
RL Reporting Limit

Page 3 of 7

**QC SUMMARY REPORT****Hall Environmental Analysis Laboratory, Inc.**

WO#: 2106F51

08-Jul-21

**Client:** Souder, Miller & Associates**Project:** A9

Sample ID: <b>MB-61070</b>	SampType: <b>MBLK</b>	TestCode: <b>EPA Method 8015M/D: Diesel Range Organics</b>								
Client ID: <b>PBS</b>	Batch ID: <b>61070</b>	RunNo: <b>79583</b>								
Prep Date: <b>7/1/2021</b>	Analysis Date: <b>7/4/2021</b>	SeqNo: <b>2798932</b> Units: <b>mg/Kg</b>								
Analyte	Result	PQL	SPK value	SPK Ref Val	%REC	LowLimit	HighLimit	%RPD	RPDLimit	Qual
Diesel Range Organics (DRO)	ND	10								
Motor Oil Range Organics (MRO)	ND	50								
Surr: DNOP	9.5		10.00		95.5	70	130			

Sample ID: <b>LCS-61070</b>	SampType: <b>LCS</b>	TestCode: <b>EPA Method 8015M/D: Diesel Range Organics</b>								
Client ID: <b>LCSS</b>	Batch ID: <b>61070</b>	RunNo: <b>79583</b>								
Prep Date: <b>7/1/2021</b>	Analysis Date: <b>7/4/2021</b>	SeqNo: <b>2798933</b> Units: <b>mg/Kg</b>								
Analyte	Result	PQL	SPK value	SPK Ref Val	%REC	LowLimit	HighLimit	%RPD	RPDLimit	Qual
Diesel Range Organics (DRO)	42	10	50.00	0	84.9	68.9	141			
Surr: DNOP	4.6		5.000		92.4	70	130			

**Qualifiers:**

\* Value exceeds Maximum Contaminant Level.  
D Sample Diluted Due to Matrix  
H Holding times for preparation or analysis exceeded  
ND Not Detected at the Reporting Limit  
PQL Practical Quantitative Limit  
S % Recovery outside of range due to dilution or matrix

B Analyte detected in the associated Method Blank  
E Value above quantitation range  
J Analyte detected below quantitation limits  
P Sample pH Not In Range  
RL Reporting Limit

Page 4 of 7

**QC SUMMARY REPORT****Hall Environmental Analysis Laboratory, Inc.**

WO#: 2106F51

08-Jul-21

**Client:** Souder, Miller & Associates**Project:** A9

Sample ID: <b>lcs-61051</b>	SampType: <b>LCS4</b>	TestCode: <b>EPA Method 8260B: Volatiles Short List</b>								
Client ID: <b>BatchQC</b>	Batch ID: <b>61051</b>	RunNo: <b>79525</b>								
Prep Date: <b>6/30/2021</b>	Analysis Date: <b>7/2/2021</b>	SeqNo: <b>2796933</b>			Units: <b>mg/Kg</b>					
Analyte	Result	PQL	SPK value	SPK Ref Val	%REC	LowLimit	HighLimit	%RPD	RPDLimit	Qual
Benzene	1.0	0.025	1.000	0	101	80	120			
Toluene	0.95	0.050	1.000	0	95.1	80	120			
Ethylbenzene	0.99	0.050	1.000	0	98.7	80	120			
Xylenes, Total	2.9	0.10	3.000	0	96.2	80	120			
Surr: 1,2-Dichloroethane-d4	0.52		0.5000		104	70	130			
Surr: 4-Bromofluorobenzene	0.51		0.5000		101	70	130			
Surr: Dibromofluoromethane	0.51		0.5000		101	70	130			
Surr: Toluene-d8	0.47		0.5000		94.6	70	130			

Sample ID: <b>mb-61051</b>	SampType: <b>MBLK</b>	TestCode: <b>EPA Method 8260B: Volatiles Short List</b>								
Client ID: <b>PBS</b>	Batch ID: <b>61051</b>	RunNo: <b>79525</b>								
Prep Date: <b>6/30/2021</b>	Analysis Date: <b>7/2/2021</b>	SeqNo: <b>2796935</b>			Units: <b>mg/Kg</b>					
Analyte	Result	PQL	SPK value	SPK Ref Val	%REC	LowLimit	HighLimit	%RPD	RPDLimit	Qual
Benzene	ND	0.025								
Toluene	ND	0.050								
Ethylbenzene	ND	0.050								
Xylenes, Total	ND	0.10								
Surr: 1,2-Dichloroethane-d4	0.48		0.5000		95.9	70	130			
Surr: 4-Bromofluorobenzene	0.54		0.5000		108	70	130			
Surr: Dibromofluoromethane	0.49		0.5000		98.0	70	130			
Surr: Toluene-d8	0.48		0.5000		95.2	70	130			

Sample ID: <b>2106f51-002ams</b>	SampType: <b>MS4</b>	TestCode: <b>EPA Method 8260B: Volatiles Short List</b>								
Client ID: <b>CSW1</b>	Batch ID: <b>61051</b>	RunNo: <b>79552</b>								
Prep Date: <b>6/30/2021</b>	Analysis Date: <b>7/2/2021</b>	SeqNo: <b>2798633</b>			Units: <b>mg/Kg</b>					
Analyte	Result	PQL	SPK value	SPK Ref Val	%REC	LowLimit	HighLimit	%RPD	RPDLimit	Qual
Benzene	0.87	0.024	0.9718	0	89.7	73.5	138			
Toluene	0.82	0.049	0.9718	0	84.4	83	131			
Ethylbenzene	0.87	0.049	0.9718	0	89.6	84.9	132			
Xylenes, Total	2.6	0.097	2.915	0	89.7	79.6	144			
Surr: 1,2-Dichloroethane-d4	0.51		0.4859		104	70	130			
Surr: 4-Bromofluorobenzene	0.50		0.4859		103	70	130			
Surr: Dibromofluoromethane	0.50		0.4859		103	70	130			
Surr: Toluene-d8	0.47		0.4859		97.0	70	130			

**Qualifiers:**

\* Value exceeds Maximum Contaminant Level.  
D Sample Diluted Due to Matrix  
H Holding times for preparation or analysis exceeded  
ND Not Detected at the Reporting Limit  
PQL Practical Quantitative Limit  
S % Recovery outside of range due to dilution or matrix

B Analyte detected in the associated Method Blank  
E Value above quantitation range  
J Analyte detected below quantitation limits  
P Sample pH Not In Range  
RL Reporting Limit



**QC SUMMARY REPORT****Hall Environmental Analysis Laboratory, Inc.**

WO#: 2106F51

08-Jul-21

**Client:** Souder, Miller & Associates**Project:** A9

Sample ID: <b>2106f51-002amsd</b>		SampType: <b>MSD4</b>		TestCode: <b>EPA Method 8260B: Volatiles Short List</b>						
Client ID: <b>CSW1</b>		Batch ID: <b>61051</b>		RunNo: <b>79552</b>						
Prep Date: <b>6/30/2021</b>		Analysis Date: <b>7/2/2021</b>		SeqNo: <b>2798634</b>		Units: <b>mg/Kg</b>				
Analyte	Result	PQL	SPK value	SPK Ref Val	%REC	LowLimit	HighLimit	%RPD	RPDLimit	Qual
Benzene	0.75	0.023	0.9107	0	82.3	73.5	138	15.1	20	
Toluene	0.78	0.046	0.9107	0	85.2	83	131	5.56	20	
Ethylbenzene	0.79	0.046	0.9107	0	87.1	84.9	132	9.30	20	
Xylenes, Total	2.4	0.091	2.732	0	87.1	79.6	144	9.41	20	
Surr: 1,2-Dichloroethane-d4	0.44		0.4554		97.3	70	130	0	0	
Surr: 4-Bromofluorobenzene	0.45		0.4554		99.6	70	130	0	0	
Surr: Dibromofluoromethane	0.45		0.4554		98.2	70	130	0	0	
Surr: Toluene-d8	0.43		0.4554		95.3	70	130	0	0	

**Qualifiers:**

\* Value exceeds Maximum Contaminant Level.  
D Sample Diluted Due to Matrix  
H Holding times for preparation or analysis exceeded  
ND Not Detected at the Reporting Limit  
PQL Practical Quantitative Limit  
S % Recovery outside of range due to dilution or matrix

B Analyte detected in the associated Method Blank  
E Value above quantitation range  
J Analyte detected below quantitation limits  
P Sample pH Not In Range  
RL Reporting Limit

Page 6 of 7



**QC SUMMARY REPORT****Hall Environmental Analysis Laboratory, Inc.**

WO#: 2106F51

08-Jul-21

**Client:** Souder, Miller & Associates**Project:** A9

Sample ID: <b>lcs-61051</b>	SampType: <b>LCS</b>				TestCode: <b>EPA Method 8015D Mod: Gasoline Range</b>					
Client ID: <b>LCSS</b>	Batch ID: <b>61051</b>				RunNo: <b>79525</b>					
Prep Date: <b>6/30/2021</b>	Analysis Date: <b>7/2/2021</b>				SeqNo: <b>2796981</b>	Units: <b>mg/Kg</b>				
Analyte	Result	PQL	SPK value	SPK Ref Val	%REC	LowLimit	HighLimit	%RPD	RPDLimit	Qual
Gasoline Range Organics (GRO)	25	5.0	25.00	0	99.1	70	130			
Surr: BFB	510		500.0		101	70	130			

Sample ID: <b>mb-61051</b>	SampType: <b>MBLK</b>				TestCode: <b>EPA Method 8015D Mod: Gasoline Range</b>					
Client ID: <b>PBS</b>	Batch ID: <b>61051</b>				RunNo: <b>79525</b>					
Prep Date: <b>6/30/2021</b>	Analysis Date: <b>7/2/2021</b>				SeqNo: <b>2796983</b>	Units: <b>mg/Kg</b>				
Analyte	Result	PQL	SPK value	SPK Ref Val	%REC	LowLimit	HighLimit	%RPD	RPDLimit	Qual
Gasoline Range Organics (GRO)	ND	5.0								
Surr: BFB	500		500.0		101	70	130			

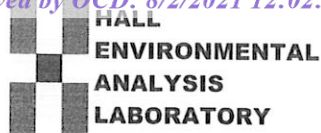
Sample ID: <b>2106f51-001ams</b>	SampType: <b>MS</b>				TestCode: <b>EPA Method 8015D Mod: Gasoline Range</b>					
Client ID: <b>CS1</b>	Batch ID: <b>61051</b>				RunNo: <b>79552</b>					
Prep Date: <b>6/30/2021</b>	Analysis Date: <b>7/2/2021</b>				SeqNo: <b>2798654</b>	Units: <b>mg/Kg</b>				
Analyte	Result	PQL	SPK value	SPK Ref Val	%REC	LowLimit	HighLimit	%RPD	RPDLimit	Qual
Gasoline Range Organics (GRO)	23	4.6	23.23	0	97.8	64.4	124			
Surr: BFB	480		464.7		103	70	130			

Sample ID: <b>2106f51-001amsd</b>	SampType: <b>MSD</b>				TestCode: <b>EPA Method 8015D Mod: Gasoline Range</b>					
Client ID: <b>CS1</b>	Batch ID: <b>61051</b>				RunNo: <b>79552</b>					
Prep Date: <b>6/30/2021</b>	Analysis Date: <b>7/2/2021</b>				SeqNo: <b>2798655</b>	Units: <b>mg/Kg</b>				
Analyte	Result	PQL	SPK value	SPK Ref Val	%REC	LowLimit	HighLimit	%RPD	RPDLimit	Qual
Gasoline Range Organics (GRO)	23	4.6	23.06	0	99.2	64.4	124	0.640	20	
Surr: BFB	470		461.3		102	70	130	0	0	

**Qualifiers:**

\* Value exceeds Maximum Contaminant Level.  
D Sample Diluted Due to Matrix  
H Holding times for preparation or analysis exceeded  
ND Not Detected at the Reporting Limit  
PQL Practical Quantitative Limit  
S % Recovery outside of range due to dilution or matrix

B Analyte detected in the associated Method Blank  
E Value above quantitation range  
J Analyte detected below quantitation limits  
P Sample pH Not In Range  
RL Reporting Limit



Hall Environmental Analysis Laboratory  
4901 Hawkins NE  
Albuquerque, NM 87109  
TEL: 505-345-3975 FAX: 505-345-4107  
Website: clients.hallenvironmental.com

## Sample Log-In Check List

Client Name: **Souder, Miller & Associates**

Work Order Number: **2106F51**

RcptNo: **1**

Received By: **Juan Rojas**

6/30/2021 7:40:00 AM

Completed By: **Sean Livingston**

6/30/2021 8:07:06 AM

Reviewed By:

*JR 6/30/21*

*Juan Rojas*

*Sean Livingston*

### Chain of Custody

1. Is Chain of Custody complete? Yes ☒ No ☐ Not Present ☐
2. How was the sample delivered? Courier

### Log In

3. Was an attempt made to cool the samples? Yes ☒ No ☐ NA ☐
4. Were all samples received at a temperature of  $>0^{\circ}\text{C}$  to  $6.0^{\circ}\text{C}$ ? Yes ☒ No ☐ NA ☐
5. Sample(s) in proper container(s)? Yes ☒ No ☐
6. Sufficient sample volume for indicated test(s)? Yes ☒ No ☐
7. Are samples (except VOA and ONG) properly preserved? Yes ☒ No ☐
8. Was preservative added to bottles? Yes ☐ No ☒ NA ☐
9. Received at least 1 vial with headspace  $<1/4$ " for AQ VOA? Yes ☐ No ☐ NA ☒
10. Were any sample containers received broken? Yes ☐ No ☒
11. Does paperwork match bottle labels?  
(Note discrepancies on chain of custody) Yes ☒ No ☐
12. Are matrices correctly identified on Chain of Custody? Yes ☒ No ☐
13. Is it clear what analyses were requested? Yes ☒ No ☐
14. Were all holding times able to be met?  
(If no, notify customer for authorization.) Yes ☒ No ☐

# of preserved  
bottles checked  
for pH:

( $<2$  or  $>12$  unless noted)

Adjusted?

Checked by: *T.C. 6.30.21*

### Special Handling (if applicable)

15. Was client notified of all discrepancies with this order? Yes ☐ No ☐ NA ☒

Person Notified:

Date:

By Whom:

Via:

☐ eMail

☐ Phone

☐ Fax

☐ In Person

Regarding:

Client Instructions:

16. Additional remarks:

### 17. Cooler Information

Cooler No	Temp $^{\circ}\text{C}$	Condition	Seal Intact	Seal No	Seal Date	Signed By
1	2.1	Good				



**District I**  
1625 N. French Dr., Hobbs, NM 88240  
Phone:(575) 393-6161 Fax:(575) 393-0720  
**District II**  
811 S. First St., Artesia, NM 88210  
Phone:(575) 748-1283 Fax:(575) 748-9720  
**District III**  
1000 Rio Brazos Rd., Aztec, NM 87410  
Phone:(505) 334-6178 Fax:(505) 334-6170  
**District IV**  
1220 S. St Francis Dr., Santa Fe, NM 87505  
Phone:(505) 476-3470 Fax:(505) 476-3462

**State of New Mexico**  
**Energy, Minerals and Natural Resources**  
**Oil Conservation Division**  
**1220 S. St Francis Dr.**  
**Santa Fe, NM 87505**

CONDITIONS  
  
Action 39275

CONDITIONS

Operator: Enterprise Field Services, LLC PO Box 4324 Houston, TX 77210	OGRID: 241602
	Action Number: 39275
	Action Type: [C-141] Release Corrective Action (C-141)

CONDITIONS

Created By	Condition	Condition Date
rhamlet	We have received your closure report and final C-141 for Incident #NAPP2114534777 LINE A-9, thank you. This closure is approved.	11/3/2021