



February 28, 2022

Bradford Billings
Hydrologist/E.Spec.A
District 2 Artesia
1220 South St. Francis Drive
Oil Conservation Division
Santa Fe, NM 87505

**Re: Release Characterization and Remediation Work Plan
ConocoPhillips
Heritage Concho
Nervous Horz Com #3H Tank Release
Unit Letter B, Section 36, Township 18 South, Range 31 East
Eddy County, New Mexico
Incident ID# nAB1534956719
2RP-3450**

Mr. Billings,

Tetra Tech, Inc. (Tetra Tech) was contacted by ConocoPhillips to assess a Heritage Concho release that occurred from a tank battery at the Nervous Horz Com #3H (API No. 30-015-37145). The release footprint is located in Public Land Survey System (PLSS) Unit Letter B, Section 36, Township 18 South, Range 31 East, in Eddy County, New Mexico (Site). The approximate release point occurred at coordinates 32.710434°, -103.820831°, as shown on Figures 1 and 2.

BACKGROUND

According to the State of New Mexico Oil Conservation Division (NMOCD) C-141 Initial Report, the release was discovered on November 24, 2015. The C-141 reports that the cause of the release was a valve being left open on a battery piping. Approximately 30 barrels (bbls) of crude oil were released and approximately 25 bbls of oil were recovered. The release remained on the oil and gas operations pad within the lined containment. The NMOCD approved the initial C-141 on December 8, 2015 and subsequently assigned the release the Incident ID nAB1534956719 and the remediation permit (RP) number 2RP-3450. The initial C-141 form is included in Appendix A.

SITE CHARACTERIZATION

A site characterization was performed and no sinkholes, residences, schools, hospitals, institutions, churches, springs, private domestic water wells, playa lakes, stream bodies, wetlands, incorporated municipal boundaries, subsurface mines, or floodplains are located within the distances specified in 19.15.29 New Mexico Administrative Code (NMAC). The Site is not in an area of high karst potential.

There are no water wells listed in the New Mexico Office of the State Engineer (NMOSE) database located within approximately 0.5 miles (800 meters) of the Site. According to data from one (1) water well listed in the NMOSE database within approximately 3.73 miles (6,000 meters) of the site, the minimum depth to groundwater is 430 feet below ground surface (bgs). The site characterization data are presented in Appendix B.

Tetra Tech

901 West Wall St., Suite 100, Midland, TX 79701

Tel 432.682.4559 Fax 432.682.3946 www.tetrattech.com

REGULATORY FRAMEWORK

Based upon the release footprint and in accordance with Subsection E of 19.15.29.12 NMAC, per 19.15.29.11 NMAC, the site characterization data was used to determine recommended remedial action levels (RRALs) for benzene, toluene, ethylbenzene, and xylene (collectively referred to as BTEX), total petroleum hydrocarbons (TPH), and chlorides in soil.

Based on the site characterization, established depth to groundwater, and in accordance with Table I of 19.15.29.12 NMAC, the RRALs for the Site are as follows:

Constituent	Site RRALs
Chloride	20,000 mg/kg
TPH	2,500 mg/kg
BTEX	50 mg/kg
Benzene	10 mg/kg

INITIAL RESPONSE ACTIVITIES AND INITIAL ASSESSMENT

Following the release, Concho dispatched vacuum trucks to recover standing fluid within the lined containment. The facility was then cleaned and put back into service. The approximate release extent and location are presented in Figure 3.

On January 19, 2016, Concho was onsite to install one (1) soil boring (S1) to a total depth of 4 feet bgs. Although the exact location of the soil boring installed by Concho is unknown, Concho indicated that it may have been placed in front of the tanks to preserve the integrity of the liner. A total of five (5) soil samples were collected from one (1) boring and sent to Cardinal Laboratories in Hobbs, New Mexico to be analyzed for TPH via EPA Method 8015M and BTEX via EPA Method 8021B. The soil samples were not analyzed for chloride during the January 2016 soil assessment activities. A copy of the laboratory analytical report and chain-of-custody documentation are included in Appendix C.

Analytical results from the January 2016 assessment activities are summarized in Table 1. The analytical results associated with the surface sample (S1-SURFACE) exceeded the Site RRALs for TPH (100 mg/kg), BTEX (50 mg/kg), and benzene (10 mg/kg).

ADDITIONAL SITE ASSESSMENT AND SAMPLING RESULTS

Tetra Tech conducted a visual inspection at the Site on September 21, 2021 to assess current conditions. The liner was observed in the tank battery containment, as reported. Stained gravels were observed in a portion of the lined containment, appearing too fresh and minor in extent to be related to the November 2015 release. No additional staining or evidence of a release was observed in the remainder of the containment and surrounding pad. Photographic documentation from the September 2021 visual inspection is presented in Appendix D.

In order to complete the release assessment and delineation per NMOCD regulations, Tetra Tech conducted additional soil sampling at the release site on behalf of ConocoPhillips on January 24 and February 9, 2022. Tetra Tech installed one (1) air rotary soil boring (BH-1) within the release extent to 10 feet bgs to achieve vertical delineation of the release. The BH-1 boring was installed immediately outside of the tank battery containment in order to preserve the integrity of the liner, and because the area inside of the berm was inaccessible to the drill rig. An additional four (4) hand auger borings (AH-1 through AH-4) were installed along the perimeter of the release to depths of 2 feet bgs to complete horizontal delineation of the release. Boring locations are presented in Figure 4.

A total of fifteen (15) soil samples were collected and sent to Cardinal Laboratories in Hobbs, New Mexico to be analyzed for chloride via EPA Method SM4500Cl-B, TPH via EPA Method 8015M and BTEX via EPA

Method 8261B. A copy of the laboratory analytical report and chain-of-custody documentation are included in Appendix C.

Analytical results from the 2022 assessment activities are summarized in Table 2. The analytical results associated with the 0-1 foot sampling interval at BH-1 exceeded the Site RRAL for chloride (600 mg/kg). There were no other sampling intervals at BH-1 which exceeded Site RRALs. All analytical results associated with samples from perimeter borings (AH-1 through AH-4) were below the applicable Site RRALs for soils in active oil and gas production areas.

REMEDATION WORK PLAN

Based on the analytical results, ConocoPhillips proposes to remove the remaining impacted material as shown in Figure 5. Impacted soils in the area around BH-1 will be excavated using heavy equipment (backhoes, hoe rams, and track hoes) to a maximum depth of 1 foot below the surrounding surface or until a representative sample from the walls and bottom of the excavation is below the RRALs. Any area containing pressurized lines will be hand-dug to a depth of 1 foot or the maximum extent practicable and heavy equipment will come no more than 3 ft from any pressurized lines.

Excavated soils will be transported offsite and disposed of at an NMOCD-approved or permitted facility. Confirmation bottom and sidewall samples will be collected for verification of remedial activities, and analyzed for TPH, BTEX, and chlorides. Once results are received, NMOCD will be notified, and the excavation will then be backfilled with clean material to surface grade. The estimated volume of material to be remediated is approximately 30 cubic yards.

Given that the 2016 sampling results indicated TPH and BTEX impacts to surface soils that were not encountered in the 2022 sampling event, coupled with the unknown location of the 2016 sampling location, ConocoPhillips additionally proposes to conduct an inspection of the liner in accordance with 19.15.29.11(A)(5). The gravel will be removed, and the liner will be inspected for rips, tears, or holes. If damage to the liner is observed, then additional soil samples will be collected from beneath the liner to vertically delineate soil impacts beneath the tank battery facility.

ALTERNATIVE CONFIRMATION SAMPLING PLAN

In accordance with 19.15.29.12(D)(1)(b) NMAC, ConocoPhillips proposes the following alternative confirmation sampling plan to adhere with NMOCD requirements. The proposed confirmation sample locations are depicted in Figure 6. Two (2) confirmation floor samples and eight (8) confirmation sidewall samples are proposed for verification of remedial activities. The proposed excavation encompasses a surface area of approximately 770 square feet.

These confirmation sidewall and floor samples will be representative of no more than approximately 500 square feet of excavated area. Confirmation samples will be sent to an accredited laboratory for analysis of TPH (Method 8015 modified), BTEX (Method 8260B), and chloride (USEPA Method 300.0). Once results are received, NMOCD will be notified, and the excavation will then be backfilled with clean material to surface grade.

CONCLUSION

ConocoPhillips proposes to begin remediation activities at the Site within 120 days of NMOCD plan approval. Upon completion of the proposed work, a final closure report detailing the remediation activities and the results of the confirmation sampling will be submitted to NMOCD.

Release Characterization and Remediation Work Plan
February 28, 2022

ConocoPhillips

If you have any questions concerning the soil assessment or the proposed remediation activities for the Site, please call me at (512) 217-7254 or Christian at (512) 338-2861.

Sincerely,
Tetra Tech, Inc.



Samantha K. Abbott, P.G.
Senior Staff Geologist



Christian M. Llull, P.G.
Project Manager

cc:
Mr. Charles Beauvais, BU – ConocoPhillips

LIST OF ATTACHMENTS

Figures:

- Figure 1 – Overview Map
- Figure 2 – Topographic Map
- Figure 3 – Approximate Release Extent Map
- Figure 4 – Site Assessment Map
- Figure 5 – Proposed Remediation Extent
- Figure 6 – Alternative Confirmation Sampling Plan

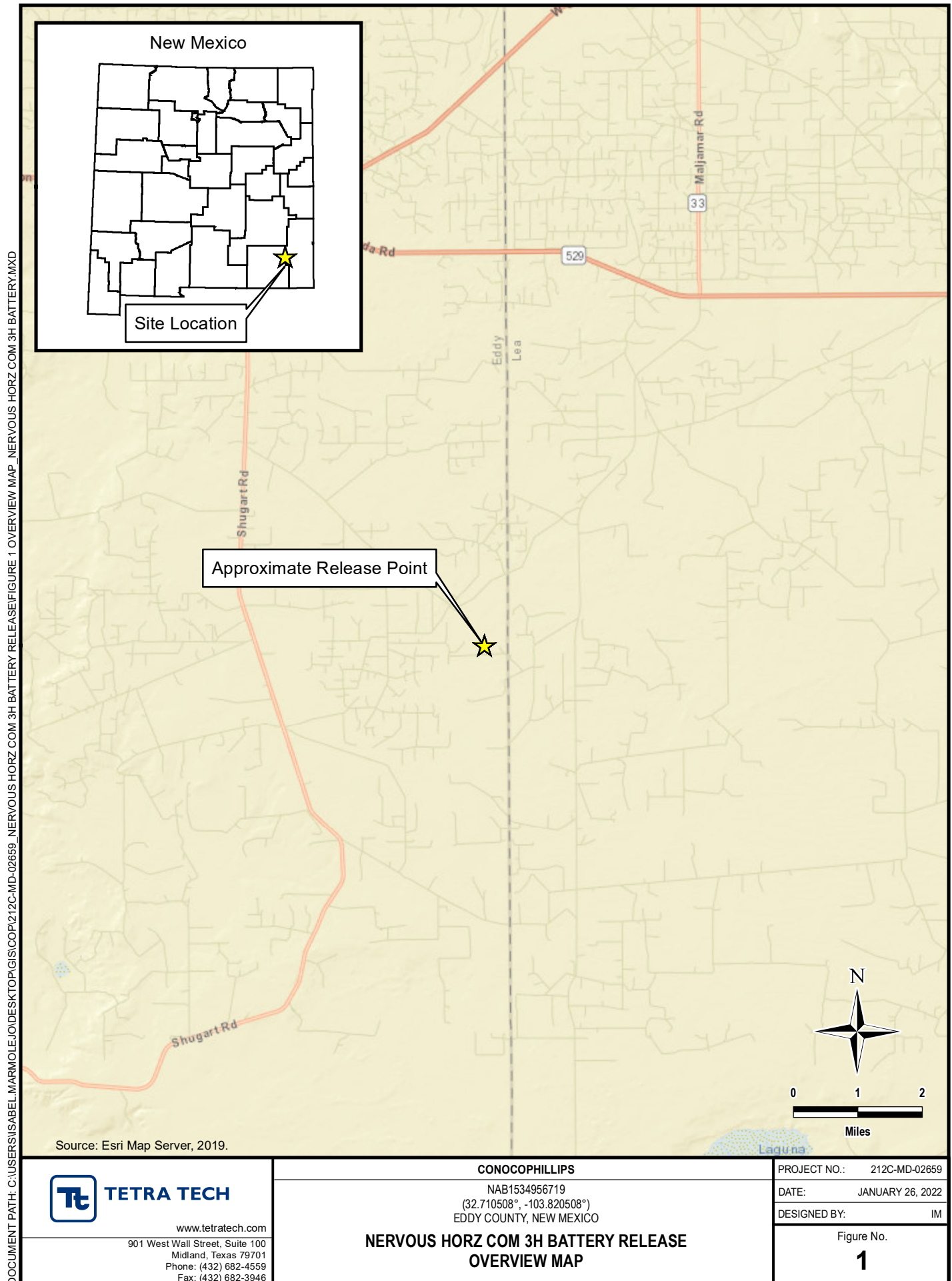
Tables:

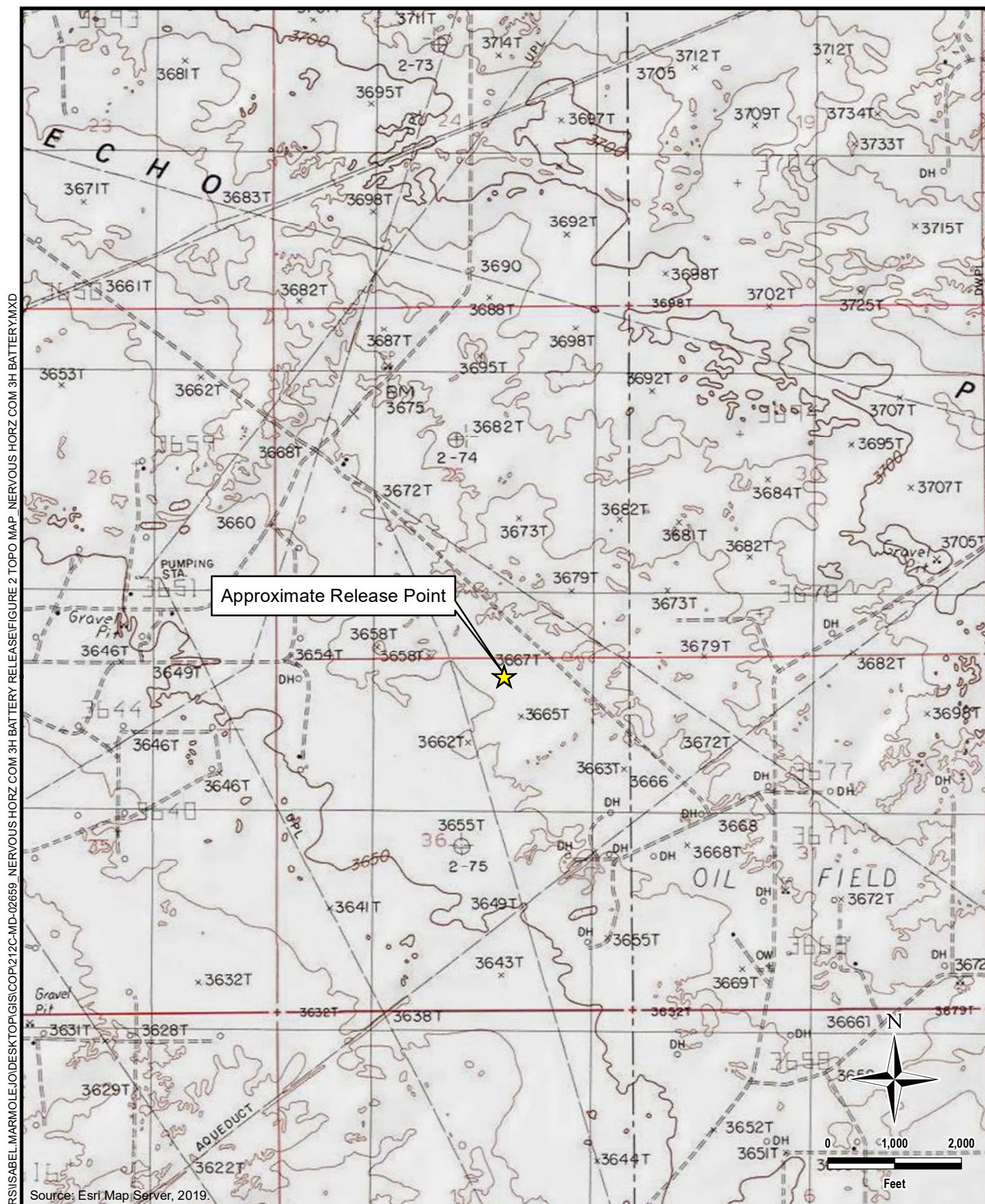
- Table 1 – Summary of Analytical Results – Initial Soil Assessment
- Table 2 – Summary of Analytical Results – Additional Soil Assessment

Appendices:

- Appendix A – C-141 Forms
- Appendix B – Site Characterization Data
- Appendix C – Laboratory Analytical Data
- Appendix D – Photographic Documentation

FIGURES





TETRA TECH

www.tetrattech.com

901 West Wall Street, Suite 100
Midland, Texas 79701
Phone: (432) 682-4559
Fax: (432) 682-3946

CONOCOPHILLIPS

NAB1534956719
(32.710508°, -103.820508°)
EDDY COUNTY, NEW MEXICO

**NERVOUS HORZ COM 3H BATTERY RELEASE
TOPOGRAPHIC MAP**

PROJECT NO.: 212C-MD-02659

DATE: JANUARY 26, 2022

DESIGNED BY: IM

Figure No.

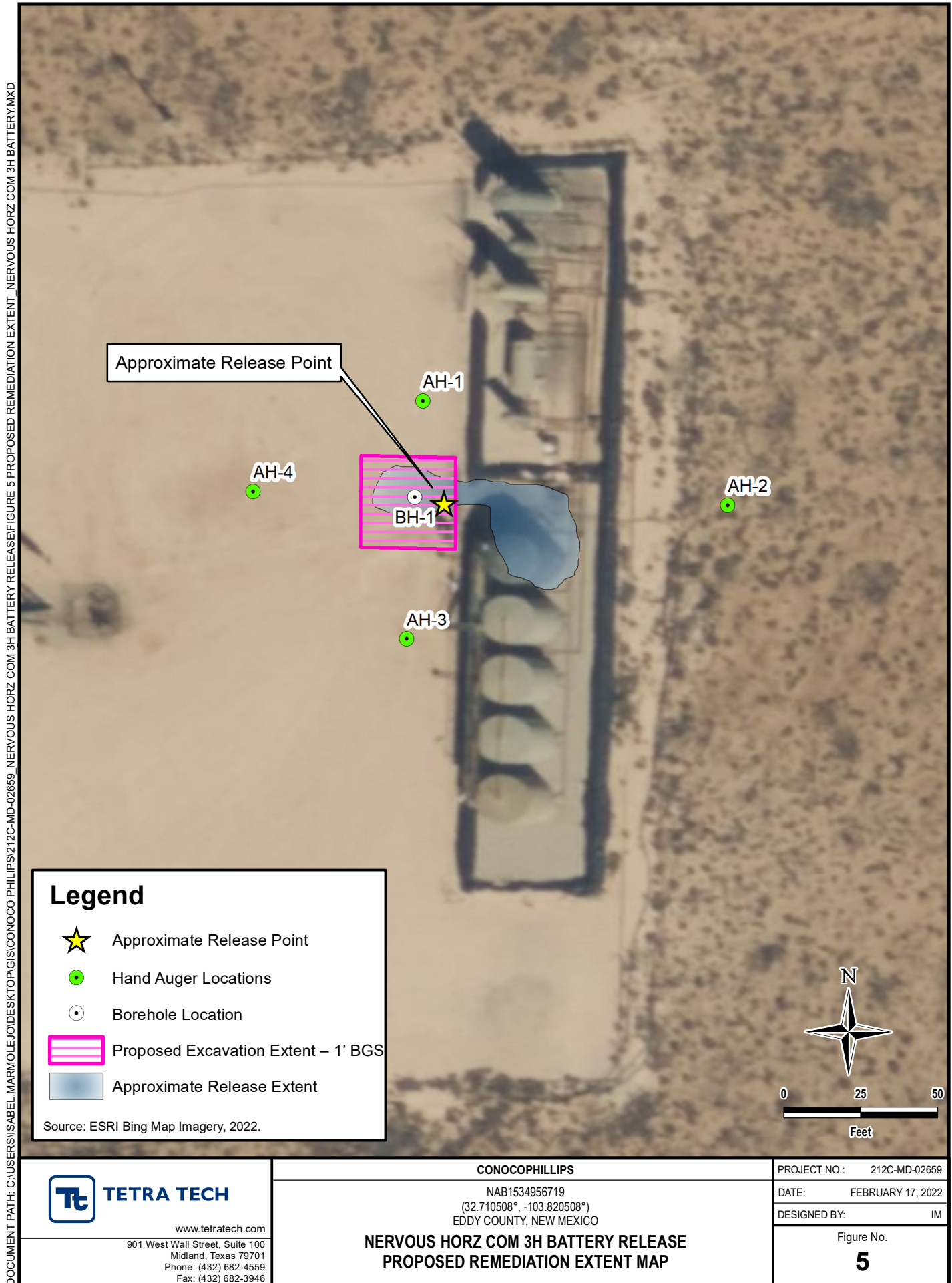
2

DOCUMENT PATH: C:\USERS\ISABEL.MARMOLEJO\DESKTOP\GIS\CONOCO PHILIPS\212C-MD-02659_NERVOUS HORZ COM 3H BATTERY RELEASE EXTENT MAP_NERVOUS HORZ COM 3H BATTERY.MXD



DOCUMENT PATH: C:\USERS\ISABEL.MARMOLEJO\DESKTOP\GIS\CONOCO PHILIPS\212C-MD-02659_NERVOUS HORZ COM 3H BATTERY RELEASE\FIGURE 4 SITE ASSESSMENT MAP_NERVOUS HORZ COM 3H BATTERY.MXD





DOCUMENT PATH: C:\USERS\ISABEL.MARMOLEJO\DESKTOP\GIS\CONOCO PHILLIPS\212C-MD-02659_NERVOUS HORZ COM 3H BATTERY RELEASE\FIGURE 6 ALTERNATIVE CONFIRMATION SAMPLING PLAN_NERVOUS HORZ COM 3H BATTERY.MXD



Legend

- Approximate Release Point
- Proposed Floor Confirmation Sample Location
- Proposed Sidewall Confirmation Sample Location
- Proposed Excavation Extent – 1' BGS
- Approximate Release Extent

Source: ESRI Bing Map Imagery, 2022.



TETRA TECH

www.tetrattech.com

901 West Wall Street, Suite 100
Midland, Texas 79701
Phone: (432) 682-4559
Fax: (432) 682-3946

CONOCOPHILLIPS

NAB1534956719
(32.710508°, -103.820508°)
EDDY COUNTY, NEW MEXICO

**NERVOUS HORZ COM 3H BATTERY RELEASE
ALTERNATIVE CONFIRMATION SAMPLING PLAN MAP**

PROJECT NO.: 212C-MD-02659

DATE: FEBRUARY 17, 2022

DESIGNED BY: IM

Figure No.

6

TABLES

TABLE 1
SUMMARY OF ANALYTICAL RESULTS
INITIAL SOIL ASSESSMENT- 2RP-3450 / NAB1534956719
HERITAGE CONCHO
NERVOUS HORZ COM 3H
EDDY COUNTY, NM

Sample ID	Sample Date	Sample Depth	BTEX ²										TPH ³				
			Benzene		Toluene		Ethylbenzene		Total Xylenes		Total BTEX		GRO		DRO		Total TPH (GRO+DRO)
													C ₆ - C ₁₀		> C ₁₀ - C ₂₈		
		ft. bgs	mg/kg	Q	mg/kg	Q	mg/kg	Q	mg/kg	Q	mg/kg	Q	mg/kg	Q	mg/kg	Q	mg/kg
S1-SURFACE	1/19/2016	SURFACE	11.5		107		51.2		118		288		1150		1930		3080
S1-1'	1/19/2016	1	< 0.050		0.390		0.107		0.426		0.923		< 10.0		12.1		12.1
S1-2'	1/19/2016	2	< 0.050		0.064		< 0.050		< 0.150		< 0.300		< 10.0		10.7		10.7
S1-3'	1/19/2016	3	< 0.050		0.193		0.191		0.665		1.05		< 10.0		< 10.0		-
S1-4'	1/19/2016	4	0.134		3.12		2.17		7.02		12.4		103		712		815

NOTES:

- ft. Feet
- bgs Below ground surface
- mg/kg Milligrams per kilogram
- TPH Total Petroleum Hydrocarbons
- GRO Gasoline range organics
- DRO Diesel range organics
- 1 Method 8021B
- 2 Method 8015M

Bold and italicized values indicate exceedance of proposed Remediation RRALs

TABLE 2
SUMMARY OF ANALYTICAL RESULTS
ADDITIONAL SOIL ASSESSMENT- 2RP-3450 / NAB1534956719
HERITAGE CONCHO
NERVOUS HORZ COM 3H
EDDY COUNTY, NM

Sample ID	Sample Date	Sample Depth	Field Screening Results		Chloride ¹		BTEX ²										TPH ³							
			Chloride	PID			Benzene		Toluene		Ethylbenzene		Total Xylenes		Total BTEX		GRO		DRO		EXT DRO		Total TPH (GRO+DRO+EXT DRO)	
		ft. bgs			ppm		mg/kg	Q	mg/kg	Q	mg/kg	Q	mg/kg	Q	mg/kg	Q	mg/kg	Q	mg/kg	Q	mg/kg	Q		mg/kg
BH-1	1/24/2022	0-1	-	-	12,600		< 0.050		< 0.050		< 0.050		< 0.150		< 0.300		< 10.0		< 10.0		< 10.0		-	
		2-3	-	-	272		< 0.050		< 0.050		< 0.050		< 0.150		< 0.300		< 10.0		< 10.0		< 10.0		-	
		3-4	-	-	160		< 0.050		< 0.050		< 0.050		< 0.150		< 0.300		< 10.0		< 10.0		< 10.0		-	
		4-5	-	-	96.0		< 0.050		< 0.050		< 0.050		< 0.150		< 0.300		< 10.0		< 10.0		< 10.0		-	
		6-7	-	-	80.0		< 0.050		< 0.050		< 0.050		< 0.150		< 0.300		< 10.0		< 10.0		< 10.0		-	
		8-9	-	-	96.0		< 0.050		< 0.050		< 0.050		< 0.150		< 0.300		< 10.0		< 10.0		< 10.0		-	
		9-10	-	-	80.0		< 0.050		< 0.050		< 0.050		< 0.150		< 0.300		< 10.0		< 10.0		< 10.0		-	
AH-1	2/9/2022	0-1	311	-	208		< 0.050		< 0.050		< 0.050		< 0.150		< 0.300		< 10.0		< 10.0		< 10.0		-	
		1-2	402	-	224		< 0.050		< 0.050		< 0.050		< 0.150		< 0.300		< 10.0		< 10.0		< 10.0		-	
AH-2	2/9/2022	0-1	23.2	-	16.0		< 0.050		< 0.050		< 0.050		< 0.150		< 0.300		< 10.0		< 10.0		< 10.0		-	
		1-2	70.2	-	32.0		< 0.050		< 0.050		< 0.050		< 0.150		< 0.300		< 10.0		< 10.0		< 10.0		-	
AH-3	2/9/2022	0-1	39.4	-	16.0		< 0.050		< 0.050		< 0.050		< 0.150		< 0.300		< 10.0		< 10.0		< 10.0		-	
		1-2	253.3	-	32.0		< 0.050		< 0.050		< 0.050		< 0.150		< 0.300		< 10.0		< 10.0		< 10.0		-	
AH-4	2/9/2022	0-1	75.1	-	48.0		< 0.050		< 0.050		< 0.050		< 0.150		< 0.300		< 10.0		< 10.0		< 10.0		-	
		1-2	72.4	-	48.0		< 0.050		< 0.050		< 0.050		< 0.150		< 0.300		< 10.0		< 10.0		< 10.0		-	

NOTES:

- ft. Feet
- bgs Below ground surface
- mg/kg Milligrams per kilogram
- TPH Total Petroleum Hydrocarbons
- GRO Gasoline range organics
- DRO Diesel range organics
- 1 Method SM4500CI-B
- 2 Method 8021B
- 3 Method 8015M

Bold and italicized values indicate exceedance of proposed Remediation RRALs and Reclamation Requirements.

Shaded rows indicate intervals proposed for excavation.

QUALIFIERS:

APPENDIX A

C-141 Forms

District I
1625 N. French Dr., Hobbs, NM 88240
District II
811 S. First St., Artesia, NM 88210
District III
1000 Rio Brazos Road, Aztec, NM 87410
District IV
1220 S. St. Francis Dr., Santa Fe, NM 87505

State of New Mexico
Energy Minerals and Natural Resources

Oil Conservation Division
1220 South St. Francis Dr.
Santa Fe, NM 87505

Form C-141
Revised August 8, 2011

Submit 1 Copy to appropriate District Office in
accordance with 19.15.29 NMAC.

Release Notification and Corrective Action

NAB1534956719 **OPERATOR** ☒ Initial Report ☐ Final Report

Name of Company: COG Operating LLC 229137	Contact: Robert McNeill
Address: 600 West Illinois Avenue, Midland TX 79701	Telephone No. 432-230-0077
Facility Name: Nervous Horz Com #3H	Facility Type: Battery

Surface Owner: State	Mineral Owner:	API No. 30-015-37145
----------------------	----------------	----------------------

LOCATION OF RELEASE

Unit Letter	Section	Township	Range	Feet from the	North/South Line	Feet from the	East/West Line	County
B	36	18S	31E	330'	North	1980'	East	Eddy

Latitude 32.710434 Longitude -103.8208313

NATURE OF RELEASE

Type of Release: Oil	Volume of Release: 30 bbls Oil	Volume Recovered: 25 bbls Oil
Source of Release: Open Valve	Date and Hour of Occurrence: 11/24/2015 7:30 am	Date and Hour of Discovery: 11/24/2015 7:30 am
Was Immediate Notice Given? <input checked="" type="checkbox"/> Yes <input type="checkbox"/> No <input type="checkbox"/> Not Required	If YES, To Whom? Mike Bratcher - NMOCD	
By Whom? Lupe Carrasco	Date and Hour: Tue 11/24/2015 3:34 PM	
Was a Watercourse Reached? <input type="checkbox"/> Yes <input checked="" type="checkbox"/> No	If YES, Volume Impacting the Watercourse.	

If a Watercourse was Impacted, Describe Fully.*

Describe Cause of Problem and Remedial Action Taken.*

This release was caused when a valve was left open on battery piping. Vacuum trucks were dispatched to recover all standing fluid.

Describe Area Affected and Cleanup Action Taken.*

This release occurred within a lined containment, however we are further investigating the release. Fluids were recovered, the facility cleaned and put back into service. Concho will have the spill site sampled to delineate any possible contamination from the release and we will present a remediation work plan to the NMOCD for approval prior to any significant remediation work.

I hereby certify that the information given above is true and complete to the best of my knowledge and understand that pursuant to NMOCD rules and regulations all operators are required to report and/or file certain release notifications and perform corrective actions for releases which may endanger public health or the environment. The acceptance of a C-141 report by the NMOCD marked as "Final Report" does not relieve the operator of liability should their operations have failed to adequately investigate and remediate contamination that pose a threat to ground water, surface water, human health or the environment. In addition, NMOCD acceptance of a C-141 report does not relieve the operator of responsibility for compliance with any other federal, state, or local laws and/or regulations.

Signature: <i>Amanda T. Davis</i>	OIL CONSERVATION DIVISION	
Printed Name: Amanda Trujillo Davis	Approved by Environmental Specialist: <i>[Signature]</i>	
Title: Senior Environmental Coordinator	Approval Date: 12/15/15	Expiration Date: N/A
E-mail Address: atrujillo@concho.com	Conditions of Approval: Remediation per O.C.D. Rules & Guidelines SUBMIT REMEDIATION PROPOSAL NO	
Date: December 8, 2015 Phone: 575-748-6940	Attached <input type="checkbox"/> LATER THAN: 1/16/16	

* Attach Additional Sheets If Necessary

2RP-3450

Incident ID	
District RP	
Facility ID	
Application ID	

Site Assessment/Characterization

This information must be provided to the appropriate district office no later than 90 days after the release discovery date.

What is the shallowest depth to groundwater beneath the area affected by the release?	_____ (ft bgs)
Did this release impact groundwater or surface water?	<input type="checkbox"/> Yes <input type="checkbox"/> No
Are the lateral extents of the release within 300 feet of a continuously flowing watercourse or any other significant watercourse?	<input type="checkbox"/> Yes <input type="checkbox"/> No
Are the lateral extents of the release within 200 feet of any lakebed, sinkhole, or playa lake (measured from the ordinary high-water mark)?	<input type="checkbox"/> Yes <input type="checkbox"/> No
Are the lateral extents of the release within 300 feet of an occupied permanent residence, school, hospital, institution, or church?	<input type="checkbox"/> Yes <input type="checkbox"/> No
Are the lateral extents of the release within 500 horizontal feet of a spring or a private domestic fresh water well used by less than five households for domestic or stock watering purposes?	<input type="checkbox"/> Yes <input type="checkbox"/> No
Are the lateral extents of the release within 1000 feet of any other fresh water well or spring?	<input type="checkbox"/> Yes <input type="checkbox"/> No
Are the lateral extents of the release within incorporated municipal boundaries or within a defined municipal fresh water well field?	<input type="checkbox"/> Yes <input type="checkbox"/> No
Are the lateral extents of the release within 300 feet of a wetland?	<input type="checkbox"/> Yes <input type="checkbox"/> No
Are the lateral extents of the release overlying a subsurface mine?	<input type="checkbox"/> Yes <input type="checkbox"/> No
Are the lateral extents of the release overlying an unstable area such as karst geology?	<input type="checkbox"/> Yes <input type="checkbox"/> No
Are the lateral extents of the release within a 100-year floodplain?	<input type="checkbox"/> Yes <input type="checkbox"/> No
Did the release impact areas not on an exploration, development, production, or storage site?	<input type="checkbox"/> Yes <input type="checkbox"/> No

Attach a comprehensive report (electronic submittals in .pdf format are preferred) demonstrating the lateral and vertical extents of soil contamination associated with the release have been determined. Refer to 19.15.29.11 NMAC for specifics.

Characterization Report Checklist: *Each of the following items must be included in the report.*

- ☐ Scaled site map showing impacted area, surface features, subsurface features, delineation points, and monitoring wells.
- ☐ Field data
- ☐ Data table of soil contaminant concentration data
- ☐ Depth to water determination
- ☐ Determination of water sources and significant watercourses within ½-mile of the lateral extents of the release
- ☐ Boring or excavation logs
- ☐ Photographs including date and GIS information
- ☐ Topographic/Aerial maps
- ☐ Laboratory data including chain of custody

If the site characterization report does not include completed efforts at remediation of the release, the report must include a proposed remediation plan. That plan must include the estimated volume of material to be remediated, the proposed remediation technique, proposed sampling plan and methods, anticipated timelines for beginning and completing the remediation. The closure criteria for a release are contained in Table 1 of 19.15.29.12 NMAC, however, use of the table is modified by site- and release-specific parameters.

State of New Mexico
Oil Conservation Division

Page 4

Incident ID	
District RP	
Facility ID	
Application ID	

I hereby certify that the information given above is true and complete to the best of my knowledge and understand that pursuant to OCD rules and regulations all operators are required to report and/or file certain release notifications and perform corrective actions for releases which may endanger public health or the environment. The acceptance of a C-141 report by the OCD does not relieve the operator of liability should their operations have failed to adequately investigate and remediate contamination that pose a threat to groundwater, surface water, human health or the environment. In addition, OCD acceptance of a C-141 report does not relieve the operator of responsibility for compliance with any other federal, state, or local laws and/or regulations.

Printed Name: _____ Title: _____

Signature: Charles R. Beauvais II Date: _____

email: _____ Telephone: _____

OCD Only

Received by: _____ Date: _____

Incident ID	
District RP	
Facility ID	
Application ID	

Remediation Plan

Remediation Plan Checklist: *Each of the following items must be included in the plan.*

- ☐ Detailed description of proposed remediation technique
- ☐ Scaled sitemap with GPS coordinates showing delineation points
- ☐ Estimated volume of material to be remediated
- ☐ Closure criteria is to Table 1 specifications subject to 19.15.29.12(C)(4) NMAC
- ☐ Proposed schedule for remediation (note if remediation plan timeline is more than 90 days OCD approval is required)

Deferral Requests Only: *Each of the following items must be confirmed as part of any request for deferral of remediation.*

- ☐ Contamination must be in areas immediately under or around production equipment where remediation could cause a major facility deconstruction.
- ☐ Extents of contamination must be fully delineated.
- ☐ Contamination does not cause an imminent risk to human health, the environment, or groundwater.

I hereby certify that the information given above is true and complete to the best of my knowledge and understand that pursuant to OCD rules and regulations all operators are required to report and/or file certain release notifications and perform corrective actions for releases which may endanger public health or the environment. The acceptance of a C-141 report by the OCD does not relieve the operator of liability should their operations have failed to adequately investigate and remediate contamination that pose a threat to groundwater, surface water, human health or the environment. In addition, OCD acceptance of a C-141 report does not relieve the operator of responsibility for compliance with any other federal, state, or local laws and/or regulations.

Printed Name: _____ Title: _____

Signature: Charles R. Beauvais II Date: _____

email: _____ Telephone: _____

OCD Only

Received by: _____ Date: _____

☐ Approved ☐ Approved with Attached Conditions of Approval ☐ Denied ☐ Deferral ApprovedSignature: Bradford Billings Date: _____

APPENDIX B

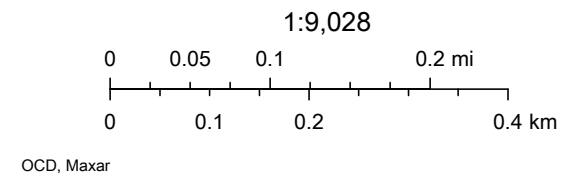
Site Characterization Data

OCD Water Bodies



1/11/2022, 11:36:13 AM

- ★ OCD District Offices
- PLJV Probable Playas
- OSE Water-bodies
- OSE Streams

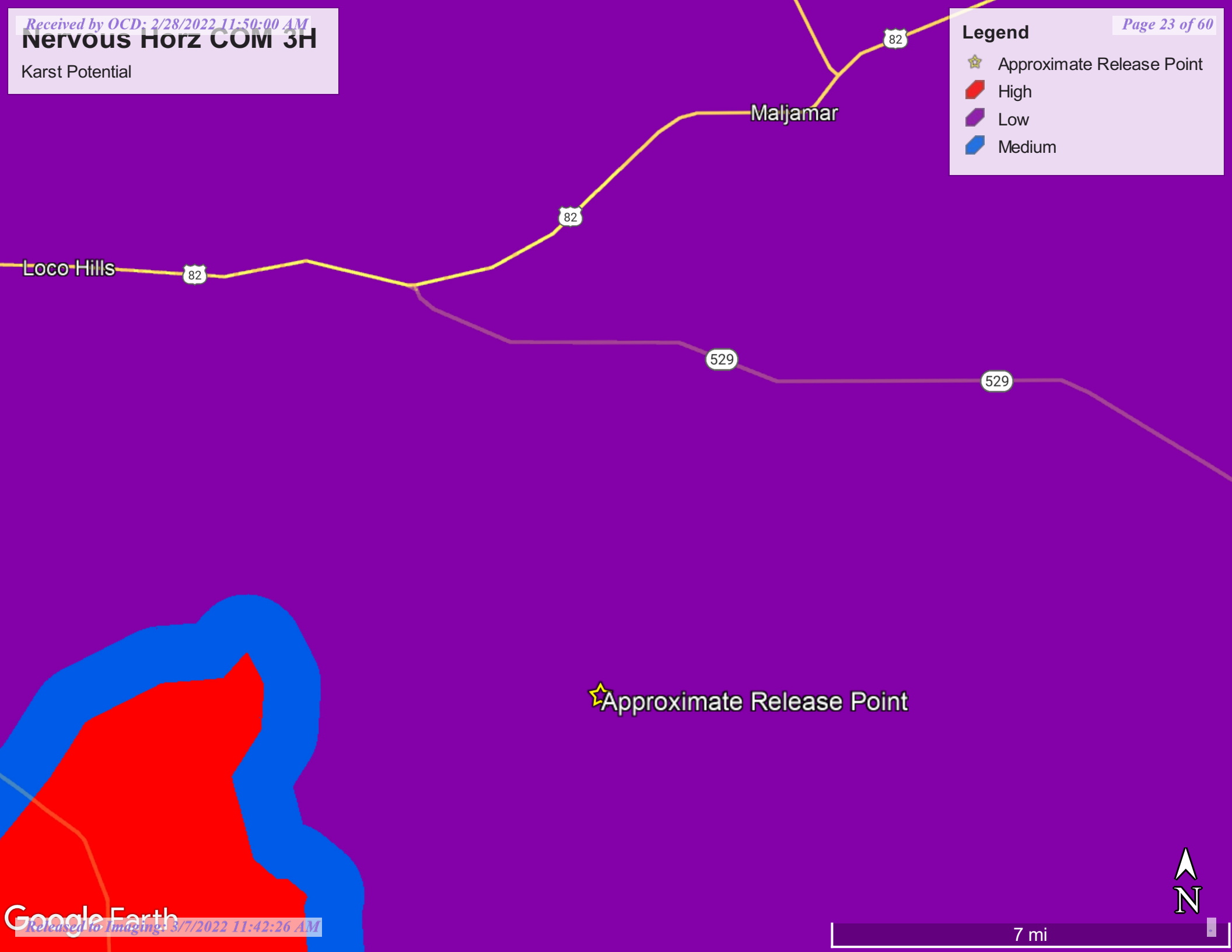


Nervous Horz COM 3H

Karst Potential

Legend

- ☆ Approximate Release Point
- High
- Low
- Medium



☆ Approximate Release Point





New Mexico Office of the State Engineer

Water Column/Average Depth to Water

(A CLW##### in the POD suffix indicates the POD has been replaced & no longer serves a water right file.)

(R=POD has been replaced,
O=orphaned,
C=the file is closed)

(quarters are 1=NW 2=NE 3=SW 4=SE)

(quarters are smallest to largest)

(NAD83 UTM in meters)

(In feet)

POD Number	Code	POD Sub-basin	County	Q 64	Q 16	Q 4	Sec	Tws	Rng	X	Y	Distance	DepthWell	DepthWater	Water Column
CP 00849 POD1		CP	LE	3	1	3	35	18S	31E	608012	3618757*	2712	300		
CP 00672		CP	LE		4	4	07	18S	32E	612475	3624947*	5506	524	430	94
CP 00672 CLW475398	O	CP	LE		4	4	07	18S	32E	612475	3624947*	5506	540	460	80

Average Depth to Water:

445 feet

Minimum Depth:

430 feet

Maximum Depth:

460 feet

Record Count: 3

UTMNAD83 Radius Search (in meters):

Easting (X): 610515

Northing (Y): 3619801

Radius: 6000

*UTM location was derived from PLSS - see Help

The data is furnished by the NMOSE/ISC and is accepted by the recipient with the expressed understanding that the OSE/ISC make no warranties, expressed or implied, concerning the accuracy, completeness, reliability, usability, or suitability for any particular purpose of the data.

1/11/22 9:26 AM

WATER COLUMN/ AVERAGE DEPTH TO
WATER

APPENDIX C

Laboratory Analytical Data



PHONE (575) 393-2326 ° 101 E. MARLAND ° HOBBS, NM 88240

January 25, 2016

DAKOTA NEEL

COG OPERATING

P. O. BOX 1630

ARTESIA, NM 88210

RE: NERVOUS HORZ COM #3H

Enclosed are the results of analyses for samples received by the laboratory on 01/20/16 14:00.

Cardinal Laboratories is accredited through Texas NELAP under certificate number T104704398-15-7. Accreditation applies to drinking water, non-potable water and solid and chemical materials. All accredited analytes are denoted by an asterisk (*). For a complete list of accredited analytes and matrices visit the TCEQ website at www.tceq.texas.gov/field/qa/lab_accred_certif.html.

Cardinal Laboratories is accredited through the State of Colorado Department of Public Health and Environment for:

Method EPA 552.2	Haloacetic Acids (HAA-5)
Method EPA 524.2	Total Trihalomethanes (TTHM)
Method EPA 524.4	Regulated VOCs (V1, V2, V3)

Accreditation applies to public drinking water matrices.

This report meets NELAP requirements and is made up of a cover page, analytical results, and a copy of the original chain-of-custody. If you have any questions concerning this report, please feel free to contact me.

Sincerely,

A handwritten signature in black ink that reads "Celey D. Keene". The signature is written in a cursive, flowing style.

Celey D. Keene

Lab Director/Quality Manager



PHONE (575) 393-2326 ° 101 E. MARLAND ° HOBBS, NM 88240

Analytical Results For:

COG OPERATING
 DAKOTA NEEL
 P. O. BOX 1630
 ARTESIA NM, 88210
 Fax To: NONE

Received:	01/20/2016	Sampling Date:	01/19/2016
Reported:	01/25/2016	Sampling Type:	Soil
Project Name:	NERVOUS HORZ COM #3H	Sampling Condition:	Cool & Intact
Project Number:	NONE GIVEN	Sample Received By:	Jodi Henson
Project Location:	NOT GIVEN		

Sample ID: S-1 SURFACE (H600132-01)

BTEX 8021B		mg/kg		Analyzed By: MS					
Analyte	Result	Reporting Limit	Analyzed	Method Blank	BS	% Recovery	True Value QC	RPD	Qualifier
Benzene*	11.5	0.500	01/22/2016	ND	1.71	85.6	2.00	6.03	
Toluene*	107	0.500	01/22/2016	ND	1.83	91.6	2.00	5.89	
Ethylbenzene*	51.2	0.500	01/22/2016	ND	1.70	85.2	2.00	5.40	
Total Xylenes*	118	1.50	01/22/2016	ND	5.26	87.7	6.00	5.81	
Total BTEX	288	3.00	01/22/2016	ND					

Surrogate: 4-Bromofluorobenzene (PID) 114 % 73.6-140

TPH 8015M		mg/kg		Analyzed By: MS					
Analyte	Result	Reporting Limit	Analyzed	Method Blank	BS	% Recovery	True Value QC	RPD	Qualifier
GRO C6-C10	1150	50.0	01/21/2016	ND	186	92.9	200	7.25	
DRO >C10-C28	1930	50.0	01/21/2016	ND	189	94.3	200	4.86	

Surrogate: 1-Chlorooctane 88.9 % 35-147

Surrogate: 1-Chlorooctadecane 60.8 % 28-171

Cardinal Laboratories

*=Accredited Analyte

PLEASE NOTE: Liability and Damages. Cardinal's liability and client's exclusive remedy for any claim arising, whether based in contract or tort, shall be limited to the amount paid by client for analyses. All claims, including those for negligence and any other cause whatsoever shall be deemed waived unless made in writing and received by Cardinal within thirty (30) days after completion of the applicable service. In no event shall Cardinal be liable for incidental or consequential damages, including, without limitation, business interruptions, loss of use, or loss of profits incurred by client, its subsidiaries, affiliates or successors arising out of or related to the performance of the services hereunder by Cardinal, regardless of whether such claim is based upon any of the above stated reasons or otherwise. Results relate only to the samples identified above. This report shall not be reproduced except in full with written approval of Cardinal Laboratories.

Celey D. Keene, Lab Director/Quality Manager



PHONE (575) 393-2326 ° 101 E. MARLAND ° HOBBS, NM 88240

Analytical Results For:

COG OPERATING
 DAKOTA NEEL
 P. O. BOX 1630
 ARTESIA NM, 88210
 Fax To: NONE

Received:	01/20/2016	Sampling Date:	01/19/2016
Reported:	01/25/2016	Sampling Type:	Soil
Project Name:	NERVOUS HORZ COM #3H	Sampling Condition:	Cool & Intact
Project Number:	NONE GIVEN	Sample Received By:	Jodi Henson
Project Location:	NOT GIVEN		

Sample ID: S-1 1' (H600132-02)

BTEx 8021B		mg/kg		Analyzed By: MS					
Analyte	Result	Reporting Limit	Analyzed	Method Blank	BS	% Recovery	True Value QC	RPD	Qualifier
Benzene*	<0.050	0.050	01/22/2016	ND	1.71	85.6	2.00	6.03	
Toluene*	0.390	0.050	01/22/2016	ND	1.83	91.6	2.00	5.89	
Ethylbenzene*	0.107	0.050	01/22/2016	ND	1.70	85.2	2.00	5.40	
Total Xylenes*	0.426	0.150	01/22/2016	ND	5.26	87.7	6.00	5.81	
Total BTEX	0.923	0.300	01/22/2016	ND					

Surrogate: 4-Bromofluorobenzene (PID) 101 % 73.6-140

TPH 8015M		mg/kg		Analyzed By: MS					
Analyte	Result	Reporting Limit	Analyzed	Method Blank	BS	% Recovery	True Value QC	RPD	Qualifier
GRO C6-C10	<10.0	10.0	01/21/2016	ND	186	92.9	200	7.25	
DRO >C10-C28	12.1	10.0	01/21/2016	ND	189	94.3	200	4.86	

Surrogate: 1-Chlorooctane 83.8 % 35-147

Surrogate: 1-Chlorooctadecane 79.9 % 28-171

Cardinal Laboratories

*=Accredited Analyte

PLEASE NOTE: Liability and Damages. Cardinal's liability and client's exclusive remedy for any claim arising, whether based in contract or tort, shall be limited to the amount paid by client for analyses. All claims, including those for negligence and any other cause whatsoever shall be deemed waived unless made in writing and received by Cardinal within thirty (30) days after completion of the applicable service. In no event shall Cardinal be liable for incidental or consequential damages, including, without limitation, business interruptions, loss of use, or loss of profits incurred by client, its subsidiaries, affiliates or successors arising out of or related to the performance of the services hereunder by Cardinal, regardless of whether such claim is based upon any of the above stated reasons or otherwise. Results relate only to the samples identified above. This report shall not be reproduced except in full with written approval of Cardinal Laboratories.

Celey D. Keene, Lab Director/Quality Manager



PHONE (575) 393-2326 ° 101 E. MARLAND ° HOBBS, NM 88240

Analytical Results For:

COG OPERATING
 DAKOTA NEEL
 P. O. BOX 1630
 ARTESIA NM, 88210
 Fax To: NONE

Received:	01/20/2016	Sampling Date:	01/19/2016
Reported:	01/25/2016	Sampling Type:	Soil
Project Name:	NERVOUS HORZ COM #3H	Sampling Condition:	Cool & Intact
Project Number:	NONE GIVEN	Sample Received By:	Jodi Henson
Project Location:	NOT GIVEN		

Sample ID: S-1 2' (H600132-03)

BTEx 8021B		mg/kg		Analyzed By: MS					
Analyte	Result	Reporting Limit	Analyzed	Method Blank	BS	% Recovery	True Value QC	RPD	Qualifier
Benzene*	<0.050	0.050	01/22/2016	ND	1.71	85.6	2.00	6.03	
Toluene*	0.064	0.050	01/22/2016	ND	1.83	91.6	2.00	5.89	
Ethylbenzene*	<0.050	0.050	01/22/2016	ND	1.70	85.2	2.00	5.40	
Total Xylenes*	<0.150	0.150	01/22/2016	ND	5.26	87.7	6.00	5.81	
Total BTEX	<0.300	0.300	01/22/2016	ND					

Surrogate: 4-Bromofluorobenzene (PID) 102 % 73.6-140

TPH 8015M		mg/kg		Analyzed By: MS					
Analyte	Result	Reporting Limit	Analyzed	Method Blank	BS	% Recovery	True Value QC	RPD	Qualifier
GRO C6-C10	<10.0	10.0	01/21/2016	ND	186	92.9	200	7.25	
DRO >C10-C28	10.7	10.0	01/21/2016	ND	189	94.3	200	4.86	

Surrogate: 1-Chlorooctane 83.6 % 35-147

Surrogate: 1-Chlorooctadecane 81.9 % 28-171

Cardinal Laboratories

*=Accredited Analyte

PLEASE NOTE: Liability and Damages. Cardinal's liability and client's exclusive remedy for any claim arising, whether based in contract or tort, shall be limited to the amount paid by client for analyses. All claims, including those for negligence and any other cause whatsoever shall be deemed waived unless made in writing and received by Cardinal within thirty (30) days after completion of the applicable service. In no event shall Cardinal be liable for incidental or consequential damages, including, without limitation, business interruptions, loss of use, or loss of profits incurred by client, its subsidiaries, affiliates or successors arising out of or related to the performance of the services hereunder by Cardinal, regardless of whether such claim is based upon any of the above stated reasons or otherwise. Results relate only to the samples identified above. This report shall not be reproduced except in full with written approval of Cardinal Laboratories.

Celey D. Keene, Lab Director/Quality Manager



PHONE (575) 393-2326 ° 101 E. MARLAND ° HOBBS, NM 88240

Analytical Results For:

COG OPERATING
 DAKOTA NEEL
 P. O. BOX 1630
 ARTESIA NM, 88210
 Fax To: NONE

Received:	01/20/2016	Sampling Date:	01/19/2016
Reported:	01/25/2016	Sampling Type:	Soil
Project Name:	NERVOUS HORZ COM #3H	Sampling Condition:	Cool & Intact
Project Number:	NONE GIVEN	Sample Received By:	Jodi Henson
Project Location:	NOT GIVEN		

Sample ID: S-1 3' (H600132-04)

BTEx 8021B		mg/kg		Analyzed By: MS					
Analyte	Result	Reporting Limit	Analyzed	Method Blank	BS	% Recovery	True Value QC	RPD	Qualifier
Benzene*	<0.050	0.050	01/22/2016	ND	1.71	85.6	2.00	6.03	
Toluene*	0.193	0.050	01/22/2016	ND	1.83	91.6	2.00	5.89	
Ethylbenzene*	0.191	0.050	01/22/2016	ND	1.70	85.2	2.00	5.40	
Total Xylenes*	0.665	0.150	01/22/2016	ND	5.26	87.7	6.00	5.81	
Total BTEX	1.05	0.300	01/22/2016	ND					

Surrogate: 4-Bromofluorobenzene (PID) 103 % 73.6-140

TPH 8015M		mg/kg		Analyzed By: MS						
Analyte	Result	Reporting Limit	Analyzed	Method Blank	BS	% Recovery	True Value QC	RPD	Qualifier	
GRO C6-C10	<10.0	10.0	01/21/2016	ND	186	92.9	200	7.25		
DRO >C10-C28	<10.0	10.0	01/21/2016	ND	189	94.3	200	4.86		

Surrogate: 1-Chlorooctane 81.7 % 35-147

Surrogate: 1-Chlorooctadecane 80.0 % 28-171

Cardinal Laboratories

*=Accredited Analyte

PLEASE NOTE: Liability and Damages. Cardinal's liability and client's exclusive remedy for any claim arising, whether based in contract or tort, shall be limited to the amount paid by client for analyses. All claims, including those for negligence and any other cause whatsoever shall be deemed waived unless made in writing and received by Cardinal within thirty (30) days after completion of the applicable service. In no event shall Cardinal be liable for incidental or consequential damages, including, without limitation, business interruptions, loss of use, or loss of profits incurred by client, its subsidiaries, affiliates or successors arising out of or related to the performance of the services hereunder by Cardinal, regardless of whether such claim is based upon any of the above stated reasons or otherwise. Results relate only to the samples identified above. This report shall not be reproduced except in full with written approval of Cardinal Laboratories.

Celey D. Keene, Lab Director/Quality Manager



PHONE (575) 393-2326 ° 101 E. MARLAND ° HOBBS, NM 88240

Analytical Results For:

COG OPERATING
 DAKOTA NEEL
 P. O. BOX 1630
 ARTESIA NM, 88210
 Fax To: NONE

Received: 01/20/2016
 Reported: 01/25/2016
 Project Name: NERVOUS HORZ COM #3H
 Project Number: NONE GIVEN
 Project Location: NOT GIVEN

Sampling Date: 01/19/2016
 Sampling Type: Soil
 Sampling Condition: Cool & Intact
 Sample Received By: Jodi Henson

Sample ID: S-1 4' (H600132-05)

BTEx 8021B		mg/kg		Analyzed By: MS					
Analyte	Result	Reporting Limit	Analyzed	Method Blank	BS	% Recovery	True Value QC	RPD	Qualifier
Benzene*	0.134	0.050	01/22/2016	ND	1.71	85.6	2.00	6.03	
Toluene*	3.12	0.050	01/22/2016	ND	1.83	91.6	2.00	5.89	
Ethylbenzene*	2.17	0.050	01/22/2016	ND	1.70	85.2	2.00	5.40	
Total Xylenes*	7.02	0.150	01/22/2016	ND	5.26	87.7	6.00	5.81	
Total BTEX	12.4	0.300	01/22/2016	ND					

Surrogate: 4-Bromofluorobenzene (PID) 117 % 73.6-140

TPH 8015M		mg/kg		Analyzed By: MS					
Analyte	Result	Reporting Limit	Analyzed	Method Blank	BS	% Recovery	True Value QC	RPD	Qualifier
GRO C6-C10	103	10.0	01/21/2016	ND	186	92.9	200	7.25	
DRO >C10-C28	712	10.0	01/21/2016	ND	189	94.3	200	4.86	

Surrogate: 1-Chlorooctane 98.6 % 35-147

Surrogate: 1-Chlorooctadecane 90.4 % 28-171

Cardinal Laboratories

*=Accredited Analyte

PLEASE NOTE: Liability and Damages. Cardinal's liability and client's exclusive remedy for any claim arising, whether based in contract or tort, shall be limited to the amount paid by client for analyses. All claims, including those for negligence and any other cause whatsoever shall be deemed waived unless made in writing and received by Cardinal within thirty (30) days after completion of the applicable service. In no event shall Cardinal be liable for incidental or consequential damages, including, without limitation, business interruptions, loss of use, or loss of profits incurred by client, its subsidiaries, affiliates or successors arising out of or related to the performance of the services hereunder by Cardinal, regardless of whether such claim is based upon any of the above stated reasons or otherwise. Results relate only to the samples identified above. This report shall not be reproduced except in full with written approval of Cardinal Laboratories.

Celey D. Keene, Lab Director/Quality Manager



PHONE (575) 393-2326 ° 101 E. MARLAND ° HOBBS, NM 88240

Notes and Definitions

ND	Analyte NOT DETECTED at or above the reporting limit
RPD	Relative Percent Difference
**	Samples not received at proper temperature of 6°C or below.
***	Insufficient time to reach temperature.
-	Chloride by SM4500Cl-B does not require samples be received at or below 6°C Samples reported on an as received basis (wet) unless otherwise noted on report

Cardinal Laboratories

*=Accredited Analyte

PLEASE NOTE: Liability and Damages. Cardinal's liability and client's exclusive remedy for any claim arising, whether based in contract or tort, shall be limited to the amount paid by client for analyses. All claims, including those for negligence and any other cause whatsoever shall be deemed waived unless made in writing and received by Cardinal within thirty (30) days after completion of the applicable service. In no event shall Cardinal be liable for incidental or consequential damages, including, without limitation, business interruptions, loss of use, or loss of profits incurred by client, its subsidiaries, affiliates or successors arising out of or related to the performance of the services hereunder by Cardinal, regardless of whether such claim is based upon any of the above stated reasons or otherwise. Results relate only to the samples identified above. This report shall not be reproduced except in full with written approval of Cardinal Laboratories.

A handwritten signature in black ink, appearing to read "Celey D. Keene".

Celey D. Keene, Lab Director/Quality Manager



101 East Marland, Hobbs, NM 88240
(575) 393-2326 FAX (575) 393-2476

CHAIN-OF-CUSTODY AND ANALYSIS REQUEST

FORM 000 R-2.0

BILL TO

ANALYSIS REQUEST

Company Name: COG Operating LLC
Project Manager: Dakota Neel

P.O. #:

Address: 2208 West Main

Company: COG Operating LLC

City: Artesia

Attn: Robert McNeill

Phone #: (575) 748-6930

Address: 600 W Illinois

Project #:

Project Owner:

City: Midland

Project Name: Nervous Horz Com #3H

State: TX Zip: 79701

Project Location:

Phone #: (432) 221-0388

Sampler Name: Dakota Neel

Fax #:

FOR LAB USE ONLY

Lab I.D.

Sample I.D.

#000132

(G)RAB OR (C)OMP.

CONTAINERS

GROUNDWATER

WASTEWATER

SOIL

OIL

SLUDGE

OTHER :

ACID/BASE:

ICE / COOL

OTHER :

DATE

TIME

BTEX

TPH

Chloride

S1 - Surface

S1-1'

S1-2'

S1-3'

S1-4'

1
2
3
4
5

PLEASE NOTE: Liability and Damages. Cardinal's liability and client's exclusive remedy for any claim arising whether based in contract or tort, shall be limited to the amount paid by the client for the analyses. All claims including those for negligence and any other cause whatsoever shall be deemed waived unless made in writing and received by Cardinal within 30 days after completion of the applicable service. In no event shall Cardinal be liable for incidental or consequential damages, including without limitation, business interruptions, loss of use, or loss of profits incurred by client, its subsidiaries, affiliates or successors arising out of or related to the performance of services hereunder by Cardinal, regardless of whether such claim is based upon any of the above stated reasons or otherwise.

Relinquished By:

Date:

Received By:

Relinquished By:

Date:

Received By:

Delivered By: (Circle One)

Sampler - UPS - Bus - Other:

Sample Condition

CHECKED BY:

Cool Intact

Yes Yes

No No

REMARKS:

Phone Result:

Fax Result:

Add'l Phone #:

Add'l Fax #:

dneel@concho.com
icarrasco@concho.com
atrujillo@concho.com

5. Please fax written changes to 575-393-2476



PHONE (575) 393-2326 ° 101 E. MARLAND ° HOBBS, NM 88240

January 28, 2022

SAM ABBOTT

TETRA TECH

901 WEST WALL STREET , STE 100

MIDLAND, TX 79701

RE: NERVOUS HORZ COM 3H

Enclosed are the results of analyses for samples received by the laboratory on 01/24/22 15:50.

Cardinal Laboratories is accredited through Texas NELAP under certificate number T104704398-21-14. Accreditation applies to drinking water, non-potable water and solid and chemical materials. All accredited analytes are denoted by an asterisk (*). For a complete list of accredited analytes and matrices visit the TCEQ website at www.tceq.texas.gov/field/qa/lab_accred_certif.html.

Cardinal Laboratories is accredited through the State of Colorado Department of Public Health and Environment for:

Method EPA 552.2	Haloacetic Acids (HAA-5)
Method EPA 524.2	Total Trihalomethanes (TTHM)
Method EPA 524.4	Regulated VOCs (V1, V2, V3)

Accreditation applies to public drinking water matrices.

This report meets NELAP requirements and is made up of a cover page, analytical results, and a copy of the original chain-of-custody. If you have any questions concerning this report, please feel free to contact me.

Sincerely,

A handwritten signature in black ink that reads "Celey D. Keene". The signature is written in a cursive style with a large, stylized 'C' and 'K'.

Celey D. Keene

Lab Director/Quality Manager



PHONE (575) 393-2326 ° 101 E. MARLAND ° HOBBS, NM 88240

Analytical Results For:

TETRA TECH
 SAM ABBOTT
 901 WEST WALL STREET , STE 100
 MIDLAND TX, 79701
 Fax To: (432) 682-3946

Received:	01/24/2022	Sampling Date:	01/24/2022
Reported:	01/28/2022	Sampling Type:	Soil
Project Name:	NERVOUS HORZ COM 3H	Sampling Condition:	Cool & Intact
Project Number:	212C-MD - 02659.101	Sample Received By:	Tamara Oldaker
Project Location:	COP - EDDY CO NM		

Sample ID: BH - 1 (0-1') (H220268-01)

BTEX 8021B		mg/kg		Analyzed By: JH					
Analyte	Result	Reporting Limit	Analyzed	Method Blank	BS	% Recovery	True Value QC	RPD	Qualifier
Benzene*	<0.050	0.050	01/27/2022	ND	2.13	107	2.00	4.69	
Toluene*	<0.050	0.050	01/27/2022	ND	2.19	110	2.00	0.630	
Ethylbenzene*	<0.050	0.050	01/27/2022	ND	2.06	103	2.00	1.56	
Total Xylenes*	<0.150	0.150	01/27/2022	ND	6.44	107	6.00	2.61	
Total BTEX	<0.300	0.300	01/27/2022	ND					

Surrogate: 4-Bromofluorobenzene (PID) 102 % 69.9-140

Chloride, SM4500Cl-B		mg/kg		Analyzed By: AC					
Analyte	Result	Reporting Limit	Analyzed	Method Blank	BS	% Recovery	True Value QC	RPD	Qualifier
Chloride	12600	16.0	01/27/2022	ND	416	104	400	3.77	

TPH 8015M		mg/kg		Analyzed By: MS					
Analyte	Result	Reporting Limit	Analyzed	Method Blank	BS	% Recovery	True Value QC	RPD	Qualifier
GRO C6-C10*	<10.0	10.0	01/27/2022	ND	196	98.0	200	8.76	
DRO >C10-C28*	<10.0	10.0	01/27/2022	ND	202	101	200	3.34	
EXT DRO >C28-C36	<10.0	10.0	01/27/2022	ND					

Surrogate: 1-Chlorooctane 87.1 % 66.9-136

Surrogate: 1-Chlorooctadecane 84.5 % 59.5-142

Cardinal Laboratories

*=Accredited Analyte

PLEASE NOTE: Liability and Damages. Cardinal's liability and client's exclusive remedy for any claim arising, whether based in contract or tort, shall be limited to the amount paid by client for analyses. All claims, including those for negligence and any other cause whatsoever shall be deemed waived unless made in writing and received by Cardinal within thirty (30) days after completion of the applicable service. In no event shall Cardinal be liable for incidental or consequential damages, including, without limitation, business interruptions, loss of use, or loss of profits incurred by client, its subsidiaries, affiliates or successors arising out of or related to the performance of the services hereunder by Cardinal, regardless of whether such claim is based upon any of the above stated reasons or otherwise. Results relate only to the samples identified above. This report shall not be reproduced except in full with written approval of Cardinal Laboratories.

Celey D. Keene, Lab Director/Quality Manager



PHONE (575) 393-2326 ° 101 E. MARLAND ° HOBBS, NM 88240

Analytical Results For:

TETRA TECH
 SAM ABBOTT
 901 WEST WALL STREET , STE 100
 MIDLAND TX, 79701
 Fax To: (432) 682-3946

Received:	01/24/2022	Sampling Date:	01/24/2022
Reported:	01/28/2022	Sampling Type:	Soil
Project Name:	NERVOUS HORZ COM 3H	Sampling Condition:	Cool & Intact
Project Number:	212C-MD - 02659.101	Sample Received By:	Tamara Oldaker
Project Location:	COP - EDDY CO NM		

Sample ID: BH - 1 (2-3') (H220268-02)

BTX 8021B		mg/kg		Analyzed By: JH						
Analyte	Result	Reporting Limit	Analyzed	Method Blank	BS	% Recovery	True Value QC	RPD	Qualifier	
Benzene*	<0.050	0.050	01/28/2022	ND	2.13	107	2.00	4.69		
Toluene*	<0.050	0.050	01/28/2022	ND	2.19	110	2.00	0.630		
Ethylbenzene*	<0.050	0.050	01/28/2022	ND	2.06	103	2.00	1.56		
Total Xylenes*	<0.150	0.150	01/28/2022	ND	6.44	107	6.00	2.61		
Total BTX	<0.300	0.300	01/28/2022	ND						

Surrogate: 4-Bromofluorobenzene (PID) 101 % 69.9-140

Chloride, SM4500CI-B		mg/kg		Analyzed By: AC						
Analyte	Result	Reporting Limit	Analyzed	Method Blank	BS	% Recovery	True Value QC	RPD	Qualifier	
Chloride	272	16.0	01/27/2022	ND	416	104	400	3.77		

TPH 8015M		mg/kg		Analyzed By: MS					
Analyte	Result	Reporting Limit	Analyzed	Method Blank	BS	% Recovery	True Value QC	RPD	Qualifier
GRO C6-C10*	<10.0	10.0	01/27/2022	ND	196	98.0	200	8.76	
DRO >C10-C28*	<10.0	10.0	01/27/2022	ND	202	101	200	3.34	
EXT DRO >C28-C36	<10.0	10.0	01/27/2022	ND					

Surrogate: 1-Chlorooctane 92.3 % 66.9-136

Surrogate: 1-Chlorooctadecane 90.5 % 59.5-142

Cardinal Laboratories

*=Accredited Analyte

PLEASE NOTE: Liability and Damages. Cardinal's liability and client's exclusive remedy for any claim arising, whether based in contract or tort, shall be limited to the amount paid by client for analyses. All claims, including those for negligence and any other cause whatsoever shall be deemed waived unless made in writing and received by Cardinal within thirty (30) days after completion of the applicable service. In no event shall Cardinal be liable for incidental or consequential damages, including, without limitation, business interruptions, loss of use, or loss of profits incurred by client, its subsidiaries, affiliates or successors arising out of or related to the performance of the services hereunder by Cardinal, regardless of whether such claim is based upon any of the above stated reasons or otherwise. Results relate only to the samples identified above. This report shall not be reproduced except in full with written approval of Cardinal Laboratories.

Celey D. Keene, Lab Director/Quality Manager



PHONE (575) 393-2326 ° 101 E. MARLAND ° HOBBS, NM 88240

Analytical Results For:

TETRA TECH
 SAM ABBOTT
 901 WEST WALL STREET , STE 100
 MIDLAND TX, 79701
 Fax To: (432) 682-3946

Received:	01/24/2022	Sampling Date:	01/24/2022
Reported:	01/28/2022	Sampling Type:	Soil
Project Name:	NERVOUS HORZ COM 3H	Sampling Condition:	Cool & Intact
Project Number:	212C-MD - 02659.101	Sample Received By:	Tamara Oldaker
Project Location:	COP - EDDY CO NM		

Sample ID: BH - 1 (3-4') (H220268-03)

BTEx 8021B		mg/kg		Analyzed By: JH					
Analyte	Result	Reporting Limit	Analyzed	Method Blank	BS	% Recovery	True Value QC	RPD	Qualifier
Benzene*	<0.050	0.050	01/28/2022	ND	2.13	107	2.00	4.69	
Toluene*	<0.050	0.050	01/28/2022	ND	2.19	110	2.00	0.630	
Ethylbenzene*	<0.050	0.050	01/28/2022	ND	2.06	103	2.00	1.56	
Total Xylenes*	<0.150	0.150	01/28/2022	ND	6.44	107	6.00	2.61	
Total BTEx	<0.300	0.300	01/28/2022	ND					

Surrogate: 4-Bromofluorobenzene (PID) 102 % 69.9-140

Chloride, SM4500CI-B		mg/kg		Analyzed By: AC						
Analyte	Result	Reporting Limit	Analyzed	Method Blank	BS	% Recovery	True Value QC	RPD	Qualifier	
Chloride	160	16.0	01/27/2022	ND	416	104	400	3.77		

TPH 8015M		mg/kg		Analyzed By: MS					
Analyte	Result	Reporting Limit	Analyzed	Method Blank	BS	% Recovery	True Value QC	RPD	Qualifier
GRO C6-C10*	<10.0	10.0	01/27/2022	ND	196	98.0	200	8.76	
DRO >C10-C28*	<10.0	10.0	01/27/2022	ND	202	101	200	3.34	
EXT DRO >C28-C36	<10.0	10.0	01/27/2022	ND					

Surrogate: 1-Chlorooctane 100 % 66.9-136

Surrogate: 1-Chlorooctadecane 99.0 % 59.5-142

Cardinal Laboratories

*=Accredited Analyte

PLEASE NOTE: Liability and Damages. Cardinal's liability and client's exclusive remedy for any claim arising, whether based in contract or tort, shall be limited to the amount paid by client for analyses. All claims, including those for negligence and any other cause whatsoever shall be deemed waived unless made in writing and received by Cardinal within thirty (30) days after completion of the applicable service. In no event shall Cardinal be liable for incidental or consequential damages, including, without limitation, business interruptions, loss of use, or loss of profits incurred by client, its subsidiaries, affiliates or successors arising out of or related to the performance of the services hereunder by Cardinal, regardless of whether such claim is based upon any of the above stated reasons or otherwise. Results relate only to the samples identified above. This report shall not be reproduced except in full with written approval of Cardinal Laboratories.

Celey D. Keene, Lab Director/Quality Manager



PHONE (575) 393-2326 ° 101 E. MARLAND ° HOBBS, NM 88240

Analytical Results For:

TETRA TECH
 SAM ABBOTT
 901 WEST WALL STREET , STE 100
 MIDLAND TX, 79701
 Fax To: (432) 682-3946

Received:	01/24/2022	Sampling Date:	01/24/2022
Reported:	01/28/2022	Sampling Type:	Soil
Project Name:	NERVOUS HORZ COM 3H	Sampling Condition:	Cool & Intact
Project Number:	212C-MD - 02659.101	Sample Received By:	Tamara Oldaker
Project Location:	COP - EDDY CO NM		

Sample ID: BH - 1 (4-5') (H220268-04)

BTEx 8021B		mg/kg		Analyzed By: JH						
Analyte	Result	Reporting Limit	Analyzed	Method Blank	BS	% Recovery	True Value QC	RPD	Qualifier	
Benzene*	<0.050	0.050	01/28/2022	ND	2.13	107	2.00	4.69		
Toluene*	<0.050	0.050	01/28/2022	ND	2.19	110	2.00	0.630		
Ethylbenzene*	<0.050	0.050	01/28/2022	ND	2.06	103	2.00	1.56		
Total Xylenes*	<0.150	0.150	01/28/2022	ND	6.44	107	6.00	2.61		
Total BTEx	<0.300	0.300	01/28/2022	ND						

Surrogate: 4-Bromofluorobenzene (PID) 101 % 69.9-140

Chloride, SM4500CI-B		mg/kg		Analyzed By: AC						
Analyte	Result	Reporting Limit	Analyzed	Method Blank	BS	% Recovery	True Value QC	RPD	Qualifier	
Chloride	96.0	16.0	01/27/2022	ND	416	104	400	3.77		

TPH 8015M		mg/kg		Analyzed By: MS					
Analyte	Result	Reporting Limit	Analyzed	Method Blank	BS	% Recovery	True Value QC	RPD	Qualifier
GRO C6-C10*	<10.0	10.0	01/27/2022	ND	196	98.0	200	8.76	
DRO >C10-C28*	<10.0	10.0	01/27/2022	ND	202	101	200	3.34	
EXT DRO >C28-C36	<10.0	10.0	01/27/2022	ND					

Surrogate: 1-Chlorooctane 99.8 % 66.9-136

Surrogate: 1-Chlorooctadecane 97.4 % 59.5-142

Cardinal Laboratories

*=Accredited Analyte

PLEASE NOTE: Liability and Damages. Cardinal's liability and client's exclusive remedy for any claim arising, whether based in contract or tort, shall be limited to the amount paid by client for analyses. All claims, including those for negligence and any other cause whatsoever shall be deemed waived unless made in writing and received by Cardinal within thirty (30) days after completion of the applicable service. In no event shall Cardinal be liable for incidental or consequential damages, including, without limitation, business interruptions, loss of use, or loss of profits incurred by client, its subsidiaries, affiliates or successors arising out of or related to the performance of the services hereunder by Cardinal, regardless of whether such claim is based upon any of the above stated reasons or otherwise. Results relate only to the samples identified above. This report shall not be reproduced except in full with written approval of Cardinal Laboratories.

Celey D. Keene, Lab Director/Quality Manager



PHONE (575) 393-2326 ° 101 E. MARLAND ° HOBBS, NM 88240

Analytical Results For:

TETRA TECH
 SAM ABBOTT
 901 WEST WALL STREET , STE 100
 MIDLAND TX, 79701
 Fax To: (432) 682-3946

Received:	01/24/2022	Sampling Date:	01/24/2022
Reported:	01/28/2022	Sampling Type:	Soil
Project Name:	NERVOUS HORZ COM 3H	Sampling Condition:	Cool & Intact
Project Number:	212C-MD - 02659.101	Sample Received By:	Tamara Oldaker
Project Location:	COP - EDDY CO NM		

Sample ID: BH - 1 (6-7') (H220268-05)

BTEx 8021B		mg/kg		Analyzed By: JH						
Analyte	Result	Reporting Limit	Analyzed	Method Blank	BS	% Recovery	True Value QC	RPD	Qualifier	
Benzene*	<0.050	0.050	01/28/2022	ND	2.13	107	2.00	4.69		
Toluene*	<0.050	0.050	01/28/2022	ND	2.19	110	2.00	0.630		
Ethylbenzene*	<0.050	0.050	01/28/2022	ND	2.06	103	2.00	1.56		
Total Xylenes*	<0.150	0.150	01/28/2022	ND	6.44	107	6.00	2.61		
Total BTEx	<0.300	0.300	01/28/2022	ND						

Surrogate: 4-Bromofluorobenzene (PID) 102 % 69.9-140

Chloride, SM4500CI-B		mg/kg		Analyzed By: AC						
Analyte	Result	Reporting Limit	Analyzed	Method Blank	BS	% Recovery	True Value QC	RPD	Qualifier	
Chloride	80.0	16.0	01/27/2022	ND	416	104	400	3.77		

TPH 8015M		mg/kg		Analyzed By: MS					
Analyte	Result	Reporting Limit	Analyzed	Method Blank	BS	% Recovery	True Value QC	RPD	Qualifier
GRO C6-C10*	<10.0	10.0	01/27/2022	ND	196	98.0	200	8.76	
DRO >C10-C28*	<10.0	10.0	01/27/2022	ND	202	101	200	3.34	
EXT DRO >C28-C36	<10.0	10.0	01/27/2022	ND					

Surrogate: 1-Chlorooctane 98.4 % 66.9-136

Surrogate: 1-Chlorooctadecane 100 % 59.5-142

Cardinal Laboratories

*=Accredited Analyte

PLEASE NOTE: Liability and Damages. Cardinal's liability and client's exclusive remedy for any claim arising, whether based in contract or tort, shall be limited to the amount paid by client for analyses. All claims, including those for negligence and any other cause whatsoever shall be deemed waived unless made in writing and received by Cardinal within thirty (30) days after completion of the applicable service. In no event shall Cardinal be liable for incidental or consequential damages, including, without limitation, business interruptions, loss of use, or loss of profits incurred by client, its subsidiaries, affiliates or successors arising out of or related to the performance of the services hereunder by Cardinal, regardless of whether such claim is based upon any of the above stated reasons or otherwise. Results relate only to the samples identified above. This report shall not be reproduced except in full with written approval of Cardinal Laboratories.

Celey D. Keene, Lab Director/Quality Manager



PHONE (575) 393-2326 ° 101 E. MARLAND ° HOBBS, NM 88240

Analytical Results For:

TETRA TECH
 SAM ABBOTT
 901 WEST WALL STREET , STE 100
 MIDLAND TX, 79701
 Fax To: (432) 682-3946

Received:	01/24/2022	Sampling Date:	01/24/2022
Reported:	01/28/2022	Sampling Type:	Soil
Project Name:	NERVOUS HORZ COM 3H	Sampling Condition:	Cool & Intact
Project Number:	212C-MD - 02659.101	Sample Received By:	Tamara Oldaker
Project Location:	COP - EDDY CO NM		

Sample ID: BH - 1 (8-9') (H220268-06)

BTEx 8021B		mg/kg		Analyzed By: JH						
Analyte	Result	Reporting Limit	Analyzed	Method Blank	BS	% Recovery	True Value QC	RPD	Qualifier	
Benzene*	<0.050	0.050	01/28/2022	ND	2.13	107	2.00	4.69		
Toluene*	<0.050	0.050	01/28/2022	ND	2.19	110	2.00	0.630		
Ethylbenzene*	<0.050	0.050	01/28/2022	ND	2.06	103	2.00	1.56		
Total Xylenes*	<0.150	0.150	01/28/2022	ND	6.44	107	6.00	2.61		
Total BTEx	<0.300	0.300	01/28/2022	ND						

Surrogate: 4-Bromofluorobenzene (PID) 101 % 69.9-140

Chloride, SM4500Cl-B		mg/kg		Analyzed By: AC						
Analyte	Result	Reporting Limit	Analyzed	Method Blank	BS	% Recovery	True Value QC	RPD	Qualifier	
Chloride	96.0	16.0	01/27/2022	ND	416	104	400	3.77		

TPH 8015M		mg/kg		Analyzed By: MS					
Analyte	Result	Reporting Limit	Analyzed	Method Blank	BS	% Recovery	True Value QC	RPD	Qualifier
GRO C6-C10*	<10.0	10.0	01/27/2022	ND	196	98.0	200	8.76	
DRO >C10-C28*	<10.0	10.0	01/27/2022	ND	202	101	200	3.34	
EXT DRO >C28-C36	<10.0	10.0	01/27/2022	ND					

Surrogate: 1-Chlorooctane 92.1 % 66.9-136

Surrogate: 1-Chlorooctadecane 93.6 % 59.5-142

Cardinal Laboratories

*=Accredited Analyte

PLEASE NOTE: Liability and Damages. Cardinal's liability and client's exclusive remedy for any claim arising, whether based in contract or tort, shall be limited to the amount paid by client for analyses. All claims, including those for negligence and any other cause whatsoever shall be deemed waived unless made in writing and received by Cardinal within thirty (30) days after completion of the applicable service. In no event shall Cardinal be liable for incidental or consequential damages, including, without limitation, business interruptions, loss of use, or loss of profits incurred by client, its subsidiaries, affiliates or successors arising out of or related to the performance of the services hereunder by Cardinal, regardless of whether such claim is based upon any of the above stated reasons or otherwise. Results relate only to the samples identified above. This report shall not be reproduced except in full with written approval of Cardinal Laboratories.

Celey D. Keene, Lab Director/Quality Manager



PHONE (575) 393-2326 ° 101 E. MARLAND ° HOBBS, NM 88240

Analytical Results For:

TETRA TECH
 SAM ABBOTT
 901 WEST WALL STREET , STE 100
 MIDLAND TX, 79701
 Fax To: (432) 682-3946

Received:	01/24/2022	Sampling Date:	01/24/2022
Reported:	01/28/2022	Sampling Type:	Soil
Project Name:	NERVOUS HORZ COM 3H	Sampling Condition:	Cool & Intact
Project Number:	212C-MD - 02659.101	Sample Received By:	Tamara Oldaker
Project Location:	COP - EDDY CO NM		

Sample ID: BH - 1 (9-10') (H220268-07)

BTEX 8021B		mg/kg		Analyzed By: JH						
Analyte	Result	Reporting Limit	Analyzed	Method Blank	BS	% Recovery	True Value QC	RPD	Qualifier	
Benzene*	<0.050	0.050	01/28/2022	ND	2.13	107	2.00	4.69		
Toluene*	<0.050	0.050	01/28/2022	ND	2.19	110	2.00	0.630		
Ethylbenzene*	<0.050	0.050	01/28/2022	ND	2.06	103	2.00	1.56		
Total Xylenes*	<0.150	0.150	01/28/2022	ND	6.44	107	6.00	2.61		
Total BTEX	<0.300	0.300	01/28/2022	ND						

Surrogate: 4-Bromofluorobenzene (PID) 99.8 % 69.9-140

Chloride, SM4500CI-B		mg/kg		Analyzed By: AC						
Analyte	Result	Reporting Limit	Analyzed	Method Blank	BS	% Recovery	True Value QC	RPD	Qualifier	
Chloride	80.0	16.0	01/27/2022	ND	416	104	400	0.00		

TPH 8015M		mg/kg		Analyzed By: MS					
Analyte	Result	Reporting Limit	Analyzed	Method Blank	BS	% Recovery	True Value QC	RPD	Qualifier
GRO C6-C10*	<10.0	10.0	01/27/2022	ND	196	98.0	200	8.76	
DRO >C10-C28*	<10.0	10.0	01/27/2022	ND	202	101	200	3.34	
EXT DRO >C28-C36	<10.0	10.0	01/27/2022	ND					

Surrogate: 1-Chlorooctane 86.7 % 66.9-136

Surrogate: 1-Chlorooctadecane 85.0 % 59.5-142

Cardinal Laboratories

*=Accredited Analyte

PLEASE NOTE: Liability and Damages. Cardinal's liability and client's exclusive remedy for any claim arising, whether based in contract or tort, shall be limited to the amount paid by client for analyses. All claims, including those for negligence and any other cause whatsoever shall be deemed waived unless made in writing and received by Cardinal within thirty (30) days after completion of the applicable service. In no event shall Cardinal be liable for incidental or consequential damages, including, without limitation, business interruptions, loss of use, or loss of profits incurred by client, its subsidiaries, affiliates or successors arising out of or related to the performance of the services hereunder by Cardinal, regardless of whether such claim is based upon any of the above stated reasons or otherwise. Results relate only to the samples identified above. This report shall not be reproduced except in full with written approval of Cardinal Laboratories.

Celey D. Keene, Lab Director/Quality Manager



PHONE (575) 393-2326 ° 101 E. MARLAND ° HOBBS, NM 88240

Notes and Definitions

ND	Analyte NOT DETECTED at or above the reporting limit
RPD	Relative Percent Difference
**	Samples not received at proper temperature of 6°C or below.
***	Insufficient time to reach temperature.
-	Chloride by SM4500Cl-B does not require samples be received at or below 6°C Samples reported on an as received basis (wet) unless otherwise noted on report

Cardinal Laboratories

*=Accredited Analyte

PLEASE NOTE: Liability and Damages. Cardinal's liability and client's exclusive remedy for any claim arising, whether based in contract or tort, shall be limited to the amount paid by client for analyses. All claims, including those for negligence and any other cause whatsoever shall be deemed waived unless made in writing and received by Cardinal within thirty (30) days after completion of the applicable service. In no event shall Cardinal be liable for incidental or consequential damages, including, without limitation, business interruptions, loss of use, or loss of profits incurred by client, its subsidiaries, affiliates or successors arising out of or related to the performance of the services hereunder by Cardinal, regardless of whether such claim is based upon any of the above stated reasons or otherwise. Results relate only to the samples identified above. This report shall not be reproduced except in full with written approval of Cardinal Laboratories.

A handwritten signature in black ink, appearing to read "Celey D. Keene".

Celey D. Keene, Lab Director/Quality Manager



101 East Marland, Hobbs, NM 88240
(575) 393-2326 FAX (575) 393-2476

CHAIN-OF-CUSTODY AND ANALYSIS REQUEST

Company Name: Tetra Tech, Inc.		P.O. #:		BILL TO		ANALYSIS REQUEST											
Project Manager: Sam Abbott		Company: Tetra Tech															
Address: 901 W. Wall St.		Attn: Sam Abbott															
City: Midland		Address: 901 W. Wall St.															
State: TX Zip: 79701		City: Midland															
Phone #: (512) 739-7874 Fax #: -		State: TX Zip: 79701															
Project #: 2126-MD-026591M Project Owner: ConocoPhillips		Phone #: (512) 739-7874															
Project Location: Eddy County, NM		Fax #: -															
Sampler Name: Davis Brown																	
FOR LAB USE ONLY																	
Lab I.D.	Sample I.D.	(G)RAB OR (C)OMP.	# CONTAINERS	GROUNDWATER	WASTEWATER	SOIL	OIL	SLUDGE	OTHER :	ACID/BASE:	ICE / COOL	OTHER :	DATE	TIME			
H320268	BH-1 (0-1')	6	1			X					X		1-24-22	1230	X	13TEX 8021B	
	2 BH-1 (0-3')												1235		X	Chloride 300.0 4500	
	3 BH-1 (3-4')												1240		X	TPH 8015 (GRO + DRO + DRO)	
	4 BH-1 (4-5')												1245				
	5 BH-1 (6-7')												1250				
	6 BH-1 (8-9')												1255				
	7 BH-1 (9-10')												1300				
PLEASE NOTE: Liability and Damages: Cardinal's liability and client's exclusive remedy for any claim arising whether based in contract or tort, shall be limited to the amount paid by the client for the analysis. All claims including those for negligence and any other cause whatsoever shall be deemed waived unless made in writing and received by Cardinal within 30 days after completion of the applicable service. In no event shall Cardinal be liable for incidental or consequential damages, including without limitation, business interruptions, loss of use, or loss of profits incurred by client, its subsidiaries, affiliates or successors arising out of or related to the performance of services hereunder by Cardinal, regardless of whether such claim is based upon any of the above stated reasons or otherwise.																	
Relinquished By: [Signature]		Date: 1-24-22		Received By: [Signature]		Date: 1-24-22		Time: 1550		Received By: [Signature]		Time: 1550		REMARKS: Sam A.			
Delivered By: (Circle One)		Observed Temp. °C 4.3		Sample Condition		CHECKED BY: (Initials)		Turnaround Time:		Standard		Bacteria (only)		Sample Condition			
Sampler - UPS - Bus - Other:		Corrected Temp. °C 3.8		Cool Intact		Yes		Thermometer ID #113		Rush		Cool Intact		Observed Temp. °C			
				Yes		No		Correction Factor .0.5°C		No		Yes		Corrected Temp. °C			

† Cardinal cannot accept verbal changes. Please email changes to celey.keene@cardinallabsnm.com



PHONE (575) 393-2326 ° 101 E. MARLAND ° HOBBS, NM 88240

February 15, 2022

SAM ABBOTT

TETRA TECH

901 WEST WALL STREET , STE 100

MIDLAND, TX 79701

RE: NERVOUS HORZ COM 3H

Enclosed are the results of analyses for samples received by the laboratory on 02/11/22 13:00.

Cardinal Laboratories is accredited through Texas NELAP under certificate number T104704398-21-14. Accreditation applies to drinking water, non-potable water and solid and chemical materials. All accredited analytes are denoted by an asterisk (*). For a complete list of accredited analytes and matrices visit the TCEQ website at www.tceq.texas.gov/field/qa/lab_accred_certif.html.

Cardinal Laboratories is accredited through the State of Colorado Department of Public Health and Environment for:

Method EPA 552.2	Haloacetic Acids (HAA-5)
Method EPA 524.2	Total Trihalomethanes (TTHM)
Method EPA 524.4	Regulated VOCs (V1, V2, V3)

Accreditation applies to public drinking water matrices.

This report meets NELAP requirements and is made up of a cover page, analytical results, and a copy of the original chain-of-custody. If you have any questions concerning this report, please feel free to contact me.

Sincerely,

A handwritten signature in black ink that reads "Celey D. Keene". The signature is written in a cursive, flowing style.

Celey D. Keene

Lab Director/Quality Manager



PHONE (575) 393-2326 ° 101 E. MARLAND ° HOBBS, NM 88240

Analytical Results For:

TETRA TECH
 SAM ABBOTT
 901 WEST WALL STREET , STE 100
 MIDLAND TX, 79701
 Fax To: (432) 682-3946

Received:	02/11/2022	Sampling Date:	02/09/2022
Reported:	02/15/2022	Sampling Type:	Soil
Project Name:	NERVOUS HORZ COM 3H	Sampling Condition:	Cool & Intact
Project Number:	212C-MD - 02659	Sample Received By:	Tamara Oldaker
Project Location:	COP - EDDY CO NM		

Sample ID: AH - 1 (0-1') (H220550-01)

BTEX 8021B		mg/kg		Analyzed By: MS/						
Analyte	Result	Reporting Limit	Analyzed	Method Blank	BS	% Recovery	True Value QC	RPD	Qualifier	
Benzene*	<0.050	0.050	02/13/2022	ND	1.84	91.8	2.00	7.05		
Toluene*	<0.050	0.050	02/13/2022	ND	1.86	93.0	2.00	6.57		
Ethylbenzene*	<0.050	0.050	02/13/2022	ND	1.81	90.6	2.00	6.06		
Total Xylenes*	<0.150	0.150	02/13/2022	ND	5.67	94.5	6.00	5.02		
Total BTEX	<0.300	0.300	02/13/2022	ND						

Surrogate: 4-Bromofluorobenzene (PID) 102 % 69.9-140

Chloride, SM4500Cl-B		mg/kg		Analyzed By: GM						
Analyte	Result	Reporting Limit	Analyzed	Method Blank	BS	% Recovery	True Value QC	RPD	Qualifier	
Chloride	208	16.0	02/14/2022	ND	400	100	400	0.00		

TPH 8015M		mg/kg		Analyzed By: CK					
Analyte	Result	Reporting Limit	Analyzed	Method Blank	BS	% Recovery	True Value QC	RPD	Qualifier
GRO C6-C10*	<10.0	10.0	02/13/2022	ND	231	116	200	2.45	
DRO >C10-C28*	<10.0	10.0	02/13/2022	ND	206	103	200	3.66	
EXT DRO >C28-C36	<10.0	10.0	02/13/2022	ND					

Surrogate: 1-Chlorooctane 103 % 66.9-136

Surrogate: 1-Chlorooctadecane 114 % 59.5-142

Cardinal Laboratories

*=Accredited Analyte

PLEASE NOTE: Liability and Damages. Cardinal's liability and client's exclusive remedy for any claim arising, whether based in contract or tort, shall be limited to the amount paid by client for analyses. All claims, including those for negligence and any other cause whatsoever shall be deemed waived unless made in writing and received by Cardinal within thirty (30) days after completion of the applicable service. In no event shall Cardinal be liable for incidental or consequential damages, including, without limitation, business interruptions, loss of use, or loss of profits incurred by client, its subsidiaries, affiliates or successors arising out of or related to the performance of the services hereunder by Cardinal, regardless of whether such claim is based upon any of the above stated reasons or otherwise. Results relate only to the samples identified above. This report shall not be reproduced except in full with written approval of Cardinal Laboratories.

Celey D. Keene, Lab Director/Quality Manager



PHONE (575) 393-2326 • 101 E. MARLAND • HOBBS, NM 88240

Analytical Results For:

TETRA TECH
 SAM ABBOTT
 901 WEST WALL STREET , STE 100
 MIDLAND TX, 79701
 Fax To: (432) 682-3946

Received:	02/11/2022	Sampling Date:	02/09/2022
Reported:	02/15/2022	Sampling Type:	Soil
Project Name:	NERVOUS HORZ COM 3H	Sampling Condition:	Cool & Intact
Project Number:	212C-MD - 02659	Sample Received By:	Tamara Oldaker
Project Location:	COP - EDDY CO NM		

Sample ID: AH - 1 (1'-2') (H220550-02)

BTX 8021B		mg/kg		Analyzed By: MS/					
Analyte	Result	Reporting Limit	Analyzed	Method Blank	BS	% Recovery	True Value QC	RPD	Qualifier
Benzene*	<0.050	0.050	02/14/2022	ND	1.83	91.7	2.00	6.71	
Toluene*	<0.050	0.050	02/14/2022	ND	1.85	92.6	2.00	6.15	
Ethylbenzene*	<0.050	0.050	02/14/2022	ND	1.80	90.2	2.00	5.26	
Total Xylenes*	<0.150	0.150	02/14/2022	ND	5.65	94.1	6.00	4.35	
Total BTX	<0.300	0.300	02/14/2022	ND					

Surrogate: 4-Bromofluorobenzene (PID) 103 % 69.9-140

Chloride, SM4500CI-B		mg/kg		Analyzed By: GM						
Analyte	Result	Reporting Limit	Analyzed	Method Blank	BS	% Recovery	True Value QC	RPD	Qualifier	
Chloride	224	16.0	02/14/2022	ND	400	100	400	0.00		

TPH 8015M		mg/kg		Analyzed By: CK					
Analyte	Result	Reporting Limit	Analyzed	Method Blank	BS	% Recovery	True Value QC	RPD	Qualifier
GRO C6-C10*	<10.0	10.0	02/13/2022	ND	231	116	200	2.45	
DRO >C10-C28*	<10.0	10.0	02/13/2022	ND	206	103	200	3.66	
EXT DRO >C28-C36	<10.0	10.0	02/13/2022	ND					

Surrogate: 1-Chlorooctane 104 % 66.9-136

Surrogate: 1-Chlorooctadecane 115 % 59.5-142

Cardinal Laboratories

*=Accredited Analyte

PLEASE NOTE: Liability and Damages. Cardinal's liability and client's exclusive remedy for any claim arising, whether based in contract or tort, shall be limited to the amount paid by client for analyses. All claims, including those for negligence and any other cause whatsoever shall be deemed waived unless made in writing and received by Cardinal within thirty (30) days after completion of the applicable service. In no event shall Cardinal be liable for incidental or consequential damages, including, without limitation, business interruptions, loss of use, or loss of profits incurred by client, its subsidiaries, affiliates or successors arising out of or related to the performance of the services hereunder by Cardinal, regardless of whether such claim is based upon any of the above stated reasons or otherwise. Results relate only to the samples identified above. This report shall not be reproduced except in full with written approval of Cardinal Laboratories.

Celey D. Keene, Lab Director/Quality Manager



PHONE (575) 393-2326 ° 101 E. MARLAND ° HOBBS, NM 88240

Analytical Results For:

TETRA TECH
 SAM ABBOTT
 901 WEST WALL STREET , STE 100
 MIDLAND TX, 79701
 Fax To: (432) 682-3946

Received:	02/11/2022	Sampling Date:	02/09/2022
Reported:	02/15/2022	Sampling Type:	Soil
Project Name:	NERVOUS HORZ COM 3H	Sampling Condition:	Cool & Intact
Project Number:	212C-MD - 02659	Sample Received By:	Tamara Oldaker
Project Location:	COP - EDDY CO NM		

Sample ID: AH - 2 (0-1') (H220550-03)

BTX 8021B		mg/kg		Analyzed By: MS/					
Analyte	Result	Reporting Limit	Analyzed	Method Blank	BS	% Recovery	True Value QC	RPD	Qualifier
Benzene*	<0.050	0.050	02/14/2022	ND	1.83	91.7	2.00	6.71	
Toluene*	<0.050	0.050	02/14/2022	ND	1.85	92.6	2.00	6.15	
Ethylbenzene*	<0.050	0.050	02/14/2022	ND	1.80	90.2	2.00	5.26	
Total Xylenes*	<0.150	0.150	02/14/2022	ND	5.65	94.1	6.00	4.35	
Total BTX	<0.300	0.300	02/14/2022	ND					

Surrogate: 4-Bromofluorobenzene (PID) 103 % 69.9-140

Chloride, SM4500CI-B		mg/kg		Analyzed By: GM						
Analyte	Result	Reporting Limit	Analyzed	Method Blank	BS	% Recovery	True Value QC	RPD	Qualifier	
Chloride	16.0	16.0	02/14/2022	ND	400	100	400	0.00		

TPH 8015M		mg/kg		Analyzed By: CK					
Analyte	Result	Reporting Limit	Analyzed	Method Blank	BS	% Recovery	True Value QC	RPD	Qualifier
GRO C6-C10*	<10.0	10.0	02/13/2022	ND	231	116	200	2.45	
DRO >C10-C28*	<10.0	10.0	02/13/2022	ND	206	103	200	3.66	
EXT DRO >C28-C36	<10.0	10.0	02/13/2022	ND					

Surrogate: 1-Chlorooctane 106 % 66.9-136

Surrogate: 1-Chlorooctadecane 116 % 59.5-142

Cardinal Laboratories

*=Accredited Analyte

PLEASE NOTE: Liability and Damages. Cardinal's liability and client's exclusive remedy for any claim arising, whether based in contract or tort, shall be limited to the amount paid by client for analyses. All claims, including those for negligence and any other cause whatsoever shall be deemed waived unless made in writing and received by Cardinal within thirty (30) days after completion of the applicable service. In no event shall Cardinal be liable for incidental or consequential damages, including, without limitation, business interruptions, loss of use, or loss of profits incurred by client, its subsidiaries, affiliates or successors arising out of or related to the performance of the services hereunder by Cardinal, regardless of whether such claim is based upon any of the above stated reasons or otherwise. Results relate only to the samples identified above. This report shall not be reproduced except in full with written approval of Cardinal Laboratories.

Celey D. Keene, Lab Director/Quality Manager



PHONE (575) 393-2326 • 101 E. MARLAND • HOBBS, NM 88240

Analytical Results For:

TETRA TECH
 SAM ABBOTT
 901 WEST WALL STREET , STE 100
 MIDLAND TX, 79701
 Fax To: (432) 682-3946

Received:	02/11/2022	Sampling Date:	02/09/2022
Reported:	02/15/2022	Sampling Type:	Soil
Project Name:	NERVOUS HORZ COM 3H	Sampling Condition:	Cool & Intact
Project Number:	212C-MD - 02659	Sample Received By:	Tamara Oldaker
Project Location:	COP - EDDY CO NM		

Sample ID: AH - 2 (1'-2') (H220550-04)

BTX 8021B		mg/kg		Analyzed By: MS/					
Analyte	Result	Reporting Limit	Analyzed	Method Blank	BS	% Recovery	True Value QC	RPD	Qualifier
Benzene*	<0.050	0.050	02/14/2022	ND	1.83	91.7	2.00	6.71	
Toluene*	<0.050	0.050	02/14/2022	ND	1.85	92.6	2.00	6.15	
Ethylbenzene*	<0.050	0.050	02/14/2022	ND	1.80	90.2	2.00	5.26	
Total Xylenes*	<0.150	0.150	02/14/2022	ND	5.65	94.1	6.00	4.35	
Total BTX	<0.300	0.300	02/14/2022	ND					

Surrogate: 4-Bromofluorobenzene (PID) 103 % 69.9-140

Chloride, SM4500CI-B		mg/kg		Analyzed By: GM						
Analyte	Result	Reporting Limit	Analyzed	Method Blank	BS	% Recovery	True Value QC	RPD	Qualifier	
Chloride	32.0	16.0	02/14/2022	ND	400	100	400	0.00		

TPH 8015M		mg/kg		Analyzed By: CK					
Analyte	Result	Reporting Limit	Analyzed	Method Blank	BS	% Recovery	True Value QC	RPD	Qualifier
GRO C6-C10*	<10.0	10.0	02/13/2022	ND	231	116	200	2.45	
DRO >C10-C28*	<10.0	10.0	02/13/2022	ND	206	103	200	3.66	
EXT DRO >C28-C36	<10.0	10.0	02/13/2022	ND					

Surrogate: 1-Chlorooctane 105 % 66.9-136

Surrogate: 1-Chlorooctadecane 117 % 59.5-142

Cardinal Laboratories

*=Accredited Analyte

PLEASE NOTE: Liability and Damages. Cardinal's liability and client's exclusive remedy for any claim arising, whether based in contract or tort, shall be limited to the amount paid by client for analyses. All claims, including those for negligence and any other cause whatsoever shall be deemed waived unless made in writing and received by Cardinal within thirty (30) days after completion of the applicable service. In no event shall Cardinal be liable for incidental or consequential damages, including, without limitation, business interruptions, loss of use, or loss of profits incurred by client, its subsidiaries, affiliates or successors arising out of or related to the performance of the services hereunder by Cardinal, regardless of whether such claim is based upon any of the above stated reasons or otherwise. Results relate only to the samples identified above. This report shall not be reproduced except in full with written approval of Cardinal Laboratories.

Celey D. Keene, Lab Director/Quality Manager



PHONE (575) 393-2326 ° 101 E. MARLAND ° HOBBS, NM 88240

Analytical Results For:

TETRA TECH
 SAM ABBOTT
 901 WEST WALL STREET , STE 100
 MIDLAND TX, 79701
 Fax To: (432) 682-3946

Received:	02/11/2022	Sampling Date:	02/09/2022
Reported:	02/15/2022	Sampling Type:	Soil
Project Name:	NERVOUS HORZ COM 3H	Sampling Condition:	Cool & Intact
Project Number:	212C-MD - 02659	Sample Received By:	Tamara Oldaker
Project Location:	COP - EDDY CO NM		

Sample ID: AH - 3 (0-1') (H220550-05)

BTEx 8021B		mg/kg		Analyzed By: MS/						
Analyte	Result	Reporting Limit	Analyzed	Method Blank	BS	% Recovery	True Value QC	RPD	Qualifier	
Benzene*	<0.050	0.050	02/14/2022	ND	1.83	91.7	2.00	6.71		
Toluene*	<0.050	0.050	02/14/2022	ND	1.85	92.6	2.00	6.15		
Ethylbenzene*	<0.050	0.050	02/14/2022	ND	1.80	90.2	2.00	5.26		
Total Xylenes*	<0.150	0.150	02/14/2022	ND	5.65	94.1	6.00	4.35		
Total BTEx	<0.300	0.300	02/14/2022	ND						

Surrogate: 4-Bromofluorobenzene (PID) 103 % 69.9-140

Chloride, SM4500CI-B		mg/kg		Analyzed By: GM						
Analyte	Result	Reporting Limit	Analyzed	Method Blank	BS	% Recovery	True Value QC	RPD	Qualifier	
Chloride	16.0	16.0	02/14/2022	ND	400	100	400	0.00		

TPH 8015M		mg/kg		Analyzed By: CK					
Analyte	Result	Reporting Limit	Analyzed	Method Blank	BS	% Recovery	True Value QC	RPD	Qualifier
GRO C6-C10*	<10.0	10.0	02/13/2022	ND	231	116	200	2.45	
DRO >C10-C28*	<10.0	10.0	02/13/2022	ND	206	103	200	3.66	
EXT DRO >C28-C36	<10.0	10.0	02/13/2022	ND					

Surrogate: 1-Chlorooctane 110 % 66.9-136

Surrogate: 1-Chlorooctadecane 127 % 59.5-142

Cardinal Laboratories

*=Accredited Analyte

PLEASE NOTE: Liability and Damages. Cardinal's liability and client's exclusive remedy for any claim arising, whether based in contract or tort, shall be limited to the amount paid by client for analyses. All claims, including those for negligence and any other cause whatsoever shall be deemed waived unless made in writing and received by Cardinal within thirty (30) days after completion of the applicable service. In no event shall Cardinal be liable for incidental or consequential damages, including, without limitation, business interruptions, loss of use, or loss of profits incurred by client, its subsidiaries, affiliates or successors arising out of or related to the performance of the services hereunder by Cardinal, regardless of whether such claim is based upon any of the above stated reasons or otherwise. Results relate only to the samples identified above. This report shall not be reproduced except in full with written approval of Cardinal Laboratories.

Celey D. Keene, Lab Director/Quality Manager



PHONE (575) 393-2326 • 101 E. MARLAND • HOBBS, NM 88240

Analytical Results For:

TETRA TECH
 SAM ABBOTT
 901 WEST WALL STREET , STE 100
 MIDLAND TX, 79701
 Fax To: (432) 682-3946

Received:	02/11/2022	Sampling Date:	02/09/2022
Reported:	02/15/2022	Sampling Type:	Soil
Project Name:	NERVOUS HORZ COM 3H	Sampling Condition:	Cool & Intact
Project Number:	212C-MD - 02659	Sample Received By:	Tamara Oldaker
Project Location:	COP - EDDY CO NM		

Sample ID: AH - 3 (1'-2') (H220550-06)

BTEx 8021B		mg/kg		Analyzed By: MS/						
Analyte	Result	Reporting Limit	Analyzed	Method Blank	BS	% Recovery	True Value QC	RPD	Qualifier	
Benzene*	<0.050	0.050	02/14/2022	ND	1.83	91.7	2.00	6.71		
Toluene*	<0.050	0.050	02/14/2022	ND	1.85	92.6	2.00	6.15		
Ethylbenzene*	<0.050	0.050	02/14/2022	ND	1.80	90.2	2.00	5.26		
Total Xylenes*	<0.150	0.150	02/14/2022	ND	5.65	94.1	6.00	4.35		
Total BTEx	<0.300	0.300	02/14/2022	ND						

Surrogate: 4-Bromofluorobenzene (PID) 103 % 69.9-140

Chloride, SM4500CI-B		mg/kg		Analyzed By: GM						
Analyte	Result	Reporting Limit	Analyzed	Method Blank	BS	% Recovery	True Value QC	RPD	Qualifier	
Chloride	32.0	16.0	02/14/2022	ND	400	100	400	0.00		

TPH 8015M		mg/kg		Analyzed By: CK					
Analyte	Result	Reporting Limit	Analyzed	Method Blank	BS	% Recovery	True Value QC	RPD	Qualifier
GRO C6-C10*	<10.0	10.0	02/13/2022	ND	231	116	200	2.45	
DRO >C10-C28*	<10.0	10.0	02/13/2022	ND	206	103	200	3.66	
EXT DRO >C28-C36	<10.0	10.0	02/13/2022	ND					

Surrogate: 1-Chlorooctane 110 % 66.9-136

Surrogate: 1-Chlorooctadecane 128 % 59.5-142

Cardinal Laboratories

*=Accredited Analyte

PLEASE NOTE: Liability and Damages. Cardinal's liability and client's exclusive remedy for any claim arising, whether based in contract or tort, shall be limited to the amount paid by client for analyses. All claims, including those for negligence and any other cause whatsoever shall be deemed waived unless made in writing and received by Cardinal within thirty (30) days after completion of the applicable service. In no event shall Cardinal be liable for incidental or consequential damages, including, without limitation, business interruptions, loss of use, or loss of profits incurred by client, its subsidiaries, affiliates or successors arising out of or related to the performance of the services hereunder by Cardinal, regardless of whether such claim is based upon any of the above stated reasons or otherwise. Results relate only to the samples identified above. This report shall not be reproduced except in full with written approval of Cardinal Laboratories.

Celey D. Keene, Lab Director/Quality Manager



PHONE (575) 393-2326 ° 101 E. MARLAND ° HOBBS, NM 88240

Analytical Results For:

TETRA TECH
 SAM ABBOTT
 901 WEST WALL STREET , STE 100
 MIDLAND TX, 79701
 Fax To: (432) 682-3946

Received:	02/11/2022	Sampling Date:	02/09/2022
Reported:	02/15/2022	Sampling Type:	Soil
Project Name:	NERVOUS HORZ COM 3H	Sampling Condition:	Cool & Intact
Project Number:	212C-MD - 02659	Sample Received By:	Tamara Oldaker
Project Location:	COP - EDDY CO NM		

Sample ID: AH - 4 (0-1') (H220550-07)

BTEx 8021B		mg/kg		Analyzed By: MS/						
Analyte	Result	Reporting Limit	Analyzed	Method Blank	BS	% Recovery	True Value QC	RPD	Qualifier	
Benzene*	<0.050	0.050	02/14/2022	ND	1.83	91.7	2.00	6.71		
Toluene*	<0.050	0.050	02/14/2022	ND	1.85	92.6	2.00	6.15		
Ethylbenzene*	<0.050	0.050	02/14/2022	ND	1.80	90.2	2.00	5.26		
Total Xylenes*	<0.150	0.150	02/14/2022	ND	5.65	94.1	6.00	4.35		
Total BTEx	<0.300	0.300	02/14/2022	ND						

Surrogate: 4-Bromofluorobenzene (PID) 103 % 69.9-140

Chloride, SM4500CI-B		mg/kg		Analyzed By: GM						
Analyte	Result	Reporting Limit	Analyzed	Method Blank	BS	% Recovery	True Value QC	RPD	Qualifier	
Chloride	48.0	16.0	02/14/2022	ND	400	100	400	0.00		

TPH 8015M		mg/kg		Analyzed By: CK					
Analyte	Result	Reporting Limit	Analyzed	Method Blank	BS	% Recovery	True Value QC	RPD	Qualifier
GRO C6-C10*	<10.0	10.0	02/13/2022	ND	231	116	200	2.45	
DRO >C10-C28*	<10.0	10.0	02/13/2022	ND	206	103	200	3.66	
EXT DRO >C28-C36	<10.0	10.0	02/13/2022	ND					

Surrogate: 1-Chlorooctane 106 % 66.9-136

Surrogate: 1-Chlorooctadecane 122 % 59.5-142

Cardinal Laboratories

*=Accredited Analyte

PLEASE NOTE: Liability and Damages. Cardinal's liability and client's exclusive remedy for any claim arising, whether based in contract or tort, shall be limited to the amount paid by client for analyses. All claims, including those for negligence and any other cause whatsoever shall be deemed waived unless made in writing and received by Cardinal within thirty (30) days after completion of the applicable service. In no event shall Cardinal be liable for incidental or consequential damages, including, without limitation, business interruptions, loss of use, or loss of profits incurred by client, its subsidiaries, affiliates or successors arising out of or related to the performance of the services hereunder by Cardinal, regardless of whether such claim is based upon any of the above stated reasons or otherwise. Results relate only to the samples identified above. This report shall not be reproduced except in full with written approval of Cardinal Laboratories.

Celey D. Keene, Lab Director/Quality Manager



PHONE (575) 393-2326 ° 101 E. MARLAND ° HOBBS, NM 88240

Analytical Results For:

TETRA TECH
 SAM ABBOTT
 901 WEST WALL STREET , STE 100
 MIDLAND TX, 79701
 Fax To: (432) 682-3946

Received:	02/11/2022	Sampling Date:	02/09/2022
Reported:	02/15/2022	Sampling Type:	Soil
Project Name:	NERVOUS HORZ COM 3H	Sampling Condition:	Cool & Intact
Project Number:	212C-MD - 02659	Sample Received By:	Tamara Oldaker
Project Location:	COP - EDDY CO NM		

Sample ID: AH - 4 (1'-2') (H220550-08)

BTEx 8021B		mg/kg		Analyzed By: MS/						
Analyte	Result	Reporting Limit	Analyzed	Method Blank	BS	% Recovery	True Value QC	RPD	Qualifier	
Benzene*	<0.050	0.050	02/14/2022	ND	1.83	91.7	2.00	6.71		
Toluene*	<0.050	0.050	02/14/2022	ND	1.85	92.6	2.00	6.15		
Ethylbenzene*	<0.050	0.050	02/14/2022	ND	1.80	90.2	2.00	5.26		
Total Xylenes*	<0.150	0.150	02/14/2022	ND	5.65	94.1	6.00	4.35		
Total BTEx	<0.300	0.300	02/14/2022	ND						

Surrogate: 4-Bromofluorobenzene (PID) 103 % 69.9-140

Chloride, SM4500CI-B		mg/kg		Analyzed By: GM						
Analyte	Result	Reporting Limit	Analyzed	Method Blank	BS	% Recovery	True Value QC	RPD	Qualifier	
Chloride	48.0	16.0	02/14/2022	ND	400	100	400	0.00		

TPH 8015M		mg/kg		Analyzed By: CK					
Analyte	Result	Reporting Limit	Analyzed	Method Blank	BS	% Recovery	True Value QC	RPD	Qualifier
GRO C6-C10*	<10.0	10.0	02/14/2022	ND	211	106	200	2.00	
DRO >C10-C28*	<10.0	10.0	02/14/2022	ND	233	117	200	9.93	
EXT DRO >C28-C36	<10.0	10.0	02/14/2022	ND					

Surrogate: 1-Chlorooctane 120 % 66.9-136

Surrogate: 1-Chlorooctadecane 129 % 59.5-142

Cardinal Laboratories

*=Accredited Analyte

PLEASE NOTE: Liability and Damages. Cardinal's liability and client's exclusive remedy for any claim arising, whether based in contract or tort, shall be limited to the amount paid by client for analyses. All claims, including those for negligence and any other cause whatsoever shall be deemed waived unless made in writing and received by Cardinal within thirty (30) days after completion of the applicable service. In no event shall Cardinal be liable for incidental or consequential damages, including, without limitation, business interruptions, loss of use, or loss of profits incurred by client, its subsidiaries, affiliates or successors arising out of or related to the performance of the services hereunder by Cardinal, regardless of whether such claim is based upon any of the above stated reasons or otherwise. Results relate only to the samples identified above. This report shall not be reproduced except in full with written approval of Cardinal Laboratories.

Celey D. Keene, Lab Director/Quality Manager

PHONE (575) 393-2326 • 101 E. MARLAND • HOBBS, NM 88240

Notes and Definitions

S-04	The surrogate recovery for this sample is outside of established control limits due to a sample matrix effect.
QM-07	The spike recovery was outside acceptance limits for the MS and/or MSD. The batch was accepted based on acceptable LCS recovery.
ND	Analyte NOT DETECTED at or above the reporting limit
RPD	Relative Percent Difference
**	Samples not received at proper temperature of 6°C or below.
***	Insufficient time to reach temperature.
-	Chloride by SM4500Cl-B does not require samples be received at or below 6°C Samples reported on an as received basis (wet) unless otherwise noted on report

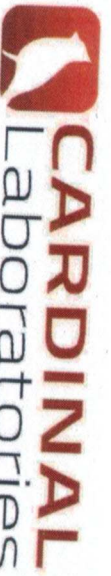
Cardinal Laboratories

*=Accredited Analyte

PLEASE NOTE: Liability and Damages. Cardinal's liability and client's exclusive remedy for any claim arising, whether based in contract or tort, shall be limited to the amount paid by client for analyses. All claims, including those for negligence and any other cause whatsoever shall be deemed waived unless made in writing and received by Cardinal within thirty (30) days after completion of the applicable service. In no event shall Cardinal be liable for incidental or consequential damages, including, without limitation, business interruptions, loss of use, or loss of profits incurred by client, its subsidiaries, affiliates or successors arising out of or related to the performance of the services hereunder by Cardinal, regardless of whether such claim is based upon any of the above stated reasons or otherwise. Results relate only to the samples identified above. This report shall not be reproduced except in full with written approval of Cardinal Laboratories.

A handwritten signature in black ink, appearing to read "C. D. Keene", is written over a horizontal line.

Celey D. Keene, Lab Director/Quality Manager



101 East Marland, Hobbs, NM 88240
(575) 393-2326 FAX (575) 393-2476

CHAIN-OF-CUSTODY AND ANALYSIS REQUEST

Company Name: Tetra Tech Project Manager: Sam Abbott Address: Sam Abbott Extra Tech, Inc. City: State: Zip: Phone #: Fax #: Project #: 212C-MD-02659 Project Owner: Project Name: Newark Hazardous Waste Site Project Location: Eddy County, NM Sampler Name: Lolita Brinkmann		P.O. #: Company: Tetra Tech Attn: Sam Abbott Address: by email City: State: Zip: Phone #: Fax #:	
Lab I.D. H220550 Sample I.D.		BILL TO	
PLEASE NOTE: Liability and Damages. Cardinal's liability and client's exclusive remedy for any claim arising whether based in contract or tort, shall be limited to the amount paid by the client for the analyses. All claims including those for negligence and any other cause whatsoever shall be deemed waived unless made in writing and received by Cardinal within 30 days after completion of the applicable service. In no event shall Cardinal be liable for incidental or consequential damages, including without limitation, business interruptions, loss of use, or loss of profits incurred by client, its subsidiaries, affiliates or successors arising out of or related to the performance of services hereunder by Cardinal, regardless of whether such claim is based upon any of the above stated reasons or otherwise.		ANALYSIS REQUEST	
Relinquished By: Lolita Brinkmann Date: 2/11/22 Time: 1:30 Received By: Lawrence Keene Date: Time: Observed Temp. °C: 4.7 Corrected Temp. °C: 4.2 Sample Condition: Cool Intact <input checked="" type="checkbox"/> Yes <input type="checkbox"/> No Checked By: (initials) Turnaround Time: Standard <input checked="" type="checkbox"/> Rush <input type="checkbox"/> Thermometer ID #113 Correction Factor -0.5°C Bacteria (only) Sample Condition: Cool Intact <input checked="" type="checkbox"/> Yes <input type="checkbox"/> No Observed Temp. °C: Corrected Temp. °C: REMARKS: Sam Abbott Extra Tech, Inc.		FOR LAB USE ONLY	
Matrix: GROUNDWATER <input checked="" type="checkbox"/> WASTEWATER <input type="checkbox"/> SOIL <input type="checkbox"/> OIL <input type="checkbox"/> SLUDGE <input type="checkbox"/> OTHER: ACID/BASE: <input checked="" type="checkbox"/> ICE / COOL <input type="checkbox"/> OTHER: DATE: 2/9/22 TIME: TPH <input checked="" type="checkbox"/> BTEX <input checked="" type="checkbox"/> Chlorides <input checked="" type="checkbox"/>			

APPENDIX D

Photographic Documentation



TETRA TECH, INC. PROJECT NO. 212C-MD-02659	DESCRIPTION	View south of Nervous Horz Com 3H signage	1
	SITE NAME	HConcho - Nervous Horz Com 3H	9/21/2021



TETRA TECH, INC. PROJECT NO. 212C-MD-02659	DESCRIPTION	View south of the release area and tank battery secondary containment.	2
	SITE NAME	HConcho - Nervous Horz Com 3H	9/21/2021



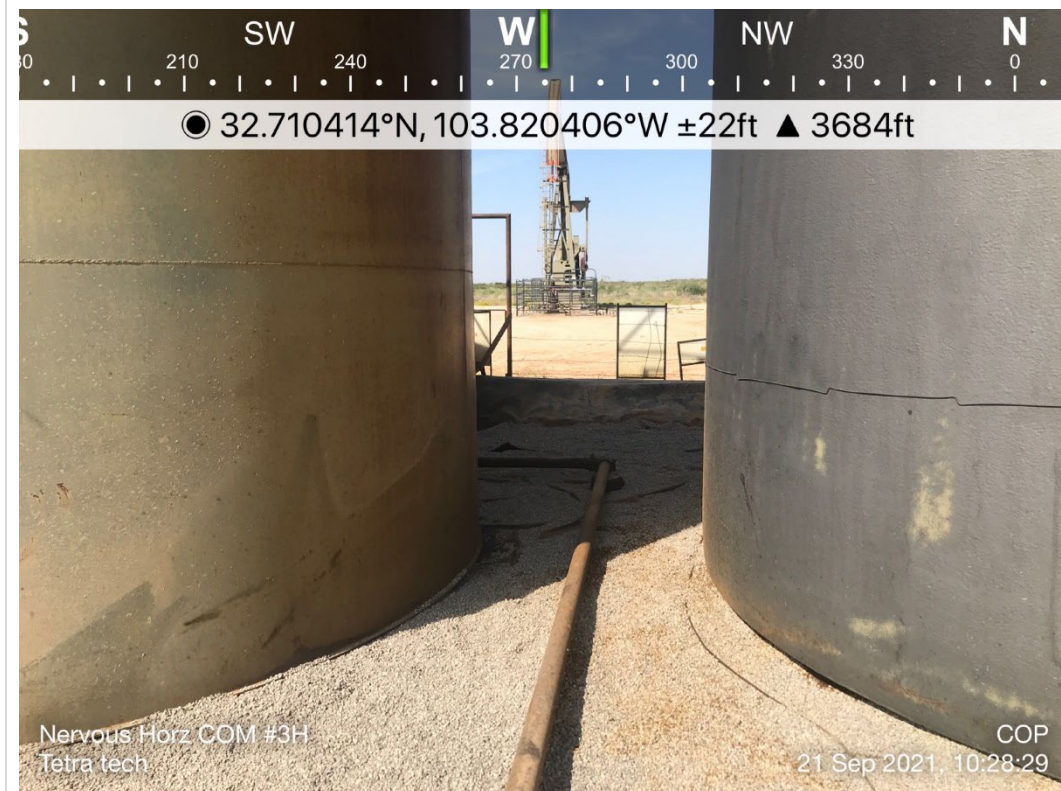
TETRA TECH, INC. PROJECT NO. 212C-MD-02659	DESCRIPTION	View north of the release area and tank battery secondary containment.	3
	SITE NAME	HConcho - Nervous Horz Com 3H	9/21/2021



TETRA TECH, INC. PROJECT NO. 212C-MD-02659	DESCRIPTION	View west of the release area and tank battery secondary containment.	4
	SITE NAME	HConcho - Nervous Horz Com 3H	9/21/2021



TETRA TECH, INC. PROJECT NO. 212C-MD-02659	DESCRIPTION	View east of the release area and tank batteries.	5
	SITE NAME	HConcho - Nervous Horz Com 3H	9/21/2021



TETRA TECH, INC. PROJECT NO. 212C-MD-02659	DESCRIPTION	View west of the release area and tank batteries.	6
	SITE NAME	HConcho - Nervous Horz Com 3H	9/21/2021



TETRA TECH, INC. PROJECT NO. 212C-MD-02659	DESCRIPTION	View south of stained gravels in the lined containment.	7
	SITE NAME	HConcho - Nervous Horz Com 3H	9/21/2021



TETRA TECH, INC. PROJECT NO. 212C-MD-02659	DESCRIPTION	View east of the release area and tank batteries.	8
	SITE NAME	HConcho - Nervous Horz Com 3H	9/21/2021

District I

1625 N. French Dr., Hobbs, NM 88240
Phone:(575) 393-6161 Fax:(575) 393-0720

District II

811 S. First St., Artesia, NM 88210
Phone:(575) 748-1283 Fax:(575) 748-9720

District III

1000 Rio Brazos Rd., Aztec, NM 87410
Phone:(505) 334-6178 Fax:(505) 334-6170

District IV

1220 S. St Francis Dr., Santa Fe, NM 87505
Phone:(505) 476-3470 Fax:(505) 476-3462

State of New Mexico
Energy, Minerals and Natural Resources
Oil Conservation Division
1220 S. St Francis Dr.
Santa Fe, NM 87505

CONDITIONS

Action 84753

CONDITIONS

Operator: COG OPERATING LLC 600 W Illinois Ave Midland, TX 79701	OGRID: 229137
	Action Number: 84753
	Action Type: [C-141] Release Corrective Action (C-141)

CONDITIONS

Created By	Condition	Condition Date
bbillings	DTW determination not accurate enough. However, it appears you may be able to excavate on pad to 50 foot or less Table 1 needs in the range of 1-2 feet. Requested confirm samples at better than 700 sq/ft is denied but you can go to a max of 500 sq/ft. If acceptable, carry on.	3/7/2022