



February 28, 2022

Bradford Billings
Hydrologist/E.Spec.A
District 2 Artesia
1220 South St. Francis Drive
Oil Conservation Division
Santa Fe, NM 87505

**Re: Release Characterization and Remediation Work Plan
ConocoPhillips
Heritage Concho
SRO State Com #008H Battery Release
Unit Letter P, Section 2, Township 26 South, Range 28 East
Eddy County, New Mexico
Incident ID# nHMP1518725850
2RP-3092**

Mr. Billings,

Tetra Tech, Inc. (Tetra Tech) was contacted by ConocoPhillips to assess a Heritage Concho release and evaluate subsequent remedial actions performed at the SRO State Com #008H Battery Release site (associated API No. 30-015-37548). The release footprint is located in Public Land Survey System (PLSS) Unit Letter P, Section 2, Township 26 South, Range 28 East, in Eddy County, New Mexico (Site). The approximate release point occurred at coordinates 32.065123°, -104.050597°, as shown on Figures 1 and 2.

BACKGROUND

According to the State of New Mexico Oil Conservation Division (NMOCD) C-141 Initial Report, the release was discovered on June 17, 2015. The C-141 reports that the cause of the release was caused by a gasket failure on the separator. Approximately 5 barrels (bbls) of crude oil and 130 bbls of produced water were released. Approximately 4 bbls of oil and 128 bbls of produced water were recovered with a vacuum truck during initial response activities.

According to initial NMOCD correspondence, the release remained within the containment. However, subsequent Concho documentation indicates that a small amount of fluid misted over the west berm and approximately 40 feet into the pasture southwest of the battery. Based on correspondence, the impacted area within the berm was excavated to a depth of approximately 8 inches. The NMOCD approved the initial C-141 on December 8, 2015, and subsequently assigned the release the Incident ID nHMP1518725850 and the Remediation Permit (RP) number 2RP-3092. The initial C-141 form is included in Appendix A.

SITE CHARACTERIZATION

A site characterization was performed and no sinkholes, residences, schools, hospitals, institutions, churches, springs, private domestic water wells, playa lakes, stream bodies, wetlands, incorporated municipal boundaries, subsurface mines, or floodplains are located within the distances specified in 19.15.29 New Mexico Administrative Code (NMAC). The Site is not in an area of high karst potential.

Tetra Tech

901 West Wall St., Suite 100, Midland, TX 79701

Tel 432.682.4559 Fax 432.682.3946 www.tetrattech.com

There are no water wells listed in the New Mexico Office of the State Engineer (NMOSE) database located within approximately ½ mile (800 meters) of the Site. According to data from two (2) water wells listed in the NMOSE database within approximately 0.7 miles (1,200 meters) of the Site, the minimum depth to groundwater is 120 feet below ground surface (bgs). The site characterization data are presented in Appendix B.

REGULATORY FRAMEWORK

Based upon the release footprint and in accordance with Subsection E of 19.15.29.12 NMAC, per 19.15.29.11 NMAC, the site characterization data was used to determine recommended remedial action levels (RRALs) for benzene, toluene, ethylbenzene, and xylene (collectively referred to as BTEX), total petroleum hydrocarbons (TPH), and chlorides in soil.

Based on the site characterization, established depth to groundwater, and in accordance with Table I of 19.15.29.12 NMAC, the RRALs for the Site are as follows:

Constituent	Site RRALs
Chloride	20,000 mg/kg
TPH	2,500 mg/kg
BTEX	50 mg/kg

Additionally, in accordance with the NMOCD guidance *Procedures for Implementation of the Spill Rule (19.15.29 NMAC)* (September 6, 2019), the following reclamation requirements for surface soils (0-4 ft bgs) outside of active oil and gas operations are as follows:

Constituent	Reclamation Requirements
Chloride	600 mg/kg
TPH	100 mg/kg
BTEX	50 mg/kg

INITIAL RESPONSE ACTIVITIES AND INITIAL ASSESSMENT

As mentioned, based on documentation provided by Concho representatives, the release occurred inside of the bermed facility. However, subsequent Concho documentation indicates that a small amount of fluid misted over the west berm and approximately 40 feet into the west pasture. At the time of the release (2015) the facility layout was slightly different from the present-day layout. The release footprint is indicated in Figure 3, with aerial imagery from 2014. The release extent and approximate release location are presented in Figure 4 with current facility conditions. The facility is currently named Graham Cracker #2.

Based on correspondence, during initial response activities, the impacted area within the berm was excavated to a depth of approximately 8 inches bgs. The contaminated soil was reportedly hauled to an approved NMOCD disposal facility. Waste manifests were not provided by Concho.

According to available documentation, Concho representatives were onsite on July 1, 2015 to collect soil samples from three (3) locations (S1 through S3) at approximate depths of 1 foot bgs. Two of the locations were located within the berm interior (S1 and S2) and the third location was collected from a small pooling area with the misted portion of the pasture. The sample locations are indicated in Figure 3. A total of three (3) soil samples were collected from the locations and sent to Cardinal Laboratories in Hobbs, New Mexico to be analyzed for chloride via Method SM4500Cl-B, TPH via EPA Method 8015M and BTEX via EPA Method 8021B.

A summary of the July 2015 analytical results is presented in Table 1. The analytical results from the berm interior were below applicable Site RRALs for soils in active oil and gas production areas. The sample S3

collected from the pasture area exceeded the reclamation requirements for surface soils (0-4 ft bgs) outside of active oil and gas operations.

CLOSURE REQUEST (AUGUST 28, 2015) AND NMOCD CORRESPONDENCE

The closure request was submitted via email to Mike Bratcher and Heather Patterson of the NMOCD on August 28, 2015. A site diagram was provided indicating the approximate release extent, sampling locations and site features, as well as the laboratory analytical report and a table of the results of the sampling event. On September 18, 2015 Heather Patterson requested that Concho provide surface samples at each previous sampling points and conduct further vertical delineation at sample point S3. The submitted closure report and associated NMOCD correspondence is provided in Appendix C.

It appears from available records that no further correspondence occurred between Concho and NMOCD. The requests from the NMOCD appeared unresolved. The 2RP-3092 release is included in an Agreed Compliance Order-Releases (ACO-R) between COG Operating LLC (Concho) and the NMOCD signed on November 20 and 26, 2018, respectively.

A review of historical aerial imagery revealed that the former tank battery was replaced with a new tank battery at some point between the release date and December 2019. Tetra Tech personnel visited the site on September 23, 2021 to document current site conditions. The facility is currently named Graham Cracker #2, and the former on-pad release footprint has been replaced with a lined battery facility. The gravel within the existing lined containment had no visible staining or odor. Photographic documentation from the site visit is included in Appendix D.

ADDITIONAL SITE ASSESSMENT AND SAMPLING RESULTS

In order to complete the release assessment and delineation per NMOCD regulations, Tetra Tech conducted additional soil sampling at the release site on behalf of ConocoPhillips on January 19, 2022. One (1) soil boring (BH-1) was completed using air rotary drill rig in the misted pasture area adjacent to the west berm to a depth of 15 feet bgs to complete vertical delineation of the release. Tetra Tech installed one (1) hand auger soil boring (AH-1) within the former approximate release extent and one (1) hand auger boring (AH-3) to 2 feet bgs to delineate to the west. On February 9, 2022, Tetra Tech installed an additional hand auger soil boring (AH-2) to 2 feet bgs to complete horizontal delineation of the release to the south. Boring locations are indicated on Figure 4.

A total of twelve (12) soil samples were collected and sent to Cardinal Laboratories in Hobbs, New Mexico to be analyzed for chloride via Method SM4500Cl-B, TPH via EPA Method 8015M and BTEX via EPA Method 8261B. A copy of the laboratory analytical report and chain-of-custody documentation are included in Appendix E.

Analytical results from the January and February 2022 assessment activities are summarized in Table 2. The analytical results associated with BH-1 boring location exceed the Site RRAL for chloride (600 mg/kg) in the 0-1 and 2-3 feet bgs sample intervals. All other analytical results were below applicable Site RRALs for chlorides, BTEX, and TPH. Vertical and horizontal delineation of the release were successfully achieved as a result of 2022 assessment activities.

REMEDIATION WORK PLAN

Based on the analytical results from the assessment, ConocoPhillips proposes to remove the impacted material within the release extent as shown in Figure 5. Impacted soils will be excavated using heavy equipment (backhoes, hoe rams, and track hoes) to a maximum depth of 4 feet below the surrounding surface or until a representative sample from the walls and bottom of the excavation is below the reclamation requirements or the Site RRALs. Heavy equipment will come no more than 3 feet from any pressurized lines. Impacted soils within the vicinity of the surface and subsurface lines which intersect the release footprint will be dug by hand to the maximum extent practicable.

Excavated soils will be transported offsite and disposed of at an NMOCD-approved or permitted facility. Confirmation bottom and sidewall samples will be collected for verification of remedial activities, and analyzed for TPH, BTEX, and chlorides. Once analytical results are received, NMOCD will be notified, and the excavation will then be backfilled with clean material to surface grade. The estimated volume of material to be remediated is approximately 275 cubic yards.

ALTERNATIVE CONFIRMATION SAMPLING PLAN

In accordance with 19.15.29.12(D)(1)(b) NMAC, ConocoPhillips proposes the following alternative confirmation sampling plan to adhere with NMOCD requirements. The proposed confirmation sample locations are depicted in Figure 6. Two (2) confirmation floor samples and four (4) confirmation sidewall samples are proposed for verification of remedial activities. The proposed excavation encompasses a surface area of approximately 1,840 square feet.

These confirmation sidewall and floor samples will be representative of no more than approximately 500 square feet of excavated area. Confirmation samples will be sent to an accredited laboratory for analysis of TPH (Method 8015 modified), BTEX (Method 8260B), and chloride (Method 300.0). Once results are received, NMOCD will be notified, and the excavation will then be backfilled with clean material to surface grade.

SITE RECLAMATION AND RESTORATION PLAN

Based on the previous assessment activities, the impacted surface area of the release on the production lease pad meets the remediation standards of Table I of 19.15.29.12 NMAC. As these areas are needed for production operations, final reclamation of any impact within the lease pad areas shall take place in accordance with 19.15.29.12 and 19.15.29.13 NMAC once the Site is no longer being used for oil and gas operations. Therefore, reclamation of the soils located within the confines of the battery lease pad will be delayed until the abandonment of the SRO State Com #008H Battery facility (currently named the Graham Cracker #2 facility) and the full pad reclamation.

CONCLUSION

Based on the results of the site assessment, ConocoPhillips considers the current release footprint to be fully delineated. ConocoPhillips proposes to begin remediation activities at the Site within 120 days of NMOCD plan approval. Upon completion of the proposed work, a final closure report detailing the remediation activities and the results of the confirmation sampling will be submitted to NMOCD. If you have any questions concerning the soil assessment or the proposed remediation activities for the Site, please call me at (512) 217-7254 or Christian at (512) 338-2861.

Sincerely,
Tetra Tech, Inc.



Samantha K. Abbott, P.G.
Project Manager



Christian M. Llull, P.G.
Program Manager

cc:
Mr. Charles Beauvais, BU – ConocoPhillips

LIST OF ATTACHMENTS

Figures:

- Figure 1 – Overview Map
- Figure 2 – Topographic Map
- Figure 3 – Approximate Release Extent Map and 2015 Initial Site Assessment
- Figure 4 – Current Site Conditions and 2022 Additional Site Assessment
- Figure 5 – Proposed Remediation Extent Map
- Figure 6 – Alternative Confirmation Sampling Plan Map

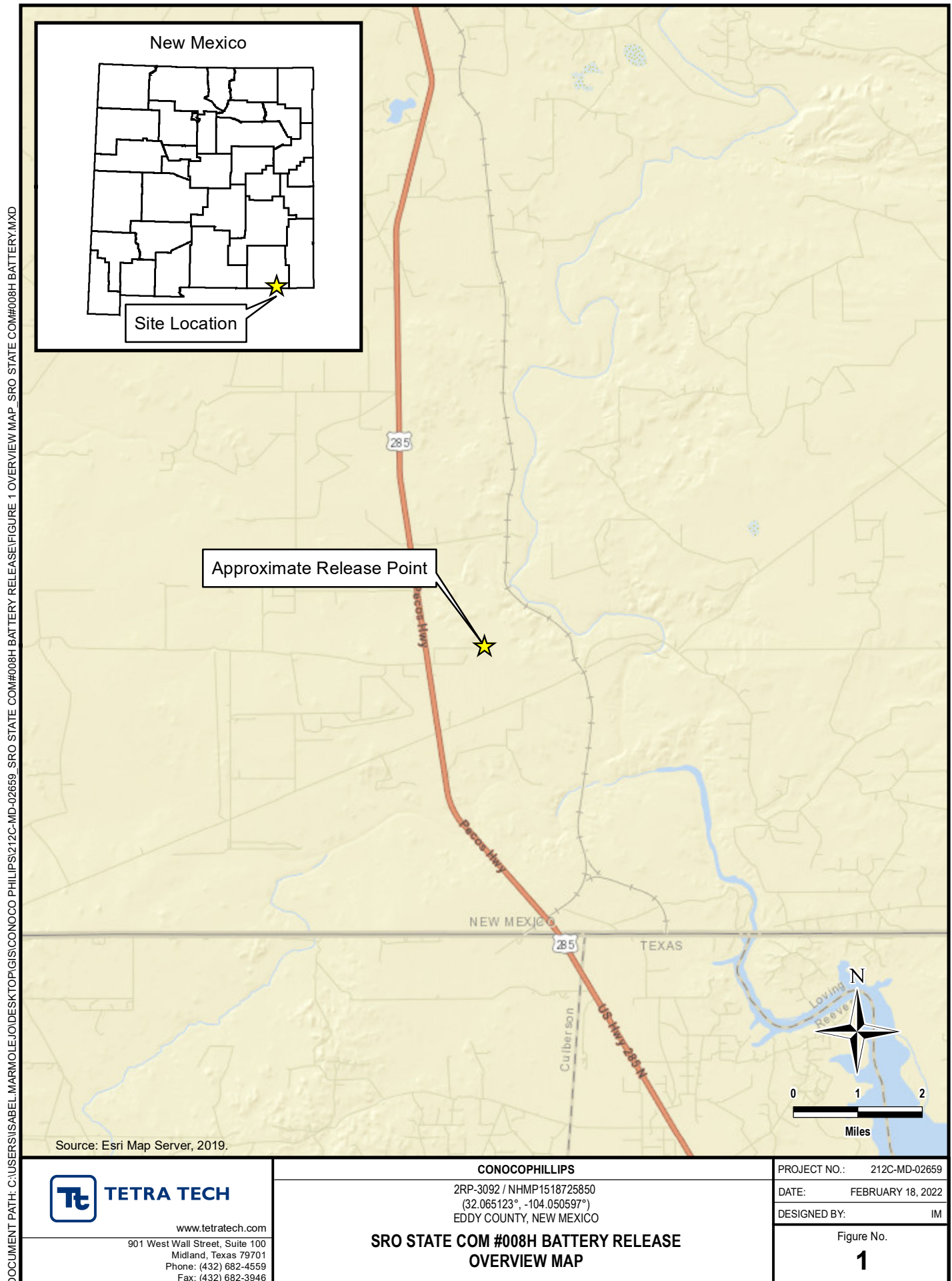
Tables:

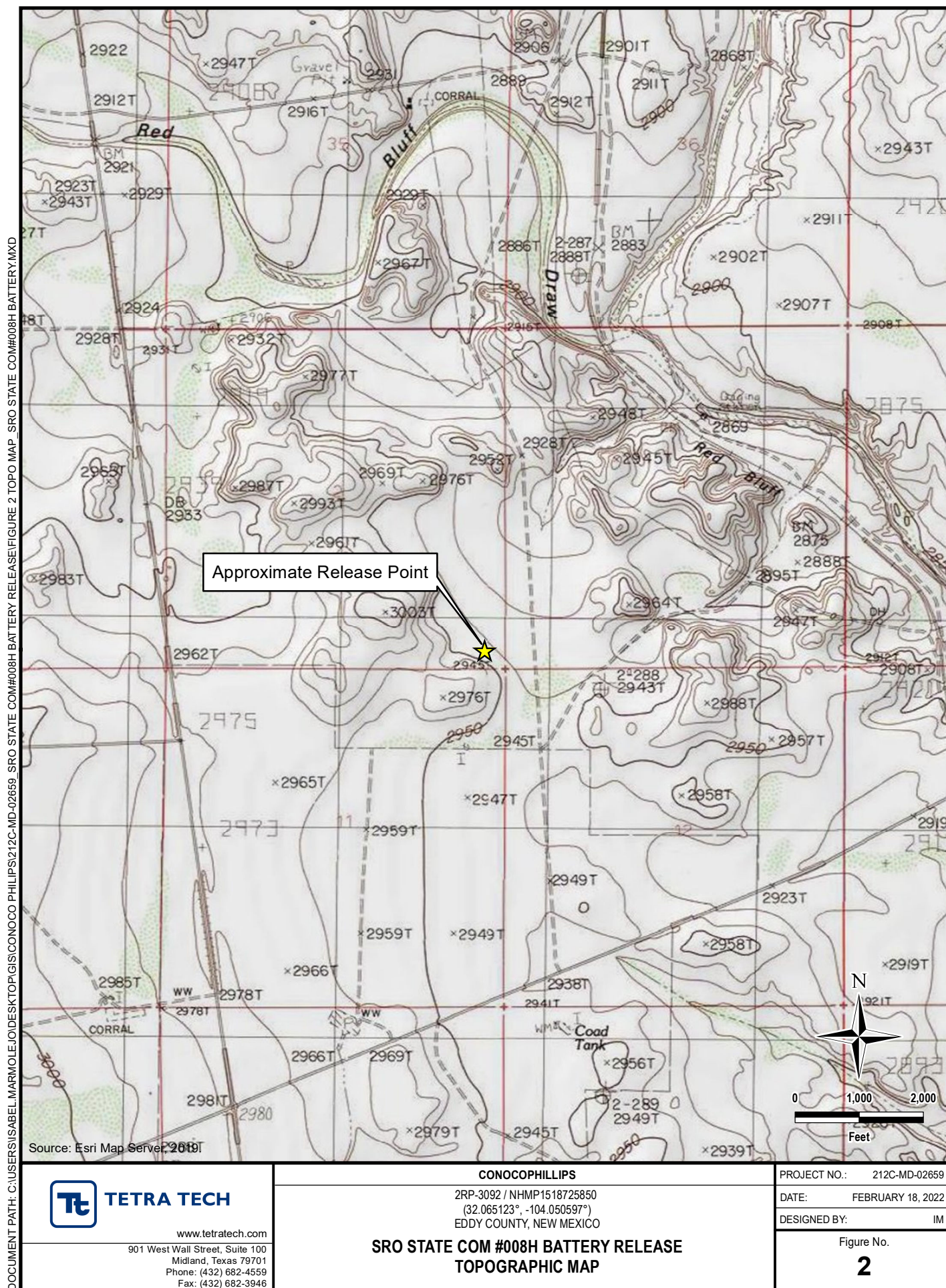
- Table 1 – Summary of Analytical Results – 2015 Initial Site Assessment
- Table 2 – Summary of Analytical Results – 2022 Additional Site Assessment

Appendices:

- Appendix A – C-141 Forms
- Appendix B – Site Characterization Data
- Appendix C – 2015 Closure Request & NMOCD Correspondence
- Appendix D – Photographic Documentation
- Appendix E – Laboratory Analytical Data

FIGURES

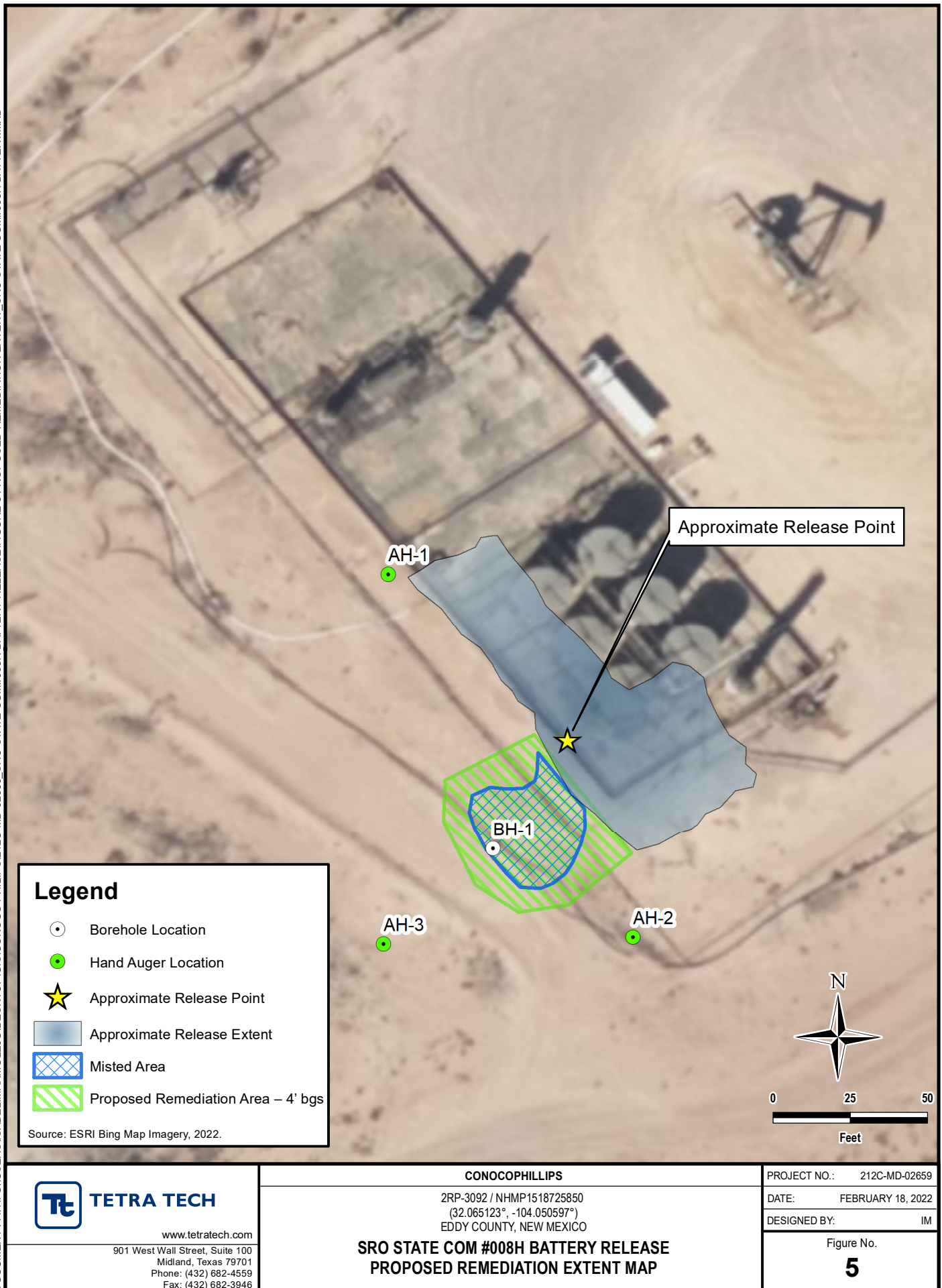




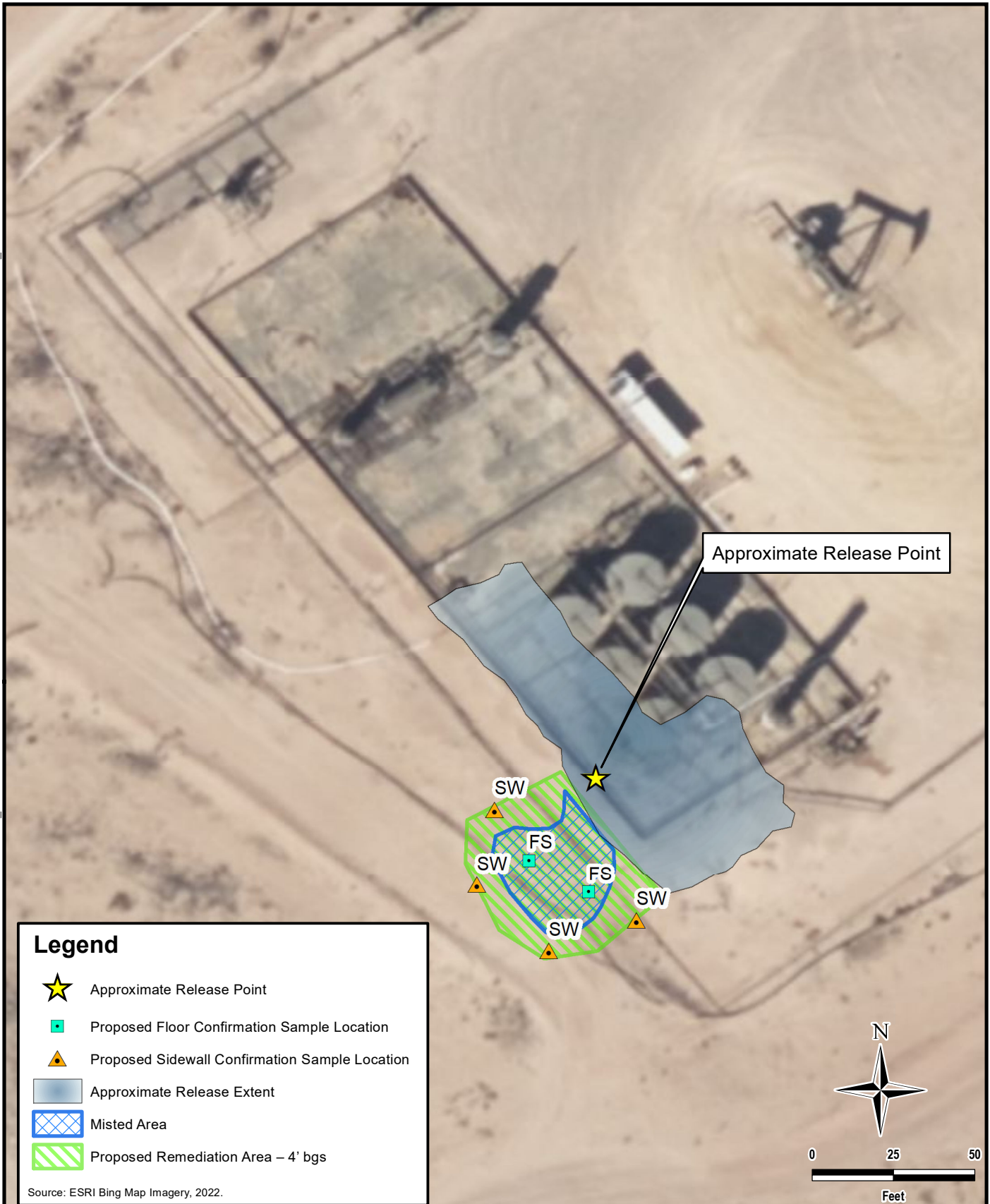




DOCUMENT PATH: C:\USERS\ISABEL.MARMOLEJO\DESKTOP\GIS\CONOCO PHILLIPS\212C-MD-02659 -SRO STATE COM#008H BATTERY RELEASE\FIGURE 5 PROPOSED REMEDIATION EXTENT -SRO STATE COM#008H BATTERY.MXD



DOCUMENT PATH: C:\USERS\ISABEL.MARMOLEJO\DESKTOP\GIS\CONOCO PHILLIPS\212C-MD-02659 -SRO STATE COM#008H BATTERY RELEASE\FIGURE 6 ALTERNATIVE CONFIRMATION SAMPLING PLAN -SRO STATE COM#008H BATTERY.MXD

**TETRA TECH**

www.tetrattech.com

901 West Wall Street, Suite 100
Midland, Texas 79701
Phone: (432) 682-4559
Fax: (432) 682-3946

CONOCOPHILLIPS

2RP-3092 / NHMP1518725850
(32.065123°, -104.050597°)
EDDY COUNTY, NEW MEXICO

**SRO STATE COM #008H BATTERY RELEASE
ALTERNATIVE CONFIRMATION SAMPLING PLAN MAP**

PROJECT NO.: 212C-MD-02659

DATE: FEBRUARY 18, 2022

DESIGNED BY: IM

Figure No.

6

TABLES

TABLE 1
SUMMARY OF ANALYTICAL RESULTS
INITIAL SOIL ASSESSMENT- 2RP-3092 / NHMP1518725850
HERITAGE CONCHO
SRO STATE COM #008H BATTERY RELEASE
EDDY COUNTY, NM

Sample ID	Sample Date	Sample Depth	Chloride ¹		BTEX ²										TPH ³				
					Benzene		Toluene		Ethylbenzene		Total Xylenes		Total BTEX		GRO		DRO		Total TPH (GRO+DRO)
		C ₆ - C ₁₀		> C ₁₀ - C ₂₈															
		ft. bgs	mg/kg	Q	mg/kg	Q	mg/kg	Q	mg/kg	Q	mg/kg	Q	mg/kg	Q	mg/kg	Q	mg/kg	Q	mg/kg
S1	7/1/2015	1	416		< 0.050		< 0.050		< 0.050		< 0.150		< 0.300		< 10.0		< 10.0		-
S2	7/1/2015	1	192		< 0.050		< 0.050		< 0.050		< 0.150		< 0.300		< 10.0		< 10.0		-
S3	7/1/2015	1	832		< 0.050		< 0.050		< 0.050		< 0.150		< 0.300		< 10.0		< 10.0		922

NOTES:

- ft. Feet
bgs Below ground surface
mg/kg Milligrams per kilogram
TPH Total Petroleum Hydrocarbons
GRO Gasoline range organics
DRO Diesel range organics
1 Method SM4500Cl-B
2 Method 8021B
3 Method 8015M

Bold and italicized values indicate exceedance of proposed Remediation RRALs and Reclamation Requirements.

QUALIFIERS:

TABLE 2
SUMMARY OF ANALYTICAL RESULTS
SOIL ASSESSMENT- 2RP-3092 / NHMP1518725850
HERITAGE CONCHO
SRO STATE COM #008H BATTERY RELEASE
EDDY COUNTY, NM

Sample ID	Sample Date	Sample Depth	Field Screening Results		Chloride ¹		BTEX ²										TPH ³							
							Benzene		Toluene		Ethylbenzene		Total Xylenes		Total BTEX		GRO		DRO		EXT DRO		Total TPH (GRO+DRO+EXT DRO)	
			C ₆ - C ₁₀														> C ₁₀ - C ₂₈		> C ₂₈ - C ₃₆					
			ft. bgs	ppm			mg/kg	Q	mg/kg	Q	mg/kg	Q	mg/kg	Q	mg/kg	Q	mg/kg	Q	mg/kg	Q	mg/kg	Q	mg/kg	Q
BH-1	1/19/2022	0-1	-	-	1,310		< 0.050		< 0.050		< 0.050		< 0.150		< 0.300		< 10.0		< 10.0		< 10.0		-	
		2-3	-	-	832		< 0.050		< 0.050		< 0.050		< 0.150		< 0.300		< 10.0		< 10.0		< 10.0		-	
		4-5	-	-	592		< 0.050		< 0.050		< 0.050		< 0.150		< 0.300		< 10.0		< 10.0		< 10.0		-	
		6-7	-	-	864		< 0.050		< 0.050		< 0.050		< 0.150		< 0.300		< 10.0		< 10.0		< 10.0		-	
		9-10	-	-	560		< 0.050		0.056		< 0.050		< 0.150		< 0.300		< 10.0		< 10.0		< 10.0		-	
		14-15	-	-	672		< 0.050		< 0.050		< 0.050		< 0.150		< 0.300		< 10.0		< 10.0		< 10.0		-	
AH-1	1/19/2022	0-1	-	-	256		< 0.050		< 0.050		< 0.050		< 0.150		< 0.300		< 10.0		< 10.0		< 10.0		-	
		1-2	-	-	160		< 0.050		< 0.050		< 0.050		< 0.150		< 0.300		< 10.0		< 10.0		< 10.0		-	
AH-2	2/9/2022	0-1	265	-	224		< 0.050		< 0.050		< 0.050		< 0.150		< 0.300		< 10.0		< 10.0		< 10.0		-	
		1-2	46.0	-	192		< 0.050		< 0.050		< 0.050		< 0.150		< 0.300		< 10.0		< 10.0		< 10.0		-	
AH-3	1/19/2022	0-1	-	-	176		< 0.050		< 0.050		< 0.050		< 0.150		< 0.300		< 10.0		< 10.0		< 10.0		-	
		1-2	-	-	192		< 0.050		< 0.050		< 0.050		< 0.150		< 0.300		< 10.0		< 10.0		< 10.0		-	

NOTES:

ft. Feet

bgs Below ground surface

mg/kg Milligrams per kilogram

TPH Total Petroleum Hydrocarbons

GRO Gasoline range organics

DRO Diesel range organics

1 Method SM4500Cl-B

2 Method 8021B

3 Method 8015M

Bold and italicized values indicate exceedance of proposed Remediation RRALs and Reclamation Requirements.

Shaded rows indicate intervals proposed for excavation.

QUALIFIERS:

APPENDIX A C-141 Forms

District I
1625 N. French Dr., Hobbs, NM 88240
District II
811 S. First St., Artesia, NM 88210
District III
1000 Rio Brazos Road, Aztec, NM 87410
District IV
1220 S. St. Francis Dr., Santa Fe, NM 87505

State of New Mexico
Energy Minerals and Natural Resources
Oil Conservation Division
1220 South St. Francis Dr.
Santa Fe, NM 87505

Received 7/1/2015

NMOCD Artesia

Form C-141
Revised August 8, 2011Submit 1 Copy to appropriate District Office in
accordance with 19.15.29 NMAC.**Release Notification and Corrective Action**

nHMP1518725850

OPERATOR☒ Initial Report ☐ Final Report

Name of Company: COG Operating LLC	Contact: Robert McNeill
Address: 600 West Illinois Avenue, Midland TX 79701	Telephone No. 432-230-0077
Facility Name: SRO STATE COM #008H	Facility Type: Battery
Surface Owner: State	Mineral Owner:
API No. 30-015-37548	

LOCATION OF RELEASE

Unit Letter	Section	Township	Range	Feet from the	North/South Line	Feet from the	East/West Line	County
P	2	26S	28E	380	South	330	East	Eddy

Latitude 32.0653343 Longitude -104.0503311

NATURE OF RELEASE

Type of Release: Oil & Produced Water	Volume of Release: 5 bbls oil; 130 bbls PW	Volume Recovered: 4 bbls oil; 128 bbls PW
Source of Release: Gasket Failure	Date and Hour of Occurrence: 6/17/2015 8:00 am	Date and Hour of Discovery: 6/17/2015 8:00 am
Was Immediate Notice Given? <input checked="" type="checkbox"/> Yes <input type="checkbox"/> No <input type="checkbox"/> Not Required	If YES, To Whom? Mike Bratcher – NMOCD	
By Whom? Amanda Trujillo	Date and Hour: Fri 6/19/2015 1:16 PM	
Was a Watercourse Reached? <input type="checkbox"/> Yes <input checked="" type="checkbox"/> No	If YES, Volume Impacting the Watercourse.	

If a Watercourse was Impacted, Describe Fully.*

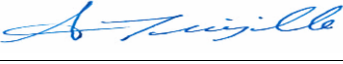

Describe Cause of Problem and Remedial Action Taken.*

This release was caused by a gasket failure on the separator. Vacuum trucks were dispatched to recover all standing fluid.

Describe Area Affected and Cleanup Action Taken.*

This spill occurred within the bermed area. Crews hand excavated the impacted material. Concho will have the spill site sampled to delineate any possible contamination from the release and we will present a remediation work plan to the NMOCD for approval prior to any significant remediation work.

I hereby certify that the information given above is true and complete to the best of my knowledge and understand that pursuant to NMOCD rules and regulations all operators are required to report and/or file certain release notifications and perform corrective actions for releases which may endanger public health or the environment. The acceptance of a C-141 report by the NMOCD marked as "Final Report" does not relieve the operator of liability should their operations have failed to adequately investigate and remediate contamination that pose a threat to ground water, surface water, human health or the environment. In addition, NMOCD acceptance of a C-141 report does not relieve the operator of responsibility for compliance with any other federal, state, or local laws and/or regulations.

Signature: 	OIL CONSERVATION DIVISION	
Printed Name: Amanda Trujillo	Approved by Environmental Specialist: 	
Title: Senior Environmental Coordinator	Approval Date: 7/6/2015	Expiration Date: N/A
E-mail Address: atrujillo@concho.com	Conditions of Approval:	
Date: July 1, 2015 Phone: 575-748-6940	Remdiation per OCD Rules and Guidelines	
	Attached <input type="checkbox"/>	

* Attach Additional Sheets If Necessary

Submit Remediation Proposal No
Later Than 8/6/2015

2RP-3092

Incident ID	
District RP	
Facility ID	
Application ID	

Site Assessment/Characterization

This information must be provided to the appropriate district office no later than 90 days after the release discovery date.

What is the shallowest depth to groundwater beneath the area affected by the release?	_____ (ft bgs)
Did this release impact groundwater or surface water?	<input type="checkbox"/> Yes <input type="checkbox"/> No
Are the lateral extents of the release within 300 feet of a continuously flowing watercourse or any other significant watercourse?	<input type="checkbox"/> Yes <input type="checkbox"/> No
Are the lateral extents of the release within 200 feet of any lakebed, sinkhole, or playa lake (measured from the ordinary high-water mark)?	<input type="checkbox"/> Yes <input type="checkbox"/> No
Are the lateral extents of the release within 300 feet of an occupied permanent residence, school, hospital, institution, or church?	<input type="checkbox"/> Yes <input type="checkbox"/> No
Are the lateral extents of the release within 500 horizontal feet of a spring or a private domestic fresh water well used by less than five households for domestic or stock watering purposes?	<input type="checkbox"/> Yes <input type="checkbox"/> No
Are the lateral extents of the release within 1000 feet of any other fresh water well or spring?	<input type="checkbox"/> Yes <input type="checkbox"/> No
Are the lateral extents of the release within incorporated municipal boundaries or within a defined municipal fresh water well field?	<input type="checkbox"/> Yes <input type="checkbox"/> No
Are the lateral extents of the release within 300 feet of a wetland?	<input type="checkbox"/> Yes <input type="checkbox"/> No
Are the lateral extents of the release overlying a subsurface mine?	<input type="checkbox"/> Yes <input type="checkbox"/> No
Are the lateral extents of the release overlying an unstable area such as karst geology?	<input type="checkbox"/> Yes <input type="checkbox"/> No
Are the lateral extents of the release within a 100-year floodplain?	<input type="checkbox"/> Yes <input type="checkbox"/> No
Did the release impact areas not on an exploration, development, production, or storage site?	<input type="checkbox"/> Yes <input type="checkbox"/> No

Attach a comprehensive report (electronic submittals in .pdf format are preferred) demonstrating the lateral and vertical extents of soil contamination associated with the release have been determined. Refer to 19.15.29.11 NMAC for specifics.

Characterization Report Checklist: *Each of the following items must be included in the report.*

- ☐ Scaled site map showing impacted area, surface features, subsurface features, delineation points, and monitoring wells.
- ☐ Field data
- ☐ Data table of soil contaminant concentration data
- ☐ Depth to water determination
- ☐ Determination of water sources and significant watercourses within ½-mile of the lateral extents of the release
- ☐ Boring or excavation logs
- ☐ Photographs including date and GIS information
- ☐ Topographic/Aerial maps
- ☐ Laboratory data including chain of custody

If the site characterization report does not include completed efforts at remediation of the release, the report must include a proposed remediation plan. That plan must include the estimated volume of material to be remediated, the proposed remediation technique, proposed sampling plan and methods, anticipated timelines for beginning and completing the remediation. The closure criteria for a release are contained in Table 1 of 19.15.29.12 NMAC, however, use of the table is modified by site- and release-specific parameters.

State of New Mexico
Oil Conservation Division

Page 4

Incident ID	
District RP	
Facility ID	
Application ID	

I hereby certify that the information given above is true and complete to the best of my knowledge and understand that pursuant to OCD rules and regulations all operators are required to report and/or file certain release notifications and perform corrective actions for releases which may endanger public health or the environment. The acceptance of a C-141 report by the OCD does not relieve the operator of liability should their operations have failed to adequately investigate and remediate contamination that pose a threat to groundwater, surface water, human health or the environment. In addition, OCD acceptance of a C-141 report does not relieve the operator of responsibility for compliance with any other federal, state, or local laws and/or regulations.

Printed Name: _____ Title: _____

Signature: Charles R. Beauvais II Date: _____

email: _____ Telephone: _____

OCD Only

Received by: _____ Date: _____

Incident ID	
District RP	
Facility ID	
Application ID	

Remediation Plan

Remediation Plan Checklist: *Each of the following items must be included in the plan.*

- ☐ Detailed description of proposed remediation technique
- ☐ Scaled sitemap with GPS coordinates showing delineation points
- ☐ Estimated volume of material to be remediated
- ☐ Closure criteria is to Table 1 specifications subject to 19.15.29.12(C)(4) NMAC
- ☐ Proposed schedule for remediation (note if remediation plan timeline is more than 90 days OCD approval is required)

Deferral Requests Only: *Each of the following items must be confirmed as part of any request for deferral of remediation.*

- ☐ Contamination must be in areas immediately under or around production equipment where remediation could cause a major facility deconstruction.
- ☐ Extents of contamination must be fully delineated.
- ☐ Contamination does not cause an imminent risk to human health, the environment, or groundwater.

I hereby certify that the information given above is true and complete to the best of my knowledge and understand that pursuant to OCD rules and regulations all operators are required to report and/or file certain release notifications and perform corrective actions for releases which may endanger public health or the environment. The acceptance of a C-141 report by the OCD does not relieve the operator of liability should their operations have failed to adequately investigate and remediate contamination that pose a threat to groundwater, surface water, human health or the environment. In addition, OCD acceptance of a C-141 report does not relieve the operator of responsibility for compliance with any other federal, state, or local laws and/or regulations.

Printed Name: _____ Title: _____

Signature: Charles R. Beauvais II Date: _____

email: _____ Telephone: _____

OCD Only

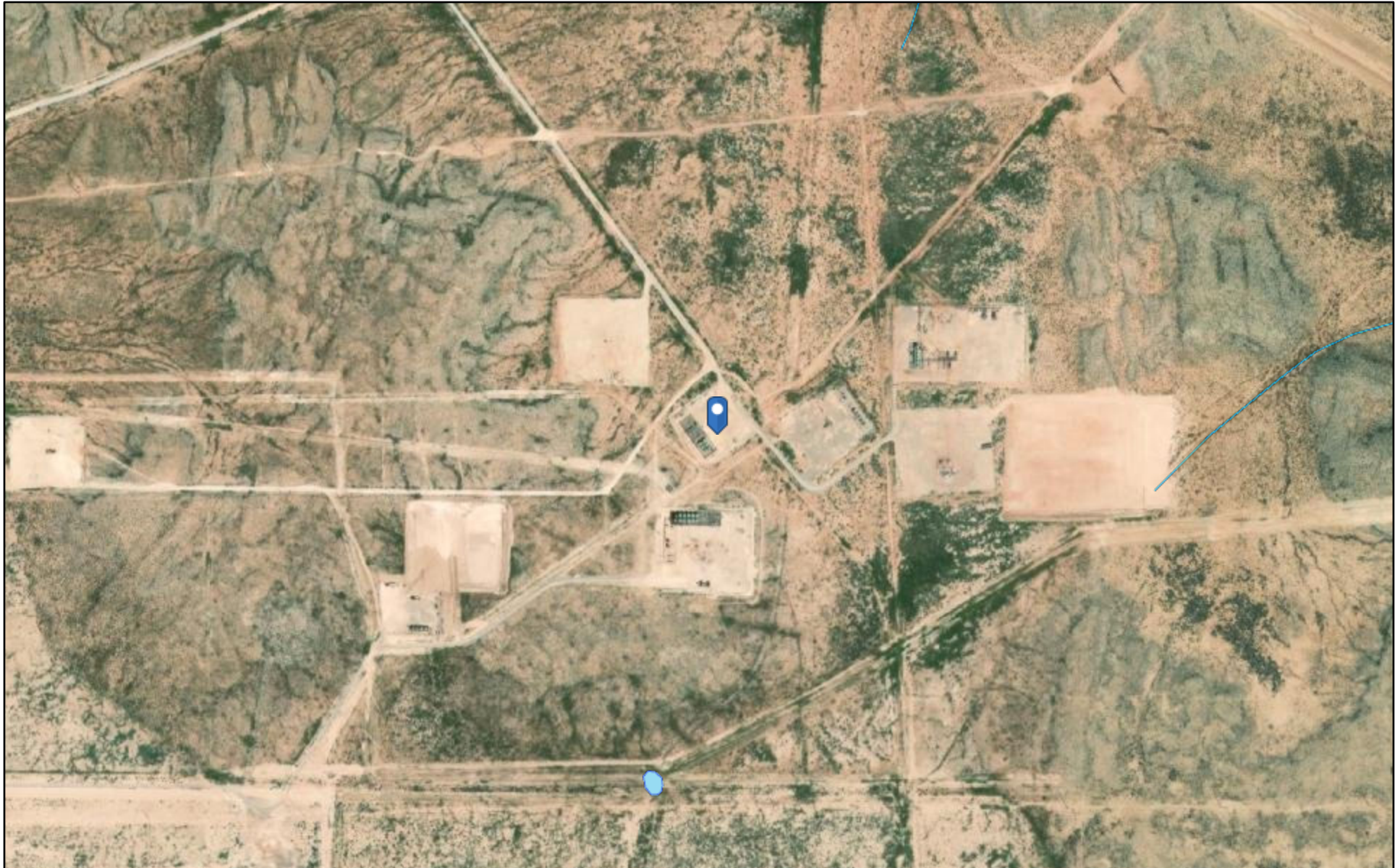
Received by: _____ Date: _____

☐ Approved ☐ Approved with Attached Conditions of Approval ☐ Denied ☐ Deferral ApprovedSignature: Bradford Billings Date: _____

APPENDIX B

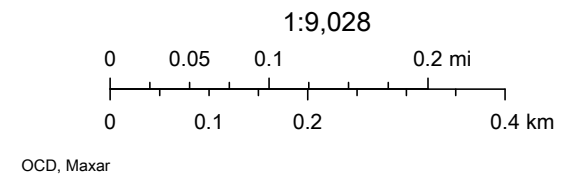
Site Characterization Data

SRO State Com #008H Battery Release Water Bodies



1/11/2022, 11:56:23 AM

- ★ OCD District Offices
- PLJV Probable Playas
- OSE Water-bodies
- OSE Streams



SRO State #8

Karst Potential

Legend

- ☆ Approximate Release Location
- High
- Low
- Medium

Malaga

285

☆ Approximate Release Location

Google Earth

7 mi





New Mexico Office of the State Engineer Water Column/Average Depth to Water

(quarters are 1=NW 2=NE 3=SW 4=SE)
(quarters are smallest to largest) (NAD83 UTM in meters)

No records found.

UTMNAD83 Radius Search (in meters):

Easting (X): 589639

Northing (Y): 3548072

Radius: 800

The data is furnished by the NMOSE/ISC and is accepted by the recipient with the expressed understanding that the OSE/ISC make no warranties, expressed or implied, concerning the accuracy, completeness, reliability, usability, or suitability for any particular purpose of the data.

2/17/22 11:12 AM

WATER COLUMN/ AVERAGE
DEPTH TO WATER



New Mexico Office of the State Engineer

Water Column/Average Depth to Water

(A CLW#### in the POD suffix indicates the POD has been replaced & no longer serves a water right file.)

(R=POD has been replaced,
O=orphaned,
C=the file is closed)

(quarters are 1=NW 2=NE 3=SW 4=SE)

(quarters are smallest to largest) (NAD83 UTM in meters)

(In feet)

POD Number	Code	Sub-basin	County	Q 64	Q 16	Q 4	Sec	Tws	Rng	X	Y	Distance	DepthWell	DepthWater	Water Column
C 02924		C	ED	1	3	2	11	26S	28E	589032	3547451*	868			
C 02160 S9		CUB	ED	3	3	2	02	26S	28E	589020	3548868*	1008	300	120	180

Average Depth to Water: **120 feet**

Minimum Depth: **120 feet**

Maximum Depth: **120 feet**

Record Count: 2

UTM NAD83 Radius Search (in meters):

Easting (X): 589639

Northing (Y): 3548072

Radius: 1200

*UTM location was derived from PLSS - see Help

The data is furnished by the NMOSE/ISC and is accepted by the recipient with the expressed understanding that the OSE/ISC make no warranties, expressed or implied, concerning the accuracy, completeness, reliability, usability, or suitability for any particular purpose of the data.

2/17/22 11:13 AM

WATER COLUMN/ AVERAGE DEPTH TO
WATER

APPENDIX C 2015 Closure Request & NMOCD Correspondence



August 26, 2015

Oil Conservation Division
District 2 – Artesia
811 S. First St.
Artesia, NM 88210

Re: SRO State Unit Com #8H
30-015-37548
Sec. 4, T26S-R28E
Eddy County, NM

Mr. Mike Bratcher,

COG Operating LLC would like to submit for your consideration the enclosed work plan/closure report for the above captioned well. The plan is in response to the C-141 Initial report dated July 1, 2015.

Background

The release was due to a gasket failure on the separator resulting in the release of 5 barrels of oil and 130 barrels of produced water of which 4 barrels of oil and 128 barrels of produced water were recovered. The majority of the released fluid was contained within the unlined facility and a small amount of fluid misted over the west berm and approximately 40' into the adjacent pasture. The impacted area within the berm was excavated to a depth of approximately 8" with all impacted material hauled for disposal at a NMOCD approved facility. The attached Site Diagram depicts the approximate area impacted by the release.

Groundwater

Based on the information obtained through the New Mexico Office of the State Engineer Website, the release area would be classified at a site ranking of **Zero** with depth to groundwater at greater than 100'. The NMOSE Website indicates various wells within the T26S-R28E to be at depths greater than 100' where as the Chevron Maps show depth to groundwater at approximately 50'. The closest well to this location is approximately 6 tenths of a mile north within Section 2 of T26S-R28E with a depth to groundwater of 120'.

NMOCD
August 26, 2015
Page 2

Soil Assessment and Analytical Results

Sample points noted on the attached Site Diagram are labeled with an S to denote samples taken within the release area.

Sample results for TPH and BTEX were tested at the 1' depth for all sample points and proved to be non-detect for S1 and S2 within the berm facility and within RRAL's for S3. S3 was taken from a small pooling area within the misted portion of the pasture. Chloride results proved to be within permissible levels for a site ranking of Zero. Analytical Results and a Site Diagram with a Sample Summary Table have been attached for your consideration.

Work Plan

COG Operating LLC proposes that no further excavation be required due to low chloride levels and the non-detection of BTEX and TPH within the bermed facility. The pasture will be treated with Micro-Blaze® due to the misting of the pasture and the detection of TPH within RRAL's for a site ranking of Zero. Chloride results for S3 are within tolerable levels for re-vegetation.

If there are no objections or further stipulations, COG Operating LLC would like to request closure of the release. Please feel free to contact me with any questions or concerns at (575) 748-6933.

Sincerely,




Lupe Carrasco
Environmental Coordinator

Enclosure(s): Site Diagram
Analytical Results
C-141 Initial (Copy)
C-141 Final

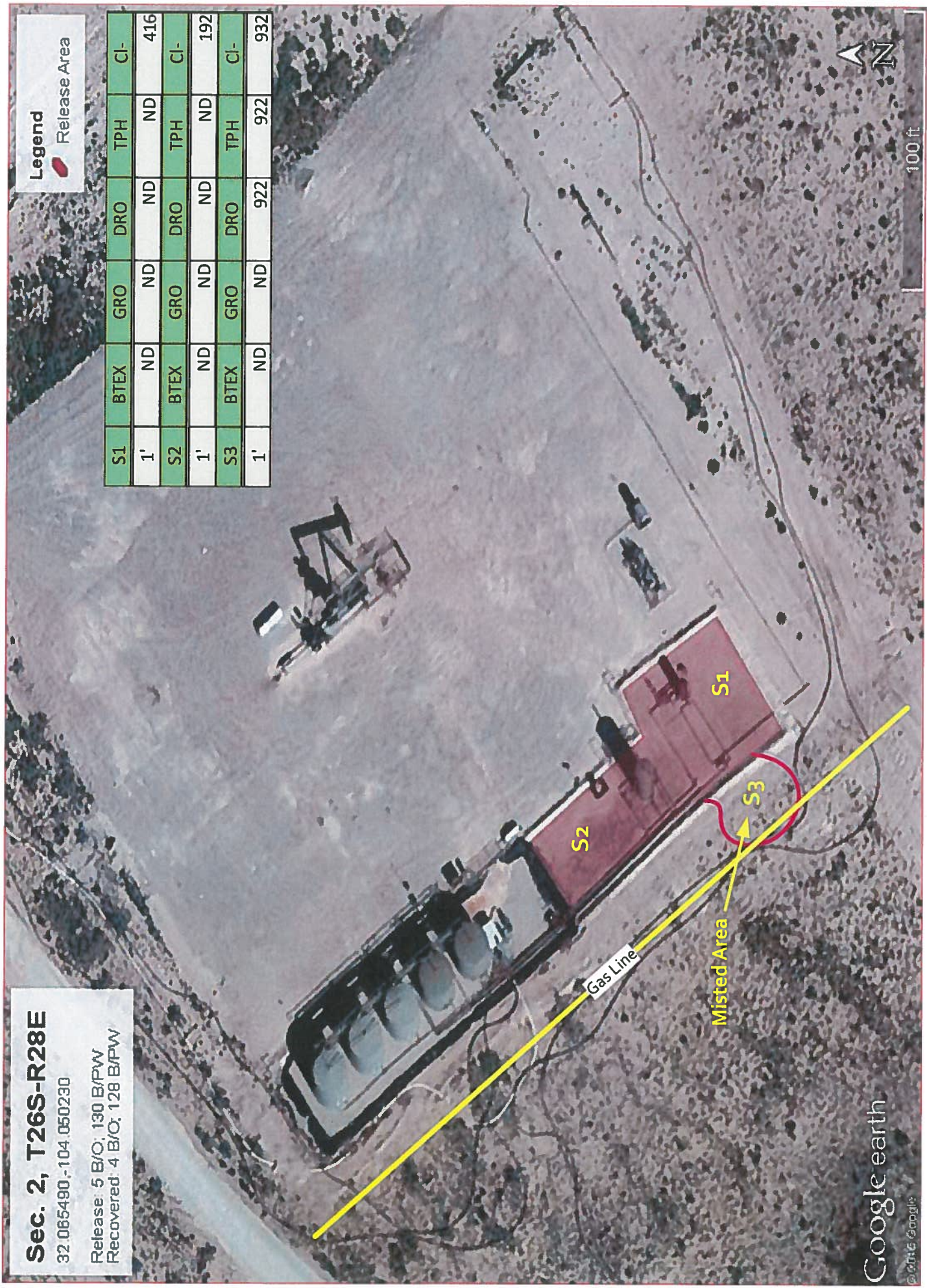
SRO State Unit Com #8H

June 17, 2015

Sec. 2, T26S-R28E
32.065490,-104.050230
Release: 5 B/O; 130 B/PW
Recovered: 4 B/O; 128 B/PW

Legend
 Release Area

S1	BTEX	GRO	DRO	TPH	CI-
1'	ND	ND	ND	ND	416
S2	BTEX	GRO	DRO	TPH	CI-
1'	ND	ND	ND	ND	192
S3	BTEX	GRO	DRO	TPH	CI-
1'	ND	ND	922	922	932



Google earth
© 2015 Google



PHONE (575) 393-2326 • 101 E. MARLAND • HOBBS, NM 88240

July 07, 2015

LUPE CARRASCO

COG OPERATING

P. O. BOX 1630

ARTESIA, NM 88210

RE: SRO STATE #8

Enclosed are the results of analyses for samples received by the laboratory on 07/01/15 13:45.

Cardinal Laboratories is accredited through Texas NELAP under certificate number T104704398-13-5. Accreditation applies to drinking water, non-potable water and solid and chemical materials. All accredited analytes are denoted by an asterisk (*). For a complete list of accredited analytes and matrices visit the TCEQ website at www.tceq.texas.gov/field/qa/lab_accred_certif.html.

Cardinal Laboratories is accredited through the State of Colorado Department of Public Health and Environment for:

Method EPA 552.2	Haloacetic Acids (HAA-5)
Method EPA 524.2	Total Trihalomethanes (TTHM)
Method EPA 524.4	Regulated VOCs (V1, V2, V3)

Accreditation applies to public drinking water matrices.

This report meets NELAP requirements and is made up of a cover page, analytical results, and a copy of the original chain-of-custody. If you have any questions concerning this report, please feel free to contact me.

Sincerely,

A handwritten signature in black ink that reads "Hope S. Moreno".

Hope S. Moreno For Celey D. Keene

Lab Director/Quality Manager



PHONE (575) 393-2326 • 101 E. MARLAND • HOBBS, NM 88240

Analytical Results For:

COG OPERATING
 LUPE CARRASCO
 P. O. BOX 1630
 ARTESIA NM, 88210
 Fax To: NONE

Received: 07/01/2015
 Reported: 07/07/2015
 Project Name: SRO STATE #8
 Project Number: NONE GIVEN
 Project Location: NOT GIVEN

Sampling Date: 07/01/2015
 Sampling Type: Soil
 Sampling Condition: Cool & Intact
 Sample Received By: Celey D. Keene

Sample ID: S1-1 (H501696-01)

BTEx 8021B			mg/kg		Analyzed By: MS					
Analyte	Result	Reporting Limit	Analyzed	Method Blank	BS	% Recovery	True Value QC	RPD	Qualifier	
Benzene*	<0.050	0.050	07/02/2015	ND	2.27	114	2.00	2.86		
Toluene*	<0.050	0.050	07/02/2015	ND	2.03	101	2.00	3.09		
Ethylbenzene*	<0.050	0.050	07/02/2015	ND	1.92	96.0	2.00	5.36		
Total Xylenes*	<0.150	0.150	07/02/2015	ND	5.76	96.0	6.00	5.18		
Total BTEx	<0.300	0.300	07/02/2015	ND						

Surrogate: 4-Bromofluorobenzene (PIE) 110 % 61-154

Chloride, SM4500Cl-B			mg/kg							Analyzed By: AP	
Analyte	Result	Reporting Limit	Analyzed	Method Blank	BS	% Recovery	True Value QC	RPD	Qualifier		
Chloride	416	16.0	07/06/2015	ND	432	108	400	0.00			

TPH 8015M			mg/kg							Analyzed By: MS	
Analyte	Result	Reporting Limit	Analyzed	Method Blank	BS	% Recovery	True Value QC	RPD	Qualifier		
GRO C6-C10	<10.0	10.0	07/02/2015	ND	198	98.8	200	4.52			
DRO >C10-C28	<10.0	10.0	07/02/2015	ND	211	106	200	4.94			

Surrogate: 1-Chlorooctane 79.5 % 47.2-157

Surrogate: 1-Chlorooctadecane 80.7 % 52.1-176

Cardinal Laboratories

* = Accredited Analyte

PLEASE NOTE: Liability and Damages. Cardinal's liability and client's exclusive remedy for any claim arising, whether based in contract or tort, shall be limited to the amount paid by client for analyses. All claims, including those for negligence and any other cause whatsoever shall be deemed waived unless made in writing and received by Cardinal within thirty (30) days after completion of the applicable service. In no event shall Cardinal be liable for incidental or consequential damages, including, without limitation, business interruptions, loss of use, or loss of profits incurred by client, its subsidiaries, affiliates or successors arising out of or related to the performance of the services hereunder by Cardinal, regardless of whether such claim is based upon any of the above stated reasons or otherwise. Results relate only to the samples identified above. This report shall not be reproduced except in full with written approval of Cardinal Laboratories.

Hope S. Moreno

Hope S. Moreno For Celey D. Keene, Lab Director/Quality Manager



PHONE (575) 393-2326 • 101 E. MARLAND • HOBBS, NM 88240

Analytical Results For:

COG OPERATING
 LUPE CARRASCO
 P. O. BOX 1630
 ARTESIA NM, 88210
 Fax To: NONE

Received: 07/01/2015
 Reported: 07/07/2015
 Project Name: SRO STATE #8
 Project Number: NONE GIVEN
 Project Location: NOT GIVEN

Sampling Date: 07/01/2015
 Sampling Type: Soil
 Sampling Condition: Cool & Intact
 Sample Received By: Celey D. Keene

Sample ID: S2-1 (H501696-07)

BTEX 8021B		mg/kg		Analyzed By: MS					
Analyte	Result	Reporting Limit	Analyzed	Method Blank	BS	% Recovery	True Value QC	RPD	Qualifier
Benzene*	<0.050	0.050	07/02/2015	ND	2.27	114	2.00	2.86	
Toluene*	<0.050	0.050	07/02/2015	ND	2.03	101	2.00	3.09	
Ethylbenzene*	<0.050	0.050	07/02/2015	ND	1.92	96.0	2.00	5.36	
Total Xylenes*	<0.150	0.150	07/02/2015	ND	5.76	96.0	6.00	5.18	
Total BTEX	<0.300	0.300	07/02/2015	ND					

Surrogate: 4-Bromofluorobenzene (PIC) 110 % 61-154

Chloride, SM4500Cl-B		mg/kg		Analyzed By: AP					
Analyte	Result	Reporting Limit	Analyzed	Method Blank	BS	% Recovery	True Value QC	RPD	Qualifier
Chloride	192	16.0	07/06/2015	ND	432	108	400	0.00	

TPH 8015M		mg/kg		Analyzed By: MS					
Analyte	Result	Reporting Limit	Analyzed	Method Blank	BS	% Recovery	True Value QC	RPD	Qualifier
GRO C6-C10	<10.0	10.0	07/02/2015	ND	198	98.8	200	4.52	
DRO >C10-C28	<10.0	10.0	07/02/2015	ND	211	106	200	4.94	

Surrogate: 1-Chlorooctane 82.1 % 47.2-157

Surrogate: 1-Chlorooctadecane 82.0 % 52.1-176

Cardinal Laboratories

* = Accredited Analyte

PLEASE NOTE: Liability and Damages. Cardinal's liability and client's exclusive remedy for any claim arising, whether based in contract or tort, shall be limited to the amount paid by client for analyses. All claims, including those for negligence and any other cause whatsoever shall be deemed waived unless made in writing and received by Cardinal within thirty (30) days after completion of the applicable service. In no event shall Cardinal be liable for incidental or consequential damages, including, without limitation, business interruptions, loss of use, or loss of profits incurred by client, its subsidiaries, affiliates or successors arising out of or related to the performance of the services hereunder by Cardinal, regardless of whether such claim is based upon any of the above stated reasons or otherwise. Results relate only to the samples identified above. This report shall not be reproduced except in full with written approval of Cardinal Laboratories.

Hope S. Moreno

Hope S. Moreno For: Celey D. Keene, Lab Director/Quality Manager



PHONE (575) 393-2326 • 101 E. MARLAND • HOBBS, NM 88240

Analytical Results For:

COG OPERATING
 LUPE CARRASCO
 P. O. BOX 1630
 ARTESIA NM, 88210
 Fax To: NONE

Received: 07/01/2015
 Reported: 07/07/2015
 Project Name: SRO STATE #8
 Project Number: NONE GIVEN
 Project Location: NOT GIVEN

Sampling Date: 07/01/2015
 Sampling Type: Soil
 Sampling Condition: Cool & Intact
 Sample Received By: Celey D. Keene

Sample ID: S3-1 (H501696-13)

BTEx 8021B		mg/kg		Analyzed By: MS					
Analyte	Result	Reporting Limit	Analyzed	Method Blank	BS	% Recovery	True Value QC	RPD	Qualifier
Benzene*	<0.050	0.050	07/02/2015	ND	2.27	114	2.00	2.86	
Toluene*	<0.050	0.050	07/02/2015	ND	2.03	101	2.00	3.09	
Ethylbenzene*	<0.050	0.050	07/02/2015	ND	1.92	96.0	2.00	5.36	
Total Xylenes*	<0.150	0.150	07/02/2015	ND	5.76	96.0	6.00	5.18	
Total BTEx	<0.300	0.300	07/02/2015	ND					

Surrogate: 4-Bromofluorobenzene (PIC) 108 % 61-154

Chloride, SM4500Cl-B			mg/kg							Analyzed By: AP	
Analyte	Result	Reporting Limit	Analyzed	Method Blank	BS	% Recovery	True Value QC	RPD	Qualifier		
Chloride	832	16.0	07/06/2015	ND	432	108	400	0.00			

TPH 8015M			mg/kg							Analyzed By: MS	
Analyte	Result	Reporting Limit	Analyzed	Method Blank	BS	% Recovery	True Value QC	RPD	Qualifier		
GRO C6-C10	<10.0	10.0	07/02/2015	ND	198	98.8	200	4.52			
DRO >C10-C28	922	10.0	07/02/2015	ND	211	106	200	4.94			

Surrogate: 1-Chlorooctane 83.7 % 47.2-157

Surrogate: 1-Chlorooctadecane 83.6 % 52.1-176

Cardinal Laboratories

*=Accredited Analyte

PLEASE NOTE: Liability and Damages. Cardinal's liability and client's exclusive remedy for any claim arising, whether based in contract or tort, shall be limited to the amount paid by client for analyses. All claims, including those for negligence and any other cause whatsoever shall be deemed waived unless made in writing and received by Cardinal within thirty (30) days after completion of the applicable service. In no event shall Cardinal be liable for incidental or consequential damages, including, without limitation, business interruptions, loss of use, or loss of profits incurred by client, its subsidiaries, affiliates or successors arising out of or related to the performance of the services hereunder by Cardinal, regardless of whether such claim is based upon any of the above stated reasons or otherwise. Results relate only to the samples identified above. This report shall not be reproduced except in full with written approval of Cardinal Laboratories.

Hope S. Moreno

Hope S. Moreno For Celey D. Keene, Lab Director/Quality Manager

Notes and Definitions

ND	Analyte NOT DETECTED at or above the reporting limit
RPD	Relative Percent Difference
**	Samples not received at proper temperature of 6°C or below.
***	Insufficient time to reach temperature.
-	Chloride by SM4500Cl-B does not require samples be received at or below 6°C Samples reported on an as received basis (wet) unless otherwise noted on report

Cardinal Laboratories

*=Accredited Analyte

PLEASE NOTE: Liability and Damages. Cardinal's liability and client's exclusive remedy for any claim arising, whether based in contract or tort, shall be limited to the amount paid by client for analyses. All claims, including those for negligence and any other cause whatsoever shall be deemed waived unless made in writing and received by Cardinal within thirty (30) days after completion of the applicable service. In no event shall Cardinal be liable for incidental or consequential damages, including, without limitation, business interruptions, loss of use, or loss of profits incurred by client, its subsidiaries, affiliates or successors arising out of or related to the performance of the services hereunder by Cardinal, regardless of whether such claim is based upon any of the above stated reasons or otherwise. Results relate only to the samples identified above. This report shall not be reproduced except in full with written approval of Cardinal Laboratories.



Hope S. Moreno For Celey D. Keene, Lab Director/Quality Manager



101 East Marland, Hobbs, NM 88240
(575) 393-2326 FAX (575) 393-2476

CHAIN-OF-CUSTODY AND ANALYSIS REQUEST

pg 1 of 2

BILL TO				ANALYSIS REQUEST																	
P.O. #:																					
Company: COG Operating LLC																					
Attn: Robert McNeill																					
Address: 600 W Illinois																					
City: Midland																					
State: TX Zip: 79701																					
Phone #: (432) 221-0388																					
Fax #:																					
Project Name: SRO State #8																					
Project Location:																					
Sampler Name: Lupe Carrasco																					
FOR LAB USE ONLY																					
Lab I.D.	Sample I.D.	(G)RAB OR (C)OMP.	# CONTAINERS	MATRIX	PRESERV	DATE	TIME	BTEX	TPH	Chloride											
H501696	S1-1		1	WASTEWATER	✓	7/1/15		X	X	X											
1	S1-2		1	WASTEWATER	✓																
2	S1-3		1	WASTEWATER	✓																
3	S1-4		1	WASTEWATER	✓																
4	S1-5		1	WASTEWATER	✓																
5	S1-6		1	WASTEWATER	✓																
6	S1-8		1	WASTEWATER	✓																

PLEASE NOTE: Liability and Damages. Cardinal's liability and client's exclusive remedy for any claim arising whether based in contract or tort, shall be limited to the amount paid by the client for the analysis. All claims, including those for negligence and any other cause whatsoever shall be deemed waived unless made in writing and received by Cardinal within 30 days after completion of the applicable service. In no event shall Cardinal be liable for incidental or consequential damages, including without limitation, business interruptions, loss of use, or loss of profits incurred by client, its subsidiaries, affiliates or successors arising out of or related to the performance of services hereunder by Cardinal regardless of whether such claim is based upon any of the above stated reasons or otherwise.

Relinquished By: <i>[Signature]</i>	Date: 7/1/15	Received By: <i>[Signature]</i>	Date: 7/1/15
Relinquished By: <i>[Signature]</i>	Date: 7/1/15	Received By: <i>[Signature]</i>	Date: 7/1/15
Delivered By: (Circle One) FORM-006 R 2.0 Sampler - UPS - Bus - Other:	Time: 11am	Time: 1:45P	Time: 5:20C
Sample Condition Cool <input checked="" type="checkbox"/> Intact <input checked="" type="checkbox"/>	Checked By: <i>[Signature]</i>	Checked By: <i>[Signature]</i>	Checked By: <i>[Signature]</i>
Phone Result: <input type="checkbox"/> Yes <input type="checkbox"/> No	Fax Result: <input type="checkbox"/> Yes <input type="checkbox"/> No	Add'l Phone #: <input type="checkbox"/> Yes <input type="checkbox"/> No	Add'l Fax #: <input type="checkbox"/> Yes <input type="checkbox"/> No
REMARKS: <i>atrujillo@concho.com</i> Run chlorides until chlorides fall below 1000 ppm.			



**101 East Marland, Hobbs, NM 88240
(575) 393-2326 FAX (575) 393-2476**

Released to Imaging: 3/7/2022 10:37:32 AM

District I
1625 N. French Dr., Hobbs, NM 88240
District II
811 S. First St., Artesia, NM 88210
District III
1000 Rio Brazos Road, Aztec, NM 87410
District IV
1220 S. St. Francis Dr., Santa Fe, NM 87505

State of New Mexico
Energy Minerals and Natural Resources
Oil Conservation Division
1220 South St. Francis Dr.
Santa Fe, NM 87505

Form C-141
Revised August 8, 2011

Submit 1 Copy to appropriate District Office in
accordance with 19.15.29 NMAC.

Release Notification and Corrective Action

OPERATOR

☒ Initial Report ☐ Final Report

Name of Company: COG Operating LLC	Contact: Robert McNeill
Address: 600 West Illinois Avenue, Midland TX 79701	Telephone No. 432-230-0077
Facility Name: SRO STATE COM #008H	Facility Type: Battery

Surface Owner: State	Mineral Owner:	API No. 30-015-37548
----------------------	----------------	----------------------

LOCATION OF RELEASE

Unit Letter P	Section 2	Township 26S	Range 28E	Feet from the 380	North/South Line South	Feet from the 330	East/West Line East	County Eddy
------------------	--------------	-----------------	--------------	----------------------	---------------------------	----------------------	------------------------	----------------

Latitude 32.0653343 Longitude -104.0503311

NATURE OF RELEASE

Type of Release: Oil & Produced Water	Volume of Release: 5 bbls oil; 130 bbls PW	Volume Recovered: 4 bbls oil; 128 bbls PW
Source of Release: Gasket Failure	Date and Hour of Occurrence: 6/17/2015 8:00 am	Date and Hour of Discovery: 6/17/2015 8:00 am
Was Immediate Notice Given? <input checked="" type="checkbox"/> Yes <input type="checkbox"/> No <input type="checkbox"/> Not Required	If YES, To Whom? Mike Bratcher - NMOCD	
By Whom? Amanda Trujillo	Date and Hour: Fri 6/19/2015 1:16 PM	
Was a Watercourse Reached? <input type="checkbox"/> Yes <input checked="" type="checkbox"/> No	If YES, Volume Impacting the Watercourse.	

If a Watercourse was Impacted, Describe Fully.*


Describe Cause of Problem and Remedial Action Taken.*

This release was caused by a gasket failure on the separator. Vacuum trucks were dispatched to recover all standing fluid.

Describe Area Affected and Cleanup Action Taken.*

This spill occurred within the bermed area. Crews hand excavated the impacted material. Concho will have the spill site sampled to delineate any possible contamination from the release and we will present a remediation work plan to the NMOCD for approval prior to any significant remediation work.

I hereby certify that the information given above is true and complete to the best of my knowledge and understand that pursuant to NMOCD rules and regulations all operators are required to report and/or file certain release notifications and perform corrective actions for releases which may endanger public health or the environment. The acceptance of a C-141 report by the NMOCD marked as "Final Report" does not relieve the operator of liability should their operations have failed to adequately investigate and remediate contamination that pose a threat to ground water, surface water, human health or the environment. In addition, NMOCD acceptance of a C-141 report does not relieve the operator of responsibility for compliance with any other federal, state, or local laws and/or regulations.

Signature: 	OIL CONSERVATION DIVISION		
Printed Name: Amanda Trujillo	Approved by Environmental Specialist:		
Title: Senior Environmental Coordinator	Approval Date:	Expiration Date:	
E-mail Address: atrujillo@concho.com	Conditions of Approval:		Attached <input type="checkbox"/>
Date: July 1, 2015 Phone: 575-748-6940			

Attach Additional Sheets If Necessary

District I
1625 N. French Dr., Hobbs, NM 88240
District II
811 S. First St., Artesia, NM 88210
District III
1000 Rio Brazos Road, Aztec, NM 87410
District IV
1220 S. St. Francis Dr., Santa Fe, NM 87505

State of New Mexico
Energy Minerals and Natural Resources
Oil Conservation Division
1220 South St. Francis Dr.
Santa Fe, NM 87505

Form C-141
Revised August 8, 2011

Submit 1 Copy to appropriate District Office in
accordance with 19.15.29 NMAC.

Release Notification and Corrective Action

OPERATOR

☐ Initial Report ☒ Final Report

Name of Company: COG Operating LLC	Contact: Robert McNeill
Address: 600 West Illinois Avenue, Midland TX 79701	Telephone No. 432-230-0077
Facility Name: SRO STATE COM #008H	Facility Type: Battery

Surface Owner: State	Mineral Owner:	API No. 30-015-37548
----------------------	----------------	----------------------

LOCATION OF RELEASE

Unit Letter P	Section 2	Township 26S	Range 28E	Feet from the 380	North/South Line South	Feet from the 330	East/West Line East	County Eddy
------------------	--------------	-----------------	--------------	----------------------	---------------------------	----------------------	------------------------	----------------

Latitude 32.0653343 Longitude -104.0503311

NATURE OF RELEASE

Type of Release: Oil & Produced Water	Volume of Release: 5 bbls oil; 130 bbls PW	Volume Recovered: 4 bbls oil; 128 bbls PW
Source of Release: Gasket Failure	Date and Hour of Occurrence: 6/17/2015 8:00 am	Date and Hour of Discovery: 6/17/2015 8:00 am
Was Immediate Notice Given? <input checked="" type="checkbox"/> Yes <input type="checkbox"/> No <input type="checkbox"/> Not Required	If YES, To Whom? Mike Bratcher – NMOCD	
By Whom? Amanda Trujillo	Date and Hour: Fri 6/19/2015 1:16 PM	
Was a Watercourse Reached? <input type="checkbox"/> Yes <input checked="" type="checkbox"/> No	If YES, Volume Impacting the Watercourse.	

If a Watercourse was Impacted, Describe Fully.*


Describe Cause of Problem and Remedial Action Taken.*

This release was caused by a gasket failure on the separator. Vacuum trucks were dispatched to recover all standing fluid.

Describe Area Affected and Cleanup Action Taken.*

This spill occurred within the bermed area. Crews hand excavated the impacted material. Concho had the spill site sampled to delineate any possible contamination from the release and presented a remediation work plan to the NMOCD for approval prior to any significant remediation work.

I hereby certify that the information given above is true and complete to the best of my knowledge and understand that pursuant to NMOCD rules and regulations all operators are required to report and/or file certain release notifications and perform corrective actions for releases which may endanger public health or the environment. The acceptance of a C-141 report by the NMOCD marked as "Final Report" does not relieve the operator of liability should their operations have failed to adequately investigate and remediate contamination that pose a threat to ground water, surface water, human health or the environment. In addition, NMOCD acceptance of a C-141 report does not relieve the operator of responsibility for compliance with any other federal, state, or local laws and/or regulations.

Signature: 		OIL CONSERVATION DIVISION	
Printed Name: Lupe Carrasco		Approved by Environmental Specialist:	
Title: Environmental Coordinator		Approval Date:	Expiration Date:
E-mail Address: gcarrasco@concho.com		Conditions of Approval:	Attached <input type="checkbox"/>
Date: August 26, 2015 Phone: 575-748-6940			

Attach Additional Sheets If Necessary

From: [Amanda Trujillo](#)
To: [Bratcher, Mike, EMNRD](#); [Patterson, Heather, EMNRD](#)
Subject: (C-141 Initial) SRO STATE COM #008H (30-015-37548)
Date: Wednesday, July 01, 2015 3:50:19 PM
Attachments: image001.png
6-17-2015 SRO State Unit #8H (TB) Initial.pdf

Mr. Bratcher,

Attached is a C-141 for your consideration. Please feel free to contact me if you have any questions or concerns.

Thank you,

Amanda Trujillo

Senior Environmental Coordinator

COG Operating LLC

Cell: 505.350.1336

Office: 575.748.6930

atrujillo@concho.com

2407 Pecos Ave.

Artesia , NM 88210



CONFIDENTIALITY NOTICE: The information in this email may be confidential and/or privileged. If you are not the intended recipient or an authorized representative of the intended recipient, you are hereby notified that any review, dissemination or copying of this email and its attachments, if any, or the information herein, is prohibited. If you received this email in error, please immediately notify the sender by return email and delete this email from your system. Thank you.

From: Amanda Trujillo
Sent: Friday, June 19, 2015 1:16 PM
To: 'Bratcher, Mike, EMNRD'; 'Patterson, Heather, EMNRD'
Subject: (Notification) SRO STATE COM #008H (30-015-37548)

Mr. Bratcher,

COG Operating LLC is reporting a release on the SRO STATE COM #008H (30-015-37548)
Unit P Section 2, Township 26S Range 28E
The release occurred at 8:00 am on 6/17/2015
Released: 5 bbls oil; 130 bbls PW
Recovered: 4 bbls oil; 128 bbls PW

The release was caused by a gasket failure and remained within the containment. The area is

being evaluated and a C-141 will be submitted. If you have any additional questions please feel free to contact me.

Thank you,

Amanda Trujillo

Senior Environmental Coordinator

COG Operating LLC

Cell: [505.350.1336](tel:505.350.1336)

Office: [575.748.6930](tel:575.748.6930)

atrujillo@concho.com

[2208 W. Main St.](#)

[Artesia, NM 88210](#)



CONFIDENTIALITY NOTICE: The information in this email may be confidential and/or privileged. If you are not the intended recipient or an authorized representative of the intended recipient, you are hereby notified that any review, dissemination or copying of this email and its attachments, if any, or the information herein, is prohibited. If you received this email in error, please immediately notify the sender by return email and delete this email from your system. Thank you.

CONFIDENTIALITY NOTICE: The information in this email may be confidential and/or privileged. If you are not the intended recipient or an authorized representative of the intended recipient, you are hereby notified that any review, dissemination or copying of this email and its attachments, if any, or the information contained herein, is prohibited. If you have received this email in error, please immediately notify the sender by return email and delete this email from your system. Thank you.

From: [Lupe Carrasco](#)
To: [Bratcher, Mike, EMNRD](#); [Patterson, Heather, EMNRD](#)
Cc: [Amanda Trujillo](#)
Subject: (Work Plan/Closure) SRO STATE COM #008H (30-015-37548)
Date: Friday, August 28, 2015 10:43:38 AM
Attachments: image001.png
(Work Plan-Closure) SRO State Com #8H.pdf

Mr. Bratcher,

Attached for your consideration is a closure report for the SRO State Com #8 H. Please feel free to contact me with any questions or concerns.

Thanks!

Lupe Carrasco

Environmental Coordinator

Concho Resources

Cell: [575.725.0787](tel:575.725.0787)

Office: [575.748.6933](tel:575.748.6933)

gcarrasco@concho.com

[2208 W. Main St.](#)

[Artesia, NM 88210](#)

CONFIDENTIALITY NOTICE: The information in this email may be confidential and/or privileged. If you are not the intended recipient or an authorized representative of the intended recipient, you are hereby notified that any review, dissemination or copying of this email and its attachments, if any, or the information herein, is prohibited. If you received this email in error, please immediately notify the sender by return email and delete this email from your system. Thank you.

From: Amanda Trujillo
Sent: Wednesday, July 01, 2015 3:50 PM
To: Bratcher, Mike, EMNRD; Patterson, Heather, EMNRD
Subject: (C-141 Initial) SRO STATE COM #008H (30-015-37548)

Mr. Bratcher,

Attached is a C-141 for your consideration. Please feel free to contact me if you have any questions or concerns.

Thank you,

Amanda Trujillo

Senior Environmental Coordinator

COG Operating LLC
Cell: 505.350.1336
Office: 575.748.6930
atrujillo@concho.com

2407 Pecos Ave.
Artesia , NM 88210



CONFIDENTIALITY NOTICE: The information in this email may be confidential and/or privileged. If you are not the intended recipient or an authorized representative of the intended recipient, you are hereby notified that any review, dissemination or copying of this email and its attachments, if any, or the information herein, is prohibited. If you received this email in error, please immediately notify the sender by return email and delete this email from your system. Thank you.

From: Amanda Trujillo
Sent: Friday, June 19, 2015 1:16 PM
To: 'Bratcher, Mike, EMNRD'; 'Patterson, Heather, EMNRD'
Subject: (Notification) SRO STATE COM #008H (30-015-37548)

Mr. Bratcher,

COG Operating LLC is reporting a release on the SRO STATE COM #008H (30-015-37548)
Unit P Section 2, Township 26S Range 28E
The release occurred at 8:00 am on 6/17/2015
Released: 5 bbls oil; 130 bbls PW
Recovered: 4 bbls oil; 128 bbls PW

The release was caused by a gasket failure and remained within the containment. The area is being evaluated and a C-141 will be submitted. If you have any additional questions please feel free to contact me.

Thank you,

Amanda Trujillo
Senior Environmental Coordinator
COG Operating LLC
Cell: [505.350.1336](tel:505.350.1336)
Office: [575.748.6930](tel:575.748.6930)
atrujillo@concho.com

[2208 W. Main St.](#)
[Artesia , NM 88210](#)



CONFIDENTIALITY NOTICE: The information in this email may be confidential and/or privileged. If you are not the intended recipient or an authorized representative of the intended recipient, you are hereby notified that any review, dissemination or copying of this email and its attachments, if any, or the information herein, is prohibited. If you received this email in error, please immediately notify the sender by return email and delete this email from your system. Thank you.

CONFIDENTIALITY NOTICE: The information in this email may be confidential and/or privileged. If you are not the intended recipient or an authorized representative of the intended recipient, you are hereby notified that any review, dissemination or copying of this email and its attachments, if any, or the information contained herein, is prohibited. If you have received this email in error, please immediately notify the sender by return email and delete this email from your system. Thank you.

From: Patterson, Heather, EMNRD
To: ["Lupe Carrasco"; Bratcher, Mike, EMNRD](#)
Cc: [Amanda Trujillo; agroves@slo.state.nm.us](mailto:agroves@slo.state.nm.us)
Subject: RE: (Work Plan/Closure) SRO STATE COM #008H (30-015-37548)
Date: Friday, September 18, 2015 8:51:00 AM
Attachments: image001.png

RE: COG * SRO State Com #008H * 30-015-37548 * 2RP-3092

Lupe,

Can you please provide surface samples at each point and further vertical delineation at sample point S3?

Thanks,

OCD approval does not relieve the operator of liability should their operations fail to adequately investigate and remediate contamination that may pose a threat to ground water, surface water, human health or the environment. In addition, OCD approval does not relieve the operator of responsibility for compliance with any other federal, state, local laws and/or regulations.

If you have any questions or concerns, and for notification, please contact me.

Heather Patterson
Environmental Specialist
NMOCD District II
Office (575)748-1283 ext.101
Cell (575)703-0228

From: Lupe Carrasco [<mailto:GCarrasco@concho.com>]
Sent: Friday, August 28, 2015 10:43 AM
To: Bratcher, Mike, EMNRD; Patterson, Heather, EMNRD
Cc: Amanda Trujillo
Subject: (Work Plan/Closure) SRO STATE COM #008H (30-015-37548)

Mr. Bratcher,

Attached for your consideration is a closure report for the SRO State Com #8 H. Please feel free to contact me with any questions or concerns.

Thanks!

Lupe Carrasco
Environmental Coordinator
Concho Resources
Cell: [575.725.0787](tel:575.725.0787)
Office: [575.748.6933](tel:575.748.6933)
gcarrasco@concho.com

[2208 W. Main St.](#)
[Artesia , NM 88210](#)

CONFIDENTIALITY NOTICE: The information in this email may be confidential and/or privileged. If you are not the intended recipient or an authorized representative of the intended recipient, you are hereby notified that any review, dissemination or copying of this email and its attachments, if any, or the information herein, is prohibited. If you received this email in error, please immediately notify the sender by return email and delete this email from your system. Thank you.

From: Amanda Trujillo
Sent: Wednesday, July 01, 2015 3:50 PM
To: Bratcher, Mike, EMNRD; Patterson, Heather, EMNRD
Subject: (C-141 Initial) SRO STATE COM #008H (30-015-37548)

Mr. Bratcher,

Attached is a C-141 for your consideration. Please feel free to contact me if you have any questions or concerns.

Thank you,

Amanda Trujillo
Senior Environmental Coordinator
COG Operating LLC
Cell: 505.350.1336
Office: 575.748.6930
atrujillo@concho.com

2407 Pecos Ave.
Artesia , NM 88210



CONFIDENTIALITY NOTICE: The information in this email may be confidential and/or privileged. If you are not the intended recipient or an authorized representative of the intended recipient, you are hereby notified that any review, dissemination or copying of this email and its attachments, if any, or the information herein, is prohibited. If you received this email in error, please immediately notify the sender by return email and delete this email from your system. Thank you.

From: Amanda Trujillo
Sent: Friday, June 19, 2015 1:16 PM

To: 'Bratcher, Mike, EMNRD'; 'Patterson, Heather, EMNRD'
Subject: (Notification) SRO STATE COM #008H (30-015-37548)

Mr. Bratcher,

COG Operating LLC is reporting a release on the SRO STATE COM #008H (30-015-37548)
Unit P Section 2, Township 26S Range 28E
The release occurred at 8:00 am on 6/17/2015
Released: 5 bbls oil; 130 bbls PW
Recovered: 4 bbls oil; 128 bbls PW

The release was caused by a gasket failure and remained within the containment. The area is being evaluated and a C-141 will be submitted. If you have any additional questions please feel free to contact me.

Thank you,

Amanda Trujillo
Senior Environmental Coordinator
COG Operating LLC
Cell: [505.350.1336](tel:505.350.1336)
Office: [575.748.6930](tel:575.748.6930)
atrujillo@concho.com

[2208 W. Main St.](#)
[Artesia, NM 88210](#)

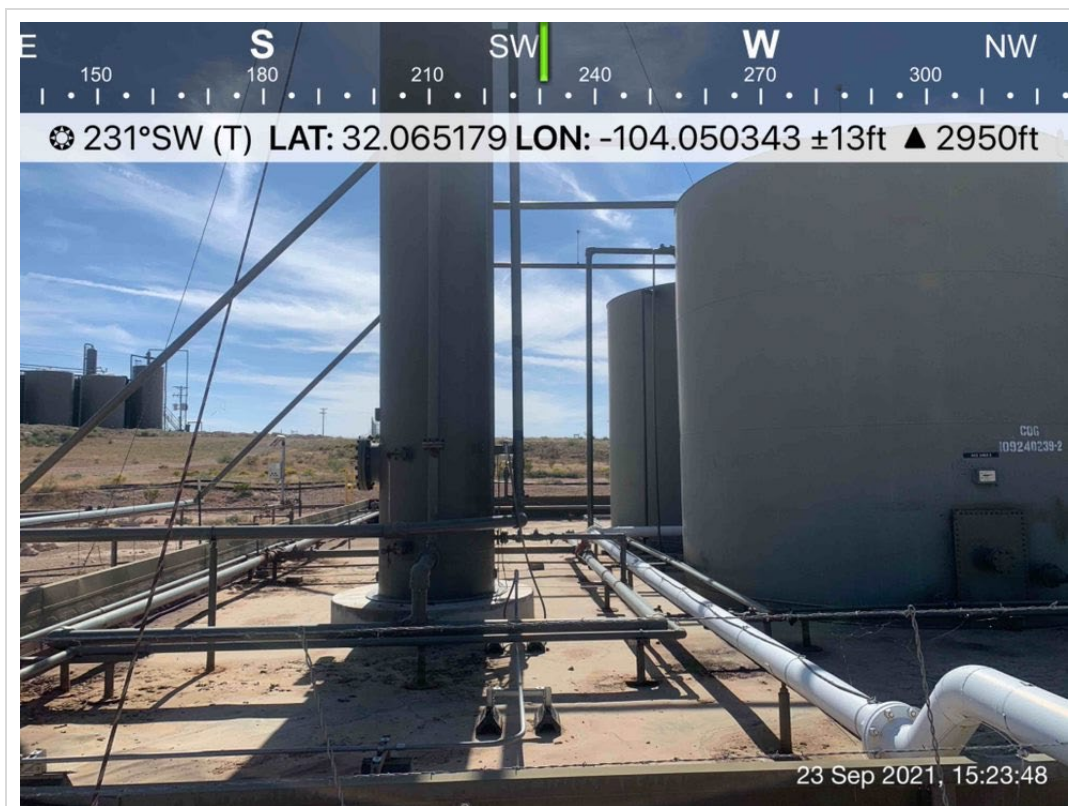


CONFIDENTIALITY NOTICE: The information in this email may be confidential and/or privileged. If you are not the intended recipient or an authorized representative of the intended recipient, you are hereby notified that any review, dissemination or copying of this email and its attachments, if any, or the information herein, is prohibited. If you received this email in error, please immediately notify the sender by return email and delete this email from your system. Thank you.

CONFIDENTIALITY NOTICE: The information in this email may be confidential and/or privileged. If you are not the intended recipient or an authorized representative of the intended recipient, you are hereby notified that any review, dissemination or copying of this email and its attachments, if any, or the information contained herein, is prohibited. If you have received this email in error, please immediately notify the sender by return email and delete this email from your system. Thank you.

APPENDIX D

Photographic Documentation



TETRA TECH, INC. PROJECT NO. 212C-MD-02578	DESCRIPTION	View southwest of release area and tank battery secondary containment.	1
	SITE NAME	HConcho - SRO STATE COM #008H	9/23/2021



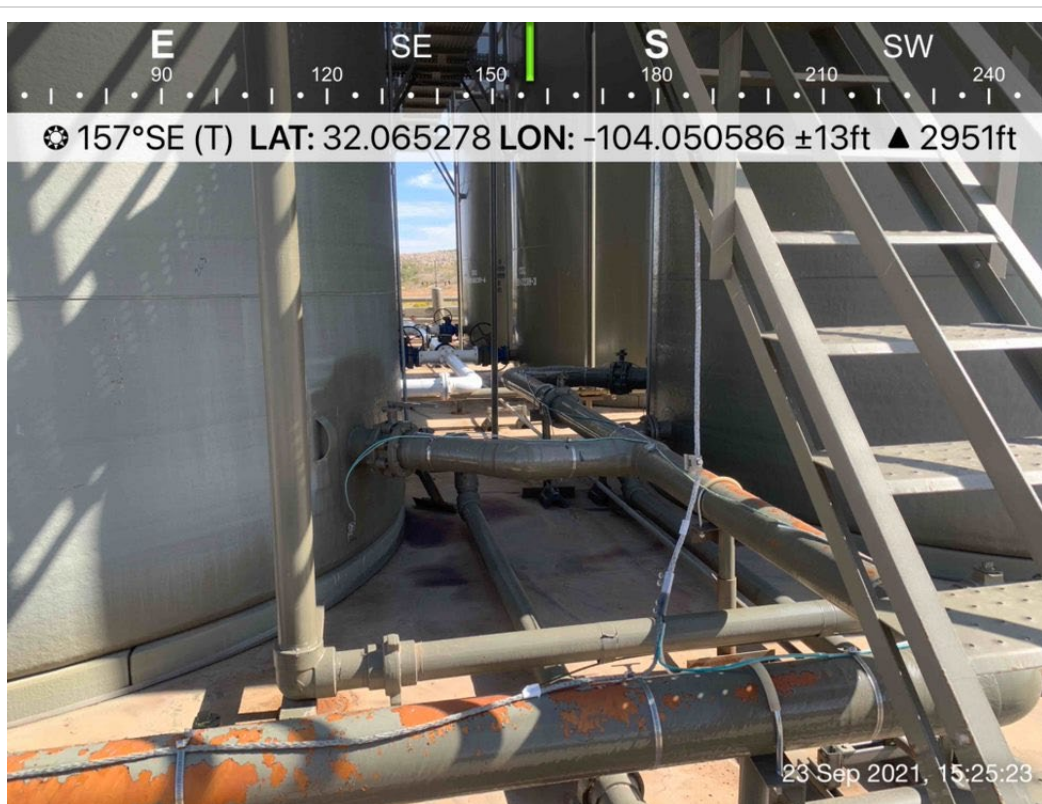
TETRA TECH, INC. PROJECT NO. 212C-MD-02578	DESCRIPTION	View west of release area and tank battery secondary containment.	2
	SITE NAME	HConcho - SRO STATE COM #008H	9/23/2021



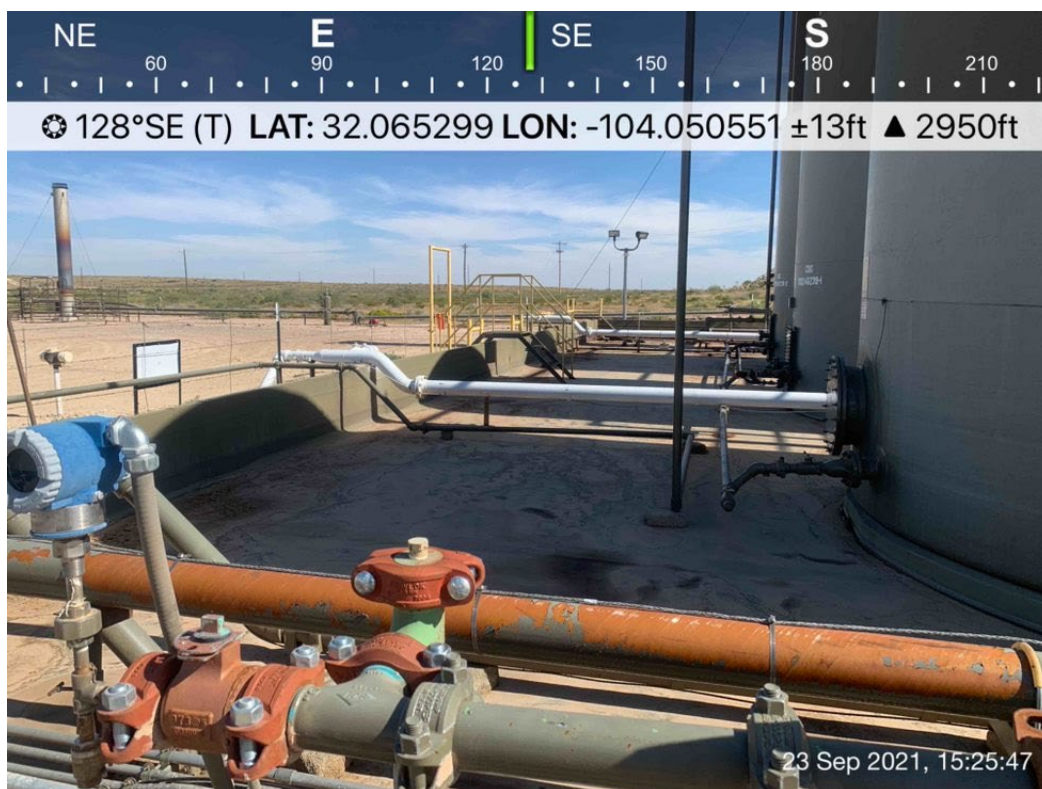
TETRA TECH, INC. PROJECT NO. 212C-MD-02578	DESCRIPTION	View west of release area and tank battery secondary containment.	3
	SITE NAME	HConcho - SRO STATE COM #008H	9/23/2021



TETRA TECH, INC. PROJECT NO. 212C-MD-02578	DESCRIPTION	View northeast of release area and tank battery secondary containment.	4
	SITE NAME	HConcho - SRO STATE COM #008H	9/23/2021



TETRA TECH, INC. PROJECT NO. 212C-MD-02578	DESCRIPTION	View southeast south of release area and tank battery secondary containment.	5
	SITE NAME	HConcho - SRO STATE COM #008H	9/23/2021



TETRA TECH, INC. PROJECT NO. 212C-MD-02578	DESCRIPTION	View southeast of release area and tank battery secondary containment.	6
	SITE NAME	HConcho - SRO STATE COM #008H	9/23/2021

APPENDIX E

Laboratory Analytical Data



PHONE (575) 393-2326 ° 101 E. MARLAND ° HOBBS, NM 88240

January 26, 2022

SAM ABBOTT

TETRA TECH

901 WEST WALL STREET , STE 100

MIDLAND, TX 79701

RE: SRO STATE COM 008H

Enclosed are the results of analyses for samples received by the laboratory on 01/21/22 13:30.

Cardinal Laboratories is accredited through Texas NELAP under certificate number T104704398-21-14. Accreditation applies to drinking water, non-potable water and solid and chemical materials. All accredited analytes are denoted by an asterisk (*). For a complete list of accredited analytes and matrices visit the TCEQ website at www.tceq.texas.gov/field/qa/lab_accred_certif.html.

Cardinal Laboratories is accredited through the State of Colorado Department of Public Health and Environment for:

Method EPA 552.2	Haloacetic Acids (HAA-5)
Method EPA 524.2	Total Trihalomethanes (TTHM)
Method EPA 524.4	Regulated VOCs (V1, V2, V3)

Accreditation applies to public drinking water matrices.

This report meets NELAP requirements and is made up of a cover page, analytical results, and a copy of the original chain-of-custody. If you have any questions concerning this report, please feel free to contact me.

Sincerely,

A handwritten signature in black ink that reads "Celey D. Keene". The signature is written in a cursive, flowing style.

Celey D. Keene

Lab Director/Quality Manager



PHONE (575) 393-2326 ° 101 E. MARLAND ° HOBBS, NM 88240

Analytical Results For:

TETRA TECH
 SAM ABBOTT
 901 WEST WALL STREET , STE 100
 MIDLAND TX, 79701
 Fax To: (432) 682-3946

Received:	01/21/2022	Sampling Date:	01/19/2022
Reported:	01/26/2022	Sampling Type:	Soil
Project Name:	SRO STATE COM 008H	Sampling Condition:	Cool & Intact
Project Number:	212C - MD - 02659	Sample Received By:	Tamara Oldaker
Project Location:	EDDY CO NM		

Sample ID: BH 1 (0-1) (H220245-01)

BTEX 8021B			mg/kg							
			Analyzed By: MS/							
Analyte	Result	Reporting Limit	Analyzed	Method Blank	BS	% Recovery	True Value QC	RPD	Qualifier	
Benzene*	<0.050	0.050	01/23/2022	ND	2.13	107	2.00	1.80		
Toluene*	<0.050	0.050	01/23/2022	ND	2.03	102	2.00	2.48		
Ethylbenzene*	<0.050	0.050	01/23/2022	ND	2.07	104	2.00	1.47		
Total Xylenes*	<0.150	0.150	01/23/2022	ND	6.28	105	6.00	1.43		
Total BTEX	<0.300	0.300	01/23/2022	ND						

Surrogate: 4-Bromofluorobenzene (PID) 99.9 % 69.9-140

Chloride, SM4500Cl-B			mg/kg							
			Analyzed By: AC							
Analyte	Result	Reporting Limit	Analyzed	Method Blank	BS	% Recovery	True Value QC	RPD	Qualifier	
Chloride	1310	16.0	01/23/2022	ND	400	100	400	0.00		

TPH 8015M			mg/kg							
			Analyzed By: MS							
Analyte	Result	Reporting Limit	Analyzed	Method Blank	BS	% Recovery	True Value QC	RPD	Qualifier	
GRO C6-C10*	<10.0	10.0	01/24/2022	ND	247	123	200	1.92		
DRO >C10-C28*	<10.0	10.0	01/24/2022	ND	199	99.4	200	0.305		
EXT DRO >C28-C36	<10.0	10.0	01/24/2022	ND						

Surrogate: 1-Chlorooctane 74.0 % 66.9-136

Surrogate: 1-Chlorooctadecane 66.2 % 59.5-142

Cardinal Laboratories

*=Accredited Analyte

PLEASE NOTE: Liability and Damages. Cardinal's liability and client's exclusive remedy for any claim arising, whether based in contract or tort, shall be limited to the amount paid by client for analyses. All claims, including those for negligence and any other cause whatsoever shall be deemed waived unless made in writing and received by Cardinal within thirty (30) days after completion of the applicable service. In no event shall Cardinal be liable for incidental or consequential damages, including, without limitation, business interruptions, loss of use, or loss of profits incurred by client, its subsidiaries, affiliates or successors arising out of or related to the performance of the services hereunder by Cardinal, regardless of whether such claim is based upon any of the above stated reasons or otherwise. Results relate only to the samples identified above. This report shall not be reproduced except in full with written approval of Cardinal Laboratories.

Celey D. Keene, Lab Director/Quality Manager



PHONE (575) 393-2326 ° 101 E. MARLAND ° HOBBS, NM 88240

Analytical Results For:

TETRA TECH
 SAM ABBOTT
 901 WEST WALL STREET , STE 100
 MIDLAND TX, 79701
 Fax To: (432) 682-3946

Received: 01/21/2022
 Reported: 01/26/2022
 Project Name: SRO STATE COM 008H
 Project Number: 212C - MD - 02659
 Project Location: EDDY CO NM

Sampling Date: 01/19/2022
 Sampling Type: Soil
 Sampling Condition: Cool & Intact
 Sample Received By: Tamara Oldaker

Sample ID: BH 1 (2-3) (H220245-02)

BTEx 8021B		mg/kg		Analyzed By: MS/					
Analyte	Result	Reporting Limit	Analyzed	Method Blank	BS	% Recovery	True Value QC	RPD	Qualifier
Benzene*	<0.050	0.050	01/23/2022	ND	2.13	107	2.00	1.80	
Toluene*	<0.050	0.050	01/23/2022	ND	2.03	102	2.00	2.48	
Ethylbenzene*	<0.050	0.050	01/23/2022	ND	2.07	104	2.00	1.47	
Total Xylenes*	<0.150	0.150	01/23/2022	ND	6.28	105	6.00	1.43	
Total BTEx	<0.300	0.300	01/23/2022	ND					

Surrogate: 4-Bromofluorobenzene (PID) 102 % 69.9-140

Chloride, SM4500CI-B		mg/kg		Analyzed By: AC						
Analyte	Result	Reporting Limit	Analyzed	Method Blank	BS	% Recovery	True Value QC	RPD	Qualifier	
Chloride	832	16.0	01/23/2022	ND	400	100	400	0.00		

TPH 8015M		mg/kg		Analyzed By: MS					
Analyte	Result	Reporting Limit	Analyzed	Method Blank	BS	% Recovery	True Value QC	RPD	Qualifier
GRO C6-C10*	<10.0	10.0	01/24/2022	ND	247	123	200	1.92	
DRO >C10-C28*	<10.0	10.0	01/24/2022	ND	199	99.4	200	0.305	
EXT DRO >C28-C36	<10.0	10.0	01/24/2022	ND					

Surrogate: 1-Chlorooctane 75.4 % 66.9-136

Surrogate: 1-Chlorooctadecane 67.6 % 59.5-142

Cardinal Laboratories

*=Accredited Analyte

PLEASE NOTE: Liability and Damages. Cardinal's liability and client's exclusive remedy for any claim arising, whether based in contract or tort, shall be limited to the amount paid by client for analyses. All claims, including those for negligence and any other cause whatsoever shall be deemed waived unless made in writing and received by Cardinal within thirty (30) days after completion of the applicable service. In no event shall Cardinal be liable for incidental or consequential damages, including, without limitation, business interruptions, loss of use, or loss of profits incurred by client, its subsidiaries, affiliates or successors arising out of or related to the performance of the services hereunder by Cardinal, regardless of whether such claim is based upon any of the above stated reasons or otherwise. Results relate only to the samples identified above. This report shall not be reproduced except in full with written approval of Cardinal Laboratories.

Celey D. Keene, Lab Director/Quality Manager



PHONE (575) 393-2326 ° 101 E. MARLAND ° HOBBS, NM 88240

Analytical Results For:

TETRA TECH
 SAM ABBOTT
 901 WEST WALL STREET , STE 100
 MIDLAND TX, 79701
 Fax To: (432) 682-3946

Received: 01/21/2022
 Reported: 01/26/2022
 Project Name: SRO STATE COM 008H
 Project Number: 212C - MD - 02659
 Project Location: EDDY CO NM

Sampling Date: 01/19/2022
 Sampling Type: Soil
 Sampling Condition: Cool & Intact
 Sample Received By: Tamara Oldaker

Sample ID: BH 1 (4-5) (H220245-03)

BTX 8021B		mg/kg		Analyzed By: MS/					
Analyte	Result	Reporting Limit	Analyzed	Method Blank	BS	% Recovery	True Value QC	RPD	Qualifier
Benzene*	<0.050	0.050	01/22/2022	ND	2.27	114	2.00	9.67	
Toluene*	<0.050	0.050	01/22/2022	ND	2.20	110	2.00	10.2	
Ethylbenzene*	<0.050	0.050	01/22/2022	ND	2.16	108	2.00	9.60	
Total Xylenes*	<0.150	0.150	01/22/2022	ND	6.53	109	6.00	9.68	
Total BTX	<0.300	0.300	01/22/2022	ND					

Surrogate: 4-Bromofluorobenzene (PID) 100 % 69.9-140

Chloride, SM4500CI-B		mg/kg		Analyzed By: AC						
Analyte	Result	Reporting Limit	Analyzed	Method Blank	BS	% Recovery	True Value QC	RPD	Qualifier	
Chloride	592	16.0	01/23/2022	ND	400	100	400	0.00		

TPH 8015M		mg/kg		Analyzed By: MS					
Analyte	Result	Reporting Limit	Analyzed	Method Blank	BS	% Recovery	True Value QC	RPD	Qualifier
GRO C6-C10*	<10.0	10.0	01/24/2022	ND	201	101	200	3.20	
DRO >C10-C28*	<10.0	10.0	01/24/2022	ND	192	95.8	200	3.19	
EXT DRO >C28-C36	<10.0	10.0	01/24/2022	ND					

Surrogate: 1-Chlorooctane 89.0 % 66.9-136

Surrogate: 1-Chlorooctadecane 79.3 % 59.5-142

Cardinal Laboratories

*=Accredited Analyte

PLEASE NOTE: Liability and Damages. Cardinal's liability and client's exclusive remedy for any claim arising, whether based in contract or tort, shall be limited to the amount paid by client for analyses. All claims, including those for negligence and any other cause whatsoever shall be deemed waived unless made in writing and received by Cardinal within thirty (30) days after completion of the applicable service. In no event shall Cardinal be liable for incidental or consequential damages, including, without limitation, business interruptions, loss of use, or loss of profits incurred by client, its subsidiaries, affiliates or successors arising out of or related to the performance of the services hereunder by Cardinal, regardless of whether such claim is based upon any of the above stated reasons or otherwise. Results relate only to the samples identified above. This report shall not be reproduced except in full with written approval of Cardinal Laboratories.

Celey D. Keene, Lab Director/Quality Manager



PHONE (575) 393-2326 ° 101 E. MARLAND ° HOBBS, NM 88240

Analytical Results For:

TETRA TECH
 SAM ABBOTT
 901 WEST WALL STREET , STE 100
 MIDLAND TX, 79701
 Fax To: (432) 682-3946

Received: 01/21/2022
 Reported: 01/26/2022
 Project Name: SRO STATE COM 008H
 Project Number: 212C - MD - 02659
 Project Location: EDDY CO NM

Sampling Date: 01/19/2022
 Sampling Type: Soil
 Sampling Condition: Cool & Intact
 Sample Received By: Tamara Oldaker

Sample ID: BH 1 (6-7) (H220245-04)

BTX 8021B		mg/kg		Analyzed By: MS/						
Analyte	Result	Reporting Limit	Analyzed	Method Blank	BS	% Recovery	True Value QC	RPD	Qualifier	
Benzene*	<0.050	0.050	01/24/2022	ND	2.16	108	2.00	0.717		
Toluene*	<0.050	0.050	01/24/2022	ND	2.06	103	2.00	0.219		
Ethylbenzene*	<0.050	0.050	01/24/2022	ND	2.09	104	2.00	0.160		
Total Xylenes*	<0.150	0.150	01/24/2022	ND	6.34	106	6.00	0.319		
Total BTX	<0.300	0.300	01/24/2022	ND						

Surrogate: 4-Bromofluorobenzene (PID) 100 % 69.9-140

Chloride, SM4500CI-B		mg/kg		Analyzed By: AC						
Analyte	Result	Reporting Limit	Analyzed	Method Blank	BS	% Recovery	True Value QC	RPD	Qualifier	
Chloride	864	16.0	01/23/2022	ND	400	100	400	0.00		

TPH 8015M		mg/kg		Analyzed By: MS					
Analyte	Result	Reporting Limit	Analyzed	Method Blank	BS	% Recovery	True Value QC	RPD	Qualifier
GRO C6-C10*	<10.0	10.0	01/24/2022	ND	201	101	200	3.20	
DRO >C10-C28*	<10.0	10.0	01/24/2022	ND	192	95.8	200	3.19	
EXT DRO >C28-C36	<10.0	10.0	01/24/2022	ND					

Surrogate: 1-Chlorooctane 88.6 % 66.9-136

Surrogate: 1-Chlorooctadecane 78.5 % 59.5-142

Cardinal Laboratories

*=Accredited Analyte

PLEASE NOTE: Liability and Damages. Cardinal's liability and client's exclusive remedy for any claim arising, whether based in contract or tort, shall be limited to the amount paid by client for analyses. All claims, including those for negligence and any other cause whatsoever shall be deemed waived unless made in writing and received by Cardinal within thirty (30) days after completion of the applicable service. In no event shall Cardinal be liable for incidental or consequential damages, including, without limitation, business interruptions, loss of use, or loss of profits incurred by client, its subsidiaries, affiliates or successors arising out of or related to the performance of the services hereunder by Cardinal, regardless of whether such claim is based upon any of the above stated reasons or otherwise. Results relate only to the samples identified above. This report shall not be reproduced except in full with written approval of Cardinal Laboratories.

Celey D. Keene, Lab Director/Quality Manager



PHONE (575) 393-2326 • 101 E. MARLAND • HOBBS, NM 88240

Analytical Results For:

TETRA TECH
 SAM ABBOTT
 901 WEST WALL STREET , STE 100
 MIDLAND TX, 79701
 Fax To: (432) 682-3946

Received: 01/21/2022
 Reported: 01/26/2022
 Project Name: SRO STATE COM 008H
 Project Number: 212C - MD - 02659
 Project Location: EDDY CO NM

Sampling Date: 01/19/2022
 Sampling Type: Soil
 Sampling Condition: Cool & Intact
 Sample Received By: Tamara Oldaker

Sample ID: BH 1 (9-10') (H220245-05)

BTX 8021B		mg/kg		Analyzed By: MS/					
Analyte	Result	Reporting Limit	Analyzed	Method Blank	BS	% Recovery	True Value QC	RPD	Qualifier
Benzene*	<0.050	0.050	01/24/2022	ND	2.16	108	2.00	0.717	
Toluene*	0.056	0.050	01/24/2022	ND	2.06	103	2.00	0.219	
Ethylbenzene*	<0.050	0.050	01/24/2022	ND	2.09	104	2.00	0.160	
Total Xylenes*	<0.150	0.150	01/24/2022	ND	6.34	106	6.00	0.319	
Total BTX	<0.300	0.300	01/24/2022	ND					

Surrogate: 4-Bromofluorobenzene (PID) 101 % 69.9-140

Chloride, SM4500CI-B		mg/kg		Analyzed By: AC						
Analyte	Result	Reporting Limit	Analyzed	Method Blank	BS	% Recovery	True Value QC	RPD	Qualifier	
Chloride	560	16.0	01/23/2022	ND	400	100	400	0.00		

TPH 8015M		mg/kg		Analyzed By: MS					
Analyte	Result	Reporting Limit	Analyzed	Method Blank	BS	% Recovery	True Value QC	RPD	Qualifier
GRO C6-C10*	<10.0	10.0	01/24/2022	ND	201	101	200	3.20	
DRO >C10-C28*	<10.0	10.0	01/24/2022	ND	192	95.8	200	3.19	
EXT DRO >C28-C36	<10.0	10.0	01/24/2022	ND					

Surrogate: 1-Chlorooctane 80.0 % 66.9-136

Surrogate: 1-Chlorooctadecane 71.0 % 59.5-142

Cardinal Laboratories

*=Accredited Analyte

PLEASE NOTE: Liability and Damages. Cardinal's liability and client's exclusive remedy for any claim arising, whether based in contract or tort, shall be limited to the amount paid by client for analyses. All claims, including those for negligence and any other cause whatsoever shall be deemed waived unless made in writing and received by Cardinal within thirty (30) days after completion of the applicable service. In no event shall Cardinal be liable for incidental or consequential damages, including, without limitation, business interruptions, loss of use, or loss of profits incurred by client, its subsidiaries, affiliates or successors arising out of or related to the performance of the services hereunder by Cardinal, regardless of whether such claim is based upon any of the above stated reasons or otherwise. Results relate only to the samples identified above. This report shall not be reproduced except in full with written approval of Cardinal Laboratories.

Celey D. Keene, Lab Director/Quality Manager



PHONE (575) 393-2326 ° 101 E. MARLAND ° HOBBS, NM 88240

Analytical Results For:

TETRA TECH
 SAM ABBOTT
 901 WEST WALL STREET , STE 100
 MIDLAND TX, 79701
 Fax To: (432) 682-3946

Received: 01/21/2022
 Reported: 01/26/2022
 Project Name: SRO STATE COM 008H
 Project Number: 212C - MD - 02659
 Project Location: EDDY CO NM

Sampling Date: 01/19/2022
 Sampling Type: Soil
 Sampling Condition: Cool & Intact
 Sample Received By: Tamara Oldaker

Sample ID: BH 1 (14-15') (H220245-06)

BTX 8021B		mg/kg		Analyzed By: MS/						
Analyte	Result	Reporting Limit	Analyzed	Method Blank	BS	% Recovery	True Value QC	RPD	Qualifier	
Benzene*	<0.050	0.050	01/24/2022	ND	2.16	108	2.00	0.717		
Toluene*	<0.050	0.050	01/24/2022	ND	2.06	103	2.00	0.219		
Ethylbenzene*	<0.050	0.050	01/24/2022	ND	2.09	104	2.00	0.160		
Total Xylenes*	<0.150	0.150	01/24/2022	ND	6.34	106	6.00	0.319		
Total BTX	<0.300	0.300	01/24/2022	ND						

Surrogate: 4-Bromofluorobenzene (PID) 101 % 69.9-140

Chloride, SM4500CI-B		mg/kg		Analyzed By: AC						
Analyte	Result	Reporting Limit	Analyzed	Method Blank	BS	% Recovery	True Value QC	RPD	Qualifier	
Chloride	672	16.0	01/23/2022	ND	400	100	400	0.00		

TPH 8015M		mg/kg		Analyzed By: MS					
Analyte	Result	Reporting Limit	Analyzed	Method Blank	BS	% Recovery	True Value QC	RPD	Qualifier
GRO C6-C10*	<10.0	10.0	01/24/2022	ND	201	101	200	3.20	
DRO >C10-C28*	<10.0	10.0	01/24/2022	ND	192	95.8	200	3.19	
EXT DRO >C28-C36	<10.0	10.0	01/24/2022	ND					

Surrogate: 1-Chlorooctane 85.9 % 66.9-136

Surrogate: 1-Chlorooctadecane 75.7 % 59.5-142

Cardinal Laboratories

*=Accredited Analyte

PLEASE NOTE: Liability and Damages. Cardinal's liability and client's exclusive remedy for any claim arising, whether based in contract or tort, shall be limited to the amount paid by client for analyses. All claims, including those for negligence and any other cause whatsoever shall be deemed waived unless made in writing and received by Cardinal within thirty (30) days after completion of the applicable service. In no event shall Cardinal be liable for incidental or consequential damages, including, without limitation, business interruptions, loss of use, or loss of profits incurred by client, its subsidiaries, affiliates or successors arising out of or related to the performance of the services hereunder by Cardinal, regardless of whether such claim is based upon any of the above stated reasons or otherwise. Results relate only to the samples identified above. This report shall not be reproduced except in full with written approval of Cardinal Laboratories.

Celey D. Keene, Lab Director/Quality Manager



PHONE (575) 393-2326 • 101 E. MARLAND • HOBBS, NM 88240

Analytical Results For:

TETRA TECH
 SAM ABBOTT
 901 WEST WALL STREET , STE 100
 MIDLAND TX, 79701
 Fax To: (432) 682-3946

Received: 01/21/2022
 Reported: 01/26/2022
 Project Name: SRO STATE COM 008H
 Project Number: 212C - MD - 02659
 Project Location: EDDY CO NM

Sampling Date: 01/19/2022
 Sampling Type: Soil
 Sampling Condition: Cool & Intact
 Sample Received By: Tamara Oldaker

Sample ID: AH 1 (0-1) (H220245-07)

BTEx 8021B		mg/kg		Analyzed By: MS/						
Analyte	Result	Reporting Limit	Analyzed	Method Blank	BS	% Recovery	True Value QC	RPD	Qualifier	
Benzene*	<0.050	0.050	01/24/2022	ND	2.16	108	2.00	0.717		
Toluene*	<0.050	0.050	01/24/2022	ND	2.06	103	2.00	0.219		
Ethylbenzene*	<0.050	0.050	01/24/2022	ND	2.09	104	2.00	0.160		
Total Xylenes*	<0.150	0.150	01/24/2022	ND	6.34	106	6.00	0.319		
Total BTEx	<0.300	0.300	01/24/2022	ND						

Surrogate: 4-Bromofluorobenzene (PID) 101 % 69.9-140

Chloride, SM4500CI-B		mg/kg		Analyzed By: AC						
Analyte	Result	Reporting Limit	Analyzed	Method Blank	BS	% Recovery	True Value QC	RPD	Qualifier	
Chloride	256	16.0	01/23/2022	ND	400	100	400	0.00		

TPH 8015M		mg/kg		Analyzed By: MS					
Analyte	Result	Reporting Limit	Analyzed	Method Blank	BS	% Recovery	True Value QC	RPD	Qualifier
GRO C6-C10*	<10.0	10.0	01/24/2022	ND	201	101	200	3.20	
DRO >C10-C28*	<10.0	10.0	01/24/2022	ND	192	95.8	200	3.19	
EXT DRO >C28-C36	<10.0	10.0	01/24/2022	ND					

Surrogate: 1-Chlorooctane 83.9 % 66.9-136

Surrogate: 1-Chlorooctadecane 73.8 % 59.5-142

Cardinal Laboratories

*=Accredited Analyte

PLEASE NOTE: Liability and Damages. Cardinal's liability and client's exclusive remedy for any claim arising, whether based in contract or tort, shall be limited to the amount paid by client for analyses. All claims, including those for negligence and any other cause whatsoever shall be deemed waived unless made in writing and received by Cardinal within thirty (30) days after completion of the applicable service. In no event shall Cardinal be liable for incidental or consequential damages, including, without limitation, business interruptions, loss of use, or loss of profits incurred by client, its subsidiaries, affiliates or successors arising out of or related to the performance of the services hereunder by Cardinal, regardless of whether such claim is based upon any of the above stated reasons or otherwise. Results relate only to the samples identified above. This report shall not be reproduced except in full with written approval of Cardinal Laboratories.

Celey D. Keene, Lab Director/Quality Manager



PHONE (575) 393-2326 • 101 E. MARLAND • HOBBS, NM 88240

Analytical Results For:

TETRA TECH
 SAM ABBOTT
 901 WEST WALL STREET , STE 100
 MIDLAND TX, 79701
 Fax To: (432) 682-3946

Received: 01/21/2022
 Reported: 01/26/2022
 Project Name: SRO STATE COM 008H
 Project Number: 212C - MD - 02659
 Project Location: EDDY CO NM

Sampling Date: 01/19/2022
 Sampling Type: Soil
 Sampling Condition: Cool & Intact
 Sample Received By: Tamara Oldaker

Sample ID: AH 1 (1-2) (H220245-08)

BTX 8021B		mg/kg		Analyzed By: MS/						
Analyte	Result	Reporting Limit	Analyzed	Method Blank	BS	% Recovery	True Value QC	RPD	Qualifier	
Benzene*	<0.050	0.050	01/24/2022	ND	2.16	108	2.00	0.717		
Toluene*	<0.050	0.050	01/24/2022	ND	2.06	103	2.00	0.219		
Ethylbenzene*	<0.050	0.050	01/24/2022	ND	2.09	104	2.00	0.160		
Total Xylenes*	<0.150	0.150	01/24/2022	ND	6.34	106	6.00	0.319		
Total BTX	<0.300	0.300	01/24/2022	ND						

Surrogate: 4-Bromofluorobenzene (PID) 100 % 69.9-140

Chloride, SM4500CI-B		mg/kg		Analyzed By: AC					
Analyte	Result	Reporting Limit	Analyzed	Method Blank	BS	% Recovery	True Value QC	RPD	Qualifier
Chloride	160	16.0	01/23/2022	ND	400	100	400	0.00	

TPH 8015M		mg/kg		Analyzed By: MS					
Analyte	Result	Reporting Limit	Analyzed	Method Blank	BS	% Recovery	True Value QC	RPD	Qualifier
GRO C6-C10*	<10.0	10.0	01/24/2022	ND	201	101	200	3.20	
DRO >C10-C28*	<10.0	10.0	01/24/2022	ND	192	95.8	200	3.19	
EXT DRO >C28-C36	<10.0	10.0	01/24/2022	ND					

Surrogate: 1-Chlorooctane 91.1 % 66.9-136

Surrogate: 1-Chlorooctadecane 79.3 % 59.5-142

Cardinal Laboratories

*=Accredited Analyte

PLEASE NOTE: Liability and Damages. Cardinal's liability and client's exclusive remedy for any claim arising, whether based in contract or tort, shall be limited to the amount paid by client for analyses. All claims, including those for negligence and any other cause whatsoever shall be deemed waived unless made in writing and received by Cardinal within thirty (30) days after completion of the applicable service. In no event shall Cardinal be liable for incidental or consequential damages, including, without limitation, business interruptions, loss of use, or loss of profits incurred by client, its subsidiaries, affiliates or successors arising out of or related to the performance of the services hereunder by Cardinal, regardless of whether such claim is based upon any of the above stated reasons or otherwise. Results relate only to the samples identified above. This report shall not be reproduced except in full with written approval of Cardinal Laboratories.

Celey D. Keene, Lab Director/Quality Manager



PHONE (575) 393-2326 ° 101 E. MARLAND ° HOBBS, NM 88240

Analytical Results For:

TETRA TECH
 SAM ABBOTT
 901 WEST WALL STREET , STE 100
 MIDLAND TX, 79701
 Fax To: (432) 682-3946

Received: 01/21/2022
 Reported: 01/26/2022
 Project Name: SRO STATE COM 008H
 Project Number: 212C - MD - 02659
 Project Location: EDDY CO NM

Sampling Date: 01/19/2022
 Sampling Type: Soil
 Sampling Condition: Cool & Intact
 Sample Received By: Tamara Oldaker

Sample ID: AH 3 (0-1) (H220245-09)

BTEx 8021B		mg/kg		Analyzed By: MS/						
Analyte	Result	Reporting Limit	Analyzed	Method Blank	BS	% Recovery	True Value QC	RPD	Qualifier	
Benzene*	<0.050	0.050	01/24/2022	ND	2.16	108	2.00	0.717		
Toluene*	<0.050	0.050	01/24/2022	ND	2.06	103	2.00	0.219		
Ethylbenzene*	<0.050	0.050	01/24/2022	ND	2.09	104	2.00	0.160		
Total Xylenes*	<0.150	0.150	01/24/2022	ND	6.34	106	6.00	0.319		
Total BTEx	<0.300	0.300	01/24/2022	ND						

Surrogate: 4-Bromofluorobenzene (PID) 100 % 69.9-140

Chloride, SM4500CI-B		mg/kg		Analyzed By: AC						
Analyte	Result	Reporting Limit	Analyzed	Method Blank	BS	% Recovery	True Value QC	RPD	Qualifier	
Chloride	176	16.0	01/23/2022	ND	432	108	400	3.77		

TPH 8015M		mg/kg		Analyzed By: MS					
Analyte	Result	Reporting Limit	Analyzed	Method Blank	BS	% Recovery	True Value QC	RPD	Qualifier
GRO C6-C10*	<10.0	10.0	01/24/2022	ND	201	101	200	3.20	
DRO >C10-C28*	<10.0	10.0	01/24/2022	ND	192	95.8	200	3.19	
EXT DRO >C28-C36	<10.0	10.0	01/24/2022	ND					

Surrogate: 1-Chlorooctane 86.8 % 66.9-136

Surrogate: 1-Chlorooctadecane 75.7 % 59.5-142

Cardinal Laboratories

*=Accredited Analyte

PLEASE NOTE: Liability and Damages. Cardinal's liability and client's exclusive remedy for any claim arising, whether based in contract or tort, shall be limited to the amount paid by client for analyses. All claims, including those for negligence and any other cause whatsoever shall be deemed waived unless made in writing and received by Cardinal within thirty (30) days after completion of the applicable service. In no event shall Cardinal be liable for incidental or consequential damages, including, without limitation, business interruptions, loss of use, or loss of profits incurred by client, its subsidiaries, affiliates or successors arising out of or related to the performance of the services hereunder by Cardinal, regardless of whether such claim is based upon any of the above stated reasons or otherwise. Results relate only to the samples identified above. This report shall not be reproduced except in full with written approval of Cardinal Laboratories.

Celey D. Keene, Lab Director/Quality Manager



PHONE (575) 393-2326 ° 101 E. MARLAND ° HOBBS, NM 88240

Analytical Results For:

TETRA TECH
 SAM ABBOTT
 901 WEST WALL STREET , STE 100
 MIDLAND TX, 79701
 Fax To: (432) 682-3946

Received: 01/21/2022
 Reported: 01/26/2022
 Project Name: SRO STATE COM 008H
 Project Number: 212C - MD - 02659
 Project Location: EDDY CO NM

Sampling Date: 01/19/2022
 Sampling Type: Soil
 Sampling Condition: Cool & Intact
 Sample Received By: Tamara Oldaker

Sample ID: AH 3 (1-2) (H220245-10)

BTX 8021B		mg/kg		Analyzed By: MS/					
Analyte	Result	Reporting Limit	Analyzed	Method Blank	BS	% Recovery	True Value QC	RPD	Qualifier
Benzene*	<0.050	0.050	01/24/2022	ND	2.16	108	2.00	0.717	
Toluene*	<0.050	0.050	01/24/2022	ND	2.06	103	2.00	0.219	
Ethylbenzene*	<0.050	0.050	01/24/2022	ND	2.09	104	2.00	0.160	
Total Xylenes*	<0.150	0.150	01/24/2022	ND	6.34	106	6.00	0.319	
Total BTX	<0.300	0.300	01/24/2022	ND					

Surrogate: 4-Bromofluorobenzene (PID) 100 % 69.9-140

Chloride, SM4500CI-B		mg/kg		Analyzed By: AC						
Analyte	Result	Reporting Limit	Analyzed	Method Blank	BS	% Recovery	True Value QC	RPD	Qualifier	
Chloride	192	16.0	01/23/2022	ND	432	108	400	3.77		

TPH 8015M		mg/kg		Analyzed By: MS					
Analyte	Result	Reporting Limit	Analyzed	Method Blank	BS	% Recovery	True Value QC	RPD	Qualifier
GRO C6-C10*	<10.0	10.0	01/24/2022	ND	201	101	200	3.20	
DRO >C10-C28*	<10.0	10.0	01/24/2022	ND	192	95.8	200	3.19	
EXT DRO >C28-C36	<10.0	10.0	01/24/2022	ND					

Surrogate: 1-Chlorooctane 91.8 % 66.9-136

Surrogate: 1-Chlorooctadecane 79.8 % 59.5-142

Cardinal Laboratories

*=Accredited Analyte

PLEASE NOTE: Liability and Damages. Cardinal's liability and client's exclusive remedy for any claim arising, whether based in contract or tort, shall be limited to the amount paid by client for analyses. All claims, including those for negligence and any other cause whatsoever shall be deemed waived unless made in writing and received by Cardinal within thirty (30) days after completion of the applicable service. In no event shall Cardinal be liable for incidental or consequential damages, including, without limitation, business interruptions, loss of use, or loss of profits incurred by client, its subsidiaries, affiliates or successors arising out of or related to the performance of the services hereunder by Cardinal, regardless of whether such claim is based upon any of the above stated reasons or otherwise. Results relate only to the samples identified above. This report shall not be reproduced except in full with written approval of Cardinal Laboratories.

Celey D. Keene, Lab Director/Quality Manager



PHONE (575) 393-2326 ° 101 E. MARLAND ° HOBBS, NM 88240

Notes and Definitions

ND	Analyte NOT DETECTED at or above the reporting limit
RPD	Relative Percent Difference
**	Samples not received at proper temperature of 6°C or below.
***	Insufficient time to reach temperature.
-	Chloride by SM4500Cl-B does not require samples be received at or below 6°C Samples reported on an as received basis (wet) unless otherwise noted on report

Cardinal Laboratories

*=Accredited Analyte

PLEASE NOTE: Liability and Damages. Cardinal's liability and client's exclusive remedy for any claim arising, whether based in contract or tort, shall be limited to the amount paid by client for analyses. All claims, including those for negligence and any other cause whatsoever shall be deemed waived unless made in writing and received by Cardinal within thirty (30) days after completion of the applicable service. In no event shall Cardinal be liable for incidental or consequential damages, including, without limitation, business interruptions, loss of use, or loss of profits incurred by client, its subsidiaries, affiliates or successors arising out of or related to the performance of the services hereunder by Cardinal, regardless of whether such claim is based upon any of the above stated reasons or otherwise. Results relate only to the samples identified above. This report shall not be reproduced except in full with written approval of Cardinal Laboratories.

A handwritten signature in black ink, appearing to read "Celey D. Keene", is written over a horizontal line.

Celey D. Keene, Lab Director/Quality Manager



101 East Marland, Hobbs, NM 88240
(575) 393-2326 FAX (575) 393-2476

CHAIN-OF-CUSTODY AND ANALYSIS REQUEST

Company Name: Tetra Tech Inc		P.O. #:		BILL TO		ANALYSIS REQUEST													
Project Manager: Sam Abbott		Company:																	
Address: 8911 N. Capital of Texas Hwy # 2310		Attn:																	
City: Austin		Address:																	
Phone #: (512) 739-7874		City:																	
Project #: 812C-MD-02159		State:																	
Project Name: 520 th State Com 008H		Zip:																	
Project Location: Edley Co. NM		Phone #:																	
Sample Name: Adm 602		Fax #:																	
FOR LAB USE ONLY																			
Lab I.D.	Sample I.D.	(G)RAB OR (C)OMP.		MATRIX		PRESERV.		SAMPLING											
		# CONTAINERS	GROUNDWATER	WASTEWATER	SOIL	OIL	SLUDGE	OTHER :	ACID/BASE:	ICE / COOL	OTHER :								
1	BH 1 (0-1)	6	1	X					11/19/12	8:00	X	BTEX 8021 B							
2	(2-3)	6	1	X						8:30	X	TPH 8015							
3	(4-5)	6	1	X						8:45	X								
4	(6-7)	6	1	X						9:00	X								
5	(9-10)	6	1	X						9:15	X								
6	(14-15)	6	1	X						9:30	X								
7	(1-2)	6	1	X						9:40	X								
8		6	1	X						9:50	X								
PLEASE NOTE: Liability and Damages. Cardinal's liability and client's exclusive remedy for any claim arising whether based in contract or tort, shall be limited to the amount paid by the client for the service. In no event shall Cardinal be liable for incidental or consequential damages, including without limitation, business interruptions, loss of use, or loss of profits incurred by client, its subsidiaries, affiliates or successors arising out of or related to the performance of services hereunder by Cardinal, regardless of whether such claim is based upon any of the above stated reasons or otherwise.		Relinquished By: Adm 602		Date: 12/21/12		Time: 1:30		Received By: Shirata Chakraborty		Date: 12/21/12		Time: 1:30		Received By: Shirata Chakraborty		Date: 12/21/12		Time: 1:30	
Relinquished By: Adm 602		Date: 12/21/12		Time: 1:30		Received By: Shirata Chakraborty		Date: 12/21/12		Time: 1:30		Received By: Shirata Chakraborty		Date: 12/21/12		Time: 1:30		Received By: Shirata Chakraborty	
Delivered By: (Circle One)		Observed Temp. °C		Corrected Temp. °C		Sample Condition		CHECKED BY: (Initials)		Turnaround Time:		Standard		Bacteria (only)		Sample Condition		Observed Temp. °C	
Sampler - UPS - Bus - Other:		37		33		Cool Intact		Y		Thermometer ID #113		Rush		Cool Intact		Observed Temp. °C		Corrected Temp. °C	
FORM 5008 R 3.2 10/07/12						<input checked="" type="checkbox"/> Yes <input type="checkbox"/> No						<input checked="" type="checkbox"/> Yes <input type="checkbox"/> No		<input checked="" type="checkbox"/> Yes <input type="checkbox"/> No					



101 East Marland, Hobbs, NM 88240
(575) 393-2326 FAX (575) 393-2476

CHAIN-OF-CUSTODY AND ANALYSIS REQUEST

Company Name: Tetra Tech Project Manager: Address: City: State: Zip: Phone #: Fax #: Project #: Project Name: SRD State Com 0084 Project Location: Sampler Name:				BILL TO P.O. #: Company: Attn: Address: City: State: Zip: Phone #: Fax #:				ANALYSIS REQUEST			
PLEASE NOTE: Liability and Damages. Cardinal's liability and client's exclusive remedy for any claim arising whether based in contract or tort, shall be limited to the amount paid by the client for the analyses. All claims including those for negligence and any other cause whatsoever shall be deemed waived unless made in writing and received by Cardinal within 30 days after completion of the applicable service. In no event shall Cardinal be liable for incidental or consequential damages, including without limitation, business interruptions, loss of use, or loss of profits incurred by client, its subsidiaries, affiliates or successors arising out of or related to the performance of services hereunder by Cardinal, regardless of whether such claim is based upon any of the above stated reasons or otherwise.											
Relinquished By: Date: 1/21/22 Time: 1:30 Received By: Jennifer Blackmer		Relinquished By: Date: 1/21/22 Time: 1:30 Received By: Jennifer Blackmer		Verbal Result: <input type="checkbox"/> Yes <input type="checkbox"/> No <input type="checkbox"/> Add'l Phone #: All Results are emailed. Please provide Email address:		REMARKS: Turnaround Time: <input checked="" type="checkbox"/> Standard <input type="checkbox"/> Rush Bacteria (only) <input type="checkbox"/> Cool <input type="checkbox"/> Intact <input type="checkbox"/> Yes <input type="checkbox"/> No Sample Condition <input type="checkbox"/> Cool <input type="checkbox"/> Intact <input type="checkbox"/> Yes <input type="checkbox"/> No Observed Temp. °C 37 Corrected Temp. °C 3.2 CHECKED BY: (Initials) VE					
Lab I.D. H220245 9 ID AH3 (10-1) (1-2)		Sample I.D. (G)RAB OR (C)OMP. # CONTAINERS GROUNDWATER WASTEWATER SOIL OIL SLUDGE OTHER : ACID/BASE: ICE / COOL OTHER : DATE 11/9/22 10:00 TIME 11:14 AM 11:00		BTEX 8021B TPH 8015 Chlorides							



PHONE (575) 393-2326 ° 101 E. MARLAND ° HOBBS, NM 88240

February 15, 2022

SAM ABBOTT

TETRA TECH

901 WEST WALL STREET , STE 100

MIDLAND, TX 79701

RE: SRO STATE COM 008H

Enclosed are the results of analyses for samples received by the laboratory on 02/11/22 13:00.

Cardinal Laboratories is accredited through Texas NELAP under certificate number T104704398-21-14. Accreditation applies to drinking water, non-potable water and solid and chemical materials. All accredited analytes are denoted by an asterisk (*). For a complete list of accredited analytes and matrices visit the TCEQ website at www.tceq.texas.gov/field/qa/lab_accred_certif.html.

Cardinal Laboratories is accredited through the State of Colorado Department of Public Health and Environment for:

Method EPA 552.2	Haloacetic Acids (HAA-5)
Method EPA 524.2	Total Trihalomethanes (TTHM)
Method EPA 524.4	Regulated VOCs (V1, V2, V3)

Accreditation applies to public drinking water matrices.

This report meets NELAP requirements and is made up of a cover page, analytical results, and a copy of the original chain-of-custody. If you have any questions concerning this report, please feel free to contact me.

Sincerely,

A handwritten signature in black ink that reads "Celey D. Keene". The signature is written in a cursive style with a large, stylized 'C' and 'K'.

Celey D. Keene

Lab Director/Quality Manager



PHONE (575) 393-2326 • 101 E. MARLAND • HOBBS, NM 88240

Analytical Results For:

TETRA TECH
 SAM ABBOTT
 901 WEST WALL STREET , STE 100
 MIDLAND TX, 79701
 Fax To: (432) 682-3946

Received: 02/11/2022
 Reported: 02/15/2022
 Project Name: SRO STATE COM 008H
 Project Number: 212C - MD - 02659
 Project Location: EDDY CO NM

Sampling Date: 02/09/2022
 Sampling Type: Soil
 Sampling Condition: Cool & Intact
 Sample Received By: Tamara Oldaker

Sample ID: AH - 2 (0-1') (H220552-01)

BTEX 8021B		mg/kg		Analyzed By: MS/					
Analyte	Result	Reporting Limit	Analyzed	Method Blank	BS	% Recovery	True Value QC	RPD	Qualifier
Benzene*	<0.050	0.050	02/14/2022	ND	1.83	91.7	2.00	6.71	
Toluene*	<0.050	0.050	02/14/2022	ND	1.85	92.6	2.00	6.15	
Ethylbenzene*	<0.050	0.050	02/14/2022	ND	1.80	90.2	2.00	5.26	
Total Xylenes*	<0.150	0.150	02/14/2022	ND	5.65	94.1	6.00	4.35	
Total BTEX	<0.300	0.300	02/14/2022	ND					

Surrogate: 4-Bromofluorobenzene (PID) 102 % 69.9-140

Chloride, SM4500Cl-B		mg/kg		Analyzed By: GM						
Analyte	Result	Reporting Limit	Analyzed	Method Blank	BS	% Recovery	True Value QC	RPD	Qualifier	
Chloride	224	16.0	02/14/2022	ND	416	104	400	3.77		

TPH 8015M		mg/kg		Analyzed By: CK					
Analyte	Result	Reporting Limit	Analyzed	Method Blank	BS	% Recovery	True Value QC	RPD	Qualifier
GRO C6-C10*	<10.0	10.0	02/14/2022	ND	211	106	200	2.00	
DRO >C10-C28*	<10.0	10.0	02/14/2022	ND	233	117	200	9.93	
EXT DRO >C28-C36	<10.0	10.0	02/14/2022	ND					

Surrogate: 1-Chlorooctane 119 % 66.9-136

Surrogate: 1-Chlorooctadecane 128 % 59.5-142

Cardinal Laboratories

*=Accredited Analyte

PLEASE NOTE: Liability and Damages. Cardinal's liability and client's exclusive remedy for any claim arising, whether based in contract or tort, shall be limited to the amount paid by client for analyses. All claims, including those for negligence and any other cause whatsoever shall be deemed waived unless made in writing and received by Cardinal within thirty (30) days after completion of the applicable service. In no event shall Cardinal be liable for incidental or consequential damages, including, without limitation, business interruptions, loss of use, or loss of profits incurred by client, its subsidiaries, affiliates or successors arising out of or related to the performance of the services hereunder by Cardinal, regardless of whether such claim is based upon any of the above stated reasons or otherwise. Results relate only to the samples identified above. This report shall not be reproduced except in full with written approval of Cardinal Laboratories.

Celey D. Keene, Lab Director/Quality Manager



PHONE (575) 393-2326 • 101 E. MARLAND • HOBBS, NM 88240

Analytical Results For:

TETRA TECH
 SAM ABBOTT
 901 WEST WALL STREET , STE 100
 MIDLAND TX, 79701
 Fax To: (432) 682-3946

Received: 02/11/2022
 Reported: 02/15/2022
 Project Name: SRO STATE COM 008H
 Project Number: 212C - MD - 02659
 Project Location: EDDY CO NM

Sampling Date: 02/09/2022
 Sampling Type: Soil
 Sampling Condition: Cool & Intact
 Sample Received By: Tamara Oldaker

Sample ID: AH - 2 (1'-2') (H220552-02)

BTEx 8021B		mg/kg		Analyzed By: MS/						
Analyte	Result	Reporting Limit	Analyzed	Method Blank	BS	% Recovery	True Value QC	RPD	Qualifier	
Benzene*	<0.050	0.050	02/14/2022	ND	1.83	91.7	2.00	6.71		
Toluene*	<0.050	0.050	02/14/2022	ND	1.85	92.6	2.00	6.15		
Ethylbenzene*	<0.050	0.050	02/14/2022	ND	1.80	90.2	2.00	5.26		
Total Xylenes*	<0.150	0.150	02/14/2022	ND	5.65	94.1	6.00	4.35		
Total BTEx	<0.300	0.300	02/14/2022	ND						

Surrogate: 4-Bromofluorobenzene (PID) 104 % 69.9-140

Chloride, SM4500CI-B		mg/kg		Analyzed By: GM						
Analyte	Result	Reporting Limit	Analyzed	Method Blank	BS	% Recovery	True Value QC	RPD	Qualifier	
Chloride	192	16.0	02/14/2022	ND	416	104	400	3.77		

TPH 8015M		mg/kg		Analyzed By: CK					
Analyte	Result	Reporting Limit	Analyzed	Method Blank	BS	% Recovery	True Value QC	RPD	Qualifier
GRO C6-C10*	<10.0	10.0	02/14/2022	ND	211	106	200	2.00	
DRO >C10-C28*	<10.0	10.0	02/14/2022	ND	233	117	200	9.93	
EXT DRO >C28-C36	<10.0	10.0	02/14/2022	ND					

Surrogate: 1-Chlorooctane 120 % 66.9-136

Surrogate: 1-Chlorooctadecane 129 % 59.5-142

Cardinal Laboratories

*=Accredited Analyte

PLEASE NOTE: Liability and Damages. Cardinal's liability and client's exclusive remedy for any claim arising, whether based in contract or tort, shall be limited to the amount paid by client for analyses. All claims, including those for negligence and any other cause whatsoever shall be deemed waived unless made in writing and received by Cardinal within thirty (30) days after completion of the applicable service. In no event shall Cardinal be liable for incidental or consequential damages, including, without limitation, business interruptions, loss of use, or loss of profits incurred by client, its subsidiaries, affiliates or successors arising out of or related to the performance of the services hereunder by Cardinal, regardless of whether such claim is based upon any of the above stated reasons or otherwise. Results relate only to the samples identified above. This report shall not be reproduced except in full with written approval of Cardinal Laboratories.

Celey D. Keene, Lab Director/Quality Manager



PHONE (575) 393-2326 ° 101 E. MARLAND ° HOBBS, NM 88240

Notes and Definitions

S-04	The surrogate recovery for this sample is outside of established control limits due to a sample matrix effect.
ND	Analyte NOT DETECTED at or above the reporting limit
RPD	Relative Percent Difference
**	Samples not received at proper temperature of 6°C or below.
***	Insufficient time to reach temperature.
-	Chloride by SM4500Cl-B does not require samples be received at or below 6°C Samples reported on an as received basis (wet) unless otherwise noted on report

Cardinal Laboratories

*=Accredited Analyte

PLEASE NOTE: Liability and Damages. Cardinal's liability and client's exclusive remedy for any claim arising, whether based in contract or tort, shall be limited to the amount paid by client for analyses. All claims, including those for negligence and any other cause whatsoever shall be deemed waived unless made in writing and received by Cardinal within thirty (30) days after completion of the applicable service. In no event shall Cardinal be liable for incidental or consequential damages, including, without limitation, business interruptions, loss of use, or loss of profits incurred by client, its subsidiaries, affiliates or successors arising out of or related to the performance of the services hereunder by Cardinal, regardless of whether such claim is based upon any of the above stated reasons or otherwise. Results relate only to the samples identified above. This report shall not be reproduced except in full with written approval of Cardinal Laboratories.

A handwritten signature in black ink, appearing to read "Celey D. Keene".

Celey D. Keene, Lab Director/Quality Manager



176

Page 5 of 5

District I
1625 N. French Dr., Hobbs, NM 88240
Phone:(575) 393-6161 Fax:(575) 393-0720
District II
811 S. First St., Artesia, NM 88210
Phone:(575) 748-1283 Fax:(575) 748-9720
District III
1000 Rio Brazos Rd., Aztec, NM 87410
Phone:(505) 334-6178 Fax:(505) 334-6170
District IV
1220 S. St Francis Dr., Santa Fe, NM 87505
Phone:(505) 476-3470 Fax:(505) 476-3462

State of New Mexico
Energy, Minerals and Natural Resources
Oil Conservation Division
1220 S. St Francis Dr.
Santa Fe, NM 87505

CONDITIONS

Action 84881

CONDITIONS

Operator: COG OPERATING LLC 600 W Illinois Ave Midland, TX 79701	OGRID: 229137
	Action Number: 84881
	Action Type: [C-141] Release Corrective Action (C-141)

CONDITIONS

Created By	Condition	Condition Date
bbillings	Max of 500 sq/ft on confirm samples and 120 days from 3/7/2022 to complete work.	3/7/2022