

District I
1625 N. French Dr., Hobbs, NM 88240
District II
811 S. First St., Artesia, NM 88210
District III
1000 Rio Brazos Road, Aztec, NM 87410
District IV
1220 S. St. Francis Dr., Santa Fe, NM 87505

State of New Mexico
Energy Minerals and Natural
Resources Department

Oil Conservation Division
1220 South St. Francis Dr.
Santa Fe, NM 87505

Form C-141
Revised August 24, 2018
Submit to appropriate OCD District office

Incident ID	
District RP	
Facility ID	
Application ID	

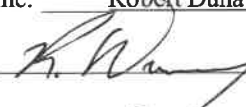
Closure

The responsible party must attach information demonstrating they have complied with all applicable closure requirements and any conditions or directives of the OCD. This demonstration should be in the form of a comprehensive report (electronic submittals in .pdf format are preferred) including a scaled site map, sampling diagrams, relevant field notes, photographs of any excavation prior to backfilling, laboratory data including chain of custody documents of final sampling, and a narrative of the remedial activities. Refer to 19.15.29.12 NMAC.

Closure Report Attachment Checklist: *Each of the following items must be included in the closure report.*

- ☒ A scaled site and sampling diagram as described in 19.15.29.11 NMAC
- ☒ Photographs of the remediated site prior to backfill or photos of the liner integrity if applicable (Note: appropriate OCD District office must be notified 2 days prior to liner inspection)
- ☒ Laboratory analyses of final sampling (Note: appropriate ODC District office must be notified 2 days prior to final sampling)
- ☒ Description of remediation activities

I hereby certify that the information given above is true and complete to the best of my knowledge and understand that pursuant to OCD rules and regulations all operators are required to report and/or file certain release notifications and perform corrective actions for releases which may endanger public health or the environment. The acceptance of a C-141 report by the OCD does not relieve the operator of liability should their operations have failed to adequately investigate and remediate contamination that pose a threat to groundwater, surface water, human health or the environment. In addition, OCD acceptance of a C-141 report does not relieve the operator of responsibility for compliance with any other federal, state, or local laws and/or regulations. The responsible party acknowledges they must substantially restore, reclaim, and re-vegetate the impacted surface area to the conditions that existed prior to the release or their final land use in accordance with 19.15.29.13 NMAC including notification to the OCD when reclamation and re-vegetation are complete.

Printed Name: Robert Dunaway Title: Senior Environmental Engineer
Signature:  Date: 2/15/21
email: rhodunaway@eprod.com Telephone: 575-628-6802

State of New Mexico
Oil Conservation Division

Incident ID	
District RP	
Facility ID	
Application ID	

OCD Only

Received by: _____

Date: _____

Closure approval by the OCD does not relieve the responsible party of liability should their operations have failed to adequately investigate and remediate contamination that poses a threat to groundwater, surface water, human health, or the environment nor does not relieve the responsible party of compliance with any other federal, state, or local laws and/or regulations.

Closure Approved by: _____

*Jennifer Nobui*Date: 03/10/2022Printed Name: Jennifer NobuiTitle: Environmental Specialist A



Souder, Miller & Associates ♦ 201 S. Halagueno St. ♦ Carlsbad, NM 88220
(575) 689-8801

February 15, 2022

#5E29921-BG23

NMOCD District 2
811 S. First St.
Artesia, New Mexico 88210

SUBJECT: Remediation Closure Report for the Poker Lake Suction (Trunk D) Release (NAPP2132628487), Eddy County, New Mexico

1.0 Executive Summary

On behalf of Enterprise Field Services LLC (Enterprise), Souder, Miller & Associates (SMA) has prepared this Remediation Closure Report that describes the remediation of a natural gas and condensate release related to oil and gas production activities at the Poker Lake Suction (Trunk D) Release (NAPP2132628487). The release site is located in Unit J, Section 33, Township 24S, Range 31E, Eddy County, New Mexico, on Federal land. Figure 1 illustrates the vicinity and site location on a United States Geological Survey (USGS) 7.5-minute quadrangle map.

This report demonstrates that the release area has been remediated to meet the standards of Table I of 19.15.29.12 New Mexico Administrative Code (NMAC). In addition to meeting the Closure Criteria, the top four feet of impacted areas meet the reclamation requirement of Paragraph (1) of Subsection (D) of 19.15.29.13. The information provided in this report is intended to fulfill final New Mexico Oil Conservation Division (NMOCD) closure requirements.

The gas portion of this release constitutes venting that occurred during an emergency or malfunction, as authorized by NMOCD regulations at NMAC 19.15.28.8.A and B(1). This release therefore is not prohibited by NMAC 19.15.29.8.A.

SMA recommends no further action and requests that the releases associated with the Poker Lake Suction (Trunk D) Release (NAPP213628487).

Table 1 summarizes release information and Closure Criteria.

Table 1: Release Information and Closure Criteria			
Name	Poker Lake Suction (Trunk D)	Company	Enterprise Field Services LLC
API Number	N/A	Location	32.173659, -103.78069
Tracking Number	NAPP2132628487		
Estimated Date of Release	November 18, 2021	Date Reported to NMOCD	November 22, 2021
Land Owner	Federal	Reported To	NMOCD District II
Source of Release	Leak on a gathering pipeline		
Released Volume	55 Mcf, 1.0 bbl	Released Material	Natural Gas, Condensate
Recovered Volume	0 Mcf, 0 bbl	Net Release	55 Mcf, 1.0 bbl

Poker Lake Suction (Trunk D) Closure Report
February 15, 2022

Page 2 of 4

NMOCD Closure Criteria	<50 feet
SMA Response Dates	December 6, 2021, January 11, 2022, and January 26, 2022

2.0 Background

On November 18, 2021, a natural gas and condensate release was discovered at the Poker Lake Suction (Trunk D) site. Initial response activities were conducted by Enterprise, and included source elimination and site security, containment, and site stabilization activities. Figure 1 illustrates the vicinity and site location; Figure 2 illustrates the release location. The initial C-141 form is included in Appendix A.

3.0 Site Information and Closure Criteria

The Poker Lake Suction (Trunk D) site is located approximately 31 miles southeast of Carlsbad, New Mexico on Federal (BLM) land at an elevation of approximately 3,460 feet above mean sea level (amsl).

Depth to Groundwater

Due to a lack of documented water well data (Appendix B), a depth to groundwater of less than 50 feet below grade surface (bgs) has been assigned.

Wellhead Protection Area

There are no known water sources within ½-mile of the location, according to the Office of the State Engineer (OSE) New Mexico Water Rights Reporting System (NMWRRS) and USGS National Water Information System. Registered wells in the vicinity are shown on Figure 1.

Distance to Nearest Significant Watercourse

The nearest significant watercourse is a small unnamed playa, located approximately 3,950 feet to the southwest.

Table 2 demonstrates the Closure Criteria applicable to this location. Figures 1 and 2 illustrate the 200 and 300-foot radii which indicate that the site does not lie within a sensitive area as described in Paragraph (4) of Subsection (C) of 19.15.29.12 NMAC.

Based on the information presented herein, the applicable NMOCD Closure Criteria for this site is for a groundwater depth of less than 50 feet bgs in addition to the requirements of reclamation for the upper four feet of impacted soil.

4.0 Release Characterization and Remediation Activities

On December 6, 2021, following pipeline repair and excavation activities, SMA personnel performed closure confirmation sampling.

Six (6) composite confirmation samples were collected from the excavation for laboratory analysis for total chloride using United States Environmental Protection Agency (USEPA) Method 300.0; benzene, toluene, ethylbenzene and total xylenes (BTEX) using USEPA Method 8021B; and total petroleum hydrocarbons (TPH) as motor, diesel and gasoline range organics (MRO, DRO, and GRO) by USEPA Method 8015D. Excavation samples were composed of 5-point composites collected every 200 square feet in accordance with the sampling protocol included in Appendix C. Additionally, a background sample (PLS-BG-01) was collected from the surface soils at a nearby, undisturbed location for laboratory analysis for total chloride using USEPA Method 300.0.

Poker Lake Suction (Trunk D) Closure Report February 15, 2022

Page 3 of 4

Soil samples were field screened for chloride using an electrical conductivity (EC) meter and for hydrocarbon impacts using a calibrated MiniRAE 3000 photoionization detector (PID) equipped with a 10.6 eV lamp. Field notes are included in Appendix D.

Laboratory results indicated that initial closure samples exceeded the Closure Criteria. On January 11, 2021, following additional excavation, SMA collected six (6) composite confirmation samples for laboratory analysis for total chloride using USEPA Method 300.0; benzene, toluene, ethylbenzene and total xylenes (BTEX) using USEPA Method 8021B; and motor, diesel and gasoline range organics (MRO, DRO, and GRO) by USEPA Method 8015D. An additional background sample (PLS-BG-08) was collected from the initial background sample location for laboratory analysis for chlorides using USEPA Method 300.0.

The final remediation excavation measured approximately 32 feet by 23 feet with a maximum depth of 8 feet.

Local soils are known to exhibit elevated concentrations of chlorides as evidenced by the presence of a salt mine approximately one mile northwest of the release site. To further characterize the distribution of natural chloride concentrations, on January 26, 2022, SMA returned to site to collect an additional background sample (Trunk D-CL-01) for laboratory analysis for chlorides using USEPA Method 300.0. The chloride concentration for this sample is the greatest concentration (11,400 milligrams per kilogram) reported for the three background samples, and thus used as the closure standard for the excavation samples.

Excavation extents, closure confirmation, and background sample locations are depicted in Figure 3. A photo log is included in Appendix D. Confirmation laboratory results are summarized in Table 3. Laboratory reports are included in Appendix E.

5.0 Recommendations

As demonstrated in Table 3, all closure confirmation samples meet NMOCD Closure Criteria. The site has been remediated to meet the standards of Table I of 19.15.29.12 NMAC. In addition to meeting the Closure Criteria, the top four (4) feet of impacted areas meet the reclamation requirement of Paragraph (1) of Subsection (D) of 19.15.29.13 NMAC.

Contaminated soils were removed and replaced with clean backfill material to return the surface to previous contours. Approximately 86 compacted cubic yards of contaminated soil was transported and disposed of at Lea Land LLC, Hobbs, New Mexico, an NMOCD-permitted disposal facility.

SMA recommends no further action and requests closure of Incident Number NAPP2132628487.

6.0 Scope and Limitations

The scope of our services included: assessment sampling; verifying release stabilization; regulatory liaison; remediation guidance; and preparing this report. All work has been performed in accordance with generally accepted professional environmental consulting practices for oil and gas releases in the Permian Basin in New Mexico.

If there are any questions regarding this report, please contact Ashley Maxwell at 505-320-8975.

Poker Lake Suction (Trunk D) Closure Report
February 15, 2022

Page 4 of 4

Submitted by:
SOUDER, MILLER & ASSOCIATES

Reviewed by:



Ashley Maxwell
Project Scientist



Reid S. Allan, P.G.
Sr. Vice President

REFERENCES:

New Mexico Office of the State Engineer (NMOSE) online water well database
https://gis.ose.state.nm.us/gisapps/ose_pod_locations/; accessed 12/1/2021

ATTACHMENTS:

Figures:

Figure 1: Site Map
Figure 2: Surface Water Protection Map
Figure 3: Site and Sample Location Map

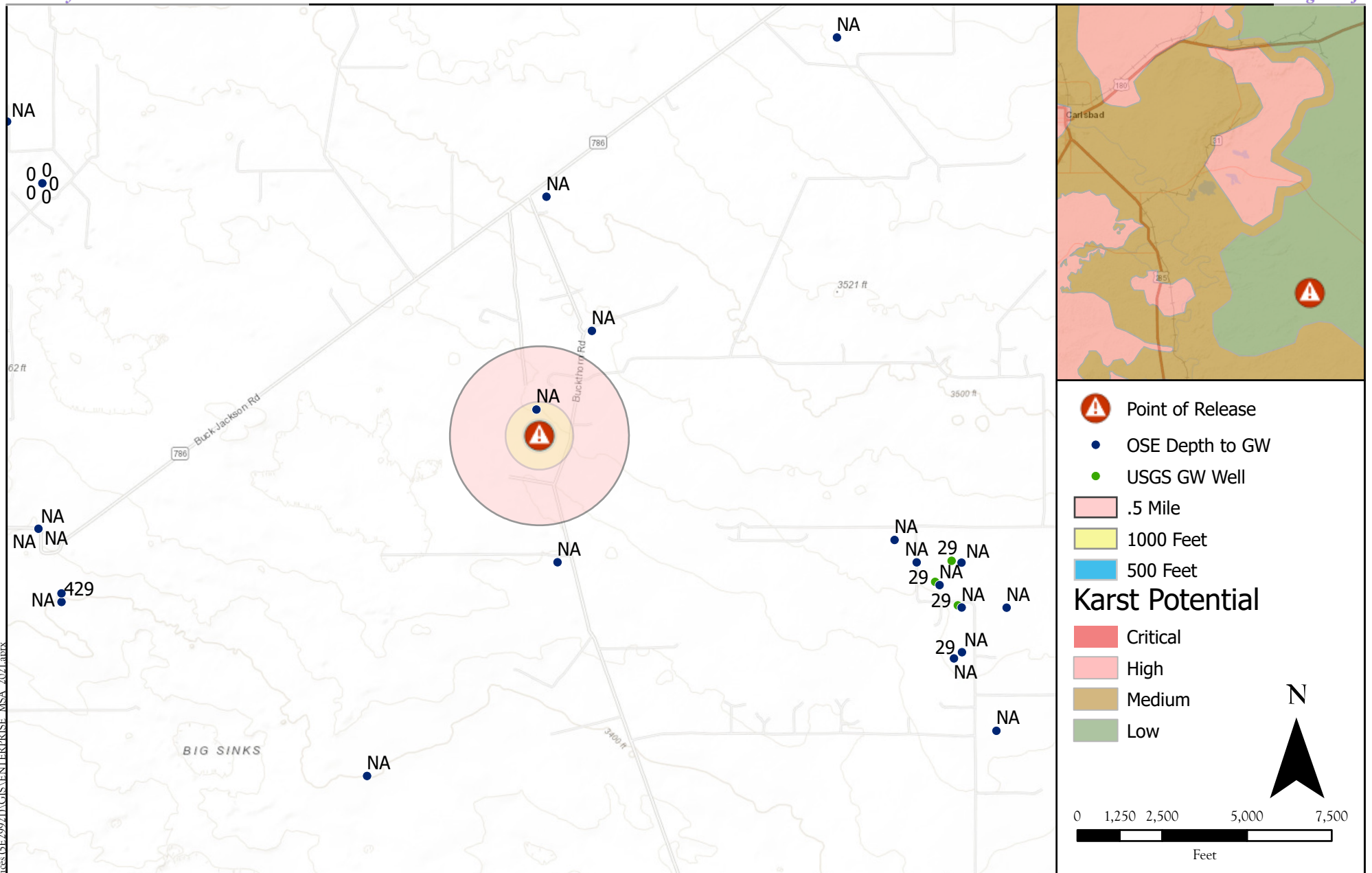
Tables:

Table 2: NMOCD Closure Criteria Justification
Table 3: Summary of Sample Results

Appendices:

Appendix A: Form C-141
Appendix B: Water Well Data
Appendix C: Sampling Protocol
Appendix D: Field Notes and Photo Log
Appendix E: Laboratory Analytical Reports

FIGURES



Site Map
Poker Lake Suction (Trunk D)- Enterprise Field Services, LLC
32.173659, -103.78069, Eddy County, New Mexico

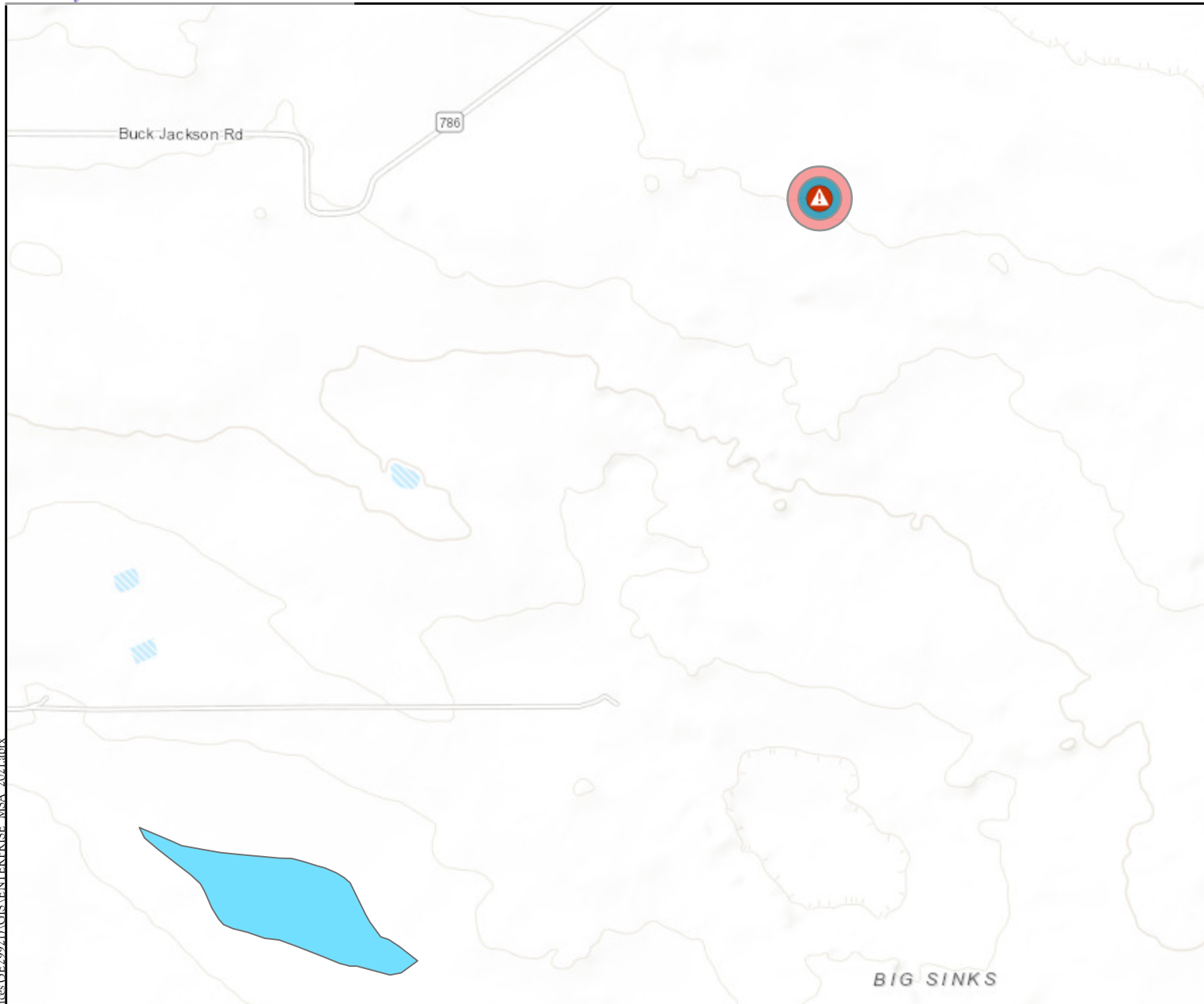
Figure 1









Revisions		
By: _____	Date: _____	Descr: _____
By: _____	Date: _____	Descr: _____

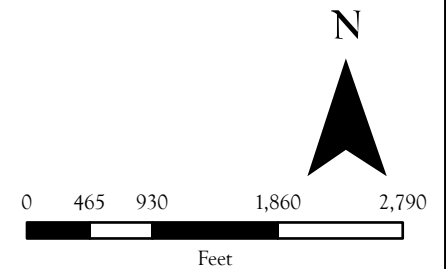
Drawn	PRS
Date	11/29/2021
Checked	_____
Approved	_____



201 South Halaguena Street
Carlsbad, New Mexico 88221
(575) 689-7040
Serving the Southwest & Rocky Mountains



-  Point of Release
-  100 Feet
-  200 Feet
-  300 Feet
-  Streams & Canals
-  Flowlines SENM
-  Lakes & Playas
-  FEMA Flood Zones 2011



Surface Water Protection Map
 Poker Lake Suction (Trunk D)- Enterprise Field Services, LLC
 32.173659, -103.78069, Eddy County, New Mexico

Figure 2

Revisions

By: _____ Date: _____ Descr: _____
 By: _____ Date: _____ Descr: _____

© Souder, Miller & Associates, 2021, All Rights Reserved

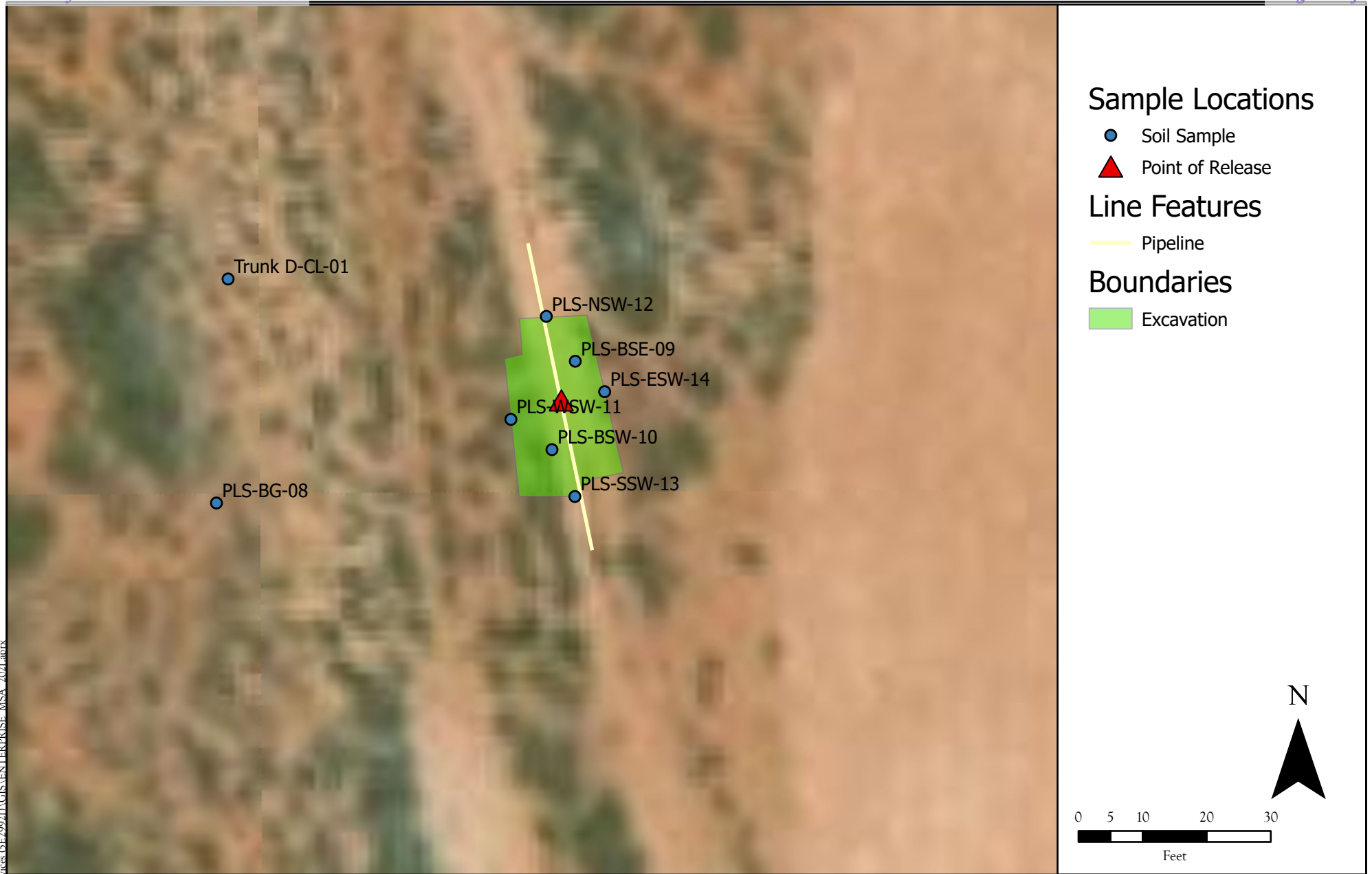
Drawn
 Date
 Checked
 Approved

PRS

11/29/2021



201 South Halaguena Street
 Carlsbad, New Mexico 88221
 (575) 689-7040
 Serving the Southwest & Rocky Mountains



Site and Sample Location Map
Poker Lake Suction (Trunk D)Enterprise Field Services LLC
Eddy, New Mexico

Figure 3



201 South Halaguena Street
Carlsbad, New Mexico 88221
(575) 689-7040
Serving the Southwest & Rocky Mountains

Revisions

By: _____ Date: _____ Descr: _____
By: _____ Date: _____ Descr: _____

Drawn

Ashley Maxwell

Date

2/15/2022

Checked

Approved

© Souder, Miller & Associates, 2021, All Rights Reserved

TABLES

Table 2:
NMOCD Closure CriteriaEnterprise Field Services
Poker Lake Suction (Trunk D)
NAPP2132628487

Site Information (19.15.29.11.A(2, 3, and 4) NMAC)		Source/Notes
Depth to Groundwater (feet bgs)	No Data	NMOSE and USGS Water Well Data
Horizontal Distance From All Water Sources Within 1/2 Mile (ft)	1,060	NMOSE Water Well Data
Horizontal Distance to Nearest Significant Watercourse (ft)	3,950	USGS 7.5-minute Quadrangle Map

Closure Criteria (19.15.29.12.B(4) and Table 1 NMAC)						
Depth to Groundwater		Closure Criteria (units in mg/kg)				
		Chloride *numerical limit or background, whichever is greater	TPH	GRO + DRO	BTEX	Benzene
< 50' BGS	X	600	100		50	10
51' to 100'		10000	2500	1000	50	10
>100'		20000	2500	1000	50	10
Surface Water	yes or no	if yes, then				
<300' from continuously flowing watercourse or other significant watercourse?	no	600	100		50	10
<200' from lakebed, sinkhole or playa lake?	no					
Water Well or Water Source						
<500 feet from spring or a private, domestic fresh water well used by less than 5 households for domestic or stock watering purposes?	no					
<1000' from fresh water well or spring?	no					
Human and Other Areas						
<300' from an occupied permanent residence, school, hospital, institution or church?	no					
within incorporated municipal boundaries or within a defined municipal fresh water well field?	no					
<100' from wetland?	no					
within area overlying a subsurface mine	no					
within an unstable area?	no					
within a 100-year floodplain?	no					



Table 3:
Sample ResultsEnterprise Field Services
Poker Lake Suction (Trunk D)
NAPP22132628487

Sample ID	Sample Date	Depth of Sample (feet bgs)		Method 8021B		Method 8015D				Method 300.0
			Action Taken	BTEX	Benzene	GRO	DRO	MRO	Total TPH	Cl-
				mg/Kg	mg/Kg	mg/Kg	mg/Kg	mg/Kg	mg/Kg	mg/Kg
NMOCD Closure Criteria				50	10				100	11,400**
PLS-BG-01	12/6/2021	Surface		--	--	--	--	--	--	<20.00
PLS-BG-08	1/11/2022	0-4		--	--	--	--	--	--	2,020
Trunk D-CL-01	1/26/2022	0-4		--	--	--	--	--	--	11,400
PLS-BSE-02	12/6/2021	6	Excavated	0.0915	<0.0250	<20.0	1,330	541	1,871	1,460
PLS-BSE-09	1/11/2022	8	In-situ	<0.100	<0.0250	<20.0	<25.0	<50.0	<95.0	2,620
PLS-BSW-03	12/6/2021	6	Excavated	0.0315	<0.0250	<20.0	1,130	505	1,635	4,750
PLS-BSW-10	1/11/2022	8	In-situ	<0.100	<0.0250	<20.0	<25.0	<50.0	<95.0	1,720
PLS-WSW-04	12/6/2021	0-8	Excavated	5.19	<0.0250	125	3,450	1,260	4,835	4,930
PLS-WSW-11	1/11/2022	0-8	In-situ	<0.100	<0.0250	<20.0	<25.0	<50.0	<95.0	1,790
PLS-ESE-05	12/6/2021	0-6	Excavated	<0.100	<0.0250	<20.0	<25.0	<50.0	<95.0	3,420
PLS-ESW-14	1/11/2022	0-6	In-situ	<0.100	<0.0250	<20.0	<25.0	<50.0	<95.0	2,320
PLS-NSW-06	12/6/2021	0-4	Excavated	<0.100	<0.0250	<20.0	<25.0	<50.0	<95.0	3,290
PLS-NSW-12	1/11/2022	0-4	In-situ	<0.100	<0.0250	<20.0	<25.0	<50.0	<95.0	3,000
PLS-SSW-07	12/6/2021	0-4	Excavated	0.3325	<0.0250	34.1	901	340	1,275.1	2,430
PLS-SSW-13	1/11/2022	0-4	In-situ	<0.100	<0.0250	<20.0	<25.0	<50.0	<95.0	2,870
Stockpile Samples										
PLS-SP-08	12/6/2021	NA	Disposed	1.5685	<0.0250	80.7	1,560	567	2,207.7	2,500
PLS-SP-09	12/6/2021	NA	Disposed	58	<0.0250	1,020	7,640	2,150	10,810	2,460
PLS-SP-10	12/6/2021	NA	Disposed	0.106	<0.0250	<20.0	500	178	678	103
PLS-SP-11	12/6/2021	NA	Disposed	16.46	<0.0250	277	3,500	983	4,760	2,650
PLS-SP-12	12/6/2021	NA	Disposed	0.453	<0.0250	21.5	1,410	520	1,951.5	2,820
PLS-SP-13	12/6/2021	NA	Disposed	0.0335	<0.0250	<20.0	360	182	542	1,460
PLS-SP-14	12/6/2021	NA	Disposed	2.178	<0.0250	86	1,370	481	1,937	2,930
PLS-SP-15	12/6/2021	NA	Disposed	42.19	<0.0250	551	8,620	2,550	11,721	3,680
PLS-SP-16	12/6/2021	NA	Disposed	0.748	<0.0250	33.5	449	206	688.5	1,680
PLS-SP-17	12/6/2021	NA	Disposed	0.0260	<0.0250	<20.0	222	121	343	1,420
PLS-SP-18	12/6/2021	NA	Disposed	0.5445	<0.0250	26.2	793	322	1,141	999
PLS-SP-19	12/6/2021	NA	Disposed	3.893	<0.0250	93.5	2,840	948	3,882	1,670

"SP" = Stockpile

BG: Background sample

"***" Based on BG sample



APPENDIX A

FORM C141

District I
1625 N. French Dr., Hobbs, NM 88240
District II
811 S. First St., Artesia, NM 88210
District III
1000 Rio Brazos Road, Aztec, NM 87410
District IV
1220 S. St. Francis Dr., Santa Fe, NM 87505

State of New Mexico
Energy Minerals and Natural
Resources Department
Oil Conservation Division
1220 South St. Francis Dr.
Santa Fe, NM 87505

Form C-141
Revised August 24, 2018
Submit to appropriate OCD District office

Incident ID	NAPP2132628487
District RP	
Facility ID	
Application ID	

Release Notification

Responsible Party

Responsible Party	Enterprise Field Services LLC	OGRID	241602
Contact Name	Robert Dunaway	Contact Telephone	575-628-6802
Contact email	rhunaway@eprod.com	Incident # (assigned by OCD)	
Contact mailing address	PO Box 4324, Houston, TX 77210		

Location of Release Source

Latitude 32.173659 Longitude -103.78069
(NAD 83 in decimal degrees to 5 decimal places)

Site Name	Poker Lake Suction (Trunk D)	Site Type	Gathering Pipeline
Date Release Discovered	11/18/21	API# (if applicable)	

Unit Letter	Section	Township	Range	County
J	33	24S	31E	Eddy

Surface Owner: ☐ State ☒ Federal ☐ Tribal ☐ Private (Name: _____)

Nature and Volume of Release

Material(s) Released (Select all that apply and attach calculations or specific justification for the volumes provided below)

<input type="checkbox"/> Crude Oil	Volume Released (bbls)	Volume Recovered (bbls)
<input type="checkbox"/> Produced Water	Volume Released (bbls)	Volume Recovered (bbls)
	Is the concentration of dissolved chloride in the produced water >10,000 mg/l?	<input type="checkbox"/> Yes <input type="checkbox"/> No
<input checked="" type="checkbox"/> Condensate	Volume Released (bbls) 1	Volume Recovered (bbls) -0-
<input checked="" type="checkbox"/> Natural Gas	Volume Released (Mcf) 55	Volume Recovered (Mcf) -0-
<input type="checkbox"/> Other (describe)	Volume/Weight Released (provide units)	Volume/Weight Recovered (provide units)

Cause of Release

Found a leak on a gathering pipeline, cause is to be determined.

State of New Mexico
Oil Conservation Division

Incident ID	NAPP2132628487
District RP	
Facility ID	
Application ID	

Was this a major release as defined by 19.15.29.7(A) NMAC?

☐ Yes ☒ No

If YES, for what reason(s) does the responsible party consider this a major release?

If YES, was immediate notice given to the OCD? By whom? To whom? When and by what means (phone, email, etc)?

Initial Response

The responsible party must undertake the following actions immediately unless they could create a safety hazard that would result in injury

- ☒ The source of the release has been stopped.
- ☒ The impacted area has been secured to protect human health and the environment.
- ☒ Released materials have been contained via the use of berms or dikes, absorbent pads, or other containment devices.
- ☒ All free liquids and recoverable materials have been removed and managed appropriately.

If all the actions described above have not been undertaken, explain why:

Per 19.15.29.8 B. (4) NMAC the responsible party may commence remediation immediately after discovery of a release. If remediation has begun, please attach a narrative of actions to date. If remedial efforts have been successfully completed or if the release occurred within a lined containment area (see 19.15.29.11(A)(5)(a) NMAC), please attach all information needed for closure evaluation.

I hereby certify that the information given above is true and complete to the best of my knowledge and understand that pursuant to OCD rules and regulations all operators are required to report and/or file certain release notifications and perform corrective actions for releases which may endanger public health or the environment. The acceptance of a C-141 report by the OCD does not relieve the operator of liability should their operations have failed to adequately investigate and remediate contamination that pose a threat to groundwater, surface water, human health or the environment. In addition, OCD acceptance of a C-141 report does not relieve the operator of responsibility for compliance with any other federal, state, or local laws and/or regulations.

Printed Name: Robert Dunaway

Title: Senior Environmental Engineer

Signature: 

Date: 11/22/21

email: rhdunaway@eprod.com

Telephone: 575-628-6802

OCD Only

Received by: Ramona Marcus

Date: 11/22/2021

APPENDIX B

WATER WELL DATA



New Mexico Office of the State Engineer

Water Column/Average Depth to Water

(A CLW##### in the POD suffix indicates the POD has been replaced & no longer serves a water right file.)

(R=POD has been replaced,
O=orphaned,
C=the file is closed)

(quarters are 1=NW 2=NE 3=SW 4=SE)

(quarters are smallest to largest)

(NAD83 UTM in meters)

(In feet)

POD Number	POD Sub-Code	basin	County	Q 64	Q 16	Q 4	Sec	Tws	Rng	X	Y	Distance	Depth Well	Depth Water	Water Column
C 04479 POD1	CUB	ED		2	1	1	04	25S	31E	614182	3559400	1214	0	0	0

Average Depth to Water: **0 feet**

Minimum Depth: **0 feet**

Maximum Depth: **0 feet**

Record Count: 1

UTMNAD83 Radius Search (in meters):

Easting (X): 614956.531

Northing (Y): 3560336.142

Radius: 2500

The data is furnished by the NMOSE/ISC and is accepted by the recipient with the expressed understanding that the OSE/ISC make no warranties, expressed or implied, concerning the accuracy, completeness, reliability, usability, or suitability for any particular purpose of the data.

12/1/21 11:29 AM

Page 1 of 1

WATER COLUMN/ AVERAGE
DEPTH TO WATER

APPENDIX C

SAMPLING PROTOCOL



Sampling Protocol

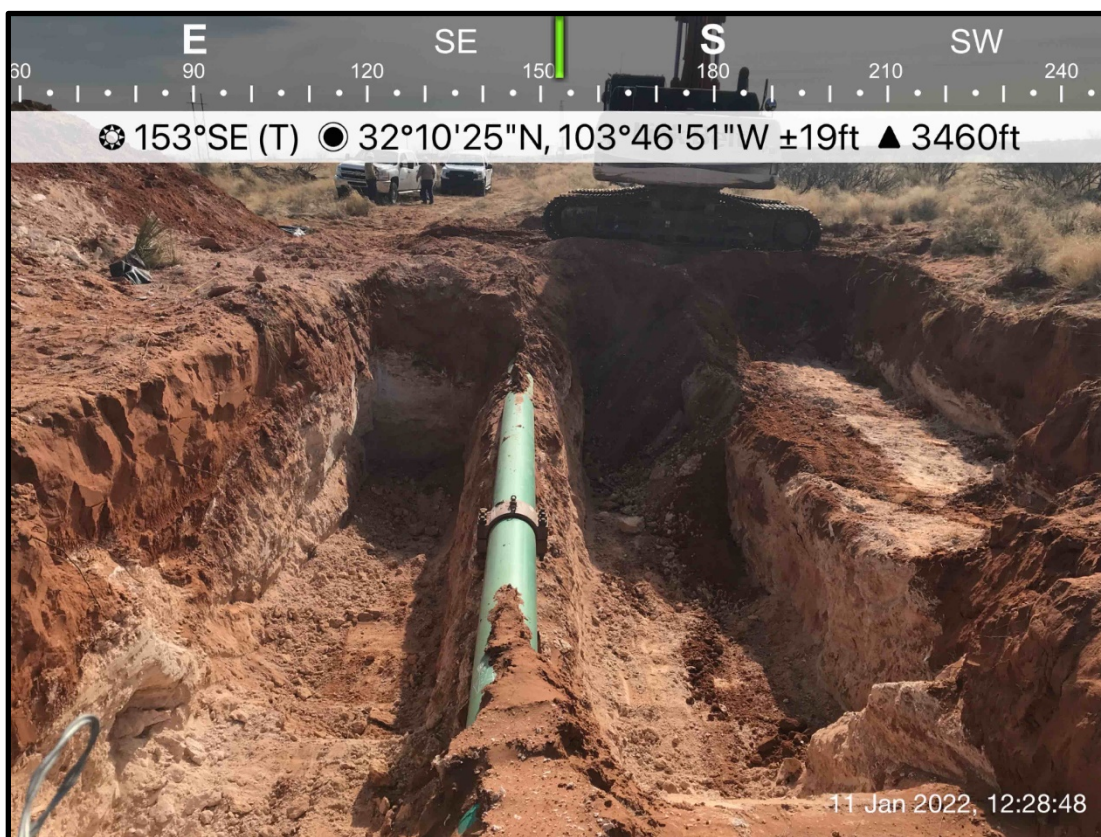
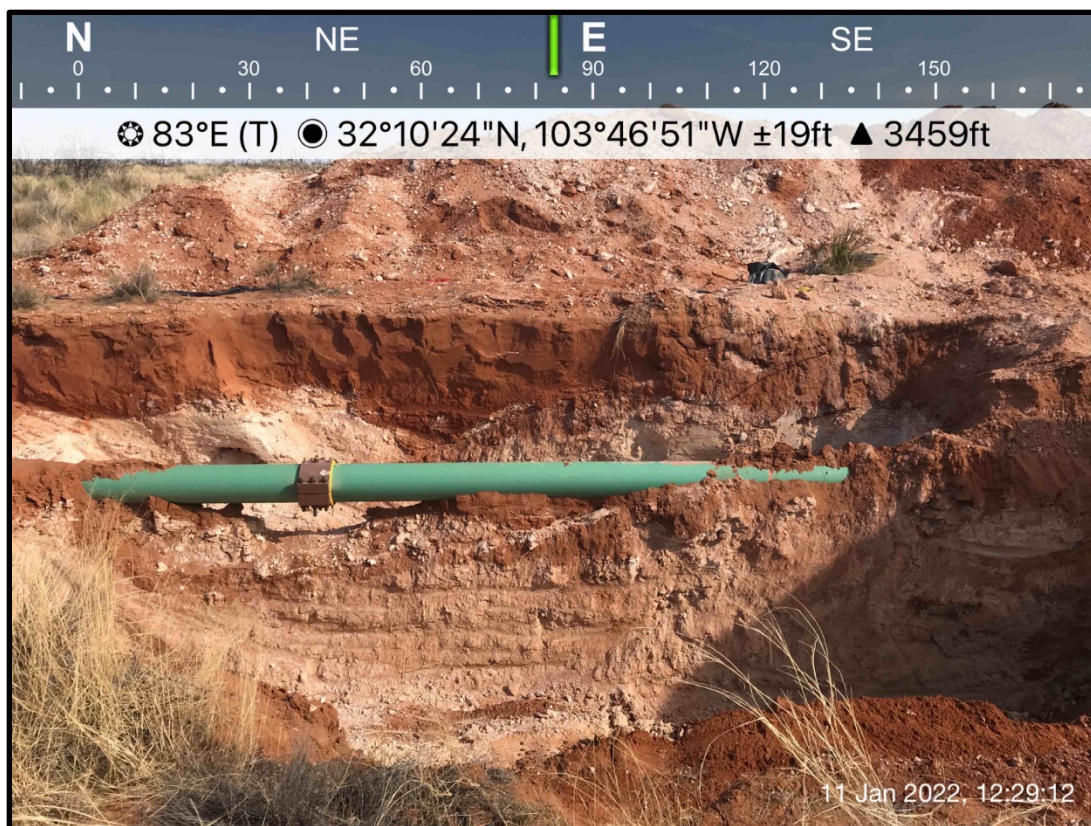
The soil samples were collected in laboratory supplied containers in accordance with this sampling protocol, immediately placed on ice and sent under standard chain-of-custody protocols to Envirotech Laboratory in Farmington, New Mexico for analysis. A total of twelve (12) samples were collected for laboratory analysis for total chloride using EPA Method 300.0; benzene, toluene, ethylbenzene and total xylenes (BTEX) using EPA Method 8021B; and motor, diesel and gasoline range organics (MRO, DRO, and GRO) by EPA Method 8015D.

Sampling Analysis Field Quality Assurance Procedures

A unique sample numbering was used to identify each sample collected and designated for on-site and off-site laboratory analysis. The purpose of this numbering scheme was to provide a tracking system for the retrieval of analytical and field data on each sample. Sample identification numbers were recorded on sample labels or tags, field notes, chain-of-custody records (COC) and all other applicable documentation used during the project. Sample labels were affixed to all sample containers during sampling activities. Information was recorded on each sample container label at the time of sample collection. The information recorded on the labels were as follows: sample identification number; sample type (discrete or composite); site name and area/location number; analysis to be performed; type of chemical preservative present in container; date and time of sample collection; and sample collector's name and initials. All samples were packed in ice in an approved rigid body container, custody sealed signed and shipped to the appropriate laboratory via insured carrier service.

COC procedures implemented for the project provided documentation of the handling of each sample from the time of collection until completion of laboratory analysis. A COC form serves as a legal record of possession of the sample. A sample is considered to be under custody if one or more of the following criteria are met: the sample is in the sampler's possession; the sample is in the sampler's view after being in possession; the sample was in the sampler's possession and then was placed into a locked area to prevent tampering; and/or the sample is in a designated secure area. Custody was documented throughout the project field sampling activities by a chain-of custody form initiated each day during which samples are collected. Container custody seals placed on either individual samples or on the rigid body container were used to ensure that no sample tampering occurs between the time the samples are placed into the containers and the time the containers are opened for analysis at the laboratory. Container custody seals were signed and dated by the individual responsible for completing the COC form contained within the container.

APPENDIX D FIELD NOTES & PHOTO LOG





Field Screening

PTD

1452

Location Name: Frank D					Date: 1/11/22			
Sample Name:	Collection Time:	EC (ms)	Temp (°C)	PID Reading /PF	Soil Color	Primary Soil Type	Moisture Level	Other Remarks/Notes:
✓ BS East 09	0800	1.72	19.1	4.8	Light Tan Dark Brown Gray Olive Yellow Red	Gravel Sand Rock Silt Clay	Dry Moist Wet	Base caliche ↓
✓ BS West 10	0810	1.63	18.9	5.1	Light Tan Dark Brown Gray Olive Yellow Red	Gravel Sand Rock Silt Clay	Dry Moist Wet	↓
N SW 11	0820	1.27	17.9	5.7	Light Tan Dark Brown Gray Olive Yellow Red	Gravel Sand Rock Silt Clay	Dry Moist Wet	Caliche
W SW 12	0830	2.03	17.9	826.2	Light Tan Dark Brown Gray Olive Yellow Red	Gravel Sand Rock Silt Clay	Dry Moist Wet	Red sand + caliche mix ↓
S SW 13	0845	0.59	17.9	352.3	Light Tan Dark Brown Gray Olive Yellow Red	Gravel Sand Rock Silt Clay	Dry Moist Wet	Caliche
E SW 14	0900	1.30	18.0	10.5	Light Tan Dark Brown Gray Olive Yellow Red	Gravel Sand Rock Silt Clay	Dry Moist Wet	
WS W 2 12	1145	2.46	19.3	130.9 27.9	Light Tan Dark Brown Gray Olive Yellow Red	Gravel Sand Rock Silt Clay	Dry Moist Wet	
SS W 2 13	1150	2.86	18.5	27.9	Light Tan Dark Brown Gray Olive Yellow Red	Gravel Sand Rock Silt Clay	Dry Moist Wet	
✓ BG 2 08	1215	1.40 1.40	17.9		Light Tan Dark Brown Gray Olive Yellow Red	Gravel Sand Rock Silt Clay	Dry Moist Wet	

* ESW more @ WSW + SW Due to h. PID

NOTE - Anekti in Natural Ch.

2022 LB

SMA

Field Screening

Location Name: Trunk D
LAB samples

Date: 1/11/2022

Sample Name:	Collection Time:	EC (mS)	Temp (°C)	PID Reading /PF	Soil Color	Primary Soil Type	Moisture Level	Other Remarks/Notes:
PLS-BG-0800-4	1215	1.40	17.9	/	Light Tan Dark Brown Olive Red	Gravel Sand Rock Silt Clay	Dry Moist Wet	Mix of soils from 0-4' w-2' red sand 2-4' caliche sample comp. 0-4'
PLS-BSE-0908'	0800	1.72	19.1	4.8	Light Tan Dark Brown Olive Red	Gravel Sand Rock Silt Clay	Dry Moist Wet	Mix of Red sand + caliche taken as comp. sample along riprap @ POR
PLS-BSW-1008'	0810	1.63	18.9	5.1	Light Tan Dark Brown Olive Red	Gravel Sand Rock Silt Clay	Dry Moist Wet	more caliche comp sample along riprap
PLS-MSW-1108'	0820	1.21	17.9	5.7	Light Tan Dark Brown Olive Red	Gravel Sand Rock Silt Clay	Dry Moist Wet	hard, caliche comp sample on E side of RPT.
PLS-MSW-1204'	1145	2.46	19.3	12.9	Light Tan Dark Brown Olive Red	Gravel Sand Rock Silt Clay	Dry Moist Wet	Mix of mostly Red sand, some caliche
PLS-SSW-1304'	1150	2.86	18.5	27.9	Light Tan Dark Brown Olive Red	Gravel Sand Rock Silt Clay	Dry Moist Wet	in caliche zone, comp sample taken from area below POR
PLS-TSW-1404-6'	0900	1.70	18.0	10.5	Light Tan Dark Brown Olive Red	Gravel Sand Rock Silt Clay	Dry Moist Wet	

APPENDIX E

LABORATORY ANALYTICAL REPORTS

Report to:
Ashley Maxwell



envirotech

Practical Solutions for a Better Tomorrow

Analytical Report

Souder Miller Associates - Carlsbad

Project Name: Poker Lake Section Trunk D

Work Order: E112032

Job Number: 19026-0001

Received: 12/9/2021

Revision: 1

Report Reviewed By:

Walter Hinchman
Laboratory Director
12/16/21

5796 U.S. Hwy 64
Farmington, NM 87401

Phone: (505) 632-1881
Envirotech-inc.com



Envirotech Inc. certifies the test results meet all requirements of TNI unless noted otherwise.
Statement of Data Authenticity: Envirotech Inc. attests the data reported has not been altered in any way.
Partial or incomplete reproduction of this report is prohibited, unless approved by Envirotech Inc.
Envirotech Inc. holds the Utah TNI certification NM00979 for data reported.
Envirotech Inc. holds the Texas TNI certification T104704557 for data reported.
Envirotech Inc. holds the NM SDWA certification for data reported. (Lab #NM00979)

Date Reported: 12/16/21

Ashley Maxwell
201 S Halagueno St.
Carlsbad, NM 88220



Project Name: Poker Lake Section Trunk D
Workorder: E112032
Date Received: 12/9/2021 11:48:00AM

Ashley Maxwell,

Thank you for choosing Envirotech, Inc. as your analytical testing laboratory for the sample(s) received on, 12/9/2021 11:48:00AM, under the Project Name: Poker Lake Section Trunk D.

The analytical test results summarized in this report with the Project Name: Poker Lake Section Trunk D apply to the individual samples collected, identified and submitted bearing the project name on the enclosed chain-of-custody. Subcontracted sample analyses not conducted by Envirotech, Inc., are attached in full as issued by the subcontract laboratory.

Please review the Chain-of-Custody (COC) and Sample Receipt Checklist (SRC) for any issues regarding sample receipt temperature, containers, preservation etc. To best understand your test results, review the entire report summarizing your sample data and the associated quality control batch data.

All reported data in this analytical report were analyzed according to the referenced method(s) and are in compliance with the latest NELAC/TNI standards, unless otherwise noted. Samples or analytical quality control parameters not meeting specific QC criteria are qualified with a data flag. Data flag definitions are located in the Notes and Definitions section of this analytical report.

If you have any questions concerning this report, please feel free to contact Envirotech, Inc.

Respectfully,

Walter Hinchman
Laboratory Director
Office: 505-632-1881
Cell: 775-287-1762
whinchman@envirotech-inc.com

Raina Schwanz
Laboratory Administrator
Office: 505-632-1881
rainaschwanz@envirotech-inc.com

Alexa Michaels
Sample Custody Officer
Office: 505-632-1881
labadmin@envirotech-inc.com

Field Offices:

Southern New Mexico Area
Lynn Jarboe
Technical Representative/Client Services
Office: 505-421-LABS(5227)
Cell: 505-320-4759
ljjarboe@envirotech-inc.com

West Texas Midland/Odessa Area
Rayny Hagan
Technical Representative
Office: 505-421-LABS(5227)

Envirotech Web Address: www.envirotech-inc.com

Table of Contents

Title Page	1
Cover Page	2
Table of Contents	3
Sample Summary	5
Sample Data	6
PLS-BG-01	6
PLS-BSE-02	7
PLS-BSW-03	8
PLS-WSW-04	9
PLS-ESW-05	10
PLS-NSW-06	11
PLS-SSW-07	12
PLS-SP-08	13
PLS-SP-09	14
PLS-SP-10	15
PLS-SP-11	16
PLS-SP-12	17
PLS-SP-13	18
PLS-SP-14	19
PLS-SP-15	20
PLS-SP-16	21
PLS-SP-17	22
PLS-SP-18	23
PLS-SP-19	24
QC Summary Data	25

Table of Contents (continued)

QC - Volatile Organic Compounds by EPA 8260B	25
QC - Nonhalogenated Organics by EPA 8015D - GRO	26
QC - Nonhalogenated Organics by EPA 8015D - DRO/ORO	27
QC - Anions by EPA 300.0/9056A	28
Definitions and Notes	29
Chain of Custody etc.	30

Sample Summary

Souder Miller Associates - Carlsbad	Project Name:	Poker Lake Section Trunk D	Reported:
201 S Halagueno St.	Project Number:	19026-0001	
Carlsbad NM, 88220	Project Manager:	Ashley Maxwell	12/16/21 12:49

Client Sample ID	Lab Sample ID	Matrix	Sampled	Received	Container
PLS-BG-01	E112032-01A	Soil	12/06/21	12/09/21	Glass Jar, 4 oz.
PLS-BSE-02	E112032-02A	Soil	12/06/21	12/09/21	Glass Jar, 4 oz.
PLS-BSW-03	E112032-03A	Soil	12/06/21	12/09/21	Glass Jar, 4 oz.
PLS-WSW-04	E112032-04A	Soil	12/06/21	12/09/21	Glass Jar, 4 oz.
PLS-ESW-05	E112032-05A	Soil	12/06/21	12/09/21	Glass Jar, 4 oz.
PLS-NSW-06	E112032-06A	Soil	12/06/21	12/09/21	Glass Jar, 4 oz.
PLS-SSW-07	E112032-07A	Soil	12/06/21	12/09/21	Glass Jar, 4 oz.
PLS-SP-08	E112032-08A	Soil	12/06/21	12/09/21	Glass Jar, 4 oz.
PLS-SP-09	E112032-09A	Soil	12/06/21	12/09/21	Glass Jar, 4 oz.
PLS-SP-10	E112032-10A	Soil	12/06/21	12/09/21	Glass Jar, 4 oz.
PLS-SP-11	E112032-11A	Soil	12/06/21	12/09/21	Glass Jar, 4 oz.
PLS-SP-12	E112032-12A	Soil	12/06/21	12/09/21	Glass Jar, 4 oz.
PLS-SP-13	E112032-13A	Soil	12/06/21	12/09/21	Glass Jar, 4 oz.
PLS-SP-14	E112032-14A	Soil	12/06/21	12/09/21	Glass Jar, 4 oz.
PLS-SP-15	E112032-15A	Soil	12/06/21	12/09/21	Glass Jar, 4 oz.
PLS-SP-16	E112032-16A	Soil	12/06/21	12/09/21	Glass Jar, 4 oz.
PLS-SP-17	E112032-17A	Soil	12/06/21	12/09/21	Glass Jar, 4 oz.
PLS-SP-18	E112032-18A	Soil	12/06/21	12/09/21	Glass Jar, 4 oz.
PLS-SP-19	E112032-19A	Soil	12/06/21	12/09/21	Glass Jar, 4 oz.



Sample Data

Souder Miller Associates - Carlsbad	Project Name:	Poker Lake Section Trunk D	
201 S Halagueno St.	Project Number:	19026-0001	Reported:
Carlsbad NM, 88220	Project Manager:	Ashley Maxwell	12/16/2021 12:49:27PM

PLS-BG-01

E112032-01

Analyte	Result	Reporting Limit	Dilution	Prepared	Analyzed	Notes
---------	--------	-----------------	----------	----------	----------	-------

Anions by EPA 300.0/9056A	mg/kg	mg/kg	Analyst: IY			Batch: 2150028
Chloride	ND	20.0	1	12/09/21	12/09/21	



Sample Data

Souder Miller Associates - Carlsbad
201 S Halagueno St.
Carlsbad NM, 88220

Project Name: Poker Lake Section Trunk D
Project Number: 19026-0001
Project Manager: Ashley Maxwell

Reported:
12/16/2021 12:49:27PM

PLS-BSE-02

E112032-02

Analyte	Result	Reporting Limit	Dilution	Prepared	Analyzed	Notes
Volatile Organic Compounds by EPA 8260B						
	mg/kg	mg/kg		Analyst: IY		Batch: 2150025
Benzene	ND	0.0250	1	12/09/21	12/09/21	
Ethylbenzene	ND	0.0250	1	12/09/21	12/09/21	
Toluene	ND	0.0250	1	12/09/21	12/09/21	
o-Xylene	0.0355	0.0250	1	12/09/21	12/09/21	
p,m-Xylene	0.0560	0.0500	1	12/09/21	12/09/21	
Total Xylenes	0.0915	0.0250	1	12/09/21	12/09/21	
Surrogate: Bromofluorobenzene		107 %	70-130	12/09/21	12/09/21	
Surrogate: 1,2-Dichloroethane-d4		98.4 %	70-130	12/09/21	12/09/21	
Surrogate: Toluene-d8		98.9 %	70-130	12/09/21	12/09/21	
Nonhalogenated Organics by EPA 8015D - GRO						
	mg/kg	mg/kg		Analyst: IY		Batch: 2150025
Gasoline Range Organics (C6-C10)	ND	20.0	1	12/09/21	12/09/21	
Surrogate: Bromofluorobenzene		107 %	70-130	12/09/21	12/09/21	
Surrogate: 1,2-Dichloroethane-d4		98.4 %	70-130	12/09/21	12/09/21	
Surrogate: Toluene-d8		98.9 %	70-130	12/09/21	12/09/21	
Nonhalogenated Organics by EPA 8015D - DRO/ORO						
	mg/kg	mg/kg		Analyst: JL		Batch: 2150032
Diesel Range Organics (C10-C28)	1330	50.0	2	12/09/21	12/15/21	
Oil Range Organics (C28-C36)	541	100	2	12/09/21	12/15/21	
Surrogate: n-Nonane		117 %	50-200	12/09/21	12/15/21	
Anions by EPA 300.0/9056A						
	mg/kg	mg/kg		Analyst: IY		Batch: 2150028
Chloride	1460	20.0	1	12/09/21	12/09/21	



Sample Data

Souder Miller Associates - Carlsbad
201 S Halagueno St.
Carlsbad NM, 88220

Project Name: Poker Lake Section Trunk D
Project Number: 19026-0001
Project Manager: Ashley Maxwell

Reported:
12/16/2021 12:49:27PM

PLS-BSW-03

E112032-03

Analyte	Result	Reporting Limit	Dilution	Prepared	Analyzed	Notes
Volatile Organic Compounds by EPA 8260B						
	mg/kg	mg/kg		Analyst: IY		Batch: 2150025
Benzene	ND	0.0250	1	12/09/21	12/10/21	
Ethylbenzene	ND	0.0250	1	12/09/21	12/10/21	
Toluene	ND	0.0250	1	12/09/21	12/10/21	
o-Xylene	0.0315	0.0250	1	12/09/21	12/10/21	
p,m-Xylene	ND	0.0500	1	12/09/21	12/10/21	
Total Xylenes	0.0315	0.0250	1	12/09/21	12/10/21	
Surrogate: Bromofluorobenzene		106 %	70-130	12/09/21	12/10/21	
Surrogate: 1,2-Dichloroethane-d4		102 %	70-130	12/09/21	12/10/21	
Surrogate: Toluene-d8		96.3 %	70-130	12/09/21	12/10/21	
Nonhalogenated Organics by EPA 8015D - GRO						
	mg/kg	mg/kg		Analyst: IY		Batch: 2150025
Gasoline Range Organics (C6-C10)	ND	20.0	1	12/09/21	12/10/21	
Surrogate: Bromofluorobenzene		106 %	70-130	12/09/21	12/10/21	
Surrogate: 1,2-Dichloroethane-d4		102 %	70-130	12/09/21	12/10/21	
Surrogate: Toluene-d8		96.3 %	70-130	12/09/21	12/10/21	
Nonhalogenated Organics by EPA 8015D - DRO/ORO						
	mg/kg	mg/kg		Analyst: JL		Batch: 2150032
Diesel Range Organics (C10-C28)	1130	25.0	1	12/09/21	12/15/21	
Oil Range Organics (C28-C36)	505	50.0	1	12/09/21	12/15/21	
Surrogate: n-Nonane		114 %	50-200	12/09/21	12/15/21	
Anions by EPA 300.0/9056A						
	mg/kg	mg/kg		Analyst: IY		Batch: 2150028
Chloride	4750	40.0	2	12/09/21	12/09/21	



Sample Data

Souder Miller Associates - Carlsbad
201 S Halagueno St.
Carlsbad NM, 88220

Project Name: Poker Lake Section Trunk D
Project Number: 19026-0001
Project Manager: Ashley Maxwell

Reported:
12/16/2021 12:49:27PM

PLS-WSW-04

E112032-04

Analyte	Result	Reporting Limit	Dilution	Prepared	Analyzed	Notes
Volatile Organic Compounds by EPA 8260B						
	mg/kg	mg/kg		Analyst: IY		Batch: 2150025
Benzene	ND	0.0250	1	12/09/21	12/10/21	
Ethylbenzene	0.471	0.0250	1	12/09/21	12/10/21	
Toluene	0.619	0.0250	1	12/09/21	12/10/21	
o-Xylene	1.25	0.0250	1	12/09/21	12/10/21	
p,m-Xylene	2.85	0.0500	1	12/09/21	12/10/21	
Total Xylenes	4.10	0.0250	1	12/09/21	12/10/21	
Surrogate: Bromofluorobenzene		119 %	70-130	12/09/21	12/10/21	
Surrogate: 1,2-Dichloroethane-d4		98.4 %	70-130	12/09/21	12/10/21	
Surrogate: Toluene-d8		105 %	70-130	12/09/21	12/10/21	
Nonhalogenated Organics by EPA 8015D - GRO						
	mg/kg	mg/kg		Analyst: IY		Batch: 2150025
Gasoline Range Organics (C6-C10)	125	20.0	1	12/09/21	12/10/21	
Surrogate: Bromofluorobenzene		119 %	70-130	12/09/21	12/10/21	
Surrogate: 1,2-Dichloroethane-d4		98.4 %	70-130	12/09/21	12/10/21	
Surrogate: Toluene-d8		105 %	70-130	12/09/21	12/10/21	
Nonhalogenated Organics by EPA 8015D - DRO/ORO						
	mg/kg	mg/kg		Analyst: JL		Batch: 2150032
Diesel Range Organics (C10-C28)	3450	250	10	12/09/21	12/15/21	
Oil Range Organics (C28-C36)	1260	500	10	12/09/21	12/15/21	
Surrogate: n-Nonane		153 %	50-200	12/09/21	12/15/21	
Anions by EPA 300.0/9056A						
	mg/kg	mg/kg		Analyst: IY		Batch: 2150028
Chloride	4930	40.0	2	12/09/21	12/09/21	



Sample Data

Souder Miller Associates - Carlsbad
201 S Halagueno St.
Carlsbad NM, 88220

Project Name: Poker Lake Section Trunk D
Project Number: 19026-0001
Project Manager: Ashley Maxwell

Reported:
12/16/2021 12:49:27PM

PLS-ESW-05

E112032-05

Analyte	Result	Reporting Limit	Dilution	Prepared	Analyzed	Notes
Volatile Organic Compounds by EPA 8260B						
	mg/kg	mg/kg		Analyst: IY		Batch: 2150025
Benzene	ND	0.0250	1	12/09/21	12/09/21	
Ethylbenzene	ND	0.0250	1	12/09/21	12/09/21	
Toluene	ND	0.0250	1	12/09/21	12/09/21	
o-Xylene	ND	0.0250	1	12/09/21	12/09/21	
p,m-Xylene	ND	0.0500	1	12/09/21	12/09/21	
Total Xylenes	ND	0.0250	1	12/09/21	12/09/21	
Surrogate: Bromofluorobenzene		108 %	70-130	12/09/21	12/09/21	
Surrogate: 1,2-Dichloroethane-d4		99.2 %	70-130	12/09/21	12/09/21	
Surrogate: Toluene-d8		102 %	70-130	12/09/21	12/09/21	
Nonhalogenated Organics by EPA 8015D - GRO						
	mg/kg	mg/kg		Analyst: IY		Batch: 2150025
Gasoline Range Organics (C6-C10)	ND	20.0	1	12/09/21	12/09/21	
Surrogate: Bromofluorobenzene		108 %	70-130	12/09/21	12/09/21	
Surrogate: 1,2-Dichloroethane-d4		99.2 %	70-130	12/09/21	12/09/21	
Surrogate: Toluene-d8		102 %	70-130	12/09/21	12/09/21	
Nonhalogenated Organics by EPA 8015D - DRO/ORO						
	mg/kg	mg/kg		Analyst: JL		Batch: 2150032
Diesel Range Organics (C10-C28)	ND	25.0	1	12/09/21	12/15/21	
Oil Range Organics (C28-C36)	ND	50.0	1	12/09/21	12/15/21	
Surrogate: n-Nonane		114 %	50-200	12/09/21	12/15/21	
Anions by EPA 300.0/9056A						
	mg/kg	mg/kg		Analyst: IY		Batch: 2150028
Chloride	3420	40.0	2	12/09/21	12/09/21	



Sample Data

Souder Miller Associates - Carlsbad
201 S Halagueno St.
Carlsbad NM, 88220

Project Name: Poker Lake Section Trunk D
Project Number: 19026-0001
Project Manager: Ashley Maxwell

Reported:
12/16/2021 12:49:27PM

PLS-NSW-06

E112032-06

Analyte	Result	Reporting Limit	Dilution	Prepared	Analyzed	Notes
Volatile Organic Compounds by EPA 8260B						
	mg/kg	mg/kg		Analyst: IY		Batch: 2150025
Benzene	ND	0.0250	1	12/09/21	12/10/21	
Ethylbenzene	ND	0.0250	1	12/09/21	12/10/21	
Toluene	ND	0.0250	1	12/09/21	12/10/21	
o-Xylene	ND	0.0250	1	12/09/21	12/10/21	
p,m-Xylene	ND	0.0500	1	12/09/21	12/10/21	
Total Xylenes	ND	0.0250	1	12/09/21	12/10/21	
Surrogate: Bromofluorobenzene		108 %	70-130	12/09/21	12/10/21	
Surrogate: 1,2-Dichloroethane-d4		98.5 %	70-130	12/09/21	12/10/21	
Surrogate: Toluene-d8		96.5 %	70-130	12/09/21	12/10/21	
Nonhalogenated Organics by EPA 8015D - GRO						
	mg/kg	mg/kg		Analyst: IY		Batch: 2150025
Gasoline Range Organics (C6-C10)	ND	20.0	1	12/09/21	12/10/21	
Surrogate: Bromofluorobenzene		108 %	70-130	12/09/21	12/10/21	
Surrogate: 1,2-Dichloroethane-d4		98.5 %	70-130	12/09/21	12/10/21	
Surrogate: Toluene-d8		96.5 %	70-130	12/09/21	12/10/21	
Nonhalogenated Organics by EPA 8015D - DRO/ORO						
	mg/kg	mg/kg		Analyst: JL		Batch: 2150032
Diesel Range Organics (C10-C28)	ND	25.0	1	12/09/21	12/15/21	
Oil Range Organics (C28-C36)	ND	50.0	1	12/09/21	12/15/21	
Surrogate: n-Nonane		113 %	50-200	12/09/21	12/15/21	
Anions by EPA 300.0/9056A						
	mg/kg	mg/kg		Analyst: IY		Batch: 2150028
Chloride	3290	40.0	2	12/09/21	12/09/21	



Sample Data

Souder Miller Associates - Carlsbad
201 S Halagueno St.
Carlsbad NM, 88220

Project Name: Poker Lake Section Trunk D
Project Number: 19026-0001
Project Manager: Ashley Maxwell

Reported:
12/16/2021 12:49:27PM

PLS-SSW-07

E112032-07

Analyte	Result	Reporting Limit	Dilution	Prepared	Analyzed	Notes
Volatile Organic Compounds by EPA 8260B						
	mg/kg	mg/kg		Analyst: IY		Batch: 2150025
Benzene	ND	0.0250	1	12/09/21	12/10/21	
Ethylbenzene	0.0325	0.0250	1	12/09/21	12/10/21	
Toluene	ND	0.0250	1	12/09/21	12/10/21	
o-Xylene	0.123	0.0250	1	12/09/21	12/10/21	
p,m-Xylene	0.178	0.0500	1	12/09/21	12/10/21	
Total Xylenes	0.300	0.0250	1	12/09/21	12/10/21	
Surrogate: Bromofluorobenzene		113 %	70-130	12/09/21	12/10/21	
Surrogate: 1,2-Dichloroethane-d4		104 %	70-130	12/09/21	12/10/21	
Surrogate: Toluene-d8		102 %	70-130	12/09/21	12/10/21	
Nonhalogenated Organics by EPA 8015D - GRO						
	mg/kg	mg/kg		Analyst: IY		Batch: 2150025
Gasoline Range Organics (C6-C10)	34.1	20.0	1	12/09/21	12/10/21	
Surrogate: Bromofluorobenzene		113 %	70-130	12/09/21	12/10/21	
Surrogate: 1,2-Dichloroethane-d4		104 %	70-130	12/09/21	12/10/21	
Surrogate: Toluene-d8		102 %	70-130	12/09/21	12/10/21	
Nonhalogenated Organics by EPA 8015D - DRO/ORO						
	mg/kg	mg/kg		Analyst: JL		Batch: 2150032
Diesel Range Organics (C10-C28)	901	25.0	1	12/09/21	12/15/21	
Oil Range Organics (C28-C36)	340	50.0	1	12/09/21	12/15/21	
Surrogate: n-Nonane		120 %	50-200	12/09/21	12/15/21	
Anions by EPA 300.0/9056A						
	mg/kg	mg/kg		Analyst: IY		Batch: 2150028
Chloride	2430	20.0	1	12/09/21	12/09/21	



Sample Data

Souder Miller Associates - Carlsbad
201 S Halagueno St.
Carlsbad NM, 88220

Project Name: Poker Lake Section Trunk D
Project Number: 19026-0001
Project Manager: Ashley Maxwell

Reported:
12/16/2021 12:49:27PM

PLS-SP-08

E112032-08

Analyte	Result	Reporting Limit	Dilution	Prepared	Analyzed	Notes
Volatile Organic Compounds by EPA 8260B						
	mg/kg	mg/kg		Analyst: IY		Batch: 2150025
Benzene	ND	0.0250	1	12/09/21	12/10/21	
Ethylbenzene	0.136	0.0250	1	12/09/21	12/10/21	
Toluene	0.0625	0.0250	1	12/09/21	12/10/21	
o-Xylene	0.457	0.0250	1	12/09/21	12/10/21	
p,m-Xylene	0.916	0.0500	1	12/09/21	12/10/21	
Total Xylenes	1.37	0.0250	1	12/09/21	12/10/21	
Surrogate: Bromofluorobenzene		117 %	70-130	12/09/21	12/10/21	
Surrogate: 1,2-Dichloroethane-d4		95.8 %	70-130	12/09/21	12/10/21	
Surrogate: Toluene-d8		106 %	70-130	12/09/21	12/10/21	
Nonhalogenated Organics by EPA 8015D - GRO						
	mg/kg	mg/kg		Analyst: IY		Batch: 2150025
Gasoline Range Organics (C6-C10)	80.7	20.0	1	12/09/21	12/10/21	
Surrogate: Bromofluorobenzene		117 %	70-130	12/09/21	12/10/21	
Surrogate: 1,2-Dichloroethane-d4		95.8 %	70-130	12/09/21	12/10/21	
Surrogate: Toluene-d8		106 %	70-130	12/09/21	12/10/21	
Nonhalogenated Organics by EPA 8015D - DRO/ORO						
	mg/kg	mg/kg		Analyst: JL		Batch: 2150032
Diesel Range Organics (C10-C28)	1560	50.0	2	12/09/21	12/15/21	
Oil Range Organics (C28-C36)	567	100	2	12/09/21	12/15/21	
Surrogate: n-Nonane		123 %	50-200	12/09/21	12/15/21	
Anions by EPA 300.0/9056A						
	mg/kg	mg/kg		Analyst: IY		Batch: 2150028
Chloride	2500	40.0	2	12/09/21	12/09/21	



Sample Data

Souder Miller Associates - Carlsbad
201 S Halagueno St.
Carlsbad NM, 88220

Project Name: Poker Lake Section Trunk D
Project Number: 19026-0001
Project Manager: Ashley Maxwell

Reported:
12/16/2021 12:49:27PM

PLS-SP-09

E112032-09

Analyte	Result	Reporting Limit	Dilution	Prepared	Analyzed	Notes
Volatile Organic Compounds by EPA 8260B						
	mg/kg	mg/kg		Analyst: IY		Batch: 2150025
Benzene	ND	0.250	10	12/09/21	12/14/21	
Ethylbenzene	5.83	0.250	10	12/09/21	12/14/21	
Toluene	6.87	0.250	10	12/09/21	12/14/21	
o-Xylene	12.1	0.250	10	12/09/21	12/14/21	
p,m-Xylene	33.2	0.500	10	12/09/21	12/14/21	
Total Xylenes	45.3	0.250	10	12/09/21	12/14/21	
Surrogate: Bromofluorobenzene	118 %	70-130		12/09/21	12/14/21	
Surrogate: 1,2-Dichloroethane-d4	99.2 %	70-130		12/09/21	12/14/21	
Surrogate: Toluene-d8	101 %	70-130		12/09/21	12/14/21	
Nonhalogenated Organics by EPA 8015D - GRO						
	mg/kg	mg/kg		Analyst: IY		Batch: 2150025
Gasoline Range Organics (C6-C10)	1020	200	10	12/09/21	12/14/21	
Surrogate: Bromofluorobenzene	118 %	70-130		12/09/21	12/14/21	
Surrogate: 1,2-Dichloroethane-d4	99.2 %	70-130		12/09/21	12/14/21	
Surrogate: Toluene-d8	101 %	70-130		12/09/21	12/14/21	
Nonhalogenated Organics by EPA 8015D - DRO/ORO						
	mg/kg	mg/kg		Analyst: JL		Batch: 2150032
Diesel Range Organics (C10-C28)	7640	250	10	12/09/21	12/15/21	
Oil Range Organics (C28-C36)	2150	500	10	12/09/21	12/15/21	
Surrogate: n-Nonane	287 %	50-200		12/09/21	12/15/21	S5
Anions by EPA 300.0/9056A						
	mg/kg	mg/kg		Analyst: IY		Batch: 2150028
Chloride	2460	40.0	2	12/09/21	12/09/21	



Sample Data

Souder Miller Associates - Carlsbad
201 S Halagueno St.
Carlsbad NM, 88220

Project Name: Poker Lake Section Trunk D
Project Number: 19026-0001
Project Manager: Ashley Maxwell

Reported:
12/16/2021 12:49:27PM

PLS-SP-10

E112032-10

Analyte	Result	Reporting Limit	Dilution	Prepared	Analyzed	Notes
Volatile Organic Compounds by EPA 8260B						
	mg/kg	mg/kg		Analyst: IY		Batch: 2150025
Benzene	ND	0.0250	1	12/09/21	12/14/21	
Ethylbenzene	ND	0.0250	1	12/09/21	12/14/21	
Toluene	ND	0.0250	1	12/09/21	12/14/21	
o-Xylene	0.0355	0.0250	1	12/09/21	12/14/21	
p,m-Xylene	0.0705	0.0500	1	12/09/21	12/14/21	
Total Xylenes	0.106	0.0250	1	12/09/21	12/14/21	
Surrogate: Bromofluorobenzene		112 %	70-130	12/09/21	12/14/21	
Surrogate: 1,2-Dichloroethane-d4		97.2 %	70-130	12/09/21	12/14/21	
Surrogate: Toluene-d8		98.5 %	70-130	12/09/21	12/14/21	
Nonhalogenated Organics by EPA 8015D - GRO						
	mg/kg	mg/kg		Analyst: IY		Batch: 2150025
Gasoline Range Organics (C6-C10)	ND	20.0	1	12/09/21	12/14/21	
Surrogate: Bromofluorobenzene		112 %	70-130	12/09/21	12/14/21	
Surrogate: 1,2-Dichloroethane-d4		97.2 %	70-130	12/09/21	12/14/21	
Surrogate: Toluene-d8		98.5 %	70-130	12/09/21	12/14/21	
Nonhalogenated Organics by EPA 8015D - DRO/ORO						
	mg/kg	mg/kg		Analyst: JL		Batch: 2150032
Diesel Range Organics (C10-C28)	500	25.0	1	12/09/21	12/15/21	
Oil Range Organics (C28-C36)	178	50.0	1	12/09/21	12/15/21	
Surrogate: n-Nonane		111 %	50-200	12/09/21	12/15/21	
Anions by EPA 300.0/9056A						
	mg/kg	mg/kg		Analyst: IY		Batch: 2150028
Chloride	103	20.0	1	12/09/21	12/10/21	



Sample Data

Souder Miller Associates - Carlsbad
201 S Halagueno St.
Carlsbad NM, 88220

Project Name: Poker Lake Section Trunk D
Project Number: 19026-0001
Project Manager: Ashley Maxwell

Reported:
12/16/2021 12:49:27PM

PLS-SP-11

E112032-11

Analyte	Result	Reporting Limit	Dilution	Prepared	Analyzed	Notes
Volatile Organic Compounds by EPA 8260B						
	mg/kg	mg/kg		Analyst: IY		Batch: 2150025
Benzene	ND	0.250	10	12/09/21	12/14/21	
Ethylbenzene	1.53	0.250	10	12/09/21	12/14/21	
Toluene	2.53	0.250	10	12/09/21	12/14/21	
o-Xylene	3.11	0.250	10	12/09/21	12/14/21	
p,m-Xylene	9.33	0.500	10	12/09/21	12/14/21	
Total Xylenes	12.4	0.250	10	12/09/21	12/14/21	
Surrogate: Bromofluorobenzene	98.6 %	70-130		12/09/21	12/14/21	
Surrogate: 1,2-Dichloroethane-d4	99.3 %	70-130		12/09/21	12/14/21	
Surrogate: Toluene-d8	123 %	70-130		12/09/21	12/14/21	
Nonhalogenated Organics by EPA 8015D - GRO						
	mg/kg	mg/kg		Analyst: IY		Batch: 2150025
Gasoline Range Organics (C6-C10)	277	200	10	12/09/21	12/14/21	
Surrogate: Bromofluorobenzene	98.6 %	70-130		12/09/21	12/14/21	
Surrogate: 1,2-Dichloroethane-d4	99.3 %	70-130		12/09/21	12/14/21	
Surrogate: Toluene-d8	123 %	70-130		12/09/21	12/14/21	
Nonhalogenated Organics by EPA 8015D - DRO/ORO						
	mg/kg	mg/kg		Analyst: JL		Batch: 2150032
Diesel Range Organics (C10-C28)	3500	125	5	12/09/21	12/15/21	
Oil Range Organics (C28-C36)	983	250	5	12/09/21	12/15/21	
Surrogate: n-Nonane	170 %	50-200		12/09/21	12/15/21	
Anions by EPA 300.0/9056A						
	mg/kg	mg/kg		Analyst: IY		Batch: 2150028
Chloride	2650	40.0	2	12/09/21	12/09/21	



Sample Data

Souder Miller Associates - Carlsbad
201 S Halagueno St.
Carlsbad NM, 88220

Project Name: Poker Lake Section Trunk D
Project Number: 19026-0001
Project Manager: Ashley Maxwell

Reported:
12/16/2021 12:49:27PM

PLS-SP-12

E112032-12

Analyte	Result	Reporting Limit	Dilution	Prepared	Analyzed	Notes
Volatile Organic Compounds by EPA 8260B						
	mg/kg	mg/kg		Analyst: IY		Batch: 2150025
Benzene	ND	0.0250	1	12/09/21	12/14/21	
Ethylbenzene	0.0250	0.0250	1	12/09/21	12/14/21	
Toluene	0.0320	0.0250	1	12/09/21	12/14/21	
o-Xylene	0.160	0.0250	1	12/09/21	12/14/21	
p,m-Xylene	0.237	0.0500	1	12/09/21	12/14/21	
Total Xylenes	0.396	0.0250	1	12/09/21	12/14/21	
Surrogate: Bromofluorobenzene		111 %	70-130	12/09/21	12/14/21	
Surrogate: 1,2-Dichloroethane-d4		95.0 %	70-130	12/09/21	12/14/21	
Surrogate: Toluene-d8		101 %	70-130	12/09/21	12/14/21	
Nonhalogenated Organics by EPA 8015D - GRO						
	mg/kg	mg/kg		Analyst: IY		Batch: 2150025
Gasoline Range Organics (C6-C10)	21.5	20.0	1	12/09/21	12/14/21	
Surrogate: Bromofluorobenzene		111 %	70-130	12/09/21	12/14/21	
Surrogate: 1,2-Dichloroethane-d4		95.0 %	70-130	12/09/21	12/14/21	
Surrogate: Toluene-d8		101 %	70-130	12/09/21	12/14/21	
Nonhalogenated Organics by EPA 8015D - DRO/ORO						
	mg/kg	mg/kg		Analyst: JL		Batch: 2150032
Diesel Range Organics (C10-C28)	1410	50.0	2	12/09/21	12/16/21	
Oil Range Organics (C28-C36)	520	100	2	12/09/21	12/16/21	
Surrogate: n-Nonane		115 %	50-200	12/09/21	12/16/21	
Anions by EPA 300.0/9056A						
	mg/kg	mg/kg		Analyst: IY		Batch: 2150028
Chloride	2820	40.0	2	12/09/21	12/09/21	



Sample Data

Souder Miller Associates - Carlsbad
201 S Halagueno St.
Carlsbad NM, 88220

Project Name: Poker Lake Section Trunk D
Project Number: 19026-0001
Project Manager: Ashley Maxwell

Reported:
12/16/2021 12:49:27PM

PLS-SP-13

E112032-13

Analyte	Result	Reporting Limit	Dilution	Prepared	Analyzed	Notes
Volatile Organic Compounds by EPA 8260B						
	mg/kg	mg/kg		Analyst: IY		Batch: 2150025
Benzene	ND	0.0250	1	12/09/21	12/10/21	
Ethylbenzene	ND	0.0250	1	12/09/21	12/10/21	
Toluene	ND	0.0250	1	12/09/21	12/10/21	
o-Xylene	0.0335	0.0250	1	12/09/21	12/10/21	
p,m-Xylene	ND	0.0500	1	12/09/21	12/10/21	
Total Xylenes	0.0335	0.0250	1	12/09/21	12/10/21	
Surrogate: Bromofluorobenzene		113 %	70-130	12/09/21	12/10/21	
Surrogate: 1,2-Dichloroethane-d4		101 %	70-130	12/09/21	12/10/21	
Surrogate: Toluene-d8		100 %	70-130	12/09/21	12/10/21	
Nonhalogenated Organics by EPA 8015D - GRO						
	mg/kg	mg/kg		Analyst: IY		Batch: 2150025
Gasoline Range Organics (C6-C10)	ND	20.0	1	12/09/21	12/10/21	
Surrogate: Bromofluorobenzene		113 %	70-130	12/09/21	12/10/21	
Surrogate: 1,2-Dichloroethane-d4		101 %	70-130	12/09/21	12/10/21	
Surrogate: Toluene-d8		100 %	70-130	12/09/21	12/10/21	
Nonhalogenated Organics by EPA 8015D - DRO/ORO						
	mg/kg	mg/kg		Analyst: JL		Batch: 2150032
Diesel Range Organics (C10-C28)	360	25.0	1	12/09/21	12/16/21	
Oil Range Organics (C28-C36)	182	50.0	1	12/09/21	12/16/21	
Surrogate: n-Nonane		114 %	50-200	12/09/21	12/16/21	
Anions by EPA 300.0/9056A						
	mg/kg	mg/kg		Analyst: IY		Batch: 2150028
Chloride	1460	20.0	1	12/09/21	12/09/21	



Sample Data

Souder Miller Associates - Carlsbad
201 S Halagueno St.
Carlsbad NM, 88220

Project Name: Poker Lake Section Trunk D
Project Number: 19026-0001
Project Manager: Ashley Maxwell

Reported:
12/16/2021 12:49:27PM

PLS-SP-14

E112032-14

Analyte	Result	Reporting Limit	Dilution	Prepared	Analyzed	Notes
Volatile Organic Compounds by EPA 8260B						
	mg/kg	mg/kg		Analyst: IY		Batch: 2150025
Benzene	ND	0.0250	1	12/09/21	12/10/21	
Ethylbenzene	0.195	0.0250	1	12/09/21	12/10/21	
Toluene	0.143	0.0250	1	12/09/21	12/10/21	
o-Xylene	0.574	0.0250	1	12/09/21	12/10/21	
p,m-Xylene	1.27	0.0500	1	12/09/21	12/10/21	
Total Xylenes	1.84	0.0250	1	12/09/21	12/10/21	
Surrogate: Bromofluorobenzene		119 %	70-130	12/09/21	12/10/21	
Surrogate: 1,2-Dichloroethane-d4		101 %	70-130	12/09/21	12/10/21	
Surrogate: Toluene-d8		109 %	70-130	12/09/21	12/10/21	
Nonhalogenated Organics by EPA 8015D - GRO						
	mg/kg	mg/kg		Analyst: IY		Batch: 2150025
Gasoline Range Organics (C6-C10)	86.0	20.0	1	12/09/21	12/10/21	
Surrogate: Bromofluorobenzene		119 %	70-130	12/09/21	12/10/21	
Surrogate: 1,2-Dichloroethane-d4		101 %	70-130	12/09/21	12/10/21	
Surrogate: Toluene-d8		109 %	70-130	12/09/21	12/10/21	
Nonhalogenated Organics by EPA 8015D - DRO/ORO						
	mg/kg	mg/kg		Analyst: JL		Batch: 2150032
Diesel Range Organics (C10-C28)	1370	50.0	2	12/09/21	12/16/21	
Oil Range Organics (C28-C36)	481	100	2	12/09/21	12/16/21	
Surrogate: n-Nonane		122 %	50-200	12/09/21	12/16/21	
Anions by EPA 300.0/9056A						
	mg/kg	mg/kg		Analyst: IY		Batch: 2150028
Chloride	2930	20.0	1	12/09/21	12/10/21	



Sample Data

Souder Miller Associates - Carlsbad
201 S Halagueno St.
Carlsbad NM, 88220

Project Name: Poker Lake Section Trunk D
Project Number: 19026-0001
Project Manager: Ashley Maxwell

Reported:
12/16/2021 12:49:27PM

PLS-SP-15

E112032-15

Analyte	Result	Reporting Limit	Dilution	Prepared	Analyzed	Notes
Volatile Organic Compounds by EPA 8260B						
	mg/kg	mg/kg		Analyst: IY		Batch: 2150025
Benzene	ND	0.250	10	12/09/21	12/14/21	
Ethylbenzene	4.38	0.250	10	12/09/21	12/14/21	
Toluene	6.31	0.250	10	12/09/21	12/14/21	
o-Xylene	7.40	0.250	10	12/09/21	12/14/21	
p,m-Xylene	24.1	0.500	10	12/09/21	12/14/21	
Total Xylenes	31.5	0.250	10	12/09/21	12/14/21	
Surrogate: Bromofluorobenzene	97.0 %	70-130		12/09/21	12/14/21	
Surrogate: 1,2-Dichloroethane-d4	100 %	70-130		12/09/21	12/14/21	
Surrogate: Toluene-d8	104 %	70-130		12/09/21	12/14/21	
Nonhalogenated Organics by EPA 8015D - GRO						
	mg/kg	mg/kg		Analyst: IY		Batch: 2150025
Gasoline Range Organics (C6-C10)	551	200	10	12/09/21	12/14/21	
Surrogate: Bromofluorobenzene	97.0 %	70-130		12/09/21	12/14/21	
Surrogate: 1,2-Dichloroethane-d4	100 %	70-130		12/09/21	12/14/21	
Surrogate: Toluene-d8	104 %	70-130		12/09/21	12/14/21	
Nonhalogenated Organics by EPA 8015D - DRO/ORO						
	mg/kg	mg/kg		Analyst: JL		Batch: 2150032
Diesel Range Organics (C10-C28)	8620	125	5	12/09/21	12/16/21	
Oil Range Organics (C28-C36)	2550	250	5	12/09/21	12/16/21	
Surrogate: n-Nonane	251 %	50-200		12/09/21	12/16/21	S5
Anions by EPA 300.0/9056A						
	mg/kg	mg/kg		Analyst: IY		Batch: 2150028
Chloride	3680	40.0	2	12/09/21	12/10/21	



Sample Data

Souder Miller Associates - Carlsbad
201 S Halagueno St.
Carlsbad NM, 88220

Project Name: Poker Lake Section Trunk D
Project Number: 19026-0001
Project Manager: Ashley Maxwell

Reported:
12/16/2021 12:49:27PM

PLS-SP-16

E112032-16

Analyte	Result	Reporting Limit	Dilution	Prepared	Analyzed	Notes
Volatile Organic Compounds by EPA 8260B						
	mg/kg	mg/kg		Analyst: IY		Batch: 2150025
Benzene	ND	0.0250	1	12/09/21	12/14/21	
Ethylbenzene	0.0595	0.0250	1	12/09/21	12/14/21	
Toluene	0.0885	0.0250	1	12/09/21	12/14/21	
o-Xylene	0.185	0.0250	1	12/09/21	12/14/21	
p,m-Xylene	0.415	0.0500	1	12/09/21	12/14/21	
Total Xylenes	0.600	0.0250	1	12/09/21	12/14/21	
Surrogate: Bromofluorobenzene		115 %	70-130	12/09/21	12/14/21	
Surrogate: 1,2-Dichloroethane-d4		93.3 %	70-130	12/09/21	12/14/21	
Surrogate: Toluene-d8		101 %	70-130	12/09/21	12/14/21	
Nonhalogenated Organics by EPA 8015D - GRO						
	mg/kg	mg/kg		Analyst: IY		Batch: 2150025
Gasoline Range Organics (C6-C10)	33.5	20.0	1	12/09/21	12/14/21	
Surrogate: Bromofluorobenzene		115 %	70-130	12/09/21	12/14/21	
Surrogate: 1,2-Dichloroethane-d4		93.3 %	70-130	12/09/21	12/14/21	
Surrogate: Toluene-d8		101 %	70-130	12/09/21	12/14/21	
Nonhalogenated Organics by EPA 8015D - DRO/ORO						
	mg/kg	mg/kg		Analyst: JL		Batch: 2150032
Diesel Range Organics (C10-C28)	449	25.0	1	12/09/21	12/16/21	
Oil Range Organics (C28-C36)	206	50.0	1	12/09/21	12/16/21	
Surrogate: n-Nonane		118 %	50-200	12/09/21	12/16/21	
Anions by EPA 300.0/9056A						
	mg/kg	mg/kg		Analyst: IY		Batch: 2150028
Chloride	1680	20.0	1	12/09/21	12/10/21	



Sample Data

Souder Miller Associates - Carlsbad
201 S Halagueno St.
Carlsbad NM, 88220

Project Name: Poker Lake Section Trunk D
Project Number: 19026-0001
Project Manager: Ashley Maxwell

Reported:
12/16/2021 12:49:27PM

PLS-SP-17

E112032-17

Analyte	Result	Reporting Limit	Dilution	Prepared	Analyzed	Notes
Volatile Organic Compounds by EPA 8260B						
	mg/kg	mg/kg		Analyst: IY		Batch: 2150025
Benzene	ND	0.0250	1	12/09/21	12/10/21	
Ethylbenzene	ND	0.0250	1	12/09/21	12/10/21	
Toluene	ND	0.0250	1	12/09/21	12/10/21	
o-Xylene	0.0260	0.0250	1	12/09/21	12/10/21	
p,m-Xylene	ND	0.0500	1	12/09/21	12/10/21	
Total Xylenes	0.0260	0.0250	1	12/09/21	12/10/21	
Surrogate: Bromofluorobenzene		108 %	70-130	12/09/21	12/10/21	
Surrogate: 1,2-Dichloroethane-d4		99.9 %	70-130	12/09/21	12/10/21	
Surrogate: Toluene-d8		97.9 %	70-130	12/09/21	12/10/21	
Nonhalogenated Organics by EPA 8015D - GRO						
	mg/kg	mg/kg		Analyst: IY		Batch: 2150025
Gasoline Range Organics (C6-C10)	ND	20.0	1	12/09/21	12/10/21	
Surrogate: Bromofluorobenzene		108 %	70-130	12/09/21	12/10/21	
Surrogate: 1,2-Dichloroethane-d4		99.9 %	70-130	12/09/21	12/10/21	
Surrogate: Toluene-d8		97.9 %	70-130	12/09/21	12/10/21	
Nonhalogenated Organics by EPA 8015D - DRO/ORO						
	mg/kg	mg/kg		Analyst: JL		Batch: 2150032
Diesel Range Organics (C10-C28)	222	25.0	1	12/09/21	12/16/21	
Oil Range Organics (C28-C36)	121	50.0	1	12/09/21	12/16/21	
Surrogate: n-Nonane		114 %	50-200	12/09/21	12/16/21	
Anions by EPA 300.0/9056A						
	mg/kg	mg/kg		Analyst: IY		Batch: 2150028
Chloride	1420	20.0	1	12/09/21	12/10/21	



Sample Data

Souder Miller Associates - Carlsbad
201 S Halagueno St.
Carlsbad NM, 88220

Project Name: Poker Lake Section Trunk D
Project Number: 19026-0001
Project Manager: Ashley Maxwell

Reported:
12/16/2021 12:49:27PM

PLS-SP-18

E112032-18

Analyte	Result	Reporting Limit	Dilution	Prepared	Analyzed	Notes
Volatile Organic Compounds by EPA 8260B						
	mg/kg	mg/kg		Analyst: IY		Batch: 2150025
Benzene	ND	0.0250	1	12/09/21	12/10/21	
Ethylbenzene	ND	0.0250	1	12/09/21	12/10/21	
Toluene	0.0285	0.0250	1	12/09/21	12/10/21	
o-Xylene	0.204	0.0250	1	12/09/21	12/10/21	
p,m-Xylene	0.312	0.0500	1	12/09/21	12/10/21	
Total Xylenes	0.516	0.0250	1	12/09/21	12/10/21	
Surrogate: Bromofluorobenzene		112 %	70-130	12/09/21	12/10/21	
Surrogate: 1,2-Dichloroethane-d4		101 %	70-130	12/09/21	12/10/21	
Surrogate: Toluene-d8		100 %	70-130	12/09/21	12/10/21	
Nonhalogenated Organics by EPA 8015D - GRO						
	mg/kg	mg/kg		Analyst: IY		Batch: 2150025
Gasoline Range Organics (C6-C10)	26.2	20.0	1	12/09/21	12/10/21	
Surrogate: Bromofluorobenzene		112 %	70-130	12/09/21	12/10/21	
Surrogate: 1,2-Dichloroethane-d4		101 %	70-130	12/09/21	12/10/21	
Surrogate: Toluene-d8		100 %	70-130	12/09/21	12/10/21	
Nonhalogenated Organics by EPA 8015D - DRO/ORO						
	mg/kg	mg/kg		Analyst: JL		Batch: 2150032
Diesel Range Organics (C10-C28)	793	25.0	1	12/09/21	12/16/21	
Oil Range Organics (C28-C36)	322	50.0	1	12/09/21	12/16/21	
Surrogate: n-Nonane		118 %	50-200	12/09/21	12/16/21	
Anions by EPA 300.0/9056A						
	mg/kg	mg/kg		Analyst: IY		Batch: 2150028
Chloride	999	20.0	1	12/09/21	12/10/21	



Sample Data

Souder Miller Associates - Carlsbad
201 S Halagueno St.
Carlsbad NM, 88220

Project Name: Poker Lake Section Trunk D
Project Number: 19026-0001
Project Manager: Ashley Maxwell

Reported:
12/16/2021 12:49:27PM

PLS-SP-19

E112032-19

Analyte	Result	Reporting Limit	Dilution	Prepared	Analyzed	Notes
Volatile Organic Compounds by EPA 8260B						
	mg/kg	mg/kg		Analyst: IY		Batch: 2150025
Benzene	ND	0.0250	1	12/09/21	12/10/21	
Ethylbenzene	0.119	0.0250	1	12/09/21	12/10/21	
Toluene	0.174	0.0250	1	12/09/21	12/10/21	
o-Xylene	1.23	0.0250	1	12/09/21	12/10/21	
p,m-Xylene	2.37	0.0500	1	12/09/21	12/10/21	
Total Xylenes	3.60	0.0250	1	12/09/21	12/10/21	
Surrogate: Bromofluorobenzene		116 %	70-130	12/09/21	12/10/21	
Surrogate: 1,2-Dichloroethane-d4		101 %	70-130	12/09/21	12/10/21	
Surrogate: Toluene-d8		107 %	70-130	12/09/21	12/10/21	
Nonhalogenated Organics by EPA 8015D - GRO						
	mg/kg	mg/kg		Analyst: IY		Batch: 2150025
Gasoline Range Organics (C6-C10)	93.5	20.0	1	12/09/21	12/10/21	
Surrogate: Bromofluorobenzene		116 %	70-130	12/09/21	12/10/21	
Surrogate: 1,2-Dichloroethane-d4		101 %	70-130	12/09/21	12/10/21	
Surrogate: Toluene-d8		107 %	70-130	12/09/21	12/10/21	
Nonhalogenated Organics by EPA 8015D - DRO/ORO						
	mg/kg	mg/kg		Analyst: JL		Batch: 2150032
Diesel Range Organics (C10-C28)	2840	125	5	12/09/21	12/16/21	
Oil Range Organics (C28-C36)	948	250	5	12/09/21	12/16/21	
Surrogate: n-Nonane		138 %	50-200	12/09/21	12/16/21	
Anions by EPA 300.0/9056A						
	mg/kg	mg/kg		Analyst: IY		Batch: 2150028
Chloride	1670	20.0	1	12/09/21	12/10/21	



QC Summary Data

Souder Miller Associates - Carlsbad	Project Name:	Poker Lake Section Trunk D	Reported:
201 S Halagueno St.	Project Number:	19026-0001	
Carlsbad NM, 88220	Project Manager:	Ashley Maxwell	12/16/2021 12:49:27PM

Volatile Organic Compounds by EPA 8260B

Analyst: IY

Analyte	Result mg/kg	Reporting Limit mg/kg	Spike Level mg/kg	Source Result mg/kg	Rec %	Rec Limits %	RPD %	RPD Limit %	Notes
---------	-----------------	-----------------------------	-------------------------	---------------------------	----------	--------------------	----------	-------------------	-------

Blank (2150025-BLK1)

Prepared: 12/09/21 Analyzed: 12/09/21

Benzene	ND	0.0250							
Ethylbenzene	ND	0.0250							
Toluene	ND	0.0250							
o-Xylene	ND	0.0250							
p,m-Xylene	ND	0.0500							
Total Xylenes	ND	0.0250							
Surrogate: Bromofluorobenzene	0.538		0.500		108	70-130			
Surrogate: 1,2-Dichloroethane-d4	0.488		0.500		97.5	70-130			
Surrogate: Toluene-d8	0.521		0.500		104	70-130			

LCS (2150025-BS1)

Prepared: 12/09/21 Analyzed: 12/09/21

Benzene	2.59	0.0250	2.50		104	70-130			
Ethylbenzene	2.60	0.0250	2.50		104	70-130			
Toluene	2.70	0.0250	2.50		108	70-130			
o-Xylene	2.43	0.0250	2.50		97.0	70-130			
p,m-Xylene	5.16	0.0500	5.00		103	70-130			
Total Xylenes	7.59	0.0250	7.50		101	70-130			
Surrogate: Bromofluorobenzene	0.544		0.500		109	70-130			
Surrogate: 1,2-Dichloroethane-d4	0.485		0.500		96.9	70-130			
Surrogate: Toluene-d8	0.526		0.500		105	70-130			

Matrix Spike (2150025-MS1)

Source: E112032-05

Prepared: 12/09/21 Analyzed: 12/09/21

Benzene	2.59	0.0250	2.50	ND	104	48-131			
Ethylbenzene	2.56	0.0250	2.50	ND	102	45-135			
Toluene	2.62	0.0250	2.50	ND	105	48-130			
o-Xylene	2.39	0.0250	2.50	ND	95.5	43-135			
p,m-Xylene	5.15	0.0500	5.00	ND	103	43-135			
Total Xylenes	7.54	0.0250	7.50	ND	101	43-135			
Surrogate: Bromofluorobenzene	0.541		0.500		108	70-130			
Surrogate: 1,2-Dichloroethane-d4	0.520		0.500		104	70-130			
Surrogate: Toluene-d8	0.512		0.500		102	70-130			

Matrix Spike Dup (2150025-MSD1)

Source: E112032-05

Prepared: 12/09/21 Analyzed: 12/09/21

Benzene	2.34	0.0250	2.50	ND	93.7	48-131	10.1	23	
Ethylbenzene	2.36	0.0250	2.50	ND	94.3	45-135	8.27	27	
Toluene	2.36	0.0250	2.50	ND	94.4	48-130	10.6	24	
o-Xylene	2.21	0.0250	2.50	ND	88.2	43-135	7.95	27	
p,m-Xylene	4.65	0.0500	5.00	ND	93.1	43-135	10.2	27	
Total Xylenes	6.86	0.0250	7.50	ND	91.5	43-135	9.47	27	
Surrogate: Bromofluorobenzene	0.541		0.500		108	70-130			
Surrogate: 1,2-Dichloroethane-d4	0.518		0.500		104	70-130			
Surrogate: Toluene-d8	0.505		0.500		101	70-130			



QC Summary Data

Souder Miller Associates - Carlsbad	Project Name:	Poker Lake Section Trunk D	Reported:
201 S Halagueno St.	Project Number:	19026-0001	
Carlsbad NM, 88220	Project Manager:	Ashley Maxwell	12/16/2021 12:49:27PM

Nonhalogenated Organics by EPA 8015D - GRO

Analyst: IY

Analyte	Result mg/kg	Reporting Limit mg/kg	Spike Level mg/kg	Source Result mg/kg	Rec %	Rec Limits %	RPD %	RPD Limit %	Notes
---------	-----------------	-----------------------------	-------------------------	---------------------------	----------	--------------------	----------	-------------------	-------

Blank (2150025-BLK1)

Prepared: 12/09/21 Analyzed: 12/09/21

Gasoline Range Organics (C6-C10)	ND	20.0							
Surrogate: Bromofluorobenzene	0.538		0.500		108	70-130			
Surrogate: 1,2-Dichloroethane-d4	0.488		0.500		97.5	70-130			
Surrogate: Toluene-d8	0.521		0.500		104	70-130			

LCS (2150025-BS2)

Prepared: 12/09/21 Analyzed: 12/09/21

Gasoline Range Organics (C6-C10)	54.8	20.0	50.0		110	70-130			
Surrogate: Bromofluorobenzene	0.528		0.500		106	70-130			
Surrogate: 1,2-Dichloroethane-d4	0.492		0.500		98.4	70-130			
Surrogate: Toluene-d8	0.520		0.500		104	70-130			

Matrix Spike (2150025-MS2)

Source: E112032-05

Prepared: 12/09/21 Analyzed: 12/09/21

Gasoline Range Organics (C6-C10)	51.4	20.0	50.0	ND	103	70-130			
Surrogate: Bromofluorobenzene	0.526		0.500		105	70-130			
Surrogate: 1,2-Dichloroethane-d4	0.497		0.500		99.3	70-130			
Surrogate: Toluene-d8	0.492		0.500		98.3	70-130			

Matrix Spike Dup (2150025-MSD2)

Source: E112032-05

Prepared: 12/09/21 Analyzed: 12/09/21

Gasoline Range Organics (C6-C10)	56.4	20.0	50.0	ND	113	70-130	9.11	20	
Surrogate: Bromofluorobenzene	0.532		0.500		106	70-130			
Surrogate: 1,2-Dichloroethane-d4	0.527		0.500		105	70-130			
Surrogate: Toluene-d8	0.496		0.500		99.1	70-130			



QC Summary Data

Souder Miller Associates - Carlsbad	Project Name:	Poker Lake Section Trunk D	Reported:
201 S Halagueno St.	Project Number:	19026-0001	
Carlsbad NM, 88220	Project Manager:	Ashley Maxwell	12/16/2021 12:49:27PM

Nonhalogenated Organics by EPA 8015D - DRO/ORO

Analyst: JL

Analyte	Result mg/kg	Reporting Limit mg/kg	Spike Level mg/kg	Source Result mg/kg	Rec %	Rec Limits %	RPD %	RPD Limit %	Notes
---------	-----------------	-----------------------------	-------------------------	---------------------------	----------	--------------------	----------	-------------------	-------

Blank (2150032-BLK1)

Prepared: 12/09/21 Analyzed: 12/15/21

Diesel Range Organics (C10-C28)	ND	25.0							
Oil Range Organics (C28-C36)	ND	50.0							
Surrogate: <i>n</i> -Nonane	65.2		50.0		130	50-200			

LCS (2150032-BS1)

Prepared: 12/09/21 Analyzed: 12/09/21

Diesel Range Organics (C10-C28)	584	25.0	500		117	38-132			
Surrogate: <i>n</i> -Nonane	59.8		50.0		120	50-200			

Matrix Spike (2150032-MS1)

Source: E112032-05

Prepared: 12/09/21 Analyzed: 12/15/21

Diesel Range Organics (C10-C28)	569	25.0	500	ND	114	38-132			
Surrogate: <i>n</i> -Nonane	58.1		50.0		116	50-200			

Matrix Spike Dup (2150032-MSD1)

Source: E112032-05

Prepared: 12/09/21 Analyzed: 12/15/21

Diesel Range Organics (C10-C28)	573	25.0	500	ND	115	38-132	0.792	20	
Surrogate: <i>n</i> -Nonane	58.9		50.0		118	50-200			



QC Summary Data

Souder Miller Associates - Carlsbad	Project Name:	Poker Lake Section Trunk D	Reported:
201 S Halagueno St.	Project Number:	19026-0001	
Carlsbad NM, 88220	Project Manager:	Ashley Maxwell	12/16/2021 12:49:27PM

Anions by EPA 300.0/9056A

Analyst: IY

Analyte	Result mg/kg	Reporting Limit mg/kg	Spike Level mg/kg	Source Result mg/kg	Rec %	Rec Limits %	RPD %	RPD Limit %	Notes
---------	-----------------	-----------------------------	-------------------------	---------------------------	----------	--------------------	----------	-------------------	-------

Blank (2150028-BLK1)

Prepared: 12/09/21 Analyzed: 12/09/21

Chloride	ND	20.0
----------	----	------

LCS (2150028-BS1)

Prepared: 12/09/21 Analyzed: 12/09/21

Chloride	254	20.0	250	102	90-110
----------	-----	------	-----	-----	--------

Matrix Spike (2150028-MS1)

Source: E112032-01

Prepared: 12/09/21 Analyzed: 12/09/21

Chloride	257	20.0	250	ND	103	80-120
----------	-----	------	-----	----	-----	--------

Matrix Spike Dup (2150028-MSD1)

Source: E112032-01

Prepared: 12/09/21 Analyzed: 12/09/21

Chloride	258	20.0	250	ND	103	80-120	0.373	20
----------	-----	------	-----	----	-----	--------	-------	----

QC Summary Report Comment:

Calculations are based off of the raw (non-rounded) data. However, for reporting purposes all QC data is rounded to three significant figures. Therefore, hand calculated values may differ slightly.



Definitions and Notes

Souder Miller Associates - Carlsbad	Project Name:	Poker Lake Section Trunk D	
201 S Halagueno St.	Project Number:	19026-0001	Reported:
Carlsbad NM, 88220	Project Manager:	Ashley Maxwell	12/16/21 12:49

- S5 Surrogate spike recovery exceeded acceptance limits due to interfering target and/or non-target analytes.
- ND Analyte NOT DETECTED at or above the reporting limit
- NR Not Reported
- RPD Relative Percent Difference
- DNI Did Not Ignite

Note (1): Methods marked with ** are non-accredited methods.

Note (2): Soil data is reported on an "as received" weight basis, unless reported otherwise.



Project Information

Chain of Custody

Page 1 of 2

Client: SMA Carlshad
 Project: Poker Lake Section Transect
 Project Manager: Ashley Maxwell
 Address: Ashley Maxwell
 City, State, Zip: _____
 Phone: _____
 Email: Ashley Maxwell
 Report due by: _____

Bill To
 Attention: _____
 Address: _____
 City, State, Zip: _____
 Phone: _____
 Email: _____

Lab Use Only
 Lab WO# PE 112032 Job Number 19026-0001
 Analysis and Method
 DRO/DRO by 8015 _____ GRO/DRO by 8015 _____
 BTEX by 8021 _____ VOC by 8260 _____
 Metals 6010 _____ Chloride 300.0 _____
 BGDOC - NM _____ BGDOC - TX _____

EPA Program
 TAT 1D 3D RCRA CWA SDWA
 State NM CO UT AZ
 TX OK _____
 Remarks

Time Sampled	Date Sampled	Matrix	No Containers	Sample ID	Lab Number	DRO/DRO by 8015	GRO/DRO by 8015	BTEX by 8021	VOC by 8260	Metals 6010	Chloride 300.0	BGDOC - NM	BGDOC - TX	Remarks
1500	12/6/21	Soil	1	PLS-BG-01	1						X			
1530			1	PLS-BSE-02	2							X		
1535			1	PLS-BSW-03	3							X		
1537			1	PLS-WSW-04	4							X		
1540			1	PLS-ESW-05	5							X		
1545			1	PLS-NSW-06	6							X		
1551			1	PLS-SSW-07	7							X		
1601			1	PLS-SP-08	8							X		
1602			1	PLS-SP-09	9							X		
1603			1	PLS-SP-10	10							X		

Additional Instructions:

I, (field sampler), attest to the validity and authenticity of this sample. I am aware that tampering with or intentionally mislabeling the sample location, date or time of collection is considered fraud and may be grounds for legal action. Sampled by: 12/8/21

Relinquished by: (Signature) [Signature] Date 12/8/21 Time 11:00 Received by: (Signature) [Signature] Date 12-8-21 Time 11:00

Relinquished by: (Signature) [Signature] Date 12/8/21 Time 1630 Received by: (Signature) Carlynn Christman Date 12/9/21 Time 11:48

Relinquished by: (Signature) _____ Date _____ Time _____ Received by: (Signature) _____ Date _____ Time _____

Sample Matrix: S - Soil, Sd - Solid, Sg - Sludge, A - Aqueous, O - Other _____ Container Type: g - glass, p - poly/plastic, ag - amber glass, v - VOA

Note: Samples are discarded 30 days after results are reported unless other arrangements are made. Hazardous samples will be returned to client or disposed of at the client's expense. The report for the analysis of the above samples is applicable only to those samples received by the laboratory with this COC. The liability of the laboratory is limited to the amount paid for on the report.

Lab Use Only
 Received on ice: Y / N
 T1 _____ T2 _____ T3 _____
 AVG Temp °C 4

Project Information

Chain of Custody

Page 2 of 2

Client: SMA - Carlsbad
 Project: Pocket Lake Station Trucked
 Project Manager: Ashley Maxwell
 Address: Ashley Maxwell
 City, State, Zip: Ashley Maxwell
 Phone: Ashley Maxwell
 Email: Ashley Maxwell
 Report due by:

Bill To
 Attention:
 Address:
 City, State, Zip:
 Phone:
 Email:

Lab Use Only
 Lab WO# P Job Number
 Analysis and Method
 DRO/DRO by 8015 GRO/DRO by 8015 BTEX by 8021 VOC by 8260 Metals 6010 Chloride 300.0 BGDGC - NM X BGDGC - TX

EPA Program
 TAT
 1D 3D
 RCRA CWA SDWA
 State
 NM X CO UT AZ
 TX OK
 Remarks

Time Sampled	Date Sampled	Matrix	No. Containers	Sample ID	Lab Number	DRO/DRO by 8015	GRO/DRO by 8015	BTEX by 8021	VOC by 8260	Metals 6010	Chloride 300.0	BGDGC - NM	BGDGC - TX	Remarks
1604	12/6/21	Soil	1	PLS-SP-11	11							X		
1605			1	PLS-SP-12	12							X		
1606			1	PLS-SP-13	13							X		
1607			1	PLS-SP-14	14							X		
1608			1	PLS-SP-15	15							X		
1609			1	PLS-SP-16	16							X		
1610			1	PLS-SP-17	17							X		
1611			1	PLS-SP-18	18							X		
1612	✓	✓	1	PLS-SP-19	19							X		

Additional Instructions:

I, (field sampler), attest to the validity and authenticity of this sample. I am aware that tampering with or intentionally mislabeling the sample location, date or time of collection is considered fraud and may be grounds for legal action. Sampled by:

Samples requiring thermal preservation must be received on ice the day they are sampled or received packed in ice at an avg temp above 0 but less than 5°C on subsequent days.

Relinquished by: (Signature) <u>[Signature]</u>	Date <u>12/8/21</u>	Time <u>11:00</u>	Received by: (Signature) <u>[Signature]</u>	Date <u>12-8-21</u>	Time <u>11:00</u>	Received on ice: <u>Y</u> / N T1 <u></u> T2 <u></u> T3 <u></u> AVG Temp °C <u>4</u>
Relinquished by: (Signature) <u>[Signature]</u>	Date <u>12/8/21</u>	Time <u>16:30</u>	Received by: (Signature) <u>Cathy Chatter</u>	Date <u>12/9/21</u>	Time <u>11:49</u>	
Relinquished by: (Signature) <u></u>	Date <u></u>	Time <u></u>	Received by: (Signature) <u></u>	Date <u></u>	Time <u></u>	

Sample Matrix: S - Soil, Sd - Solid, Sg - Sludge, A - Aqueous, O - Other

Container Type: g - glass, p - poly/plastic, ag - amber glass, v - VOA

Note: Samples are discarded 30 days after results are reported unless other arrangements are made. Hazardous samples will be returned to client or disposed of at the client expense. The report for the analysis of the above samples is applicable only to those samples received by the laboratory with this COC. The liability of the laboratory is limited to the amount paid for on the report.

Envirotech Analytical Laboratory

Printed: 12/11/2021 2:21:01PM

Sample Receipt Checklist (SRC)

Instructions: Please take note of any NO checkmarks.

If we receive no response concerning these items within 24 hours of the date of this notice, all the samples will be analyzed as requested.

Client:	Souder Miller Associates - Carlsbad	Date Received:	12/09/21 11:48	Work Order ID:	E112032
Phone:	(505) 325-7535	Date Logged In:	12/08/21 12:20	Logged In By:	Jessica Liesse
Email:	ashley.maxwell@soudermiller.com	Due Date:	12/15/21 17:00 (4 day TAT)		

Chain of Custody (COC)

1. Does the sample ID match the COC? Yes
2. Does the number of samples per sampling site location match the COC? Yes
3. Were samples dropped off by client or carrier? Yes
4. Was the COC complete, i.e., signatures, dates/times, requested analyses? Yes
5. Were all samples received within holding time? Yes

Note: Analysis, such as pH which should be conducted in the field, i.e., 15 minute hold time, are not included in this discussion.

Carrier: Fed Ex**Comments/Resolution****Sample Turn Around Time (TAT)**

6. Did the COC indicate standard TAT, or Expedited TAT? Yes

Sample Cooler

7. Was a sample cooler received? Yes
8. If yes, was cooler received in good condition? Yes
9. Was the sample(s) received intact, i.e., not broken? Yes
10. Were custody/security seals present? No
11. If yes, were custody/security seals intact? NA
12. Was the sample received on ice? If yes, the recorded temp is 4°C, i.e., 6°±2°C? Yes

Note: Thermal preservation is not required, if samples are received w/i 15 minutes of sampling

13. If no visible ice, record the temperature. Actual sample temperature: 4°C

Sample Container

14. Are aqueous VOC samples present? No
15. Are VOC samples collected in VOA Vials? NA
16. Is the head space less than 6-8 mm (pea sized or less)? NA
17. Was a trip blank (TB) included for VOC analyses? NA
18. Are non-VOC samples collected in the correct containers? Yes
19. Is the appropriate volume/weight or number of sample containers collected? Yes

Field Label

20. Were field sample labels filled out with the minimum information:
 - Sample ID? Yes
 - Date/Time Collected? Yes
 - Collectors name? No

Sample Preservation

21. Does the COC or field labels indicate the samples were preserved? No
22. Are sample(s) correctly preserved? NA
24. Is lab filtration required and/or requested for dissolved metals? No

Multiphase Sample Matrix

26. Does the sample have more than one phase, i.e., multiphase? No
27. If yes, does the COC specify which phase(s) is to be analyzed? NA

Subcontract Laboratory

28. Are samples required to get sent to a subcontract laboratory? No
29. Was a subcontract laboratory specified by the client and if so who? NA Subcontract Lab: n/a

Client Instruction

Signature of client authorizing changes to the COC or sample disposition.

Date



envirotech Inc.

Report to:
Ashley Maxwell



5796 U.S. Hwy 64
Farmington, NM 87401

Phone: (505) 632-1881
Envirotech-inc.com



envirotech

Practical Solutions for a Better Tomorrow

Analytical Report

Souder Miller & Associates

Project Name: Poker Lake Suct. Trunk D

Work Order: E201041

Job Number: 97057-0001

Received: 1/13/2022

Revision: 2

Report Reviewed By:

Walter Hinchman
Laboratory Director
1/26/22

Envirotech Inc. certifies the test results meet all requirements of TNI unless noted otherwise.
Statement of Data Authenticity: Envirotech Inc. attests the data reported has not been altered in any way.
Partial or incomplete reproduction of this report is prohibited, unless approved by Envirotech Inc.
Envirotech Inc. holds the Utah TNI certification NM00979 for data reported.
Envirotech Inc. holds the Texas TNI certification T104704557 for data reported.
Envirotech Inc. holds the NM SDWA certification for data reported. (Lab #NM00979)

Date Reported: 1/26/22

Ashley Maxwell
401 W. Broadway
Farmington, NM 87401



Project Name: Poker Lake Suct. Trunk D
Workorder: E201041
Date Received: 1/13/2022 10:53:00AM

Ashley Maxwell,

Thank you for choosing Envirotech, Inc. as your analytical testing laboratory for the sample(s) received on, 1/13/2022 10:53:00AM, under the Project Name: Poker Lake Suct. Trunk D.

The analytical test results summarized in this report with the Project Name: Poker Lake Suct. Trunk D apply to the individual samples collected, identified and submitted bearing the project name on the enclosed chain-of-custody. Subcontracted sample analyses not conducted by Envirotech, Inc., are attached in full as issued by the subcontract laboratory.

Please review the Chain-of-Custody (COC) and Sample Receipt Checklist (SRC) for any issues regarding sample receipt temperature, containers, preservation etc. To best understand your test results, review the entire report summarizing your sample data and the associated quality control batch data.

All reported data in this analytical report were analyzed according to the referenced method(s) and are in compliance with the latest NELAC/TNI standards, unless otherwise noted. Samples or analytical quality control parameters not meeting specific QC criteria are qualified with a data flag. Data flag definitions are located in the Notes and Definitions section of this analytical report.

If you have any questions concerning this report, please feel free to contact Envirotech, Inc.

Respectfully,

Walter Hinchman
Laboratory Director
Office: 505-632-1881
Cell: 775-287-1762
whinchman@envirotech-inc.com

Raina Schwanz
Laboratory Administrator
Office: 505-632-1881
rainaschwanz@envirotech-inc.com

Alexa Michaels
Sample Custody Officer
Office: 505-632-1881
labadmin@envirotech-inc.com

Field Offices:

Southern New Mexico Area
Lynn Jarboe
Technical Representative/Client Services
Office: 505-421-LABS(5227)
Cell: 505-320-4759
ljjarboe@envirotech-inc.com

West Texas Midland/Odessa Area
Rayny Hagan
Technical Representative
Office: 505-421-LABS(5227)

Envirotech Web Address: www.envirotech-inc.com

Table of Contents

Title Page	1
Cover Page	2
Table of Contents	3
Sample Summary	4
Sample Data	5
PLS-BG-08 @ 0-4'	5
PLS-BSE-09 @ 8'	6
PLS-BSW-10 @ 8'	7
PLS-WSW-11 @ 8'	8
PLS-NSW-12 @ 4'	9
PLS-SSW-13 @ 4'	10
PLS-ESW-14 @ 4-6'	11
QC Summary Data	12
QC - Volatile Organics by EPA 8021B	12
QC - Nonhalogenated Organics by EPA 8015D - GRO	13
QC - Nonhalogenated Organics by EPA 8015D - DRO/ORO	14
QC - Anions by EPA 300.0/9056A	15
Definitions and Notes	16
Chain of Custody etc.	17

Sample Summary

Souder Miller & Associates 401 W. Broadway Farmington NM, 87401	Project Name: Poker Lake Suct. Trunk D Project Number: 97057-0001 Project Manager: Ashley Maxwell	Reported: 01/26/22 12:44
---	---	------------------------------------

Client Sample ID	Lab Sample ID	Matrix	Sampled	Received	Container
PLS-BG-08 @ 0-4'	E201041-01A	Soil	01/11/22	01/13/22	Glass Jar, 4 oz.
PLS-BSE-09 @ 8'	E201041-02A	Soil	01/11/22	01/13/22	Glass Jar, 4 oz.
PLS-BSW-10 @ 8'	E201041-03A	Soil	01/11/22	01/13/22	Glass Jar, 4 oz.
PLS-WSW-11 @ 8'	E201041-04A	Soil	01/11/22	01/13/22	Glass Jar, 4 oz.
PLS-NSW-12 @ 4'	E201041-05A	Soil	01/11/22	01/13/22	Glass Jar, 4 oz.
PLS-SSW-13 @ 4'	E201041-06A	Soil	01/11/22	01/13/22	Glass Jar, 4 oz.
PLS-ESW-14 @ 4-6'	E201041-07A	Soil	01/11/22	01/13/22	Glass Jar, 4 oz.



Sample Data

Souder Miller & Associates 401 W. Broadway Farmington NM, 87401	Project Name: Poker Lake Suct. Trunk D Project Number: 97057-0001 Project Manager: Ashley Maxwell	Reported: 1/26/2022 12:44:20PM
---	---	-----------------------------------

PLS-BG-08 @ 0-4'

E201041-01

Analyte	Result	Reporting Limit	Dilution	Prepared	Analyzed	Notes
Anions by EPA 300.0/9056A	mg/kg	mg/kg	Analyst: RAS			Batch: 2204003
Chloride	2020	20.0	1	01/17/22	01/17/22	



Sample Data

Souder Miller & Associates 401 W. Broadway Farmington NM, 87401	Project Name: Poker Lake Suct. Trunk D Project Number: 97057-0001 Project Manager: Ashley Maxwell	Reported: 1/26/2022 12:44:20PM
---	---	--

PLS-BSE-09 @ 8'

E201041-02

Analyte	Result	Reporting Limit	Dilution	Prepared	Analyzed	Notes
Volatile Organics by EPA 8021B	mg/kg	mg/kg	Analyst: RKS		Batch: 2203027	
Benzene	ND	0.0250	1	01/14/22	01/18/22	
Ethylbenzene	ND	0.0250	1	01/14/22	01/18/22	
Toluene	ND	0.0250	1	01/14/22	01/18/22	
o-Xylene	ND	0.0250	1	01/14/22	01/18/22	
p,m-Xylene	ND	0.0500	1	01/14/22	01/18/22	
Total Xylenes	ND	0.0250	1	01/14/22	01/18/22	
<i>Surrogate: 4-Bromochlorobenzene-PID</i>	97.5 %	70-130		01/14/22	01/18/22	
Nonhalogenated Organics by EPA 8015D - GRO	mg/kg	mg/kg	Analyst: RKS		Batch: 2203027	
Gasoline Range Organics (C6-C10)	ND	20.0	1	01/14/22	01/18/22	
<i>Surrogate: 1-Chloro-4-fluorobenzene-FID</i>	102 %	70-130		01/14/22	01/18/22	
Nonhalogenated Organics by EPA 8015D - DRO/ORO	mg/kg	mg/kg	Analyst: JL		Batch: 2203024	
Diesel Range Organics (C10-C28)	ND	25.0	1	01/14/22	01/15/22	
Oil Range Organics (C28-C36)	ND	50.0	1	01/14/22	01/15/22	
<i>Surrogate: n-Nonane</i>	105 %	50-200		01/14/22	01/15/22	
Anions by EPA 300.0/9056A	mg/kg	mg/kg	Analyst: RAS		Batch: 2204003	
Chloride	2620	40.0	2	01/17/22	01/17/22	



Sample Data

Souder Miller & Associates
401 W. Broadway
Farmington NM, 87401

Project Name: Poker Lake Suct. Trunk D
Project Number: 97057-0001
Project Manager: Ashley Maxwell

Reported:
1/26/2022 12:44:20PM

PLS-BSW-10 @ 8'

E201041-03

Analyte	Result	Reporting Limit	Dilution	Prepared	Analyzed	Notes
Volatile Organics by EPA 8021B						
	mg/kg	mg/kg		Analyst: RKS		Batch: 2203027
Benzene	ND	0.0250	1	01/14/22	01/18/22	
Ethylbenzene	ND	0.0250	1	01/14/22	01/18/22	
Toluene	ND	0.0250	1	01/14/22	01/18/22	
o-Xylene	ND	0.0250	1	01/14/22	01/18/22	
p,m-Xylene	ND	0.0500	1	01/14/22	01/18/22	
Total Xylenes	ND	0.0250	1	01/14/22	01/18/22	
<i>Surrogate: 4-Bromochlorobenzene-PID</i>						
	97.0 %	70-130		01/14/22	01/18/22	
Nonhalogenated Organics by EPA 8015D - GRO						
	mg/kg	mg/kg		Analyst: RKS		Batch: 2203027
Gasoline Range Organics (C6-C10)	ND	20.0	1	01/14/22	01/18/22	
<i>Surrogate: 1-Chloro-4-fluorobenzene-FID</i>						
	103 %	70-130		01/14/22	01/18/22	
Nonhalogenated Organics by EPA 8015D - DRO/ORO						
	mg/kg	mg/kg		Analyst: JL		Batch: 2203024
Diesel Range Organics (C10-C28)	ND	25.0	1	01/14/22	01/15/22	
Oil Range Organics (C28-C36)	ND	50.0	1	01/14/22	01/15/22	
<i>Surrogate: n-Nonane</i>						
	110 %	50-200		01/14/22	01/15/22	
Anions by EPA 300.0/9056A						
	mg/kg	mg/kg		Analyst: RAS		Batch: 2204003
Chloride	1720	20.0	1	01/17/22	01/18/22	



Sample Data

Souder Miller & Associates
401 W. Broadway
Farmington NM, 87401

Project Name: Poker Lake Suct. Trunk D
Project Number: 97057-0001
Project Manager: Ashley Maxwell

Reported:
1/26/2022 12:44:20PM

PLS-WSW-11 @ 8'

E201041-04

Analyte	Result	Reporting Limit	Dilution	Prepared	Analyzed	Notes
Volatile Organics by EPA 8021B						
	mg/kg	mg/kg		Analyst: RKS		Batch: 2203027
Benzene	ND	0.0250	1	01/14/22	01/18/22	
Ethylbenzene	ND	0.0250	1	01/14/22	01/18/22	
Toluene	ND	0.0250	1	01/14/22	01/18/22	
o-Xylene	ND	0.0250	1	01/14/22	01/18/22	
p,m-Xylene	ND	0.0500	1	01/14/22	01/18/22	
Total Xylenes	ND	0.0250	1	01/14/22	01/18/22	
<i>Surrogate: 4-Bromochlorobenzene-PID</i>						
	96.0 %	70-130		01/14/22	01/18/22	
Nonhalogenated Organics by EPA 8015D - GRO						
	mg/kg	mg/kg		Analyst: RKS		Batch: 2203027
Gasoline Range Organics (C6-C10)	ND	20.0	1	01/14/22	01/18/22	
<i>Surrogate: 1-Chloro-4-fluorobenzene-FID</i>						
	103 %	70-130		01/14/22	01/18/22	
Nonhalogenated Organics by EPA 8015D - DRO/ORO						
	mg/kg	mg/kg		Analyst: JL		Batch: 2203024
Diesel Range Organics (C10-C28)	ND	25.0	1	01/14/22	01/15/22	
Oil Range Organics (C28-C36)	ND	50.0	1	01/14/22	01/15/22	
<i>Surrogate: n-Nonane</i>						
	111 %	50-200		01/14/22	01/15/22	
Anions by EPA 300.0/9056A						
	mg/kg	mg/kg		Analyst: RAS		Batch: 2204003
Chloride	1790	20.0	1	01/17/22	01/18/22	



Sample Data

Souder Miller & Associates
401 W. Broadway
Farmington NM, 87401

Project Name: Poker Lake Suct. Trunk D
Project Number: 97057-0001
Project Manager: Ashley Maxwell

Reported:
1/26/2022 12:44:20PM

PLS-NSW-12 @ 4'

E201041-05

Analyte	Result	Reporting Limit	Dilution	Prepared	Analyzed	Notes
Volatile Organics by EPA 8021B						
	mg/kg	mg/kg		Analyst: RKS		Batch: 2203027
Benzene	ND	0.0250	1	01/14/22	01/18/22	
Ethylbenzene	ND	0.0250	1	01/14/22	01/18/22	
Toluene	ND	0.0250	1	01/14/22	01/18/22	
o-Xylene	ND	0.0250	1	01/14/22	01/18/22	
p,m-Xylene	ND	0.0500	1	01/14/22	01/18/22	
Total Xylenes	ND	0.0250	1	01/14/22	01/18/22	
<i>Surrogate: 4-Bromochlorobenzene-PID</i>						
	96.5 %	70-130		01/14/22	01/18/22	
Nonhalogenated Organics by EPA 8015D - GRO						
	mg/kg	mg/kg		Analyst: RKS		Batch: 2203027
Gasoline Range Organics (C6-C10)	ND	20.0	1	01/14/22	01/18/22	
<i>Surrogate: 1-Chloro-4-fluorobenzene-FID</i>						
	103 %	70-130		01/14/22	01/18/22	
Nonhalogenated Organics by EPA 8015D - DRO/ORO						
	mg/kg	mg/kg		Analyst: JL		Batch: 2203024
Diesel Range Organics (C10-C28)	ND	25.0	1	01/14/22	01/15/22	
Oil Range Organics (C28-C36)	ND	50.0	1	01/14/22	01/15/22	
<i>Surrogate: n-Nonane</i>						
	107 %	50-200		01/14/22	01/15/22	
Anions by EPA 300.0/9056A						
	mg/kg	mg/kg		Analyst: RAS		Batch: 2204003
Chloride	3000	20.0	1	01/17/22	01/18/22	



Sample Data

Souder Miller & Associates
401 W. Broadway
Farmington NM, 87401

Project Name: Poker Lake Suct. Trunk D
Project Number: 97057-0001
Project Manager: Ashley Maxwell

Reported:
1/26/2022 12:44:20PM

PLS-SSW-13 @ 4'

E201041-06

Analyte	Result	Reporting Limit	Dilution	Prepared	Analyzed	Notes
Volatile Organics by EPA 8021B						
	mg/kg	mg/kg		Analyst: RKS		Batch: 2203027
Benzene	ND	0.0250	1	01/14/22	01/18/22	
Ethylbenzene	ND	0.0250	1	01/14/22	01/18/22	
Toluene	ND	0.0250	1	01/14/22	01/18/22	
o-Xylene	ND	0.0250	1	01/14/22	01/18/22	
p,m-Xylene	ND	0.0500	1	01/14/22	01/18/22	
Total Xylenes	ND	0.0250	1	01/14/22	01/18/22	
<i>Surrogate: 4-Bromochlorobenzene-PID</i>						
	96.3 %	70-130		01/14/22	01/18/22	
Nonhalogenated Organics by EPA 8015D - GRO						
	mg/kg	mg/kg		Analyst: RKS		Batch: 2203027
Gasoline Range Organics (C6-C10)	ND	20.0	1	01/14/22	01/18/22	
<i>Surrogate: 1-Chloro-4-fluorobenzene-FID</i>						
	103 %	70-130		01/14/22	01/18/22	
Nonhalogenated Organics by EPA 8015D - DRO/ORO						
	mg/kg	mg/kg		Analyst: JL		Batch: 2203024
Diesel Range Organics (C10-C28)	ND	25.0	1	01/14/22	01/15/22	
Oil Range Organics (C28-C36)	ND	50.0	1	01/14/22	01/15/22	
<i>Surrogate: n-Nonane</i>						
	106 %	50-200		01/14/22	01/15/22	
Anions by EPA 300.0/9056A						
	mg/kg	mg/kg		Analyst: RAS		Batch: 2204003
Chloride	2870	40.0	2	01/17/22	01/18/22	



Sample Data

Souder Miller & Associates
401 W. Broadway
Farmington NM, 87401

Project Name: Poker Lake Suct. Trunk D
Project Number: 97057-0001
Project Manager: Ashley Maxwell

Reported:
1/26/2022 12:44:20PM

PLS-ESW-14 @ 4-6'

E201041-07

Analyte	Result	Reporting Limit	Dilution	Prepared	Analyzed	Notes
Volatile Organics by EPA 8021B						
	mg/kg	mg/kg		Analyst: RKS		Batch: 2203027
Benzene	ND	0.0250	1	01/14/22	01/18/22	
Ethylbenzene	ND	0.0250	1	01/14/22	01/18/22	
Toluene	ND	0.0250	1	01/14/22	01/18/22	
o-Xylene	ND	0.0250	1	01/14/22	01/18/22	
p,m-Xylene	ND	0.0500	1	01/14/22	01/18/22	
Total Xylenes	ND	0.0250	1	01/14/22	01/18/22	
<i>Surrogate: 4-Bromochlorobenzene-PID</i>						
	95.0 %	70-130		01/14/22	01/18/22	
Nonhalogenated Organics by EPA 8015D - GRO						
	mg/kg	mg/kg		Analyst: RKS		Batch: 2203027
Gasoline Range Organics (C6-C10)	ND	20.0	1	01/14/22	01/18/22	
<i>Surrogate: 1-Chloro-4-fluorobenzene-FID</i>						
	103 %	70-130		01/14/22	01/18/22	
Nonhalogenated Organics by EPA 8015D - DRO/ORO						
	mg/kg	mg/kg		Analyst: JL		Batch: 2203024
Diesel Range Organics (C10-C28)	ND	25.0	1	01/14/22	01/15/22	
Oil Range Organics (C28-C36)	ND	50.0	1	01/14/22	01/15/22	
<i>Surrogate: n-Nonane</i>						
	105 %	50-200		01/14/22	01/15/22	
Anions by EPA 300.0/9056A						
	mg/kg	mg/kg		Analyst: RAS		Batch: 2204003
Chloride	2320	20.0	1	01/17/22	01/18/22	



QC Summary Data

Souder Miller & Associates 401 W. Broadway Farmington NM, 87401	Project Name: Poker Lake Suct. Trunk D Project Number: 97057-0001 Project Manager: Ashley Maxwell	Reported: 1/26/2022 12:44:20PM
---	---	---------------------------------------

Volatile Organics by EPA 8021B

Analyst: RKS

Analyte	Result mg/kg	Reporting Limit mg/kg	Spike Level mg/kg	Source Result mg/kg	Rec %	Rec Limits %	RPD %	RPD Limit %	Notes
---------	-----------------	-----------------------------	-------------------------	---------------------------	----------	--------------------	----------	-------------------	-------

Blank (2203027-BLK1)

Prepared: 01/14/22 Analyzed: 01/18/22

Benzene	ND	0.0250							
Ethylbenzene	ND	0.0250							
Toluene	ND	0.0250							
o-Xylene	ND	0.0250							
p,m-Xylene	ND	0.0500							
Total Xylenes	ND	0.0250							
Surrogate: 4-Bromochlorobenzene-PID	7.73		8.00		96.6	70-130			

LCS (2203027-BS1)

Prepared: 01/14/22 Analyzed: 01/18/22

Benzene	4.52	0.0250	5.00		90.5	70-130			
Ethylbenzene	4.68	0.0250	5.00		93.7	70-130			
Toluene	4.84	0.0250	5.00		96.7	70-130			
o-Xylene	4.64	0.0250	5.00		92.7	70-130			
p,m-Xylene	9.51	0.0500	10.0		95.1	70-130			
Total Xylenes	14.1	0.0250	15.0		94.3	70-130			
Surrogate: 4-Bromochlorobenzene-PID	7.79		8.00		97.3	70-130			

Matrix Spike (2203027-MS1)

Source: E201041-05

Prepared: 01/14/22 Analyzed: 01/18/22

Benzene	4.70	0.0250	5.00	ND	94.0	54-133			
Ethylbenzene	4.86	0.0250	5.00	ND	97.2	61-133			
Toluene	5.05	0.0250	5.00	ND	101	61-130			
o-Xylene	4.81	0.0250	5.00	ND	96.2	63-131			
p,m-Xylene	9.86	0.0500	10.0	ND	98.6	63-131			
Total Xylenes	14.7	0.0250	15.0	ND	97.8	63-131			
Surrogate: 4-Bromochlorobenzene-PID	7.80		8.00		97.5	70-130			

Matrix Spike Dup (2203027-MSD1)

Source: E201041-05

Prepared: 01/14/22 Analyzed: 01/18/22

Benzene	4.71	0.0250	5.00	ND	94.1	54-133	0.103	20	
Ethylbenzene	4.86	0.0250	5.00	ND	97.3	61-133	0.107	20	
Toluene	5.03	0.0250	5.00	ND	101	61-130	0.312	20	
o-Xylene	4.82	0.0250	5.00	ND	96.4	63-131	0.123	20	
p,m-Xylene	9.87	0.0500	10.0	ND	98.7	63-131	0.119	20	
Total Xylenes	14.7	0.0250	15.0	ND	97.9	63-131	0.120	20	
Surrogate: 4-Bromochlorobenzene-PID	7.77		8.00		97.1	70-130			



QC Summary Data

Souder Miller & Associates 401 W. Broadway Farmington NM, 87401	Project Name: Poker Lake Suct. Trunk D Project Number: 97057-0001 Project Manager: Ashley Maxwell	Reported: 1/26/2022 12:44:20PM
---	---	---------------------------------------

Nonhalogenated Organics by EPA 8015D - GRO

Analyst: RKS

Analyte	Result mg/kg	Reporting Limit mg/kg	Spike Level mg/kg	Source Result mg/kg	Rec %	Rec Limits %	RPD %	RPD Limit %	Notes
---------	-----------------	-----------------------------	-------------------------	---------------------------	----------	--------------------	----------	-------------------	-------

Blank (2203027-BLK1)

Prepared: 01/14/22 Analyzed: 01/18/22

Gasoline Range Organics (C6-C10)	ND	20.0							
Surrogate: 1-Chloro-4-fluorobenzene-FID	8.12		8.00		102	70-130			

LCS (2203027-BS2)

Prepared: 01/14/22 Analyzed: 01/18/22

Gasoline Range Organics (C6-C10)	45.1	20.0	50.0		90.2	70-130			
Surrogate: 1-Chloro-4-fluorobenzene-FID	8.12		8.00		101	70-130			

Matrix Spike (2203027-MS2)

Source: E201041-05

Prepared: 01/14/22 Analyzed: 01/18/22

Gasoline Range Organics (C6-C10)	48.1	20.0	50.0	ND	96.3	70-130			
Surrogate: 1-Chloro-4-fluorobenzene-FID	8.41		8.00		105	70-130			

Matrix Spike Dup (2203027-MSD2)

Source: E201041-05

Prepared: 01/14/22 Analyzed: 01/18/22

Gasoline Range Organics (C6-C10)	47.8	20.0	50.0	ND	95.7	70-130	0.617	20	
Surrogate: 1-Chloro-4-fluorobenzene-FID	8.26		8.00		103	70-130			



QC Summary Data

Souder Miller & Associates 401 W. Broadway Farmington NM, 87401	Project Name: Poker Lake Suct. Trunk D Project Number: 97057-0001 Project Manager: Ashley Maxwell	Reported: 1/26/2022 12:44:20PM
---	---	---------------------------------------

Nonhalogenated Organics by EPA 8015D - DRO/ORO

Analyst: JL

Analyte	Result mg/kg	Reporting Limit mg/kg	Spike Level mg/kg	Source Result mg/kg	Rec %	Rec Limits %	RPD %	RPD Limit %	Notes
---------	-----------------	-----------------------------	-------------------------	---------------------------	----------	--------------------	----------	-------------------	-------

Blank (2203024-BLK1)

Prepared: 01/14/22 Analyzed: 01/14/22

Diesel Range Organics (C10-C28)	ND	25.0							
Oil Range Organics (C28-C36)	ND	50.0							
Surrogate: n-Nonane	51.1		50.0		102	50-200			

LCS (2203024-BS1)

Prepared: 01/14/22 Analyzed: 01/14/22

Diesel Range Organics (C10-C28)	526	25.0	500		105	38-132			
Surrogate: n-Nonane	51.4		50.0		103	50-200			

Matrix Spike (2203024-MS1)

Source: E201039-13

Prepared: 01/14/22 Analyzed: 01/14/22

Diesel Range Organics (C10-C28)	518	25.0	500	ND	104	38-132			
Surrogate: n-Nonane	50.5		50.0		101	50-200			

Matrix Spike Dup (2203024-MSD1)

Source: E201039-13

Prepared: 01/14/22 Analyzed: 01/14/22

Diesel Range Organics (C10-C28)	312	25.0	500	ND	62.3	38-132	49.8	20	R3
Surrogate: n-Nonane	30.4		50.0		60.8	50-200			



QC Summary Data

Souder Miller & Associates 401 W. Broadway Farmington NM, 87401	Project Name: Poker Lake Suct. Trunk D Project Number: 97057-0001 Project Manager: Ashley Maxwell	Reported: 1/26/2022 12:44:20PM
---	---	--

Anions by EPA 300.0/9056A

Analyst: RAS

Analyte	Result mg/kg	Reporting Limit mg/kg	Spike Level mg/kg	Source Result mg/kg	Rec %	Rec Limits %	RPD %	RPD Limit %	Notes
---------	-----------------	-----------------------------	-------------------------	---------------------------	----------	--------------------	----------	-------------------	-------

Blank (2204003-BLK1)

Prepared: 01/17/22 Analyzed: 01/17/22

Chloride ND 20.0

LCS (2204003-BS1)

Prepared: 01/17/22 Analyzed: 01/17/22

Chloride 254 20.0 250 101 90-110

Matrix Spike (2204003-MS1)

Source: E201040-02

Prepared: 01/17/22 Analyzed: 01/17/22

Chloride 332 20.0 250 74.4 103 80-120

Matrix Spike Dup (2204003-MSD1)

Source: E201040-02

Prepared: 01/17/22 Analyzed: 01/17/22

Chloride 330 20.0 250 74.4 102 80-120 0.433 20

QC Summary Report Comment:

Calculations are based off of the raw (non-rounded) data. However, for reporting purposes all QC data is rounded to three significant figures. Therefore, hand calculated values may differ slightly.



Definitions and Notes

Souder Miller & Associates	Project Name:	Poker Lake Suct. Trunk D	
401 W. Broadway	Project Number:	97057-0001	Reported:
Farmington NM, 87401	Project Manager:	Ashley Maxwell	01/26/22 12:44

- R3 The RPD exceeded the acceptance limit. LCS spike recovery met acceptance criteria.
- ND Analyte NOT DETECTED at or above the reporting limit
- NR Not Reported
- RPD Relative Percent Difference
- DNI Did Not Ignite

Note (1): Methods marked with ** are non-accredited methods.

Note (2): Soil data is reported on an "as received" weight basis, unless reported otherwise.



Project Information

Chain of Custody

Page 1 of 1

Client: SMA Carlisle
 Project: Pelzer Lake Suct. Truck D
 Project Manager: Ashley Maxwell
 Address: _____
 City, State, Zip _____
 Phone: _____
 Email: Ashley Maxwell
 Report due by: _____

Bill To
 Attention: Enterprise
 Address: _____
 City, State, Zip _____
 Phone: _____
 Email: _____

Lab Use Only
 Lab WO# PE 201041 Job Number 95057-0001
CC 1/13/22 Analysis and Method _____
 State _____

Time Sampled	Date Sampled	Matrix	No Containers	Sample ID	Lab Number	DRO/ORO by 8015		GRO/DRO by 8015		BTEX by 8021		VOC by 8260		Metals 6010		Chloride 300.0		BGDOC - NM		BGDOC - TX		EPA Program			
						1D	3D	RCRA	CWA	SDWA	NM	CO	UT	AZ											
1215	1/11/22	Soil	1	PLS - BG - 08 @ 0-4'	1																				
0800			1	PLS - BSE - 09 @ 8'	2														X						
0810			1	PLS - BSW - 10 @ 8'	3																				
0820			1	PLS - BSW - 11 @ 8'	4																				
1145			1	PLS - WSW - 12 @ 4'	5																				
1150			1	PLS - SSW - 13 @ 4'	6																				
0900	✓	✓	1	PLS - ESW - 14 @ 4-6'	7														X						

Additional Instructions:

I, (field sampler), attest to the validity and authenticity of this sample. I am aware that tampering with or intentionally mislabelling the sample location, date or time of collection is considered fraud and may be grounds for legal action. Sampled by: _____

Relinquished by: (Signature) _____ Date 1/12/22 Time 1200 Received by: (Signature) _____ Date 1-12-22 Time 1200

Relinquished by: (Signature) _____ Date 1-12-22 Time 1022 Received by: (Signature) Carly Chantler Date 1/13/22 Time _____

Relinquished by: (Signature) _____ Date _____ Time _____ Received by: (Signature) _____ Date _____ Time _____

Sample Matrix: S - Soil, Sd - Solid, Sg - Sludge, A - Aqueous, O - Other _____ Container Type: g - glass, p - poly/plastic, ag - amber glass, v - VOA

Note: Samples are discarded 30 days after results are reported unless other arrangements are made. Hazardous samples will be returned to client or disposed of at the client expense. The report for the analysis of the above samples is applicable only to those samples received by the laboratory with this COC. The liability of the laboratory is limited to the amount paid for on the report.

Lab Use Only
 Received on ice: Y N
 T1 _____ T2 _____ T3 _____
 AVG Temp °C 4

Envirotech Analytical Laboratory

Printed: 1/13/2022 11:33:42AM

Sample Receipt Checklist (SRC)

Instructions: Please take note of any NO checkmarks.

If we receive no response concerning these items within 24 hours of the date of this notice, all the samples will be analyzed as requested.

Client:	Souder Miller & Associates	Date Received:	01/13/22 10:53	Work Order ID:	E201041
Phone:	(505) 325-7535	Date Logged In:	01/12/22 15:42	Logged In By:	Caitlin Christian
Email:	ashley.maxwell@soudermiller.com	Due Date:	01/19/22 17:00 (4 day TAT)		

Chain of Custody (COC)

1. Does the sample ID match the COC? Yes
2. Does the number of samples per sampling site location match the COC? Yes
3. Were samples dropped off by client or carrier? Yes
4. Was the COC complete, i.e., signatures, dates/times, requested analyses? Yes
5. Were all samples received within holding time? Yes

Note: Analysis, such as pH which should be conducted in the field, i.e., 15 minute hold time, are not included in this discussion.

Carrier: UPSComments/ResolutionSample Turn Around Time (TAT)

6. Did the COC indicate standard TAT, or Expedited TAT? Yes

Sample Cooler

7. Was a sample cooler received? Yes
8. If yes, was cooler received in good condition? Yes
9. Was the sample(s) received intact, i.e., not broken? Yes
10. Were custody/security seals present? No
11. If yes, were custody/security seals intact? NA
12. Was the sample received on ice? If yes, the recorded temp is 4°C, i.e., 6°±2°C No

Note: Thermal preservation is not required, if samples are received w/i 15 minutes of sampling

13. If no visible ice, record the temperature. Actual sample temperature: 4°C

Sample Container

14. Are aqueous VOC samples present? Yes
15. Are VOC samples collected in VOA Vials? No
16. Is the head space less than 6-8 mm (pea sized or less)? No
17. Was a trip blank (TB) included for VOC analyses? No
18. Are non-VOC samples collected in the correct containers? Yes
19. Is the appropriate volume/weight or number of sample containers collected? Yes

Field Label

20. Were field sample labels filled out with the minimum information:
 - Sample ID? Yes
 - Date/Time Collected? Yes
 - Collectors name? No

Sample Preservation

21. Does the COC or field labels indicate the samples were preserved? No
22. Are sample(s) correctly preserved? NA
24. Is lab filtration required and/or requested for dissolved metals? No

Multiphase Sample Matrix

26. Does the sample have more than one phase, i.e., multiphase? No
27. If yes, does the COC specify which phase(s) is to be analyzed? NA

Subcontract Laboratory

28. Are samples required to get sent to a subcontract laboratory? No
29. Was a subcontract laboratory specified by the client and if so who? NA Subcontract Lab: na

Client Instruction

Signature of client authorizing changes to the COC or sample disposition.

Date



envirotech Inc.

Project Information

Chain of Custody

Page 1 of 1

Client: <u>SMA Carlisbad</u>		Bill To		Lab Use Only		TAT		EPA Program			
Project: <u>Parker Lake Suct. Truck D</u>		Attention: <u>Enterprise</u>		Lab WO# <u>PE 201041</u>		Job Number <u>95057-0001</u>		1D 3D RCRA CWA SDWA			
Project Manager: <u>Ashley Maxwell</u>		Address: <u>Enterprise</u>		City, State, Zip <u>CC 11/3/22</u>		Analysis and Method		State			
Address:		City, State, Zip		Phone:		Metals 6010		NM CO UT AZ			
City, State, Zip		Email:		DRO/DRO by 8015		Chloride 300.0		TX OK			
Phone:		Email:		GRO/DRO by 8015		BTEX by 8021		BGDOC - NM			
Report due by:		Email:		VOC by 8260		BGDOC - TX					
Time Sampled	Date Sampled	Matrix	No Containers	Sample ID	Lab Number	Remarks					
1215	1/11/22	Soil	1	PLS - BG - DB @ 0-4'	1						
0800			1	PLS - BSE - 09 @ 8'	2						
0810			1	PLS - BSW - 10 @ 8'	3						
0820			1	PLS - BSW - 11 @ 8'	4						
1145			1	PLS - WSW - 12 @ 4'	5	PLS - NSW - 12 @ 4'					
1150			1	PLS - SSW - 13 @ 4'	6						
0900	✓	✓	1	PLS - ESW - 14 @ 4-6'	7	det 1/26/22					
Additional Instructions:											
I, (field sampler), attest to the validity and authenticity of this sample. I am aware that tampering with or intentionally mislabeling the sample location, date or time of collection is considered fraud and may be grounds for legal action. Sampled by:						Samples requiring thermal preservation must be received on ice the day they are sampled or received packed in ice at an avg temp above 0 but less than 6 °C on subsequent days					
Relinquished by: (Signature)		Date		Time		Received by: (Signature)		Date		Time	
		1/12/22		1200				1-12-22		1200	
Relinquished by: (Signature)		Date		Time		Received by: (Signature)		Date		Time	
		1-12-22		1022				1/13/22			
Relinquished by: (Signature)		Date		Time		Received by: (Signature)		Date		Time	
										10:53	
Sample Matrix: S - Soil, Sd - Solid, Sg - Sludge, A - Aqueous, O - Other						Container Type: g - glass, p - poly/plastic, ag - amber glass, v - VOA					
Note: Samples are discarded 30 days after results are reported unless other arrangements are made. Hazardous samples will be returned to client or disposed of at the client expense. The report for the analysis of the above samples is applicable only to those samples received by the laboratory with this COC. The liability of the laboratory is limited to the amount paid for on the report.											



1000 US Highway 29, Lexington, VA 24304
 24-hour Emergency Response Phone: 800-351-1171

Fax: 800-351-1171 Fax: 540-462-1171

envirotech-inc.com
 labadmin@envirotech-inc.com

Report to:
Ashley Maxwell



5796 U.S. Hwy 64
Farmington, NM 87401

Phone: (505) 632-1881
Envirotech-inc.com



envirotech

Practical Solutions for a Better Tomorrow

Analytical Report

Souder Miller Associates - Carlsbad

Project Name: Poker Lake Trunk D

Work Order: E201146

Job Number: 97057-0001

Received: 1/28/2022

Revision: 1

Report Reviewed By:

Walter Hinchman
Laboratory Director
2/7/22

Envirotech Inc. certifies the test results meet all requirements of TNI unless noted otherwise.
Statement of Data Authenticity: Envirotech Inc. attests the data reported has not been altered in any way.
Partial or incomplete reproduction of this report is prohibited, unless approved by Envirotech Inc.
Envirotech Inc. holds the Utah TNI certification NM00979 for data reported.
Envirotech Inc. holds the Texas TNI certification T104704557 for data reported.
Envirotech Inc. holds the NM SDWA certification for data reported. (Lab #NM00979)

Date Reported: 2/7/22

Ashley Maxwell
201 S Halagueno St.
Carlsbad, NM 88220



Project Name: Poker Lake Trunk D
Workorder: E201146
Date Received: 1/28/2022 5:19:00PM

Ashley Maxwell,

Thank you for choosing Envirotech, Inc. as your analytical testing laboratory for the sample(s) received on, 1/28/2022 5:19:00PM, under the Project Name: Poker Lake Trunk D.

The analytical test results summarized in this report with the Project Name: Poker Lake Trunk D apply to the individual samples collected, identified and submitted bearing the project name on the enclosed chain-of-custody. Subcontracted sample analyses not conducted by Envirotech, Inc., are attached in full as issued by the subcontract laboratory.

Please review the Chain-of-Custody (COC) and Sample Receipt Checklist (SRC) for any issues regarding sample receipt temperature, containers, preservation etc. To best understand your test results, review the entire report summarizing your sample data and the associated quality control batch data.

All reported data in this analytical report were analyzed according to the referenced method(s) and are in compliance with the latest NELAC/TNI standards, unless otherwise noted. Samples or analytical quality control parameters not meeting specific QC criteria are qualified with a data flag. Data flag definitions are located in the Notes and Definitions section of this analytical report.

If you have any questions concerning this report, please feel free to contact Envirotech, Inc.

Respectfully,

Walter Hinchman
Laboratory Director
Office: 505-632-1881
Cell: 775-287-1762
whinchman@envirotech-inc.com

Raina Schwanz
Laboratory Administrator
Office: 505-632-1881
rainaschwanz@envirotech-inc.com

Alexa Michaels
Sample Custody Officer
Office: 505-632-1881
labadmin@envirotech-inc.com

Field Offices:

Southern New Mexico Area
Lynn Jarboe
Technical Representative/Client Services
Office: 505-421-LABS(5227)
Cell: 505-320-4759
ljjarboe@envirotech-inc.com

West Texas Midland/Odessa Area
Rayny Hagan
Technical Representative
Office: 505-421-LABS(5227)

Envirotech Web Address: www.envirotech-inc.com

Table of Contents

Title Page	1
Cover Page	2
Table of Contents	3
Sample Summary	4
Sample Data	5
Trunk D-CL-01	5
QC Summary Data	6
QC - Anions by EPA 300.0/9056A	6
Definitions and Notes	7
Chain of Custody etc.	8

Sample Summary

Souder Miller Associates - Carlsbad	Project Name:	Poker Lake Trunk D	Reported:
201 S Halagueno St.	Project Number:	97057-0001	
Carlsbad NM, 88220	Project Manager:	Ashley Maxwell	02/07/22 10:39

Client Sample ID	Lab Sample ID	Matrix	Sampled	Received	Container
Trunk D-CL-01	E201146-01A	Soil	01/26/22	01/28/22	Glass Jar, 4 oz.



Sample Data

Souder Miller Associates - Carlsbad	Project Name:	Poker Lake Trunk D	
201 S Halagueno St.	Project Number:	97057-0001	Reported:
Carlsbad NM, 88220	Project Manager:	Ashley Maxwell	2/7/2022 10:39:39AM

Trunk D-CL-01

E201146-01

Analyte	Result	Reporting Limit	Dilution	Prepared	Analyzed	Notes
---------	--------	-----------------	----------	----------	----------	-------

Anions by EPA 300.0/9056A	mg/kg	mg/kg	Analyst: IY			Batch: 2206008
Chloride	11400	200	10	02/01/22	02/01/22	



QC Summary Data

Souder Miller Associates - Carlsbad	Project Name:	Poker Lake Trunk D	Reported:
201 S Halagueno St.	Project Number:	97057-0001	
Carlsbad NM, 88220	Project Manager:	Ashley Maxwell	2/7/2022 10:39:39AM

Anions by EPA 300.0/9056A

Analyst: IY

Analyte	Result mg/kg	Reporting Limit mg/kg	Spike Level mg/kg	Source Result mg/kg	Rec %	Rec Limits %	RPD %	RPD Limit %	Notes
---------	-----------------	-----------------------------	-------------------------	---------------------------	----------	--------------------	----------	-------------------	-------

Blank (2206008-BLK1)

Prepared: 02/01/22 Analyzed: 02/01/22

Chloride	ND	20.0
----------	----	------

LCS (2206008-BS1)

Prepared: 02/01/22 Analyzed: 02/01/22

Chloride	244	20.0	250	97.7	90-110
----------	-----	------	-----	------	--------

Matrix Spike (2206008-MS1)

Source: E201096-01

Prepared: 02/01/22 Analyzed: 02/01/22

Chloride	385	20.0	250	160	90.0	80-120
----------	-----	------	-----	-----	------	--------

Matrix Spike Dup (2206008-MSD1)

Source: E201096-01

Prepared: 02/01/22 Analyzed: 02/01/22

Chloride	413	20.0	250	160	101	80-120	7.03	20
----------	-----	------	-----	-----	-----	--------	------	----

QC Summary Report Comment:

Calculations are based off of the raw (non-rounded) data. However, for reporting purposes all QC data is rounded to three significant figures. Therefore, hand calculated values may differ slightly.



Definitions and Notes

Souder Miller Associates - Carlsbad	Project Name:	Poker Lake Trunk D	
201 S Halagueno St.	Project Number:	97057-0001	Reported:
Carlsbad NM, 88220	Project Manager:	Ashley Maxwell	02/07/22 10:39

- ND Analyte NOT DETECTED at or above the reporting limit
- NR Not Reported
- RPD Relative Percent Difference
- DNI Did Not Ignite

Note (1): Methods marked with ** are non-accredited methods.

Note (2): Soil data is reported on an "as received" weight basis, unless reported otherwise.





Envirotech Analytical Laboratory

Printed: 1/31/2022 5:04:31PM

Sample Receipt Checklist (SRC)

Instructions: Please take note of any NO checkmarks.

If we receive no response concerning these items within 24 hours of the date of this notice, all the samples will be analyzed as requested.

Client:	Souder Miller Associates - Carlsbad	Date Received:	01/28/22 17:19	Work Order ID:	E201146
Phone:	(505) 325-7535	Date Logged In:	01/28/22 11:13	Logged In By:	Caitlin Christian
Email:	ashley.maxwell@soudermiller.com	Due Date:	02/04/22 17:00 (5 day TAT)		

Chain of Custody (COC)

1. Does the sample ID match the COC? Yes
2. Does the number of samples per sampling site location match the COC? Yes
3. Were samples dropped off by client or carrier? Yes
4. Was the COC complete, i.e., signatures, dates/times, requested analyses? Yes
5. Were all samples received within holding time? Yes

Note: Analysis, such as pH which should be conducted in the field, i.e., 15 minute hold time, are not included in this discussion.

Carrier: CarrierComments/ResolutionSample Turn Around Time (TAT)

6. Did the COC indicate standard TAT, or Expedited TAT? Yes

Sample Cooler

7. Was a sample cooler received? Yes
8. If yes, was cooler received in good condition? Yes
9. Was the sample(s) received intact, i.e., not broken? Yes
10. Were custody/security seals present? No
11. If yes, were custody/security seals intact? NA
12. Was the sample received on ice? If yes, the recorded temp is 4°C, i.e., 6°±2°C Yes

Note: Thermal preservation is not required, if samples are received w/i 15 minutes of sampling

13. If no visible ice, record the temperature. Actual sample temperature: 4°C

Sample Container

14. Are aqueous VOC samples present? No
15. Are VOC samples collected in VOA Vials? NA
16. Is the head space less than 6-8 mm (pea sized or less)? NA
17. Was a trip blank (TB) included for VOC analyses? NA
18. Are non-VOC samples collected in the correct containers? Yes
19. Is the appropriate volume/weight or number of sample containers collected? Yes

Field Label

20. Were field sample labels filled out with the minimum information:
 - Sample ID? Yes
 - Date/Time Collected? Yes
 - Collectors name? No

Sample Preservation

21. Does the COC or field labels indicate the samples were preserved? No
22. Are sample(s) correctly preserved? NA
24. Is lab filtration required and/or requested for dissolved metals? No

Multiphase Sample Matrix

26. Does the sample have more than one phase, i.e., multiphase? No
27. If yes, does the COC specify which phase(s) is to be analyzed? NA

Subcontract Laboratory

28. Are samples required to get sent to a subcontract laboratory? No
29. Was a subcontract laboratory specified by the client and if so who? NA Subcontract Lab: na

Client Instruction

Signature of client authorizing changes to the COC or sample disposition.

Date



envirotech Inc.

District I
1625 N. French Dr., Hobbs, NM 88240
Phone:(575) 393-6161 Fax:(575) 393-0720
District II
811 S. First St., Artesia, NM 88210
Phone:(575) 748-1283 Fax:(575) 748-9720
District III
1000 Rio Brazos Rd., Aztec, NM 87410
Phone:(505) 334-6178 Fax:(505) 334-6170
District IV
1220 S. St Francis Dr., Santa Fe, NM 87505
Phone:(505) 476-3470 Fax:(505) 476-3462

State of New Mexico
Energy, Minerals and Natural Resources
Oil Conservation Division
1220 S. St Francis Dr.
Santa Fe, NM 87505

CONDITIONS

Action 81784

CONDITIONS

Operator: Enterprise Field Services, LLC PO Box 4324 Houston, TX 77210	OGRID: 241602
	Action Number: 81784
	Action Type: [C-141] Release Corrective Action (C-141)

CONDITIONS

Created By	Condition	Condition Date
jnobui	Closure Report Approved. Going forward, background sample location should be approved by OCD and should be depth discrete.	3/10/2022