



303 Veterans Airpark Lane Midland, TX 79705

## **Closure Report**

September 22, 2021

Re: JG Hare #019

Case # NRM2013250166

On 05/04/2020 a release occurred due to a small leak due to a packing failure at the wellhead resulting in the loss of fluid. The release (GPS: 32.4344521, -103.1711426) is located south of Eunice, NM in unit letter K section 33 township 21S range 37E. A groundwater survey was conducted utilizing the NMOSE wells of record. The nearest well suggest that groundwater beneath the release is 100 feet. A remediation plan was submitted and approved by OCD with stipulations. On 9/16/2021 a soil bore was conducted GPS: 32.433952, -103.171106 to a depth of 71 feet. The bore hole was left open for 72 hours and gauged with no water present in the hole at 71 feet.

On 9/17/2021 the areas around B15 and B32 were excavated to 1 foot. Final 5 point bottom wall and bottom composite samples were collected not to exceed 200 square feet and submitted to a commercial laboratory for analysis of chloride, TPH and BTEX. All Laboratory results were below table one standards for releases 51-100 feet to groundwater. All excavated material was hauled to an OCD approved facility. The excavation was backfilled with clean imported caliche to ground surface.

Apache Corporation has remediated the release to below table one standard and respectfully request event #NRM2013250166 be closed.

Enclosed: C-141, Groundwater data, Maps, Sample Data, Laboratory Results, Field Notes, and Photos.

Submitted by;

*Bruce Baker*

**Environmental Technician**

[larry.baker@apachecorp.com](mailto:larry.baker@apachecorp.com)

**Cell# 432-631-6982**

**Off# 575-393-7106**

Incident ID	
District RP	
Facility ID	
Application ID	

## Closure

The responsible party must attach information demonstrating they have complied with all applicable closure requirements and any conditions or directives of the OCD. This demonstration should be in the form of a comprehensive report (electronic submittals in .pdf format are preferred) including a scaled site map, sampling diagrams, relevant field notes, photographs of any excavation prior to backfilling, laboratory data including chain of custody documents of final sampling, and a narrative of the remedial activities. Refer to 19.15.29.12 NMAC.

**Closure Report Attachment Checklist:** *Each of the following items must be included in the closure report.*

- ☒ A scaled site and sampling diagram as described in 19.15.29.11 NMAC
- ☒ Photographs of the remediated site prior to backfill or photos of the liner integrity if applicable (Note: appropriate OCD District office must be notified 2 days prior to liner inspection)
- ☒ Laboratory analyses of final sampling (Note: appropriate ODC District office must be notified 2 days prior to final sampling)
- ☒ Description of remediation activities

I hereby certify that the information given above is true and complete to the best of my knowledge and understand that pursuant to OCD rules and regulations all operators are required to report and/or file certain release notifications and perform corrective actions for releases which may endanger public health or the environment. The acceptance of a C-141 report by the OCD does not relieve the operator of liability should their operations have failed to adequately investigate and remediate contamination that pose a threat to groundwater, surface water, human health or the environment. In addition, OCD acceptance of a C-141 report does not relieve the operator of responsibility for compliance with any other federal, state, or local laws and/or regulations. The responsible party acknowledges they must substantially restore, reclaim, and re-vegetate the impacted surface area to the conditions that existed prior to the release or their final land use in accordance with 19.15.29.13 NMAC including notification to the OCD when reclamation and re-vegetation are complete.

Printed Name: Larry Baker

Title: Environmental Tech SR.

Signature: Larry Baker

Date: 9/22/2021

email: larry.baker@apachecorp.com

Telephone: 432-631-6982

**OCD Only**

Received by: \_\_\_\_\_

Date: \_\_\_\_\_

Closure approval by the OCD does not relieve the responsible party of liability should their operations have failed to adequately investigate and remediate contamination that poses a threat to groundwater, surface water, human health, or the environment nor does not relieve the responsible party of compliance with any other federal, state, or local laws and/or regulations.

Closure Approved by: \_\_\_\_\_ Date: \_\_\_\_\_

Printed Name: \_\_\_\_\_

Title: \_\_\_\_\_

# Desert Sand Water Well Services, LLC.

## Soil Bore Report

General / Well Info	Customer:		Phone:	Date:
	Well Name:		Location:	

LOG OF WELL	DEPTH		THICKNESS (feet)	COLOR AND TYPE OF MATERIAL ENCOUNTERED - INCLUDE WATER BEARING CAVITIES OR FRACTURES
	FROM	TO		

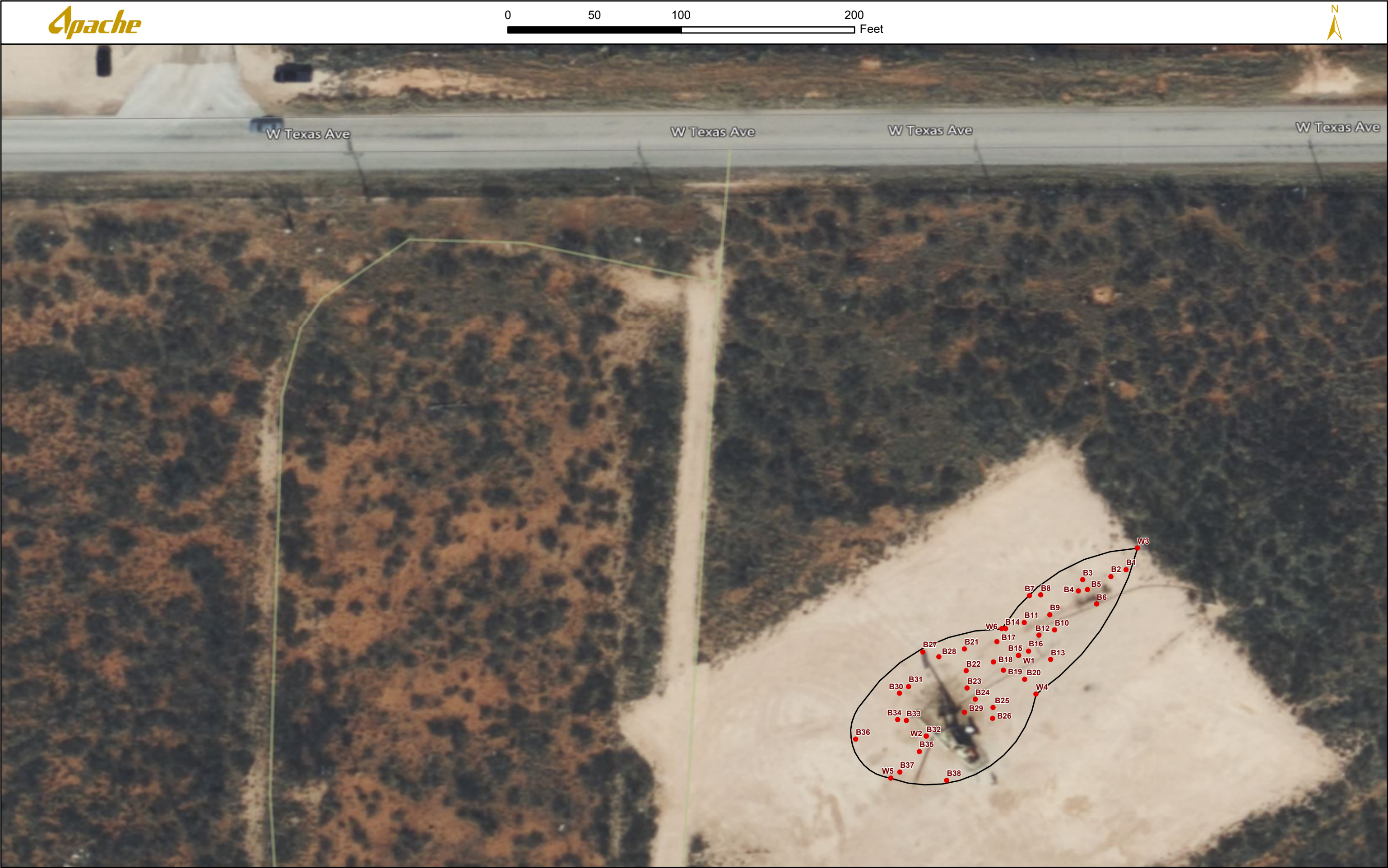




Soil Bore

75 ft







Final Bottom Samples

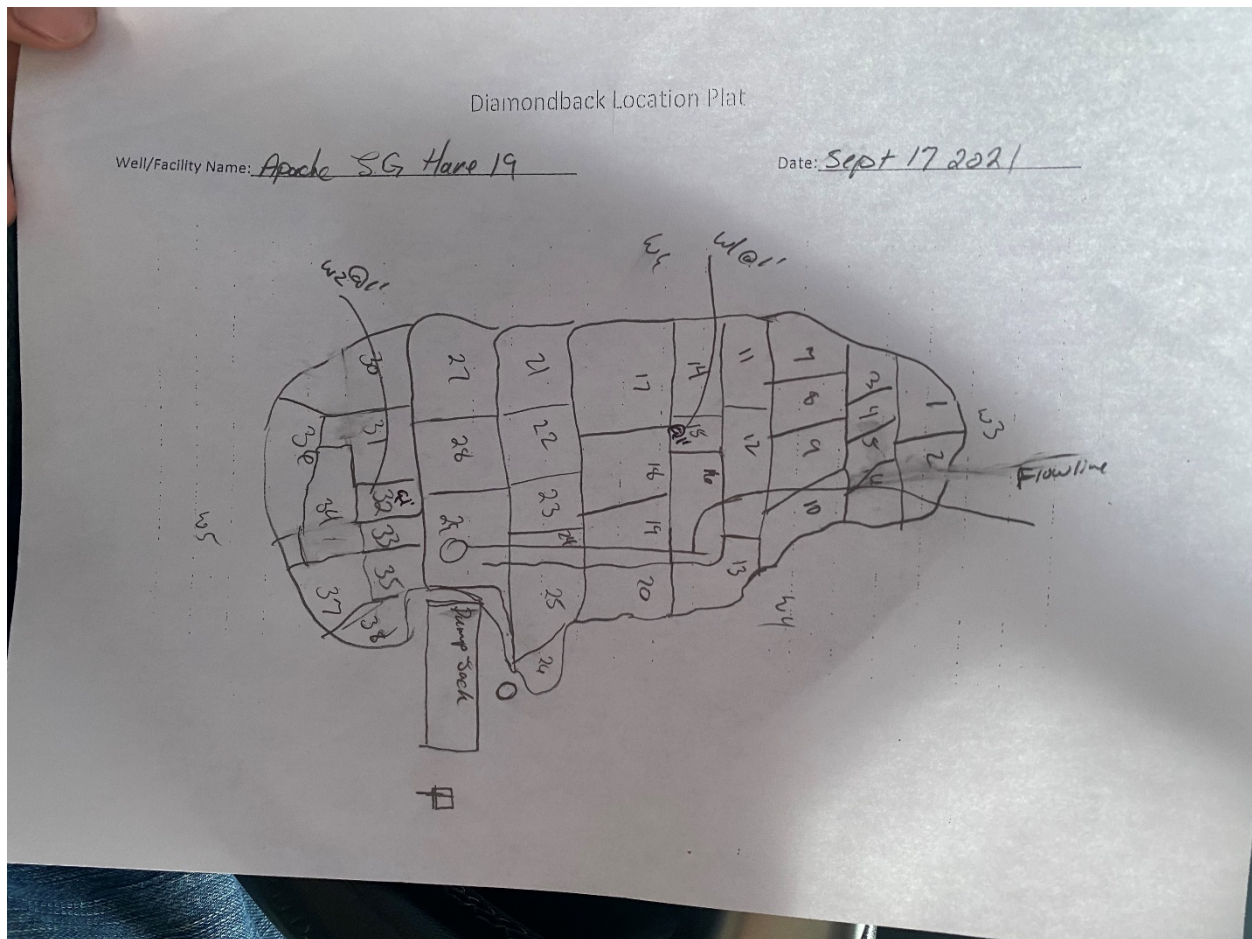
Sample Date	Sample ID	Depth	Chloride	Benzene	Toulene	Ethybenzene	Total Xylenes	Total BTEX	GRO	DRO	EXT DRO
9/17/2021	B1	Surface	32	<0.050	<0.050	<0.050	<0.150	<0.300	<10.0	<10.0	<10.0
9/17/2021	B2	Surface	16	<0.050	<0.050	<0.050	<0.150	<0.300	<10.0	<10.0	<10.0
9/17/2021	B3	Surface	<16	<0.050	<0.050	<0.050	<0.150	<0.300	<10.0	<10.0	<10.0
9/17/2021	B4	Surface	32	<0.050	<0.050	<0.050	<0.150	<0.300	<10.0	<10.0	<10.0
9/17/2021	B5	Surface	48	<0.050	<0.050	<0.050	<0.150	<0.300	<10.0	<10.0	<10.0
9/17/2021	B6	Surface	32	<0.050	<0.050	<0.050	<0.150	<0.300	<10.0	<10.0	<10.0
9/17/2021	B7	Surface	160	<0.050	<0.050	<0.050	<0.150	<0.300	<10.0	<10.0	<10.0
9/17/2021	B8	Surface	448	<0.050	<0.050	<0.050	<0.150	<0.300	<10.0	<10.0	<10.0
9/17/2021	B9	Surface	240	<0.050	<0.050	<0.050	<0.150	<0.300	<10.0	<10.0	<10.0
9/17/2021	B10	Surface	720	<0.050	<0.050	<0.050	<0.150	<0.300	<10.0	<10.0	<10.0
9/17/2021	B11	Surface	640	<0.050	<0.050	<0.050	<0.150	<0.300	<10.0	<10.0	<10.0
9/17/2021	B12	Surface	480	<0.050	<0.050	<0.050	<0.150	<0.300	<10.0	<10.0	<10.0
9/17/2021	B13	Surface	1360	<0.050	<0.050	<0.050	<0.150	<0.300	<10.0	<10.0	<10.0
9/17/2021	B14	Surface	1200	<0.050	<0.050	<0.050	<0.150	<0.300	<10.0	<10.0	<10.0
9/17/2021	B15	1'	368	<0.050	<0.050	<0.050	<0.150	<0.300	<10.0	<10.0	<10.0
9/17/2021	B16	Surface	3080	<0.050	<0.050	<0.050	<0.150	<0.300	<10.0	<10.0	<10.0
9/17/2021	B17	Surface	2160	<0.050	<0.050	<0.050	<0.150	<0.300	<10.0	<10.0	<10.0
9/17/2021	B18	Surface	2600	<0.050	<0.050	<0.050	<0.150	<0.300	<10.0	<10.0	<10.0
9/17/2021	B19	Surface	272	<0.050	<0.050	<0.050	<0.150	<0.300	<10.0	<10.0	<10.0
9/17/2021	B20	Surface	768	<0.050	<0.050	<0.050	<0.150	<0.300	<10.0	<10.0	<10.0
9/17/2021	B21	Surface	301	<0.050	<0.050	<0.050	<0.150	<0.300	<10.0	<10.0	<10.0
9/17/2021	B22	Surface	3640	<0.050	<0.050	<0.050	<0.150	<0.300	<10.0	<10.0	<10.0
9/17/2021	B23	Surface	784	<0.050	<0.050	<0.050	<0.150	<0.300	<10.0	<10.0	<10.0
9/17/2021	B24	Surface	1680	<0.050	<0.050	<0.050	<0.150	<0.300	<10.0	<10.0	<10.0
9/17/2021	B25	Surface	800	<0.050	<0.050	<0.050	<0.150	<0.300	<10.0	<10.0	<10.0
9/17/2021	B26	Surface	1710	<0.050	<0.050	<0.050	<0.150	<0.300	<10.0	80.3	<10.0
9/17/2021	B27	Surface	2080	<0.050	<0.050	<0.050	<0.150	<0.300	<10.0	<10.0	<10.0
9/17/2021	B28	Surface	3200	<0.050	<0.050	<0.050	<0.150	<0.300	<10.0	<10.0	<10.0
9/17/2021	B29	Surface	3120	<0.050	<0.050	<0.050	<0.150	<0.300	<10.0	<10.0	<10.0
9/17/2021	B30	Surface	496	<0.050	<0.050	<0.050	<0.150	<0.300	<10.0	<10.0	<10.0
9/17/2021	B31	Surface	1760	<0.050	<0.050	<0.050	<0.150	<0.300	<10.0	<10.0	<10.0
9/17/2021	B32	1'	2920	<0.050	<0.050	<0.050	<0.150	<0.300	<10.0	<10.0	<10.0
9/17/2021	B33	Surface	798	<0.050	<0.050	<0.050	<0.150	<0.300	<10.0	<10.0	<10.0
9/17/2021	B34	Surface	224	<0.050	<0.050	<0.050	<0.150	<0.300	<10.0	<10.0	<10.0
9/17/2021	B35	Surface	48	<0.050	<0.050	<0.050	<0.150	<0.300	<10.0	<10.0	<10.0
9/17/2021	B36	Surface	384	<0.050	<0.050	<0.050	<0.150	<0.300	<10.0	<10.0	<10.0
9/17/2021	B37	Surface	208	<0.050	<0.050	<0.050	<0.150	<0.300	<10.0	<10.0	<10.0
9/17/2021	B38	Surface	400	<0.050	<0.050	<0.050	<0.150	<0.300	<10.0	<10.0	<10.0

Final Wall Samples

Sample Date	Sample ID	Depth	Chloride	Benzene	Toulene	Ethybenzene	Total Xylenes	Total BTEX	GRO	DRO	EXT DRO
9/17/2021	W1	0-1'	48	<0.050	<0.050	<0.050	<0.150	<0.300	<10.0	<10.0	<10.0
9/17/2021	W2	0-1'	960	<0.050	<0.050	<0.050	<0.150	<0.300	<10.0	<10.0	<10.0
9/17/2021	W3	Surface	48	<0.050	<0.050	<0.050	<0.150	<0.300	<10.0	<10.0	<10.0



9/17/2021	W4	Surface	48	<0.050	<0.050	<0.050	<0.150	<0.300	<10.0	<10.0	<10.0
9/17/2021	W5	Surface	48	<0.050	<0.050	<0.050	<0.150	<0.300	<10.0	<10.0	<10.0
9/17/2021	W6	Surface	32	<0.050	<0.050	<0.050	<0.150	<0.300	<10.0	<10.0	<10.0







Ph 806-687-5991 ♦ Fax 806-687-5999 ♦ Toll Free 8

@1 W1 32.4344763 - 103.1709294  
 @1 W2 32.4343487 - 103.1710755  
 W3 32.4346461 - 103.1707419  
 W4 32.4344152 - 103.1709022  
 W5 32.4342825 - 103.1711319  
 W6 32.4345185 - 103.1709562  
 B1 32.4346119 - 103.1707597  
 B2 32.4346011 - 103.1707839  
 B3 32.4345960 - 103.1708281  
 B4 32.4345782 - 103.1708355  
 B5 32.4345802 - 103.1708207  
 B6 32.4345576 - 103.1708063  
 B7 32.4345711 - 103.1709126  
 B8 32.4345720 - 103.1708948  
 B9 32.4345409 - 103.1708804  
 B10 32.4345165 - 103.1708730  
 B11 32.4345284 - 103.1709210  
 B12 32.4345083 - 103.1708975  
 B13 32.4344698 - 103.1708787  
 B14 32.4345135 - 103.1709502  
 @1 B15 32.4344763 - 103.1709294  
 B16 32.4344831 - 103.1709139  
 B17 32.4344494 - 103.1709639  
 B18 32.4344659 - 103.1709693  
 B19 32.4344529 - 103.1709538

5221 M.L.K. Jr Blvd.

Lubbock, Texas 79404

www.teinertmetalsinc.com

Lubbock



Ph 806-687-5991 ♦ Fax 806-687-5999 ♦ Toll Free 877-68

B20 32.4344384 - 103.1709200  
 B21 32.4344868 - 103.1710152  
 B22 32.4344520 - 103.1710125  
 B23 32.4344248 - 103.1710112  
 B24 32.4344067 - 103.1709984  
 B25 32.4343940 - 103.1709699  
 B26 32.4343767 - 103.1709709  
 B27 32.4343487 - 103.1710812  
 B28 32.4344741 - 103.1710561  
 B29 32.4343846 - 103.1710155  
 B30 32.4344163 - 103.1711181  
 B31 32.4344271 - 103.1711037  
 @1 B32 32.4343487 - 103.1710755  
 B33 32.4343733 - 103.1710752  
 B34 32.4343796 - 103.1711208  
 B35 32.4343244 - 103.1710869  
 B36 32.4343459 - 103.1711872  
 B37 32.4342916 - 103.1711173  
 B38 32.4342791 - 103.1710437

5221 M.L.K. Jr Blvd.

Lubbock, Texas 79404

www.teinertmetalsinc.com

Lubbock,



PHONE (575) 393-2326 ° 101 E. MARLAND ° HOBBS, NM 88240

---

September 20, 2021

BRUCE BAKER

APACHE CORP - HOBBS

2350 W. MARLAND BLVD.

HOBBS, NM 88240

RE: J G HARE #019

Enclosed are the results of analyses for samples received by the laboratory on 09/17/21 16:41.

Cardinal Laboratories is accredited through Texas NELAP under certificate number T104704398-21-14. Accreditation applies to drinking water, non-potable water and solid and chemical materials. All accredited analytes are denoted by an asterisk (\*). For a complete list of accredited analytes and matrices visit the TCEQ website at [www.tceq.texas.gov/field/qa/lab\\_accred\\_certif.html](http://www.tceq.texas.gov/field/qa/lab_accred_certif.html).

Cardinal Laboratories is accredited through the State of Colorado Department of Public Health and Environment for:

Method EPA 552.2	Haloacetic Acids (HAA-5)
Method EPA 524.2	Total Trihalomethanes (TTHM)
Method EPA 524.4	Regulated VOCs (V1, V2, V3)

Accreditation applies to public drinking water matrices.

This report meets NELAP requirements and is made up of a cover page, analytical results, and a copy of the original chain-of-custody. If you have any questions concerning this report, please feel free to contact me.

Sincerely,

A handwritten signature in black ink that reads "Celey D. Keene". The signature is written in a cursive style with a large, stylized 'C' and 'K'.

Celey D. Keene

Lab Director/Quality Manager





PHONE (575) 393-2326 ° 101 E. MARLAND ° HOBBS, NM 88240

**Analytical Results For:**

APACHE CORP - HOBBS  
 BRUCE BAKER  
 2350 W. MARLAND BLVD.  
 HOBBS NM, 88240  
 Fax To: (575) 393-2432

Received: 09/17/2021  
 Reported: 09/20/2021  
 Project Name: J G HARE #019  
 Project Number: NOT GIVEN  
 Project Location: J G HARE #019

Sampling Date: 09/17/2021  
 Sampling Type: Soil  
 Sampling Condition: Cool & Intact  
 Sample Received By: Jodi Henson

**Sample ID: B 32 (H212601-01)**

BTX 8021B		mg/kg		Analyzed By: MS					
Analyte	Result	Reporting Limit	Analyzed	Method Blank	BS	% Recovery	True Value QC	RPD	Qualifier
Benzene*	<0.050	0.050	09/20/2021	ND	1.97	98.4	2.00	1.33	
Toluene*	<0.050	0.050	09/20/2021	ND	2.11	106	2.00	1.83	
Ethylbenzene*	<0.050	0.050	09/20/2021	ND	2.06	103	2.00	1.62	
Total Xylenes*	<0.150	0.150	09/20/2021	ND	6.18	103	6.00	1.60	
Total BTX	<0.300	0.300	09/20/2021	ND					

Surrogate: 4-Bromofluorobenzene (PID) 99.6 % 69.9-140

Chloride, SM4500Cl-B		mg/kg		Analyzed By: AC					
Analyte	Result	Reporting Limit	Analyzed	Method Blank	BS	% Recovery	True Value QC	RPD	Qualifier
Chloride	2920	16.0	09/20/2021	ND	416	104	400	0.00	

TPH 8015M		mg/kg		Analyzed By: MS					
Analyte	Result	Reporting Limit	Analyzed	Method Blank	BS	% Recovery	True Value QC	RPD	Qualifier
GRO C6-C10*	<10.0	10.0	09/17/2021	ND	195	97.6	200	1.02	
DRO >C10-C28*	<10.0	10.0	09/17/2021	ND	219	109	200	1.65	
EXT DRO >C28-C36	<10.0	10.0	09/17/2021	ND					

Surrogate: 1-Chlorooctane 82.8 % 44.3-133

Surrogate: 1-Chlorooctadecane 79.0 % 38.9-142

Cardinal Laboratories

\*=Accredited Analyte

PLEASE NOTE: Liability and Damages. Cardinal's liability and client's exclusive remedy for any claim arising, whether based in contract or tort, shall be limited to the amount paid by client for analyses. All claims, including those for negligence and any other cause whatsoever shall be deemed waived unless made in writing and received by Cardinal within thirty (30) days after completion of the applicable service. In no event shall Cardinal be liable for incidental or consequential damages, including, without limitation, business interruptions, loss of use, or loss of profits incurred by client, its subsidiaries, affiliates or successors arising out of or related to the performance of the services hereunder by Cardinal, regardless of whether such claim is based upon any of the above stated reasons or otherwise. Results relate only to the samples identified above. This report shall not be reproduced except in full with written approval of Cardinal Laboratories.

Celey D. Keene, Lab Director/Quality Manager



PHONE (575) 393-2326 ° 101 E. MARLAND ° HOBBS, NM 88240

**Analytical Results For:**

APACHE CORP - HOBBS  
 BRUCE BAKER  
 2350 W. MARLAND BLVD.  
 HOBBS NM, 88240  
 Fax To: (575) 393-2432

Received: 09/17/2021  
 Reported: 09/20/2021  
 Project Name: J G HARE #019  
 Project Number: NOT GIVEN  
 Project Location: J G HARE #019

Sampling Date: 09/17/2021  
 Sampling Type: Soil  
 Sampling Condition: Cool & Intact  
 Sample Received By: Jodi Henson

**Sample ID: B 15 (H212601-02)**

BTX 8021B		mg/kg		Analyzed By: MS					
Analyte	Result	Reporting Limit	Analyzed	Method Blank	BS	% Recovery	True Value QC	RPD	Qualifier
Benzene*	<0.050	0.050	09/17/2021	ND	1.97	98.4	2.00	1.33	
Toluene*	<0.050	0.050	09/17/2021	ND	2.11	106	2.00	1.83	
Ethylbenzene*	<0.050	0.050	09/17/2021	ND	2.06	103	2.00	1.62	
Total Xylenes*	<0.150	0.150	09/17/2021	ND	6.18	103	6.00	1.60	
Total BTX	<0.300	0.300	09/17/2021	ND					

Surrogate: 4-Bromofluorobenzene (PID) 99.8 % 69.9-140

Chloride, SM4500CI-B		mg/kg		Analyzed By: AC						
Analyte	Result	Reporting Limit	Analyzed	Method Blank	BS	% Recovery	True Value QC	RPD	Qualifier	
Chloride	368	16.0	09/20/2021	ND	416	104	400	0.00	QM-07	

TPH 8015M		mg/kg		Analyzed By: MS					
Analyte	Result	Reporting Limit	Analyzed	Method Blank	BS	% Recovery	True Value QC	RPD	Qualifier
GRO C6-C10*	<10.0	10.0	09/17/2021	ND	195	97.6	200	1.02	
DRO >C10-C28*	<10.0	10.0	09/17/2021	ND	219	109	200	1.65	
EXT DRO >C28-C36	<10.0	10.0	09/17/2021	ND					

Surrogate: 1-Chlorooctane 87.5 % 44.3-133

Surrogate: 1-Chlorooctadecane 82.7 % 38.9-142

Cardinal Laboratories

\*=Accredited Analyte

PLEASE NOTE: Liability and Damages. Cardinal's liability and client's exclusive remedy for any claim arising, whether based in contract or tort, shall be limited to the amount paid by client for analyses. All claims, including those for negligence and any other cause whatsoever shall be deemed waived unless made in writing and received by Cardinal within thirty (30) days after completion of the applicable service. In no event shall Cardinal be liable for incidental or consequential damages, including, without limitation, business interruptions, loss of use, or loss of profits incurred by client, its subsidiaries, affiliates or successors arising out of or related to the performance of the services hereunder by Cardinal, regardless of whether such claim is based upon any of the above stated reasons or otherwise. Results relate only to the samples identified above. This report shall not be reproduced except in full with written approval of Cardinal Laboratories.

Celey D. Keene, Lab Director/Quality Manager





PHONE (575) 393-2326 ° 101 E. MARLAND ° HOBBS, NM 88240

**Analytical Results For:**

APACHE CORP - HOBBS  
 BRUCE BAKER  
 2350 W. MARLAND BLVD.  
 HOBBS NM, 88240  
 Fax To: (575) 393-2432

Received: 09/17/2021  
 Reported: 09/20/2021  
 Project Name: J G HARE #019  
 Project Number: NOT GIVEN  
 Project Location: J G HARE #019

Sampling Date: 09/17/2021  
 Sampling Type: Soil  
 Sampling Condition: Cool & Intact  
 Sample Received By: Jodi Henson

**Sample ID: B 14 (H212601-03)**

BTEx 8021B		mg/kg		Analyzed By: MS					
Analyte	Result	Reporting Limit	Analyzed	Method Blank	BS	% Recovery	True Value QC	RPD	Qualifier
Benzene*	<0.050	0.050	09/17/2021	ND	1.97	98.4	2.00	1.33	
Toluene*	<0.050	0.050	09/17/2021	ND	2.11	106	2.00	1.83	
Ethylbenzene*	<0.050	0.050	09/17/2021	ND	2.06	103	2.00	1.62	
Total Xylenes*	<0.150	0.150	09/17/2021	ND	6.18	103	6.00	1.60	
Total BTEx	<0.300	0.300	09/17/2021	ND					

Surrogate: 4-Bromofluorobenzene (PID) 99.8 % 69.9-140

Chloride, SM4500CI-B		mg/kg		Analyzed By: AC					
Analyte	Result	Reporting Limit	Analyzed	Method Blank	BS	% Recovery	True Value QC	RPD	Qualifier
Chloride	1200	16.0	09/20/2021	ND	416	104	400	0.00	

TPH 8015M		mg/kg		Analyzed By: MS					
Analyte	Result	Reporting Limit	Analyzed	Method Blank	BS	% Recovery	True Value QC	RPD	Qualifier
GRO C6-C10*	<10.0	10.0	09/17/2021	ND	195	97.6	200	1.02	
DRO >C10-C28*	<10.0	10.0	09/17/2021	ND	219	109	200	1.65	
EXT DRO >C28-C36	<10.0	10.0	09/17/2021	ND					

Surrogate: 1-Chlorooctane 87.9 % 44.3-133

Surrogate: 1-Chlorooctadecane 82.5 % 38.9-142

Cardinal Laboratories

\*=Accredited Analyte

PLEASE NOTE: Liability and Damages. Cardinal's liability and client's exclusive remedy for any claim arising, whether based in contract or tort, shall be limited to the amount paid by client for analyses. All claims, including those for negligence and any other cause whatsoever shall be deemed waived unless made in writing and received by Cardinal within thirty (30) days after completion of the applicable service. In no event shall Cardinal be liable for incidental or consequential damages, including, without limitation, business interruptions, loss of use, or loss of profits incurred by client, its subsidiaries, affiliates or successors arising out of or related to the performance of the services hereunder by Cardinal, regardless of whether such claim is based upon any of the above stated reasons or otherwise. Results relate only to the samples identified above. This report shall not be reproduced except in full with written approval of Cardinal Laboratories.

Celey D. Keene, Lab Director/Quality Manager



PHONE (575) 393-2326 ° 101 E. MARLAND ° HOBBS, NM 88240

**Analytical Results For:**

APACHE CORP - HOBBS  
 BRUCE BAKER  
 2350 W. MARLAND BLVD.  
 HOBBS NM, 88240  
 Fax To: (575) 393-2432

Received: 09/17/2021  
 Reported: 09/20/2021  
 Project Name: J G HARE #019  
 Project Number: NOT GIVEN  
 Project Location: J G HARE #019

Sampling Date: 09/17/2021  
 Sampling Type: Soil  
 Sampling Condition: Cool & Intact  
 Sample Received By: Jodi Henson

**Sample ID: B 17 (H212601-04)**

BTX 8021B		mg/kg		Analyzed By: MS					
Analyte	Result	Reporting Limit	Analyzed	Method Blank	BS	% Recovery	True Value QC	RPD	Qualifier
Benzene*	<0.050	0.050	09/17/2021	ND	1.97	98.4	2.00	1.33	
Toluene*	<0.050	0.050	09/17/2021	ND	2.11	106	2.00	1.83	
Ethylbenzene*	<0.050	0.050	09/17/2021	ND	2.06	103	2.00	1.62	
Total Xylenes*	<0.150	0.150	09/17/2021	ND	6.18	103	6.00	1.60	
Total BTX	<0.300	0.300	09/17/2021	ND					

Surrogate: 4-Bromofluorobenzene (PID) 100 % 69.9-140

Chloride, SM4500CI-B		mg/kg		Analyzed By: AC					
Analyte	Result	Reporting Limit	Analyzed	Method Blank	BS	% Recovery	True Value QC	RPD	Qualifier
Chloride	2160	16.0	09/20/2021	ND	416	104	400	0.00	

TPH 8015M		mg/kg		Analyzed By: MS					
Analyte	Result	Reporting Limit	Analyzed	Method Blank	BS	% Recovery	True Value QC	RPD	Qualifier
GRO C6-C10*	<10.0	10.0	09/17/2021	ND	195	97.6	200	1.02	
DRO >C10-C28*	<10.0	10.0	09/17/2021	ND	219	109	200	1.65	
EXT DRO >C28-C36	<10.0	10.0	09/17/2021	ND					

Surrogate: 1-Chlorooctane 87.1 % 44.3-133

Surrogate: 1-Chlorooctadecane 80.4 % 38.9-142

Cardinal Laboratories

\*=Accredited Analyte

PLEASE NOTE: Liability and Damages. Cardinal's liability and client's exclusive remedy for any claim arising, whether based in contract or tort, shall be limited to the amount paid by client for analyses. All claims, including those for negligence and any other cause whatsoever shall be deemed waived unless made in writing and received by Cardinal within thirty (30) days after completion of the applicable service. In no event shall Cardinal be liable for incidental or consequential damages, including, without limitation, business interruptions, loss of use, or loss of profits incurred by client, its subsidiaries, affiliates or successors arising out of or related to the performance of the services hereunder by Cardinal, regardless of whether such claim is based upon any of the above stated reasons or otherwise. Results relate only to the samples identified above. This report shall not be reproduced except in full with written approval of Cardinal Laboratories.

Celey D. Keene, Lab Director/Quality Manager



PHONE (575) 393-2326 ° 101 E. MARLAND ° HOBBS, NM 88240

**Analytical Results For:**

APACHE CORP - HOBBS  
 BRUCE BAKER  
 2350 W. MARLAND BLVD.  
 HOBBS NM, 88240  
 Fax To: (575) 393-2432

Received: 09/17/2021  
 Reported: 09/20/2021  
 Project Name: J G HARE #019  
 Project Number: NOT GIVEN  
 Project Location: J G HARE #019

Sampling Date: 09/17/2021  
 Sampling Type: Soil  
 Sampling Condition: Cool & Intact  
 Sample Received By: Jodi Henson

**Sample ID: B 33 (H212601-05)**

BTEx 8021B		mg/kg		Analyzed By: MS					
Analyte	Result	Reporting Limit	Analyzed	Method Blank	BS	% Recovery	True Value QC	RPD	Qualifier
Benzene*	<0.050	0.050	09/17/2021	ND	1.97	98.4	2.00	1.33	
Toluene*	<0.050	0.050	09/17/2021	ND	2.11	106	2.00	1.83	
Ethylbenzene*	<0.050	0.050	09/17/2021	ND	2.06	103	2.00	1.62	
Total Xylenes*	<0.150	0.150	09/17/2021	ND	6.18	103	6.00	1.60	
Total BTEx	<0.300	0.300	09/17/2021	ND					

Surrogate: 4-Bromofluorobenzene (PID) 100 % 69.9-140

Chloride, SM4500CI-B		mg/kg		Analyzed By: AC						
Analyte	Result	Reporting Limit	Analyzed	Method Blank	BS	% Recovery	True Value QC	RPD	Qualifier	
Chloride	768	16.0	09/20/2021	ND	416	104	400	0.00		

TPH 8015M		mg/kg		Analyzed By: MS					
Analyte	Result	Reporting Limit	Analyzed	Method Blank	BS	% Recovery	True Value QC	RPD	Qualifier
GRO C6-C10*	<10.0	10.0	09/17/2021	ND	195	97.6	200	1.02	
DRO >C10-C28*	<10.0	10.0	09/17/2021	ND	219	109	200	1.65	
EXT DRO >C28-C36	<10.0	10.0	09/17/2021	ND					

Surrogate: 1-Chlorooctane 79.9 % 44.3-133

Surrogate: 1-Chlorooctadecane 74.2 % 38.9-142

Cardinal Laboratories

\*=Accredited Analyte

PLEASE NOTE: Liability and Damages. Cardinal's liability and client's exclusive remedy for any claim arising, whether based in contract or tort, shall be limited to the amount paid by client for analyses. All claims, including those for negligence and any other cause whatsoever shall be deemed waived unless made in writing and received by Cardinal within thirty (30) days after completion of the applicable service. In no event shall Cardinal be liable for incidental or consequential damages, including, without limitation, business interruptions, loss of use, or loss of profits incurred by client, its subsidiaries, affiliates or successors arising out of or related to the performance of the services hereunder by Cardinal, regardless of whether such claim is based upon any of the above stated reasons or otherwise. Results relate only to the samples identified above. This report shall not be reproduced except in full with written approval of Cardinal Laboratories.

Celey D. Keene, Lab Director/Quality Manager





PHONE (575) 393-2326 ° 101 E. MARLAND ° HOBBS, NM 88240

**Analytical Results For:**

APACHE CORP - HOBBS  
 BRUCE BAKER  
 2350 W. MARLAND BLVD.  
 HOBBS NM, 88240  
 Fax To: (575) 393-2432

Received: 09/17/2021  
 Reported: 09/20/2021  
 Project Name: J G HARE #019  
 Project Number: NOT GIVEN  
 Project Location: J G HARE #019

Sampling Date: 09/17/2021  
 Sampling Type: Soil  
 Sampling Condition: Cool & Intact  
 Sample Received By: Jodi Henson

**Sample ID: B 28 (H212601-06)**

BTEx 8021B		mg/kg		Analyzed By: MS					
Analyte	Result	Reporting Limit	Analyzed	Method Blank	BS	% Recovery	True Value QC	RPD	Qualifier
Benzene*	<0.050	0.050	09/17/2021	ND	1.97	98.4	2.00	1.33	
Toluene*	<0.050	0.050	09/17/2021	ND	2.11	106	2.00	1.83	
Ethylbenzene*	<0.050	0.050	09/17/2021	ND	2.06	103	2.00	1.62	
Total Xylenes*	<0.150	0.150	09/17/2021	ND	6.18	103	6.00	1.60	
Total BTEx	<0.300	0.300	09/17/2021	ND					

Surrogate: 4-Bromofluorobenzene (PID) 99.9 % 69.9-140

Chloride, SM4500CI-B		mg/kg		Analyzed By: AC					
Analyte	Result	Reporting Limit	Analyzed	Method Blank	BS	% Recovery	True Value QC	RPD	Qualifier
Chloride	3200	16.0	09/20/2021	ND	416	104	400	0.00	

TPH 8015M		mg/kg		Analyzed By: MS					
Analyte	Result	Reporting Limit	Analyzed	Method Blank	BS	% Recovery	True Value QC	RPD	Qualifier
GRO C6-C10*	<10.0	10.0	09/17/2021	ND	195	97.6	200	1.02	
DRO >C10-C28*	<10.0	10.0	09/17/2021	ND	219	109	200	1.65	
EXT DRO >C28-C36	<10.0	10.0	09/17/2021	ND					

Surrogate: 1-Chlorooctane 88.8 % 44.3-133

Surrogate: 1-Chlorooctadecane 82.3 % 38.9-142

Cardinal Laboratories

\*=Accredited Analyte

PLEASE NOTE: Liability and Damages. Cardinal's liability and client's exclusive remedy for any claim arising, whether based in contract or tort, shall be limited to the amount paid by client for analyses. All claims, including those for negligence and any other cause whatsoever shall be deemed waived unless made in writing and received by Cardinal within thirty (30) days after completion of the applicable service. In no event shall Cardinal be liable for incidental or consequential damages, including, without limitation, business interruptions, loss of use, or loss of profits incurred by client, its subsidiaries, affiliates or successors arising out of or related to the performance of the services hereunder by Cardinal, regardless of whether such claim is based upon any of the above stated reasons or otherwise. Results relate only to the samples identified above. This report shall not be reproduced except in full with written approval of Cardinal Laboratories.

Celey D. Keene, Lab Director/Quality Manager



PHONE (575) 393-2326 ° 101 E. MARLAND ° HOBBS, NM 88240

**Analytical Results For:**

APACHE CORP - HOBBS  
 BRUCE BAKER  
 2350 W. MARLAND BLVD.  
 HOBBS NM, 88240  
 Fax To: (575) 393-2432

Received: 09/17/2021  
 Reported: 09/20/2021  
 Project Name: J G HARE #019  
 Project Number: NOT GIVEN  
 Project Location: J G HARE #019

Sampling Date: 09/17/2021  
 Sampling Type: Soil  
 Sampling Condition: Cool & Intact  
 Sample Received By: Jodi Henson

**Sample ID: B 12 (H212601-07)**

BTX 8021B		mg/kg		Analyzed By: MS					
Analyte	Result	Reporting Limit	Analyzed	Method Blank	BS	% Recovery	True Value QC	RPD	Qualifier
Benzene*	<0.050	0.050	09/17/2021	ND	1.97	98.4	2.00	1.33	
Toluene*	<0.050	0.050	09/17/2021	ND	2.11	106	2.00	1.83	
Ethylbenzene*	<0.050	0.050	09/17/2021	ND	2.06	103	2.00	1.62	
Total Xylenes*	<0.150	0.150	09/17/2021	ND	6.18	103	6.00	1.60	
Total BTX	<0.300	0.300	09/17/2021	ND					

Surrogate: 4-Bromofluorobenzene (PID) 100 % 69.9-140

Chloride, SM4500CI-B		mg/kg		Analyzed By: AC					
Analyte	Result	Reporting Limit	Analyzed	Method Blank	BS	% Recovery	True Value QC	RPD	Qualifier
Chloride	480	16.0	09/20/2021	ND	416	104	400	0.00	

TPH 8015M		mg/kg		Analyzed By: MS					
Analyte	Result	Reporting Limit	Analyzed	Method Blank	BS	% Recovery	True Value QC	RPD	Qualifier
GRO C6-C10*	<10.0	10.0	09/17/2021	ND	195	97.6	200	1.02	
DRO >C10-C28*	<10.0	10.0	09/17/2021	ND	219	109	200	1.65	
EXT DRO >C28-C36	<10.0	10.0	09/17/2021	ND					

Surrogate: 1-Chlorooctane 84.0 % 44.3-133

Surrogate: 1-Chlorooctadecane 78.4 % 38.9-142

Cardinal Laboratories

\*=Accredited Analyte

PLEASE NOTE: Liability and Damages. Cardinal's liability and client's exclusive remedy for any claim arising, whether based in contract or tort, shall be limited to the amount paid by client for analyses. All claims, including those for negligence and any other cause whatsoever shall be deemed waived unless made in writing and received by Cardinal within thirty (30) days after completion of the applicable service. In no event shall Cardinal be liable for incidental or consequential damages, including, without limitation, business interruptions, loss of use, or loss of profits incurred by client, its subsidiaries, affiliates or successors arising out of or related to the performance of the services hereunder by Cardinal, regardless of whether such claim is based upon any of the above stated reasons or otherwise. Results relate only to the samples identified above. This report shall not be reproduced except in full with written approval of Cardinal Laboratories.

Celey D. Keene, Lab Director/Quality Manager



PHONE (575) 393-2326 ° 101 E. MARLAND ° HOBBS, NM 88240

**Analytical Results For:**

APACHE CORP - HOBBS  
 BRUCE BAKER  
 2350 W. MARLAND BLVD.  
 HOBBS NM, 88240  
 Fax To: (575) 393-2432

Received: 09/17/2021  
 Reported: 09/20/2021  
 Project Name: J G HARE #019  
 Project Number: NOT GIVEN  
 Project Location: J G HARE #019

Sampling Date: 09/17/2021  
 Sampling Type: Soil  
 Sampling Condition: Cool & Intact  
 Sample Received By: Jodi Henson

**Sample ID: B 16 (H212601-08)**

BTEx 8021B		mg/kg		Analyzed By: MS					
Analyte	Result	Reporting Limit	Analyzed	Method Blank	BS	% Recovery	True Value QC	RPD	Qualifier
Benzene*	<0.050	0.050	09/17/2021	ND	1.97	98.4	2.00	1.33	
Toluene*	<0.050	0.050	09/17/2021	ND	2.11	106	2.00	1.83	
Ethylbenzene*	<0.050	0.050	09/17/2021	ND	2.06	103	2.00	1.62	
Total Xylenes*	<0.150	0.150	09/17/2021	ND	6.18	103	6.00	1.60	
Total BTEx	<0.300	0.300	09/17/2021	ND					

Surrogate: 4-Bromofluorobenzene (PID) 100 % 69.9-140

Chloride, SM4500CI-B		mg/kg		Analyzed By: AC						
Analyte	Result	Reporting Limit	Analyzed	Method Blank	BS	% Recovery	True Value QC	RPD	Qualifier	
Chloride	3080	16.0	09/20/2021	ND	416	104	400	0.00		

TPH 8015M		mg/kg		Analyzed By: MS					
Analyte	Result	Reporting Limit	Analyzed	Method Blank	BS	% Recovery	True Value QC	RPD	Qualifier
GRO C6-C10*	<10.0	10.0	09/17/2021	ND	195	97.6	200	1.02	
DRO >C10-C28*	<10.0	10.0	09/17/2021	ND	219	109	200	1.65	
EXT DRO >C28-C36	<10.0	10.0	09/17/2021	ND					

Surrogate: 1-Chlorooctane 64.8 % 44.3-133

Surrogate: 1-Chlorooctadecane 58.7 % 38.9-142

Cardinal Laboratories

\*=Accredited Analyte

PLEASE NOTE: Liability and Damages. Cardinal's liability and client's exclusive remedy for any claim arising, whether based in contract or tort, shall be limited to the amount paid by client for analyses. All claims, including those for negligence and any other cause whatsoever shall be deemed waived unless made in writing and received by Cardinal within thirty (30) days after completion of the applicable service. In no event shall Cardinal be liable for incidental or consequential damages, including, without limitation, business interruptions, loss of use, or loss of profits incurred by client, its subsidiaries, affiliates or successors arising out of or related to the performance of the services hereunder by Cardinal, regardless of whether such claim is based upon any of the above stated reasons or otherwise. Results relate only to the samples identified above. This report shall not be reproduced except in full with written approval of Cardinal Laboratories.

Celey D. Keene, Lab Director/Quality Manager





PHONE (575) 393-2326 ° 101 E. MARLAND ° HOBBS, NM 88240

**Analytical Results For:**

APACHE CORP - HOBBS  
 BRUCE BAKER  
 2350 W. MARLAND BLVD.  
 HOBBS NM, 88240  
 Fax To: (575) 393-2432

Received: 09/17/2021  
 Reported: 09/20/2021  
 Project Name: J G HARE #019  
 Project Number: NOT GIVEN  
 Project Location: J G HARE #019

Sampling Date: 09/17/2021  
 Sampling Type: Soil  
 Sampling Condition: Cool & Intact  
 Sample Received By: Jodi Henson

**Sample ID: B 31 (H212601-09)**

BTX 8021B		mg/kg		Analyzed By: MS					
Analyte	Result	Reporting Limit	Analyzed	Method Blank	BS	% Recovery	True Value QC	RPD	Qualifier
Benzene*	<0.050	0.050	09/17/2021	ND	1.97	98.4	2.00	1.33	
Toluene*	<0.050	0.050	09/17/2021	ND	2.11	106	2.00	1.83	
Ethylbenzene*	<0.050	0.050	09/17/2021	ND	2.06	103	2.00	1.62	
Total Xylenes*	<0.150	0.150	09/17/2021	ND	6.18	103	6.00	1.60	
Total BTX	<0.300	0.300	09/17/2021	ND					

Surrogate: 4-Bromofluorobenzene (PID) 101 % 69.9-140

Chloride, SM4500CI-B		mg/kg		Analyzed By: AC						
Analyte	Result	Reporting Limit	Analyzed	Method Blank	BS	% Recovery	True Value QC	RPD	Qualifier	
Chloride	1760	16.0	09/20/2021	ND	416	104	400	0.00		

TPH 8015M		mg/kg		Analyzed By: MS					
Analyte	Result	Reporting Limit	Analyzed	Method Blank	BS	% Recovery	True Value QC	RPD	Qualifier
GRO C6-C10*	<10.0	10.0	09/17/2021	ND	195	97.6	200	1.02	
DRO >C10-C28*	<10.0	10.0	09/17/2021	ND	219	109	200	1.65	
EXT DRO >C28-C36	<10.0	10.0	09/17/2021	ND					

Surrogate: 1-Chlorooctane 89.4 % 44.3-133

Surrogate: 1-Chlorooctadecane 85.9 % 38.9-142

Cardinal Laboratories

\*=Accredited Analyte

PLEASE NOTE: Liability and Damages. Cardinal's liability and client's exclusive remedy for any claim arising, whether based in contract or tort, shall be limited to the amount paid by client for analyses. All claims, including those for negligence and any other cause whatsoever shall be deemed waived unless made in writing and received by Cardinal within thirty (30) days after completion of the applicable service. In no event shall Cardinal be liable for incidental or consequential damages, including, without limitation, business interruptions, loss of use, or loss of profits incurred by client, its subsidiaries, affiliates or successors arising out of or related to the performance of the services hereunder by Cardinal, regardless of whether such claim is based upon any of the above stated reasons or otherwise. Results relate only to the samples identified above. This report shall not be reproduced except in full with written approval of Cardinal Laboratories.

Celey D. Keene, Lab Director/Quality Manager



PHONE (575) 393-2326 ° 101 E. MARLAND ° HOBBS, NM 88240

**Analytical Results For:**

APACHE CORP - HOBBS  
 BRUCE BAKER  
 2350 W. MARLAND BLVD.  
 HOBBS NM, 88240  
 Fax To: (575) 393-2432

Received: 09/17/2021  
 Reported: 09/20/2021  
 Project Name: J G HARE #019  
 Project Number: NOT GIVEN  
 Project Location: J G HARE #019

Sampling Date: 09/17/2021  
 Sampling Type: Soil  
 Sampling Condition: Cool & Intact  
 Sample Received By: Jodi Henson

**Sample ID: B 11 (H212601-10)**

BTX 8021B		mg/kg		Analyzed By: MS					
Analyte	Result	Reporting Limit	Analyzed	Method Blank	BS	% Recovery	True Value QC	RPD	Qualifier
Benzene*	<0.050	0.050	09/17/2021	ND	1.97	98.4	2.00	1.33	
Toluene*	<0.050	0.050	09/17/2021	ND	2.11	106	2.00	1.83	
Ethylbenzene*	<0.050	0.050	09/17/2021	ND	2.06	103	2.00	1.62	
Total Xylenes*	<0.150	0.150	09/17/2021	ND	6.18	103	6.00	1.60	
Total BTX	<0.300	0.300	09/17/2021	ND					

Surrogate: 4-Bromofluorobenzene (PID) 101 % 69.9-140

Chloride, SM4500CI-B		mg/kg		Analyzed By: AC					
Analyte	Result	Reporting Limit	Analyzed	Method Blank	BS	% Recovery	True Value QC	RPD	Qualifier
Chloride	640	16.0	09/20/2021	ND	416	104	400	0.00	

TPH 8015M		mg/kg		Analyzed By: MS					
Analyte	Result	Reporting Limit	Analyzed	Method Blank	BS	% Recovery	True Value QC	RPD	Qualifier
GRO C6-C10*	<10.0	10.0	09/17/2021	ND	195	97.6	200	1.02	
DRO >C10-C28*	<10.0	10.0	09/17/2021	ND	219	109	200	1.65	
EXT DRO >C28-C36	<10.0	10.0	09/17/2021	ND					

Surrogate: 1-Chlorooctane 87.5 % 44.3-133

Surrogate: 1-Chlorooctadecane 82.9 % 38.9-142

Cardinal Laboratories

\*=Accredited Analyte

PLEASE NOTE: Liability and Damages. Cardinal's liability and client's exclusive remedy for any claim arising, whether based in contract or tort, shall be limited to the amount paid by client for analyses. All claims, including those for negligence and any other cause whatsoever shall be deemed waived unless made in writing and received by Cardinal within thirty (30) days after completion of the applicable service. In no event shall Cardinal be liable for incidental or consequential damages, including, without limitation, business interruptions, loss of use, or loss of profits incurred by client, its subsidiaries, affiliates or successors arising out of or related to the performance of the services hereunder by Cardinal, regardless of whether such claim is based upon any of the above stated reasons or otherwise. Results relate only to the samples identified above. This report shall not be reproduced except in full with written approval of Cardinal Laboratories.

Celey D. Keene, Lab Director/Quality Manager





PHONE (575) 393-2326 ° 101 E. MARLAND ° HOBBS, NM 88240

**Analytical Results For:**

APACHE CORP - HOBBS  
 BRUCE BAKER  
 2350 W. MARLAND BLVD.  
 HOBBS NM, 88240  
 Fax To: (575) 393-2432

Received: 09/17/2021  
 Reported: 09/20/2021  
 Project Name: J G HARE #019  
 Project Number: NOT GIVEN  
 Project Location: J G HARE #019

Sampling Date: 09/17/2021  
 Sampling Type: Soil  
 Sampling Condition: Cool & Intact  
 Sample Received By: Jodi Henson

**Sample ID: B 1 (H212601-11)**

BTEx 8021B		mg/kg		Analyzed By: MS						
Analyte	Result	Reporting Limit	Analyzed	Method Blank	BS	% Recovery	True Value QC	RPD	Qualifier	
Benzene*	<0.050	0.050	09/17/2021	ND	1.97	98.4	2.00	1.33		
Toluene*	<0.050	0.050	09/17/2021	ND	2.11	106	2.00	1.83		
Ethylbenzene*	<0.050	0.050	09/17/2021	ND	2.06	103	2.00	1.62		
Total Xylenes*	<0.150	0.150	09/17/2021	ND	6.18	103	6.00	1.60		
Total BTEx	<0.300	0.300	09/17/2021	ND						

Surrogate: 4-Bromofluorobenzene (PID) 101 % 69.9-140

Chloride, SM4500CI-B		mg/kg		Analyzed By: AC					
Analyte	Result	Reporting Limit	Analyzed	Method Blank	BS	% Recovery	True Value QC	RPD	Qualifier
Chloride	32.0	16.0	09/20/2021	ND	416	104	400	0.00	

TPH 8015M		mg/kg		Analyzed By: MS					
Analyte	Result	Reporting Limit	Analyzed	Method Blank	BS	% Recovery	True Value QC	RPD	Qualifier
GRO C6-C10*	<10.0	10.0	09/17/2021	ND	195	97.6	200	1.02	
DRO >C10-C28*	<10.0	10.0	09/17/2021	ND	219	109	200	1.65	
EXT DRO >C28-C36	<10.0	10.0	09/17/2021	ND					

Surrogate: 1-Chlorooctane 91.9 % 44.3-133

Surrogate: 1-Chlorooctadecane 85.0 % 38.9-142

Cardinal Laboratories

\*=Accredited Analyte

PLEASE NOTE: Liability and Damages. Cardinal's liability and client's exclusive remedy for any claim arising, whether based in contract or tort, shall be limited to the amount paid by client for analyses. All claims, including those for negligence and any other cause whatsoever shall be deemed waived unless made in writing and received by Cardinal within thirty (30) days after completion of the applicable service. In no event shall Cardinal be liable for incidental or consequential damages, including, without limitation, business interruptions, loss of use, or loss of profits incurred by client, its subsidiaries, affiliates or successors arising out of or related to the performance of the services hereunder by Cardinal, regardless of whether such claim is based upon any of the above stated reasons or otherwise. Results relate only to the samples identified above. This report shall not be reproduced except in full with written approval of Cardinal Laboratories.

Celey D. Keene, Lab Director/Quality Manager



PHONE (575) 393-2326 ° 101 E. MARLAND ° HOBBS, NM 88240

**Analytical Results For:**

APACHE CORP - HOBBS  
 BRUCE BAKER  
 2350 W. MARLAND BLVD.  
 HOBBS NM, 88240  
 Fax To: (575) 393-2432

Received: 09/17/2021  
 Reported: 09/20/2021  
 Project Name: J G HARE #019  
 Project Number: NOT GIVEN  
 Project Location: J G HARE #019

Sampling Date: 09/17/2021  
 Sampling Type: Soil  
 Sampling Condition: Cool & Intact  
 Sample Received By: Jodi Henson

**Sample ID: B 2 (H212601-12)**

BTEx 8021B		mg/kg		Analyzed By: MS						
Analyte	Result	Reporting Limit	Analyzed	Method Blank	BS	% Recovery	True Value QC	RPD	Qualifier	
Benzene*	<0.050	0.050	09/18/2021	ND	1.97	98.4	2.00	1.33		
Toluene*	<0.050	0.050	09/18/2021	ND	2.11	106	2.00	1.83		
Ethylbenzene*	<0.050	0.050	09/18/2021	ND	2.06	103	2.00	1.62		
Total Xylenes*	<0.150	0.150	09/18/2021	ND	6.18	103	6.00	1.60		
Total BTEx	<0.300	0.300	09/18/2021	ND						

Surrogate: 4-Bromofluorobenzene (PID) 102 % 69.9-140

Chloride, SM4500Cl-B		mg/kg		Analyzed By: AC					
Analyte	Result	Reporting Limit	Analyzed	Method Blank	BS	% Recovery	True Value QC	RPD	Qualifier
Chloride	16.0	16.0	09/20/2021	ND	416	104	400	0.00	

TPH 8015M		mg/kg		Analyzed By: MS					
Analyte	Result	Reporting Limit	Analyzed	Method Blank	BS	% Recovery	True Value QC	RPD	Qualifier
GRO C6-C10*	<10.0	10.0	09/18/2021	ND	195	97.6	200	1.02	
DRO >C10-C28*	<10.0	10.0	09/18/2021	ND	219	109	200	1.65	
EXT DRO >C28-C36	<10.0	10.0	09/18/2021	ND					

Surrogate: 1-Chlorooctane 86.0 % 44.3-133

Surrogate: 1-Chlorooctadecane 80.0 % 38.9-142

Cardinal Laboratories

\*=Accredited Analyte

PLEASE NOTE: Liability and Damages. Cardinal's liability and client's exclusive remedy for any claim arising, whether based in contract or tort, shall be limited to the amount paid by client for analyses. All claims, including those for negligence and any other cause whatsoever shall be deemed waived unless made in writing and received by Cardinal within thirty (30) days after completion of the applicable service. In no event shall Cardinal be liable for incidental or consequential damages, including, without limitation, business interruptions, loss of use, or loss of profits incurred by client, its subsidiaries, affiliates or successors arising out of or related to the performance of the services hereunder by Cardinal, regardless of whether such claim is based upon any of the above stated reasons or otherwise. Results relate only to the samples identified above. This report shall not be reproduced except in full with written approval of Cardinal Laboratories.

Celey D. Keene, Lab Director/Quality Manager





PHONE (575) 393-2326 ° 101 E. MARLAND ° HOBBS, NM 88240

**Analytical Results For:**

APACHE CORP - HOBBS  
 BRUCE BAKER  
 2350 W. MARLAND BLVD.  
 HOBBS NM, 88240  
 Fax To: (575) 393-2432

Received: 09/17/2021  
 Reported: 09/20/2021  
 Project Name: J G HARE #019  
 Project Number: NOT GIVEN  
 Project Location: J G HARE #019

Sampling Date: 09/17/2021  
 Sampling Type: Soil  
 Sampling Condition: Cool & Intact  
 Sample Received By: Jodi Henson

**Sample ID: B 3 (H212601-13)**

BTEx 8021B		mg/kg		Analyzed By: MS						
Analyte	Result	Reporting Limit	Analyzed	Method Blank	BS	% Recovery	True Value QC	RPD	Qualifier	
Benzene*	<0.050	0.050	09/18/2021	ND	1.97	98.4	2.00	1.33		
Toluene*	<0.050	0.050	09/18/2021	ND	2.11	106	2.00	1.83		
Ethylbenzene*	<0.050	0.050	09/18/2021	ND	2.06	103	2.00	1.62		
Total Xylenes*	<0.150	0.150	09/18/2021	ND	6.18	103	6.00	1.60		
Total BTEx	<0.300	0.300	09/18/2021	ND						

Surrogate: 4-Bromofluorobenzene (PID) 100 % 69.9-140

Chloride, SM4500CI-B		mg/kg		Analyzed By: AC						
Analyte	Result	Reporting Limit	Analyzed	Method Blank	BS	% Recovery	True Value QC	RPD	Qualifier	
Chloride	<16.0	16.0	09/20/2021	ND	416	104	400	0.00		

TPH 8015M		mg/kg		Analyzed By: MS					
Analyte	Result	Reporting Limit	Analyzed	Method Blank	BS	% Recovery	True Value QC	RPD	Qualifier
GRO C6-C10*	<10.0	10.0	09/18/2021	ND	195	97.6	200	1.02	
DRO >C10-C28*	<10.0	10.0	09/18/2021	ND	219	109	200	1.65	
EXT DRO >C28-C36	<10.0	10.0	09/18/2021	ND					

Surrogate: 1-Chlorooctane 83.7 % 44.3-133

Surrogate: 1-Chlorooctadecane 77.4 % 38.9-142

Cardinal Laboratories

\*=Accredited Analyte

PLEASE NOTE: Liability and Damages. Cardinal's liability and client's exclusive remedy for any claim arising, whether based in contract or tort, shall be limited to the amount paid by client for analyses. All claims, including those for negligence and any other cause whatsoever shall be deemed waived unless made in writing and received by Cardinal within thirty (30) days after completion of the applicable service. In no event shall Cardinal be liable for incidental or consequential damages, including, without limitation, business interruptions, loss of use, or loss of profits incurred by client, its subsidiaries, affiliates or successors arising out of or related to the performance of the services hereunder by Cardinal, regardless of whether such claim is based upon any of the above stated reasons or otherwise. Results relate only to the samples identified above. This report shall not be reproduced except in full with written approval of Cardinal Laboratories.

Celey D. Keene, Lab Director/Quality Manager



PHONE (575) 393-2326 ° 101 E. MARLAND ° HOBBS, NM 88240

**Analytical Results For:**

APACHE CORP - HOBBS  
 BRUCE BAKER  
 2350 W. MARLAND BLVD.  
 HOBBS NM, 88240  
 Fax To: (575) 393-2432

Received: 09/17/2021  
 Reported: 09/20/2021  
 Project Name: J G HARE #019  
 Project Number: NOT GIVEN  
 Project Location: J G HARE #019

Sampling Date: 09/17/2021  
 Sampling Type: Soil  
 Sampling Condition: Cool & Intact  
 Sample Received By: Jodi Henson

**Sample ID: B 4 (H212601-14)**

BTX 8021B		mg/kg		Analyzed By: MS					
Analyte	Result	Reporting Limit	Analyzed	Method Blank	BS	% Recovery	True Value QC	RPD	Qualifier
Benzene*	<0.050	0.050	09/18/2021	ND	1.97	98.4	2.00	1.33	
Toluene*	<0.050	0.050	09/18/2021	ND	2.11	106	2.00	1.83	
Ethylbenzene*	<0.050	0.050	09/18/2021	ND	2.06	103	2.00	1.62	
Total Xylenes*	<0.150	0.150	09/18/2021	ND	6.18	103	6.00	1.60	
Total BTX	<0.300	0.300	09/18/2021	ND					

Surrogate: 4-Bromofluorobenzene (PID) 100 % 69.9-140

Chloride, SM4500CI-B		mg/kg		Analyzed By: AC					
Analyte	Result	Reporting Limit	Analyzed	Method Blank	BS	% Recovery	True Value QC	RPD	Qualifier
Chloride	32.0	16.0	09/20/2021	ND	416	104	400	0.00	

TPH 8015M		mg/kg		Analyzed By: MS					
Analyte	Result	Reporting Limit	Analyzed	Method Blank	BS	% Recovery	True Value QC	RPD	Qualifier
GRO C6-C10*	<10.0	10.0	09/18/2021	ND	195	97.6	200	1.02	
DRO >C10-C28*	<10.0	10.0	09/18/2021	ND	219	109	200	1.65	
EXT DRO >C28-C36	<10.0	10.0	09/18/2021	ND					

Surrogate: 1-Chlorooctane 86.2 % 44.3-133

Surrogate: 1-Chlorooctadecane 80.2 % 38.9-142

Cardinal Laboratories

\*=Accredited Analyte

PLEASE NOTE: Liability and Damages. Cardinal's liability and client's exclusive remedy for any claim arising, whether based in contract or tort, shall be limited to the amount paid by client for analyses. All claims, including those for negligence and any other cause whatsoever shall be deemed waived unless made in writing and received by Cardinal within thirty (30) days after completion of the applicable service. In no event shall Cardinal be liable for incidental or consequential damages, including, without limitation, business interruptions, loss of use, or loss of profits incurred by client, its subsidiaries, affiliates or successors arising out of or related to the performance of the services hereunder by Cardinal, regardless of whether such claim is based upon any of the above stated reasons or otherwise. Results relate only to the samples identified above. This report shall not be reproduced except in full with written approval of Cardinal Laboratories.

Celey D. Keene, Lab Director/Quality Manager



PHONE (575) 393-2326 ° 101 E. MARLAND ° HOBBS, NM 88240

**Analytical Results For:**

APACHE CORP - HOBBS  
 BRUCE BAKER  
 2350 W. MARLAND BLVD.  
 HOBBS NM, 88240  
 Fax To: (575) 393-2432

Received: 09/17/2021  
 Reported: 09/20/2021  
 Project Name: J G HARE #019  
 Project Number: NOT GIVEN  
 Project Location: J G HARE #019

Sampling Date: 09/17/2021  
 Sampling Type: Soil  
 Sampling Condition: Cool & Intact  
 Sample Received By: Jodi Henson

**Sample ID: B 5 (H212601-15)**

BTX 8021B		mg/kg		Analyzed By: MS					
Analyte	Result	Reporting Limit	Analyzed	Method Blank	BS	% Recovery	True Value QC	RPD	Qualifier
Benzene*	<0.050	0.050	09/18/2021	ND	1.97	98.4	2.00	1.33	
Toluene*	<0.050	0.050	09/18/2021	ND	2.11	106	2.00	1.83	
Ethylbenzene*	<0.050	0.050	09/18/2021	ND	2.06	103	2.00	1.62	
Total Xylenes*	<0.150	0.150	09/18/2021	ND	6.18	103	6.00	1.60	
Total BTX	<0.300	0.300	09/18/2021	ND					

Surrogate: 4-Bromofluorobenzene (PID) 99.9 % 69.9-140

Chloride, SM4500CI-B		mg/kg		Analyzed By: AC					
Analyte	Result	Reporting Limit	Analyzed	Method Blank	BS	% Recovery	True Value QC	RPD	Qualifier
Chloride	48.0	16.0	09/20/2021	ND	416	104	400	0.00	

TPH 8015M		mg/kg		Analyzed By: MS					
Analyte	Result	Reporting Limit	Analyzed	Method Blank	BS	% Recovery	True Value QC	RPD	Qualifier
GRO C6-C10*	<10.0	10.0	09/17/2021	ND	210	105	200	1.96	
DRO >C10-C28*	<10.0	10.0	09/17/2021	ND	207	103	200	2.21	
EXT DRO >C28-C36	<10.0	10.0	09/17/2021	ND					

Surrogate: 1-Chlorooctane 75.8 % 44.3-133

Surrogate: 1-Chlorooctadecane 72.9 % 38.9-142

Cardinal Laboratories

\*=Accredited Analyte

PLEASE NOTE: Liability and Damages. Cardinal's liability and client's exclusive remedy for any claim arising, whether based in contract or tort, shall be limited to the amount paid by client for analyses. All claims, including those for negligence and any other cause whatsoever shall be deemed waived unless made in writing and received by Cardinal within thirty (30) days after completion of the applicable service. In no event shall Cardinal be liable for incidental or consequential damages, including, without limitation, business interruptions, loss of use, or loss of profits incurred by client, its subsidiaries, affiliates or successors arising out of or related to the performance of the services hereunder by Cardinal, regardless of whether such claim is based upon any of the above stated reasons or otherwise. Results relate only to the samples identified above. This report shall not be reproduced except in full with written approval of Cardinal Laboratories.

Celey D. Keene, Lab Director/Quality Manager





PHONE (575) 393-2326 ° 101 E. MARLAND ° HOBBS, NM 88240

**Analytical Results For:**

APACHE CORP - HOBBS  
 BRUCE BAKER  
 2350 W. MARLAND BLVD.  
 HOBBS NM, 88240  
 Fax To: (575) 393-2432

Received: 09/17/2021  
 Reported: 09/20/2021  
 Project Name: J G HARE #019  
 Project Number: NOT GIVEN  
 Project Location: J G HARE #019

Sampling Date: 09/17/2021  
 Sampling Type: Soil  
 Sampling Condition: Cool & Intact  
 Sample Received By: Jodi Henson

**Sample ID: B 6 (H212601-16)**

BTX 8021B		mg/kg		Analyzed By: MS					
Analyte	Result	Reporting Limit	Analyzed	Method Blank	BS	% Recovery	True Value QC	RPD	Qualifier
Benzene*	<0.050	0.050	09/18/2021	ND	1.97	98.4	2.00	1.33	
Toluene*	<0.050	0.050	09/18/2021	ND	2.11	106	2.00	1.83	
Ethylbenzene*	<0.050	0.050	09/18/2021	ND	2.06	103	2.00	1.62	
Total Xylenes*	<0.150	0.150	09/18/2021	ND	6.18	103	6.00	1.60	
Total BTX	<0.300	0.300	09/18/2021	ND					

Surrogate: 4-Bromofluorobenzene (PID) 101 % 69.9-140

Chloride, SM4500CI-B		mg/kg		Analyzed By: AC					
Analyte	Result	Reporting Limit	Analyzed	Method Blank	BS	% Recovery	True Value QC	RPD	Qualifier
Chloride	32.0	16.0	09/20/2021	ND	416	104	400	0.00	

TPH 8015M		mg/kg		Analyzed By: MS					
Analyte	Result	Reporting Limit	Analyzed	Method Blank	BS	% Recovery	True Value QC	RPD	Qualifier
GRO C6-C10*	<10.0	10.0	09/17/2021	ND	210	105	200	1.96	
DRO >C10-C28*	<10.0	10.0	09/17/2021	ND	207	103	200	2.21	
EXT DRO >C28-C36	<10.0	10.0	09/17/2021	ND					

Surrogate: 1-Chlorooctane 78.7 % 44.3-133

Surrogate: 1-Chlorooctadecane 74.6 % 38.9-142

Cardinal Laboratories

\*=Accredited Analyte

PLEASE NOTE: Liability and Damages. Cardinal's liability and client's exclusive remedy for any claim arising, whether based in contract or tort, shall be limited to the amount paid by client for analyses. All claims, including those for negligence and any other cause whatsoever shall be deemed waived unless made in writing and received by Cardinal within thirty (30) days after completion of the applicable service. In no event shall Cardinal be liable for incidental or consequential damages, including, without limitation, business interruptions, loss of use, or loss of profits incurred by client, its subsidiaries, affiliates or successors arising out of or related to the performance of the services hereunder by Cardinal, regardless of whether such claim is based upon any of the above stated reasons or otherwise. Results relate only to the samples identified above. This report shall not be reproduced except in full with written approval of Cardinal Laboratories.

Celey D. Keene, Lab Director/Quality Manager



PHONE (575) 393-2326 ° 101 E. MARLAND ° HOBBS, NM 88240

**Analytical Results For:**

APACHE CORP - HOBBS  
 BRUCE BAKER  
 2350 W. MARLAND BLVD.  
 HOBBS NM, 88240  
 Fax To: (575) 393-2432

Received: 09/17/2021  
 Reported: 09/20/2021  
 Project Name: J G HARE #019  
 Project Number: NOT GIVEN  
 Project Location: J G HARE #019

Sampling Date: 09/17/2021  
 Sampling Type: Soil  
 Sampling Condition: Cool & Intact  
 Sample Received By: Jodi Henson

**Sample ID: B 7 (H212601-17)**

BTEx 8021B		mg/kg		Analyzed By: MS						
Analyte	Result	Reporting Limit	Analyzed	Method Blank	BS	% Recovery	True Value QC	RPD	Qualifier	
Benzene*	<0.050	0.050	09/18/2021	ND	1.97	98.4	2.00	1.33		
Toluene*	<0.050	0.050	09/18/2021	ND	2.11	106	2.00	1.83		
Ethylbenzene*	<0.050	0.050	09/18/2021	ND	2.06	103	2.00	1.62		
Total Xylenes*	<0.150	0.150	09/18/2021	ND	6.18	103	6.00	1.60		
Total BTEx	<0.300	0.300	09/18/2021	ND						

Surrogate: 4-Bromofluorobenzene (PID) 100 % 69.9-140

Chloride, SM4500Cl-B		mg/kg		Analyzed By: AC						
Analyte	Result	Reporting Limit	Analyzed	Method Blank	BS	% Recovery	True Value QC	RPD	Qualifier	
Chloride	160	16.0	09/20/2021	ND	416	104	400	0.00		

TPH 8015M		mg/kg		Analyzed By: MS					
Analyte	Result	Reporting Limit	Analyzed	Method Blank	BS	% Recovery	True Value QC	RPD	Qualifier
GRO C6-C10*	<10.0	10.0	09/17/2021	ND	210	105	200	1.96	
DRO >C10-C28*	<10.0	10.0	09/17/2021	ND	207	103	200	2.21	
EXT DRO >C28-C36	<10.0	10.0	09/17/2021	ND					

Surrogate: 1-Chlorooctane 79.6 % 44.3-133

Surrogate: 1-Chlorooctadecane 76.9 % 38.9-142

Cardinal Laboratories

\*=Accredited Analyte

PLEASE NOTE: Liability and Damages. Cardinal's liability and client's exclusive remedy for any claim arising, whether based in contract or tort, shall be limited to the amount paid by client for analyses. All claims, including those for negligence and any other cause whatsoever shall be deemed waived unless made in writing and received by Cardinal within thirty (30) days after completion of the applicable service. In no event shall Cardinal be liable for incidental or consequential damages, including, without limitation, business interruptions, loss of use, or loss of profits incurred by client, its subsidiaries, affiliates or successors arising out of or related to the performance of the services hereunder by Cardinal, regardless of whether such claim is based upon any of the above stated reasons or otherwise. Results relate only to the samples identified above. This report shall not be reproduced except in full with written approval of Cardinal Laboratories.

Celey D. Keene, Lab Director/Quality Manager



PHONE (575) 393-2326 ° 101 E. MARLAND ° HOBBS, NM 88240

**Analytical Results For:**

APACHE CORP - HOBBS  
 BRUCE BAKER  
 2350 W. MARLAND BLVD.  
 HOBBS NM, 88240  
 Fax To: (575) 393-2432

Received: 09/17/2021  
 Reported: 09/20/2021  
 Project Name: J G HARE #019  
 Project Number: NOT GIVEN  
 Project Location: J G HARE #019

Sampling Date: 09/17/2021  
 Sampling Type: Soil  
 Sampling Condition: Cool & Intact  
 Sample Received By: Jodi Henson

**Sample ID: B 8 (H212601-18)**

BTX 8021B		mg/kg		Analyzed By: MS					
Analyte	Result	Reporting Limit	Analyzed	Method Blank	BS	% Recovery	True Value QC	RPD	Qualifier
Benzene*	<0.050	0.050	09/18/2021	ND	2.15	107	2.00	4.12	QM-07
Toluene*	<0.050	0.050	09/18/2021	ND	2.12	106	2.00	3.68	
Ethylbenzene*	<0.050	0.050	09/18/2021	ND	2.09	105	2.00	6.22	
Total Xylenes*	<0.150	0.150	09/18/2021	ND	6.44	107	6.00	6.66	
Total BTX	<0.300	0.300	09/18/2021	ND					

Surrogate: 4-Bromofluorobenzene (PID) 103 % 69.9-140

Chloride, SM4500Cl-B		mg/kg		Analyzed By: AC					
Analyte	Result	Reporting Limit	Analyzed	Method Blank	BS	% Recovery	True Value QC	RPD	Qualifier
Chloride	448	16.0	09/20/2021	ND	416	104	400	0.00	

TPH 8015M		mg/kg		Analyzed By: MS					
Analyte	Result	Reporting Limit	Analyzed	Method Blank	BS	% Recovery	True Value QC	RPD	Qualifier
GRO C6-C10*	<10.0	10.0	09/17/2021	ND	210	105	200	1.96	
DRO >C10-C28*	<10.0	10.0	09/17/2021	ND	207	103	200	2.21	
EXT DRO >C28-C36	<10.0	10.0	09/17/2021	ND					

Surrogate: 1-Chlorooctane 79.6 % 44.3-133

Surrogate: 1-Chlorooctadecane 76.9 % 38.9-142

Cardinal Laboratories

\*=Accredited Analyte

PLEASE NOTE: Liability and Damages. Cardinal's liability and client's exclusive remedy for any claim arising, whether based in contract or tort, shall be limited to the amount paid by client for analyses. All claims, including those for negligence and any other cause whatsoever shall be deemed waived unless made in writing and received by Cardinal within thirty (30) days after completion of the applicable service. In no event shall Cardinal be liable for incidental or consequential damages, including, without limitation, business interruptions, loss of use, or loss of profits incurred by client, its subsidiaries, affiliates or successors arising out of or related to the performance of the services hereunder by Cardinal, regardless of whether such claim is based upon any of the above stated reasons or otherwise. Results relate only to the samples identified above. This report shall not be reproduced except in full with written approval of Cardinal Laboratories.

Celey D. Keene, Lab Director/Quality Manager





PHONE (575) 393-2326 ° 101 E. MARLAND ° HOBBS, NM 88240

**Analytical Results For:**

APACHE CORP - HOBBS  
 BRUCE BAKER  
 2350 W. MARLAND BLVD.  
 HOBBS NM, 88240  
 Fax To: (575) 393-2432

Received: 09/17/2021  
 Reported: 09/20/2021  
 Project Name: J G HARE #019  
 Project Number: NOT GIVEN  
 Project Location: J G HARE #019

Sampling Date: 09/17/2021  
 Sampling Type: Soil  
 Sampling Condition: Cool & Intact  
 Sample Received By: Jodi Henson

**Sample ID: B 9 (H212601-19)**

BTEx 8021B		mg/kg		Analyzed By: MS						
Analyte	Result	Reporting Limit	Analyzed	Method Blank	BS	% Recovery	True Value QC	RPD	Qualifier	
Benzene*	<0.050	0.050	09/18/2021	ND	2.15	107	2.00	4.12		
Toluene*	<0.050	0.050	09/18/2021	ND	2.12	106	2.00	3.68		
Ethylbenzene*	<0.050	0.050	09/18/2021	ND	2.09	105	2.00	6.22		
Total Xylenes*	<0.150	0.150	09/18/2021	ND	6.44	107	6.00	6.66		
Total BTEx	<0.300	0.300	09/18/2021	ND						

Surrogate: 4-Bromofluorobenzene (PID) 97.4 % 69.9-140

Chloride, SM4500Cl-B		mg/kg		Analyzed By: AC					
Analyte	Result	Reporting Limit	Analyzed	Method Blank	BS	% Recovery	True Value QC	RPD	Qualifier
Chloride	240	16.0	09/20/2021	ND	416	104	400	0.00	

TPH 8015M		mg/kg		Analyzed By: MS					
Analyte	Result	Reporting Limit	Analyzed	Method Blank	BS	% Recovery	True Value QC	RPD	Qualifier
GRO C6-C10*	<10.0	10.0	09/17/2021	ND	210	105	200	1.96	
DRO >C10-C28*	<10.0	10.0	09/17/2021	ND	207	103	200	2.21	
EXT DRO >C28-C36	<10.0	10.0	09/17/2021	ND					

Surrogate: 1-Chlorooctane 77.2 % 44.3-133

Surrogate: 1-Chlorooctadecane 73.8 % 38.9-142

Cardinal Laboratories

\*=Accredited Analyte

PLEASE NOTE: Liability and Damages. Cardinal's liability and client's exclusive remedy for any claim arising, whether based in contract or tort, shall be limited to the amount paid by client for analyses. All claims, including those for negligence and any other cause whatsoever shall be deemed waived unless made in writing and received by Cardinal within thirty (30) days after completion of the applicable service. In no event shall Cardinal be liable for incidental or consequential damages, including, without limitation, business interruptions, loss of use, or loss of profits incurred by client, its subsidiaries, affiliates or successors arising out of or related to the performance of the services hereunder by Cardinal, regardless of whether such claim is based upon any of the above stated reasons or otherwise. Results relate only to the samples identified above. This report shall not be reproduced except in full with written approval of Cardinal Laboratories.

Celey D. Keene, Lab Director/Quality Manager



PHONE (575) 393-2326 ° 101 E. MARLAND ° HOBBS, NM 88240

**Analytical Results For:**

APACHE CORP - HOBBS  
 BRUCE BAKER  
 2350 W. MARLAND BLVD.  
 HOBBS NM, 88240  
 Fax To: (575) 393-2432

Received: 09/17/2021  
 Reported: 09/20/2021  
 Project Name: J G HARE #019  
 Project Number: NOT GIVEN  
 Project Location: J G HARE #019

Sampling Date: 09/17/2021  
 Sampling Type: Soil  
 Sampling Condition: Cool & Intact  
 Sample Received By: Jodi Henson

**Sample ID: B 10 (H212601-20)**

BTEx 8021B		mg/kg		Analyzed By: MS					
Analyte	Result	Reporting Limit	Analyzed	Method Blank	BS	% Recovery	True Value QC	RPD	Qualifier
Benzene*	<0.050	0.050	09/18/2021	ND	2.15	107	2.00	4.12	
Toluene*	<0.050	0.050	09/18/2021	ND	2.12	106	2.00	3.68	
Ethylbenzene*	<0.050	0.050	09/18/2021	ND	2.09	105	2.00	6.22	
Total Xylenes*	<0.150	0.150	09/18/2021	ND	6.44	107	6.00	6.66	
Total BTEx	<0.300	0.300	09/18/2021	ND					

Surrogate: 4-Bromofluorobenzene (PID) 103 % 69.9-140

Chloride, SM4500Cl-B		mg/kg		Analyzed By: AC						
Analyte	Result	Reporting Limit	Analyzed	Method Blank	BS	% Recovery	True Value QC	RPD	Qualifier	
Chloride	720	16.0	09/20/2021	ND	416	104	400	0.00		

TPH 8015M		mg/kg		Analyzed By: MS					
Analyte	Result	Reporting Limit	Analyzed	Method Blank	BS	% Recovery	True Value QC	RPD	Qualifier
GRO C6-C10*	<10.0	10.0	09/17/2021	ND	210	105	200	1.96	
DRO >C10-C28*	<10.0	10.0	09/17/2021	ND	207	103	200	2.21	
EXT DRO >C28-C36	<10.0	10.0	09/17/2021	ND					

Surrogate: 1-Chlorooctane 78.2 % 44.3-133

Surrogate: 1-Chlorooctadecane 74.3 % 38.9-142

Cardinal Laboratories

\*=Accredited Analyte

PLEASE NOTE: Liability and Damages. Cardinal's liability and client's exclusive remedy for any claim arising, whether based in contract or tort, shall be limited to the amount paid by client for analyses. All claims, including those for negligence and any other cause whatsoever shall be deemed waived unless made in writing and received by Cardinal within thirty (30) days after completion of the applicable service. In no event shall Cardinal be liable for incidental or consequential damages, including, without limitation, business interruptions, loss of use, or loss of profits incurred by client, its subsidiaries, affiliates or successors arising out of or related to the performance of the services hereunder by Cardinal, regardless of whether such claim is based upon any of the above stated reasons or otherwise. Results relate only to the samples identified above. This report shall not be reproduced except in full with written approval of Cardinal Laboratories.

Celey D. Keene, Lab Director/Quality Manager



PHONE (575) 393-2326 ° 101 E. MARLAND ° HOBBS, NM 88240

**Analytical Results For:**

APACHE CORP - HOBBS  
 BRUCE BAKER  
 2350 W. MARLAND BLVD.  
 HOBBS NM, 88240  
 Fax To: (575) 393-2432

Received: 09/17/2021  
 Reported: 09/20/2021  
 Project Name: J G HARE #019  
 Project Number: NOT GIVEN  
 Project Location: J G HARE #019

Sampling Date: 09/17/2021  
 Sampling Type: Soil  
 Sampling Condition: Cool & Intact  
 Sample Received By: Jodi Henson

**Sample ID: B 13 (H212601-21)**

BTX 8021B		mg/kg		Analyzed By: MS					
Analyte	Result	Reporting Limit	Analyzed	Method Blank	BS	% Recovery	True Value QC	RPD	Qualifier
Benzene*	<0.050	0.050	09/18/2021	ND	2.15	107	2.00	4.12	
Toluene*	<0.050	0.050	09/18/2021	ND	2.12	106	2.00	3.68	
Ethylbenzene*	<0.050	0.050	09/18/2021	ND	2.09	105	2.00	6.22	
Total Xylenes*	<0.150	0.150	09/18/2021	ND	6.44	107	6.00	6.66	
Total BTX	<0.300	0.300	09/18/2021	ND					

Surrogate: 4-Bromofluorobenzene (PID) 97.8 % 69.9-140

Chloride, SM4500CI-B		mg/kg		Analyzed By: AC					
Analyte	Result	Reporting Limit	Analyzed	Method Blank	BS	% Recovery	True Value QC	RPD	Qualifier
Chloride	1360	16.0	09/20/2021	ND	416	104	400	0.00	

TPH 8015M		mg/kg		Analyzed By: MS					
Analyte	Result	Reporting Limit	Analyzed	Method Blank	BS	% Recovery	True Value QC	RPD	Qualifier
GRO C6-C10*	<10.0	10.0	09/17/2021	ND	210	105	200	1.96	
DRO >C10-C28*	<10.0	10.0	09/17/2021	ND	207	103	200	2.21	
EXT DRO >C28-C36	<10.0	10.0	09/17/2021	ND					

Surrogate: 1-Chlorooctane 78.8 % 44.3-133

Surrogate: 1-Chlorooctadecane 74.8 % 38.9-142

Cardinal Laboratories

\*=Accredited Analyte

PLEASE NOTE: Liability and Damages. Cardinal's liability and client's exclusive remedy for any claim arising, whether based in contract or tort, shall be limited to the amount paid by client for analyses. All claims, including those for negligence and any other cause whatsoever shall be deemed waived unless made in writing and received by Cardinal within thirty (30) days after completion of the applicable service. In no event shall Cardinal be liable for incidental or consequential damages, including, without limitation, business interruptions, loss of use, or loss of profits incurred by client, its subsidiaries, affiliates or successors arising out of or related to the performance of the services hereunder by Cardinal, regardless of whether such claim is based upon any of the above stated reasons or otherwise. Results relate only to the samples identified above. This report shall not be reproduced except in full with written approval of Cardinal Laboratories.

Celey D. Keene, Lab Director/Quality Manager





PHONE (575) 393-2326 ° 101 E. MARLAND ° HOBBS, NM 88240

**Analytical Results For:**

APACHE CORP - HOBBS  
 BRUCE BAKER  
 2350 W. MARLAND BLVD.  
 HOBBS NM, 88240  
 Fax To: (575) 393-2432

Received: 09/17/2021  
 Reported: 09/20/2021  
 Project Name: J G HARE #019  
 Project Number: NOT GIVEN  
 Project Location: J G HARE #019

Sampling Date: 09/17/2021  
 Sampling Type: Soil  
 Sampling Condition: Cool & Intact  
 Sample Received By: Jodi Henson

**Sample ID: B 18 (H212601-22)**

BTEx 8021B		mg/kg		Analyzed By: MS					
Analyte	Result	Reporting Limit	Analyzed	Method Blank	BS	% Recovery	True Value QC	RPD	Qualifier
Benzene*	<0.050	0.050	09/18/2021	ND	2.15	107	2.00	4.12	
Toluene*	<0.050	0.050	09/18/2021	ND	2.12	106	2.00	3.68	
Ethylbenzene*	<0.050	0.050	09/18/2021	ND	2.09	105	2.00	6.22	
Total Xylenes*	<0.150	0.150	09/18/2021	ND	6.44	107	6.00	6.66	
Total BTEx	<0.300	0.300	09/18/2021	ND					

Surrogate: 4-Bromofluorobenzene (PID) 102 % 69.9-140

Chloride, SM4500CI-B		mg/kg		Analyzed By: AC						
Analyte	Result	Reporting Limit	Analyzed	Method Blank	BS	% Recovery	True Value QC	RPD	Qualifier	
Chloride	2600	16.0	09/20/2021	ND	400	100	400	0.00	QM-07	

TPH 8015M		mg/kg		Analyzed By: MS					
Analyte	Result	Reporting Limit	Analyzed	Method Blank	BS	% Recovery	True Value QC	RPD	Qualifier
GRO C6-C10*	<10.0	10.0	09/17/2021	ND	210	105	200	1.96	
DRO >C10-C28*	<10.0	10.0	09/17/2021	ND	207	103	200	2.21	
EXT DRO >C28-C36	<10.0	10.0	09/17/2021	ND					

Surrogate: 1-Chlorooctane 77.6 % 44.3-133

Surrogate: 1-Chlorooctadecane 73.2 % 38.9-142

Cardinal Laboratories

\*=Accredited Analyte

PLEASE NOTE: Liability and Damages. Cardinal's liability and client's exclusive remedy for any claim arising, whether based in contract or tort, shall be limited to the amount paid by client for analyses. All claims, including those for negligence and any other cause whatsoever shall be deemed waived unless made in writing and received by Cardinal within thirty (30) days after completion of the applicable service. In no event shall Cardinal be liable for incidental or consequential damages, including, without limitation, business interruptions, loss of use, or loss of profits incurred by client, its subsidiaries, affiliates or successors arising out of or related to the performance of the services hereunder by Cardinal, regardless of whether such claim is based upon any of the above stated reasons or otherwise. Results relate only to the samples identified above. This report shall not be reproduced except in full with written approval of Cardinal Laboratories.

Celey D. Keene, Lab Director/Quality Manager



PHONE (575) 393-2326 ° 101 E. MARLAND ° HOBBS, NM 88240

**Analytical Results For:**

APACHE CORP - HOBBS  
 BRUCE BAKER  
 2350 W. MARLAND BLVD.  
 HOBBS NM, 88240  
 Fax To: (575) 393-2432

Received: 09/17/2021  
 Reported: 09/20/2021  
 Project Name: J G HARE #019  
 Project Number: NOT GIVEN  
 Project Location: J G HARE #019

Sampling Date: 09/17/2021  
 Sampling Type: Soil  
 Sampling Condition: Cool & Intact  
 Sample Received By: Jodi Henson

**Sample ID: B 19 (H212601-23)**

BTX 8021B		mg/kg		Analyzed By: MS					
Analyte	Result	Reporting Limit	Analyzed	Method Blank	BS	% Recovery	True Value QC	RPD	Qualifier
Benzene*	<0.050	0.050	09/18/2021	ND	2.15	107	2.00	4.12	
Toluene*	<0.050	0.050	09/18/2021	ND	2.12	106	2.00	3.68	
Ethylbenzene*	<0.050	0.050	09/18/2021	ND	2.09	105	2.00	6.22	
Total Xylenes*	<0.150	0.150	09/18/2021	ND	6.44	107	6.00	6.66	
Total BTX	<0.300	0.300	09/18/2021	ND					

Surrogate: 4-Bromofluorobenzene (PID) 101 % 69.9-140

Chloride, SM4500CI-B		mg/kg		Analyzed By: AC						
Analyte	Result	Reporting Limit	Analyzed	Method Blank	BS	% Recovery	True Value QC	RPD	Qualifier	
Chloride	272	16.0	09/20/2021	ND	400	100	400	0.00		

TPH 8015M		mg/kg		Analyzed By: MS					
Analyte	Result	Reporting Limit	Analyzed	Method Blank	BS	% Recovery	True Value QC	RPD	Qualifier
GRO C6-C10*	<10.0	10.0	09/17/2021	ND	210	105	200	1.96	
DRO >C10-C28*	<10.0	10.0	09/17/2021	ND	207	103	200	2.21	
EXT DRO >C28-C36	<10.0	10.0	09/17/2021	ND					

Surrogate: 1-Chlorooctane 76.7 % 44.3-133

Surrogate: 1-Chlorooctadecane 73.1 % 38.9-142

Cardinal Laboratories

\*=Accredited Analyte

PLEASE NOTE: Liability and Damages. Cardinal's liability and client's exclusive remedy for any claim arising, whether based in contract or tort, shall be limited to the amount paid by client for analyses. All claims, including those for negligence and any other cause whatsoever shall be deemed waived unless made in writing and received by Cardinal within thirty (30) days after completion of the applicable service. In no event shall Cardinal be liable for incidental or consequential damages, including, without limitation, business interruptions, loss of use, or loss of profits incurred by client, its subsidiaries, affiliates or successors arising out of or related to the performance of the services hereunder by Cardinal, regardless of whether such claim is based upon any of the above stated reasons or otherwise. Results relate only to the samples identified above. This report shall not be reproduced except in full with written approval of Cardinal Laboratories.

Celey D. Keene, Lab Director/Quality Manager



PHONE (575) 393-2326 ° 101 E. MARLAND ° HOBBS, NM 88240

**Analytical Results For:**

APACHE CORP - HOBBS  
 BRUCE BAKER  
 2350 W. MARLAND BLVD.  
 HOBBS NM, 88240  
 Fax To: (575) 393-2432

Received: 09/17/2021  
 Reported: 09/20/2021  
 Project Name: J G HARE #019  
 Project Number: NOT GIVEN  
 Project Location: J G HARE #019

Sampling Date: 09/17/2021  
 Sampling Type: Soil  
 Sampling Condition: Cool & Intact  
 Sample Received By: Jodi Henson

**Sample ID: B 20 (H212601-24)**

BTEx 8021B		mg/kg		Analyzed By: MS					
Analyte	Result	Reporting Limit	Analyzed	Method Blank	BS	% Recovery	True Value QC	RPD	Qualifier
Benzene*	<0.050	0.050	09/18/2021	ND	2.15	107	2.00	4.12	
Toluene*	<0.050	0.050	09/18/2021	ND	2.12	106	2.00	3.68	
Ethylbenzene*	<0.050	0.050	09/18/2021	ND	2.09	105	2.00	6.22	
Total Xylenes*	<0.150	0.150	09/18/2021	ND	6.44	107	6.00	6.66	
Total BTEx	<0.300	0.300	09/18/2021	ND					

Surrogate: 4-Bromofluorobenzene (PID) 107 % 69.9-140

Chloride, SM4500CI-B		mg/kg		Analyzed By: AC						
Analyte	Result	Reporting Limit	Analyzed	Method Blank	BS	% Recovery	True Value QC	RPD	Qualifier	
Chloride	768	16.0	09/20/2021	ND	400	100	400	0.00		

TPH 8015M		mg/kg		Analyzed By: MS					
Analyte	Result	Reporting Limit	Analyzed	Method Blank	BS	% Recovery	True Value QC	RPD	Qualifier
GRO C6-C10*	<10.0	10.0	09/17/2021	ND	210	105	200	1.96	
DRO >C10-C28*	<10.0	10.0	09/17/2021	ND	207	103	200	2.21	
EXT DRO >C28-C36	<10.0	10.0	09/17/2021	ND					

Surrogate: 1-Chlorooctane 73.2 % 44.3-133

Surrogate: 1-Chlorooctadecane 69.0 % 38.9-142

Cardinal Laboratories

\*=Accredited Analyte

PLEASE NOTE: Liability and Damages. Cardinal's liability and client's exclusive remedy for any claim arising, whether based in contract or tort, shall be limited to the amount paid by client for analyses. All claims, including those for negligence and any other cause whatsoever shall be deemed waived unless made in writing and received by Cardinal within thirty (30) days after completion of the applicable service. In no event shall Cardinal be liable for incidental or consequential damages, including, without limitation, business interruptions, loss of use, or loss of profits incurred by client, its subsidiaries, affiliates or successors arising out of or related to the performance of the services hereunder by Cardinal, regardless of whether such claim is based upon any of the above stated reasons or otherwise. Results relate only to the samples identified above. This report shall not be reproduced except in full with written approval of Cardinal Laboratories.

Celey D. Keene, Lab Director/Quality Manager



PHONE (575) 393-2326 ° 101 E. MARLAND ° HOBBS, NM 88240

**Analytical Results For:**

APACHE CORP - HOBBS  
 BRUCE BAKER  
 2350 W. MARLAND BLVD.  
 HOBBS NM, 88240  
 Fax To: (575) 393-2432

Received: 09/17/2021  
 Reported: 09/20/2021  
 Project Name: J G HARE #019  
 Project Number: NOT GIVEN  
 Project Location: J G HARE #019

Sampling Date: 09/17/2021  
 Sampling Type: Soil  
 Sampling Condition: Cool & Intact  
 Sample Received By: Jodi Henson

**Sample ID: B 21 (H212601-25)**

BTX 8021B		mg/kg		Analyzed By: MS					
Analyte	Result	Reporting Limit	Analyzed	Method Blank	BS	% Recovery	True Value QC	RPD	Qualifier
Benzene*	<0.050	0.050	09/18/2021	ND	2.15	107	2.00	4.12	
Toluene*	<0.050	0.050	09/18/2021	ND	2.12	106	2.00	3.68	
Ethylbenzene*	<0.050	0.050	09/18/2021	ND	2.09	105	2.00	6.22	
Total Xylenes*	<0.150	0.150	09/18/2021	ND	6.44	107	6.00	6.66	
Total BTX	<0.300	0.300	09/18/2021	ND					

Surrogate: 4-Bromofluorobenzene (PID) 98.8 % 69.9-140

Chloride, SM4500CI-B		mg/kg		Analyzed By: AC					
Analyte	Result	Reporting Limit	Analyzed	Method Blank	BS	% Recovery	True Value QC	RPD	Qualifier
Chloride	304	16.0	09/20/2021	ND	400	100	400	0.00	

TPH 8015M		mg/kg		Analyzed By: MS					
Analyte	Result	Reporting Limit	Analyzed	Method Blank	BS	% Recovery	True Value QC	RPD	Qualifier
GRO C6-C10*	<10.0	10.0	09/17/2021	ND	210	105	200	1.96	
DRO >C10-C28*	<10.0	10.0	09/17/2021	ND	207	103	200	2.21	
EXT DRO >C28-C36	<10.0	10.0	09/17/2021	ND					

Surrogate: 1-Chlorooctane 75.7 % 44.3-133

Surrogate: 1-Chlorooctadecane 71.3 % 38.9-142

Cardinal Laboratories

\*=Accredited Analyte

PLEASE NOTE: Liability and Damages. Cardinal's liability and client's exclusive remedy for any claim arising, whether based in contract or tort, shall be limited to the amount paid by client for analyses. All claims, including those for negligence and any other cause whatsoever shall be deemed waived unless made in writing and received by Cardinal within thirty (30) days after completion of the applicable service. In no event shall Cardinal be liable for incidental or consequential damages, including, without limitation, business interruptions, loss of use, or loss of profits incurred by client, its subsidiaries, affiliates or successors arising out of or related to the performance of the services hereunder by Cardinal, regardless of whether such claim is based upon any of the above stated reasons or otherwise. Results relate only to the samples identified above. This report shall not be reproduced except in full with written approval of Cardinal Laboratories.

Celey D. Keene, Lab Director/Quality Manager





PHONE (575) 393-2326 ° 101 E. MARLAND ° HOBBS, NM 88240

**Analytical Results For:**

APACHE CORP - HOBBS  
 BRUCE BAKER  
 2350 W. MARLAND BLVD.  
 HOBBS NM, 88240  
 Fax To: (575) 393-2432

Received: 09/17/2021  
 Reported: 09/20/2021  
 Project Name: J G HARE #019  
 Project Number: NOT GIVEN  
 Project Location: J G HARE #019

Sampling Date: 09/17/2021  
 Sampling Type: Soil  
 Sampling Condition: Cool & Intact  
 Sample Received By: Jodi Henson

**Sample ID: B 22 (H212601-26)**

BTEx 8021B		mg/kg		Analyzed By: MS					
Analyte	Result	Reporting Limit	Analyzed	Method Blank	BS	% Recovery	True Value QC	RPD	Qualifier
Benzene*	<0.050	0.050	09/18/2021	ND	2.15	107	2.00	4.12	
Toluene*	<0.050	0.050	09/18/2021	ND	2.12	106	2.00	3.68	
Ethylbenzene*	<0.050	0.050	09/18/2021	ND	2.09	105	2.00	6.22	
Total Xylenes*	<0.150	0.150	09/18/2021	ND	6.44	107	6.00	6.66	
Total BTEx	<0.300	0.300	09/18/2021	ND					

Surrogate: 4-Bromofluorobenzene (PID) 99.2 % 69.9-140

Chloride, SM4500CI-B		mg/kg		Analyzed By: AC					
Analyte	Result	Reporting Limit	Analyzed	Method Blank	BS	% Recovery	True Value QC	RPD	Qualifier
Chloride	3640	16.0	09/20/2021	ND	400	100	400	0.00	

TPH 8015M		mg/kg		Analyzed By: MS					
Analyte	Result	Reporting Limit	Analyzed	Method Blank	BS	% Recovery	True Value QC	RPD	Qualifier
GRO C6-C10*	<10.0	10.0	09/17/2021	ND	210	105	200	1.96	
DRO >C10-C28*	<10.0	10.0	09/17/2021	ND	207	103	200	2.21	
EXT DRO >C28-C36	<10.0	10.0	09/17/2021	ND					

Surrogate: 1-Chlorooctane 74.8 % 44.3-133

Surrogate: 1-Chlorooctadecane 70.0 % 38.9-142

Cardinal Laboratories

\*=Accredited Analyte

PLEASE NOTE: Liability and Damages. Cardinal's liability and client's exclusive remedy for any claim arising, whether based in contract or tort, shall be limited to the amount paid by client for analyses. All claims, including those for negligence and any other cause whatsoever shall be deemed waived unless made in writing and received by Cardinal within thirty (30) days after completion of the applicable service. In no event shall Cardinal be liable for incidental or consequential damages, including, without limitation, business interruptions, loss of use, or loss of profits incurred by client, its subsidiaries, affiliates or successors arising out of or related to the performance of the services hereunder by Cardinal, regardless of whether such claim is based upon any of the above stated reasons or otherwise. Results relate only to the samples identified above. This report shall not be reproduced except in full with written approval of Cardinal Laboratories.

Celey D. Keene, Lab Director/Quality Manager



PHONE (575) 393-2326 ° 101 E. MARLAND ° HOBBS, NM 88240

**Analytical Results For:**

APACHE CORP - HOBBS  
 BRUCE BAKER  
 2350 W. MARLAND BLVD.  
 HOBBS NM, 88240  
 Fax To: (575) 393-2432

Received: 09/17/2021  
 Reported: 09/20/2021  
 Project Name: J G HARE #019  
 Project Number: NOT GIVEN  
 Project Location: J G HARE #019

Sampling Date: 09/17/2021  
 Sampling Type: Soil  
 Sampling Condition: Cool & Intact  
 Sample Received By: Jodi Henson

**Sample ID: B 23 (H212601-27)**

BTX 8021B		mg/kg		Analyzed By: MS					
Analyte	Result	Reporting Limit	Analyzed	Method Blank	BS	% Recovery	True Value QC	RPD	Qualifier
Benzene*	<0.050	0.050	09/18/2021	ND	2.15	107	2.00	4.12	
Toluene*	<0.050	0.050	09/18/2021	ND	2.12	106	2.00	3.68	
Ethylbenzene*	<0.050	0.050	09/18/2021	ND	2.09	105	2.00	6.22	
Total Xylenes*	<0.150	0.150	09/18/2021	ND	6.44	107	6.00	6.66	
Total BTX	<0.300	0.300	09/18/2021	ND					

Surrogate: 4-Bromofluorobenzene (PID) 99.8 % 69.9-140

Chloride, SM4500CI-B		mg/kg		Analyzed By: AC					
Analyte	Result	Reporting Limit	Analyzed	Method Blank	BS	% Recovery	True Value QC	RPD	Qualifier
Chloride	784	16.0	09/20/2021	ND	400	100	400	0.00	

TPH 8015M		mg/kg		Analyzed By: MS					
Analyte	Result	Reporting Limit	Analyzed	Method Blank	BS	% Recovery	True Value QC	RPD	Qualifier
GRO C6-C10*	<10.0	10.0	09/18/2021	ND	210	105	200	1.96	
DRO >C10-C28*	<10.0	10.0	09/18/2021	ND	207	103	200	2.21	
EXT DRO >C28-C36	<10.0	10.0	09/18/2021	ND					

Surrogate: 1-Chlorooctane 74.2 % 44.3-133

Surrogate: 1-Chlorooctadecane 70.0 % 38.9-142

Cardinal Laboratories

\*=Accredited Analyte

PLEASE NOTE: Liability and Damages. Cardinal's liability and client's exclusive remedy for any claim arising, whether based in contract or tort, shall be limited to the amount paid by client for analyses. All claims, including those for negligence and any other cause whatsoever shall be deemed waived unless made in writing and received by Cardinal within thirty (30) days after completion of the applicable service. In no event shall Cardinal be liable for incidental or consequential damages, including, without limitation, business interruptions, loss of use, or loss of profits incurred by client, its subsidiaries, affiliates or successors arising out of or related to the performance of the services hereunder by Cardinal, regardless of whether such claim is based upon any of the above stated reasons or otherwise. Results relate only to the samples identified above. This report shall not be reproduced except in full with written approval of Cardinal Laboratories.

Celey D. Keene, Lab Director/Quality Manager



PHONE (575) 393-2326 ° 101 E. MARLAND ° HOBBS, NM 88240

**Analytical Results For:**

APACHE CORP - HOBBS  
 BRUCE BAKER  
 2350 W. MARLAND BLVD.  
 HOBBS NM, 88240  
 Fax To: (575) 393-2432

Received: 09/17/2021  
 Reported: 09/20/2021  
 Project Name: J G HARE #019  
 Project Number: NOT GIVEN  
 Project Location: J G HARE #019

Sampling Date: 09/17/2021  
 Sampling Type: Soil  
 Sampling Condition: Cool & Intact  
 Sample Received By: Jodi Henson

**Sample ID: B 24 (H212601-28)**

BTEx 8021B		mg/kg		Analyzed By: MS					
Analyte	Result	Reporting Limit	Analyzed	Method Blank	BS	% Recovery	True Value QC	RPD	Qualifier
Benzene*	<0.050	0.050	09/18/2021	ND	2.15	107	2.00	4.12	
Toluene*	<0.050	0.050	09/18/2021	ND	2.12	106	2.00	3.68	
Ethylbenzene*	<0.050	0.050	09/18/2021	ND	2.09	105	2.00	6.22	
Total Xylenes*	<0.150	0.150	09/18/2021	ND	6.44	107	6.00	6.66	
Total BTEx	<0.300	0.300	09/18/2021	ND					

Surrogate: 4-Bromofluorobenzene (PID) 101 % 69.9-140

Chloride, SM4500Cl-B		mg/kg		Analyzed By: AC					
Analyte	Result	Reporting Limit	Analyzed	Method Blank	BS	% Recovery	True Value QC	RPD	Qualifier
Chloride	1680	16.0	09/20/2021	ND	400	100	400	0.00	

TPH 8015M		mg/kg		Analyzed By: MS					
Analyte	Result	Reporting Limit	Analyzed	Method Blank	BS	% Recovery	True Value QC	RPD	Qualifier
GRO C6-C10*	<10.0	10.0	09/18/2021	ND	210	105	200	1.96	
DRO >C10-C28*	<10.0	10.0	09/18/2021	ND	207	103	200	2.21	
EXT DRO >C28-C36	<10.0	10.0	09/18/2021	ND					

Surrogate: 1-Chlorooctane 72.4 % 44.3-133

Surrogate: 1-Chlorooctadecane 68.0 % 38.9-142

Cardinal Laboratories

\*=Accredited Analyte

PLEASE NOTE: Liability and Damages. Cardinal's liability and client's exclusive remedy for any claim arising, whether based in contract or tort, shall be limited to the amount paid by client for analyses. All claims, including those for negligence and any other cause whatsoever shall be deemed waived unless made in writing and received by Cardinal within thirty (30) days after completion of the applicable service. In no event shall Cardinal be liable for incidental or consequential damages, including, without limitation, business interruptions, loss of use, or loss of profits incurred by client, its subsidiaries, affiliates or successors arising out of or related to the performance of the services hereunder by Cardinal, regardless of whether such claim is based upon any of the above stated reasons or otherwise. Results relate only to the samples identified above. This report shall not be reproduced except in full with written approval of Cardinal Laboratories.

Celey D. Keene, Lab Director/Quality Manager



PHONE (575) 393-2326 ° 101 E. MARLAND ° HOBBS, NM 88240

**Analytical Results For:**

APACHE CORP - HOBBS  
 BRUCE BAKER  
 2350 W. MARLAND BLVD.  
 HOBBS NM, 88240  
 Fax To: (575) 393-2432

Received: 09/17/2021  
 Reported: 09/20/2021  
 Project Name: J G HARE #019  
 Project Number: NOT GIVEN  
 Project Location: J G HARE #019

Sampling Date: 09/17/2021  
 Sampling Type: Soil  
 Sampling Condition: Cool & Intact  
 Sample Received By: Jodi Henson

**Sample ID: B 25 (H212601-29)**

BTX 8021B		mg/kg		Analyzed By: MS					
Analyte	Result	Reporting Limit	Analyzed	Method Blank	BS	% Recovery	True Value QC	RPD	Qualifier
Benzene*	<0.050	0.050	09/18/2021	ND	2.15	107	2.00	4.12	
Toluene*	<0.050	0.050	09/18/2021	ND	2.12	106	2.00	3.68	
Ethylbenzene*	<0.050	0.050	09/18/2021	ND	2.09	105	2.00	6.22	
Total Xylenes*	<0.150	0.150	09/18/2021	ND	6.44	107	6.00	6.66	
Total BTX	<0.300	0.300	09/18/2021	ND					

Surrogate: 4-Bromofluorobenzene (PID) 101 % 69.9-140

Chloride, SM4500CI-B		mg/kg		Analyzed By: AC					
Analyte	Result	Reporting Limit	Analyzed	Method Blank	BS	% Recovery	True Value QC	RPD	Qualifier
Chloride	800	16.0	09/20/2021	ND	400	100	400	0.00	

TPH 8015M		mg/kg		Analyzed By: MS					
Analyte	Result	Reporting Limit	Analyzed	Method Blank	BS	% Recovery	True Value QC	RPD	Qualifier
GRO C6-C10*	<10.0	10.0	09/18/2021	ND	210	105	200	1.96	
DRO >C10-C28*	<10.0	10.0	09/18/2021	ND	207	103	200	2.21	
EXT DRO >C28-C36	<10.0	10.0	09/18/2021	ND					

Surrogate: 1-Chlorooctane 78.2 % 44.3-133

Surrogate: 1-Chlorooctadecane 74.8 % 38.9-142

Cardinal Laboratories

\*=Accredited Analyte

PLEASE NOTE: Liability and Damages. Cardinal's liability and client's exclusive remedy for any claim arising, whether based in contract or tort, shall be limited to the amount paid by client for analyses. All claims, including those for negligence and any other cause whatsoever shall be deemed waived unless made in writing and received by Cardinal within thirty (30) days after completion of the applicable service. In no event shall Cardinal be liable for incidental or consequential damages, including, without limitation, business interruptions, loss of use, or loss of profits incurred by client, its subsidiaries, affiliates or successors arising out of or related to the performance of the services hereunder by Cardinal, regardless of whether such claim is based upon any of the above stated reasons or otherwise. Results relate only to the samples identified above. This report shall not be reproduced except in full with written approval of Cardinal Laboratories.

Celey D. Keene, Lab Director/Quality Manager





PHONE (575) 393-2326 ° 101 E. MARLAND ° HOBBS, NM 88240

**Analytical Results For:**

APACHE CORP - HOBBS  
 BRUCE BAKER  
 2350 W. MARLAND BLVD.  
 HOBBS NM, 88240  
 Fax To: (575) 393-2432

Received: 09/17/2021  
 Reported: 09/20/2021  
 Project Name: J G HARE #019  
 Project Number: NOT GIVEN  
 Project Location: J G HARE #019

Sampling Date: 09/17/2021  
 Sampling Type: Soil  
 Sampling Condition: Cool & Intact  
 Sample Received By: Jodi Henson

**Sample ID: B 26 (H212601-30)**

BTX 8021B		mg/kg		Analyzed By: MS					
Analyte	Result	Reporting Limit	Analyzed	Method Blank	BS	% Recovery	True Value QC	RPD	Qualifier
Benzene*	<0.050	0.050	09/18/2021	ND	2.15	107	2.00	4.12	
Toluene*	<0.050	0.050	09/18/2021	ND	2.12	106	2.00	3.68	
Ethylbenzene*	<0.050	0.050	09/18/2021	ND	2.09	105	2.00	6.22	
Total Xylenes*	<0.150	0.150	09/18/2021	ND	6.44	107	6.00	6.66	
Total BTX	<0.300	0.300	09/18/2021	ND					

Surrogate: 4-Bromofluorobenzene (PID) 97.1 % 69.9-140

Chloride, SM4500CI-B		mg/kg		Analyzed By: AC					
Analyte	Result	Reporting Limit	Analyzed	Method Blank	BS	% Recovery	True Value QC	RPD	Qualifier
Chloride	1710	16.0	09/20/2021	ND	400	100	400	0.00	

TPH 8015M		mg/kg		Analyzed By: MS					
Analyte	Result	Reporting Limit	Analyzed	Method Blank	BS	% Recovery	True Value QC	RPD	Qualifier
GRO C6-C10*	<10.0	10.0	09/18/2021	ND	210	105	200	1.96	
DRO >C10-C28*	80.3	10.0	09/18/2021	ND	207	103	200	2.21	
EXT DRO >C28-C36	<10.0	10.0	09/18/2021	ND					

Surrogate: 1-Chlorooctane 77.6 % 44.3-133

Surrogate: 1-Chlorooctadecane 78.7 % 38.9-142

Cardinal Laboratories

\*=Accredited Analyte

PLEASE NOTE: Liability and Damages. Cardinal's liability and client's exclusive remedy for any claim arising, whether based in contract or tort, shall be limited to the amount paid by client for analyses. All claims, including those for negligence and any other cause whatsoever shall be deemed waived unless made in writing and received by Cardinal within thirty (30) days after completion of the applicable service. In no event shall Cardinal be liable for incidental or consequential damages, including, without limitation, business interruptions, loss of use, or loss of profits incurred by client, its subsidiaries, affiliates or successors arising out of or related to the performance of the services hereunder by Cardinal, regardless of whether such claim is based upon any of the above stated reasons or otherwise. Results relate only to the samples identified above. This report shall not be reproduced except in full with written approval of Cardinal Laboratories.

Celey D. Keene, Lab Director/Quality Manager



PHONE (575) 393-2326 ° 101 E. MARLAND ° HOBBS, NM 88240

**Analytical Results For:**

APACHE CORP - HOBBS  
 BRUCE BAKER  
 2350 W. MARLAND BLVD.  
 HOBBS NM, 88240  
 Fax To: (575) 393-2432

Received: 09/17/2021  
 Reported: 09/20/2021  
 Project Name: J G HARE #019  
 Project Number: NOT GIVEN  
 Project Location: J G HARE #019

Sampling Date: 09/17/2021  
 Sampling Type: Soil  
 Sampling Condition: Cool & Intact  
 Sample Received By: Jodi Henson

**Sample ID: B 29 (H212601-31)**

BTEx 8021B		mg/kg		Analyzed By: MS					
Analyte	Result	Reporting Limit	Analyzed	Method Blank	BS	% Recovery	True Value QC	RPD	Qualifier
Benzene*	<0.050	0.050	09/18/2021	ND	2.15	107	2.00	4.12	
Toluene*	<0.050	0.050	09/18/2021	ND	2.12	106	2.00	3.68	
Ethylbenzene*	<0.050	0.050	09/18/2021	ND	2.09	105	2.00	6.22	
Total Xylenes*	<0.150	0.150	09/18/2021	ND	6.44	107	6.00	6.66	
Total BTEx	<0.300	0.300	09/18/2021	ND					

Surrogate: 4-Bromofluorobenzene (PID) 105 % 69.9-140

Chloride, SM4500CI-B		mg/kg		Analyzed By: AC					
Analyte	Result	Reporting Limit	Analyzed	Method Blank	BS	% Recovery	True Value QC	RPD	Qualifier
Chloride	3120	16.0	09/20/2021	ND	400	100	400	0.00	

TPH 8015M		mg/kg		Analyzed By: MS					
Analyte	Result	Reporting Limit	Analyzed	Method Blank	BS	% Recovery	True Value QC	RPD	Qualifier
GRO C6-C10*	<10.0	10.0	09/18/2021	ND	210	105	200	1.96	
DRO >C10-C28*	<10.0	10.0	09/18/2021	ND	207	103	200	2.21	
EXT DRO >C28-C36	<10.0	10.0	09/18/2021	ND					

Surrogate: 1-Chlorooctane 71.4 % 44.3-133

Surrogate: 1-Chlorooctadecane 69.1 % 38.9-142

Cardinal Laboratories

\*=Accredited Analyte

PLEASE NOTE: Liability and Damages. Cardinal's liability and client's exclusive remedy for any claim arising, whether based in contract or tort, shall be limited to the amount paid by client for analyses. All claims, including those for negligence and any other cause whatsoever shall be deemed waived unless made in writing and received by Cardinal within thirty (30) days after completion of the applicable service. In no event shall Cardinal be liable for incidental or consequential damages, including, without limitation, business interruptions, loss of use, or loss of profits incurred by client, its subsidiaries, affiliates or successors arising out of or related to the performance of the services hereunder by Cardinal, regardless of whether such claim is based upon any of the above stated reasons or otherwise. Results relate only to the samples identified above. This report shall not be reproduced except in full with written approval of Cardinal Laboratories.

Celey D. Keene, Lab Director/Quality Manager



PHONE (575) 393-2326 ° 101 E. MARLAND ° HOBBS, NM 88240

**Analytical Results For:**

APACHE CORP - HOBBS  
 BRUCE BAKER  
 2350 W. MARLAND BLVD.  
 HOBBS NM, 88240  
 Fax To: (575) 393-2432

Received: 09/17/2021  
 Reported: 09/20/2021  
 Project Name: J G HARE #019  
 Project Number: NOT GIVEN  
 Project Location: J G HARE #019

Sampling Date: 09/17/2021  
 Sampling Type: Soil  
 Sampling Condition: Cool & Intact  
 Sample Received By: Jodi Henson

**Sample ID: B 30 (H212601-32)**

BTX 8021B		mg/kg		Analyzed By: MS					
Analyte	Result	Reporting Limit	Analyzed	Method Blank	BS	% Recovery	True Value QC	RPD	Qualifier
Benzene*	<0.050	0.050	09/18/2021	ND	2.15	107	2.00	4.12	
Toluene*	<0.050	0.050	09/18/2021	ND	2.12	106	2.00	3.68	
Ethylbenzene*	<0.050	0.050	09/18/2021	ND	2.09	105	2.00	6.22	
Total Xylenes*	<0.150	0.150	09/18/2021	ND	6.44	107	6.00	6.66	
Total BTX	<0.300	0.300	09/18/2021	ND					

Surrogate: 4-Bromofluorobenzene (PID) 100 % 69.9-140

Chloride, SM4500CI-B		mg/kg		Analyzed By: AC					
Analyte	Result	Reporting Limit	Analyzed	Method Blank	BS	% Recovery	True Value QC	RPD	Qualifier
Chloride	496	16.0	09/20/2021	ND	400	100	400	0.00	

TPH 8015M		mg/kg		Analyzed By: MS					
Analyte	Result	Reporting Limit	Analyzed	Method Blank	BS	% Recovery	True Value QC	RPD	Qualifier
GRO C6-C10*	<10.0	10.0	09/18/2021	ND	210	105	200	1.96	
DRO >C10-C28*	<10.0	10.0	09/18/2021	ND	207	103	200	2.21	
EXT DRO >C28-C36	<10.0	10.0	09/18/2021	ND					

Surrogate: 1-Chlorooctane 73.9 % 44.3-133

Surrogate: 1-Chlorooctadecane 71.6 % 38.9-142

Cardinal Laboratories

\*=Accredited Analyte

PLEASE NOTE: Liability and Damages. Cardinal's liability and client's exclusive remedy for any claim arising, whether based in contract or tort, shall be limited to the amount paid by client for analyses. All claims, including those for negligence and any other cause whatsoever shall be deemed waived unless made in writing and received by Cardinal within thirty (30) days after completion of the applicable service. In no event shall Cardinal be liable for incidental or consequential damages, including, without limitation, business interruptions, loss of use, or loss of profits incurred by client, its subsidiaries, affiliates or successors arising out of or related to the performance of the services hereunder by Cardinal, regardless of whether such claim is based upon any of the above stated reasons or otherwise. Results relate only to the samples identified above. This report shall not be reproduced except in full with written approval of Cardinal Laboratories.

Celey D. Keene, Lab Director/Quality Manager



PHONE (575) 393-2326 ° 101 E. MARLAND ° HOBBS, NM 88240

**Analytical Results For:**

APACHE CORP - HOBBS  
 BRUCE BAKER  
 2350 W. MARLAND BLVD.  
 HOBBS NM, 88240  
 Fax To: (575) 393-2432

Received: 09/17/2021  
 Reported: 09/20/2021  
 Project Name: J G HARE #019  
 Project Number: NOT GIVEN  
 Project Location: J G HARE #019

Sampling Date: 09/17/2021  
 Sampling Type: Soil  
 Sampling Condition: Cool & Intact  
 Sample Received By: Jodi Henson

**Sample ID: B 34 (H212601-33)**

BTEx 8021B		mg/kg		Analyzed By: MS					
Analyte	Result	Reporting Limit	Analyzed	Method Blank	BS	% Recovery	True Value QC	RPD	Qualifier
Benzene*	<0.050	0.050	09/18/2021	ND	2.15	107	2.00	4.12	
Toluene*	<0.050	0.050	09/18/2021	ND	2.12	106	2.00	3.68	
Ethylbenzene*	<0.050	0.050	09/18/2021	ND	2.09	105	2.00	6.22	
Total Xylenes*	<0.150	0.150	09/18/2021	ND	6.44	107	6.00	6.66	
Total BTEX	<0.300	0.300	09/18/2021	ND					

Surrogate: 4-Bromofluorobenzene (PID) 100 % 69.9-140

Chloride, SM4500Cl-B		mg/kg		Analyzed By: AC					
Analyte	Result	Reporting Limit	Analyzed	Method Blank	BS	% Recovery	True Value QC	RPD	Qualifier
Chloride	224	16.0	09/20/2021	ND	400	100	400	0.00	

TPH 8015M		mg/kg		Analyzed By: MS					
Analyte	Result	Reporting Limit	Analyzed	Method Blank	BS	% Recovery	True Value QC	RPD	Qualifier
GRO C6-C10*	<10.0	10.0	09/18/2021	ND	210	105	200	1.96	
DRO >C10-C28*	<10.0	10.0	09/18/2021	ND	207	103	200	2.21	
EXT DRO >C28-C36	<10.0	10.0	09/18/2021	ND					

Surrogate: 1-Chlorooctane 74.9 % 44.3-133

Surrogate: 1-Chlorooctadecane 73.7 % 38.9-142

Cardinal Laboratories

\*=Accredited Analyte

PLEASE NOTE: Liability and Damages. Cardinal's liability and client's exclusive remedy for any claim arising, whether based in contract or tort, shall be limited to the amount paid by client for analyses. All claims, including those for negligence and any other cause whatsoever shall be deemed waived unless made in writing and received by Cardinal within thirty (30) days after completion of the applicable service. In no event shall Cardinal be liable for incidental or consequential damages, including, without limitation, business interruptions, loss of use, or loss of profits incurred by client, its subsidiaries, affiliates or successors arising out of or related to the performance of the services hereunder by Cardinal, regardless of whether such claim is based upon any of the above stated reasons or otherwise. Results relate only to the samples identified above. This report shall not be reproduced except in full with written approval of Cardinal Laboratories.

Celey D. Keene, Lab Director/Quality Manager



PHONE (575) 393-2326 ° 101 E. MARLAND ° HOBBS, NM 88240

**Analytical Results For:**

APACHE CORP - HOBBS  
 BRUCE BAKER  
 2350 W. MARLAND BLVD.  
 HOBBS NM, 88240  
 Fax To: (575) 393-2432

Received: 09/17/2021  
 Reported: 09/20/2021  
 Project Name: J G HARE #019  
 Project Number: NOT GIVEN  
 Project Location: J G HARE #019

Sampling Date: 09/17/2021  
 Sampling Type: Soil  
 Sampling Condition: Cool & Intact  
 Sample Received By: Jodi Henson

**Sample ID: B 35 (H212601-34)**

BTX 8021B		mg/kg		Analyzed By: MS						
Analyte	Result	Reporting Limit	Analyzed	Method Blank	BS	% Recovery	True Value QC	RPD	Qualifier	
Benzene*	<0.050	0.050	09/18/2021	ND	2.15	107	2.00	4.12		
Toluene*	<0.050	0.050	09/18/2021	ND	2.12	106	2.00	3.68		
Ethylbenzene*	<0.050	0.050	09/18/2021	ND	2.09	105	2.00	6.22		
Total Xylenes*	<0.150	0.150	09/18/2021	ND	6.44	107	6.00	6.66		
Total BTX	<0.300	0.300	09/18/2021	ND						

Surrogate: 4-Bromofluorobenzene (PID) 99.1 % 69.9-140

Chloride, SM4500CI-B		mg/kg		Analyzed By: AC						
Analyte	Result	Reporting Limit	Analyzed	Method Blank	BS	% Recovery	True Value QC	RPD	Qualifier	
Chloride	48.0	16.0	09/20/2021	ND	400	100	400	0.00		

TPH 8015M		mg/kg		Analyzed By: MS					
Analyte	Result	Reporting Limit	Analyzed	Method Blank	BS	% Recovery	True Value QC	RPD	Qualifier
GRO C6-C10*	<10.0	10.0	09/18/2021	ND	210	105	200	1.96	
DRO >C10-C28*	<10.0	10.0	09/18/2021	ND	207	103	200	2.21	
EXT DRO >C28-C36	<10.0	10.0	09/18/2021	ND					

Surrogate: 1-Chlorooctane 79.6 % 44.3-133

Surrogate: 1-Chlorooctadecane 78.9 % 38.9-142

Cardinal Laboratories

\*=Accredited Analyte

PLEASE NOTE: Liability and Damages. Cardinal's liability and client's exclusive remedy for any claim arising, whether based in contract or tort, shall be limited to the amount paid by client for analyses. All claims, including those for negligence and any other cause whatsoever shall be deemed waived unless made in writing and received by Cardinal within thirty (30) days after completion of the applicable service. In no event shall Cardinal be liable for incidental or consequential damages, including, without limitation, business interruptions, loss of use, or loss of profits incurred by client, its subsidiaries, affiliates or successors arising out of or related to the performance of the services hereunder by Cardinal, regardless of whether such claim is based upon any of the above stated reasons or otherwise. Results relate only to the samples identified above. This report shall not be reproduced except in full with written approval of Cardinal Laboratories.

Celey D. Keene, Lab Director/Quality Manager





PHONE (575) 393-2326 ° 101 E. MARLAND ° HOBBS, NM 88240

**Analytical Results For:**

APACHE CORP - HOBBS  
 BRUCE BAKER  
 2350 W. MARLAND BLVD.  
 HOBBS NM, 88240  
 Fax To: (575) 393-2432

Received: 09/17/2021  
 Reported: 09/20/2021  
 Project Name: J G HARE #019  
 Project Number: NOT GIVEN  
 Project Location: J G HARE #019

Sampling Date: 09/17/2021  
 Sampling Type: Soil  
 Sampling Condition: Cool & Intact  
 Sample Received By: Jodi Henson

**Sample ID: B 36 (H212601-35)**

BTX 8021B		mg/kg		Analyzed By: MS					
Analyte	Result	Reporting Limit	Analyzed	Method Blank	BS	% Recovery	True Value QC	RPD	Qualifier
Benzene*	<0.050	0.050	09/18/2021	ND	2.15	107	2.00	4.12	
Toluene*	<0.050	0.050	09/18/2021	ND	2.12	106	2.00	3.68	
Ethylbenzene*	<0.050	0.050	09/18/2021	ND	2.09	105	2.00	6.22	
Total Xylenes*	<0.150	0.150	09/18/2021	ND	6.44	107	6.00	6.66	
Total BTX	<0.300	0.300	09/18/2021	ND					

Surrogate: 4-Bromofluorobenzene (PID) 100 % 69.9-140

Chloride, SM4500CI-B		mg/kg		Analyzed By: AC					
Analyte	Result	Reporting Limit	Analyzed	Method Blank	BS	% Recovery	True Value QC	RPD	Qualifier
Chloride	384	16.0	09/20/2021	ND	400	100	400	0.00	

TPH 8015M		mg/kg		Analyzed By: MS					
Analyte	Result	Reporting Limit	Analyzed	Method Blank	BS	% Recovery	True Value QC	RPD	Qualifier
GRO C6-C10*	<10.0	10.0	09/20/2021	ND	198	98.9	200	1.79	
DRO >C10-C28*	<10.0	10.0	09/20/2021	ND	217	109	200	1.35	
EXT DRO >C28-C36	<10.0	10.0	09/20/2021	ND					

Surrogate: 1-Chlorooctane 79.3 % 44.3-133

Surrogate: 1-Chlorooctadecane 70.6 % 38.9-142

Cardinal Laboratories

\*=Accredited Analyte

PLEASE NOTE: Liability and Damages. Cardinal's liability and client's exclusive remedy for any claim arising, whether based in contract or tort, shall be limited to the amount paid by client for analyses. All claims, including those for negligence and any other cause whatsoever shall be deemed waived unless made in writing and received by Cardinal within thirty (30) days after completion of the applicable service. In no event shall Cardinal be liable for incidental or consequential damages, including, without limitation, business interruptions, loss of use, or loss of profits incurred by client, its subsidiaries, affiliates or successors arising out of or related to the performance of the services hereunder by Cardinal, regardless of whether such claim is based upon any of the above stated reasons or otherwise. Results relate only to the samples identified above. This report shall not be reproduced except in full with written approval of Cardinal Laboratories.

Celey D. Keene, Lab Director/Quality Manager



PHONE (575) 393-2326 ° 101 E. MARLAND ° HOBBS, NM 88240

**Analytical Results For:**

APACHE CORP - HOBBS  
 BRUCE BAKER  
 2350 W. MARLAND BLVD.  
 HOBBS NM, 88240  
 Fax To: (575) 393-2432

Received: 09/17/2021  
 Reported: 09/20/2021  
 Project Name: J G HARE #019  
 Project Number: NOT GIVEN  
 Project Location: J G HARE #019

Sampling Date: 09/17/2021  
 Sampling Type: Soil  
 Sampling Condition: Cool & Intact  
 Sample Received By: Jodi Henson

**Sample ID: B 37 (H212601-36)**

BTEx 8021B		mg/kg		Analyzed By: MS					
Analyte	Result	Reporting Limit	Analyzed	Method Blank	BS	% Recovery	True Value QC	RPD	Qualifier
Benzene*	<0.050	0.050	09/18/2021	ND	2.15	107	2.00	4.12	
Toluene*	<0.050	0.050	09/18/2021	ND	2.12	106	2.00	3.68	
Ethylbenzene*	<0.050	0.050	09/18/2021	ND	2.09	105	2.00	6.22	
Total Xylenes*	<0.150	0.150	09/18/2021	ND	6.44	107	6.00	6.66	
Total BTEx	<0.300	0.300	09/18/2021	ND					

Surrogate: 4-Bromofluorobenzene (PID) 96.4 % 69.9-140

Chloride, SM4500CI-B		mg/kg		Analyzed By: AC					
Analyte	Result	Reporting Limit	Analyzed	Method Blank	BS	% Recovery	True Value QC	RPD	Qualifier
Chloride	208	16.0	09/20/2021	ND	400	100	400	0.00	

TPH 8015M		mg/kg		Analyzed By: MS					
Analyte	Result	Reporting Limit	Analyzed	Method Blank	BS	% Recovery	True Value QC	RPD	Qualifier
GRO C6-C10*	<10.0	10.0	09/20/2021	ND	198	98.9	200	1.79	
DRO >C10-C28*	<10.0	10.0	09/20/2021	ND	217	109	200	1.35	
EXT DRO >C28-C36	<10.0	10.0	09/20/2021	ND					

Surrogate: 1-Chlorooctane 77.6 % 44.3-133

Surrogate: 1-Chlorooctadecane 69.5 % 38.9-142

Cardinal Laboratories

\*=Accredited Analyte

PLEASE NOTE: Liability and Damages. Cardinal's liability and client's exclusive remedy for any claim arising, whether based in contract or tort, shall be limited to the amount paid by client for analyses. All claims, including those for negligence and any other cause whatsoever shall be deemed waived unless made in writing and received by Cardinal within thirty (30) days after completion of the applicable service. In no event shall Cardinal be liable for incidental or consequential damages, including, without limitation, business interruptions, loss of use, or loss of profits incurred by client, its subsidiaries, affiliates or successors arising out of or related to the performance of the services hereunder by Cardinal, regardless of whether such claim is based upon any of the above stated reasons or otherwise. Results relate only to the samples identified above. This report shall not be reproduced except in full with written approval of Cardinal Laboratories.

Celey D. Keene, Lab Director/Quality Manager



PHONE (575) 393-2326 ° 101 E. MARLAND ° HOBBS, NM 88240

**Analytical Results For:**

APACHE CORP - HOBBS  
 BRUCE BAKER  
 2350 W. MARLAND BLVD.  
 HOBBS NM, 88240  
 Fax To: (575) 393-2432

Received: 09/17/2021  
 Reported: 09/20/2021  
 Project Name: J G HARE #019  
 Project Number: NOT GIVEN  
 Project Location: J G HARE #019

Sampling Date: 09/17/2021  
 Sampling Type: Soil  
 Sampling Condition: Cool & Intact  
 Sample Received By: Jodi Henson

**Sample ID: B 38 (H212601-37)**

BTEx 8021B		mg/kg		Analyzed By: MS					
Analyte	Result	Reporting Limit	Analyzed	Method Blank	BS	% Recovery	True Value QC	RPD	Qualifier
Benzene*	<0.050	0.050	09/18/2021	ND	2.15	107	2.00	4.12	
Toluene*	<0.050	0.050	09/18/2021	ND	2.12	106	2.00	3.68	
Ethylbenzene*	<0.050	0.050	09/18/2021	ND	2.09	105	2.00	6.22	
Total Xylenes*	<0.150	0.150	09/18/2021	ND	6.44	107	6.00	6.66	
Total BTEx	<0.300	0.300	09/18/2021	ND					

Surrogate: 4-Bromofluorobenzene (PID) 103 % 69.9-140

Chloride, SM4500CI-B		mg/kg		Analyzed By: AC					
Analyte	Result	Reporting Limit	Analyzed	Method Blank	BS	% Recovery	True Value QC	RPD	Qualifier
Chloride	400	16.0	09/20/2021	ND	400	100	400	0.00	

TPH 8015M		mg/kg		Analyzed By: MS					
Analyte	Result	Reporting Limit	Analyzed	Method Blank	BS	% Recovery	True Value QC	RPD	Qualifier
GRO C6-C10*	<10.0	10.0	09/20/2021	ND	198	98.9	200	1.79	
DRO >C10-C28*	<10.0	10.0	09/20/2021	ND	217	109	200	1.35	
EXT DRO >C28-C36	<10.0	10.0	09/20/2021	ND					

Surrogate: 1-Chlorooctane 79.4 % 44.3-133

Surrogate: 1-Chlorooctadecane 70.5 % 38.9-142

Cardinal Laboratories

\*=Accredited Analyte

PLEASE NOTE: Liability and Damages. Cardinal's liability and client's exclusive remedy for any claim arising, whether based in contract or tort, shall be limited to the amount paid by client for analyses. All claims, including those for negligence and any other cause whatsoever shall be deemed waived unless made in writing and received by Cardinal within thirty (30) days after completion of the applicable service. In no event shall Cardinal be liable for incidental or consequential damages, including, without limitation, business interruptions, loss of use, or loss of profits incurred by client, its subsidiaries, affiliates or successors arising out of or related to the performance of the services hereunder by Cardinal, regardless of whether such claim is based upon any of the above stated reasons or otherwise. Results relate only to the samples identified above. This report shall not be reproduced except in full with written approval of Cardinal Laboratories.

Celey D. Keene, Lab Director/Quality Manager



PHONE (575) 393-2326 ° 101 E. MARLAND ° HOBBS, NM 88240

**Analytical Results For:**

APACHE CORP - HOBBS  
 BRUCE BAKER  
 2350 W. MARLAND BLVD.  
 HOBBS NM, 88240  
 Fax To: (575) 393-2432

Received: 09/17/2021  
 Reported: 09/20/2021  
 Project Name: J G HARE #019  
 Project Number: NOT GIVEN  
 Project Location: J G HARE #019

Sampling Date: 09/17/2021  
 Sampling Type: Soil  
 Sampling Condition: Cool & Intact  
 Sample Received By: Jodi Henson

**Sample ID: B 27 (H212601-38)**

BTX 8021B		mg/kg		Analyzed By: MS					
Analyte	Result	Reporting Limit	Analyzed	Method Blank	BS	% Recovery	True Value QC	RPD	Qualifier
Benzene*	<0.050	0.050	09/17/2021	ND	2.11	105	2.00	3.56	
Toluene*	<0.050	0.050	09/17/2021	ND	2.05	103	2.00	2.00	
Ethylbenzene*	<0.050	0.050	09/17/2021	ND	2.03	102	2.00	1.31	
Total Xylenes*	<0.150	0.150	09/17/2021	ND	6.22	104	6.00	1.92	
Total BTX	<0.300	0.300	09/17/2021	ND					

Surrogate: 4-Bromofluorobenzene (PID) 99.6 % 69.9-140

Chloride, SM4500CI-B		mg/kg		Analyzed By: AC					
Analyte	Result	Reporting Limit	Analyzed	Method Blank	BS	% Recovery	True Value QC	RPD	Qualifier
Chloride	2080	16.0	09/20/2021	ND	400	100	400	0.00	

TPH 8015M		mg/kg		Analyzed By: MS					
Analyte	Result	Reporting Limit	Analyzed	Method Blank	BS	% Recovery	True Value QC	RPD	Qualifier
GRO C6-C10*	<10.0	10.0	09/20/2021	ND	198	98.9	200	1.79	
DRO >C10-C28*	<10.0	10.0	09/20/2021	ND	217	109	200	1.35	
EXT DRO >C28-C36	<10.0	10.0	09/20/2021	ND					

Surrogate: 1-Chlorooctane 80.8 % 44.3-133

Surrogate: 1-Chlorooctadecane 72.2 % 38.9-142

Cardinal Laboratories

\*=Accredited Analyte

PLEASE NOTE: Liability and Damages. Cardinal's liability and client's exclusive remedy for any claim arising, whether based in contract or tort, shall be limited to the amount paid by client for analyses. All claims, including those for negligence and any other cause whatsoever shall be deemed waived unless made in writing and received by Cardinal within thirty (30) days after completion of the applicable service. In no event shall Cardinal be liable for incidental or consequential damages, including, without limitation, business interruptions, loss of use, or loss of profits incurred by client, its subsidiaries, affiliates or successors arising out of or related to the performance of the services hereunder by Cardinal, regardless of whether such claim is based upon any of the above stated reasons or otherwise. Results relate only to the samples identified above. This report shall not be reproduced except in full with written approval of Cardinal Laboratories.

Celey D. Keene, Lab Director/Quality Manager



---

PHONE (575) 393-2326 • 101 E. MARLAND • HOBBS, NM 88240

---

### Notes and Definitions

QM-07	The spike recovery was outside acceptance limits for the MS and/or MSD. The batch was accepted based on acceptable LCS recovery.
ND	Analyte NOT DETECTED at or above the reporting limit
RPD	Relative Percent Difference
**	Samples not received at proper temperature of 6°C or below.
***	Insufficient time to reach temperature.
-	Chloride by SM4500Cl-B does not require samples be received at or below 6°C Samples reported on an as received basis (wet) unless otherwise noted on report

---

Cardinal Laboratories

\*=Accredited Analyte

PLEASE NOTE: Liability and Damages. Cardinal's liability and client's exclusive remedy for any claim arising, whether based in contract or tort, shall be limited to the amount paid by client for analyses. All claims, including those for negligence and any other cause whatsoever shall be deemed waived unless made in writing and received by Cardinal within thirty (30) days after completion of the applicable service. In no event shall Cardinal be liable for incidental or consequential damages, including, without limitation, business interruptions, loss of use, or loss of profits incurred by client, its subsidiaries, affiliates or successors arising out of or related to the performance of the services hereunder by Cardinal, regardless of whether such claim is based upon any of the above stated reasons or otherwise. Results relate only to the samples identified above. This report shall not be reproduced except in full with written approval of Cardinal Laboratories.

A handwritten signature in black ink, appearing to read "Celey D. Keene".

---

Celey D. Keene, Lab Director/Quality Manager





101 East Marland, Hobbs, NM 88240  
(575) 393-2326 FAX (575) 393-2476

## CHAIN-OF-CUSTODY AND ANALYSIS REQUEST

Company Name: <u>Acme</u>		P.O. #:		BILL TO		ANALYSIS REQUEST	
Project Manager: <u>Beck Bruce Baker</u>		Company:					
Address:		Attn:					
City: <u>Hobbs</u>		State: <u>NM</u>		Zip: <u>88240</u>			
Phone #:		Fax #:					
Project #:		Project Owner:					
Project Name: <u>JG Hare #19</u>		City:		State:		Zip:	
Project Location:		Phone #:					
Sampler Name:		Fax #:					
FOR LAB USE ONLY		MATRIX		PRESERV.		SAMPLING	
Lab I.D.		Sample I.D.		(G)RAB OR (C)OMP.		# CONTAINERS	
H212601		B32		GROUNDWATER		WASTEWATER	
01		B32		SOIL		OIL	
02		B15		SLUDGE		OTHER:	
03		B14		ACID/BASE:		ICE / COOL	
04		B17		OTHER:		DATE	
05		B33				TIME	
06		B28				11:40	
07		B12				11:42	
08		B14				11:44	
09		B31				11:46	
10		B31				11:52	
						11:54	
						11:58	
						11:50	
						11:52	
						11:54	
						11:56	
						11:58	
						11:50	
						11:52	
						11:54	
						11:56	
						11:58	
						11:50	
						11:52	
						11:54	
						11:56	
						11:58	
						11:50	
						11:52	
						11:54	
						11:56	
						11:58	
						11:50	
						11:52	
						11:54	
						11:56	
						11:58	
						11:50	
						11:52	
						11:54	
						11:56	
						11:58	
						11:50	
						11:52	
						11:54	
						11:56	
						11:58	
						11:50	
						11:52	
						11:54	
						11:56	
						11:58	
						11:50	
						11:52	
						11:54	
						11:56	
						11:58	
						11:50	
						11:52	
						11:54	
						11:56	
						11:58	
						11:50	
						11:52	
						11:54	
						11:56	
						11:58	
						11:50	
						11:52	
						11:54	
						11:56	
						11:58	
						11:50	
						11:52	
						11:54	
						11:56	
						11:58	
						11:50	
						11:52	
						11:54	
						11:56	
						11:58	
						11:50	
						11:52	
						11:54	
						11:56	
						11:58	
						11:50	
						11:52	
						11:54	
						11:56	
						11:58	
						11:50	
						11:52	
						11:54	
						11:56	
						11:58	
						11:50	
						11:52	
						11:54	
						11:56	
						11:58	
						11:50	
						11:52	
						11:54	
						11:56	
						11:58	
						11:50	
						11:52	
						11:54	
						11:56	
						11:58	
						11:50	
						11:52	
						11:54	
						11:56	
						11:58	
						11:50	
						11:52	
						11:54	
						11:56	
						11:58	
						11:50	
						11:52	
						11:54	
						11:56	
						11:58	
						11:50	
						11:52	
						11:54	
						11:56	
						11:58	
						11:50	
						11:52	
						11:54	
						11:56	
						11:58	
						11:50	
						11:52	
						11:54	
						11:56	
						11:58	
						11:50	
						11:52	
						11:54	
						11:56	
						11:58	
						11:50	
						11:52	
						11:54	
						11:56	
						11:58	
						11:50	
						11:52	
						11:54	
						11:56	
						11:58	
						11:50	
						11:52	
						11:54	
						11:56	
						11:58	
						11:50	
						11:52	
						11:54	
						11:56	
						11:58	
						11:50	
						11:52	
						11:54	
						11:56	
						11:58	
						11:50	
						11:52	
						11:54	
						11:56	
						11:58	
						11:50	
						11:52	
						11:54	
						11:56	
						11:58	
						11:50	
						11:52	
						11:54	
						11:56	
						11:58	
						11:50	
						11:52	
						11:54	
						11:56	
						11:58	
						11:50	
						11:52	
						11:54	
						11:56	
						11:58	
						11:50	
						11:52	
						11:54	
						11:56	
						11:58	
						11:50	
						11:52	
						11:54	
						11:56	
						11:58	
						11:50	
						11:52	
						11:54	
						11:56	
						11:58	
						11:50	
						11:52	
						11:54	
						11:56	
						11:58	
						11:50	
						11:52	
						11:54	
						11:56	
						11:58	
						11:50	
						11:52	
						11:54	
						11:56	
						11:58	
						11:50	
						11:52	
						11:54	
						11:56	
						11:58	
						11:50	
						11:52	
						11:54	
						11:56	
						11:58	
						11:50	
						11:52	
						11:54	
						11:56	
						11:58	
						11:50	
						11:52	
						11:54	
						11:56	
						11:58	
						11:50	
						11:52	
						11:54	
						11:56	
						11:58	
						11:50	





101 East Marland, Hobbs, NM 88240  
(575) 393-2326 FAX (575) 393-2476

# CHAIN-OF-CUSTODY AND ANALYSIS REQUEST

## BILL TO

## ANALYSIS REQUEST

Company Name: Apache

Project Manager: Bruce Baker

Address:

City: Hobbs

State: NM zip: 88240

Phone #:

Fax #:

Project #:

Project Owner:

Project Name:

SG Hare #19

Project Location:

Sampler Name: Jose Lopez

P.O. #:

Company:

Attn:

Address:

City:

State:

Zip:

Phone #:

Fax #:

FOR LAB USE ONLY

Lab I.D.

Sample I.D.

H212601

11

12

13

14

15

16

17

18

19

20

21

22

23

24

25

26

27

28

29

30

31

32

33

34

35

36

37

38

39

40

41

42

43

44

45

46

47

48

49

50

51

52

53

54

55

56

57

58

59

60

61

62

63

64

65

66

67

68

69

70

71

72

73

74

75

76

77

78

79

80

81

82

83

84

85

86

87

88

89

90

91

92

93

94

95

96

97

98

99

100

101

102

103

104

105

106

107

108

109

110

111

112

113

114

115

116

117

118

119

120

121

122

123

124

125

126

127

128

129

130

131

132

133

134

135

136

137

138

139

140

141

142

143

144

145

146

147

148

149

150

151

152

153

154

155

156

157

158

159

160

161

162

163

164

165

166

167

168

169

170

171

172

173

174

175

176

177

178

179

180

181

182

183

184

185

186

187

188

189

190

191

192

193

194

195

196

197

198

199

200

201

202

203

204

205

206

207

208

209

210

211

212

213

214

215

216

217

218

219

220

221

222

223

224

225

226

227

228

229

230

231

232

233

234

235

236

237

238

239

240

241

242

243

244

245

246

247

248

249

250

251

25



101 East Marland, Hobbs, NM 88240  
(575) 393-2326 FAX (575) 393-2476

# CHAIN-OF-CUSTODY AND ANALYSIS REQUEST

Company Name: <u>Apache</u>		P.O. #:		BILL TO				ANALYSIS REQUEST					
Project Manager: <u>Bruce Baker</u>		Company:											
Address:		Attn:											
City: <u>Hobbs</u>		State: <u>NM</u>		Zip: <u>88240</u>									
Phone #:		Fax #:		Address:									
Project #:		Project Owner:		City:									
Project Name:		State:		Zip:									
Project Location: <u>SG Hare #19</u>		Phone #:		Fax #:									
Sample Name: <u>See Label</u>													
FOR LAB USE ONLY													
Lab I.D.	Sample I.D.	(G)RAB OR (C)OMP.	# CONTAINERS	MATRIX		PRESERV.	SAMPLING						
		GROUNDWATER		WASTEWATER									
		SOIL		OIL									
		SLUDGE		OTHER:									
		ACID/BASE:		ICE / COOL									
		OTHER:											
		DATE	TIME										
21	B13	C 1		9/12	11:54								
22	B18	C 1			11:54								
23	B17	C 1			11:58								
24	B20	C 1			1:00								
25	B21	C 1			2:02								
26	B22	C 1			2:04								
27	B23	C 1			2:06								
28	B24	C 1			2:08								
29	B25	C 1			2:10								
30	B26	C 1			2:12								

PLEASE NOTE: Liability and Damages: Cardinal's liability and client's exclusive remedy for any claim arising whether based in contract or tort, shall be limited to the amount paid by the client for the analyses. All claims including those for negligence and any other cause whatsoever shall be deemed waived unless made in writing and received by Cardinal within 30 days after completion of the applicable service. In no event shall Cardinal be liable for incidental or consequential damages, including without limitation, business interruptions, loss of use, or loss of profits incurred by client, its subsidiaries, affiliates or successors arising out of or related to the performance of services hereunder by Cardinal, regardless of whether such claim is based in contract or any of the above stated reasons or otherwise.

Relinquished By: <u>Joe Keene</u>	Date: <u>4/17</u>	Received By: <u>Heidi Jensen</u>	Time: <u>4:42</u>
Relinquished By:	Date:	Received By:	Time:

Delivered By: (Circle One) Observed Temp. °C 8.4

Sampler - UPS - Bus - Other: Corrected Temp. °C

Sample Condition: ☒ Cool ☐ Intact ☐ Yes ☐ No

Checked By: (initials)

Turnaround Time: Standard ☐ Rush ☒ Bacteria (only) ☐ Sample Condition ☐ Observed Temp. °C ☐ Corrected Temp. °C

Thermometer ID #113 ☐ Correction Factor None ☐ Yes ☐ No

Remarks: E. Weill to salts

Verbal Result: ☐ Yes ☐ No Add'l Phone #:

All Results are emailed. Please provide Email address:





101 East Marland, Hobbs, NM 88240  
(575) 393-2326 FAX (575) 393-2476

# CHAIN-OF-CUSTODY AND ANALYSIS REQUEST

## BILL TO

## ANALYSIS REQUEST

Company Name: <i>Apple</i>		P.O. #:
Project Manager: <i>Bruck Baker</i>		Company:
Address:		Attn:
City: <i>Hobbs</i>	State: <i>NM</i> Zip: <i>88240</i>	Address:
Phone #:	Fax #:	City:
Project #:	Project Owner:	State:
Project Location: <i>S.E. Hore #19</i>	Phone #:	Zip:
Sample Name: <i>Soil Decease</i>	Fax #:	

Lab I.D.	Sample I.D.	(G)RAB OR (C)OMP	# CONTAINERS	GROUNDWATER	WASTEWATER	SOIL	OIL	SLUDGE	OTHER :	ACID/BASE:	ICE / COOL	OTHER :	DATE	TIME	CI	BTEX	EXTPH
H212601	31	1329	C	1									2/17	2:16			
	32	1330	C	1										2:18			
	33	1334	C	1										2:20			
	34	1335	C	1										2:22			
	35	1336	C	1										2:24			
	36	1337	C	1										2:26			
	37	1338	C	1										2:28			
	38	1327	C	1									2/17	2:14			

PLEASE NOTE: Liability and Damages. Cardinal's liability and client's exclusive remedy for any claim arising whether based in contract or tort, shall be limited to the amount paid by the client for the analyses. All claims, including those for negligence and any other cause whatsoever shall be deemed waived unless made in writing and received by Cardinal within 30 days after completion of the applicable service. In no event shall Cardinal be liable for incidental or consequential damages, including without limitation, business interruptions, loss of use, or loss of profits incurred by client, its subsidiaries, affiliates or successors arising out of or related to the performance of services rendered by Cardinal, regardless of whether such claim is based upon any of the above stated reasons or otherwise.

Relinquished By: <i>Soil Decease</i>	Date: <i>2/17/21</i>	Received By: <i>Soil Decease</i>	Verbal Result: <input type="checkbox"/> Yes <input type="checkbox"/> No <input type="checkbox"/> Add'l Phone #:
Relinquished By:	Date:	Received By:	All Results are emailed. Please provide Email address:
Time: <i>4:42</i>	Time:	Time:	
Date:	Date:	Date:	
Time:	Time:	Time:	
Delivered By: (Circle One)	Observed Temp. °C: <i>34</i>	Sample Condition	CHECKED BY: <i>[Signature]</i>
Sampler - UPS - Bus - Other:	Corrected Temp. °C:	Cool <input checked="" type="checkbox"/> Intact <input checked="" type="checkbox"/>	Thermometer ID #113
		Yes <input type="checkbox"/> No <input type="checkbox"/>	Correction Factor None
		Yes <input type="checkbox"/> No <input type="checkbox"/>	Standard <input checked="" type="checkbox"/> Rush <input type="checkbox"/>
		Yes <input type="checkbox"/> No <input type="checkbox"/>	Bacteria (only) <input type="checkbox"/>
		Yes <input type="checkbox"/> No <input type="checkbox"/>	Cool Intact <input type="checkbox"/>
		Yes <input type="checkbox"/> No <input type="checkbox"/>	Observed Temp. °C
		Yes <input type="checkbox"/> No <input type="checkbox"/>	Corrected Temp. °C

FORM 006 R-3-1 09/07/20

† Cardinal cannot accept verbal changes. Please email changes to [celey.keene@cardinallabsnm.com](mailto:celey.keene@cardinallabsnm.com)



PHONE (575) 393-2326 ° 101 E. MARLAND ° HOBBS, NM 88240

---

September 20, 2021

BRUCE BAKER

APACHE CORP - HOBBS

2350 W. MARLAND BLVD.

HOBBS, NM 88240

RE: J G HARE #019

Enclosed are the results of analyses for samples received by the laboratory on 09/17/21 16:41.

Cardinal Laboratories is accredited through Texas NELAP under certificate number T104704398-21-14. Accreditation applies to drinking water, non-potable water and solid and chemical materials. All accredited analytes are denoted by an asterisk (\*). For a complete list of accredited analytes and matrices visit the TCEQ website at [www.tceq.texas.gov/field/qa/lab\\_accred\\_certif.html](http://www.tceq.texas.gov/field/qa/lab_accred_certif.html).

Cardinal Laboratories is accredited through the State of Colorado Department of Public Health and Environment for:

Method EPA 552.2	Haloacetic Acids (HAA-5)
Method EPA 524.2	Total Trihalomethanes (TTHM)
Method EPA 524.4	Regulated VOCs (V1, V2, V3)

Accreditation applies to public drinking water matrices.

This report meets NELAP requirements and is made up of a cover page, analytical results, and a copy of the original chain-of-custody. If you have any questions concerning this report, please feel free to contact me.

Sincerely,

A handwritten signature in black ink that reads "Celey D. Keene". The signature is written in a cursive style with a large, stylized 'C' and 'K'.

Celey D. Keene

Lab Director/Quality Manager





PHONE (575) 393-2326 ° 101 E. MARLAND ° HOBBS, NM 88240

**Analytical Results For:**

APACHE CORP - HOBBS  
 BRUCE BAKER  
 2350 W. MARLAND BLVD.  
 HOBBS NM, 88240  
 Fax To: (575) 393-2432

Received: 09/17/2021  
 Reported: 09/20/2021  
 Project Name: J G HARE #019  
 Project Number: NOT GIVEN  
 Project Location: J G HARE #019

Sampling Date: 09/17/2021  
 Sampling Type: Soil  
 Sampling Condition: Cool & Intact  
 Sample Received By: Jodi Henson

**Sample ID: W 1 @ 1' (H212600-01)**

BTEX 8021B		mg/kg		Analyzed By: MS					
Analyte	Result	Reporting Limit	Analyzed	Method Blank	BS	% Recovery	True Value QC	RPD	Qualifier
Benzene*	<0.050	0.050	09/17/2021	ND	2.11	105	2.00	3.56	
Toluene*	<0.050	0.050	09/17/2021	ND	2.05	103	2.00	2.00	
Ethylbenzene*	<0.050	0.050	09/17/2021	ND	2.03	102	2.00	1.31	
Total Xylenes*	<0.150	0.150	09/17/2021	ND	6.22	104	6.00	1.92	
Total BTEX	<0.300	0.300	09/17/2021	ND					

Surrogate: 4-Bromofluorobenzene (PID) 101 % 69.9-140

Chloride, SM4500Cl-B		mg/kg		Analyzed By: GM					
Analyte	Result	Reporting Limit	Analyzed	Method Blank	BS	% Recovery	True Value QC	RPD	Qualifier
Chloride	48.0	16.0	09/20/2021	ND	416	104	400	0.00	

TPH 8015M		mg/kg		Analyzed By: MS					
Analyte	Result	Reporting Limit	Analyzed	Method Blank	BS	% Recovery	True Value QC	RPD	Qualifier
GRO C6-C10*	<10.0	10.0	09/17/2021	ND	195	97.6	200	1.02	
DRO >C10-C28*	<10.0	10.0	09/17/2021	ND	219	109	200	1.65	
EXT DRO >C28-C36	<10.0	10.0	09/17/2021	ND					

Surrogate: 1-Chlorooctane 86.2 % 44.3-133

Surrogate: 1-Chlorooctadecane 81.6 % 38.9-142

Cardinal Laboratories

\*=Accredited Analyte

PLEASE NOTE: Liability and Damages. Cardinal's liability and client's exclusive remedy for any claim arising, whether based in contract or tort, shall be limited to the amount paid by client for analyses. All claims, including those for negligence and any other cause whatsoever shall be deemed waived unless made in writing and received by Cardinal within thirty (30) days after completion of the applicable service. In no event shall Cardinal be liable for incidental or consequential damages, including, without limitation, business interruptions, loss of use, or loss of profits incurred by client, its subsidiaries, affiliates or successors arising out of or related to the performance of the services hereunder by Cardinal, regardless of whether such claim is based upon any of the above stated reasons or otherwise. Results relate only to the samples identified above. This report shall not be reproduced except in full with written approval of Cardinal Laboratories.

Celey D. Keene, Lab Director/Quality Manager



PHONE (575) 393-2326 ° 101 E. MARLAND ° HOBBS, NM 88240

**Analytical Results For:**

APACHE CORP - HOBBS  
 BRUCE BAKER  
 2350 W. MARLAND BLVD.  
 HOBBS NM, 88240  
 Fax To: (575) 393-2432

Received: 09/17/2021  
 Reported: 09/20/2021  
 Project Name: J G HARE #019  
 Project Number: NOT GIVEN  
 Project Location: J G HARE #019

Sampling Date: 09/17/2021  
 Sampling Type: Soil  
 Sampling Condition: Cool & Intact  
 Sample Received By: Jodi Henson

**Sample ID: W 2 @ 1' (H212600-02)**

BTX 8021B		mg/kg		Analyzed By: MS					
Analyte	Result	Reporting Limit	Analyzed	Method Blank	BS	% Recovery	True Value QC	RPD	Qualifier
Benzene*	<0.050	0.050	09/17/2021	ND	2.11	105	2.00	3.56	
Toluene*	<0.050	0.050	09/17/2021	ND	2.05	103	2.00	2.00	
Ethylbenzene*	<0.050	0.050	09/17/2021	ND	2.03	102	2.00	1.31	
Total Xylenes*	<0.150	0.150	09/17/2021	ND	6.22	104	6.00	1.92	
Total BTX	<0.300	0.300	09/17/2021	ND					

Surrogate: 4-Bromofluorobenzene (PID) 96.4 % 69.9-140

Chloride, SM4500CI-B		mg/kg		Analyzed By: GM					
Analyte	Result	Reporting Limit	Analyzed	Method Blank	BS	% Recovery	True Value QC	RPD	Qualifier
Chloride	960	16.0	09/20/2021	ND	416	104	400	0.00	

TPH 8015M		mg/kg		Analyzed By: MS					
Analyte	Result	Reporting Limit	Analyzed	Method Blank	BS	% Recovery	True Value QC	RPD	Qualifier
GRO C6-C10*	<10.0	10.0	09/17/2021	ND	195	97.6	200	1.02	
DRO >C10-C28*	<10.0	10.0	09/17/2021	ND	219	109	200	1.65	
EXT DRO >C28-C36	<10.0	10.0	09/17/2021	ND					

Surrogate: 1-Chlorooctane 90.6 % 44.3-133

Surrogate: 1-Chlorooctadecane 84.9 % 38.9-142

Cardinal Laboratories

\*=Accredited Analyte

PLEASE NOTE: Liability and Damages. Cardinal's liability and client's exclusive remedy for any claim arising, whether based in contract or tort, shall be limited to the amount paid by client for analyses. All claims, including those for negligence and any other cause whatsoever shall be deemed waived unless made in writing and received by Cardinal within thirty (30) days after completion of the applicable service. In no event shall Cardinal be liable for incidental or consequential damages, including, without limitation, business interruptions, loss of use, or loss of profits incurred by client, its subsidiaries, affiliates or successors arising out of or related to the performance of the services hereunder by Cardinal, regardless of whether such claim is based upon any of the above stated reasons or otherwise. Results relate only to the samples identified above. This report shall not be reproduced except in full with written approval of Cardinal Laboratories.

Celey D. Keene, Lab Director/Quality Manager



PHONE (575) 393-2326 ° 101 E. MARLAND ° HOBBS, NM 88240

**Analytical Results For:**

APACHE CORP - HOBBS  
 BRUCE BAKER  
 2350 W. MARLAND BLVD.  
 HOBBS NM, 88240  
 Fax To: (575) 393-2432

Received: 09/17/2021  
 Reported: 09/20/2021  
 Project Name: J G HARE #019  
 Project Number: NOT GIVEN  
 Project Location: J G HARE #019

Sampling Date: 09/17/2021  
 Sampling Type: Soil  
 Sampling Condition: Cool & Intact  
 Sample Received By: Jodi Henson

**Sample ID: W 3 (H212600-03)**

BTX 8021B		mg/kg		Analyzed By: MS					
Analyte	Result	Reporting Limit	Analyzed	Method Blank	BS	% Recovery	True Value QC	RPD	Qualifier
Benzene*	<0.050	0.050	09/17/2021	ND	2.11	105	2.00	3.56	
Toluene*	<0.050	0.050	09/17/2021	ND	2.05	103	2.00	2.00	
Ethylbenzene*	<0.050	0.050	09/17/2021	ND	2.03	102	2.00	1.31	
Total Xylenes*	<0.150	0.150	09/17/2021	ND	6.22	104	6.00	1.92	
Total BTX	<0.300	0.300	09/17/2021	ND					

Surrogate: 4-Bromofluorobenzene (PID) 97.1 % 69.9-140

Chloride, SM4500CI-B		mg/kg		Analyzed By: GM						
Analyte	Result	Reporting Limit	Analyzed	Method Blank	BS	% Recovery	True Value QC	RPD	Qualifier	
Chloride	48.0	16.0	09/20/2021	ND	416	104	400	0.00		

TPH 8015M		mg/kg		Analyzed By: MS					
Analyte	Result	Reporting Limit	Analyzed	Method Blank	BS	% Recovery	True Value QC	RPD	Qualifier
GRO C6-C10*	<10.0	10.0	09/17/2021	ND	195	97.6	200	1.02	
DRO >C10-C28*	<10.0	10.0	09/17/2021	ND	219	109	200	1.65	
EXT DRO >C28-C36	<10.0	10.0	09/17/2021	ND					

Surrogate: 1-Chlorooctane 84.2 % 44.3-133

Surrogate: 1-Chlorooctadecane 80.4 % 38.9-142

Cardinal Laboratories

\*=Accredited Analyte

PLEASE NOTE: Liability and Damages. Cardinal's liability and client's exclusive remedy for any claim arising, whether based in contract or tort, shall be limited to the amount paid by client for analyses. All claims, including those for negligence and any other cause whatsoever shall be deemed waived unless made in writing and received by Cardinal within thirty (30) days after completion of the applicable service. In no event shall Cardinal be liable for incidental or consequential damages, including, without limitation, business interruptions, loss of use, or loss of profits incurred by client, its subsidiaries, affiliates or successors arising out of or related to the performance of the services hereunder by Cardinal, regardless of whether such claim is based upon any of the above stated reasons or otherwise. Results relate only to the samples identified above. This report shall not be reproduced except in full with written approval of Cardinal Laboratories.

Celey D. Keene, Lab Director/Quality Manager



PHONE (575) 393-2326 ° 101 E. MARLAND ° HOBBS, NM 88240

**Analytical Results For:**

APACHE CORP - HOBBS  
 BRUCE BAKER  
 2350 W. MARLAND BLVD.  
 HOBBS NM, 88240  
 Fax To: (575) 393-2432

Received: 09/17/2021  
 Reported: 09/20/2021  
 Project Name: J G HARE #019  
 Project Number: NOT GIVEN  
 Project Location: J G HARE #019

Sampling Date: 09/17/2021  
 Sampling Type: Soil  
 Sampling Condition: Cool & Intact  
 Sample Received By: Jodi Henson

**Sample ID: W 4 (H212600-04)**

BTEx 8021B		mg/kg		Analyzed By: MS					
Analyte	Result	Reporting Limit	Analyzed	Method Blank	BS	% Recovery	True Value QC	RPD	Qualifier
Benzene*	<0.050	0.050	09/17/2021	ND	1.97	98.4	2.00	1.33	
Toluene*	<0.050	0.050	09/17/2021	ND	2.11	106	2.00	1.83	
Ethylbenzene*	<0.050	0.050	09/17/2021	ND	2.06	103	2.00	1.62	
Total Xylenes*	<0.150	0.150	09/17/2021	ND	6.18	103	6.00	1.60	
Total BTEx	<0.300	0.300	09/17/2021	ND					

Surrogate: 4-Bromofluorobenzene (PID) 100 % 69.9-140

Chloride, SM4500Cl-B		mg/kg		Analyzed By: GM					
Analyte	Result	Reporting Limit	Analyzed	Method Blank	BS	% Recovery	True Value QC	RPD	Qualifier
Chloride	48.0	16.0	09/20/2021	ND	416	104	400	0.00	

TPH 8015M		mg/kg		Analyzed By: MS					
Analyte	Result	Reporting Limit	Analyzed	Method Blank	BS	% Recovery	True Value QC	RPD	Qualifier
GRO C6-C10*	<10.0	10.0	09/17/2021	ND	195	97.6	200	1.02	
DRO >C10-C28*	<10.0	10.0	09/17/2021	ND	219	109	200	1.65	
EXT DRO >C28-C36	<10.0	10.0	09/17/2021	ND					

Surrogate: 1-Chlorooctane 86.6 % 44.3-133

Surrogate: 1-Chlorooctadecane 82.4 % 38.9-142

Cardinal Laboratories

\*=Accredited Analyte

PLEASE NOTE: Liability and Damages. Cardinal's liability and client's exclusive remedy for any claim arising, whether based in contract or tort, shall be limited to the amount paid by client for analyses. All claims, including those for negligence and any other cause whatsoever shall be deemed waived unless made in writing and received by Cardinal within thirty (30) days after completion of the applicable service. In no event shall Cardinal be liable for incidental or consequential damages, including, without limitation, business interruptions, loss of use, or loss of profits incurred by client, its subsidiaries, affiliates or successors arising out of or related to the performance of the services hereunder by Cardinal, regardless of whether such claim is based upon any of the above stated reasons or otherwise. Results relate only to the samples identified above. This report shall not be reproduced except in full with written approval of Cardinal Laboratories.

Celey D. Keene, Lab Director/Quality Manager



PHONE (575) 393-2326 ° 101 E. MARLAND ° HOBBS, NM 88240

**Analytical Results For:**

APACHE CORP - HOBBS  
 BRUCE BAKER  
 2350 W. MARLAND BLVD.  
 HOBBS NM, 88240  
 Fax To: (575) 393-2432

Received: 09/17/2021  
 Reported: 09/20/2021  
 Project Name: J G HARE #019  
 Project Number: NOT GIVEN  
 Project Location: J G HARE #019

Sampling Date: 09/17/2021  
 Sampling Type: Soil  
 Sampling Condition: Cool & Intact  
 Sample Received By: Jodi Henson

**Sample ID: W 5 (H212600-05)**

BTEx 8021B		mg/kg		Analyzed By: MS					
Analyte	Result	Reporting Limit	Analyzed	Method Blank	BS	% Recovery	True Value QC	RPD	Qualifier
Benzene*	<0.050	0.050	09/17/2021	ND	1.97	98.4	2.00	1.33	
Toluene*	<0.050	0.050	09/17/2021	ND	2.11	106	2.00	1.83	
Ethylbenzene*	<0.050	0.050	09/17/2021	ND	2.06	103	2.00	1.62	
Total Xylenes*	<0.150	0.150	09/17/2021	ND	6.18	103	6.00	1.60	
Total BTEx	<0.300	0.300	09/17/2021	ND					

Surrogate: 4-Bromofluorobenzene (PID) 101 % 69.9-140

Chloride, SM4500CI-B		mg/kg		Analyzed By: GM					
Analyte	Result	Reporting Limit	Analyzed	Method Blank	BS	% Recovery	True Value QC	RPD	Qualifier
Chloride	48.0	16.0	09/20/2021	ND	416	104	400	0.00	

TPH 8015M		mg/kg		Analyzed By: MS					
Analyte	Result	Reporting Limit	Analyzed	Method Blank	BS	% Recovery	True Value QC	RPD	Qualifier
GRO C6-C10*	<10.0	10.0	09/17/2021	ND	195	97.6	200	1.02	
DRO >C10-C28*	<10.0	10.0	09/17/2021	ND	219	109	200	1.65	
EXT DRO >C28-C36	<10.0	10.0	09/17/2021	ND					

Surrogate: 1-Chlorooctane 81.8 % 44.3-133

Surrogate: 1-Chlorooctadecane 77.8 % 38.9-142

Cardinal Laboratories

\*=Accredited Analyte

PLEASE NOTE: Liability and Damages. Cardinal's liability and client's exclusive remedy for any claim arising, whether based in contract or tort, shall be limited to the amount paid by client for analyses. All claims, including those for negligence and any other cause whatsoever shall be deemed waived unless made in writing and received by Cardinal within thirty (30) days after completion of the applicable service. In no event shall Cardinal be liable for incidental or consequential damages, including, without limitation, business interruptions, loss of use, or loss of profits incurred by client, its subsidiaries, affiliates or successors arising out of or related to the performance of the services hereunder by Cardinal, regardless of whether such claim is based upon any of the above stated reasons or otherwise. Results relate only to the samples identified above. This report shall not be reproduced except in full with written approval of Cardinal Laboratories.

Celey D. Keene, Lab Director/Quality Manager





PHONE (575) 393-2326 ° 101 E. MARLAND ° HOBBS, NM 88240

**Analytical Results For:**

APACHE CORP - HOBBS  
 BRUCE BAKER  
 2350 W. MARLAND BLVD.  
 HOBBS NM, 88240  
 Fax To: (575) 393-2432

Received: 09/17/2021  
 Reported: 09/20/2021  
 Project Name: J G HARE #019  
 Project Number: NOT GIVEN  
 Project Location: J G HARE #019

Sampling Date: 09/17/2021  
 Sampling Type: Soil  
 Sampling Condition: Cool & Intact  
 Sample Received By: Jodi Henson

**Sample ID: W 6 (H212600-06)**

BTEx 8021B		mg/kg		Analyzed By: MS						
Analyte	Result	Reporting Limit	Analyzed	Method Blank	BS	% Recovery	True Value QC	RPD	Qualifier	
Benzene*	<0.050	0.050	09/17/2021	ND	1.97	98.4	2.00	1.33		
Toluene*	<0.050	0.050	09/17/2021	ND	2.11	106	2.00	1.83		
Ethylbenzene*	<0.050	0.050	09/17/2021	ND	2.06	103	2.00	1.62		
Total Xylenes*	<0.150	0.150	09/17/2021	ND	6.18	103	6.00	1.60		
Total BTEx	<0.300	0.300	09/17/2021	ND						

Surrogate: 4-Bromofluorobenzene (PID) 101 % 69.9-140

Chloride, SM4500Cl-B		mg/kg		Analyzed By: GM					
Analyte	Result	Reporting Limit	Analyzed	Method Blank	BS	% Recovery	True Value QC	RPD	Qualifier
Chloride	32.0	16.0	09/20/2021	ND	416	104	400	0.00	

TPH 8015M		mg/kg		Analyzed By: MS					
Analyte	Result	Reporting Limit	Analyzed	Method Blank	BS	% Recovery	True Value QC	RPD	Qualifier
GRO C6-C10*	<10.0	10.0	09/17/2021	ND	195	97.6	200	1.02	
DRO >C10-C28*	<10.0	10.0	09/17/2021	ND	219	109	200	1.65	
EXT DRO >C28-C36	<10.0	10.0	09/17/2021	ND					

Surrogate: 1-Chlorooctane 82.1 % 44.3-133

Surrogate: 1-Chlorooctadecane 77.0 % 38.9-142

Cardinal Laboratories

\*=Accredited Analyte

PLEASE NOTE: Liability and Damages. Cardinal's liability and client's exclusive remedy for any claim arising, whether based in contract or tort, shall be limited to the amount paid by client for analyses. All claims, including those for negligence and any other cause whatsoever shall be deemed waived unless made in writing and received by Cardinal within thirty (30) days after completion of the applicable service. In no event shall Cardinal be liable for incidental or consequential damages, including, without limitation, business interruptions, loss of use, or loss of profits incurred by client, its subsidiaries, affiliates or successors arising out of or related to the performance of the services hereunder by Cardinal, regardless of whether such claim is based upon any of the above stated reasons or otherwise. Results relate only to the samples identified above. This report shall not be reproduced except in full with written approval of Cardinal Laboratories.

Celey D. Keene, Lab Director/Quality Manager



---

PHONE (575) 393-2326 ° 101 E. MARLAND ° HOBBS, NM 88240

---

### Notes and Definitions

ND	Analyte NOT DETECTED at or above the reporting limit
RPD	Relative Percent Difference
**	Samples not received at proper temperature of 6°C or below.
***	Insufficient time to reach temperature.
-	Chloride by SM4500Cl-B does not require samples be received at or below 6°C Samples reported on an as received basis (wet) unless otherwise noted on report

---

Cardinal Laboratories

\*=Accredited Analyte

PLEASE NOTE: Liability and Damages. Cardinal's liability and client's exclusive remedy for any claim arising, whether based in contract or tort, shall be limited to the amount paid by client for analyses. All claims, including those for negligence and any other cause whatsoever shall be deemed waived unless made in writing and received by Cardinal within thirty (30) days after completion of the applicable service. In no event shall Cardinal be liable for incidental or consequential damages, including, without limitation, business interruptions, loss of use, or loss of profits incurred by client, its subsidiaries, affiliates or successors arising out of or related to the performance of the services hereunder by Cardinal, regardless of whether such claim is based upon any of the above stated reasons or otherwise. Results relate only to the samples identified above. This report shall not be reproduced except in full with written approval of Cardinal Laboratories.

A handwritten signature in black ink, appearing to read "Celey D. Keene".

---

Celey D. Keene, Lab Director/Quality Manager



# CHAIN-OF-CUSTODY AND ANALYSIS REQUEST

Page 9 of 9



## West Elevation

☉ 102°E (T) ● 32°26'4"N, 103°10'16"W ±32ft ▲ 3454ft



## North Elevation

☉ 202°S (T) ● 32°26'5"N, 103°10'14"W ±13ft ▲ 3452ft







Incident ID	NRM2013250166
District RP	
Facility ID	
Application ID	

## Closure

The responsible party must attach information demonstrating they have complied with all applicable closure requirements and any conditions or directives of the OCD. This demonstration should be in the form of a comprehensive report (electronic submittals in .pdf format are preferred) including a scaled site map, sampling diagrams, relevant field notes, photographs of any excavation prior to backfilling, laboratory data including chain of custody documents of final sampling, and a narrative of the remedial activities. Refer to 19.15.29.12 NMAC.

**Closure Report Attachment Checklist:** *Each of the following items must be included in the closure report.*

- ☒ A scaled site and sampling diagram as described in 19.15.29.11 NMAC
- ☒ Photographs of the remediated site prior to backfill or photos of the liner integrity if applicable (Note: appropriate OCD District office must be notified 2 days prior to liner inspection)
- ☒ Laboratory analyses of final sampling (Note: appropriate ODC District office must be notified 2 days prior to final sampling)
- ☒ Description of remediation activities

I hereby certify that the information given above is true and complete to the best of my knowledge and understand that pursuant to OCD rules and regulations all operators are required to report and/or file certain release notifications and perform corrective actions for releases which may endanger public health or the environment. The acceptance of a C-141 report by the OCD does not relieve the operator of liability should their operations have failed to adequately investigate and remediate contamination that pose a threat to groundwater, surface water, human health or the environment. In addition, OCD acceptance of a C-141 report does not relieve the operator of responsibility for compliance with any other federal, state, or local laws and/or regulations. The responsible party acknowledges they must substantially restore, reclaim, and re-vegetate the impacted surface area to the conditions that existed prior to the release or their final land use in accordance with 19.15.29.13 NMAC including notification to the OCD when reclamation and re-vegetation are complete.

Printed Name: Larry Baker

Title: Environmental Tech SR.

Signature: Larry Baker

Date: 9/22/2021

email: larry.baker@apachecorp.com

Telephone: 432-631-6982

**OCD Only**

Received by: Robert Hamlet

Date: 3/10/2022

Closure approval by the OCD does not relieve the responsible party of liability should their operations have failed to adequately investigate and remediate contamination that poses a threat to groundwater, surface water, human health, or the environment nor does not relieve the responsible party of compliance with any other federal, state, or local laws and/or regulations.

Closure Approved by: Robert Hamlet

Date: 3/10/2022

Printed Name: Robert Hamlet

Title: Environmental Specialist - Advanced



**District I**

1625 N. French Dr., Hobbs, NM 88240  
Phone:(575) 393-6161 Fax:(575) 393-0720

**District II**

811 S. First St., Artesia, NM 88210  
Phone:(575) 748-1283 Fax:(575) 748-9720

**District III**

1000 Rio Brazos Rd., Aztec, NM 87410  
Phone:(505) 334-6178 Fax:(505) 334-6170

**District IV**

1220 S. St Francis Dr., Santa Fe, NM 87505  
Phone:(505) 476-3470 Fax:(505) 476-3462

**State of New Mexico**  
**Energy, Minerals and Natural Resources**  
**Oil Conservation Division**  
**1220 S. St Francis Dr.**  
**Santa Fe, NM 87505**

CONDITIONS

Action 89146

**CONDITIONS**

Operator: APACHE CORPORATION 303 Veterans Airpark Ln Midland, TX 79705	OGRID: 873
	Action Number: 89146
	Action Type: [C-141] Release Corrective Action (C-141)

**CONDITIONS**

Created By	Condition	Condition Date
rhamlet	We have received your closure report and final C-141 for Incident #NRM2013250166 JG HARE 019, thank you. This closure is approved.	3/10/2022