

Form C-141

Page 6

State of New Mexico
Oil Conservation Division

Incident ID	nRM2015552273
District RP	
Facility ID	
Application ID	


Closure

The responsible party must attach information demonstrating they have complied with all applicable closure requirements and any conditions or directives of the OCD. This demonstration should be in the form of a comprehensive report (electronic submittals in .pdf format are preferred) including a scaled site map, sampling diagrams, relevant field notes, photographs of any excavation prior to backfilling, laboratory data including chain of custody documents of final sampling, and a narrative of the remedial activities. Refer to 19.15.29.12 NMAC.

Closure Report Attachment Checklist: *Each of the following items must be included in the closure report.*

- ☒ A scaled site and sampling diagram as described in 19.15.29.11 NMAC
- ☒ Photographs of the remediated site prior to backfill or photos of the liner integrity if applicable (Note: appropriate OCD District office must be notified 2 days prior to liner inspection)
- ☒ Laboratory analyses of final sampling (Note: appropriate ODC District office must be notified 2 days prior to final sampling)
- ☒ Description of remediation activities

I hereby certify that the information given above is true and complete to the best of my knowledge and understand that pursuant to OCD rules and regulations all operators are required to report and/or file certain release notifications and perform corrective actions for releases which may endanger public health or the environment. The acceptance of a C-141 report by the OCD does not relieve the operator of liability should their operations have failed to adequately investigate and remediate contamination that pose a threat to groundwater, surface water, human health or the environment. In addition, OCD acceptance of a C-141 report does not relieve the operator of responsibility for compliance with any other federal, state, or local laws and/or regulations. The responsible party acknowledges they must substantially restore, reclaim, and re-vegetate the impacted surface area to the conditions that existed prior to the release or their final land use in accordance with 19.15.29.13 NMAC including notification to the OCD when reclamation and re-vegetation are complete.

Printed Name: Wade Dittrich Title: Environmental Coordinator
Signature:  Date: 3-24-22
email: wade_dittrich@oxy.com Telephone: (575) 390-2828

OCD Only

Received by: Robert Hamlet Date: 4/26/2022

Closure approval by the OCD does not relieve the responsible party of liability should their operations have failed to adequately investigate and remediate contamination that poses a threat to groundwater, surface water, human health, or the environment nor does not relieve the responsible party of compliance with any other federal, state, or local laws and/or regulations.

Closure Approved by: Robert Hamlet Date: 4/26/2022
Printed Name: Robert Hamlet Title: Environmental Specialist - Advanced

Closure Report

Incident ID: nRM2015552273

Site Description

Site Name:	Federal 12-1H Central Tank Oil
Company:	Oxy, Permian
Legal Description:	U/L P, Section 1, T23S, R30E
County:	Eddy County, NM
GPS Coordinates:	N 32.329830 W 103.829586

Release Data

Date of Release:	4/16/2020
Type of Release:	Crude Oil
Source of Release:	Water Dump Valve Closed
Volume of Release:	375 BBLS
Volume Recovered:	375 BBLS

Remediation Specifications

Remediation Parameters:	Oxy excavated the spill area as depicted on the following site diagram. Bottom confirmation samples will be collected every 200 square feet.	
Remediation Activities:	5/18/20,5/21/21,5/26/21, 6/11/21,6/25/21,7/2/21,7/7/21,7/9/21,7/14/21,& 7/19/21	
Plan Sent to OCD:		
OCD Approval of Plan:	11/24/2020	Email from Robert Hamlet to Wade forward it to Cliff Brunson
Plan Sent to BLM:	7/29/2020	Email from Cliff Brunson to CFO Spill@blm.gov
BLM Approval of Plan:	8/7/2020	Email from James Amos to Cliff Brunson

Supporting Documentation

Initial C-141	signed and included	
C-141, page 6	signed and included	
Site Diagram	Google Earth map with excavation depths & confirmation sample points	
Pictures	Remediation photos	
Lab Summary/Analysis	Confirmation lab summary/analysis report for 5/21/21	
Sampling Notification	5/4/2021	

Request for Closure

Based on the completion of the remediation plan as agreed upon, BBC International requests closure approval from NMOCD.

Cliff Brunson, President of BBC International Inc.

3/18/2022

Form C-141

Page 6

State of New Mexico
Oil Conservation Division

Incident ID	nRM2015552273
District RP	
Facility ID	
Application ID	


Closure

The responsible party must attach information demonstrating they have complied with all applicable closure requirements and any conditions or directives of the OCD. This demonstration should be in the form of a comprehensive report (electronic submittals in .pdf format are preferred) including a scaled site map, sampling diagrams, relevant field notes, photographs of any excavation prior to backfilling, laboratory data including chain of custody documents of final sampling, and a narrative of the remedial activities. Refer to 19.15.29.12 NMAC.

Closure Report Attachment Checklist: *Each of the following items must be included in the closure report.*

- ☐ A scaled site and sampling diagram as described in 19.15.29.11 NMAC
- ☐ Photographs of the remediated site prior to backfill or photos of the liner integrity if applicable (Note: appropriate OCD District office must be notified 2 days prior to liner inspection)
- ☐ Laboratory analyses of final sampling (Note: appropriate OCD District office must be notified 2 days prior to final sampling)
- ☐ Description of remediation activities

I hereby certify that the information given above is true and complete to the best of my knowledge and understand that pursuant to OCD rules and regulations all operators are required to report and/or file certain release notifications and perform corrective actions for releases which may endanger public health or the environment. The acceptance of a C-141 report by the OCD does not relieve the operator of liability should their operations have failed to adequately investigate and remediate contamination that pose a threat to groundwater, surface water, human health or the environment. In addition, OCD acceptance of a C-141 report does not relieve the operator of responsibility for compliance with any other federal, state, or local laws and/or regulations. The responsible party acknowledges they must substantially restore, reclaim, and re-vegetate the impacted surface area to the conditions that existed prior to the release or their final land use in accordance with 19.15.29.13 NMAC including notification to the OCD when reclamation and re-vegetation are complete.

Printed Name: Wade Dittrich Title: Environmental Coordinator
 Signature:  Date: 3-24-22
 email: wade_dittrich@oxy.com Telephone: (575) 390-2828

OCD Only

Received by: _____ Date: _____

Closure approval by the OCD does not relieve the responsible party of liability should their operations have failed to adequately investigate and remediate contamination that poses a threat to groundwater, surface water, human health, or the environment nor does not relieve the responsible party of compliance with any other federal, state, or local laws and/or regulations.

Closure Approved by: _____ Date: _____

Printed Name: _____ Title: _____

julia@bbcinternational.com

From: Cliff Brunson <cbrunson@bbcinternational.com>
Sent: Tuesday, May 4, 2021 2:47 PM
To: 'Enviro, OCD, EMNRD'
Cc: 'Wade Dittrich'; 'Ken Swinney'; 'Jennifer Gilkey'; Isabel Ramirez
Subject: OXY - Federal 12-1H Central Oil Tank - Sampling Notification

This is a notification that BBC will conduct confirmation sampling on behalf of OXY at the Federal 12-1H Central Oil Tank (Incident ID # NRM2015552273) on Thursday, May 6 at 10:00 a.m.

Cliff P. Brunson, CEI, CRS
President
BBC International, Inc.
World-Wide Environmental Specialists
Mailing Address:
P. O. Box 805
Hobbs, NM 88241-0805 USA
Shipping Address:
1324 W. Marland St.
Hobbs, NM 88240 USA
Phone: (575) 397-6388
Fax: (575) 397-0397
E-Mail: cbrunson@bbcinternational.com



Confidentiality Notice: This electronic transmission (and any attached documents) is intended only for the person(s) to whom it is addressed and may contain information that is privileged, confidential, or otherwise protected from disclosure. If you have received this transmission in error, please immediately notify the sender by e-mail or by telephone call to (575) 397-6388 for handling instructions. Any disclosure or distribution of the contents of this transmission by anyone other than the named recipient(s) is strictly prohibited.

FEDERAL 12-1H CENTRAL OIL TANK

LEAK DATE: 4/16/20
ID#nRM2015552273
EDDY CO., NM

Legend

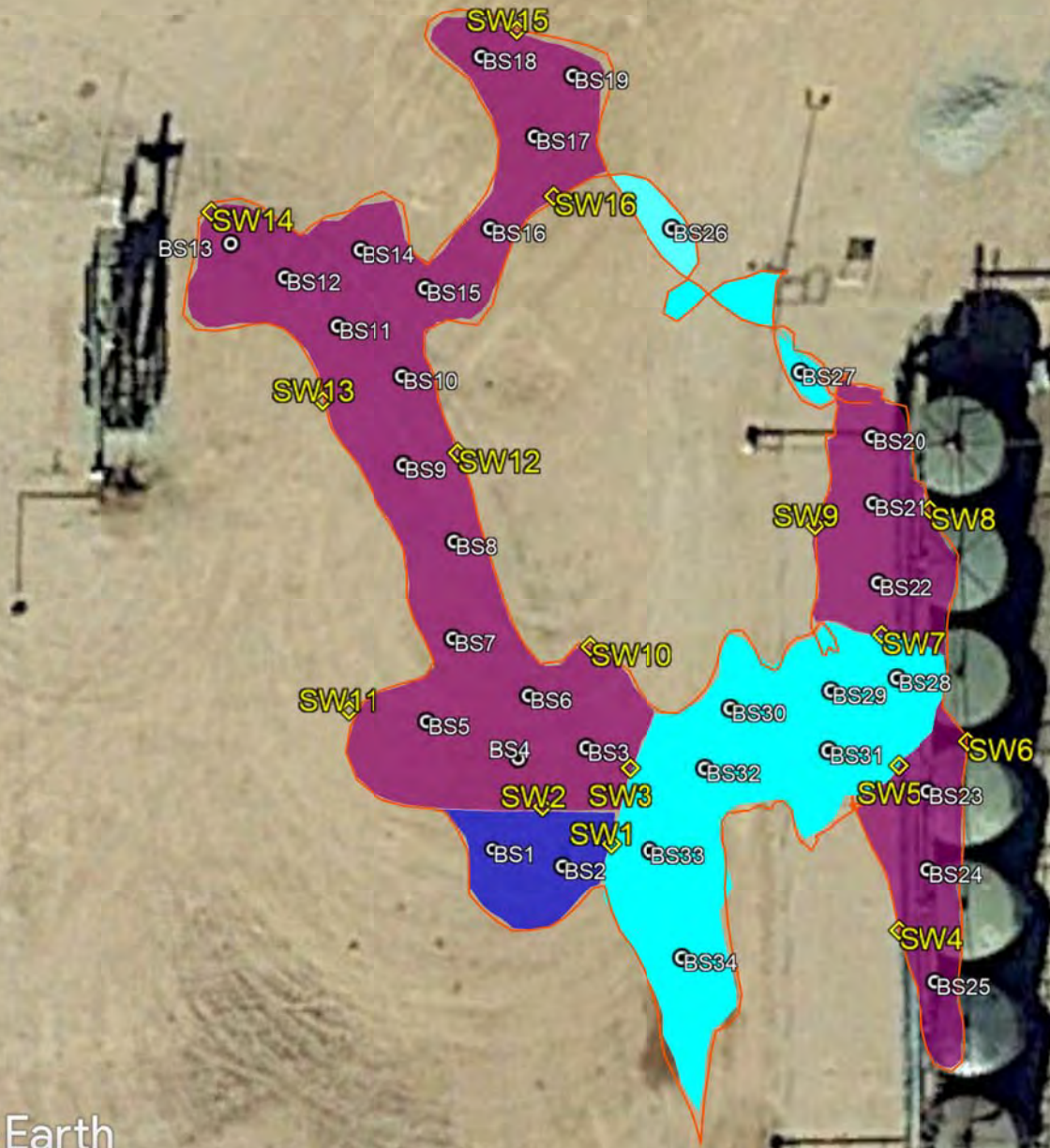
2FT EXCAVATION

3FT EXCAVATION

4FT EXCAVATION

BOTTOM CONFIRMATION SAMPLE POINT

SIDEWALL CONFIRMATION SAMPLE POINT



FEDERAL 12-1 H CTB (4/16/20)

SIDEWALL 1	N32.329815	W-103.829726
SIDEWALL 2	N32.329831	W-103.829761
SIDEWALL 3	N32.329848	W-103.829716
SIDEWALL 4	N32.32977	W-103.829577
SIDEWALL 5	N32.329849	W-103.829577
SIDEWALL 6	N32.329859	W-103.829541
SIDEWALL 7	N32.329906	W-103.829586
SIDEWALL 8	N32.329961	W-103.829560
SIDEWALL 9	N32.329954	W-103.829620
SIDEWALL 10	N32.329901	W-103.829737
SIDEWALL 11	N32.329873	W-103.829862
SIDEWALL 12	N32.329986	W-103.829805
SIDEWALL 13	N32.330008	W-103.829875
SIDEWALL 14	N32.330091	W-103.829933
SIDEWALL 15	N32.330170	W-103.829775
SIDEWALL 16	N32.330098	W-103.829756
BS1 @ 4'	N32.329813	W-103.829787
BS2 @ 4'	N32.329805	W-103.829751
BS3 @ 3'	N32.329857	W-103.829738
BS4@ 3'	N32.329853	W-103.829773
BS5@ 3'	N32.329869	W-103.829820
BS6@ 3'	N32.329880	W-103.829768
BS7@ 3'	N32.329905	W-103.829807
BS8@ 3'	N32.329948	W-103.829806
BS9@ 3'	N32.329981	W-103.829833
BS10@ 3'	N32.330020	W-103.829833
BS11@ 3'	N32.330042	W-103.829867
BS 12@ 3'	N32.330063	W-103.829894
BS13@ 3'		

FEDERAL 12-1 H CTB (4/16/20)

BS14@ 3'	N32.330075	W-103.829855
BS15@ 3'	N32.30058	W-103.829821
BS16@ 3'	N32.330084	W-103.829788
BS17@ 3'	N32.330124	W-103.829765
BS18@ 3'	N32.330159	W-103.829792
BS19@ 3'	N32.330151	W-103.829745
BS20@ 3'	N32.329993	W-103.829591
BS21@ 3'	N32.329964	W-103.829590
BS22@ 3'	N32.329930	W-103.829588
BS23@ 3'	N32.329838	W-103.829561
BS24@ 3'	N32.329804	W-103.829561
BS25@ 3'	N32.329755	W-103.829557
BS26@2'	N32.330084	W-103.829694
BS27@2'	N32.330021	W-103.829628
BS28@2'	N32.329888	W-103.829578
BS29@2'	N32.329882	W-103.829612
BS30@2'	N32.329874	W-103.829664
BS31@2'	N32.329856	W-103.829613
BS32@2'	N32.329848	W-103.829677
BS33@2'	N32.329812	W-103.829705
BS34@2'	N32.329765	W-103.829688

Laboratory Analytical Results Summary
Oxy, Federal 12-1H

		Sample ID	Bottom 1 @ 4'	Bottom 2 @ 4'	Bottom 3 @ 3'	Bottom 4 @ 3'	Bottom 5 @ 3'	Bottom 6 @ 3'	Bottom 7 @ 3'	Bottom 8 @ 3'	Bottom 9 @ 3'	Bottom 10 @ 3'
Analyte	Method	Date	5/21/21	5/21/21	5/21/21	5/21/21	5/21/21	5/21/21	5/21/21	5/21/21	5/21/21	5/21/21
			mg/kg	mg/kg	mg/kg	mg/kg	mg/kg	mg/kg	mg/kg	mg/kg	mg/kg	mg/kg
Benzene	BTEX 8021B		<0.050	<0.050	<0.050	<0.050	<0.050	<0.050	<0.050	<0.050	<0.050	<0.050
Toluene	BTEX 8021B		<0.050	<0.050	<0.050	<0.050	<0.050	<0.050	<0.050	<0.050	<0.050	<0.050
Ethylbenzene	BTEX 8021B		<0.050	<0.050	<0.050	<0.050	<0.050	<0.050	<0.050	<0.050	<0.050	<0.050
Total Xylenes	BTEX 8021B		<0.150	<0.150	<0.150	<0.150	<0.150	<0.150	<0.150	<0.150	<0.150	<0.150
Total BTEX	BTEX 8021B		<0.300	<0.300	<0.300	<0.300	<0.300	<0.300	<0.300	<0.300	<0.300	<0.300
Chloride	SM4500Cl-B		16.0	64.0	80.0	32.0	32.0	80.0	48.0	80.0	64.0	80.0
GRO	TPH 8015M		<10.0	<10.0	<10.0	<10.0	<10.0	<10.0	<10.0	<10.0	<10.0	<10.0
DRO	TPH 8015M		<10.0	<10.0	<10.0	<10.0	<10.0	<10.0	<10.0	<10.0	<10.0	<10.0
EXT DRO	TPH 8015M		<10.0	<10.0	<10.0	<10.0	<10.0	<10.0	<10.0	<10.0	<10.0	<10.0

		Sample ID	Bottom 11 @ 3'	Bottom 12 @ 3'	Bottom 13 @ 3'	Bottom 14 @ 3'	Bottom 15 @ 3'	Bottom 16 @ 3'	Bottom 17 @ 3'	Bottom 18 @ 3'	Bottom 19 @ 3'	Bottom 20 @ 3'
Analyte	Method	Date	5/21/21	5/21/21	5/21/21	5/21/21	5/21/21	5/21/21	5/21/21	5/21/21	5/21/21	5/21/21
			mg/kg	mg/kg	mg/kg	mg/kg	mg/kg	mg/kg	mg/kg	mg/kg	mg/kg	mg/kg
Benzene	BTEX 8021B		<0.050	<0.050	<0.050	<0.050	<0.050	<0.050	<0.050	<0.050	<0.050	<0.050
Toluene	BTEX 8021B		<0.050	<0.050	<0.050	<0.050	<0.050	<0.050	<0.050	<0.050	<0.050	<0.050
Ethylbenzene	BTEX 8021B		<0.050	<0.050	<0.050	<0.050	<0.050	<0.050	<0.050	<0.050	<0.050	<0.050
Total Xylenes	BTEX 8021B		<0.150	<0.150	<0.150	<0.150	<0.150	<0.150	<0.150	<0.150	<0.150	<0.150
Total BTEX	BTEX 8021B		<0.300	<0.300	<0.300	<0.300	<0.300	<0.300	<0.300	<0.300	<0.300	<0.300
Chloride	SM4500Cl-B		80.0	128.0	96.0	128.0	48.0	64.0	48.0	48.0	48.0	96.0
GRO	TPH 8015M		<10.0	<10.0	<10.0	<10.0	<10.0	<10.0	<10.0	<10.0	<10.0	<10.0
DRO	TPH 8015M		<10.0	<10.0	<10.0	<10.0	<10.0	<10.0	<10.0	<10.0	<10.0	<10.0
EXT DRO	TPH 8015M		<10.0	<10.0	<10.0	<10.0	<10.0	<10.0	<10.0	<10.0	<10.0	<10.0

		Sample ID	Bottom 21 @ 3'	Bottom 22 @ 3'	Bottom 23 @ 2'	Bottom 24 @ 2'	Bottom 25 @ 2'	Bottom 26 @ 2'	Bottom 27 @ 2'	Bottom 28 @ 2'	Bottom 29 @ 2'	Bottom 30 @ 2'
Analyte	Method	Date	5/21/21	5/21/21	5/21/21	5/21/21	5/21/21	5/21/21	5/21/21	5/21/21	5/21/21	5/21/21
			mg/kg	mg/kg	mg/kg	mg/kg	mg/kg	mg/kg	mg/kg	mg/kg	mg/kg	mg/kg
Benzene	BTEX 8021B		<0.050	<0.050	<0.050	<0.050	<0.050	<0.050	<0.050	<0.050	<0.050	<0.050
Toluene	BTEX 8021B		<0.050	<0.050	<0.050	<0.050	<0.050	<0.050	<0.050	<0.050	<0.050	<0.050
Ethylbenzene	BTEX 8021B		<0.050	<0.050	<0.050	<0.050	<0.050	<0.050	<0.050	<0.050	<0.050	<0.050
Total Xylenes	BTEX 8021B		<0.150	<0.150	<0.150	<0.150	<0.150	<0.150	<0.150	<0.150	<0.150	<0.150
Total BTEX	BTEX 8021B		<0.300	<0.300	<0.300	<0.300	<0.300	<0.300	<0.300	<0.300	<0.300	<0.300
Chloride	SM4500Cl-B		64.0	32.0	32.0	80.0	32.0	48.0	80.0	48.0	<16.0	48.0
GRO	TPH 8015M		<10.0	<10.0	<10.0	<10.0	<10.0	<10.0	<10.0	<10.0	<10.0	<10.0
DRO	TPH 8015M		<10.0	<10.0	<10.0	<10.0	<10.0	<10.0	<10.0	<10.0	<10.0	<10.0
EXT DRO	TPH 8015M		<10.0	<10.0	<10.0	<10.0	<10.0	<10.0	<10.0	<10.0	<10.0	<10.0

		Sample ID	Bottom 31 @ 2'	Bottom 32 @ 3'	Bottom 33 @ 3'	Bottom 34 @ 3'	Sidewall 1	Sidewall 2	Sidewall 3	Sidewall 4	Sidewall 5	Sidewall 6
Analyte	Method	Date	5/21/21	5/21/21	5/21/21	5/21/21	5/21/21	5/21/21	5/21/21	5/21/21	5/21/21	5/21/21
			mg/kg	mg/kg	mg/kg	mg/kg	mg/kg	mg/kg	mg/kg	mg/kg	mg/kg	mg/kg
Benzene	BTEX 8021B		<0.050	<0.050	<0.050	<0.050	<0.050	<0.050	<0.050	<0.050	<0.050	<0.050
Toluene	BTEX 8021B		<0.050	<0.050	<0.050	<0.050	<0.050	<0.050	<0.050	<0.050	<0.050	<0.050
Ethylbenzene	BTEX 8021B		<0.050	<0.050	<0.050	<0.050	<0.050	<0.050	<0.050	<0.050	<0.050	<0.050
Total Xylenes	BTEX 8021B		<0.150	<0.150	<0.150	<0.150	<0.150	<0.150	<0.150	<0.150	<0.150	<0.150
Total BTEX	BTEX 8021B		<0.300	<0.300	<0.300	<0.300	<0.300	<0.300	<0.300	<0.300	<0.300	<0.300
Chloride	SM4500Cl-B		32.0	32.0	96.0	96.0	48.0	48.0	64.0	80.0	64.0	48.0
GRO	TPH 8015M		<10.0	<10.0	<10.0	<10.0	<10.0	<10.0	<10.0	<10.0	<10.0	<10.0
DRO	TPH 8015M		<10.0	<10.0	<10.0	<10.0	10.6	<10.0	<10.0	<10.0	<10.0	<10.0
EXT DRO	TPH 8015M		<10.0	<10.0	<10.0	<10.0	<10.0	<10.0	<10.0	<10.0	<10.0	<10.0

		Sample ID	Sidewall 7	Sidewall 8	Sidewall 9	Sidewall 10	Sidewall 11	Sidewall 12	Sidewall 13	Sidewall 14	Sidewall 15	Sidewall 16
Analyte	Method	Date	5/21/21	5/21/21	5/21/21	5/21/21	5/21/21	5/21/21	5/21/21	5/21/21	5/21/21	5/21/21
			mg/kg	mg/kg	mg/kg	mg/kg	mg/kg	mg/kg	mg/kg	mg/kg	mg/kg	mg/kg
Benzene	BTEX 8021B		<0.050	<0.050	<0.050	<0.050	<0.050	<0.050	<0.050	<0.050	<0.050	<0.050
Toluene	BTEX 8021B		<0.050	<0.050	<0.050	<0.050	<0.050	<0.050	<0.050	<0.050	<0.050	<0.050
Ethylbenzene	BTEX 8021B		<0.050	<0.050	<0.050	<0.050	<0.050	<0.050	<0.050	<0.050	<0.050	<0.050
Total Xylenes	BTEX 8021B		<0.150	<0.150	<0.150	<0.150	<0.150	<0.150	<0.150	<0.150	<0.150	<0.150
Total BTEX	BTEX 8021B		<0.300	<0.300	<0.300	<0.300	<0.300	<0.300	<0.300	<0.300	<0.300	<0.300
Chloride	SM4500Cl-B		32.0	48.0	48.0	64.0	64.0	96.0	32.0	48.0	64.0	96.0
GRO	TPH 8015M		<10.0	<10.0	<10.0	<10.0	<10.0	<10.0	<10.0	<10.0	<10.0	<10.0
DRO	TPH 8015M		<10.0	<10.0	<10.0	<10.0	<10.0	<10.0	<10.0	<10.0	<10.0	<10.0
EXT DRO	TPH 8015M		<10.0	<10.0	<10.0	<10.0	<10.0	<10.0	<10.0	<10.0	<10.0	<10.0



FEDERAL 12-1 H CENTRAL OIL TANK
4/16/20



FEDERAL 12-1 H CENTRAL OIL TANK
4/16/20



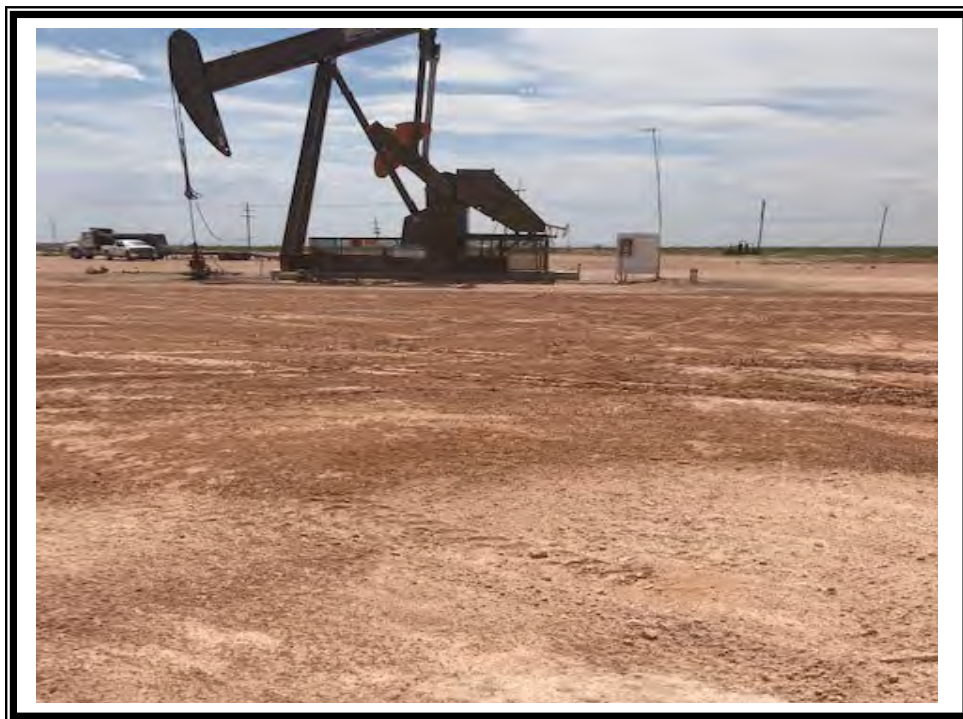
FEDERAL 12-1 H CENTRAL OIL TANK
4/16/20



FEDERAL 12-1 H CENTRAL OIL TANK
4/16/20



FEDERAL 12-1 H CENTRAL OIL TANK
4/16/20





PHONE (575) 393-2326 ° 101 E. MARLAND ° HOBBS, NM 88240

May 27, 2021

Cliff Brunson

BBC International, Inc.

P.O. Box 805

Hobbs, NM 88241

RE: FEDERAL 12 - 1H

Enclosed are the results of analyses for samples received by the laboratory on 05/24/21 8:25.

Cardinal Laboratories is accredited through Texas NELAP under certificate number T104704398-20-13. Accreditation applies to drinking water, non-potable water and solid and chemical materials. All accredited analytes are denoted by an asterisk (*). For a complete list of accredited analytes and matrices visit the TCEQ website at www.tceq.texas.gov/field/qa/lab_accred_certif.html.

Cardinal Laboratories is accredited through the State of Colorado Department of Public Health and Environment for:

Method EPA 552.2	Haloacetic Acids (HAA-5)
Method EPA 524.2	Total Trihalomethanes (TTHM)
Method EPA 524.4	Regulated VOCs (V1, V2, V3)

Accreditation applies to public drinking water matrices.

This report meets NELAP requirements and is made up of a cover page, analytical results, and a copy of the original chain-of-custody. If you have any questions concerning this report, please feel free to contact me.

Sincerely,

A handwritten signature in black ink that reads "Celey D. Keene". The signature is written in a cursive style with a large, stylized 'C' and 'K'.

Celey D. Keene

Lab Director/Quality Manager



PHONE (575) 393-2326 ° 101 E. MARLAND ° HOBBS, NM 88240

Analytical Results For:

BBC International, Inc.
 Cliff Brunson
 P.O. Box 805
 Hobbs NM, 88241
 Fax To: (575) 397-0397

Received:	05/24/2021	Sampling Date:	05/21/2021
Reported:	05/27/2021	Sampling Type:	Soil
Project Name:	FEDERAL 12 - 1H	Sampling Condition:	** (See Notes)
Project Number:	NONE GIVEN	Sample Received By:	Tamara Oldaker
Project Location:	OXY		

Sample ID: BOTTOM 1 @ 4' (H211329-01)

BTEX 8021B		mg/kg		Analyzed By: MS					
Analyte	Result	Reporting Limit	Analyzed	Method Blank	BS	% Recovery	True Value QC	RPD	Qualifier
Benzene*	<0.050	0.050	05/25/2021	ND	2.11	105	2.00	0.566	
Toluene*	<0.050	0.050	05/25/2021	ND	2.22	111	2.00	0.111	
Ethylbenzene*	<0.050	0.050	05/25/2021	ND	2.20	110	2.00	0.909	
Total Xylenes*	<0.150	0.150	05/25/2021	ND	6.52	109	6.00	0.587	
Total BTEX	<0.300	0.300	05/25/2021	ND					

Surrogate: 4-Bromofluorobenzene (PID) 103 % 69.9-140

Chloride, SM4500Cl-B		mg/kg		Analyzed By: GM					
Analyte	Result	Reporting Limit	Analyzed	Method Blank	BS	% Recovery	True Value QC	RPD	Qualifier
Chloride	16.0	16.0	05/26/2021	ND	400	100	400	3.92	

TPH 8015M		mg/kg		Analyzed By: MS					
Analyte	Result	Reporting Limit	Analyzed	Method Blank	BS	% Recovery	True Value QC	RPD	Qualifier
GRO C6-C10*	<10.0	10.0	05/25/2021	ND	219	109	200	1.23	
DRO >C10-C28*	<10.0	10.0	05/25/2021	ND	225	113	200	0.770	
EXT DRO >C28-C36	<10.0	10.0	05/25/2021	ND					

Surrogate: 1-Chlorooctane 88.1 % 44.3-133

Surrogate: 1-Chlorooctadecane 88.8 % 38.9-142

Cardinal Laboratories

*=Accredited Analyte

PLEASE NOTE: Liability and Damages. Cardinal's liability and client's exclusive remedy for any claim arising, whether based in contract or tort, shall be limited to the amount paid by client for analyses. All claims, including those for negligence and any other cause whatsoever shall be deemed waived unless made in writing and received by Cardinal within thirty (30) days after completion of the applicable service. In no event shall Cardinal be liable for incidental or consequential damages, including, without limitation, business interruptions, loss of use, or loss of profits incurred by client, its subsidiaries, affiliates or successors arising out of or related to the performance of the services hereunder by Cardinal, regardless of whether such claim is based upon any of the above stated reasons or otherwise. Results relate only to the samples identified above. This report shall not be reproduced except in full with written approval of Cardinal Laboratories.

Celey D. Keene, Lab Director/Quality Manager



PHONE (575) 393-2326 ° 101 E. MARLAND ° HOBBS, NM 88240

Analytical Results For:

BBC International, Inc.
 Cliff Brunson
 P.O. Box 805
 Hobbs NM, 88241
 Fax To: (575) 397-0397

Received:	05/24/2021	Sampling Date:	05/21/2021
Reported:	05/27/2021	Sampling Type:	Soil
Project Name:	FEDERAL 12 - 1H	Sampling Condition:	** (See Notes)
Project Number:	NONE GIVEN	Sample Received By:	Tamara Oldaker
Project Location:	OXY		

Sample ID: BOTTOM 2 @ 4' (H211329-02)

BTEx 8021B		mg/kg		Analyzed By: MS						
Analyte	Result	Reporting Limit	Analyzed	Method Blank	BS	% Recovery	True Value QC	RPD	Qualifier	
Benzene*	<0.050	0.050	05/25/2021	ND	2.11	105	2.00	0.566		
Toluene*	<0.050	0.050	05/25/2021	ND	2.22	111	2.00	0.111		
Ethylbenzene*	<0.050	0.050	05/25/2021	ND	2.20	110	2.00	0.909		
Total Xylenes*	<0.150	0.150	05/25/2021	ND	6.52	109	6.00	0.587		
Total BTEx	<0.300	0.300	05/25/2021	ND						

Surrogate: 4-Bromofluorobenzene (PID) 101 % 69.9-140

Chloride, SM4500CI-B		mg/kg		Analyzed By: GM						
Analyte	Result	Reporting Limit	Analyzed	Method Blank	BS	% Recovery	True Value QC	RPD	Qualifier	
Chloride	64.0	16.0	05/26/2021	ND	400	100	400	3.92		

TPH 8015M		mg/kg		Analyzed By: MS					
Analyte	Result	Reporting Limit	Analyzed	Method Blank	BS	% Recovery	True Value QC	RPD	Qualifier
GRO C6-C10*	<10.0	10.0	05/25/2021	ND	219	109	200	1.23	
DRO >C10-C28*	<10.0	10.0	05/25/2021	ND	225	113	200	0.770	
EXT DRO >C28-C36	<10.0	10.0	05/25/2021	ND					

Surrogate: 1-Chlorooctane 87.4 % 44.3-133

Surrogate: 1-Chlorooctadecane 89.0 % 38.9-142

Cardinal Laboratories

*=Accredited Analyte

PLEASE NOTE: Liability and Damages. Cardinal's liability and client's exclusive remedy for any claim arising, whether based in contract or tort, shall be limited to the amount paid by client for analyses. All claims, including those for negligence and any other cause whatsoever shall be deemed waived unless made in writing and received by Cardinal within thirty (30) days after completion of the applicable service. In no event shall Cardinal be liable for incidental or consequential damages, including, without limitation, business interruptions, loss of use, or loss of profits incurred by client, its subsidiaries, affiliates or successors arising out of or related to the performance of the services hereunder by Cardinal, regardless of whether such claim is based upon any of the above stated reasons or otherwise. Results relate only to the samples identified above. This report shall not be reproduced except in full with written approval of Cardinal Laboratories.

Celey D. Keene, Lab Director/Quality Manager



PHONE (575) 393-2326 ° 101 E. MARLAND ° HOBBS, NM 88240

Analytical Results For:

BBC International, Inc.
 Cliff Brunson
 P.O. Box 805
 Hobbs NM, 88241
 Fax To: (575) 397-0397

Received:	05/24/2021	Sampling Date:	05/21/2021
Reported:	05/27/2021	Sampling Type:	Soil
Project Name:	FEDERAL 12 - 1H	Sampling Condition:	** (See Notes)
Project Number:	NONE GIVEN	Sample Received By:	Tamara Oldaker
Project Location:	OXY		

Sample ID: BOTTOM 3 @ 3' (H211329-03)

BTX 8021B		mg/kg		Analyzed By: MS					
Analyte	Result	Reporting Limit	Analyzed	Method Blank	BS	% Recovery	True Value QC	RPD	Qualifier
Benzene*	<0.050	0.050	05/25/2021	ND	2.11	105	2.00	0.566	
Toluene*	<0.050	0.050	05/25/2021	ND	2.22	111	2.00	0.111	
Ethylbenzene*	<0.050	0.050	05/25/2021	ND	2.20	110	2.00	0.909	
Total Xylenes*	<0.150	0.150	05/25/2021	ND	6.52	109	6.00	0.587	
Total BTX	<0.300	0.300	05/25/2021	ND					

Surrogate: 4-Bromofluorobenzene (PID) 109 % 69.9-140

Chloride, SM4500Cl-B		mg/kg		Analyzed By: GM						
Analyte	Result	Reporting Limit	Analyzed	Method Blank	BS	% Recovery	True Value QC	RPD	Qualifier	
Chloride	80.0	16.0	05/26/2021	ND	400	100	400	3.92		

TPH 8015M		mg/kg		Analyzed By: MS					
Analyte	Result	Reporting Limit	Analyzed	Method Blank	BS	% Recovery	True Value QC	RPD	Qualifier
GRO C6-C10*	<10.0	10.0	05/25/2021	ND	219	109	200	1.23	
DRO >C10-C28*	<10.0	10.0	05/25/2021	ND	225	113	200	0.770	
EXT DRO >C28-C36	<10.0	10.0	05/25/2021	ND					

Surrogate: 1-Chlorooctane 85.3 % 44.3-133

Surrogate: 1-Chlorooctadecane 86.8 % 38.9-142

Cardinal Laboratories

*=Accredited Analyte

PLEASE NOTE: Liability and Damages. Cardinal's liability and client's exclusive remedy for any claim arising, whether based in contract or tort, shall be limited to the amount paid by client for analyses. All claims, including those for negligence and any other cause whatsoever shall be deemed waived unless made in writing and received by Cardinal within thirty (30) days after completion of the applicable service. In no event shall Cardinal be liable for incidental or consequential damages, including, without limitation, business interruptions, loss of use, or loss of profits incurred by client, its subsidiaries, affiliates or successors arising out of or related to the performance of the services hereunder by Cardinal, regardless of whether such claim is based upon any of the above stated reasons or otherwise. Results relate only to the samples identified above. This report shall not be reproduced except in full with written approval of Cardinal Laboratories.

Celey D. Keene, Lab Director/Quality Manager



PHONE (575) 393-2326 ° 101 E. MARLAND ° HOBBS, NM 88240

Analytical Results For:

BBC International, Inc.
 Cliff Brunson
 P.O. Box 805
 Hobbs NM, 88241
 Fax To: (575) 397-0397

Received:	05/24/2021	Sampling Date:	05/21/2021
Reported:	05/27/2021	Sampling Type:	Soil
Project Name:	FEDERAL 12 - 1H	Sampling Condition:	** (See Notes)
Project Number:	NONE GIVEN	Sample Received By:	Tamara Oldaker
Project Location:	OXY		

Sample ID: BOTTOM 4 @ 3' (H211329-04)

BTX 8021B		mg/kg		Analyzed By: MS					
Analyte	Result	Reporting Limit	Analyzed	Method Blank	BS	% Recovery	True Value QC	RPD	Qualifier
Benzene*	<0.050	0.050	05/25/2021	ND	2.11	105	2.00	0.566	
Toluene*	<0.050	0.050	05/25/2021	ND	2.22	111	2.00	0.111	
Ethylbenzene*	<0.050	0.050	05/25/2021	ND	2.20	110	2.00	0.909	
Total Xylenes*	<0.150	0.150	05/25/2021	ND	6.52	109	6.00	0.587	
Total BTX	<0.300	0.300	05/25/2021	ND					

Surrogate: 4-Bromofluorobenzene (PID) 102 % 69.9-140

Chloride, SM4500CI-B		mg/kg		Analyzed By: GM						
Analyte	Result	Reporting Limit	Analyzed	Method Blank	BS	% Recovery	True Value QC	RPD	Qualifier	
Chloride	32.0	16.0	05/26/2021	ND	400	100	400	3.92		

TPH 8015M		mg/kg		Analyzed By: MS					
Analyte	Result	Reporting Limit	Analyzed	Method Blank	BS	% Recovery	True Value QC	RPD	Qualifier
GRO C6-C10*	<10.0	10.0	05/25/2021	ND	219	109	200	1.23	
DRO >C10-C28*	<10.0	10.0	05/25/2021	ND	225	113	200	0.770	
EXT DRO >C28-C36	<10.0	10.0	05/25/2021	ND					

Surrogate: 1-Chlorooctane 73.4 % 44.3-133

Surrogate: 1-Chlorooctadecane 74.6 % 38.9-142

Cardinal Laboratories

*=Accredited Analyte

PLEASE NOTE: Liability and Damages. Cardinal's liability and client's exclusive remedy for any claim arising, whether based in contract or tort, shall be limited to the amount paid by client for analyses. All claims, including those for negligence and any other cause whatsoever shall be deemed waived unless made in writing and received by Cardinal within thirty (30) days after completion of the applicable service. In no event shall Cardinal be liable for incidental or consequential damages, including, without limitation, business interruptions, loss of use, or loss of profits incurred by client, its subsidiaries, affiliates or successors arising out of or related to the performance of the services hereunder by Cardinal, regardless of whether such claim is based upon any of the above stated reasons or otherwise. Results relate only to the samples identified above. This report shall not be reproduced except in full with written approval of Cardinal Laboratories.

Celey D. Keene, Lab Director/Quality Manager



PHONE (575) 393-2326 ° 101 E. MARLAND ° HOBBS, NM 88240

Analytical Results For:

BBC International, Inc.
 Cliff Brunson
 P.O. Box 805
 Hobbs NM, 88241
 Fax To: (575) 397-0397

Received:	05/24/2021	Sampling Date:	05/21/2021
Reported:	05/27/2021	Sampling Type:	Soil
Project Name:	FEDERAL 12 - 1H	Sampling Condition:	** (See Notes)
Project Number:	NONE GIVEN	Sample Received By:	Tamara Oldaker
Project Location:	OXY		

Sample ID: BOTTOM 5 @ 3' (H211329-05)

BTX 8021B		mg/kg		Analyzed By: MS					
Analyte	Result	Reporting Limit	Analyzed	Method Blank	BS	% Recovery	True Value QC	RPD	Qualifier
Benzene*	<0.050	0.050	05/25/2021	ND	2.11	105	2.00	0.566	
Toluene*	<0.050	0.050	05/25/2021	ND	2.22	111	2.00	0.111	
Ethylbenzene*	<0.050	0.050	05/25/2021	ND	2.20	110	2.00	0.909	
Total Xylenes*	<0.150	0.150	05/25/2021	ND	6.52	109	6.00	0.587	
Total BTX	<0.300	0.300	05/25/2021	ND					

Surrogate: 4-Bromofluorobenzene (PID) 106 % 69.9-140

Chloride, SM4500CI-B		mg/kg		Analyzed By: GM						
Analyte	Result	Reporting Limit	Analyzed	Method Blank	BS	% Recovery	True Value QC	RPD	Qualifier	
Chloride	32.0	16.0	05/26/2021	ND	400	100	400	3.92		

TPH 8015M		mg/kg		Analyzed By: MS					
Analyte	Result	Reporting Limit	Analyzed	Method Blank	BS	% Recovery	True Value QC	RPD	Qualifier
GRO C6-C10*	<10.0	10.0	05/25/2021	ND	219	109	200	1.23	
DRO >C10-C28*	<10.0	10.0	05/25/2021	ND	225	113	200	0.770	
EXT DRO >C28-C36	<10.0	10.0	05/25/2021	ND					

Surrogate: 1-Chlorooctane 78.6 % 44.3-133

Surrogate: 1-Chlorooctadecane 79.4 % 38.9-142

Cardinal Laboratories

*=Accredited Analyte

PLEASE NOTE: Liability and Damages. Cardinal's liability and client's exclusive remedy for any claim arising, whether based in contract or tort, shall be limited to the amount paid by client for analyses. All claims, including those for negligence and any other cause whatsoever shall be deemed waived unless made in writing and received by Cardinal within thirty (30) days after completion of the applicable service. In no event shall Cardinal be liable for incidental or consequential damages, including, without limitation, business interruptions, loss of use, or loss of profits incurred by client, its subsidiaries, affiliates or successors arising out of or related to the performance of the services hereunder by Cardinal, regardless of whether such claim is based upon any of the above stated reasons or otherwise. Results relate only to the samples identified above. This report shall not be reproduced except in full with written approval of Cardinal Laboratories.

Celey D. Keene, Lab Director/Quality Manager



PHONE (575) 393-2326 ° 101 E. MARLAND ° HOBBS, NM 88240

Analytical Results For:

BBC International, Inc.
 Cliff Brunson
 P.O. Box 805
 Hobbs NM, 88241
 Fax To: (575) 397-0397

Received:	05/24/2021	Sampling Date:	05/21/2021
Reported:	05/27/2021	Sampling Type:	Soil
Project Name:	FEDERAL 12 - 1H	Sampling Condition:	** (See Notes)
Project Number:	NONE GIVEN	Sample Received By:	Tamara Oldaker
Project Location:	OXY		

Sample ID: BOTTOM 6 @ 3' (H211329-06)

BTX 8021B		mg/kg		Analyzed By: MS					
Analyte	Result	Reporting Limit	Analyzed	Method Blank	BS	% Recovery	True Value QC	RPD	Qualifier
Benzene*	<0.050	0.050	05/25/2021	ND	2.11	105	2.00	0.566	
Toluene*	<0.050	0.050	05/25/2021	ND	2.22	111	2.00	0.111	
Ethylbenzene*	<0.050	0.050	05/25/2021	ND	2.20	110	2.00	0.909	
Total Xylenes*	<0.150	0.150	05/25/2021	ND	6.52	109	6.00	0.587	
Total BTX	<0.300	0.300	05/25/2021	ND					

Surrogate: 4-Bromofluorobenzene (PID) 108 % 69.9-140

Chloride, SM4500CI-B		mg/kg		Analyzed By: GM						
Analyte	Result	Reporting Limit	Analyzed	Method Blank	BS	% Recovery	True Value QC	RPD	Qualifier	
Chloride	80.0	16.0	05/26/2021	ND	400	100	400	3.92		

TPH 8015M		mg/kg		Analyzed By: MS					
Analyte	Result	Reporting Limit	Analyzed	Method Blank	BS	% Recovery	True Value QC	RPD	Qualifier
GRO C6-C10*	<10.0	10.0	05/25/2021	ND	219	109	200	1.23	
DRO >C10-C28*	<10.0	10.0	05/25/2021	ND	225	113	200	0.770	
EXT DRO >C28-C36	<10.0	10.0	05/25/2021	ND					

Surrogate: 1-Chlorooctane 85.4 % 44.3-133

Surrogate: 1-Chlorooctadecane 85.6 % 38.9-142

Cardinal Laboratories

*=Accredited Analyte

PLEASE NOTE: Liability and Damages. Cardinal's liability and client's exclusive remedy for any claim arising, whether based in contract or tort, shall be limited to the amount paid by client for analyses. All claims, including those for negligence and any other cause whatsoever shall be deemed waived unless made in writing and received by Cardinal within thirty (30) days after completion of the applicable service. In no event shall Cardinal be liable for incidental or consequential damages, including, without limitation, business interruptions, loss of use, or loss of profits incurred by client, its subsidiaries, affiliates or successors arising out of or related to the performance of the services hereunder by Cardinal, regardless of whether such claim is based upon any of the above stated reasons or otherwise. Results relate only to the samples identified above. This report shall not be reproduced except in full with written approval of Cardinal Laboratories.

Celey D. Keene, Lab Director/Quality Manager



PHONE (575) 393-2326 ° 101 E. MARLAND ° HOBBS, NM 88240

Analytical Results For:

BBC International, Inc.
 Cliff Brunson
 P.O. Box 805
 Hobbs NM, 88241
 Fax To: (575) 397-0397

Received:	05/24/2021	Sampling Date:	05/21/2021
Reported:	05/27/2021	Sampling Type:	Soil
Project Name:	FEDERAL 12 - 1H	Sampling Condition:	** (See Notes)
Project Number:	NONE GIVEN	Sample Received By:	Tamara Oldaker
Project Location:	OXY		

Sample ID: BOTTOM 7 @ 3' (H211329-07)

BTX 8021B		mg/kg		Analyzed By: MS					
Analyte	Result	Reporting Limit	Analyzed	Method Blank	BS	% Recovery	True Value QC	RPD	Qualifier
Benzene*	<0.050	0.050	05/25/2021	ND	2.11	105	2.00	0.566	
Toluene*	<0.050	0.050	05/25/2021	ND	2.22	111	2.00	0.111	
Ethylbenzene*	<0.050	0.050	05/25/2021	ND	2.20	110	2.00	0.909	
Total Xylenes*	<0.150	0.150	05/25/2021	ND	6.52	109	6.00	0.587	
Total BTX	<0.300	0.300	05/25/2021	ND					

Surrogate: 4-Bromofluorobenzene (PID) 107 % 69.9-140

Chloride, SM4500CI-B		mg/kg		Analyzed By: GM					
Analyte	Result	Reporting Limit	Analyzed	Method Blank	BS	% Recovery	True Value QC	RPD	Qualifier
Chloride	48.0	16.0	05/26/2021	ND	400	100	400	3.92	

TPH 8015M		mg/kg		Analyzed By: MS					
Analyte	Result	Reporting Limit	Analyzed	Method Blank	BS	% Recovery	True Value QC	RPD	Qualifier
GRO C6-C10*	<10.0	10.0	05/25/2021	ND	219	109	200	1.23	
DRO >C10-C28*	<10.0	10.0	05/25/2021	ND	225	113	200	0.770	
EXT DRO >C28-C36	<10.0	10.0	05/25/2021	ND					

Surrogate: 1-Chlorooctane 86.7 % 44.3-133

Surrogate: 1-Chlorooctadecane 86.0 % 38.9-142

Cardinal Laboratories

*=Accredited Analyte

PLEASE NOTE: Liability and Damages. Cardinal's liability and client's exclusive remedy for any claim arising, whether based in contract or tort, shall be limited to the amount paid by client for analyses. All claims, including those for negligence and any other cause whatsoever shall be deemed waived unless made in writing and received by Cardinal within thirty (30) days after completion of the applicable service. In no event shall Cardinal be liable for incidental or consequential damages, including, without limitation, business interruptions, loss of use, or loss of profits incurred by client, its subsidiaries, affiliates or successors arising out of or related to the performance of the services hereunder by Cardinal, regardless of whether such claim is based upon any of the above stated reasons or otherwise. Results relate only to the samples identified above. This report shall not be reproduced except in full with written approval of Cardinal Laboratories.

Celey D. Keene, Lab Director/Quality Manager



PHONE (575) 393-2326 ° 101 E. MARLAND ° HOBBS, NM 88240

Analytical Results For:

BBC International, Inc.
 Cliff Brunson
 P.O. Box 805
 Hobbs NM, 88241
 Fax To: (575) 397-0397

Received:	05/24/2021	Sampling Date:	05/21/2021
Reported:	05/27/2021	Sampling Type:	Soil
Project Name:	FEDERAL 12 - 1H	Sampling Condition:	** (See Notes)
Project Number:	NONE GIVEN	Sample Received By:	Tamara Oldaker
Project Location:	OXY		

Sample ID: BOTTOM 8 @ 3' (H211329-08)

BTX 8021B		mg/kg		Analyzed By: MS					
Analyte	Result	Reporting Limit	Analyzed	Method Blank	BS	% Recovery	True Value QC	RPD	Qualifier
Benzene*	<0.050	0.050	05/25/2021	ND	2.11	105	2.00	0.566	
Toluene*	<0.050	0.050	05/25/2021	ND	2.22	111	2.00	0.111	
Ethylbenzene*	<0.050	0.050	05/25/2021	ND	2.20	110	2.00	0.909	
Total Xylenes*	<0.150	0.150	05/25/2021	ND	6.52	109	6.00	0.587	
Total BTX	<0.300	0.300	05/25/2021	ND					

Surrogate: 4-Bromofluorobenzene (PID) 104 % 69.9-140

Chloride, SM4500CI-B		mg/kg		Analyzed By: GM						
Analyte	Result	Reporting Limit	Analyzed	Method Blank	BS	% Recovery	True Value QC	RPD	Qualifier	
Chloride	80.0	16.0	05/26/2021	ND	400	100	400	3.92		

TPH 8015M		mg/kg		Analyzed By: MS					
Analyte	Result	Reporting Limit	Analyzed	Method Blank	BS	% Recovery	True Value QC	RPD	Qualifier
GRO C6-C10*	<10.0	10.0	05/25/2021	ND	219	109	200	1.23	
DRO >C10-C28*	<10.0	10.0	05/25/2021	ND	225	113	200	0.770	
EXT DRO >C28-C36	<10.0	10.0	05/25/2021	ND					

Surrogate: 1-Chlorooctane 82.3 % 44.3-133

Surrogate: 1-Chlorooctadecane 81.0 % 38.9-142

Cardinal Laboratories

*=Accredited Analyte

PLEASE NOTE: Liability and Damages. Cardinal's liability and client's exclusive remedy for any claim arising, whether based in contract or tort, shall be limited to the amount paid by client for analyses. All claims, including those for negligence and any other cause whatsoever shall be deemed waived unless made in writing and received by Cardinal within thirty (30) days after completion of the applicable service. In no event shall Cardinal be liable for incidental or consequential damages, including, without limitation, business interruptions, loss of use, or loss of profits incurred by client, its subsidiaries, affiliates or successors arising out of or related to the performance of the services hereunder by Cardinal, regardless of whether such claim is based upon any of the above stated reasons or otherwise. Results relate only to the samples identified above. This report shall not be reproduced except in full with written approval of Cardinal Laboratories.

Celey D. Keene, Lab Director/Quality Manager



PHONE (575) 393-2326 ° 101 E. MARLAND ° HOBBS, NM 88240

Analytical Results For:

BBC International, Inc.
 Cliff Brunson
 P.O. Box 805
 Hobbs NM, 88241
 Fax To: (575) 397-0397

Received:	05/24/2021	Sampling Date:	05/21/2021
Reported:	05/27/2021	Sampling Type:	Soil
Project Name:	FEDERAL 12 - 1H	Sampling Condition:	** (See Notes)
Project Number:	NONE GIVEN	Sample Received By:	Tamara Oldaker
Project Location:	OXY		

Sample ID: BOTTOM 9 @ 3' (H211329-09)

BTX 8021B		mg/kg		Analyzed By: MS					
Analyte	Result	Reporting Limit	Analyzed	Method Blank	BS	% Recovery	True Value QC	RPD	Qualifier
Benzene*	<0.050	0.050	05/25/2021	ND	2.11	105	2.00	0.566	
Toluene*	<0.050	0.050	05/25/2021	ND	2.22	111	2.00	0.111	
Ethylbenzene*	<0.050	0.050	05/25/2021	ND	2.20	110	2.00	0.909	
Total Xylenes*	<0.150	0.150	05/25/2021	ND	6.52	109	6.00	0.587	
Total BTX	<0.300	0.300	05/25/2021	ND					

Surrogate: 4-Bromofluorobenzene (PID) 116 % 69.9-140

Chloride, SM4500CI-B		mg/kg		Analyzed By: GM						
Analyte	Result	Reporting Limit	Analyzed	Method Blank	BS	% Recovery	True Value QC	RPD	Qualifier	
Chloride	64.0	16.0	05/26/2021	ND	400	100	400	3.92		

TPH 8015M		mg/kg		Analyzed By: MS					
Analyte	Result	Reporting Limit	Analyzed	Method Blank	BS	% Recovery	True Value QC	RPD	Qualifier
GRO C6-C10*	<10.0	10.0	05/25/2021	ND	219	109	200	1.23	
DRO >C10-C28*	<10.0	10.0	05/25/2021	ND	225	113	200	0.770	
EXT DRO >C28-C36	<10.0	10.0	05/25/2021	ND					

Surrogate: 1-Chlorooctane 84.4 % 44.3-133

Surrogate: 1-Chlorooctadecane 83.2 % 38.9-142

Cardinal Laboratories

*=Accredited Analyte

PLEASE NOTE: Liability and Damages. Cardinal's liability and client's exclusive remedy for any claim arising, whether based in contract or tort, shall be limited to the amount paid by client for analyses. All claims, including those for negligence and any other cause whatsoever shall be deemed waived unless made in writing and received by Cardinal within thirty (30) days after completion of the applicable service. In no event shall Cardinal be liable for incidental or consequential damages, including, without limitation, business interruptions, loss of use, or loss of profits incurred by client, its subsidiaries, affiliates or successors arising out of or related to the performance of the services hereunder by Cardinal, regardless of whether such claim is based upon any of the above stated reasons or otherwise. Results relate only to the samples identified above. This report shall not be reproduced except in full with written approval of Cardinal Laboratories.

Celey D. Keene, Lab Director/Quality Manager



PHONE (575) 393-2326 ° 101 E. MARLAND ° HOBBS, NM 88240

Analytical Results For:

BBC International, Inc.
 Cliff Brunson
 P.O. Box 805
 Hobbs NM, 88241
 Fax To: (575) 397-0397

Received:	05/24/2021	Sampling Date:	05/21/2021
Reported:	05/27/2021	Sampling Type:	Soil
Project Name:	FEDERAL 12 - 1H	Sampling Condition:	** (See Notes)
Project Number:	NONE GIVEN	Sample Received By:	Tamara Oldaker
Project Location:	OXY		

Sample ID: BOTTOM 10 @ 3' (H211329-10)

BTX 8021B		mg/kg		Analyzed By: MS					
Analyte	Result	Reporting Limit	Analyzed	Method Blank	BS	% Recovery	True Value QC	RPD	Qualifier
Benzene*	<0.050	0.050	05/25/2021	ND	2.11	105	2.00	0.566	
Toluene*	<0.050	0.050	05/25/2021	ND	2.22	111	2.00	0.111	
Ethylbenzene*	<0.050	0.050	05/25/2021	ND	2.20	110	2.00	0.909	
Total Xylenes*	<0.150	0.150	05/25/2021	ND	6.52	109	6.00	0.587	
Total BTX	<0.300	0.300	05/25/2021	ND					

Surrogate: 4-Bromofluorobenzene (PID) 101 % 69.9-140

Chloride, SM4500CI-B		mg/kg		Analyzed By: GM						
Analyte	Result	Reporting Limit	Analyzed	Method Blank	BS	% Recovery	True Value QC	RPD	Qualifier	
Chloride	80.0	16.0	05/26/2021	ND	400	100	400	3.92		

TPH 8015M		mg/kg		Analyzed By: MS					
Analyte	Result	Reporting Limit	Analyzed	Method Blank	BS	% Recovery	True Value QC	RPD	Qualifier
GRO C6-C10*	<10.0	10.0	05/25/2021	ND	219	109	200	1.23	
DRO >C10-C28*	<10.0	10.0	05/25/2021	ND	225	113	200	0.770	
EXT DRO >C28-C36	<10.0	10.0	05/25/2021	ND					

Surrogate: 1-Chlorooctane 88.0 % 44.3-133

Surrogate: 1-Chlorooctadecane 88.8 % 38.9-142

Cardinal Laboratories

*=Accredited Analyte

PLEASE NOTE: Liability and Damages. Cardinal's liability and client's exclusive remedy for any claim arising, whether based in contract or tort, shall be limited to the amount paid by client for analyses. All claims, including those for negligence and any other cause whatsoever shall be deemed waived unless made in writing and received by Cardinal within thirty (30) days after completion of the applicable service. In no event shall Cardinal be liable for incidental or consequential damages, including, without limitation, business interruptions, loss of use, or loss of profits incurred by client, its subsidiaries, affiliates or successors arising out of or related to the performance of the services hereunder by Cardinal, regardless of whether such claim is based upon any of the above stated reasons or otherwise. Results relate only to the samples identified above. This report shall not be reproduced except in full with written approval of Cardinal Laboratories.

Celey D. Keene, Lab Director/Quality Manager



PHONE (575) 393-2326 ° 101 E. MARLAND ° HOBBS, NM 88240

Analytical Results For:

BBC International, Inc.
 Cliff Brunson
 P.O. Box 805
 Hobbs NM, 88241
 Fax To: (575) 397-0397

Received:	05/24/2021	Sampling Date:	05/21/2021
Reported:	05/27/2021	Sampling Type:	Soil
Project Name:	FEDERAL 12 - 1H	Sampling Condition:	** (See Notes)
Project Number:	NONE GIVEN	Sample Received By:	Tamara Oldaker
Project Location:	OXY		

Sample ID: BOTTOM 11 @ 3' (H211329-11)

BTX 8021B			mg/kg							
			Analyzed By: MS							
Analyte	Result	Reporting Limit	Analyzed	Method Blank	BS	% Recovery	True Value QC	RPD	Qualifier	
Benzene*	<0.050	0.050	05/25/2021	ND	2.11	105	2.00	0.566		
Toluene*	<0.050	0.050	05/25/2021	ND	2.22	111	2.00	0.111		
Ethylbenzene*	<0.050	0.050	05/25/2021	ND	2.20	110	2.00	0.909		
Total Xylenes*	<0.150	0.150	05/25/2021	ND	6.52	109	6.00	0.587		
Total BTX	<0.300	0.300	05/25/2021	ND						

Surrogate: 4-Bromofluorobenzene (PID) 107 % 69.9-140

Chloride, SM4500CI-B			mg/kg							
			Analyzed By: GM							
Analyte	Result	Reporting Limit	Analyzed	Method Blank	BS	% Recovery	True Value QC	RPD	Qualifier	
Chloride	80.0	16.0	05/26/2021	ND	400	100	400	3.92		

TPH 8015M			mg/kg							
			Analyzed By: MS							
Analyte	Result	Reporting Limit	Analyzed	Method Blank	BS	% Recovery	True Value QC	RPD	Qualifier	
GRO C6-C10*	<10.0	10.0	05/25/2021	ND	219	109	200	1.23		
DRO >C10-C28*	<10.0	10.0	05/25/2021	ND	225	113	200	0.770		
EXT DRO >C28-C36	<10.0	10.0	05/25/2021	ND						

Surrogate: 1-Chlorooctane 92.1 % 44.3-133

Surrogate: 1-Chlorooctadecane 91.5 % 38.9-142

Cardinal Laboratories

*=Accredited Analyte

PLEASE NOTE: Liability and Damages. Cardinal's liability and client's exclusive remedy for any claim arising, whether based in contract or tort, shall be limited to the amount paid by client for analyses. All claims, including those for negligence and any other cause whatsoever shall be deemed waived unless made in writing and received by Cardinal within thirty (30) days after completion of the applicable service. In no event shall Cardinal be liable for incidental or consequential damages, including, without limitation, business interruptions, loss of use, or loss of profits incurred by client, its subsidiaries, affiliates or successors arising out of or related to the performance of the services hereunder by Cardinal, regardless of whether such claim is based upon any of the above stated reasons or otherwise. Results relate only to the samples identified above. This report shall not be reproduced except in full with written approval of Cardinal Laboratories.

Celey D. Keene, Lab Director/Quality Manager



PHONE (575) 393-2326 ° 101 E. MARLAND ° HOBBS, NM 88240

Analytical Results For:

BBC International, Inc.
 Cliff Brunson
 P.O. Box 805
 Hobbs NM, 88241
 Fax To: (575) 397-0397

Received:	05/24/2021	Sampling Date:	05/21/2021
Reported:	05/27/2021	Sampling Type:	Soil
Project Name:	FEDERAL 12 - 1H	Sampling Condition:	** (See Notes)
Project Number:	NONE GIVEN	Sample Received By:	Tamara Oldaker
Project Location:	OXY		

Sample ID: BOTTOM 12 @ 3' (H211329-12)

BTX 8021B		mg/kg		Analyzed By: MS					
Analyte	Result	Reporting Limit	Analyzed	Method Blank	BS	% Recovery	True Value QC	RPD	Qualifier
Benzene*	<0.050	0.050	05/25/2021	ND	2.11	105	2.00	0.566	
Toluene*	<0.050	0.050	05/25/2021	ND	2.22	111	2.00	0.111	
Ethylbenzene*	<0.050	0.050	05/25/2021	ND	2.20	110	2.00	0.909	
Total Xylenes*	<0.150	0.150	05/25/2021	ND	6.52	109	6.00	0.587	
Total BTX	<0.300	0.300	05/25/2021	ND					

Surrogate: 4-Bromofluorobenzene (PID) 112 % 69.9-140

Chloride, SM4500Cl-B		mg/kg		Analyzed By: GM						
Analyte	Result	Reporting Limit	Analyzed	Method Blank	BS	% Recovery	True Value QC	RPD	Qualifier	
Chloride	128	16.0	05/26/2021	ND	400	100	400	3.92		

TPH 8015M		mg/kg		Analyzed By: MS					
Analyte	Result	Reporting Limit	Analyzed	Method Blank	BS	% Recovery	True Value QC	RPD	Qualifier
GRO C6-C10*	<10.0	10.0	05/25/2021	ND	219	110	200	4.03	
DRO >C10-C28*	<10.0	10.0	05/25/2021	ND	208	104	200	2.22	
EXT DRO >C28-C36	<10.0	10.0	05/25/2021	ND					

Surrogate: 1-Chlorooctane 91.8 % 44.3-133

Surrogate: 1-Chlorooctadecane 95.0 % 38.9-142

Cardinal Laboratories

*=Accredited Analyte

PLEASE NOTE: Liability and Damages. Cardinal's liability and client's exclusive remedy for any claim arising, whether based in contract or tort, shall be limited to the amount paid by client for analyses. All claims, including those for negligence and any other cause whatsoever shall be deemed waived unless made in writing and received by Cardinal within thirty (30) days after completion of the applicable service. In no event shall Cardinal be liable for incidental or consequential damages, including, without limitation, business interruptions, loss of use, or loss of profits incurred by client, its subsidiaries, affiliates or successors arising out of or related to the performance of the services hereunder by Cardinal, regardless of whether such claim is based upon any of the above stated reasons or otherwise. Results relate only to the samples identified above. This report shall not be reproduced except in full with written approval of Cardinal Laboratories.

Celey D. Keene, Lab Director/Quality Manager



PHONE (575) 393-2326 ° 101 E. MARLAND ° HOBBS, NM 88240

Analytical Results For:

BBC International, Inc.
 Cliff Brunson
 P.O. Box 805
 Hobbs NM, 88241
 Fax To: (575) 397-0397

Received:	05/24/2021	Sampling Date:	05/21/2021
Reported:	05/27/2021	Sampling Type:	Soil
Project Name:	FEDERAL 12 - 1H	Sampling Condition:	** (See Notes)
Project Number:	NONE GIVEN	Sample Received By:	Tamara Oldaker
Project Location:	OXY		

Sample ID: BOTTOM 13 @ 3' (H211329-13)

BTX 8021B			mg/kg							
			Analyzed By: MS							
Analyte	Result	Reporting Limit	Analyzed	Method Blank	BS	% Recovery	True Value QC	RPD	Qualifier	
Benzene*	<0.050	0.050	05/25/2021	ND	2.11	105	2.00	0.566		
Toluene*	<0.050	0.050	05/25/2021	ND	2.22	111	2.00	0.111		
Ethylbenzene*	<0.050	0.050	05/25/2021	ND	2.20	110	2.00	0.909		
Total Xylenes*	<0.150	0.150	05/25/2021	ND	6.52	109	6.00	0.587		
Total BTX	<0.300	0.300	05/25/2021	ND						

Surrogate: 4-Bromofluorobenzene (PID) 106 % 69.9-140

Chloride, SM4500CI-B			mg/kg							
			Analyzed By: GM							
Analyte	Result	Reporting Limit	Analyzed	Method Blank	BS	% Recovery	True Value QC	RPD	Qualifier	
Chloride	96.0	16.0	05/26/2021	ND	400	100	400	3.92		

TPH 8015M			mg/kg							
			Analyzed By: MS							
Analyte	Result	Reporting Limit	Analyzed	Method Blank	BS	% Recovery	True Value QC	RPD	Qualifier	
GRO C6-C10*	<10.0	10.0	05/25/2021	ND	219	110	200	4.03		
DRO >C10-C28*	<10.0	10.0	05/25/2021	ND	208	104	200	2.22		
EXT DRO >C28-C36	<10.0	10.0	05/25/2021	ND						

Surrogate: 1-Chlorooctane 84.6 % 44.3-133

Surrogate: 1-Chlorooctadecane 85.8 % 38.9-142

Cardinal Laboratories

*=Accredited Analyte

PLEASE NOTE: Liability and Damages. Cardinal's liability and client's exclusive remedy for any claim arising, whether based in contract or tort, shall be limited to the amount paid by client for analyses. All claims, including those for negligence and any other cause whatsoever shall be deemed waived unless made in writing and received by Cardinal within thirty (30) days after completion of the applicable service. In no event shall Cardinal be liable for incidental or consequential damages, including, without limitation, business interruptions, loss of use, or loss of profits incurred by client, its subsidiaries, affiliates or successors arising out of or related to the performance of the services hereunder by Cardinal, regardless of whether such claim is based upon any of the above stated reasons or otherwise. Results relate only to the samples identified above. This report shall not be reproduced except in full with written approval of Cardinal Laboratories.

Celey D. Keene, Lab Director/Quality Manager



PHONE (575) 393-2326 ° 101 E. MARLAND ° HOBBS, NM 88240

Analytical Results For:

BBC International, Inc.
 Cliff Brunson
 P.O. Box 805
 Hobbs NM, 88241
 Fax To: (575) 397-0397

Received:	05/24/2021	Sampling Date:	05/21/2021
Reported:	05/27/2021	Sampling Type:	Soil
Project Name:	FEDERAL 12 - 1H	Sampling Condition:	** (See Notes)
Project Number:	NONE GIVEN	Sample Received By:	Tamara Oldaker
Project Location:	OXY		

Sample ID: BOTTOM 14 @ 3' (H211329-14)

BTX 8021B		mg/kg		Analyzed By: MS					
Analyte	Result	Reporting Limit	Analyzed	Method Blank	BS	% Recovery	True Value QC	RPD	Qualifier
Benzene*	<0.050	0.050	05/25/2021	ND	2.11	105	2.00	0.566	
Toluene*	<0.050	0.050	05/25/2021	ND	2.22	111	2.00	0.111	
Ethylbenzene*	<0.050	0.050	05/25/2021	ND	2.20	110	2.00	0.909	
Total Xylenes*	<0.150	0.150	05/25/2021	ND	6.52	109	6.00	0.587	
Total BTX	<0.300	0.300	05/25/2021	ND					

Surrogate: 4-Bromofluorobenzene (PID) 113 % 69.9-140

Chloride, SM4500CI-B		mg/kg		Analyzed By: GM					
Analyte	Result	Reporting Limit	Analyzed	Method Blank	BS	% Recovery	True Value QC	RPD	Qualifier
Chloride	128	16.0	05/26/2021	ND	400	100	400	3.92	

TPH 8015M		mg/kg		Analyzed By: MS					
Analyte	Result	Reporting Limit	Analyzed	Method Blank	BS	% Recovery	True Value QC	RPD	Qualifier
GRO C6-C10*	<10.0	10.0	05/25/2021	ND	219	110	200	4.03	
DRO >C10-C28*	<10.0	10.0	05/25/2021	ND	208	104	200	2.22	
EXT DRO >C28-C36	<10.0	10.0	05/25/2021	ND					

Surrogate: 1-Chlorooctane 94.0 % 44.3-133

Surrogate: 1-Chlorooctadecane 97.9 % 38.9-142

Cardinal Laboratories

*=Accredited Analyte

PLEASE NOTE: Liability and Damages. Cardinal's liability and client's exclusive remedy for any claim arising, whether based in contract or tort, shall be limited to the amount paid by client for analyses. All claims, including those for negligence and any other cause whatsoever shall be deemed waived unless made in writing and received by Cardinal within thirty (30) days after completion of the applicable service. In no event shall Cardinal be liable for incidental or consequential damages, including, without limitation, business interruptions, loss of use, or loss of profits incurred by client, its subsidiaries, affiliates or successors arising out of or related to the performance of the services hereunder by Cardinal, regardless of whether such claim is based upon any of the above stated reasons or otherwise. Results relate only to the samples identified above. This report shall not be reproduced except in full with written approval of Cardinal Laboratories.

Celey D. Keene, Lab Director/Quality Manager



PHONE (575) 393-2326 ° 101 E. MARLAND ° HOBBS, NM 88240

Analytical Results For:

BBC International, Inc.
 Cliff Brunson
 P.O. Box 805
 Hobbs NM, 88241
 Fax To: (575) 397-0397

Received:	05/24/2021	Sampling Date:	05/21/2021
Reported:	05/27/2021	Sampling Type:	Soil
Project Name:	FEDERAL 12 - 1H	Sampling Condition:	** (See Notes)
Project Number:	NONE GIVEN	Sample Received By:	Tamara Oldaker
Project Location:	OXY		

Sample ID: BOTTOM 15 @ 3' (H211329-15)

BTX 8021B		mg/kg		Analyzed By: MS					
Analyte	Result	Reporting Limit	Analyzed	Method Blank	BS	% Recovery	True Value QC	RPD	Qualifier
Benzene*	<0.050	0.050	05/25/2021	ND	2.11	105	2.00	0.566	
Toluene*	<0.050	0.050	05/25/2021	ND	2.22	111	2.00	0.111	
Ethylbenzene*	<0.050	0.050	05/25/2021	ND	2.20	110	2.00	0.909	
Total Xylenes*	<0.150	0.150	05/25/2021	ND	6.52	109	6.00	0.587	
Total BTX	<0.300	0.300	05/25/2021	ND					

Surrogate: 4-Bromofluorobenzene (PID) 109 % 69.9-140

Chloride, SM4500CI-B		mg/kg		Analyzed By: GM					
Analyte	Result	Reporting Limit	Analyzed	Method Blank	BS	% Recovery	True Value QC	RPD	Qualifier
Chloride	48.0	16.0	05/26/2021	ND	400	100	400	3.92	

TPH 8015M		mg/kg		Analyzed By: MS					
Analyte	Result	Reporting Limit	Analyzed	Method Blank	BS	% Recovery	True Value QC	RPD	Qualifier
GRO C6-C10*	<10.0	10.0	05/25/2021	ND	219	110	200	4.03	
DRO >C10-C28*	<10.0	10.0	05/25/2021	ND	208	104	200	2.22	
EXT DRO >C28-C36	<10.0	10.0	05/25/2021	ND					

Surrogate: 1-Chlorooctane 91.1 % 44.3-133

Surrogate: 1-Chlorooctadecane 93.8 % 38.9-142

Cardinal Laboratories

*=Accredited Analyte

PLEASE NOTE: Liability and Damages. Cardinal's liability and client's exclusive remedy for any claim arising, whether based in contract or tort, shall be limited to the amount paid by client for analyses. All claims, including those for negligence and any other cause whatsoever shall be deemed waived unless made in writing and received by Cardinal within thirty (30) days after completion of the applicable service. In no event shall Cardinal be liable for incidental or consequential damages, including, without limitation, business interruptions, loss of use, or loss of profits incurred by client, its subsidiaries, affiliates or successors arising out of or related to the performance of the services hereunder by Cardinal, regardless of whether such claim is based upon any of the above stated reasons or otherwise. Results relate only to the samples identified above. This report shall not be reproduced except in full with written approval of Cardinal Laboratories.

Celey D. Keene, Lab Director/Quality Manager



PHONE (575) 393-2326 ° 101 E. MARLAND ° HOBBS, NM 88240

Analytical Results For:

BBC International, Inc.
 Cliff Brunson
 P.O. Box 805
 Hobbs NM, 88241
 Fax To: (575) 397-0397

Received:	05/24/2021	Sampling Date:	05/21/2021
Reported:	05/27/2021	Sampling Type:	Soil
Project Name:	FEDERAL 12 - 1H	Sampling Condition:	** (See Notes)
Project Number:	NONE GIVEN	Sample Received By:	Tamara Oldaker
Project Location:	OXY		

Sample ID: BOTTOM 16 @ 3' (H211329-16)

BTX 8021B		mg/kg		Analyzed By: MS					
Analyte	Result	Reporting Limit	Analyzed	Method Blank	BS	% Recovery	True Value QC	RPD	Qualifier
Benzene*	<0.050	0.050	05/25/2021	ND	2.11	105	2.00	0.566	
Toluene*	<0.050	0.050	05/25/2021	ND	2.22	111	2.00	0.111	
Ethylbenzene*	<0.050	0.050	05/25/2021	ND	2.20	110	2.00	0.909	
Total Xylenes*	<0.150	0.150	05/25/2021	ND	6.52	109	6.00	0.587	
Total BTX	<0.300	0.300	05/25/2021	ND					

Surrogate: 4-Bromofluorobenzene (PID) 102 % 69.9-140

Chloride, SM4500CI-B		mg/kg		Analyzed By: GM						
Analyte	Result	Reporting Limit	Analyzed	Method Blank	BS	% Recovery	True Value QC	RPD	Qualifier	
Chloride	64.0	16.0	05/26/2021	ND	400	100	400	3.92		

TPH 8015M		mg/kg		Analyzed By: MS					
Analyte	Result	Reporting Limit	Analyzed	Method Blank	BS	% Recovery	True Value QC	RPD	Qualifier
GRO C6-C10*	<10.0	10.0	05/25/2021	ND	219	110	200	4.03	
DRO >C10-C28*	14.8	10.0	05/25/2021	ND	208	104	200	2.22	
EXT DRO >C28-C36	<10.0	10.0	05/25/2021	ND					

Surrogate: 1-Chlorooctane 93.6 % 44.3-133

Surrogate: 1-Chlorooctadecane 96.5 % 38.9-142

Cardinal Laboratories

*=Accredited Analyte

PLEASE NOTE: Liability and Damages. Cardinal's liability and client's exclusive remedy for any claim arising, whether based in contract or tort, shall be limited to the amount paid by client for analyses. All claims, including those for negligence and any other cause whatsoever shall be deemed waived unless made in writing and received by Cardinal within thirty (30) days after completion of the applicable service. In no event shall Cardinal be liable for incidental or consequential damages, including, without limitation, business interruptions, loss of use, or loss of profits incurred by client, its subsidiaries, affiliates or successors arising out of or related to the performance of the services hereunder by Cardinal, regardless of whether such claim is based upon any of the above stated reasons or otherwise. Results relate only to the samples identified above. This report shall not be reproduced except in full with written approval of Cardinal Laboratories.

Celey D. Keene, Lab Director/Quality Manager



PHONE (575) 393-2326 ° 101 E. MARLAND ° HOBBS, NM 88240

Analytical Results For:

BBC International, Inc.
 Cliff Brunson
 P.O. Box 805
 Hobbs NM, 88241
 Fax To: (575) 397-0397

Received:	05/24/2021	Sampling Date:	05/21/2021
Reported:	05/27/2021	Sampling Type:	Soil
Project Name:	FEDERAL 12 - 1H	Sampling Condition:	** (See Notes)
Project Number:	NONE GIVEN	Sample Received By:	Tamara Oldaker
Project Location:	OXY		

Sample ID: BOTTOM 17 @ 3' (H211329-17)

BTEx 8021B		mg/kg		Analyzed By: MS						
Analyte	Result	Reporting Limit	Analyzed	Method Blank	BS	% Recovery	True Value QC	RPD	Qualifier	
Benzene*	<0.050	0.050	05/26/2021	ND	2.04	102	2.00	9.41		
Toluene*	<0.050	0.050	05/26/2021	ND	1.97	98.6	2.00	9.57		
Ethylbenzene*	<0.050	0.050	05/26/2021	ND	1.85	92.7	2.00	10.8		
Total Xylenes*	<0.150	0.150	05/26/2021	ND	5.60	93.3	6.00	10.5		
Total BTEx	<0.300	0.300	05/26/2021	ND						

Surrogate: 4-Bromofluorobenzene (PID) 110 % 69.9-140

Chloride, SM4500CI-B		mg/kg		Analyzed By: GM						
Analyte	Result	Reporting Limit	Analyzed	Method Blank	BS	% Recovery	True Value QC	RPD	Qualifier	
Chloride	48.0	16.0	05/26/2021	ND	400	100	400	3.92		

TPH 8015M		mg/kg		Analyzed By: MS					
Analyte	Result	Reporting Limit	Analyzed	Method Blank	BS	% Recovery	True Value QC	RPD	Qualifier
GRO C6-C10*	<10.0	10.0	05/25/2021	ND	219	110	200	4.03	
DRO >C10-C28*	<10.0	10.0	05/25/2021	ND	208	104	200	2.22	
EXT DRO >C28-C36	<10.0	10.0	05/25/2021	ND					

Surrogate: 1-Chlorooctane 88.0 % 44.3-133

Surrogate: 1-Chlorooctadecane 91.8 % 38.9-142

Cardinal Laboratories

*=Accredited Analyte

PLEASE NOTE: Liability and Damages. Cardinal's liability and client's exclusive remedy for any claim arising, whether based in contract or tort, shall be limited to the amount paid by client for analyses. All claims, including those for negligence and any other cause whatsoever shall be deemed waived unless made in writing and received by Cardinal within thirty (30) days after completion of the applicable service. In no event shall Cardinal be liable for incidental or consequential damages, including, without limitation, business interruptions, loss of use, or loss of profits incurred by client, its subsidiaries, affiliates or successors arising out of or related to the performance of the services hereunder by Cardinal, regardless of whether such claim is based upon any of the above stated reasons or otherwise. Results relate only to the samples identified above. This report shall not be reproduced except in full with written approval of Cardinal Laboratories.

Celey D. Keene, Lab Director/Quality Manager



PHONE (575) 393-2326 ° 101 E. MARLAND ° HOBBS, NM 88240

Analytical Results For:

BBC International, Inc.
 Cliff Brunson
 P.O. Box 805
 Hobbs NM, 88241
 Fax To: (575) 397-0397

Received:	05/24/2021	Sampling Date:	05/21/2021
Reported:	05/27/2021	Sampling Type:	Soil
Project Name:	FEDERAL 12 - 1H	Sampling Condition:	** (See Notes)
Project Number:	NONE GIVEN	Sample Received By:	Tamara Oldaker
Project Location:	OXY		

Sample ID: BOTTOM 18 @ 3' (H211329-18)

BTX 8021B		mg/kg		Analyzed By: MS					
Analyte	Result	Reporting Limit	Analyzed	Method Blank	BS	% Recovery	True Value QC	RPD	Qualifier
Benzene*	<0.050	0.050	05/26/2021	ND	2.04	102	2.00	9.41	
Toluene*	<0.050	0.050	05/26/2021	ND	1.97	98.6	2.00	9.57	
Ethylbenzene*	<0.050	0.050	05/26/2021	ND	1.85	92.7	2.00	10.8	
Total Xylenes*	<0.150	0.150	05/26/2021	ND	5.60	93.3	6.00	10.5	
Total BTX	<0.300	0.300	05/26/2021	ND					

Surrogate: 4-Bromofluorobenzene (PID) 111 % 69.9-140

Chloride, SM4500CI-B		mg/kg		Analyzed By: GM					
Analyte	Result	Reporting Limit	Analyzed	Method Blank	BS	% Recovery	True Value QC	RPD	Qualifier
Chloride	48.0	16.0	05/26/2021	ND	400	100	400	3.92	

TPH 8015M		mg/kg		Analyzed By: MS					
Analyte	Result	Reporting Limit	Analyzed	Method Blank	BS	% Recovery	True Value QC	RPD	Qualifier
GRO C6-C10*	<10.0	10.0	05/25/2021	ND	219	110	200	4.03	
DRO >C10-C28*	<10.0	10.0	05/25/2021	ND	208	104	200	2.22	
EXT DRO >C28-C36	<10.0	10.0	05/25/2021	ND					

Surrogate: 1-Chlorooctane 90.2 % 44.3-133

Surrogate: 1-Chlorooctadecane 94.2 % 38.9-142

Cardinal Laboratories

*=Accredited Analyte

PLEASE NOTE: Liability and Damages. Cardinal's liability and client's exclusive remedy for any claim arising, whether based in contract or tort, shall be limited to the amount paid by client for analyses. All claims, including those for negligence and any other cause whatsoever shall be deemed waived unless made in writing and received by Cardinal within thirty (30) days after completion of the applicable service. In no event shall Cardinal be liable for incidental or consequential damages, including, without limitation, business interruptions, loss of use, or loss of profits incurred by client, its subsidiaries, affiliates or successors arising out of or related to the performance of the services hereunder by Cardinal, regardless of whether such claim is based upon any of the above stated reasons or otherwise. Results relate only to the samples identified above. This report shall not be reproduced except in full with written approval of Cardinal Laboratories.

Celey D. Keene, Lab Director/Quality Manager



PHONE (575) 393-2326 ° 101 E. MARLAND ° HOBBS, NM 88240

Analytical Results For:

BBC International, Inc.
 Cliff Brunson
 P.O. Box 805
 Hobbs NM, 88241
 Fax To: (575) 397-0397

Received:	05/24/2021	Sampling Date:	05/21/2021
Reported:	05/27/2021	Sampling Type:	Soil
Project Name:	FEDERAL 12 - 1H	Sampling Condition:	** (See Notes)
Project Number:	NONE GIVEN	Sample Received By:	Tamara Oldaker
Project Location:	OXY		

Sample ID: BOTTOM 19 @ 2' (H211329-19)

BTX 8021B			mg/kg							
			Analyzed By: MS							
Analyte	Result	Reporting Limit	Analyzed	Method Blank	BS	% Recovery	True Value QC	RPD	Qualifier	
Benzene*	<0.050	0.050	05/26/2021	ND	2.04	102	2.00	9.41		
Toluene*	<0.050	0.050	05/26/2021	ND	1.97	98.6	2.00	9.57		
Ethylbenzene*	<0.050	0.050	05/26/2021	ND	1.85	92.7	2.00	10.8		
Total Xylenes*	<0.150	0.150	05/26/2021	ND	5.60	93.3	6.00	10.5		
Total BTX	<0.300	0.300	05/26/2021	ND						

Surrogate: 4-Bromofluorobenzene (PID) 111 % 69.9-140

Chloride, SM4500CI-B			mg/kg							
			Analyzed By: GM							
Analyte	Result	Reporting Limit	Analyzed	Method Blank	BS	% Recovery	True Value QC	RPD	Qualifier	
Chloride	48.0	16.0	05/26/2021	ND	400	100	400	3.92		

TPH 8015M			mg/kg							
			Analyzed By: MS							
Analyte	Result	Reporting Limit	Analyzed	Method Blank	BS	% Recovery	True Value QC	RPD	Qualifier	
GRO C6-C10*	<10.0	10.0	05/25/2021	ND	219	110	200	4.03		
DRO >C10-C28*	<10.0	10.0	05/25/2021	ND	208	104	200	2.22		
EXT DRO >C28-C36	<10.0	10.0	05/25/2021	ND						

Surrogate: 1-Chlorooctane 92.8 % 44.3-133

Surrogate: 1-Chlorooctadecane 95.8 % 38.9-142

Cardinal Laboratories

*=Accredited Analyte

PLEASE NOTE: Liability and Damages. Cardinal's liability and client's exclusive remedy for any claim arising, whether based in contract or tort, shall be limited to the amount paid by client for analyses. All claims, including those for negligence and any other cause whatsoever shall be deemed waived unless made in writing and received by Cardinal within thirty (30) days after completion of the applicable service. In no event shall Cardinal be liable for incidental or consequential damages, including, without limitation, business interruptions, loss of use, or loss of profits incurred by client, its subsidiaries, affiliates or successors arising out of or related to the performance of the services hereunder by Cardinal, regardless of whether such claim is based upon any of the above stated reasons or otherwise. Results relate only to the samples identified above. This report shall not be reproduced except in full with written approval of Cardinal Laboratories.

Celey D. Keene, Lab Director/Quality Manager



PHONE (575) 393-2326 ° 101 E. MARLAND ° HOBBS, NM 88240

Analytical Results For:

BBC International, Inc.
 Cliff Brunson
 P.O. Box 805
 Hobbs NM, 88241
 Fax To: (575) 397-0397

Received:	05/24/2021	Sampling Date:	05/21/2021
Reported:	05/27/2021	Sampling Type:	Soil
Project Name:	FEDERAL 12 - 1H	Sampling Condition:	** (See Notes)
Project Number:	NONE GIVEN	Sample Received By:	Tamara Oldaker
Project Location:	OXY		

Sample ID: BOTTOM 20 @ 3' (H211329-20)

BTX 8021B		mg/kg		Analyzed By: MS						
Analyte	Result	Reporting Limit	Analyzed	Method Blank	BS	% Recovery	True Value QC	RPD	Qualifier	
Benzene*	<0.050	0.050	05/25/2021	ND	2.04	102	2.00	9.41		
Toluene*	<0.050	0.050	05/25/2021	ND	1.97	98.6	2.00	9.57		
Ethylbenzene*	<0.050	0.050	05/25/2021	ND	1.85	92.7	2.00	10.8		
Total Xylenes*	<0.150	0.150	05/25/2021	ND	5.60	93.3	6.00	10.5		
Total BTX	<0.300	0.300	05/25/2021	ND						

Surrogate: 4-Bromofluorobenzene (PID) 110 % 69.9-140

Chloride, SM4500CI-B		mg/kg		Analyzed By: GM						
Analyte	Result	Reporting Limit	Analyzed	Method Blank	BS	% Recovery	True Value QC	RPD	Qualifier	
Chloride	96.0	16.0	05/26/2021	ND	400	100	400	3.92		

TPH 8015M		mg/kg		Analyzed By: MS					
Analyte	Result	Reporting Limit	Analyzed	Method Blank	BS	% Recovery	True Value QC	RPD	Qualifier
GRO C6-C10*	<10.0	10.0	05/25/2021	ND	219	110	200	4.03	
DRO >C10-C28*	<10.0	10.0	05/25/2021	ND	208	104	200	2.22	
EXT DRO >C28-C36	<10.0	10.0	05/25/2021	ND					

Surrogate: 1-Chlorooctane 88.7 % 44.3-133

Surrogate: 1-Chlorooctadecane 93.0 % 38.9-142

Cardinal Laboratories

*=Accredited Analyte

PLEASE NOTE: Liability and Damages. Cardinal's liability and client's exclusive remedy for any claim arising, whether based in contract or tort, shall be limited to the amount paid by client for analyses. All claims, including those for negligence and any other cause whatsoever shall be deemed waived unless made in writing and received by Cardinal within thirty (30) days after completion of the applicable service. In no event shall Cardinal be liable for incidental or consequential damages, including, without limitation, business interruptions, loss of use, or loss of profits incurred by client, its subsidiaries, affiliates or successors arising out of or related to the performance of the services hereunder by Cardinal, regardless of whether such claim is based upon any of the above stated reasons or otherwise. Results relate only to the samples identified above. This report shall not be reproduced except in full with written approval of Cardinal Laboratories.

Celey D. Keene, Lab Director/Quality Manager



PHONE (575) 393-2326 • 101 E. MARLAND • HOBBS, NM 88240

Analytical Results For:

BBC International, Inc.
 Cliff Brunson
 P.O. Box 805
 Hobbs NM, 88241
 Fax To: (575) 397-0397

Received:	05/24/2021	Sampling Date:	05/21/2021
Reported:	05/27/2021	Sampling Type:	Soil
Project Name:	FEDERAL 12 - 1H	Sampling Condition:	** (See Notes)
Project Number:	NONE GIVEN	Sample Received By:	Tamara Oldaker
Project Location:	OXY		

Sample ID: BOTTOM 21 @ 3' (H211329-21)

BTX 8021B			mg/kg							
			Analyzed By: MS							
Analyte	Result	Reporting Limit	Analyzed	Method Blank	BS	% Recovery	True Value QC	RPD	Qualifier	
Benzene*	<0.050	0.050	05/26/2021	ND	2.04	102	2.00	9.41		
Toluene*	<0.050	0.050	05/26/2021	ND	1.97	98.6	2.00	9.57		
Ethylbenzene*	<0.050	0.050	05/26/2021	ND	1.85	92.7	2.00	10.8		
Total Xylenes*	<0.150	0.150	05/26/2021	ND	5.60	93.3	6.00	10.5		
Total BTX	<0.300	0.300	05/26/2021	ND						

Surrogate: 4-Bromofluorobenzene (PID) 110 % 69.9-140

Chloride, SM4500CI-B			mg/kg							
			Analyzed By: GM							
Analyte	Result	Reporting Limit	Analyzed	Method Blank	BS	% Recovery	True Value QC	RPD	Qualifier	
Chloride	64.0	16.0	05/26/2021	ND	400	100	400	3.92		

TPH 8015M			mg/kg							
			Analyzed By: MS							
Analyte	Result	Reporting Limit	Analyzed	Method Blank	BS	% Recovery	True Value QC	RPD	Qualifier	
GRO C6-C10*	<10.0	10.0	05/25/2021	ND	219	110	200	4.03		
DRO >C10-C28*	<10.0	10.0	05/25/2021	ND	208	104	200	2.22		
EXT DRO >C28-C36	<10.0	10.0	05/25/2021	ND						

Surrogate: 1-Chlorooctane 90.5 % 44.3-133

Surrogate: 1-Chlorooctadecane 93.7 % 38.9-142

Cardinal Laboratories

*=Accredited Analyte

PLEASE NOTE: Liability and Damages. Cardinal's liability and client's exclusive remedy for any claim arising, whether based in contract or tort, shall be limited to the amount paid by client for analyses. All claims, including those for negligence and any other cause whatsoever shall be deemed waived unless made in writing and received by Cardinal within thirty (30) days after completion of the applicable service. In no event shall Cardinal be liable for incidental or consequential damages, including, without limitation, business interruptions, loss of use, or loss of profits incurred by client, its subsidiaries, affiliates or successors arising out of or related to the performance of the services hereunder by Cardinal, regardless of whether such claim is based upon any of the above stated reasons or otherwise. Results relate only to the samples identified above. This report shall not be reproduced except in full with written approval of Cardinal Laboratories.

Celey D. Keene, Lab Director/Quality Manager



PHONE (575) 393-2326 ° 101 E. MARLAND ° HOBBS, NM 88240

Analytical Results For:

BBC International, Inc.
 Cliff Brunson
 P.O. Box 805
 Hobbs NM, 88241
 Fax To: (575) 397-0397

Received:	05/24/2021	Sampling Date:	05/21/2021
Reported:	05/27/2021	Sampling Type:	Soil
Project Name:	FEDERAL 12 - 1H	Sampling Condition:	** (See Notes)
Project Number:	NONE GIVEN	Sample Received By:	Tamara Oldaker
Project Location:	OXY		

Sample ID: BOTTOM 22 @ 3' (H211329-22)

BTEx 8021B		mg/kg		Analyzed By: MS						
Analyte	Result	Reporting Limit	Analyzed	Method Blank	BS	% Recovery	True Value QC	RPD	Qualifier	
Benzene*	<0.050	0.050	05/25/2021	ND	2.04	102	2.00	9.41		
Toluene*	<0.050	0.050	05/25/2021	ND	1.97	98.6	2.00	9.57		
Ethylbenzene*	<0.050	0.050	05/25/2021	ND	1.85	92.7	2.00	10.8		
Total Xylenes*	<0.150	0.150	05/25/2021	ND	5.60	93.3	6.00	10.5		
Total BTEx	<0.300	0.300	05/25/2021	ND						

Surrogate: 4-Bromofluorobenzene (PID) 109 % 69.9-140

Chloride, SM4500Cl-B		mg/kg		Analyzed By: GM					
Analyte	Result	Reporting Limit	Analyzed	Method Blank	BS	% Recovery	True Value QC	RPD	Qualifier
Chloride	32.0	16.0	05/26/2021	ND	400	100	400	3.92	

TPH 8015M		mg/kg		Analyzed By: MS					
Analyte	Result	Reporting Limit	Analyzed	Method Blank	BS	% Recovery	True Value QC	RPD	Qualifier
GRO C6-C10*	<10.0	10.0	05/25/2021	ND	219	110	200	4.03	
DRO >C10-C28*	<10.0	10.0	05/25/2021	ND	208	104	200	2.22	
EXT DRO >C28-C36	<10.0	10.0	05/25/2021	ND					

Surrogate: 1-Chlorooctane 91.2 % 44.3-133

Surrogate: 1-Chlorooctadecane 95.5 % 38.9-142

Cardinal Laboratories

*=Accredited Analyte

PLEASE NOTE: Liability and Damages. Cardinal's liability and client's exclusive remedy for any claim arising, whether based in contract or tort, shall be limited to the amount paid by client for analyses. All claims, including those for negligence and any other cause whatsoever shall be deemed waived unless made in writing and received by Cardinal within thirty (30) days after completion of the applicable service. In no event shall Cardinal be liable for incidental or consequential damages, including, without limitation, business interruptions, loss of use, or loss of profits incurred by client, its subsidiaries, affiliates or successors arising out of or related to the performance of the services hereunder by Cardinal, regardless of whether such claim is based upon any of the above stated reasons or otherwise. Results relate only to the samples identified above. This report shall not be reproduced except in full with written approval of Cardinal Laboratories.

Celey D. Keene, Lab Director/Quality Manager



PHONE (575) 393-2326 ° 101 E. MARLAND ° HOBBS, NM 88240

Analytical Results For:

BBC International, Inc.
 Cliff Brunson
 P.O. Box 805
 Hobbs NM, 88241
 Fax To: (575) 397-0397

Received:	05/24/2021	Sampling Date:	05/21/2021
Reported:	05/27/2021	Sampling Type:	Soil
Project Name:	FEDERAL 12 - 1H	Sampling Condition:	** (See Notes)
Project Number:	NONE GIVEN	Sample Received By:	Tamara Oldaker
Project Location:	OXY		

Sample ID: BOTTOM 23 @ 2' (H211329-23)

BTX 8021B		mg/kg		Analyzed By: MS						
Analyte	Result	Reporting Limit	Analyzed	Method Blank	BS	% Recovery	True Value QC	RPD	Qualifier	
Benzene*	<0.050	0.050	05/25/2021	ND	2.04	102	2.00	9.41		
Toluene*	<0.050	0.050	05/25/2021	ND	1.97	98.6	2.00	9.57		
Ethylbenzene*	<0.050	0.050	05/25/2021	ND	1.85	92.7	2.00	10.8		
Total Xylenes*	<0.150	0.150	05/25/2021	ND	5.60	93.3	6.00	10.5		
Total BTX	<0.300	0.300	05/25/2021	ND						

Surrogate: 4-Bromofluorobenzene (PID) 111 % 69.9-140

Chloride, SM4500CI-B		mg/kg		Analyzed By: GM					
Analyte	Result	Reporting Limit	Analyzed	Method Blank	BS	% Recovery	True Value QC	RPD	Qualifier
Chloride	32.0	16.0	05/26/2021	ND	400	100	400	3.92	

TPH 8015M		mg/kg		Analyzed By: MS					
Analyte	Result	Reporting Limit	Analyzed	Method Blank	BS	% Recovery	True Value QC	RPD	Qualifier
GRO C6-C10*	<10.0	10.0	05/25/2021	ND	219	110	200	4.03	
DRO >C10-C28*	<10.0	10.0	05/25/2021	ND	208	104	200	2.22	
EXT DRO >C28-C36	<10.0	10.0	05/25/2021	ND					

Surrogate: 1-Chlorooctane 92.8 % 44.3-133

Surrogate: 1-Chlorooctadecane 97.7 % 38.9-142

Cardinal Laboratories

*=Accredited Analyte

PLEASE NOTE: Liability and Damages. Cardinal's liability and client's exclusive remedy for any claim arising, whether based in contract or tort, shall be limited to the amount paid by client for analyses. All claims, including those for negligence and any other cause whatsoever shall be deemed waived unless made in writing and received by Cardinal within thirty (30) days after completion of the applicable service. In no event shall Cardinal be liable for incidental or consequential damages, including, without limitation, business interruptions, loss of use, or loss of profits incurred by client, its subsidiaries, affiliates or successors arising out of or related to the performance of the services hereunder by Cardinal, regardless of whether such claim is based upon any of the above stated reasons or otherwise. Results relate only to the samples identified above. This report shall not be reproduced except in full with written approval of Cardinal Laboratories.

Celey D. Keene, Lab Director/Quality Manager



PHONE (575) 393-2326 ° 101 E. MARLAND ° HOBBS, NM 88240

Analytical Results For:

BBC International, Inc.
 Cliff Brunson
 P.O. Box 805
 Hobbs NM, 88241
 Fax To: (575) 397-0397

Received:	05/24/2021	Sampling Date:	05/21/2021
Reported:	05/27/2021	Sampling Type:	Soil
Project Name:	FEDERAL 12 - 1H	Sampling Condition:	** (See Notes)
Project Number:	NONE GIVEN	Sample Received By:	Tamara Oldaker
Project Location:	OXY		

Sample ID: BOTTOM 24 @ 2' (H211329-24)

BTEx 8021B		mg/kg		Analyzed By: MS					
Analyte	Result	Reporting Limit	Analyzed	Method Blank	BS	% Recovery	True Value QC	RPD	Qualifier
Benzene*	<0.050	0.050	05/25/2021	ND	2.04	102	2.00	9.41	
Toluene*	<0.050	0.050	05/25/2021	ND	1.97	98.6	2.00	9.57	
Ethylbenzene*	<0.050	0.050	05/25/2021	ND	1.85	92.7	2.00	10.8	
Total Xylenes*	<0.150	0.150	05/25/2021	ND	5.60	93.3	6.00	10.5	
Total BTEx	<0.300	0.300	05/25/2021	ND					

Surrogate: 4-Bromofluorobenzene (PID) 110 % 69.9-140

Chloride, SM4500CI-B		mg/kg		Analyzed By: GM						
Analyte	Result	Reporting Limit	Analyzed	Method Blank	BS	% Recovery	True Value QC	RPD	Qualifier	
Chloride	80.0	16.0	05/26/2021	ND	400	100	400	3.92		

TPH 8015M		mg/kg		Analyzed By: MS					
Analyte	Result	Reporting Limit	Analyzed	Method Blank	BS	% Recovery	True Value QC	RPD	Qualifier
GRO C6-C10*	<10.0	10.0	05/25/2021	ND	219	110	200	4.03	
DRO >C10-C28*	<10.0	10.0	05/25/2021	ND	208	104	200	2.22	
EXT DRO >C28-C36	<10.0	10.0	05/25/2021	ND					

Surrogate: 1-Chlorooctane 91.9 % 44.3-133

Surrogate: 1-Chlorooctadecane 96.2 % 38.9-142

Cardinal Laboratories

*=Accredited Analyte

PLEASE NOTE: Liability and Damages. Cardinal's liability and client's exclusive remedy for any claim arising, whether based in contract or tort, shall be limited to the amount paid by client for analyses. All claims, including those for negligence and any other cause whatsoever shall be deemed waived unless made in writing and received by Cardinal within thirty (30) days after completion of the applicable service. In no event shall Cardinal be liable for incidental or consequential damages, including, without limitation, business interruptions, loss of use, or loss of profits incurred by client, its subsidiaries, affiliates or successors arising out of or related to the performance of the services hereunder by Cardinal, regardless of whether such claim is based upon any of the above stated reasons or otherwise. Results relate only to the samples identified above. This report shall not be reproduced except in full with written approval of Cardinal Laboratories.

Celey D. Keene, Lab Director/Quality Manager



PHONE (575) 393-2326 • 101 E. MARLAND • HOBBS, NM 88240

Analytical Results For:

BBC International, Inc.
 Cliff Brunson
 P.O. Box 805
 Hobbs NM, 88241
 Fax To: (575) 397-0397

Received:	05/24/2021	Sampling Date:	05/21/2021
Reported:	05/27/2021	Sampling Type:	Soil
Project Name:	FEDERAL 12 - 1H	Sampling Condition:	** (See Notes)
Project Number:	NONE GIVEN	Sample Received By:	Tamara Oldaker
Project Location:	OXY		

Sample ID: BOTTOM 25 @ 2' (H211329-25)

BTX 8021B		mg/kg		Analyzed By: MS						
Analyte	Result	Reporting Limit	Analyzed	Method Blank	BS	% Recovery	True Value QC	RPD	Qualifier	
Benzene*	<0.050	0.050	05/25/2021	ND	2.04	102	2.00	9.41		
Toluene*	<0.050	0.050	05/25/2021	ND	1.97	98.6	2.00	9.57		
Ethylbenzene*	<0.050	0.050	05/25/2021	ND	1.85	92.7	2.00	10.8		
Total Xylenes*	<0.150	0.150	05/25/2021	ND	5.60	93.3	6.00	10.5		
Total BTX	<0.300	0.300	05/25/2021	ND						

Surrogate: 4-Bromofluorobenzene (PID) 110 % 69.9-140

Chloride, SM4500CI-B		mg/kg		Analyzed By: GM					
Analyte	Result	Reporting Limit	Analyzed	Method Blank	BS	% Recovery	True Value QC	RPD	Qualifier
Chloride	32.0	16.0	05/26/2021	ND	400	100	400	3.92	

TPH 8015M		mg/kg		Analyzed By: MS					
Analyte	Result	Reporting Limit	Analyzed	Method Blank	BS	% Recovery	True Value QC	RPD	Qualifier
GRO C6-C10*	<10.0	10.0	05/25/2021	ND	219	110	200	4.03	
DRO >C10-C28*	<10.0	10.0	05/25/2021	ND	208	104	200	2.22	
EXT DRO >C28-C36	<10.0	10.0	05/25/2021	ND					

Surrogate: 1-Chlorooctane 87.3 % 44.3-133

Surrogate: 1-Chlorooctadecane 91.6 % 38.9-142

Cardinal Laboratories

*=Accredited Analyte

PLEASE NOTE: Liability and Damages. Cardinal's liability and client's exclusive remedy for any claim arising, whether based in contract or tort, shall be limited to the amount paid by client for analyses. All claims, including those for negligence and any other cause whatsoever shall be deemed waived unless made in writing and received by Cardinal within thirty (30) days after completion of the applicable service. In no event shall Cardinal be liable for incidental or consequential damages, including, without limitation, business interruptions, loss of use, or loss of profits incurred by client, its subsidiaries, affiliates or successors arising out of or related to the performance of the services hereunder by Cardinal, regardless of whether such claim is based upon any of the above stated reasons or otherwise. Results relate only to the samples identified above. This report shall not be reproduced except in full with written approval of Cardinal Laboratories.

Celey D. Keene, Lab Director/Quality Manager



PHONE (575) 393-2326 • 101 E. MARLAND • HOBBS, NM 88240

Analytical Results For:

BBC International, Inc.
 Cliff Brunson
 P.O. Box 805
 Hobbs NM, 88241
 Fax To: (575) 397-0397

Received:	05/24/2021	Sampling Date:	05/21/2021
Reported:	05/27/2021	Sampling Type:	Soil
Project Name:	FEDERAL 12 - 1H	Sampling Condition:	** (See Notes)
Project Number:	NONE GIVEN	Sample Received By:	Tamara Oldaker
Project Location:	OXY		

Sample ID: BOTTOM 26 @ 2' (H211329-26)

BTX 8021B		mg/kg		Analyzed By: MS						
Analyte	Result	Reporting Limit	Analyzed	Method Blank	BS	% Recovery	True Value QC	RPD	Qualifier	
Benzene*	<0.050	0.050	05/25/2021	ND	2.04	102	2.00	9.41		
Toluene*	<0.050	0.050	05/25/2021	ND	1.97	98.6	2.00	9.57		
Ethylbenzene*	<0.050	0.050	05/25/2021	ND	1.85	92.7	2.00	10.8		
Total Xylenes*	<0.150	0.150	05/25/2021	ND	5.60	93.3	6.00	10.5		
Total BTX	<0.300	0.300	05/25/2021	ND						

Surrogate: 4-Bromofluorobenzene (PID) 110 % 69.9-140

Chloride, SM4500CI-B		mg/kg		Analyzed By: GM						
Analyte	Result	Reporting Limit	Analyzed	Method Blank	BS	% Recovery	True Value QC	RPD	Qualifier	
Chloride	48.0	16.0	05/26/2021	ND	400	100	400	3.92		

TPH 8015M		mg/kg		Analyzed By: MS					
Analyte	Result	Reporting Limit	Analyzed	Method Blank	BS	% Recovery	True Value QC	RPD	Qualifier
GRO C6-C10*	<10.0	10.0	05/25/2021	ND	219	110	200	4.03	
DRO >C10-C28*	<10.0	10.0	05/25/2021	ND	208	104	200	2.22	
EXT DRO >C28-C36	<10.0	10.0	05/25/2021	ND					

Surrogate: 1-Chlorooctane 79.9 % 44.3-133

Surrogate: 1-Chlorooctadecane 83.4 % 38.9-142

Cardinal Laboratories

*=Accredited Analyte

PLEASE NOTE: Liability and Damages. Cardinal's liability and client's exclusive remedy for any claim arising, whether based in contract or tort, shall be limited to the amount paid by client for analyses. All claims, including those for negligence and any other cause whatsoever shall be deemed waived unless made in writing and received by Cardinal within thirty (30) days after completion of the applicable service. In no event shall Cardinal be liable for incidental or consequential damages, including, without limitation, business interruptions, loss of use, or loss of profits incurred by client, its subsidiaries, affiliates or successors arising out of or related to the performance of the services hereunder by Cardinal, regardless of whether such claim is based upon any of the above stated reasons or otherwise. Results relate only to the samples identified above. This report shall not be reproduced except in full with written approval of Cardinal Laboratories.

Celey D. Keene, Lab Director/Quality Manager



PHONE (575) 393-2326 ° 101 E. MARLAND ° HOBBS, NM 88240

Analytical Results For:

BBC International, Inc.
 Cliff Brunson
 P.O. Box 805
 Hobbs NM, 88241
 Fax To: (575) 397-0397

Received:	05/24/2021	Sampling Date:	05/21/2021
Reported:	05/27/2021	Sampling Type:	Soil
Project Name:	FEDERAL 12 - 1H	Sampling Condition:	** (See Notes)
Project Number:	NONE GIVEN	Sample Received By:	Tamara Oldaker
Project Location:	OXY		

Sample ID: BOTTOM 27 @ 2' (H211329-27)

BTX 8021B		mg/kg		Analyzed By: MS					
Analyte	Result	Reporting Limit	Analyzed	Method Blank	BS	% Recovery	True Value QC	RPD	Qualifier
Benzene*	<0.050	0.050	05/25/2021	ND	2.04	102	2.00	9.41	
Toluene*	<0.050	0.050	05/25/2021	ND	1.97	98.6	2.00	9.57	
Ethylbenzene*	<0.050	0.050	05/25/2021	ND	1.85	92.7	2.00	10.8	
Total Xylenes*	<0.150	0.150	05/25/2021	ND	5.60	93.3	6.00	10.5	
Total BTX	<0.300	0.300	05/25/2021	ND					

Surrogate: 4-Bromofluorobenzene (PID) 108 % 69.9-140

Chloride, SM4500CI-B		mg/kg		Analyzed By: GM						
Analyte	Result	Reporting Limit	Analyzed	Method Blank	BS	% Recovery	True Value QC	RPD	Qualifier	
Chloride	80.0	16.0	05/26/2021	ND	400	100	400	3.92		

TPH 8015M		mg/kg		Analyzed By: MS					
Analyte	Result	Reporting Limit	Analyzed	Method Blank	BS	% Recovery	True Value QC	RPD	Qualifier
GRO C6-C10*	<10.0	10.0	05/25/2021	ND	219	110	200	4.03	
DRO >C10-C28*	<10.0	10.0	05/25/2021	ND	208	104	200	2.22	
EXT DRO >C28-C36	<10.0	10.0	05/25/2021	ND					

Surrogate: 1-Chlorooctane 86.8 % 44.3-133

Surrogate: 1-Chlorooctadecane 90.4 % 38.9-142

Cardinal Laboratories

*=Accredited Analyte

PLEASE NOTE: Liability and Damages. Cardinal's liability and client's exclusive remedy for any claim arising, whether based in contract or tort, shall be limited to the amount paid by client for analyses. All claims, including those for negligence and any other cause whatsoever shall be deemed waived unless made in writing and received by Cardinal within thirty (30) days after completion of the applicable service. In no event shall Cardinal be liable for incidental or consequential damages, including, without limitation, business interruptions, loss of use, or loss of profits incurred by client, its subsidiaries, affiliates or successors arising out of or related to the performance of the services hereunder by Cardinal, regardless of whether such claim is based upon any of the above stated reasons or otherwise. Results relate only to the samples identified above. This report shall not be reproduced except in full with written approval of Cardinal Laboratories.

Celey D. Keene, Lab Director/Quality Manager



PHONE (575) 393-2326 ° 101 E. MARLAND ° HOBBS, NM 88240

Analytical Results For:

BBC International, Inc.
 Cliff Brunson
 P.O. Box 805
 Hobbs NM, 88241
 Fax To: (575) 397-0397

Received:	05/24/2021	Sampling Date:	05/21/2021
Reported:	05/27/2021	Sampling Type:	Soil
Project Name:	FEDERAL 12 - 1H	Sampling Condition:	** (See Notes)
Project Number:	NONE GIVEN	Sample Received By:	Tamara Oldaker
Project Location:	OXY		

Sample ID: BOTTOM 28 @ 2' (H211329-28)

BTEx 8021B		mg/kg		Analyzed By: MS						
Analyte	Result	Reporting Limit	Analyzed	Method Blank	BS	% Recovery	True Value QC	RPD	Qualifier	
Benzene*	<0.050	0.050	05/25/2021	ND	2.04	102	2.00	9.41		
Toluene*	<0.050	0.050	05/25/2021	ND	1.97	98.6	2.00	9.57		
Ethylbenzene*	<0.050	0.050	05/25/2021	ND	1.85	92.7	2.00	10.8		
Total Xylenes*	<0.150	0.150	05/25/2021	ND	5.60	93.3	6.00	10.5		
Total BTEx	<0.300	0.300	05/25/2021	ND						

Surrogate: 4-Bromofluorobenzene (PID) 109 % 69.9-140

Chloride, SM4500Cl-B		mg/kg		Analyzed By: GM						
Analyte	Result	Reporting Limit	Analyzed	Method Blank	BS	% Recovery	True Value QC	RPD	Qualifier	
Chloride	48.0	16.0	05/26/2021	ND	400	100	400	3.92		

TPH 8015M		mg/kg		Analyzed By: MS					
Analyte	Result	Reporting Limit	Analyzed	Method Blank	BS	% Recovery	True Value QC	RPD	Qualifier
GRO C6-C10*	<10.0	10.0	05/26/2021	ND	219	110	200	4.03	
DRO >C10-C28*	<10.0	10.0	05/26/2021	ND	208	104	200	2.22	
EXT DRO >C28-C36	<10.0	10.0	05/26/2021	ND					

Surrogate: 1-Chlorooctane 88.0 % 44.3-133

Surrogate: 1-Chlorooctadecane 92.2 % 38.9-142

Cardinal Laboratories

*=Accredited Analyte

PLEASE NOTE: Liability and Damages. Cardinal's liability and client's exclusive remedy for any claim arising, whether based in contract or tort, shall be limited to the amount paid by client for analyses. All claims, including those for negligence and any other cause whatsoever shall be deemed waived unless made in writing and received by Cardinal within thirty (30) days after completion of the applicable service. In no event shall Cardinal be liable for incidental or consequential damages, including, without limitation, business interruptions, loss of use, or loss of profits incurred by client, its subsidiaries, affiliates or successors arising out of or related to the performance of the services hereunder by Cardinal, regardless of whether such claim is based upon any of the above stated reasons or otherwise. Results relate only to the samples identified above. This report shall not be reproduced except in full with written approval of Cardinal Laboratories.

Celey D. Keene, Lab Director/Quality Manager



PHONE (575) 393-2326 ° 101 E. MARLAND ° HOBBS, NM 88240

Analytical Results For:

BBC International, Inc.
 Cliff Brunson
 P.O. Box 805
 Hobbs NM, 88241
 Fax To: (575) 397-0397

Received:	05/24/2021	Sampling Date:	05/21/2021
Reported:	05/27/2021	Sampling Type:	Soil
Project Name:	FEDERAL 12 - 1H	Sampling Condition:	** (See Notes)
Project Number:	NONE GIVEN	Sample Received By:	Tamara Oldaker
Project Location:	OXY		

Sample ID: BOTTOM 29 @ 2' (H211329-29)

BTX 8021B		mg/kg		Analyzed By: MS						
Analyte	Result	Reporting Limit	Analyzed	Method Blank	BS	% Recovery	True Value QC	RPD	Qualifier	
Benzene*	<0.050	0.050	05/25/2021	ND	2.04	102	2.00	9.41		
Toluene*	<0.050	0.050	05/25/2021	ND	1.97	98.6	2.00	9.57		
Ethylbenzene*	<0.050	0.050	05/25/2021	ND	1.85	92.7	2.00	10.8		
Total Xylenes*	<0.150	0.150	05/25/2021	ND	5.60	93.3	6.00	10.5		
Total BTX	<0.300	0.300	05/25/2021	ND						

Surrogate: 4-Bromofluorobenzene (PID) 110 % 69.9-140

Chloride, SM4500CI-B		mg/kg		Analyzed By: GM						
Analyte	Result	Reporting Limit	Analyzed	Method Blank	BS	% Recovery	True Value QC	RPD	Qualifier	
Chloride	<16.0	16.0	05/26/2021	ND	416	104	400	3.92		

TPH 8015M		mg/kg		Analyzed By: MS					
Analyte	Result	Reporting Limit	Analyzed	Method Blank	BS	% Recovery	True Value QC	RPD	Qualifier
GRO C6-C10*	<10.0	10.0	05/25/2021	ND	223	112	200	1.02	
DRO >C10-C28*	10.6	10.0	05/25/2021	ND	224	112	200	1.65	
EXT DRO >C28-C36	<10.0	10.0	05/25/2021	ND					

Surrogate: 1-Chlorooctane 95.3 % 44.3-133

Surrogate: 1-Chlorooctadecane 99.2 % 38.9-142

Cardinal Laboratories

*=Accredited Analyte

PLEASE NOTE: Liability and Damages. Cardinal's liability and client's exclusive remedy for any claim arising, whether based in contract or tort, shall be limited to the amount paid by client for analyses. All claims, including those for negligence and any other cause whatsoever shall be deemed waived unless made in writing and received by Cardinal within thirty (30) days after completion of the applicable service. In no event shall Cardinal be liable for incidental or consequential damages, including, without limitation, business interruptions, loss of use, or loss of profits incurred by client, its subsidiaries, affiliates or successors arising out of or related to the performance of the services hereunder by Cardinal, regardless of whether such claim is based upon any of the above stated reasons or otherwise. Results relate only to the samples identified above. This report shall not be reproduced except in full with written approval of Cardinal Laboratories.

Celey D. Keene, Lab Director/Quality Manager



PHONE (575) 393-2326 ° 101 E. MARLAND ° HOBBS, NM 88240

Analytical Results For:

BBC International, Inc.
 Cliff Brunson
 P.O. Box 805
 Hobbs NM, 88241
 Fax To: (575) 397-0397

Received:	05/24/2021	Sampling Date:	05/21/2021
Reported:	05/27/2021	Sampling Type:	Soil
Project Name:	FEDERAL 12 - 1H	Sampling Condition:	** (See Notes)
Project Number:	NONE GIVEN	Sample Received By:	Tamara Oldaker
Project Location:	OXY		

Sample ID: BOTTOM 30 @ 2' (H211329-30)

BTX 8021B			mg/kg							
			Analyzed By: MS							
Analyte	Result	Reporting Limit	Analyzed	Method Blank	BS	% Recovery	True Value QC	RPD	Qualifier	
Benzene*	<0.050	0.050	05/25/2021	ND	2.04	102	2.00	9.41		
Toluene*	<0.050	0.050	05/25/2021	ND	1.97	98.6	2.00	9.57		
Ethylbenzene*	<0.050	0.050	05/25/2021	ND	1.85	92.7	2.00	10.8		
Total Xylenes*	<0.150	0.150	05/25/2021	ND	5.60	93.3	6.00	10.5		
Total BTX	<0.300	0.300	05/25/2021	ND						

Surrogate: 4-Bromofluorobenzene (PID) 110 % 69.9-140

Chloride, SM4500CI-B			mg/kg							
			Analyzed By: GM							
Analyte	Result	Reporting Limit	Analyzed	Method Blank	BS	% Recovery	True Value QC	RPD	Qualifier	
Chloride	48.0	16.0	05/26/2021	ND	416	104	400	3.92		

TPH 8015M			mg/kg							
			Analyzed By: MS							
Analyte	Result	Reporting Limit	Analyzed	Method Blank	BS	% Recovery	True Value QC	RPD	Qualifier	
GRO C6-C10*	<10.0	10.0	05/25/2021	ND	223	112	200	1.02		
DRO >C10-C28*	<10.0	10.0	05/25/2021	ND	224	112	200	1.65		
EXT DRO >C28-C36	<10.0	10.0	05/25/2021	ND						

Surrogate: 1-Chlorooctane 90.1 % 44.3-133

Surrogate: 1-Chlorooctadecane 89.9 % 38.9-142

Cardinal Laboratories

*=Accredited Analyte

PLEASE NOTE: Liability and Damages. Cardinal's liability and client's exclusive remedy for any claim arising, whether based in contract or tort, shall be limited to the amount paid by client for analyses. All claims, including those for negligence and any other cause whatsoever shall be deemed waived unless made in writing and received by Cardinal within thirty (30) days after completion of the applicable service. In no event shall Cardinal be liable for incidental or consequential damages, including, without limitation, business interruptions, loss of use, or loss of profits incurred by client, its subsidiaries, affiliates or successors arising out of or related to the performance of the services hereunder by Cardinal, regardless of whether such claim is based upon any of the above stated reasons or otherwise. Results relate only to the samples identified above. This report shall not be reproduced except in full with written approval of Cardinal Laboratories.

Celey D. Keene, Lab Director/Quality Manager



PHONE (575) 393-2326 ° 101 E. MARLAND ° HOBBS, NM 88240

Analytical Results For:

BBC International, Inc.
 Cliff Brunson
 P.O. Box 805
 Hobbs NM, 88241
 Fax To: (575) 397-0397

Received:	05/24/2021	Sampling Date:	05/21/2021
Reported:	05/27/2021	Sampling Type:	Soil
Project Name:	FEDERAL 12 - 1H	Sampling Condition:	** (See Notes)
Project Number:	NONE GIVEN	Sample Received By:	Tamara Oldaker
Project Location:	OXY		

Sample ID: BOTTOM 31 @ 2' (H211329-31)

BTX 8021B		mg/kg		Analyzed By: MS						
Analyte	Result	Reporting Limit	Analyzed	Method Blank	BS	% Recovery	True Value QC	RPD	Qualifier	
Benzene*	<0.050	0.050	05/25/2021	ND	2.04	102	2.00	9.41		
Toluene*	<0.050	0.050	05/25/2021	ND	1.97	98.6	2.00	9.57		
Ethylbenzene*	<0.050	0.050	05/25/2021	ND	1.85	92.7	2.00	10.8		
Total Xylenes*	<0.150	0.150	05/25/2021	ND	5.60	93.3	6.00	10.5		
Total BTX	<0.300	0.300	05/25/2021	ND						

Surrogate: 4-Bromofluorobenzene (PID) 110 % 69.9-140

Chloride, SM4500Cl-B		mg/kg		Analyzed By: GM						
Analyte	Result	Reporting Limit	Analyzed	Method Blank	BS	% Recovery	True Value QC	RPD	Qualifier	
Chloride	32.0	16.0	05/26/2021	ND	416	104	400	3.92		

TPH 8015M		mg/kg		Analyzed By: MS					
Analyte	Result	Reporting Limit	Analyzed	Method Blank	BS	% Recovery	True Value QC	RPD	Qualifier
GRO C6-C10*	<10.0	10.0	05/25/2021	ND	223	112	200	1.02	
DRO >C10-C28*	<10.0	10.0	05/25/2021	ND	224	112	200	1.65	
EXT DRO >C28-C36	<10.0	10.0	05/25/2021	ND					

Surrogate: 1-Chlorooctane 99.3 % 44.3-133

Surrogate: 1-Chlorooctadecane 100 % 38.9-142

Cardinal Laboratories

*=Accredited Analyte

PLEASE NOTE: Liability and Damages. Cardinal's liability and client's exclusive remedy for any claim arising, whether based in contract or tort, shall be limited to the amount paid by client for analyses. All claims, including those for negligence and any other cause whatsoever shall be deemed waived unless made in writing and received by Cardinal within thirty (30) days after completion of the applicable service. In no event shall Cardinal be liable for incidental or consequential damages, including, without limitation, business interruptions, loss of use, or loss of profits incurred by client, its subsidiaries, affiliates or successors arising out of or related to the performance of the services hereunder by Cardinal, regardless of whether such claim is based upon any of the above stated reasons or otherwise. Results relate only to the samples identified above. This report shall not be reproduced except in full with written approval of Cardinal Laboratories.

Celey D. Keene, Lab Director/Quality Manager



PHONE (575) 393-2326 ° 101 E. MARLAND ° HOBBS, NM 88240

Analytical Results For:

BBC International, Inc.
 Cliff Brunson
 P.O. Box 805
 Hobbs NM, 88241
 Fax To: (575) 397-0397

Received:	05/24/2021	Sampling Date:	05/21/2021
Reported:	05/27/2021	Sampling Type:	Soil
Project Name:	FEDERAL 12 - 1H	Sampling Condition:	** (See Notes)
Project Number:	NONE GIVEN	Sample Received By:	Tamara Oldaker
Project Location:	OXY		

Sample ID: BOTTOM 32 @ 3' (H211329-32)

BTEx 8021B		mg/kg		Analyzed By: MS						
Analyte	Result	Reporting Limit	Analyzed	Method Blank	BS	% Recovery	True Value QC	RPD	Qualifier	
Benzene*	<0.050	0.050	05/25/2021	ND	2.04	102	2.00	9.41		
Toluene*	<0.050	0.050	05/25/2021	ND	1.97	98.6	2.00	9.57		
Ethylbenzene*	<0.050	0.050	05/25/2021	ND	1.85	92.7	2.00	10.8		
Total Xylenes*	<0.150	0.150	05/25/2021	ND	5.60	93.3	6.00	10.5		
Total BTEx	<0.300	0.300	05/25/2021	ND						

Surrogate: 4-Bromofluorobenzene (PID) 111 % 69.9-140

Chloride, SM4500Cl-B		mg/kg		Analyzed By: GM						
Analyte	Result	Reporting Limit	Analyzed	Method Blank	BS	% Recovery	True Value QC	RPD	Qualifier	
Chloride	32.0	16.0	05/26/2021	ND	416	104	400	3.92		

TPH 8015M		mg/kg		Analyzed By: MS					
Analyte	Result	Reporting Limit	Analyzed	Method Blank	BS	% Recovery	True Value QC	RPD	Qualifier
GRO C6-C10*	<10.0	10.0	05/25/2021	ND	223	112	200	1.02	
DRO >C10-C28*	<10.0	10.0	05/25/2021	ND	224	112	200	1.65	
EXT DRO >C28-C36	<10.0	10.0	05/25/2021	ND					

Surrogate: 1-Chlorooctane 97.1 % 44.3-133

Surrogate: 1-Chlorooctadecane 97.3 % 38.9-142

Cardinal Laboratories

*=Accredited Analyte

PLEASE NOTE: Liability and Damages. Cardinal's liability and client's exclusive remedy for any claim arising, whether based in contract or tort, shall be limited to the amount paid by client for analyses. All claims, including those for negligence and any other cause whatsoever shall be deemed waived unless made in writing and received by Cardinal within thirty (30) days after completion of the applicable service. In no event shall Cardinal be liable for incidental or consequential damages, including, without limitation, business interruptions, loss of use, or loss of profits incurred by client, its subsidiaries, affiliates or successors arising out of or related to the performance of the services hereunder by Cardinal, regardless of whether such claim is based upon any of the above stated reasons or otherwise. Results relate only to the samples identified above. This report shall not be reproduced except in full with written approval of Cardinal Laboratories.

Celey D. Keene, Lab Director/Quality Manager



PHONE (575) 393-2326 ° 101 E. MARLAND ° HOBBS, NM 88240

Analytical Results For:

BBC International, Inc.
 Cliff Brunson
 P.O. Box 805
 Hobbs NM, 88241
 Fax To: (575) 397-0397

Received:	05/24/2021	Sampling Date:	05/21/2021
Reported:	05/27/2021	Sampling Type:	Soil
Project Name:	FEDERAL 12 - 1H	Sampling Condition:	** (See Notes)
Project Number:	NONE GIVEN	Sample Received By:	Tamara Oldaker
Project Location:	OXY		

Sample ID: BOTTOM 33 @ 3' (H211329-33)

BTX 8021B		mg/kg		Analyzed By: MS					
Analyte	Result	Reporting Limit	Analyzed	Method Blank	BS	% Recovery	True Value QC	RPD	Qualifier
Benzene*	<0.050	0.050	05/25/2021	ND	2.04	102	2.00	9.41	
Toluene*	<0.050	0.050	05/25/2021	ND	1.97	98.6	2.00	9.57	
Ethylbenzene*	<0.050	0.050	05/25/2021	ND	1.85	92.7	2.00	10.8	
Total Xylenes*	<0.150	0.150	05/25/2021	ND	5.60	93.3	6.00	10.5	
Total BTX	<0.300	0.300	05/25/2021	ND					

Surrogate: 4-Bromofluorobenzene (PID) 111 % 69.9-140

Chloride, SM4500CI-B		mg/kg		Analyzed By: GM						
Analyte	Result	Reporting Limit	Analyzed	Method Blank	BS	% Recovery	True Value QC	RPD	Qualifier	
Chloride	96.0	16.0	05/26/2021	ND	416	104	400	3.92		

TPH 8015M		mg/kg		Analyzed By: MS					
Analyte	Result	Reporting Limit	Analyzed	Method Blank	BS	% Recovery	True Value QC	RPD	Qualifier
GRO C6-C10*	<10.0	10.0	05/25/2021	ND	223	112	200	1.02	
DRO >C10-C28*	<10.0	10.0	05/25/2021	ND	224	112	200	1.65	
EXT DRO >C28-C36	<10.0	10.0	05/25/2021	ND					

Surrogate: 1-Chlorooctane 88.9 % 44.3-133

Surrogate: 1-Chlorooctadecane 88.9 % 38.9-142

Cardinal Laboratories

*=Accredited Analyte

PLEASE NOTE: Liability and Damages. Cardinal's liability and client's exclusive remedy for any claim arising, whether based in contract or tort, shall be limited to the amount paid by client for analyses. All claims, including those for negligence and any other cause whatsoever shall be deemed waived unless made in writing and received by Cardinal within thirty (30) days after completion of the applicable service. In no event shall Cardinal be liable for incidental or consequential damages, including, without limitation, business interruptions, loss of use, or loss of profits incurred by client, its subsidiaries, affiliates or successors arising out of or related to the performance of the services hereunder by Cardinal, regardless of whether such claim is based upon any of the above stated reasons or otherwise. Results relate only to the samples identified above. This report shall not be reproduced except in full with written approval of Cardinal Laboratories.

Celey D. Keene, Lab Director/Quality Manager



PHONE (575) 393-2326 ° 101 E. MARLAND ° HOBBS, NM 88240

Analytical Results For:

BBC International, Inc.
 Cliff Brunson
 P.O. Box 805
 Hobbs NM, 88241
 Fax To: (575) 397-0397

Received:	05/24/2021	Sampling Date:	05/21/2021
Reported:	05/27/2021	Sampling Type:	Soil
Project Name:	FEDERAL 12 - 1H	Sampling Condition:	** (See Notes)
Project Number:	NONE GIVEN	Sample Received By:	Tamara Oldaker
Project Location:	OXY		

Sample ID: BOTTOM 34 @ 3' (H211329-34)

BTEx 8021B		mg/kg		Analyzed By: MS						
Analyte	Result	Reporting Limit	Analyzed	Method Blank	BS	% Recovery	True Value QC	RPD	Qualifier	
Benzene*	<0.050	0.050	05/25/2021	ND	2.04	102	2.00	9.41		
Toluene*	<0.050	0.050	05/25/2021	ND	1.97	98.6	2.00	9.57		
Ethylbenzene*	<0.050	0.050	05/25/2021	ND	1.85	92.7	2.00	10.8		
Total Xylenes*	<0.150	0.150	05/25/2021	ND	5.60	93.3	6.00	10.5		
Total BTEx	<0.300	0.300	05/25/2021	ND						

Surrogate: 4-Bromofluorobenzene (PID) 110 % 69.9-140

Chloride, SM4500CI-B		mg/kg		Analyzed By: GM						
Analyte	Result	Reporting Limit	Analyzed	Method Blank	BS	% Recovery	True Value QC	RPD	Qualifier	
Chloride	96.0	16.0	05/26/2021	ND	416	104	400	3.92		

TPH 8015M		mg/kg		Analyzed By: MS					
Analyte	Result	Reporting Limit	Analyzed	Method Blank	BS	% Recovery	True Value QC	RPD	Qualifier
GRO C6-C10*	<10.0	10.0	05/25/2021	ND	223	112	200	1.02	
DRO >C10-C28*	<10.0	10.0	05/25/2021	ND	224	112	200	1.65	
EXT DRO >C28-C36	<10.0	10.0	05/25/2021	ND					

Surrogate: 1-Chlorooctane 85.9 % 44.3-133

Surrogate: 1-Chlorooctadecane 85.5 % 38.9-142

Cardinal Laboratories

*=Accredited Analyte

PLEASE NOTE: Liability and Damages. Cardinal's liability and client's exclusive remedy for any claim arising, whether based in contract or tort, shall be limited to the amount paid by client for analyses. All claims, including those for negligence and any other cause whatsoever shall be deemed waived unless made in writing and received by Cardinal within thirty (30) days after completion of the applicable service. In no event shall Cardinal be liable for incidental or consequential damages, including, without limitation, business interruptions, loss of use, or loss of profits incurred by client, its subsidiaries, affiliates or successors arising out of or related to the performance of the services hereunder by Cardinal, regardless of whether such claim is based upon any of the above stated reasons or otherwise. Results relate only to the samples identified above. This report shall not be reproduced except in full with written approval of Cardinal Laboratories.

Celey D. Keene, Lab Director/Quality Manager



PHONE (575) 393-2326 ° 101 E. MARLAND ° HOBBS, NM 88240

Analytical Results For:

BBC International, Inc.
 Cliff Brunson
 P.O. Box 805
 Hobbs NM, 88241
 Fax To: (575) 397-0397

Received:	05/24/2021	Sampling Date:	05/21/2021
Reported:	05/27/2021	Sampling Type:	Soil
Project Name:	FEDERAL 12 - 1H	Sampling Condition:	** (See Notes)
Project Number:	NONE GIVEN	Sample Received By:	Tamara Oldaker
Project Location:	OXY		

Sample ID: SIDEWALL 1 (H211329-35)

BTEx 8021B		mg/kg		Analyzed By: MS						
Analyte	Result	Reporting Limit	Analyzed	Method Blank	BS	% Recovery	True Value QC	RPD	Qualifier	
Benzene*	<0.050	0.050	05/25/2021	ND	2.04	102	2.00	9.41		
Toluene*	<0.050	0.050	05/25/2021	ND	1.97	98.6	2.00	9.57		
Ethylbenzene*	<0.050	0.050	05/25/2021	ND	1.85	92.7	2.00	10.8		
Total Xylenes*	<0.150	0.150	05/25/2021	ND	5.60	93.3	6.00	10.5		
Total BTEx	<0.300	0.300	05/25/2021	ND						

Surrogate: 4-Bromofluorobenzene (PID) 111 % 69.9-140

Chloride, SM4500CI-B		mg/kg		Analyzed By: GM						
Analyte	Result	Reporting Limit	Analyzed	Method Blank	BS	% Recovery	True Value QC	RPD	Qualifier	
Chloride	48.0	16.0	05/26/2021	ND	416	104	400	3.92		

TPH 8015M		mg/kg		Analyzed By: MS					
Analyte	Result	Reporting Limit	Analyzed	Method Blank	BS	% Recovery	True Value QC	RPD	Qualifier
GRO C6-C10*	<10.0	10.0	05/25/2021	ND	223	112	200	1.02	
DRO >C10-C28*	10.6	10.0	05/25/2021	ND	224	112	200	1.65	
EXT DRO >C28-C36	<10.0	10.0	05/25/2021	ND					

Surrogate: 1-Chlorooctane 95.3 % 44.3-133

Surrogate: 1-Chlorooctadecane 94.4 % 38.9-142

Cardinal Laboratories

*=Accredited Analyte

PLEASE NOTE: Liability and Damages. Cardinal's liability and client's exclusive remedy for any claim arising, whether based in contract or tort, shall be limited to the amount paid by client for analyses. All claims, including those for negligence and any other cause whatsoever shall be deemed waived unless made in writing and received by Cardinal within thirty (30) days after completion of the applicable service. In no event shall Cardinal be liable for incidental or consequential damages, including, without limitation, business interruptions, loss of use, or loss of profits incurred by client, its subsidiaries, affiliates or successors arising out of or related to the performance of the services hereunder by Cardinal, regardless of whether such claim is based upon any of the above stated reasons or otherwise. Results relate only to the samples identified above. This report shall not be reproduced except in full with written approval of Cardinal Laboratories.

Celey D. Keene, Lab Director/Quality Manager



PHONE (575) 393-2326 ° 101 E. MARLAND ° HOBBS, NM 88240

Analytical Results For:

BBC International, Inc.
 Cliff Brunson
 P.O. Box 805
 Hobbs NM, 88241
 Fax To: (575) 397-0397

Received:	05/24/2021	Sampling Date:	05/21/2021
Reported:	05/27/2021	Sampling Type:	Soil
Project Name:	FEDERAL 12 - 1H	Sampling Condition:	** (See Notes)
Project Number:	NONE GIVEN	Sample Received By:	Tamara Oldaker
Project Location:	OXY		

Sample ID: SIDEWALL 2 (H211329-36)

BTX 8021B		mg/kg		Analyzed By: MS					
Analyte	Result	Reporting Limit	Analyzed	Method Blank	BS	% Recovery	True Value QC	RPD	Qualifier
Benzene*	<0.050	0.050	05/25/2021	ND	2.04	102	2.00	9.41	
Toluene*	<0.050	0.050	05/25/2021	ND	1.97	98.6	2.00	9.57	
Ethylbenzene*	<0.050	0.050	05/25/2021	ND	1.85	92.7	2.00	10.8	
Total Xylenes*	<0.150	0.150	05/25/2021	ND	5.60	93.3	6.00	10.5	
Total BTX	<0.300	0.300	05/25/2021	ND					

Surrogate: 4-Bromofluorobenzene (PID) 111 % 69.9-140

Chloride, SM4500CI-B		mg/kg		Analyzed By: GM						
Analyte	Result	Reporting Limit	Analyzed	Method Blank	BS	% Recovery	True Value QC	RPD	Qualifier	
Chloride	48.0	16.0	05/26/2021	ND	416	104	400	3.92		

TPH 8015M		mg/kg		Analyzed By: MS					
Analyte	Result	Reporting Limit	Analyzed	Method Blank	BS	% Recovery	True Value QC	RPD	Qualifier
GRO C6-C10*	<10.0	10.0	05/25/2021	ND	223	112	200	1.02	
DRO >C10-C28*	<10.0	10.0	05/25/2021	ND	224	112	200	1.65	
EXT DRO >C28-C36	<10.0	10.0	05/25/2021	ND					

Surrogate: 1-Chlorooctane 91.5 % 44.3-133

Surrogate: 1-Chlorooctadecane 92.0 % 38.9-142

Cardinal Laboratories

*=Accredited Analyte

PLEASE NOTE: Liability and Damages. Cardinal's liability and client's exclusive remedy for any claim arising, whether based in contract or tort, shall be limited to the amount paid by client for analyses. All claims, including those for negligence and any other cause whatsoever shall be deemed waived unless made in writing and received by Cardinal within thirty (30) days after completion of the applicable service. In no event shall Cardinal be liable for incidental or consequential damages, including, without limitation, business interruptions, loss of use, or loss of profits incurred by client, its subsidiaries, affiliates or successors arising out of or related to the performance of the services hereunder by Cardinal, regardless of whether such claim is based upon any of the above stated reasons or otherwise. Results relate only to the samples identified above. This report shall not be reproduced except in full with written approval of Cardinal Laboratories.

Celey D. Keene, Lab Director/Quality Manager



PHONE (575) 393-2326 ° 101 E. MARLAND ° HOBBS, NM 88240

Analytical Results For:

BBC International, Inc.
 Cliff Brunson
 P.O. Box 805
 Hobbs NM, 88241
 Fax To: (575) 397-0397

Received:	05/24/2021	Sampling Date:	05/21/2021
Reported:	05/27/2021	Sampling Type:	Soil
Project Name:	FEDERAL 12 - 1H	Sampling Condition:	** (See Notes)
Project Number:	NONE GIVEN	Sample Received By:	Tamara Oldaker
Project Location:	OXY		

Sample ID: SIDEWALL 3 (H211329-37)

BTEx 8021B		mg/kg		Analyzed By: MS						
Analyte	Result	Reporting Limit	Analyzed	Method Blank	BS	% Recovery	True Value QC	RPD	Qualifier	
Benzene*	<0.050	0.050	05/26/2021	ND	2.04	102	2.00	15.3		
Toluene*	<0.050	0.050	05/26/2021	ND	1.97	98.5	2.00	15.9		
Ethylbenzene*	<0.050	0.050	05/26/2021	ND	1.88	94.0	2.00	17.7		
Total Xylenes*	<0.150	0.150	05/26/2021	ND	5.71	95.2	6.00	17.4		
Total BTEx	<0.300	0.300	05/26/2021	ND						

Surrogate: 4-Bromofluorobenzene (PID) 111 % 69.9-140

Chloride, SM4500CI-B		mg/kg		Analyzed By: GM						
Analyte	Result	Reporting Limit	Analyzed	Method Blank	BS	% Recovery	True Value QC	RPD	Qualifier	
Chloride	64.0	16.0	05/26/2021	ND	416	104	400	3.92		

TPH 8015M		mg/kg		Analyzed By: MS					
Analyte	Result	Reporting Limit	Analyzed	Method Blank	BS	% Recovery	True Value QC	RPD	Qualifier
GRO C6-C10*	<10.0	10.0	05/25/2021	ND	223	112	200	1.02	
DRO >C10-C28*	<10.0	10.0	05/25/2021	ND	224	112	200	1.65	
EXT DRO >C28-C36	<10.0	10.0	05/25/2021	ND					

Surrogate: 1-Chlorooctane 88.8 % 44.3-133

Surrogate: 1-Chlorooctadecane 88.6 % 38.9-142

Cardinal Laboratories

*=Accredited Analyte

PLEASE NOTE: Liability and Damages. Cardinal's liability and client's exclusive remedy for any claim arising, whether based in contract or tort, shall be limited to the amount paid by client for analyses. All claims, including those for negligence and any other cause whatsoever shall be deemed waived unless made in writing and received by Cardinal within thirty (30) days after completion of the applicable service. In no event shall Cardinal be liable for incidental or consequential damages, including, without limitation, business interruptions, loss of use, or loss of profits incurred by client, its subsidiaries, affiliates or successors arising out of or related to the performance of the services hereunder by Cardinal, regardless of whether such claim is based upon any of the above stated reasons or otherwise. Results relate only to the samples identified above. This report shall not be reproduced except in full with written approval of Cardinal Laboratories.

Celey D. Keene, Lab Director/Quality Manager



PHONE (575) 393-2326 ° 101 E. MARLAND ° HOBBS, NM 88240

Analytical Results For:

BBC International, Inc.
 Cliff Brunson
 P.O. Box 805
 Hobbs NM, 88241
 Fax To: (575) 397-0397

Received:	05/24/2021	Sampling Date:	05/21/2021
Reported:	05/27/2021	Sampling Type:	Soil
Project Name:	FEDERAL 12 - 1H	Sampling Condition:	** (See Notes)
Project Number:	NONE GIVEN	Sample Received By:	Tamara Oldaker
Project Location:	OXY		

Sample ID: SIDEWALL 4 (H211329-38)

BTEx 8021B		mg/kg		Analyzed By: MS						
Analyte	Result	Reporting Limit	Analyzed	Method Blank	BS	% Recovery	True Value QC	RPD	Qualifier	
Benzene*	<0.050	0.050	05/26/2021	ND	2.04	102	2.00	15.3		
Toluene*	<0.050	0.050	05/26/2021	ND	1.97	98.5	2.00	15.9		
Ethylbenzene*	<0.050	0.050	05/26/2021	ND	1.88	94.0	2.00	17.7		
Total Xylenes*	<0.150	0.150	05/26/2021	ND	5.71	95.2	6.00	17.4		
Total BTEx	<0.300	0.300	05/26/2021	ND						

Surrogate: 4-Bromofluorobenzene (PID) 111 % 69.9-140

Chloride, SM4500Cl-B		mg/kg		Analyzed By: GM						
Analyte	Result	Reporting Limit	Analyzed	Method Blank	BS	% Recovery	True Value QC	RPD	Qualifier	
Chloride	80.0	16.0	05/26/2021	ND	416	104	400	3.92		

TPH 8015M		mg/kg		Analyzed By: MS					
Analyte	Result	Reporting Limit	Analyzed	Method Blank	BS	% Recovery	True Value QC	RPD	Qualifier
GRO C6-C10*	<10.0	10.0	05/25/2021	ND	223	112	200	1.02	
DRO >C10-C28*	<10.0	10.0	05/25/2021	ND	224	112	200	1.65	
EXT DRO >C28-C36	<10.0	10.0	05/25/2021	ND					

Surrogate: 1-Chlorooctane 97.1 % 44.3-133

Surrogate: 1-Chlorooctadecane 96.8 % 38.9-142

Cardinal Laboratories

*=Accredited Analyte

PLEASE NOTE: Liability and Damages. Cardinal's liability and client's exclusive remedy for any claim arising, whether based in contract or tort, shall be limited to the amount paid by client for analyses. All claims, including those for negligence and any other cause whatsoever shall be deemed waived unless made in writing and received by Cardinal within thirty (30) days after completion of the applicable service. In no event shall Cardinal be liable for incidental or consequential damages, including, without limitation, business interruptions, loss of use, or loss of profits incurred by client, its subsidiaries, affiliates or successors arising out of or related to the performance of the services hereunder by Cardinal, regardless of whether such claim is based upon any of the above stated reasons or otherwise. Results relate only to the samples identified above. This report shall not be reproduced except in full with written approval of Cardinal Laboratories.

Celey D. Keene, Lab Director/Quality Manager



PHONE (575) 393-2326 ° 101 E. MARLAND ° HOBBS, NM 88240

Analytical Results For:

BBC International, Inc.
 Cliff Brunson
 P.O. Box 805
 Hobbs NM, 88241
 Fax To: (575) 397-0397

Received:	05/24/2021	Sampling Date:	05/21/2021
Reported:	05/27/2021	Sampling Type:	Soil
Project Name:	FEDERAL 12 - 1H	Sampling Condition:	** (See Notes)
Project Number:	NONE GIVEN	Sample Received By:	Tamara Oldaker
Project Location:	OXY		

Sample ID: SIDEWALL 5 (H211329-39)

BTX 8021B			mg/kg							
			Analyzed By: MS							
Analyte	Result	Reporting Limit	Analyzed	Method Blank	BS	% Recovery	True Value QC	RPD	Qualifier	
Benzene*	<0.050	0.050	05/26/2021	ND	2.04	102	2.00	15.3		
Toluene*	<0.050	0.050	05/26/2021	ND	1.97	98.5	2.00	15.9		
Ethylbenzene*	<0.050	0.050	05/26/2021	ND	1.88	94.0	2.00	17.7		
Total Xylenes*	<0.150	0.150	05/26/2021	ND	5.71	95.2	6.00	17.4		
Total BTX	<0.300	0.300	05/26/2021	ND						

Surrogate: 4-Bromofluorobenzene (PID) 111 % 69.9-140

Chloride, SM4500CI-B			mg/kg							
			Analyzed By: GM							
Analyte	Result	Reporting Limit	Analyzed	Method Blank	BS	% Recovery	True Value QC	RPD	Qualifier	
Chloride	64.0	16.0	05/26/2021	ND	416	104	400	3.92		

TPH 8015M			mg/kg							
			Analyzed By: MS							
Analyte	Result	Reporting Limit	Analyzed	Method Blank	BS	% Recovery	True Value QC	RPD	Qualifier	
GRO C6-C10*	<10.0	10.0	05/25/2021	ND	223	112	200	1.02		
DRO >C10-C28*	<10.0	10.0	05/25/2021	ND	224	112	200	1.65		
EXT DRO >C28-C36	<10.0	10.0	05/25/2021	ND						

Surrogate: 1-Chlorooctane 95.0 % 44.3-133

Surrogate: 1-Chlorooctadecane 95.5 % 38.9-142

Cardinal Laboratories

*=Accredited Analyte

PLEASE NOTE: Liability and Damages. Cardinal's liability and client's exclusive remedy for any claim arising, whether based in contract or tort, shall be limited to the amount paid by client for analyses. All claims, including those for negligence and any other cause whatsoever shall be deemed waived unless made in writing and received by Cardinal within thirty (30) days after completion of the applicable service. In no event shall Cardinal be liable for incidental or consequential damages, including, without limitation, business interruptions, loss of use, or loss of profits incurred by client, its subsidiaries, affiliates or successors arising out of or related to the performance of the services hereunder by Cardinal, regardless of whether such claim is based upon any of the above stated reasons or otherwise. Results relate only to the samples identified above. This report shall not be reproduced except in full with written approval of Cardinal Laboratories.

Celey D. Keene, Lab Director/Quality Manager



PHONE (575) 393-2326 ° 101 E. MARLAND ° HOBBS, NM 88240

Analytical Results For:

BBC International, Inc.
 Cliff Brunson
 P.O. Box 805
 Hobbs NM, 88241
 Fax To: (575) 397-0397

Received: 05/24/2021
 Reported: 05/27/2021
 Project Name: FEDERAL 12 - 1H
 Project Number: NONE GIVEN
 Project Location: OXY

Sampling Date: 05/21/2021
 Sampling Type: Soil
 Sampling Condition: ** (See Notes)
 Sample Received By: Tamara Oldaker

Sample ID: SIDEWALL 6 (H211329-40)

BTEx 8021B		mg/kg		Analyzed By: MS						
Analyte	Result	Reporting Limit	Analyzed	Method Blank	BS	% Recovery	True Value QC	RPD	Qualifier	
Benzene*	<0.050	0.050	05/26/2021	ND	2.04	102	2.00	15.3		
Toluene*	<0.050	0.050	05/26/2021	ND	1.97	98.5	2.00	15.9		
Ethylbenzene*	<0.050	0.050	05/26/2021	ND	1.88	94.0	2.00	17.7		
Total Xylenes*	<0.150	0.150	05/26/2021	ND	5.71	95.2	6.00	17.4		
Total BTEx	<0.300	0.300	05/26/2021	ND						

Surrogate: 4-Bromofluorobenzene (PID) 111 % 69.9-140

Chloride, SM4500CI-B		mg/kg		Analyzed By: GM					
Analyte	Result	Reporting Limit	Analyzed	Method Blank	BS	% Recovery	True Value QC	RPD	Qualifier
Chloride	48.0	16.0	05/26/2021	ND	416	104	400	3.92	

TPH 8015M		mg/kg		Analyzed By: MS					
Analyte	Result	Reporting Limit	Analyzed	Method Blank	BS	% Recovery	True Value QC	RPD	Qualifier
GRO C6-C10*	<10.0	10.0	05/25/2021	ND	223	112	200	1.02	
DRO >C10-C28*	<10.0	10.0	05/25/2021	ND	224	112	200	1.65	
EXT DRO >C28-C36	<10.0	10.0	05/25/2021	ND					

Surrogate: 1-Chlorooctane 99.1 % 44.3-133

Surrogate: 1-Chlorooctadecane 98.4 % 38.9-142

Cardinal Laboratories

*=Accredited Analyte

PLEASE NOTE: Liability and Damages. Cardinal's liability and client's exclusive remedy for any claim arising, whether based in contract or tort, shall be limited to the amount paid by client for analyses. All claims, including those for negligence and any other cause whatsoever shall be deemed waived unless made in writing and received by Cardinal within thirty (30) days after completion of the applicable service. In no event shall Cardinal be liable for incidental or consequential damages, including, without limitation, business interruptions, loss of use, or loss of profits incurred by client, its subsidiaries, affiliates or successors arising out of or related to the performance of the services hereunder by Cardinal, regardless of whether such claim is based upon any of the above stated reasons or otherwise. Results relate only to the samples identified above. This report shall not be reproduced except in full with written approval of Cardinal Laboratories.

Celey D. Keene, Lab Director/Quality Manager



PHONE (575) 393-2326 ° 101 E. MARLAND ° HOBBS, NM 88240

Analytical Results For:

BBC International, Inc.
 Cliff Brunson
 P.O. Box 805
 Hobbs NM, 88241
 Fax To: (575) 397-0397

Received:	05/24/2021	Sampling Date:	05/21/2021
Reported:	05/27/2021	Sampling Type:	Soil
Project Name:	FEDERAL 12 - 1H	Sampling Condition:	** (See Notes)
Project Number:	NONE GIVEN	Sample Received By:	Tamara Oldaker
Project Location:	OXY		

Sample ID: SIDEWALL 7 (H211329-41)

BTEx 8021B		mg/kg		Analyzed By: MS						
Analyte	Result	Reporting Limit	Analyzed	Method Blank	BS	% Recovery	True Value QC	RPD	Qualifier	
Benzene*	<0.050	0.050	05/26/2021	ND	2.04	102	2.00	15.3		
Toluene*	<0.050	0.050	05/26/2021	ND	1.97	98.5	2.00	15.9		
Ethylbenzene*	<0.050	0.050	05/26/2021	ND	1.88	94.0	2.00	17.7		
Total Xylenes*	<0.150	0.150	05/26/2021	ND	5.71	95.2	6.00	17.4		
Total BTEx	<0.300	0.300	05/26/2021	ND						

Surrogate: 4-Bromofluorobenzene (PID) 109 % 69.9-140

Chloride, SM4500CI-B		mg/kg		Analyzed By: GM						
Analyte	Result	Reporting Limit	Analyzed	Method Blank	BS	% Recovery	True Value QC	RPD	Qualifier	
Chloride	32.0	16.0	05/26/2021	ND	416	104	400	3.92		

TPH 8015M		mg/kg		Analyzed By: MS					
Analyte	Result	Reporting Limit	Analyzed	Method Blank	BS	% Recovery	True Value QC	RPD	Qualifier
GRO C6-C10*	<10.0	10.0	05/25/2021	ND	223	112	200	1.02	
DRO >C10-C28*	<10.0	10.0	05/25/2021	ND	224	112	200	1.65	
EXT DRO >C28-C36	<10.0	10.0	05/25/2021	ND					

Surrogate: 1-Chlorooctane 99.9 % 44.3-133

Surrogate: 1-Chlorooctadecane 98.7 % 38.9-142

Cardinal Laboratories

*=Accredited Analyte

PLEASE NOTE: Liability and Damages. Cardinal's liability and client's exclusive remedy for any claim arising, whether based in contract or tort, shall be limited to the amount paid by client for analyses. All claims, including those for negligence and any other cause whatsoever shall be deemed waived unless made in writing and received by Cardinal within thirty (30) days after completion of the applicable service. In no event shall Cardinal be liable for incidental or consequential damages, including, without limitation, business interruptions, loss of use, or loss of profits incurred by client, its subsidiaries, affiliates or successors arising out of or related to the performance of the services hereunder by Cardinal, regardless of whether such claim is based upon any of the above stated reasons or otherwise. Results relate only to the samples identified above. This report shall not be reproduced except in full with written approval of Cardinal Laboratories.

Celey D. Keene, Lab Director/Quality Manager



PHONE (575) 393-2326 ° 101 E. MARLAND ° HOBBS, NM 88240

Analytical Results For:

BBC International, Inc.
 Cliff Brunson
 P.O. Box 805
 Hobbs NM, 88241
 Fax To: (575) 397-0397

Received: 05/24/2021
 Reported: 05/27/2021
 Project Name: FEDERAL 12 - 1H
 Project Number: NONE GIVEN
 Project Location: OXY

Sampling Date: 05/21/2021
 Sampling Type: Soil
 Sampling Condition: ** (See Notes)
 Sample Received By: Tamara Oldaker

Sample ID: SIDEWALL 8 (H211329-42)

BTEx 8021B		mg/kg		Analyzed By: MS						
Analyte	Result	Reporting Limit	Analyzed	Method Blank	BS	% Recovery	True Value QC	RPD	Qualifier	
Benzene*	<0.050	0.050	05/26/2021	ND	2.04	102	2.00	15.3		
Toluene*	<0.050	0.050	05/26/2021	ND	1.97	98.5	2.00	15.9		
Ethylbenzene*	<0.050	0.050	05/26/2021	ND	1.88	94.0	2.00	17.7		
Total Xylenes*	<0.150	0.150	05/26/2021	ND	5.71	95.2	6.00	17.4		
Total BTEx	<0.300	0.300	05/26/2021	ND						

Surrogate: 4-Bromofluorobenzene (PID) 111 % 69.9-140

Chloride, SM4500CI-B		mg/kg		Analyzed By: GM					
Analyte	Result	Reporting Limit	Analyzed	Method Blank	BS	% Recovery	True Value QC	RPD	Qualifier
Chloride	48.0	16.0	05/26/2021	ND	416	104	400	3.92	

TPH 8015M		mg/kg		Analyzed By: MS					
Analyte	Result	Reporting Limit	Analyzed	Method Blank	BS	% Recovery	True Value QC	RPD	Qualifier
GRO C6-C10*	<10.0	10.0	05/25/2021	ND	223	112	200	1.02	
DRO >C10-C28*	<10.0	10.0	05/25/2021	ND	224	112	200	1.65	
EXT DRO >C28-C36	<10.0	10.0	05/25/2021	ND					

Surrogate: 1-Chlorooctane 93.8 % 44.3-133

Surrogate: 1-Chlorooctadecane 92.7 % 38.9-142

Cardinal Laboratories

*=Accredited Analyte

PLEASE NOTE: Liability and Damages. Cardinal's liability and client's exclusive remedy for any claim arising, whether based in contract or tort, shall be limited to the amount paid by client for analyses. All claims, including those for negligence and any other cause whatsoever shall be deemed waived unless made in writing and received by Cardinal within thirty (30) days after completion of the applicable service. In no event shall Cardinal be liable for incidental or consequential damages, including, without limitation, business interruptions, loss of use, or loss of profits incurred by client, its subsidiaries, affiliates or successors arising out of or related to the performance of the services hereunder by Cardinal, regardless of whether such claim is based upon any of the above stated reasons or otherwise. Results relate only to the samples identified above. This report shall not be reproduced except in full with written approval of Cardinal Laboratories.

Celey D. Keene, Lab Director/Quality Manager



PHONE (575) 393-2326 ° 101 E. MARLAND ° HOBBS, NM 88240

Analytical Results For:

BBC International, Inc.
 Cliff Brunson
 P.O. Box 805
 Hobbs NM, 88241
 Fax To: (575) 397-0397

Received:	05/24/2021	Sampling Date:	05/21/2021
Reported:	05/27/2021	Sampling Type:	Soil
Project Name:	FEDERAL 12 - 1H	Sampling Condition:	** (See Notes)
Project Number:	NONE GIVEN	Sample Received By:	Tamara Oldaker
Project Location:	OXY		

Sample ID: SIDEWALL 9 (H211329-43)

BTEX 8021B		mg/kg		Analyzed By: MS						
Analyte	Result	Reporting Limit	Analyzed	Method Blank	BS	% Recovery	True Value QC	RPD	Qualifier	
Benzene*	<0.050	0.050	05/26/2021	ND	2.04	102	2.00	15.3		
Toluene*	<0.050	0.050	05/26/2021	ND	1.97	98.5	2.00	15.9		
Ethylbenzene*	<0.050	0.050	05/26/2021	ND	1.88	94.0	2.00	17.7		
Total Xylenes*	<0.150	0.150	05/26/2021	ND	5.71	95.2	6.00	17.4		
Total BTEX	<0.300	0.300	05/26/2021	ND						

Surrogate: 4-Bromofluorobenzene (PID) 110 % 69.9-140

Chloride, SM4500Cl-B		mg/kg		Analyzed By: GM						
Analyte	Result	Reporting Limit	Analyzed	Method Blank	BS	% Recovery	True Value QC	RPD	Qualifier	
Chloride	48.0	16.0	05/26/2021	ND	416	104	400	3.92		

TPH 8015M		mg/kg		Analyzed By: MS					
Analyte	Result	Reporting Limit	Analyzed	Method Blank	BS	% Recovery	True Value QC	RPD	Qualifier
GRO C6-C10*	<10.0	10.0	05/25/2021	ND	223	112	200	1.02	
DRO >C10-C28*	<10.0	10.0	05/25/2021	ND	224	112	200	1.65	
EXT DRO >C28-C36	<10.0	10.0	05/25/2021	ND					

Surrogate: 1-Chlorooctane 103 % 44.3-133

Surrogate: 1-Chlorooctadecane 102 % 38.9-142

Cardinal Laboratories

*=Accredited Analyte

PLEASE NOTE: Liability and Damages. Cardinal's liability and client's exclusive remedy for any claim arising, whether based in contract or tort, shall be limited to the amount paid by client for analyses. All claims, including those for negligence and any other cause whatsoever shall be deemed waived unless made in writing and received by Cardinal within thirty (30) days after completion of the applicable service. In no event shall Cardinal be liable for incidental or consequential damages, including, without limitation, business interruptions, loss of use, or loss of profits incurred by client, its subsidiaries, affiliates or successors arising out of or related to the performance of the services hereunder by Cardinal, regardless of whether such claim is based upon any of the above stated reasons or otherwise. Results relate only to the samples identified above. This report shall not be reproduced except in full with written approval of Cardinal Laboratories.

Celey D. Keene, Lab Director/Quality Manager



PHONE (575) 393-2326 ° 101 E. MARLAND ° HOBBS, NM 88240

Analytical Results For:

BBC International, Inc.
 Cliff Brunson
 P.O. Box 805
 Hobbs NM, 88241
 Fax To: (575) 397-0397

Received:	05/24/2021	Sampling Date:	05/21/2021
Reported:	05/27/2021	Sampling Type:	Soil
Project Name:	FEDERAL 12 - 1H	Sampling Condition:	** (See Notes)
Project Number:	NONE GIVEN	Sample Received By:	Tamara Oldaker
Project Location:	OXY		

Sample ID: SIDEWALL 10 (H211329-44)

BTEx 8021B		mg/kg		Analyzed By: MS						
Analyte	Result	Reporting Limit	Analyzed	Method Blank	BS	% Recovery	True Value QC	RPD	Qualifier	
Benzene*	<0.050	0.050	05/26/2021	ND	2.04	102	2.00	15.3		
Toluene*	<0.050	0.050	05/26/2021	ND	1.97	98.5	2.00	15.9		
Ethylbenzene*	<0.050	0.050	05/26/2021	ND	1.88	94.0	2.00	17.7		
Total Xylenes*	<0.150	0.150	05/26/2021	ND	5.71	95.2	6.00	17.4		
Total BTEx	<0.300	0.300	05/26/2021	ND						

Surrogate: 4-Bromofluorobenzene (PID) 110 % 69.9-140

Chloride, SM4500CI-B		mg/kg		Analyzed By: GM						
Analyte	Result	Reporting Limit	Analyzed	Method Blank	BS	% Recovery	True Value QC	RPD	Qualifier	
Chloride	64.0	16.0	05/26/2021	ND	416	104	400	3.92		

TPH 8015M		mg/kg		Analyzed By: MS					
Analyte	Result	Reporting Limit	Analyzed	Method Blank	BS	% Recovery	True Value QC	RPD	Qualifier
GRO C6-C10*	<10.0	10.0	05/25/2021	ND	223	112	200	1.02	
DRO >C10-C28*	<10.0	10.0	05/25/2021	ND	224	112	200	1.65	
EXT DRO >C28-C36	<10.0	10.0	05/25/2021	ND					

Surrogate: 1-Chlorooctane 101 % 44.3-133

Surrogate: 1-Chlorooctadecane 102 % 38.9-142

Cardinal Laboratories

*=Accredited Analyte

PLEASE NOTE: Liability and Damages. Cardinal's liability and client's exclusive remedy for any claim arising, whether based in contract or tort, shall be limited to the amount paid by client for analyses. All claims, including those for negligence and any other cause whatsoever shall be deemed waived unless made in writing and received by Cardinal within thirty (30) days after completion of the applicable service. In no event shall Cardinal be liable for incidental or consequential damages, including, without limitation, business interruptions, loss of use, or loss of profits incurred by client, its subsidiaries, affiliates or successors arising out of or related to the performance of the services hereunder by Cardinal, regardless of whether such claim is based upon any of the above stated reasons or otherwise. Results relate only to the samples identified above. This report shall not be reproduced except in full with written approval of Cardinal Laboratories.

Celey D. Keene, Lab Director/Quality Manager



PHONE (575) 393-2326 ° 101 E. MARLAND ° HOBBS, NM 88240

Analytical Results For:

BBC International, Inc.
 Cliff Brunson
 P.O. Box 805
 Hobbs NM, 88241
 Fax To: (575) 397-0397

Received:	05/24/2021	Sampling Date:	05/21/2021
Reported:	05/27/2021	Sampling Type:	Soil
Project Name:	FEDERAL 12 - 1H	Sampling Condition:	** (See Notes)
Project Number:	NONE GIVEN	Sample Received By:	Tamara Oldaker
Project Location:	OXY		

Sample ID: SIDEWALL 11 (H211329-45)

BTEx 8021B		mg/kg		Analyzed By: MS						
Analyte	Result	Reporting Limit	Analyzed	Method Blank	BS	% Recovery	True Value QC	RPD	Qualifier	
Benzene*	<0.050	0.050	05/26/2021	ND	2.04	102	2.00	15.3		
Toluene*	<0.050	0.050	05/26/2021	ND	1.97	98.5	2.00	15.9		
Ethylbenzene*	<0.050	0.050	05/26/2021	ND	1.88	94.0	2.00	17.7		
Total Xylenes*	<0.150	0.150	05/26/2021	ND	5.71	95.2	6.00	17.4		
Total BTEx	<0.300	0.300	05/26/2021	ND						

Surrogate: 4-Bromofluorobenzene (PID) 109 % 69.9-140

Chloride, SM4500CI-B		mg/kg		Analyzed By: GM						
Analyte	Result	Reporting Limit	Analyzed	Method Blank	BS	% Recovery	True Value QC	RPD	Qualifier	
Chloride	64.0	16.0	05/26/2021	ND	416	104	400	3.92		

TPH 8015M		mg/kg		Analyzed By: MS					
Analyte	Result	Reporting Limit	Analyzed	Method Blank	BS	% Recovery	True Value QC	RPD	Qualifier
GRO C6-C10*	<10.0	10.0	05/25/2021	ND	223	112	200	1.02	
DRO >C10-C28*	<10.0	10.0	05/25/2021	ND	224	112	200	1.65	
EXT DRO >C28-C36	<10.0	10.0	05/25/2021	ND					

Surrogate: 1-Chlorooctane 88.6 % 44.3-133

Surrogate: 1-Chlorooctadecane 89.0 % 38.9-142

Cardinal Laboratories

*=Accredited Analyte

PLEASE NOTE: Liability and Damages. Cardinal's liability and client's exclusive remedy for any claim arising, whether based in contract or tort, shall be limited to the amount paid by client for analyses. All claims, including those for negligence and any other cause whatsoever shall be deemed waived unless made in writing and received by Cardinal within thirty (30) days after completion of the applicable service. In no event shall Cardinal be liable for incidental or consequential damages, including, without limitation, business interruptions, loss of use, or loss of profits incurred by client, its subsidiaries, affiliates or successors arising out of or related to the performance of the services hereunder by Cardinal, regardless of whether such claim is based upon any of the above stated reasons or otherwise. Results relate only to the samples identified above. This report shall not be reproduced except in full with written approval of Cardinal Laboratories.

Celey D. Keene, Lab Director/Quality Manager



PHONE (575) 393-2326 ° 101 E. MARLAND ° HOBBS, NM 88240

Analytical Results For:

BBC International, Inc.
 Cliff Brunson
 P.O. Box 805
 Hobbs NM, 88241
 Fax To: (575) 397-0397

Received:	05/24/2021	Sampling Date:	05/21/2021
Reported:	05/27/2021	Sampling Type:	Soil
Project Name:	FEDERAL 12 - 1H	Sampling Condition:	** (See Notes)
Project Number:	NONE GIVEN	Sample Received By:	Tamara Oldaker
Project Location:	OXY		

Sample ID: SIDEWALL 12 (H211329-46)

BTX 8021B			mg/kg							
			Analyzed By: MS							
Analyte	Result	Reporting Limit	Analyzed	Method Blank	BS	% Recovery	True Value QC	RPD	Qualifier	
Benzene*	<0.050	0.050	05/26/2021	ND	2.04	102	2.00	15.3		
Toluene*	<0.050	0.050	05/26/2021	ND	1.97	98.5	2.00	15.9		
Ethylbenzene*	<0.050	0.050	05/26/2021	ND	1.88	94.0	2.00	17.7		
Total Xylenes*	<0.150	0.150	05/26/2021	ND	5.71	95.2	6.00	17.4		
Total BTX	<0.300	0.300	05/26/2021	ND						

Surrogate: 4-Bromofluorobenzene (PID) 109 % 69.9-140

Chloride, SM4500CI-B			mg/kg							
			Analyzed By: GM							
Analyte	Result	Reporting Limit	Analyzed	Method Blank	BS	% Recovery	True Value QC	RPD	Qualifier	
Chloride	96.0	16.0	05/26/2021	ND	416	104	400	3.92		

TPH 8015M			mg/kg							
			Analyzed By: MS							
Analyte	Result	Reporting Limit	Analyzed	Method Blank	BS	% Recovery	True Value QC	RPD	Qualifier	
GRO C6-C10*	<10.0	10.0	05/26/2021	ND	223	112	200	1.02		
DRO >C10-C28*	<10.0	10.0	05/26/2021	ND	224	112	200	1.65		
EXT DRO >C28-C36	<10.0	10.0	05/26/2021	ND						

Surrogate: 1-Chlorooctane 94.3 % 44.3-133

Surrogate: 1-Chlorooctadecane 92.9 % 38.9-142

Cardinal Laboratories

*=Accredited Analyte

PLEASE NOTE: Liability and Damages. Cardinal's liability and client's exclusive remedy for any claim arising, whether based in contract or tort, shall be limited to the amount paid by client for analyses. All claims, including those for negligence and any other cause whatsoever shall be deemed waived unless made in writing and received by Cardinal within thirty (30) days after completion of the applicable service. In no event shall Cardinal be liable for incidental or consequential damages, including, without limitation, business interruptions, loss of use, or loss of profits incurred by client, its subsidiaries, affiliates or successors arising out of or related to the performance of the services hereunder by Cardinal, regardless of whether such claim is based upon any of the above stated reasons or otherwise. Results relate only to the samples identified above. This report shall not be reproduced except in full with written approval of Cardinal Laboratories.

Celey D. Keene, Lab Director/Quality Manager



PHONE (575) 393-2326 ° 101 E. MARLAND ° HOBBS, NM 88240

Analytical Results For:

BBC International, Inc.
 Cliff Brunson
 P.O. Box 805
 Hobbs NM, 88241
 Fax To: (575) 397-0397

Received:	05/24/2021	Sampling Date:	05/21/2021
Reported:	05/27/2021	Sampling Type:	Soil
Project Name:	FEDERAL 12 - 1H	Sampling Condition:	** (See Notes)
Project Number:	NONE GIVEN	Sample Received By:	Tamara Oldaker
Project Location:	OXY		

Sample ID: SIDEWALL 13 (H211329-47)

BTX 8021B		mg/kg		Analyzed By: MS						
Analyte	Result	Reporting Limit	Analyzed	Method Blank	BS	% Recovery	True Value QC	RPD	Qualifier	
Benzene*	<0.050	0.050	05/26/2021	ND	2.04	102	2.00	15.3		
Toluene*	<0.050	0.050	05/26/2021	ND	1.97	98.5	2.00	15.9		
Ethylbenzene*	<0.050	0.050	05/26/2021	ND	1.88	94.0	2.00	17.7		
Total Xylenes*	<0.150	0.150	05/26/2021	ND	5.71	95.2	6.00	17.4		
Total BTX	<0.300	0.300	05/26/2021	ND						

Surrogate: 4-Bromofluorobenzene (PID) 110 % 69.9-140

Chloride, SM4500CI-B		mg/kg		Analyzed By: GM						
Analyte	Result	Reporting Limit	Analyzed	Method Blank	BS	% Recovery	True Value QC	RPD	Qualifier	
Chloride	32.0	16.0	05/26/2021	ND	416	104	400	3.92		

TPH 8015M		mg/kg		Analyzed By: MS					
Analyte	Result	Reporting Limit	Analyzed	Method Blank	BS	% Recovery	True Value QC	RPD	Qualifier
GRO C6-C10*	<10.0	10.0	05/26/2021	ND	223	112	200	1.02	
DRO >C10-C28*	<10.0	10.0	05/26/2021	ND	224	112	200	1.65	
EXT DRO >C28-C36	<10.0	10.0	05/26/2021	ND					

Surrogate: 1-Chlorooctane 95.4 % 44.3-133

Surrogate: 1-Chlorooctadecane 94.0 % 38.9-142

Cardinal Laboratories

*=Accredited Analyte

PLEASE NOTE: Liability and Damages. Cardinal's liability and client's exclusive remedy for any claim arising, whether based in contract or tort, shall be limited to the amount paid by client for analyses. All claims, including those for negligence and any other cause whatsoever shall be deemed waived unless made in writing and received by Cardinal within thirty (30) days after completion of the applicable service. In no event shall Cardinal be liable for incidental or consequential damages, including, without limitation, business interruptions, loss of use, or loss of profits incurred by client, its subsidiaries, affiliates or successors arising out of or related to the performance of the services hereunder by Cardinal, regardless of whether such claim is based upon any of the above stated reasons or otherwise. Results relate only to the samples identified above. This report shall not be reproduced except in full with written approval of Cardinal Laboratories.

Celey D. Keene, Lab Director/Quality Manager



PHONE (575) 393-2326 ° 101 E. MARLAND ° HOBBS, NM 88240

Analytical Results For:

BBC International, Inc.
 Cliff Brunson
 P.O. Box 805
 Hobbs NM, 88241
 Fax To: (575) 397-0397

Received:	05/24/2021	Sampling Date:	05/21/2021
Reported:	05/27/2021	Sampling Type:	Soil
Project Name:	FEDERAL 12 - 1H	Sampling Condition:	** (See Notes)
Project Number:	NONE GIVEN	Sample Received By:	Tamara Oldaker
Project Location:	OXY		

Sample ID: SIDEWALL 14 (H211329-48)

BTEx 8021B		mg/kg		Analyzed By: MS						
Analyte	Result	Reporting Limit	Analyzed	Method Blank	BS	% Recovery	True Value QC	RPD	Qualifier	
Benzene*	<0.050	0.050	05/26/2021	ND	2.04	102	2.00	15.3		
Toluene*	<0.050	0.050	05/26/2021	ND	1.97	98.5	2.00	15.9		
Ethylbenzene*	<0.050	0.050	05/26/2021	ND	1.88	94.0	2.00	17.7		
Total Xylenes*	<0.150	0.150	05/26/2021	ND	5.71	95.2	6.00	17.4		
Total BTEx	<0.300	0.300	05/26/2021	ND						

Surrogate: 4-Bromofluorobenzene (PID) 112 % 69.9-140

Chloride, SM4500CI-B		mg/kg		Analyzed By: GM						
Analyte	Result	Reporting Limit	Analyzed	Method Blank	BS	% Recovery	True Value QC	RPD	Qualifier	
Chloride	48.0	16.0	05/26/2021	ND	416	104	400	3.92		

TPH 8015M		mg/kg		Analyzed By: MS					
Analyte	Result	Reporting Limit	Analyzed	Method Blank	BS	% Recovery	True Value QC	RPD	Qualifier
GRO C6-C10*	<10.0	10.0	05/26/2021	ND	223	112	200	1.02	
DRO >C10-C28*	<10.0	10.0	05/26/2021	ND	224	112	200	1.65	
EXT DRO >C28-C36	<10.0	10.0	05/26/2021	ND					

Surrogate: 1-Chlorooctane 91.9 % 44.3-133

Surrogate: 1-Chlorooctadecane 91.4 % 38.9-142

Cardinal Laboratories

*=Accredited Analyte

PLEASE NOTE: Liability and Damages. Cardinal's liability and client's exclusive remedy for any claim arising, whether based in contract or tort, shall be limited to the amount paid by client for analyses. All claims, including those for negligence and any other cause whatsoever shall be deemed waived unless made in writing and received by Cardinal within thirty (30) days after completion of the applicable service. In no event shall Cardinal be liable for incidental or consequential damages, including, without limitation, business interruptions, loss of use, or loss of profits incurred by client, its subsidiaries, affiliates or successors arising out of or related to the performance of the services hereunder by Cardinal, regardless of whether such claim is based upon any of the above stated reasons or otherwise. Results relate only to the samples identified above. This report shall not be reproduced except in full with written approval of Cardinal Laboratories.

Celey D. Keene, Lab Director/Quality Manager



PHONE (575) 393-2326 ° 101 E. MARLAND ° HOBBS, NM 88240

Analytical Results For:

BBC International, Inc.
 Cliff Brunson
 P.O. Box 805
 Hobbs NM, 88241
 Fax To: (575) 397-0397

Received:	05/24/2021	Sampling Date:	05/21/2021
Reported:	05/27/2021	Sampling Type:	Soil
Project Name:	FEDERAL 12 - 1H	Sampling Condition:	** (See Notes)
Project Number:	NONE GIVEN	Sample Received By:	Tamara Oldaker
Project Location:	OXY		

Sample ID: SIDEWALL 15 (H211329-49)

BTEx 8021B		mg/kg		Analyzed By: MS						
Analyte	Result	Reporting Limit	Analyzed	Method Blank	BS	% Recovery	True Value QC	RPD	Qualifier	
Benzene*	<0.050	0.050	05/26/2021	ND	2.04	102	2.00	15.3		
Toluene*	<0.050	0.050	05/26/2021	ND	1.97	98.5	2.00	15.9		
Ethylbenzene*	<0.050	0.050	05/26/2021	ND	1.88	94.0	2.00	17.7		
Total Xylenes*	<0.150	0.150	05/26/2021	ND	5.71	95.2	6.00	17.4		
Total BTEx	<0.300	0.300	05/26/2021	ND						

Surrogate: 4-Bromofluorobenzene (PID) 110 % 69.9-140

Chloride, SM4500Cl-B		mg/kg		Analyzed By: GM						
Analyte	Result	Reporting Limit	Analyzed	Method Blank	BS	% Recovery	True Value QC	RPD	Qualifier	
Chloride	64.0	16.0	05/26/2021	ND	400	100	400	0.00		

TPH 8015M		mg/kg		Analyzed By: MS					
Analyte	Result	Reporting Limit	Analyzed	Method Blank	BS	% Recovery	True Value QC	RPD	Qualifier
GRO C6-C10*	<10.0	10.0	05/26/2021	ND	220	110	200	1.69	
DRO >C10-C28*	<10.0	10.0	05/26/2021	ND	225	112	200	0.890	
EXT DRO >C28-C36	<10.0	10.0	05/26/2021	ND					

Surrogate: 1-Chlorooctane 78.9 % 44.3-133

Surrogate: 1-Chlorooctadecane 78.5 % 38.9-142

Cardinal Laboratories

*=Accredited Analyte

PLEASE NOTE: Liability and Damages. Cardinal's liability and client's exclusive remedy for any claim arising, whether based in contract or tort, shall be limited to the amount paid by client for analyses. All claims, including those for negligence and any other cause whatsoever shall be deemed waived unless made in writing and received by Cardinal within thirty (30) days after completion of the applicable service. In no event shall Cardinal be liable for incidental or consequential damages, including, without limitation, business interruptions, loss of use, or loss of profits incurred by client, its subsidiaries, affiliates or successors arising out of or related to the performance of the services hereunder by Cardinal, regardless of whether such claim is based upon any of the above stated reasons or otherwise. Results relate only to the samples identified above. This report shall not be reproduced except in full with written approval of Cardinal Laboratories.

Celey D. Keene, Lab Director/Quality Manager



PHONE (575) 393-2326 ° 101 E. MARLAND ° HOBBS, NM 88240

Analytical Results For:

BBC International, Inc.
 Cliff Brunson
 P.O. Box 805
 Hobbs NM, 88241
 Fax To: (575) 397-0397

Received:	05/24/2021	Sampling Date:	05/21/2021
Reported:	05/27/2021	Sampling Type:	Soil
Project Name:	FEDERAL 12 - 1H	Sampling Condition:	** (See Notes)
Project Number:	NONE GIVEN	Sample Received By:	Tamara Oldaker
Project Location:	OXY		

Sample ID: SIDEWALL 16 (H211329-50)

BTX 8021B			mg/kg							
			Analyzed By: MS							
Analyte	Result	Reporting Limit	Analyzed	Method Blank	BS	% Recovery	True Value QC	RPD	Qualifier	
Benzene*	<0.050	0.050	05/26/2021	ND	2.04	102	2.00	15.3		
Toluene*	<0.050	0.050	05/26/2021	ND	1.97	98.5	2.00	15.9		
Ethylbenzene*	<0.050	0.050	05/26/2021	ND	1.88	94.0	2.00	17.7		
Total Xylenes*	<0.150	0.150	05/26/2021	ND	5.71	95.2	6.00	17.4		
Total BTX	<0.300	0.300	05/26/2021	ND						

Surrogate: 4-Bromofluorobenzene (PID) 109 % 69.9-140

Chloride, SM4500CI-B			mg/kg							
			Analyzed By: GM							
Analyte	Result	Reporting Limit	Analyzed	Method Blank	BS	% Recovery	True Value QC	RPD	Qualifier	
Chloride	96.0	16.0	05/26/2021	ND	400	100	400	0.00		

TPH 8015M			mg/kg							
			Analyzed By: MS							
Analyte	Result	Reporting Limit	Analyzed	Method Blank	BS	% Recovery	True Value QC	RPD	Qualifier	
GRO C6-C10*	<10.0	10.0	05/26/2021	ND	220	110	200	1.69		
DRO >C10-C28*	<10.0	10.0	05/26/2021	ND	225	112	200	0.890		
EXT DRO >C28-C36	<10.0	10.0	05/26/2021	ND						

Surrogate: 1-Chlorooctane 92.6 % 44.3-133

Surrogate: 1-Chlorooctadecane 94.1 % 38.9-142

Cardinal Laboratories

*=Accredited Analyte

PLEASE NOTE: Liability and Damages. Cardinal's liability and client's exclusive remedy for any claim arising, whether based in contract or tort, shall be limited to the amount paid by client for analyses. All claims, including those for negligence and any other cause whatsoever shall be deemed waived unless made in writing and received by Cardinal within thirty (30) days after completion of the applicable service. In no event shall Cardinal be liable for incidental or consequential damages, including, without limitation, business interruptions, loss of use, or loss of profits incurred by client, its subsidiaries, affiliates or successors arising out of or related to the performance of the services hereunder by Cardinal, regardless of whether such claim is based upon any of the above stated reasons or otherwise. Results relate only to the samples identified above. This report shall not be reproduced except in full with written approval of Cardinal Laboratories.

Celey D. Keene, Lab Director/Quality Manager



PHONE (575) 393-2326 • 101 E. MARLAND • HOBBS, NM 88240

Notes and Definitions

S-04	The surrogate recovery for this sample is outside of established control limits due to a sample matrix effect.
QR-04	The RPD for the BS/BSD was outside of historical limits.
QR-03	The RPD value for the sample duplicate or MS/MSD was outside of QC acceptance limits due to matrix interference. QC batch accepted based on LCS and/or LCSD recovery and/or RPD values.
QM-07	The spike recovery was outside acceptance limits for the MS and/or MSD. The batch was accepted based on acceptable LCS recovery.
BS-3	Blank spike recovery outside of lab established statistical limits, but still within method limits. Data is not adversely affected.
ND	Analyte NOT DETECTED at or above the reporting limit
RPD	Relative Percent Difference
**	Samples not received at proper temperature of 6°C or below.
***	Insufficient time to reach temperature.
-	Chloride by SM4500Cl-B does not require samples be received at or below 6°C Samples reported on an as received basis (wet) unless otherwise noted on report

Cardinal Laboratories

*=Accredited Analyte

PLEASE NOTE: Liability and Damages. Cardinal's liability and client's exclusive remedy for any claim arising, whether based in contract or tort, shall be limited to the amount paid by client for analyses. All claims, including those for negligence and any other cause whatsoever shall be deemed waived unless made in writing and received by Cardinal within thirty (30) days after completion of the applicable service. In no event shall Cardinal be liable for incidental or consequential damages, including, without limitation, business interruptions, loss of use, or loss of profits incurred by client, its subsidiaries, affiliates or successors arising out of or related to the performance of the services hereunder by Cardinal, regardless of whether such claim is based upon any of the above stated reasons or otherwise. Results relate only to the samples identified above. This report shall not be reproduced except in full with written approval of Cardinal Laboratories.

A handwritten signature in black ink, appearing to read "Celey D. Keene", is written over a horizontal line.

Celey D. Keene, Lab Director/Quality Manager



101 East Marland, Hobbs, NM 88240

(505) 393-2326 FAX (505) 393-2476

BILL TO

ANALYSIS REQUEST

This image shows a blank sheet of white paper with horizontal blue or grey ruling lines. The lines are evenly spaced and run across the width of the page. There is no handwriting or other markings on the paper.

Lab I.D.	Sample I.D.	(G)RAB OR (C)OM	# CONTAINERS	GROUNDWATER	WASTEWATER	SOIL	OIL	SLUDGE	OTHER :	ACID/BASE:	ICE / COOL	OTHER :	DATE	TIME	CL	BTEX	TPH EXT
H211339	* SLURRY																
1	B ^o F ^o M	G	-			✓				✓	✓	✓	5/21/21	8:30	✓	✓	✓
2	B ^o F ^o M	G	-			✓				✓	✓	✓	5/21/21	8:40	✓	✓	✓
3	B ^o F ^o M	G	-			✓				✓	✓	✓	5/21/21	8:50	✓	✓	✓
4	B ^o F ^o M	G	-			✓				✓	✓	✓	5/21/21	9:00	✓	✓	✓
5	B ^o F ^o M	G	-			✓				✓	✓	✓	5/21/21	9:10	✓	✓	✓
6	B ^o F ^o M	G	-			✓				✓	✓	✓	5/21/21	9:20	✓	✓	✓
7	B ^o F ^o M	G	-			✓				✓	✓	✓	5/21/21	9:30	✓	✓	✓
8	B ^o F ^o M	G	-			✓				✓	✓	✓	5/21/21	9:40	✓	✓	✓
9	B ^o F ^o M	G	-			✓				✓	✓	✓	5/21/21	9:50	✓	✓	✓
10	B ^o F ^o M	G	-			✓				✓	✓	✓	5/21/21	10:00	✓	✓	✓

PLEASE NOTE: Liability and Damages. Cardinal's liability and client's exclusive remedy for any claim arising whether caused in contract or tort, shall be limited to the amount paid by the client for the service. All claims, including those for negligence and any other cause whatsoever shall be deemed waived unless made in writing and received by Cardinal within 30 days after completion of the applicable analyses. All claims, including those for negligence and any other cause whatsoever shall be deemed waived unless made in writing and received by Cardinal within 30 days after completion of the applicable analyses. All claims, including those for negligence and any other cause whatsoever shall be deemed waived unless made in writing and received by Cardinal within 30 days after completion of the applicable analyses. All claims, including those for negligence and any other cause whatsoever shall be deemed waived unless made in writing and received by Cardinal within 30 days after completion of the applicable analyses. In no event shall Cardinal be liable for incidental or consequential damages, including without limitation, business interruptions, loss of use, or loss of profits incurred by client, its subsidiaries, affiliates, or third parties. The effectiveness of services hereunder by Cardinal, regardless of whether such claim is based upon any of the above stated reasons or otherwise, shall not be affected by the effectiveness of services hereunder by Cardinal.

Relinquished By: <i>Godwin Hernandez</i>		Date: <i>5/24/21</i>	Received By: <i>Monica Blake</i>
Relinquished By:		Time: <i>0825</i>	
Date:			
Time:			
Delivered By: (Circle One)	Sample Condition	CHECKED BY: (Initials)	
Sampler - UPS - Bus - Other:	Cool <input type="checkbox"/> Intact <input checked="" type="checkbox"/>	<i>VB.</i>	
<i>13.8c #113</i>	<input checked="" type="checkbox"/> Yes <input type="checkbox"/> No		
REMARKS: <i>* Sample drops added as per Isabel. 5/26/21. Cde</i>			

† Cardinal cannot accept verbal changes. Please fax written changes to 505-553-2711



101 East Marland, Hobbs, NM 88240
(505) 393-2326 FAX (505) 393-2476

CHAIN-OF-CUSTODY AND ANALYSIS REQUEST

Company Name: BBC International, Inc.

Project Manager: Cliff Brunson

Address: P.O. Box 805

City: Hobbs

Phone #: 575-397-6388

Project #:

Project Name:

Project Location:

Sampler Name: ROGER HERNANDEZ

P.O. #:

Company: OXY

Attn: WADE

Address:

City:

State:

Phone #:

Zip:

State: NM **Zip:** 88241

Fax #: 575-397-0397

Project Owner: Oxy

Fax #:

FOR LAB USE ONLY

Lab I.D.	Sample I.D.	(G)RAB OR (C)OMP.	# CONTAINERS	MATRIX						PRESERV	SAMPLING	DATE	TIME	CL	BTX	TPH EXT
				GROUNDWATER	WASTEWATER	SOIL	OIL	SLUDGE	OTHER :							
#211329	Bottain	21 3'	1									5-21-11	1150			
21	Bottain	22 3'	1									5-21-11	1200			
23	Bottain	23 2'	1									5-21-11	1210			
24	Bottain	24 2'	1									5-21-11	1220			
25	Bottain	25 2'	1									5-21-11	1230			
26	Bottain	26 2'	1									5-21-11	1240			
27	Bottain	27 2'	1									5-21-11	1250			
28	Bottain	28 2'	1									5-21-11	1300			
29	Bottain	29 2'	1									5-21-11	1310			
30	Bottain	30 2'	1									5-21-11	1320			

REINQUISHED BY:

Relinquished By:

Delivered By: (Circle One)

Sampler - UPS - Bus - Other:

REMARKS:



101 East Marland, Hobbs, NM 88240
(505) 393-2326 FAX (505) 393-2476

CHAIN-OF-CUSTODY AND ANALYSIS REQUEST

Company Name: BBC International, Inc.										BILL TO										ANALYSIS REQUEST									
Project Manager: Cliff Brunson										P.O. #:																			
Address: P.O. Box 805										Company: OXY																			
City: Hobbs										Attn: WADE																			
Phone #: 575-397-6388										Address:																			
State: NM Zip: 88241										City:																			
Project #:										State: Zip:																			
Project Name:										Phone #:																			
Project Location:										Fax #:																			
Sampler Name: ROGER HERNANDEZ										PRESERV										SAMPLING									
FOR LAB USE ONLY										MATRIX																			
Lab I.D.										Sample I.D.																			
(G)RAB OR (C)OMP										# CONTAINERS																			
GROUNDWATER										WASTEWATER																			
SOIL										OIL																			
SLUDGE										OTHER :																			
ACID/BASE:										ICE / COOL																			
OTHER :										DATE										TIME									
CL										BTX										TPH EXT									
BTX																													
TPH EXT																													
CL																													
BTX																													
TPH EXT																													
CL																													
BTX																													
TPH EXT																													
CL																													
BTX																													
TPH EXT																													
CL																													
BTX																													
TPH EXT																													
CL																													
BTX																													
TPH EXT																													
CL																													
BTX																													
TPH EXT																													
CL																													
BTX																													
TPH EXT																													
CL																													
BTX																													
TPH EXT																													
CL																													
BTX																													
TPH EXT																													
CL																													
BTX																													
TPH EXT																													
CL																													
BTX																													
TPH EXT																													
CL																													
BTX																													
TPH EXT																													
CL																													
BTX																													
TPH EXT																													
CL																													
BTX																													
TPH EXT																													
CL																													
BTX																													
TPH EXT																													
CL																													
BTX																													
TPH EXT																													
CL																													
BTX																													
TPH EXT																													
CL																													
BTX																													
TPH EXT																													
CL																													
BTX																													
TPH EXT																													
CL																													
BTX																													
TPH EXT																													
CL																													
BTX																													
TPH EXT																													
CL																													
BTX																													
TPH EXT																													
CL																													
BTX																													
TPH EXT																													
CL																													
BTX																													
TPH EXT																													



USGS Home
Contact USGS
Search USGS

National Water Information System: Web Interface

USGS Water Resources

Data Category:
Groundwater

Geographic Area:
New Mexico

GO

Click to hideNews Bulletins

- Introducing The Next Generation of USGS Water Data for the Nation
- Full News

Groundwater levels for New Mexico

Click to hide state-specific text

Search Results -- 1 sites found

Agency code = usgs
site_no list =

- 321937103503701

Minimum number of levels = 1
[Save file of selected sites](#) to local disk for future upload

USGS 321937103503701 23S.30E.02.44414 A

Eddy County, New Mexico
Latitude 32°19'40.0", Longitude 103°50'38.7" NAD83
Land-surface elevation 3,268.00 feet above NGVD29
The depth of the well is 317 feet below land surface.
This well is completed in the Rustler Formation (312RSLR) local aquifer.

Output formats

Table of data
Tab-separated data
Graph of data
Reselect period

Date	Time	? Water-level date-time accuracy	Water level, feet below land surface	Water level, feet above specific vertical datum	Referenced vertical datum	? Water-level accuracy	? Status	? Method of measurement	? Measuring agency	? Source of measur
1959-04-20			D	260.48			2		U	
1959-05-01			D	260.75			2		U	
1972-09-20			D	257.73			2		U	
1975-12-09			D	257.68			2		U	
1976-01-15			D	257.63			2		U	
1976-12-02			D	257.10			2		U	
1977-01-19			D	256.90			2		U	
1988-03-17			D	252.14			2		U	
1992-11-16			D	251.02			2		S	
2013-01-16	15:00 MST	m						O	S	USGS

Explanation

Section	Code	Description
Water-level date-time accuracy	D	Date is accurate to the Day
Water-level date-time accuracy	m	Date is accurate to the Minute
Water-level accuracy		Not determined
Water-level accuracy	2	Water level accuracy to nearest hundredth of a foot

Section	Code	Description
Status		The reported water-level measurement represents a static level
Status	O	Obstruction was encountered in the well (no water level was recorded).
Method of measurement	S	Steel-tape measurement.
Method of measurement	U	Unknown method.
Measuring agency		Not determined
Measuring agency	USGS	U.S. Geological Survey
Source of measurement	R	Reported by person other than the owner, driller, or another government agency.
Source of measurement	U	Source is unknown.
Water-level approval status	A	Approved for publication -- Processing and review completed.

[Questions about sites/data?](#)

[Feedback on this web site](#)

[Automated retrievals](#)

[Help](#)

[Data Tips](#)

[Explanation of terms](#)

[Subscribe for system changes](#)

[News](#)

[Accessibility](#) [Plug-Ins](#) [FOIA](#) [Privacy](#) [Policies and Notices](#)

[U.S. Department of the Interior](#) | [U.S. Geological Survey](#)

Title: Groundwater for New Mexico: Water Levels

URL: <https://nwis.waterdata.usgs.gov/nm/nwis/gwlevels?>



Page Contact Information: [New Mexico Water Data Maintainer](#)

Page Last Modified: 2020-05-26 13:15:33 EDT

0.26 0.23 nadww02

District I

1625 N. French Dr., Hobbs, NM 88240
Phone:(575) 393-6161 Fax:(575) 393-0720

District II

811 S. First St., Artesia, NM 88210
Phone:(575) 748-1283 Fax:(575) 748-9720

District III

1000 Rio Brazos Rd., Aztec, NM 87410
Phone:(505) 334-6178 Fax:(505) 334-6170

District IV

1220 S. St Francis Dr., Santa Fe, NM 87505
Phone:(505) 476-3470 Fax:(505) 476-3462

State of New Mexico
Energy, Minerals and Natural Resources
Oil Conservation Division
1220 S. St Francis Dr.
Santa Fe, NM 87505

CONDITIONS

Action 93246

CONDITIONS

Operator: OXY USA INC P.O. Box 4294 Houston, TX 772104294	OGRID: 16696
	Action Number: 93246
	Action Type: [C-141] Release Corrective Action (C-141)

CONDITIONS

Created By	Condition	Condition Date
rhamlet	We have received your closure report and final C-141 for Incident #NRM2015552273 FEDERAL 12-1H CENTRAL TANK OIL, thank you. This closure is approved.	4/26/2022