

Form C-141

Page 6

State of New Mexico  
Oil Conservation Division

Incident ID	NRM2015534932
District RP	
Facility ID	
Application ID	


## Closure

The responsible party must attach information demonstrating they have complied with all applicable closure requirements and any conditions or directives of the OCD. This demonstration should be in the form of a comprehensive report (electronic submittals in .pdf format are preferred) including a scaled site map, sampling diagrams, relevant field notes, photographs of any excavation prior to backfilling, laboratory data including chain of custody documents of final sampling, and a narrative of the remedial activities. Refer to 19.15.29.12 NMAC.

**Closure Report Attachment Checklist:** *Each of the following items must be included in the closure report.*

- ☒ A scaled site and sampling diagram as described in 19.15.29.11 NMAC
- ☒ Photographs of the remediated site prior to backfill or photos of the liner integrity if applicable (Note: appropriate OCD District office must be notified 2 days prior to liner inspection)
- ☒ Laboratory analyses of final sampling (Note: appropriate ODC District office must be notified 2 days prior to final sampling)
- ☒ Description of remediation activities

I hereby certify that the information given above is true and complete to the best of my knowledge and understand that pursuant to OCD rules and regulations all operators are required to report and/or file certain release notifications and perform corrective actions for releases which may endanger public health or the environment. The acceptance of a C-141 report by the OCD does not relieve the operator of liability should their operations have failed to adequately investigate and remediate contamination that pose a threat to groundwater, surface water, human health or the environment. In addition, OCD acceptance of a C-141 report does not relieve the operator of responsibility for compliance with any other federal, state, or local laws and/or regulations. The responsible party acknowledges they must substantially restore, reclaim, and re-vegetate the impacted surface area to the conditions that existed prior to the release or their final land use in accordance with 19.15.29.13 NMAC including notification to the OCD when reclamation and re-vegetation are complete.

Printed Name: Wade Dittrich Title: Environmental Coordinator  
Signature:  Date: 3-24-22  
email: wade\_dittrich@oxy.com Telephone: (575) 390-2828

**OCD Only**

Received by: Robert Hamlet Date: 5/3/2022

Closure approval by the OCD does not relieve the responsible party of liability should their operations have failed to adequately investigate and remediate contamination that poses a threat to groundwater, surface water, human health, or the environment nor does not relieve the responsible party of compliance with any other federal, state, or local laws and/or regulations.

Closure Approved by: Robert Hamlet Date: 5/3/2022  
Printed Name: Robert Hamlet Title: Environmental Specialist - Advanced

# Closure Report

nRM2018236487

nRM2015534932

## Site Description

Site Name:	CEDAR CANYON 22 CTB & CEDAR CANYON CTB LACT #2
Company:	OXY
Legal Description:	U/L: L, SECTION 22, T24S, R29E
County:	EDDY COUNTY, NM
GPS Coordinates:	N32.19959 W-103.97819

## Release Data

Date of Release:	4/19/20 & 6/10/20
Type of Release:	CRUDE OIL
Source of Release:	NIPPLE BROKE
Volume of Release:	6 BBLS CRUDE OIL(4-19-20) & 15 BBLS CRUDE OIL (6/10/20)/ 0 BBLS PRODUCED WATER
Volume Recovered:	0 BBLS CRUDE OIL/ 0 BBLS PRODUCED WATER

## Remediation Specifications

Remediation Parameters	OXY excavated the spill area as depicted on the following site diagram. The leak area (BLUE shade on diagram) was excavated to a depth of 2 feet. The leak area (PINK shade on diagram) will be excavated to a depth of 3 feet. Bottom confirmation samples were collected every 200 square feet.
------------------------	--

Remediation Activities:	8/5/21 - 8/20/21
-------------------------	------------------

Plan Sent to OCD:		FROM CLIFF TO BLM NM AND WADE
OCD Approval of Plan:	11/5/2020	FROM @STATE.NM.US TO WADE AND CLIFF
Plan Sent to BLM:	7/28/2020	FROM CLIFF TO SPILL@BLM AND WADE
BLM Approval of Plan:		FROM JAMOS@BLM.GOV TO WADE AND CLIFF

## Supporting Documentation

C 141 PAGE 6	3/24/2022	
SITE DIAGRAM	GOOGLE EARTH MAP WITH CONFIRMATION SAMPLES	
PICTURES	CLOSURE PICTURES	
LAB SUMMARY	CLOSURE SAMPLES	
LAB ANALYSIS	CLOSURE SAMPLES	
Sample Notification	8/12/2021	

## Request for Closure

Based on the completion of the remediation plan as agreed upon, BBC International requests closure approval from NMOCD.

Cliff Brunson, President of BBC International Inc.

3/30/2022

**From:** [Cliff Brunson](#)  
**To:** ["Enviro. OCD, EMNRD"](#)  
**Cc:** ["Wade Ditttrich"](#); [Ken Swinney](#); ["Jennifer Gilkey"](#); [Julia French](#)  
**Subject:** OXY - Cedar Canyon 22 CTB - Sampling Notification  
**Date:** Thursday, August 12, 2021 5:46:00 PM

---

This is a notification that BBC will conduct confirmation sampling on behalf of OXY at the Cedar Canyon 22 CTB (Incident ID # nRM2018236487) on Tuesday, August 17 at 9:30 a.m.

Cliff P. Brunson, CEI, CRS  
President  
BBC International, Inc.  
World-Wide Environmental Specialists  
Mailing Address:  
P. O. Box 805  
Hobbs, NM 88241-0805 USA  
Shipping Address:  
1324 W. Marland St.  
Hobbs, NM 88240 USA  
Phone: (575) 397-6388  
Fax: (575) 397-0397  
E-Mail: [cbrunson@bbcinternational.com](mailto:cbrunson@bbcinternational.com)



\*\*\*\*\*

Confidentiality Notice: This electronic transmission (and any attached documents) is intended only for the person(s) to whom it is addressed and may contain information that is privileged, confidential, or otherwise protected from disclosure. If you have received this transmission in error, please immediately notify the sender by e-mail or by telephone call to (575) 397-6388 for handling instructions. Any disclosure or distribution of the contents of this transmission by anyone other than the named recipient(s) is strictly prohibited.

\*\*\*\*\*

Form C-141

Page 6

State of New Mexico  
Oil Conservation Division

Incident ID	NRM2015534932
District RP	
Facility ID	
Application ID	


## Closure

The responsible party must attach information demonstrating they have complied with all applicable closure requirements and any conditions or directives of the OCD. This demonstration should be in the form of a comprehensive report (electronic submittals in .pdf format are preferred) including a scaled site map, sampling diagrams, relevant field notes, photographs of any excavation prior to backfilling, laboratory data including chain of custody documents of final sampling, and a narrative of the remedial activities. Refer to 19.15.29.12 NMAC.

**Closure Report Attachment Checklist:** *Each of the following items must be included in the closure report.*

- ☐ A scaled site and sampling diagram as described in 19.15.29.11 NMAC
- ☐ Photographs of the remediated site prior to backfill or photos of the liner integrity if applicable (Note: appropriate OCD District office must be notified 2 days prior to liner inspection)
- ☐ Laboratory analyses of final sampling (Note: appropriate OCD District office must be notified 2 days prior to final sampling)
- ☐ Description of remediation activities

I hereby certify that the information given above is true and complete to the best of my knowledge and understand that pursuant to OCD rules and regulations all operators are required to report and/or file certain release notifications and perform corrective actions for releases which may endanger public health or the environment. The acceptance of a C-141 report by the OCD does not relieve the operator of liability should their operations have failed to adequately investigate and remediate contamination that pose a threat to groundwater, surface water, human health or the environment. In addition, OCD acceptance of a C-141 report does not relieve the operator of responsibility for compliance with any other federal, state, or local laws and/or regulations. The responsible party acknowledges they must substantially restore, reclaim, and re-vegetate the impacted surface area to the conditions that existed prior to the release or their final land use in accordance with 19.15.29.13 NMAC including notification to the OCD when reclamation and re-vegetation are complete.

Printed Name: Wade Dittrich Title: Environmental Coordinator  
Signature:  Date: 3-24-22  
email: wade\_dittrich@oxy.com Telephone: (575) 390-2828

**OCD Only**

Received by: \_\_\_\_\_ Date: \_\_\_\_\_

Closure approval by the OCD does not relieve the responsible party of liability should their operations have failed to adequately investigate and remediate contamination that poses a threat to groundwater, surface water, human health, or the environment nor does not relieve the responsible party of compliance with any other federal, state, or local laws and/or regulations.

Closure Approved by: \_\_\_\_\_ Date: \_\_\_\_\_

Printed Name: \_\_\_\_\_ Title: \_\_\_\_\_

Form C-141

State of New Mexico  
Oil Conservation Division

Page 6

Incident ID	NRM2018236487
District RP	
Facility ID	
Application ID	


## Closure

The responsible party must attach information demonstrating they have complied with all applicable closure requirements and any conditions or directives of the OCD. This demonstration should be in the form of a comprehensive report (electronic submittals in .pdf format are preferred) including a scaled site map, sampling diagrams, relevant field notes, photographs of any excavation prior to backfilling, laboratory data including chain of custody documents of final sampling, and a narrative of the remedial activities. Refer to 19.15.29.12 NMAC.

**Closure Report Attachment Checklist:** Each of the following items must be included in the closure report.

- ☐ A scaled site and sampling diagram as described in 19.15.29.11 NMAC
- ☐ Photographs of the remediated site prior to backfill or photos of the liner integrity if applicable (Note: appropriate OCD District office must be notified 2 days prior to liner inspection)
- ☐ Laboratory analyses of final sampling (Note: appropriate OCD District office must be notified 2 days prior to final sampling)
- ☐ Description of remediation activities

I hereby certify that the information given above is true and complete to the best of my knowledge and understand that pursuant to OCD rules and regulations all operators are required to report and/or file certain release notifications and perform corrective actions for releases which may endanger public health or the environment. The acceptance of a C-141 report by the OCD does not relieve the operator of liability should their operations have failed to adequately investigate and remediate contamination that pose a threat to groundwater, surface water, human health or the environment. In addition, OCD acceptance of a C-141 report does not relieve the operator of responsibility for compliance with any other federal, state, or local laws and/or regulations. The responsible party acknowledges they must substantially restore, reclaim, and re-vegetate the impacted surface area to the conditions that existed prior to the release or their final land use in accordance with 19.15.29.13 NMAC including notification to the OCD when reclamation and re-vegetation are complete.

Printed Name: Wade Dittrich Title: Environmental Coordinator  
Signature:  Date: 3-24-22  
email: wade\_dittrich@oxy.com Telephone: (575) 390-2828

**OCD Only**

Received by: \_\_\_\_\_ Date: \_\_\_\_\_

Closure approval by the OCD does not relieve the responsible party of liability should their operations have failed to adequately investigate and remediate contamination that poses a threat to groundwater, surface water, human health, or the environment nor does not relieve the responsible party of compliance with any other federal, state, or local laws and/or regulations.

Closure Approved by: \_\_\_\_\_ Date: \_\_\_\_\_

Printed Name: \_\_\_\_\_ Title: \_\_\_\_\_








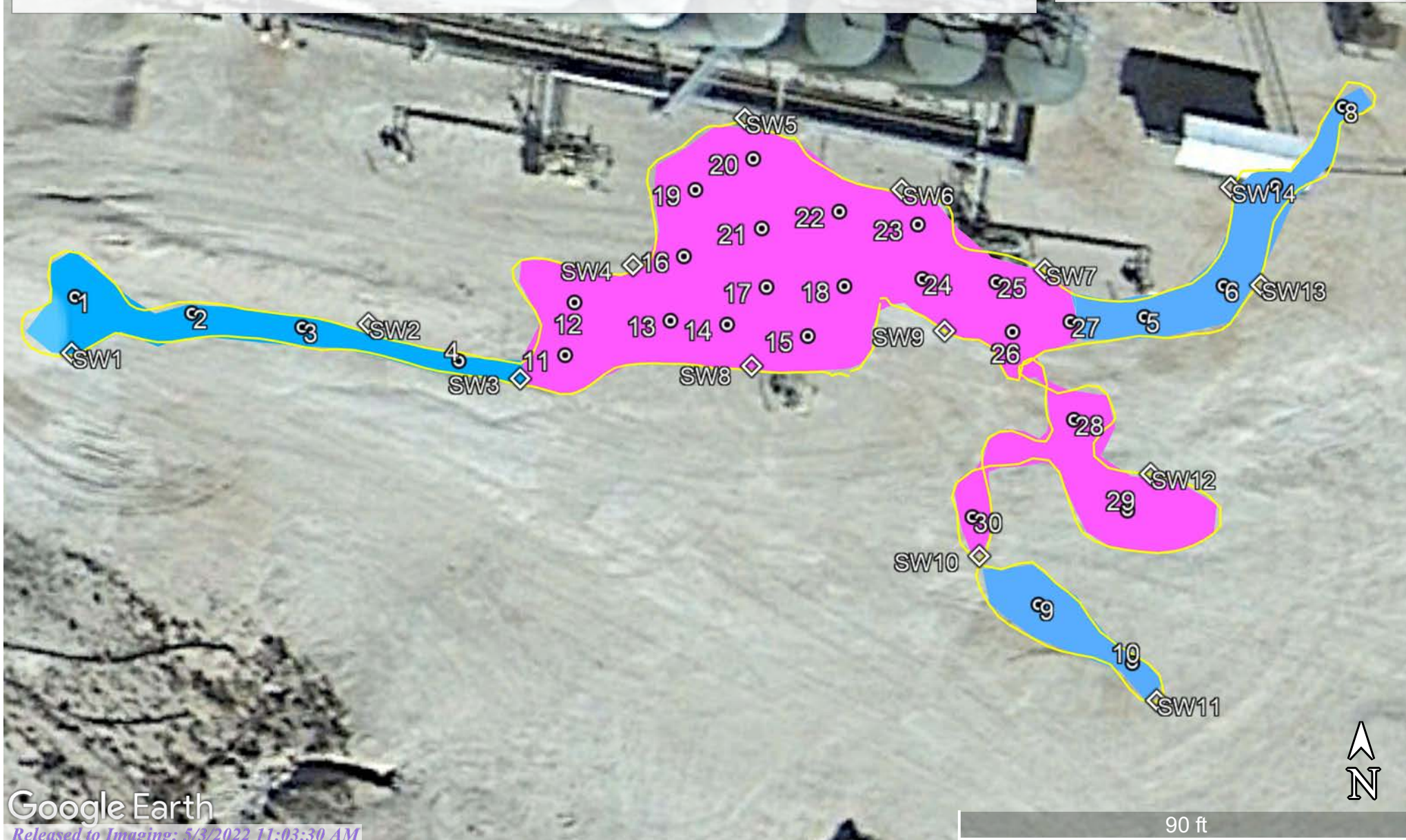
## Oxy Cedar Canyon 22 CTB & Oxy, Cedar Canyon 22 CTB Lact 2

Leak Date: 4-19-20  
ID #: nRM2015534932  
Eddy Co., NM

Leak Date: 6-10-20  
ID #: nRM2018236487  
Eddy Co., NM

### Legend

-  2 ft excavation
-  3ft excavation
-  Bottom Confirmation Sample
-  Leak Area
-  Sidewall Confirmation Sample



## CEDAR CANYON 22 CTB LACT 2 (4-19-20 &amp; 6-10-20)

SIDEWALL 1	N32.199603	W-103.978170
SIDEWALL 2	N32.199619	W-103.977978
SIDEWALL 3	N32.199589	W-103.977881
SIDEWALL 4	N32.199651	W-103.977808
SIDEWALL 5	N32.199730	W-103.977737
SIDEWALL 6	N32.199691	W-103.977637
SIDEWALL 7	N32.199648	W-103.977545
SIDEWALL 8	N32.199596	W-103.977733
SIDEWALL 9	N32.199615	W-103.977609
SIDEWALL 10	N32.199493	W-103.977587
SIDEWALL 11	N32.199415	W-103.977473
SIDEWALL 12	N32.199537	W-103.977477
SIDEWALL 13	N32.199640	W-103.977408
SIDEWALL 14	N32.199693	W-103.977427
BS1@2'	N32.199634	W-103.978166
BS2@2'	N32.199625	W-103.978091
BS3@2'	N32.199618	W-103.978020
BS4@2'	N32.199599	W-103.977920
BS5@2'	N32.199623	W-103.977481
BS6@2'	N32.199640	W-103.977431
BS7@2'	N32.199694	W-103.977398
BS8@2'	N32.199737	W-103.977355
BS9@2'	N32.199467	W-103.977548
BS10@2'	N32.199435	W-103.977488
BS11@3'	N32.199602	W-103.977852
BS12@3'	N32.199631	W-103.977846
BS13@3'	N32.199621	W-103.977784
BS14@3'	N32.199619	W-103.977748
BS15@3'	N32.199613	W-103.977696

## CEDAR CANYON 22 CTB LACT 2 (4-19-20 &amp; 6-10-20)

BS16@3'	N32.199656	W-103.977776
BS17@3'	N32.199639	W-103.977723
BS18@3'	N32.199640	W-103.977673
BS19@3'	N32.199692	W-103.977768
BS20@3'	N32.199709	W-103.977731
BS21@3'	N32.199671	W-103.977726
BS22@3'	N32.199680	W-103.977676
BS23@3'	N32.199673	W-103.977626
BS24@3'	N32.199644	W-103.977623
BS25@3'	N32.199642	W-103.977576
BS26@3'	N32.199615	W-103.977565
BS27@3'	N32.199621	W-103.977529
BS28@3'	N32.199567	W-103.977526
BS29@3'	N32.199518	W-103.977491
BS30@3'	N32.199515	W-103.977591



Laboratory Analytical Results Summary  
CEDAR CANYON 22 CTB LACT 2  
4-19-20 6-10-20

		Sample ID	BS 1 @ 2'	BS 2 @ 2'	BS 3 @ 2'	BS 4 @ 2'	BS 5 @ 2'	BS 6 @ 2'	BS 7 @ 2'	BS 8 @ 2'	BS 9 @ 2'	BS 10 @ 2'
Analyte	Method	Date	8/23/21	8/23/21	8/23/21	8/23/21	8/23/21	8/23/21	8/23/21	8/23/21	8/23/21	8/23/21
			mg/kg	mg/kg	mg/kg	mg/kg	mg/kg	mg/kg	mg/kg	mg/kg	mg/kg	mg/kg
Benzene	BTEX 8021B		<0.050	<0.050	<0.050	<0.050	<0.050	<0.050	<0.050	<0.050	<0.050	<0.050
Toluene	BTEX 8021B		<0.050	<0.050	<0.050	<0.050	<0.050	<0.050	<0.050	<0.050	<0.050	<0.050
Ethylbenzene	BTEX 8021B		<0.050	<0.050	<0.050	<0.050	<0.050	<0.050	<0.050	<0.050	<0.050	<0.050
Total Xylenes	BTEX 8021B		<0.150	<0.150	<0.150	<0.150	<0.150	<0.150	<0.150	<0.150	<0.150	<0.150
Total BTEX	BTEX 8021B		<0.300	<0.300	<0.300	<0.300	<0.300	<0.300	<0.300	<0.300	<0.300	<0.300
Chloride	SM4500Cl-B		<16.0	<b>32.0</b>	<16.0	<b>32.0</b>	<b>32.0</b>	<b>32.0</b>	<16.0	<16.0	<16.0	<16.0
GRO	TPH 8015M		<10.0	<10.0	<10.0	<10.0	<10.0	<10.0	<10.0	<10.0	<10.0	<10.0
DRO	TPH 8015M		<10.0	<10.0	<10.0	<10.0	<b>10.6</b>	<10.0	<10.0	<b>11.4</b>	<10.0	<b>12.4</b>
EXT DRO	TPH 8015M		<b>18.9</b>	<10.0	<b>16.9</b>	<b>28.6</b>	<b>28.1</b>	<b>21.4</b>	<b>27.2</b>	<b>28.4</b>	<b>12.4</b>	<b>33.7</b>

		Sample ID	BS 11 @ 3'	BS 12 @ 3'	BS 13 @ 3'	BS 14 @ 3'	BS 15 @ 3'	BS 16 @ 3'	BS 17 @ 3'	BS 18 @ 3'	BS 19 @ 3'	BS 20 @ 3'	BS 21 @ 3'	BS 22 @ 3'	BS 23 @ 3'	BS 24 @ 3'	BS 25 @ 3'
Analyte	Method	Date	8/23/21	8/23/21	8/23/21	8/23/21	8/23/21	8/23/21	8/23/21	8/23/21	8/23/21	8/23/21	8/23/21	8/23/21	8/23/21	8/23/21	8/23/21
			mg/kg	mg/kg	mg/kg	mg/kg	mg/kg	mg/kg	mg/kg	mg/kg	mg/kg	mg/kg	mg/kg	mg/kg	mg/kg	mg/kg	mg/kg
Benzene	BTEX 8021B		<0.050	<0.050	<0.050	<0.050	<0.050	<0.050	<0.050	<0.050	<0.050	<0.050	<0.050	<0.050	<0.050	<0.050	<0.050
Toluene	BTEX 8021B		<0.050	<0.050	<0.050	<0.050	<0.050	<0.050	<0.050	<0.050	<0.050	<0.050	<0.050	<0.050	<0.050	<0.050	<0.050
Ethylbenzene	BTEX 8021B		<0.050	<0.050	<0.050	<0.050	<0.050	<0.050	<0.050	<0.050	<0.050	<0.050	<0.050	<0.050	<0.050	<0.050	<0.050
Total Xylenes	BTEX 8021B		<0.150	<0.150	<0.150	<0.150	<0.150	<0.150	<0.150	<0.150	<0.150	<0.150	<0.150	<0.150	<0.150	<0.150	<0.150
Total BTEX	BTEX 8021B		<0.300	<0.300	<0.300	<0.300	<0.300	<0.300	<0.300	<0.300	<0.300	<0.300	<0.300	<0.300	<0.300	<0.300	<0.300
Chloride	SM4500Cl-B		<16.0	<16.0	<16.0	<16.0	<16.0	<16.0	<b>32.0</b>	<16.0	<16.0	<16.0	<b>48.0</b>	<b>32.0</b>	<b>16.0</b>	<b>32.0</b>	<b>32.0</b>
GRO	TPH 8015M		<10.0	<10.0	<10.0	<10.0	<10.0	<10.0	<10.0	<10.0	<10.0	<10.0	<10.0	<10.0	<10.0	<10.0	<10.0
DRO	TPH 8015M		<10.0	<10.0	<10.0	<10.0	<10.0	<10.0	<10.0	<10.0	<10.0	<10.0	<10.0	<10.0	<10.0	<10.0	<10.0
EXT DRO	TPH 8015M		<10.0	<10.0	<b>17.2</b>	<10.0	<b>24.8</b>	<b>12.8</b>	<b>11.5</b>	<10.0	<10.0	<10.0	<10.0	<10.0	<10.0	<10.0	<10.0

		Sample ID	BS 26 @ 3'	BS 27 @ 3'	BS 28 @ 3'	BS 29 @ 3'	BS 30 @ 3'
Analyte	Method	Date	8/23/21	8/23/21	8/23/21	8/23/21	8/23/21
			mg/kg	mg/kg	mg/kg	mg/kg	mg/kg
Benzene	BTEX 8021B		<0.050	<0.050	<0.050	<0.050	<0.050
Toluene	BTEX 8021B		<0.050	<0.050	<0.050	<0.050	<0.050
Ethylbenzene	BTEX 8021B		<0.050	<0.050	<0.050	<0.050	<0.050
Total Xylenes	BTEX 8021B		<0.150	<0.150	<0.150	<0.150	<0.150
Total BTEX	BTEX 8021B		<0.300	<0.300	<0.300	<0.300	<0.300
Chloride	SM4500Cl-B		<16.0	<b>16.0</b>	<b>32.0</b>	<b>48.0</b>	<b>16.0</b>
GRO	TPH 8015M		<10.0	<10.0	<10.0	<10.0	<10.0
DRO	TPH 8015M		<10.0	<10.0	<10.0	<10.0	<10.0
EXT DRO	TPH 8015M		<10.0	<10.0	<10.0	<10.0	<10.0

		Sample ID	SW 1	SW 2	SW 3	SW 4	SW 5	SW 6	SW 7	SW 8	SW 9	SW 10	SW 11	SW 12	SW 13	SW 14
Analyte	Method	Date	8/23/21	8/23/21	8/23/21	8/23/21	8/23/21	8/23/21	8/23/21	8/23/21	8/23/21	8/23/21	8/23/21	8/23/21	8/23/21	8/23/21
			mg/kg	mg/kg	mg/kg	mg/kg	mg/kg	mg/kg	mg/kg	mg/kg	mg/kg	mg/kg	mg/kg	mg/kg	mg/kg	mg/kg
Benzene	BTEX 8021B		<0.050	<0.050	<0.050	<0.050	<0.050	<0.050	<0.050	<0.050	<0.050	<0.050	<0.050	<0.050	<0.050	<0.050
Toluene	BTEX 8021B		<0.050	<0.050	<0.050	<0.050	<0.050	<0.050	<0.050	<0.050	<0.050	<0.050	<0.050	<0.050	<0.050	<0.050
Ethylbenzene	BTEX 8021B		<0.050	<0.050	<0.050	<0.050	<0.050	<0.050	<0.050	<0.050	<0.050	<0.050	<0.050	<0.050	<0.050	<0.050
Total Xylenes	BTEX 8021B		<0.150	<0.150	<0.150	<0.150	<0.150	<0.150	<0.150	<0.150	<0.150	<0.150	<0.150	<0.150	<0.150	<0.150
Total BTEX	BTEX 8021B		<0.300	<0.300	<0.300	<0.300	<0.300	<0.300	<0.300	<0.300	<0.300	<0.300	<0.300	<0.300	<0.300	<0.300
Chloride	SM4500Cl-B		<16.0	<b>32.0</b>	<b>16.0</b>	<16.0	<16.0	<16.0	<16.0	<16.0	<b>32.0</b>	<b>32.0</b>	<b>16.0</b>	<16.0	<16.0	<16.0
GRO	TPH 8015M		<10.0	<10.0	<10.0	<10.0	<10.0	<10.0	<10.0	<10.0	<10.0	<10.0	<10.0	<10.0	<10.0	<10.0
DRO	TPH 8015M		<10.0	<10.0	<10.0	<10.0	<10.0	<10.0	<b>11.3</b>	<b>10.4</b>	<10.0	<10.0	<10.0	<10.0	<10.0	<10.0
EXT DRO	TPH 8015M		<10.0	<b>10.1</b>	<10.0	<10.0	<10.0	<b>16.7</b>	<b>30.9</b>	<b>21.7</b>	<10.0	<10.0	<b>12.8</b>	<b>20.2</b>	<b>15.4</b>	<b>13.1</b>



CEDAR CANYON 22 CTB LACT #2  
4-19-20 & 6-10-20





CEDAR CANYON 22 CTB LACT #2  
4-19-20 & 6-10-20



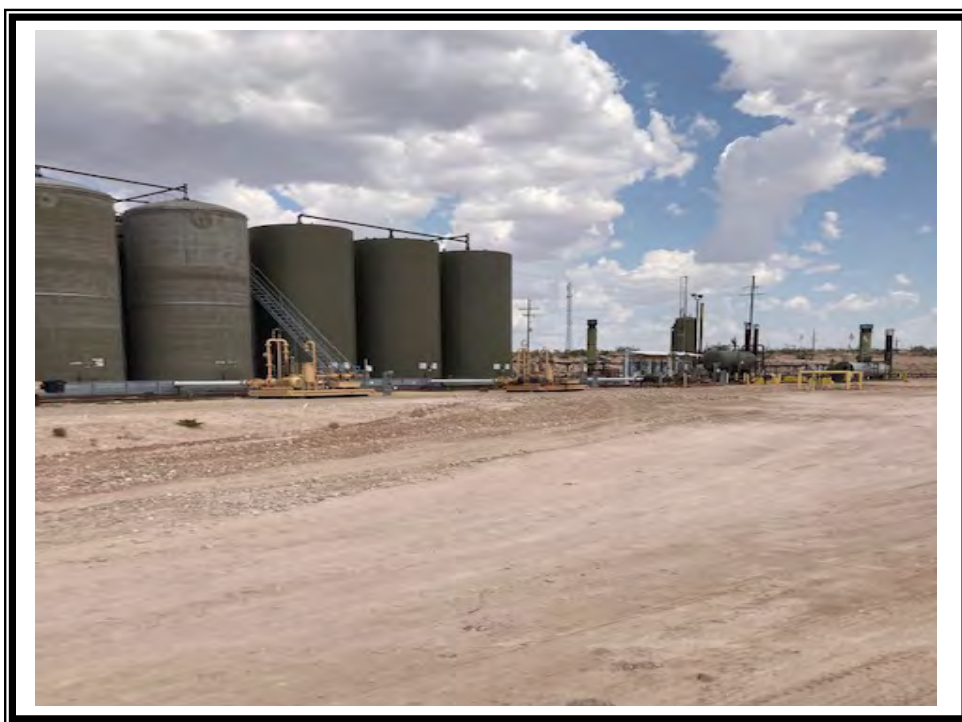


CEDAR CANYON 22 CTB LACT #2  
4-19-20 & 6-10-20





CEDAR CANYON 22 CTB LACT #2  
4-19-20 & 6-10-20





PHONE (575) 393-2326 ° 101 E. MARLAND ° HOBBS, NM 88240

---

August 26, 2021

Cliff Brunson

BBC International, Inc.

P.O. Box 805

Hobbs, NM 88241

RE: CEDAR CANYON 22 CTB

Enclosed are the results of analyses for samples received by the laboratory on 08/24/21 10:45.

Cardinal Laboratories is accredited through Texas NELAP under certificate number T104704398-20-13. Accreditation applies to drinking water, non-potable water and solid and chemical materials. All accredited analytes are denoted by an asterisk (\*). For a complete list of accredited analytes and matrices visit the TCEQ website at [www.tceq.texas.gov/field/qa/lab\\_accred\\_certif.html](http://www.tceq.texas.gov/field/qa/lab_accred_certif.html).

Cardinal Laboratories is accredited through the State of Colorado Department of Public Health and Environment for:

Method EPA 552.2	Haloacetic Acids (HAA-5)
Method EPA 524.2	Total Trihalomethanes (TTHM)
Method EPA 524.4	Regulated VOCs (V1, V2, V3)

Accreditation applies to public drinking water matrices.

This report meets NELAP requirements and is made up of a cover page, analytical results, and a copy of the original chain-of-custody. If you have any questions concerning this report, please feel free to contact me.

Sincerely,

A handwritten signature in black ink that reads "Celey D. Keene". The signature is written in a cursive style with a large, stylized 'C' and 'K'.

Celey D. Keene

Lab Director/Quality Manager



PHONE (575) 393-2326 ° 101 E. MARLAND ° HOBBS, NM 88240

**Analytical Results For:**

BBC International, Inc.  
 Cliff Brunson  
 P.O. Box 805  
 Hobbs NM, 88241  
 Fax To: (575) 397-0397

Received:	08/24/2021	Sampling Date:	08/23/2021
Reported:	08/26/2021	Sampling Type:	Soil
Project Name:	CEDAR CANYON 22 CTB	Sampling Condition:	Cool & Intact
Project Number:	NONE GIVEN	Sample Received By:	Tamara Oldaker
Project Location:	OXY - EDDY COUNTY, NM		

**Sample ID: BOTTOM 1 @ 2' (H212253-01)**

BTEX 8021B		mg/kg		Analyzed By: MS					
Analyte	Result	Reporting Limit	Analyzed	Method Blank	BS	% Recovery	True Value QC	RPD	Qualifier
Benzene*	<0.050	0.050	08/25/2021	ND	1.85	92.6	2.00	1.93	
Toluene*	<0.050	0.050	08/25/2021	ND	2.00	100	2.00	1.94	
Ethylbenzene*	<0.050	0.050	08/25/2021	ND	1.96	98.0	2.00	1.51	
Total Xylenes*	<0.150	0.150	08/25/2021	ND	5.95	99.1	6.00	0.135	
Total BTEX	<0.300	0.300	08/25/2021	ND					

Surrogate: 4-Bromofluorobenzene (PID) 99.8 % 69.9-140

Chloride, SM4500Cl-B		mg/kg		Analyzed By: AC						
Analyte	Result	Reporting Limit	Analyzed	Method Blank	BS	% Recovery	True Value QC	RPD	Qualifier	
Chloride	<16.0	16.0	08/25/2021	ND	432	108	400	7.14		

TPH 8015M		mg/kg		Analyzed By: MS					
Analyte	Result	Reporting Limit	Analyzed	Method Blank	BS	% Recovery	True Value QC	RPD	Qualifier
GRO C6-C10*	<10.0	10.0	08/24/2021	ND	209	104	200	0.788	
DRO >C10-C28*	<10.0	10.0	08/24/2021	ND	220	110	200	0.628	
EXT DRO >C28-C36	18.9	10.0	08/24/2021	ND					

Surrogate: 1-Chlorooctane 73.1 % 44.3-133

Surrogate: 1-Chlorooctadecane 73.1 % 38.9-142

Cardinal Laboratories

\*=Accredited Analyte

PLEASE NOTE: Liability and Damages. Cardinal's liability and client's exclusive remedy for any claim arising, whether based in contract or tort, shall be limited to the amount paid by client for analyses. All claims, including those for negligence and any other cause whatsoever shall be deemed waived unless made in writing and received by Cardinal within thirty (30) days after completion of the applicable service. In no event shall Cardinal be liable for incidental or consequential damages, including, without limitation, business interruptions, loss of use, or loss of profits incurred by client, its subsidiaries, affiliates or successors arising out of or related to the performance of the services hereunder by Cardinal, regardless of whether such claim is based upon any of the above stated reasons or otherwise. Results relate only to the samples identified above. This report shall not be reproduced except in full with written approval of Cardinal Laboratories.

Celey D. Keene, Lab Director/Quality Manager



PHONE (575) 393-2326 ° 101 E. MARLAND ° HOBBS, NM 88240

**Analytical Results For:**

BBC International, Inc.  
 Cliff Brunson  
 P.O. Box 805  
 Hobbs NM, 88241  
 Fax To: (575) 397-0397

Received: 08/24/2021  
 Reported: 08/26/2021  
 Project Name: CEDAR CANYON 22 CTB  
 Project Number: NONE GIVEN  
 Project Location: OXY - EDDY COUNTY, NM

Sampling Date: 08/23/2021  
 Sampling Type: Soil  
 Sampling Condition: Cool & Intact  
 Sample Received By: Tamara Oldaker

**Sample ID: BOTTOM 2 @ 2' (H212253-02)**

BTEx 8021B		mg/kg		Analyzed By: MS					
Analyte	Result	Reporting Limit	Analyzed	Method Blank	BS	% Recovery	True Value QC	RPD	Qualifier
Benzene*	<0.050	0.050	08/25/2021	ND	1.85	92.6	2.00	1.93	
Toluene*	<0.050	0.050	08/25/2021	ND	2.00	100	2.00	1.94	
Ethylbenzene*	<0.050	0.050	08/25/2021	ND	1.96	98.0	2.00	1.51	
Total Xylenes*	<0.150	0.150	08/25/2021	ND	5.95	99.1	6.00	0.135	
Total BTEx	<0.300	0.300	08/25/2021	ND					

Surrogate: 4-Bromofluorobenzene (PID) 99.9 % 69.9-140

Chloride, SM4500CI-B		mg/kg		Analyzed By: AC					
Analyte	Result	Reporting Limit	Analyzed	Method Blank	BS	% Recovery	True Value QC	RPD	Qualifier
Chloride	32.0	16.0	08/25/2021	ND	432	108	400	7.14	

TPH 8015M		mg/kg		Analyzed By: MS					
Analyte	Result	Reporting Limit	Analyzed	Method Blank	BS	% Recovery	True Value QC	RPD	Qualifier
GRO C6-C10*	<10.0	10.0	08/24/2021	ND	209	104	200	0.788	
DRO >C10-C28*	<10.0	10.0	08/24/2021	ND	220	110	200	0.628	
EXT DRO >C28-C36	<10.0	10.0	08/24/2021	ND					

Surrogate: 1-Chlorooctane 58.0 % 44.3-133

Surrogate: 1-Chlorooctadecane 56.2 % 38.9-142

Cardinal Laboratories

\*=Accredited Analyte

PLEASE NOTE: Liability and Damages. Cardinal's liability and client's exclusive remedy for any claim arising, whether based in contract or tort, shall be limited to the amount paid by client for analyses. All claims, including those for negligence and any other cause whatsoever shall be deemed waived unless made in writing and received by Cardinal within thirty (30) days after completion of the applicable service. In no event shall Cardinal be liable for incidental or consequential damages, including, without limitation, business interruptions, loss of use, or loss of profits incurred by client, its subsidiaries, affiliates or successors arising out of or related to the performance of the services hereunder by Cardinal, regardless of whether such claim is based upon any of the above stated reasons or otherwise. Results relate only to the samples identified above. This report shall not be reproduced except in full with written approval of Cardinal Laboratories.

Celey D. Keene, Lab Director/Quality Manager





PHONE (575) 393-2326 • 101 E. MARLAND • HOBBS, NM 88240

**Analytical Results For:**

BBC International, Inc.  
 Cliff Brunson  
 P.O. Box 805  
 Hobbs NM, 88241  
 Fax To: (575) 397-0397

Received: 08/24/2021  
 Reported: 08/26/2021  
 Project Name: CEDAR CANYON 22 CTB  
 Project Number: NONE GIVEN  
 Project Location: OXY - EDDY COUNTY, NM

Sampling Date: 08/23/2021  
 Sampling Type: Soil  
 Sampling Condition: Cool & Intact  
 Sample Received By: Tamara Oldaker

**Sample ID: BOTTOM 3 @ 2' (H212253-03)**

BTEX 8021B		mg/kg		Analyzed By: MS						
Analyte	Result	Reporting Limit	Analyzed	Method Blank	BS	% Recovery	True Value QC	RPD	Qualifier	
Benzene*	<0.050	0.050	08/25/2021	ND	1.85	92.6	2.00	1.93		
Toluene*	<0.050	0.050	08/25/2021	ND	2.00	100	2.00	1.94		
Ethylbenzene*	<0.050	0.050	08/25/2021	ND	1.96	98.0	2.00	1.51		
Total Xylenes*	<0.150	0.150	08/25/2021	ND	5.95	99.1	6.00	0.135		
Total BTEX	<0.300	0.300	08/25/2021	ND						

Surrogate: 4-Bromofluorobenzene (PID) 99.3 % 69.9-140

Chloride, SM4500Cl-B		mg/kg		Analyzed By: AC						
Analyte	Result	Reporting Limit	Analyzed	Method Blank	BS	% Recovery	True Value QC	RPD	Qualifier	
Chloride	<16.0	16.0	08/25/2021	ND	432	108	400	7.14		

TPH 8015M		mg/kg		Analyzed By: MS					
Analyte	Result	Reporting Limit	Analyzed	Method Blank	BS	% Recovery	True Value QC	RPD	Qualifier
GRO C6-C10*	<10.0	10.0	08/24/2021	ND	209	104	200	0.788	
DRO >C10-C28*	<10.0	10.0	08/24/2021	ND	220	110	200	0.628	
EXT DRO >C28-C36	16.9	10.0	08/24/2021	ND					

Surrogate: 1-Chlorooctane 85.9 % 44.3-133

Surrogate: 1-Chlorooctadecane 84.5 % 38.9-142

Cardinal Laboratories

\*=Accredited Analyte

PLEASE NOTE: Liability and Damages. Cardinal's liability and client's exclusive remedy for any claim arising, whether based in contract or tort, shall be limited to the amount paid by client for analyses. All claims, including those for negligence and any other cause whatsoever shall be deemed waived unless made in writing and received by Cardinal within thirty (30) days after completion of the applicable service. In no event shall Cardinal be liable for incidental or consequential damages, including, without limitation, business interruptions, loss of use, or loss of profits incurred by client, its subsidiaries, affiliates or successors arising out of or related to the performance of the services hereunder by Cardinal, regardless of whether such claim is based upon any of the above stated reasons or otherwise. Results relate only to the samples identified above. This report shall not be reproduced except in full with written approval of Cardinal Laboratories.

Celey D. Keene, Lab Director/Quality Manager



PHONE (575) 393-2326 • 101 E. MARLAND • HOBBS, NM 88240

**Analytical Results For:**

BBC International, Inc.  
 Cliff Brunson  
 P.O. Box 805  
 Hobbs NM, 88241  
 Fax To: (575) 397-0397

Received: 08/24/2021  
 Reported: 08/26/2021  
 Project Name: CEDAR CANYON 22 CTB  
 Project Number: NONE GIVEN  
 Project Location: OXY - EDDY COUNTY, NM

Sampling Date: 08/23/2021  
 Sampling Type: Soil  
 Sampling Condition: Cool & Intact  
 Sample Received By: Tamara Oldaker

**Sample ID: BOTTOM 4 @ 2' (H212253-04)**

BTX 8021B		mg/kg		Analyzed By: MS						
Analyte	Result	Reporting Limit	Analyzed	Method Blank	BS	% Recovery	True Value QC	RPD	Qualifier	
Benzene*	<0.050	0.050	08/25/2021	ND	1.85	92.6	2.00	1.93		
Toluene*	<0.050	0.050	08/25/2021	ND	2.00	100	2.00	1.94		
Ethylbenzene*	<0.050	0.050	08/25/2021	ND	1.96	98.0	2.00	1.51		
Total Xylenes*	<0.150	0.150	08/25/2021	ND	5.95	99.1	6.00	0.135		
Total BTX	<0.300	0.300	08/25/2021	ND						

Surrogate: 4-Bromofluorobenzene (PID) 100 % 69.9-140

Chloride, SM4500CI-B		mg/kg		Analyzed By: AC						
Analyte	Result	Reporting Limit	Analyzed	Method Blank	BS	% Recovery	True Value QC	RPD	Qualifier	
Chloride	32.0	16.0	08/25/2021	ND	432	108	400	7.14		

TPH 8015M		mg/kg		Analyzed By: MS					
Analyte	Result	Reporting Limit	Analyzed	Method Blank	BS	% Recovery	True Value QC	RPD	Qualifier
GRO C6-C10*	<10.0	10.0	08/24/2021	ND	209	104	200	0.788	
DRO >C10-C28*	<10.0	10.0	08/24/2021	ND	220	110	200	0.628	
EXT DRO >C28-C36	28.6	10.0	08/24/2021	ND					

Surrogate: 1-Chlorooctane 67.3 % 44.3-133

Surrogate: 1-Chlorooctadecane 66.3 % 38.9-142

Cardinal Laboratories

\*=Accredited Analyte

PLEASE NOTE: Liability and Damages. Cardinal's liability and client's exclusive remedy for any claim arising, whether based in contract or tort, shall be limited to the amount paid by client for analyses. All claims, including those for negligence and any other cause whatsoever shall be deemed waived unless made in writing and received by Cardinal within thirty (30) days after completion of the applicable service. In no event shall Cardinal be liable for incidental or consequential damages, including, without limitation, business interruptions, loss of use, or loss of profits incurred by client, its subsidiaries, affiliates or successors arising out of or related to the performance of the services hereunder by Cardinal, regardless of whether such claim is based upon any of the above stated reasons or otherwise. Results relate only to the samples identified above. This report shall not be reproduced except in full with written approval of Cardinal Laboratories.

Celey D. Keene, Lab Director/Quality Manager



PHONE (575) 393-2326 ° 101 E. MARLAND ° HOBBS, NM 88240

**Analytical Results For:**

BBC International, Inc.  
 Cliff Brunson  
 P.O. Box 805  
 Hobbs NM, 88241  
 Fax To: (575) 397-0397

Received: 08/24/2021  
 Reported: 08/26/2021  
 Project Name: CEDAR CANYON 22 CTB  
 Project Number: NONE GIVEN  
 Project Location: OXY - EDDY COUNTY, NM

Sampling Date: 08/23/2021  
 Sampling Type: Soil  
 Sampling Condition: Cool & Intact  
 Sample Received By: Tamara Oldaker

**Sample ID: BOTTOM 5 @ 2' (H212253-05)**

BTX 8021B		mg/kg		Analyzed By: MS						
Analyte	Result	Reporting Limit	Analyzed	Method Blank	BS	% Recovery	True Value QC	RPD	Qualifier	
Benzene*	<0.050	0.050	08/25/2021	ND	1.85	92.6	2.00	1.93		
Toluene*	<0.050	0.050	08/25/2021	ND	2.00	100	2.00	1.94		
Ethylbenzene*	<0.050	0.050	08/25/2021	ND	1.96	98.0	2.00	1.51		
Total Xylenes*	<0.150	0.150	08/25/2021	ND	5.95	99.1	6.00	0.135		
Total BTX	<0.300	0.300	08/25/2021	ND						

Surrogate: 4-Bromofluorobenzene (PID) 101 % 69.9-140

Chloride, SM4500Cl-B		mg/kg		Analyzed By: AC						
Analyte	Result	Reporting Limit	Analyzed	Method Blank	BS	% Recovery	True Value QC	RPD	Qualifier	
Chloride	32.0	16.0	08/25/2021	ND	432	108	400	7.14		

TPH 8015M		mg/kg		Analyzed By: MS					
Analyte	Result	Reporting Limit	Analyzed	Method Blank	BS	% Recovery	True Value QC	RPD	Qualifier
GRO C6-C10*	<10.0	10.0	08/24/2021	ND	209	104	200	0.788	
DRO >C10-C28*	10.6	10.0	08/24/2021	ND	220	110	200	0.628	
EXT DRO >C28-C36	28.1	10.0	08/24/2021	ND					

Surrogate: 1-Chlorooctane 83.8 % 44.3-133

Surrogate: 1-Chlorooctadecane 82.9 % 38.9-142

Cardinal Laboratories

\*=Accredited Analyte

PLEASE NOTE: Liability and Damages. Cardinal's liability and client's exclusive remedy for any claim arising, whether based in contract or tort, shall be limited to the amount paid by client for analyses. All claims, including those for negligence and any other cause whatsoever shall be deemed waived unless made in writing and received by Cardinal within thirty (30) days after completion of the applicable service. In no event shall Cardinal be liable for incidental or consequential damages, including, without limitation, business interruptions, loss of use, or loss of profits incurred by client, its subsidiaries, affiliates or successors arising out of or related to the performance of the services hereunder by Cardinal, regardless of whether such claim is based upon any of the above stated reasons or otherwise. Results relate only to the samples identified above. This report shall not be reproduced except in full with written approval of Cardinal Laboratories.

Celey D. Keene, Lab Director/Quality Manager



PHONE (575) 393-2326 ° 101 E. MARLAND ° HOBBS, NM 88240

**Analytical Results For:**

BBC International, Inc.  
 Cliff Brunson  
 P.O. Box 805  
 Hobbs NM, 88241  
 Fax To: (575) 397-0397

Received: 08/24/2021  
 Reported: 08/26/2021  
 Project Name: CEDAR CANYON 22 CTB  
 Project Number: NONE GIVEN  
 Project Location: OXY - EDDY COUNTY, NM

Sampling Date: 08/23/2021  
 Sampling Type: Soil  
 Sampling Condition: Cool & Intact  
 Sample Received By: Tamara Oldaker

**Sample ID: BOTTOM 6 @ 2' (H212253-06)**

BTEX 8021B		mg/kg		Analyzed By: MS						
Analyte	Result	Reporting Limit	Analyzed	Method Blank	BS	% Recovery	True Value QC	RPD	Qualifier	
Benzene*	<0.050	0.050	08/25/2021	ND	1.85	92.6	2.00	1.93		
Toluene*	<0.050	0.050	08/25/2021	ND	2.00	100	2.00	1.94		
Ethylbenzene*	<0.050	0.050	08/25/2021	ND	1.96	98.0	2.00	1.51		
Total Xylenes*	<0.150	0.150	08/25/2021	ND	5.95	99.1	6.00	0.135		
Total BTEX	<0.300	0.300	08/25/2021	ND						

Surrogate: 4-Bromofluorobenzene (PID) 98.9 % 69.9-140

Chloride, SM4500CI-B		mg/kg		Analyzed By: AC						
Analyte	Result	Reporting Limit	Analyzed	Method Blank	BS	% Recovery	True Value QC	RPD	Qualifier	
Chloride	32.0	16.0	08/25/2021	ND	432	108	400	7.14		

TPH 8015M		mg/kg		Analyzed By: MS					
Analyte	Result	Reporting Limit	Analyzed	Method Blank	BS	% Recovery	True Value QC	RPD	Qualifier
GRO C6-C10*	<10.0	10.0	08/24/2021	ND	209	104	200	0.788	
DRO >C10-C28*	<10.0	10.0	08/24/2021	ND	220	110	200	0.628	
EXT DRO >C28-C36	21.4	10.0	08/24/2021	ND					

Surrogate: 1-Chlorooctane 81.6 % 44.3-133

Surrogate: 1-Chlorooctadecane 80.9 % 38.9-142

Cardinal Laboratories

\*=Accredited Analyte

PLEASE NOTE: Liability and Damages. Cardinal's liability and client's exclusive remedy for any claim arising, whether based in contract or tort, shall be limited to the amount paid by client for analyses. All claims, including those for negligence and any other cause whatsoever shall be deemed waived unless made in writing and received by Cardinal within thirty (30) days after completion of the applicable service. In no event shall Cardinal be liable for incidental or consequential damages, including, without limitation, business interruptions, loss of use, or loss of profits incurred by client, its subsidiaries, affiliates or successors arising out of or related to the performance of the services hereunder by Cardinal, regardless of whether such claim is based upon any of the above stated reasons or otherwise. Results relate only to the samples identified above. This report shall not be reproduced except in full with written approval of Cardinal Laboratories.

Celey D. Keene, Lab Director/Quality Manager





PHONE (575) 393-2326 • 101 E. MARLAND • HOBBS, NM 88240

**Analytical Results For:**

BBC International, Inc.  
 Cliff Brunson  
 P.O. Box 805  
 Hobbs NM, 88241  
 Fax To: (575) 397-0397

Received: 08/24/2021  
 Reported: 08/26/2021  
 Project Name: CEDAR CANYON 22 CTB  
 Project Number: NONE GIVEN  
 Project Location: OXY - EDDY COUNTY, NM

Sampling Date: 08/23/2021  
 Sampling Type: Soil  
 Sampling Condition: Cool & Intact  
 Sample Received By: Tamara Oldaker

**Sample ID: BOTTOM 7 @ 2' (H212253-07)**

BTEX 8021B		mg/kg		Analyzed By: MS						
Analyte	Result	Reporting Limit	Analyzed	Method Blank	BS	% Recovery	True Value QC	RPD	Qualifier	
Benzene*	<0.050	0.050	08/25/2021	ND	1.85	92.6	2.00	1.93		
Toluene*	<0.050	0.050	08/25/2021	ND	2.00	100	2.00	1.94		
Ethylbenzene*	<0.050	0.050	08/25/2021	ND	1.96	98.0	2.00	1.51		
Total Xylenes*	<0.150	0.150	08/25/2021	ND	5.95	99.1	6.00	0.135		
Total BTEX	<0.300	0.300	08/25/2021	ND						

Surrogate: 4-Bromofluorobenzene (PID) 100 % 69.9-140

Chloride, SM4500Cl-B		mg/kg		Analyzed By: AC						
Analyte	Result	Reporting Limit	Analyzed	Method Blank	BS	% Recovery	True Value QC	RPD	Qualifier	
Chloride	<16.0	16.0	08/25/2021	ND	432	108	400	7.14		

TPH 8015M		mg/kg		Analyzed By: MS					
Analyte	Result	Reporting Limit	Analyzed	Method Blank	BS	% Recovery	True Value QC	RPD	Qualifier
GRO C6-C10*	<10.0	10.0	08/24/2021	ND	209	104	200	0.788	
DRO >C10-C28*	<10.0	10.0	08/24/2021	ND	220	110	200	0.628	
EXT DRO >C28-C36	27.2	10.0	08/24/2021	ND					

Surrogate: 1-Chlorooctane 74.8 % 44.3-133

Surrogate: 1-Chlorooctadecane 74.7 % 38.9-142

Cardinal Laboratories

\*=Accredited Analyte

PLEASE NOTE: Liability and Damages. Cardinal's liability and client's exclusive remedy for any claim arising, whether based in contract or tort, shall be limited to the amount paid by client for analyses. All claims, including those for negligence and any other cause whatsoever shall be deemed waived unless made in writing and received by Cardinal within thirty (30) days after completion of the applicable service. In no event shall Cardinal be liable for incidental or consequential damages, including, without limitation, business interruptions, loss of use, or loss of profits incurred by client, its subsidiaries, affiliates or successors arising out of or related to the performance of the services hereunder by Cardinal, regardless of whether such claim is based upon any of the above stated reasons or otherwise. Results relate only to the samples identified above. This report shall not be reproduced except in full with written approval of Cardinal Laboratories.

Celey D. Keene, Lab Director/Quality Manager



PHONE (575) 393-2326 ° 101 E. MARLAND ° HOBBS, NM 88240

**Analytical Results For:**

BBC International, Inc.  
 Cliff Brunson  
 P.O. Box 805  
 Hobbs NM, 88241  
 Fax To: (575) 397-0397

Received: 08/24/2021  
 Reported: 08/26/2021  
 Project Name: CEDAR CANYON 22 CTB  
 Project Number: NONE GIVEN  
 Project Location: OXY - EDDY COUNTY, NM

Sampling Date: 08/23/2021  
 Sampling Type: Soil  
 Sampling Condition: Cool & Intact  
 Sample Received By: Tamara Oldaker

**Sample ID: BOTTOM 8 @ 2' (H212253-08)**

BTEx 8021B		mg/kg		Analyzed By: MS					
Analyte	Result	Reporting Limit	Analyzed	Method Blank	BS	% Recovery	True Value QC	RPD	Qualifier
Benzene*	<0.050	0.050	08/25/2021	ND	1.85	92.6	2.00	1.93	
Toluene*	<0.050	0.050	08/25/2021	ND	2.00	100	2.00	1.94	
Ethylbenzene*	<0.050	0.050	08/25/2021	ND	1.96	98.0	2.00	1.51	
Total Xylenes*	<0.150	0.150	08/25/2021	ND	5.95	99.1	6.00	0.135	
Total BTEx	<0.300	0.300	08/25/2021	ND					

Surrogate: 4-Bromofluorobenzene (PID) 99.4 % 69.9-140

Chloride, SM4500CI-B		mg/kg		Analyzed By: AC						
Analyte	Result	Reporting Limit	Analyzed	Method Blank	BS	% Recovery	True Value QC	RPD	Qualifier	
Chloride	<16.0	16.0	08/25/2021	ND	432	108	400	7.14		

TPH 8015M		mg/kg		Analyzed By: MS					
Analyte	Result	Reporting Limit	Analyzed	Method Blank	BS	% Recovery	True Value QC	RPD	Qualifier
GRO C6-C10*	<10.0	10.0	08/24/2021	ND	209	104	200	0.788	
DRO >C10-C28*	11.4	10.0	08/24/2021	ND	220	110	200	0.628	
EXT DRO >C28-C36	28.4	10.0	08/24/2021	ND					

Surrogate: 1-Chlorooctane 69.3 % 44.3-133

Surrogate: 1-Chlorooctadecane 69.1 % 38.9-142

Cardinal Laboratories

\*=Accredited Analyte

PLEASE NOTE: Liability and Damages. Cardinal's liability and client's exclusive remedy for any claim arising, whether based in contract or tort, shall be limited to the amount paid by client for analyses. All claims, including those for negligence and any other cause whatsoever shall be deemed waived unless made in writing and received by Cardinal within thirty (30) days after completion of the applicable service. In no event shall Cardinal be liable for incidental or consequential damages, including, without limitation, business interruptions, loss of use, or loss of profits incurred by client, its subsidiaries, affiliates or successors arising out of or related to the performance of the services hereunder by Cardinal, regardless of whether such claim is based upon any of the above stated reasons or otherwise. Results relate only to the samples identified above. This report shall not be reproduced except in full with written approval of Cardinal Laboratories.

Celey D. Keene, Lab Director/Quality Manager



PHONE (575) 393-2326 ° 101 E. MARLAND ° HOBBS, NM 88240

**Analytical Results For:**

BBC International, Inc.  
 Cliff Brunson  
 P.O. Box 805  
 Hobbs NM, 88241  
 Fax To: (575) 397-0397

Received: 08/24/2021  
 Reported: 08/26/2021  
 Project Name: CEDAR CANYON 22 CTB  
 Project Number: NONE GIVEN  
 Project Location: OXY - EDDY COUNTY, NM

Sampling Date: 08/23/2021  
 Sampling Type: Soil  
 Sampling Condition: Cool & Intact  
 Sample Received By: Tamara Oldaker

**Sample ID: BOTTOM 9 @ 2' (H212253-09)**

BTEX 8021B		mg/kg		Analyzed By: MS						
Analyte	Result	Reporting Limit	Analyzed	Method Blank	BS	% Recovery	True Value QC	RPD	Qualifier	
Benzene*	<0.050	0.050	08/25/2021	ND	1.85	92.6	2.00	1.93		
Toluene*	<0.050	0.050	08/25/2021	ND	2.00	100	2.00	1.94		
Ethylbenzene*	<0.050	0.050	08/25/2021	ND	1.96	98.0	2.00	1.51		
Total Xylenes*	<0.150	0.150	08/25/2021	ND	5.95	99.1	6.00	0.135		
Total BTEX	<0.300	0.300	08/25/2021	ND						

Surrogate: 4-Bromofluorobenzene (PID) 101 % 69.9-140

Chloride, SM4500Cl-B		mg/kg		Analyzed By: AC						
Analyte	Result	Reporting Limit	Analyzed	Method Blank	BS	% Recovery	True Value QC	RPD	Qualifier	
Chloride	<16.0	16.0	08/25/2021	ND	432	108	400	7.14		

TPH 8015M		mg/kg		Analyzed By: MS					
Analyte	Result	Reporting Limit	Analyzed	Method Blank	BS	% Recovery	True Value QC	RPD	Qualifier
GRO C6-C10*	<10.0	10.0	08/24/2021	ND	209	104	200	0.788	
DRO >C10-C28*	<10.0	10.0	08/24/2021	ND	220	110	200	0.628	
EXT DRO >C28-C36	12.4	10.0	08/24/2021	ND					

Surrogate: 1-Chlorooctane 86.0 % 44.3-133

Surrogate: 1-Chlorooctadecane 85.4 % 38.9-142

Cardinal Laboratories

\*=Accredited Analyte

PLEASE NOTE: Liability and Damages. Cardinal's liability and client's exclusive remedy for any claim arising, whether based in contract or tort, shall be limited to the amount paid by client for analyses. All claims, including those for negligence and any other cause whatsoever shall be deemed waived unless made in writing and received by Cardinal within thirty (30) days after completion of the applicable service. In no event shall Cardinal be liable for incidental or consequential damages, including, without limitation, business interruptions, loss of use, or loss of profits incurred by client, its subsidiaries, affiliates or successors arising out of or related to the performance of the services hereunder by Cardinal, regardless of whether such claim is based upon any of the above stated reasons or otherwise. Results relate only to the samples identified above. This report shall not be reproduced except in full with written approval of Cardinal Laboratories.

Celey D. Keene, Lab Director/Quality Manager



PHONE (575) 393-2326 ° 101 E. MARLAND ° HOBBS, NM 88240

**Analytical Results For:**

BBC International, Inc.  
 Cliff Brunson  
 P.O. Box 805  
 Hobbs NM, 88241  
 Fax To: (575) 397-0397

Received:	08/24/2021	Sampling Date:	08/23/2021
Reported:	08/26/2021	Sampling Type:	Soil
Project Name:	CEDAR CANYON 22 CTB	Sampling Condition:	Cool & Intact
Project Number:	NONE GIVEN	Sample Received By:	Tamara Oldaker
Project Location:	OXY - EDDY COUNTY, NM		

**Sample ID: BOTTOM 10 @ 2' (H212253-10)**

BTX 8021B		mg/kg		Analyzed By: MS						
Analyte	Result	Reporting Limit	Analyzed	Method Blank	BS	% Recovery	True Value QC	RPD	Qualifier	
Benzene*	<0.050	0.050	08/25/2021	ND	1.85	92.6	2.00	1.93		
Toluene*	<0.050	0.050	08/25/2021	ND	2.00	100	2.00	1.94		
Ethylbenzene*	<0.050	0.050	08/25/2021	ND	1.96	98.0	2.00	1.51		
Total Xylenes*	<0.150	0.150	08/25/2021	ND	5.95	99.1	6.00	0.135		
Total BTX	<0.300	0.300	08/25/2021	ND						

Surrogate: 4-Bromofluorobenzene (PID) 98.8 % 69.9-140

Chloride, SM4500CI-B		mg/kg		Analyzed By: AC						
Analyte	Result	Reporting Limit	Analyzed	Method Blank	BS	% Recovery	True Value QC	RPD	Qualifier	
Chloride	<16.0	16.0	08/25/2021	ND	432	108	400	7.14		

TPH 8015M		mg/kg		Analyzed By: MS					
Analyte	Result	Reporting Limit	Analyzed	Method Blank	BS	% Recovery	True Value QC	RPD	Qualifier
GRO C6-C10*	<10.0	10.0	08/24/2021	ND	209	104	200	0.788	
DRO >C10-C28*	12.4	10.0	08/24/2021	ND	220	110	200	0.628	
EXT DRO >C28-C36	33.7	10.0	08/24/2021	ND					

Surrogate: 1-Chlorooctane 88.3 % 44.3-133

Surrogate: 1-Chlorooctadecane 88.7 % 38.9-142

Cardinal Laboratories

\*=Accredited Analyte

PLEASE NOTE: Liability and Damages. Cardinal's liability and client's exclusive remedy for any claim arising, whether based in contract or tort, shall be limited to the amount paid by client for analyses. All claims, including those for negligence and any other cause whatsoever shall be deemed waived unless made in writing and received by Cardinal within thirty (30) days after completion of the applicable service. In no event shall Cardinal be liable for incidental or consequential damages, including, without limitation, business interruptions, loss of use, or loss of profits incurred by client, its subsidiaries, affiliates or successors arising out of or related to the performance of the services hereunder by Cardinal, regardless of whether such claim is based upon any of the above stated reasons or otherwise. Results relate only to the samples identified above. This report shall not be reproduced except in full with written approval of Cardinal Laboratories.

Celey D. Keene, Lab Director/Quality Manager



PHONE (575) 393-2326 • 101 E. MARLAND • HOBBS, NM 88240

**Analytical Results For:**

BBC International, Inc.  
 Cliff Brunson  
 P.O. Box 805  
 Hobbs NM, 88241  
 Fax To: (575) 397-0397

Received: 08/24/2021  
 Reported: 08/26/2021  
 Project Name: CEDAR CANYON 22 CTB  
 Project Number: NONE GIVEN  
 Project Location: OXY - EDDY COUNTY, NM

Sampling Date: 08/23/2021  
 Sampling Type: Soil  
 Sampling Condition: Cool & Intact  
 Sample Received By: Tamara Oldaker

**Sample ID: BOTTOM 11 @ 3' (H212253-11)**

BTX 8021B		mg/kg		Analyzed By: MS						
Analyte	Result	Reporting Limit	Analyzed	Method Blank	BS	% Recovery	True Value QC	RPD	Qualifier	
Benzene*	<0.050	0.050	08/25/2021	ND	1.85	92.6	2.00	1.93		
Toluene*	<0.050	0.050	08/25/2021	ND	2.00	100	2.00	1.94		
Ethylbenzene*	<0.050	0.050	08/25/2021	ND	1.96	98.0	2.00	1.51		
Total Xylenes*	<0.150	0.150	08/25/2021	ND	5.95	99.1	6.00	0.135		
Total BTX	<0.300	0.300	08/25/2021	ND						

Surrogate: 4-Bromofluorobenzene (PID) 100 % 69.9-140

Chloride, SM4500CI-B		mg/kg		Analyzed By: AC						
Analyte	Result	Reporting Limit	Analyzed	Method Blank	BS	% Recovery	True Value QC	RPD	Qualifier	
Chloride	<16.0	16.0	08/25/2021	ND	432	108	400	7.14		

TPH 8015M		mg/kg		Analyzed By: MS					
Analyte	Result	Reporting Limit	Analyzed	Method Blank	BS	% Recovery	True Value QC	RPD	Qualifier
GRO C6-C10*	<10.0	10.0	08/24/2021	ND	193	96.5	200	0.700	
DRO >C10-C28*	<10.0	10.0	08/24/2021	ND	223	111	200	0.110	
EXT DRO >C28-C36	<10.0	10.0	08/24/2021	ND					

Surrogate: 1-Chlorooctane 72.7 % 44.3-133

Surrogate: 1-Chlorooctadecane 73.6 % 38.9-142

Cardinal Laboratories

\*=Accredited Analyte

PLEASE NOTE: Liability and Damages. Cardinal's liability and client's exclusive remedy for any claim arising, whether based in contract or tort, shall be limited to the amount paid by client for analyses. All claims, including those for negligence and any other cause whatsoever shall be deemed waived unless made in writing and received by Cardinal within thirty (30) days after completion of the applicable service. In no event shall Cardinal be liable for incidental or consequential damages, including, without limitation, business interruptions, loss of use, or loss of profits incurred by client, its subsidiaries, affiliates or successors arising out of or related to the performance of the services hereunder by Cardinal, regardless of whether such claim is based upon any of the above stated reasons or otherwise. Results relate only to the samples identified above. This report shall not be reproduced except in full with written approval of Cardinal Laboratories.

Celey D. Keene, Lab Director/Quality Manager





PHONE (575) 393-2326 ° 101 E. MARLAND ° HOBBS, NM 88240

**Analytical Results For:**

BBC International, Inc.  
 Cliff Brunson  
 P.O. Box 805  
 Hobbs NM, 88241  
 Fax To: (575) 397-0397

Received:	08/24/2021	Sampling Date:	08/23/2021
Reported:	08/26/2021	Sampling Type:	Soil
Project Name:	CEDAR CANYON 22 CTB	Sampling Condition:	Cool & Intact
Project Number:	NONE GIVEN	Sample Received By:	Tamara Oldaker
Project Location:	OXY - EDDY COUNTY, NM		

**Sample ID: BOTTOM 12 @ 3' (H212253-12)**

BTX 8021B		mg/kg		Analyzed By: MS						
Analyte	Result	Reporting Limit	Analyzed	Method Blank	BS	% Recovery	True Value QC	RPD	Qualifier	
Benzene*	<0.050	0.050	08/25/2021	ND	1.85	92.6	2.00	1.93		
Toluene*	<0.050	0.050	08/25/2021	ND	2.00	100	2.00	1.94		
Ethylbenzene*	<0.050	0.050	08/25/2021	ND	1.96	98.0	2.00	1.51		
Total Xylenes*	<0.150	0.150	08/25/2021	ND	5.95	99.1	6.00	0.135		
Total BTX	<0.300	0.300	08/25/2021	ND						

Surrogate: 4-Bromofluorobenzene (PID) 99.7 % 69.9-140

Chloride, SM4500CI-B		mg/kg		Analyzed By: AC						
Analyte	Result	Reporting Limit	Analyzed	Method Blank	BS	% Recovery	True Value QC	RPD	Qualifier	
Chloride	<16.0	16.0	08/25/2021	ND	432	108	400	7.14		

TPH 8015M		mg/kg		Analyzed By: MS					
Analyte	Result	Reporting Limit	Analyzed	Method Blank	BS	% Recovery	True Value QC	RPD	Qualifier
GRO C6-C10*	<10.0	10.0	08/24/2021	ND	193	96.5	200	0.700	
DRO >C10-C28*	<10.0	10.0	08/24/2021	ND	223	111	200	0.110	
EXT DRO >C28-C36	<10.0	10.0	08/24/2021	ND					

Surrogate: 1-Chlorooctane 78.7 % 44.3-133

Surrogate: 1-Chlorooctadecane 84.4 % 38.9-142

Cardinal Laboratories

\*=Accredited Analyte

PLEASE NOTE: Liability and Damages. Cardinal's liability and client's exclusive remedy for any claim arising, whether based in contract or tort, shall be limited to the amount paid by client for analyses. All claims, including those for negligence and any other cause whatsoever shall be deemed waived unless made in writing and received by Cardinal within thirty (30) days after completion of the applicable service. In no event shall Cardinal be liable for incidental or consequential damages, including, without limitation, business interruptions, loss of use, or loss of profits incurred by client, its subsidiaries, affiliates or successors arising out of or related to the performance of the services hereunder by Cardinal, regardless of whether such claim is based upon any of the above stated reasons or otherwise. Results relate only to the samples identified above. This report shall not be reproduced except in full with written approval of Cardinal Laboratories.

Celey D. Keene, Lab Director/Quality Manager



PHONE (575) 393-2326 ° 101 E. MARLAND ° HOBBS, NM 88240

**Analytical Results For:**

BBC International, Inc.  
 Cliff Brunson  
 P.O. Box 805  
 Hobbs NM, 88241  
 Fax To: (575) 397-0397

Received: 08/24/2021  
 Reported: 08/26/2021  
 Project Name: CEDAR CANYON 22 CTB  
 Project Number: NONE GIVEN  
 Project Location: OXY - EDDY COUNTY, NM

Sampling Date: 08/23/2021  
 Sampling Type: Soil  
 Sampling Condition: Cool & Intact  
 Sample Received By: Tamara Oldaker

**Sample ID: BOTTOM 13 @ 3' (H212253-13)**

BTX 8021B		mg/kg		Analyzed By: MS						
Analyte	Result	Reporting Limit	Analyzed	Method Blank	BS	% Recovery	True Value QC	RPD	Qualifier	
Benzene*	<0.050	0.050	08/25/2021	ND	1.85	92.6	2.00	1.93		
Toluene*	<0.050	0.050	08/25/2021	ND	2.00	100	2.00	1.94		
Ethylbenzene*	<0.050	0.050	08/25/2021	ND	1.96	98.0	2.00	1.51		
Total Xylenes*	<0.150	0.150	08/25/2021	ND	5.95	99.1	6.00	0.135		
Total BTX	<0.300	0.300	08/25/2021	ND						

Surrogate: 4-Bromofluorobenzene (PID) 100 % 69.9-140

Chloride, SM4500CI-B		mg/kg		Analyzed By: AC						
Analyte	Result	Reporting Limit	Analyzed	Method Blank	BS	% Recovery	True Value QC	RPD	Qualifier	
Chloride	<16.0	16.0	08/25/2021	ND	432	108	400	7.14		

TPH 8015M		mg/kg		Analyzed By: MS					
Analyte	Result	Reporting Limit	Analyzed	Method Blank	BS	% Recovery	True Value QC	RPD	Qualifier
GRO C6-C10*	<10.0	10.0	08/24/2021	ND	193	96.5	200	0.700	
DRO >C10-C28*	<10.0	10.0	08/24/2021	ND	223	111	200	0.110	
EXT DRO >C28-C36	17.2	10.0	08/24/2021	ND					

Surrogate: 1-Chlorooctane 77.7 % 44.3-133

Surrogate: 1-Chlorooctadecane 85.1 % 38.9-142

Cardinal Laboratories

\*=Accredited Analyte

PLEASE NOTE: Liability and Damages. Cardinal's liability and client's exclusive remedy for any claim arising, whether based in contract or tort, shall be limited to the amount paid by client for analyses. All claims, including those for negligence and any other cause whatsoever shall be deemed waived unless made in writing and received by Cardinal within thirty (30) days after completion of the applicable service. In no event shall Cardinal be liable for incidental or consequential damages, including, without limitation, business interruptions, loss of use, or loss of profits incurred by client, its subsidiaries, affiliates or successors arising out of or related to the performance of the services hereunder by Cardinal, regardless of whether such claim is based upon any of the above stated reasons or otherwise. Results relate only to the samples identified above. This report shall not be reproduced except in full with written approval of Cardinal Laboratories.

Celey D. Keene, Lab Director/Quality Manager



PHONE (575) 393-2326 • 101 E. MARLAND • HOBBS, NM 88240

**Analytical Results For:**

BBC International, Inc.  
 Cliff Brunson  
 P.O. Box 805  
 Hobbs NM, 88241  
 Fax To: (575) 397-0397

Received: 08/24/2021  
 Reported: 08/26/2021  
 Project Name: CEDAR CANYON 22 CTB  
 Project Number: NONE GIVEN  
 Project Location: OXY - EDDY COUNTY, NM

Sampling Date: 08/23/2021  
 Sampling Type: Soil  
 Sampling Condition: Cool & Intact  
 Sample Received By: Tamara Oldaker

**Sample ID: BOTTOM 14 @ 3' (H212253-14)**

BTX 8021B		mg/kg		Analyzed By: MS						
Analyte	Result	Reporting Limit	Analyzed	Method Blank	BS	% Recovery	True Value QC	RPD	Qualifier	
Benzene*	<0.050	0.050	08/25/2021	ND	1.85	92.6	2.00	1.93		
Toluene*	<0.050	0.050	08/25/2021	ND	2.00	100	2.00	1.94		
Ethylbenzene*	<0.050	0.050	08/25/2021	ND	1.96	98.0	2.00	1.51		
Total Xylenes*	<0.150	0.150	08/25/2021	ND	5.95	99.1	6.00	0.135		
Total BTX	<0.300	0.300	08/25/2021	ND						

Surrogate: 4-Bromofluorobenzene (PID) 98.9 % 69.9-140

Chloride, SM4500CI-B		mg/kg		Analyzed By: AC						
Analyte	Result	Reporting Limit	Analyzed	Method Blank	BS	% Recovery	True Value QC	RPD	Qualifier	
Chloride	<16.0	16.0	08/25/2021	ND	432	108	400	7.14		

TPH 8015M		mg/kg		Analyzed By: MS					
Analyte	Result	Reporting Limit	Analyzed	Method Blank	BS	% Recovery	True Value QC	RPD	Qualifier
GRO C6-C10*	<10.0	10.0	08/24/2021	ND	193	96.5	200	0.700	
DRO >C10-C28*	<10.0	10.0	08/24/2021	ND	223	111	200	0.110	
EXT DRO >C28-C36	<10.0	10.0	08/24/2021	ND					

Surrogate: 1-Chlorooctane 75.2 % 44.3-133

Surrogate: 1-Chlorooctadecane 82.6 % 38.9-142

Cardinal Laboratories

\*=Accredited Analyte

PLEASE NOTE: Liability and Damages. Cardinal's liability and client's exclusive remedy for any claim arising, whether based in contract or tort, shall be limited to the amount paid by client for analyses. All claims, including those for negligence and any other cause whatsoever shall be deemed waived unless made in writing and received by Cardinal within thirty (30) days after completion of the applicable service. In no event shall Cardinal be liable for incidental or consequential damages, including, without limitation, business interruptions, loss of use, or loss of profits incurred by client, its subsidiaries, affiliates or successors arising out of or related to the performance of the services hereunder by Cardinal, regardless of whether such claim is based upon any of the above stated reasons or otherwise. Results relate only to the samples identified above. This report shall not be reproduced except in full with written approval of Cardinal Laboratories.

Celey D. Keene, Lab Director/Quality Manager



PHONE (575) 393-2326 • 101 E. MARLAND • HOBBS, NM 88240

**Analytical Results For:**

BBC International, Inc.  
 Cliff Brunson  
 P.O. Box 805  
 Hobbs NM, 88241  
 Fax To: (575) 397-0397

Received: 08/24/2021  
 Reported: 08/26/2021  
 Project Name: CEDAR CANYON 22 CTB  
 Project Number: NONE GIVEN  
 Project Location: OXY - EDDY COUNTY, NM

Sampling Date: 08/23/2021  
 Sampling Type: Soil  
 Sampling Condition: Cool & Intact  
 Sample Received By: Tamara Oldaker

**Sample ID: BOTTOM 15 @ 3' (H212253-15)**

BTX 8021B		mg/kg		Analyzed By: MS						
Analyte	Result	Reporting Limit	Analyzed	Method Blank	BS	% Recovery	True Value QC	RPD	Qualifier	
Benzene*	<0.050	0.050	08/25/2021	ND	1.85	92.6	2.00	1.93		
Toluene*	<0.050	0.050	08/25/2021	ND	2.00	100	2.00	1.94		
Ethylbenzene*	<0.050	0.050	08/25/2021	ND	1.96	98.0	2.00	1.51		
Total Xylenes*	<0.150	0.150	08/25/2021	ND	5.95	99.1	6.00	0.135		
Total BTX	<0.300	0.300	08/25/2021	ND						

Surrogate: 4-Bromofluorobenzene (PID) 100 % 69.9-140

Chloride, SM4500Cl-B		mg/kg		Analyzed By: AC						
Analyte	Result	Reporting Limit	Analyzed	Method Blank	BS	% Recovery	True Value QC	RPD	Qualifier	
Chloride	<16.0	16.0	08/25/2021	ND	432	108	400	7.14		

TPH 8015M		mg/kg		Analyzed By: MS					
Analyte	Result	Reporting Limit	Analyzed	Method Blank	BS	% Recovery	True Value QC	RPD	Qualifier
GRO C6-C10*	<10.0	10.0	08/24/2021	ND	193	96.5	200	0.700	
DRO >C10-C28*	<10.0	10.0	08/24/2021	ND	223	111	200	0.110	
EXT DRO >C28-C36	24.8	10.0	08/24/2021	ND					

Surrogate: 1-Chlorooctane 74.9 % 44.3-133

Surrogate: 1-Chlorooctadecane 81.1 % 38.9-142

Cardinal Laboratories

\*=Accredited Analyte

PLEASE NOTE: Liability and Damages. Cardinal's liability and client's exclusive remedy for any claim arising, whether based in contract or tort, shall be limited to the amount paid by client for analyses. All claims, including those for negligence and any other cause whatsoever shall be deemed waived unless made in writing and received by Cardinal within thirty (30) days after completion of the applicable service. In no event shall Cardinal be liable for incidental or consequential damages, including, without limitation, business interruptions, loss of use, or loss of profits incurred by client, its subsidiaries, affiliates or successors arising out of or related to the performance of the services hereunder by Cardinal, regardless of whether such claim is based upon any of the above stated reasons or otherwise. Results relate only to the samples identified above. This report shall not be reproduced except in full with written approval of Cardinal Laboratories.

Celey D. Keene, Lab Director/Quality Manager



PHONE (575) 393-2326 ° 101 E. MARLAND ° HOBBS, NM 88240

**Analytical Results For:**

BBC International, Inc.  
 Cliff Brunson  
 P.O. Box 805  
 Hobbs NM, 88241  
 Fax To: (575) 397-0397

Received: 08/24/2021  
 Reported: 08/26/2021  
 Project Name: CEDAR CANYON 22 CTB  
 Project Number: NONE GIVEN  
 Project Location: OXY - EDDY COUNTY, NM

Sampling Date: 08/23/2021  
 Sampling Type: Soil  
 Sampling Condition: Cool & Intact  
 Sample Received By: Tamara Oldaker

**Sample ID: BOTTOM 16 @ 3' (H212253-16)**

BTX 8021B		mg/kg		Analyzed By: MS						
Analyte	Result	Reporting Limit	Analyzed	Method Blank	BS	% Recovery	True Value QC	RPD	Qualifier	
Benzene*	<0.050	0.050	08/25/2021	ND	1.85	92.6	2.00	1.93		
Toluene*	<0.050	0.050	08/25/2021	ND	2.00	100	2.00	1.94		
Ethylbenzene*	<0.050	0.050	08/25/2021	ND	1.96	98.0	2.00	1.51		
Total Xylenes*	<0.150	0.150	08/25/2021	ND	5.95	99.1	6.00	0.135		
Total BTX	<0.300	0.300	08/25/2021	ND						

Surrogate: 4-Bromofluorobenzene (PID) 101 % 69.9-140

Chloride, SM4500CI-B		mg/kg		Analyzed By: AC						
Analyte	Result	Reporting Limit	Analyzed	Method Blank	BS	% Recovery	True Value QC	RPD	Qualifier	
Chloride	<16.0	16.0	08/25/2021	ND	432	108	400	7.14		

TPH 8015M		mg/kg		Analyzed By: MS					
Analyte	Result	Reporting Limit	Analyzed	Method Blank	BS	% Recovery	True Value QC	RPD	Qualifier
GRO C6-C10*	<10.0	10.0	08/24/2021	ND	193	96.5	200	0.700	
DRO >C10-C28*	<10.0	10.0	08/24/2021	ND	223	111	200	0.110	
EXT DRO >C28-C36	12.8	10.0	08/24/2021	ND					

Surrogate: 1-Chlorooctane 71.2 % 44.3-133

Surrogate: 1-Chlorooctadecane 78.4 % 38.9-142

Cardinal Laboratories

\*=Accredited Analyte

PLEASE NOTE: Liability and Damages. Cardinal's liability and client's exclusive remedy for any claim arising, whether based in contract or tort, shall be limited to the amount paid by client for analyses. All claims, including those for negligence and any other cause whatsoever shall be deemed waived unless made in writing and received by Cardinal within thirty (30) days after completion of the applicable service. In no event shall Cardinal be liable for incidental or consequential damages, including, without limitation, business interruptions, loss of use, or loss of profits incurred by client, its subsidiaries, affiliates or successors arising out of or related to the performance of the services hereunder by Cardinal, regardless of whether such claim is based upon any of the above stated reasons or otherwise. Results relate only to the samples identified above. This report shall not be reproduced except in full with written approval of Cardinal Laboratories.

Celey D. Keene, Lab Director/Quality Manager





PHONE (575) 393-2326 • 101 E. MARLAND • HOBBS, NM 88240

**Analytical Results For:**

BBC International, Inc.  
 Cliff Brunson  
 P.O. Box 805  
 Hobbs NM, 88241  
 Fax To: (575) 397-0397

Received: 08/24/2021  
 Reported: 08/26/2021  
 Project Name: CEDAR CANYON 22 CTB  
 Project Number: NONE GIVEN  
 Project Location: OXY - EDDY COUNTY, NM

Sampling Date: 08/23/2021  
 Sampling Type: Soil  
 Sampling Condition: Cool & Intact  
 Sample Received By: Tamara Oldaker

**Sample ID: BOTTOM 17 @ 3' (H212253-17)**

BTX 8021B		mg/kg		Analyzed By: MS					
Analyte	Result	Reporting Limit	Analyzed	Method Blank	BS	% Recovery	True Value QC	RPD	Qualifier
Benzene*	<0.050	0.050	08/25/2021	ND	1.85	92.6	2.00	1.93	
Toluene*	<0.050	0.050	08/25/2021	ND	2.00	100	2.00	1.94	
Ethylbenzene*	<0.050	0.050	08/25/2021	ND	1.96	98.0	2.00	1.51	
Total Xylenes*	<0.150	0.150	08/25/2021	ND	5.95	99.1	6.00	0.135	
Total BTX	<0.300	0.300	08/25/2021	ND					

Surrogate: 4-Bromofluorobenzene (PID) 101 % 69.9-140

Chloride, SM4500CI-B		mg/kg		Analyzed By: AC					
Analyte	Result	Reporting Limit	Analyzed	Method Blank	BS	% Recovery	True Value QC	RPD	Qualifier
Chloride	32.0	16.0	08/25/2021	ND	432	108	400	7.14	

TPH 8015M		mg/kg		Analyzed By: MS					
Analyte	Result	Reporting Limit	Analyzed	Method Blank	BS	% Recovery	True Value QC	RPD	Qualifier
GRO C6-C10*	<10.0	10.0	08/24/2021	ND	193	96.5	200	0.700	
DRO >C10-C28*	<10.0	10.0	08/24/2021	ND	223	111	200	0.110	
EXT DRO >C28-C36	11.5	10.0	08/24/2021	ND					

Surrogate: 1-Chlorooctane 77.1 % 44.3-133

Surrogate: 1-Chlorooctadecane 85.6 % 38.9-142

Cardinal Laboratories

\*=Accredited Analyte

PLEASE NOTE: Liability and Damages. Cardinal's liability and client's exclusive remedy for any claim arising, whether based in contract or tort, shall be limited to the amount paid by client for analyses. All claims, including those for negligence and any other cause whatsoever shall be deemed waived unless made in writing and received by Cardinal within thirty (30) days after completion of the applicable service. In no event shall Cardinal be liable for incidental or consequential damages, including, without limitation, business interruptions, loss of use, or loss of profits incurred by client, its subsidiaries, affiliates or successors arising out of or related to the performance of the services hereunder by Cardinal, regardless of whether such claim is based upon any of the above stated reasons or otherwise. Results relate only to the samples identified above. This report shall not be reproduced except in full with written approval of Cardinal Laboratories.

Celey D. Keene, Lab Director/Quality Manager



PHONE (575) 393-2326 ° 101 E. MARLAND ° HOBBS, NM 88240

**Analytical Results For:**

BBC International, Inc.  
 Cliff Brunson  
 P.O. Box 805  
 Hobbs NM, 88241  
 Fax To: (575) 397-0397

Received:	08/24/2021	Sampling Date:	08/23/2021
Reported:	08/26/2021	Sampling Type:	Soil
Project Name:	CEDAR CANYON 22 CTB	Sampling Condition:	Cool & Intact
Project Number:	NONE GIVEN	Sample Received By:	Tamara Oldaker
Project Location:	OXY - EDDY COUNTY, NM		

**Sample ID: BOTTOM 18 @ 3' (H212253-18)**

BTEX 8021B		mg/kg		Analyzed By: MS						
Analyte	Result	Reporting Limit	Analyzed	Method Blank	BS	% Recovery	True Value QC	RPD	Qualifier	
Benzene*	<0.050	0.050	08/25/2021	ND	1.85	92.6	2.00	1.93		
Toluene*	<0.050	0.050	08/25/2021	ND	2.00	100	2.00	1.94		
Ethylbenzene*	<0.050	0.050	08/25/2021	ND	1.96	98.0	2.00	1.51		
Total Xylenes*	<0.150	0.150	08/25/2021	ND	5.95	99.1	6.00	0.135		
Total BTEX	<0.300	0.300	08/25/2021	ND						

Surrogate: 4-Bromofluorobenzene (PID) 99.3 % 69.9-140

Chloride, SM4500CI-B		mg/kg		Analyzed By: AC						
Analyte	Result	Reporting Limit	Analyzed	Method Blank	BS	% Recovery	True Value QC	RPD	Qualifier	
Chloride	<16.0	16.0	08/25/2021	ND	432	108	400	7.14		

TPH 8015M		mg/kg		Analyzed By: MS					
Analyte	Result	Reporting Limit	Analyzed	Method Blank	BS	% Recovery	True Value QC	RPD	Qualifier
GRO C6-C10*	<10.0	10.0	08/24/2021	ND	193	96.5	200	0.700	
DRO >C10-C28*	<10.0	10.0	08/24/2021	ND	223	111	200	0.110	
EXT DRO >C28-C36	<10.0	10.0	08/24/2021	ND					

Surrogate: 1-Chlorooctane 74.5 % 44.3-133

Surrogate: 1-Chlorooctadecane 82.3 % 38.9-142

Cardinal Laboratories

\*=Accredited Analyte

PLEASE NOTE: Liability and Damages. Cardinal's liability and client's exclusive remedy for any claim arising, whether based in contract or tort, shall be limited to the amount paid by client for analyses. All claims, including those for negligence and any other cause whatsoever shall be deemed waived unless made in writing and received by Cardinal within thirty (30) days after completion of the applicable service. In no event shall Cardinal be liable for incidental or consequential damages, including, without limitation, business interruptions, loss of use, or loss of profits incurred by client, its subsidiaries, affiliates or successors arising out of or related to the performance of the services hereunder by Cardinal, regardless of whether such claim is based upon any of the above stated reasons or otherwise. Results relate only to the samples identified above. This report shall not be reproduced except in full with written approval of Cardinal Laboratories.

Celey D. Keene, Lab Director/Quality Manager



PHONE (575) 393-2326 ° 101 E. MARLAND ° HOBBS, NM 88240

**Analytical Results For:**

BBC International, Inc.  
 Cliff Brunson  
 P.O. Box 805  
 Hobbs NM, 88241  
 Fax To: (575) 397-0397

Received: 08/24/2021  
 Reported: 08/26/2021  
 Project Name: CEDAR CANYON 22 CTB  
 Project Number: NONE GIVEN  
 Project Location: OXY - EDDY COUNTY, NM

Sampling Date: 08/23/2021  
 Sampling Type: Soil  
 Sampling Condition: Cool & Intact  
 Sample Received By: Tamara Oldaker

**Sample ID: BOTTOM 19 @ 3' (H212253-19)**

BTEX 8021B		mg/kg		Analyzed By: MS						
Analyte	Result	Reporting Limit	Analyzed	Method Blank	BS	% Recovery	True Value QC	RPD	Qualifier	
Benzene*	<0.050	0.050	08/25/2021	ND	1.85	92.6	2.00	1.93		
Toluene*	<0.050	0.050	08/25/2021	ND	2.00	100	2.00	1.94		
Ethylbenzene*	<0.050	0.050	08/25/2021	ND	1.96	98.0	2.00	1.51		
Total Xylenes*	<0.150	0.150	08/25/2021	ND	5.95	99.1	6.00	0.135		
Total BTEX	<0.300	0.300	08/25/2021	ND						

Surrogate: 4-Bromofluorobenzene (PID) 99.5 % 69.9-140

Chloride, SM4500CI-B		mg/kg		Analyzed By: AC						
Analyte	Result	Reporting Limit	Analyzed	Method Blank	BS	% Recovery	True Value QC	RPD	Qualifier	
Chloride	<16.0	16.0	08/25/2021	ND	432	108	400	7.14		

TPH 8015M		mg/kg		Analyzed By: MS					
Analyte	Result	Reporting Limit	Analyzed	Method Blank	BS	% Recovery	True Value QC	RPD	Qualifier
GRO C6-C10*	<10.0	10.0	08/24/2021	ND	193	96.5	200	0.700	
DRO >C10-C28*	<10.0	10.0	08/24/2021	ND	223	111	200	0.110	
EXT DRO >C28-C36	<10.0	10.0	08/24/2021	ND					

Surrogate: 1-Chlorooctane 73.7 % 44.3-133

Surrogate: 1-Chlorooctadecane 79.9 % 38.9-142

Cardinal Laboratories

\*=Accredited Analyte

PLEASE NOTE: Liability and Damages. Cardinal's liability and client's exclusive remedy for any claim arising, whether based in contract or tort, shall be limited to the amount paid by client for analyses. All claims, including those for negligence and any other cause whatsoever shall be deemed waived unless made in writing and received by Cardinal within thirty (30) days after completion of the applicable service. In no event shall Cardinal be liable for incidental or consequential damages, including, without limitation, business interruptions, loss of use, or loss of profits incurred by client, its subsidiaries, affiliates or successors arising out of or related to the performance of the services hereunder by Cardinal, regardless of whether such claim is based upon any of the above stated reasons or otherwise. Results relate only to the samples identified above. This report shall not be reproduced except in full with written approval of Cardinal Laboratories.

Celey D. Keene, Lab Director/Quality Manager



PHONE (575) 393-2326 • 101 E. MARLAND • HOBBS, NM 88240

**Analytical Results For:**

BBC International, Inc.  
 Cliff Brunson  
 P.O. Box 805  
 Hobbs NM, 88241  
 Fax To: (575) 397-0397

Received:	08/24/2021	Sampling Date:	08/23/2021
Reported:	08/26/2021	Sampling Type:	Soil
Project Name:	CEDAR CANYON 22 CTB	Sampling Condition:	Cool & Intact
Project Number:	NONE GIVEN	Sample Received By:	Tamara Oldaker
Project Location:	OXY - EDDY COUNTY, NM		

**Sample ID: BOTTOM 20 @ 3' (H212253-20)**

BTX 8021B		mg/kg		Analyzed By: MS					
Analyte	Result	Reporting Limit	Analyzed	Method Blank	BS	% Recovery	True Value QC	RPD	Qualifier
Benzene*	<0.050	0.050	08/24/2021	ND	1.84	91.8	2.00	5.73	
Toluene*	<0.050	0.050	08/24/2021	ND	1.99	99.3	2.00	0.769	
Ethylbenzene*	<0.050	0.050	08/24/2021	ND	1.92	95.8	2.00	1.17	
Total Xylenes*	<0.150	0.150	08/24/2021	ND	5.69	94.8	6.00	1.57	
Total BTX	<0.300	0.300	08/24/2021	ND					

Surrogate: 4-Bromofluorobenzene (PID) 99.5 % 69.9-140

Chloride, SM4500CI-B		mg/kg		Analyzed By: AC						
Analyte	Result	Reporting Limit	Analyzed	Method Blank	BS	% Recovery	True Value QC	RPD	Qualifier	
Chloride	<16.0	16.0	08/25/2021	ND	432	108	400	7.14		

TPH 8015M		mg/kg		Analyzed By: MS					
Analyte	Result	Reporting Limit	Analyzed	Method Blank	BS	% Recovery	True Value QC	RPD	Qualifier
GRO C6-C10*	<10.0	10.0	08/24/2021	ND	193	96.5	200	0.700	
DRO >C10-C28*	<10.0	10.0	08/24/2021	ND	223	111	200	0.110	
EXT DRO >C28-C36	<10.0	10.0	08/24/2021	ND					

Surrogate: 1-Chlorooctane 78.9 % 44.3-133

Surrogate: 1-Chlorooctadecane 82.8 % 38.9-142

Cardinal Laboratories

\*=Accredited Analyte

PLEASE NOTE: Liability and Damages. Cardinal's liability and client's exclusive remedy for any claim arising, whether based in contract or tort, shall be limited to the amount paid by client for analyses. All claims, including those for negligence and any other cause whatsoever shall be deemed waived unless made in writing and received by Cardinal within thirty (30) days after completion of the applicable service. In no event shall Cardinal be liable for incidental or consequential damages, including, without limitation, business interruptions, loss of use, or loss of profits incurred by client, its subsidiaries, affiliates or successors arising out of or related to the performance of the services hereunder by Cardinal, regardless of whether such claim is based upon any of the above stated reasons or otherwise. Results relate only to the samples identified above. This report shall not be reproduced except in full with written approval of Cardinal Laboratories.

Celey D. Keene, Lab Director/Quality Manager



PHONE (575) 393-2326 ° 101 E. MARLAND ° HOBBS, NM 88240

**Analytical Results For:**

BBC International, Inc.  
 Cliff Brunson  
 P.O. Box 805  
 Hobbs NM, 88241  
 Fax To: (575) 397-0397

Received:	08/24/2021	Sampling Date:	08/23/2021
Reported:	08/26/2021	Sampling Type:	Soil
Project Name:	CEDAR CANYON 22 CTB	Sampling Condition:	Cool & Intact
Project Number:	NONE GIVEN	Sample Received By:	Tamara Oldaker
Project Location:	OXY - EDDY COUNTY, NM		

**Sample ID: BOTTOM 21 @ 3' (H212253-21)**

BTX 8021B		mg/kg		Analyzed By: MS						
Analyte	Result	Reporting Limit	Analyzed	Method Blank	BS	% Recovery	True Value QC	RPD	Qualifier	
Benzene*	<0.050	0.050	08/24/2021	ND	1.84	91.8	2.00	5.73		
Toluene*	<0.050	0.050	08/24/2021	ND	1.99	99.3	2.00	0.769		
Ethylbenzene*	<0.050	0.050	08/24/2021	ND	1.92	95.8	2.00	1.17		
Total Xylenes*	<0.150	0.150	08/24/2021	ND	5.69	94.8	6.00	1.57		
Total BTX	<0.300	0.300	08/24/2021	ND						

Surrogate: 4-Bromofluorobenzene (PID) 102 % 69.9-140

Chloride, SM4500CI-B		mg/kg		Analyzed By: AC						
Analyte	Result	Reporting Limit	Analyzed	Method Blank	BS	% Recovery	True Value QC	RPD	Qualifier	
Chloride	48.0	16.0	08/25/2021	ND	432	108	400	7.14		

TPH 8015M		mg/kg		Analyzed By: MS					
Analyte	Result	Reporting Limit	Analyzed	Method Blank	BS	% Recovery	True Value QC	RPD	Qualifier
GRO C6-C10*	<10.0	10.0	08/24/2021	ND	193	96.5	200	0.700	
DRO >C10-C28*	<10.0	10.0	08/24/2021	ND	223	111	200	0.110	
EXT DRO >C28-C36	<10.0	10.0	08/24/2021	ND					

Surrogate: 1-Chlorooctane 75.0 % 44.3-133

Surrogate: 1-Chlorooctadecane 82.1 % 38.9-142

Cardinal Laboratories

\*=Accredited Analyte

PLEASE NOTE: Liability and Damages. Cardinal's liability and client's exclusive remedy for any claim arising, whether based in contract or tort, shall be limited to the amount paid by client for analyses. All claims, including those for negligence and any other cause whatsoever shall be deemed waived unless made in writing and received by Cardinal within thirty (30) days after completion of the applicable service. In no event shall Cardinal be liable for incidental or consequential damages, including, without limitation, business interruptions, loss of use, or loss of profits incurred by client, its subsidiaries, affiliates or successors arising out of or related to the performance of the services hereunder by Cardinal, regardless of whether such claim is based upon any of the above stated reasons or otherwise. Results relate only to the samples identified above. This report shall not be reproduced except in full with written approval of Cardinal Laboratories.

Celey D. Keene, Lab Director/Quality Manager



PHONE (575) 393-2326 • 101 E. MARLAND • HOBBS, NM 88240

**Analytical Results For:**

BBC International, Inc.  
 Cliff Brunson  
 P.O. Box 805  
 Hobbs NM, 88241  
 Fax To: (575) 397-0397

Received: 08/24/2021  
 Reported: 08/26/2021  
 Project Name: CEDAR CANYON 22 CTB  
 Project Number: NONE GIVEN  
 Project Location: OXY - EDDY COUNTY, NM

Sampling Date: 08/23/2021  
 Sampling Type: Soil  
 Sampling Condition: Cool & Intact  
 Sample Received By: Tamara Oldaker

**Sample ID: BOTTOM 22 @ 3' (H212253-22)**

BTX 8021B		mg/kg		Analyzed By: MS					
Analyte	Result	Reporting Limit	Analyzed	Method Blank	BS	% Recovery	True Value QC	RPD	Qualifier
Benzene*	<0.050	0.050	08/25/2021	ND	1.84	91.8	2.00	5.73	
Toluene*	<0.050	0.050	08/25/2021	ND	1.99	99.3	2.00	0.769	
Ethylbenzene*	<0.050	0.050	08/25/2021	ND	1.92	95.8	2.00	1.17	
Total Xylenes*	<0.150	0.150	08/25/2021	ND	5.69	94.8	6.00	1.57	
Total BTX	<0.300	0.300	08/25/2021	ND					

Surrogate: 4-Bromofluorobenzene (PID) 103 % 69.9-140

Chloride, SM4500CI-B		mg/kg		Analyzed By: AC					
Analyte	Result	Reporting Limit	Analyzed	Method Blank	BS	% Recovery	True Value QC	RPD	Qualifier
Chloride	32.0	16.0	08/25/2021	ND	432	108	400	7.14	

TPH 8015M		mg/kg		Analyzed By: MS					
Analyte	Result	Reporting Limit	Analyzed	Method Blank	BS	% Recovery	True Value QC	RPD	Qualifier
GRO C6-C10*	<10.0	10.0	08/24/2021	ND	193	96.5	200	0.700	
DRO >C10-C28*	<10.0	10.0	08/24/2021	ND	223	111	200	0.110	
EXT DRO >C28-C36	<10.0	10.0	08/24/2021	ND					

Surrogate: 1-Chlorooctane 71.7 % 44.3-133

Surrogate: 1-Chlorooctadecane 78.8 % 38.9-142

Cardinal Laboratories

\*=Accredited Analyte

PLEASE NOTE: Liability and Damages. Cardinal's liability and client's exclusive remedy for any claim arising, whether based in contract or tort, shall be limited to the amount paid by client for analyses. All claims, including those for negligence and any other cause whatsoever shall be deemed waived unless made in writing and received by Cardinal within thirty (30) days after completion of the applicable service. In no event shall Cardinal be liable for incidental or consequential damages, including, without limitation, business interruptions, loss of use, or loss of profits incurred by client, its subsidiaries, affiliates or successors arising out of or related to the performance of the services hereunder by Cardinal, regardless of whether such claim is based upon any of the above stated reasons or otherwise. Results relate only to the samples identified above. This report shall not be reproduced except in full with written approval of Cardinal Laboratories.

Celey D. Keene, Lab Director/Quality Manager





PHONE (575) 393-2326 • 101 E. MARLAND • HOBBS, NM 88240

**Analytical Results For:**

BBC International, Inc.  
 Cliff Brunson  
 P.O. Box 805  
 Hobbs NM, 88241  
 Fax To: (575) 397-0397

Received: 08/24/2021  
 Reported: 08/26/2021  
 Project Name: CEDAR CANYON 22 CTB  
 Project Number: NONE GIVEN  
 Project Location: OXY - EDDY COUNTY, NM

Sampling Date: 08/23/2021  
 Sampling Type: Soil  
 Sampling Condition: Cool & Intact  
 Sample Received By: Tamara Oldaker

**Sample ID: BOTTOM 23 @ 3' (H212253-23)**

BTX 8021B		mg/kg		Analyzed By: MS						
Analyte	Result	Reporting Limit	Analyzed	Method Blank	BS	% Recovery	True Value QC	RPD	Qualifier	
Benzene*	<0.050	0.050	08/25/2021	ND	1.84	91.8	2.00	5.73		
Toluene*	<0.050	0.050	08/25/2021	ND	1.99	99.3	2.00	0.769		
Ethylbenzene*	<0.050	0.050	08/25/2021	ND	1.92	95.8	2.00	1.17		
Total Xylenes*	<0.150	0.150	08/25/2021	ND	5.69	94.8	6.00	1.57		
Total BTX	<0.300	0.300	08/25/2021	ND						

Surrogate: 4-Bromofluorobenzene (PID) 101 % 69.9-140

Chloride, SM4500CI-B		mg/kg		Analyzed By: AC					
Analyte	Result	Reporting Limit	Analyzed	Method Blank	BS	% Recovery	True Value QC	RPD	Qualifier
Chloride	16.0	16.0	08/25/2021	ND	432	108	400	7.14	

TPH 8015M		mg/kg		Analyzed By: MS					
Analyte	Result	Reporting Limit	Analyzed	Method Blank	BS	% Recovery	True Value QC	RPD	Qualifier
GRO C6-C10*	<10.0	10.0	08/24/2021	ND	193	96.5	200	0.700	
DRO >C10-C28*	<10.0	10.0	08/24/2021	ND	223	111	200	0.110	
EXT DRO >C28-C36	<10.0	10.0	08/24/2021	ND					

Surrogate: 1-Chlorooctane 79.7 % 44.3-133

Surrogate: 1-Chlorooctadecane 88.2 % 38.9-142

Cardinal Laboratories

\*=Accredited Analyte

PLEASE NOTE: Liability and Damages. Cardinal's liability and client's exclusive remedy for any claim arising, whether based in contract or tort, shall be limited to the amount paid by client for analyses. All claims, including those for negligence and any other cause whatsoever shall be deemed waived unless made in writing and received by Cardinal within thirty (30) days after completion of the applicable service. In no event shall Cardinal be liable for incidental or consequential damages, including, without limitation, business interruptions, loss of use, or loss of profits incurred by client, its subsidiaries, affiliates or successors arising out of or related to the performance of the services hereunder by Cardinal, regardless of whether such claim is based upon any of the above stated reasons or otherwise. Results relate only to the samples identified above. This report shall not be reproduced except in full with written approval of Cardinal Laboratories.

Celey D. Keene, Lab Director/Quality Manager



PHONE (575) 393-2326 • 101 E. MARLAND • HOBBS, NM 88240

**Analytical Results For:**

BBC International, Inc.  
 Cliff Brunson  
 P.O. Box 805  
 Hobbs NM, 88241  
 Fax To: (575) 397-0397

Received: 08/24/2021  
 Reported: 08/26/2021  
 Project Name: CEDAR CANYON 22 CTB  
 Project Number: NONE GIVEN  
 Project Location: OXY - EDDY COUNTY, NM

Sampling Date: 08/23/2021  
 Sampling Type: Soil  
 Sampling Condition: Cool & Intact  
 Sample Received By: Tamara Oldaker

**Sample ID: BOTTOM 24 @ 3' (H212253-24)**

BTX 8021B		mg/kg		Analyzed By: MS						
Analyte	Result	Reporting Limit	Analyzed	Method Blank	BS	% Recovery	True Value QC	RPD	Qualifier	
Benzene*	<0.050	0.050	08/25/2021	ND	1.84	91.8	2.00	5.73		
Toluene*	<0.050	0.050	08/25/2021	ND	1.99	99.3	2.00	0.769		
Ethylbenzene*	<0.050	0.050	08/25/2021	ND	1.92	95.8	2.00	1.17		
Total Xylenes*	<0.150	0.150	08/25/2021	ND	5.69	94.8	6.00	1.57		
Total BTX	<0.300	0.300	08/25/2021	ND						

Surrogate: 4-Bromofluorobenzene (PID) 105 % 69.9-140

Chloride, SM4500Cl-B		mg/kg		Analyzed By: AC						
Analyte	Result	Reporting Limit	Analyzed	Method Blank	BS	% Recovery	True Value QC	RPD	Qualifier	
Chloride	32.0	16.0	08/25/2021	ND	432	108	400	7.14		

TPH 8015M		mg/kg		Analyzed By: MS					
Analyte	Result	Reporting Limit	Analyzed	Method Blank	BS	% Recovery	True Value QC	RPD	Qualifier
GRO C6-C10*	<10.0	10.0	08/25/2021	ND	193	96.5	200	0.700	
DRO >C10-C28*	<10.0	10.0	08/25/2021	ND	223	111	200	0.110	
EXT DRO >C28-C36	<10.0	10.0	08/25/2021	ND					

Surrogate: 1-Chlorooctane 82.1 % 44.3-133

Surrogate: 1-Chlorooctadecane 91.4 % 38.9-142

Cardinal Laboratories

\*=Accredited Analyte

PLEASE NOTE: Liability and Damages. Cardinal's liability and client's exclusive remedy for any claim arising, whether based in contract or tort, shall be limited to the amount paid by client for analyses. All claims, including those for negligence and any other cause whatsoever shall be deemed waived unless made in writing and received by Cardinal within thirty (30) days after completion of the applicable service. In no event shall Cardinal be liable for incidental or consequential damages, including, without limitation, business interruptions, loss of use, or loss of profits incurred by client, its subsidiaries, affiliates or successors arising out of or related to the performance of the services hereunder by Cardinal, regardless of whether such claim is based upon any of the above stated reasons or otherwise. Results relate only to the samples identified above. This report shall not be reproduced except in full with written approval of Cardinal Laboratories.

Celey D. Keene, Lab Director/Quality Manager



PHONE (575) 393-2326 ° 101 E. MARLAND ° HOBBS, NM 88240

**Analytical Results For:**

BBC International, Inc.  
 Cliff Brunson  
 P.O. Box 805  
 Hobbs NM, 88241  
 Fax To: (575) 397-0397

Received: 08/24/2021  
 Reported: 08/26/2021  
 Project Name: CEDAR CANYON 22 CTB  
 Project Number: NONE GIVEN  
 Project Location: OXY - EDDY COUNTY, NM

Sampling Date: 08/23/2021  
 Sampling Type: Soil  
 Sampling Condition: Cool & Intact  
 Sample Received By: Tamara Oldaker

**Sample ID: BOTTOM 25 @ 3' (H212253-25)**

BTX 8021B		mg/kg		Analyzed By: MS						
Analyte	Result	Reporting Limit	Analyzed	Method Blank	BS	% Recovery	True Value QC	RPD	Qualifier	
Benzene*	<0.050	0.050	08/25/2021	ND	1.84	91.8	2.00	5.73		
Toluene*	<0.050	0.050	08/25/2021	ND	1.99	99.3	2.00	0.769		
Ethylbenzene*	<0.050	0.050	08/25/2021	ND	1.92	95.8	2.00	1.17		
Total Xylenes*	<0.150	0.150	08/25/2021	ND	5.69	94.8	6.00	1.57		
Total BTX	<0.300	0.300	08/25/2021	ND						

Surrogate: 4-Bromofluorobenzene (PID) 99.8 % 69.9-140

Chloride, SM4500CI-B		mg/kg		Analyzed By: AC						
Analyte	Result	Reporting Limit	Analyzed	Method Blank	BS	% Recovery	True Value QC	RPD	Qualifier	
Chloride	32.0	16.0	08/25/2021	ND	432	108	400	7.14		

TPH 8015M		mg/kg		Analyzed By: MS					
Analyte	Result	Reporting Limit	Analyzed	Method Blank	BS	% Recovery	True Value QC	RPD	Qualifier
GRO C6-C10*	<10.0	10.0	08/25/2021	ND	193	96.5	200	0.700	
DRO >C10-C28*	<10.0	10.0	08/25/2021	ND	223	111	200	0.110	
EXT DRO >C28-C36	<10.0	10.0	08/25/2021	ND					

Surrogate: 1-Chlorooctane 74.6 % 44.3-133

Surrogate: 1-Chlorooctadecane 81.9 % 38.9-142

Cardinal Laboratories

\*=Accredited Analyte

PLEASE NOTE: Liability and Damages. Cardinal's liability and client's exclusive remedy for any claim arising, whether based in contract or tort, shall be limited to the amount paid by client for analyses. All claims, including those for negligence and any other cause whatsoever shall be deemed waived unless made in writing and received by Cardinal within thirty (30) days after completion of the applicable service. In no event shall Cardinal be liable for incidental or consequential damages, including, without limitation, business interruptions, loss of use, or loss of profits incurred by client, its subsidiaries, affiliates or successors arising out of or related to the performance of the services hereunder by Cardinal, regardless of whether such claim is based upon any of the above stated reasons or otherwise. Results relate only to the samples identified above. This report shall not be reproduced except in full with written approval of Cardinal Laboratories.

Celey D. Keene, Lab Director/Quality Manager



PHONE (575) 393-2326 • 101 E. MARLAND • HOBBS, NM 88240

**Analytical Results For:**

BBC International, Inc.  
 Cliff Brunson  
 P.O. Box 805  
 Hobbs NM, 88241  
 Fax To: (575) 397-0397

Received: 08/24/2021  
 Reported: 08/26/2021  
 Project Name: CEDAR CANYON 22 CTB  
 Project Number: NONE GIVEN  
 Project Location: OXY - EDDY COUNTY, NM

Sampling Date: 08/23/2021  
 Sampling Type: Soil  
 Sampling Condition: Cool & Intact  
 Sample Received By: Tamara Oldaker

**Sample ID: BOTTOM 26 @ 3' (H212253-26)**

BTX 8021B		mg/kg		Analyzed By: MS						
Analyte	Result	Reporting Limit	Analyzed	Method Blank	BS	% Recovery	True Value QC	RPD	Qualifier	
Benzene*	<0.050	0.050	08/25/2021	ND	1.84	91.8	2.00	5.73		
Toluene*	<0.050	0.050	08/25/2021	ND	1.99	99.3	2.00	0.769		
Ethylbenzene*	<0.050	0.050	08/25/2021	ND	1.92	95.8	2.00	1.17		
Total Xylenes*	<0.150	0.150	08/25/2021	ND	5.69	94.8	6.00	1.57		
Total BTX	<0.300	0.300	08/25/2021	ND						

Surrogate: 4-Bromofluorobenzene (PID) 114 % 69.9-140

Chloride, SM4500CI-B		mg/kg		Analyzed By: AC						
Analyte	Result	Reporting Limit	Analyzed	Method Blank	BS	% Recovery	True Value QC	RPD	Qualifier	
Chloride	<16.0	16.0	08/25/2021	ND	432	108	400	7.14		

TPH 8015M		mg/kg		Analyzed By: MS					
Analyte	Result	Reporting Limit	Analyzed	Method Blank	BS	% Recovery	True Value QC	RPD	Qualifier
GRO C6-C10*	<10.0	10.0	08/25/2021	ND	193	96.5	200	0.700	
DRO >C10-C28*	<10.0	10.0	08/25/2021	ND	223	111	200	0.110	
EXT DRO >C28-C36	<10.0	10.0	08/25/2021	ND					

Surrogate: 1-Chlorooctane 80.8 % 44.3-133

Surrogate: 1-Chlorooctadecane 88.8 % 38.9-142

Cardinal Laboratories

\*=Accredited Analyte

PLEASE NOTE: Liability and Damages. Cardinal's liability and client's exclusive remedy for any claim arising, whether based in contract or tort, shall be limited to the amount paid by client for analyses. All claims, including those for negligence and any other cause whatsoever shall be deemed waived unless made in writing and received by Cardinal within thirty (30) days after completion of the applicable service. In no event shall Cardinal be liable for incidental or consequential damages, including, without limitation, business interruptions, loss of use, or loss of profits incurred by client, its subsidiaries, affiliates or successors arising out of or related to the performance of the services hereunder by Cardinal, regardless of whether such claim is based upon any of the above stated reasons or otherwise. Results relate only to the samples identified above. This report shall not be reproduced except in full with written approval of Cardinal Laboratories.

Celey D. Keene, Lab Director/Quality Manager



PHONE (575) 393-2326 ° 101 E. MARLAND ° HOBBS, NM 88240

**Analytical Results For:**

BBC International, Inc.  
 Cliff Brunson  
 P.O. Box 805  
 Hobbs NM, 88241  
 Fax To: (575) 397-0397

Received: 08/24/2021  
 Reported: 08/26/2021  
 Project Name: CEDAR CANYON 22 CTB  
 Project Number: NONE GIVEN  
 Project Location: OXY - EDDY COUNTY, NM

Sampling Date: 08/23/2021  
 Sampling Type: Soil  
 Sampling Condition: Cool & Intact  
 Sample Received By: Tamara Oldaker

**Sample ID: BOTTOM 27 @ 3' (H212253-27)**

BTEX 8021B		mg/kg		Analyzed By: MS						
Analyte	Result	Reporting Limit	Analyzed	Method Blank	BS	% Recovery	True Value QC	RPD	Qualifier	
Benzene*	<0.050	0.050	08/25/2021	ND	1.84	91.8	2.00	5.73		
Toluene*	<0.050	0.050	08/25/2021	ND	1.99	99.3	2.00	0.769		
Ethylbenzene*	<0.050	0.050	08/25/2021	ND	1.92	95.8	2.00	1.17		
Total Xylenes*	<0.150	0.150	08/25/2021	ND	5.69	94.8	6.00	1.57		
Total BTEX	<0.300	0.300	08/25/2021	ND						

Surrogate: 4-Bromofluorobenzene (PID) 101 % 69.9-140

Chloride, SM4500CI-B		mg/kg		Analyzed By: AC						
Analyte	Result	Reporting Limit	Analyzed	Method Blank	BS	% Recovery	True Value QC	RPD	Qualifier	
Chloride	16.0	16.0	08/25/2021	ND	432	108	400	7.14		

TPH 8015M		mg/kg		Analyzed By: MS					
Analyte	Result	Reporting Limit	Analyzed	Method Blank	BS	% Recovery	True Value QC	RPD	Qualifier
GRO C6-C10*	<10.0	10.0	08/25/2021	ND	193	96.5	200	0.700	
DRO >C10-C28*	<10.0	10.0	08/25/2021	ND	223	111	200	0.110	
EXT DRO >C28-C36	<10.0	10.0	08/25/2021	ND					

Surrogate: 1-Chlorooctane 81.1 % 44.3-133

Surrogate: 1-Chlorooctadecane 90.9 % 38.9-142

Cardinal Laboratories

\*=Accredited Analyte

PLEASE NOTE: Liability and Damages. Cardinal's liability and client's exclusive remedy for any claim arising, whether based in contract or tort, shall be limited to the amount paid by client for analyses. All claims, including those for negligence and any other cause whatsoever shall be deemed waived unless made in writing and received by Cardinal within thirty (30) days after completion of the applicable service. In no event shall Cardinal be liable for incidental or consequential damages, including, without limitation, business interruptions, loss of use, or loss of profits incurred by client, its subsidiaries, affiliates or successors arising out of or related to the performance of the services hereunder by Cardinal, regardless of whether such claim is based upon any of the above stated reasons or otherwise. Results relate only to the samples identified above. This report shall not be reproduced except in full with written approval of Cardinal Laboratories.

Celey D. Keene, Lab Director/Quality Manager



PHONE (575) 393-2326 • 101 E. MARLAND • HOBBS, NM 88240

**Analytical Results For:**

BBC International, Inc.  
 Cliff Brunson  
 P.O. Box 805  
 Hobbs NM, 88241  
 Fax To: (575) 397-0397

Received: 08/24/2021  
 Reported: 08/26/2021  
 Project Name: CEDAR CANYON 22 CTB  
 Project Number: NONE GIVEN  
 Project Location: OXY - EDDY COUNTY, NM

Sampling Date: 08/23/2021  
 Sampling Type: Soil  
 Sampling Condition: Cool & Intact  
 Sample Received By: Tamara Oldaker

**Sample ID: BOTTOM 28 @ 3' (H212253-28)**

BTX 8021B		mg/kg		Analyzed By: MS						
Analyte	Result	Reporting Limit	Analyzed	Method Blank	BS	% Recovery	True Value QC	RPD	Qualifier	
Benzene*	<0.050	0.050	08/25/2021	ND	1.84	91.8	2.00	5.73		
Toluene*	<0.050	0.050	08/25/2021	ND	1.99	99.3	2.00	0.769		
Ethylbenzene*	<0.050	0.050	08/25/2021	ND	1.92	95.8	2.00	1.17		
Total Xylenes*	<0.150	0.150	08/25/2021	ND	5.69	94.8	6.00	1.57		
Total BTX	<0.300	0.300	08/25/2021	ND						

Surrogate: 4-Bromofluorobenzene (PID) 99.9 % 69.9-140

Chloride, SM4500CI-B		mg/kg		Analyzed By: AC						
Analyte	Result	Reporting Limit	Analyzed	Method Blank	BS	% Recovery	True Value QC	RPD	Qualifier	
Chloride	32.0	16.0	08/25/2021	ND	432	108	400	7.14		

TPH 8015M		mg/kg		Analyzed By: MS					
Analyte	Result	Reporting Limit	Analyzed	Method Blank	BS	% Recovery	True Value QC	RPD	Qualifier
GRO C6-C10*	<10.0	10.0	08/25/2021	ND	193	96.5	200	0.700	
DRO >C10-C28*	<10.0	10.0	08/25/2021	ND	223	111	200	0.110	
EXT DRO >C28-C36	<10.0	10.0	08/25/2021	ND					

Surrogate: 1-Chlorooctane 77.9 % 44.3-133

Surrogate: 1-Chlorooctadecane 87.3 % 38.9-142

Cardinal Laboratories

\*=Accredited Analyte

PLEASE NOTE: Liability and Damages. Cardinal's liability and client's exclusive remedy for any claim arising, whether based in contract or tort, shall be limited to the amount paid by client for analyses. All claims, including those for negligence and any other cause whatsoever shall be deemed waived unless made in writing and received by Cardinal within thirty (30) days after completion of the applicable service. In no event shall Cardinal be liable for incidental or consequential damages, including, without limitation, business interruptions, loss of use, or loss of profits incurred by client, its subsidiaries, affiliates or successors arising out of or related to the performance of the services hereunder by Cardinal, regardless of whether such claim is based upon any of the above stated reasons or otherwise. Results relate only to the samples identified above. This report shall not be reproduced except in full with written approval of Cardinal Laboratories.

Celey D. Keene, Lab Director/Quality Manager





PHONE (575) 393-2326 ° 101 E. MARLAND ° HOBBS, NM 88240

**Analytical Results For:**

BBC International, Inc.  
 Cliff Brunson  
 P.O. Box 805  
 Hobbs NM, 88241  
 Fax To: (575) 397-0397

Received: 08/24/2021  
 Reported: 08/26/2021  
 Project Name: CEDAR CANYON 22 CTB  
 Project Number: NONE GIVEN  
 Project Location: OXY - EDDY COUNTY, NM

Sampling Date: 08/23/2021  
 Sampling Type: Soil  
 Sampling Condition: Cool & Intact  
 Sample Received By: Tamara Oldaker

**Sample ID: BOTTOM 29 @ 3' (H212253-29)**

BTEX 8021B		mg/kg		Analyzed By: MS						
Analyte	Result	Reporting Limit	Analyzed	Method Blank	BS	% Recovery	True Value QC	RPD	Qualifier	
Benzene*	<0.050	0.050	08/25/2021	ND	1.84	91.8	2.00	5.73		
Toluene*	<0.050	0.050	08/25/2021	ND	1.99	99.3	2.00	0.769		
Ethylbenzene*	<0.050	0.050	08/25/2021	ND	1.92	95.8	2.00	1.17		
Total Xylenes*	<0.150	0.150	08/25/2021	ND	5.69	94.8	6.00	1.57		
Total BTEX	<0.300	0.300	08/25/2021	ND						

Surrogate: 4-Bromofluorobenzene (PID) 101 % 69.9-140

Chloride, SM4500CI-B		mg/kg		Analyzed By: AC						
Analyte	Result	Reporting Limit	Analyzed	Method Blank	BS	% Recovery	True Value QC	RPD	Qualifier	
Chloride	48.0	16.0	08/25/2021	ND	432	108	400	7.14		

TPH 8015M		mg/kg		Analyzed By: MS					
Analyte	Result	Reporting Limit	Analyzed	Method Blank	BS	% Recovery	True Value QC	RPD	Qualifier
GRO C6-C10*	<10.0	10.0	08/25/2021	ND	193	96.5	200	0.700	
DRO >C10-C28*	<10.0	10.0	08/25/2021	ND	223	111	200	0.110	
EXT DRO >C28-C36	<10.0	10.0	08/25/2021	ND					

Surrogate: 1-Chlorooctane 77.1 % 44.3-133

Surrogate: 1-Chlorooctadecane 86.5 % 38.9-142

Cardinal Laboratories

\*=Accredited Analyte

PLEASE NOTE: Liability and Damages. Cardinal's liability and client's exclusive remedy for any claim arising, whether based in contract or tort, shall be limited to the amount paid by client for analyses. All claims, including those for negligence and any other cause whatsoever shall be deemed waived unless made in writing and received by Cardinal within thirty (30) days after completion of the applicable service. In no event shall Cardinal be liable for incidental or consequential damages, including, without limitation, business interruptions, loss of use, or loss of profits incurred by client, its subsidiaries, affiliates or successors arising out of or related to the performance of the services hereunder by Cardinal, regardless of whether such claim is based upon any of the above stated reasons or otherwise. Results relate only to the samples identified above. This report shall not be reproduced except in full with written approval of Cardinal Laboratories.

Celey D. Keene, Lab Director/Quality Manager



PHONE (575) 393-2326 • 101 E. MARLAND • HOBBS, NM 88240

**Analytical Results For:**

BBC International, Inc.  
 Cliff Brunson  
 P.O. Box 805  
 Hobbs NM, 88241  
 Fax To: (575) 397-0397

Received: 08/24/2021  
 Reported: 08/26/2021  
 Project Name: CEDAR CANYON 22 CTB  
 Project Number: NONE GIVEN  
 Project Location: OXY - EDDY COUNTY, NM

Sampling Date: 08/23/2021  
 Sampling Type: Soil  
 Sampling Condition: Cool & Intact  
 Sample Received By: Tamara Oldaker

**Sample ID: BOTTOM 30 @ 3' (H212253-30)**

BTEx 8021B		mg/kg		Analyzed By: MS						
Analyte	Result	Reporting Limit	Analyzed	Method Blank	BS	% Recovery	True Value QC	RPD	Qualifier	
Benzene*	<0.050	0.050	08/25/2021	ND	1.84	91.8	2.00	5.73		
Toluene*	<0.050	0.050	08/25/2021	ND	1.99	99.3	2.00	0.769		
Ethylbenzene*	<0.050	0.050	08/25/2021	ND	1.92	95.8	2.00	1.17		
Total Xylenes*	<0.150	0.150	08/25/2021	ND	5.69	94.8	6.00	1.57		
Total BTEx	<0.300	0.300	08/25/2021	ND						

Surrogate: 4-Bromofluorobenzene (PID) 104 % 69.9-140

Chloride, SM4500Cl-B		mg/kg		Analyzed By: AC						
Analyte	Result	Reporting Limit	Analyzed	Method Blank	BS	% Recovery	True Value QC	RPD	Qualifier	
Chloride	16.0	16.0	08/25/2021	ND	432	108	400	7.14		

TPH 8015M		mg/kg		Analyzed By: MS					
Analyte	Result	Reporting Limit	Analyzed	Method Blank	BS	% Recovery	True Value QC	RPD	Qualifier
GRO C6-C10*	<10.0	10.0	08/25/2021	ND	193	96.5	200	0.700	
DRO >C10-C28*	<10.0	10.0	08/25/2021	ND	223	111	200	0.110	
EXT DRO >C28-C36	<10.0	10.0	08/25/2021	ND					

Surrogate: 1-Chlorooctane 66.9 % 44.3-133

Surrogate: 1-Chlorooctadecane 73.9 % 38.9-142

Cardinal Laboratories

\*=Accredited Analyte

PLEASE NOTE: Liability and Damages. Cardinal's liability and client's exclusive remedy for any claim arising, whether based in contract or tort, shall be limited to the amount paid by client for analyses. All claims, including those for negligence and any other cause whatsoever shall be deemed waived unless made in writing and received by Cardinal within thirty (30) days after completion of the applicable service. In no event shall Cardinal be liable for incidental or consequential damages, including, without limitation, business interruptions, loss of use, or loss of profits incurred by client, its subsidiaries, affiliates or successors arising out of or related to the performance of the services hereunder by Cardinal, regardless of whether such claim is based upon any of the above stated reasons or otherwise. Results relate only to the samples identified above. This report shall not be reproduced except in full with written approval of Cardinal Laboratories.

Celey D. Keene, Lab Director/Quality Manager



PHONE (575) 393-2326 ° 101 E. MARLAND ° HOBBS, NM 88240

**Analytical Results For:**

BBC International, Inc.  
 Cliff Brunson  
 P.O. Box 805  
 Hobbs NM, 88241  
 Fax To: (575) 397-0397

Received: 08/24/2021  
 Reported: 08/26/2021  
 Project Name: CEDAR CANYON 22 CTB  
 Project Number: NONE GIVEN  
 Project Location: OXY - EDDY COUNTY, NM

Sampling Date: 08/23/2021  
 Sampling Type: Soil  
 Sampling Condition: Cool & Intact  
 Sample Received By: Tamara Oldaker

**Sample ID: SIDEWALL 1 (H212253-31)**

BTX 8021B			mg/kg							
			Analyzed By: MS							
Analyte	Result	Reporting Limit	Analyzed	Method Blank	BS	% Recovery	True Value QC	RPD	Qualifier	
Benzene*	<0.050	0.050	08/25/2021	ND	1.84	91.8	2.00	5.73		
Toluene*	<0.050	0.050	08/25/2021	ND	1.99	99.3	2.00	0.769		
Ethylbenzene*	<0.050	0.050	08/25/2021	ND	1.92	95.8	2.00	1.17		
Total Xylenes*	<0.150	0.150	08/25/2021	ND	5.69	94.8	6.00	1.57		
Total BTX	<0.300	0.300	08/25/2021	ND						

Surrogate: 4-Bromofluorobenzene (PID) 104 % 69.9-140

Chloride, SM4500CI-B			mg/kg							
			Analyzed By: AC							
Analyte	Result	Reporting Limit	Analyzed	Method Blank	BS	% Recovery	True Value QC	RPD	Qualifier	
Chloride	<16.0	16.0	08/25/2021	ND	432	108	400	7.14		

TPH 8015M			mg/kg							
			Analyzed By: MS							
Analyte	Result	Reporting Limit	Analyzed	Method Blank	BS	% Recovery	True Value QC	RPD	Qualifier	
GRO C6-C10*	<10.0	10.0	08/25/2021	ND	221	110	200	1.94	QM-07, QR-03	
DRO >C10-C28*	<10.0	10.0	08/25/2021	ND	230	115	200	0.508		
EXT DRO >C28-C36	<10.0	10.0	08/25/2021	ND						

Surrogate: 1-Chlorooctane 75.6 % 44.3-133

Surrogate: 1-Chlorooctadecane 75.7 % 38.9-142

Cardinal Laboratories

\*=Accredited Analyte

PLEASE NOTE: Liability and Damages. Cardinal's liability and client's exclusive remedy for any claim arising, whether based in contract or tort, shall be limited to the amount paid by client for analyses. All claims, including those for negligence and any other cause whatsoever shall be deemed waived unless made in writing and received by Cardinal within thirty (30) days after completion of the applicable service. In no event shall Cardinal be liable for incidental or consequential damages, including, without limitation, business interruptions, loss of use, or loss of profits incurred by client, its subsidiaries, affiliates or successors arising out of or related to the performance of the services hereunder by Cardinal, regardless of whether such claim is based upon any of the above stated reasons or otherwise. Results relate only to the samples identified above. This report shall not be reproduced except in full with written approval of Cardinal Laboratories.

Celey D. Keene, Lab Director/Quality Manager



PHONE (575) 393-2326 ° 101 E. MARLAND ° HOBBS, NM 88240

**Analytical Results For:**

BBC International, Inc.  
 Cliff Brunson  
 P.O. Box 805  
 Hobbs NM, 88241  
 Fax To: (575) 397-0397

Received: 08/24/2021  
 Reported: 08/26/2021  
 Project Name: CEDAR CANYON 22 CTB  
 Project Number: NONE GIVEN  
 Project Location: OXY - EDDY COUNTY, NM

Sampling Date: 08/23/2021  
 Sampling Type: Soil  
 Sampling Condition: Cool & Intact  
 Sample Received By: Tamara Oldaker

**Sample ID: SIDEWALL 2 (H212253-32)**

BTX 8021B		mg/kg		Analyzed By: MS					
Analyte	Result	Reporting Limit	Analyzed	Method Blank	BS	% Recovery	True Value QC	RPD	Qualifier
Benzene*	<0.050	0.050	08/25/2021	ND	1.84	91.8	2.00	5.73	
Toluene*	<0.050	0.050	08/25/2021	ND	1.99	99.3	2.00	0.769	
Ethylbenzene*	<0.050	0.050	08/25/2021	ND	1.92	95.8	2.00	1.17	
Total Xylenes*	<0.150	0.150	08/25/2021	ND	5.69	94.8	6.00	1.57	
Total BTX	<0.300	0.300	08/25/2021	ND					

Surrogate: 4-Bromofluorobenzene (PID) 103 % 69.9-140

Chloride, SM4500CI-B		mg/kg		Analyzed By: AC						
Analyte	Result	Reporting Limit	Analyzed	Method Blank	BS	% Recovery	True Value QC	RPD	Qualifier	
Chloride	32.0	16.0	08/25/2021	ND	432	108	400	7.14		

TPH 8015M		mg/kg		Analyzed By: MS					
Analyte	Result	Reporting Limit	Analyzed	Method Blank	BS	% Recovery	True Value QC	RPD	Qualifier
GRO C6-C10*	<10.0	10.0	08/25/2021	ND	221	110	200	1.94	
DRO >C10-C28*	<10.0	10.0	08/25/2021	ND	230	115	200	0.508	
EXT DRO >C28-C36	10.1	10.0	08/25/2021	ND					

Surrogate: 1-Chlorooctane 79.2 % 44.3-133

Surrogate: 1-Chlorooctadecane 78.7 % 38.9-142

Cardinal Laboratories

\*=Accredited Analyte

PLEASE NOTE: Liability and Damages. Cardinal's liability and client's exclusive remedy for any claim arising, whether based in contract or tort, shall be limited to the amount paid by client for analyses. All claims, including those for negligence and any other cause whatsoever shall be deemed waived unless made in writing and received by Cardinal within thirty (30) days after completion of the applicable service. In no event shall Cardinal be liable for incidental or consequential damages, including, without limitation, business interruptions, loss of use, or loss of profits incurred by client, its subsidiaries, affiliates or successors arising out of or related to the performance of the services hereunder by Cardinal, regardless of whether such claim is based upon any of the above stated reasons or otherwise. Results relate only to the samples identified above. This report shall not be reproduced except in full with written approval of Cardinal Laboratories.

Celey D. Keene, Lab Director/Quality Manager



PHONE (575) 393-2326 ° 101 E. MARLAND ° HOBBS, NM 88240

**Analytical Results For:**

BBC International, Inc.  
 Cliff Brunson  
 P.O. Box 805  
 Hobbs NM, 88241  
 Fax To: (575) 397-0397

Received: 08/24/2021  
 Reported: 08/26/2021  
 Project Name: CEDAR CANYON 22 CTB  
 Project Number: NONE GIVEN  
 Project Location: OXY - EDDY COUNTY, NM

Sampling Date: 08/23/2021  
 Sampling Type: Soil  
 Sampling Condition: Cool & Intact  
 Sample Received By: Tamara Oldaker

**Sample ID: SIDEWALL 3 (H212253-33)**

BTEx 8021B		mg/kg		Analyzed By: MS						
Analyte	Result	Reporting Limit	Analyzed	Method Blank	BS	% Recovery	True Value QC	RPD	Qualifier	
Benzene*	<0.050	0.050	08/25/2021	ND	1.84	91.8	2.00	5.73		
Toluene*	<0.050	0.050	08/25/2021	ND	1.99	99.3	2.00	0.769		
Ethylbenzene*	<0.050	0.050	08/25/2021	ND	1.92	95.8	2.00	1.17		
Total Xylenes*	<0.150	0.150	08/25/2021	ND	5.69	94.8	6.00	1.57		
Total BTEx	<0.300	0.300	08/25/2021	ND						

Surrogate: 4-Bromofluorobenzene (PID) 102 % 69.9-140

Chloride, SM4500Cl-B		mg/kg		Analyzed By: AC						
Analyte	Result	Reporting Limit	Analyzed	Method Blank	BS	% Recovery	True Value QC	RPD	Qualifier	
Chloride	16.0	16.0	08/25/2021	ND	432	108	400	7.14		

TPH 8015M		mg/kg		Analyzed By: MS					
Analyte	Result	Reporting Limit	Analyzed	Method Blank	BS	% Recovery	True Value QC	RPD	Qualifier
GRO C6-C10*	<10.0	10.0	08/25/2021	ND	221	110	200	1.94	
DRO >C10-C28*	<10.0	10.0	08/25/2021	ND	230	115	200	0.508	
EXT DRO >C28-C36	<10.0	10.0	08/25/2021	ND					

Surrogate: 1-Chlorooctane 79.4 % 44.3-133

Surrogate: 1-Chlorooctadecane 79.1 % 38.9-142

Cardinal Laboratories

\*=Accredited Analyte

PLEASE NOTE: Liability and Damages. Cardinal's liability and client's exclusive remedy for any claim arising, whether based in contract or tort, shall be limited to the amount paid by client for analyses. All claims, including those for negligence and any other cause whatsoever shall be deemed waived unless made in writing and received by Cardinal within thirty (30) days after completion of the applicable service. In no event shall Cardinal be liable for incidental or consequential damages, including, without limitation, business interruptions, loss of use, or loss of profits incurred by client, its subsidiaries, affiliates or successors arising out of or related to the performance of the services hereunder by Cardinal, regardless of whether such claim is based upon any of the above stated reasons or otherwise. Results relate only to the samples identified above. This report shall not be reproduced except in full with written approval of Cardinal Laboratories.

Celey D. Keene, Lab Director/Quality Manager



PHONE (575) 393-2326 ° 101 E. MARLAND ° HOBBS, NM 88240

**Analytical Results For:**

BBC International, Inc.  
 Cliff Brunson  
 P.O. Box 805  
 Hobbs NM, 88241  
 Fax To: (575) 397-0397

Received: 08/24/2021  
 Reported: 08/26/2021  
 Project Name: CEDAR CANYON 22 CTB  
 Project Number: NONE GIVEN  
 Project Location: OXY - EDDY COUNTY, NM

Sampling Date: 08/23/2021  
 Sampling Type: Soil  
 Sampling Condition: Cool & Intact  
 Sample Received By: Tamara Oldaker

**Sample ID: SIDEWALL 4 (H212253-34)**

BTX 8021B			mg/kg							
			Analyzed By: MS							
Analyte	Result	Reporting Limit	Analyzed	Method Blank	BS	% Recovery	True Value QC	RPD	Qualifier	
Benzene*	<0.050	0.050	08/25/2021	ND	1.84	91.8	2.00	5.73		
Toluene*	<0.050	0.050	08/25/2021	ND	1.99	99.3	2.00	0.769		
Ethylbenzene*	<0.050	0.050	08/25/2021	ND	1.92	95.8	2.00	1.17		
Total Xylenes*	<0.150	0.150	08/25/2021	ND	5.69	94.8	6.00	1.57		
Total BTX	<0.300	0.300	08/25/2021	ND						

Surrogate: 4-Bromofluorobenzene (PID) 102 % 69.9-140

Chloride, SM4500CI-B			mg/kg							
			Analyzed By: AC							
Analyte	Result	Reporting Limit	Analyzed	Method Blank	BS	% Recovery	True Value QC	RPD	Qualifier	
Chloride	<16.0	16.0	08/25/2021	ND	432	108	400	7.14		

TPH 8015M			mg/kg							
			Analyzed By: MS							
Analyte	Result	Reporting Limit	Analyzed	Method Blank	BS	% Recovery	True Value QC	RPD	Qualifier	
GRO C6-C10*	<10.0	10.0	08/25/2021	ND	221	110	200	1.94		
DRO >C10-C28*	<10.0	10.0	08/25/2021	ND	230	115	200	0.508		
EXT DRO >C28-C36	<10.0	10.0	08/25/2021	ND						

Surrogate: 1-Chlorooctane 73.1 % 44.3-133

Surrogate: 1-Chlorooctadecane 72.3 % 38.9-142

Cardinal Laboratories

\*=Accredited Analyte

PLEASE NOTE: Liability and Damages. Cardinal's liability and client's exclusive remedy for any claim arising, whether based in contract or tort, shall be limited to the amount paid by client for analyses. All claims, including those for negligence and any other cause whatsoever shall be deemed waived unless made in writing and received by Cardinal within thirty (30) days after completion of the applicable service. In no event shall Cardinal be liable for incidental or consequential damages, including, without limitation, business interruptions, loss of use, or loss of profits incurred by client, its subsidiaries, affiliates or successors arising out of or related to the performance of the services hereunder by Cardinal, regardless of whether such claim is based upon any of the above stated reasons or otherwise. Results relate only to the samples identified above. This report shall not be reproduced except in full with written approval of Cardinal Laboratories.

Celey D. Keene, Lab Director/Quality Manager





PHONE (575) 393-2326 ° 101 E. MARLAND ° HOBBS, NM 88240

**Analytical Results For:**

BBC International, Inc.  
 Cliff Brunson  
 P.O. Box 805  
 Hobbs NM, 88241  
 Fax To: (575) 397-0397

Received: 08/24/2021  
 Reported: 08/26/2021  
 Project Name: CEDAR CANYON 22 CTB  
 Project Number: NONE GIVEN  
 Project Location: OXY - EDDY COUNTY, NM

Sampling Date: 08/23/2021  
 Sampling Type: Soil  
 Sampling Condition: Cool & Intact  
 Sample Received By: Tamara Oldaker

**Sample ID: SIDEWALL 5 (H212253-35)**

BTX 8021B		mg/kg		Analyzed By: MS					
Analyte	Result	Reporting Limit	Analyzed	Method Blank	BS	% Recovery	True Value QC	RPD	Qualifier
Benzene*	<0.050	0.050	08/25/2021	ND	1.84	91.8	2.00	5.73	
Toluene*	<0.050	0.050	08/25/2021	ND	1.99	99.3	2.00	0.769	
Ethylbenzene*	<0.050	0.050	08/25/2021	ND	1.92	95.8	2.00	1.17	
Total Xylenes*	<0.150	0.150	08/25/2021	ND	5.69	94.8	6.00	1.57	
Total BTX	<0.300	0.300	08/25/2021	ND					

Surrogate: 4-Bromofluorobenzene (PID) 104 % 69.9-140

Chloride, SM4500CI-B		mg/kg		Analyzed By: AC						
Analyte	Result	Reporting Limit	Analyzed	Method Blank	BS	% Recovery	True Value QC	RPD	Qualifier	
Chloride	<16.0	16.0	08/25/2021	ND	432	108	400	7.14		

TPH 8015M		mg/kg		Analyzed By: MS					
Analyte	Result	Reporting Limit	Analyzed	Method Blank	BS	% Recovery	True Value QC	RPD	Qualifier
GRO C6-C10*	<10.0	10.0	08/25/2021	ND	221	110	200	1.94	
DRO >C10-C28*	<10.0	10.0	08/25/2021	ND	230	115	200	0.508	
EXT DRO >C28-C36	<10.0	10.0	08/25/2021	ND					

Surrogate: 1-Chlorooctane 74.8 % 44.3-133

Surrogate: 1-Chlorooctadecane 74.5 % 38.9-142

Cardinal Laboratories

\*=Accredited Analyte

PLEASE NOTE: Liability and Damages. Cardinal's liability and client's exclusive remedy for any claim arising, whether based in contract or tort, shall be limited to the amount paid by client for analyses. All claims, including those for negligence and any other cause whatsoever shall be deemed waived unless made in writing and received by Cardinal within thirty (30) days after completion of the applicable service. In no event shall Cardinal be liable for incidental or consequential damages, including, without limitation, business interruptions, loss of use, or loss of profits incurred by client, its subsidiaries, affiliates or successors arising out of or related to the performance of the services hereunder by Cardinal, regardless of whether such claim is based upon any of the above stated reasons or otherwise. Results relate only to the samples identified above. This report shall not be reproduced except in full with written approval of Cardinal Laboratories.

Celey D. Keene, Lab Director/Quality Manager



PHONE (575) 393-2326 ° 101 E. MARLAND ° HOBBS, NM 88240

**Analytical Results For:**

BBC International, Inc.  
 Cliff Brunson  
 P.O. Box 805  
 Hobbs NM, 88241  
 Fax To: (575) 397-0397

Received: 08/24/2021  
 Reported: 08/26/2021  
 Project Name: CEDAR CANYON 22 CTB  
 Project Number: NONE GIVEN  
 Project Location: OXY - EDDY COUNTY, NM

Sampling Date: 08/23/2021  
 Sampling Type: Soil  
 Sampling Condition: Cool & Intact  
 Sample Received By: Tamara Oldaker

**Sample ID: SIDEWALL 6 (H212253-36)**

BTX 8021B			mg/kg							
			Analyzed By: MS							
Analyte	Result	Reporting Limit	Analyzed	Method Blank	BS	% Recovery	True Value QC	RPD	Qualifier	
Benzene*	<0.050	0.050	08/25/2021	ND	1.84	91.8	2.00	5.73		
Toluene*	<0.050	0.050	08/25/2021	ND	1.99	99.3	2.00	0.769		
Ethylbenzene*	<0.050	0.050	08/25/2021	ND	1.92	95.8	2.00	1.17		
Total Xylenes*	<0.150	0.150	08/25/2021	ND	5.69	94.8	6.00	1.57		
Total BTX	<0.300	0.300	08/25/2021	ND						

Surrogate: 4-Bromofluorobenzene (PID) 103 % 69.9-140

Chloride, SM4500CI-B			mg/kg							
			Analyzed By: AC							
Analyte	Result	Reporting Limit	Analyzed	Method Blank	BS	% Recovery	True Value QC	RPD	Qualifier	
Chloride	<16.0	16.0	08/25/2021	ND	432	108	400	7.14		

TPH 8015M			mg/kg							
			Analyzed By: MS							
Analyte	Result	Reporting Limit	Analyzed	Method Blank	BS	% Recovery	True Value QC	RPD	Qualifier	
GRO C6-C10*	<10.0	10.0	08/25/2021	ND	221	110	200	1.94		
DRO >C10-C28*	<10.0	10.0	08/25/2021	ND	230	115	200	0.508		
EXT DRO >C28-C36	16.7	10.0	08/25/2021	ND						

Surrogate: 1-Chlorooctane 87.2 % 44.3-133

Surrogate: 1-Chlorooctadecane 86.8 % 38.9-142

Cardinal Laboratories

\*=Accredited Analyte

PLEASE NOTE: Liability and Damages. Cardinal's liability and client's exclusive remedy for any claim arising, whether based in contract or tort, shall be limited to the amount paid by client for analyses. All claims, including those for negligence and any other cause whatsoever shall be deemed waived unless made in writing and received by Cardinal within thirty (30) days after completion of the applicable service. In no event shall Cardinal be liable for incidental or consequential damages, including, without limitation, business interruptions, loss of use, or loss of profits incurred by client, its subsidiaries, affiliates or successors arising out of or related to the performance of the services hereunder by Cardinal, regardless of whether such claim is based upon any of the above stated reasons or otherwise. Results relate only to the samples identified above. This report shall not be reproduced except in full with written approval of Cardinal Laboratories.

Celey D. Keene, Lab Director/Quality Manager



PHONE (575) 393-2326 ° 101 E. MARLAND ° HOBBS, NM 88240

**Analytical Results For:**

BBC International, Inc.  
 Cliff Brunson  
 P.O. Box 805  
 Hobbs NM, 88241  
 Fax To: (575) 397-0397

Received: 08/24/2021  
 Reported: 08/26/2021  
 Project Name: CEDAR CANYON 22 CTB  
 Project Number: NONE GIVEN  
 Project Location: OXY - EDDY COUNTY, NM

Sampling Date: 08/23/2021  
 Sampling Type: Soil  
 Sampling Condition: Cool & Intact  
 Sample Received By: Tamara Oldaker

**Sample ID: SIDEWALL 7 (H212253-37)**

BTX 8021B		mg/kg		Analyzed By: MS						
Analyte	Result	Reporting Limit	Analyzed	Method Blank	BS	% Recovery	True Value QC	RPD	Qualifier	
Benzene*	<0.050	0.050	08/25/2021	ND	1.84	91.8	2.00	5.73		
Toluene*	<0.050	0.050	08/25/2021	ND	1.99	99.3	2.00	0.769		
Ethylbenzene*	<0.050	0.050	08/25/2021	ND	1.92	95.8	2.00	1.17		
Total Xylenes*	<0.150	0.150	08/25/2021	ND	5.69	94.8	6.00	1.57		
Total BTX	<0.300	0.300	08/25/2021	ND						

Surrogate: 4-Bromofluorobenzene (PID) 102 % 69.9-140

Chloride, SM4500CI-B		mg/kg		Analyzed By: AC						
Analyte	Result	Reporting Limit	Analyzed	Method Blank	BS	% Recovery	True Value QC	RPD	Qualifier	
Chloride	<16.0	16.0	08/25/2021	ND	432	108	400	7.14		

TPH 8015M		mg/kg		Analyzed By: MS					
Analyte	Result	Reporting Limit	Analyzed	Method Blank	BS	% Recovery	True Value QC	RPD	Qualifier
GRO C6-C10*	<10.0	10.0	08/25/2021	ND	221	110	200	1.94	
DRO >C10-C28*	11.3	10.0	08/25/2021	ND	230	115	200	0.508	
EXT DRO >C28-C36	30.9	10.0	08/25/2021	ND					

Surrogate: 1-Chlorooctane 73.4 % 44.3-133

Surrogate: 1-Chlorooctadecane 73.7 % 38.9-142

Cardinal Laboratories

\*=Accredited Analyte

PLEASE NOTE: Liability and Damages. Cardinal's liability and client's exclusive remedy for any claim arising, whether based in contract or tort, shall be limited to the amount paid by client for analyses. All claims, including those for negligence and any other cause whatsoever shall be deemed waived unless made in writing and received by Cardinal within thirty (30) days after completion of the applicable service. In no event shall Cardinal be liable for incidental or consequential damages, including, without limitation, business interruptions, loss of use, or loss of profits incurred by client, its subsidiaries, affiliates or successors arising out of or related to the performance of the services hereunder by Cardinal, regardless of whether such claim is based upon any of the above stated reasons or otherwise. Results relate only to the samples identified above. This report shall not be reproduced except in full with written approval of Cardinal Laboratories.

Celey D. Keene, Lab Director/Quality Manager



PHONE (575) 393-2326 ° 101 E. MARLAND ° HOBBS, NM 88240

**Analytical Results For:**

BBC International, Inc.  
 Cliff Brunson  
 P.O. Box 805  
 Hobbs NM, 88241  
 Fax To: (575) 397-0397

Received: 08/24/2021  
 Reported: 08/26/2021  
 Project Name: CEDAR CANYON 22 CTB  
 Project Number: NONE GIVEN  
 Project Location: OXY - EDDY COUNTY, NM

Sampling Date: 08/23/2021  
 Sampling Type: Soil  
 Sampling Condition: Cool & Intact  
 Sample Received By: Tamara Oldaker

**Sample ID: SIDEWALL 8 (H212253-38)**

BTX 8021B			mg/kg							
			Analyzed By: MS							
Analyte	Result	Reporting Limit	Analyzed	Method Blank	BS	% Recovery	True Value QC	RPD	Qualifier	
Benzene*	<0.050	0.050	08/25/2021	ND	1.84	91.8	2.00	5.73		
Toluene*	<0.050	0.050	08/25/2021	ND	1.99	99.3	2.00	0.769		
Ethylbenzene*	<0.050	0.050	08/25/2021	ND	1.92	95.8	2.00	1.17		
Total Xylenes*	<0.150	0.150	08/25/2021	ND	5.69	94.8	6.00	1.57		
Total BTX	<0.300	0.300	08/25/2021	ND						

Surrogate: 4-Bromofluorobenzene (PID) 101 % 69.9-140

Chloride, SM4500CI-B			mg/kg							
			Analyzed By: AC							
Analyte	Result	Reporting Limit	Analyzed	Method Blank	BS	% Recovery	True Value QC	RPD	Qualifier	
Chloride	<16.0	16.0	08/25/2021	ND	432	108	400	7.14		

TPH 8015M			mg/kg							
			Analyzed By: MS							
Analyte	Result	Reporting Limit	Analyzed	Method Blank	BS	% Recovery	True Value QC	RPD	Qualifier	
GRO C6-C10*	<10.0	10.0	08/25/2021	ND	221	110	200	1.94		
<b>DRO &gt;C10-C28*</b>	<b>10.4</b>	10.0	08/25/2021	ND	230	115	200	0.508		
<b>EXT DRO &gt;C28-C36</b>	<b>21.7</b>	10.0	08/25/2021	ND						

Surrogate: 1-Chlorooctane 75.8 % 44.3-133

Surrogate: 1-Chlorooctadecane 76.5 % 38.9-142

Cardinal Laboratories

\*=Accredited Analyte

PLEASE NOTE: Liability and Damages. Cardinal's liability and client's exclusive remedy for any claim arising, whether based in contract or tort, shall be limited to the amount paid by client for analyses. All claims, including those for negligence and any other cause whatsoever shall be deemed waived unless made in writing and received by Cardinal within thirty (30) days after completion of the applicable service. In no event shall Cardinal be liable for incidental or consequential damages, including, without limitation, business interruptions, loss of use, or loss of profits incurred by client, its subsidiaries, affiliates or successors arising out of or related to the performance of the services hereunder by Cardinal, regardless of whether such claim is based upon any of the above stated reasons or otherwise. Results relate only to the samples identified above. This report shall not be reproduced except in full with written approval of Cardinal Laboratories.

Celey D. Keene, Lab Director/Quality Manager



PHONE (575) 393-2326 ° 101 E. MARLAND ° HOBBS, NM 88240

**Analytical Results For:**

BBC International, Inc.  
 Cliff Brunson  
 P.O. Box 805  
 Hobbs NM, 88241  
 Fax To: (575) 397-0397

Received: 08/24/2021  
 Reported: 08/26/2021  
 Project Name: CEDAR CANYON 22 CTB  
 Project Number: NONE GIVEN  
 Project Location: OXY - EDDY COUNTY, NM

Sampling Date: 08/23/2021  
 Sampling Type: Soil  
 Sampling Condition: Cool & Intact  
 Sample Received By: Tamara Oldaker

**Sample ID: SIDEWALL 9 (H212253-39)**

BTX 8021B			mg/kg							
			Analyzed By: MS							
Analyte	Result	Reporting Limit	Analyzed	Method Blank	BS	% Recovery	True Value QC	RPD	Qualifier	
Benzene*	<0.050	0.050	08/25/2021	ND	1.75	87.6	2.00	3.40		
Toluene*	<0.050	0.050	08/25/2021	ND	1.91	95.6	2.00	2.72		
Ethylbenzene*	<0.050	0.050	08/25/2021	ND	1.86	93.1	2.00	3.34		
Total Xylenes*	<0.150	0.150	08/25/2021	ND	5.66	94.3	6.00	2.88		
Total BTX	<0.300	0.300	08/25/2021	ND						

Surrogate: 4-Bromofluorobenzene (PID) 98.6 % 69.9-140

Chloride, SM4500CI-B			mg/kg							
			Analyzed By: AC							
Analyte	Result	Reporting Limit	Analyzed	Method Blank	BS	% Recovery	True Value QC	RPD	Qualifier	
Chloride	32.0	16.0	08/25/2021	ND	416	104	400	0.00		

TPH 8015M			mg/kg							
			Analyzed By: MS							
Analyte	Result	Reporting Limit	Analyzed	Method Blank	BS	% Recovery	True Value QC	RPD	Qualifier	
GRO C6-C10*	<10.0	10.0	08/25/2021	ND	221	110	200	1.94		
DRO >C10-C28*	<10.0	10.0	08/25/2021	ND	230	115	200	0.508		
EXT DRO >C28-C36	<10.0	10.0	08/25/2021	ND						

Surrogate: 1-Chlorooctane 77.2 % 44.3-133

Surrogate: 1-Chlorooctadecane 77.6 % 38.9-142

Cardinal Laboratories

\*=Accredited Analyte

PLEASE NOTE: Liability and Damages. Cardinal's liability and client's exclusive remedy for any claim arising, whether based in contract or tort, shall be limited to the amount paid by client for analyses. All claims, including those for negligence and any other cause whatsoever shall be deemed waived unless made in writing and received by Cardinal within thirty (30) days after completion of the applicable service. In no event shall Cardinal be liable for incidental or consequential damages, including, without limitation, business interruptions, loss of use, or loss of profits incurred by client, its subsidiaries, affiliates or successors arising out of or related to the performance of the services hereunder by Cardinal, regardless of whether such claim is based upon any of the above stated reasons or otherwise. Results relate only to the samples identified above. This report shall not be reproduced except in full with written approval of Cardinal Laboratories.

Celey D. Keene, Lab Director/Quality Manager



PHONE (575) 393-2326 ° 101 E. MARLAND ° HOBBS, NM 88240

**Analytical Results For:**

BBC International, Inc.  
 Cliff Brunson  
 P.O. Box 805  
 Hobbs NM, 88241  
 Fax To: (575) 397-0397

Received: 08/24/2021  
 Reported: 08/26/2021  
 Project Name: CEDAR CANYON 22 CTB  
 Project Number: NONE GIVEN  
 Project Location: OXY - EDDY COUNTY, NM

Sampling Date: 08/23/2021  
 Sampling Type: Soil  
 Sampling Condition: Cool & Intact  
 Sample Received By: Tamara Oldaker

**Sample ID: SIDEWALL 10 (H212253-40)**

BTEx 8021B		mg/kg		Analyzed By: MS						
Analyte	Result	Reporting Limit	Analyzed	Method Blank	BS	% Recovery	True Value QC	RPD	Qualifier	
Benzene*	<0.050	0.050	08/25/2021	ND	1.75	87.6	2.00	3.40		
Toluene*	<0.050	0.050	08/25/2021	ND	1.91	95.6	2.00	2.72		
Ethylbenzene*	<0.050	0.050	08/25/2021	ND	1.86	93.1	2.00	3.34		
Total Xylenes*	<0.150	0.150	08/25/2021	ND	5.66	94.3	6.00	2.88		
Total BTEx	<0.300	0.300	08/25/2021	ND						

Surrogate: 4-Bromofluorobenzene (PID) 99.7 % 69.9-140

Chloride, SM4500CI-B		mg/kg		Analyzed By: AC					
Analyte	Result	Reporting Limit	Analyzed	Method Blank	BS	% Recovery	True Value QC	RPD	Qualifier
Chloride	32.0	16.0	08/25/2021	ND	416	104	400	0.00	

TPH 8015M		mg/kg		Analyzed By: MS					
Analyte	Result	Reporting Limit	Analyzed	Method Blank	BS	% Recovery	True Value QC	RPD	Qualifier
GRO C6-C10*	<10.0	10.0	08/25/2021	ND	221	110	200	1.94	
DRO >C10-C28*	<10.0	10.0	08/25/2021	ND	230	115	200	0.508	
EXT DRO >C28-C36	<10.0	10.0	08/25/2021	ND					

Surrogate: 1-Chlorooctane 72.9 % 44.3-133

Surrogate: 1-Chlorooctadecane 73.2 % 38.9-142

Cardinal Laboratories

\*=Accredited Analyte

PLEASE NOTE: Liability and Damages. Cardinal's liability and client's exclusive remedy for any claim arising, whether based in contract or tort, shall be limited to the amount paid by client for analyses. All claims, including those for negligence and any other cause whatsoever shall be deemed waived unless made in writing and received by Cardinal within thirty (30) days after completion of the applicable service. In no event shall Cardinal be liable for incidental or consequential damages, including, without limitation, business interruptions, loss of use, or loss of profits incurred by client, its subsidiaries, affiliates or successors arising out of or related to the performance of the services hereunder by Cardinal, regardless of whether such claim is based upon any of the above stated reasons or otherwise. Results relate only to the samples identified above. This report shall not be reproduced except in full with written approval of Cardinal Laboratories.

Celey D. Keene, Lab Director/Quality Manager





PHONE (575) 393-2326 ° 101 E. MARLAND ° HOBBS, NM 88240

**Analytical Results For:**

BBC International, Inc.  
 Cliff Brunson  
 P.O. Box 805  
 Hobbs NM, 88241  
 Fax To: (575) 397-0397

Received:	08/24/2021	Sampling Date:	08/23/2021
Reported:	08/26/2021	Sampling Type:	Soil
Project Name:	CEDAR CANYON 22 CTB	Sampling Condition:	Cool & Intact
Project Number:	NONE GIVEN	Sample Received By:	Tamara Oldaker
Project Location:	OXY - EDDY COUNTY, NM		

**Sample ID: SIDEWALL 11 (H212253-41)**

BTEX 8021B		mg/kg		Analyzed By: MS						
Analyte	Result	Reporting Limit	Analyzed	Method Blank	BS	% Recovery	True Value QC	RPD	Qualifier	
Benzene*	<0.050	0.050	08/25/2021	ND	1.75	87.6	2.00	3.40		
Toluene*	<0.050	0.050	08/25/2021	ND	1.91	95.6	2.00	2.72		
Ethylbenzene*	<0.050	0.050	08/25/2021	ND	1.86	93.1	2.00	3.34		
Total Xylenes*	<0.150	0.150	08/25/2021	ND	5.66	94.3	6.00	2.88		
Total BTEX	<0.300	0.300	08/25/2021	ND						

Surrogate: 4-Bromofluorobenzene (PID) 98.9 % 69.9-140

Chloride, SM4500Cl-B		mg/kg		Analyzed By: AC						
Analyte	Result	Reporting Limit	Analyzed	Method Blank	BS	% Recovery	True Value QC	RPD	Qualifier	
Chloride	16.0	16.0	08/25/2021	ND	416	104	400	0.00		

TPH 8015M		mg/kg		Analyzed By: MS					
Analyte	Result	Reporting Limit	Analyzed	Method Blank	BS	% Recovery	True Value QC	RPD	Qualifier
GRO C6-C10*	<10.0	10.0	08/25/2021	ND	221	110	200	1.94	
DRO >C10-C28*	<10.0	10.0	08/25/2021	ND	230	115	200	0.508	
EXT DRO >C28-C36	12.8	10.0	08/25/2021	ND					

Surrogate: 1-Chlorooctane 72.9 % 44.3-133

Surrogate: 1-Chlorooctadecane 73.6 % 38.9-142

Cardinal Laboratories

\*=Accredited Analyte

PLEASE NOTE: Liability and Damages. Cardinal's liability and client's exclusive remedy for any claim arising, whether based in contract or tort, shall be limited to the amount paid by client for analyses. All claims, including those for negligence and any other cause whatsoever shall be deemed waived unless made in writing and received by Cardinal within thirty (30) days after completion of the applicable service. In no event shall Cardinal be liable for incidental or consequential damages, including, without limitation, business interruptions, loss of use, or loss of profits incurred by client, its subsidiaries, affiliates or successors arising out of or related to the performance of the services hereunder by Cardinal, regardless of whether such claim is based upon any of the above stated reasons or otherwise. Results relate only to the samples identified above. This report shall not be reproduced except in full with written approval of Cardinal Laboratories.

Celey D. Keene, Lab Director/Quality Manager



PHONE (575) 393-2326 ° 101 E. MARLAND ° HOBBS, NM 88240

**Analytical Results For:**

BBC International, Inc.  
 Cliff Brunson  
 P.O. Box 805  
 Hobbs NM, 88241  
 Fax To: (575) 397-0397

Received:	08/24/2021	Sampling Date:	08/23/2021
Reported:	08/26/2021	Sampling Type:	Soil
Project Name:	CEDAR CANYON 22 CTB	Sampling Condition:	Cool & Intact
Project Number:	NONE GIVEN	Sample Received By:	Tamara Oldaker
Project Location:	OXY - EDDY COUNTY, NM		

**Sample ID: SIDEWALL 12 (H212253-42)**

BTX 8021B		mg/kg		Analyzed By: MS						
Analyte	Result	Reporting Limit	Analyzed	Method Blank	BS	% Recovery	True Value QC	RPD	Qualifier	
Benzene*	<0.050	0.050	08/25/2021	ND	1.75	87.6	2.00	3.40		
Toluene*	<0.050	0.050	08/25/2021	ND	1.91	95.6	2.00	2.72		
Ethylbenzene*	<0.050	0.050	08/25/2021	ND	1.86	93.1	2.00	3.34		
Total Xylenes*	<0.150	0.150	08/25/2021	ND	5.66	94.3	6.00	2.88		
Total BTX	<0.300	0.300	08/25/2021	ND						

Surrogate: 4-Bromofluorobenzene (PID) 99.0 % 69.9-140

Chloride, SM4500Cl-B		mg/kg		Analyzed By: AC						
Analyte	Result	Reporting Limit	Analyzed	Method Blank	BS	% Recovery	True Value QC	RPD	Qualifier	
Chloride	<16.0	16.0	08/25/2021	ND	416	104	400	0.00		

TPH 8015M		mg/kg		Analyzed By: MS					
Analyte	Result	Reporting Limit	Analyzed	Method Blank	BS	% Recovery	True Value QC	RPD	Qualifier
GRO C6-C10*	<10.0	10.0	08/25/2021	ND	221	110	200	1.94	
DRO >C10-C28*	<10.0	10.0	08/25/2021	ND	230	115	200	0.508	
EXT DRO >C28-C36	20.2	10.0	08/25/2021	ND					

Surrogate: 1-Chlorooctane 58.5 % 44.3-133

Surrogate: 1-Chlorooctadecane 58.0 % 38.9-142

Cardinal Laboratories

\*=Accredited Analyte

PLEASE NOTE: Liability and Damages. Cardinal's liability and client's exclusive remedy for any claim arising, whether based in contract or tort, shall be limited to the amount paid by client for analyses. All claims, including those for negligence and any other cause whatsoever shall be deemed waived unless made in writing and received by Cardinal within thirty (30) days after completion of the applicable service. In no event shall Cardinal be liable for incidental or consequential damages, including, without limitation, business interruptions, loss of use, or loss of profits incurred by client, its subsidiaries, affiliates or successors arising out of or related to the performance of the services hereunder by Cardinal, regardless of whether such claim is based upon any of the above stated reasons or otherwise. Results relate only to the samples identified above. This report shall not be reproduced except in full with written approval of Cardinal Laboratories.

Celey D. Keene, Lab Director/Quality Manager



PHONE (575) 393-2326 ° 101 E. MARLAND ° HOBBS, NM 88240

**Analytical Results For:**

BBC International, Inc.  
 Cliff Brunson  
 P.O. Box 805  
 Hobbs NM, 88241  
 Fax To: (575) 397-0397

Received: 08/24/2021  
 Reported: 08/26/2021  
 Project Name: CEDAR CANYON 22 CTB  
 Project Number: NONE GIVEN  
 Project Location: OXY - EDDY COUNTY, NM

Sampling Date: 08/23/2021  
 Sampling Type: Soil  
 Sampling Condition: Cool & Intact  
 Sample Received By: Tamara Oldaker

**Sample ID: SIDEWALL 13 (H212253-43)**

BTX 8021B		mg/kg		Analyzed By: MS						
Analyte	Result	Reporting Limit	Analyzed	Method Blank	BS	% Recovery	True Value QC	RPD	Qualifier	
Benzene*	<0.050	0.050	08/25/2021	ND	1.75	87.6	2.00	3.40		
Toluene*	<0.050	0.050	08/25/2021	ND	1.91	95.6	2.00	2.72		
Ethylbenzene*	<0.050	0.050	08/25/2021	ND	1.86	93.1	2.00	3.34		
Total Xylenes*	<0.150	0.150	08/25/2021	ND	5.66	94.3	6.00	2.88		
Total BTX	<0.300	0.300	08/25/2021	ND						

Surrogate: 4-Bromofluorobenzene (PID) 100 % 69.9-140

Chloride, SM4500CI-B		mg/kg		Analyzed By: AC						
Analyte	Result	Reporting Limit	Analyzed	Method Blank	BS	% Recovery	True Value QC	RPD	Qualifier	
Chloride	<16.0	16.0	08/25/2021	ND	416	104	400	0.00		

TPH 8015M		mg/kg		Analyzed By: MS					
Analyte	Result	Reporting Limit	Analyzed	Method Blank	BS	% Recovery	True Value QC	RPD	Qualifier
GRO C6-C10*	<10.0	10.0	08/25/2021	ND	221	110	200	1.94	
DRO >C10-C28*	<10.0	10.0	08/25/2021	ND	230	115	200	0.508	
EXT DRO >C28-C36	15.4	10.0	08/25/2021	ND					

Surrogate: 1-Chlorooctane 66.5 % 44.3-133

Surrogate: 1-Chlorooctadecane 67.2 % 38.9-142

Cardinal Laboratories

\*=Accredited Analyte

PLEASE NOTE: Liability and Damages. Cardinal's liability and client's exclusive remedy for any claim arising, whether based in contract or tort, shall be limited to the amount paid by client for analyses. All claims, including those for negligence and any other cause whatsoever shall be deemed waived unless made in writing and received by Cardinal within thirty (30) days after completion of the applicable service. In no event shall Cardinal be liable for incidental or consequential damages, including, without limitation, business interruptions, loss of use, or loss of profits incurred by client, its subsidiaries, affiliates or successors arising out of or related to the performance of the services hereunder by Cardinal, regardless of whether such claim is based upon any of the above stated reasons or otherwise. Results relate only to the samples identified above. This report shall not be reproduced except in full with written approval of Cardinal Laboratories.

Celey D. Keene, Lab Director/Quality Manager



PHONE (575) 393-2326 ° 101 E. MARLAND ° HOBBS, NM 88240

**Analytical Results For:**

BBC International, Inc.  
 Cliff Brunson  
 P.O. Box 805  
 Hobbs NM, 88241  
 Fax To: (575) 397-0397

Received: 08/24/2021  
 Reported: 08/26/2021  
 Project Name: CEDAR CANYON 22 CTB  
 Project Number: NONE GIVEN  
 Project Location: OXY - EDDY COUNTY, NM

Sampling Date: 08/23/2021  
 Sampling Type: Soil  
 Sampling Condition: Cool & Intact  
 Sample Received By: Tamara Oldaker

**Sample ID: SIDEWALL 14 (H212253-44)**

BTX 8021B		mg/kg		Analyzed By: MS						
Analyte	Result	Reporting Limit	Analyzed	Method Blank	BS	% Recovery	True Value QC	RPD	Qualifier	
Benzene*	<0.050	0.050	08/25/2021	ND	1.75	87.6	2.00	3.40		
Toluene*	<0.050	0.050	08/25/2021	ND	1.91	95.6	2.00	2.72		
Ethylbenzene*	<0.050	0.050	08/25/2021	ND	1.86	93.1	2.00	3.34		
Total Xylenes*	<0.150	0.150	08/25/2021	ND	5.66	94.3	6.00	2.88		
Total BTX	<0.300	0.300	08/25/2021	ND						

Surrogate: 4-Bromofluorobenzene (PID) 99.7 % 69.9-140

Chloride, SM4500CI-B		mg/kg		Analyzed By: AC						
Analyte	Result	Reporting Limit	Analyzed	Method Blank	BS	% Recovery	True Value QC	RPD	Qualifier	
Chloride	<16.0	16.0	08/25/2021	ND	416	104	400	0.00		

TPH 8015M		mg/kg		Analyzed By: MS					
Analyte	Result	Reporting Limit	Analyzed	Method Blank	BS	% Recovery	True Value QC	RPD	Qualifier
GRO C6-C10*	<10.0	10.0	08/25/2021	ND	221	110	200	1.94	
DRO >C10-C28*	<10.0	10.0	08/25/2021	ND	230	115	200	0.508	
EXT DRO >C28-C36	13.1	10.0	08/25/2021	ND					

Surrogate: 1-Chlorooctane 91.3 % 44.3-133

Surrogate: 1-Chlorooctadecane 92.1 % 38.9-142

Cardinal Laboratories

\*=Accredited Analyte

PLEASE NOTE: Liability and Damages. Cardinal's liability and client's exclusive remedy for any claim arising, whether based in contract or tort, shall be limited to the amount paid by client for analyses. All claims, including those for negligence and any other cause whatsoever shall be deemed waived unless made in writing and received by Cardinal within thirty (30) days after completion of the applicable service. In no event shall Cardinal be liable for incidental or consequential damages, including, without limitation, business interruptions, loss of use, or loss of profits incurred by client, its subsidiaries, affiliates or successors arising out of or related to the performance of the services hereunder by Cardinal, regardless of whether such claim is based upon any of the above stated reasons or otherwise. Results relate only to the samples identified above. This report shall not be reproduced except in full with written approval of Cardinal Laboratories.

Celey D. Keene, Lab Director/Quality Manager

PHONE (575) 393-2326 • 101 E. MARLAND • HOBBS, NM 88240

---

### Notes and Definitions

QR-03	The RPD value for the sample duplicate or MS/MSD was outside of QC acceptance limits due to matrix interference. QC batch accepted based on LCS and/or LCSD recovery and/or RPD values.
QM-07	The spike recovery was outside acceptance limits for the MS and/or MSD. The batch was accepted based on acceptable LCS recovery.
ND	Analyte NOT DETECTED at or above the reporting limit
RPD	Relative Percent Difference
**	Samples not received at proper temperature of 6°C or below.
***	Insufficient time to reach temperature.
-	Chloride by SM4500Cl-B does not require samples be received at or below 6°C Samples reported on an as received basis (wet) unless otherwise noted on report

---

Cardinal Laboratories

\*=Accredited Analyte

PLEASE NOTE: Liability and Damages. Cardinal's liability and client's exclusive remedy for any claim arising, whether based in contract or tort, shall be limited to the amount paid by client for analyses. All claims, including those for negligence and any other cause whatsoever shall be deemed waived unless made in writing and received by Cardinal within thirty (30) days after completion of the applicable service. In no event shall Cardinal be liable for incidental or consequential damages, including, without limitation, business interruptions, loss of use, or loss of profits incurred by client, its subsidiaries, affiliates or successors arising out of or related to the performance of the services hereunder by Cardinal, regardless of whether such claim is based upon any of the above stated reasons or otherwise. Results relate only to the samples identified above. This report shall not be reproduced except in full with written approval of Cardinal Laboratories.

A handwritten signature in black ink, appearing to read "Celey D. Keene".

---

Celey D. Keene, Lab Director/Quality Manager





## CARDINAL LABORATORIES

101 East Maryland, Hobbs, NM 88240  
(505) 393-2326 FAX (505) 393-2476

## CHAIN-OF-CUSTODY AND ANALYSIS REQUEST

BILL TO										ANALYSIS REQUEST									
Company Name: BBC International, Inc.										P.O. #:									
Project Manager: Cliff Brunson										Company:									
Address: P.O. Box 805										Attn:									
City: Hobbs										Address:									
Phone #: 575-397-6388										City:									
Fax #: 575-397-0397										State:									
Project #: Project Owner: Oxy										Zip:									
Project Name: Cedar Canyon 22 CTB										Phone #:									
Project Location: Cedar Canyon 22 CTB										Fax #:									
Sample Name: Roger Hernandez										PRESERV									
FOR LAB USE ONLY										SAMPLING									
Lab I.D.										DATE									
Sample I.D.										TIME									
(G)RAB OR (C)OMP																			
# CONTAINERS																			
GROUNDWATER																			
WASTEWATER																			
SOIL																			
OIL																			
SLUDGE																			
OTHER :																			
ACID/BASE:																			
ICE / COOL																			
OTHER :																			
DATE																			
TIME																			
TPH																			
BTEX																			
CL-																			

PLEASE NOTE: Liability and Cardinal's liability and client's exclusive remedy for any claim arising whether based in contract or tort, shall be limited to the amount paid by the client for the analyses. All claims, including those for negligence and any other causes whatsoever shall be deemed waived unless made in writing and received by Cardinal within 30 days after completion of the applicable service. In no event shall Cardinal be liable for incidental or consequential damages, including without limitation, business interruption, loss of use, or loss of profits incurred by client, its subsidiaries, affiliates or successors arising out of or related to the performance of services hereunder by Cardinal, regardless of whether such claim is based on any of the above stated reasons or otherwise.

Relinquished By: *Roger Hernandez* Date: *8-24-21* Received By: *Roger Hernandez* Date: *8-24-21*

Relinquished By: *Roger Hernandez* Date: *8-24-21* Received By: *Roger Hernandez* Date: *8-24-21*

Delivered By: (Circle One) *Roger Hernandez* Time: *10:45 AM* Sample Condition: *Intact* CHECKED BY: *Roger Hernandez* (Initials)

Sampler - UPS - Bus - Other: *1.6c #113* Yes ☒ No ☐ Yes ☐ No ☐

REMARKS:

† Cardinal cannot accept verbal changes. Please fax written changes to 505-393-2476





101 East Marland, Hobbs, NM 88240  
(505) 393-2326 FAX (505) 393-2476

**CHAIN-OF-CUSTODY AND ANALYSIS REQUEST**

24





# CARDINAL LABORATORIES

101 East Marland, Hobbs, NM 88240  
(505) 393-2326 FAX (505) 393-2476

## CHAIN-OF-CUSTODY AND ANALYSIS REQUEST

<b>Company Name:</b> BBC International, Inc. <b>Project Manager:</b> Cliff Brunson <b>Address:</b> P.O. Box 805 <b>City:</b> Hobbs <b>Phone #:</b> 575-397-6388 <b>Project #:</b> <b>Project Name:</b> <b>Project Location:</b> <b>Sample Name:</b>		<b>State:</b> NM <b>Zip:</b> 88241 <b>Fax #:</b> 575-397-0397 <b>Project Owner:</b> Oxy <b>City:</b> <b>State:</b> <b>Zip:</b>		<b>BILL TO</b> <b>P.O. #:</b> <b>Company:</b> <b>Attn:</b> <b>Address:</b> <b>City:</b> <b>State:</b> <b>Zip:</b>		<b>ANALYSIS REQUEST</b>	
<b>FOR LAB USE ONLY</b>		<b>Matrix</b> GROUNDWATER WASTEWATER SOIL OIL SLUDGE OTHER:		<b>Preserv</b> ACID/BASE: ICE / COOL OTHER:		<b>SAMPLING</b>	
<b>Lab I.D.</b> H21A253	<b>Sample I.D.</b> B <sub>0</sub> Hom 21e 3- B <sub>0</sub> Hom 22 03- B <sub>0</sub> Hom 23 03- B <sub>0</sub> Hom 24 03- B <sub>0</sub> Hom 25 03- B <sub>0</sub> Hom 26 03- B <sub>0</sub> Hom 27 03- B <sub>0</sub> Hom 28 03- B <sub>0</sub> Hom 29 03- B <sub>0</sub> Hom 30 03-	(G)RAB OR (C)OMP. # CONTAINERS 1	DATE 8-23-21	TIME 11:25	TPH BTEX CL-		
<b>Relinquished By:</b> [Signature] <b>Date:</b> 8-24-21 <b>Time:</b> 8:00 AM		<b>Received By:</b> [Signature] <b>Date:</b> 8-24-21 <b>Time:</b> 8:45 AM		<b>Sample Condition</b> Cool <input checked="" type="checkbox"/> Intact <input checked="" type="checkbox"/> Yes <input checked="" type="checkbox"/> No <input type="checkbox"/>		<b>Phone Result:</b> <input type="checkbox"/> Yes <input type="checkbox"/> No <input type="checkbox"/> Add'l Phone #: _____ <b>Fax Result:</b> <input type="checkbox"/> Yes <input type="checkbox"/> No <input type="checkbox"/> Add'l Fax #: _____ <b>REMARKS:</b>	
<b>Delivered By:</b> (Circle One) Sampler - UPS - Bus - Other:		<b>1.6c #113</b>		<b>V-8</b>			

\* Cardinal cannot accept verbal changes. Please fax written changes to 505-393-2476





101 East Marland, Hobbs, NM 88240  
(505) 393-2326 FAX (505) 393-2476

**CHAIN-OF-CUSTODY AND ANALYSIS REQUEST**

Page 50 of 51





101 East Marland, Hobbs, NM 88240  
(505) 393-2326 FAX (505) 393-2476

### CHAIN-OF-CUSTODY AND ANALYSIS REQUEST

51



USGS Home  
Contact USGS  
Search USGS

National Water Information System: Web Interface

[USGS Water Resources](#)

Data Category:

Groundwater

Geographic Area:

New Mexico

GO

Click to hideNews Bulletins

- [Introducing The Next Generation of USGS Water Data for the Nation](#)
- [Full News](#) 

Groundwater levels for New Mexico

Click to hide state-specific text

Search Results -- 1 sites found

Agency code = usgs  
site\_no list =

- 321234104002601

Minimum number of levels = 1  
[Save file of selected sites](#) to local disk for future upload

USGS 321234104002601 24S.29E.20.122

Eddy County, New Mexico  
Latitude 32°12'34", Longitude 104°00'26" NAD27  
Land-surface elevation 2,950 feet above NGVD29

Output formats

<a href="#">Table of data</a>
<a href="#">Tab-separated data</a>
<a href="#">Graph of data</a>
<a href="#">Reselect period</a>

Date	Time	? Water-level date-time accuracy	Water level, feet below land surface	Water level, feet above specific vertical datum	Referenced vertical datum	? Water-level accuracy	? Status	? Method of measurement	? Measuring agency	? Source of measurement
1974-12-17		D	57.11			2		Z	USGS	
1975-07-14		D	57.55			2		Z	USGS	

Explanation

Section	Code	Description
Water-level date-time accuracy	D	Date is accurate to the Day
Water-level accuracy	2	Water level accuracy to nearest hundredth of a foot
Status		The reported water-level measurement represents a static level
Method of measurement	Z	Other.
Measuring agency	USGS	U.S. Geological Survey
Source of measurement	S	Measured by personnel of reporting agency.
Water-level approval status	A	Approved for publication -- Processing and review completed.

[Questions about sites/data?](#)  
[Feedback on this web site](#)  
[Automated retrievals](#)  
[Help](#)  
[Data Tips](#)  
[Explanation of terms](#)

**District I**

1625 N. French Dr., Hobbs, NM 88240  
Phone:(575) 393-6161 Fax:(575) 393-0720

**District II**

811 S. First St., Artesia, NM 88210  
Phone:(575) 748-1283 Fax:(575) 748-9720

**District III**

1000 Rio Brazos Rd., Aztec, NM 87410  
Phone:(505) 334-6178 Fax:(505) 334-6170

**District IV**

1220 S. St Francis Dr., Santa Fe, NM 87505  
Phone:(505) 476-3470 Fax:(505) 476-3462

**State of New Mexico**  
**Energy, Minerals and Natural Resources**  
**Oil Conservation Division**  
**1220 S. St Francis Dr.**  
**Santa Fe, NM 87505**

CONDITIONS

Action 95360

**CONDITIONS**

Operator: OXY USA INC P.O. Box 4294 Houston, TX 772104294	OGRID: 16696
	Action Number: 95360
	Action Type: [C-141] Release Corrective Action (C-141)

**CONDITIONS**

Created By	Condition	Condition Date
rhamlet	We have received your closure report and final C-141 for Incident #NRM2015534932 CEDAR CANYON 22 CTB LACT #2, thank you. This closure is approved.	5/3/2022