



June 8, 2022

District Supervisor
Oil Conservation Division, District 1
1625 North French Drive
Hobbs, New Mexico 88240

**Re: Release Characterization, Remediation, and Closure Report
ConocoPhillips
Jazzbass 34 Federal #003H Release
Unit Letter O, Section 34, Township 25 South, Range 35 East
Lea County, New Mexico
Incident ID: NAPP2209136398**

Sir or Madam:

Tetra Tech, Inc. (Tetra Tech) was contacted by ConocoPhillips to assess a release that occurred from a tank battery at the Jazzbass 34 Federal #003H lease pad (API # 30-025-27916). The release footprint is located on Bureau of Land Management (BLM) land within Public Land Survey System (PLSS) Unit Letter O, Section 34, Township 25 South, Range 35 East, in Lea County, New Mexico (Site). The approximate release point occurred at coordinates 32.08163°, -103.35265°, as shown on Figures 1 and 2.

BACKGROUND

According to the State of New Mexico C-141 Initial Report (Appendix A), the release was discovered on March 15, 2022. As documented on the C-141 form, a bleeding hose was left open on the tank and resulted in the release of approximately 0.2 barrels (bbls) of crude oil.

According to ConocoPhillips, the release originated from the tank battery and flowed into the pasture. No free liquids were recovered immediately following the release. The spill calculator included with the C-141 indicated that the release impacted approximately 98 square feet of lease pad and pasture. This release extent was corroborated by a review of photographs taken following the release and observations made in the field. The approximate release extent is presented in Figure 3.

The C-141 report form for the release was submitted to the New Mexico Oil Conservation District (NMOCD) on March 31, 2022. The NMOCD assigned this release Incident ID NAPP2209136398. The C-141 was approved by NMOCD on April 1, 2022.

SITE CHARACTERIZATION

A site characterization was performed and no watercourses, sinkholes, residences, schools, hospitals, institutions, churches, private domestic water wells, springs, playa lakes, wetlands, incorporated municipal boundaries, subsurface mines, or floodplains are located within the distances specified in 19.15.29 New Mexico Administrative Code (NMAC). The Site is in an area of low karst potential.

According to the New Mexico Office of the State Engineers (NMOSE) reporting system, there is one (1) water well within 800 meters (approximately ½ mile) of the Site with a depth to groundwater of 230 feet below ground surface (bgs). The data from this nearby well used to determine depth to groundwater is no

Tetra Tech

901 West Wall St., Suite 100, Midland, TX 79701

Tel 432.682.4559

Fax 432.682.3946

www.tetrattech.com

more than 25 years old and well construction information is provided. The site characterization data is included in Appendix B.

REGULATORY FRAMEWORK

Based upon the release footprint and in accordance with Subsection E of 19.15.29.12 NMAC, per 19.15.29.11 NMAC, the site characterization data was used to determine recommended remedial action levels (RRALs) for benzene, toluene, ethylbenzene, and xylene (collectively referred to as BTEX), total petroleum hydrocarbons (TPH), and chlorides in soil.

Based on the site characterization and in accordance with Table I of 19.15.29.12 NMAC, the Site RRALs for the on-pad areas at the release Site are as follows:

Constituent	Site RRALs
Chloride	20,000 mg/kg
TPH	2,500 mg/kg
BTEX	50 mg/kg
Benzene	10 mg/kg

Additionally, in accordance with the NMOCD guidance *Procedures for Implementation of the Spill Rule (19.15.29 NMAC)* (September 6, 2019), the following reclamation requirements for surface soils (0-4 ft bgs) outside of active oil and gas operations are as follows:

Constituent	Reclamation Requirements
Chloride	600 mg/kg
TPH	100 mg/kg

REMEDIATION ACTIVITIES AND CONFIRMATION SAMPLING

In accordance with 19.15.29.12 B (2) NMAC, ConocoPhillips elected to begin remediation of the impacted area in May 2022. The BLM was notified of the proposed remedial activities via email dated May 10, 2022. On May 17, 2022 Tetra Tech was onsite to oversee the excavation of impacted soils in the release extent to a depth of 1.5 feet bgs. Initial excavation work continued until a representative sample from the walls and bottom of the excavation had a field screening value inferred as lower than the RRALs for the Site. Each confirmation sample laboratory analytical result was directly compared to the proposed RRALs and/or reclamation requirements to demonstrate compliance. The NMOCD was notified prior to confirmation sampling via email dated May 16, 2022. Regulatory correspondence is included as Appendix C.

In accordance with 19.15.29.12(D)(1)(b) NMAC, ConocoPhillips conducted confirmation sampling of the remediated area for verification of remedial activities where each sidewall and floor sample was representative of approximately 200 square feet. Confirmation sidewall (SW) sample locations were categorized with the cardinal direction (N, E, S, W) followed by SW-#. Confirmation floor sample locations are labeled with "FS-#". Excavated areas, depths and confirmation sample locations are shown in Figure 4.

A total of two (2) confirmation floor sample locations and two (2) confirmation sidewall samples were collected during the remedial activities in May 2022. Confirmation samples were placed into laboratory-provided sample containers, transferred under chain-of-custody, and analyzed for TPH, BTEX, and chloride within appropriate holding times by Cardinal Laboratories in Hobbs, New Mexico. Copies of the laboratory analytical reports and chain-of-custody documentation are included in Appendix D.

All confirmation sidewall and floor sample results were below the 19.15.29.12 NMAC Table I closure criteria. In accordance with 19.15.29.13 (D) NMAC, analytical results for soils collected above 4 ft bgs in the off-pad pasture areas were below reclamation requirements for soils in the 0-4 ft bgs interval. Results from the May 2022 confirmation sampling events are summarized in Table 1.

Release Characterization, Remediation, and Closure Report
June 8, 2022

ConocoPhillips

The total remediated area encompassed a surface area of approximately 180 square feet. Approximately 10 cubic yards of excavated material were transported to the R360 facility in Hobbs, New Mexico. Copies of the waste manifests are included in Appendix E. Photographic documentation of the excavation activities prior to backfilling is presented in Appendix F. The excavated areas were backfilled post-confirmation sample collection and upon receiving analytical results below the applicable RRALs. The impacted surface area occurring on the developed pad at the site was remediated to meet the standards of Table I of 19.15.29.12 NMAC.

The backfilled areas in the pasture were seeded to aid in revegetation. The remediated area was seeded in May 2022. Based on the soils at the site, an approved BLM seed mixture was used for seeding and planted in the amount specified in the pounds pure live seed (PLS) per acre.

Site inspections will be performed to assess the revegetation progress and evaluate the site for the presence of primary or secondary noxious weeds. If noxious weeds are identified, the BLM will be contacted to determine an effective method for eradication. If the site does not show revegetation after one growing season, the area will be reseeded as appropriate.

CONCLUSION

ConocoPhillips has completed remediation at the release site. This final closure report has been submitted within 90 days of discovery of the release. The final C-141 form is included in Appendix A. This final closure report details the release characterization and remediation activities and the results of the confirmation sampling. As noted, final on-site reclamation and restoration will occur once the well is plugged and operations have ceased at this active well pad.

If you have any questions concerning the soil assessment, the remediation work, or confirmation sampling for the Site, please call me at (512) 739-7874 or Christian at (512) 338-2861.

Sincerely,

Tetra Tech, Inc.



Samantha K. Abbott, P.G.
Project Manager



Christian M. Llull, P.G.
Program Manager

cc:

Mr. Charles Beauvais, GPBU – ConocoPhillips

LIST OF ATTACHMENTS

Figures:

- Figure 1 – Overview Map
- Figure 2 – Topographic Map
- Figure 3 – Approximate Release Extent
- Figure 4 – Remediation Extent and Confirmation Sample Locations

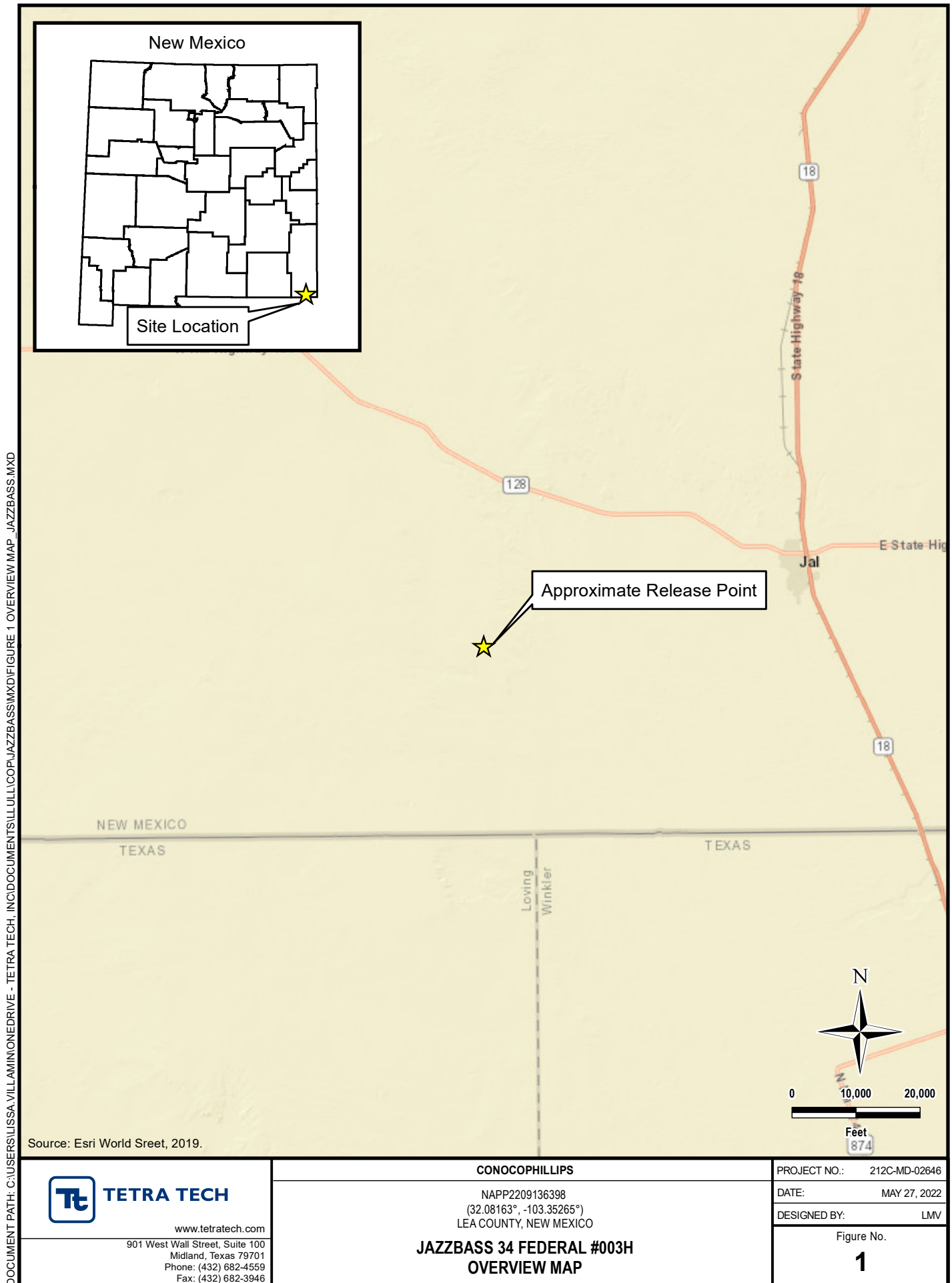
Tables:

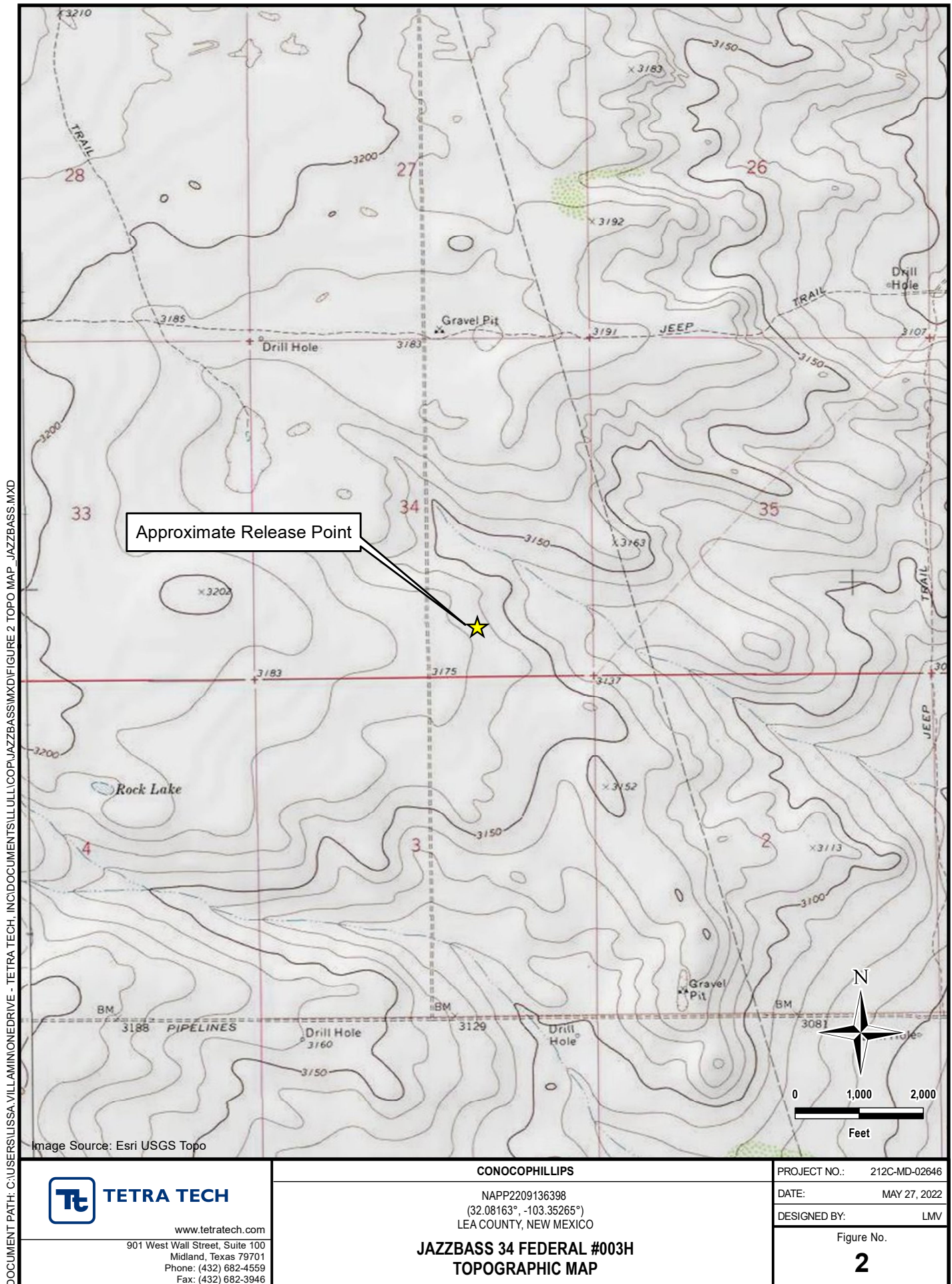
- Table 1 – Summary of Analytical Results – Confirmation Sampling

Appendices:

- Appendix A – C-141 Forms
- Appendix B – Site Characterization Data
- Appendix C – Regulatory Correspondence
- Appendix D – Laboratory Analytical Data
- Appendix E – Waste Manifests
- Appendix F – Photographic Documentation

FIGURES





DOCUMENT PATH: C:\USERS\LISSA.VILLAMINONE\DRIVE - TETRA TECH\INCDOCUMENTS\LISSA.VILLAMINONE\FIGURE 3 RELEASE - JAZZBASS.MXD



TETRA TECH

www.tetratech.com

901 West Wall Street, Suite 100
Midland, Texas 79701
Phone: (432) 682-4559
Fax: (432) 682-3946

CONOCOPHILLIPS

NAPP2209136398
(32.08163°, -103.35265°)
LEA COUNTY, NEW MEXICO

**JAZZBASS 34 FEDERAL #003H
APPROXIMATE RELEASE EXTENT**

PROJECT NO.: 212C-MD-02646

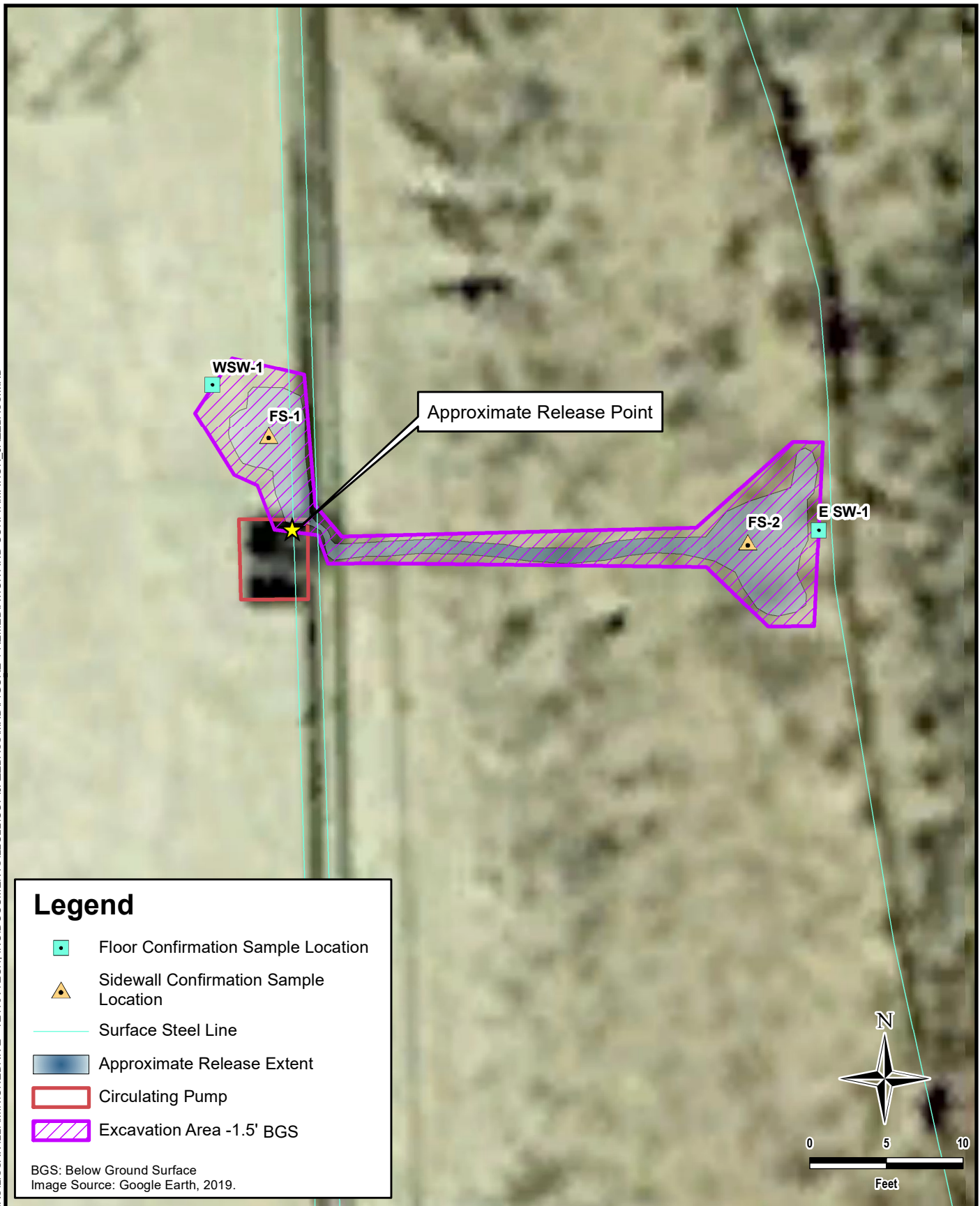
DATE: MAY 27, 2022

DESIGNED BY: LMV

Figure No.

3

DOCUMENT PATH: C:\USERS\LISSA.VILLAMINON\DRIVE - TETRA TECH\INCDOCUMENTS\TULLUL\COPI\JAZZBASS\MXD\FIGURE 4 REMEDIATION AND CONFIRMATION - JAZZBASS.MXD

**TETRA TECH**

www.tetrattech.com

901 West Wall Street, Suite 100
Midland, Texas 79701
Phone: (432) 682-4559
Fax: (432) 682-3946

CONOCOPHILLIPS

NAPP2209136398
(32.08163°, -103.35265°)
LEA COUNTY, NEW MEXICO

JAZZBASS 34 FEDERAL #003H
REMEDATION EXTENT AND CONFIRMATION SAMPLE LOCATIONS

PROJECT NO.: 212C-MD-02646

DATE: JUNE 01, 2022

DESIGNED BY: LMV

Figure No.

4

TABLES

TABLE 1
SUMMARY OF ANALYTICAL RESULTS
SOIL REMEDIATION - NAPP2209136398
CONOCOPHILLIPS
JAZZBASS 34 FEDERAL #003H RELEASE
LEA COUNTY, STATE

Sample ID	Sample Date	Sample Depth	Field Screening Results		Chloride ¹		BTEX ²										TPH ³							
							Benzene		Toluene		Ethylbenzene		Total Xylenes		Total BTEX		GRO		DRO		EXT DRO		Total TPH	
			C ₆ - C ₁₀														> C ₁₀ - C ₂₈		> C ₂₈ - C ₃₆		(GRO+DRO+EXT DRO)			
		ft. bgs	ppm	mg/kg	Q	mg/kg	Q	mg/kg	Q	mg/kg	Q	mg/kg	Q	mg/kg	Q	mg/kg	Q	mg/kg	Q	mg/kg	Q	mg/kg	Q	mg/kg
FS-1	5/17/2022	1.5			80		< 0.050		< 0.050		< 0.050		< 0.150		< 0.300		< 10.0		106		62.3		168	
FS-2	5/17/2022	1.5			32		< 0.050		< 0.050		< 0.050		< 0.150		< 0.300		< 10.0		< 10.0		< 10.0		-	
ESW-1	5/17/2022	-			16		< 0.050		< 0.050		< 0.050		< 0.150		< 0.300		< 10.0		< 10.0		< 10.0		-	
WSW-1	5/17/2022	-			112		< 0.050		< 0.050		< 0.050		< 0.150		< 0.300		< 10.0		98.4		46.8		145	

NOTES:

- ft. Feet
- bgs Below ground surface
- mg/kg Milligrams per kilogram
- TPH Total Petroleum Hydrocarbons
- GRO Gasoline range organics
- DRO Diesel range organics
- 1 Method SM4500Cl-B
- 2 Method 8021B
- 3 Method 8015M

Bold and italicized values indicate exceedance of proposed Remediation RRALs and Reclamation Requirements.

Gold highlight represents soil horizons that were removed during deepening of excavation floors.

Green highlight represents soil intervals that were removed during horizontal expansion of excavation sidewalls.

* These iterative samples are located to encompass the original sample location that triggered removal, with further excavation in each area indicated in ().

QUALIFIERS:

APPENDIX A C-141 Forms

District I
1625 N. French Dr., Hobbs, NM 88240
District II
811 S. First St., Artesia, NM 88210
District III
1000 Rio Brazos Road, Aztec, NM 87410
District IV
1220 S. St. Francis Dr., Santa Fe, NM 87505

State of New Mexico
Energy Minerals and Natural
Resources Department

Oil Conservation Division
1220 South St. Francis Dr.
Santa Fe, NM 87505

Form C-141
Revised August 24, 2018
Submit to appropriate OCD District office

Incident ID	
District RP	
Facility ID	
Application ID	

Release Notification

Responsible Party

Responsible Party	OGRID
Contact Name	Contact Telephone
Contact email	Incident # (assigned by OCD)
Contact mailing address	

Location of Release Source

Latitude _____ Longitude _____
(NAD 83 in decimal degrees to 5 decimal places)

Site Name	Site Type
Date Release Discovered	API# (if applicable)

Unit Letter	Section	Township	Range	County

Surface Owner: ☐ State ☐ Federal ☐ Tribal ☐ Private (Name: _____)

Nature and Volume of Release

Material(s) Released (Select all that apply and attach calculations or specific justification for the volumes provided below)

<input type="checkbox"/> Crude Oil	Volume Released (bbls)	Volume Recovered (bbls)
<input type="checkbox"/> Produced Water	Volume Released (bbls)	Volume Recovered (bbls)
	Is the concentration of dissolved chloride in the produced water >10,000 mg/l?	<input type="checkbox"/> Yes <input type="checkbox"/> No
<input type="checkbox"/> Condensate	Volume Released (bbls)	Volume Recovered (bbls)
<input type="checkbox"/> Natural Gas	Volume Released (Mcf)	Volume Recovered (Mcf)
<input type="checkbox"/> Other (describe)	Volume/Weight Released (provide units)	Volume/Weight Recovered (provide units)


Cause of Release

Incident ID	
District RP	
Facility ID	
Application ID	

Was this a major release as defined by 19.15.29.7(A) NMAC? <input type="checkbox"/> Yes <input type="checkbox"/> No	If YES, for what reason(s) does the responsible party consider this a major release?
If YES, was immediate notice given to the OCD? By whom? To whom? When and by what means (phone, email, etc)?	

Initial Response

The responsible party must undertake the following actions immediately unless they could create a safety hazard that would result in injury

<input type="checkbox"/> The source of the release has been stopped.	
<input type="checkbox"/> The impacted area has been secured to protect human health and the environment.	
<input type="checkbox"/> Released materials have been contained via the use of berms or dikes, absorbent pads, or other containment devices.	
<input type="checkbox"/> All free liquids and recoverable materials have been removed and managed appropriately.	
If all the actions described above have <u>not</u> been undertaken, explain why:	
Per 19.15.29.8 B. (4) NMAC the responsible party may commence remediation immediately after discovery of a release. If remediation has begun, please attach a narrative of actions to date. If remedial efforts have been successfully completed or if the release occurred within a lined containment area (see 19.15.29.11(A)(5)(a) NMAC), please attach all information needed for closure evaluation.	
I hereby certify that the information given above is true and complete to the best of my knowledge and understand that pursuant to OCD rules and regulations all operators are required to report and/or file certain release notifications and perform corrective actions for releases which may endanger public health or the environment. The acceptance of a C-141 report by the OCD does not relieve the operator of liability should their operations have failed to adequately investigate and remediate contamination that pose a threat to groundwater, surface water, human health or the environment. In addition, OCD acceptance of a C-141 report does not relieve the operator of responsibility for compliance with any other federal, state, or local laws and/or regulations.	
Printed Name _____	Title: _____
Signature: <u></u>	Date: _____
email: _____	Telephone: _____
<u>OCD Only</u>	
Received by: <u>Jocelyn Harimon</u>	Date: <u>04/01/2022</u>

L48 Spill Volume Estimate Form

Received by OCD: 6/8/2022 3:11:41 PM

NAPP2209136398 Page 15 of 45

Number:	JazzBass 34 RB
Asset Area:	Northern delaware basin east
Release Discovery Date & Time:	3/15/2022
Release Type:	Oil
Provide any known details about the event:	on circulating pump leg towards tank was open and bleeding hose was open causing containment to over fill and run into pasture

Spill Calculation - On Pad Surface Pool Spill

Convert Irregular shape into a series of rectangles	Length (ft.)	Width (ft.)	Deepest point in each of the areas (in.)	No. of boundaries of "shore" in each area	Estimated <u>Pool</u> Area (sq. ft.)	Estimated Average Depth (ft.)	Estimated volume of each pool area (bbl.)	Penetration allowance (ft.)	Total Estimated Volume of Spill (bbl.)	Percentage of Oil if Spilled Fluid is a Mixture
Rectangle A	21.0	2.0	0.12	4	42.000	0.002	0.018	0.000	0.018	
Rectangle B	3.0	8.0	2.00	4	24.000	0.042	0.178	0.002	0.178	
Rectangle C	4.0	8.0	0.12	4	32.000	0.002	0.014	0.000	0.014	
Rectangle D					0.000	#DIV/0!	#DIV/0!	#DIV/0!	#DIV/0!	
Rectangle E					0.000	#DIV/0!	#DIV/0!	#DIV/0!	#DIV/0!	
Rectangle F					0.000	#DIV/0!	#DIV/0!	#DIV/0!	#DIV/0!	
Rectangle G					0.000	#DIV/0!	#DIV/0!	#DIV/0!	#DIV/0!	
Rectangle H					0.000	#DIV/0!	#DIV/0!	#DIV/0!	#DIV/0!	
Rectangle I					0.000	#DIV/0!	#DIV/0!	#DIV/0!	#DIV/0!	
Rectangle J					0.000	#DIV/0!	#DIV/0!	#DIV/0!	#DIV/0!	
Total Volume Release:									0.211	

Released to Imaging: 6/13/2022 11:51:05 AM

District I
1625 N. French Dr., Hobbs, NM 88240
Phone:(575) 393-6161 Fax:(575) 393-0720
District II
811 S. First St., Artesia, NM 88210
Phone:(575) 748-1283 Fax:(575) 748-9720
District III
1000 Rio Brazos Rd., Aztec, NM 87410
Phone:(505) 334-6178 Fax:(505) 334-6170
District IV
1220 S. St Francis Dr., Santa Fe, NM 87505
Phone:(505) 476-3470 Fax:(505) 476-3462

State of New Mexico
Energy, Minerals and Natural Resources
Oil Conservation Division
1220 S. St Francis Dr.
Santa Fe, NM 87505

CONDITIONS

Action 95243

CONDITIONS

Operator: COG OPERATING LLC 600 W Illinois Ave Midland, TX 79701	OGRID: 229137
	Action Number: 95243
	Action Type: [C-141] Release Corrective Action (C-141)

CONDITIONS

Created By	Condition	Condition Date
jharimon	None	4/1/2022

Incident ID	
District RP	
Facility ID	
Application ID	

Site Assessment/Characterization

This information must be provided to the appropriate district office no later than 90 days after the release discovery date.

What is the shallowest depth to groundwater beneath the area affected by the release?	_____ (ft bgs)
Did this release impact groundwater or surface water?	<input type="checkbox"/> Yes <input type="checkbox"/> No
Are the lateral extents of the release within 300 feet of a continuously flowing watercourse or any other significant watercourse?	<input type="checkbox"/> Yes <input type="checkbox"/> No
Are the lateral extents of the release within 200 feet of any lakebed, sinkhole, or playa lake (measured from the ordinary high-water mark)?	<input type="checkbox"/> Yes <input type="checkbox"/> No
Are the lateral extents of the release within 300 feet of an occupied permanent residence, school, hospital, institution, or church?	<input type="checkbox"/> Yes <input type="checkbox"/> No
Are the lateral extents of the release within 500 horizontal feet of a spring or a private domestic fresh water well used by less than five households for domestic or stock watering purposes?	<input type="checkbox"/> Yes <input type="checkbox"/> No
Are the lateral extents of the release within 1000 feet of any other fresh water well or spring?	<input type="checkbox"/> Yes <input type="checkbox"/> No
Are the lateral extents of the release within incorporated municipal boundaries or within a defined municipal fresh water well field?	<input type="checkbox"/> Yes <input type="checkbox"/> No
Are the lateral extents of the release within 300 feet of a wetland?	<input type="checkbox"/> Yes <input type="checkbox"/> No
Are the lateral extents of the release overlying a subsurface mine?	<input type="checkbox"/> Yes <input type="checkbox"/> No
Are the lateral extents of the release overlying an unstable area such as karst geology?	<input type="checkbox"/> Yes <input type="checkbox"/> No
Are the lateral extents of the release within a 100-year floodplain?	<input type="checkbox"/> Yes <input type="checkbox"/> No
Did the release impact areas not on an exploration, development, production, or storage site?	<input type="checkbox"/> Yes <input type="checkbox"/> No

Attach a comprehensive report (electronic submittals in .pdf format are preferred) demonstrating the lateral and vertical extents of soil contamination associated with the release have been determined. Refer to 19.15.29.11 NMAC for specifics.

Characterization Report Checklist: *Each of the following items must be included in the report.*

- ☐ Scaled site map showing impacted area, surface features, subsurface features, delineation points, and monitoring wells.
- ☐ Field data
- ☐ Data table of soil contaminant concentration data
- ☐ Depth to water determination
- ☐ Determination of water sources and significant watercourses within ½-mile of the lateral extents of the release
- ☐ Boring or excavation logs
- ☐ Photographs including date and GIS information
- ☐ Topographic/Aerial maps
- ☐ Laboratory data including chain of custody

If the site characterization report does not include completed efforts at remediation of the release, the report must include a proposed remediation plan. That plan must include the estimated volume of material to be remediated, the proposed remediation technique, proposed sampling plan and methods, anticipated timelines for beginning and completing the remediation. The closure criteria for a release are contained in Table 1 of 19.15.29.12 NMAC, however, use of the table is modified by site- and release-specific parameters.

State of New Mexico
Oil Conservation Division

Page 4

Incident ID	
District RP	
Facility ID	
Application ID	

I hereby certify that the information given above is true and complete to the best of my knowledge and understand that pursuant to OCD rules and regulations all operators are required to report and/or file certain release notifications and perform corrective actions for releases which may endanger public health or the environment. The acceptance of a C-141 report by the OCD does not relieve the operator of liability should their operations have failed to adequately investigate and remediate contamination that pose a threat to groundwater, surface water, human health or the environment. In addition, OCD acceptance of a C-141 report does not relieve the operator of responsibility for compliance with any other federal, state, or local laws and/or regulations.

Printed Name: _____ Title: _____

Signature:  _____ Date: _____

email: _____ Telephone: _____

OCD Only

Received by: _____ Date: _____

Incident ID	
District RP	
Facility ID	
Application ID	

Closure

The responsible party must attach information demonstrating they have complied with all applicable closure requirements and any conditions or directives of the OCD. This demonstration should be in the form of a comprehensive report (electronic submittals in .pdf format are preferred) including a scaled site map, sampling diagrams, relevant field notes, photographs of any excavation prior to backfilling, laboratory data including chain of custody documents of final sampling, and a narrative of the remedial activities. Refer to 19.15.29.12 NMAC.

Closure Report Attachment Checklist: *Each of the following items must be included in the closure report.*

- ☐ A scaled site and sampling diagram as described in 19.15.29.11 NMAC
- ☐ Photographs of the remediated site prior to backfill or photos of the liner integrity if applicable (Note: appropriate OCD District office must be notified 2 days prior to liner inspection)
- ☐ Laboratory analyses of final sampling (Note: appropriate ODC District office must be notified 2 days prior to final sampling)
- ☐ Description of remediation activities

I hereby certify that the information given above is true and complete to the best of my knowledge and understand that pursuant to OCD rules and regulations all operators are required to report and/or file certain release notifications and perform corrective actions for releases which may endanger public health or the environment. The acceptance of a C-141 report by the OCD does not relieve the operator of liability should their operations have failed to adequately investigate and remediate contamination that pose a threat to groundwater, surface water, human health or the environment. In addition, OCD acceptance of a C-141 report does not relieve the operator of responsibility for compliance with any other federal, state, or local laws and/or regulations. The responsible party acknowledges they must substantially restore, reclaim, and re-vegetate the impacted surface area to the conditions that existed prior to the release or their final land use in accordance with 19.15.29.13 NMAC including notification to the OCD when reclamation and re-vegetation are complete.

Printed Name: _____ Title: _____

Signature:  _____ Date: _____

email: _____ Telephone: _____

OCD Only

Received by: _____ Date: _____

Closure approval by the OCD does not relieve the responsible party of liability should their operations have failed to adequately investigate and remediate contamination that poses a threat to groundwater, surface water, human health, or the environment nor does not relieve the responsible party of compliance with any other federal, state, or local laws and/or regulations.

Closure Approved by:  _____ Date: _____

Printed Name: _____ Title: _____

APPENDIX B

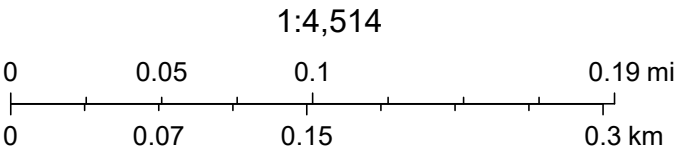
Site Characterization Data

OCD Waterbodies



5/5/2022, 11:15:20 AM

- OSW Water Bodys
- OSE Probable Playas
- OSE Streams
- NMED Drinking Water Systems







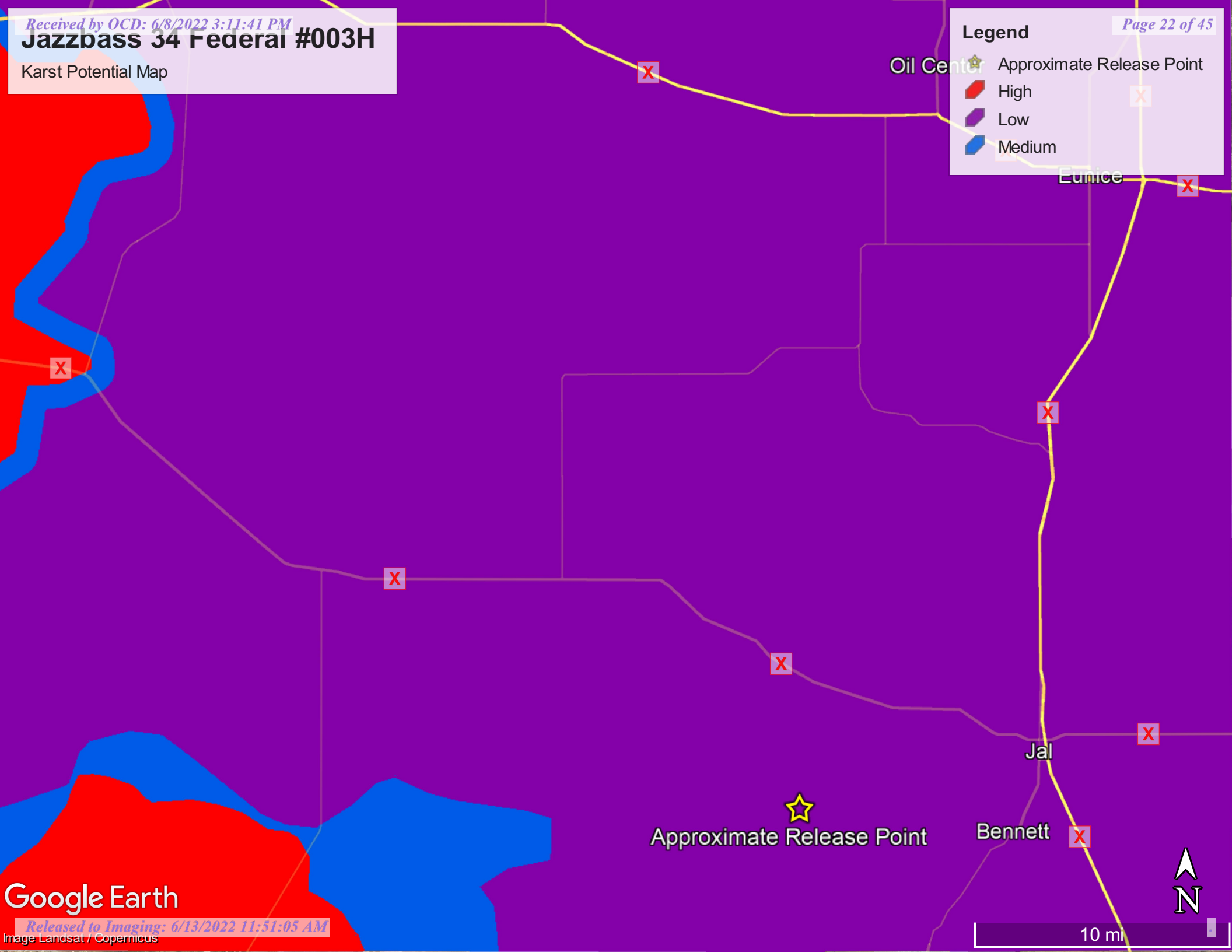
Source: Esri, Maxar, GeoEye, Earthstar Geographics, CNES/Airbus DS, USDA, USGS, AeroGRID, IGN, and the GIS User Community, Esri, HERE, Garmin, (c) OpenStreetMap contributors, and the GIS user community, NM OSE

Jazzbass 34 Federal #003H

Karst Potential Map

Legend

-  Approximate Release Point
-  High
-  Low
-  Medium



Google Earth



New Mexico Office of the State Engineer

Water Column/Average Depth to Water

(A CLW##### in the POD suffix indicates the POD has been replaced & no longer serves a water right file.)

(R=POD has been replaced,
O=orphaned,
C=the file is closed)

(quarters are 1=NW 2=NE 3=SW 4=SE)

(quarters are smallest to largest)

(NAD83 UTM in meters)

(In feet)

POD Number	POD Sub-Code	basin	County	Q 64	Q 16	Q 4	Sec	Tws	Rng	X	Y	Distance	Depth Well	Depth Water	Water Column
CP 01305 POD1	CP	LE		1	4	31	25S	37E		655628	3551065	418	420	230	190

Average Depth to Water: **230 feet**

Minimum Depth: **230 feet**

Maximum Depth: **230 feet**

Record Count: 1

UTMNAD83 Radius Search (in meters):

Easting (X): 655472.76

Northing (Y): 3550676.5

Radius: 800

The data is furnished by the NMOSE/ISC and is accepted by the recipient with the expressed understanding that the OSE/ISC make no warranties, expressed or implied, concerning the accuracy, completeness, reliability, usability, or suitability for any particular purpose of the data.

5/5/22 10:21 AM

Page 1 of 1

WATER COLUMN/ AVERAGE
DEPTH TO WATER

APPENDIX C

Regulatory Correspondence

Poole, Nicholas

From: Nobui, Jennifer, EMNRD <Jennifer.Nobui@state.nm.us>
Sent: Tuesday, May 17, 2022 9:15 AM
To: Poole, Nicholas
Cc: Bratcher, Mike, EMNRD; Hamlet, Robert, EMNRD; Harimon, Jocelyn, EMNRD
Subject: FW: [EXTERNAL] Incident ID: NAPP2209136398 - Confirmation Sampling

⚠ CAUTION: This email originated from an external sender. Verify the source before opening links or attachments. **⚠**

Nicholas,

Thank you for the notification. Please include a copy of this and all notifications in the remedial and/or closure reports to ensure the notifications are documented in the project file.

Thanks
Jennifer Nobui

From: Enviro, OCD, EMNRD <OCD.Enviro@state.nm.us>
Sent: Monday, May 16, 2022 9:08 AM
To: Hamlet, Robert, EMNRD <Robert.Hamlet@state.nm.us>; Nobui, Jennifer, EMNRD <Jennifer.Nobui@state.nm.us>; Harimon, Jocelyn, EMNRD <Jocelyn.Harimon@state.nm.us>; Bratcher, Mike, EMNRD <mike.bratcher@state.nm.us>
Subject: Fw: [EXTERNAL] Incident ID: NAPP2209136398 - Confirmation Sampling

From: Poole, Nicholas <NICHOLAS.POOLE@tetrattech.com>
Sent: Monday, May 16, 2022 8:42 AM
To: Enviro, OCD, EMNRD <OCD.Enviro@state.nm.us>
Cc: Llull, Christian <Christian.Llull@tetrattech.com>; Abbott, Sam <Sam.Abbott@tetrattech.com>
Subject: [EXTERNAL] Incident ID: NAPP2209136398 - Confirmation Sampling

CAUTION: This email originated outside of our organization. Exercise caution prior to clicking on links or opening attachments.

RE: Incident ID (n#) **NAPP2209136398** (Jazzbass 34 Federal #003H Release)

To whom it may concern,

In accordance with Subsection D of 19.15.29.12 NMAC, the responsible party must verbally notify the appropriate division district office prior to conducting confirmation sampling.

Remediation activities are beginning at the site starting Wednesday May 18, 2022.

Thus, on behalf of ConocoPhillips for the above referenced incident, Tetra Tech is duly providing this communication which serves as notification that final confirmation sampling will be conducted at this site on May 18, 2022.

NOTE: If you have any questions regarding this sampling schedule, please contact me.

Nicholas Poole | Staff Geoscientist
Mobile +1 (512) 560-9064 | nicholas.poole@tetrattech.com

Tetra Tech | *Leading with Science*® | OGA
8911 N. Capital of Texas Highway | Bldg. 2, Suite 2310 | Austin, TX 78759 | tetrattech.com

This message, including any attachments, may include privileged, confidential and/or inside information. Any distribution or use of this communication by anyone other than the intended recipient is strictly prohibited and may be unlawful. If you are not the intended recipient, please notify the sender by replying to this message and then delete it from your system.



Please consider the environment before printing. [Read more](#)



Poole, Nicholas

From: Arias, Arthur A <aaarias@blm.gov>
Sent: Monday, May 16, 2022 9:45 AM
To: Llull, Christian; Tucker, Shelly J; Abbott, Sam; Poole, Nicholas
Subject: Re: [EXTERNAL] Request for Approval - Remediation - Jazzbass 34 Federal #003H

⚠ CAUTION: This email originated from an external sender. Verify the source before opening links or attachments. **⚠**

Good Morning , Your clear for clean-up . Thank you.

From: Llull, Christian <Christian.Llull@tetrattech.com>
Sent: Thursday, May 12, 2022 9:01 PM
To: Tucker, Shelly J <stucker@blm.gov>; Arias, Arthur A <aaarias@blm.gov>; Abbott, Sam <Sam.Abbott@tetrattech.com>; Poole, Nicholas <NICHOLAS.POOLE@tetrattech.com>
Subject: [EXTERNAL] Request for Approval - Remediation - Jazzbass 34 Federal #003H

This email has been received from outside of DOI - Use caution before clicking on links, opening attachments, or responding.

Shelly:

Tetra Tech is assisting with remediation of a previously reported unplanned release with the NMOCD. Requesting expedited approval for site remediation from BLM for this minor release.

Attached is the NMOCD C-141.

.kmz attached. Photos below.

Details below.

In order to complete the remediation we are requesting verbal approval to proceed with remediation at the location listed below.

ConocoPhillips
Jazzbass 34 Federal #003H Release
Lea County, New Mexico
DOR: 3/15/2022
INCIDENT ID NAPP2209136398
Approximate Release Point 32.08163°, -103.35265°

Volume Released: The release occurred as the result of a sump pump failure located at the surface and encompasses an area of 200 square feet. Approximately 0.2 barrels (bbls) of oil were reported released.

Area: The observed impacted area in the field is approximately 200 square feet. Both on and off pad.

Remediation will be conducted by hand dig over footprint, in and around areas of buried flowlines.

Christian







APPENDIX D

Laboratory Analytical Data



PHONE (575) 393-2326 ° 101 E. MARLAND ° HOBBS, NM 88240

May 17, 2022

CHRISTIAN LLULL

TETRA TECH

901 WEST WALL STREET , STE 100

MIDLAND, TX 79701

RE: JAZZBASS 34FED # 003H

Enclosed are the results of analyses for samples received by the laboratory on 05/17/22 14:48.

Cardinal Laboratories is accredited through Texas NELAP under certificate number T104704398-21-14. Accreditation applies to drinking water, non-potable water and solid and chemical materials. All accredited analytes are denoted by an asterisk (*). For a complete list of accredited analytes and matrices visit the TCEQ website at www.tceq.texas.gov/field/qa/lab_accred_certif.html.

Cardinal Laboratories is accredited through the State of Colorado Department of Public Health and Environment for:

Method EPA 552.2	Haloacetic Acids (HAA-5)
Method EPA 524.2	Total Trihalomethanes (TTHM)
Method EPA 524.4	Regulated VOCs (V1, V2, V3)

Accreditation applies to public drinking water matrices.

This report meets NELAP requirements and is made up of a cover page, analytical results, and a copy of the original chain-of-custody. If you have any questions concerning this report, please feel free to contact me.

Sincerely,

A handwritten signature in black ink that reads "Celey D. Keene". The signature is fluid and cursive, with the first name "Celey" and last name "Keene" clearly distinguishable.

Celey D. Keene

Lab Director/Quality Manager



PHONE (575) 393-2326 ° 101 E. MARLAND ° HOBBS, NM 88240

Analytical Results For:

TETRA TECH
 CHRISTIAN LLULL
 901 WEST WALL STREET , STE 100
 MIDLAND TX, 79701
 Fax To: (432) 682-3946

Received:	05/17/2022	Sampling Date:	05/17/2022
Reported:	05/17/2022	Sampling Type:	Soil
Project Name:	JAZZBASS 34FED # 003H	Sampling Condition:	** (See Notes)
Project Number:	212C-MD-02646	Sample Received By:	Tamara Oldaker
Project Location:	LEA COUNTY, NM		

Sample ID: FS - 1 (18") (H222093-01)

BTEX 8021B		mg/kg		Analyzed By: MS/					
Analyte	Result	Reporting Limit	Analyzed	Method Blank	BS	% Recovery	True Value QC	RPD	Qualifier
Benzene*	<0.050	0.050	05/17/2022	ND	2.03	101	2.00	2.76	
Toluene*	<0.050	0.050	05/17/2022	ND	2.02	101	2.00	2.45	
Ethylbenzene*	<0.050	0.050	05/17/2022	ND	1.91	95.6	2.00	2.61	
Total Xylenes*	<0.150	0.150	05/17/2022	ND	5.98	99.6	6.00	1.51	
Total BTEX	<0.300	0.300	05/17/2022	ND					

Surrogate: 4-Bromofluorobenzene (PID) 102 % 69.9-140

Chloride, SM4500Cl-B		mg/kg		Analyzed By: GM						
Analyte	Result	Reporting Limit	Analyzed	Method Blank	BS	% Recovery	True Value QC	RPD	Qualifier	
Chloride	80.0	16.0	05/17/2022	ND	416	104	400	3.77		

TPH 8015M		mg/kg		Analyzed By: MS					
Analyte	Result	Reporting Limit	Analyzed	Method Blank	BS	% Recovery	True Value QC	RPD	Qualifier
GRO C6-C10*	<10.0	10.0	05/17/2022	ND	186	92.9	200	0.600	
DRO >C10-C28*	106	10.0	05/17/2022	ND	196	98.0	200	1.73	
EXT DRO >C28-C36	62.3	10.0	05/17/2022	ND					

Surrogate: 1-Chlorooctane 107 % 66.9-136

Surrogate: 1-Chlorooctadecane 131 % 59.5-142

Cardinal Laboratories

*=Accredited Analyte

PLEASE NOTE: Liability and Damages. Cardinal's liability and client's exclusive remedy for any claim arising, whether based in contract or tort, shall be limited to the amount paid by client for analyses. All claims, including those for negligence and any other cause whatsoever shall be deemed waived unless made in writing and received by Cardinal within thirty (30) days after completion of the applicable service. In no event shall Cardinal be liable for incidental or consequential damages, including, without limitation, business interruptions, loss of use, or loss of profits incurred by client, its subsidiaries, affiliates or successors arising out of or related to the performance of the services hereunder by Cardinal, regardless of whether such claim is based upon any of the above stated reasons or otherwise. Results relate only to the samples identified above. This report shall not be reproduced except in full with written approval of Cardinal Laboratories.

Celey D. Keene, Lab Director/Quality Manager



PHONE (575) 393-2326 ° 101 E. MARLAND ° HOBBS, NM 88240

Analytical Results For:

TETRA TECH
 CHRISTIAN LLULL
 901 WEST WALL STREET , STE 100
 MIDLAND TX, 79701
 Fax To: (432) 682-3946

Received: 05/17/2022
 Reported: 05/17/2022
 Project Name: JAZZBASS 34FED # 003H
 Project Number: 212C-MD-02646
 Project Location: LEA COUNTY, NM

Sampling Date: 05/17/2022
 Sampling Type: Soil
 Sampling Condition: ** (See Notes)
 Sample Received By: Tamara Oldaker

Sample ID: FS - 2 (18") (H222093-02)

BTEx 8021B		mg/kg		Analyzed By: MS/						
Analyte	Result	Reporting Limit	Analyzed	Method Blank	BS	% Recovery	True Value QC	RPD	Qualifier	
Benzene*	<0.050	0.050	05/17/2022	ND	2.03	101	2.00	2.76		
Toluene*	<0.050	0.050	05/17/2022	ND	2.02	101	2.00	2.45		
Ethylbenzene*	<0.050	0.050	05/17/2022	ND	1.91	95.6	2.00	2.61		
Total Xylenes*	<0.150	0.150	05/17/2022	ND	5.98	99.6	6.00	1.51		
Total BTEx	<0.300	0.300	05/17/2022	ND						

Surrogate: 4-Bromofluorobenzene (PID) 102 % 69.9-140

Chloride, SM4500CI-B		mg/kg		Analyzed By: GM						
Analyte	Result	Reporting Limit	Analyzed	Method Blank	BS	% Recovery	True Value QC	RPD	Qualifier	
Chloride	32.0	16.0	05/17/2022	ND	416	104	400	3.77		

TPH 8015M		mg/kg		Analyzed By: MS					
Analyte	Result	Reporting Limit	Analyzed	Method Blank	BS	% Recovery	True Value QC	RPD	Qualifier
GRO C6-C10*	<10.0	10.0	05/17/2022	ND	186	92.9	200	0.600	
DRO >C10-C28*	<10.0	10.0	05/17/2022	ND	196	98.0	200	1.73	
EXT DRO >C28-C36	<10.0	10.0	05/17/2022	ND					

Surrogate: 1-Chlorooctane 111 % 66.9-136

Surrogate: 1-Chlorooctadecane 129 % 59.5-142

Cardinal Laboratories

*=Accredited Analyte

PLEASE NOTE: Liability and Damages. Cardinal's liability and client's exclusive remedy for any claim arising, whether based in contract or tort, shall be limited to the amount paid by client for analyses. All claims, including those for negligence and any other cause whatsoever shall be deemed waived unless made in writing and received by Cardinal within thirty (30) days after completion of the applicable service. In no event shall Cardinal be liable for incidental or consequential damages, including, without limitation, business interruptions, loss of use, or loss of profits incurred by client, its subsidiaries, affiliates or successors arising out of or related to the performance of the services hereunder by Cardinal, regardless of whether such claim is based upon any of the above stated reasons or otherwise. Results relate only to the samples identified above. This report shall not be reproduced except in full with written approval of Cardinal Laboratories.

Celey D. Keene, Lab Director/Quality Manager



PHONE (575) 393-2326 ° 101 E. MARLAND ° HOBBS, NM 88240

Analytical Results For:

TETRA TECH
 CHRISTIAN LLULL
 901 WEST WALL STREET , STE 100
 MIDLAND TX, 79701
 Fax To: (432) 682-3946

Received: 05/17/2022
 Reported: 05/17/2022
 Project Name: JAZZBASS 34FED # 003H
 Project Number: 212C-MD-02646
 Project Location: LEA COUNTY, NM

Sampling Date: 05/17/2022
 Sampling Type: Soil
 Sampling Condition: ** (See Notes)
 Sample Received By: Tamara Oldaker

Sample ID: ESW - 1 (H222093-03)

BTX 8021B		mg/kg		Analyzed By: MS/						
Analyte	Result	Reporting Limit	Analyzed	Method Blank	BS	% Recovery	True Value QC	RPD	Qualifier	
Benzene*	<0.050	0.050	05/17/2022	ND	2.03	101	2.00	2.76		
Toluene*	<0.050	0.050	05/17/2022	ND	2.02	101	2.00	2.45		
Ethylbenzene*	<0.050	0.050	05/17/2022	ND	1.91	95.6	2.00	2.61		
Total Xylenes*	<0.150	0.150	05/17/2022	ND	5.98	99.6	6.00	1.51		
Total BTX	<0.300	0.300	05/17/2022	ND						

Surrogate: 4-Bromofluorobenzene (PID) 102 % 69.9-140

Chloride, SM4500CI-B		mg/kg		Analyzed By: GM						
Analyte	Result	Reporting Limit	Analyzed	Method Blank	BS	% Recovery	True Value QC	RPD	Qualifier	
Chloride	16.0	16.0	05/17/2022	ND	416	104	400	3.77		

TPH 8015M		mg/kg		Analyzed By: MS					
Analyte	Result	Reporting Limit	Analyzed	Method Blank	BS	% Recovery	True Value QC	RPD	Qualifier
GRO C6-C10*	<10.0	10.0	05/17/2022	ND	186	92.9	200	0.600	
DRO >C10-C28*	<10.0	10.0	05/17/2022	ND	196	98.0	200	1.73	
EXT DRO >C28-C36	<10.0	10.0	05/17/2022	ND					

Surrogate: 1-Chlorooctane 107 % 66.9-136

Surrogate: 1-Chlorooctadecane 128 % 59.5-142

Cardinal Laboratories

*=Accredited Analyte

PLEASE NOTE: Liability and Damages. Cardinal's liability and client's exclusive remedy for any claim arising, whether based in contract or tort, shall be limited to the amount paid by client for analyses. All claims, including those for negligence and any other cause whatsoever shall be deemed waived unless made in writing and received by Cardinal within thirty (30) days after completion of the applicable service. In no event shall Cardinal be liable for incidental or consequential damages, including, without limitation, business interruptions, loss of use, or loss of profits incurred by client, its subsidiaries, affiliates or successors arising out of or related to the performance of the services hereunder by Cardinal, regardless of whether such claim is based upon any of the above stated reasons or otherwise. Results relate only to the samples identified above. This report shall not be reproduced except in full with written approval of Cardinal Laboratories.

Celey D. Keene, Lab Director/Quality Manager



PHONE (575) 393-2326 ° 101 E. MARLAND ° HOBBS, NM 88240

Analytical Results For:

TETRA TECH
 CHRISTIAN LLULL
 901 WEST WALL STREET , STE 100
 MIDLAND TX, 79701
 Fax To: (432) 682-3946

Received: 05/17/2022
 Reported: 05/17/2022
 Project Name: JAZZBASS 34FED # 003H
 Project Number: 212C-MD-02646
 Project Location: LEA COUNTY, NM

Sampling Date: 05/17/2022
 Sampling Type: Soil
 Sampling Condition: ** (See Notes)
 Sample Received By: Tamara Oldaker

Sample ID: WSW - 1 (H222093-04)

BTX 8021B		mg/kg		Analyzed By: MS/						
Analyte	Result	Reporting Limit	Analyzed	Method Blank	BS	% Recovery	True Value QC	RPD	Qualifier	
Benzene*	<0.050	0.050	05/17/2022	ND	2.03	101	2.00	2.76		
Toluene*	<0.050	0.050	05/17/2022	ND	2.02	101	2.00	2.45		
Ethylbenzene*	<0.050	0.050	05/17/2022	ND	1.91	95.6	2.00	2.61		
Total Xylenes*	<0.150	0.150	05/17/2022	ND	5.98	99.6	6.00	1.51		
Total BTX	<0.300	0.300	05/17/2022	ND						

Surrogate: 4-Bromofluorobenzene (PID) 102 % 69.9-140

Chloride, SM4500CI-B		mg/kg		Analyzed By: GM						
Analyte	Result	Reporting Limit	Analyzed	Method Blank	BS	% Recovery	True Value QC	RPD	Qualifier	
Chloride	112	16.0	05/17/2022	ND	416	104	400	3.77		

TPH 8015M		mg/kg		Analyzed By: MS					
Analyte	Result	Reporting Limit	Analyzed	Method Blank	BS	% Recovery	True Value QC	RPD	Qualifier
GRO C6-C10*	<10.0	10.0	05/17/2022	ND	186	92.9	200	0.600	
DRO >C10-C28*	98.4	10.0	05/17/2022	ND	196	98.0	200	1.73	
EXT DRO >C28-C36	46.8	10.0	05/17/2022	ND					

Surrogate: 1-Chlorooctane 106 % 66.9-136

Surrogate: 1-Chlorooctadecane 132 % 59.5-142

Cardinal Laboratories

*=Accredited Analyte

PLEASE NOTE: Liability and Damages. Cardinal's liability and client's exclusive remedy for any claim arising, whether based in contract or tort, shall be limited to the amount paid by client for analyses. All claims, including those for negligence and any other cause whatsoever shall be deemed waived unless made in writing and received by Cardinal within thirty (30) days after completion of the applicable service. In no event shall Cardinal be liable for incidental or consequential damages, including, without limitation, business interruptions, loss of use, or loss of profits incurred by client, its subsidiaries, affiliates or successors arising out of or related to the performance of the services hereunder by Cardinal, regardless of whether such claim is based upon any of the above stated reasons or otherwise. Results relate only to the samples identified above. This report shall not be reproduced except in full with written approval of Cardinal Laboratories.

Celey D. Keene, Lab Director/Quality Manager



PHONE (575) 393-2326 ° 101 E. MARLAND ° HOBBS, NM 88240

Notes and Definitions

ND	Analyte NOT DETECTED at or above the reporting limit
RPD	Relative Percent Difference
**	Samples not received at proper temperature of 6°C or below.
***	Insufficient time to reach temperature.
-	Chloride by SM4500Cl-B does not require samples be received at or below 6°C Samples reported on an as received basis (wet) unless otherwise noted on report

Cardinal Laboratories

*=Accredited Analyte

PLEASE NOTE: Liability and Damages. Cardinal's liability and client's exclusive remedy for any claim arising, whether based in contract or tort, shall be limited to the amount paid by client for analyses. All claims, including those for negligence and any other cause whatsoever shall be deemed waived unless made in writing and received by Cardinal within thirty (30) days after completion of the applicable service. In no event shall Cardinal be liable for incidental or consequential damages, including, without limitation, business interruptions, loss of use, or loss of profits incurred by client, its subsidiaries, affiliates or successors arising out of or related to the performance of the services hereunder by Cardinal, regardless of whether such claim is based upon any of the above stated reasons or otherwise. Results relate only to the samples identified above. This report shall not be reproduced except in full with written approval of Cardinal Laboratories.

A handwritten signature in black ink, appearing to read "C. D. Keene", is written over a horizontal line.

Celey D. Keene, Lab Director/Quality Manager



101 East Marland, Hobbs, NM 88240
(575) 393-2326 FAX (575) 393-2476

CHAIN-OF-CUSTODY AND ANALYSIS REQUEST

Page 1 of 1

Company Name: Conoco Phillips Project Manager: Christian Lull Address: City: State: Zip: Phone #: Fax #: Project #: 212C-MD-02646 Project Owner: Project Name: J422bass 34 Fed #003H Project Location: Lea County, NM Sampler Name: Andrew Garcia FOR LAB USE ONLY		BILL TO P.O. #: Company: Tetra Tech Attn: Christian Lull Address: City: State: Zip: Phone #: Fax #:		ANALYSIS REQUEST									
Lab I.D. H22093 Sample I.D. FS-1 (18") FS-2 (18") ESW-1 ESW-2 WSW-1		(G)RAB OR (C)OMP. # CONTAINERS GROUNDWATER WASTEWATER SOIL OIL SLUDGE OTHER: ACID/BASE: ICE / COOL OTHER:		MATRIX PRESERV. SAMPLING		DATE 2022 May 17 TIME 9:00 10:00 11:00 12:00				Chlorides 4500 BTEX TPH			
Relinquished By: Andrew Garcia Date: 5/17/22 Time: 1448 Received By: [Signature] Date: Time:		Delivered By: (Circle One) Sampler - UPS - Bus - Other: Corrected Temp. °C 31.7 Corrected Temp. °C 31.2		Sample Condition Cool <input type="checkbox"/> Intact <input checked="" type="checkbox"/> Yes <input type="checkbox"/> No <input type="checkbox"/> Yes <input type="checkbox"/> No <input type="checkbox"/> Checked BY: (Initials) TO		Turnaround Time: Standard <input checked="" type="checkbox"/> Rush <input type="checkbox"/> Bacteria (only) <input checked="" type="checkbox"/> Cool <input type="checkbox"/> Intact <input type="checkbox"/> Yes <input type="checkbox"/> No <input type="checkbox"/> Yes <input type="checkbox"/> No <input type="checkbox"/> Sample Condition Observed Temp. °C Corrected Temp. °C							
REMARKS:													

APPENDIX E

Waste Manifests



TEXAS NON-HAZARDOUS OILFIELD WASTE MANIFEST

(PLEASE PRINT)

REQUIRED INFORMATION

Company Man Contact Information

Name

Phone No.

GENERATOR

NO.

8002477

Operator No.

Operators Name

Address

City, State, Zip

Phone No.

Permit/RRC No.

Lease/Well

Name & No.

County

API No.

Rig Name & No.

AFE/PO No.

EXEMPT E&P Waste/Service Identification and Amount (place volume next to waste type in barrels or cubic yards)

Oil Based Muds	NON-INJECTABLE WATERS	OTHER EXEMPT WASTES (type and generation process of the waste)
Oil Based Cuttings	Washout Water (Non-Injectable)	
Water Based Muds	Completion Fluid/Flow back (Non-Injectable)	
Water Based Cuttings	Produced Water (Non-Injectable)	
Produced Formation Solids	Gathering Line Water/Waste (Non-Injectable)	
Tank Bottoms	INTERNAL USE ONLY	
E&P Contaminated Soil	Truck Washout (exempt waste)	
Gas Plant Waste		

WASTE GENERATION PROCESS:

☐

DRILLING

☐

COMPLETION

☐

PRODUCTION

☐

GATHERING LINES

NON-EXEMPT E&P Waste/Service Identification and Amount

All non-exempt E&P waste must be analysed and be below the threshold limits for toxicity (TCLP), Ignitability, Corrosivity and Reactivity.

Non-Exempt Other

*please select from Non-Exempt Waste List on back

QUANTITY

10

B - BARRELS

Y - YARDS

E - EACH

I hereby certify that the above listed material(s), is (are) not a hazardous waste as defined by 40 CFR Part 261 or any applicable state law. That each waste has been properly described, classified and packaged, and is in proper condition for transportation according to applicable regulation.

☐

RCRA EXEMPT:

Oil field wastes generated from oil and gas exploration and production operations and are not mixed with non-exempt waste (R360 Accepts certifications on a per load basis only)

☐

RCRA NON-EXEMPT:

Oil field waste which is non-hazardous that does not exceed the minimum standards for waste hazardous by characteristics established in RCRA regulations, 40 CFR 261.21-261.24, or listed hazardous waste as defined by 40 CFR, part 261, subpart D, as amended. The following documentation demonstrating the waste as non-hazardous is attached. (Check the appropriate items as provided)

☐

MSDS Information

☐

RCRA Hazardous Waste Analysis

☐

Other (Provide Description Below)

(PRINT) AUTHORIZED AGENTS SIGNATURE

DATE

SIGNATURE

TRANSPORTER

Transporter's

Name

Address

Phone No.

Driver's Name

Print Name

Phone No.

Truck No.

I hereby certify that the above named material(s) was/were picked up at the Generator's site listed above and delivered without incident to the disposal facility listed below.

SHIPMENT DATE

DRIVER'S SIGNATURE

DELIVERY DATE

DRIVER'S SIGNATURE

TRUCK TIME STAMP

IN:

OUT:

DISPOSAL FACILITY

RECEIVING AREA

Name/No.

Site Name/

Permit No.

Address

Red Bluff Facility/ STF-065

5053 US Highway 285, Orla, TX 79770

Phone No.

432-448-4239

NORM READINGS TAKEN? (Circle One)

YES

NO

If YES, was reading > 50 micro roentgens? (circle one)

YES

NO

Chemical Analysis (Mg/l)

Conductivity (mmhos/cm)

pH

TANK BOTTOMS

Feet

Inches

1st Gauge
2nd Gauge
Received

BS&W/BBLs Received

BS&W (%)

Free Water

Total Received

I hereby certify that the above load material has been (circle one):

ACCEPTED

DENIED

If denied, why?

DATE

TITLE

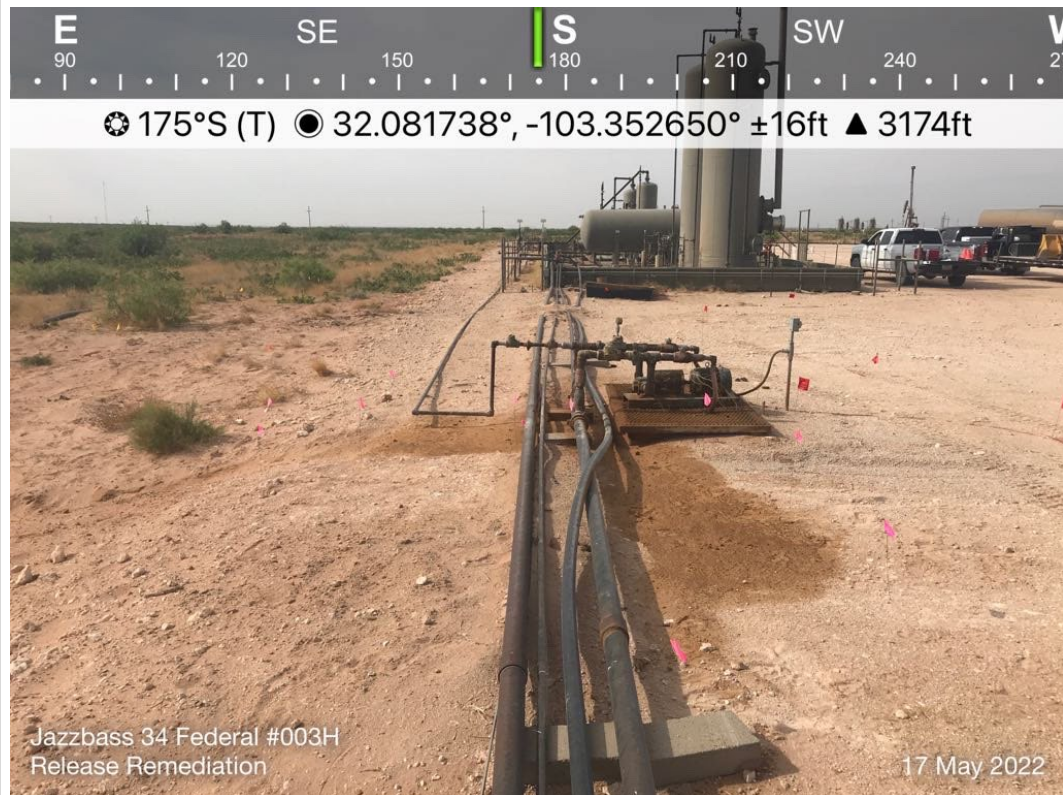
SIGNATURE

APPENDIX F

Photographic Documentation



TETRA TECH, INC. PROJECT NO. 212C-MD-02761	DESCRIPTION	View of site signage.	1
	SITE NAME	ConocoPhillips Jazzbass 34 Federal #003H Tank Release	5/17/2022



TETRA TECH, INC. PROJECT NO. 212C-MD-02761	DESCRIPTION	View south of the release extent.	2
	SITE NAME	ConocoPhillips Jazzbass 34 Federal #003H Tank Release	5/17/2022



TETRA TECH, INC. PROJECT NO. 212C-MD-02761	DESCRIPTION	View northwest of off-pad release extent.	3
	SITE NAME	ConocoPhillips Jazzbass 34 Federal #003H Tank Release	5/17/2022



TETRA TECH, INC. PROJECT NO. 212C-MD-02761	DESCRIPTION	View west of excavated remediation extent.	4
	SITE NAME	ConocoPhillips Jazzbass 34 Federal #003H Tank Release	5/17/2022



TETRA TECH, INC. PROJECT NO. 212C-MD-02761	DESCRIPTION	View north-northwest of excavated remediation extent.	5
	SITE NAME	ConocoPhillips Jazzbass 34 Federal #003H Tank Release	5/17/2022



TETRA TECH, INC. PROJECT NO. 212C-MD-02761	DESCRIPTION	View southwest of backfilled release area.	6
	SITE NAME	ConocoPhillips Jazzbass 34 Federal #003H Tank Release	5/17/2022

District I
1625 N. French Dr., Hobbs, NM 88240
Phone:(575) 393-6161 Fax:(575) 393-0720
District II
811 S. First St., Artesia, NM 88210
Phone:(575) 748-1283 Fax:(575) 748-9720
District III
1000 Rio Brazos Rd., Aztec, NM 87410
Phone:(505) 334-6178 Fax:(505) 334-6170
District IV
1220 S. St Francis Dr., Santa Fe, NM 87505
Phone:(505) 476-3470 Fax:(505) 476-3462

State of New Mexico
Energy, Minerals and Natural Resources
Oil Conservation Division
1220 S. St Francis Dr.
Santa Fe, NM 87505

CONDITIONS

Action 115165

CONDITIONS

Operator: COG OPERATING LLC 600 W Illinois Ave Midland, TX 79701	OGRID: 229137
	Action Number: 115165
	Action Type: [C-141] Release Corrective Action (C-141)

CONDITIONS

Created By	Condition	Condition Date
jnobui	Closure Report Approved. Please implement 19.15.29.13 NMAC when completing P&A.	6/13/2022