

District I  
1625 N. French Dr., Hobbs, NM 88240  
District II  
811 S. First St., Artesia, NM 88210  
District III  
1000 Rio Brazos Road, Aztec, NM 87410  
District IV  
1220 S. St. Francis Dr., Santa Fe, NM 87505

State of New Mexico  
Energy Minerals and Natural  
Resources Department  
  
Oil Conservation Division  
1220 South St. Francis Dr.  
Santa Fe, NM 87505

Form C-141  
Revised August 24, 2018  
Submit to appropriate OCD District office

Incident ID	
District RP	
Facility ID	
Application ID	

## Release Notification

### Responsible Party

Responsible Party: <b>Enterprise Field Services, LLC</b>	OGRID: <b>241602</b>
Contact Name: <b>Thomas Long</b>	Contact Telephone: <b>505-599-2286</b>
Contact email: <b>tjlong@eprod.com</b>	Incident # (assigned by OCD) <b>nAPP2207346984</b>
Contact mailing address: <b>614 Reilly Ave, Farmington, NM 87401</b>	

### Location of Release Source

Latitude **36.447118** Longitude **-108.119250** (NAD 83 in decimal degrees to 5 decimal places)

Site Name <b>Lateral 10A-5</b>	Site Type <b>Natural Gas Gathering Pipeline</b>
Date Release Discovered: <b>03/14/2022</b>	Serial Number (if applicable): <b>N/A</b>

Unit Letter	Section	Township	Range	County
<b>F</b>	<b>33</b>	<b>26N</b>	<b>12W</b>	<b>San Juan</b>

Surface Owner: ☐ State ☐ Federal ☒ Tribal ☐ Private (Name: Navajo Tribal)

### Nature and Volume of Release

Material(s) Released (Select all that apply and attach calculations or specific justification for the volumes provided below)

<input type="checkbox"/> Crude Oil	Volume Released (bbls)	Volume Recovered (bbls)
<input type="checkbox"/> Produced Water	Volume Released (bbls)	Volume Recovered (bbls)
	Is the concentration of dissolved chloride in the produced water >10,000 mg/l?	<input type="checkbox"/> Yes <input type="checkbox"/> No
<input checked="" type="checkbox"/> Condensate	Volume Released (bbls): <b>3-5 BBLS</b>	Volume Recovered (bbls): <b>None</b>
<input checked="" type="checkbox"/> Natural Gas	Volume Released (Mcf): <b>7 MCF</b>	Volume Recovered (Mcf): <b>None</b>
<input type="checkbox"/> Other (describe)	Volume/Weight Released (provide units):	Volume/Weight Recovered (provide units)

**Cause of Release:** : On March 9, 2022, Enterprise had a release of natural gas and condensate from the Lateral 10A-5 pipeline. The pipeline was isolated, depressurized, locked and tagged out. No residents were affected. No washes were affected. No emergency services responded. Enterprise began repairs and remediation on March 14, 2022 and determined this release reportable per NMOCD regulation due to the volume of impacted subsurface soil. The final excavation dimensions measured approximately 22 feet long by 18 feet wide by 6 feet deep. A total of 60 cubic yards of hydrocarbon impacted soil was excavated and transported to a New Mexico Oil Conservation Division (NMOCD) approved land farm. A third party closure report is included with this "Final." C-141.

Incident ID	
District RP	
Facility ID	
Application ID	

## Closure

The responsible party must attach information demonstrating they have complied with all applicable closure requirements and any conditions or directives of the OCD. This demonstration should be in the form of a comprehensive report (electronic submittals in .pdf format are preferred) including a scaled site map, sampling diagrams, relevant field notes, photographs of any excavation prior to backfilling, laboratory data including chain of custody documents of final sampling, and a narrative of the remedial activities. Refer to 19.15.29.12 NMAC.

**Closure Report Attachment Checklist:** *Each of the following items must be included in the closure report.*

- ☒ A scaled site and sampling diagram as described in 19.15.29.11 NMAC
- ☒ Photographs of the remediated site prior to backfill or photos of the liner integrity if applicable (Note: appropriate OCD District office must be notified 2 days prior to liner inspection)
- ☒ Laboratory analyses of final sampling (Note: appropriate ODC District office must be notified 2 days prior to final sampling)
- ☒ Description of remediation activities

I hereby certify that the information given above is true and complete to the best of my knowledge and understand that pursuant to OCD rules and regulations all operators are required to report and/or file certain release notifications and perform corrective actions for releases which may endanger public health or the environment. The acceptance of a C-141 report by the OCD does not relieve the operator of liability should their operations have failed to adequately investigate and remediate contamination that pose a threat to groundwater, surface water, human health or the environment. In addition, OCD acceptance of a C-141 report does not relieve the operator of responsibility for compliance with any other federal, state, or local laws and/or regulations. The responsible party acknowledges they must substantially restore, reclaim, and re-vegetate the impacted surface area to the conditions that existed prior to the release or their final land use in accordance with 19.15.29.13 NMAC including notification to the OCD when reclamation and re-vegetation are complete.

Printed Name: Thomas Long Title: Senior Environmental Scientist

Signature:  Date: 05-06-2022

email: tjlong@eprod.com Telephone: (505) 599-2286

### OCD Only

Received by: \_\_\_\_\_ Date: \_\_\_\_\_

Closure approval by the OCD does not relieve the responsible party of liability should their operations have failed to adequately investigate and remediate contamination that poses a threat to groundwater, surface water, human health, or the environment nor does not relieve the responsible party of compliance with any other federal, state, or local laws and/or regulations.

Closure Approved by:  Date: 06/24/2022

Printed Name: Nelson Velez Title: Environmental Specialist – Adv



## CLOSURE REPORT

Property:

**Lateral 10A-5 (3/14/22)  
Unit Letter F, S33 T26N R12W  
San Juan County, New Mexico**

**NM EMNRD OCD Incident ID No. NAPP2207346984**

April 26, 2022  
Ensolum Project No. 05A1226187

Prepared for:

**Enterprise Field Services, LLC  
614 Reilly Avenue  
Farmington, NM 87401  
Attn: Mr. Thomas Long**

Prepared by:

Ranee Deechilly  
Project Manager

Kyle Summers  
Senior Project Manager

Closure Report  
Enterprise Field Services, LLC  
Lateral 10A-5 (3/14/22)  
April 26, 2022



## TABLE OF CONTENTS

<b>1.0</b>	<b>INTRODUCTION .....</b>	<b>1</b>
1.1	Site Description & Background .....	1
1.2	Project Objective .....	1
<b>2.0</b>	<b>CLOSURE CRITERIA.....</b>	<b>1</b>
<b>3.0</b>	<b>SOIL REMEDIATION ACTIVITIES.....</b>	<b>3</b>
<b>4.0</b>	<b>SOIL SAMPLING PROGRAM .....</b>	<b>3</b>
<b>5.0</b>	<b>SOIL LABORATORY ANALYTICAL METHODS .....</b>	<b>3</b>
<b>6.0</b>	<b>SOIL DATA EVALUATION .....</b>	<b>4</b>
<b>7.0</b>	<b>RECLAMATION AND REVEGETATION .....</b>	<b>4</b>
<b>8.0</b>	<b>FINDINGS AND RECOMMENDATION .....</b>	<b>4</b>
<b>9.0</b>	<b>STANDARDS OF CARE, LIMITATIONS, AND RELIANCE .....</b>	<b>4</b>
9.1	Standard of Care.....	4
9.2	Limitations .....	5
9.3	Reliance .....	5

## LIST OF APPENDICES

<b>Appendix A:</b>	<b>Figures</b>
	Figure 1 Topographic Map
	Figure 2 Site Vicinity Map
	Figure 3 Site Map with Soil Analytical Results
<b>Appendix B:</b>	<b>Siting Figures and Documentation</b>
	Figure A 1.0 Mile Radius Water Well/POD Location Map
	Figure B Cathodic Protection Well Recorded Depth to Water
	Figure C 300 Foot Radius Watercourse and Drainage Identification
	Figure D 300 Foot Radius Occupied Structure Identification
	Figure E Water Well and Natural Spring Location
	Figure F Wetlands
	Figure G Mines, Mills, and Quarries
	Figure H 100-Year Flood Plain Map
<b>Appendix C:</b>	<b>Executed C-138 Solid Waste Acceptance Form</b>
<b>Appendix D:</b>	<b>Photographic Documentation</b>
<b>Appendix E:</b>	<b>Regulatory Correspondence</b>
<b>Appendix F:</b>	<b>Table 1 - Soil Analytical Summary</b>
<b>Appendix G:</b>	<b>Laboratory Data Sheets &amp; Chain of Custody Documentation</b>

Closure Report  
Enterprise Field Services, LLC  
Lateral 10A-5 (3/14/22)  
April 26, 2022



## 1.0 INTRODUCTION

### 1.1 Site Description & Background

<b>Operator:</b>	Enterprise Field Services, LLC / Enterprise Products Operating LLC (Enterprise)
<b>Site Name:</b>	Lateral 10A-5 (3/14/22) (Site)
<b>NM EMNRD OCD Incident ID No.</b>	NAPP2207346984
<b>Location:</b>	36.447118° North, 108.11925° West Unit Letter F, Section 33, Township 26 North, Range 12 West San Juan County, New Mexico
<b>Property:</b>	Navajo Nation
<b>Regulatory:</b>	Navajo Nation Environmental Protection Agency (NNEPA) and New Mexico (NM) Energy, Minerals and Natural Resources Department (EMNRD) Oil Conservation Division (OCD)

On March 9, 2022, an Enterprise personnel discovered a release of natural gas on the Lateral 10A-5 pipeline. Enterprise subsequently isolated and locked the pipeline out of service. On March 11, 2022, Enterprise initiated activities to repair the pipeline and remediate potential petroleum hydrocarbon impact. On March 14, 2022, Enterprise determined the release was “reportable” due to the estimated volume of impacted soil. The NM EMNRD OCD was subsequently notified.

A **Topographic Map** depicting the location of the Site is included as **Figure 1**, and a **Site Vicinity Map** is included as **Figure 2** in **Appendix A**.

### 1.2 Project Objective

The primary objective of the closure activities was to reduce constituent of concern (COC) concentrations in the on-site soils to below the applicable NM EMNRD OCD closure criteria.

## 2.0 CLOSURE CRITERIA

The Site is subject to regulatory oversight by the NNEPA and the New Mexico EMNRD OCD. Ensolum, LLC (Ensolum) referenced New Mexico Administrative Code (NMAC) 19.15.29 *Releases*, which establishes investigation and abatement action requirements for oil and gas release sites that are subject to reporting and/or corrective action, during the evaluation and remediation of the Site. The appropriate closure criteria for sites are determined using the siting requirements outlined in Paragraph (4) of Subsection C of 19.15.29.12 NMAC. Ensolum utilized the general site characteristics and information available from NM state agency databases and federal agency geospatial databases to determine the appropriate closure criteria for the Site. Supporting figures and documentation associated with the following Siting bullets are provided in **Appendix B**.

- The NM Office of the State Engineer (OSE) tracks the usage and assignment of water rights and water well installations and records this information in the Water Rights Reporting System (WRRS) database. Water wells and other points of diversion (PODs) are each assigned POD numbers in the database (which is searchable and includes an interactive map). No PODs were identified in the same Public Land Survey System (PLSS) section as the Site, and no PODs were identified in the adjacent PLSS sections (**Figure A, Appendix B**).

Closure Report  
Enterprise Field Services, LLC  
Lateral 10A-5 (3/14/22)  
April 26, 2022



- No cathodic protection wells (CPWs) were identified in the NM EMNRD OCD imaging database in the same PLSS section as the Site, and no CPWs were identified in the adjacent PLSS sections **Figure B (Appendix B)**.
- The Site is not located within 300 feet of a NM EMNRD OCD-defined continuously flowing watercourse or significant watercourse (**Figure C, Appendix B**).
- The Site is not located within 200 feet of a lakebed, sinkhole, or playa lake.
- The Site is not located within 300 feet of a permanent residence, school, hospital, institution, or church (**Figure D, Appendix B**).
- No springs, or private domestic fresh water wells used by less than five households for domestic or stock watering purposes were identified within 500 feet of the Site (**Figure E, Appendix B**).
- No fresh water wells or springs were identified within 1,000 feet of the Site (**Figure E, Appendix B**).
- The Site is not located within incorporated municipal boundaries or within a defined municipal fresh water well field covered under a municipal ordinance adopted pursuant to New Mexico Statutes Annotated (NMSA) 1978, Section 3-27-3.
- Based on information identified in the U.S. Fish & Wildlife Service National Wetlands Inventory Wetlands Mapper, the Site is not within 300 feet of a wetland (**Figure F, Appendix B**).
- Based on information identified in the NM Mining and Minerals Division's Geographic Information System (GIS) Maps and Mine Data database, the Site is not within an area overlying a subsurface mine (**Figure G, Appendix B**).
- The Site is not located within an unstable area.
- Based on information provided by the Federal Emergency Management Agency (FEMA) National Flood Hazard Layer (NFHL) geospatial database, the Site is not within a 100-year floodplain (**Figure H, Appendix B**).

Based on the identified siting criteria, Enterprise estimates the depth to water at the Site to be greater than 50 feet bgs, resulting in a Tier II ranking. However, the soil requirements of NMAC 19.15.29.13(D)(1) indicate that a minimum of the upper four feet must contain "uncontaminated" soil and that the soils meet Tier I closure criteria listed in Table 1 of NMAC 19.15.29.12. None of the samples collected below four feet bgs exceeded the Tier I closure criteria, so Tier II closure criteria were not included in the report. The Tier I closure criteria include:

Closure Criteria for Soils Impacted by a Release (Tier I)		
Constituent <sup>1</sup>	Method	Limit
Chloride	EPA 300.0 or SM4500 Cl B	600 mg/kg
TPH (GRO+DRO+MRO) <sup>2</sup>	EPA SW-846 Method 8015	100 mg/kg
BTEX <sup>3</sup>	EPA SW-846 Method 8021 or 8260	50 mg/kg
Benzene	EPA SW-846 Method 8021 or 8260	10 mg/kg

<sup>1</sup> – Constituent concentrations are in milligrams per kilograms (mg/kg).

<sup>2</sup> – Total Petroleum Hydrocarbons (TPH). Gasoline Range Organics (GRO). Diesel Range Organics (DRO). Motor Oil/Lube Oil Range Organics (MRO).

<sup>3</sup> – Benzene, Toluene, Ethylbenzene, and Total Xylenes (BTEX).

### 3.0 SOIL REMEDIATION ACTIVITIES

On March 11, 2022, Enterprise initiated activities to remediate petroleum hydrocarbon impact resulting from the release. During the remediation and corrective action activities, Industrial Mechanical Inc (IMI), provided heavy equipment and labor support, while Ensolum provided environmental consulting support.

The final excavation measured approximately 22 feet long and 18 feet wide at the maximum extents. The maximum depth of the excavation measured approximately six feet bgs. The lithology encountered during the completion of remediation activities consisted primarily of unconsolidated silty sand.

Approximately 60 cubic yards (yd<sup>3</sup>) of petroleum hydrocarbon affected soils were transported to the Envirotech, Inc., (Envirotech) landfarm near Hilltop, NM for disposal/remediation. The executed C-138 solid waste acceptance form is provided in **Appendix C**. The excavation was backfilled with imported fill and laboratory-confirmed stockpiled soils and was subsequently contoured to the surrounding topography.

**Figure 3** is a map that identifies approximate soil sample locations and depicts the approximate dimensions of the excavation with respect to the pipeline (**Appendix A**). Photographic documentation of the field activities is included in **Appendix D**.

### 4.0 SOIL SAMPLING PROGRAM

Ensolum field screened the soil samples from the excavation utilizing a calibrated Dextsil PetroFLAG<sup>®</sup> hydrocarbon analyzer system and a photoionization detector (PID) fitted with a 10.6 eV lamp to guide excavation extents.

Ensolum's soil sampling program included the collection of five composite soil samples (S-1 through S-5) from the excavation for laboratory analysis. In addition, one composite soil sample (SP-1) was collected from the stockpiled soils to confirm the material was suitable to use as backfill. The composite samples were comprised of five aliquots each and represent an estimated 200 square foot (ft<sup>2</sup>) sample area per guidelines outlined in Section D of 19.15.29.12 NMAC. Hand tools were utilized to obtain fresh aliquots from each area of the excavation. Regulatory correspondence is provided in **Appendix E**.

#### First Sampling Event

On March 15, 2022, the first sampling event was performed at the Site. The NM EMNRD OCD and NNEPA were notified of the sampling event although no representatives were present during sampling activities. Composite soil sample S-1 (6') was collected from the floor of the excavation. Composites soil samples S-2 (0'-6'), S-3 (0'-6'), S-4 (0'-6'), and S-5 (0'-6') were collected from the sloped walls of the excavation. Composite soil sample SP-1 was collected from the stockpiled soil to demonstrate that the soil did not exhibit COC impact and that it was suitable for use as backfill.

All soil samples were collected and placed in laboratory prepared glassware. The containers were labeled and sealed using the laboratory supplied labels and custody seals and were stored on ice in a cooler. The samples were relinquished to the courier for Hall Environmental Analysis Laboratory of Albuquerque, NM, under proper chain-of-custody procedures.

### 5.0 SOIL LABORATORY ANALYTICAL METHODS

The composite soil samples were analyzed for BTEX using Environmental Protection Agency (EPA) SW-846 Method #8021; TPH GRO/DRO/MRO using EPA SW-846 Method #8015; and chlorides using EPA Method #300.0.

The laboratory analytical results are summarized in **Table 1 (Appendix F)**. The laboratory data sheets and executed chain-of-custody forms are provided in **Appendix G**.



## 6.0 SOIL DATA EVALUATION

Ensolum compared the BTEX, TPH, and chloride laboratory analytical results or laboratory practical quantitation limits (PQLs) / reporting limits (RLs) associated with the composite soil samples (S-1 through S-5 and SP-1) to the Tier I NM EMNRD OCD closure criteria. The laboratory analytical results are summarized in **Table 1 (Appendix F)**.

- The laboratory analytical results for all composite soil samples indicate benzene is not present at concentrations greater than the laboratory PQLs/RLs, which are less than the Tier I NM EMNRD OCD closure criteria of 10 mg/kg.
- The laboratory analytical results for all composite soil samples indicate total BTEX is not present at concentrations greater than the laboratory PQLs/RLs, which are less than the Tier I NM EMNRD OCD closure criteria of 50 mg/kg.
- The laboratory analytical results for composite soil samples S-1, S-2, and S-4 indicate combined TPH GRO/DRO/MRO concentrations ranging from 24 mg/kg (S-2) to 28 mg/kg (S-4), which are less than the Tier I New Mexico EMNRD OCD closure criteria of 100 mg/kg. The laboratory analytical results for all other composite soil samples indicate combined TPH GRO/DRO/MRO is not present at concentrations greater than the laboratory PQLs/RLs, which are less than the Tier I New Mexico EMNRD OCD closure criteria of 100 mg/kg.
- The laboratory analytical results for the composite soil samples indicate chloride concentrations ranging from 130 mg/kg (S-3) to 370 mg/kg (S-2), which are less than the Tier I New Mexico EMNRD OCD closure criteria of 600 mg/kg.

## 7.0 RECLAMATION AND REVEGETATION

The excavation was backfilled with imported fill and laboratory-confirmed stockpiled soil and was then contoured to surrounding grade.

## 8.0 FINDINGS AND RECOMMENDATION

- Six composite soil samples were collected from the Site. Based on laboratory analytical results, no benzene, BTEX, chloride, or combined TPH GRO/DRO/MRO exceedances were identified in the soils remaining at the Site.
- Approximately 60 yd<sup>3</sup> of petroleum hydrocarbon affected soils were transported to the Envirotech landfarm for disposal/remediation. The excavation was backfilled with imported fill and laboratory-confirmed stockpiled soils and was subsequently contoured to the surrounding topography.

**Based on field observations and laboratory analytical results, no additional investigation or corrective action appears warranted at this time.**

## 9.0 STANDARDS OF CARE, LIMITATIONS, AND RELIANCE

### 9.1 Standard of Care

Ensolum's services were performed in accordance with standards customarily provided by a firm rendering the same or similar services in the area during the same time period. Ensolum makes no warranties,



Closure Report  
Enterprise Field Services, LLC  
Lateral 10A-5 (3/14/22)  
April 26, 2022

---



express or implied, as to the services performed hereunder. Additionally, Ensolum does not warrant the work of third parties supplying information used in the report (e.g., laboratories, regulatory agencies, or other third parties).

## **9.2 Limitations**

Findings, conclusions, and recommendations resulting from these services are based upon information derived from the on-Site activities and other services performed under this scope of work and it should be noted that this information is subject to change over time. Certain indicators of the presence of hazardous substances, petroleum products, or other constituents may have been latent, inaccessible, unobservable, or not present during these services, and Ensolum cannot represent that the Site contains no hazardous substances, toxic materials, petroleum products, or other latent conditions beyond those identified during the investigation. Environmental conditions at other areas or portions of the Site may vary from those encountered at actual sample locations. Ensolum's findings and recommendation are based solely upon data available to Ensolum at the time of these services.

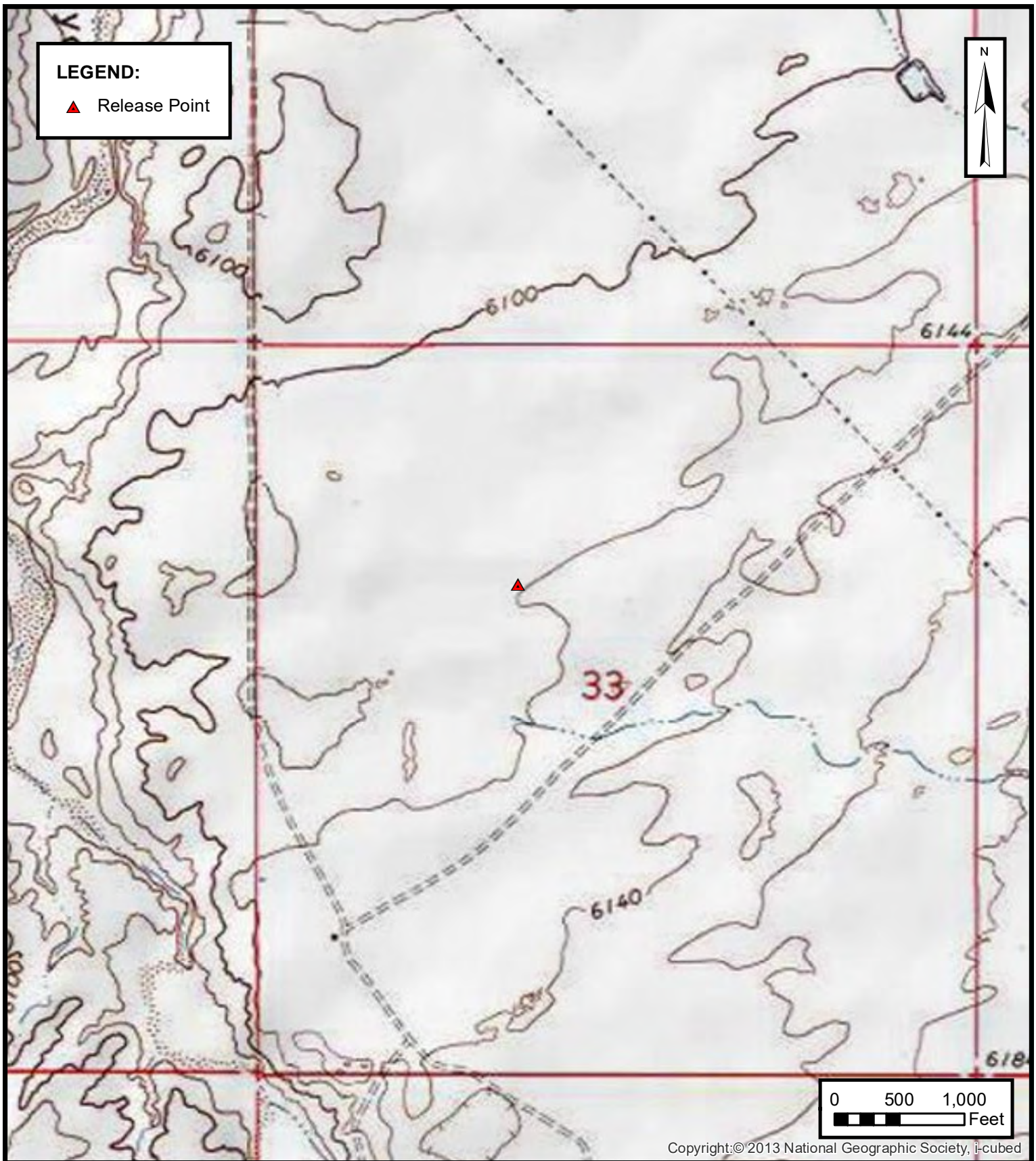
## **9.3 Reliance**

This report has been prepared for the exclusive use of Enterprise, and any authorization for use or reliance by any other party (except a governmental entity having jurisdiction over the Site) is prohibited without the express written authorization of Enterprise and Ensolum. Any unauthorized distribution or reuse is at the client's sole risk. Notwithstanding the foregoing, reliance by authorized parties will be subject to the terms, conditions and limitations stated in the Closure Report, and Ensolum's Master Services Agreement. The limitation of liability defined in the agreement is the aggregate limit of Ensolum's liability to the client.



## APPENDIX A

### Figures



**ENSOLUM**  
Environmental & Hydrogeologic Consultants

### TOPOGRAPHIC MAP

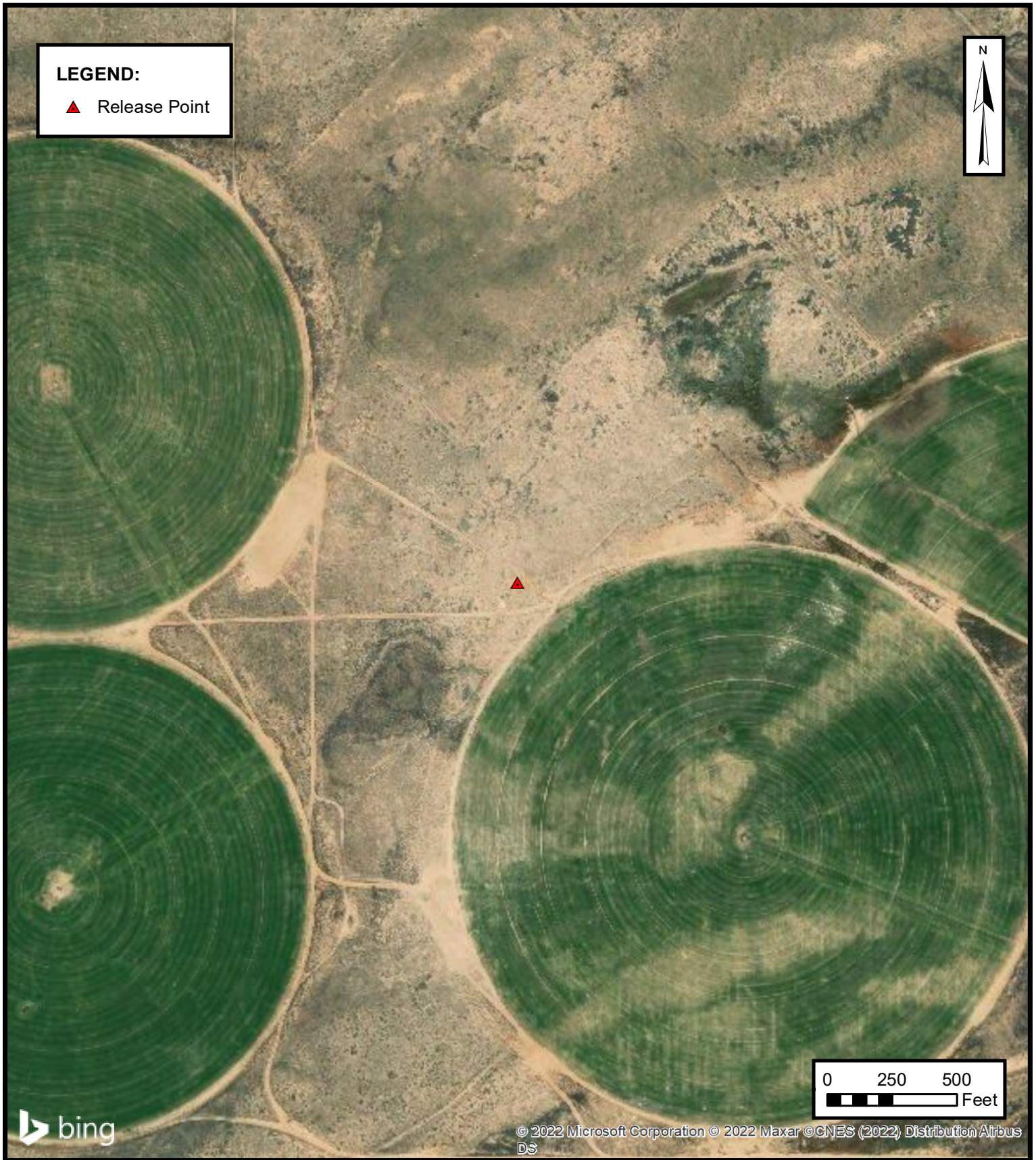
ENTERPRISE FIELD SERVICES, LLC  
LATERAL 10A-5 (3/14/22)  
Unit Letter F, Sec 33 T26N R12W, San Juan County, New Mexico  
36.447118° N, 108.11925° W

PROJECT NUMBER: 05A1226187

**FIGURE**

**1**





**SITE VICINITY MAP**

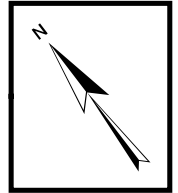
ENTERPRISE FIELD SERVICES, LLC  
LATERAL 10A-5 (3/14/22)  
Unit Letter F, Sec 33 T26N R12W, San Juan County, New Mexico  
36.447118° N, 108.11925° W

PROJECT NUMBER: 05A1226187

**FIGURE**  
**2**

**LEGEND:**

- ▲ Release Point
- Excavation Composite Soil Sample Location
- Approximate Pipeline Location
- Extent of Excavation
- Sloped Sidewalls



**S-1**  
3/15/2022  
F (6')  
Benzene...<0.016  
Toluene...<0.032  
Ethylbenzene...<0.032  
Xylenes...<0.064  
Total BTEX...ND  
TPH GRO...<3.2  
TPH DRO...27  
TPH MRO...<48  
Total Combined TPH  
GRO/DRO/MRO...27  
Chloride...340

**S-5**  
3/15/2022  
W (0-6')  
Benzene...<0.018  
Toluene...<0.036  
Ethylbenzene...<0.036  
Xylenes...<0.071  
Total BTEX...ND  
TPH GRO...<3.6  
TPH DRO...<9.9  
TPH MRO...<50  
Total Combined TPH  
GRO/DRO/MRO...ND  
Chloride...290

**S-2**  
3/15/2022  
W (0-6')  
Benzene...<0.023  
Toluene...<0.046  
Ethylbenzene...<0.046  
Xylenes...<0.093  
Total BTEX...ND  
TPH GRO...<4.6  
TPH DRO...24  
TPH MRO...<49  
Total Combined TPH  
GRO/DRO/MRO...24  
Chloride...370

**S-3**  
3/15/2022  
W (0-6')  
Benzene...<0.021  
Toluene...<0.042  
Ethylbenzene...<0.042  
Xylenes...<0.083  
Total BTEX...ND  
TPH GRO...<4.2  
TPH DRO...<9.8  
TPH MRO...<49  
Total Combined TPH  
GRO/DRO/MRO...ND  
Chloride...130

**S-4**  
3/15/2022  
W (0-6')  
Benzene...<0.017  
Toluene...<0.035  
Ethylbenzene...<0.035  
Xylenes...<0.069  
Total BTEX...ND  
TPH GRO...<3.5  
TPH DRO...28  
TPH MRO...<48  
Total Combined TPH  
GRO/DRO/MRO...28  
Chloride...150

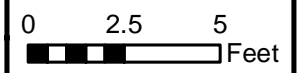
**NOTES:**

W - Wall Sample

F - Floor Sample

All depths are listed in feet below grade surface (bgs).

All concentrations are in mg/Kg.

**SITE MAP WITH SOIL ANALYTICAL RESULTS**

ENTERPRISE FIELD SERVICES, LLC

LATERAL 10A-5 (3/14/22)

Unit Letter F, Sec 33 T26N R12W, San Juan County, New Mexico

36.447118° N, 108.11925° W

PROJECT NUMBER: 05A1226187

**FIGURE****3**

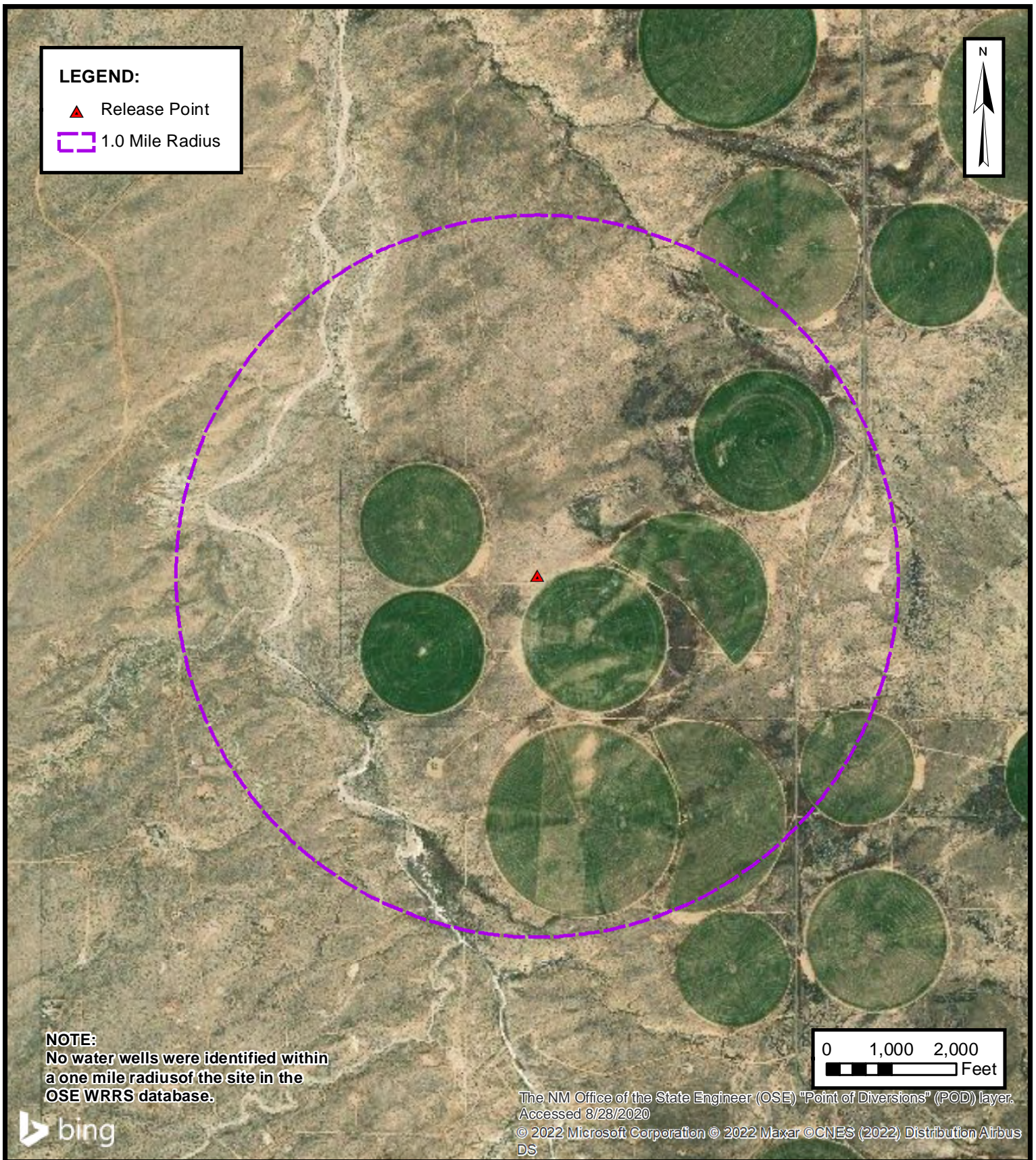


## APPENDIX B

### Siting Figures and Documentation

---



**1.0 MILE RADIUS WATER WELL/ POD LOCATION MAP**

ENTERPRISE FIELD SERVICES, LLC

LATERAL 10A-5 (3/14/22)

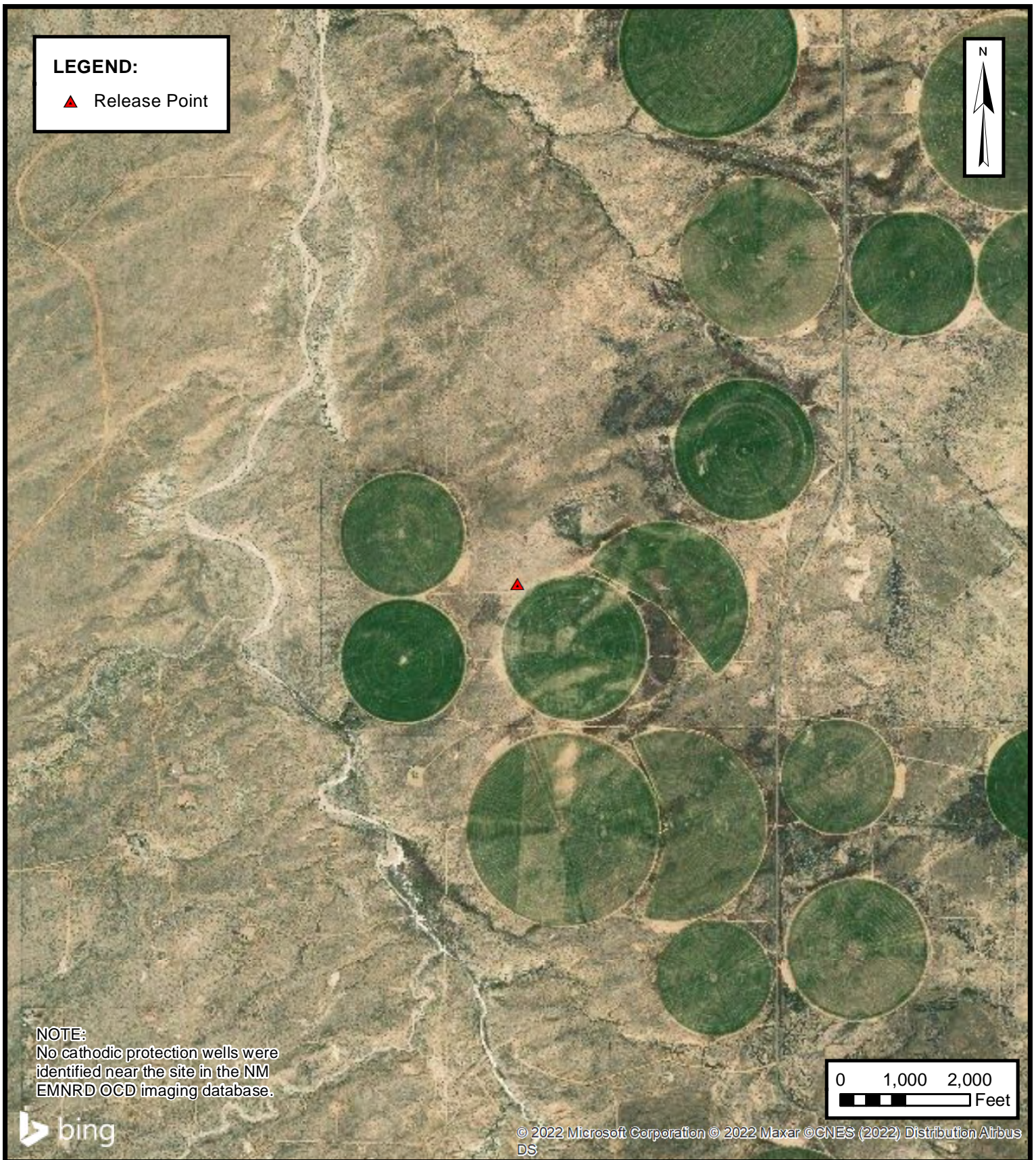
Unit Letter F, Sec 33 T26N R12W, San Juan County, New Mexico  
36.447118° N, 108.11925° W

PROJECT NUMBER: 05A1226187

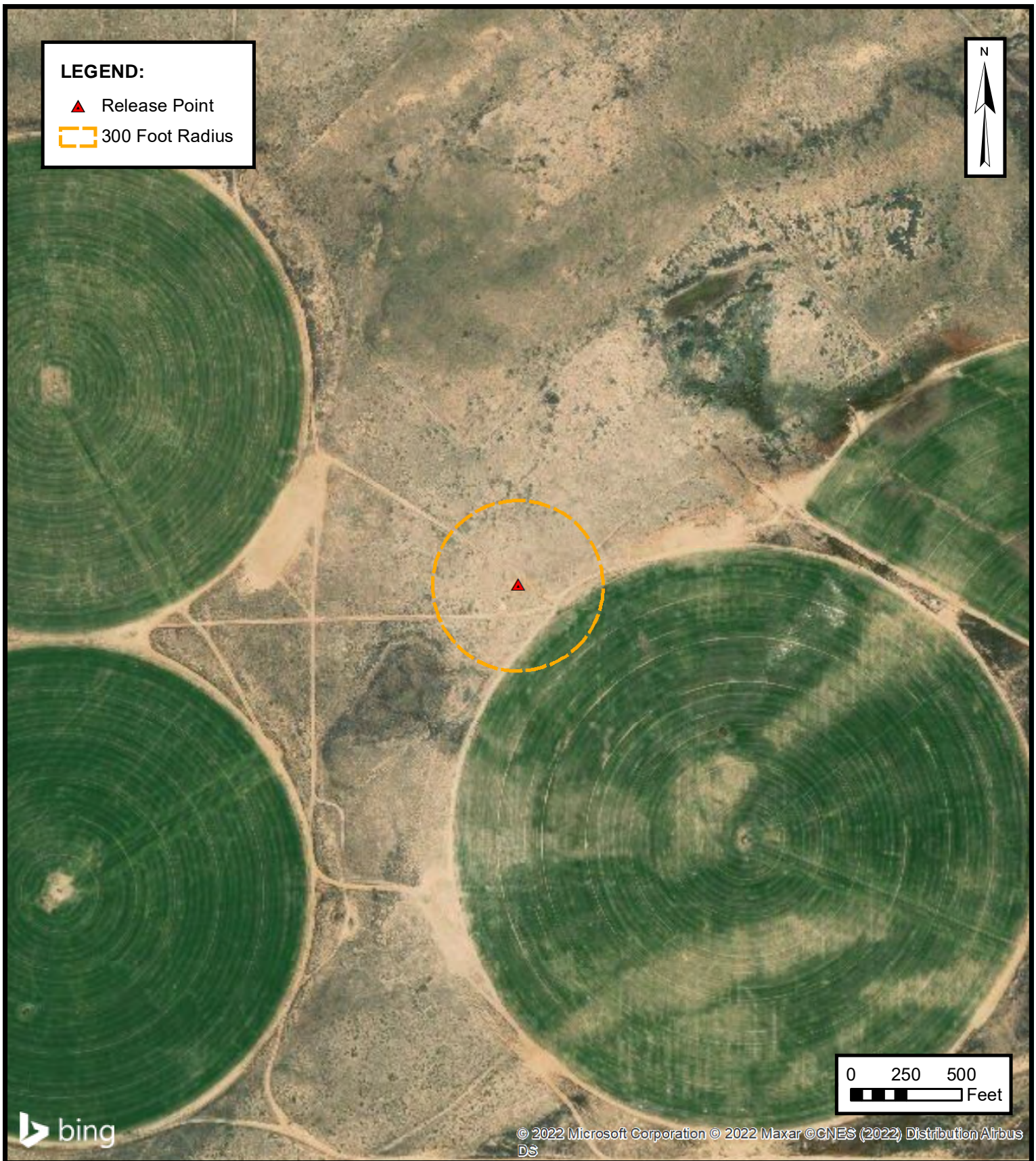
**FIGURE****A**

**ENSOLUM**  
Environmental & Hydrogeologic Consultants









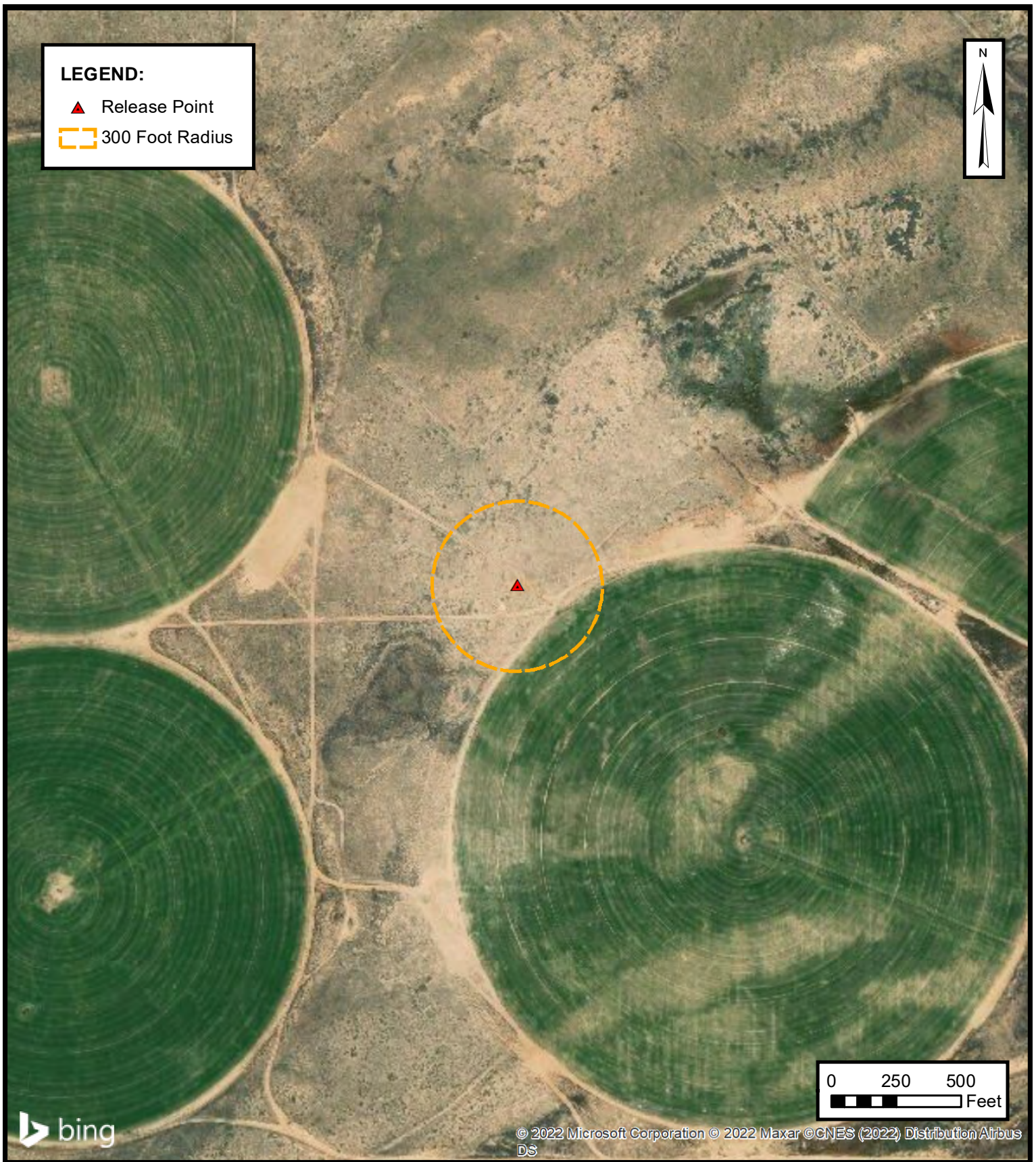
**ENSOLUM**  
Environmental & Hydrogeologic Consultants

**300 FOOT RADIUS  
WATERCOURSE AND DRAINAGE IDENTIFICATION**  
ENTERPRISE FIELD SERVICES, LLC  
LATERAL 10A-5 (3/14/22)  
Unit Letter F, Sec 33 T26N R12W, San Juan County, New Mexico  
36.447118° N, 108.11925° W

PROJECT NUMBER: 05A1226187

**FIGURE  
C**





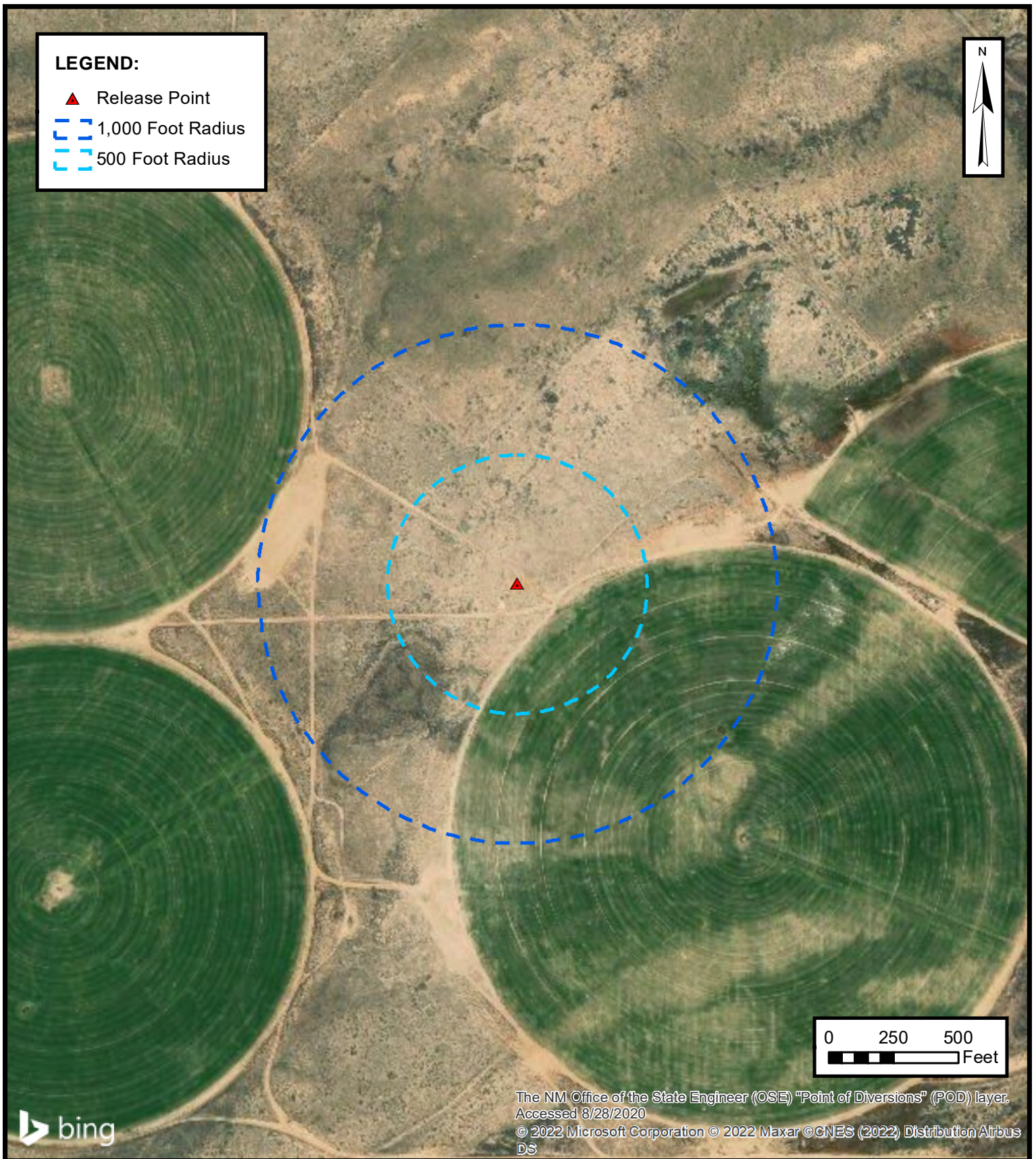
**300 FOOT RADIUS  
OCCUPIED STRUCTURE IDENTIFICATION**

ENTERPRISE FIELD SERVICES, LLC  
LATERAL 10A-5 (3/14/22)  
Unit Letter F, Sec 33 T26N R12W, San Juan County, New Mexico  
36.447118° N, 108.11925° W

PROJECT NUMBER: 05A1226187

**FIGURE  
D**





**ENSOLUM**  
Environmental & Hydrogeologic Consultants

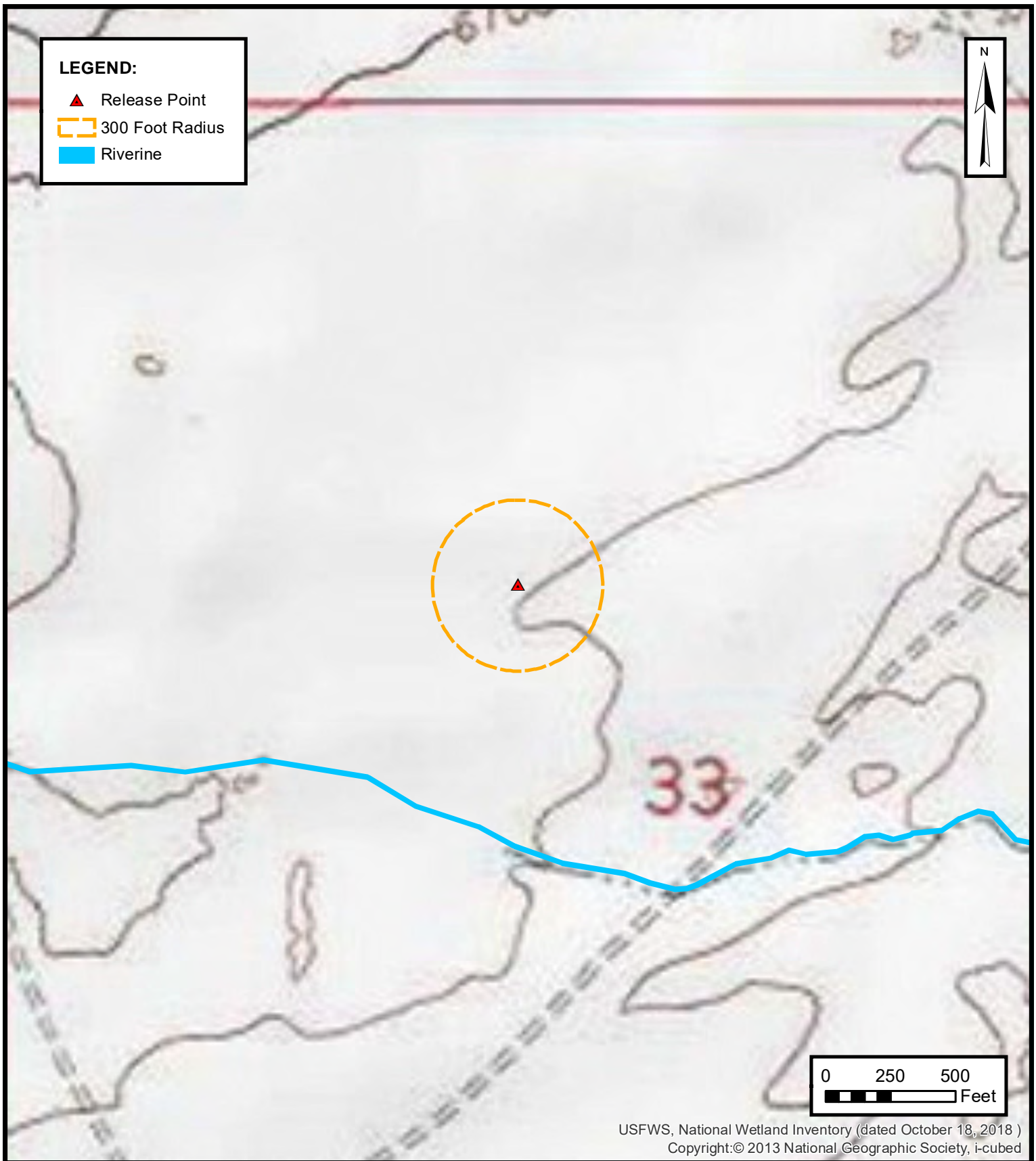
### WATER WELL AND NATURAL SPRING LOCATION

ENTERPRISE FIELD SERVICES, LLC  
LATERAL 10A-5 (3/14/22)  
Unit Letter F, Sec 33 T26N R12W, San Juan County, New Mexico  
36.447118° N, 108.11925° W

PROJECT NUMBER: 05A1226187

**FIGURE**  
**E**





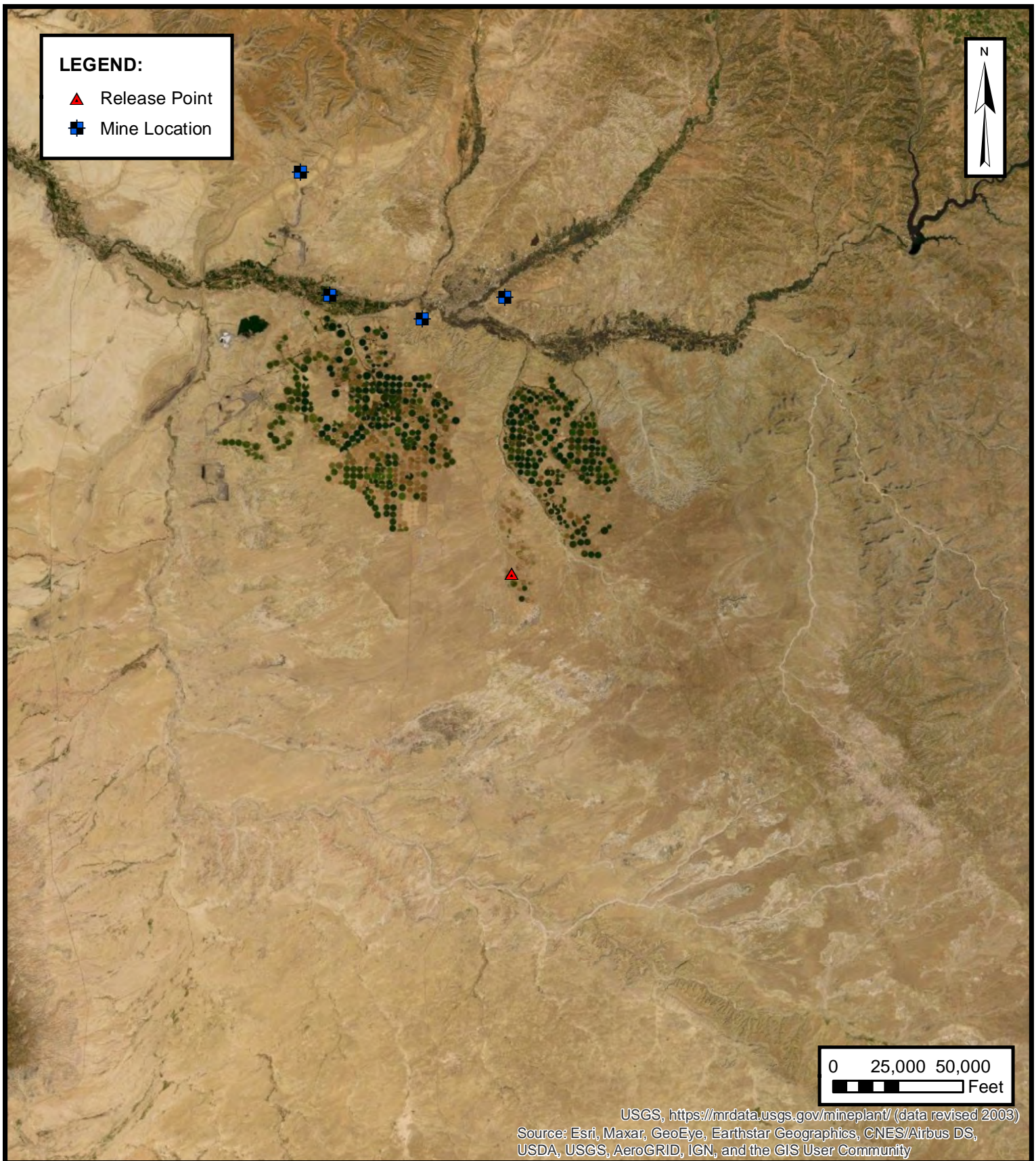
### WETLANDS

ENTERPRISE FIELD SERVICES, LLC  
LATERAL 10A-5 (3/14/22)  
Unit Letter F, Sec 33 T26N R12W, San Juan County, New Mexico  
36.447118° N, 108.11925° W

PROJECT NUMBER: 05A1226187

**FIGURE**  
**F**





**ENSOLUM**  
Environmental & Hydrogeologic Consultants

### MINES, MILLS, AND QUARRIES

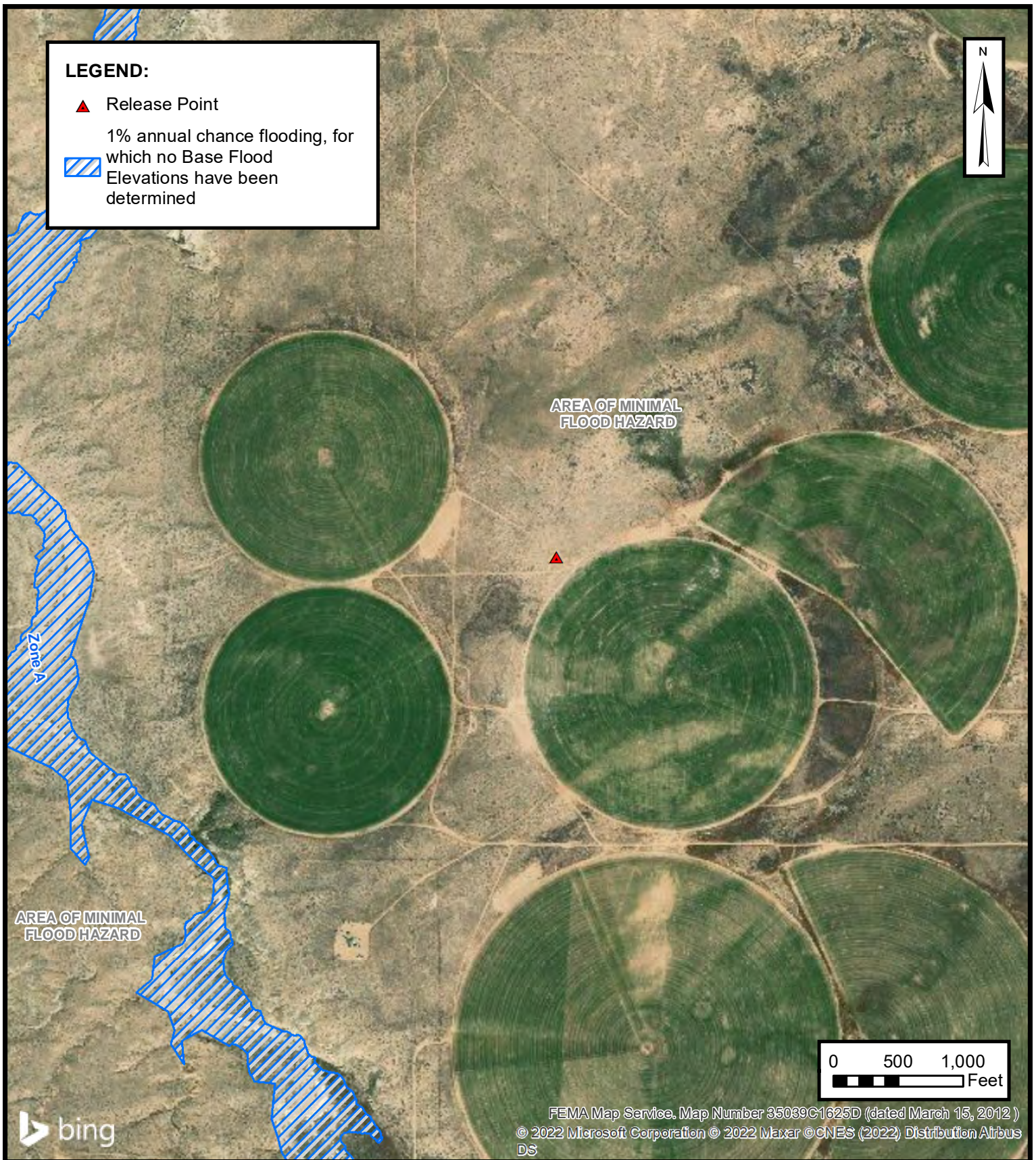
ENTERPRISE FIELD SERVICES, LLC  
LATERAL 10A-5 (3/14/22)

Unit Letter F, Sec 33 T26N R12W, San Juan County, New Mexico  
36.447118° N, 108.11925° W

PROJECT NUMBER: 05A1226187

**FIGURE**  
**G**



**100-YEAR FLOOD PLAIN MAP**

ENTERPRISE FIELD SERVICES, LLC

LATERAL 10A-5 (3/14/22)

Unit Letter F, Sec 33 T26N R12W, San Juan County, New Mexico  
36.447118° N, 108.11925° W

PROJECT NUMBER: 05A1226187

**FIGURE****H**

**ENSOLUM**  
 Environmental & Hydrogeologic Consultants





# New Mexico Office of the State Engineer

## Water Column/Average Depth to Water

---

No records found.

**PLSS Search:**

**Section(s):** 33, 32, 29, 28, **Township:** 26N **Range:** 12W  
27, 34

---

The data is furnished by the NMOSE/ISC and is accepted by the recipient with the expressed understanding that the OSE/ISC make no warranties, expressed or implied, concerning the accuracy, completeness, reliability, usability, or suitability for any particular purpose of the data.

---

3/11/22 9:04 AM

Page 1 of 1

WATER COLUMN/ AVERAGE  
DEPTH TO WATER



# New Mexico Office of the State Engineer

## Water Column/Average Depth to Water

---

No records found.

**PLSS Search:**

**Section(s):** 4, 5, 3

**Township:** 25N

**Range:** 12W

---

The data is furnished by the NMOSE/ISC and is accepted by the recipient with the expressed understanding that the OSE/ISC make no warranties, expressed or implied, concerning the accuracy, completeness, reliability, usability, or suitability for any particular purpose of the data.

---

3/11/22 9:05 AM

Page 1 of 1

WATER COLUMN/ AVERAGE  
DEPTH TO WATER



## APPENDIX C

### Executed C-138 Solid Waste Acceptance Form

---

District I  
1625 N. French Dr., Hobbs, NM 88240  
District II  
1301 W. Grand Avenue, Artesia, NM 88210  
District III  
1000 Rio Brazos Road, Aztec, NM 87410  
District IV  
1220 S. St. Francis Dr., Santa Fe, NM 87505

State of New Mexico  
Energy Minerals and Natural Resources  
Oil Conservation Division  
1220 South St. Francis Dr.  
Santa Fe, NM 87505

Form C-138  
Revised 08/01/11

\*Surface Waste Management Facility Operator  
and Generator shall maintain and make this  
documentation available for Division inspection.

97057-1125

## REQUEST FOR APPROVAL TO ACCEPT SOLID WASTE

<b>1. Generator Name and Address:</b> Enterprise Field Services, LLC, 614 Reilly Ave, Farmington NM 87401	<b>Invoicing Information</b> PayKey: RB21200 PM: ME Eddleman AFE: N58867
<b>2. Originating Site:</b> Lateral 10A-5	
<b>3. Location of Material (Street Address, City, State or ULSTR):</b> UL F Section 33 T26N R12W; 36.447118, -108.119250	
<b>4. Source and Description of Waste:</b> Source: Sediment/Soil/sludge from remediation activities associated with a natural gas pipeline release. Description: Soil/Sediment/sludge associated with remediation activities. Estimated Volume <u>50</u> yd <sup>3</sup> / bbls Known Volume (to be entered by the operator at the end of the haul) <u>60</u> yd <sup>3</sup> / bbls	
<b>5. GENERATOR CERTIFICATION STATEMENT OF WASTE STATUS</b> I, Thomas Long <i>Thomas Long</i> , representative or authorized agent for Enterprise Products Operating do hereby <b>Generator Signature</b> certify that according to the Resource Conservation and Recovery Act (RCRA) and the US Environmental Protection Agency's July 1988 regulatory determination, the above described waste is: (Check the appropriate classification) <input checked="" type="checkbox"/> RCRA Exempt: Oil field wastes generated from oil and gas exploration and production operations and are not mixed with non-exempt waste. <u>Operator Use Only: Waste Acceptance Frequency</u> <input type="checkbox"/> Monthly <input type="checkbox"/> Weekly <input checked="" type="checkbox"/> Per Load <input type="checkbox"/> RCRA Non-Exempt: Oil field waste which is non-hazardous that does not exceed the minimum standards for waste hazardous by characteristics established in RCRA regulations, 40 CFR 261.21-261.24, or listed hazardous waste as defined in 40 CFR, part 261, subpart D, as amended. The following documentation is attached to demonstrate the above-described waste is non-hazardous. (Check the appropriate items) <input type="checkbox"/> MSDS Information <input type="checkbox"/> RCRA Hazardous Waste Analysis <input type="checkbox"/> Process Knowledge <input type="checkbox"/> Other (Provide description in Box 4)	
<b>GENERATOR 19.15.36.15 WASTE TESTING CERTIFICATION STATEMENT FOR LANDFARMS</b>	
I, Thomas Long <i>Thomas Long</i> , representative for Enterprise Products Operating authorizes <u>Envirotech, Inc.</u> to complete <b>Generator!</b> the required testing and Waste Testing Certification.	
I, <u>Greg Crabtree</u> , representative for <u>Envirotech, Inc.</u> do hereby certify that representative samples of the oil field waste have been subjected to the paint filter test and tested for chloride content and that the samples have been found to conform to the specific requirements applicable to landfarms pursuant to Section 15 of 19.15.36 NMAC. The results of the representative samples are attached to demonstrate the above-described waste conform to the requirements of Section 15 of 19.15.36 NMAC.	

### 5. Transporter: IMI or Subcontractors

#### OCD Permitted Surface Waste Management Facility

Name and Facility Permit #: Envirotech, Inc. Soil Remediation Facility \* Permit #: NM01-0011

Address of Facility: Hill Top, NM

Method of Treatment and/or Disposal:

☐ Evaporation ☐ Injection ☐ Treating Plant ☒ Landfarm ☐ Landfill ☐ Other

#### Waste Acceptance Status:

☒ **APPROVED**

☐ **DENIED** (Must Be Maintained As Permanent Record)

PRINT NAME: Greg Crabtree

TITLE: Enviro Manager DATE: 03/14/22

SIGNATURE: *Greg Crabtree*  
Surface Waste Management Facility Authorized Agent

TELEPHONE NO.: 505-632-0615



## APPENDIX D

### Photographic Documentation

---



## SITE PHOTOGRAPHS

Closure Report  
Enterprise Field Services, LLC  
Lateral 10A-5 (3/14/22)  
Ensolum Project No. 05A1226187

**Photograph 1**

Photograph Description: View of in-process excavation activities.

**Photograph 2**

Photograph Description: View of the final excavation.

**Photograph 3**

Photograph Description: View of the final excavation.





## SITE PHOTOGRAPHS

Closure Report  
Enterprise Field Services, LLC  
Lateral 10A-5 (3/14/22)  
Ensolum Project No. 05A1226187



### Photograph 4

Photograph Description: View of the site after initial restoration.



### Photograph 5

Photograph Description: View of the site after initial restoration.







## APPENDIX E

### Regulatory Correspondence

---

**From:** [Velez, Nelson, EMNRD](#)  
**To:** [Long, Thomas](#); [Steve Austin](#)  
**Cc:** [Stone, Brian](#)  
**Subject:** RE: [EXTERNAL] RE: Lateral 10A-5 - UL F Section 33 T26N R12W; 36.447118, -108.119250; Incident #nAPP2207346984  
**Date:** Thursday, March 17, 2022 2:16:02 PM

---

[Use caution with links/attachments]

Tom,

Your request to utilize the stockpiled soils as backfill material is approved. Please keep a copy of this communication for inclusion within the final closure report submittal.

Thanks

**Nelson Velez** • Environmental Specialist - Adv  
Environmental Bureau | EMNRD - Oil Conservation Division  
1000 Rio Brazos Road | Aztec, NM 87410  
(505) 469-6146 | [nelson.velez@state.nm.us](mailto:nelson.velez@state.nm.us)

Hrs.: 7:00-11:00 am & 12:00-3:30 pm Mon.-Thur.  
7:00-11:00 am & 12:00-4:00 pm Fri.

---

**From:** Long, Thomas <tjlong@eprod.com>  
**Sent:** Thursday, March 17, 2022 7:49 AM  
**To:** Steve Austin <nnepawq@frontiernet.net>; Velez, Nelson, EMNRD <Nelson.Velez@state.nm.us>  
**Cc:** Stone, Brian <bmstone@eprod.com>  
**Subject:** RE: [EXTERNAL] RE: Lateral 10A-5 - UL F Section 33 T26N R12W; 36.447118, -108.119250; Incident #nAPP2207346984

Steve/Nelson,

Please find the attached site sketch and lab reports for the Lateral 10A-5 excavation and stockpile. All sample results are below NMOCD Tier I soil remediation standards. The sample from the stock piled soil is approximately 20 cubic yards. Enterprise requests utilizing this stock piled soil as backfill material. Please acknowledge acceptance of the request. If you have any questions, please call or email.

**Thomas J. Long**  
**Senior Environmental Scientist**  
**Enterprise Products Company**  
**614 Reilly Ave.**  
**Farmington, New Mexico 87401**  
**505-599-2286 (office)**  
**505-215-4727 (Cell)**  
[tjlong@eprod.com](mailto:tjlong@eprod.com)



---

**From:** Steve Austin <[nnepawq@frontiernet.net](mailto:nnepawq@frontiernet.net)>  
**Sent:** Tuesday, March 15, 2022 9:54 AM  
**To:** Long, Thomas <[tjlong@eprod.com](mailto:tjlong@eprod.com)>; 'Velez, Nelson, EMNRD' <[Nelson.Velez@state.nm.us](mailto:Nelson.Velez@state.nm.us)>  
**Cc:** Stone, Brian <[bmstone@eprod.com](mailto:bmstone@eprod.com)>  
**Subject:** [EXTERNAL] RE: Lateral 10A-5 - UL F Section 33 T26N R12W; 36.447118, -108.119250

[Use caution with links/attachments]

Thanks for the notification—please forward the sample results when they become available.

--Steve

Steve Austin  
Senior Hydrologist  
NNEPA WQ/NPDES Program  
505-368-1037

---

**From:** Long, Thomas [<mailto:tjlong@eprod.com>]  
**Sent:** Monday, March 14, 2022 11:22 AM  
**To:** Steve Austin <[nnepawq@frontiernet.net](mailto:nnepawq@frontiernet.net)>; Velez, Nelson, EMNRD <[Nelson.Velez@state.nm.us](mailto:Nelson.Velez@state.nm.us)>  
**Cc:** Stone, Brian <[bmstone@eprod.com](mailto:bmstone@eprod.com)>  
**Subject:** Lateral 10A-5 - UL F Section 33 T26N R12W; 36.447118, -108.119250

Nelson/Steve,

This email is a notification that Enterprise had a release of natural gas and condensate from the Lateral 10A-5 pipeline on March 9, 2022. No liquids were observed on the ground surface. No washes were affected. No fire nor injuries resulted from the release. No emergency services responded to the release. Enterprise began repairs and remediation today and determined this release reportable per NMOCD regulation due to the volume of impacted subsurface soil. This email also serves as a notification that Enterprise will be collecting soil samples for laboratory analysis tomorrow March 15, 2022 at 10:00 a.m. I will be submitting the NOR and subsequent C-141 via the NMOCD website. If you have any questions, please call or email.

**Thomas J. Long**  
**Senior Environmental Scientist**  
**Enterprise Products Company**  
**614 Reilly Ave.**  
**Farmington, New Mexico 87401**  
**505-215-4727 (Cell)**  
**[tjlong@eprod.com](mailto:tjlong@eprod.com)**



---

This message (including any attachments) is confidential and intended for a specific individual and purpose. If you are not the intended recipient, please notify the sender immediately and delete this message.



## APPENDIX F

### Table 1 – Soil Analytical Summary

---



**TABLE 1**  
Lateral 10A-5 (3/14/22)  
SOIL ANALYTICAL SUMMARY

Sample I.D.	Date	Sample Type	Sample Depth	Benzene	Toluene	Ethylbenzene	Xylenes	Total BTEX <sup>1</sup>	TPH GRO	TPH DRO	TPH MRO	Total Combined TPH (GRO/DRO/MRO) <sup>1</sup>	Chloride
		C- Composite G - Grab	(feet)	(mg/kg)	(mg/kg)	(mg/kg)	(mg/kg)	(mg/kg)	(mg/kg)	(mg/kg)	(mg/kg)	(mg/kg)	(mg/kg)
New Mexico Energy, Mineral & Natural Resources Department Oil Conservation Division Closure Criteria (Tier I)				10	NE	NE	NE	50				100	600
Composite Soil Sample Collected from Stockpiled Soil													
SP-1	3.15.22	C	Stockpile	<0.019	<0.038	<0.038	<0.076	ND	<3.8	<10	<50	ND	140
Excavation Composite Soil Samples													
S-1	3.15.22	C	6	<0.016	<0.032	<0.032	<0.064	ND	<3.2	27	<48	27	340
S-2	3.15.22	C	0 to 6	<0.023	<0.046	<0.046	<0.093	ND	<4.6	24	<49	24	370
S-3	3.15.22	C	0 to 6	<0.021	<0.042	<0.042	<0.083	ND	<4.2	<9.8	<49	ND	130
S-4	3.15.22	C	0 to 6	<0.017	<0.035	<0.035	<0.069	ND	<3.5	28	<48	28	150
S-5	3.15.22	C	0 to 6	<0.018	<0.036	<0.036	<0.071	ND	<3.6	<9.9	<50	ND	290

Note: Concentrations in **bold** and yellow exceed the applicable NM EMNRD Closure Criteria

<sup>1</sup> = Total combined concentrations are rounded to two (2) significant figures to match the laboratory resolution of the individual constituents.

ND = Not Detected above the Practical Quantitation Limits (PQLs) or Reporting Limits (RLs)

NA = Not Analyzed

NE = Not established

mg/kg = milligram per kilogram

BTEX = Benzene, Toluene, Ethylbenzene, and Xylenes

TPH = Total Petroleum Hydrocarbons

GRO = Gasoline Range Organics

DRO = Diesel Range Organics

MRO = Motor Oil/Lube Oil Range Organics



## APPENDIX G

### Laboratory Data Sheets & Chain of Custody Documentation

---





Hall Environmental Analysis Laboratory  
4901 Hawkins NE  
Albuquerque, NM 87109  
TEL: 505-345-3975 FAX: 505-345-4107  
Website: [clients.hallenvironmental.com](http://clients.hallenvironmental.com)

March 18, 2022

Kyle Summers

ENSOLUM

606 S. Rio Grande Suite A

Aztec, NM 87410

TEL: (903) 821-5603

FAX

RE: Lateral 10A 5

OrderNo.: 2203829

Dear Kyle Summers:

Hall Environmental Analysis Laboratory received 5 sample(s) on 3/16/2022 for the analyses presented in the following report.

These were analyzed according to EPA procedures or equivalent. To access our accredited tests please go to [www.hallenvironmental.com](http://www.hallenvironmental.com) or the state specific web sites. In order to properly interpret your results, it is imperative that you review this report in its entirety. See the sample checklist and/or the Chain of Custody for information regarding the sample receipt temperature and preservation. Data qualifiers or a narrative will be provided if the sample analysis or analytical quality control parameters require a flag. When necessary, data qualifiers are provided on both the sample analysis report and the QC summary report, both sections should be reviewed. All samples are reported, as received, unless otherwise indicated. Lab measurement of analytes considered field parameters that require analysis within 15 minutes of sampling such as pH and residual chlorine are qualified as being analyzed outside of the recommended holding time.

Please don't hesitate to contact HEAL for any additional information or clarifications.

ADHS Cert #AZ0682 -- NMED-DWB Cert #NM9425 -- NMED-Micro Cert #NM0901

Sincerely,

A handwritten signature in black ink, appearing to read "Andy Freeman", is written over a light blue horizontal line.

Andy Freeman

Laboratory Manager

4901 Hawkins NE

Albuquerque, NM 87109

## Analytical Report

Lab Order 2203829

Date Reported: 3/18/2022

## Hall Environmental Analysis Laboratory, Inc.

CLIENT: ENSOLUM

Client Sample ID: S-1

Project: Lateral 10A 5

Collection Date: 3/15/2022 10:00:00 AM

Lab ID: 2203829-001

Matrix: SOIL

Received Date: 3/16/2022 8:00:00 AM

Analyses	Result	PQL	Qual	Units	DF	Date Analyzed	Batch
<b>EPA METHOD 300.0: ANIONS</b>							Analyst: <b>MRA</b>
Chloride	340	60		mg/Kg	20	3/16/2022 11:10:20 AM	66211
<b>EPA METHOD 8015M/D: DIESEL RANGE ORGANICS</b>							Analyst: <b>SB</b>
Diesel Range Organics (DRO)	27	9.6		mg/Kg	1	3/16/2022 11:02:47 AM	66204
Motor Oil Range Organics (MRO)	ND	48		mg/Kg	1	3/16/2022 11:02:47 AM	66204
Surr: DNOP	96.6	51.1-141		%Rec	1	3/16/2022 11:02:47 AM	66204
<b>EPA METHOD 8015D: GASOLINE RANGE</b>							Analyst: <b>RAA</b>
Gasoline Range Organics (GRO)	ND	3.2		mg/Kg	1	3/16/2022 11:12:00 AM	66198
Surr: BFB	106	70-130		%Rec	1	3/16/2022 11:12:00 AM	66198
<b>EPA METHOD 8021B: VOLATILES</b>							Analyst: <b>RAA</b>
Benzene	ND	0.016		mg/Kg	1	3/16/2022 11:12:00 AM	66198
Toluene	ND	0.032		mg/Kg	1	3/16/2022 11:12:00 AM	66198
Ethylbenzene	ND	0.032		mg/Kg	1	3/16/2022 11:12:00 AM	66198
Xylenes, Total	ND	0.064		mg/Kg	1	3/16/2022 11:12:00 AM	66198
Surr: 4-Bromofluorobenzene	88.0	70-130		%Rec	1	3/16/2022 11:12:00 AM	66198

Refer to the QC Summary report and sample login checklist for flagged QC data and preservation information.

<b>Qualifiers:</b>	*	Value exceeds Maximum Contaminant Level.	B	Analyte detected in the associated Method Blank
	D	Sample Diluted Due to Matrix	E	Estimated value
	H	Holding times for preparation or analysis exceeded	J	Analyte detected below quantitation limits
	ND	Not Detected at the Reporting Limit	P	Sample pH Not In Range
	PQL	Practical Quantitative Limit	RL	Reporting Limit
	S	% Recovery outside of range due to dilution or matrix interference		

Page 1 of 9

## Analytical Report

Lab Order 2203829

Date Reported: 3/18/2022

## Hall Environmental Analysis Laboratory, Inc.

CLIENT: ENSOLUM

Client Sample ID: S-2

Project: Lateral 10A 5

Collection Date: 3/15/2022 10:05:00 AM

Lab ID: 2203829-002

Matrix: SOIL

Received Date: 3/16/2022 8:00:00 AM

Analyses	Result	PQL	Qual	Units	DF	Date Analyzed	Batch
<b>EPA METHOD 300.0: ANIONS</b>							Analyst: <b>MRA</b>
Chloride	370	60		mg/Kg	20	3/16/2022 11:22:44 AM	66211
<b>EPA METHOD 8015M/D: DIESEL RANGE ORGANICS</b>							Analyst: <b>SB</b>
Diesel Range Organics (DRO)	24	9.7		mg/Kg	1	3/16/2022 11:13:19 AM	66204
Motor Oil Range Organics (MRO)	ND	49		mg/Kg	1	3/16/2022 11:13:19 AM	66204
Surr: DNOP	90.9	51.1-141		%Rec	1	3/16/2022 11:13:19 AM	66204
<b>EPA METHOD 8015D: GASOLINE RANGE</b>							Analyst: <b>RAA</b>
Gasoline Range Organics (GRO)	ND	4.6		mg/Kg	1	3/16/2022 11:31:00 AM	66198
Surr: BFB	103	70-130		%Rec	1	3/16/2022 11:31:00 AM	66198
<b>EPA METHOD 8021B: VOLATILES</b>							Analyst: <b>RAA</b>
Benzene	ND	0.023		mg/Kg	1	3/16/2022 11:31:00 AM	66198
Toluene	ND	0.046		mg/Kg	1	3/16/2022 11:31:00 AM	66198
Ethylbenzene	ND	0.046		mg/Kg	1	3/16/2022 11:31:00 AM	66198
Xylenes, Total	ND	0.093		mg/Kg	1	3/16/2022 11:31:00 AM	66198
Surr: 4-Bromofluorobenzene	86.2	70-130		%Rec	1	3/16/2022 11:31:00 AM	66198

Refer to the QC Summary report and sample login checklist for flagged QC data and preservation information.

<b>Qualifiers:</b>	*	Value exceeds Maximum Contaminant Level.	B	Analyte detected in the associated Method Blank
	D	Sample Diluted Due to Matrix	E	Estimated value
	H	Holding times for preparation or analysis exceeded	J	Analyte detected below quantitation limits
	ND	Not Detected at the Reporting Limit	P	Sample pH Not In Range
	PQL	Practical Quantitative Limit	RL	Reporting Limit
	S	% Recovery outside of range due to dilution or matrix interference		

## Analytical Report

Lab Order 2203829

Date Reported: 3/18/2022

## Hall Environmental Analysis Laboratory, Inc.

CLIENT: ENSOLUM

Client Sample ID: S-3

Project: Lateral 10A 5

Collection Date: 3/15/2022 10:10:00 AM

Lab ID: 2203829-003

Matrix: SOIL

Received Date: 3/16/2022 8:00:00 AM

Analyses	Result	PQL	Qual	Units	DF	Date Analyzed	Batch
<b>EPA METHOD 300.0: ANIONS</b>							Analyst: <b>MRA</b>
Chloride	130	60		mg/Kg	20	3/16/2022 11:35:09 AM	66211
<b>EPA METHOD 8015M/D: DIESEL RANGE ORGANICS</b>							Analyst: <b>SB</b>
Diesel Range Organics (DRO)	ND	9.8		mg/Kg	1	3/16/2022 11:23:52 AM	66204
Motor Oil Range Organics (MRO)	ND	49		mg/Kg	1	3/16/2022 11:23:52 AM	66204
Surr: DNOP	95.5	51.1-141		%Rec	1	3/16/2022 11:23:52 AM	66204
<b>EPA METHOD 8015D: GASOLINE RANGE</b>							Analyst: <b>RAA</b>
Gasoline Range Organics (GRO)	ND	4.2		mg/Kg	1	3/16/2022 11:51:00 AM	66198
Surr: BFB	101	70-130		%Rec	1	3/16/2022 11:51:00 AM	66198
<b>EPA METHOD 8021B: VOLATILES</b>							Analyst: <b>RAA</b>
Benzene	ND	0.021		mg/Kg	1	3/16/2022 11:51:00 AM	66198
Toluene	ND	0.042		mg/Kg	1	3/16/2022 11:51:00 AM	66198
Ethylbenzene	ND	0.042		mg/Kg	1	3/16/2022 11:51:00 AM	66198
Xylenes, Total	ND	0.083		mg/Kg	1	3/16/2022 11:51:00 AM	66198
Surr: 4-Bromofluorobenzene	85.6	70-130		%Rec	1	3/16/2022 11:51:00 AM	66198

Refer to the QC Summary report and sample login checklist for flagged QC data and preservation information.

<b>Qualifiers:</b>	*	Value exceeds Maximum Contaminant Level.	B	Analyte detected in the associated Method Blank
	D	Sample Diluted Due to Matrix	E	Estimated value
	H	Holding times for preparation or analysis exceeded	J	Analyte detected below quantitation limits
	ND	Not Detected at the Reporting Limit	P	Sample pH Not In Range
	PQL	Practical Quantitative Limit	RL	Reporting Limit
	S	% Recovery outside of range due to dilution or matrix interference		

Page 3 of 9



## Analytical Report

Lab Order 2203829

Date Reported: 3/18/2022

## Hall Environmental Analysis Laboratory, Inc.

CLIENT: ENSOLUM

Client Sample ID: S-4

Project: Lateral 10A 5

Collection Date: 3/15/2022 10:15:00 AM

Lab ID: 2203829-004

Matrix: SOIL

Received Date: 3/16/2022 8:00:00 AM

Analyses	Result	PQL	Qual	Units	DF	Date Analyzed	Batch
<b>EPA METHOD 300.0: ANIONS</b>							Analyst: <b>MRA</b>
Chloride	150	60		mg/Kg	20	3/16/2022 11:47:33 AM	66211
<b>EPA METHOD 8015M/D: DIESEL RANGE ORGANICS</b>							Analyst: <b>SB</b>
Diesel Range Organics (DRO)	28	9.6		mg/Kg	1	3/16/2022 11:34:24 AM	66204
Motor Oil Range Organics (MRO)	ND	48		mg/Kg	1	3/16/2022 11:34:24 AM	66204
Surr: DNOP	92.2	51.1-141		%Rec	1	3/16/2022 11:34:24 AM	66204
<b>EPA METHOD 8015D: GASOLINE RANGE</b>							Analyst: <b>RAA</b>
Gasoline Range Organics (GRO)	ND	3.5		mg/Kg	1	3/16/2022 12:11:00 PM	66198
Surr: BFB	103	70-130		%Rec	1	3/16/2022 12:11:00 PM	66198
<b>EPA METHOD 8021B: VOLATILES</b>							Analyst: <b>RAA</b>
Benzene	ND	0.017		mg/Kg	1	3/16/2022 12:11:00 PM	66198
Toluene	ND	0.035		mg/Kg	1	3/16/2022 12:11:00 PM	66198
Ethylbenzene	ND	0.035		mg/Kg	1	3/16/2022 12:11:00 PM	66198
Xylenes, Total	ND	0.069		mg/Kg	1	3/16/2022 12:11:00 PM	66198
Surr: 4-Bromofluorobenzene	87.4	70-130		%Rec	1	3/16/2022 12:11:00 PM	66198

Refer to the QC Summary report and sample login checklist for flagged QC data and preservation information.

<b>Qualifiers:</b>	*	Value exceeds Maximum Contaminant Level.	B	Analyte detected in the associated Method Blank
	D	Sample Diluted Due to Matrix	E	Estimated value
	H	Holding times for preparation or analysis exceeded	J	Analyte detected below quantitation limits
	ND	Not Detected at the Reporting Limit	P	Sample pH Not In Range
	PQL	Practical Quantitative Limit	RL	Reporting Limit
	S	% Recovery outside of range due to dilution or matrix interference		

Page 4 of 9

## Analytical Report

Lab Order 2203829

Date Reported: 3/18/2022

## Hall Environmental Analysis Laboratory, Inc.

CLIENT: ENSOLUM

Client Sample ID: S-5

Project: Lateral 10A 5

Collection Date: 3/15/2022 10:20:00 AM

Lab ID: 2203829-005

Matrix: SOIL

Received Date: 3/16/2022 8:00:00 AM

Analyses	Result	PQL	Qual	Units	DF	Date Analyzed	Batch
<b>EPA METHOD 300.0: ANIONS</b>							Analyst: <b>MRA</b>
Chloride	290	60		mg/Kg	20	3/16/2022 11:59:58 AM	66211
<b>EPA METHOD 8015M/D: DIESEL RANGE ORGANICS</b>							Analyst: <b>SB</b>
Diesel Range Organics (DRO)	ND	9.9		mg/Kg	1	3/16/2022 11:44:59 AM	66204
Motor Oil Range Organics (MRO)	ND	50		mg/Kg	1	3/16/2022 11:44:59 AM	66204
Surr: DNOP	91.2	51.1-141		%Rec	1	3/16/2022 11:44:59 AM	66204
<b>EPA METHOD 8015D: GASOLINE RANGE</b>							Analyst: <b>RAA</b>
Gasoline Range Organics (GRO)	ND	3.6		mg/Kg	1	3/16/2022 12:30:00 PM	66198
Surr: BFB	106	70-130		%Rec	1	3/16/2022 12:30:00 PM	66198
<b>EPA METHOD 8021B: VOLATILES</b>							Analyst: <b>RAA</b>
Benzene	ND	0.018		mg/Kg	1	3/16/2022 12:30:00 PM	66198
Toluene	ND	0.036		mg/Kg	1	3/16/2022 12:30:00 PM	66198
Ethylbenzene	ND	0.036		mg/Kg	1	3/16/2022 12:30:00 PM	66198
Xylenes, Total	ND	0.071		mg/Kg	1	3/16/2022 12:30:00 PM	66198
Surr: 4-Bromofluorobenzene	88.7	70-130		%Rec	1	3/16/2022 12:30:00 PM	66198

Refer to the QC Summary report and sample login checklist for flagged QC data and preservation information.

<b>Qualifiers:</b>	*	Value exceeds Maximum Contaminant Level.	B	Analyte detected in the associated Method Blank
	D	Sample Diluted Due to Matrix	E	Estimated value
	H	Holding times for preparation or analysis exceeded	J	Analyte detected below quantitation limits
	ND	Not Detected at the Reporting Limit	P	Sample pH Not In Range
	PQL	Practical Quantitative Limit	RL	Reporting Limit
	S	% Recovery outside of range due to dilution or matrix interference		

Page 5 of 9

# QC SUMMARY REPORT

## Hall Environmental Analysis Laboratory, Inc.

WO#: 2203829

18-Mar-22

**Client:** ENSOLUM  
**Project:** Lateral 10A 5

Sample ID: <b>MB-66211</b>	SampType: <b>mblk</b>	TestCode: <b>EPA Method 300.0: Anions</b>								
Client ID: <b>PBS</b>	Batch ID: <b>66211</b>	RunNo: <b>86512</b>								
Prep Date: <b>3/16/2022</b>	Analysis Date: <b>3/16/2022</b>	SeqNo: <b>3053142</b>	Units: <b>mg/Kg</b>							
Analyte	Result	PQL	SPK value	SPK Ref Val	%REC	LowLimit	HighLimit	%RPD	RPDLimit	Qual
Chloride	ND	1.5								

Sample ID: <b>LCS-66211</b>	SampType: <b>lcs</b>	TestCode: <b>EPA Method 300.0: Anions</b>								
Client ID: <b>LCSS</b>	Batch ID: <b>66211</b>	RunNo: <b>86512</b>								
Prep Date: <b>3/16/2022</b>	Analysis Date: <b>3/16/2022</b>	SeqNo: <b>3053143</b>	Units: <b>mg/Kg</b>							
Analyte	Result	PQL	SPK value	SPK Ref Val	%REC	LowLimit	HighLimit	%RPD	RPDLimit	Qual
Chloride	14	1.5	15.00	0	92.5	90	110			

### Qualifiers:

*	Value exceeds Maximum Contaminant Level.	B	Analyte detected in the associated Method Blank
D	Sample Diluted Due to Matrix	E	Estimated value
H	Holding times for preparation or analysis exceeded	J	Analyte detected below quantitation limits
ND	Not Detected at the Reporting Limit	P	Sample pH Not In Range
PQL	Practical Quantitative Limit	RL	Reporting Limit
S	% Recovery outside of range due to dilution or matrix interference		

Page 6 of 9

**QC SUMMARY REPORT****Hall Environmental Analysis Laboratory, Inc.**

WO#: 2203829

18-Mar-22

**Client:** ENSOLUM  
**Project:** Lateral 10A 5

Sample ID: <b>LCS-66204</b>	SampType: <b>LCS</b>			TestCode: <b>EPA Method 8015M/D: Diesel Range Organics</b>						
Client ID: <b>LCSS</b>	Batch ID: <b>66204</b>			RunNo: <b>86505</b>						
Prep Date: <b>3/16/2022</b>	Analysis Date: <b>3/16/2022</b>			SeqNo: <b>3052645</b>		Units: <b>mg/Kg</b>				
Analyte	Result	PQL	SPK value	SPK Ref Val	%REC	LowLimit	HighLimit	%RPD	RPDLimit	Qual
Diesel Range Organics (DRO)	47	10	50.00	0	94.7	68.9	135			
Surr: DNOP	4.6		5.000		92.3	51.1	141			

Sample ID: <b>MB-66204</b>	SampType: <b>MBLK</b>			TestCode: <b>EPA Method 8015M/D: Diesel Range Organics</b>						
Client ID: <b>PBS</b>	Batch ID: <b>66204</b>			RunNo: <b>86505</b>						
Prep Date: <b>3/16/2022</b>	Analysis Date: <b>3/16/2022</b>			SeqNo: <b>3052646</b>		Units: <b>mg/Kg</b>				
Analyte	Result	PQL	SPK value	SPK Ref Val	%REC	LowLimit	HighLimit	%RPD	RPDLimit	Qual
Diesel Range Organics (DRO)	ND	10								
Motor Oil Range Organics (MRO)	ND	50								
Surr: DNOP	9.2		10.00		92.2	51.1	141			

**Qualifiers:**

*	Value exceeds Maximum Contaminant Level.	B	Analyte detected in the associated Method Blank
D	Sample Diluted Due to Matrix	E	Estimated value
H	Holding times for preparation or analysis exceeded	J	Analyte detected below quantitation limits
ND	Not Detected at the Reporting Limit	P	Sample pH Not In Range
PQL	Practical Quantitative Limit	RL	Reporting Limit
S	% Recovery outside of range due to dilution or matrix interference		

**QC SUMMARY REPORT****Hall Environmental Analysis Laboratory, Inc.**

WO#: 2203829

18-Mar-22

**Client:** ENSOLUM  
**Project:** Lateral 10A 5

Sample ID: <b>mb-66198</b>	SampType: <b>MBLK</b>	TestCode: <b>EPA Method 8015D: Gasoline Range</b>								
Client ID: <b>PBS</b>	Batch ID: <b>66198</b>	RunNo: <b>86499</b>								
Prep Date: <b>3/15/2022</b>	Analysis Date: <b>3/16/2022</b>	SeqNo: <b>3052369</b>	Units: <b>mg/Kg</b>							
Analyte	Result	PQL	SPK value	SPK Ref Val	%REC	LowLimit	HighLimit	%RPD	RPDLimit	Qual
Gasoline Range Organics (GRO)	ND	5.0								
Surr: BFB	1100		1000		107	70	130			

Sample ID: <b>lcs-66198</b>	SampType: <b>LCS</b>	TestCode: <b>EPA Method 8015D: Gasoline Range</b>								
Client ID: <b>LCSS</b>	Batch ID: <b>66198</b>	RunNo: <b>86499</b>								
Prep Date: <b>3/15/2022</b>	Analysis Date: <b>3/16/2022</b>	SeqNo: <b>3052374</b>	Units: <b>mg/Kg</b>							
Analyte	Result	PQL	SPK value	SPK Ref Val	%REC	LowLimit	HighLimit	%RPD	RPDLimit	Qual
Gasoline Range Organics (GRO)	30	5.0	25.00	0	120	78.6	131			
Surr: BFB	2300		1000		235	70	130			S

**Qualifiers:**

*	Value exceeds Maximum Contaminant Level.	B	Analyte detected in the associated Method Blank
D	Sample Diluted Due to Matrix	E	Estimated value
H	Holding times for preparation or analysis exceeded	J	Analyte detected below quantitation limits
ND	Not Detected at the Reporting Limit	P	Sample pH Not In Range
PQL	Practical Quantitative Limit	RL	Reporting Limit
S	% Recovery outside of range due to dilution or matrix interference		



**QC SUMMARY REPORT****Hall Environmental Analysis Laboratory, Inc.**

WO#: 2203829

18-Mar-22

**Client:** ENSOLUM  
**Project:** Lateral 10A 5

Sample ID: <b>lcs-66198</b>	SampType: <b>LCS</b>				TestCode: <b>EPA Method 8021B: Volatiles</b>					
Client ID: <b>LCSS</b>	Batch ID: <b>66198</b>				RunNo: <b>86499</b>					
Prep Date: <b>3/15/2022</b>	Analysis Date: <b>3/16/2022</b>				SeqNo: <b>3052378</b>	Units: <b>mg/Kg</b>				
Analyte	Result	PQL	SPK value	SPK Ref Val	%REC	LowLimit	HighLimit	%RPD	RPDLimit	Qual
Benzene	0.97	0.025	1.000	0	96.9	80	120			
Toluene	0.99	0.050	1.000	0	98.8	80	120			
Ethylbenzene	0.99	0.050	1.000	0	99.4	80	120			
Xylenes, Total	3.0	0.10	3.000	0	99.3	80	120			
Surr: 4-Bromofluorobenzene	0.88		1.000		88.4	70	130			

Sample ID: <b>mb-66198</b>	SampType: <b>MBLK</b>				TestCode: <b>EPA Method 8021B: Volatiles</b>					
Client ID: <b>PBS</b>	Batch ID: <b>66198</b>				RunNo: <b>86499</b>					
Prep Date: <b>3/15/2022</b>	Analysis Date: <b>3/16/2022</b>				SeqNo: <b>3052379</b>	Units: <b>mg/Kg</b>				
Analyte	Result	PQL	SPK value	SPK Ref Val	%REC	LowLimit	HighLimit	%RPD	RPDLimit	Qual
Benzene	ND	0.025								
Toluene	ND	0.050								
Ethylbenzene	ND	0.050								
Xylenes, Total	ND	0.10								
Surr: 4-Bromofluorobenzene	0.91		1.000		91.0	70	130			

**Qualifiers:**

*	Value exceeds Maximum Contaminant Level.	B	Analyte detected in the associated Method Blank
D	Sample Diluted Due to Matrix	E	Estimated value
H	Holding times for preparation or analysis exceeded	J	Analyte detected below quantitation limits
ND	Not Detected at the Reporting Limit	P	Sample pH Not In Range
PQL	Practical Quantitative Limit	RL	Reporting Limit
S	% Recovery outside of range due to dilution or matrix interference		



Hall Environmental Analysis Laboratory  
4901 Hawkins NE  
Albuquerque, NM 87109  
TEL: 505-345-3975 FAX: 505-345-4107  
Website: clients.hallenvironmental.com

## Sample Log-In Check List

Client Name: ENSOLUM

Work Order Number: 2203829

RcptNo: 1

Received By: Tracy Casarrubias 3/16/2022 8:00:00 AM

Completed By: Tracy Casarrubias 3/16/2022 8:58:38 AM

Reviewed By: *sa 3/16/22*

### Chain of Custody

1. Is Chain of Custody complete? Yes ☒ No ☐ Not Present ☐
2. How was the sample delivered? Courier

### Log In

3. Was an attempt made to cool the samples? Yes ☒ No ☐ NA ☐
4. Were all samples received at a temperature of  $>0^{\circ}\text{C}$  to  $6.0^{\circ}\text{C}$ ? Yes ☐ No ☒ NA ☐
5. Sample(s) in proper container(s)? Samples not Frozen.  
Yes ☒ No ☐
6. Sufficient sample volume for indicated test(s)? Yes ☒ No ☐
7. Are samples (except VOA and ONG) properly preserved? Yes ☒ No ☐
8. Was preservative added to bottles? Yes ☐ No ☒ NA ☐
9. Received at least 1 vial with headspace  $<1/4$ " for AQ VOA? Yes ☐ No ☐ NA ☒
10. Were any sample containers received broken? Yes ☐ No ☒
11. Does paperwork match bottle labels?  
(Note discrepancies on chain of custody) Yes ☒ No ☐
12. Are matrices correctly identified on Chain of Custody? Yes ☒ No ☐
13. Is it clear what analyses were requested? Yes ☒ No ☐
14. Were all holding times able to be met?  
(If no, notify customer for authorization.) Yes ☒ No ☐

# of preserved  
bottles checked  
for pH:

(<2 or >12 unless noted)

Adjusted?

Checked by: *gn 3/16/22*

### Special Handling (if applicable)

15. Was client notified of all discrepancies with this order? Yes ☐ No ☐ NA ☒

Person Notified: \_\_\_\_\_

Date: \_\_\_\_\_

By Whom: \_\_\_\_\_

Via: ☐ eMail ☐ Phone ☐ Fax ☐ In Person

Regarding: \_\_\_\_\_

Client Instructions: \_\_\_\_\_

16. Additional remarks:

### 17. Cooler Information

Cooler No	Temp °C	Condition	Seal Intact	Seal No	Seal Date	Signed By
1	-0.9	Good	Yes			





Hall Environmental Analysis Laboratory  
4901 Hawkins NE  
Albuquerque, NM 87109  
TEL: 505-345-3975 FAX: 505-345-4107  
Website: [clients.hallenvironmental.com](http://clients.hallenvironmental.com)

March 18, 2022

Kyle Summers

ENSOLUM

606 S. Rio Grande Suite A

Aztec, NM 87410

TEL: (903) 821-5603

FAX

RE: Lateral 10A 5

OrderNo.: 2203822

Dear Kyle Summers:

Hall Environmental Analysis Laboratory received 1 sample(s) on 3/16/2022 for the analyses presented in the following report.

These were analyzed according to EPA procedures or equivalent. To access our accredited tests please go to [www.hallenvironmental.com](http://www.hallenvironmental.com) or the state specific web sites. In order to properly interpret your results, it is imperative that you review this report in its entirety. See the sample checklist and/or the Chain of Custody for information regarding the sample receipt temperature and preservation. Data qualifiers or a narrative will be provided if the sample analysis or analytical quality control parameters require a flag. When necessary, data qualifiers are provided on both the sample analysis report and the QC summary report, both sections should be reviewed. All samples are reported, as received, unless otherwise indicated. Lab measurement of analytes considered field parameters that require analysis within 15 minutes of sampling such as pH and residual chlorine are qualified as being analyzed outside of the recommended holding time.

Please don't hesitate to contact HEAL for any additional information or clarifications.

ADHS Cert #AZ0682 -- NMED-DWB Cert #NM9425 -- NMED-Micro Cert #NM0901

Sincerely,

A handwritten signature in black ink, appearing to read "Andy Freeman", is written over a light blue horizontal line.

Andy Freeman

Laboratory Manager

4901 Hawkins NE

Albuquerque, NM 87109

## Analytical Report

Lab Order 2203822

Date Reported: 3/18/2022

## Hall Environmental Analysis Laboratory, Inc.

CLIENT: ENSOLUM

Client Sample ID: SP-1

Project: Lateral 10A 5

Collection Date: 3/15/2022 10:25:00 AM

Lab ID: 2203822-001

Matrix: SOIL

Received Date: 3/16/2022 8:00:00 AM

Analyses	Result	PQL	Qual	Units	DF	Date Analyzed	Batch
<b>EPA METHOD 300.0: ANIONS</b>							Analyst: <b>MRA</b>
Chloride	140	60		mg/Kg	20	3/16/2022 12:37:11 PM	66211
<b>EPA METHOD 8015M/D: DIESEL RANGE ORGANICS</b>							Analyst: <b>SB</b>
Diesel Range Organics (DRO)	ND	10		mg/Kg	1	3/16/2022 10:52:17 AM	66204
Motor Oil Range Organics (MRO)	ND	50		mg/Kg	1	3/16/2022 10:52:17 AM	66204
Surr: DNOP	96.2	51.1-141		%Rec	1	3/16/2022 10:52:17 AM	66204
<b>EPA METHOD 8015D: GASOLINE RANGE</b>							Analyst: <b>RAA</b>
Gasoline Range Organics (GRO)	ND	3.8		mg/Kg	1	3/16/2022 10:52:00 AM	66198
Surr: BFB	104	70-130		%Rec	1	3/16/2022 10:52:00 AM	66198
<b>EPA METHOD 8021B: VOLATILES</b>							Analyst: <b>RAA</b>
Benzene	ND	0.019		mg/Kg	1	3/16/2022 10:52:00 AM	66198
Toluene	ND	0.038		mg/Kg	1	3/16/2022 10:52:00 AM	66198
Ethylbenzene	ND	0.038		mg/Kg	1	3/16/2022 10:52:00 AM	66198
Xylenes, Total	ND	0.076		mg/Kg	1	3/16/2022 10:52:00 AM	66198
Surr: 4-Bromofluorobenzene	88.0	70-130		%Rec	1	3/16/2022 10:52:00 AM	66198

Refer to the QC Summary report and sample login checklist for flagged QC data and preservation information.

<b>Qualifiers:</b>	*	Value exceeds Maximum Contaminant Level.	B	Analyte detected in the associated Method Blank
	D	Sample Diluted Due to Matrix	E	Estimated value
	H	Holding times for preparation or analysis exceeded	J	Analyte detected below quantitation limits
	ND	Not Detected at the Reporting Limit	P	Sample pH Not In Range
	PQL	Practical Quantitative Limit	RL	Reporting Limit
	S	% Recovery outside of range due to dilution or matrix interference		

Page 1 of 5



QC SUMMARY REPORT

Hall Environmental Analysis Laboratory, Inc.

WO#: 2203822

18-Mar-22

Client: ENSOLUM  
Project: Lateral 10A 5

Sample ID: <b>MB-66211</b>		SampType: <b>mblk</b>		TestCode: <b>EPA Method 300.0: Anions</b>						
Client ID: <b>PBS</b>		Batch ID: <b>66211</b>		RunNo: <b>86512</b>						
Prep Date: <b>3/16/2022</b>		Analysis Date: <b>3/16/2022</b>		SeqNo: <b>3053142</b>		Units: <b>mg/Kg</b>				
Analyte	Result	PQL	SPK value	SPK Ref Val	%REC	LowLimit	HighLimit	%RPD	RPDLimit	Qual
Chloride	ND	1.5								

Sample ID: <b>LCS-66211</b>		SampType: <b>lcs</b>		TestCode: <b>EPA Method 300.0: Anions</b>						
Client ID: <b>LCSS</b>		Batch ID: <b>66211</b>		RunNo: <b>86512</b>						
Prep Date: <b>3/16/2022</b>		Analysis Date: <b>3/16/2022</b>		SeqNo: <b>3053143</b>		Units: <b>mg/Kg</b>				
Analyte	Result	PQL	SPK value	SPK Ref Val	%REC	LowLimit	HighLimit	%RPD	RPDLimit	Qual
Chloride	14	1.5	15.00	0	92.5	90	110			

Qualifiers:

- \*

Value exceeds Maximum Contaminant Level.
- D

Sample Diluted Due to Matrix
- H

Holding times for preparation or analysis exceeded
- ND

Not Detected at the Reporting Limit
- PQL

Practical Quantitative Limit
- S

% Recovery outside of range due to dilution or matrix interference
- B

Analyte detected in the associated Method Blank
- E

Estimated value
- J

Analyte detected below quantitation limits
- P

Sample pH Not In Range
- RL

Reporting Limit

**QC SUMMARY REPORT****Hall Environmental Analysis Laboratory, Inc.**

WO#: 2203822

18-Mar-22

**Client:** ENSOLUM  
**Project:** Lateral 10A 5

Sample ID: <b>2203822-001AMS</b>	SampType: <b>MS</b>	TestCode: <b>EPA Method 8015M/D: Diesel Range Organics</b>								
Client ID: <b>SP-1</b>	Batch ID: <b>66204</b>	RunNo: <b>86505</b>								
Prep Date: <b>3/16/2022</b>	Analysis Date: <b>3/16/2022</b>	SeqNo: <b>3052638</b> Units: <b>mg/Kg</b>								
Analyte	Result	PQL	SPK value	SPK Ref Val	%REC	LowLimit	HighLimit	%RPD	RPDLimit	Qual
Diesel Range Organics (DRO)	51	9.6	48.12	10.02	86.0	36.1	154			
Surr: DNOP	4.4		4.812		91.7	51.1	141			

Sample ID: <b>2203822-001AMSD</b>	SampType: <b>MSD</b>	TestCode: <b>EPA Method 8015M/D: Diesel Range Organics</b>								
Client ID: <b>SP-1</b>	Batch ID: <b>66204</b>	RunNo: <b>86505</b>								
Prep Date: <b>3/16/2022</b>	Analysis Date: <b>3/16/2022</b>	SeqNo: <b>3052639</b> Units: <b>mg/Kg</b>								
Analyte	Result	PQL	SPK value	SPK Ref Val	%REC	LowLimit	HighLimit	%RPD	RPDLimit	Qual
Diesel Range Organics (DRO)	61	9.8	49.16	10.02	104	36.1	154	17.2	33.9	
Surr: DNOP	4.6		4.916		92.7	51.1	141	0	0	

Sample ID: <b>LCS-66204</b>	SampType: <b>LCS</b>	TestCode: <b>EPA Method 8015M/D: Diesel Range Organics</b>								
Client ID: <b>LCSS</b>	Batch ID: <b>66204</b>	RunNo: <b>86505</b>								
Prep Date: <b>3/16/2022</b>	Analysis Date: <b>3/16/2022</b>	SeqNo: <b>3052645</b> Units: <b>mg/Kg</b>								
Analyte	Result	PQL	SPK value	SPK Ref Val	%REC	LowLimit	HighLimit	%RPD	RPDLimit	Qual
Diesel Range Organics (DRO)	47	10	50.00	0	94.7	68.9	135			
Surr: DNOP	4.6		5.000		92.3	51.1	141			

Sample ID: <b>MB-66204</b>	SampType: <b>MBLK</b>	TestCode: <b>EPA Method 8015M/D: Diesel Range Organics</b>								
Client ID: <b>PBS</b>	Batch ID: <b>66204</b>	RunNo: <b>86505</b>								
Prep Date: <b>3/16/2022</b>	Analysis Date: <b>3/16/2022</b>	SeqNo: <b>3052646</b> Units: <b>mg/Kg</b>								
Analyte	Result	PQL	SPK value	SPK Ref Val	%REC	LowLimit	HighLimit	%RPD	RPDLimit	Qual
Diesel Range Organics (DRO)	ND	10								
Motor Oil Range Organics (MRO)	ND	50								
Surr: DNOP	9.2		10.00		92.2	51.1	141			

**Qualifiers:**

*	Value exceeds Maximum Contaminant Level.	B	Analyte detected in the associated Method Blank
D	Sample Diluted Due to Matrix	E	Estimated value
H	Holding times for preparation or analysis exceeded	J	Analyte detected below quantitation limits
ND	Not Detected at the Reporting Limit	P	Sample pH Not In Range
PQL	Practical Quantitative Limit	RL	Reporting Limit
S	% Recovery outside of range due to dilution or matrix interference		

**QC SUMMARY REPORT****Hall Environmental Analysis Laboratory, Inc.**

WO#: 2203822

18-Mar-22

**Client:** ENSOLUM  
**Project:** Lateral 10A 5

Sample ID: <b>mb-66198</b>	SampType: <b>MBLK</b>		TestCode: <b>EPA Method 8015D: Gasoline Range</b>							
Client ID: <b>PBS</b>	Batch ID: <b>66198</b>		RunNo: <b>86499</b>							
Prep Date: <b>3/15/2022</b>	Analysis Date: <b>3/16/2022</b>		SeqNo: <b>3052369</b>		Units: <b>mg/Kg</b>					
Analyte	Result	PQL	SPK value	SPK Ref Val	%REC	LowLimit	HighLimit	%RPD	RPDLimit	Qual
Gasoline Range Organics (GRO)	ND	5.0								
Surr: BFB	1100		1000		107	70	130			

Sample ID: <b>lcs-66198</b>	SampType: <b>LCS</b>		TestCode: <b>EPA Method 8015D: Gasoline Range</b>							
Client ID: <b>LCSS</b>	Batch ID: <b>66198</b>		RunNo: <b>86499</b>							
Prep Date: <b>3/15/2022</b>	Analysis Date: <b>3/16/2022</b>		SeqNo: <b>3052374</b>		Units: <b>mg/Kg</b>					
Analyte	Result	PQL	SPK value	SPK Ref Val	%REC	LowLimit	HighLimit	%RPD	RPDLimit	Qual
Gasoline Range Organics (GRO)	30	5.0	25.00	0	120	78.6	131			
Surr: BFB	2300		1000		235	70	130			S

**Qualifiers:**

*	Value exceeds Maximum Contaminant Level.	B	Analyte detected in the associated Method Blank
D	Sample Diluted Due to Matrix	E	Estimated value
H	Holding times for preparation or analysis exceeded	J	Analyte detected below quantitation limits
ND	Not Detected at the Reporting Limit	P	Sample pH Not In Range
PQL	Practical Quantitative Limit	RL	Reporting Limit
S	% Recovery outside of range due to dilution or matrix interference		

**QC SUMMARY REPORT****Hall Environmental Analysis Laboratory, Inc.**

WO#: 2203822

18-Mar-22

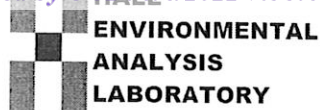
**Client:** ENSOLUM  
**Project:** Lateral 10A 5

Sample ID: <b>lcs-66198</b>	SampType: <b>LCS</b>			TestCode: <b>EPA Method 8021B: Volatiles</b>						
Client ID: <b>LCSS</b>	Batch ID: <b>66198</b>			RunNo: <b>86499</b>						
Prep Date: <b>3/15/2022</b>	Analysis Date: <b>3/16/2022</b>			SeqNo: <b>3052378</b>		Units: <b>mg/Kg</b>				
Analyte	Result	PQL	SPK value	SPK Ref Val	%REC	LowLimit	HighLimit	%RPD	RPDLimit	Qual
Benzene	0.97	0.025	1.000	0	96.9	80	120			
Toluene	0.99	0.050	1.000	0	98.8	80	120			
Ethylbenzene	0.99	0.050	1.000	0	99.4	80	120			
Xylenes, Total	3.0	0.10	3.000	0	99.3	80	120			
Surr: 4-Bromofluorobenzene	0.88		1.000		88.4	70	130			

Sample ID: <b>mb-66198</b>	SampType: <b>MBLK</b>			TestCode: <b>EPA Method 8021B: Volatiles</b>						
Client ID: <b>PBS</b>	Batch ID: <b>66198</b>			RunNo: <b>86499</b>						
Prep Date: <b>3/15/2022</b>	Analysis Date: <b>3/16/2022</b>			SeqNo: <b>3052379</b>		Units: <b>mg/Kg</b>				
Analyte	Result	PQL	SPK value	SPK Ref Val	%REC	LowLimit	HighLimit	%RPD	RPDLimit	Qual
Benzene	ND	0.025								
Toluene	ND	0.050								
Ethylbenzene	ND	0.050								
Xylenes, Total	ND	0.10								
Surr: 4-Bromofluorobenzene	0.91		1.000		91.0	70	130			

**Qualifiers:**

*	Value exceeds Maximum Contaminant Level.	B	Analyte detected in the associated Method Blank
D	Sample Diluted Due to Matrix	E	Estimated value
H	Holding times for preparation or analysis exceeded	J	Analyte detected below quantitation limits
ND	Not Detected at the Reporting Limit	P	Sample pH Not In Range
PQL	Practical Quantitative Limit	RL	Reporting Limit
S	% Recovery outside of range due to dilution or matrix interference		



## Sample Log-In Check List

Client Name: ENSOLUM

Work Order Number: 2203822

RcptNo: 1

Received By: Tracy Casarrubias 3/16/2022 8:00:00 AM

Completed By: Tracy Casarrubias 3/16/2022 8:23:14 AM

Reviewed By: *822 3/16/22*Chain of Custody

1. Is Chain of Custody complete? Yes ☒ No ☐ Not Present ☐
2. How was the sample delivered? Courier

Log In

3. Was an attempt made to cool the samples? Yes ☒ No ☐ NA ☐
4. Were all samples received at a temperature of  $>0^{\circ}\text{C}$  to  $6.0^{\circ}\text{C}$ ? Yes ☐ No ☒ NA ☐  
Samples not Frozen
5. Sample(s) in proper container(s)? Yes ☒ No ☐
6. Sufficient sample volume for indicated test(s)? Yes ☒ No ☐
7. Are samples (except VOA and ONG) properly preserved? Yes ☒ No ☐
8. Was preservative added to bottles? Yes ☐ No ☒ NA ☐
9. Received at least 1 vial with headspace  $<1/4"$  for AQ VOA? Yes ☐ No ☐ NA ☒
10. Were any sample containers received broken? Yes ☐ No ☒
11. Does paperwork match bottle labels? Yes ☒ No ☐  
(Note discrepancies on chain of custody)
12. Are matrices correctly identified on Chain of Custody? Yes ☒ No ☐
13. Is it clear what analyses were requested? Yes ☒ No ☐
14. Were all holding times able to be met? Yes ☒ No ☐  
(If no, notify customer for authorization.)

# of preserved  
bottles checked  
for pH:

(&lt;2 or &gt;12 unless noted)

Adjusted?

Checked by: *jn 3/16/22*Special Handling (if applicable)

15. Was client notified of all discrepancies with this order? Yes ☐ No ☐ NA ☒

Person Notified: \_\_\_\_\_

Date: \_\_\_\_\_

By Whom: \_\_\_\_\_

Via: ☐ eMail ☐ Phone ☐ Fax ☐ In Person

Regarding: \_\_\_\_\_

Client Instructions: \_\_\_\_\_

16. Additional remarks:

17. Cooler Information

Cooler No	Temp $^{\circ}\text{C}$	Condition	Seal Intact	Seal No	Seal Date	Signed By
1	-0.9	Good	Yes			





**District I**  
1625 N. French Dr., Hobbs, NM 88240  
Phone:(575) 393-6161 Fax:(575) 393-0720  
**District II**  
811 S. First St., Artesia, NM 88210  
Phone:(575) 748-1283 Fax:(575) 748-9720  
**District III**  
1000 Rio Brazos Rd., Aztec, NM 87410  
Phone:(505) 334-6178 Fax:(505) 334-6170  
**District IV**  
1220 S. St Francis Dr., Santa Fe, NM 87505  
Phone:(505) 476-3470 Fax:(505) 476-3462

State of New Mexico  
Energy, Minerals and Natural Resources  
Oil Conservation Division  
1220 S. St Francis Dr.  
Santa Fe, NM 87505

CONDITIONS  
  
Action 104840

CONDITIONS

Operator: Enterprise Field Services, LLC PO Box 4324 Houston, TX 77210	OGRID: 241602
	Action Number: 104840
	Action Type: [C-141] Release Corrective Action (C-141)

CONDITIONS

Created By	Condition	Condition Date
nvelez	None	6/24/2022