



## Remediation Summary and Closure Request

**Frontier Field Services, LLC  
MAL 10-33 Siete 6" Steel Line  
Lea County, New Mexico**

**Unit Letter "I", Section 18, Township 18 South, Range 32 East  
Latitude 32.747034 North, Longitude 103.801475 West  
NMOCD Incident # nAPP2213335346**

---

Prepared For:

Frontier Field Services, LLC  
47 Conoco Rd  
Maljamar, NM 88264

Prepared By:

Hungry Horse, LLC  
4024 Plains Hwy  
Lovington, NM 88260  
Office: (575) 393-3386

**August 2022**

*Bradley Wells*

Bradley Wells  
Project Manager  
bwells@hungry-horse.com

*Daniel Dominguez*

Daniel Dominguez  
Environmental Manager  
ddominguez@hungry-horse.com

## Table Of Contents

NMOCD Form C-141 Closure Page	
Background	1
NMOCD Site Classification	1
Delineation and Remediation Activities	2
Restoration, Reclamation, and Re-Vegetation	2
Closure Request	3
Limitations	3
Distribution	4

### Figures

- Figure 1 – Topographic Map
- Figure 2 – OSE POD Locations Map
- Figure 3 – USGS Well Locations Map
- Figure 4 – Delineation Sample Map
- Figure 5 – Excavation Sample Map

### Tables

- Table 1 – Summary of Soil Sample Laboratory Analytical Results

### Attachments

- Attachment I – Karst and Wetland Maps
- Attachment II – NMOCD Correspondence
- Attachment III – Site Photographs
- Attachment IV – Depth to Groundwater
- Attachment V – Field Data
- Attachment VI – Laboratory Analytical Reports
- Attachment VII – NMOCD Form Initial C-141

Form C-141

Page 6

State of New Mexico  
Oil Conservation Division

Incident ID	nAPP2213335346
District RP	
Facility ID	
Application ID	

## Closure

The responsible party must attach information demonstrating they have complied with all applicable closure requirements and any conditions or directives of the OCD. This demonstration should be in the form of a comprehensive report (electronic submittals in .pdf format are preferred) including a scaled site map, sampling diagrams, relevant field notes, photographs of any excavation prior to backfilling, laboratory data including chain of custody documents of final sampling, and a narrative of the remedial activities. Refer to 19.15.29.12 NMAC.

**Closure Report Attachment Checklist:** *Each of the following items must be included in the closure report.*

- ☒ A scaled site and sampling diagram as described in 19.15.29.11 NMAC
- ☒ Photographs of the remediated site prior to backfill or photos of the liner integrity if applicable (Note: appropriate OCD District office must be notified 2 days prior to liner inspection)
- ☒ Laboratory analyses of final sampling (Note: appropriate ODC District office must be notified 2 days prior to final sampling)
- ☒ Description of remediation activities

I hereby certify that the information given above is true and complete to the best of my knowledge and understand that pursuant to OCD rules and regulations all operators are required to report and/or file certain release notifications and perform corrective actions for releases which may endanger public health or the environment. The acceptance of a C-141 report by the OCD does not relieve the operator of liability should their operations have failed to adequately investigate and remediate contamination that pose a threat to groundwater, surface water, human health or the environment. In addition, OCD acceptance of a C-141 report does not relieve the operator of responsibility for compliance with any other federal, state, or local laws and/or regulations. The responsible party acknowledges they must substantially restore, reclaim, and re-vegetate the impacted surface area to the conditions that existed prior to the release or their final land use in accordance with 19.15.29.13 NMAC including notification to the OCD when reclamation and re-vegetation are complete.

Printed Name: Amber Groves Title: Sr. Environmental Specialist  
Signature: [Signature] Date: 8/16/2022  
email: agroves@durangomidstream.com Telephone: 575-703-7992

**OCD Only**

Received by: \_\_\_\_\_ Date: \_\_\_\_\_

Closure approval by the OCD does not relieve the responsible party of liability should their operations have failed to adequately investigate and remediate contamination that poses a threat to groundwater, surface water, human health, or the environment nor does not relieve the responsible party of compliance with any other federal, state, or local laws and/or regulations.

Closure Approved by: Jennifer Nobui Date: 08/17/2022  
Printed Name: Jennifer Nobui Title: Environmental Specialist A



## HUNGRY HORSE, LLC

---

The following *Remediation Summary and Closure Request* serves as a condensed update on field activities undertaken at the afore referenced Site.

### Background:

The site is located in Unit Letter I (NE/SE), Section 18, Township 18 South, Range 32 East, approximately 8 miles Southwest of Maljamar, in Lea County, New Mexico. The property is Federally owned. Topographic Map, OSE POD Locations Map, and USGS Well Locations Map are included as Figure 1, Figure 2, and Figure 3, respectively.

The release occurred on an active pipeline; Latitude 32.747034 North, Longitude 103.801475 West. The Initial NMOCD Form C-141 indicated that on May 10, 2022 approximately 8.88 bbls of condensate and 23.15 Mcf of natural gas were released due to internal and external corrosion on the pipeline. A crew was dispatched to the release site and the line was repaired. Previously submitted pages of the NMOCD Form C-141 are available on the NMOCD Imaging System. NMOCD Form Initial C-141 is also included as Attachment VII.

### NMOCD Site Classification:

A search of the New Mexico Office of the State Engineer (NMOSE) and United States Geological Survey (USGS) groundwater databases was completed in an effort to determine the horizontal distance to known water sources within a half mile radius of the Release Site. Approximate depth to groundwater was determined using maintained and published water well data. Karst mapping indicates the site is not located in a Karst designated area. Karst and Wetland Maps are provided as Attachment I. Depth to groundwater information is provided as Attachment IV and the results are depicted on Figures 2 & 3.

No water wells were located within a half mile of the release area, therefore depth to groundwater could not be determined. Consequently, the site was delineated and further remediated according to the strictest NMOCD Closure Criteria. Utilizing this information, the NMOCD Closure Criteria for the Site were determined as follows:

Depth to Groundwater	Constituent	Method	Limit
undetermined	Chloride	EPA 300.0 or SM4500 CLB	600 mg/kg
	TPH (GRO + DRO + MRO)	EPA SW-846 Method 8015M Ext	100 mg/kg
	BTEX	EPA SW-846 Methods 8021B or 8260B	50 mg/kg
	Benzene	EPA SW-846 Methods 8021B or 8260B	10 mg/kg



---

**Delineation and Remediation Activities:**

On July 8 and 18, 2022, Hungry Horse conducted an initial site assessment and a series of sampling events. During the sampling events, a test trench was advanced in the floor of the excavated area in an effort to determine the vertical extent of contamination. This sample location is identified by SP designation. In addition, test trenches were advanced along the outside edges of the excavated area in an effort to determine the horizontal extent of contamination. These sample locations are identified by HZ designation. During the advancement of the test trenches, soil samples were collected and field screened for the presence of chloride concentrations utilizing a Hach Quantab® chloride test kit.

Based on field observations and field test data noted above and provided in Attachment IV, ten representative soil samples were selected for laboratory analysis. Delineation soil samples, SP1 and HZ1 through HZ4, were submitted to the laboratory for analysis of BTEX, TPH, and chloride. Laboratory analytical results indicated contaminant concentrations were below the NMOCD Closure Criteria in each of the submitted samples with the exception of SP1 at Surface which exhibited TPH concentrations in excess of NMOCD Closure Criteria.

From July 14-15, 2022, the area excavated during pipeline repair activities was excavated to approximately six feet bgs. Soil impacted above the NMOCD Closure Criteria was excavated and stockpiled on-site, atop plastic, before transport to an NMOCD approved disposal facility.

The excavated area measured approximately twenty-seven feet in length, eighteen feet in width, and six feet in depth. During remediation activities approximately 252 cubic yards of impacted soil were excavated and hauled to an NMOCD approved disposal facility. Manifests can be provided upon request.

On July 28, 2022, four composite confirmation soil samples were collected from the excavation floor and sidewalls, every 200 square feet and every 50 linear feet, respectively. Soil samples FL1, FL2, SW1, and SW2, were submitted to the laboratory for analysis of BTEX, TPH, and chloride. Laboratory analytical results indicated contaminant concentrations were below the NMOCD Closure Criteria in each of the submitted samples.

A Delineation Sample Map and Excavation Sample Map are provided as Figure 4 and Figure 5, respectively. A Summary of Soil Sample Laboratory Analytical Results is provided as Table 1 and Laboratory Analytical Reports are provided as Attachment VI.

**Restoration, Reclamation, and Re-Vegetation:**

Based upon laboratory analytical results from confirmation soil samples, the excavated area was backfilled with locally sourced, clean, non-impacted material. The area was contoured to achieve erosion control and preserve surface water flow. The affected area will be reseeded



with an approved seed mixture during the first favorable growing season following these completed remediation activities.

**Closure Request:**

Remediation activities were conducted in accordance with applicable NMOCD Regulations. Soil affected above the NMOCD Closure Criteria has been excavated and hauled to an NMOCD approved facility for disposal. Laboratory analytical results from composite confirmation samples indicate concentrations of BTEX, TPH, and chloride are below the NMOCD Closure Criteria.

Based on laboratory analytical results, Frontier Field Services, LLC respectfully requests closure of the MAL 10-33 Siete 6" Steel Line location, nAPP2213335346.

**Limitations:**

Hungry Horse, LLC, has prepared this *Remediation Summary and Closure Request* to the best of its ability. No other warranty, expressed or implied, is made or intended. Hungry Horse has examined and relied upon documents referenced in the report and on oral statements made by certain individuals. Hungry Horse has not conducted an independent examination of the facts contained in referenced materials and statements. Hungry Horse has presumed the genuineness of these documents and statements and that the information provided therein is true and accurate. Hungry Horse notes that the facts and conditions referenced in this report may change over time, and the conclusions and recommendations set forth herein are applicable only to the facts and conditions as described at the time of this report.

**Distribution:**



---

**Frontier Field Services, LLC**

47 Conoco Rd.

Maljamar, NM 88264

**New Mexico Energy, Minerals and Natural Resources Department**

Oil Conservation Division, District 2

811 S. First St.

Artesia, NM 88210

**New Mexico Bureau of Land Management**

620 E. Greene St

Carlsbad, NM 88220



## **Figures**



**Figure 1**

Topographic Map  
 Frontier Field Services, LLC  
 MAL 10-33 Siete 6" Steel Line  
 GPS: 32.747034, -103.801475  
 Lea County

**Legend:**

● MAL 10-33 Siete 6" Steel Line Location

Drafted: dd  
 Checked: bw  
 Date: 7/8/22





**Figure 2**

OSE POD Locations Map  
Frontier Field Services, LLC  
MAL 10-33 Siete 6" Steel Line  
GPS: 32.747034, -103.801475  
Lea County

**Legend:**

- MAL 10-33 Siete 6" Steel Line Location

Drafted: dd  
Checked: bw  
Date: 7/14/22





**Figure 3**

USGS Well Locations Map  
Frontier Field Services, LLC  
MAL 10-33 Siete 6" Steel Line  
GPS: 32.747034, -103.801475  
Lea County

**Legend:**

- MAL 10-33 Siete 6" Steel Line Location

Drafted: dd  
Checked: bw  
Date: 7/14/22


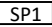




**Figure 4**

Delineation Sample Map  
Frontier Field Services, LLC  
MAL 10-33 Siete 6" Steel Line  
GPS: 32.747034, -103.801475  
Lea County

**Legend:**

-  Excavated Area  
 Delineation Sample Location

Drafted: dd  
Checked: bw  
Date: 7/14/22


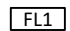




**Figure 5**

Excavation Sample Map  
Frontier Field Services, LLC  
MAL 10-33 Siete 6" Steel Line  
GPS: 32.747034, -103.801475  
Lea County

**Legend:**

-  Excavated Area  
 Composite Confirmation Sample Location



Drafted: dd  
Checked: bw  
Date: 7/28/22

## **Table**

**TABLE 1**  
**Summary of Soil Sample Laboratory Analytical Results**  
**Frontier Field Services, LLC**  
**MAL 10-33 Siete 6" Steel Line**  
**NMOCD Ref. #: nAPP2213335346**

Sample ID	Date	Depth (ft)	Soil Status	Benzene (mg/kg)	BTEX (mg/kg)	GRO C <sub>6</sub> -C <sub>10</sub> (mg/kg)	DRO C <sub>10</sub> -C <sub>28</sub> (mg/kg)	GRO + DRO C <sub>6</sub> -C <sub>28</sub> (mg/kg)	ORO C <sub>28</sub> -C <sub>36</sub> (mg/kg)	TPH C <sub>6</sub> -C <sub>36</sub> (mg/kg)	Chloride (mg/kg)
SP1	7/18/22	Surf	Excavated	0.591	9.58	83.5	13,900	13,983.5	2,830	<b>16,813.5</b>	112.0
	7/18/22	12	In-Situ	<0.050	<0.300	<10.0	<10.0	<20.0	<10.0	<30.0	16.0
HZ1	7/18/22	Surf	In-Situ	<0.050	<0.300	<10.0	<10.0	<20.0	<10.0	<30.0	32.0
	7/18/22	1	In-Situ	<0.050	<0.300	<10.0	<10.0	<20.0	<10.0	<30.0	48.0
HZ2	7/18/22	Surf	In-Situ	<0.050	<0.300	<10.0	<10.0	<20.0	<10.0	<30.0	16.0
	7/18/22	1	In-Situ	<0.050	<0.300	<10.0	<10.0	<20.0	<10.0	<30.0	16.0
HZ3	7/18/22	Surf	In-Situ	<0.050	<0.300	<10.0	<10.0	<20.0	<10.0	<30.0	32.0
	7/18/22	1	In-Situ	<0.050	<0.300	<10.0	<10.0	<20.0	<10.0	<30.0	16.0
HZ4	7/18/22	Surf	In-Situ	<0.050	<0.300	<10.0	<10.0	<20.0	<10.0	<30.0	16.0
	7/18/22	1	In-Situ	<0.050	<0.300	<10.0	<10.0	<20.0	<10.0	<30.0	32.0
FL1	7/28/22	12	In-Situ	<0.050	<0.300	<10.0	<10.0	<20.0	<10.0	<30.0	32.0
FL2	7/28/22	12	In-Situ	<0.050	<0.300	<10.0	<10.0	<20.0	<10.0	<30.0	16.0
SW1	7/28/22	4	In-Situ	<0.050	<0.300	<10.0	<10.0	<20.0	<10.0	<30.0	16.0
SW2	7/28/22	4	In-Situ	<0.050	<0.300	<10.0	<10.0	<20.0	<10.0	<30.0	<16.0
<b>NMOCD Closure Criteria</b>				<b>10</b>	<b>50</b>	-	-	<b>N/A</b>	-	<b>100</b>	<b>600</b>

**NOTES:**

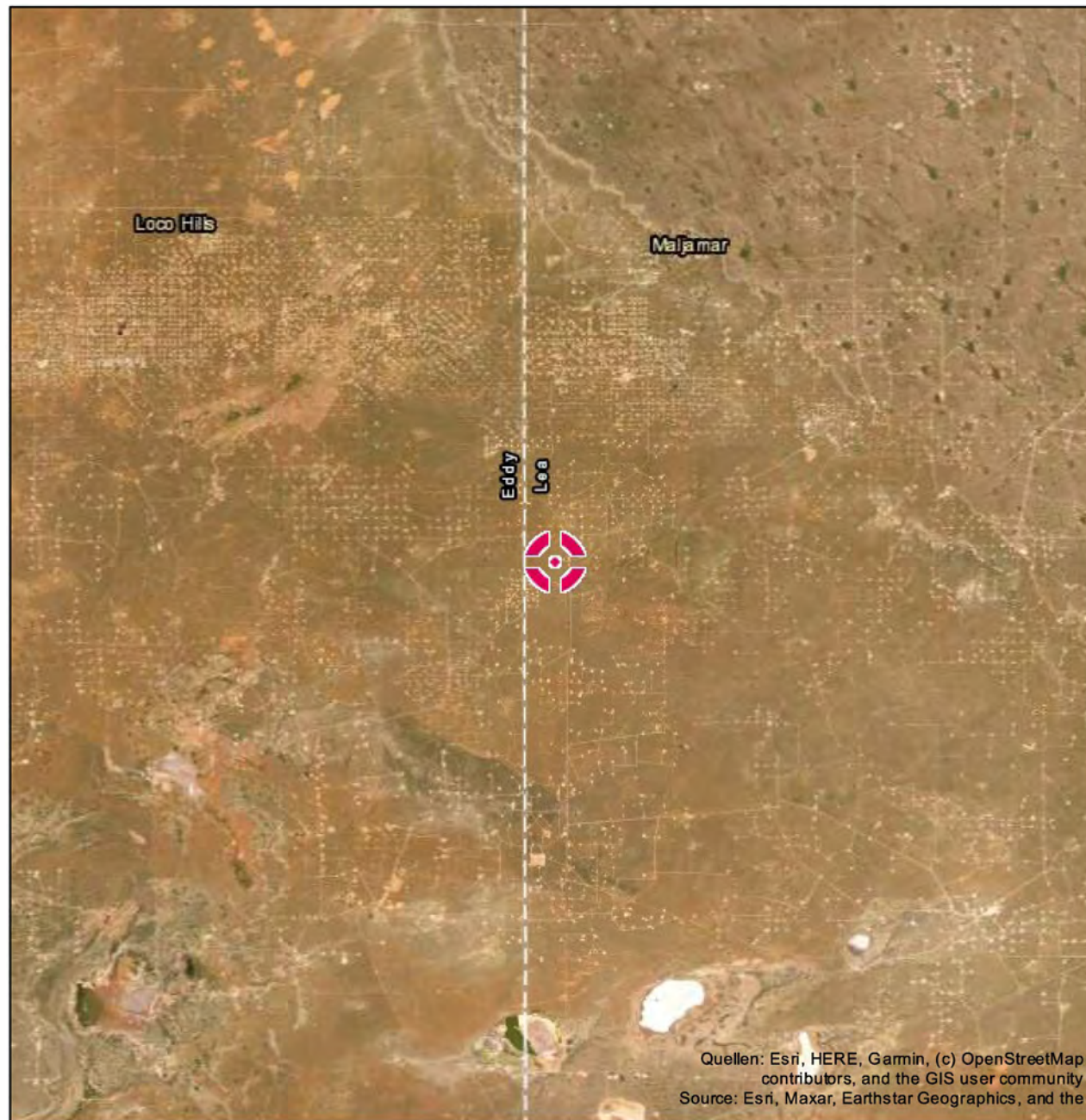
- = Sample not analyzed for that constituent.

**Bold** text denotes a concentration that exceeds the NMOCD Closure Criteria



## **Attachment I**

### **Karst and Wetland Maps**

**Karst springs**

Spring with low flow discharge  $\geq 2 \text{ m}^3/\text{s}$

Spring with low flow discharge  $< 2 \text{ m}^3/\text{s}$

Submarine spring

Thermal spring

Water abstraction structure in karst aquifer

Cave systems

Border between exposed and non-exposed karstifiable rocks

Selected city, partly dependent on groundwater

Boundary of continuous permafrost

Continuous ice sheet

**Karstifiable rocks (potential karst aquifer)**

Continuous carbonate rocks

Discontinuous carbonate rocks

Continuous evaporite rocks

Discontinuous evaporite rocks

Mixed carbonate and evaporite rocks





## Wetlands



August 12, 2022

**Wetlands**

- Estuarine and Marine Deepwater
- Estuarine and Marine Wetland

- Freshwater Emergent Wetland
- Freshwater Forested/Shrub Wetland
- Freshwater Pond

- Lake
- Other
- Riverine

This map is for general reference only. The US Fish and Wildlife Service is not responsible for the accuracy or currentness of the base data shown on this map. All wetlands related data should be used in accordance with the layer metadata found on the Wetlands Mapper web site.

National Wetlands Inventory (NWI)  
This page was produced by the NWI mapper

## **Attachment II NMOCD Correspondence**

## Daniel Dominguez

---

**From:** Nobui, Jennifer, EMNRD <Jennifer.Nobui@state.nm.us>  
**Sent:** Monday, July 25, 2022 12:12 PM  
**To:** Daniel Dominguez  
**Cc:** Bratcher, Mike, EMNRD; Hamlet, Robert, EMNRD; Harimon, Jocelyn, EMNRD  
**Subject:** FW: [EXTERNAL] Closure Samples

Daniel

Thank you for the notification. Please include a copy of this and all notifications in the remedial and/or closure reports to ensure the notifications are documented in the project file.

Thanks,  
Jennifer Nobui

---

**From:** Enviro, OCD, EMNRD <OCD.Enviro@state.nm.us>  
**Sent:** Monday, July 25, 2022 11:17 AM  
**To:** Nobui, Jennifer, EMNRD <Jennifer.Nobui@state.nm.us>; Harimon, Jocelyn, EMNRD <Jocelyn.Harimon@state.nm.us>; Bratcher, Mike, EMNRD <mike.bratcher@state.nm.us>; Hamlet, Robert, EMNRD <Robert.Hamlet@state.nm.us>; Velez, Nelson, EMNRD <Nelson.Velez@state.nm.us>  
**Subject:** Fw: [EXTERNAL] Closure Samples

---

**From:** Daniel Dominguez <[ddominguez@hungry-horse.com](mailto:ddominguez@hungry-horse.com)>  
**Sent:** Monday, July 25, 2022 11:16 AM  
**To:** Enviro, OCD, EMNRD <[OCD.Enviro@state.nm.us](mailto:OCD.Enviro@state.nm.us)>  
**Subject:** [EXTERNAL] Closure Samples

**CAUTION:** This email originated outside of our organization. Exercise caution prior to clicking on links or opening attachments.

We will be collecting closure samples at the MAL 10-33 Siete (nAPP2213335346) on Thursday, July 28, 2022 at 7 am.  
This is our 48 hour notice.

Thank you,

Daniel Dominguez  
Environmental Manager  
Hungry Horse, LLC  
(mobile) 575-408-3134  
[ddominguez@hungry-horse.com](mailto:ddominguez@hungry-horse.com)

## **Attachment III Site Photographs**

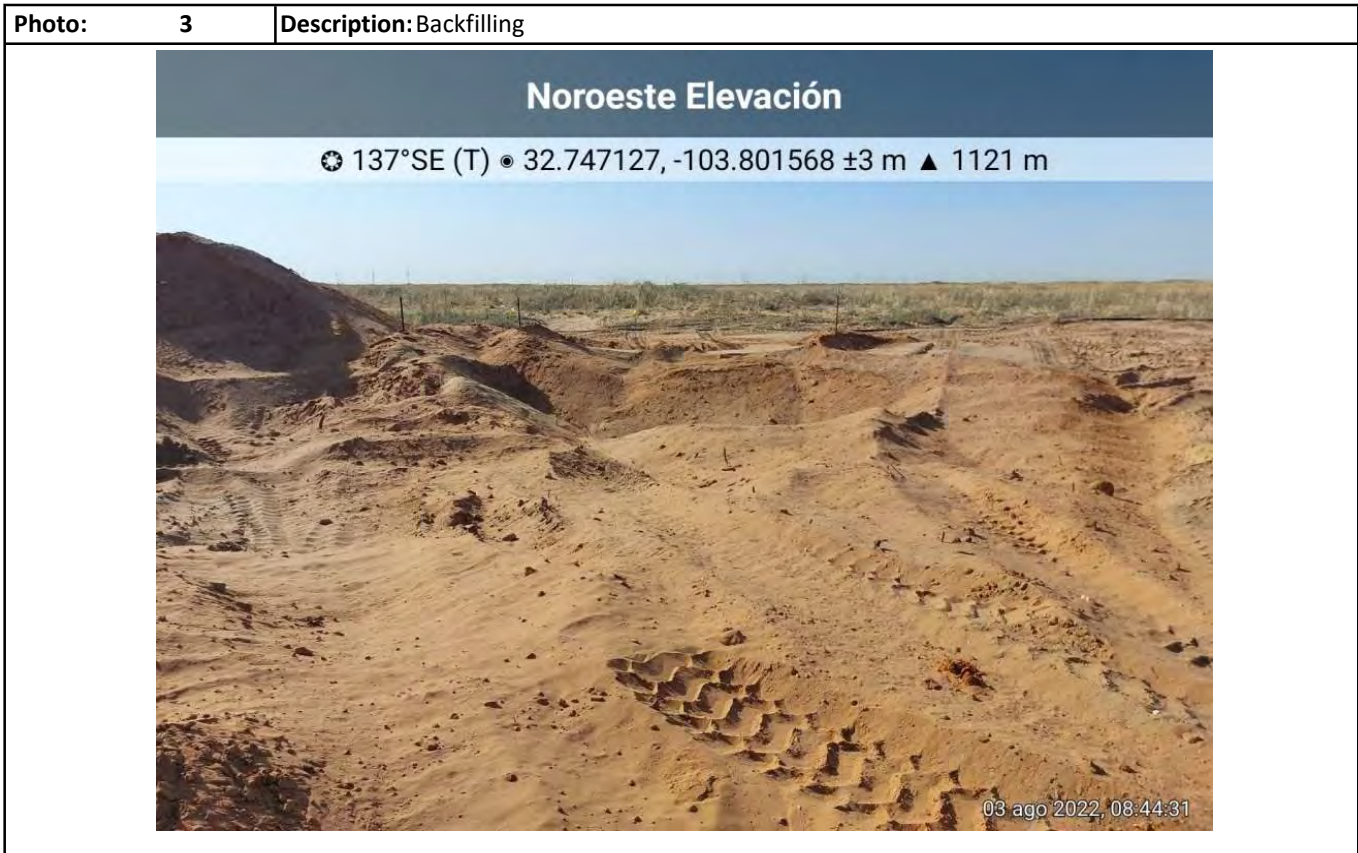


## Photographs





## Photographs





## Photographs





## Photographs



## **Attachment IV**

### **Depth to Groundwater**



New Mexico Office of the State Engineer  
Wells with Well Log Information

No wells found.

UTMNAD83 Radius Search (in meters):

Easting (X): 612283.37      Northing (Y): 3623879.53      Radius: 805

The data is furnished by the NMOSE/ISC and is accepted by the recipient with the expressed understanding that the OSE/ISC make no warranties, expressed or implied, concerning the accuracy, completeness, reliability, usability, or suitability for any particular purpose of the data.

7/14/22 10:40 AM

WELLS WITH WELL LOG INFORMATION

## **Attachment V**

### **Field Data**

Hungry Horse, LLC

## Sample Log

Date:

7/18/22

Project: MAL 10-33 Siete

Latitude: 32.74718

Longitude: -103.80137

Sampler:

B. Wells

Sample ID	Depth	PID/Odor	Chloride	GPS
H21 - Surf	surf	N/A	>100	L2b
H21	1'	N/A	>100	L2b
H22	surf	N/A	>100	L2b
H22	1'	N/A	1.8 = 38 x 4 = 152	L2b
H23	surf	N/A	>100	L2b
H23	1'	N/A	>100	L2b
H24	surf	N/A	>100	L2b
H24	1'	N/A	>100	L2b
<hr/>				
Sp1	surf	TPH	4.0 = 145 x 4 = 580	L2b
Sp1	1'	TPH	3.4 = 109 x 4 = 436	
Sp1	2'	TPH	5.2 = 235 x 4 = 940	
Sp1	3'	Possible	6.8 = 411 x 4 = 1644	
Sp1	4'	Possible	7.4 = 506 x 4 = 2024	
Sp1	5'	Odor/TPH	5.2 H = 1143 x 4 = 4572	
Sp1	6'	Odor/TPH	4.8 H = 974 x 4 = 3896	
Sp1	12'	N/A	>100	L2b

Sample Point = SP1 @ ## etc

Floor = FL1 etc

Sidewall = SW1 etc

Horizontal = HZ1 etc

Refusal = SP1 @ 4'-R

GPS Sample Points, Center of Comp Areas

Test Trench = TT1 @ ##

Resamples = SP1b @ 5' or SW #1b

Stockpile = Stockpile #1



## **Attachment VI**

### **Laboratory Analytical Reports**



PHONE (575) 393-2326 ° 101 E. MARLAND ° HOBBS, NM 88240

July 25, 2022

DANIEL DOMINGUEZ

Hungry Horse Environmental

P.O. Box 1058

Hobbs, NM 88240

RE: MAL 10-33 SIETE

Enclosed are the results of analyses for samples received by the laboratory on 07/18/22 16:30.

Cardinal Laboratories is accredited through Texas NELAP under certificate number T104704398-22-15. Accreditation applies to drinking water, non-potable water and solid and chemical materials. All accredited analytes are denoted by an asterisk (\*). For a complete list of accredited analytes and matrices visit the TCEQ website at [www.tceq.texas.gov/field/qa/lab\\_accred\\_certif.html](http://www.tceq.texas.gov/field/qa/lab_accred_certif.html).

Cardinal Laboratories is accredited through the State of Colorado Department of Public Health and Environment for:

Method EPA 552.2	Haloacetic Acids (HAA-5)
Method EPA 524.2	Total Trihalomethanes (TTHM)
Method EPA 524.4	Regulated VOCs (V1, V2, V3)

Accreditation applies to public drinking water matrices.

This report meets NELAP requirements and is made up of a cover page, analytical results, and a copy of the original chain-of-custody. If you have any questions concerning this report, please feel free to contact me.

Sincerely,

A handwritten signature in black ink that reads "Celey D. Keene". The signature is written in a cursive, flowing style.

Celey D. Keene

Lab Director/Quality Manager



PHONE (575) 393-2326 ° 101 E. MARLAND ° HOBBS, NM 88240

**Analytical Results For:**

Hungry Horse Environmental  
 DANIEL DOMINGUEZ  
 P.O. Box 1058  
 Hobbs NM, 88240  
 Fax To: (505) 391-4585

Received:	07/18/2022	Sampling Date:	07/18/2022
Reported:	07/25/2022	Sampling Type:	Soil
Project Name:	MAL 10-33 SIETE	Sampling Condition:	Cool & Intact
Project Number:	FRONTIER FIELD SERVICES	Sample Received By:	Tamara Oldaker
Project Location:	UL / I SEC 18 T18S - R32E		

**Sample ID: SP 1 - SURF (H223119-01)**

BTX 8021B		mg/kg		Analyzed By: JH					
Analyte	Result	Reporting Limit	Analyzed	Method Blank	BS	% Recovery	True Value QC	RPD	Qualifier
<b>Benzene*</b>	<b>0.591</b>	0.100	07/21/2022	ND	2.07	104	2.00	2.92	
<b>Toluene*</b>	<b>2.23</b>	0.100	07/21/2022	ND	2.18	109	2.00	2.66	
<b>Ethylbenzene*</b>	<b>2.51</b>	0.100	07/21/2022	ND	2.22	111	2.00	2.81	
<b>Total Xylenes*</b>	<b>4.25</b>	0.300	07/21/2022	ND	6.81	114	6.00	3.31	
<b>Total BTX</b>	<b>9.58</b>	0.600	07/21/2022	ND					

Surrogate: 4-Bromofluorobenzene (PID) 124 % 69.9-140

Chloride, SM4500Cl-B		mg/kg		Analyzed By: GM					
Analyte	Result	Reporting Limit	Analyzed	Method Blank	BS	% Recovery	True Value QC	RPD	Qualifier
<b>Chloride</b>	<b>112</b>	16.0	07/20/2022	ND	416	104	400	3.77	

TPH 8015M		mg/kg		Analyzed By: MS						S-06
Analyte	Result	Reporting Limit	Analyzed	Method Blank	BS	% Recovery	True Value QC	RPD	Qualifier	
<b>GRO C6-C10*</b>	<b>83.5</b>	50.0	07/19/2022	ND	219	110	200	1.18		
<b>DRO &gt;C10-C28*</b>	<b>13900</b>	50.0	07/19/2022	ND	227	114	200	3.70		
<b>EXT DRO &gt;C28-C36</b>	<b>2830</b>	50.0	07/19/2022	ND						

Surrogate: 1-Chlorooctane 106 % 43-149

Surrogate: 1-Chlorooctadecane 606 % 42.5-161

Cardinal Laboratories

\*=Accredited Analyte

PLEASE NOTE: Liability and Damages. Cardinal's liability and client's exclusive remedy for any claim arising, whether based in contract or tort, shall be limited to the amount paid by client for analyses. All claims, including those for negligence and any other cause whatsoever shall be deemed waived unless made in writing and received by Cardinal within thirty (30) days after completion of the applicable service. In no event shall Cardinal be liable for incidental or consequential damages, including, without limitation, business interruptions, loss of use, or loss of profits incurred by client, its subsidiaries, affiliates or successors arising out of or related to the performance of the services hereunder by Cardinal, regardless of whether such claim is based upon any of the above stated reasons or otherwise. Results relate only to the samples identified above. This report shall not be reproduced except in full with written approval of Cardinal Laboratories.

Celey D. Keene, Lab Director/Quality Manager



PHONE (575) 393-2326 ° 101 E. MARLAND ° HOBBS, NM 88240

**Analytical Results For:**

Hungry Horse Environmental  
 DANIEL DOMINGUEZ  
 P.O. Box 1058  
 Hobbs NM, 88240  
 Fax To: (505) 391-4585

Received:	07/18/2022	Sampling Date:	07/18/2022
Reported:	07/25/2022	Sampling Type:	Soil
Project Name:	MAL 10-33 SIETE	Sampling Condition:	Cool & Intact
Project Number:	FRONTIER FIELD SERVICES	Sample Received By:	Tamara Oldaker
Project Location:	UL / I SEC 18 T18S - R32E		

**Sample ID: SP 1 - 12' (H223119-02)**

BTX 8021B		mg/kg		Analyzed By: JH					
Analyte	Result	Reporting Limit	Analyzed	Method Blank	BS	% Recovery	True Value QC	RPD	Qualifier
Benzene*	<0.050	0.050	07/21/2022	ND	2.07	104	2.00	2.92	
Toluene*	<0.050	0.050	07/21/2022	ND	2.18	109	2.00	2.66	
Ethylbenzene*	<0.050	0.050	07/21/2022	ND	2.22	111	2.00	2.81	
Total Xylenes*	<0.150	0.150	07/21/2022	ND	6.81	114	6.00	3.31	
Total BTX	<0.300	0.300	07/21/2022	ND					

Surrogate: 4-Bromofluorobenzene (PID) 118 % 69.9-140

Chloride, SM4500CI-B		mg/kg		Analyzed By: GM					
Analyte	Result	Reporting Limit	Analyzed	Method Blank	BS	% Recovery	True Value QC	RPD	Qualifier
Chloride	16.0	16.0	07/20/2022	ND	416	104	400	3.77	

TPH 8015M		mg/kg		Analyzed By: MS					
Analyte	Result	Reporting Limit	Analyzed	Method Blank	BS	% Recovery	True Value QC	RPD	Qualifier
GRO C6-C10*	<10.0	10.0	07/19/2022	ND	219	110	200	1.18	
DRO >C10-C28*	<10.0	10.0	07/19/2022	ND	227	114	200	3.70	
EXT DRO >C28-C36	<10.0	10.0	07/19/2022	ND					

Surrogate: 1-Chlorooctane 85.7 % 43-149

Surrogate: 1-Chlorooctadecane 85.7 % 42.5-161

Cardinal Laboratories

\*=Accredited Analyte

PLEASE NOTE: Liability and Damages. Cardinal's liability and client's exclusive remedy for any claim arising, whether based in contract or tort, shall be limited to the amount paid by client for analyses. All claims, including those for negligence and any other cause whatsoever shall be deemed waived unless made in writing and received by Cardinal within thirty (30) days after completion of the applicable service. In no event shall Cardinal be liable for incidental or consequential damages, including, without limitation, business interruptions, loss of use, or loss of profits incurred by client, its subsidiaries, affiliates or successors arising out of or related to the performance of the services hereunder by Cardinal, regardless of whether such claim is based upon any of the above stated reasons or otherwise. Results relate only to the samples identified above. This report shall not be reproduced except in full with written approval of Cardinal Laboratories.

Celey D. Keene, Lab Director/Quality Manager



PHONE (575) 393-2326 ° 101 E. MARLAND ° HOBBS, NM 88240

**Analytical Results For:**

Hungry Horse Environmental  
 DANIEL DOMINGUEZ  
 P.O. Box 1058  
 Hobbs NM, 88240  
 Fax To: (505) 391-4585

Received: 07/18/2022  
 Reported: 07/25/2022  
 Project Name: MAL 10-33 SIETE  
 Project Number: FRONTIER FIELD SERVICES  
 Project Location: UL / I SEC 18 T18S - R32E

Sampling Date: 07/18/2022  
 Sampling Type: Soil  
 Sampling Condition: Cool & Intact  
 Sample Received By: Tamara Oldaker

**Sample ID: HZ 1 - SURF (H223119-03)**

BTEx 8021B		mg/kg		Analyzed By: JH					
Analyte	Result	Reporting Limit	Analyzed	Method Blank	BS	% Recovery	True Value QC	RPD	Qualifier
Benzene*	<0.050	0.050	07/21/2022	ND	2.07	104	2.00	2.92	
Toluene*	<0.050	0.050	07/21/2022	ND	2.18	109	2.00	2.66	
Ethylbenzene*	<0.050	0.050	07/21/2022	ND	2.22	111	2.00	2.81	
Total Xylenes*	<0.150	0.150	07/21/2022	ND	6.81	114	6.00	3.31	
Total BTEx	<0.300	0.300	07/21/2022	ND					

Surrogate: 4-Bromofluorobenzene (PID) 117 % 69.9-140

Chloride, SM4500CI-B		mg/kg		Analyzed By: GM					
Analyte	Result	Reporting Limit	Analyzed	Method Blank	BS	% Recovery	True Value QC	RPD	Qualifier
Chloride	32.0	16.0	07/20/2022	ND	432	108	400	0.00	

TPH 8015M		mg/kg		Analyzed By: MS					
Analyte	Result	Reporting Limit	Analyzed	Method Blank	BS	% Recovery	True Value QC	RPD	Qualifier
GRO C6-C10*	<10.0	10.0	07/19/2022	ND	219	110	200	1.18	
DRO >C10-C28*	<10.0	10.0	07/19/2022	ND	227	114	200	3.70	
EXT DRO >C28-C36	<10.0	10.0	07/19/2022	ND					

Surrogate: 1-Chlorooctane 102 % 43-149

Surrogate: 1-Chlorooctadecane 106 % 42.5-161

Cardinal Laboratories

\*=Accredited Analyte

PLEASE NOTE: Liability and Damages. Cardinal's liability and client's exclusive remedy for any claim arising, whether based in contract or tort, shall be limited to the amount paid by client for analyses. All claims, including those for negligence and any other cause whatsoever shall be deemed waived unless made in writing and received by Cardinal within thirty (30) days after completion of the applicable service. In no event shall Cardinal be liable for incidental or consequential damages, including, without limitation, business interruptions, loss of use, or loss of profits incurred by client, its subsidiaries, affiliates or successors arising out of or related to the performance of the services hereunder by Cardinal, regardless of whether such claim is based upon any of the above stated reasons or otherwise. Results relate only to the samples identified above. This report shall not be reproduced except in full with written approval of Cardinal Laboratories.

Celey D. Keene, Lab Director/Quality Manager



PHONE (575) 393-2326 ° 101 E. MARLAND ° HOBBS, NM 88240

**Analytical Results For:**

Hungry Horse Environmental  
 DANIEL DOMINGUEZ  
 P.O. Box 1058  
 Hobbs NM, 88240  
 Fax To: (505) 391-4585

Received: 07/18/2022  
 Reported: 07/25/2022  
 Project Name: MAL 10-33 SIETE  
 Project Number: FRONTIER FIELD SERVICES  
 Project Location: UL / I SEC 18 T18S - R32E

Sampling Date: 07/18/2022  
 Sampling Type: Soil  
 Sampling Condition: Cool & Intact  
 Sample Received By: Tamara Oldaker

**Sample ID: HZ 1 - 1' (H223119-04)**

BTX 8021B		mg/kg		Analyzed By: JH						
Analyte	Result	Reporting Limit	Analyzed	Method Blank	BS	% Recovery	True Value QC	RPD	Qualifier	
Benzene*	<0.050	0.050	07/21/2022	ND	2.07	104	2.00	2.92		
Toluene*	<0.050	0.050	07/21/2022	ND	2.18	109	2.00	2.66		
Ethylbenzene*	<0.050	0.050	07/21/2022	ND	2.22	111	2.00	2.81		
Total Xylenes*	<0.150	0.150	07/21/2022	ND	6.81	114	6.00	3.31		
Total BTX	<0.300	0.300	07/21/2022	ND						

Surrogate: 4-Bromofluorobenzene (PID) 119 % 69.9-140

Chloride, SM4500CI-B		mg/kg		Analyzed By: GM						
Analyte	Result	Reporting Limit	Analyzed	Method Blank	BS	% Recovery	True Value QC	RPD	Qualifier	
Chloride	48.0	16.0	07/20/2022	ND	432	108	400	0.00		

TPH 8015M		mg/kg		Analyzed By: MS					
Analyte	Result	Reporting Limit	Analyzed	Method Blank	BS	% Recovery	True Value QC	RPD	Qualifier
GRO C6-C10*	<10.0	10.0	07/19/2022	ND	219	110	200	1.18	
DRO >C10-C28*	<10.0	10.0	07/19/2022	ND	227	114	200	3.70	
EXT DRO >C28-C36	<10.0	10.0	07/19/2022	ND					

Surrogate: 1-Chlorooctane 117 % 43-149

Surrogate: 1-Chlorooctadecane 122 % 42.5-161

Cardinal Laboratories

\*=Accredited Analyte

PLEASE NOTE: Liability and Damages. Cardinal's liability and client's exclusive remedy for any claim arising, whether based in contract or tort, shall be limited to the amount paid by client for analyses. All claims, including those for negligence and any other cause whatsoever shall be deemed waived unless made in writing and received by Cardinal within thirty (30) days after completion of the applicable service. In no event shall Cardinal be liable for incidental or consequential damages, including, without limitation, business interruptions, loss of use, or loss of profits incurred by client, its subsidiaries, affiliates or successors arising out of or related to the performance of the services hereunder by Cardinal, regardless of whether such claim is based upon any of the above stated reasons or otherwise. Results relate only to the samples identified above. This report shall not be reproduced except in full with written approval of Cardinal Laboratories.

Celey D. Keene, Lab Director/Quality Manager



PHONE (575) 393-2326 ° 101 E. MARLAND ° HOBBS, NM 88240

**Analytical Results For:**

Hungry Horse Environmental  
 DANIEL DOMINGUEZ  
 P.O. Box 1058  
 Hobbs NM, 88240  
 Fax To: (505) 391-4585

Received: 07/18/2022  
 Reported: 07/25/2022  
 Project Name: MAL 10-33 SIETE  
 Project Number: FRONTIER FIELD SERVICES  
 Project Location: UL / I SEC 18 T18S - R32E

Sampling Date: 07/18/2022  
 Sampling Type: Soil  
 Sampling Condition: Cool & Intact  
 Sample Received By: Tamara Oldaker

**Sample ID: HZ 2 - SURF (H223119-05)**

BTEx 8021B		mg/kg		Analyzed By: JH						
Analyte	Result	Reporting Limit	Analyzed	Method Blank	BS	% Recovery	True Value QC	RPD	Qualifier	
Benzene*	<0.050	0.050	07/21/2022	ND	2.07	104	2.00	2.92		
Toluene*	<0.050	0.050	07/21/2022	ND	2.18	109	2.00	2.66		
Ethylbenzene*	<0.050	0.050	07/21/2022	ND	2.22	111	2.00	2.81		
Total Xylenes*	<0.150	0.150	07/21/2022	ND	6.81	114	6.00	3.31		
Total BTEx	<0.300	0.300	07/21/2022	ND						

Surrogate: 4-Bromofluorobenzene (PID) 118 % 69.9-140

Chloride, SM4500CI-B		mg/kg		Analyzed By: GM						
Analyte	Result	Reporting Limit	Analyzed	Method Blank	BS	% Recovery	True Value QC	RPD	Qualifier	
Chloride	16.0	16.0	07/20/2022	ND	432	108	400	0.00		

TPH 8015M		mg/kg		Analyzed By: MS					
Analyte	Result	Reporting Limit	Analyzed	Method Blank	BS	% Recovery	True Value QC	RPD	Qualifier
GRO C6-C10*	<10.0	10.0	07/20/2022	ND	233	116	200	21.0	
DRO >C10-C28*	<10.0	10.0	07/20/2022	ND	231	115	200	29.3	
EXT DRO >C28-C36	<10.0	10.0	07/20/2022	ND					

Surrogate: 1-Chlorooctane 80.1 % 43-149

Surrogate: 1-Chlorooctadecane 80.7 % 42.5-161

Cardinal Laboratories

\*=Accredited Analyte

PLEASE NOTE: Liability and Damages. Cardinal's liability and client's exclusive remedy for any claim arising, whether based in contract or tort, shall be limited to the amount paid by client for analyses. All claims, including those for negligence and any other cause whatsoever shall be deemed waived unless made in writing and received by Cardinal within thirty (30) days after completion of the applicable service. In no event shall Cardinal be liable for incidental or consequential damages, including, without limitation, business interruptions, loss of use, or loss of profits incurred by client, its subsidiaries, affiliates or successors arising out of or related to the performance of the services hereunder by Cardinal, regardless of whether such claim is based upon any of the above stated reasons or otherwise. Results relate only to the samples identified above. This report shall not be reproduced except in full with written approval of Cardinal Laboratories.

Celey D. Keene, Lab Director/Quality Manager





PHONE (575) 393-2326 ° 101 E. MARLAND ° HOBBS, NM 88240

**Analytical Results For:**

Hungry Horse Environmental  
 DANIEL DOMINGUEZ  
 P.O. Box 1058  
 Hobbs NM, 88240  
 Fax To: (505) 391-4585

Received: 07/18/2022  
 Reported: 07/25/2022  
 Project Name: MAL 10-33 SIETE  
 Project Number: FRONTIER FIELD SERVICES  
 Project Location: UL / I SEC 18 T18S - R32E

Sampling Date: 07/18/2022  
 Sampling Type: Soil  
 Sampling Condition: Cool & Intact  
 Sample Received By: Tamara Oldaker

**Sample ID: HZ 2 - 1' (H223119-06)**

BTEx 8021B		mg/kg		Analyzed By: JH						
Analyte	Result	Reporting Limit	Analyzed	Method Blank	BS	% Recovery	True Value QC	RPD	Qualifier	
Benzene*	<0.050	0.050	07/21/2022	ND	2.07	104	2.00	2.92		
Toluene*	<0.050	0.050	07/21/2022	ND	2.18	109	2.00	2.66		
Ethylbenzene*	<0.050	0.050	07/21/2022	ND	2.22	111	2.00	2.81		
Total Xylenes*	<0.150	0.150	07/21/2022	ND	6.81	114	6.00	3.31		
Total BTEx	<0.300	0.300	07/21/2022	ND						

Surrogate: 4-Bromofluorobenzene (PID) 117 % 69.9-140

Chloride, SM4500Cl-B		mg/kg		Analyzed By: GM						
Analyte	Result	Reporting Limit	Analyzed	Method Blank	BS	% Recovery	True Value QC	RPD	Qualifier	
Chloride	16.0	16.0	07/20/2022	ND	432	108	400	0.00		

TPH 8015M		mg/kg		Analyzed By: MS					
Analyte	Result	Reporting Limit	Analyzed	Method Blank	BS	% Recovery	True Value QC	RPD	Qualifier
GRO C6-C10*	<10.0	10.0	07/20/2022	ND	233	116	200	21.0	
DRO >C10-C28*	<10.0	10.0	07/20/2022	ND	231	115	200	29.3	
EXT DRO >C28-C36	<10.0	10.0	07/20/2022	ND					

Surrogate: 1-Chlorooctane 116 % 43-149

Surrogate: 1-Chlorooctadecane 115 % 42.5-161

Cardinal Laboratories

\*=Accredited Analyte

PLEASE NOTE: Liability and Damages. Cardinal's liability and client's exclusive remedy for any claim arising, whether based in contract or tort, shall be limited to the amount paid by client for analyses. All claims, including those for negligence and any other cause whatsoever shall be deemed waived unless made in writing and received by Cardinal within thirty (30) days after completion of the applicable service. In no event shall Cardinal be liable for incidental or consequential damages, including, without limitation, business interruptions, loss of use, or loss of profits incurred by client, its subsidiaries, affiliates or successors arising out of or related to the performance of the services hereunder by Cardinal, regardless of whether such claim is based upon any of the above stated reasons or otherwise. Results relate only to the samples identified above. This report shall not be reproduced except in full with written approval of Cardinal Laboratories.

Celey D. Keene, Lab Director/Quality Manager



PHONE (575) 393-2326 ° 101 E. MARLAND ° HOBBS, NM 88240

**Analytical Results For:**

Hungry Horse Environmental  
 DANIEL DOMINGUEZ  
 P.O. Box 1058  
 Hobbs NM, 88240  
 Fax To: (505) 391-4585

Received: 07/18/2022  
 Reported: 07/25/2022  
 Project Name: MAL 10-33 SIETE  
 Project Number: FRONTIER FIELD SERVICES  
 Project Location: UL / I SEC 18 T18S - R32E

Sampling Date: 07/18/2022  
 Sampling Type: Soil  
 Sampling Condition: Cool & Intact  
 Sample Received By: Tamara Oldaker

**Sample ID: HZ 3 - SURF (H223119-07)**

BTEx 8021B		mg/kg		Analyzed By: JH						
Analyte	Result	Reporting Limit	Analyzed	Method Blank	BS	% Recovery	True Value QC	RPD	Qualifier	
Benzene*	<0.050	0.050	07/21/2022	ND	2.07	104	2.00	2.92		
Toluene*	<0.050	0.050	07/21/2022	ND	2.18	109	2.00	2.66		
Ethylbenzene*	<0.050	0.050	07/21/2022	ND	2.22	111	2.00	2.81		
Total Xylenes*	<0.150	0.150	07/21/2022	ND	6.81	114	6.00	3.31		
Total BTEx	<0.300	0.300	07/21/2022	ND						

Surrogate: 4-Bromofluorobenzene (PID) 118 % 69.9-140

Chloride, SM4500CI-B		mg/kg		Analyzed By: GM						
Analyte	Result	Reporting Limit	Analyzed	Method Blank	BS	% Recovery	True Value QC	RPD	Qualifier	
Chloride	32.0	16.0	07/20/2022	ND	432	108	400	0.00		

TPH 8015M		mg/kg		Analyzed By: MS					
Analyte	Result	Reporting Limit	Analyzed	Method Blank	BS	% Recovery	True Value QC	RPD	Qualifier
GRO C6-C10*	<10.0	10.0	07/20/2022	ND	233	116	200	21.0	
DRO >C10-C28*	<10.0	10.0	07/20/2022	ND	231	115	200	29.3	
EXT DRO >C28-C36	<10.0	10.0	07/20/2022	ND					

Surrogate: 1-Chlorooctane 82.6 % 43-149

Surrogate: 1-Chlorooctadecane 83.1 % 42.5-161

Cardinal Laboratories

\*=Accredited Analyte

PLEASE NOTE: Liability and Damages. Cardinal's liability and client's exclusive remedy for any claim arising, whether based in contract or tort, shall be limited to the amount paid by client for analyses. All claims, including those for negligence and any other cause whatsoever shall be deemed waived unless made in writing and received by Cardinal within thirty (30) days after completion of the applicable service. In no event shall Cardinal be liable for incidental or consequential damages, including, without limitation, business interruptions, loss of use, or loss of profits incurred by client, its subsidiaries, affiliates or successors arising out of or related to the performance of the services hereunder by Cardinal, regardless of whether such claim is based upon any of the above stated reasons or otherwise. Results relate only to the samples identified above. This report shall not be reproduced except in full with written approval of Cardinal Laboratories.

Celey D. Keene, Lab Director/Quality Manager



PHONE (575) 393-2326 ° 101 E. MARLAND ° HOBBS, NM 88240

**Analytical Results For:**

Hungry Horse Environmental  
 DANIEL DOMINGUEZ  
 P.O. Box 1058  
 Hobbs NM, 88240  
 Fax To: (505) 391-4585

Received: 07/18/2022  
 Reported: 07/25/2022  
 Project Name: MAL 10-33 SIETE  
 Project Number: FRONTIER FIELD SERVICES  
 Project Location: UL / I SEC 18 T18S - R32E

Sampling Date: 07/18/2022  
 Sampling Type: Soil  
 Sampling Condition: Cool & Intact  
 Sample Received By: Tamara Oldaker

**Sample ID: HZ 3 - 1' (H223119-08)**

BTEx 8021B		mg/kg		Analyzed By: JH					
Analyte	Result	Reporting Limit	Analyzed	Method Blank	BS	% Recovery	True Value QC	RPD	Qualifier
Benzene*	<0.050	0.050	07/21/2022	ND	2.07	104	2.00	2.92	
Toluene*	<0.050	0.050	07/21/2022	ND	2.18	109	2.00	2.66	
Ethylbenzene*	<0.050	0.050	07/21/2022	ND	2.22	111	2.00	2.81	
Total Xylenes*	<0.150	0.150	07/21/2022	ND	6.81	114	6.00	3.31	
Total BTEx	<0.300	0.300	07/21/2022	ND					

Surrogate: 4-Bromofluorobenzene (PID) 118 % 69.9-140

Chloride, SM4500Cl-B		mg/kg		Analyzed By: GM						
Analyte	Result	Reporting Limit	Analyzed	Method Blank	BS	% Recovery	True Value QC	RPD	Qualifier	
Chloride	16.0	16.0	07/20/2022	ND	432	108	400	0.00		

TPH 8015M		mg/kg		Analyzed By: MS					
Analyte	Result	Reporting Limit	Analyzed	Method Blank	BS	% Recovery	True Value QC	RPD	Qualifier
GRO C6-C10*	<10.0	10.0	07/20/2022	ND	233	116	200	21.0	
DRO >C10-C28*	<10.0	10.0	07/20/2022	ND	231	115	200	29.3	
EXT DRO >C28-C36	<10.0	10.0	07/20/2022	ND					

Surrogate: 1-Chlorooctane 83.0 % 43-149

Surrogate: 1-Chlorooctadecane 82.9 % 42.5-161

Cardinal Laboratories

\*=Accredited Analyte

PLEASE NOTE: Liability and Damages. Cardinal's liability and client's exclusive remedy for any claim arising, whether based in contract or tort, shall be limited to the amount paid by client for analyses. All claims, including those for negligence and any other cause whatsoever shall be deemed waived unless made in writing and received by Cardinal within thirty (30) days after completion of the applicable service. In no event shall Cardinal be liable for incidental or consequential damages, including, without limitation, business interruptions, loss of use, or loss of profits incurred by client, its subsidiaries, affiliates or successors arising out of or related to the performance of the services hereunder by Cardinal, regardless of whether such claim is based upon any of the above stated reasons or otherwise. Results relate only to the samples identified above. This report shall not be reproduced except in full with written approval of Cardinal Laboratories.

Celey D. Keene, Lab Director/Quality Manager



PHONE (575) 393-2326 ° 101 E. MARLAND ° HOBBS, NM 88240

**Analytical Results For:**

Hungry Horse Environmental  
 DANIEL DOMINGUEZ  
 P.O. Box 1058  
 Hobbs NM, 88240  
 Fax To: (505) 391-4585

Received: 07/18/2022  
 Reported: 07/25/2022  
 Project Name: MAL 10-33 SIETE  
 Project Number: FRONTIER FIELD SERVICES  
 Project Location: UL / I SEC 18 T18S - R32E

Sampling Date: 07/18/2022  
 Sampling Type: Soil  
 Sampling Condition: Cool & Intact  
 Sample Received By: Tamara Oldaker

**Sample ID: HZ 4 - SURF (H223119-09)**

BTEx 8021B		mg/kg		Analyzed By: JH						
Analyte	Result	Reporting Limit	Analyzed	Method Blank	BS	% Recovery	True Value QC	RPD	Qualifier	
Benzene*	<0.050	0.050	07/21/2022	ND	2.07	104	2.00	2.92		
Toluene*	<0.050	0.050	07/21/2022	ND	2.18	109	2.00	2.66		
Ethylbenzene*	<0.050	0.050	07/21/2022	ND	2.22	111	2.00	2.81		
Total Xylenes*	<0.150	0.150	07/21/2022	ND	6.81	114	6.00	3.31		
Total BTEx	<0.300	0.300	07/21/2022	ND						

Surrogate: 4-Bromofluorobenzene (PID) 118 % 69.9-140

Chloride, SM4500Cl-B		mg/kg		Analyzed By: GM						
Analyte	Result	Reporting Limit	Analyzed	Method Blank	BS	% Recovery	True Value QC	RPD	Qualifier	
Chloride	16.0	16.0	07/20/2022	ND	432	108	400	0.00		

TPH 8015M		mg/kg		Analyzed By: MS					
Analyte	Result	Reporting Limit	Analyzed	Method Blank	BS	% Recovery	True Value QC	RPD	Qualifier
GRO C6-C10*	<10.0	10.0	07/20/2022	ND	233	116	200	21.0	
DRO >C10-C28*	<10.0	10.0	07/20/2022	ND	231	115	200	29.3	
EXT DRO >C28-C36	<10.0	10.0	07/20/2022	ND					

Surrogate: 1-Chlorooctane 106 % 43-149

Surrogate: 1-Chlorooctadecane 107 % 42.5-161

Cardinal Laboratories

\*=Accredited Analyte

PLEASE NOTE: Liability and Damages. Cardinal's liability and client's exclusive remedy for any claim arising, whether based in contract or tort, shall be limited to the amount paid by client for analyses. All claims, including those for negligence and any other cause whatsoever shall be deemed waived unless made in writing and received by Cardinal within thirty (30) days after completion of the applicable service. In no event shall Cardinal be liable for incidental or consequential damages, including, without limitation, business interruptions, loss of use, or loss of profits incurred by client, its subsidiaries, affiliates or successors arising out of or related to the performance of the services hereunder by Cardinal, regardless of whether such claim is based upon any of the above stated reasons or otherwise. Results relate only to the samples identified above. This report shall not be reproduced except in full with written approval of Cardinal Laboratories.

Celey D. Keene, Lab Director/Quality Manager



PHONE (575) 393-2326 ° 101 E. MARLAND ° HOBBS, NM 88240

**Analytical Results For:**

Hungry Horse Environmental  
 DANIEL DOMINGUEZ  
 P.O. Box 1058  
 Hobbs NM, 88240  
 Fax To: (505) 391-4585

Received: 07/18/2022  
 Reported: 07/25/2022  
 Project Name: MAL 10-33 SIETE  
 Project Number: FRONTIER FIELD SERVICES  
 Project Location: UL / I SEC 18 T18S - R32E

Sampling Date: 07/18/2022  
 Sampling Type: Soil  
 Sampling Condition: Cool & Intact  
 Sample Received By: Tamara Oldaker

**Sample ID: HZ 4 - 1' (H223119-10)**

BTEx 8021B		mg/kg		Analyzed By: JH						
Analyte	Result	Reporting Limit	Analyzed	Method Blank	BS	% Recovery	True Value QC	RPD	Qualifier	
Benzene*	<0.050	0.050	07/21/2022	ND	2.07	104	2.00	2.92		
Toluene*	<0.050	0.050	07/21/2022	ND	2.18	109	2.00	2.66		
Ethylbenzene*	<0.050	0.050	07/21/2022	ND	2.22	111	2.00	2.81		
Total Xylenes*	<0.150	0.150	07/21/2022	ND	6.81	114	6.00	3.31		
Total BTEx	<0.300	0.300	07/21/2022	ND						

Surrogate: 4-Bromofluorobenzene (PID) 116 % 69.9-140

Chloride, SM4500CI-B		mg/kg		Analyzed By: GM						
Analyte	Result	Reporting Limit	Analyzed	Method Blank	BS	% Recovery	True Value QC	RPD	Qualifier	
Chloride	32.0	16.0	07/20/2022	ND	432	108	400	0.00		

TPH 8015M		mg/kg		Analyzed By: MS					
Analyte	Result	Reporting Limit	Analyzed	Method Blank	BS	% Recovery	True Value QC	RPD	Qualifier
GRO C6-C10*	<10.0	10.0	07/20/2022	ND	233	116	200	21.0	
DRO >C10-C28*	<10.0	10.0	07/20/2022	ND	231	115	200	29.3	
EXT DRO >C28-C36	<10.0	10.0	07/20/2022	ND					

Surrogate: 1-Chlorooctane 97.6 % 43-149

Surrogate: 1-Chlorooctadecane 97.0 % 42.5-161

Cardinal Laboratories

\*=Accredited Analyte

PLEASE NOTE: Liability and Damages. Cardinal's liability and client's exclusive remedy for any claim arising, whether based in contract or tort, shall be limited to the amount paid by client for analyses. All claims, including those for negligence and any other cause whatsoever shall be deemed waived unless made in writing and received by Cardinal within thirty (30) days after completion of the applicable service. In no event shall Cardinal be liable for incidental or consequential damages, including, without limitation, business interruptions, loss of use, or loss of profits incurred by client, its subsidiaries, affiliates or successors arising out of or related to the performance of the services hereunder by Cardinal, regardless of whether such claim is based upon any of the above stated reasons or otherwise. Results relate only to the samples identified above. This report shall not be reproduced except in full with written approval of Cardinal Laboratories.

Celey D. Keene, Lab Director/Quality Manager



---

PHONE (575) 393-2326 ° 101 E. MARLAND ° HOBBS, NM 88240

---

### Notes and Definitions

S-06	The recovery of this surrogate is outside control limits due to sample dilution required from high analyte concentration and/or matrix interference's.
QR-04	The RPD for the BS/BSD was outside of historical limits.
ND	Analyte NOT DETECTED at or above the reporting limit
RPD	Relative Percent Difference
**	Samples not received at proper temperature of 6°C or below.
***	Insufficient time to reach temperature.
-	Chloride by SM4500Cl-B does not require samples be received at or below 6°C Samples reported on an as received basis (wet) unless otherwise noted on report

---

Cardinal Laboratories

\*=Accredited Analyte

PLEASE NOTE: Liability and Damages. Cardinal's liability and client's exclusive remedy for any claim arising, whether based in contract or tort, shall be limited to the amount paid by client for analyses. All claims, including those for negligence and any other cause whatsoever shall be deemed waived unless made in writing and received by Cardinal within thirty (30) days after completion of the applicable service. In no event shall Cardinal be liable for incidental or consequential damages, including, without limitation, business interruptions, loss of use, or loss of profits incurred by client, its subsidiaries, affiliates or successors arising out of or related to the performance of the services hereunder by Cardinal, regardless of whether such claim is based upon any of the above stated reasons or otherwise. Results relate only to the samples identified above. This report shall not be reproduced except in full with written approval of Cardinal Laboratories.

A handwritten signature in black ink, appearing to read "Celey D. Keene".

---

Celey D. Keene, Lab Director/Quality Manager





101 East Marland, Hobbs, NM 88240  
(575) 393-2326 FAX (575) 393-2476

## CHAIN-OF-CUSTODY AND ANALYSIS REQUEST

[illegible]



PHONE (575) 393-2326 ° 101 E. MARLAND ° HOBBS, NM 88240

August 02, 2022

DANIEL DOMINGUEZ

Hungry Horse Environmental

P.O. Box 1058

Hobbs, NM 88240

RE: MAL 10-33 SIETE

Enclosed are the results of analyses for samples received by the laboratory on 07/28/22 16:00.

Cardinal Laboratories is accredited through Texas NELAP under certificate number T104704398-22-15. Accreditation applies to drinking water, non-potable water and solid and chemical materials. All accredited analytes are denoted by an asterisk (\*). For a complete list of accredited analytes and matrices visit the TCEQ website at [www.tceq.texas.gov/field/qa/lab\\_accred\\_certif.html](http://www.tceq.texas.gov/field/qa/lab_accred_certif.html).

Cardinal Laboratories is accredited through the State of Colorado Department of Public Health and Environment for:

Method EPA 552.2	Haloacetic Acids (HAA-5)
Method EPA 524.2	Total Trihalomethanes (TTHM)
Method EPA 524.4	Regulated VOCs (V1, V2, V3)

Accreditation applies to public drinking water matrices.

This report meets NELAP requirements and is made up of a cover page, analytical results, and a copy of the original chain-of-custody. If you have any questions concerning this report, please feel free to contact me.

Sincerely,

A handwritten signature in black ink that reads "Celey D. Keene". The signature is written in a cursive style with a large, stylized 'C' and 'K'.

Celey D. Keene

Lab Director/Quality Manager





PHONE (575) 393-2326 ° 101 E. MARLAND ° HOBBS, NM 88240

**Analytical Results For:**

Hungry Horse Environmental  
 DANIEL DOMINGUEZ  
 P.O. Box 1058  
 Hobbs NM, 88240  
 Fax To: (505) 391-4585

Received:	07/28/2022	Sampling Date:	07/28/2022
Reported:	08/02/2022	Sampling Type:	Soil
Project Name:	MAL 10-33 SIETE	Sampling Condition:	Cool & Intact
Project Number:	FRONTIER FIELD SERVICES	Sample Received By:	Tamara Oldaker
Project Location:	UL / I SEC 18 T18S - R32E		

**Sample ID: FL1 (H223342-01)**

BTX 8021B		mg/kg		Analyzed By: JH						
Analyte	Result	Reporting Limit	Analyzed	Method Blank	BS	% Recovery	True Value QC	RPD	Qualifier	
Benzene*	<0.050	0.050	07/29/2022	ND	1.81	90.4	2.00	8.44		
Toluene*	<0.050	0.050	07/29/2022	ND	1.90	95.1	2.00	8.85		
Ethylbenzene*	<0.050	0.050	07/29/2022	ND	1.95	97.6	2.00	8.91		
Total Xylenes*	<0.150	0.150	07/29/2022	ND	6.00	100	6.00	8.74		
Total BTX	<0.300	0.300	07/29/2022	ND						

Surrogate: 4-Bromofluorobenzene (PID) 117 % 69.9-140

Chloride, SM4500Cl-B		mg/kg		Analyzed By: AC						
Analyte	Result	Reporting Limit	Analyzed	Method Blank	BS	% Recovery	True Value QC	RPD	Qualifier	
Chloride	32.0	16.0	08/01/2022	ND	416	104	400	3.77		

TPH 8015M		mg/kg		Analyzed By: MS					
Analyte	Result	Reporting Limit	Analyzed	Method Blank	BS	% Recovery	True Value QC	RPD	Qualifier
GRO C6-C10*	<10.0	10.0	08/01/2022	ND	226	113	200	3.31	
DRO >C10-C28*	<10.0	10.0	08/01/2022	ND	229	115	200	0.787	
EXT DRO >C28-C36	<10.0	10.0	08/01/2022	ND					

Surrogate: 1-Chlorooctane 67.3 % 43-149

Surrogate: 1-Chlorooctadecane 70.6 % 42.5-161

Cardinal Laboratories

\*=Accredited Analyte

PLEASE NOTE: Liability and Damages. Cardinal's liability and client's exclusive remedy for any claim arising, whether based in contract or tort, shall be limited to the amount paid by client for analyses. All claims, including those for negligence and any other cause whatsoever shall be deemed waived unless made in writing and received by Cardinal within thirty (30) days after completion of the applicable service. In no event shall Cardinal be liable for incidental or consequential damages, including, without limitation, business interruptions, loss of use, or loss of profits incurred by client, its subsidiaries, affiliates or successors arising out of or related to the performance of the services hereunder by Cardinal, regardless of whether such claim is based upon any of the above stated reasons or otherwise. Results relate only to the samples identified above. This report shall not be reproduced except in full with written approval of Cardinal Laboratories.

Celey D. Keene, Lab Director/Quality Manager



PHONE (575) 393-2326 ° 101 E. MARLAND ° HOBBS, NM 88240

**Analytical Results For:**

Hungry Horse Environmental  
 DANIEL DOMINGUEZ  
 P.O. Box 1058  
 Hobbs NM, 88240  
 Fax To: (505) 391-4585

Received: 07/28/2022  
 Reported: 08/02/2022  
 Project Name: MAL 10-33 SIETE  
 Project Number: FRONTIER FIELD SERVICES  
 Project Location: UL / I SEC 18 T18S - R32E

Sampling Date: 07/28/2022  
 Sampling Type: Soil  
 Sampling Condition: Cool & Intact  
 Sample Received By: Tamara Oldaker

**Sample ID: FL2 (H223342-02)**

BTX 8021B		mg/kg		Analyzed By: JH						
Analyte	Result	Reporting Limit	Analyzed	Method Blank	BS	% Recovery	True Value QC	RPD	Qualifier	
Benzene*	<0.050	0.050	07/29/2022	ND	1.81	90.4	2.00	8.44		
Toluene*	<0.050	0.050	07/29/2022	ND	1.90	95.1	2.00	8.85		
Ethylbenzene*	<0.050	0.050	07/29/2022	ND	1.95	97.6	2.00	8.91		
Total Xylenes*	<0.150	0.150	07/29/2022	ND	6.00	100	6.00	8.74		
Total BTX	<0.300	0.300	07/29/2022	ND						

Surrogate: 4-Bromofluorobenzene (PID) 116 % 69.9-140

Chloride, SM4500CI-B		mg/kg		Analyzed By: AC					
Analyte	Result	Reporting Limit	Analyzed	Method Blank	BS	% Recovery	True Value QC	RPD	Qualifier
Chloride	16.0	16.0	08/01/2022	ND	416	104	400	3.77	

TPH 8015M		mg/kg		Analyzed By: MS					
Analyte	Result	Reporting Limit	Analyzed	Method Blank	BS	% Recovery	True Value QC	RPD	Qualifier
GRO C6-C10*	<10.0	10.0	08/01/2022	ND	226	113	200	3.31	
DRO >C10-C28*	<10.0	10.0	08/01/2022	ND	229	115	200	0.787	
EXT DRO >C28-C36	<10.0	10.0	08/01/2022	ND					

Surrogate: 1-Chlorooctane 76.1 % 43-149

Surrogate: 1-Chlorooctadecane 78.1 % 42.5-161

Cardinal Laboratories

\*=Accredited Analyte

PLEASE NOTE: Liability and Damages. Cardinal's liability and client's exclusive remedy for any claim arising, whether based in contract or tort, shall be limited to the amount paid by client for analyses. All claims, including those for negligence and any other cause whatsoever shall be deemed waived unless made in writing and received by Cardinal within thirty (30) days after completion of the applicable service. In no event shall Cardinal be liable for incidental or consequential damages, including, without limitation, business interruptions, loss of use, or loss of profits incurred by client, its subsidiaries, affiliates or successors arising out of or related to the performance of the services hereunder by Cardinal, regardless of whether such claim is based upon any of the above stated reasons or otherwise. Results relate only to the samples identified above. This report shall not be reproduced except in full with written approval of Cardinal Laboratories.

Celey D. Keene, Lab Director/Quality Manager



PHONE (575) 393-2326 ° 101 E. MARLAND ° HOBBS, NM 88240

**Analytical Results For:**

Hungry Horse Environmental  
 DANIEL DOMINGUEZ  
 P.O. Box 1058  
 Hobbs NM, 88240  
 Fax To: (505) 391-4585

Received: 07/28/2022  
 Reported: 08/02/2022  
 Project Name: MAL 10-33 SIETE  
 Project Number: FRONTIER FIELD SERVICES  
 Project Location: UL / I SEC 18 T18S - R32E

Sampling Date: 07/28/2022  
 Sampling Type: Soil  
 Sampling Condition: Cool & Intact  
 Sample Received By: Tamara Oldaker

**Sample ID: SW1 (H223342-03)**

BTX 8021B		mg/kg		Analyzed By: JH					
Analyte	Result	Reporting Limit	Analyzed	Method Blank	BS	% Recovery	True Value QC	RPD	Qualifier
Benzene*	<0.050	0.050	07/30/2022	ND	1.81	90.4	2.00	8.44	
Toluene*	<0.050	0.050	07/30/2022	ND	1.90	95.1	2.00	8.85	
Ethylbenzene*	<0.050	0.050	07/30/2022	ND	1.95	97.6	2.00	8.91	
Total Xylenes*	<0.150	0.150	07/30/2022	ND	6.00	100	6.00	8.74	
Total BTX	<0.300	0.300	07/30/2022	ND					

Surrogate: 4-Bromofluorobenzene (PID) 118 % 69.9-140

Chloride, SM4500CI-B		mg/kg		Analyzed By: AC					
Analyte	Result	Reporting Limit	Analyzed	Method Blank	BS	% Recovery	True Value QC	RPD	Qualifier
Chloride	16.0	16.0	08/01/2022	ND	416	104	400	3.77	

TPH 8015M		mg/kg		Analyzed By: MS					
Analyte	Result	Reporting Limit	Analyzed	Method Blank	BS	% Recovery	True Value QC	RPD	Qualifier
GRO C6-C10*	<10.0	10.0	08/01/2022	ND	226	113	200	3.31	
DRO >C10-C28*	<10.0	10.0	08/01/2022	ND	229	115	200	0.787	
EXT DRO >C28-C36	<10.0	10.0	08/01/2022	ND					

Surrogate: 1-Chlorooctane 73.8 % 43-149

Surrogate: 1-Chlorooctadecane 79.2 % 42.5-161

Cardinal Laboratories

\*=Accredited Analyte

PLEASE NOTE: Liability and Damages. Cardinal's liability and client's exclusive remedy for any claim arising, whether based in contract or tort, shall be limited to the amount paid by client for analyses. All claims, including those for negligence and any other cause whatsoever shall be deemed waived unless made in writing and received by Cardinal within thirty (30) days after completion of the applicable service. In no event shall Cardinal be liable for incidental or consequential damages, including, without limitation, business interruptions, loss of use, or loss of profits incurred by client, its subsidiaries, affiliates or successors arising out of or related to the performance of the services hereunder by Cardinal, regardless of whether such claim is based upon any of the above stated reasons or otherwise. Results relate only to the samples identified above. This report shall not be reproduced except in full with written approval of Cardinal Laboratories.

Celey D. Keene, Lab Director/Quality Manager



PHONE (575) 393-2326 ° 101 E. MARLAND ° HOBBS, NM 88240

**Analytical Results For:**

Hungry Horse Environmental  
 DANIEL DOMINGUEZ  
 P.O. Box 1058  
 Hobbs NM, 88240  
 Fax To: (505) 391-4585

Received: 07/28/2022  
 Reported: 08/02/2022  
 Project Name: MAL 10-33 SIETE  
 Project Number: FRONTIER FIELD SERVICES  
 Project Location: UL / I SEC 18 T18S - R32E

Sampling Date: 07/28/2022  
 Sampling Type: Soil  
 Sampling Condition: Cool & Intact  
 Sample Received By: Tamara Oldaker

**Sample ID: SW2 (H223342-04)**

BTX 8021B		mg/kg		Analyzed By: JH						
Analyte	Result	Reporting Limit	Analyzed	Method Blank	BS	% Recovery	True Value QC	RPD	Qualifier	
Benzene*	<0.050	0.050	07/30/2022	ND	1.81	90.4	2.00	8.44		
Toluene*	<0.050	0.050	07/30/2022	ND	1.90	95.1	2.00	8.85		
Ethylbenzene*	<0.050	0.050	07/30/2022	ND	1.95	97.6	2.00	8.91		
Total Xylenes*	<0.150	0.150	07/30/2022	ND	6.00	100	6.00	8.74		
Total BTX	<0.300	0.300	07/30/2022	ND						

Surrogate: 4-Bromofluorobenzene (PID) 116 % 69.9-140

Chloride, SM4500CI-B		mg/kg		Analyzed By: AC						
Analyte	Result	Reporting Limit	Analyzed	Method Blank	BS	% Recovery	True Value QC	RPD	Qualifier	
Chloride	<16.0	16.0	08/01/2022	ND	416	104	400	3.77		

TPH 8015M		mg/kg		Analyzed By: MS					
Analyte	Result	Reporting Limit	Analyzed	Method Blank	BS	% Recovery	True Value QC	RPD	Qualifier
GRO C6-C10*	<10.0	10.0	08/01/2022	ND	225	113	200	1.94	
DRO >C10-C28*	<10.0	10.0	08/01/2022	ND	237	119	200	5.44	
EXT DRO >C28-C36	<10.0	10.0	08/01/2022	ND					

Surrogate: 1-Chlorooctane 78.8 % 43-149

Surrogate: 1-Chlorooctadecane 63.9 % 42.5-161

Cardinal Laboratories

\*=Accredited Analyte

PLEASE NOTE: Liability and Damages. Cardinal's liability and client's exclusive remedy for any claim arising, whether based in contract or tort, shall be limited to the amount paid by client for analyses. All claims, including those for negligence and any other cause whatsoever shall be deemed waived unless made in writing and received by Cardinal within thirty (30) days after completion of the applicable service. In no event shall Cardinal be liable for incidental or consequential damages, including, without limitation, business interruptions, loss of use, or loss of profits incurred by client, its subsidiaries, affiliates or successors arising out of or related to the performance of the services hereunder by Cardinal, regardless of whether such claim is based upon any of the above stated reasons or otherwise. Results relate only to the samples identified above. This report shall not be reproduced except in full with written approval of Cardinal Laboratories.

Celey D. Keene, Lab Director/Quality Manager

PHONE (575) 393-2326 ° 101 E. MARLAND ° HOBBS, NM 88240

---

### Notes and Definitions

QM-07	The spike recovery was outside acceptance limits for the MS and/or MSD. The batch was accepted based on acceptable LCS recovery.
ND	Analyte NOT DETECTED at or above the reporting limit
RPD	Relative Percent Difference
**	Samples not received at proper temperature of 6°C or below.
***	Insufficient time to reach temperature.
-	Chloride by SM4500Cl-B does not require samples be received at or below 6°C Samples reported on an as received basis (wet) unless otherwise noted on report

---

Cardinal Laboratories

\*=Accredited Analyte

PLEASE NOTE: Liability and Damages. Cardinal's liability and client's exclusive remedy for any claim arising, whether based in contract or tort, shall be limited to the amount paid by client for analyses. All claims, including those for negligence and any other cause whatsoever shall be deemed waived unless made in writing and received by Cardinal within thirty (30) days after completion of the applicable service. In no event shall Cardinal be liable for incidental or consequential damages, including, without limitation, business interruptions, loss of use, or loss of profits incurred by client, its subsidiaries, affiliates or successors arising out of or related to the performance of the services hereunder by Cardinal, regardless of whether such claim is based upon any of the above stated reasons or otherwise. Results relate only to the samples identified above. This report shall not be reproduced except in full with written approval of Cardinal Laboratories.

A handwritten signature in black ink, appearing to read "Celey D. Keene".

---

Celey D. Keene, Lab Director/Quality Manager





**(575) 393-2326 FAX (575) 393-2476**

Page 7 of 7

**Attachment VII**  
**NMOCD Form Initial C-141**

District I  
1625 N. French Dr., Hobbs, NM 88240  
District II  
811 S. First St., Artesia, NM 88210  
District III  
1000 Rio Brazos Road, Aztec, NM 87410  
District IV  
1220 S. St. Francis Dr., Santa Fe, NM 87505

State of New Mexico  
Energy Minerals and Natural  
Resources Department

Oil Conservation Division  
1220 South St. Francis Dr.  
Santa Fe, NM 87505

Form C-141  
Revised August 24, 2018  
Submit to appropriate OCD District office

Incident ID	nAPP2213335346
District RP	
Facility ID	
Application ID	

## Release Notification

### Responsible Party

Responsible Party Frontier Field Services, LLC	OGRID 221115
Contact Name Amber Groves	Contact Telephone 575-703-7992
Contact email <a href="mailto:agroves@durangomidstream.com">agroves@durangomidstream.com</a>	Incident # (assigned by OCD)
Contact mailing address 47 Conoco Rd, Maljamar NM 88264	

### Location of Release Source

Latitude 32.74718 Longitude -103.80137  
(NAD 83 in decimal degrees to 5 decimal places)

Site Name Mal 10-33 Siete	Site Type Pipeline
Date Release Discovered 5/10/2022	API# (if applicable)

Unit Letter	Section	Township	Range	County
I	18	18S	32E	Eddy

Surface Owner: ☒ State ☐ Federal ☐ Tribal ☐ Private (Name: \_\_\_\_\_)

### Nature and Volume of Release

Material(s) Released (Select all that apply and attach calculations or specific justification for the volumes provided below)

<input type="checkbox"/> Crude Oil	Volume Released (bbls)	Volume Recovered (bbls)
<input type="checkbox"/> Produced Water	Volume Released (bbls)	Volume Recovered (bbls)
	Is the concentration of dissolved chloride in the produced water >10,000 mg/l?	<input type="checkbox"/> Yes <input type="checkbox"/> No
<input checked="" type="checkbox"/> Condensate	Volume Released (bbls) 8.88	Volume Recovered (bbls) 0
<input checked="" type="checkbox"/> Natural Gas	Volume Released (Mcf) 23.15	Volume Recovered (Mcf)
<input type="checkbox"/> Other (describe)	Volume/Weight Released (provide units)	Volume/Weight Recovered (provide units)

Cause of Release  
Internal and external corrosion.

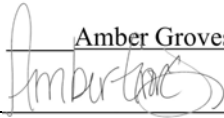


Incident ID	nAPP2213335346
District RP	
Facility ID	
Application ID	

Was this a major release as defined by 19.15.29.7(A) NMAC?  <input type="checkbox"/> Yes <input checked="" type="checkbox"/> No	If YES, for what reason(s) does the responsible party consider this a major release?

### Initial Response

*The responsible party must undertake the following actions immediately unless they could create a safety hazard that would result in injury*

<input checked="" type="checkbox"/> The source of the release has been stopped. <input checked="" type="checkbox"/> The impacted area has been secured to protect human health and the environment. <input checked="" type="checkbox"/> Released materials have been contained via the use of berms or dikes, absorbent pads, or other containment devices. <input checked="" type="checkbox"/> All free liquids and recoverable materials have been removed and managed appropriately.
If all the actions described above have <u>not</u> been undertaken, explain why:
Per 19.15.29.8 B. (4) NMAC the responsible party may commence remediation immediately after discovery of a release. If remediation has begun, please attach a narrative of actions to date. If remedial efforts have been successfully completed or if the release occurred within a lined containment area (see 19.15.29.11(A)(5)(a) NMAC), please attach all information needed for closure evaluation.
I hereby certify that the information given above is true and complete to the best of my knowledge and understand that pursuant to OCD rules and regulations all operators are required to report and/or file certain release notifications and perform corrective actions for releases which may endanger public health or the environment. The acceptance of a C-141 report by the OCD does not relieve the operator of liability should their operations have failed to adequately investigate and remediate contamination that pose a threat to groundwater, surface water, human health or the environment. In addition, OCD acceptance of a C-141 report does not relieve the operator of responsibility for compliance with any other federal, state, or local laws and/or regulations.
Printed Name: <u>Amber Groves</u> Title: <u>Remediation Specialist</u>
Signature: <u></u> Date: <u>5/13/2022</u>
email: <u>agroves@durangomidstream.com</u> Telephone: <u>(575)703-7992</u>
<b><u>OCD Only</u></b> Received by: <u>Jocelyn Harimon</u> Date: <u>05/13/2022</u>

**District I**  
1625 N. French Dr., Hobbs, NM 88240  
Phone:(575) 393-6161 Fax:(575) 393-0720  
**District II**  
811 S. First St., Artesia, NM 88210  
Phone:(575) 748-1283 Fax:(575) 748-9720  
**District III**  
1000 Rio Brazos Rd., Aztec, NM 87410  
Phone:(505) 334-6178 Fax:(505) 334-6170  
**District IV**  
1220 S. St Francis Dr., Santa Fe, NM 87505  
Phone:(505) 476-3470 Fax:(505) 476-3462

State of New Mexico  
Energy, Minerals and Natural Resources  
Oil Conservation Division  
1220 S. St Francis Dr.  
Santa Fe, NM 87505

CONDITIONS  
  
Action 134687

CONDITIONS

Operator: FRONTIER FIELD SERVICES, LLC 10077 Grogans Mill Rd. The Woodlands, TX 77380	OGRID: 221115
	Action Number: 134687
	Action Type: [C-141] Release Corrective Action (C-141)

CONDITIONS

Created By	Condition	Condition Date
jnobui	Closure Report Approved.	8/17/2022