



June 29, 2022

Bradford Billings
Hydrologist/E.Spec.A
District 2 Artesia
1220 South St. Francis Drive
Oil Conservation Division
Santa Fe, NM 87505

**Re: Closure Report
ConocoPhillips
Heritage Concho
SRO State Com #008H Battery Release
Unit Letter P, Section 2, Township 26 South, Range 28 East
Eddy County, New Mexico
Incident ID# nHMP1518725850
2RP-3092**

Mr. Billings,

Tetra Tech, Inc. (Tetra Tech) was contacted by ConocoPhillips to assess a Heritage Concho release and evaluate subsequent remedial actions performed at the SRO State Com #008H Battery Release site (associated API No. 30-015-37548). The release footprint is located in Public Land Survey System (PLSS) Unit Letter P, Section 2, Township 26 South, Range 28 East, in Eddy County, New Mexico (Site). The approximate release point occurred at coordinates 32.065123°, -104.050597°, as shown on Figures 1 and 2.

BACKGROUND

According to the State of New Mexico Oil Conservation Division (NMOCD) C-141 Initial Report, the release was discovered on June 17, 2015. The C-141 reports that the cause of the release was caused by a gasket failure on the separator. Approximately 5 barrels (bbls) of crude oil and 130 bbls of produced water were released. Approximately 4 bbls of oil and 128 bbls of produced water were recovered with a vacuum truck during initial response activities.

According to initial NMOCD correspondence, the release remained within the containment. However, subsequent Concho documentation indicates that a small amount of fluid misted over the west berm and approximately 40 feet into the pasture southwest of the battery. Based on correspondence, the impacted area within the berm was excavated to a depth of approximately 8 inches. The NMOCD approved the initial C-141 on December 8, 2015, and subsequently assigned the release the Incident ID nHMP1518725850 and the Remediation Permit (RP) number 2RP-3092. The initial C-141 form is included in Appendix A.

SITE CHARACTERIZATION

A site characterization was performed and no sinkholes, residences, schools, hospitals, institutions, churches, springs, private domestic water wells, playa lakes, stream bodies, wetlands, incorporated municipal boundaries, subsurface mines, or floodplains are located within the distances specified in 19.15.29 New Mexico Administrative Code (NMAC). The Site is not in an area of high karst potential.

Tetra Tech

901 West Wall St., Suite 100, Midland, TX 79701

Tel 432.682.4559 Fax 432.682.3946 www.tetrattech.com

Closure Report
June 29, 2022

ConocoPhillips

There are no water wells listed in the New Mexico Office of the State Engineer (NMOSE) database located within approximately ½ mile (800 meters) of the Site. According to data from two (2) water wells listed in the NMOSE database within approximately 0.7 miles (1,200 meters) of the Site, the minimum depth to groundwater is 120 feet below ground surface (bgs). The site characterization data are presented in Appendix B.

REGULATORY FRAMEWORK

Based upon the release footprint and in accordance with Subsection E of 19.15.29.12 NMAC, per 19.15.29.11 NMAC, the site characterization data was used to determine recommended remedial action levels (RRALs) for benzene, toluene, ethylbenzene, and xylene (collectively referred to as BTEX), total petroleum hydrocarbons (TPH), and chlorides in soil.

Based on the site characterization, established depth to groundwater, and in accordance with Table I of 19.15.29.12 NMAC, the RRALs for the Site are as follows:

Constituent	Site RRALs
Chloride	20,000 mg/kg
TPH	2,500 mg/kg
BTEX	50 mg/kg

Additionally, in accordance with the NMOCD guidance *Procedures for Implementation of the Spill Rule (19.15.29 NMAC)* (September 6, 2019), the following reclamation requirements for surface soils (0-4 ft bgs) outside of active oil and gas operations are as follows:

Constituent	Reclamation Requirements
Chloride	600 mg/kg
TPH	100 mg/kg
BTEX	50 mg/kg

INITIAL RESPONSE ACTIVITIES AND INITIAL ASSESSMENT

As mentioned, based on documentation provided by Concho representatives, the release occurred inside of the bermed facility. However, subsequent Concho documentation indicates that a small amount of fluid misted over the west berm and approximately 40 feet into the west pasture. At the time of the release (2015) the facility layout was slightly different from the present-day layout. The release footprint is indicated in Figure 3, with aerial imagery from 2014. The release extent and approximate release location are presented in Figure 4 with current facility conditions. The facility is currently named Graham Cracker #2.

Based on correspondence, during initial response activities, the impacted area within the berm was excavated to a depth of approximately 8 inches bgs. The contaminated soil was reportedly hauled to an approved NMOCD disposal facility. Waste manifests were not provided by Concho.

According to available documentation, Concho representatives were onsite on July 1, 2015 to collect soil samples from three (3) locations (S1 through S3) at approximate depths of 1 foot bgs. Two of the locations were located within the berm interior (S1 and S2) and the third location was collected from a small pooling area with the misted portion of the pasture. The sample locations are indicated in Figure 3. A total of three (3) soil samples were collected from the locations and sent to Cardinal Laboratories in Hobbs, New Mexico to be analyzed for chloride via Method SM4500Cl-B, TPH via EPA Method 8015M and BTEX via EPA Method 8021B.

A summary of the July 2015 analytical results is presented in Table 1. The analytical results from the berm interior were below applicable Site RRALs for soils in active oil and gas production areas. The sample S3

collected from the pasture area exceeded the reclamation requirements for surface soils (0-4 ft bgs) outside of active oil and gas operations.

CLOSURE REQUEST (AUGUST 28, 2015) AND NMOCD CORRESPONDENCE

The closure request was submitted via email to Mike Bratcher and Heather Patterson of the NMOCD on August 28, 2015. A site diagram was provided indicating the approximate release extent, sampling locations and site features, as well as the laboratory analytical report and a table of the results of the sampling event. On September 18, 2015 Heather Patterson requested that Concho provide surface samples at each previous sampling points and conduct further vertical delineation at sample point S3.

It appears from available records that no further correspondence occurred between Concho and NMOCD. The requests from the NMOCD appeared unresolved. The 2RP-3092 release is included in an Agreed Compliance Order-Releases (ACO-R) between COG Operating LLC (Concho) and the NMOCD signed on November 20 and 26, 2018, respectively.

A review of historical aerial imagery revealed that the former tank battery was replaced with a new tank battery at some point between the release date and December 2019. Tetra Tech personnel visited the site on September 23, 2021 to document current site conditions. The facility is currently named Graham Cracker #2, and the former on-pad release footprint has been replaced with a lined battery facility. The gravel within the existing lined containment had no visible staining or odor.

ADDITIONAL SITE ASSESSMENT AND SAMPLING RESULTS

In order to complete the release assessment and delineation per NMOCD regulations, Tetra Tech conducted additional soil sampling at the release site on behalf of ConocoPhillips on January 19, 2022. One (1) soil boring (BH-1) was completed using air rotary drill rig in the misted pasture area adjacent to the west berm to a depth of 15 feet bgs to complete vertical delineation of the release. Tetra Tech installed one (1) hand auger soil boring (AH-1) within the former approximate release extent and one (1) hand auger boring (AH-3) to 2 feet bgs to delineate to the west. On February 9, 2022, Tetra Tech installed an additional hand auger soil boring (AH-2) to 2 feet bgs to complete horizontal delineation of the release to the south. Boring locations are indicated on Figure 4.

A total of twelve (12) soil samples were collected and sent to Cardinal Laboratories in Hobbs, New Mexico to be analyzed for chloride via Method SM4500Cl-B, TPH via EPA Method 8015M and BTEX via EPA Method 8261B.

Analytical results from the January and February 2022 assessment activities are summarized in Table 2. The analytical results associated with BH-1 boring location exceed the Site RRAL for chloride (600 mg/kg) in the 0-1 and 2-3 feet bgs sample intervals. All other analytical results were below applicable Site RRALs for chlorides, BTEX, and TPH. Vertical and horizontal delineation of the release were successfully achieved as a result of 2022 assessment activities.

REMEDIATION WORK PLAN AND ALTERNATIVE CONFIRMATION SAMPLING PLAN

A Release Characterization Work Plan (Work Plan) was prepared by Tetra Tech on behalf of ConocoPhillips and submitted to NMOCD on February 28, 2022, with fee application payment PO Number 9WVMB-220228-C-1410. The Work Plan described the results of the additional release assessment activities performed at the site. The Work Plan was approved via email by Mr. Bradford Billings on Monday, March 7, 2022. Mr. Billings also executed page 4 of the C-141 form included with the Work Plan. A copy of the NMOCD correspondence is included as Appendix C.

REMEDIATION ACTIVITIES AND CONFIRMATION SAMPLING

From June 6-9, 2022, Tetra Tech personnel were onsite to supervise the remediation activities proposed in the approved Work Plan, including excavation, disposal, and confirmation sampling. Impacted soils were

excavated until a representative sample from the walls and bottom of the excavation had a field screening value inferred as lower than the RRALs for the Site. Once field screening was completed, confirmation floor and sidewall samples were collected for laboratory analysis to verify that the impacted materials were properly removed. Each confirmation sample laboratory analytical result was directly compared to the proposed reclamation requirements/RRALs to demonstrate compliance. Per the approved Alternative Confirmation Sampling Plan, confirmation samples were collected such that each discrete sample (sidewall and floor) were representative of no more than 500 square feet of excavated area. A total of four (4) floor sample locations and four (4) sidewall sample locations were used during the remedial activities. Confirmation sidewall sample locations were categorized with the cardinal direction (N, E, S, W) followed by SW-#. Confirmation floor sample locations were labeled with "FS"-#. Excavated areas, depths and confirmation sample locations are indicated in Figure 4.

Initial confirmation soil sampling analytical results associated with locations NSW-1 and WSW-1 exceeded the RRAL of 600 mg/kg for chlorides. After this area was expanded 10 feet to the north and west, iterative confirmation samples were collected to encompass the original sample locations that triggered removal (nomenclature defined in Table 3) post-additional excavation.

Collected confirmation samples to be submitted for analysis were placed into laboratory-provided sample containers, transferred under chain-of-custody, and analyzed within appropriate holding times by Cardinal Laboratories in Hobbs, New Mexico. The soil samples were analyzed for TPH (GRO, DRO and ORO) by EPA Method 8015M, BTEX by EPA Method 8021B, and chlorides by SM4500Cl-B. Copies of laboratory analysis and chain-of-custody documentation are included in Appendix D.

Per the approved Work Plan and laboratory analytical results, the impacted area was excavated to 4 feet below pre-release grade. Impacted soils within the vicinity of the subsurface lines which intersect the release footprint were dug by hand to 4 feet bgs. All final confirmation soil samples (floor and sidewall) were below the respective RRALs and reclamation requirements for chloride, BTEX, and TPH. The results of the June 2022 confirmation sampling event are summarized in Table 3.

All the excavated material was transported offsite for proper disposal. Approximately 328 cubic yards of material were transported to the R360 Red Bluff facility in Orla, Texas for disposal. Once confirmation sampling activities were completed and associated analytical results were below the RRALs, the excavated areas were backfilled with clean material to surface grade. Photographs from the excavated areas prior to and immediately following placement of backfill are provided in Appendix E. Copies of the waste manifests are included in Appendix F.

The backfilled areas were seeded in June 2022 to aid in revegetation. Site inspections will be performed to assess the revegetation progress and evaluate the Site for the presence of primary or secondary noxious weeds. If noxious weeds are identified, the NMSLO will be contacted to determine an effective method for eradication. If the Site does not show revegetation after one growing season the area will be reseeded as appropriate.

Closure Report
June 29, 2022

ConocoPhillips

CONCLUSION

ConocoPhillips respectfully requests closure of the incident based on the confirmation sampling results and remediation activities performed. The final C-141 forms are enclosed in Appendix A. If you have any questions concerning the remediation activities for the Site, please call me at (512) 739-7874 or Christian at (512) 338-2661.

Sincerely,
Tetra Tech, Inc.



Samantha K. Abbott, P.G.
Project Manager



Christian M. Llull, P.G.
Program Manager

cc:
Mr. Charles Beauvais, BU – ConocoPhillips

Closure Report
June 29, 2022

ConocoPhillips

LIST OF ATTACHMENTS

Figures:

- Figure 1 – Overview Map
- Figure 2 – Topographic Map
- Figure 3 – Approximate Release Extent Map and 2015 Initial Site Assessment
- Figure 4 – Current Site Conditions and 2022 Additional Site Assessment
- Figure 5 – Excavation Extent and Confirmation Sampling Locations

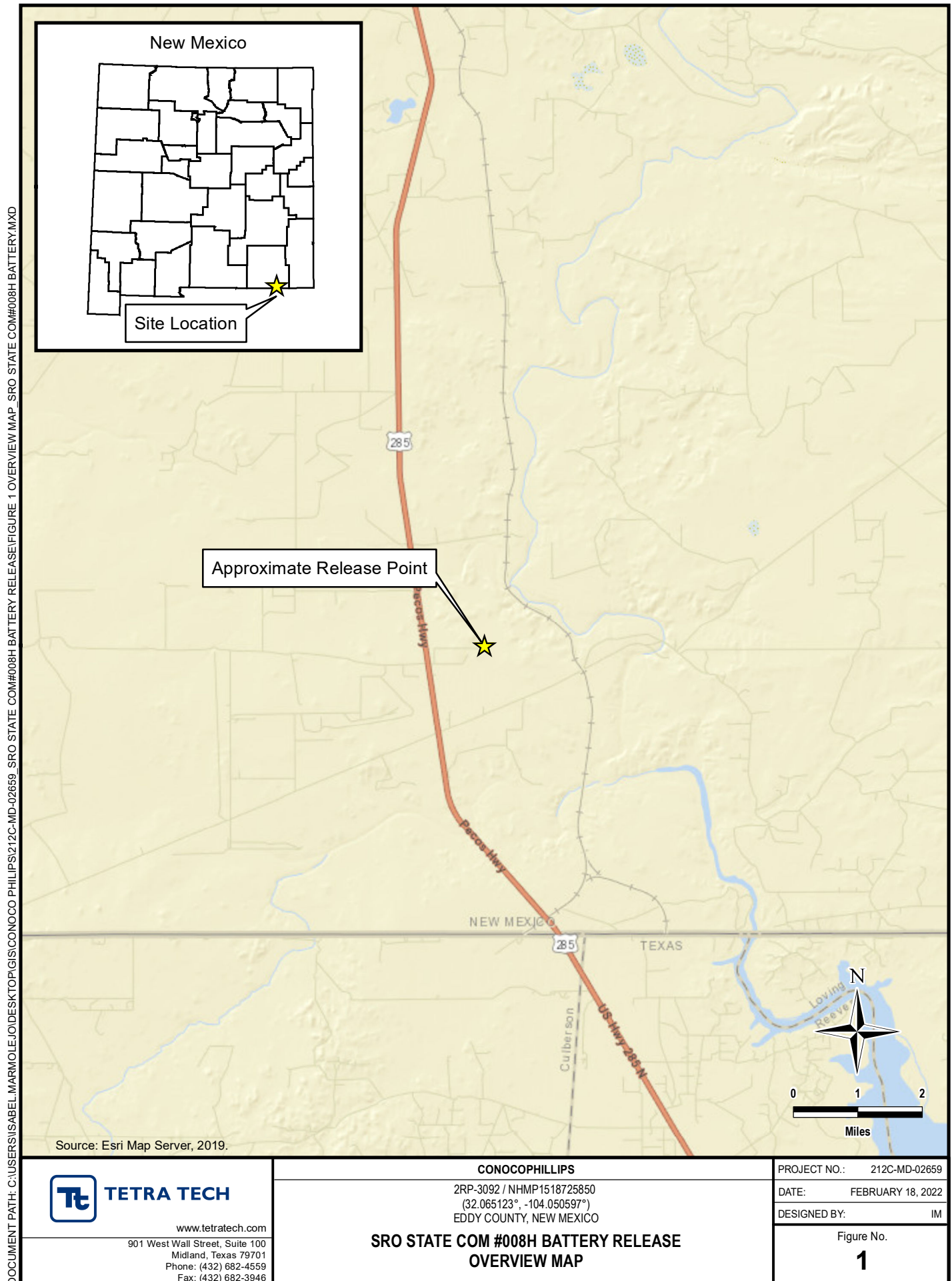
Tables:

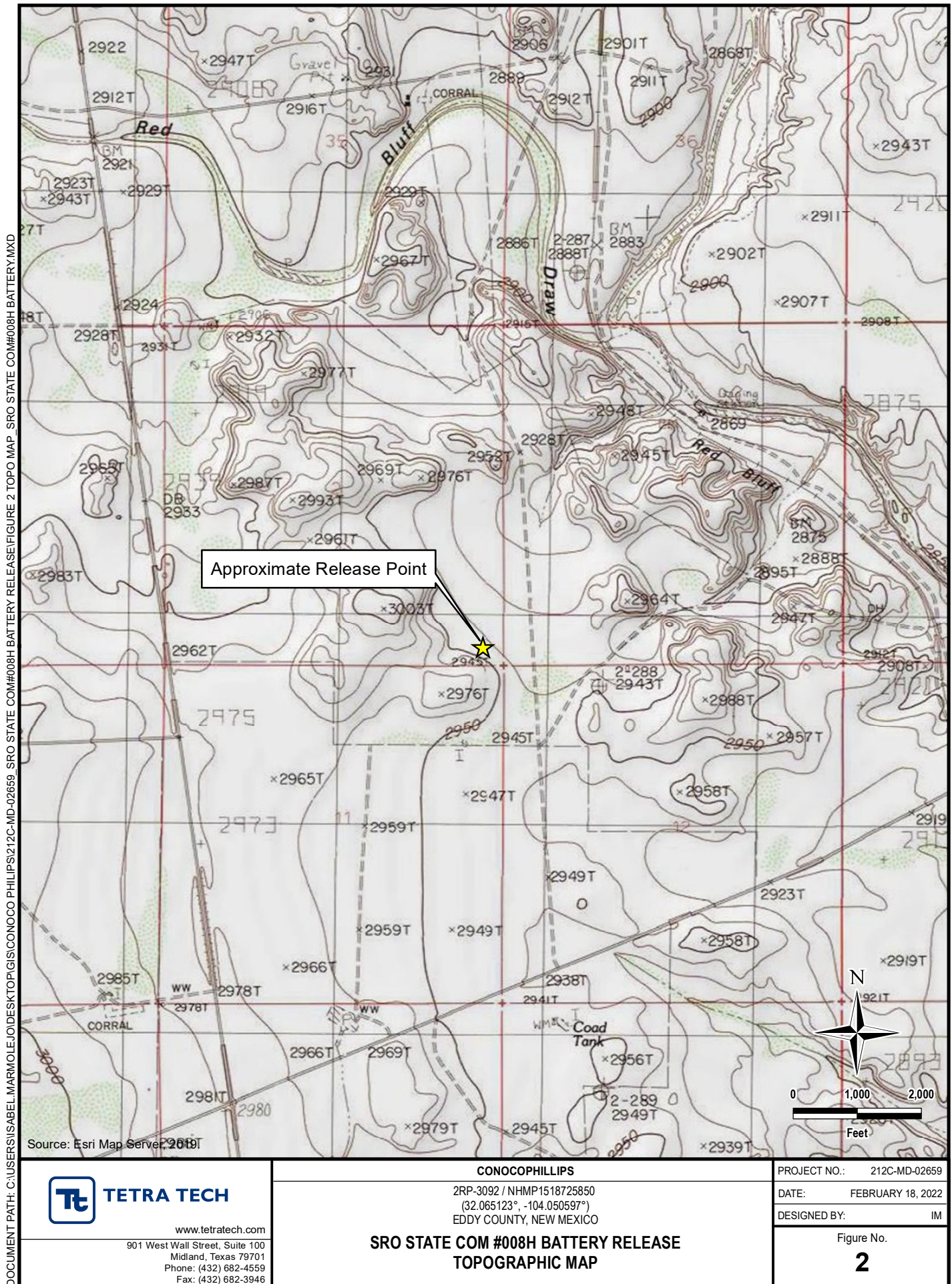
- Table 1 – Summary of Analytical Results – 2015 Initial Site Assessment
- Table 2 – Summary of Analytical Results – 2022 Additional Site Assessment
- Table 3 – Summary of Analytical Results – 2022 Confirmation Sampling

Appendices:

- Appendix A – C-141 Forms
- Appendix B – Site Characterization Data
- Appendix C – Regulatory Correspondence
- Appendix D – Laboratory Analytical Data
- Appendix E – Photographic Documentation
- Appendix F – Waste Manifests

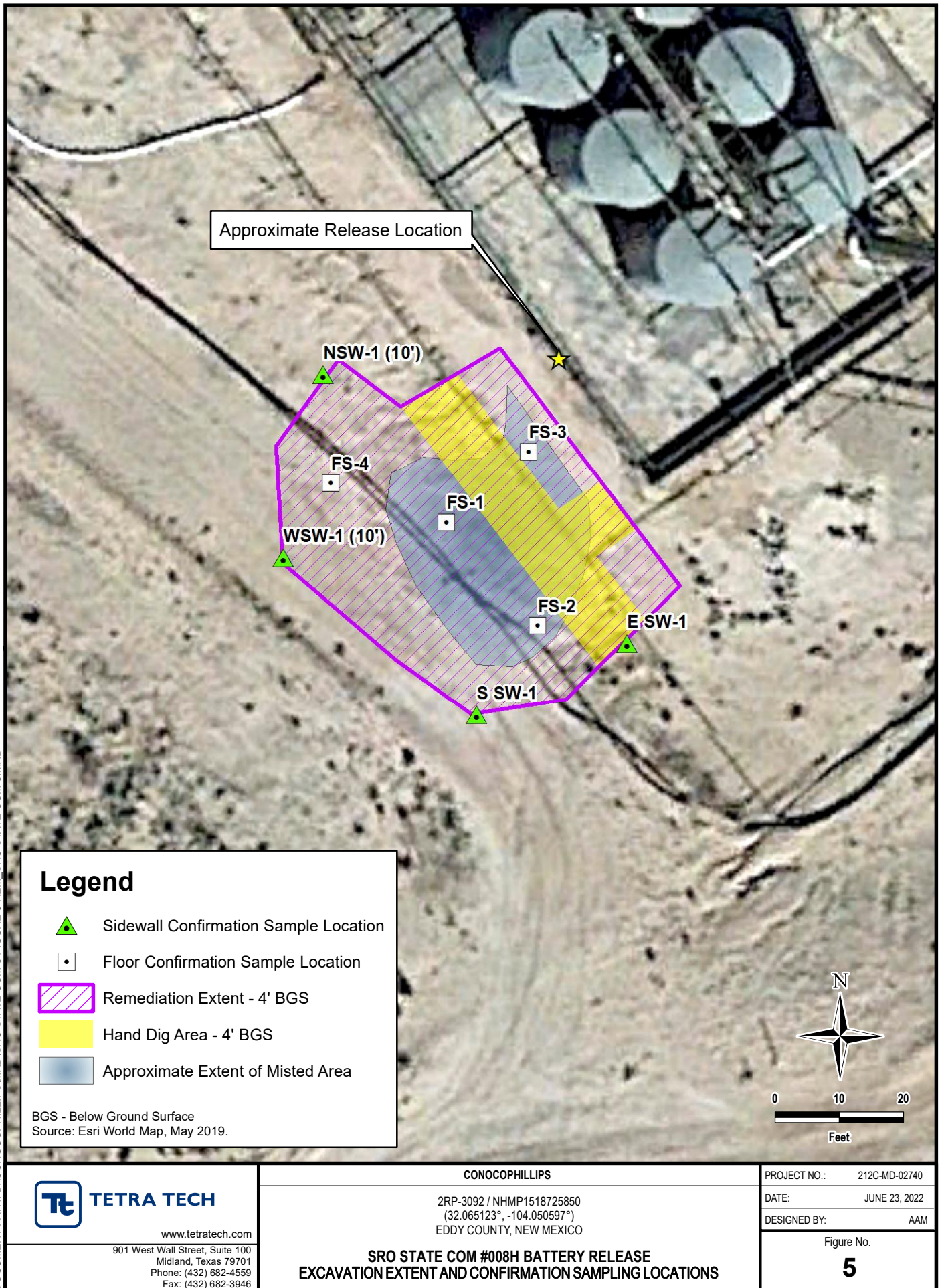
FIGURES











TABLES

TABLE 1
SUMMARY OF ANALYTICAL RESULTS
INITIAL SOIL ASSESSMENT- 2RP-3092 / NHMP1518725850
HERITAGE CONCHO
SRO STATE COM #008H BATTERY RELEASE
EDDY COUNTY, NM

Sample ID	Sample Date	Sample Depth	Chloride ¹		BTEX ²										TPH ³				
					Benzene		Toluene		Ethylbenzene		Total Xylenes		Total BTEX		GRO		DRO		Total TPH (GRO+DRO)
		C ₆ - C ₁₀		> C ₁₀ - C ₂₈															
		ft. bgs	mg/kg	Q	mg/kg	Q	mg/kg	Q	mg/kg	Q	mg/kg	Q	mg/kg	Q	mg/kg	Q	mg/kg	Q	mg/kg
S1	7/1/2015	1	416		< 0.050		< 0.050		< 0.050		< 0.150		< 0.300		< 10.0		< 10.0		-
S2	7/1/2015	1	192		< 0.050		< 0.050		< 0.050		< 0.150		< 0.300		< 10.0		< 10.0		-
S3	7/1/2015	1	832		< 0.050		< 0.050		< 0.050		< 0.150		< 0.300		< 10.0		< 10.0		922

NOTES:

- ft. Feet
bgs Below ground surface
mg/kg Milligrams per kilogram
TPH Total Petroleum Hydrocarbons
GRO Gasoline range organics
DRO Diesel range organics
1 Method SM4500Cl-B
2 Method 8021B
3 Method 8015M

Bold and italicized values indicate exceedance of proposed Remediation RRALs and Reclamation Requirements.

QUALIFIERS:

TABLE 2
SUMMARY OF ANALYTICAL RESULTS
SOIL ASSESSMENT- 2RP-3092 / NHMP1518725850
HERITAGE CONCHO
SRO STATE COM #008H BATTERY RELEASE
EDDY COUNTY, NM

Sample ID	Sample Date	Sample Depth	Field Screening Results		Chloride ¹		BTEX ²										TPH ³							
			Chloride	PID			Benzene		Toluene		Ethylbenzene		Total Xylenes		Total BTEX		GRO		DRO		EXT DRO		Total TPH (GRO+DRO+EXT DRO)	
							C ₆ - C ₁₀	> C ₁₀ - C ₂₈	> C ₂₈ - C ₃₆	mg/kg	Q	mg/kg	Q	mg/kg	Q	mg/kg	Q	mg/kg	Q	mg/kg	Q	mg/kg		Q
		ft. bgs	ppm		mg/kg	Q	mg/kg	Q	mg/kg	Q	mg/kg	Q	mg/kg	Q	mg/kg	Q	mg/kg	Q	mg/kg	Q	mg/kg	Q	mg/kg	
BH-1	1/19/2022	0-1	-	-	1,310		< 0.050		< 0.050		< 0.050		< 0.150		< 0.300		< 10.0		< 10.0		< 10.0		-	
		2-3	-	-	832		< 0.050		< 0.050		< 0.050		< 0.150		< 0.300		< 10.0		< 10.0		< 10.0		-	
		4-5	-	-	592		< 0.050		< 0.050		< 0.050		< 0.150		< 0.300		< 10.0		< 10.0		< 10.0		-	
		6-7	-	-	864		< 0.050		< 0.050		< 0.050		< 0.150		< 0.300		< 10.0		< 10.0		< 10.0		-	
		9-10	-	-	560		< 0.050		0.056		< 0.050		< 0.150		< 0.300		< 10.0		< 10.0		< 10.0		-	
		14-15	-	-	672		< 0.050		< 0.050		< 0.050		< 0.150		< 0.300		< 10.0		< 10.0		< 10.0		-	
AH-1	1/19/2022	0-1	-	-	256		< 0.050		< 0.050		< 0.050		< 0.150		< 0.300		< 10.0		< 10.0		< 10.0		-	
		1-2	-	-	160		< 0.050		< 0.050		< 0.050		< 0.150		< 0.300		< 10.0		< 10.0		< 10.0		-	
AH-2	2/9/2022	0-1	265	-	224		< 0.050		< 0.050		< 0.050		< 0.150		< 0.300		< 10.0		< 10.0		< 10.0		-	
		1-2	46.0	-	192		< 0.050		< 0.050		< 0.050		< 0.150		< 0.300		< 10.0		< 10.0		< 10.0		-	
AH-3	1/19/2022	0-1	-	-	176		< 0.050		< 0.050		< 0.050		< 0.150		< 0.300		< 10.0		< 10.0		< 10.0		-	
		1-2	-	-	192		< 0.050		< 0.050		< 0.050		< 0.150		< 0.300		< 10.0		< 10.0		< 10.0		-	

NOTES:

- ft. Feet
- bgs Below ground surface
- mg/kg Milligrams per kilogram
- TPH Total Petroleum Hydrocarbons
- GRO Gasoline range organics
- DRO Diesel range organics
- 1 Method SM4500Cl-B
- 2 Method 8021B
- 3 Method 8015M

Bold and italicized values indicate exceedance of proposed Remediation RRALs and Reclamation Requirements.

Shaded rows indicate intervals proposed for excavation.

QUALIFIERS:

TABLE 3
SUMMARY OF ANALYTICAL RESULTS
SOIL REMEDIATION - 2RP-3092 / NHMP1518725850
HERITAGE CONCHO
SRO State Com #008H BATTERY RELEASE
EDDY COUNTY, NM

Sample ID	Sample Date	Sample Depth	Chloride ¹		BTEx ²										TPH ³							
					Benzene		Toluene		Ethylbenzene		Total Xylenes		Total BTEx		Gro		Dro		Ext Dro		Total TPH (Gro+Dro+Ext Dro)	
															C ₆ - C ₁₀		> C ₁₀ - C ₂₈		> C ₂₈ - C ₃₆			
		ft. bgs	mg/kg	Q	mg/kg	Q	mg/kg	Q	mg/kg	Q	mg/kg	Q	mg/kg	Q	mg/kg	Q	mg/kg	Q	mg/kg			
FS-1	6/8/2022	4	928		<0.050		<0.050		<0.050		<0.150		<0.300		<10.0		<10.0		<10.0	-		
FS-2	6/8/2022	4	912.0		<0.050		<0.050		<0.050		<0.150		<0.300		<10.0		<10.0		<10.0	-		
FS-3	6/10/2022	4	608.0		<0.050		<0.050		<0.050		<0.150		<0.300		<10.0		<10.0		<10.0	-		
FS-4	6/10/2022	4	400.0		<0.050		<0.050		<0.050		<0.150		<0.300		<10.0		<10.0		<10.0	-		
NSW-1	6/7/2022	-	1440		<0.050		<0.050		<0.050		<0.150		<0.300		<10.0		<10.0		<10.0	-		
NSW-1 (10')	6/9/2022	-	224.0		<0.050		<0.050		<0.050		<0.150		<0.300		<10.0		<10.0		<10.0	-		
ESW-1	6/7/2022	-	160.0		<0.050		<0.050		<0.050		<0.150		<0.300		<10.0		<10.0		<10.0	-		
SSW-1	6/8/2022	-	<16.0		<0.050		<0.050		<0.050		<0.150		<0.300		<10.0		<10.0		<10.0	-		
WSW-1	6/7/2022	-	1520.0		<0.050		<0.050		<0.050		<0.150		<0.300		<10.0		<10.0		<10.0	-		
WSW-1 (10')	6/9/2022	-	240		<0.050		<0.050		<0.050		<0.150		<0.300		<10.0		<10.0		<10.0	-		

NOTES:

ft. Feet

bgs Below ground surface

mg/kg Milligrams per kilogram

TPH Total Petroleum Hydrocarbons

GRO Gasoline range organics

DRO Diesel range organics

1 Method SM4500Cl-B

2 Method 80218

3 Method 8015M

ND Nondetect

Bold and italicized values indicate exceedance of proposed Remediation RRALs and/or Reclamation Requirements.

Gold highlight represents soil horizons that were removed during deepening of excavation floors.

Green highlight represents soil intervals that were removed during horizontal expansion of excavation sidewalls.

* These iterative samples are located to encompass the original sample location that triggered removal, with further excavation in each area indicated in (I).

QUALIFIERS:

APPENDIX A C-141 Forms

District I
1625 N. French Dr., Hobbs, NM 88240
District II
811 S. First St., Artesia, NM 88210
District III
1000 Rio Brazos Road, Aztec, NM 87410
District IV
1220 S. St. Francis Dr., Santa Fe, NM 87505

State of New Mexico
Energy Minerals and Natural Resources
Oil Conservation Division
1220 South St. Francis Dr.
Santa Fe, NM 87505

Received 7/1/2015

NMOCD Artesia

Form C-141
Revised August 8, 2011Submit 1 Copy to appropriate District Office in
accordance with 19.15.29 NMAC.**Release Notification and Corrective Action**

nHMP1518725850

OPERATOR☒ Initial Report ☐ Final Report

Name of Company: COG Operating LLC	Contact: Robert McNeill
Address: 600 West Illinois Avenue, Midland TX 79701	Telephone No. 432-230-0077
Facility Name: SRO STATE COM #008H	Facility Type: Battery
Surface Owner: State	Mineral Owner:
API No. 30-015-37548	

LOCATION OF RELEASE

Unit Letter	Section	Township	Range	Feet from the	North/South Line	Feet from the	East/West Line	County
P	2	26S	28E	380	South	330	East	Eddy

Latitude 32.0653343 Longitude -104.0503311

NATURE OF RELEASE

Type of Release: Oil & Produced Water	Volume of Release: 5 bbls oil; 130 bbls PW	Volume Recovered: 4 bbls oil; 128 bbls PW
Source of Release: Gasket Failure	Date and Hour of Occurrence: 6/17/2015 8:00 am	Date and Hour of Discovery: 6/17/2015 8:00 am
Was Immediate Notice Given? <input checked="" type="checkbox"/> Yes <input type="checkbox"/> No <input type="checkbox"/> Not Required	If YES, To Whom? Mike Bratcher – NMOCD	
By Whom? Amanda Trujillo	Date and Hour: Fri 6/19/2015 1:16 PM	
Was a Watercourse Reached? <input type="checkbox"/> Yes <input checked="" type="checkbox"/> No	If YES, Volume Impacting the Watercourse.	

If a Watercourse was Impacted, Describe Fully.*

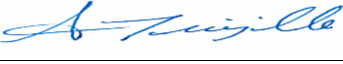

Describe Cause of Problem and Remedial Action Taken.*

This release was caused by a gasket failure on the separator. Vacuum trucks were dispatched to recover all standing fluid.

Describe Area Affected and Cleanup Action Taken.*

This spill occurred within the bermed area. Crews hand excavated the impacted material. Concho will have the spill site sampled to delineate any possible contamination from the release and we will present a remediation work plan to the NMOCD for approval prior to any significant remediation work.

I hereby certify that the information given above is true and complete to the best of my knowledge and understand that pursuant to NMOCD rules and regulations all operators are required to report and/or file certain release notifications and perform corrective actions for releases which may endanger public health or the environment. The acceptance of a C-141 report by the NMOCD marked as "Final Report" does not relieve the operator of liability should their operations have failed to adequately investigate and remediate contamination that pose a threat to ground water, surface water, human health or the environment. In addition, NMOCD acceptance of a C-141 report does not relieve the operator of responsibility for compliance with any other federal, state, or local laws and/or regulations.

Signature: 	OIL CONSERVATION DIVISION	
Printed Name: Amanda Trujillo	Approved by Environmental Specialist: 	
Title: Senior Environmental Coordinator	Approval Date: 7/6/2015	Expiration Date: N/A
E-mail Address: atrujillo@concho.com	Conditions of Approval:	
Date: July 1, 2015 Phone: 575-748-6940	Remdiation per OCD Rules and Guidelines	
	Attached <input type="checkbox"/>	

* Attach Additional Sheets If Necessary

Submit Remediation Proposal No
Later Than 8/6/2015

2RP-3092

Incident ID	
District RP	
Facility ID	
Application ID	

Site Assessment/Characterization

This information must be provided to the appropriate district office no later than 90 days after the release discovery date.

What is the shallowest depth to groundwater beneath the area affected by the release?	_____ (ft bgs)
Did this release impact groundwater or surface water?	<input type="checkbox"/> Yes <input type="checkbox"/> No
Are the lateral extents of the release within 300 feet of a continuously flowing watercourse or any other significant watercourse?	<input type="checkbox"/> Yes <input type="checkbox"/> No
Are the lateral extents of the release within 200 feet of any lakebed, sinkhole, or playa lake (measured from the ordinary high-water mark)?	<input type="checkbox"/> Yes <input type="checkbox"/> No
Are the lateral extents of the release within 300 feet of an occupied permanent residence, school, hospital, institution, or church?	<input type="checkbox"/> Yes <input type="checkbox"/> No
Are the lateral extents of the release within 500 horizontal feet of a spring or a private domestic fresh water well used by less than five households for domestic or stock watering purposes?	<input type="checkbox"/> Yes <input type="checkbox"/> No
Are the lateral extents of the release within 1000 feet of any other fresh water well or spring?	<input type="checkbox"/> Yes <input type="checkbox"/> No
Are the lateral extents of the release within incorporated municipal boundaries or within a defined municipal fresh water well field?	<input type="checkbox"/> Yes <input type="checkbox"/> No
Are the lateral extents of the release within 300 feet of a wetland?	<input type="checkbox"/> Yes <input type="checkbox"/> No
Are the lateral extents of the release overlying a subsurface mine?	<input type="checkbox"/> Yes <input type="checkbox"/> No
Are the lateral extents of the release overlying an unstable area such as karst geology?	<input type="checkbox"/> Yes <input type="checkbox"/> No
Are the lateral extents of the release within a 100-year floodplain?	<input type="checkbox"/> Yes <input type="checkbox"/> No
Did the release impact areas not on an exploration, development, production, or storage site?	<input type="checkbox"/> Yes <input type="checkbox"/> No

Attach a comprehensive report (electronic submittals in .pdf format are preferred) demonstrating the lateral and vertical extents of soil contamination associated with the release have been determined. Refer to 19.15.29.11 NMAC for specifics.

Characterization Report Checklist: *Each of the following items must be included in the report.*

- ☐ Scaled site map showing impacted area, surface features, subsurface features, delineation points, and monitoring wells.
- ☐ Field data
- ☐ Data table of soil contaminant concentration data
- ☐ Depth to water determination
- ☐ Determination of water sources and significant watercourses within ½-mile of the lateral extents of the release
- ☐ Boring or excavation logs
- ☐ Photographs including date and GIS information
- ☐ Topographic/Aerial maps
- ☐ Laboratory data including chain of custody

If the site characterization report does not include completed efforts at remediation of the release, the report must include a proposed remediation plan. That plan must include the estimated volume of material to be remediated, the proposed remediation technique, proposed sampling plan and methods, anticipated timelines for beginning and completing the remediation. The closure criteria for a release are contained in Table 1 of 19.15.29.12 NMAC, however, use of the table is modified by site- and release-specific parameters.

State of New Mexico
Oil Conservation Division

Page 4

Incident ID	
District RP	
Facility ID	
Application ID	

I hereby certify that the information given above is true and complete to the best of my knowledge and understand that pursuant to OCD rules and regulations all operators are required to report and/or file certain release notifications and perform corrective actions for releases which may endanger public health or the environment. The acceptance of a C-141 report by the OCD does not relieve the operator of liability should their operations have failed to adequately investigate and remediate contamination that pose a threat to groundwater, surface water, human health or the environment. In addition, OCD acceptance of a C-141 report does not relieve the operator of responsibility for compliance with any other federal, state, or local laws and/or regulations.

Printed Name: _____ Title: _____

Signature: Charles R. Beauvais II Date: _____

email: _____ Telephone: _____

OCD Only

Received by: _____ Date: _____

Incident ID	
District RP	
Facility ID	
Application ID	

Remediation Plan

Remediation Plan Checklist: *Each of the following items must be included in the plan.*

- ☐ Detailed description of proposed remediation technique
- ☐ Scaled sitemap with GPS coordinates showing delineation points
- ☐ Estimated volume of material to be remediated
- ☐ Closure criteria is to Table 1 specifications subject to 19.15.29.12(C)(4) NMAC
- ☐ Proposed schedule for remediation (note if remediation plan timeline is more than 90 days OCD approval is required)

Deferral Requests Only: *Each of the following items must be confirmed as part of any request for deferral of remediation.*

- ☐ Contamination must be in areas immediately under or around production equipment where remediation could cause a major facility deconstruction.
- ☐ Extents of contamination must be fully delineated.
- ☐ Contamination does not cause an imminent risk to human health, the environment, or groundwater.

I hereby certify that the information given above is true and complete to the best of my knowledge and understand that pursuant to OCD rules and regulations all operators are required to report and/or file certain release notifications and perform corrective actions for releases which may endanger public health or the environment. The acceptance of a C-141 report by the OCD does not relieve the operator of liability should their operations have failed to adequately investigate and remediate contamination that pose a threat to groundwater, surface water, human health or the environment. In addition, OCD acceptance of a C-141 report does not relieve the operator of responsibility for compliance with any other federal, state, or local laws and/or regulations.

Printed Name: _____ Title: _____

Signature: Charles R. Beauvais II Date: _____

email: _____ Telephone: _____

OCD Only

Received by: _____ Date: _____

☐ Approved ☐ Approved with Attached Conditions of Approval ☐ Denied ☐ Deferral ApprovedSignature: Bradford Billings Date: _____

District I
1625 N. French Dr., Hobbs, NM 88240
Phone:(575) 393-6161 Fax:(575) 393-0720
District II
811 S. First St., Artesia, NM 88210
Phone:(575) 748-1283 Fax:(575) 748-9720
District III
1000 Rio Brazos Rd., Aztec, NM 87410
Phone:(505) 334-6178 Fax:(505) 334-6170
District IV
1220 S. St Francis Dr., Santa Fe, NM 87505
Phone:(505) 476-3470 Fax:(505) 476-3462

State of New Mexico
Energy, Minerals and Natural Resources
Oil Conservation Division
1220 S. St Francis Dr.
Santa Fe, NM 87505

CONDITIONS

Action 84881

CONDITIONS

Operator: COG OPERATING LLC 600 W Illinois Ave Midland, TX 79701	OGRID: 229137
	Action Number: 84881
	Action Type: [C-141] Release Corrective Action (C-141)

CONDITIONS

Created By	Condition	Condition Date
bbillings	Max of 500 sq/ft on confirm samples and 120 days from 3/7/2022 to complete work.	3/7/2022

Incident ID	
District RP	
Facility ID	
Application ID	

Closure

The responsible party must attach information demonstrating they have complied with all applicable closure requirements and any conditions or directives of the OCD. This demonstration should be in the form of a comprehensive report (electronic submittals in .pdf format are preferred) including a scaled site map, sampling diagrams, relevant field notes, photographs of any excavation prior to backfilling, laboratory data including chain of custody documents of final sampling, and a narrative of the remedial activities. Refer to 19.15.29.12 NMAC.

Closure Report Attachment Checklist: *Each of the following items must be included in the closure report.*

- ☐ A scaled site and sampling diagram as described in 19.15.29.11 NMAC
- ☐ Photographs of the remediated site prior to backfill or photos of the liner integrity if applicable (Note: appropriate OCD District office must be notified 2 days prior to liner inspection)
- ☐ Laboratory analyses of final sampling (Note: appropriate ODC District office must be notified 2 days prior to final sampling)
- ☐ Description of remediation activities

I hereby certify that the information given above is true and complete to the best of my knowledge and understand that pursuant to OCD rules and regulations all operators are required to report and/or file certain release notifications and perform corrective actions for releases which may endanger public health or the environment. The acceptance of a C-141 report by the OCD does not relieve the operator of liability should their operations have failed to adequately investigate and remediate contamination that pose a threat to groundwater, surface water, human health or the environment. In addition, OCD acceptance of a C-141 report does not relieve the operator of responsibility for compliance with any other federal, state, or local laws and/or regulations. The responsible party acknowledges they must substantially restore, reclaim, and re-vegetate the impacted surface area to the conditions that existed prior to the release or their final land use in accordance with 19.15.29.13 NMAC including notification to the OCD when reclamation and re-vegetation are complete.

Printed Name: _____ Title: _____

Signature: Charles R. Beauvais II Date: _____

email: _____ Telephone: _____

OCD Only

Received by: _____ Date: _____

Closure approval by the OCD does not relieve the responsible party of liability should their operations have failed to adequately investigate and remediate contamination that poses a threat to groundwater, surface water, human health, or the environment nor does not relieve the responsible party of compliance with any other federal, state, or local laws and/or regulations.

Closure Approved by: Ashley Maxwell Date: _____

Printed Name: _____ Title: _____

APPENDIX B

Site Characterization Data



(quarters are smallest to largest) (NAD83 UTM in meters)

No records found.

UTMNAD83 Radius Search (in meters):

Easting (X): 589639

Northing (Y): 3548072

Radius: 800

The data is furnished by the NMOSE/ISC and is accepted by the recipient with the expressed understanding that the OSE/ISC make no warranties, expressed or implied, concerning the accuracy, completeness, reliability, usability, or suitability for any particular purpose of the data.

2/17/22 11:12 AM

WATER COLUMN/ AVERAGE
DEPTH TO WATER



(In feet)

SRO State #8

Karst Potential

Legend

- ☆ Approximate Release Location
- High
- Low
- Medium

Malaga

285

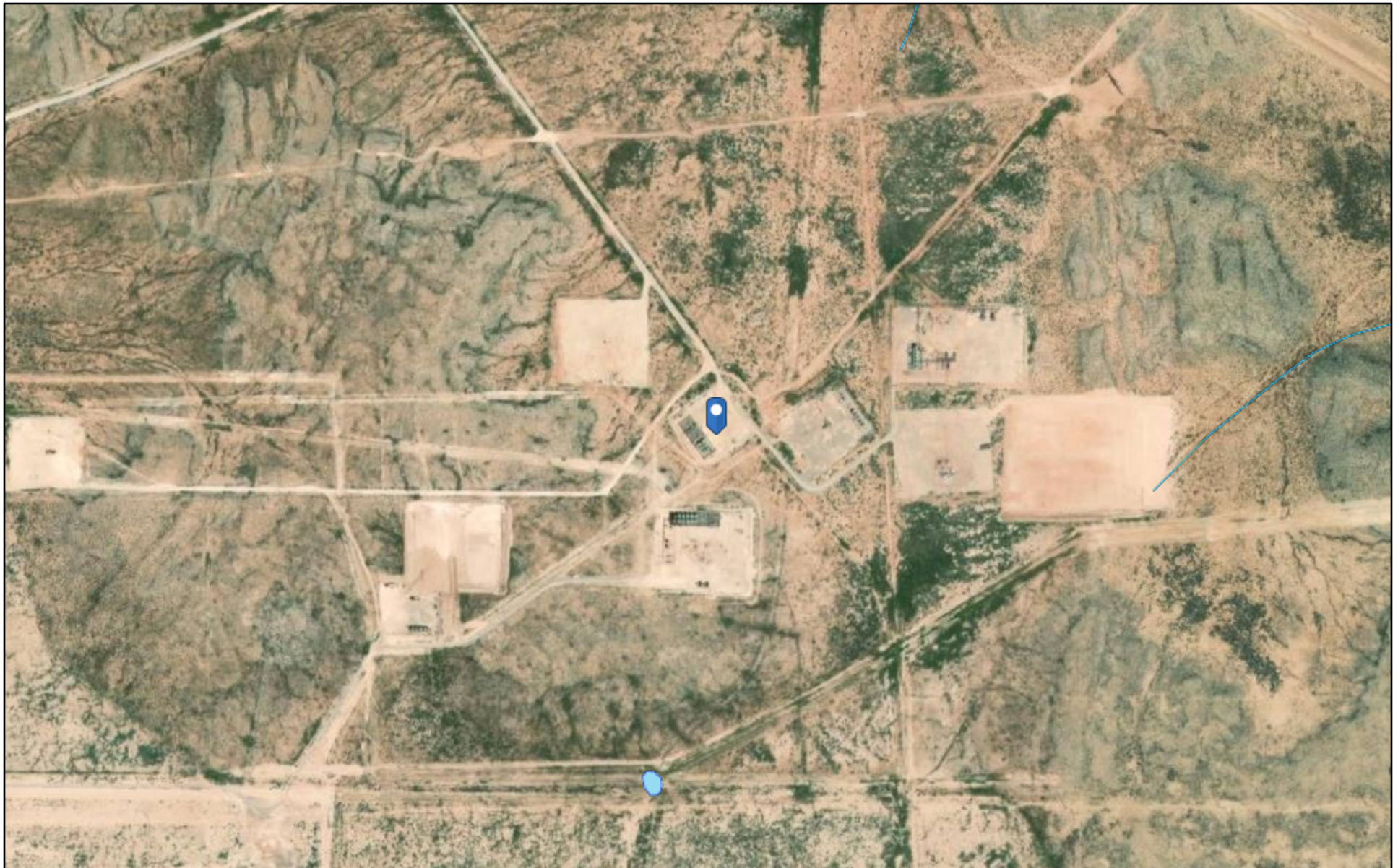
☆ Approximate Release Location

Google Earth

7 mi

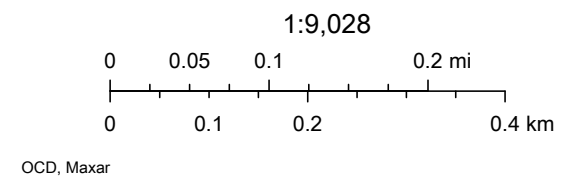


SRO State Com #008H Battery Release Water Bodies



1/11/2022, 11:56:23 AM

- ★ OCD District Offices
- PLJV Probable Playas
- OSE Water-bodies
- OSE Streams



APPENDIX C

Regulatory Correspondence

From: OCDOnline@state.nm.us
To: [Lull, Christian](#)
Subject: The Oil Conservation Division (OCD) has approved the application, Application ID: 84881
Date: Monday, March 7, 2022 11:37:44 AM

CAUTION: This email originated from an external sender. Verify the source before opening links or attachments.

To whom it may concern (c/o Christian Lull for COG OPERATING LLC),

The OCD has approved the submitted *Application for administrative approval of a release notification and corrective action* (C-141), for incident ID (n#) nHMP1518725850, with the following conditions:

- **Max of 500 sq/ft on confirm samples and 120 days from 3/7/2022 to complete work.**

The signed C-141 can be found in the OCD Online: Imaging under the incident ID (n#).

If you have any questions regarding this application, please contact me.

Thank you,
Bradford Billings
Hydrologist/E.Spec.A
505-670-6549
bradford.billings@state.nm.us

New Mexico Energy, Minerals and Natural Resources Department
1220 South St. Francis Drive
Santa Fe, NM 87505

APPENDIX D

Laboratory Analytical Data



PHONE (575) 393-2326 ° 101 E. MARLAND ° HOBBS, NM 88240

June 08, 2022

CHRISTIAN LLULL

TETRA TECH

901 WEST WALL STREET , STE 100

MIDLAND, TX 79701

RE: SRO STATE COM #008H

Enclosed are the results of analyses for samples received by the laboratory on 06/07/22 16:38.

Cardinal Laboratories is accredited through Texas NELAP under certificate number T104704398-21-14. Accreditation applies to drinking water, non-potable water and solid and chemical materials. All accredited analytes are denoted by an asterisk (*). For a complete list of accredited analytes and matrices visit the TCEQ website at www.tceq.texas.gov/field/qa/lab_accred_certif.html.

Cardinal Laboratories is accredited through the State of Colorado Department of Public Health and Environment for:

Method EPA 552.2	Haloacetic Acids (HAA-5)
Method EPA 524.2	Total Trihalomethanes (TTHM)
Method EPA 524.4	Regulated VOCs (V1, V2, V3)

Accreditation applies to public drinking water matrices.

This report meets NELAP requirements and is made up of a cover page, analytical results, and a copy of the original chain-of-custody. If you have any questions concerning this report, please feel free to contact me.

Sincerely,

A handwritten signature in black ink that reads "Celey D. Keene". The signature is written in a cursive, flowing style.

Celey D. Keene

Lab Director/Quality Manager



PHONE (575) 393-2326 ° 101 E. MARLAND ° HOBBS, NM 88240

Analytical Results For:

TETRA TECH
 CHRISTIAN LLULL
 901 WEST WALL STREET , STE 100
 MIDLAND TX, 79701
 Fax To: (432) 682-3946

Received:	06/07/2022	Sampling Date:	06/07/2022
Reported:	06/08/2022	Sampling Type:	Soil
Project Name:	SRO STATE COM #008H	Sampling Condition:	** (See Notes)
Project Number:	212C - MD - 02740	Sample Received By:	Tamara Oldaker
Project Location:	EDDY CO NM		

Sample ID: NSW - 1 (H222411-01)

BTX 8021B		mg/kg		Analyzed By: JH					
Analyte	Result	Reporting Limit	Analyzed	Method Blank	BS	% Recovery	True Value QC	RPD	Qualifier
Benzene*	<0.050	0.050	06/08/2022	ND	2.04	102	2.00	1.90	
Toluene*	<0.050	0.050	06/08/2022	ND	2.03	101	2.00	2.20	
Ethylbenzene*	<0.050	0.050	06/08/2022	ND	1.90	94.9	2.00	1.80	
Total Xylenes*	<0.150	0.150	06/08/2022	ND	5.90	98.4	6.00	1.87	
Total BTX	<0.300	0.300	06/08/2022	ND					

Surrogate: 4-Bromofluorobenzene (PID) 100 % 69.9-140

Chloride, SM4500Cl-B		mg/kg		Analyzed By: AC						
Analyte	Result	Reporting Limit	Analyzed	Method Blank	BS	% Recovery	True Value QC	RPD	Qualifier	
Chloride	1440	16.0	06/08/2022	ND	448	112	400	0.00		

TPH 8015M		mg/kg		Analyzed By: MS					
Analyte	Result	Reporting Limit	Analyzed	Method Blank	BS	% Recovery	True Value QC	RPD	Qualifier
GRO C6-C10*	<10.0	10.0	06/08/2022	ND	201	100	200	3.70	
DRO >C10-C28*	<10.0	10.0	06/08/2022	ND	204	102	200	2.12	
EXT DRO >C28-C36	<10.0	10.0	06/08/2022	ND					

Surrogate: 1-Chlorooctane 114 % 66.9-136

Surrogate: 1-Chlorooctadecane 114 % 59.5-142

Cardinal Laboratories

*=Accredited Analyte

PLEASE NOTE: Liability and Damages. Cardinal's liability and client's exclusive remedy for any claim arising, whether based in contract or tort, shall be limited to the amount paid by client for analyses. All claims, including those for negligence and any other cause whatsoever shall be deemed waived unless made in writing and received by Cardinal within thirty (30) days after completion of the applicable service. In no event shall Cardinal be liable for incidental or consequential damages, including, without limitation, business interruptions, loss of use, or loss of profits incurred by client, its subsidiaries, affiliates or successors arising out of or related to the performance of the services hereunder by Cardinal, regardless of whether such claim is based upon any of the above stated reasons or otherwise. Results relate only to the samples identified above. This report shall not be reproduced except in full with written approval of Cardinal Laboratories.

Celey D. Keene, Lab Director/Quality Manager



PHONE (575) 393-2326 ° 101 E. MARLAND ° HOBBS, NM 88240

Analytical Results For:

TETRA TECH
 CHRISTIAN LLULL
 901 WEST WALL STREET , STE 100
 MIDLAND TX, 79701
 Fax To: (432) 682-3946

Received:	06/07/2022	Sampling Date:	06/07/2022
Reported:	06/08/2022	Sampling Type:	Soil
Project Name:	SRO STATE COM #008H	Sampling Condition:	** (See Notes)
Project Number:	212C - MD - 02740	Sample Received By:	Tamara Oldaker
Project Location:	EDDY CO NM		

Sample ID: ESW - 1 (H222411-02)

BTX 8021B		mg/kg		Analyzed By: JH						
Analyte	Result	Reporting Limit	Analyzed	Method Blank	BS	% Recovery	True Value QC	RPD	Qualifier	
Benzene*	<0.050	0.050	06/08/2022	ND	2.04	102	2.00	1.90		
Toluene*	<0.050	0.050	06/08/2022	ND	2.03	101	2.00	2.20		
Ethylbenzene*	<0.050	0.050	06/08/2022	ND	1.90	94.9	2.00	1.80		
Total Xylenes*	<0.150	0.150	06/08/2022	ND	5.90	98.4	6.00	1.87		
Total BTX	<0.300	0.300	06/08/2022	ND						

Surrogate: 4-Bromofluorobenzene (PID) 101 % 69.9-140

Chloride, SM4500Cl-B		mg/kg		Analyzed By: AC						
Analyte	Result	Reporting Limit	Analyzed	Method Blank	BS	% Recovery	True Value QC	RPD	Qualifier	
Chloride	160	16.0	06/08/2022	ND	448	112	400	0.00		

TPH 8015M		mg/kg		Analyzed By: MS					
Analyte	Result	Reporting Limit	Analyzed	Method Blank	BS	% Recovery	True Value QC	RPD	Qualifier
GRO C6-C10*	<10.0	10.0	06/08/2022	ND	201	100	200	3.70	
DRO >C10-C28*	<10.0	10.0	06/08/2022	ND	204	102	200	2.12	
EXT DRO >C28-C36	<10.0	10.0	06/08/2022	ND					

Surrogate: 1-Chlorooctane 126 % 66.9-136

Surrogate: 1-Chlorooctadecane 125 % 59.5-142

Cardinal Laboratories

*=Accredited Analyte

PLEASE NOTE: Liability and Damages. Cardinal's liability and client's exclusive remedy for any claim arising, whether based in contract or tort, shall be limited to the amount paid by client for analyses. All claims, including those for negligence and any other cause whatsoever shall be deemed waived unless made in writing and received by Cardinal within thirty (30) days after completion of the applicable service. In no event shall Cardinal be liable for incidental or consequential damages, including, without limitation, business interruptions, loss of use, or loss of profits incurred by client, its subsidiaries, affiliates or successors arising out of or related to the performance of the services hereunder by Cardinal, regardless of whether such claim is based upon any of the above stated reasons or otherwise. Results relate only to the samples identified above. This report shall not be reproduced except in full with written approval of Cardinal Laboratories.

Celey D. Keene, Lab Director/Quality Manager



PHONE (575) 393-2326 ° 101 E. MARLAND ° HOBBS, NM 88240

Analytical Results For:

TETRA TECH
 CHRISTIAN LLULL
 901 WEST WALL STREET , STE 100
 MIDLAND TX, 79701
 Fax To: (432) 682-3946

Received:	06/07/2022	Sampling Date:	06/07/2022
Reported:	06/08/2022	Sampling Type:	Soil
Project Name:	SRO STATE COM #008H	Sampling Condition:	** (See Notes)
Project Number:	212C - MD - 02740	Sample Received By:	Tamara Oldaker
Project Location:	EDDY CO NM		

Sample ID: WSW - 1 (H222411-03)

BTEx 8021B		mg/kg		Analyzed By: JH						
Analyte	Result	Reporting Limit	Analyzed	Method Blank	BS	% Recovery	True Value QC	RPD	Qualifier	
Benzene*	<0.050	0.050	06/08/2022	ND	2.04	102	2.00	1.90		
Toluene*	<0.050	0.050	06/08/2022	ND	2.03	101	2.00	2.20		
Ethylbenzene*	<0.050	0.050	06/08/2022	ND	1.90	94.9	2.00	1.80		
Total Xylenes*	<0.150	0.150	06/08/2022	ND	5.90	98.4	6.00	1.87		
Total BTEx	<0.300	0.300	06/08/2022	ND						

Surrogate: 4-Bromofluorobenzene (PID) 101 % 69.9-140

Chloride, SM4500Cl-B		mg/kg		Analyzed By: AC						
Analyte	Result	Reporting Limit	Analyzed	Method Blank	BS	% Recovery	True Value QC	RPD	Qualifier	
Chloride	1520	16.0	06/08/2022	ND	448	112	400	0.00		

TPH 8015M		mg/kg		Analyzed By: MS					
Analyte	Result	Reporting Limit	Analyzed	Method Blank	BS	% Recovery	True Value QC	RPD	Qualifier
GRO C6-C10*	<10.0	10.0	06/08/2022	ND	201	100	200	3.70	
DRO >C10-C28*	<10.0	10.0	06/08/2022	ND	204	102	200	2.12	
EXT DRO >C28-C36	<10.0	10.0	06/08/2022	ND					

Surrogate: 1-Chlorooctane 128 % 66.9-136

Surrogate: 1-Chlorooctadecane 127 % 59.5-142

Cardinal Laboratories

*=Accredited Analyte

PLEASE NOTE: Liability and Damages. Cardinal's liability and client's exclusive remedy for any claim arising, whether based in contract or tort, shall be limited to the amount paid by client for analyses. All claims, including those for negligence and any other cause whatsoever shall be deemed waived unless made in writing and received by Cardinal within thirty (30) days after completion of the applicable service. In no event shall Cardinal be liable for incidental or consequential damages, including, without limitation, business interruptions, loss of use, or loss of profits incurred by client, its subsidiaries, affiliates or successors arising out of or related to the performance of the services hereunder by Cardinal, regardless of whether such claim is based upon any of the above stated reasons or otherwise. Results relate only to the samples identified above. This report shall not be reproduced except in full with written approval of Cardinal Laboratories.

Celey D. Keene, Lab Director/Quality Manager



PHONE (575) 393-2326 ° 101 E. MARLAND ° HOBBS, NM 88240

Notes and Definitions

ND	Analyte NOT DETECTED at or above the reporting limit
RPD	Relative Percent Difference
**	Samples not received at proper temperature of 6°C or below.
***	Insufficient time to reach temperature.
-	Chloride by SM4500Cl-B does not require samples be received at or below 6°C Samples reported on an as received basis (wet) unless otherwise noted on report

Cardinal Laboratories

*=Accredited Analyte

PLEASE NOTE: Liability and Damages. Cardinal's liability and client's exclusive remedy for any claim arising, whether based in contract or tort, shall be limited to the amount paid by client for analyses. All claims, including those for negligence and any other cause whatsoever shall be deemed waived unless made in writing and received by Cardinal within thirty (30) days after completion of the applicable service. In no event shall Cardinal be liable for incidental or consequential damages, including, without limitation, business interruptions, loss of use, or loss of profits incurred by client, its subsidiaries, affiliates or successors arising out of or related to the performance of the services hereunder by Cardinal, regardless of whether such claim is based upon any of the above stated reasons or otherwise. Results relate only to the samples identified above. This report shall not be reproduced except in full with written approval of Cardinal Laboratories.

A handwritten signature in black ink, appearing to read "C. D. Keene", is written over a horizontal line.

Celey D. Keene, Lab Director/Quality Manager



101 East Marland, Hobbs, NM 88240
(575) 393-2326 FAX (575) 393-2476

CHAIN-OF-CUSTODY AND ANALYSIS REQUEST

[illegible]



PHONE (575) 393-2326 ° 101 E. MARLAND ° HOBBS, NM 88240

June 09, 2022

CHRISTIAN LLULL

TETRA TECH

901 WEST WALL STREET , STE 100

MIDLAND, TX 79701

RE: SRO STATE COM #008H

Enclosed are the results of analyses for samples received by the laboratory on 06/08/22 17:00.

Cardinal Laboratories is accredited through Texas NELAP under certificate number T104704398-21-14. Accreditation applies to drinking water, non-potable water and solid and chemical materials. All accredited analytes are denoted by an asterisk (*). For a complete list of accredited analytes and matrices visit the TCEQ website at www.tceq.texas.gov/field/qa/lab_accred_certif.html.

Cardinal Laboratories is accredited through the State of Colorado Department of Public Health and Environment for:

Method EPA 552.2	Haloacetic Acids (HAA-5)
Method EPA 524.2	Total Trihalomethanes (TTHM)
Method EPA 524.4	Regulated VOCs (V1, V2, V3)

Accreditation applies to public drinking water matrices.

This report meets NELAP requirements and is made up of a cover page, analytical results, and a copy of the original chain-of-custody. If you have any questions concerning this report, please feel free to contact me.

Sincerely,

A handwritten signature in black ink that reads "Celey D. Keene". The signature is fluid and cursive, with the first name "Celey" being more prominent.

Celey D. Keene

Lab Director/Quality Manager



PHONE (575) 393-2326 ° 101 E. MARLAND ° HOBBS, NM 88240

Analytical Results For:

TETRA TECH
 CHRISTIAN LLULL
 901 WEST WALL STREET , STE 100
 MIDLAND TX, 79701
 Fax To: (432) 682-3946

Received:	06/08/2022	Sampling Date:	06/08/2022
Reported:	06/09/2022	Sampling Type:	Soil
Project Name:	SRO STATE COM #008H	Sampling Condition:	** (See Notes)
Project Number:	212C - MD - 02740	Sample Received By:	Yvonne Muniz
Project Location:	EDDY CO NM		

Sample ID: SSW - 1 (H222448-01)

BTX 8021B		mg / kg		Analyzed By: JH						
Analyte	Result	Reporting Limit	Analyzed	Method Blank	BS	% Recovery	True Value QC	RPD	Qualifier	
Benzene*	<0.050	0.050	06/09/2022	ND	2.05	102	2.00	4.40		
Toluene*	<0.050	0.050	06/09/2022	ND	2.04	102	2.00	3.18		
Ethylbenzene*	<0.050	0.050	06/09/2022	ND	1.92	96.0	2.00	4.37		
Total Xylenes*	<0.150	0.150	06/09/2022	ND	5.99	99.8	6.00	4.95		
Total BTX	<0.300	0.300	06/09/2022	ND						

Surrogate: 4-Bromofluorobenzene (PID) 99.6 % 69.9-140

Chloride, SM4500Cl-B		mg/kg		Analyzed By: AC						
Analyte	Result	Reporting Limit	Analyzed	Method Blank	BS	% Recovery	True Value QC	RPD	Qualifier	
Chloride	<16.0	16.0	06/09/2022	ND	432	108	400	0.00		

TPH 8015M		mg/kg		Analyzed By: MS					
Analyte	Result	Reporting Limit	Analyzed	Method Blank	BS	% Recovery	True Value QC	RPD	Qualifier
GRO C6-C10*	<10.0	10.0	06/09/2022	ND	202	101	200	2.04	
DRO >C10-C28*	<10.0	10.0	06/09/2022	ND	204	102	200	3.39	
EXT DRO >C28-C36	<10.0	10.0	06/09/2022	ND					

Surrogate: 1-Chlorooctane 122 % 66.9-136

Surrogate: 1-Chlorooctadecane 124 % 59.5-142

Cardinal Laboratories

*=Accredited Analyte

PLEASE NOTE: Liability and Damages. Cardinal's liability and client's exclusive remedy for any claim arising, whether based in contract or tort, shall be limited to the amount paid by client for analyses. All claims, including those for negligence and any other cause whatsoever shall be deemed waived unless made in writing and received by Cardinal within thirty (30) days after completion of the applicable service. In no event shall Cardinal be liable for incidental or consequential damages, including, without limitation, business interruptions, loss of use, or loss of profits incurred by client, its subsidiaries, affiliates or successors arising out of or related to the performance of the services hereunder by Cardinal, regardless of whether such claim is based upon any of the above stated reasons or otherwise. Results relate only to the samples identified above. This report shall not be reproduced except in full with written approval of Cardinal Laboratories.

Celey D. Keene, Lab Director/Quality Manager



PHONE (575) 393-2326 ° 101 E. MARLAND ° HOBBS, NM 88240

Analytical Results For:

TETRA TECH
 CHRISTIAN LLULL
 901 WEST WALL STREET , STE 100
 MIDLAND TX, 79701
 Fax To: (432) 682-3946

Received:	06/08/2022	Sampling Date:	06/08/2022
Reported:	06/09/2022	Sampling Type:	Soil
Project Name:	SRO STATE COM #008H	Sampling Condition:	** (See Notes)
Project Number:	212C - MD - 02740	Sample Received By:	Yvonne Muniz
Project Location:	EDDY CO NM		

Sample ID: FS - 1 (4') (H222448-02)

BTEx 8021B		mg/kg		Analyzed By: JH					
Analyte	Result	Reporting Limit	Analyzed	Method Blank	BS	% Recovery	True Value QC	RPD	Qualifier
Benzene*	<0.050	0.050	06/09/2022	ND	2.05	102	2.00	4.40	
Toluene*	<0.050	0.050	06/09/2022	ND	2.04	102	2.00	3.18	
Ethylbenzene*	<0.050	0.050	06/09/2022	ND	1.92	96.0	2.00	4.37	
Total Xylenes*	<0.150	0.150	06/09/2022	ND	5.99	99.8	6.00	4.95	
Total BTEx	<0.300	0.300	06/09/2022	ND					

Surrogate: 4-Bromofluorobenzene (PID) 101 % 69.9-140

Chloride, SM4500CI-B		mg/kg		Analyzed By: AC					
Analyte	Result	Reporting Limit	Analyzed	Method Blank	BS	% Recovery	True Value QC	RPD	Qualifier
Chloride	928	16.0	06/09/2022	ND	432	108	400	0.00	

TPH 8015M		mg/kg		Analyzed By: MS					
Analyte	Result	Reporting Limit	Analyzed	Method Blank	BS	% Recovery	True Value QC	RPD	Qualifier
GRO C6-C10*	<10.0	10.0	06/09/2022	ND	202	101	200	2.04	
DRO >C10-C28*	<10.0	10.0	06/09/2022	ND	204	102	200	3.39	
EXT DRO >C28-C36	<10.0	10.0	06/09/2022	ND					

Surrogate: 1-Chlorooctane 110 % 66.9-136

Surrogate: 1-Chlorooctadecane 113 % 59.5-142

Cardinal Laboratories

*=Accredited Analyte

PLEASE NOTE: Liability and Damages. Cardinal's liability and client's exclusive remedy for any claim arising, whether based in contract or tort, shall be limited to the amount paid by client for analyses. All claims, including those for negligence and any other cause whatsoever shall be deemed waived unless made in writing and received by Cardinal within thirty (30) days after completion of the applicable service. In no event shall Cardinal be liable for incidental or consequential damages, including, without limitation, business interruptions, loss of use, or loss of profits incurred by client, its subsidiaries, affiliates or successors arising out of or related to the performance of the services hereunder by Cardinal, regardless of whether such claim is based upon any of the above stated reasons or otherwise. Results relate only to the samples identified above. This report shall not be reproduced except in full with written approval of Cardinal Laboratories.

Celey D. Keene, Lab Director/Quality Manager



PHONE (575) 393-2326 ° 101 E. MARLAND ° HOBBS, NM 88240

Analytical Results For:

TETRA TECH
 CHRISTIAN LLULL
 901 WEST WALL STREET , STE 100
 MIDLAND TX, 79701
 Fax To: (432) 682-3946

Received:	06/08/2022	Sampling Date:	06/08/2022
Reported:	06/09/2022	Sampling Type:	Soil
Project Name:	SRO STATE COM #008H	Sampling Condition:	** (See Notes)
Project Number:	212C - MD - 02740	Sample Received By:	Yvonne Muniz
Project Location:	EDDY CO NM		

Sample ID: FS - 2 (4') (H222448-03)

BTEX 8021B		mg/kg		Analyzed By: JH					
Analyte	Result	Reporting Limit	Analyzed	Method Blank	BS	% Recovery	True Value QC	RPD	Qualifier
Benzene*	<0.050	0.050	06/09/2022	ND	2.05	102	2.00	4.40	
Toluene*	<0.050	0.050	06/09/2022	ND	2.04	102	2.00	3.18	
Ethylbenzene*	<0.050	0.050	06/09/2022	ND	1.92	96.0	2.00	4.37	
Total Xylenes*	<0.150	0.150	06/09/2022	ND	5.99	99.8	6.00	4.95	
Total BTEX	<0.300	0.300	06/09/2022	ND					

Surrogate: 4-Bromofluorobenzene (PID) 101 % 69.9-140

Chloride, SM4500CI-B		mg/kg		Analyzed By: AC					
Analyte	Result	Reporting Limit	Analyzed	Method Blank	BS	% Recovery	True Value QC	RPD	Qualifier
Chloride	912	16.0	06/09/2022	ND	432	108	400	0.00	

TPH 8015M		mg/kg		Analyzed By: MS					
Analyte	Result	Reporting Limit	Analyzed	Method Blank	BS	% Recovery	True Value QC	RPD	Qualifier
GRO C6-C10*	<10.0	10.0	06/09/2022	ND	202	101	200	2.04	
DRO >C10-C28*	<10.0	10.0	06/09/2022	ND	204	102	200	3.39	
EXT DRO >C28-C36	<10.0	10.0	06/09/2022	ND					

Surrogate: 1-Chlorooctane 119 % 66.9-136

Surrogate: 1-Chlorooctadecane 119 % 59.5-142

Cardinal Laboratories

*=Accredited Analyte

PLEASE NOTE: Liability and Damages. Cardinal's liability and client's exclusive remedy for any claim arising, whether based in contract or tort, shall be limited to the amount paid by client for analyses. All claims, including those for negligence and any other cause whatsoever shall be deemed waived unless made in writing and received by Cardinal within thirty (30) days after completion of the applicable service. In no event shall Cardinal be liable for incidental or consequential damages, including, without limitation, business interruptions, loss of use, or loss of profits incurred by client, its subsidiaries, affiliates or successors arising out of or related to the performance of the services hereunder by Cardinal, regardless of whether such claim is based upon any of the above stated reasons or otherwise. Results relate only to the samples identified above. This report shall not be reproduced except in full with written approval of Cardinal Laboratories.

Celey D. Keene, Lab Director/Quality Manager



PHONE (575) 393-2326 ° 101 E. MARLAND ° HOBBS, NM 88240

Notes and Definitions

S-04	The surrogate recovery for this sample is outside of established control limits due to a sample matrix effect.
ND	Analyte NOT DETECTED at or above the reporting limit
RPD	Relative Percent Difference
**	Samples not received at proper temperature of 6°C or below.
***	Insufficient time to reach temperature.
-	Chloride by SM4500Cl-B does not require samples be received at or below 6°C Samples reported on an as received basis (wet) unless otherwise noted on report

Cardinal Laboratories

*=Accredited Analyte

PLEASE NOTE: Liability and Damages. Cardinal's liability and client's exclusive remedy for any claim arising, whether based in contract or tort, shall be limited to the amount paid by client for analyses. All claims, including those for negligence and any other cause whatsoever shall be deemed waived unless made in writing and received by Cardinal within thirty (30) days after completion of the applicable service. In no event shall Cardinal be liable for incidental or consequential damages, including, without limitation, business interruptions, loss of use, or loss of profits incurred by client, its subsidiaries, affiliates or successors arising out of or related to the performance of the services hereunder by Cardinal, regardless of whether such claim is based upon any of the above stated reasons or otherwise. Results relate only to the samples identified above. This report shall not be reproduced except in full with written approval of Cardinal Laboratories.

A handwritten signature in black ink, appearing to read "Celey D. Keene".

Celey D. Keene, Lab Director/Quality Manager



101 East Marland, Hobbs, NM 88240
(575) 393-2326 FAX (575) 393-2476

CHAIN-OF-CUSTODY AND ANALYSIS REQUEST

pcss (0.4)

[illegible]



PHONE (575) 393-2326 ° 101 E. MARLAND ° HOBBS, NM 88240

June 10, 2022

CHRISTIAN LLULL

TETRA TECH

901 WEST WALL STREET , STE 100

MIDLAND, TX 79701

RE: SRO STATE COM #008H

Enclosed are the results of analyses for samples received by the laboratory on 06/09/22 15:50.

Cardinal Laboratories is accredited through Texas NELAP under certificate number T104704398-21-14. Accreditation applies to drinking water, non-potable water and solid and chemical materials. All accredited analytes are denoted by an asterisk (*). For a complete list of accredited analytes and matrices visit the TCEQ website at www.tceq.texas.gov/field/qa/lab_accred_certif.html.

Cardinal Laboratories is accredited through the State of Colorado Department of Public Health and Environment for:

Method EPA 552.2	Haloacetic Acids (HAA-5)
Method EPA 524.2	Total Trihalomethanes (TTHM)
Method EPA 524.4	Regulated VOCs (V1, V2, V3)

Accreditation applies to public drinking water matrices.

This report meets NELAP requirements and is made up of a cover page, analytical results, and a copy of the original chain-of-custody. If you have any questions concerning this report, please feel free to contact me.

Sincerely,

A handwritten signature in black ink that reads "Celey D. Keene". The signature is written in a cursive style with a large, stylized 'C' and 'K'.

Celey D. Keene

Lab Director/Quality Manager



PHONE (575) 393-2326 ° 101 E. MARLAND ° HOBBS, NM 88240

Analytical Results For:

TETRA TECH
 CHRISTIAN LLULL
 901 WEST WALL STREET , STE 100
 MIDLAND TX, 79701
 Fax To: (432) 682-3946

Received:	06/09/2022	Sampling Date:	06/09/2022
Reported:	06/10/2022	Sampling Type:	Soil
Project Name:	SRO STATE COM #008H	Sampling Condition:	** (See Notes)
Project Number:	212C - MD - 02740	Sample Received By:	Tamara Oldaker
Project Location:	EDDY CO NM		

Sample ID: NSW - 1 (10') (H222471-01)

BTX 8021B		mg/kg		Analyzed By: JH/					
Analyte	Result	Reporting Limit	Analyzed	Method Blank	BS	% Recovery	True Value QC	RPD	Qualifier
Benzene*	<0.050	0.050	06/09/2022	ND	2.16	108	2.00	3.02	
Toluene*	<0.050	0.050	06/09/2022	ND	2.13	107	2.00	3.56	
Ethylbenzene*	<0.050	0.050	06/09/2022	ND	2.06	103	2.00	3.30	
Total Xylenes*	<0.150	0.150	06/09/2022	ND	6.40	107	6.00	3.10	
Total BTX	<0.300	0.300	06/09/2022	ND					

Surrogate: 4-Bromofluorobenzene (PID) 97.4 % 69.9-140

Chloride, SM4500Cl-B		mg/kg		Analyzed By: AC						
Analyte	Result	Reporting Limit	Analyzed	Method Blank	BS	% Recovery	True Value QC	RPD	Qualifier	
Chloride	224	16.0	06/10/2022	ND	432	108	400	0.00		

TPH 8015M		mg/kg		Analyzed By: MS					
Analyte	Result	Reporting Limit	Analyzed	Method Blank	BS	% Recovery	True Value QC	RPD	Qualifier
GRO C6-C10*	<10.0	10.0	06/10/2022	ND	196	97.8	200	5.27	
DRO >C10-C28*	<10.0	10.0	06/10/2022	ND	202	101	200	4.45	
EXT DRO >C28-C36	<10.0	10.0	06/10/2022	ND					

Surrogate: 1-Chlorooctane 67.8 % 66.9-136

Surrogate: 1-Chlorooctadecane 70.2 % 59.5-142

Cardinal Laboratories

*=Accredited Analyte

PLEASE NOTE: Liability and Damages. Cardinal's liability and client's exclusive remedy for any claim arising, whether based in contract or tort, shall be limited to the amount paid by client for analyses. All claims, including those for negligence and any other cause whatsoever shall be deemed waived unless made in writing and received by Cardinal within thirty (30) days after completion of the applicable service. In no event shall Cardinal be liable for incidental or consequential damages, including, without limitation, business interruptions, loss of use, or loss of profits incurred by client, its subsidiaries, affiliates or successors arising out of or related to the performance of the services hereunder by Cardinal, regardless of whether such claim is based upon any of the above stated reasons or otherwise. Results relate only to the samples identified above. This report shall not be reproduced except in full with written approval of Cardinal Laboratories.

Celey D. Keene, Lab Director/Quality Manager



PHONE (575) 393-2326 ° 101 E. MARLAND ° HOBBS, NM 88240

Analytical Results For:

TETRA TECH
 CHRISTIAN LLULL
 901 WEST WALL STREET , STE 100
 MIDLAND TX, 79701
 Fax To: (432) 682-3946

Received:	06/09/2022	Sampling Date:	06/09/2022
Reported:	06/10/2022	Sampling Type:	Soil
Project Name:	SRO STATE COM #008H	Sampling Condition:	** (See Notes)
Project Number:	212C - MD - 02740	Sample Received By:	Tamara Oldaker
Project Location:	EDDY CO NM		

Sample ID: WSW - 1 (10') (H222471-02)

BTX 8021B		mg/kg		Analyzed By: JH/					
Analyte	Result	Reporting Limit	Analyzed	Method Blank	BS	% Recovery	True Value QC	RPD	Qualifier
Benzene*	<0.050	0.050	06/09/2022	ND	2.16	108	2.00	3.02	
Toluene*	<0.050	0.050	06/09/2022	ND	2.13	107	2.00	3.56	
Ethylbenzene*	<0.050	0.050	06/09/2022	ND	2.06	103	2.00	3.30	
Total Xylenes*	<0.150	0.150	06/09/2022	ND	6.40	107	6.00	3.10	
Total BTX	<0.300	0.300	06/09/2022	ND					

Surrogate: 4-Bromofluorobenzene (PID) 98.8 % 69.9-140

Chloride, SM4500CI-B		mg/kg		Analyzed By: AC					
Analyte	Result	Reporting Limit	Analyzed	Method Blank	BS	% Recovery	True Value QC	RPD	Qualifier
Chloride	240	16.0	06/10/2022	ND	448	112	400	7.41	

TPH 8015M		mg/kg		Analyzed By: MS					
Analyte	Result	Reporting Limit	Analyzed	Method Blank	BS	% Recovery	True Value QC	RPD	Qualifier
GRO C6-C10*	<10.0	10.0	06/10/2022	ND	196	97.8	200	5.27	
DRO >C10-C28*	<10.0	10.0	06/10/2022	ND	202	101	200	4.45	
EXT DRO >C28-C36	<10.0	10.0	06/10/2022	ND					

Surrogate: 1-Chlorooctane 69.8 % 66.9-136

Surrogate: 1-Chlorooctadecane 70.7 % 59.5-142

Cardinal Laboratories

*=Accredited Analyte

PLEASE NOTE: Liability and Damages. Cardinal's liability and client's exclusive remedy for any claim arising, whether based in contract or tort, shall be limited to the amount paid by client for analyses. All claims, including those for negligence and any other cause whatsoever shall be deemed waived unless made in writing and received by Cardinal within thirty (30) days after completion of the applicable service. In no event shall Cardinal be liable for incidental or consequential damages, including, without limitation, business interruptions, loss of use, or loss of profits incurred by client, its subsidiaries, affiliates or successors arising out of or related to the performance of the services hereunder by Cardinal, regardless of whether such claim is based upon any of the above stated reasons or otherwise. Results relate only to the samples identified above. This report shall not be reproduced except in full with written approval of Cardinal Laboratories.

Celey D. Keene, Lab Director/Quality Manager



PHONE (575) 393-2326 ° 101 E. MARLAND ° HOBBS, NM 88240

Notes and Definitions

ND	Analyte NOT DETECTED at or above the reporting limit
RPD	Relative Percent Difference
**	Samples not received at proper temperature of 6°C or below.
***	Insufficient time to reach temperature.
-	Chloride by SM4500Cl-B does not require samples be received at or below 6°C Samples reported on an as received basis (wet) unless otherwise noted on report

Cardinal Laboratories

*=Accredited Analyte

PLEASE NOTE: Liability and Damages. Cardinal's liability and client's exclusive remedy for any claim arising, whether based in contract or tort, shall be limited to the amount paid by client for analyses. All claims, including those for negligence and any other cause whatsoever shall be deemed waived unless made in writing and received by Cardinal within thirty (30) days after completion of the applicable service. In no event shall Cardinal be liable for incidental or consequential damages, including, without limitation, business interruptions, loss of use, or loss of profits incurred by client, its subsidiaries, affiliates or successors arising out of or related to the performance of the services hereunder by Cardinal, regardless of whether such claim is based upon any of the above stated reasons or otherwise. Results relate only to the samples identified above. This report shall not be reproduced except in full with written approval of Cardinal Laboratories.

A handwritten signature in black ink, appearing to read "Celey D. Keene", is written over a horizontal line.

Celey D. Keene, Lab Director/Quality Manager



101 East Marland, Hobbs, NM 88240
(575) 393-2326 FAX (575) 393-2476

CHAIN-OF-CUSTODY AND ANALYSIS REQUEST

BILL TO

ANALYSIS REQUEST

Company Name: Conoco Phillips

Project Manager: Christian Lluvi

Address:

City: State: Zip:

Phone #: Fax #:

Project #: 212C-MD-02740 Project Owner:

Project Name: SRO State Com # 008 H

Project Location: Eddy Co, NM

Sampler Name: Andrew Garcia

FOR LAB USE ONLY

Lab I.D. Sample I.D.

H222471

1 NSM-1 (10')
2 WSM-1 (10')

(G)RAB OR (C)OMP.

CONTAINERS

GROUNDWATER

WASTEWATER

SOIL

OIL

SLUDGE

OTHER :

ACID/BASE:

ICE / COOL

OTHER :

DATE
2022
9 Jun

TIME
1100
1200

TPH

BTEX

Chlorides 4500

PLEASE NOTE: Liability and Damages. Cardinal's liability and client's exclusive remedy for any claim arising whether based in contract or tort, shall be limited to the amount paid by the client for the analyses. All claims, including those for negligence and any other cause whatsoever shall be deemed waived unless made in writing and received by Cardinal within 30 days after completion of the applicable service. In no event shall Cardinal be liable for incidental or consequential damages, including without limitation, business interruptions, loss of use, or loss of profits incurred by client, its subsidiaries, affiliates or successors arising out of or related to the performance of services hereunder by Cardinal, regardless of whether such claim is based upon any of the above stated reasons or otherwise.

Relinquished By:

Date: 9 Jun 22

Received By:

Andrew Garcia

Relinquished By:

Date: 9 Jun 22

Received By:

Time: 1550

Date: 9 Jun 22

Received By:

Delivered By: (Circle One)

Observed Temp. °C 26.2

Corrected Temp. °C 25.7

Sample Condition

Cool Intact ☒ Yes ☐ No

CHECKED BY: (Initials)

Turnaround Time:

Standard ☒ Rush ☐

Bacteria (only) Sample Condition

Cool Intact ☒ Yes ☐ No

Observed Temp. °C

Corrected Temp. °C

Thermometer ID #113

Correction Factor -0.5°C

Verbal Result: ☐ Yes ☐ No Add'l Phone #:

All Results are emailed. Please provide Email address:

REMARKS: Christian Lluvi et tstratch.com

FORM-006 R-3.2 10/07/21

† Cardinal cannot accept verbal changes. Please email changes to celey.keene@cardinallabsnm.com



PHONE (575) 393-2326 ° 101 E. MARLAND ° HOBBS, NM 88240

June 13, 2022

CHRISTIAN LLULL

TETRA TECH

901 WEST WALL STREET , STE 100

MIDLAND, TX 79701

RE: SRO STATE COM #008H

Enclosed are the results of analyses for samples received by the laboratory on 06/10/22 14:00.

Cardinal Laboratories is accredited through Texas NELAP under certificate number T104704398-21-14. Accreditation applies to drinking water, non-potable water and solid and chemical materials. All accredited analytes are denoted by an asterisk (*). For a complete list of accredited analytes and matrices visit the TCEQ website at www.tceq.texas.gov/field/qa/lab_accred_certif.html.

Cardinal Laboratories is accredited through the State of Colorado Department of Public Health and Environment for:

Method EPA 552.2	Haloacetic Acids (HAA-5)
Method EPA 524.2	Total Trihalomethanes (TTHM)
Method EPA 524.4	Regulated VOCs (V1, V2, V3)

Accreditation applies to public drinking water matrices.

This report meets NELAP requirements and is made up of a cover page, analytical results, and a copy of the original chain-of-custody. If you have any questions concerning this report, please feel free to contact me.

Sincerely,

A handwritten signature in black ink that reads "Celey D. Keene". The signature is fluid and cursive, with the first name "Celey" and last name "Keene" clearly distinguishable.

Celey D. Keene

Lab Director/Quality Manager



PHONE (575) 393-2326 ° 101 E. MARLAND ° HOBBS, NM 88240

Analytical Results For:

TETRA TECH
 CHRISTIAN LLULL
 901 WEST WALL STREET , STE 100
 MIDLAND TX, 79701
 Fax To: (432) 682-3946

Received:	06/10/2022	Sampling Date:	06/10/2022
Reported:	06/13/2022	Sampling Type:	Soil
Project Name:	SRO STATE COM #008H	Sampling Condition:	** (See Notes)
Project Number:	212C - MD - 02740	Sample Received By:	Tamara Oldaker
Project Location:	EDDY CO NM		

Sample ID: FS - 3 (4') (H222496-01)

BTX 8021B		mg/kg		Analyzed By: JH						
Analyte	Result	Reporting Limit	Analyzed	Method Blank	BS	% Recovery	True Value QC	RPD	Qualifier	
Benzene*	<0.050	0.050	06/10/2022	ND	2.10	105	2.00	7.21		
Toluene*	<0.050	0.050	06/10/2022	ND	2.10	105	2.00	6.94		
Ethylbenzene*	<0.050	0.050	06/10/2022	ND	1.98	99.1	2.00	7.54		
Total Xylenes*	<0.150	0.150	06/10/2022	ND	6.19	103	6.00	7.41		
Total BTX	<0.300	0.300	06/10/2022	ND						

Surrogate: 4-Bromofluorobenzene (PID) 99.9 % 69.9-140

Chloride, SM4500Cl-B		mg/kg		Analyzed By: AC						
Analyte	Result	Reporting Limit	Analyzed	Method Blank	BS	% Recovery	True Value QC	RPD	Qualifier	
Chloride	608	16.0	06/13/2022	ND	432	108	400	3.64		

TPH 8015M		mg/kg		Analyzed By: MS					
Analyte	Result	Reporting Limit	Analyzed	Method Blank	BS	% Recovery	True Value QC	RPD	Qualifier
GRO C6-C10*	<10.0	10.0	06/10/2022	ND	207	104	200	0.727	
DRO >C10-C28*	<10.0	10.0	06/10/2022	ND	209	104	200	3.58	
EXT DRO >C28-C36	<10.0	10.0	06/10/2022	ND					

Surrogate: 1-Chlorooctane 105 % 66.9-136

Surrogate: 1-Chlorooctadecane 106 % 59.5-142

Cardinal Laboratories

*=Accredited Analyte

PLEASE NOTE: Liability and Damages. Cardinal's liability and client's exclusive remedy for any claim arising, whether based in contract or tort, shall be limited to the amount paid by client for analyses. All claims, including those for negligence and any other cause whatsoever shall be deemed waived unless made in writing and received by Cardinal within thirty (30) days after completion of the applicable service. In no event shall Cardinal be liable for incidental or consequential damages, including, without limitation, business interruptions, loss of use, or loss of profits incurred by client, its subsidiaries, affiliates or successors arising out of or related to the performance of the services hereunder by Cardinal, regardless of whether such claim is based upon any of the above stated reasons or otherwise. Results relate only to the samples identified above. This report shall not be reproduced except in full with written approval of Cardinal Laboratories.

Celey D. Keene, Lab Director/Quality Manager



PHONE (575) 393-2326 ° 101 E. MARLAND ° HOBBS, NM 88240

Analytical Results For:

TETRA TECH
 CHRISTIAN LLULL
 901 WEST WALL STREET , STE 100
 MIDLAND TX, 79701
 Fax To: (432) 682-3946

Received:	06/10/2022	Sampling Date:	06/10/2022
Reported:	06/13/2022	Sampling Type:	Soil
Project Name:	SRO STATE COM #008H	Sampling Condition:	** (See Notes)
Project Number:	212C - MD - 02740	Sample Received By:	Tamara Oldaker
Project Location:	EDDY CO NM		

Sample ID: FS - 4 (4') (H222496-02)

BTEx 8021B		mg/kg		Analyzed By: JH						
Analyte	Result	Reporting Limit	Analyzed	Method Blank	BS	% Recovery	True Value QC	RPD	Qualifier	
Benzene*	<0.050	0.050	06/10/2022	ND	2.10	105	2.00	7.21		
Toluene*	<0.050	0.050	06/10/2022	ND	2.10	105	2.00	6.94		
Ethylbenzene*	<0.050	0.050	06/10/2022	ND	1.98	99.1	2.00	7.54		
Total Xylenes*	<0.150	0.150	06/10/2022	ND	6.19	103	6.00	7.41		
Total BTEx	<0.300	0.300	06/10/2022	ND						

Surrogate: 4-Bromofluorobenzene (PID) 102 % 69.9-140

Chloride, SM4500CI-B		mg/kg		Analyzed By: AC						
Analyte	Result	Reporting Limit	Analyzed	Method Blank	BS	% Recovery	True Value QC	RPD	Qualifier	
Chloride	400	16.0	06/13/2022	ND	432	108	400	3.64		

TPH 8015M		mg/kg		Analyzed By: MS					
Analyte	Result	Reporting Limit	Analyzed	Method Blank	BS	% Recovery	True Value QC	RPD	Qualifier
GRO C6-C10*	<10.0	10.0	06/10/2022	ND	207	104	200	0.727	
DRO >C10-C28*	<10.0	10.0	06/10/2022	ND	209	104	200	3.58	
EXT DRO >C28-C36	<10.0	10.0	06/10/2022	ND					

Surrogate: 1-Chlorooctane 117 % 66.9-136

Surrogate: 1-Chlorooctadecane 119 % 59.5-142

Cardinal Laboratories

*=Accredited Analyte

PLEASE NOTE: Liability and Damages. Cardinal's liability and client's exclusive remedy for any claim arising, whether based in contract or tort, shall be limited to the amount paid by client for analyses. All claims, including those for negligence and any other cause whatsoever shall be deemed waived unless made in writing and received by Cardinal within thirty (30) days after completion of the applicable service. In no event shall Cardinal be liable for incidental or consequential damages, including, without limitation, business interruptions, loss of use, or loss of profits incurred by client, its subsidiaries, affiliates or successors arising out of or related to the performance of the services hereunder by Cardinal, regardless of whether such claim is based upon any of the above stated reasons or otherwise. Results relate only to the samples identified above. This report shall not be reproduced except in full with written approval of Cardinal Laboratories.

Celey D. Keene, Lab Director/Quality Manager



PHONE (575) 393-2326 ° 101 E. MARLAND ° HOBBS, NM 88240

Notes and Definitions

ND	Analyte NOT DETECTED at or above the reporting limit
RPD	Relative Percent Difference
**	Samples not received at proper temperature of 6°C or below.
***	Insufficient time to reach temperature.
-	Chloride by SM4500Cl-B does not require samples be received at or below 6°C Samples reported on an as received basis (wet) unless otherwise noted on report

Cardinal Laboratories

*=Accredited Analyte

PLEASE NOTE: Liability and Damages. Cardinal's liability and client's exclusive remedy for any claim arising, whether based in contract or tort, shall be limited to the amount paid by client for analyses. All claims, including those for negligence and any other cause whatsoever shall be deemed waived unless made in writing and received by Cardinal within thirty (30) days after completion of the applicable service. In no event shall Cardinal be liable for incidental or consequential damages, including, without limitation, business interruptions, loss of use, or loss of profits incurred by client, its subsidiaries, affiliates or successors arising out of or related to the performance of the services hereunder by Cardinal, regardless of whether such claim is based upon any of the above stated reasons or otherwise. Results relate only to the samples identified above. This report shall not be reproduced except in full with written approval of Cardinal Laboratories.

A handwritten signature in black ink, appearing to read "Celey D. Keene".

Celey D. Keene, Lab Director/Quality Manager



101 East Marland, Hobbs, NM 88240
(575) 393-2326 FAX (575) 393-2476

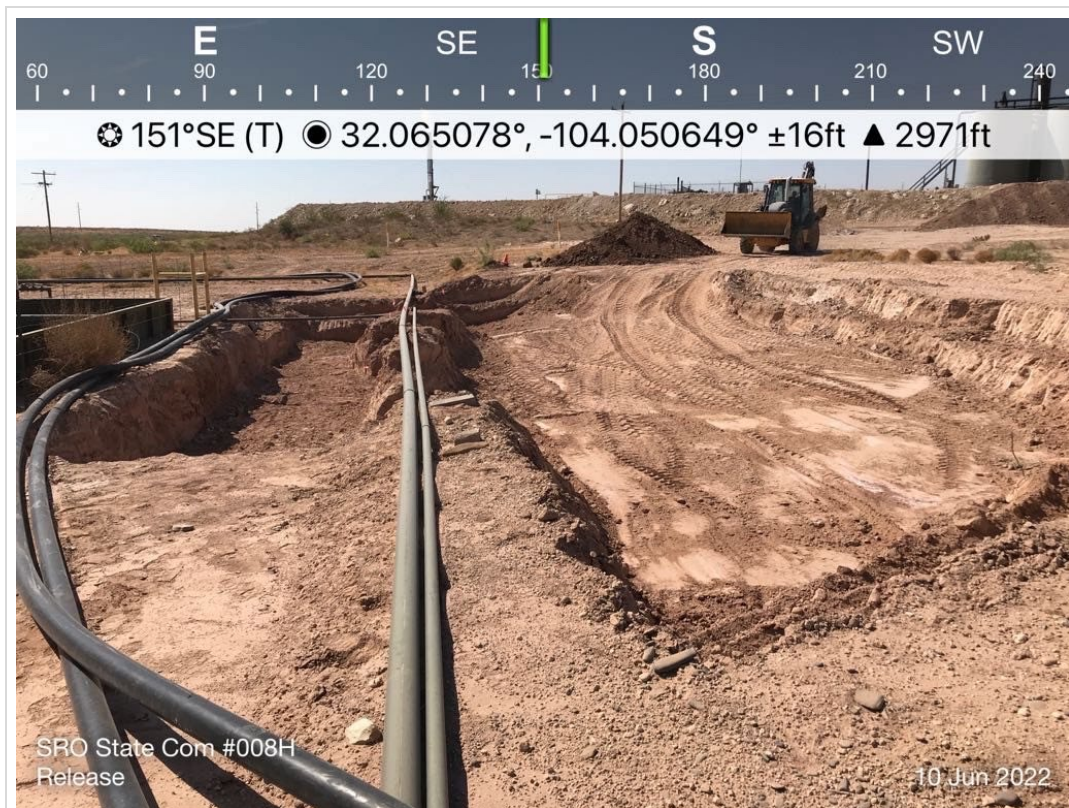
CHAIN-OF-CUSTODY AND ANALYSIS REQUEST

Page 1 of 1

[illegible]

APPENDIX E

Photographic Documentation



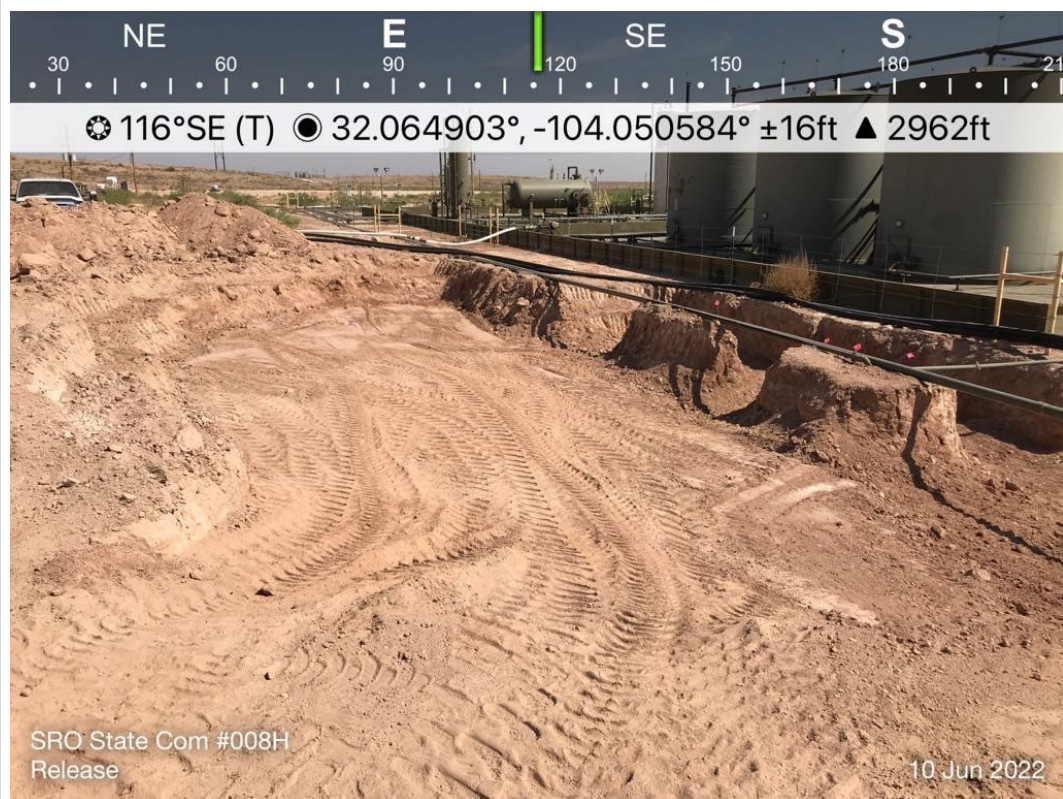
TETRA TECH, INC. PROJECT NO. 212C-MD-02740	DESCRIPTION	View southeast of release excavation extent.	1
	SITE NAME	ConocoPhillips SRO State Com #8 Release	6/10/2022



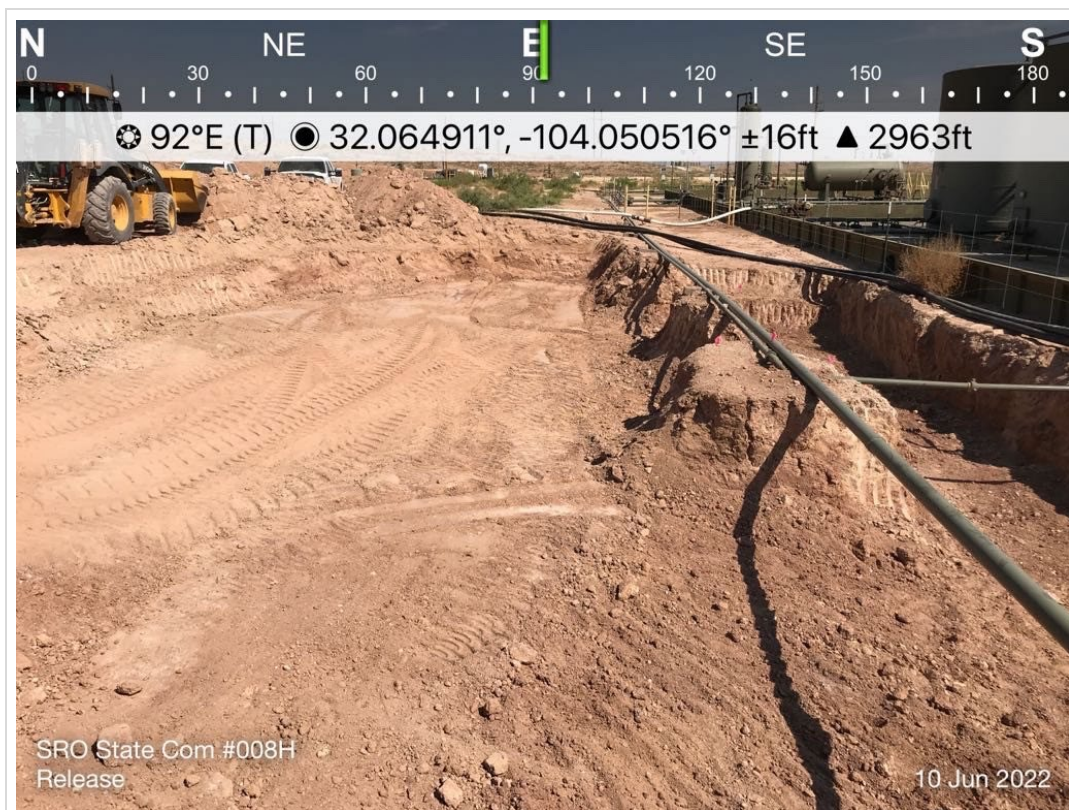
TETRA TECH, INC. PROJECT NO. 212C-MD-02740	DESCRIPTION	View north-northeast of release excavation extent.	2
	SITE NAME	ConocoPhillips SRO State Com #8 Release	6/10/2022



TETRA TECH, INC. PROJECT NO. 212C-MD-02740	DESCRIPTION	View south of release excavation extent.	3
	SITE NAME	ConocoPhillips SRO State Com #8 Release	6/10/2022



TETRA TECH, INC. PROJECT NO. 212C-MD-02740	DESCRIPTION	View east-southeast of release excavation extent.	4
	SITE NAME	ConocoPhillips SRO State Com #8 Release	6/10/2022



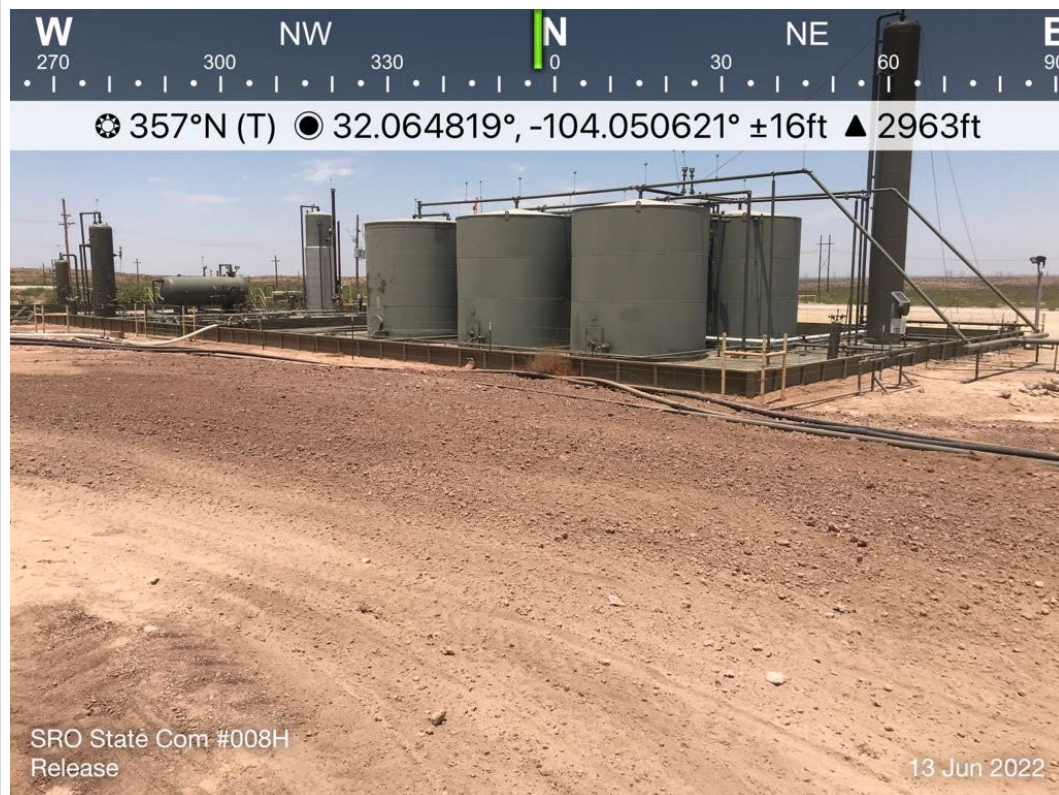
TETRA TECH, INC. PROJECT NO. 212C-MD-02740	DESCRIPTION	View east of release excavation extent.	5
	SITE NAME	ConocoPhillips SRO State Com #8 Release	6/10/2022



TETRA TECH, INC. PROJECT NO. 212C-MD-02740	DESCRIPTION	View northeast of release excavation extent.	6
	SITE NAME	ConocoPhillips SRO State Com #8 Release	6/10/2022



TETRA TECH, INC. PROJECT NO. 212C-MD-02740	DESCRIPTION	View southeast of backfilled area.	7
	SITE NAME	ConocoPhillips SRO State Com #8 Release	6/13/2022



TETRA TECH, INC. PROJECT NO. 212C-MD-02740	DESCRIPTION	View north of backfilled area.	8
	SITE NAME	ConocoPhillips SRO State Com #8 Release	6/13/2022

APPENDIX F

Waste Manifests



(PLEASE PRINT)

REQUIRED INFORMATION

Name

Phone No.

GENERATOR

NO. 239388

Operator No. _____
 Operators Name Concho Phillips
 Address 2208 W. Main Artesia NM 88210
 City, State, Zip 8324862477
 Phone No. 8324862477

Permit/RRC No. _____
 Lease/Well Name & No. SRO State com 008H
 County Elm
 API No. 29710530
 Rig Name & No. 015-37548
 AFE/PO No. 257

EXEMPT E&P Waste/Service Identification and Amount (place volume next to waste type in barrels or cubic yards)

Oil Based Muds	NON-INJECTABLE WATERS	OTHER EXEMPT WASTES (type and generation process of the waste)
<u>54</u>	Washout Water (Non-Injectable) _____	<u>10.54</u>
Oil Based Cuttings _____	Completion Fluid/Flow back (Non-Injectable) _____	<u>430</u>
Water Based Muds _____	Produced Water (Non-Injectable) _____	
Water Based Cuttings _____	Gathering Line Water/Waste (Non-Injectable) _____	
Produced Formation Solids _____	INTERNAL USE ONLY _____	
Tank Bottoms _____	Truck Washout (exempt waste) _____	
E&P Contaminated Soil <u>✓</u>		
Gas Plant Waste _____		

WASTE GENERATION PROCESS: ☐ DRILLING ☐ COMPLETION ☐ PRODUCTION ☐ GATHERING LINES

NON-EXEMPT E&P Waste/Service Identification and Amount

All non-exempt E&P waste must be analysed and be below the threshold limits for toxicity (TCLP), Ignitability, Corrosivity and Reactivity.

Non-Exempt Other _____ *please select from Non-Exempt Waste List on back

QUANTITY B - BARRELS 18 Y - YARDS E - EACH

I hereby certify that the above listed material(s), is (are) not a hazardous waste as defined by 40 CFR Part 261 or any applicable state law. That each waste has been properly described, classified and packaged, and is in proper condition for transportation according to applicable regulation.

- ☒ RCRA EXEMPT: Oil field wastes generated from oil and gas exploration and production operations and are not mixed with non-exempt waste (R360 Accepts certifications on a per load basis only)
- ☐ RCRA NON-EXEMPT: Oil field waste which is non-hazardous that does not exceed the minimum standards for waste hazardous by characteristics established in RCRA regulations, 40 CFR 261.21-261.24, or listed hazardous waste as defined by 40 CFR, part 261, subpart D, as amended. The following documentation demonstrating the waste as non-hazardous is attached. (Check the appropriate items as provided)
- ☐ MSDS Information ☐ RCRA Hazardous Waste Analysis ☐ Other (Provide Description Below)

(PRINT) AUTHORIZED AGENTS SIGNATURE

DATE

SIGNATURE

TRANSPORTER

Transporter's Name Marshall Partners
 Address 4008 N. Grimes
Hubbs, NM 88240
 Phone No. _____

Driver's Name _____
 Print Name _____
 Phone No. _____
 Truck No. _____

I hereby certify that the above named material(s) was/were picked up at the Generator's site listed above and delivered without incident to the disposal facility listed below.

SHIPMENT DATE

DRIVER'S SIGNATURE

DELIVERY DATE

DRIVER'S SIGNATURE

TRUCK TIME STAMP

IN: 10:26AM OUT: _____

DISPOSAL FACILITY

RECEIVING AREA

Name/No. DI

Site Name/ Permit No. Red Bluff Facility/ STF-065
 Address 5053 US Highway 285, Orla, TX 79770

Phone No. 432-448-4239

NORM READINGS TAKEN? (Circle One) YES 7 NO

If YES, was reading > 50 micro roentgens? (circle one) YES NO

Chemical Analysis (Mg/l) 5053
 Chloride 0.16

Conductivity (mmhos/cm) _____ pH _____

TANK BOTTOMS

1st Gauge _____
 2nd Gauge _____
 Received _____

BS&W/BBLS Received	BS&W (%)
Free Water	
Total Received	

I hereby certify that the above load material has been (circle one): ACCEPTED DENIED If denied, why?

NAME (PRINT)

DATE

TITLE

SIGNATURE



(PLEASE PRINT)

REQUIRED INFORMATION

Name _____

Phone No. _____

GENERATOR

NO. 255305

Operator No. _____
Operators Name Canoco
Address _____
City, State, Zip _____
Phone No. _____

Permit/PPC No. _____
Lease/Well Name & No. SRO ST Can 8H
County Edley
API No. 30-015-37548
Rig Name & No. _____
AFE/PO No. _____

EXEMPT E&P Waste/Service Identification and Amount (place volume next to waste type in barrels or cubic yards)

Oil Based Muds	_____	NON-INJECTABLE WATERS	Washout Water (Non-Injectable) _____ Completion Fluid/Flow Back (Non-Injectable) _____ Produced Water (Non-Injectable) _____ Gathering Line Water/Waste (Non-Injectable) _____	OTHER EXEMPT WASTES (type and generation process of the waste) <u>End Dump</u>
Oil Based Cuttings	_____			
Water Based Muds	_____	INTERNAL USE ONLY	Truck Washout (exempt waste) _____	
Water Based Cuttings	_____			
Produced Formation Solids	_____			
Tank Bottoms	_____			
E&P Contaminated Soil	_____			
Gas Plant Waste	_____			

WASTE GENERATION PROCESS: ☐ DRILLING ☐ COMPLETION ☐ PRODUCTION ☐ GATHERING LINES**NON-EXEMPT E&P Waste/Service Identification and Amount**

All non-exempt E&P waste must be analysed and be below threshold limits for toxicity (TCLP), Ignitability, Corrosivity and Reactivity.

Non-Exempt Other _____ *please select from **Non-Exempt Waste List** on back

QUANTITY B-BARRELS 18 Y-YARDS E-EACH

I hereby certify that the above listed material(s), is (are) not hazardous waste as defined by 40 CFR Part 261 or any applicable state law. That each waste has been properly described, classified and packaged, and is in proper condition for transportation according to applicable regulation.

- ☐ RCRA EXEMPT: Oil field wastes generated from oil and gas exploration and production operation and are not mixed with non-exempt waste (R360 Accepts certifications on a per load basis only)
- ☐ RCRA NON-EXEMPT: Oil field waste which is non-hazardous that does not exceed the minimum standards for waste hazardous by characteristics established in RCRA regulations, 40 CFR 261.21-261.24, or listed hazardous waste as defined by 40 CFR, part 261, subpart D, as amended. The following documentation demonstrating the waste as non-hazardous is attached. (Check the appropriate items as provided)
- ☐ MSDS Information ☐ RCRA Hazardous Waste Analysis ☐ Other (Provide Description Below)

(PRINT) AUTHORIZED AGENT'S SIGNATURE

DATE

SIGNATURE

TRANSPORTER

Transporter's Name McKibbin Brothers
Address Hobbs on
Phone No. _____

Driver's Name Josh Baby
Phone No. _____
Truck No. MT
WHP No. _____

I hereby certify that the above named material(s) was/were picked up at the Generator's site listed above and delivered without incident to the disposal facility listed below.

SHIPMENT DATE 6-7-22DRIVER'S SIGNATURE [Signature]DELIVERY DATE 6-7-22DRIVER'S SIGNATURE [Signature]**TRUCK TIME STAMP**IN: 11:41 AM OUT: _____**DISPOSAL FACILITY****RECEIVING AREA**Name/No. DI

Site Name/ Permit No. Red Bluff Facility / STF-065
Address 5053 US Hwy 285, Orla, TX 79770

Phone No. 432-448-4239NORM READINGS TAKEN? (Circle One) YES 7 NOIf YES, was reading > 50 micro roentgens? (Circle One) YES NO
NORM (mR/hr) _____**TANK BOTTOMS**

1st Gauge	Feet _____	Inches _____	BS&W Received	_____	BS&W (%)	_____
2nd Gauge	_____	_____	Free Water	_____		
Received	_____	_____	Total Received	_____		

I hereby certify that the above load material has been (circle one):

ACCEPTED 7-22DENIED RAIf denied, why? MANUAL

NAME (PRINT)

DATE

TITLE

SIGNATURE



(PLEASE PRINT)

REQUIRED INFORMATION

Name _____

Phone No. _____

GENERATOR

NO. 255306

Operator No. _____

Permit/PPC No. _____

Operators Name Crow

Lease/Well _____

Address _____

Name & No. 320 St Com 84County Edley

City, State, Zip _____

API No. 30-013-37548

Phone No. _____

Rig Name & No. _____

AFE/PO No. _____

EXEMPT E&P Waste/Service Identification and Amount (place volume next to waste type in barrels or cubic yards)

Oil Based Muds _____

Oil Based Cuttings _____

Water Based Muds _____

Water Based Cuttings _____

Produced Formation Solids _____

Tank Bottoms _____

E&P Contaminated Soil ✓

Gas Plant Waste _____

NON-INJECTABLE WATERS

Washout Water (Non-Injectable) _____

Completion Fluid/Flow Back (Non-Injectable) _____

Produced Water (Non-Injectable) _____

Gathering Line Water/Waste (Non-Injectable) _____

INTERNAL USE ONLY

Truck Washout (exempt waste) _____

OTHER EXEMPT WASTES (type and generation process of the waste)End dumpWASTE GENERATION PROCESS: ☐ DRILLING ☐ COMPLETION ☐ PRODUCTION ☐ GATHERING LINES**NON-EXEMPT E&P Waste/Service Identification and Amount**

All non-exempt E&P waste must be analysed and be below threshold limits for toxicity (TCLP), Ignitability, Corrosivity and Reactivity.

Non-Exempt Other _____ *please select from Non-Exempt Waste List on back

QUANTITY B-BARRELS 18 Y-YARDS E-EACH

I hereby certify that the above listed material(s), is (are) not hazardous waste as defined by 40 CFR Part 261 or any applicable state law. That each waste has been properly described, classified and packaged, and is in proper condition for transportation according to applicable regulation.

☐ RCRA EXEMPT:

Oil field wastes generated from oil and gas exploration and production operation and are not mixed with non-exempt waste (R360 Accepts certifications on a per load basis only)

☐ RCRA NON-EXEMPT:

Oil field waste which is non-hazardous that does not exceed the minimum standards for waste hazardous by characteristics established in RCRA regulations, 40 CFR 261.21-261.24, or listed hazardous waste as defined by 40 CFR, part 261, subpart D, as amended. The following documentation demonstrating the waste as non-hazardous is attached. (Check the appropriate items as provided)

☐ MSDS Information☐ RCRA Hazardous Waste Analysis☐ Other (Provide Description Below)

(PRINT) AUTHORIZED AGENTS SIGNATURE _____

DATE _____

SIGNATURE _____

TRANSPORTERTransporter's Name McClure PartnersDriver's Name JoshAddress 11008 McGinnis

Phone No. _____

Phone No. _____

Truck No. M75

WHP No. _____

I hereby certify that the above named material(s) was/were picked up at the Generator's site listed above and delivered without incident to the disposal facility listed below.

SHIPMENT DATE 6-7-22DRIVER'S SIGNATURE [Signature]DELIVERY DATE 6-7-22DRIVER'S SIGNATURE [Signature]**TRUCK TIME STAMP**IN: 1251 PM OUT: _____**DISPOSAL FACILITY****RECEIVING AREA**

Name/No. _____

Site Name/

Red Bluff Facility / STF-065

Permit No.

Phone No.

432-448-4239

Address

5053 US Hwy 285, Orla, TX 79770

NORM READINGS TAKEN? (Circle One) YES NO

If YES, was reading > 50 micro roentgens? (Circle One) YES NO

NORM (mR/hr) _____

TANK BOTTOMS

Feet

Inches

1st Gauge		
2nd Gauge		
Received		

BS&W Received		BS&W (%)	
Free Water			
Total Received			

I hereby certify that the above load material has been (circle one):

ACCEPTED 6/7/22DENIED RecIf denied, why? 8 CalibrationNAME (PRINT) Michael AndersonDATE 6/7/22

TITLE _____

SIGNATURE [Signature]



(PLEASE PRINT)

REQUIRED INFORMATION

Name Andrew [unclear]

Phone No. _____

GENERATORNO. 255307

Operator No. _____

Operators Name Conoco

Address _____

City, State, Zip _____

Phone No. _____

Permit/PPC No. _____

Lease/Well Name & No. SLO, St Com 84

County Edley

API No. 30 015 57548

Rig Name & No. 07

AFE/PO No. _____

EXEMPT E&P Waste/Service Identification and Amount (place volume next to waste type in barrels or cubic yards)

Oil Based Muds	NON-INJECTABLE WATERS	OTHER EXEMPT WASTES (type and generation process of the waste)
Oil Based Cuttings	Washout Water (Non-Injectable)	<u>End Dump</u>
Water Based Muds	Completion Fluid/Flow Back (Non-Injectable)	
Water Based Cuttings	Produced Water (Non-Injectable)	
Produced Formation Solids	Gathering Line Water/Waste (Non-Injectable)	
Tank Bottoms	INTERNAL USE ONLY	
E&P Contaminated Soil	Truck Washout (exempt waste)	
Gas Plant Waste		

WASTE GENERATION PROCESS: ☐ DRILLING ☐ COMPLETION ☐ PRODUCTION ☐ GATHERING LINES

NON-EXEMPT E&P Waste/Service Identification and Amount

All non-exempt E&P waste must be analysed and be below threshold limits for toxicity (TCLP), Ignitability, Corrosivity and Reactivity.

Non-Exempt Other _____ *please select from **Non-Exempt Waste List** on back

QUANTITY B-BARRELS 18 Y-YARDS _____ E-EACH _____

I hereby certify that the above listed material(s), is (are) not hazardous waste as defined by 40 CFR Part 261 or any applicable state law. That each waste has been properly described, classified and packaged, and is in proper condition for transportation according to applicable regulation.

- ☐ RCRA EXEMPT: Oil field wastes generated from oil and gas exploration and production operation and are not mixed with non-exempt waste (R360 Accepts certifications on a per load basis only)
- ☐ RCRA NON-EXEMPT: Oil field waste which is non-hazardous that does not exceed the minimum standards for waste hazardous by characteristics established in RCRA regulations, 40 CFR 261.21-261.24, or listed hazardous waste as defined by 40 CFR, part 261, subpart D, as amended. The following documentation demonstrating the waste as non-hazardous is attached. (Check the appropriate items as provided)
- ☐ MSDS Information ☐ RCRA Hazardous Waste Analysis ☐ Other (Provide Description Below)

(PRINT) AUTHORIZED AGENTS SIGNATURE

DATE

SIGNATURE

TRANSPORTER

Transporter's Name Marshall [unclear]

Address 4008 A Gunes

Phone No. _____

Driver's Name Jose [unclear]

Phone No. _____

Truck No. 175

WHP No. _____

I hereby certify that the above named material(s) was/were picked up at the Generator's site listed above and delivered without incident to the disposal facility listed below.

6-7-22 SHIPMENT DATE [unclear] DRIVER'S SIGNATURE 6-7-22 DELIVERY DATE [unclear] DRIVER'S SIGNATURE

TRUCK TIME STAMP

IN: 2:14 PM OUT: _____

DISPOSAL FACILITY**RECEIVING AREA**

Name/No. DI

Site Name/Permit No. Red Bluff Facility / STF-065

Address 5053 US Hwy 285, Orla, TX 79770

Phone No. 432-448-4239

NORM READINGS TAKEN? (Circle One) YES 7 NO

If YES, was reading > 50 micro roentgens? (Circle One) YES NO

NORM (mR/hr) _____

TANK BOTTOMS

	Feet	Inches	BS&W Received	BS&W (%)
1st Gauge				
2nd Gauge				
Received				

I hereby certify that the above load material has been (circle one):

ACCEPTED U-7-22DENIED [unclear]If denied, why? [unclear]

NAME (PRINT)

DATE

TITLE

SIGNATURE



(PLEASE PRINT)

REQUIRED INFORMATION

Name Andrew Garcia

Phone No. _____

GENERATORNO. 255308

Operator No. _____

Permit/PPC No. _____

Operators Name Conoco

Lease/Well _____

Address _____

Name & No. SRO ST Cam 8H

City, State, Zip _____

County EDDY

Phone No. _____

API No. 30-015-37548

Rig Name & No. _____

AFE/PO No. _____

EXEMPT E&P Waste/Service Identification and Amount (place volume next to waste type in barrels or cubic yards)

Oil Based Muds	NON-INJECTABLE WATERS	OTHER EXEMPT WASTES (type and generation process of the waste)
Oil Based Cuttings	Washout Water (Non-Injectable)	<u>End Dump</u>
Water Based Muds	Completion Fluid/Flow Back (Non-Injectable)	
Water Based Cuttings	Produced Water (Non-Injectable)	
Produced Formation Solids	Gathering Line Water/Waste (Non-Injectable)	
Tank Bottoms	INTERNAL USE ONLY	
E&P Contaminated Soil	Truck Washout (exempt waste)	
Gas Plant Waste		

WASTE GENERATION PROCESS: ☐ DRILLING ☐ COMPLETION ☐ PRODUCTION ☐ GATHERING LINES**NON-EXEMPT E&P Waste/Service Identification and Amount**

All non-exempt E&P waste must be analysed and be below threshold limits for toxicity (TCLP), Ignitability, Corrosivity and Reactivity.

Non-Exempt Other _____ *please select from Non-Exempt Waste List on back

QUANTITY B-BARRELS 18 Y-YARDS E-EACH

I hereby certify that the above listed material(s), is (are) not hazardous waste as defined by 40 CFR Part 261 or any applicable state law. That each waste has been properly described, classified and packaged, and is in proper condition for transportation according to applicable regulation.

- ☐ RCRA EXEMPT: Oil field wastes generated from oil and gas exploration and production operation and are not mixed with non-exempt waste (R360 Accepts certifications on a per load basis only)
- ☐ RCRA NON-EXEMPT: Oil field waste which is non-hazardous that does not exceed the minimum standards for waste hazardous by characteristics established in RCRA regulations, 40 CFR 261.21-261.24, or listed hazardous waste as defined by 40 CFR, part 261, subpart D, as amended. The following documentation demonstrating the waste as non-hazardous is attached. (Check the appropriate items as provided)
- ☐ MSDS Information ☐ RCRA Hazardous Waste Analysis ☐ Other (Provide Description Below)

(PRINT) AUTHORIZED AGENTS SIGNATURE

DATE

SIGNATURE

TRANSPORTER

Transporter's Name

Address

Phone No.

Driver's Name Josh Busby

Phone No. _____

Truck No. 1175

WHP No. _____

I hereby certify that the above named material(s) was/were picked up at the Generator's site listed above and delivered without incident to the disposal facility listed below.

SHIPMENT DATE 6-7-22DRIVER'S SIGNATURE [Signature]DELIVERY DATE 6-7-22DRIVER'S SIGNATURE [Signature]**TRUCK TIME STAMP**IN: 3:22 PM OUT: _____**DISPOSAL FACILITY****RECEIVING AREA**Name/No. D1

Site Name/ Permit No.

Red Bluff Facility / STF-065

Address

5053 US Hwy 285, Orla, TX 79770Phone No. 432-448-4239NORM READINGS TAKEN? (Circle One) YES X NOIf YES, was reading > 50 micro roentgens? (Circle One) YES NO X

NORM (mR/hr) _____

TANK BOTTOMS

1st Gauge	Feet	Inches	BS&W Received	BS&W (%)
2nd Gauge			Free Water	
Received			Total Received	

I hereby certify that the above load material has been (circle one):

ACCEPTED

DENIED

If denied, why?

NAME (PRINT) [Signature]DATE 6-7-22TITLE [Signature]SIGNATURE [Signature]



(PLEASE PRINT)

REQUIRED INFORMATION

Name _____

Phone No. _____

GENERATOR

NO. 256209

Operator No. _____

Operators Name Conoco Phillips

Address _____

City, State, Zip _____

Phone No. 832-486-2477

Permit/PPC No. _____

Lease/Well Name & No. C SRO State Com

County _____

API No. 30-015-37548

Rig Name & No. _____

AFE/PO No. _____

EXEMPT E&P Waste/Service Identification and Amount (place volume next to waste type in barrels or cubic yards)

Oil Based Muds	_____	NON-INJECTABLE WATERS	_____	OTHER EXEMPT WASTES (type and generation process of the waste)	_____
Oil Based Cuttings	_____	Washout Water (Non-Injectable)	_____		
Water Based Muds	_____	Completion Fluid/Flow Back (Non-Injectable)	_____		
Water Based Cuttings	_____	Produced Water (Non-Injectable)	_____		
Produced Formation Solids	_____	Gathering Line Water/Waste (Non-Injectable)	_____		
Tank Bottoms	_____	INTERNAL USE ONLY	_____		
E&P Contaminated Soil	_____	Truck Washout (exempt waste)	_____		
Gas Plant Waste	_____				

WASTE GENERATION PROCESS: ☐ DRILLING ☐ COMPLETION ☐ PRODUCTION ☐ GATHERING LINES**NON-EXEMPT E&P Waste/Service Identification and Amount**

All non-exempt E&P waste must be analysed and be below threshold limits for toxicity (TCLP), Ignitability, Corrosivity and Reactivity.

Non-Exempt Other _____ *please select from Non-Exempt Waste List on back

QUANTITY 18 B-BARRELS Y-YARDS E-EACH

I hereby certify that the above listed material(s), is (are) not hazardous waste as defined by 40 CFR Part 261 or any applicable state law. That each waste has been properly described, classified and packaged, and is in proper condition for transportation according to applicable regulation.

☐ RCRA EXEMPT: Oil field wastes generated from oil and gas exploration and production operation and are not mixed with non-exempt waste (R360 Accepts certifications on a per load basis only)☐ RCRA NON-EXEMPT: Oil field waste which is non-hazardous that does not exceed the minimum standards for waste hazardous by characteristics established in RCRA regulations, 40 CFR 261.21-261.24, or listed hazardous waste as defined by 40 CFR, part 261, subpart D, as amended. The following documentation demonstrating the waste as non-hazardous is attached. (Check the appropriate items as provided)☐ MSDS Information ☐ RCRA Hazardous Waste Analysis ☐ Other (Provide Description Below)

(PRINT) AUTHORIZED AGENTS SIGNATURE _____

DATE _____

SIGNATURE _____

TRANSPORTERTransporter's Name McArthur PartnersAddress Hobbes, TX

Phone No. _____

Driver's Name Jesse MorenoPhone No. (975) 961-5903Truck No. 180

WHP No. _____

I hereby certify that the above named material(s) was/were picked up at the Generator's site listed above and delivered without incident to the disposal facility listed below.

SHIPMENT DATE 06/08/22DRIVER'S SIGNATURE Jesse Moreno

DELIVERY DATE _____

DRIVER'S SIGNATURE Jesse Moreno**TRUCK TIME STAMP**IN: 11:38 AM OUT: _____**DISPOSAL FACILITY****RECEIVING AREA**Name/No. D-1Site Name/ Permit No. Red Bluff Facility / STF-065Address 5053 US Hwy 285, Orla, TX 79770Phone No. 432-448-4239

NORM READINGS TAKEN? (Circle One) YES NO

If YES, was reading > 50 micro roentgens? (Circle One) YES NO

NORM (mR/hr) 2**TANK BOTTOMS**

	Feet	Inches	BS&W Received	Free Water	Total Received	BS&W (%)
1st Gauge	_____	_____	_____	_____	_____	_____
2nd Gauge	_____	_____	_____	_____	_____	_____
Received	_____	_____	_____	_____	_____	_____

I hereby certify that the above load material has been (circle one):

ACCEPTED

DENIED

If denied, why? _____

NAME (PRINT) Veronica CalderonDATE 6/8/22TITLE RecSIGNATURE Veronica Calderon



(PLEASE PRINT)

REQUIRED INFORMATION

Name _____

Phone No. _____

GENERATOR

NO. 256210

Operator No. _____

Operators Name Corcoran, William

Address _____

City, State, Zip 580056-2177

Phone No. _____

Permit/PPC No. _____

Lease/Well _____

Name & No. 380 State road 1154

County Leban

API No. _____

Rig Name & No. 30-015-27548

AFE/PO No. _____

EXEMPT E&P Waste/Service Identification and Amount (place volume next to waste type in barrels or cubic yards)

Oil Based Muds	NON-INJECTABLE WATERS	OTHER EXEMPT WASTES (type and generation process of the waste)
Oil Based Cuttings	Washout Water (Non-Injectable)	<u>Belly</u>
Water Based Muds	Completion Fluid/Flow Back (Non-Injectable)	
Water Based Cuttings	Produced Water (Non-Injectable)	
Produced Formation Solids	Gathering Line Water/Waste (Non-Injectable)	
Tank Bottoms	INTERNAL USE ONLY	
E&P Contaminated Soil	Truck Washout (exempt waste)	
Gas Plant Waste		

WASTE GENERATION PROCESS: ☐ DRILLING ☐ COMPLETION ☐ PRODUCTION ☐ GATHERING LINES

NON-EXEMPT E&P Waste/Service Identification and Amount

All non-exempt E&P waste must be analysed and be below threshold limits for toxicity (TCLP), Ignitability, Corrosivity and Reactivity.

Non-Exempt Other _____ *please select from **Non-Exempt Waste List on back**

QUANTITY 18 B-BARRELS Y-YARDS E-EACH

I hereby certify that the above listed material(s), is (are) not hazardous waste as defined by 40 CFR Part 261 or any applicable state law. That each waste has been properly described, classified and packaged, and is in proper condition for transportation according to applicable regulation.

- ☐ RCRA EXEMPT: Oil field wastes generated from oil and gas exploration and production operation and are not mixed with non-exempt waste (R360 Accepts certifications on a per load basis only)
- ☐ RCRA NON-EXEMPT: Oil field waste which is non-hazardous that does not exceed the minimum standards for waste hazardous by characteristics established in RCRA regulations, 40 CFR 261.21-261.24, or listed hazardous waste as defined by 40 CFR, part 261, subpart D, as amended. The following documentation demonstrating the waste as non-hazardous is attached. (Check the appropriate items as provided)
- ☐ MSDS Information ☐ RCRA Hazardous Waste Analysis ☐ Other (Provide Description Below)

(PRINT) AUTHORIZED AGENTS SIGNATURE

DATE

SIGNATURE

TRANSPORTER

Transporter's Name McNabb Brothers

Address Hobbs, NM

Phone No. _____

Driver's Name _____

Phone No. _____

Truck No. _____

WHP No. _____

I hereby certify that the above named material(s) was/were picked up at the Generator's site listed above and delivered without incident to the disposal facility listed below.

SHIPMENT DATE

DRIVER'S SIGNATURE

DELIVERY DATE

DRIVER'S SIGNATURE

TRUCK TIME STAMPIN: 1:37 PM OUT: _____**DISPOSAL FACILITY****RECEIVING AREA**Name/No. D-1

Site Name/ Permit No. Red Bluff Facility / STF-065

Address 5053 US Hwy 285, Orla, TX 79770

Phone No. 432-448-4239

NORM READINGS TAKEN? (Circle One) YES NO

If YES, was reading > 50 micro roentgens? (Circle One) YES NO

NORM (mR/hr) 7

TANK BOTTOMS

	Feet	Inches
1st Gauge		
2nd Gauge		
Received		

BS&W Received		BS&W (%)	
Free Water			
Total Received			

I hereby certify that the above load material has been (circle one):

ACCEPTED

DENIED

If denied, why?

NAME (PRINT)

DATE

TITLE

SIGNATURE



(PLEASE PRINT)

REQUIRED INFORMATION

Name Charles D. ...

Phone No. _____

GENERATORNO. **256234**

Operator No. _____

Operators Name C. ...

Address _____

City, State, Zip 832-454-2477

Phone No. _____

Permit/PPC No. _____

Lease/Well _____

Name & No. 580 State Hwy 008 H

County _____

API No. 310-015-31548

Rig Name & No. _____

AFE/PO No. _____

EXEMPT E&P Waste/Service Identification and Amount (place volume next to waste type in barrels or cubic yards)

Oil Based Muds	NON-INJECTABLE WATERS	OTHER EXEMPT WASTES (type and generation process of the waste)
Oil Based Cuttings	Washout Water (Non-Injectable)	
Water Based Muds	Completion Fluid/Flow Back (Non-Injectable)	
Water Based Cuttings	Produced Water (Non-Injectable)	
Produced Formation Solids	Gathering Line Water/Waste (Non-Injectable)	
Tank Bottoms	INTERNAL USE ONLY	
E&P Contaminated Soil	Truck Washout (exempt waste)	
Gas Plant Waste		

WASTE GENERATION PROCESS: ☐ DRILLING ☐ COMPLETION ☐ PRODUCTION ☐ GATHERING LINES**NON-EXEMPT E&P Waste/Service Identification and Amount**

All non-exempt E&P waste must be analysed and be below threshold limits for toxicity (TCLP), Ignitability, Corrosivity and Reactivity.

Non-Exempt Other _____ *please select from Non-Exempt Waste List on back

QUANTITY 18 B-BARRELS Y-YARDS E-EACH

I hereby certify that the above listed material(s), is (are) not hazardous waste as defined by 40 CFR Part 261 or any applicable state law. That each waste has been properly described, classified and packaged, and is in proper condition for transportation according to applicable regulation.

- ☐ RCRA EXEMPT: Oil field wastes generated from oil and gas exploration and production operation and are not mixed with non-exempt waste (R360 Accepts certifications on a per load basis only)
- ☐ RCRA NON-EXEMPT: Oil field waste which is non-hazardous that does not exceed the minimum standards for waste hazardous by characteristics established in RCRA regulations, 40 CFR 261.21-261.24, or listed hazardous waste as defined by 40 CFR, part 261, subpart D, as amended. The following documentation demonstrating the waste as non-hazardous is attached. (Check the appropriate items as provided)
- ☐ MSDS Information ☐ RCRA Hazardous Waste Analysis ☐ Other (Provide Description Below)

(PRINT) AUTHORIZED AGENTS SIGNATURE

DATE

SIGNATURE

TRANSPORTERTransporter's Name McLobb BrothersAddress 1644

Phone No. _____

Driver's Name Joe McPherson

Phone No. _____

Truck No. 1187

WHP No. _____

I hereby certify that the above named material(s) was/were picked up at the Generator's site listed above and delivered without incident to the disposal facility listed below.

SHIPMENT DATE 6-8-22DRIVER'S SIGNATURE Joe McPhersonDELIVERY DATE 6-8-22DRIVER'S SIGNATURE Joe McPherson**TRUCK TIME STAMP**IN: 2:33 PM OUT: _____**DISPOSAL FACILITY****RECEIVING AREA**Name/No. D-1Site Name/ Red Bluff Facility / STF-065Permit No. 5053 US Hwy 285, Orla, TX 79770

Address _____

Phone No. 432-448-4239

NORM READINGS TAKEN? (Circle One) YES NO

If YES, was reading > 50 micro roentgens? (Circle One) YES NO

NORM (mR/hr) _____

TANK BOTTOMS

1st Gauge	Feet	Inches	BS&W Received	BS&W (%)
2nd Gauge			Free Water	
Received			Total Received	

I hereby certify that the above load material has been (circle one): ACCEPTED DENIED If denied, why? _____

NAME (PRINT) Joe McPhersonDATE 6/8/22TITLE RecSIGNATURE Joe McPherson



(PLEASE PRINT)

REQUIRED INFORMATION

Name _____

Phone No. _____

GENERATOR

NO. 256211

Operator No. _____
 Operators Name _____
 Address _____
 City, State, Zip _____
 Phone No. 430 956 2477

Permit/PPC No. _____
 Lease/Well _____
 Name & No. SA State com #100-11
 County _____
 API No. _____
 Rig Name & No. 30-115-37518
 AFE/PO No. _____

EXEMPT E&P Waste/Service Identification and Amount (place volume next to waste type in barrels or cubic yards)

Oil Based Muds	NON-INJECTABLE WATERS	OTHER EXEMPT WASTES (type and generation process of the waste)
Oil Based Cuttings	Washout Water (Non-Injectable)	
Water Based Muds	Completion Fluid/Flow Back (Non-Injectable)	
Water Based Cuttings	Produced Water (Non-Injectable)	
Produced Formation Solids	Gathering Line Water/Waste (Non-Injectable)	
Tank Bottoms	INTERNAL USE ONLY	
E&P Contaminated Soil	Truck Washout (exempt waste)	
Gas Plant Waste		

WASTE GENERATION PROCESS: ☐ DRILLING ☐ COMPLETION ☐ PRODUCTION ☐ GATHERING LINES

NON-EXEMPT E&P Waste/Service Identification and Amount

All non-exempt E&P waste must be analysed and be below threshold limits for toxicity (TCLP), Ignitability, Corrosivity and Reactivity.

Non-Exempt Other _____ *please select from Non-Exempt Waste List on back

QUANTITY 18 B-BARRELS Y-YARDS E-EACH

I hereby certify that the above listed material(s), is (are) not hazardous waste as defined by 40 CFR Part 261 or any applicable state law. That each waste has been properly described, classified and packaged, and is in proper condition for transportation according to applicable regulation.

- ☐ RCRA EXEMPT: Oil field wastes generated from oil and gas exploration and production operation and are not mixed with non-exempt waste (R360 Accepts certifications on a per load basis only)
- ☐ RCRA NON-EXEMPT: Oil field waste which is non-hazardous that does not exceed the minimum standards for waste hazardous by characteristics established in RCRA regulations, 40 CFR 261.21-261.24, or listed hazardous waste as defined by 40 CFR, part 261, subpart D, as amended. The following documentation demonstrating the waste as non-hazardous is attached. (Check the appropriate items as provided)
- ☐ MSDS Information ☐ RCRA Hazardous Waste Analysis ☐ Other (Provide Description Below)

(PRINT) AUTHORIZED AGENTS SIGNATURE

DATE

SIGNATURE

TRANSPORTER

Transporter's Name _____
 Address _____
 Phone No. _____

Driver's Name _____
 Phone No. _____
 Truck No. _____
 WHP No. _____

I hereby certify that the above named material(s) was/were picked up at the Generator's site listed above and delivered without incident to the disposal facility listed below.

SHIPMENT DATE

DRIVER'S SIGNATURE

DELIVERY DATE

DRIVER'S SIGNATURE

TRUCK TIME STAMP

IN: 2:51 PM OUT: _____

DISPOSAL FACILITY**RECEIVING AREA**

Name/No. D-1

Site Name/ Permit No. Red Bluff Facility / STF-065
 Address 5053 US Hwy 285, Orla, TX 79770

Phone No. 432-448-4239

NORM READINGS TAKEN? (Circle One) YES NO

If YES, was reading > 50 micro roentgens? (Circle One) YES NO

NORM (mR/hr) _____

TANK BOTTOMS

Feet

Inches

1st Gauge	
2nd Gauge	
Received	

BS&W Received		BS&W (%)	
Free Water			
Total Received			

I hereby certify that the above load material has been (circle one):

ACCEPTED

DENIED

If denied, why?

NAME (PRINT)

DATE

TITLE

SIGNATURE



(PLEASE PRINT)

REQUIRED INFORMATION

Name

Phone No.

GENERATOR

NO. 8002630

Operator No. _____
Operators Name _____
Address _____
City, State, Zip _____
Phone No. _____

Permit/RRC No. _____
Lease/Well _____
Name & No. _____
County _____
API No. _____
Rig Name & No. _____
AFE/PO No. _____

EXEMPT E&P Waste/Service Identification and Amount (place volume next to waste type in barrels or cubic yards)

OIL BASED MUDS	NON-INJECTABLE WATERS	OTHER EXEMPT WASTES (type and generation process of the waste)
Oil Based Muds _____	Washout Water (Non-Injectable) _____	
Oil Based Cuttings _____	Completion Fluid/Flow back (Non-Injectable) _____	
Water Based Muds _____	Produced Water (Non-Injectable) _____	
Water Based Cuttings _____	Gathering Line Water/Waste (Non-Injectable) _____	
Produced Formation Solids _____	INTERNAL USE ONLY	
Tank Bottoms _____	Truck Washout (exempt waste) _____	
E&P Contaminated Soil _____		
Gas Plant Waste _____		

WASTE GENERATION PROCESS: ☐ DRILLING ☐ COMPLETION ☐ PRODUCTION ☐ GATHERING LINES

NON-EXEMPT E&P Waste/Service Identification and Amount

All non-exempt E&P waste must be analysed and be below the threshold limits for toxicity (TCLP), Ignitability, Corrosivity and Reactivity.

Non-Exempt Other _____ *please select from Non-Exempt Waste List on back

QUANTITY B - BARRELS Y - YARDS E - EACH

I hereby certify that the above listed material(s), is (are) not a hazardous waste as defined by 40 CFR Part 261 or any applicable state law. That each waste has been properly described, classified and packaged, and is in proper condition for transportation according to applicable regulation.

- ☐ RCRA EXEMPT: Oil field wastes generated from oil and gas exploration and production operations and are not mixed with non-exempt waste (R360 Accepts certifications on a per load basis only)
- ☐ RCRA NON-EXEMPT: Oil field waste which is non-hazardous that does not exceed the minimum standards for waste hazardous by characteristics established in RCRA regulations, 40 CFR 261.21-261.24, or listed hazardous waste as defined by 40 CFR, part 261, subpart D, as amended. The following documentation demonstrating the waste as non-hazardous is attached. (Check the appropriate items as provided)
- ☐ MSDS Information ☐ RCRA Hazardous Waste Analysis ☐ Other (Provide Description Below)

(PRINT) AUTHORIZED AGENTS SIGNATURE

DATE

SIGNATURE

TRANSPORTER

Transporter's Name _____
Address _____
Phone No. _____

Driver's Name _____
Print Name _____
Phone No. _____
Truck No. _____

I hereby certify that the above named material(s) was/were picked up at the Generator's site listed above and delivered without incident to the disposal facility listed below.

SHIPMENT DATE

DRIVER'S SIGNATURE

DELIVERY DATE

DRIVER'S SIGNATURE

TRUCK TIME STAMP

IN: 10/11/2021 OUT: 10/11/2021

DISPOSAL FACILITY

RECEIVING AREA

Name/No. 151

Site Name/ Permit No. Red Bluff Facility/ STF-065
Address 5053 US Highway 285, Orla, TX 79770

Phone No. 432-448-4239

NORM READINGS TAKEN? (Circle One) YES NO

If YES, was reading > 50 micro roentgens? (circle one) YES NO

Chemical Analysis (Mg/l) Chloride _____

Conductivity (mmhos/cm) _____ pH _____

TANK BOTTOMS

1st Gauge Feet _____ Inches _____
2nd Gauge _____
Received _____

BS&W/BBLs Received	BS&W (%)
Free Water	
Total Received	

I hereby certify that the above load material has been (circle one): ACCEPTED DENIED If denied, why?

NAME (PRINT)

DATE

TITLE

SIGNATURE



(PLEASE PRINT)

REQUIRED INFORMATION

Name John P. [unclear]Phone No. [unclear]**GENERATOR**NO. **8002638**

Operator No. _____

Operators Name James P. [unclear]

Address _____

City, State, Zip _____

Phone No. _____

Permit/RRC No. _____

Lease/Well Name & No. NO. 1045 11012 Perm # 134

County Edwards

API No. 30-015-13282

Rig Name & No. _____

AFE/PO No. _____

EXEMPT E&P Waste/Service Identification and Amount (place volume next to waste type in barrels or cubic yards)

Oil Based Muds	NON-INJECTABLE WATERS	OTHER EXEMPT WASTES (type and generation process of the waste)
Oil Based Cuttings	Washout Water (Non-Injectable)	
Water Based Muds	Completion Fluid/Flow back (Non-Injectable)	
Water Based Cuttings	Produced Water (Non-Injectable)	
Produced Formation Solids	Gathering Line Water/Waste (Non-Injectable)	
Tank Bottoms	INTERNAL USE ONLY	
E&P Contaminated Soil	Truck Washout (exempt waste)	
Gas Plant Waste		

WASTE GENERATION PROCESS: ☐ DRILLING ☐ COMPLETION ☐ PRODUCTION ☐ GATHERING LINES

NON-EXEMPT E&P Waste/Service Identification and Amount

All non-exempt E&P waste must be analysed and be below the threshold limits for toxicity (TCLP), Ignitability, Corrosivity and Reactivity.

Non-Exempt Other _____ *please select from Non-Exempt Waste List on back

QUANTITY 18 B - BARRELS 7 Y - YARDS E - EACH

I hereby certify that the above listed material(s), is (are) not a hazardous waste as defined by 40 CFR Part 261 or any applicable state law. That each waste has been properly described, classified and packaged, and is in proper condition for transportation according to applicable regulation.

☐ RCRA EXEMPT:

Oil field wastes generated from oil and gas exploration and production operations and are not mixed with non-exempt waste (R360 Accepts certifications on a per load basis only)

☐ RCRA NON-EXEMPT:

Oil field waste which is non-hazardous that does not exceed the minimum standards for waste hazardous by characteristics established in RCRA regulations, 40 CFR 261.21-261.24, or listed hazardous waste as defined by 40 CFR, part 261, subpart D, as amended. The following documentation demonstrating the waste as non-hazardous is attached. (Check the appropriate items as provided)

☐ MSDS Information☐ RCRA Hazardous Waste Analysis☐ Other (Provide Description Below)

(PRINT) AUTHORIZED AGENTS SIGNATURE

DATE

SIGNATURE

TRANSPORTER

Transporter's Name James P. [unclear]

Address _____

Phone No. _____

Driver's Name Joe P. [unclear]

Print Name _____

Phone No. _____

Truck No. 1001

I hereby certify that the above named material(s) was/were picked up at the Generator's site listed above and delivered without incident to the disposal facility listed below.

SHIPMENT DATE

DRIVER'S SIGNATURE

DELIVERY DATE

DRIVER'S SIGNATURE

TRUCK TIME STAMPIN: 10:46 AM OUT: _____**DISPOSAL FACILITY****RECEIVING AREA**Name/No. DI

Site Name/

Red Bluff Facility/ STF-065

Phone No.

432-448-4239

Permit No.

Address

5053 US Highway 285, Orla, TX 79770

NORM READINGS TAKEN? (Circle One)

YES

NO

If YES, was reading > 50 micro roentgens? (circle one)

YES

NO

Chloride

Conductivity

(mmhos/cm) 7

pH

Chemical Analysis (Mg/l) _____

TANK BOTTOMS

Feet

Inches

1st Gauge

2nd Gauge

Received

BS&W/BBLs Received

Free Water

Total Received

BS&W (%)

I hereby certify that the above load material has been (circle one):

ACCEPTED

DENIED

If denied, why? _____

NAME (PRINT)

DATE

TITLE

SIGNATURE



(PLEASE PRINT)

REQUIRED INFORMATION

Name

Phone No.

GENERATOR

NO.

8002637

Operator No. CONOCO-Phillips

Operators Name CONOCO-Phillips

Address _____

City, State, Zip _____

Phone No. _____

Permit/RRC No. _____

Lease/Well _____

Name & No. _____

County _____

API No. 30-015-47282

Rig Name & No. _____

AFE/PO No. _____

EXEMPT E&P Waste/Service Identification and Amount (place volume next to waste type in barrels or cubic yards)

Oil Based Muds	NON-INJECTABLE WATERS	OTHER EXEMPT WASTES (type and generation process of the waste)
Oil Based Cuttings	Washout Water (Non-Injectable)	<u>End dump</u>
Water Based Muds	Completion Fluid/Flow back (Non-Injectable)	
Water Based Cuttings	Produced Water (Non-Injectable)	
Produced Formation Solids	Gathering Line Water/Waste (Non-Injectable)	
Tank Bottoms	INTERNAL USE ONLY	
E&P Contaminated Soil	Truck Washout (exempt waste)	
Gas Plant Waste		

WASTE GENERATION PROCESS: ☐ DRILLING ☐ COMPLETION ☐ PRODUCTION ☐ GATHERING LINES

NON-EXEMPT E&P Waste/Service Identification and Amount

All non-exempt E&P waste must be analysed and be below the threshold limits for toxicity (TCLP), Ignitability, Corrosivity and Reactivity.

Non-Exempt Other _____

*please select from Non-Exempt Waste List on back

QUANTITY

B - BARRELS

Y - YARDS

E - EACH

I hereby certify that the above listed material(s), is (are) not a hazardous waste as defined by 40 CFR Part 261 or any applicable state law. That each waste has been properly described, classified and packaged, and is in proper condition for transportation according to applicable regulation.

- ☒ RCRA EXEMPT: Oil field wastes generated from oil and gas exploration and production operations and are not mixed with non-exempt waste (R360 Accepts certifications on a per load basis only)
- ☐ RCRA NON-EXEMPT: Oil field waste which is non-hazardous that does not exceed the minimum standards for waste hazardous by characteristics established in RCRA regulations, 40 CFR 261.21-261.24, or listed hazardous waste as defined by 40 CFR, part 261, subpart D, as amended. The following documentation demonstrating the waste as non-hazardous is attached. (Check the appropriate items as provided)
- ☐ MSDS Information ☐ RCRA Hazardous Waste Analysis ☐ Other (Provide Description Below)

(PRINT) AUTHORIZED AGENTS SIGNATURE

DATE

SIGNATURE

TRANSPORTER

Transporter's Name WMB - Partners

Address _____

Phone No. _____

Driver's Name Joe

Print Name _____

Phone No. _____

Truck No. 1481

I hereby certify that the above named material(s) was/were picked up at the Generator's site listed above and delivered without incident to the disposal facility listed below.

SHIPMENT DATE

DRIVER'S SIGNATURE

DELIVERY DATE

DRIVER'S SIGNATURE

TRUCK TIME STAMP

IN: 6-29-22 OUT: _____

DISPOSAL FACILITY

RECEIVING AREA

Name/No. _____

Site Name/ Red Bluff Facility/ STF-065

Permit No. _____

Address 5053 US Highway 285, Orla, TX 79770

Phone No. 432-448-4239

NORM READINGS TAKEN? (Circle One) YES NO

If YES, was reading > 50 micro roentgens? (circle one) YES NO

Chemical Analysis (Mg/l) _____

Conductivity (mmhos/cm) _____ pH _____

TANK BOTTOMS

	Feet	Inches
1st Gauge		
2nd Gauge		
Received		

BS&W/BBLS Received	BS&W (%)
Free Water	
Total Received	

I hereby certify that the above load material has been (circle one): ACCEPTED DENIED If denied, why? _____

NAME (PRINT)

DATE

TITLE

SIGNATURE



(PLEASE PRINT)

REQUIRED INFORMATION

Name

Phone No.

GENERATOR

NO.

8002631

Operator No. _____
Operators Name _____
Address _____
City, State, Zip _____
Phone No. _____

Permit/RRC No. _____
Lease/Well _____
Name & No. _____
County _____
API No. _____
Rig Name & No. _____
AFE/PO No. _____

EXEMPT E&P Waste/Service Identification and Amount (place volume next to waste type in barrels or cubic yards)

Oil Based Muds	NON-INJECTABLE WATERS	OTHER EXEMPT WASTES (type and generation process of the waste)
Oil Based Cuttings	Washout Water (Non-Injectable)	
Water Based Muds	Completion Fluid/Flow back (Non-Injectable)	
Water Based Cuttings	Produced Water (Non-Injectable)	
Produced Formation Solids	Gathering Line Water/Waste (Non-Injectable)	
Tank Bottoms	INTERNAL USE ONLY	
E&P Contaminated Soil	Truck Washout (exempt waste)	
Gas Plant Waste		

WASTE GENERATION PROCESS: ☐ DRILLING ☐ COMPLETION ☐ PRODUCTION ☐ GATHERING LINES

NON-EXEMPT E&P Waste/Service Identification and Amount

All non-exempt E&P waste must be analysed and be below the threshold limits for toxicity (TCLP), Ignitability, Corrosivity and Reactivity.

Non-Exempt Other _____ *please select from Non-Exempt Waste List on back

QUANTITY B - BARRELS Y - YARDS E - EACH

I hereby certify that the above listed material(s), is (are) not a hazardous waste as defined by 40 CFR Part 261 or any applicable state law. That each waste has been properly described, classified and packaged, and is in proper condition for transportation according to applicable regulation.

- ☐ RCRA EXEMPT: Oil field wastes generated from oil and gas exploration and production operations and are not mixed with non-exempt waste (R360 Accepts certifications on a per load basis only)
- ☐ RCRA NON-EXEMPT: Oil field waste which is non-hazardous that does not exceed the minimum standards for waste hazardous by characteristics established in RCRA regulations, 40 CFR 261.21-261.24, or listed hazardous waste as defined by 40 CFR, part 261, subpart D, as amended. The following documentation demonstrating the waste as non-hazardous is attached. (Check the appropriate items as provided)
- ☐ MSDS Information ☐ RCRA Hazardous Waste Analysis ☐ Other (Provide Description Below)

(PRINT) AUTHORIZED AGENTS SIGNATURE

DATE

SIGNATURE

TRANSPORTER

Transporter's Name _____
Address _____
Phone No. _____

Driver's Name _____
Print Name _____
Phone No. _____
Truck No. _____

I hereby certify that the above named material(s) was/were picked up at the Generator's site listed above and delivered without incident to the disposal facility listed below.

SHIPMENT DATE

DRIVER'S SIGNATURE

DELIVERY DATE

DRIVER'S SIGNATURE

TRUCK TIME STAMP

IN: 1-311-11 OUT: _____

DISPOSAL FACILITY

RECEIVING AREA

Name/No. _____

Site Name/ Permit No. Red Bluff Facility/ STF-065
Address 5053 US Highway 285, Orla, TX 79770

Phone No. 432-448-4239

NORM READINGS TAKEN? (Circle One) YES NO

If YES, was reading > 50 micro roentgens? (circle one) YES NO

Chemical Analysis (Mg/I) _____

Conductivity (mmhos/cm) _____ pH _____

TANK BOTTOMS

	Feet	Inches
1st Gauge		
2nd Gauge		
Received		

BS&W/BBLS Received	BS&W (%)
Free Water	
Total Received	

I hereby certify that the above load material has been (circle one): ACCEPTED DENIED If denied, why? _____

NAME (PRINT)

DATE

TITLE

SIGNATURE



(PLEASE PRINT)

REQUIRED INFORMATION

Name Andrew

Phone No. _____

GENERATORNO. 256421

Operator No. _____

Operators Name Conoco

Address _____

City, State, Zip _____

Phone No. _____

Permit/PPC No. _____

Lease/Well _____

Name & No. SKO State Com # 54

County _____

API No. 30-015-488237543

Rig Name & No. _____

AFE/PO No. _____

EXEMPT E&P Waste/Service Identification and Amount (place volume next to waste type in barrels or cubic yards)

Oil Based Muds	NON-INJECTABLE WATERS	OTHER EXEMPT WASTES (type and generation process of the waste)
Oil Based Cuttings	Washout Water (Non-Injectable)	<u>Dump Truck</u>
Water Based Muds	Completion Fluid/Flow Back (Non-Injectable)	
Water Based Cuttings	Produced Water (Non-Injectable)	
Produced Formation Solids	Gathering Line Water/Waste (Non-Injectable)	
Tank Bottoms	INTERNAL USE ONLY	
E&P Contaminated Soil	Truck Washout (exempt waste)	
Gas Plant Waste		

WASTE GENERATION PROCESS: ☐ DRILLING ☐ COMPLETION ☐ PRODUCTION ☐ GATHERING LINES

NON-EXEMPT E&P Waste/Service Identification and Amount

All non-exempt E&P waste must be analysed and be below threshold limits for toxicity (TCLP), Ignitability, Corrosivity and Reactivity.

Non-Exempt Other _____ *please select from **Non-Exempt Waste List on back**

QUANTITY B-BARRELS Y-YARDS 10 E-EACH

I hereby certify that the above listed material(s), is (are) not hazardous waste as defined by 40 CFR Part 261 or any applicable state law. That each waste has been properly described, classified and packaged, and is in proper condition for transportation according to applicable regulation.

- ☒ RCRA EXEMPT: Oil field wastes generated from oil and gas exploration and production operation and are not mixed with non-exempt waste (R360 Accepts certifications on a per load basis only)
- ☐ RCRA NON-EXEMPT: Oil field waste which is non-hazardous that does not exceed the minimum standards for waste hazardous by characteristics established in RCRA regulations, 40 CFR 261.21-261.24, or listed hazardous waste as defined by 40 CFR, part 261, subpart D, as amended. The following documentation demonstrating the waste as non-hazardous is attached. (Check the appropriate items as provided)
- ☐ MSDS Information ☐ RCRA Hazardous Waste Analysis ☐ Other (Provide Description Below)

(PRINT) AUTHORIZED AGENTS SIGNATURE

DATE

SIGNATURE

TRANSPORTER

Transporter's Name McNabb Brothers

Address _____

Phone No. _____

Driver's Name Ross Giora

Phone No. _____

Truck No. 1102

WHP No. _____

I hereby certify that the above named material(s) was/were picked up at the Generator's site listed above and delivered without incident to the disposal facility listed below.

SHIPMENT DATE

DRIVER'S SIGNATURE

DELIVERY DATE

DRIVER'S SIGNATURE

TRUCK TIME STAMPIN: 1:15 pm OUT: _____**DISPOSAL FACILITY****RECEIVING AREA**Name/No. D

Site Name/ Red Bluff Facility / STF-065

Permit No. 5053 US Hwy 285, Orla, TX 79770

Address _____

Phone No. 432-448-4239

NORM READINGS TAKEN? (Circle One) YES NO

If YES, was reading > 50 micro roentgens? (Circle One) YES NO

NORM (mR/hr) _____

TANK BOTTOMS

	Feet	Inches	BS&W Received	BS&W (%)
1st Gauge				
2nd Gauge			Free Water	
Received			Total Received	

I hereby certify that the above load material has been (circle one):

ACCEPTED

DENIED

If denied, why?

NAME (PRINT)

DATE

TITLE

SIGNATURE



(PLEASE PRINT)

REQUIRED INFORMATION

Name Subcontractor

Phone No. _____

GENERATORNO. **8002640**

Operator No. _____

Operators Name CONCRETE 11/11/18

Address _____

City, State, Zip _____

Phone No. _____

Permit/RRC No. _____

Lease/Well _____

Name & No. 320 10-10-10-10 44

County _____

API No. 30-018-47282 7511

Rig Name & No. _____

AFE/PO No. _____

EXEMPT E&P Waste/Service Identification and Amount (place volume next to waste type in barrels or cubic yards)

Oil Based Muds _____	NON-INJECTABLE WATERS	OTHER EXEMPT WASTES (type and generation process of the waste)
Oil Based Cuttings _____	Washout Water (Non-Injectable) _____	<u>End dump</u>
Water Based Muds _____	Completion Fluid/Flow back (Non-Injectable) _____	
Water Based Cuttings _____	Produced Water (Non-Injectable) _____	
Produced Formation Solids _____	Gathering Line Water/Waste (Non-Injectable) _____	
Tank Bottoms _____	INTERNAL USE ONLY	
E&P Contaminated Soil <u>18</u>	Truck Washout (exempt waste) _____	
Gas Plant Waste _____		

WASTE GENERATION PROCESS: ☐ DRILLING ☐ COMPLETION ☐ PRODUCTION ☐ GATHERING LINES

NON-EXEMPT E&P Waste/Service Identification and Amount

All non-exempt E&P waste must be analysed and be below the threshold limits for toxicity (TCLP), Ignitability, Corrosivity and Reactivity.

Non-Exempt Other _____ *please select from **Non-Exempt Waste List** on back

QUANTITY B - BARRELS Y - YARDS E - EACH

I hereby certify that the above listed material(s), is (are) not a hazardous waste as defined by 40 CFR Part 261 or any applicable state law. That each waste has been properly described, classified and packaged, and is in proper condition for transportation according to applicable regulation.

- ☒ **RCRA EXEMPT:** Oil field wastes generated from oil and gas exploration and production operations and are not mixed with non-exempt waste (R360 Accepts certifications on a per load basis only)
- ☐ **RCRA NON-EXEMPT:** Oil field waste which is non-hazardous that does not exceed the minimum standards for waste hazardous by characteristics established in RCRA regulations, 40 CFR 261.21-261.24, or listed hazardous waste as defined by 40 CFR, part 261, subpart D, as amended. The following documentation demonstrating the waste as non-hazardous is attached. (Check the appropriate items as provided)
- ☐ MSDS Information ☐ RCRA Hazardous Waste Analysis ☐ Other (Provide Description Below)

(PRINT) AUTHORIZED AGENTS SIGNATURE

DATE

SIGNATURE

TRANSPORTER

Transporter's Name Michael R. Patten

Address _____

Phone No. _____

Driver's Name Joe Pullar

Print Name _____

Phone No. _____

Truck No. 1181

I hereby certify that the above named material(s) was/were picked up at the Generator's site listed above and delivered without incident to the disposal facility listed below.

SHIPMENT DATE

DRIVER'S SIGNATURE

DELIVERY DATE

DRIVER'S SIGNATURE

TRUCK TIME STAMPIN: 3:00 OUT: _____**DISPOSAL FACILITY****RECEIVING AREA**Name/No. 01

Site Name/ **Red Bluff Facility/ STF-065**

Permit No. _____

Address **5053 US Highway 285, Orla, TX 79770**

Phone No. **432-448-4239**

NORM READINGS TAKEN? (Circle One) YES NO

If YES, was reading > 50 micro roentgens? (circle one) YES NO

Chemical Analysis (Mg/I) _____

Conductivity (mmhos/cm) _____ pH _____

TANK BOTTOMS

1st Gauge _____ Feet _____ Inches _____

2nd Gauge _____

Received _____

BS&W/BBLS Received	BS&W (%)
Free Water	
Total Received	

I hereby certify that the above load material has been (circle one): ACCEPTED DENIED If denied, why? _____

NAME (PRINT)

DATE

TITLE

SIGNATURE



(PLEASE PRINT)

REQUIRED INFORMATION

Name _____

Phone No. _____

GENERATORNO. **256420**

Operator No. _____
Operators Name CONOCO
Address _____
City, State, Zip _____
Phone No. _____

Permit/PPC No. _____
Lease/Well _____
Name & No. SPO ST. COM 8H
County 18
API No. 20-015-27548
Rig Name & No. _____
AFE/PO No. _____

EXEMPT E&P Waste/Service Identification and Amount (place volume next to waste type in barrels or cubic yards)

Oil Based Muds	NON-INJECTABLE WATERS	OTHER EXEMPT WASTES (type and generation process of the waste)
Oil Based Cuttings	Washout Water (Non-Injectable)	<u>45 Dump Truck</u>
Water Based Muds	Completion Fluid/Flow Back (Non-Injectable)	
Water Based Cuttings	Produced Water (Non-Injectable)	
Produced Formation Solids	Gathering Line Water/Waste (Non-Injectable)	
Tank Bottoms	INTERNAL USE ONLY	
E&P Contaminated Soil	Truck Washout (exempt waste)	
Gas Plant Waste		

WASTE GENERATION PROCESS: ☐ DRILLING ☐ COMPLETION ☐ PRODUCTION ☐ GATHERING LINES

NON-EXEMPT E&P Waste/Service Identification and Amount

All non-exempt E&P waste must be analysed and be below threshold limits for toxicity (TCLP), Ignitability, Corrosivity and Reactivity.

Non-Exempt Other _____ *please select from **Non-Exempt Waste List** on back

QUANTITY B-BARRELS Y-YARDS E-EACH

I hereby certify that the above listed material(s), is (are) not hazardous waste as defined by 40 CFR Part 261 or any applicable state law. That each waste has been properly described, classified and packaged, and is in proper condition for transportation according to applicable regulation.

☐ RCRA EXEMPT:

Oil field wastes generated from oil and gas exploration and production operation and are not mixed with non-exempt waste (R360 Accepts certifications on a per load basis only)

☐ RCRA NON-EXEMPT:

Oil field waste which is non-hazardous that does not exceed the minimum standards for waste hazardous by characteristics established in RCRA regulations, 40 CFR 261.21-261.24, or listed hazardous waste as defined by 40 CFR, part 261, subpart D, as amended. The following documentation demonstrating the waste as non-hazardous is attached. (Check the appropriate items as provided)

☐ MSDS Information☐ RCRA Hazardous Waste Analysis☐ Other (Provide Description Below)

(PRINT) AUTHORIZED AGENTS SIGNATURE

DATE

SIGNATURE

TRANSPORTER

Transporter's Name McNabb Partners
Address _____
Phone No. _____

Driver's Name Ray Garcia
Phone No. _____
Truck No. 11-02
WHP No. _____

I hereby certify that the above named material(s) was/were picked up at the Generator's site listed above and delivered without incident to the disposal facility listed below.

SHIPMENT DATE

DRIVER'S SIGNATURE

DELIVERY DATE

DRIVER'S SIGNATURE

TRUCK TIME STAMPIN: 3:16 pm OUT: _____**DISPOSAL FACILITY****RECEIVING AREA**Name/No. D1

Site Name/ Permit No. Red Bluff Facility / STF-065
Address 5053 US Hwy 285, Orla, TX 79770

Phone No. 432-448-4239NORM READINGS TAKEN? (Circle One) YES NOIf YES, was reading > 50 micro roentgens? (Circle One) YES NO
NORM (mR/hr) 7**TANK BOTTOMS**

	Feet	Inches	BS&W Received	Free Water	Total Received	BS&W (%)
1st Gauge						
2nd Gauge						
Received						

I hereby certify that the above load material has been (circle one):

ACCEPTED

DENIED

If denied, why?

NAME (PRINT)

DATE

TITLE

SIGNATURE



(PLEASE PRINT)

REQUIRED INFORMATION

Name

Phone No.

GENERATOR

NO.

8002641

Operator No. _____
Operators Name Corrado Phillips
Address _____
City, State, Zip _____
Phone No. _____

Permit/RRC No. _____
Lease/Well Name & No. 80 T-10-1084
County _____
API No. 70-015-42282
Rig Name & No. _____
AFE/PO No. _____

EXEMPT E&P Waste/Service Identification and Amount (place volume next to waste type in barrels or cubic yards)

	NON-INJECTABLE WATERS	OTHER EXEMPT WASTES (type and generation process of the waste)
Oil Based Muds	Washout Water (Non-Injectable)	
Oil Based Cuttings	Completion Fluid/Flow back (Non-Injectable)	
Water Based Muds	Produced Water (Non-Injectable)	
Water Based Cuttings	Gathering Line Water/Waste (Non-Injectable)	
Produced Formation Solids		
Tank Bottoms	INTERNAL USE ONLY	
E&P Contaminated Soil	Truck Washout (exempt waste)	
Gas Plant Waste		

WASTE GENERATION PROCESS: ☐ DRILLING ☐ COMPLETION ☐ PRODUCTION ☐ GATHERING LINES

NON-EXEMPT E&P Waste/Service Identification and Amount

All non-exempt E&P waste must be analysed and be below the threshold limits for toxicity (TCLP), Ignitability, Corrosivity and Reactivity.

Non-Exempt Other _____ *please select from Non-Exempt Waste List on back

QUANTITY B - BARRELS 19 Y - YARDS E - EACH

I hereby certify that the above listed material(s), is (are) not a hazardous waste as defined by 40 CFR Part 261 or any applicable state law. That each waste has been properly described, classified and packaged, and is in proper condition for transportation according to applicable regulation.

☒ RCRA EXEMPT:

Oil field wastes generated from oil and gas exploration and production operations and are not mixed with non-exempt waste (R360 Accepts certifications on a per load basis only)

☐ RCRA NON-EXEMPT:

Oil field waste which is non-hazardous that does not exceed the minimum standards for waste hazardous by characteristics established in RCRA regulations, 40 CFR 261.21-261.24, or listed hazardous waste as defined by 40 CFR, part 261, subpart D, as amended. The following documentation demonstrating the waste as non-hazardous is attached. (Check the appropriate items as provided)

☐ MSDS Information☐ RCRA Hazardous Waste Analysis☐ Other (Provide Description Below)

(PRINT) AUTHORIZED AGENTS SIGNATURE

DATE

SIGNATURE

TRANSPORTER

Transporter's Name Michael Portner
Address _____
Phone No. _____

Driver's Name Joe P. Hester
Print Name _____
Phone No. _____
Truck No. _____

I hereby certify that the above named material(s) was/were picked up at the Generator's site listed above and delivered without incident to the disposal facility listed below.

SHIPMENT DATE

DRIVER'S SIGNATURE

DELIVERY DATE

DRIVER'S SIGNATURE

TRUCK TIME STAMP

IN: 10:42 AM OUT: _____

DISPOSAL FACILITY

RECEIVING AREA

Name/No. TD1

Site Name/ Red Bluff Facility/ STF-065
Permit No. _____
Address 5053 US Highway 285, Orla, TX 79770

Phone No. 432-448-4239

NORM READINGS TAKEN? (Circle One)

YES

NO

If YES, was reading > 50 micro roentgens? (circle one)

YES

NO

Chemical Analysis (Mg/l) _____

Conductivity (mmhos/cm) _____

pH _____

TANK BOTTOMS

	Feet	Inches
1st Gauge		
2nd Gauge		
Received		

BS&W/BBLs Received	BS&W (%)
Free Water	
Total Received	

I hereby certify that the above load material has been (circle one):

ACCEPTED

DENIED

If denied, why? _____

NAME (PRINT)

DATE

TITLE

SIGNATURE



(PLEASE PRINT)

REQUIRED INFORMATION

Name _____

Phone No. _____

GENERATOR

NO. 255520

Operator No. _____

Permit/PPC No. _____

Lease/Well _____

Operators Name _____

Name & No. SLO STATE 0084Address CANON PHILIPS

County _____

City, State, Zip _____

API No. 30-025-12282

Phone No. _____

Rig Name & No. _____

AFE/PO No. _____

EXEMPT E&P Waste/Service Identification and Amount (place volume next to waste type in barrels or cubic yards)

Oil Based Muds	NON-INJECTABLE WATERS	OTHER EXEMPT WASTES (type and generation process of the waste)
Oil Based Cuttings	Washout Water (Non-Injectable)	
Water Based Muds	Completion Fluid/Flow Back (Non-Injectable)	
Water Based Cuttings	Produced Water (Non-Injectable)	
Produced Formation Solids	Gathering Line Water/Waste (Non-Injectable)	
Tank Bottoms		
E&P Contaminated Soil	INTERNAL USE ONLY	
Gas Plant Waste	Truck Washout (exempt waste)	

WASTE GENERATION PROCESS: ☐ DRILLING ☐ COMPLETION ☐ PRODUCTION ☐ GATHERING LINES**NON-EXEMPT E&P Waste/Service Identification and Amount**

All non-exempt E&P waste must be analysed and be below threshold limits for toxicity (TCLP), Ignitability, Corrosivity and Reactivity.

Non-Exempt Other _____

*please select from **Non-Exempt Waste List on back**

QUANTITY B-BARRELS 110 Y-YARDS E-EACH

I hereby certify that the above listed material(s), is (are) not hazardous waste as defined by 40 CFR Part 261 or any applicable state law. That each waste has been properly described, classified and packaged, and is in proper condition for transportation according to applicable regulation.

☒ RCRA EXEMPT:

Oil field wastes generated from oil and gas exploration and production operation and are not mixed with non-exempt waste (R360 Accepts certifications on a per load basis only)

☐ RCRA NON-EXEMPT:

Oil field waste which is non-hazardous that does not exceed the minimum standards for waste hazardous by characteristics established in RCRA regulations, 40 CFR 261.21-261.24, or listed hazardous waste as defined by 40 CFR, part 261, subpart D, as amended. The following documentation demonstrating the waste as non-hazardous is attached. (Check the appropriate items as provided)

☐ MSDS Information☐ RCRA Hazardous Waste Analysis☐ Other (Provide Description Below)

(PRINT) AUTHORIZED AGENTS SIGNATURE _____

DATE _____

SIGNATURE _____

TRANSPORTER

Transporter's Name _____

Driver's Name _____

Address _____

Phone No. _____

Phone No. _____

Truck No. _____

WHP No. _____

I hereby certify that the above named material(s) was/were picked up at the Generator's site listed above and delivered without incident to the disposal facility listed below.

SHIPMENT DATE _____

DRIVER'S SIGNATURE _____

DELIVERY DATE _____

DRIVER'S SIGNATURE _____

TRUCK TIME STAMP

IN: 10:30 AM OUT: _____

DISPOSAL FACILITY**RECEIVING AREA**Name/No. DI

Site Name/ Permit No. _____

Red Bluff Facility / STF-065

Phone No. _____

432-448-4239Address **5053 US Hwy 285, Orla, TX 79770**

NORM READINGS TAKEN? (Circle One) YES NO

If YES, was reading > 50 micro roentgens? (Circle One) YES NO

NORM (mR/hr) _____

TANK BOTTOMS

Feet

Inches

1st Gauge		
2nd Gauge		
Received		

BS&W Received		BS&W (%)	
Free Water			
Total Received			

I hereby certify that the above load material has been (circle one):

ACCEPTED

DENIED

If denied, why? _____

NAME (PRINT) _____

DATE _____

TITLE _____

SIGNATURE _____

(PLEASE PRINT)

REQUIRED INFORMATION

Name Andrew Baccia

Phone No. _____

GENERATORNO. **255594**

Operator No. _____

Operators Name Coroco

Address _____

City, State, Zip _____

Phone No. _____

Permit/PPC No. _____

Lease/Well _____

Name & No. SRO Stab (om #1084)

County _____

API No. 30-615-42782

Rig Name & No. _____

AFE/PO No. _____

EXEMPT E&P Waste/Service Identification and Amount (place volume next to waste type in barrels or cubic yards)

Oil Based Muds	NON-INJECTABLE WATERS	OTHER EXEMPT WASTES (type and generation process of the waste)
<input checked="" type="checkbox"/> Oil Based Cuttings	Washout Water (Non-Injectable) _____	<u>Dump Truck</u>
<input checked="" type="checkbox"/> Water Based Muds	Completion Fluid/Flow Back (Non-Injectable) _____	
<input checked="" type="checkbox"/> Water Based Cuttings	Produced Water (Non-Injectable) _____	
<input checked="" type="checkbox"/> Produced Formation Solids	Gathering Line Water/Waste (Non-Injectable) _____	
<input checked="" type="checkbox"/> Tank Bottoms	INTERNAL USE ONLY	
<input checked="" type="checkbox"/> E&P Contaminated Soil	Truck Washout (exempt waste) _____	
<input checked="" type="checkbox"/> Gas Plant Waste		

WASTE GENERATION PROCESS: ☐ DRILLING ☐ COMPLETION ☐ PRODUCTION ☐ GATHERING LINES

NON-EXEMPT E&P Waste/Service Identification and Amount

All non-exempt E&P waste must be analysed and be below threshold limits for toxicity (TCLP), Ignitability, Corrosivity and Reactivity.

Non-Exempt Other _____ *please select from **Non-Exempt Waste List on back**

QUANTITY 10 B-BARRELS 10 Y-YARDS 10 E-EACH

I hereby certify that the above listed material(s), is (are) not hazardous waste as defined by 40 CFR Part 261 or any applicable state law. That each waste has been properly described, classified and packaged, and is in proper condition for transportation according to applicable regulation.

- ☒ RCRA EXEMPT: Oil field wastes generated from oil and gas exploration and production operation and are not mixed with non-exempt waste (R360 Accepts certifications on a per load basis only)
- ☐ RCRA NON-EXEMPT: Oil field waste which is non-hazardous that does not exceed the minimum standards for waste hazardous by characteristics established in RCRA regulations, 40 CFR 261.21-261.24, or listed hazardous waste as defined by 40 CFR, part 261, subpart D, as amended. The following documentation demonstrating the waste as non-hazardous is attached. (Check the appropriate items as provided)
- ☐ MSDS Information ☐ RCRA Hazardous Waste Analysis ☐ Other (Provide Description Below)

(PRINT) AUTHORIZED AGENTS SIGNATURE

DATE

SIGNATURE

TRANSPORTER

Transporter's Name Mc Nabbs Partners

Address _____

Phone No. _____

Driver's Name Tony Soto

Phone No. 602 620 4327

Truck No. 1M02

WHP No. _____

I hereby certify that the above named material(s) was/were picked up at the Generator's site listed above and delivered without incident to the disposal facility listed below.

SHIPMENT DATE

DRIVER'S SIGNATURE

DELIVERY DATE

DRIVER'S SIGNATURE

TRUCK TIME STAMP**DISPOSAL FACILITY****RECEIVING AREA**

IN: _____ OUT: _____

Name/No. DI

Site Name/ Permit No. Red Bluff Facility / STF-065

Address 5053 US Hwy 285, Orla, TX 79770

Phone No. 432-448-4239

NORM READINGS TAKEN? (Circle One) YES NO

If YES, was reading > 50 micro roentgens? (Circle One) YES NO

NORM (mR/hr) _____

TANK BOTTOMS

	Feet	Inches	BS&W Received	BS&W (%)
1st Gauge				
2nd Gauge			Free Water	
Received			Total Received	

I hereby certify that the above load material has been (circle one): ACCEPTED DENIED If denied, why? mis

NAME (PRINT) Mc Nabbs DATE 6/13/22 TITLE Owner SIGNATURE _____

District I
1625 N. French Dr., Hobbs, NM 88240
Phone:(575) 393-6161 Fax:(575) 393-0720

District II
811 S. First St., Artesia, NM 88210
Phone:(575) 748-1283 Fax:(575) 748-9720

District III
1000 Rio Brazos Rd., Aztec, NM 87410
Phone:(505) 334-6178 Fax:(505) 334-6170

District IV
1220 S. St Francis Dr., Santa Fe, NM 87505
Phone:(505) 476-3470 Fax:(505) 476-3462

State of New Mexico
Energy, Minerals and Natural Resources
Oil Conservation Division
1220 S. St Francis Dr.
Santa Fe, NM 87505

CONDITIONS

Action 121547

CONDITIONS

Operator: COG OPERATING LLC 600 W Illinois Ave Midland, TX 79701	OGRID: 229137
	Action Number: 121547
	Action Type: [C-141] Release Corrective Action (C-141)

CONDITIONS

Created By	Condition	Condition Date
amaxwell	None	11/18/2022