

RICE Operating Company

112 West Taylor • Hobbs, New Mexico 88240

Phone: (575) 393-9174 • Fax: (575) 397-1471

April 1, 2022

REVIEWED

By Nelson Velez at 3:10 pm, Dec 16, 2022

Bradford Billings

Environmental Bureau, Oil Conservation Division
New Mexico Energy, Minerals, & Natural Resources Department
1220 S. St. Francis Drive
Santa Fe, New Mexico 87505

Review of 2021 Annual Groundwater Report:
Content satisfactory

1. Continue sampling on a semi-annual schedule at a minimum
2. Submit next annual report no later than March 31, 2023.

RE: **2021 Annual Groundwater Report**
Rice Operating Company – Hobbs SWD System
Hobbs K-29 EOL Boot (1R428-50): UL/K, Sec. 29, T18S, R38E

Mr. Billings:

ROC is the service provider (agent) for the Hobbs SWD System and has no ownership of any portion of the pipeline, well, or facility. The system is owned by a consortium of oil producers, System Parties, who provide all operating capital on a percentage ownership/usage basis. The system is now abandoned.

The site is located approximately 2.37 miles west of Hobbs, New Mexico at UL/K, Sec. 29, T18S, R38E as shown on the Geographical Location Map. NM OSE records indicate that groundwater will likely be encountered at a depth of approximately 67 feet.

An Investigation and Characterization Plan (ICP) was submitted to NMOCD on April 4th, 2008 and approved on May 21st, 2008. According to the ICP, the site was investigated through vertical and soil bore installation resulting in elevated chloride concentrations that decreased with depth. Based on the investigation, two monitoring wells were installed to determine groundwater quality and the wells have been sampled regularly since installation.

A Corrective Action Plan (CAP) was submitted and approved by NMOCD on February 5th, 2015. According to the NMOCD approved CAP, a 63x53-ft 20-mil reinforced liner was installed and properly seated at 4 ft bgs. The site was backfilled and seeded with a blend of native vegetation. A CAP Report and Soil Closure Request detailing this work was submitted to the NMOCD on September 8th, 2015. The report also requested an additional monitoring well (MW-3) be installed down-gradient of the site. NMOCD approved this report and granted 'Soil Closure' on September 15th, 2015. On October 2nd, 2015, the down-gradient well (MW-3) was installed, and lithology soil samples were collected at regular intervals.

ROC submitted the 2018 Annual Report and Addendum with a request to plug and abandon MW-1 and replace it with a 4-inch well to be used for groundwater recovery. NMOCD approved the request on September 5th, 2019. On November 12th, 2019, the well was plugged using a cement grout with 1-3% bentonite and a three ft cap of cement at the surface. A 4-inch

well (MW-1R) was installed approximately 10 ft southeast of the former well and lithology samples were collected at regular intervals.

All wells have been sampled regularly per NMOCD guidelines since installation. The attached table summarizes the analytical results from groundwater samples collected from the monitor wells at the site. The most recent sampling event resulted in a chloride concentration of 300 mg/L in MW-1, 80 mg/L in MW-2, and 228 mg/L in MW-3. BTEX concentrations have remained below detectable limit in each well since installation. In 2020, ROC received NMOCD approval to cease BTEX sampling. On January 31st, 2022, NMOCD granted approval to cease further sampling of MW-2 and MW-3. ROC will continue to grab samples from MW-2, as need, to ensure there are no non-ROC, up-gradient sources contributing to the degradation of groundwater quality. ROC will continue quarterly sampling in 2022.

Attached is the Appendix, which contains:

1. A Geographical Location Map.
2. A map showing well locations.
3. A table presenting all laboratory results and depth to groundwater for each well at the site, and a graph showing recent laboratory results.
4. The laboratory analytical results for 2021.

Rice Operating Company appreciates the opportunity to work with you on this project. Please contact me at (575) 393-9174 or Edward Hansen at (505) 920-4965 if you have any questions or wish to further discuss this site. Thank you for your time and consideration.

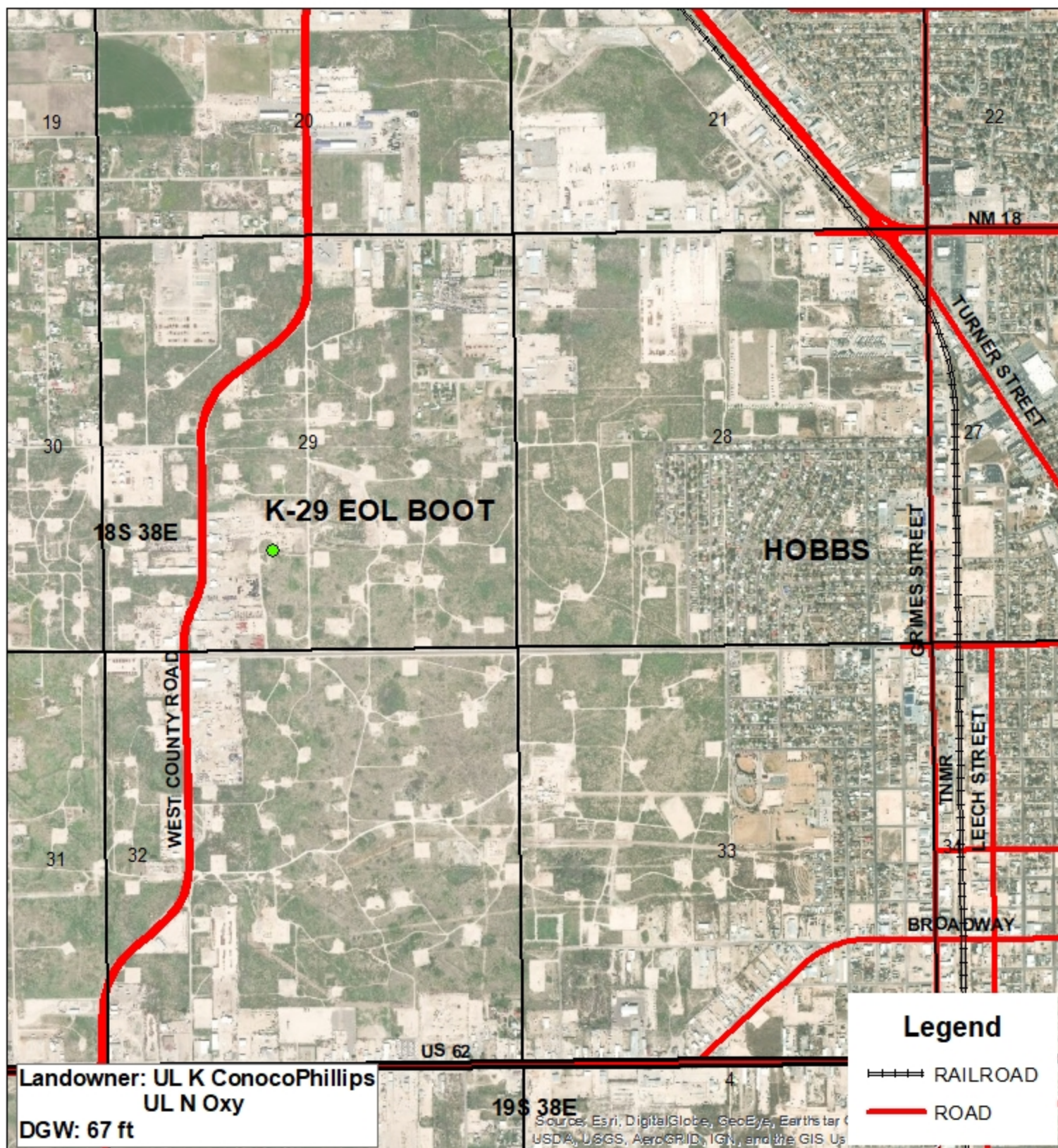
Sincerely,



Katie Davis
Environmental Manager
RICE Operating Company (ROC)

Cc – Edward J. Hansen (ROC)

appendix



HOBBS K-29 BOOT & EOL

1R428-50

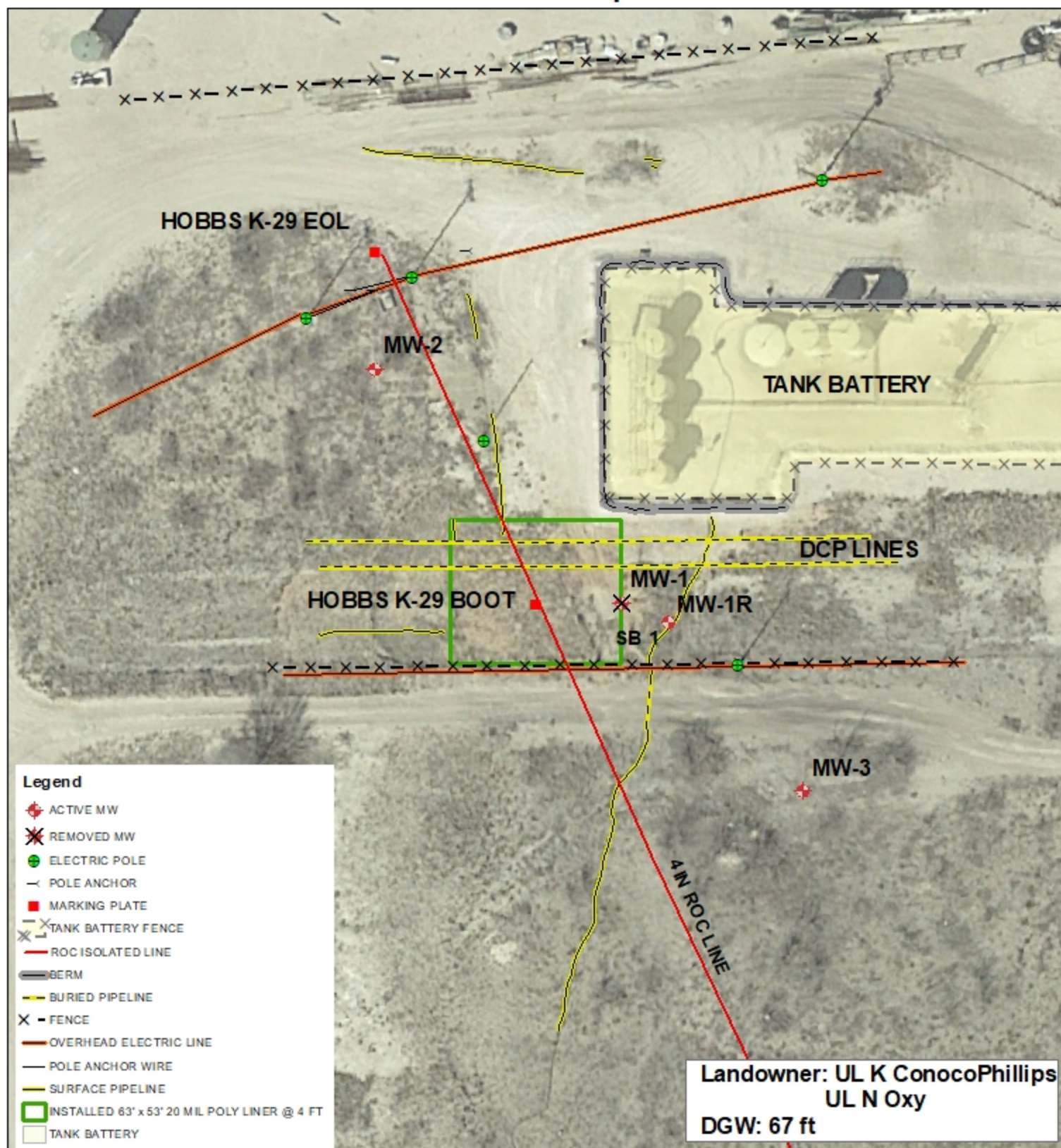
UL K & N SECTION 29
T-18-S R-38-E
LEA COUNTY, NM

GPS: 32.714915 -103.172174
NAD83 STATE PLANE PROJ
NM EAST ZONE

0 1,000 2,000
Feet

Drawing date: 2/4/20
Drafted by: T. Grieco





HOBBS K-29 BOOT & EOL

1R428-50

UL K & N SECTION 29
T-18-S R-38-E
LEA COUNTY, NM

GPS: 32.714915 -103.172174
NAD83 STATE PLANE PROJ
NM EAST ZONE

0 25 50
Feet

GPS date: 11/03/14 TG
Drawing date: 2/4/20
Drafted by: T. Grieco



ROC - Hobbs K-29 EOL (1R428-50)
Unit Letter K, Section 29, T18S, R38E

| MW | Depth to Water | Total Depth | Well Volume | Volume Purged | Sample Date | Cl | TDS | Benzene | Toluene | Ethyl Benzene | Total Xylenes | Sulfate | Comments |
|----|----------------|-------------|-------------|---------------|-------------|-----|-------|---------|---------|---------------|---------------|---------|---------------------------|
| 1 | 62.34 | 73.6 | 1.8 | 6 | 7/14/2009 | 520 | 1,310 | <0.001 | <0.001 | <0.001 | <0.003 | 57 | Silt to clear Slight odor |
| 1 | 62.43 | 73.6 | 1.8 | 6 | 10/27/2009 | 332 | 757 | 0.001 | <0.001 | 0.002 | <0.003 | 59.5 | Silt to clear Slight odor |
| 1 | 62.72 | 73.62 | 1.7 | 6 | 3/15/2010 | 476 | 1,170 | <0.001 | <0.001 | <0.001 | <0.003 | 71.5 | Silt to clear Slight odor |
| 1 | 62.81 | 73.62 | 1.7 | 6 | 6/4/2010 | 432 | 1,320 | <0.001 | <0.001 | <0.001 | <0.003 | 78 | Silt to clear Slight odor |
| 1 | 62.56 | 73.62 | 1.8 | 6 | 8/30/2010 | 540 | 1,400 | <0.001 | <0.001 | <0.001 | <0.003 | 51.7 | Silt to clear Slight odor |
| 1 | 62.91 | 73.62 | 1.7 | 6 | 12/10/2010 | 560 | 1,280 | <0.001 | <0.001 | <0.001 | <0.003 | 67.9 | Silt to clear Slight odor |
| 1 | 63.05 | 73.62 | 1.7 | 6 | 3/23/2011 | 610 | 1,620 | <0.001 | <0.001 | <0.001 | <0.003 | 76.9 | Silt to clear Slight odor |
| 1 | 63.22 | 73.62 | 1.7 | 6 | 6/20/2011 | 540 | 1,280 | <0.001 | <0.001 | <0.001 | <0.003 | 71.9 | Silt to clear Slight odor |
| 1 | 63.44 | 73.62 | 1.6 | 6 | 9/20/2011 | 610 | 1,470 | <0.001 | <0.001 | <0.001 | <0.003 | 82.1 | Silt to clear Slight odor |
| 1 | 63.62 | 73.62 | 1.6 | 6 | 12/15/2011 | 540 | 1,320 | <0.001 | <0.001 | <0.001 | <0.003 | 87.2 | Silt to clear Slight odor |
| 1 | 63.78 | 73.62 | 1.6 | 6 | 3/13/2012 | 570 | 1,360 | 0.003 | <0.001 | <0.001 | <0.003 | 74.2 | Silt to clear Slight odor |
| 1 | 63.93 | 73.62 | 1.6 | 6 | 6/11/2012 | 500 | 1,410 | <0.001 | <0.001 | <0.001 | <0.003 | 85.5 | Silt to clear Slight odor |
| 1 | 64.14 | 73.62 | 1.5 | 6 | 9/6/2012 | 500 | 1,280 | <0.001 | <0.001 | <0.001 | <0.003 | 77.6 | Silt to clear Slight odor |
| 1 | 64.3 | 73.62 | 1.5 | 6 | 11/29/2012 | 550 | 1,340 | <0.001 | <0.001 | <0.001 | <0.003 | 71.5 | Silt to clear Slight odor |
| 1 | 64.48 | 73.62 | 1.5 | 6 | 3/7/2013 | 492 | 1,220 | <0.001 | <0.001 | <0.001 | <0.003 | 88 | Silt to clear Slight odor |
| 1 | 64.69 | 73.62 | 1.4 | 6 | 6/24/2013 | 344 | 1,060 | <0.001 | <0.001 | <0.001 | <0.003 | 63 | Silt to clear Slight odor |
| 1 | 64.95 | 73.62 | 1.4 | 8 | 9/16/2013 | 336 | 987 | <0.001 | <0.001 | <0.001 | <0.003 | 88 | Silt to clear Slight odor |
| 1 | 65.15 | 73.62 | 1.4 | 6 | 12/12/2013 | 352 | 1,130 | <0.001 | <0.001 | <0.001 | <0.003 | 194 | Silt to clear Slight odor |
| 1 | 65.29 | 73.62 | 1.3 | 6 | 3/19/2014 | 352 | 1,080 | <0.001 | <0.001 | <0.001 | <0.003 | 112 | Silt to clear Slight odor |
| 1 | 65.49 | 73.62 | 1.3 | 6 | 6/16/2014 | 264 | 864 | <0.001 | <0.001 | <0.001 | <0.003 | 64.2 | Silt to clear Slight odor |
| 1 | 65.78 | 73.62 | 1.3 | 6 | 9/10/2014 | 352 | 1,150 | <0.001 | <0.001 | <0.001 | <0.003 | 250 | Silt to clear Slight odor |
| 1 | 65.63 | 73.62 | 1.3 | 6 | 12/17/2014 | 300 | 904 | <0.001 | <0.001 | <0.001 | <0.003 | 158 | Silt to clear Slight odor |
| 1 | 65.78 | 73.62 | 1.3 | 6 | 3/17/2015 | 264 | 904 | <0.001 | <0.001 | <0.001 | <0.003 | 73 | Silt to clear Slight odor |
| 1 | 65.88 | 73.62 | 1.2 | 6 | 6/16/2015 | 320 | 1,020 | <0.001 | <0.001 | <0.001 | <0.003 | 86 | Silt to clear Slight odor |
| 1 | 65.93 | 73.65 | 1.2 | 6 | 9/17/2015 | 316 | 1,050 | <0.001 | <0.001 | <0.001 | <0.003 | 144 | Silt to clear Slight odor |
| 1 | 65.65 | 73.65 | 1.2 | 6 | 12/1/2015 | 252 | 764 | <0.001 | <0.001 | <0.001 | <0.003 | 79.9 | Silt to clear Slight odor |
| 1 | 65.9 | 73.65 | 1.2 | 6 | 3/28/2016 | 416 | 1,120 | <0.001 | <0.001 | <0.001 | <0.003 | 58.7 | Silt to clear Slight odor |
| 1 | 66.05 | 73.65 | 1.2 | 6 | 6/23/2016 | 490 | 1,430 | <0.001 | <0.001 | <0.001 | <0.003 | 62.4 | Silt to clear Slight odor |
| 1 | 65.93 | 73.65 | 1.2 | 6 | 9/26/2016 | 640 | 1,940 | <0.001 | <0.001 | <0.001 | <0.003 | 73 | Silt to clear Slight odor |

ROC - Hobbs K-29 EOL (1R428-50)**Unit Letter K, Section 29, T18S, R38E**

| MW | Depth to Water | Total Depth | Well Volume | Volume Purged | Sample Date | Cl | TDS | Benzene | Toluene | Ethyl Benzene | Total Xylenes | Sulfate | Comments |
|----|----------------|-------------|-------------|---------------|-------------|-----|-------|---------|---------|---------------|---------------|---------|---------------------------|
| 1 | 65.67 | 73.65 | 1.3 | 6 | 12/5/2016 | 500 | 1,420 | <0.001 | <0.001 | <0.001 | <0.003 | 72 | Silt to clear Slight odor |
| 1 | 65.91 | 73.65 | 1.2 | 6 | 3/20/2017 | 610 | 1,520 | <0.001 | <0.001 | <0.001 | <0.003 | 78 | Silt to clear Slight odor |
| 1 | 66.26 | 73.65 | 1.2 | 6 | 6/22/2017 | 620 | 1,690 | <0.001 | <0.001 | <0.001 | <0.003 | 81 | Silt to clear Slight odor |
| 1 | 66.28 | 73.65 | 1.2 | 6 | 9/25/2017 | 460 | 1,780 | <0.001 | <0.001 | <0.001 | <0.003 | 74 | Silt to clear Slight odor |
| 1 | 66.32 | 73.65 | 1.2 | 6 | 12/21/2017 | 510 | 1,290 | <0.001 | <0.001 | <0.001 | <0.003 | 80 | Silt to clear Slight odor |
| 1 | 66.46 | 73.62 | 1.1 | 6 | 3/20/2018 | 550 | 1,410 | <0.001 | <0.001 | <0.001 | <0.003 | 70.9 | Silt to clear Slight odor |
| 1 | 66.62 | 73.62 | 1.1 | 6 | 6/26/2018 | 550 | 1,380 | <0.001 | <0.001 | <0.001 | <0.003 | 67.8 | Silt to clear Slight odor |
| 1 | 66.77 | 73.62 | 1.1 | 6 | 9/18/2018 | 500 | 1,240 | <0.001 | <0.001 | <0.001 | <0.003 | 71.6 | Silt to clear Slight odor |
| 1 | 66.81 | 73.62 | 1.1 | 6 | 12/20/2018 | 500 | 1,310 | <0.001 | <0.001 | <0.001 | <0.003 | 89.8 | Silt to clear Slight odor |
| 1 | 66.94 | 73.65 | 1.1 | 6 | 3/25/2019 | 660 | 1,620 | <0.001 | <0.001 | <0.001 | <0.003 | 67 | Silt to clear Slight odor |
| 1 | 67.08 | 73.65 | 1 | 6 | 6/24/2019 | 620 | 1,610 | <0.001 | <0.001 | <0.001 | <0.003 | 66 | Silt to clear Slight odor |
| 1 | 67.15 | 73.65 | 1 | 6 | 9/23/2019 | 640 | 1,670 | <0.001 | <0.001 | <0.001 | <0.003 | 62 | Silt to clear Slight odor |
| 1R | 67.46 | 112.78 | 29 | 100 | 12/9/2019 | 200 | 730 | <0.001 | <0.001 | <0.001 | <0.003 | 70.7 | Silt to clear Slight odor |
| 1R | 67.63 | 112.78 | 29.3 | 100 | 3/19/2020 | 264 | 822 | <0.001 | <0.001 | <0.001 | <0.003 | 73.5 | Silt to clear Slight odor |
| 1R | 67.88 | 112.78 | 29.2 | 100 | 9/28/2020 | 284 | 674 | XXX | XXX | XXX | XXX | 62 | Silt to clear Slight odor |
| 1R | 68.15 | 112.78 | 29 | 100 | 3/25/2021 | 292 | 913 | XXX | XXX | XXX | XXX | 75.5 | Silt to clear Slight odor |
| 1R | 68.33 | 112.78 | 29 | 100 | 6/25/2021 | 236 | 927 | XXX | XXX | XXX | XXX | 126 | Silt to clear Slight odor |
| 1R | 68.27 | 112.78 | 29 | 100 | 9/24/2021 | 288 | 939 | XXX | XXX | XXX | XXX | 79.3 | Silt to clear Slight odor |
| 1R | 68.17 | 112.78 | 29 | 100 | 12/1/2021 | 300 | 955 | XXX | XXX | XXX | XXX | 78 | Silt to clear Slight odor |

| MW | Depth to Water | Total Depth | Well Volume | Volume Purged | Sample Date | Cl | TDS | Benzene | Toluene | Ethyl Benzene | Total Xylenes | Sulfate | Comments |
|----|----------------|-------------|-------------|---------------|-------------|----|-----|---------|---------|---------------|---------------|---------|---------------------------|
| 2 | 63.67 | 77.41 | 2.2 | 8 | 3/13/2012 | 68 | 522 | <0.001 | <0.001 | <0.001 | <0.003 | 83.2 | Silt to clear Slight odor |
| 2 | 63.87 | 77.41 | 2.2 | 8 | 6/11/2012 | 68 | 474 | <0.001 | <0.001 | <0.001 | <0.003 | 86.4 | Silt to clear Slight odor |
| 2 | 64.02 | 77.41 | 2.1 | 8 | 9/6/2012 | 64 | 500 | <0.001 | <0.001 | <0.001 | <0.003 | 88.2 | Silt to clear Slight odor |
| 2 | 64.22 | 77.41 | 2.1 | 8 | 11/29/2012 | 68 | 521 | <0.001 | <0.001 | <0.001 | <0.003 | 88.5 | Silt to clear Slight odor |
| 2 | 64.41 | 77.41 | 2.1 | 8 | 3/7/2013 | 72 | 478 | <0.001 | <0.001 | <0.001 | <0.003 | 95 | Silt to clear Slight odor |
| 2 | 64.65 | 77.41 | 2 | 8 | 6/24/2013 | 68 | 504 | <0.001 | <0.001 | <0.001 | <0.003 | 83 | Silt to clear Slight odor |
| 2 | 64.86 | 77.41 | 2 | 8 | 9/16/2013 | 64 | 485 | <0.001 | <0.001 | <0.001 | <0.003 | 75.3 | Silt to clear Slight odor |

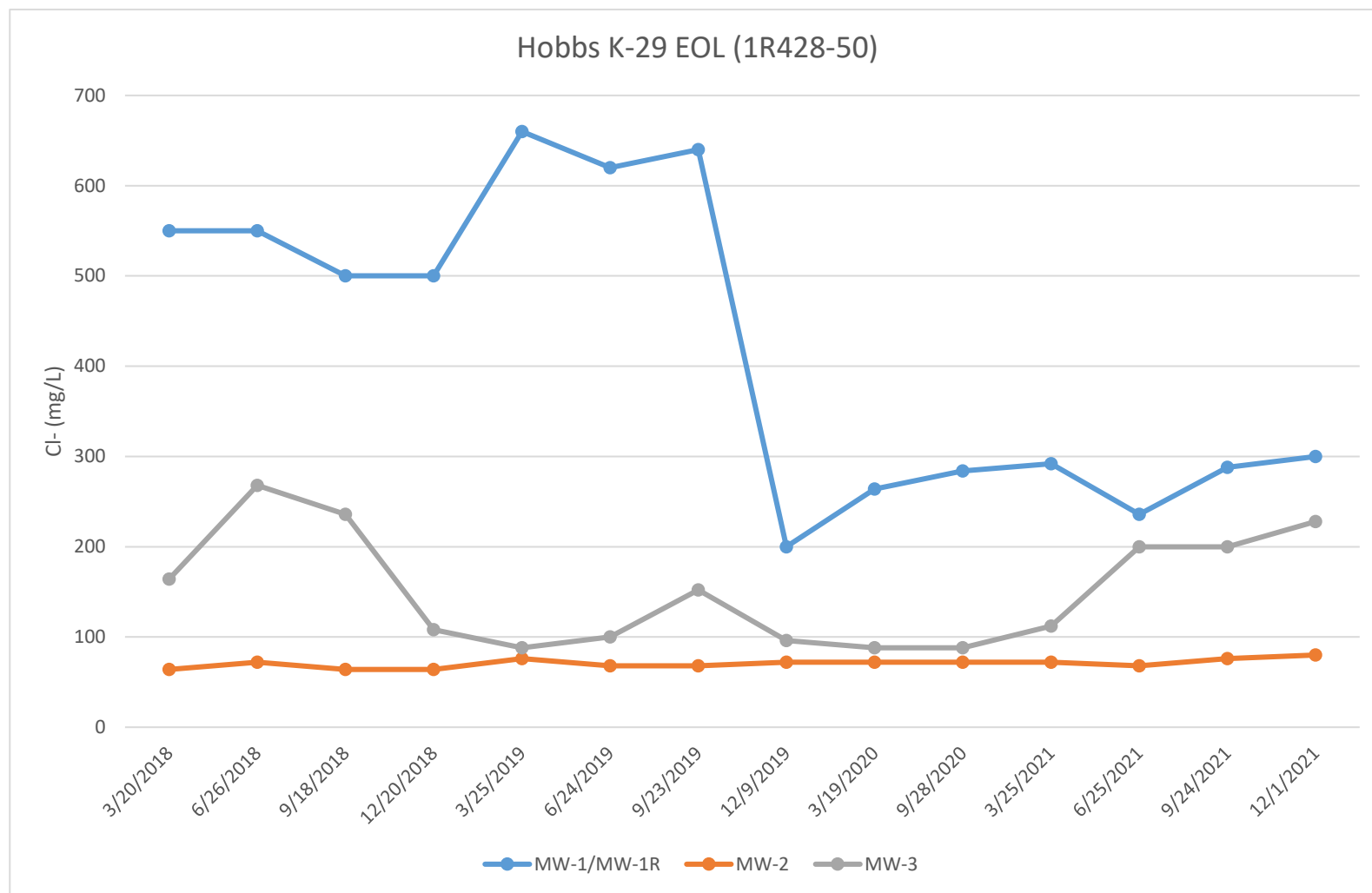
ROC - Hobbs K-29 EOL (1R428-50)
Unit Letter K, Section 29, T18S, R38E

| MW | Depth to Water | Total Depth | Well Volume | Volume Purged | Sample Date | Cl | TDS | Benzene | Toluene | Ethyl Benzene | Total Xylenes | Sulfate | Comments |
|----|----------------|-------------|-------------|---------------|-------------|----|-----|---------|---------|---------------|---------------|---------|---------------------------|
| 2 | 65.04 | 77.41 | 2 | 8 | 12/12/2013 | 64 | 473 | <0.001 | <0.001 | <0.001 | <0.003 | 93.4 | Silt to clear Slight odor |
| 2 | 65.24 | 77.41 | 1.9 | 8 | 3/19/2014 | 68 | 426 | <0.001 | <0.001 | <0.001 | <0.003 | 88.2 | Silt to clear Slight odor |
| 2 | 65.51 | 77.41 | 1.9 | 8 | 6/16/2014 | 68 | 572 | <0.001 | <0.001 | <0.001 | <0.003 | 82.5 | Silt to clear Slight odor |
| 2 | 65.74 | 77.41 | 1.9 | 8 | 9/10/2014 | 64 | 512 | <0.001 | <0.001 | <0.001 | <0.003 | 98.1 | Silt to clear Slight odor |
| 2 | 65.57 | 77.41 | 1.9 | 8 | 12/17/2014 | 68 | 482 | <0.001 | <0.001 | <0.001 | <0.003 | 87 | Silt to clear Slight odor |
| 2 | 65.72 | 77.41 | 1.9 | 8 | 3/17/2015 | 52 | 452 | <0.001 | <0.001 | <0.001 | <0.003 | 77 | Silt to clear Slight odor |
| 2 | 65.84 | 77.41 | 1.9 | 8 | 6/16/2015 | 72 | 518 | <0.001 | <0.001 | <0.001 | <0.003 | 70 | Silt to clear Slight odor |
| 2 | 65.88 | 77.41 | 1.9 | 8 | 9/17/2015 | 72 | 546 | <0.001 | <0.001 | <0.001 | <0.003 | 63.3 | Silt to clear Slight odor |
| 2 | 65.57 | 77.41 | 1.9 | 8 | 12/1/2015 | 72 | 558 | <0.001 | <0.001 | <0.001 | <0.003 | 87 | Silt to clear Slight odor |
| 2 | 65.84 | 77.41 | 1.9 | 8 | 3/28/2016 | 68 | 556 | <0.001 | <0.001 | <0.001 | <0.003 | 76.8 | Silt to clear Slight odor |
| 2 | 65.96 | 77.41 | 1.8 | 8 | 6/23/2016 | 76 | 506 | <0.001 | <0.001 | <0.001 | <0.003 | 110 | Silt to clear Slight odor |
| 2 | 65.86 | 77.41 | 1.8 | 8 | 9/26/2016 | 68 | 544 | <0.001 | <0.001 | <0.001 | <0.003 | 95 | Silt to clear Slight odor |
| 2 | 65.6 | 77.41 | 1.9 | 8 | 12/5/2016 | 92 | 560 | <0.001 | <0.001 | <0.001 | <0.003 | 107 | Silt to clear Slight odor |
| 2 | 65.84 | 77.41 | 1.9 | 8 | 3/20/2017 | 68 | 540 | <0.001 | <0.001 | <0.001 | <0.003 | 72 | Silt to clear Slight odor |
| 2 | 66.18 | 77.41 | 1.8 | 8 | 6/22/2017 | 72 | 532 | <0.001 | <0.001 | <0.001 | <0.003 | 82 | Silt to clear Slight odor |
| 2 | 66.21 | 77.41 | 1.8 | 8 | 9/25/2017 | 72 | 714 | <0.001 | <0.001 | <0.001 | <0.003 | 92 | Silt to clear Slight odor |
| 2 | 66.28 | 77.41 | 1.8 | 8 | 12/21/2017 | 92 | 526 | <0.001 | <0.001 | <0.001 | <0.003 | 98 | Silt to clear Slight odor |
| 2 | 66.41 | 77.41 | 1.8 | 8 | 3/20/2018 | 64 | 404 | <0.001 | <0.001 | <0.001 | <0.003 | 94.7 | Silt to clear Slight odor |
| 2 | 66.55 | 77.41 | 1.7 | 8 | 6/26/2018 | 72 | 638 | <0.001 | <0.001 | <0.001 | <0.003 | 71.6 | Silt to clear Slight odor |
| 2 | 66.71 | 77.41 | 1.7 | 8 | 9/18/2018 | 64 | 520 | <0.001 | <0.001 | <0.001 | <0.003 | 86.2 | Silt to clear Slight odor |
| 2 | 66.74 | 77.41 | 1.7 | 8 | 12/20/2018 | 64 | 510 | <0.001 | <0.001 | <0.001 | <0.003 | 121 | Silt to clear Slight odor |
| 2 | 66.89 | 77.41 | 1.7 | 8 | 3/25/2019 | 76 | 543 | <0.001 | <0.001 | <0.001 | <0.003 | 94 | Silt to clear Slight odor |
| 2 | 67.02 | 77.41 | 1.7 | 8 | 6/24/2019 | 68 | 603 | <0.001 | <0.001 | <0.001 | <0.003 | 34 | Silt to clear Slight odor |
| 2 | 67.09 | 77.41 | 1.7 | 8 | 9/23/2019 | 68 | 496 | <0.001 | <0.001 | <0.001 | <0.003 | 103 | Silt to clear Slight odor |
| 2 | 67.28 | 77.41 | 1.6 | 8 | 12/9/2019 | 72 | 561 | <0.001 | <0.001 | <0.001 | <0.003 | 85 | Silt to clear Slight odor |
| 2 | 67.45 | 77.41 | 1.6 | 8 | 3/19/2020 | 72 | 526 | <0.001 | <0.001 | <0.001 | <0.003 | 72 | Silt to clear Slight odor |
| 2 | 67.72 | 77.41 | 1.6 | 8 | 9/28/2020 | 72 | 460 | XXX | XXX | XXX | XXX | 79 | Silt to clear Slight odor |
| 2 | 68 | 77.41 | 1.5 | 8 | 3/25/2021 | 72 | 517 | XXX | XXX | XXX | XXX | 99.6 | Silt to clear Slight odor |
| 2 | 68.18 | 77.41 | 1.5 | 8 | 6/25/2021 | 68 | 539 | XXX | XXX | XXX | XXX | 91.6 | Silt to clear Slight odor |

ROC - Hobbs K-29 EOL (1R428-50)**Unit Letter K, Section 29, T18S, R38E**

| MW | Depth to Water | Total Depth | Well Volume | Volume Purged | Sample Date | Cl | TDS | Benzene | Toluene | Ethyl Benzene | Total Xylenes | Sulfate | Comments |
|----|----------------|-------------|-------------|---------------|-------------|----|-----|---------|---------|---------------|---------------|---------|---------------------------|
| 2 | 68.18 | 77.41 | 1.5 | 8 | 9/24/2021 | 76 | 542 | XXX | XXX | XXX | XXX | 103 | Silt to clear Slight odor |
| 2 | 68.03 | 77.41 | 1.5 | 8 | 12/1/2021 | 80 | 572 | XXX | XXX | XXX | XXX | 91 | Silt to clear Slight odor |

| MW | Depth to Water | Total Depth | Well Volume | Volume Purged | Sample Date | Cl | TDS | Benzene | Toluene | Ethyl Benzene | Total Xylenes | Sulfate | Comments |
|----|----------------|-------------|-------------|---------------|-------------|-----|-------|---------|---------|---------------|---------------|---------|---------------------------|
| 3 | 64.23 | 110.22 | 29.9 | 120 | 12/1/2015 | 220 | 784 | <0.001 | <0.001 | <0.001 | <0.003 | 65 | Silt to clear Slight odor |
| 3 | 64.18 | 110.22 | 30 | 100 | 3/28/2016 | 296 | 960 | <0.001 | <0.001 | <0.001 | <0.003 | 65 | Silt to clear Slight odor |
| 3 | 64.6 | 110.22 | 30 | 100 | 6/23/2016 | 510 | 1,240 | <0.001 | <0.001 | <0.001 | <0.003 | 62 | Silt to clear Slight odor |
| 3 | 64.45 | 110.22 | 30 | 100 | 9/26/2016 | 540 | 1,600 | <0.001 | <0.001 | <0.001 | <0.003 | 67 | Silt to clear Slight odor |
| 3 | 64.18 | 110.22 | 30 | 100 | 12/5/2016 | 560 | 1,400 | <0.001 | <0.001 | <0.001 | <0.003 | 71 | Silt to clear Slight odor |
| 3 | 64.5 | 110.22 | 30 | 100 | 3/20/2017 | 570 | 1,520 | <0.001 | <0.001 | <0.001 | <0.003 | 96 | Silt to clear Slight odor |
| 3 | 64.83 | 110.22 | 30 | 100 | 6/22/2017 | 510 | 1,560 | <0.001 | <0.001 | <0.001 | <0.003 | 78 | Silt to clear Slight odor |
| 3 | 64.85 | 110.22 | 30 | 100 | 9/25/2017 | 540 | 1,800 | <0.001 | <0.001 | <0.001 | <0.003 | 71 | Silt to clear Slight odor |
| 3 | 64.88 | 110.22 | 30 | 100 | 12/21/2017 | 300 | 980 | <0.001 | <0.001 | <0.001 | <0.003 | 45 | Silt to clear Slight odor |
| 3 | 65.02 | 110.22 | 29.4 | 100 | 3/20/2018 | 164 | 662 | <0.001 | <0.001 | <0.001 | <0.003 | 77.2 | Silt to clear Slight odor |
| 3 | 65.11 | 110.22 | 29.3 | 100 | 6/26/2018 | 268 | 984 | <0.001 | <0.001 | <0.001 | <0.003 | 130 | Silt to clear Slight odor |
| 3 | 65.26 | 110.22 | 29.2 | 100 | 9/18/2018 | 236 | 584 | <0.001 | <0.001 | <0.001 | <0.003 | 91.1 | Silt to clear Slight odor |
| 3 | 65.28 | 110.22 | 29.2 | 100 | 12/20/2018 | 108 | 474 | <0.001 | <0.001 | <0.001 | <0.003 | 60.9 | Silt to clear Slight odor |
| 3 | 65.49 | 110.22 | 29 | 100 | 3/25/2019 | 88 | 614 | <0.001 | <0.001 | <0.001 | <0.003 | 88 | Silt to clear Slight odor |
| 3 | 65.63 | 110.22 | 29 | 100 | 6/24/2019 | 100 | 627 | <0.001 | <0.001 | <0.001 | <0.003 | 55 | Silt to clear Slight odor |
| 3 | 65.7 | 110.22 | 29 | 100 | 9/23/2019 | 152 | 634 | <0.001 | <0.001 | <0.001 | <0.003 | 92 | Silt to clear Slight odor |
| 3 | 65.88 | 110.22 | 29 | 100 | 12/9/2019 | 96 | 628 | <0.001 | <0.001 | <0.001 | <0.003 | 58 | Silt to clear Slight odor |
| 3 | 66.03 | 110.22 | 28.7 | 100 | 3/19/2020 | 88 | 616 | <0.001 | <0.001 | <0.001 | <0.003 | 88 | Silt to clear Slight odor |
| 3 | 66.31 | 110.22 | 28.5 | 100 | 9/28/2020 | 88 | 544 | XXX | XXX | XXX | XXX | 79.8 | Silt to clear Slight odor |
| 3 | 66.57 | 110.22 | 28 | 100 | 3/25/2021 | 112 | 698 | XXX | XXX | XXX | XXX | 99.2 | Silt to clear Slight odor |
| 3 | 66.62 | 110.22 | 28 | 100 | 6/25/2021 | 200 | 781 | XXX | XXX | XXX | XXX | 87.6 | Silt to clear Slight odor |
| 3 | 66.69 | 110.22 | 28 | 100 | 9/24/2021 | 200 | 760 | XXX | XXX | XXX | XXX | 88.2 | Silt to clear Slight odor |
| 3 | 66.55 | 110.22 | 28 | 100 | 12/1/2021 | 228 | 776 | XXX | XXX | XXX | XXX | 74.4 | Silt to clear Slight odor |





PHONE (575) 393-2326 ° 101 E. MARLAND ° HOBBS, NM 88240

April 05, 2021

KATIE JONES

Rice Operating Company

112 W. Taylor

Hobbs, NM 88240

RE: HOBBS K-29 BOOT

Enclosed are the results of analyses for samples received by the laboratory on 03/26/21 16:15.

Cardinal Laboratories is accredited through Texas NELAP under certificate number T104704398-20-13. Accreditation applies to drinking water, non-potable water and solid and chemical materials. All accredited analytes are denoted by an asterisk (*). For a complete list of accredited analytes and matrices visit the TCEQ website at www.tceq.texas.gov/field/qa/lab_accred_certif.html.

Cardinal Laboratories is accredited through the State of Colorado Department of Public Health and Environment for:

| | |
|------------------|------------------------------|
| Method EPA 552.2 | Haloacetic Acids (HAA-5) |
| Method EPA 524.2 | Total Trihalomethanes (TTHM) |
| Method EPA 524.4 | Regulated VOCs (V1, V2, V3) |

Accreditation applies to public drinking water matrices.

This report meets NELAP requirements and is made up of a cover page, analytical results, and a copy of the original chain-of-custody. If you have any questions concerning this report, please feel free to contact me.

Sincerely,

A handwritten signature in black ink that reads "Celey D. Keene". The signature is written in a cursive, flowing style.

Celey D. Keene

Lab Director/Quality Manager



PHONE (575) 393-2326 • 101 E. MARLAND • HOBBS, NM 88240

Analytical Results For:

Rice Operating Company
 KATIE JONES
 112 W. Taylor
 Hobbs NM, 88240
 Fax To: (575) 397-1471

| | | | |
|-------------------|--------------------------------|---------------------|----------------|
| Received: | 03/26/2021 | Sampling Date: | 03/25/2021 |
| Reported: | 04/05/2021 | Sampling Type: | Water |
| Project Name: | HOBBS K-29 BOOT | Sampling Condition: | Cool & Intact |
| Project Number: | NOT GIVEN | Sample Received By: | Tamara Oldaker |
| Project Location: | T18S-R38E-SEC29 K-LEA CTY., NM | | |

Sample ID: MONITOR WELL # 1R (H210766-01)

| Chloride, SM4500Cl-B | | mg/L | | Analyzed By: GM | | | | | | |
|----------------------|--------|-----------------|------------|-----------------|------|------------|---------------|-------|-----------|--|
| Analyte | Result | Reporting Limit | Analyzed | Method Blank | BS | % Recovery | True Value QC | RPD | Qualifier | |
| Chloride* | 292 | 4.00 | 03/29/2021 | ND | 104 | 104 | 100 | 3.92 | | |
| Sulfate 375.4 | | mg/L | | Analyzed By: GM | | | | | | |
| Analyte | Result | Reporting Limit | Analyzed | Method Blank | BS | % Recovery | True Value QC | RPD | Qualifier | |
| Sulfate* | 75.3 | 10.0 | 03/31/2021 | ND | 22.0 | 110 | 20.0 | 0.273 | | |
| TDS 160.1 | | mg/L | | Analyzed By: GM | | | | | | |
| Analyte | Result | Reporting Limit | Analyzed | Method Blank | BS | % Recovery | True Value QC | RPD | Qualifier | |
| TDS* | 913 | 5.00 | 03/31/2021 | ND | 543 | 109 | 500 | 1.52 | | |

Sample ID: MONITOR WELL # 2 (H210766-02)

| Chloride, SM4500Cl-B | | mg/L | | Analyzed By: GM | | | | | | |
|----------------------|--------|-----------------|------------|-----------------|------|------------|---------------|-------|-----------|--|
| Analyte | Result | Reporting Limit | Analyzed | Method Blank | BS | % Recovery | True Value QC | RPD | Qualifier | |
| Chloride* | 72.0 | 4.00 | 03/29/2021 | ND | 104 | 104 | 100 | 3.92 | | |
| Sulfate 375.4 | | mg/L | | Analyzed By: GM | | | | | | |
| Analyte | Result | Reporting Limit | Analyzed | Method Blank | BS | % Recovery | True Value QC | RPD | Qualifier | |
| Sulfate* | 99.6 | 25.0 | 03/31/2021 | ND | 22.0 | 110 | 20.0 | 0.273 | | |
| TDS 160.1 | | mg/L | | Analyzed By: GM | | | | | | |
| Analyte | Result | Reporting Limit | Analyzed | Method Blank | BS | % Recovery | True Value QC | RPD | Qualifier | |
| TDS* | 517 | 5.00 | 03/31/2021 | ND | 543 | 109 | 500 | 1.52 | | |

Cardinal Laboratories

*=Accredited Analyte

PLEASE NOTE: Liability and Damages. Cardinal's liability and client's exclusive remedy for any claim arising, whether based in contract or tort, shall be limited to the amount paid by client for analyses. All claims, including those for negligence and any other cause whatsoever shall be deemed waived unless made in writing and received by Cardinal within thirty (30) days after completion of the applicable service. In no event shall Cardinal be liable for incidental or consequential damages, including, without limitation, business interruptions, loss of use, or loss of profits incurred by client, its subsidiaries, affiliates or successors arising out of or related to the performance of the services hereunder by Cardinal, regardless of whether such claim is based upon any of the above stated reasons or otherwise. Results relate only to the samples identified above. This report shall not be reproduced except in full with written approval of Cardinal Laboratories.

Celey D. Keene, Lab Director/Quality Manager



PHONE (575) 393-2326 ° 101 E. MARLAND ° HOBBS, NM 88240

Analytical Results For:

Rice Operating Company
 KATIE JONES
 112 W. Taylor
 Hobbs NM, 88240
 Fax To: (575) 397-1471

| | | | |
|-------------------|--------------------------------|---------------------|----------------|
| Received: | 03/26/2021 | Sampling Date: | 03/25/2021 |
| Reported: | 04/05/2021 | Sampling Type: | Water |
| Project Name: | HOBBS K-29 BOOT | Sampling Condition: | Cool & Intact |
| Project Number: | NOT GIVEN | Sample Received By: | Tamara Oldaker |
| Project Location: | T18S-R38E-SEC29 K-LEA CTY., NM | | |

Sample ID: MONITOR WELL #3 (H210766-03)

| Chloride, SM4500Cl-B | | mg/L | | Analyzed By: GM | | | | | | |
|----------------------|--------|-----------------|------------|-----------------|------|------------|---------------|-------|-----------|--|
| Analyte | Result | Reporting Limit | Analyzed | Method Blank | BS | % Recovery | True Value QC | RPD | Qualifier | |
| Chloride* | 112 | 4.00 | 03/29/2021 | ND | 104 | 104 | 100 | 3.92 | | |
| Sulfate 375.4 | | mg/L | | Analyzed By: GM | | | | | | |
| Analyte | Result | Reporting Limit | Analyzed | Method Blank | BS | % Recovery | True Value QC | RPD | Qualifier | |
| Sulfate* | 99.2 | 25.0 | 03/31/2021 | ND | 22.0 | 110 | 20.0 | 0.273 | | |
| TDS 160.1 | | mg/L | | Analyzed By: GM | | | | | | |
| Analyte | Result | Reporting Limit | Analyzed | Method Blank | BS | % Recovery | True Value QC | RPD | Qualifier | |
| TDS* | 698 | 5.00 | 04/01/2021 | ND | 543 | 109 | 500 | 1.52 | | |

Cardinal Laboratories

*=Accredited Analyte

PLEASE NOTE: Liability and Damages. Cardinal's liability and client's exclusive remedy for any claim arising, whether based in contract or tort, shall be limited to the amount paid by client for analyses. All claims, including those for negligence and any other cause whatsoever shall be deemed waived unless made in writing and received by Cardinal within thirty (30) days after completion of the applicable service. In no event shall Cardinal be liable for incidental or consequential damages, including, without limitation, business interruptions, loss of use, or loss of profits incurred by client, its subsidiaries, affiliates or successors arising out of or related to the performance of the services hereunder by Cardinal, regardless of whether such claim is based upon any of the above stated reasons or otherwise. Results relate only to the samples identified above. This report shall not be reproduced except in full with written approval of Cardinal Laboratories.

Celey D. Keene, Lab Director/Quality Manager



PHONE (575) 393-2326 • 101 E. MARLAND • HOBBS, NM 88240

Notes and Definitions

| | |
|-------|--|
| QM-07 | The spike recovery was outside acceptance limits for the MS and/or MSD. The batch was accepted based on acceptable LCS recovery. |
| ND | Analyte NOT DETECTED at or above the reporting limit |
| RPD | Relative Percent Difference |
| ** | Samples not received at proper temperature of 6°C or below. |
| *** | Insufficient time to reach temperature. |
| - | Chloride by SM4500Cl-B does not require samples be received at or below 6°C Samples reported on an as received basis (wet) unless otherwise noted on report |

Cardinal Laboratories

*=Accredited Analyte

PLEASE NOTE: Liability and Damages. Cardinal's liability and client's exclusive remedy for any claim arising, whether based in contract or tort, shall be limited to the amount paid by client for analyses. All claims, including those for negligence and any other cause whatsoever shall be deemed waived unless made in writing and received by Cardinal within thirty (30) days after completion of the applicable service. In no event shall Cardinal be liable for incidental or consequential damages, including, without limitation, business interruptions, loss of use, or loss of profits incurred by client, its subsidiaries, affiliates or successors arising out of or related to the performance of the services hereunder by Cardinal, regardless of whether such claim is based upon any of the above stated reasons or otherwise. Results relate only to the samples identified above. This report shall not be reproduced except in full with written approval of Cardinal Laboratories.

A handwritten signature in black ink, appearing to read "Celey D. Keene".

Celey D. Keene, Lab Director/Quality Manager

Cardinal Laboratories, Inc.

CHAIN-OF-CUSTODY AND ANALYSIS REQUEST

LAB Order ID # _____

ANALYSIS REQUEST

(Circle or Specify Method No.)

[illegible]

Page 5 of 5

Released to Imaging: 12/16/2022 3:13:18 PM



PHONE (575) 393-2326 ° 101 E. MARLAND ° HOBBS, NM 88240

July 02, 2021

KATIE JONES

Rice Operating Company

112 W. Taylor

Hobbs, NM 88240

RE: HOBBS K-29 BOOT

Enclosed are the results of analyses for samples received by the laboratory on 06/29/21 16:45.

Cardinal Laboratories is accredited through Texas NELAP under certificate number T104704398-20-13. Accreditation applies to drinking water, non-potable water and solid and chemical materials. All accredited analytes are denoted by an asterisk (*). For a complete list of accredited analytes and matrices visit the TCEQ website at www.tceq.texas.gov/field/qa/lab_accred_certif.html.

Cardinal Laboratories is accredited through the State of Colorado Department of Public Health and Environment for:

| | |
|------------------|------------------------------|
| Method EPA 552.2 | Haloacetic Acids (HAA-5) |
| Method EPA 524.2 | Total Trihalomethanes (TTHM) |
| Method EPA 524.4 | Regulated VOCs (V1, V2, V3) |

Accreditation applies to public drinking water matrices.

This report meets NELAP requirements and is made up of a cover page, analytical results, and a copy of the original chain-of-custody. If you have any questions concerning this report, please feel free to contact me.

Sincerely,

A handwritten signature in black ink that reads "Celey D. Keene". The signature is written in a cursive style with a large, stylized 'C' and 'K'.

Celey D. Keene

Lab Director/Quality Manager



PHONE (575) 393-2326 ° 101 E. MARLAND ° HOBBS, NM 88240

Analytical Results For:

Rice Operating Company
 KATIE JONES
 112 W. Taylor
 Hobbs NM, 88240
 Fax To: (575) 397-1471

| | | | |
|-------------------|--------------------------------|---------------------|----------------|
| Received: | 06/29/2021 | Sampling Date: | 06/25/2021 |
| Reported: | 07/02/2021 | Sampling Type: | Water |
| Project Name: | HOBBS K-29 BOOT | Sampling Condition: | Cool & Intact |
| Project Number: | NOT GIVEN | Sample Received By: | Tamara Oldaker |
| Project Location: | T18S-R38E-SEC29 K-LEA CTY., NM | | |

Sample ID: MONITOR WELL # 1R (H211684-01)

| Chloride, SM4500Cl-B | | mg/L | | Analyzed By: AC | | | | | | |
|----------------------|--------|-----------------|------------|-----------------|------|------------|---------------|------|-----------|--|
| Analyte | Result | Reporting Limit | Analyzed | Method Blank | BS | % Recovery | True Value QC | RPD | Qualifier | |
| Chloride* | 236 | 4.00 | 06/30/2021 | ND | 104 | 104 | 100 | 0.00 | | |
| Sulfate 375.4 | | mg/L | | Analyzed By: AC | | | | | | |
| Analyte | Result | Reporting Limit | Analyzed | Method Blank | BS | % Recovery | True Value QC | RPD | Qualifier | |
| Sulfate* | 126 | 25.0 | 06/30/2021 | ND | 22.0 | 110 | 20.0 | 17.3 | | |
| TDS 160.1 | | mg/L | | Analyzed By: AC | | | | | | |
| Analyte | Result | Reporting Limit | Analyzed | Method Blank | BS | % Recovery | True Value QC | RPD | Qualifier | |
| TDS* | 927 | 5.00 | 07/02/2021 | ND | 520 | 104 | 500 | 1.65 | | |

Sample ID: MONITOR WELL # 2 (H211684-02)

| Chloride, SM4500Cl-B | | mg/L | | Analyzed By: AC | | | | | | |
|----------------------|--------|-----------------|------------|-----------------|------|------------|---------------|------|-----------|--|
| Analyte | Result | Reporting Limit | Analyzed | Method Blank | BS | % Recovery | True Value QC | RPD | Qualifier | |
| Chloride* | 68.0 | 4.00 | 06/30/2021 | ND | 104 | 104 | 100 | 0.00 | | |
| Sulfate 375.4 | | mg/L | | Analyzed By: AC | | | | | | |
| Analyte | Result | Reporting Limit | Analyzed | Method Blank | BS | % Recovery | True Value QC | RPD | Qualifier | |
| Sulfate* | 91.6 | 25.0 | 06/30/2021 | ND | 22.0 | 110 | 20.0 | 17.3 | | |
| TDS 160.1 | | mg/L | | Analyzed By: AC | | | | | | |
| Analyte | Result | Reporting Limit | Analyzed | Method Blank | BS | % Recovery | True Value QC | RPD | Qualifier | |
| TDS* | 539 | 5.00 | 07/02/2021 | ND | 520 | 104 | 500 | 1.65 | | |

Cardinal Laboratories

*=Accredited Analyte

PLEASE NOTE: Liability and Damages. Cardinal's liability and client's exclusive remedy for any claim arising, whether based in contract or tort, shall be limited to the amount paid by client for analyses. All claims, including those for negligence and any other cause whatsoever shall be deemed waived unless made in writing and received by Cardinal within thirty (30) days after completion of the applicable service. In no event shall Cardinal be liable for incidental or consequential damages, including, without limitation, business interruptions, loss of use, or loss of profits incurred by client, its subsidiaries, affiliates or successors arising out of or related to the performance of the services hereunder by Cardinal, regardless of whether such claim is based upon any of the above stated reasons or otherwise. Results relate only to the samples identified above. This report shall not be reproduced except in full with written approval of Cardinal Laboratories.

Celey D. Keene, Lab Director/Quality Manager



PHONE (575) 393-2326 ° 101 E. MARLAND ° HOBBS, NM 88240

Analytical Results For:

Rice Operating Company
 KATIE JONES
 112 W. Taylor
 Hobbs NM, 88240
 Fax To: (575) 397-1471

| | | | |
|-------------------|--------------------------------|---------------------|----------------|
| Received: | 06/29/2021 | Sampling Date: | 06/25/2021 |
| Reported: | 07/02/2021 | Sampling Type: | Water |
| Project Name: | HOBBS K-29 BOOT | Sampling Condition: | Cool & Intact |
| Project Number: | NOT GIVEN | Sample Received By: | Tamara Oldaker |
| Project Location: | T18S-R38E-SEC29 K-LEA CTY., NM | | |

Sample ID: MONITOR WELL #3 (H211684-03)

| Chloride, SM4500Cl-B | | mg/L | | Analyzed By: AC | | | | | | |
|----------------------|--------|-----------------|------------|-----------------|------|------------|---------------|------|-----------|--|
| Analyte | Result | Reporting Limit | Analyzed | Method Blank | BS | % Recovery | True Value QC | RPD | Qualifier | |
| Chloride* | 200 | 4.00 | 06/30/2021 | ND | 104 | 104 | 100 | 3.92 | | |
| Sulfate 375.4 | | mg/L | | Analyzed By: AC | | | | | | |
| Analyte | Result | Reporting Limit | Analyzed | Method Blank | BS | % Recovery | True Value QC | RPD | Qualifier | |
| Sulfate* | 87.6 | 25.0 | 06/30/2021 | ND | 22.0 | 110 | 20.0 | 17.3 | | |
| TDS 160.1 | | mg/L | | Analyzed By: AC | | | | | | |
| Analyte | Result | Reporting Limit | Analyzed | Method Blank | BS | % Recovery | True Value QC | RPD | Qualifier | |
| TDS* | 781 | 5.00 | 07/02/2021 | ND | 520 | 104 | 500 | 1.65 | | |

Cardinal Laboratories

*=Accredited Analyte

PLEASE NOTE: Liability and Damages. Cardinal's liability and client's exclusive remedy for any claim arising, whether based in contract or tort, shall be limited to the amount paid by client for analyses. All claims, including those for negligence and any other cause whatsoever shall be deemed waived unless made in writing and received by Cardinal within thirty (30) days after completion of the applicable service. In no event shall Cardinal be liable for incidental or consequential damages, including, without limitation, business interruptions, loss of use, or loss of profits incurred by client, its subsidiaries, affiliates or successors arising out of or related to the performance of the services hereunder by Cardinal, regardless of whether such claim is based upon any of the above stated reasons or otherwise. Results relate only to the samples identified above. This report shall not be reproduced except in full with written approval of Cardinal Laboratories.

Celey D. Keene, Lab Director/Quality Manager



PHONE (575) 393-2326 ° 101 E. MARLAND ° HOBBS, NM 88240

Notes and Definitions

| | |
|-----|--|
| ND | Analyte NOT DETECTED at or above the reporting limit |
| RPD | Relative Percent Difference |
| ** | Samples not received at proper temperature of 6°C or below. |
| *** | Insufficient time to reach temperature. |
| - | Chloride by SM4500Cl-B does not require samples be received at or below 6°C Samples reported on an as received basis (wet) unless otherwise noted on report |

Cardinal Laboratories

*=Accredited Analyte

PLEASE NOTE: Liability and Damages. Cardinal's liability and client's exclusive remedy for any claim arising, whether based in contract or tort, shall be limited to the amount paid by client for analyses. All claims, including those for negligence and any other cause whatsoever shall be deemed waived unless made in writing and received by Cardinal within thirty (30) days after completion of the applicable service. In no event shall Cardinal be liable for incidental or consequential damages, including, without limitation, business interruptions, loss of use, or loss of profits incurred by client, its subsidiaries, affiliates or successors arising out of or related to the performance of the services hereunder by Cardinal, regardless of whether such claim is based upon any of the above stated reasons or otherwise. Results relate only to the samples identified above. This report shall not be reproduced except in full with written approval of Cardinal Laboratories.

A handwritten signature in cursive script, appearing to read "Celey D. Keene", written in black ink.

Celey D. Keene, Lab Director/Quality Manager

Cardinal Laboratories, Inc.

LAB Order ID # _____

ANALYSIS REQUEST
(Circle or Specify Method No.)[illegible]

| | | | | |
|---------------|--------------------------|-----|--------------------------|--------------------------------|
| Phone Results | <input type="checkbox"/> | Yes | <input type="checkbox"/> | No |
| Fax Results | <input type="checkbox"/> | Yes | <input type="checkbox"/> | No Additional Fax Number: |

Email Results: kjones@riceswd.com
rozanne@sdacres.com

(Initials)



PHONE (575) 393-2326 ° 101 E. MARLAND ° HOBBS, NM 88240

October 05, 2021

KATIE JONES

Rice Operating Company

112 W. Taylor

Hobbs, NM 88240

RE: HOBBS K-29 BOOT

Enclosed are the results of analyses for samples received by the laboratory on 09/29/21 14:45.

Cardinal Laboratories is accredited through Texas NELAP under certificate number T104704398-21-14. Accreditation applies to drinking water, non-potable water and solid and chemical materials. All accredited analytes are denoted by an asterisk (*). For a complete list of accredited analytes and matrices visit the TCEQ website at www.tceq.texas.gov/field/qa/lab_accred_certif.html.

Cardinal Laboratories is accredited through the State of Colorado Department of Public Health and Environment for:

| | |
|------------------|------------------------------|
| Method EPA 552.2 | Haloacetic Acids (HAA-5) |
| Method EPA 524.2 | Total Trihalomethanes (TTHM) |
| Method EPA 524.4 | Regulated VOCs (V1, V2, V3) |

Accreditation applies to public drinking water matrices.

This report meets NELAP requirements and is made up of a cover page, analytical results, and a copy of the original chain-of-custody. If you have any questions concerning this report, please feel free to contact me.

Sincerely,

A handwritten signature in black ink that reads "Celey D. Keene". The signature is written in a cursive, flowing style.

Celey D. Keene

Lab Director/Quality Manager



PHONE (575) 393-2326 • 101 E. MARLAND • HOBBS, NM 88240

Analytical Results For:

Rice Operating Company
 KATIE JONES
 112 W. Taylor
 Hobbs NM, 88240
 Fax To: (575) 397-1471

| | | | |
|-------------------|--------------------------------|---------------------|----------------|
| Received: | 09/29/2021 | Sampling Date: | 09/24/2021 |
| Reported: | 10/05/2021 | Sampling Type: | Water |
| Project Name: | HOBBS K-29 BOOT | Sampling Condition: | Cool & Intact |
| Project Number: | NOT GIVEN | Sample Received By: | Tamara Oldaker |
| Project Location: | T18S-R38E-SEC29 K-LEA CTY., NM | | |

Sample ID: MONITOR WELL # 1R (H212711-01)

| Chloride, SM4500Cl-B | | mg/L | | Analyzed By: AC | | | | | | |
|----------------------|--------|-----------------|------------|-----------------|------|------------|---------------|------|-----------|--|
| Analyte | Result | Reporting Limit | Analyzed | Method Blank | BS | % Recovery | True Value QC | RPD | Qualifier | |
| Chloride* | 288 | 4.00 | 09/30/2021 | ND | 96.0 | 96.0 | 100 | 4.08 | | |
| Sulfate 375.4 | | mg/L | | Analyzed By: GM | | | | | | |
| Analyte | Result | Reporting Limit | Analyzed | Method Blank | BS | % Recovery | True Value QC | RPD | Qualifier | |
| Sulfate* | 79.3 | 25.0 | 09/30/2021 | ND | 18.5 | 92.4 | 20.0 | 15.0 | | |
| TDS 160.1 | | mg/L | | Analyzed By: GM | | | | | | |
| Analyte | Result | Reporting Limit | Analyzed | Method Blank | BS | % Recovery | True Value QC | RPD | Qualifier | |
| TDS* | 939 | 5.00 | 10/04/2021 | ND | 253 | 84.3 | 300 | 1.89 | | |

Sample ID: MONITOR WELL # 2 (H212711-02)

| Chloride, SM4500Cl-B | | mg/L | | Analyzed By: AC | | | | | | |
|----------------------|--------|-----------------|------------|-----------------|------|------------|---------------|------|-----------|--|
| Analyte | Result | Reporting Limit | Analyzed | Method Blank | BS | % Recovery | True Value QC | RPD | Qualifier | |
| Chloride* | 76.0 | 4.00 | 09/30/2021 | ND | 96.0 | 96.0 | 100 | 4.08 | | |
| Sulfate 375.4 | | mg/L | | Analyzed By: GM | | | | | | |
| Analyte | Result | Reporting Limit | Analyzed | Method Blank | BS | % Recovery | True Value QC | RPD | Qualifier | |
| Sulfate* | 103 | 25.0 | 09/30/2021 | ND | 18.5 | 92.4 | 20.0 | 15.0 | | |
| TDS 160.1 | | mg/L | | Analyzed By: AC | | | | | | |
| Analyte | Result | Reporting Limit | Analyzed | Method Blank | BS | % Recovery | True Value QC | RPD | Qualifier | |
| TDS* | 542 | 5.00 | 10/01/2021 | ND | 253 | 84.3 | 300 | 1.89 | | |

Cardinal Laboratories

*=Accredited Analyte

PLEASE NOTE: Liability and Damages. Cardinal's liability and client's exclusive remedy for any claim arising, whether based in contract or tort, shall be limited to the amount paid by client for analyses. All claims, including those for negligence and any other cause whatsoever shall be deemed waived unless made in writing and received by Cardinal within thirty (30) days after completion of the applicable service. In no event shall Cardinal be liable for incidental or consequential damages, including, without limitation, business interruptions, loss of use, or loss of profits incurred by client, its subsidiaries, affiliates or successors arising out of or related to the performance of the services hereunder by Cardinal, regardless of whether such claim is based upon any of the above stated reasons or otherwise. Results relate only to the samples identified above. This report shall not be reproduced except in full with written approval of Cardinal Laboratories.

Celey D. Keene, Lab Director/Quality Manager



PHONE (575) 393-2326 ° 101 E. MARLAND ° HOBBS, NM 88240

Analytical Results For:

Rice Operating Company
 KATIE JONES
 112 W. Taylor
 Hobbs NM, 88240
 Fax To: (575) 397-1471

| | | | |
|-------------------|--------------------------------|---------------------|----------------|
| Received: | 09/29/2021 | Sampling Date: | 09/24/2021 |
| Reported: | 10/05/2021 | Sampling Type: | Water |
| Project Name: | HOBBS K-29 BOOT | Sampling Condition: | Cool & Intact |
| Project Number: | NOT GIVEN | Sample Received By: | Tamara Oldaker |
| Project Location: | T18S-R38E-SEC29 K-LEA CTY., NM | | |

Sample ID: MONITOR WELL # 3 (H212711-03)

| Chloride, SM4500Cl-B | | mg/L | | Analyzed By: AC | | | | | | |
|----------------------|--------|-----------------|------------|-----------------|------|------------|---------------|------|-----------|--|
| Analyte | Result | Reporting Limit | Analyzed | Method Blank | BS | % Recovery | True Value QC | RPD | Qualifier | |
| Chloride* | 200 | 4.00 | 09/30/2021 | ND | 96.0 | 96.0 | 100 | 4.08 | | |
| Sulfate 375.4 | | mg/L | | Analyzed By: GM | | | | | | |
| Analyte | Result | Reporting Limit | Analyzed | Method Blank | BS | % Recovery | True Value QC | RPD | Qualifier | |
| Sulfate* | 88.2 | 25.0 | 09/30/2021 | ND | 18.5 | 92.4 | 20.0 | 15.0 | | |
| TDS 160.1 | | mg/L | | Analyzed By: GM | | | | | | |
| Analyte | Result | Reporting Limit | Analyzed | Method Blank | BS | % Recovery | True Value QC | RPD | Qualifier | |
| TDS* | 760 | 5.00 | 10/04/2021 | ND | 253 | 84.3 | 300 | 1.89 | | |

Cardinal Laboratories

*=Accredited Analyte

PLEASE NOTE: Liability and Damages. Cardinal's liability and client's exclusive remedy for any claim arising, whether based in contract or tort, shall be limited to the amount paid by client for analyses. All claims, including those for negligence and any other cause whatsoever shall be deemed waived unless made in writing and received by Cardinal within thirty (30) days after completion of the applicable service. In no event shall Cardinal be liable for incidental or consequential damages, including, without limitation, business interruptions, loss of use, or loss of profits incurred by client, its subsidiaries, affiliates or successors arising out of or related to the performance of the services hereunder by Cardinal, regardless of whether such claim is based upon any of the above stated reasons or otherwise. Results relate only to the samples identified above. This report shall not be reproduced except in full with written approval of Cardinal Laboratories.

Celey D. Keene, Lab Director/Quality Manager



PHONE (575) 393-2326 ° 101 E. MARLAND ° HOBBS, NM 88240

Notes and Definitions

| | |
|-----|--|
| ND | Analyte NOT DETECTED at or above the reporting limit |
| RPD | Relative Percent Difference |
| ** | Samples not received at proper temperature of 6°C or below. |
| *** | Insufficient time to reach temperature. |
| - | Chloride by SM4500Cl-B does not require samples be received at or below 6°C Samples reported on an as received basis (wet) unless otherwise noted on report |

Cardinal Laboratories

*=Accredited Analyte

PLEASE NOTE: Liability and Damages. Cardinal's liability and client's exclusive remedy for any claim arising, whether based in contract or tort, shall be limited to the amount paid by client for analyses. All claims, including those for negligence and any other cause whatsoever shall be deemed waived unless made in writing and received by Cardinal within thirty (30) days after completion of the applicable service. In no event shall Cardinal be liable for incidental or consequential damages, including, without limitation, business interruptions, loss of use, or loss of profits incurred by client, its subsidiaries, affiliates or successors arising out of or related to the performance of the services hereunder by Cardinal, regardless of whether such claim is based upon any of the above stated reasons or otherwise. Results relate only to the samples identified above. This report shall not be reproduced except in full with written approval of Cardinal Laboratories.

A handwritten signature in black ink, appearing to read "Celey D. Keene".

Celey D. Keene, Lab Director/Quality Manager

101 East Marland - Hobbs, NM 88240
Tel (575) 393-2326
Fax (575) 393-2476

Cardinal Laboratories, Inc.

Page 1 of 1

| | | | | |
|--|--|--|--|--------------------------------|
| Company Name: RICE Operating Company | | BILL TO Company: RICE Operating Company | | PO# |
| Project Manager: Katie Jones | | Address: (Street, City, Zip) 122 W Taylor Street ~ Hobbs, New Mexico 88240 | | |
| Address: (Street, City, Zip) 122 W Taylor Street ~ Hobbs, New Mexico 88240 | | Phone#: (575) 393-9174 | | Fax#: (575) 397-1471 |
| Phone #: (575) 393-9174 | | Fax #: (575) 397-1471 | | |

| | |
|---|---|
| Project #: | Project Name: Hobbs K-29 Boot |
| Project Location: T18S-R38E-Sec29 K ~ Lea County - New Mexico | |
| Sampler Signature: <i>Rozanne Johnson</i> (575) 631-9310 | |

| H212711 LAB # (LAB USE ONLY) | FIELD CODE | (G)rab or (C)omp | # CONTAINERS | MATRIX | | | | PRESERVATIVE METHOD | | | | | SAMPLING | | |
|--|------------------|------------------|--------------|--------|------|-----|--------|---------------------|------------------|--------------------|--------------------------------|---------------------|----------|-------------|-------|
| | | | | WATER | SOIL | AIR | SLUDGE | HCL (4 40ml VOA) | HNO ₃ | NaHSO ₄ | H ₂ SO ₄ | ICE (1-1Liter HDPE) | NONE | DATE (2021) | TIME |
| 1 | Monitor Well #1R | G | 1 | X | | | | | | | | 1 | | 9/24 | 15:00 |
| 2 | Monitor Well #2 | G | 1 | X | | | | | | | | 1 | | 9/24 | 10:15 |
| 3 | Monitor Well #3 | G | 1 | X | | | | | | | | 1 | | 9/24 | 12:35 |
| | | | | | | | | | | | | | | | |
| | | | | | | | | | | | | | | | |
| | | | | | | | | | | | | | | | |
| | | | | | | | | | | | | | | | |
| | | | | | | | | | | | | | | | |
| | | | | | | | | | | | | | | | |
| | | | | | | | | | | | | | | | |
| | | | | | | | | | | | | | | | |
| | | | | | | | | | | | | | | | |
| | | | | | | | | | | | | | | | |
| | | | | | | | | | | | | | | | |
| | | | | | | | | | | | | | | | |
| | | | | | | | | | | | | | | | |
| | | | | | | | | | | | | | | | |
| | | | | | | | | | | | | | | | |
| | | | | | | | | | | | | | | | |
| | | | | | | | | | | | | | | | |
| | | | | | | | | | | | | | | | |
| | | | | | | | | | | | | | | | |
| | | | | | | | | | | | | | | | |
| | | | | | | | | | | | | | | | |
| | | | | | | | | | | | | | | | |
| | | | | | | | | | | | | | | | |
| | | | | | | | | | | | | | | | |
| | | | | | | | | | | | | | | | |
| | | | | | | | | | | | | | | | |
| | | | | | | | | | | | | | | | |
| | | | | | | | | | | | | | | | |
| | | | | | | | | | | | | | | | |
| | | | | | | | | | | | | | | | |
| | | | | | | | | | | | | | | | |
| | | | | | | | | | | | | | | | |
| | | | | | | | | | | | | | | | |
| | | | | | | | | | | | | | | | |
| | | | | | | | | | | | | | | | |
| | | | | | | | | | | | | | | | |
| | | | | | | | | | | | | | | | |
| | | | | | | | | | | | | | | | |
| | | | | | | | | | | | | | | | |
| | | | | | | | | | | | | | | | |
| | | | | | | | | | | | | | | | |
| | | | | | | | | | | | | | | | |
| | | | | | | | | | | | | | | | |
| | | | | | | | | | | | | | | | |
| | | | | | | | | | | | | | | | |
| | | | | | | | | | | | | | | | |
| | | | | | | | | | | | | | | | |
| | | | | | | | | | | | | | | | |
| | | | | | | | | | | | | | | | |
| | | | | | | | | | | | | | | | |
| | | | | | | | | | | | | | | | |
| | | | | | | | | | | | | | | | |
| | | | | | | | | | | | | | | | |
| | | | | | | | | | | | | | | | |
| | | | | | | | | | | | | | | | |
| | | | | | | | | | | | | | | | |
| | | | | | | | | | | | | | | | |
| | | | | | | | | | | | | | | | |
| | | | | | | | | | | | | | | | |
| | | | | | | | | | | | | | | | |
| | | | | | | | | | | | | | | | |
| | | | | | | | | | | | | | | | |
| | | | | | | | | | | | | | | | |
| | | | | | | | | | | | | | | | |
| | | | | | | | | | | | | | | | |
| | | | | | | | | | | | | | | | |
| | | | | | | | | | | | | | | | |
| | | | | | | | | | | | | | | | |
| | | | | | | | | | | | | | | | |
| | | | | | | | | | | | | | | | |
| | | | | | | | | | | | | | | | |
| | | | | | | | | | | | | | | | |
| | | | | | | | | | | | | | | | |
| | | | | | | | | | | | | | | | |
| | | | | | | | | | | | | | | | |
| | | | | | | | | | | | | | | | |
| | | | | | | | | | | | | | | | |
| | | | | | | | | | | | | | | | |

| | | | | | |
|--|----------------------|--------------------|--|----------------------|--------------------|
| Relinquished by: <i>Rozanne Johnson</i> | Date: 9/24/22 | Time: 14:45 | Received by: <i>Rozanne Johnson</i> | Date: 9/24/22 | Time: 14:45 |
| Relinquished by: | Date: | Time: | Received By: (Laboratory Staff) | Date: | Time: |

Delivered By: (Circle One)

Sampler ☒ UPS ☐ Bus ☐ Other:

Sample Condition

Cool ☒ Intact ☒
Yes ☒ No ☐

CHECKED BY:

(Initials)

JO

CHAIN-OF-CUSTODY AND ANALYSIS REQUEST

LAB Order ID # _____

ANALYSIS REQUEST

(Circle or Specify Method No.)

| | | | | | | | | | | | | | | | | | | | | | |
|----------------|----------------|--|-----------|--|-------------------------------------|----------------|---------------------|-----------------|-----|----------------------|----------------------------|----------------|----------------------|--------------|------------------|-------------------------|--|----------|------------------------|-----------|-----------------------------|
| MTBE 8021B/602 | BTEX 8021B/602 | TPH 418.1/TX1005 / TX1005 Extended (C35) | PAH 8270C | Total Metals Ag As Ba Cd Cr Pb Se Hg 6010B/200.7 | TCLP Metals Ag As Ba Cd Cr Pb Se Hg | TCLP Volatiles | TCLP Semi Volatiles | TCLP Pesticides | RCI | GC/MS Vol. 8260B/624 | GC/MS Semi. Vol. 8270C/625 | PCB's 8082/608 | Pesticides 8081A/608 | BOD, TSS, pH | Moisture Content | Cations (Ca, Mg, Na, K) | Anions (Cl, SO ₄ , CO ₃ , HCO ₃) | Sulfates | Total Dissolved Solids | Chlorides | Turn Around Time ~ 24 Hours |
| | | | | | | | | | | | | | | | | | | | | | |

| | | |
|---------------|-----|----|
| Phone Results | Yes | No |
| Fax Results | Yes | No |

| |
|---|
| REMARKS: |
| Email Results: kjones@riceswd.com rozanne@sdacres.com |



PHONE (575) 393-2326 ° 101 E. MARLAND ° HOBBS, NM 88240

December 08, 2021

KATIE JONES

Rice Operating Company

112 W. Taylor

Hobbs, NM 88240

RE: HOBBS K-29 BOOT

Enclosed are the results of analyses for samples received by the laboratory on 12/03/21 8:35.

Cardinal Laboratories is accredited through Texas NELAP under certificate number T104704398-21-14. Accreditation applies to drinking water, non-potable water and solid and chemical materials. All accredited analytes are denoted by an asterisk (*). For a complete list of accredited analytes and matrices visit the TCEQ website at www.tceq.texas.gov/field/qa/lab_accred_certif.html.

Cardinal Laboratories is accredited through the State of Colorado Department of Public Health and Environment for:

| | |
|------------------|------------------------------|
| Method EPA 552.2 | Haloacetic Acids (HAA-5) |
| Method EPA 524.2 | Total Trihalomethanes (TTHM) |
| Method EPA 524.4 | Regulated VOCs (V1, V2, V3) |

Accreditation applies to public drinking water matrices.

This report meets NELAP requirements and is made up of a cover page, analytical results, and a copy of the original chain-of-custody. If you have any questions concerning this report, please feel free to contact me.

Sincerely,

A handwritten signature in black ink that reads "Celey D. Keene". The signature is written in a cursive style with a large, stylized 'C' and 'K'.

Celey D. Keene

Lab Director/Quality Manager



PHONE (575) 393-2326 • 101 E. MARLAND • HOBBS, NM 88240

Analytical Results For:

Rice Operating Company
 KATIE JONES
 112 W. Taylor
 Hobbs NM, 88240
 Fax To: (575) 397-1471

| | | | |
|-------------------|--------------------------------|---------------------|----------------|
| Received: | 12/03/2021 | Sampling Date: | 12/01/2021 |
| Reported: | 12/08/2021 | Sampling Type: | Water |
| Project Name: | HOBBS K-29 BOOT | Sampling Condition: | Cool & Intact |
| Project Number: | NOT GIVEN | Sample Received By: | Tamara Oldaker |
| Project Location: | T18S-R38E-SEC29 K-LEA CTY., NM | | |

Sample ID: MONITOR WELL # 1R (H213473-01)

| Chloride, SM4500Cl-B | | mg/L | | Analyzed By: AC | | | | | | |
|----------------------|--------|-----------------|------------|-----------------|------|------------|---------------|-------|-----------|--|
| Analyte | Result | Reporting Limit | Analyzed | Method Blank | BS | % Recovery | True Value QC | RPD | Qualifier | |
| Chloride* | 300 | 4.00 | 12/06/2021 | ND | 100 | 100 | 100 | 4.08 | | |
| Sulfate 375.4 | | mg/L | | Analyzed By: AC | | | | | | |
| Analyte | Result | Reporting Limit | Analyzed | Method Blank | BS | % Recovery | True Value QC | RPD | Qualifier | |
| Sulfate* | 78.0 | 25.0 | 12/06/2021 | ND | 23.6 | 118 | 20.0 | 0.636 | | |
| TDS 160.1 | | mg/L | | Analyzed By: AC | | | | | | |
| Analyte | Result | Reporting Limit | Analyzed | Method Blank | BS | % Recovery | True Value QC | RPD | Qualifier | |
| TDS* | 955 | 5.00 | 12/07/2021 | ND | 501 | 100 | 500 | 0.398 | | |

Sample ID: MONITOR WELL # 2 (H213473-02)

| Chloride, SM4500Cl-B | | mg/L | | Analyzed By: AC | | | | | | |
|----------------------|--------|-----------------|------------|-----------------|------|------------|---------------|-------|-----------|--|
| Analyte | Result | Reporting Limit | Analyzed | Method Blank | BS | % Recovery | True Value QC | RPD | Qualifier | |
| Chloride* | 80.0 | 4.00 | 12/06/2021 | ND | 100 | 100 | 100 | 4.08 | | |
| Sulfate 375.4 | | mg/L | | Analyzed By: AC | | | | | | |
| Analyte | Result | Reporting Limit | Analyzed | Method Blank | BS | % Recovery | True Value QC | RPD | Qualifier | |
| Sulfate* | 91.0 | 25.0 | 12/06/2021 | ND | 23.6 | 118 | 20.0 | 0.636 | | |
| TDS 160.1 | | mg/L | | Analyzed By: AC | | | | | | |
| Analyte | Result | Reporting Limit | Analyzed | Method Blank | BS | % Recovery | True Value QC | RPD | Qualifier | |
| TDS* | 572 | 5.00 | 12/07/2021 | ND | 501 | 100 | 500 | 0.398 | | |

Cardinal Laboratories

*=Accredited Analyte

PLEASE NOTE: Liability and Damages. Cardinal's liability and client's exclusive remedy for any claim arising, whether based in contract or tort, shall be limited to the amount paid by client for analyses. All claims, including those for negligence and any other cause whatsoever shall be deemed waived unless made in writing and received by Cardinal within thirty (30) days after completion of the applicable service. In no event shall Cardinal be liable for incidental or consequential damages, including, without limitation, business interruptions, loss of use, or loss of profits incurred by client, its subsidiaries, affiliates or successors arising out of or related to the performance of the services hereunder by Cardinal, regardless of whether such claim is based upon any of the above stated reasons or otherwise. Results relate only to the samples identified above. This report shall not be reproduced except in full with written approval of Cardinal Laboratories.

Celey D. Keene, Lab Director/Quality Manager



PHONE (575) 393-2326 ° 101 E. MARLAND ° HOBBS, NM 88240

Analytical Results For:

Rice Operating Company
 KATIE JONES
 112 W. Taylor
 Hobbs NM, 88240
 Fax To: (575) 397-1471

| | | | |
|-------------------|--------------------------------|---------------------|----------------|
| Received: | 12/03/2021 | Sampling Date: | 12/01/2021 |
| Reported: | 12/08/2021 | Sampling Type: | Water |
| Project Name: | HOBBS K-29 BOOT | Sampling Condition: | Cool & Intact |
| Project Number: | NOT GIVEN | Sample Received By: | Tamara Oldaker |
| Project Location: | T18S-R38E-SEC29 K-LEA CTY., NM | | |

Sample ID: MONITOR WELL # 3 (H213473-03)

| Chloride, SM4500Cl-B | | mg/L | | Analyzed By: AC | | | | | | |
|----------------------|--------|-----------------|------------|-----------------|------|------------|---------------|-------|-----------|--|
| Analyte | Result | Reporting Limit | Analyzed | Method Blank | BS | % Recovery | True Value QC | RPD | Qualifier | |
| Chloride* | 228 | 4.00 | 12/06/2021 | ND | 100 | 100 | 100 | 4.08 | | |
| Sulfate 375.4 | | mg/L | | Analyzed By: AC | | | | | | |
| Analyte | Result | Reporting Limit | Analyzed | Method Blank | BS | % Recovery | True Value QC | RPD | Qualifier | |
| Sulfate* | 74.4 | 10.0 | 12/06/2021 | ND | 23.6 | 118 | 20.0 | 0.636 | | |
| TDS 160.1 | | mg/L | | Analyzed By: AC | | | | | | |
| Analyte | Result | Reporting Limit | Analyzed | Method Blank | BS | % Recovery | True Value QC | RPD | Qualifier | |
| TDS* | 776 | 5.00 | 12/07/2021 | ND | 501 | 100 | 500 | 0.398 | | |

Cardinal Laboratories

*=Accredited Analyte

PLEASE NOTE: Liability and Damages. Cardinal's liability and client's exclusive remedy for any claim arising, whether based in contract or tort, shall be limited to the amount paid by client for analyses. All claims, including those for negligence and any other cause whatsoever shall be deemed waived unless made in writing and received by Cardinal within thirty (30) days after completion of the applicable service. In no event shall Cardinal be liable for incidental or consequential damages, including, without limitation, business interruptions, loss of use, or loss of profits incurred by client, its subsidiaries, affiliates or successors arising out of or related to the performance of the services hereunder by Cardinal, regardless of whether such claim is based upon any of the above stated reasons or otherwise. Results relate only to the samples identified above. This report shall not be reproduced except in full with written approval of Cardinal Laboratories.

Celey D. Keene, Lab Director/Quality Manager

PHONE (575) 393-2326 ° 101 E. MARLAND ° HOBBS, NM 88240

Notes and Definitions

| | |
|-------|--|
| QM-07 | The spike recovery was outside acceptance limits for the MS and/or MSD. The batch was accepted based on acceptable LCS recovery. |
| ND | Analyte NOT DETECTED at or above the reporting limit |
| RPD | Relative Percent Difference |
| ** | Samples not received at proper temperature of 6°C or below. |
| *** | Insufficient time to reach temperature. |
| - | Chloride by SM4500Cl-B does not require samples be received at or below 6°C Samples reported on an as received basis (wet) unless otherwise noted on report |

Cardinal Laboratories

*=Accredited Analyte

PLEASE NOTE: Liability and Damages. Cardinal's liability and client's exclusive remedy for any claim arising, whether based in contract or tort, shall be limited to the amount paid by client for analyses. All claims, including those for negligence and any other cause whatsoever shall be deemed waived unless made in writing and received by Cardinal within thirty (30) days after completion of the applicable service. In no event shall Cardinal be liable for incidental or consequential damages, including, without limitation, business interruptions, loss of use, or loss of profits incurred by client, its subsidiaries, affiliates or successors arising out of or related to the performance of the services hereunder by Cardinal, regardless of whether such claim is based upon any of the above stated reasons or otherwise. Results relate only to the samples identified above. This report shall not be reproduced except in full with written approval of Cardinal Laboratories.

A handwritten signature in black ink, appearing to read "Celey D. Keene".

Celey D. Keene, Lab Director/Quality Manager

Cardinal Laboratories, Inc.

CHAIN-OF-CUSTODY AND ANALYSIS REQUEST

LAB Order ID # _____

(Circle or Specify Method No.)

[illegible]

MTBE 8021B/602

| | |
|----------------|--|
| BTEX 8021B/602 | |
|----------------|--|

TPH 418.1/TX1005 / TX1005 Extended (C35)

PAH 8270C

Total Metals Ag As Ba Cd Cr Pb Se Hg 6010B/200.7

TCLP Metals Ag As Ba Cd Cr Pb Se Hg

TCLP Volatiles

TCLP Semi Volatiles

TCLP Pesticides

BCI

RCI

GC/MS Vol. 8260B/624

GC/MS Semi. Vol. 8270C/625

PCB's 8082/608

809/7809

Pesticides 808

BOD, TSS, pH

Moisture Content

Cations (Ca, Mg, Na, K)

Anions (Cl, SO₄, CO₃, HCO₃)Sulfates (Cl, SO₄, CO₃, HCO₃)

Sulfates

Total Dissolved Solids

Chlorides

Turn Around Time ~ 24 Hours

| | | | | | |
|--|------------------------|----------------------|--|------------------------|-------------------|
| Relinquished by: <u>Shirley Johnson</u> | Date: <u>12/3/2021</u> | Time: <u>7:25</u> | Received by: <u>Hand Simon</u> | Date: <u>12/3/2021</u> | Time: <u>7:26</u> |
| Relinquished by: <u>Shirley Johnson</u> | Date: <u>12/3/2021</u> | Time: <u>8:32 AM</u> | Received By: (Laboratory Staff) <u>Shirley Johnson</u> | Date: <u>12-3-21</u> | Time: <u>0835</u> |
| Delivered By: (Circle One) <u>UPS</u> | | | Sample Condition | CHECKED BY: | |
| | | | Cool Intact | | |
| | | Yes | <input checked="" type="checkbox"/> Yes <input type="checkbox"/> | (Initials) | |
| | | No | <input type="checkbox"/> No <input type="checkbox"/> | | |

| | | | |
|---------------|-----|----|------------------------|
| Phone Results | Yes | No | |
| Fax Results | Yes | No | Additional Fax Number: |

REMARKS:

Email Results: kjones@riceswd.com
rozanne@sdacres.com

Page 5 of 5

District I

1625 N. French Dr., Hobbs, NM 88240
Phone:(575) 393-6161 Fax:(575) 393-0720

District II

811 S. First St., Artesia, NM 88210
Phone:(575) 748-1283 Fax:(575) 748-9720

District III

1000 Rio Brazos Rd., Aztec, NM 87410
Phone:(505) 334-6178 Fax:(505) 334-6170

District IV

1220 S. St Francis Dr., Santa Fe, NM 87505
Phone:(505) 476-3470 Fax:(505) 476-3462

State of New Mexico
Energy, Minerals and Natural Resources
Oil Conservation Division
1220 S. St Francis Dr.
Santa Fe, NM 87505

CONDITIONS

Action 90552

CONDITIONS

| | |
|--|--|
| Operator: RICE OPERATING COMPANY 122 W Taylor Hobbs, NM 88240 | OGRID: 19174 |
| | Action Number: 90552 |
| | Action Type: [UF-GWA] Ground Water Abatement (GROUND WATER ABATEMENT) |

CONDITIONS

| Created By | Condition | Condition Date |
|------------|---|----------------|
| nvelez | Review of 2021 Annual Groundwater Report: Content satisfactory 1. Continue sampling on a semi-annual schedule at a minimum 2. Submit next annual report no later than March 31, 2023. | 12/16/2022 |