



Remediation Summary and Closure Request

Devon Energy Corporation

Peridot 13 State #3H

Eddy County, New Mexico

Unit Letter "H", Section 12, Township 19 South, Range 29 East

Latitude 32.678207 North, Longitude 104.023742 West

NMOCD Incident # nAB1535131213

Prepared For:

Devon Energy Corporation

6488 Seven Rivers Hwy

Artesia, NM 88210

Prepared By:

Hungry Horse, LLC

4024 Plains Hwy

Lovington, NM 88260

Office: (575) 393-3386

June 2022

A handwritten signature in black ink that reads "Bradley Wells".

Bradley Wells

Project Manager

bwells@hungry-horse.com

A handwritten signature in black ink that reads "Daniel Dominguez".

Daniel Dominguez

Environmental Manager

ddominguez@hungry-horse.com

Table Of Contents

Background	1
NMOCD Site Classification	1
Delineation and Remediation Activities	2
Restoration, Reclamation, and Re-Vegetation	3
Closure Request	3
Limitations	3
Distribution	4

Figures

- Figure 1 – Topographic Map
- Figure 2 – OSE POD Locations Map
- Figure 3 – USGS Well Locations Map
- Figure 4 – Sample Location Map

Tables

- Table 1 – Summary of Soil Sample Laboratory Analytical Results

Attachments

- Attachment I – NMOCD Correspondence
- Attachment II – Site Photographs
- Attachment III – Depth to Groundwater
- Attachment IV – Laboratory Analytical Reports
- Attachment V – NMOCD Form C-141 Closure Page



HUNGRY HORSE, LLC

The following Remediation Summary and Closure Request serves as a condensed update on field activities undertaken at the afore referenced Site.

Background:

The site is located in Unit Letter H (SE/NE), Section 12, Township 19 South, Range 29 East, approximately 10 miles Southwest of Loco Hills, in Eddy County, New Mexico. The property is New Mexico State Trust Land. Topographic Map, OSE POD Locations Map, and USGS Well Locations Map are included as Figure 1, Figure 2, and Figure 3, respectively.

The release occurred on an active well pad; Latitude 32.678207 North, Longitude 104.023742 West. The Initial NMOCD Form C-141 indicates on December 11, 2015, approximately one bbl of oil and five bbls of produced water were released due to a gauge failing. A crew was dispatched to the release site and the well was shut in and gauge replaced. Approximately one bbl of oil and two bbls of produced water were recovered. Previously submitted NMOCD Form C-141 is available on the NMOCD Imaging System. NMOCD Form C-141 Closure page is included as Attachment V. The release event occurred, remediation activities were completed, and closure was accepted before the NMOCD Rule change on August 24, 2018.

NMOCD Site Classification:

A search of the New Mexico Office of the State Engineer (NMOSE) and United States Geological Survey (USGS) groundwater databases was completed in an effort to determine the horizontal distance to known water sources within a half mile radius of the release site. Approximate depth to groundwater was determined using maintained and published water well data. Karst mapping indicates the site is not located in a Karst designated area. Depth to groundwater information is provided as Attachment III and the results are depicted on Figures 2 & 3.

No water wells could be located within a half mile of the release area, however, depth to water was estimated to be approximately one hundred-fifty feet bgs based upon the Eddy County Depth to Ground Water map. At that time the NMOCD allowed use of these maps to estimate depth to water. Utilizing this information, the NMOCD Recommended Remedial Action Levels for the Site were determined as follows:

Depth to Groundwater	Constituent	Method	RRAL
~150'	Chloride	EPA 300.0 or SM4500 CLB	1,000 mg/kg
	TPH (GRO + DRO)	EPA SW-846 Method 8015M	5,000 mg/kg
	BTEX	EPA SW-846 Methods 8021B or 8260B	50 mg/kg
	Benzene	EPA SW-846 Methods 8021B or 8260B	10 mg/kg



Delineation and Remediation Activities:

On January 19, 2016, Hungry Horse conducted an initial site assessment and delineation. Soil samples were collected using a hand auger and field screened for the presence of chloride concentrations. Four delineation soil samples, SP1 at surface and two feet bgs, and SP2 at surface and two feet bgs, were submitted to the laboratory for analysis of BTEX, TPH, and chloride.

Laboratory analytical results indicated contaminant concentrations were below the NMOCD RRAL's in each of the submitted samples, with the exception of SP1 and SP2 at surface, which exhibited TPH concentrations in excess of NMOCD RRAL's.

On February 22, 2016, the Peridot 13 St 3H Wk Plan Packet was emailed to Heather Patterson at the NMOCD. The work plan proposed in-situ remediation of the release area utilizing MicroBlaze. The area would be sampled approximately 60-90 days following application. On February 24, 2016, the proposed work plan was approved. Work plan and email correspondence are provided as Attachment I.

During the first week of March 2016, according to the approved work plan, the release area was heavily tilled to loosen the hardened caliche crust and treated with MicroBlaze. On June 6 and 22, 2016, the area was sampled again at surface and one-foot bgs. Four confirmation soil samples, SP1 at surface and one foot, and SP2 at surface and one foot, were submitted to the laboratory for analysis of TPH.

Laboratory analytical results indicated contaminant concentrations were below the NMOCD RRAL's in each of the submitted samples, with the exception of SP2 at one foot, which exhibited TPH concentrations in excess of NMOCD RRAL's.

On June 29, 2016, the laboratory analytical results were emailed to Heather Patterson at the NMOCD. At this time closure was also requested as a 55%-60% reduction in hydrocarbons had been achieved. On July 8, 2016, closure was accepted and a closure report with Final C-141 was requested. Email correspondence are provided as Attachment I.

However, as the oil and gas industry faced a slowdown in 2016, Devon put a hold on all environmental jobs and related work before a closure report with Final C-141 could be submitted to the NMOCD. In June 2022, Devon requested Hungry Horse prepare for submission this Remediation Summary and Closure Request with NMOCD Form C-141 Closure page.

A Sample Location Map is provided as Figure 4. A Summary of Soil Sample Laboratory Analytical Results is provided as Table 1 and Laboratory Analytical Reports are provided as Attachment IV. Site Photographs are provided as Attachment II.



Restoration, Reclamation, and Re-Vegetation:

Based upon laboratory analytical results from confirmation soil samples, the affected area was contoured to achieve erosion control and preserve surface water flow. As the affected area is located on an active well pad, seeding will not be required.

Closure Request:

Remediation activities were conducted in accordance with NMOCD approved work plan. Soil affected above the NMOCD Recommended Remedial Action Levels has been in-situ treated with MicroBlaze. Laboratory analytical results from confirmation soil samples were accepted by the NMOCD and closure report with Final C-141 was requested.

Based on laboratory analytical results and field activities conducted to date, Devon Energy Corporation respectfully requests closure be granted for the Peridot 13 State #3H location.

Limitations:

Hungry Horse, LLC, has prepared this Remediation Summary and Closure Request to the best of its ability. No other warranty, expressed or implied, is made or intended. Hungry Horse has examined and relied upon documents referenced in the report and on oral statements made by certain individuals. Hungry Horse has not conducted an independent examination of the facts contained in referenced materials and statements. Hungry Horse has presumed the genuineness of these documents and statements and that the information provided therein is true and accurate. Hungry Horse notes that the facts and conditions referenced in this report may change over time, and the conclusions and recommendations set forth herein are applicable only to the facts and conditions as described at the time of this report.



Distribution:

Devon Energy Corporation

6488 Seven Rivers Hwy
Artesia, NM 88210

New Mexico Energy, Minerals and Natural Resources Department

Oil Conservation Division, District 2
811 S. First St.
Artesia, NM 88210

New Mexico State Land Office

602 N. Canal, Suite B
Carlsbad, NM 88220

Figures

**Figure 1**

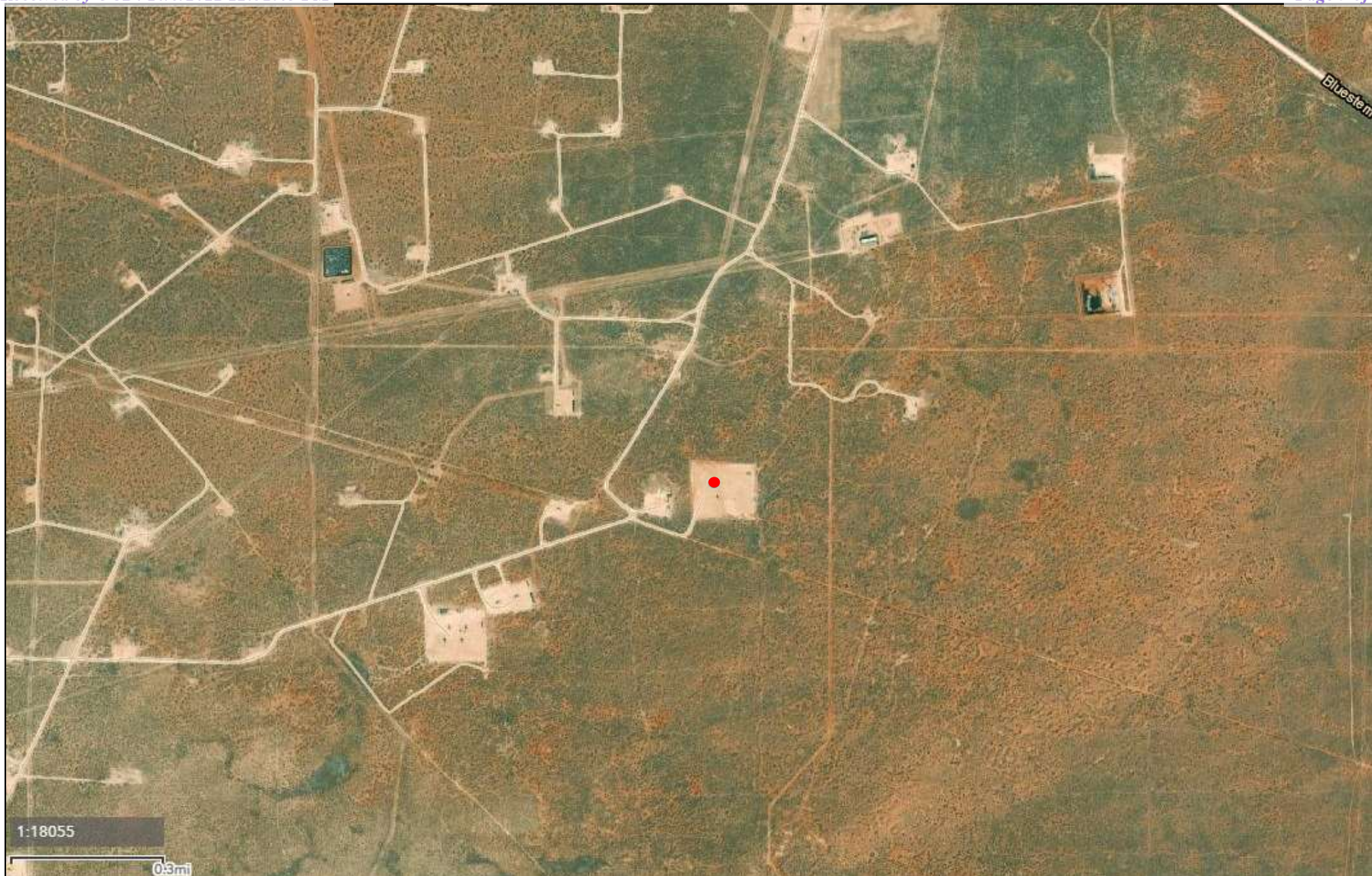
Topographic Map
 Devon Energy Corporation
 Peridot 13 State #3H
 GPS: 32.678207, -104.023742
 Eddy County

Legend:

● Peridot 13 State #3H Location

Drafted: dd
 Checked: bw
 Date: 6/17/22



**Figure 2**

OSE POD Locations Map
Devon Energy Corporation
Peridot 13 State #3H
GPS: 32.678207, -104.023742
Eddy County

Legend:

- Peridot 13 State #3H Location

Drafted: dd
Checked: bw
Date: 6/17/22



**Figure 3**

USGS Well Locations Map
Devon Energy Corporation
Peridot 13 State #3H
GPS: 32.678207, -104.023742
Eddy County

Legend:

● Peridot 13 State #3H Location


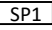
Drafted: dd
Checked: bw
Date: 6/17/22



**Figure 4**

Sample Location Map
Devon Energy Corporation
Peridot 13 State #3H
GPS: 32.678207, -104.023742
Eddy County

Legend:

-  Release Area
 Sample Location

Drafted: dd
Checked: bw
Date: 6/17/22



Table

TABLE 1
Summary of Soil Sample Laboratory Analytical Results
Devon Energy Corporation
Peridot 13 State #3H
NMOCD Ref. #: nAB1535131213

Sample ID	Date	Depth (ft)	Soil Status	Field Chloride	Benzene (mg/kg)	BTEX (mg/kg)	GRO C ₆ -C ₁₀ (mg/kg)	DRO C ₁₀ -C ₂₈ (mg/kg)	TPH C ₆ -C ₃₆ (mg/kg)	Chloride (mg/kg)
SP1	1/19/16	Surf	In-Situ	<100	<1.00	64.5	778	9,610	10,388	32.0
	6/22/16	Surf	In-Situ	-	-	-	<10.0	3,300	3,300	-
	6/6/16	1	In-Situ	78	-	-	<10.0	109	109	-
	1/19/16	2	In-Situ	78	<0.050	<0.300	<10.0	<10.0	<20.0	160
SP2	1/19/16	Surf	In-Situ	78	0.739	146	996	10,500	11,496	128
	6/22/16	Surf	In-Situ	-	-	-	<50.0	4,600	4,600	-
	6/6/16	1	In-Situ	122	-	-	1,050	4,440	5,490	-
	1/19/16	2	In-Situ	122	<0.050	0.809	<10.0	66.2	66.2	64.0
NMOCD Recommended Remedial Action Levels					10	50	-	-	5,000	1,000

NOTES:

- = Sample not analyzed for that constituent.

Bold text denotes a concentration that exceeds the NMOCD Closure Criteria

Attachment I

NMOCD Correspondence

From: Patterson, Heather, EMNRD
To: ["Vernon Black"](#)
Cc: [Bratcher, Mike, EMNRD](#); [Fulks, Brett](#); agroves@slo.state.nm.us
Subject: RE: Devon Peridot 13 St #3H
Date: Wednesday, February 24, 2016 8:15:00 AM

RE: Devon * Peridot 13 State #3H *30-015-40778 * 2RP-3456 * revised work plan

Vernon,

Your revised work plan is approved with the following conditions:

- You must obtain confirmation samples at surface and at 1 ft. for both sample points;
- If RRAL's for the site have not been achieved after 180 days, OCD will require impacted soils to be removed to a disposal.

OCD approval does not relieve the operator of liability should their operations fail to adequately investigate and remediate contamination that may pose a threat to ground water, surface water, human health or the environment. In addition, OCD approval does not relieve the operator of responsibility for compliance with any other federal, state, local laws and/or regulations.

If you have any questions or concerns, and for notification, please contact me.

Heather Patterson
Environmental Specialist
NMOCD District II
Office (575)748-1283 ext.101
Cell (575)703-0228

From: Vernon Black [mailto:vblack@hungry-horse.com]
Sent: Monday, February 22, 2016 9:19 AM
To: Patterson, Heather, EMNRD
Subject: Devon PERidot 13 St #3H

Good Morning Heather,

Please see the attached revised work plan for the Devon location referenced above. You had already given approval to the original work plan for dig and haul. However, upon further review, I think we can achieve the same results by using MicroBlaze since Chlorides are not an issue and depth of penetration is minimal. We'll follow up with confirmation samples in 60-90 days and present the results for closure.

Thanks,
Vernon

HUNGRY HORSE, LLC

3709 S. Eunice HWY
P.O. Box 1058
Hobbs, NM 88241
Office: 575-393-3386
Fax: 575-391-4585
info@hungry-horse.com

DIRT WORK * ON-SITE REMEDIATION
SOIL TESTING * EXCAVATION * ELECTRICAL

25Jan16

To: Heather Patterson, New Mexico Oil Conservation Division, District II
Reference: Remediation Work Plan
Operator: Devon Energy Production Company
Location: Peridot 13 St 3H
API: 30-015-40778
Legals: UL. H, Sec. 12, T 19S, R29E, Eddy County
GPS: 32.6782 -104.0237
NM OCD: 2RP 3456

Site Information

This location is west of Highway 360 approximately two miles west of the intersection of Highway 360 and Grubbs Road. The area has very defined sand dunes with sparse vegetation present. The depth to groundwater is 150' based upon the Eddy County Depth to Ground Water. The New Mexico Office of the State Engineer's website list no groundwater data for the area.

The release is the result of a failed gauge. All released fluid remained on the caliche pad. The impacted area is 65' x 140'.

Work Conducted to Date

A delineation was conducted using a hand auger and soil samples were obtained from two sample points and field tested for chlorides. Laboratory analysis for Chlorides, TPH and BTEX was conducted on surface and 2' BGS samples (See attached results).

Proposal

Due to the hydrocarbon contamination being contained to the top few inches of soil. I propose to remediate the impacted using the in-situ method using MicroBlaze. A liberal application of 1.5 gallons of MicroBlaze to 10 cubic yards of soil, mixed to a 10% solution, will be applied to the impacted area.

Confirmation samples will be obtained from the same sample points 60-90 days after application and analyzed. Results will be presented for closure request.

Vernon K. Black, Hungry Horse, LLC

From: Patterson, Heather, EMNRD
To: ["Vernon Black"](#)
Subject: RE: Devon Peridot 13 St #3h
Date: Friday, July 08, 2016 10:47:00 AM

Vernon,

Although one of your samples is still slightly elevated above RRAL's, I believe it is close enough that we can accept a closure request. Go ahead and send in your closure report and a Final C-141.

Thank you,

Heather Patterson
Environmental Specialist
NMOCD District II
Office (575)748-1283 ext.101
Cell (575)703-0228

From: Vernon Black [mailto:vblack@hungry-horse.com]
Sent: Wednesday, June 29, 2016 7:29 AM
To: Patterson, Heather, EMNRD
Subject: Devon Peridot 13 St #3h

Good Morning Heather,

Please see that attached surface and 1' lab results from the soil samples taken 90 days after the Micro Blaze application. Although there are still remaining hydrocarbons, we made a 55%-60% reduction. The impact is on the well pad and I feel like the heat, wind, and occasional rains will assist greatly in the continual reduction of the remaining hydrocarbons. Please accept this correspondence as request for closure.

Thanks for all you help,
Vernon

Attachment II Site Photographs

Photographs



Photographs



Photographs



Photographs



Attachment III

Depth to Groundwater



New Mexico Office of the State Engineer

Water Column/Average Depth to Water

(quarters are 1=NW 2=NE 3=SW 4=SE)

(quarters are smallest to largest) (NAD83 UTM in meters)

No records found.

UTMNAD83 Radius Search (in meters):

Easting (X): 591525.31

Northing (Y): 3616036.45

Radius: 805

The data is furnished by the NMOSE/ISC and is accepted by the recipient with the expressed understanding that the OSE/ISC make no warranties, expressed or implied, concerning the accuracy, completeness, reliability, usability, or suitability for any particular purpose of the data.

6/28/22 11:51 AM

WATER COLUMN/ AVERAGE
DEPTH TO WATER



New Mexico Office of the State Engineer Water Column/Average Depth to Water

No records found.

PLSS Search:

Section(s): 12

Township: 19S

Range: 29E

The data is furnished by the NMOSE/ISC and is accepted by the recipient with the expressed understanding that the OSE/ISC make no warranties, expressed or implied, concerning the accuracy, completeness, reliability, usability, or suitability for any particular purpose of the data.

1/25/16 12:47 PM

Page 1 of 1

WATER COLUMN/ AVERAGE
DEPTH TO WATER

Attachment IV

Laboratory Analytical Reports



PHONE (575) 393-2326 ° 101 E. MARLAND ° HOBBS, NM 88240

January 25, 2016

VERNON BLACK

Hungry Horse Environmental

P.O. Box 1058

Hobbs, NM 88240

RE: PERIDOT 13 STATE 3H

Enclosed are the results of analyses for samples received by the laboratory on 01/19/16 14:40.

Cardinal Laboratories is accredited through Texas NELAP under certificate number T104704398-15-7. Accreditation applies to drinking water, non-potable water and solid and chemical materials. All accredited analytes are denoted by an asterisk (*). For a complete list of accredited analytes and matrices visit the TCEQ website at www.tceq.texas.gov/field/qa/lab_accred_certif.html.

Cardinal Laboratories is accredited through the State of Colorado Department of Public Health and Environment for:

Method EPA 552.2	Haloacetic Acids (HAA-5)
Method EPA 524.2	Total Trihalomethanes (TTHM)
Method EPA 524.4	Regulated VOCs (V1, V2, V3)

Accreditation applies to public drinking water matrices.

This report meets NELAP requirements and is made up of a cover page, analytical results, and a copy of the original chain-of-custody. If you have any questions concerning this report, please feel free to contact me.

Sincerely,

A handwritten signature in black ink that reads "Celey D. Keene". The signature is written in a cursive, flowing style.

Celey D. Keene

Lab Director/Quality Manager



PHONE (575) 393-2326 ° 101 E. MARLAND ° HOBBS, NM 88240

Analytical Results For:

Hungry Horse Environmental
 VERNON BLACK
 P.O. Box 1058
 Hobbs NM, 88240
 Fax To: (505) 391-4585

Received: 01/19/2016
 Reported: 01/25/2016
 Project Name: PERIDOT 13 STATE 3H
 Project Number: NONE GIVEN
 Project Location: NOT GIVEN

Sampling Date: 01/19/2016
 Sampling Type: Soil
 Sampling Condition: ** (See Notes)
 Sample Received By: Amanda Ponce

Sample ID: SP1 SURFACE (H600109-01)

BTX 8021B		mg/kg		Analyzed By: MS					
Analyte	Result	Reporting Limit	Analyzed	Method Blank	BS	% Recovery	True Value QC	RPD	Qualifier
Benzene*	<1.00	1.00	01/20/2016	ND	1.77	88.3	2.00	1.48	
Toluene*	13.6	1.00	01/20/2016	ND	1.75	87.7	2.00	0.520	
Ethylbenzene*	13.5	1.00	01/20/2016	ND	1.61	80.4	2.00	1.16	
Total Xylenes*	37.5	3.00	01/20/2016	ND	4.99	83.2	6.00	1.16	
Total BTX	64.5	6.00	01/20/2016	ND					

Surrogate: 4-Bromofluorobenzene (PID) 102 % 73.6-140

Chloride, SM4500Cl-B		mg/kg		Analyzed By: AP					
Analyte	Result	Reporting Limit	Analyzed	Method Blank	BS	% Recovery	True Value QC	RPD	Qualifier
Chloride	32.0	16.0	01/20/2016	ND	448	112	400	0.00	

TPH 8015M		mg/kg		Analyzed By: MS						S-06
Analyte	Result	Reporting Limit	Analyzed	Method Blank	BS	% Recovery	True Value QC	RPD	Qualifier	
GRO C6-C10	778	50.0	01/19/2016	ND	194	96.9	200	3.69		
DRO >C10-C28	9610	50.0	01/19/2016	ND	179	89.5	200	4.37		

Surrogate: 1-Chlorooctane 138 % 35-147

Surrogate: 1-Chlorooctadecane 214 % 28-171

Cardinal Laboratories

*=Accredited Analyte

PLEASE NOTE: Liability and Damages. Cardinal's liability and client's exclusive remedy for any claim arising, whether based in contract or tort, shall be limited to the amount paid by client for analyses. All claims, including those for negligence and any other cause whatsoever shall be deemed waived unless made in writing and received by Cardinal within thirty (30) days after completion of the applicable service. In no event shall Cardinal be liable for incidental or consequential damages, including, without limitation, business interruptions, loss of use, or loss of profits incurred by client, its subsidiaries, affiliates or successors arising out of or related to the performance of the services hereunder by Cardinal, regardless of whether such claim is based upon any of the above stated reasons or otherwise. Results relate only to the samples identified above. This report shall not be reproduced except in full with written approval of Cardinal Laboratories.

Celey D. Keene, Lab Director/Quality Manager



PHONE (575) 393-2326 ° 101 E. MARLAND ° HOBBS, NM 88240

Analytical Results For:

Hungry Horse Environmental
 VERNON BLACK
 P.O. Box 1058
 Hobbs NM, 88240
 Fax To: (505) 391-4585

Received: 01/19/2016
 Reported: 01/25/2016
 Project Name: PERIDOT 13 STATE 3H
 Project Number: NONE GIVEN
 Project Location: NOT GIVEN

Sampling Date: 01/19/2016
 Sampling Type: Soil
 Sampling Condition: ** (See Notes)
 Sample Received By: Amanda Ponce

Sample ID: SP1 @ 2' (H600109-02)

BTX 8021B		mg/kg		Analyzed By: MS						
Analyte	Result	Reporting Limit	Analyzed	Method Blank	BS	% Recovery	True Value QC	RPD	Qualifier	
Benzene*	<0.050	0.050	01/21/2016	ND	1.83	91.4	2.00	10.6		
Toluene*	<0.050	0.050	01/21/2016	ND	1.80	89.8	2.00	8.52		
Ethylbenzene*	<0.050	0.050	01/21/2016	ND	1.65	82.3	2.00	7.09		
Total Xylenes*	<0.150	0.150	01/21/2016	ND	5.11	85.1	6.00	6.58		
Total BTX	<0.300	0.300	01/21/2016	ND						

Surrogate: 4-Bromofluorobenzene (PID) 100 % 73.6-140

Chloride, SM4500CI-B		mg/kg		Analyzed By: AP					
Analyte	Result	Reporting Limit	Analyzed	Method Blank	BS	% Recovery	True Value QC	RPD	Qualifier
Chloride	160	16.0	01/20/2016	ND	448	112	400	0.00	

TPH 8015M		mg/kg		Analyzed By: MS					
Analyte	Result	Reporting Limit	Analyzed	Method Blank	BS	% Recovery	True Value QC	RPD	Qualifier
GRO C6-C10	<10.0	10.0	01/19/2016	ND	194	96.9	200	3.69	
DRO >C10-C28	<10.0	10.0	01/19/2016	ND	179	89.5	200	4.37	

Surrogate: 1-Chlorooctane 93.9 % 35-147

Surrogate: 1-Chlorooctadecane 98.7 % 28-171

Cardinal Laboratories

*=Accredited Analyte

PLEASE NOTE: Liability and Damages. Cardinal's liability and client's exclusive remedy for any claim arising, whether based in contract or tort, shall be limited to the amount paid by client for analyses. All claims, including those for negligence and any other cause whatsoever shall be deemed waived unless made in writing and received by Cardinal within thirty (30) days after completion of the applicable service. In no event shall Cardinal be liable for incidental or consequential damages, including, without limitation, business interruptions, loss of use, or loss of profits incurred by client, its subsidiaries, affiliates or successors arising out of or related to the performance of the services hereunder by Cardinal, regardless of whether such claim is based upon any of the above stated reasons or otherwise. Results relate only to the samples identified above. This report shall not be reproduced except in full with written approval of Cardinal Laboratories.

Celey D. Keene, Lab Director/Quality Manager



PHONE (575) 393-2326 ° 101 E. MARLAND ° HOBBS, NM 88240

Analytical Results For:

Hungry Horse Environmental
 VERNON BLACK
 P.O. Box 1058
 Hobbs NM, 88240
 Fax To: (505) 391-4585

Received: 01/19/2016
 Reported: 01/25/2016
 Project Name: PERIDOT 13 STATE 3H
 Project Number: NONE GIVEN
 Project Location: NOT GIVEN

Sampling Date: 01/19/2016
 Sampling Type: Soil
 Sampling Condition: ** (See Notes)
 Sample Received By: Amanda Ponce

Sample ID: SP2 SURFACE (H600109-03)

BTX 8021B		mg/kg		Analyzed By: MS					
Analyte	Result	Reporting Limit	Analyzed	Method Blank	BS	% Recovery	True Value QC	RPD	Qualifier
Benzene*	0.739	0.500	01/25/2016	ND	1.83	91.4	2.00	10.6	
Toluene*	27.8	0.500	01/25/2016	ND	1.80	89.8	2.00	8.52	
Ethylbenzene*	31.1	0.500	01/25/2016	ND	1.65	82.3	2.00	7.09	
Total Xylenes*	86.2	1.50	01/25/2016	ND	5.11	85.1	6.00	6.58	
Total BTX	146	3.00	01/25/2016	ND					

Surrogate: 4-Bromofluorobenzene (PID) 112 % 73.6-140

Chloride, SM4500CI-B		mg/kg		Analyzed By: AP					
Analyte	Result	Reporting Limit	Analyzed	Method Blank	BS	% Recovery	True Value QC	RPD	Qualifier
Chloride	128	16.0	01/20/2016	ND	448	112	400	0.00	

TPH 8015M		mg/kg		Analyzed By: MS						S-06
Analyte	Result	Reporting Limit	Analyzed	Method Blank	BS	% Recovery	True Value QC	RPD	Qualifier	
GRO C6-C10	996	50.0	01/19/2016	ND	194	96.9	200	3.69		
DRO >C10-C28	10500	50.0	01/19/2016	ND	179	89.5	200	4.37		

Surrogate: 1-Chlorooctane 140 % 35-147

Surrogate: 1-Chlorooctadecane 239 % 28-171

Cardinal Laboratories

*=Accredited Analyte

PLEASE NOTE: Liability and Damages. Cardinal's liability and client's exclusive remedy for any claim arising, whether based in contract or tort, shall be limited to the amount paid by client for analyses. All claims, including those for negligence and any other cause whatsoever shall be deemed waived unless made in writing and received by Cardinal within thirty (30) days after completion of the applicable service. In no event shall Cardinal be liable for incidental or consequential damages, including, without limitation, business interruptions, loss of use, or loss of profits incurred by client, its subsidiaries, affiliates or successors arising out of or related to the performance of the services hereunder by Cardinal, regardless of whether such claim is based upon any of the above stated reasons or otherwise. Results relate only to the samples identified above. This report shall not be reproduced except in full with written approval of Cardinal Laboratories.

Celey D. Keene, Lab Director/Quality Manager



PHONE (575) 393-2326 ° 101 E. MARLAND ° HOBBS, NM 88240

Analytical Results For:

Hungry Horse Environmental
 VERNON BLACK
 P.O. Box 1058
 Hobbs NM, 88240
 Fax To: (505) 391-4585

Received: 01/19/2016
 Reported: 01/25/2016
 Project Name: PERIDOT 13 STATE 3H
 Project Number: NONE GIVEN
 Project Location: NOT GIVEN

Sampling Date: 01/19/2016
 Sampling Type: Soil
 Sampling Condition: ** (See Notes)
 Sample Received By: Amanda Ponce

Sample ID: SP2 @ 2' (H600109-04)

BTX 8021B		mg/kg		Analyzed By: MS					
Analyte	Result	Reporting Limit	Analyzed	Method Blank	BS	% Recovery	True Value QC	RPD	Qualifier
Benzene*	<0.050	0.050	01/21/2016	ND	1.83	91.4	2.00	10.6	
Toluene*	0.182	0.050	01/21/2016	ND	1.80	89.8	2.00	8.52	
Ethylbenzene*	0.151	0.050	01/21/2016	ND	1.65	82.3	2.00	7.09	
Total Xylenes*	0.476	0.150	01/21/2016	ND	5.11	85.1	6.00	6.58	
Total BTX	0.809	0.300	01/21/2016	ND					

Surrogate: 4-Bromofluorobenzene (PID) 103 % 73.6-140

Chloride, SM4500CI-B		mg/kg		Analyzed By: AP						
Analyte	Result	Reporting Limit	Analyzed	Method Blank	BS	% Recovery	True Value QC	RPD	Qualifier	
Chloride	64.0	16.0	01/20/2016	ND	448	112	400	0.00		

TPH 8015M		mg/kg		Analyzed By: MS					
Analyte	Result	Reporting Limit	Analyzed	Method Blank	BS	% Recovery	True Value QC	RPD	Qualifier
GRO C6-C10	<10.0	10.0	01/20/2016	ND	191	95.3	200	1.65	
DRO >C10-C28	66.2	10.0	01/20/2016	ND	197	98.7	200	9.16	

Surrogate: 1-Chlorooctane 94.5 % 35-147

Surrogate: 1-Chlorooctadecane 102 % 28-171

Cardinal Laboratories

*=Accredited Analyte

PLEASE NOTE: Liability and Damages. Cardinal's liability and client's exclusive remedy for any claim arising, whether based in contract or tort, shall be limited to the amount paid by client for analyses. All claims, including those for negligence and any other cause whatsoever shall be deemed waived unless made in writing and received by Cardinal within thirty (30) days after completion of the applicable service. In no event shall Cardinal be liable for incidental or consequential damages, including, without limitation, business interruptions, loss of use, or loss of profits incurred by client, its subsidiaries, affiliates or successors arising out of or related to the performance of the services hereunder by Cardinal, regardless of whether such claim is based upon any of the above stated reasons or otherwise. Results relate only to the samples identified above. This report shall not be reproduced except in full with written approval of Cardinal Laboratories.

Celey D. Keene, Lab Director/Quality Manager



PHONE (575) 393-2326 ° 101 E. MARLAND ° HOBBS, NM 88240

Notes and Definitions

- S-06 The recovery of this surrogate is outside control limits due to sample dilution required from high analyte concentration and/or matrix interference's.
- ND Analyte NOT DETECTED at or above the reporting limit
- RPD Relative Percent Difference
- ** Samples not received at proper temperature of 6°C or below.
- *** Insufficient time to reach temperature.
- Chloride by SM4500Cl-B does not require samples be received at or below 6°C
- Samples reported on an as received basis (wet) unless otherwise noted on report

Cardinal Laboratories

*=Accredited Analyte

PLEASE NOTE: Liability and Damages. Cardinal's liability and client's exclusive remedy for any claim arising, whether based in contract or tort, shall be limited to the amount paid by client for analyses. All claims, including those for negligence and any other cause whatsoever shall be deemed waived unless made in writing and received by Cardinal within thirty (30) days after completion of the applicable service. In no event shall Cardinal be liable for incidental or consequential damages, including, without limitation, business interruptions, loss of use, or loss of profits incurred by client, its subsidiaries, affiliates or successors arising out of or related to the performance of the services hereunder by Cardinal, regardless of whether such claim is based upon any of the above stated reasons or otherwise. Results relate only to the samples identified above. This report shall not be reproduced except in full with written approval of Cardinal Laboratories.

A handwritten signature in black ink, appearing to read "Celey D. Keene".

Celey D. Keene, Lab Director/Quality Manager



CHAIN-OF-CUSTODY AND ANALYSIS REQUEST

101 East Marland, Hobbs, NM 88240
(575) 393-2326 FAX (575) 393-2476

Company Name: Hungry Horse, LLC Project Manager: Vernon K. Black Address: PO Box 1058 City: Hobbs State: NM Zip: 88241 Phone #: 575-631-2253 Fax #: 575-391-4585 Project #: Project Name: peridot 13state 3h Project Location: Sampler Name: Vernon K. Black				P.O. #: Company: Attn: Address: City: State: Zip: Phone #: Fax #:			
FOR LAB USE ONLY		LAB I.D.		SAMPLE I.D.			
1 peridot 13state SPI surf 2 peridot 13state SPI 2' 3 peridot 13state SPI 2' surf 4 peridot 13state 3h SPI 2'		(G)RAB OR (C)OMP. # CONTAINERS GROUNDWATER WASTEWATER SOIL OIL SLUDGE OTHER : ACID/BASE: ICE / COOL OTHER :		DATE TIME			
				1/19/16 12:30 1/19/16 1:00 1/19/16 1:15 1/19/16 1:30			
Relinquished By: <i>[Signature]</i> Date: 1/19/16 Time: 2:40		Received By: <i>[Signature]</i> Date: Time:		REMARKS:			
Relinquished By: Date: Time:		Received By: Date: Time:		REMARKS:			
Delivered By: (Circle One) UPS - Bus - Other:		Sample Condition Cool <input checked="" type="checkbox"/> Intact <input checked="" type="checkbox"/> Yes <input checked="" type="checkbox"/> No <input type="checkbox"/> Yes <input type="checkbox"/> No <input type="checkbox"/>		CHECKED BY: <i>[Signature]</i> (Initials)			



PHONE (575) 393-2326 ° 101 E. MARLAND ° HOBBS, NM 88240

June 13, 2016

VERNON BLACK

Hungry Horse Environmental

P.O. Box 1058

Hobbs, NM 88240

RE: PERIDOT 13 STATE 3H

Enclosed are the results of analyses for samples received by the laboratory on 06/06/16 16:04.

Cardinal Laboratories is accredited through Texas NELAP under certificate number T104704398-15-7. Accreditation applies to drinking water, non-potable water and solid and chemical materials. All accredited analytes are denoted by an asterisk (*). For a complete list of accredited analytes and matrices visit the TCEQ website at www.tceq.texas.gov/field/qa/lab_accred_certif.html.

Cardinal Laboratories is accredited through the State of Colorado Department of Public Health and Environment for:

Method EPA 552.2	Haloacetic Acids (HAA-5)
Method EPA 524.2	Total Trihalomethanes (TTHM)
Method EPA 524.4	Regulated VOCs (V1, V2, V3)

Accreditation applies to public drinking water matrices.

This report meets NELAP requirements and is made up of a cover page, analytical results, and a copy of the original chain-of-custody. If you have any questions concerning this report, please feel free to contact me.

Sincerely,

A handwritten signature in black ink that reads "Celey D. Keene". The signature is written in a cursive, flowing style.

Celey D. Keene

Lab Director/Quality Manager



PHONE (575) 393-2326 ° 101 E. MARLAND ° HOBBS, NM 88240

Analytical Results For:

Hungry Horse Environmental
 VERNON BLACK
 P.O. Box 1058
 Hobbs NM, 88240
 Fax To: (505) 391-4585

Received:	06/06/2016	Sampling Date:	06/06/2016
Reported:	06/13/2016	Sampling Type:	Soil
Project Name:	PERIDOT 13 STATE 3H	Sampling Condition:	** (See Notes)
Project Number:	NONE GIVEN	Sample Received By:	Jodi Henson
Project Location:	NOT GIVEN		

Sample ID: SP1 1' (H601229-01)

TPH 8015M		mg/kg		Analyzed By: CK					
Analyte	Result	Reporting Limit	Analyzed	Method Blank	BS	% Recovery	True Value QC	RPD	Qualifier
GRO C6-C10	<10.0	10.0	06/07/2016	ND	169	84.7	200	11.4	
DRO >C10-C28	109	10.0	06/07/2016	ND	183	91.6	200	14.1	

Surrogate: 1-Chlorooctane 73.6 % 35-147

Surrogate: 1-Chlorooctadecane 101 % 28-171

Sample ID: SP2 1' (H601229-02)

TPH 8015M		mg/kg		Analyzed By: CK					
Analyte	Result	Reporting Limit	Analyzed	Method Blank	BS	% Recovery	True Value QC	RPD	Qualifier
GRO C6-C10	1050	50.0	06/07/2016	ND	169	84.7	200	11.4	
DRO >C10-C28	4440	50.0	06/07/2016	ND	183	91.6	200	14.1	

Surrogate: 1-Chlorooctane 110 % 35-147

Surrogate: 1-Chlorooctadecane 129 % 28-171

Cardinal Laboratories

*=Accredited Analyte

PLEASE NOTE: Liability and Damages. Cardinal's liability and client's exclusive remedy for any claim arising, whether based in contract or tort, shall be limited to the amount paid by client for analyses. All claims, including those for negligence and any other cause whatsoever shall be deemed waived unless made in writing and received by Cardinal within thirty (30) days after completion of the applicable service. In no event shall Cardinal be liable for incidental or consequential damages, including, without limitation, business interruptions, loss of use, or loss of profits incurred by client, its subsidiaries, affiliates or successors arising out of or related to the performance of the services hereunder by Cardinal, regardless of whether such claim is based upon any of the above stated reasons or otherwise. Results relate only to the samples identified above. This report shall not be reproduced except in full with written approval of Cardinal Laboratories.

Celey D. Keene, Lab Director/Quality Manager



PHONE (575) 393-2326 • 101 E. MARLAND • HOBBS, NM 88240

Notes and Definitions

- QR-02 The RPD result exceeded the QC control limits; however, both percent recoveries were acceptable. Sample results for the QC batch were accepted based on percent recoveries and completeness of QC data.
- ND Analyte NOT DETECTED at or above the reporting limit
- RPD Relative Percent Difference
- ** Samples not received at proper temperature of 6°C or below.
- *** Insufficient time to reach temperature.
- Chloride by SM4500Cl-B does not require samples be received at or below 6°C
Samples reported on an as received basis (wet) unless otherwise noted on report

Cardinal Laboratories

*=Accredited Analyte

PLEASE NOTE: Liability and Damages. Cardinal's liability and client's exclusive remedy for any claim arising, whether based in contract or tort, shall be limited to the amount paid by client for analyses. All claims, including those for negligence and any other cause whatsoever shall be deemed waived unless made in writing and received by Cardinal within thirty (30) days after completion of the applicable service. In no event shall Cardinal be liable for incidental or consequential damages, including, without limitation, business interruptions, loss of use, or loss of profits incurred by client, its subsidiaries, affiliates or successors arising out of or related to the performance of the services hereunder by Cardinal, regardless of whether such claim is based upon any of the above stated reasons or otherwise. Results relate only to the samples identified above. This report shall not be reproduced except in full with written approval of Cardinal Laboratories.

A handwritten signature in black ink, appearing to read "Celey D. Keene".

Celey D. Keene, Lab Director/Quality Manager



CARDINAL
Laboratories

CHAIN-OF-CUSTODY AND ANALYSIS REQUEST

101 East Marland, Hobbs, NM 88240
(575) 393-2326 FAX (575) 393-2476

[illegible]



PHONE (575) 393-2326 ° 101 E. MARLAND ° HOBBS, NM 88240

June 24, 2016

VERNON BLACK

Hungry Horse Environmental

P.O. Box 1058

Hobbs, NM 88240

RE: PERIDOT 13 STATE 3H

Enclosed are the results of analyses for samples received by the laboratory on 06/22/16 16:00.

Cardinal Laboratories is accredited through Texas NELAP under certificate number T104704398-15-7. Accreditation applies to drinking water, non-potable water and solid and chemical materials. All accredited analytes are denoted by an asterisk (*). For a complete list of accredited analytes and matrices visit the TCEQ website at www.tceq.texas.gov/field/qa/lab_accred_certif.html.

Cardinal Laboratories is accredited through the State of Colorado Department of Public Health and Environment for:

Method EPA 552.2	Haloacetic Acids (HAA-5)
Method EPA 524.2	Total Trihalomethanes (TTHM)
Method EPA 524.4	Regulated VOCs (V1, V2, V3)

Accreditation applies to public drinking water matrices.

This report meets NELAP requirements and is made up of a cover page, analytical results, and a copy of the original chain-of-custody. If you have any questions concerning this report, please feel free to contact me.

Sincerely,

A handwritten signature in black ink that reads "Celey D. Keene". The signature is written in a cursive style with a large, stylized 'C' and 'K'.

Celey D. Keene

Lab Director/Quality Manager



PHONE (575) 393-2326 ° 101 E. MARLAND ° HOBBS, NM 88240

Analytical Results For:

Hungry Horse Environmental
 VERNON BLACK
 P.O. Box 1058
 Hobbs NM, 88240
 Fax To: (505) 391-4585

Received:	06/22/2016	Sampling Date:	06/22/2016
Reported:	06/24/2016	Sampling Type:	Soil
Project Name:	PERIDOT 13 STATE 3H	Sampling Condition:	** (See Notes)
Project Number:	NONE GIVEN	Sample Received By:	Jodi Henson
Project Location:	NOT GIVEN		

Sample ID: SP 1 SURFACE (H601378-01)

TPH 8015M		mg/kg		Analyzed By: MS					
Analyte	Result	Reporting Limit	Analyzed	Method Blank	BS	% Recovery	True Value QC	RPD	Qualifier
GRO C6-C10	<10.0	10.0	06/23/2016	ND	189	94.5	200	7.04	
DRO >C10-C28	3300	10.0	06/23/2016	ND	185	92.4	200	8.20	

Surrogate: 1-Chlorooctane 75.7 % 35-147

Surrogate: 1-Chlorooctadecane 152 % 28-171

Sample ID: SP 2 SURFACE (H601378-02)

TPH 8015M		mg/kg		Analyzed By: MS					
Analyte	Result	Reporting Limit	Analyzed	Method Blank	BS	% Recovery	True Value QC	RPD	Qualifier
GRO C6-C10	<50.0	50.0	06/23/2016	ND	189	94.5	200	7.04	
DRO >C10-C28	4600	50.0	06/23/2016	ND	185	92.4	200	8.20	

Surrogate: 1-Chlorooctane 85.4 % 35-147

Surrogate: 1-Chlorooctadecane 166 % 28-171

Cardinal Laboratories

*=Accredited Analyte

PLEASE NOTE: Liability and Damages. Cardinal's liability and client's exclusive remedy for any claim arising, whether based in contract or tort, shall be limited to the amount paid by client for analyses. All claims, including those for negligence and any other cause whatsoever shall be deemed waived unless made in writing and received by Cardinal within thirty (30) days after completion of the applicable service. In no event shall Cardinal be liable for incidental or consequential damages, including, without limitation, business interruptions, loss of use, or loss of profits incurred by client, its subsidiaries, affiliates or successors arising out of or related to the performance of the services hereunder by Cardinal, regardless of whether such claim is based upon any of the above stated reasons or otherwise. Results relate only to the samples identified above. This report shall not be reproduced except in full with written approval of Cardinal Laboratories.

Celey D. Keene, Lab Director/Quality Manager



PHONE (575) 393-2326 ° 101 E. MARLAND ° HOBBS, NM 88240

Notes and Definitions

ND	Analyte NOT DETECTED at or above the reporting limit
RPD	Relative Percent Difference
**	Samples not received at proper temperature of 6°C or below.
***	Insufficient time to reach temperature.
-	Chloride by SM4500Cl-B does not require samples be received at or below 6°C Samples reported on an as received basis (wet) unless otherwise noted on report

Cardinal Laboratories

*=Accredited Analyte

PLEASE NOTE: Liability and Damages. Cardinal's liability and client's exclusive remedy for any claim arising, whether based in contract or tort, shall be limited to the amount paid by client for analyses. All claims, including those for negligence and any other cause whatsoever shall be deemed waived unless made in writing and received by Cardinal within thirty (30) days after completion of the applicable service. In no event shall Cardinal be liable for incidental or consequential damages, including, without limitation, business interruptions, loss of use, or loss of profits incurred by client, its subsidiaries, affiliates or successors arising out of or related to the performance of the services hereunder by Cardinal, regardless of whether such claim is based upon any of the above stated reasons or otherwise. Results relate only to the samples identified above. This report shall not be reproduced except in full with written approval of Cardinal Laboratories.

A handwritten signature in black ink, appearing to read "Celey D. Keene".

Celey D. Keene, Lab Director/Quality Manager

Attachment V
NMOCD Form C-141 Closure page

Incident ID	nAB1535131213
District RP	
Facility ID	
Application ID	

Closure

The responsible party must attach information demonstrating they have complied with all applicable closure requirements and any conditions or directives of the OCD. This demonstration should be in the form of a comprehensive report (electronic submittals in .pdf format are preferred) including a scaled site map, sampling diagrams, relevant field notes, photographs of any excavation prior to backfilling, laboratory data including chain of custody documents of final sampling, and a narrative of the remedial activities. Refer to 19.15.29.12 NMAC.

Closure Report Attachment Checklist: *Each of the following items must be included in the closure report.*

- ☒ A scaled site and sampling diagram as described in 19.15.29.11 NMAC
- ☒ Photographs of the remediated site prior to backfill or photos of the liner integrity if applicable (Note: appropriate OCD District office must be notified 2 days prior to liner inspection)
- ☒ Laboratory analyses of final sampling (Note: appropriate ODC District office must be notified 2 days prior to final sampling)
- ☒ Description of remediation activities

I hereby certify that the information given above is true and complete to the best of my knowledge and understand that pursuant to OCD rules and regulations all operators are required to report and/or file certain release notifications and perform corrective actions for releases which may endanger public health or the environment. The acceptance of a C-141 report by the OCD does not relieve the operator of liability should their operations have failed to adequately investigate and remediate contamination that pose a threat to groundwater, surface water, human health or the environment. In addition, OCD acceptance of a C-141 report does not relieve the operator of responsibility for compliance with any other federal, state, or local laws and/or regulations. The responsible party acknowledges they must substantially restore, reclaim, and re-vegetate the impacted surface area to the conditions that existed prior to the release or their final land use in accordance with 19.15.29.13 NMAC including notification to the OCD when reclamation and re-vegetation are complete.

Printed Name: Dale Woodall Title: EHS Professional
Signature: *Dale Woodall* Date: 10/5/2022
email: Dale.Woodall@dvn.com Telephone: _____

OCD Only

Received by: _____ Date: _____

Closure approval by the OCD does not relieve the responsible party of liability should their operations have failed to adequately investigate and remediate contamination that poses a threat to groundwater, surface water, human health, or the environment nor does not relieve the responsible party of compliance with any other federal, state, or local laws and/or regulations.

Closure Approved by: *Brittany Hall* Date: 12/27/2022

Printed Name: Brittany Hall Title: Environmental Specialist

District I
1625 N. French Dr., Hobbs, NM 88240
Phone:(575) 393-6161 Fax:(575) 393-0720
District II
811 S. First St., Artesia, NM 88210
Phone:(575) 748-1283 Fax:(575) 748-9720
District III
1000 Rio Brazos Rd., Aztec, NM 87410
Phone:(505) 334-6178 Fax:(505) 334-6170
District IV
1220 S. St Francis Dr., Santa Fe, NM 87505
Phone:(505) 476-3470 Fax:(505) 476-3462

State of New Mexico
Energy, Minerals and Natural Resources
Oil Conservation Division
1220 S. St Francis Dr.
Santa Fe, NM 87505

CONDITIONS

Action 149017

CONDITIONS

Operator: DEVON ENERGY PRODUCTION COMPANY, LP 333 West Sheridan Ave. Oklahoma City, OK 73102	OGRID: 6137
	Action Number: 149017
	Action Type: [C-141] Release Corrective Action (C-141)

CONDITIONS

Created By	Condition	Condition Date
bhall	None	12/27/2022