

District I  
1625 N. French Dr., Hobbs, NM 88240  
District II  
811 S. First St., Artesia, NM 88210  
District III  
1000 Rio Brazos Road, Aztec, NM 87410  
District IV  
1220 S. St. Francis Dr., Santa Fe, NM 87505

State of New Mexico  
Energy Minerals and Natural  
Resources Department

Oil Conservation Division  
1220 South St. Francis Dr.  
Santa Fe, NM 87505

Form C-141  
Revised August 24, 2018  
Submit to appropriate OCD District office

Incident ID	
District RP	
Facility ID	
Application ID	

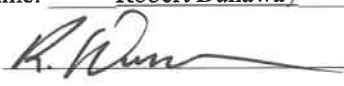
## Closure

The responsible party must attach information demonstrating they have complied with all applicable closure requirements and any conditions or directives of the OCD. This demonstration should be in the form of a comprehensive report (electronic submittals in .pdf format are preferred) including a scaled site map, sampling diagrams, relevant field notes, photographs of any excavation prior to backfilling, laboratory data including chain of custody documents of final sampling, and a narrative of the remedial activities. Refer to 19.15.29.12 NMAC.

**Closure Report Attachment Checklist:** *Each of the following items must be included in the closure report.*

- ☒ A scaled site and sampling diagram as described in 19.15.29.11 NMAC
- ☒ Photographs of the remediated site prior to backfill or photos of the liner integrity if applicable (Note: appropriate OCD District office must be notified 2 days prior to liner inspection)
- ☒ Laboratory analyses of final sampling (Note: appropriate ODC District office must be notified 2 days prior to final sampling)
- ☒ Description of remediation activities

I hereby certify that the information given above is true and complete to the best of my knowledge and understand that pursuant to OCD rules and regulations all operators are required to report and/or file certain release notifications and perform corrective actions for releases which may endanger public health or the environment. The acceptance of a C-141 report by the OCD does not relieve the operator of liability should their operations have failed to adequately investigate and remediate contamination that pose a threat to groundwater, surface water, human health or the environment. In addition, OCD acceptance of a C-141 report does not relieve the operator of responsibility for compliance with any other federal, state, or local laws and/or regulations. The responsible party acknowledges they must substantially restore, reclaim, and re-vegetate the impacted surface area to the conditions that existed prior to the release or their final land use in accordance with 19.15.29.13 NMAC including notification to the OCD when reclamation and re-vegetation are complete.

Printed Name: Robert Dunaway Title: Senior Environmental Engineer  
Signature:  Date: 11/2/22  
email: rhunaway@eprod.com Telephone: 575-628-6802

State of New Mexico  
Oil Conservation Division

Incident ID	
District RP	
Facility ID	
Application ID	

**OCD Only**

Received by: \_\_\_\_\_

Date: \_\_\_\_\_

Closure approval by the OCD does not relieve the responsible party of liability should their operations have failed to adequately investigate and remediate contamination that poses a threat to groundwater, surface water, human health, or the environment nor does not relieve the responsible party of compliance with any other federal, state, or local laws and/or regulations.

Closure Approved by: \_\_\_\_\_ Date: \_\_\_\_\_

Printed Name: \_\_\_\_\_ Title: \_\_\_\_\_

District I  
1625 N. French Dr., Hobbs, NM 88240  
District II  
811 S. First St., Artesia, NM 88210  
District III  
1000 Rio Brazos Road, Aztec, NM 87410  
District IV  
1220 S. St. Francis Dr., Santa Fe, NM 87505

State of New Mexico  
Energy Minerals and Natural  
Resources Department  
  
Oil Conservation Division  
1220 South St. Francis Dr.  
Santa Fe, NM 87505

Form C-141  
Revised August 24, 2018  
Submit to appropriate OCD District office

Incident ID	NAPP2224125510
District RP	
Facility ID	
Application ID	

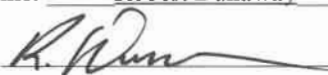
## Closure

The responsible party must attach information demonstrating they have complied with all applicable closure requirements and any conditions or directives of the OCD. This demonstration should be in the form of a comprehensive report (electronic submittals in .pdf format are preferred) including a scaled site map, sampling diagrams, relevant field notes, photographs of any excavation prior to backfilling, laboratory data including chain of custody documents of final sampling, and a narrative of the remedial activities. Refer to 19.15.29.12 NMAC.

**Closure Report Attachment Checklist:** *Each of the following items must be included in the closure report.*

- ☒ A scaled site and sampling diagram as described in 19.15.29.11 NMAC
- ☒ Photographs of the remediated site prior to backfill or photos of the liner integrity if applicable (Note: appropriate OCD District office must be notified 2 days prior to liner inspection)
- ☒ Laboratory analyses of final sampling (Note: appropriate ODC District office must be notified 2 days prior to final sampling)
- ☒ Description of remediation activities

I hereby certify that the information given above is true and complete to the best of my knowledge and understand that pursuant to OCD rules and regulations all operators are required to report and/or file certain release notifications and perform corrective actions for releases which may endanger public health or the environment. The acceptance of a C-141 report by the OCD does not relieve the operator of liability should their operations have failed to adequately investigate and remediate contamination that pose a threat to groundwater, surface water, human health or the environment. In addition, OCD acceptance of a C-141 report does not relieve the operator of responsibility for compliance with any other federal, state, or local laws and/or regulations. The responsible party acknowledges they must substantially restore, reclaim, and re-vegetate the impacted surface area to the conditions that existed prior to the release or their final land use in accordance with 19.15.29.13 NMAC including notification to the OCD when reclamation and re-vegetation are complete.

Printed Name: Robert Dunaway Title: Senior Environmental Engineer  
Signature:  Date: 11/2/22  
email: rhunaway@eprod.com Telephone: 575-628-6802

State of New Mexico  
Oil Conservation Division

Incident ID	
District RP	
Facility ID	
Application ID	

**OCD Only**Received by: Robert HamletDate: 1/12/2023

Closure approval by the OCD does not relieve the responsible party of liability should their operations have failed to adequately investigate and remediate contamination that poses a threat to groundwater, surface water, human health, or the environment nor does not relieve the responsible party of compliance with any other federal, state, or local laws and/or regulations.

Closure Approved by: Robert Hamlet Date: 1/12/2023Printed Name: Robert Hamlet Title: Environmental Specialist - Advanced





Souder, Miller & Associates ♦ 201 S. Halagueno St. ♦ Carlsbad, NM 88220  
(575) 689-8801

November 2, 2022

#5E31002-BG20

NMOCD District 2  
811 S. First St.  
Artesia, New Mexico 88210

SUBJECT: Remediation Closure Report for the Line 30137 Pipeline Release, Eddy County, New Mexico

## **1.0 Executive Summary**

On behalf of Enterprise Field Services LLC (Enterprise), Souder, Miller & Associates (SMA) has prepared this Remediation Closure Report that describes the remediation of a natural gas and condensate release related to gas gathering activities at the Line 30137 Pipeline Release. The release site is located in Unit Letter O, Section 14, Township 19S, Range 28E, Eddy County, New Mexico, on public land administered by the State of New Mexico Land Trust. Figure 1 illustrates the vicinity and site location on a United States Geological Survey (USGS) 7.5-minute quadrangle map.

This report demonstrates that the release area has been remediated to meet the standards of Table I of 19.15.29.12 New Mexico Administrative Code (NMAC). The information provided in this report is intended to fulfill final New Mexico Oil Conservation Division (NMOCD) closure requirements.

The gas portion of this release constitutes venting that occurred during an emergency or malfunction, as authorized by NMOCD regulations at NMAC 19.15.28.8.A and B(1). This release therefore is not prohibited by NMAC 19.15.29.8.A.

**SMA recommends no further action and requests that the release associated with the Line 30137 Pipeline Release (NAPP2224125510) be closed.**

**Table 1: Release Information and Closure Criteria**

Name	Line 30137	Company	Enterprise Field Services LLC
API Number	N/A	Location	32.65381, -104.14508
Incident Number	nAPP2224125510	Date Release Discovered	August 28, 2022
Land Status	State (Land Trust)	Reported To	NMOCD District II
Source of Release	Leak on a gathering pipeline		
Nature and Volume of Release	1.0 bbl Condensate 746 Mcf Natural Gas	Volume Recovered	0 bbl Condensate 0 Mcf Natural Gas
NMOCD Closure Criteria	<50 feet per Table 1 of 19.15.29.12 NMAC		
SMA Response Dates	September 1, 2, and 15, 2022		

Line 30137 Release Closure Report  
November 2, 2022

Page 2 of 4

## **2.0 Background**

On August 28, 2022, a natural gas and condensate release was discovered at the Line 30137 Pipeline Release site. Initial response activities were conducted by Enterprise, and included source elimination and site security, containment, and site stabilization activities. Figure 1 illustrates the vicinity and site location; Figure 2 illustrates the release location. The initial C-141 form is included in Appendix A.

## **3.0 Site Information and Closure Criteria**

The Line 30137 Pipeline Release site is located approximately 16 miles northeast of Carlsbad, New Mexico on public land administered by the State of New Mexico Land Trust, at an elevation of approximately 3,394 feet above mean sea level (amsl).

### **Depth to Groundwater and Wellhead Protection Area**

A search of the New Mexico Office of the State Engineer (OSE) New Mexico Water Rights Reporting System (NMWRRS) and the USGS National Water Information System reported no wells within ½-mile of the site. Water well documentation is included in Appendix B and registered wells in the vicinity are shown on Figure 1.

### **Distance to Nearest Significant Watercourse**

The nearest significant watercourse is Palmilla Draw, located approximately 3,260 feet to the east. However, there are several small ephemeral drainage features to the west, south and east of the release site; the closest of which is approximately 230 feet to the west.

### **Closure Criteria**

Table 2 demonstrates the Closure Criteria applicable to this location. Figures 1 and 2 illustrate the 200 and 300-foot radii which indicate that the site does lie within a sensitive area as described in Paragraph (4) of Subsection (C) of 19.15.29.12 NMAC due to the proximity of the small ephemeral drainages.

Based on the information presented herein, the applicable NMOCD Closure Criteria for this site is for a groundwater depth of less than 50 feet below grade surface (bgs).

## **4.0 Release Characterization and Remediation Activities**

On September 1, 2, and 15, 2022, following pipeline repair and excavation activities, SMA personnel performed excavation guidance and closure confirmation sampling. Copies of sampling notification emails are included in Appendix A.

Composite confirmation samples were collected from the excavation for laboratory analysis for total chloride using United States Environmental Protection Agency (USEPA) Method 300.0; benzene, toluene, ethylbenzene and total xylenes (BTEX) using USEPA Method 8021B; and total petroleum hydrocarbons (TPH) as motor, diesel, and gasoline range organics (MRO, DRO, and GRO) by USEPA Method 8015D. Excavation samples were composed of 5-point composites collected every 200 square feet or less in accordance with the sampling protocol included in Appendix C.

Soil samples were field screened for hydrocarbon impacts using a calibrated MiniRAE 3000 photoionization detector (PID) equipped with a 10.6 eV lamp. Field notes are included in Appendix D.

The main remediation excavation measured approximately 34 feet by 22 feet with a depth of 17 feet.

Line 30137 Release Closure Report  
November 2, 2022

Page 3 of 4

## **5.0 Recommendations**

As demonstrated in Table 3, all closure confirmation samples meet NMOCD Closure Criteria. The site has been remediated to meet the standards of Table I of 19.15.29.12 NMAC.

Excavated soils were removed and replaced with clean backfill material to return the surface to previous contours. All excavated soil was transported and disposed of at Lea Land LLC, Hobbs, New Mexico, an NMOCD-permitted disposal facility.

**SMA recommends no further action and requests closure of Incident Number nAPP2224125510.**

## **6.0 Scope and Limitations**

The scope of our services included: assessment sampling; verifying release stabilization; regulatory liaison; remediation guidance; and preparing this report. All work has been performed in accordance with generally accepted professional environmental consulting practices for oil and gas releases in the Permian Basin in New Mexico.

If there are any questions regarding this report, please contact Heather Woods at (505) 716-2787.

Submitted by:  
SOUDER, MILLER & ASSOCIATES

Reviewed by:



Sarahmay Schlea  
Staff Scientist I



Heather M. Woods, P.G.  
Project Geoscientist

## **REFERENCES:**

New Mexico Office of the State Engineer (NMOSE) online water well database  
[https://gis.ose.state.nm.us/gisapps/ose\\_pod\\_locations/](https://gis.ose.state.nm.us/gisapps/ose_pod_locations/); accessed 8/25/2022

USGS National Water Information System: Web Interface online water well database  
[https://nwis.waterdata.usgs.gov/nwis/gwlevels?site\\_no=321205103544701&agency\\_cd=USGS&format=html](https://nwis.waterdata.usgs.gov/nwis/gwlevels?site_no=321205103544701&agency_cd=USGS&format=html); accessed 8/25/2022

## **ATTACHMENTS:**

### **Figures:**

Figure 1: Topographic Site Map

Figure 2: Aerial Site Map

Figure 3: Site and Sample Location Map

Line 30137 Release Closure Report  
November 2, 2022

Page 4 of 4

**Tables:**

Table 2: NMOCD Closure Criteria

Table 3: Summary of Field Screening and Laboratory Analytical Results

**Appendices:**

Appendix A: Form C-141 and Correspondence

Appendix B: Water Well Data

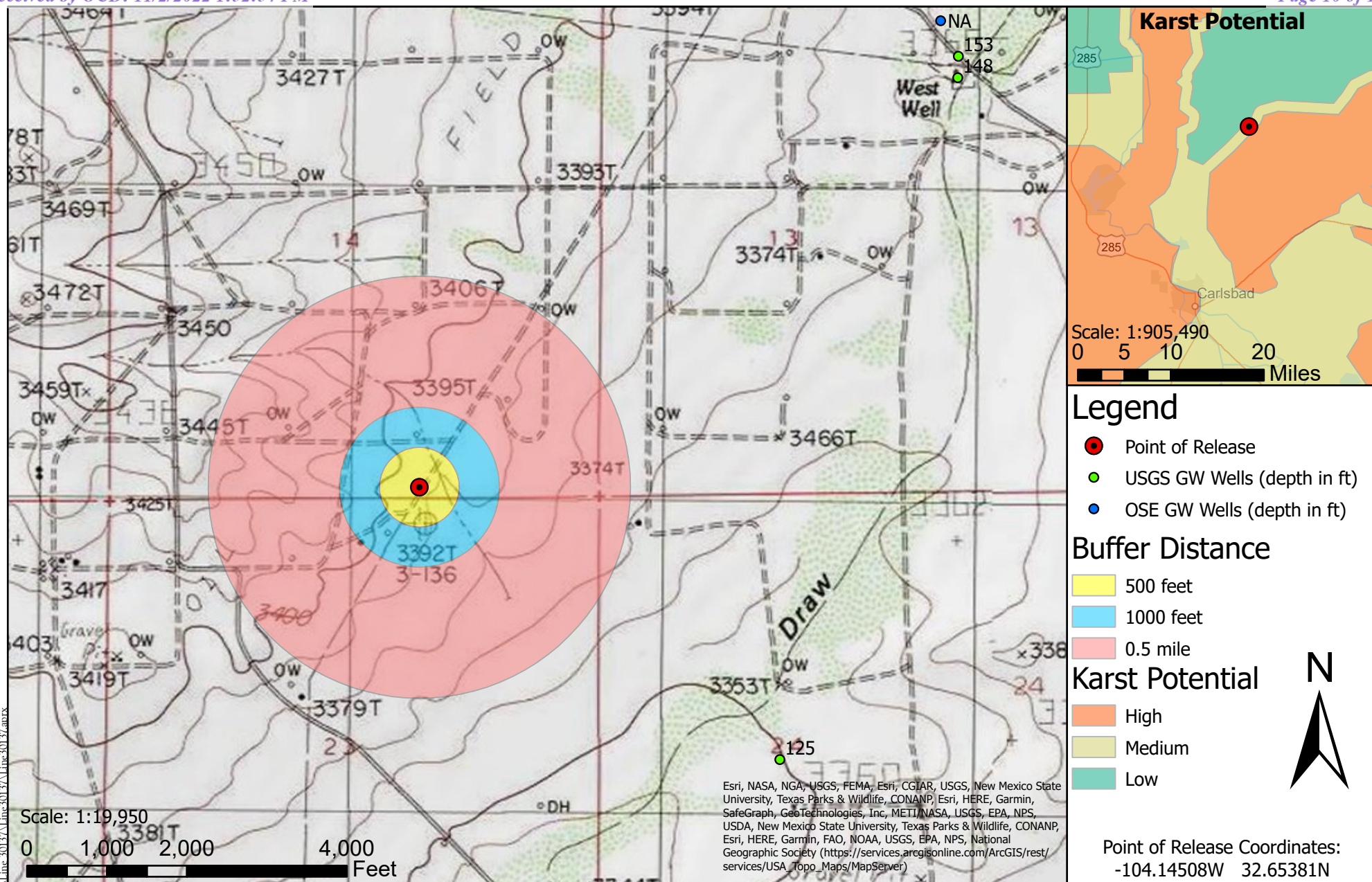
Appendix C: Sampling Protocol

Appendix D: Field Notes and Photo Log

Appendix E: Laboratory Analytical Reports

# FIGURES





## Topographic Site Map

Line 30137 Release - Enterprise Field Services, LLC  
UL: O S: 14 T: 19S R: 28E, Eddy County, New Mexico

Figure 1

## Revisions

By: \_\_\_\_\_ Date: \_\_\_\_\_ Descr: \_\_\_\_\_  
By: \_\_\_\_\_ Date: \_\_\_\_\_ Descr: \_\_\_\_\_

Drawn  
Date  
Checked  
Approved

Sarahmay Schlea  
8/31/2022  
\_\_\_\_\_  
\_\_\_\_\_



201 South Halagueno Street  
Carlsbad, New Mexico 88221  
(575) 689-7040  
Serving the Southwest & Rocky Mountains

© Souder, Miller & Associates, 2021, All Rights Reserved

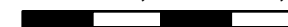




## Legend

- Point of Release
- Streams/Canals/Flowlines
- 0.5 Mile Radius
- 300 Foot Radius

0 1,000 2,000



Feet

Scale: 1:16,625



Point of Release Coordinates:  
-104.14508W 32.65381N

### Aerial Site Map

Line 30137 Release - Enterprise Field Services, LLC  
UL: O S: 14 T: 19S R: 28E, Eddy County, New Mexico

Figure 2

#### Revisions

By: \_\_\_\_\_ Date: \_\_\_\_\_ Descr: \_\_\_\_\_  
By: \_\_\_\_\_ Date: \_\_\_\_\_ Descr: \_\_\_\_\_

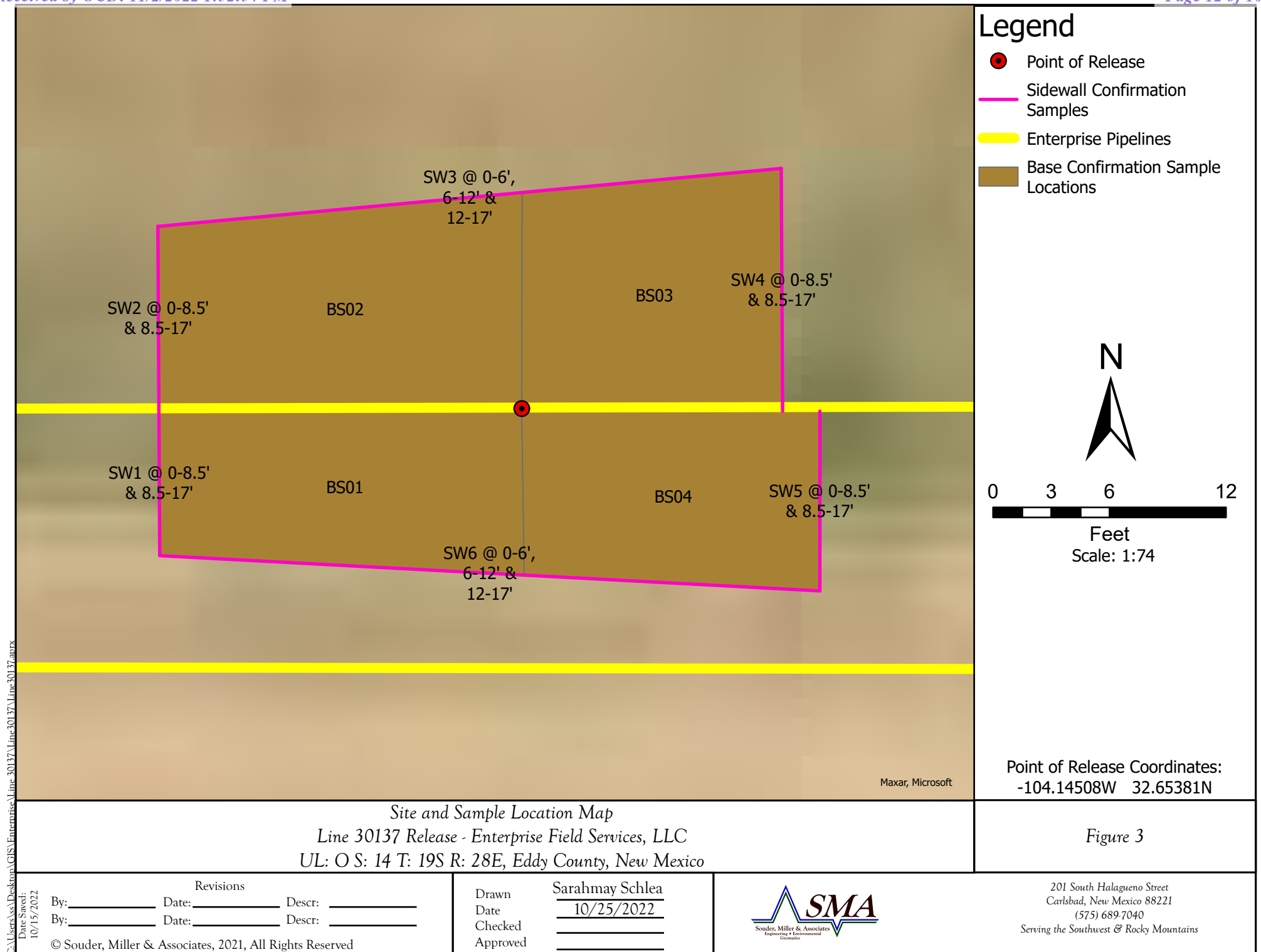
© Souder, Miller & Associates, 2021, All Rights Reserved

Drawn  
Date  
Checked  
Approved

Sarahmay Schlea  
8/31/2022  
\_\_\_\_\_  
\_\_\_\_\_



201 South Halagueno Street  
Carlsbad, New Mexico 88221  
(575) 689-7040  
Serving the Southwest & Rocky Mountains



# TABLES

Table 2:  
NMOCD Closure CriteriaEnterprise Field Services, LLC  
Line 30137  
nAPP2224125510

Site Information (19.15.29.11.A(2, 3, and 4) NMAC)		Source/Notes
Depth to Groundwater (feet bgs)	No Data	United States Geological Survey New Mexico Office of the State Engineer
Horizontal Distance From All Water Sources Within 1/2 Mile (mi)	>0.5 mi	
Horizontal Distance to Nearest Significant Watercourse (ft)	230	United States Geological Survey Topo Map / Google

Closure Criteria (19.15.29.12.B(4) and Table 1 NMAC)						
Depth to Groundwater		Closure Criteria (units in mg/kg)				
		Chloride *numerical limit or background, whichever is greater	TPH	GRO + DRO	BTEX	Benzene
< 50' BGS	X	600	100		50	10
51' to 100'		10000	2500	1000	50	10
>100'		20000	2500	1000	50	10
Surface Water	yes or no	if yes, then				
<300' from continuously flowing watercourse or other significant watercourse?	Yes	600	100		50	10
<200' from lakebed, sinkhole or playa lake?	No					
Water Well or Water Source						
<500 feet from spring or a private, domestic fresh water well used by less than 5 households for domestic or stock watering purposes?	No					
<1000' from fresh water well or spring?	No					
Human and Other Areas						
<300' from an occupied permanent residence, school, hospital, institution or church?	No					
within incorporated municipal boundaries or within a defined municipal fresh water well field?	No					
<100' from wetland?	No					
within area overlying a subsurface mine	No					
within an unstable area?	No					
within a 100-year floodplain?	No					



Table 3:  
Summary of Field Screening and Laboratory Analytical Results

Enterprise Field Services

Line 30137

nAPP2224125510

Sample ID	Sample Date	Depth of Sample (feet bgs)	Field Screening		Method 8021B		Method 8015D				Method 300.0
			VOCs by PID	EC	BTEX	Benzene	GRO	DRO	MRO	Total TPH	Chloride
			ppm	mS	mg/kg	mg/kg	mg/kg	mg/kg	mg/kg	mg/kg	mg/kg
NMOCD Closure Criteria			--	--	50	10	--	--	--	100	600
Final Excavation Confirmation Closure Samples											
BS01	9/15/2022	17	--	--	<0.100	<0.0250	<20.0	<25.0	<50.0	<95.0	<20.0
BS02	9/15/2022	17	--	--	0.177	<0.0250	<20.0	<25.0	<50.0	<95.0	<20.0
BS03	9/15/2022	17	--	--	<0.100	<0.0250	<20.0	<25.0	<50.0	<95.0	<20.0
BS04	9/15/2022	17	--	--	<0.100	<0.0250	<20.0	<25.0	<50.0	<95.0	<20.0
SW01	9/15/2022	0 - 8.5	--	--	<0.100	<0.0250	<20.0	<25.0	<50.0	<95.0	<20.0
		8.5 - 17	--	--	<0.100	<0.0250	<20.0	<25.0	<50.0	<95.0	<20.0
SW02	9/15/2022	0 - 8.5	--	--	<0.100	<0.0250	<20.0	<25.0	<50.0	<95.0	<20.0
		8.5 - 17	--	--	<0.100	<0.0250	<20.0	<25.0	<50.0	<95.0	<20.0
SW03	9/15/2022	0 - 6	--	--	<0.100	<0.0250	<20.0	<25.0	<50.0	<95.0	<20.0
		6 - 12	--	--	<0.100	<0.0250	<20.0	<25.0	<50.0	<95.0	<20.0
		12 - 17	--	--	<0.100	<0.0250	<20.0	<25.0	<50.0	<95.0	<20.0
SW04	9/15/2022	0 - 8.5	--	--	<0.100	<0.0250	<20.0	<25.0	<50.0	<95.0	<20.0
		8.5-17	--	--	0.0515	<0.0250	<20.0	28.1	<50.0	28.1	<20.0
SW05	9/15/2022	0 - 8.5	--	--	<0.100	<0.0250	<20.0	<25.0	<50.0	<95.0	<20.0
		8.5 - 17	--	--	1.253	<0.0250	41.5	26.0	<50.0	67.5	<20.0
SW06	9/15/2022	0 - 6	--	--	<0.100	<0.0250	<20.0	<25.0	<50.0	<95.0	<20.0
		6 - 12	--	--	<0.100	<0.0250	<20.0	<25.0	<50.0	<95.0	<20.0
		12 - 17	--	--	<0.100	<0.0250	<20.0	<25.0	<50.0	<95.0	<20.0
Excavation Guidance Samples (removed by excavation)											
BS01	9/1/2022	17	381.9	0.04	84.9	2.35	659	50.8	<50.0	710	<20.0
BS02	9/1/2022	17	2,114	0.06	0.749	<0.0250	55.0	<25.0	<50.0	55.0	<20.0
BS03	9/1/2022	17	2,638	0.06	2.01	<0.0250	75.4	49.0	<50.0	124	<20.0
BS04	9/1/2022	17	344.1	0.05	6.40	0.0394	108	<25.0	<50.0	108	<20.0
SW01	9/1/2022	0 - 17	374.4	0.05	<0.100	<0.0250	<20.0	<25.0	<50.0	<95.0	<20.0
SW02	9/1/2022	0 - 17	199.3	0.04	<0.100	<0.0250	<20.0	<25.0	<50.0	<95.0	<20.0
SW03	9/1/2022	3	859	0.06	<0.100	<0.0250	<20.0	<25.0	<50.0	<95.0	<20.0
	9/1/2022	10	309	0.05	<0.100	<0.0250	<20.0	<25.0	<50.0	<95.0	<20.0
	9/1/2022	17	83.7	0.05	<0.100	<0.0250	<20.0	<25.0	<50.0	<95.0	<20.0
SW04	9/1/2022	4	1,816	0.06	<0.100	<0.0250	<20.0	<25.0	<50.0	<95.0	<20.0
	9/1/2022	17	774	0.06	0.25	0.0298	<20.0	<25.0	<50.0	<95.0	<20.0
SW05	9/1/2022	0 - 17	1,215	0.05	4.58	0.215	86.2	<25.0	<50.0	86.2	<20.0
SW06	9/1/2022	2	3,620	0.06	<0.100	<0.0250	<20.0	<25.0	<50.0	<95.0	<20.0
	9/1/2022	8	80.6	0.06	0.334	<0.0250	<20.0	<25.0	<50.0	<95.0	<20.0
	9/1/2022	16	1,640	0.04	4.436	<0.0250	83.2	89.7	<50.0	172.9	<20.0

Notes: NMOCD - New Mexico Oil Conservation Division

bgs - below grade surface

VOC - volatile organic compound

PID - photoionization detector

EC - electrical conductivity

ppm - parts per million

mS - milliseimens

mg/kg - milligrams per kilogram

"--" - not analyzed

BTEX - benzene, ethylbenzene, toluene, and xylenes

GRO - gasoline range organics

DRO - diesel range organics

MRO - motor oil range organics

TPH - total petroleum hydrocarbons





# APPENDIX A

## FORM C-141 AND

## CORRESPONDENCE



District I  
1625 N. French Dr., Hobbs, NM 88240  
District II  
811 S. First St., Artesia, NM 88210  
District III  
1000 Rio Brazos Road, Aztec, NM 87410  
District IV  
1220 S. St. Francis Dr., Santa Fe, NM 87505

State of New Mexico  
Energy Minerals and Natural  
Resources Department

Oil Conservation Division  
1220 South St. Francis Dr.  
Santa Fe, NM 87505

Form C-141  
Revised August 24, 2018  
Submit to appropriate OCD District office

Incident ID	NAPP2224125510
District RP	
Facility ID	
Application ID	

## Release Notification

### Responsible Party

Responsible Party	Enterprise Field Services LLC	OGRID	241602
Contact Name	Robert Dunaway	Contact Telephone	575-628-6802
Contact email	rhunaway@eprod.com	Incident # (assigned by OCD)	nAPP2224125510
Contact mailing address	PO Box 4324, Houston, TX 77210		

### Location of Release Source

Latitude 32.65381 Longitude -104.14508  
(NAD 83 in decimal degrees to 5 decimal places)

Site Name	Line 30137	Site Type	Gathering Pipeline
Date Release Discovered	08/28/2022	API# (if applicable)	

Unit Letter	Section	Township	Range	County
O	14	19S	28E	Eddy

Surface Owner: ☒ State ☐ Federal ☐ Tribal ☐ Private (Name: \_\_\_\_\_)

### Nature and Volume of Release

Material(s) Released (Select all that apply and attach calculations or specific justification for the volumes provided below)

<input type="checkbox"/> Crude Oil	Volume Released (bbls)	Volume Recovered (bbls)
<input type="checkbox"/> Produced Water	Volume Released (bbls)	Volume Recovered (bbls)
	Is the concentration of dissolved chloride in the produced water >10,000 mg/l?	<input type="checkbox"/> Yes <input type="checkbox"/> No
<input checked="" type="checkbox"/> Condensate	Volume Released (bbls) 1	Volume Recovered (bbls) -0-
<input checked="" type="checkbox"/> Natural Gas	Volume Released (Mcf) 746	Volume Recovered (Mcf) -0-
<input type="checkbox"/> Other (describe)	Volume/Weight Released (provide units)	Volume/Weight Recovered (provide units)

#### Cause of Release

Found a leak on a gathering pipeline, cause is to be determined. The gas portion of this release constitutes venting that occurs during an emergency or malfunction, as authorized by NMOCD regulations at NMAC 19.15.28.8.A and B(1). This release therefore is not prohibited by NMAC 19.15.29.8.A.

State of New Mexico  
Oil Conservation Division

Incident ID	
District RP	
Facility ID	
Application ID	

Was this a major release as defined by 19.15.29.7(A) NMAC?

☒ Yes ☐ No

If YES, for what reason(s) does the responsible party consider this a major release?  
Gas release > 500 mscf

If YES, was immediate notice given to the OCD? By whom? To whom? When and by what means (phone, email, etc)?

Yes. Robert Dunaway. OCD E-Portal. 8/29/2022. NOR on OCD E-Portal.

### Initial Response

*The responsible party must undertake the following actions immediately unless they could create a safety hazard that would result in injury*

- ☒ The source of the release has been stopped.
- ☒ The impacted area has been secured to protect human health and the environment.
- ☒ Released materials have been contained via the use of berms or dikes, absorbent pads, or other containment devices.
- ☒ All free liquids and recoverable materials have been removed and managed appropriately.

If all the actions described above have not been undertaken, explain why:

Per 19.15.29.8 B. (4) NMAC the responsible party may commence remediation immediately after discovery of a release. If remediation has begun, please attach a narrative of actions to date. If remedial efforts have been successfully completed or if the release occurred within a lined containment area (see 19.15.29.11(A)(5)(a) NMAC), please attach all information needed for closure evaluation.

I hereby certify that the information given above is true and complete to the best of my knowledge and understand that pursuant to OCD rules and regulations all operators are required to report and/or file certain release notifications and perform corrective actions for releases which may endanger public health or the environment. The acceptance of a C-141 report by the OCD does not relieve the operator of liability should their operations have failed to adequately investigate and remediate contamination that pose a threat to groundwater, surface water, human health or the environment. In addition, OCD acceptance of a C-141 report does not relieve the operator of responsibility for compliance with any other federal, state, or local laws and/or regulations.

Printed Name: Robert Dunaway

Title: Senior Environmental Engineer

Signature: 

Date: 8/30/22

email: rhdunaway@eprod.com

Telephone: 575-628-6802

#### OCD Only

Received by: Jocelyn Harimon

Date: 08/30/2022

Diameter of hole (inches)	0.025	
Line Pressure at Leak	846	Hourly Bas
<b>Volume of Gas Leaked</b>	<b>0.54</b>	0.54

Calculations:

Volume of Gas Leaked (MSCF) = Diameter\*Diameter\*(Upstream Gauge Pressu

\*\*Reference: Pipeline Rules of Thumb Handbook, 3rd Edition, McAllister. Page

Footage of Pipe blowdown	13,992	
Initial line pressure	846	
Diameter of Pipe (inches)	12	
<b>Volume of Gas Blown Down</b>	<b>745.51201</b>	MSCF

Calculations:

Volume of Gas Blown Down (MSCF) = Volume at pipeline conditions (ft3)\*(Gau  
/(1000 scf/mscf)\*Standard Pressure (14.7psi)\*Temperature(F)\*Z Factor

Volume at pipeline conditions (scf) = Diameter/12 (ft)\*Diameter/12 (ft)\*PI/4\*Ler

\*\*Reference: Gas Pipeline Hydraulics, Menon (2005) Pages 132-134. Assuming

**District I**  
1625 N. French Dr., Hobbs, NM 88240  
Phone:(575) 393-6161 Fax:(575) 393-0720  
**District II**  
811 S. First St., Artesia, NM 88210  
Phone:(575) 748-1283 Fax:(575) 748-9720  
**District III**  
1000 Rio Brazos Rd., Aztec, NM 87410  
Phone:(505) 334-6178 Fax:(505) 334-6170  
**District IV**  
1220 S. St Francis Dr., Santa Fe, NM 87505  
Phone:(505) 476-3470 Fax:(505) 476-3462

State of New Mexico  
Energy, Minerals and Natural Resources  
Oil Conservation Division  
1220 S. St Francis Dr.  
Santa Fe, NM 87505

CONDITIONS  
  
Action 139228

CONDITIONS

Operator: Enterprise Field Services, LLC PO Box 4324 Houston, TX 77210	OGRID: 241602
	Action Number: 139228
	Action Type: [C-141] Release Corrective Action (C-141)

CONDITIONS

Created By	Condition	Condition Date
jharimon	None	8/31/2022

**Heather Woods**

---

**From:** Heather Woods  
**Sent:** Tuesday, August 30, 2022 12:34 PM  
**To:** Enviro, OCD, EMNRD  
**Cc:** rhdunaway@eprod.com; Sarahmay Schlea; Georgeann Goodman  
**Subject:** Confirmation Sampling Notification - Enterprise Line 30137 (nAPP2224125510)

Good Afternoon,

Souder, Miller & Associates will be on location Thursday, September 1<sup>st</sup> 2022, at 8:00am to conduct confirmation sampling at the Enterprise Line 30137 release location (nAPP2224125510) located at 32.65381, -104.14508.

Many Thanks,  
Heather

Heather Woods, P.G.  
*Project Geoscientist*

Personal Registrations: UT Professional Geologist

Corporate Registrations: AZ Engineering/Geology/Surveying Firm (14070), FL Engineering Firm (34203), ID Engineering/Surveying Firm (C-3564), ND Engineering Firm (28545PE), OK Engineering Firm (8498), SD Surveying Firm (C-7436), TX Engineering Firm (8877), TX Geology Firm (50254), TX PST CAPM (CS-0000051), TX Surveying Firm (10162200), WY Engineering/Surveying Firm (S-1704)

**Souder, Miller & Associates**

Engineering ♦ Environmental ♦ Geomatics

401 West Broadway

Farmington, NM 87401

(505) 716-2787 (mobile)

(505) 325-7535 (office)

[www.soudermiller.com](http://www.soudermiller.com)



**Notice of Confidentiality and Privileged Status:** This electronic mail message, including all attachments, is for the sole use of the intended recipient(s) and may contain confidential and/or privileged information or otherwise may be protected from disclosure. Any unauthorized review, use, disclosure, distribution or actions which rely on the contents of this information is prohibited. If you are not the intended recipient, please contact the sender and delete the message and any attachment(s) from your system.

**Statement on Viruses and Harmful Software:** While the message and attachment(s) have been scanned with anti-virus software, SMA does not guarantee that this message or any attachment(s) is free of computer viruses or other harmful software. SMA does not accept liability for any damages caused by any computer virus or other harmful software transmitted herewith.

## Heather Woods

---

**From:** Sarahmay Schlea  
**Sent:** Tuesday, September 13, 2022 1:29 PM  
**To:** Enviro, OCD, EMNRD  
**Cc:** rhdunaway@eprod.com; Georgeann Goodman; Heather Woods  
**Subject:** Confirmation Sampling Notification - Enterprise Line 30137 (nAPP2224125510)

Good Afternoon,

Souder, Miller & Associates will be on location Thursday, September 15, 2022, at 7:30am to conduct confirmation sampling at the Enterprise Line 30137 release location (nAPP2224125510) located at 32.65381, -104.14508.

Many Thanks,  
Sarahmay Schlea



**Stronger Communities by Design**



[www.soudermiller.com](http://www.soudermiller.com)

**Sarahmay Schlea**

*Staff Scientist I  
(she/her)*

Direct/Mobile: 330-958-5689

Office: 575-449-2758

201 S Halagueno St  
Carlsbad, NM 88220

**Corporate Registrations:** AZ Engineering/Geology/Surveying Firm (14070), FL Engineering Firm (34203), ID Engineering/Surveying Firm (C-3564), ND Engineering Firm (28545PE), OK Engineering Firm (8498), SD Surveying Firm (C-7436), TX Engineering Firm (8877), TX Geology Firm (50254), TX Surveying Firm (10162200), WY Engineering/Surveying Firm (S-1704)

**Notice of Confidentiality and Privileged Status:** This electronic mail message, including all attachments, is for the sole use of the intended recipient(s) and may contain confidential and/or privileged information or otherwise may be protected from disclosure. Any unauthorized review, use, disclosure, distribution or actions which rely on the contents of this information is prohibited. If you are not the intended recipient, please contact the sender and delete the message and any attachment(s) from your system.

**Statement on Viruses and Harmful Software:** While the message and attachment(s) have been scanned with anti-virus software, SMA does not guarantee that this message or any attachment(s) is free of computer viruses or other harmful software. SMA does not accept liability for any damages caused by any computer virus or other harmful software transmitted herewith.



# APPENDIX B

## WATER WELL DATA



# New Mexico Office of the State Engineer

## Water Column/Average Depth to Water

---

No records found.

**PLSS Search:**

**Section(s):** 14, 15, 13, 10,  
11, 12, 22, 23,  
24      **Township:** 19S      **Range:** 28E

---


The data is furnished by the NMOSE/ISC and is accepted by the recipient with the expressed understanding that the OSE/ISC make no warranties, expressed or implied, concerning the accuracy, completeness, reliability, usability, or suitability for any particular purpose of the data.

---

10/15/22 6:23 AM

Page 1 of 1

WATER COLUMN/ AVERAGE  
DEPTH TO WATER

 An official website of the United States government  
[Here's how you know](#)

MENU

# 19S.28E.24.32233



IMPORTANT [Inventory Page](#) 

Monitoring location 323845104075601 is associated with a WELL in EDDY COUNTY, NEW MEXICO.  
Water data back to 1965 are available online.

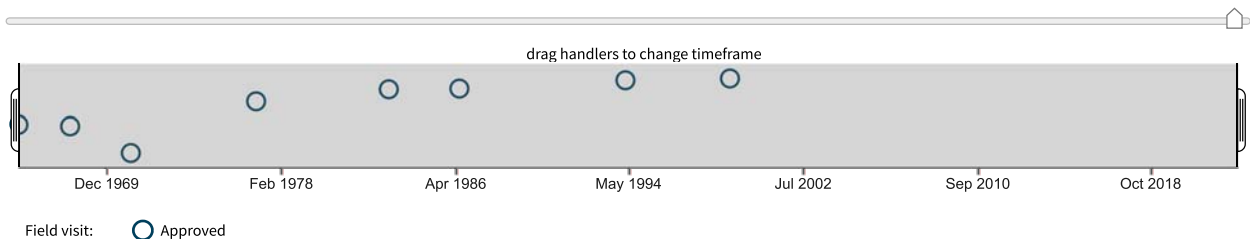
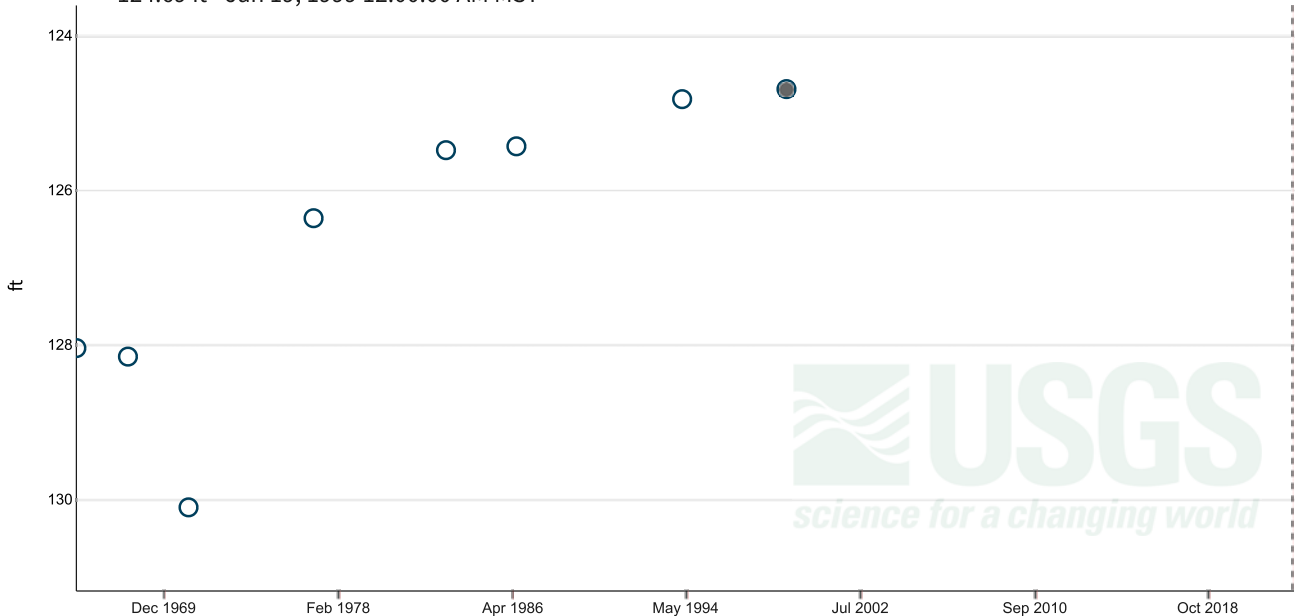
- ☐ 1 year ☐ 10 years  
☒ Period of record

Change time span

Retrieve data

## Depth to water level, ft below land surface

124.69 ft - Jan 19, 1999 12:00:00 AM MST



Questions or Comments

☐ Compare to last year

☐ Display median

IMPORTANT Data may be provisional - [learn more](#)

## Select data to graph

1965-11-03 to 1999-01-19 ^

☒ **Depth to water level, ft below land surface**

1965-11-03 to 1999-01-19 v

☐ **Groundwater level above NAVD 1988, ft**

1965-11-03 to 1999-01-19 v

☐ **Groundwater level above NGVD 1929, feet**

### Hydrograph data table(s)

#### Depth to water level, ft below land surface -- field visit data

Time v	Result	Accuracy	Approval	Qualifiers
1999-01-19	124.69	0.01	Approved	Static
1994-03-04	124.82	0.01	Approved	Static
1986-06-03	125.43	0.01	Approved	Static
1983-02-16	125.48	0.01	Approved	Static
1976-12-07	126.36	0.01	Approved	Static
1971-02-01	130.10	0.01	Approved	Above, Pumping
1968-04-02	128.15	0.01	Approved	Static
1965-11-03	128.04	0.01	Approved	Static

Retrieve data

Groundwater Data BETA



ie National Map: National Boundaries Dataset, 3DEP Elevation Program, Geographic Names Information System, National ...

Interested in understanding how to access the upstream/downstream data? [Learn about the Network-Linked Data Index \(NLDI\)](#).

Summary of All Available Data

USGS Parameter Group	Data Types	Start Date	End Date
Physical	Groundwater Levels	1965-11-03	1999-01-19

[Water Data for the Nation inventory](#).

Location Metadata

[DOI Privacy Policy](#) | [Legal](#) | [Accessibility](#) | [Site Map](#) | [Contact USGS](#)

Follow [-](#) [-](#) [-](#) [-](#) [-](#)

[U.S. Department of the Interior](#) | [DOI Inspector General](#) | [White House](#) | [E-gov](#) | [No Fear Act](#) | [FOIA](#)

# APPENDIX C

## SAMPLING PROTOCOL





## Sampling Protocol

The soil samples were collected in laboratory supplied containers in accordance with this sampling protocol, immediately placed on ice and sent under standard chain-of-custody protocols to Envirotech Analytical Laboratory in Farmington, New Mexico for analysis. A total of eighteen confirmation and fifteen excavation guidance samples were collected for laboratory analysis for total chloride using EPA Method 300.0; benzene, toluene, ethylbenzene and total xylenes (BTEX) using EPA Method 8021B; and motor, diesel, and gasoline range organics (MRO, DRO, and GRO) by EPA Method 8015D.

## Sampling Analysis Field Quality Assurance Procedures

A unique sample numbering was used to identify each sample collected and designated for on-site field screening and off-site laboratory analysis. The purpose of this numbering scheme was to provide a tracking system for the retrieval of analytical and field data on each sample. Sample identification numbers were recorded on sample labels or tags, field notes, chain-of-custody records (COC) and all other applicable documentation used during the project. Sample labels were affixed to all sample containers during sampling activities. Information was recorded on each sample container label at the time of sample collection. The information recorded on the labels were as follows: sample identification number; sample type (discrete or composite); site name and area/location number; analysis to be performed; type of chemical preservative present in container; date and time of sample collection; and sample collector's name and initials. All samples were packed in ice in an approved rigid body container, custody sealed signed and shipped to the appropriate laboratory via insured courier service.

COC procedures implemented for the project provided documentation of the handling of each sample from the time of collection until completion of laboratory analysis. A COC form serves as a legal record of possession of the sample. A sample is considered under custody if one or more of the following criteria are met: the sample is in the sampler's possession; the sample is in the sampler's view after being in possession; the sample was in the sampler's possession and then was placed into a locked area to prevent tampering; and/or the sample is in a designated secure area. Custody was documented throughout the project field sampling activities by a chain-of custody form initiated each day during which samples are collected. Container custody seals placed on either individual samples or on the rigid body container were used to ensure that no sample tampering occurs between the time the samples are placed into the containers and the time the containers are opened for analysis at the laboratory. Container custody seals were signed and dated by the individual responsible for completing the COC form contained within the container.

# APPENDIX D FIELD NOTES AND PHOTO LOG



## Field Screening

Location Name: <u>Line 30137</u>				Date: <u>September 1, 2022</u>				
Sample Name:	Collection Time:	EC (mS)	Temp (°C)	PID Reading /PF	Soil Color	Primary Soil Type	Moisture Level	Other Remarks/Notes:
<u>B50106'</u>	<u>0921</u>			<u>5000+</u>	Light Tan Gray Yellow Dark Brown Olive Red	Gravel Sand Clay Rock Silt Clay	Dry Moist Wet	
<u>B50206'</u>	<u>0927</u>			<u>250.6</u>	Light Tan Gray Yellow Dark Brown Olive Red	Gravel Sand Clay Rock Silt Clay	Dry Moist Wet	
<u>SW0105'</u>	<u>0924</u>			<u>4097</u>	Light Tan Gray Yellow Dark Brown Olive Red	Gravel Sand Clay Rock Silt Clay	Dry Moist Wet	
<u>SW0205'</u>	<u>0928</u>			<u>3560</u>	Light Tan Gray Yellow Dark Brown Olive Red	Gravel Sand Clay Rock Silt Clay	Dry Moist Wet	
<u>SW0305'</u>	<u>0930</u>			<u>5000+</u>	Light Tan Gray Yellow Dark Brown Olive Red	Gravel Sand Clay Rock Silt Clay	Dry Moist Wet	
<u>SW0405'</u>	<u>0935</u>			<u>252.3</u>	Light Tan Gray Yellow Dark Brown Olive Red	Gravel Sand Clay Rock Silt Clay	Dry Moist Wet	
<u>SW0505'</u>	<u>0933</u>			<u>3543</u>	Light Tan Gray Yellow Dark Brown Olive Red	Gravel Sand Clay Rock Silt Clay	Dry Moist Wet	
<u>SW0605'</u>	<u>0926</u>			<u>160.9</u>	Light Tan Gray Yellow Dark Brown Olive Red	Gravel Sand Clay Rock Silt Clay	Dry Moist Wet	
<u>SW0606'</u>	<u>0943</u>			<u>87.9</u>	Light Tan Gray Yellow Dark Brown Olive Red	Gravel Sand Clay Rock Silt Clay	Dry Moist Wet	

ASMA Field Screening									
Location Name: Line 30137		Date: September 1, 2022							
Sample Name:	Collection Time:	EC (mS)	Temp (°C)	PID Reading /PF	Soil Color	Primary Soil Type	Moisture Level	Other Remarks/Notes:	
S00306'	0951			1700	Light Tan Gray Yellow Dark Brown Olive Red	Gravel Sand Clay Rock Silt Clay	Dry Moist Wet		
B50107'	1001			2065	Light Tan Gray Yellow Dark Brown Olive Red	Gravel Sand Clay Rock Silt Clay	Dry Moist Wet		
B50207'	1010			235.7	Light Tan Gray Yellow Dark Brown Olive Red	Gravel Sand Clay Rock Silt Clay	Dry Moist Wet		
B502011'	1017			334	Light Tan Gray Yellow Dark Brown Olive Red	Gravel Sand Clay Rock Silt Clay	Dry Moist Wet		
B501011'	1025			133	Light Tan Gray Yellow Dark Brown Olive Red	Gravel Sand Clay Rock Silt Clay	Dry Moist Wet		
B501013'	1030			1881	Light Tan Gray Yellow Dark Brown Olive Red	Gravel Sand Clay Rock Silt Clay	Dry Moist Wet		
B502013	1035			211	Light Tan Gray Yellow Dark Brown Olive Red	Gravel Sand Clay Rock Silt Clay	Dry Moist Wet		
B502010	1045			270	Light Tan Gray Yellow Dark Brown Olive Red	Gravel Sand Clay Rock Silt Clay	Dry Moist Wet		
B501010	1051	0.06	22.4	205.1	Light Tan Gray Yellow Dark Brown Olive Red	Gravel Sand Clay Rock Silt Clay	Dry Moist Wet		





## Field Screening

Location Name: LIN 30137				Date: September 1, 2022				
Sample Name:	Collection Time:	EC (mS)	Temp (°C)	PID Reading /PF	Soil Color	Primary Soil Type	Moisture Level	Other Remarks/Notes:
SW002	1156 ND			7925	Light Tan Gray Yellow Dark Brown Olive Red	Gravel Sand Clay Rock Silt Clay	Dry Moist Wet	
SW001	1235	0.005	22.4	374.4	Light Tan Gray Yellow Dark Brown Olive Red	Gravel Sand Clay Rock Silt Clay	Dry Moist Wet	
SW002	1249			549.8	Light Tan Gray Yellow Dark Brown Olive Red	Gravel Sand Clay Rock Silt Clay	Dry Moist Wet	
BS002017	1252	0.006	22.2	2114	Light Tan Gray Yellow Dark Brown Olive Red	Gravel Sand Clay Rock Silt Clay	Dry Moist Wet	
BS01017	1307	0.004	22.2	381.9	Light Tan Gray Yellow Dark Brown Olive Red	Gravel Sand Clay Rock Silt Clay	Dry Moist Wet	
SW002	1309	0.004	22.5	199.3	Light Tan Gray Yellow Dark Brown Olive Red	Gravel Sand Clay Rock Silt Clay	Dry Moist Wet	
BS003017	1315	0.006	22.4	2638	Light Tan Gray Yellow Dark Brown Olive Red	Gravel Sand Clay Rock Silt Clay	Dry Moist Wet	
SW005	1317	0.005	22.5	1215	Light Tan Gray Yellow Dark Brown Olive Red	Gravel Sand Clay Rock Silt Clay	Dry Moist Wet	
BS004	1320	0.005	22.2	344.1	Light Tan Gray Yellow Dark Brown Olive Red	Gravel Sand Clay Rock Silt Clay	Dry Moist Wet	



## Field Screening

Location Name: Line 30137					Date: September 1, 2022				
Sample Name:	Collection Time:	EC (mS)	Temp (°C)	PID Reading /PF	Soil Color	Primary Soil Type	Moisture Level	Other Remarks/Notes:	
SW03@17'	1323	0.05	22.2	83.7	Light Tan Gray Olive Red	Gravel Sand Silt Clay	Dry Moist Wet		
SW03@10'	1324	0.05	22.8	309	Dark Brown Olive Red	Gravel Sand Silt Clay	Dry Moist Wet		
SW03@3'	1326	0.06	22.4	859	Dark Brown Olive Red	Gravel Sand Silt Clay	Dry Moist Wet		
SW04@4'	1327 <del>1327</del>	0.06	22.3	1816	Dark Brown Olive Red	Gravel Sand Silt Clay	Dry Moist Wet		
SW04@17'	1329	0.06	22.5	774	Dark Brown Olive Red	Gravel Sand Silt Clay	Dry Moist Wet		
					Dark Brown Olive Red	Gravel Sand Silt Clay	Dry Moist Wet		
					Dark Brown Olive Red	Gravel Sand Silt Clay	Dry Moist Wet		
					Dark Brown Olive Red	Gravel Sand Silt Clay	Dry Moist Wet		
					Dark Brown Olive Red	Gravel Sand Silt Clay	Dry Moist Wet		
					Dark Brown Olive Red	Gravel Sand Silt Clay	Dry Moist Wet		
					Dark Brown Olive Red	Gravel Sand Silt Clay	Dry Moist Wet		
					Dark Brown Olive Red	Gravel Sand Silt Clay	Dry Moist Wet		
					Dark Brown Olive Red	Gravel Sand Silt Clay	Dry Moist Wet		
					Dark Brown Olive Red	Gravel Sand Silt Clay	Dry Moist Wet		
					Dark Brown Olive Red	Gravel Sand Silt Clay	Dry Moist Wet		
					Dark Brown Olive Red	Gravel Sand Silt Clay	Dry Moist Wet		
					Dark Brown Olive Red	Gravel Sand Silt Clay	Dry Moist Wet		
					Dark Brown Olive Red	Gravel Sand Silt Clay	Dry Moist Wet		
					Dark Brown Olive Red	Gravel Sand Silt Clay	Dry Moist Wet		
					Dark Brown Olive Red	Gravel Sand Silt Clay	Dry Moist Wet		
					Dark Brown Olive Red	Gravel Sand Silt Clay	Dry Moist Wet		
					Dark Brown Olive Red	Gravel Sand Silt Clay	Dry Moist Wet		
					Dark Brown Olive Red	Gravel Sand Silt Clay	Dry Moist Wet		
					Dark Brown Olive Red	Gravel Sand Silt Clay	Dry Moist Wet		
					Dark Brown Olive Red	Gravel Sand Silt Clay	Dry Moist Wet		
					Dark Brown Olive Red	Gravel Sand Silt Clay	Dry Moist Wet		
					Dark Brown Olive Red	Gravel Sand Silt Clay	Dry Moist Wet		
					Dark Brown Olive Red	Gravel Sand Silt Clay	Dry Moist Wet		
					Dark Brown Olive Red	Gravel Sand Silt Clay	Dry Moist Wet		
					Dark Brown Olive Red	Gravel Sand Silt Clay	Dry Moist Wet		
					Dark Brown Olive Red	Gravel Sand Silt Clay	Dry Moist Wet		
					Dark Brown Olive Red	Gravel Sand Silt Clay	Dry Moist Wet		
					Dark Brown Olive Red	Gravel Sand Silt Clay	Dry Moist Wet		
					Dark Brown Olive Red	Gravel Sand Silt Clay	Dry Moist Wet		
					Dark Brown Olive Red	Gravel Sand Silt Clay	Dry Moist Wet		
					Dark Brown Olive Red	Gravel Sand Silt Clay	Dry Moist Wet		
					Dark Brown Olive Red	Gravel Sand Silt Clay	Dry Moist Wet		
					Dark Brown Olive Red	Gravel Sand Silt Clay	Dry Moist Wet		
					Dark Brown Olive Red	Gravel Sand Silt Clay	Dry Moist Wet		
					Dark Brown Olive Red	Gravel Sand Silt Clay	Dry Moist Wet		
					Dark Brown Olive Red	Gravel Sand Silt Clay	Dry Moist Wet		
					Dark Brown Olive Red	Gravel Sand Silt Clay	Dry Moist Wet		
					Dark Brown Olive Red	Gravel Sand Silt Clay	Dry Moist Wet		
					Dark Brown Olive Red	Gravel Sand Silt Clay	Dry Moist Wet		
					Dark Brown Olive Red	Gravel Sand Silt Clay	Dry Moist Wet		
					Dark Brown Olive Red	Gravel Sand Silt Clay	Dry Moist Wet		
					Dark Brown Olive Red	Gravel Sand Silt Clay	Dry Moist Wet		
					Dark Brown Olive Red	Gravel Sand Silt Clay	Dry Moist Wet		
					Dark Brown Olive Red	Gravel Sand Silt Clay	Dry Moist Wet		
					Dark Brown Olive Red	Gravel Sand Silt Clay	Dry Moist Wet		
					Dark Brown Olive Red	Gravel Sand Silt Clay	Dry Moist Wet		
					Dark Brown Olive Red	Gravel Sand Silt Clay	Dry Moist Wet		
					Dark Brown Olive Red	Gravel Sand Silt Clay	Dry Moist Wet		
					Dark Brown Olive Red	Gravel Sand Silt Clay	Dry Moist Wet		
					Dark Brown Olive Red	Gravel Sand Silt Clay	Dry Moist Wet		
					Dark Brown Olive Red	Gravel Sand Silt Clay	Dry Moist Wet		
					Dark Brown Olive Red	Gravel Sand Silt Clay	Dry Moist Wet		
					Dark Brown Olive Red	Gravel Sand Silt Clay	Dry Moist Wet		
					Dark Brown Olive Red	Gravel Sand Silt Clay	Dry Moist Wet		
					Dark Brown Olive Red	Gravel Sand Silt Clay	Dry Moist Wet		
					Dark Brown Olive Red	Gravel Sand Silt Clay	Dry Moist Wet		
					Dark Brown Olive Red	Gravel Sand Silt Clay	Dry Moist Wet		
					Dark Brown Olive Red	Gravel Sand Silt Clay	Dry Moist Wet		
					Dark Brown Olive Red	Gravel Sand Silt Clay	Dry Moist Wet		
					Dark Brown Olive Red	Gravel Sand Silt Clay	Dry Moist Wet		
					Dark Brown Olive Red	Gravel Sand Silt Clay	Dry Moist Wet		
					Dark Brown Olive Red	Gravel Sand Silt Clay	Dry Moist Wet		
					Dark Brown Olive Red	Gravel Sand Silt Clay	Dry Moist Wet		
					Dark Brown Olive Red	Gravel Sand Silt Clay	Dry Moist Wet		
					Dark Brown Olive Red	Gravel Sand Silt Clay	Dry Moist Wet		
					Dark Brown Olive Red	Gravel Sand Silt Clay	Dry Moist Wet		
					Dark Brown Olive Red	Gravel Sand Silt Clay	Dry Moist Wet		
					Dark Brown Olive Red	Gravel Sand Silt Clay	Dry Moist Wet		
					Dark Brown Olive Red	Gravel Sand Silt Clay	Dry Moist Wet		
					Dark Brown Olive Red	Gravel Sand Silt Clay	Dry Moist Wet		
					Dark Brown Olive Red	Gravel Sand Silt Clay	Dry Moist Wet		
					Dark Brown Olive Red	Gravel Sand Silt Clay	Dry Moist Wet		
					Dark Brown Olive Red	Gravel Sand Silt Clay	Dry Moist Wet		
					Dark Brown Olive Red	Gravel Sand Silt Clay	Dry Moist Wet		
					Dark Brown Olive Red	Gravel Sand Silt Clay	Dry Moist Wet		
					Dark Brown Olive Red	Gravel Sand Silt Clay	Dry Moist Wet		
					Dark Brown Olive Red	Gravel Sand Silt Clay	Dry Moist Wet		
			</						





## Field Screening

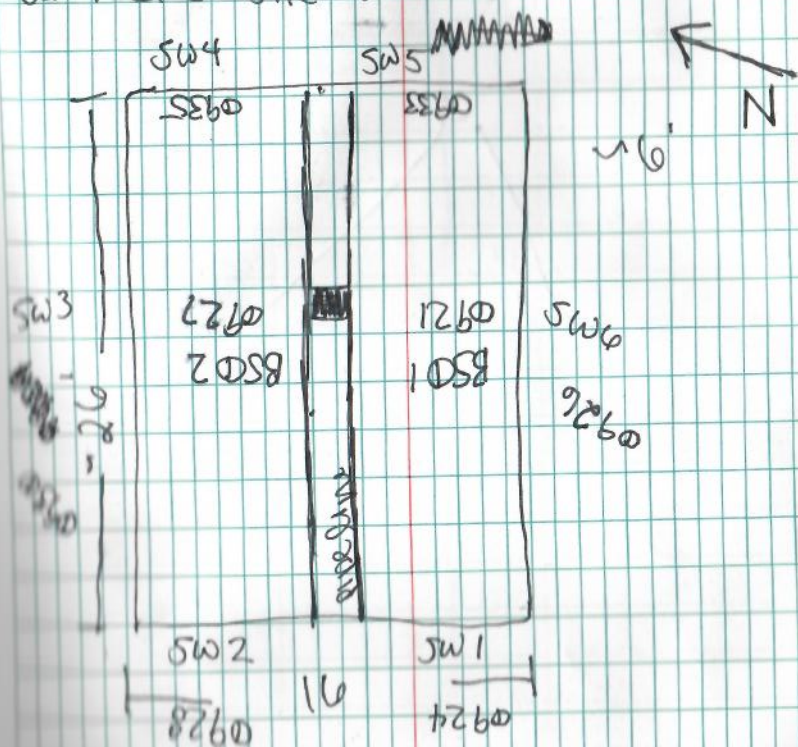
Location Name: Line 30137		Date: September 1, 2022							
Sample Name:	Collection Time:	EC (mS)	Temp (°C)	PID Reading /PF	Soil Color	Primary Soil Type	Moisture Level	Other Remarks/Notes:	
SW06016'	1057	0.04	22.2	1640	Light Tan Dark Brown Gray Olive Yellow Red	Gravel Sand Rock Silt Clay	Dry Moist Wet		
SW06018'	1058	0.06	22.5	80.6	Light Tan Dark Brown Gray Olive Yellow Red	Gravel Sand Rock Silt Clay	Dry Moist Wet		
SW06022'	1059	0.06	22.1	3620	Light Tan Dark Brown Gray Olive Yellow Red	Gravel Sand Rock Silt Clay	Dry Moist Wet		
B502 017'	1108			1312	Light Tan Dark Brown Gray Olive Yellow Red	Gravel Sand Rock Silt Clay	Dry Moist Wet		
SW03 017'	1131			2500	Light Tan Dark Brown Gray Olive Yellow Red	Gravel Sand Rock Silt Clay	Dry Moist Wet		
SW03 018'	1132	0.06	22.5	95.2	Light Tan Dark Brown Gray Olive Yellow Red	Gravel Sand Rock Silt Clay	Dry Moist Wet		
SW0303	1133			1652	Light Tan Dark Brown Gray Olive Yellow Red	Gravel Sand Rock Silt Clay	Dry Moist Wet		
SW01	1138			288.9	Light Tan Dark Brown Gray Olive Yellow Red	Gravel Sand Rock Silt Clay	Dry Moist Wet		
SW02	1141			773.5	Light Tan Dark Brown Gray Olive Yellow Red	Gravel Sand Rock Silt Clay	Dry Moist Wet		



Line 30132

September 1, 2022 SS

arrived on site @ 0905



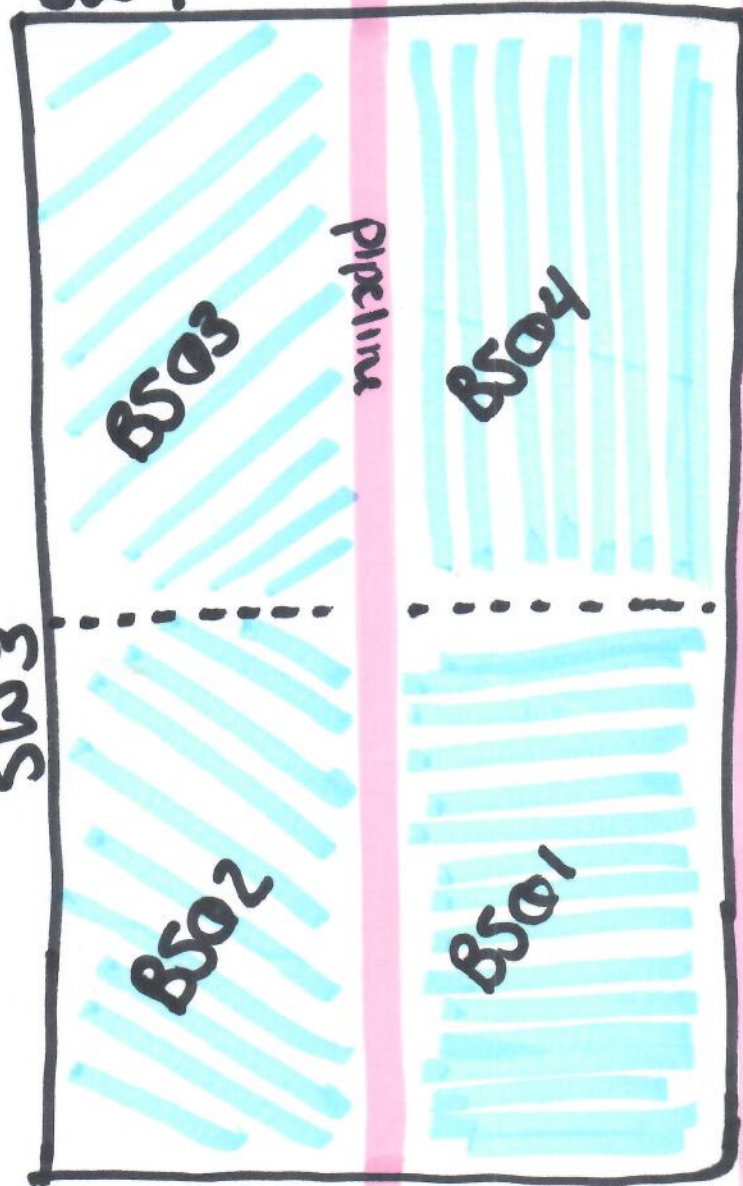
## Field Screens

$$1017 - 334 = 683$$

# Biras eye view

North  
Top Bottom  
0-8.6  
8.5-17

SW4 SW5



Top  
Middle  
Bottom

-Top: 0-6  
Middle: 6-12  
Bottom: 12-17

Top  
Bottom



**Photograph Log**  
**Line 30137 Pipeline Release**  
**Enterprise Field Services**



Photograph #1	A photograph of a pipeline release site. A green pipe is visible in a trench. A surveying scale is placed vertically on the left side of the image, showing elevations from 180 to 300 feet. The scale is marked with 'S' at the bottom and 'W' at the top. The background shows a flat, arid landscape with a white pickup truck parked in the distance under a cloudy sky. A vertical timestamp on the right side of the image reads '09/02/2022, 08:38:42 MDT'. <p>09/02/2022, 08:38:42 MDT</p>
Client: Enterprise Field Services	
Site Name: Line 30137 Pipeline Release	
Date Photo Taken: September 2, 2022	
Release Location: N32.65381, W104.14508  O-S14-T19S-R28E Eddy County, New Mexico	
Photo Taken by: Sarahmay Schlea	Description: Facing southwest, view of confirmation sample SW6, as sampled on September 15, 2022



**Photograph Log**  
**Line 30137 Pipeline Release**  
**Enterprise Field Services**



Photograph #2	
Client: Enterprise Field Services	
Site Name: Line 30137 Pipeline Release	
Date Photo Taken: September 2, 2022	
Release Location: N32.65381, W104.14508  O-S14-T19S-R28E Eddy County, New Mexico	
Photo Taken by: Sarahmay Schlea	Description: Facing west, view of confirmation sample SW1 on the left, SW2 and base BS02 on the right of the pipeline, as sampled on September 15, 2022



**Photograph Log**  
**Line 30137 Pipeline Release**  
**Enterprise Field Services**



Photograph #3	A photograph showing a deep, reddish-brown soil pit. A green pipeline runs horizontally across the bottom of the pit. A white tarp is draped over the top edge of the pit. In the background, a Link-Belt excavator is visible. A vertical scale bar on the left side of the image indicates a height of 3391ft. A compass rose on the left indicates North (N) and Northeast (NE). A date and time stamp on the right reads "09/02/2022, 08:38:14 MDT".
Client: Enterprise Field Services	
Site Name: Line 30137 Pipeline Release	
Date Photo Taken: September 2, 2022	
Release Location: N32.65381, W104.14508  O-S14-T19S-R28E Eddy County, New Mexico	
Photo Taken by: Sarahmay Schlea	Description: Facing north, view of confirmation sample SW3, as sampled on September 15, 2022

**Photograph Log**  
**Line 30137 Pipeline Release**  
**Enterprise Field Services**



Photograph #4	
Client: Enterprise Field Services	
Site Name: Line 30137 Pipeline Release	
Date Photo Taken: September 2, 2022	
Release Location: N32.65381, W104.14508  O-S14-T19S-R28E Eddy County, New Mexico	
Photo Taken by: Sarahmay Schlea	Description: Facing northeast, view of confirmation sample SW4, with BS03 on the base, as sampled on September 15, 2022



**Photograph Log**  
**Line 30137 Pipeline Release**  
**Enterprise Field Services**



Photograph #5	A photograph showing a deep, narrow trench dug into reddish-brown soil. A green pipe is visible on the left side of the trench. Above the trench, a surveying scale is visible with markings for NE, E, and SE, and a green vertical line. The scale also displays coordinates: 78°E (T), 32.653748°N, 104.144119°W ±9ft, and an elevation of 3395ft. The date and time '09/02/2022 08:37:47 MDT' are printed in the bottom right corner of the photo.
Client: Enterprise Field Services	
Site Name: Line 30137 Pipeline Release	
Date Photo Taken: September 2, 2022	
Release Location: N32.65381, W104.14508  O-S14-T19S-R28E Eddy County, New Mexico	
Photo Taken by: Sarahmay Schlea	Description: Facing east, view of confirmation sample SW5 and base samples BS01 and BS04, as sampled on September 15, 2022



# APPENDIX E

## LABORATORY ANALYTICAL REPORTS

Report to:  
Heather Woods



5796 U.S. Hwy 64  
Farmington, NM 87401

Phone: (505) 632-1881  
Envirotech-inc.com



# envirotech

*Practical Solutions for a Better Tomorrow*

## Analytical Report

Souder Miller Associates - Carlsbad

Project Name: Line 30137

Work Order: E209012

Job Number: 97057-0001

Received: 9/6/2022

Revision: 2

Report Reviewed By:

Walter Hinchman  
Laboratory Director  
9/9/22

Envirotech Inc. certifies the test results meet all requirements of TNI unless noted otherwise.  
Statement of Data Authenticity: Envirotech Inc. attests the data reported has not been altered in any way.  
Partial or incomplete reproduction of this report is prohibited, unless approved by Envirotech Inc.  
Envirotech Inc. holds the Utah TNI certification NM00979 for data reported.  
Envirotech Inc. holds the Texas TNI certification T104704557 for data reported.  
Envirotech Inc. holds the NM SDWA certification for data reported. (Lab #NM00979)

Date Reported: 9/9/22

Heather Woods  
201 S Halagueno St.  
Carlsbad, NM 88220



Project Name: Line 30137  
Workorder: E209012  
Date Received: 9/6/2022 8:24:00AM

Heather Woods,

Thank you for choosing Envirotech, Inc. as your analytical testing laboratory for the sample(s) received on, 9/6/2022 8:24:00AM, under the Project Name: Line 30137.

The analytical test results summarized in this report with the Project Name: Line 30137 apply to the individual samples collected, identified and submitted bearing the project name on the enclosed chain-of-custody. Subcontracted sample analyses not conducted by Envirotech, Inc., are attached in full as issued by the subcontract laboratory.

Please review the Chain-of-Custody (COC) and Sample Receipt Checklist (SRC) for any issues regarding sample receipt temperature, containers, preservation etc. To best understand your test results, review the entire report summarizing your sample data and the associated quality control batch data.

All reported data in this analytical report were analyzed according to the referenced method(s) and are in compliance with the latest NELAC/TNI standards, unless otherwise noted. Samples or analytical quality control parameters not meeting specific QC criteria are qualified with a data flag. Data flag definitions are located in the Notes and Definitions section of this analytical report.

If you have any questions concerning this report, please feel free to contact Envirotech, Inc.

Respectfully,

**Walter Hinchman**  
Laboratory Director  
Office: 505-632-1881  
Cell: 775-287-1762  
[whinchman@envirotech-inc.com](mailto:whinchman@envirotech-inc.com)

**Raina Schwanz**  
Laboratory Administrator  
Office: 505-632-1881  
[rainaschwanz@envirotech-inc.com](mailto:rainaschwanz@envirotech-inc.com)

**Alexa Michaels**  
Sample Custody Officer  
Office: 505-632-1881  
[labadmin@envirotech-inc.com](mailto:labadmin@envirotech-inc.com)

Field Offices:

**Southern New Mexico Area**  
**Lynn Jarboe**  
Technical Representative/Client Services  
Office: 505-421-LABS(5227)  
Cell: 505-320-4759  
[ljjarboe@envirotech-inc.com](mailto:ljjarboe@envirotech-inc.com)

**West Texas Midland/Odessa Area**  
**Rayny Hagan**  
Technical Representative  
Office: 505-421-LABS(5227)

Envirotech Web Address: [www.envirotech-inc.com](http://www.envirotech-inc.com)

## Table of Contents

Title Page	1
Cover Page	2
Table of Contents	3
Sample Summary	5
Sample Data	6
BS01 @ 17	6
BS02 @ 17	7
BS03 @ 17	8
BS04 @ 17	9
SW1	10
SW2	11
SW3 @ 3	12
SW3 @ 10	13
SW3 @ 17	14
SW4 @ 4	15
SW4 @ 17	16
SW5	17
SW6 @ 2	18
SW6 @ 8	19
SW6 @ 16	20
QC Summary Data	21
QC - Volatile Organics by EPA 8021B	21
QC - Nonhalogenated Organics by EPA 8015D - GRO	22
QC - Nonhalogenated Organics by EPA 8015D - DRO/ORO	23
QC - Anions by EPA 300.0/9056A	24

## Table of Contents (continued)

Definitions and Notes	25
Chain of Custody etc.	26

## Sample Summary

Souder Miller Associates - Carlsbad	Project Name:	Line 30137	<b>Reported:</b> 09/09/22 15:46
201 S Halagueno St.	Project Number:	97057-0001	
Carlsbad NM, 88220	Project Manager:	Heather Woods	

Client Sample ID	Lab Sample ID	Matrix	Sampled	Received	Container
BS01 @ 17	E209012-01A	Soil	09/01/22	09/06/22	Glass Jar, 4 oz.
BS02 @ 17	E209012-02A	Soil	09/01/22	09/06/22	Glass Jar, 4 oz.
BS03 @ 17	E209012-03A	Soil	09/01/22	09/06/22	Glass Jar, 4 oz.
BS04 @ 17	E209012-04A	Soil	09/01/22	09/06/22	Glass Jar, 4 oz.
SW1	E209012-05A	Soil	09/01/22	09/06/22	Glass Jar, 4 oz.
SW2	E209012-06A	Soil	09/01/22	09/06/22	Glass Jar, 4 oz.
SW3 @ 3	E209012-07A	Soil	09/01/22	09/06/22	Glass Jar, 4 oz.
SW3 @ 10	E209012-08A	Soil	09/01/22	09/06/22	Glass Jar, 4 oz.
SW3 @ 17	E209012-09A	Soil	09/01/22	09/06/22	Glass Jar, 4 oz.
SW4 @ 4	E209012-10A	Soil	09/01/22	09/06/22	Glass Jar, 4 oz.
SW4 @ 17	E209012-11A	Soil	09/01/22	09/06/22	Glass Jar, 4 oz.
SW5	E209012-12A	Soil	09/01/22	09/06/22	Glass Jar, 4 oz.
SW6 @ 2	E209012-13A	Soil	09/01/22	09/06/22	Glass Jar, 4 oz.
SW6 @ 8	E209012-14A	Soil	09/01/22	09/06/22	Glass Jar, 4 oz.
SW6 @ 16	E209012-15A	Soil	09/01/22	09/06/22	Glass Jar, 4 oz.



## Sample Data

Souder Miller Associates - Carlsbad	Project Name:	Line 30137	
201 S Halagueno St.	Project Number:	97057-0001	<b>Reported:</b>
Carlsbad NM, 88220	Project Manager:	Heather Woods	9/9/2022 3:46:38PM

## BS01 @ 17

## E209012-01

Analyte	Result	Reporting Limit	Dilution	Prepared	Analyzed	Notes
<b>Volatile Organics by EPA 8021B</b>	mg/kg	mg/kg	Analyst: IY		Batch: 2237010	
Benzene	2.35	0.250	10	09/06/22	09/09/22	
Ethylbenzene	12.3	0.250	10	09/06/22	09/09/22	
Toluene	39.8	0.250	10	09/06/22	09/09/22	
o-Xylene	6.62	0.250	10	09/06/22	09/09/22	
p,m-Xylene	23.8	0.500	10	09/06/22	09/09/22	
Total Xylenes	30.4	0.250	10	09/06/22	09/09/22	
Surrogate: 4-Bromochlorobenzene-PID	98.7 %	70-130		09/06/22	09/09/22	
<b>Nonhalogenated Organics by EPA 8015D - GRO</b>	mg/kg	mg/kg	Analyst: IY		Batch: 2237010	
Gasoline Range Organics (C6-C10)	659	200	10	09/06/22	09/09/22	
Surrogate: 1-Chloro-4-fluorobenzene-FID	91.6 %	70-130		09/06/22	09/09/22	
<b>Nonhalogenated Organics by EPA 8015D - DRO/ORO</b>	mg/kg	mg/kg	Analyst: JL		Batch: 2237027	
Diesel Range Organics (C10-C28)	50.8	25.0	1	09/07/22	09/07/22	
Oil Range Organics (C28-C36)	ND	50.0	1	09/07/22	09/07/22	
Surrogate: n-Nonane	118 %	50-200		09/07/22	09/07/22	
<b>Anions by EPA 300.0/9056A</b>	mg/kg	mg/kg	Analyst: KL		Batch: 2237008	
Chloride	ND	20.0	1	09/06/22	09/06/22	





## Sample Data

Souder Miller Associates - Carlsbad  
201 S Halagueno St.  
Carlsbad NM, 88220

Project Name: Line 30137  
Project Number: 97057-0001  
Project Manager: Heather Woods

**Reported:**  
9/9/2022 3:46:38PM

BS02 @ 17

E209012-02

Analyte	Result	Reporting Limit	Dilution	Prepared	Analyzed	Notes
<b>Volatile Organics by EPA 8021B</b>						
	mg/kg	mg/kg	Analyst: IY		Batch: 2237010	
Benzene	ND	0.0250	1	09/06/22	09/09/22	
Ethylbenzene	0.147	0.0250	1	09/06/22	09/09/22	
Toluene	0.0640	0.0250	1	09/06/22	09/09/22	
o-Xylene	0.109	0.0250	1	09/06/22	09/09/22	
p,m-Xylene	0.429	0.0500	1	09/06/22	09/09/22	
Total Xylenes	0.538	0.0250	1	09/06/22	09/09/22	
<i>Surrogate: 4-Bromochlorobenzene-PID</i>						
	94.5 %	70-130		09/06/22	09/09/22	
<b>Nonhalogenated Organics by EPA 8015D - GRO</b>						
	mg/kg	mg/kg	Analyst: IY		Batch: 2237010	
Gasoline Range Organics (C6-C10)	55.0	20.0	1	09/06/22	09/09/22	
<i>Surrogate: 1-Chloro-4-fluorobenzene-FID</i>						
	97.6 %	70-130		09/06/22	09/09/22	
<b>Nonhalogenated Organics by EPA 8015D - DRO/ORO</b>						
	mg/kg	mg/kg	Analyst: JL		Batch: 2237027	
Diesel Range Organics (C10-C28)	ND	25.0	1	09/07/22	09/07/22	
Oil Range Organics (C28-C36)	ND	50.0	1	09/07/22	09/07/22	
<i>Surrogate: n-Nonane</i>						
	105 %	50-200		09/07/22	09/07/22	
<b>Anions by EPA 300.0/9056A</b>						
	mg/kg	mg/kg	Analyst: KL		Batch: 2237008	
Chloride	ND	20.0	1	09/06/22	09/06/22	



## Sample Data

Souder Miller Associates - Carlsbad  
201 S Halagueno St.  
Carlsbad NM, 88220

Project Name: Line 30137  
Project Number: 97057-0001  
Project Manager: Heather Woods

**Reported:**  
9/9/2022 3:46:38PM

BS03 @ 17

E209012-03

Analyte	Result	Reporting Limit	Dilution	Prepared	Analyzed	Notes
<b>Volatile Organics by EPA 8021B</b>						
	mg/kg	mg/kg	Analyst: IY		Batch: 2237010	
Benzene	ND	0.0250	1	09/06/22	09/08/22	
Ethylbenzene	<b>0.390</b>	0.0250	1	09/06/22	09/08/22	
Toluene	<b>0.174</b>	0.0250	1	09/06/22	09/08/22	
o-Xylene	<b>0.363</b>	0.0250	1	09/06/22	09/08/22	
p,m-Xylene	<b>1.09</b>	0.0500	1	09/06/22	09/08/22	
Total Xylenes	<b>1.45</b>	0.0250	1	09/06/22	09/08/22	
<i>Surrogate: 4-Bromochlorobenzene-PID</i>						
	97.5 %	70-130		09/06/22	09/08/22	
<b>Nonhalogenated Organics by EPA 8015D - GRO</b>						
	mg/kg	mg/kg	Analyst: IY		Batch: 2237010	
Gasoline Range Organics (C6-C10)	<b>75.4</b>	20.0	1	09/06/22	09/08/22	
<i>Surrogate: 1-Chloro-4-fluorobenzene-FID</i>						
	108 %	70-130		09/06/22	09/08/22	
<b>Nonhalogenated Organics by EPA 8015D - DRO/ORO</b>						
	mg/kg	mg/kg	Analyst: JL		Batch: 2237027	
Diesel Range Organics (C10-C28)	<b>49.0</b>	25.0	1	09/07/22	09/07/22	
Oil Range Organics (C28-C36)	ND	50.0	1	09/07/22	09/07/22	
<i>Surrogate: n-Nonane</i>						
	109 %	50-200		09/07/22	09/07/22	
<b>Anions by EPA 300.0/9056A</b>						
	mg/kg	mg/kg	Analyst: KL		Batch: 2237008	
Chloride	ND	20.0	1	09/06/22	09/06/22	



## Sample Data

Souder Miller Associates - Carlsbad  
201 S Halagueno St.  
Carlsbad NM, 88220

Project Name: Line 30137  
Project Number: 97057-0001  
Project Manager: Heather Woods

**Reported:**  
9/9/2022 3:46:38PM

BS04 @ 17

E209012-04

Analyte	Result	Reporting Limit	Dilution	Prepared	Analyzed	Notes
<b>Volatile Organics by EPA 8021B</b>						
	mg/kg	mg/kg	Analyst: IY		Batch: 2237010	
Benzene	0.0394	0.0250	1	09/06/22	09/08/22	
Ethylbenzene	1.35	0.0250	1	09/06/22	09/08/22	
Toluene	0.514	0.0250	1	09/06/22	09/08/22	
o-Xylene	1.08	0.0250	1	09/06/22	09/08/22	
p,m-Xylene	3.43	0.0500	1	09/06/22	09/08/22	
Total Xylenes	4.50	0.0250	1	09/06/22	09/08/22	
<i>Surrogate: 4-Bromochlorobenzene-PID</i>						
	97.0 %	70-130		09/06/22	09/08/22	
<b>Nonhalogenated Organics by EPA 8015D - GRO</b>						
	mg/kg	mg/kg	Analyst: IY		Batch: 2237010	
Gasoline Range Organics (C6-C10)	108	20.0	1	09/06/22	09/08/22	
<i>Surrogate: 1-Chloro-4-fluorobenzene-FID</i>						
	103 %	70-130		09/06/22	09/08/22	
<b>Nonhalogenated Organics by EPA 8015D - DRO/ORO</b>						
	mg/kg	mg/kg	Analyst: JL		Batch: 2237027	
Diesel Range Organics (C10-C28)	ND	25.0	1	09/07/22	09/07/22	
Oil Range Organics (C28-C36)	ND	50.0	1	09/07/22	09/07/22	
<i>Surrogate: n-Nonane</i>						
	105 %	50-200		09/07/22	09/07/22	
<b>Anions by EPA 300.0/9056A</b>						
	mg/kg	mg/kg	Analyst: KL		Batch: 2237008	
Chloride	ND	20.0	1	09/06/22	09/06/22	



## Sample Data

Souder Miller Associates - Carlsbad  
201 S Halagueno St.  
Carlsbad NM, 88220

Project Name: Line 30137  
Project Number: 97057-0001  
Project Manager: Heather Woods

**Reported:**  
9/9/2022 3:46:38PM

## SW1

## E209012-05

Analyte	Result	Reporting Limit	Dilution	Prepared	Analyzed	Notes
<b>Volatile Organics by EPA 8021B</b>	mg/kg	mg/kg	Analyst: IY		Batch: 2237010	
Benzene	ND	0.0250	1	09/06/22	09/07/22	
Ethylbenzene	ND	0.0250	1	09/06/22	09/07/22	
Toluene	ND	0.0250	1	09/06/22	09/07/22	
o-Xylene	ND	0.0250	1	09/06/22	09/07/22	
p,m-Xylene	ND	0.0500	1	09/06/22	09/07/22	
Total Xylenes	ND	0.0250	1	09/06/22	09/07/22	
<i>Surrogate: 4-Bromochlorobenzene-PID</i>		105 %	70-130	09/06/22	09/07/22	
<b>Nonhalogenated Organics by EPA 8015D - GRO</b>	mg/kg	mg/kg	Analyst: IY		Batch: 2237010	
Gasoline Range Organics (C6-C10)	ND	20.0	1	09/06/22	09/07/22	
<i>Surrogate: 1-Chloro-4-fluorobenzene-FID</i>		131 %	70-130	09/06/22	09/07/22	S3
<b>Nonhalogenated Organics by EPA 8015D - DRO/ORO</b>	mg/kg	mg/kg	Analyst: JL		Batch: 2237027	
Diesel Range Organics (C10-C28)	ND	25.0	1	09/07/22	09/07/22	
Oil Range Organics (C28-C36)	ND	50.0	1	09/07/22	09/07/22	
<i>Surrogate: n-Nonane</i>		102 %	50-200	09/07/22	09/07/22	
<b>Anions by EPA 300.0/9056A</b>	mg/kg	mg/kg	Analyst: KL		Batch: 2237008	
Chloride	ND	20.0	1	09/06/22	09/06/22	



## Sample Data

Souder Miller Associates - Carlsbad  
201 S Halagueno St.  
Carlsbad NM, 88220

Project Name: Line 30137  
Project Number: 97057-0001  
Project Manager: Heather Woods

**Reported:**  
9/9/2022 3:46:38PM

## SW2

## E209012-06

Analyte	Result	Reporting Limit	Dilution	Prepared	Analyzed	Notes
<b>Volatile Organics by EPA 8021B</b>						
	mg/kg	mg/kg		Analyst: IY		Batch: 2237010
Benzene	ND	0.0250	1	09/06/22	09/07/22	
Ethylbenzene	ND	0.0250	1	09/06/22	09/07/22	
Toluene	ND	0.0250	1	09/06/22	09/07/22	
o-Xylene	ND	0.0250	1	09/06/22	09/07/22	
p,m-Xylene	ND	0.0500	1	09/06/22	09/07/22	
Total Xylenes	ND	0.0250	1	09/06/22	09/07/22	
<i>Surrogate: 4-Bromochlorobenzene-PID</i>						
		105 %	70-130	09/06/22	09/07/22	
<b>Nonhalogenated Organics by EPA 8015D - GRO</b>						
	mg/kg	mg/kg		Analyst: IY		Batch: 2237010
Gasoline Range Organics (C6-C10)	ND	20.0	1	09/06/22	09/07/22	
<i>Surrogate: 1-Chloro-4-fluorobenzene-FID</i>						
		127 %	70-130	09/06/22	09/07/22	
<b>Nonhalogenated Organics by EPA 8015D - DRO/ORO</b>						
	mg/kg	mg/kg		Analyst: JL		Batch: 2237027
Diesel Range Organics (C10-C28)	ND	25.0	1	09/07/22	09/08/22	
Oil Range Organics (C28-C36)	ND	50.0	1	09/07/22	09/08/22	
<i>Surrogate: n-Nonane</i>						
		100 %	50-200	09/07/22	09/08/22	
<b>Anions by EPA 300.0/9056A</b>						
	mg/kg	mg/kg		Analyst: KL		Batch: 2237008
Chloride	ND	20.0	1	09/06/22	09/06/22	



## Sample Data

Souder Miller Associates - Carlsbad  
201 S Halagueno St.  
Carlsbad NM, 88220

Project Name: Line 30137  
Project Number: 97057-0001  
Project Manager: Heather Woods

**Reported:**  
9/9/2022 3:46:38PM

SW3 @ 3

E209012-07

Analyte	Result	Reporting Limit	Dilution	Prepared	Analyzed	Notes
<b>Volatile Organics by EPA 8021B</b>						
	mg/kg	mg/kg	Analyst: IY		Batch: 2237010	
Benzene	ND	0.0250	1	09/06/22	09/07/22	
Ethylbenzene	ND	0.0250	1	09/06/22	09/07/22	
Toluene	ND	0.0250	1	09/06/22	09/07/22	
o-Xylene	ND	0.0250	1	09/06/22	09/07/22	
p,m-Xylene	ND	0.0500	1	09/06/22	09/07/22	
Total Xylenes	ND	0.0250	1	09/06/22	09/07/22	
<i>Surrogate: 4-Bromochlorobenzene-PID</i>						
		104 %	70-130	09/06/22	09/07/22	
<b>Nonhalogenated Organics by EPA 8015D - GRO</b>						
	mg/kg	mg/kg	Analyst: IY		Batch: 2237010	
Gasoline Range Organics (C6-C10)	ND	20.0	1	09/06/22	09/07/22	
<i>Surrogate: 1-Chloro-4-fluorobenzene-FID</i>						
		128 %	70-130	09/06/22	09/07/22	
<b>Nonhalogenated Organics by EPA 8015D - DRO/ORO</b>						
	mg/kg	mg/kg	Analyst: JL		Batch: 2237027	
Diesel Range Organics (C10-C28)	ND	25.0	1	09/07/22	09/08/22	
Oil Range Organics (C28-C36)	ND	50.0	1	09/07/22	09/08/22	
<i>Surrogate: n-Nonane</i>						
		94.8 %	50-200	09/07/22	09/08/22	
<b>Anions by EPA 300.0/9056A</b>						
	mg/kg	mg/kg	Analyst: KL		Batch: 2237008	
Chloride	ND	20.0	1	09/06/22	09/06/22	



## Sample Data

Souder Miller Associates - Carlsbad  
201 S Halagueno St.  
Carlsbad NM, 88220

Project Name: Line 30137  
Project Number: 97057-0001  
Project Manager: Heather Woods

**Reported:**  
9/9/2022 3:46:38PM

SW3 @ 10

E209012-08

Analyte	Result	Reporting Limit	Dilution	Prepared	Analyzed	Notes
<b>Volatile Organics by EPA 8021B</b>						
	mg/kg	mg/kg		Analyst: IY		Batch: 2237010
Benzene	ND	0.0250	1	09/06/22	09/07/22	
Ethylbenzene	ND	0.0250	1	09/06/22	09/07/22	
Toluene	ND	0.0250	1	09/06/22	09/07/22	
o-Xylene	ND	0.0250	1	09/06/22	09/07/22	
p,m-Xylene	ND	0.0500	1	09/06/22	09/07/22	
Total Xylenes	ND	0.0250	1	09/06/22	09/07/22	
<i>Surrogate: 4-Bromochlorobenzene-PID</i>						
		104 %	70-130	09/06/22	09/07/22	
<b>Nonhalogenated Organics by EPA 8015D - GRO</b>						
	mg/kg	mg/kg		Analyst: IY		Batch: 2237010
Gasoline Range Organics (C6-C10)	ND	20.0	1	09/06/22	09/07/22	
<i>Surrogate: 1-Chloro-4-fluorobenzene-FID</i>						
		129 %	70-130	09/06/22	09/07/22	
<b>Nonhalogenated Organics by EPA 8015D - DRO/ORO</b>						
	mg/kg	mg/kg		Analyst: JL		Batch: 2237027
Diesel Range Organics (C10-C28)	ND	25.0	1	09/07/22	09/08/22	
Oil Range Organics (C28-C36)	ND	50.0	1	09/07/22	09/08/22	
<i>Surrogate: n-Nonane</i>						
		100 %	50-200	09/07/22	09/08/22	
<b>Anions by EPA 300.0/9056A</b>						
	mg/kg	mg/kg		Analyst: KL		Batch: 2237008
Chloride	ND	20.0	1	09/06/22	09/06/22	





## Sample Data

Souder Miller Associates - Carlsbad  
201 S Halagueno St.  
Carlsbad NM, 88220

Project Name: Line 30137  
Project Number: 97057-0001  
Project Manager: Heather Woods

**Reported:**  
9/9/2022 3:46:38PM

SW3 @ 17

E209012-09

Analyte	Result	Reporting Limit	Dilution	Prepared	Analyzed	Notes
<b>Volatile Organics by EPA 8021B</b>						
	mg/kg	mg/kg		Analyst: IY		Batch: 2237010
Benzene	ND	0.0250	1	09/06/22	09/07/22	
Ethylbenzene	ND	0.0250	1	09/06/22	09/07/22	
Toluene	ND	0.0250	1	09/06/22	09/07/22	
o-Xylene	ND	0.0250	1	09/06/22	09/07/22	
p,m-Xylene	ND	0.0500	1	09/06/22	09/07/22	
Total Xylenes	ND	0.0250	1	09/06/22	09/07/22	
<i>Surrogate: 4-Bromochlorobenzene-PID</i>						
		103 %	70-130	09/06/22	09/07/22	
<b>Nonhalogenated Organics by EPA 8015D - GRO</b>						
	mg/kg	mg/kg		Analyst: IY		Batch: 2237010
Gasoline Range Organics (C6-C10)	ND	20.0	1	09/06/22	09/07/22	
<i>Surrogate: 1-Chloro-4-fluorobenzene-FID</i>						
		127 %	70-130	09/06/22	09/07/22	
<b>Nonhalogenated Organics by EPA 8015D - DRO/ORO</b>						
	mg/kg	mg/kg		Analyst: JL		Batch: 2237027
Diesel Range Organics (C10-C28)	ND	25.0	1	09/07/22	09/08/22	
Oil Range Organics (C28-C36)	ND	50.0	1	09/07/22	09/08/22	
<i>Surrogate: n-Nonane</i>						
		96.3 %	50-200	09/07/22	09/08/22	
<b>Anions by EPA 300.0/9056A</b>						
	mg/kg	mg/kg		Analyst: KL		Batch: 2237008
Chloride	ND	20.0	1	09/06/22	09/06/22	



## Sample Data

Souder Miller Associates - Carlsbad  
201 S Halagueno St.  
Carlsbad NM, 88220

Project Name: Line 30137  
Project Number: 97057-0001  
Project Manager: Heather Woods

**Reported:**  
9/9/2022 3:46:38PM

SW4 @ 4

E209012-10

Analyte	Result	Reporting Limit	Dilution	Prepared	Analyzed	Notes
<b>Volatile Organics by EPA 8021B</b>						
	mg/kg	mg/kg	Analyst: IY		Batch: 2237010	
Benzene	ND	0.0250	1	09/06/22	09/07/22	
Ethylbenzene	ND	0.0250	1	09/06/22	09/07/22	
Toluene	ND	0.0250	1	09/06/22	09/07/22	
o-Xylene	ND	0.0250	1	09/06/22	09/07/22	
p,m-Xylene	ND	0.0500	1	09/06/22	09/07/22	
Total Xylenes	ND	0.0250	1	09/06/22	09/07/22	
<i>Surrogate: 4-Bromochlorobenzene-PID</i>						
		101 %	70-130	09/06/22	09/07/22	
<b>Nonhalogenated Organics by EPA 8015D - GRO</b>						
	mg/kg	mg/kg	Analyst: IY		Batch: 2237010	
Gasoline Range Organics (C6-C10)	ND	20.0	1	09/06/22	09/07/22	
<i>Surrogate: 1-Chloro-4-fluorobenzene-FID</i>						
		125 %	70-130	09/06/22	09/07/22	
<b>Nonhalogenated Organics by EPA 8015D - DRO/ORO</b>						
	mg/kg	mg/kg	Analyst: JL		Batch: 2237027	
Diesel Range Organics (C10-C28)	ND	25.0	1	09/07/22	09/08/22	
Oil Range Organics (C28-C36)	ND	50.0	1	09/07/22	09/08/22	
<i>Surrogate: n-Nonane</i>						
		96.8 %	50-200	09/07/22	09/08/22	
<b>Anions by EPA 300.0/9056A</b>						
	mg/kg	mg/kg	Analyst: KL		Batch: 2237008	
Chloride	ND	20.0	1	09/06/22	09/06/22	



## Sample Data

Souder Miller Associates - Carlsbad  
201 S Halagueno St.  
Carlsbad NM, 88220

Project Name: Line 30137  
Project Number: 97057-0001  
Project Manager: Heather Woods

**Reported:**  
9/9/2022 3:46:38PM

SW4 @ 17

E209012-11

Analyte	Result	Reporting Limit	Dilution	Prepared	Analyzed	Notes
<b>Volatile Organics by EPA 8021B</b>						
	mg/kg	mg/kg		Analyst: IY		Batch: 2237010
Benzene	0.0298	0.0250	1	09/06/22	09/07/22	
Ethylbenzene	ND	0.0250	1	09/06/22	09/07/22	
Toluene	0.0704	0.0250	1	09/06/22	09/07/22	
o-Xylene	0.0398	0.0250	1	09/06/22	09/07/22	
p,m-Xylene	0.113	0.0500	1	09/06/22	09/07/22	
Total Xylenes	0.152	0.0250	1	09/06/22	09/07/22	
<i>Surrogate: 4-Bromochlorobenzene-PID</i>						
		103 %	70-130	09/06/22	09/07/22	
<b>Nonhalogenated Organics by EPA 8015D - GRO</b>						
	mg/kg	mg/kg		Analyst: IY		Batch: 2237010
Gasoline Range Organics (C6-C10)	ND	20.0	1	09/06/22	09/07/22	
<i>Surrogate: 1-Chloro-4-fluorobenzene-FID</i>						
		123 %	70-130	09/06/22	09/07/22	
<b>Nonhalogenated Organics by EPA 8015D - DRO/ORO</b>						
	mg/kg	mg/kg		Analyst: JL		Batch: 2237027
Diesel Range Organics (C10-C28)	ND	25.0	1	09/07/22	09/08/22	
Oil Range Organics (C28-C36)	ND	50.0	1	09/07/22	09/08/22	
<i>Surrogate: n-Nonane</i>						
		102 %	50-200	09/07/22	09/08/22	
<b>Anions by EPA 300.0/9056A</b>						
	mg/kg	mg/kg		Analyst: KL		Batch: 2237008
Chloride	ND	20.0	1	09/06/22	09/06/22	



## Sample Data

Souder Miller Associates - Carlsbad  
201 S Halagueno St.  
Carlsbad NM, 88220

Project Name: Line 30137  
Project Number: 97057-0001  
Project Manager: Heather Woods

**Reported:**  
9/9/2022 3:46:38PM

## SW5

## E209012-12

Analyte	Result	Reporting Limit	Dilution	Prepared	Analyzed	Notes
<b>Volatile Organics by EPA 8021B</b>						
	mg/kg	mg/kg	Analyst: IY		Batch: 2237010	
Benzene	0.215	0.0250	1	09/06/22	09/08/22	
Ethylbenzene	0.631	0.0250	1	09/06/22	09/08/22	
Toluene	2.12	0.0250	1	09/06/22	09/08/22	
o-Xylene	0.361	0.0250	1	09/06/22	09/08/22	
p,m-Xylene	1.25	0.0500	1	09/06/22	09/08/22	
Total Xylenes	1.61	0.0250	1	09/06/22	09/08/22	
<i>Surrogate: 4-Bromochlorobenzene-PID</i>						
	97.4 %	70-130		09/06/22	09/08/22	
<b>Nonhalogenated Organics by EPA 8015D - GRO</b>						
	mg/kg	mg/kg	Analyst: IY		Batch: 2237010	
Gasoline Range Organics (C6-C10)	86.2	20.0	1	09/06/22	09/08/22	
<i>Surrogate: 1-Chloro-4-fluorobenzene-FID</i>						
	97.8 %	70-130		09/06/22	09/08/22	
<b>Nonhalogenated Organics by EPA 8015D - DRO/ORO</b>						
	mg/kg	mg/kg	Analyst: JL		Batch: 2237027	
Diesel Range Organics (C10-C28)	ND	25.0	1	09/07/22	09/08/22	
Oil Range Organics (C28-C36)	ND	50.0	1	09/07/22	09/08/22	
<i>Surrogate: n-Nonane</i>						
	113 %	50-200		09/07/22	09/08/22	
<b>Anions by EPA 300.0/9056A</b>						
	mg/kg	mg/kg	Analyst: KL		Batch: 2237008	
Chloride	ND	20.0	1	09/06/22	09/06/22	



## Sample Data

Souder Miller Associates - Carlsbad  
201 S Halagueno St.  
Carlsbad NM, 88220

Project Name: Line 30137  
Project Number: 97057-0001  
Project Manager: Heather Woods

**Reported:**  
9/9/2022 3:46:38PM

## SW6 @ 2

## E209012-13

Analyte	Result	Reporting Limit	Dilution	Prepared	Analyzed	Notes
<b>Volatile Organics by EPA 8021B</b>	mg/kg	mg/kg	Analyst: IY		Batch: 2237010	
Benzene	ND	0.0250	1	09/06/22	09/08/22	
Ethylbenzene	ND	0.0250	1	09/06/22	09/08/22	
Toluene	ND	0.0250	1	09/06/22	09/08/22	
o-Xylene	ND	0.0250	1	09/06/22	09/08/22	
p,m-Xylene	ND	0.0500	1	09/06/22	09/08/22	
Total Xylenes	ND	0.0250	1	09/06/22	09/08/22	
<i>Surrogate: 4-Bromochlorobenzene-PID</i>	97.6 %	70-130		09/06/22	09/08/22	
<b>Nonhalogenated Organics by EPA 8015D - GRO</b>	mg/kg	mg/kg	Analyst: IY		Batch: 2237010	
Gasoline Range Organics (C6-C10)	ND	20.0	1	09/06/22	09/08/22	
<i>Surrogate: 1-Chloro-4-fluorobenzene-FID</i>	82.6 %	70-130		09/06/22	09/08/22	
<b>Nonhalogenated Organics by EPA 8015D - DRO/ORO</b>	mg/kg	mg/kg	Analyst: JL		Batch: 2237027	
Diesel Range Organics (C10-C28)	ND	25.0	1	09/07/22	09/08/22	
Oil Range Organics (C28-C36)	ND	50.0	1	09/07/22	09/08/22	
<i>Surrogate: n-Nonane</i>	103 %	50-200		09/07/22	09/08/22	
<b>Anions by EPA 300.0/9056A</b>	mg/kg	mg/kg	Analyst: KL		Batch: 2237008	
Chloride	ND	20.0	1	09/06/22	09/06/22	



## Sample Data

Souder Miller Associates - Carlsbad  
201 S Halagueno St.  
Carlsbad NM, 88220

Project Name: Line 30137  
Project Number: 97057-0001  
Project Manager: Heather Woods

**Reported:**  
9/9/2022 3:46:38PM

SW6 @ 8

E209012-14

Analyte	Result	Reporting Limit	Dilution	Prepared	Analyzed	Notes
<b>Volatile Organics by EPA 8021B</b>						
	mg/kg	mg/kg		Analyst: IY		Batch: 2237010
Benzene	ND	0.0250	1	09/06/22	09/07/22	
Ethylbenzene	0.0571	0.0250	1	09/06/22	09/07/22	
Toluene	0.161	0.0250	1	09/06/22	09/07/22	
o-Xylene	0.0322	0.0250	1	09/06/22	09/07/22	
p,m-Xylene	0.0837	0.0500	1	09/06/22	09/07/22	
Total Xylenes	0.116	0.0250	1	09/06/22	09/07/22	
<i>Surrogate: 4-Bromochlorobenzene-PID</i>						
		102 %	70-130	09/06/22	09/07/22	
<b>Nonhalogenated Organics by EPA 8015D - GRO</b>						
	mg/kg	mg/kg		Analyst: IY		Batch: 2237010
Gasoline Range Organics (C6-C10)	ND	20.0	1	09/06/22	09/07/22	
<i>Surrogate: 1-Chloro-4-fluorobenzene-FID</i>						
		120 %	70-130	09/06/22	09/07/22	
<b>Nonhalogenated Organics by EPA 8015D - DRO/ORO</b>						
	mg/kg	mg/kg		Analyst: JL		Batch: 2237027
Diesel Range Organics (C10-C28)	ND	25.0	1	09/07/22	09/08/22	
Oil Range Organics (C28-C36)	ND	50.0	1	09/07/22	09/08/22	
<i>Surrogate: n-Nonane</i>						
		104 %	50-200	09/07/22	09/08/22	
<b>Anions by EPA 300.0/9056A</b>						
	mg/kg	mg/kg		Analyst: KL		Batch: 2237008
Chloride	ND	20.0	1	09/06/22	09/06/22	



## Sample Data

Souder Miller Associates - Carlsbad  
201 S Halagueno St.  
Carlsbad NM, 88220

Project Name: Line 30137  
Project Number: 97057-0001  
Project Manager: Heather Woods

**Reported:**  
9/9/2022 3:46:38PM

SW6 @ 16

E209012-15

Analyte	Result	Reporting Limit	Dilution	Prepared	Analyzed	Notes
<b>Volatile Organics by EPA 8021B</b>						
	mg/kg	mg/kg		Analyst: IY		Batch: 2237010
Benzene	ND	0.0250	1	09/06/22	09/08/22	
Ethylbenzene	<b>0.793</b>	0.0250	1	09/06/22	09/08/22	
Toluene	<b>0.0330</b>	0.0250	1	09/06/22	09/08/22	
o-Xylene	<b>1.11</b>	0.0250	1	09/06/22	09/08/22	
p,m-Xylene	<b>2.51</b>	0.0500	1	09/06/22	09/08/22	
Total Xylenes	<b>3.61</b>	0.0250	1	09/06/22	09/08/22	
<i>Surrogate: 4-Bromochlorobenzene-PID</i>						
	98.8 %	70-130		09/06/22	09/08/22	
<b>Nonhalogenated Organics by EPA 8015D - GRO</b>						
	mg/kg	mg/kg		Analyst: IY		Batch: 2237010
Gasoline Range Organics (C6-C10)	<b>83.2</b>	20.0	1	09/06/22	09/08/22	
<i>Surrogate: 1-Chloro-4-fluorobenzene-FID</i>						
	113 %	70-130		09/06/22	09/08/22	
<b>Nonhalogenated Organics by EPA 8015D - DRO/ORO</b>						
	mg/kg	mg/kg		Analyst: JL		Batch: 2237027
Diesel Range Organics (C10-C28)	<b>89.7</b>	25.0	1	09/07/22	09/08/22	
Oil Range Organics (C28-C36)	ND	50.0	1	09/07/22	09/08/22	
<i>Surrogate: n-Nonane</i>						
	114 %	50-200		09/07/22	09/08/22	
<b>Anions by EPA 300.0/9056A</b>						
	mg/kg	mg/kg		Analyst: KL		Batch: 2237008
Chloride	ND	20.0	1	09/06/22	09/06/22	



## QC Summary Data

Souder Miller Associates - Carlsbad	Project Name:	Line 30137	<b>Reported:</b>
201 S Halagueno St.	Project Number:	97057-0001	
Carlsbad NM, 88220	Project Manager:	Heather Woods	9/9/2022 3:46:38PM

## Volatile Organics by EPA 8021B

Analyst: IY

Analyte	Result mg/kg	Reporting Limit mg/kg	Spike Level mg/kg	Source Result mg/kg	Rec %	Rec Limits %	RPD %	RPD Limit %	Notes
---------	-----------------	-----------------------------	-------------------------	---------------------------	----------	--------------------	----------	-------------------	-------

## Blank (2237010-BLK1)

Prepared: 09/06/22 Analyzed: 09/07/22

Benzene	ND	0.0250							
Ethylbenzene	ND	0.0250							
Toluene	ND	0.0250							
o-Xylene	ND	0.0250							
p,m-Xylene	ND	0.0500							
Total Xylenes	ND	0.0250							
Surrogate: 4-Bromochlorobenzene-PID	8.32		8.00		104	70-130			

## LCS (2237010-BS1)

Prepared: 09/06/22 Analyzed: 09/07/22

Benzene	4.82	0.0250	5.00		96.5	70-130			
Ethylbenzene	4.41	0.0250	5.00		88.2	70-130			
Toluene	4.69	0.0250	5.00		93.7	70-130			
o-Xylene	4.52	0.0250	5.00		90.4	70-130			
p,m-Xylene	8.90	0.0500	10.0		89.0	70-130			
Total Xylenes	13.4	0.0250	15.0		89.5	70-130			
Surrogate: 4-Bromochlorobenzene-PID	8.41		8.00		105	70-130			

## LCS Dup (2237010-BSD1)

Prepared: 09/06/22 Analyzed: 09/07/22

Benzene	5.00	0.0250	5.00		100	70-130	3.58	20	
Ethylbenzene	4.59	0.0250	5.00		91.8	70-130	4.08	20	
Toluene	4.88	0.0250	5.00		97.6	70-130	4.05	20	
o-Xylene	4.70	0.0250	5.00		94.0	70-130	3.93	20	
p,m-Xylene	9.29	0.0500	10.0		92.9	70-130	4.31	20	
Total Xylenes	14.0	0.0250	15.0		93.3	70-130	4.19	20	
Surrogate: 4-Bromochlorobenzene-PID	8.26		8.00		103	70-130			





QC Summary Data

Souder Miller Associates - Carlsbad	Project Name:	Line 30137	Reported:
201 S Halagueno St.	Project Number:	97057-0001	
Carlsbad NM, 88220	Project Manager:	Heather Woods	9/9/2022 3:46:38PM

Nonhalogenated Organics by EPA 8015D - GRO

Analyst: IY

Analyte	Result mg/kg	Reporting Limit mg/kg	Spike Level mg/kg	Source Result mg/kg	Rec %	Rec Limits %	RPD %	RPD Limit %	Notes
---------	-----------------	-----------------------------	-------------------------	---------------------------	----------	--------------------	----------	-------------------	-------

Blank (2237010-BLK1) Prepared: 09/06/22 Analyzed: 09/07/22

Gasoline Range Organics (C6-C10)	ND	20.0							
Surrogate: 1-Chloro-4-fluorobenzene-FID	8.57		8.00		107	70-130			

LCS (2237010-BS2) Prepared: 09/06/22 Analyzed: 09/07/22

Gasoline Range Organics (C6-C10)	57.6	20.0	50.0		115	70-130			
Surrogate: 1-Chloro-4-fluorobenzene-FID	9.76		8.00		122	70-130			

LCS Dup (2237010-BSD2) Prepared: 09/06/22 Analyzed: 09/07/22

Gasoline Range Organics (C6-C10)	58.9	20.0	50.0		118	70-130	2.23	20	
Surrogate: 1-Chloro-4-fluorobenzene-FID	9.82		8.00		123	70-130			



## QC Summary Data

Souder Miller Associates - Carlsbad	Project Name:	Line 30137	<b>Reported:</b>
201 S Halagueno St.	Project Number:	97057-0001	
Carlsbad NM, 88220	Project Manager:	Heather Woods	9/9/2022 3:46:38PM

## Nonhalogenated Organics by EPA 8015D - DRO/ORO

Analyst: JL

Analyte	Result mg/kg	Reporting Limit mg/kg	Spike Level mg/kg	Source Result mg/kg	Rec %	Rec Limits %	RPD %	RPD Limit %	Notes
---------	-----------------	-----------------------------	-------------------------	---------------------------	----------	--------------------	----------	-------------------	-------

## Blank (2237027-BLK1)

Prepared: 09/07/22 Analyzed: 09/07/22

Diesel Range Organics (C10-C28)	ND	25.0							
Oil Range Organics (C28-C36)	ND	50.0							
Surrogate: n-Nonane	50.6		50.0		101	50-200			

## LCS (2237027-BS1)

Prepared: 09/07/22 Analyzed: 09/07/22

Diesel Range Organics (C10-C28)	254	25.0	250		102	38-132			
Surrogate: n-Nonane	49.6		50.0		99.3	50-200			

## Matrix Spike (2237027-MS1)

Source: E209012-07

Prepared: 09/07/22 Analyzed: 09/07/22

Diesel Range Organics (C10-C28)	251	25.0	250	ND	101	38-132			
Surrogate: n-Nonane	46.2		50.0		92.5	50-200			

## Matrix Spike Dup (2237027-MSD1)

Source: E209012-07

Prepared: 09/07/22 Analyzed: 09/07/22

Diesel Range Organics (C10-C28)	268	25.0	250	ND	107	38-132	6.53	20	
Surrogate: n-Nonane	48.5		50.0		97.0	50-200			



QC Summary Data

Souder Miller Associates - Carlsbad	Project Name:	Line 30137	Reported:
201 S Halagueno St.	Project Number:	97057-0001	
Carlsbad NM, 88220	Project Manager:	Heather Woods	9/9/2022 3:46:38PM

Anions by EPA 300.0/9056A

Analyst: KL

Analyte	Result	Reporting Limit	Spike Level	Source Result	Rec	Rec Limits	RPD	RPD Limit	Notes
	mg/kg	mg/kg	mg/kg	mg/kg	%	%	%	%	

Blank (2237008-BLK1)					Prepared: 09/06/22 Analyzed: 09/06/22				
Chloride	ND	20.0							
LCS (2237008-BS1)					Prepared: 09/06/22 Analyzed: 09/06/22				
Chloride	268	20.0	250		107	90-110			
LCS Dup (2237008-BSD1)					Prepared: 09/06/22 Analyzed: 09/06/22				
Chloride	269	20.0	250		107	90-110	0.383	20	

QC Summary Report Comment:  
Calculations are based off of the raw (non-rounded) data. However, for reporting purposes all QC data is rounded to three significant figures.  
Therefore, hand calculated values may differ slightly.



Definitions and Notes

Souder Miller Associates - Carlsbad	Project Name:	Line 30137	
201 S Halagueno St.	Project Number:	97057-0001	Reported:
Carlsbad NM, 88220	Project Manager:	Heather Woods	09/09/22 15:46

- S3 Surrogate spike recovery was outside acceptance limits. LCS spike recovery was acceptable.
- ND Analyte NOT DETECTED at or above the reporting limit
- NR Not Reported
- RPD Relative Percent Difference
- DNI Did Not Ignite

Note (1): Methods marked with \*\* are non-accredited methods.

Note (2): Soil data is reported on an "as received" weight basis, unless reported otherwise.



## Chain of Custody

## Project Information

Client: Souder Miller & Associates  
 Project: Line 30137  
 Project Manager: Heather Woods  
 Address: 201 S. Halaguen  
 City, State, Zip: Culiacan NM 88220  
 Phone: \_\_\_\_\_  
 Email: \_\_\_\_\_  
 Report due by: \_\_\_\_\_

Bill To  
 Attention: Enterprise  
 Address: \_\_\_\_\_  
 City, State, Zip: \_\_\_\_\_  
 Phone: \_\_\_\_\_  
 Email: \_\_\_\_\_

WO# Rd22121

Lab Use Only		TAT		EPA Program		
Lab WO#	Job Number	1D	3D	RCRA	CWA	SDWA
<u>PE209012</u>	<u>97057-0001</u>	<input checked="" type="checkbox"/>	<input checked="" type="checkbox"/>			
Analysis and Method				State		
				NM	CO	UT AZ
				TX	OK	
Remarks						

Time Sampled	Date Sampled	Matrix	No Containers	Sample ID	Lab Number	DRO/DRO by 8015	GRO/DRO by 8015	RTEX by 8021	VOC by 8260	Metals 6010	Chloride 300.0	BGDOC - NM	BGDOC - TX		
1307	9/1/22	Soil	1	BS01 @ 17	1							X			
1051	9/1/22	Soil	1	BS01 @ 10								X			
1252	9/1/22	Soil	1	BS02 @ 17	2							X			
1315	9/1/22	Soil	1	BS03 @ 17	3							X			
1320	9/1/22	Soil	1	BS04 @ 17	4							X			
1235	9/1/22	Soil	1	SW 1	5							X			
1309	9/1/22	Soil	1	SW 2	6							X			
1326	9/1/22	Soil	1	SW3 @ 3	7							X			
					8							X			
1324	9/1/22	Soil	1	SW3 @ 10											

## Additional Instructions:

Please send to Heather Woods, Sarahmay Schlegel + Georgann Goodman

I, (field sampler), attest to the validity and authenticity of this sample. I am aware that tampering with or intentionally mislabeling the sample location, date or time of collection is considered fraud and may be grounds for legal action. Sampled by: \_\_\_\_\_

Samples requiring thermal preservation must be received on ice the day they are sampled or received packed in ice at an avg temp above 0 but less than 5 °C on subsequent days

Relinquished by: (Signature)			Date	Time	Received by: (Signature)	Date	Time	Lab Use Only		
			9-1-22	4:35		9/2/22	3:00	Received on ice: <input checked="" type="checkbox"/> Y / <input type="checkbox"/> N		
			9/2/22	4:15		9/6/22	8:24	T1 _____ T2 _____ T3 _____		
								AVG Temp °C <u>4</u>		

Container Type: g - glass, p - poly/plastic, ag - amber glass, v - VOA

Sample Matrix: S - Sol, Sd - Solid, Sg - Sludge, A - Aqueous, O - Other \_\_\_\_\_  
 Note: Samples are discarded 30 days after results are reported unless other arrangements are made. Hazardous samples will be returned to client or disposed of at the client expense. The report for the analysis of the above samples is applicable only to those samples received by the laboratory with this COC. The liability of the laboratory is limited to the amount paid for on the report.



## Project Information

## Chain of Custody

Client: Sander Miller & Ass.  
 Project: Line 30137  
 Project Manager: Heather Woods  
 Address: 201 S. Hargrave  
 City, State, Zip: Carrsboro NM 88020  
 Phone: \_\_\_\_\_  
 Email: \_\_\_\_\_  
 Report due by: \_\_\_\_\_

Bill To  
 Attention: Enterprise  
 Address: \_\_\_\_\_  
 City, State, Zip: \_\_\_\_\_  
 Phone: \_\_\_\_\_  
 Email: \_\_\_\_\_  
WO # Rd 22121

Lab Use Only  
 Lab WO# PE209012 Job Number 97057-0001  
 Analysis and Method

EPA Program  
 TAT 1D 3D X  
 RCRA CWA SDWA  
 State  
 NM CO UT AZ  
 TX OK  
 Remarks

Time Sampled	Date Sampled	Matrix	No Containers	Sample ID	Lab Number	DRO/DRO by 8015	GRO/DRO by 8015	BTEX by 8021	VOC by 8260	Metals 6010	Chloride 300.0	IGDOC - NM	IGDOC - TX
1323	9-1-22	Soil	1	SW3 @ 17	9							X	
1327	9-1-22	Soil	1	SW4 @ 4	10							X	
1329	9-1-22	Soil	1	SW4 @ 17	11							X	
1317	9-1-22	Soil	1	SW5	12							X	
1059	9-1-22	Soil	1	SW6 @ 2	13							X	
1058	9-1-22	Soil	1	SW6 @ 8	14							X	
1057	9-1-22	Soil	1	SW6 @ 16	15							X	

Additional Instructions:  
Please send to Heather Woods Savannah Schlea + Georgann Goodman  
 (field sampler), attest to the validity and authenticity of this sample. I am aware that tampering with or intentionally mislabeling the sample location, date or time of collection is considered fraud and may be grounds for legal action. Sampled by: \_\_\_\_\_

Relinquished by: (Signature) \_\_\_\_\_ Date 9-1-22 Time 4:40 Received by: (Signature) \_\_\_\_\_ Date 9-2-22 Time 3:00  
 Relinquished by: (Signature) \_\_\_\_\_ Date 9-2-22 Time 4:15 Received by: (Signature) \_\_\_\_\_ Date 9/6/22 Time 8:24  
 Relinquished by: (Signature) \_\_\_\_\_ Date \_\_\_\_\_ Time \_\_\_\_\_ Received by: (Signature) \_\_\_\_\_ Date \_\_\_\_\_ Time \_\_\_\_\_

Lab Use Only  
 Received on ice: N  
 T1 \_\_\_\_\_ T2 \_\_\_\_\_ T3 \_\_\_\_\_  
 AVG Temp °C 4

Sample Matrix: S - Sol, Sd - Solid, Sg - Sludge, A - Aqueous, O - Other  
 Container Type: g - glass, p - poly/plastic, ag - amber glass, v - VOA

Note: Samples are discarded 30 days after results are reported unless other arrangements are made. Hazardous samples will be returned to client or disposed of at the client expense. The report for the analysis of the above samples is applicable only to those samples received by the laboratory with this COC. The liability of the laboratory is limited to the amount paid for on the report.

envirotech

## Envirotech Analytical Laboratory

Printed: 9/6/2022 10:45:06AM

## Sample Receipt Checklist (SRC)

Instructions: Please take note of any NO checkmarks.

If we receive no response concerning these items within 24 hours of the date of this notice, all the samples will be analyzed as requested.

Client:	Souder Miller Associates - Carlsbad	Date Received:	09/06/22 08:24	Work Order ID:	E209012
Phone:	(575) 200-5443	Date Logged In:	09/06/22 09:02	Logged In By:	Caitlin Christian
Email:		Due Date:	09/12/22 17:00 (4 day TAT)		

Chain of Custody (COC)

1. Does the sample ID match the COC? Yes
2. Does the number of samples per sampling site location match the COC? Yes
3. Were samples dropped off by client or carrier? Yes
4. Was the COC complete, i.e., signatures, dates/times, requested analyses? Yes
5. Were all samples received within holding time? Yes

Note: Analysis, such as pH which should be conducted in the field, i.e., 15 minute hold time, are not included in this discussion.

Carrier: UPSComments/ResolutionSample Turn Around Time (TAT)

6. Did the COC indicate standard TAT, or Expedited TAT? Yes

Sample Cooler

7. Was a sample cooler received? Yes
8. If yes, was cooler received in good condition? Yes
9. Was the sample(s) received intact, i.e., not broken? Yes
10. Were custody/security seals present? No
11. If yes, were custody/security seals intact? NA
12. Was the sample received on ice? If yes, the recorded temp is 4°C, i.e., 6°±2°C Yes

Note: Thermal preservation is not required, if samples are received w/i 15 minutes of sampling

13. If no visible ice, record the temperature. Actual sample temperature: 4°C

Sample Container

14. Are aqueous VOC samples present? No
15. Are VOC samples collected in VOA Vials? NA
16. Is the head space less than 6-8 mm (pea sized or less)? NA
17. Was a trip blank (TB) included for VOC analyses? NA
18. Are non-VOC samples collected in the correct containers? Yes
19. Is the appropriate volume/weight or number of sample containers collected? Yes

Field Label

20. Were field sample labels filled out with the minimum information:
  - Sample ID? Yes
  - Date/Time Collected? Yes
  - Collectors name? No

Sample Preservation

21. Does the COC or field labels indicate the samples were preserved? No
22. Are sample(s) correctly preserved? NA
24. Is lab filtration required and/or requested for dissolved metals? No

Multiphase Sample Matrix

26. Does the sample have more than one phase, i.e., multiphase? No
27. If yes, does the COC specify which phase(s) is to be analyzed? NA

Subcontract Laboratory

28. Are samples required to get sent to a subcontract laboratory? No
29. Was a subcontract laboratory specified by the client and if so who? NA Subcontract Lab: na

Client Instruction

Signature of client authorizing changes to the COC or sample disposition.

Date



envirotech Inc.

Report to:  
Heather Woods



5796 U.S. Hwy 64  
Farmington, NM 87401

Phone: (505) 632-1881  
Envirotech-inc.com



# envirotech

*Practical Solutions for a Better Tomorrow*

## Analytical Report

Souder Miller Associates - Carlsbad

Project Name: Line 30137

Work Order: E209117

Job Number: 97057-0001

Received: 9/21/2022

Revision: 1

Report Reviewed By:

Walter Hinchman  
Laboratory Director  
9/27/22

Envirotech Inc. certifies the test results meet all requirements of TNI unless noted otherwise.  
Statement of Data Authenticity: Envirotech Inc. attests the data reported has not been altered in any way.  
Partial or incomplete reproduction of this report is prohibited, unless approved by Envirotech Inc.  
Envirotech Inc. holds the Utah TNI certification NM00979 for data reported.  
Envirotech Inc. holds the Texas TNI certification T104704557 for data reported.  
Envirotech Inc. holds the NM SDWA certification for data reported. (Lab #NM00979)



Date Reported: 9/27/22

Heather Woods  
201 S Halagueno St.  
Carlsbad, NM 88220



Project Name: Line 30137  
Workorder: E209117  
Date Received: 9/21/2022 10:45:00AM

Heather Woods,

Thank you for choosing Envirotech, Inc. as your analytical testing laboratory for the sample(s) received on, 9/21/2022 10:45:00AM, under the Project Name: Line 30137.

The analytical test results summarized in this report with the Project Name: Line 30137 apply to the individual samples collected, identified and submitted bearing the project name on the enclosed chain-of-custody. Subcontracted sample analyses not conducted by Envirotech, Inc., are attached in full as issued by the subcontract laboratory.

Please review the Chain-of-Custody (COC) and Sample Receipt Checklist (SRC) for any issues regarding sample receipt temperature, containers, preservation etc. To best understand your test results, review the entire report summarizing your sample data and the associated quality control batch data.

All reported data in this analytical report were analyzed according to the referenced method(s) and are in compliance with the latest NELAC/TNI standards, unless otherwise noted. Samples or analytical quality control parameters not meeting specific QC criteria are qualified with a data flag. Data flag definitions are located in the Notes and Definitions section of this analytical report.

If you have any questions concerning this report, please feel free to contact Envirotech, Inc.

Respectfully,

**Walter Hinchman**  
Laboratory Director  
Office: 505-632-1881  
Cell: 775-287-1762  
[whinchman@envirotech-inc.com](mailto:whinchman@envirotech-inc.com)

**Raina Schwanz**  
Laboratory Administrator  
Office: 505-632-1881  
[rainaschwanz@envirotech-inc.com](mailto:rainaschwanz@envirotech-inc.com)

**Alexa Michaels**  
Sample Custody Officer  
Office: 505-632-1881  
[labadmin@envirotech-inc.com](mailto:labadmin@envirotech-inc.com)

Field Offices:

**Southern New Mexico Area**  
**Lynn Jarboe**  
Technical Representative/Client Services  
Office: 505-421-LABS(5227)  
Cell: 505-320-4759  
[ljjarboe@envirotech-inc.com](mailto:ljjarboe@envirotech-inc.com)

**West Texas Midland/Odessa Area**  
**Rayny Hagan**  
Technical Representative  
Office: 505-421-LABS(5227)

Envirotech Web Address: [www.envirotech-inc.com](http://www.envirotech-inc.com)

## Table of Contents

Title Page	1
Cover Page	2
Table of Contents	3
Sample Summary	5
Sample Data	6
BS01 @ 17'	6
BS02 @ 17'	7
BS03 @ 17'	8
BS04 @ 17'	9
SW1 @ 0 - 8.5'	10
SW1 @ 8.5 - 17'	11
SW2 @ 0 - 8.5'	12
SW2 @ 8.5 - 17'	13
SW3 @ 0 - 6'	14
SW3 @ 6 - 12'	15
SW3 @ 12 - 17'	16
SW4 @ 0 - 8.5'	17
SW4 @ 8.5 - 17'	18
SW5 @ 0 - 8.5'	19
SW5 @ 8.5 - 17'	20
SW6 @ 0 - 6'	21
SW6 @ 6 - 12'	22
SW6 @ 12 - 17'	23
QC Summary Data	24
QC - Volatile Organic Compounds by EPA 8260B	24

Table of Contents (continued)

QC - Nonhalogenated Organics by EPA 8015D - GRO	25
QC - Nonhalogenated Organics by EPA 8015D - DRO/ORO	26
QC - Anions by EPA 300.0/9056A	27
Definitions and Notes	28
Chain of Custody etc.	29

## Sample Summary

Souder Miller Associates - Carlsbad	Project Name:	Line 30137	<b>Reported:</b> 09/27/22 16:01
201 S Halagueno St.	Project Number:	97057-0001	
Carlsbad NM, 88220	Project Manager:	Heather Woods	

Client Sample ID	Lab Sample ID	Matrix	Sampled	Received	Container
BS01 @ 17'	E209117-01A	Soil	09/15/22	09/21/22	Glass Jar, 4 oz.
BS02 @ 17'	E209117-02A	Soil	09/15/22	09/21/22	Glass Jar, 4 oz.
BS03 @ 17'	E209117-03A	Soil	09/15/22	09/21/22	Glass Jar, 4 oz.
BS04 @ 17'	E209117-04A	Soil	09/15/22	09/21/22	Glass Jar, 4 oz.
SW1 @ 0 - 8.5'	E209117-05A	Soil	09/15/22	09/21/22	Glass Jar, 4 oz.
SW1 @ 8.5 - 17'	E209117-06A	Soil	09/15/22	09/21/22	Glass Jar, 4 oz.
SW2 @ 0 - 8.5'	E209117-07A	Soil	09/15/22	09/21/22	Glass Jar, 4 oz.
SW2 @ 8.5 - 17'	E209117-08A	Soil	09/15/22	09/21/22	Glass Jar, 4 oz.
SW3 @ 0 - 6'	E209117-09A	Soil	09/15/22	09/21/22	Glass Jar, 4 oz.
SW3 @ 6 - 12'	E209117-10A	Soil	09/15/22	09/21/22	Glass Jar, 4 oz.
SW3 @ 12 - 17'	E209117-11A	Soil	09/15/22	09/21/22	Glass Jar, 4 oz.
SW4 @ 0 - 8.5'	E209117-12A	Soil	09/15/22	09/21/22	Glass Jar, 4 oz.
SW4 @ 8.5 - 17'	E209117-13A	Soil	09/15/22	09/21/22	Glass Jar, 4 oz.
SW5 @ 0 - 8.5'	E209117-14A	Soil	09/15/22	09/21/22	Glass Jar, 4 oz.
SW5 @ 8.5 - 17'	E209117-15A	Soil	09/15/22	09/21/22	Glass Jar, 4 oz.
SW6 @ 0 - 6'	E209117-16A	Soil	09/15/22	09/21/22	Glass Jar, 4 oz.
SW6 @ 6 - 12'	E209117-17A	Soil	09/15/22	09/21/22	Glass Jar, 4 oz.
SW6 @ 12 - 17'	E209117-18A	Soil	09/15/22	09/21/22	Glass Jar, 4 oz.



## Sample Data

Souder Miller Associates - Carlsbad	Project Name:	Line 30137	
201 S Halagueno St.	Project Number:	97057-0001	<b>Reported:</b>
Carlsbad NM, 88220	Project Manager:	Heather Woods	9/27/2022 4:01:13PM

BS01 @ 17'

E209117-01

Analyte	Result	Reporting Limit	Dilution	Prepared	Analyzed	Notes
<b>Volatile Organic Compounds by EPA 8260B</b>						
	mg/kg	mg/kg		Analyst: IY		Batch: 2239068
Benzene	ND	0.0250	1	09/21/22	09/23/22	
Ethylbenzene	ND	0.0250	1	09/21/22	09/23/22	
Toluene	ND	0.0250	1	09/21/22	09/23/22	
o-Xylene	ND	0.0250	1	09/21/22	09/23/22	
p,m-Xylene	ND	0.0500	1	09/21/22	09/23/22	
Total Xylenes	ND	0.0250	1	09/21/22	09/23/22	
Surrogate: Bromofluorobenzene	104 %	70-130		09/21/22	09/23/22	
Surrogate: 1,2-Dichloroethane-d4	90.4 %	70-130		09/21/22	09/23/22	
Surrogate: Toluene-d8	99.5 %	70-130		09/21/22	09/23/22	
<b>Nonhalogenated Organics by EPA 8015D - GRO</b>						
	mg/kg	mg/kg		Analyst: IY		Batch: 2239068
Gasoline Range Organics (C6-C10)	ND	20.0	1	09/21/22	09/23/22	
Surrogate: Bromofluorobenzene	104 %	70-130		09/21/22	09/23/22	
Surrogate: 1,2-Dichloroethane-d4	90.4 %	70-130		09/21/22	09/23/22	
Surrogate: Toluene-d8	99.5 %	70-130		09/21/22	09/23/22	
<b>Nonhalogenated Organics by EPA 8015D - DRO/ORO</b>						
	mg/kg	mg/kg		Analyst: JL		Batch: 2239093
Diesel Range Organics (C10-C28)	ND	25.0	1	09/23/22	09/23/22	
Oil Range Organics (C28-C36)	ND	50.0	1	09/23/22	09/23/22	
Surrogate: n-Nonane	98.9 %	50-200		09/23/22	09/23/22	
<b>Anions by EPA 300.0/9056A</b>						
	mg/kg	mg/kg		Analyst: RAS		Batch: 2239106
Chloride	ND	20.0	1	09/23/22	09/23/22	





## Sample Data

Souder Miller Associates - Carlsbad  
201 S Halagueno St.  
Carlsbad NM, 88220

Project Name: Line 30137  
Project Number: 97057-0001  
Project Manager: Heather Woods

**Reported:**  
9/27/2022 4:01:13PM

BS02 @ 17'

E209117-02

Analyte	Result	Reporting Limit	Dilution	Prepared	Analyzed	Notes
<b>Volatile Organic Compounds by EPA 8260B</b>						
	mg/kg	mg/kg		Analyst: IY		Batch: 2239068
Benzene	ND	0.0250	1	09/21/22	09/24/22	
Ethylbenzene	ND	0.0250	1	09/21/22	09/24/22	
Toluene	ND	0.0250	1	09/21/22	09/24/22	
o-Xylene	<b>0.0470</b>	0.0250	1	09/21/22	09/24/22	
p,m-Xylene	<b>0.130</b>	0.0500	1	09/21/22	09/24/22	
Total Xylenes	<b>0.177</b>	0.0250	1	09/21/22	09/24/22	
Surrogate: Bromofluorobenzene		105 %	70-130	09/21/22	09/24/22	
Surrogate: 1,2-Dichloroethane-d4		92.0 %	70-130	09/21/22	09/24/22	
Surrogate: Toluene-d8		98.8 %	70-130	09/21/22	09/24/22	
<b>Nonhalogenated Organics by EPA 8015D - GRO</b>						
	mg/kg	mg/kg		Analyst: IY		Batch: 2239068
Gasoline Range Organics (C6-C10)	ND	20.0	1	09/21/22	09/24/22	
Surrogate: Bromofluorobenzene		105 %	70-130	09/21/22	09/24/22	
Surrogate: 1,2-Dichloroethane-d4		92.0 %	70-130	09/21/22	09/24/22	
Surrogate: Toluene-d8		98.8 %	70-130	09/21/22	09/24/22	
<b>Nonhalogenated Organics by EPA 8015D - DRO/ORO</b>						
	mg/kg	mg/kg		Analyst: JL		Batch: 2239093
Diesel Range Organics (C10-C28)	ND	25.0	1	09/23/22	09/23/22	
Oil Range Organics (C28-C36)	ND	50.0	1	09/23/22	09/23/22	
Surrogate: n-Nonane		101 %	50-200	09/23/22	09/23/22	
<b>Anions by EPA 300.0/9056A</b>						
	mg/kg	mg/kg		Analyst: RAS		Batch: 2239106
Chloride	ND	20.0	1	09/23/22	09/23/22	



## Sample Data

Souder Miller Associates - Carlsbad  
201 S Halagueno St.  
Carlsbad NM, 88220

Project Name: Line 30137  
Project Number: 97057-0001  
Project Manager: Heather Woods

**Reported:**  
9/27/2022 4:01:13PM

BS03 @ 17'

E209117-03

Analyte	Result	Reporting Limit	Dilution	Prepared	Analyzed	Notes
<b>Volatile Organic Compounds by EPA 8260B</b>						
	mg/kg	mg/kg		Analyst: IY		Batch: 2239068
Benzene	ND	0.0250	1	09/21/22	09/24/22	
Ethylbenzene	ND	0.0250	1	09/21/22	09/24/22	
Toluene	ND	0.0250	1	09/21/22	09/24/22	
o-Xylene	ND	0.0250	1	09/21/22	09/24/22	
p,m-Xylene	ND	0.0500	1	09/21/22	09/24/22	
Total Xylenes	ND	0.0250	1	09/21/22	09/24/22	
Surrogate: Bromofluorobenzene		104 %	70-130	09/21/22	09/24/22	
Surrogate: 1,2-Dichloroethane-d4		92.4 %	70-130	09/21/22	09/24/22	
Surrogate: Toluene-d8		99.1 %	70-130	09/21/22	09/24/22	
<b>Nonhalogenated Organics by EPA 8015D - GRO</b>						
	mg/kg	mg/kg		Analyst: IY		Batch: 2239068
Gasoline Range Organics (C6-C10)	ND	20.0	1	09/21/22	09/24/22	
Surrogate: Bromofluorobenzene		104 %	70-130	09/21/22	09/24/22	
Surrogate: 1,2-Dichloroethane-d4		92.4 %	70-130	09/21/22	09/24/22	
Surrogate: Toluene-d8		99.1 %	70-130	09/21/22	09/24/22	
<b>Nonhalogenated Organics by EPA 8015D - DRO/ORO</b>						
	mg/kg	mg/kg		Analyst: JL		Batch: 2239093
Diesel Range Organics (C10-C28)	ND	25.0	1	09/23/22	09/23/22	
Oil Range Organics (C28-C36)	ND	50.0	1	09/23/22	09/23/22	
Surrogate: n-Nonane		96.8 %	50-200	09/23/22	09/23/22	
<b>Anions by EPA 300.0/9056A</b>						
	mg/kg	mg/kg		Analyst: RAS		Batch: 2239106
Chloride	ND	20.0	1	09/23/22	09/23/22	



## Sample Data

Souder Miller Associates - Carlsbad  
201 S Halagueno St.  
Carlsbad NM, 88220

Project Name: Line 30137  
Project Number: 97057-0001  
Project Manager: Heather Woods

**Reported:**  
9/27/2022 4:01:13PM

BS04 @ 17'

E209117-04

Analyte	Result	Reporting Limit	Dilution	Prepared	Analyzed	Notes
<b>Volatile Organic Compounds by EPA 8260B</b>						
	mg/kg	mg/kg		Analyst: IY		Batch: 2239068
Benzene	ND	0.0250	1	09/21/22	09/24/22	
Ethylbenzene	ND	0.0250	1	09/21/22	09/24/22	
Toluene	ND	0.0250	1	09/21/22	09/24/22	
o-Xylene	ND	0.0250	1	09/21/22	09/24/22	
p,m-Xylene	ND	0.0500	1	09/21/22	09/24/22	
Total Xylenes	ND	0.0250	1	09/21/22	09/24/22	
Surrogate: Bromofluorobenzene		102 %	70-130	09/21/22	09/24/22	
Surrogate: 1,2-Dichloroethane-d4		92.3 %	70-130	09/21/22	09/24/22	
Surrogate: Toluene-d8		96.1 %	70-130	09/21/22	09/24/22	
<b>Nonhalogenated Organics by EPA 8015D - GRO</b>						
	mg/kg	mg/kg		Analyst: IY		Batch: 2239068
Gasoline Range Organics (C6-C10)	ND	20.0	1	09/21/22	09/24/22	
Surrogate: Bromofluorobenzene		102 %	70-130	09/21/22	09/24/22	
Surrogate: 1,2-Dichloroethane-d4		92.3 %	70-130	09/21/22	09/24/22	
Surrogate: Toluene-d8		96.1 %	70-130	09/21/22	09/24/22	
<b>Nonhalogenated Organics by EPA 8015D - DRO/ORO</b>						
	mg/kg	mg/kg		Analyst: JL		Batch: 2239093
Diesel Range Organics (C10-C28)	ND	25.0	1	09/23/22	09/23/22	
Oil Range Organics (C28-C36)	ND	50.0	1	09/23/22	09/23/22	
Surrogate: n-Nonane		89.3 %	50-200	09/23/22	09/23/22	
<b>Anions by EPA 300.0/9056A</b>						
	mg/kg	mg/kg		Analyst: RAS		Batch: 2239106
Chloride	ND	20.0	1	09/23/22	09/23/22	



## Sample Data

Souder Miller Associates - Carlsbad  
201 S Halagueno St.  
Carlsbad NM, 88220

Project Name: Line 30137  
Project Number: 97057-0001  
Project Manager: Heather Woods

**Reported:**  
9/27/2022 4:01:13PM

SW1 @ 0 - 8.5'

E209117-05

Analyte	Result	Reporting Limit	Dilution	Prepared	Analyzed	Notes
<b>Volatile Organic Compounds by EPA 8260B</b>						
	mg/kg	mg/kg		Analyst: IY		Batch: 2239068
Benzene	ND	0.0250	1	09/21/22	09/24/22	
Ethylbenzene	ND	0.0250	1	09/21/22	09/24/22	
Toluene	ND	0.0250	1	09/21/22	09/24/22	
o-Xylene	ND	0.0250	1	09/21/22	09/24/22	
p,m-Xylene	ND	0.0500	1	09/21/22	09/24/22	
Total Xylenes	ND	0.0250	1	09/21/22	09/24/22	
Surrogate: Bromofluorobenzene		101 %	70-130	09/21/22	09/24/22	
Surrogate: 1,2-Dichloroethane-d4		92.4 %	70-130	09/21/22	09/24/22	
Surrogate: Toluene-d8		96.0 %	70-130	09/21/22	09/24/22	
<b>Nonhalogenated Organics by EPA 8015D - GRO</b>						
	mg/kg	mg/kg		Analyst: IY		Batch: 2239068
Gasoline Range Organics (C6-C10)	ND	20.0	1	09/21/22	09/24/22	
Surrogate: Bromofluorobenzene		101 %	70-130	09/21/22	09/24/22	
Surrogate: 1,2-Dichloroethane-d4		92.4 %	70-130	09/21/22	09/24/22	
Surrogate: Toluene-d8		96.0 %	70-130	09/21/22	09/24/22	
<b>Nonhalogenated Organics by EPA 8015D - DRO/ORO</b>						
	mg/kg	mg/kg		Analyst: JL		Batch: 2239093
Diesel Range Organics (C10-C28)	ND	25.0	1	09/23/22	09/23/22	
Oil Range Organics (C28-C36)	ND	50.0	1	09/23/22	09/23/22	
Surrogate: n-Nonane		92.9 %	50-200	09/23/22	09/23/22	
<b>Anions by EPA 300.0/9056A</b>						
	mg/kg	mg/kg		Analyst: RAS		Batch: 2239106
Chloride	ND	20.0	1	09/23/22	09/23/22	



## Sample Data

Souder Miller Associates - Carlsbad  
201 S Halagueno St.  
Carlsbad NM, 88220

Project Name: Line 30137  
Project Number: 97057-0001  
Project Manager: Heather Woods

**Reported:**  
9/27/2022 4:01:13PM

SW1 @ 8.5 - 17'

E209117-06

Analyte	Result	Reporting Limit	Dilution	Prepared	Analyzed	Notes
<b>Volatile Organic Compounds by EPA 8260B</b>						
	mg/kg	mg/kg		Analyst: IY		Batch: 2239068
Benzene	ND	0.0250	1	09/21/22	09/24/22	
Ethylbenzene	ND	0.0250	1	09/21/22	09/24/22	
Toluene	ND	0.0250	1	09/21/22	09/24/22	
o-Xylene	ND	0.0250	1	09/21/22	09/24/22	
p,m-Xylene	ND	0.0500	1	09/21/22	09/24/22	
Total Xylenes	ND	0.0250	1	09/21/22	09/24/22	
Surrogate: Bromofluorobenzene		102 %	70-130	09/21/22	09/24/22	
Surrogate: 1,2-Dichloroethane-d4		90.8 %	70-130	09/21/22	09/24/22	
Surrogate: Toluene-d8		95.6 %	70-130	09/21/22	09/24/22	
<b>Nonhalogenated Organics by EPA 8015D - GRO</b>						
	mg/kg	mg/kg		Analyst: IY		Batch: 2239068
Gasoline Range Organics (C6-C10)	ND	20.0	1	09/21/22	09/24/22	
Surrogate: Bromofluorobenzene		102 %	70-130	09/21/22	09/24/22	
Surrogate: 1,2-Dichloroethane-d4		90.8 %	70-130	09/21/22	09/24/22	
Surrogate: Toluene-d8		95.6 %	70-130	09/21/22	09/24/22	
<b>Nonhalogenated Organics by EPA 8015D - DRO/ORO</b>						
	mg/kg	mg/kg		Analyst: JL		Batch: 2239093
Diesel Range Organics (C10-C28)	ND	25.0	1	09/23/22	09/24/22	
Oil Range Organics (C28-C36)	ND	50.0	1	09/23/22	09/24/22	
Surrogate: n-Nonane		82.5 %	50-200	09/23/22	09/24/22	
<b>Anions by EPA 300.0/9056A</b>						
	mg/kg	mg/kg		Analyst: RAS		Batch: 2239106
Chloride	ND	20.0	1	09/23/22	09/23/22	



## Sample Data

Souder Miller Associates - Carlsbad  
201 S Halagueno St.  
Carlsbad NM, 88220

Project Name: Line 30137  
Project Number: 97057-0001  
Project Manager: Heather Woods

**Reported:**  
9/27/2022 4:01:13PM

SW2 @ 0 -8.5'

E209117-07

Analyte	Result	Reporting Limit	Dilution	Prepared	Analyzed	Notes
<b>Volatile Organic Compounds by EPA 8260B</b>						
	mg/kg	mg/kg		Analyst: IY		Batch: 2239068
Benzene	ND	0.0250	1	09/21/22	09/24/22	
Ethylbenzene	ND	0.0250	1	09/21/22	09/24/22	
Toluene	ND	0.0250	1	09/21/22	09/24/22	
o-Xylene	ND	0.0250	1	09/21/22	09/24/22	
p,m-Xylene	ND	0.0500	1	09/21/22	09/24/22	
Total Xylenes	ND	0.0250	1	09/21/22	09/24/22	
Surrogate: Bromofluorobenzene		101 %	70-130	09/21/22	09/24/22	
Surrogate: 1,2-Dichloroethane-d4		94.1 %	70-130	09/21/22	09/24/22	
Surrogate: Toluene-d8		96.8 %	70-130	09/21/22	09/24/22	
<b>Nonhalogenated Organics by EPA 8015D - GRO</b>						
	mg/kg	mg/kg		Analyst: IY		Batch: 2239068
Gasoline Range Organics (C6-C10)	ND	20.0	1	09/21/22	09/24/22	
Surrogate: Bromofluorobenzene		101 %	70-130	09/21/22	09/24/22	
Surrogate: 1,2-Dichloroethane-d4		94.1 %	70-130	09/21/22	09/24/22	
Surrogate: Toluene-d8		96.8 %	70-130	09/21/22	09/24/22	
<b>Nonhalogenated Organics by EPA 8015D - DRO/ORO</b>						
	mg/kg	mg/kg		Analyst: JL		Batch: 2239093
Diesel Range Organics (C10-C28)	ND	25.0	1	09/23/22	09/24/22	
Oil Range Organics (C28-C36)	ND	50.0	1	09/23/22	09/24/22	
Surrogate: n-Nonane		101 %	50-200	09/23/22	09/24/22	
<b>Anions by EPA 300.0/9056A</b>						
	mg/kg	mg/kg		Analyst: RAS		Batch: 2239106
Chloride	ND	20.0	1	09/23/22	09/23/22	





## Sample Data

Souder Miller Associates - Carlsbad  
201 S Halagueno St.  
Carlsbad NM, 88220

Project Name: Line 30137  
Project Number: 97057-0001  
Project Manager: Heather Woods

**Reported:**  
9/27/2022 4:01:13PM

SW2 @ 8.5 - 17'

E209117-08

Analyte	Result	Reporting Limit	Dilution	Prepared	Analyzed	Notes
<b>Volatile Organic Compounds by EPA 8260B</b>						
	mg/kg	mg/kg		Analyst: IY		Batch: 2239068
Benzene	ND	0.0250	1	09/21/22	09/24/22	
Ethylbenzene	ND	0.0250	1	09/21/22	09/24/22	
Toluene	ND	0.0250	1	09/21/22	09/24/22	
o-Xylene	ND	0.0250	1	09/21/22	09/24/22	
p,m-Xylene	ND	0.0500	1	09/21/22	09/24/22	
Total Xylenes	ND	0.0250	1	09/21/22	09/24/22	
Surrogate: Bromofluorobenzene		100 %	70-130	09/21/22	09/24/22	
Surrogate: 1,2-Dichloroethane-d4		94.4 %	70-130	09/21/22	09/24/22	
Surrogate: Toluene-d8		96.0 %	70-130	09/21/22	09/24/22	
<b>Nonhalogenated Organics by EPA 8015D - GRO</b>						
	mg/kg	mg/kg		Analyst: IY		Batch: 2239068
Gasoline Range Organics (C6-C10)	ND	20.0	1	09/21/22	09/24/22	
Surrogate: Bromofluorobenzene		100 %	70-130	09/21/22	09/24/22	
Surrogate: 1,2-Dichloroethane-d4		94.4 %	70-130	09/21/22	09/24/22	
Surrogate: Toluene-d8		96.0 %	70-130	09/21/22	09/24/22	
<b>Nonhalogenated Organics by EPA 8015D - DRO/ORO</b>						
	mg/kg	mg/kg		Analyst: JL		Batch: 2239093
Diesel Range Organics (C10-C28)	ND	25.0	1	09/23/22	09/24/22	
Oil Range Organics (C28-C36)	ND	50.0	1	09/23/22	09/24/22	
Surrogate: n-Nonane		96.8 %	50-200	09/23/22	09/24/22	
<b>Anions by EPA 300.0/9056A</b>						
	mg/kg	mg/kg		Analyst: RAS		Batch: 2239106
Chloride	ND	20.0	1	09/23/22	09/23/22	



## Sample Data

Souder Miller Associates - Carlsbad  
201 S Halagueno St.  
Carlsbad NM, 88220

Project Name: Line 30137  
Project Number: 97057-0001  
Project Manager: Heather Woods

**Reported:**  
9/27/2022 4:01:13PM

SW3 @ 0 - 6'

E209117-09

Analyte	Result	Reporting Limit	Dilution	Prepared	Analyzed	Notes
<b>Volatile Organic Compounds by EPA 8260B</b>						
	mg/kg	mg/kg		Analyst: IY		Batch: 2239068
Benzene	ND	0.0250	1	09/21/22	09/24/22	
Ethylbenzene	ND	0.0250	1	09/21/22	09/24/22	
Toluene	ND	0.0250	1	09/21/22	09/24/22	
o-Xylene	ND	0.0250	1	09/21/22	09/24/22	
p,m-Xylene	ND	0.0500	1	09/21/22	09/24/22	
Total Xylenes	ND	0.0250	1	09/21/22	09/24/22	
Surrogate: Bromofluorobenzene		102 %	70-130	09/21/22	09/24/22	
Surrogate: 1,2-Dichloroethane-d4		91.0 %	70-130	09/21/22	09/24/22	
Surrogate: Toluene-d8		97.0 %	70-130	09/21/22	09/24/22	
<b>Nonhalogenated Organics by EPA 8015D - GRO</b>						
	mg/kg	mg/kg		Analyst: IY		Batch: 2239068
Gasoline Range Organics (C6-C10)	ND	20.0	1	09/21/22	09/24/22	
Surrogate: Bromofluorobenzene		102 %	70-130	09/21/22	09/24/22	
Surrogate: 1,2-Dichloroethane-d4		91.0 %	70-130	09/21/22	09/24/22	
Surrogate: Toluene-d8		97.0 %	70-130	09/21/22	09/24/22	
<b>Nonhalogenated Organics by EPA 8015D - DRO/ORO</b>						
	mg/kg	mg/kg		Analyst: JL		Batch: 2239093
Diesel Range Organics (C10-C28)	ND	25.0	1	09/23/22	09/24/22	
Oil Range Organics (C28-C36)	ND	50.0	1	09/23/22	09/24/22	
Surrogate: n-Nonane		104 %	50-200	09/23/22	09/24/22	
<b>Anions by EPA 300.0/9056A</b>						
	mg/kg	mg/kg		Analyst: RAS		Batch: 2239106
Chloride	ND	20.0	1	09/23/22	09/23/22	



## Sample Data

Souder Miller Associates - Carlsbad  
201 S Halagueno St.  
Carlsbad NM, 88220

Project Name: Line 30137  
Project Number: 97057-0001  
Project Manager: Heather Woods

**Reported:**  
9/27/2022 4:01:13PM

## SW3 @ 6 - 12'

## E209117-10

Analyte	Result	Reporting Limit	Dilution	Prepared	Analyzed	Notes
<b>Volatile Organic Compounds by EPA 8260B</b>						
	mg/kg	mg/kg		Analyst: IY		Batch: 2239068
Benzene	ND	0.0250	1	09/21/22	09/24/22	
Ethylbenzene	ND	0.0250	1	09/21/22	09/24/22	
Toluene	ND	0.0250	1	09/21/22	09/24/22	
o-Xylene	ND	0.0250	1	09/21/22	09/24/22	
p,m-Xylene	ND	0.0500	1	09/21/22	09/24/22	
Total Xylenes	ND	0.0250	1	09/21/22	09/24/22	
Surrogate: Bromofluorobenzene	99.1 %	70-130		09/21/22	09/24/22	
Surrogate: 1,2-Dichloroethane-d4	97.8 %	70-130		09/21/22	09/24/22	
Surrogate: Toluene-d8	95.6 %	70-130		09/21/22	09/24/22	
<b>Nonhalogenated Organics by EPA 8015D - GRO</b>						
	mg/kg	mg/kg		Analyst: IY		Batch: 2239068
Gasoline Range Organics (C6-C10)	ND	20.0	1	09/21/22	09/24/22	
Surrogate: Bromofluorobenzene	99.1 %	70-130		09/21/22	09/24/22	
Surrogate: 1,2-Dichloroethane-d4	97.8 %	70-130		09/21/22	09/24/22	
Surrogate: Toluene-d8	95.6 %	70-130		09/21/22	09/24/22	
<b>Nonhalogenated Organics by EPA 8015D - DRO/ORO</b>						
	mg/kg	mg/kg		Analyst: JL		Batch: 2239093
Diesel Range Organics (C10-C28)	ND	25.0	1	09/23/22	09/24/22	
Oil Range Organics (C28-C36)	ND	50.0	1	09/23/22	09/24/22	
Surrogate: n-Nonane	89.3 %	50-200		09/23/22	09/24/22	
<b>Anions by EPA 300.0/9056A</b>						
	mg/kg	mg/kg		Analyst: RAS		Batch: 2239106
Chloride	ND	20.0	1	09/23/22	09/23/22	



## Sample Data

Souder Miller Associates - Carlsbad  
201 S Halagueno St.  
Carlsbad NM, 88220

Project Name: Line 30137  
Project Number: 97057-0001  
Project Manager: Heather Woods

**Reported:**  
9/27/2022 4:01:13PM

SW3 @ 12 - 17'

E209117-11

Analyte	Result	Reporting Limit	Dilution	Prepared	Analyzed	Notes
<b>Volatile Organic Compounds by EPA 8260B</b>						
	mg/kg	mg/kg		Analyst: IY		Batch: 2239068
Benzene	ND	0.0250	1	09/21/22	09/24/22	
Ethylbenzene	ND	0.0250	1	09/21/22	09/24/22	
Toluene	ND	0.0250	1	09/21/22	09/24/22	
o-Xylene	ND	0.0250	1	09/21/22	09/24/22	
p,m-Xylene	ND	0.0500	1	09/21/22	09/24/22	
Total Xylenes	ND	0.0250	1	09/21/22	09/24/22	
Surrogate: Bromofluorobenzene		104 %	70-130	09/21/22	09/24/22	
Surrogate: 1,2-Dichloroethane-d4		91.6 %	70-130	09/21/22	09/24/22	
Surrogate: Toluene-d8		97.4 %	70-130	09/21/22	09/24/22	
<b>Nonhalogenated Organics by EPA 8015D - GRO</b>						
	mg/kg	mg/kg		Analyst: IY		Batch: 2239068
Gasoline Range Organics (C6-C10)	ND	20.0	1	09/21/22	09/24/22	
Surrogate: Bromofluorobenzene		104 %	70-130	09/21/22	09/24/22	
Surrogate: 1,2-Dichloroethane-d4		91.6 %	70-130	09/21/22	09/24/22	
Surrogate: Toluene-d8		97.4 %	70-130	09/21/22	09/24/22	
<b>Nonhalogenated Organics by EPA 8015D - DRO/ORO</b>						
	mg/kg	mg/kg		Analyst: JL		Batch: 2239093
Diesel Range Organics (C10-C28)	ND	25.0	1	09/23/22	09/24/22	
Oil Range Organics (C28-C36)	ND	50.0	1	09/23/22	09/24/22	
Surrogate: n-Nonane		92.1 %	50-200	09/23/22	09/24/22	
<b>Anions by EPA 300.0/9056A</b>						
	mg/kg	mg/kg		Analyst: RAS		Batch: 2239106
Chloride	ND	20.0	1	09/23/22	09/23/22	



## Sample Data

Souder Miller Associates - Carlsbad  
201 S Halagueno St.  
Carlsbad NM, 88220

Project Name: Line 30137  
Project Number: 97057-0001  
Project Manager: Heather Woods

**Reported:**  
9/27/2022 4:01:13PM

SW4 @ 0 - 8.5'

E209117-12

Analyte	Result	Reporting Limit	Dilution	Prepared	Analyzed	Notes
<b>Volatile Organic Compounds by EPA 8260B</b>						
	mg/kg	mg/kg		Analyst: IY		Batch: 2239068
Benzene	ND	0.0250	1	09/21/22	09/24/22	
Ethylbenzene	ND	0.0250	1	09/21/22	09/24/22	
Toluene	ND	0.0250	1	09/21/22	09/24/22	
o-Xylene	ND	0.0250	1	09/21/22	09/24/22	
p,m-Xylene	ND	0.0500	1	09/21/22	09/24/22	
Total Xylenes	ND	0.0250	1	09/21/22	09/24/22	
Surrogate: Bromofluorobenzene		102 %	70-130	09/21/22	09/24/22	
Surrogate: 1,2-Dichloroethane-d4		92.5 %	70-130	09/21/22	09/24/22	
Surrogate: Toluene-d8		95.9 %	70-130	09/21/22	09/24/22	
<b>Nonhalogenated Organics by EPA 8015D - GRO</b>						
	mg/kg	mg/kg		Analyst: IY		Batch: 2239068
Gasoline Range Organics (C6-C10)	ND	20.0	1	09/21/22	09/24/22	
Surrogate: Bromofluorobenzene		102 %	70-130	09/21/22	09/24/22	
Surrogate: 1,2-Dichloroethane-d4		92.5 %	70-130	09/21/22	09/24/22	
Surrogate: Toluene-d8		95.9 %	70-130	09/21/22	09/24/22	
<b>Nonhalogenated Organics by EPA 8015D - DRO/ORO</b>						
	mg/kg	mg/kg		Analyst: JL		Batch: 2239093
Diesel Range Organics (C10-C28)	ND	25.0	1	09/23/22	09/24/22	
Oil Range Organics (C28-C36)	ND	50.0	1	09/23/22	09/24/22	
Surrogate: n-Nonane		80.3 %	50-200	09/23/22	09/24/22	
<b>Anions by EPA 300.0/9056A</b>						
	mg/kg	mg/kg		Analyst: RAS		Batch: 2239106
Chloride	ND	20.0	1	09/23/22	09/23/22	



## Sample Data

Souder Miller Associates - Carlsbad  
201 S Halagueno St.  
Carlsbad NM, 88220

Project Name: Line 30137  
Project Number: 97057-0001  
Project Manager: Heather Woods

**Reported:**  
9/27/2022 4:01:13PM

SW4 @ 8.5 - 17'

E209117-13

Analyte	Result	Reporting Limit	Dilution	Prepared	Analyzed	Notes
<b>Volatile Organic Compounds by EPA 8260B</b>						
	mg/kg	mg/kg		Analyst: IY		Batch: 2239068
Benzene	ND	0.0250	1	09/21/22	09/24/22	
Ethylbenzene	ND	0.0250	1	09/21/22	09/24/22	
Toluene	ND	0.0250	1	09/21/22	09/24/22	
o-Xylene	ND	0.0250	1	09/21/22	09/24/22	
p,m-Xylene	0.0515	0.0500	1	09/21/22	09/24/22	
Total Xylenes	0.0515	0.0250	1	09/21/22	09/24/22	
Surrogate: Bromofluorobenzene		105 %	70-130	09/21/22	09/24/22	
Surrogate: 1,2-Dichloroethane-d4		92.9 %	70-130	09/21/22	09/24/22	
Surrogate: Toluene-d8		99.5 %	70-130	09/21/22	09/24/22	
<b>Nonhalogenated Organics by EPA 8015D - GRO</b>						
	mg/kg	mg/kg		Analyst: IY		Batch: 2239068
Gasoline Range Organics (C6-C10)	ND	20.0	1	09/21/22	09/24/22	
Surrogate: Bromofluorobenzene		105 %	70-130	09/21/22	09/24/22	
Surrogate: 1,2-Dichloroethane-d4		92.9 %	70-130	09/21/22	09/24/22	
Surrogate: Toluene-d8		99.5 %	70-130	09/21/22	09/24/22	
<b>Nonhalogenated Organics by EPA 8015D - DRO/ORO</b>						
	mg/kg	mg/kg		Analyst: JL		Batch: 2239093
Diesel Range Organics (C10-C28)	28.1	25.0	1	09/23/22	09/24/22	
Oil Range Organics (C28-C36)	ND	50.0	1	09/23/22	09/24/22	
Surrogate: n-Nonane		84.9 %	50-200	09/23/22	09/24/22	
<b>Anions by EPA 300.0/9056A</b>						
	mg/kg	mg/kg		Analyst: RAS		Batch: 2239106
Chloride	ND	20.0	1	09/23/22	09/23/22	





## Sample Data

Souder Miller Associates - Carlsbad  
201 S Halagueno St.  
Carlsbad NM, 88220

Project Name: Line 30137  
Project Number: 97057-0001  
Project Manager: Heather Woods

**Reported:**  
9/27/2022 4:01:13PM

SW5 @ 0 - 8.5'

E209117-14

Analyte	Result	Reporting Limit	Dilution	Prepared	Analyzed	Notes
<b>Volatile Organic Compounds by EPA 8260B</b>						
	mg/kg	mg/kg		Analyst: IY		Batch: 2239068
Benzene	ND	0.0250	1	09/21/22	09/24/22	
Ethylbenzene	ND	0.0250	1	09/21/22	09/24/22	
Toluene	ND	0.0250	1	09/21/22	09/24/22	
o-Xylene	ND	0.0250	1	09/21/22	09/24/22	
p,m-Xylene	ND	0.0500	1	09/21/22	09/24/22	
Total Xylenes	ND	0.0250	1	09/21/22	09/24/22	
Surrogate: Bromofluorobenzene		102 %	70-130	09/21/22	09/24/22	
Surrogate: 1,2-Dichloroethane-d4		95.7 %	70-130	09/21/22	09/24/22	
Surrogate: Toluene-d8		96.0 %	70-130	09/21/22	09/24/22	
<b>Nonhalogenated Organics by EPA 8015D - GRO</b>						
	mg/kg	mg/kg		Analyst: IY		Batch: 2239068
Gasoline Range Organics (C6-C10)	ND	20.0	1	09/21/22	09/24/22	
Surrogate: Bromofluorobenzene		102 %	70-130	09/21/22	09/24/22	
Surrogate: 1,2-Dichloroethane-d4		95.7 %	70-130	09/21/22	09/24/22	
Surrogate: Toluene-d8		96.0 %	70-130	09/21/22	09/24/22	
<b>Nonhalogenated Organics by EPA 8015D - DRO/ORO</b>						
	mg/kg	mg/kg		Analyst: JL		Batch: 2239093
Diesel Range Organics (C10-C28)	ND	25.0	1	09/23/22	09/24/22	
Oil Range Organics (C28-C36)	ND	50.0	1	09/23/22	09/24/22	
Surrogate: n-Nonane		88.3 %	50-200	09/23/22	09/24/22	
<b>Anions by EPA 300.0/9056A</b>						
	mg/kg	mg/kg		Analyst: RAS		Batch: 2239106
Chloride	ND	20.0	1	09/23/22	09/23/22	



## Sample Data

Souder Miller Associates - Carlsbad  
201 S Halagueno St.  
Carlsbad NM, 88220

Project Name: Line 30137  
Project Number: 97057-0001  
Project Manager: Heather Woods

**Reported:**  
9/27/2022 4:01:13PM

SW5 @ 8.5 - 17'

E209117-15

Analyte	Result	Reporting Limit	Dilution	Prepared	Analyzed	Notes
<b>Volatile Organic Compounds by EPA 8260B</b>						
	mg/kg	mg/kg		Analyst: IY		Batch: 2239068
Benzene	ND	0.0250	1	09/21/22	09/24/22	
Ethylbenzene	<b>0.241</b>	0.0250	1	09/21/22	09/24/22	
Toluene	<b>0.365</b>	0.0250	1	09/21/22	09/24/22	
o-Xylene	<b>0.160</b>	0.0250	1	09/21/22	09/24/22	
p,m-Xylene	<b>0.487</b>	0.0500	1	09/21/22	09/24/22	
Total Xylenes	<b>0.647</b>	0.0250	1	09/21/22	09/24/22	
Surrogate: Bromofluorobenzene		105 %	70-130	09/21/22	09/24/22	
Surrogate: 1,2-Dichloroethane-d4		90.7 %	70-130	09/21/22	09/24/22	
Surrogate: Toluene-d8		101 %	70-130	09/21/22	09/24/22	
<b>Nonhalogenated Organics by EPA 8015D - GRO</b>						
	mg/kg	mg/kg		Analyst: IY		Batch: 2239068
Gasoline Range Organics (C6-C10)	<b>41.5</b>	20.0	1	09/21/22	09/24/22	
Surrogate: Bromofluorobenzene		105 %	70-130	09/21/22	09/24/22	
Surrogate: 1,2-Dichloroethane-d4		90.7 %	70-130	09/21/22	09/24/22	
Surrogate: Toluene-d8		101 %	70-130	09/21/22	09/24/22	
<b>Nonhalogenated Organics by EPA 8015D - DRO/ORO</b>						
	mg/kg	mg/kg		Analyst: JL		Batch: 2239093
Diesel Range Organics (C10-C28)	<b>26.0</b>	25.0	1	09/23/22	09/24/22	
Oil Range Organics (C28-C36)	ND	50.0	1	09/23/22	09/24/22	
Surrogate: n-Nonane		94.1 %	50-200	09/23/22	09/24/22	
<b>Anions by EPA 300.0/9056A</b>						
	mg/kg	mg/kg		Analyst: RAS		Batch: 2239106
Chloride	ND	20.0	1	09/23/22	09/23/22	



## Sample Data

Souder Miller Associates - Carlsbad  
201 S Halagueno St.  
Carlsbad NM, 88220

Project Name: Line 30137  
Project Number: 97057-0001  
Project Manager: Heather Woods

**Reported:**  
9/27/2022 4:01:13PM

SW6 @ 0 - 6'

E209117-16

Analyte	Result	Reporting Limit	Dilution	Prepared	Analyzed	Notes
<b>Volatile Organic Compounds by EPA 8260B</b>						
	mg/kg	mg/kg		Analyst: IY		Batch: 2239068
Benzene	ND	0.0250	1	09/21/22	09/24/22	
Ethylbenzene	ND	0.0250	1	09/21/22	09/24/22	
Toluene	ND	0.0250	1	09/21/22	09/24/22	
o-Xylene	ND	0.0250	1	09/21/22	09/24/22	
p,m-Xylene	ND	0.0500	1	09/21/22	09/24/22	
Total Xylenes	ND	0.0250	1	09/21/22	09/24/22	
Surrogate: Bromofluorobenzene		103 %	70-130	09/21/22	09/24/22	
Surrogate: 1,2-Dichloroethane-d4		96.3 %	70-130	09/21/22	09/24/22	
Surrogate: Toluene-d8		97.0 %	70-130	09/21/22	09/24/22	
<b>Nonhalogenated Organics by EPA 8015D - GRO</b>						
	mg/kg	mg/kg		Analyst: IY		Batch: 2239068
Gasoline Range Organics (C6-C10)	ND	20.0	1	09/21/22	09/24/22	
Surrogate: Bromofluorobenzene		103 %	70-130	09/21/22	09/24/22	
Surrogate: 1,2-Dichloroethane-d4		96.3 %	70-130	09/21/22	09/24/22	
Surrogate: Toluene-d8		97.0 %	70-130	09/21/22	09/24/22	
<b>Nonhalogenated Organics by EPA 8015D - DRO/ORO</b>						
	mg/kg	mg/kg		Analyst: JL		Batch: 2239093
Diesel Range Organics (C10-C28)	ND	25.0	1	09/23/22	09/24/22	
Oil Range Organics (C28-C36)	ND	50.0	1	09/23/22	09/24/22	
Surrogate: n-Nonane		89.4 %	50-200	09/23/22	09/24/22	
<b>Anions by EPA 300.0/9056A</b>						
	mg/kg	mg/kg		Analyst: RAS		Batch: 2239106
Chloride	ND	20.0	1	09/23/22	09/23/22	



## Sample Data

Souder Miller Associates - Carlsbad  
201 S Halagueno St.  
Carlsbad NM, 88220

Project Name: Line 30137  
Project Number: 97057-0001  
Project Manager: Heather Woods

**Reported:**  
9/27/2022 4:01:13PM

SW6 @ 6 -12'

E209117-17

Analyte	Result	Reporting Limit	Dilution	Prepared	Analyzed	Notes
<b>Volatile Organic Compounds by EPA 8260B</b>						
	mg/kg	mg/kg		Analyst: IY		Batch: 2239068
Benzene	ND	0.0250	1	09/21/22	09/24/22	
Ethylbenzene	ND	0.0250	1	09/21/22	09/24/22	
Toluene	ND	0.0250	1	09/21/22	09/24/22	
o-Xylene	ND	0.0250	1	09/21/22	09/24/22	
p,m-Xylene	ND	0.0500	1	09/21/22	09/24/22	
Total Xylenes	ND	0.0250	1	09/21/22	09/24/22	
Surrogate: Bromofluorobenzene		101 %	70-130	09/21/22	09/24/22	
Surrogate: 1,2-Dichloroethane-d4		94.1 %	70-130	09/21/22	09/24/22	
Surrogate: Toluene-d8		95.9 %	70-130	09/21/22	09/24/22	
<b>Nonhalogenated Organics by EPA 8015D - GRO</b>						
	mg/kg	mg/kg		Analyst: IY		Batch: 2239068
Gasoline Range Organics (C6-C10)	ND	20.0	1	09/21/22	09/24/22	
Surrogate: Bromofluorobenzene		101 %	70-130	09/21/22	09/24/22	
Surrogate: 1,2-Dichloroethane-d4		94.1 %	70-130	09/21/22	09/24/22	
Surrogate: Toluene-d8		95.9 %	70-130	09/21/22	09/24/22	
<b>Nonhalogenated Organics by EPA 8015D - DRO/ORO</b>						
	mg/kg	mg/kg		Analyst: JL		Batch: 2239093
Diesel Range Organics (C10-C28)	ND	25.0	1	09/23/22	09/24/22	
Oil Range Organics (C28-C36)	ND	50.0	1	09/23/22	09/24/22	
Surrogate: n-Nonane		87.2 %	50-200	09/23/22	09/24/22	
<b>Anions by EPA 300.0/9056A</b>						
	mg/kg	mg/kg		Analyst: RAS		Batch: 2239106
Chloride	ND	20.0	1	09/23/22	09/23/22	



## Sample Data

Souder Miller Associates - Carlsbad  
201 S Halagueno St.  
Carlsbad NM, 88220

Project Name: Line 30137  
Project Number: 97057-0001  
Project Manager: Heather Woods

**Reported:**  
9/27/2022 4:01:13PM

SW6 @ 12 - 17'

E209117-18

Analyte	Result	Reporting Limit	Dilution	Prepared	Analyzed	Notes
<b>Volatile Organic Compounds by EPA 8260B</b>						
	mg/kg	mg/kg		Analyst: IY		Batch: 2239068
Benzene	ND	0.0250	1	09/21/22	09/24/22	
Ethylbenzene	ND	0.0250	1	09/21/22	09/24/22	
Toluene	ND	0.0250	1	09/21/22	09/24/22	
o-Xylene	ND	0.0250	1	09/21/22	09/24/22	
p,m-Xylene	ND	0.0500	1	09/21/22	09/24/22	
Total Xylenes	ND	0.0250	1	09/21/22	09/24/22	
Surrogate: Bromofluorobenzene		101 %	70-130	09/21/22	09/24/22	
Surrogate: 1,2-Dichloroethane-d4		92.2 %	70-130	09/21/22	09/24/22	
Surrogate: Toluene-d8		97.7 %	70-130	09/21/22	09/24/22	
<b>Nonhalogenated Organics by EPA 8015D - GRO</b>						
	mg/kg	mg/kg		Analyst: IY		Batch: 2239068
Gasoline Range Organics (C6-C10)	ND	20.0	1	09/21/22	09/24/22	
Surrogate: Bromofluorobenzene		101 %	70-130	09/21/22	09/24/22	
Surrogate: 1,2-Dichloroethane-d4		92.2 %	70-130	09/21/22	09/24/22	
Surrogate: Toluene-d8		97.7 %	70-130	09/21/22	09/24/22	
<b>Nonhalogenated Organics by EPA 8015D - DRO/ORO</b>						
	mg/kg	mg/kg		Analyst: JL		Batch: 2239093
Diesel Range Organics (C10-C28)	ND	25.0	1	09/23/22	09/24/22	
Oil Range Organics (C28-C36)	ND	50.0	1	09/23/22	09/24/22	
Surrogate: n-Nonane		85.9 %	50-200	09/23/22	09/24/22	
<b>Anions by EPA 300.0/9056A</b>						
	mg/kg	mg/kg		Analyst: RAS		Batch: 2239106
Chloride	ND	20.0	1	09/23/22	09/23/22	



## QC Summary Data

Souder Miller Associates - Carlsbad	Project Name:	Line 30137	Reported:
201 S Halagueno St.	Project Number:	97057-0001	
Carlsbad NM, 88220	Project Manager:	Heather Woods	9/27/2022 4:01:13PM

## Volatile Organic Compounds by EPA 8260B

Analyst: IY

Analyte	Result	Reporting Limit	Spike Level	Source Result	Rec	Rec Limits	RPD	RPD Limit	Notes
	mg/kg	mg/kg	mg/kg	mg/kg	%	%	%	%	

## Blank (2239068-BLK1)

Prepared: 09/21/22 Analyzed: 09/23/22

Benzene	ND	0.0250							
Ethylbenzene	ND	0.0250							
Toluene	ND	0.0250							
o-Xylene	ND	0.0250							
p,m-Xylene	ND	0.0500							
Total Xylenes	ND	0.0250							
Surrogate: Bromofluorobenzene	0.496		0.500		99.1	70-130			
Surrogate: 1,2-Dichloroethane-d4	0.452		0.500		90.3	70-130			
Surrogate: Toluene-d8	0.489		0.500		97.7	70-130			

## LCS (2239068-BS1)

Prepared: 09/21/22 Analyzed: 09/23/22

Benzene	2.21	0.0250	2.50		88.4	70-130			
Ethylbenzene	2.33	0.0250	2.50		93.1	70-130			
Toluene	2.19	0.0250	2.50		87.5	70-130			
o-Xylene	2.37	0.0250	2.50		94.6	70-130			
p,m-Xylene	4.56	0.0500	5.00		91.1	70-130			
Total Xylenes	6.92	0.0250	7.50		92.3	70-130			
Surrogate: Bromofluorobenzene	0.534		0.500		107	70-130			
Surrogate: 1,2-Dichloroethane-d4	0.460		0.500		92.0	70-130			
Surrogate: Toluene-d8	0.504		0.500		101	70-130			

## Matrix Spike (2239068-MS1)

Source: E209117-02

Prepared: 09/21/22 Analyzed: 09/23/22

Benzene	2.20	0.0250	2.50	ND	87.9	48-131			
Ethylbenzene	2.55	0.0250	2.50	ND	102	45-135			
Toluene	2.49	0.0250	2.50	ND	99.6	48-130			
o-Xylene	2.66	0.0250	2.50	0.0470	104	43-135			
p,m-Xylene	5.41	0.0500	5.00	0.130	106	43-135			
Total Xylenes	8.06	0.0250	7.50	0.177	105	43-135			
Surrogate: Bromofluorobenzene	0.523		0.500		105	70-130			
Surrogate: 1,2-Dichloroethane-d4	0.445		0.500		88.9	70-130			
Surrogate: Toluene-d8	0.513		0.500		103	70-130			

## Matrix Spike Dup (2239068-MSD1)

Source: E209117-02

Prepared: 09/21/22 Analyzed: 09/23/22

Benzene	2.22	0.0250	2.50	ND	88.8	48-131	0.996	23	
Ethylbenzene	2.67	0.0250	2.50	ND	107	45-135	4.58	27	
Toluene	2.42	0.0250	2.50	ND	96.9	48-130	2.67	24	
o-Xylene	2.74	0.0250	2.50	0.0470	108	43-135	2.82	27	
p,m-Xylene	5.63	0.0500	5.00	0.130	110	43-135	4.02	27	
Total Xylenes	8.36	0.0250	7.50	0.177	109	43-135	3.62	27	
Surrogate: Bromofluorobenzene	0.543		0.500		109	70-130			
Surrogate: 1,2-Dichloroethane-d4	0.455		0.500		91.0	70-130			
Surrogate: Toluene-d8	0.521		0.500		104	70-130			





## QC Summary Data

Souder Miller Associates - Carlsbad	Project Name:	Line 30137	<b>Reported:</b> 9/27/2022 4:01:13PM
201 S Halagueno St.	Project Number:	97057-0001	
Carlsbad NM, 88220	Project Manager:	Heather Woods	

## Nonhalogenated Organics by EPA 8015D - GRO

Analyst: IY

Analyte	Result mg/kg	Reporting Limit mg/kg	Spike Level mg/kg	Source Result mg/kg	Rec %	Rec Limits %	RPD %	RPD Limit %	Notes
---------	-----------------	-----------------------------	-------------------------	---------------------------	----------	--------------------	----------	-------------------	-------

## Blank (2239068-BLK1)

Prepared: 09/21/22 Analyzed: 09/23/22

Gasoline Range Organics (C6-C10)	ND	20.0							
Surrogate: Bromofluorobenzene	0.496		0.500		99.1	70-130			
Surrogate: 1,2-Dichloroethane-d4	0.452		0.500		90.3	70-130			
Surrogate: Toluene-d8	0.489		0.500		97.7	70-130			

## LCS (2239068-BS2)

Prepared: 09/21/22 Analyzed: 09/23/22

Gasoline Range Organics (C6-C10)	41.5	20.0	50.0		83.0	70-130			
Surrogate: Bromofluorobenzene	0.527		0.500		105	70-130			
Surrogate: 1,2-Dichloroethane-d4	0.452		0.500		90.3	70-130			
Surrogate: Toluene-d8	0.500		0.500		100	70-130			

## Matrix Spike (2239068-MS2)

Source: E209117-02

Prepared: 09/21/22 Analyzed: 09/23/22

Gasoline Range Organics (C6-C10)	88.2	20.0	50.0	ND	176	70-130			M6
Surrogate: Bromofluorobenzene	0.520		0.500		104	70-130			
Surrogate: 1,2-Dichloroethane-d4	0.459		0.500		91.7	70-130			
Surrogate: Toluene-d8	0.519		0.500		104	70-130			

## Matrix Spike Dup (2239068-MSD2)

Source: E209117-02

Prepared: 09/21/22 Analyzed: 09/23/22

Gasoline Range Organics (C6-C10)	91.2	20.0	50.0	ND	182	70-130	3.29	20	M6
Surrogate: Bromofluorobenzene	0.522		0.500		104	70-130			
Surrogate: 1,2-Dichloroethane-d4	0.438		0.500		87.5	70-130			
Surrogate: Toluene-d8	0.518		0.500		104	70-130			



## QC Summary Data

Souder Miller Associates - Carlsbad	Project Name:	Line 30137	<b>Reported:</b>
201 S Halagueno St.	Project Number:	97057-0001	
Carlsbad NM, 88220	Project Manager:	Heather Woods	9/27/2022 4:01:13PM

## Nonhalogenated Organics by EPA 8015D - DRO/ORO

Analyst: JL

Analyte	Result mg/kg	Reporting Limit mg/kg	Spike Level mg/kg	Source Result mg/kg	Rec %	Rec Limits %	RPD %	RPD Limit %	Notes
---------	-----------------	-----------------------------	-------------------------	---------------------------	----------	--------------------	----------	-------------------	-------

## Blank (2239093-BLK1)

Prepared: 09/23/22 Analyzed: 09/23/22

Diesel Range Organics (C10-C28)	ND	25.0							
Oil Range Organics (C28-C36)	ND	50.0							
Surrogate: n-Nonane	48.8		50.0		97.6	50-200			

## LCS (2239093-BS1)

Prepared: 09/23/22 Analyzed: 09/23/22

Diesel Range Organics (C10-C28)	278	25.0	250		111	38-132			
Surrogate: n-Nonane	49.3		50.0		98.7	50-200			

## Matrix Spike (2239093-MS1)

Source: E209117-13

Prepared: 09/23/22 Analyzed: 09/23/22

Diesel Range Organics (C10-C28)	304	25.0	250	28.1	110	38-132			
Surrogate: n-Nonane	50.4		50.0		101	50-200			

## Matrix Spike Dup (2239093-MSD1)

Source: E209117-13

Prepared: 09/23/22 Analyzed: 09/23/22

Diesel Range Organics (C10-C28)	322	25.0	250	28.1	117	38-132	5.63	20	
Surrogate: n-Nonane	44.6		50.0		89.1	50-200			



QC Summary Data

Souder Miller Associates - Carlsbad	Project Name:	Line 30137	Reported:
201 S Halagueno St.	Project Number:	97057-0001	
Carlsbad NM, 88220	Project Manager:	Heather Woods	9/27/2022 4:01:13PM

Anions by EPA 300.0/9056A

Analyst: RAS

Analyte	Result	Reporting Limit	Spike Level	Source Result	Rec	Rec Limits	RPD	RPD Limit	Notes
	mg/kg	mg/kg	mg/kg	mg/kg	%	%	%	%	

Blank (2239106-BLK1)					Prepared: 09/23/22 Analyzed: 09/23/22				
Chloride	ND	20.0							
LCS (2239106-BS1)					Prepared: 09/23/22 Analyzed: 09/23/22				
Chloride	249	20.0	250		99.7	90-110			
Matrix Spike (2239106-MS1)					Source: E209117-01		Prepared: 09/23/22 Analyzed: 09/23/22		
Chloride	251	20.0	250	ND	100	80-120			
Matrix Spike Dup (2239106-MSD1)					Source: E209117-01		Prepared: 09/23/22 Analyzed: 09/23/22		
Chloride	256	20.0	250	ND	102	80-120	2.17	20	

QC Summary Report Comment:  
Calculations are based off of the raw (non-rounded) data. However, for reporting purposes all QC data is rounded to three significant figures.  
Therefore, hand calculated values may differ slightly.



## Definitions and Notes

Souder Miller Associates - Carlsbad	Project Name:	Line 30137	
201 S Halagueno St.	Project Number:	97057-0001	<b>Reported:</b>
Carlsbad NM, 88220	Project Manager:	Heather Woods	09/27/22 16:01

M6 Matrix spike recovery has a high bias. The native sample results were below the RL, but appears to have contributed to high MS recoveries.

ND Analyte NOT DETECTED at or above the reporting limit

NR Not Reported

RPD Relative Percent Difference

DNI Did Not Ignite

Note (1): Methods marked with \*\* are non-accredited methods.

Note (2): Soil data is reported on an "as received" weight basis, unless reported otherwise.



## Project Information

Chain of Custody

Page 1 of 2

Client: Snyder Miller & Associates  
 Project: Line 30037  
 Project Manager: Heather Woods  
 Address: 2015 Halagueno St  
 City, State, Zip: Carlsbad, NM 88220  
 Phone: \_\_\_\_\_  
 Email: \_\_\_\_\_  
 Report due by: \_\_\_\_\_

Bill To  
 Attention: Enterprise  
 Address: \_\_\_\_\_  
 City, State, Zip: \_\_\_\_\_  
 Phone: \_\_\_\_\_  
 Email: \_\_\_\_\_

PO 325484

E209117

97057-0005 day

Lab Use Only		TAT		EPA Program		
Lab WO#	Job Number	1D	3D	RCRA	CWA	SDWA
<u>997 CC</u>	<u>209117</u>					
Analysis and Method				State		
				NM	CO	UT
				TX	OK	AZ
				Remarks		

Time Sampled	Date Sampled	Matrix	No Containers	Sample ID	Lab Number	DIO/DRO by 8015	GRO/DRO by 8015	RTEX by 8021	VOC by 8260	Metals 6010	Chloride 300.0	BGDOC - NM	BGDOC - TX				
1039	9/15/22	Soil	1	BS001 @ 17'	1							X					
1044	9/15/22	Soil	1	BS002 @ 17'	2							X					
1034	9/15/22	Soil	1	BS003 @ 17'	3							X					
1036	9/15/22	Soil	1	BS004 @ 17'	4							X					
1009	9/15/22	Soil	1	SW1 @ 0-8.5'	5							X					
1006	9/15/22	Soil	1	SW1 @ 8.5-17'	6							X					
	9/15/22	Soil	1	SW2 @ 0-8.5'	7							X					
0959	9/15/22	Soil	1	SW2 @ 8.5-17'	8							X					
1030	9/15/22	Soil	1	SW3 @ 0-6'	9							X					
1028	9/15/22	Soil	1	<del>SW3 @ 0-6'</del> SW3 @ 6-12'	10							X					

## Additional Instructions:

please send to Sarahman Schwa, Georgeann Goodman & Heather Woods

(Field sampler), attest to the validity and authenticity of this sample. I am aware that tampering with or intentionally mislabeling the sample location, date or time of collection is considered fraud and may be grounds for legal action. Sampled by: Sarahman Schwa

Samples requiring thermal preservation must be received on ice the day they are sampled or retained packed in ice at an avg temp above 0 but less than 5 °C or subsequent days

Relinquished by: (Signature)	Date	Time	Received by: (Signature)	Date	Time	Lab Use Only Received on ice: <u>Y</u> / N T1 _____ T2 _____ T3 _____ AVG Temp °C <u>4</u>
<u>[Signature]</u>	9/16/22	1740	<u>[Signature]</u>	9/20/22	3:00	
Relinquished by: (Signature)	Date	Time	Received by: (Signature)	Date	Time	
<u>[Signature]</u>	9/20/22	4:15	<u>Heather Woods</u>	9/16/22	10:45	
Relinquished by: (Signature)	Date	Time	Received by: (Signature)	Date	Time	

Sample Matrix: S - Soil, Sd - Solid, Sg - Sludge, A - Aqueous, O - Other \_\_\_\_\_

Container Type: g - glass, p - poly/plastic, ag - amber glass, v - VOA

Note: Samples are discarded 30 days after results are reported unless other arrangements are made. Hazardous samples will be returned to client or disposed of at the client expense. The report for the analysis of the above samples is applicable only to those samples received by the laboratory with this COC. The liability of the laboratory is limited to the amount paid for on the report.

envirotech



## Project Information

## Chain of Custody

Page 2 of 2

STD 5 day

Client: <u>Sander Miller &amp; Associates</u> Project: <u>Line 30137</u> Project Manager: <u>Heather Woods</u> Address: <u>201 S Halague St</u> City, State, Zip: <u>Carlsbad, NM 88220</u> Phone: _____ Email: _____ Report due by: _____					Bill To Attention: <u>Enterprise</u> Address: _____ City, State, Zip: _____ Phone: _____ Email: _____ <u>PO 325484</u>		Lab Use Only		TAT		EPA Program			
							Lab WO# <u>PE209117</u>	Job Number <u>97057-0001</u>	1D	3D	RCRA	CWA	SDWA	
Analysis and Method								State						
DRO by 8015 GRO/DRO by 8015 RTE by 8021 VOC by 8260 Metals 6010 Chloride 300.0								BGDOC - NM	BGDOC - TX	NM	CO	UT	AZ	
										TX	OK			
								Remarks						
Time Sampled	Date Sampled	Matrix	No Containers	Sample ID	Lab Number									
1026	9/15/22	soil	1	SW3 @ 12-17'	11						X			
1024	9/15/22	soil	1	SW4 @ 0-8.5'	12						X			
1020	9/15/22	soil	1	SW4 @ 8.5-17'	13						X			
1017	9/15/22	soil	1	SW5 @ 0-8.5'	14						X			
1014	9/15/22	soil	1	SW5 @ 8.5-17'	15						X			
1013	9/15/22	soil	1	SW6 @ 0-6'	16						X			
1012	9/15/22	soil	1	SW6 @ 6-12'	17						X			
1010	9/15/22	soil	1	SW6 @ 12-17'	18						X			
					19									
					20									
Additional Instructions: <u>Please send to Sarahmay Schlee, Georgeann Goodman &amp; Heather Woods</u>														
(Field sampler): attest to the validity and authenticity of this sample. I am aware that tampering with or intentionally mislabeling the sample location, date or time of collection is considered fraud and may be grounds for legal action. Sampled by: <u>Sarahmay Schlee</u>														
Relinquished by: (Signature) <u>[Signature]</u> Date <u>9/16/22</u> Time <u>1740</u>						Received by: (Signature) <u>[Signature]</u> Date <u>9/20/22</u> Time <u>3:00P</u>								
Relinquished by: (Signature) <u>[Signature]</u> Date <u>9/20/22</u> Time <u>4:15P</u>						Received by: (Signature) <u>[Signature]</u> Date <u>9/21/22</u> Time <u>10:45</u>								
Relinquished by: (Signature) _____ Date _____ Time _____						Received by: (Signature) _____ Date _____ Time _____								
						Lab Use Only Received on ice: <u>Y</u> / N T1 _____ T2 _____ T3 _____ AVG Temp °C <u>4</u>								
Sample Matrix: S - Soil, sd - Solid, sg - Sludge, A - Aqueous, O - Other _____						Container Type: g - glass, p - poly/plastic, ag - amber glass, v - VOA								
Note: Samples are discarded 30 days after results are reported unless other arrangements are made. Hazardous samples will be returned to client or disposed of at the client expense. The report for the analysis of the above samples is applicable only to those samples received by the laboratory with this COC. The liability of the laboratory is limited to the amount paid for on the report.														

envirotech



## Envirotech Analytical Laboratory

Printed: 9/21/2022 12:14:46PM

## Sample Receipt Checklist (SRC)

Instructions: Please take note of any NO checkmarks.

If we receive no response concerning these items within 24 hours of the date of this notice, all the samples will be analyzed as requested.

Client:	Souder Miller Associates - Carlsbad	Date Received:	09/21/22 10:45	Work Order ID:	E209117
Phone:	(575) 200-5443	Date Logged In:	09/21/22 08:54	Logged In By:	Caitlin Christian
Email:		Due Date:	09/27/22 17:00 (4 day TAT)		

Chain of Custody (COC)

1. Does the sample ID match the COC? Yes
2. Does the number of samples per sampling site location match the COC? Yes
3. Were samples dropped off by client or carrier? Yes
4. Was the COC complete, i.e., signatures, dates/times, requested analyses? Yes
5. Were all samples received within holding time? Yes

Note: Analysis, such as pH which should be conducted in the field, i.e., 15 minute hold time, are not included in this discussion.

Carrier: UPSComments/ResolutionSample Turn Around Time (TAT)

6. Did the COC indicate standard TAT, or Expedited TAT? Yes

Sample Cooler

7. Was a sample cooler received? Yes
8. If yes, was cooler received in good condition? Yes
9. Was the sample(s) received intact, i.e., not broken? Yes
10. Were custody/security seals present? No
11. If yes, were custody/security seals intact? NA
12. Was the sample received on ice? If yes, the recorded temp is 4°C, i.e., 6°±2°C Yes

Note: Thermal preservation is not required, if samples are received w/i 15 minutes of sampling

13. If no visible ice, record the temperature. Actual sample temperature: 4°C

Sample Container

14. Are aqueous VOC samples present? No
15. Are VOC samples collected in VOA Vials? NA
16. Is the head space less than 6-8 mm (pea sized or less)? NA
17. Was a trip blank (TB) included for VOC analyses? NA
18. Are non-VOC samples collected in the correct containers? Yes
19. Is the appropriate volume/weight or number of sample containers collected? Yes

Field Label

20. Were field sample labels filled out with the minimum information:
  - Sample ID? Yes
  - Date/Time Collected? Yes
  - Collectors name? No

Sample Preservation

21. Does the COC or field labels indicate the samples were preserved? No
22. Are sample(s) correctly preserved? NA
24. Is lab filtration required and/or requested for dissolved metals? No

Multiphase Sample Matrix

26. Does the sample have more than one phase, i.e., multiphase? No
27. If yes, does the COC specify which phase(s) is to be analyzed? NA

Subcontract Laboratory

28. Are samples required to get sent to a subcontract laboratory? No
29. Was a subcontract laboratory specified by the client and if so who? NA Subcontract Lab: na

Client Instruction

Signature of client authorizing changes to the COC or sample disposition.

Date



envirotech Inc.

**District I**  
1625 N. French Dr., Hobbs, NM 88240  
Phone:(575) 393-6161 Fax:(575) 393-0720  
**District II**  
811 S. First St., Artesia, NM 88210  
Phone:(575) 748-1283 Fax:(575) 748-9720  
**District III**  
1000 Rio Brazos Rd., Aztec, NM 87410  
Phone:(505) 334-6178 Fax:(505) 334-6170  
**District IV**  
1220 S. St Francis Dr., Santa Fe, NM 87505  
Phone:(505) 476-3470 Fax:(505) 476-3462

**State of New Mexico**  
**Energy, Minerals and Natural Resources**  
**Oil Conservation Division**  
**1220 S. St Francis Dr.**  
**Santa Fe, NM 87505**

CONDITIONS  
  
Action 155708

CONDITIONS

Operator: Enterprise Field Services, LLC PO Box 4324 Houston, TX 77210	OGRID: 241602
	Action Number: 155708
	Action Type: [C-141] Release Corrective Action (C-141)

CONDITIONS

Created By	Condition	Condition Date
rhamlet	We have received your closure report and final C-141 for Incident #NAPP2224125510 LINE 30137, thank you. This closure is approved.	1/12/2023