

Closure Report

nKMW1101939461

Site Description

Site Name:	RIGHTHAND CAYON 34-2
Company:	Oxy USA, Inc.
Legal Description:	UL M ,S 34 ,TS 21S , R 24E
County:	EDDY
GPS Coordinates:	32.42054, -104.49556

Release Data

Date of Release:	12/15/2010
Type of Release:	PRODUCED WATER
Source of Release:	FIBERGLASS MAIN WATER TUNK LINE FROM THE WELLS SPLIT
Volume of Release:	79 bbls
Volume Recovered:	40 bbls

Remediation Specifications

Remediation Parameters:	This site is listed on the Agreed Compliance Order of 4/5/19. This site had previously been remediated but no paperwork existed for verification therefore, OXY performed confirmation sampling to verify remediation limits had been met. The enclosed site diagram depicts the spill area, excavation depths, and the confirmation sample points. OXY collected sidewall and bottom confirmation samples every 200 square feet .	
Remediation Activities:		
Plan Sent to OCD:	1/28/2011	
OCD Approval of Plan:		
Plan Sent to BLM:		
BLM Approval of Plan:		

Supporting Documentation

C-141, page 6	signed and included	
Site Diagram	Google Earth map with excavation depths & confirmation sample points	
Pictures	Closure photos	
Lab Summary/Analysis	Confirmation lab summary/analysis report for	
Notifications		

Request for Closure

Based on the completion of the remediation plan, BBC International requests closure approval from NMOCD.

Cliff P. Brunson
President, BBC International, Inc.

10/11/2022

Form C-141

Page 6

State of New Mexico
Oil Conservation Division

Incident ID	nKMW1101939461
District RP	
Facility ID	
Application ID	


Closure

The responsible party must attach information demonstrating they have complied with all applicable closure requirements and any conditions or directives of the OCD. This demonstration should be in the form of a comprehensive report (electronic submittals in .pdf format are preferred) including a scaled site map, sampling diagrams, relevant field notes, photographs of any excavation prior to backfilling, laboratory data including chain of custody documents of final sampling, and a narrative of the remedial activities. Refer to 19.15.29.12 NMAC.

Closure Report Attachment Checklist: *Each of the following items must be included in the closure report.*

- ☒ A scaled site and sampling diagram as described in 19.15.29.11 NMAC
- ☒ Photographs of the remediated site prior to backfill or photos of the liner integrity if applicable (Note: appropriate OCD District office must be notified 2 days prior to liner inspection)
- ☒ Laboratory analyses of final sampling (Note: appropriate ODC District office must be notified 2 days prior to final sampling)
- ☒ Description of remediation activities

I hereby certify that the information given above is true and complete to the best of my knowledge and understand that pursuant to OCD rules and regulations all operators are required to report and/or file certain release notifications and perform corrective actions for releases which may endanger public health or the environment. The acceptance of a C-141 report by the OCD does not relieve the operator of liability should their operations have failed to adequately investigate and remediate contamination that pose a threat to groundwater, surface water, human health or the environment. In addition, OCD acceptance of a C-141 report does not relieve the operator of responsibility for compliance with any other federal, state, or local laws and/or regulations. The responsible party acknowledges they must substantially restore, reclaim, and re-vegetate the impacted surface area to the conditions that existed prior to the release or their final land use in accordance with 19.15.29.13 NMAC including notification to the OCD when reclamation and re-vegetation are complete.

Printed Name: Wade Dittrich Title: Environmental Coordinator
Signature:  Date: 8-30-22
email: wade_dittrich@oxy.com Telephone: (575) 390-2828

OCD Only

Received by: OCD Date: 10/10/2022

Closure approval by the OCD does not relieve the responsible party of liability should their operations have failed to adequately investigate and remediate contamination that poses a threat to groundwater, surface water, human health, or the environment nor does not relieve the responsible party of compliance with any other federal, state, or local laws and/or regulations.

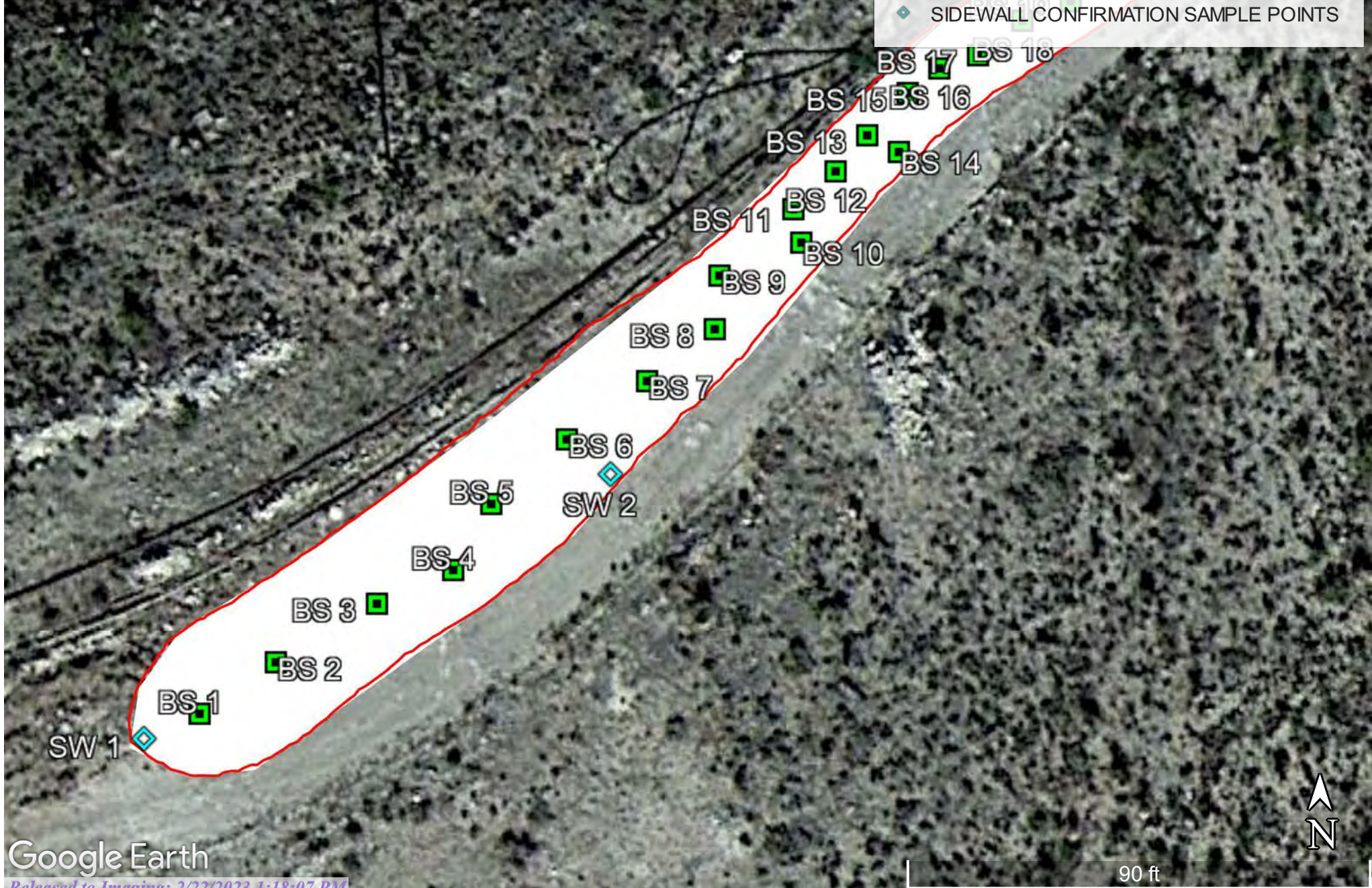
Closure Approved by:  Date: 2/22/2023
Printed Name: Ashley Maxwell Title: Environmental Specialist

OXY-RIGHT HAND CANYON #34 FEDERAL #2

LEAK DATE 12/17/2010
EDDY CO, NM
ID#nKMW1101939461

Legend

- IFT EXCAVATION
- BOTTOM CONFIRMATION SAMPLE POINTS
- LEAK AREA
- SIDEWALL CONFIRMATION SAMPLE POINTS

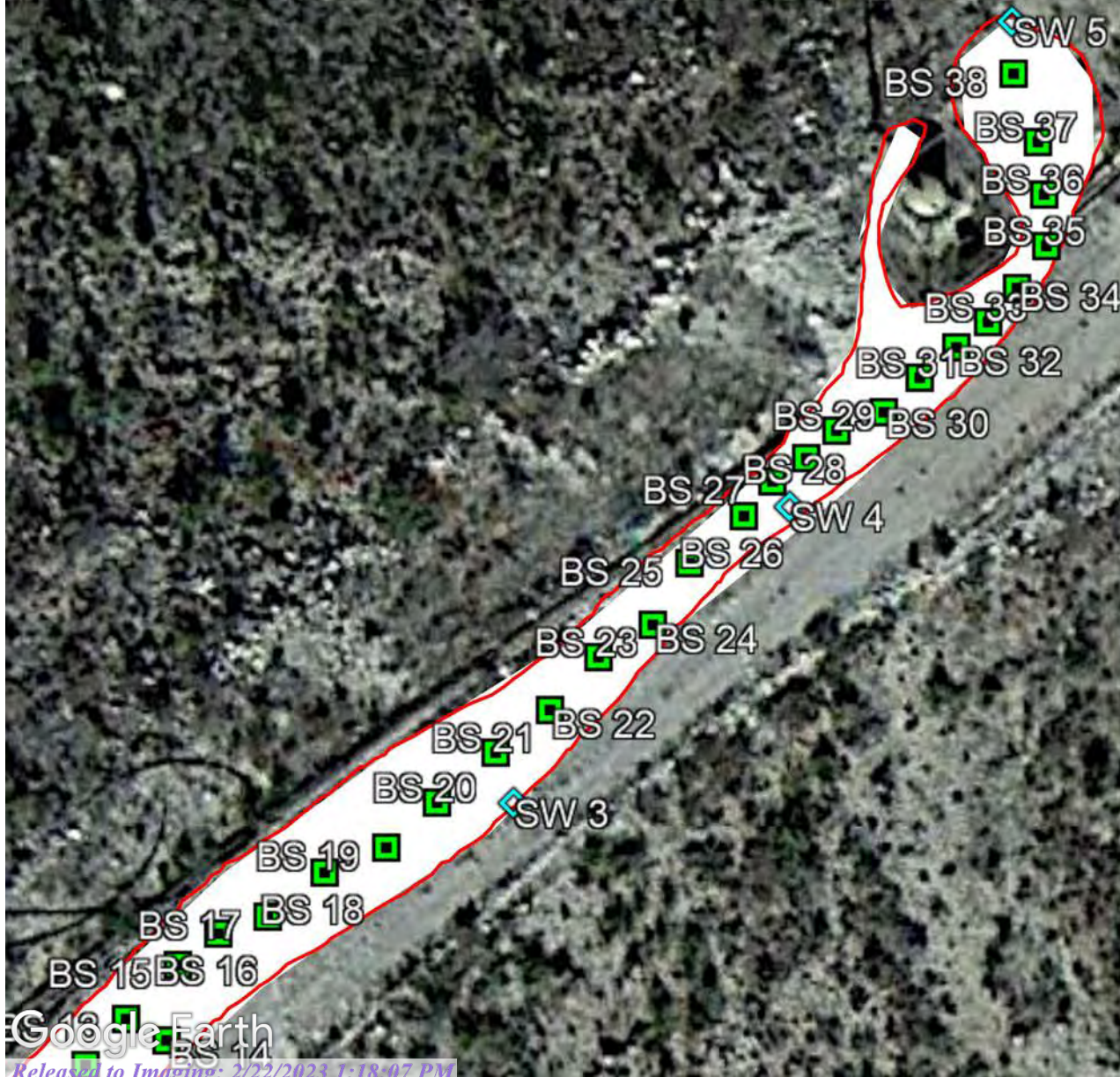


OXY-RIGHT HAND CANYON #34 FEDERAL #2

LEAK DATE 12/17/2010
EDDY CO, NM
ID#nKMW1101939461

Legend

- IFT EXCAVATION
- BOTTOM CONFIRMATION SAMPLE POINTS
- LEAK AREA
- SIDEWALL CONFIRMATION SAMPLE POINTS



RIGHT HAND CANYON #34-2 (12/15/10)

SAMPLE 7/14/22-7/15/22

BS 1	N 32.42986	W-104.49644
BS 2	N 32.42992	W-104.49644
BS 3	N 32.42994	W-104.49634
BS 4	N 32.47996	W-104.49641
BS 5	N 32.42999	W-104.49003
BS 6	N32.43006	W-104.49636
BS 7	N 32.43002	W-104.49633
BS 8	N 32.43005	W-104.49629
BS 9	N 32.42009	W-104.49627
BS 10	N 32.42002	W-104.49626
BS 11	N 32.42009	W-104.49619
BS 12	N 32.42014	W-104.49618
BS 13	N 32.43011	W-104.49615
BS 14	N 32.43015	W-104.49611
BS 15	N 32.42013	W-104.49612
BS 16	N 32.42021	W-104.49605
BS 17	N 32.42020	W-104.49605
BS 18	N32.42023	W-104.48603
BS 19	N32.42029	W-104.49600
BS 20	N 32.42025	W-104.49599
BS 21	N 32.42027	W-104.49546
BS22	N 32.42022	W-104.49596
BS 23	N 32.42026	W-104.49593
BS 24	N 32.42033	W-104.49589
BS 25	N 32.42043	W-104.49585
BS 26	N 32.42036	W-104.49583
BS 27	N 32.42044	W-104.49580
BS 28	N 32.42041	W-104.49577
BS 29	N 32.42037	W-104.48576
BS 30	N32.42043	W-104.49573
BS 31	N32.42044	W-104.49571
BS 32	N32.42041	W-104.49569
BS 33	N 32.42046	W-104.49563
BS 34	N 32.42052	W-104.49561
BS 35	N 32.42048	W-104.49560
BS 36	N 32.42055	W-104.49565
BS 37	N 32.42054	W-104.49556
BS 38	N 32.42054	W-104.49553
SW 1	N 32.42087	W-104.49648
SW 2	N 32.42048	W -104.49986
SW 3	N32.42077	W-104.49626
SW 4	N32.42049	W-104.49561
SW 5	N32.42036	W-104.49544

	Sample ID	BS 1 @ 1'	BS 2 @ 1'	BS 3 @ 1'	BS 4 @ 1'	BS 5 @ 1'	BS 6 @ 1'	BS 7 @ 1'	BS 8 @ 1'	BS 9 @ 1'	BS10 @ 1'	BS 11 @ 1'	BS 12 @ 1'	BS13 @ 1'	BS 14@1'	BS 15@ 1'	BS 16@1'	BS17 @ 1'	BS 18@1'
Analyte	Date	7/15/22	7/15/22	7/15/22	7/15/22	7/15/22	7/15/22	7/15/22	7/15/22	7/15/22	7/15/22	7/15/22	7/15/22	7/15/22	7/15/22	7/15/22	7/15/22	7/15/22	7/15/22
		mg/kg	mg/kg	mg/kg	mg/kg	mg/kg	mg/kg	mg/kg	mg/kg	mg/kg	mg/kg	mg/kg	mg/kg	mg/kg	mg/kg	mg/kg	mg/kg	mg/kg	mg/kg
Benzene		<0.025	<0.025	<0.050	<0.025	<0.025	<0.025	<0.025	<0.025	<0.025	<0.025	<0.025	<0.025	<0.025	<0.025	<0.025	<0.025	<0.025	<0.025
Toluene		<0.050	0.065	<0.050	<0.050	<0.050	<0.050	<0.050	<0.050	<0.050	<0.050	<0.050	<0.050	<0.050	<0.050	0.07	0.56	<0.050	0.56
Ethylbenzene		<0.025	<0.025	<0.050	<0.025	<0.025	<0.025	<0.025	<0.025	<0.025	<0.025	<0.025	<0.025	<0.025	<0.025	<0.050	<0.025	<0.025	<0.025
Total Xylenes		<0.075	<0.075	<0.150	<0.075	<0.075	<0.075	<0.075	<0.075	<0.075	<0.075	<0.075	<0.075	<0.075	<0.075	<0.075	<0.075	<0.075	<0.075
Total BTEX		<0.150	<0.150	<0.300	<0.150	<0.150	<0.150	<0.150	<0.150	<0.150	<0.150	<0.150	<0.150	<0.150	<0.150	<0.150	<0.150	<0.150	<0.150
Chloride		<16.0	<16.0	<16.0	<16.0	<16.0	<16.0	<16.0	<16.0	<16.0	<16.0	<16.0	<16.0	<16.0	<16.0	<16.0	16.0	<16.0	32.0
GRO		<10.0	<10.0	<10.0	<10.0	<10.0	<10.0	<10.0	<10.0	<10.0	<10.0	<10.0	<10.0	<10.0	<10.0	<10.0	<10.0	<10.0	<10.0
DRO		36.3	<10.0	<10.0	<10.0	<10.0	<10.0	20.6	<10.0	15	<10.0	<10.0	10.2	11.6	<10.0	13.7	13.2	<10.0	<10.0
EXT DRO		33.3	<10.0	<10.0	<10.0	<10.0	<10.0	10.8	<10.0	<10.0	<10.0	<10.0	<10.0	<10.0	<10.0	<10.0	<10.0	<10.0	<10.0

	Sample ID	BS 19 @1'	BS 20 @1'	BS 21@1'	BS 22@1'	BS 23@1'	BS24@1'	BS 25@1	BS 26@1'	BS27@1'	BS28@ 1'	BS 29 @ 1'	BS 30 @ 1'	BS 31@1'	BS 32@1'	BS 33@1'	BS 34@1'	BS 35@1'	BS 36@1'
Analyte	Date	7/15/22	7/15/22	7/15/22	7/15/22	7/15/22	7/15/22	7/15/22	7/15/22	7/15/22	7/15/22	7/15/22	7/15/22	7/15/22	7/15/22	7/15/22	7/15/22	7/15/22	7/15/22
		mg/kg	mg/kg	mg/kg	mg/kg	mg/kg	mg/kg	mg/kg	mg/kg	mg/kg	mg/kg	mg/kg	mg/kg	mg/kg	mg/kg	mg/kg	mg/kg	mg/kg	mg/kg
Benzene		<0.025	<0.025	<0.025	<0.025	<0.025	<0.025	<0.025	<0.025	<0.025	<0.025	<0.025	<0.025	<0.025	<0.025	<0.025	<0.025	<0.025	<0.025
Toluene		<0.050	<0.050	<0.050	54	0.7	<0.050	<0.050	<0.050	<0.050	<0.050	<0.050	<0.050	<0.050	<0.050	0.05	<0.050	<0.050	<0.050
Ethylbenzene		<0.025	<0.025	<0.025	<0.025	<0.025	<0.025	<0.025	<0.025	<0.025	<0.025	<0.025	<0.025	<0.025	<0.025	<0.025	<0.025	<0.025	<0.025
Total Xylenes		<0.075	<0.075	<0.075	<0.075	<0.075	<0.075	<0.075	<0.075	<0.075	<0.075	<0.075	<0.075	<0.075	<0.075	<0.075	<0.075	<0.075	<0.075
Total BTEX		<0.075	<0.150	<0.150	<0.150	<0.150	<0.150	<0.150	<0.150	<0.150	<0.150	<0.150	<0.150	<0.150	<0.150	<0.150	<0.150	<0.150	<0.150
Chloride		<16.0	16.0	<16.0	<16.0	<16.0	<16.0	<16.0	<16.0	<16.0	<16.0	<16.0	<16.0	<16.0	<16.0	<16.0	<16.0	<16.0	<16.0
GRO		<10.0	<10.0	<10.0	<10.0	<10.0	<10.0	<10.0	<10.0	<10.0	<10.0	<10.0	<10.0	<10.0	<10.0	<10.0	<10.0	<10.0	<10.0
DRO		<10.0	<10.0	12.1	<10.0	16	12.1	11.7	12.5	11.4	12	11	11.1	10.9	<10.0	20.2	<10.0	<10.0	<10.0
EXT DRO		<10.0	<10.0	<10.0	<10.0	<10.0	<10.0	<10.0	<10.0	<10.0	<10.0	<10.0	<10.0	<10.0	<10.0	12	<10.0	<10.0	<10.0

	Sample ID	BS 37 @1'	BS 38@1'
Analyte	Date	7/15/22	7/15/22
		mg/kg	mg/kg
Benzene		<0.025	<0.025
Toluene		<0.050	0.07
Ethylbenzene		<0.025	<0.025
Total Xylenes		<0.075	<0.075
Total BTEX		<0.150	<0.150
Chloride		<16.0	<16.0
GRO		<10.0	<10.0
DRO		10.8	<10.0
EXT DRO		<10.0	<10.0

	Sample ID	SW 1	SW 2	SW 3	SW 4	SW 5
Analyte	Date	7/15/22	7/15/22	7/15/22	7/15/22	7/15/22
		mg/kg	mg/kg	mg/kg	mg/kg	mg/kg
Benzene		<0.025	<0.025	<0.025	<0.025	<0.025
Toluene		0.082	0.055	0.054	<0.050	<0.050
Ethylbenzene		<0.025	<0.025	<0.025	<0.025	<0.025
Total Xylenes		<0.075	<0.075	<0.075	<0.075	<0.075
Total BTEX		<0.150	<0.150	<0.150	<0.150	<0.150
Chloride		48.0	64.0	<16.0	32.0	32.0
GRO		<10.0	<10.0	<10.0	<10.0	<10.0
DRO		<10.0	20.5	<10.0	<10.0	<10.0
EXT DRO		<10.0	<10.0	<10.0	<10.0	<10.0



OXY- RIGHTHAND CAYON #34 FEDERAL #2 (12/17/10)





OXY- RIGHTHAND CAYON #34 FEDERAL #2 (12/17/10)





OXY- RIGHTHAND CAYON #34 FEDERAL #2 (12/17/10)





OXY- RIGHTHAND CAYON #34 FEDERAL #2 (12/17/10)





PHONE (575) 393-2326 ° 101 E. MARLAND ° HOBBS, NM 88240

July 25, 2022

Cliff Brunson

BBC International, Inc.

P.O. Box 805

Hobbs, NM 88241

RE: RIGHT HAND CANYON 34-2 (12-15-10)

Enclosed are the results of analyses for samples received by the laboratory on 07/19/22 16:49.

Cardinal Laboratories is accredited through Texas NELAP under certificate number T104704398-22-15. Accreditation applies to drinking water, non-potable water and solid and chemical materials. All accredited analytes are denoted by an asterisk (*). For a complete list of accredited analytes and matrices visit the TCEQ website at www.tceq.texas.gov/field/qa/lab_accred_certif.html.

Cardinal Laboratories is accredited through the State of Colorado Department of Public Health and Environment for:

Method EPA 552.2	Haloacetic Acids (HAA-5)
Method EPA 524.2	Total Trihalomethanes (TTHM)
Method EPA 524.4	Regulated VOCs (V1, V2, V3)

Accreditation applies to public drinking water matrices.

This report meets NELAP requirements and is made up of a cover page, analytical results, and a copy of the original chain-of-custody. If you have any questions concerning this report, please feel free to contact me.

Sincerely,

A handwritten signature in black ink that reads "Celey D. Keene". The signature is written in a cursive style with a large, stylized 'C' and 'K'.

Celey D. Keene

Lab Director/Quality Manager



PHONE (575) 393-2326 • 101 E. MARLAND • HOBBS, NM 88240

Analytical Results For:

BBC International, Inc.
 Cliff Brunson
 P.O. Box 805
 Hobbs NM, 88241
 Fax To: (575) 397-0397

Received:	07/19/2022	Sampling Date:	07/14/2022
Reported:	07/25/2022	Sampling Type:	Soil
Project Name:	RIGHT HAND CANYON 34-2 (12-15-10)	Sampling Condition:	Cool & Intact
Project Number:	NOT GIVEN	Sample Received By:	Shalyn Rodriguez
Project Location:	OXY - NEW MEXICO		

Sample ID: BOTTOM SAMPLE 1 @ 1' (H223138-01)

BTEX 8260B		mg/kg		Analyzed By: MS					
Analyte	Result	Reporting Limit	Analyzed	Method Blank	BS	% Recovery	True Value QC	RPD	Qualifier
Benzene*	<0.025	0.025	07/20/2022	ND	2.09	105	2.00	3.33	
Toluene*	<0.050	0.050	07/20/2022	ND	2.13	106	2.00	1.41	
Ethylbenzene*	<0.025	0.025	07/20/2022	ND	2.14	107	2.00	1.23	
Total Xylenes*	<0.075	0.075	07/20/2022	ND	6.57	110	6.00	1.84	
Total BTEX	<0.150	0.150	07/20/2022	ND					

Surrogate: Dibromofluoromethane 99.2 % 84-115

Surrogate: Toluene-d8 98.0 % 95.3-106

Surrogate: 4-Bromofluorobenzene 98.9 % 85.1-109

Chloride, SM4500Cl-B		mg/kg		Analyzed By: AC						
Analyte	Result	Reporting Limit	Analyzed	Method Blank	BS	% Recovery	True Value QC	RPD	Qualifier	
Chloride	<16.0	16.0	07/20/2022	ND	432	108	400	0.00		

TPH 8015M		mg/kg		Analyzed By: MS					
Analyte	Result	Reporting Limit	Analyzed	Method Blank	BS	% Recovery	True Value QC	RPD	Qualifier
GRO C6-C10*	<10.0	10.0	07/21/2022	ND	193	96.6	200	3.31	
DRO >C10-C28*	40.1	10.0	07/21/2022	ND	194	97.0	200	1.99	
EXT DRO >C28-C36	34.8	10.0	07/21/2022	ND					

Surrogate: 1-Chlorooctane 73.6 % 43-149

Surrogate: 1-Chlorooctadecane 85.8 % 42.5-161

Cardinal Laboratories

*=Accredited Analyte

PLEASE NOTE: Liability and Damages. Cardinal's liability and client's exclusive remedy for any claim arising, whether based in contract or tort, shall be limited to the amount paid by client for analyses. All claims, including those for negligence and any other cause whatsoever shall be deemed waived unless made in writing and received by Cardinal within thirty (30) days after completion of the applicable service. In no event shall Cardinal be liable for incidental or consequential damages, including, without limitation, business interruptions, loss of use, or loss of profits incurred by client, its subsidiaries, affiliates or successors arising out of or related to the performance of the services hereunder by Cardinal, regardless of whether such claim is based upon any of the above stated reasons or otherwise. Results relate only to the samples identified above. This report shall not be reproduced except in full with written approval of Cardinal Laboratories.

Celey D. Keene, Lab Director/Quality Manager



PHONE (575) 393-2326 ° 101 E. MARLAND ° HOBBS, NM 88240

Analytical Results For:

BBC International, Inc.
 Cliff Brunson
 P.O. Box 805
 Hobbs NM, 88241
 Fax To: (575) 397-0397

Received:	07/19/2022	Sampling Date:	07/14/2022
Reported:	07/25/2022	Sampling Type:	Soil
Project Name:	RIGHT HAND CANYON 34-2 (12-15-10)	Sampling Condition:	Cool & Intact
Project Number:	NOT GIVEN	Sample Received By:	Shalyn Rodriguez
Project Location:	OXY - NEW MEXICO		

Sample ID: BOTTOM SAMPLE 2 @ 1' (H223138-02)

BTEX 8260B		mg/kg		Analyzed By: MS					
Analyte	Result	Reporting Limit	Analyzed	Method Blank	BS	% Recovery	True Value QC	RPD	Qualifier
Benzene*	<0.025	0.025	07/20/2022	ND	2.09	105	2.00	3.33	
Toluene*	<0.050	0.050	07/20/2022	ND	2.13	106	2.00	1.41	
Ethylbenzene*	<0.025	0.025	07/20/2022	ND	2.14	107	2.00	1.23	
Total Xylenes*	<0.075	0.075	07/20/2022	ND	6.57	110	6.00	1.84	
Total BTEX	<0.150	0.150	07/20/2022	ND					

Surrogate: Dibromofluoromethane 102 % 84-115
 Surrogate: Toluene-d8 98.8 % 95.3-106
 Surrogate: 4-Bromofluorobenzene 99.5 % 85.1-109

Chloride, SM4500Cl-B		mg/kg		Analyzed By: AC					
Analyte	Result	Reporting Limit	Analyzed	Method Blank	BS	% Recovery	True Value QC	RPD	Qualifier
Chloride	<16.0	16.0	07/20/2022	ND	432	108	400	0.00	

TPH 8015M		mg/kg		Analyzed By: MS					
Analyte	Result	Reporting Limit	Analyzed	Method Blank	BS	% Recovery	True Value QC	RPD	Qualifier
GRO C6-C10*	<10.0	10.0	07/21/2022	ND	193	96.6	200	3.31	
DRO >C10-C28*	36.3	10.0	07/21/2022	ND	194	97.0	200	1.99	
EXT DRO >C28-C36	33.3	10.0	07/21/2022	ND					

Surrogate: 1-Chlorooctane 75.5 % 43-149
 Surrogate: 1-Chlorooctadecane 87.5 % 42.5-161

Cardinal Laboratories

*=Accredited Analyte

PLEASE NOTE: Liability and Damages. Cardinal's liability and client's exclusive remedy for any claim arising, whether based in contract or tort, shall be limited to the amount paid by client for analyses. All claims, including those for negligence and any other cause whatsoever shall be deemed waived unless made in writing and received by Cardinal within thirty (30) days after completion of the applicable service. In no event shall Cardinal be liable for incidental or consequential damages, including, without limitation, business interruptions, loss of use, or loss of profits incurred by client, its subsidiaries, affiliates or successors arising out of or related to the performance of the services hereunder by Cardinal, regardless of whether such claim is based upon any of the above stated reasons or otherwise. Results relate only to the samples identified above. This report shall not be reproduced except in full with written approval of Cardinal Laboratories.

Celey D. Keene, Lab Director/Quality Manager



PHONE (575) 393-2326 • 101 E. MARLAND • HOBBS, NM 88240

Analytical Results For:

BBC International, Inc.
 Cliff Brunson
 P.O. Box 805
 Hobbs NM, 88241
 Fax To: (575) 397-0397

Received:	07/19/2022	Sampling Date:	07/14/2022
Reported:	07/25/2022	Sampling Type:	Soil
Project Name:	RIGHT HAND CANYON 34-2 (12-15-10)	Sampling Condition:	Cool & Intact
Project Number:	NOT GIVEN	Sample Received By:	Shalyn Rodriguez
Project Location:	OXY - NEW MEXICO		

Sample ID: BOTTOM SAMPLE 3 @ 1' (H223138-03)

BTEx 8260B		mg/kg		Analyzed By: MS					
Analyte	Result	Reporting Limit	Analyzed	Method Blank	BS	% Recovery	True Value QC	RPD	Qualifier
Benzene*	<0.025	0.025	07/20/2022	ND	2.09	105	2.00	3.33	
Toluene*	0.065	0.050	07/20/2022	ND	2.13	106	2.00	1.41	
Ethylbenzene*	<0.025	0.025	07/20/2022	ND	2.14	107	2.00	1.23	
Total Xylenes*	<0.075	0.075	07/20/2022	ND	6.57	110	6.00	1.84	
Total BTEx	<0.150	0.150	07/20/2022	ND					

Surrogate: Dibromofluoromethane 100 % 84-115
 Surrogate: Toluene-d8 99.0 % 95.3-106
 Surrogate: 4-Bromofluorobenzene 98.8 % 85.1-109

Chloride, SM4500Cl-B		mg/kg		Analyzed By: AC						
Analyte	Result	Reporting Limit	Analyzed	Method Blank	BS	% Recovery	True Value QC	RPD	Qualifier	
Chloride	<16.0	16.0	07/20/2022	ND	432	108	400	0.00		

TPH 8015M		mg/kg		Analyzed By: MS					
Analyte	Result	Reporting Limit	Analyzed	Method Blank	BS	% Recovery	True Value QC	RPD	Qualifier
GRO C6-C10*	<10.0	10.0	07/21/2022	ND	193	96.6	200	3.31	
DRO >C10-C28*	<10.0	10.0	07/21/2022	ND	194	97.0	200	1.99	
EXT DRO >C28-C36	<10.0	10.0	07/21/2022	ND					

Surrogate: 1-Chlorooctane 71.6 % 43-149
 Surrogate: 1-Chlorooctadecane 80.8 % 42.5-161

Cardinal Laboratories

*=Accredited Analyte

PLEASE NOTE: Liability and Damages. Cardinal's liability and client's exclusive remedy for any claim arising, whether based in contract or tort, shall be limited to the amount paid by client for analyses. All claims, including those for negligence and any other cause whatsoever shall be deemed waived unless made in writing and received by Cardinal within thirty (30) days after completion of the applicable service. In no event shall Cardinal be liable for incidental or consequential damages, including, without limitation, business interruptions, loss of use, or loss of profits incurred by client, its subsidiaries, affiliates or successors arising out of or related to the performance of the services hereunder by Cardinal, regardless of whether such claim is based upon any of the above stated reasons or otherwise. Results relate only to the samples identified above. This report shall not be reproduced except in full with written approval of Cardinal Laboratories.

Celey D. Keene, Lab Director/Quality Manager



PHONE (575) 393-2326 • 101 E. MARLAND • HOBBS, NM 88240

Analytical Results For:

BBC International, Inc.
 Cliff Brunson
 P.O. Box 805
 Hobbs NM, 88241
 Fax To: (575) 397-0397

Received:	07/19/2022	Sampling Date:	07/14/2022
Reported:	07/25/2022	Sampling Type:	Soil
Project Name:	RIGHT HAND CANYON 34-2 (12-15-10)	Sampling Condition:	Cool & Intact
Project Number:	NOT GIVEN	Sample Received By:	Shalyn Rodriguez
Project Location:	OXY - NEW MEXICO		

Sample ID: BOTTOM SAMPLE 4 @ 1' (H223138-04)

BTX 8260B			mg/kg							
			Analyzed By: MS							
Analyte	Result	Reporting Limit	Analyzed	Method Blank	BS	% Recovery	True Value QC	RPD	Qualifier	
Benzene*	<0.025	0.025	07/20/2022	ND	2.09	105	2.00	3.33		
Toluene*	<0.050	0.050	07/20/2022	ND	2.13	106	2.00	1.41		
Ethylbenzene*	<0.025	0.025	07/20/2022	ND	2.14	107	2.00	1.23		
Total Xylenes*	<0.075	0.075	07/20/2022	ND	6.57	110	6.00	1.84		
Total BTX	<0.150	0.150	07/20/2022	ND						

Surrogate: Dibromofluoromethane 98.9 % 84-115
 Surrogate: Toluene-d8 98.6 % 95.3-106
 Surrogate: 4-Bromofluorobenzene 101 % 85.1-109

Chloride, SM4500Cl-B			mg/kg							
			Analyzed By: AC							
Analyte	Result	Reporting Limit	Analyzed	Method Blank	BS	% Recovery	True Value QC	RPD	Qualifier	
Chloride	<16.0	16.0	07/20/2022	ND	432	108	400	0.00		

TPH 8015M			mg/kg							
			Analyzed By: MS							
Analyte	Result	Reporting Limit	Analyzed	Method Blank	BS	% Recovery	True Value QC	RPD	Qualifier	
GRO C6-C10*	<10.0	10.0	07/21/2022	ND	193	96.6	200	3.31		
DRO >C10-C28*	<10.0	10.0	07/21/2022	ND	194	97.0	200	1.99		
EXT DRO >C28-C36	<10.0	10.0	07/21/2022	ND						

Surrogate: 1-Chlorooctane 77.3 % 43-149
 Surrogate: 1-Chlorooctadecane 88.1 % 42.5-161

Cardinal Laboratories

*=Accredited Analyte

PLEASE NOTE: Liability and Damages. Cardinal's liability and client's exclusive remedy for any claim arising, whether based in contract or tort, shall be limited to the amount paid by client for analyses. All claims, including those for negligence and any other cause whatsoever shall be deemed waived unless made in writing and received by Cardinal within thirty (30) days after completion of the applicable service. In no event shall Cardinal be liable for incidental or consequential damages, including, without limitation, business interruptions, loss of use, or loss of profits incurred by client, its subsidiaries, affiliates or successors arising out of or related to the performance of the services hereunder by Cardinal, regardless of whether such claim is based upon any of the above stated reasons or otherwise. Results relate only to the samples identified above. This report shall not be reproduced except in full with written approval of Cardinal Laboratories.

Celey D. Keene, Lab Director/Quality Manager



PHONE (575) 393-2326 • 101 E. MARLAND • HOBBS, NM 88240

Analytical Results For:

BBC International, Inc.
 Cliff Brunson
 P.O. Box 805
 Hobbs NM, 88241
 Fax To: (575) 397-0397

Received:	07/19/2022	Sampling Date:	07/14/2022
Reported:	07/25/2022	Sampling Type:	Soil
Project Name:	RIGHT HAND CANYON 34-2 (12-15-10)	Sampling Condition:	Cool & Intact
Project Number:	NOT GIVEN	Sample Received By:	Shalyn Rodriguez
Project Location:	OXY - NEW MEXICO		

Sample ID: BOTTOM SAMPLE 5 @ 1' (H223138-05)

BTX 8260B		mg/kg		Analyzed By: MS					
Analyte	Result	Reporting Limit	Analyzed	Method Blank	BS	% Recovery	True Value QC	RPD	Qualifier
Benzene*	<0.025	0.025	07/20/2022	ND	2.09	105	2.00	3.33	
Toluene*	<0.050	0.050	07/20/2022	ND	2.13	106	2.00	1.41	
Ethylbenzene*	<0.025	0.025	07/20/2022	ND	2.14	107	2.00	1.23	
Total Xylenes*	<0.075	0.075	07/20/2022	ND	6.57	110	6.00	1.84	
Total BTX	<0.150	0.150	07/20/2022	ND					

Surrogate: Dibromofluoromethane 99.3 % 84-115

Surrogate: Toluene-d8 98.1 % 95.3-106

Surrogate: 4-Bromofluorobenzene 102 % 85.1-109

Chloride, SM4500Cl-B		mg/kg		Analyzed By: AC						
Analyte	Result	Reporting Limit	Analyzed	Method Blank	BS	% Recovery	True Value QC	RPD	Qualifier	
Chloride	<16.0	16.0	07/20/2022	ND	432	108	400	0.00		

TPH 8015M		mg/kg		Analyzed By: MS					
Analyte	Result	Reporting Limit	Analyzed	Method Blank	BS	% Recovery	True Value QC	RPD	Qualifier
GRO C6-C10*	<10.0	10.0	07/21/2022	ND	193	96.6	200	3.31	
DRO >C10-C28*	<10.0	10.0	07/21/2022	ND	194	97.0	200	1.99	
EXT DRO >C28-C36	<10.0	10.0	07/21/2022	ND					

Surrogate: 1-Chlorooctane 66.0 % 43-149

Surrogate: 1-Chlorooctadecane 73.8 % 42.5-161

Cardinal Laboratories

*=Accredited Analyte

PLEASE NOTE: Liability and Damages. Cardinal's liability and client's exclusive remedy for any claim arising, whether based in contract or tort, shall be limited to the amount paid by client for analyses. All claims, including those for negligence and any other cause whatsoever shall be deemed waived unless made in writing and received by Cardinal within thirty (30) days after completion of the applicable service. In no event shall Cardinal be liable for incidental or consequential damages, including, without limitation, business interruptions, loss of use, or loss of profits incurred by client, its subsidiaries, affiliates or successors arising out of or related to the performance of the services hereunder by Cardinal, regardless of whether such claim is based upon any of the above stated reasons or otherwise. Results relate only to the samples identified above. This report shall not be reproduced except in full with written approval of Cardinal Laboratories.

Celey D. Keene, Lab Director/Quality Manager



PHONE (575) 393-2326 • 101 E. MARLAND • HOBBS, NM 88240

Analytical Results For:

BBC International, Inc.
 Cliff Brunson
 P.O. Box 805
 Hobbs NM, 88241
 Fax To: (575) 397-0397

Received:	07/19/2022	Sampling Date:	07/14/2022
Reported:	07/25/2022	Sampling Type:	Soil
Project Name:	RIGHT HAND CANYON 34-2 (12-15-10)	Sampling Condition:	Cool & Intact
Project Number:	NOT GIVEN	Sample Received By:	Shalyn Rodriguez
Project Location:	OXY - NEW MEXICO		

Sample ID: BOTTOM SAMPLE 6 @ 1' (H223138-06)

BTX 8260B		mg/kg		Analyzed By: MS						
Analyte	Result	Reporting Limit	Analyzed	Method Blank	BS	% Recovery	True Value QC	RPD	Qualifier	
Benzene*	<0.025	0.025	07/20/2022	ND	2.09	105	2.00	3.33		
Toluene*	<0.050	0.050	07/20/2022	ND	2.13	106	2.00	1.41		
Ethylbenzene*	<0.025	0.025	07/20/2022	ND	2.14	107	2.00	1.23		
Total Xylenes*	<0.075	0.075	07/20/2022	ND	6.57	110	6.00	1.84		
Total BTX	<0.150	0.150	07/20/2022	ND						

Surrogate: Dibromofluoromethane 98.9 % 84-115

Surrogate: Toluene-d8 99.7 % 95.3-106

Surrogate: 4-Bromofluorobenzene 101 % 85.1-109

Chloride, SM4500Cl-B		mg/kg		Analyzed By: AC						
Analyte	Result	Reporting Limit	Analyzed	Method Blank	BS	% Recovery	True Value QC	RPD	Qualifier	
Chloride	<16.0	16.0	07/20/2022	ND	432	108	400	0.00		

TPH 8015M		mg/kg		Analyzed By: MS					
Analyte	Result	Reporting Limit	Analyzed	Method Blank	BS	% Recovery	True Value QC	RPD	Qualifier
GRO C6-C10*	<10.0	10.0	07/21/2022	ND	193	96.6	200	3.31	
DRO >C10-C28*	<10.0	10.0	07/21/2022	ND	194	97.0	200	1.99	
EXT DRO >C28-C36	<10.0	10.0	07/21/2022	ND					

Surrogate: 1-Chlorooctane 73.6 % 43-149

Surrogate: 1-Chlorooctadecane 85.7 % 42.5-161

Cardinal Laboratories

*=Accredited Analyte

PLEASE NOTE: Liability and Damages. Cardinal's liability and client's exclusive remedy for any claim arising, whether based in contract or tort, shall be limited to the amount paid by client for analyses. All claims, including those for negligence and any other cause whatsoever shall be deemed waived unless made in writing and received by Cardinal within thirty (30) days after completion of the applicable service. In no event shall Cardinal be liable for incidental or consequential damages, including, without limitation, business interruptions, loss of use, or loss of profits incurred by client, its subsidiaries, affiliates or successors arising out of or related to the performance of the services hereunder by Cardinal, regardless of whether such claim is based upon any of the above stated reasons or otherwise. Results relate only to the samples identified above. This report shall not be reproduced except in full with written approval of Cardinal Laboratories.

Celey D. Keene, Lab Director/Quality Manager



PHONE (575) 393-2326 • 101 E. MARLAND • HOBBS, NM 88240

Analytical Results For:

BBC International, Inc.
 Cliff Brunson
 P.O. Box 805
 Hobbs NM, 88241
 Fax To: (575) 397-0397

Received:	07/19/2022	Sampling Date:	07/14/2022
Reported:	07/25/2022	Sampling Type:	Soil
Project Name:	RIGHT HAND CANYON 34-2 (12-15-10)	Sampling Condition:	Cool & Intact
Project Number:	NOT GIVEN	Sample Received By:	Shalyn Rodriguez
Project Location:	OXY - NEW MEXICO		

Sample ID: BOTTOM SAMPLE 7 @ 1' (H223138-07)

BTEX 8260B		mg/kg		Analyzed By: MS						
Analyte	Result	Reporting Limit	Analyzed	Method Blank	BS	% Recovery	True Value QC	RPD	Qualifier	
Benzene*	<0.025	0.025	07/20/2022	ND	2.09	105	2.00	3.33		
Toluene*	<0.050	0.050	07/20/2022	ND	2.13	106	2.00	1.41		
Ethylbenzene*	<0.025	0.025	07/20/2022	ND	2.14	107	2.00	1.23		
Total Xylenes*	<0.075	0.075	07/20/2022	ND	6.57	110	6.00	1.84		
Total BTEX	<0.150	0.150	07/20/2022	ND						

Surrogate: Dibromofluoromethane 99.3 % 84-115
 Surrogate: Toluene-d8 99.0 % 95.3-106
 Surrogate: 4-Bromofluorobenzene 97.4 % 85.1-109

Chloride, SM4500Cl-B		mg/kg		Analyzed By: AC						
Analyte	Result	Reporting Limit	Analyzed	Method Blank	BS	% Recovery	True Value QC	RPD	Qualifier	
Chloride	<16.0	16.0	07/20/2022	ND	432	108	400	0.00		

TPH 8015M		mg/kg		Analyzed By: MS					
Analyte	Result	Reporting Limit	Analyzed	Method Blank	BS	% Recovery	True Value QC	RPD	Qualifier
GRO C6-C10*	<10.0	10.0	07/21/2022	ND	193	96.6	200	3.31	
DRO >C10-C28*	20.6	10.0	07/21/2022	ND	194	97.0	200	1.99	
EXT DRO >C28-C36	10.8	10.0	07/21/2022	ND					

Surrogate: 1-Chlorooctane 72.0 % 43-149
 Surrogate: 1-Chlorooctadecane 82.6 % 42.5-161

Cardinal Laboratories

*=Accredited Analyte

PLEASE NOTE: Liability and Damages. Cardinal's liability and client's exclusive remedy for any claim arising, whether based in contract or tort, shall be limited to the amount paid by client for analyses. All claims, including those for negligence and any other cause whatsoever shall be deemed waived unless made in writing and received by Cardinal within thirty (30) days after completion of the applicable service. In no event shall Cardinal be liable for incidental or consequential damages, including, without limitation, business interruptions, loss of use, or loss of profits incurred by client, its subsidiaries, affiliates or successors arising out of or related to the performance of the services hereunder by Cardinal, regardless of whether such claim is based upon any of the above stated reasons or otherwise. Results relate only to the samples identified above. This report shall not be reproduced except in full with written approval of Cardinal Laboratories.

Celey D. Keene, Lab Director/Quality Manager



PHONE (575) 393-2326 ° 101 E. MARLAND ° HOBBS, NM 88240

Analytical Results For:

BBC International, Inc.
 Cliff Brunson
 P.O. Box 805
 Hobbs NM, 88241
 Fax To: (575) 397-0397

Received:	07/19/2022	Sampling Date:	07/14/2022
Reported:	07/25/2022	Sampling Type:	Soil
Project Name:	RIGHT HAND CANYON 34-2 (12-15-10)	Sampling Condition:	Cool & Intact
Project Number:	NOT GIVEN	Sample Received By:	Shalyn Rodriguez
Project Location:	OXY - NEW MEXICO		

Sample ID: BOTTOM SAMPLE 8 @ 1' (H223138-08)

BTX 8260B		mg/kg		Analyzed By: MS					
Analyte	Result	Reporting Limit	Analyzed	Method Blank	BS	% Recovery	True Value QC	RPD	Qualifier
Benzene*	<0.025	0.025	07/20/2022	ND	2.09	105	2.00	3.33	
Toluene*	<0.050	0.050	07/20/2022	ND	2.13	106	2.00	1.41	
Ethylbenzene*	<0.025	0.025	07/20/2022	ND	2.14	107	2.00	1.23	
Total Xylenes*	<0.075	0.075	07/20/2022	ND	6.57	110	6.00	1.84	
Total BTX	<0.150	0.150	07/20/2022	ND					

Surrogate: Dibromofluoromethane 99.5 % 84-115
 Surrogate: Toluene-d8 100 % 95.3-106
 Surrogate: 4-Bromofluorobenzene 99.9 % 85.1-109

Chloride, SM4500Cl-B		mg/kg		Analyzed By: AC					
Analyte	Result	Reporting Limit	Analyzed	Method Blank	BS	% Recovery	True Value QC	RPD	Qualifier
Chloride	<16.0	16.0	07/20/2022	ND	432	108	400	0.00	

TPH 8015M		mg/kg		Analyzed By: MS					
Analyte	Result	Reporting Limit	Analyzed	Method Blank	BS	% Recovery	True Value QC	RPD	Qualifier
GRO C6-C10*	<10.0	10.0	07/21/2022	ND	193	96.6	200	3.31	
DRO >C10-C28*	<10.0	10.0	07/21/2022	ND	194	97.0	200	1.99	
EXT DRO >C28-C36	<10.0	10.0	07/21/2022	ND					

Surrogate: 1-Chlorooctane 72.6 % 43-149
 Surrogate: 1-Chlorooctadecane 82.7 % 42.5-161

Cardinal Laboratories

*=Accredited Analyte

PLEASE NOTE: Liability and Damages. Cardinal's liability and client's exclusive remedy for any claim arising, whether based in contract or tort, shall be limited to the amount paid by client for analyses. All claims, including those for negligence and any other cause whatsoever shall be deemed waived unless made in writing and received by Cardinal within thirty (30) days after completion of the applicable service. In no event shall Cardinal be liable for incidental or consequential damages, including, without limitation, business interruptions, loss of use, or loss of profits incurred by client, its subsidiaries, affiliates or successors arising out of or related to the performance of the services hereunder by Cardinal, regardless of whether such claim is based upon any of the above stated reasons or otherwise. Results relate only to the samples identified above. This report shall not be reproduced except in full with written approval of Cardinal Laboratories.

Celey D. Keene, Lab Director/Quality Manager



PHONE (575) 393-2326 • 101 E. MARLAND • HOBBS, NM 88240

Analytical Results For:

BBC International, Inc.
 Cliff Brunson
 P.O. Box 805
 Hobbs NM, 88241
 Fax To: (575) 397-0397

Received:	07/19/2022	Sampling Date:	07/14/2022
Reported:	07/25/2022	Sampling Type:	Soil
Project Name:	RIGHT HAND CANYON 34-2 (12-15-10)	Sampling Condition:	Cool & Intact
Project Number:	NOT GIVEN	Sample Received By:	Shalyn Rodriguez
Project Location:	OXY - NEW MEXICO		

Sample ID: BOTTOM SAMPLE 9 @ 1' (H223138-09)

BTX 8260B		mg/kg		Analyzed By: MS					
Analyte	Result	Reporting Limit	Analyzed	Method Blank	BS	% Recovery	True Value QC	RPD	Qualifier
Benzene*	<0.025	0.025	07/20/2022	ND	2.09	105	2.00	3.33	
Toluene*	<0.050	0.050	07/20/2022	ND	2.13	106	2.00	1.41	
Ethylbenzene*	<0.025	0.025	07/20/2022	ND	2.14	107	2.00	1.23	
Total Xylenes*	<0.075	0.075	07/20/2022	ND	6.57	110	6.00	1.84	
Total BTX	<0.150	0.150	07/20/2022	ND					

Surrogate: Dibromofluoromethane 99.4 % 84-115
 Surrogate: Toluene-d8 98.9 % 95.3-106
 Surrogate: 4-Bromofluorobenzene 97.5 % 85.1-109

Chloride, SM4500Cl-B		mg/kg		Analyzed By: AC						
Analyte	Result	Reporting Limit	Analyzed	Method Blank	BS	% Recovery	True Value QC	RPD	Qualifier	
Chloride	<16.0	16.0	07/20/2022	ND	432	108	400	0.00		

TPH 8015M		mg/kg		Analyzed By: MS					
Analyte	Result	Reporting Limit	Analyzed	Method Blank	BS	% Recovery	True Value QC	RPD	Qualifier
GRO C6-C10*	<10.0	10.0	07/21/2022	ND	193	96.6	200	3.31	
DRO >C10-C28*	15.0	10.0	07/21/2022	ND	194	97.0	200	1.99	
EXT DRO >C28-C36	<10.0	10.0	07/21/2022	ND					

Surrogate: 1-Chlorooctane 68.8 % 43-149
 Surrogate: 1-Chlorooctadecane 77.3 % 42.5-161

Cardinal Laboratories

*=Accredited Analyte

PLEASE NOTE: Liability and Damages. Cardinal's liability and client's exclusive remedy for any claim arising, whether based in contract or tort, shall be limited to the amount paid by client for analyses. All claims, including those for negligence and any other cause whatsoever shall be deemed waived unless made in writing and received by Cardinal within thirty (30) days after completion of the applicable service. In no event shall Cardinal be liable for incidental or consequential damages, including, without limitation, business interruptions, loss of use, or loss of profits incurred by client, its subsidiaries, affiliates or successors arising out of or related to the performance of the services hereunder by Cardinal, regardless of whether such claim is based upon any of the above stated reasons or otherwise. Results relate only to the samples identified above. This report shall not be reproduced except in full with written approval of Cardinal Laboratories.

Celey D. Keene, Lab Director/Quality Manager



PHONE (575) 393-2326 • 101 E. MARLAND • HOBBS, NM 88240

Analytical Results For:

BBC International, Inc.
 Cliff Brunson
 P.O. Box 805
 Hobbs NM, 88241
 Fax To: (575) 397-0397

Received:	07/19/2022	Sampling Date:	07/14/2022
Reported:	07/25/2022	Sampling Type:	Soil
Project Name:	RIGHT HAND CANYON 34-2 (12-15-10)	Sampling Condition:	Cool & Intact
Project Number:	NOT GIVEN	Sample Received By:	Shalyn Rodriguez
Project Location:	OXY - NEW MEXICO		

Sample ID: BOTTOM SAMPLE 10 @ 1' (H223138-10)

BTX 8260B		mg/kg		Analyzed By: MS					
Analyte	Result	Reporting Limit	Analyzed	Method Blank	BS	% Recovery	True Value QC	RPD	Qualifier
Benzene*	<0.025	0.025	07/20/2022	ND	2.09	105	2.00	3.33	
Toluene*	<0.050	0.050	07/20/2022	ND	2.13	106	2.00	1.41	
Ethylbenzene*	<0.025	0.025	07/20/2022	ND	2.14	107	2.00	1.23	
Total Xylenes*	<0.075	0.075	07/20/2022	ND	6.57	110	6.00	1.84	
Total BTX	<0.150	0.150	07/20/2022	ND					

Surrogate: Dibromofluoromethane 98.3 % 84-115

Surrogate: Toluene-d8 99.5 % 95.3-106

Surrogate: 4-Bromofluorobenzene 99.2 % 85.1-109

Chloride, SM4500Cl-B		mg/kg		Analyzed By: AC						
Analyte	Result	Reporting Limit	Analyzed	Method Blank	BS	% Recovery	True Value QC	RPD	Qualifier	
Chloride	<16.0	16.0	07/20/2022	ND	432	108	400	0.00		

TPH 8015M		mg/kg		Analyzed By: MS					
Analyte	Result	Reporting Limit	Analyzed	Method Blank	BS	% Recovery	True Value QC	RPD	Qualifier
GRO C6-C10*	<10.0	10.0	07/21/2022	ND	193	96.6	200	3.31	
DRO >C10-C28*	<10.0	10.0	07/21/2022	ND	194	97.0	200	1.99	
EXT DRO >C28-C36	<10.0	10.0	07/21/2022	ND					

Surrogate: 1-Chlorooctane 63.5 % 43-149

Surrogate: 1-Chlorooctadecane 76.0 % 42.5-161

Cardinal Laboratories

*=Accredited Analyte

PLEASE NOTE: Liability and Damages. Cardinal's liability and client's exclusive remedy for any claim arising, whether based in contract or tort, shall be limited to the amount paid by client for analyses. All claims, including those for negligence and any other cause whatsoever shall be deemed waived unless made in writing and received by Cardinal within thirty (30) days after completion of the applicable service. In no event shall Cardinal be liable for incidental or consequential damages, including, without limitation, business interruptions, loss of use, or loss of profits incurred by client, its subsidiaries, affiliates or successors arising out of or related to the performance of the services hereunder by Cardinal, regardless of whether such claim is based upon any of the above stated reasons or otherwise. Results relate only to the samples identified above. This report shall not be reproduced except in full with written approval of Cardinal Laboratories.

Celey D. Keene, Lab Director/Quality Manager



PHONE (575) 393-2326 • 101 E. MARLAND • HOBBS, NM 88240

Analytical Results For:

BBC International, Inc.
 Cliff Brunson
 P.O. Box 805
 Hobbs NM, 88241
 Fax To: (575) 397-0397

Received:	07/19/2022	Sampling Date:	07/14/2022
Reported:	07/25/2022	Sampling Type:	Soil
Project Name:	RIGHT HAND CANYON 34-2 (12-15-10)	Sampling Condition:	Cool & Intact
Project Number:	NOT GIVEN	Sample Received By:	Shalyn Rodriguez
Project Location:	OXY - NEW MEXICO		

Sample ID: BOTTOM SAMPLE 11 @ 1' (H223138-11)

BTX 8260B		mg/kg		Analyzed By: MS					
Analyte	Result	Reporting Limit	Analyzed	Method Blank	BS	% Recovery	True Value QC	RPD	Qualifier
Benzene*	<0.025	0.025	07/20/2022	ND	2.09	105	2.00	3.33	
Toluene*	<0.050	0.050	07/20/2022	ND	2.13	106	2.00	1.41	
Ethylbenzene*	<0.025	0.025	07/20/2022	ND	2.14	107	2.00	1.23	
Total Xylenes*	<0.075	0.075	07/20/2022	ND	6.57	110	6.00	1.84	
Total BTX	<0.150	0.150	07/20/2022	ND					

Surrogate: Dibromofluoromethane 99.4 % 84-115
 Surrogate: Toluene-d8 99.9 % 95.3-106
 Surrogate: 4-Bromofluorobenzene 97.6 % 85.1-109

Chloride, SM4500Cl-B		mg/kg		Analyzed By: AC					
Analyte	Result	Reporting Limit	Analyzed	Method Blank	BS	% Recovery	True Value QC	RPD	Qualifier
Chloride	<16.0	16.0	07/20/2022	ND	432	108	400	0.00	

TPH 8015M		mg/kg		Analyzed By: MS					
Analyte	Result	Reporting Limit	Analyzed	Method Blank	BS	% Recovery	True Value QC	RPD	Qualifier
GRO C6-C10*	<10.0	10.0	07/21/2022	ND	193	96.6	200	3.31	
DRO >C10-C28*	<10.0	10.0	07/21/2022	ND	194	97.0	200	1.99	
EXT DRO >C28-C36	<10.0	10.0	07/21/2022	ND					

Surrogate: 1-Chlorooctane 76.7 % 43-149
 Surrogate: 1-Chlorooctadecane 89.9 % 42.5-161

Cardinal Laboratories

*=Accredited Analyte

PLEASE NOTE: Liability and Damages. Cardinal's liability and client's exclusive remedy for any claim arising, whether based in contract or tort, shall be limited to the amount paid by client for analyses. All claims, including those for negligence and any other cause whatsoever shall be deemed waived unless made in writing and received by Cardinal within thirty (30) days after completion of the applicable service. In no event shall Cardinal be liable for incidental or consequential damages, including, without limitation, business interruptions, loss of use, or loss of profits incurred by client, its subsidiaries, affiliates or successors arising out of or related to the performance of the services hereunder by Cardinal, regardless of whether such claim is based upon any of the above stated reasons or otherwise. Results relate only to the samples identified above. This report shall not be reproduced except in full with written approval of Cardinal Laboratories.

Celey D. Keene, Lab Director/Quality Manager



PHONE (575) 393-2326 • 101 E. MARLAND • HOBBS, NM 88240

Analytical Results For:

BBC International, Inc.
 Cliff Brunson
 P.O. Box 805
 Hobbs NM, 88241
 Fax To: (575) 397-0397

Received:	07/19/2022	Sampling Date:	07/14/2022
Reported:	07/25/2022	Sampling Type:	Soil
Project Name:	RIGHT HAND CANYON 34-2 (12-15-10)	Sampling Condition:	Cool & Intact
Project Number:	NOT GIVEN	Sample Received By:	Shalyn Rodriguez
Project Location:	OXY - NEW MEXICO		

Sample ID: BOTTOM SAMPLE 12 @ 1' (H223138-12)

BTEx 8260B		mg/kg		Analyzed By: MS					
Analyte	Result	Reporting Limit	Analyzed	Method Blank	BS	% Recovery	True Value QC	RPD	Qualifier
Benzene*	<0.025	0.025	07/20/2022	ND	2.09	105	2.00	3.33	
Toluene*	<0.050	0.050	07/20/2022	ND	2.13	106	2.00	1.41	
Ethylbenzene*	<0.025	0.025	07/20/2022	ND	2.14	107	2.00	1.23	
Total Xylenes*	<0.075	0.075	07/20/2022	ND	6.57	110	6.00	1.84	
Total BTEx	<0.150	0.150	07/20/2022	ND					

Surrogate: Dibromofluoromethane 99.0 % 84-115
 Surrogate: Toluene-d8 99.1 % 95.3-106
 Surrogate: 4-Bromofluorobenzene 97.7 % 85.1-109

Chloride, SM4500Cl-B		mg/kg		Analyzed By: AC						
Analyte	Result	Reporting Limit	Analyzed	Method Blank	BS	% Recovery	True Value QC	RPD	Qualifier	
Chloride	<16.0	16.0	07/20/2022	ND	432	108	400	0.00		

TPH 8015M		mg/kg		Analyzed By: MS					
Analyte	Result	Reporting Limit	Analyzed	Method Blank	BS	% Recovery	True Value QC	RPD	Qualifier
GRO C6-C10*	<10.0	10.0	07/21/2022	ND	193	96.6	200	3.31	
DRO >C10-C28*	10.2	10.0	07/21/2022	ND	194	97.0	200	1.99	
EXT DRO >C28-C36	<10.0	10.0	07/21/2022	ND					

Surrogate: 1-Chlorooctane 70.6 % 43-149
 Surrogate: 1-Chlorooctadecane 81.6 % 42.5-161

Cardinal Laboratories

*=Accredited Analyte

PLEASE NOTE: Liability and Damages. Cardinal's liability and client's exclusive remedy for any claim arising, whether based in contract or tort, shall be limited to the amount paid by client for analyses. All claims, including those for negligence and any other cause whatsoever shall be deemed waived unless made in writing and received by Cardinal within thirty (30) days after completion of the applicable service. In no event shall Cardinal be liable for incidental or consequential damages, including, without limitation, business interruptions, loss of use, or loss of profits incurred by client, its subsidiaries, affiliates or successors arising out of or related to the performance of the services hereunder by Cardinal, regardless of whether such claim is based upon any of the above stated reasons or otherwise. Results relate only to the samples identified above. This report shall not be reproduced except in full with written approval of Cardinal Laboratories.

Celey D. Keene, Lab Director/Quality Manager



PHONE (575) 393-2326 • 101 E. MARLAND • HOBBS, NM 88240

Analytical Results For:

BBC International, Inc.
 Cliff Brunson
 P.O. Box 805
 Hobbs NM, 88241
 Fax To: (575) 397-0397

Received:	07/19/2022	Sampling Date:	07/14/2022
Reported:	07/25/2022	Sampling Type:	Soil
Project Name:	RIGHT HAND CANYON 34-2 (12-15-10)	Sampling Condition:	Cool & Intact
Project Number:	NOT GIVEN	Sample Received By:	Shalyn Rodriguez
Project Location:	OXY - NEW MEXICO		

Sample ID: BOTTOM SAMPLE 13 @ 1' (H223138-13)

BTEX 8260B		mg/kg		Analyzed By: MS					
Analyte	Result	Reporting Limit	Analyzed	Method Blank	BS	% Recovery	True Value QC	RPD	Qualifier
Benzene*	<0.025	0.025	07/20/2022	ND	2.09	105	2.00	3.33	
Toluene*	<0.050	0.050	07/20/2022	ND	2.13	106	2.00	1.41	
Ethylbenzene*	<0.025	0.025	07/20/2022	ND	2.14	107	2.00	1.23	
Total Xylenes*	<0.075	0.075	07/20/2022	ND	6.57	110	6.00	1.84	
Total BTEX	<0.150	0.150	07/20/2022	ND					

Surrogate: Dibromofluoromethane 99.5 % 84-115
 Surrogate: Toluene-d8 99.8 % 95.3-106
 Surrogate: 4-Bromofluorobenzene 98.7 % 85.1-109

Chloride, SM4500Cl-B		mg/kg		Analyzed By: AC					
Analyte	Result	Reporting Limit	Analyzed	Method Blank	BS	% Recovery	True Value QC	RPD	Qualifier
Chloride	<16.0	16.0	07/20/2022	ND	432	108	400	0.00	

TPH 8015M		mg/kg		Analyzed By: MS					
Analyte	Result	Reporting Limit	Analyzed	Method Blank	BS	% Recovery	True Value QC	RPD	Qualifier
GRO C6-C10*	<10.0	10.0	07/21/2022	ND	193	96.6	200	3.31	
DRO >C10-C28*	11.6	10.0	07/21/2022	ND	194	97.0	200	1.99	
EXT DRO >C28-C36	<10.0	10.0	07/21/2022	ND					

Surrogate: 1-Chlorooctane 74.9 % 43-149
 Surrogate: 1-Chlorooctadecane 83.7 % 42.5-161

Cardinal Laboratories

*=Accredited Analyte

PLEASE NOTE: Liability and Damages. Cardinal's liability and client's exclusive remedy for any claim arising, whether based in contract or tort, shall be limited to the amount paid by client for analyses. All claims, including those for negligence and any other cause whatsoever shall be deemed waived unless made in writing and received by Cardinal within thirty (30) days after completion of the applicable service. In no event shall Cardinal be liable for incidental or consequential damages, including, without limitation, business interruptions, loss of use, or loss of profits incurred by client, its subsidiaries, affiliates or successors arising out of or related to the performance of the services hereunder by Cardinal, regardless of whether such claim is based upon any of the above stated reasons or otherwise. Results relate only to the samples identified above. This report shall not be reproduced except in full with written approval of Cardinal Laboratories.

Celey D. Keene, Lab Director/Quality Manager



PHONE (575) 393-2326 • 101 E. MARLAND • HOBBS, NM 88240

Analytical Results For:

BBC International, Inc.
 Cliff Brunson
 P.O. Box 805
 Hobbs NM, 88241
 Fax To: (575) 397-0397

Received:	07/19/2022	Sampling Date:	07/14/2022
Reported:	07/25/2022	Sampling Type:	Soil
Project Name:	RIGHT HAND CANYON 34-2 (12-15-10)	Sampling Condition:	Cool & Intact
Project Number:	NOT GIVEN	Sample Received By:	Shalyn Rodriguez
Project Location:	OXY - NEW MEXICO		

Sample ID: BOTTOM SAMPLE 14 @ 1' (H223138-14)

BTX 8260B		mg/kg		Analyzed By: MS					
Analyte	Result	Reporting Limit	Analyzed	Method Blank	BS	% Recovery	True Value QC	RPD	Qualifier
Benzene*	<0.025	0.025	07/20/2022	ND	2.09	105	2.00	3.33	
Toluene*	0.070	0.050	07/20/2022	ND	2.13	106	2.00	1.41	
Ethylbenzene*	<0.025	0.025	07/20/2022	ND	2.14	107	2.00	1.23	
Total Xylenes*	<0.075	0.075	07/20/2022	ND	6.57	110	6.00	1.84	
Total BTX	<0.150	0.150	07/20/2022	ND					

Surrogate: Dibromofluoromethane 99.8 % 84-115
 Surrogate: Toluene-d8 98.6 % 95.3-106
 Surrogate: 4-Bromofluorobenzene 97.1 % 85.1-109

Chloride, SM4500Cl-B		mg/kg		Analyzed By: AC						
Analyte	Result	Reporting Limit	Analyzed	Method Blank	BS	% Recovery	True Value QC	RPD	Qualifier	
Chloride	<16.0	16.0	07/20/2022	ND	432	108	400	0.00		

TPH 8015M		mg/kg		Analyzed By: MS					
Analyte	Result	Reporting Limit	Analyzed	Method Blank	BS	% Recovery	True Value QC	RPD	Qualifier
GRO C6-C10*	<10.0	10.0	07/21/2022	ND	193	96.6	200	3.31	
DRO >C10-C28*	13.7	10.0	07/21/2022	ND	194	97.0	200	1.99	
EXT DRO >C28-C36	<10.0	10.0	07/21/2022	ND					

Surrogate: 1-Chlorooctane 78.6 % 43-149
 Surrogate: 1-Chlorooctadecane 86.3 % 42.5-161

Cardinal Laboratories

*=Accredited Analyte

PLEASE NOTE: Liability and Damages. Cardinal's liability and client's exclusive remedy for any claim arising, whether based in contract or tort, shall be limited to the amount paid by client for analyses. All claims, including those for negligence and any other cause whatsoever shall be deemed waived unless made in writing and received by Cardinal within thirty (30) days after completion of the applicable service. In no event shall Cardinal be liable for incidental or consequential damages, including, without limitation, business interruptions, loss of use, or loss of profits incurred by client, its subsidiaries, affiliates or successors arising out of or related to the performance of the services hereunder by Cardinal, regardless of whether such claim is based upon any of the above stated reasons or otherwise. Results relate only to the samples identified above. This report shall not be reproduced except in full with written approval of Cardinal Laboratories.

Celey D. Keene, Lab Director/Quality Manager



PHONE (575) 393-2326 • 101 E. MARLAND • HOBBS, NM 88240

Analytical Results For:

BBC International, Inc.
 Cliff Brunson
 P.O. Box 805
 Hobbs NM, 88241
 Fax To: (575) 397-0397

Received:	07/19/2022	Sampling Date:	07/14/2022
Reported:	07/25/2022	Sampling Type:	Soil
Project Name:	RIGHT HAND CANYON 34-2 (12-15-10)	Sampling Condition:	Cool & Intact
Project Number:	NOT GIVEN	Sample Received By:	Shalyn Rodriguez
Project Location:	OXY - NEW MEXICO		

Sample ID: BOTTOM SAMPLE 15 @ 1' (H223138-15)

BTX 8260B		mg/kg		Analyzed By: MS					
Analyte	Result	Reporting Limit	Analyzed	Method Blank	BS	% Recovery	True Value QC	RPD	Qualifier
Benzene*	<0.025	0.025	07/20/2022	ND	2.09	105	2.00	3.33	
Toluene*	0.056	0.050	07/20/2022	ND	2.13	106	2.00	1.41	
Ethylbenzene*	<0.025	0.025	07/20/2022	ND	2.14	107	2.00	1.23	
Total Xylenes*	<0.075	0.075	07/20/2022	ND	6.57	110	6.00	1.84	
Total BTX	<0.150	0.150	07/20/2022	ND					

Surrogate: Dibromofluoromethane 97.2 % 84-115
 Surrogate: Toluene-d8 100 % 95.3-106
 Surrogate: 4-Bromofluorobenzene 97.0 % 85.1-109

Chloride, SM4500Cl-B		mg/kg		Analyzed By: AC					
Analyte	Result	Reporting Limit	Analyzed	Method Blank	BS	% Recovery	True Value QC	RPD	Qualifier
Chloride	16.0	16.0	07/20/2022	ND	432	108	400	0.00	

TPH 8015M		mg/kg		Analyzed By: MS					
Analyte	Result	Reporting Limit	Analyzed	Method Blank	BS	% Recovery	True Value QC	RPD	Qualifier
GRO C6-C10*	<10.0	10.0	07/21/2022	ND	193	96.6	200	3.31	
DRO >C10-C28*	13.2	10.0	07/21/2022	ND	194	97.0	200	1.99	
EXT DRO >C28-C36	<10.0	10.0	07/21/2022	ND					

Surrogate: 1-Chlorooctane 90.6 % 43-149
 Surrogate: 1-Chlorooctadecane 99.9 % 42.5-161

Cardinal Laboratories

*=Accredited Analyte

PLEASE NOTE: Liability and Damages. Cardinal's liability and client's exclusive remedy for any claim arising, whether based in contract or tort, shall be limited to the amount paid by client for analyses. All claims, including those for negligence and any other cause whatsoever shall be deemed waived unless made in writing and received by Cardinal within thirty (30) days after completion of the applicable service. In no event shall Cardinal be liable for incidental or consequential damages, including, without limitation, business interruptions, loss of use, or loss of profits incurred by client, its subsidiaries, affiliates or successors arising out of or related to the performance of the services hereunder by Cardinal, regardless of whether such claim is based upon any of the above stated reasons or otherwise. Results relate only to the samples identified above. This report shall not be reproduced except in full with written approval of Cardinal Laboratories.

Celey D. Keene, Lab Director/Quality Manager



PHONE (575) 393-2326 • 101 E. MARLAND • HOBBS, NM 88240

Analytical Results For:

BBC International, Inc.
 Cliff Brunson
 P.O. Box 805
 Hobbs NM, 88241
 Fax To: (575) 397-0397

Received:	07/19/2022	Sampling Date:	07/14/2022
Reported:	07/25/2022	Sampling Type:	Soil
Project Name:	RIGHT HAND CANYON 34-2 (12-15-10)	Sampling Condition:	Cool & Intact
Project Number:	NOT GIVEN	Sample Received By:	Shalyn Rodriguez
Project Location:	OXY - NEW MEXICO		

Sample ID: BOTTOM SAMPLE 16 @ 1' (H223138-16)

BTEx 8260B		mg/kg		Analyzed By: MS					
Analyte	Result	Reporting Limit	Analyzed	Method Blank	BS	% Recovery	True Value QC	RPD	Qualifier
Benzene*	<0.025	0.025	07/20/2022	ND	2.09	105	2.00	3.33	
Toluene*	<0.050	0.050	07/20/2022	ND	2.13	106	2.00	1.41	
Ethylbenzene*	<0.025	0.025	07/20/2022	ND	2.14	107	2.00	1.23	
Total Xylenes*	<0.075	0.075	07/20/2022	ND	6.57	110	6.00	1.84	
Total BTEx	<0.150	0.150	07/20/2022	ND					

Surrogate: Dibromofluoromethane 100 % 84-115
 Surrogate: Toluene-d8 99.2 % 95.3-106
 Surrogate: 4-Bromofluorobenzene 97.2 % 85.1-109

Chloride, SM4500Cl-B		mg/kg		Analyzed By: AC						
Analyte	Result	Reporting Limit	Analyzed	Method Blank	BS	% Recovery	True Value QC	RPD	Qualifier	
Chloride	<16.0	16.0	07/20/2022	ND	416	104	400	3.77		

TPH 8015M		mg/kg		Analyzed By: MS					
Analyte	Result	Reporting Limit	Analyzed	Method Blank	BS	% Recovery	True Value QC	RPD	Qualifier
GRO C6-C10*	<10.0	10.0	07/21/2022	ND	193	96.6	200	3.31	
DRO >C10-C28*	<10.0	10.0	07/21/2022	ND	194	97.0	200	1.99	
EXT DRO >C28-C36	<10.0	10.0	07/21/2022	ND					

Surrogate: 1-Chlorooctane 78.2 % 43-149
 Surrogate: 1-Chlorooctadecane 85.4 % 42.5-161

Cardinal Laboratories

*=Accredited Analyte

PLEASE NOTE: Liability and Damages. Cardinal's liability and client's exclusive remedy for any claim arising, whether based in contract or tort, shall be limited to the amount paid by client for analyses. All claims, including those for negligence and any other cause whatsoever shall be deemed waived unless made in writing and received by Cardinal within thirty (30) days after completion of the applicable service. In no event shall Cardinal be liable for incidental or consequential damages, including, without limitation, business interruptions, loss of use, or loss of profits incurred by client, its subsidiaries, affiliates or successors arising out of or related to the performance of the services hereunder by Cardinal, regardless of whether such claim is based upon any of the above stated reasons or otherwise. Results relate only to the samples identified above. This report shall not be reproduced except in full with written approval of Cardinal Laboratories.

Celey D. Keene, Lab Director/Quality Manager



PHONE (575) 393-2326 • 101 E. MARLAND • HOBBS, NM 88240

Analytical Results For:

BBC International, Inc.
 Cliff Brunson
 P.O. Box 805
 Hobbs NM, 88241
 Fax To: (575) 397-0397

Received:	07/19/2022	Sampling Date:	07/14/2022
Reported:	07/25/2022	Sampling Type:	Soil
Project Name:	RIGHT HAND CANYON 34-2 (12-15-10)	Sampling Condition:	Cool & Intact
Project Number:	NOT GIVEN	Sample Received By:	Shalyn Rodriguez
Project Location:	OXY - NEW MEXICO		

Sample ID: BOTTOM SAMPLE 17 @ 1' (H223138-17)

BTEX 8260B		mg/kg		Analyzed By: MS					
Analyte	Result	Reporting Limit	Analyzed	Method Blank	BS	% Recovery	True Value QC	RPD	Qualifier
Benzene*	<0.025	0.025	07/20/2022	ND	2.09	105	2.00	3.33	
Toluene*	<0.050	0.050	07/20/2022	ND	2.13	106	2.00	1.41	
Ethylbenzene*	<0.025	0.025	07/20/2022	ND	2.14	107	2.00	1.23	
Total Xylenes*	<0.075	0.075	07/20/2022	ND	6.57	110	6.00	1.84	
Total BTEX	<0.150	0.150	07/20/2022	ND					

Surrogate: Dibromofluoromethane 98.2 % 84-115

Surrogate: Toluene-d8 100 % 95.3-106

Surrogate: 4-Bromofluorobenzene 97.7 % 85.1-109

Chloride, SM4500Cl-B		mg/kg		Analyzed By: AC						
Analyte	Result	Reporting Limit	Analyzed	Method Blank	BS	% Recovery	True Value QC	RPD	Qualifier	
Chloride	<16.0	16.0	07/20/2022	ND	416	104	400	3.77		

TPH 8015M		mg/kg		Analyzed By: MS					
Analyte	Result	Reporting Limit	Analyzed	Method Blank	BS	% Recovery	True Value QC	RPD	Qualifier
GRO C6-C10*	<10.0	10.0	07/21/2022	ND	193	96.6	200	3.31	
DRO >C10-C28*	<10.0	10.0	07/21/2022	ND	194	97.0	200	1.99	
EXT DRO >C28-C36	<10.0	10.0	07/21/2022	ND					

Surrogate: 1-Chlorooctane 88.9 % 43-149

Surrogate: 1-Chlorooctadecane 95.5 % 42.5-161

Cardinal Laboratories

*=Accredited Analyte

PLEASE NOTE: Liability and Damages. Cardinal's liability and client's exclusive remedy for any claim arising, whether based in contract or tort, shall be limited to the amount paid by client for analyses. All claims, including those for negligence and any other cause whatsoever shall be deemed waived unless made in writing and received by Cardinal within thirty (30) days after completion of the applicable service. In no event shall Cardinal be liable for incidental or consequential damages, including, without limitation, business interruptions, loss of use, or loss of profits incurred by client, its subsidiaries, affiliates or successors arising out of or related to the performance of the services hereunder by Cardinal, regardless of whether such claim is based upon any of the above stated reasons or otherwise. Results relate only to the samples identified above. This report shall not be reproduced except in full with written approval of Cardinal Laboratories.

Celey D. Keene, Lab Director/Quality Manager



PHONE (575) 393-2326 • 101 E. MARLAND • HOBBS, NM 88240

Analytical Results For:

BBC International, Inc.
 Cliff Brunson
 P.O. Box 805
 Hobbs NM, 88241
 Fax To: (575) 397-0397

Received:	07/19/2022	Sampling Date:	07/14/2022
Reported:	07/25/2022	Sampling Type:	Soil
Project Name:	RIGHT HAND CANYON 34-2 (12-15-10)	Sampling Condition:	Cool & Intact
Project Number:	NOT GIVEN	Sample Received By:	Shalyn Rodriguez
Project Location:	OXY - NEW MEXICO		

Sample ID: BOTTOM SAMPLE 18 @ 1' (H223138-18)

BTX 8260B		mg/kg		Analyzed By: MS					
Analyte	Result	Reporting Limit	Analyzed	Method Blank	BS	% Recovery	True Value QC	RPD	Qualifier
Benzene*	<0.025	0.025	07/20/2022	ND	2.09	105	2.00	3.33	
Toluene*	0.056	0.050	07/20/2022	ND	2.13	106	2.00	1.41	
Ethylbenzene*	<0.025	0.025	07/20/2022	ND	2.14	107	2.00	1.23	
Total Xylenes*	<0.075	0.075	07/20/2022	ND	6.57	110	6.00	1.84	
Total BTX	<0.150	0.150	07/20/2022	ND					

Surrogate: Dibromofluoromethane 99.8 % 84-115
 Surrogate: Toluene-d8 101 % 95.3-106
 Surrogate: 4-Bromofluorobenzene 98.5 % 85.1-109

Chloride, SM4500Cl-B		mg/kg		Analyzed By: AC						
Analyte	Result	Reporting Limit	Analyzed	Method Blank	BS	% Recovery	True Value QC	RPD	Qualifier	
Chloride	32.0	16.0	07/20/2022	ND	416	104	400	3.77		

TPH 8015M		mg/kg		Analyzed By: MS					
Analyte	Result	Reporting Limit	Analyzed	Method Blank	BS	% Recovery	True Value QC	RPD	Qualifier
GRO C6-C10*	<10.0	10.0	07/21/2022	ND	193	96.6	200	3.31	
DRO >C10-C28*	<10.0	10.0	07/21/2022	ND	194	97.0	200	1.99	
EXT DRO >C28-C36	<10.0	10.0	07/21/2022	ND					

Surrogate: 1-Chlorooctane 83.8 % 43-149
 Surrogate: 1-Chlorooctadecane 89.1 % 42.5-161

Cardinal Laboratories

*=Accredited Analyte

PLEASE NOTE: Liability and Damages. Cardinal's liability and client's exclusive remedy for any claim arising, whether based in contract or tort, shall be limited to the amount paid by client for analyses. All claims, including those for negligence and any other cause whatsoever shall be deemed waived unless made in writing and received by Cardinal within thirty (30) days after completion of the applicable service. In no event shall Cardinal be liable for incidental or consequential damages, including, without limitation, business interruptions, loss of use, or loss of profits incurred by client, its subsidiaries, affiliates or successors arising out of or related to the performance of the services hereunder by Cardinal, regardless of whether such claim is based upon any of the above stated reasons or otherwise. Results relate only to the samples identified above. This report shall not be reproduced except in full with written approval of Cardinal Laboratories.

Celey D. Keene, Lab Director/Quality Manager



PHONE (575) 393-2326 • 101 E. MARLAND • HOBBS, NM 88240

Analytical Results For:

BBC International, Inc.
 Cliff Brunson
 P.O. Box 805
 Hobbs NM, 88241
 Fax To: (575) 397-0397

Received:	07/19/2022	Sampling Date:	07/14/2022
Reported:	07/25/2022	Sampling Type:	Soil
Project Name:	RIGHT HAND CANYON 34-2 (12-15-10)	Sampling Condition:	Cool & Intact
Project Number:	NOT GIVEN	Sample Received By:	Shalyn Rodriguez
Project Location:	OXY - NEW MEXICO		

Sample ID: BOTTOM SAMPLE 19 @ 1' (H223138-19)

BTX 8260B		mg/kg		Analyzed By: MS					
Analyte	Result	Reporting Limit	Analyzed	Method Blank	BS	% Recovery	True Value QC	RPD	Qualifier
Benzene*	<0.025	0.025	07/20/2022	ND	2.09	105	2.00	3.33	
Toluene*	<0.050	0.050	07/20/2022	ND	2.13	106	2.00	1.41	
Ethylbenzene*	<0.025	0.025	07/20/2022	ND	2.14	107	2.00	1.23	
Total Xylenes*	<0.075	0.075	07/20/2022	ND	6.57	110	6.00	1.84	
Total BTX	<0.150	0.150	07/20/2022	ND					

Surrogate: Dibromofluoromethane 99.8 % 84-115

Surrogate: Toluene-d8 99.9 % 95.3-106

Surrogate: 4-Bromofluorobenzene 96.6 % 85.1-109

Chloride, SM4500Cl-B		mg/kg		Analyzed By: AC						
Analyte	Result	Reporting Limit	Analyzed	Method Blank	BS	% Recovery	True Value QC	RPD	Qualifier	
Chloride	<16.0	16.0	07/20/2022	ND	416	104	400	3.77		

TPH 8015M		mg/kg		Analyzed By: MS					
Analyte	Result	Reporting Limit	Analyzed	Method Blank	BS	% Recovery	True Value QC	RPD	Qualifier
GRO C6-C10*	<10.0	10.0	07/21/2022	ND	193	96.6	200	3.31	
DRO >C10-C28*	<10.0	10.0	07/21/2022	ND	194	97.0	200	1.99	
EXT DRO >C28-C36	<10.0	10.0	07/21/2022	ND					

Surrogate: 1-Chlorooctane 76.5 % 43-149

Surrogate: 1-Chlorooctadecane 81.9 % 42.5-161

Cardinal Laboratories

*=Accredited Analyte

PLEASE NOTE: Liability and Damages. Cardinal's liability and client's exclusive remedy for any claim arising, whether based in contract or tort, shall be limited to the amount paid by client for analyses. All claims, including those for negligence and any other cause whatsoever shall be deemed waived unless made in writing and received by Cardinal within thirty (30) days after completion of the applicable service. In no event shall Cardinal be liable for incidental or consequential damages, including, without limitation, business interruptions, loss of use, or loss of profits incurred by client, its subsidiaries, affiliates or successors arising out of or related to the performance of the services hereunder by Cardinal, regardless of whether such claim is based upon any of the above stated reasons or otherwise. Results relate only to the samples identified above. This report shall not be reproduced except in full with written approval of Cardinal Laboratories.

Celey D. Keene, Lab Director/Quality Manager



PHONE (575) 393-2326 • 101 E. MARLAND • HOBBS, NM 88240

Analytical Results For:

BBC International, Inc.
 Cliff Brunson
 P.O. Box 805
 Hobbs NM, 88241
 Fax To: (575) 397-0397

Received:	07/19/2022	Sampling Date:	07/14/2022
Reported:	07/25/2022	Sampling Type:	Soil
Project Name:	RIGHT HAND CANYON 34-2 (12-15-10)	Sampling Condition:	Cool & Intact
Project Number:	NOT GIVEN	Sample Received By:	Shalyn Rodriguez
Project Location:	OXY - NEW MEXICO		

Sample ID: BOTTOM SAMPLE 20 @ 1' (H223138-20)

BTX 8260B		mg/kg		Analyzed By: MS					
Analyte	Result	Reporting Limit	Analyzed	Method Blank	BS	% Recovery	True Value QC	RPD	Qualifier
Benzene*	<0.025	0.025	07/20/2022	ND	2.09	105	2.00	3.33	
Toluene*	<0.050	0.050	07/20/2022	ND	2.13	106	2.00	1.41	
Ethylbenzene*	<0.025	0.025	07/20/2022	ND	2.14	107	2.00	1.23	
Total Xylenes*	<0.075	0.075	07/20/2022	ND	6.57	110	6.00	1.84	
Total BTX	<0.150	0.150	07/20/2022	ND					

Surrogate: Dibromofluoromethane 97.7 % 84-115
 Surrogate: Toluene-d8 99.1 % 95.3-106
 Surrogate: 4-Bromofluorobenzene 97.6 % 85.1-109

Chloride, SM4500Cl-B		mg/kg		Analyzed By: AC					
Analyte	Result	Reporting Limit	Analyzed	Method Blank	BS	% Recovery	True Value QC	RPD	Qualifier
Chloride	16.0	16.0	07/20/2022	ND	416	104	400	3.77	

TPH 8015M		mg/kg		Analyzed By: MS					
Analyte	Result	Reporting Limit	Analyzed	Method Blank	BS	% Recovery	True Value QC	RPD	Qualifier
GRO C6-C10*	<10.0	10.0	07/21/2022	ND	193	96.6	200	3.31	
DRO >C10-C28*	<10.0	10.0	07/21/2022	ND	194	97.0	200	1.99	
EXT DRO >C28-C36	<10.0	10.0	07/21/2022	ND					

Surrogate: 1-Chlorooctane 78.2 % 43-149
 Surrogate: 1-Chlorooctadecane 84.9 % 42.5-161

Cardinal Laboratories

*=Accredited Analyte

PLEASE NOTE: Liability and Damages. Cardinal's liability and client's exclusive remedy for any claim arising, whether based in contract or tort, shall be limited to the amount paid by client for analyses. All claims, including those for negligence and any other cause whatsoever shall be deemed waived unless made in writing and received by Cardinal within thirty (30) days after completion of the applicable service. In no event shall Cardinal be liable for incidental or consequential damages, including, without limitation, business interruptions, loss of use, or loss of profits incurred by client, its subsidiaries, affiliates or successors arising out of or related to the performance of the services hereunder by Cardinal, regardless of whether such claim is based upon any of the above stated reasons or otherwise. Results relate only to the samples identified above. This report shall not be reproduced except in full with written approval of Cardinal Laboratories.

Celey D. Keene, Lab Director/Quality Manager



PHONE (575) 393-2326 • 101 E. MARLAND • HOBBS, NM 88240

Analytical Results For:

BBC International, Inc.
 Cliff Brunson
 P.O. Box 805
 Hobbs NM, 88241
 Fax To: (575) 397-0397

Received:	07/19/2022	Sampling Date:	07/14/2022
Reported:	07/25/2022	Sampling Type:	Soil
Project Name:	RIGHT HAND CANYON 34-2 (12-15-10)	Sampling Condition:	Cool & Intact
Project Number:	NOT GIVEN	Sample Received By:	Shalyn Rodriguez
Project Location:	OXY - NEW MEXICO		

Sample ID: BOTTOM SAMPLE 21 @ 1' (H223138-21)

BTX 8260B			mg/kg		Analyzed By: MS				
Analyte	Result	Reporting Limit	Analyzed	Method Blank	BS	% Recovery	True Value QC	RPD	Qualifier
Benzene*	<0.025	0.025	07/21/2022	ND	2.19	109	2.00	5.38	QR-03
Toluene*	<0.050	0.050	07/21/2022	ND	2.23	112	2.00	4.04	
Ethylbenzene*	<0.025	0.025	07/21/2022	ND	2.24	112	2.00	6.67	QR-03
Total Xylenes*	<0.075	0.075	07/21/2022	ND	6.76	113	6.00	6.67	
Total BTX	<0.150	0.150	07/21/2022	ND					

Surrogate: Dibromofluoromethane 99.7 % 84-115
 Surrogate: Toluene-d8 99.7 % 95.3-106
 Surrogate: 4-Bromofluorobenzene 97.3 % 85.1-109

Chloride, SM4500Cl-B			mg/kg		Analyzed By: AC				
Analyte	Result	Reporting Limit	Analyzed	Method Blank	BS	% Recovery	True Value QC	RPD	Qualifier
Chloride	<16.0	16.0	07/20/2022	ND	416	104	400	3.77	

TPH 8015M			mg/kg		Analyzed By: MS				
Analyte	Result	Reporting Limit	Analyzed	Method Blank	BS	% Recovery	True Value QC	RPD	Qualifier
GRO C6-C10*	<10.0	10.0	07/20/2022	ND	243	121	200	3.85	
DRO >C10-C28*	12.1	10.0	07/20/2022	ND	242	121	200	1.77	
EXT DRO >C28-C36	<10.0	10.0	07/20/2022	ND					

Surrogate: 1-Chlorooctane 75.4 % 43-149
 Surrogate: 1-Chlorooctadecane 76.9 % 42.5-161

Cardinal Laboratories

*=Accredited Analyte

PLEASE NOTE: Liability and Damages. Cardinal's liability and client's exclusive remedy for any claim arising, whether based in contract or tort, shall be limited to the amount paid by client for analyses. All claims, including those for negligence and any other cause whatsoever shall be deemed waived unless made in writing and received by Cardinal within thirty (30) days after completion of the applicable service. In no event shall Cardinal be liable for incidental or consequential damages, including, without limitation, business interruptions, loss of use, or loss of profits incurred by client, its subsidiaries, affiliates or successors arising out of or related to the performance of the services hereunder by Cardinal, regardless of whether such claim is based upon any of the above stated reasons or otherwise. Results relate only to the samples identified above. This report shall not be reproduced except in full with written approval of Cardinal Laboratories.

Celey D. Keene, Lab Director/Quality Manager



PHONE (575) 393-2326 • 101 E. MARLAND • HOBBS, NM 88240

Analytical Results For:

BBC International, Inc.
 Cliff Brunson
 P.O. Box 805
 Hobbs NM, 88241
 Fax To: (575) 397-0397

Received:	07/19/2022	Sampling Date:	07/15/2022
Reported:	07/25/2022	Sampling Type:	Soil
Project Name:	RIGHT HAND CANYON 34-2 (12-15-10)	Sampling Condition:	Cool & Intact
Project Number:	NOT GIVEN	Sample Received By:	Shalyn Rodriguez
Project Location:	OXY - NEW MEXICO		

Sample ID: BOTTOM SAMPLE 22 @ 1' (H223138-22)

BTEX 8260B		mg/kg		Analyzed By: MS					
Analyte	Result	Reporting Limit	Analyzed	Method Blank	BS	% Recovery	True Value QC	RPD	Qualifier
Benzene*	<0.025	0.025	07/21/2022	ND	2.19	109	2.00	5.38	
Toluene*	0.054	0.050	07/21/2022	ND	2.23	112	2.00	4.04	
Ethylbenzene*	<0.025	0.025	07/21/2022	ND	2.24	112	2.00	6.67	
Total Xylenes*	<0.075	0.075	07/21/2022	ND	6.76	113	6.00	6.67	
Total BTEX	<0.150	0.150	07/21/2022	ND					

Surrogate: Dibromofluoromethane 101 % 84-115
 Surrogate: Toluene-d8 100 % 95.3-106
 Surrogate: 4-Bromofluorobenzene 99.1 % 85.1-109

Chloride, SM4500Cl-B			mg/kg		Analyzed By: AC					
Analyte	Result	Reporting Limit	Analyzed	Method Blank	BS	% Recovery	True Value QC	RPD	Qualifier	
Chloride	<16.0	16.0	07/20/2022	ND	416	104	400	3.77		
TPH 8015M			mg/kg		Analyzed By: MS					
Analyte	Result	Reporting Limit	Analyzed	Method Blank	BS	% Recovery	True Value QC	RPD	Qualifier	
GRO C6-C10*	<10.0	10.0	07/20/2022	ND	243	121	200	3.85		
DRO >C10-C28*	<10.0	10.0	07/20/2022	ND	242	121	200	1.77		
EXT DRO >C28-C36	<10.0	10.0	07/20/2022	ND						

Surrogate: 1-Chlorooctane 79.6 % 43-149
 Surrogate: 1-Chlorooctadecane 82.5 % 42.5-161

Cardinal Laboratories

*=Accredited Analyte

PLEASE NOTE: Liability and Damages. Cardinal's liability and client's exclusive remedy for any claim arising, whether based in contract or tort, shall be limited to the amount paid by client for analyses. All claims, including those for negligence and any other cause whatsoever shall be deemed waived unless made in writing and received by Cardinal within thirty (30) days after completion of the applicable service. In no event shall Cardinal be liable for incidental or consequential damages, including, without limitation, business interruptions, loss of use, or loss of profits incurred by client, its subsidiaries, affiliates or successors arising out of or related to the performance of the services hereunder by Cardinal, regardless of whether such claim is based upon any of the above stated reasons or otherwise. Results relate only to the samples identified above. This report shall not be reproduced except in full with written approval of Cardinal Laboratories.

Celey D. Keene, Lab Director/Quality Manager



PHONE (575) 393-2326 • 101 E. MARLAND • HOBBS, NM 88240

Analytical Results For:

BBC International, Inc.
 Cliff Brunson
 P.O. Box 805
 Hobbs NM, 88241
 Fax To: (575) 397-0397

Received:	07/19/2022	Sampling Date:	07/15/2022
Reported:	07/25/2022	Sampling Type:	Soil
Project Name:	RIGHT HAND CANYON 34-2 (12-15-10)	Sampling Condition:	Cool & Intact
Project Number:	NOT GIVEN	Sample Received By:	Shalyn Rodriguez
Project Location:	OXY - NEW MEXICO		

Sample ID: BOTTOM SAMPLE 23 @ 1' (H223138-23)

BTX 8260B		mg/kg		Analyzed By: MS					
Analyte	Result	Reporting Limit	Analyzed	Method Blank	BS	% Recovery	True Value QC	RPD	Qualifier
Benzene*	<0.025	0.025	07/21/2022	ND	2.19	109	2.00	5.38	
Toluene*	0.070	0.050	07/21/2022	ND	2.23	112	2.00	4.04	
Ethylbenzene*	<0.025	0.025	07/21/2022	ND	2.24	112	2.00	6.67	
Total Xylenes*	<0.075	0.075	07/21/2022	ND	6.76	113	6.00	6.67	
Total BTX	<0.150	0.150	07/21/2022	ND					

Surrogate: Dibromofluoromethane 101 % 84-115
 Surrogate: Toluene-d8 98.5 % 95.3-106
 Surrogate: 4-Bromofluorobenzene 97.1 % 85.1-109

Chloride, SM4500Cl-B		mg/kg		Analyzed By: AC					
Analyte	Result	Reporting Limit	Analyzed	Method Blank	BS	% Recovery	True Value QC	RPD	Qualifier
Chloride	<16.0	16.0	07/20/2022	ND	416	104	400	3.77	
TPH 8015M		mg/kg		Analyzed By: MS					
Analyte	Result	Reporting Limit	Analyzed	Method Blank	BS	% Recovery	True Value QC	RPD	Qualifier
GRO C6-C10*	<10.0	10.0	07/20/2022	ND	243	121	200	3.85	
DRO >C10-C28*	16.0	10.0	07/20/2022	ND	242	121	200	1.77	
EXT DRO >C28-C36	<10.0	10.0	07/20/2022	ND					

Surrogate: 1-Chlorooctane 68.3 % 43-149
 Surrogate: 1-Chlorooctadecane 68.7 % 42.5-161

Cardinal Laboratories

*=Accredited Analyte

PLEASE NOTE: Liability and Damages. Cardinal's liability and client's exclusive remedy for any claim arising, whether based in contract or tort, shall be limited to the amount paid by client for analyses. All claims, including those for negligence and any other cause whatsoever shall be deemed waived unless made in writing and received by Cardinal within thirty (30) days after completion of the applicable service. In no event shall Cardinal be liable for incidental or consequential damages, including, without limitation, business interruptions, loss of use, or loss of profits incurred by client, its subsidiaries, affiliates or successors arising out of or related to the performance of the services hereunder by Cardinal, regardless of whether such claim is based upon any of the above stated reasons or otherwise. Results relate only to the samples identified above. This report shall not be reproduced except in full with written approval of Cardinal Laboratories.

Celey D. Keene, Lab Director/Quality Manager



PHONE (575) 393-2326 • 101 E. MARLAND • HOBBS, NM 88240

Analytical Results For:

BBC International, Inc.
 Cliff Brunson
 P.O. Box 805
 Hobbs NM, 88241
 Fax To: (575) 397-0397

Received:	07/19/2022	Sampling Date:	07/15/2022
Reported:	07/25/2022	Sampling Type:	Soil
Project Name:	RIGHT HAND CANYON 34-2 (12-15-10)	Sampling Condition:	Cool & Intact
Project Number:	NOT GIVEN	Sample Received By:	Shalyn Rodriguez
Project Location:	OXY - NEW MEXICO		

Sample ID: BOTTOM SAMPLE 24 @ 1' (H223138-24)

BTEx 8260B		mg/kg		Analyzed By: MS					
Analyte	Result	Reporting Limit	Analyzed	Method Blank	BS	% Recovery	True Value QC	RPD	Qualifier
Benzene*	<0.025	0.025	07/21/2022	ND	2.19	109	2.00	5.38	
Toluene*	<0.050	0.050	07/21/2022	ND	2.23	112	2.00	4.04	
Ethylbenzene*	<0.025	0.025	07/21/2022	ND	2.24	112	2.00	6.67	
Total Xylenes*	<0.075	0.075	07/21/2022	ND	6.76	113	6.00	6.67	
Total BTEx	<0.150	0.150	07/21/2022	ND					

Surrogate: Dibromofluoromethane 101 % 84-115
 Surrogate: Toluene-d8 100 % 95.3-106
 Surrogate: 4-Bromofluorobenzene 98.8 % 85.1-109

Chloride, SM4500Cl-B		mg/kg		Analyzed By: AC					
Analyte	Result	Reporting Limit	Analyzed	Method Blank	BS	% Recovery	True Value QC	RPD	Qualifier
Chloride	<16.0	16.0	07/20/2022	ND	416	104	400	3.77	

TPH 8015M		mg/kg		Analyzed By: MS					
Analyte	Result	Reporting Limit	Analyzed	Method Blank	BS	% Recovery	True Value QC	RPD	Qualifier
GRO C6-C10*	<10.0	10.0	07/20/2022	ND	243	121	200	3.85	
DRO >C10-C28*	12.1	10.0	07/20/2022	ND	242	121	200	1.77	
EXT DRO >C28-C36	<10.0	10.0	07/20/2022	ND					

Surrogate: 1-Chlorooctane 90.3 % 43-149
 Surrogate: 1-Chlorooctadecane 91.6 % 42.5-161

Cardinal Laboratories

*=Accredited Analyte

PLEASE NOTE: Liability and Damages. Cardinal's liability and client's exclusive remedy for any claim arising, whether based in contract or tort, shall be limited to the amount paid by client for analyses. All claims, including those for negligence and any other cause whatsoever shall be deemed waived unless made in writing and received by Cardinal within thirty (30) days after completion of the applicable service. In no event shall Cardinal be liable for incidental or consequential damages, including, without limitation, business interruptions, loss of use, or loss of profits incurred by client, its subsidiaries, affiliates or successors arising out of or related to the performance of the services hereunder by Cardinal, regardless of whether such claim is based upon any of the above stated reasons or otherwise. Results relate only to the samples identified above. This report shall not be reproduced except in full with written approval of Cardinal Laboratories.

Celey D. Keene, Lab Director/Quality Manager



PHONE (575) 393-2326 • 101 E. MARLAND • HOBBS, NM 88240

Analytical Results For:

BBC International, Inc.
 Cliff Brunson
 P.O. Box 805
 Hobbs NM, 88241
 Fax To: (575) 397-0397

Received:	07/19/2022	Sampling Date:	07/15/2022
Reported:	07/25/2022	Sampling Type:	Soil
Project Name:	RIGHT HAND CANYON 34-2 (12-15-10)	Sampling Condition:	Cool & Intact
Project Number:	NOT GIVEN	Sample Received By:	Shalyn Rodriguez
Project Location:	OXY - NEW MEXICO		

Sample ID: BOTTOM SAMPLE 25 @ 1' (H223138-25)

BTX 8260B		mg/kg		Analyzed By: MS					
Analyte	Result	Reporting Limit	Analyzed	Method Blank	BS	% Recovery	True Value QC	RPD	Qualifier
Benzene*	<0.025	0.025	07/21/2022	ND	2.19	109	2.00	5.38	
Toluene*	0.054	0.050	07/21/2022	ND	2.23	112	2.00	4.04	
Ethylbenzene*	<0.025	0.025	07/21/2022	ND	2.24	112	2.00	6.67	
Total Xylenes*	<0.075	0.075	07/21/2022	ND	6.76	113	6.00	6.67	
Total BTX	<0.150	0.150	07/21/2022	ND					

Surrogate: Dibromofluoromethane 101 % 84-115
 Surrogate: Toluene-d8 99.6 % 95.3-106
 Surrogate: 4-Bromofluorobenzene 96.8 % 85.1-109

Chloride, SM4500Cl-B		mg/kg		Analyzed By: AC					
Analyte	Result	Reporting Limit	Analyzed	Method Blank	BS	% Recovery	True Value QC	RPD	Qualifier
Chloride	<16.0	16.0	07/20/2022	ND	416	104	400	3.77	

TPH 8015M		mg/kg		Analyzed By: MS					
Analyte	Result	Reporting Limit	Analyzed	Method Blank	BS	% Recovery	True Value QC	RPD	Qualifier
GRO C6-C10*	<10.0	10.0	07/20/2022	ND	243	121	200	3.85	
DRO >C10-C28*	11.7	10.0	07/20/2022	ND	242	121	200	1.77	
EXT DRO >C28-C36	<10.0	10.0	07/20/2022	ND					

Surrogate: 1-Chlorooctane 67.5 % 43-149
 Surrogate: 1-Chlorooctadecane 69.5 % 42.5-161

Cardinal Laboratories

*=Accredited Analyte

PLEASE NOTE: Liability and Damages. Cardinal's liability and client's exclusive remedy for any claim arising, whether based in contract or tort, shall be limited to the amount paid by client for analyses. All claims, including those for negligence and any other cause whatsoever shall be deemed waived unless made in writing and received by Cardinal within thirty (30) days after completion of the applicable service. In no event shall Cardinal be liable for incidental or consequential damages, including, without limitation, business interruptions, loss of use, or loss of profits incurred by client, its subsidiaries, affiliates or successors arising out of or related to the performance of the services hereunder by Cardinal, regardless of whether such claim is based upon any of the above stated reasons or otherwise. Results relate only to the samples identified above. This report shall not be reproduced except in full with written approval of Cardinal Laboratories.

Celey D. Keene, Lab Director/Quality Manager



PHONE (575) 393-2326 • 101 E. MARLAND • HOBBS, NM 88240

Analytical Results For:

BBC International, Inc.
 Cliff Brunson
 P.O. Box 805
 Hobbs NM, 88241
 Fax To: (575) 397-0397

Received:	07/19/2022	Sampling Date:	07/15/2022
Reported:	07/25/2022	Sampling Type:	Soil
Project Name:	RIGHT HAND CANYON 34-2 (12-15-10)	Sampling Condition:	Cool & Intact
Project Number:	NOT GIVEN	Sample Received By:	Shalyn Rodriguez
Project Location:	OXY - NEW MEXICO		

Sample ID: BOTTOM SAMPLE 26 @ 1' (H223138-26)

BTX 8260B		mg/kg		Analyzed By: MS					
Analyte	Result	Reporting Limit	Analyzed	Method Blank	BS	% Recovery	True Value QC	RPD	Qualifier
Benzene*	<0.025	0.025	07/21/2022	ND	2.19	109	2.00	5.38	
Toluene*	<0.050	0.050	07/21/2022	ND	2.23	112	2.00	4.04	
Ethylbenzene*	<0.025	0.025	07/21/2022	ND	2.24	112	2.00	6.67	
Total Xylenes*	<0.075	0.075	07/21/2022	ND	6.76	113	6.00	6.67	
Total BTX	<0.150	0.150	07/21/2022	ND					

Surrogate: Dibromofluoromethane 101 % 84-115
 Surrogate: Toluene-d8 98.8 % 95.3-106
 Surrogate: 4-Bromofluorobenzene 95.6 % 85.1-109

Chloride, SM4500Cl-B		mg/kg		Analyzed By: AC						
Analyte	Result	Reporting Limit	Analyzed	Method Blank	BS	% Recovery	True Value QC	RPD	Qualifier	
Chloride	<16.0	16.0	07/20/2022	ND	416	104	400	3.77		

TPH 8015M		mg/kg		Analyzed By: MS					
Analyte	Result	Reporting Limit	Analyzed	Method Blank	BS	% Recovery	True Value QC	RPD	Qualifier
GRO C6-C10*	<10.0	10.0	07/20/2022	ND	243	121	200	3.85	
DRO >C10-C28*	12.5	10.0	07/20/2022	ND	242	121	200	1.77	
EXT DRO >C28-C36	<10.0	10.0	07/20/2022	ND					

Surrogate: 1-Chlorooctane 101 % 43-149
 Surrogate: 1-Chlorooctadecane 104 % 42.5-161

Cardinal Laboratories

*=Accredited Analyte

PLEASE NOTE: Liability and Damages. Cardinal's liability and client's exclusive remedy for any claim arising, whether based in contract or tort, shall be limited to the amount paid by client for analyses. All claims, including those for negligence and any other cause whatsoever shall be deemed waived unless made in writing and received by Cardinal within thirty (30) days after completion of the applicable service. In no event shall Cardinal be liable for incidental or consequential damages, including, without limitation, business interruptions, loss of use, or loss of profits incurred by client, its subsidiaries, affiliates or successors arising out of or related to the performance of the services hereunder by Cardinal, regardless of whether such claim is based upon any of the above stated reasons or otherwise. Results relate only to the samples identified above. This report shall not be reproduced except in full with written approval of Cardinal Laboratories.

Celey D. Keene, Lab Director/Quality Manager



PHONE (575) 393-2326 • 101 E. MARLAND • HOBBS, NM 88240

Analytical Results For:

BBC International, Inc.
 Cliff Brunson
 P.O. Box 805
 Hobbs NM, 88241
 Fax To: (575) 397-0397

Received:	07/19/2022	Sampling Date:	07/15/2022
Reported:	07/25/2022	Sampling Type:	Soil
Project Name:	RIGHT HAND CANYON 34-2 (12-15-10)	Sampling Condition:	Cool & Intact
Project Number:	NOT GIVEN	Sample Received By:	Shalyn Rodriguez
Project Location:	OXY - NEW MEXICO		

Sample ID: BOTTOM SAMPLE 27 @ 1' (H223138-27)

BTX 8260B		mg/kg		Analyzed By: MS					
Analyte	Result	Reporting Limit	Analyzed	Method Blank	BS	% Recovery	True Value QC	RPD	Qualifier
Benzene*	<0.025	0.025	07/21/2022	ND	2.19	109	2.00	5.38	
Toluene*	<0.050	0.050	07/21/2022	ND	2.23	112	2.00	4.04	
Ethylbenzene*	<0.025	0.025	07/21/2022	ND	2.24	112	2.00	6.67	
Total Xylenes*	<0.075	0.075	07/21/2022	ND	6.76	113	6.00	6.67	
Total BTX	<0.150	0.150	07/21/2022	ND					

Surrogate: Dibromofluoromethane 99.7 % 84-115
 Surrogate: Toluene-d8 100 % 95.3-106
 Surrogate: 4-Bromofluorobenzene 96.3 % 85.1-109

Chloride, SM4500Cl-B		mg/kg		Analyzed By: AC						
Analyte	Result	Reporting Limit	Analyzed	Method Blank	BS	% Recovery	True Value QC	RPD	Qualifier	
Chloride	<16.0	16.0	07/20/2022	ND	416	104	400	3.77		

TPH 8015M		mg/kg		Analyzed By: MS					
Analyte	Result	Reporting Limit	Analyzed	Method Blank	BS	% Recovery	True Value QC	RPD	Qualifier
GRO C6-C10*	<10.0	10.0	07/20/2022	ND	243	121	200	3.85	
DRO >C10-C28*	11.4	10.0	07/20/2022	ND	242	121	200	1.77	
EXT DRO >C28-C36	<10.0	10.0	07/20/2022	ND					

Surrogate: 1-Chlorooctane 72.7 % 43-149
 Surrogate: 1-Chlorooctadecane 73.2 % 42.5-161

Cardinal Laboratories

*=Accredited Analyte

PLEASE NOTE: Liability and Damages. Cardinal's liability and client's exclusive remedy for any claim arising, whether based in contract or tort, shall be limited to the amount paid by client for analyses. All claims, including those for negligence and any other cause whatsoever shall be deemed waived unless made in writing and received by Cardinal within thirty (30) days after completion of the applicable service. In no event shall Cardinal be liable for incidental or consequential damages, including, without limitation, business interruptions, loss of use, or loss of profits incurred by client, its subsidiaries, affiliates or successors arising out of or related to the performance of the services hereunder by Cardinal, regardless of whether such claim is based upon any of the above stated reasons or otherwise. Results relate only to the samples identified above. This report shall not be reproduced except in full with written approval of Cardinal Laboratories.

Celey D. Keene, Lab Director/Quality Manager



PHONE (575) 393-2326 • 101 E. MARLAND • HOBBS, NM 88240

Analytical Results For:

BBC International, Inc.
 Cliff Brunson
 P.O. Box 805
 Hobbs NM, 88241
 Fax To: (575) 397-0397

Received:	07/19/2022	Sampling Date:	07/15/2022
Reported:	07/25/2022	Sampling Type:	Soil
Project Name:	RIGHT HAND CANYON 34-2 (12-15-10)	Sampling Condition:	Cool & Intact
Project Number:	NOT GIVEN	Sample Received By:	Shalyn Rodriguez
Project Location:	OXY - NEW MEXICO		

Sample ID: BOTTOM SAMPLE 28 @ 1' (H223138-28)

BTX 8260B		mg/kg		Analyzed By: MS					
Analyte	Result	Reporting Limit	Analyzed	Method Blank	BS	% Recovery	True Value QC	RPD	Qualifier
Benzene*	<0.025	0.025	07/21/2022	ND	2.19	109	2.00	5.38	
Toluene*	<0.050	0.050	07/21/2022	ND	2.23	112	2.00	4.04	
Ethylbenzene*	<0.025	0.025	07/21/2022	ND	2.24	112	2.00	6.67	
Total Xylenes*	<0.075	0.075	07/21/2022	ND	6.76	113	6.00	6.67	
Total BTX	<0.150	0.150	07/21/2022	ND					

Surrogate: Dibromofluoromethane 102 % 84-115
 Surrogate: Toluene-d8 99.2 % 95.3-106
 Surrogate: 4-Bromofluorobenzene 96.0 % 85.1-109

Chloride, SM4500Cl-B		mg/kg		Analyzed By: AC						
Analyte	Result	Reporting Limit	Analyzed	Method Blank	BS	% Recovery	True Value QC	RPD	Qualifier	
Chloride	<16.0	16.0	07/20/2022	ND	416	104	400	3.77		

TPH 8015M		mg/kg		Analyzed By: MS					
Analyte	Result	Reporting Limit	Analyzed	Method Blank	BS	% Recovery	True Value QC	RPD	Qualifier
GRO C6-C10*	<10.0	10.0	07/20/2022	ND	243	121	200	3.85	
DRO >C10-C28*	12.0	10.0	07/20/2022	ND	242	121	200	1.77	
EXT DRO >C28-C36	<10.0	10.0	07/20/2022	ND					

Surrogate: 1-Chlorooctane 100 % 43-149
 Surrogate: 1-Chlorooctadecane 101 % 42.5-161

Cardinal Laboratories

*=Accredited Analyte

PLEASE NOTE: Liability and Damages. Cardinal's liability and client's exclusive remedy for any claim arising, whether based in contract or tort, shall be limited to the amount paid by client for analyses. All claims, including those for negligence and any other cause whatsoever shall be deemed waived unless made in writing and received by Cardinal within thirty (30) days after completion of the applicable service. In no event shall Cardinal be liable for incidental or consequential damages, including, without limitation, business interruptions, loss of use, or loss of profits incurred by client, its subsidiaries, affiliates or successors arising out of or related to the performance of the services hereunder by Cardinal, regardless of whether such claim is based upon any of the above stated reasons or otherwise. Results relate only to the samples identified above. This report shall not be reproduced except in full with written approval of Cardinal Laboratories.

Celey D. Keene, Lab Director/Quality Manager



PHONE (575) 393-2326 • 101 E. MARLAND • HOBBS, NM 88240

Analytical Results For:

BBC International, Inc.
 Cliff Brunson
 P.O. Box 805
 Hobbs NM, 88241
 Fax To: (575) 397-0397

Received:	07/19/2022	Sampling Date:	07/15/2022
Reported:	07/25/2022	Sampling Type:	Soil
Project Name:	RIGHT HAND CANYON 34-2 (12-15-10)	Sampling Condition:	Cool & Intact
Project Number:	NOT GIVEN	Sample Received By:	Shalyn Rodriguez
Project Location:	OXY - NEW MEXICO		

Sample ID: BOTTOM SAMPLE 29 @ 1' (H223138-29)

BTEx 8260B		mg/kg		Analyzed By: MS					
Analyte	Result	Reporting Limit	Analyzed	Method Blank	BS	% Recovery	True Value QC	RPD	Qualifier
Benzene*	<0.025	0.025	07/21/2022	ND	2.19	109	2.00	5.38	
Toluene*	<0.050	0.050	07/21/2022	ND	2.23	112	2.00	4.04	
Ethylbenzene*	<0.025	0.025	07/21/2022	ND	2.24	112	2.00	6.67	
Total Xylenes*	<0.075	0.075	07/21/2022	ND	6.76	113	6.00	6.67	
Total BTEx	<0.150	0.150	07/21/2022	ND					

Surrogate: Dibromofluoromethane 103 % 84-115
 Surrogate: Toluene-d8 99.2 % 95.3-106
 Surrogate: 4-Bromofluorobenzene 97.4 % 85.1-109

Chloride, SM4500Cl-B		mg/kg		Analyzed By: AC						
Analyte	Result	Reporting Limit	Analyzed	Method Blank	BS	% Recovery	True Value QC	RPD	Qualifier	
Chloride	<16.0	16.0	07/20/2022	ND	416	104	400	3.77		

TPH 8015M		mg/kg		Analyzed By: MS					
Analyte	Result	Reporting Limit	Analyzed	Method Blank	BS	% Recovery	True Value QC	RPD	Qualifier
GRO C6-C10*	<10.0	10.0	07/20/2022	ND	243	121	200	3.85	
DRO >C10-C28*	11.0	10.0	07/20/2022	ND	242	121	200	1.77	
EXT DRO >C28-C36	<10.0	10.0	07/20/2022	ND					

Surrogate: 1-Chlorooctane 93.6 % 43-149
 Surrogate: 1-Chlorooctadecane 93.6 % 42.5-161

Cardinal Laboratories

*=Accredited Analyte

PLEASE NOTE: Liability and Damages. Cardinal's liability and client's exclusive remedy for any claim arising, whether based in contract or tort, shall be limited to the amount paid by client for analyses. All claims, including those for negligence and any other cause whatsoever shall be deemed waived unless made in writing and received by Cardinal within thirty (30) days after completion of the applicable service. In no event shall Cardinal be liable for incidental or consequential damages, including, without limitation, business interruptions, loss of use, or loss of profits incurred by client, its subsidiaries, affiliates or successors arising out of or related to the performance of the services hereunder by Cardinal, regardless of whether such claim is based upon any of the above stated reasons or otherwise. Results relate only to the samples identified above. This report shall not be reproduced except in full with written approval of Cardinal Laboratories.

Celey D. Keene, Lab Director/Quality Manager



PHONE (575) 393-2326 • 101 E. MARLAND • HOBBS, NM 88240

Analytical Results For:

BBC International, Inc.
 Cliff Brunson
 P.O. Box 805
 Hobbs NM, 88241
 Fax To: (575) 397-0397

Received:	07/19/2022	Sampling Date:	07/15/2022
Reported:	07/25/2022	Sampling Type:	Soil
Project Name:	RIGHT HAND CANYON 34-2 (12-15-10)	Sampling Condition:	Cool & Intact
Project Number:	NOT GIVEN	Sample Received By:	Shalyn Rodriguez
Project Location:	OXY - NEW MEXICO		

Sample ID: BOTTOM SAMPLE 30 @ 1' (H223138-30)

BTX 8260B		mg/kg		Analyzed By: MS					
Analyte	Result	Reporting Limit	Analyzed	Method Blank	BS	% Recovery	True Value QC	RPD	Qualifier
Benzene*	<0.025	0.025	07/21/2022	ND	2.19	109	2.00	5.38	
Toluene*	<0.050	0.050	07/21/2022	ND	2.23	112	2.00	4.04	
Ethylbenzene*	<0.025	0.025	07/21/2022	ND	2.24	112	2.00	6.67	
Total Xylenes*	<0.075	0.075	07/21/2022	ND	6.76	113	6.00	6.67	
Total BTX	<0.150	0.150	07/21/2022	ND					

Surrogate: Dibromofluoromethane 101 % 84-115
 Surrogate: Toluene-d8 99.9 % 95.3-106
 Surrogate: 4-Bromofluorobenzene 97.2 % 85.1-109

Chloride, SM4500Cl-B		mg/kg		Analyzed By: AC						
Analyte	Result	Reporting Limit	Analyzed	Method Blank	BS	% Recovery	True Value QC	RPD	Qualifier	
Chloride	<16.0	16.0	07/20/2022	ND	416	104	400	3.77		

TPH 8015M		mg/kg		Analyzed By: MS					
Analyte	Result	Reporting Limit	Analyzed	Method Blank	BS	% Recovery	True Value QC	RPD	Qualifier
GRO C6-C10*	<10.0	10.0	07/20/2022	ND	243	121	200	3.85	
DRO >C10-C28*	11.1	10.0	07/20/2022	ND	242	121	200	1.77	
EXT DRO >C28-C36	<10.0	10.0	07/20/2022	ND					

Surrogate: 1-Chlorooctane 66.0 % 43-149
 Surrogate: 1-Chlorooctadecane 68.8 % 42.5-161

Cardinal Laboratories

*=Accredited Analyte

PLEASE NOTE: Liability and Damages. Cardinal's liability and client's exclusive remedy for any claim arising, whether based in contract or tort, shall be limited to the amount paid by client for analyses. All claims, including those for negligence and any other cause whatsoever shall be deemed waived unless made in writing and received by Cardinal within thirty (30) days after completion of the applicable service. In no event shall Cardinal be liable for incidental or consequential damages, including, without limitation, business interruptions, loss of use, or loss of profits incurred by client, its subsidiaries, affiliates or successors arising out of or related to the performance of the services hereunder by Cardinal, regardless of whether such claim is based upon any of the above stated reasons or otherwise. Results relate only to the samples identified above. This report shall not be reproduced except in full with written approval of Cardinal Laboratories.

Celey D. Keene, Lab Director/Quality Manager



PHONE (575) 393-2326 • 101 E. MARLAND • HOBBS, NM 88240

Analytical Results For:

BBC International, Inc.
 Cliff Brunson
 P.O. Box 805
 Hobbs NM, 88241
 Fax To: (575) 397-0397

Received:	07/19/2022	Sampling Date:	07/15/2022
Reported:	07/25/2022	Sampling Type:	Soil
Project Name:	RIGHT HAND CANYON 34-2 (12-15-10)	Sampling Condition:	Cool & Intact
Project Number:	NOT GIVEN	Sample Received By:	Shalyn Rodriguez
Project Location:	OXY - NEW MEXICO		

Sample ID: BOTTOM SAMPLE 31 @ 1' (H223138-31)

BTX 8260B		mg/kg		Analyzed By: MS					
Analyte	Result	Reporting Limit	Analyzed	Method Blank	BS	% Recovery	True Value QC	RPD	Qualifier
Benzene*	<0.025	0.025	07/21/2022	ND	2.19	109	2.00	5.38	
Toluene*	<0.050	0.050	07/21/2022	ND	2.23	112	2.00	4.04	
Ethylbenzene*	<0.025	0.025	07/21/2022	ND	2.24	112	2.00	6.67	
Total Xylenes*	<0.075	0.075	07/21/2022	ND	6.76	113	6.00	6.67	
Total BTX	<0.150	0.150	07/21/2022	ND					

Surrogate: Dibromofluoromethane 99.6 % 84-115
 Surrogate: Toluene-d8 100 % 95.3-106
 Surrogate: 4-Bromofluorobenzene 97.3 % 85.1-109

Chloride, SM4500Cl-B		mg/kg		Analyzed By: AC						
Analyte	Result	Reporting Limit	Analyzed	Method Blank	BS	% Recovery	True Value QC	RPD	Qualifier	
Chloride	<16.0	16.0	07/20/2022	ND	416	104	400	3.77		

TPH 8015M		mg/kg		Analyzed By: MS					
Analyte	Result	Reporting Limit	Analyzed	Method Blank	BS	% Recovery	True Value QC	RPD	Qualifier
GRO C6-C10*	<10.0	10.0	07/20/2022	ND	243	121	200	3.85	
DRO >C10-C28*	10.9	10.0	07/20/2022	ND	242	121	200	1.77	
EXT DRO >C28-C36	<10.0	10.0	07/20/2022	ND					

Surrogate: 1-Chlorooctane 73.6 % 43-149
 Surrogate: 1-Chlorooctadecane 74.8 % 42.5-161

Cardinal Laboratories

*=Accredited Analyte

PLEASE NOTE: Liability and Damages. Cardinal's liability and client's exclusive remedy for any claim arising, whether based in contract or tort, shall be limited to the amount paid by client for analyses. All claims, including those for negligence and any other cause whatsoever shall be deemed waived unless made in writing and received by Cardinal within thirty (30) days after completion of the applicable service. In no event shall Cardinal be liable for incidental or consequential damages, including, without limitation, business interruptions, loss of use, or loss of profits incurred by client, its subsidiaries, affiliates or successors arising out of or related to the performance of the services hereunder by Cardinal, regardless of whether such claim is based upon any of the above stated reasons or otherwise. Results relate only to the samples identified above. This report shall not be reproduced except in full with written approval of Cardinal Laboratories.

Celey D. Keene, Lab Director/Quality Manager



PHONE (575) 393-2326 • 101 E. MARLAND • HOBBS, NM 88240

Analytical Results For:

BBC International, Inc.
 Cliff Brunson
 P.O. Box 805
 Hobbs NM, 88241
 Fax To: (575) 397-0397

Received:	07/19/2022	Sampling Date:	07/15/2022
Reported:	07/25/2022	Sampling Type:	Soil
Project Name:	RIGHT HAND CANYON 34-2 (12-15-10)	Sampling Condition:	Cool & Intact
Project Number:	NOT GIVEN	Sample Received By:	Shalyn Rodriguez
Project Location:	OXY - NEW MEXICO		

Sample ID: BOTTOM SAMPLE 32 @ 1' (H223138-32)

BTX 8260B		mg/kg		Analyzed By: MS					
Analyte	Result	Reporting Limit	Analyzed	Method Blank	BS	% Recovery	True Value QC	RPD	Qualifier
Benzene*	<0.025	0.025	07/21/2022	ND	2.19	109	2.00	5.38	
Toluene*	<0.050	0.050	07/21/2022	ND	2.23	112	2.00	4.04	
Ethylbenzene*	<0.025	0.025	07/21/2022	ND	2.24	112	2.00	6.67	
Total Xylenes*	<0.075	0.075	07/21/2022	ND	6.76	113	6.00	6.67	
Total BTX	<0.150	0.150	07/21/2022	ND					

Surrogate: Dibromofluoromethane 101 % 84-115

Surrogate: Toluene-d8 99.5 % 95.3-106

Surrogate: 4-Bromofluorobenzene 95.1 % 85.1-109

Chloride, SM4500Cl-B		mg/kg		Analyzed By: AC						
Analyte	Result	Reporting Limit	Analyzed	Method Blank	BS	% Recovery	True Value QC	RPD	Qualifier	
Chloride	<16.0	16.0	07/20/2022	ND	416	104	400	3.77		

TPH 8015M		mg/kg		Analyzed By: MS					
Analyte	Result	Reporting Limit	Analyzed	Method Blank	BS	% Recovery	True Value QC	RPD	Qualifier
GRO C6-C10*	<10.0	10.0	07/20/2022	ND	243	121	200	3.85	
DRO >C10-C28*	<10.0	10.0	07/20/2022	ND	242	121	200	1.77	
EXT DRO >C28-C36	<10.0	10.0	07/20/2022	ND					

Surrogate: 1-Chlorooctane 65.0 % 43-149

Surrogate: 1-Chlorooctadecane 69.2 % 42.5-161

Cardinal Laboratories

*=Accredited Analyte

PLEASE NOTE: Liability and Damages. Cardinal's liability and client's exclusive remedy for any claim arising, whether based in contract or tort, shall be limited to the amount paid by client for analyses. All claims, including those for negligence and any other cause whatsoever shall be deemed waived unless made in writing and received by Cardinal within thirty (30) days after completion of the applicable service. In no event shall Cardinal be liable for incidental or consequential damages, including, without limitation, business interruptions, loss of use, or loss of profits incurred by client, its subsidiaries, affiliates or successors arising out of or related to the performance of the services hereunder by Cardinal, regardless of whether such claim is based upon any of the above stated reasons or otherwise. Results relate only to the samples identified above. This report shall not be reproduced except in full with written approval of Cardinal Laboratories.

Celey D. Keene, Lab Director/Quality Manager



PHONE (575) 393-2326 • 101 E. MARLAND • HOBBS, NM 88240

Analytical Results For:

BBC International, Inc.
 Cliff Brunson
 P.O. Box 805
 Hobbs NM, 88241
 Fax To: (575) 397-0397

Received:	07/19/2022	Sampling Date:	07/15/2022
Reported:	07/25/2022	Sampling Type:	Soil
Project Name:	RIGHT HAND CANYON 34-2 (12-15-10)	Sampling Condition:	Cool & Intact
Project Number:	NOT GIVEN	Sample Received By:	Shalyn Rodriguez
Project Location:	OXY - NEW MEXICO		

Sample ID: BOTTOM SAMPLE 33 @ 1' (H223138-33)

BTX 8260B		mg/kg		Analyzed By: MS					
Analyte	Result	Reporting Limit	Analyzed	Method Blank	BS	% Recovery	True Value QC	RPD	Qualifier
Benzene*	<0.025	0.025	07/21/2022	ND	2.19	109	2.00	5.38	
Toluene*	0.050	0.050	07/21/2022	ND	2.23	112	2.00	4.04	
Ethylbenzene*	<0.025	0.025	07/21/2022	ND	2.24	112	2.00	6.67	
Total Xylenes*	<0.075	0.075	07/21/2022	ND	6.76	113	6.00	6.67	
Total BTX	<0.150	0.150	07/21/2022	ND					

Surrogate: Dibromofluoromethane 102 % 84-115
 Surrogate: Toluene-d8 99.9 % 95.3-106
 Surrogate: 4-Bromofluorobenzene 97.0 % 85.1-109

Chloride, SM4500Cl-B		mg/kg		Analyzed By: AC					
Analyte	Result	Reporting Limit	Analyzed	Method Blank	BS	% Recovery	True Value QC	RPD	Qualifier
Chloride	<16.0	16.0	07/20/2022	ND	416	104	400	3.77	
TPH 8015M		mg/kg		Analyzed By: MS					
Analyte	Result	Reporting Limit	Analyzed	Method Blank	BS	% Recovery	True Value QC	RPD	Qualifier
GRO C6-C10*	<10.0	10.0	07/20/2022	ND	243	121	200	3.85	
DRO >C10-C28*	20.2	10.0	07/20/2022	ND	242	121	200	1.77	
EXT DRO >C28-C36	12.0	10.0	07/20/2022	ND					

Surrogate: 1-Chlorooctane 103 % 43-149
 Surrogate: 1-Chlorooctadecane 105 % 42.5-161

Cardinal Laboratories

*=Accredited Analyte

PLEASE NOTE: Liability and Damages. Cardinal's liability and client's exclusive remedy for any claim arising, whether based in contract or tort, shall be limited to the amount paid by client for analyses. All claims, including those for negligence and any other cause whatsoever shall be deemed waived unless made in writing and received by Cardinal within thirty (30) days after completion of the applicable service. In no event shall Cardinal be liable for incidental or consequential damages, including, without limitation, business interruptions, loss of use, or loss of profits incurred by client, its subsidiaries, affiliates or successors arising out of or related to the performance of the services hereunder by Cardinal, regardless of whether such claim is based upon any of the above stated reasons or otherwise. Results relate only to the samples identified above. This report shall not be reproduced except in full with written approval of Cardinal Laboratories.

Celey D. Keene, Lab Director/Quality Manager



PHONE (575) 393-2326 • 101 E. MARLAND • HOBBS, NM 88240

Analytical Results For:

BBC International, Inc.
 Cliff Brunson
 P.O. Box 805
 Hobbs NM, 88241
 Fax To: (575) 397-0397

Received:	07/19/2022	Sampling Date:	07/15/2022
Reported:	07/25/2022	Sampling Type:	Soil
Project Name:	RIGHT HAND CANYON 34-2 (12-15-10)	Sampling Condition:	Cool & Intact
Project Number:	NOT GIVEN	Sample Received By:	Shalyn Rodriguez
Project Location:	OXY - NEW MEXICO		

Sample ID: BOTTOM SAMPLE 34 @ 1' (H223138-34)

BTEx 8260B		mg/kg		Analyzed By: MS					
Analyte	Result	Reporting Limit	Analyzed	Method Blank	BS	% Recovery	True Value QC	RPD	Qualifier
Benzene*	<0.025	0.025	07/21/2022	ND	2.19	109	2.00	5.38	
Toluene*	<0.050	0.050	07/21/2022	ND	2.23	112	2.00	4.04	
Ethylbenzene*	<0.025	0.025	07/21/2022	ND	2.24	112	2.00	6.67	
Total Xylenes*	<0.075	0.075	07/21/2022	ND	6.76	113	6.00	6.67	
Total BTEx	<0.150	0.150	07/21/2022	ND					

Surrogate: Dibromofluoromethane 99.9 % 84-115

Surrogate: Toluene-d8 100 % 95.3-106

Surrogate: 4-Bromofluorobenzene 95.9 % 85.1-109

Chloride, SM4500Cl-B		mg/kg		Analyzed By: AC						
Analyte	Result	Reporting Limit	Analyzed	Method Blank	BS	% Recovery	True Value QC	RPD	Qualifier	
Chloride	<16.0	16.0	07/20/2022	ND	416	104	400	3.77		

TPH 8015M		mg/kg		Analyzed By: MS					
Analyte	Result	Reporting Limit	Analyzed	Method Blank	BS	% Recovery	True Value QC	RPD	Qualifier
GRO C6-C10*	<10.0	10.0	07/20/2022	ND	243	121	200	3.85	
DRO >C10-C28*	<10.0	10.0	07/20/2022	ND	242	121	200	1.77	
EXT DRO >C28-C36	<10.0	10.0	07/20/2022	ND					

Surrogate: 1-Chlorooctane 96.4 % 43-149

Surrogate: 1-Chlorooctadecane 99.1 % 42.5-161

Cardinal Laboratories

*=Accredited Analyte

PLEASE NOTE: Liability and Damages. Cardinal's liability and client's exclusive remedy for any claim arising, whether based in contract or tort, shall be limited to the amount paid by client for analyses. All claims, including those for negligence and any other cause whatsoever shall be deemed waived unless made in writing and received by Cardinal within thirty (30) days after completion of the applicable service. In no event shall Cardinal be liable for incidental or consequential damages, including, without limitation, business interruptions, loss of use, or loss of profits incurred by client, its subsidiaries, affiliates or successors arising out of or related to the performance of the services hereunder by Cardinal, regardless of whether such claim is based upon any of the above stated reasons or otherwise. Results relate only to the samples identified above. This report shall not be reproduced except in full with written approval of Cardinal Laboratories.

Celey D. Keene, Lab Director/Quality Manager



PHONE (575) 393-2326 • 101 E. MARLAND • HOBBS, NM 88240

Analytical Results For:

BBC International, Inc.
 Cliff Brunson
 P.O. Box 805
 Hobbs NM, 88241
 Fax To: (575) 397-0397

Received:	07/19/2022	Sampling Date:	07/15/2022
Reported:	07/25/2022	Sampling Type:	Soil
Project Name:	RIGHT HAND CANYON 34-2 (12-15-10)	Sampling Condition:	Cool & Intact
Project Number:	NOT GIVEN	Sample Received By:	Shalyn Rodriguez
Project Location:	OXY - NEW MEXICO		

Sample ID: BOTTOM SAMPLE 35 @ 1' (H223138-35)

BTX 8260B		mg/kg		Analyzed By: MS					
Analyte	Result	Reporting Limit	Analyzed	Method Blank	BS	% Recovery	True Value QC	RPD	Qualifier
Benzene*	<0.025	0.025	07/21/2022	ND	2.19	109	2.00	5.38	
Toluene*	<0.050	0.050	07/21/2022	ND	2.23	112	2.00	4.04	
Ethylbenzene*	<0.025	0.025	07/21/2022	ND	2.24	112	2.00	6.67	
Total Xylenes*	<0.075	0.075	07/21/2022	ND	6.76	113	6.00	6.67	
Total BTX	<0.150	0.150	07/21/2022	ND					

Surrogate: Dibromofluoromethane 102 % 84-115
 Surrogate: Toluene-d8 100 % 95.3-106
 Surrogate: 4-Bromofluorobenzene 97.4 % 85.1-109

Chloride, SM4500Cl-B		mg/kg		Analyzed By: AC						
Analyte	Result	Reporting Limit	Analyzed	Method Blank	BS	% Recovery	True Value QC	RPD	Qualifier	
Chloride	<16.0	16.0	07/20/2022	ND	416	104	400	3.77		

TPH 8015M		mg/kg		Analyzed By: MS					
Analyte	Result	Reporting Limit	Analyzed	Method Blank	BS	% Recovery	True Value QC	RPD	Qualifier
GRO C6-C10*	<10.0	10.0	07/20/2022	ND	243	121	200	3.85	
DRO >C10-C28*	<10.0	10.0	07/20/2022	ND	242	121	200	1.77	
EXT DRO >C28-C36	<10.0	10.0	07/20/2022	ND					

Surrogate: 1-Chlorooctane 65.0 % 43-149
 Surrogate: 1-Chlorooctadecane 66.1 % 42.5-161

Cardinal Laboratories

*=Accredited Analyte

PLEASE NOTE: Liability and Damages. Cardinal's liability and client's exclusive remedy for any claim arising, whether based in contract or tort, shall be limited to the amount paid by client for analyses. All claims, including those for negligence and any other cause whatsoever shall be deemed waived unless made in writing and received by Cardinal within thirty (30) days after completion of the applicable service. In no event shall Cardinal be liable for incidental or consequential damages, including, without limitation, business interruptions, loss of use, or loss of profits incurred by client, its subsidiaries, affiliates or successors arising out of or related to the performance of the services hereunder by Cardinal, regardless of whether such claim is based upon any of the above stated reasons or otherwise. Results relate only to the samples identified above. This report shall not be reproduced except in full with written approval of Cardinal Laboratories.

Celey D. Keene, Lab Director/Quality Manager



PHONE (575) 393-2326 • 101 E. MARLAND • HOBBS, NM 88240

Analytical Results For:

BBC International, Inc.
 Cliff Brunson
 P.O. Box 805
 Hobbs NM, 88241
 Fax To: (575) 397-0397

Received:	07/19/2022	Sampling Date:	07/15/2022
Reported:	07/25/2022	Sampling Type:	Soil
Project Name:	RIGHT HAND CANYON 34-2 (12-15-10)	Sampling Condition:	Cool & Intact
Project Number:	NOT GIVEN	Sample Received By:	Shalyn Rodriguez
Project Location:	OXY - NEW MEXICO		

Sample ID: BOTTOM SAMPLE 36 @ 1' (H223138-36)

BTX 8260B		mg/kg		Analyzed By: MS					
Analyte	Result	Reporting Limit	Analyzed	Method Blank	BS	% Recovery	True Value QC	RPD	Qualifier
Benzene*	<0.025	0.025	07/21/2022	ND	2.19	109	2.00	5.38	
Toluene*	<0.050	0.050	07/21/2022	ND	2.23	112	2.00	4.04	
Ethylbenzene*	<0.025	0.025	07/21/2022	ND	2.24	112	2.00	6.67	
Total Xylenes*	<0.075	0.075	07/21/2022	ND	6.76	113	6.00	6.67	
Total BTX	<0.150	0.150	07/21/2022	ND					

Surrogate: Dibromofluoromethane 100 % 84-115
 Surrogate: Toluene-d8 99.1 % 95.3-106
 Surrogate: 4-Bromofluorobenzene 95.6 % 85.1-109

Chloride, SM4500Cl-B		mg/kg		Analyzed By: AC						
Analyte	Result	Reporting Limit	Analyzed	Method Blank	BS	% Recovery	True Value QC	RPD	Qualifier	
Chloride	<16.0	16.0	07/20/2022	ND	448	112	400	3.64		

TPH 8015M		mg/kg		Analyzed By: MS					
Analyte	Result	Reporting Limit	Analyzed	Method Blank	BS	% Recovery	True Value QC	RPD	Qualifier
GRO C6-C10*	<10.0	10.0	07/21/2022	ND	243	121	200	3.85	
DRO >C10-C28*	<10.0	10.0	07/21/2022	ND	242	121	200	1.77	
EXT DRO >C28-C36	<10.0	10.0	07/21/2022	ND					

Surrogate: 1-Chlorooctane 64.4 % 43-149
 Surrogate: 1-Chlorooctadecane 66.2 % 42.5-161

Cardinal Laboratories

*=Accredited Analyte

PLEASE NOTE: Liability and Damages. Cardinal's liability and client's exclusive remedy for any claim arising, whether based in contract or tort, shall be limited to the amount paid by client for analyses. All claims, including those for negligence and any other cause whatsoever shall be deemed waived unless made in writing and received by Cardinal within thirty (30) days after completion of the applicable service. In no event shall Cardinal be liable for incidental or consequential damages, including, without limitation, business interruptions, loss of use, or loss of profits incurred by client, its subsidiaries, affiliates or successors arising out of or related to the performance of the services hereunder by Cardinal, regardless of whether such claim is based upon any of the above stated reasons or otherwise. Results relate only to the samples identified above. This report shall not be reproduced except in full with written approval of Cardinal Laboratories.

Celey D. Keene, Lab Director/Quality Manager



PHONE (575) 393-2326 • 101 E. MARLAND • HOBBS, NM 88240

Analytical Results For:

BBC International, Inc.
 Cliff Brunson
 P.O. Box 805
 Hobbs NM, 88241
 Fax To: (575) 397-0397

Received:	07/19/2022	Sampling Date:	07/15/2022
Reported:	07/25/2022	Sampling Type:	Soil
Project Name:	RIGHT HAND CANYON 34-2 (12-15-10)	Sampling Condition:	Cool & Intact
Project Number:	NOT GIVEN	Sample Received By:	Shalyn Rodriguez
Project Location:	OXY - NEW MEXICO		

Sample ID: BOTTOM SAMPLE 37 @ 1' (H223138-37)

BTX 8260B		mg/kg		Analyzed By: MS					
Analyte	Result	Reporting Limit	Analyzed	Method Blank	BS	% Recovery	True Value QC	RPD	Qualifier
Benzene*	<0.025	0.025	07/21/2022	ND	2.19	109	2.00	5.38	
Toluene*	<0.050	0.050	07/21/2022	ND	2.23	112	2.00	4.04	
Ethylbenzene*	<0.025	0.025	07/21/2022	ND	2.24	112	2.00	6.67	
Total Xylenes*	<0.075	0.075	07/21/2022	ND	6.76	113	6.00	6.67	
Total BTX	<0.150	0.150	07/21/2022	ND					

Surrogate: Dibromofluoromethane 103 % 84-115
 Surrogate: Toluene-d8 99.9 % 95.3-106
 Surrogate: 4-Bromofluorobenzene 97.5 % 85.1-109

Chloride, SM4500Cl-B		mg/kg		Analyzed By: AC						
Analyte	Result	Reporting Limit	Analyzed	Method Blank	BS	% Recovery	True Value QC	RPD	Qualifier	
Chloride	<16.0	16.0	07/20/2022	ND	448	112	400	3.64		

TPH 8015M		mg/kg		Analyzed By: MS					
Analyte	Result	Reporting Limit	Analyzed	Method Blank	BS	% Recovery	True Value QC	RPD	Qualifier
GRO C6-C10*	<10.0	10.0	07/21/2022	ND	243	121	200	3.85	
DRO >C10-C28*	10.8	10.0	07/21/2022	ND	242	121	200	1.77	
EXT DRO >C28-C36	<10.0	10.0	07/21/2022	ND					

Surrogate: 1-Chlorooctane 99.8 % 43-149
 Surrogate: 1-Chlorooctadecane 104 % 42.5-161

Cardinal Laboratories

*=Accredited Analyte

PLEASE NOTE: Liability and Damages. Cardinal's liability and client's exclusive remedy for any claim arising, whether based in contract or tort, shall be limited to the amount paid by client for analyses. All claims, including those for negligence and any other cause whatsoever shall be deemed waived unless made in writing and received by Cardinal within thirty (30) days after completion of the applicable service. In no event shall Cardinal be liable for incidental or consequential damages, including, without limitation, business interruptions, loss of use, or loss of profits incurred by client, its subsidiaries, affiliates or successors arising out of or related to the performance of the services hereunder by Cardinal, regardless of whether such claim is based upon any of the above stated reasons or otherwise. Results relate only to the samples identified above. This report shall not be reproduced except in full with written approval of Cardinal Laboratories.

Celey D. Keene, Lab Director/Quality Manager



PHONE (575) 393-2326 • 101 E. MARLAND • HOBBS, NM 88240

Analytical Results For:

BBC International, Inc.
 Cliff Brunson
 P.O. Box 805
 Hobbs NM, 88241
 Fax To: (575) 397-0397

Received:	07/19/2022	Sampling Date:	07/15/2022
Reported:	07/25/2022	Sampling Type:	Soil
Project Name:	RIGHT HAND CANYON 34-2 (12-15-10)	Sampling Condition:	Cool & Intact
Project Number:	NOT GIVEN	Sample Received By:	Shalyn Rodriguez
Project Location:	OXY - NEW MEXICO		

Sample ID: BOTTOM SAMPLE 38 @ 1' (H223138-38)

BTEx 8260B		mg/kg		Analyzed By: MS					
Analyte	Result	Reporting Limit	Analyzed	Method Blank	BS	% Recovery	True Value QC	RPD	Qualifier
Benzene*	<0.025	0.025	07/21/2022	ND	2.19	109	2.00	5.38	
Toluene*	0.070	0.050	07/21/2022	ND	2.23	112	2.00	4.04	
Ethylbenzene*	<0.025	0.025	07/21/2022	ND	2.24	112	2.00	6.67	
Total Xylenes*	<0.075	0.075	07/21/2022	ND	6.76	113	6.00	6.67	
Total BTEx	<0.150	0.150	07/21/2022	ND					

Surrogate: Dibromofluoromethane 102 % 84-115

Surrogate: Toluene-d8 99.5 % 95.3-106

Surrogate: 4-Bromofluorobenzene 97.5 % 85.1-109

Chloride, SM4500Cl-B		mg/kg		Analyzed By: AC						
Analyte	Result	Reporting Limit	Analyzed	Method Blank	BS	% Recovery	True Value QC	RPD	Qualifier	
Chloride	<16.0	16.0	07/20/2022	ND	448	112	400	3.64		

TPH 8015M		mg/kg		Analyzed By: MS					
Analyte	Result	Reporting Limit	Analyzed	Method Blank	BS	% Recovery	True Value QC	RPD	Qualifier
GRO C6-C10*	<10.0	10.0	07/21/2022	ND	243	121	200	3.85	
DRO >C10-C28*	<10.0	10.0	07/21/2022	ND	242	121	200	1.77	
EXT DRO >C28-C36	<10.0	10.0	07/21/2022	ND					

Surrogate: 1-Chlorooctane 74.8 % 43-149

Surrogate: 1-Chlorooctadecane 77.0 % 42.5-161

Cardinal Laboratories

*=Accredited Analyte

PLEASE NOTE: Liability and Damages. Cardinal's liability and client's exclusive remedy for any claim arising, whether based in contract or tort, shall be limited to the amount paid by client for analyses. All claims, including those for negligence and any other cause whatsoever shall be deemed waived unless made in writing and received by Cardinal within thirty (30) days after completion of the applicable service. In no event shall Cardinal be liable for incidental or consequential damages, including, without limitation, business interruptions, loss of use, or loss of profits incurred by client, its subsidiaries, affiliates or successors arising out of or related to the performance of the services hereunder by Cardinal, regardless of whether such claim is based upon any of the above stated reasons or otherwise. Results relate only to the samples identified above. This report shall not be reproduced except in full with written approval of Cardinal Laboratories.

Celey D. Keene, Lab Director/Quality Manager



PHONE (575) 393-2326 • 101 E. MARLAND • HOBBS, NM 88240

Analytical Results For:

BBC International, Inc.
 Cliff Brunson
 P.O. Box 805
 Hobbs NM, 88241
 Fax To: (575) 397-0397

Received:	07/19/2022	Sampling Date:	07/15/2022
Reported:	07/25/2022	Sampling Type:	Soil
Project Name:	RIGHT HAND CANYON 34-2 (12-15-10)	Sampling Condition:	Cool & Intact
Project Number:	NOT GIVEN	Sample Received By:	Shalyn Rodriguez
Project Location:	OXY - NEW MEXICO		

Sample ID: SIDEWALL SAMPLE 1 @ 1' (H223138-39)

BTX 8260B		mg/kg		Analyzed By: MS					
Analyte	Result	Reporting Limit	Analyzed	Method Blank	BS	% Recovery	True Value QC	RPD	Qualifier
Benzene*	<0.025	0.025	07/21/2022	ND	2.19	109	2.00	5.38	
Toluene*	0.082	0.050	07/21/2022	ND	2.23	112	2.00	4.04	
Ethylbenzene*	<0.025	0.025	07/21/2022	ND	2.24	112	2.00	6.67	
Total Xylenes*	<0.075	0.075	07/21/2022	ND	6.76	113	6.00	6.67	
Total BTX	<0.150	0.150	07/21/2022	ND					

Surrogate: Dibromofluoromethane 100 % 84-115
 Surrogate: Toluene-d8 99.3 % 95.3-106
 Surrogate: 4-Bromofluorobenzene 96.6 % 85.1-109

Chloride, SM4500Cl-B		mg/kg		Analyzed By: AC						
Analyte	Result	Reporting Limit	Analyzed	Method Blank	BS	% Recovery	True Value QC	RPD	Qualifier	
Chloride	48.0	16.0	07/20/2022	ND	448	112	400	3.64		

TPH 8015M		mg/kg		Analyzed By: MS					
Analyte	Result	Reporting Limit	Analyzed	Method Blank	BS	% Recovery	True Value QC	RPD	Qualifier
GRO C6-C10*	<10.0	10.0	07/21/2022	ND	243	121	200	3.85	
DRO >C10-C28*	<10.0	10.0	07/21/2022	ND	242	121	200	1.77	
EXT DRO >C28-C36	<10.0	10.0	07/21/2022	ND					

Surrogate: 1-Chlorooctane 67.6 % 43-149
 Surrogate: 1-Chlorooctadecane 68.3 % 42.5-161

Cardinal Laboratories

*=Accredited Analyte

PLEASE NOTE: Liability and Damages. Cardinal's liability and client's exclusive remedy for any claim arising, whether based in contract or tort, shall be limited to the amount paid by client for analyses. All claims, including those for negligence and any other cause whatsoever shall be deemed waived unless made in writing and received by Cardinal within thirty (30) days after completion of the applicable service. In no event shall Cardinal be liable for incidental or consequential damages, including, without limitation, business interruptions, loss of use, or loss of profits incurred by client, its subsidiaries, affiliates or successors arising out of or related to the performance of the services hereunder by Cardinal, regardless of whether such claim is based upon any of the above stated reasons or otherwise. Results relate only to the samples identified above. This report shall not be reproduced except in full with written approval of Cardinal Laboratories.

Celey D. Keene, Lab Director/Quality Manager



PHONE (575) 393-2326 • 101 E. MARLAND • HOBBS, NM 88240

Analytical Results For:

BBC International, Inc.
 Cliff Brunson
 P.O. Box 805
 Hobbs NM, 88241
 Fax To: (575) 397-0397

Received:	07/19/2022	Sampling Date:	07/15/2022
Reported:	07/25/2022	Sampling Type:	Soil
Project Name:	RIGHT HAND CANYON 34-2 (12-15-10)	Sampling Condition:	Cool & Intact
Project Number:	NOT GIVEN	Sample Received By:	Shalyn Rodriguez
Project Location:	OXY - NEW MEXICO		

Sample ID: SIDEWALL SAMPLE 2 @ 1' (H223138-40)

BTEx 8260B		mg/kg		Analyzed By: MS						
Analyte	Result	Reporting Limit	Analyzed	Method Blank	BS	% Recovery	True Value QC	RPD	Qualifier	
Benzene*	<0.025	0.025	07/21/2022	ND	2.19	109	2.00	5.38		
Toluene*	0.055	0.050	07/21/2022	ND	2.23	112	2.00	4.04		
Ethylbenzene*	<0.025	0.025	07/21/2022	ND	2.24	112	2.00	6.67		
Total Xylenes*	<0.075	0.075	07/21/2022	ND	6.76	113	6.00	6.67		
Total BTEx	<0.150	0.150	07/21/2022	ND						

Surrogate: Dibromofluoromethane 103 % 84-115
 Surrogate: Toluene-d8 99.6 % 95.3-106
 Surrogate: 4-Bromofluorobenzene 99.1 % 85.1-109

Chloride, SM4500Cl-B		mg/kg		Analyzed By: AC						
Analyte	Result	Reporting Limit	Analyzed	Method Blank	BS	% Recovery	True Value QC	RPD	Qualifier	
Chloride	64.0	16.0	07/20/2022	ND	448	112	400	3.64		

TPH 8015M		mg/kg		Analyzed By: MS					
Analyte	Result	Reporting Limit	Analyzed	Method Blank	BS	% Recovery	True Value QC	RPD	Qualifier
GRO C6-C10*	<10.0	10.0	07/21/2022	ND	243	121	200	3.85	
DRO >C10-C28*	20.5	10.0	07/21/2022	ND	242	121	200	1.77	
EXT DRO >C28-C36	<10.0	10.0	07/21/2022	ND					

Surrogate: 1-Chlorooctane 74.9 % 43-149
 Surrogate: 1-Chlorooctadecane 75.8 % 42.5-161

Cardinal Laboratories

*=Accredited Analyte

PLEASE NOTE: Liability and Damages. Cardinal's liability and client's exclusive remedy for any claim arising, whether based in contract or tort, shall be limited to the amount paid by client for analyses. All claims, including those for negligence and any other cause whatsoever shall be deemed waived unless made in writing and received by Cardinal within thirty (30) days after completion of the applicable service. In no event shall Cardinal be liable for incidental or consequential damages, including, without limitation, business interruptions, loss of use, or loss of profits incurred by client, its subsidiaries, affiliates or successors arising out of or related to the performance of the services hereunder by Cardinal, regardless of whether such claim is based upon any of the above stated reasons or otherwise. Results relate only to the samples identified above. This report shall not be reproduced except in full with written approval of Cardinal Laboratories.

Celey D. Keene, Lab Director/Quality Manager



PHONE (575) 393-2326 • 101 E. MARLAND • HOBBS, NM 88240

Analytical Results For:

BBC International, Inc.
 Cliff Brunson
 P.O. Box 805
 Hobbs NM, 88241
 Fax To: (575) 397-0397

Received:	07/19/2022	Sampling Date:	07/15/2022
Reported:	07/25/2022	Sampling Type:	Soil
Project Name:	RIGHT HAND CANYON 34-2 (12-15-10)	Sampling Condition:	Cool & Intact
Project Number:	NOT GIVEN	Sample Received By:	Shalyn Rodriguez
Project Location:	OXY - NEW MEXICO		

Sample ID: SIDEWALL SAMPLE 3 @ 1' (H223138-41)

BTX 8260B		mg/kg		Analyzed By: MS					
Analyte	Result	Reporting Limit	Analyzed	Method Blank	BS	% Recovery	True Value QC	RPD	Qualifier
Benzene*	<0.025	0.025	07/21/2022	ND	2.16	108	2.00	2.94	
Toluene*	0.054	0.050	07/21/2022	ND	2.19	110	2.00	3.54	
Ethylbenzene*	<0.025	0.025	07/21/2022	ND	2.17	109	2.00	2.26	
Total Xylenes*	<0.075	0.075	07/21/2022	ND	6.61	110	6.00	1.39	
Total BTX	<0.150	0.150	07/21/2022	ND					

Surrogate: Dibromofluoromethane 99.8 % 84-115
 Surrogate: Toluene-d8 98.9 % 95.3-106
 Surrogate: 4-Bromofluorobenzene 97.2 % 85.1-109

Chloride, SM4500Cl-B		mg/kg		Analyzed By: AC					
Analyte	Result	Reporting Limit	Analyzed	Method Blank	BS	% Recovery	True Value QC	RPD	Qualifier
Chloride	<16.0	16.0	07/20/2022	ND	448	112	400	3.64	
TPH 8015M		mg/kg		Analyzed By: MS					
Analyte	Result	Reporting Limit	Analyzed	Method Blank	BS	% Recovery	True Value QC	RPD	Qualifier
GRO C6-C10*	<10.0	10.0	07/20/2022	ND	209	104	200	2.68	
DRO >C10-C28*	<10.0	10.0	07/20/2022	ND	224	112	200	2.81	
EXT DRO >C28-C36	<10.0	10.0	07/20/2022	ND					

Surrogate: 1-Chlorooctane 76.6 % 43-149
 Surrogate: 1-Chlorooctadecane 70.4 % 42.5-161

Cardinal Laboratories

*=Accredited Analyte

PLEASE NOTE: Liability and Damages. Cardinal's liability and client's exclusive remedy for any claim arising, whether based in contract or tort, shall be limited to the amount paid by client for analyses. All claims, including those for negligence and any other cause whatsoever shall be deemed waived unless made in writing and received by Cardinal within thirty (30) days after completion of the applicable service. In no event shall Cardinal be liable for incidental or consequential damages, including, without limitation, business interruptions, loss of use, or loss of profits incurred by client, its subsidiaries, affiliates or successors arising out of or related to the performance of the services hereunder by Cardinal, regardless of whether such claim is based upon any of the above stated reasons or otherwise. Results relate only to the samples identified above. This report shall not be reproduced except in full with written approval of Cardinal Laboratories.

Celey D. Keene, Lab Director/Quality Manager



PHONE (575) 393-2326 • 101 E. MARLAND • HOBBS, NM 88240

Analytical Results For:

BBC International, Inc.
 Cliff Brunson
 P.O. Box 805
 Hobbs NM, 88241
 Fax To: (575) 397-0397

Received:	07/19/2022	Sampling Date:	07/15/2022
Reported:	07/25/2022	Sampling Type:	Soil
Project Name:	RIGHT HAND CANYON 34-2 (12-15-10)	Sampling Condition:	Cool & Intact
Project Number:	NOT GIVEN	Sample Received By:	Shalyn Rodriguez
Project Location:	OXY - NEW MEXICO		

Sample ID: SIDEWALL SAMPLE 4 @ 1' (H223138-42)

BTX 8260B			mg/kg							
			Analyzed By: MS							
Analyte	Result	Reporting Limit	Analyzed	Method Blank	BS	% Recovery	True Value QC	RPD	Qualifier	
Benzene*	<0.025	0.025	07/21/2022	ND	2.16	108	2.00	2.94		
Toluene*	<0.050	0.050	07/21/2022	ND	2.19	110	2.00	3.54		
Ethylbenzene*	<0.025	0.025	07/21/2022	ND	2.17	109	2.00	2.26		
Total Xylenes*	<0.075	0.075	07/21/2022	ND	6.61	110	6.00	1.39		
Total BTX	<0.150	0.150	07/21/2022	ND						

Surrogate: Dibromofluoromethane 101 % 84-115
 Surrogate: Toluene-d8 99.7 % 95.3-106
 Surrogate: 4-Bromofluorobenzene 96.5 % 85.1-109

Chloride, SM4500Cl-B			mg/kg							
			Analyzed By: AC							
Analyte	Result	Reporting Limit	Analyzed	Method Blank	BS	% Recovery	True Value QC	RPD	Qualifier	
Chloride	32.0	16.0	07/20/2022	ND	448	112	400	3.64		

TPH 8015M			mg/kg							
			Analyzed By: MS							
Analyte	Result	Reporting Limit	Analyzed	Method Blank	BS	% Recovery	True Value QC	RPD	Qualifier	
GRO C6-C10*	<10.0	10.0	07/20/2022	ND	209	104	200	2.68		
DRO >C10-C28*	<10.0	10.0	07/20/2022	ND	224	112	200	2.81		
EXT DRO >C28-C36	<10.0	10.0	07/20/2022	ND						

Surrogate: 1-Chlorooctane 82.9 % 43-149
 Surrogate: 1-Chlorooctadecane 74.1 % 42.5-161

Cardinal Laboratories

*=Accredited Analyte

PLEASE NOTE: Liability and Damages. Cardinal's liability and client's exclusive remedy for any claim arising, whether based in contract or tort, shall be limited to the amount paid by client for analyses. All claims, including those for negligence and any other cause whatsoever shall be deemed waived unless made in writing and received by Cardinal within thirty (30) days after completion of the applicable service. In no event shall Cardinal be liable for incidental or consequential damages, including, without limitation, business interruptions, loss of use, or loss of profits incurred by client, its subsidiaries, affiliates or successors arising out of or related to the performance of the services hereunder by Cardinal, regardless of whether such claim is based upon any of the above stated reasons or otherwise. Results relate only to the samples identified above. This report shall not be reproduced except in full with written approval of Cardinal Laboratories.

Celey D. Keene, Lab Director/Quality Manager



PHONE (575) 393-2326 • 101 E. MARLAND • HOBBS, NM 88240

Analytical Results For:

BBC International, Inc.
 Cliff Brunson
 P.O. Box 805
 Hobbs NM, 88241
 Fax To: (575) 397-0397

Received:	07/19/2022	Sampling Date:	07/15/2022
Reported:	07/25/2022	Sampling Type:	Soil
Project Name:	RIGHT HAND CANYON 34-2 (12-15-10)	Sampling Condition:	Cool & Intact
Project Number:	NOT GIVEN	Sample Received By:	Shalyn Rodriguez
Project Location:	OXY - NEW MEXICO		

Sample ID: SIDEWALL SAMPLE 5 @ 1' (H223138-43)

BTEx 8260B		mg/kg		Analyzed By: MS					
Analyte	Result	Reporting Limit	Analyzed	Method Blank	BS	% Recovery	True Value QC	RPD	Qualifier
Benzene*	<0.025	0.025	07/21/2022	ND	2.16	108	2.00	2.94	
Toluene*	<0.050	0.050	07/21/2022	ND	2.19	110	2.00	3.54	
Ethylbenzene*	<0.025	0.025	07/21/2022	ND	2.17	109	2.00	2.26	
Total Xylenes*	<0.075	0.075	07/21/2022	ND	6.61	110	6.00	1.39	
Total BTEx	<0.150	0.150	07/21/2022	ND					

Surrogate: Dibromofluoromethane 101 % 84-115
 Surrogate: Toluene-d8 99.3 % 95.3-106
 Surrogate: 4-Bromofluorobenzene 98.6 % 85.1-109

Chloride, SM4500Cl-B		mg/kg		Analyzed By: AC						
Analyte	Result	Reporting Limit	Analyzed	Method Blank	BS	% Recovery	True Value QC	RPD	Qualifier	
Chloride	32.0	16.0	07/20/2022	ND	448	112	400	3.64		

TPH 8015M		mg/kg		Analyzed By: MS					
Analyte	Result	Reporting Limit	Analyzed	Method Blank	BS	% Recovery	True Value QC	RPD	Qualifier
GRO C6-C10*	<10.0	10.0	07/20/2022	ND	209	104	200	2.68	
DRO >C10-C28*	<10.0	10.0	07/20/2022	ND	224	112	200	2.81	
EXT DRO >C28-C36	<10.0	10.0	07/20/2022	ND					

Surrogate: 1-Chlorooctane 82.5 % 43-149
 Surrogate: 1-Chlorooctadecane 75.2 % 42.5-161

Cardinal Laboratories

*=Accredited Analyte

PLEASE NOTE: Liability and Damages. Cardinal's liability and client's exclusive remedy for any claim arising, whether based in contract or tort, shall be limited to the amount paid by client for analyses. All claims, including those for negligence and any other cause whatsoever shall be deemed waived unless made in writing and received by Cardinal within thirty (30) days after completion of the applicable service. In no event shall Cardinal be liable for incidental or consequential damages, including, without limitation, business interruptions, loss of use, or loss of profits incurred by client, its subsidiaries, affiliates or successors arising out of or related to the performance of the services hereunder by Cardinal, regardless of whether such claim is based upon any of the above stated reasons or otherwise. Results relate only to the samples identified above. This report shall not be reproduced except in full with written approval of Cardinal Laboratories.

Celey D. Keene, Lab Director/Quality Manager

PHONE (575) 393-2326 ° 101 E. MARLAND ° HOBBS, NM 88240

Notes and Definitions

QR-03	The RPD value for the sample duplicate or MS/MSD was outside of QC acceptance limits due to matrix interference. QC batch accepted based on LCS and/or LCSD recovery and/or RPD values.
ND	Analyte NOT DETECTED at or above the reporting limit
RPD	Relative Percent Difference
**	Samples not received at proper temperature of 6°C or below.
***	Insufficient time to reach temperature.
-	Chloride by SM4500Cl-B does not require samples be received at or below 6°C Samples reported on an as received basis (wet) unless otherwise noted on report

Cardinal Laboratories

*=Accredited Analyte

PLEASE NOTE: Liability and Damages. Cardinal's liability and client's exclusive remedy for any claim arising, whether based in contract or tort, shall be limited to the amount paid by client for analyses. All claims, including those for negligence and any other cause whatsoever shall be deemed waived unless made in writing and received by Cardinal within thirty (30) days after completion of the applicable service. In no event shall Cardinal be liable for incidental or consequential damages, including, without limitation, business interruptions, loss of use, or loss of profits incurred by client, its subsidiaries, affiliates or successors arising out of or related to the performance of the services hereunder by Cardinal, regardless of whether such claim is based upon any of the above stated reasons or otherwise. Results relate only to the samples identified above. This report shall not be reproduced except in full with written approval of Cardinal Laboratories.

A handwritten signature in black ink, appearing to read "Celey D. Keene".

Celey D. Keene, Lab Director/Quality Manager



101 East Marland, Hobbs, NM 88240
(505) 393-2326 FAX (505) 393-2476

CHAIN-OF-CUSTODY AND ANALYSIS REQUEST

Company Name: BBC International, Inc. Project Manager: Cliff Brunson Address: P.O. Box 805 City: Hobbs Phone #: 575-397-6388 Project #: Project Name: RIGHT HAND CANYON 34-2 (12-15-10) Project Location: New Mexico Sample Name: SIMON RENDON										BILL TO P.O. #: Company: Oxy Attn: Address: City: State: Zip: Phone #: Fax #:										ANALYSIS REQUEST																													
FOR LAB USE ONLY										Lab I.D.										Sample I.D.																													
										Bottom Sample 1 @1' Bottom Sample 2 @1' Bottom Sample 3 @1' Bottom Sample 4 @1' Bottom Sample 5 @1' Bottom Sample 6 @1' Bottom Sample 7 @1' Bottom Sample 8 @1' Bottom Sample 9 @1' Bottom Sample 10 @1'										(G)RAB OR (C)OMP. # CONTAINERS GROUNDWATER WASTEWATER SOIL OIL SLUDGE OTHER : ACID/BASE: ICE / COOL OTHER :										DATE TIME										Chloride BTEX TPH Ext									
Relinquished By: [Signature] Date: 7-14-22 Time: 8:00 AM Received By: [Signature] Date: 7-14-22 Time: 11:41 AM										Relinquished By: [Signature] Date: 7-14-22 Time: 11:41 AM Received By: [Signature]										Sample Condition <input checked="" type="checkbox"/> Intact <input type="checkbox"/> Damaged <input type="checkbox"/> Yes <input type="checkbox"/> No CHECKED BY: [Signature]										REMARKS:																			



• CARDINAL LABORATORIES

101 East Marland, Hobbs, NM 88240
(505) 393-2326 FAX (505) 393-2476

CHAIN-OF-CUSTODY AND ANALYSIS REQUEST

[illegible]



ORDINAL LABORATORIES

101 East Marland, Hobbs, NM 88240
(505) 393-2326 FAX (505) 393-2476

CHAIN-OF-CUSTODY AND ANALYSIS REQUEST

Company Name: BBC International, Inc.						P.O. #:						ANALYSIS REQUEST											
Project Manager: Cliff Brunson						Company: Oxy																	
Address: P.O. Box 805						Attn:																	
City: Hobbs						State: NM Zip: 88241																	
Phone #: 575-397-6388						Fax #: 575-397-0397						Address:											
Project #:						Project Owner: Oxy						City:											
Project Name: RIGHT HAND CANYON 34-2 (12-15-10)						State: Zip:						Phone #:											
Project Location: New Mexico						Fax #:																	
Sampler Name: SIMON RENDON						PRESERV:						SAMPLING											
FOR LAB USE ONLY						MATRIX																	
Lab I.D.						(G)RAB OR (C)OMP.																	
Sample I.D.						# CONTAINERS																	
						GROUNDWATER																	
						WASTEWATER																	
						SOIL																	
						OIL																	
						SLUDGE																	
						OTHER :																	
						ACID/BASE:																	
						ICE / COOL																	
						OTHER :																	
						DATE						TIME											
Bottom Sample 21 @1'						7/14/22						3:41 PM											
Bottom Sample 22 @1'						7/15/22						9:45 AM											
Bottom Sample 23 @1'						7/15/22						9:57 AM											
Bottom Sample 24 @1'						7/15/22						10:12 AM											
Bottom Sample 25 @1'						7/15/22						10:25 AM											
Bottom Sample 26 @1'						7/15/22						10:42 AM											
Bottom Sample 27 @1'						7/15/22						10:54 AM											
Bottom Sample 28 @1'						7/15/22						11:07 AM											
Bottom Sample 29 @1'						7/15/22						11:19 AM											
Bottom Sample 30 @1'						7/15/22						11:33 AM											
PLEASE NOTE: Liability and Damages: Contractor's liability and client's exclusive remedy for any claim arising whether based in contract or tort, shall be limited to the amount paid by the client for the analysis. All claims, including those for negligence and any other cause whatsoever shall be deemed waived unless made in writing and received by Cardinal within 30 days after completion of the applicable service. In no event shall Cardinal be liable for incidental or consequential damages, including without limitation, business interruptions, loss of use, or loss of profits incurred by client, its subsidiaries, affiliates or successors arising out of or related to the performance of services hereunder for Cardinal regardless of whether such claim is based upon any of the above stated reasons or otherwise.						Chloride						BTEX						TPH - Ext					
Relinquished By: [Signature]						Date: 7-14-22						Received By: [Signature]						Time: 8:00am					
Relinquished By: [Signature]						Date: 7-14-22						Received By: [Signature]						Time: 10:49					
Delivered By: (Circle One) - 11/9 C - O - U - E						Sample Condition						CHECKED BY: [Signature]						Cool Intact					
Sampler - UPS - Bus - Other: 2-11.10c #113						Yes No						Yes No						Yes No					
REMARKS:						Phone Result: Yes No Add'l Phone #: Add'l Fax #:																	



ORDINAL LABORATORIES

101 East Marland, Hobbs, NM 88240
(505) 393-2326 FAX (505) 393-2476

CHAIN-OF-CUSTODY AND ANALYSIS REQUEST

Company Name: BBC International, Inc.				BILL TO				ANALYSIS REQUEST					
Project Manager: Cliff Brunson				P.O. #:									
Address: P.O. Box 805				Company: Oxy									
City: Hobbs				Attn:									
State: NM Zip: 88241				Address:									
Phone #: 575-397-6388 Fax #: 575-397-0397				City:									
Project #:				State: Zip:									
Project Name: RIGHT HAND CANYON 34-2 (12-15-10)				Phone #:									
Project Location: New Mexico				Fax #:									
Sampler Name: SIMON RENDON													
FOR LAB USE ONLY													
Lab I.D.		Sample I.D.		MATRIX		PRESERV		SAMPLING					
				# CONTAINERS									
				GROUNDWATER									
				WASTEWATER									
				SOIL									
				OIL									
				SLUDGE									
				OTHER :									
				ACID/BASE:									
				ICE / COOL									
				OTHER :									
				DATE		TIME							
1002338		Bottom Sample 31 @1'		7/15/22		11:46 AM				Chloride			
31		Bottom Sample 32 @1'		7/15/22		11:58 AM				BTEx			
33		Bottom Sample 33 @1'		7/15/22		12:12 AM				TPN Ext			
34		Bottom Sample 34 @1'		7/15/22		12:24 PM							
35		Bottom Sample 35 @1'		7/15/22		12:36 PM							
36		Bottom Sample 36 @1'		7/15/22		12:48 PM							
37		Bottom Sample 37 @1'		7/15/22		1:06 PM							
38		Bottom Sample 38 @1'		7/15/22		1:17 PM							
39		Sidewall Sample 1 @1'		7/15/22		1:30 PM							
40		Sidewall Sample 2 @1'		7/15/22		1:39 PM							
PLEASE NOTE: Liability and Damages. Cardinal's liability and client's exclusive remedy for any claim arising whether based in contract or tort, shall be limited to the amount paid for the client for two analyses. All claims, including those for negligence and any other cause whatsoever shall be deemed waived unless made in writing and received by Cardinal within 30 days after completion of the applicable service. In no event shall Cardinal be liable for incidental or consequential damages, including without limitation, business interruptions, loss of use, or loss of profits incurred by client, its subsidiaries, affiliates or successors arising out of or related to the performance of services hereunder by Cardinal, regardless of whether such claim is based upon any of the above stated reasons of otherwise.													
Relinquished By:		Date: 7-19-22		Received By:		Date: 7-19-22		Phone Result: <input type="checkbox"/> Yes <input type="checkbox"/> No		Add'l Phone #:			
Relinquished By:		Time: 8:00 AM		Received By:		Time: 10:49		Fax Result: <input type="checkbox"/> Yes <input type="checkbox"/> No		Add'l Fax #:			
Delivered By: (Circle One)		-11°C -11.0°C #13		Sample Condition		CHECKED BY: (Initials)							
Sampler - UPS - Bus - Other:				Cool <input type="checkbox"/> Intact <input type="checkbox"/>									



ORDINAL LABORATORIES

101 East Marland, Hobbs, NM 88240
(505) 393-2326 FAX (505) 393-2476

CHAIN-OF-CUSTODY AND ANALYSIS REQUEST

[illegible]

District I
1625 N. French Dr., Hobbs, NM 88240
Phone:(575) 393-6161 Fax:(575) 393-0720
District II
811 S. First St., Artesia, NM 88210
Phone:(575) 748-1283 Fax:(575) 748-9720
District III
1000 Rio Brazos Rd., Aztec, NM 87410
Phone:(505) 334-6178 Fax:(505) 334-6170
District IV
1220 S. St Francis Dr., Santa Fe, NM 87505
Phone:(505) 476-3470 Fax:(505) 476-3462

State of New Mexico
Energy, Minerals and Natural Resources
Oil Conservation Division
1220 S. St Francis Dr.
Santa Fe, NM 87505

CONDITIONS

Action 150004

CONDITIONS

Operator: OXY USA INC P.O. Box 4294 Houston, TX 772104294	OGRID: 16696
	Action Number: 150004
	Action Type: [C-141] Release Corrective Action (C-141)

CONDITIONS

Created By	Condition	Condition Date
amaxwell	None	2/22/2023