



REVISED CLOSURE REPORT

Property:

Jones Canyon 4 Fed #2

**Eddy County, New Mexico
32.41680 N, 104.50244 W
NMOCD Incident ID: nLLB0631356160
RP No.: 2RP-524
API No.: 30-015-28779**

May 22, 2023
Ensolum Project No. 03B1417035

Prepared for:

**Oxy USA Inc.
P.O. Box 4294
Houston, TX 77210
Attn: Mr. Wade Dittrich**

Prepared by:


Beaux Jennings
Senior Project Manager

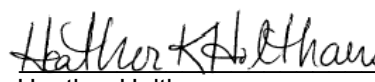

Heather Holthaus
Senior Project Manager



TABLE OF CONTENTS

1.0	INTRODUCTION	1
1.1	EXECUTIVE SUMMARY	1
1.2	SITE DESCRIPTION & BACKGROUND	2
1.3	PROJECT OBJECTIVE.....	2
2.0	CLOSURE CRITERIA.....	2
3.0	SOIL REMEDIATION ACTIVITIES.....	3
4.0	SOIL SAMPLING PROGRAM	4
5.0	SOIL LABORATORY ANALYTICAL METHODS	4
6.0	DATA EVALUATION	4
7.0	RECLAMATION AND RE-VEGETATION	5
8.0	FINDINGS AND RECOMMENDATION	5
9.0	STANDARDS OF CARE, LIMITATIONS, AND RELIANCE	6
9.1	STANDARD OF CARE.....	6
9.2	LIMITATIONS	6
9.3	RELIANCE.....	6

LIST OF APPENDICES

Appendix A: Figures

Appendix B: Supporting Documentation

Appendix C: Photographic Documentation

Appendix D: Table

Appendix E: Laboratory Data Sheets & Chain-of-Custody Documentation

Appendix F: C-141



ENSOLUM

REVISED CLOSURE REPORT

Jones Canyon 4 Fed #2

Eddy County, New Mexico

32.41680 N, 104.50244 W

NMOCD Incident ID: nLLB0631356160

RP No.: 2RP-524

API No.: 30-015-28779

Ensolum Project No. 03B1417035

1.0 INTRODUCTION

1.1 Executive Summary

- On August 10, 2006, a release of produced fluids was reported from a ruptured flowline. Approximately 56 barrels (bbls) of produced fluids were released and mixed with rainwater on-site. A vacuum truck was brought in and recovered approximately 50 bbls of produced fluids and rainwater. Due to the lack of information regarding the release, it is unknown if the impacted soil was remediated at the Jones Canyon 4 Fed #2, hereinafter referred to as the "Site". Based on the lack of remediation information, Oxy USA Inc. (Oxy) contracted Ensolum, LLC (Ensolum) to perform sampling of the approximate spill location at the Site.
- On April 4, 2022, Ensolum arrived on-Site and collected six (6) composite soil samples from three (3) potholes that had been installed in the release area with a backhoe (PH-1, PH-2 and PH-3) at depths of 0.5 to three (3) feet below ground surface (bgs).
- The primary objective of the closure activities was to reduce chemical of concern (COC) concentrations in the on-Site soils to below the applicable New Mexico Energy, Minerals and Natural Resources Department (EMNRD) Oil Conservation Division (OCD) Closure Criteria for Soils Impacted by a Release using the New Mexico Administrative Code (NMAC) 19.15.29 *Releases* as guidance.
- The impacted area measured approximately 50 feet long and 12 feet wide at the maximum extents. The maximum depth of the impacted area measured approximately two (2) feet bgs.
- A total of six (6) composite soil samples from three (3) locations were collected from the release area. Based on the sample analytical results, composite pothole soil samples PH-1, PH-2 collected at two (2) feet bgs and PH-3 collected at three (3) feet bgs exhibited all results below the applicable NMOCD Closure Criteria, while composite pothole soil samples PH-1, PH-2 and PH-3 collected at 0.5 feet bgs exhibited chloride concentrations above the applicable NMOCD Closure Criteria. Subsequent to the results of the pothole soil sampling, the identified impacted soils were removed and taken off-Site for proper disposal.
- On July 19, 2022, a Closure Report was submitted to the New Mexico EMNRD OCD for approval.
- On February 21, 2023, the New Mexico EMNRD OCD rejected the Closure Report. Steps were subsequently taken by Oxy to address the requirements needed for closure.
- Based on the request from the New Mexico EMNRD OCD, horizontal delineation samples (BG-1 through BG-4) were collected outside of the spill extent on February 27, 2023.

Oxy USA Inc.
Revised Closure Report
Jones Canyon 4 Fed #2
May 22, 2023



- In addition, sidewall samples (SW-1 and SW-2) were collected at the request of the New Mexico EMNRD OCD on February 27 and May 1, 2023.

Based on additional field observations and laboratory analytical results, no additional investigation or corrective action appears warranted at this time.

1.2 Site Description & Background

Operator:	Oxy USA Inc. (Oxy)
Site Name:	Jones Canyon 4 Fed #2
Location:	32.41680 N, 104.50244 W Eddy County, New Mexico
Property:	Bureau of Land Management (BLM)
Regulatory:	New Mexico Energy, Minerals and Natural Resources Department (EMNRD) Oil Conservation Division (OCD)

On August 10, 2006, a release of produced fluids was reported from a ruptured flowline. Approximately 56 bbls of produced fluids were released and mixed with rainwater on-site. A vacuum truck was brought in and recovered approximately 50 bbls of produced fluids and rainwater.

The Topographic Map depicting the location of the Site is included as **Figure 1**, the Site Vicinity Map is included as **Figure 2**, the Site Map indicating the locations of composite soil samples is included as **Figure 3**, and the Closure Criteria Map is included as **Figure 4** in **Appendix A**.

1.3 Project Objective

The primary objective of the closure activities was to reduce COC concentrations in the on-Site soils to below the applicable New Mexico EMNRD OCD closure criteria concentrations.

2.0 CLOSURE CRITERIA

The Site is subject to regulatory oversight by the New Mexico EMNRD OCD. In order to address activities related to exempt oil and gas releases, the New Mexico EMNRD OCD references NMAC 19.15.29 *Releases*, which establishes investigation and abatement action requirements for sites subject to reporting and/or corrective action. Ensolum utilized information provided by Oxy, the general site characteristics, and information available from the New Mexico Office of the State Engineer (OSE) and the New Mexico EMNRD OCD Imaging database to determine the appropriate closure criteria for the Site.

- The Site is not located within 300 feet of a New Mexico EMNRD OCD-defined continuously flowing watercourse or any other significant watercourse.
- The Site is not located within 200 feet of a lakebed, sinkhole, or playa lake.
- The Site is not located within 300 feet from an occupied permanent residence, school, hospital, institution, or church.
- According to the OSE WRSS database there are no private, domestic freshwater wells used by less than five (5) households for domestic or stock water purposes identified within 500 feet of the Site.
- According to the OSE WRSS database there are no freshwater wells identified within 1,000 feet of the Site as declared in the previous bullet.

Oxy USA Inc.
Revised Closure Report
Jones Canyon 4 Fed #2
May 22, 2023



- The Site is not located within incorporated municipal boundaries or within a defined municipal fresh water well field covered under a municipal ordinance adopted pursuant to NMSA 1978, Section 3-27-3.
- The Site is not located within 300 feet of a wetland.
- Based on information identified on the New Mexico Mining and Minerals Division's GIS, Maps and Mine Data database, the Site is not located within an area overlying a subsurface mine.
- Based on the Karst Occurrence Potential (.kmz) provided by the BLM, the Site is located within an unstable area, also referred to as high karst.
- The Site is noted to be located within an area of minimal flood hazard.

Based on the identified siting criteria, cleanup goals for soils remaining in place at the Site include:

Closure Criteria for Soils Impacted by a Release			
Minimum depth below any point within horizontal boundary of the release to groundwater less than 10,000 mg/l TDS	Constituent	Method	Limit
≤ 50 feet	Chloride	EPA 300.0 or SM4500 Cl B	600 mg/kg
	TPH (GRO+DRO+MRO)	EPA SW-846 Method 8015M	100 mg/kg
	BTEX	EPA SW-846 Method 8021B or 8260B	50 mg/kg
	Benzene	EPA SW-846 Method 8021B or 8260B	10 mg/kg

3.0 SOIL REMEDIATION ACTIVITIES

On August 10, 2006, a release of produced fluids was reported from a ruptured flowline. Approximately 56 bbls of produced fluids were released and mixed with rainwater on-site. A vacuum truck was brought in and recovered approximately 50 bbls of produced fluids and rainwater. Due to the lack of information regarding the release, it is unknown if the impacted soil was remediated at the Site. Based on the lack of remediation information, Oxy contracted Ensolum to perform sampling of the approximate spill location at the Site.

On March 24, 2022, Ensolum was contacted by Oxy with the purpose of sampling the area of the release to determine if further excavation was required.

On April 4, 2022, Ensolum arrived on-Site and collected six (6) composite soil samples from three (3) potholes that had been installed in the release area with a backhoe (PH-1, PH-2 and PH-3). The composite soil samples were collected at 0.5 feet bgs, and two (2) or three (3) feet bgs at each pothole location, and were analyzed for benzene, toluene, ethylbenzene, and xylene (BTEX), total petroleum hydrocarbons (TPH), gasoline range organics (GRO), diesel range organics (DRO), motor oil range organics (MRO and chloride in accordance with NMOCD Closure Criteria for Soils Impacted by a Release (NMOCD Closure Criteria). Composite pothole soil samples PH-1, PH-2 and PH-3 collected at 0.5 feet bgs exhibited chloride concentrations above the applicable NMOCD Closure Criteria. Composite pothole soil samples PH-1, PH-2 collected at two (2) feet bgs and PH-3 collected at three (3) feet bgs exhibited all results below the applicable NMOCD Closure Criteria.

Oxy USA Inc.
Revised Closure Report
Jones Canyon 4 Fed #2
May 22, 2023



Subsequent to the results of the pothole soil sampling, the identified impacted soils were removed and taken off-Site for proper disposal.

On July 19, 2022, a Closure Report was submitted to the New Mexico EMNRD OCD for approval.

On February 21, 2023, the New Mexico EMNRD OCD rejected the Closure Report. Steps were subsequently taken by Oxy to address the requirements needed for closure.

Based on the request from the New Mexico EMNRD OCD, horizontal delineation samples (BG-1 through BG-4) were collected outside of the spill extent on February 27, 2023, at a depth of 0-0.5 foot bgs.

In addition, sidewall samples (SW-1 and SW-2) were collected at the request of the New Mexico EMNRD OCD on February 27 and May 1, 2023. The identified impacted soils were removed and taken off-Site for proper disposal.

Based on additional field observations and laboratory analytical results, no additional investigation or corrective action appears warranted at this time.

The impacted area measured approximately 50 feet long and 12 feet wide at the maximum extents. The maximum depth of the impacted area measured approximately two (2) feet bgs.

The lithology encountered during the completion of sampling activities consisted primarily of a well graded silty tan caliche from the surface to two (2) foot bgs, followed by a well graded silty sand from two (2) to three (3) feet bgs.

Figure 3 identifies approximate pothole soil sample locations and approximate dimensions of the impacted area with respect to the Site (**Appendix A**). Photographic documentation of the field activities is included in **Appendix C**.

4.0 SOIL SAMPLING PROGRAM

Ensolum's composite soil sampling program included the collection of six composite soil samples from three locations (PH-1, PH-2 and PH-3) and three composite sidewall samples from two locations (SW-1 and SW-2) from the impacted area. In addition, horizontal delineation samples (BG-1 through BG-4) were also collected outside of the spill extent.

The composite soil samples were collected and placed in laboratory prepared glassware, labeled/sealed using laboratory supplied labels and custody seals, and stored on ice in a cooler. The samples were relinquished to Cardinal Laboratories in Hobbs, New Mexico for an expedited laboratory analysis.

5.0 SOIL LABORATORY ANALYTICAL METHODS

The composite soil samples were analyzed for BTEX utilizing Environmental Protection Agency (EPA) SW-846 Method 8021B, TPH GRO/DRO/MRO utilizing EPA SW-846 Method 8015M, and chloride utilizing EPA Method 4500-Cl B.

Laboratory analytical results are summarized in **Table 1** in **Appendix D**. The executed chain-of-custody forms and laboratory analytical reports are provided in **Appendix E**.

6.0 DATA EVALUATION

Ensolum compared the benzene, total BTEX, TPH GRO/DRO/MRO, and chloride concentrations associated with the final composite soil samples (PH-1, PH-2 and PH-3), final composite sidewall samples (SW-1 and SW-2), and horizontal delineation samples (BG-1 through BG-4) to the applicable NMOCD Closure Criteria.

Oxy USA Inc.
Revised Closure Report
Jones Canyon 4 Fed #2
May 22, 2023



- Laboratory analytical results indicate benzene concentrations for the final soil samples are below the laboratory sample detection limits (SDLs), which are below the applicable NMOCD Closure Criteria of 10 milligrams per kilogram (mg/kg).
- Laboratory analytical results indicate that total BTEX concentrations for the final soil samples below the laboratory SDLs, which are below the applicable NMOCD Closure Criteria of 50 mg/kg.
- Laboratory analytical results indicate combined TPH GRO/DRO/MRO concentrations for the final soil samples are below the laboratory SDLs and/or the applicable NMOCD Closure Criteria of 100 mg/kg from ≤50 feet.
- Laboratory analytical results indicate chloride concentrations for the final soil samples are below the applicable NMOCD Closure Criteria of 600 mg/kg from ≤50 feet.

Laboratory analytical results are summarized in **Table 1** in **Appendix D**.

7.0 RECLAMATION AND RE-VEGETATION

Subsequent to the results of the pothole soil sampling, the identified impacted soils were removed and taken off-Site for proper disposal. The excavated area was backfilled with clean fill material, topped with gravel, and then contoured to the original surrounding grade.

8.0 FINDINGS AND RECOMMENDATION

- On August 10, 2006, a release of produced fluids was reported from a ruptured flowline. Approximately 56 bbls of produced fluids were released and mixed with rainwater on-site. A vacuum truck was brought in and recovered approximately 50 bbls of produced fluids and rainwater. Due to the lack of information regarding the release, it is unknown if the impacted soil was remediated at the Jones Canyon 4 Fed #2. Based on the lack of remediation information, Oxy contracted Ensolum to perform sampling of the approximate spill location at the Site.
- On April 4, 2022, Ensolum arrived on-Site and collected six (6) composite soil samples from three (3) potholes that had been installed in the release area with a backhoe (PH-1, PH-2 and PH-3) at depths of 0.5 to three (3) feet bgs.
- The primary objective of the closure activities was to reduce COC concentrations in the on-Site soils to below the applicable New Mexico EMNRD OCD Closure Criteria for Soils Impacted by a Release using the NMAC 19.15.29 *Releases* as guidance.
- The impacted area measured approximately 50 feet long and 12 feet wide at the maximum extents. The maximum depth of the impacted area measured approximately two (2) feet bgs.
- A total of six (6) composite soil samples from three (3) locations were collected from the release area. Based on the sample analytical results, composite pothole soil samples PH-1, PH-2 collected at two (2) feet bgs and PH-3 collected at three (3) feet bgs exhibited all results below the applicable NMOCD Closure Criteria, while composite pothole soil samples PH-1, PH-2 and PH-3 collected at 0.5 feet bgs exhibited chloride concentrations above the applicable NMOCD Closure Criteria. Subsequent to the results of the pothole soil sampling, the identified impacted soils were removed and taken off-Site for proper disposal.
- On July 19, 2022, a Closure Report was submitted to the New Mexico EMNRD OCD for approval.
- On February 21, 2023, the New Mexico EMNRD OCD rejected the Closure Report. Steps were subsequently taken by Oxy to address the requirements needed for closure.

Oxy USA Inc.
Revised Closure Report
Jones Canyon 4 Fed #2
May 22, 2023



- Based on the request from the New Mexico EMNRD OCD, horizontal delineation samples (BG-1 through BG-4) were collected outside of the spill extent on February 27, 2023.
- In addition, sidewall samples (SW-1 and SW-2) were collected at the request of the New Mexico EMNRD OCD on February 27 and May 1, 2023.

Based on additional field observations and laboratory analytical results, no additional investigation or corrective action appears warranted at this time.

9.0 STANDARDS OF CARE, LIMITATIONS, AND RELIANCE

9.1 Standard of Care

Ensolum's services were performed in accordance with standards customarily provided by a firm rendering the same or similar services in the area during the same time period. Ensolum makes no warranties, express or implied, as to the services performed hereunder. Additionally, Ensolum does not warrant the work of third parties supplying information used in the report (e.g., laboratories, regulatory agencies, or other third parties). This scope of services was performed in accordance with the scope of work agreed with the client, as detailed in our proposal.

9.2 Limitations

Findings, conclusions, and recommendations resulting from these services are based upon information derived from the on-Site activities and other services performed under this scope of work and it should be noted that this information is subject to change over time. Certain indicators of the presence of hazardous substances, petroleum products, or other constituents may have been latent, inaccessible, unobservable, or not present during these services, and Ensolum cannot represent that the Site contains no hazardous substances, toxic materials, petroleum products, or other latent conditions beyond those identified during the investigation. Environmental conditions at other areas or portions of the Site may vary from those encountered at actual sample locations. Ensolum's findings and recommendations are based solely upon data available to Ensolum at the time of these services.

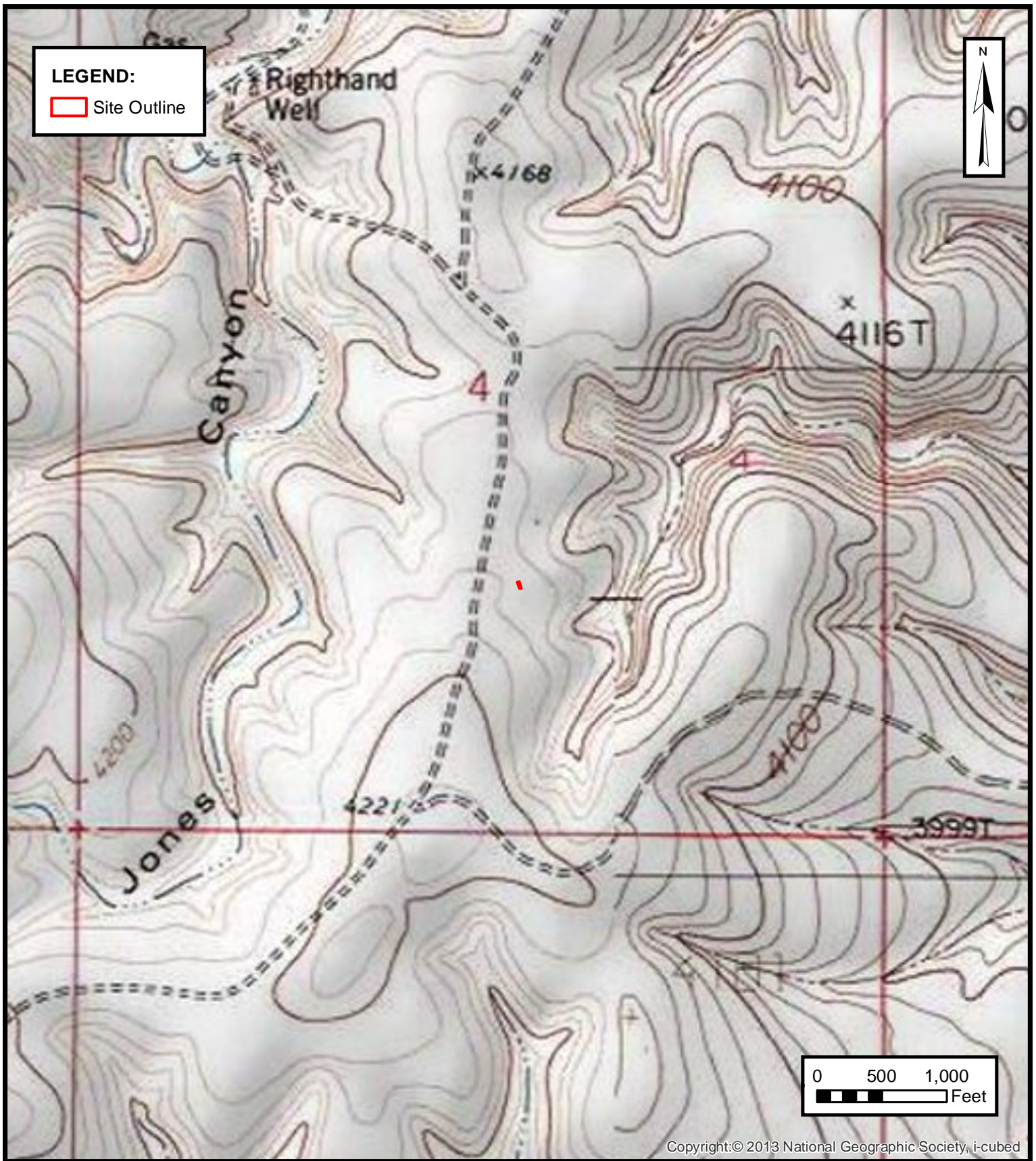
9.3 Reliance

This report has been prepared for the exclusive use of Oxy USA, Inc., and any authorization for use or reliance by any other party (except a governmental entity having jurisdiction over the Site) is prohibited without the express written authorization Oxy USA, Inc. and Ensolum. Any unauthorized distribution or reuse is at the client's sole risk. Notwithstanding the foregoing, reliance by authorized parties will be subject to the terms, conditions and limitations stated in the Closure Report, and Ensolum's Master Services Agreement. The limitation of liability defined in the agreement is the aggregate limit of Ensolum's liability to the client.



APPENDIX A

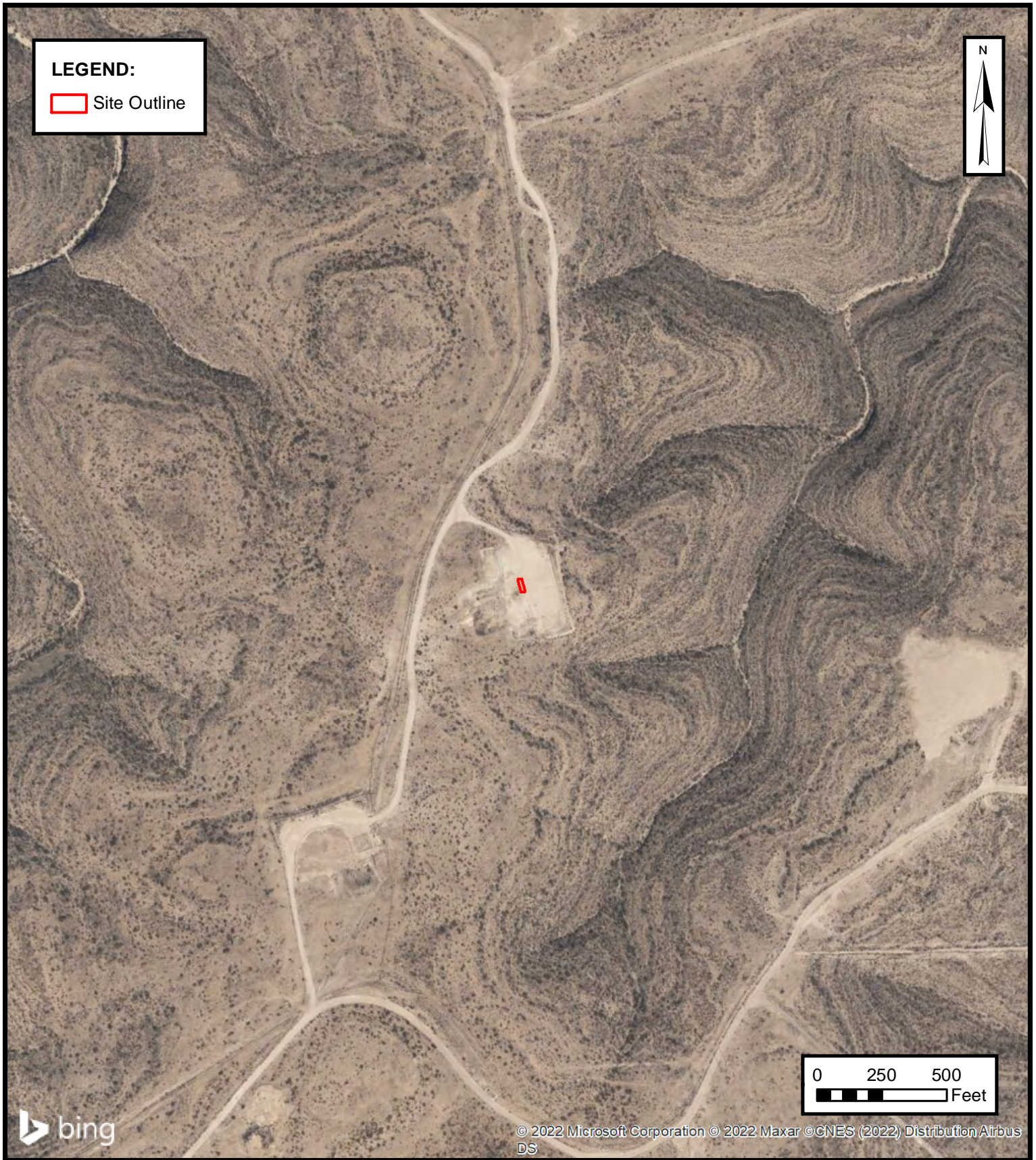
Figures



 **ENSOLUM**
Environmental & Hydrogeologic Consultants

TOPOGRAPHIC MAP
OXY USA INC.
JONES CANYON 4 FED #2
Eddy County, New Mexico
32.41680° N, 104.50244° W
PROJECT NUMBER: 03B1417035

FIGURE
1



SITE VICINITY MAP

OXY USA INC.
JONES CANYON 4 FED #2
Eddy County, New Mexico
32.41680° N, 104.50244° W

PROJECT NUMBER: 03B1417035

This block contains the title 'SITE VICINITY MAP' and the project details. The details include the company name 'OXY USA INC.', the project name 'JONES CANYON 4 FED #2', the location 'Eddy County, New Mexico', the coordinates '32.41680° N, 104.50244° W', and the project number '03B1417035'.

FIGURE
2

This block contains the figure number '2' under the heading 'FIGURE'.

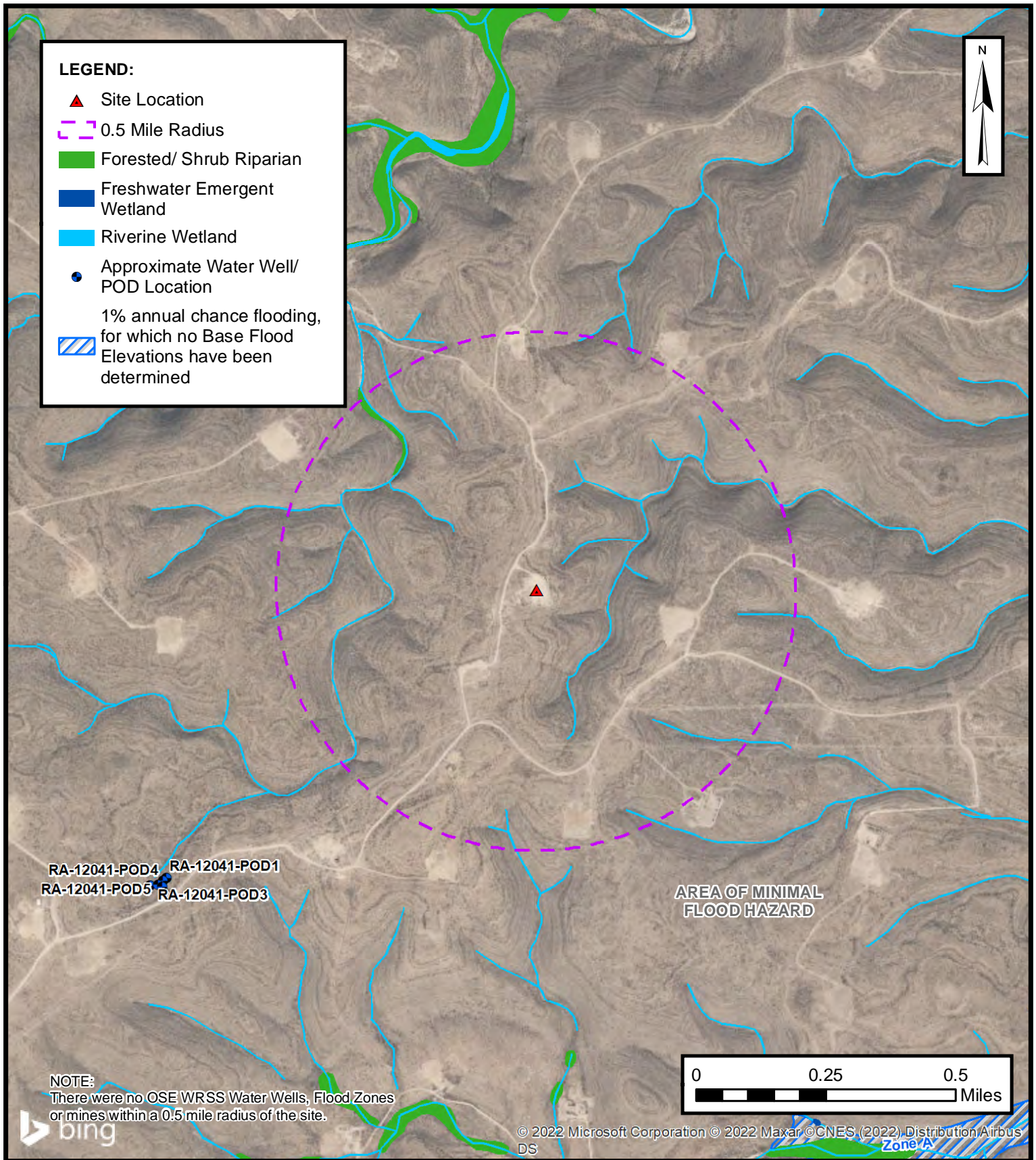


SITE MAP

OXY USA INC.
JONES CANYON 4 FED #2
Eddy County, New Mexico
32.41680° N, 104.50244° W

PROJECT NUMBER: 03B1417035

FIGURE
3

**CLOSURE CRITERIA MAP**

OXY USA INC.
JONES CANYON 4 FED #2
Eddy County, New Mexico
32.41680° N, 104.50244° W

PROJECT NUMBER: 03B1417035

FIGURE**4**

ENSOLUM
Environmental & Hydrogeologic Consultants



APPENDIX B

Supporting Documentation

Beaux Jennings

From: Enviro, OCD, EMNRD <OCD.Enviro@emnrd.nm.gov>
Sent: Thursday, February 23, 2023 5:13 PM
To: Beaux Jennings
Subject: RE: [EXTERNAL] Jones Canyon 4 Federal #2 (2RP-524)

[**EXTERNAL EMAIL**]

Beaux,

As you only provided an RP# and it wasn't associated with an incident, I wasn't sure however there are two open incidents associated with this well. The release I was referring to can be found under [NKMW1035650013 2010 MAJOR A SWS @ 30-015-28779](#). I will go ahead and associate the RP to the incident #.

If you have any further questions, please feel free to contact me.

JH

Jocelyn Harimon • Environmental Specialist
Environmental Bureau
EMNRD - Oil Conservation Division
1220 South St. Francis Drive | Santa Fe, NM 87505
(505)469-2821 | Jocelyn.Harimon@emnrd.nm.gov
[http:// www.emnrd.nm.gov](http://www.emnrd.nm.gov)



From: Beaux Jennings <bjennings@ensolum.com>
Sent: Thursday, February 23, 2023 9:53 AM
To: Enviro, OCD, EMNRD <OCD.Enviro@emnrd.nm.gov>
Subject: RE: [EXTERNAL] Jones Canyon 4 Federal #2 (2RP-524)

This one should be Incident # nLLB0631356160.
I can't seem to find anything on Incident # NKMW1035650013. Is that an Oxy spill as well?



Beaux Jennings
Senior Project Manager
210-219-8858
Ensolum, LLC
in f t

From: Enviro, OCD, EMNRD <OCD.Enviro@emnrd.nm.gov>
Sent: Thursday, February 23, 2023 9:08 AM
To: Beaux Jennings <bjennings@ensolum.com>
Subject: RE: [EXTERNAL] Jones Canyon 4 Federal #2 (2RP-524)

[**EXTERNAL EMAIL**]

Beaux,

Thank you for the notification. Please include a copy of this and all notifications in the remedial and/or closure reports to ensure the notifications are documented in the project file.

Is this Release associated with Incident # NKMW1035650013. Thank you for your help.

JH

Jocelyn Harimon • Environmental Specialist
Environmental Bureau
EMNRD - Oil Conservation Division
1220 South St. Francis Drive | Santa Fe, NM 87505
(505)469-2821 | Jocelyn.Harimon@emnrd.nm.gov
[http:// www.emnrd.nm.gov](http://www.emnrd.nm.gov)



From: Beaux Jennings <bjennings@ensolum.com>
Sent: Wednesday, February 22, 2023 1:40 PM
To: Enviro, OCD, EMNRD <OCD.Enviro@emnrd.nm.gov>
Subject: [EXTERNAL] Jones Canyon 4 Federal #2 (2RP-524)

CAUTION: This email originated outside of our organization. Exercise caution prior to clicking on links or opening attachments.

Good Afternoon,

On behalf of Oxy USA Inc, Ensolum, LLC would like to provide notification for sampling activities that will be conducted at the Jones Canyon 4 Federal #2 (2RP-524) on Monday, February 27, 2023. The samples may be used for closure, provided that they meet applicable closure limits.

Thank you,



Beaux Jennings
Senior Project Manager
210-219-8858
Ensolum, LLC
in f

Beaux Jennings

From: Enviro, OCD, EMNRD <OCD.Enviro@emnrd.nm.gov>
Sent: Monday, March 20, 2023 11:46 AM
To: Beaux Jennings
Cc: Maxwell, Ashley, EMNRD; Bratcher, Michael, EMNRD
Subject: RE: [EXTERNAL] Jones Canyon 4 Federal #2 (Incident ID # nLLB0631356160)

[**EXTERNAL EMAIL**]

Beaux,

Thank you for the notification. Please include a copy of this and all notifications in the remedial and/or closure reports to ensure the notifications are documented in the project file.

JH

Jocelyn Harimon • Environmental Specialist
Environmental Bureau
EMNRD - Oil Conservation Division
1220 South St. Francis Drive | Santa Fe, NM 87505
(505)469-2821 | Jocelyn.Harimon@emnrd.nm.gov
<http://www.emnrd.nm.gov>



From: Beaux Jennings <bjennings@ensolum.com>
Sent: Friday, March 17, 2023 8:49 AM
To: Enviro, OCD, EMNRD <OCD.Enviro@emnrd.nm.gov>
Subject: [EXTERNAL] Jones Canyon 4 Federal #2 (Incident ID # nLLB0631356160)

CAUTION: This email originated outside of our organization. Exercise caution prior to clicking on links or opening attachments.

Good Afternoon,

On behalf of Oxy USA Inc, Ensolum, LLC would like to provide notification for sampling activities that will be conducted at the Jones Canyon 4 Federal #2 (Incident ID # nLLB0631356160) on Thursday, March 23rd. The samples may be used for closure, provided that they meet applicable closure limits.

Thank you,



Beaux Jennings
Senior Project Manager
210-219-8858
Ensolum, LLC
in f 

Beaux Jennings

From: Hamlet, Robert, EMNRD <Robert.Hamlet@state.nm.us>
Sent: Tuesday, April 5, 2022 9:06 AM
To: Beaux Jennings
Cc: Bratcher, Mike, EMNRD; Hensley, Chad, EMNRD; Velez, Nelson, EMNRD; Nobui, Jennifer, EMNRD
Subject: RE: [EXTERNAL] Jones Canyon 4 Federal #2 (2RP-524)

Beaux,

Thank you for the notification. Please include a copy of this and all notifications in the remedial and/or closure reports to ensure the notifications are documented in the project file.

Robert Hamlet • Environmental Specialist - Advanced
Environmental Bureau
EMNRD - Oil Conservation Division
811 S. First Street | Artesia, NM 88210
575.909.0302 | robert.hamlet@state.nm.us
<http://www.emnrd.state.nm.us/OCD/>



From: Enviro, OCD, EMNRD <OCD.Enviro@state.nm.us>
Sent: Friday, April 1, 2022 3:00 PM
To: Hamlet, Robert, EMNRD <Robert.Hamlet@state.nm.us>; Hensley, Chad, EMNRD <Chad.Hensley@state.nm.us>
Subject: Fw: [EXTERNAL] Jones Canyon 4 Federal #2 (2RP-524)

From: Beaux Jennings <bjennings@ensolum.com>
Sent: Friday, April 1, 2022 2:10 PM
To: Enviro, OCD, EMNRD <OCD.Enviro@state.nm.us>
Subject: [EXTERNAL] Jones Canyon 4 Federal #2 (2RP-524)

CAUTION: This email originated outside of our organization. Exercise caution prior to clicking on links or opening attachments.

Good Afternoon,

On behalf of Oxy USA Inc, Ensolum, LLC would like to provided notification for characterization sampling activities that will be conducted at the Jones Canyon 4 Federal #2 (2RP-524). The characterization samples may be used for closure, provided that they meet applicable closure limits.

Thank you,



Beaux Jennings

Senior Project Manager

210-219-8858

Ensolum, LLC

in f 

Beaux Jennings

From: Enviro, OCD, EMNRD <OCD.Enviro@emnrd.nm.gov>
Sent: Friday, April 14, 2023 10:44 AM
To: Beaux Jennings
Cc: Bratcher, Michael, EMNRD; Maxwell, Ashley, EMNRD
Subject: RE: [EXTERNAL] Jones Canyon 4 Federal #2 (Incident ID # nLLB0631356160)

[**EXTERNAL EMAIL**]

Beaux,

Please be aware that notification requirements are **two business days**, per rule. You may proceed on your schedule. This, and all correspondence, should be included in the closure report to insure inclusion in the project file.

JH

Jocelyn Harimon • Environmental Specialist
Environmental Bureau
EMNRD - Oil Conservation Division
1220 South St. Francis Drive | Santa Fe, NM 87505
(505)469-2821 | Jocelyn.Harimon@emnrd.nm.gov
<http://www.emnrd.nm.gov>



From: Beaux Jennings <bjenning@ensolum.com>
Sent: Friday, April 14, 2023 9:27 AM
To: Enviro, OCD, EMNRD <OCD.Enviro@emnrd.nm.gov>
Subject: [EXTERNAL] Jones Canyon 4 Federal #2 (Incident ID # nLLB0631356160)

CAUTION: This email originated outside of our organization. Exercise caution prior to clicking on links or opening attachments.

Good Morning,

On behalf of Oxy USA Inc, Ensolum, LLC would like to provide notification for sampling activities that will be conducted at the Jones Canyon 4 Federal #2 (Incident ID # nLLB0631356160) on Tuesday, April 18th. The samples may be used for closure, provided that they meet applicable closure limits.

Thank you,



Beaux Jennings
Senior Project Manager
210-219-8858
Ensolum, LLC
in f 

Beaux Jennings

From: Dittrich, John W <Wade_Dittrich@oxy.com>
Sent: Tuesday, February 21, 2023 2:21 PM
To: Beaux Jennings
Subject: FW: The Oil Conservation Division (OCD) has rejected the application, Application ID: 126941

[**EXTERNAL EMAIL**]

From: OCDOnline@state.nm.us <OCDOnline@state.nm.us>
Sent: Tuesday, February 21, 2023 12:38 PM
To: Dittrich, John W <Wade_Dittrich@oxy.com>
Subject: [EXTERNAL] The Oil Conservation Division (OCD) has rejected the application, Application ID: 126941

WARNING - This message is from an EXTERNAL SENDER - be CAUTIOUS, particularly with links and attachments.

To whom it may concern (c/o Wade Dittrich for OXY USA INC),

The OCD has rejected the submitted *Application for administrative approval of a release notification and corrective action* (C-141), for incident ID (n#) nLLB0631356160, for the following reasons:

- **Horizontal delineation submitted was incomplete and did not meet the requirements of 19.15.29.11 NMAC. The values for determination of horizontal impact are derived by either approved "background" values or Table I Closure Criteria for releases where groundwater is at a depth of 50 feet or less. This is especially important for "on-pad" releases to ensure the release did not extend to the "off-pad"/pasture area. A visual footprint on the surface is not sufficient to assess the horizontal extent of the release. Laboratory data must be provided as evidence of delineation efforts. Any sample exceeding approved "background" values or Table I Closure Criteria for releases where groundwater is at a depth of 50 feet or less requires additional samples for horizontal delineation.**
- **Confirmation sidewall samples of the excavation are not included in the submitted report.**
- **Submit a report via the OCD permitting portal by 5/26/2023.**

The rejected C-141 can be found in the OCD Online: Permitting - Action Status, under the Application ID: 126941. Please review and make the required correction(s) prior to resubmitting.

If you have any questions why this application was rejected or believe it was rejected in error, please contact me prior to submitting an additional C-141.

Thank you,
Ashley Maxwell
Projects Environmental Specialist - A
505-635-5000
Ashley.Maxwell@emnrd.nm.gov

New Mexico Energy, Minerals and Natural Resources Department

1220 South St. Francis Drive

Santa Fe, NM 87505



APPENDIX C

Photographic Documentation



View of release area prior to pothole installation, facing northwest.



View of pothole installations (PH-1, PH-2 and PH-3) within the release area, facing northwest.



View of the final excavation of impacted soils from the release area, facing northwest.



View of the backfilled excavation area, facing northwest.




APPENDIX D

Tables

TABLE 1
SOIL SAMPLE ANALYTICAL RESULTS
 Jones Canyon 4 Fed #2
 Oxy USA Inc.
 Eddy County, New Mexico
 Ensolum Project No. 03B1417035

Sample I.D.	Sample Date	Sample Depth (feet bgs)	Benzene (mg/kg)	Toluene (mg/kg)	Ethylbenzene (mg/kg)	Total Xylenes (mg/kg)	Total BTEX (mg/kg)	TPH GRO (mg/kg)	TPH DRO (mg/kg)	TPH MRO (mg/kg)	Total TPH (GRO+DRO+MRO) (mg/kg)	Chloride (mg/kg)
New Mexico Oil Conservation Division Closure Criteria for Soils Impacted by a Release (≤ 50 feet)			10	NE	NE	NE	50	NE	NE	NE	100	600
Pothole Sample Analytical Results												
PH-1	4/4/2022	0.5	<0.050	<0.050	<0.050	<0.150	<0.300	<10.0	16.9	<10.0	16.9	3,760
		2	<0.050	<0.050	<0.050	<0.150	<0.300	<10.0	<10.0	<10.0	<10.0	469
PH-2	4/4/2022	0.5	<0.050	<0.050	<0.050	<0.150	<0.300	<10.0	<10.0	<10.0	<10.0	9,330
		2	<0.050	<0.050	<0.050	<0.150	<0.300	<10.0	<10.0	<10.0	<10.0	352
PH-3	4/4/2022	0.5	<0.050	<0.050	<0.050	<0.150	<0.300	<10.0	<10.0	<10.0	<10.0	3,600
		3	<0.050	<0.050	<0.050	<0.150	<0.300	<10.0	<10.0	<10.0	<10.0	432
Sidewall Sample Analytical Results												
SW-1	2/27/2023	NA	<0.050	<0.050	<0.050	<0.150	<0.300	<10.0	<10.0	<10.0	<10.0	656
	5/1/2023	NA	NS									176
SW-2	2/27/2023	NA	<0.050	<0.050	<0.050	<0.150	<0.300	<10.0	<10.0	<10.0	<10.0	32.0
Background Sample Analytical Results												
BG-1	2/27/2023	0 - 0.5	<0.050	<0.050	<0.050	<0.150	<0.300	<10.0	<10.0	<10.0	<10.0	48.0
BG-2	2/27/2023	0 - 0.5	<0.050	<0.050	<0.050	<0.150	<0.300	<10.0	<10.0	<10.0	<10.0	320
BG-3	2/27/2023	0 - 0.5	<0.050	<0.050	<0.050	<0.150	<0.300	<10.0	<10.0	<10.0	<10.0	32.0
BG-4	2/27/2023	0 - 0.5	<0.050	<0.050	<0.050	<0.150	<0.300	<10.0	<10.0	<10.0	<10.0	32.0

Concentrations in **bold** and yellow exceed the New Mexico Oil Conservation Division Closure Criteria for Soils Impacted by a Release (≤ 50 feet)

 Over Excavated and/or Re-Sampled

bgs: below ground surface

mg/kg: milligrams per kilogram

NA: Not Applicable

NE: Not Established

NS: Not Sampled

BTEX: Benzene, Toluene, Ethylbenzene, and Xylenes

GRO: Gasoline Range Organics

DRO: Diesel Range Organics

MRO: Motor Oil/Lube Oil Range Organics

TPH: Total Petroleum Hydrocarbon



APPENDIX E

Laboratory Data Sheets and Chain-of-Custody Documentation



PHONE (575) 393-2326 ° 101 E. MARLAND ° HOBBS, NM 88240

April 08, 2022

BEAUX JENNINGS
ENSOLUM, LLC
705 W WADLEY AVE.
MIDLAND, TX 79705

RE: JONES CANYON 4 FED #2

Enclosed are the results of analyses for samples received by the laboratory on 04/06/22 11:40.

Cardinal Laboratories is accredited through Texas NELAP under certificate number T104704398-21-14. Accreditation applies to drinking water, non-potable water and solid and chemical materials. All accredited analytes are denoted by an asterisk (*). For a complete list of accredited analytes and matrices visit the TCEQ website at www.tceq.texas.gov/field/qa/lab_accred_certif.html.

Cardinal Laboratories is accredited through the State of Colorado Department of Public Health and Environment for:

Method EPA 552.2	Haloacetic Acids (HAA-5)
Method EPA 524.2	Total Trihalomethanes (TTHM)
Method EPA 524.4	Regulated VOCs (V1, V2, V3)

Accreditation applies to public drinking water matrices.

This report meets NELAP requirements and is made up of a cover page, analytical results, and a copy of the original chain-of-custody. If you have any questions concerning this report, please feel free to contact me.

Sincerely,

A handwritten signature in black ink that reads "Celey D. Keene". The signature is written in a cursive, flowing style.

Celey D. Keene
Lab Director/Quality Manager



PHONE (575) 393-2326 ° 101 E. MARLAND ° HOBBS, NM 88240

Analytical Results For:

ENSOLUM, LLC
 BEAUX JENNINGS
 705 W WADLEY AVE.
 MIDLAND TX, 79705
 Fax To:

Received: 04/06/2022
 Reported: 04/08/2022
 Project Name: JONES CANYON 4 FED #2
 Project Number: 03B1417035
 Project Location: OXY

Sampling Date: 04/04/2022
 Sampling Type: Soil
 Sampling Condition: Cool & Intact
 Sample Received By: Tamara Oldaker

Sample ID: PH - 1 0.5' (H221371-01)

BTEX 8021B		mg/kg	Analyzed By: MS/							
Analyte	Result	Reporting Limit	Analyzed	Method Blank	BS	% Recovery	True Value QC	RPD	Qualifier	
Benzene*	<0.050	0.050	04/08/2022	ND	1.97	98.7	2.00	8.08		
Toluene*	<0.050	0.050	04/08/2022	ND	1.95	97.3	2.00	8.20		
Ethylbenzene*	<0.050	0.050	04/08/2022	ND	1.84	92.1	2.00	8.69		
Total Xylenes*	<0.150	0.150	04/08/2022	ND	5.74	95.7	6.00	8.61		
Total BTEX	<0.300	0.300	04/08/2022	ND						

Surrogate: 4-Bromofluorobenzene (PID) 101 % 69.9-140

Chloride, SM4500Cl-B		mg/kg		Analyzed By: AC						
Analyte	Result	Reporting Limit	Analyzed	Method Blank	BS	% Recovery	True Value QC	RPD	Qualifier	
Chloride	3760	16.0	04/07/2022	ND	416	104	400	0.00		

TPH 8015M		mg/kg		Analyzed By: MS					
Analyte	Result	Reporting Limit	Analyzed	Method Blank	BS	% Recovery	True Value QC	RPD	Qualifier
GRO C6-C10*	<10.0	10.0	04/07/2022	ND	181	90.5	200	0.0127	
DRO >C10-C28*	16.9	10.0	04/07/2022	ND	187	93.3	200	1.57	
EXT DRO >C28-C36	<10.0	10.0	04/07/2022	ND					

Surrogate: 1-Chlorooctane 90.7 % 66.9-136

Surrogate: 1-Chlorooctadecane 98.5 % 59.5-142

Cardinal Laboratories

*=Accredited Analyte

PLEASE NOTE: Liability and Damages. Cardinal's liability and client's exclusive remedy for any claim arising, whether based in contract or tort, shall be limited to the amount paid by client for analyses. All claims, including those for negligence and any other cause whatsoever shall be deemed waived unless made in writing and received by Cardinal within thirty (30) days after completion of the applicable service. In no event shall Cardinal be liable for incidental or consequential damages, including, without limitation, business interruptions, loss of use, or loss of profits incurred by client, its subsidiaries, affiliates or successors arising out of or related to the performance of the services hereunder by Cardinal, regardless of whether such claim is based upon any of the above stated reasons or otherwise. Results relate only to the samples identified above. This report shall not be reproduced except in full with written approval of Cardinal Laboratories.

Celey D. Keene, Lab Director/Quality Manager



PHONE (575) 393-2326 ° 101 E. MARLAND ° HOBBS, NM 88240

Analytical Results For:

ENSOLUM, LLC
 BEAUX JENNINGS
 705 W WADLEY AVE.
 MIDLAND TX, 79705
 Fax To:

Received: 04/06/2022
 Reported: 04/08/2022
 Project Name: JONES CANYON 4 FED #2
 Project Number: 03B1417035
 Project Location: OXY

Sampling Date: 04/04/2022
 Sampling Type: Soil
 Sampling Condition: Cool & Intact
 Sample Received By: Tamara Oldaker

Sample ID: PH - 1 2' (H221371-02)

BTEx 8021B		mg/kg		Analyzed By: MS/					
Analyte	Result	Reporting Limit	Analyzed	Method Blank	BS	% Recovery	True Value QC	RPD	Qualifier
Benzene*	<0.050	0.050	04/08/2022	ND	1.97	98.7	2.00	8.08	
Toluene*	<0.050	0.050	04/08/2022	ND	1.95	97.3	2.00	8.20	
Ethylbenzene*	<0.050	0.050	04/08/2022	ND	1.84	92.1	2.00	8.69	
Total Xylenes*	<0.150	0.150	04/08/2022	ND	5.74	95.7	6.00	8.61	
Total BTEX	<0.300	0.300	04/08/2022	ND					

Surrogate: 4-Bromofluorobenzene (PID) 103 % 69.9-140

Chloride, SM4500CI-B		mg/kg		Analyzed By: AC					
Analyte	Result	Reporting Limit	Analyzed	Method Blank	BS	% Recovery	True Value QC	RPD	Qualifier
Chloride	496	16.0	04/07/2022	ND	432	108	400	0.00	

TPH 8015M		mg/kg		Analyzed By: MS					
Analyte	Result	Reporting Limit	Analyzed	Method Blank	BS	% Recovery	True Value QC	RPD	Qualifier
GRO C6-C10*	<10.0	10.0	04/07/2022	ND	181	90.5	200	0.0127	
DRO >C10-C28*	<10.0	10.0	04/07/2022	ND	187	93.3	200	1.57	
EXT DRO >C28-C36	<10.0	10.0	04/07/2022	ND					

Surrogate: 1-Chlorooctane 107 % 66.9-136

Surrogate: 1-Chlorooctadecane 118 % 59.5-142

Cardinal Laboratories

*=Accredited Analyte

PLEASE NOTE: Liability and Damages. Cardinal's liability and client's exclusive remedy for any claim arising, whether based in contract or tort, shall be limited to the amount paid by client for analyses. All claims, including those for negligence and any other cause whatsoever shall be deemed waived unless made in writing and received by Cardinal within thirty (30) days after completion of the applicable service. In no event shall Cardinal be liable for incidental or consequential damages, including, without limitation, business interruptions, loss of use, or loss of profits incurred by client, its subsidiaries, affiliates or successors arising out of or related to the performance of the services hereunder by Cardinal, regardless of whether such claim is based upon any of the above stated reasons or otherwise. Results relate only to the samples identified above. This report shall not be reproduced except in full with written approval of Cardinal Laboratories.

Celey D. Keene, Lab Director/Quality Manager



PHONE (575) 393-2326 ° 101 E. MARLAND ° HOBBS, NM 88240

Analytical Results For:

ENSOLUM, LLC
 BEAUX JENNINGS
 705 W WADLEY AVE.
 MIDLAND TX, 79705
 Fax To:

Received: 04/06/2022
 Reported: 04/08/2022
 Project Name: JONES CANYON 4 FED #2
 Project Number: 03B1417035
 Project Location: OXY

Sampling Date: 04/04/2022
 Sampling Type: Soil
 Sampling Condition: Cool & Intact
 Sample Received By: Tamara Oldaker

Sample ID: PH - 2 0.5' (H221371-03)

BTX 8021B		mg/kg		Analyzed By: MS/					
Analyte	Result	Reporting Limit	Analyzed	Method Blank	BS	% Recovery	True Value QC	RPD	Qualifier
Benzene*	<0.050	0.050	04/08/2022	ND	1.97	98.7	2.00	8.08	
Toluene*	<0.050	0.050	04/08/2022	ND	1.95	97.3	2.00	8.20	
Ethylbenzene*	<0.050	0.050	04/08/2022	ND	1.84	92.1	2.00	8.69	
Total Xylenes*	<0.150	0.150	04/08/2022	ND	5.74	95.7	6.00	8.61	
Total BTX	<0.300	0.300	04/08/2022	ND					

Surrogate: 4-Bromofluorobenzene (PID) 102 % 69.9-140

Chloride, SM4500CI-B		mg/kg		Analyzed By: AC						
Analyte	Result	Reporting Limit	Analyzed	Method Blank	BS	% Recovery	True Value QC	RPD	Qualifier	
Chloride	9330	16.0	04/07/2022	ND	432	108	400	0.00		

TPH 8015M		mg/kg		Analyzed By: MS					
Analyte	Result	Reporting Limit	Analyzed	Method Blank	BS	% Recovery	True Value QC	RPD	Qualifier
GRO C6-C10*	<10.0	10.0	04/07/2022	ND	181	90.5	200	0.0127	
DRO >C10-C28*	<10.0	10.0	04/07/2022	ND	187	93.3	200	1.57	
EXT DRO >C28-C36	<10.0	10.0	04/07/2022	ND					

Surrogate: 1-Chlorooctane 93.9 % 66.9-136

Surrogate: 1-Chlorooctadecane 103 % 59.5-142

Cardinal Laboratories

*=Accredited Analyte

PLEASE NOTE: Liability and Damages. Cardinal's liability and client's exclusive remedy for any claim arising, whether based in contract or tort, shall be limited to the amount paid by client for analyses. All claims, including those for negligence and any other cause whatsoever shall be deemed waived unless made in writing and received by Cardinal within thirty (30) days after completion of the applicable service. In no event shall Cardinal be liable for incidental or consequential damages, including, without limitation, business interruptions, loss of use, or loss of profits incurred by client, its subsidiaries, affiliates or successors arising out of or related to the performance of the services hereunder by Cardinal, regardless of whether such claim is based upon any of the above stated reasons or otherwise. Results relate only to the samples identified above. This report shall not be reproduced except in full with written approval of Cardinal Laboratories.

Celey D. Keene, Lab Director/Quality Manager



PHONE (575) 393-2326 ° 101 E. MARLAND ° HOBBS, NM 88240

Analytical Results For:

ENSOLUM, LLC
 BEAUX JENNINGS
 705 W WADLEY AVE.
 MIDLAND TX, 79705
 Fax To:

Received: 04/06/2022
 Reported: 04/08/2022
 Project Name: JONES CANYON 4 FED #2
 Project Number: 03B1417035
 Project Location: OXY

Sampling Date: 04/04/2022
 Sampling Type: Soil
 Sampling Condition: Cool & Intact
 Sample Received By: Tamara Oldaker

Sample ID: PH - 2 2' (H221371-04)

BTEx 8021B		mg/kg		Analyzed By: MS/					
Analyte	Result	Reporting Limit	Analyzed	Method Blank	BS	% Recovery	True Value QC	RPD	Qualifier
Benzene*	<0.050	0.050	04/08/2022	ND	1.97	98.7	2.00	8.08	
Toluene*	<0.050	0.050	04/08/2022	ND	1.95	97.3	2.00	8.20	
Ethylbenzene*	<0.050	0.050	04/08/2022	ND	1.84	92.1	2.00	8.69	
Total Xylenes*	<0.150	0.150	04/08/2022	ND	5.74	95.7	6.00	8.61	
Total BTEX	<0.300	0.300	04/08/2022	ND					

Surrogate: 4-Bromofluorobenzene (PID) 102 % 69.9-140

Chloride, SM4500CI-B		mg/kg		Analyzed By: AC						
Analyte	Result	Reporting Limit	Analyzed	Method Blank	BS	% Recovery	True Value QC	RPD	Qualifier	
Chloride	352	16.0	04/07/2022	ND	432	108	400	0.00		

TPH 8015M		mg/kg		Analyzed By: MS					
Analyte	Result	Reporting Limit	Analyzed	Method Blank	BS	% Recovery	True Value QC	RPD	Qualifier
GRO C6-C10*	<10.0	10.0	04/07/2022	ND	181	90.5	200	0.0127	
DRO >C10-C28*	<10.0	10.0	04/07/2022	ND	187	93.3	200	1.57	
EXT DRO >C28-C36	<10.0	10.0	04/07/2022	ND					

Surrogate: 1-Chlorooctane 108 % 66.9-136

Surrogate: 1-Chlorooctadecane 119 % 59.5-142

Cardinal Laboratories

*=Accredited Analyte

PLEASE NOTE: Liability and Damages. Cardinal's liability and client's exclusive remedy for any claim arising, whether based in contract or tort, shall be limited to the amount paid by client for analyses. All claims, including those for negligence and any other cause whatsoever shall be deemed waived unless made in writing and received by Cardinal within thirty (30) days after completion of the applicable service. In no event shall Cardinal be liable for incidental or consequential damages, including, without limitation, business interruptions, loss of use, or loss of profits incurred by client, its subsidiaries, affiliates or successors arising out of or related to the performance of the services hereunder by Cardinal, regardless of whether such claim is based upon any of the above stated reasons or otherwise. Results relate only to the samples identified above. This report shall not be reproduced except in full with written approval of Cardinal Laboratories.

Celey D. Keene, Lab Director/Quality Manager



PHONE (575) 393-2326 ° 101 E. MARLAND ° HOBBS, NM 88240

Analytical Results For:

ENSOLUM, LLC
 BEAUX JENNINGS
 705 W WADLEY AVE.
 MIDLAND TX, 79705
 Fax To:

Received: 04/06/2022
 Reported: 04/08/2022
 Project Name: JONES CANYON 4 FED #2
 Project Number: 03B1417035
 Project Location: OXY

Sampling Date: 04/04/2022
 Sampling Type: Soil
 Sampling Condition: Cool & Intact
 Sample Received By: Tamara Oldaker

Sample ID: PH - 3 0.5' (H221371-05)

BTEx 8021B		mg/kg		Analyzed By: MS/						
Analyte	Result	Reporting Limit	Analyzed	Method Blank	BS	% Recovery	True Value QC	RPD	Qualifier	
Benzene*	<0.050	0.050	04/08/2022	ND	1.97	98.7	2.00	8.08		
Toluene*	<0.050	0.050	04/08/2022	ND	1.95	97.3	2.00	8.20		
Ethylbenzene*	<0.050	0.050	04/08/2022	ND	1.84	92.1	2.00	8.69		
Total Xylenes*	<0.150	0.150	04/08/2022	ND	5.74	95.7	6.00	8.61		
Total BTEX	<0.300	0.300	04/08/2022	ND						

Surrogate: 4-Bromofluorobenzene (PID) 102 % 69.9-140

Chloride, SM4500Cl-B		mg/kg		Analyzed By: AC						
Analyte	Result	Reporting Limit	Analyzed	Method Blank	BS	% Recovery	True Value QC	RPD	Qualifier	
Chloride	3600	16.0	04/07/2022	ND	432	108	400	0.00		

TPH 8015M		mg/kg		Analyzed By: MS					
Analyte	Result	Reporting Limit	Analyzed	Method Blank	BS	% Recovery	True Value QC	RPD	Qualifier
GRO C6-C10*	<10.0	10.0	04/07/2022	ND	181	90.5	200	0.0127	
DRO >C10-C28*	<10.0	10.0	04/07/2022	ND	187	93.3	200	1.57	
EXT DRO >C28-C36	<10.0	10.0	04/07/2022	ND					

Surrogate: 1-Chlorooctane 105 % 66.9-136

Surrogate: 1-Chlorooctadecane 114 % 59.5-142

Cardinal Laboratories

*=Accredited Analyte

PLEASE NOTE: Liability and Damages. Cardinal's liability and client's exclusive remedy for any claim arising, whether based in contract or tort, shall be limited to the amount paid by client for analyses. All claims, including those for negligence and any other cause whatsoever shall be deemed waived unless made in writing and received by Cardinal within thirty (30) days after completion of the applicable service. In no event shall Cardinal be liable for incidental or consequential damages, including, without limitation, business interruptions, loss of use, or loss of profits incurred by client, its subsidiaries, affiliates or successors arising out of or related to the performance of the services hereunder by Cardinal, regardless of whether such claim is based upon any of the above stated reasons or otherwise. Results relate only to the samples identified above. This report shall not be reproduced except in full with written approval of Cardinal Laboratories.

Celey D. Keene, Lab Director/Quality Manager



PHONE (575) 393-2326 ° 101 E. MARLAND ° HOBBS, NM 88240

Analytical Results For:

ENSOLUM, LLC
 BEAUX JENNINGS
 705 W WADLEY AVE.
 MIDLAND TX, 79705
 Fax To:

Received: 04/06/2022
 Reported: 04/08/2022
 Project Name: JONES CANYON 4 FED #2
 Project Number: 03B1417035
 Project Location: OXY

Sampling Date: 04/04/2022
 Sampling Type: Soil
 Sampling Condition: Cool & Intact
 Sample Received By: Tamara Oldaker

Sample ID: PH - 3 3' (H221371-06)

BTEx 8021B		mg/kg		Analyzed By: MS/						
Analyte	Result	Reporting Limit	Analyzed	Method Blank	BS	% Recovery	True Value QC	RPD	Qualifier	
Benzene*	<0.050	0.050	04/08/2022	ND	1.97	98.7	2.00	8.08		
Toluene*	<0.050	0.050	04/08/2022	ND	1.95	97.3	2.00	8.20		
Ethylbenzene*	<0.050	0.050	04/08/2022	ND	1.84	92.1	2.00	8.69		
Total Xylenes*	<0.150	0.150	04/08/2022	ND	5.74	95.7	6.00	8.61		
Total BTEX	<0.300	0.300	04/08/2022	ND						

Surrogate: 4-Bromofluorobenzene (PID) 103 % 69.9-140

Chloride, SM4500CI-B		mg/kg		Analyzed By: AC						
Analyte	Result	Reporting Limit	Analyzed	Method Blank	BS	% Recovery	True Value QC	RPD	Qualifier	
Chloride	432	16.0	04/07/2022	ND	432	108	400	0.00		

TPH 8015M		mg/kg		Analyzed By: MS					
Analyte	Result	Reporting Limit	Analyzed	Method Blank	BS	% Recovery	True Value QC	RPD	Qualifier
GRO C6-C10*	<10.0	10.0	04/07/2022	ND	181	90.5	200	0.0127	
DRO >C10-C28*	<10.0	10.0	04/07/2022	ND	187	93.3	200	1.57	
EXT DRO >C28-C36	<10.0	10.0	04/07/2022	ND					

Surrogate: 1-Chlorooctane 106 % 66.9-136

Surrogate: 1-Chlorooctadecane 117 % 59.5-142

Cardinal Laboratories

*=Accredited Analyte

PLEASE NOTE: Liability and Damages. Cardinal's liability and client's exclusive remedy for any claim arising, whether based in contract or tort, shall be limited to the amount paid by client for analyses. All claims, including those for negligence and any other cause whatsoever shall be deemed waived unless made in writing and received by Cardinal within thirty (30) days after completion of the applicable service. In no event shall Cardinal be liable for incidental or consequential damages, including, without limitation, business interruptions, loss of use, or loss of profits incurred by client, its subsidiaries, affiliates or successors arising out of or related to the performance of the services hereunder by Cardinal, regardless of whether such claim is based upon any of the above stated reasons or otherwise. Results relate only to the samples identified above. This report shall not be reproduced except in full with written approval of Cardinal Laboratories.

Celey D. Keene, Lab Director/Quality Manager

PHONE (575) 393-2326 • 101 E. MARLAND • HOBBS, NM 88240

Notes and Definitions

S-04	The surrogate recovery for this sample is outside of established control limits due to a sample matrix effect.
QR-03	The RPD value for the sample duplicate or MS/MSD was outside of QC acceptance limits due to matrix interference. QC batch accepted based on LCS and/or LCSD recovery and/or RPD values.
QM-07	The spike recovery was outside acceptance limits for the MS and/or MSD. The batch was accepted based on acceptable LCS recovery.
ND	Analyte NOT DETECTED at or above the reporting limit
RPD	Relative Percent Difference
**	Samples not received at proper temperature of 6°C or below.
***	Insufficient time to reach temperature.
-	Chloride by SM4500Cl-B does not require samples be received at or below 6°C Samples reported on an as received basis (wet) unless otherwise noted on report

Cardinal Laboratories

*=Accredited Analyte

PLEASE NOTE: Liability and Damages. Cardinal's liability and client's exclusive remedy for any claim arising, whether based in contract or tort, shall be limited to the amount paid by client for analyses. All claims, including those for negligence and any other cause whatsoever shall be deemed waived unless made in writing and received by Cardinal within thirty (30) days after completion of the applicable service. In no event shall Cardinal be liable for incidental or consequential damages, including, without limitation, business interruptions, loss of use, or loss of profits incurred by client, its subsidiaries, affiliates or successors arising out of or related to the performance of the services hereunder by Cardinal, regardless of whether such claim is based upon any of the above stated reasons or otherwise. Results relate only to the samples identified above. This report shall not be reproduced except in full with written approval of Cardinal Laboratories.

A handwritten signature in black ink, appearing to read "Celey D. Keene".

Celey D. Keene, Lab Director/Quality Manager



**101 East Marland, Hobbs, NM 88240
(575) 393-2326 FAX (575) 393-2476**

CHAIN-OF-CUSTODY AND ANALYSIS REQUEST

Page 1 of 1

[illegible]



PHONE (575) 393-2326 ° 101 E. MARLAND ° HOBBS, NM 88240

March 02, 2023

BEAUX JENNINGS

ENSOLUM, LLC

705 W WADLEY AVE.

MIDLAND, TX 79705

RE: JONES CANYON 4 FED #2

Enclosed are the results of analyses for samples received by the laboratory on 02/28/23 10:08.

Cardinal Laboratories is accredited through Texas NELAP under certificate number T104704398-22-15. Accreditation applies to drinking water, non-potable water and solid and chemical materials. All accredited analytes are denoted by an asterisk (*). For a complete list of accredited analytes and matrices visit the TCEQ website at www.tceq.texas.gov/field/qa/lab_accred_certif.html.

Cardinal Laboratories is accredited through the State of Colorado Department of Public Health and Environment for:

Method EPA 552.2	Haloacetic Acids (HAA-5)
Method EPA 524.2	Total Trihalomethanes (TTHM)
Method EPA 524.4	Regulated VOCs (V1, V2, V3)

Accreditation applies to public drinking water matrices.

This report meets NELAP requirements and is made up of a cover page, analytical results, and a copy of the original chain-of-custody. If you have any questions concerning this report, please feel free to contact me.

Sincerely,

A handwritten signature in black ink that reads "Celey D. Keene". The signature is written in a cursive, flowing style.

Celey D. Keene

Lab Director/Quality Manager



PHONE (575) 393-2326 ° 101 E. MARLAND ° HOBBS, NM 88240

Analytical Results For:

ENSOLUM, LLC
 BEAUX JENNINGS
 705 W WADLEY AVE.
 MIDLAND TX, 79705
 Fax To:

Received: 02/28/2023
 Reported: 03/02/2023
 Project Name: JONES CANYON 4 FED #2
 Project Number: 03B1417035
 Project Location: OXY 32.41680, -104.50244

Sampling Date: 02/27/2023
 Sampling Type: Soil
 Sampling Condition: Cool & Intact
 Sample Received By: Tamara Oldaker

Sample ID: BG - 1 0 - 0.5' (H230920-01)

BTEX 8021B		mg/kg		Analyzed By: JH					
Analyte	Result	Reporting Limit	Analyzed	Method Blank	BS	% Recovery	True Value QC	RPD	Qualifier
Benzene*	<0.050	0.050	03/02/2023	ND	2.09	105	2.00	0.931	
Toluene*	<0.050	0.050	03/02/2023	ND	2.10	105	2.00	1.27	
Ethylbenzene*	<0.050	0.050	03/02/2023	ND	2.24	112	2.00	1.30	
Total Xylenes*	<0.150	0.150	03/02/2023	ND	6.88	115	6.00	0.803	
Total BTEX	<0.300	0.300	03/02/2023	ND					

Surrogate: 4-Bromofluorobenzene (PID) 117 % 71.5-134

Chloride, SM4500Cl-B		mg/kg		Analyzed By: AC					
Analyte	Result	Reporting Limit	Analyzed	Method Blank	BS	% Recovery	True Value QC	RPD	Qualifier
Chloride	48.0	16.0	03/01/2023	ND	416	104	400	0.00	

TPH 8015M		mg/kg		Analyzed By: MS					
Analyte	Result	Reporting Limit	Analyzed	Method Blank	BS	% Recovery	True Value QC	RPD	Qualifier
GRO C6-C10*	<10.0	10.0	03/01/2023	ND	222	111	200	5.30	
DRO >C10-C28*	<10.0	10.0	03/01/2023	ND	219	109	200	5.64	
EXT DRO >C28-C36	<10.0	10.0	03/01/2023	ND					

Surrogate: 1-Chlorooctane 77.0 % 48.2-134

Surrogate: 1-Chlorooctadecane 81.0 % 49.1-148

Cardinal Laboratories

*=Accredited Analyte

PLEASE NOTE: Liability and Damages. Cardinal's liability and client's exclusive remedy for any claim arising, whether based in contract or tort, shall be limited to the amount paid by client for analyses. All claims, including those for negligence and any other cause whatsoever shall be deemed waived unless made in writing and received by Cardinal within thirty (30) days after completion of the applicable service. In no event shall Cardinal be liable for incidental or consequential damages, including, without limitation, business interruptions, loss of use, or loss of profits incurred by client, its subsidiaries, affiliates or successors arising out of or related to the performance of the services hereunder by Cardinal, regardless of whether such claim is based upon any of the above stated reasons or otherwise. Results relate only to the samples identified above. This report shall not be reproduced except in full with written approval of Cardinal Laboratories.

Celey D. Keene, Lab Director/Quality Manager



PHONE (575) 393-2326 ° 101 E. MARLAND ° HOBBS, NM 88240

Analytical Results For:

ENSOLUM, LLC
 BEAUX JENNINGS
 705 W WADLEY AVE.
 MIDLAND TX, 79705
 Fax To:

Received: 02/28/2023
 Reported: 03/02/2023
 Project Name: JONES CANYON 4 FED #2
 Project Number: 03B1417035
 Project Location: OXY 32.41680, -104.50244

Sampling Date: 02/27/2023
 Sampling Type: Soil
 Sampling Condition: Cool & Intact
 Sample Received By: Tamara Oldaker

Sample ID: BG - 2 0 - 0.5' (H230920-02)

BTEX 8021B		mg/kg		Analyzed By: JH					
Analyte	Result	Reporting Limit	Analyzed	Method Blank	BS	% Recovery	True Value QC	RPD	Qualifier
Benzene*	<0.050	0.050	03/02/2023	ND	2.09	105	2.00	0.931	
Toluene*	<0.050	0.050	03/02/2023	ND	2.10	105	2.00	1.27	
Ethylbenzene*	<0.050	0.050	03/02/2023	ND	2.24	112	2.00	1.30	
Total Xylenes*	<0.150	0.150	03/02/2023	ND	6.88	115	6.00	0.803	
Total BTEX	<0.300	0.300	03/02/2023	ND					

Surrogate: 4-Bromofluorobenzene (PID) 116 % 71.5-134

Chloride, SM4500CI-B		mg/kg		Analyzed By: AC						
Analyte	Result	Reporting Limit	Analyzed	Method Blank	BS	% Recovery	True Value QC	RPD	Qualifier	
Chloride	320	16.0	03/01/2023	ND	416	104	400	0.00		

TPH 8015M		mg/kg		Analyzed By: MS					
Analyte	Result	Reporting Limit	Analyzed	Method Blank	BS	% Recovery	True Value QC	RPD	Qualifier
GRO C6-C10*	<10.0	10.0	03/01/2023	ND	222	111	200	5.30	
DRO >C10-C28*	<10.0	10.0	03/01/2023	ND	219	109	200	5.64	
EXT DRO >C28-C36	<10.0	10.0	03/01/2023	ND					

Surrogate: 1-Chlorooctane 83.9 % 48.2-134

Surrogate: 1-Chlorooctadecane 85.9 % 49.1-148

Cardinal Laboratories

*=Accredited Analyte

PLEASE NOTE: Liability and Damages. Cardinal's liability and client's exclusive remedy for any claim arising, whether based in contract or tort, shall be limited to the amount paid by client for analyses. All claims, including those for negligence and any other cause whatsoever shall be deemed waived unless made in writing and received by Cardinal within thirty (30) days after completion of the applicable service. In no event shall Cardinal be liable for incidental or consequential damages, including, without limitation, business interruptions, loss of use, or loss of profits incurred by client, its subsidiaries, affiliates or successors arising out of or related to the performance of the services hereunder by Cardinal, regardless of whether such claim is based upon any of the above stated reasons or otherwise. Results relate only to the samples identified above. This report shall not be reproduced except in full with written approval of Cardinal Laboratories.

Celey D. Keene, Lab Director/Quality Manager



PHONE (575) 393-2326 ° 101 E. MARLAND ° HOBBS, NM 88240

Analytical Results For:

ENSOLUM, LLC
 BEAUX JENNINGS
 705 W WADLEY AVE.
 MIDLAND TX, 79705
 Fax To:

Received: 02/28/2023
 Reported: 03/02/2023
 Project Name: JONES CANYON 4 FED #2
 Project Number: 03B1417035
 Project Location: OXY 32.41680, -104.50244

Sampling Date: 02/27/2023
 Sampling Type: Soil
 Sampling Condition: Cool & Intact
 Sample Received By: Tamara Oldaker

Sample ID: BG - 3 0 - 0.5' (H230920-03)

BTEx 8021B		mg/kg		Analyzed By: JH					
Analyte	Result	Reporting Limit	Analyzed	Method Blank	BS	% Recovery	True Value QC	RPD	Qualifier
Benzene*	<0.050	0.050	03/02/2023	ND	2.09	105	2.00	0.931	
Toluene*	<0.050	0.050	03/02/2023	ND	2.10	105	2.00	1.27	
Ethylbenzene*	<0.050	0.050	03/02/2023	ND	2.24	112	2.00	1.30	
Total Xylenes*	<0.150	0.150	03/02/2023	ND	6.88	115	6.00	0.803	
Total BTEX	<0.300	0.300	03/02/2023	ND					

Surrogate: 4-Bromofluorobenzene (PID) 116 % 71.5-134

Chloride, SM4500CI-B		mg/kg		Analyzed By: AC					
Analyte	Result	Reporting Limit	Analyzed	Method Blank	BS	% Recovery	True Value QC	RPD	Qualifier
Chloride	32.0	16.0	03/01/2023	ND	416	104	400	0.00	

TPH 8015M		mg/kg		Analyzed By: MS					
Analyte	Result	Reporting Limit	Analyzed	Method Blank	BS	% Recovery	True Value QC	RPD	Qualifier
GRO C6-C10*	<10.0	10.0	02/28/2023	ND	216	108	200	6.33	
DRO >C10-C28*	<10.0	10.0	02/28/2023	ND	208	104	200	7.05	
EXT DRO >C28-C36	<10.0	10.0	02/28/2023	ND					

Surrogate: 1-Chlorooctane 92.0 % 48.2-134

Surrogate: 1-Chlorooctadecane 90.8 % 49.1-148

Cardinal Laboratories

*=Accredited Analyte

PLEASE NOTE: Liability and Damages. Cardinal's liability and client's exclusive remedy for any claim arising, whether based in contract or tort, shall be limited to the amount paid by client for analyses. All claims, including those for negligence and any other cause whatsoever shall be deemed waived unless made in writing and received by Cardinal within thirty (30) days after completion of the applicable service. In no event shall Cardinal be liable for incidental or consequential damages, including, without limitation, business interruptions, loss of use, or loss of profits incurred by client, its subsidiaries, affiliates or successors arising out of or related to the performance of the services hereunder by Cardinal, regardless of whether such claim is based upon any of the above stated reasons or otherwise. Results relate only to the samples identified above. This report shall not be reproduced except in full with written approval of Cardinal Laboratories.

Celey D. Keene, Lab Director/Quality Manager



PHONE (575) 393-2326 ° 101 E. MARLAND ° HOBBS, NM 88240

Analytical Results For:

ENSOLUM, LLC
 BEAUX JENNINGS
 705 W WADLEY AVE.
 MIDLAND TX, 79705
 Fax To:

Received: 02/28/2023
 Reported: 03/02/2023
 Project Name: JONES CANYON 4 FED #2
 Project Number: 03B1417035
 Project Location: OXY 32.41680, -104.50244

Sampling Date: 02/27/2023
 Sampling Type: Soil
 Sampling Condition: Cool & Intact
 Sample Received By: Tamara Oldaker

Sample ID: BG - 4 0 - 0.5' (H230920-04)

BTEx 8021B		mg/kg		Analyzed By: JH					
Analyte	Result	Reporting Limit	Analyzed	Method Blank	BS	% Recovery	True Value QC	RPD	Qualifier
Benzene*	<0.050	0.050	03/02/2023	ND	2.09	105	2.00	0.931	
Toluene*	<0.050	0.050	03/02/2023	ND	2.10	105	2.00	1.27	
Ethylbenzene*	<0.050	0.050	03/02/2023	ND	2.24	112	2.00	1.30	
Total Xylenes*	<0.150	0.150	03/02/2023	ND	6.88	115	6.00	0.803	
Total BTEx	<0.300	0.300	03/02/2023	ND					

Surrogate: 4-Bromofluorobenzene (PID) 118 % 71.5-134

Chloride, SM4500CI-B		mg/kg		Analyzed By: AC					
Analyte	Result	Reporting Limit	Analyzed	Method Blank	BS	% Recovery	True Value QC	RPD	Qualifier
Chloride	32.0	16.0	03/01/2023	ND	416	104	400	0.00	

TPH 8015M		mg/kg		Analyzed By: MS					
Analyte	Result	Reporting Limit	Analyzed	Method Blank	BS	% Recovery	True Value QC	RPD	Qualifier
GRO C6-C10*	<10.0	10.0	02/28/2023	ND	216	108	200	6.33	
DRO >C10-C28*	<10.0	10.0	02/28/2023	ND	208	104	200	7.05	
EXT DRO >C28-C36	<10.0	10.0	02/28/2023	ND					

Surrogate: 1-Chlorooctane 104 % 48.2-134

Surrogate: 1-Chlorooctadecane 100 % 49.1-148

Cardinal Laboratories

*=Accredited Analyte

PLEASE NOTE: Liability and Damages. Cardinal's liability and client's exclusive remedy for any claim arising, whether based in contract or tort, shall be limited to the amount paid by client for analyses. All claims, including those for negligence and any other cause whatsoever shall be deemed waived unless made in writing and received by Cardinal within thirty (30) days after completion of the applicable service. In no event shall Cardinal be liable for incidental or consequential damages, including, without limitation, business interruptions, loss of use, or loss of profits incurred by client, its subsidiaries, affiliates or successors arising out of or related to the performance of the services hereunder by Cardinal, regardless of whether such claim is based upon any of the above stated reasons or otherwise. Results relate only to the samples identified above. This report shall not be reproduced except in full with written approval of Cardinal Laboratories.

Celey D. Keene, Lab Director/Quality Manager



PHONE (575) 393-2326 ° 101 E. MARLAND ° HOBBS, NM 88240

Analytical Results For:

ENSOLUM, LLC
 BEAUX JENNINGS
 705 W WADLEY AVE.
 MIDLAND TX, 79705
 Fax To:

Received: 02/28/2023
 Reported: 03/02/2023
 Project Name: JONES CANYON 4 FED #2
 Project Number: 03B1417035
 Project Location: OXY 32.41680, -104.50244

Sampling Date: 02/27/2023
 Sampling Type: Soil
 Sampling Condition: Cool & Intact
 Sample Received By: Tamara Oldaker

Sample ID: SW - 1 (H230920-05)

BTX 8021B		mg/kg		Analyzed By: JH					
Analyte	Result	Reporting Limit	Analyzed	Method Blank	BS	% Recovery	True Value QC	RPD	Qualifier
Benzene*	<0.050	0.050	03/02/2023	ND	2.09	105	2.00	0.931	
Toluene*	<0.050	0.050	03/02/2023	ND	2.10	105	2.00	1.27	
Ethylbenzene*	<0.050	0.050	03/02/2023	ND	2.24	112	2.00	1.30	
Total Xylenes*	<0.150	0.150	03/02/2023	ND	6.88	115	6.00	0.803	
Total BTX	<0.300	0.300	03/02/2023	ND					

Surrogate: 4-Bromofluorobenzene (PID) 115 % 71.5-134

Chloride, SM4500CI-B		mg/kg		Analyzed By: AC					
Analyte	Result	Reporting Limit	Analyzed	Method Blank	BS	% Recovery	True Value QC	RPD	Qualifier
Chloride	656	16.0	03/01/2023	ND	416	104	400	0.00	

TPH 8015M		mg/kg		Analyzed By: MS					
Analyte	Result	Reporting Limit	Analyzed	Method Blank	BS	% Recovery	True Value QC	RPD	Qualifier
GRO C6-C10*	<10.0	10.0	02/28/2023	ND	216	108	200	6.33	
DRO >C10-C28*	<10.0	10.0	02/28/2023	ND	208	104	200	7.05	
EXT DRO >C28-C36	<10.0	10.0	02/28/2023	ND					

Surrogate: 1-Chlorooctane 113 % 48.2-134

Surrogate: 1-Chlorooctadecane 108 % 49.1-148

Cardinal Laboratories

*=Accredited Analyte

PLEASE NOTE: Liability and Damages. Cardinal's liability and client's exclusive remedy for any claim arising, whether based in contract or tort, shall be limited to the amount paid by client for analyses. All claims, including those for negligence and any other cause whatsoever shall be deemed waived unless made in writing and received by Cardinal within thirty (30) days after completion of the applicable service. In no event shall Cardinal be liable for incidental or consequential damages, including, without limitation, business interruptions, loss of use, or loss of profits incurred by client, its subsidiaries, affiliates or successors arising out of or related to the performance of the services hereunder by Cardinal, regardless of whether such claim is based upon any of the above stated reasons or otherwise. Results relate only to the samples identified above. This report shall not be reproduced except in full with written approval of Cardinal Laboratories.

Celey D. Keene, Lab Director/Quality Manager



PHONE (575) 393-2326 ° 101 E. MARLAND ° HOBBS, NM 88240

Analytical Results For:

ENSOLUM, LLC
 BEAUX JENNINGS
 705 W WADLEY AVE.
 MIDLAND TX, 79705
 Fax To:

Received: 02/28/2023
 Reported: 03/02/2023
 Project Name: JONES CANYON 4 FED #2
 Project Number: 03B1417035
 Project Location: OXY 32.41680, -104.50244

Sampling Date: 02/27/2023
 Sampling Type: Soil
 Sampling Condition: Cool & Intact
 Sample Received By: Tamara Oldaker

Sample ID: SW - 2 (H230920-06)

BTEx 8021B		mg/kg		Analyzed By: JH					
Analyte	Result	Reporting Limit	Analyzed	Method Blank	BS	% Recovery	True Value QC	RPD	Qualifier
Benzene*	<0.050	0.050	03/02/2023	ND	2.09	105	2.00	0.931	
Toluene*	<0.050	0.050	03/02/2023	ND	2.10	105	2.00	1.27	
Ethylbenzene*	<0.050	0.050	03/02/2023	ND	2.24	112	2.00	1.30	
Total Xylenes*	<0.150	0.150	03/02/2023	ND	6.88	115	6.00	0.803	
Total BTEx	<0.300	0.300	03/02/2023	ND					

Surrogate: 4-Bromofluorobenzene (PID) 117 % 71.5-134

Chloride, SM4500CI-B		mg/kg		Analyzed By: AC					
Analyte	Result	Reporting Limit	Analyzed	Method Blank	BS	% Recovery	True Value QC	RPD	Qualifier
Chloride	32.0	16.0	03/01/2023	ND	416	104	400	0.00	

TPH 8015M		mg/kg		Analyzed By: MS					
Analyte	Result	Reporting Limit	Analyzed	Method Blank	BS	% Recovery	True Value QC	RPD	Qualifier
GRO C6-C10*	<10.0	10.0	02/28/2023	ND	216	108	200	6.33	
DRO >C10-C28*	<10.0	10.0	02/28/2023	ND	208	104	200	7.05	
EXT DRO >C28-C36	<10.0	10.0	02/28/2023	ND					

Surrogate: 1-Chlorooctane 101 % 48.2-134

Surrogate: 1-Chlorooctadecane 98.9 % 49.1-148

Cardinal Laboratories

*=Accredited Analyte

PLEASE NOTE: Liability and Damages. Cardinal's liability and client's exclusive remedy for any claim arising, whether based in contract or tort, shall be limited to the amount paid by client for analyses. All claims, including those for negligence and any other cause whatsoever shall be deemed waived unless made in writing and received by Cardinal within thirty (30) days after completion of the applicable service. In no event shall Cardinal be liable for incidental or consequential damages, including, without limitation, business interruptions, loss of use, or loss of profits incurred by client, its subsidiaries, affiliates or successors arising out of or related to the performance of the services hereunder by Cardinal, regardless of whether such claim is based upon any of the above stated reasons or otherwise. Results relate only to the samples identified above. This report shall not be reproduced except in full with written approval of Cardinal Laboratories.

Celey D. Keene, Lab Director/Quality Manager

PHONE (575) 393-2326 ° 101 E. MARLAND ° HOBBS, NM 88240

Notes and Definitions

ND	Analyte NOT DETECTED at or above the reporting limit
RPD	Relative Percent Difference
**	Samples not received at proper temperature of 6°C or below.
***	Insufficient time to reach temperature.
-	Chloride by SM4500Cl-B does not require samples be received at or below 6°C Samples reported on an as received basis (wet) unless otherwise noted on report

Cardinal Laboratories

*=Accredited Analyte

PLEASE NOTE: Liability and Damages. Cardinal's liability and client's exclusive remedy for any claim arising, whether based in contract or tort, shall be limited to the amount paid by client for analyses. All claims, including those for negligence and any other cause whatsoever shall be deemed waived unless made in writing and received by Cardinal within thirty (30) days after completion of the applicable service. In no event shall Cardinal be liable for incidental or consequential damages, including, without limitation, business interruptions, loss of use, or loss of profits incurred by client, its subsidiaries, affiliates or successors arising out of or related to the performance of the services hereunder by Cardinal, regardless of whether such claim is based upon any of the above stated reasons or otherwise. Results relate only to the samples identified above. This report shall not be reproduced except in full with written approval of Cardinal Laboratories.

A handwritten signature in black ink, appearing to read "Celey D. Keene".

Celey D. Keene, Lab Director/Quality Manager



101 East Marland, Hobbs, NM 88240
(575) 393-2326 FAX (575) 393-2476

CHAIN-OF-CUSTODY AND ANALYSIS REQUEST

Company Name: Ensdorff, LLC		P.O. #:		ANALYSIS REQUEST	
Project Manager: Beaut Jennings					
Address: 101 N. Martenfeld St. STE 400		Company: Oxy USA, Inc			
City: Midland		Attn: Wade B. Hirsch			
State: TX		Address:			
Phone #: 210-219-8858		City:			
Fax #: 210-219-8858		State:			
Project #: 6381417035		Zip:			
Project Name: Jones Canyon		Phone #: 575-340-2828			
Project Location: 32.411680, -104.50244		Fax #:			
Sample Name: Kaikesm, TX					

Lab I.D.	Sample I.D.	Depth	(G)RAB OR (C)OMP.	# CONTAINERS	MATRIX						PRESERV.		SAMPLING		Chlorides 4500	BTEX 8021b	TPH 8015m							
					GROUNDWATER	WASTEWATER	SOIL	OIL	SLUDGE	OTHER :	ACID/BASE:	ICE / COOL	OTHER :	DATE										TIME
H230920	B6-1	0-0.5'	G	1	X																			
	B6-2	0-0.5'	G	1	X																			
	B6-3	0-0.5'	G	1	X																			
	B6-4	0-0.5'	G	1	X																			
	B6-1	0-0.5'	G	1	X																			
	B6-2	0-0.5'	G	1	X																			
	B6-3	0-0.5'	G	1	X																			
	B6-4	0-0.5'	G	1	X																			
	B6-1	0-0.5'	G	1	X																			
	B6-2	0-0.5'	G	1	X																			
	B6-3	0-0.5'	G	1	X																			
	B6-4	0-0.5'	G	1	X																			
	B6-1	0-0.5'	G	1	X																			
	B6-2	0-0.5'	G	1	X																			
	B6-3	0-0.5'	G	1	X																			
	B6-4	0-0.5'	G	1	X																			
	B6-1	0-0.5'	G	1	X																			
	B6-2	0-0.5'	G	1	X																			
	B6-3	0-0.5'	G	1	X																			
	B6-4	0-0.5'	G	1	X																			
	B6-1	0-0.5'	G	1	X																			
	B6-2	0-0.5'	G	1	X			</																



PHONE (575) 393-2326 ° 101 E. MARLAND ° HOBBS, NM 88240

May 04, 2023

BEAUX JENNINGS
ENSOLUM, LLC
705 W WADLEY AVE.
MIDLAND, TX 79705

RE: JONES CANYON 4 FED #2

Enclosed are the results of analyses for samples received by the laboratory on 05/01/23 12:31.

Cardinal Laboratories is accredited through Texas NELAP under certificate number T104704398-22-15. Accreditation applies to drinking water, non-potable water and solid and chemical materials. All accredited analytes are denoted by an asterisk (*). For a complete list of accredited analytes and matrices visit the TCEQ website at www.tceq.texas.gov/field/qa/lab_accred_certif.html.

Cardinal Laboratories is accredited through the State of Colorado Department of Public Health and Environment for:

Method EPA 552.2	Haloacetic Acids (HAA-5)
Method EPA 524.2	Total Trihalomethanes (TTHM)
Method EPA 524.4	Regulated VOCs (V1, V2, V3)

Accreditation applies to public drinking water matrices.

This report meets NELAP requirements and is made up of a cover page, analytical results, and a copy of the original chain-of-custody. If you have any questions concerning this report, please feel free to contact me.

Sincerely,

A handwritten signature in black ink that reads "Celey D. Keene". The signature is fluid and cursive, with the first name "Celey" and last name "Keene" clearly distinguishable.

Celey D. Keene
Lab Director/Quality Manager



PHONE (575) 393-2326 ° 101 E. MARLAND ° HOBBS, NM 88240

Analytical Results For:

ENSOLUM, LLC
 BEAUX JENNINGS
 705 W WADLEY AVE.
 MIDLAND TX, 79705
 Fax To:

Received: 05/01/2023
 Reported: 05/04/2023
 Project Name: JONES CANYON 4 FED #2
 Project Number: 03B1417035
 Project Location: OXY 32.41680, -104.50244

Sampling Date: 05/01/2023
 Sampling Type: Soil
 Sampling Condition: Cool & Intact
 Sample Received By: Tamara Oldaker

Sample ID: SW - 1 (H232127-01)

Chloride, SM4500Cl-B		mg/kg		Analyzed By: AC					
Analyte	Result	Reporting Limit	Analyzed	Method Blank	BS	% Recovery	True Value QC	RPD	Qualifier
Chloride	176	16.0	05/02/2023	ND	432	108	400	0.00	

Cardinal Laboratories

*=Accredited Analyte

PLEASE NOTE: Liability and Damages. Cardinal's liability and client's exclusive remedy for any claim arising, whether based in contract or tort, shall be limited to the amount paid by client for analyses. All claims, including those for negligence and any other cause whatsoever shall be deemed waived unless made in writing and received by Cardinal within thirty (30) days after completion of the applicable service. In no event shall Cardinal be liable for incidental or consequential damages, including, without limitation, business interruptions, loss of use, or loss of profits incurred by client, its subsidiaries, affiliates or successors arising out of or related to the performance of the services hereunder by Cardinal, regardless of whether such claim is based upon any of the above stated reasons or otherwise. Results relate only to the samples identified above. This report shall not be reproduced except in full with written approval of Cardinal Laboratories.

Celey D. Keene, Lab Director/Quality Manager

PHONE (575) 393-2326 ° 101 E. MARLAND ° HOBBS, NM 88240

Notes and Definitions

QM-07	The spike recovery was outside acceptance limits for the MS and/or MSD. The batch was accepted based on acceptable LCS recovery.
ND	Analyte NOT DETECTED at or above the reporting limit
RPD	Relative Percent Difference
**	Samples not received at proper temperature of 6°C or below.
***	Insufficient time to reach temperature.
-	Chloride by SM4500Cl-B does not require samples be received at or below 6°C Samples reported on an as received basis (wet) unless otherwise noted on report

Cardinal Laboratories

*=Accredited Analyte

PLEASE NOTE: Liability and Damages. Cardinal's liability and client's exclusive remedy for any claim arising, whether based in contract or tort, shall be limited to the amount paid by client for analyses. All claims, including those for negligence and any other cause whatsoever shall be deemed waived unless made in writing and received by Cardinal within thirty (30) days after completion of the applicable service. In no event shall Cardinal be liable for incidental or consequential damages, including, without limitation, business interruptions, loss of use, or loss of profits incurred by client, its subsidiaries, affiliates or successors arising out of or related to the performance of the services hereunder by Cardinal, regardless of whether such claim is based upon any of the above stated reasons or otherwise. Results relate only to the samples identified above. This report shall not be reproduced except in full with written approval of Cardinal Laboratories.

A handwritten signature in black ink, appearing to read "Celey D. Keene".

Celey D. Keene, Lab Director/Quality Manager



101 East Marland, Hobbs, NM 88240
(575) 393-2326 FAX (575) 393-2476

CHAIN-OF-CUSTODY AND ANALYSIS REQUEST

[illegible]



APPENDIX F

C-141

District I
1625 N. French Dr., Hobbs, NM 88240
District II
811 S. First St., Artesia, NM 88210
District III
1000 Rio Brazos Road, Aztec, NM 87410
District IV
1220 S. St. Francis Dr., Santa Fe, NM 87505

State of New Mexico
Energy Minerals and Natural
Resources Department

Oil Conservation Division
1220 South St. Francis Dr.
Santa Fe, NM 87505

Form C-141
Revised August 24, 2018
Submit to appropriate OCD District office

Incident ID	nLLB0631356160
District RP	2RP-524
Facility ID	
Application ID	

Release Notification

Responsible Party

Responsible Party: Oxy USA Inc.	OGRID: 16696
Contact Name: Wade Dittrich	Contact Telephone: 575-390-2828
Contact email: wade_dittrich@oxy.com	Incident # (assigned by OCD) nLLB0631356160
Contact mailing address: PO Box 4294, Houston, TX 77210	

Location of Release Source

Latitude 32.41680 Longitude -104.50244
(NAD 83 in decimal degrees to 5 decimal places)

Site Name: Jones Canyon 4 Fed #2	Site Type: Well Pad
Date Release Discovered: 8/10/2006	API# 30-015-28779

Unit Letter	Section	Township	Range	County
J	4	22S	24E	Eddy

Surface Owner: ☐ State ☒ Federal ☐ Tribal ☐ Private (Name: _____)

Nature and Volume of Release

Material(s) Released (Select all that apply and attach calculations or specific justification for the volumes provided below)

<input type="checkbox"/> Crude Oil	Volume Released (bbls):	Volume Recovered (bbls):
<input checked="" type="checkbox"/> Produced Water	Volume Released (bbls): 56	Volume Recovered (bbls): 50
	Is the concentration of dissolved chloride in the produced water >10,000 mg/l?	<input checked="" type="checkbox"/> Yes <input type="checkbox"/> No
<input type="checkbox"/> Condensate	Volume Released (bbls)	Volume Recovered (bbls)
<input type="checkbox"/> Natural Gas	Volume Released (Mcf)	Volume Recovered (Mcf)
<input type="checkbox"/> Other (describe)	Volume/Weight Released (provide units)	Volume/Weight Recovered (provide units)

Cause of Release: Emergency shutdown switch failed and ruptured flow line.

Form C-141


State of New Mexico
Oil Conservation Division

Page 2

Incident ID	nLLB0631356160
District RP	2RP-524
Facility ID	
Application ID	

Was this a major release as defined by 19.15.29.7(A) NMAC? <input checked="" type="checkbox"/> Yes <input type="checkbox"/> No	If YES, for what reason(s) does the responsible party consider this a major release? Release over 25 bbls.
If YES, was immediate notice given to the OCD? By whom? To whom? When and by what means (phone, email, etc)? Unknown.	

Initial Response*The responsible party must undertake the following actions immediately unless they could create a safety hazard that would result in injury*

<input checked="" type="checkbox"/> The source of the release has been stopped.	
<input checked="" type="checkbox"/> The impacted area has been secured to protect human health and the environment.	
<input checked="" type="checkbox"/> Released materials have been contained via the use of berms or dikes, absorbent pads, or other containment devices.	
<input checked="" type="checkbox"/> All free liquids and recoverable materials have been removed and managed appropriately.	
If all the actions described above have <u>not</u> been undertaken, explain why:	
Per 19.15.29.8 B. (4) NMAC the responsible party may commence remediation immediately after discovery of a release. If remediation has begun, please attach a narrative of actions to date. If remedial efforts have been successfully completed or if the release occurred within a lined containment area (see 19.15.29.11(A)(5)(a) NMAC), please attach all information needed for closure evaluation.	
I hereby certify that the information given above is true and complete to the best of my knowledge and understand that pursuant to OCD rules and regulations all operators are required to report and/or file certain release notifications and perform corrective actions for releases which may endanger public health or the environment. The acceptance of a C-141 report by the OCD does not relieve the operator of liability should their operations have failed to adequately investigate and remediate contamination that pose a threat to groundwater, surface water, human health or the environment. In addition, OCD acceptance of a C-141 report does not relieve the operator of responsibility for compliance with any other federal, state, or local laws and/or regulations.	
Printed Name: <u>Wade Dittrich</u>	Title: <u>Environmental Specialist</u>
Signature: <u></u>	Date: <u>5-22-23</u>
email: <u>wade_dittrich@oxy.com</u>	Telephone: <u>575-390-2828</u>
<u>OCD Only</u>	
Received by: _____	Date: _____

State of New Mexico
Oil Conservation Division

Incident ID	nLLB0631356160
District RP	2RP-524
Facility ID	
Application ID	

Site Assessment/Characterization

This information must be provided to the appropriate district office no later than 90 days after the release discovery date.

What is the shallowest depth to groundwater beneath the area affected by the release?

 N/A (ft bgs)

Did this release impact groundwater or surface water?

☐ Yes ☒ No

Are the lateral extents of the release within 300 feet of a continuously flowing watercourse or any other significant watercourse?

☐ Yes ☒ No

Are the lateral extents of the release within 200 feet of any lakebed, sinkhole, or playa lake (measured from the ordinary high-water mark)?

☐ Yes ☒ No

Are the lateral extents of the release within 300 feet of an occupied permanent residence, school, hospital, institution, or church?

☐ Yes ☒ No

Are the lateral extents of the release within 500 horizontal feet of a spring or a private domestic fresh water well used by less than five households for domestic or stock watering purposes?

☐ Yes ☒ No

Are the lateral extents of the release within 1000 feet of any other fresh water well or spring?

☐ Yes ☒ No

Are the lateral extents of the release within incorporated municipal boundaries or within a defined municipal fresh water well field?

☐ Yes ☒ No

Are the lateral extents of the release within 300 feet of a wetland?

☐ Yes ☒ No

Are the lateral extents of the release overlying a subsurface mine?

☐ Yes ☒ No

Are the lateral extents of the release overlying an unstable area such as karst geology?

☒ Yes ☐ No

Are the lateral extents of the release within a 100-year floodplain?

☐ Yes ☒ No

Did the release impact areas **not** on an exploration, development, production, or storage site?

☐ Yes ☒ No

Attach a comprehensive report (electronic submittals in .pdf format are preferred) demonstrating the lateral and vertical extents of soil contamination associated with the release have been determined. Refer to 19.15.29.11 NMAC for specifics.

Characterization Report Checklist: *Each of the following items must be included in the report.*

- ☒ Scaled site map showing impacted area, surface features, subsurface features, delineation points, and monitoring wells.
- ☒ Field data
- ☒ Data table of soil contaminant concentration data
- ☒ Depth to water determination
- ☒ Determination of water sources and significant watercourses within ½-mile of the lateral extents of the release
- ☒ Boring or excavation logs
- ☒ Photographs including date and GIS information
- ☒ Topographic/Aerial maps
- ☒ Laboratory data including chain of custody

If the site characterization report does not include completed efforts at remediation of the release, the report must include a proposed remediation plan. That plan must include the estimated volume of material to be remediated, the proposed remediation technique, proposed sampling plan and methods, anticipated timelines for beginning and completing the remediation. The closure criteria for a release are contained in Table 19.15.29.12 NMAC, however, use of the table is modified by site- and release-specific parameters.

State of New Mexico
Oil Conservation Division

Incident ID	nLLB0631356160
District RP	2RP-524
Facility ID	
Application ID	

I hereby certify that the information given above is true and complete to the best of my knowledge and understand that pursuant to OCD rules and regulations all operators are required to report and/or file certain release notifications and perform corrective actions for releases which may endanger public health or the environment. The acceptance of a C-141 report by the OCD does not relieve the operator of liability should their operations have failed to adequately investigate and remediate contamination that pose a threat to groundwater, surface water, human health or the environment. In addition, OCD acceptance of a C-141 report does not relieve the operator of responsibility for compliance with any other federal, state, or local laws and/or regulations.

Printed Name: Wade Dittrich

Title: Environmental Specialist

Signature: _____

Date: _____

email: wade_dittrich@oxy.com

Telephone: 575-390-2828

OCD Only

Received by: _____

Date: _____

State of New Mexico
Oil Conservation Division

Incident ID	nLLB0631356160
District RP	2RP-524
Facility ID	
Application ID	

Closure

The responsible party must attach information demonstrating they have complied with all applicable closure requirements and any conditions or directives of the OCD. This demonstration should be in the form of a comprehensive report (electronic submittals in .pdf format are preferred) including a scaled site map, sampling diagrams, relevant field notes, photographs of any excavation prior to backfilling, laboratory data including chain of custody documents of final sampling, and a narrative of the remedial activities. Refer to 19.15.29.12 NMAC.

Closure Report Attachment Checklist: *Each of the following items must be included in the closure report.*

- ☒ A scaled site and sampling diagram as described in 19.15.29.11 NMAC
- ☒ Photographs of the remediated site prior to backfill or photos of the liner integrity if applicable (Note: appropriate OCD District office must be notified 2 days prior to liner inspection)
- ☒ Laboratory analyses of final sampling (Note: appropriate ODC District office must be notified 2 days prior to final sampling)
- ☒ Description of remediation activities

I hereby certify that the information given above is true and complete to the best of my knowledge and understand that pursuant to OCD rules and regulations all operators are required to report and/or file certain release notifications and perform corrective actions for releases which may endanger public health or the environment. The acceptance of a C-141 report by the OCD does not relieve the operator of liability should their operations have failed to adequately investigate and remediate contamination that pose a threat to groundwater, surface water, human health or the environment. In addition, OCD acceptance of a C-141 report does not relieve the operator of responsibility for compliance with any other federal, state, or local laws and/or regulations. The responsible party acknowledges they must substantially restore, reclaim, and re-vegetate the impacted surface area to the conditions that existed prior to the release or their final land use in accordance with 19.15.29.13 NMAC including notification to the OCD when reclamation and re-vegetation are complete.

Printed Name: Wade Dittrich

Title: Environmental Specialist

Signature: _____

Date: _____

email: wade_dittrich@oxy.com

Telephone: 575-390-2828

OCD Only

Received by: _____ OCD

Date: 5/22/2023

Closure approval by the OCD does not relieve the responsible party of liability should their operations have failed to adequately investigate and remediate contamination that poses a threat to groundwater, surface water, human health, or the environment nor does not relieve the responsible party of compliance with any other federal, state, or local laws and/or regulations.

Closure Approved by: Ashley Maxwell

Date: 5/24/2023

Printed Name: Ashley Maxwell

Title: Environmental Specialist

District I
1625 N. French Dr., Hobbs, NM 88240
Phone:(575) 393-6161 Fax:(575) 393-0720
District II
811 S. First St., Artesia, NM 88210
Phone:(575) 748-1283 Fax:(575) 748-9720
District III
1000 Rio Brazos Rd., Aztec, NM 87410
Phone:(505) 334-6178 Fax:(505) 334-6170
District IV
1220 S. St Francis Dr., Santa Fe, NM 87505
Phone:(505) 476-3470 Fax:(505) 476-3462

State of New Mexico
Energy, Minerals and Natural Resources
Oil Conservation Division
1220 S. St Francis Dr.
Santa Fe, NM 87505

CONDITIONS

Action 219370

CONDITIONS

Operator: OXY USA INC P.O. Box 4294 Houston, TX 772104294	OGRID: 16696
	Action Number: 219370
	Action Type: [C-141] Release Corrective Action (C-141)

CONDITIONS

Created By	Condition	Condition Date
amaxwell	None	5/24/2023