

Incident ID	nAPP2301860476
District RP	
Facility ID	
Application ID	

Closure

The responsible party must attach information demonstrating they have complied with all applicable closure requirements and any conditions or directives of the OCD. This demonstration should be in the form of a comprehensive report (electronic submittals in .pdf format are preferred) including a scaled site map, sampling diagrams, relevant field notes, photographs of any excavation prior to backfilling, laboratory data including chain of custody documents of final sampling, and a narrative of the remedial activities. Refer to 19.15.29.12 NMAC.

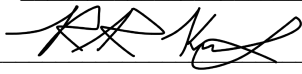
Closure Report Attachment Checklist: *Each of the following items must be included in the closure report.*

- ☒ A scaled site and sampling diagram as described in 19.15.29.11 NMAC
- ☒ Photographs of the remediated site prior to backfill or photos of the liner integrity if applicable (Note: appropriate OCD District office must be notified 2 days prior to liner inspection)
- ☒ Laboratory analyses of final sampling (Note: appropriate ODC District office must be notified 2 days prior to final sampling)
- ☒ Description of remediation activities

I hereby certify that the information given above is true and complete to the best of my knowledge and understand that pursuant to OCD rules and regulations all operators are required to report and/or file certain release notifications and perform corrective actions for releases which may endanger public health or the environment. The acceptance of a C-141 report by the OCD does not relieve the operator of liability should their operations have failed to adequately investigate and remediate contamination that pose a threat to groundwater, surface water, human health or the environment. In addition, OCD acceptance of a C-141 report does not relieve the operator of responsibility for compliance with any other federal, state, or local laws and/or regulations. The responsible party acknowledges they must substantially restore, reclaim, and re-vegetate the impacted surface area to the conditions that existed prior to the release or their final land use in accordance with 19.15.29.13 NMAC including notification to the OCD when reclamation and re-vegetation are complete.

Printed Name: Rob Kirk

Title: VP & GM, HSE & Compliance

Signature: 

Date: 05/12/2023

email: rob.kirk@ariswater.com

Telephone: 469-978-5620

OCD Only

Received by: Jocelyn Harimon

Date: 8/18/2023

Closure approval by the OCD does not relieve the responsible party of liability should their operations have failed to adequately investigate and remediate contamination that poses a threat to groundwater, surface water, human health, or the environment nor does not relieve the responsible party of compliance with any other federal, state, or local laws and/or regulations.

Closure Approved by: Shelly Wells

Date: 8/18/2023

Printed Name: Shelly Wells

Title: Environmental Specialist-Advanced



May 9, 2023

Solaris Water Midstream LLC
3305 Boyd Dr
Carlsbad, NM 88220

Attn: New Mexico Oil Conservation District
1220 S. St. Francis Drive
Santa Fe, NM 87505

Re: Notice of Liner Inspection
Trove SWD
NMCOD Incident Number:nAPP2301860476
32.213043 °, -104.04112°
Eddy County, New Mexico
Terracon Project No. KH237031

To Whom It May Concern:

On April 14, 2023, Terracon was requested by Solaris Water Midstream LLC (Solaris) to conduct a Liner Inspection associated with a release of a reportable quantity within the lined secondary containment at the Trove SWD (nAPP2301860476) site. The New Mexico Oil Conservation District (NMOCD) was notified of the release on January 18, 2023, according to the submitted C-141 form. Terracon personnel were informed that a reportable release of 240 barrels (bbls) of produced water within secondary containment had taken place at the site and Solaris had recovered a total of 240 bbls. Surface ownership is held by the Bureau of Land Management (BLM).

Regulatory Criteria

The nearest groundwater elevation data was obtained from the New Mexico Office of the State Engineer (NMOSE) website indicating the depth to groundwater was measured to be present at 106 feet below grade surface (bgs). The well was located on the Lobo 285 SWD #1 site. A review of geospatial data obtained from the Bureau of Land Management (BLM) Carlsbad Field Office (CFO) website indicated that the site is within an area of medium risk for karst formations. Per New Mexico Administrative Code (NMAC) 19.15.29.12, remediation and closure criteria for a depth to groundwater of 51-100 feet were utilized for this release.

Notice Documentation

Trove SWD

Liner Inspection ■ Eddy County, New Mexico

May 9, 2023 ■ Terracon Project No. KH237031



Remedial Activities

On January 18, 2023, Solaris conducted recovery activities of the release, recovering 240 bbls of the 240 bbls released. Terracon mobilized to the site on April 14, 2023, to conduct an initial broad-scope visual assessment and conduct the Liner Inspection.

Conclusion

In accordance with NMOCD 19.15.29.11.5a, the integrity of the battery containment liner is visually observed to be intact with no tears. Based on the volume of recovered fluids, the lack of evidence of the release leaving the containment, and the observed integrity of the liner based on visual inspection Solaris requests the concurrence of closure of the Trove SWD – incident number nAPP2301860476.

Should you have any questions, please contact the undersigned at (806) 507-7057.

Sincerely,

Terracon

Prepared by:


Becky Sue Miller
Field Scientist
Carlsbad

Reviewed by:


Erin Loyd
Senior Principal
Office Manager - Lubbock

Attachments

Appendix A – Exhibits

- Exhibit 1 – Site Map
- Exhibit 2 – NMOSE POD Location Map
- Exhibit 3 – Cave Karst Public UCP Map
- Exhibit 4 – Photographic Log

Responsive ■ Resourceful ■ Reliable

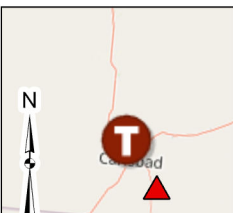
APPENDIX A – EXHIBITS



DATA SOURCES: Bing

0 25 50 100

Feet




 Site Location

Project No.:
KH237031

Date:
May 2023

Drawn By:
JWL

Reviewed By:
JRG

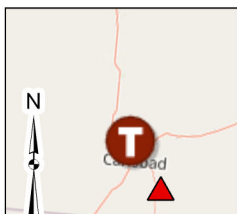
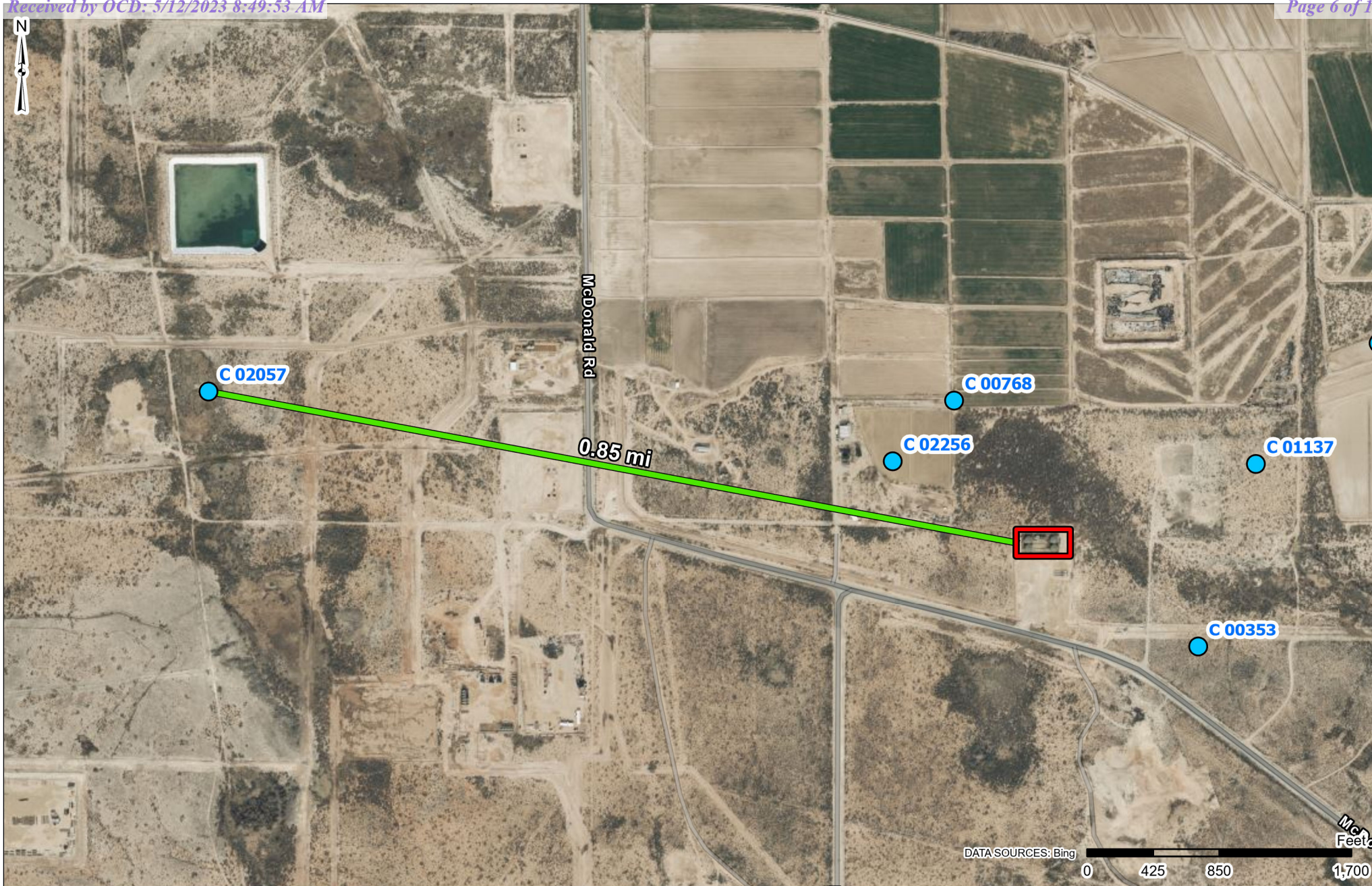

4518 W Pierce St
Carlsbad, NM
PH. 806-300-0140 terracon.com

Site Map

Trove SWD
-104.0413475, 32.2137947
Eddy County, New Mexico

Exhibit

1



- NMOSE POD Locations
- ▭ Site Location

Project No.:
KH237031
Date:
May 2023
Drawn By:
JWL
Reviewed By:
JRG

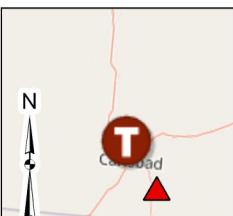
Terracon
4518 W Pierce St
Carlsbad, NM
PH. 806-300-0140 terracon.com

NMOSE POD Location Map

Trove SWD
-104.0413475, 32.2137947
Eddy County, New Mexico

Exhibit

2



Site Location

Karst Potential

High

Medium

Low

Project No.:
KH237031

Date:
May 2023

Drawn By:
JWL

Reviewed By:
JRG



4518 W Pierce St
Carlsbad, NM

PH. 806-300-0140

terracon.com

Cave Karst Public UCP Map

Trove SWD
-104.0413475, 32.2137947
Eddy County, New Mexico

Exhibit

3

Trove SWD ■ Eddy County, New Mexico
May 11, 2023 ■ Terracon Project No. KH237031

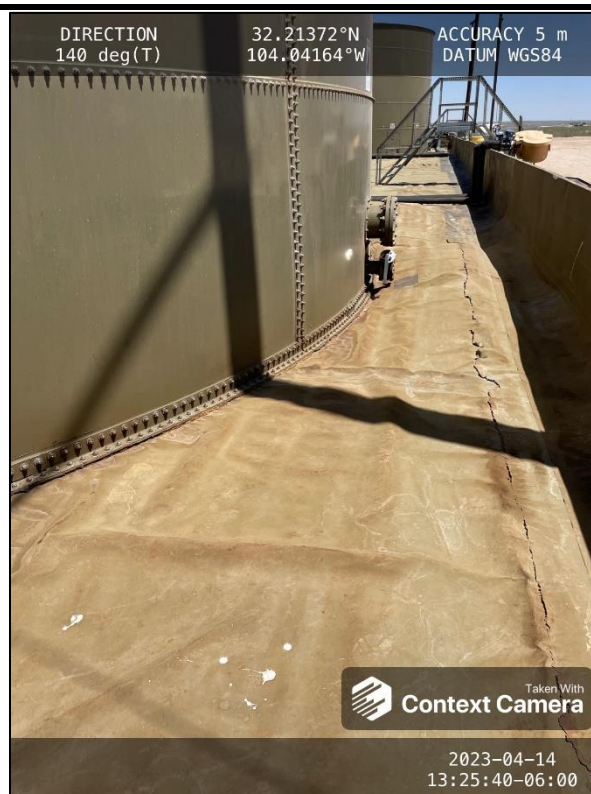


PHOTO 1: View of the liner.

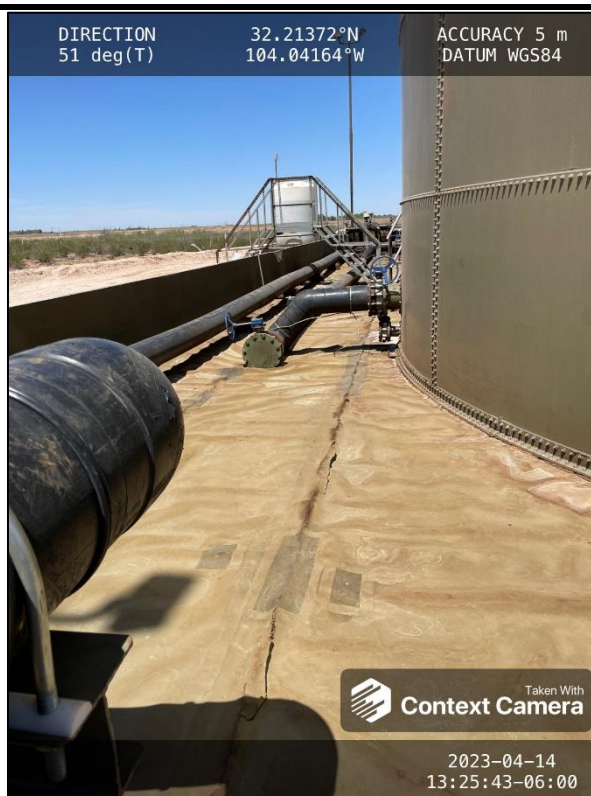


PHOTO 2: View of the liner.

Responsive ■ Resourceful ■ Reliable

Trove SWD ■ Eddy County, New Mexico
May 11, 2023 ■ Terracon Project No. KH237031



PHOTO 3: View of the liner.



PHOTO 4: View of the liner.

Responsive ■ Resourceful ■ Reliable

Trove SWD ■ Eddy County, New Mexico
May 11, 2023 ■ Terracon Project No. KH237031

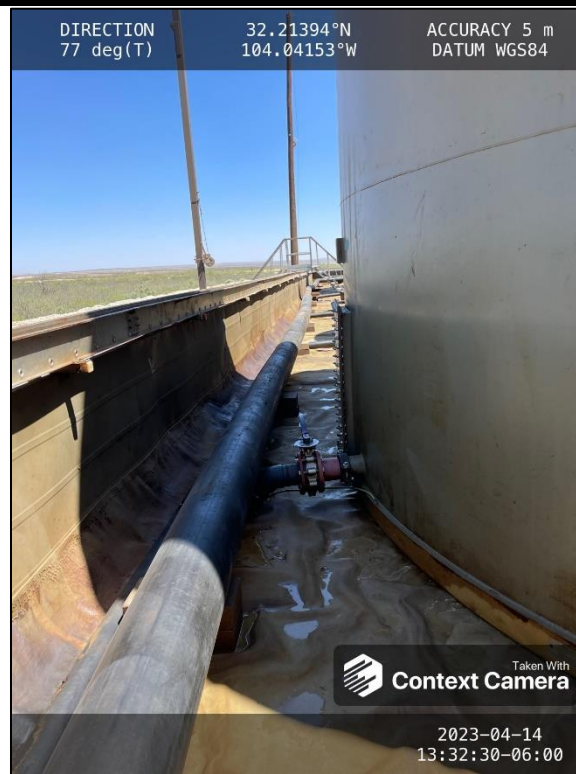


PHOTO 5: View of the liner.

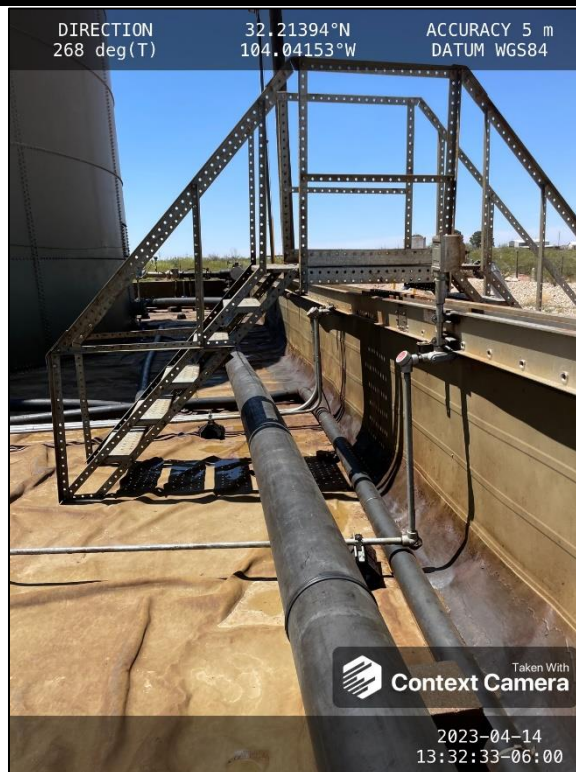


PHOTO 6: View of the liner.

Responsive ■ Resourceful ■ Reliable

Trove SWD ■ Eddy County, New Mexico
May 11, 2023 ■ Terracon Project No. KH237031

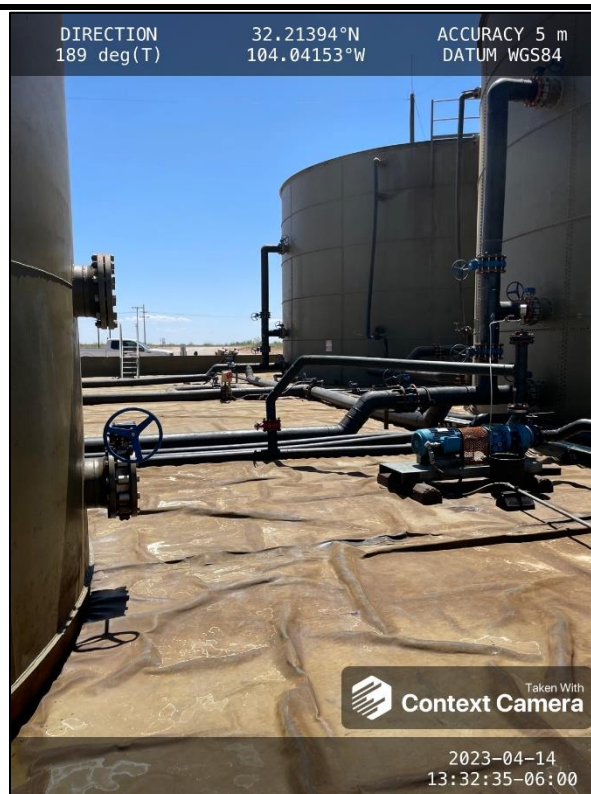


PHOTO 7: View of the liner.

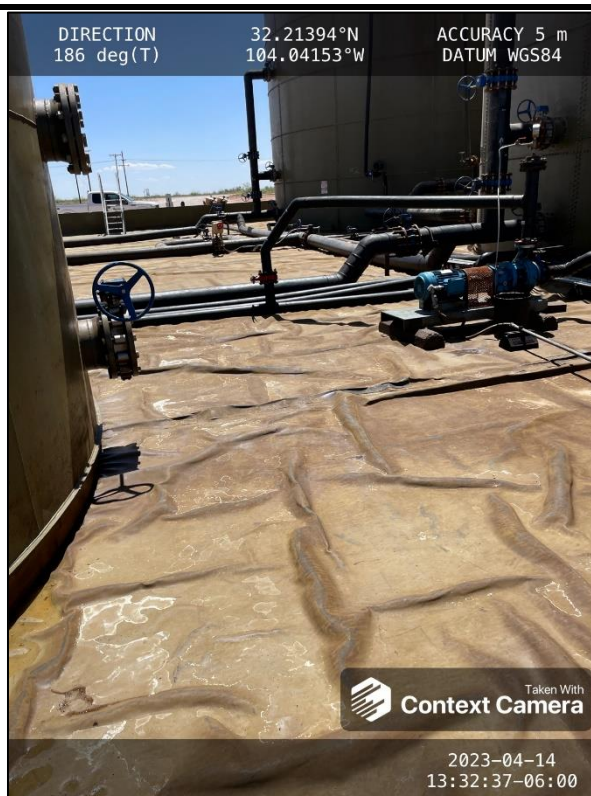


PHOTO 8: View of the liner.

Responsive ■ Resourceful ■ Reliable

Trove SWD ■ Eddy County, New Mexico
May 11, 2023 ■ Terracon Project No. KH237031



PHOTO 9: View of the liner.



PHOTO 10: View of the liner.

Responsive ■ Resourceful ■ Reliable

Trove SWD ■ Eddy County, New Mexico
May 11, 2023 ■ Terracon Project No. KH237031



PHOTO 11: View of the liner.

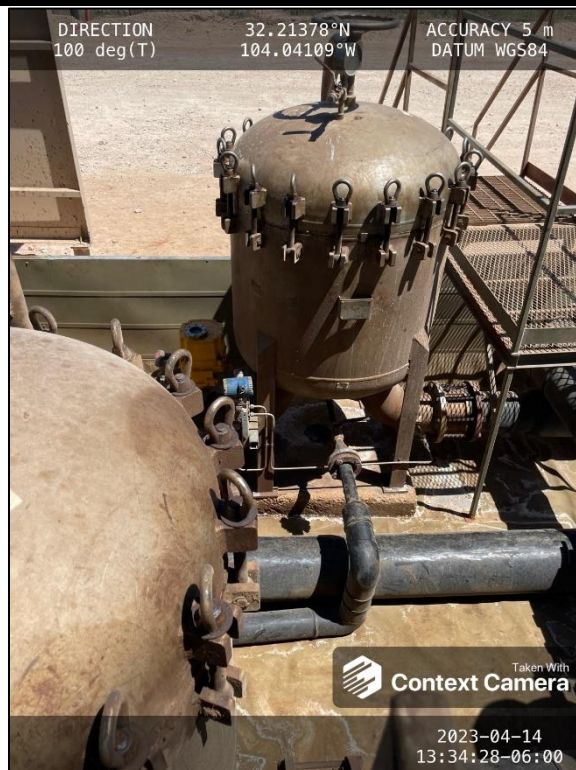


PHOTO 12: View of the liner.

Responsive ■ Resourceful ■ Reliable

Trove SWD ■ Eddy County, New Mexico
May 11, 2023 ■ Terracon Project No. KH237031

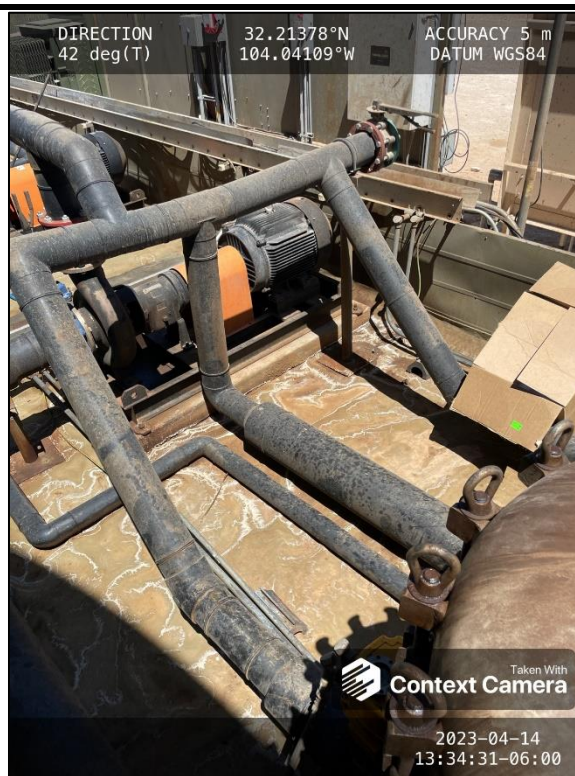


PHOTO 13: View of the liner.

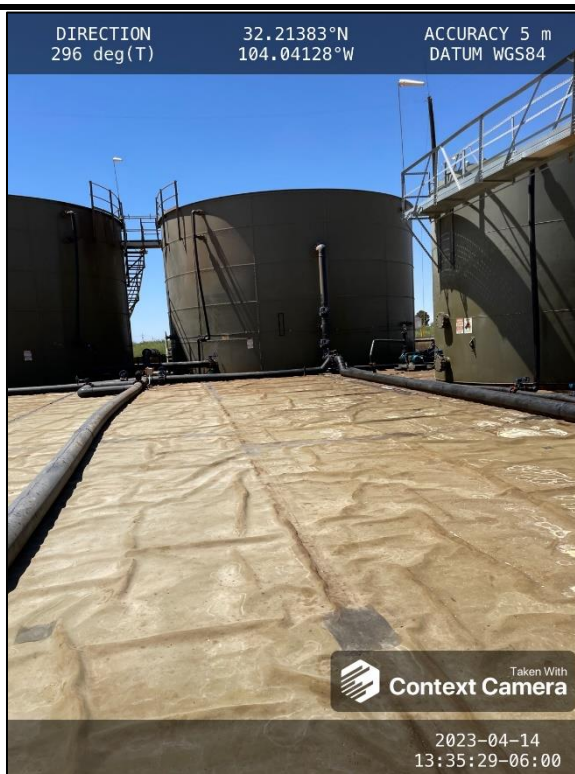


PHOTO 14: View of the liner.

Responsive ■ Resourceful ■ Reliable

Trove SWD ■ Eddy County, New Mexico
May 11, 2023 ■ Terracon Project No. KH237031

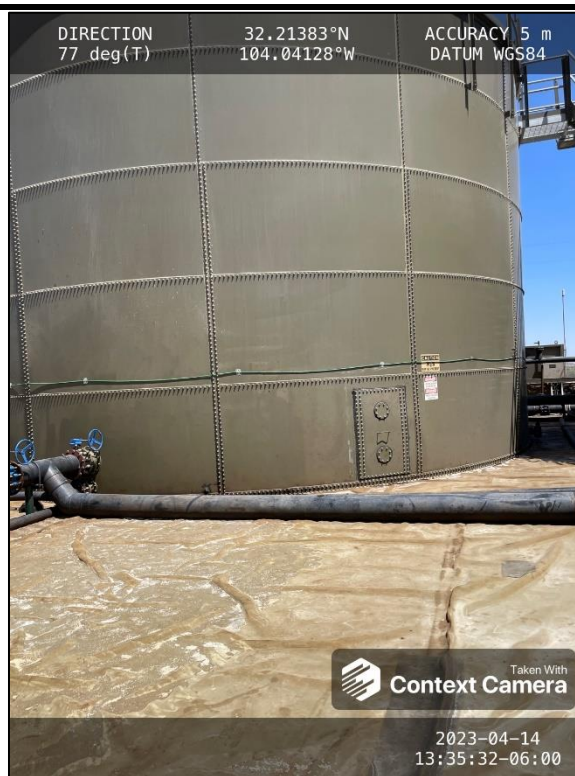


PHOTO 15: View of the liner.

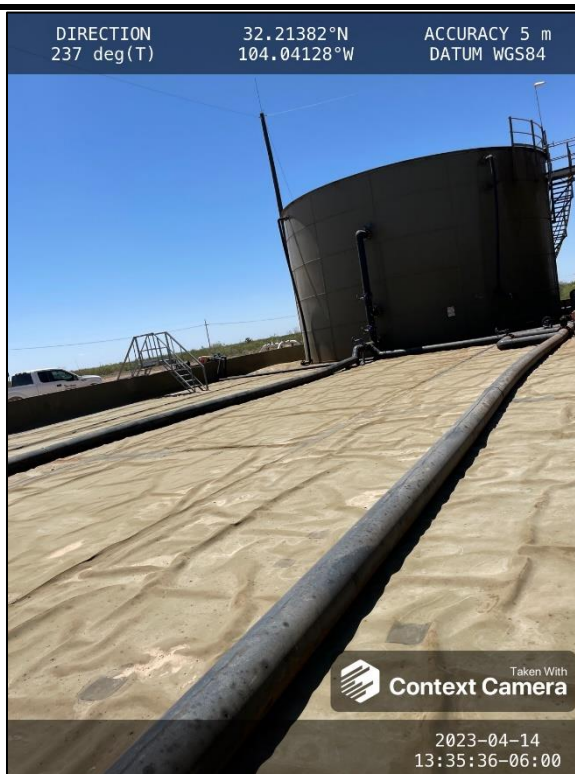


PHOTO 16: View of the liner.

Responsive ■ Resourceful ■ Reliable

Trove SWD ■ Eddy County, New Mexico
May 11, 2023 ■ Terracon Project No. KH237031



PHOTO 17: View of the liner.

Responsive ■ Resourceful ■ Reliable

District I
1625 N. French Dr., Hobbs, NM 88240
Phone:(575) 393-6161 Fax:(575) 393-0720
District II
811 S. First St., Artesia, NM 88210
Phone:(575) 748-1283 Fax:(575) 748-9720
District III
1000 Rio Brazos Rd., Aztec, NM 87410
Phone:(505) 334-6178 Fax:(505) 334-6170
District IV
1220 S. St Francis Dr., Santa Fe, NM 87505
Phone:(505) 476-3470 Fax:(505) 476-3462

State of New Mexico
Energy, Minerals and Natural Resources
Oil Conservation Division
1220 S. St Francis Dr.
Santa Fe, NM 87505

CONDITIONS

Action 216379

CONDITIONS

Operator: SOLARIS WATER MIDSTREAM, LLC 907 Tradewinds Blvd, Suite B Midland, TX 79706	OGRID: 371643
	Action Number: 216379
	Action Type: [C-141] Release Corrective Action (C-141)

CONDITIONS

Created By	Condition	Condition Date
scwells	None	8/18/2023