

**Frontier Field Services, LLC**

Mal-11-5 Fed AF 6" Poly Line LP  
32.7723056°, -103.8054167°  
NMOCD Reference # nAPP2233262667  
Terracon Project # KH237020



Attn: New Mexico Oil Conservation Division  
1220 South St. Francis Drive  
Santa Fe, NM 87505

**RE: Release Investigation, and Closure Report**

Mal-11-5 Fed AF 6" Poly Line LP  
Unit O, Section 6, Township 18 South, Range 32 East  
32.77221°, -103.80566°  
Lea County, New Mexico  
Terracon Project No. KH237020

To Whom it May Concern:

Terracon Consultants, Inc. (Terracon) is pleased to submit our Release Investigation and Closure Report for the site referenced above. The scope of services was developed in accordance with the New Mexico Oil Conservation Division (NMOCD) regulations concerning clean-up actions required for releases of crude oil and produced water. The investigative response actions were taken as the result of a natural gas release from a suspected corroded lateral line. The below sections detail Terracon's assessment and remediation actions in response to the noted release.

**Action Items****Completed Actions**

- 1) Initial site assessment and sampling events completed.
- 2) All conditions needed for approval of closure have been met.
- 3) All Maps and associated data for approval have been provided.
- 4) Soil samples collected from the excavation were submitted to an approved Lab to determine levels of impact vertically and horizontally.
- 5) Excavation of the inferred release area was completed with the intent to remove impacted soil as determined by the Closure Criteria set by NMOCD.
- 6) Soil stockpiles on site were placed on plastic and bermed around the edges to reduce loss.
- 7) All confirmation samples were collected every 200 sq. ft.
- 8) Remedial activities were terminated when a confirmation sample was collected below the NMOCD remedial action levels (RALs) for Oil and Gas impacted soils.

Explore with us

**Frontier Field Services, LLC**

Mal-11-5 Fed AF 6" Poly

32.7723056°, -103.8054167°

NMOCD Reference # nAPP2233262667

Terracon Project # KH237020



**Anticipated Actions**

- 
- 1) Following the completion of remedial activities all areas of the excavation activities will be backfilled and brought to the surrounding grade and reseeded.
  - 2) Approval by the NMOCD.
- 

Terracon appreciates this opportunity to provide environmental services to Frontier Field Services, LLC. Should you have any questions or require additional information, please do not hesitate to contact our office.

Sincerely,

**Terracon Consultants, Inc.**

A handwritten signature in blue ink, appearing to read 'Travis Casey', is positioned above the printed name.

**Travis Casey**  
Senior Staff Scientist  
Carlsbad

A handwritten signature in blue ink, appearing to read 'Erin Loyd', is positioned above the printed name.

**Erin Loyd, P.G. (TX)**  
Senior Principal  
Office Manager – Lubbock

**TABLE OF CONTENTS****Table of Contents**

Section 1 – Incident Information .....	2
Section 2 – General Site Characteristics .....	3
Section 3 – Regulatory Framework and Response Action Levels.....	4
Section 4 – Remediation Activities .....	5
Section 5 - Remediation Confirmation Assessment.....	5
Section 6 – Analytical Results .....	5
Section 7 – Conclusion and Closure Request .....	6

**Attachments:****Appendix A – Exhibits**

- Exhibit 1 – Topographic Map
- Exhibit 2 – Site Location Map
- Exhibit 3 – Confirmation Sample Map
- Exhibit 4 – NMOSE POD Location Map
- Exhibit 5 – Designated Wetland Area Map
- Exhibit 6 – CFO Karst Potential Map

**Appendix B – Tables, Procedures, and Figures**

- Table 1 – Soil Sample Analytical Results

**Appendix C – Photographic Log****Appendix D – Analytical Report and Chain of Custody****Appendix E – Initial Form C-141****Appendix F – Terracon Standard of Care, Limitation, and Reliance**

**Frontier Field Services, LLC**

Mal-11-5 Fed AF 6" Poly

32.7723056°, -103.8054167°

NMOCD Reference # nAPP2233262667

Terracon Project # KH237020

**Section 1 – Incident Information**

The following table provides detailed information regarding the November 20, 2022, natural gas, and petroleum liquid release at the Mal-11-5 Fed AF 6" Poly Line LP (Mal-11-5 Fed AF) site in Lea County, New Mexico:

Required Information	Site and Release information	
Responsible party	The pipeline is operated by Frontier Field Services LLC	
Local contact	Contact: Ms. Amber Groves	P: (575)-703-7992 E: <a href="mailto:agroves@durangomidstream.com">agroves@durangomidstream.com</a>
NMOCD Notification	Notice of the release was provided to the NMOCD District 2 Artesia Office by Ms. Amber Groves on November 20, 2022. NMOCD Reference ID: nAPP2233262667	
Facility Description	Mal-11-5 Fed AF is in Lea County, New Mexico. The site is located within Unit O, Section 6, Township 18 South, Range 32 East, approximately 6.32 miles southwest of Maljamar, New Mexico. The site is predominantly developed as an oil and gas Right of Way (ROW) surrounded by native pastureland and owned by the Bureau of Land Management (BLM).	
Time of incident	November 20, 2022, discovered during third-party excavation.	
Discharge event	The natural gas pipeline leak was caused by a third-party line strike during excavation. The Site is illustrated in Exhibits 1 and 2 of Appendix A.	
Type of discharge	The documented natural gas release occurred in an open ROW, BLM-owned, native pastureland area. Soils at the site are affected at the surface and beyond the depth of the pipeline.	
Quantity of spilled material	Total Fluids: 10 bbls	Natural Gas: 1,226.23 Mcf
Site characteristics	Relatively flat with drainage following the natural ground surface; very gently sloping to the southeast.	
Immediate corrective actions	The damaged pipeline was closed in at the nearest isolation valve, blown down, and clamped. A backhoe was utilized to excavate	



**Frontier Field Services, LLC**

Mal-11-5 Fed AF 6" Poly

32.7723056°, -103.8054167°

NMOCD Reference # nAPP2233262667

Terracon Project # KH237020



Required Information	Site and Release information
	impacted soils around the line strike to repair the source of the release.
<b>Section 2 – General Site Characteristics</b>	
Physical Characteristic	Site Ranking Characteristics
<b>Groundwater</b> NMOSE POD Location Map – (Exhibit 4 in Appendix A)	<u>POD Number:</u> (RA-12020 POD 1)
	<u>Depth to Groundwater:</u> 81 ft. bgs
	<u>Distance to Well:</u> 3.17 miles to the northeast
	<u>Date Drilled:</u> Augusts 19, 2013
	<u>Groundwater Quality:</u> Groundwater quality at the site is predominately used for livestock production.
<b>Surface Water</b> NM Wetland Map – (Exhibit 5 in Appendix A)	Salt Lake (unnamed), approximately 14.46 miles to the southwest.
<b>100-Year Flood Plain</b>	This site is located within the 100-year flood plain of the Pecos River.
<b>Soil Characteristics</b>	Soils at the site are mapped as Kermit-Berino Fine Sand series soils, 0 to 3 percent slopes, well-drained, 4 to 12 inches single-grained; loose; few fine roots; very porous; few dark organic stains; noncalcareous; neutral; gradual smooth boundary. (6 to 12 inches thick). The formation is categorized with a very high runoff classification.
<b>Karst Characterization</b> CFO Karst Potential Map – (Exhibit 6 in Appendix A)	Terracon evaluated data from the BLM Carlsbad Field Office's publicly available spatial data, and Karst map designations in reference to the site location. The site appears to be within a low-level Karst risk area. Based on site observations within the extent of the release margins the potential for Karst formations in this specific area is of low potential. Restrictive features were not encountered from surface to 168 inches below grade surface (bgs) within the release margins. The full extent of release

**Frontier Field Services, LLC**

Mal-11-5 Fed AF 6" Poly

32.7723056°, -103.8054167°

NMOCD Reference # nAPP2233262667

Terracon Project # KH237020



Physical Characteristic	Site Ranking Characteristics
	quantities and excavation activities did not extend greater than 168 inches bgs.

### Section 3 – Regulatory Framework and Response Action Levels

Oil and gas exploration and production facilities in New Mexico are generally regulated by the New Mexico Oil Conservation Division (NMOCD). The NMOCD has issued the *Closure Criteria for Soils Impacted by a Release, June 21, 2018*, and *Restoration, Reclamation, and Re-vegetation (19.15.29.13) NMAC – D (Reclamation of areas no longer in use)* as guidance documents for the remediation and reclamation of sites impacted by releases from oil and gas exploration and production activities. Sections detailed below the applicability of these guidance documents to the site-specific characteristics associated with the Mal-11-5 Fed AF 6" Poly.

#### Section 3.1 – Reclamation Levels (Surface to 4 ft. bgs)

The below Reclamation Limits for chlorides, Total Petroleum Hydrocarbons (TPH (GRO+DRO+MRO)), BTEX (includes benzene, toluene, ethylbenzene, and xylenes), and benzene are defined within the New Mexico Administration Code (NMAC) *Restoration, Reclamation, and Re-vegetation (19.15.29.13) New Mexico Administration Code (NMAC) – D (Reclamation of areas no longer in use)* for soils extending to 4 ft. bgs.:

Constituent	Remediation Limits
Chloride	600 mg/kg
TPH (GRO+DRO+MRO)	100 mg/kg
BTEX	50 mg/kg
Benzene	10 mg/kg

\*milligrams per kilogram (mg/kg)

#### Section 3.2 – Remediation Levels (> 4 ft. bgs)

Based on the lack of a well within 0.5 miles of the site, the site was remediated to the most conservative standard. the applicable NMOCD remediation levels for Total BTEX, chloride, and TPH within soils, exclusive of the Reclamation Zone (surface to 4 ft. bgs), are as follows:

**Frontier Field Services, LLC**

Mal-11-5 Fed AF 6" Poly

32.7723056°, -103.8054167°

NMOCD Reference # nAPP2233262667

Terracon Project # KH237020



Constituent	Remediation Limit
Chloride	600 mg/kg
TPH (GRO+DRO+MRO)	100 mg/kg
BTEX	50 mg/kg
Benzene	10 mg/kg

**Section 4 – Remediation Activities**

On March 20, 2023, Terracon mobilized to the site to meet Terracon's Remediation and Construction Services (RCS) personnel, who performed soil remediation activities. The areas exhibiting visual impacts were excavated to a depth of approximately 4 to 5 feet bgs.

Approximately 76 cubic yards of soil were excavated and stockpiled atop a polyethylene liner pending waste characterization and disposal under an approved Form C-138. Excavation efforts ceased based on the removal of visually impacted material. Excavated materials were disposed of at Lea Land Landfill.

**Section 5 - Remediation Confirmation Assessment**

A total of 11 composite soil samples (N-SW-01 through 03, S-SW-01 through 03, E-SW-01, W-SW-01, and FS-01 through 03) were collected from the excavation, placed in laboratory-provided sample containers, preserved with ice, and transported under a chain of custody to Cardinal Laboratories, Inc. in Hobbs, New Mexico for analysis of BTEX, TPH, and chlorides.

**Section 6 – Analytical Results**

Of the composite soil samples collected on March 20, 2023, only one sample exhibited concentrations of TPH above sample detection limits (SDLs). The detected TPH concentration of 88.5 mg/kg in soil sample FS01 (5 ft bgs) was below the NMOCD closure criteria of 100 mg/kg for this site.

All the soil samples collected from the excavation area exhibited concentrations of chloride above laboratory SDLs and ranged from 32.0 mg/kg in E-SW-01 (0-5 feet) to 192 mg/kg in S-SW-01 (0-4 feet). However, all the chloride sample results were below the NMOCD closure criteria of 600 mg/kg for this site.

**Frontier Field Services, LLC**

Mal-11-5 Fed AF 6" Poly

32.7723056°, -103.8054167°

NMOCD Reference # nAPP2233262667

Terracon Project # KH237020



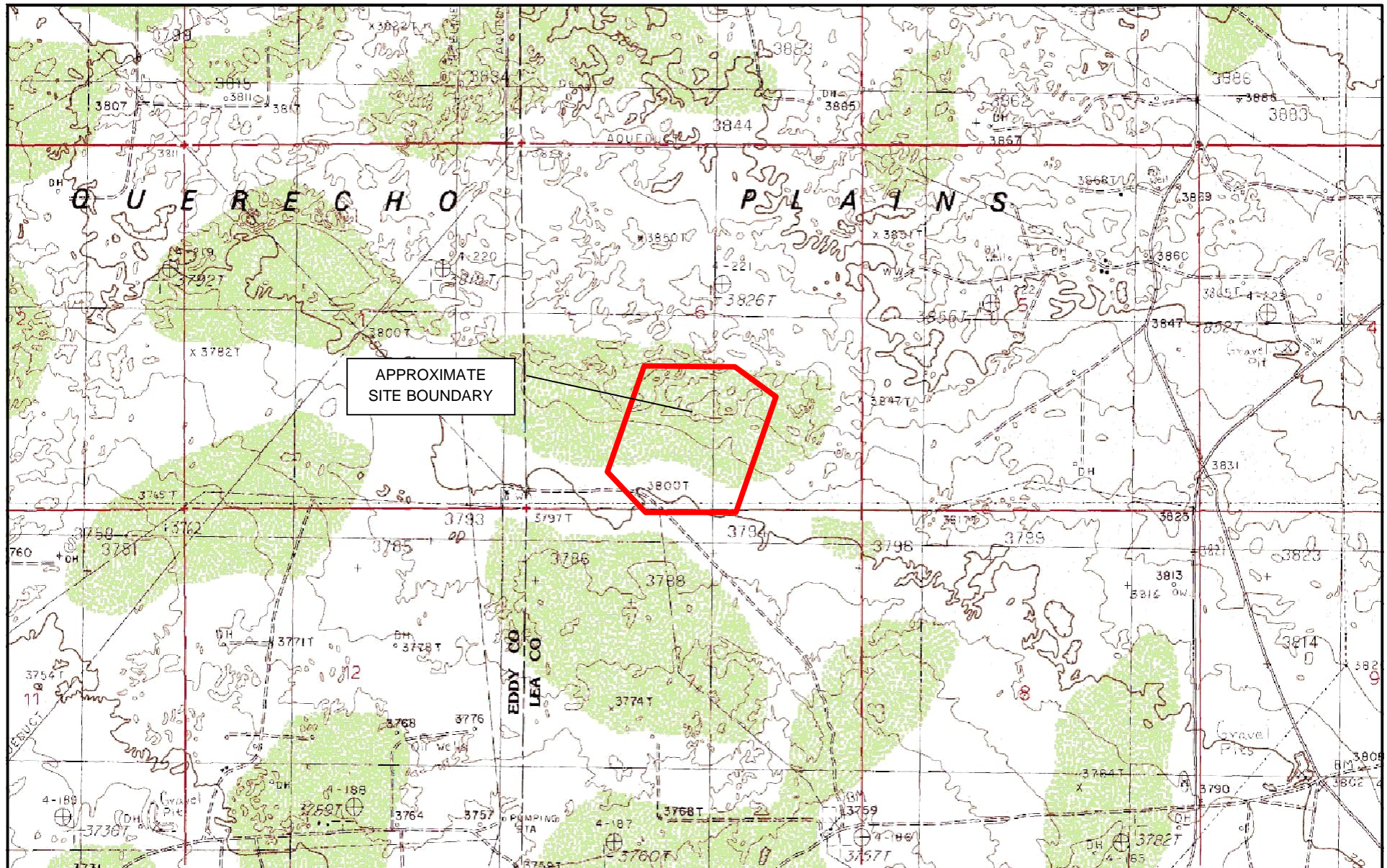
A summary of BTEX, chloride, and TPH concentrations of all collected soil samples is attached as Table 1.

## **Section 7 – Conclusion and Closure Request**

In accordance with NMAC 19.15.29.12, remediation of the impacted material is complete, and Terracon along with Frontier Field Services respectfully requests closure of the incident nAPP2233262667.

## **APPENDIX A – EXHIBITS**





TOPOGRAPHIC MAP IMAGE COURTESY OF  
THE U.S. GEOLOGICAL SURVEY  
QUADRANGLES INCLUDE: MALJAMAR, NM  
(1/1/1985).

DIAGRAM IS FOR GENERAL LOCATION ONLY,  
AND IS NOT INTENDED FOR CONSTRUCTION  
PURPOSES

Project Manager:  
**Joe Guesnier**

Drawn by:  
**Becky Miller**

Checked by:  
**Travis Casey**

Approved by:  
**Joe Guesnier**

Project No.  
**E2135001**

Scale:  
**1"=2,000'**

File Name:  
**Topo**

Date:  
**03/27/23**




4518 W. Pierce St.  
Carlsbad, New Mexico 88220

### Exhibit 1 – Topographic Map

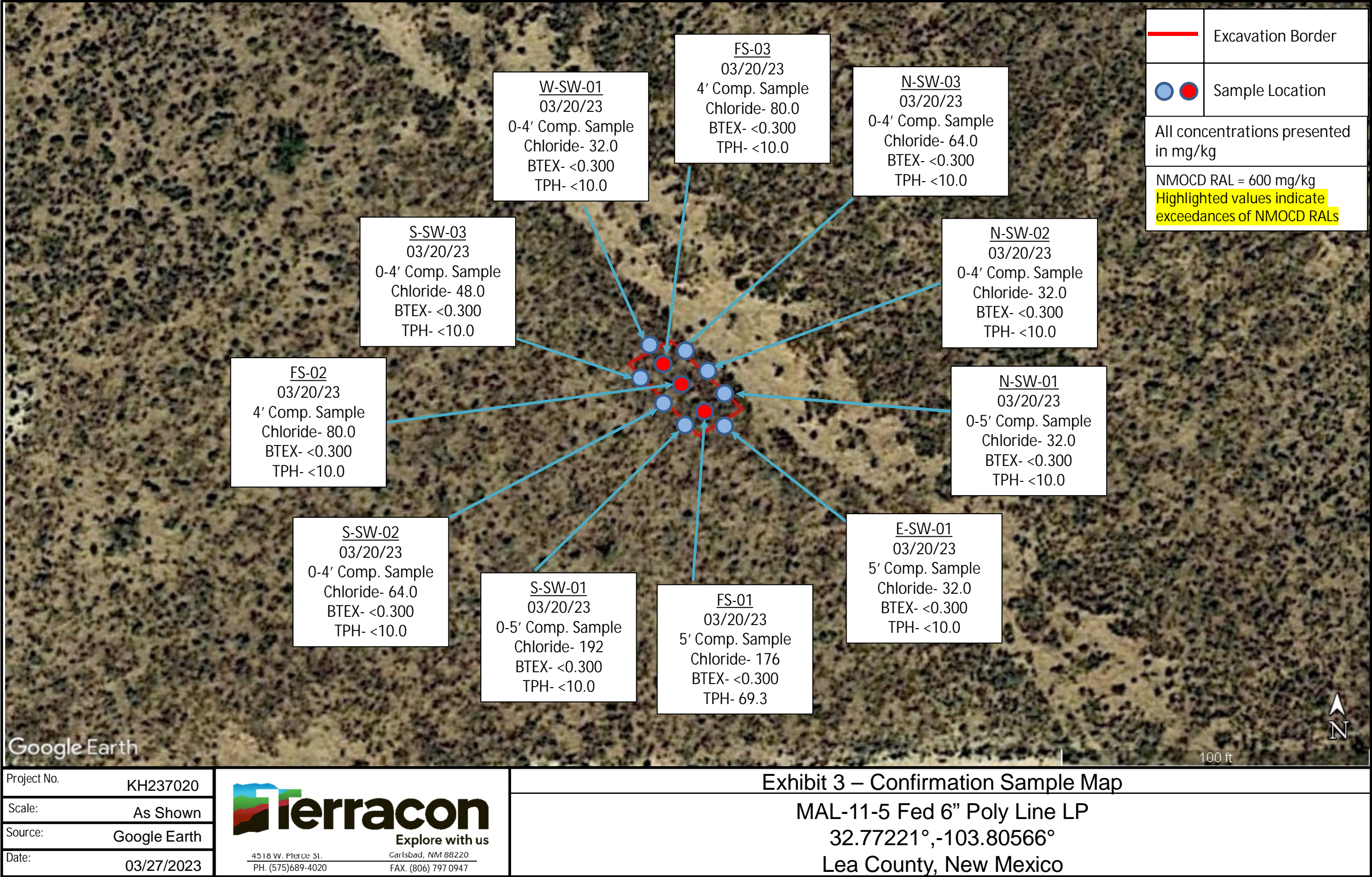
**Mal-11-5 Fed AF 6" Poly Line LP**  
**32.77221, -103.80566**  
**Lea County, New Mexico**





Project No.	KH237020	Exhibit 2 - Site Map	
Scale:	As Shown	MAL-11-5 Fed 6" Poly Line LP	
Source:	Google Earth	32.77221°,-103.80566°	
Date:	03/09/2023	Lea County, New Mexico	
<div><div><p>Explore with us</p></div><div><p>4518 W. Pierce St. PH. (575)689-4020</p><p>Carlsbad, NM 88220 FAX. (806) 797 0947</p></div></div>			










Project No.	KH237020	Exhibit 4 – NMOSE POD Location Map	
Scale:	As Shown	MAL-11-5-Fed 6" Poly Line	
Source:	Google Earth	32.77221°, -103.80566°	
Date:	03/01/2023	Lea County, New Mexico	

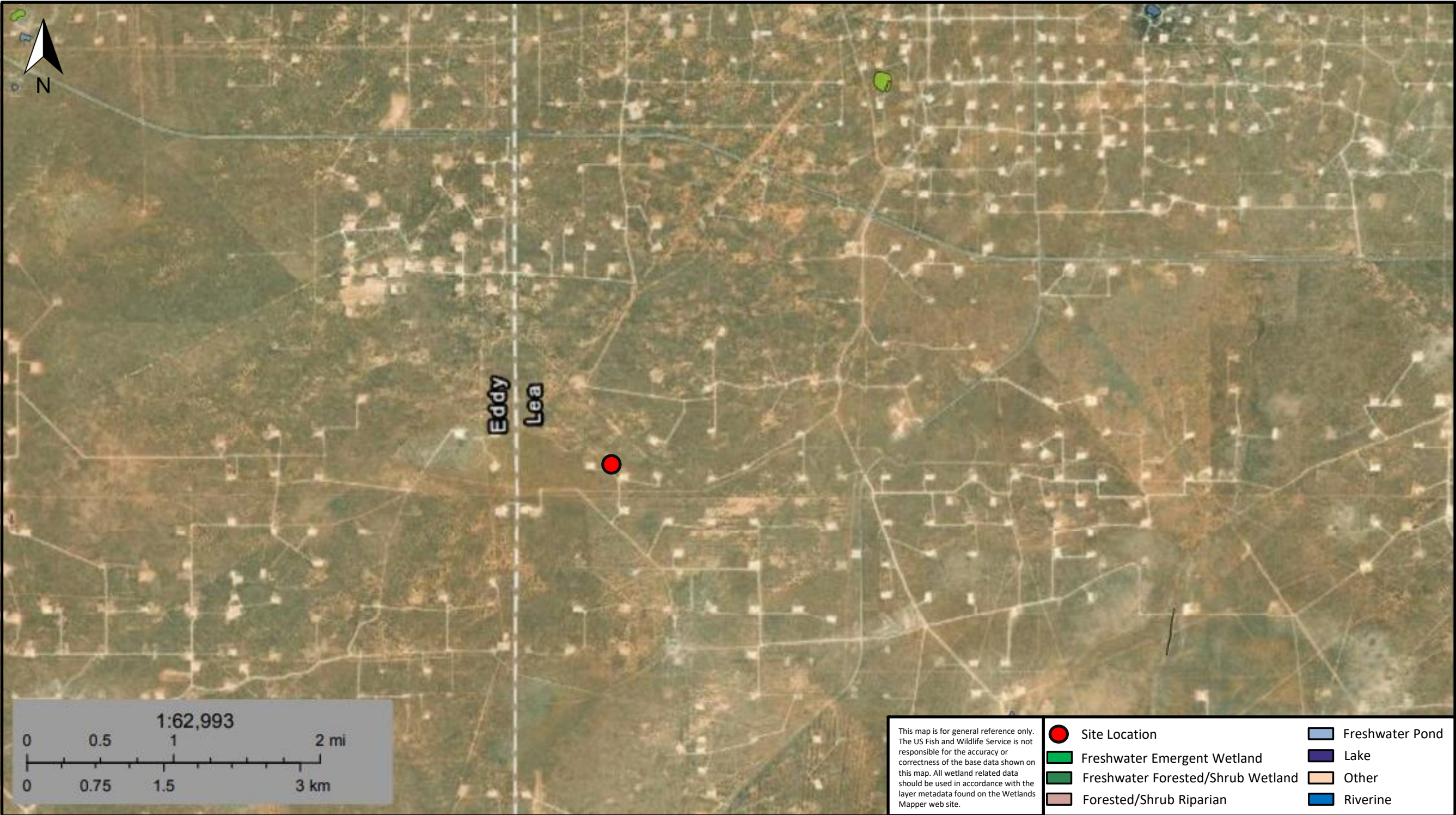


Explore with us

4518 W. Pierce St.  
PH. (575)689-4020

Carlsbad, NM 88220  
FAX. (806) 797 0947



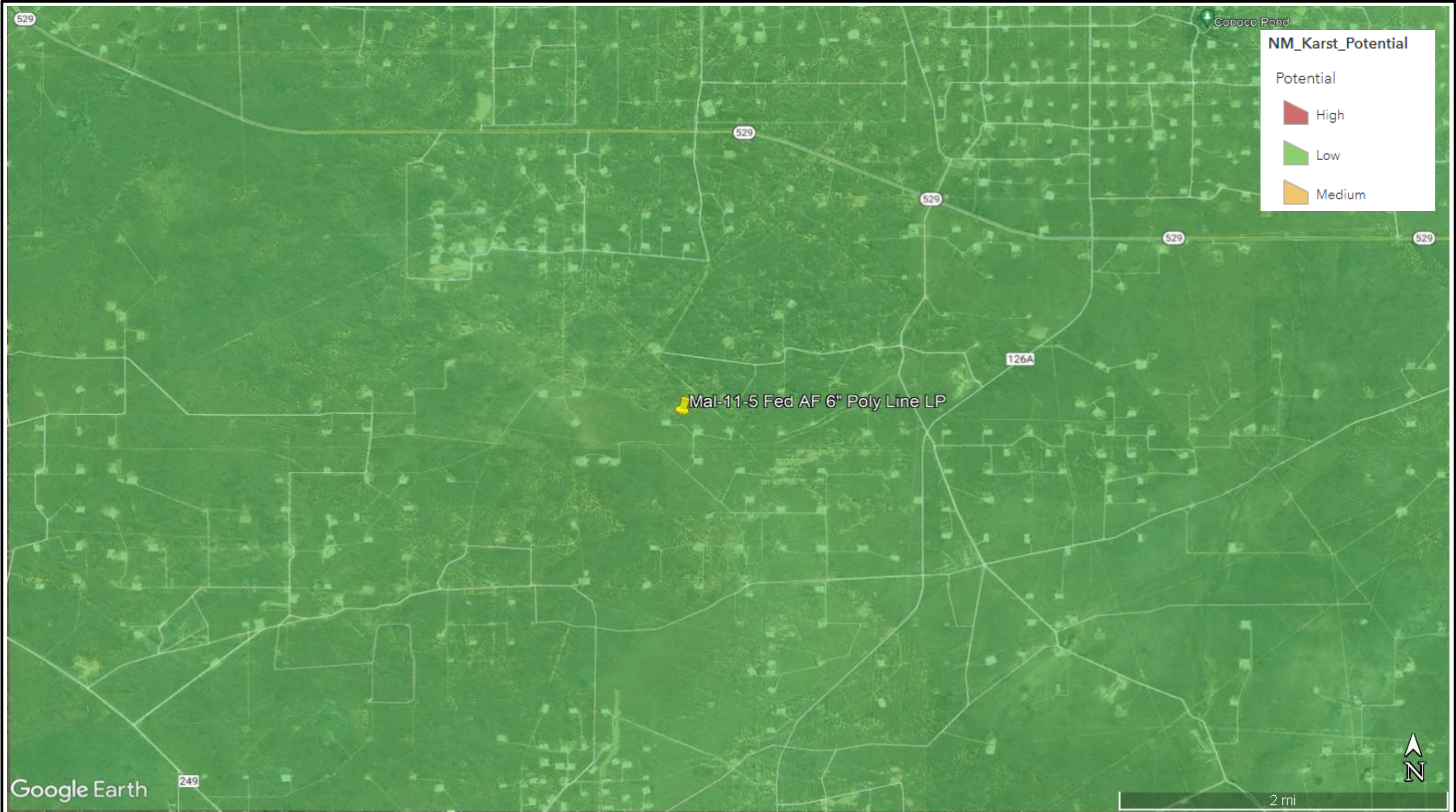



This map is for general reference only. The US Fish and Wildlife Service is not responsible for the accuracy or correctness of the base data shown on this map. All wetland related data should be used in accordance with the layer metadata found on the Wetlands Mapper web site.

	Site Location		Freshwater Pond
	Freshwater Emergent Wetland		Lake
	Freshwater Forested/Shrub Wetland		Other
	Forested/Shrub Riparian		Riverine

Project No.	KH237020	 <div>Explore with us</div> <div>4518 W. Pierce St. Carlsbad, NM 88220</div> <div>PH. (575)689-4020 FAX. (806) 797 0947</div>	Exhibit 5 – Designated Wetland Area Map
Scale:	62,993		MAL-11-5-Fed 6” Poly Line
Source:	National Wetland Inventory		32.7723056°, -103.8054167°
Date:	03/16/2023		Lea County, New Mexico





Project No. KH237020		Exhibit 6 – CFO Karst Potential Map MAL-11-5-Fed 6” Poly Line 32.7723056°, -103.8054167° Lea County, New Mexico	
Scale:	As Shown		
Source:	Google Earth		
Date:	03/16/2023		
 Explore with us			
4518 W. Pierce St. PH. (575)689-4020		Carlsbad, NM 88220 FAX. (806) 797 0947	

## **APPENDIX B – TABLES, PROCEDURES, AND FIGURES**

TABLE 1 SOIL SAMPLE ANALYTICAL RESULTS - BTEX <sup>1</sup> , Chloride <sup>2</sup> , and TPH <sup>3</sup> Mal-11-5 Fed AF 6" Poly Line LP Terracon Project No. KH237020									
Sample I.D.	Sample Depth (ft. bgs)	Sample Type	Sample Date	BTEX (mg/kg)	Chloride (mg/kg)	TPH (8015M)			
						(mg/kg)			
						GRO	DRO	EXT DRO	
Confirmation Samples (Off Pad)									
FS-01	5'	Comp	03/20/23	Benzene -	<0.050	176	<10.0	69.3	19.2
				Total BTEX -	<0.300				
FS-02	4'	Comp	03/20/23	Benzene -	<0.050	80.0	<10.0	<10.0	<10.0
				Total BTEX -	<0.300				
FS-03	4'	Comp	03/20/23	Benzene -	<0.050	80.0	<10.0	<10.0	<10.0
				Total BTEX -	<0.300				
N-SW-01	0-5'	Comp	03/20/23	Benzene -	<0.050	32.0	<10.0	<10.0	<10.0
				Total BTEX -	<0.300				
N-SW-02	0-4'	Comp	03/20/23	Benzene -	<0.050	32.0	<10.0	<10.0	<10.0
				Total BTEX -	<0.300				
N-SW-03	0-4'	Comp	03/20/23	Benzene -	<0.050	64.0	<10.0	<10.0	<10.0
				Total BTEX -	<0.300				
S-SW-01	0-5'	Comp	03/20/23	Benzene -	<0.050	192	<10.0	<10.0	<10.0
				Total BTEX -	<0.300				
S-SW-02	0-4'	Comp	03/20/23	Benzene -	<0.050	64.0	<10.0	<10.0	<10.0
				Total BTEX -	<0.300				
S-SW-03	0-4'	Comp	03/20/23	Benzene -	<0.050	48.0	<10.0	<10.0	<10.0
				Total BTEX -	<0.300				
E-SW-01	0-5'	Comp	03/20/23	Benzene -	<0.050	32.0	<10.0	<10.0	<10.0
				Total BTEX -	<0.300				
W-SW-01	0-4'	Comp	03/20/23	Benzene -	<0.050	32.0	<10.0	<10.0	<10.0
				Total BTEX -	<0.300				
NMOCD Reclamation Standards <sup>4</sup> (Applicable for Soils from the Surface to 4 ft. Below Grade Surface)				Benzene -	10	600	100		
				Total BTEX -	50				
NMOCD Remediation and Delineation Standards <sup>5</sup> (Applicable for Soils at Depths Greater than 4 ft. Below Grade Surface)				Benzene -	10	600	100		
				Total BTEX -	50				

1. BTEX = Benzene, toluene, ethylbenzene, total xylenes analyzed by EPA Method 8021B

2. Chloride = Chloride analyzed by EPA Method 300.

3. TPH = Total petroleum hydrocarbons analyzed by EPA Method 8015M (GRO/DRO/MRO)

4. New Mexico Administration Code (NMAC) Restoration, Reclamation, and Re-vegetation (19.15.29.13) New Mexico Administration Code (NMAC) – D (Reclamation of areas no longer in use) for soils extending to 4 ft. bgs

5. New Mexico Oil Conservation Division (NMOCD) Remediation and Delineation Standards are proposed in 19.15.29.12 NMAC - N, 8/14/2018

< = Constituent not detected above the indicated laboratory SDL

NA = Not Analyzed

N/A = Not Applicable

**Bold and Highlight denotes concentrations that exceed the New Mexico Oil Conservation Division (NMOCD) Reclamation and/or Remediation and Delineation Standards.**

## **APPENDIX C – PHOTOGRAPHIC LOG**



Mal-11-5-Fed 6" Poly Line ■ Lea County, New Mexico  
March 22, 2023 ■ Terracon Project No. KH227020



**PHOTO 1:** View of area before excavation



**PHOTO 2:** View of area after excavation

Responsive ■ Resourceful ■ Reliable

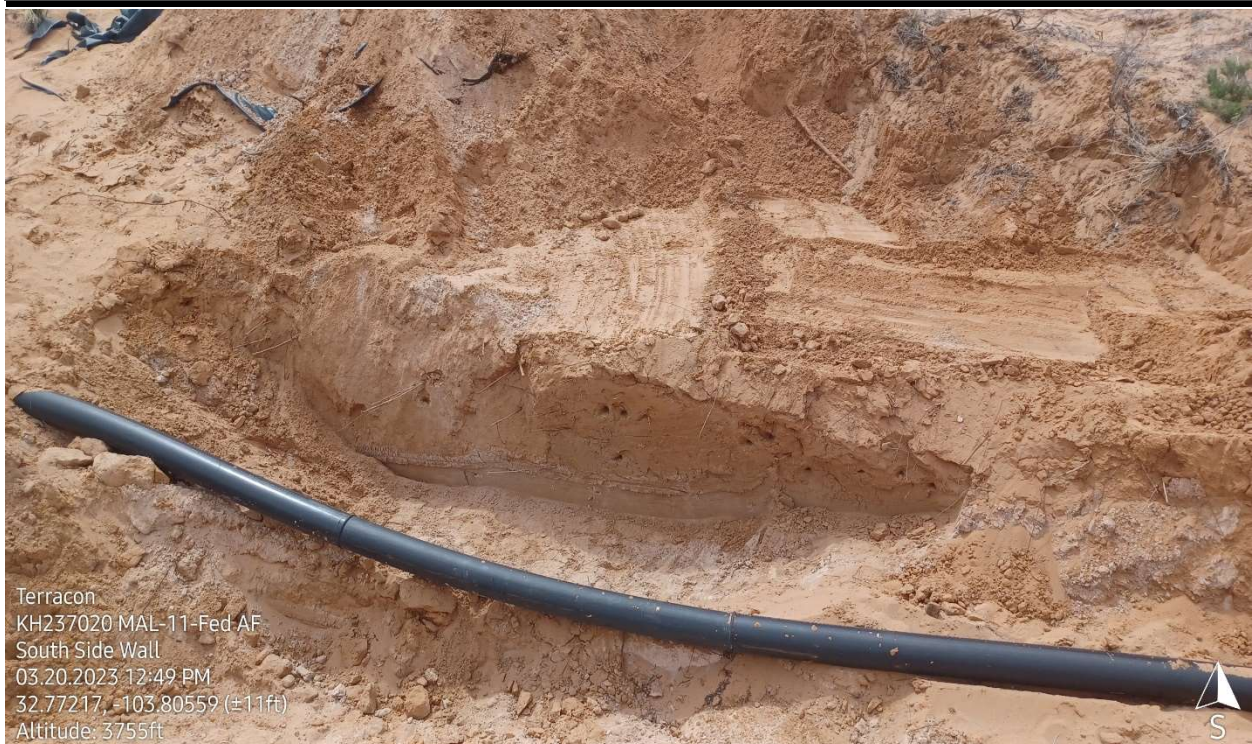


Mal-11-5-Fed 6" Poly Line ■ Lea County, New Mexico  
March 22, 2023 ■ Terracon Project No. KH227020



Terracon  
KH237020 MAL-11-Fed AF  
North Side Wall  
03.20.2023 12:48 PM  
32.77214, -103.80559 (±10ft)  
Altitude: 3755ft

**PHOTO 3:** View of North Wall before excavation



Terracon  
KH237020 MAL-11-Fed AF  
South Side Wall  
03.20.2023 12:49 PM  
32.77217, -103.80559 (±11ft)  
Altitude: 3755ft

**PHOTO 4:** View of South Wall after excavation

Responsive ■ Resourceful ■ Reliable



## **APPENDIX D – ANALYTICAL REPORT AND CHAIN OF CUSTODY**



PHONE (575) 393-2326 ° 101 E. MARLAND ° HOBBS, NM 88240

---

March 23, 2023

JOSEPH GUESNIER

TERRACON CONSULTANTS

5827 50TH ST. SUITE 1

LUBBOCK, TX 79424

RE: MAL-11-FED AF

Enclosed are the results of analyses for samples received by the laboratory on 03/20/23 14:55.

Cardinal Laboratories is accredited through Texas NELAP under certificate number T104704398-22-15. Accreditation applies to drinking water, non-potable water and solid and chemical materials. All accredited analytes are denoted by an asterisk (\*). For a complete list of accredited analytes and matrices visit the TCEQ website at [www.tceq.texas.gov/field/qa/lab\\_accred\\_certif.html](http://www.tceq.texas.gov/field/qa/lab_accred_certif.html).

Cardinal Laboratories is accredited through the State of Colorado Department of Public Health and Environment for:

Method EPA 552.2	Haloacetic Acids (HAA-5)
Method EPA 524.2	Total Trihalomethanes (TTHM)
Method EPA 524.4	Regulated VOCs (V1, V2, V3)

Accreditation applies to public drinking water matrices.

This report meets NELAP requirements and is made up of a cover page, analytical results, and a copy of the original chain-of-custody. If you have any questions concerning this report, please feel free to contact me.

Sincerely,

A handwritten signature in black ink that reads "Celey D. Keene". The signature is written in a cursive, flowing style.

Celey D. Keene

Lab Director/Quality Manager



PHONE (575) 393-2326 ° 101 E. MARLAND ° HOBBS, NM 88240

**Analytical Results For:**

TERRACON CONSULTANTS  
 JOSEPH GUESNIER  
 5827 50TH ST. SUITE 1  
 LUBBOCK TX, 79424  
 Fax To:

Received: 03/20/2023  
 Reported: 03/23/2023  
 Project Name: MAL-11-FED AF  
 Project Number: KH237020  
 Project Location: DURANGO - LEA COUNTY

Sampling Date: 03/20/2023  
 Sampling Type: Soil  
 Sampling Condition: Cool & Intact  
 Sample Received By: Tamara Oldaker

**Sample ID: FS - 01 5' (H231248-01)**

BTX 8021B			mg/kg		Analyzed By: JH/				
Analyte	Result	Reporting Limit	Analyzed	Method Blank	BS	% Recovery	True Value QC	RPD	Qualifier
Benzene*	<0.050	0.050	03/22/2023	ND	2.24	112	2.00	1.42	
Toluene*	<0.050	0.050	03/22/2023	ND	2.28	114	2.00	1.51	
Ethylbenzene*	<0.050	0.050	03/22/2023	ND	2.22	111	2.00	1.86	
Total Xylenes*	<0.150	0.150	03/22/2023	ND	6.94	116	6.00	1.71	
Total BTX	<0.300	0.300	03/22/2023	ND					

Surrogate: 4-Bromofluorobenzene (PID) 103 % 71.5-134

Chloride, SM4500Cl-B			mg/kg		Analyzed By: GM				
Analyte	Result	Reporting Limit	Analyzed	Method Blank	BS	% Recovery	True Value QC	RPD	Qualifier
Chloride	176	16.0	03/21/2023	ND	432	108	400	7.69	

TPH 8015M			mg/kg		Analyzed By: MS				
Analyte	Result	Reporting Limit	Analyzed	Method Blank	BS	% Recovery	True Value QC	RPD	Qualifier
GRO C6-C10*	<10.0	10.0	03/21/2023	ND	156	78.2	200	12.3	
DRO >C10-C28*	69.3	10.0	03/21/2023	ND	158	79.0	200	16.7	
EXT DRO >C28-C36	19.2	10.0	03/21/2023	ND					

Surrogate: 1-Chlorooctane 99.7 % 48.2-134

Surrogate: 1-Chlorooctadecane 111 % 49.1-148

Cardinal Laboratories

\*=Accredited Analyte

PLEASE NOTE: Liability and Damages. Cardinal's liability and client's exclusive remedy for any claim arising, whether based in contract or tort, shall be limited to the amount paid by client for analyses. All claims, including those for negligence and any other cause whatsoever shall be deemed waived unless made in writing and received by Cardinal within thirty (30) days after completion of the applicable service. In no event shall Cardinal be liable for incidental or consequential damages, including, without limitation, business interruptions, loss of use, or loss of profits incurred by client, its subsidiaries, affiliates or successors arising out of or related to the performance of the services hereunder by Cardinal, regardless of whether such claim is based upon any of the above stated reasons or otherwise. Results relate only to the samples identified above. This report shall not be reproduced except in full with written approval of Cardinal Laboratories.

Celey D. Keene, Lab Director/Quality Manager



PHONE (575) 393-2326 ° 101 E. MARLAND ° HOBBS, NM 88240

**Analytical Results For:**

TERRACON CONSULTANTS  
 JOSEPH GUESNIER  
 5827 50TH ST. SUITE 1  
 LUBBOCK TX, 79424  
 Fax To:

Received: 03/20/2023  
 Reported: 03/23/2023  
 Project Name: MAL-11-FED AF  
 Project Number: KH237020  
 Project Location: DURANGO - LEA COUNTY

Sampling Date: 03/20/2023  
 Sampling Type: Soil  
 Sampling Condition: Cool & Intact  
 Sample Received By: Tamara Oldaker

**Sample ID: N-SW-01 0-5' (H231248-02)**

BTEx 8021B		mg/kg		Analyzed By: JH/						
Analyte	Result	Reporting Limit	Analyzed	Method Blank	BS	% Recovery	True Value QC	RPD	Qualifier	
Benzene*	<0.050	0.050	03/22/2023	ND	2.24	112	2.00	1.42		
Toluene*	<0.050	0.050	03/22/2023	ND	2.28	114	2.00	1.51		
Ethylbenzene*	<0.050	0.050	03/22/2023	ND	2.22	111	2.00	1.86		
Total Xylenes*	<0.150	0.150	03/22/2023	ND	6.94	116	6.00	1.71		
Total BTEx	<0.300	0.300	03/22/2023	ND						

Surrogate: 4-Bromofluorobenzene (PID) 102 % 71.5-134

Chloride, SM4500CI-B		mg/kg		Analyzed By: GM						
Analyte	Result	Reporting Limit	Analyzed	Method Blank	BS	% Recovery	True Value QC	RPD	Qualifier	
Chloride	32.0	16.0	03/21/2023	ND	432	108	400	7.69		

TPH 8015M		mg/kg		Analyzed By: MS					
Analyte	Result	Reporting Limit	Analyzed	Method Blank	BS	% Recovery	True Value QC	RPD	Qualifier
GRO C6-C10*	<10.0	10.0	03/21/2023	ND	156	78.2	200	12.3	
DRO >C10-C28*	<10.0	10.0	03/21/2023	ND	158	79.0	200	16.7	
EXT DRO >C28-C36	<10.0	10.0	03/21/2023	ND					

Surrogate: 1-Chlorooctane 82.1 % 48.2-134

Surrogate: 1-Chlorooctadecane 87.9 % 49.1-148

Cardinal Laboratories

\*=Accredited Analyte

PLEASE NOTE: Liability and Damages. Cardinal's liability and client's exclusive remedy for any claim arising, whether based in contract or tort, shall be limited to the amount paid by client for analyses. All claims, including those for negligence and any other cause whatsoever shall be deemed waived unless made in writing and received by Cardinal within thirty (30) days after completion of the applicable service. In no event shall Cardinal be liable for incidental or consequential damages, including, without limitation, business interruptions, loss of use, or loss of profits incurred by client, its subsidiaries, affiliates or successors arising out of or related to the performance of the services hereunder by Cardinal, regardless of whether such claim is based upon any of the above stated reasons or otherwise. Results relate only to the samples identified above. This report shall not be reproduced except in full with written approval of Cardinal Laboratories.

Celey D. Keene, Lab Director/Quality Manager



PHONE (575) 393-2326 ° 101 E. MARLAND ° HOBBS, NM 88240

**Analytical Results For:**

TERRACON CONSULTANTS  
 JOSEPH GUESNIER  
 5827 50TH ST. SUITE 1  
 LUBBOCK TX, 79424  
 Fax To:

Received: 03/20/2023  
 Reported: 03/23/2023  
 Project Name: MAL-11-FED AF  
 Project Number: KH237020  
 Project Location: DURANGO - LEA COUNTY

Sampling Date: 03/20/2023  
 Sampling Type: Soil  
 Sampling Condition: Cool & Intact  
 Sample Received By: Tamara Oldaker

**Sample ID: S-SW-01 0-5' (H231248-03)**

BTEx 8021B		mg/kg		Analyzed By: JH/					
Analyte	Result	Reporting Limit	Analyzed	Method Blank	BS	% Recovery	True Value QC	RPD	Qualifier
Benzene*	<0.050	0.050	03/22/2023	ND	2.24	112	2.00	1.42	
Toluene*	<0.050	0.050	03/22/2023	ND	2.28	114	2.00	1.51	
Ethylbenzene*	<0.050	0.050	03/22/2023	ND	2.22	111	2.00	1.86	
Total Xylenes*	<0.150	0.150	03/22/2023	ND	6.94	116	6.00	1.71	
Total BTEx	<0.300	0.300	03/22/2023	ND					

Surrogate: 4-Bromofluorobenzene (PID) 99.7 % 71.5-134

Chloride, SM4500CI-B		mg/kg		Analyzed By: GM					
Analyte	Result	Reporting Limit	Analyzed	Method Blank	BS	% Recovery	True Value QC	RPD	Qualifier
Chloride	192	16.0	03/21/2023	ND	432	108	400	7.69	

TPH 8015M		mg/kg		Analyzed By: MS					
Analyte	Result	Reporting Limit	Analyzed	Method Blank	BS	% Recovery	True Value QC	RPD	Qualifier
GRO C6-C10*	<10.0	10.0	03/21/2023	ND	156	78.2	200	12.3	
DRO >C10-C28*	<10.0	10.0	03/21/2023	ND	158	79.0	200	16.7	
EXT DRO >C28-C36	<10.0	10.0	03/21/2023	ND					

Surrogate: 1-Chlorooctane 90.0 % 48.2-134

Surrogate: 1-Chlorooctadecane 97.3 % 49.1-148

Cardinal Laboratories

\*=Accredited Analyte

PLEASE NOTE: Liability and Damages. Cardinal's liability and client's exclusive remedy for any claim arising, whether based in contract or tort, shall be limited to the amount paid by client for analyses. All claims, including those for negligence and any other cause whatsoever shall be deemed waived unless made in writing and received by Cardinal within thirty (30) days after completion of the applicable service. In no event shall Cardinal be liable for incidental or consequential damages, including, without limitation, business interruptions, loss of use, or loss of profits incurred by client, its subsidiaries, affiliates or successors arising out of or related to the performance of the services hereunder by Cardinal, regardless of whether such claim is based upon any of the above stated reasons or otherwise. Results relate only to the samples identified above. This report shall not be reproduced except in full with written approval of Cardinal Laboratories.

Celey D. Keene, Lab Director/Quality Manager



PHONE (575) 393-2326 • 101 E. MARLAND • HOBBS, NM 88240

**Analytical Results For:**

TERRACON CONSULTANTS  
 JOSEPH GUESNIER  
 5827 50TH ST. SUITE 1  
 LUBBOCK TX, 79424  
 Fax To:

Received: 03/20/2023  
 Reported: 03/23/2023  
 Project Name: MAL-11-FED AF  
 Project Number: KH237020  
 Project Location: DURANGO - LEA COUNTY

Sampling Date: 03/20/2023  
 Sampling Type: Soil  
 Sampling Condition: Cool & Intact  
 Sample Received By: Tamara Oldaker

**Sample ID: S-SW-02 0-4' (H231248-04)**

BTEx 8021B		mg/kg		Analyzed By: JH/					
Analyte	Result	Reporting Limit	Analyzed	Method Blank	BS	% Recovery	True Value QC	RPD	Qualifier
Benzene*	<0.050	0.050	03/22/2023	ND	2.24	112	2.00	1.42	
Toluene*	<0.050	0.050	03/22/2023	ND	2.28	114	2.00	1.51	
Ethylbenzene*	<0.050	0.050	03/22/2023	ND	2.22	111	2.00	1.86	
Total Xylenes*	<0.150	0.150	03/22/2023	ND	6.94	116	6.00	1.71	
Total BTEx	<0.300	0.300	03/22/2023	ND					

Surrogate: 4-Bromofluorobenzene (PID) 99.7 % 71.5-134

Chloride, SM4500CI-B		mg/kg		Analyzed By: GM						
Analyte	Result	Reporting Limit	Analyzed	Method Blank	BS	% Recovery	True Value QC	RPD	Qualifier	
Chloride	64.0	16.0	03/21/2023	ND	432	108	400	7.69		

TPH 8015M		mg/kg		Analyzed By: MS					
Analyte	Result	Reporting Limit	Analyzed	Method Blank	BS	% Recovery	True Value QC	RPD	Qualifier
GRO C6-C10*	<10.0	10.0	03/21/2023	ND	156	78.2	200	12.3	
DRO >C10-C28*	<10.0	10.0	03/21/2023	ND	158	79.0	200	16.7	
EXT DRO >C28-C36	<10.0	10.0	03/21/2023	ND					

Surrogate: 1-Chlorooctane 87.3 % 48.2-134

Surrogate: 1-Chlorooctadecane 94.9 % 49.1-148

Cardinal Laboratories

\*=Accredited Analyte

PLEASE NOTE: Liability and Damages. Cardinal's liability and client's exclusive remedy for any claim arising, whether based in contract or tort, shall be limited to the amount paid by client for analyses. All claims, including those for negligence and any other cause whatsoever shall be deemed waived unless made in writing and received by Cardinal within thirty (30) days after completion of the applicable service. In no event shall Cardinal be liable for incidental or consequential damages, including, without limitation, business interruptions, loss of use, or loss of profits incurred by client, its subsidiaries, affiliates or successors arising out of or related to the performance of the services hereunder by Cardinal, regardless of whether such claim is based upon any of the above stated reasons or otherwise. Results relate only to the samples identified above. This report shall not be reproduced except in full with written approval of Cardinal Laboratories.

Celey D. Keene, Lab Director/Quality Manager



---

PHONE (575) 393-2326 ° 101 E. MARLAND ° HOBBS, NM 88240

---

### Notes and Definitions

BS-3	Blank spike recovery outside of lab established statistical limits, but still within method limits. Data is not adversely affected.
ND	Analyte NOT DETECTED at or above the reporting limit
RPD	Relative Percent Difference
**	Samples not received at proper temperature of 6°C or below.
***	Insufficient time to reach temperature.
-	Chloride by SM4500Cl-B does not require samples be received at or below 6°C Samples reported on an as received basis (wet) unless otherwise noted on report

---

Cardinal Laboratories

\*=Accredited Analyte

PLEASE NOTE: Liability and Damages. Cardinal's liability and client's exclusive remedy for any claim arising, whether based in contract or tort, shall be limited to the amount paid by client for analyses. All claims, including those for negligence and any other cause whatsoever shall be deemed waived unless made in writing and received by Cardinal within thirty (30) days after completion of the applicable service. In no event shall Cardinal be liable for incidental or consequential damages, including, without limitation, business interruptions, loss of use, or loss of profits incurred by client, its subsidiaries, affiliates or successors arising out of or related to the performance of the services hereunder by Cardinal, regardless of whether such claim is based upon any of the above stated reasons or otherwise. Results relate only to the samples identified above. This report shall not be reproduced except in full with written approval of Cardinal Laboratories.

A handwritten signature in black ink, appearing to read "Celey D. Keene", is written over a horizontal line.

Celey D. Keene, Lab Director/Quality Manager



# CHAIN-OF-CUSTODY AND ANALYSIS REQUEST

101 East Marland, Hobbs, NM 88240  
(575) 393-2326 FAX (575) 393-2476

Company Name: Terracon				<b>BILL TO</b>				<b>ANALYSIS REQUEST</b>																		
Project Manager: Joseph Guesnier				P.O. #:				<div style="display: flex; justify-content: space-between;"> <div>Chloride (EPA Method 4500)</div> <div>TPH Extended 8015</div> <div>BTEX (EPA Method 8021B)</div> </div>																		
Address: 4518 W. Perice Street				Company: <u>Durango</u>																						
City: Carlsbad State: NM Zip: 88220				Attn: <u>Amber Groves</u>																						
Phone #: 8065077057 Fax #:				Address:																						
Project #: <u>KH237020</u> Project Owner:				City:																						
Project Name: <u>Mal-11-Fed AF</u>				State: Zip:																						
Project Location: <u>Lea County</u>				Phone #:																						
Sampler Name: <u>Gus Sanchez</u>				Fax #:																						
FOR LAB USE ONLY																										
Lab I.D.	Sample I.D.	(GRAB OR C)OMP.	# CONTAINERS	MATRIX				PRESERV.		SAMPLING																
				GROUNDWATER	WASTEWATER	SOIL	OIL	SLUDGE	OTHER :	ACID/BASE:	ICE / COOL	OTHER :	DATE	TIME												
<u>163248</u>																										
<u>1</u>	<u>FS-01 5'</u>	<u>C</u>	<u>1</u>			<input checked="" type="checkbox"/>							<u>3-20-23</u>	<u>12:02</u>	<input checked="" type="checkbox"/>	<input checked="" type="checkbox"/>	<input checked="" type="checkbox"/>									
<u>2</u>	<u>N-SW-01 0-5'</u>	<u>C</u>	<u>1</u>			<input checked="" type="checkbox"/>							<u>3-20-23</u>	<u>11:48</u>	<input checked="" type="checkbox"/>	<input checked="" type="checkbox"/>	<input checked="" type="checkbox"/>									
<u>3</u>	<u>S-SW-01 0-5'</u>	<u>C</u>	<u>1</u>			<input checked="" type="checkbox"/>							<u>3-20-23</u>	<u>11:32</u>	<input checked="" type="checkbox"/>	<input checked="" type="checkbox"/>	<input checked="" type="checkbox"/>									
<u>4</u>	<u>S-SW-02 0-4'</u>	<u>C</u>	<u>1</u>			<input checked="" type="checkbox"/>							<u>3-20-23</u>	<u>11:49</u>	<input checked="" type="checkbox"/>	<input checked="" type="checkbox"/>	<input checked="" type="checkbox"/>									

PLEASE NOTE: Liability and Damages. Cardinal's liability and client's exclusive remedy for any claim arising whether based in contract or tort, shall be limited to the amount paid by the client for the analyses. All claims including those for negligence and any other cause whatsoever shall be deemed waived unless made in writing and received by Cardinal within 30 days after completion of the applicable service. In no event shall Cardinal be liable for incidental or consequential damages, including without limitation, business interruptions, loss of use, or loss of profits incurred by client, its subsidiaries, affiliates or successors arising out of or related to the performance of services hereunder by Cardinal, regardless of whether such claim is based upon any of the above stated reasons or otherwise.

Relinquished By: <u>[Signature]</u>	Date: <u>3-20-23</u>	Received By: <u>[Signature]</u>	Verbal Result: <input type="checkbox"/> Yes <input type="checkbox"/> No Add'l Phone #:
Time: <u>2:55</u>			All Results are emailed. Please provide Email address:
Relinquished By:	Date:	Received By:	<u>Cooler Temp Blank 2.3</u>
Time:			REMARKS: joesph.guesnier@terracon.com; travis.casey@terracon.com; austin.worley@terracon.com; michael.adams@terracon.com; beckysue.miller@terracon.com; justin.friend@terracon.com; gus.sanchez@terracon.com
Delivered By: (Circle One)	Observed Temp. °C <u>2.3</u>	Sample Condition	Turnaround Time: <b>Standard</b> <input checked="" type="checkbox"/> <b>Rush</b> <input type="checkbox"/>
Sampler - UPS - Bus - Other:	Corrected Temp. °C <u>1.7</u>	Cool <input checked="" type="checkbox"/> Intact <input checked="" type="checkbox"/> Yes <input checked="" type="checkbox"/> No <input type="checkbox"/>	Bacteria (only) Sample Condition Cool Intact <input type="checkbox"/> Observed Temp. °C Yes <input type="checkbox"/> No <input type="checkbox"/>
		CHECKED BY: (Initials) <u>[Signature]</u>	Thermometer ID #113





PHONE (575) 393-2326 ° 101 E. MARLAND ° HOBBS, NM 88240

March 27, 2023

JOSEPH GUESNIER

TERRACON CONSULTANTS

5827 50TH ST. SUITE 1

LUBBOCK, TX 79424

RE: MAL-11-FED AF

Enclosed are the results of analyses for samples received by the laboratory on 03/21/23 11:47.

Cardinal Laboratories is accredited through Texas NELAP under certificate number T104704398-22-15. Accreditation applies to drinking water, non-potable water and solid and chemical materials. All accredited analytes are denoted by an asterisk (\*). For a complete list of accredited analytes and matrices visit the TCEQ website at [www.tceq.texas.gov/field/qa/lab\\_accred\\_certif.html](http://www.tceq.texas.gov/field/qa/lab_accred_certif.html).

Cardinal Laboratories is accredited through the State of Colorado Department of Public Health and Environment for:

Method EPA 552.2	Haloacetic Acids (HAA-5)
Method EPA 524.2	Total Trihalomethanes (TTHM)
Method EPA 524.4	Regulated VOCs (V1, V2, V3)

Accreditation applies to public drinking water matrices.

This report meets NELAP requirements and is made up of a cover page, analytical results, and a copy of the original chain-of-custody. If you have any questions concerning this report, please feel free to contact me.

Sincerely,

A handwritten signature in black ink that reads "Celey D. Keene". The signature is written in a cursive, flowing style.

Celey D. Keene

Lab Director/Quality Manager



PHONE (575) 393-2326 • 101 E. MARLAND • HOBBS, NM 88240

**Analytical Results For:**

TERRACON CONSULTANTS  
 JOSEPH GUESNIER  
 5827 50TH ST. SUITE 1  
 LUBBOCK TX, 79424  
 Fax To:

Received: 03/21/2023  
 Reported: 03/27/2023  
 Project Name: MAL-11-FED AF  
 Project Number: KH237020  
 Project Location: DURANGO - LEA COUNTY

Sampling Date: 03/20/2023  
 Sampling Type: Soil  
 Sampling Condition: Cool & Intact  
 Sample Received By: Tamara Oldaker

**Sample ID: N-SW-02 0-4' (H231268-01)**

BTEX 8021B		mg/kg		Analyzed By: JH/					
Analyte	Result	Reporting Limit	Analyzed	Method Blank	BS	% Recovery	True Value QC	RPD	Qualifier
Benzene*	<0.050	0.050	03/23/2023	ND	1.94	97.2	2.00	1.16	
Toluene*	<0.050	0.050	03/23/2023	ND	2.01	101	2.00	3.50	
Ethylbenzene*	<0.050	0.050	03/23/2023	ND	2.00	100	2.00	2.46	
Total Xylenes*	<0.150	0.150	03/23/2023	ND	6.05	101	6.00	0.435	
Total BTEX	<0.300	0.300	03/23/2023	ND					

Surrogate: 4-Bromofluorobenzene (PID) 101 % 71.5-134

Chloride, SM4500Cl-B		mg/kg		Analyzed By: AC						
Analyte	Result	Reporting Limit	Analyzed	Method Blank	BS	% Recovery	True Value QC	RPD	Qualifier	
Chloride	32.0	16.0	03/23/2023	ND	400	100	400	3.92		

TPH 8015M		mg/kg		Analyzed By: MS					
Analyte	Result	Reporting Limit	Analyzed	Method Blank	BS	% Recovery	True Value QC	RPD	Qualifier
GRO C6-C10*	<10.0	10.0	03/22/2023	ND	168	83.9	200	6.77	
DRO >C10-C28*	<10.0	10.0	03/22/2023	ND	176	87.8	200	2.32	
EXT DRO >C28-C36	<10.0	10.0	03/22/2023	ND					

Surrogate: 1-Chlorooctane 95.2 % 48.2-134

Surrogate: 1-Chlorooctadecane 96.6 % 49.1-148

Cardinal Laboratories

\*=Accredited Analyte

PLEASE NOTE: Liability and Damages. Cardinal's liability and client's exclusive remedy for any claim arising, whether based in contract or tort, shall be limited to the amount paid by client for analyses. All claims, including those for negligence and any other cause whatsoever shall be deemed waived unless made in writing and received by Cardinal within thirty (30) days after completion of the applicable service. In no event shall Cardinal be liable for incidental or consequential damages, including, without limitation, business interruptions, loss of use, or loss of profits incurred by client, its subsidiaries, affiliates or successors arising out of or related to the performance of the services hereunder by Cardinal, regardless of whether such claim is based upon any of the above stated reasons or otherwise. Results relate only to the samples identified above. This report shall not be reproduced except in full with written approval of Cardinal Laboratories.

Celey D. Keene, Lab Director/Quality Manager



PHONE (575) 393-2326 ° 101 E. MARLAND ° HOBBS, NM 88240

**Analytical Results For:**

TERRACON CONSULTANTS  
 JOSEPH GUESNIER  
 5827 50TH ST. SUITE 1  
 LUBBOCK TX, 79424  
 Fax To:

Received: 03/21/2023  
 Reported: 03/27/2023  
 Project Name: MAL-11-FED AF  
 Project Number: KH237020  
 Project Location: DURANGO - LEA COUNTY

Sampling Date: 03/20/2023  
 Sampling Type: Soil  
 Sampling Condition: Cool & Intact  
 Sample Received By: Tamara Oldaker

**Sample ID: N-SW-03 0-4' (H231268-02)**

BTEx 8021B		mg/kg		Analyzed By: JH/					
Analyte	Result	Reporting Limit	Analyzed	Method Blank	BS	% Recovery	True Value QC	RPD	Qualifier
Benzene*	<0.050	0.050	03/23/2023	ND	1.94	97.2	2.00	1.16	
Toluene*	0.076	0.050	03/23/2023	ND	2.01	101	2.00	3.50	
Ethylbenzene*	<0.050	0.050	03/23/2023	ND	2.00	100	2.00	2.46	
Total Xylenes*	<0.150	0.150	03/23/2023	ND	6.05	101	6.00	0.435	
Total BTEx	<0.300	0.300	03/23/2023	ND					

Surrogate: 4-Bromofluorobenzene (PID) 103 % 71.5-134

Chloride, SM4500CI-B		mg/kg		Analyzed By: AC						
Analyte	Result	Reporting Limit	Analyzed	Method Blank	BS	% Recovery	True Value QC	RPD	Qualifier	
Chloride	64.0	16.0	03/23/2023	ND	400	100	400	3.92		

TPH 8015M		mg/kg		Analyzed By: MS					
Analyte	Result	Reporting Limit	Analyzed	Method Blank	BS	% Recovery	True Value QC	RPD	Qualifier
GRO C6-C10*	<10.0	10.0	03/23/2023	ND	168	83.9	200	6.77	
DRO >C10-C28*	<10.0	10.0	03/23/2023	ND	176	87.8	200	2.32	
EXT DRO >C28-C36	<10.0	10.0	03/23/2023	ND					

Surrogate: 1-Chlorooctane 92.0 % 48.2-134

Surrogate: 1-Chlorooctadecane 94.1 % 49.1-148

Cardinal Laboratories

\*=Accredited Analyte

PLEASE NOTE: Liability and Damages. Cardinal's liability and client's exclusive remedy for any claim arising, whether based in contract or tort, shall be limited to the amount paid by client for analyses. All claims, including those for negligence and any other cause whatsoever shall be deemed waived unless made in writing and received by Cardinal within thirty (30) days after completion of the applicable service. In no event shall Cardinal be liable for incidental or consequential damages, including, without limitation, business interruptions, loss of use, or loss of profits incurred by client, its subsidiaries, affiliates or successors arising out of or related to the performance of the services hereunder by Cardinal, regardless of whether such claim is based upon any of the above stated reasons or otherwise. Results relate only to the samples identified above. This report shall not be reproduced except in full with written approval of Cardinal Laboratories.

Celey D. Keene, Lab Director/Quality Manager



PHONE (575) 393-2326 ° 101 E. MARLAND ° HOBBS, NM 88240

**Analytical Results For:**

TERRACON CONSULTANTS  
 JOSEPH GUESNIER  
 5827 50TH ST. SUITE 1  
 LUBBOCK TX, 79424  
 Fax To:

Received: 03/21/2023  
 Reported: 03/27/2023  
 Project Name: MAL-11-FED AF  
 Project Number: KH237020  
 Project Location: DURANGO - LEA COUNTY

Sampling Date: 03/20/2023  
 Sampling Type: Soil  
 Sampling Condition: Cool & Intact  
 Sample Received By: Tamara Oldaker

**Sample ID: S-SW-03 0-4' (H231268-03)**

BTEx 8021B		mg/kg		Analyzed By: JH/						
Analyte	Result	Reporting Limit	Analyzed	Method Blank	BS	% Recovery	True Value QC	RPD	Qualifier	
Benzene*	<0.050	0.050	03/23/2023	ND	1.94	97.2	2.00	1.16		
Toluene*	<0.050	0.050	03/23/2023	ND	2.01	101	2.00	3.50		
Ethylbenzene*	<0.050	0.050	03/23/2023	ND	2.00	100	2.00	2.46		
Total Xylenes*	<0.150	0.150	03/23/2023	ND	6.05	101	6.00	0.435		
Total BTEx	<0.300	0.300	03/23/2023	ND						

Surrogate: 4-Bromofluorobenzene (PID) 106 % 71.5-134

Chloride, SM4500CI-B		mg/kg		Analyzed By: AC						
Analyte	Result	Reporting Limit	Analyzed	Method Blank	BS	% Recovery	True Value QC	RPD	Qualifier	
Chloride	48.0	16.0	03/23/2023	ND	400	100	400	3.92		

TPH 8015M		mg/kg		Analyzed By: MS					
Analyte	Result	Reporting Limit	Analyzed	Method Blank	BS	% Recovery	True Value QC	RPD	Qualifier
GRO C6-C10*	<10.0	10.0	03/23/2023	ND	168	83.9	200	6.77	
DRO >C10-C28*	<10.0	10.0	03/23/2023	ND	176	87.8	200	2.32	
EXT DRO >C28-C36	<10.0	10.0	03/23/2023	ND					

Surrogate: 1-Chlorooctane 91.1 % 48.2-134

Surrogate: 1-Chlorooctadecane 92.6 % 49.1-148

Cardinal Laboratories

\*=Accredited Analyte

PLEASE NOTE: Liability and Damages. Cardinal's liability and client's exclusive remedy for any claim arising, whether based in contract or tort, shall be limited to the amount paid by client for analyses. All claims, including those for negligence and any other cause whatsoever shall be deemed waived unless made in writing and received by Cardinal within thirty (30) days after completion of the applicable service. In no event shall Cardinal be liable for incidental or consequential damages, including, without limitation, business interruptions, loss of use, or loss of profits incurred by client, its subsidiaries, affiliates or successors arising out of or related to the performance of the services hereunder by Cardinal, regardless of whether such claim is based upon any of the above stated reasons or otherwise. Results relate only to the samples identified above. This report shall not be reproduced except in full with written approval of Cardinal Laboratories.

Celey D. Keene, Lab Director/Quality Manager



PHONE (575) 393-2326 ° 101 E. MARLAND ° HOBBS, NM 88240

**Analytical Results For:**

TERRACON CONSULTANTS  
 JOSEPH GUESNIER  
 5827 50TH ST. SUITE 1  
 LUBBOCK TX, 79424  
 Fax To:

Received: 03/21/2023  
 Reported: 03/27/2023  
 Project Name: MAL-11-FED AF  
 Project Number: KH237020  
 Project Location: DURANGO - LEA COUNTY

Sampling Date: 03/20/2023  
 Sampling Type: Soil  
 Sampling Condition: Cool & Intact  
 Sample Received By: Tamara Oldaker

**Sample ID: E-SW-01 0-5' (H231268-04)**

BTX 8021B		mg/kg		Analyzed By: JH/						
Analyte	Result	Reporting Limit	Analyzed	Method Blank	BS	% Recovery	True Value QC	RPD	Qualifier	
Benzene*	<0.050	0.050	03/23/2023	ND	1.94	97.2	2.00	1.16		
Toluene*	<0.050	0.050	03/23/2023	ND	2.01	101	2.00	3.50		
Ethylbenzene*	<0.050	0.050	03/23/2023	ND	2.00	100	2.00	2.46		
Total Xylenes*	<0.150	0.150	03/23/2023	ND	6.05	101	6.00	0.435		
Total BTX	<0.300	0.300	03/23/2023	ND						

Surrogate: 4-Bromofluorobenzene (PID) 106 % 71.5-134

Chloride, SM4500Cl-B		mg/kg		Analyzed By: AC						
Analyte	Result	Reporting Limit	Analyzed	Method Blank	BS	% Recovery	True Value QC	RPD	Qualifier	
Chloride	32.0	16.0	03/23/2023	ND	400	100	400	3.92		

TPH 8015M		mg/kg		Analyzed By: MS					
Analyte	Result	Reporting Limit	Analyzed	Method Blank	BS	% Recovery	True Value QC	RPD	Qualifier
GRO C6-C10*	<10.0	10.0	03/23/2023	ND	168	83.9	200	6.77	
DRO >C10-C28*	<10.0	10.0	03/23/2023	ND	176	87.8	200	2.32	
EXT DRO >C28-C36	<10.0	10.0	03/23/2023	ND					

Surrogate: 1-Chlorooctane 93.7 % 48.2-134

Surrogate: 1-Chlorooctadecane 97.5 % 49.1-148

Cardinal Laboratories

\*=Accredited Analyte

PLEASE NOTE: Liability and Damages. Cardinal's liability and client's exclusive remedy for any claim arising, whether based in contract or tort, shall be limited to the amount paid by client for analyses. All claims, including those for negligence and any other cause whatsoever shall be deemed waived unless made in writing and received by Cardinal within thirty (30) days after completion of the applicable service. In no event shall Cardinal be liable for incidental or consequential damages, including, without limitation, business interruptions, loss of use, or loss of profits incurred by client, its subsidiaries, affiliates or successors arising out of or related to the performance of the services hereunder by Cardinal, regardless of whether such claim is based upon any of the above stated reasons or otherwise. Results relate only to the samples identified above. This report shall not be reproduced except in full with written approval of Cardinal Laboratories.

Celey D. Keene, Lab Director/Quality Manager



PHONE (575) 393-2326 ° 101 E. MARLAND ° HOBBS, NM 88240

**Analytical Results For:**

TERRACON CONSULTANTS  
 JOSEPH GUESNIER  
 5827 50TH ST. SUITE 1  
 LUBBOCK TX, 79424  
 Fax To:

Received: 03/21/2023  
 Reported: 03/27/2023  
 Project Name: MAL-11-FED AF  
 Project Number: KH237020  
 Project Location: DURANGO - LEA COUNTY

Sampling Date: 03/20/2023  
 Sampling Type: Soil  
 Sampling Condition: Cool & Intact  
 Sample Received By: Tamara Oldaker

**Sample ID: W-SW-01 0-4' (H231268-05)**

BTEx 8021B		mg/kg		Analyzed By: JH/						
Analyte	Result	Reporting Limit	Analyzed	Method Blank	BS	% Recovery	True Value QC	RPD	Qualifier	
Benzene*	<0.050	0.050	03/23/2023	ND	1.94	97.2	2.00	1.16		
Toluene*	<0.050	0.050	03/23/2023	ND	2.01	101	2.00	3.50		
Ethylbenzene*	<0.050	0.050	03/23/2023	ND	2.00	100	2.00	2.46		
Total Xylenes*	<0.150	0.150	03/23/2023	ND	6.05	101	6.00	0.435		
Total BTEx	<0.300	0.300	03/23/2023	ND						

Surrogate: 4-Bromofluorobenzene (PID) 106 % 71.5-134

Chloride, SM4500Cl-B		mg/kg		Analyzed By: AC						
Analyte	Result	Reporting Limit	Analyzed	Method Blank	BS	% Recovery	True Value QC	RPD	Qualifier	
Chloride	32.0	16.0	03/23/2023	ND	400	100	400	3.92		

TPH 8015M		mg/kg		Analyzed By: MS					
Analyte	Result	Reporting Limit	Analyzed	Method Blank	BS	% Recovery	True Value QC	RPD	Qualifier
GRO C6-C10*	<10.0	10.0	03/23/2023	ND	168	83.9	200	6.77	
DRO >C10-C28*	<10.0	10.0	03/23/2023	ND	176	87.8	200	2.32	
EXT DRO >C28-C36	<10.0	10.0	03/23/2023	ND					

Surrogate: 1-Chlorooctane 95.7 % 48.2-134

Surrogate: 1-Chlorooctadecane 98.3 % 49.1-148

Cardinal Laboratories

\*=Accredited Analyte

PLEASE NOTE: Liability and Damages. Cardinal's liability and client's exclusive remedy for any claim arising, whether based in contract or tort, shall be limited to the amount paid by client for analyses. All claims, including those for negligence and any other cause whatsoever shall be deemed waived unless made in writing and received by Cardinal within thirty (30) days after completion of the applicable service. In no event shall Cardinal be liable for incidental or consequential damages, including, without limitation, business interruptions, loss of use, or loss of profits incurred by client, its subsidiaries, affiliates or successors arising out of or related to the performance of the services hereunder by Cardinal, regardless of whether such claim is based upon any of the above stated reasons or otherwise. Results relate only to the samples identified above. This report shall not be reproduced except in full with written approval of Cardinal Laboratories.

Celey D. Keene, Lab Director/Quality Manager



PHONE (575) 393-2326 ° 101 E. MARLAND ° HOBBS, NM 88240

**Analytical Results For:**

TERRACON CONSULTANTS  
 JOSEPH GUESNIER  
 5827 50TH ST. SUITE 1  
 LUBBOCK TX, 79424  
 Fax To:

Received: 03/21/2023  
 Reported: 03/27/2023  
 Project Name: MAL-11-FED AF  
 Project Number: KH237020  
 Project Location: DURANGO - LEA COUNTY

Sampling Date: 03/20/2023  
 Sampling Type: Soil  
 Sampling Condition: Cool & Intact  
 Sample Received By: Tamara Oldaker

**Sample ID: FS 02 4' (H231268-06)**

BTEx 8021B		mg/kg		Analyzed By: JH/					
Analyte	Result	Reporting Limit	Analyzed	Method Blank	BS	% Recovery	True Value QC	RPD	Qualifier
Benzene*	<0.050	0.050	03/23/2023	ND	2.12	106	2.00	0.398	
Toluene*	<0.050	0.050	03/23/2023	ND	2.18	109	2.00	1.76	
Ethylbenzene*	<0.050	0.050	03/23/2023	ND	2.14	107	2.00	1.30	
Total Xylenes*	<0.150	0.150	03/23/2023	ND	6.73	112	6.00	2.38	
Total BTEx	<0.300	0.300	03/23/2023	ND					

Surrogate: 4-Bromofluorobenzene (PID) 95.3 % 71.5-134

Chloride, SM4500CI-B		mg/kg		Analyzed By: AC						
Analyte	Result	Reporting Limit	Analyzed	Method Blank	BS	% Recovery	True Value QC	RPD	Qualifier	
Chloride	80.0	16.0	03/23/2023	ND	400	100	400	3.92		

TPH 8015M		mg/kg		Analyzed By: MS					
Analyte	Result	Reporting Limit	Analyzed	Method Blank	BS	% Recovery	True Value QC	RPD	Qualifier
GRO C6-C10*	<10.0	10.0	03/23/2023	ND	168	83.9	200	6.77	
DRO >C10-C28*	<10.0	10.0	03/23/2023	ND	176	87.8	200	2.32	
EXT DRO >C28-C36	<10.0	10.0	03/23/2023	ND					

Surrogate: 1-Chlorooctane 97.5 % 48.2-134

Surrogate: 1-Chlorooctadecane 100 % 49.1-148

Cardinal Laboratories

\*=Accredited Analyte

PLEASE NOTE: Liability and Damages. Cardinal's liability and client's exclusive remedy for any claim arising, whether based in contract or tort, shall be limited to the amount paid by client for analyses. All claims, including those for negligence and any other cause whatsoever shall be deemed waived unless made in writing and received by Cardinal within thirty (30) days after completion of the applicable service. In no event shall Cardinal be liable for incidental or consequential damages, including, without limitation, business interruptions, loss of use, or loss of profits incurred by client, its subsidiaries, affiliates or successors arising out of or related to the performance of the services hereunder by Cardinal, regardless of whether such claim is based upon any of the above stated reasons or otherwise. Results relate only to the samples identified above. This report shall not be reproduced except in full with written approval of Cardinal Laboratories.

Celey D. Keene, Lab Director/Quality Manager



PHONE (575) 393-2326 ° 101 E. MARLAND ° HOBBS, NM 88240

**Analytical Results For:**

TERRACON CONSULTANTS  
 JOSEPH GUESNIER  
 5827 50TH ST. SUITE 1  
 LUBBOCK TX, 79424  
 Fax To:

Received: 03/21/2023  
 Reported: 03/27/2023  
 Project Name: MAL-11-FED AF  
 Project Number: KH237020  
 Project Location: DURANGO - LEA COUNTY

Sampling Date: 03/20/2023  
 Sampling Type: Soil  
 Sampling Condition: Cool & Intact  
 Sample Received By: Tamara Oldaker

**Sample ID: FS 03 4' (H231268-07)**

BTEx 8021B		mg/kg		Analyzed By: JH/						
Analyte	Result	Reporting Limit	Analyzed	Method Blank	BS	% Recovery	True Value QC	RPD	Qualifier	
Benzene*	<0.050	0.050	03/23/2023	ND	2.12	106	2.00	0.398		
Toluene*	<0.050	0.050	03/23/2023	ND	2.18	109	2.00	1.76		
Ethylbenzene*	<0.050	0.050	03/23/2023	ND	2.14	107	2.00	1.30		
Total Xylenes*	<0.150	0.150	03/23/2023	ND	6.73	112	6.00	2.38		
Total BTEx	<0.300	0.300	03/23/2023	ND						

Surrogate: 4-Bromofluorobenzene (PID) 95.9 % 71.5-134

Chloride, SM4500CI-B		mg/kg		Analyzed By: AC						
Analyte	Result	Reporting Limit	Analyzed	Method Blank	BS	% Recovery	True Value QC	RPD	Qualifier	
Chloride	80.0	16.0	03/23/2023	ND	400	100	400	3.92		

TPH 8015M		mg/kg		Analyzed By: MS					
Analyte	Result	Reporting Limit	Analyzed	Method Blank	BS	% Recovery	True Value QC	RPD	Qualifier
GRO C6-C10*	<10.0	10.0	03/23/2023	ND	168	83.9	200	6.77	
DRO >C10-C28*	<10.0	10.0	03/23/2023	ND	176	87.8	200	2.32	
EXT DRO >C28-C36	<10.0	10.0	03/23/2023	ND					

Surrogate: 1-Chlorooctane 96.7 % 48.2-134

Surrogate: 1-Chlorooctadecane 99.3 % 49.1-148

Cardinal Laboratories

\*=Accredited Analyte

PLEASE NOTE: Liability and Damages. Cardinal's liability and client's exclusive remedy for any claim arising, whether based in contract or tort, shall be limited to the amount paid by client for analyses. All claims, including those for negligence and any other cause whatsoever shall be deemed waived unless made in writing and received by Cardinal within thirty (30) days after completion of the applicable service. In no event shall Cardinal be liable for incidental or consequential damages, including, without limitation, business interruptions, loss of use, or loss of profits incurred by client, its subsidiaries, affiliates or successors arising out of or related to the performance of the services hereunder by Cardinal, regardless of whether such claim is based upon any of the above stated reasons or otherwise. Results relate only to the samples identified above. This report shall not be reproduced except in full with written approval of Cardinal Laboratories.

Celey D. Keene, Lab Director/Quality Manager



PHONE (575) 393-2326 ° 101 E. MARLAND ° HOBBS, NM 88240

---

### Notes and Definitions

QR-03	The RPD value for the sample duplicate or MS/MSD was outside of QC acceptance limits due to matrix interference. QC batch accepted based on LCS and/or LCSD recovery and/or RPD values.
ND	Analyte NOT DETECTED at or above the reporting limit
RPD	Relative Percent Difference
**	Samples not received at proper temperature of 6°C or below.
***	Insufficient time to reach temperature.
-	Chloride by SM4500Cl-B does not require samples be received at or below 6°C Samples reported on an as received basis (wet) unless otherwise noted on report

---

Cardinal Laboratories

\*=Accredited Analyte

PLEASE NOTE: Liability and Damages. Cardinal's liability and client's exclusive remedy for any claim arising, whether based in contract or tort, shall be limited to the amount paid by client for analyses. All claims, including those for negligence and any other cause whatsoever shall be deemed waived unless made in writing and received by Cardinal within thirty (30) days after completion of the applicable service. In no event shall Cardinal be liable for incidental or consequential damages, including, without limitation, business interruptions, loss of use, or loss of profits incurred by client, its subsidiaries, affiliates or successors arising out of or related to the performance of the services hereunder by Cardinal, regardless of whether such claim is based upon any of the above stated reasons or otherwise. Results relate only to the samples identified above. This report shall not be reproduced except in full with written approval of Cardinal Laboratories.

A handwritten signature in black ink, appearing to read "Celey D. Keene".

---

Celey D. Keene, Lab Director/Quality Manager



## **APPENDIX E – INITIAL C-141**

District I  
1625 N. French Dr., Hobbs, NM 88240  
District II  
811 S. First St., Artesia, NM 88210  
District III  
1000 Rio Brazos Road, Aztec, NM 87410  
District IV  
1220 S. St. Francis Dr., Santa Fe, NM 87505

State of New Mexico  
Energy Minerals and Natural  
Resources Department

Oil Conservation Division  
1220 South St. Francis Dr.  
Santa Fe, NM 87505

Form C-141  
Revised August 24, 2018  
Submit to appropriate OCD District office

Incident ID	nAPP2233262667
District RP	
Facility ID	
Application ID	

## Release Notification

### Responsible Party

Responsible Party Frontier Field Services, LLC	OGRID 221115
Contact Name Amber Groves	Contact Telephone 575-703-7992
Contact email <a href="mailto:agroves@durangomidstream.com">agroves@durangomidstream.com</a>	Incident # (assigned by OCD)
Contact mailing address 47 Conoco Rd, Maljamar NM 88264	

### Location of Release Source

Latitude 32.7723056 Longitude -103.8054167  
(NAD 83 in decimal degrees to 5 decimal places)

Site Name Mal-11-5 Fed AF 6" Poly	Site Type Pipeline
Date Release Discovered 11/20/2022	API# (if applicable)

Unit Letter	Section	Township	Range	County
O	6	18S	32E	Eddy

Surface Owner: ☐ State ☒ Federal ☐ Tribal ☐ Private (Name: \_\_\_\_\_)

### Nature and Volume of Release

Material(s) Released (Select all that apply and attach calculations or specific justification for the volumes provided below)

<input type="checkbox"/> Crude Oil	Volume Released (bbls)	Volume Recovered (bbls)
<input type="checkbox"/> Produced Water	Volume Released (bbls)	Volume Recovered (bbls)
	Is the concentration of dissolved chloride in the produced water >10,000 mg/l?	<input type="checkbox"/> Yes <input type="checkbox"/> No
<input checked="" type="checkbox"/> Condensate	Volume Released (bbls) 10	Volume Recovered (bbls)
<input checked="" type="checkbox"/> Natural Gas	Volume Released (Mcf) 1,226.23	Volume Recovered (Mcf)
<input type="checkbox"/> Other (describe)	Volume/Weight Released (provide units)	Volume/Weight Recovered (provide units)

#### Cause of Release

Third party line strike while excavating.



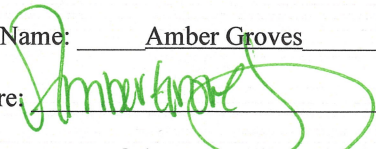
## Oil Conservation Division

Incident ID	nAPP2233262667
District RP	
Facility ID	
Application ID	

Was this a major release as defined by 19.15.29.7(A) NMAC?  <input checked="" type="checkbox"/> Yes <input type="checkbox"/> No	If YES, for what reason(s) does the responsible party consider this a major release?          
E-mail notification on 11/20/2022 to Robert Hamlet, Jocelyn Harimon, Jennifer Nobui, Nelson Velez, Mike Bratcher & Bradford Billings.	

### Initial Response

*The responsible party must undertake the following actions immediately unless they could create a safety hazard that would result in injury*

<input checked="" type="checkbox"/> The source of the release has been stopped.	
<input checked="" type="checkbox"/> The impacted area has been secured to protect human health and the environment.	
<input checked="" type="checkbox"/> Released materials have been contained via the use of berms or dikes, absorbent pads, or other containment devices.	
<input checked="" type="checkbox"/> All free liquids and recoverable materials have been removed and managed appropriately.	
If all the actions described above have <u>not</u> been undertaken, explain why:          	
Per 19.15.29.8 B. (4) NMAC the responsible party may commence remediation immediately after discovery of a release. If remediation has begun, please attach a narrative of actions to date. If remedial efforts have been successfully completed or if the release occurred within a lined containment area (see 19.15.29.11(A)(5)(a) NMAC), please attach all information needed for closure evaluation.	
I hereby certify that the information given above is true and complete to the best of my knowledge and understand that pursuant to OCD rules and regulations all operators are required to report and/or file certain release notifications and perform corrective actions for releases which may endanger public health or the environment. The acceptance of a C-141 report by the OCD does not relieve the operator of liability should their operations have failed to adequately investigate and remediate contamination that pose a threat to groundwater, surface water, human health or the environment. In addition, OCD acceptance of a C-141 report does not relieve the operator of responsibility for compliance with any other federal, state, or local laws and/or regulations.	
Printed Name: <u>Amber Groves</u>	Title: <u>Remediation Specialist</u>
Signature: 	Date: <u>11/29/2022</u>
email: <u>agroves@durangomidstream.com</u>	Telephone: <u>(575)703-7992</u>
<b><u>OCD Only</u></b>	
Received by: <u>Jocelyn Harimon</u>	Date: <u>11/29/2022</u>



## Gas Volume Release Report

Gas Release Volume Calculator		
Date:	11/20/2022	
Site or Line Name:	MAL-11-5 Fed AF 6" Poly Line LP	
Area of Hole in Pipe:	3	square inches
Absolute Pressure:	64.7	psia - absolute pressure (psia = psig gauge pressure + 14.7)
Duration of Release:	60.00	minutes
Actual Temperature:	26.2	Degrees F
Representative Gas Analysis	Please attach or email a representative gas analysis	

Constants		
Temperature at standard conditions:	60	Deg. F
Pressure at standard conditions:	14.7	PSIA
Volume of Gas - ACF	260.48	MACF
Volume of Gas - SCF	1,226.23	MSCF

Notes
Entered by user
Calculated Value
Constant





## Liquid Volume Release Report

## Liquid Release Volume Calculator

Date:	11/20/2022						
Site or Line Name:	MAL-11-5 Fed AF 6" Poly Line LP						
Soil Type	Porosity	Length	Width	Depth (.083 per inch)	Cubic Feet	Estimated Barrels	Soil Type
Clay	0.15				0	0.00	Clay
Sandy Clay	0.12				0	0.00	Sandy Clay
Silt	0.16				0	0.00	Silt
Fine Sand	0.16				0	0.00	Fine Sand
Medium Sand	0.25	40	22.54	0.249	224.4984	10.00	Medium Sand
Coarse Sand	0.26				0	0.00	Coarse Sand
Gravely Sand	0.26				0	0.00	Gravely Sand
Fine Gravel	0.26				0	0.00	Fine Gravel
Medium Gravel	0.20				0	0.00	Medium Gravel
Coarse Gravel	0.18				0	0.00	Coarse Gravel
Sandstone	0.25				0	0.00	Sandstone
Siltstone	0.18				0	0.00	Siltstone
Limestone	0.13				0	0.00	Limestone
Basalt	0.19				0	0.00	Basalt
Standing Liquids	X				0	0.00	Standing Liquids

Choose the one prevailing ground type for estimating spill volumes at a single location. Standing liquids are figured separately using the green cell.

Note that the depth should be measured in feet and tenths of feet (1 inch = .083)

Cubic Feet = L x W x D

Estimated Barrels = ((Cubic Feet x Porosity) / 5.61)

**District I**  
1625 N. French Dr., Hobbs, NM 88240  
Phone:(575) 393-6161 Fax:(575) 393-0720

**District II**  
811 S. First St., Artesia, NM 88210  
Phone:(575) 748-1283 Fax:(575) 748-9720

**District III**  
1000 Rio Brazos Rd., Aztec, NM 87410  
Phone:(505) 334-6178 Fax:(505) 334-6170

**District IV**  
1220 S. St Francis Dr., Santa Fe, NM 87505  
Phone:(505) 476-3470 Fax:(505) 476-3462

State of New Mexico  
Energy, Minerals and Natural Resources  
Oil Conservation Division  
1220 S. St Francis Dr.  
Santa Fe, NM 87505

CONDITIONS

Action 161896

CONDITIONS

Operator: FRONTIER FIELD SERVICES, LLC 10077 Grogans Mill Rd. The Woodlands, TX 77380	OGRID: 221115
	Action Number: 161896
	Action Type: [C-141] Release Corrective Action (C-141)

CONDITIONS

Created By	Condition	Condition Date
jharimon	None	11/29/2022



Incident ID	nAPP2233262667
District RP	
Facility ID	
Application ID	

## Site Assessment/Characterization

*This information must be provided to the appropriate district office no later than 90 days after the release discovery date.*

What is the shallowest depth to groundwater beneath the area affected by the release?	<u>81</u> (ft bgs)
Did this release impact groundwater or surface water?	<input type="checkbox"/> Yes <input checked="" type="checkbox"/> No
Are the lateral extents of the release within 300 feet of a continuously flowing watercourse or any other significant watercourse?	<input type="checkbox"/> Yes <input checked="" type="checkbox"/> No
Are the lateral extents of the release within 200 feet of any lakebed, sinkhole, or playa lake (measured from the ordinary high-water mark)?	<input type="checkbox"/> Yes <input checked="" type="checkbox"/> No
Are the lateral extents of the release within 300 feet of an occupied permanent residence, school, hospital, institution, or church?	<input type="checkbox"/> Yes <input checked="" type="checkbox"/> No
Are the lateral extents of the release within 500 horizontal feet of a spring or a private domestic fresh water well used by less than five households for domestic or stock watering purposes?	<input type="checkbox"/> Yes <input checked="" type="checkbox"/> No
Are the lateral extents of the release within 1000 feet of any other fresh water well or spring?	<input type="checkbox"/> Yes <input checked="" type="checkbox"/> No
Are the lateral extents of the release within incorporated municipal boundaries or within a defined municipal fresh water well field?	<input type="checkbox"/> Yes <input checked="" type="checkbox"/> No
Are the lateral extents of the release within 300 feet of a wetland?	<input type="checkbox"/> Yes <input checked="" type="checkbox"/> No
Are the lateral extents of the release overlying a subsurface mine?	<input type="checkbox"/> Yes <input checked="" type="checkbox"/> No
Are the lateral extents of the release overlying an unstable area such as karst geology?	<input type="checkbox"/> Yes <input checked="" type="checkbox"/> No
Are the lateral extents of the release within a 100-year floodplain?	<input type="checkbox"/> Yes <input checked="" type="checkbox"/> No
Did the release impact areas <b>not</b> on an exploration, development, production, or storage site?	<input type="checkbox"/> Yes <input checked="" type="checkbox"/> No

Attach a comprehensive report (electronic submittals in .pdf format are preferred) demonstrating the lateral and vertical extents of soil contamination associated with the release have been determined. Refer to 19.15.29.11 NMAC for specifics.

### **Characterization Report Checklist:** *Each of the following items must be included in the report.*

- ☒ Scaled site map showing impacted area, surface features, subsurface features, delineation points, and monitoring wells.
- ☒ Field data
- ☒ Data table of soil contaminant concentration data
- ☒ Depth to water determination
- ☒ Determination of water sources and significant watercourses within ½-mile of the lateral extents of the release
- ☒ Boring or excavation logs
- ☒ Photographs including date and GIS information
- ☒ Topographic/Aerial maps
- ☒ Laboratory data including chain of custody

If the site characterization report does not include completed efforts at remediation of the release, the report must include a proposed remediation plan. That plan must include the estimated volume of material to be remediated, the proposed remediation technique, proposed sampling plan and methods, anticipated timelines for beginning and completing the remediation. The closure criteria for a release are contained in Table 1 of 19.15.29.12 NMAC, however, use of the table is modified by site- and release-specific parameters.

## Oil Conservation Division

Incident ID	nAPP2233262667
District RP	
Facility ID	
Application ID	

I hereby certify that the information given above is true and complete to the best of my knowledge and understand that pursuant to OCD rules and regulations all operators are required to report and/or file certain release notifications and perform corrective actions for releases which may endanger public health or the environment. The acceptance of a C-141 report by the OCD does not relieve the operator of liability should their operations have failed to adequately investigate and remediate contamination that pose a threat to groundwater, surface water, human health or the environment. In addition, OCD acceptance of a C-141 report does not relieve the operator of responsibility for compliance with any other federal, state, or local laws and/or regulations.

Printed Name: Lupe Carrasco Title: Sr. Environmental Specialist

Signature: Lupe Carrasco Date: 6/15/23

email: gcarrasco@durangomidstream.com Telephone: 575-725-0787

**OCD Only**

Received by: Jocelyn Harimon Date: 06/15/2023

Incident ID	nAPP2233262667
District RP	
Facility ID	
Application ID	

## Remediation Plan

**Remediation Plan Checklist:** *Each of the following items must be included in the plan.*

- ☒ Detailed description of proposed remediation technique
- ☒ Scaled sitemap with GPS coordinates showing delineation points
- ☒ Estimated volume of material to be remediated
- ☒ Closure criteria is to Table 1 specifications subject to 19.15.29.12(C)(4) NMAC
- ☒ Proposed schedule for remediation (note if remediation plan timeline is more than 90 days OCD approval is required)

**Deferral Requests Only:** *Each of the following items must be confirmed as part of any request for deferral of remediation.*

- ☐ Contamination must be in areas immediately under or around production equipment where remediation could cause a major facility deconstruction.
- ☐ Extents of contamination must be fully delineated.
- ☐ Contamination does not cause an imminent risk to human health, the environment, or groundwater.

I hereby certify that the information given above is true and complete to the best of my knowledge and understand that pursuant to OCD rules and regulations all operators are required to report and/or file certain release notifications and perform corrective actions for releases which may endanger public health or the environment. The acceptance of a C-141 report by the OCD does not relieve the operator of liability should their operations have failed to adequately investigate and remediate contamination that pose a threat to groundwater, surface water, human health or the environment. In addition, OCD acceptance of a C-141 report does not relieve the operator of responsibility for compliance with any other federal, state, or local laws and/or regulations.

Printed Name: Lupe Carrasco Title: Sr. Environmental Specialist  
Signature: Lupe Carrasco Date: 6/15/23  
email: gcarrasco@durangomidstream.com Telephone: 575-725-0787

**OCD Only**

Received by: Jocelyn Harimon Date: 06/15/2023

☐ Approved ☐ Approved with Attached Conditions of Approval ☐ Denied ☐ Deferral Approved

Signature: \_\_\_\_\_ Date: \_\_\_\_\_

Incident ID	nAPP2233262667
District RP	
Facility ID	
Application ID	

## Closure

The responsible party must attach information demonstrating they have complied with all applicable closure requirements and any conditions or directives of the OCD. This demonstration should be in the form of a comprehensive report (electronic submittals in .pdf format are preferred) including a scaled site map, sampling diagrams, relevant field notes, photographs of any excavation prior to backfilling, laboratory data including chain of custody documents of final sampling, and a narrative of the remedial activities. Refer to 19.15.29.12 NMAC.

**Closure Report Attachment Checklist:** *Each of the following items must be included in the closure report.*

- ☒ A scaled site and sampling diagram as described in 19.15.29.11 NMAC
- ☒ Photographs of the remediated site prior to backfill or photos of the liner integrity if applicable (Note: appropriate OCD District office must be notified 2 days prior to liner inspection)
- ☒ Laboratory analyses of final sampling (Note: appropriate ODC District office must be notified 2 days prior to final sampling)
- ☒ Description of remediation activities

I hereby certify that the information given above is true and complete to the best of my knowledge and understand that pursuant to OCD rules and regulations all operators are required to report and/or file certain release notifications and perform corrective actions for releases which may endanger public health or the environment. The acceptance of a C-141 report by the OCD does not relieve the operator of liability should their operations have failed to adequately investigate and remediate contamination that pose a threat to groundwater, surface water, human health or the environment. In addition, OCD acceptance of a C-141 report does not relieve the operator of responsibility for compliance with any other federal, state, or local laws and/or regulations. The responsible party acknowledges they must substantially restore, reclaim, and re-vegetate the impacted surface area to the conditions that existed prior to the release or their final land use in accordance with 19.15.29.13 NMAC including notification to the OCD when reclamation and re-vegetation are complete.

Printed Name: Lupe Carrasco Title: Sr. Environmental Specialist  
Signature: Lupe Carrasco Date: 6/15/23  
email: gcarrasco@durangomidstream.com Telephone: 575-725-0787

**OCD Only**

Received by: Jocelyn Harimon Date: 06/15/2023

Closure approval by the OCD does not relieve the responsible party of liability should their operations have failed to adequately investigate and remediate contamination that poses a threat to groundwater, surface water, human health, or the environment nor does not relieve the responsible party of compliance with any other federal, state, or local laws and/or regulations.

Closure Approved by: Nelson Velez Date: 09/15/2023  
Printed Name: Nelson Velez Title: Environmental Specialist - Adv

## APPENDIX F – TERRACON STANDARD OF CARE, LIMITATION, AND RELIANCE

### Standard of Care

Terracon's services were performed in a manner consistent with generally accepted practices of the profession undertaken in similar studies in the same geographical area during the same time. Terracon makes no warranties, either express or implied, regarding the findings, conclusions, or recommendations. Please note that Terracon does not warrant the work of laboratories, regulatory agencies, or other third parties supplying information used in the preparation of the report. These services were performed in accordance with the scope of work agreed with you, Durango Midstream LLC, as reflected in our proposal (PKH227021).

### Additional Scope Limitations

The development of this Amended RAP is based upon information provided by the Client and Terracon's remediation and construction services line. Such information is subject to change over time. Certain indicators of the presence of hazardous substances, petroleum products, or other constituents may have been latent, inaccessible, unobservable, nondetectable, or not present during these services. We cannot represent that the site contains no hazardous substances, toxic materials, petroleum products, or other latent conditions beyond those by information provided by the Client. The data, interpretations, findings, and recommendations are based solely upon reformation executed within the scope of these services.

### Reliance

This report has been prepared for the exclusive use of Durango Midstream LLC, and any authorization for use or reliance by any other party (except a governmental entity having jurisdiction over the site) is prohibited without the express written authorization of Durango Midstream LLC and Terracon. Any unauthorized distribution or reuse is at Durango Midstream LLC sole risk. Notwithstanding the foregoing, reliance by authorized parties will be subject to the terms, conditions, and limitations stated in the proposal and Durango Midstream LLC and Terracon's Master Services Agreement. The limitation of liability defined in the terms and conditions is the aggregate limit of Terracon's liability to Durango Midstream LLC and all relying parties unless otherwise agreed in writing.

**District I**  
1625 N. French Dr., Hobbs, NM 88240  
Phone:(575) 393-6161 Fax:(575) 393-0720  
**District II**  
811 S. First St., Artesia, NM 88210  
Phone:(575) 748-1283 Fax:(575) 748-9720  
**District III**  
1000 Rio Brazos Rd., Aztec, NM 87410  
Phone:(505) 334-6178 Fax:(505) 334-6170  
**District IV**  
1220 S. St Francis Dr., Santa Fe, NM 87505  
Phone:(505) 476-3470 Fax:(505) 476-3462

State of New Mexico  
Energy, Minerals and Natural Resources  
Oil Conservation Division  
1220 S. St Francis Dr.  
Santa Fe, NM 87505

CONDITIONS  
  
Action 228553

CONDITIONS

Operator: FRONTIER FIELD SERVICES, LLC 10077 Grogans Mill Rd. The Woodlands, TX 77380	OGRID: 221115
	Action Number: 228553
	Action Type: [C-141] Release Corrective Action (C-141)

CONDITIONS

Created By	Condition	Condition Date
nvelez	None	9/15/2023