



September 6, 2023

Brittany Hall
Projects Environmental Specialist
New Mexico Energy, Minerals, and Natural Resources Department
1220 South St. Francis Drive
Santa Fe, NM 87505

**Re: Revised Closure Report
ConocoPhillips
Heritage Concho
Telecaster 30 Federal #003H
Unit Letter B, Section 30, Township 23 South, Range 34 East
Lea County, New Mexico
Incident ID# nOY1818442568**

Ms. Hall:

Tetra Tech, Inc. (Tetra Tech) was contacted by ConocoPhillips to assess a Heritage Concho release that occurred at the Telecaster 30 Federal #003H lease pad (associated API No. 30-025-41455). The reported release footprint is located in Public Land Survey System (PLSS) Unit Letter B, Section 30, Township 23 South, Range 34 East, in Lea County, New Mexico (Site). The approximate release point is located at coordinates 32.2819786°, -103.5069962°, as shown on Figures 1 and 2.

BACKGROUND

According to the C-141 Initial Report, the release occurred on June 28, 2018 and was caused by a third party truck driver leaving the suction valve open. Approximately 23 barrels (bbls) of produced water were released onto the production pad, of which approximately 20 bbls were recovered with a vacuum truck. The New Mexico Oil Conservation Division (NMOCD) approved the initial C-141 on July 3, 2018 and assigned the release the Incident ID nOY1818442568. The C-141 is included as Appendix A.

SITE CHARACTERIZATION

A site characterization was performed and no sinkholes, residences, schools, hospitals, institutions, churches, springs, private domestic water wells, wetlands, incorporated municipal boundaries, subsurface mines, or floodplains are located within the distances specified in 19.15.29 New Mexico Administrative Code (NMAC). The Site is in an area of low karst potential.

According to the New Mexico Office of the State Engineers (NMOSE) reporting system, there are no water wells within ½ mile (800 meters) of the Site. However, in the approved BBC Work Plan, a nearby USGS water well (USGS 321510103290801 23S.34E.32.44234) was located with data from 2013 indicating a water level of 162.14 feet bgs. According to the nearest NMOSE well data, groundwater in the vicinity is approximately 330 feet below ground surface (bgs). The site characterization data are presented in Appendix B.

Tetra Tech

901 West Wall St., Suite 100, Midland, TX 79701

Tel 432.682.4559 Fax 432.682.3946 www.tetrattech.com

Revised Closure Report
September 6, 2023

ConocoPhillips

REGULATORY FRAMEWORK

Based upon the release footprint location and in accordance with Subsection E of 19.15.29.12 NMAC, per 19.15.29.11 NMAC, the site characterization data was used to determine recommended remedial action levels (RRALs) for benzene, toluene, ethylbenzene, and xylene (collectively referred to as BTEX), total petroleum hydrocarbons (TPH), and chlorides in soil.

Based on the site characterization and in accordance with Table I of 19.15.29.12 NMAC, the remediation RRALs for the Site are as follows:

Constituent	Site RRALs
Chloride	20,000 mg/kg
TPH (GRO+DRO+ORO)	2,500 mg/kg
BTEX	50 mg/kg
Benzene	10 mg/kg

NOVEMBER 2018 INITIAL SITE ASSESSMENT

On behalf of COG, on November 5, 2018, BBC International, Incorporated (BBC) collected fourteen (14) soil samples from three (3) hand auger locations (SP1 through SP3) to determine the vertical extent of soil impact and an additional four (4) soil samples from the perimeter of the release (North, East, South, and West) to determine the horizontal extent of soil impact. The initial assessment sampling locations are presented in Figure 3. The analytical results from the 2018 initial assessment activities are summarized in Table 1.

BBC submitted a Delineation Workplan to NMOCD on November 15, 2018, which described the site characterization, initial site assessment, and proposed remediation activities. The proposed remediation activities included excavating the areas of SP1 and SP2 to a depth of 6 inches, as indicated on Figure 4. A copy of the Delineation Workplan is available on the NMOCD online incident files.

The Delineation Workplan was approved by NMOCD on November 29, 2022, with the following comments:

- *“Remediation and closure must meet all requirements in 19.15.29.12 and 19.15.29.13 NMAC. Confirmation samples must be collected from the base and side walls of the excavation. Confirmation samples must be representative of no more than 200 square feet and be analyzed for all constituents listed in Table I.*
- *1RP-5114 closed. Refer to incident #NOY1818442568 in all future communications.*
- *Please submit a complete closure report through the OCD Permitting website by 3/3/2023.”*

An extension request to June 3, 2023 was approved via email on March 3, 2023. A copy of the regulatory correspondence is included as Appendix C.

MAY 2023 ADDITIONAL SITE ASSESSMENT AND SAMPLING RESULTS

Tetra Tech conducted additional soil sampling at the Site on behalf of ConocoPhillips to assess the current soil concentration levels within the reported release footprint prior to remedial action. On May 1, 2023, Tetra Tech installed six (6) hand auger borings (AH-23-1 through AH-23-6) in the reported release extent, as indicated on Figure 5. Photographic documentation from the 2023 confirmation sampling activities is presented in Appendix D.

A total of six (6) soil samples sent to Cardinal Laboratories in Hobbs, New Mexico to be analyzed for chloride via Standard Method 4500.0, TPH via EPA Method 8015M, and BTEX via EPA Method 8261B. A copy of the laboratory analytical report and chain-of-custody documentation are included in Appendix E.

Analytical results from the May 2023 confirmation sampling activities are summarized in Table 2. All analytical results were below the applicable approved on-pad Site RRALs for all analyzed constituents.

MAY 2023 CLOSURE REPORT AND NMOCD REJECTION

A Closure Report based on the results of the additional assessment was submitted to the NMOCD on May 26, 2023. The Closure Report was rejected by Brittany Hall via email on Tuesday, June 6, 2023, with the following comments:

- *"Closure denied. During the initial round of sampling performed in 2018, the chloride results were below or slightly above the reclamation standard of 600 mg/kg. Chloride results increased significantly in the samples collected in 2023. Vertical and horizontal delineation of the area will need to be completed.*
- *Submit a complete report through the OCD Permitting website by 9/6/2023."*

Regulatory correspondence is included in Appendix C.

JUNE AND JULY 2023 ADDITIONAL SITE ASSESSMENT

Tetra Tech remobilized to the Site on June 21, 2023 to collect additional soil samples in accordance with the NMOCD directives received on June 6, 2023. One boring (BH-23-1) was installed using an air rotary drill rig within the release extent to complete vertical delineation of chloride concentrations above 600 mg/kg. The release footprint is congested with active, energized lines and boring locations are difficult to access. Five additional borings (BH-23-2 through BH-23-4 and AH-23-7) were installed along the perimeter of the release to complete horizontal delineation. Tetra Tech returned to the Site on July 26, 2023 to collect two additional hand auger samples (AH-23-8 and AH-23-9) to complete horizontal delineation of chloride concentrations above 600 mg/kg.

A total of ten (10) soil samples sent to Cardinal Laboratories in Hobbs, New Mexico to be analyzed for chloride via Standard Method 4500.0, TPH via EPA Method 8015M, and BTEX via EPA Method 8261B. A copy of the laboratory analytical report and chain-of-custody documentation are included in Appendix E.

Analytical results from the June and July 2023 delineation/confirmation sampling activities are summarized in Table 3. Analytical results associated with boring BH-23-1, which was installed within the release extent in the vicinity of May 2023 sample locations AH-23-3 and AH-23-4, indicated chloride concentrations slightly above or below the reclamation RRAL of 600 mg/kg at all sample intervals. Chloride concentrations elevated above the reclamation standard of 600 mg/kg were observed at June 2023 horizontal sample locations BH-23-4 and AH-23-7. July 2023 sample locations AH-23-8 and AH-23-9 were collected at step out locations and were below the reclamation standards. All analytical results from the additional assessment activities were below the applicable approved on-pad Site RRALs for all analyzed constituents.

CONCLUSION

Additional assessment sampling was conducted to delineate the release for chloride concentrations above the reclamation standard of 600 mg/kg, as directed by NMOCD. Both vertical and horizontal delineation for chloride was achieved following the additional sampling activities.

As all analytical results associated with the 2023 delineation/confirmation sampling activities were below the approved Site RRALs, no additional remediation of the release footprint is required at this time. The fully delineated release footprint is located atop an active well pad in the vicinity of energized lines and production equipment in an area needed for production operations and does not cause an imminent risk to human health, the environment, or groundwater. The Site will need to meet all the requirements of 19.15.29.13 NMAC at time of plugging and abandonment or major facility reconstruction, whichever comes first.

Based on the above, ConocoPhillips respectfully requests closure of this release and requests that NMOCD will approve delaying reclamation activities at the Site until the end of life of the facility/well. Final

Revised Closure Report
September 6, 2023

ConocoPhillips

reclamation shall take place in accordance with 19.15.29.13 NMAC once the Site is no longer being used for oil and gas operations. The final C-141 forms are enclosed in Appendix A. If you have any questions concerning the soil assessment activities for the Site, please call me at (512) 739-7874.

Sincerely,
Tetra Tech, Inc.



Samantha Abbott, P.G.
Project Manager



Christian M. Llull, P.G.
Program Manager

cc:
Mr. Moises Cantu Garcia, PBU – ConocoPhillips

Revised Closure Report
September 6, 2023

ConocoPhillips

LIST OF ATTACHMENTS

Figures:

- Figure 1 – Overview Map
- Figure 2 – Topographic Map
- Figure 3 – Approximate Release Extent and Site Assessment (BBC 2018)
- Figure 4 – Approximate Release Extent and Site Assessment (BBC 2018)
- Figure 5 – Approximate Release Extent and Additional Assessment (Tetra Tech 2023)

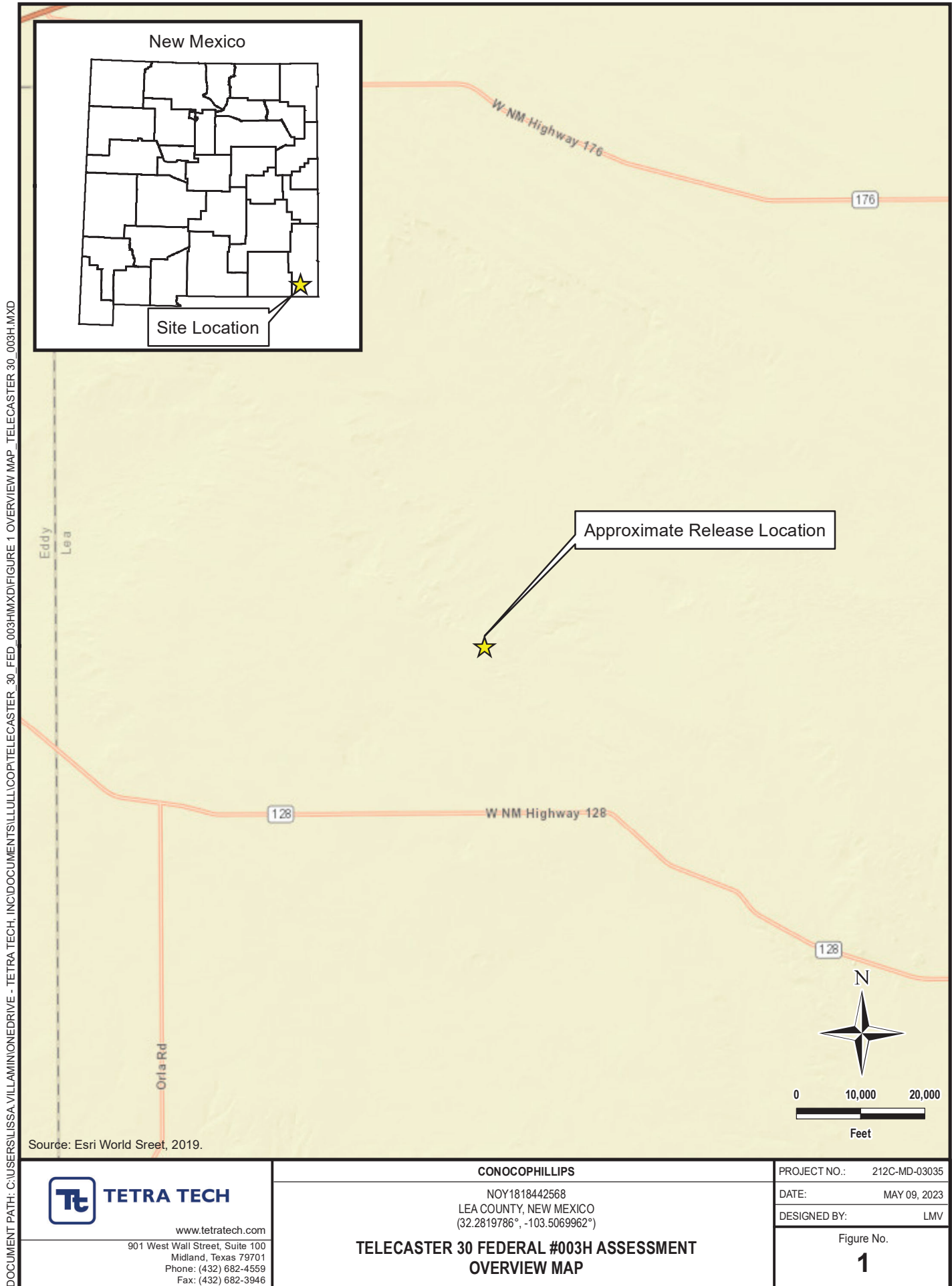
Tables:

- Table 1 – Summary of Analytical Results – November 2018 Initial Soil Assessment
- Table 2 – Summary of Analytical Results – May 2023 Additional Soil Assessment
- Table 3 – Summary of Analytical Results – June and July 2023 Additional Soil Assessment

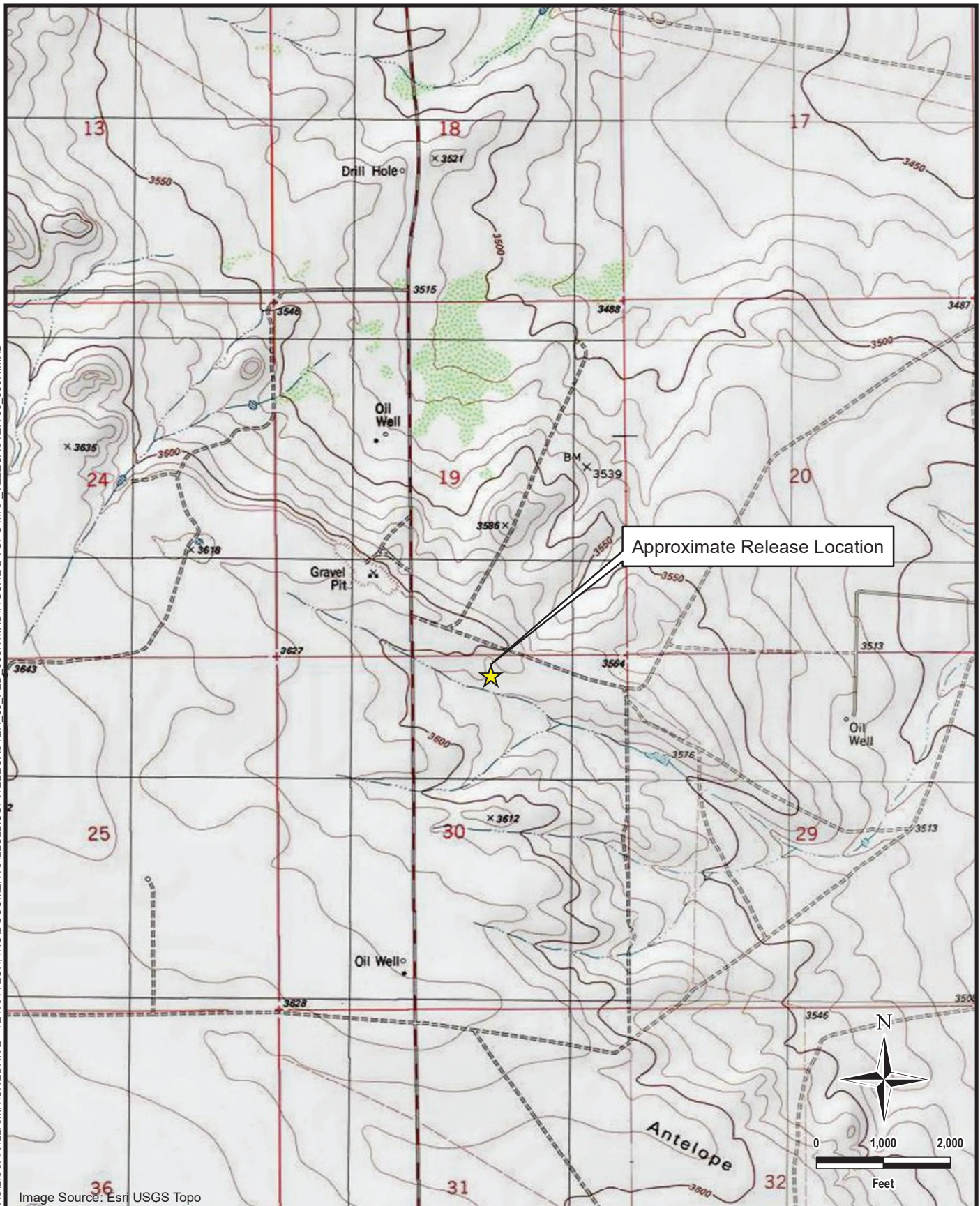
Appendices:

- Appendix A – C-141 Forms
- Appendix B – Site Characterization Data
- Appendix C – Regulatory Correspondence
- Appendix D – Photographic Documentation
- Appendix E – Laboratory Analytical Data

FIGURES



DOCUMENT PATH: C:\USERS\LISSA.VILLAMONEDRIVE - TETRA TECH\INC\DOCUMENTS\ILLU\COPT\TELECASTER_30_FED_003H.MXD

**TETRA TECH**

www.tetrattech.com

901 West Wall Street, Suite 100
Midland, Texas 79701
Phone: (432) 682-4559
Fax: (432) 682-3946

CONOCOPHILLIPS

NOY1818442568
LEA COUNTY, NEW MEXICO
(32.2819786°, -103.5069962°)

**TELECASTER 30 FEDERAL #003H ASSESSMENT
TOPOGRAPHIC MAP**

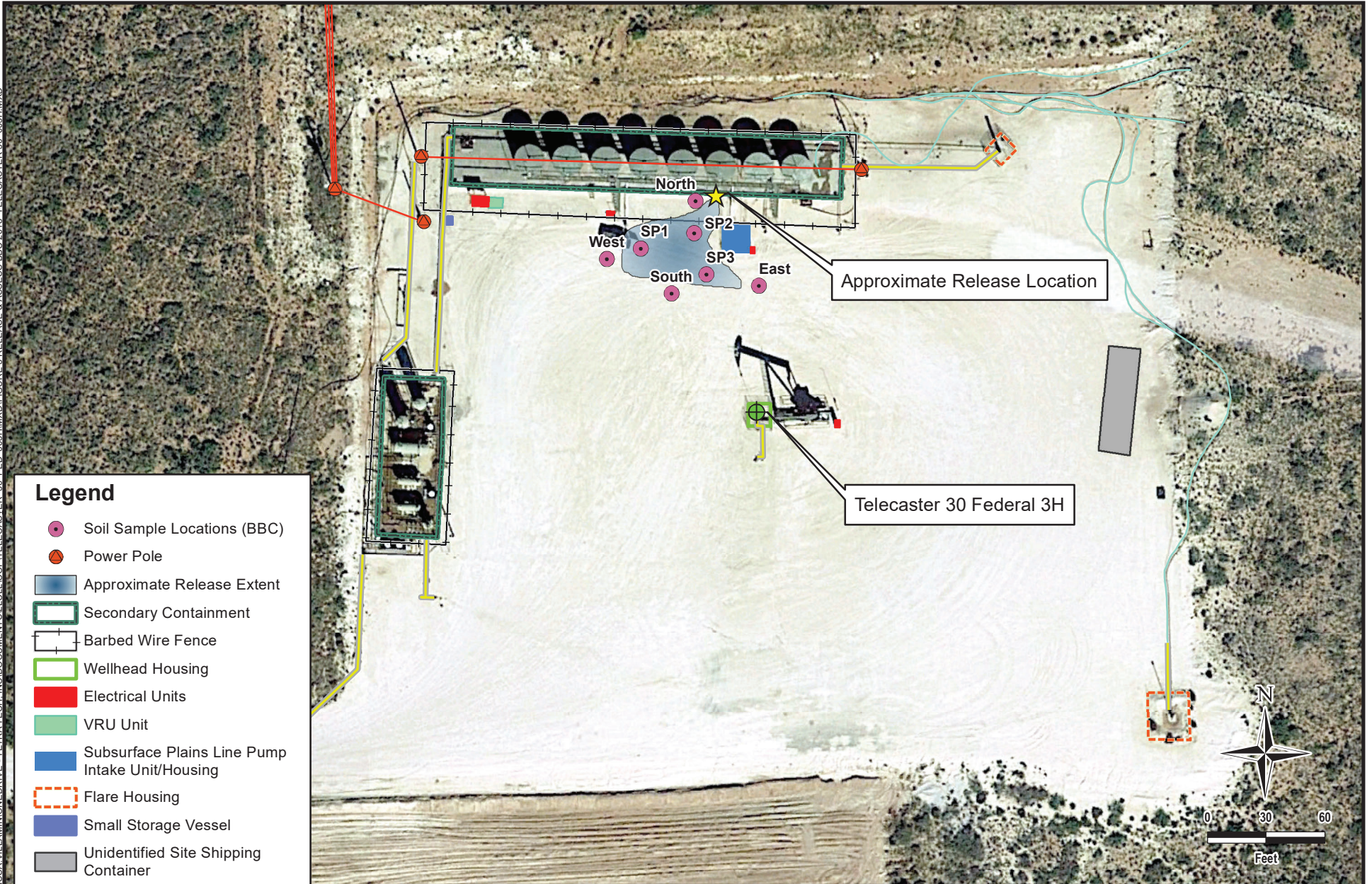
PROJECT NO.: 212C-MD-03035

DATE: MAY 09, 2023

DESIGNED BY: LMV

Figure No.

2



www.tetrattech.com
901 West Wall Street, Suite 100
Midland, Texas 79701
Phone: (432) 682-4559
Fax: (432) 682-3946

CONOCOPHILLIPS

NOY1818442568
LEA COUNTY, NEW MEXICO
(32.2819786°, -103.5069962°)

TELECASTER 30 FEDERAL #003H ASSESSMENT
APPROXIMATE RELEASE EXTENT AND SITE ASSESSMENT (BBC 2018)

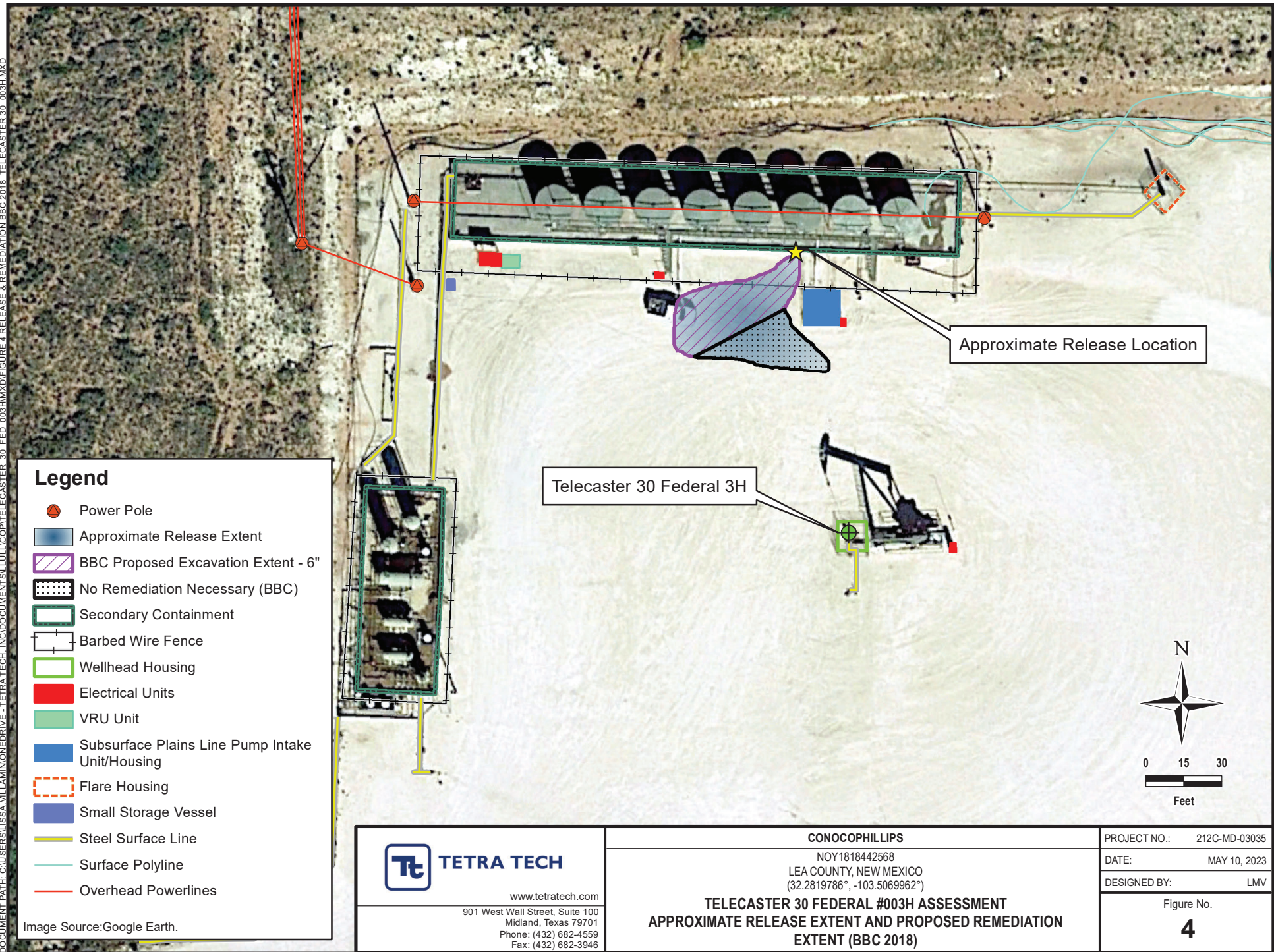
PROJECT NO.: 212C-MD-03035

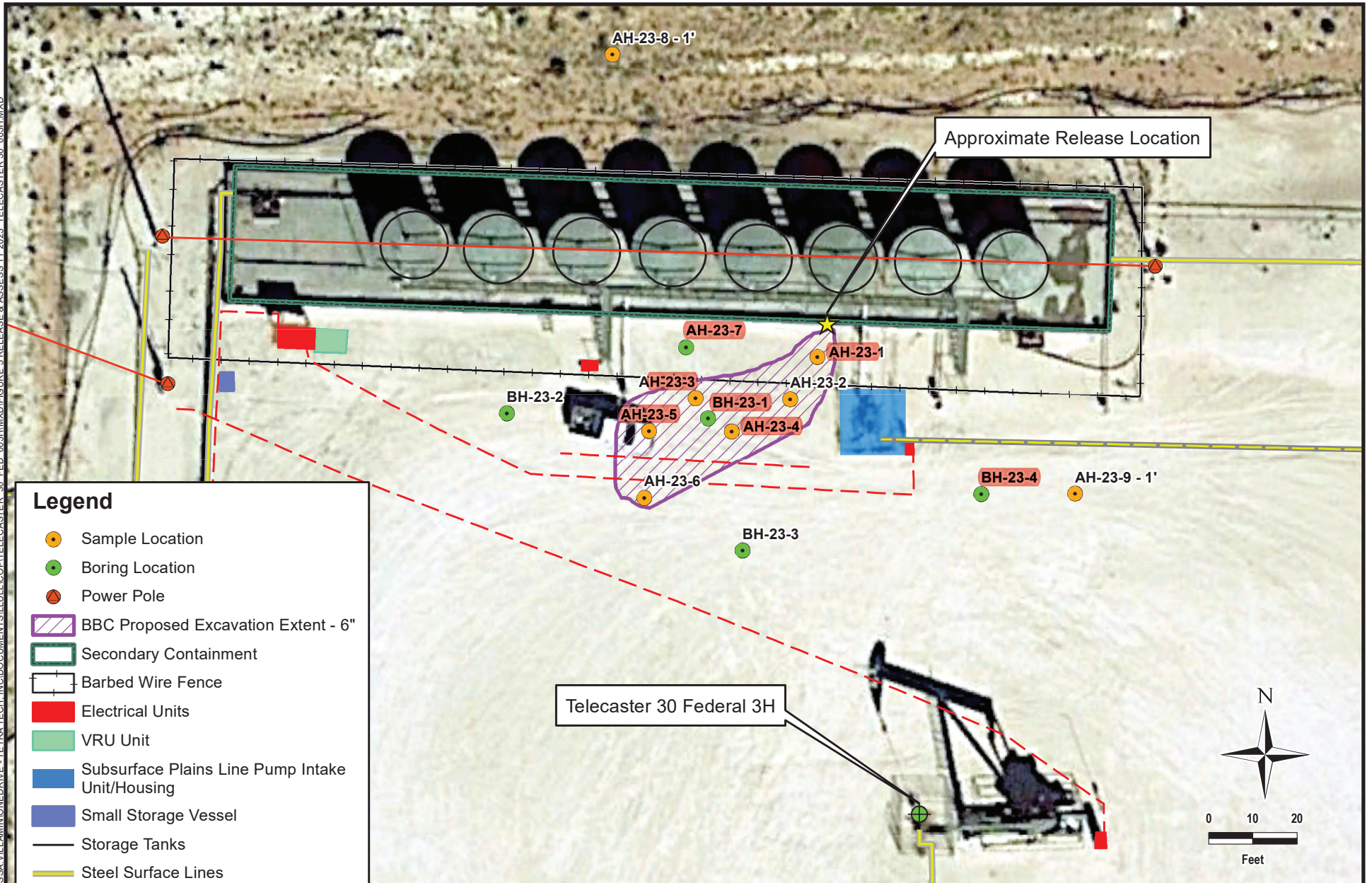
DATE: MAY 10, 2023

DESIGNED BY: LMV

Figure No.

3






Legend

- Sample Location
- Boring Location
- Power Pole
- BBC Proposed Excavation Extent - 6"
- Secondary Containment
- Barbed Wire Fence
- Electrical Units
- VRU Unit
- Subsurface Plains Line Pump Intake Unit/Housing
- Small Storage Vessel
- Storage Tanks
- Steel Surface Lines
- Subsurface Lines
- Overhead Powerlines
- Buried Electrical Lines

Image Source: Google Earth.

<div></div> <div>TETRA TECH</div> <div>www.tetrattech.com</div> <div>901 West Wall Street, Suite 100 Midland, Texas 79701 Phone: (432) 682-4559 Fax: (432) 682-3946</div>	CONOCOPHILLIPS NOY1818442568 LEA COUNTY, NEW MEXICO (32.2819786°, -103.5069962°)		PROJECT NO.: 212C-MD-03035
	TELECASTER 30 FEDERAL #003H ASSESSMENT APPROXIMATE RELEASE EXTENT AND ADDITIONAL ASSESSMENT (TETRA TECH 2023)		DATE: OCTOBER 10, 2023
			DESIGNED BY: LMV
			Figure No. 5

DOCUMENT PATH: C:\USERS\JESSICA VILLAMONNE\DRIVE - TETRA TECH\INCIDENTS\TETRA TECH\TELECASTER 30 - FED 003H\MXD\FIGURE 5 RELEASE & ASSESS TT 2023 TELECASTER 30 - 003H.MXD

TABLES

TABLE 1
SUMMARY OF ANALYTICAL RESULTS
2018 INITIAL SOIL ASSESSMENT- (nOY1818442568)
CONOCOPHILLIPS
TELECASTER 30 FEDERAL #003H
LEA COUNTY, NM

Sample ID	Sample Date	Sample Depth	Chloride ¹		BTEx ²										TPH ³							
					Benzene		Toluene		Ethylbenzene		Total Xylenes		Total BTEx		Gro		Dro		Ext Dro		Total TPH (Gro+Dro+Ext Dro)	
															C ₆ - C ₁₀		> C ₁₀ - C ₂₈		> C ₂₈ - C ₃₆			
		ft. bgs	mg/kg	Q	mg/kg	Q	mg/kg	Q	mg/kg	Q	mg/kg	Q	mg/kg	Q	mg/kg	Q	mg/kg	Q	mg/kg	Q	mg/kg	
SP1	11/5/2018	Surface	224		1.19		18.2		13		55.2		87.59		1100		15200		2620		18920	
		1	208		<0.050		<0.050		0.13		0.733		0.863		11.5		163		26.6		201.1	
		2	272		<0.050		0.179		0.382		1.88		2.441		23		255		29.4		307.4	
		3	640		-		-		-		-		-		-		-		-		-	
		4	384		-		-		-		-		-		-		-		-		-	
		5	256		-		-		-		-		-		-		-		-		-	
SP2	11/5/2018	Surface	<16.0		<0.050		<0.050		<0.050		<0.150		<0.300		<10.0		3510		859		4369	
		1	<16.0		<0.050		<0.050		<0.050		<0.150		<0.300		<10.0		40		13.2		53.2	
		2	32		-		-		-		-		-		-		-		-		-	
		3	48		-		-		-		-		-		-		-		-		-	
SP3	11/5/2018	Surface	32		<0.050		<0.050		<0.050		<0.150		<0.300		<10.0		170		32		202	
		1	656		<0.050		<0.050		<0.050		<0.150		<0.300		<10.0		<10.0		<10.0		<10.0	
		2	192		-		-		-		-		-		-		-		-		-	
		3	144		-		-		-		-		-		-		-		-		-	
North	11/5/2018	Surface	304		<0.050		<0.050		<0.050		<0.150		<0.300		<10.0		54.6		<10.0		54.6	
East		Surface	32		<0.050		<0.050		<0.050		<0.150		<0.300		<10.0		<10.0		<10.0		<10.0	
South		Surface	112		<0.050		<0.050		<0.050		<0.150		<0.300		<10.0		<10.0		<10.0		<10.0	
West		Surface	32		<0.050		<0.050		<0.050		<0.150		<0.300		<10.0		<10.0		<10.0		<10.0	

NOTES:

- ft. Feet
- bgs Below ground surface
- mg/kg Milligrams per kilogram
- TPH Total Petroleum Hydrocarbons
- GRO Gasoline range organics
- DRO Diesel range organics
- 1 Method SM4500Cl-B
- 2 Method 8021B
- 3 Method 8015M
- Sample not analyzed for parameter

Bold and italicized values indicate exceedance of proposed RRALs.

QUALIFIERS:

TABLE 2
SUMMARY OF ANALYTICAL RESULTS
MAY 2023 ADDITIONAL SOIL ASSESSMENT- nOY1818442568
CONOCOPHILLIPS
TELECASTER 30 FEDERAL #003H
LEA COUNTY, NM

Sample ID	Sample Date	Sample Depth	Chloride ¹		BTEx ²										TPH ³							
					Benzene		Toluene		Ethylbenzene		Total Xylenes		Total BTEx		Gro		Dro		Ext Dro		Total TPH (Gro+Dro+Ext Dro)	
												C ₆ - C ₁₀		> C ₁₀ - C ₂₈		> C ₂₈ - C ₃₆						
		ft. bgs	mg/kg	Q	mg/kg	Q	mg/kg	Q	mg/kg	Q	mg/kg	Q	mg/kg	Q	mg/kg	Q	mg/kg	Q	mg/kg	Q	mg/kg	
AH-23-1	5/1/2023	0-0.5	1,680		<0.050		<0.050		<0.050		<0.150		<0.300		<10.0		218		94.0		312.0	
AH-23-2	5/1/2023	0-0.5	48.0		<0.050		<0.050		<0.050		<0.150		<0.300		<10.0		<10.0		<10.0		-	
AH-23-3	5/1/2023	0-0.5	8,400		<0.050		<0.050		<0.050		<0.150		<0.300		<10.0		<10.0		<10.0		-	
AH-23-4	5/1/2023	0-0.5	5,120		<0.050		<0.050		<0.050		<0.150		<0.300		<10.0		125		66.4		191.4	
AH-23-5	5/1/2023	0-0.5	3,080		<0.050		<0.050		<0.050		<0.150		<0.300		<10.0		597		217		814	
AH-23-6	5/1/2023	0-0.5	48.0		<0.050		<0.050		<0.050		<0.150		<0.300		<10.0		<10.0		<10.0		-	

NOTES:

- ft. Feet
- bgs Below ground surface
- mg/kg Milligrams per kilogram
- TPH Total Petroleum Hydrocarbons
- GRO Gasoline range organics
- DRO Diesel range organics
- 1 Method SM4500Cl-B
- 2 Method 8021B
- 3 Method 8015M

Bold and italicized values indicate exceedance of proposed RRALs.

QUALIFIERS:

TABLE 3
SUMMARY OF ANALYTICAL RESULTS
JUNE AND JULY 2023 SOIL ASSESSMENT- nOY1818442568
CONOCOPHILLIPS
TELECASTER 30 FEDERAL #003H
LEA, NEW MEXICO

Sample ID	Sample Date	Sample Depth	Chloride ¹		BTEx ²										TPH ³							
					Benzene		Toluene		Ethylbenzene		Total Xylenes		Total BTEx		Gro		Dro		Ext Dro		Total TPH (Gro+Dro+Ext Dro)	
		C ₆ - C ₁₀		> C ₁₀ - C ₂₈		> C ₂₈ - C ₃₆																
		ft. bgs	mg/kg	Q	mg/kg	Q	mg/kg	Q	mg/kg	Q	mg/kg	Q	mg/kg	Q	mg/kg	Q	mg/kg	Q	mg/kg	Q	mg/kg	
BH-23-1	6/21/2023	0-1	640		<0.050		<0.050		<0.050		<0.150		<0.300		<10.0		<10.0		<10.0		-	
		2-3	352		<0.050		<0.050		<0.050		<0.150		<0.300		<10.0		<10.0		<10.0		-	
		3-4	176		<0.050		<0.050		<0.050		<0.150		<0.300		<10.0		<10.0		<10.0		-	
		5-6	240		<0.050		<0.050		<0.050		<0.150		<0.300		<10.0		<10.0		<10.0		-	
BH-23-2	6/21/2023	0-1	16.0		<0.050		<0.050		<0.050		<0.150		<0.300		<10.0		20.5		<10.0		20.5	
BH-23-3	6/21/2023	0-1	240		<0.050		<0.050		<0.050		<0.150		<0.300		<10.0		<10.0		<10.0		-	
BH-23-4	6/21/2023	0-1	1,740		<0.050		<0.050		<0.050		<0.150		<0.300		<10.0		<10.0		<10.0		-	
AH-23-7	6/21/2023	0-1	6,720		<0.050		<0.050		<0.050		<0.150		<0.300		<10.0		<10.0		<10.0		-	
AH-23-8	7/26/2023	0-1	<16.0		<0.050		<0.050		<0.050		<0.150		<0.300		<10.0		<10.0		<10.0		-	
AH-23-9	7/26/2023	0-1	192		<0.050		<0.050		<0.050		<0.150		<0.300		<10.0		<10.0		<10.0		-	

NOTES:

- ft. Feet
- bgs Below ground surface
- mg/kg Milligrams per kilogram
- TPH Total Petroleum Hydrocarbons
- GRO Gasoline range organics
- DRO Diesel range organics
- 1 Method SM4500CI-B
- 2 Method 8021B
- 3 Method 8015M

Bold and italicized values indicate exceedance of proposed RRALs and Reclamation Requirements.

QUALIFIERS:

APPENDIX A C-141 Forms

District I
1625 N. French Dr., Hobbs, NM 88240
District II
811 S. First St., Artesia, NM 88210
District III
1000 Rio Brazos Road, Aztec, NM 87410
District IV
1220 S. St. Francis Dr., Santa Fe, NM 87505

State of New Mexico
Energy Minerals and Natural Resources
Oil Conservation Division
1220 South St. Francis Dr.
Santa Fe, NM 87505

Form C-141
Revised April 3, 2017
Submit 1 Copy to appropriate District Office in
accordance with 19.15.29 NMAC.

Release Notification and Corrective Action

OPERATOR

☒ Initial Report ☐ Final Report

Name of Company: COG Operating LLC (OGRID #229137)	Contact: Robert McNeill
Address: 600 West Illinois Avenue, Midland TX 79701	Telephone No. 432-683-7443
Facility Name: Telecaster 30 Federal #003H	Facility Type: Tank Battery
Surface Owner: State	Mineral Owner: Federal
API No. 30-025-41455	

LOCATION OF RELEASE

Unit Letter	Section	Township	Range	Feet from the	North/South Line	Feet from the	East/West Line	County
B	30	23S	34E	330	North	1,980	East	Lea

Latitude 32.2819786 Longitude -103.5069962 NAD83

NATURE OF RELEASE

Type of Release: Produced Water	Volume of Release: 23 bbls.	Volume Recovered: 20 bbls.
Source of Release: Valve	Date and Hour of Occurrence: June 28, 2018 6:30am	Date and Hour of Discovery: June 28, 2018 6:30am
Was Immediate Notice Given? <input type="checkbox"/> Yes <input checked="" type="checkbox"/> No <input checked="" type="checkbox"/> Not Required	If YES, To Whom?	
By Whom?	Date and Hour:	
Was a Watercourse Reached? <input type="checkbox"/> Yes <input checked="" type="checkbox"/> No	If YES, Volume Impacting the Watercourse.	

If a Watercourse was Impacted, Describe Fully.*

RECEIVED

By Olivia Yu at 11:47 am, Jul 03, 2018

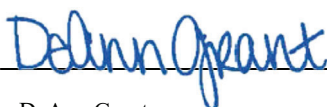

Describe Cause of Problem and Remedial Action Taken.*

The release was caused by a third party truck driver leaving the suction valve open. The valve has been closed.

Describe Area Affected and Cleanup Action Taken.*

The release was on location. A vacuum truck was dispatched to remove all freestanding fluids. Concho will have the spill area sampled to delineate any possible impact from the release and we will present a remediation work plan to the NMOCD for approval prior to any significant remediation activities.

I hereby certify that the information given above is true and complete to the best of my knowledge and understand that pursuant to NMOCD rules and regulations all operators are required to report and/or file certain release notifications and perform corrective actions for releases which may endanger public health or the environment. The acceptance of a C-141 report by the NMOCD marked as "Final Report" does not relieve the operator of liability should their operations have failed to adequately investigate and remediate contamination that pose a threat to ground water, surface water, human health or the environment. In addition, NMOCD acceptance of a C-141 report does not relieve the operator of responsibility for compliance with any other federal, state, or local laws and/or regulations.

Signature: 	OIL CONSERVATION DIVISION	
Printed Name: DeAnn Grant	Approved by Environmental Specialist: 	
Title: HSE Administrative Assistant	Approval Date: 7/3/2018	Expiration Date:
E-mail Address: agrant@concho.com	Conditions of Approval: see attached directive	Attached <input checked="" type="checkbox"/>
Date: June 29, 2018	Phone: 432-253-4513	

* Attach Additional Sheets If Necessary

1RP-5114

nOY1818442568

pOY1818442737

Form C-141

Page 3

State of New Mexico
Oil Conservation Division

Incident ID	
District RP	1RP-5114
Facility ID	
Application ID	

Site Assessment/Characterization*This information must be provided to the appropriate district office no later than 90 days after the release discovery date.*

What is the shallowest depth to groundwater beneath the area affected by the release?	162 (ft bgs)
Did this release impact groundwater or surface water?	<input type="checkbox"/> Yes <input checked="" type="checkbox"/> No
Are the lateral extents of the release within 300 feet of a continuously flowing watercourse or any other significant watercourse?	<input type="checkbox"/> Yes <input checked="" type="checkbox"/> No
Are the lateral extents of the release within 200 feet of any lakebed, sinkhole, or playa lake (measured from the ordinary high-water mark)?	<input type="checkbox"/> Yes <input checked="" type="checkbox"/> No
Are the lateral extents of the release within 300 feet of an occupied permanent residence, school, hospital, institution, or church?	<input type="checkbox"/> Yes <input checked="" type="checkbox"/> No
Are the lateral extents of the release within 500 horizontal feet of a spring or a private domestic fresh water well used by less than five households for domestic or stock watering purposes?	<input type="checkbox"/> Yes <input checked="" type="checkbox"/> No
Are the lateral extents of the release within 1000 feet of any other fresh water well or spring?	<input type="checkbox"/> Yes <input checked="" type="checkbox"/> No
Are the lateral extents of the release within incorporated municipal boundaries or within a defined municipal fresh water well field?	<input type="checkbox"/> Yes <input checked="" type="checkbox"/> No
Are the lateral extents of the release within 300 feet of a wetland?	<input type="checkbox"/> Yes <input checked="" type="checkbox"/> No
Are the lateral extents of the release overlying a subsurface mine?	<input type="checkbox"/> Yes <input checked="" type="checkbox"/> No
Are the lateral extents of the release overlying an unstable area such as karst geology?	<input type="checkbox"/> Yes <input checked="" type="checkbox"/> No
Are the lateral extents of the release within a 100-year floodplain?	<input type="checkbox"/> Yes <input checked="" type="checkbox"/> No
Did the release impact areas not on an exploration, development, production, or storage site?	<input type="checkbox"/> Yes <input checked="" type="checkbox"/> No

Attach a comprehensive report (electronic submittals in .pdf format are preferred) demonstrating the lateral and vertical extents of soil contamination associated with the release have been determined. Refer to 19.15.29.11 NMAC for specifics.

Characterization Report Checklist: *Each of the following items must be included in the report.*

- ☒ Scaled site map showing impacted area, surface features, subsurface features, delineation points, and monitoring wells.
- ☐ Field data
- ☒ Data table of soil contaminant concentration data
- ☒ Depth to water determination
- ☒ Determination of water sources and significant watercourses within 1/2-mile of the lateral extents of the release
- ☐ Boring or excavation logs
- ☐ Photographs including date and GIS information
- ☒ Topographic/Aerial maps
- ☒ Laboratory data including chain of custody

If the site characterization report does not include completed efforts at remediation of the release, the report must include a proposed remediation plan. That plan must include the estimated volume of material to be remediated, the proposed remediation technique, proposed sampling plan and methods, anticipated timelines for beginning and completing the remediation. The closure criteria for a release are contained in Table 1 of 19.15.29.12 NMAC, however, use of the table is modified by site- and release-specific parameters.

Form C-141

State of New Mexico
Oil Conservation Division

Page 4

Incident ID	
District RP	1RP-5114
Facility ID	
Application ID	

I hereby certify that the information given above is true and complete to the best of my knowledge and understand that pursuant to OCD rules and regulations all operators are required to report and/or file certain release notifications and perform corrective actions for releases which may endanger public health or the environment. The acceptance of a C-141 report by the OCD does not relieve the operator of liability should their operations have failed to adequately investigate and remediate contamination that pose a threat to groundwater, surface water, human health or the environment. In addition, OCD acceptance of a C-141 report does not relieve the operator of responsibility for compliance with any other federal, state, or local laws and/or regulations.

Printed Name: **Rebecca Haskell**Title: **Senior HSE Coordinator**Signature: *Rebecca Haskell*Date: *11/15/18*email: **rhaskell@concho.com**Telephone: **(432) 683-7443****OCD Only**

Received by: _____

Date: _____

Form C-141

State of New Mexico
Oil Conservation Division

Page 5

Incident ID	
District RP	1RP-5114
Facility ID	
Application ID	

Remediation Plan

Remediation Plan Checklist: *Each of the following items must be included in the plan.*

- ☒ Detailed description of proposed remediation technique
- ☒ Scaled sitemap with GPS coordinates showing delineation points
- ☒ Estimated volume of material to be remediated
- ☒ Closure criteria is to Table 1 specifications subject to 19.15.29.12(C)(4) NMAC
- ☒ Proposed schedule for remediation (note if remediation plan timeline is more than 90 days OCD approval is required)

Deferral Requests Only: *Each of the following items must be confirmed as part of any request for deferral of remediation.*

- ☐ Contamination must be in areas immediately under or around production equipment where remediation could cause a major facility deconstruction.
- ☐ Extents of contamination must be fully delineated.
- ☐ Contamination does not cause an imminent risk to human health, the environment, or groundwater.

I hereby certify that the information given above is true and complete to the best of my knowledge and understand that pursuant to OCD rules and regulations all operators are required to report and/or file certain release notifications and perform corrective actions for releases which may endanger public health or the environment. The acceptance of a C-141 report by the OCD does not relieve the operator of liability should their operations have failed to adequately investigate and remediate contamination that pose a threat to groundwater, surface water, human health or the environment. In addition, OCD acceptance of a C-141 report does not relieve the operator of responsibility for compliance with any other federal, state, or local laws and/or regulations.

Printed Name: Rebecca HaskellTitle: Senior HSE CoordinatorSignature: Rebecca HaskellDate: 11/15/18email: rhaskell@concho.comTelephone: (432) 683-7443**OCD Only**

Received by: _____ Date: _____

☐ Approved ☒ Approved with Attached Conditions of Approval ☐ Denied ☐ Deferral ApprovedSignature: Bryan HallDate: 11/29/2022

District I
1625 N. French Dr., Hobbs, NM 88240
Phone:(575) 393-6161 Fax:(575) 393-0720
District II
811 S. First St., Artesia, NM 88210
Phone:(575) 748-1283 Fax:(575) 748-9720
District III
1000 Rio Brazos Rd., Aztec, NM 87410
Phone:(505) 334-6178 Fax:(505) 334-6170
District IV
1220 S. St Francis Dr., Santa Fe, NM 87505
Phone:(505) 476-3470 Fax:(505) 476-3462

State of New Mexico
Energy, Minerals and Natural Resources
Oil Conservation Division
1220 S. St Francis Dr.
Santa Fe, NM 87505

CONDITIONS

Action 162045

CONDITIONS

Operator: COG OPERATING LLC 600 W Illinois Ave Midland, TX 79701	OGRID: 229137
	Action Number: 162045
	Action Type: [IM-SD] Incident File Support Doc (ENV) (IM-BNF)

CONDITIONS

Created By	Condition	Condition Date
bhall	Remediation and closure must meet all requirements in 19.15.29.12 and 19.15.29.13 NMAC. Confirmation samples must be collected from the base and side walls of the excavation. Confirmation samples must be representative of no more than 200 square feet and be analyzed for all constituents listed in Table I.	11/29/2022
bhall	1RP-5114 closed. Refer to incident #NOY1818442568 in all future communications.	11/29/2022
bhall	Please submit a complete closure report through the OCD Permitting website by 3/3/2023.	11/29/2022

Incident ID	nOY1818442568
District RP	
Facility ID	
Application ID	

Closure

The responsible party must attach information demonstrating they have complied with all applicable closure requirements and any conditions or directives of the OCD. This demonstration should be in the form of a comprehensive report (electronic submittals in .pdf format are preferred) including a scaled site map, sampling diagrams, relevant field notes, photographs of any excavation prior to backfilling, laboratory data including chain of custody documents of final sampling, and a narrative of the remedial activities. Refer to 19.15.29.12 NMAC.

Closure Report Attachment Checklist: *Each of the following items must be included in the closure report.*

- ☒ A scaled site and sampling diagram as described in 19.15.29.11 NMAC
- ☐ Photographs of the remediated site prior to backfill or photos of the liner integrity if applicable (Note: appropriate OCD District office must be notified 2 days prior to liner inspection)
- ☒ Laboratory analyses of final sampling (Note: appropriate ODC District office must be notified 2 days prior to final sampling)
- ☐ Description of remediation activities


I hereby certify that the information given above is true and complete to the best of my knowledge and understand that pursuant to OCD rules and regulations all operators are required to report and/or file certain release notifications and perform corrective actions for releases which may endanger public health or the environment. The acceptance of a C-141 report by the OCD does not relieve the operator of liability should their operations have failed to adequately investigate and remediate contamination that pose a threat to groundwater, surface water, human health or the environment. In addition, OCD acceptance of a C-141 report does not relieve the operator of responsibility for compliance with any other federal, state, or local laws and/or regulations. The responsible party acknowledges they must substantially restore, reclaim, and re-vegetate the impacted surface area to the conditions that existed prior to the release or their final land use in accordance with 19.15.29.13 NMAC including notification to the OCD when reclamation and re-vegetation are complete.

Printed Name: Moises Hiram Cantu Garcia Title: Sr. Environmental Engineer
Signature: Moises H Cantu Garcia Date: 9/1/2023
email: Moises.H.CantuGarcia@conocophillips.com Telephone: 318-461-5581

OCD Only

Received by: Shelly Wells Date: 9/7/2023

Closure approval by the OCD does not relieve the responsible party of liability should their operations have failed to adequately investigate and remediate contamination that poses a threat to groundwater, surface water, human health, or the environment nor does not relieve the responsible party of compliance with any other federal, state, or local laws and/or regulations.

Closure Approved by:  Date: 10/30/2023
Printed Name: Brittany Hall Title: Environmental Specialist

APPENDIX B

Site Characterization Data

Water Bodies



5/25/2023, 1:56:11 PM



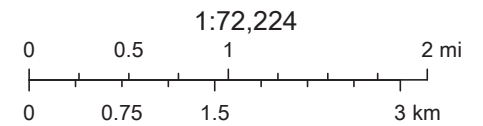
Override 1



OSW Water Bodys

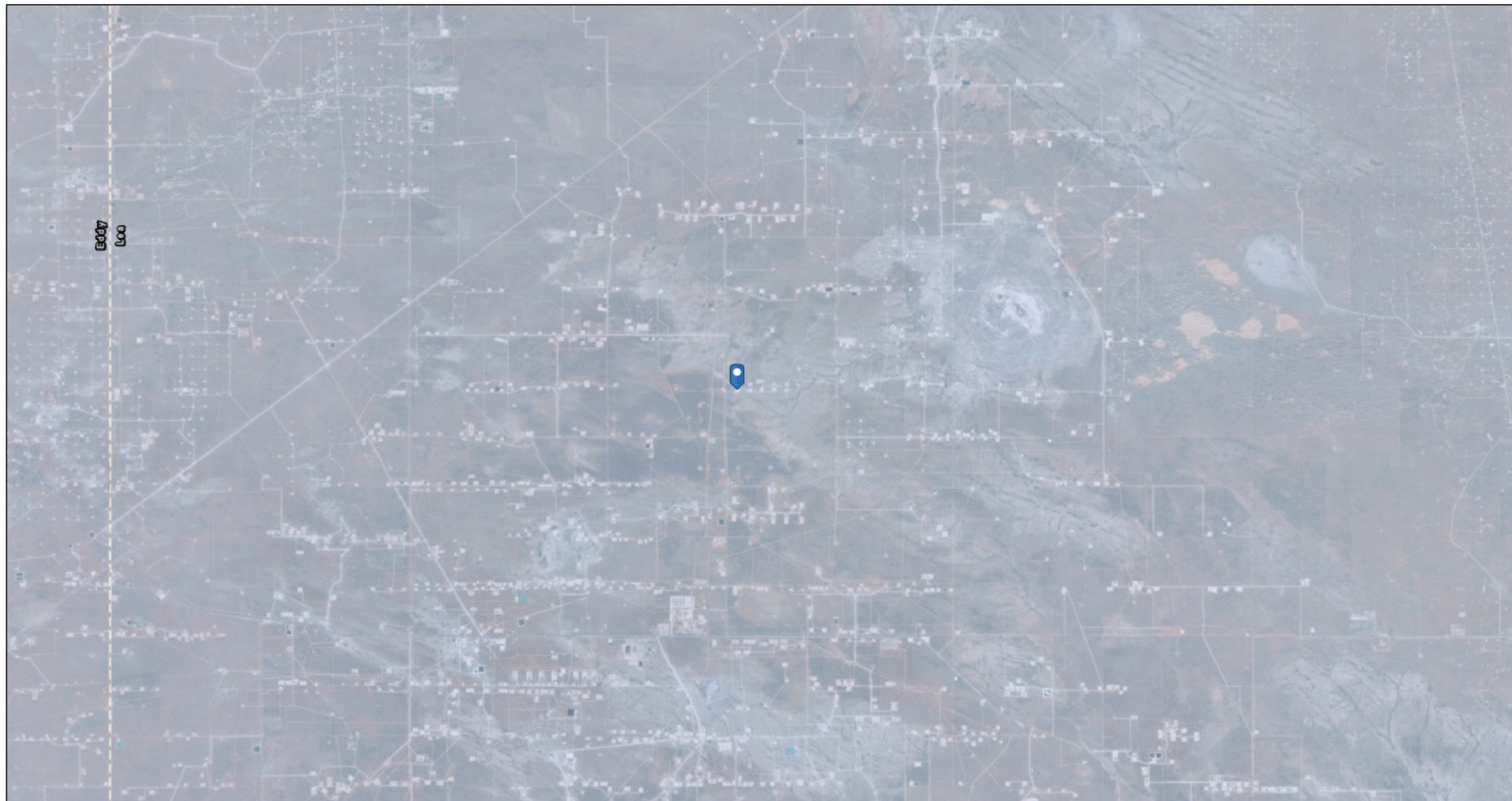


OSE Streams



Earthstar Geographics, NM OSE

OCD Karst Potential Map

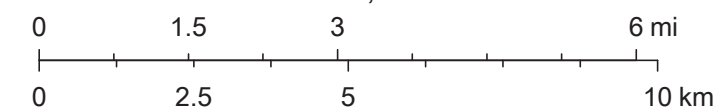


2/24/2023, 1:56:55 PM

Karst Occurrence Potential

Low

1:144,448



BLM, OCD, New Mexico Tech, Esri, HERE, Garmin, Earthstar Geographics



New Mexico Office of the State Engineer

Water Column/Average Depth to Water

(A CLW##### in the POD suffix indicates the POD has been replaced & no longer serves a water right file.)

(R=POD has been replaced, O=orphaned, C=the file is closed)

(quarters are 1=NW 2=NE 3=SW 4=SE)

(quarters are smallest to largest)

(NAD83 UTM in meters)

(In feet)

POD Number	POD Sub-Code	basin	County	Q 64	Q 16	Q 4	Sec	Tws	Rng	X	Y	Distance	Depth Well	Depth Water	Water Column
C 04667 POD1	CUB	LE		3	4	3	20	23S	34E	641770	3572915	1203			
C 04353 POD1	CUB	ED		4	2	2	24	23S	33E	639474	3574098	1785	603	330	273

Average Depth to Water: **330 feet**

Minimum Depth: **330 feet**

Maximum Depth: **330 feet**

Record Count: 2

UTMNAD83 Radius Search (in meters):

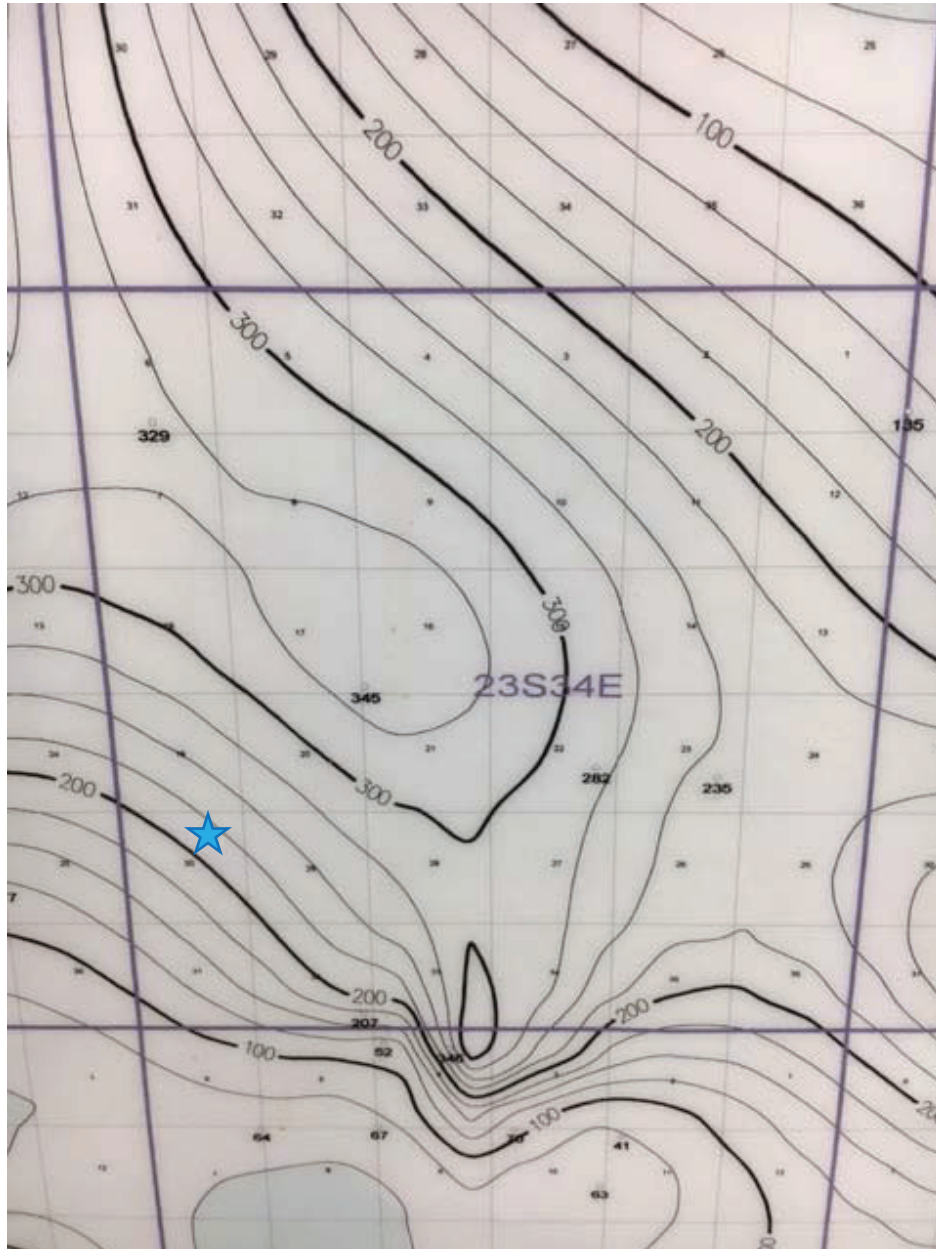
Easting (X): 640586.137

Northing (Y): 3572701.766

Radius: 2400

The data is furnished by the NMOSE/ISC and is accepted by the recipient with the expressed understanding that the OSE/ISC make no warranties, expressed or implied, concerning the accuracy, completeness, reliability, usability, or suitability for any particular purpose of the data.

COG, Telecaster 30 Federal #003H
U/L B, Section 30, T23S, R34E
Groundwater: 200'-225'



APPENDIX C

Regulatory Correspondence

From: OCDOnline@state.nm.us
To: [Beauvais, Charles R](#)
Subject: [EXTERNAL]The Oil Conservation Division (OCD) has approved the application, Application ID: 162045
Date: Tuesday, November 29, 2022 12:14:15 PM

CAUTION: This email originated from outside of the organization. Do not click links or open attachments unless you recognize the sender and know the content is safe.

To whom it may concern (c/o Charles Beauvais for COG OPERATING LLC),

The OCD has approved the submitted *Internal Manual Incident File Supporting Documentation (ENV)* (IM-BNF), for incident ID (n#) nOY1818442568, with the following conditions:

- **Remediation and closure must meet all requirements in 19.15.29.12 and 19.15.29.13 NMAC. Confirmation samples must be collected from the base and side walls of the excavation. Confirmation samples must be representative of no more than 200 square feet and be analyzed for all constituents listed in Table I.**
- **1RP-5114 closed. Refer to incident #NOY1818442568 in all future communications.**
- **Please submit a complete closure report through the OCD Permitting website by 3/3/2023.**

The signed IM-BNF can be found in the OCD Online: Imaging under the incident ID (n#).

If you have any questions regarding this application, please contact me.

Thank you,
Brittany Hall
Projects Environmental Specialist - A
505-517-5333
Brittany.Hall@emnrd.nm.gov

New Mexico Energy, Minerals and Natural Resources Department
1220 South St. Francis Drive
Santa Fe, NM 87505

From: [Hall, Brittany, EMNRD](#)
To: [Abbott, Sam](#)
Cc: [Beauvais, Charles R](#); [Llull, Christian](#); [Chavira, Lisbeth](#)
Subject: RE: [EXTERNAL] Extension Request - Application ID 162045 (nOY1818442568)
Date: Friday, March 3, 2023 2:06:04 PM
Attachments: [image001.png](#)
[image002.png](#)
[image003.png](#)
[image004.png](#)
[image005.png](#)

CAUTION: This email originated from an external sender. Verify the source before opening links or attachments.

Sam,

Your extension request for **nOY1818442568** is approved. The new due date is June 3, 2023.

Please include a copy of this and all notifications in the remedial and/or closure reports to ensure the notifications are documented in the project file.

Thank you,

Brittany Hall • Environmental Specialist
Environmental Bureau Projects Group
EMNRD - Oil Conservation Division
1000 Rio Brazos Road | Aztec, NM 87110
505.517.5333 | Brittany.Hall@emnrd.nm.gov
<http://www.emnrd.nm.gov/ocd/>

From: Abbott, Sam <Sam.Abbott@tetrattech.com>
Sent: Friday, March 3, 2023 12:03 PM
To: Hall, Brittany, EMNRD <Brittany.Hall@emnrd.nm.gov>
Cc: Beauvais, Charles R <Charles.R.Beauvais@conocophillips.com>; Llull, Christian <Christian.Llull@tetrattech.com>; Chavira, Lisbeth <LISBETH.CHAVIRA@tetrattech.com>
Subject: [EXTERNAL] Extension Request - Application ID 162045 (nOY1818442568)

CAUTION: This email originated outside of our organization. Exercise caution prior to clicking on links or opening attachments.

Ms. Hall:

On behalf of ConocoPhillips, Tetra Tech is requesting a 90-day extension (until June 3, 2023) to complete the remedial action and associated closure reporting for the Telecaster 30 Federal #003H Release site (**nOY1818442568**).

ConocoPhillips recently received a large volume of NMOCD determinations related to unresolved releases from ConocoPhillips' predecessor-in-interest ("COG") via the *Internal Manual Incident File Supporting Documentation (ENV)* (IM-BNF) process.

Given the difficulties inherent with available resource allocation for several projects with similar deadlines within a short period of time, this schedule is not currently practical. ConocoPhillips plans to conduct remediation in the coming month however, and once the confirmation sampling data is collected, tabulated, and evaluated, a closure report will be submitted to the OCD.

Please let me know if you have any questions or concerns.

Sam

Samantha Abbott, PG | Project Manager

Direct Mobile +1 (512) 739-7874 | Business +1 (512) 338-1667 | Sam.Abbott@tetrattech.com

Tetra Tech, Inc. | *Leading with Science*® | OGA

8911 N Capital of Texas Hwy #2310 | Austin, TX 78759 | tetrattech.com

This message, including any attachments, may include privileged, confidential and/or inside information. Any distribution or use of this communication by anyone other than the intended recipient is strictly prohibited and may be unlawful. If you are not the intended recipient, please notify the sender by replying to this message and then delete it from your system.



Please consider the environment before printing. [Read more](#)



From: OCDOnline@state.nm.us
To: [Lull, Christian](#)
Subject: The Oil Conservation Division (OCD) has rejected the application, Application ID: 221137
Date: Tuesday, June 6, 2023 11:36:32 AM

CAUTION: This email originated from an external sender. Verify the source before opening links or attachments.

To whom it may concern (c/o Christian Lull for COG OPERATING LLC),

The OCD has rejected the submitted *Application for administrative approval of a release notification and corrective action* (C-141), for incident ID (n#) nOY1818442568, for the following reasons:

- **Closure denied. During the initial round of sampling performed in 2018, the chloride results were below or slightly above the reclamation standard of 600 mg/kg. Chloride results increased significantly in the samples collected in 2023. Vertical and horizontal delineation of the area will need to be completed.**
- **Submit a complete report though the OCD Permitting website by 9/6/2023.**

The rejected C-141 can be found in the OCD Online: Permitting - Action Status, under the Application ID: 221137.

Please review and make the required correction(s) prior to resubmitting.

If you have any questions why this application was rejected or believe it was rejected in error, please contact me prior to submitting an additional C-141.

Thank you,
Brittany Hall
Projects Environmental Specialist - A
505-517-5333
Brittany.Hall@emnrd.nm.gov

New Mexico Energy, Minerals and Natural Resources Department
1220 South St. Francis Drive
Santa Fe, NM 87505

APPENDIX D

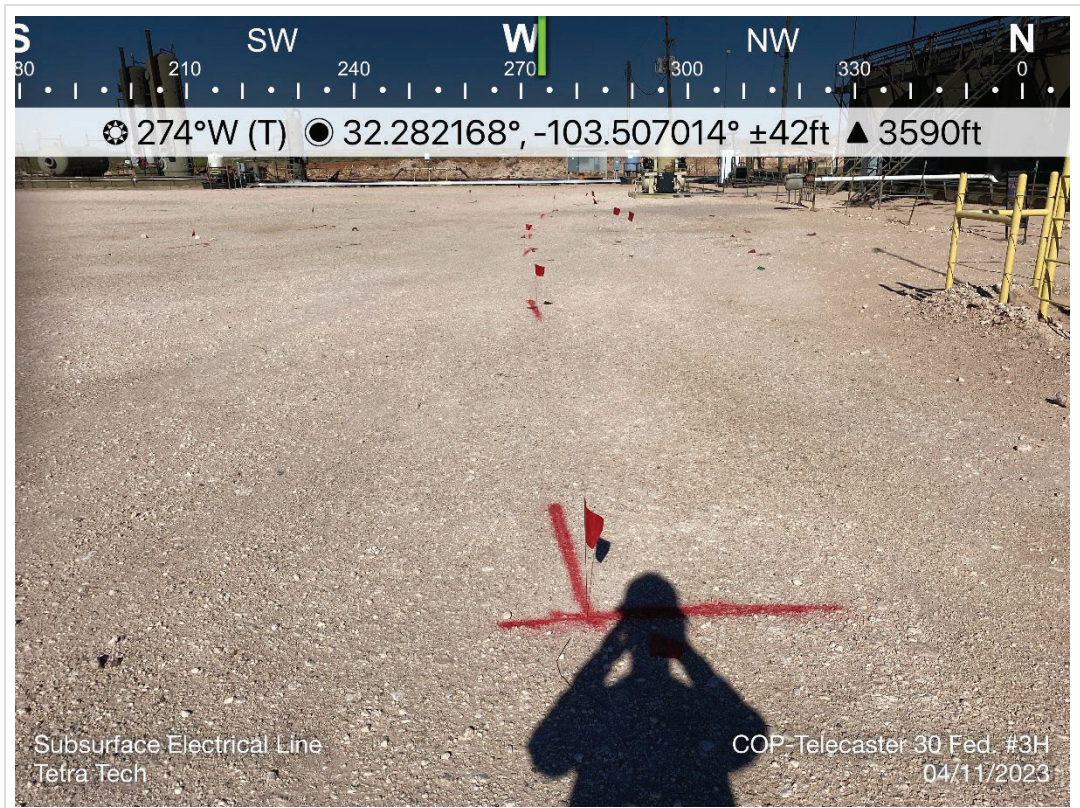
Photographic Documentation



TETRA TECH, INC. PROJECT NO. 212C-MD-03035	DESCRIPTION	View north of site signage.	1
	SITE NAME	Telecaster 30 Federal 30 #003H	4/11/2023



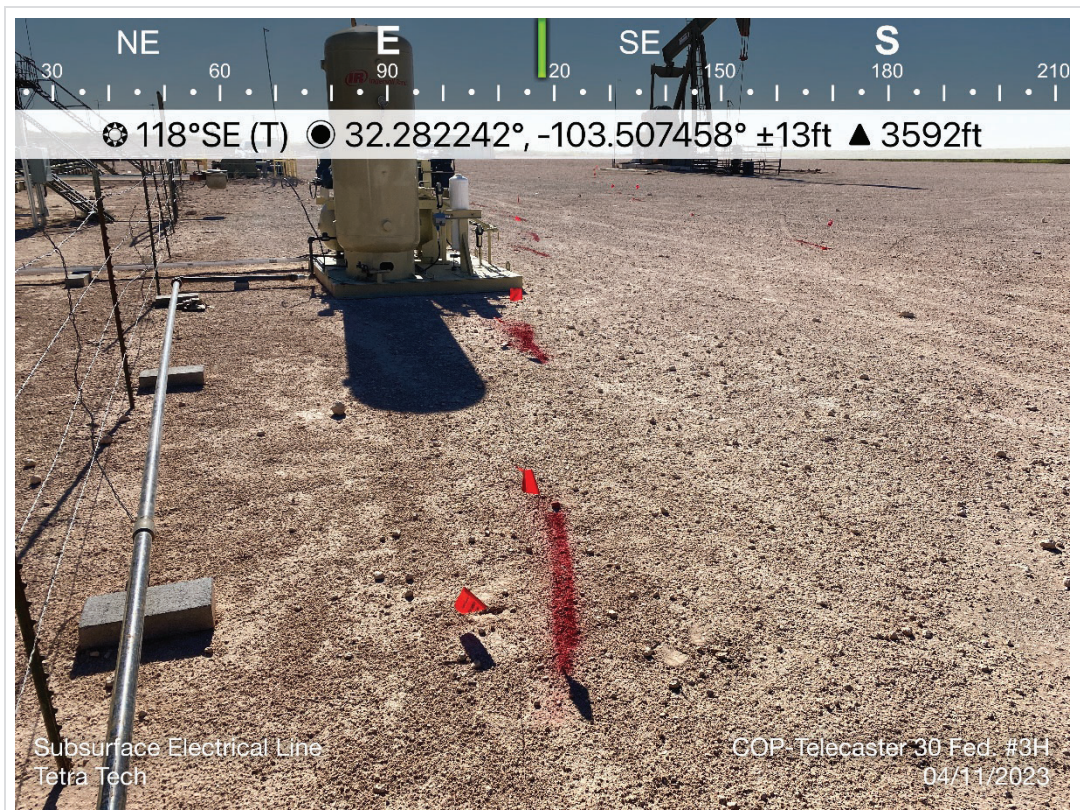
TETRA TECH, INC. PROJECT NO. 212C-MD-03035	DESCRIPTION	View northeast. Release extent and tank battery.	2
	SITE NAME	Telecaster 30 Federal 30 #003H	4/11/2023



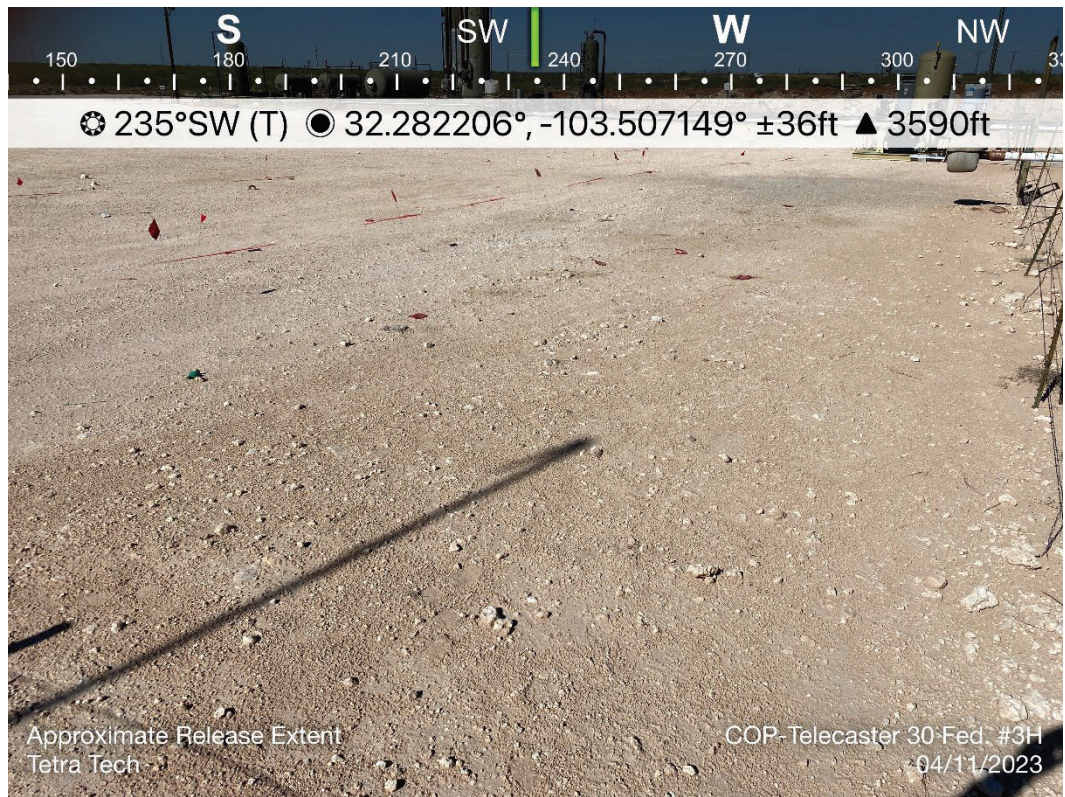
TETRA TECH, INC. PROJECT NO. 212C-MD-03035	DESCRIPTION	View west. South side of tank batteries. Subsurface lines marked over release extent.	3
	SITE NAME	Telecaster 30 Federal 30 #003H	4/11/2023



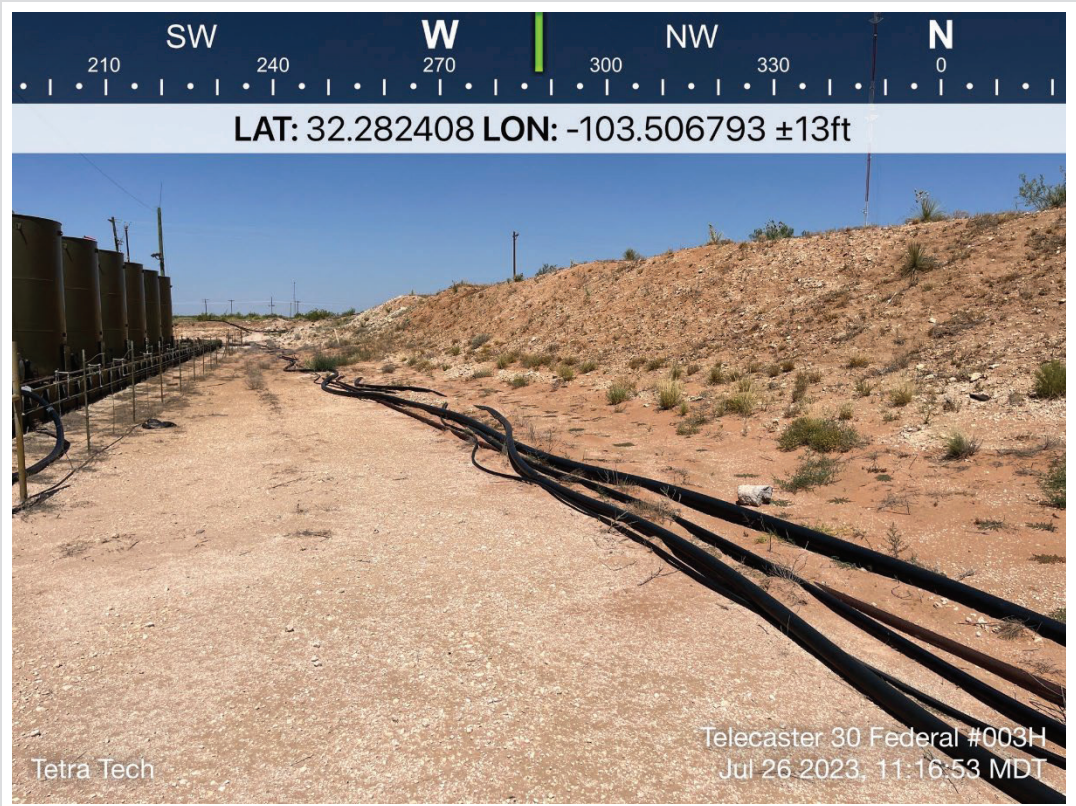
TETRA TECH, INC. PROJECT NO. 212C-MD-03035	DESCRIPTION	View east. South side of tank batteries. Subsurface lines marked over release extent.	4
	SITE NAME	Telecaster 30 Federal 30 #003H	4/11/2023



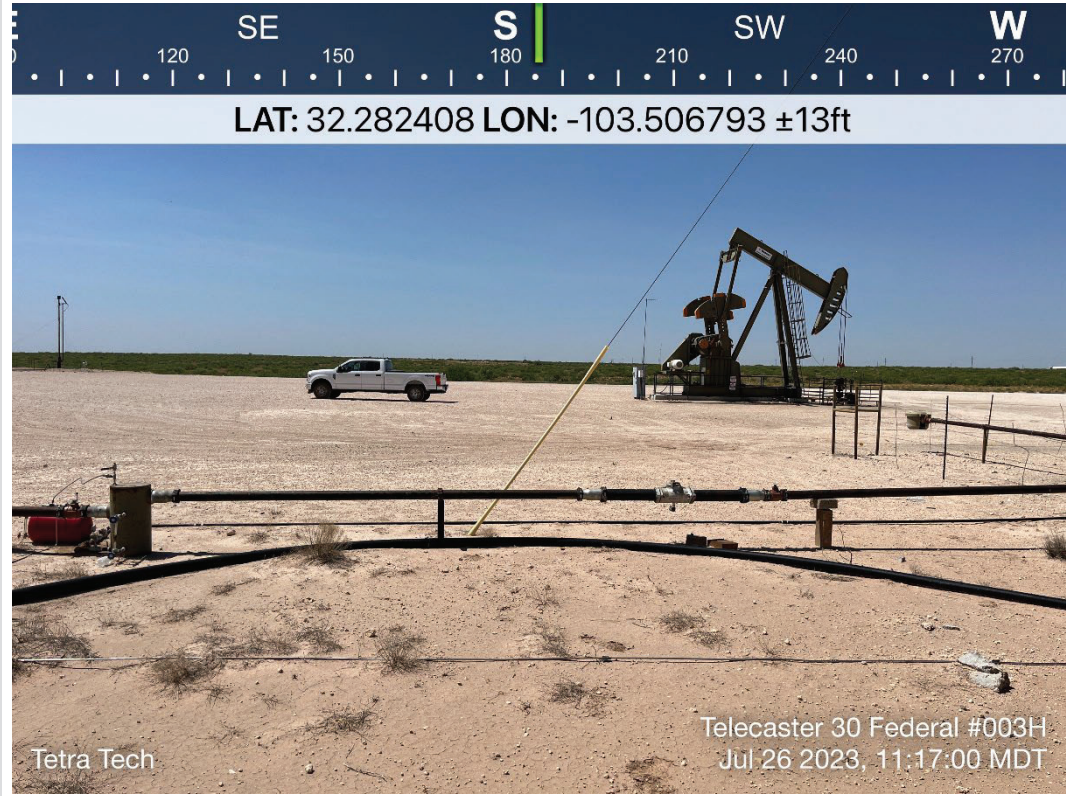
TETRA TECH, INC. PROJECT NO. 212C-MD-03035	DESCRIPTION	View southeast. South side of tank batteries. Subsurface lines marked over release extent.	5
	SITE NAME	Telecaster 30 Federal 30 #003H	4/11/2023



TETRA TECH, INC. PROJECT NO. 212C-MD-03035	DESCRIPTION	View southwest. Release extent.	6
	SITE NAME	Telecaster 30 Federal 30 #003H	4/11/2023



TETRA TECH, INC. PROJECT NO. 212C-MD-03035	DESCRIPTION	View west. North side of tank batteries.	7
	SITE NAME	Telecaster 30 Federal 30 #003H	7/26/2023



TETRA TECH, INC. PROJECT NO. 212C-MD-03035	DESCRIPTION	View south. Release extent on pad.	8
	SITE NAME	Telecaster 30 Federal 30 #003H	7/26/2023

APPENDIX E

Laboratory Analytical Data



PHONE (575) 393-2326 ° 101 E. MARLAND ° HOBBS, NM 88240

May 05, 2023

SAM ABBOTT

TETRA TECH

901 WEST WALL STREET , STE 100

MIDLAND, TX 79701

RE: TELECASTER 30 FEDERAL #002H

Enclosed are the results of analyses for samples received by the laboratory on 05/02/23 12:56.

Cardinal Laboratories is accredited through Texas NELAP under certificate number T104704398-22-15. Accreditation applies to drinking water, non-potable water and solid and chemical materials. All accredited analytes are denoted by an asterisk (*). For a complete list of accredited analytes and matrices visit the TCEQ website at www.tceq.texas.gov/field/qa/lab_accred_certif.html.

Cardinal Laboratories is accredited through the State of Colorado Department of Public Health and Environment for:

Method EPA 552.2	Haloacetic Acids (HAA-5)
Method EPA 524.2	Total Trihalomethanes (TTHM)
Method EPA 524.4	Regulated VOCs (V1, V2, V3)

Accreditation applies to public drinking water matrices.

This report meets NELAP requirements and is made up of a cover page, analytical results, and a copy of the original chain-of-custody. If you have any questions concerning this report, please feel free to contact me.

Sincerely,

A handwritten signature in black ink that reads "Coley D. Keene". The signature is written in a cursive, flowing style.

Celey D. Keene

Lab Director/Quality Manager



PHONE (575) 393-2326 ° 101 E. MARLAND ° HOBBS, NM 88240

Analytical Results For:

TETRA TECH
 SAM ABBOTT
 901 WEST WALL STREET , STE 100
 MIDLAND TX, 79701
 Fax To: (432) 682-3946

Received:	05/02/2023	Sampling Date:	05/01/2023
Reported:	05/05/2023	Sampling Type:	Soil
Project Name:	TELECASTER 30 FEDERAL #002H	Sampling Condition:	Cool & Intact
Project Number:	212C - MD - 03035	Sample Received By:	Shalyn Rodriguez
Project Location:	LEA CO NM		

Sample ID: AH-23-1 (0-0.5') (H232140-01)

BTEX 8021B		mg/kg		Analyzed By: JH					
Analyte	Result	Reporting Limit	Analyzed	Method Blank	BS	% Recovery	True Value QC	RPD	Qualifier
Benzene*	<0.050	0.050	05/04/2023	ND	1.89	94.7	2.00	4.24	
Toluene*	<0.050	0.050	05/04/2023	ND	1.91	95.3	2.00	4.31	
Ethylbenzene*	<0.050	0.050	05/04/2023	ND	1.89	94.3	2.00	4.99	
Total Xylenes*	<0.150	0.150	05/04/2023	ND	5.83	97.2	6.00	6.14	
Total BTEX	<0.300	0.300	05/04/2023	ND					

Surrogate: 4-Bromofluorobenzene (PID) 98.4 % 71.5-134

Chloride, SM4500Cl-B		mg/kg		Analyzed By: AC					
Analyte	Result	Reporting Limit	Analyzed	Method Blank	BS	% Recovery	True Value QC	RPD	Qualifier
Chloride	1680	16.0	05/04/2023	ND	400	100	400	3.92	

TPH 8015M	mg/kg		Analyzed By: MS						
Analyte	Result	Reporting Limit	Analyzed	Method Blank	BS	% Recovery	True Value QC	RPD	Qualifier
GRO C6-C10*	<10.0	10.0	05/03/2023	ND	193	96.4	200	2.03	
DRO >C10-C28*	218	10.0	05/03/2023	ND	186	92.8	200	4.50	
EXT DRO >C28-C36	94.0	10.0	05/03/2023	ND					

Surrogate: 1-Chlorooctane 73.3 % 48.2-134

Surrogate: 1-Chlorooctadecane 109 % 49.1-148

Cardinal Laboratories

*=Accredited Analyte

PLEASE NOTE: Liability and Damages. Cardinal's liability and client's exclusive remedy for any claim arising, whether based in contract or tort, shall be limited to the amount paid by client for analyses. All claims, including those for negligence and any other cause whatsoever shall be deemed waived unless made in writing and received by Cardinal within thirty (30) days after completion of the applicable service. In no event shall Cardinal be liable for incidental or consequential damages, including, without limitation, business interruptions, loss of use, or loss of profits incurred by client, its subsidiaries, affiliates or successors arising out of or related to the performance of the services hereunder by Cardinal, regardless of whether such claim is based upon any of the above stated reasons or otherwise. Results relate only to the samples identified above. This report shall not be reproduced except in full with written approval of Cardinal Laboratories.

Celey D. Keene, Lab Director/Quality Manager



PHONE (575) 393-2326 ° 101 E. MARLAND ° HOBBS, NM 88240

Analytical Results For:

TETRA TECH
 SAM ABBOTT
 901 WEST WALL STREET , STE 100
 MIDLAND TX, 79701
 Fax To: (432) 682-3946

Received:	05/02/2023	Sampling Date:	05/01/2023
Reported:	05/05/2023	Sampling Type:	Soil
Project Name:	TELECASTER 30 FEDERAL #002H	Sampling Condition:	Cool & Intact
Project Number:	212C - MD - 03035	Sample Received By:	Shalyn Rodriguez
Project Location:	LEA CO NM		

Sample ID: AH-23-2 (0-0.5') (H232140-02)

BTX 8021B		mg/kg		Analyzed By: JH						
Analyte	Result	Reporting Limit	Analyzed	Method Blank	BS	% Recovery	True Value QC	RPD	Qualifier	
Benzene*	<0.050	0.050	05/04/2023	ND	1.89	94.7	2.00	4.24		
Toluene*	<0.050	0.050	05/04/2023	ND	1.91	95.3	2.00	4.31		
Ethylbenzene*	<0.050	0.050	05/04/2023	ND	1.89	94.3	2.00	4.99		
Total Xylenes*	<0.150	0.150	05/04/2023	ND	5.83	97.2	6.00	6.14		
Total BTX	<0.300	0.300	05/04/2023	ND						

Surrogate: 4-Bromofluorobenzene (PID) 100 % 71.5-134

Chloride, SM4500CI-B		mg/kg		Analyzed By: AC						
Analyte	Result	Reporting Limit	Analyzed	Method Blank	BS	% Recovery	True Value QC	RPD	Qualifier	
Chloride	48.0	16.0	05/04/2023	ND	400	100	400	3.92		

TPH 8015M		mg/kg		Analyzed By: MS					
Analyte	Result	Reporting Limit	Analyzed	Method Blank	BS	% Recovery	True Value QC	RPD	Qualifier
GRO C6-C10*	<10.0	10.0	05/03/2023	ND	193	96.4	200	2.03	
DRO >C10-C28*	<10.0	10.0	05/03/2023	ND	186	92.8	200	4.50	
EXT DRO >C28-C36	<10.0	10.0	05/03/2023	ND					

Surrogate: 1-Chlorooctane 79.3 % 48.2-134

Surrogate: 1-Chlorooctadecane 89.4 % 49.1-148

Cardinal Laboratories

*=Accredited Analyte

PLEASE NOTE: Liability and Damages. Cardinal's liability and client's exclusive remedy for any claim arising, whether based in contract or tort, shall be limited to the amount paid by client for analyses. All claims, including those for negligence and any other cause whatsoever shall be deemed waived unless made in writing and received by Cardinal within thirty (30) days after completion of the applicable service. In no event shall Cardinal be liable for incidental or consequential damages, including, without limitation, business interruptions, loss of use, or loss of profits incurred by client, its subsidiaries, affiliates or successors arising out of or related to the performance of the services hereunder by Cardinal, regardless of whether such claim is based upon any of the above stated reasons or otherwise. Results relate only to the samples identified above. This report shall not be reproduced except in full with written approval of Cardinal Laboratories.

Celey D. Keene, Lab Director/Quality Manager



PHONE (575) 393-2326 ° 101 E. MARLAND ° HOBBS, NM 88240

Analytical Results For:

TETRA TECH
 SAM ABBOTT
 901 WEST WALL STREET , STE 100
 MIDLAND TX, 79701
 Fax To: (432) 682-3946

Received:	05/02/2023	Sampling Date:	05/01/2023
Reported:	05/05/2023	Sampling Type:	Soil
Project Name:	TELECASTER 30 FEDERAL #002H	Sampling Condition:	Cool & Intact
Project Number:	212C - MD - 03035	Sample Received By:	Shalyn Rodriguez
Project Location:	LEA CO NM		

Sample ID: AH-23-3 (0-0.5') (H232140-03)

BTX 8021B		mg/kg		Analyzed By: JH						
Analyte	Result	Reporting Limit	Analyzed	Method Blank	BS	% Recovery	True Value QC	RPD	Qualifier	
Benzene*	<0.050	0.050	05/04/2023	ND	1.89	94.7	2.00	4.24		
Toluene*	<0.050	0.050	05/04/2023	ND	1.91	95.3	2.00	4.31		
Ethylbenzene*	<0.050	0.050	05/04/2023	ND	1.89	94.3	2.00	4.99		
Total Xylenes*	<0.150	0.150	05/04/2023	ND	5.83	97.2	6.00	6.14		
Total BTX	<0.300	0.300	05/04/2023	ND						

Surrogate: 4-Bromofluorobenzene (PID) 98.8 % 71.5-134

Chloride, SM4500CI-B		mg/kg		Analyzed By: AC						
Analyte	Result	Reporting Limit	Analyzed	Method Blank	BS	% Recovery	True Value QC	RPD	Qualifier	
Chloride	8400	16.0	05/04/2023	ND	400	100	400	3.92		

TPH 8015M		mg/kg		Analyzed By: MS					
Analyte	Result	Reporting Limit	Analyzed	Method Blank	BS	% Recovery	True Value QC	RPD	Qualifier
GRO C6-C10*	<10.0	10.0	05/03/2023	ND	193	96.4	200	2.03	
DRO >C10-C28*	<10.0	10.0	05/03/2023	ND	186	92.8	200	4.50	
EXT DRO >C28-C36	<10.0	10.0	05/03/2023	ND					

Surrogate: 1-Chlorooctane 76.8 % 48.2-134

Surrogate: 1-Chlorooctadecane 86.0 % 49.1-148

Cardinal Laboratories

*=Accredited Analyte

PLEASE NOTE: Liability and Damages. Cardinal's liability and client's exclusive remedy for any claim arising, whether based in contract or tort, shall be limited to the amount paid by client for analyses. All claims, including those for negligence and any other cause whatsoever shall be deemed waived unless made in writing and received by Cardinal within thirty (30) days after completion of the applicable service. In no event shall Cardinal be liable for incidental or consequential damages, including, without limitation, business interruptions, loss of use, or loss of profits incurred by client, its subsidiaries, affiliates or successors arising out of or related to the performance of the services hereunder by Cardinal, regardless of whether such claim is based upon any of the above stated reasons or otherwise. Results relate only to the samples identified above. This report shall not be reproduced except in full with written approval of Cardinal Laboratories.

Celey D. Keene, Lab Director/Quality Manager



PHONE (575) 393-2326 • 101 E. MARLAND • HOBBS, NM 88240

Analytical Results For:

TETRA TECH
 SAM ABBOTT
 901 WEST WALL STREET , STE 100
 MIDLAND TX, 79701
 Fax To: (432) 682-3946

Received:	05/02/2023	Sampling Date:	05/01/2023
Reported:	05/05/2023	Sampling Type:	Soil
Project Name:	TELECASTER 30 FEDERAL #002H	Sampling Condition:	Cool & Intact
Project Number:	212C - MD - 03035	Sample Received By:	Shalyn Rodriguez
Project Location:	LEA CO NM		

Sample ID: AH-23-4 (0-0.5') (H232140-04)

BTX 8021B		mg/kg		Analyzed By: JH						
Analyte	Result	Reporting Limit	Analyzed	Method Blank	BS	% Recovery	True Value QC	RPD	Qualifier	
Benzene*	<0.050	0.050	05/04/2023	ND	1.89	94.7	2.00	4.24		
Toluene*	<0.050	0.050	05/04/2023	ND	1.91	95.3	2.00	4.31		
Ethylbenzene*	<0.050	0.050	05/04/2023	ND	1.89	94.3	2.00	4.99		
Total Xylenes*	<0.150	0.150	05/04/2023	ND	5.83	97.2	6.00	6.14		
Total BTX	<0.300	0.300	05/04/2023	ND						

Surrogate: 4-Bromofluorobenzene (PID) 100 % 71.5-134

Chloride, SM4500CI-B		mg/kg		Analyzed By: AC						
Analyte	Result	Reporting Limit	Analyzed	Method Blank	BS	% Recovery	True Value QC	RPD	Qualifier	
Chloride	5120	16.0	05/04/2023	ND	400	100	400	3.92		

TPH 8015M		mg/kg		Analyzed By: MS					
Analyte	Result	Reporting Limit	Analyzed	Method Blank	BS	% Recovery	True Value QC	RPD	Qualifier
GRO C6-C10*	<10.0	10.0	05/03/2023	ND	193	96.4	200	2.03	
DRO >C10-C28*	125	10.0	05/03/2023	ND	186	92.8	200	4.50	
EXT DRO >C28-C36	66.4	10.0	05/03/2023	ND					

Surrogate: 1-Chlorooctane 68.6 % 48.2-134

Surrogate: 1-Chlorooctadecane 78.4 % 49.1-148

Cardinal Laboratories

*=Accredited Analyte

PLEASE NOTE: Liability and Damages. Cardinal's liability and client's exclusive remedy for any claim arising, whether based in contract or tort, shall be limited to the amount paid by client for analyses. All claims, including those for negligence and any other cause whatsoever shall be deemed waived unless made in writing and received by Cardinal within thirty (30) days after completion of the applicable service. In no event shall Cardinal be liable for incidental or consequential damages, including, without limitation, business interruptions, loss of use, or loss of profits incurred by client, its subsidiaries, affiliates or successors arising out of or related to the performance of the services hereunder by Cardinal, regardless of whether such claim is based upon any of the above stated reasons or otherwise. Results relate only to the samples identified above. This report shall not be reproduced except in full with written approval of Cardinal Laboratories.

Celey D. Keene, Lab Director/Quality Manager



PHONE (575) 393-2326 ° 101 E. MARLAND ° HOBBS, NM 88240

Analytical Results For:

TETRA TECH
 SAM ABBOTT
 901 WEST WALL STREET , STE 100
 MIDLAND TX, 79701
 Fax To: (432) 682-3946

Received:	05/02/2023	Sampling Date:	05/01/2023
Reported:	05/05/2023	Sampling Type:	Soil
Project Name:	TELECASTER 30 FEDERAL #002H	Sampling Condition:	Cool & Intact
Project Number:	212C - MD - 03035	Sample Received By:	Shalyn Rodriguez
Project Location:	LEA CO NM		

Sample ID: AH-23-5 (0-0.5') (H232140-05)

BTX 8021B		mg/kg		Analyzed By: JH						
Analyte	Result	Reporting Limit	Analyzed	Method Blank	BS	% Recovery	True Value QC	RPD	Qualifier	
Benzene*	<0.050	0.050	05/04/2023	ND	1.89	94.7	2.00	4.24		
Toluene*	<0.050	0.050	05/04/2023	ND	1.91	95.3	2.00	4.31		
Ethylbenzene*	<0.050	0.050	05/04/2023	ND	1.89	94.3	2.00	4.99		
Total Xylenes*	<0.150	0.150	05/04/2023	ND	5.83	97.2	6.00	6.14		
Total BTX	<0.300	0.300	05/04/2023	ND						

Surrogate: 4-Bromofluorobenzene (PID) 99.0 % 71.5-134

Chloride, SM4500CI-B		mg/kg		Analyzed By: AC						
Analyte	Result	Reporting Limit	Analyzed	Method Blank	BS	% Recovery	True Value QC	RPD	Qualifier	
Chloride	3080	16.0	05/04/2023	ND	400	100	400	3.92		

TPH 8015M		mg/kg		Analyzed By: MS					
Analyte	Result	Reporting Limit	Analyzed	Method Blank	BS	% Recovery	True Value QC	RPD	Qualifier
GRO C6-C10*	<10.0	10.0	05/03/2023	ND	193	96.4	200	2.03	
DRO >C10-C28*	597	10.0	05/03/2023	ND	186	92.8	200	4.50	
EXT DRO >C28-C36	217	10.0	05/03/2023	ND					

Surrogate: 1-Chlorooctane 78.3 % 48.2-134

Surrogate: 1-Chlorooctadecane 110 % 49.1-148

Cardinal Laboratories

*=Accredited Analyte

PLEASE NOTE: Liability and Damages. Cardinal's liability and client's exclusive remedy for any claim arising, whether based in contract or tort, shall be limited to the amount paid by client for analyses. All claims, including those for negligence and any other cause whatsoever shall be deemed waived unless made in writing and received by Cardinal within thirty (30) days after completion of the applicable service. In no event shall Cardinal be liable for incidental or consequential damages, including, without limitation, business interruptions, loss of use, or loss of profits incurred by client, its subsidiaries, affiliates or successors arising out of or related to the performance of the services hereunder by Cardinal, regardless of whether such claim is based upon any of the above stated reasons or otherwise. Results relate only to the samples identified above. This report shall not be reproduced except in full with written approval of Cardinal Laboratories.

Celey D. Keene, Lab Director/Quality Manager



PHONE (575) 393-2326 ° 101 E. MARLAND ° HOBBS, NM 88240

Analytical Results For:

TETRA TECH
 SAM ABBOTT
 901 WEST WALL STREET , STE 100
 MIDLAND TX, 79701
 Fax To: (432) 682-3946

Received:	05/02/2023	Sampling Date:	05/01/2023
Reported:	05/05/2023	Sampling Type:	Soil
Project Name:	TELECASTER 30 FEDERAL #002H	Sampling Condition:	Cool & Intact
Project Number:	212C - MD - 03035	Sample Received By:	Shalyn Rodriguez
Project Location:	LEA CO NM		

Sample ID: AH-23-6 (0-0.5') (H232140-06)

BTX 8021B		mg/kg		Analyzed By: JH/					
Analyte	Result	Reporting Limit	Analyzed	Method Blank	BS	% Recovery	True Value QC	RPD	Qualifier
Benzene*	<0.050	0.050	05/03/2023	ND	2.07	103	2.00	9.05	
Toluene*	<0.050	0.050	05/03/2023	ND	2.16	108	2.00	8.48	
Ethylbenzene*	<0.050	0.050	05/03/2023	ND	2.10	105	2.00	9.43	
Total Xylenes*	<0.150	0.150	05/03/2023	ND	6.58	110	6.00	10.8	
Total BTX	<0.300	0.300	05/03/2023	ND					

Surrogate: 4-Bromofluorobenzene (PID) 104 % 71.5-134

Chloride, SM4500CI-B		mg/kg		Analyzed By: AC					
Analyte	Result	Reporting Limit	Analyzed	Method Blank	BS	% Recovery	True Value QC	RPD	Qualifier
Chloride	48.0	16.0	05/04/2023	ND	400	100	400	3.92	

TPH 8015M		mg/kg		Analyzed By: MS					
Analyte	Result	Reporting Limit	Analyzed	Method Blank	BS	% Recovery	True Value QC	RPD	Qualifier
GRO C6-C10*	<10.0	10.0	05/03/2023	ND	193	96.4	200	2.03	
DRO >C10-C28*	<10.0	10.0	05/03/2023	ND	186	92.8	200	4.50	
EXT DRO >C28-C36	<10.0	10.0	05/03/2023	ND					

Surrogate: 1-Chlorooctane 80.5 % 48.2-134

Surrogate: 1-Chlorooctadecane 88.4 % 49.1-148

Cardinal Laboratories

*=Accredited Analyte

PLEASE NOTE: Liability and Damages. Cardinal's liability and client's exclusive remedy for any claim arising, whether based in contract or tort, shall be limited to the amount paid by client for analyses. All claims, including those for negligence and any other cause whatsoever shall be deemed waived unless made in writing and received by Cardinal within thirty (30) days after completion of the applicable service. In no event shall Cardinal be liable for incidental or consequential damages, including, without limitation, business interruptions, loss of use, or loss of profits incurred by client, its subsidiaries, affiliates or successors arising out of or related to the performance of the services hereunder by Cardinal, regardless of whether such claim is based upon any of the above stated reasons or otherwise. Results relate only to the samples identified above. This report shall not be reproduced except in full with written approval of Cardinal Laboratories.

Celey D. Keene, Lab Director/Quality Manager

PHONE (575) 393-2326 ° 101 E. MARLAND ° HOBBS, NM 88240

Notes and Definitions

ND	Analyte NOT DETECTED at or above the reporting limit
RPD	Relative Percent Difference
**	Samples not received at proper temperature of 6°C or below.
***	Insufficient time to reach temperature.
-	Chloride by SM4500Cl-B does not require samples be received at or below 6°C Samples reported on an as received basis (wet) unless otherwise noted on report

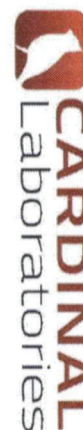
Cardinal Laboratories

*=Accredited Analyte

PLEASE NOTE: Liability and Damages. Cardinal's liability and client's exclusive remedy for any claim arising, whether based in contract or tort, shall be limited to the amount paid by client for analyses. All claims, including those for negligence and any other cause whatsoever shall be deemed waived unless made in writing and received by Cardinal within thirty (30) days after completion of the applicable service. In no event shall Cardinal be liable for incidental or consequential damages, including, without limitation, business interruptions, loss of use, or loss of profits incurred by client, its subsidiaries, affiliates or successors arising out of or related to the performance of the services hereunder by Cardinal, regardless of whether such claim is based upon any of the above stated reasons or otherwise. Results relate only to the samples identified above. This report shall not be reproduced except in full with written approval of Cardinal Laboratories.

A handwritten signature in black ink, appearing to read "Celey D. Keene".

Celey D. Keene, Lab Director/Quality Manager



101 East Marland, Hobbs, NM 88240
(575) 393-2326 FAX (575) 393-2476

CHAIN-OF-CUSTODY AND ANALYSIS REQUEST

[illegible]



PHONE (575) 393-2326 ° 101 E. MARLAND ° HOBBS, NM 88240

June 26, 2023

SAM ABBOTT

TETRA TECH

901 WEST WALL STREET , STE 100

MIDLAND, TX 79701

RE: TELECASTER 30 FEDERAL #003H

Enclosed are the results of analyses for samples received by the laboratory on 06/21/23 15:07.

Cardinal Laboratories is accredited through Texas NELAP under certificate number T104704398-22-15. Accreditation applies to drinking water, non-potable water and solid and chemical materials. All accredited analytes are denoted by an asterisk (*). For a complete list of accredited analytes and matrices visit the TCEQ website at www.tceq.texas.gov/field/qa/lab_accred_certif.html.

Cardinal Laboratories is accredited through the State of Colorado Department of Public Health and Environment for:

Method EPA 552.2	Haloacetic Acids (HAA-5)
Method EPA 524.2	Total Trihalomethanes (TTHM)
Method EPA 524.4	Regulated VOCs (V1, V2, V3)

Accreditation applies to public drinking water matrices.

This report meets NELAP requirements and is made up of a cover page, analytical results, and a copy of the original chain-of-custody. If you have any questions concerning this report, please feel free to contact me.

Sincerely,

A handwritten signature in black ink that reads "Celey D. Keene". The signature is written in a cursive, flowing style.

Celey D. Keene

Lab Director/Quality Manager



PHONE (575) 393-2326 ° 101 E. MARLAND ° HOBBS, NM 88240

Analytical Results For:

TETRA TECH
 SAM ABBOTT
 901 WEST WALL STREET , STE 100
 MIDLAND TX, 79701
 Fax To: (432) 682-3946

Received:	06/21/2023	Sampling Date:	06/21/2023
Reported:	06/26/2023	Sampling Type:	Soil
Project Name:	TELECASTER 30 FEDERAL #003H	Sampling Condition:	Cool & Intact
Project Number:	212C - MD - 03035	Sample Received By:	Tamara Oldaker
Project Location:	LEA CO NM		

Sample ID: BH - 23 - 1 (0-1') (H233223-01)

BTEX 8021B		mg/kg		Analyzed By: JH/					
Analyte	Result	Reporting Limit	Analyzed	Method Blank	BS	% Recovery	True Value QC	RPD	Qualifier
Benzene*	<0.050	0.050	06/23/2023	ND	2.10	105	2.00	0.326	
Toluene*	<0.050	0.050	06/23/2023	ND	2.00	100	2.00	7.29	
Ethylbenzene*	<0.050	0.050	06/23/2023	ND	2.16	108	2.00	0.650	
Total Xylenes*	<0.150	0.150	06/23/2023	ND	6.52	109	6.00	0.740	
Total BTEX	<0.300	0.300	06/23/2023	ND					

Surrogate: 4-Bromofluorobenzene (PID) 115 % 71.5-134

Chloride, SM4500Cl-B		mg/kg		Analyzed By: AC						
Analyte	Result	Reporting Limit	Analyzed	Method Blank	BS	% Recovery	True Value QC	RPD	Qualifier	
Chloride	640	16.0	06/22/2023	ND	416	104	400	3.77		

TPH 8015M		mg/kg		Analyzed By: MS					
Analyte	Result	Reporting Limit	Analyzed	Method Blank	BS	% Recovery	True Value QC	RPD	Qualifier
GRO C6-C10*	<10.0	10.0	06/22/2023	ND	161	80.7	200	7.25	
DRO >C10-C28*	<10.0	10.0	06/22/2023	ND	181	90.4	200	7.10	
EXT DRO >C28-C36	<10.0	10.0	06/22/2023	ND					

Surrogate: 1-Chlorooctane 101 % 48.2-134

Surrogate: 1-Chlorooctadecane 118 % 49.1-148

Cardinal Laboratories

*=Accredited Analyte

PLEASE NOTE: Liability and Damages. Cardinal's liability and client's exclusive remedy for any claim arising, whether based in contract or tort, shall be limited to the amount paid by client for analyses. All claims, including those for negligence and any other cause whatsoever shall be deemed waived unless made in writing and received by Cardinal within thirty (30) days after completion of the applicable service. In no event shall Cardinal be liable for incidental or consequential damages, including, without limitation, business interruptions, loss of use, or loss of profits incurred by client, its subsidiaries, affiliates or successors arising out of or related to the performance of the services hereunder by Cardinal, regardless of whether such claim is based upon any of the above stated reasons or otherwise. Results relate only to the samples identified above. This report shall not be reproduced except in full with written approval of Cardinal Laboratories.

Celey D. Keene, Lab Director/Quality Manager



PHONE (575) 393-2326 ° 101 E. MARLAND ° HOBBS, NM 88240

Analytical Results For:

TETRA TECH
 SAM ABBOTT
 901 WEST WALL STREET , STE 100
 MIDLAND TX, 79701
 Fax To: (432) 682-3946

Received:	06/21/2023	Sampling Date:	06/21/2023
Reported:	06/26/2023	Sampling Type:	Soil
Project Name:	TELECASTER 30 FEDERAL #003H	Sampling Condition:	Cool & Intact
Project Number:	212C - MD - 03035	Sample Received By:	Tamara Oldaker
Project Location:	LEA CO NM		

Sample ID: BH - 23 - 1 (2'-3') (H233223-02)

BTEx 8021B		mg/kg		Analyzed By: JH/						
Analyte	Result	Reporting Limit	Analyzed	Method Blank	BS	% Recovery	True Value QC	RPD	Qualifier	
Benzene*	<0.050	0.050	06/23/2023	ND	2.10	105	2.00	0.326		
Toluene*	<0.050	0.050	06/23/2023	ND	2.00	100	2.00	7.29		
Ethylbenzene*	<0.050	0.050	06/23/2023	ND	2.16	108	2.00	0.650		
Total Xylenes*	<0.150	0.150	06/23/2023	ND	6.52	109	6.00	0.740		
Total BTEX	<0.300	0.300	06/23/2023	ND						

Surrogate: 4-Bromofluorobenzene (PID) 114 % 71.5-134

Chloride, SM4500Cl-B		mg/kg		Analyzed By: AC						
Analyte	Result	Reporting Limit	Analyzed	Method Blank	BS	% Recovery	True Value QC	RPD	Qualifier	
Chloride	352	16.0	06/22/2023	ND	416	104	400	3.77		

TPH 8015M		mg/kg		Analyzed By: MS					
Analyte	Result	Reporting Limit	Analyzed	Method Blank	BS	% Recovery	True Value QC	RPD	Qualifier
GRO C6-C10*	<10.0	10.0	06/23/2023	ND	161	80.7	200	7.25	
DRO >C10-C28*	<10.0	10.0	06/23/2023	ND	181	90.4	200	7.10	
EXT DRO >C28-C36	<10.0	10.0	06/23/2023	ND					

Surrogate: 1-Chlorooctane 89.3 % 48.2-134

Surrogate: 1-Chlorooctadecane 102 % 49.1-148

Cardinal Laboratories

*=Accredited Analyte

PLEASE NOTE: Liability and Damages. Cardinal's liability and client's exclusive remedy for any claim arising, whether based in contract or tort, shall be limited to the amount paid by client for analyses. All claims, including those for negligence and any other cause whatsoever shall be deemed waived unless made in writing and received by Cardinal within thirty (30) days after completion of the applicable service. In no event shall Cardinal be liable for incidental or consequential damages, including, without limitation, business interruptions, loss of use, or loss of profits incurred by client, its subsidiaries, affiliates or successors arising out of or related to the performance of the services hereunder by Cardinal, regardless of whether such claim is based upon any of the above stated reasons or otherwise. Results relate only to the samples identified above. This report shall not be reproduced except in full with written approval of Cardinal Laboratories.

Celey D. Keene, Lab Director/Quality Manager



PHONE (575) 393-2326 ° 101 E. MARLAND ° HOBBS, NM 88240

Analytical Results For:

TETRA TECH
 SAM ABBOTT
 901 WEST WALL STREET , STE 100
 MIDLAND TX, 79701
 Fax To: (432) 682-3946

Received:	06/21/2023	Sampling Date:	06/21/2023
Reported:	06/26/2023	Sampling Type:	Soil
Project Name:	TELECASTER 30 FEDERAL #003H	Sampling Condition:	Cool & Intact
Project Number:	212C - MD - 03035	Sample Received By:	Tamara Oldaker
Project Location:	LEA CO NM		

Sample ID: BH - 23 - 1 (3'-4') (H233223-03)

BTEx 8021B		mg/kg		Analyzed By: JH/						
Analyte	Result	Reporting Limit	Analyzed	Method Blank	BS	% Recovery	True Value QC	RPD	Qualifier	
Benzene*	<0.050	0.050	06/23/2023	ND	2.10	105	2.00	0.326		
Toluene*	<0.050	0.050	06/23/2023	ND	2.00	100	2.00	7.29		
Ethylbenzene*	<0.050	0.050	06/23/2023	ND	2.16	108	2.00	0.650		
Total Xylenes*	<0.150	0.150	06/23/2023	ND	6.52	109	6.00	0.740		
Total BTEx	<0.300	0.300	06/23/2023	ND						

Surrogate: 4-Bromofluorobenzene (PID) 113 % 71.5-134

Chloride, SM4500CI-B		mg/kg		Analyzed By: AC						
Analyte	Result	Reporting Limit	Analyzed	Method Blank	BS	% Recovery	True Value QC	RPD	Qualifier	
Chloride	176	16.0	06/22/2023	ND	416	104	400	3.77		

TPH 8015M		mg/kg		Analyzed By: MS					
Analyte	Result	Reporting Limit	Analyzed	Method Blank	BS	% Recovery	True Value QC	RPD	Qualifier
GRO C6-C10*	<10.0	10.0	06/23/2023	ND	161	80.7	200	7.25	
DRO >C10-C28*	<10.0	10.0	06/23/2023	ND	181	90.4	200	7.10	
EXT DRO >C28-C36	<10.0	10.0	06/23/2023	ND					

Surrogate: 1-Chlorooctane 94.5 % 48.2-134

Surrogate: 1-Chlorooctadecane 108 % 49.1-148

Cardinal Laboratories

*=Accredited Analyte

PLEASE NOTE: Liability and Damages. Cardinal's liability and client's exclusive remedy for any claim arising, whether based in contract or tort, shall be limited to the amount paid by client for analyses. All claims, including those for negligence and any other cause whatsoever shall be deemed waived unless made in writing and received by Cardinal within thirty (30) days after completion of the applicable service. In no event shall Cardinal be liable for incidental or consequential damages, including, without limitation, business interruptions, loss of use, or loss of profits incurred by client, its subsidiaries, affiliates or successors arising out of or related to the performance of the services hereunder by Cardinal, regardless of whether such claim is based upon any of the above stated reasons or otherwise. Results relate only to the samples identified above. This report shall not be reproduced except in full with written approval of Cardinal Laboratories.

Celey D. Keene, Lab Director/Quality Manager



PHONE (575) 393-2326 ° 101 E. MARLAND ° HOBBS, NM 88240

Analytical Results For:

TETRA TECH
 SAM ABBOTT
 901 WEST WALL STREET , STE 100
 MIDLAND TX, 79701
 Fax To: (432) 682-3946

Received:	06/21/2023	Sampling Date:	06/21/2023
Reported:	06/26/2023	Sampling Type:	Soil
Project Name:	TELECASTER 30 FEDERAL #003H	Sampling Condition:	Cool & Intact
Project Number:	212C - MD - 03035	Sample Received By:	Tamara Oldaker
Project Location:	LEA CO NM		

Sample ID: BH - 23 - 1 (5'-6') (H233223-04)

BTEx 8021B		mg/kg		Analyzed By: JH/						
Analyte	Result	Reporting Limit	Analyzed	Method Blank	BS	% Recovery	True Value QC	RPD	Qualifier	
Benzene*	<0.050	0.050	06/23/2023	ND	2.10	105	2.00	0.326		
Toluene*	<0.050	0.050	06/23/2023	ND	2.00	100	2.00	7.29		
Ethylbenzene*	<0.050	0.050	06/23/2023	ND	2.16	108	2.00	0.650		
Total Xylenes*	<0.150	0.150	06/23/2023	ND	6.52	109	6.00	0.740		
Total BTEx	<0.300	0.300	06/23/2023	ND						

Surrogate: 4-Bromofluorobenzene (PID) 115 % 71.5-134

Chloride, SM4500CI-B		mg/kg		Analyzed By: AC						
Analyte	Result	Reporting Limit	Analyzed	Method Blank	BS	% Recovery	True Value QC	RPD	Qualifier	
Chloride	240	16.0	06/22/2023	ND	416	104	400	3.77		

TPH 8015M		mg/kg		Analyzed By: MS					
Analyte	Result	Reporting Limit	Analyzed	Method Blank	BS	% Recovery	True Value QC	RPD	Qualifier
GRO C6-C10*	<10.0	10.0	06/23/2023	ND	161	80.7	200	7.25	
DRO >C10-C28*	<10.0	10.0	06/23/2023	ND	181	90.4	200	7.10	
EXT DRO >C28-C36	<10.0	10.0	06/23/2023	ND					

Surrogate: 1-Chlorooctane 94.1 % 48.2-134

Surrogate: 1-Chlorooctadecane 109 % 49.1-148

Cardinal Laboratories

*=Accredited Analyte

PLEASE NOTE: Liability and Damages. Cardinal's liability and client's exclusive remedy for any claim arising, whether based in contract or tort, shall be limited to the amount paid by client for analyses. All claims, including those for negligence and any other cause whatsoever shall be deemed waived unless made in writing and received by Cardinal within thirty (30) days after completion of the applicable service. In no event shall Cardinal be liable for incidental or consequential damages, including, without limitation, business interruptions, loss of use, or loss of profits incurred by client, its subsidiaries, affiliates or successors arising out of or related to the performance of the services hereunder by Cardinal, regardless of whether such claim is based upon any of the above stated reasons or otherwise. Results relate only to the samples identified above. This report shall not be reproduced except in full with written approval of Cardinal Laboratories.

Celey D. Keene, Lab Director/Quality Manager



PHONE (575) 393-2326 ° 101 E. MARLAND ° HOBBS, NM 88240

Analytical Results For:

TETRA TECH
 SAM ABBOTT
 901 WEST WALL STREET , STE 100
 MIDLAND TX, 79701
 Fax To: (432) 682-3946

Received:	06/21/2023	Sampling Date:	06/21/2023
Reported:	06/26/2023	Sampling Type:	Soil
Project Name:	TELECASTER 30 FEDERAL #003H	Sampling Condition:	Cool & Intact
Project Number:	212C - MD - 03035	Sample Received By:	Tamara Oldaker
Project Location:	LEA CO NM		

Sample ID: BH - 23 - 2 (0-1') (H233223-08)

BTEx 8021B		mg/kg		Analyzed By: JH/						
Analyte	Result	Reporting Limit	Analyzed	Method Blank	BS	% Recovery	True Value QC	RPD	Qualifier	
Benzene*	<0.050	0.050	06/23/2023	ND	2.10	105	2.00	0.326		
Toluene*	<0.050	0.050	06/23/2023	ND	2.00	100	2.00	7.29		
Ethylbenzene*	<0.050	0.050	06/23/2023	ND	2.16	108	2.00	0.650		
Total Xylenes*	<0.150	0.150	06/23/2023	ND	6.52	109	6.00	0.740		
Total BTEx	<0.300	0.300	06/23/2023	ND						

Surrogate: 4-Bromofluorobenzene (PID) 114 % 71.5-134

Chloride, SM4500CI-B		mg/kg		Analyzed By: AC						
Analyte	Result	Reporting Limit	Analyzed	Method Blank	BS	% Recovery	True Value QC	RPD	Qualifier	
Chloride	16.0	16.0	06/22/2023	ND	416	104	400	3.77		

TPH 8015M		mg/kg		Analyzed By: MS					
Analyte	Result	Reporting Limit	Analyzed	Method Blank	BS	% Recovery	True Value QC	RPD	Qualifier
GRO C6-C10*	<10.0	10.0	06/23/2023	ND	161	80.7	200	7.25	
DRO >C10-C28*	20.5	10.0	06/23/2023	ND	181	90.4	200	7.10	
EXT DRO >C28-C36	<10.0	10.0	06/23/2023	ND					

Surrogate: 1-Chlorooctane 76.3 % 48.2-134

Surrogate: 1-Chlorooctadecane 86.3 % 49.1-148

Cardinal Laboratories

*=Accredited Analyte

PLEASE NOTE: Liability and Damages. Cardinal's liability and client's exclusive remedy for any claim arising, whether based in contract or tort, shall be limited to the amount paid by client for analyses. All claims, including those for negligence and any other cause whatsoever shall be deemed waived unless made in writing and received by Cardinal within thirty (30) days after completion of the applicable service. In no event shall Cardinal be liable for incidental or consequential damages, including, without limitation, business interruptions, loss of use, or loss of profits incurred by client, its subsidiaries, affiliates or successors arising out of or related to the performance of the services hereunder by Cardinal, regardless of whether such claim is based upon any of the above stated reasons or otherwise. Results relate only to the samples identified above. This report shall not be reproduced except in full with written approval of Cardinal Laboratories.

Celey D. Keene, Lab Director/Quality Manager



PHONE (575) 393-2326 ° 101 E. MARLAND ° HOBBS, NM 88240

Analytical Results For:

TETRA TECH
 SAM ABBOTT
 901 WEST WALL STREET , STE 100
 MIDLAND TX, 79701
 Fax To: (432) 682-3946

Received:	06/21/2023	Sampling Date:	06/21/2023
Reported:	06/26/2023	Sampling Type:	Soil
Project Name:	TELECASTER 30 FEDERAL #003H	Sampling Condition:	Cool & Intact
Project Number:	212C - MD - 03035	Sample Received By:	Tamara Oldaker
Project Location:	LEA CO NM		

Sample ID: BH - 23 - 3 (0-1') (H233223-09)

BTEx 8021B		mg/kg		Analyzed By: JH/						
Analyte	Result	Reporting Limit	Analyzed	Method Blank	BS	% Recovery	True Value QC	RPD	Qualifier	
Benzene*	<0.050	0.050	06/23/2023	ND	2.10	105	2.00	0.326		
Toluene*	<0.050	0.050	06/23/2023	ND	2.00	100	2.00	7.29		
Ethylbenzene*	<0.050	0.050	06/23/2023	ND	2.16	108	2.00	0.650		
Total Xylenes*	<0.150	0.150	06/23/2023	ND	6.52	109	6.00	0.740		
Total BTEx	<0.300	0.300	06/23/2023	ND						

Surrogate: 4-Bromofluorobenzene (PID) 117 % 71.5-134

Chloride, SM4500CI-B		mg/kg		Analyzed By: AC						
Analyte	Result	Reporting Limit	Analyzed	Method Blank	BS	% Recovery	True Value QC	RPD	Qualifier	
Chloride	240	16.0	06/22/2023	ND	416	104	400	3.77		

TPH 8015M		mg/kg		Analyzed By: MS					
Analyte	Result	Reporting Limit	Analyzed	Method Blank	BS	% Recovery	True Value QC	RPD	Qualifier
GRO C6-C10*	<10.0	10.0	06/23/2023	ND	161	80.7	200	7.25	
DRO >C10-C28*	<10.0	10.0	06/23/2023	ND	181	90.4	200	7.10	
EXT DRO >C28-C36	<10.0	10.0	06/23/2023	ND					

Surrogate: 1-Chlorooctane 64.4 % 48.2-134

Surrogate: 1-Chlorooctadecane 71.5 % 49.1-148

Cardinal Laboratories

*=Accredited Analyte

PLEASE NOTE: Liability and Damages. Cardinal's liability and client's exclusive remedy for any claim arising, whether based in contract or tort, shall be limited to the amount paid by client for analyses. All claims, including those for negligence and any other cause whatsoever shall be deemed waived unless made in writing and received by Cardinal within thirty (30) days after completion of the applicable service. In no event shall Cardinal be liable for incidental or consequential damages, including, without limitation, business interruptions, loss of use, or loss of profits incurred by client, its subsidiaries, affiliates or successors arising out of or related to the performance of the services hereunder by Cardinal, regardless of whether such claim is based upon any of the above stated reasons or otherwise. Results relate only to the samples identified above. This report shall not be reproduced except in full with written approval of Cardinal Laboratories.

Celey D. Keene, Lab Director/Quality Manager



PHONE (575) 393-2326 ° 101 E. MARLAND ° HOBBS, NM 88240

Analytical Results For:

TETRA TECH
 SAM ABBOTT
 901 WEST WALL STREET , STE 100
 MIDLAND TX, 79701
 Fax To: (432) 682-3946

Received:	06/21/2023	Sampling Date:	06/21/2023
Reported:	06/26/2023	Sampling Type:	Soil
Project Name:	TELECASTER 30 FEDERAL #003H	Sampling Condition:	Cool & Intact
Project Number:	212C - MD - 03035	Sample Received By:	Tamara Oldaker
Project Location:	LEA CO NM		

Sample ID: BH - 23 - 4 (0-1') (H233223-10)

BTEX 8021B		mg/kg		Analyzed By: JH/						
Analyte	Result	Reporting Limit	Analyzed	Method Blank	BS	% Recovery	True Value QC	RPD	Qualifier	
Benzene*	<0.050	0.050	06/23/2023	ND	2.10	105	2.00	0.326		
Toluene*	<0.050	0.050	06/23/2023	ND	2.00	100	2.00	7.29		
Ethylbenzene*	<0.050	0.050	06/23/2023	ND	2.16	108	2.00	0.650		
Total Xylenes*	<0.150	0.150	06/23/2023	ND	6.52	109	6.00	0.740		
Total BTEX	<0.300	0.300	06/23/2023	ND						

Surrogate: 4-Bromofluorobenzene (PID) 114 % 71.5-134

Chloride, SM4500CI-B		mg/kg		Analyzed By: AC						
Analyte	Result	Reporting Limit	Analyzed	Method Blank	BS	% Recovery	True Value QC	RPD	Qualifier	
Chloride	1740	16.0	06/22/2023	ND	416	104	400	3.77		

TPH 8015M		mg/kg		Analyzed By: MS					
Analyte	Result	Reporting Limit	Analyzed	Method Blank	BS	% Recovery	True Value QC	RPD	Qualifier
GRO C6-C10*	<10.0	10.0	06/23/2023	ND	161	80.7	200	7.25	
DRO >C10-C28*	<10.0	10.0	06/23/2023	ND	181	90.4	200	7.10	
EXT DRO >C28-C36	<10.0	10.0	06/23/2023	ND					

Surrogate: 1-Chlorooctane 82.6 % 48.2-134

Surrogate: 1-Chlorooctadecane 95.8 % 49.1-148

Cardinal Laboratories

*=Accredited Analyte

PLEASE NOTE: Liability and Damages. Cardinal's liability and client's exclusive remedy for any claim arising, whether based in contract or tort, shall be limited to the amount paid by client for analyses. All claims, including those for negligence and any other cause whatsoever shall be deemed waived unless made in writing and received by Cardinal within thirty (30) days after completion of the applicable service. In no event shall Cardinal be liable for incidental or consequential damages, including, without limitation, business interruptions, loss of use, or loss of profits incurred by client, its subsidiaries, affiliates or successors arising out of or related to the performance of the services hereunder by Cardinal, regardless of whether such claim is based upon any of the above stated reasons or otherwise. Results relate only to the samples identified above. This report shall not be reproduced except in full with written approval of Cardinal Laboratories.

Celey D. Keene, Lab Director/Quality Manager



PHONE (575) 393-2326 ° 101 E. MARLAND ° HOBBS, NM 88240

Analytical Results For:

TETRA TECH
 SAM ABBOTT
 901 WEST WALL STREET , STE 100
 MIDLAND TX, 79701
 Fax To: (432) 682-3946

Received:	06/21/2023	Sampling Date:	06/21/2023
Reported:	06/26/2023	Sampling Type:	Soil
Project Name:	TELECASTER 30 FEDERAL #003H	Sampling Condition:	Cool & Intact
Project Number:	212C - MD - 03035	Sample Received By:	Tamara Oldaker
Project Location:	LEA CO NM		

Sample ID: AH - 23 - 7 (0-1') (H233223-11)

BTX 8021B		mg/kg		Analyzed By: JH/					
Analyte	Result	Reporting Limit	Analyzed	Method Blank	BS	% Recovery	True Value QC	RPD	Qualifier
Benzene*	<0.050	0.050	06/23/2023	ND	2.10	105	2.00	0.326	
Toluene*	<0.050	0.050	06/23/2023	ND	2.00	100	2.00	7.29	
Ethylbenzene*	<0.050	0.050	06/23/2023	ND	2.16	108	2.00	0.650	
Total Xylenes*	<0.150	0.150	06/23/2023	ND	6.52	109	6.00	0.740	
Total BTX	<0.300	0.300	06/23/2023	ND					

Surrogate: 4-Bromofluorobenzene (PID) 114 % 71.5-134

Chloride, SM4500CI-B		mg/kg		Analyzed By: AC						
Analyte	Result	Reporting Limit	Analyzed	Method Blank	BS	% Recovery	True Value QC	RPD	Qualifier	
Chloride	6720	16.0	06/22/2023	ND	416	104	400	3.77		

TPH 8015M		mg/kg		Analyzed By: MS					
Analyte	Result	Reporting Limit	Analyzed	Method Blank	BS	% Recovery	True Value QC	RPD	Qualifier
GRO C6-C10*	<10.0	10.0	06/23/2023	ND	161	80.7	200	7.25	
DRO >C10-C28*	<10.0	10.0	06/23/2023	ND	181	90.4	200	7.10	
EXT DRO >C28-C36	<10.0	10.0	06/23/2023	ND					

Surrogate: 1-Chlorooctane 70.5 % 48.2-134

Surrogate: 1-Chlorooctadecane 80.6 % 49.1-148

Cardinal Laboratories

*=Accredited Analyte

PLEASE NOTE: Liability and Damages. Cardinal's liability and client's exclusive remedy for any claim arising, whether based in contract or tort, shall be limited to the amount paid by client for analyses. All claims, including those for negligence and any other cause whatsoever shall be deemed waived unless made in writing and received by Cardinal within thirty (30) days after completion of the applicable service. In no event shall Cardinal be liable for incidental or consequential damages, including, without limitation, business interruptions, loss of use, or loss of profits incurred by client, its subsidiaries, affiliates or successors arising out of or related to the performance of the services hereunder by Cardinal, regardless of whether such claim is based upon any of the above stated reasons or otherwise. Results relate only to the samples identified above. This report shall not be reproduced except in full with written approval of Cardinal Laboratories.

Celey D. Keene, Lab Director/Quality Manager

PHONE (575) 393-2326 ° 101 E. MARLAND ° HOBBS, NM 88240

Notes and Definitions

QM-07	The spike recovery was outside acceptance limits for the MS and/or MSD. The batch was accepted based on acceptable LCS recovery.
ND	Analyte NOT DETECTED at or above the reporting limit
RPD	Relative Percent Difference
**	Samples not received at proper temperature of 6°C or below.
***	Insufficient time to reach temperature.
-	Chloride by SM4500Cl-B does not require samples be received at or below 6°C Samples reported on an as received basis (wet) unless otherwise noted on report

Cardinal Laboratories

*=Accredited Analyte

PLEASE NOTE: Liability and Damages. Cardinal's liability and client's exclusive remedy for any claim arising, whether based in contract or tort, shall be limited to the amount paid by client for analyses. All claims, including those for negligence and any other cause whatsoever shall be deemed waived unless made in writing and received by Cardinal within thirty (30) days after completion of the applicable service. In no event shall Cardinal be liable for incidental or consequential damages, including, without limitation, business interruptions, loss of use, or loss of profits incurred by client, its subsidiaries, affiliates or successors arising out of or related to the performance of the services hereunder by Cardinal, regardless of whether such claim is based upon any of the above stated reasons or otherwise. Results relate only to the samples identified above. This report shall not be reproduced except in full with written approval of Cardinal Laboratories.

A handwritten signature in black ink, appearing to read "Celey D. Keene", is written over a horizontal line.

Celey D. Keene, Lab Director/Quality Manager



101 East Marland, Hobbs, NM 88240
(575) 393-2326 FAX (575) 393-2476

CHAIN-OF-CUSTODY AND ANALYSIS REQUEST

Page 1 of 2

ANALYSIS REQUEST

BILL TO

Company Name: <u>Corcoran Phillips</u>		P.O. #:																	
Project Manager: <u>Christina Ull</u>		Company: <u>Tetra Tech</u>																	
Address: <u>christina.ull@tetra-tech.com</u>		Attn: <u>Christina Ull</u>																	
City: _____ State: _____ Zip: _____		Address: _____																	
Phone #: _____ Fax #: _____		City: _____																	
Project #: <u>210C-MO-03035</u> Project Owner: _____		State: _____ Zip: _____																	
Project Name: <u>Telecaster 30 Federal #003H</u>		Phone #: _____																	
Project Location: <u>Lea County, NM</u>		Fax #: _____																	
Sample Name: <u>Joe Giv</u>		PRESERV:																	
FOR LAB USE ONLY		SAMPLING																	
Lab I.D.	Sample I.D.	(G)RAB OR (C)OMP.		# CONTAINERS	GROUNDWATER	WASTEWATER	SOIL	OIL	SLUDGE	OTHER :	ACID/BASE:	ICE / COOL	OTHER :	DATE	TIME	Chlorides	TPH	BTEX	Hold
<u>H33323</u>	BH-23-1 (6'-1')													6-21	1300	X	X	X	
	BH-23-1 (8'-5')														1310	X	X	X	
	BH-23-1 (3'-4')														1315	X	X	X	
	BH-23-1 (5'-6')														1320	X	X	X	
	BH-23-1 (7'-8')														1330				X
	BH-23-1 (9'-10')														1340				X
	BH-23-1 (14'-15')														1350				X
	BH-23-2 (0'-1')														1330				
	BH-23-3 (0'-1')														1345				
	BH-23-4 (0'-1')														1400				

PLEASE NOTE: Liability and Damages. Cardinal's liability and client's exclusive remedy for any claim arising whether based in contract or tort, shall be limited to the amount paid by the client for the analyses. All claims including those for negligence and any other cause whatsoever shall be deemed waived unless made in writing and received by Cardinal within 30 days after completion of the applicable service. In no event shall Cardinal be liable for incidental or consequential damages, including without limitation, business interruptions, loss of use, or loss of profits incurred by client, its subsidiaries, affiliates or successors arising out of or related to the performance of services hereunder by Cardinal, regardless of whether such claim is based upon any of the above stated reasons or otherwise.

Relinquished By: _____	Date: <u>6-21-23</u>	Received By: _____	Verbal Result: <input type="checkbox"/> Yes <input type="checkbox"/> No <input type="checkbox"/> Add'l Phone #:
Relinquished By: _____	Date: <u>7-5-07</u>	Received By: _____	All Results are emailed. Please provide Email address:
REMARKS:			

Delivered By: (Circle One)	Observed Temp. °C <u>4.9</u>	Sample Condition	CHECKED BY: _____ (Initials)	Turnaround Time:	Standard <input checked="" type="checkbox"/> Rush <input type="checkbox"/>	Bacteria (only) <input type="checkbox"/>	Sample Condition
Sampler - UPS - Bus - Other:	Corrected Temp. °C <u>4.3</u>	Cool <input checked="" type="checkbox"/> Intact <input type="checkbox"/> Yes <input type="checkbox"/> No <input type="checkbox"/> No <input type="checkbox"/> No <input type="checkbox"/> No		Thermometer ID #113		Cool <input type="checkbox"/> Intact <input type="checkbox"/> Yes <input type="checkbox"/> No <input type="checkbox"/> No <input type="checkbox"/> No	Observed Temp. °C
				Correction Factor -0.5°C			Corrected Temp. °C

FORM 008-R-3-3 07/18/22

† Cardinal cannot accept verbal changes. Please email changes to celey.keene@cardinallabsnm.com



**101 East Marland, Hobbs, NM 88240
(575) 393-2326 FAX (575) 393-2476**

CHAIN-OF-CUSTODY AND ANALYSIS REQUEST

Page 2 of 2

[illegible]



PHONE (575) 393-2326 ° 101 E. MARLAND ° HOBBS, NM 88240

August 01, 2023

CHRISTIAN LLULL

TETRA TECH

901 WEST WALL STREET , STE 100

MIDLAND, TX 79701

RE: TELECASTER 30 FEDERAL #003H

Enclosed are the results of analyses for samples received by the laboratory on 07/26/23 13:08.

Cardinal Laboratories is accredited through Texas NELAP under certificate number T104704398-22-15. Accreditation applies to drinking water, non-potable water and solid and chemical materials. All accredited analytes are denoted by an asterisk (*). For a complete list of accredited analytes and matrices visit the TCEQ website at www.tceq.texas.gov/field/qa/lab_accred_certif.html.

Cardinal Laboratories is accredited through the State of Colorado Department of Public Health and Environment for:

Method EPA 552.2	Haloacetic Acids (HAA-5)
Method EPA 524.2	Total Trihalomethanes (TTHM)
Method EPA 524.4	Regulated VOCs (V1, V2, V3)

Accreditation applies to public drinking water matrices.

This report meets NELAP requirements and is made up of a cover page, analytical results, and a copy of the original chain-of-custody. If you have any questions concerning this report, please feel free to contact me.

Sincerely,

A handwritten signature in black ink that reads "Celey D. Keene". The signature is written in a cursive style with a large, stylized 'C' and 'K'.

Celey D. Keene

Lab Director/Quality Manager



PHONE (575) 393-2326 ° 101 E. MARLAND ° HOBBS, NM 88240

Analytical Results For:

TETRA TECH
 CHRISTIAN LLULL
 901 WEST WALL STREET , STE 100
 MIDLAND TX, 79701
 Fax To: (432) 682-3946

Received:	07/26/2023	Sampling Date:	07/26/2023
Reported:	08/01/2023	Sampling Type:	Soil
Project Name:	TELECASTER 30 FEDERAL #003H	Sampling Condition:	Cool & Intact
Project Number:	212C - MD - 03035	Sample Received By:	Jodi Henson
Project Location:	LEA CO NM		

Sample ID: AH - 8 (0-1') (H233905-01)

BTX 8021B		mg/kg		Analyzed By: JH/						
Analyte	Result	Reporting Limit	Analyzed	Method Blank	BS	% Recovery	True Value QC	RPD	Qualifier	
Benzene*	<0.050	0.050	07/31/2023	ND	2.02	101	2.00	3.44		
Toluene*	<0.050	0.050	07/31/2023	ND	1.92	95.9	2.00	3.86		
Ethylbenzene*	<0.050	0.050	07/31/2023	ND	1.94	97.1	2.00	4.29		
Total Xylenes*	<0.150	0.150	07/31/2023	ND	5.74	95.6	6.00	3.58		
Total BTX	<0.300	0.300	07/31/2023	ND						

Surrogate: 4-Bromofluorobenzene (PID) 112 % 71.5-134

Chloride, SM4500Cl-B		mg/kg		Analyzed By: AC						
Analyte	Result	Reporting Limit	Analyzed	Method Blank	BS	% Recovery	True Value QC	RPD	Qualifier	
Chloride	<16.0	16.0	07/31/2023	ND	416	104	400	0.00		

TPH 8015M		mg/kg		Analyzed By: MS					
Analyte	Result	Reporting Limit	Analyzed	Method Blank	BS	% Recovery	True Value QC	RPD	Qualifier
GRO C6-C10*	<10.0	10.0	07/31/2023	ND	183	91.7	200	9.26	
DRO >C10-C28*	<10.0	10.0	07/31/2023	ND	194	97.1	200	5.38	
EXT DRO >C28-C36	<10.0	10.0	07/31/2023	ND					

Surrogate: 1-Chlorooctane 95.0 % 48.2-134

Surrogate: 1-Chlorooctadecane 103 % 49.1-148

Cardinal Laboratories

*=Accredited Analyte

PLEASE NOTE: Liability and Damages. Cardinal's liability and client's exclusive remedy for any claim arising, whether based in contract or tort, shall be limited to the amount paid by client for analyses. All claims, including those for negligence and any other cause whatsoever shall be deemed waived unless made in writing and received by Cardinal within thirty (30) days after completion of the applicable service. In no event shall Cardinal be liable for incidental or consequential damages, including, without limitation, business interruptions, loss of use, or loss of profits incurred by client, its subsidiaries, affiliates or successors arising out of or related to the performance of the services hereunder by Cardinal, regardless of whether such claim is based upon any of the above stated reasons or otherwise. Results relate only to the samples identified above. This report shall not be reproduced except in full with written approval of Cardinal Laboratories.

Celey D. Keene, Lab Director/Quality Manager



PHONE (575) 393-2326 ° 101 E. MARLAND ° HOBBS, NM 88240

Analytical Results For:

TETRA TECH
 CHRISTIAN LLULL
 901 WEST WALL STREET , STE 100
 MIDLAND TX, 79701
 Fax To: (432) 682-3946

Received:	07/26/2023	Sampling Date:	07/26/2023
Reported:	08/01/2023	Sampling Type:	Soil
Project Name:	TELECASTER 30 FEDERAL #003H	Sampling Condition:	Cool & Intact
Project Number:	212C - MD - 03035	Sample Received By:	Jodi Henson
Project Location:	LEA CO NM		

Sample ID: AH - 9 (0-1') (H233905-02)

BTEx 8021B		mg/kg		Analyzed By: JH/						
Analyte	Result	Reporting Limit	Analyzed	Method Blank	BS	% Recovery	True Value QC	RPD	Qualifier	
Benzene*	<0.050	0.050	07/31/2023	ND	2.02	101	2.00	3.44		
Toluene*	<0.050	0.050	07/31/2023	ND	1.92	95.9	2.00	3.86		
Ethylbenzene*	<0.050	0.050	07/31/2023	ND	1.94	97.1	2.00	4.29		
Total Xylenes*	<0.150	0.150	07/31/2023	ND	5.74	95.6	6.00	3.58		
Total BTEX	<0.300	0.300	07/31/2023	ND						

Surrogate: 4-Bromofluorobenzene (PID) 111 % 71.5-134

Chloride, SM4500Cl-B		mg/kg		Analyzed By: AC						
Analyte	Result	Reporting Limit	Analyzed	Method Blank	BS	% Recovery	True Value QC	RPD	Qualifier	
Chloride	192	16.0	07/31/2023	ND	416	104	400	0.00		

TPH 8015M		mg/kg		Analyzed By: MS					
Analyte	Result	Reporting Limit	Analyzed	Method Blank	BS	% Recovery	True Value QC	RPD	Qualifier
GRO C6-C10*	<10.0	10.0	07/31/2023	ND	183	91.7	200	9.26	
DRO >C10-C28*	<10.0	10.0	07/31/2023	ND	194	97.1	200	5.38	
EXT DRO >C28-C36	<10.0	10.0	07/31/2023	ND					

Surrogate: 1-Chlorooctane 75.8 % 48.2-134

Surrogate: 1-Chlorooctadecane 83.8 % 49.1-148

Cardinal Laboratories

*=Accredited Analyte

PLEASE NOTE: Liability and Damages. Cardinal's liability and client's exclusive remedy for any claim arising, whether based in contract or tort, shall be limited to the amount paid by client for analyses. All claims, including those for negligence and any other cause whatsoever shall be deemed waived unless made in writing and received by Cardinal within thirty (30) days after completion of the applicable service. In no event shall Cardinal be liable for incidental or consequential damages, including, without limitation, business interruptions, loss of use, or loss of profits incurred by client, its subsidiaries, affiliates or successors arising out of or related to the performance of the services hereunder by Cardinal, regardless of whether such claim is based upon any of the above stated reasons or otherwise. Results relate only to the samples identified above. This report shall not be reproduced except in full with written approval of Cardinal Laboratories.

Celey D. Keene, Lab Director/Quality Manager

PHONE (575) 393-2326 ° 101 E. MARLAND ° HOBBS, NM 88240

Notes and Definitions

QM-07	The spike recovery was outside acceptance limits for the MS and/or MSD. The batch was accepted based on acceptable LCS recovery.
ND	Analyte NOT DETECTED at or above the reporting limit
RPD	Relative Percent Difference
**	Samples not received at proper temperature of 6°C or below.
***	Insufficient time to reach temperature.
-	Chloride by SM4500Cl-B does not require samples be received at or below 6°C Samples reported on an as received basis (wet) unless otherwise noted on report

Cardinal Laboratories

*=Accredited Analyte

PLEASE NOTE: Liability and Damages. Cardinal's liability and client's exclusive remedy for any claim arising, whether based in contract or tort, shall be limited to the amount paid by client for analyses. All claims, including those for negligence and any other cause whatsoever shall be deemed waived unless made in writing and received by Cardinal within thirty (30) days after completion of the applicable service. In no event shall Cardinal be liable for incidental or consequential damages, including, without limitation, business interruptions, loss of use, or loss of profits incurred by client, its subsidiaries, affiliates or successors arising out of or related to the performance of the services hereunder by Cardinal, regardless of whether such claim is based upon any of the above stated reasons or otherwise. Results relate only to the samples identified above. This report shall not be reproduced except in full with written approval of Cardinal Laboratories.

A handwritten signature in black ink, appearing to read "Caley D. Keene", is written over a horizontal line.

Caley D. Keene, Lab Director/Quality Manager



CHAIN-OF-CUSTODY AND ANALYSIS REQUEST

101 East Marland, Hobbs, NM 88240
(575) 393-2326 FAX (575) 393-2476

Page 1 of 1

[illegible]

District I
1625 N. French Dr., Hobbs, NM 88240
Phone:(575) 393-6161 Fax:(575) 393-0720
District II
811 S. First St., Artesia, NM 88210
Phone:(575) 748-1283 Fax:(575) 748-9720
District III
1000 Rio Brazos Rd., Aztec, NM 87410
Phone:(505) 334-6178 Fax:(505) 334-6170
District IV
1220 S. St Francis Dr., Santa Fe, NM 87505
Phone:(505) 476-3470 Fax:(505) 476-3462

State of New Mexico
Energy, Minerals and Natural Resources
Oil Conservation Division
1220 S. St Francis Dr.
Santa Fe, NM 87505

CONDITIONS

Action 262497

CONDITIONS

Operator: COG OPERATING LLC 600 W Illinois Ave Midland, TX 79701	OGRID: 229137
	Action Number: 262497
	Action Type: [C-141] Release Corrective Action (C-141)

CONDITIONS

Created By	Condition	Condition Date
bhall	Closure approved. Site will need to meet the requirements of 19.15.29.13 NMAC at time of a major facility deconstruction or plugging and abandonment, whichever comes first.	10/30/2023