

# Closure Report

ID#: nOY1826928236

## Site Description

Site Name:	NHU INJECTION BATTERY
Company:	OXY USA, Inc.
Legal Description:	U/L E, SECTION 33,T 18S, R38E
County:	LEA COUNTY, NM
GPS Coordinates:	N32.70650, W-103.16114

## Release Data

Date of Release:	8/23/2018
Type of Release:	CRUDE OIL
Source of Release:	GUN BARREL SPILLED OVER
Volume of Release:	13BBL CRUDE OIL/
Volume Recovered:	10BBLS CRUDE OIL

## Remediation Specifications

Remediation Parameters:	<p>RISK REMEDIATION - The site was excavated as depicted on the enclosed <input type="checkbox"/> diagram according to the Table 1 Closure Criteria in 19.15.29.1 NMAC.<input type="checkbox"/></p> <p>OXY collected confirmation bottom and sidewall samples every 200 square <input type="checkbox"/> feet. In addition a soil boring was advanced to a depth of 55 feet within a half-mile radius of the site, temporarily cased and monitored for 72 hours for the presence of water. No water was detected so the borehole was abandoned according to NMOSE standards. This proves depth to water is greater than 50 feet therefore, the closing standards are relevant to the Table 1 standards of 51-100 feet depth to ground water.<input type="checkbox"/></p>
Remediation Activities:	

Plan Sent to OCD:		
OCD Approval of Plan:		
Plan Sent to BLM:		
BLM Approval of Plan:		

## Supporting Documentation

C-141, page 6	signed and included	
Site Diagram	Google Earth map with excavation depths & confirmation sample points	
Pictures	Remediation photos	
Lab Summary/Analysis	Confirmation lab summary/analysis report for 9/25/23, 9/26/23, 10/04/23	
Notifications	9/20/2023	

## Request for Closure

Based on the completion of the remediation plan, OXY requests closure approval from NMOCD.

Cliff Brunson, President of BBC International Inc.

11/1/2023

Form C-141

Page 6

State of New Mexico  
Oil Conservation Division

Incident ID	nOY1826928236
District RP	
Facility ID	
Application ID	

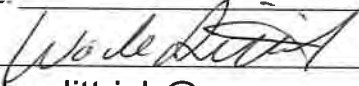
## Closure

The responsible party must attach information demonstrating they have complied with all applicable closure requirements and any conditions or directives of the OCD. This demonstration should be in the form of a comprehensive report (electronic submittals in .pdf format are preferred) including a scaled site map, sampling diagrams, relevant field notes, photographs of any excavation prior to backfilling, laboratory data including chain of custody documents of final sampling, and a narrative of the remedial activities. Refer to 19.15.29.12 NMAC.

**Closure Report Attachment Checklist:** *Each of the following items must be included in the closure report.*

- ☒ A scaled site and sampling diagram as described in 19.15.29.11 NMAC
- ☒ Photographs of the remediated site prior to backfill or photos of the liner integrity if applicable (Note: appropriate OCD District office must be notified 2 days prior to liner inspection)
- ☒ Laboratory analyses of final sampling (Note: appropriate OCD District office must be notified 2 days prior to final sampling)
- ☒ Description of remediation activities

I hereby certify that the information given above is true and complete to the best of my knowledge and understand that pursuant to OCD rules and regulations all operators are required to report and/or file certain release notifications and perform corrective actions for releases which may endanger public health or the environment. The acceptance of a C-141 report by the OCD does not relieve the operator of liability should their operations have failed to adequately investigate and remediate contamination that pose a threat to groundwater, surface water, human health or the environment. In addition, OCD acceptance of a C-141 report does not relieve the operator of responsibility for compliance with any other federal, state, or local laws and/or regulations. The responsible party acknowledges they must substantially restore, reclaim, and re-vegetate the impacted surface area to the conditions that existed prior to the release or their final land use in accordance with 19.15.29.13 NMAC including notification to the OCD when reclamation and re-vegetation are complete.

Printed Name: Wade Dittrich Title: Environmental Coordinator  
Signature:  Date: 10-11-23  
email: wade\_dittrich@oxy.com Telephone: (575) 390-2828

**OCD Only**

Received by: \_\_\_\_\_ Date: \_\_\_\_\_

Closure approval by the OCD does not relieve the responsible party of liability should their operations have failed to adequately investigate and remediate contamination that poses a threat to groundwater, surface water, human health, or the environment nor does not relieve the responsible party of compliance with any other federal, state, or local laws and/or regulations.

Closure Approved by: Ashley Maxwell Date: 11/02/2023  
Printed Name: Ashley Maxwell Title: Environmental Specialist

**From:** [Kathy Sweeney](#)  
**To:** ["OCD.Enviro@emnrd.nm.gov"](mailto:OCD.Enviro@emnrd.nm.gov)  
**Cc:** ["Cliff Brunson"](#); ["Dittrich, John W"](#); ["TYSON\\_PIERCE@OXY.COM"](mailto:TYSON_PIERCE@OXY.COM); ["Jennifer Gilkey"](#)  
**Subject:** OXY -NHU Injection Battery (8/23/2018) (nOY1826928236)-Sampling Notification  
**Date:** Wednesday, September 20, 2023 3:06:00 PM

---

This is a notification that BBC will conduct confirmation sampling on behalf of OXY at the NHU Injection Battery (8/23/2018) (nOY1826928236) on Monday ,September 25, 2023 at 9:00 a.m.

**From:** [Rodgers, Scott, EMNRD](#)  
**To:** [Kathy Sweeney](#); [Hall, Brittany, EMNRD](#); [Bratcher, Michael, EMNRD](#)  
**Cc:** ["Cliff Brunson"](#); ["Dittrich, John W"](#); [TYSON\\_PIERCE@OXY.COM](mailto:TYSON_PIERCE@OXY.COM); ["Jennifer Gilkey"](#)  
**Subject:** RE: [EXTERNAL] OXY -NHU Injection Battery (8/23/2018) (nOY1826928236)-Sampling Notification  
**Date:** Wednesday, September 20, 2023 3:08:17 PM

---

The OCD has received your notification. Include a copy of this and all notifications in the remedial and/or closure reports to ensure the notifications are documented in the project file.

**Scott Rodgers** • Environmental Specialist  
Environmental Bureau  
EMNRD - Oil Conservation Division  
8801 Horizon Blvd. NE, Suite 260 | Albuquerque, NM 87113  
505.469.1830 | [scott.rodgers@emnrd.nm.gov](mailto:scott.rodgers@emnrd.nm.gov)  
<http://www.emnrd.nm.gov/oed>



---

**From:** Kathy Sweeney <kathys@bbcinternational.com>  
**Sent:** Wednesday, September 20, 2023 3:06 PM  
**To:** Enviro, OCD, EMNRD <OCD.Enviro@emnrd.nm.gov>  
**Cc:** 'Cliff Brunson' <cbrunson@bbcinternational.com>; 'Dittrich, John W' <Wade\_Dittrich@oxy.com>; TYSON\_PIERCE@OXY.COM; 'Jennifer Gilkey' <jgilkey@bbcinternational.com>  
**Subject:** [EXTERNAL] OXY -NHU Injection Battery (8/23/2018) (nOY1826928236)-Sampling Notification

CAUTION: This email originated outside of our organization. Exercise caution prior to clicking on links or opening attachments.

This is a notification that BBC will conduct confirmation sampling on behalf of OXY at the NHU Injection Battery (8/23/2018) (nOY1826928236) on Monday ,September 25, 2023 at 9:00 a.m.

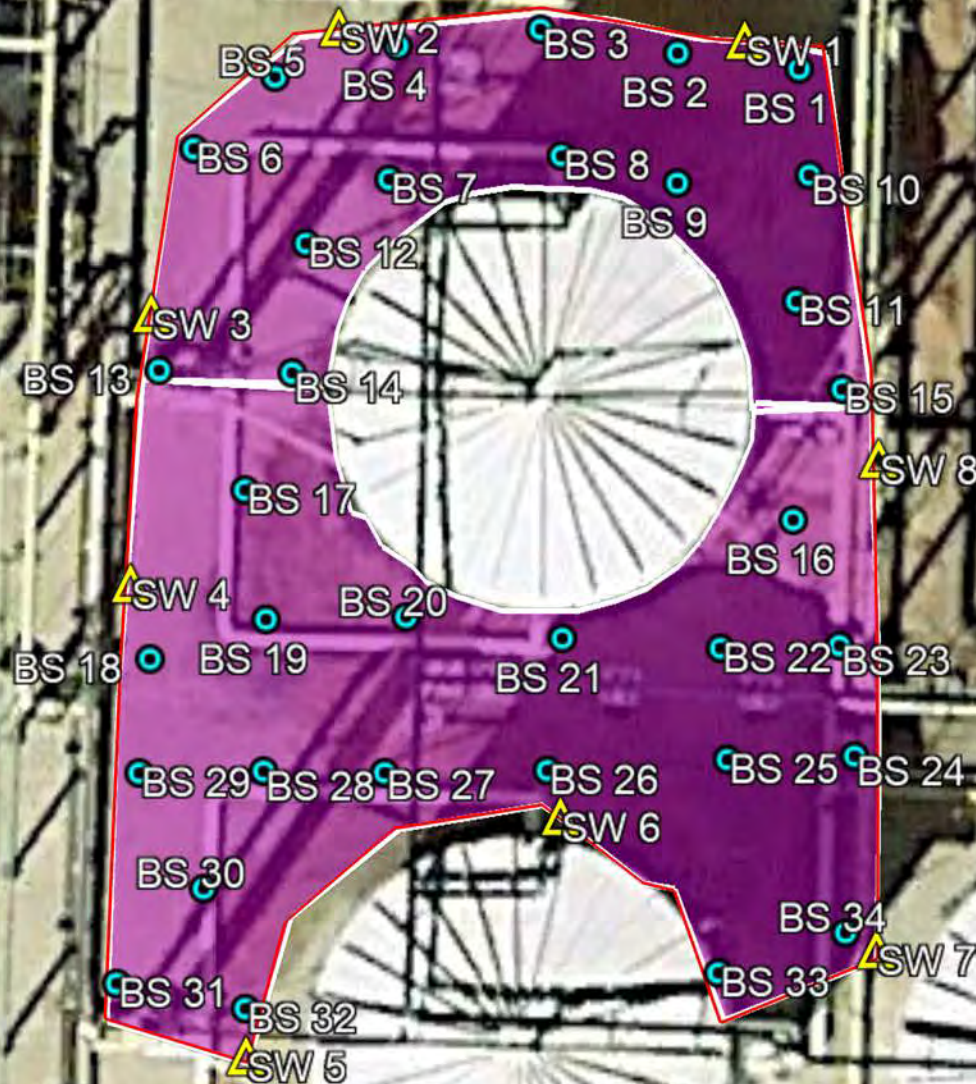


# OXY-NHU INJECTION BATTERY

LEAK DATE : 8/23/18  
LEA CO , NM  
ID#nOY1826928236

## Legend

- 1' EXCAVATION
- BOTTOM CONFIRMATION SAMPLE POINTS
- LEAK AREA
- SIDEWALL CONFIRMATION SAMPLE POINTS



Google Earth

## OXY-NHU INJECTION BATTERY (8/23/18) SAMPLE DATE 9/25/23-9/26/23

## BOTTOM SAMPLES

BS 1@1'	N 32.70649	W-103.16104
BS 2@1'	N 32.70648	W-103.16113
BS 3@1'	N 32.70646	W-103.16119
BS 4@1'	N 32.70646	W-103.16122
BS 5@1'	N 32.70644	W-103.16129
BS 6@1'	N 32.70642	W-103.16132
BS 7@1'	N 32.70642	W-103.16124
BS 8@1'	N 32.70646	W-103.16118
BS 9@1'	N 32.70642	W-103.16106
BS 10@1'	N 32.70638	W-103.16102
BS 11@1'	N 32.70641	W-103.16114
BS 12@1'	N 32.70646	W-103.16126
BS 13@1'	N 32.70636	W-103.16135
BS 14@1'	N 32.70638	W-103.16135
BS 15@1'	N 32.70638	W-103.16104
BS 16@1'	N 32.70628	W-103.16109
BS 17@1'	N 32.70630	W-103.16134
BS 18@1'	N 32.70634	W-103.16135
BS 19@1'	N 32.70637	W-103.16125
BS 20@1'	N 32.70628	W-103.16125
BS 21@1'	N 32.70630	W-103.16116
BS 22@1'	N 32.70631	W-103.16113
BS 23@1'	N 32.70629	W-103.16103
BS 24@1'	N 32.70626	W-103.16104
BS 25@1'	N 32.70628	W-103.16107
BS 26@1'	N 32.70628	W-103.16113
BS 27@1'	N 32.70630	W-103.16120
BS 28@1'	N 32.70628	W-103.16127
BS 29@1'	N 32.70629	W-103.16132
BS 30@1'	N 32.70624	W-103.16131
BS 31@1'	N 32.70614	W-103.16121
BS 32@1'	N 32.70614	W-103.16125
BS 33@1'	N 32.70610	W-103.16108
BS 34@1'	N 32.70609	W-103.16106

## SIDEWALL SAMPLE

SW 1	N 32.70647	W-103.16099
SW 2	N 32.70646	W-103.16124



SW 3	N 32.70642	W-103.16131
SW 4	N 32.70623	W-103.16129
SW 5	N 32.70617	W-103.16120
SW 6	N 32.70625	W-103.16117
SW 7	N 32.70618	W-103.16107
SW 8	N 32.70630	W-103.16100

	Sample ID	BS 1@1'	BS 2@1'	BS 3@1'	BS 4@1'	BS 5@1'	BS 6@1'	BS 7@1'	BS 8@1'	BS 9@1'	BS 10@1'	BS 11@1'	BS 12@1'	BS 13@1'	BS 14@1'	BS 15@1'	BS 16@1'	BS 17@1'	BS 18@1'
Analyte	Date	9/25/23	9/25/23	9/25/23	9/25/23	9/25/23	9/25/23	9/25/23	9/25/23	9/25/23	9/25/23	9/25/23	9/25/23	9/25/23	9/25/23	9/25/23	9/25/23	9/25/23	9/25/23
		mg/kg	mg/kg	mg/kg	mg/kg	mg/kg	mg/kg	mg/kg	mg/kg	mg/kg	mg/kg	mg/kg	mg/kg	mg/kg	mg/kg	mg/kg	mg/kg	mg/kg	mg/kg
Benzene		<0.050	<0.050	<0.050	<0.050	<0.050	<0.050	<0.050	<0.050	<0.050	<0.050	<0.050	<0.050	<0.050	<0.050	<0.050	<0.050	<0.050	<0.050
Toluene		<0.050	<0.050	<0.050	<0.050	<0.050	<0.050	<0.050	<0.050	<0.050	<0.050	<0.050	<0.050	<0.050	<0.050	<0.050	<0.050	<0.050	<0.050
Ethylbenzene		<0.050	<0.050	<0.050	<0.050	<0.050	<0.050	<0.050	<0.050	<0.050	<0.050	<0.050	<0.050	<0.050	<0.050	<0.050	<0.050	<0.050	<0.050
Total Xylenes		<0.150	<0.150	<0.150	<0.150	<0.150	<0.150	<0.150	<0.150	<0.150	<0.150	<0.150	<0.150	<0.150	<0.150	<0.150	<0.150	<0.150	<0.150
Total BTEX		<0.300	<0.300	<0.300	<0.300	<0.300	<0.300	<0.300	<0.300	<0.300	<0.300	<0.300	<0.300	<0.300	<0.300	<0.300	<0.300	<0.300	<0.300
Chloride		64.0	48.0	80.0	48.0	80.0	48.0	64.0	64.0	64.0	64.0	64.0	64.0	64.0	64.0	48.0	64.0	64.0	64.0
GRO		<10.0	<10.0	<10.0	<10.0	<10.0	<10.0	<10.0	<10.0	<10.0	<10.0	<10.0	<10.0	<10.0	<10.0	<10.0	<10.0	<10.0	<10.0
DRO		<10.0	<10.0	<10.0	<10.0	<10.0	<10.0	<10.0	<10.0	<10.0	<10.0	<10.0	<10.0	<10.0	<10.0	<10.0	<10.0	<10.0	<10.0
EXT DRO		<10.0	<10.0	<10.0	<10.0	<10.0	<10.0	<10.0	<10.0	<10.0	<10.0	<10.0	<10.0	<10.0	<10.0	<10.0	<10.0	<10.0	<10.0

	Sample ID	BS 19@1'	BS 20@1'	BS 21@1'	BS 22@1'	BS 23@1'	BS 24@1'	BS 25@1'	BS 26@1'	BS 27@1'	BS 28@1'	BS 29@1'	BS 30@1'	BS 31@1'	BS 32@1'	BS 33@1'	BS 34@1'
Analyte	Date	9/25/23	9/25/23	9/25/23	9/25/23	9/25/23	9/25/23	9/25/23	9/25/23	9/25/23	9/25/23	9/25/23	9/25/23	9/25/23	9/25/23	9/26/23	9/26/03
		mg/kg	mg/kg	mg/kg	mg/kg	mg/kg	mg/kg	mg/kg	mg/kg	mg/kg	mg/kg	mg/kg	mg/kg	mg/kg	mg/kg	mg/kg	mg/kg
Benzene		<0.050	<0.050	<0.050	<0.050	<0.050	<0.050	<0.050	<0.050	<0.050	<0.050	<0.050	<0.050	<0.050	<0.050	<0.050	<0.050
Toluene		<0.050	<0.050	<0.050	<0.050	<0.050	<0.050	<0.050	<0.050	<0.050	<0.050	<0.050	<0.050	<0.050	<0.050	<0.050	<0.050
Ethylbenzene		<0.050	<0.050	<0.050	<0.050	<0.050	<0.050	<0.050	<0.050	<0.050	<0.050	<0.050	<0.050	<0.050	<0.050	<0.050	<0.050
Total Xylenes		<0.150	<0.150	<0.150	<0.150	<0.150	<0.150	<0.150	<0.150	<0.150	<0.150	<0.150	<0.150	<0.150	<0.150	<0.150	<0.150
Total BTEX		<0.300	<0.300	<0.300	<0.300	<0.300	<0.300	<0.300	<0.300	<0.300	<0.300	<0.300	<0.300	<0.300	<0.300	<0.300	<0.300
Chloride		64.0	48.0	64.0	32.0	80.0	64.0	64.0	80.0	48.0	64.0	64.0	64.0	80.0	32.0	80.0	64.0
GRO		<10.0	<10.0	<10.0	<10.0	<10.0	<10.0	<10.0	<10.0	<10.0	<10.0	<10.0	<10.0	<10.0	<10.0	<10.0	<10.0
DRO		<10.0	<10.0	<10.0	<10.0	<10.0	<10.0	<10.0	<10.0	<10.0	<10.0	<10.0	<10.0	<10.0	<10.0	<10.0	<10.0
EXT DRO		<10.0	<10.0	<10.0	<10.0	<10.0	<10.0	<10.0	<10.0	<10.0	<10.0	<10.0	<10.0	<10.0	<10.0	<10.0	<10.0




	Sample ID	SW 1	SW 2	SW 3	SW 4	SW 5	SW 6	SW 7	SW 8
Analyte	Date	9/26/23	9/26/23	9/26/23	9/26/23	9/26/23	9/26/23	9/26/23	9/26/23
		mg/kg	mg/kg	mg/kg	mg/kg	mg/kg	mg/kg	mg/kg	mg/kg
Benzene		<0.050	<0.050	<0.050	<0.050	<0.050	<0.050	<0.050	<0.050
Toluene		<0.050	<0.050	<0.050	<0.050	<0.050	<0.050	<0.050	<0.050
Ethylbenzene		<0.050	<0.050	<0.050	<0.050	<0.050	<0.050	<0.050	<0.050
Total Xylenes		<0.150	<0.150	<0.150	<0.150	<0.150	<0.150	<0.150	<0.150
Total BTEX		<0.300	<0.300	<0.300	<0.300	<0.300	<0.300	<0.300	<0.300
Chloride		80.0	80.0	96.0	80.0	64.0	80.0	96.0	96.0
GRO		<10.0	<10.0	<10.0	<10.0	<10.0	<10.0	<10.0	<10.0
DRO		<10.0	<10.0	<10.0	<10.0	<10.0	<10.0	<10.0	<10.0
EXT DRO		<10.0	<10.0	<10.0	<10.0	<10.0	<10.0	<10.0	<10.0

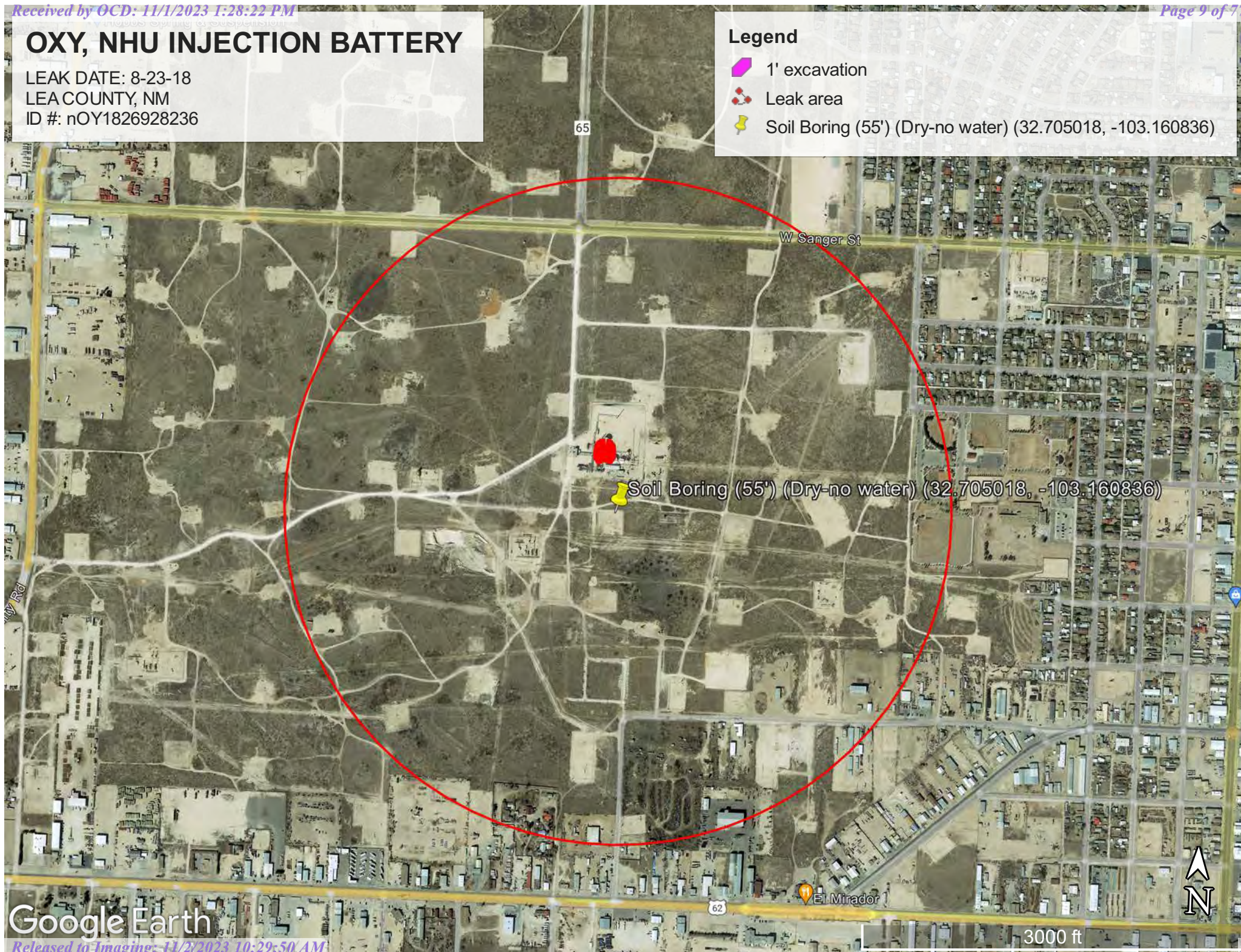


# OXY, NHU INJECTION BATTERY

LEAK DATE: 8-23-18  
LEA COUNTY, NM  
ID #: nOY1826928236

## Legend

-  1' excavation
-  Leak area
-  Soil Boring (55') (Dry-no water) (32.705018, -103.160836)








# OXY, NHU INJECTION BATTERY (08/23/18) TO SOIL BORING 0.11 MILES



10/31/2023, 3:40:07 PM

## OSE Water PODs Wells - Large Scale

- Active     Miscellaneous    ● Oil, Active      PLSS Second Division  
● Pending     Injection, Active    ● Oil, Cancelled      PLSS First Division  
● Plugged     Injection, New    ● Oil, Plugged

A scale bar for Figure 1. The top scale is in miles, with markings at 0, 0.04, 0.09, and 0.17 mi. The bottom scale is in kilometers, with markings at 0, 0.05, 0.1, and 0.2 km. The text '1:4,514' is centered above the scales.

Oil Conservation Division of the New Mexico Energy, Minerals and Natural Resources Department., Sources: Esri, Airbus DS, USGS, NGA, NASA, CGIAR, N Robinson, NCEAS, NLS, OS, NMA, Geodatastyrelsen, Rijkswaterstaat, GSA, Geoland, FEMA, Intermap and the GIS user community, BLM



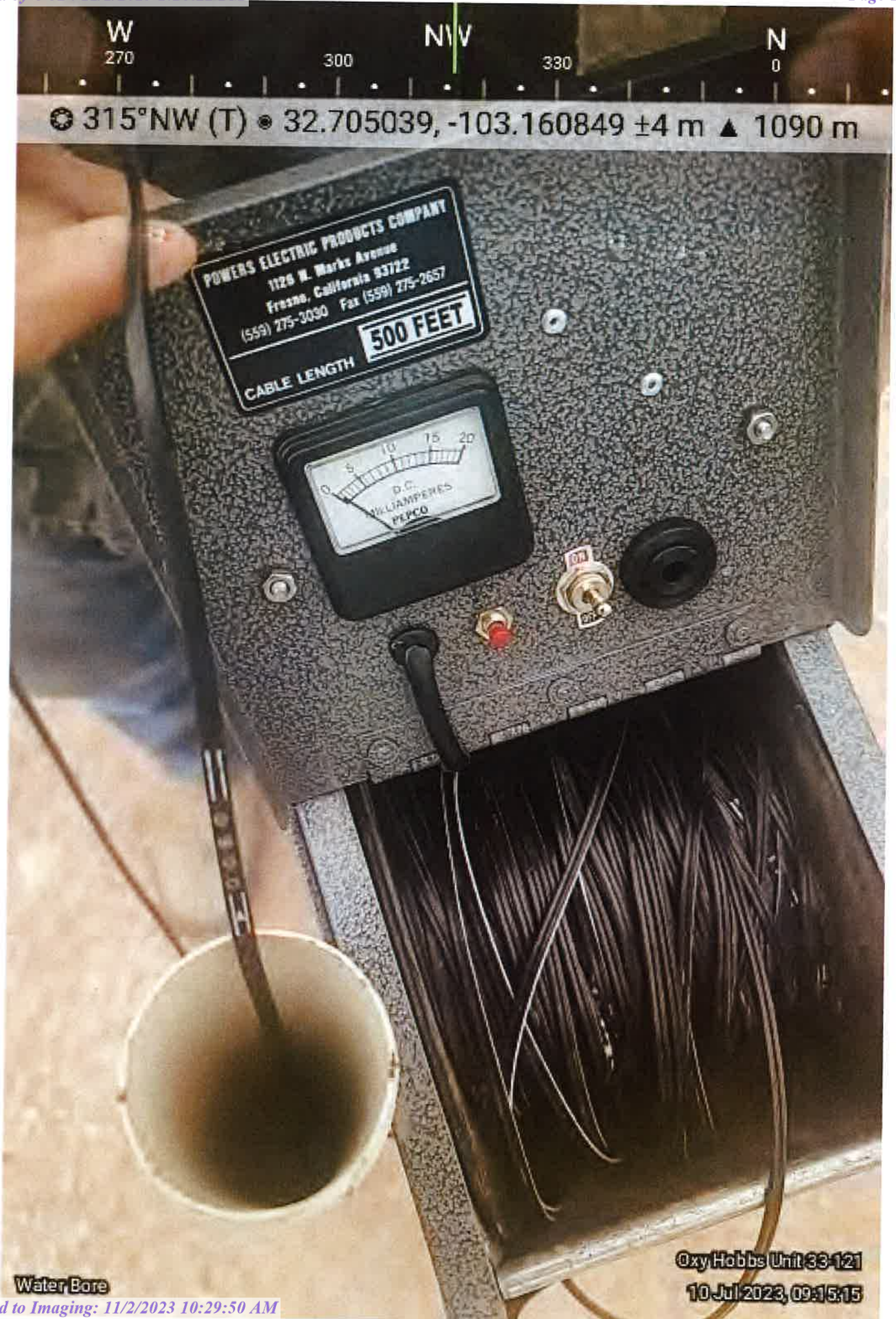
MCollier@h-r-enterprises.com, JHawley@h-r-enterprises.com  
575-909-0326 575-605-3471

# SOIL BORE LOG

<b>Project:</b>	OXY North Hobbs Unit 33-121	<b>Date:</b>	Jun 30, 2023
<b>Type:</b>	Exploratory Water Bore	<b>Location:</b>	32.705018,-103.160836

[illegible]













OXY-NHU INJECTION BATTERY (8/23/18)





# OXY-NHU INJECTION BATTERY (8/23/18)







# OXY-NHU INJECTION BATTERY (8/23/18)





OXY-NHU INJECTION BATTERY (8/23/18)







# OXY-NHU INJECTION BATTERY (8/23/18)







OXY-NHU INJECTION BATTERY (8/23/18)





OXY-NHU INJECTION BATTERY (8/23/18)





# OXY-NHU INJECTION BATTERY (8/23/18)







OXY-NHU INJECTION BATTERY (8/23/18)





OXY-NHU INJECTION BATTERY (8/23/18)







OXY-NHU INJECTION BATTERY (8/23/18)





OXY-NHU INJECTION BATTERY (8/23/18)





OXY-NHU INJECTION BATTERY (8/23/18)





OXY-NHU INJECTION BATTERY (8/23/18)





PHONE (575) 393-2326 ° 101 E. MARLAND ° HOBBS, NM 88240

---

October 03, 2023

Cliff Brunson

BBC International, Inc.

P.O. Box 805

Hobbs, NM 88241

RE: NHU INJECTION BATTERY (8/23/18)

Enclosed are the results of analyses for samples received by the laboratory on 09/26/23 16:20.

Cardinal Laboratories is accredited through Texas NELAP under certificate number T104704398-22-15. Accreditation applies to drinking water, non-potable water and solid and chemical materials. All accredited analytes are denoted by an asterisk (\*). For a complete list of accredited analytes and matrices visit the TCEQ website at [www.tceq.texas.gov/field/qa/lab\\_accred\\_certif.html](http://www.tceq.texas.gov/field/qa/lab_accred_certif.html).

Cardinal Laboratories is accredited through the State of Colorado Department of Public Health and Environment for:

Method EPA 552.2	Haloacetic Acids (HAA-5)
Method EPA 524.2	Total Trihalomethanes (TTHM)
Method EPA 524.4	Regulated VOCs (V1, V2, V3)

Accreditation applies to public drinking water matrices.

This report meets NELAP requirements and is made up of a cover page, analytical results, and a copy of the original chain-of-custody. If you have any questions concerning this report, please feel free to contact me.

Sincerely,

A handwritten signature in black ink that reads "Celey D. Keene". The signature is written in a cursive style with a large, stylized 'C' and 'K'.

Celey D. Keene

Lab Director/Quality Manager





PHONE (575) 393-2326 • 101 E. MARLAND • HOBBS, NM 88240

**Analytical Results For:**

BBC International, Inc.  
 Cliff Brunson  
 P.O. Box 805  
 Hobbs NM, 88241  
 Fax To: (575) 397-0397

Received:	09/26/2023	Sampling Date:	09/25/2023
Reported:	10/03/2023	Sampling Type:	Soil
Project Name:	NHU INJECTION BATTERY (8/23/18)	Sampling Condition:	Cool & Intact
Project Number:	NONE GIVEN	Sample Received By:	Tamara Oldaker
Project Location:	OXY - NEW MEXICO		

**Sample ID: BOTTOM SAMPLE 1 @ 1' (H235258-01)**

BTEX 8021B		mg/kg		Analyzed By: MS					
Analyte	Result	Reporting Limit	Analyzed	Method Blank	BS	% Recovery	True Value QC	RPD	Qualifier
Benzene*	<0.050	0.050	09/29/2023	ND	2.11	105	2.00	0.115	
Toluene*	<0.050	0.050	09/29/2023	ND	2.22	111	2.00	0.941	
Ethylbenzene*	<0.050	0.050	09/29/2023	ND	2.25	113	2.00	0.123	
Total Xylenes*	<0.150	0.150	09/29/2023	ND	6.17	103	6.00	0.896	
Total BTEX	<0.300	0.300	09/29/2023	ND					

Surrogate: 4-Bromofluorobenzene (PID) 112 % 71.5-134

Chloride, SM4500Cl-B		mg/kg		Analyzed By: AC					
Analyte	Result	Reporting Limit	Analyzed	Method Blank	BS	% Recovery	True Value QC	RPD	Qualifier
Chloride	64.0	16.0	09/27/2023	ND	416	104	400	0.00	

TPH 8015M		mg/kg		Analyzed By: MS					
Analyte	Result	Reporting Limit	Analyzed	Method Blank	BS	% Recovery	True Value QC	RPD	Qualifier
GRO C6-C10*	<10.0	10.0	09/27/2023	ND	198	98.9	200	9.96	
DRO >C10-C28*	<10.0	10.0	09/27/2023	ND	187	93.3	200	7.97	
EXT DRO >C28-C36	<10.0	10.0	09/27/2023	ND					

Surrogate: 1-Chlorooctane 88.2 % 48.2-134

Surrogate: 1-Chlorooctadecane 87.8 % 49.1-148

Cardinal Laboratories

\*=Accredited Analyte

PLEASE NOTE: Liability and Damages. Cardinal's liability and client's exclusive remedy for any claim arising, whether based in contract or tort, shall be limited to the amount paid by client for analyses. All claims, including those for negligence and any other cause whatsoever shall be deemed waived unless made in writing and received by Cardinal within thirty (30) days after completion of the applicable service. In no event shall Cardinal be liable for incidental or consequential damages, including, without limitation, business interruptions, loss of use, or loss of profits incurred by client, its subsidiaries, affiliates or successors arising out of or related to the performance of the services hereunder by Cardinal, regardless of whether such claim is based upon any of the above stated reasons or otherwise. Results relate only to the samples identified above. This report shall not be reproduced except in full with written approval of Cardinal Laboratories.

Celey D. Keene, Lab Director/Quality Manager



PHONE (575) 393-2326 ° 101 E. MARLAND ° HOBBS, NM 88240

**Analytical Results For:**

BBC International, Inc.  
 Cliff Brunson  
 P.O. Box 805  
 Hobbs NM, 88241  
 Fax To: (575) 397-0397

Received:	09/26/2023	Sampling Date:	09/25/2023
Reported:	10/03/2023	Sampling Type:	Soil
Project Name:	NHU INJECTION BATTERY (8/23/18)	Sampling Condition:	Cool & Intact
Project Number:	NONE GIVEN	Sample Received By:	Tamara Oldaker
Project Location:	OXY - NEW MEXICO		

**Sample ID: BOTTOM SAMPLE 2 @ 1' (H235258-02)**

BTX 8021B		mg/kg		Analyzed By: MS					
Analyte	Result	Reporting Limit	Analyzed	Method Blank	BS	% Recovery	True Value QC	RPD	Qualifier
Benzene*	<0.050	0.050	09/29/2023	ND	2.11	105	2.00	0.115	
Toluene*	<0.050	0.050	09/29/2023	ND	2.22	111	2.00	0.941	
Ethylbenzene*	<0.050	0.050	09/29/2023	ND	2.25	113	2.00	0.123	
Total Xylenes*	<0.150	0.150	09/29/2023	ND	6.17	103	6.00	0.896	
Total BTX	<0.300	0.300	09/29/2023	ND					

Surrogate: 4-Bromofluorobenzene (PID) 114 % 71.5-134

Chloride, SM4500CI-B		mg/kg		Analyzed By: AC						
Analyte	Result	Reporting Limit	Analyzed	Method Blank	BS	% Recovery	True Value QC	RPD	Qualifier	
Chloride	48.0	16.0	09/27/2023	ND	416	104	400	0.00		

TPH 8015M		mg/kg		Analyzed By: MS					
Analyte	Result	Reporting Limit	Analyzed	Method Blank	BS	% Recovery	True Value QC	RPD	Qualifier
GRO C6-C10*	<10.0	10.0	09/27/2023	ND	198	98.9	200	9.96	
DRO >C10-C28*	<10.0	10.0	09/27/2023	ND	187	93.3	200	7.97	
EXT DRO >C28-C36	<10.0	10.0	09/27/2023	ND					

Surrogate: 1-Chlorooctane 98.5 % 48.2-134

Surrogate: 1-Chlorooctadecane 102 % 49.1-148

Cardinal Laboratories

\*=Accredited Analyte

PLEASE NOTE: Liability and Damages. Cardinal's liability and client's exclusive remedy for any claim arising, whether based in contract or tort, shall be limited to the amount paid by client for analyses. All claims, including those for negligence and any other cause whatsoever shall be deemed waived unless made in writing and received by Cardinal within thirty (30) days after completion of the applicable service. In no event shall Cardinal be liable for incidental or consequential damages, including, without limitation, business interruptions, loss of use, or loss of profits incurred by client, its subsidiaries, affiliates or successors arising out of or related to the performance of the services hereunder by Cardinal, regardless of whether such claim is based upon any of the above stated reasons or otherwise. Results relate only to the samples identified above. This report shall not be reproduced except in full with written approval of Cardinal Laboratories.

Celey D. Keene, Lab Director/Quality Manager



PHONE (575) 393-2326 • 101 E. MARLAND • HOBBS, NM 88240

**Analytical Results For:**

BBC International, Inc.  
 Cliff Brunson  
 P.O. Box 805  
 Hobbs NM, 88241  
 Fax To: (575) 397-0397

Received:	09/26/2023	Sampling Date:	09/25/2023
Reported:	10/03/2023	Sampling Type:	Soil
Project Name:	NHU INJECTION BATTERY (8/23/18)	Sampling Condition:	Cool & Intact
Project Number:	NONE GIVEN	Sample Received By:	Tamara Oldaker
Project Location:	OXY - NEW MEXICO		

**Sample ID: BOTTOM SAMPLE 3 @ 1' (H235258-03)**

BTX 8021B		mg/kg		Analyzed By: JH/						
Analyte	Result	Reporting Limit	Analyzed	Method Blank	BS	% Recovery	True Value QC	RPD	Qualifier	
Benzene*	<0.050	0.050	09/29/2023	ND	1.92	96.2	2.00	0.971		
Toluene*	<0.050	0.050	09/29/2023	ND	1.91	95.4	2.00	5.88		
Ethylbenzene*	<0.050	0.050	09/29/2023	ND	1.98	99.2	2.00	1.37		
Total Xylenes*	<0.150	0.150	09/29/2023	ND	5.89	98.2	6.00	0.874		
Total BTX	<0.300	0.300	09/29/2023	ND						

Surrogate: 4-Bromofluorobenzene (PID) 109 % 71.5-134

Chloride, SM4500CI-B		mg/kg		Analyzed By: AC						
Analyte	Result	Reporting Limit	Analyzed	Method Blank	BS	% Recovery	True Value QC	RPD	Qualifier	
Chloride	80.0	16.0	09/27/2023	ND	416	104	400	0.00		

TPH 8015M		mg/kg		Analyzed By: MS					
Analyte	Result	Reporting Limit	Analyzed	Method Blank	BS	% Recovery	True Value QC	RPD	Qualifier
GRO C6-C10*	<10.0	10.0	09/27/2023	ND	198	98.9	200	9.96	
DRO >C10-C28*	<10.0	10.0	09/27/2023	ND	187	93.3	200	7.97	
EXT DRO >C28-C36	<10.0	10.0	09/27/2023	ND					

Surrogate: 1-Chlorooctane 86.3 % 48.2-134

Surrogate: 1-Chlorooctadecane 87.0 % 49.1-148

Cardinal Laboratories

\*=Accredited Analyte

PLEASE NOTE: Liability and Damages. Cardinal's liability and client's exclusive remedy for any claim arising, whether based in contract or tort, shall be limited to the amount paid by client for analyses. All claims, including those for negligence and any other cause whatsoever shall be deemed waived unless made in writing and received by Cardinal within thirty (30) days after completion of the applicable service. In no event shall Cardinal be liable for incidental or consequential damages, including, without limitation, business interruptions, loss of use, or loss of profits incurred by client, its subsidiaries, affiliates or successors arising out of or related to the performance of the services hereunder by Cardinal, regardless of whether such claim is based upon any of the above stated reasons or otherwise. Results relate only to the samples identified above. This report shall not be reproduced except in full with written approval of Cardinal Laboratories.

Celey D. Keene, Lab Director/Quality Manager





PHONE (575) 393-2326 ° 101 E. MARLAND ° HOBBS, NM 88240

**Analytical Results For:**

BBC International, Inc.  
 Cliff Brunson  
 P.O. Box 805  
 Hobbs NM, 88241  
 Fax To: (575) 397-0397

Received:	09/26/2023	Sampling Date:	09/25/2023
Reported:	10/03/2023	Sampling Type:	Soil
Project Name:	NHU INJECTION BATTERY (8/23/18)	Sampling Condition:	Cool & Intact
Project Number:	NONE GIVEN	Sample Received By:	Tamara Oldaker
Project Location:	OXY - NEW MEXICO		

**Sample ID: BOTTOM SAMPLE 4 @ 1' (H235258-04)**

BTX 8021B		mg/kg		Analyzed By: JH/						
Analyte	Result	Reporting Limit	Analyzed	Method Blank	BS	% Recovery	True Value QC	RPD	Qualifier	
Benzene*	<0.050	0.050	09/29/2023	ND	1.92	96.2	2.00	0.971		
Toluene*	<0.050	0.050	09/29/2023	ND	1.91	95.4	2.00	5.88		
Ethylbenzene*	<0.050	0.050	09/29/2023	ND	1.98	99.2	2.00	1.37		
Total Xylenes*	<0.150	0.150	09/29/2023	ND	5.89	98.2	6.00	0.874		
Total BTX	<0.300	0.300	09/29/2023	ND						

Surrogate: 4-Bromofluorobenzene (PID) 113 % 71.5-134

Chloride, SM4500CI-B		mg/kg		Analyzed By: AC						
Analyte	Result	Reporting Limit	Analyzed	Method Blank	BS	% Recovery	True Value QC	RPD	Qualifier	
Chloride	48.0	16.0	09/27/2023	ND	416	104	400	0.00		

TPH 8015M		mg/kg		Analyzed By: MS					
Analyte	Result	Reporting Limit	Analyzed	Method Blank	BS	% Recovery	True Value QC	RPD	Qualifier
GRO C6-C10*	<10.0	10.0	09/27/2023	ND	198	98.9	200	9.96	
DRO >C10-C28*	<10.0	10.0	09/27/2023	ND	187	93.3	200	7.97	
EXT DRO >C28-C36	<10.0	10.0	09/27/2023	ND					

Surrogate: 1-Chlorooctane 92.2 % 48.2-134

Surrogate: 1-Chlorooctadecane 96.7 % 49.1-148

Cardinal Laboratories

\*=Accredited Analyte

PLEASE NOTE: Liability and Damages. Cardinal's liability and client's exclusive remedy for any claim arising, whether based in contract or tort, shall be limited to the amount paid by client for analyses. All claims, including those for negligence and any other cause whatsoever shall be deemed waived unless made in writing and received by Cardinal within thirty (30) days after completion of the applicable service. In no event shall Cardinal be liable for incidental or consequential damages, including, without limitation, business interruptions, loss of use, or loss of profits incurred by client, its subsidiaries, affiliates or successors arising out of or related to the performance of the services hereunder by Cardinal, regardless of whether such claim is based upon any of the above stated reasons or otherwise. Results relate only to the samples identified above. This report shall not be reproduced except in full with written approval of Cardinal Laboratories.

Celey D. Keene, Lab Director/Quality Manager



PHONE (575) 393-2326 • 101 E. MARLAND • HOBBS, NM 88240

**Analytical Results For:**

BBC International, Inc.  
 Cliff Brunson  
 P.O. Box 805  
 Hobbs NM, 88241  
 Fax To: (575) 397-0397

Received:	09/26/2023	Sampling Date:	09/25/2023
Reported:	10/03/2023	Sampling Type:	Soil
Project Name:	NHU INJECTION BATTERY (8/23/18)	Sampling Condition:	Cool & Intact
Project Number:	NONE GIVEN	Sample Received By:	Tamara Oldaker
Project Location:	OXY - NEW MEXICO		

**Sample ID: BOTTOM SAMPLE 5 @ 1' (H235258-05)**

BTX 8021B		mg/kg		Analyzed By: JH/						
Analyte	Result	Reporting Limit	Analyzed	Method Blank	BS	% Recovery	True Value QC	RPD	Qualifier	
Benzene*	<0.050	0.050	09/29/2023	ND	1.92	96.2	2.00	0.971		
Toluene*	<0.050	0.050	09/29/2023	ND	1.91	95.4	2.00	5.88		
Ethylbenzene*	<0.050	0.050	09/29/2023	ND	1.98	99.2	2.00	1.37		
Total Xylenes*	<0.150	0.150	09/29/2023	ND	5.89	98.2	6.00	0.874		
Total BTX	<0.300	0.300	09/29/2023	ND						

Surrogate: 4-Bromofluorobenzene (PID) 112 % 71.5-134

Chloride, SM4500CI-B		mg/kg		Analyzed By: AC						
Analyte	Result	Reporting Limit	Analyzed	Method Blank	BS	% Recovery	True Value QC	RPD	Qualifier	
Chloride	80.0	16.0	09/27/2023	ND	432	108	400	0.00		

TPH 8015M		mg/kg		Analyzed By: MS					
Analyte	Result	Reporting Limit	Analyzed	Method Blank	BS	% Recovery	True Value QC	RPD	Qualifier
GRO C6-C10*	<10.0	10.0	09/27/2023	ND	198	98.9	200	9.96	
DRO >C10-C28*	<10.0	10.0	09/27/2023	ND	187	93.3	200	7.97	
EXT DRO >C28-C36	<10.0	10.0	09/27/2023	ND					

Surrogate: 1-Chlorooctane 98.2 % 48.2-134

Surrogate: 1-Chlorooctadecane 102 % 49.1-148

Cardinal Laboratories

\*=Accredited Analyte

PLEASE NOTE: Liability and Damages. Cardinal's liability and client's exclusive remedy for any claim arising, whether based in contract or tort, shall be limited to the amount paid by client for analyses. All claims, including those for negligence and any other cause whatsoever shall be deemed waived unless made in writing and received by Cardinal within thirty (30) days after completion of the applicable service. In no event shall Cardinal be liable for incidental or consequential damages, including, without limitation, business interruptions, loss of use, or loss of profits incurred by client, its subsidiaries, affiliates or successors arising out of or related to the performance of the services hereunder by Cardinal, regardless of whether such claim is based upon any of the above stated reasons or otherwise. Results relate only to the samples identified above. This report shall not be reproduced except in full with written approval of Cardinal Laboratories.

Celey D. Keene, Lab Director/Quality Manager



PHONE (575) 393-2326 ° 101 E. MARLAND ° HOBBS, NM 88240

**Analytical Results For:**

BBC International, Inc.  
 Cliff Brunson  
 P.O. Box 805  
 Hobbs NM, 88241  
 Fax To: (575) 397-0397

Received:	09/26/2023	Sampling Date:	09/25/2023
Reported:	10/03/2023	Sampling Type:	Soil
Project Name:	NHU INJECTION BATTERY (8/23/18)	Sampling Condition:	Cool & Intact
Project Number:	NONE GIVEN	Sample Received By:	Tamara Oldaker
Project Location:	OXY - NEW MEXICO		

**Sample ID: BOTTOM SAMPLE 6 @ 1' (H235258-06)**

BTEX 8021B		mg/kg		Analyzed By: JH/					
Analyte	Result	Reporting Limit	Analyzed	Method Blank	BS	% Recovery	True Value QC	RPD	Qualifier
Benzene*	<0.050	0.050	09/29/2023	ND	1.92	96.2	2.00	0.971	
Toluene*	<0.050	0.050	09/29/2023	ND	1.91	95.4	2.00	5.88	
Ethylbenzene*	<0.050	0.050	09/29/2023	ND	1.98	99.2	2.00	1.37	
Total Xylenes*	<0.150	0.150	09/29/2023	ND	5.89	98.2	6.00	0.874	
Total BTEX	<0.300	0.300	09/29/2023	ND					

Surrogate: 4-Bromofluorobenzene (PID) 111 % 71.5-134

Chloride, SM4500Cl-B		mg/kg		Analyzed By: AC					
Analyte	Result	Reporting Limit	Analyzed	Method Blank	BS	% Recovery	True Value QC	RPD	Qualifier
Chloride	48.0	16.0	09/27/2023	ND	432	108	400	0.00	

TPH 8015M		mg/kg		Analyzed By: MS					
Analyte	Result	Reporting Limit	Analyzed	Method Blank	BS	% Recovery	True Value QC	RPD	Qualifier
GRO C6-C10*	<10.0	10.0	09/27/2023	ND	198	98.9	200	9.96	
DRO >C10-C28*	<10.0	10.0	09/27/2023	ND	187	93.3	200	7.97	
EXT DRO >C28-C36	<10.0	10.0	09/27/2023	ND					

Surrogate: 1-Chlorooctane 86.6 % 48.2-134

Surrogate: 1-Chlorooctadecane 90.5 % 49.1-148

Cardinal Laboratories

\*=Accredited Analyte

PLEASE NOTE: Liability and Damages. Cardinal's liability and client's exclusive remedy for any claim arising, whether based in contract or tort, shall be limited to the amount paid by client for analyses. All claims, including those for negligence and any other cause whatsoever shall be deemed waived unless made in writing and received by Cardinal within thirty (30) days after completion of the applicable service. In no event shall Cardinal be liable for incidental or consequential damages, including, without limitation, business interruptions, loss of use, or loss of profits incurred by client, its subsidiaries, affiliates or successors arising out of or related to the performance of the services hereunder by Cardinal, regardless of whether such claim is based upon any of the above stated reasons or otherwise. Results relate only to the samples identified above. This report shall not be reproduced except in full with written approval of Cardinal Laboratories.

Celey D. Keene, Lab Director/Quality Manager





PHONE (575) 393-2326 ° 101 E. MARLAND ° HOBBS, NM 88240

**Analytical Results For:**

BBC International, Inc.  
 Cliff Brunson  
 P.O. Box 805  
 Hobbs NM, 88241  
 Fax To: (575) 397-0397

Received:	09/26/2023	Sampling Date:	09/25/2023
Reported:	10/03/2023	Sampling Type:	Soil
Project Name:	NHU INJECTION BATTERY (8/23/18)	Sampling Condition:	Cool & Intact
Project Number:	NONE GIVEN	Sample Received By:	Tamara Oldaker
Project Location:	OXY - NEW MEXICO		

**Sample ID: BOTTOM SAMPLE 7 @ 1' (H235258-07)**

BTEx 8021B		mg/kg		Analyzed By: JH/						
Analyte	Result	Reporting Limit	Analyzed	Method Blank	BS	% Recovery	True Value QC	RPD	Qualifier	
Benzene*	<0.050	0.050	09/29/2023	ND	1.92	96.2	2.00	0.971		
Toluene*	<0.050	0.050	09/29/2023	ND	1.91	95.4	2.00	5.88		
Ethylbenzene*	<0.050	0.050	09/29/2023	ND	1.98	99.2	2.00	1.37		
Total Xylenes*	<0.150	0.150	09/29/2023	ND	5.89	98.2	6.00	0.874		
Total BTEx	<0.300	0.300	09/29/2023	ND						

Surrogate: 4-Bromofluorobenzene (PID) 109 % 71.5-134

Chloride, SM4500Cl-B		mg/kg		Analyzed By: AC					
Analyte	Result	Reporting Limit	Analyzed	Method Blank	BS	% Recovery	True Value QC	RPD	Qualifier
Chloride	64.0	16.0	09/27/2023	ND	432	108	400	0.00	

TPH 8015M		mg/kg		Analyzed By: MS					
Analyte	Result	Reporting Limit	Analyzed	Method Blank	BS	% Recovery	True Value QC	RPD	Qualifier
GRO C6-C10*	<10.0	10.0	09/27/2023	ND	198	98.9	200	9.96	
DRO >C10-C28*	<10.0	10.0	09/27/2023	ND	187	93.3	200	7.97	
EXT DRO >C28-C36	<10.0	10.0	09/27/2023	ND					

Surrogate: 1-Chlorooctane 69.8 % 48.2-134

Surrogate: 1-Chlorooctadecane 69.6 % 49.1-148

Cardinal Laboratories

\*=Accredited Analyte

PLEASE NOTE: Liability and Damages. Cardinal's liability and client's exclusive remedy for any claim arising, whether based in contract or tort, shall be limited to the amount paid by client for analyses. All claims, including those for negligence and any other cause whatsoever shall be deemed waived unless made in writing and received by Cardinal within thirty (30) days after completion of the applicable service. In no event shall Cardinal be liable for incidental or consequential damages, including, without limitation, business interruptions, loss of use, or loss of profits incurred by client, its subsidiaries, affiliates or successors arising out of or related to the performance of the services hereunder by Cardinal, regardless of whether such claim is based upon any of the above stated reasons or otherwise. Results relate only to the samples identified above. This report shall not be reproduced except in full with written approval of Cardinal Laboratories.

Celey D. Keene, Lab Director/Quality Manager



PHONE (575) 393-2326 • 101 E. MARLAND • HOBBS, NM 88240

**Analytical Results For:**

BBC International, Inc.  
 Cliff Brunson  
 P.O. Box 805  
 Hobbs NM, 88241  
 Fax To: (575) 397-0397

Received:	09/26/2023	Sampling Date:	09/25/2023
Reported:	10/03/2023	Sampling Type:	Soil
Project Name:	NHU INJECTION BATTERY (8/23/18)	Sampling Condition:	Cool & Intact
Project Number:	NONE GIVEN	Sample Received By:	Tamara Oldaker
Project Location:	OXY - NEW MEXICO		

**Sample ID: BOTTOM SAMPLE 8 @ 1' (H235258-08)**

BTX 8021B		mg/kg		Analyzed By: JH/						
Analyte	Result	Reporting Limit	Analyzed	Method Blank	BS	% Recovery	True Value QC	RPD	Qualifier	
Benzene*	<0.050	0.050	09/29/2023	ND	1.92	96.2	2.00	0.971		
Toluene*	<0.050	0.050	09/29/2023	ND	1.91	95.4	2.00	5.88		
Ethylbenzene*	<0.050	0.050	09/29/2023	ND	1.98	99.2	2.00	1.37		
Total Xylenes*	<0.150	0.150	09/29/2023	ND	5.89	98.2	6.00	0.874		
Total BTX	<0.300	0.300	09/29/2023	ND						

Surrogate: 4-Bromofluorobenzene (PID) 111 % 71.5-134

Chloride, SM4500CI-B		mg/kg		Analyzed By: AC					
Analyte	Result	Reporting Limit	Analyzed	Method Blank	BS	% Recovery	True Value QC	RPD	Qualifier
Chloride	64.0	16.0	09/27/2023	ND	432	108	400	0.00	

TPH 8015M		mg/kg		Analyzed By: MS					
Analyte	Result	Reporting Limit	Analyzed	Method Blank	BS	% Recovery	True Value QC	RPD	Qualifier
GRO C6-C10*	<10.0	10.0	09/28/2023	ND	183	91.5	200	1.56	
DRO >C10-C28*	<10.0	10.0	09/28/2023	ND	190	94.9	200	0.897	
EXT DRO >C28-C36	<10.0	10.0	09/28/2023	ND					

Surrogate: 1-Chlorooctane 65.7 % 48.2-134

Surrogate: 1-Chlorooctadecane 71.4 % 49.1-148

Cardinal Laboratories

\*=Accredited Analyte

PLEASE NOTE: Liability and Damages. Cardinal's liability and client's exclusive remedy for any claim arising, whether based in contract or tort, shall be limited to the amount paid by client for analyses. All claims, including those for negligence and any other cause whatsoever shall be deemed waived unless made in writing and received by Cardinal within thirty (30) days after completion of the applicable service. In no event shall Cardinal be liable for incidental or consequential damages, including, without limitation, business interruptions, loss of use, or loss of profits incurred by client, its subsidiaries, affiliates or successors arising out of or related to the performance of the services hereunder by Cardinal, regardless of whether such claim is based upon any of the above stated reasons or otherwise. Results relate only to the samples identified above. This report shall not be reproduced except in full with written approval of Cardinal Laboratories.

Celey D. Keene, Lab Director/Quality Manager



PHONE (575) 393-2326 • 101 E. MARLAND • HOBBS, NM 88240

**Analytical Results For:**

BBC International, Inc.  
 Cliff Brunson  
 P.O. Box 805  
 Hobbs NM, 88241  
 Fax To: (575) 397-0397

Received:	09/26/2023	Sampling Date:	09/25/2023
Reported:	10/03/2023	Sampling Type:	Soil
Project Name:	NHU INJECTION BATTERY (8/23/18)	Sampling Condition:	Cool & Intact
Project Number:	NONE GIVEN	Sample Received By:	Tamara Oldaker
Project Location:	OXY - NEW MEXICO		

**Sample ID: BOTTOM SAMPLE 9 @ 1' (H235258-09)**

BTX 8021B		mg/kg		Analyzed By: JH/						
Analyte	Result	Reporting Limit	Analyzed	Method Blank	BS	% Recovery	True Value QC	RPD	Qualifier	
Benzene*	<0.050	0.050	09/29/2023	ND	1.92	96.2	2.00	0.971		
Toluene*	<0.050	0.050	09/29/2023	ND	1.91	95.4	2.00	5.88		
Ethylbenzene*	<0.050	0.050	09/29/2023	ND	1.98	99.2	2.00	1.37		
Total Xylenes*	<0.150	0.150	09/29/2023	ND	5.89	98.2	6.00	0.874		
Total BTX	<0.300	0.300	09/29/2023	ND						

Surrogate: 4-Bromofluorobenzene (PID) 111 % 71.5-134

Chloride, SM4500CI-B		mg/kg		Analyzed By: AC						
Analyte	Result	Reporting Limit	Analyzed	Method Blank	BS	% Recovery	True Value QC	RPD	Qualifier	
Chloride	64.0	16.0	09/27/2023	ND	432	108	400	0.00		

TPH 8015M		mg/kg		Analyzed By: MS					
Analyte	Result	Reporting Limit	Analyzed	Method Blank	BS	% Recovery	True Value QC	RPD	Qualifier
GRO C6-C10*	<10.0	10.0	09/28/2023	ND	183	91.5	200	1.56	
DRO >C10-C28*	<10.0	10.0	09/28/2023	ND	190	94.9	200	0.897	
EXT DRO >C28-C36	<10.0	10.0	09/28/2023	ND					

Surrogate: 1-Chlorooctane 65.0 % 48.2-134

Surrogate: 1-Chlorooctadecane 69.8 % 49.1-148

Cardinal Laboratories

\*=Accredited Analyte

PLEASE NOTE: Liability and Damages. Cardinal's liability and client's exclusive remedy for any claim arising, whether based in contract or tort, shall be limited to the amount paid by client for analyses. All claims, including those for negligence and any other cause whatsoever shall be deemed waived unless made in writing and received by Cardinal within thirty (30) days after completion of the applicable service. In no event shall Cardinal be liable for incidental or consequential damages, including, without limitation, business interruptions, loss of use, or loss of profits incurred by client, its subsidiaries, affiliates or successors arising out of or related to the performance of the services hereunder by Cardinal, regardless of whether such claim is based upon any of the above stated reasons or otherwise. Results relate only to the samples identified above. This report shall not be reproduced except in full with written approval of Cardinal Laboratories.

Celey D. Keene, Lab Director/Quality Manager





PHONE (575) 393-2326 ° 101 E. MARLAND ° HOBBS, NM 88240

**Analytical Results For:**

BBC International, Inc.  
 Cliff Brunson  
 P.O. Box 805  
 Hobbs NM, 88241  
 Fax To: (575) 397-0397

Received:	09/26/2023	Sampling Date:	09/25/2023
Reported:	10/03/2023	Sampling Type:	Soil
Project Name:	NHU INJECTION BATTERY (8/23/18)	Sampling Condition:	Cool & Intact
Project Number:	NONE GIVEN	Sample Received By:	Tamara Oldaker
Project Location:	OXY - NEW MEXICO		

**Sample ID: BOTTOM SAMPLE 10 @ 1' (H235258-10)**

BTX 8021B		mg/kg		Analyzed By: JH/						
Analyte	Result	Reporting Limit	Analyzed	Method Blank	BS	% Recovery	True Value QC	RPD	Qualifier	
Benzene*	<0.050	0.050	09/29/2023	ND	1.92	96.2	2.00	0.971		
Toluene*	<0.050	0.050	09/29/2023	ND	1.91	95.4	2.00	5.88		
Ethylbenzene*	<0.050	0.050	09/29/2023	ND	1.98	99.2	2.00	1.37		
Total Xylenes*	<0.150	0.150	09/29/2023	ND	5.89	98.2	6.00	0.874		
Total BTX	<0.300	0.300	09/29/2023	ND						

Surrogate: 4-Bromofluorobenzene (PID) 111 % 71.5-134

Chloride, SM4500CI-B		mg/kg		Analyzed By: AC						
Analyte	Result	Reporting Limit	Analyzed	Method Blank	BS	% Recovery	True Value QC	RPD	Qualifier	
Chloride	64.0	16.0	09/27/2023	ND	432	108	400	0.00		

TPH 8015M		mg/kg		Analyzed By: MS					
Analyte	Result	Reporting Limit	Analyzed	Method Blank	BS	% Recovery	True Value QC	RPD	Qualifier
GRO C6-C10*	<10.0	10.0	09/28/2023	ND	183	91.5	200	1.56	
DRO >C10-C28*	<10.0	10.0	09/28/2023	ND	190	94.9	200	0.897	
EXT DRO >C28-C36	<10.0	10.0	09/28/2023	ND					

Surrogate: 1-Chlorooctane 86.9 % 48.2-134

Surrogate: 1-Chlorooctadecane 96.8 % 49.1-148

Cardinal Laboratories

\*=Accredited Analyte

PLEASE NOTE: Liability and Damages. Cardinal's liability and client's exclusive remedy for any claim arising, whether based in contract or tort, shall be limited to the amount paid by client for analyses. All claims, including those for negligence and any other cause whatsoever shall be deemed waived unless made in writing and received by Cardinal within thirty (30) days after completion of the applicable service. In no event shall Cardinal be liable for incidental or consequential damages, including, without limitation, business interruptions, loss of use, or loss of profits incurred by client, its subsidiaries, affiliates or successors arising out of or related to the performance of the services hereunder by Cardinal, regardless of whether such claim is based upon any of the above stated reasons or otherwise. Results relate only to the samples identified above. This report shall not be reproduced except in full with written approval of Cardinal Laboratories.

Celey D. Keene, Lab Director/Quality Manager



PHONE (575) 393-2326 ° 101 E. MARLAND ° HOBBS, NM 88240

**Analytical Results For:**

BBC International, Inc.  
 Cliff Brunson  
 P.O. Box 805  
 Hobbs NM, 88241  
 Fax To: (575) 397-0397

Received:	09/26/2023	Sampling Date:	09/25/2023
Reported:	10/03/2023	Sampling Type:	Soil
Project Name:	NHU INJECTION BATTERY (8/23/18)	Sampling Condition:	Cool & Intact
Project Number:	NONE GIVEN	Sample Received By:	Tamara Oldaker
Project Location:	OXY - NEW MEXICO		

**Sample ID: BOTTOM SAMPLE 11 @ 1' (H235258-11)**

BTEX 8021B		mg/kg		Analyzed By: JH/						
Analyte	Result	Reporting Limit	Analyzed	Method Blank	BS	% Recovery	True Value QC	RPD	Qualifier	
Benzene*	<0.050	0.050	09/29/2023	ND	1.92	96.2	2.00	0.971		
Toluene*	<0.050	0.050	09/29/2023	ND	1.91	95.4	2.00	5.88		
Ethylbenzene*	<0.050	0.050	09/29/2023	ND	1.98	99.2	2.00	1.37		
Total Xylenes*	<0.150	0.150	09/29/2023	ND	5.89	98.2	6.00	0.874		
Total BTEX	<0.300	0.300	09/29/2023	ND						

Surrogate: 4-Bromofluorobenzene (PID) 112 % 71.5-134

Chloride, SM4500Cl-B		mg/kg		Analyzed By: AC						
Analyte	Result	Reporting Limit	Analyzed	Method Blank	BS	% Recovery	True Value QC	RPD	Qualifier	
Chloride	64.0	16.0	09/27/2023	ND	432	108	400	0.00		

TPH 8015M		mg/kg		Analyzed By: MS					
Analyte	Result	Reporting Limit	Analyzed	Method Blank	BS	% Recovery	True Value QC	RPD	Qualifier
GRO C6-C10*	<10.0	10.0	09/28/2023	ND	183	91.5	200	1.56	
DRO >C10-C28*	<10.0	10.0	09/28/2023	ND	190	94.9	200	0.897	
EXT DRO >C28-C36	<10.0	10.0	09/28/2023	ND					

Surrogate: 1-Chlorooctane 68.1 % 48.2-134

Surrogate: 1-Chlorooctadecane 73.7 % 49.1-148

Cardinal Laboratories

\*=Accredited Analyte

PLEASE NOTE: Liability and Damages. Cardinal's liability and client's exclusive remedy for any claim arising, whether based in contract or tort, shall be limited to the amount paid by client for analyses. All claims, including those for negligence and any other cause whatsoever shall be deemed waived unless made in writing and received by Cardinal within thirty (30) days after completion of the applicable service. In no event shall Cardinal be liable for incidental or consequential damages, including, without limitation, business interruptions, loss of use, or loss of profits incurred by client, its subsidiaries, affiliates or successors arising out of or related to the performance of the services hereunder by Cardinal, regardless of whether such claim is based upon any of the above stated reasons or otherwise. Results relate only to the samples identified above. This report shall not be reproduced except in full with written approval of Cardinal Laboratories.

Celey D. Keene, Lab Director/Quality Manager



PHONE (575) 393-2326 ° 101 E. MARLAND ° HOBBS, NM 88240

**Analytical Results For:**

BBC International, Inc.  
 Cliff Brunson  
 P.O. Box 805  
 Hobbs NM, 88241  
 Fax To: (575) 397-0397

Received:	09/26/2023	Sampling Date:	09/25/2023
Reported:	10/03/2023	Sampling Type:	Soil
Project Name:	NHU INJECTION BATTERY (8/23/18)	Sampling Condition:	Cool & Intact
Project Number:	NONE GIVEN	Sample Received By:	Tamara Oldaker
Project Location:	OXY - NEW MEXICO		

**Sample ID: BOTTOM SAMPLE 12 @ 1' (H235258-12)**

BTEX 8021B		mg/kg		Analyzed By: JH/						
Analyte	Result	Reporting Limit	Analyzed	Method Blank	BS	% Recovery	True Value QC	RPD	Qualifier	
Benzene*	<0.050	0.050	09/29/2023	ND	1.92	96.2	2.00	0.971		
Toluene*	<0.050	0.050	09/29/2023	ND	1.91	95.4	2.00	5.88		
Ethylbenzene*	<0.050	0.050	09/29/2023	ND	1.98	99.2	2.00	1.37		
Total Xylenes*	<0.150	0.150	09/29/2023	ND	5.89	98.2	6.00	0.874		
Total BTEX	<0.300	0.300	09/29/2023	ND						

Surrogate: 4-Bromofluorobenzene (PID) 113 % 71.5-134

Chloride, SM4500Cl-B		mg/kg		Analyzed By: AC						
Analyte	Result	Reporting Limit	Analyzed	Method Blank	BS	% Recovery	True Value QC	RPD	Qualifier	
Chloride	64.0	16.0	09/27/2023	ND	432	108	400	0.00		

TPH 8015M		mg/kg		Analyzed By: MS					
Analyte	Result	Reporting Limit	Analyzed	Method Blank	BS	% Recovery	True Value QC	RPD	Qualifier
GRO C6-C10*	<10.0	10.0	09/28/2023	ND	183	91.5	200	1.56	
DRO >C10-C28*	<10.0	10.0	09/28/2023	ND	190	94.9	200	0.897	
EXT DRO >C28-C36	<10.0	10.0	09/28/2023	ND					

Surrogate: 1-Chlorooctane 85.7 % 48.2-134

Surrogate: 1-Chlorooctadecane 94.7 % 49.1-148

Cardinal Laboratories

\*=Accredited Analyte

PLEASE NOTE: Liability and Damages. Cardinal's liability and client's exclusive remedy for any claim arising, whether based in contract or tort, shall be limited to the amount paid by client for analyses. All claims, including those for negligence and any other cause whatsoever shall be deemed waived unless made in writing and received by Cardinal within thirty (30) days after completion of the applicable service. In no event shall Cardinal be liable for incidental or consequential damages, including, without limitation, business interruptions, loss of use, or loss of profits incurred by client, its subsidiaries, affiliates or successors arising out of or related to the performance of the services hereunder by Cardinal, regardless of whether such claim is based upon any of the above stated reasons or otherwise. Results relate only to the samples identified above. This report shall not be reproduced except in full with written approval of Cardinal Laboratories.

Celey D. Keene, Lab Director/Quality Manager



PHONE (575) 393-2326 ° 101 E. MARLAND ° HOBBS, NM 88240

**Analytical Results For:**

BBC International, Inc.  
 Cliff Brunson  
 P.O. Box 805  
 Hobbs NM, 88241  
 Fax To: (575) 397-0397

Received:	09/26/2023	Sampling Date:	09/25/2023
Reported:	10/03/2023	Sampling Type:	Soil
Project Name:	NHU INJECTION BATTERY (8/23/18)	Sampling Condition:	Cool & Intact
Project Number:	NONE GIVEN	Sample Received By:	Tamara Oldaker
Project Location:	OXY - NEW MEXICO		

**Sample ID: BOTTOM SAMPLE 13 @ 1' (H235258-13)**

BTEx 8021B		mg/kg		Analyzed By: JH/						
Analyte	Result	Reporting Limit	Analyzed	Method Blank	BS	% Recovery	True Value QC	RPD	Qualifier	
Benzene*	<0.050	0.050	09/29/2023	ND	1.92	96.2	2.00	0.971		
Toluene*	<0.050	0.050	09/29/2023	ND	1.91	95.4	2.00	5.88		
Ethylbenzene*	<0.050	0.050	09/29/2023	ND	1.98	99.2	2.00	1.37		
Total Xylenes*	<0.150	0.150	09/29/2023	ND	5.89	98.2	6.00	0.874		
Total BTEX	<0.300	0.300	09/29/2023	ND						

Surrogate: 4-Bromofluorobenzene (PID) 112 % 71.5-134

Chloride, SM4500Cl-B		mg/kg		Analyzed By: AC						
Analyte	Result	Reporting Limit	Analyzed	Method Blank	BS	% Recovery	True Value QC	RPD	Qualifier	
Chloride	64.0	16.0	09/27/2023	ND	432	108	400	0.00		

TPH 8015M		mg/kg		Analyzed By: MS					
Analyte	Result	Reporting Limit	Analyzed	Method Blank	BS	% Recovery	True Value QC	RPD	Qualifier
GRO C6-C10*	<10.0	10.0	09/28/2023	ND	183	91.5	200	1.56	
DRO >C10-C28*	<10.0	10.0	09/28/2023	ND	190	94.9	200	0.897	
EXT DRO >C28-C36	<10.0	10.0	09/28/2023	ND					

Surrogate: 1-Chlorooctane 79.1 % 48.2-134

Surrogate: 1-Chlorooctadecane 85.8 % 49.1-148

Cardinal Laboratories

\*=Accredited Analyte

PLEASE NOTE: Liability and Damages. Cardinal's liability and client's exclusive remedy for any claim arising, whether based in contract or tort, shall be limited to the amount paid by client for analyses. All claims, including those for negligence and any other cause whatsoever shall be deemed waived unless made in writing and received by Cardinal within thirty (30) days after completion of the applicable service. In no event shall Cardinal be liable for incidental or consequential damages, including, without limitation, business interruptions, loss of use, or loss of profits incurred by client, its subsidiaries, affiliates or successors arising out of or related to the performance of the services hereunder by Cardinal, regardless of whether such claim is based upon any of the above stated reasons or otherwise. Results relate only to the samples identified above. This report shall not be reproduced except in full with written approval of Cardinal Laboratories.

Celey D. Keene, Lab Director/Quality Manager





PHONE (575) 393-2326 ° 101 E. MARLAND ° HOBBS, NM 88240

**Analytical Results For:**

BBC International, Inc.  
 Cliff Brunson  
 P.O. Box 805  
 Hobbs NM, 88241  
 Fax To: (575) 397-0397

Received:	09/26/2023	Sampling Date:	09/25/2023
Reported:	10/03/2023	Sampling Type:	Soil
Project Name:	NHU INJECTION BATTERY (8/23/18)	Sampling Condition:	Cool & Intact
Project Number:	NONE GIVEN	Sample Received By:	Tamara Oldaker
Project Location:	OXY - NEW MEXICO		

**Sample ID: BOTTOM SAMPLE 14 @ 1' (H235258-14)**

BTX 8021B		mg/kg		Analyzed By: JH/						
Analyte	Result	Reporting Limit	Analyzed	Method Blank	BS	% Recovery	True Value QC	RPD	Qualifier	
Benzene*	<0.050	0.050	09/29/2023	ND	1.92	96.2	2.00	0.971		
Toluene*	<0.050	0.050	09/29/2023	ND	1.91	95.4	2.00	5.88		
Ethylbenzene*	<0.050	0.050	09/29/2023	ND	1.98	99.2	2.00	1.37		
Total Xylenes*	<0.150	0.150	09/29/2023	ND	5.89	98.2	6.00	0.874		
Total BTX	<0.300	0.300	09/29/2023	ND						

Surrogate: 4-Bromofluorobenzene (PID) 110 % 71.5-134

Chloride, SM4500CI-B		mg/kg		Analyzed By: AC						
Analyte	Result	Reporting Limit	Analyzed	Method Blank	BS	% Recovery	True Value QC	RPD	Qualifier	
Chloride	64.0	16.0	09/27/2023	ND	432	108	400	0.00		

TPH 8015M		mg/kg		Analyzed By: MS					
Analyte	Result	Reporting Limit	Analyzed	Method Blank	BS	% Recovery	True Value QC	RPD	Qualifier
GRO C6-C10*	<10.0	10.0	09/28/2023	ND	183	91.5	200	1.56	
DRO >C10-C28*	<10.0	10.0	09/28/2023	ND	190	94.9	200	0.897	
EXT DRO >C28-C36	<10.0	10.0	09/28/2023	ND					

Surrogate: 1-Chlorooctane 82.8 % 48.2-134

Surrogate: 1-Chlorooctadecane 89.5 % 49.1-148

Cardinal Laboratories

\*=Accredited Analyte

PLEASE NOTE: Liability and Damages. Cardinal's liability and client's exclusive remedy for any claim arising, whether based in contract or tort, shall be limited to the amount paid by client for analyses. All claims, including those for negligence and any other cause whatsoever shall be deemed waived unless made in writing and received by Cardinal within thirty (30) days after completion of the applicable service. In no event shall Cardinal be liable for incidental or consequential damages, including, without limitation, business interruptions, loss of use, or loss of profits incurred by client, its subsidiaries, affiliates or successors arising out of or related to the performance of the services hereunder by Cardinal, regardless of whether such claim is based upon any of the above stated reasons or otherwise. Results relate only to the samples identified above. This report shall not be reproduced except in full with written approval of Cardinal Laboratories.

Celey D. Keene, Lab Director/Quality Manager



PHONE (575) 393-2326 ° 101 E. MARLAND ° HOBBS, NM 88240

**Analytical Results For:**

BBC International, Inc.  
 Cliff Brunson  
 P.O. Box 805  
 Hobbs NM, 88241  
 Fax To: (575) 397-0397

Received:	09/26/2023	Sampling Date:	09/25/2023
Reported:	10/03/2023	Sampling Type:	Soil
Project Name:	NHU INJECTION BATTERY (8/23/18)	Sampling Condition:	Cool & Intact
Project Number:	NONE GIVEN	Sample Received By:	Tamara Oldaker
Project Location:	OXY - NEW MEXICO		

**Sample ID: BOTTOM SAMPLE 15 @ 1' (H235258-15)**

BTEx 8021B		mg/kg		Analyzed By: JH/						
Analyte	Result	Reporting Limit	Analyzed	Method Blank	BS	% Recovery	True Value QC	RPD	Qualifier	
Benzene*	<0.050	0.050	09/29/2023	ND	1.92	96.2	2.00	0.971		
Toluene*	<0.050	0.050	09/29/2023	ND	1.91	95.4	2.00	5.88		
Ethylbenzene*	<0.050	0.050	09/29/2023	ND	1.98	99.2	2.00	1.37		
Total Xylenes*	<0.150	0.150	09/29/2023	ND	5.89	98.2	6.00	0.874		
Total BTEx	<0.300	0.300	09/29/2023	ND						

Surrogate: 4-Bromofluorobenzene (PID) 110 % 71.5-134

Chloride, SM4500CI-B		mg/kg		Analyzed By: AC						
Analyte	Result	Reporting Limit	Analyzed	Method Blank	BS	% Recovery	True Value QC	RPD	Qualifier	
Chloride	48.0	16.0	09/27/2023	ND	432	108	400	0.00		

TPH 8015M		mg/kg		Analyzed By: MS					
Analyte	Result	Reporting Limit	Analyzed	Method Blank	BS	% Recovery	True Value QC	RPD	Qualifier
GRO C6-C10*	<10.0	10.0	09/28/2023	ND	183	91.5	200	1.56	
DRO >C10-C28*	<10.0	10.0	09/28/2023	ND	190	94.9	200	0.897	
EXT DRO >C28-C36	<10.0	10.0	09/28/2023	ND					

Surrogate: 1-Chlorooctane 82.6 % 48.2-134

Surrogate: 1-Chlorooctadecane 89.2 % 49.1-148

Cardinal Laboratories

\*=Accredited Analyte

PLEASE NOTE: Liability and Damages. Cardinal's liability and client's exclusive remedy for any claim arising, whether based in contract or tort, shall be limited to the amount paid by client for analyses. All claims, including those for negligence and any other cause whatsoever shall be deemed waived unless made in writing and received by Cardinal within thirty (30) days after completion of the applicable service. In no event shall Cardinal be liable for incidental or consequential damages, including, without limitation, business interruptions, loss of use, or loss of profits incurred by client, its subsidiaries, affiliates or successors arising out of or related to the performance of the services hereunder by Cardinal, regardless of whether such claim is based upon any of the above stated reasons or otherwise. Results relate only to the samples identified above. This report shall not be reproduced except in full with written approval of Cardinal Laboratories.

Celey D. Keene, Lab Director/Quality Manager



PHONE (575) 393-2326 ° 101 E. MARLAND ° HOBBS, NM 88240

**Analytical Results For:**

BBC International, Inc.  
 Cliff Brunson  
 P.O. Box 805  
 Hobbs NM, 88241  
 Fax To: (575) 397-0397

Received:	09/26/2023	Sampling Date:	09/25/2023
Reported:	10/03/2023	Sampling Type:	Soil
Project Name:	NHU INJECTION BATTERY (8/23/18)	Sampling Condition:	Cool & Intact
Project Number:	NONE GIVEN	Sample Received By:	Tamara Oldaker
Project Location:	OXY - NEW MEXICO		

**Sample ID: BOTTOM SAMPLE 16 @ 1' (H235258-16)**

BTEx 8021B		mg/kg		Analyzed By: JH/						
Analyte	Result	Reporting Limit	Analyzed	Method Blank	BS	% Recovery	True Value QC	RPD	Qualifier	
Benzene*	<0.050	0.050	09/29/2023	ND	1.92	96.2	2.00	0.971		
Toluene*	<0.050	0.050	09/29/2023	ND	1.91	95.4	2.00	5.88		
Ethylbenzene*	<0.050	0.050	09/29/2023	ND	1.98	99.2	2.00	1.37		
Total Xylenes*	<0.150	0.150	09/29/2023	ND	5.89	98.2	6.00	0.874		
Total BTEx	<0.300	0.300	09/29/2023	ND						

Surrogate: 4-Bromofluorobenzene (PID) 112 % 71.5-134

Chloride, SM4500CI-B		mg/kg		Analyzed By: AC						
Analyte	Result	Reporting Limit	Analyzed	Method Blank	BS	% Recovery	True Value QC	RPD	Qualifier	
Chloride	64.0	16.0	09/27/2023	ND	432	108	400	0.00		

TPH 8015M		mg/kg		Analyzed By: MS					
Analyte	Result	Reporting Limit	Analyzed	Method Blank	BS	% Recovery	True Value QC	RPD	Qualifier
GRO C6-C10*	<10.0	10.0	09/28/2023	ND	183	91.5	200	1.56	
DRO >C10-C28*	<10.0	10.0	09/28/2023	ND	190	94.9	200	0.897	
EXT DRO >C28-C36	<10.0	10.0	09/28/2023	ND					

Surrogate: 1-Chlorooctane 85.8 % 48.2-134

Surrogate: 1-Chlorooctadecane 95.2 % 49.1-148

Cardinal Laboratories

\*=Accredited Analyte

PLEASE NOTE: Liability and Damages. Cardinal's liability and client's exclusive remedy for any claim arising, whether based in contract or tort, shall be limited to the amount paid by client for analyses. All claims, including those for negligence and any other cause whatsoever shall be deemed waived unless made in writing and received by Cardinal within thirty (30) days after completion of the applicable service. In no event shall Cardinal be liable for incidental or consequential damages, including, without limitation, business interruptions, loss of use, or loss of profits incurred by client, its subsidiaries, affiliates or successors arising out of or related to the performance of the services hereunder by Cardinal, regardless of whether such claim is based upon any of the above stated reasons or otherwise. Results relate only to the samples identified above. This report shall not be reproduced except in full with written approval of Cardinal Laboratories.

Celey D. Keene, Lab Director/Quality Manager



PHONE (575) 393-2326 ° 101 E. MARLAND ° HOBBS, NM 88240

**Analytical Results For:**

BBC International, Inc.  
 Cliff Brunson  
 P.O. Box 805  
 Hobbs NM, 88241  
 Fax To: (575) 397-0397

Received:	09/26/2023	Sampling Date:	09/25/2023
Reported:	10/03/2023	Sampling Type:	Soil
Project Name:	NHU INJECTION BATTERY (8/23/18)	Sampling Condition:	Cool & Intact
Project Number:	NONE GIVEN	Sample Received By:	Tamara Oldaker
Project Location:	OXY - NEW MEXICO		

**Sample ID: BOTTOM SAMPLE 17 @ 1' (H235258-17)**

BTEX 8021B		mg/kg		Analyzed By: JH/						
Analyte	Result	Reporting Limit	Analyzed	Method Blank	BS	% Recovery	True Value QC	RPD	Qualifier	
Benzene*	<0.050	0.050	09/29/2023	ND	1.92	96.2	2.00	0.971		
Toluene*	<0.050	0.050	09/29/2023	ND	1.91	95.4	2.00	5.88		
Ethylbenzene*	<0.050	0.050	09/29/2023	ND	1.98	99.2	2.00	1.37		
Total Xylenes*	<0.150	0.150	09/29/2023	ND	5.89	98.2	6.00	0.874		
Total BTEX	<0.300	0.300	09/29/2023	ND						

Surrogate: 4-Bromofluorobenzene (PID) 112 % 71.5-134

Chloride, SM4500Cl-B		mg/kg		Analyzed By: AC						
Analyte	Result	Reporting Limit	Analyzed	Method Blank	BS	% Recovery	True Value QC	RPD	Qualifier	
Chloride	64.0	16.0	09/27/2023	ND	432	108	400	0.00		

TPH 8015M		mg/kg		Analyzed By: MS					
Analyte	Result	Reporting Limit	Analyzed	Method Blank	BS	% Recovery	True Value QC	RPD	Qualifier
GRO C6-C10*	<10.0	10.0	09/28/2023	ND	183	91.5	200	1.56	
DRO >C10-C28*	<10.0	10.0	09/28/2023	ND	190	94.9	200	0.897	
EXT DRO >C28-C36	<10.0	10.0	09/28/2023	ND					

Surrogate: 1-Chlorooctane 82.7 % 48.2-134

Surrogate: 1-Chlorooctadecane 88.9 % 49.1-148

Cardinal Laboratories

\*=Accredited Analyte

PLEASE NOTE: Liability and Damages. Cardinal's liability and client's exclusive remedy for any claim arising, whether based in contract or tort, shall be limited to the amount paid by client for analyses. All claims, including those for negligence and any other cause whatsoever shall be deemed waived unless made in writing and received by Cardinal within thirty (30) days after completion of the applicable service. In no event shall Cardinal be liable for incidental or consequential damages, including, without limitation, business interruptions, loss of use, or loss of profits incurred by client, its subsidiaries, affiliates or successors arising out of or related to the performance of the services hereunder by Cardinal, regardless of whether such claim is based upon any of the above stated reasons or otherwise. Results relate only to the samples identified above. This report shall not be reproduced except in full with written approval of Cardinal Laboratories.

Celey D. Keene, Lab Director/Quality Manager





PHONE (575) 393-2326 ° 101 E. MARLAND ° HOBBS, NM 88240

**Analytical Results For:**

BBC International, Inc.  
 Cliff Brunson  
 P.O. Box 805  
 Hobbs NM, 88241  
 Fax To: (575) 397-0397

Received:	09/26/2023	Sampling Date:	09/25/2023
Reported:	10/03/2023	Sampling Type:	Soil
Project Name:	NHU INJECTION BATTERY (8/23/18)	Sampling Condition:	Cool & Intact
Project Number:	NONE GIVEN	Sample Received By:	Tamara Oldaker
Project Location:	OXY - NEW MEXICO		

**Sample ID: BOTTOM SAMPLE 18 @ 1' (H235258-18)**

BTX 8021B		mg/kg		Analyzed By: JH/						
Analyte	Result	Reporting Limit	Analyzed	Method Blank	BS	% Recovery	True Value QC	RPD	Qualifier	
Benzene*	<0.050	0.050	09/29/2023	ND	1.92	96.2	2.00	0.971		
Toluene*	<0.050	0.050	09/29/2023	ND	1.91	95.4	2.00	5.88		
Ethylbenzene*	<0.050	0.050	09/29/2023	ND	1.98	99.2	2.00	1.37		
Total Xylenes*	<0.150	0.150	09/29/2023	ND	5.89	98.2	6.00	0.874		
Total BTX	<0.300	0.300	09/29/2023	ND						

Surrogate: 4-Bromofluorobenzene (PID) 112 % 71.5-134

Chloride, SM4500CI-B		mg/kg		Analyzed By: AC						
Analyte	Result	Reporting Limit	Analyzed	Method Blank	BS	% Recovery	True Value QC	RPD	Qualifier	
Chloride	64.0	16.0	09/27/2023	ND	432	108	400	0.00		

TPH 8015M		mg/kg		Analyzed By: MS					
Analyte	Result	Reporting Limit	Analyzed	Method Blank	BS	% Recovery	True Value QC	RPD	Qualifier
GRO C6-C10*	<10.0	10.0	09/28/2023	ND	183	91.5	200	1.56	
DRO >C10-C28*	<10.0	10.0	09/28/2023	ND	190	94.9	200	0.897	
EXT DRO >C28-C36	<10.0	10.0	09/28/2023	ND					

Surrogate: 1-Chlorooctane 64.8 % 48.2-134

Surrogate: 1-Chlorooctadecane 71.0 % 49.1-148

Cardinal Laboratories

\*=Accredited Analyte

PLEASE NOTE: Liability and Damages. Cardinal's liability and client's exclusive remedy for any claim arising, whether based in contract or tort, shall be limited to the amount paid by client for analyses. All claims, including those for negligence and any other cause whatsoever shall be deemed waived unless made in writing and received by Cardinal within thirty (30) days after completion of the applicable service. In no event shall Cardinal be liable for incidental or consequential damages, including, without limitation, business interruptions, loss of use, or loss of profits incurred by client, its subsidiaries, affiliates or successors arising out of or related to the performance of the services hereunder by Cardinal, regardless of whether such claim is based upon any of the above stated reasons or otherwise. Results relate only to the samples identified above. This report shall not be reproduced except in full with written approval of Cardinal Laboratories.

Celey D. Keene, Lab Director/Quality Manager



PHONE (575) 393-2326 ° 101 E. MARLAND ° HOBBS, NM 88240

**Analytical Results For:**

BBC International, Inc.  
 Cliff Brunson  
 P.O. Box 805  
 Hobbs NM, 88241  
 Fax To: (575) 397-0397

Received:	09/26/2023	Sampling Date:	09/25/2023
Reported:	10/03/2023	Sampling Type:	Soil
Project Name:	NHU INJECTION BATTERY (8/23/18)	Sampling Condition:	Cool & Intact
Project Number:	NONE GIVEN	Sample Received By:	Tamara Oldaker
Project Location:	OXY - NEW MEXICO		

**Sample ID: BOTTOM SAMPLE 19 @ 1' (H235258-19)**

BTEx 8021B		mg/kg		Analyzed By: JH/						
Analyte	Result	Reporting Limit	Analyzed	Method Blank	BS	% Recovery	True Value QC	RPD	Qualifier	
Benzene*	<0.050	0.050	09/29/2023	ND	1.92	96.2	2.00	0.971		
Toluene*	<0.050	0.050	09/29/2023	ND	1.91	95.4	2.00	5.88		
Ethylbenzene*	<0.050	0.050	09/29/2023	ND	1.98	99.2	2.00	1.37		
Total Xylenes*	<0.150	0.150	09/29/2023	ND	5.89	98.2	6.00	0.874		
Total BTEX	<0.300	0.300	09/29/2023	ND						

Surrogate: 4-Bromofluorobenzene (PID) 111 % 71.5-134

Chloride, SM4500Cl-B		mg/kg		Analyzed By: AC						
Analyte	Result	Reporting Limit	Analyzed	Method Blank	BS	% Recovery	True Value QC	RPD	Qualifier	
Chloride	64.0	16.0	09/27/2023	ND	432	108	400	0.00		

TPH 8015M		mg/kg		Analyzed By: MS					
Analyte	Result	Reporting Limit	Analyzed	Method Blank	BS	% Recovery	True Value QC	RPD	Qualifier
GRO C6-C10*	<10.0	10.0	09/28/2023	ND	183	91.5	200	1.56	
DRO >C10-C28*	<10.0	10.0	09/28/2023	ND	190	94.9	200	0.897	
EXT DRO >C28-C36	<10.0	10.0	09/28/2023	ND					

Surrogate: 1-Chlorooctane 76.7 % 48.2-134

Surrogate: 1-Chlorooctadecane 84.1 % 49.1-148

Cardinal Laboratories

\*=Accredited Analyte

PLEASE NOTE: Liability and Damages. Cardinal's liability and client's exclusive remedy for any claim arising, whether based in contract or tort, shall be limited to the amount paid by client for analyses. All claims, including those for negligence and any other cause whatsoever shall be deemed waived unless made in writing and received by Cardinal within thirty (30) days after completion of the applicable service. In no event shall Cardinal be liable for incidental or consequential damages, including, without limitation, business interruptions, loss of use, or loss of profits incurred by client, its subsidiaries, affiliates or successors arising out of or related to the performance of the services hereunder by Cardinal, regardless of whether such claim is based upon any of the above stated reasons or otherwise. Results relate only to the samples identified above. This report shall not be reproduced except in full with written approval of Cardinal Laboratories.

Celey D. Keene, Lab Director/Quality Manager



PHONE (575) 393-2326 ° 101 E. MARLAND ° HOBBS, NM 88240

**Analytical Results For:**

BBC International, Inc.  
 Cliff Brunson  
 P.O. Box 805  
 Hobbs NM, 88241  
 Fax To: (575) 397-0397

Received:	09/26/2023	Sampling Date:	09/25/2023
Reported:	10/03/2023	Sampling Type:	Soil
Project Name:	NHU INJECTION BATTERY (8/23/18)	Sampling Condition:	Cool & Intact
Project Number:	NONE GIVEN	Sample Received By:	Tamara Oldaker
Project Location:	OXY - NEW MEXICO		

**Sample ID: BOTTOM SAMPLE 20 @ 1' (H235258-20)**

BTX 8021B		mg/kg		Analyzed By: JH/						
Analyte	Result	Reporting Limit	Analyzed	Method Blank	BS	% Recovery	True Value QC	RPD	Qualifier	
Benzene*	<0.050	0.050	09/29/2023	ND	1.92	96.2	2.00	0.971		
Toluene*	<0.050	0.050	09/29/2023	ND	1.91	95.4	2.00	5.88		
Ethylbenzene*	<0.050	0.050	09/29/2023	ND	1.98	99.2	2.00	1.37		
Total Xylenes*	<0.150	0.150	09/29/2023	ND	5.89	98.2	6.00	0.874		
Total BTX	<0.300	0.300	09/29/2023	ND						

Surrogate: 4-Bromofluorobenzene (PID) 111 % 71.5-134

Chloride, SM4500CI-B		mg/kg		Analyzed By: AC						
Analyte	Result	Reporting Limit	Analyzed	Method Blank	BS	% Recovery	True Value QC	RPD	Qualifier	
Chloride	48.0	16.0	09/27/2023	ND	432	108	400	0.00		

TPH 8015M		mg/kg		Analyzed By: MS					
Analyte	Result	Reporting Limit	Analyzed	Method Blank	BS	% Recovery	True Value QC	RPD	Qualifier
GRO C6-C10*	<10.0	10.0	09/28/2023	ND	183	91.5	200	1.56	
DRO >C10-C28*	<10.0	10.0	09/28/2023	ND	190	94.9	200	0.897	
EXT DRO >C28-C36	<10.0	10.0	09/28/2023	ND					

Surrogate: 1-Chlorooctane 72.9 % 48.2-134

Surrogate: 1-Chlorooctadecane 79.5 % 49.1-148

Cardinal Laboratories

\*=Accredited Analyte

PLEASE NOTE: Liability and Damages. Cardinal's liability and client's exclusive remedy for any claim arising, whether based in contract or tort, shall be limited to the amount paid by client for analyses. All claims, including those for negligence and any other cause whatsoever shall be deemed waived unless made in writing and received by Cardinal within thirty (30) days after completion of the applicable service. In no event shall Cardinal be liable for incidental or consequential damages, including, without limitation, business interruptions, loss of use, or loss of profits incurred by client, its subsidiaries, affiliates or successors arising out of or related to the performance of the services hereunder by Cardinal, regardless of whether such claim is based upon any of the above stated reasons or otherwise. Results relate only to the samples identified above. This report shall not be reproduced except in full with written approval of Cardinal Laboratories.

Celey D. Keene, Lab Director/Quality Manager





PHONE (575) 393-2326 ° 101 E. MARLAND ° HOBBS, NM 88240

**Analytical Results For:**

BBC International, Inc.  
 Cliff Brunson  
 P.O. Box 805  
 Hobbs NM, 88241  
 Fax To: (575) 397-0397

Received:	09/26/2023	Sampling Date:	09/25/2023
Reported:	10/03/2023	Sampling Type:	Soil
Project Name:	NHU INJECTION BATTERY (8/23/18)	Sampling Condition:	Cool & Intact
Project Number:	NONE GIVEN	Sample Received By:	Tamara Oldaker
Project Location:	OXY - NEW MEXICO		

**Sample ID: BOTTOM SAMPLE 21 @ 1' (H235258-21)**

BTEX 8021B		mg/kg		Analyzed By: JH/						
Analyte	Result	Reporting Limit	Analyzed	Method Blank	BS	% Recovery	True Value QC	RPD	Qualifier	
Benzene*	<0.050	0.050	09/29/2023	ND	1.92	96.2	2.00	0.971		
Toluene*	<0.050	0.050	09/29/2023	ND	1.91	95.4	2.00	5.88		
Ethylbenzene*	<0.050	0.050	09/29/2023	ND	1.98	99.2	2.00	1.37		
Total Xylenes*	<0.150	0.150	09/29/2023	ND	5.89	98.2	6.00	0.874		
Total BTEX	<0.300	0.300	09/29/2023	ND						

Surrogate: 4-Bromofluorobenzene (PID) 112 % 71.5-134

Chloride, SM4500Cl-B		mg/kg		Analyzed By: AC						
Analyte	Result	Reporting Limit	Analyzed	Method Blank	BS	% Recovery	True Value QC	RPD	Qualifier	
Chloride	64.0	16.0	09/27/2023	ND	432	108	400	0.00		

TPH 8015M		mg/kg		Analyzed By: MS					
Analyte	Result	Reporting Limit	Analyzed	Method Blank	BS	% Recovery	True Value QC	RPD	Qualifier
GRO C6-C10*	<10.0	10.0	10/02/2023	ND	183	91.5	200	1.56	
DRO >C10-C28*	<10.0	10.0	10/02/2023	ND	190	94.9	200	0.897	
EXT DRO >C28-C36	<10.0	10.0	10/02/2023	ND					

Surrogate: 1-Chlorooctane 74.9 % 48.2-134

Surrogate: 1-Chlorooctadecane 78.5 % 49.1-148

Cardinal Laboratories

\*=Accredited Analyte

PLEASE NOTE: Liability and Damages. Cardinal's liability and client's exclusive remedy for any claim arising, whether based in contract or tort, shall be limited to the amount paid by client for analyses. All claims, including those for negligence and any other cause whatsoever shall be deemed waived unless made in writing and received by Cardinal within thirty (30) days after completion of the applicable service. In no event shall Cardinal be liable for incidental or consequential damages, including, without limitation, business interruptions, loss of use, or loss of profits incurred by client, its subsidiaries, affiliates or successors arising out of or related to the performance of the services hereunder by Cardinal, regardless of whether such claim is based upon any of the above stated reasons or otherwise. Results relate only to the samples identified above. This report shall not be reproduced except in full with written approval of Cardinal Laboratories.

Celey D. Keene, Lab Director/Quality Manager



PHONE (575) 393-2326 ° 101 E. MARLAND ° HOBBS, NM 88240

**Analytical Results For:**

BBC International, Inc.  
 Cliff Brunson  
 P.O. Box 805  
 Hobbs NM, 88241  
 Fax To: (575) 397-0397

Received:	09/26/2023	Sampling Date:	09/25/2023
Reported:	10/03/2023	Sampling Type:	Soil
Project Name:	NHU INJECTION BATTERY (8/23/18)	Sampling Condition:	Cool & Intact
Project Number:	NONE GIVEN	Sample Received By:	Tamara Oldaker
Project Location:	OXY - NEW MEXICO		

**Sample ID: BOTTOM SAMPLE 22 @ 1' (H235258-22)**

BTEx 8021B		mg/kg		Analyzed By: JH/						
Analyte	Result	Reporting Limit	Analyzed	Method Blank	BS	% Recovery	True Value QC	RPD	Qualifier	
Benzene*	<0.050	0.050	09/29/2023	ND	1.92	96.2	2.00	0.971		
Toluene*	<0.050	0.050	09/29/2023	ND	1.91	95.4	2.00	5.88		
Ethylbenzene*	<0.050	0.050	09/29/2023	ND	1.98	99.2	2.00	1.37		
Total Xylenes*	<0.150	0.150	09/29/2023	ND	5.89	98.2	6.00	0.874		
Total BTEX	<0.300	0.300	09/29/2023	ND						

Surrogate: 4-Bromofluorobenzene (PID) 112 % 71.5-134

Chloride, SM4500Cl-B		mg/kg		Analyzed By: AC						
Analyte	Result	Reporting Limit	Analyzed	Method Blank	BS	% Recovery	True Value QC	RPD	Qualifier	
Chloride	32.0	16.0	09/27/2023	ND	432	108	400	0.00		

TPH 8015M		mg/kg		Analyzed By: MS					
Analyte	Result	Reporting Limit	Analyzed	Method Blank	BS	% Recovery	True Value QC	RPD	Qualifier
GRO C6-C10*	<10.0	10.0	09/28/2023	ND	183	91.5	200	1.56	
DRO >C10-C28*	<10.0	10.0	09/28/2023	ND	190	94.9	200	0.897	
EXT DRO >C28-C36	<10.0	10.0	09/28/2023	ND					

Surrogate: 1-Chlorooctane 78.7 % 48.2-134

Surrogate: 1-Chlorooctadecane 86.1 % 49.1-148

Cardinal Laboratories

\*=Accredited Analyte

PLEASE NOTE: Liability and Damages. Cardinal's liability and client's exclusive remedy for any claim arising, whether based in contract or tort, shall be limited to the amount paid by client for analyses. All claims, including those for negligence and any other cause whatsoever shall be deemed waived unless made in writing and received by Cardinal within thirty (30) days after completion of the applicable service. In no event shall Cardinal be liable for incidental or consequential damages, including, without limitation, business interruptions, loss of use, or loss of profits incurred by client, its subsidiaries, affiliates or successors arising out of or related to the performance of the services hereunder by Cardinal, regardless of whether such claim is based upon any of the above stated reasons or otherwise. Results relate only to the samples identified above. This report shall not be reproduced except in full with written approval of Cardinal Laboratories.

Celey D. Keene, Lab Director/Quality Manager



PHONE (575) 393-2326 ° 101 E. MARLAND ° HOBBS, NM 88240

**Analytical Results For:**

BBC International, Inc.  
 Cliff Brunson  
 P.O. Box 805  
 Hobbs NM, 88241  
 Fax To: (575) 397-0397

Received:	09/26/2023	Sampling Date:	09/25/2023
Reported:	10/03/2023	Sampling Type:	Soil
Project Name:	NHU INJECTION BATTERY (8/23/18)	Sampling Condition:	Cool & Intact
Project Number:	NONE GIVEN	Sample Received By:	Tamara Oldaker
Project Location:	OXY - NEW MEXICO		

**Sample ID: BOTTOM SAMPLE 23 @ 1' (H235258-23)**

BTEx 8021B		mg/kg		Analyzed By: JH/						
Analyte	Result	Reporting Limit	Analyzed	Method Blank	BS	% Recovery	True Value QC	RPD	Qualifier	
Benzene*	<0.050	0.050	09/29/2023	ND	1.84	92.0	2.00	2.86		
Toluene*	<0.050	0.050	09/29/2023	ND	1.83	91.7	2.00	2.76		
Ethylbenzene*	<0.050	0.050	09/29/2023	ND	1.91	95.3	2.00	2.64		
Total Xylenes*	<0.150	0.150	09/29/2023	ND	5.66	94.4	6.00	3.79		
Total BTEX	<0.300	0.300	09/29/2023	ND						

Surrogate: 4-Bromofluorobenzene (PID) 112 % 71.5-134

Chloride, SM4500Cl-B		mg/kg		Analyzed By: AC						
Analyte	Result	Reporting Limit	Analyzed	Method Blank	BS	% Recovery	True Value QC	RPD	Qualifier	
Chloride	80.0	16.0	09/27/2023	ND	432	108	400	0.00		

TPH 8015M		mg/kg		Analyzed By: MS					
Analyte	Result	Reporting Limit	Analyzed	Method Blank	BS	% Recovery	True Value QC	RPD	Qualifier
GRO C6-C10*	<10.0	10.0	09/28/2023	ND	183	91.5	200	1.56	
DRO >C10-C28*	<10.0	10.0	09/28/2023	ND	190	94.9	200	0.897	
EXT DRO >C28-C36	<10.0	10.0	09/28/2023	ND					

Surrogate: 1-Chlorooctane 81.4 % 48.2-134

Surrogate: 1-Chlorooctadecane 86.7 % 49.1-148

Cardinal Laboratories

\*=Accredited Analyte

PLEASE NOTE: Liability and Damages. Cardinal's liability and client's exclusive remedy for any claim arising, whether based in contract or tort, shall be limited to the amount paid by client for analyses. All claims, including those for negligence and any other cause whatsoever shall be deemed waived unless made in writing and received by Cardinal within thirty (30) days after completion of the applicable service. In no event shall Cardinal be liable for incidental or consequential damages, including, without limitation, business interruptions, loss of use, or loss of profits incurred by client, its subsidiaries, affiliates or successors arising out of or related to the performance of the services hereunder by Cardinal, regardless of whether such claim is based upon any of the above stated reasons or otherwise. Results relate only to the samples identified above. This report shall not be reproduced except in full with written approval of Cardinal Laboratories.

Celey D. Keene, Lab Director/Quality Manager





PHONE (575) 393-2326 ° 101 E. MARLAND ° HOBBS, NM 88240

**Analytical Results For:**

BBC International, Inc.  
 Cliff Brunson  
 P.O. Box 805  
 Hobbs NM, 88241  
 Fax To: (575) 397-0397

Received:	09/26/2023	Sampling Date:	09/25/2023
Reported:	10/03/2023	Sampling Type:	Soil
Project Name:	NHU INJECTION BATTERY (8/23/18)	Sampling Condition:	Cool & Intact
Project Number:	NONE GIVEN	Sample Received By:	Tamara Oldaker
Project Location:	OXY - NEW MEXICO		

**Sample ID: BOTTOM SAMPLE 24 @ 1' (H235258-24)**

BTX 8021B		mg/kg		Analyzed By: JH/						
Analyte	Result	Reporting Limit	Analyzed	Method Blank	BS	% Recovery	True Value QC	RPD	Qualifier	
Benzene*	<0.050	0.050	09/29/2023	ND	1.84	92.0	2.00	2.86		
Toluene*	<0.050	0.050	09/29/2023	ND	1.83	91.7	2.00	2.76		
Ethylbenzene*	<0.050	0.050	09/29/2023	ND	1.91	95.3	2.00	2.64		
Total Xylenes*	<0.150	0.150	09/29/2023	ND	5.66	94.4	6.00	3.79		
Total BTX	<0.300	0.300	09/29/2023	ND						

Surrogate: 4-Bromofluorobenzene (PID) 111 % 71.5-134

Chloride, SM4500CI-B		mg/kg		Analyzed By: AC						
Analyte	Result	Reporting Limit	Analyzed	Method Blank	BS	% Recovery	True Value QC	RPD	Qualifier	
Chloride	64.0	16.0	09/27/2023	ND	432	108	400	0.00		

TPH 8015M		mg/kg		Analyzed By: MS					
Analyte	Result	Reporting Limit	Analyzed	Method Blank	BS	% Recovery	True Value QC	RPD	Qualifier
GRO C6-C10*	<10.0	10.0	09/28/2023	ND	183	91.5	200	1.56	
DRO >C10-C28*	<10.0	10.0	09/28/2023	ND	190	94.9	200	0.897	
EXT DRO >C28-C36	<10.0	10.0	09/28/2023	ND					

Surrogate: 1-Chlorooctane 84.9 % 48.2-134

Surrogate: 1-Chlorooctadecane 93.3 % 49.1-148

Cardinal Laboratories

\*=Accredited Analyte

PLEASE NOTE: Liability and Damages. Cardinal's liability and client's exclusive remedy for any claim arising, whether based in contract or tort, shall be limited to the amount paid by client for analyses. All claims, including those for negligence and any other cause whatsoever shall be deemed waived unless made in writing and received by Cardinal within thirty (30) days after completion of the applicable service. In no event shall Cardinal be liable for incidental or consequential damages, including, without limitation, business interruptions, loss of use, or loss of profits incurred by client, its subsidiaries, affiliates or successors arising out of or related to the performance of the services hereunder by Cardinal, regardless of whether such claim is based upon any of the above stated reasons or otherwise. Results relate only to the samples identified above. This report shall not be reproduced except in full with written approval of Cardinal Laboratories.

Celey D. Keene, Lab Director/Quality Manager



PHONE (575) 393-2326 ° 101 E. MARLAND ° HOBBS, NM 88240

**Analytical Results For:**

BBC International, Inc.  
 Cliff Brunson  
 P.O. Box 805  
 Hobbs NM, 88241  
 Fax To: (575) 397-0397

Received:	09/26/2023	Sampling Date:	09/25/2023
Reported:	10/03/2023	Sampling Type:	Soil
Project Name:	NHU INJECTION BATTERY (8/23/18)	Sampling Condition:	Cool & Intact
Project Number:	NONE GIVEN	Sample Received By:	Tamara Oldaker
Project Location:	OXY - NEW MEXICO		

**Sample ID: BOTTOM SAMPLE 25 @ 1' (H235258-25)**

BTEx 8021B		mg/kg		Analyzed By: JH/					
Analyte	Result	Reporting Limit	Analyzed	Method Blank	BS	% Recovery	True Value QC	RPD	Qualifier
Benzene*	<0.050	0.050	09/29/2023	ND	1.84	92.0	2.00	2.86	
Toluene*	<0.050	0.050	09/29/2023	ND	1.83	91.7	2.00	2.76	
Ethylbenzene*	<0.050	0.050	09/29/2023	ND	1.91	95.3	2.00	2.64	
Total Xylenes*	<0.150	0.150	09/29/2023	ND	5.66	94.4	6.00	3.79	
Total BTEX	<0.300	0.300	09/29/2023	ND					

Surrogate: 4-Bromofluorobenzene (PID) 109 % 71.5-134

Chloride, SM4500CI-B		mg/kg		Analyzed By: AC						
Analyte	Result	Reporting Limit	Analyzed	Method Blank	BS	% Recovery	True Value QC	RPD	Qualifier	
Chloride	64.0	16.0	09/27/2023	ND	448	112	400	3.64		

TPH 8015M		mg/kg		Analyzed By: MS					
Analyte	Result	Reporting Limit	Analyzed	Method Blank	BS	% Recovery	True Value QC	RPD	Qualifier
GRO C6-C10*	<10.0	10.0	09/28/2023	ND	183	91.5	200	1.56	
DRO >C10-C28*	<10.0	10.0	09/28/2023	ND	190	94.9	200	0.897	
EXT DRO >C28-C36	<10.0	10.0	09/28/2023	ND					

Surrogate: 1-Chlorooctane 77.2 % 48.2-134

Surrogate: 1-Chlorooctadecane 82.6 % 49.1-148

Cardinal Laboratories

\*=Accredited Analyte

PLEASE NOTE: Liability and Damages. Cardinal's liability and client's exclusive remedy for any claim arising, whether based in contract or tort, shall be limited to the amount paid by client for analyses. All claims, including those for negligence and any other cause whatsoever shall be deemed waived unless made in writing and received by Cardinal within thirty (30) days after completion of the applicable service. In no event shall Cardinal be liable for incidental or consequential damages, including, without limitation, business interruptions, loss of use, or loss of profits incurred by client, its subsidiaries, affiliates or successors arising out of or related to the performance of the services hereunder by Cardinal, regardless of whether such claim is based upon any of the above stated reasons or otherwise. Results relate only to the samples identified above. This report shall not be reproduced except in full with written approval of Cardinal Laboratories.

Celey D. Keene, Lab Director/Quality Manager



PHONE (575) 393-2326 ° 101 E. MARLAND ° HOBBS, NM 88240

**Analytical Results For:**

BBC International, Inc.  
 Cliff Brunson  
 P.O. Box 805  
 Hobbs NM, 88241  
 Fax To: (575) 397-0397

Received:	09/26/2023	Sampling Date:	09/25/2023
Reported:	10/03/2023	Sampling Type:	Soil
Project Name:	NHU INJECTION BATTERY (8/23/18)	Sampling Condition:	Cool & Intact
Project Number:	NONE GIVEN	Sample Received By:	Tamara Oldaker
Project Location:	OXY - NEW MEXICO		

**Sample ID: BOTTOM SAMPLE 26 @ 1' (H235258-26)**

BTEx 8021B		mg/kg		Analyzed By: JH/						
Analyte	Result	Reporting Limit	Analyzed	Method Blank	BS	% Recovery	True Value QC	RPD	Qualifier	
Benzene*	<0.050	0.050	09/29/2023	ND	1.84	92.0	2.00	2.86		
Toluene*	<0.050	0.050	09/29/2023	ND	1.83	91.7	2.00	2.76		
Ethylbenzene*	<0.050	0.050	09/29/2023	ND	1.91	95.3	2.00	2.64		
Total Xylenes*	<0.150	0.150	09/29/2023	ND	5.66	94.4	6.00	3.79		
Total BTEX	<0.300	0.300	09/29/2023	ND						

Surrogate: 4-Bromofluorobenzene (PID) 110 % 71.5-134

Chloride, SM4500Cl-B		mg/kg		Analyzed By: AC						
Analyte	Result	Reporting Limit	Analyzed	Method Blank	BS	% Recovery	True Value QC	RPD	Qualifier	
Chloride	80.0	16.0	09/27/2023	ND	448	112	400	3.64		

TPH 8015M		mg/kg		Analyzed By: MS					
Analyte	Result	Reporting Limit	Analyzed	Method Blank	BS	% Recovery	True Value QC	RPD	Qualifier
GRO C6-C10*	<10.0	10.0	09/28/2023	ND	183	91.5	200	1.56	
DRO >C10-C28*	<10.0	10.0	09/28/2023	ND	190	94.9	200	0.897	
EXT DRO >C28-C36	<10.0	10.0	09/28/2023	ND					

Surrogate: 1-Chlorooctane 82.4 % 48.2-134

Surrogate: 1-Chlorooctadecane 89.4 % 49.1-148

Cardinal Laboratories

\*=Accredited Analyte

PLEASE NOTE: Liability and Damages. Cardinal's liability and client's exclusive remedy for any claim arising, whether based in contract or tort, shall be limited to the amount paid by client for analyses. All claims, including those for negligence and any other cause whatsoever shall be deemed waived unless made in writing and received by Cardinal within thirty (30) days after completion of the applicable service. In no event shall Cardinal be liable for incidental or consequential damages, including, without limitation, business interruptions, loss of use, or loss of profits incurred by client, its subsidiaries, affiliates or successors arising out of or related to the performance of the services hereunder by Cardinal, regardless of whether such claim is based upon any of the above stated reasons or otherwise. Results relate only to the samples identified above. This report shall not be reproduced except in full with written approval of Cardinal Laboratories.

Celey D. Keene, Lab Director/Quality Manager



PHONE (575) 393-2326 ° 101 E. MARLAND ° HOBBS, NM 88240

**Analytical Results For:**

BBC International, Inc.  
 Cliff Brunson  
 P.O. Box 805  
 Hobbs NM, 88241  
 Fax To: (575) 397-0397

Received:	09/26/2023	Sampling Date:	09/25/2023
Reported:	10/03/2023	Sampling Type:	Soil
Project Name:	NHU INJECTION BATTERY (8/23/18)	Sampling Condition:	Cool & Intact
Project Number:	NONE GIVEN	Sample Received By:	Tamara Oldaker
Project Location:	OXY - NEW MEXICO		

**Sample ID: BOTTOM SAMPLE 27 @ 1' (H235258-27)**

BTX 8021B		mg/kg		Analyzed By: JH/						
Analyte	Result	Reporting Limit	Analyzed	Method Blank	BS	% Recovery	True Value QC	RPD	Qualifier	
Benzene*	<0.050	0.050	09/29/2023	ND	1.84	92.0	2.00	2.86		
Toluene*	<0.050	0.050	09/29/2023	ND	1.83	91.7	2.00	2.76		
Ethylbenzene*	<0.050	0.050	09/29/2023	ND	1.91	95.3	2.00	2.64		
Total Xylenes*	<0.150	0.150	09/29/2023	ND	5.66	94.4	6.00	3.79		
Total BTX	<0.300	0.300	09/29/2023	ND						

Surrogate: 4-Bromofluorobenzene (PID) 111 % 71.5-134

Chloride, SM4500CI-B		mg/kg		Analyzed By: AC						
Analyte	Result	Reporting Limit	Analyzed	Method Blank	BS	% Recovery	True Value QC	RPD	Qualifier	
Chloride	48.0	16.0	09/27/2023	ND	448	112	400	3.64		

TPH 8015M		mg/kg		Analyzed By: MS					
Analyte	Result	Reporting Limit	Analyzed	Method Blank	BS	% Recovery	True Value QC	RPD	Qualifier
GRO C6-C10*	<10.0	10.0	09/28/2023	ND	183	91.5	200	1.56	
DRO >C10-C28*	<10.0	10.0	09/28/2023	ND	190	94.9	200	0.897	
EXT DRO >C28-C36	<10.0	10.0	09/28/2023	ND					

Surrogate: 1-Chlorooctane 66.4 % 48.2-134

Surrogate: 1-Chlorooctadecane 70.1 % 49.1-148

Cardinal Laboratories

\*=Accredited Analyte

PLEASE NOTE: Liability and Damages. Cardinal's liability and client's exclusive remedy for any claim arising, whether based in contract or tort, shall be limited to the amount paid by client for analyses. All claims, including those for negligence and any other cause whatsoever shall be deemed waived unless made in writing and received by Cardinal within thirty (30) days after completion of the applicable service. In no event shall Cardinal be liable for incidental or consequential damages, including, without limitation, business interruptions, loss of use, or loss of profits incurred by client, its subsidiaries, affiliates or successors arising out of or related to the performance of the services hereunder by Cardinal, regardless of whether such claim is based upon any of the above stated reasons or otherwise. Results relate only to the samples identified above. This report shall not be reproduced except in full with written approval of Cardinal Laboratories.

Celey D. Keene, Lab Director/Quality Manager





PHONE (575) 393-2326 ° 101 E. MARLAND ° HOBBS, NM 88240

**Analytical Results For:**

BBC International, Inc.  
 Cliff Brunson  
 P.O. Box 805  
 Hobbs NM, 88241  
 Fax To: (575) 397-0397

Received:	09/26/2023	Sampling Date:	09/25/2023
Reported:	10/03/2023	Sampling Type:	Soil
Project Name:	NHU INJECTION BATTERY (8/23/18)	Sampling Condition:	Cool & Intact
Project Number:	NONE GIVEN	Sample Received By:	Tamara Oldaker
Project Location:	OXY - NEW MEXICO		

**Sample ID: BOTTOM SAMPLE 28 @ 1' (H235258-28)**

BTEX 8021B		mg/kg		Analyzed By: JH/						
Analyte	Result	Reporting Limit	Analyzed	Method Blank	BS	% Recovery	True Value QC	RPD	Qualifier	
Benzene*	<0.050	0.050	09/29/2023	ND	1.84	92.0	2.00	2.86		
Toluene*	<0.050	0.050	09/29/2023	ND	1.83	91.7	2.00	2.76		
Ethylbenzene*	<0.050	0.050	09/29/2023	ND	1.91	95.3	2.00	2.64		
Total Xylenes*	<0.150	0.150	09/29/2023	ND	5.66	94.4	6.00	3.79		
Total BTEX	<0.300	0.300	09/29/2023	ND						

Surrogate: 4-Bromofluorobenzene (PID) 111 % 71.5-134

Chloride, SM4500CI-B		mg/kg		Analyzed By: AC					
Analyte	Result	Reporting Limit	Analyzed	Method Blank	BS	% Recovery	True Value QC	RPD	Qualifier
Chloride	64.0	16.0	09/27/2023	ND	448	112	400	3.64	

TPH 8015M		mg/kg		Analyzed By: MS					
Analyte	Result	Reporting Limit	Analyzed	Method Blank	BS	% Recovery	True Value QC	RPD	Qualifier
GRO C6-C10*	<10.0	10.0	09/27/2023	ND	189	94.4	200	1.56	
DRO >C10-C28*	<10.0	10.0	09/27/2023	ND	203	101	200	3.17	
EXT DRO >C28-C36	<10.0	10.0	09/27/2023	ND					

Surrogate: 1-Chlorooctane 66.0 % 48.2-134

Surrogate: 1-Chlorooctadecane 73.5 % 49.1-148

Cardinal Laboratories

\*=Accredited Analyte

PLEASE NOTE: Liability and Damages. Cardinal's liability and client's exclusive remedy for any claim arising, whether based in contract or tort, shall be limited to the amount paid by client for analyses. All claims, including those for negligence and any other cause whatsoever shall be deemed waived unless made in writing and received by Cardinal within thirty (30) days after completion of the applicable service. In no event shall Cardinal be liable for incidental or consequential damages, including, without limitation, business interruptions, loss of use, or loss of profits incurred by client, its subsidiaries, affiliates or successors arising out of or related to the performance of the services hereunder by Cardinal, regardless of whether such claim is based upon any of the above stated reasons or otherwise. Results relate only to the samples identified above. This report shall not be reproduced except in full with written approval of Cardinal Laboratories.

Celey D. Keene, Lab Director/Quality Manager



PHONE (575) 393-2326 ° 101 E. MARLAND ° HOBBS, NM 88240

**Analytical Results For:**

BBC International, Inc.  
 Cliff Brunson  
 P.O. Box 805  
 Hobbs NM, 88241  
 Fax To: (575) 397-0397

Received:	09/26/2023	Sampling Date:	09/25/2023
Reported:	10/03/2023	Sampling Type:	Soil
Project Name:	NHU INJECTION BATTERY (8/23/18)	Sampling Condition:	Cool & Intact
Project Number:	NONE GIVEN	Sample Received By:	Tamara Oldaker
Project Location:	OXY - NEW MEXICO		

**Sample ID: BOTTOM SAMPLE 29 @ 1' (H235258-29)**

BTX 8021B		mg/kg		Analyzed By: JH/						
Analyte	Result	Reporting Limit	Analyzed	Method Blank	BS	% Recovery	True Value QC	RPD	Qualifier	
Benzene*	<0.050	0.050	09/29/2023	ND	1.84	92.0	2.00	2.86		
Toluene*	<0.050	0.050	09/29/2023	ND	1.83	91.7	2.00	2.76		
Ethylbenzene*	<0.050	0.050	09/29/2023	ND	1.91	95.3	2.00	2.64		
Total Xylenes*	<0.150	0.150	09/29/2023	ND	5.66	94.4	6.00	3.79		
Total BTX	<0.300	0.300	09/29/2023	ND						

Surrogate: 4-Bromofluorobenzene (PID) 111 % 71.5-134

Chloride, SM4500CI-B		mg/kg		Analyzed By: AC						
Analyte	Result	Reporting Limit	Analyzed	Method Blank	BS	% Recovery	True Value QC	RPD	Qualifier	
Chloride	64.0	16.0	09/27/2023	ND	448	112	400	3.64		

TPH 8015M		mg/kg		Analyzed By: MS					
Analyte	Result	Reporting Limit	Analyzed	Method Blank	BS	% Recovery	True Value QC	RPD	Qualifier
GRO C6-C10*	<10.0	10.0	09/27/2023	ND	189	94.4	200	1.56	
DRO >C10-C28*	<10.0	10.0	09/27/2023	ND	203	101	200	3.17	
EXT DRO >C28-C36	<10.0	10.0	09/27/2023	ND					

Surrogate: 1-Chlorooctane 84.5 % 48.2-134

Surrogate: 1-Chlorooctadecane 93.1 % 49.1-148

Cardinal Laboratories

\*=Accredited Analyte

PLEASE NOTE: Liability and Damages. Cardinal's liability and client's exclusive remedy for any claim arising, whether based in contract or tort, shall be limited to the amount paid by client for analyses. All claims, including those for negligence and any other cause whatsoever shall be deemed waived unless made in writing and received by Cardinal within thirty (30) days after completion of the applicable service. In no event shall Cardinal be liable for incidental or consequential damages, including, without limitation, business interruptions, loss of use, or loss of profits incurred by client, its subsidiaries, affiliates or successors arising out of or related to the performance of the services hereunder by Cardinal, regardless of whether such claim is based upon any of the above stated reasons or otherwise. Results relate only to the samples identified above. This report shall not be reproduced except in full with written approval of Cardinal Laboratories.

Celey D. Keene, Lab Director/Quality Manager



PHONE (575) 393-2326 ° 101 E. MARLAND ° HOBBS, NM 88240

**Analytical Results For:**

BBC International, Inc.  
 Cliff Brunson  
 P.O. Box 805  
 Hobbs NM, 88241  
 Fax To: (575) 397-0397

Received:	09/26/2023	Sampling Date:	09/25/2023
Reported:	10/03/2023	Sampling Type:	Soil
Project Name:	NHU INJECTION BATTERY (8/23/18)	Sampling Condition:	Cool & Intact
Project Number:	NONE GIVEN	Sample Received By:	Tamara Oldaker
Project Location:	OXY - NEW MEXICO		

**Sample ID: BOTTOM SAMPLE 30 @ 1' (H235258-30)**

BTEx 8021B		mg/kg		Analyzed By: JH/						
Analyte	Result	Reporting Limit	Analyzed	Method Blank	BS	% Recovery	True Value QC	RPD	Qualifier	
Benzene*	<0.050	0.050	09/29/2023	ND	1.84	92.0	2.00	2.86		
Toluene*	<0.050	0.050	09/29/2023	ND	1.83	91.7	2.00	2.76		
Ethylbenzene*	<0.050	0.050	09/29/2023	ND	1.91	95.3	2.00	2.64		
Total Xylenes*	<0.150	0.150	09/29/2023	ND	5.66	94.4	6.00	3.79		
Total BTEX	<0.300	0.300	09/29/2023	ND						

Surrogate: 4-Bromofluorobenzene (PID) 110 % 71.5-134

Chloride, SM4500Cl-B		mg/kg		Analyzed By: AC						
Analyte	Result	Reporting Limit	Analyzed	Method Blank	BS	% Recovery	True Value QC	RPD	Qualifier	
Chloride	64.0	16.0	09/27/2023	ND	448	112	400	3.64		

TPH 8015M		mg/kg		Analyzed By: MS					
Analyte	Result	Reporting Limit	Analyzed	Method Blank	BS	% Recovery	True Value QC	RPD	Qualifier
GRO C6-C10*	<10.0	10.0	09/27/2023	ND	189	94.4	200	1.56	
DRO >C10-C28*	<10.0	10.0	09/27/2023	ND	203	101	200	3.17	
EXT DRO >C28-C36	<10.0	10.0	09/27/2023	ND					

Surrogate: 1-Chlorooctane 72.9 % 48.2-134

Surrogate: 1-Chlorooctadecane 80.7 % 49.1-148

Cardinal Laboratories

\*=Accredited Analyte

PLEASE NOTE: Liability and Damages. Cardinal's liability and client's exclusive remedy for any claim arising, whether based in contract or tort, shall be limited to the amount paid by client for analyses. All claims, including those for negligence and any other cause whatsoever shall be deemed waived unless made in writing and received by Cardinal within thirty (30) days after completion of the applicable service. In no event shall Cardinal be liable for incidental or consequential damages, including, without limitation, business interruptions, loss of use, or loss of profits incurred by client, its subsidiaries, affiliates or successors arising out of or related to the performance of the services hereunder by Cardinal, regardless of whether such claim is based upon any of the above stated reasons or otherwise. Results relate only to the samples identified above. This report shall not be reproduced except in full with written approval of Cardinal Laboratories.

Celey D. Keene, Lab Director/Quality Manager



PHONE (575) 393-2326 • 101 E. MARLAND • HOBBS, NM 88240

**Analytical Results For:**

BBC International, Inc.  
 Cliff Brunson  
 P.O. Box 805  
 Hobbs NM, 88241  
 Fax To: (575) 397-0397

Received:	09/26/2023	Sampling Date:	09/25/2023
Reported:	10/03/2023	Sampling Type:	Soil
Project Name:	NHU INJECTION BATTERY (8/23/18)	Sampling Condition:	Cool & Intact
Project Number:	NONE GIVEN	Sample Received By:	Tamara Oldaker
Project Location:	OXY - NEW MEXICO		

**Sample ID: BOTTOM SAMPLE 31 @ 1' (H235258-31)**

BTX 8021B		mg/kg		Analyzed By: JH/						
Analyte	Result	Reporting Limit	Analyzed	Method Blank	BS	% Recovery	True Value QC	RPD	Qualifier	
Benzene*	<0.050	0.050	09/29/2023	ND	1.84	92.0	2.00	2.86		
Toluene*	<0.050	0.050	09/29/2023	ND	1.83	91.7	2.00	2.76		
Ethylbenzene*	<0.050	0.050	09/29/2023	ND	1.91	95.3	2.00	2.64		
Total Xylenes*	<0.150	0.150	09/29/2023	ND	5.66	94.4	6.00	3.79		
Total BTX	<0.300	0.300	09/29/2023	ND						

Surrogate: 4-Bromofluorobenzene (PID) 111 % 71.5-134

Chloride, SM4500CI-B		mg/kg		Analyzed By: AC						
Analyte	Result	Reporting Limit	Analyzed	Method Blank	BS	% Recovery	True Value QC	RPD	Qualifier	
Chloride	80.0	16.0	09/27/2023	ND	448	112	400	3.64		

TPH 8015M		mg/kg		Analyzed By: MS					
Analyte	Result	Reporting Limit	Analyzed	Method Blank	BS	% Recovery	True Value QC	RPD	Qualifier
GRO C6-C10*	<10.0	10.0	09/27/2023	ND	189	94.4	200	1.56	
DRO >C10-C28*	<10.0	10.0	09/27/2023	ND	203	101	200	3.17	
EXT DRO >C28-C36	<10.0	10.0	09/27/2023	ND					

Surrogate: 1-Chlorooctane 77.3 % 48.2-134

Surrogate: 1-Chlorooctadecane 85.0 % 49.1-148

Cardinal Laboratories

\*=Accredited Analyte

PLEASE NOTE: Liability and Damages. Cardinal's liability and client's exclusive remedy for any claim arising, whether based in contract or tort, shall be limited to the amount paid by client for analyses. All claims, including those for negligence and any other cause whatsoever shall be deemed waived unless made in writing and received by Cardinal within thirty (30) days after completion of the applicable service. In no event shall Cardinal be liable for incidental or consequential damages, including, without limitation, business interruptions, loss of use, or loss of profits incurred by client, its subsidiaries, affiliates or successors arising out of or related to the performance of the services hereunder by Cardinal, regardless of whether such claim is based upon any of the above stated reasons or otherwise. Results relate only to the samples identified above. This report shall not be reproduced except in full with written approval of Cardinal Laboratories.

Celey D. Keene, Lab Director/Quality Manager





PHONE (575) 393-2326 ° 101 E. MARLAND ° HOBBS, NM 88240

**Analytical Results For:**

BBC International, Inc.  
 Cliff Brunson  
 P.O. Box 805  
 Hobbs NM, 88241  
 Fax To: (575) 397-0397

Received:	09/26/2023	Sampling Date:	09/25/2023
Reported:	10/03/2023	Sampling Type:	Soil
Project Name:	NHU INJECTION BATTERY (8/23/18)	Sampling Condition:	Cool & Intact
Project Number:	NONE GIVEN	Sample Received By:	Tamara Oldaker
Project Location:	OXY - NEW MEXICO		

**Sample ID: BOTTOM SAMPLE 32 @ 1' (H235258-32)**

BTX 8021B		mg/kg		Analyzed By: JH/						
Analyte	Result	Reporting Limit	Analyzed	Method Blank	BS	% Recovery	True Value QC	RPD	Qualifier	
Benzene*	<0.050	0.050	09/29/2023	ND	1.84	92.0	2.00	2.86		
Toluene*	<0.050	0.050	09/29/2023	ND	1.83	91.7	2.00	2.76		
Ethylbenzene*	<0.050	0.050	09/29/2023	ND	1.91	95.3	2.00	2.64		
Total Xylenes*	<0.150	0.150	09/29/2023	ND	5.66	94.4	6.00	3.79		
Total BTX	<0.300	0.300	09/29/2023	ND						

Surrogate: 4-Bromofluorobenzene (PID) 112 % 71.5-134

Chloride, SM4500CI-B		mg/kg		Analyzed By: AC						
Analyte	Result	Reporting Limit	Analyzed	Method Blank	BS	% Recovery	True Value QC	RPD	Qualifier	
Chloride	32.0	16.0	09/27/2023	ND	448	112	400	3.64		

TPH 8015M		mg/kg		Analyzed By: MS					
Analyte	Result	Reporting Limit	Analyzed	Method Blank	BS	% Recovery	True Value QC	RPD	Qualifier
GRO C6-C10*	<10.0	10.0	09/27/2023	ND	189	94.4	200	1.56	
DRO >C10-C28*	<10.0	10.0	09/27/2023	ND	203	101	200	3.17	
EXT DRO >C28-C36	<10.0	10.0	09/27/2023	ND					

Surrogate: 1-Chlorooctane 81.1 % 48.2-134

Surrogate: 1-Chlorooctadecane 89.1 % 49.1-148

Cardinal Laboratories

\*=Accredited Analyte

PLEASE NOTE: Liability and Damages. Cardinal's liability and client's exclusive remedy for any claim arising, whether based in contract or tort, shall be limited to the amount paid by client for analyses. All claims, including those for negligence and any other cause whatsoever shall be deemed waived unless made in writing and received by Cardinal within thirty (30) days after completion of the applicable service. In no event shall Cardinal be liable for incidental or consequential damages, including, without limitation, business interruptions, loss of use, or loss of profits incurred by client, its subsidiaries, affiliates or successors arising out of or related to the performance of the services hereunder by Cardinal, regardless of whether such claim is based upon any of the above stated reasons or otherwise. Results relate only to the samples identified above. This report shall not be reproduced except in full with written approval of Cardinal Laboratories.

Celey D. Keene, Lab Director/Quality Manager



PHONE (575) 393-2326 ° 101 E. MARLAND ° HOBBS, NM 88240

**Analytical Results For:**

BBC International, Inc.  
 Cliff Brunson  
 P.O. Box 805  
 Hobbs NM, 88241  
 Fax To: (575) 397-0397

Received:	09/26/2023	Sampling Date:	09/26/2023
Reported:	10/03/2023	Sampling Type:	Soil
Project Name:	NHU INJECTION BATTERY (8/23/18)	Sampling Condition:	Cool & Intact
Project Number:	NONE GIVEN	Sample Received By:	Tamara Oldaker
Project Location:	OXY - NEW MEXICO		

**Sample ID: BOTTOM SAMPLE 33 @ 1' (H235258-33)**

BTX 8021B		mg/kg		Analyzed By: JH/						
Analyte	Result	Reporting Limit	Analyzed	Method Blank	BS	% Recovery	True Value QC	RPD	Qualifier	
Benzene*	<0.050	0.050	09/29/2023	ND	1.84	92.0	2.00	2.86		
Toluene*	<0.050	0.050	09/29/2023	ND	1.83	91.7	2.00	2.76		
Ethylbenzene*	<0.050	0.050	09/29/2023	ND	1.91	95.3	2.00	2.64		
Total Xylenes*	<0.150	0.150	09/29/2023	ND	5.66	94.4	6.00	3.79		
Total BTX	<0.300	0.300	09/29/2023	ND						

Surrogate: 4-Bromofluorobenzene (PID) 112 % 71.5-134

Chloride, SM4500CI-B		mg/kg		Analyzed By: AC						
Analyte	Result	Reporting Limit	Analyzed	Method Blank	BS	% Recovery	True Value QC	RPD	Qualifier	
Chloride	80.0	16.0	09/27/2023	ND	448	112	400	3.64		

TPH 8015M		mg/kg		Analyzed By: MS					
Analyte	Result	Reporting Limit	Analyzed	Method Blank	BS	% Recovery	True Value QC	RPD	Qualifier
GRO C6-C10*	<10.0	10.0	09/27/2023	ND	189	94.4	200	1.56	
DRO >C10-C28*	<10.0	10.0	09/27/2023	ND	203	101	200	3.17	
EXT DRO >C28-C36	<10.0	10.0	09/27/2023	ND					

Surrogate: 1-Chlorooctane 63.6 % 48.2-134

Surrogate: 1-Chlorooctadecane 68.5 % 49.1-148

Cardinal Laboratories

\*=Accredited Analyte

PLEASE NOTE: Liability and Damages. Cardinal's liability and client's exclusive remedy for any claim arising, whether based in contract or tort, shall be limited to the amount paid by client for analyses. All claims, including those for negligence and any other cause whatsoever shall be deemed waived unless made in writing and received by Cardinal within thirty (30) days after completion of the applicable service. In no event shall Cardinal be liable for incidental or consequential damages, including, without limitation, business interruptions, loss of use, or loss of profits incurred by client, its subsidiaries, affiliates or successors arising out of or related to the performance of the services hereunder by Cardinal, regardless of whether such claim is based upon any of the above stated reasons or otherwise. Results relate only to the samples identified above. This report shall not be reproduced except in full with written approval of Cardinal Laboratories.

Celey D. Keene, Lab Director/Quality Manager



PHONE (575) 393-2326 ° 101 E. MARLAND ° HOBBS, NM 88240

**Analytical Results For:**

BBC International, Inc.  
 Cliff Brunson  
 P.O. Box 805  
 Hobbs NM, 88241  
 Fax To: (575) 397-0397

Received:	09/26/2023	Sampling Date:	09/26/2023
Reported:	10/03/2023	Sampling Type:	Soil
Project Name:	NHU INJECTION BATTERY (8/23/18)	Sampling Condition:	Cool & Intact
Project Number:	NONE GIVEN	Sample Received By:	Tamara Oldaker
Project Location:	OXY - NEW MEXICO		

**Sample ID: BOTTOM SAMPLE 34 @ 1' (H235258-34)**

BTEx 8021B		mg/kg		Analyzed By: JH/						
Analyte	Result	Reporting Limit	Analyzed	Method Blank	BS	% Recovery	True Value QC	RPD	Qualifier	
Benzene*	<0.050	0.050	09/29/2023	ND	1.84	92.0	2.00	2.86		
Toluene*	<0.050	0.050	09/29/2023	ND	1.83	91.7	2.00	2.76		
Ethylbenzene*	<0.050	0.050	09/29/2023	ND	1.91	95.3	2.00	2.64		
Total Xylenes*	<0.150	0.150	09/29/2023	ND	5.66	94.4	6.00	3.79		
Total BTEx	<0.300	0.300	09/29/2023	ND						

Surrogate: 4-Bromofluorobenzene (PID) 112 % 71.5-134

Chloride, SM4500CI-B		mg/kg		Analyzed By: AC					
Analyte	Result	Reporting Limit	Analyzed	Method Blank	BS	% Recovery	True Value QC	RPD	Qualifier
Chloride	64.0	16.0	09/27/2023	ND	448	112	400	3.64	

TPH 8015M		mg/kg		Analyzed By: MS					
Analyte	Result	Reporting Limit	Analyzed	Method Blank	BS	% Recovery	True Value QC	RPD	Qualifier
GRO C6-C10*	<10.0	10.0	09/27/2023	ND	189	94.4	200	1.56	
DRO >C10-C28*	<10.0	10.0	09/27/2023	ND	203	101	200	3.17	
EXT DRO >C28-C36	<10.0	10.0	09/27/2023	ND					

Surrogate: 1-Chlorooctane 74.5 % 48.2-134

Surrogate: 1-Chlorooctadecane 81.3 % 49.1-148

Cardinal Laboratories

\*=Accredited Analyte

PLEASE NOTE: Liability and Damages. Cardinal's liability and client's exclusive remedy for any claim arising, whether based in contract or tort, shall be limited to the amount paid by client for analyses. All claims, including those for negligence and any other cause whatsoever shall be deemed waived unless made in writing and received by Cardinal within thirty (30) days after completion of the applicable service. In no event shall Cardinal be liable for incidental or consequential damages, including, without limitation, business interruptions, loss of use, or loss of profits incurred by client, its subsidiaries, affiliates or successors arising out of or related to the performance of the services hereunder by Cardinal, regardless of whether such claim is based upon any of the above stated reasons or otherwise. Results relate only to the samples identified above. This report shall not be reproduced except in full with written approval of Cardinal Laboratories.

Celey D. Keene, Lab Director/Quality Manager



PHONE (575) 393-2326 ° 101 E. MARLAND ° HOBBS, NM 88240

**Analytical Results For:**

BBC International, Inc.  
 Cliff Brunson  
 P.O. Box 805  
 Hobbs NM, 88241  
 Fax To: (575) 397-0397

Received:	09/26/2023	Sampling Date:	09/26/2023
Reported:	10/03/2023	Sampling Type:	Soil
Project Name:	NHU INJECTION BATTERY (8/23/18)	Sampling Condition:	Cool & Intact
Project Number:	NONE GIVEN	Sample Received By:	Tamara Oldaker
Project Location:	OXY - NEW MEXICO		

**Sample ID: SIDEWALL 1 (H235258-35)**

BTEx 8021B		mg/kg		Analyzed By: JH/						
Analyte	Result	Reporting Limit	Analyzed	Method Blank	BS	% Recovery	True Value QC	RPD	Qualifier	
Benzene*	<0.050	0.050	09/29/2023	ND	1.84	92.0	2.00	2.86		
Toluene*	<0.050	0.050	09/29/2023	ND	1.83	91.7	2.00	2.76		
Ethylbenzene*	<0.050	0.050	09/29/2023	ND	1.91	95.3	2.00	2.64		
Total Xylenes*	<0.150	0.150	09/29/2023	ND	5.66	94.4	6.00	3.79		
Total BTEX	<0.300	0.300	09/29/2023	ND						

Surrogate: 4-Bromofluorobenzene (PID) 109 % 71.5-134

Chloride, SM4500Cl-B		mg/kg		Analyzed By: AC						
Analyte	Result	Reporting Limit	Analyzed	Method Blank	BS	% Recovery	True Value QC	RPD	Qualifier	
Chloride	80.0	16.0	09/27/2023	ND	448	112	400	3.64		

TPH 8015M		mg/kg		Analyzed By: MS					
Analyte	Result	Reporting Limit	Analyzed	Method Blank	BS	% Recovery	True Value QC	RPD	Qualifier
GRO C6-C10*	<10.0	10.0	09/27/2023	ND	189	94.4	200	1.56	
DRO >C10-C28*	<10.0	10.0	09/27/2023	ND	203	101	200	3.17	
EXT DRO >C28-C36	<10.0	10.0	09/27/2023	ND					

Surrogate: 1-Chlorooctane 85.7 % 48.2-134

Surrogate: 1-Chlorooctadecane 95.3 % 49.1-148

Cardinal Laboratories

\*=Accredited Analyte

PLEASE NOTE: Liability and Damages. Cardinal's liability and client's exclusive remedy for any claim arising, whether based in contract or tort, shall be limited to the amount paid by client for analyses. All claims, including those for negligence and any other cause whatsoever shall be deemed waived unless made in writing and received by Cardinal within thirty (30) days after completion of the applicable service. In no event shall Cardinal be liable for incidental or consequential damages, including, without limitation, business interruptions, loss of use, or loss of profits incurred by client, its subsidiaries, affiliates or successors arising out of or related to the performance of the services hereunder by Cardinal, regardless of whether such claim is based upon any of the above stated reasons or otherwise. Results relate only to the samples identified above. This report shall not be reproduced except in full with written approval of Cardinal Laboratories.

Celey D. Keene, Lab Director/Quality Manager





PHONE (575) 393-2326 ° 101 E. MARLAND ° HOBBS, NM 88240

**Analytical Results For:**

BBC International, Inc.  
 Cliff Brunson  
 P.O. Box 805  
 Hobbs NM, 88241  
 Fax To: (575) 397-0397

Received:	09/26/2023	Sampling Date:	09/26/2023
Reported:	10/03/2023	Sampling Type:	Soil
Project Name:	NHU INJECTION BATTERY (8/23/18)	Sampling Condition:	Cool & Intact
Project Number:	NONE GIVEN	Sample Received By:	Tamara Oldaker
Project Location:	OXY - NEW MEXICO		

**Sample ID: SIDEWALL 2 (H235258-36)**

BTX 8021B		mg/kg		Analyzed By: JH/						
Analyte	Result	Reporting Limit	Analyzed	Method Blank	BS	% Recovery	True Value QC	RPD	Qualifier	
Benzene*	<0.050	0.050	09/29/2023	ND	1.84	92.0	2.00	2.86		
Toluene*	<0.050	0.050	09/29/2023	ND	1.83	91.7	2.00	2.76		
Ethylbenzene*	<0.050	0.050	09/29/2023	ND	1.91	95.3	2.00	2.64		
Total Xylenes*	<0.150	0.150	09/29/2023	ND	5.66	94.4	6.00	3.79		
Total BTX	<0.300	0.300	09/29/2023	ND						

Surrogate: 4-Bromofluorobenzene (PID) 111 % 71.5-134

Chloride, SM4500CI-B		mg/kg		Analyzed By: AC						
Analyte	Result	Reporting Limit	Analyzed	Method Blank	BS	% Recovery	True Value QC	RPD	Qualifier	
Chloride	80.0	16.0	09/27/2023	ND	448	112	400	3.64		

TPH 8015M		mg/kg		Analyzed By: MS					
Analyte	Result	Reporting Limit	Analyzed	Method Blank	BS	% Recovery	True Value QC	RPD	Qualifier
GRO C6-C10*	<10.0	10.0	09/28/2023	ND	189	94.4	200	1.56	
DRO >C10-C28*	<10.0	10.0	09/28/2023	ND	203	101	200	3.17	
EXT DRO >C28-C36	<10.0	10.0	09/28/2023	ND					

Surrogate: 1-Chlorooctane 78.6 % 48.2-134

Surrogate: 1-Chlorooctadecane 86.1 % 49.1-148

Cardinal Laboratories

\*=Accredited Analyte

PLEASE NOTE: Liability and Damages. Cardinal's liability and client's exclusive remedy for any claim arising, whether based in contract or tort, shall be limited to the amount paid by client for analyses. All claims, including those for negligence and any other cause whatsoever shall be deemed waived unless made in writing and received by Cardinal within thirty (30) days after completion of the applicable service. In no event shall Cardinal be liable for incidental or consequential damages, including, without limitation, business interruptions, loss of use, or loss of profits incurred by client, its subsidiaries, affiliates or successors arising out of or related to the performance of the services hereunder by Cardinal, regardless of whether such claim is based upon any of the above stated reasons or otherwise. Results relate only to the samples identified above. This report shall not be reproduced except in full with written approval of Cardinal Laboratories.

Celey D. Keene, Lab Director/Quality Manager



PHONE (575) 393-2326 ° 101 E. MARLAND ° HOBBS, NM 88240

**Analytical Results For:**

BBC International, Inc.  
 Cliff Brunson  
 P.O. Box 805  
 Hobbs NM, 88241  
 Fax To: (575) 397-0397

Received:	09/26/2023	Sampling Date:	09/26/2023
Reported:	10/03/2023	Sampling Type:	Soil
Project Name:	NHU INJECTION BATTERY (8/23/18)	Sampling Condition:	Cool & Intact
Project Number:	NONE GIVEN	Sample Received By:	Tamara Oldaker
Project Location:	OXY - NEW MEXICO		

**Sample ID: SIDEWALL 3 (H235258-37)**

BTX 8021B		mg/kg		Analyzed By: JH/						
Analyte	Result	Reporting Limit	Analyzed	Method Blank	BS	% Recovery	True Value QC	RPD	Qualifier	
Benzene*	<0.050	0.050	09/29/2023	ND	1.84	92.0	2.00	2.86		
Toluene*	<0.050	0.050	09/29/2023	ND	1.83	91.7	2.00	2.76		
Ethylbenzene*	<0.050	0.050	09/29/2023	ND	1.91	95.3	2.00	2.64		
Total Xylenes*	<0.150	0.150	09/29/2023	ND	5.66	94.4	6.00	3.79		
Total BTX	<0.300	0.300	09/29/2023	ND						

Surrogate: 4-Bromofluorobenzene (PID) 110 % 71.5-134

Chloride, SM4500CI-B		mg/kg		Analyzed By: AC						
Analyte	Result	Reporting Limit	Analyzed	Method Blank	BS	% Recovery	True Value QC	RPD	Qualifier	
Chloride	96.0	16.0	09/27/2023	ND	448	112	400	3.64		

TPH 8015M		mg/kg		Analyzed By: MS					
Analyte	Result	Reporting Limit	Analyzed	Method Blank	BS	% Recovery	True Value QC	RPD	Qualifier
GRO C6-C10*	<10.0	10.0	09/28/2023	ND	189	94.4	200	1.56	
DRO >C10-C28*	<10.0	10.0	09/28/2023	ND	203	101	200	3.17	
EXT DRO >C28-C36	<10.0	10.0	09/28/2023	ND					

Surrogate: 1-Chlorooctane 86.6 % 48.2-134

Surrogate: 1-Chlorooctadecane 96.1 % 49.1-148

Cardinal Laboratories

\*=Accredited Analyte

PLEASE NOTE: Liability and Damages. Cardinal's liability and client's exclusive remedy for any claim arising, whether based in contract or tort, shall be limited to the amount paid by client for analyses. All claims, including those for negligence and any other cause whatsoever shall be deemed waived unless made in writing and received by Cardinal within thirty (30) days after completion of the applicable service. In no event shall Cardinal be liable for incidental or consequential damages, including, without limitation, business interruptions, loss of use, or loss of profits incurred by client, its subsidiaries, affiliates or successors arising out of or related to the performance of the services hereunder by Cardinal, regardless of whether such claim is based upon any of the above stated reasons or otherwise. Results relate only to the samples identified above. This report shall not be reproduced except in full with written approval of Cardinal Laboratories.

Celey D. Keene, Lab Director/Quality Manager



PHONE (575) 393-2326 ° 101 E. MARLAND ° HOBBS, NM 88240

**Analytical Results For:**

BBC International, Inc.  
 Cliff Brunson  
 P.O. Box 805  
 Hobbs NM, 88241  
 Fax To: (575) 397-0397

Received:	09/26/2023	Sampling Date:	09/26/2023
Reported:	10/03/2023	Sampling Type:	Soil
Project Name:	NHU INJECTION BATTERY (8/23/18)	Sampling Condition:	Cool & Intact
Project Number:	NONE GIVEN	Sample Received By:	Tamara Oldaker
Project Location:	OXY - NEW MEXICO		

**Sample ID: SIDEWALL 4 (H235258-38)**

BTX 8021B		mg/kg		Analyzed By: JH/						
Analyte	Result	Reporting Limit	Analyzed	Method Blank	BS	% Recovery	True Value QC	RPD	Qualifier	
Benzene*	<0.050	0.050	09/29/2023	ND	1.84	92.0	2.00	2.86		
Toluene*	<0.050	0.050	09/29/2023	ND	1.83	91.7	2.00	2.76		
Ethylbenzene*	<0.050	0.050	09/29/2023	ND	1.91	95.3	2.00	2.64		
Total Xylenes*	<0.150	0.150	09/29/2023	ND	5.66	94.4	6.00	3.79		
Total BTX	<0.300	0.300	09/29/2023	ND						

Surrogate: 4-Bromofluorobenzene (PID) 111 % 71.5-134

Chloride, SM4500CI-B		mg/kg		Analyzed By: AC						
Analyte	Result	Reporting Limit	Analyzed	Method Blank	BS	% Recovery	True Value QC	RPD	Qualifier	
Chloride	80.0	16.0	09/27/2023	ND	448	112	400	3.64		

TPH 8015M		mg/kg		Analyzed By: MS					
Analyte	Result	Reporting Limit	Analyzed	Method Blank	BS	% Recovery	True Value QC	RPD	Qualifier
GRO C6-C10*	<10.0	10.0	09/28/2023	ND	189	94.4	200	1.56	
DRO >C10-C28*	<10.0	10.0	09/28/2023	ND	203	101	200	3.17	
EXT DRO >C28-C36	<10.0	10.0	09/28/2023	ND					

Surrogate: 1-Chlorooctane 66.8 % 48.2-134

Surrogate: 1-Chlorooctadecane 75.9 % 49.1-148

Cardinal Laboratories

\*=Accredited Analyte

PLEASE NOTE: Liability and Damages. Cardinal's liability and client's exclusive remedy for any claim arising, whether based in contract or tort, shall be limited to the amount paid by client for analyses. All claims, including those for negligence and any other cause whatsoever shall be deemed waived unless made in writing and received by Cardinal within thirty (30) days after completion of the applicable service. In no event shall Cardinal be liable for incidental or consequential damages, including, without limitation, business interruptions, loss of use, or loss of profits incurred by client, its subsidiaries, affiliates or successors arising out of or related to the performance of the services hereunder by Cardinal, regardless of whether such claim is based upon any of the above stated reasons or otherwise. Results relate only to the samples identified above. This report shall not be reproduced except in full with written approval of Cardinal Laboratories.

Celey D. Keene, Lab Director/Quality Manager



PHONE (575) 393-2326 ° 101 E. MARLAND ° HOBBS, NM 88240

**Analytical Results For:**

BBC International, Inc.  
 Cliff Brunson  
 P.O. Box 805  
 Hobbs NM, 88241  
 Fax To: (575) 397-0397

Received:	09/26/2023	Sampling Date:	09/26/2023
Reported:	10/03/2023	Sampling Type:	Soil
Project Name:	NHU INJECTION BATTERY (8/23/18)	Sampling Condition:	Cool & Intact
Project Number:	NONE GIVEN	Sample Received By:	Tamara Oldaker
Project Location:	OXY - NEW MEXICO		

**Sample ID: SIDEWALL 5 (H235258-39)**

BTX 8021B		mg/kg		Analyzed By: JH/						
Analyte	Result	Reporting Limit	Analyzed	Method Blank	BS	% Recovery	True Value QC	RPD	Qualifier	
Benzene*	<0.050	0.050	09/29/2023	ND	1.84	92.0	2.00	2.86		
Toluene*	<0.050	0.050	09/29/2023	ND	1.83	91.7	2.00	2.76		
Ethylbenzene*	<0.050	0.050	09/29/2023	ND	1.91	95.3	2.00	2.64		
Total Xylenes*	<0.150	0.150	09/29/2023	ND	5.66	94.4	6.00	3.79		
Total BTX	<0.300	0.300	09/29/2023	ND						

Surrogate: 4-Bromofluorobenzene (PID) 113 % 71.5-134

Chloride, SM4500CI-B		mg/kg		Analyzed By: AC						
Analyte	Result	Reporting Limit	Analyzed	Method Blank	BS	% Recovery	True Value QC	RPD	Qualifier	
Chloride	64.0	16.0	09/27/2023	ND	448	112	400	3.64		

TPH 8015M		mg/kg		Analyzed By: MS					
Analyte	Result	Reporting Limit	Analyzed	Method Blank	BS	% Recovery	True Value QC	RPD	Qualifier
GRO C6-C10*	<10.0	10.0	09/28/2023	ND	189	94.4	200	1.56	
DRO >C10-C28*	<10.0	10.0	09/28/2023	ND	203	101	200	3.17	
EXT DRO >C28-C36	<10.0	10.0	09/28/2023	ND					

Surrogate: 1-Chlorooctane 62.2 % 48.2-134

Surrogate: 1-Chlorooctadecane 68.4 % 49.1-148

Cardinal Laboratories

\*=Accredited Analyte

PLEASE NOTE: Liability and Damages. Cardinal's liability and client's exclusive remedy for any claim arising, whether based in contract or tort, shall be limited to the amount paid by client for analyses. All claims, including those for negligence and any other cause whatsoever shall be deemed waived unless made in writing and received by Cardinal within thirty (30) days after completion of the applicable service. In no event shall Cardinal be liable for incidental or consequential damages, including, without limitation, business interruptions, loss of use, or loss of profits incurred by client, its subsidiaries, affiliates or successors arising out of or related to the performance of the services hereunder by Cardinal, regardless of whether such claim is based upon any of the above stated reasons or otherwise. Results relate only to the samples identified above. This report shall not be reproduced except in full with written approval of Cardinal Laboratories.

Celey D. Keene, Lab Director/Quality Manager





PHONE (575) 393-2326 ° 101 E. MARLAND ° HOBBS, NM 88240

**Analytical Results For:**

BBC International, Inc.  
 Cliff Brunson  
 P.O. Box 805  
 Hobbs NM, 88241  
 Fax To: (575) 397-0397

Received:	09/26/2023	Sampling Date:	09/26/2023
Reported:	10/03/2023	Sampling Type:	Soil
Project Name:	NHU INJECTION BATTERY (8/23/18)	Sampling Condition:	Cool & Intact
Project Number:	NONE GIVEN	Sample Received By:	Tamara Oldaker
Project Location:	OXY - NEW MEXICO		

**Sample ID: SIDEWALL 6 (H235258-40)**

BTX 8021B		mg/kg		Analyzed By: JH/						
Analyte	Result	Reporting Limit	Analyzed	Method Blank	BS	% Recovery	True Value QC	RPD	Qualifier	
Benzene*	<0.050	0.050	09/29/2023	ND	1.84	92.0	2.00	2.86		
Toluene*	<0.050	0.050	09/29/2023	ND	1.83	91.7	2.00	2.76		
Ethylbenzene*	<0.050	0.050	09/29/2023	ND	1.91	95.3	2.00	2.64		
Total Xylenes*	<0.150	0.150	09/29/2023	ND	5.66	94.4	6.00	3.79		
Total BTX	<0.300	0.300	09/29/2023	ND						

Surrogate: 4-Bromofluorobenzene (PID) 111 % 71.5-134

Chloride, SM4500CI-B		mg/kg		Analyzed By: AC						
Analyte	Result	Reporting Limit	Analyzed	Method Blank	BS	% Recovery	True Value QC	RPD	Qualifier	
Chloride	80.0	16.0	09/27/2023	ND	448	112	400	3.64		

TPH 8015M		mg/kg		Analyzed By: MS					
Analyte	Result	Reporting Limit	Analyzed	Method Blank	BS	% Recovery	True Value QC	RPD	Qualifier
GRO C6-C10*	<10.0	10.0	09/28/2023	ND	189	94.4	200	1.56	
DRO >C10-C28*	<10.0	10.0	09/28/2023	ND	203	101	200	3.17	
EXT DRO >C28-C36	<10.0	10.0	09/28/2023	ND					

Surrogate: 1-Chlorooctane 66.6 % 48.2-134

Surrogate: 1-Chlorooctadecane 74.2 % 49.1-148

Cardinal Laboratories

\*=Accredited Analyte

PLEASE NOTE: Liability and Damages. Cardinal's liability and client's exclusive remedy for any claim arising, whether based in contract or tort, shall be limited to the amount paid by client for analyses. All claims, including those for negligence and any other cause whatsoever shall be deemed waived unless made in writing and received by Cardinal within thirty (30) days after completion of the applicable service. In no event shall Cardinal be liable for incidental or consequential damages, including, without limitation, business interruptions, loss of use, or loss of profits incurred by client, its subsidiaries, affiliates or successors arising out of or related to the performance of the services hereunder by Cardinal, regardless of whether such claim is based upon any of the above stated reasons or otherwise. Results relate only to the samples identified above. This report shall not be reproduced except in full with written approval of Cardinal Laboratories.

Celey D. Keene, Lab Director/Quality Manager



PHONE (575) 393-2326 ° 101 E. MARLAND ° HOBBS, NM 88240

**Analytical Results For:**

BBC International, Inc.  
 Cliff Brunson  
 P.O. Box 805  
 Hobbs NM, 88241  
 Fax To: (575) 397-0397

Received:	09/26/2023	Sampling Date:	09/26/2023
Reported:	10/03/2023	Sampling Type:	Soil
Project Name:	NHU INJECTION BATTERY (8/23/18)	Sampling Condition:	Cool & Intact
Project Number:	NONE GIVEN	Sample Received By:	Tamara Oldaker
Project Location:	OXY - NEW MEXICO		

**Sample ID: SIDEWALL 7 (H235258-41)**

BTEx 8021B		mg/kg		Analyzed By: JH/						
Analyte	Result	Reporting Limit	Analyzed	Method Blank	BS	% Recovery	True Value QC	RPD	Qualifier	
Benzene*	<0.050	0.050	09/29/2023	ND	1.84	92.0	2.00	2.86		
Toluene*	<0.050	0.050	09/29/2023	ND	1.83	91.7	2.00	2.76		
Ethylbenzene*	<0.050	0.050	09/29/2023	ND	1.91	95.3	2.00	2.64		
Total Xylenes*	<0.150	0.150	09/29/2023	ND	5.66	94.4	6.00	3.79		
Total BTEX	<0.300	0.300	09/29/2023	ND						

Surrogate: 4-Bromofluorobenzene (PID) 112 % 71.5-134

Chloride, SM4500Cl-B		mg/kg		Analyzed By: AC						
Analyte	Result	Reporting Limit	Analyzed	Method Blank	BS	% Recovery	True Value QC	RPD	Qualifier	
Chloride	96.0	16.0	09/27/2023	ND	448	112	400	3.64		

TPH 8015M		mg/kg		Analyzed By: MS					
Analyte	Result	Reporting Limit	Analyzed	Method Blank	BS	% Recovery	True Value QC	RPD	Qualifier
GRO C6-C10*	<10.0	10.0	09/28/2023	ND	189	94.4	200	1.56	
DRO >C10-C28*	<10.0	10.0	09/28/2023	ND	203	101	200	3.17	
EXT DRO >C28-C36	<10.0	10.0	09/28/2023	ND					

Surrogate: 1-Chlorooctane 84.4 % 48.2-134

Surrogate: 1-Chlorooctadecane 94.2 % 49.1-148

Cardinal Laboratories

\*=Accredited Analyte

PLEASE NOTE: Liability and Damages. Cardinal's liability and client's exclusive remedy for any claim arising, whether based in contract or tort, shall be limited to the amount paid by client for analyses. All claims, including those for negligence and any other cause whatsoever shall be deemed waived unless made in writing and received by Cardinal within thirty (30) days after completion of the applicable service. In no event shall Cardinal be liable for incidental or consequential damages, including, without limitation, business interruptions, loss of use, or loss of profits incurred by client, its subsidiaries, affiliates or successors arising out of or related to the performance of the services hereunder by Cardinal, regardless of whether such claim is based upon any of the above stated reasons or otherwise. Results relate only to the samples identified above. This report shall not be reproduced except in full with written approval of Cardinal Laboratories.

Celey D. Keene, Lab Director/Quality Manager



PHONE (575) 393-2326 ° 101 E. MARLAND ° HOBBS, NM 88240

**Analytical Results For:**

BBC International, Inc.  
 Cliff Brunson  
 P.O. Box 805  
 Hobbs NM, 88241  
 Fax To: (575) 397-0397

Received:	09/26/2023	Sampling Date:	09/26/2023
Reported:	10/03/2023	Sampling Type:	Soil
Project Name:	NHU INJECTION BATTERY (8/23/18)	Sampling Condition:	Cool & Intact
Project Number:	NONE GIVEN	Sample Received By:	Tamara Oldaker
Project Location:	OXY - NEW MEXICO		

**Sample ID: SIDEWALL 8 (H235258-42)**

BTX 8021B		mg/kg		Analyzed By: JH/						
Analyte	Result	Reporting Limit	Analyzed	Method Blank	BS	% Recovery	True Value QC	RPD	Qualifier	
Benzene*	<0.050	0.050	09/29/2023	ND	1.84	92.0	2.00	2.86		
Toluene*	<0.050	0.050	09/29/2023	ND	1.83	91.7	2.00	2.76		
Ethylbenzene*	<0.050	0.050	09/29/2023	ND	1.91	95.3	2.00	2.64		
Total Xylenes*	<0.150	0.150	09/29/2023	ND	5.66	94.4	6.00	3.79		
Total BTX	<0.300	0.300	09/29/2023	ND						

Surrogate: 4-Bromofluorobenzene (PID) 114 % 71.5-134

Chloride, SM4500CI-B		mg/kg		Analyzed By: AC						
Analyte	Result	Reporting Limit	Analyzed	Method Blank	BS	% Recovery	True Value QC	RPD	Qualifier	
Chloride	96.0	16.0	09/27/2023	ND	448	112	400	3.64		

TPH 8015M		mg/kg		Analyzed By: MS					
Analyte	Result	Reporting Limit	Analyzed	Method Blank	BS	% Recovery	True Value QC	RPD	Qualifier
GRO C6-C10*	<10.0	10.0	09/28/2023	ND	189	94.4	200	1.56	
DRO >C10-C28*	<10.0	10.0	09/28/2023	ND	203	101	200	3.17	
EXT DRO >C28-C36	<10.0	10.0	09/28/2023	ND					

Surrogate: 1-Chlorooctane 72.6 % 48.2-134

Surrogate: 1-Chlorooctadecane 80.8 % 49.1-148

Cardinal Laboratories

\*=Accredited Analyte

PLEASE NOTE: Liability and Damages. Cardinal's liability and client's exclusive remedy for any claim arising, whether based in contract or tort, shall be limited to the amount paid by client for analyses. All claims, including those for negligence and any other cause whatsoever shall be deemed waived unless made in writing and received by Cardinal within thirty (30) days after completion of the applicable service. In no event shall Cardinal be liable for incidental or consequential damages, including, without limitation, business interruptions, loss of use, or loss of profits incurred by client, its subsidiaries, affiliates or successors arising out of or related to the performance of the services hereunder by Cardinal, regardless of whether such claim is based upon any of the above stated reasons or otherwise. Results relate only to the samples identified above. This report shall not be reproduced except in full with written approval of Cardinal Laboratories.

Celey D. Keene, Lab Director/Quality Manager

PHONE (575) 393-2326 • 101 E. MARLAND • HOBBS, NM 88240

---

### Notes and Definitions

S-04	The surrogate recovery for this sample is outside of established control limits due to a sample matrix effect.
QR-03	The RPD value for the sample duplicate or MS/MSD was outside of QC acceptance limits due to matrix interference. QC batch accepted based on LCS and/or LCSD recovery and/or RPD values.
QM-07	The spike recovery was outside acceptance limits for the MS and/or MSD. The batch was accepted based on acceptable LCS recovery.
ND	Analyte NOT DETECTED at or above the reporting limit
RPD	Relative Percent Difference
**	Samples not received at proper temperature of 6°C or below.
***	Insufficient time to reach temperature.
-	Chloride by SM4500Cl-B does not require samples be received at or below 6°C Samples reported on an as received basis (wet) unless otherwise noted on report

---

Cardinal Laboratories

\*=Accredited Analyte

PLEASE NOTE: Liability and Damages. Cardinal's liability and client's exclusive remedy for any claim arising, whether based in contract or tort, shall be limited to the amount paid by client for analyses. All claims, including those for negligence and any other cause whatsoever shall be deemed waived unless made in writing and received by Cardinal within thirty (30) days after completion of the applicable service. In no event shall Cardinal be liable for incidental or consequential damages, including, without limitation, business interruptions, loss of use, or loss of profits incurred by client, its subsidiaries, affiliates or successors arising out of or related to the performance of the services hereunder by Cardinal, regardless of whether such claim is based upon any of the above stated reasons or otherwise. Results relate only to the samples identified above. This report shall not be reproduced except in full with written approval of Cardinal Laboratories.

A handwritten signature in black ink, appearing to read "Celey D. Keene".

---

Celey D. Keene, Lab Director/Quality Manager





101 East Marland, Hobbs, NM 88240  
(505) 393-2326 FAX (505) 393-2476

### CHAIN-OF-CUSTODY AND ANALYSIS REQUEST

<b>Company Name:</b> BBC International, Inc.				<b>BILL TO</b>				<b>P.O. #:</b>				<b>ANALYSIS REQUEST</b>							
<b>Project Manager:</b> Cliff Brunson								<b>Company:</b> Oxy											
<b>Address:</b> P.O. Box 805								<b>Attn:</b>											
<b>City:</b> Hobbs								<b>State:</b> NM				<b>Zip:</b> 88241							
<b>Phone #:</b> 575-397-6388								<b>Fax #:</b> 575-397-0397											
<b>Project #:</b>								<b>Project Owner:</b> Oxy											
<b>Project Name:</b> NHU INJECTION BATTERY (8/23/18)								<b>City:</b>											
<b>Project Location:</b> New Mexico								<b>State:</b>				<b>Zip:</b>							
<b>Sample Name:</b> SIMON RENDON								<b>Phone #:</b>											
<b>Fax #:</b>								<b>SAMPLE</b>											
FOR LAB USE ONLY																			
Lab I.D.		Sample I.D.		(G)RAB OR (C)OMP.		# CONTAINERS		MATRIX						PRESERV.		SAMPLING			
								GROUNDWATER WASTEWATER SOIL OIL SLUDGE OTHER :						ACID/BASE: ICE / COOL OTHER :		DATE		TIME	
H235258		BOTTOM SAMPLE 1@1'		✓		✓												Chloride	
		BOTTOM SAMPLE 2@1'		✓		✓												BTEx	
		BOTTOM SAMPLE 3@1'		✓		✓												TPHEXT	
		BOTTOM SAMPLE 4@1'		✓		✓													
		BOTTOM SAMPLE 5@1'		✓		✓													
		BOTTOM SAMPLE 6@1'		✓		✓													
		BOTTOM SAMPLE 7@1'		✓		✓													
		BOTTOM SAMPLE 8@1'		✓		✓													
		BOTTOM SAMPLE 9@1'		✓		✓													
		BOTTOM SAMPLE 10@1'		✓		✓													
<p><b>PLEASE NOTE:</b> Liability and Damages. Contractor's liability and client's exclusives remedy for any claim arising whether based in contract or tort, shall be limited to the amount paid by the client for the analysis. All claims, including those for negligence and any other cause whatsoever shall be deemed waived unless made in writing and received by the contractor within 30 days after completion of the applicable service. In no event shall Capital be liable for incidental or consequential damages, including without limitation, business interruptions, loss of use, for loss of profits incurred by client, its subsidiaries, affiliates or successors arising out of or attributable to the performance of services hereunder by Capital regardless of whether such claim is based upon any of the above stated reasons or otherwise.</p>																			
<b>Relinquished By:</b>				<b>Date:</b> 9-26-23				<b>Received By:</b>				<b>Phone Result:</b> <input type="checkbox"/> Yes <input checked="" type="checkbox"/> No				<b>Add'l Phone #:</b>			
<b>Relinquished By:</b>				<b>Date:</b> 9-26-23				<b>Received By:</b>				<b>Fax Result:</b> <input type="checkbox"/> Yes <input checked="" type="checkbox"/> No				<b>Add'l Fax #:</b>			
<b>Delivered By:</b> (Circle One) Samuel Henry				<b>Time:</b> 10:00 AM				<b>Sample Condition:</b> <input checked="" type="checkbox"/> Cool <input type="checkbox"/> Intact				<b>CHECKED BY:</b> (Initials) J.S.							
<b>Sampler - UPS - Bus - Other:</b> -4.1°C				<b>#140</b>															
<b>REMARKS:</b>																			

Page 45 of 49



ARDINAL LABORATORIES

101 East Marland, Hobbs, NM 88240  
(505) 393-2326 FAX (505) 393-2476

### CHAIN-OF-CUSTODY AND ANALYSIS REQUEST

<b>Company Name:</b> BBC International, Inc.				<b>BILL TO</b>				<b>P.O. #:</b>													
<b>Project Manager:</b> Cliff Brunson								<b>Company:</b> Oxy													
<b>Address:</b> P.O. Box 805								<b>Attn:</b>													
<b>City:</b> Hobbs								<b>State:</b> NM				<b>Zip:</b> 88241									
<b>Phone #:</b> 575-397-6388								<b>Fax #:</b> 575-397-0397													
<b>Project #:</b>								<b>Project Owner:</b> Oxy													
<b>Project Name:</b> NHU INJECTION BATTERY (8/23/18)								<b>City:</b>													
<b>Project Location:</b> New Mexico								<b>State:</b>				<b>Zip:</b>									
<b>Sample Name:</b> SIMON RENDON								<b>Phone #:</b>													
<b>FOR LAB USE ONLY</b>								<b>Fax #:</b>													
Lab I.D.		Sample I.D.		(G)RAB OR (C)OMP.		# CONTAINERS		MATRIX						PRESERV.		SAMPLING					
								GROUNDWATER	WASTEWATER	SOIL	OIL	SLUDGE	OTHER :	ACID/BASE:	ICE / COOL	QTHER :	DATE				
H835858		BOTTOM SAMPLE 11@1'		✓		✓												Chloride			
11		BOTTOM SAMPLE 12@1'		✓		✓												BTEX			
12		BOTTOM SAMPLE 13@1'		✓		✓												PH EXT			
13		BOTTOM SAMPLE 14@1'		✓		✓															
14		BOTTOM SAMPLE 15@1'		✓		✓															
15		BOTTOM SAMPLE 16@1'		✓		✓															
16		BOTTOM SAMPLE 17@1'		✓		✓															
17		BOTTOM SAMPLE 18@1'		✓		✓															
18		BOTTOM SAMPLE 19@1'		✓		✓															
19		BOTTOM SAMPLE 20@1'		✓		✓															
20																					

**PLEASE NOTE:** Liability and Damages. Contractor's liability and client's exclusive remedy for any claim arising under contract or tort shall be limited to the amount paid by the client for the service. In no event shall Capital be liable for consequential or incidental damages, including without limitation, business interruptions, loss of life, or loss of profits incurred by client, its subsidiaries, affiliates or successors arising out of or related to the performance of services hereunder by Capital regardless of whether such claim is based upon any of the above stated reasons or otherwise.

<b>Relinquished By:</b>		<b>Date:</b> 9-26-23		<b>Received By:</b>		<b>Date:</b> 9-26-23	
<b>Relinquished By:</b>		<b>Time:</b> 11:00 AM		<b>Received By:</b>		<b>Time:</b> 11:00 AM	
<b>Delivered By:</b> (Circle One) Sampler - UPS   Bus   Other:		<b>Sample Condition</b> <input type="checkbox"/> Cool <input checked="" type="checkbox"/> Intact		<b>CHECKED BY:</b> (Initials)			
<b>REMARKS:</b>		<b>Phone Result:</b> <input type="checkbox"/> Yes <input type="checkbox"/> No		<b>Add'l Phone #:</b>			
		<b>Fax Result:</b> <input type="checkbox"/> Yes <input type="checkbox"/> No		<b>Add'l Fax #:</b>			

† Cardinal cannot accept verbal changes. Please fax written changes to 505-393-2476





## ARDINAL LABORATORIES

101 East Marland, Hobbs, NM 88240

(505) 393-2326 FAX (505)

### CHAIN-OF-CUSTODY AND ANALYSIS REQUEST

<b>BILL TO</b>	<b>P.O. #:</b>			
<b>Company Name:</b> BBC International, Inc.	<b>Company:</b> Oxy			
<b>Project Manager:</b> Cliff Brunson	<b>Attn:</b>			
<b>Address:</b> P.O. Box 805	<b>City:</b>			
<b>State:</b> NM <b>Zip:</b> 88241	<b>Address:</b>			
<b>Phone #:</b> 575-397-6388 <b>Fax #:</b> 575-397-0397	<b>State:</b>			
<b>Project #:</b>	<b>City:</b>			
<b>Project Owner:</b> Oxy	<b>State:</b>			
<b>Project Location:</b> New Mexico	<b>Zip:</b>			
<b>Sample Name:</b> SIMON RENDON	<b>Phone #:</b>			
<b>FOR LAB USE ONLY</b>	<b>Fax #:</b>			

Lab I.D.	Sample I.D.	(G)RAB OR (C)OMP. # CONTAINERS	MATRIX			PRESERV	SAMPLING	DATE  TIME												
			GROUNDWATER	WASTEWATER	SOIL															
H35A58	21 BOTTOM SAMPLE 21@'1'	D			X			9/25/23 12:59PM	V	Chloride	V									
	22 BOTTOM SAMPLE 22@'1'							9/25/23 1:16PM	V	BTEX	V									
	23 BOTTOM SAMPLE 23@'1'							9/25/23 1:34PM	V		V									
	24 BOTTOM SAMPLE 24@'1'							9/25/23 1:51PM	V		V									
	25 BOTTOM SAMPLE 25@'1'							9/25/23 2:14PM	V		V									
	26 BOTTOM SAMPLE 26@'1'							9/25/23 2:33PM	V		V									
	27 BOTTOM SAMPLE 27@'1'							9/25/23 2:51PM	V		V									
	28 BOTTOM SAMPLE 28@'1'							9/25/23 3:12PM	V		V									
	29 BOTTOM SAMPLE 29@'1'							9/25/23 3:26PM	V		V									
	30 BOTTOM SAMPLE 30@'1'							9/25/23 3:41PM	V		V									

PLEASE NOTE: Liability and Damages: Contractor's liability and client's enclosure remedy for any claim arising whether based in contract or tort, shall be limited to the amount paid by the client for the services. All claims, including those for negligence and any other cause whatsoever shall be deemed waived unless made in writing and received by Cardinal within 30 days after completion of the applicable service. In no event shall Cardinal be liable for incidental or consequential damages, including without limitation business interruptions, loss of any or tested profits incurred by client, its subsidiaries, affiliates or successors arising out of or related to the performance of services hereunder by Cardinal. Payment of written such claim as being from any of the above stated persons at otherwise.

<b>Relinquished By:</b>	Date: 9-25-23	<b>Received By:</b>	Date: 9-25-23
<b>Reinquinshed By:</b>	Time: 1:10 PM	<b>Received By:</b>	Time: 1:10 PM
<b>Delivered By:</b> (Circle One)	Date: 9-26-23	<b>Sample Condition:</b>	CHECKED BY: Jamaris Williams
Sampler - UPS - Bus - Other: - 4.1°C	#140	Cool Intact	(Initials)
		<input checked="" type="checkbox"/> Yes <input type="checkbox"/> No	aB

† Cardinal cannot accept verbal changes. Please fax written changes to 505-393-2476



# ORDINAL LABORATORIES

101 East Marland, Hobbs, NM 88240  
(505) 393-2326 FAX (505) 393-2476

### CHAIN-OF-CUSTODY AND ANALYSIS REQUEST

[illegible]





## ORDINAL LABORATORIES

101 East Marland, Hobbs, NM 88240  
(505) 393-2326 FAX (505) 393-2476

## CHAIN-OF-CUSTODY AND ANALYSIS REQUEST

Company Name: BBC International, Inc.										<b>BILL TO</b>										ANALYSIS REQUEST									
Project Manager: Cliff Brunson										P.O. #:																			
Address: P.O. Box 805										Company: Oxy																			
City: Hobbs										Attn:																			
State: NM Zip: 88241																													
Phone #: 575-397-6388										Address:																			
Fax #: 575-397-0397										City:																			
Project #:										State:										Zip:									
Project Name: NHU INJECTION BATTERY (8/23/18)										Phone #:																			
Project Location: New Mexico										Fax #:																			
Sample Name: SIMON RENDON										PRESERV										SAMPLING									
FOR LAB USE ONLY										MATRIX																			
Lab I.D.										Sample I.D.																			
33										BOTTOM SAMPLE 33@1'																			
34										BOTTOM SAMPLE 34@1'																			
35										SIDEWALL 1																			
36										SIDEWALL 2																			
37										SIDEWALL 3																			
38										SIDEWALL 4																			
39										SIDEWALL 5																			
40										SIDEWALL 6																			
41										SIDEWALL 7																			
42										SIDEWALL 8																			
PLEASE NOTE: Liability and Damages (Contractor's liability and client's exclusive remedy) for any claim arising from this contract or tort, shall be limited to the amount paid by the client for the services. All claims, including those for negligence and any other cause whatsoever shall be deemed waived unless made in writing and received by Cardinal within 30 days after completion of the applicable service. In no event shall Cardinal be liable for incidental or consequential damages, including without limitation, business interruption, loss of use, or loss of profits incurred by client, its subsidiaries, affiliates or successors arising out of or related to the performance of services hereunder by Cardinal, regardless of whether such claim is based upon any of the above stated reasons or otherwise.																													
Relinquished By: [Signature]										Date: 9-26-23										Received By: [Signature]									
Relinquished By: [Signature]										Time: 10:00 AM																			
Relinquished By: [Signature]										Date: 9-26-23																			
Relinquished By: [Signature]										Time: 11:30																			
Delivered By: (Circle One)										Sample Condition										CHECKED BY: [Signature]									
Cool <input checked="" type="checkbox"/> Intact <input checked="" type="checkbox"/>																													
Yes <input checked="" type="checkbox"/> No <input type="checkbox"/>																													
Yes <input checked="" type="checkbox"/> No <input type="checkbox"/>																													
Sampler - UPS - Bus - Other: -4.1°C																													

† Cardinal cannot accept verbal changes. Please fax written changes to 505-393-2476

**District I**  
1625 N. French Dr., Hobbs, NM 88240  
Phone:(575) 393-6161 Fax:(575) 393-0720

**District II**  
811 S. First St., Artesia, NM 88210  
Phone:(575) 748-1283 Fax:(575) 748-9720

**District III**  
1000 Rio Brazos Rd., Aztec, NM 87410  
Phone:(505) 334-6178 Fax:(505) 334-6170

**District IV**  
1220 S. St Francis Dr., Santa Fe, NM 87505  
Phone:(505) 476-3470 Fax:(505) 476-3462

**State of New Mexico**  
**Energy, Minerals and Natural Resources**  
**Oil Conservation Division**  
**1220 S. St Francis Dr.**  
**Santa Fe, NM 87505**

CONDITIONS

Action 281855

CONDITIONS

Operator: OXY USA INC P.O. Box 4294 Houston, TX 772104294	OGRID: 16696
	Action Number: 281855
	Action Type: [C-141] Release Corrective Action (C-141)

CONDITIONS

Created By	Condition	Condition Date
amaxwell	None	11/2/2023