



September 18, 2023

District Supervisor
Oil Conservation Division, District 1
1625 North French Drive
Hobbs, New Mexico 88240

**RE: Closure Report
ConocoPhillips
ConocoPhillips (Heritage COG Operating LLC)
Cuatro Hijos Fee #004H Flowline Release
Unit Letter A, Section 02, Township 19 South, Range 34 East
Lea County, New Mexico
Incident ID: nAPP2312933596**

Sir or Madam:

Tetra Tech, Inc. (Tetra Tech) was contacted by ConocoPhillips to assess an unplanned release that occurred from a flowline associated with the Cuatro Hijos Fee #004H (API #30-025-41752). The release footprint is located in Public Land Survey System (PLSS) Unit Letter A, Section 02, Township 19 South, Range 34 East, in Lea County, New Mexico (Site). The approximate release point occurred at coordinates 32.693649°, -103.522686°, as shown on Figures 1 and 2.

BACKGROUND

According to the State of New Mexico Oil Conservation Division (NMOCD) C-141 Initial Report, the release occurred on April 23, 2023. Approximately 1.78 barrels (bbls) of produced water were released from a hole in a flowline due to corrosion. The spill calculator provided with the C-141 indicates a release extent of approximately 400 square feet of pasture, as presented in Figure 3.

The NMOCD received the C-141 report form for the release on May 9, 2023, and subsequently assigned the release the Incident ID nAPP2312933596. According to ConocoPhillips internal records, the New Mexico State Land Office (NMSLO) was emailed a copy of the initial C-141. The initial C-141 is included as Appendix A.

LAND OWNERSHIP

According to the NMOCD Oil and Gas Map, the Site is located on State Trust Lands. A review of the NMSLO Land Status Map was completed and the Site is located within active oil and gas lease VB12840001, which is listed under Concho Oil & Gas LLC/COG Operations LLC. Based on guidance provided by the NMSLO, as the release footprint is located on an active oil and gas lease, and the footprint is wholly located within the boundaries of the active oil and gas lease, no Remediation Right of Entry (ROE) is required at the Site.

CULTURAL PROPERTIES PROTECTION

Tetra Tech, on behalf of ConocoPhillips, contracted SWCA Environmental Consultants (SWCA) to conduct an Archeological Resources Management Section (ARMS) review in the release area to comply with 19.2.24 NMAC and the Cultural Properties Protection (CPP) Rule. On June 27, 2023, SWCA completed a literature and file search using the State of New Mexico's New Mexico Cultural Resources Information

TETRA TECH

901 West Wall St., Suite 100, Midland, TX 79701

Tel 432.682.4559 Fax 432.682.3946 www.tetrattech.com

Closure Report
September 18, 2023

ConocoPhillips

System online database which included a review of known historic resources, including the built environment, Laboratory of Anthropology, and State/National Register listed properties.

In the review, SWCA found the Site surroundings of 1 kilometer have been subject to sixteen (16) cultural resource surveys, eleven (11) of which are qualifying (completed within the last 10 years). There are no sites within 1 kilometer of the remediation area. The remediation area is completely located on NMSLO-managed lands and is covered by two (2) qualifying surveys conducted within the last ten years (NMCRIIS No. 135745 and 128888). SWCA noted that all work will be done within previously surveyed area and therefore, does not recommend further survey at the Site location.

On June 21, 2023, NMSLO provided the verbal approval to SWCA that work was approved to begin at the Site. The ARMS review letter was submitted to the State Land Office on July 5, 2023. A copy of the ARMS letter is included in Appendix B.

SITE CHARACTERIZATION

A site characterization was performed and no sinkholes, residences, schools, hospitals, institutions, churches, springs, private domestic water wells, stream bodies, wetlands, incorporated municipal boundaries, subsurface mines, or floodplains are located within the distances specified in 19.15.29 New Mexico Administrative Code (NMAC). The Site is located in an area of low karst potential.

A groundwater well search was performed through the New Mexico Office of the State Engineer (NMOSE) system. There are no water wells within a ½-mile (800-meter) radius of the Site; however, there is one active water well located 817 meters (0.52 miles) northwest of the release. The well has a recorded depth to water of 105 feet below ground surface (bgs). The site characterization data are included as Appendix C.

REGULATORY FRAMEWORK

Based upon the release footprint and in accordance with Subsection E of 19.15.29.12 NMAC, per 19.15.29.11 NMAC, the site characterization data was used to determine recommended remedial action levels (RRALs) for benzene, toluene, ethylbenzene, and xylene (collectively referred to as BTEX), total petroleum hydrocarbons (TPH), and chlorides in soil.

Based on the site characterization and in accordance with Table I of 19.15.29.12 NMAC, the RRALs for the Site are as follows:

Constituent	Site RRALs
Chloride	20,000 mg/kg
TPH (GRO+DRO+ORO)	2,500 mg/kg
TPH (GRO+DRO)	1,000 mg/kg
BTEX	50 mg/kg
Benzene	10 mg/kg

Additionally, in accordance with the NMOCD guidance Procedures for Implementation of the Spill Rule (19.15.29 NMAC) (September 6, 2019), the following reclamation requirements for surface soils (0-4 ft bgs) outside of active oil and gas operations are as follows:

Constituent	Reclamation Requirements
Chloride	600 mg/kg
TPH (GRO+DRO+ORO)	100 mg/kg

SITE ASSESSMENT

On June 29, 2023, Tetra Tech personnel mobilized to the site and conducted assessment sampling on behalf of ConocoPhillips. Four (4) horizontal hand auger borings were advanced (AH-1 through AH-4) to depths of 1-foot bgs to the northeast, northwest, southwest, and southeast of the release to obtain horizontal delineation. Two (2) trenches (T-1 and T-2) were advanced within the release extent to obtain vertical delineation. T-1 was trenched to a depth of 6 feet bgs and T-2 to a depth of 1-foot bgs. The sampling locations are presented in Figure 3.

A total of ten (10) soil samples were collected and transmitted to Cardinal Laboratories in Hobbs, New Mexico to be analyzed for chloride via EPA Method 4500.0, TPH via EPA Method 8015M, and BTEX via EPA Method 8261B. A copy of the laboratory analytical reports and chain-of-custody documentation are included in Appendix D.

Analytical results from the 2023 assessment activities are summarized in Table 1. All analytical results were below applicable Site RRALs. However, samples collected from the upper 4 feet at trench locations T-1 and T-2 were above reclamation requirements and required remedial action. Vertical delineation was obtained at T-1 as the analytical results associated with the sample collected at 4-5 feet bgs were below the Site RRALs. Horizontal and vertical delineation were successfully completed as a result of the assessment activities. Photographic documentation of the release area and assessment activities are presented in Appendix E.

REMEDIAL WORK PLAN (NMSLO)

It was the intent of ConocoPhillips to remediate this unplanned release within 90 days of its discovery without submitting a remediation plan. However, as the release footprint is located on State Trust Lands, Tetra Tech provided notice of the planned remedial activities to the NMSLO Environmental Compliance Office (ECO) on August 1, 2023, along with site characterization data, figures, and tables. The remedial action was initially not approved by NMSLO, as the individual documents submitted did not meet the requirements for a remediation plan. The NMSLO requested that 19.15.29.13 NMAC be met, and reclamation details be provided to NMSLO ECO before work could proceed.

Per request, one .pdf file Work Plan (including the written narrative and associated attachments regarding planned remedial activities) was prepared by Tetra Tech on behalf of ConocoPhillips and subsequently submitted to NMSLO on August 3, 2023. The Work Plan described the results of the release assessment activities performed at the site, described the remedial action, and provided details on site reclamation. The Work Plan was approved via email by Ms. Tami Knight, Environmental Specialist, ECO on August 4, 2023. A copy of the NMSLO correspondence is included in Appendix B.

REMEDIAL ACTIVITIES AND CONFIRMATION SAMPLING

In August 2023, Tetra Tech personnel were onsite to remediate the release based on the results of the assessment sampling, including excavation, disposal and backfill. The extent of impacted soils was confirmed with field soil screening data and then excavated to 4 feet bgs throughout the release extent. The release footprint (including sample locations T-1 and T-2) was excavated to a depth of 4 feet bgs.

All of the excavated material was transported offsite for proper disposal. Approximately fifty-two (52) cubic yards of material were transported to the R360 Halfway Facility in Hobbs, New Mexico. Copies of the waste manifests are included in Appendix F.

Prior to confirmation sampling, the NMOCD district office was notified via email on August 9, 2023, in accordance with Subsection D of 19.15.29.12 NMAC. Documentation of associated regulatory correspondence is included in Appendix B. On August 14, 2023, Tetra Tech personnel were onsite for confirmation sampling. Confirmation floor and sidewall samples were collected for laboratory analysis to

Closure Report
September 18, 2023

ConocoPhillips

verify impacted materials were properly removed. Each confirmation sample laboratory analytical result was directly compared to the proposed RRALs/reclamation requirements to demonstrate compliance.

In accordance with Subsection D of 19.15.29.12 NMAC, confirmation samples were collected such that each discrete sample (sidewall and floor) were representative of no more than 200 square feet of excavated area. A total of two (2) floor sample locations and four (4) sidewall sample locations were used during the remedial activities. Confirmation sidewall sample locations were labeled with "SW"-#, and confirmation floor sample locations were labeled with "FS"-#. Analytical results for all confirmation soil samples (floor and sidewall) were below the RRALs for chloride, BTEX, and TPH. The results of the 2023 confirmation sampling events are summarized in Table 2. Laboratory analytical data is included in Appendix D.

Once confirmation sampling activities were completed, the excavated areas were backfilled with clean material to surface grade. Photographs from the excavated areas prior to backfill are provided in Appendix E. The backfilled areas were seeded to aid in revegetation. Based on the soils at the Site, the NMSLO Loamy (L) Sites Seed Mixture was used for seeding and planted in the amount specified in the pounds pure live seed (PLS) per acre. Remediated areas, depths and confirmation sample locations are shown in Figure 4.

CONCLUSION

As noted, ConocoPhillips elected to remediate the release and submit a closure report within 90 days of discovery of the release, per Subsection B of 19.15.29.12 NMAC; however, Tetra Tech and ConocoPhillips experienced a delay in scheduling the assessment and remediation activities at the site while in the process of complying with the New Mexico State Land Office's Cultural Properties Protection Rule and the NMSLO application and permitting requirements per Rule 12 (19.2.12 NMAC). An extension to October 20, 2023, was approved by NMOCD in an email dated July 20, 2023. A copy of the regulatory correspondence is included in Appendix B.

ConocoPhillips respectfully requests closure of the release based on the confirmation sampling results and remediation activities performed. The final C-141 forms are enclosed in Appendix A. If you have any questions concerning the remediation activities for the Site, please call me at (512) 739-7874.

Sincerely,
Tetra Tech, Inc.



Samantha K. Abbott, P.G.
Project Manager



Christian M. Llull, P.G.
Program Manager

cc:
Mr. Jacob Laird, PBU – ConocoPhillips

Closure Report
September 18, 2023

ConocoPhillips

LIST OF ATTACHMENTS

Figures:

- Figure 1 – Overview Map
- Figure 2 – Topographic Map
- Figure 3 – Site Assessment
- Figure 4 – Remediation Extent and Confirmation Sampling Locations

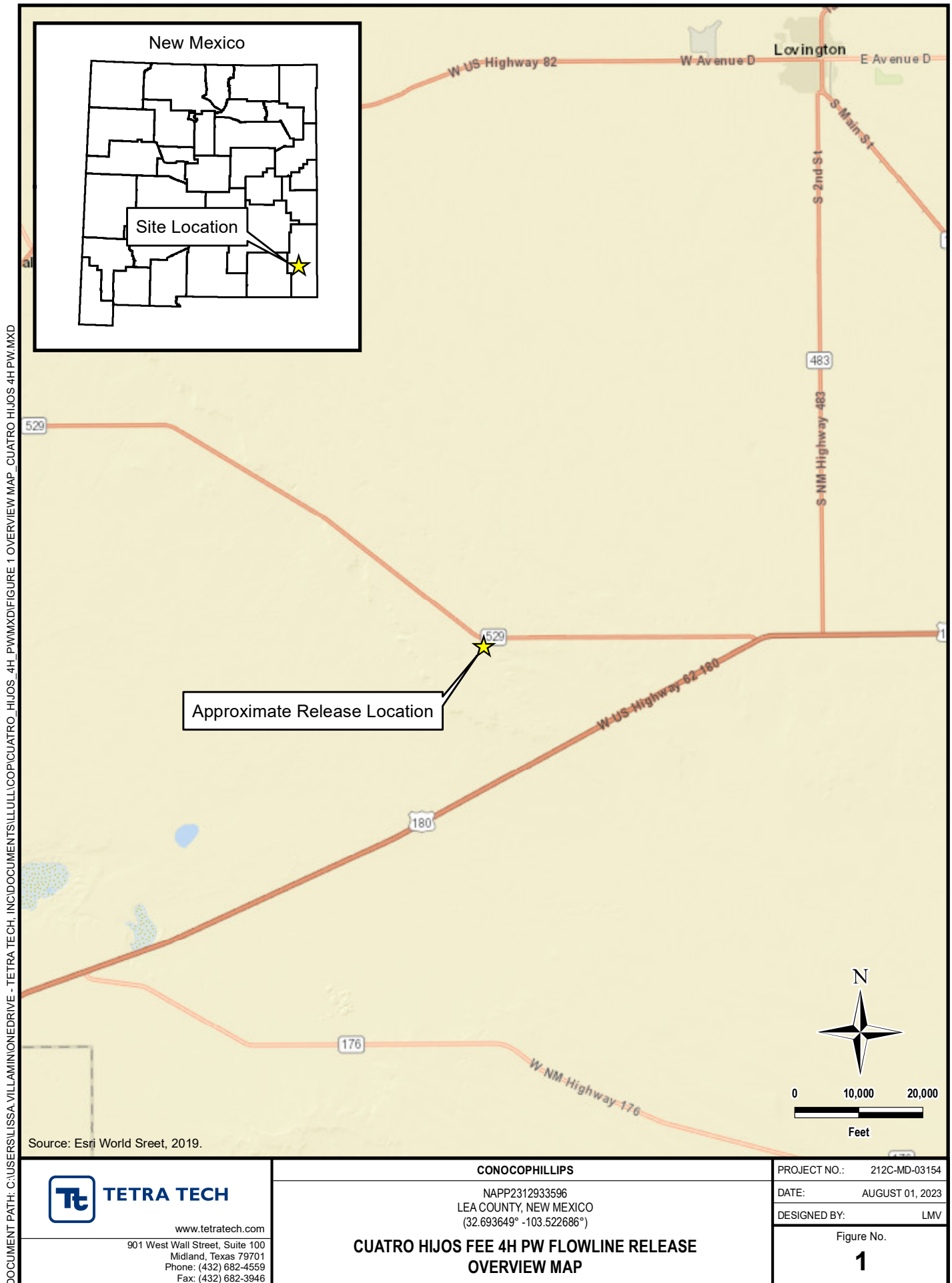
Tables:

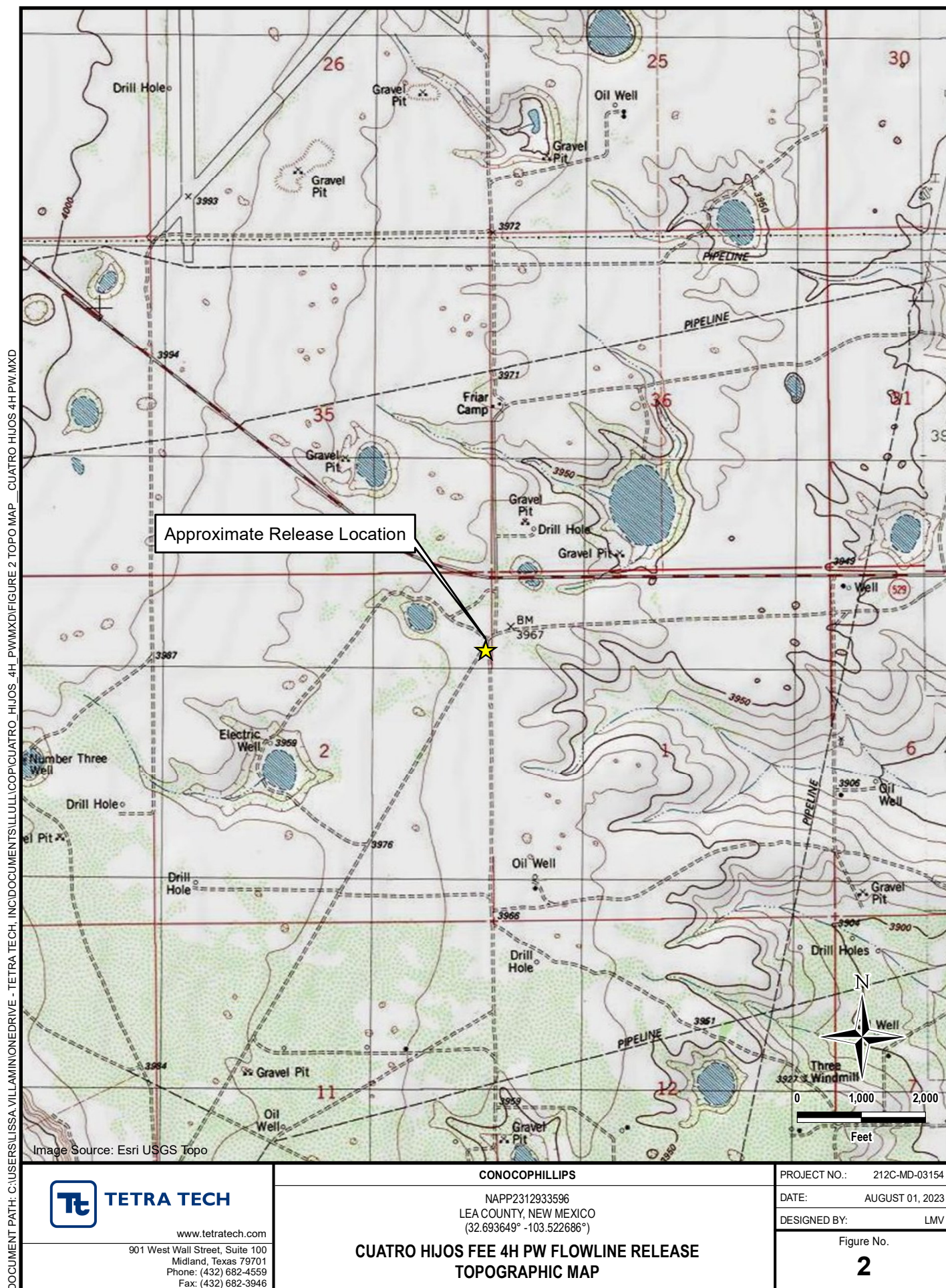
- Table 1 – Summary of Analytical Results – Soil Assessment
- Table 2 – Summary of Analytical Results – Soil Remediation

Appendices:

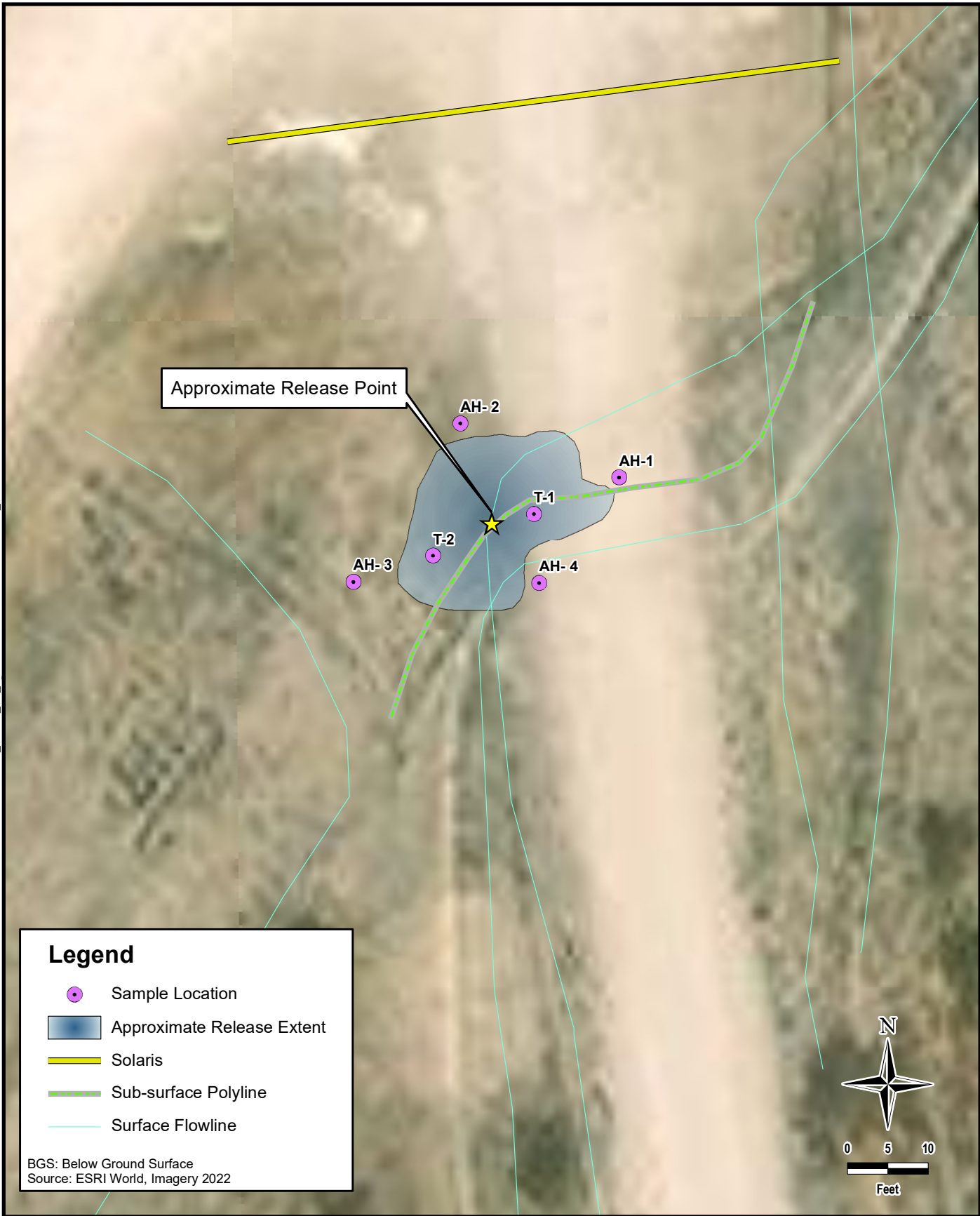
- Appendix A – C-141 Forms
- Appendix B – Regulatory Correspondence
- Appendix C – Site Characterization
- Appendix D – Laboratory Analytical Data
- Appendix E – Photographic Documentation
- Appendix F – Waste Manifests

FIGURES










DOCUMENT PATH: C:\USERS\LISSA.VILLAMINIONEDRIVE - TETRA TECH\INC\DOCUMENTS\ILLULLICOPICUATRO_HIJOS_4H_PW.MXD



Legend

-  Sample Location
-  Approximate Release Extent
-  Solaris
-  Sub-surface Polyline
-  Surface Flowline

BGS: Below Ground Surface
Source: ESRI World, Imagery 2022



TETRA TECH

www.tetrattech.com

901 West Wall Street, Suite 100
Midland, Texas 79701
Phone: (432) 682-4559
Fax: (432) 682-3946

CONOCOPHILLIPS

NAPP2312933596
LEA COUNTY, NEW MEXICO
(32.693649° -103.522686°)

**CUATRO HIJOS FEE 4H PW FLOWLINE RELEASE
SITE ASSESSMENT**

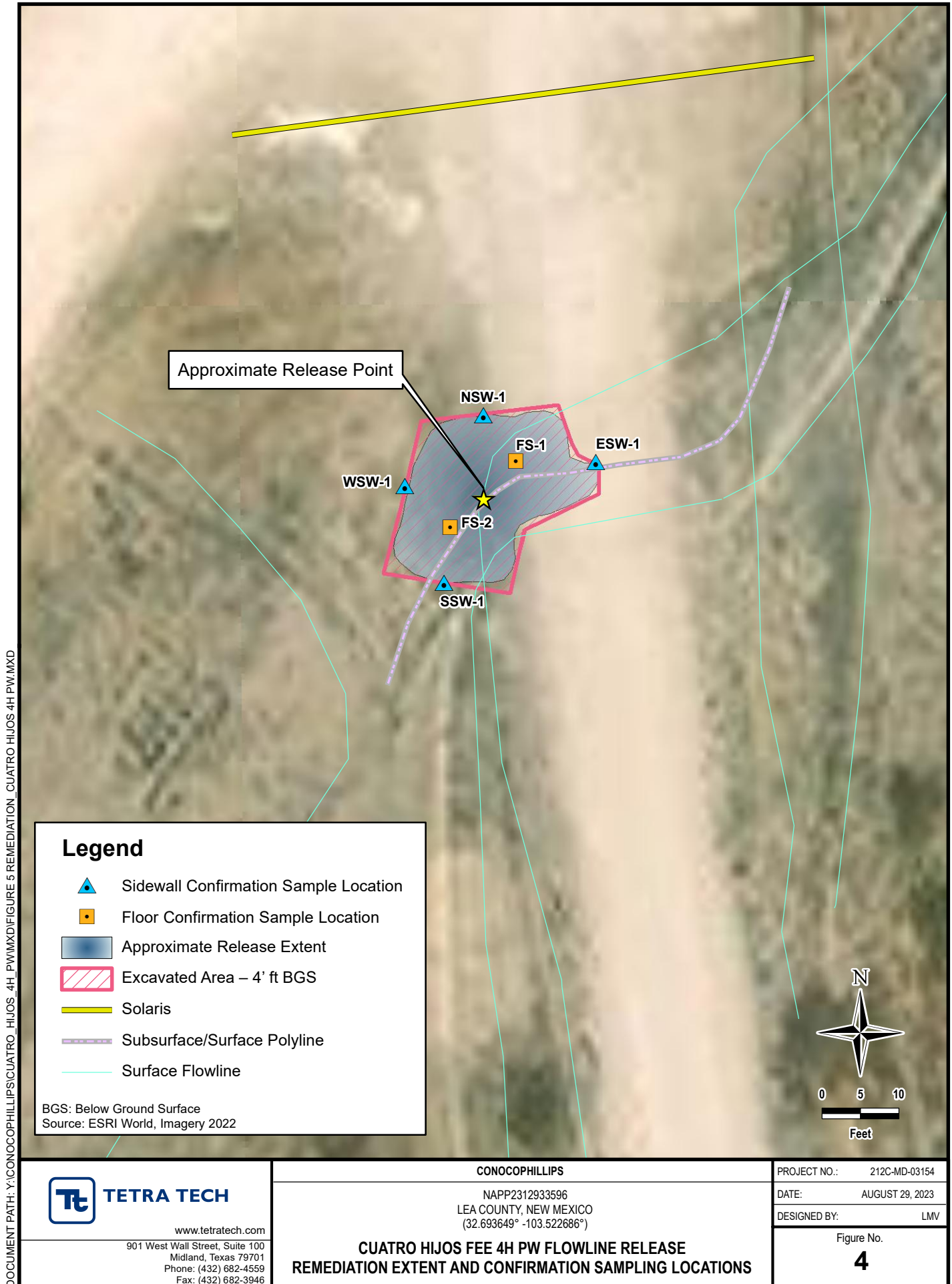
PROJECT NO.: 212C-MD-03154

DATE: AUGUST 03, 2023

DESIGNED BY: LMV

Figure No.

3



TABLES

TABLE 1
SUMMARY OF ANALYTICAL RESULTS
SOIL ASSESSMENT- nAPP2312933596
CONOCOPHILLIPS
CUATRO HIJOS FEE 4H FLOWLINE RELEASE
LEA COUNTY, NM

19.15.29.12 NMAC Closure Criteria for Soils Impacted by a Release (>100 ft):					Chlorides ¹		BTEX ²										TPH ³							
					20,000 mg/kg		< 10 mg/kg		Toluene		Ethylbenzene		Total Xylenes		< 50 mg/kg		GRO		DRO		EXT DRO		< 2,500 mg/kg	
Sample ID	Sample Date	Sample Depth Interval	Field Screening Results		Chloride		Benzene								Total BTEX								C ₆ - C ₁₀	
			Chlorides	PID											mg/kg	Q	mg/kg	Q	mg/kg	Q	mg/kg	Q		
AH-1	6/29/2023	0-1	112		32.0		<0.050		<0.050		<0.050		<0.150		<0.300		<10.0		<10.0		20.0		20.0	
AH-2	6/29/2023	0-1	69.5		32.0		<0.050		<0.050		<0.050		<0.150		<0.300		<10.0		<10.0		15.4		15.4	
AH-3	6/29/2023	0-1	70.3		32.0		<0.050		<0.050		<0.050		<0.150		<0.300		<10.0		<10.0		<10.0		-	
AH-4	6/29/2023	0-1	83.6		16.0		<0.050		<0.050		<0.050		<0.150		<0.300		<10.0		<10.0		<10.0		-	
T-1	6/29/2023	0-1	OL		16,100		<0.050		<0.050		<0.050		<0.050		<0.300		<10.0		<10.0		<10.0		-	
		2-3	6,580		5,730		<0.050		<0.050		<0.050		<0.050		<0.300		<10.0		<10.0		<10.0		-	
		3-4	1,870		1,280		<0.050		<0.050		<0.050		<0.050		<0.300		<10.0		<10.0		<10.0		-	
		4-5	1,300		1,360		<0.050		<0.050		<0.050		<0.050		<0.300		<10.0		<10.0		<10.0		-	
		5-6	200		80.0		<0.050		<0.050		<0.050		<0.050		<0.300		<10.0		<10.0		<10.0		-	
T-2	6/29/2023	0-1	11,170		12,200		<0.050		<0.050		<0.050		<0.050		<0.300		<10.0		<10.0		<10.0		-	

NOTES:

- ft. Feet
- bgs Below ground surface
- mg/kg Milligrams per kilogram
- TPH Total Petroleum Hydrocarbons
- GRO Gasoline range organics
- DRO Diesel range organics
- 1 Method SM4500CI-B
- 2 Method 8021B
- 3 Method 8015M
- OL Over Limit

Bold and italicized values indicate exceedance of proposed RRALs and/or Reclamation Requirements.

Shaded rows indicate intervals proposed for excavation.

QUALIFIERS:

TABLE 2
SUMMARY OF ANALYTICAL RESULTS
SOIL REMEDIATION - NAPP2312933596
CONOCOPHILLIPS
CUATRO HIJOS FEE 4H FLOWLINE RELEASE
LEA COUNTY, NM

Sample ID	Sample Date	Sample Depth	Chloride		BTEX ²										TPH ³							
					Benzene		Toluene		Ethylbenzene		Total Xylenes		Total BTEX		GRO		DRO		EXT DRO		Total TPH (GRO+DRO+EXT DRO)	
															C ₆ - C ₁₀		> C ₁₀ - C ₂₈		> C ₂₈ - C ₃₆			
		ft. bgs	mg/kg	Q	mg/kg	Q	mg/kg	Q	mg/kg	Q	mg/kg	Q	mg/kg	Q	mg/kg	Q	mg/kg	Q	mg/kg	Q	mg/kg	
NSW-1	8/15/2023	-	32		<0.050		<0.050		<0.050		<0.150		<0.300		<10.0		<10.0		<10.0		-	
SSW-1	8/15/2023	-	<16.0		<0.050		<0.050		<0.050		<0.150		<0.300		<10.0		<10.0		<10.0		-	
ESW-1	8/15/2023	-	<16.0		<0.050		<0.050		<0.050		<0.150		<0.300		<10.0		<10.0		<10.0		-	
WSW-1	8/15/2023	-	48		<0.050		<0.050		<0.050		<0.150		<0.300		<10.0		<10.0		<10.0		-	
FS-1	8/15/2023	4	320		<0.050		<0.050		<0.050		<0.150		<0.300		<10.0		<10.0		<10.0		-	
FS-2	8/15/2023	4	336		<0.050		<0.050		<0.050		<0.150		<0.300		<10.0		<10.0		<10.0		-	

- NOTES:
- ft. Feet
 - bgs Below ground surface
 - mg/kg Milligrams per kilogram
 - TPH Total Petroleum Hydrocarbons
 - GRO Gasoline range organics
 - DRO Diesel range organics
 - 1 Method SM4500Cl-B
 - 2 Method 8021B
 - 3 Method 8015M

APPENDIX A C-141 Forms

District I
1625 N. French Dr., Hobbs, NM 88240
District II
811 S. First St., Artesia, NM 88210
District III
1000 Rio Brazos Road, Aztec, NM 87410
District IV
1220 S. St. Francis Dr., Santa Fe, NM 87505

State of New Mexico
Energy Minerals and Natural
Resources Department

Oil Conservation Division
1220 South St. Francis Dr.
Santa Fe, NM 87505

Form C-141
Revised August 24, 2018
Submit to appropriate OCD District office

Incident ID	
District RP	
Facility ID	
Application ID	

Release Notification

Responsible Party

Responsible Party	OGRID
Contact Name	Contact Telephone
Contact email	Incident # (assigned by OCD)
Contact mailing address	

Location of Release Source

Latitude _____ Longitude _____
(NAD 83 in decimal degrees to 5 decimal places)

Site Name	Site Type
Date Release Discovered	API# (if applicable)

Unit Letter	Section	Township	Range	County

Surface Owner: ☐ State ☐ Federal ☐ Tribal ☐ Private (Name: _____)

Nature and Volume of Release

Material(s) Released (Select all that apply and attach calculations or specific justification for the volumes provided below)

<input type="checkbox"/> Crude Oil	Volume Released (bbls)	Volume Recovered (bbls)
<input type="checkbox"/> Produced Water	Volume Released (bbls)	Volume Recovered (bbls)
	Is the concentration of dissolved chloride in the produced water >10,000 mg/l?	<input type="checkbox"/> Yes <input type="checkbox"/> No
<input type="checkbox"/> Condensate	Volume Released (bbls)	Volume Recovered (bbls)
<input type="checkbox"/> Natural Gas	Volume Released (Mcf)	Volume Recovered (Mcf)
<input type="checkbox"/> Other (describe)	Volume/Weight Released (provide units)	Volume/Weight Recovered (provide units)


Cause of Release

Incident ID	
District RP	
Facility ID	
Application ID	

Was this a major release as defined by 19.15.29.7(A) NMAC? <input type="checkbox"/> Yes <input type="checkbox"/> No	If YES, for what reason(s) does the responsible party consider this a major release?
If YES, was immediate notice given to the OCD? By whom? To whom? When and by what means (phone, email, etc)?	

Initial Response

The responsible party must undertake the following actions immediately unless they could create a safety hazard that would result in injury

<input type="checkbox"/> The source of the release has been stopped.	
<input type="checkbox"/> The impacted area has been secured to protect human health and the environment.	
<input type="checkbox"/> Released materials have been contained via the use of berms or dikes, absorbent pads, or other containment devices.	
<input type="checkbox"/> All free liquids and recoverable materials have been removed and managed appropriately.	
If all the actions described above have <u>not</u> been undertaken, explain why:	
Per 19.15.29.8 B. (4) NMAC the responsible party may commence remediation immediately after discovery of a release. If remediation has begun, please attach a narrative of actions to date. If remedial efforts have been successfully completed or if the release occurred within a lined containment area (see 19.15.29.11(A)(5)(a) NMAC), please attach all information needed for closure evaluation.	
I hereby certify that the information given above is true and complete to the best of my knowledge and understand that pursuant to OCD rules and regulations all operators are required to report and/or file certain release notifications and perform corrective actions for releases which may endanger public health or the environment. The acceptance of a C-141 report by the OCD does not relieve the operator of liability should their operations have failed to adequately investigate and remediate contamination that pose a threat to groundwater, surface water, human health or the environment. In addition, OCD acceptance of a C-141 report does not relieve the operator of responsibility for compliance with any other federal, state, or local laws and/or regulations.	
Printed Name _____	Title: _____
Signature: <u></u>	Date: _____
email: _____	Telephone: _____
<u>OCD Only</u>	
Received by: <u>Jocelyn Harimon</u>	Date: <u>05/09/2023</u>

Received by OCD: 9/19/2023 8:27:07 AM								Spill Calculation - Subsurface Spill - Rectangle		NAPP2312933596		Remediation Recommendation	
												Page 17 of 76	
Convert Irregular shape into a series of rectangles	Length (ft.)	Width (ft.)	Average Depth (in.)	On/Off Pad (dropdown)	Soil Spilled-Fluid Saturation (%)	Estimated volume of each area (bbl.)	Total Estimated Volume of Spill (bbl.)					Total Estimated Contaminated Soil, uncompacted, 25% (yd³.)	Current Rule of Thumb - RMR Handover Volume, (yd³.)
Rectangle A	20.0	20.0	2.0	Off-Pad	15.02%	11.87	1.78					3.09	750
Rectangle B						0.00						0.00	
Rectangle C						0.00						0.00	
Rectangle D						0.00						0.00	
Rectangle E						0.00						0.00	
Rectangle F						0.00						0.00	
Rectangle G						0.00						0.00	
Rectangle H						0.00						0.00	
Rectangle I						0.00						0.00	
Rectangle J						0.00						0.00	
Total Subsurface Volume Released:							1.7824	3.09	BU				
Released to Imaging: 12/18/2023 4:28:47 PM													

Incident ID	
District RP	
Facility ID	
Application ID	

Site Assessment/Characterization

This information must be provided to the appropriate district office no later than 90 days after the release discovery date.

What is the shallowest depth to groundwater beneath the area affected by the release?	_____ (ft bgs)
Did this release impact groundwater or surface water?	<input type="checkbox"/> Yes <input type="checkbox"/> No
Are the lateral extents of the release within 300 feet of a continuously flowing watercourse or any other significant watercourse?	<input type="checkbox"/> Yes <input type="checkbox"/> No
Are the lateral extents of the release within 200 feet of any lakebed, sinkhole, or playa lake (measured from the ordinary high-water mark)?	<input type="checkbox"/> Yes <input type="checkbox"/> No
Are the lateral extents of the release within 300 feet of an occupied permanent residence, school, hospital, institution, or church?	<input type="checkbox"/> Yes <input type="checkbox"/> No
Are the lateral extents of the release within 500 horizontal feet of a spring or a private domestic fresh water well used by less than five households for domestic or stock watering purposes?	<input type="checkbox"/> Yes <input type="checkbox"/> No
Are the lateral extents of the release within 1000 feet of any other fresh water well or spring?	<input type="checkbox"/> Yes <input type="checkbox"/> No
Are the lateral extents of the release within incorporated municipal boundaries or within a defined municipal fresh water well field?	<input type="checkbox"/> Yes <input type="checkbox"/> No
Are the lateral extents of the release within 300 feet of a wetland?	<input type="checkbox"/> Yes <input type="checkbox"/> No
Are the lateral extents of the release overlying a subsurface mine?	<input type="checkbox"/> Yes <input type="checkbox"/> No
Are the lateral extents of the release overlying an unstable area such as karst geology?	<input type="checkbox"/> Yes <input type="checkbox"/> No
Are the lateral extents of the release within a 100-year floodplain?	<input type="checkbox"/> Yes <input type="checkbox"/> No
Did the release impact areas not on an exploration, development, production, or storage site?	<input type="checkbox"/> Yes <input type="checkbox"/> No

Attach a comprehensive report (electronic submittals in .pdf format are preferred) demonstrating the lateral and vertical extents of soil contamination associated with the release have been determined. Refer to 19.15.29.11 NMAC for specifics.

Characterization Report Checklist: *Each of the following items must be included in the report.*

- ☐ Scaled site map showing impacted area, surface features, subsurface features, delineation points, and monitoring wells.
- ☐ Field data
- ☐ Data table of soil contaminant concentration data
- ☐ Depth to water determination
- ☐ Determination of water sources and significant watercourses within ½-mile of the lateral extents of the release
- ☐ Boring or excavation logs
- ☐ Photographs including date and GIS information
- ☐ Topographic/Aerial maps
- ☐ Laboratory data including chain of custody

If the site characterization report does not include completed efforts at remediation of the release, the report must include a proposed remediation plan. That plan must include the estimated volume of material to be remediated, the proposed remediation technique, proposed sampling plan and methods, anticipated timelines for beginning and completing the remediation. The closure criteria for a release are contained in Table 1 of 19.15.29.12 NMAC, however, use of the table is modified by site- and release-specific parameters.

State of New Mexico
Oil Conservation Division

Page 4

Incident ID	
District RP	
Facility ID	
Application ID	

I hereby certify that the information given above is true and complete to the best of my knowledge and understand that pursuant to OCD rules and regulations all operators are required to report and/or file certain release notifications and perform corrective actions for releases which may endanger public health or the environment. The acceptance of a C-141 report by the OCD does not relieve the operator of liability should their operations have failed to adequately investigate and remediate contamination that pose a threat to groundwater, surface water, human health or the environment. In addition, OCD acceptance of a C-141 report does not relieve the operator of responsibility for compliance with any other federal, state, or local laws and/or regulations.

Printed Name: _____ Title: _____

Signature: Jacob Laird Date: _____

email: _____ Telephone: _____

OCD Only

Received by: _____ Date: _____

Incident ID	
District RP	
Facility ID	
Application ID	

Closure

The responsible party must attach information demonstrating they have complied with all applicable closure requirements and any conditions or directives of the OCD. This demonstration should be in the form of a comprehensive report (electronic submittals in .pdf format are preferred) including a scaled site map, sampling diagrams, relevant field notes, photographs of any excavation prior to backfilling, laboratory data including chain of custody documents of final sampling, and a narrative of the remedial activities. Refer to 19.15.29.12 NMAC.

Closure Report Attachment Checklist: *Each of the following items must be included in the closure report.*

- ☐ A scaled site and sampling diagram as described in 19.15.29.11 NMAC
- ☐ Photographs of the remediated site prior to backfill or photos of the liner integrity if applicable (Note: appropriate OCD District office must be notified 2 days prior to liner inspection)
- ☐ Laboratory analyses of final sampling (Note: appropriate ODC District office must be notified 2 days prior to final sampling)
- ☐ Description of remediation activities

I hereby certify that the information given above is true and complete to the best of my knowledge and understand that pursuant to OCD rules and regulations all operators are required to report and/or file certain release notifications and perform corrective actions for releases which may endanger public health or the environment. The acceptance of a C-141 report by the OCD does not relieve the operator of liability should their operations have failed to adequately investigate and remediate contamination that pose a threat to groundwater, surface water, human health or the environment. In addition, OCD acceptance of a C-141 report does not relieve the operator of responsibility for compliance with any other federal, state, or local laws and/or regulations. The responsible party acknowledges they must substantially restore, reclaim, and re-vegetate the impacted surface area to the conditions that existed prior to the release or their final land use in accordance with 19.15.29.13 NMAC including notification to the OCD when reclamation and re-vegetation are complete.

Printed Name: _____ Title: _____

Signature: Jacob Laird Date: _____

email: _____ Telephone: _____

OCD Only

Received by: _____ Date: _____

Closure approval by the OCD does not relieve the responsible party of liability should their operations have failed to adequately investigate and remediate contamination that poses a threat to groundwater, surface water, human health, or the environment nor does not relieve the responsible party of compliance with any other federal, state, or local laws and/or regulations.

Closure Approved by: Scott Rodgers Date: 12/18/2023

Printed Name: Scott Rodgers Title: Environmental Specialist Advanced

APPENDIX B

Regulatory Correspondence



Albuquerque Office
5647 Jefferson Street NE
Albuquerque, New Mexico 87109
Tel 505.254.1115 Fax 505.254.1116
www.swca.com

July 5, 2023

TO: David Eck or Lia Tsesmeli, Archaeologist, New Mexico State Land Office, Santa Fe, New Mexico

FROM: SWCA Environmental Consultants

SUBJECT: Completion of an Archaeological Resources Management Section (ARMS) Review for the Cuatro Hijos Fee 4H PW Flowline Release Project on New Mexico State Land Office (SLO) lands in Lea County, NM

Company Ref No:

PROJECT DESCRIPTION:

Tetra Tech, Inc. has requested that SWCA Environmental Consultants (SWCA) conduct an Archaeological Resources Management Section (ARMS) review for an inadvertent release in Lea County, New Mexico. The proposed project is located on New Mexico State Trust Lands approximately 37.19 kilometers (23.11 miles) west of Hobbs, NM in T19S R34E, Section 2.

A literature and file search were conducted on June 27, 2023, using the State of New Mexico's New Mexico Cultural Resources Information System online database which included a review of known historic resources, including the built environment, Laboratory of Anthropology, and State/National Register listed properties. Other sources reviewed include the BLM GLO Records web site, <http://www.glorerecords.blm.gov>, which include land patent and general land office survey data. As this area was not settled by Spain, land grant records were not reviewed. The review was conducted for the Area of Potential Effect (APE) and since there were no sites within 500 meters of the APE, the review was conducted to 1 kilometer surrounding the APE. The land the proposed project is located on is part of the June 21, 1934: State Grant-School Sec Patent (48 Stat. 1185) patented on December 31, 1959.

Recommendation:

The project area and surrounding 1 kilometer have been subject to sixteen (16) cultural resource surveys, eleven (11) of which are qualifying (completed within the last 10 years). There are no sites within 1km of the remediation area. The remediation area is completely located on SLO-managed lands and is covered by two (2) qualifying surveys conducted within the last ten years (NMCRIS No. 135745 and 128888). All work will be done within the previously surveyed area, and therefore, SWCA does not recommend further survey at this location. If cultural materials are identified during ground disturbing activities, work must stop and the SLO must be contacted.

Information regarding the findings can be found in Table 1 in enclosure (1).

A handwritten signature in dark ink, appearing to read 'Alissa Healy', is written over a light blue circular stamp.

Archaeologist
Alissa Healy

Enclosure: (1) Review Results, (2) ARMS Map



Albuquerque Office
5647 Jefferson Street NE
Albuquerque, New Mexico 87109
Tel 505.254.1115 Fax 505.254.1116
www.swca.com

Archaeological Resources Management System (ARMS) Review Results

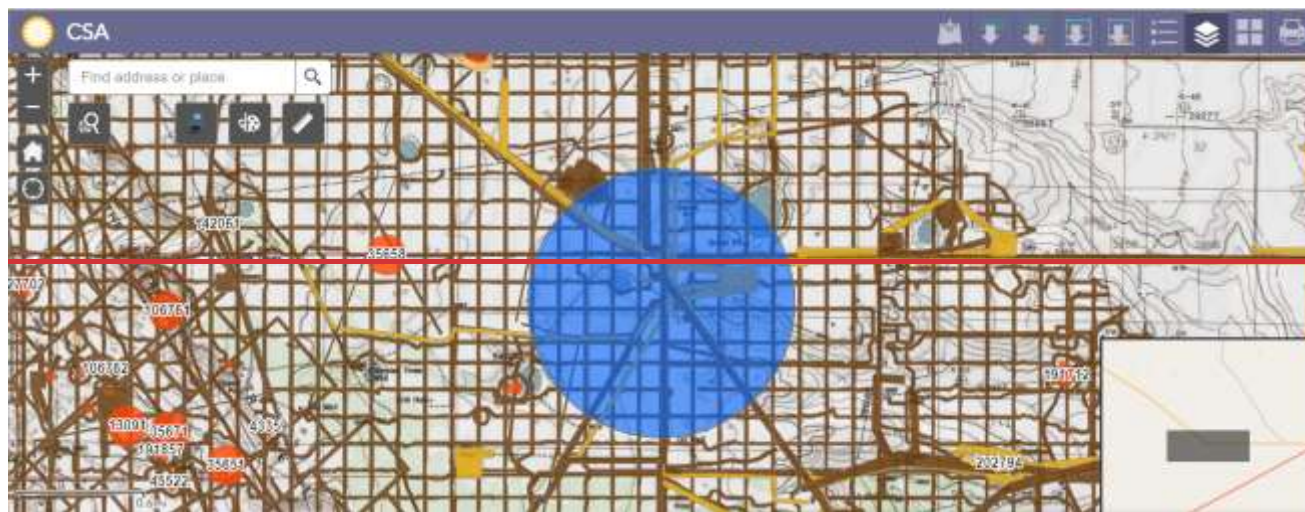
Table 1: Cultural surveys within 1000 meters (0.62 miles) of proposed project.

NMCRIS No.	Performing Organization	Date of Investigation	Acres Surveyed	Sites Visited
14689	New Mexico Archaeological Services, Inc	7/1/1980	13.07	0
15614	NM State Highway & Transportation Dept	11/17/1982	106.4	0
124302	Lone Mountain Archaeological Services	3/30/2012	825.43	9
125145	Lone Mountain Archaeological Services	7/28/2012	47.26	0
126352	Advanced Archaeological Solutions	2/9/2013	97.1	0
127915	Marron and Associates	6/10/2013	113.62	0
128888	Boone Arch Svcs of NM	10/15/2013	98.6	0
132233	Statistical Research, Inc.	7/8/2014	9528.07	79
133687	Boone Arch Svcs of NM	6/25/2015	119.34	0
135735	Boone Arch Svcs of NM	5/3/2016	27.53	0
140259	Lone Mountain Archaeological Services	4/19/2018	8.26	0
141048	Lone Mountain Archaeological Services	4/23/2018	29148.32	247
144916	Lone Mountain Archaeological Services	1/3/2020	8.25	0
146719	Goshawk Environmental Consulting	9/30/2020	66.89	0
147077	Lone Mountain Archaeological Services	12/4/2020	20.75	0
153212	APAC	6/7/2023	47.24	0



Albuquerque Office
5647 Jefferson Street NE
Albuquerque, New Mexico 87109
Tel 505.254.1115 Fax 505.254.1116
www.swca.com

***No Sites within 1km of the proposed remediation location.**



*Redacted

Figure 1. ARMS screenshot showing previous surveys (brown and yellow polygons), previously recorded sites (red polygons), and the 1000 m buffer (blue circle).

From: [Velez, Nelson, EMNRD](#)
To: [Abbott, Sam](#)
Cc: [Jacob.Laird@conocophillips.com](#); [Llull, Christian](#); [Chavira, Lisbeth](#); [Bratcher, Michael, EMNRD](#)
Subject: Extension Request - Incident ID NAPP2312933596
Date: Thursday, July 20, 2023 10:11:17 AM
Attachments: [Outlook-rbpn3vaf.png](#)

Some people who received this message don't often get email from nelson.velez@emnrd.nm.gov. [Learn why this is important](#)

CAUTION: This email originated from an external sender. Verify the source before opening links or attachments.

Good morning Samantha,

90-day time extension request is approved. Remediation Due date has been updated to 10/20/2023 within the incident page.

Please keep a copy of this communication for inclusion within the appropriate report submittal.

The OCD requires a copy of all correspondence relative to remedial activities be included in all proposals and/or final closure reports. Correspondence required to be included in reports may include, but not limited to, notifications for liner inspections, sample events, spill/release/fire, and request for time extensions or variances.

Regards,

Nelson Velez • Environmental Specialist - Adv
Environmental Bureau | EMNRD - Oil Conservation Division
1000 Rio Brazos Road | Aztec, NM 87410
(505) 469-6146 | nelson.velez@emnrd.nm.gov
<http://www.emnrd.state.nm.us/OCD/>



Previous email submitted;

From: Abbott, Sam <Sam.Abbott@tetrattech.com>
Sent: Wednesday, July 19, 2023 3:06 PM
To: Enviro, OCD, EMNRD <OCD.Enviro@emnrd.nm.gov>
Cc: Laird, Jacob <Jacob.Laird@conocophillips.com>; Llull, Christian <Christian.Llull@tetrattech.com>;

Chavira, Lisbeth <LISBETH.CHAVIRA@tetrattech.com>

Subject: [EXTERNAL] Extension Request - Incident ID NAPP2312933596

CAUTION: This email originated outside of our organization. Exercise caution prior to clicking on links or opening attachments.

To Whom it May Concern,

On behalf of ConocoPhillips, Tetra Tech is requesting an additional 90-day extension (until October 20, 2023) to complete remediation activities and associated reporting for the Cuatro Hijos Fee #004H site (**NAPP2312933596**).

The release occurred on April 23, 2023. The initial C-141 for this release was received by NMOCD on 5/9/2023. ConocoPhillips immediately commenced pursuing a 90-day (July 22, 2023) release characterization and closure per 19.15.29.11(A) NMAC.

The release footprint is located on State Trust lands. As of December 1, 2022 New Mexico State Land Office's Cultural Properties Protection (CPP) Rule is in effect. In tandem with this CPP rule, the NMSLO has begun enforcing application and permitting requirements per Rule 12 (19.2.12 NMAC) for Water/Soil Boring Exploration Permits. Any intrusive activities (i.e. # soil borings to be drilled, sampling to be conducted, etc.) must be permitted through the Water Bureau, Oil, Gas, and Minerals Division, New Mexico State Land Office.

Tetra Tech and ConocoPhillips experienced a delay in scheduling assessment at the Cuatro Hijos Fee #004H Release site while in the process of complying with these rules. The allocation of resources required to complete the cultural survey requirements and the Water/Soil Boring Exploration permit process are demanding and require additional time for coordination with not only regulatory personnel but additional archaeological subcontractors and cultural specialists. The cultural survey is now completed, the archaeological report is submitted and approved by State Land Office Cultural Resources, and the permitting process is completed. Tetra Tech and ConocoPhillips have initiated assessment activities at the site, and need additional time to complete the remediation activities and subsequent reporting.

Please let me know if you have any questions or concerns.

Thank you in advance.

Sam

Samantha Abbott, PG | Project Manager

Direct Mobile +1 (512) 739-7874 | Business +1 (512) 338-1667 | Sam.Abbott@tetrattech.com

Tetra Tech, Inc. | *Leading with Science*® | OGA

8911 N Capital of Texas Hwy #2310 | Austin, TX 78759 | tetrattech.com

This message, including any attachments, may include privileged, confidential and/or inside information. Any distribution or use of this communication by anyone other than the intended recipient is strictly prohibited and may be unlawful. If you are not the intended recipient, please notify the sender by replying to this message and then delete it from your system.

From: [Llull, Christian](#)
To: [Allen, Samantha](#)
Subject: Fwd: REVISED (Remediation Plan) Cuatro Hijos Fee 4H PW Flowline (nAPP2312933596) 4-23-23
Date: Wednesday, August 30, 2023 10:11:16 AM
Attachments: [image001.jpg](#)
[image015.jpg](#)
[image016.jpg](#)
[image017.jpg](#)
[image018.png](#)
[image019.png](#)
[image020.png](#)
[image021.png](#)
[image022.png](#)
[image023.jpg](#)
[image024.jpg](#)
[image025.jpg](#)
[image026.png](#)
[image027.png](#)
[image028.png](#)
[image029.png](#)
[image030.png](#)

Christian

Get [Outlook](#) for iOS

From: Knight, Tami C. <tknight@slo.state.nm.us>
Sent: Friday, August 4, 2023 2:55:06 PM
To: Llull, Christian <Christian.Llull@tetrattech.com>
Cc: Abbott, Sam <Sam.Abbott@tetrattech.com>; Chavira, Lisbeth <LISBETH.CHAVIRA@tetrattech.com>; SLO Surface ECO <SLOSurfaceECO@slo.state.nm.us>
Subject: RE: REVISED (Remediation Plan) Cuatro Hijos Fee 4H PW Flowline (nAPP2312933596) 4-23-23

CAUTION: This email originated from an external sender. Verify the source before opening links or attachments.

Christian

Thank you for the revisions to the remediation workplan. ECO approves the remediation workplan.

We look forward to receipt of the closure report.

Have a great weekend



Tami Knight, CHMM

Environmental Specialist

SRD-Environmental

Compliance Office (ECO)

505.670.1638

New Mexico State Land Office

1300 W. Broadway Avenue, Suite A

Bloomfield, NM 87413

tknight@slo.state.nm.us

nmstatelands.org

.....

CONFIDENTIALITY NOTICE - This e-mail transmission, including all documents, files, or previous e-mail messages attached hereto, may contain confidential and/or legally privileged information. If you are not the intended recipient, or a person responsible for delivering it to the intended recipient, you are hereby notified that you must not read this transmission and that any disclosure, copying, printing, distribution, or use of any of the information contained in and/or attached to this transmission is **STRICTLY PROHIBITED**. If you have received this transmission in error, please immediately notify the sender and delete the original transmission and its attachments without reading or saving in any manner. Thank you.

From: Llull, Christian <Christian.Llull@tetrattech.com>

Sent: Thursday, August 3, 2023 1:04 PM

To: SLO Spills <spills@slo.state.nm.us>

Cc: Knight, Tami C. <tknight@slo.state.nm.us>; Abbott, Sam <Sam.Abbott@tetrattech.com>; Chavira, Lisbeth <LISBETH.CHAVIRA@tetrattech.com>

Subject: [EXTERNAL] REVISED (Remediation Plan) Cuatro Hijos Fee 4H PW Flowline (nAPP2312933596) 4-23-23

Tami:

Per request, attached is one pdf file Work Plan that includes the written narrative and associated attachments regarding planned remedial activities at the Cuatro Hijos Fee 4H PW Flowline Release, Incident ID nAPP2312933596.

Incident ID nAPP2312933596 Details:

- Release Location: 32.693649° -103.522686°
- Site is located in Lea County, NM.
- Landowner: NMSLO
 - Located within active lease VB12840001 (Concho Oil and Gas LLC/COG Operations LLC)
- According to the C-141, the release occurred on April 23, 2023.
 - The release consisted of 1.7824 bbls of produced water, of which none were recovered.
 - The release was caused by a hole in flowline due to corrosion.
 - SLO received a copy of the initial C-141.
- The release occurred in the pasture along a lease road.

[19.15.29.13](#) NMAC will be met and reclamation details are provided.

Please let me know at your earliest convenience if we are cleared to proceed.

If you have any questions, please let me know.

Thank you,

Christian

Christian Llull, P.G. | Program Manager

Mobile +1 (512) 565-0190 | christian.llull@tetrattech.com

Tetra Tech | *Leading with Science*® | OGA

8911 N. Capital of Texas Highway | Bldg. 2, Suite 2310 | Austin, TX 78759 | [tetrattech.com](https://www.tetrattech.com)

This message, including any attachments, may include privileged, confidential and/or inside information. Any distribution or use of this communication by anyone other than the intended recipient is strictly prohibited and may be unlawful. If you are not the intended recipient, please notify the sender by replying to this message and then delete it from your system.



Please consider the environment before printing. [Read more](#)



From: Knight, Tami C. <tknight@slo.state.nm.us>

Sent: Wednesday, August 2, 2023 4:58:54 PM

To: Chavira, Lisbeth <LISBETH.CHAVIRA@tetrattech.com>

Cc: Abbott, Sam <Sam.Abbott@tetrattech.com>; Llull, Christian <Christian.Llull@tetrattech.com>; SLO Surface ECO <SLOSurfaceECO@slo.state.nm.us>

Subject: RE: Cuatro Hijos Fee 4H PW Flowline Release - Incident ID: nAPP2312933596 - Not Approved

⚠ CAUTION: This email originated from an external sender. Verify the source before opening links or attachments. ⚠

Lisbeth

NMSLO-ECO has review the multiple documents submitted regarding the subject release. We are not able to approve the remediation plan at this time because it does not meet the requirements for a remediation plan, see attached document checklist. The remediation has impacted an undisturbed pasture; therefore, [19.15.29.13](#) NMAC must be met and reclamation details must be provided to NMSLO ECO before work can proceed.

Please revise the remediation plan to meet required documentation. Also, ECO encourages you and your client to refer to their NMSLO ROW lease contract for specific remediation and reclamation requirements, outside of NMOCD Rules.

For future submittals, ECO would appreciate one pdf file that includes the written narrative and associated attachments.

If you have questions please let us know.



Tami Knight, CHMM

*Environmental Specialist
SRD-Environmental
Compliance Office (ECO)*

505.670.1638

New Mexico State Land Office

1300 W. Broadway Avenue, Suite A

Bloomfield, NM 87413

tknight@slo.state.nm.us

nmstatelands.org

.....

CONFIDENTIALITY NOTICE - This e-mail transmission, including all documents, files, or previous e-mail messages attached hereto, may contain confidential and/or legally privileged information. If you are

not the intended recipient, or a person responsible for delivering it to the intended recipient, you are hereby notified that you must not read this transmission and that any disclosure, copying, printing, distribution, or use of any of the information contained in and/or attached to this transmission is STRICTLY PROHIBITED. If you have received this transmission in error, please immediately notify the sender and delete the original transmission and its attachments without reading or saving in any manner. Thank you.

From: Chavira, Lisbeth <LISBETH.CHAVIRA@tetrattech.com>
Sent: Tuesday, August 1, 2023 4:25 PM
To: Knight, Tami C. <tknight@slo.state.nm.us>
Cc: Abbott, Sam <Sam.Abbott@tetrattech.com>; Llull, Christian <Christian.Llull@tetrattech.com>
Subject: [EXTERNAL] Cuatro Hijos Fee 4H PW Flowline Release - Incident ID: nAPP2312933596

Tami,

Tetra Tech would like to provide notice of planned remedial activities at the Cuatro Hijos Fee 4H PW Flowline Release.

Below are site details associated with Incident ID nAPP2312933596:

Incident ID nAPP2312933596 Details:

- Release Location: 32.693649° -103.522686°
- Site is located in Lea County, NM.
- Landowner: NMSLO
 - Located within active lease VB12840001 (Concho Oil and Gas LLC/COG Operations LLC)
- According to the C-141, the release occurred on April 23, 2023.
 - The release consisted of 1.7824 bbls of produced water, of which none were recovered.
 - The release was caused by a hole in flowline due to corrosion.
 - SLO received a copy of the initial C-141.
- The release occurred in the pasture along a lease road.
- Tetra Tech contracted SWCA on behalf of ConocoPhillips to conduct an ARMS review, attached is the submitted ARMS Review Letter.
 - The remediation area is completely located on SLO-managed lands and is covered by two (2) qualifying surveys conducted within the last ten years (NMCRIS No. 135745 and 128888). All work will be done within the previously surveyed area, and therefore, SWCA did not recommend further survey at this location.
- On June 29, 2023, Tetra Tech assessed the site for horizontal and vertical delineation:
 - Two trenches to various depths to evaluate the vertical extent of the release.
 - Four hand auger borings were installed to 1 ft bgs to obtain horizontal delineation.
 - Figures and tables are included.

Incident ID nAPP2312933596 Site Characterization:

- A groundwater well was located within 800-meters of the site at a depth of 105 ft, this with low karst potential sets the RRALs at 20,000 mg/kg for chloride and 2,500 mg/kg for TPH.
- The Site is in an area of low karst potential.
- A site characterization was performed and no sinkholes, residences, schools, hospitals, institutions, churches, springs, private domestic water wells, playa lakes, stream bodies, wetlands, incorporated municipal boundaries, subsurface mines, or floodplains are located within the distances specified in 19.15.29 New Mexico Administrative Code (NMAC).

To be in accordance with [19.15.29.12](#) NMAC, Tetra Tech has requested an extension with NMOCD and received approval.

Planned remedial activities are slated to begin on August 7, 2023.

- The release area will be excavated to a depth of 4 ft bgs.
- Confirmation floor and sidewall samples will be collected to represent no more than 200 square feet.

Please let me know at your earliest convenience in we are cleared to proceed.

If you have any questions, please let me know.

Thank you,

Lisbeth Chavira | Staff Geoscientist

Direct Mobile **+1 (512) 596-8201** | Lisbeth.chavira@tetrattech.com

Tetra Tech | *Leading with Science®* | OGA

8911 N. Capital of Texas Highway | Bldg. 2, Suite 2310 | Austin, TX 78759 | tetrattech.com

This message, including any attachments, may include privileged, confidential and/or inside information. Any distribution or use of this communication by anyone other than the intended recipient is strictly prohibited and may be unlawful. If you are not the intended recipient, please notify the sender by replying to this message and then delete it from your system.



Please consider the environment before printing. [Read more](#)

Adobe Systems



Poole, Nicholas

From: Wells, Shelly, EMNRD <Shelly.Wells@emnrd.nm.gov>
Sent: Wednesday, August 9, 2023 3:11 PM
To: Poole, Nicholas
Cc: Bratcher, Michael, EMNRD; Velez, Nelson, EMNRD
Subject: RE: [EXTERNAL] Incident ID: nAPP2312933596,- Confirmation Sampling

You don't often get email from shelly.wells@emnrd.nm.gov. [Learn why this is important](#)

CAUTION: This email originated from an external sender. Verify the source before opening links or attachments.

Hi Nicholas,

The OCD has received your notification. Include a copy of this and all notifications in the remedial and/or closure reports to ensure the notifications are documented in the project file.

Thank you,

Shelly

Shelly Wells * Environmental Specialist-Advanced
Environmental Bureau
EMNRD-Oil Conservation Division
1220 S. St. Francis Drive|Santa Fe, NM 87505
(505)469-7520 | Shelly.Wells@emnrd.nm.gov
<http://www.emnrd.state.nm.us/OCD/>

From: Poole, Nicholas <NICHOLAS.POOLE@tetrattech.com>
Sent: Wednesday, August 9, 2023 1:12 PM
To: Enviro, OCD, EMNRD <OCD.Enviro@emnrd.nm.gov>
Cc: Abbott, Sam <Sam.Abbott@tetrattech.com>; Chavira, Lisbeth <LISBETH.CHAVIRA@tetrattech.com>
Subject: [EXTERNAL] Incident ID: nAPP2312933596,- Confirmation Sampling

CAUTION: This email originated outside of our organization. Exercise caution prior to clicking on links or opening attachments.

Incident ID (n#) **nAPP2312933596** (Cuatro Hijos Fee 4H)

To whom it may concern,

In accordance with Subsection D of 19.15.29.12 NMAC, the responsible party must verbally notify the appropriate division district office prior to conducting confirmation sampling.

Remediation activities of the release will begin Monday, August 14, 2023.

Thus, on behalf of ConocoPhillips for the above referenced incident, Tetra Tech is duly providing this communication which serves as notification that final confirmation sampling will be conducted at this site **Monday, August 14, 2023.**

NOTE: If you have any questions regarding this sampling schedule, please contact me.

Nicholas Poole | Staff Geoscientist
Mobile +1 (512) 560-9064 | nicholas.poole@tetrattech.com

Tetra Tech | *Leading with Science*® | OGA
8911 N. Capital of Texas Highway | Bldg. 2, Suite 2310 | Austin, TX 78759 | tetrattech.com

This message, including any attachments, may include privileged, confidential and/or inside information. Any distribution or use of this communication by anyone other than the intended recipient is strictly prohibited and may be unlawful. If you are not the intended recipient, please notify the sender by replying to this message and then delete it from your system.



Please consider the environment before printing. [Read more](#)



TETRA TECH

APPENDIX C

Site Characterization Data

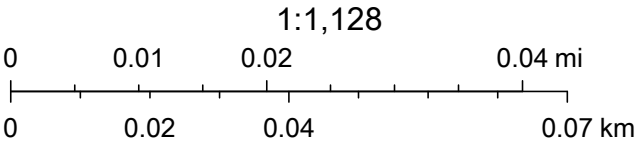
OCD - Karst Potential Map



6/12/2023, 9:53:34 AM

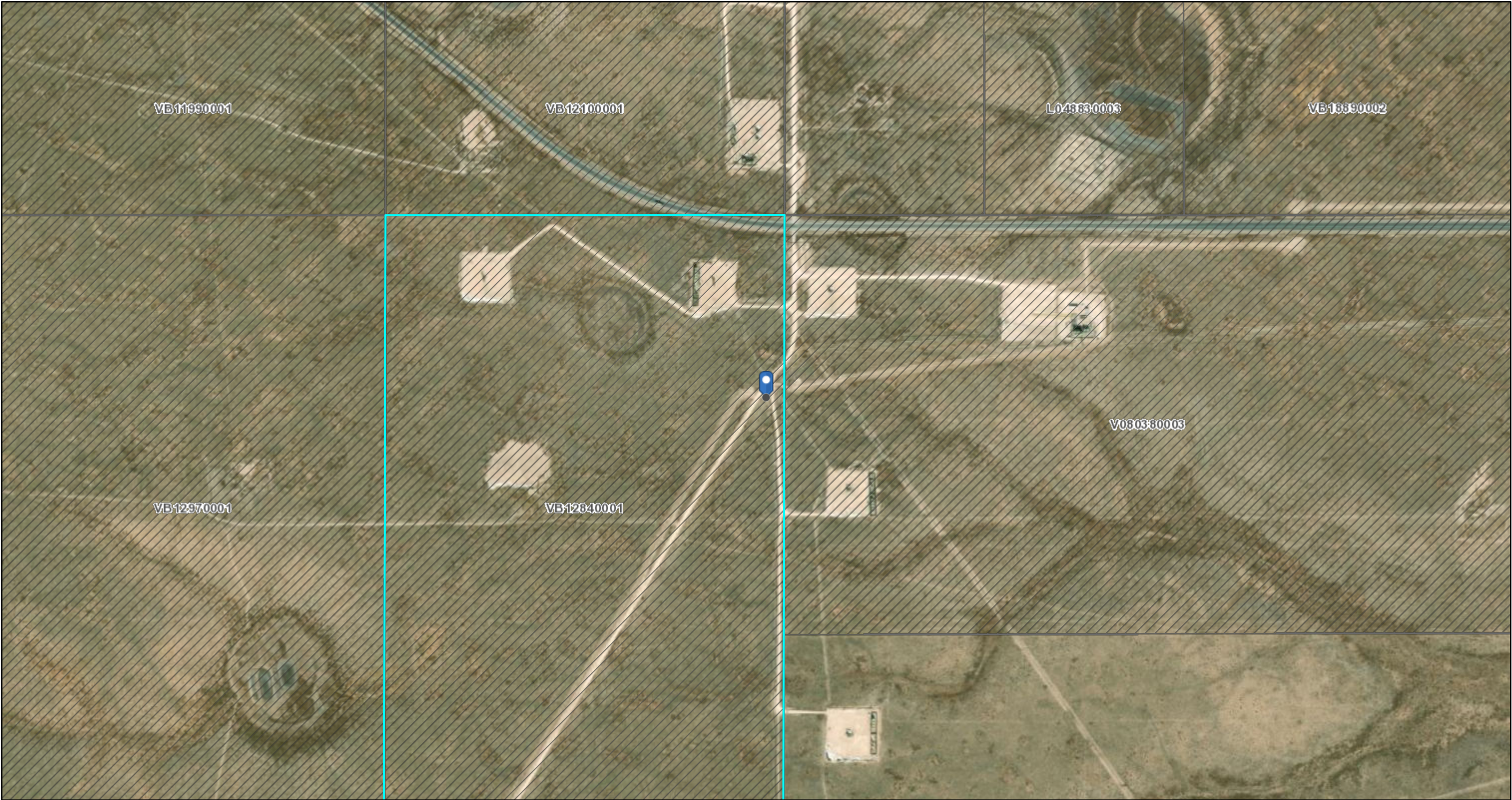
Karst Occurrence Potential

Low





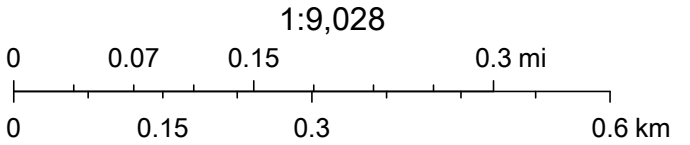
BLM, OCD, New Mexico Tech, Maxar, Microsoft, Esri, HERE, Garmin, iPC

OCD - NM SLO Oil and Gas Leases



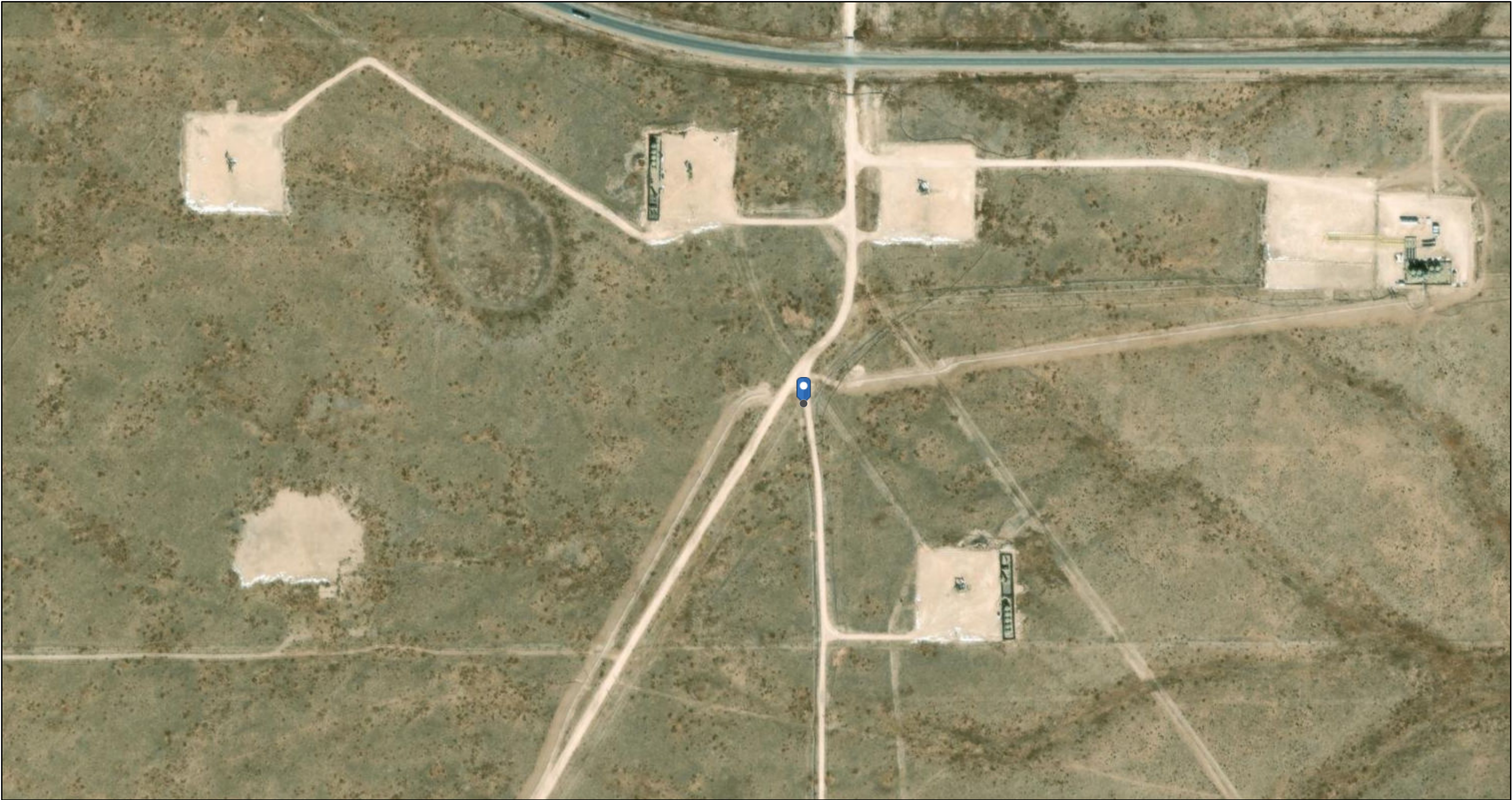
6/12/2023, 9:57:17 AM

-  Oil and Gas Leasing Restrictions
-  Oil and Gas Leases

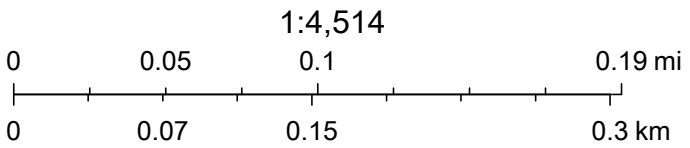


Esri, HERE, Garmin, iPC, Maxar

OCD Waterbodies



8/1/2023, 3:56:07 PM



Esri, HERE, Garmin, IPC, Maxar, NM OSE



New Mexico Office of the State Engineer

Water Column/Average Depth to Water

(A CLW##### in the POD suffix indicates the POD has been replaced & no longer serves a water right file.)

(R=POD has been replaced,
O=orphaned,
C=the file is closed)

(quarters are 1=NW 2=NE 3=SW 4=SE)

(quarters are smallest to largest)

(NAD83 UTM in meters)

(In feet)

POD Number	POD Sub-Code	basin	County	Q 64	Q 16	Q 4	Sec	Tws	Rng	X	Y	Distance	Depth Well	Depth Water	Water Column
L 11934 POD1	L	LE		3	3	4	35	18S	34E	637806	3618744*	817	160	105	55

Average Depth to Water: **105 feet**

Minimum Depth: **105 feet**

Maximum Depth: **105 feet**

Record Count: 1

UTM NAD83 Radius Search (in meters):

Easting (X): 638485.91

Northing (Y): 3618290.16

Radius: 850

*UTM location was derived from PLSS - see Help

The data is furnished by the NMOSE/ISC and is accepted by the recipient with the expressed understanding that the OSE/ISC make no warranties, expressed or implied, concerning the accuracy, completeness, reliability, usability, or suitability for any particular purpose of the data.

6/13/23 7:57 AM

Page 1 of 1

WATER COLUMN/ AVERAGE
DEPTH TO WATER

APPENDIX D

Laboratory Analytical Data



PHONE (575) 393-2326 ° 101 E. MARLAND ° HOBBS, NM 88240

July 03, 2023

SAM ABBOTT

TETRA TECH

901 WEST WALL STREET , STE 100

MIDLAND, TX 79701

RE: CUATRO HIJOS FEE 4H FLOWLINE RELEASE

Enclosed are the results of analyses for samples received by the laboratory on 06/29/23 11:45.

Cardinal Laboratories is accredited through Texas NELAP under certificate number T104704398-22-15. Accreditation applies to drinking water, non-potable water and solid and chemical materials. All accredited analytes are denoted by an asterisk (*). For a complete list of accredited analytes and matrices visit the TCEQ website at www.tceq.texas.gov/field/qa/lab_accred_certif.html.

Cardinal Laboratories is accredited through the State of Colorado Department of Public Health and Environment for:

Method EPA 552.2	Haloacetic Acids (HAA-5)
Method EPA 524.2	Total Trihalomethanes (TTHM)
Method EPA 524.4	Regulated VOCs (V1, V2, V3)

Accreditation applies to public drinking water matrices.

This report meets NELAP requirements and is made up of a cover page, analytical results, and a copy of the original chain-of-custody. If you have any questions concerning this report, please feel free to contact me.

Sincerely,

A handwritten signature in black ink that reads "Celey D. Keene". The signature is written in a cursive, flowing style.

Celey D. Keene

Lab Director/Quality Manager



PHONE (575) 393-2326 ° 101 E. MARLAND ° HOBBS, NM 88240

Analytical Results For:

TETRA TECH
 SAM ABBOTT
 901 WEST WALL STREET , STE 100
 MIDLAND TX, 79701
 Fax To: (432) 682-3946

Received:	06/29/2023	Sampling Date:	06/29/2023
Reported:	07/03/2023	Sampling Type:	Soil
Project Name:	CUATRO HIJOS FEE 4H FLOWLINE RELE	Sampling Condition:	Cool & Intact
Project Number:	212C-MD-03154	Sample Received By:	Tamara Oldaker
Project Location:	COP - LEA COUNTY		

Sample ID: AH - 1 (0-1') (H233363-01)

BTX 8021B		mg/kg		Analyzed By: MS					
Analyte	Result	Reporting Limit	Analyzed	Method Blank	BS	% Recovery	True Value QC	RPD	Qualifier
Benzene*	<0.050	0.050	06/29/2023	ND	2.22	111	2.00	2.80	
Toluene*	<0.050	0.050	06/29/2023	ND	2.20	110	2.00	2.35	
Ethylbenzene*	<0.050	0.050	06/29/2023	ND	2.14	107	2.00	2.37	
Total Xylenes*	<0.150	0.150	06/29/2023	ND	6.59	110	6.00	3.28	
Total BTX	<0.300	0.300	06/29/2023	ND					

Surrogate: 4-Bromofluorobenzene (PID) 108 % 71.5-134

Chloride, SM4500Cl-B		mg/kg		Analyzed By: AC						
Analyte	Result	Reporting Limit	Analyzed	Method Blank	BS	% Recovery	True Value QC	RPD	Qualifier	
Chloride	32.0	16.0	06/30/2023	ND	448	112	400	0.00		

TPH 8015M		mg/kg		Analyzed By: MS					
Analyte	Result	Reporting Limit	Analyzed	Method Blank	BS	% Recovery	True Value QC	RPD	Qualifier
GRO C6-C10*	<10.0	10.0	06/29/2023	ND	169	84.4	200	1.92	
DRO >C10-C28*	<10.0	10.0	06/29/2023	ND	156	78.1	200	0.512	
EXT DRO >C28-C36	20.0	10.0	06/29/2023	ND					

Surrogate: 1-Chlorooctane 91.3 % 48.2-134

Surrogate: 1-Chlorooctadecane 102 % 49.1-148

Cardinal Laboratories

*=Accredited Analyte

PLEASE NOTE: Liability and Damages. Cardinal's liability and client's exclusive remedy for any claim arising, whether based in contract or tort, shall be limited to the amount paid by client for analyses. All claims, including those for negligence and any other cause whatsoever shall be deemed waived unless made in writing and received by Cardinal within thirty (30) days after completion of the applicable service. In no event shall Cardinal be liable for incidental or consequential damages, including, without limitation, business interruptions, loss of use, or loss of profits incurred by client, its subsidiaries, affiliates or successors arising out of or related to the performance of the services hereunder by Cardinal, regardless of whether such claim is based upon any of the above stated reasons or otherwise. Results relate only to the samples identified above. This report shall not be reproduced except in full with written approval of Cardinal Laboratories.

Celey D. Keene, Lab Director/Quality Manager



PHONE (575) 393-2326 ° 101 E. MARLAND ° HOBBS, NM 88240

Analytical Results For:

TETRA TECH
 SAM ABBOTT
 901 WEST WALL STREET , STE 100
 MIDLAND TX, 79701
 Fax To: (432) 682-3946

Received:	06/29/2023	Sampling Date:	06/29/2023
Reported:	07/03/2023	Sampling Type:	Soil
Project Name:	CUATRO HIJOS FEE 4H FLOWLINE RELE	Sampling Condition:	Cool & Intact
Project Number:	212C-MD-03154	Sample Received By:	Tamara Oldaker
Project Location:	COP - LEA COUNTY		

Sample ID: AH - 2 (0-1') (H233363-02)

BTEx 8021B		mg/kg		Analyzed By: MS						
Analyte	Result	Reporting Limit	Analyzed	Method Blank	BS	% Recovery	True Value QC	RPD	Qualifier	
Benzene*	<0.050	0.050	07/03/2023	ND	2.22	111	2.00	2.80		
Toluene*	<0.050	0.050	07/03/2023	ND	2.20	110	2.00	2.35		
Ethylbenzene*	<0.050	0.050	07/03/2023	ND	2.14	107	2.00	2.37		
Total Xylenes*	<0.150	0.150	07/03/2023	ND	6.59	110	6.00	3.28		
Total BTEx	<0.300	0.300	07/03/2023	ND						

Surrogate: 4-Bromofluorobenzene (PID) 107 % 71.5-134

Chloride, SM4500CI-B		mg/kg		Analyzed By: AC					
Analyte	Result	Reporting Limit	Analyzed	Method Blank	BS	% Recovery	True Value QC	RPD	Qualifier
Chloride	32.0	16.0	06/30/2023	ND	448	112	400	0.00	

TPH 8015M		mg/kg		Analyzed By: MS					
Analyte	Result	Reporting Limit	Analyzed	Method Blank	BS	% Recovery	True Value QC	RPD	Qualifier
GRO C6-C10*	<10.0	10.0	06/29/2023	ND	169	84.4	200	1.92	
DRO >C10-C28*	<10.0	10.0	06/29/2023	ND	156	78.1	200	0.512	
EXT DRO >C28-C36	15.4	10.0	06/29/2023	ND					

Surrogate: 1-Chlorooctane 91.0 % 48.2-134

Surrogate: 1-Chlorooctadecane 99.6 % 49.1-148

Cardinal Laboratories

*=Accredited Analyte

PLEASE NOTE: Liability and Damages. Cardinal's liability and client's exclusive remedy for any claim arising, whether based in contract or tort, shall be limited to the amount paid by client for analyses. All claims, including those for negligence and any other cause whatsoever shall be deemed waived unless made in writing and received by Cardinal within thirty (30) days after completion of the applicable service. In no event shall Cardinal be liable for incidental or consequential damages, including, without limitation, business interruptions, loss of use, or loss of profits incurred by client, its subsidiaries, affiliates or successors arising out of or related to the performance of the services hereunder by Cardinal, regardless of whether such claim is based upon any of the above stated reasons or otherwise. Results relate only to the samples identified above. This report shall not be reproduced except in full with written approval of Cardinal Laboratories.

Celey D. Keene, Lab Director/Quality Manager



PHONE (575) 393-2326 ° 101 E. MARLAND ° HOBBS, NM 88240

Analytical Results For:

TETRA TECH
 SAM ABBOTT
 901 WEST WALL STREET , STE 100
 MIDLAND TX, 79701
 Fax To: (432) 682-3946

Received:	06/29/2023	Sampling Date:	06/29/2023
Reported:	07/03/2023	Sampling Type:	Soil
Project Name:	CUATRO HIJOS FEE 4H FLOWLINE RELE	Sampling Condition:	Cool & Intact
Project Number:	212C-MD-03154	Sample Received By:	Tamara Oldaker
Project Location:	COP - LEA COUNTY		

Sample ID: AH - 3 (0-1') (H233363-03)

BTEx 8021B		mg/kg		Analyzed By: MS						
Analyte	Result	Reporting Limit	Analyzed	Method Blank	BS	% Recovery	True Value QC	RPD	Qualifier	
Benzene*	<0.050	0.050	06/30/2023	ND	2.22	111	2.00	2.80		
Toluene*	<0.050	0.050	06/30/2023	ND	2.20	110	2.00	2.35		
Ethylbenzene*	<0.050	0.050	06/30/2023	ND	2.14	107	2.00	2.37		
Total Xylenes*	<0.150	0.150	06/30/2023	ND	6.59	110	6.00	3.28		
Total BTEx	<0.300	0.300	06/30/2023	ND						

Surrogate: 4-Bromofluorobenzene (PID) 108 % 71.5-134

Chloride, SM4500Cl-B		mg/kg		Analyzed By: AC						
Analyte	Result	Reporting Limit	Analyzed	Method Blank	BS	% Recovery	True Value QC	RPD	Qualifier	
Chloride	32.0	16.0	06/30/2023	ND	448	112	400	0.00		

TPH 8015M		mg/kg		Analyzed By: MS					
Analyte	Result	Reporting Limit	Analyzed	Method Blank	BS	% Recovery	True Value QC	RPD	Qualifier
GRO C6-C10*	<10.0	10.0	06/29/2023	ND	169	84.4	200	1.92	
DRO >C10-C28*	<10.0	10.0	06/29/2023	ND	156	78.1	200	0.512	
EXT DRO >C28-C36	<10.0	10.0	06/29/2023	ND					

Surrogate: 1-Chlorooctane 87.3 % 48.2-134

Surrogate: 1-Chlorooctadecane 93.9 % 49.1-148

Cardinal Laboratories

*=Accredited Analyte

PLEASE NOTE: Liability and Damages. Cardinal's liability and client's exclusive remedy for any claim arising, whether based in contract or tort, shall be limited to the amount paid by client for analyses. All claims, including those for negligence and any other cause whatsoever shall be deemed waived unless made in writing and received by Cardinal within thirty (30) days after completion of the applicable service. In no event shall Cardinal be liable for incidental or consequential damages, including, without limitation, business interruptions, loss of use, or loss of profits incurred by client, its subsidiaries, affiliates or successors arising out of or related to the performance of the services hereunder by Cardinal, regardless of whether such claim is based upon any of the above stated reasons or otherwise. Results relate only to the samples identified above. This report shall not be reproduced except in full with written approval of Cardinal Laboratories.

Celey D. Keene, Lab Director/Quality Manager



PHONE (575) 393-2326 ° 101 E. MARLAND ° HOBBS, NM 88240

Analytical Results For:

TETRA TECH
 SAM ABBOTT
 901 WEST WALL STREET , STE 100
 MIDLAND TX, 79701
 Fax To: (432) 682-3946

Received:	06/29/2023	Sampling Date:	06/29/2023
Reported:	07/03/2023	Sampling Type:	Soil
Project Name:	CUATRO HIJOS FEE 4H FLOWLINE RELE	Sampling Condition:	Cool & Intact
Project Number:	212C-MD-03154	Sample Received By:	Tamara Oldaker
Project Location:	COP - LEA COUNTY		

Sample ID: AH - 4 (0-1') (H233363-04)

BTX 8021B		mg/kg		Analyzed By: MS						
Analyte	Result	Reporting Limit	Analyzed	Method Blank	BS	% Recovery	True Value QC	RPD	Qualifier	
Benzene*	<0.050	0.050	06/30/2023	ND	2.22	111	2.00	2.80		
Toluene*	<0.050	0.050	06/30/2023	ND	2.20	110	2.00	2.35		
Ethylbenzene*	<0.050	0.050	06/30/2023	ND	2.14	107	2.00	2.37		
Total Xylenes*	<0.150	0.150	06/30/2023	ND	6.59	110	6.00	3.28		
Total BTX	<0.300	0.300	06/30/2023	ND						

Surrogate: 4-Bromofluorobenzene (PID) 105 % 71.5-134

Chloride, SM4500CI-B		mg/kg		Analyzed By: AC						
Analyte	Result	Reporting Limit	Analyzed	Method Blank	BS	% Recovery	True Value QC	RPD	Qualifier	
Chloride	16.0	16.0	06/30/2023	ND	448	112	400	0.00		

TPH 8015M		mg/kg		Analyzed By: MS					
Analyte	Result	Reporting Limit	Analyzed	Method Blank	BS	% Recovery	True Value QC	RPD	Qualifier
GRO C6-C10*	<10.0	10.0	06/29/2023	ND	169	84.4	200	1.92	
DRO >C10-C28*	<10.0	10.0	06/29/2023	ND	156	78.1	200	0.512	
EXT DRO >C28-C36	<10.0	10.0	06/29/2023	ND					

Surrogate: 1-Chlorooctane 89.2 % 48.2-134

Surrogate: 1-Chlorooctadecane 95.6 % 49.1-148

Cardinal Laboratories

*=Accredited Analyte

PLEASE NOTE: Liability and Damages. Cardinal's liability and client's exclusive remedy for any claim arising, whether based in contract or tort, shall be limited to the amount paid by client for analyses. All claims, including those for negligence and any other cause whatsoever shall be deemed waived unless made in writing and received by Cardinal within thirty (30) days after completion of the applicable service. In no event shall Cardinal be liable for incidental or consequential damages, including, without limitation, business interruptions, loss of use, or loss of profits incurred by client, its subsidiaries, affiliates or successors arising out of or related to the performance of the services hereunder by Cardinal, regardless of whether such claim is based upon any of the above stated reasons or otherwise. Results relate only to the samples identified above. This report shall not be reproduced except in full with written approval of Cardinal Laboratories.

Celey D. Keene, Lab Director/Quality Manager



PHONE (575) 393-2326 ° 101 E. MARLAND ° HOBBS, NM 88240

Analytical Results For:

TETRA TECH
 SAM ABBOTT
 901 WEST WALL STREET , STE 100
 MIDLAND TX, 79701
 Fax To: (432) 682-3946

Received:	06/29/2023	Sampling Date:	06/29/2023
Reported:	07/03/2023	Sampling Type:	Soil
Project Name:	CUATRO HIJOS FEE 4H FLOWLINE RELE	Sampling Condition:	Cool & Intact
Project Number:	212C-MD-03154	Sample Received By:	Tamara Oldaker
Project Location:	COP - LEA COUNTY		

Sample ID: T - 1 (0-1') (H233363-05)

BTEx 8021B		mg/kg		Analyzed By: MS						
Analyte	Result	Reporting Limit	Analyzed	Method Blank	BS	% Recovery	True Value QC	RPD	Qualifier	
Benzene*	<0.050	0.050	06/30/2023	ND	2.22	111	2.00	2.80		
Toluene*	<0.050	0.050	06/30/2023	ND	2.20	110	2.00	2.35		
Ethylbenzene*	<0.050	0.050	06/30/2023	ND	2.14	107	2.00	2.37		
Total Xylenes*	<0.150	0.150	06/30/2023	ND	6.59	110	6.00	3.28		
Total BTEx	<0.300	0.300	06/30/2023	ND						

Surrogate: 4-Bromofluorobenzene (PID) 107 % 71.5-134

Chloride, SM4500CI-B		mg/kg		Analyzed By: AC						
Analyte	Result	Reporting Limit	Analyzed	Method Blank	BS	% Recovery	True Value QC	RPD	Qualifier	
Chloride	16100	16.0	06/30/2023	ND	448	112	400	0.00		

TPH 8015M		mg/kg		Analyzed By: MS					
Analyte	Result	Reporting Limit	Analyzed	Method Blank	BS	% Recovery	True Value QC	RPD	Qualifier
GRO C6-C10*	<10.0	10.0	06/29/2023	ND	169	84.4	200	1.92	
DRO >C10-C28*	<10.0	10.0	06/29/2023	ND	156	78.1	200	0.512	
EXT DRO >C28-C36	<10.0	10.0	06/29/2023	ND					

Surrogate: 1-Chlorooctane 103 % 48.2-134

Surrogate: 1-Chlorooctadecane 112 % 49.1-148

Cardinal Laboratories

*=Accredited Analyte

PLEASE NOTE: Liability and Damages. Cardinal's liability and client's exclusive remedy for any claim arising, whether based in contract or tort, shall be limited to the amount paid by client for analyses. All claims, including those for negligence and any other cause whatsoever shall be deemed waived unless made in writing and received by Cardinal within thirty (30) days after completion of the applicable service. In no event shall Cardinal be liable for incidental or consequential damages, including, without limitation, business interruptions, loss of use, or loss of profits incurred by client, its subsidiaries, affiliates or successors arising out of or related to the performance of the services hereunder by Cardinal, regardless of whether such claim is based upon any of the above stated reasons or otherwise. Results relate only to the samples identified above. This report shall not be reproduced except in full with written approval of Cardinal Laboratories.

Celey D. Keene, Lab Director/Quality Manager



PHONE (575) 393-2326 ° 101 E. MARLAND ° HOBBS, NM 88240

Analytical Results For:

TETRA TECH
 SAM ABBOTT
 901 WEST WALL STREET , STE 100
 MIDLAND TX, 79701
 Fax To: (432) 682-3946

Received:	06/29/2023	Sampling Date:	06/29/2023
Reported:	07/03/2023	Sampling Type:	Soil
Project Name:	CUATRO HIJOS FEE 4H FLOWLINE RELE	Sampling Condition:	Cool & Intact
Project Number:	212C-MD-03154	Sample Received By:	Tamara Oldaker
Project Location:	COP - LEA COUNTY		

Sample ID: T - 1 (2'-3') (H233363-06)

BTEx 8021B		mg/kg		Analyzed By: MS						
Analyte	Result	Reporting Limit	Analyzed	Method Blank	BS	% Recovery	True Value QC	RPD	Qualifier	
Benzene*	<0.050	0.050	06/30/2023	ND	2.22	111	2.00	2.80		
Toluene*	<0.050	0.050	06/30/2023	ND	2.20	110	2.00	2.35		
Ethylbenzene*	<0.050	0.050	06/30/2023	ND	2.14	107	2.00	2.37		
Total Xylenes*	<0.150	0.150	06/30/2023	ND	6.59	110	6.00	3.28		
Total BTEx	<0.300	0.300	06/30/2023	ND						

Surrogate: 4-Bromofluorobenzene (PID) 109 % 71.5-134

Chloride, SM4500Cl-B		mg/kg		Analyzed By: AC						
Analyte	Result	Reporting Limit	Analyzed	Method Blank	BS	% Recovery	True Value QC	RPD	Qualifier	
Chloride	5730	16.0	06/30/2023	ND	448	112	400	0.00		

TPH 8015M		mg/kg		Analyzed By: MS					
Analyte	Result	Reporting Limit	Analyzed	Method Blank	BS	% Recovery	True Value QC	RPD	Qualifier
GRO C6-C10*	<10.0	10.0	06/29/2023	ND	169	84.4	200	1.92	
DRO >C10-C28*	<10.0	10.0	06/29/2023	ND	156	78.1	200	0.512	
EXT DRO >C28-C36	<10.0	10.0	06/29/2023	ND					

Surrogate: 1-Chlorooctane 96.9 % 48.2-134

Surrogate: 1-Chlorooctadecane 105 % 49.1-148

Cardinal Laboratories

*=Accredited Analyte

PLEASE NOTE: Liability and Damages. Cardinal's liability and client's exclusive remedy for any claim arising, whether based in contract or tort, shall be limited to the amount paid by client for analyses. All claims, including those for negligence and any other cause whatsoever shall be deemed waived unless made in writing and received by Cardinal within thirty (30) days after completion of the applicable service. In no event shall Cardinal be liable for incidental or consequential damages, including, without limitation, business interruptions, loss of use, or loss of profits incurred by client, its subsidiaries, affiliates or successors arising out of or related to the performance of the services hereunder by Cardinal, regardless of whether such claim is based upon any of the above stated reasons or otherwise. Results relate only to the samples identified above. This report shall not be reproduced except in full with written approval of Cardinal Laboratories.

Celey D. Keene, Lab Director/Quality Manager



PHONE (575) 393-2326 ° 101 E. MARLAND ° HOBBS, NM 88240

Analytical Results For:

TETRA TECH
 SAM ABBOTT
 901 WEST WALL STREET , STE 100
 MIDLAND TX, 79701
 Fax To: (432) 682-3946

Received:	06/29/2023	Sampling Date:	06/29/2023
Reported:	07/03/2023	Sampling Type:	Soil
Project Name:	CUATRO HIJOS FEE 4H FLOWLINE RELE	Sampling Condition:	Cool & Intact
Project Number:	212C-MD-03154	Sample Received By:	Tamara Oldaker
Project Location:	COP - LEA COUNTY		

Sample ID: T - 1 (3'-4') (H233363-07)

BTEX 8021B		mg/kg		Analyzed By: MS						
Analyte	Result	Reporting Limit	Analyzed	Method Blank	BS	% Recovery	True Value QC	RPD	Qualifier	
Benzene*	<0.050	0.050	06/30/2023	ND	2.22	111	2.00	2.80		
Toluene*	<0.050	0.050	06/30/2023	ND	2.20	110	2.00	2.35		
Ethylbenzene*	<0.050	0.050	06/30/2023	ND	2.14	107	2.00	2.37		
Total Xylenes*	<0.150	0.150	06/30/2023	ND	6.59	110	6.00	3.28		
Total BTEX	<0.300	0.300	06/30/2023	ND						

Surrogate: 4-Bromofluorobenzene (PID) 108 % 71.5-134

Chloride, SM4500Cl-B		mg/kg		Analyzed By: AC						
Analyte	Result	Reporting Limit	Analyzed	Method Blank	BS	% Recovery	True Value QC	RPD	Qualifier	
Chloride	1280	16.0	06/30/2023	ND	448	112	400	0.00		

TPH 8015M		mg/kg		Analyzed By: MS					
Analyte	Result	Reporting Limit	Analyzed	Method Blank	BS	% Recovery	True Value QC	RPD	Qualifier
GRO C6-C10*	<10.0	10.0	06/29/2023	ND	169	84.4	200	1.92	
DRO >C10-C28*	<10.0	10.0	06/29/2023	ND	156	78.1	200	0.512	
EXT DRO >C28-C36	<10.0	10.0	06/29/2023	ND					

Surrogate: 1-Chlorooctane 94.1 % 48.2-134

Surrogate: 1-Chlorooctadecane 102 % 49.1-148

Cardinal Laboratories

*=Accredited Analyte

PLEASE NOTE: Liability and Damages. Cardinal's liability and client's exclusive remedy for any claim arising, whether based in contract or tort, shall be limited to the amount paid by client for analyses. All claims, including those for negligence and any other cause whatsoever shall be deemed waived unless made in writing and received by Cardinal within thirty (30) days after completion of the applicable service. In no event shall Cardinal be liable for incidental or consequential damages, including, without limitation, business interruptions, loss of use, or loss of profits incurred by client, its subsidiaries, affiliates or successors arising out of or related to the performance of the services hereunder by Cardinal, regardless of whether such claim is based upon any of the above stated reasons or otherwise. Results relate only to the samples identified above. This report shall not be reproduced except in full with written approval of Cardinal Laboratories.

Celey D. Keene, Lab Director/Quality Manager



PHONE (575) 393-2326 ° 101 E. MARLAND ° HOBBS, NM 88240

Analytical Results For:

TETRA TECH
 SAM ABBOTT
 901 WEST WALL STREET , STE 100
 MIDLAND TX, 79701
 Fax To: (432) 682-3946

Received:	06/29/2023	Sampling Date:	06/29/2023
Reported:	07/03/2023	Sampling Type:	Soil
Project Name:	CUATRO HIJOS FEE 4H FLOWLINE RELE	Sampling Condition:	Cool & Intact
Project Number:	212C-MD-03154	Sample Received By:	Tamara Oldaker
Project Location:	COP - LEA COUNTY		

Sample ID: T - 1 (4'-5') (H233363-08)

BTEx 8021B		mg/kg		Analyzed By: MS						
Analyte	Result	Reporting Limit	Analyzed	Method Blank	BS	% Recovery	True Value QC	RPD	Qualifier	
Benzene*	<0.050	0.050	06/30/2023	ND	2.05	102	2.00	1.84		
Toluene*	<0.050	0.050	06/30/2023	ND	2.03	102	2.00	2.13		
Ethylbenzene*	<0.050	0.050	06/30/2023	ND	2.00	100	2.00	1.32		
Total Xylenes*	<0.150	0.150	06/30/2023	ND	6.10	102	6.00	1.86		
Total BTEX	<0.300	0.300	06/30/2023	ND						

Surrogate: 4-Bromofluorobenzene (PID) 104 % 71.5-134

Chloride, SM4500Cl-B		mg/kg		Analyzed By: AC						
Analyte	Result	Reporting Limit	Analyzed	Method Blank	BS	% Recovery	True Value QC	RPD	Qualifier	
Chloride	1360	16.0	06/30/2023	ND	448	112	400	0.00		

TPH 8015M		mg/kg		Analyzed By: MS					
Analyte	Result	Reporting Limit	Analyzed	Method Blank	BS	% Recovery	True Value QC	RPD	Qualifier
GRO C6-C10*	<10.0	10.0	06/30/2023	ND	169	84.4	200	1.92	
DRO >C10-C28*	<10.0	10.0	06/30/2023	ND	156	78.1	200	0.512	
EXT DRO >C28-C36	<10.0	10.0	06/30/2023	ND					

Surrogate: 1-Chlorooctane 96.3 % 48.2-134

Surrogate: 1-Chlorooctadecane 103 % 49.1-148

Cardinal Laboratories

*=Accredited Analyte

PLEASE NOTE: Liability and Damages. Cardinal's liability and client's exclusive remedy for any claim arising, whether based in contract or tort, shall be limited to the amount paid by client for analyses. All claims, including those for negligence and any other cause whatsoever shall be deemed waived unless made in writing and received by Cardinal within thirty (30) days after completion of the applicable service. In no event shall Cardinal be liable for incidental or consequential damages, including, without limitation, business interruptions, loss of use, or loss of profits incurred by client, its subsidiaries, affiliates or successors arising out of or related to the performance of the services hereunder by Cardinal, regardless of whether such claim is based upon any of the above stated reasons or otherwise. Results relate only to the samples identified above. This report shall not be reproduced except in full with written approval of Cardinal Laboratories.

Celey D. Keene, Lab Director/Quality Manager



PHONE (575) 393-2326 ° 101 E. MARLAND ° HOBBS, NM 88240

Analytical Results For:

TETRA TECH
 SAM ABBOTT
 901 WEST WALL STREET , STE 100
 MIDLAND TX, 79701
 Fax To: (432) 682-3946

Received:	06/29/2023	Sampling Date:	06/29/2023
Reported:	07/03/2023	Sampling Type:	Soil
Project Name:	CUATRO HIJOS FEE 4H FLOWLINE RELE	Sampling Condition:	Cool & Intact
Project Number:	212C-MD-03154	Sample Received By:	Tamara Oldaker
Project Location:	COP - LEA COUNTY		

Sample ID: T - 1 (5'-6') (H233363-09)

BTEx 8021B		mg/kg		Analyzed By: MS						
Analyte	Result	Reporting Limit	Analyzed	Method Blank	BS	% Recovery	True Value QC	RPD	Qualifier	
Benzene*	<0.050	0.050	06/30/2023	ND	2.05	102	2.00	1.84		
Toluene*	<0.050	0.050	06/30/2023	ND	2.03	102	2.00	2.13		
Ethylbenzene*	<0.050	0.050	06/30/2023	ND	2.00	100	2.00	1.32		
Total Xylenes*	<0.150	0.150	06/30/2023	ND	6.10	102	6.00	1.86		
Total BTEX	<0.300	0.300	06/30/2023	ND						

Surrogate: 4-Bromofluorobenzene (PID) 102 % 71.5-134

Chloride, SM4500Cl-B		mg/kg		Analyzed By: AC						
Analyte	Result	Reporting Limit	Analyzed	Method Blank	BS	% Recovery	True Value QC	RPD	Qualifier	
Chloride	80.0	16.0	06/30/2023	ND	448	112	400	0.00		

TPH 8015M		mg/kg		Analyzed By: MS					
Analyte	Result	Reporting Limit	Analyzed	Method Blank	BS	% Recovery	True Value QC	RPD	Qualifier
GRO C6-C10*	<10.0	10.0	06/30/2023	ND	169	84.4	200	1.92	
DRO >C10-C28*	<10.0	10.0	06/30/2023	ND	156	78.1	200	0.512	
EXT DRO >C28-C36	<10.0	10.0	06/30/2023	ND					

Surrogate: 1-Chlorooctane 88.4 % 48.2-134

Surrogate: 1-Chlorooctadecane 95.5 % 49.1-148

Cardinal Laboratories

*=Accredited Analyte

PLEASE NOTE: Liability and Damages. Cardinal's liability and client's exclusive remedy for any claim arising, whether based in contract or tort, shall be limited to the amount paid by client for analyses. All claims, including those for negligence and any other cause whatsoever shall be deemed waived unless made in writing and received by Cardinal within thirty (30) days after completion of the applicable service. In no event shall Cardinal be liable for incidental or consequential damages, including, without limitation, business interruptions, loss of use, or loss of profits incurred by client, its subsidiaries, affiliates or successors arising out of or related to the performance of the services hereunder by Cardinal, regardless of whether such claim is based upon any of the above stated reasons or otherwise. Results relate only to the samples identified above. This report shall not be reproduced except in full with written approval of Cardinal Laboratories.

Celey D. Keene, Lab Director/Quality Manager



PHONE (575) 393-2326 ° 101 E. MARLAND ° HOBBS, NM 88240

Analytical Results For:

TETRA TECH
 SAM ABBOTT
 901 WEST WALL STREET , STE 100
 MIDLAND TX, 79701
 Fax To: (432) 682-3946

Received:	06/29/2023	Sampling Date:	06/29/2023
Reported:	07/03/2023	Sampling Type:	Soil
Project Name:	CUATRO HIJOS FEE 4H FLOWLINE RELE	Sampling Condition:	Cool & Intact
Project Number:	212C-MD-03154	Sample Received By:	Tamara Oldaker
Project Location:	COP - LEA COUNTY		

Sample ID: T - 2 (0-1') (H233363-10)

BTEx 8021B		mg/kg		Analyzed By: MS						
Analyte	Result	Reporting Limit	Analyzed	Method Blank	BS	% Recovery	True Value QC	RPD	Qualifier	
Benzene*	<0.050	0.050	06/30/2023	ND	2.05	102	2.00	1.84		
Toluene*	<0.050	0.050	06/30/2023	ND	2.03	102	2.00	2.13		
Ethylbenzene*	<0.050	0.050	06/30/2023	ND	2.00	100	2.00	1.32		
Total Xylenes*	<0.150	0.150	06/30/2023	ND	6.10	102	6.00	1.86		
Total BTEX	<0.300	0.300	06/30/2023	ND						

Surrogate: 4-Bromofluorobenzene (PID) 101 % 71.5-134

Chloride, SM4500Cl-B		mg/kg		Analyzed By: AC						
Analyte	Result	Reporting Limit	Analyzed	Method Blank	BS	% Recovery	True Value QC	RPD	Qualifier	
Chloride	12200	16.0	06/30/2023	ND	448	112	400	0.00		

TPH 8015M		mg/kg		Analyzed By: MS					
Analyte	Result	Reporting Limit	Analyzed	Method Blank	BS	% Recovery	True Value QC	RPD	Qualifier
GRO C6-C10*	<10.0	10.0	06/30/2023	ND	169	84.4	200	1.92	
DRO >C10-C28*	<10.0	10.0	06/30/2023	ND	156	78.1	200	0.512	
EXT DRO >C28-C36	<10.0	10.0	06/30/2023	ND					

Surrogate: 1-Chlorooctane 91.9 % 48.2-134

Surrogate: 1-Chlorooctadecane 98.1 % 49.1-148

Cardinal Laboratories

*=Accredited Analyte

PLEASE NOTE: Liability and Damages. Cardinal's liability and client's exclusive remedy for any claim arising, whether based in contract or tort, shall be limited to the amount paid by client for analyses. All claims, including those for negligence and any other cause whatsoever shall be deemed waived unless made in writing and received by Cardinal within thirty (30) days after completion of the applicable service. In no event shall Cardinal be liable for incidental or consequential damages, including, without limitation, business interruptions, loss of use, or loss of profits incurred by client, its subsidiaries, affiliates or successors arising out of or related to the performance of the services hereunder by Cardinal, regardless of whether such claim is based upon any of the above stated reasons or otherwise. Results relate only to the samples identified above. This report shall not be reproduced except in full with written approval of Cardinal Laboratories.

Celey D. Keene, Lab Director/Quality Manager



PHONE (575) 393-2326 ° 101 E. MARLAND ° HOBBS, NM 88240

Notes and Definitions

S-06	The recovery of this surrogate is outside control limits due to sample dilution required from high analyte concentration and/or matrix interference's.
QR-03	The RPD value for the sample duplicate or MS/MSD was outside of QC acceptance limits due to matrix interference. QC batch accepted based on LCS and/or LCSD recovery and/or RPD values.
QM-07	The spike recovery was outside acceptance limits for the MS and/or MSD. The batch was accepted based on acceptable LCS recovery.
ND	Analyte NOT DETECTED at or above the reporting limit
RPD	Relative Percent Difference
**	Samples not received at proper temperature of 6°C or below.
***	Insufficient time to reach temperature.
-	Chloride by SM4500Cl-B does not require samples be received at or below 6°C Samples reported on an as received basis (wet) unless otherwise noted on report

Cardinal Laboratories

*=Accredited Analyte

PLEASE NOTE: Liability and Damages. Cardinal's liability and client's exclusive remedy for any claim arising, whether based in contract or tort, shall be limited to the amount paid by client for analyses. All claims, including those for negligence and any other cause whatsoever shall be deemed waived unless made in writing and received by Cardinal within thirty (30) days after completion of the applicable service. In no event shall Cardinal be liable for incidental or consequential damages, including, without limitation, business interruptions, loss of use, or loss of profits incurred by client, its subsidiaries, affiliates or successors arising out of or related to the performance of the services hereunder by Cardinal, regardless of whether such claim is based upon any of the above stated reasons or otherwise. Results relate only to the samples identified above. This report shall not be reproduced except in full with written approval of Cardinal Laboratories.

A handwritten signature in black ink, appearing to read "Celey D. Keene".

Celey D. Keene, Lab Director/Quality Manager



PHONE (575) 393-2326 ° 101 E. MARLAND ° HOBBS, NM 88240

August 16, 2023

SAM ABBOTT

TETRA TECH

901 WEST WALL STREET , STE 100

MIDLAND, TX 79701

RE: CUATRO HIJOS FEE 4H FLOWLINE RELEASE

Enclosed are the results of analyses for samples received by the laboratory on 08/15/23 13:12.

Cardinal Laboratories is accredited through Texas NELAP under certificate number T104704398-22-15. Accreditation applies to drinking water, non-potable water and solid and chemical materials. All accredited analytes are denoted by an asterisk (*). For a complete list of accredited analytes and matrices visit the TCEQ website at www.tceq.texas.gov/field/qa/lab_accred_certif.html.

Cardinal Laboratories is accredited through the State of Colorado Department of Public Health and Environment for:

Method EPA 552.2	Haloacetic Acids (HAA-5)
Method EPA 524.2	Total Trihalomethanes (TTHM)
Method EPA 524.4	Regulated VOCs (V1, V2, V3)

Accreditation applies to public drinking water matrices.

This report meets NELAP requirements and is made up of a cover page, analytical results, and a copy of the original chain-of-custody. If you have any questions concerning this report, please feel free to contact me.

Sincerely,

A handwritten signature in black ink that reads "Celey D. Keene".

Celey D. Keene

Lab Director/Quality Manager



PHONE (575) 393-2326 ° 101 E. MARLAND ° HOBBS, NM 88240

Analytical Results For:

TETRA TECH
 SAM ABBOTT
 901 WEST WALL STREET , STE 100
 MIDLAND TX, 79701
 Fax To: (432) 682-3946

Received:	08/15/2023	Sampling Date:	08/15/2023
Reported:	08/16/2023	Sampling Type:	Soil
Project Name:	CUATRO HIJOS FEE 4H FLOWLINE RELE	Sampling Condition:	Cool & Intact
Project Number:	212C-MD-03154	Sample Received By:	Tamara Oldaker
Project Location:	COP - LEA COUNTY		

Sample ID: NSW - 1 (H234375-01)

BTX 8021B		mg/kg		Analyzed By: MS					
Analyte	Result	Reporting Limit	Analyzed	Method Blank	BS	% Recovery	True Value QC	RPD	Qualifier
Benzene*	<0.050	0.050	08/16/2023	ND	2.07	103	2.00	3.36	
Toluene*	<0.050	0.050	08/16/2023	ND	2.02	101	2.00	1.82	
Ethylbenzene*	<0.050	0.050	08/16/2023	ND	1.93	96.6	2.00	2.80	
Total Xylenes*	<0.150	0.150	08/16/2023	ND	5.84	97.3	6.00	3.74	
Total BTX	<0.300	0.300	08/16/2023	ND					

Surrogate: 4-Bromofluorobenzene (PID) 94.4 % 71.5-134

Chloride, SM4500Cl-B		mg/kg		Analyzed By: AC						
Analyte	Result	Reporting Limit	Analyzed	Method Blank	BS	% Recovery	True Value QC	RPD	Qualifier	
Chloride	32.0	16.0	08/16/2023	ND	416	104	400	0.00		

TPH 8015M		mg/kg		Analyzed By: MS					
Analyte	Result	Reporting Limit	Analyzed	Method Blank	BS	% Recovery	True Value QC	RPD	Qualifier
GRO C6-C10*	<10.0	10.0	08/16/2023	ND	182	91.2	200	4.80	
DRO >C10-C28*	<10.0	10.0	08/16/2023	ND	184	92.2	200	4.07	
EXT DRO >C28-C36	<10.0	10.0	08/16/2023	ND					

Surrogate: 1-Chlorooctane 83.5 % 48.2-134

Surrogate: 1-Chlorooctadecane 88.2 % 49.1-148

Cardinal Laboratories

*=Accredited Analyte

PLEASE NOTE: Liability and Damages. Cardinal's liability and client's exclusive remedy for any claim arising, whether based in contract or tort, shall be limited to the amount paid by client for analyses. All claims, including those for negligence and any other cause whatsoever shall be deemed waived unless made in writing and received by Cardinal within thirty (30) days after completion of the applicable service. In no event shall Cardinal be liable for incidental or consequential damages, including, without limitation, business interruptions, loss of use, or loss of profits incurred by client, its subsidiaries, affiliates or successors arising out of or related to the performance of the services hereunder by Cardinal, regardless of whether such claim is based upon any of the above stated reasons or otherwise. Results relate only to the samples identified above. This report shall not be reproduced except in full with written approval of Cardinal Laboratories.

Celey D. Keene, Lab Director/Quality Manager



PHONE (575) 393-2326 ° 101 E. MARLAND ° HOBBS, NM 88240

Analytical Results For:

TETRA TECH
 SAM ABBOTT
 901 WEST WALL STREET , STE 100
 MIDLAND TX, 79701
 Fax To: (432) 682-3946

Received:	08/15/2023	Sampling Date:	08/15/2023
Reported:	08/16/2023	Sampling Type:	Soil
Project Name:	CUATRO HIJOS FEE 4H FLOWLINE RELE	Sampling Condition:	Cool & Intact
Project Number:	212C-MD-03154	Sample Received By:	Tamara Oldaker
Project Location:	COP - LEA COUNTY		

Sample ID: SSW - 1 (H234375-02)

BTX 8021B		mg/kg		Analyzed By: MS					
Analyte	Result	Reporting Limit	Analyzed	Method Blank	BS	% Recovery	True Value QC	RPD	Qualifier
Benzene*	<0.050	0.050	08/16/2023	ND	2.07	103	2.00	3.36	
Toluene*	<0.050	0.050	08/16/2023	ND	2.02	101	2.00	1.82	
Ethylbenzene*	<0.050	0.050	08/16/2023	ND	1.93	96.6	2.00	2.80	
Total Xylenes*	<0.150	0.150	08/16/2023	ND	5.84	97.3	6.00	3.74	
Total BTX	<0.300	0.300	08/16/2023	ND					

Surrogate: 4-Bromofluorobenzene (PID) 92.0 % 71.5-134

Chloride, SM4500Cl-B		mg/kg		Analyzed By: AC					
Analyte	Result	Reporting Limit	Analyzed	Method Blank	BS	% Recovery	True Value QC	RPD	Qualifier
Chloride	<16.0	16.0	08/16/2023	ND	416	104	400	0.00	

TPH 8015M		mg/kg		Analyzed By: MS					
Analyte	Result	Reporting Limit	Analyzed	Method Blank	BS	% Recovery	True Value QC	RPD	Qualifier
GRO C6-C10*	<10.0	10.0	08/16/2023	ND	182	91.2	200	4.80	
DRO >C10-C28*	<10.0	10.0	08/16/2023	ND	184	92.2	200	4.07	
EXT DRO >C28-C36	<10.0	10.0	08/16/2023	ND					

Surrogate: 1-Chlorooctane 83.8 % 48.2-134

Surrogate: 1-Chlorooctadecane 88.7 % 49.1-148

Cardinal Laboratories

*=Accredited Analyte

PLEASE NOTE: Liability and Damages. Cardinal's liability and client's exclusive remedy for any claim arising, whether based in contract or tort, shall be limited to the amount paid by client for analyses. All claims, including those for negligence and any other cause whatsoever shall be deemed waived unless made in writing and received by Cardinal within thirty (30) days after completion of the applicable service. In no event shall Cardinal be liable for incidental or consequential damages, including, without limitation, business interruptions, loss of use, or loss of profits incurred by client, its subsidiaries, affiliates or successors arising out of or related to the performance of the services hereunder by Cardinal, regardless of whether such claim is based upon any of the above stated reasons or otherwise. Results relate only to the samples identified above. This report shall not be reproduced except in full with written approval of Cardinal Laboratories.

Celey D. Keene, Lab Director/Quality Manager



PHONE (575) 393-2326 ° 101 E. MARLAND ° HOBBS, NM 88240

Analytical Results For:

TETRA TECH
 SAM ABBOTT
 901 WEST WALL STREET , STE 100
 MIDLAND TX, 79701
 Fax To: (432) 682-3946

Received:	08/15/2023	Sampling Date:	08/15/2023
Reported:	08/16/2023	Sampling Type:	Soil
Project Name:	CUATRO HIJOS FEE 4H FLOWLINE RELE	Sampling Condition:	Cool & Intact
Project Number:	212C-MD-03154	Sample Received By:	Tamara Oldaker
Project Location:	COP - LEA COUNTY		

Sample ID: ESW - 1 (H234375-03)

BTEx 8021B		mg/kg		Analyzed By: MS						
Analyte	Result	Reporting Limit	Analyzed	Method Blank	BS	% Recovery	True Value QC	RPD	Qualifier	
Benzene*	<0.050	0.050	08/16/2023	ND	2.07	103	2.00	3.36		
Toluene*	<0.050	0.050	08/16/2023	ND	2.02	101	2.00	1.82		
Ethylbenzene*	<0.050	0.050	08/16/2023	ND	1.93	96.6	2.00	2.80		
Total Xylenes*	<0.150	0.150	08/16/2023	ND	5.84	97.3	6.00	3.74		
Total BTEx	<0.300	0.300	08/16/2023	ND						

Surrogate: 4-Bromofluorobenzene (PID) 93.5 % 71.5-134

Chloride, SM4500CI-B		mg/kg		Analyzed By: AC						
Analyte	Result	Reporting Limit	Analyzed	Method Blank	BS	% Recovery	True Value QC	RPD	Qualifier	
Chloride	<16.0	16.0	08/16/2023	ND	416	104	400	0.00		

TPH 8015M		mg/kg		Analyzed By: MS					
Analyte	Result	Reporting Limit	Analyzed	Method Blank	BS	% Recovery	True Value QC	RPD	Qualifier
GRO C6-C10*	<10.0	10.0	08/16/2023	ND	182	91.2	200	4.80	
DRO >C10-C28*	<10.0	10.0	08/16/2023	ND	184	92.2	200	4.07	
EXT DRO >C28-C36	<10.0	10.0	08/16/2023	ND					

Surrogate: 1-Chlorooctane 79.0 % 48.2-134

Surrogate: 1-Chlorooctadecane 82.9 % 49.1-148

Cardinal Laboratories

*=Accredited Analyte

PLEASE NOTE: Liability and Damages. Cardinal's liability and client's exclusive remedy for any claim arising, whether based in contract or tort, shall be limited to the amount paid by client for analyses. All claims, including those for negligence and any other cause whatsoever shall be deemed waived unless made in writing and received by Cardinal within thirty (30) days after completion of the applicable service. In no event shall Cardinal be liable for incidental or consequential damages, including, without limitation, business interruptions, loss of use, or loss of profits incurred by client, its subsidiaries, affiliates or successors arising out of or related to the performance of the services hereunder by Cardinal, regardless of whether such claim is based upon any of the above stated reasons or otherwise. Results relate only to the samples identified above. This report shall not be reproduced except in full with written approval of Cardinal Laboratories.

Celey D. Keene, Lab Director/Quality Manager



PHONE (575) 393-2326 ° 101 E. MARLAND ° HOBBS, NM 88240

Analytical Results For:

TETRA TECH
 SAM ABBOTT
 901 WEST WALL STREET , STE 100
 MIDLAND TX, 79701
 Fax To: (432) 682-3946

Received:	08/15/2023	Sampling Date:	08/15/2023
Reported:	08/16/2023	Sampling Type:	Soil
Project Name:	CUATRO HIJOS FEE 4H FLOWLINE RELE	Sampling Condition:	Cool & Intact
Project Number:	212C-MD-03154	Sample Received By:	Tamara Oldaker
Project Location:	COP - LEA COUNTY		

Sample ID: WSW - 1 (H234375-04)

BTEx 8021B		mg/kg		Analyzed By: MS						
Analyte	Result	Reporting Limit	Analyzed	Method Blank	BS	% Recovery	True Value QC	RPD	Qualifier	
Benzene*	<0.050	0.050	08/16/2023	ND	2.07	103	2.00	3.36		
Toluene*	<0.050	0.050	08/16/2023	ND	2.02	101	2.00	1.82		
Ethylbenzene*	<0.050	0.050	08/16/2023	ND	1.93	96.6	2.00	2.80		
Total Xylenes*	<0.150	0.150	08/16/2023	ND	5.84	97.3	6.00	3.74		
Total BTEX	<0.300	0.300	08/16/2023	ND						

Surrogate: 4-Bromofluorobenzene (PID) 95.6 % 71.5-134

Chloride, SM4500Cl-B		mg/kg		Analyzed By: AC						
Analyte	Result	Reporting Limit	Analyzed	Method Blank	BS	% Recovery	True Value QC	RPD	Qualifier	
Chloride	48.0	16.0	08/16/2023	ND	416	104	400	3.77	QM-07	

TPH 8015M		mg/kg		Analyzed By: MS					
Analyte	Result	Reporting Limit	Analyzed	Method Blank	BS	% Recovery	True Value QC	RPD	Qualifier
GRO C6-C10*	<10.0	10.0	08/16/2023	ND	182	91.2	200	4.80	
DRO >C10-C28*	<10.0	10.0	08/16/2023	ND	184	92.2	200	4.07	
EXT DRO >C28-C36	<10.0	10.0	08/16/2023	ND					

Surrogate: 1-Chlorooctane 69.4 % 48.2-134

Surrogate: 1-Chlorooctadecane 72.3 % 49.1-148

Cardinal Laboratories

*=Accredited Analyte

PLEASE NOTE: Liability and Damages. Cardinal's liability and client's exclusive remedy for any claim arising, whether based in contract or tort, shall be limited to the amount paid by client for analyses. All claims, including those for negligence and any other cause whatsoever shall be deemed waived unless made in writing and received by Cardinal within thirty (30) days after completion of the applicable service. In no event shall Cardinal be liable for incidental or consequential damages, including, without limitation, business interruptions, loss of use, or loss of profits incurred by client, its subsidiaries, affiliates or successors arising out of or related to the performance of the services hereunder by Cardinal, regardless of whether such claim is based upon any of the above stated reasons or otherwise. Results relate only to the samples identified above. This report shall not be reproduced except in full with written approval of Cardinal Laboratories.

Celey D. Keene, Lab Director/Quality Manager



PHONE (575) 393-2326 ° 101 E. MARLAND ° HOBBS, NM 88240

Analytical Results For:

TETRA TECH
 SAM ABBOTT
 901 WEST WALL STREET , STE 100
 MIDLAND TX, 79701
 Fax To: (432) 682-3946

Received:	08/15/2023	Sampling Date:	08/15/2023
Reported:	08/16/2023	Sampling Type:	Soil
Project Name:	CUATRO HIJOS FEE 4H FLOWLINE RELE	Sampling Condition:	Cool & Intact
Project Number:	212C-MD-03154	Sample Received By:	Tamara Oldaker
Project Location:	COP - LEA COUNTY		

Sample ID: FS - 1 (H234375-05)

BTX 8021B		mg/kg		Analyzed By: MS						
Analyte	Result	Reporting Limit	Analyzed	Method Blank	BS	% Recovery	True Value QC	RPD	Qualifier	
Benzene*	<0.050	0.050	08/16/2023	ND	2.07	103	2.00	3.36		
Toluene*	<0.050	0.050	08/16/2023	ND	2.02	101	2.00	1.82		
Ethylbenzene*	<0.050	0.050	08/16/2023	ND	1.93	96.6	2.00	2.80		
Total Xylenes*	<0.150	0.150	08/16/2023	ND	5.84	97.3	6.00	3.74		
Total BTX	<0.300	0.300	08/16/2023	ND						

Surrogate: 4-Bromofluorobenzene (PID) 94.9 % 71.5-134

Chloride, SM4500Cl-B		mg/kg		Analyzed By: AC					
Analyte	Result	Reporting Limit	Analyzed	Method Blank	BS	% Recovery	True Value QC	RPD	Qualifier
Chloride	320	16.0	08/16/2023	ND	416	104	400	3.77	

TPH 8015M		mg/kg		Analyzed By: MS					
Analyte	Result	Reporting Limit	Analyzed	Method Blank	BS	% Recovery	True Value QC	RPD	Qualifier
GRO C6-C10*	<10.0	10.0	08/16/2023	ND	202	101	200	4.06	
DRO >C10-C28*	<10.0	10.0	08/16/2023	ND	204	102	200	9.44	
EXT DRO >C28-C36	<10.0	10.0	08/16/2023	ND					

Surrogate: 1-Chlorooctane 76.6 % 48.2-134

Surrogate: 1-Chlorooctadecane 76.9 % 49.1-148

Cardinal Laboratories

*=Accredited Analyte

PLEASE NOTE: Liability and Damages. Cardinal's liability and client's exclusive remedy for any claim arising, whether based in contract or tort, shall be limited to the amount paid by client for analyses. All claims, including those for negligence and any other cause whatsoever shall be deemed waived unless made in writing and received by Cardinal within thirty (30) days after completion of the applicable service. In no event shall Cardinal be liable for incidental or consequential damages, including, without limitation, business interruptions, loss of use, or loss of profits incurred by client, its subsidiaries, affiliates or successors arising out of or related to the performance of the services hereunder by Cardinal, regardless of whether such claim is based upon any of the above stated reasons or otherwise. Results relate only to the samples identified above. This report shall not be reproduced except in full with written approval of Cardinal Laboratories.

Celey D. Keene, Lab Director/Quality Manager



PHONE (575) 393-2326 ° 101 E. MARLAND ° HOBBS, NM 88240

Analytical Results For:

TETRA TECH
 SAM ABBOTT
 901 WEST WALL STREET , STE 100
 MIDLAND TX, 79701
 Fax To: (432) 682-3946

Received:	08/15/2023	Sampling Date:	08/15/2023
Reported:	08/16/2023	Sampling Type:	Soil
Project Name:	CUATRO HIJOS FEE 4H FLOWLINE RELE	Sampling Condition:	Cool & Intact
Project Number:	212C-MD-03154	Sample Received By:	Tamara Oldaker
Project Location:	COP - LEA COUNTY		

Sample ID: FS - 2 (H234375-06)

BTEx 8021B		mg/kg		Analyzed By: MS						
Analyte	Result	Reporting Limit	Analyzed	Method Blank	BS	% Recovery	True Value QC	RPD	Qualifier	
Benzene*	<0.050	0.050	08/16/2023	ND	2.07	103	2.00	3.36		
Toluene*	<0.050	0.050	08/16/2023	ND	2.02	101	2.00	1.82		
Ethylbenzene*	<0.050	0.050	08/16/2023	ND	1.93	96.6	2.00	2.80		
Total Xylenes*	<0.150	0.150	08/16/2023	ND	5.84	97.3	6.00	3.74		
Total BTEX	<0.300	0.300	08/16/2023	ND						

Surrogate: 4-Bromofluorobenzene (PID) 94.4 % 71.5-134

Chloride, SM4500Cl-B		mg/kg		Analyzed By: AC						
Analyte	Result	Reporting Limit	Analyzed	Method Blank	BS	% Recovery	True Value QC	RPD	Qualifier	
Chloride	336	16.0	08/16/2023	ND	416	104	400	3.77		

TPH 8015M		mg/kg		Analyzed By: MS					
Analyte	Result	Reporting Limit	Analyzed	Method Blank	BS	% Recovery	True Value QC	RPD	Qualifier
GRO C6-C10*	<10.0	10.0	08/16/2023	ND	200	99.9	200	2.88	
DRO >C10-C28*	<10.0	10.0	08/16/2023	ND	225	112	200	1.66	
EXT DRO >C28-C36	<10.0	10.0	08/16/2023	ND					

Surrogate: 1-Chlorooctane 74.2 % 48.2-134

Surrogate: 1-Chlorooctadecane 78.9 % 49.1-148

Cardinal Laboratories

*=Accredited Analyte

PLEASE NOTE: Liability and Damages. Cardinal's liability and client's exclusive remedy for any claim arising, whether based in contract or tort, shall be limited to the amount paid by client for analyses. All claims, including those for negligence and any other cause whatsoever shall be deemed waived unless made in writing and received by Cardinal within thirty (30) days after completion of the applicable service. In no event shall Cardinal be liable for incidental or consequential damages, including, without limitation, business interruptions, loss of use, or loss of profits incurred by client, its subsidiaries, affiliates or successors arising out of or related to the performance of the services hereunder by Cardinal, regardless of whether such claim is based upon any of the above stated reasons or otherwise. Results relate only to the samples identified above. This report shall not be reproduced except in full with written approval of Cardinal Laboratories.

Celey D. Keene, Lab Director/Quality Manager

PHONE (575) 393-2326 • 101 E. MARLAND • HOBBS, NM 88240

Notes and Definitions

QM-07	The spike recovery was outside acceptance limits for the MS and/or MSD. The batch was accepted based on acceptable LCS recovery.
ND	Analyte NOT DETECTED at or above the reporting limit
RPD	Relative Percent Difference
**	Samples not received at proper temperature of 6°C or below.
***	Insufficient time to reach temperature.
-	Chloride by SM4500Cl-B does not require samples be received at or below 6°C Samples reported on an as received basis (wet) unless otherwise noted on report

Cardinal Laboratories

*=Accredited Analyte

PLEASE NOTE: Liability and Damages. Cardinal's liability and client's exclusive remedy for any claim arising, whether based in contract or tort, shall be limited to the amount paid by client for analyses. All claims, including those for negligence and any other cause whatsoever shall be deemed waived unless made in writing and received by Cardinal within thirty (30) days after completion of the applicable service. In no event shall Cardinal be liable for incidental or consequential damages, including, without limitation, business interruptions, loss of use, or loss of profits incurred by client, its subsidiaries, affiliates or successors arising out of or related to the performance of the services hereunder by Cardinal, regardless of whether such claim is based upon any of the above stated reasons or otherwise. Results relate only to the samples identified above. This report shall not be reproduced except in full with written approval of Cardinal Laboratories.

A handwritten signature in black ink, appearing to read "Celey D. Keene".

Celey D. Keene, Lab Director/Quality Manager

[illegible]

ANALYSIS REQUEST

† Cardinal cannot accept verbal changes. Please email changes to celey.keene@cardinallabsnm.com

APPENDIX E

Photographic Documentation



TETRA TECH, INC. PROJECT NO. 212C-MD-03154	DESCRIPTION	View southwest. View of release area from across lease road.	1
	SITE NAME	Cuatro Hijos Fee 4H PW Flowline Release	5/23/2023



TETRA TECH, INC. PROJECT NO. 212C-MD-03154	DESCRIPTION	View southwest west. View of release area. Subsurface/surface poly lines present.	2
	SITE NAME	Cuatro Hijos Fee 4H PW Flowline Release	5/23/2023



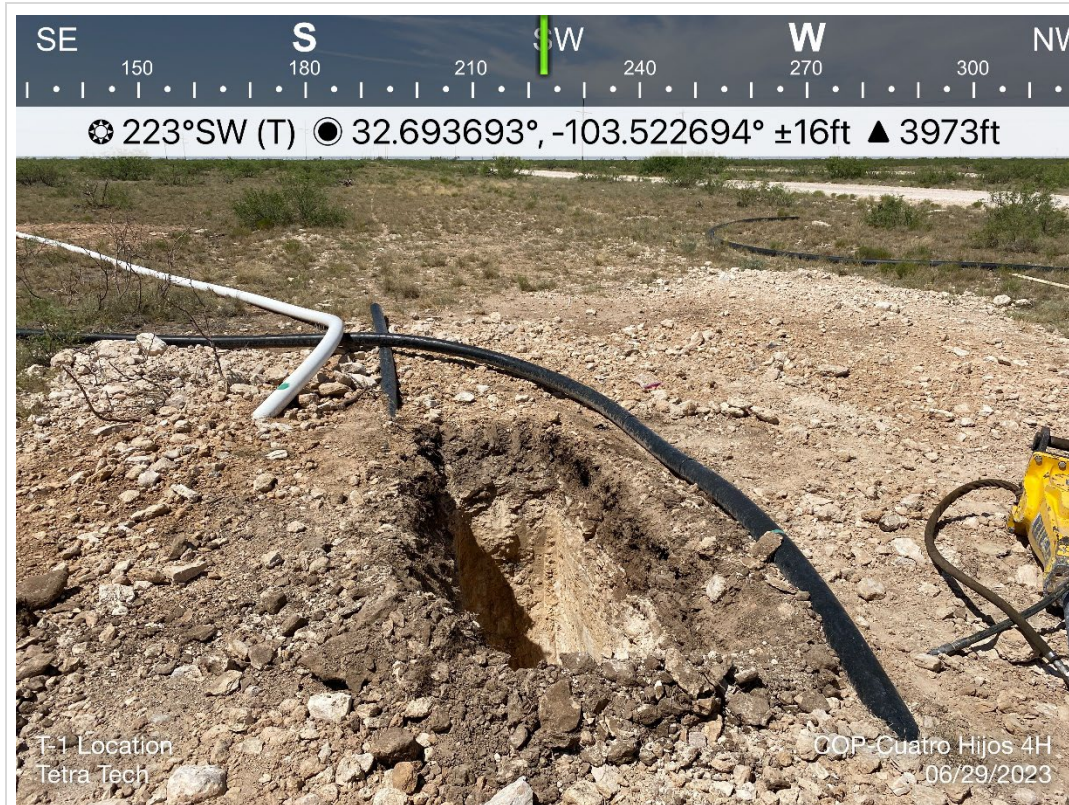
TETRA TECH, INC. PROJECT NO. 212C-MD-03154	DESCRIPTION	View southwest. View of release area. Subsurface/surface poly lines present.	3
	SITE NAME	Cuatro Hijos Fee 4H PW Flowline Release	5/23/2023



TETRA TECH, INC. PROJECT NO. 212C-MD-03154	DESCRIPTION	View south. View of release area. Subsurface/surface poly lines present.	4
	SITE NAME	Cuatro Hijos Fee 4H PW Flowline Release	5/23/2023



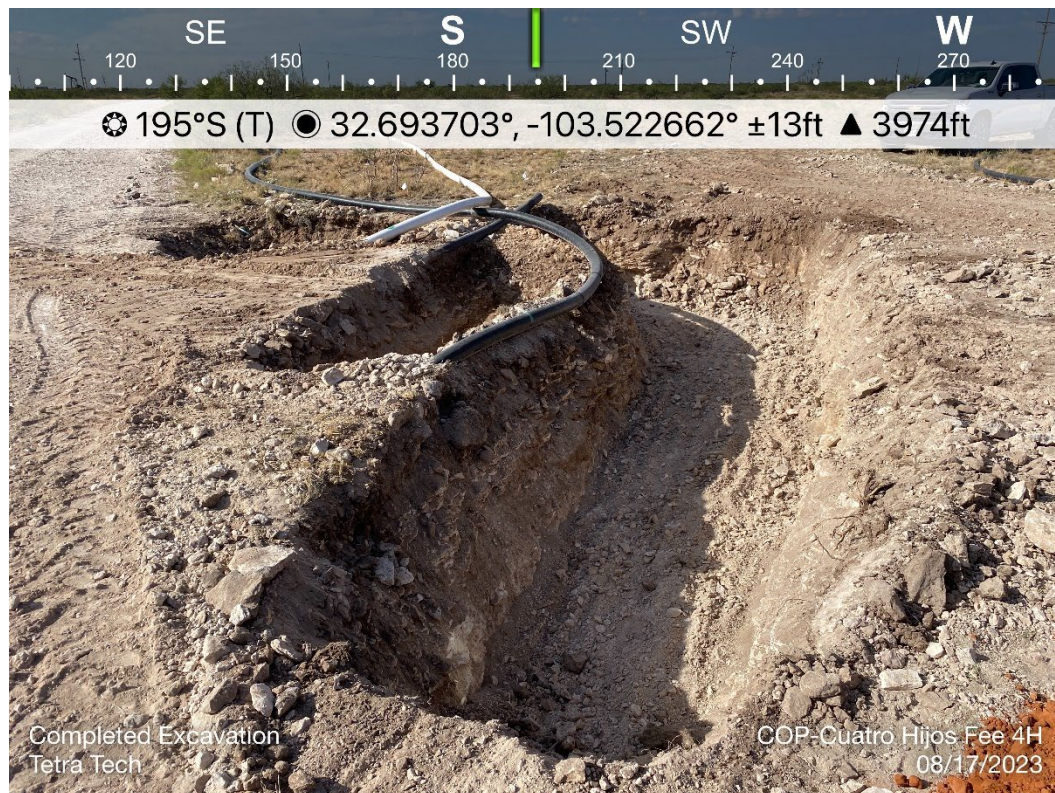
TETRA TECH, INC. PROJECT NO. 212C-MD-03154	DESCRIPTION	View west. View of release area and assessment activities. Surface polylines present.	5
	SITE NAME	Cuatro Hijos Fee 4H PW Flowline Release	6/29/2023



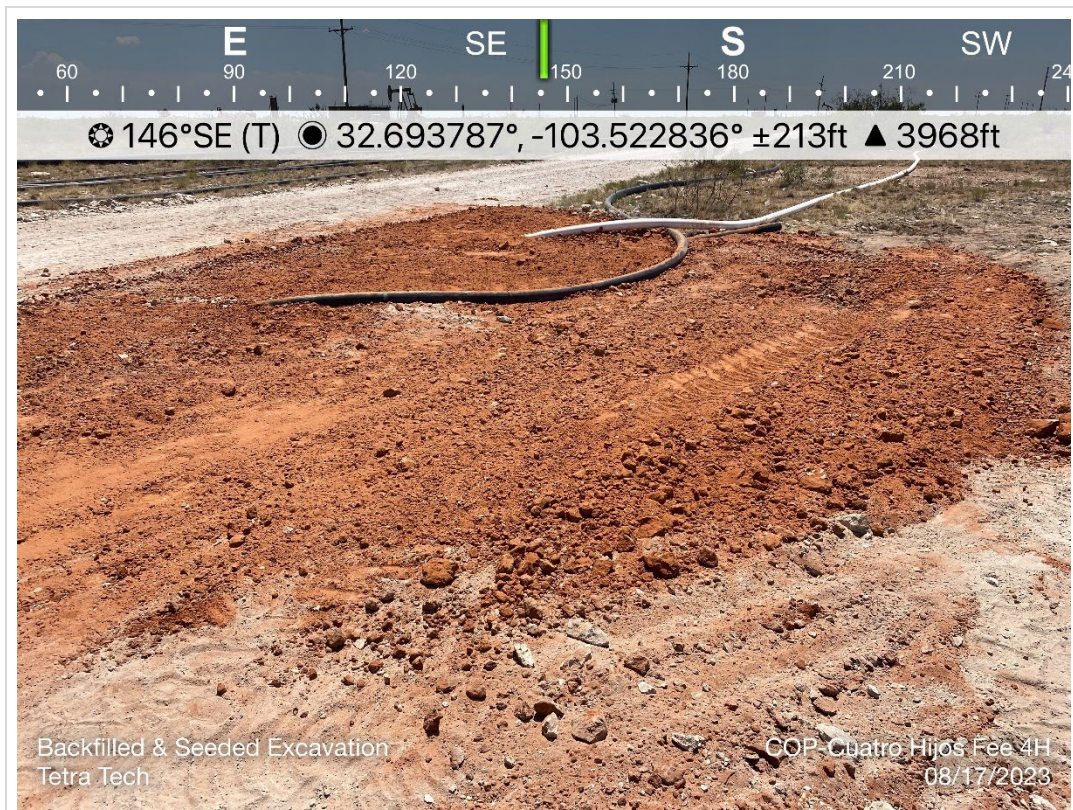
TETRA TECH, INC. PROJECT NO. 212C-MD-03154	DESCRIPTION	View southwest. View of assessment activities. Surface polylines present.	6
	SITE NAME	Cuatro Hijos Fee 4H PW Flowline Release	6/29/2023



TETRA TECH, INC. PROJECT NO. 212C-MD-03154	DESCRIPTION	View east north-east. View of completed excavation. Surface polylines present.	7
	SITE NAME	Cuatro Hijos Fee 4H PW Flowline Release	8/17/2023



TETRA TECH, INC. PROJECT NO. 212C-MD-03154	DESCRIPTION	View south- southwest. View of completed excavation. Surface polylines present.	8
	SITE NAME	Cuatro Hijos Fee 4H PW Flowline Release	8/17/2023



TETRA TECH, INC. PROJECT NO. 212C-MD-03154	DESCRIPTION	View south-southeast. View of backfilled and seeded excavation. Surface polylines present.	9
	SITE NAME	Cuatro Hijos Fee 4H PW Flowline Release	8/17/2023



TETRA TECH, INC. PROJECT NO. 212C-MD-03154	DESCRIPTION	View north-northwest. View of backfilled and seeded excavation. Surface polylines present.	10
	SITE NAME	Cuatro Hijos Fee 4H PW Flowline Release	8/17/2023

APPENDIX F

Waste Manifests

TRANSPORTER'S MANIFEST

MANIFEST # 01

SHIPPING FACILITY NAME & ADDRESS:

ConocoPhillips Company
1410 NW County Rd, Hobbs, NM 88240
Attn. Jacob Laird
Jacob.Laird@conocophillips.com
575.703.5482

ACCOUNTING INFORMATION

CUATRO HIJOS FEE #004H Release - BU Project
Assoc. CUATRO HIJOS FEE #004H
API 30-025-41752

LOCATION OF MATERIAL:

ConocoPhillips Company
CUATRO HIJOS FEE #004H
Unit Letter A, Section 02, Township 19 South, Range 34 East
Lea County, New Mexico

TRANSPORTER NAME AND ADDRESS:

McNabb Partners
4008 N. Grimes
Hobbs, New Mexico 88240
575.397.0050

TRUCK #

31

1st L -

DESCRIPTION OF WASTE:

Impacted Soil

TRUCK CAPACITY:

20 yds

18

APPROXIMATE % FULL

90%

APPROXIMATE VOLUME HAULED OFF

18 yds

16

FACILITY CONTACT:

Date: 15 Aug 2023

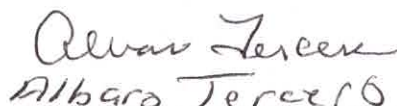
Signature of Contact:
(Agent for ConocoPhillips)

Andrew Garcia 432-270-0197

NAME OF TRANSPORTER (Driver):

Date: 08-15-2023

Signature Driver:


Alvaro Terceiro

DISPOSAL SITE:

R360
P.O. Box 388
4507 W Carlsbad Hwy
Hobbs, New Mexico 88241

Date:

8/15/23

Representative
Signature



Permian Basin

Customer: CONOCOPHILLIPS
 Customer #: CRI2190
 Ordered by: ANDREW GARCIA
 AFE #:
 PO #:
 Manifest #: 01
 Manif. Date: 8/15/2023
 Hauler: MCNABB PARTNERS
 Driver: ALBARO
 Truck #: 31
 Card #
 Job Ref #

Ticket #: 700-1463258
 Bid #: O6UJ9A000JVW
 Date: 8/15/2023
 Generator: CONOCOPHILLIPS
 Generator #:
 Well Ser. #: 41752L
 Well Name: CUATRO HIJOS FEE
 Well #: 004H
 Field:
 Field #:
 Rig: NON-DRILLING
 County: LEA (NM)

Facility: CRI

Product / Service

Quantity Units

Contaminated Soil (RCRA Exempt)

~~18.00~~ yards 16 yds**Generator Certification Statement of Waste Status**

I hereby certify that according to the Resource Conservation and Recovery Act (RCRA) and the US Environmental Protection Agency's July 1988 regulatory determination, the above described waste is:

☒ RCRA Exempt: Oil Field wastes generated from oil and gas exploration and production operations and are not mixed with non-exempt waste
☐ RCRA Non-Exempt: Oil field waste which is non-hazardous that does not exceed the minimum standards for waste hazardous by characteristics established in RCRA regulations, 40 CFR 261.21-261.24 or listed hazardous waste as defined in 40 CFR, part 261, subpart D, as amended. The following documentation is attached to demonstrate the above-described waste is non-hazardous. (Check the appropriate items):
☐ MSDS Information ☐ RCRA Hazardous Waste Analysis ☐ Process Knowledge ☐ Other (Provide description above)

Driver/ Agent Signature

R360 Representative Signature

Customer Approval

THIS IS NOT AN INVOICE!

Approved By: _____

Date: _____

TRANSPORTER'S MANIFEST

MANIFEST # 2

SHIPPING FACILITY NAME & ADDRESS:

ConocoPhillips Company
1410 NW County Rd, Hobbs, NM 88240
Attn. Jacob Laird
Jacob.Laird@conocophillips.com
575.703.5482

ACCOUNTING INFORMATION

CUATRO HIJOS FEE #004H Release – BU Project
Assoc. CUATRO HIJOS FEE #004H
API 30-025-41752

LOCATION OF MATERIAL:

ConocoPhillips Company
CUATRO HIJOS FEE #004H
Unit Letter A, Section 02, Township 19 South, Range 34 East
Lea County, New Mexico

TRANSPORTER NAME AND ADDRESS:

McNabb Partners
4008 N. Grimes
Hobbs, New Mexico 88240
575.397.0050

TRUCK # M 83

DESCRIPTION OF WASTE:

Impacted Soil

TRUCK CAPACITY:

20cy

APPROXIMATE % FULL

90%

APPROXIMATE VOLUME HAULED OFF

18cy

FACILITY CONTACT:

Date: 8/16/23Signature of Contact:
(Agent for ConocoPhillips)CB

NAME OF TRANSPORTER (Driver):

Date: 8-16-23

Signature Driver:

ACIE MAYBERRY TRUCK 177 83
Belly Dump

DISPOSAL SITE:

R360
P.O. Box 388
4507 W Carlsbad Hwy
Hobbs, New Mexico 88241

Date:

8/16/23Representative
SignatureAnt



Permian Basin

Customer: CONOCOPHILLIPS
 Customer #: CRI2190
 Ordered by: JACOB LAIRD
 AFE #:
 PO #:
 Manifest #: 2
 Manif. Date: 8/16/2023
 Hauler: MCNABB PARTNERS LLC
 Driver: ACIE
 Truck #: M83
 Card #
 Job Ref #

Ticket #: 700-1463675
 Bid #: O6UJ9A000JEC
 Date: 8/16/2023
 Generator: CONOCOPHILLIPS
 Generator #: 40946
 Well Ser. #: 41752L
 Well Name: CUATRO HIJOS FEE
 Well #: 004H
 Field:
 Field #:
 Rig: NON-DRILLING
 County: LEA (NM)

Facility: CRI

Product / Service	Quantity Units
Contaminated Soil (RCRA Exempt)	18.00 yards

Generator Certification Statement of Waste Status

I hereby certify that according to the Resource Conservation and Recovery Act (RCRA) and the US Environmental Protection Agency's July 1988 regulatory determination, the above described waste is:

☒ RCRA Exempt: Oil Field wastes generated from oil and gas exploration and production operations and are not mixed with non-exempt waste
☐ RCRA Non-Exempt: Oil field waste which is non-hazardous that does not exceed the minimum standards for waste hazardous by characteristics established in RCRA regulations, 40 CFR 261.21-261.24 or listed hazardous waste as defined in 40 CFR, part 261, subpart D, as amended. The following documentation is attached to demonstrate the above-described waste is non-hazardous. (Check the appropriate items):
☐ MSDS Information ☐ RCRA Hazardous Waste Analysis ☐ Process Knowledge ☐ Other (Provide description above)

Driver/ Agent Signature

R360 Representative Signature

Customer Approval

THIS IS NOT AN INVOICE!

Approved By: _____

Date: _____

TRANSPORTER'S MANIFEST

MANIFEST #

3

SHIPPING FACILITY NAME & ADDRESS:

ConocoPhillips Company
1410 NW County Rd, Hobbs, NM 88240
Attn: Jacob Laird
Jacob.Laird@conocophillips.com
575.703.5482

ACCOUNTING INFORMATION

CUATRO HIJOS FEE #004H Release – BU Project
Assoc. CUATRO HIJOS FEE #004H
API 30-025-41752

LOCATION OF MATERIAL:

ConocoPhillips Company
CUATRO HIJOS FEE #004H
Unit Letter A, Section 02, Township 19 South, Range 34 East
Lea County, New Mexico

TRANSPORTER NAME AND ADDRESS:

McNabb Partners
4008 N. Grimes
Hobbs, New Mexico 88240
575.397.0050

TRUCK #

M 83

DESCRIPTION OF WASTE:

Impacted Soil

TRUCK CAPACITY:

20cy

APPROXIMATE % FULL

90%

APPROXIMATE VOLUME HAULED OFF

18cy

FACILITY CONTACT:

Date:

8/16/23

Signature of Contact:

(Agent for ConocoPhillips)

CB

NAME OF TRANSPORTER (Driver):

Date:

8-16-23

Signature Driver:

ACIE Mayberry Tenet M8
Belly Dump

DISPOSAL SITE:

R360
P.O. Box 388
4507 W Carlsbad Hwy
Hobbs, New Mexico 88241

Date:

8/16/23

Representative
Signature

MML



Permian Basin

Customer: CONOCOPHILLIPS
Customer #: CRI2190
Ordered by: JACOB LAIRD
AFE #:
PO #:
Manifest #: 3
Manif. Date: 8/16/2023
Hauler: MCNABB PARTNERS
Driver: ACIE
Truck #: M83
Card #
Job Ref #

Ticket #: 700-1463842
Bid #: O6UJ9A000JVV
Date: 8/16/2023
Generator: CONOCOPHILLIPS
Generator #:
Well Ser. #: 41752L
Well Name: CUATRO HIJOS FEE
Well #: 004H
Field:
Field #:
Rig: NON-DRILLING
County: LEA (NM)

Facility: CRI

Product / Service	Quantity Units
Contaminated Soil (RCRA Exempt)	18.00 yards

Generator Certification Statement of Waste Status

I hereby certify that according to the Resource Conservation and Recovery Act (RCRA) and the US Environmental Protection Agency's July 1988 regulatory determination, the above described waste is:

☒ RCRA Exempt: Oil Field wastes generated from oil and gas exploration and production operations and are not mixed with non-exempt waste
☐ RCRA Non-Exempt: Oil field waste which is non-hazardous that does not exceed the minimum standards for waste hazardous by characteristics established in RCRA regulations, 40 CFR 261.21-261.24 or listed hazardous waste as defined in 40 CFR, part 261, subpart D, as amended. The following documentation is attached to demonstrate the above-described waste is non-hazardous. (Check the appropriate items):
☐ MSDS Information ☐ RCRA Hazardous Waste Analysis ☐ Process Knowledge ☐ Other (Provide description above)

Driver/ Agent Signature

R360 Representative Signature

Customer Approval

THIS IS NOT AN INVOICE!

Approved By: _____

Date: _____

District I
1625 N. French Dr., Hobbs, NM 88240
Phone:(575) 393-6161 Fax:(575) 393-0720
District II
811 S. First St., Artesia, NM 88210
Phone:(575) 748-1283 Fax:(575) 748-9720
District III
1000 Rio Brazos Rd., Aztec, NM 87410
Phone:(505) 334-6178 Fax:(505) 334-6170
District IV
1220 S. St Francis Dr., Santa Fe, NM 87505
Phone:(505) 476-3470 Fax:(505) 476-3462

State of New Mexico
Energy, Minerals and Natural Resources
Oil Conservation Division
1220 S. St Francis Dr.
Santa Fe, NM 87505

CONDITIONS

Action 266720

CONDITIONS

Operator: COG OPERATING LLC 600 W Illinois Ave Midland, TX 79701	OGRID: 229137
	Action Number: 266720
	Action Type: [C-141] Release Corrective Action (C-141)

CONDITIONS

Created By	Condition	Condition Date
scott.rodgers	None	12/18/2023