

<b>Location:</b>	<b>PLU 22 Dog Town Draw CVB</b>	
<b>Spill Date:</b>	<b>12/10/2023</b>	
<b>Area 1</b>		
Approximate Area =	84.21	sq. ft.
VOLUME OF LEAK		
Total Crude Oil =	15.00	bbls
Total Produced Water =	0.00	bbls
<b>TOTAL VOLUME OF LEAK</b>		
Total Crude Oil =	15.00	bbls
Total Produced Water =	0.00	bbls
<b>TOTAL VOLUME RECOVERED</b>		
Total Crude Oil =	15.00	bbls
Total Produced Water =	0.00	bbls



# WELL RECORD & LOG

OFFICE OF THE STATE ENGINEER

[www.ose.state.nm.us](http://www.ose.state.nm.us)

1. GENERAL AND WELL LOCATION	OSE POD NUMBER (WELL NUMBER) PLU Lease CP Bed				OSE FILE NUMBER(S) C-3893			
	WELL OWNER NAME(S) BOPCO, L.P.				PHONE (OPTIONAL)			
	WELL OWNER MAILING ADDRESS 201 MAIN STREET				CITY FORT WORTH		STATE TX	
					ZIP 76102			
	WELL LOCATION (FROM GPS)	DEGREES LATITUDE 32	MINUTES 12	SECONDS 32.88	N	* ACCURACY REQUIRED: ONE TENTH OF A SECOND		
	LONGITUDE 103	53	2.88	W	* DATUM REQUIRED: WGS 84			
DESCRIPTION RELATING WELL LOCATION TO STREET ADDRESS AND COMMON LANDMARKS - PLSS (SECTION, TOWNSHIP, RANGE) WHERE AVAILABLE SE 1/4 OF NW 1/4 OF NW 1/4 OF NE 1/4 OF SECTION 21, TOWNSHIP 24S, RANGE 30E								
2. DRILLING & CASING INFORMATION	LICENSE NUMBER WD-1261		NAME OF LICENSED DRILLER R. DARRELL CRASS			NAME OF WELL DRILLING COMPANY DARRELL CRASS DRILLING COMPANY		
	DRILLING STARTED 8/19/15	DRILLING ENDED 8/26/15	DEPTH OF COMPLETED WELL (FT) 600		BORE HOLE DEPTH (FT) 600	DEPTH WATER FIRST ENCOUNTERED (FT) N/A		
	COMPLETED WELL IS: <input type="radio"/> ARTESIAN <input checked="" type="radio"/> DRY HOLE <input type="radio"/> SHALLOW (UNCONFINED)					STATIC WATER LEVEL IN COMPLETED WELL (FT) N/A		
	DRILLING FLUID: <input type="radio"/> AIR <input checked="" type="radio"/> MUD ADDITIVES - SPECIFY: SUPER GEL X							
	DRILLING METHOD: <input checked="" type="radio"/> ROTARY <input type="radio"/> HAMMER <input type="radio"/> CABLE TOOL <input type="radio"/> OTHER - SPECIFY:							
	DEPTH (feet bgl) FROM TO		BORE HOLE DIAM (inches)	CASING MATERIAL AND/OR GRADE (include each casing string, and note sections of screen)	CASING CONNECTION TYPE	CASING INSIDE DIAM. (inches)	CASING WALL THICKNESS (inches)	SLOT SIZE (inches)
	0	40	8"	SCH 40 PVC BLANK	GLUE, SCREWS	8"		
3. ANNULAR MATERIAL	DEPTH (feet bgl) FROM TO		BORE HOLE DIAM. (inches)	LIST ANNULAR SEAL MATERIAL AND GRAVEL PACK SIZE-RANGE BY INTERVAL	AMOUNT (cubic feet)	METHOD OF PLACEMENT		
	10	425	8"	BENTONITE HOLE PLUG	145 CUBIC FEET	POUR		
	0	10	8"	PORTLAND CEMENT	7 CUBIC FEET	POUR		

FOR OSE INTERNAL USE

WR-20 WELL RECORD & LOG (Version 06/08/2012)

FILE NUMBER	C-3893	POD NUMBER	1	TRN NUMBER	571438
LOCATION	24S. 30E. 21				PAGE 1 OF 2

#### 4. HYDROGEOLOGIC LOG OF WELL

## 5 TEST: BIG SUPERVISION

## SIGNATURE

FOR OSE INTERNAL USE		WR-20 WELL RECORD & LOG (Version 06/08/2012)	
FILE NUMBER	C-3893	POD NUMBER	1
LOCATION		TRN NUMBER	571438
2-1-1 245.30E-21		PAGE 2 OF 2	



Layer List

Layers

☒

OSE Water PODs

☐

M2.5+ Earthquakes (USGS 30-day)

☐

NM Oil and Gas Wells

☐

USGS Groundwater wells

☐

Induced Seismicity Area

☐

Permian Basin Karst Areas

☐

BLM Oil Gas Leases Case Disp

☐

BLM Oil Gas Leases Production Status

☐

BLM Fluid Minerals Case

☐

BLM FM Agreements Case Disp

☐

BLM FM Agreements Production Status

☐

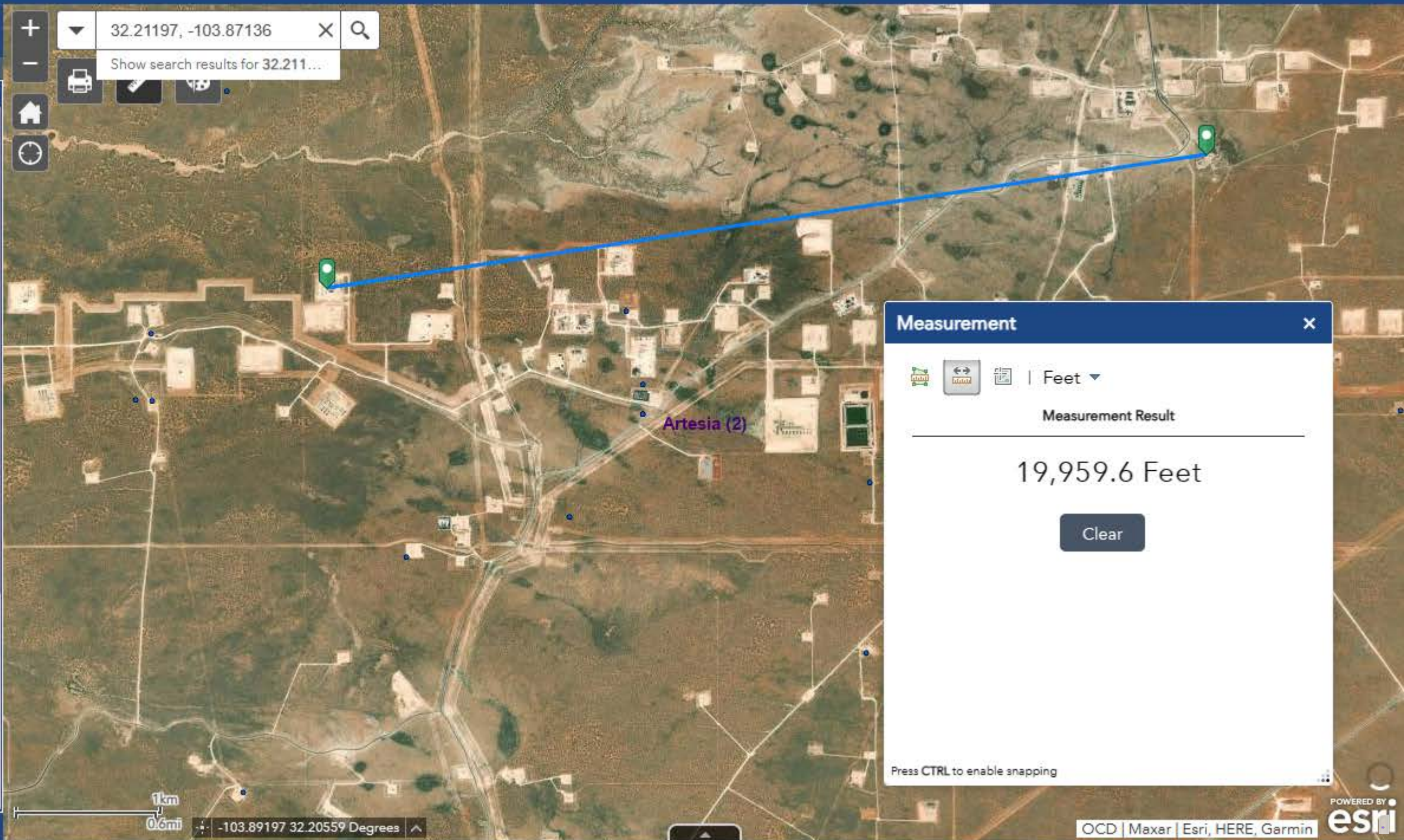
BLM FM Participating Areas Case Disp

☐

NM SLO Oil and Gas Leases

☐

NM SLO Participating Area and Unit Agreement Boundaries



Measurement

Feet

Measurement Result

19,959.6 Feet

Clear

Press CTRL to enable snapping

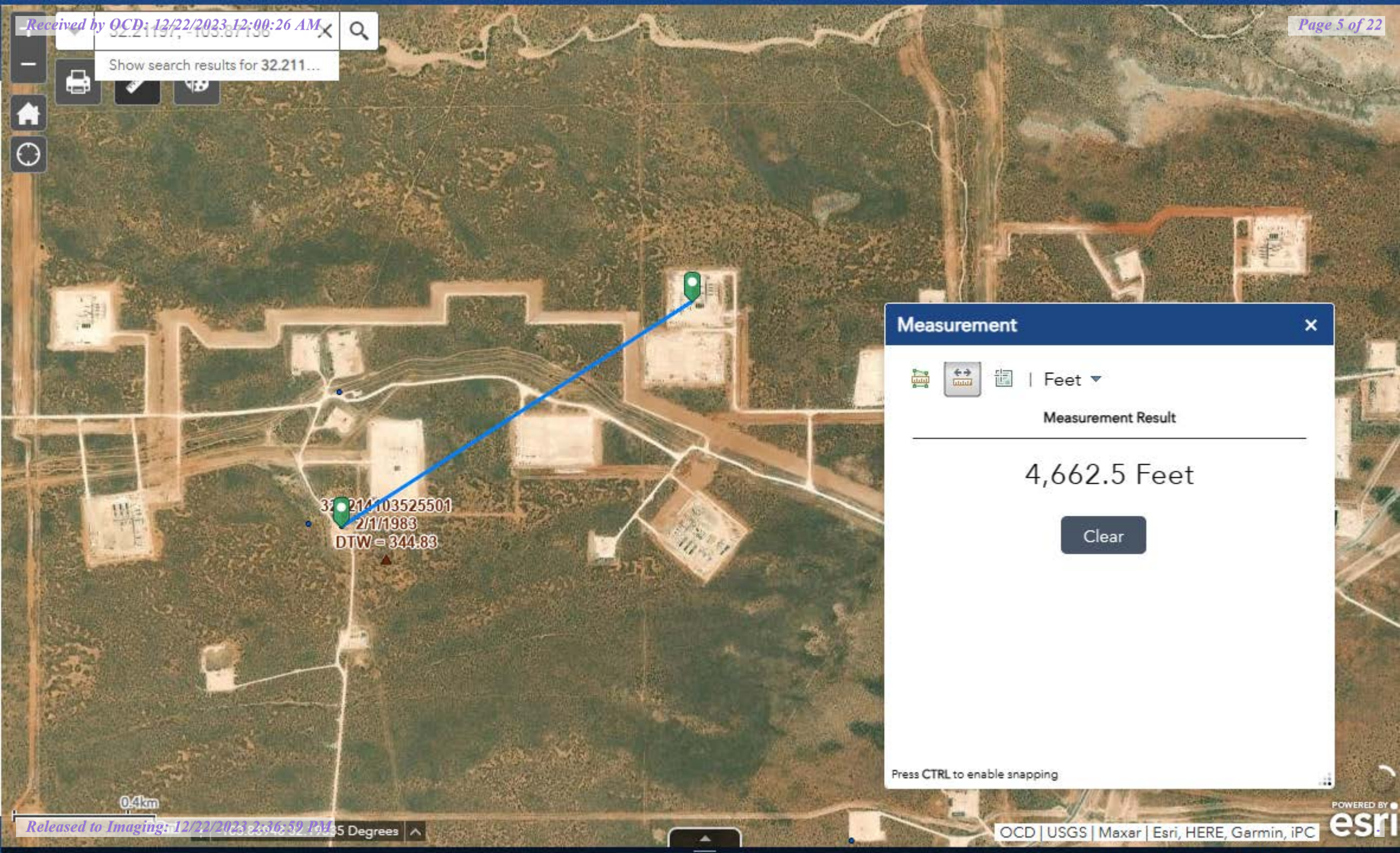


32.21157, -105.87156




Show search results for 32.211...







Measurement

 | Feet

Measurement Result

4,662.5 Feet

Clear

Press CTRL to enable snapping



Layer List

☐

Permian Basin Karst Areas

...

☐

BLM Oil Gas Leases Case Disp

...

☐

BLM Oil Gas Leases Production Status

...

☐

BLM Fluid Minerals Case

...

☐

BLM FM Agreements Case Disp

...

☐

BLM FM Agreements Production Status

...

☐

BLM FM Participating Areas Case Disp

...

☐

NM SLO Oil and Gas Leases

...

☐

NM SLO Participating Area and Unit Agreement Boundaries

...

☐

Political Boundaries and Transportation

...

☐

Mineral and Surface Ownership

...

☒

Hydrology

...

☒

OCD Districts

...

☒

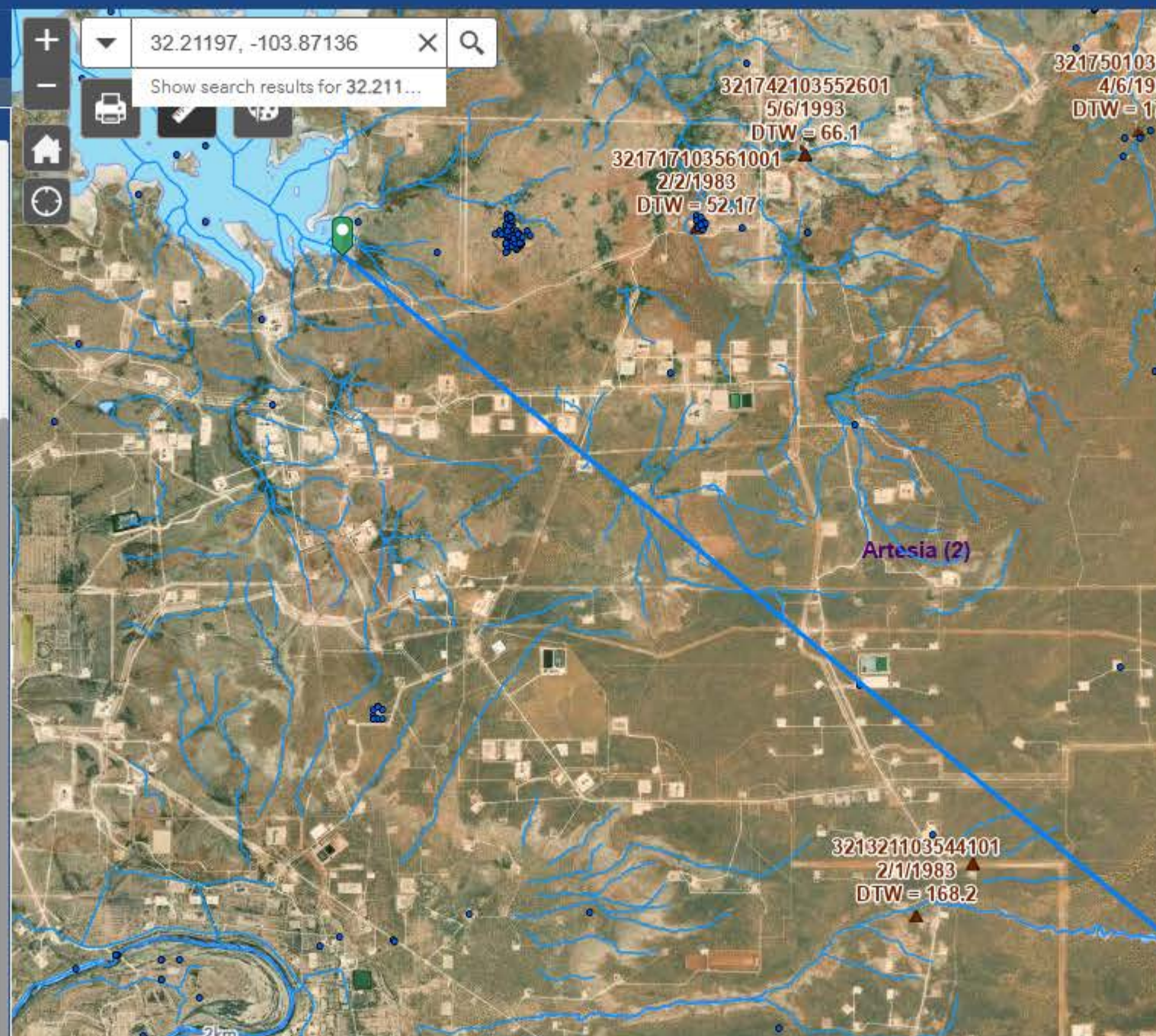
NM Oil and Gas Production Areas

...

☐

Public Land Survey System (PLSS)

...



Measurement

Feet

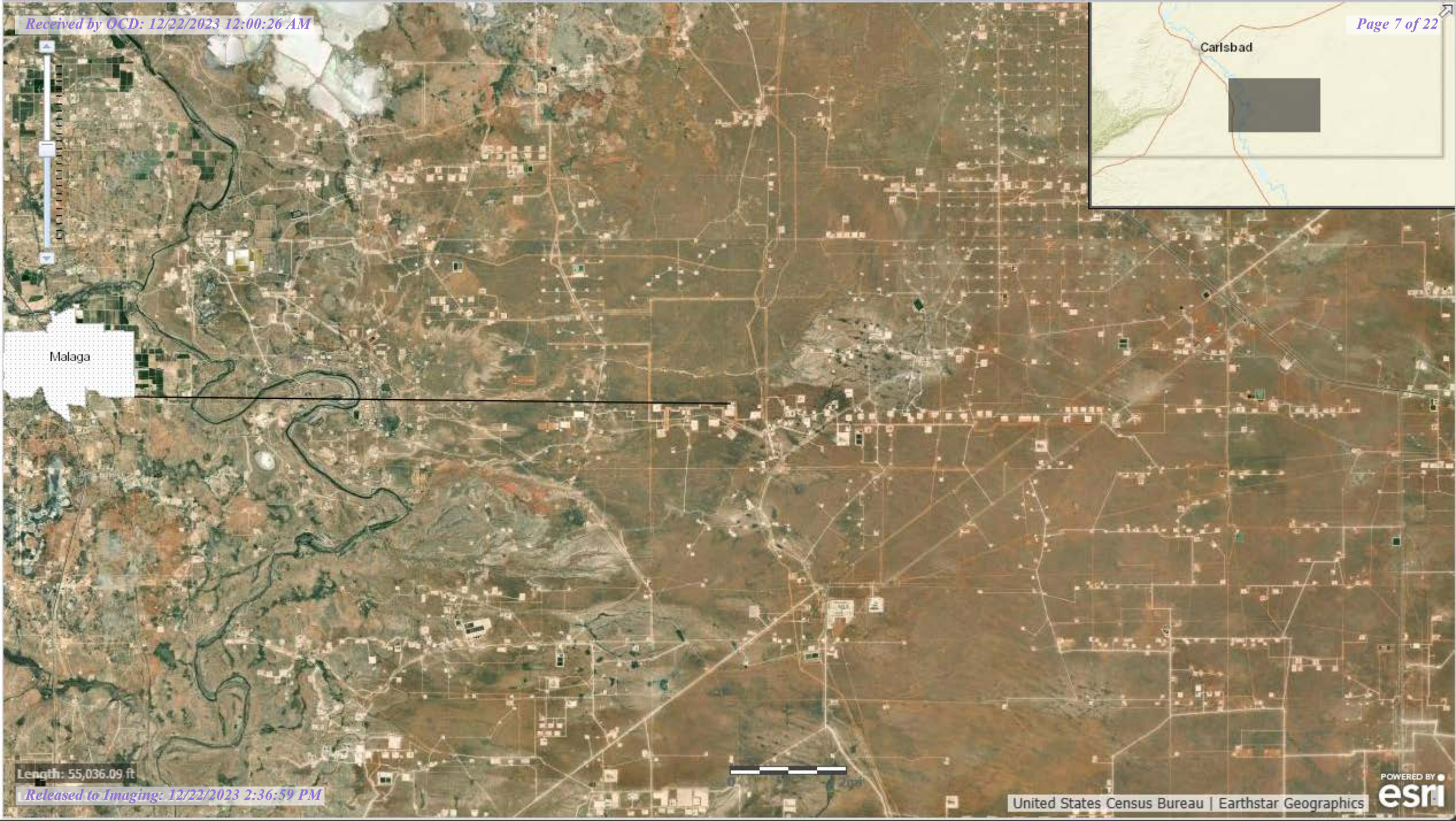
Measurement Result

42,168.9 Feet

Clear

Press CTRL to enable snapping





Malaga

Length: 55,036.09 ft





32.21197, -103.87136



Show search results for 32.21197, -10...

Measurement



Feet

Measurement Result

2,804.2 Feet

Clear

Press CTRL to enable snapping



Eddy County  
350120

35015C1650D  
eff. 6/4/2010

Zone A

App State  
Click to restore the map extent and layers visibility where you left off.





Legend

Permian Basin Karst Areas

Critical Karst Resource Area



Karst Occurrence Potential

Potential

- High
- Medium
- Low

OCD Districts

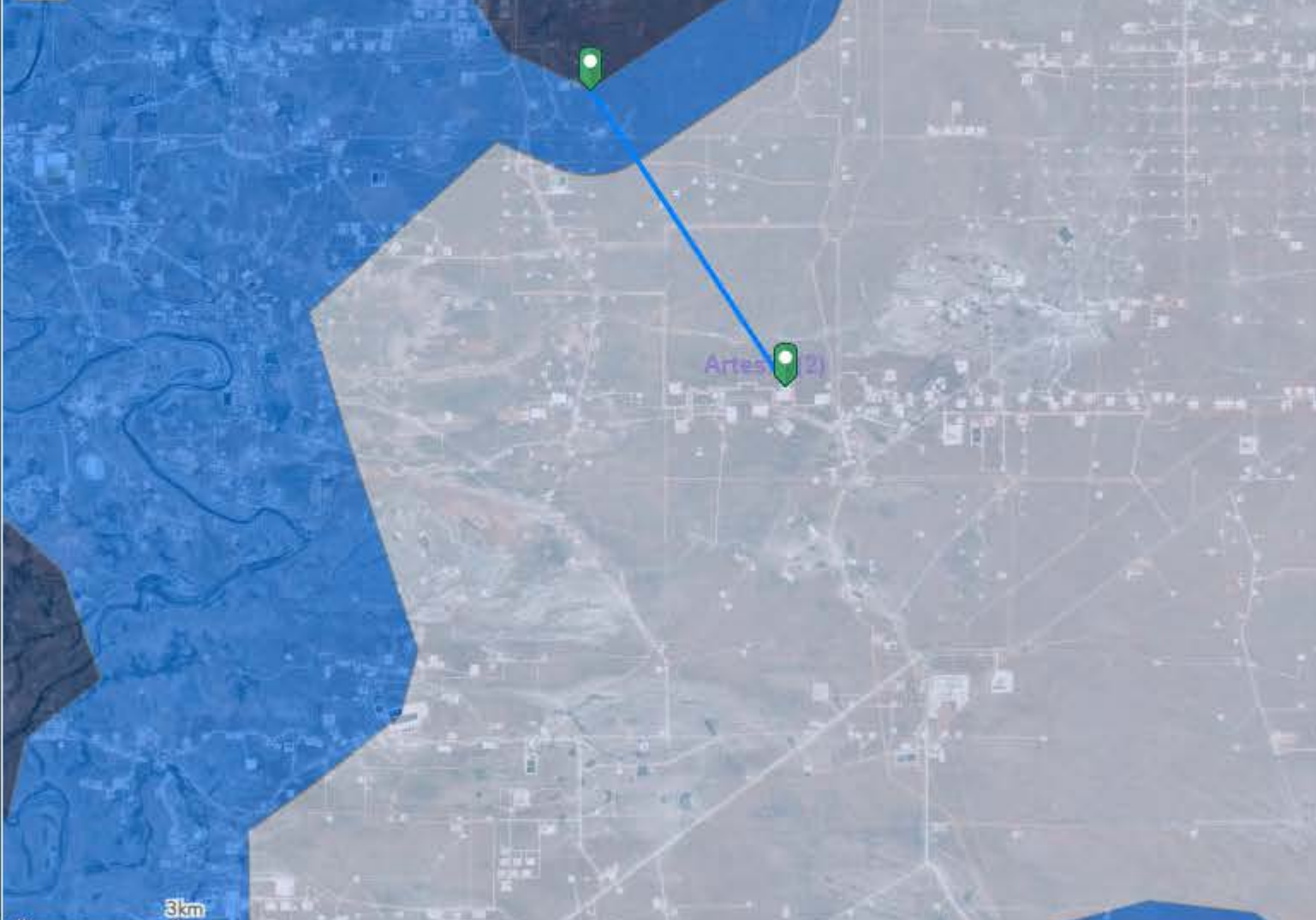
OCD District Offices



OCD Districts



Map navigation controls including zoom in (+), zoom out (-), search (magnifying glass), print, and home buttons. A search bar contains the coordinates 32.21197, -103.87136 and a button to show search results.



**Measurement**

Feet

Measurement Result

21,867.5 Feet

Clear

Press CTRL to enable snapping



-103.84338 32.11282 Degrees

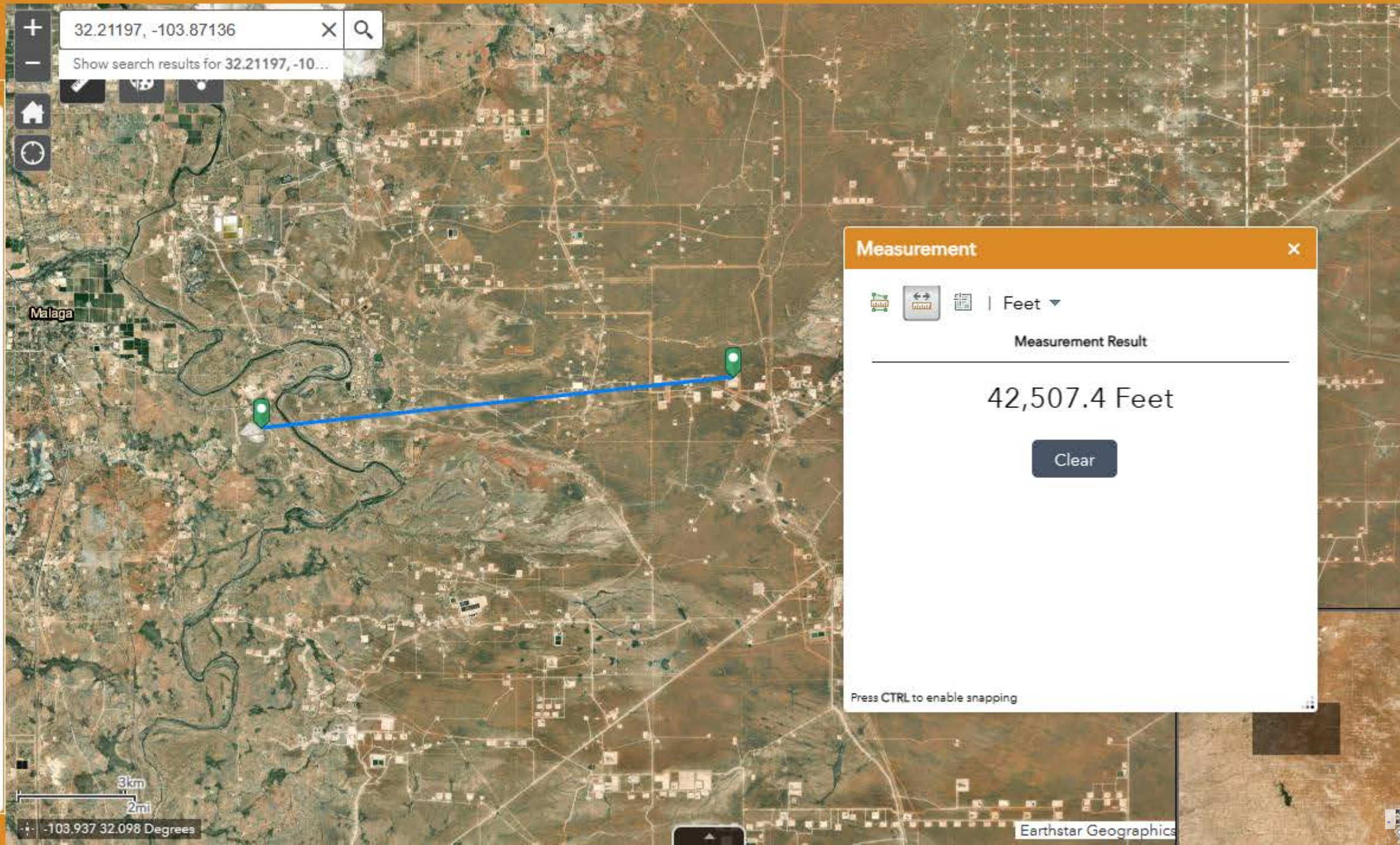




Legend

Registered Mines

- Aggregate, Stone etc.
- Coal
- Gypsum
- Humate
- Industrial Minerals (Other)
- Metals
- Perlite
- Potash
- PM Pumice
- Red Dog, Scoria
- Salt
- U Uranium
- ZE Zeolites





Legend

OSE Water PODs

USGS Groundwater wells

USGS Active Monitoring GW Wells

USGS Historical GW Wells

Hydrology

NMED Drinking Water Systems

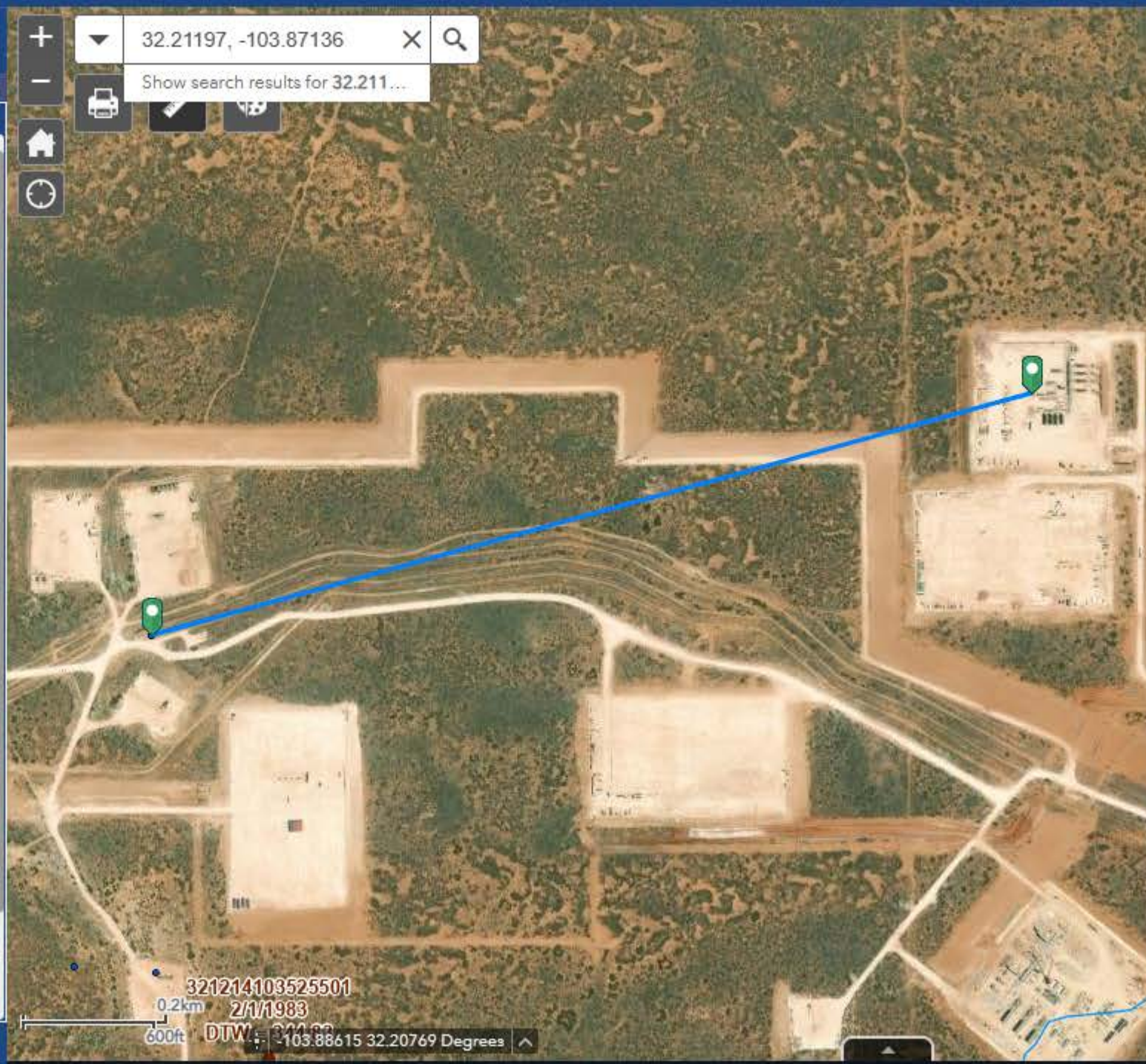
OSE Streams

OSE Probable Playas

OSW Water Bodys

OCD Districts

OCD District Offices



Measurement

Feet

Measurement Result

4,081.1 Feet


Clear

Press CTRL to enable snapping



Show search results for 32.211...

**Measurement** ✕



**Measurement Result**

6,372.6 Feet

Clear

Press CTRL to enable snapping

32121410352  
2/1/1989  
DTW = 344

321203103511801  
3/26/1959  
DTW = 423.1



















**District I**

1625 N. French Dr., Hobbs, NM 88240  
Phone:(575) 393-6161 Fax:(575) 393-0720

**District II**

811 S. First St., Artesia, NM 88210  
Phone:(575) 748-1283 Fax:(575) 748-9720

**District III**

1000 Rio Brazos Rd., Aztec, NM 87410  
Phone:(505) 334-6178 Fax:(505) 334-6170

**District IV**

1220 S. St Francis Dr., Santa Fe, NM 87505  
Phone:(505) 476-3470 Fax:(505) 476-3462

**State of New Mexico**  
**Energy, Minerals and Natural Resources**  
**Oil Conservation Division**  
**1220 S. St Francis Dr.**  
**Santa Fe, NM 87505**

QUESTIONS

Action 295566

**QUESTIONS**

Operator: XTO ENERGY, INC 6401 Holiday Hill Road Midland, TX 79707	OGRID:
	5380
	Action Number: 295566
	Action Type: [C-141] Remediation Closure Request C-141 (C-141-v-Closure)

**QUESTIONS**

<b>Prerequisites</b>	
Incident ID (n#)	nAPP2334846848
Incident Name	NAPP2334846848 PLU 22 DOG TOWN DRAW CVB @ 0
Incident Type	Oil Release
Incident Status	Remediation Closure Report Received

**Location of Release Source**

Please answer all the questions in this group.

Site Name	PLU 22 Dog Town Draw CVB
Date Release Discovered	12/10/2023
Surface Owner	Federal

**Incident Details**

Please answer all the questions in this group.

Incident Type	Oil Release
Did this release result in a fire or is the result of a fire	No
Did this release result in any injuries	No
Has this release reached or does it have a reasonable probability of reaching a watercourse	No
Has this release endangered or does it have a reasonable probability of endangering public health	No
Has this release substantially damaged or will it substantially damage property or the environment	No
Is this release of a volume that is or may with reasonable probability be detrimental to fresh water	No

**Nature and Volume of Release**

Material(s) released, please answer all that apply below. Any calculations or specific justifications for the volumes provided should be attached to the follow-up C-141 submission.

Crude Oil Released (bbls) Details	Cause: Equipment Failure   Other (Specify)   Crude Oil   Released: 15 BBL   Recovered: 15 BBL   Lost: 0 BBL.
Produced Water Released (bbls) Details	Not answered.
Is the concentration of chloride in the produced water >10,000 mg/l	No
Condensate Released (bbls) Details	Not answered.
Natural Gas Vented (Mcf) Details	Not answered.
Natural Gas Flared (Mcf) Details	Not answered.
Other Released Details	Not answered.
Are there additional details for the questions above (i.e. any answer containing Other, Specify, Unknown, and/or Fire, or any negative lost amounts)	Air eliminator on the LACT failed.



**District I**

1625 N. French Dr., Hobbs, NM 88240  
Phone:(575) 393-6161 Fax:(575) 393-0720

**District II**

811 S. First St., Artesia, NM 88210  
Phone:(575) 748-1283 Fax:(575) 748-9720

**District III**

1000 Rio Brazos Rd., Aztec, NM 87410  
Phone:(505) 334-6178 Fax:(505) 334-6170

**District IV**

1220 S. St Francis Dr., Santa Fe, NM 87505  
Phone:(505) 476-3470 Fax:(505) 476-3462

**State of New Mexico**  
**Energy, Minerals and Natural Resources**  
**Oil Conservation Division**  
**1220 S. St Francis Dr.**  
**Santa Fe, NM 87505**

QUESTIONS, Page 2

Action 295566

**QUESTIONS (continued)**

Operator: XTO ENERGY, INC 6401 Holiday Hill Road Midland, TX 79707	OGRID:	5380
	Action Number:	295566
	Action Type:	[C-141] Remediation Closure Request C-141 (C-141-v-Closure)

**QUESTIONS**

<b>Nature and Volume of Release (continued)</b>	
Is this a gas only submission (i.e. only significant Mcf values reported)	<b>No, according to supplied volumes this does not appear to be a "gas only" report.</b>
Was this a major release as defined by Subsection A of 19.15.29.7 NMAC	<b>No</b>
Reasons why this would be considered a submission for a notification of a major release	<i>Unavailable.</i>
<i>With the implementation of the 19.15.27 NMAC (05/25/2021), venting and/or flaring of natural gas (i.e. gas only) are to be submitted on the C-129 form.</i>	

**Initial Response**

*The responsible party must undertake the following actions immediately unless they could create a safety hazard that would result in injury.*

The source of the release has been stopped	<b>True</b>
The impacted area has been secured to protect human health and the environment	<b>True</b>
Released materials have been contained via the use of berms or dikes, absorbent pads, or other containment devices	<b>True</b>
All free liquids and recoverable materials have been removed and managed appropriately	<b>True</b>
If all the actions described above have not been undertaken, explain why	<i>Not answered.</i>

*Per Paragraph (4) of Subsection B of 19.15.29.8 NMAC the responsible party may commence remediation immediately after discovery of a release. If remediation has begun, please prepare and attach a narrative of actions to date in the follow-up C-141 submission. If remedial efforts have been successfully completed or if the release occurred within a lined containment area (see Subparagraph (a) of Paragraph (5) of Subsection A of 19.15.29.11 NMAC), please prepare and attach all information needed for closure evaluation in the follow-up C-141 submission.*

I hereby certify that the information given above is true and complete to the best of my knowledge and understand that pursuant to OCD rules and regulations all operators are required to report and/or file certain release notifications and perform corrective actions for releases which may endanger public health or the environment. The acceptance of a C-141 report by the OCD does not relieve the operator of liability should their operations have failed to adequately investigate and remediate contamination that pose a threat to groundwater, surface water, human health or the environment. In addition, OCD acceptance of a C-141 report does not relieve the operator of responsibility for compliance with any other federal, state, or local laws and/or regulations.

I hereby agree and sign off to the above statement	Name: Melanie Collins Title: Regulatory Analyst Email: <a href="mailto:Melanie.Collins@exxonmobil.com">Melanie.Collins@exxonmobil.com</a> Date: 12/18/2023
--	---



**District I**

1625 N. French Dr., Hobbs, NM 88240  
Phone:(575) 393-6161 Fax:(575) 393-9720

**District II**

811 S. First St., Artesia, NM 88210  
Phone:(575) 748-1283 Fax:(575) 748-9720

**District III**

1000 Rio Brazos Rd., Aztec, NM 87410  
Phone:(505) 334-6178 Fax:(505) 334-6170

**District IV**

1220 S. St Francis Dr., Santa Fe, NM 87505  
Phone:(505) 476-3470 Fax:(505) 476-3462

**State of New Mexico**  
**Energy, Minerals and Natural Resources**  
**Oil Conservation Division**  
**1220 S. St Francis Dr.**  
**Santa Fe, NM 87505**

QUESTIONS, Page 3

Action 295566

**QUESTIONS (continued)**

Operator: XTO ENERGY, INC 6401 Holiday Hill Road Midland, TX 79707	OGRID:	5380
	Action Number:	295566
	Action Type:	[C-141] Remediation Closure Request C-141 (C-141-v-Closure)

**QUESTIONS****Site Characterization**

*Please answer all the questions in this group (only required when seeking remediation plan approval and beyond). This information must be provided to the appropriate district office no later than 90 days after the release discovery date.*

What is the shallowest depth to groundwater beneath the area affected by the release in feet below ground surface (ft bgs)	Between 500 and 1000 (ft.)
What method was used to determine the depth to ground water	OCD Imaging Records Lookup
Did this release impact groundwater or surface water	No
<b>What is the minimum distance, between the closest lateral extents of the release and the following surface areas:</b>	
A continuously flowing watercourse or any other significant watercourse	Between 1000 (ft.) and ½ (mi.)
Any lakebed, sinkhole, or playa lake (measured from the ordinary high-water mark)	Greater than 5 (mi.)
An occupied permanent residence, school, hospital, institution, or church	Between 1 and 5 (mi.)
A spring or a private domestic fresh water well used by less than five households for domestic or stock watering purposes	Between ½ and 1 (mi.)
Any other fresh water well or spring	Between ½ and 1 (mi.)
Incorporated municipal boundaries or a defined municipal fresh water well field	Greater than 5 (mi.)
A wetland	Between 1 and 5 (mi.)
A subsurface mine	Greater than 5 (mi.)
An (non-karst) unstable area	Between 1 and 5 (mi.)
Categorize the risk of this well / site being in a karst geology	Low
A 100-year floodplain	Between 1 and 5 (mi.)
Did the release impact areas not on an exploration, development, production, or storage site	No

**Remediation Plan**

*Please answer all the questions that apply or are indicated. This information must be provided to the appropriate district office no later than 90 days after the release discovery date.*

Requesting a remediation plan approval with this submission	Yes
<i>Attach a comprehensive report demonstrating the lateral and vertical extents of soil contamination associated with the release have been determined, pursuant to 19.15.29.11 NMAC and 19.15.29.13 NMAC.</i>	
Have the lateral and vertical extents of contamination been fully delineated	Yes
Was this release entirely contained within a lined containment area	Yes
<i>Per Subsection B of 19.15.29.11 NMAC unless the site characterization report includes completed efforts at remediation, the report must include a proposed remediation plan in accordance with 19.15.29.12 NMAC, which includes the anticipated timelines for beginning and completing the remediation.</i>	
On what estimated date will the remediation commence	12/20/2023
On what date will (or did) the final sampling or liner inspection occur	12/20/2023
On what date will (or was) the remediation complete(d)	12/20/2023
What is the estimated surface area (in square feet) that will be remediated	800
What is the estimated volume (in cubic yards) that will be remediated	0
<i>These estimated dates and measurements are recognized to be the best guess or calculation at the time of submission and may (be) change(d) over time as more remediation efforts are completed.</i>	
<i>The OCD recognizes that proposed remediation measures may have to be minimally adjusted in accordance with the physical realities encountered during remediation. If the responsible party has any need to significantly deviate from the remediation plan proposed, then it should consult with the division to determine if another remediation plan submission is required.</i>	



**District I**

1625 N. French Dr., Hobbs, NM 88240  
Phone:(575) 393-6161 Fax:(575) 393-0720

**District II**

811 S. First St., Artesia, NM 88210  
Phone:(575) 748-1283 Fax:(575) 748-9720

**District III**

1000 Rio Brazos Rd., Aztec, NM 87410  
Phone:(505) 334-6178 Fax:(505) 334-6170

**District IV**

1220 S. St Francis Dr., Santa Fe, NM 87505  
Phone:(505) 476-3470 Fax:(505) 476-3462

**State of New Mexico**  
**Energy, Minerals and Natural Resources**  
**Oil Conservation Division**  
**1220 S. St Francis Dr.**  
**Santa Fe, NM 87505**

QUESTIONS, Page 4

Action 295566

**QUESTIONS (continued)**

Operator: XTO ENERGY, INC 6401 Holiday Hill Road Midland, TX 79707	OGRID:	5380
	Action Number:	295566
	Action Type:	[C-141] Remediation Closure Request C-141 (C-141-v-Closure)

**QUESTIONS**

<b>Remediation Plan (continued)</b>	
<i>Please answer all the questions that apply or are indicated. This information must be provided to the appropriate district office no later than 90 days after the release discovery date.</i>	
<b>This remediation will (or is expected to) utilize the following processes to remediate / reduce contaminants:</b>	
<i>(Select all answers below that apply.)</i>	
Is (or was) there affected material present needing to be removed	Yes
Is (or was) there a power wash of the lined containment area (to be) performed	Yes
OTHER (Non-listed remedial process)	No
<i>Per Subsection B of 19.15.29.11 NMAC unless the site characterization report includes completed efforts at remediation, the report must include a proposed remediation plan in accordance with 19.15.29.12 NMAC, which includes the anticipated timelines for beginning and completing the remediation.</i>	
I hereby certify that the information given above is true and complete to the best of my knowledge and understand that pursuant to OCD rules and regulations all operators are required to report and/or file certain release notifications and perform corrective actions for releases which may endanger public health or the environment. The acceptance of a C-141 report by the OCD does not relieve the operator of liability should their operations have failed to adequately investigate and remediate contamination that pose a threat to groundwater, surface water, human health or the environment. In addition, OCD acceptance of a C-141 report does not relieve the operator of responsibility for compliance with any other federal, state, or local laws and/or regulations.	
I hereby agree and sign off to the above statement	Name: Melanie Collins Title: Regulatory Analyst Email: Melanie.Collins@exxonmobil.com Date: 12/21/2023
<i>The OCD recognizes that proposed remediation measures may have to be minimally adjusted in accordance with the physical realities encountered during remediation. If the responsible party has any need to significantly deviate from the remediation plan proposed, then it should consult with the division to determine if another remediation plan submission is required.</i>	



**District I**

1625 N. French Dr., Hobbs, NM 88240  
Phone:(575) 393-6161 Fax:(575) 393-0720

**District II**

811 S. First St., Artesia, NM 88210  
Phone:(575) 748-1283 Fax:(575) 748-9720

**District III**

1000 Rio Brazos Rd., Aztec, NM 87410  
Phone:(505) 334-6178 Fax:(505) 334-6170

**District IV**

1220 S. St Francis Dr., Santa Fe, NM 87505  
Phone:(505) 476-3470 Fax:(505) 476-3462

**State of New Mexico**  
**Energy, Minerals and Natural Resources**  
**Oil Conservation Division**  
**1220 S. St Francis Dr.**  
**Santa Fe, NM 87505**

QUESTIONS, Page 6

Action 295566

**QUESTIONS (continued)**

Operator: XTO ENERGY, INC 6401 Holiday Hill Road Midland, TX 79707	OGRID:
	5380
	Action Number:
	295566
Action Type:	
[C-141] Remediation Closure Request C-141 (C-141-v-Closure)	

**QUESTIONS**

Liner Inspection Information	
Last liner inspection notification (C-141L) recorded	295898
Liner inspection date pursuant to Subparagraph (a) of Paragraph (5) of Subsection A of 19.15.29.11 NMAC	12/20/2023
Was all the impacted materials removed from the liner	Yes
What was the liner inspection surface area in square feet	800

**Remediation Closure Request**

*Only answer the questions in this group if seeking remediation closure for this release because all remediation steps have been completed.*

Requesting a remediation closure approval with this submission	Yes
Have the lateral and vertical extents of contamination been fully delineated	Yes
Was this release entirely contained within a lined containment area	Yes
What was the total surface area (in square feet) remediated	800
What was the total volume (cubic yards) remediated	0
Summarize any additional remediation activities not included by answers (above)	All fluids recovered and liner inspected

*The responsible party must attach information demonstrating they have complied with all applicable closure requirements and any conditions or directives of the OCD. This demonstration should be in the form of a comprehensive report (in .pdf format) including a scaled site map, sampling diagrams, relevant field notes, photographs of any excavation prior to backfilling, laboratory data including chain of custody documents of final sampling, and a narrative of the remedial activities. Refer to 19.15.29.12 NMAC.*

I hereby certify that the information given above is true and complete to the best of my knowledge and understand that pursuant to OCD rules and regulations all operators are required to report and/or file certain release notifications and perform corrective actions for releases which may endanger public health or the environment. The acceptance of a C-141 report by the OCD does not relieve the operator of liability should their operations have failed to adequately investigate and remediate contamination that pose a threat to groundwater, surface water, human health or the environment. In addition, OCD acceptance of a C-141 report does not relieve the operator of responsibility for compliance with any other federal, state, or local laws and/or regulations. The responsible party acknowledges they must substantially restore, reclaim, and re-vegetate the impacted surface area to the conditions that existed prior to the release or their final land use in accordance with 19.15.29.13 NMAC including notification to the OCD when reclamation and re-vegetation are complete.

I hereby agree and sign off to the above statement	Name: Melanie Collins Title: Regulatory Analyst Email: Melanie.Collins@exxonmobil.com Date: 12/21/2023
--	---



**District I**  
1625 N. French Dr., Hobbs, NM 88240  
Phone:(575) 393-6161 Fax:(575) 393-0720

**District II**  
811 S. First St., Artesia, NM 88210  
Phone:(575) 748-1283 Fax:(575) 748-9720

**District III**  
1000 Rio Brazos Rd., Aztec, NM 87410  
Phone:(505) 334-6178 Fax:(505) 334-6170

**District IV**  
1220 S. St Francis Dr., Santa Fe, NM 87505  
Phone:(505) 476-3470 Fax:(505) 476-3462

**State of New Mexico**  
**Energy, Minerals and Natural Resources**  
**Oil Conservation Division**  
**1220 S. St Francis Dr.**  
**Santa Fe, NM 87505**

CONDITIONS

Action 295566

CONDITIONS

Operator: XTO ENERGY, INC 6401 Holiday Hill Road Midland, TX 79707	OGRID: 5380
	Action Number: 295566
	Action Type: [C-141] Remediation Closure Request C-141 (C-141-v-Closure)

CONDITIONS

Created By	Condition	Condition Date
scwells	None	12/22/2023