

NAPP2314544750

Spills In Lined Containment	
Measurements Of Standing Fluid	
Length(Ft)	56
Width(Ft)	68
Depth(in.)	2.15
tank displacements (bbls)	121.52
No. of 500 bbl Tanks In Standing Fluid	2
No. of Other Tanks In Standing Fluid	
OD Of Other Tanks In Standing Fluid(feet)	
Total Volume of standing fluid accounting for tank displacement.	109.48



Pima Environmental Services
5614 N. Lovington Highway
Hobbs, NM 88240
575-964-7740

January 11, 2024

NMOCD District 2
811 S. First St
Artesia, NM, 88210

RE: Liner Inspection and Closure Report
North Thistle 2 CTB 1
API No. N/A
GPS : Latitude 32.338601 Longitude -103.541269
UL- B, Section 34, Township 23S, Range 33E
NMOCD Reference No. NAPP2314544750

Devon Energy Production Company (Devon) has contracted Pima Environmental Services, LLC (Pima) to perform a liner inspection and prepare this closure report for a Produced Water release that happened at the North Thistle 2 CTB 1 (North Thistle). An initial C-141 was submitted on June 8, 2023, and can be found in Appendix B. This incident was assigned Incident ID NAPP2314544750, by the New Mexico Oil Conservation Division (NMOCD).

Site Information and Site Characterization

The North Thistle is located approximately twenty-five (25) miles Southwest of Eunice, NM. This spill site is in Unit B, Section 34, Township 23S, Range 33E, Latitude 32.338601 Longitude -103.541269, Lea County, NM. A Location Map can be found in Figure 1.

Based upon New Mexico Office of the State Engineer well water data, depth to the nearest groundwater in this area is 305 feet below grade surface (BGS). According to the United States Geological Survey well water data, depth to the nearest groundwater in this area is 275 feet BGS. See Appendix A for referenced water surveys. The North Thistle is in a low karst area (Figure 3). A Topographic Map can be found in Figure 2.

Release Information

NAPP2314544750: On May 25, 2023, a pin hole developed on a water line causing fluid to be released into lined containment. Approximately 110 barrels (bbls) of produced water was released from the water line into the lined, secondary containment. A vacuum truck was dispatched and recovered approximately 110 bbls of fluid from the lined SPCC containment ring. Once standing fluids were removed, the liner was visually inspected by Devon field staff for any pinholes or punctures; none were found. Based on this inspection there is no evidence that the spilled fluids left containment.

A Site Map can be found in Figure 4.

Site Assessment and Liner Inspection

On January 5, 2024, after submitting the 48-hour notification application ID:299497 to the OCD, Pima Environmental conducted a liner inspection at this location. We concluded that this liner and containment maintained its integrity and was able to retain the fluids. The liner inspection form and photographic documentation can be found in Appendix C.

Closure Request

After careful review, Pima requests that this incident, NAPP2314544750, be closed. Devon has complied with the applicable closure requirements.

Should you have any questions or need additional information, please feel free to contact Gio Gomez at 575-964-7740 or Gio@pimaoil.com.

Attachments

Figures:

- 1- Location Map
- 2- Topographic Map
- 3- Karst Map
- 4- Site Map

Appendices:

- Appendix A- Referenced Water Surveys
- Appendix B- C-141 Form & 48 Hour Notification
- Appendix C- Liner Inspection Form & Photographic Documentation



Pima Environmental Services

Figures:

1-Location Map

2-Topographic Map

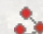

3-Karst Map

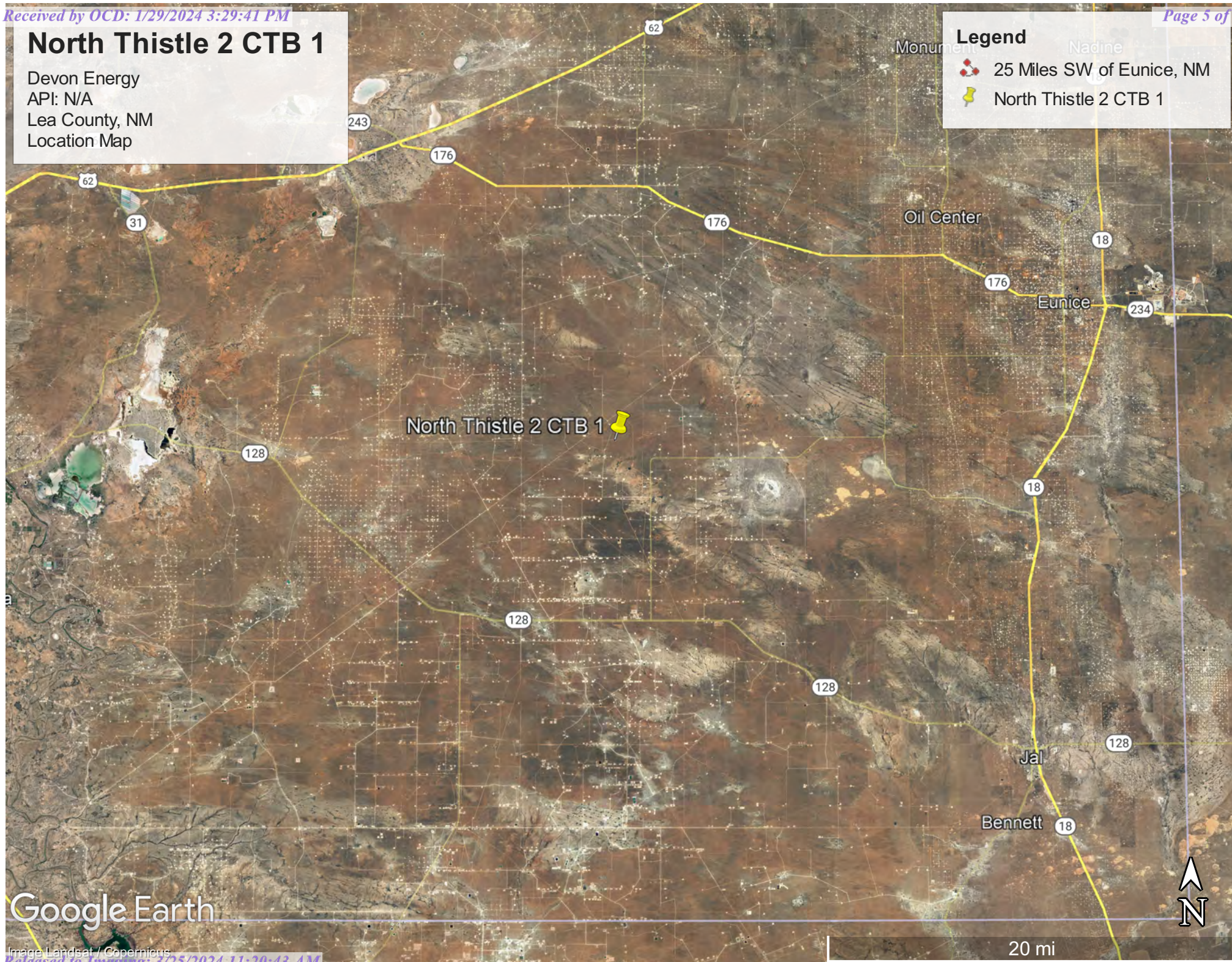
4-Site Map

North Thistle 2 CTB 1

Devon Energy
API: N/A
Lea County, NM
Location Map

Legend

-  25 Miles SW of Eunice, NM
-  North Thistle 2 CTB 1




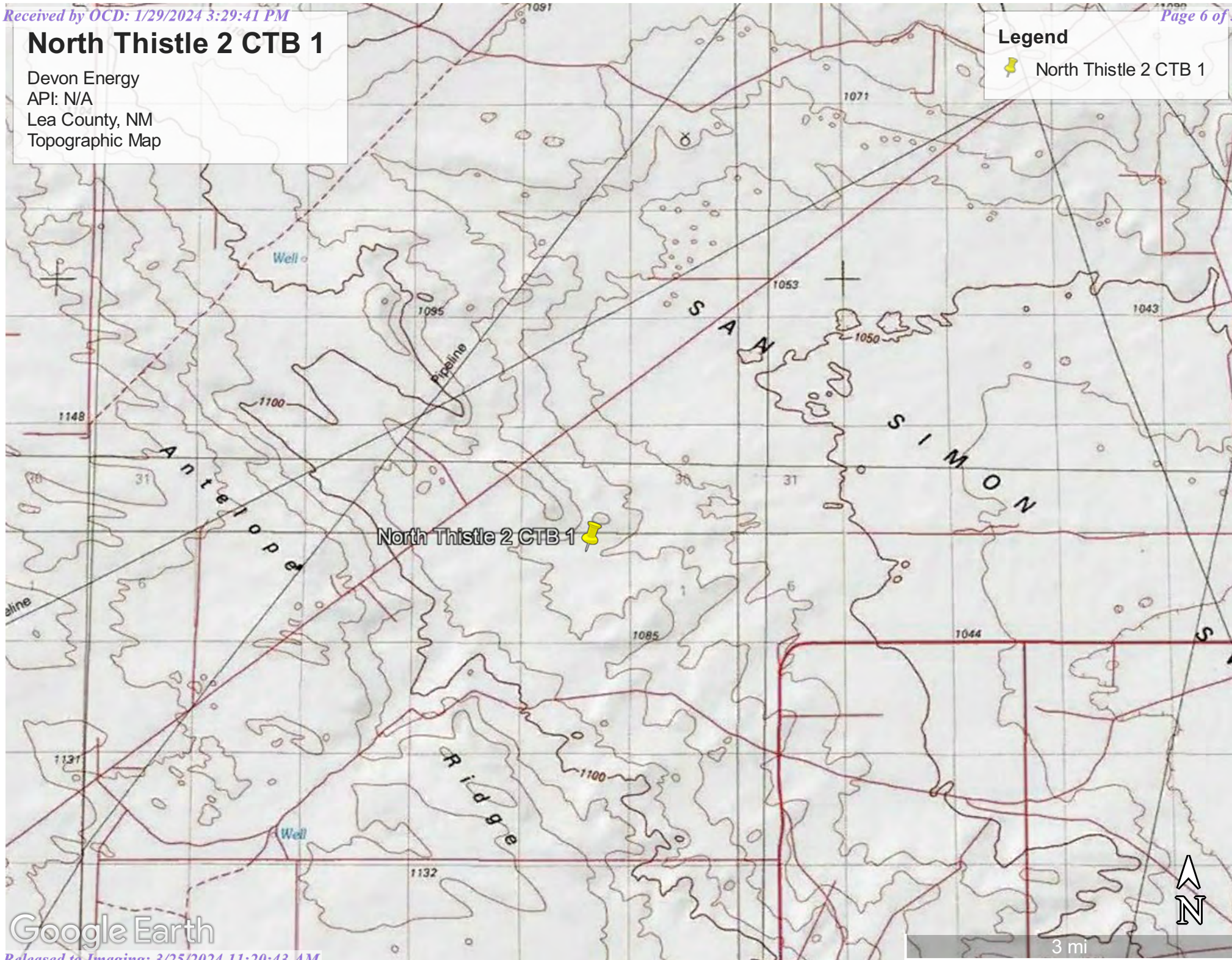
Google Earth

North Thistle 2 CTB 1

Devon Energy
API: N/A
Lea County, NM
Topographic Map

Legend

 North Thistle 2 CTB 1




North Thistle 2 CTB 1

Devon Energy
API: N/A
Lea County, NM
Karst Map

Legend

-  High Karst
-  Low Karst
-  Medium Karst
-  North Thistle 2 CTB 1

North Thistle 2 CTB 1 

128

128

128

Google Earth




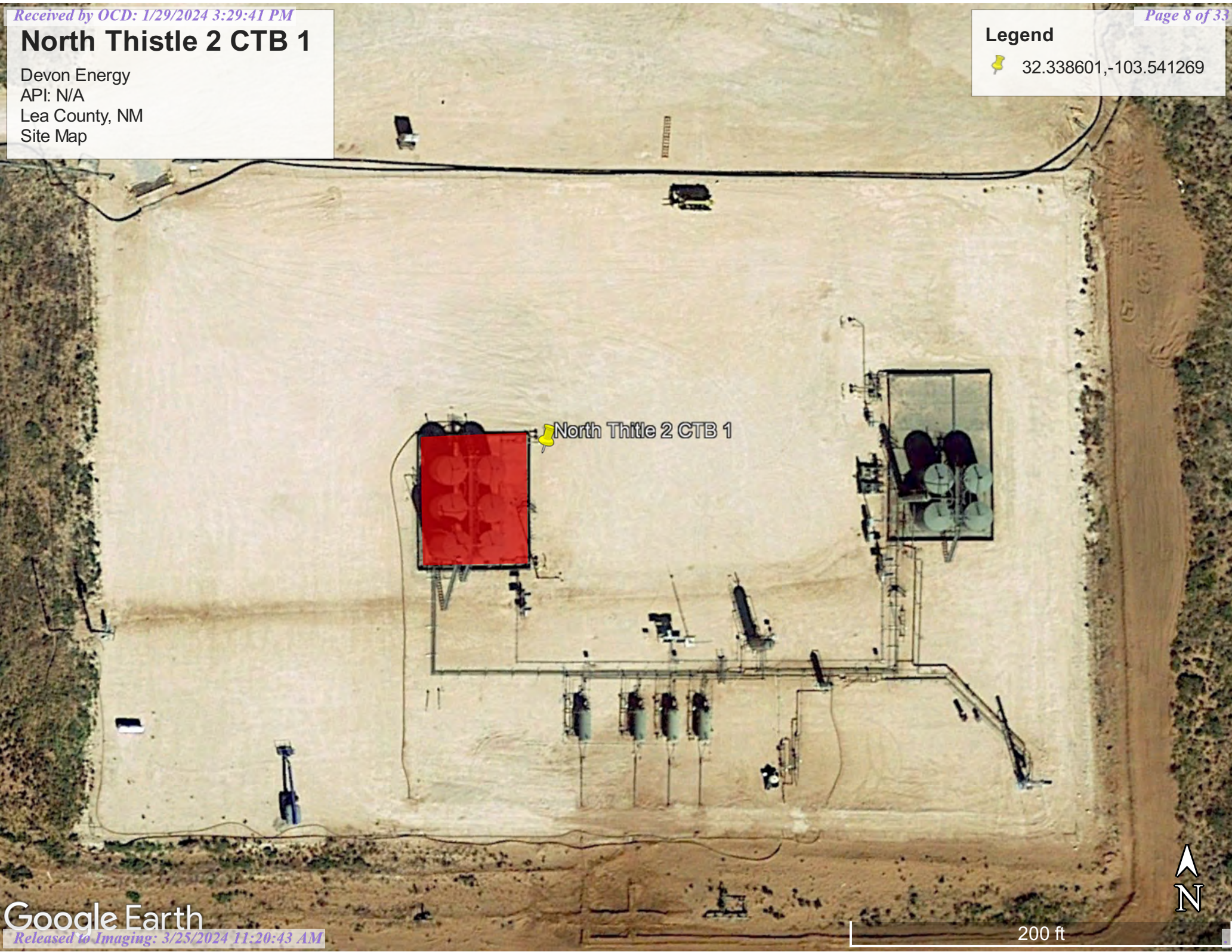
10 mi

North Thistle 2 CTB 1

Devon Energy
API: N/A
Lea County, NM
Site Map

Legend

 32.338601,-103.541269





Pima Environmental Services

Appendix A

Water Surveys:

OSE

USGS

Surface Water Map

Wetlands Map



New Mexico Office of the State Engineer

Water Column/Average Depth to Water

(A CLW##### in the POD suffix indicates the POD has been replaced & no longer serves a water right file.)

(R=POD has been replaced,
O=orphaned,
C=the file is closed)

(quarters are 1=NW 2=NE 3=SW 4=SE)

(quarters are smallest to largest) (NAD83 UTM in meters)

(In feet)

POD Number	Code	POD Sub-basin	County	Q 64	Q 16	Q 4	Sec	Tws	Rng	X	Y	Distance	DepthWell	DepthWater	Water Column
CP 00278 POD1		CP	LE	1	3	4	06	23S	34E	640413	3577897	3287	640		
C 03582 POD1		C	LE	4	1	1	14	23S	33E	636583	3575666	3310	590		
CP 01130 POD1		CP	LE	2	1	2	07	23S	34E	640662	3577558	3636	27		
CP 01130 POD2		CP	LE	2	1	2	07	23S	34E	640674	3577549	3650	27		
CP 01886 POD1		CP	LE	4	1	4	07	23S	34E	640646	3576545	4106			
CP 00872 POD1		CP	LE	1	1	1	08	23S	34E	641225	3577504*	4182	494	305	189
CP 01075 POD1		CP	LE	1	1	1	08	23S	34E	641278	3577525	4225	430	20	410
CP 01502 POD1		CP	LE	4	3	3	05	23S	34E	641316	3577635	4227	648	200	448
C 04664 POD1		CUB	LE	4	1	4	15	23S	33E	635784	3574818	4350	55		
CP 01502 POD2		CP	LE	4	3	3	05	23S	34E	642074	3577676	4944	680	300	380

Average Depth to Water: **206 feet**

Minimum Depth: **20 feet**

Maximum Depth: **305 feet**

Record Count: 10

UTMNAD83 Radius Search (in meters):

Easting (X): 637283.44

Northing (Y): 3578902.42

Radius: 5000

*UTM location was derived from PLSS - see Help

The data is furnished by the NMOSE/ISC and is accepted by the recipient with the expressed understanding that the OSE/ISC make no warranties, expressed or implied, concerning the accuracy, completeness, reliability, usability, or suitability for any particular purpose of the data.

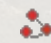


6/14/23 2:22 PM

WATER COLUMN/ AVERAGE DEPTH TO WATER

North Thistle 2 CTB 1

Devon Energy
API: N/A
Lea County, NM
CP-00278-POD 1 MAP

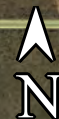
Legend

-  2.01 Miles
-  CP-00278-POD 1
-  North Thistle 2 CTB 1

North Thistle 2 CTB 1

CP-00278-POD 1

Google Earth



5000 ft



[USGS Home](#)
[Contact USGS](#)
[Search USGS](#)

National Water Information System: Web Interface

USGS Water Resources

Data Category:


Groundwater

Geographic Area:

United States

GO

Click to hide News Bulletins

- Explore the *NEW* [USGS National Water Dashboard](#) interactive map to access real-time water data from over 13,500 stations nationwide.
- [Full News](#) 

Groundwater levels for the Nation



Important: [Next Generation Monitoring Location Page](#)

Search Results -- 1 sites found

site_no list =

- 321917103303001

Minimum number of levels = 1

[Save file of selected sites](#) to local disk for future upload

USGS 321917103303001 23S.34E.06.43314

Available data for this site

Groundwater: Field measurements

GO

Lea County, New Mexico

Hydrologic Unit Code 13070007

Latitude 32°19'17", Longitude 103°30'30" NAD27

Land-surface elevation 3,480 feet above NAVD88

The depth of the well is 640 feet below land surface.

This well is completed in the Other aquifers (N9999OTHER) national aquifer.

This well is completed in the Santa Rosa Sandstone (231SNRS) local aquifer.

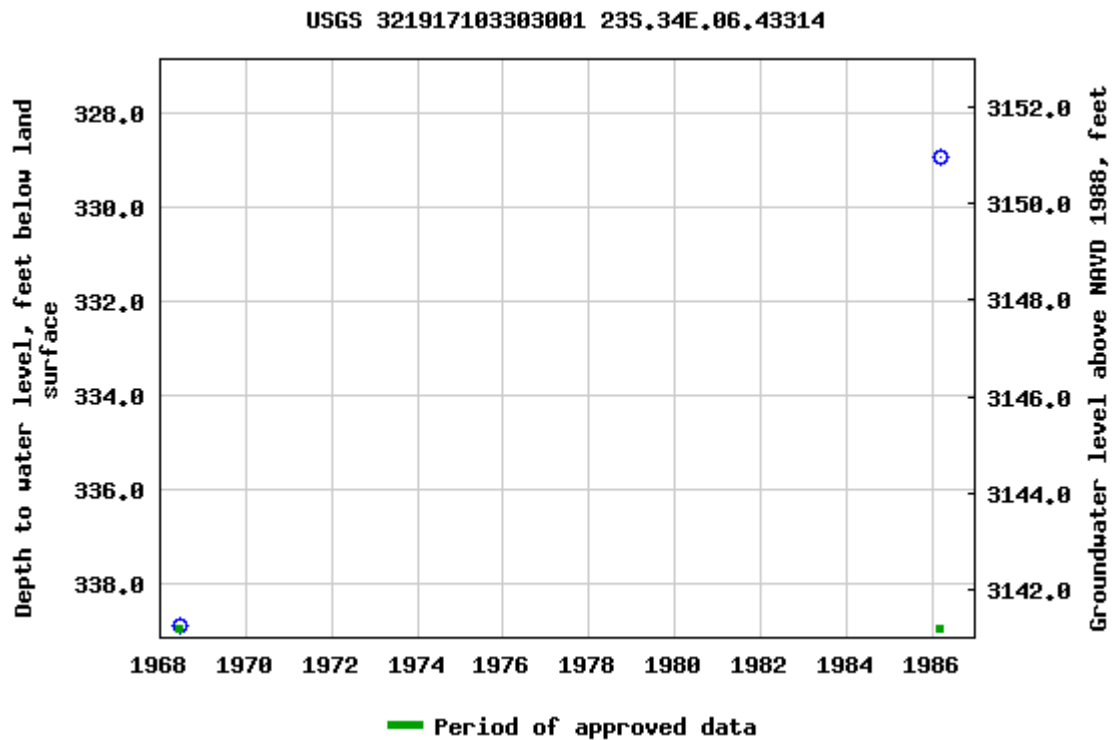
Output formats

[Table of data](#)

[Tab-separated data](#)

[Graph of data](#)

[Reselect period](#)



Breaks in the plot represent a gap of at least one year between field measurements.

[Download a presentation-quality graph](#)

[Questions or Comments](#)

[Automated retrievals](#)

[Help](#)

[Data Tips](#)

[Explanation of terms](#)

[Subscribe for system changes](#)

[News](#)

[Accessibility](#)

[FOIA](#)

[Privacy](#)

[Policies and Notices](#)

[U.S. Department of the Interior](#) | [U.S. Geological Survey](#)

Title: Groundwater for USA: Water Levels

URL: <https://nwis.waterdata.usgs.gov/nwis/gwlevels?>



Page Contact Information: [USGS Water Data Support Team](#)

Page Last Modified: 2023-06-14 16:19:20 EDT

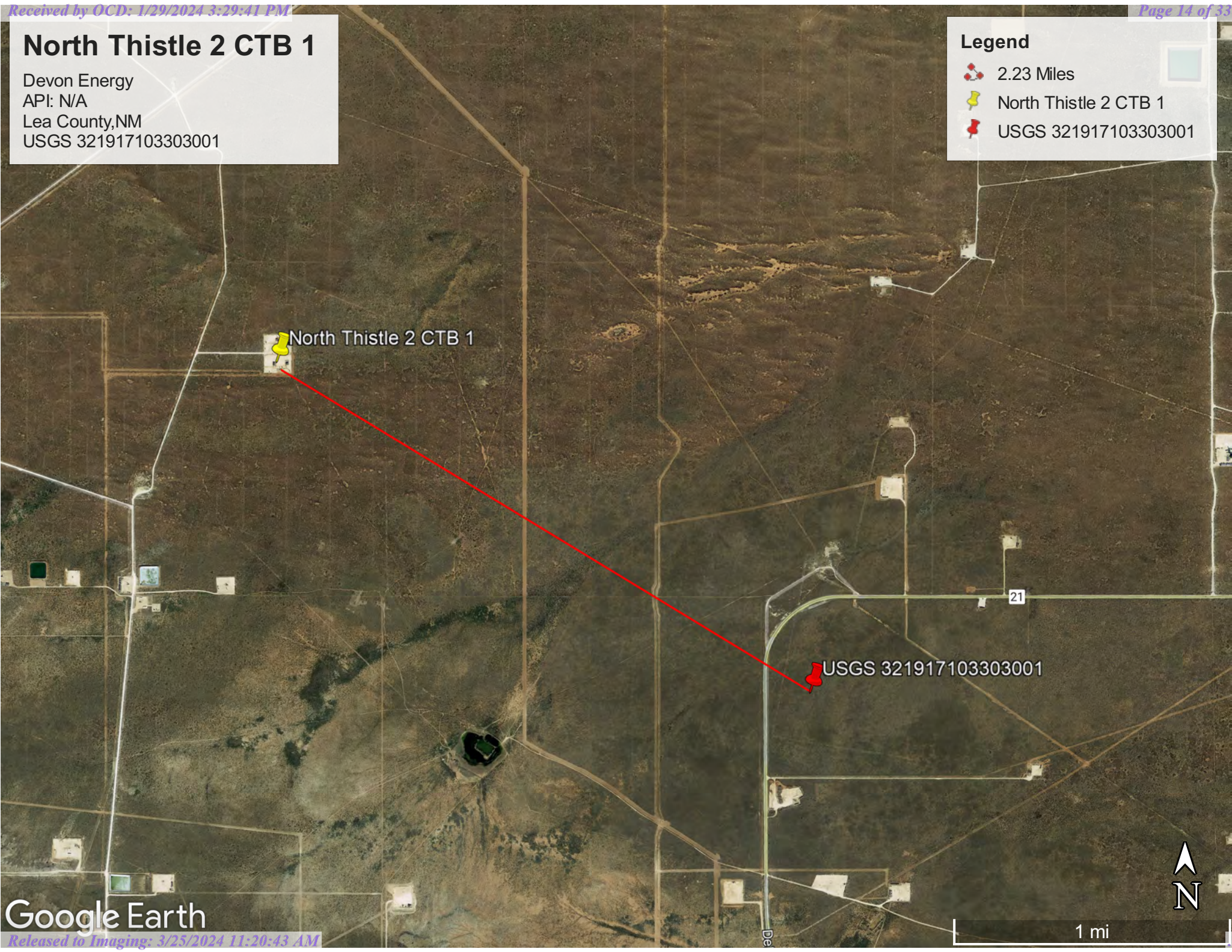
0.6 0.53 nadww01

North Thistle 2 CTB 1

Devon Energy
API: N/A
Lea County, NM
USGS 321917103303001

Legend



-  2.23 Miles
-  North Thistle 2 CTB 1
-  USGS 321917103303001





North Thistle 2 CTB 1

Devon Energy
API: N/A
Lea County, NM
Surface Water Map

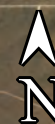
Legend

-  7.49 Miles
-  North Thistle 2 CTB 1

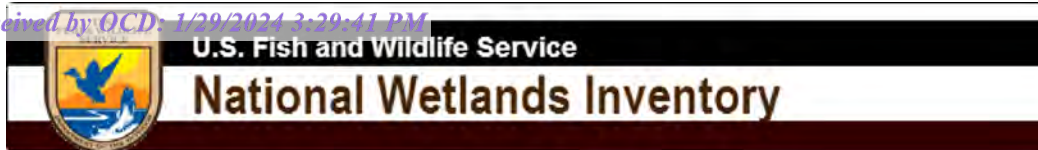
North Thistle 2 CTB 1 

 Salt Playa

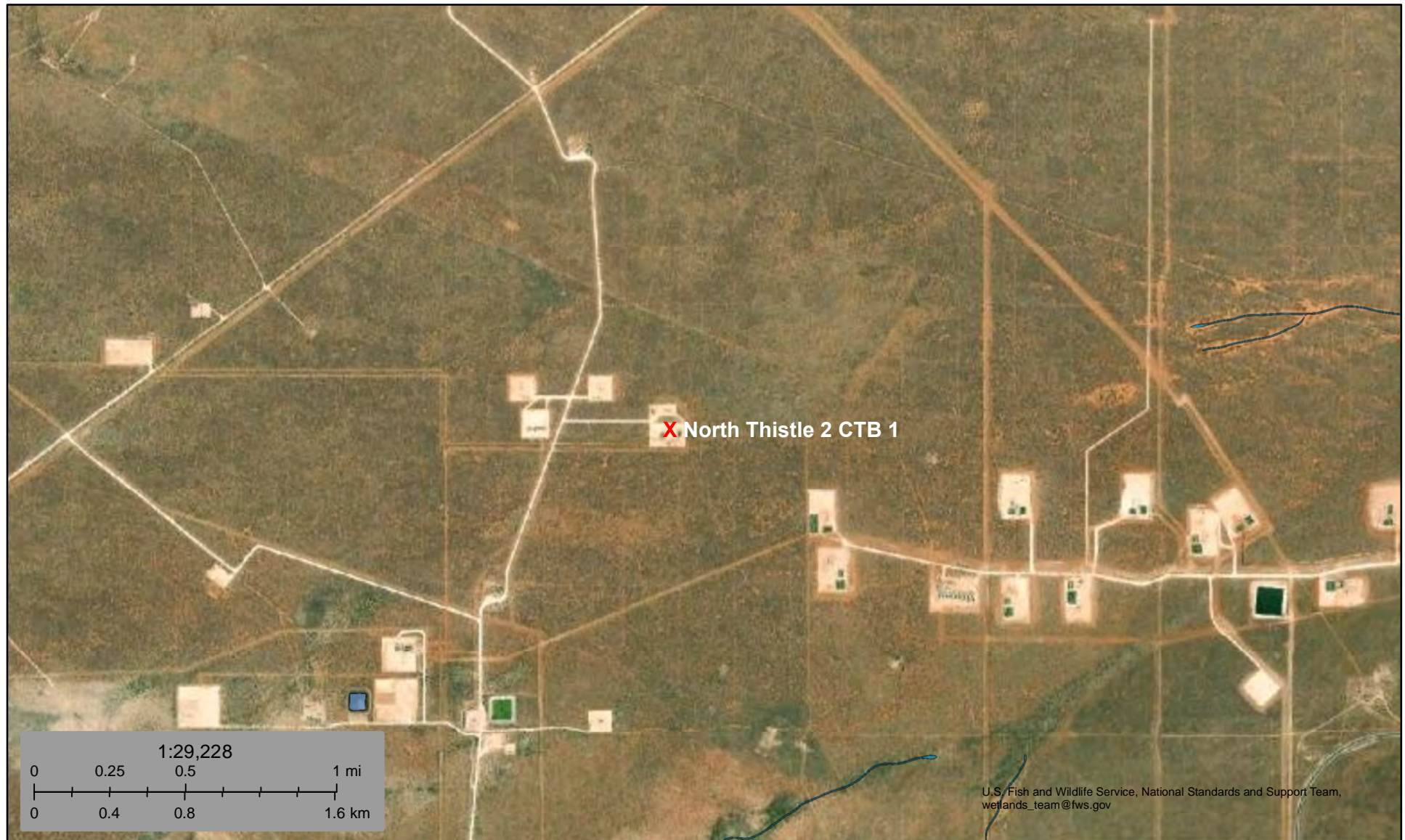
Google Earth



6 mi



Wetlands Map



June 14, 2023

Wetlands_Alaska

- Estuarine and Marine Deepwater
- Estuarine and Marine Wetland

- Freshwater Emergent Wetland
- Freshwater Forested/Shrub Wetland
- Freshwater Pond

- Lake
- Other
- Riverine

This map is for general reference only. The US Fish and Wildlife Service is not responsible for the accuracy or currentness of the base data shown on this map. All wetlands related data should be used in accordance with the layer metadata found on the Wetlands Mapper web site.



Pima Environmental Services

Appendix B

C-141 Form

48-Hour Notification

District I
1625 N. French Dr., Hobbs, NM 88240
District II
811 S. First St., Artesia, NM 88210
District III
1000 Rio Brazos Road, Aztec, NM 87410
District IV
1220 S. St. Francis Dr., Santa Fe, NM 87505

State of New Mexico
Energy Minerals and Natural
Resources Department

Oil Conservation Division
1220 South St. Francis Dr.
Santa Fe, NM 87505

Form C-141
Revised August 24, 2018
Submit to appropriate OCD District office

Incident ID	nAPP2314544750
District RP	
Facility ID	
Application ID	

Release Notification

Responsible Party

Responsible Party Devon Energy Production Company	OGRID 6137
Contact Name Dale Woodall	Contact Telephone
Contact email Dale.Woodall@dvn.com	Incident # (assigned by OCD)
Contact mailing address 6488 Seven Rivers Hwy Artesia, NM 88210	

Location of Release Source

Latitude 32.338601 Longitude -103.541269
(NAD 83 in decimal degrees to 5 decimal places)

Site Name North Thistle 2 CTB 1	Site Type Oil
Date Release Discovered 5/25/2023	API# (if applicable)

Unit Letter	Section	Township	Range	County
B	6	23S	33E	Lea

Surface Owner: ☒ State ☐ Federal ☐ Tribal ☐ Private (Name: _____)

Nature and Volume of Release

Material(s) Released (Select all that apply and attach calculations or specific justification for the volumes provided below)

<input type="checkbox"/> Crude Oil	Volume Released (bbls)	Volume Recovered (bbls)
<input checked="" type="checkbox"/> Produced Water	Volume Released (bbls) 110 BBLS	Volume Recovered (bbls) 110 BBLS
	Is the concentration of total dissolved solids (TDS) in the produced water >10,000 mg/l?	<input type="checkbox"/> Yes <input type="checkbox"/> No
<input type="checkbox"/> Condensate	Volume Released (bbls)	Volume Recovered (bbls)
<input type="checkbox"/> Natural Gas	Volume Released (Mcf)	Volume Recovered (Mcf)
<input type="checkbox"/> Other (describe)	Volume/Weight Released (provide units)	Volume/Weight Recovered (provide units)

Cause of Release Pin hole leak develop on water line.

Incident ID	nAPP2314544750
District RP	
Facility ID	
Application ID	

Was this a major release as defined by 19.15.29.7(A) NMAC? <input checked="" type="checkbox"/> Yes <input type="checkbox"/> No	If YES, for what reason(s) does the responsible party consider this a major release? Spill is over 25 BBLS
If YES, was immediate notice given to the OCD? By whom? To whom? When and by what means (phone, email, etc)? Immediate notice given to OCD by Dale Woodall, to OCD by email on 5/25/2023.	

Initial Response

The responsible party must undertake the following actions immediately unless they could create a safety hazard that would result in injury

<input checked="" type="checkbox"/> The source of the release has been stopped. <input checked="" type="checkbox"/> The impacted area has been secured to protect human health and the environment. <input checked="" type="checkbox"/> Released materials have been contained via the use of berms or dikes, absorbent pads, or other containment devices. <input checked="" type="checkbox"/> All free liquids and recoverable materials have been removed and managed appropriately.	
If all the actions described above have <u>not</u> been undertaken, explain why: 	
Per 19.15.29.8 B. (4) NMAC the responsible party may commence remediation immediately after discovery of a release. If remediation has begun, please attach a narrative of actions to date. If remedial efforts have been successfully completed or if the release occurred within a lined containment area (see 19.15.29.11(A)(5)(a) NMAC), please attach all information needed for closure evaluation.	
I hereby certify that the information given above is true and complete to the best of my knowledge and understand that pursuant to OCD rules and regulations all operators are required to report and/or file certain release notifications and perform corrective actions for releases which may endanger public health or the environment. The acceptance of a C-141 report by the OCD does not relieve the operator of liability should their operations have failed to adequately investigate and remediate contamination that pose a threat to groundwater, surface water, human health or the environment. In addition, OCD acceptance of a C-141 report does not relieve the operator of responsibility for compliance with any other federal, state, or local laws and/or regulations.	
Printed Name: Kendra Ruiz	Title: EHS Associate
Signature: Kendra Ruiz	Date: 6/8/2023
email: Kendra.Ruiz@dvn.com	Telephone: 575-748-0167
<u>OCD Only</u>	
Received by: Jocelyn Harimon	Date: 06/08/2023

District I
1625 N. French Dr., Hobbs, NM 88240
Phone:(575) 393-6161 Fax:(575) 393-0720
District II
811 S. First St., Artesia, NM 88210
Phone:(575) 748-1283 Fax:(575) 748-9720
District III
1000 Rio Brazos Rd., Aztec, NM 87410
Phone:(505) 334-6178 Fax:(505) 334-6170
District IV
1220 S. St Francis Dr., Santa Fe, NM 87505
Phone:(505) 476-3470 Fax:(505) 476-3462

State of New Mexico
Energy, Minerals and Natural Resources
Oil Conservation Division
1220 S. St Francis Dr.
Santa Fe, NM 87505

CONDITIONS

Action 225395

CONDITIONS

Operator: DEVON ENERGY PRODUCTION COMPANY, LP 333 West Sheridan Ave. Oklahoma City, OK 73102	OGRID: 6137
	Action Number: 225395
	Action Type: [C-141] Release Corrective Action (C-141)

CONDITIONS

Created By	Condition	Condition Date
jharimon	When submitting future reports regarding this release, please submit the calculations used or specific justification for the volumes reported on the initial C-141	6/8/2023



Gio PimaOil <gio@pimaoil.com>

FW: [EXTERNAL] The Oil Conservation Division (OCD) has accepted the application, Application ID: 299497

1 message

Woodall, Dale <Dale.Woodall@dvn.com>
To: Gio PimaOil <gio@pimaoil.com>

Wed, Jan 3, 2024 at 12:10 PM

Dale Woodall

Environmental Professional

Hobbs, NM

Office: 575-748-1838

Mobile: 405-318-4697

Dale.Woodall@dvn.com

From: OCDOnline@state.nm.us <OCDOnline@state.nm.us>

Sent: Wednesday, January 3, 2024 12:10 PM

To: Woodall, Dale <Dale.Woodall@dvn.com>

Subject: [EXTERNAL] The Oil Conservation Division (OCD) has accepted the application, Application ID: 299497

To whom it may concern (c/o Dale Woodall for DEVON ENERGY PRODUCTION COMPANY, LP),

The OCD has received the submitted *Notification for Liner Inspection for a Release* (C-141L), for incident ID (n#) nAPP2316618457.

The liner inspection is expected to take place:

When: 01/05/2024 @ 12:00

Where: A-18-23S-32E 525 FNL 1760 FWL (32.31145,-103.70861)

Additional Information: will be conducted by Andrew Franco 806-200-0054

Additional Instructions: P-7-23S-32E, (32.314197, -103.709342 NAD83) From the intersection of Red Rd and County Rd 797, travel East on County Rd 797 for 1.89 Miles, turn South on Lease Rd for 0.77 of a mile, turn West on lease road for 0.15 of a miles, then turn North for lease Road 0.10 of a mile, arriving to location.

An OCD representative may be available onsite at the date and time reported. In the absence or presence of an OCD representative, liner inspection pursuant to 19.15.29.11.A(5)(a) NMAC is required. Should there be a change in the scheduled date and time of the sampling event, then another notification should be resubmitted through OCD permitting as soon as possible.

- **Failure to notify the OCD of liner inspections including any changes in date/time per the requirements of 19.15.29.11.A(5)(a)(ii) NMAC, may result in the inspection not being accepted.**

If you have any questions regarding this application, or don't know why you have received this email, please contact us.

New Mexico Energy, Minerals and Natural Resources Department

[1220 South St. Francis Drive](#)

Santa Fe, NM 87505

Confidentiality Warning: This message and any attachments are intended only for the use of the intended recipient(s), are confidential, and may be privileged. If you are not the intended recipient, you are hereby notified that any review, retransmission, conversion to hard copy, copying, circulation or other use of all or any portion of this message and any attachments is strictly prohibited. If you are not the intended recipient, please notify the sender immediately by return e-mail, and delete this message and any attachments from your system.



Pima Environmental Services

Appendix C

Liner Inspection Form

Photographic Documentation



Pima Environmental Services, LLC

Liner Inspection FormCompany Name: Devon EnergySite: North Thistle 2 CTB 1Lat/Long: 32.338601, -103.541269NMOCD Incident ID
& Incident Date: NAPP2314544750 5/25/20232-Day Notification
Sent: via Email by Dale Woodall on OCD portal 1/3/2024Inspection Date: 1/5/2024

Liner Type: Earthen w/liner Earthen no liner Polystar

Steel w/poly liner Steel w/spray epoxy No Liner

Other: _____

Visualization	Yes	No	Comments
Is there a tear in the liner?		X	
Are there holes in the liner?		X	
Is the liner retaining any fluids?		X	
Does the liner have integrity to contain a leak?	X		

Comments: _____

Inspector Name: Andrew Franco Inspector Signature: Andrew Franco



SITE PHOTOGRAPHS

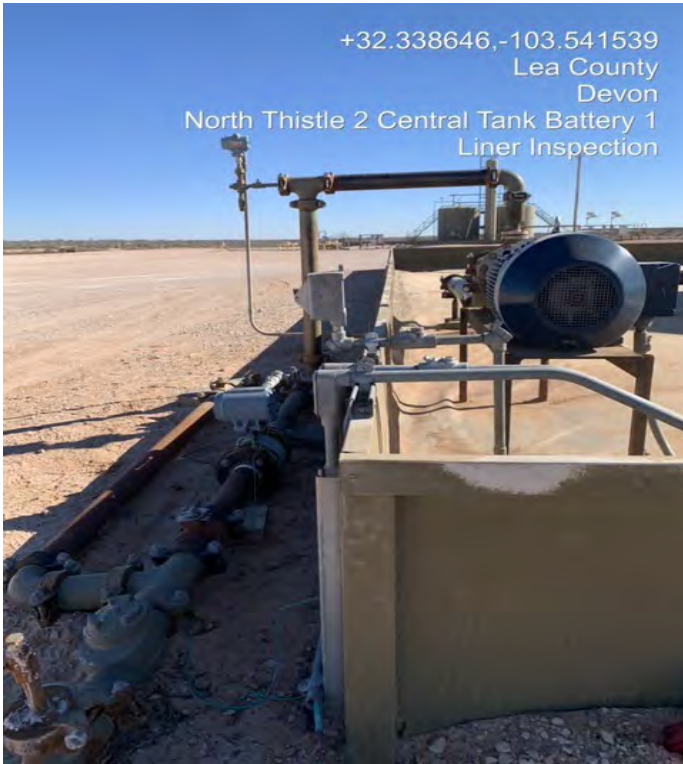
DEVON ENERGY

North Thistle 2 CTB 1

Liner Inspection







District I
1625 N. French Dr., Hobbs, NM 88240
Phone:(575) 393-6161 Fax:(575) 393-0720
District II
811 S. First St., Artesia, NM 88210
Phone:(575) 748-1283 Fax:(575) 748-9720
District III
1000 Rio Brazos Rd., Aztec, NM 87410
Phone:(505) 334-6178 Fax:(505) 334-6170
District IV
1220 S. St Francis Dr., Santa Fe, NM 87505
Phone:(505) 476-3470 Fax:(505) 476-3462

State of New Mexico
Energy, Minerals and Natural Resources
Oil Conservation Division
1220 S. St Francis Dr.
Santa Fe, NM 87505

QUESTIONS

Action 309015

QUESTIONS

Operator: DEVON ENERGY PRODUCTION COMPANY, LP 333 West Sheridan Ave. Oklahoma City, OK 73102	OGRID:
	6137
	Action Number:
	309015
Action Type: [C-141] Remediation Closure Request C-141 (C-141-v-Closure)	

QUESTIONS

Prerequisites	
Incident ID (n#)	nAPP2314544750
Incident Name	NAPP2314544750 NORTH THISTLE 2 CTB 1 @ 0
Incident Type	Produced Water Release
Incident Status	Remediation Closure Report Received
Incident Facility	[fAPP2123648372] NORTH THISTLE 2 CTB 1

Location of Release Source	
Please answer all the questions in this group.	
Site Name	NORTH THISTLE 2 CTB 1
Date Release Discovered	05/25/2023
Surface Owner	State

Incident Details	
Please answer all the questions in this group.	
Incident Type	Produced Water Release
Did this release result in a fire or is the result of a fire	No
Did this release result in any injuries	No
Has this release reached or does it have a reasonable probability of reaching a watercourse	No
Has this release endangered or does it have a reasonable probability of endangering public health	No
Has this release substantially damaged or will it substantially damage property or the environment	No
Is this release of a volume that is or may with reasonable probability be detrimental to fresh water	No

Nature and Volume of Release	
Material(s) released, please answer all that apply below. Any calculations or specific justifications for the volumes provided should be attached to the follow-up C-141 submission.	
Crude Oil Released (bbls) Details	Not answered.
Produced Water Released (bbls) Details	Cause: Equipment Failure Pipeline (Any) Produced Water Released: 110 BBL Recovered: 110 BBL Lost: 0 BBL.
Is the concentration of chloride in the produced water >10,000 mg/l	No
Condensate Released (bbls) Details	Not answered.
Natural Gas Vented (Mcf) Details	Not answered.
Natural Gas Flared (Mcf) Details	Not answered.
Other Released Details	Not answered.
Are there additional details for the questions above (i.e. any answer containing Other, Specify, Unknown, and/or Fire, or any negative lost amounts)	Devon Energy personnel discovered a 102 bbl produced water spill at the North Thistle 2 Central Tank Battery 1. A pinhole in a water line going into the tanks was seen. Wells servicing the location were shut in to stop the leak. Recovered volumes are not available at this time. Spill did not appear to breach lined containment or go offsite.

District I

1625 N. French Dr., Hobbs, NM 88240
Phone:(575) 393-6161 Fax:(575) 393-0720

District II

811 S. First St., Artesia, NM 88210
Phone:(575) 748-1283 Fax:(575) 748-9720

District III

1000 Rio Brazos Rd., Aztec, NM 87410
Phone:(505) 334-6178 Fax:(505) 334-6170

District IV

1220 S. St Francis Dr., Santa Fe, NM 87505
Phone:(505) 476-3470 Fax:(505) 476-3462

State of New Mexico
Energy, Minerals and Natural Resources
Oil Conservation Division
1220 S. St Francis Dr.
Santa Fe, NM 87505

QUESTIONS, Page 2

Action 309015

QUESTIONS (continued)

Operator: DEVON ENERGY PRODUCTION COMPANY, LP 333 West Sheridan Ave. Oklahoma City, OK 73102	OGRID:	6137
	Action Number:	309015
	Action Type:	[C-141] Remediation Closure Request C-141 (C-141-v-Closure)

QUESTIONS

Nature and Volume of Release (continued)	
Is this a gas only submission (i.e. only significant Mcf values reported)	No, according to supplied volumes this does not appear to be a "gas only" report.
Was this a major release as defined by Subsection A of 19.15.29.7 NMAC	Yes
Reasons why this would be considered a submission for a notification of a major release	From paragraph A. "Major release" determine using: (1) an unauthorized release of a volume, excluding gases, of 25 barrels or more.
With the implementation of the 19.15.27 NMAC (05/25/2021), venting and/or flaring of natural gas (i.e. gas only) are to be submitted on the C-129 form.	

Initial Response

The responsible party must undertake the following actions immediately unless they could create a safety hazard that would result in injury.

The source of the release has been stopped	True
The impacted area has been secured to protect human health and the environment	True
Released materials have been contained via the use of berms or dikes, absorbent pads, or other containment devices	True
All free liquids and recoverable materials have been removed and managed appropriately	False
If all the actions described above have not been undertaken, explain why	Recovered volumes are not available as of this submission.

Per Paragraph (4) of Subsection B of 19.15.29.8 NMAC the responsible party may commence remediation immediately after discovery of a release. If remediation has begun, please prepare and attach a narrative of actions to date in the follow-up C-141 submission. If remedial efforts have been successfully completed or if the release occurred within a lined containment area (see Subparagraph (a) of Paragraph (5) of Subsection A of 19.15.29.11 NMAC), please prepare and attach all information needed for closure evaluation in the follow-up C-141 submission.

I hereby certify that the information given above is true and complete to the best of my knowledge and understand that pursuant to OCD rules and regulations all operators are required to report and/or file certain release notifications and perform corrective actions for releases which may endanger public health or the environment. The acceptance of a C-141 report by the OCD does not relieve the operator of liability should their operations have failed to adequately investigate and remediate contamination that pose a threat to groundwater, surface water, human health or the environment. In addition, OCD acceptance of a C-141 report does not relieve the operator of responsibility for compliance with any other federal, state, or local laws and/or regulations.

I hereby agree and sign off to the above statement	Name: Dale Woodall Title: EHS Professional Email: Dale.Woodall@dmv.com Date: 01/29/2024
--	--

District I

1625 N. French Dr., Hobbs, NM 88240
Phone:(575) 393-6161 Fax:(575) 393-0720

District II

811 S. First St., Artesia, NM 88210
Phone:(575) 748-1283 Fax:(575) 748-9720

District III

1000 Rio Brazos Rd., Aztec, NM 87410
Phone:(505) 334-6178 Fax:(505) 334-6170

District IV

1220 S. St Francis Dr., Santa Fe, NM 87505
Phone:(505) 476-3470 Fax:(505) 476-3462

State of New Mexico
Energy, Minerals and Natural Resources
Oil Conservation Division
1220 S. St Francis Dr.
Santa Fe, NM 87505

QUESTIONS, Page 3

Action 309015

QUESTIONS (continued)

Operator: DEVON ENERGY PRODUCTION COMPANY, LP 333 West Sheridan Ave. Oklahoma City, OK 73102	OGRID:	6137
	Action Number:	309015
	Action Type:	[C-141] Remediation Closure Request C-141 (C-141-v-Closure)

QUESTIONS**Site Characterization**

Please answer all the questions in this group (only required when seeking remediation plan approval and beyond). This information must be provided to the appropriate district office no later than 90 days after the release discovery date.

What is the shallowest depth to groundwater beneath the area affected by the release in feet below ground surface (ft bgs)	Between 100 and 500 (ft.)
What method was used to determine the depth to ground water	NM OSE iWaters Database Search
Did this release impact groundwater or surface water	No
What is the minimum distance, between the closest lateral extents of the release and the following surface areas:	
A continuously flowing watercourse or any other significant watercourse	Greater than 5 (mi.)
Any lakebed, sinkhole, or playa lake (measured from the ordinary high-water mark)	Greater than 5 (mi.)
An occupied permanent residence, school, hospital, institution, or church	Greater than 5 (mi.)
A spring or a private domestic fresh water well used by less than five households for domestic or stock watering purposes	Greater than 5 (mi.)
Any other fresh water well or spring	Greater than 5 (mi.)
Incorporated municipal boundaries or a defined municipal fresh water well field	Greater than 5 (mi.)
A wetland	Between 1 and 5 (mi.)
A subsurface mine	Greater than 5 (mi.)
An (non-karst) unstable area	Greater than 5 (mi.)
Categorize the risk of this well / site being in a karst geology	Low
A 100-year floodplain	Greater than 5 (mi.)
Did the release impact areas not on an exploration, development, production, or storage site	No

Remediation Plan

Please answer all the questions that apply or are indicated. This information must be provided to the appropriate district office no later than 90 days after the release discovery date.

Requesting a remediation plan approval with this submission	Yes
Attach a comprehensive report demonstrating the lateral and vertical extents of soil contamination associated with the release have been determined, pursuant to 19.15.29.11 NMAC and 19.15.29.13 NMAC.	
Have the lateral and vertical extents of contamination been fully delineated	Yes
Was this release entirely contained within a lined containment area	Yes
Per Subsection B of 19.15.29.11 NMAC unless the site characterization report includes completed efforts at remediation, the report must include a proposed remediation plan in accordance with 19.15.29.12 NMAC, which includes the anticipated timelines for beginning and completing the remediation.	
On what estimated date will the remediation commence	12/29/2023
On what date will (or did) the final sampling or liner inspection occur	01/05/2024
On what date will (or was) the remediation complete(d)	01/05/2024
What is the estimated surface area (in square feet) that will be remediated	3674
What is the estimated volume (in cubic yards) that will be remediated	408
These estimated dates and measurements are recognized to be the best guess or calculation at the time of submission and may (be) change(d) over time as more remediation efforts are completed.	
The OCD recognizes that proposed remediation measures may have to be minimally adjusted in accordance with the physical realities encountered during remediation. If the responsible party has any need to significantly deviate from the remediation plan proposed, then it should consult with the division to determine if another remediation plan submission is required.	

District I

1625 N. French Dr., Hobbs, NM 88240
Phone:(575) 393-6161 Fax:(575) 393-0720

District II

811 S. First St., Artesia, NM 88210
Phone:(575) 748-1283 Fax:(575) 748-9720

District III

1000 Rio Brazos Rd., Aztec, NM 87410
Phone:(505) 334-6178 Fax:(505) 334-6170

District IV

1220 S. St Francis Dr., Santa Fe, NM 87505
Phone:(505) 476-3470 Fax:(505) 476-3462

State of New Mexico
Energy, Minerals and Natural Resources
Oil Conservation Division
1220 S. St Francis Dr.
Santa Fe, NM 87505

QUESTIONS, Page 4

Action 309015

QUESTIONS (continued)

Operator: DEVON ENERGY PRODUCTION COMPANY, LP 333 West Sheridan Ave. Oklahoma City, OK 73102	OGRID:	6137
	Action Number:	309015
	Action Type:	[C-141] Remediation Closure Request C-141 (C-141-v-Closure)

QUESTIONS**Remediation Plan (continued)**

Please answer all the questions that apply or are indicated. This information must be provided to the appropriate district office no later than 90 days after the release discovery date.

This remediation will (or is expected to) utilize the following processes to remediate / reduce contaminants:

(Select all answers below that apply.)

Is (or was) there affected material present needing to be removed	Yes
Is (or was) there a power wash of the lined containment area (to be) performed	Yes
OTHER (Non-listed remedial process)	No

Per Subsection B of 19.15.29.11 NMAC unless the site characterization report includes completed efforts at remediation, the report must include a proposed remediation plan in accordance with 19.15.29.12 NMAC, which includes the anticipated timelines for beginning and completing the remediation.

I hereby certify that the information given above is true and complete to the best of my knowledge and understand that pursuant to OCD rules and regulations all operators are required to report and/or file certain release notifications and perform corrective actions for releases which may endanger public health or the environment. The acceptance of a C-141 report by the OCD does not relieve the operator of liability should their operations have failed to adequately investigate and remediate contamination that pose a threat to groundwater, surface water, human health or the environment. In addition, OCD acceptance of a C-141 report does not relieve the operator of responsibility for compliance with any other federal, state, or local laws and/or regulations.

I hereby agree and sign off to the above statement	Name: Dale Woodall Title: EHS Professional Email: Dale.Woodall@dmn.com Date: 01/29/2024
--	--

The OCD recognizes that proposed remediation measures may have to be minimally adjusted in accordance with the physical realities encountered during remediation. If the responsible party has any need to significantly deviate from the remediation plan proposed, then it should consult with the division to determine if another remediation plan submission is required.

District I

1625 N. French Dr., Hobbs, NM 88240
Phone:(575) 393-6161 Fax:(575) 393-0720

District II

811 S. First St., Artesia, NM 88210
Phone:(575) 748-1283 Fax:(575) 748-9720

District III

1000 Rio Brazos Rd., Aztec, NM 87410
Phone:(505) 334-6178 Fax:(505) 334-6170

District IV

1220 S. St Francis Dr., Santa Fe, NM 87505
Phone:(505) 476-3470 Fax:(505) 476-3462

State of New Mexico
Energy, Minerals and Natural Resources
Oil Conservation Division
1220 S. St Francis Dr.
Santa Fe, NM 87505

QUESTIONS, Page 6

Action 309015

QUESTIONS (continued)

Operator: DEVON ENERGY PRODUCTION COMPANY, LP 333 West Sheridan Ave. Oklahoma City, OK 73102	OGRID:	6137
	Action Number:	309015
	Action Type:	[C-141] Remediation Closure Request C-141 (C-141-v-Closure)

QUESTIONS

Liner Inspection Information	
Last liner inspection notification (C-141L) recorded	299496
Liner inspection date pursuant to Subparagraph (a) of Paragraph (5) of Subsection A of 19.15.29.11 NMAC	01/05/2024
Was all the impacted materials removed from the liner	Yes
What was the liner inspection surface area in square feet	3940

Remediation Closure Request

Only answer the questions in this group if seeking remediation closure for this release because all remediation steps have been completed.

Requesting a remediation closure approval with this submission	Yes
Have the lateral and vertical extents of contamination been fully delineated	Yes
Was this release entirely contained within a lined containment area	Yes
What was the total surface area (in square feet) remediated	0
What was the total volume (cubic yards) remediated	0
Summarize any additional remediation activities not included by answers (above)	see report

The responsible party must attach information demonstrating they have complied with all applicable closure requirements and any conditions or directives of the OCD. This demonstration should be in the form of a comprehensive report (in .pdf format) including a scaled site map, sampling diagrams, relevant field notes, photographs of any excavation prior to backfilling, laboratory data including chain of custody documents of final sampling, and a narrative of the remedial activities. Refer to 19.15.29.12 NMAC.

I hereby certify that the information given above is true and complete to the best of my knowledge and understand that pursuant to OCD rules and regulations all operators are required to report and/or file certain release notifications and perform corrective actions for releases which may endanger public health or the environment. The acceptance of a C-141 report by the OCD does not relieve the operator of liability should their operations have failed to adequately investigate and remediate contamination that pose a threat to groundwater, surface water, human health or the environment. In addition, OCD acceptance of a C-141 report does not relieve the operator of responsibility for compliance with any other federal, state, or local laws and/or regulations. The responsible party acknowledges they must substantially restore, reclaim, and re-vegetate the impacted surface area to the conditions that existed prior to the release or their final land use in accordance with 19.15.29.13 NMAC including notification to the OCD when reclamation and re-vegetation are complete.

I hereby agree and sign off to the above statement	Name: Dale Woodall Title: EHS Professional Email: Dale.Woodall@dmn.com Date: 01/29/2024
--	--

District I
1625 N. French Dr., Hobbs, NM 88240
Phone:(575) 393-6161 Fax:(575) 393-0720
District II
811 S. First St., Artesia, NM 88210
Phone:(575) 748-1283 Fax:(575) 748-9720
District III
1000 Rio Brazos Rd., Aztec, NM 87410
Phone:(505) 334-6178 Fax:(505) 334-6170
District IV
1220 S. St Francis Dr., Santa Fe, NM 87505
Phone:(505) 476-3470 Fax:(505) 476-3462

State of New Mexico
Energy, Minerals and Natural Resources
Oil Conservation Division
1220 S. St Francis Dr.
Santa Fe, NM 87505

CONDITIONS

Action 309015

CONDITIONS

Operator: DEVON ENERGY PRODUCTION COMPANY, LP 333 West Sheridan Ave. Oklahoma City, OK 73102	OGRID: 6137
	Action Number: 309015
	Action Type: [C-141] Remediation Closure Request C-141 (C-141-v-Closure)

CONDITIONS

Created By	Condition	Condition Date
scott.rodgers	App ID 309015 Liner Inspection approved	3/25/2024