

Spill Volume(Bbls) Calculator		
<i>Inputs in blue, Outputs in red</i>		
Length(Ft)	Width(Ft)	Depth(In)
<u>51.000</u>	<u>42.500</u>	<u>6.000</u>
Cubic Feet Impacted		<u>1083.750</u>
Barrels		<u>193.01</u>
Soil Type		Lined Containment
Bbls Assuming 100% Saturation		<u>193.01</u>
Saturation	Fluid present with shovel/backhoe	
Estimated Barrels Released		193.10000

Instructions
1. Input spill measurements below. Length and width need to be input in feet and depth in inches.
2. Select a soil type from the drop down menu.
3. Select a saturation level from the drop down menu.
(For data gathering instructions see appendix tab)

Measurements	
Length (ft)	51
Width (ft)	43
Depth (in)	6.000









Pima Environmental Services
5614 N. Lovington Highway
Hobbs, NM 88240
575-964-7740

February 27, 2024

NMOCD District 2
811 S. First St
Artesia, NM, 88210

Bureau of Land Management
620 East Green Street
Carlsbad, NM 88220

RE: Liner Inspection and Closure Report
BC Federal 42 Battery
API No. 30-025-39416
GPS: Latitude 32.82101 Longitude -103.79616
UL- E, Section 20, Township 17S, Range 32E
NMOCD Reference No. NAPP2315042050

Spur Energy Partners (Spur) has contracted Pima Environmental Services, LLC (Pima) to perform a liner inspection and prepare this closure report for the release of produced water that happened at the BC Federal 42 Battery (BC). On May 31, 2023, the initial C-141 was formally submitted. The corresponding release received the designation Incident ID NAPP2315042050 from the New Mexico Oil Conservation Division (NMOCD).

Site Information and Site Characterization

The BC is located approximately 3.16 miles southwest of Maljamar, NM. This spill site is in Unit E, Section 20, Township 17S, Range 32E, Latitude 32.82101 Longitude -103.79616, Lea County, NM. A Location Map can be found in Figure 1.

Based on the well water data from the New Mexico Office of the State Engineer, the depth to the nearest groundwater in this vicinity measures 104 feet below grade surface (BGS), positioned roughly 0.79 miles away from the BC, drilled on October 20, 2022. Conversely, as per the United States Geological Survey well water data, the nearest groundwater depth in this region is recorded at 48.14 feet BGS, situated approximately 3.58 miles away from the BC, with the last gauge conducted on February 2, 1996. For detailed references to water surveys and the precise locations of water wells, please refer to Appendix A, inclusive of the relevant maps. Notably, BC is situated within an area with a low potential for karst, as illustrated in Figure 3. Additionally, a comprehensive Topographic Map is available for reference in Figure 2.

Release Information

NAPP2315042050: On May 29, 2023, a corroded nipple developed a hole, leading to the release of approximately 194 barrels of produced water into the lined containment. Efforts to recover from the spill resulted in the retrieval of approximately 118 barrels, while the remaining 76 barrels of produced water were successfully recovered during the remediation process. The total release area measured approximately 550 square feet.

A Site Map can be found in Figure 4.

Site Assessment and Liner Inspection

From February 7 to February 12, 2024, Pima personnel mobilized their team to the BC site to conduct remediation efforts within the lined containment area. Utilizing handheld tools to preserve the integrity of the liner, all affected gravel inside the containment was meticulously removed. A thorough cleaning spanning 606 square feet was completed, with approximately 5.6 cubic yards of impacted material successfully extracted. Ensuring proper disposal, all contaminated material was transported and disposed of at Lea Land, an approved disposal facility sanctioned by NMOCD.

After removing all contaminated gravel from the affected area, a power washing unit was used to clean any remaining oil or residue from the exposed plastic liner. A vacuum truck was deployed to extract standing fluid, and this process was repeated until all oil residue was thoroughly eliminated. Following this, a detailed inspection for tears and rips was conducted. Upon confirming the absence of any tears or rips, clean gravel was brought in and utilized to backfill the excavated area.

On February 12, 2024, Spur personnel submitted a notification for a liner inspection, adhering to the necessary 48-hour notice period. The details of the 48-hour notification can be referenced in Appendix C.

On February 15, 2024, Pima Environmental conducted a liner inspection at this location. We concluded that this liner and containment maintained its integrity and was able to retain the fluids. The liner inspection form and photographic documentation can be found in Appendix C.

Closure Request

After careful review, Pima requests that this incident NAPP2315042050 be closed. Spur has complied with the applicable closure requirements.

Should you have any questions or need additional information, please feel free to contact Sebastian Orozco at 619-721-4813 or sebastian@pimaoil.com.

Respectfully,

Sebastian Orozco

Sebastian Orozco
Project Manager
Pima Environmental Services, LLC

Attachments

Figures:

- 1- Location Map
- 2- Topographic Map
- 3- Karst Map
- 4- Site Map

Appendices:

- Appendix A- Referenced Water Surveys
- Appendix B- 48 Hour Notification
- Appendix C- Liner Inspection Form & Photographic Documentation



Pima Environmental Services

Figures:

1-Location Map

2-Topographic Map



3-Karst Map

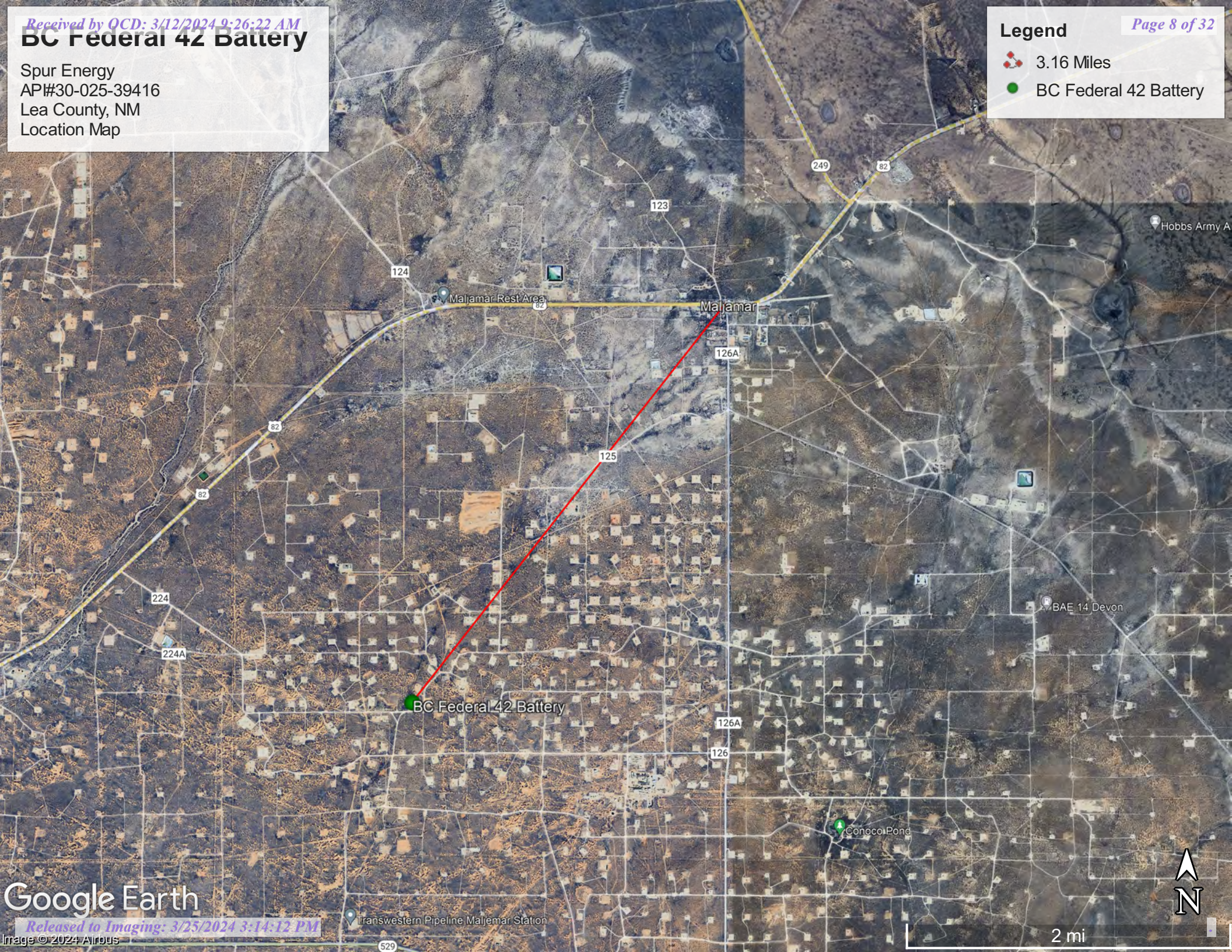
4-Site Map

BC Federal 42 Battery

Spur Energy
AP#30-025-39416
Lea County, NM
Location Map

Legend

-  3.16 Miles
-  BC Federal 42 Battery

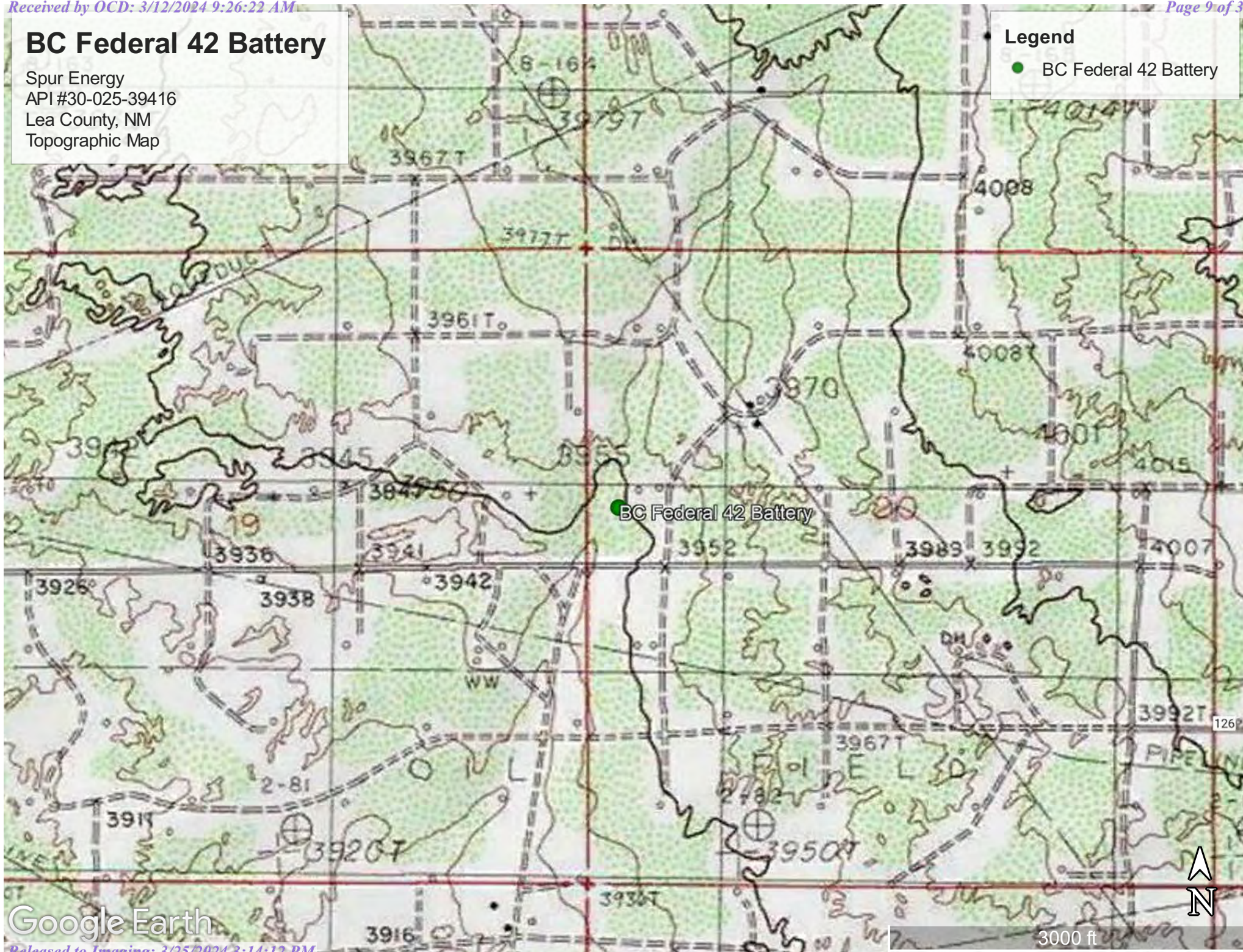


BC Federal 42 Battery

Spur Energy
API #30-025-39416
Lea County, NM
Topographic Map

Legend

● BC Federal 42 Battery



Google Earth

BC Federal 42 Battery

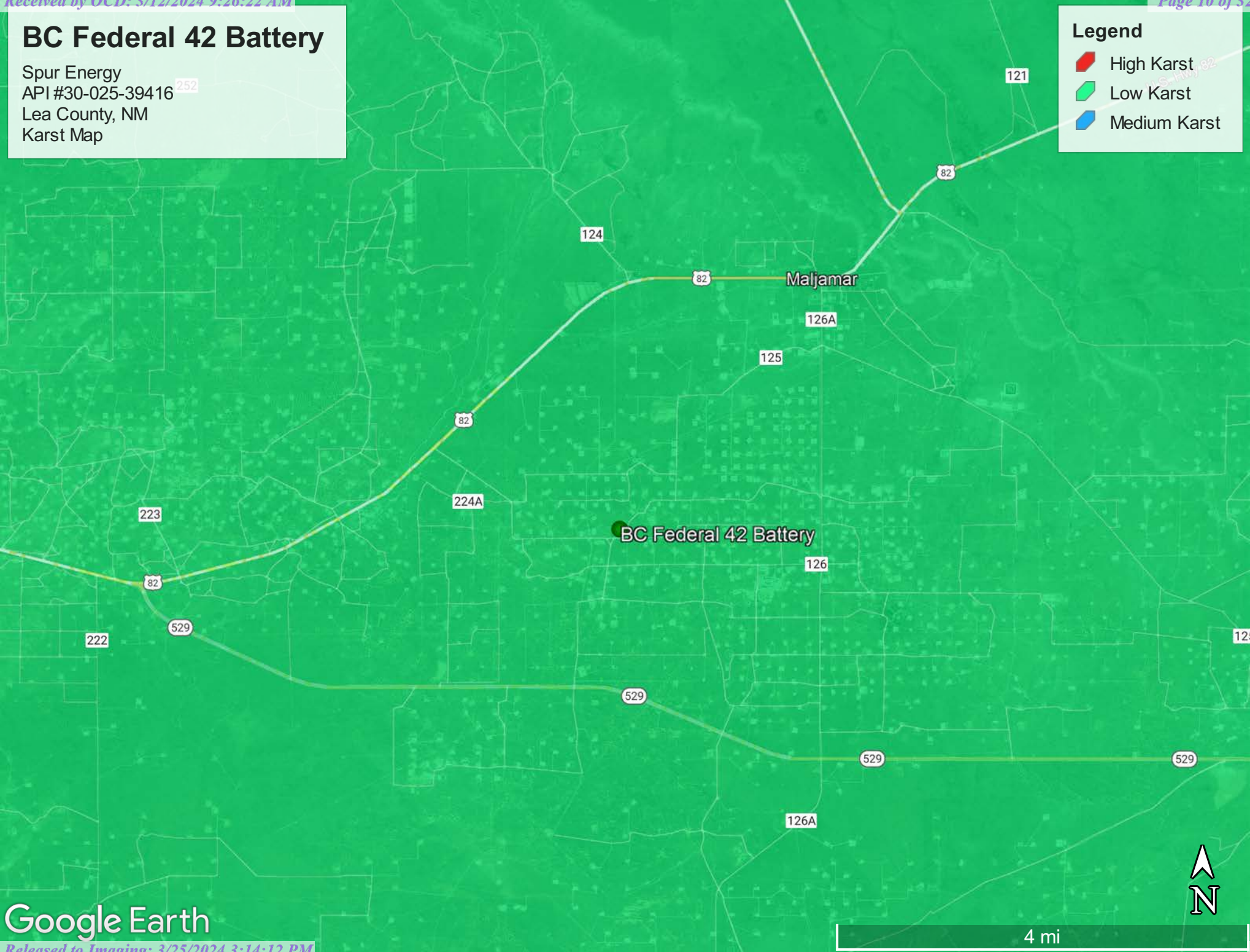
Spur Energy
API #30-025-39416
Lea County, NM
Karst Map

Legend

High Karst

Low Karst

Medium Karst

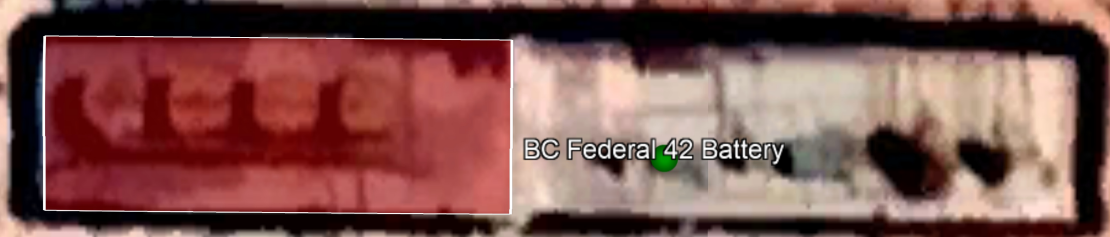


BC Federal 42 Battery

Spur Energy
AP#30-025-39416
Lea County, NM
Site Map

Legend

- BC Federal 42 Battery
- Excavated Area



BC Federal 42 Battery





Pima Environmental Services

Appendix A

Water Surveys:

OSE

USGS

Surface Water Map

Wetlands Map



New Mexico Office of the State Engineer

Water Column/Average Depth to Water

(A CLW##### in the POD suffix indicates the POD has been replaced & no longer serves a water right file.)

(R=POD has been replaced,
O=orphaned,
C=the file is closed)

(quarters are 1=NW 2=NE 3=SW 4=SE)

(quarters are smallest to largest) (NAD83 UTM in meters)

(In feet)

POD Number	Code	POD Sub-basin	County	Q 64	Q 16	Q 4	Sec	Tws	Rng	X	Y	Distance	DepthWell	DepthWater	Water Column
RA 13234 POD1		RA	LE	1	4	1	19	17S	32E	611435	3632294	1270	104		
RA 12042 POD1		RA	LE	2	2	1	28	17S	32E	614891	3631181	2380	400		
RA 10175		RA	LE		2	1	28	17S	32E	614814	3631005*	2384	158		
RA 12020 POD1		RA	LE	2	2	1	28	17S	32E	614828	3630954	2419	120	81	39
RA 12522 POD1		RA	LE	3	3	4	21	17S	32E	614941	3631122	2449	100		
RA 12522 POD2		RA	LE	2	2	1	28	17S	32E	614949	3631098	2466	100		
RA 12522 POD3		RA	LE	4	4	3	28	17S	32E	614980	3631093	2497	100		
RA 12521 POD1		RA	LE	3	3	4	21	17S	32E	615127	3631271	2570	105	92	13
RA 12020 POD3		RA	LE	2	1	2	28	17S	32E	615152	3631019	2684	112	83	29
RA 12721 POD1		RA	LE	3	2	3	28	17S	32E	614645	3630141	2757	125		
RA 12721 POD2		RA	LE	1	1	4	28	17S	32E	615055	3630407	2901	124	75	49

Average Depth to Water: **82 feet**

Minimum Depth: **75 feet**

Maximum Depth: **92 feet**

Record Count: 11

UTMNAD83 Radius Search (in meters):

Easting (X): 612688.55

Northing (Y): 3632085.5

Radius: 3000

*UTM location was derived from PLSS - see Help

The data is furnished by the NMOSE/ISC and is accepted by the recipient with the expressed understanding that the OSE/ISC make no warranties, expressed or implied, concerning the accuracy, completeness, reliability, usability, or suitability for any particular purpose of the data.

7/10/23 1:22 PM

WATER COLUMN/ AVERAGE DEPTH TO WATER

BC Federal 42 Battery

Spur Energy Partners
API:30-025-39416
Lea County,NM
OSE POD LOCATION MAP

Legend

- 0.79 Miles
- BC Federal 42 Battery
- RA 13234 POD1

RA 13234 POD1

BC Federal 42 Battery

Google Earth

2000 ft





[USGS Home](#)
[Contact USGS](#)
[Search USGS](#)

National Water Information System: Web Interface

USGS Water Resources

Data Category:

Groundwater

Geographic Area:

United States

GO

Click to hide News Bulletins

- Explore the *NEW* [USGS National Water Dashboard](#) interactive map to access real-time water data from over 13,500 stations nationwide.
- [Full News](#) 

Groundwater levels for the Nation

 Important: [Next Generation Monitoring Location Page](#)

Search Results -- 1 sites found

site_no list =

- 325028103441301

Minimum number of levels = 1

[Save file of selected sites](#) to local disk for future upload

USGS 325028103441301 17S.32E.11.34332

Available data for this site

Groundwater: Field measurements

GO

Lea County, New Mexico

Hydrologic Unit Code 13060011

Latitude 32°50'32", Longitude 103°44'24" NAD27

Land-surface elevation 4,095.50 feet above NGVD29

This well is completed in the Other aquifers (N9999OTHER) national aquifer.

This well is completed in the Ogallala Formation (121OGLL) local aquifer.

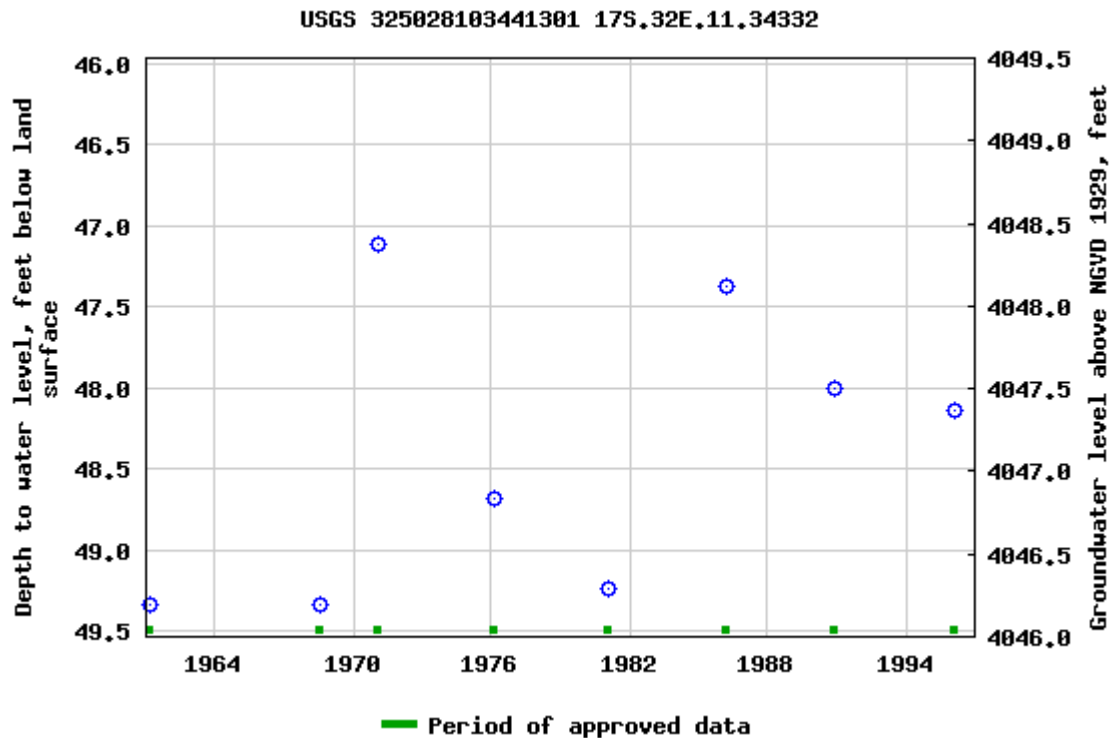
Output formats

[Table of data](#)

[Tab-separated data](#)

[Graph of data](#)

[Reselect period](#)



Breaks in the plot represent a gap of at least one year between field measurements.

[Download a presentation-quality graph](#)

[Questions or Comments](#)

[Automated retrievals](#)

[Help](#)

[Data Tips](#)

[Explanation of terms](#)

[Subscribe for system changes](#)

[News](#)

[Accessibility](#)

[FOIA](#)

[Privacy](#)

[Policies and Notices](#)

[U.S. Department of the Interior](#) | [U.S. Geological Survey](#)

Title: Groundwater for USA: Water Levels

URL: <https://nwis.waterdata.usgs.gov/nwis/gwlevels?>



Page Contact Information: [USGS Water Data Support Team](#)

Page Last Modified: 2023-07-10 15:24:39 EDT

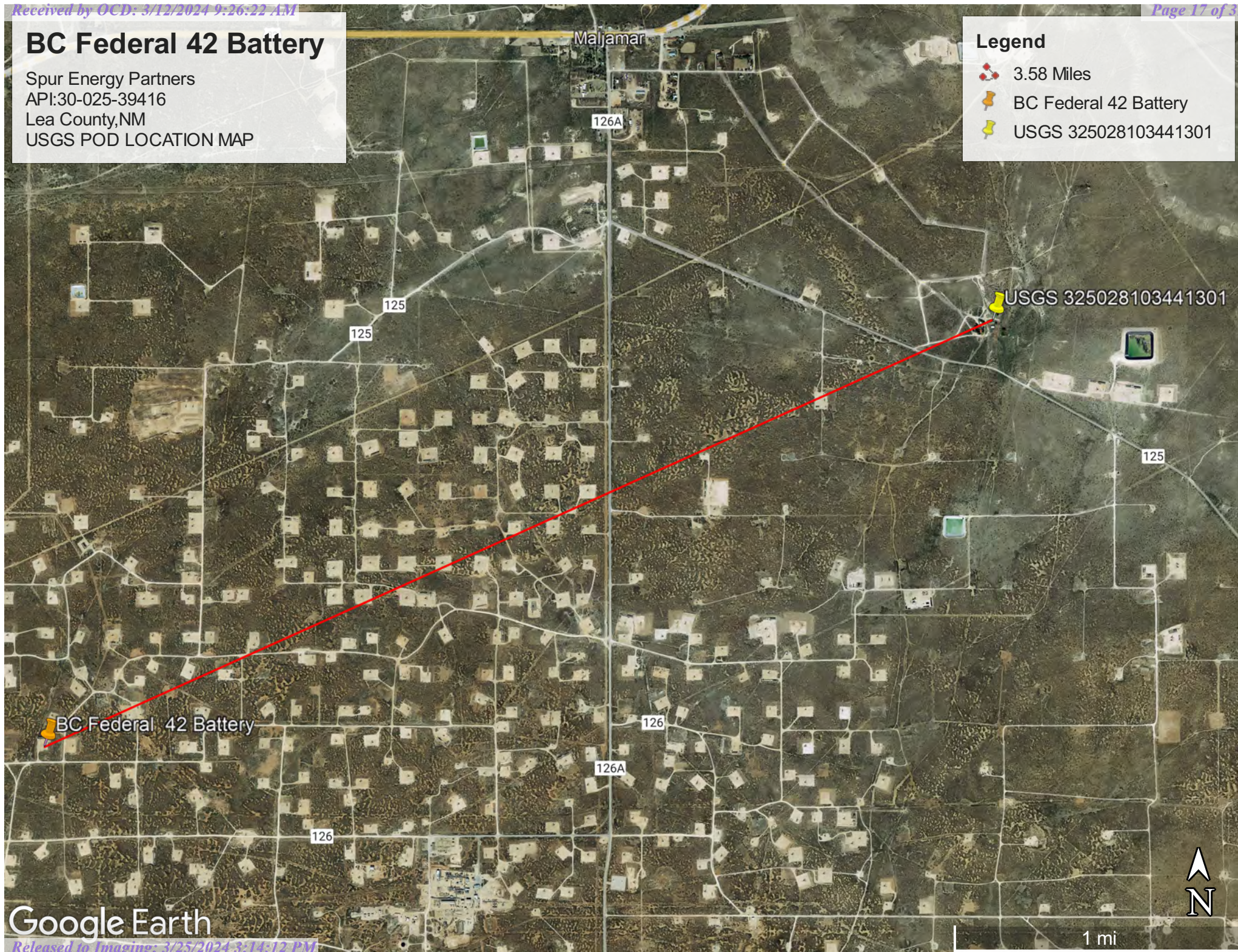
0.59 0.5 nadww02

BC Federal 42 Battery

Spur Energy Partners
API:30-025-39416
Lea County,NM
USGS POD LOCATION MAP

Legend

- 3.58 Miles
- BC Federal 42 Battery
- USGS 325028103441301





Google Earth

1 mi

BC Federal 42 Battery

Spur Energy
API #30-025-39416
Lea County, NM
Surface Water Map

Legend

-  2.7 Miles
-  Man-Made Pond

BC Federal 42 Battery

126

126

126A

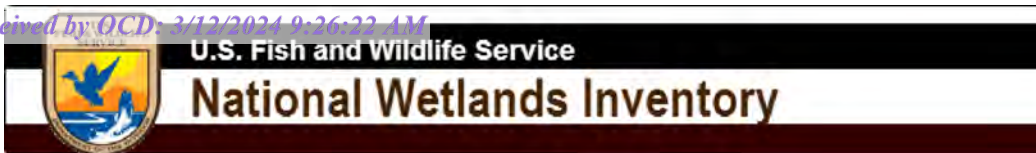
Man-Made Pond

126A

Google Earth

1 mi





Wetlands Map



July 10, 2023

Wetlands

- Estuarine and Marine Deepwater
- Estuarine and Marine Wetland

- Freshwater Emergent Wetland
- Freshwater Forested/Shrub Wetland
- Freshwater Pond

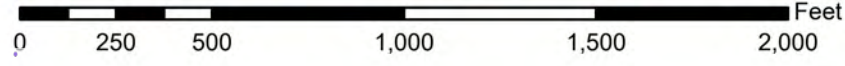
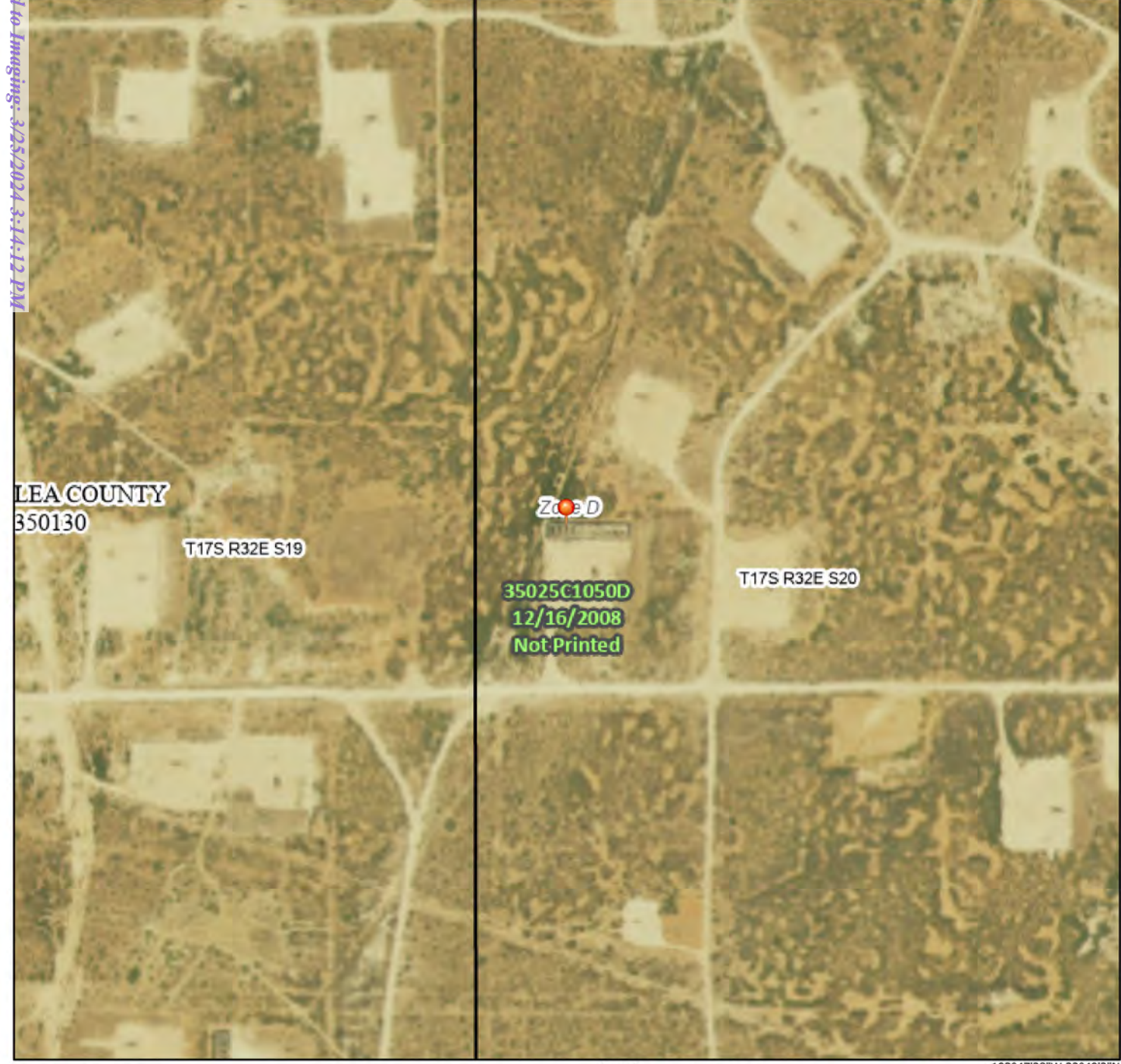
- Lake
- Other
- Riverine

This map is for general reference only. The US Fish and Wildlife Service is not responsible for the accuracy or currentness of the base data shown on this map. All wetlands related data should be used in accordance with the layer metadata found on the Wetlands Mapper web site.

National Flood Hazard Layer FIRMette



103°48'6"W 32°49'32"N



1:6,000

103°47'28"W 32°49'2"N

Basemap Imagery Source: USGS National Map 2023

Legend

SEE FIS REPORT FOR DETAILED LEGEND AND INDEX MAP FOR FIRM PANEL LAYOUT

- | | | |
|------------------------------------|-------------------|---|
| SPECIAL FLOOD HAZARD AREAS | | Without Base Flood Elevation (BFE)
Zone A, V, A99 |
| | | With BFE or Depth Zone AE, AO, AH, VE, AR |
| | | Regulatory Floodway |
| OTHER AREAS OF FLOOD HAZARD | | 0.2% Annual Chance Flood Hazard, Areas of 1% annual chance flood with average depth less than one foot or with drainage areas of less than one square mile Zone X |
| | | Future Conditions 1% Annual Chance Flood Hazard Zone X |
| | | Area with Reduced Flood Risk due to Levee. See Notes. Zone X |
| | | Area with Flood Risk due to Levee Zone X |
| OTHER AREAS | | NO SCREEN Area of Minimal Flood Hazard Zone X |
| | | Effective LOMRs |
| GENERAL STRUCTURES | | Area of Undetermined Flood Hazard Zone D |
| | | Channel, Culvert, or Storm Sewer |
| OTHER FEATURES | | Levee, Dike, or Floodwall |
| | | Cross Sections with 1% Annual Chance Water Surface Elevation |
| | | Coastal Transect |
| | | Base Flood Elevation Line (BFE) |
| | | Limit of Study |
| | | Jurisdiction Boundary |
| | | Coastal Transect Baseline |
| | | Profile Baseline |
| | | Hydrographic Feature |
| | MAP PANELS | |
| | | No Digital Data Available |
| | | Unmapped |
- The pin displayed on the map is an approximate point selected by the user and does not represent an authoritative property location.

This map complies with FEMA's standards for the use of digital flood maps if it is not void as described below. The basemap shown complies with FEMA's basemap accuracy standards

The flood hazard information is derived directly from the authoritative NFHL web services provided by FEMA. This map was exported on 2/26/2024 at 12:07 PM and does not reflect changes or amendments subsequent to this date and time. The NFHL and effective information may change or become superseded by new data over time.

This map image is void if the one or more of the following map elements do not appear: basemap imagery, flood zone labels, legend, scale bar, map creation date, community identifiers, FIRM panel number, and FIRM effective date. Map images for unmapped and unmodernized areas cannot be used for regulatory purposes.

Released to Imaging: 3/25/2024 3:14:12 PM

Received by OCD: 3/25/2024 9:26:22 AM

Page 20 of 32



Pima Environmental Services

Appendix B

48-Hour Notification

Sebastian@pimaoil.com

From: OCDOnline@state.nm.us
Sent: Monday, February 12, 2024 1:35 PM
To: sebastian@pimaoil.com
Subject: The Oil Conservation Division (OCD) has accepted the application, Application ID: 313585

To whom it may concern (c/o Sebastian Orozco for Spur Energy Partners LLC),

The OCD has received the submitted *Notification for Liner Inspection for a Release* (C-141L), for incident ID (n#) nAPP2315042050.

The liner inspection is expected to take place:

When: 02/15/2024 @ 07:00

Where: E-20-17S-32E 0 FNL 0 FEL (32.82101,-103.79616)

Additional Information: Andrew Franco 806-200-0054

Additional Instructions: From Maljimar, NM head south on Maljimar Rd towards Sand Rd and continue for 2.7 miles. Make a right hand turn onto Conoco Rd and continue west for 0.4 miles. Make a right hand turn onto an unnamed dirt road and continue for 2.0 miles. You have arrived at your destination.

An OCD representative may be available onsite at the date and time reported. In the absence or presence of an OCD representative, liner inspection pursuant to 19.15.29.11.A(5)(a) NMAC is required. Should there be a change in the scheduled date and time of the sampling event, then another notification should be resubmitted through OCD permitting as soon as possible.

- **Failure to notify the OCD of liner inspections including any changes in date/time per the requirements of 19.15.29.11.A(5)(a)(ii) NMAC, may result in the inspection not being accepted.**

If you have any questions regarding this application, or don't know why you have received this email, please contact us.

New Mexico Energy, Minerals and Natural Resources Department
1220 South St. Francis Drive
Santa Fe, NM 87505



Pima Environmental Services

Appendix C

Liner Inspection Form

Photographic Documentation



Pima Environmental Services, LLC

Liner Inspection FormCompany Name: Spur EnergySite: BC Federal 42 BatteryLat/Long: 32.82101, -103.79616NMOCD Incident ID
& Incident Date: NAPP2315042050 05/29/20232-Day Notification
Sent: via OCD Portal by Sebastian Orozco 02/12/2024Inspection Date: 02/15/2024

Liner Type: **Earthen w/liner** Earthen no liner Polystar
Steel w/poly liner Steel w/spray epoxy No Liner

Other: _____

Visualization	Yes	No	Comments
Is there a tear in the liner?		X	
Are there holes in the liner?		X	
Is the liner retaining any fluids?		X	
Does the liner have integrity to contain a leak?	X		

Comments: _____

Inspector Name: Andrew Franco Inspector Signature: Andrew Franco



SPUR ENERGY PARTNERS

BC FEDERAL 42 BATTERY

SITE PHOTOGRAPHS

LINER INSPECTION-





+32.821461,-103.796264
Lea County
Spur Energy
BC Federal 42 Battery
Liner Inspection



+32.821504,-103.796417
Lea County
Spur Energy
BC Federal 42 Battery
Liner Inspection



+32.821501,-103.796570
Lea County
Spur Energy
BC Federal 42 Battery
Liner Inspection



+32.821441,-103.796579
Lea County
Spur Energy
BC Federal 42 Battery
Liner Inspection



+32.821401,-103.796580
Lea County
Spur Energy
BC Federal 42 Battery
Liner Inspection

District I
1625 N. French Dr., Hobbs, NM 88240
Phone:(575) 393-6161 Fax:(575) 393-0720
District II
811 S. First St., Artesia, NM 88210
Phone:(575) 748-1283 Fax:(575) 748-9720
District III
1000 Rio Brazos Rd., Aztec, NM 87410
Phone:(505) 334-6178 Fax:(505) 334-6170
District IV
1220 S. St Francis Dr., Santa Fe, NM 87505
Phone:(505) 476-3470 Fax:(505) 476-3462

State of New Mexico
Energy, Minerals and Natural Resources
Oil Conservation Division
1220 S. St Francis Dr.
Santa Fe, NM 87505

QUESTIONS

Action 322460

QUESTIONS

Operator: Spur Energy Partners LLC 9655 Katy Freeway Houston, TX 77024	OGRID:
	328947
	Action Number:
	322460
Action Type: [C-141] Remediation Closure Request C-141 (C-141-v-Closure)	

QUESTIONS

Prerequisites	
Incident ID (n#)	nAPP2315042050
Incident Name	NAPP2315042050 BC FEDERAL 42 BATTERY @ 30-025-39416
Incident Type	Produced Water Release
Incident Status	Remediation Closure Report Received
Incident Well	[30-025-39416] BC FEDERAL #042

Location of Release Source	
Please answer all the questions in this group.	
Site Name	BC FEDERAL 42 BATTERY
Date Release Discovered	05/29/2023
Surface Owner	Federal

Incident Details	
Please answer all the questions in this group.	
Incident Type	Produced Water Release
Did this release result in a fire or is the result of a fire	No
Did this release result in any injuries	No
Has this release reached or does it have a reasonable probability of reaching a watercourse	No
Has this release endangered or does it have a reasonable probability of endangering public health	No
Has this release substantially damaged or will it substantially damage property or the environment	No
Is this release of a volume that is or may with reasonable probability be detrimental to fresh water	No

Nature and Volume of Release	
Material(s) released, please answer all that apply below. Any calculations or specific justifications for the volumes provided should be attached to the follow-up C-141 submission.	
Crude Oil Released (bbls) Details	Not answered.
Produced Water Released (bbls) Details	Cause: Other Dump Line Produced Water Released: 194 BBL Recovered: 118 BBL Lost: 76 BBL.
Is the concentration of chloride in the produced water >10,000 mg/l	No
Condensate Released (bbls) Details	Not answered.
Natural Gas Vented (Mcf) Details	Not answered.
Natural Gas Flared (Mcf) Details	Not answered.
Other Released Details	Not answered.
Are there additional details for the questions above (i.e. any answer containing Other, Specify, Unknown, and/or Fire, or any negative lost amounts)	NIPPLE CORRODED CAUSING A PW RELEASE INTO LINED CONTAINMENT

District I

1625 N. French Dr., Hobbs, NM 88240
Phone:(575) 393-6161 Fax:(575) 393-0720

District II

811 S. First St., Artesia, NM 88210
Phone:(575) 748-1283 Fax:(575) 748-9720

District III

1000 Rio Brazos Rd., Aztec, NM 87410
Phone:(505) 334-6178 Fax:(505) 334-6170

District IV

1220 S. St Francis Dr., Santa Fe, NM 87505
Phone:(505) 476-3470 Fax:(505) 476-3462

State of New Mexico
Energy, Minerals and Natural Resources
Oil Conservation Division
1220 S. St Francis Dr.
Santa Fe, NM 87505

QUESTIONS, Page 2

Action 322460

QUESTIONS (continued)

Operator: Spur Energy Partners LLC 9655 Katy Freeway Houston, TX 77024	OGRID:	328947
	Action Number:	322460
	Action Type:	[C-141] Remediation Closure Request C-141 (C-141-v-Closure)

QUESTIONS

Nature and Volume of Release (continued)	
Is this a gas only submission (i.e. only significant Mcf values reported)	No, according to supplied volumes this does not appear to be a "gas only" report.
Was this a major release as defined by Subsection A of 19.15.29.7 NMAC	Yes
Reasons why this would be considered a submission for a notification of a major release	From paragraph A. "Major release" determine using: (1) an unauthorized release of a volume, excluding gases, of 25 barrels or more.
With the implementation of the 19.15.27 NMAC (05/25/2021), venting and/or flaring of natural gas (i.e. gas only) are to be submitted on the C-129 form.	

Initial Response

The responsible party must undertake the following actions immediately unless they could create a safety hazard that would result in injury.

The source of the release has been stopped	True
The impacted area has been secured to protect human health and the environment	True
Released materials have been contained via the use of berms or dikes, absorbent pads, or other containment devices	True
All free liquids and recoverable materials have been removed and managed appropriately	True
If all the actions described above have not been undertaken, explain why	N/A

Per Paragraph (4) of Subsection B of 19.15.29.8 NMAC the responsible party may commence remediation immediately after discovery of a release. If remediation has begun, please prepare and attach a narrative of actions to date in the follow-up C-141 submission. If remedial efforts have been successfully completed or if the release occurred within a lined containment area (see Subparagraph (a) of Paragraph (5) of Subsection A of 19.15.29.11 NMAC), please prepare and attach all information needed for closure evaluation in the follow-up C-141 submission.

I hereby certify that the information given above is true and complete to the best of my knowledge and understand that pursuant to OCD rules and regulations all operators are required to report and/or file certain release notifications and perform corrective actions for releases which may endanger public health or the environment. The acceptance of a C-141 report by the OCD does not relieve the operator of liability should their operations have failed to adequately investigate and remediate contamination that pose a threat to groundwater, surface water, human health or the environment. In addition, OCD acceptance of a C-141 report does not relieve the operator of responsibility for compliance with any other federal, state, or local laws and/or regulations.

I hereby agree and sign off to the above statement	Name: Katherine Purvis Title: EHS Coordinator Email: katherine.purvis@spurenergy.com Date: 03/12/2024
--	--

District I

1625 N. French Dr., Hobbs, NM 88240
Phone:(575) 393-6161 Fax:(575) 393-0720

District II

811 S. First St., Artesia, NM 88210
Phone:(575) 748-1283 Fax:(575) 748-9720

District III

1000 Rio Brazos Rd., Aztec, NM 87410
Phone:(505) 334-6178 Fax:(505) 334-6170

District IV

1220 S. St Francis Dr., Santa Fe, NM 87505
Phone:(505) 476-3470 Fax:(505) 476-3462

State of New Mexico
Energy, Minerals and Natural Resources
Oil Conservation Division
1220 S. St Francis Dr.
Santa Fe, NM 87505

QUESTIONS, Page 3

Action 322460

QUESTIONS (continued)

Operator: Spur Energy Partners LLC 9655 Katy Freeway Houston, TX 77024	OGRID:	328947
	Action Number:	322460
	Action Type:	[C-141] Remediation Closure Request C-141 (C-141-v-Closure)

QUESTIONS**Site Characterization**

Please answer all the questions in this group (only required when seeking remediation plan approval and beyond). This information must be provided to the appropriate district office no later than 90 days after the release discovery date.

What is the shallowest depth to groundwater beneath the area affected by the release in feet below ground surface (ft bgs)	Between 100 and 500 (ft.)
What method was used to determine the depth to ground water	NM OSE iWaters Database Search
Did this release impact groundwater or surface water	No
What is the minimum distance, between the closest lateral extents of the release and the following surface areas:	
A continuously flowing watercourse or any other significant watercourse	Between 1 and 5 (mi.)
Any lakebed, sinkhole, or playa lake (measured from the ordinary high-water mark)	Between 1 and 5 (mi.)
An occupied permanent residence, school, hospital, institution, or church	Between 1 and 5 (mi.)
A spring or a private domestic fresh water well used by less than five households for domestic or stock watering purposes	Between 1 and 5 (mi.)
Any other fresh water well or spring	Between 1 and 5 (mi.)
Incorporated municipal boundaries or a defined municipal fresh water well field	Between 1 and 5 (mi.)
A wetland	Between 1 and 5 (mi.)
A subsurface mine	Between 1 and 5 (mi.)
An (non-karst) unstable area	Between 1 and 5 (mi.)
Categorize the risk of this well / site being in a karst geology	Low
A 100-year floodplain	Between 1 and 5 (mi.)
Did the release impact areas not on an exploration, development, production, or storage site	No

Remediation Plan

Please answer all the questions that apply or are indicated. This information must be provided to the appropriate district office no later than 90 days after the release discovery date.

Requesting a remediation plan approval with this submission	Yes
Attach a comprehensive report demonstrating the lateral and vertical extents of soil contamination associated with the release have been determined, pursuant to 19.15.29.11 NMAC and 19.15.29.13 NMAC.	
Have the lateral and vertical extents of contamination been fully delineated	Yes
Was this release entirely contained within a lined containment area	Yes
Per Subsection B of 19.15.29.11 NMAC unless the site characterization report includes completed efforts at remediation, the report must include a proposed remediation plan in accordance with 19.15.29.12 NMAC, which includes the anticipated timelines for beginning and completing the remediation.	
On what estimated date will the remediation commence	02/07/2024
On what date will (or did) the final sampling or liner inspection occur	02/15/2024
On what date will (or was) the remediation complete(d)	02/12/2024
What is the estimated surface area (in square feet) that will be remediated	550
What is the estimated volume (in cubic yards) that will be remediated	5
These estimated dates and measurements are recognized to be the best guess or calculation at the time of submission and may (be) change(d) over time as more remediation efforts are completed.	
The OCD recognizes that proposed remediation measures may have to be minimally adjusted in accordance with the physical realities encountered during remediation. If the responsible party has any need to significantly deviate from the remediation plan proposed, then it should consult with the division to determine if another remediation plan submission is required.	

District I
1625 N. French Dr., Hobbs, NM 88240
Phone:(575) 393-6161 Fax:(575) 393-0720
District II
811 S. First St., Artesia, NM 88210
Phone:(575) 748-1283 Fax:(575) 748-9720
District III
1000 Rio Brazos Rd., Aztec, NM 87410
Phone:(505) 334-6178 Fax:(505) 334-6170
District IV
1220 S. St Francis Dr., Santa Fe, NM 87505
Phone:(505) 476-3470 Fax:(505) 476-3462

State of New Mexico
Energy, Minerals and Natural Resources
Oil Conservation Division
1220 S. St Francis Dr.
Santa Fe, NM 87505

QUESTIONS, Page 4

Action 322460

QUESTIONS (continued)

Operator: Spur Energy Partners LLC 9655 Katy Freeway Houston, TX 77024	OGRID:	328947
	Action Number:	322460
	Action Type:	
	[C-141] Remediation Closure Request C-141 (C-141-v-Closure)	

QUESTIONS

Remediation Plan (continued)	
<i>Please answer all the questions that apply or are indicated. This information must be provided to the appropriate district office no later than 90 days after the release discovery date.</i>	
This remediation will (or is expected to) utilize the following processes to remediate / reduce contaminants:	
<i>(Select all answers below that apply.)</i>	
Is (or was) there affected material present needing to be removed	Yes
Is (or was) there a power wash of the lined containment area (to be) performed	Yes
OTHER (Non-listed remedial process)	Not answered.
<i>Per Subsection B of 19.15.29.11 NMAC unless the site characterization report includes completed efforts at remediation, the report must include a proposed remediation plan in accordance with 19.15.29.12 NMAC, which includes the anticipated timelines for beginning and completing the remediation.</i>	
I hereby certify that the information given above is true and complete to the best of my knowledge and understand that pursuant to OCD rules and regulations all operators are required to report and/or file certain release notifications and perform corrective actions for releases which may endanger public health or the environment. The acceptance of a C-141 report by the OCD does not relieve the operator of liability should their operations have failed to adequately investigate and remediate contamination that pose a threat to groundwater, surface water, human health or the environment. In addition, OCD acceptance of a C-141 report does not relieve the operator of responsibility for compliance with any other federal, state, or local laws and/or regulations.	
I hereby agree and sign off to the above statement	Name: Katherine Purvis Title: EHS Coordinator Email: katherine.purvis@spurenergy.com Date: 03/12/2024
<i>The OCD recognizes that proposed remediation measures may have to be minimally adjusted in accordance with the physical realities encountered during remediation. If the responsible party has any need to significantly deviate from the remediation plan proposed, then it should consult with the division to determine if another remediation plan submission is required.</i>	

District I

1625 N. French Dr., Hobbs, NM 88240
Phone:(575) 393-6161 Fax:(575) 393-0720

District II

811 S. First St., Artesia, NM 88210
Phone:(575) 748-1283 Fax:(575) 748-9720

District III

1000 Rio Brazos Rd., Aztec, NM 87410
Phone:(505) 334-6178 Fax:(505) 334-6170

District IV

1220 S. St Francis Dr., Santa Fe, NM 87505
Phone:(505) 476-3470 Fax:(505) 476-3462

State of New Mexico
Energy, Minerals and Natural Resources
Oil Conservation Division
1220 S. St Francis Dr.
Santa Fe, NM 87505

QUESTIONS, Page 6

Action 322460

QUESTIONS (continued)

Operator: Spur Energy Partners LLC 9655 Katy Freeway Houston, TX 77024	OGRID:	328947
	Action Number:	322460
	Action Type:	[C-141] Remediation Closure Request C-141 (C-141-v-Closure)

QUESTIONS

Liner Inspection Information	
Last liner inspection notification (C-141L) recorded	313585
Liner inspection date pursuant to Subparagraph (a) of Paragraph (5) of Subsection A of 19.15.29.11 NMAC	02/15/2024
Was all the impacted materials removed from the liner	Yes
What was the liner inspection surface area in square feet	600

Remediation Closure Request

Only answer the questions in this group if seeking remediation closure for this release because all remediation steps have been completed.

Requesting a remediation closure approval with this submission	Yes
Have the lateral and vertical extents of contamination been fully delineated	Yes
Was this release entirely contained within a lined containment area	Yes
What was the total surface area (in square feet) remediated	606
What was the total volume (cubic yards) remediated	6
Summarize any additional remediation activities not included by answers (above)	CONTAMINATED MATERIAL REMOVED FROM THE LINER, LINER WASHED AND INSPECTED, LINER HAS THE INTEGRITY TO CONTAIN LEAKS

The responsible party must attach information demonstrating they have complied with all applicable closure requirements and any conditions or directives of the OCD. This demonstration should be in the form of a comprehensive report (in .pdf format) including a scaled site map, sampling diagrams, relevant field notes, photographs of any excavation prior to backfilling, laboratory data including chain of custody documents of final sampling, and a narrative of the remedial activities. Refer to 19.15.29.12 NMAC.

I hereby certify that the information given above is true and complete to the best of my knowledge and understand that pursuant to OCD rules and regulations all operators are required to report and/or file certain release notifications and perform corrective actions for releases which may endanger public health or the environment. The acceptance of a C-141 report by the OCD does not relieve the operator of liability should their operations have failed to adequately investigate and remediate contamination that pose a threat to groundwater, surface water, human health or the environment. In addition, OCD acceptance of a C-141 report does not relieve the operator of responsibility for compliance with any other federal, state, or local laws and/or regulations. The responsible party acknowledges they must substantially restore, reclaim, and re-vegetate the impacted surface area to the conditions that existed prior to the release or their final land use in accordance with 19.15.29.13 NMAC including notification to the OCD when reclamation and re-vegetation are complete.

I hereby agree and sign off to the above statement	Name: Katherine Purvis Title: EHS Coordinator Email: katherine.purvis@spurenergy.com Date: 03/12/2024
--	--

District I
1625 N. French Dr., Hobbs, NM 88240
Phone:(575) 393-6161 Fax:(575) 393-0720
District II
811 S. First St., Artesia, NM 88210
Phone:(575) 748-1283 Fax:(575) 748-9720
District III
1000 Rio Brazos Rd., Aztec, NM 87410
Phone:(505) 334-6178 Fax:(505) 334-6170
District IV
1220 S. St Francis Dr., Santa Fe, NM 87505
Phone:(505) 476-3470 Fax:(505) 476-3462

State of New Mexico
Energy, Minerals and Natural Resources
Oil Conservation Division
1220 S. St Francis Dr.
Santa Fe, NM 87505

CONDITIONS

Action 322460

CONDITIONS

Operator: Spur Energy Partners LLC 9655 Katy Freeway Houston, TX 77024	OGRID: 328947
	Action Number: 322460
	Action Type: [C-141] Remediation Closure Request C-141 (C-141-v-Closure)

CONDITIONS

Created By	Condition	Condition Date
scott.rodgers	App ID 322460 Liner Inspection approved	3/25/2024