

Incident ID	nAPP2214534062
District RP	
Facility ID	
Application ID	

Site Assessment/Characterization

This information must be provided to the appropriate district office no later than 90 days after the release discovery date.

What is the shallowest depth to groundwater beneath the area affected by the release?	25____ (ft bgs)
Did this release impact groundwater or surface water?	<input type="checkbox"/> Yes <input checked="" type="checkbox"/> No
Are the lateral extents of the release within 300 feet of a continuously flowing watercourse or any other significant watercourse?	<input type="checkbox"/> Yes <input checked="" type="checkbox"/> No
Are the lateral extents of the release within 200 feet of any lakebed, sinkhole, or playa lake (measured from the ordinary high-water mark)?	<input type="checkbox"/> Yes <input checked="" type="checkbox"/> No
Are the lateral extents of the release within 300 feet of an occupied permanent residence, school, hospital, institution, or church?	<input type="checkbox"/> Yes <input checked="" type="checkbox"/> No
Are the lateral extents of the release within 500 horizontal feet of a spring or a private domestic fresh water well used by less than five households for domestic or stock watering purposes?	<input type="checkbox"/> Yes <input checked="" type="checkbox"/> No
Are the lateral extents of the release within 1000 feet of any other fresh water well or spring?	<input type="checkbox"/> Yes <input checked="" type="checkbox"/> No
Are the lateral extents of the release within incorporated municipal boundaries or within a defined municipal fresh water well field?	<input type="checkbox"/> Yes <input checked="" type="checkbox"/> No
Are the lateral extents of the release within 300 feet of a wetland?	<input checked="" type="checkbox"/> Yes <input type="checkbox"/> No
Are the lateral extents of the release overlying a subsurface mine?	<input type="checkbox"/> Yes <input checked="" type="checkbox"/> No
Are the lateral extents of the release overlying an unstable area such as karst geology?	<input type="checkbox"/> Yes <input checked="" type="checkbox"/> No
Are the lateral extents of the release within a 100-year floodplain?	<input checked="" type="checkbox"/> Yes <input type="checkbox"/> No
Did the release impact areas not on an exploration, development, production, or storage site?	<input type="checkbox"/> Yes <input checked="" type="checkbox"/> No

Attach a comprehensive report (electronic submittals in .pdf format are preferred) demonstrating the lateral and vertical extents of soil contamination associated with the release have been determined. Refer to 19.15.29.11 NMAC for specifics.

Characterization Report Checklist: *Each of the following items must be included in the report.*

- ☒ Scaled site map showing impacted area, surface features, subsurface features, delineation points, and monitoring wells.
- ☒ Field data
- ☒ Data table of soil contaminant concentration data
- ☒ Depth to water determination
- ☒ Determination of water sources and significant watercourses within ½-mile of the lateral extents of the release
- ☒ Boring or excavation logs
- ☒ Photographs including date and GIS information
- ☒ Topographic/Aerial maps
- ☒ Laboratory data including chain of custody

If the site characterization report does not include completed efforts at remediation of the release, the report must include a proposed remediation plan. That plan must include the estimated volume of material to be remediated, the proposed remediation technique, proposed sampling plan and methods, anticipated timelines for beginning and completing the remediation. The closure criteria for a release are contained in Table 1 of 19.15.29.12 NMAC, however, use of the table is modified by site- and release-specific parameters.

State of New Mexico
Oil Conservation Division

Incident ID	nAPP2214534062
District RP	
Facility ID	
Application ID	

I hereby certify that the information given above is true and complete to the best of my knowledge and understand that pursuant to OCD rules and regulations all operators are required to report and/or file certain release notifications and perform corrective actions for releases which may endanger public health or the environment. The acceptance of a C-141 report by the OCD does not relieve the operator of liability should their operations have failed to adequately investigate and remediate contamination that pose a threat to groundwater, surface water, human health or the environment. In addition, OCD acceptance of a C-141 report does not relieve the operator of responsibility for compliance with any other federal, state, or local laws and/or regulations.

Printed Name: Amber Groves Title: Remediation Specialist

Signature:  Date: 10/12/2022

email: agroves@durangomidstream.com Telephone: (575)703-7992

OCD Only

Received by: Jocelyn Harimon Date: 10/27/2022

Incident ID	nAPP2214534062
District RP	
Facility ID	
Application ID	

Remediation Plan

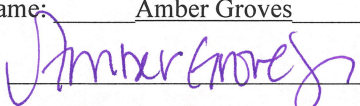
Remediation Plan Checklist: *Each of the following items must be included in the plan.*

- ☒ Detailed description of proposed remediation technique
- ☒ Scaled sitemap with GPS coordinates showing delineation points
- ☒ Estimated volume of material to be remediated
- ☒ Closure criteria is to Table 1 specifications subject to 19.15.29.12(C)(4) NMAC
- ☒ Proposed schedule for remediation (note if remediation plan timeline is more than 90 days OCD approval is required)

Deferral Requests Only: *Each of the following items must be confirmed as part of any request for deferral of remediation.*

- ☐ Contamination must be in areas immediately under or around production equipment where remediation could cause a major facility deconstruction.
- ☐ Extents of contamination must be fully delineated.
- ☐ Contamination does not cause an imminent risk to human health, the environment, or groundwater.

I hereby certify that the information given above is true and complete to the best of my knowledge and understand that pursuant to OCD rules and regulations all operators are required to report and/or file certain release notifications and perform corrective actions for releases which may endanger public health or the environment. The acceptance of a C-141 report by the OCD does not relieve the operator of liability should their operations have failed to adequately investigate and remediate contamination that pose a threat to groundwater, surface water, human health or the environment. In addition, OCD acceptance of a C-141 report does not relieve the operator of responsibility for compliance with any other federal, state, or local laws and/or regulations.

Printed Name: Amber Groves Title: Remediation Specialist
Signature:  Date: 10/12/2022
email: agroves@durangomidstream.com Telephone: (575)703-7992

OCD Only

Received by: Jocelyn Harimon Date: 10/27/2022

☐ Approved ☒ Approved with Attached Conditions of Approval ☐ Denied ☐ Deferral Approved

Signature: Michael Buchanan Date: 03/27/2023

Durango Midstream, LLC
Hnulik 6 Lateral #1
32.80236°, -104.3429°
NMOCD Reference # nAPP2214534062
Terracon Project # AR227115



Attn: New Mexico Oil Conservation Division
1220 South St. Francis Drive
Santa Fe, NM 87505

RE: Release Investigation and Remedial Action Plan
Hnulik 6 Lateral #1
Unit M, Section 25, Township 17 South, Range 26 East
32.80236°, -104.3429°
Eddy County, New Mexico
Terracon Project No. AR227115

To Whom it May Concern:

Terracon Consultants, Inc. (Terracon) is pleased to submit our Release Investigation and Remedial Action Plan (RAP) for the site referenced above. The Release Investigation and RAP were developed in accordance with the New Mexico Oil Conservation Division (NMOCD) regulations concerning clean-up actions required for releases of crude oil and produced water. The investigative response actions were taken as the result of a natural gas release accompanied by associated fluids from a corroded 6-inch lateral line. Based on the release investigation assessment, Terracon recommends the following actions be taken to achieve protection of fresh water and the environment in accordance with NMOCD regulations.

Action Items

Completed Actions

- 1) The line failure has been repaired and the release has ceased.
- 2) Terracon conducted a background evaluation of soils present outside of the release margins to establish chloride background levels at the site. Chloride concentrations appear to be naturally elevated due to the natural accumulation of soil salinity resulting from the wetting and dry of chlorides within the Pecos River and from the rising and falling of the alluvial perched water. Based on the evaluation of the detected chloride concentrations evaluated utilizing the EPAs ProUCL calculator to determine 95% Upper Confidence Limit (UCL), the background chloride concentration for the site is calculated to be 22,389 milligrams per kilogram (mg/kg).
- 3) Terracon collected an up and cross-gradient water sample from perched water from within the surrounding alluvial strata. During excavation activities, this perched water was observed at a depth of 7 feet below grade surface. A hand auger soil boring was converted to a temporary water sampling point utilizing 2-inch well screen and a sand filter pack completion method. The perched water sample indicated elevated chloride and total dissolved solid (TDS) concentrations.

Durango Midstream, LLC
Hnulik 6 Lateral #1
32.80236°, -104.3429°
NMOCD Reference # nAPP2214534062



Based on the magnitude of these concentrations, it appears the above-noted seasonality have impacted the near surface soils in the background samples.

- 4) Excavated, stockpiled petroleum impacted soils were staged on plastic sheeting pending characterization.
 - 5) Water leaching into the excavation was pumped out and collected in a tanker truck and was stored in a roll-off tank.
 - 6) Terracon collected a water sample from the Pecos River to understand the chloride and TDS concentrations within this waterbody. Based on the results, the Pecos River and the perched alluvial groundwater do not exhibit similar concentrations.
-

Anticipated Actions


- 1) Terracon will return to site to collect confirmation soil samples every 200 square feet to evaluate chloride, TPH, and BTEX to achieve required release delineation per NMOCD guidance.
-

Variance Requested

- 1) Terracon is requesting on the behalf of Durango Midstream, LLC (Durango) to remediate the open excavation to levels consistent with background chloride concentrations (chloride at 22,389 mg/kg) observed within the soils and upgradient water surrounding the release margins.
-

Terracon appreciates this opportunity to provide environmental services to Durango Midstream LLC. Should you have any questions or require additional information, please do not hesitate to contact our office.

Sincerely,
Terracon Consultants, Inc.

For 
Joseph Guesnier
Senior Staff Scientist
Office Manager - Carlsbad

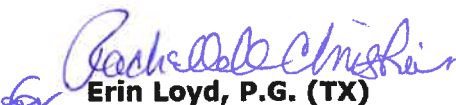

Erin Loyd, P.G. (TX)
Principal
Office Manager - Lubbock

TABLE OF CONTENTS

Incident Information.....	2
General Site Characteristics.....	3
Regulatory Framework and Response Action Levels.....	4
Soil Investigation Discussion.....	5
Remedial Activities.....	5
Analytical Results	5
Conclusion	6

Attachments:

Appendix A – Exhibits

Exhibit 1 – Topo Map

Exhibit 2 – Site Location Map

Exhibit 3 – Chloride Confirmation Soil Sampling Map

Exhibit 4 – NMOSE POD Location Map

Exhibit 5 – Designated Wetland Area Map

Exhibit 6 – Cave Karst Public UCP Map

Appendix B – Tables, Procedures, and Figures

Table 1 – Soil Sample Analytical Results

Table 2 – Water Sample Analytical Results

Appendix C – Photographic Log

Appendix D – Analytical Report and Chain of Custody

Appendix E – Terracon Standard of Care, Limitation, and Reliance

Durango Midstream, LLC
 Hnulik 6 Lateral #1
 32.80236°, -104.3429°
 NMOCD Reference # nAPP2214534062



Incident Information

The following table provides detailed information regarding the April 13, 2022 natural gas and petroleum liquid release at the Hnulik 6 Leak #1 site in Eddy County, New Mexico:

Required Information	Site and Release information	
Responsible party	The facility is operated by Durango Midstream LLC	
Local contact	Contact: Ms. Amber Groves	P: (575)-703-7992 E: agroves@durangomidstream.com
NMOCD Notification	Notice of the release was provided to the NMOCD District 2 Artesia Office by Ms. Amber Groves on May 24, 2022. nAPP2214534062	
Facility description	Hnulik 6 Lateral #1 is in Eddy County, New Mexico. It is an area located within Unit M, Section 25, Township 17 South, Range 30 East, approximately 3.6 miles southeast of Artesia, New Mexico. The site is predominantly undeveloped native privately owned pastureland.	
Time of incident	April 13, 2022, discovered at approximately 2:30 p.m.	
Discharge event	The natural gas pipeline leak was caused by corrosion of the steel line and was discovered leaking/seeping to the surface during normal field inspections. The Site is illustrated in Exhibits 1 and 2 of Appendix A	
Type of discharge	The documented natural gas and fluids release occurred in open privately owned native pastureland site and is affected at the surface to depth.	
Quantity of spilled material	Total Fluids: <5 bbls	Natural Gas: 21.34 Mcf
Site characteristics	Relatively flat with drainage following the native ground surface; very gently sloping to the southeast.	
Immediate corrective actions	The leaking pipeline was closed in at the nearest isolation valve and blown down. A backhoe was utilized to excavate soils to discover the source of the release.	

Durango Midstream, LLC
 Hnulik 6 Lateral #1
 32.80236°, -104.3429°
 NMOCD Reference # nAPP2214534062



General Site Characteristics	
Remedial Determining Information	Site Ranking Characteristics
Groundwater NMOSE POD Location Map – (Exhibit 4 in Appendix A)	<p><u>POD Number:</u> (RA-11547-POD2)</p> <p><u>Depth to Groundwater:</u> 25 ft. bgs</p> <p><u>Distance to Well:</u> 0.51 miles to the northwest</p> <p><u>Date Drilled:</u> April 3, 2010</p> <p><u>Groundwater Quality:</u> Groundwater quality at the site is predominately used for livestock production.</p>
Surface Water NM Wetland Map – (Exhibit 5 in Appendix A)	Pecos River, approximately 0.85 miles to the east.
100-Year Flood Plain	This site is located within the 100-year flood plain of the Pecos River.
Soil Characteristics	Soils at the site are mapped as Arno-Harkey series soils, 0 to 1 percent slopes, well-drained, 0 to 9 inches silty clay loam, 9 to 60 inches silty clay (Arno setting) and 0 to 9 inches very fine sandy loam, 9 to 60 inches very fine sandy loam (Harkey setting). Restrictive features are assumed present at more than 80 inches bgs resulting in the formation being categorized with a very high runoff classification.
Karst Characterization Cave Karst Public UCP Map – (Exhibit 6 in Appendix A)	Terracon evaluated data from the NMOCD Public FTP Site, Karst map designations in reference to the site location. The site appears to be within a moderate-level Karst risk area. Based on on-site observations within the extent of the release margins the potential for Karst formations in this specific area are of moderate potential. Restrictive features were not encountered from surface to 84 inches below grade surface (bgs) within the release margins. The full extent of release quantities and excavation activities did not extend greater than 84 inches bgs.

Regulatory Framework and Response Action Levels

Oil and gas exploration and production facilities in New Mexico are generally regulated by the New Mexico Oil Conservation Division (NMOCD). The NMOCD has issued the Closure Criteria for Soils Impacted by a Release, June 21, 2018, and Restoration, Reclamation, and Re-vegetation (19.15.29.13) NMAC – D (Reclamation of areas no longer in use) as guidance documents for the remediation and reclamation of sites impacted by releases from oil and gas exploration and production activities. Sections detailed below the applicability of these guidance documents to the site-specific characteristics associated with the Hnulik 6 Lateral #1 site.

Reclamation Levels (Surface to 4 ft. bgs)

The below Reclamation Limits for chlorides, TPH (GRO+DRO+MRO), BTEX (includes benzene, toluene, ethylbenzene, and xylenes), and benzene are defined within New Mexico Administration Code (NMAC) Restoration, Reclamation, and Re-vegetation (19.15.29.13) New Mexico Administration Code (NMAC) – D (Reclamation of areas no longer in use) for soils extending to 4 ft. bgs.:

Constituent	Remediation Limits
Chloride	600 mg/kg
TPH (GRO+DRO+MRO)	100 mg/kg
BTEX	50 mg/kg
Benzene	10 mg/kg

Remediation Levels (> 4 ft. bgs)

Based on the site-specific characteristics, the applicable NMOCD remediation levels for Total BTEX, chloride, and TPH within soils, exclusive of the Reclamation Zone (surface to 4 ft. bgs), are as follows:

Constituent	Remediation Limit
Chloride	600 mg/kg
TPH (GRO+DRO+MRO)	100 mg/kg
BTEX	50 mg/kg
Benzene	10 mg/kg

Soil Investigation Discussion

Remedial Activities

On May 16, 2022, Terracon mobilized to the site to meet Gandy Corporation (Gandy) personnel, who were to perform soil remediation activities. Areas exhibiting visual impact were excavated to a depth of approximately 6 feet bgs on each side of the pipeline. A total of one composite soil sample (BG-1), one water sample of infilling perched alluvial water into the excavation (EX-WATER) and one sample of water from the nearby river (River BG) were collected, placed in laboratory provided sample containers, preserved with ice, and transported under chain of custody to Cardinal Laboratories in Hobbs, New Mexico for analysis of chlorides and Total Dissolved Solids (TDS).

During soil excavation activities on May 16, 2022, perched alluvial water began infilling the excavation. The water recharge into the excavation observed periodically and was removed via trash pump into a water tank vessel for characterization prior to disposal. On July 12 and 13, 2022, field personnel returned to the project site to pump water from the excavation bottom resulting in the removal of approximately 525 bbls of liquid which was subsequently transported from site for disposal. On July 27, 2022, field personnel returned to the project site to pump additional liquid from the excavation bottom and removed approximately 480 bbls of water at this time and which was also stored in the on-site container for disposal. On August 2, 2022, additional liquid was removed from the excavation area and on this date 125 bbls of liquid were removed and containerized for disposal. In total, approximately 1,130 bbls of liquid was removed from the excavation area and transported to an approved disposal facility. Liquid removal activities will continue until background levels are reached.

On July 25, 2022, Terracon mobilized to the site to collect a total of 9 soil samples (BG-1 through BG-9) to establish background chloride concentrations in surface soils surrounding the excavation area. The soil samples were placed in laboratory provided sample containers, preserved with ice, and transported under chain of custody to Cardinal Laboratories in Hobbs, New Mexico for chloride analyses. Background chloride sample results are illustrated in Table 2 of Appendix B.

On August 24, 2022, Terracon mobilized to the site to grab a water sample from the perched alluvial waters via a temporary sampling point installed to determine concentrations of chlorides and TDS. Samples were collected from the temporary sampling point, placed in laboratory provided sample containers, preserved with ice, and transported under chain of custody to Cardinal Laboratories in Hobbs, New Mexico for analysis. The temporary sampling point was constructed of 2-inch diameter Schedule 40 PVC with 5 feet of 0.20-inch slotted screen. The sampling point was constructed to a total depth of the well is 7 feet bgs with a 10-20 silica sand placed from the total depth to 1 foot bgs and hydrated bentonite pellets from 1 foot bgs to the surface.

See Appendix A for a depiction of the water sample locations collected by Terracon.

Analytical Results

The excavation recharged water sample (EX WATER) was collected from the excavation area on May 16, 2022 and laboratory results indicated concentrations of chloride and Total Dissolved Solids (TDS) of 123,000

Durango Midstream, LLC
Hnulik 6 Lateral #1
32.80236°, -104.3429°
NMOCD Reference # nAPP2214534062



mg/L and 33,700 mg/L respectively. The Pecos River water sample (River BG), collected on May 16, 2022, exhibited concentrations of chloride and TDS of 3,300 mg/L and 8,760 mg/L, respectively. While water sample (WS-1) from the temporary sampling point on August 28, 2022 exhibited concentrations of chloride and TDS of 12,100 mg/L and 45,200 mg/L, respectively. Laboratory results for the above water samples are summarized in Table 2 of Appendix B.

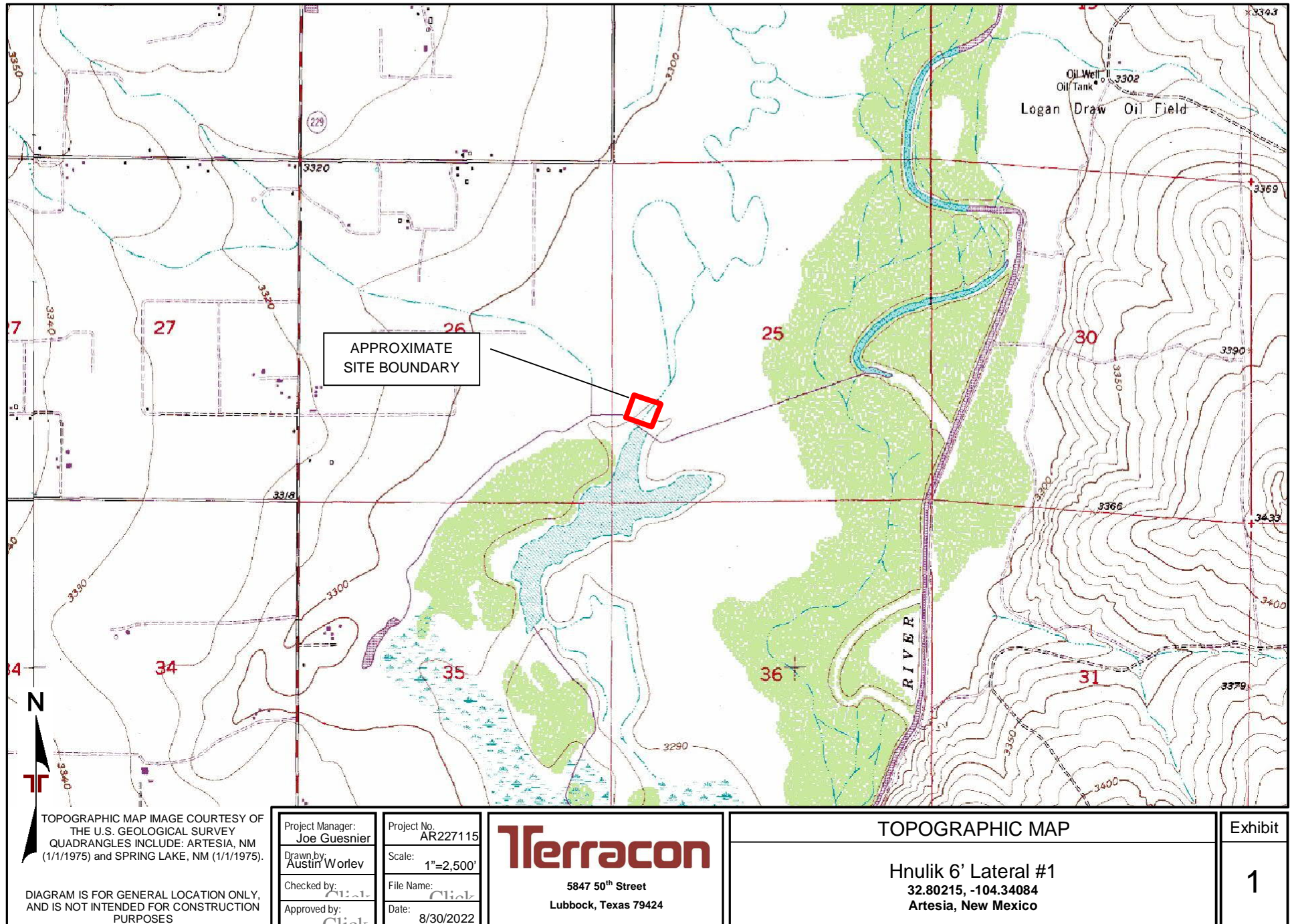
All background soil samples collected on August 1, 2022 exhibited concentrations of chloride above applicable NMOCD threshold limits. Detected concentrations of chloride ranged from 3,200 mg/kg to 32,000 mg/kg and are summarized in Table 2 of Appendix B.

Terracon utilized the EPA ProUCL calculator to establish a 95% Upper Confidence Limit (UCL) for chloride concentrations as a background standard for the area. Based on this calculation, a background chloride concentration of 22,389 mg/kg was established for the site. Terracon will utilize this value as the modified remediation standard when assessing the extent of the impacts within the release margins. The elevated magnitude of these concentrations is believed to be associated with the wetting and drying of the Pecos River Basin alluvial sediments and waters. Based on the magnitude of the chlorides and TDS of the waters entering the excavation containing perched alluvial waters, chlorides naturally deposit within the near surface soils during dry seasons such as when these sampling events occurred.

Conclusion

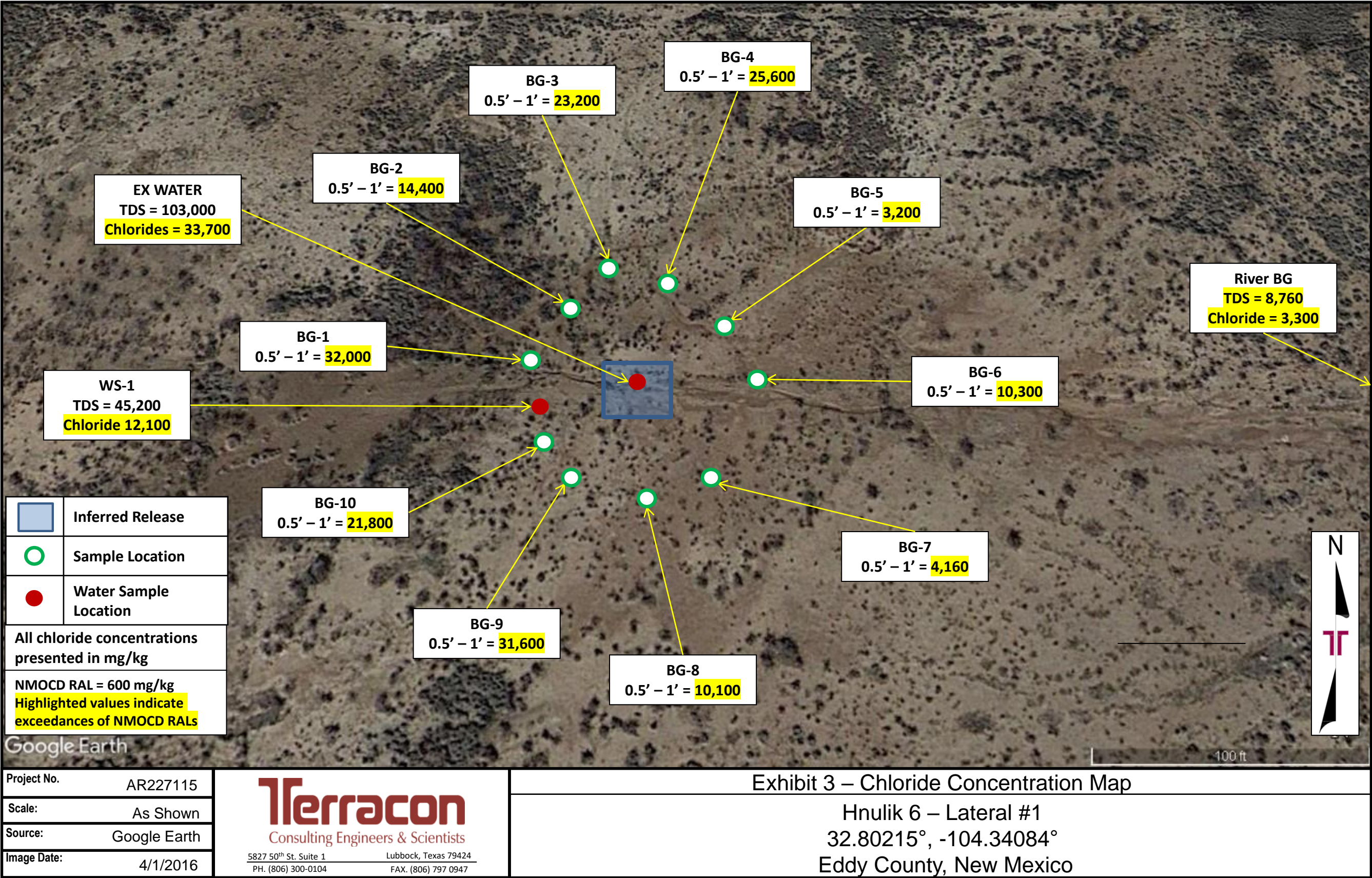
Terracon recommends confirmation soil sampling of the side walls of the open excavation in accordance with NMAC 19.15.29.12. Following the confirmation sampling activities and when remediation of the impacted material is complete in accordance with the recommended chloride standard based on the soil and perched alluvial water evaluations, Terracon will submit a variance request based on the chloride background levels in soil and water at the site.

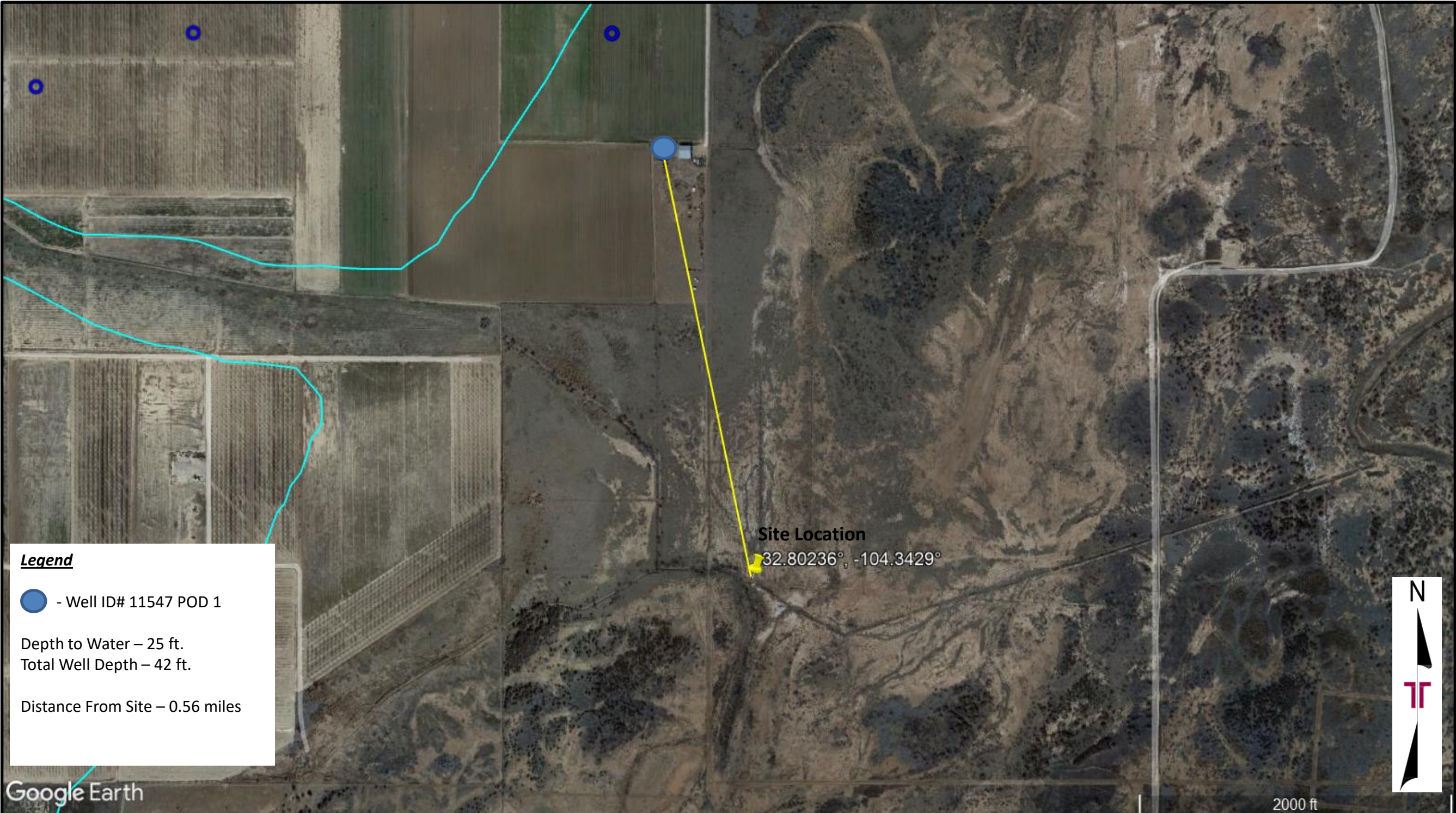
APPENDIX A – EXHIBITS




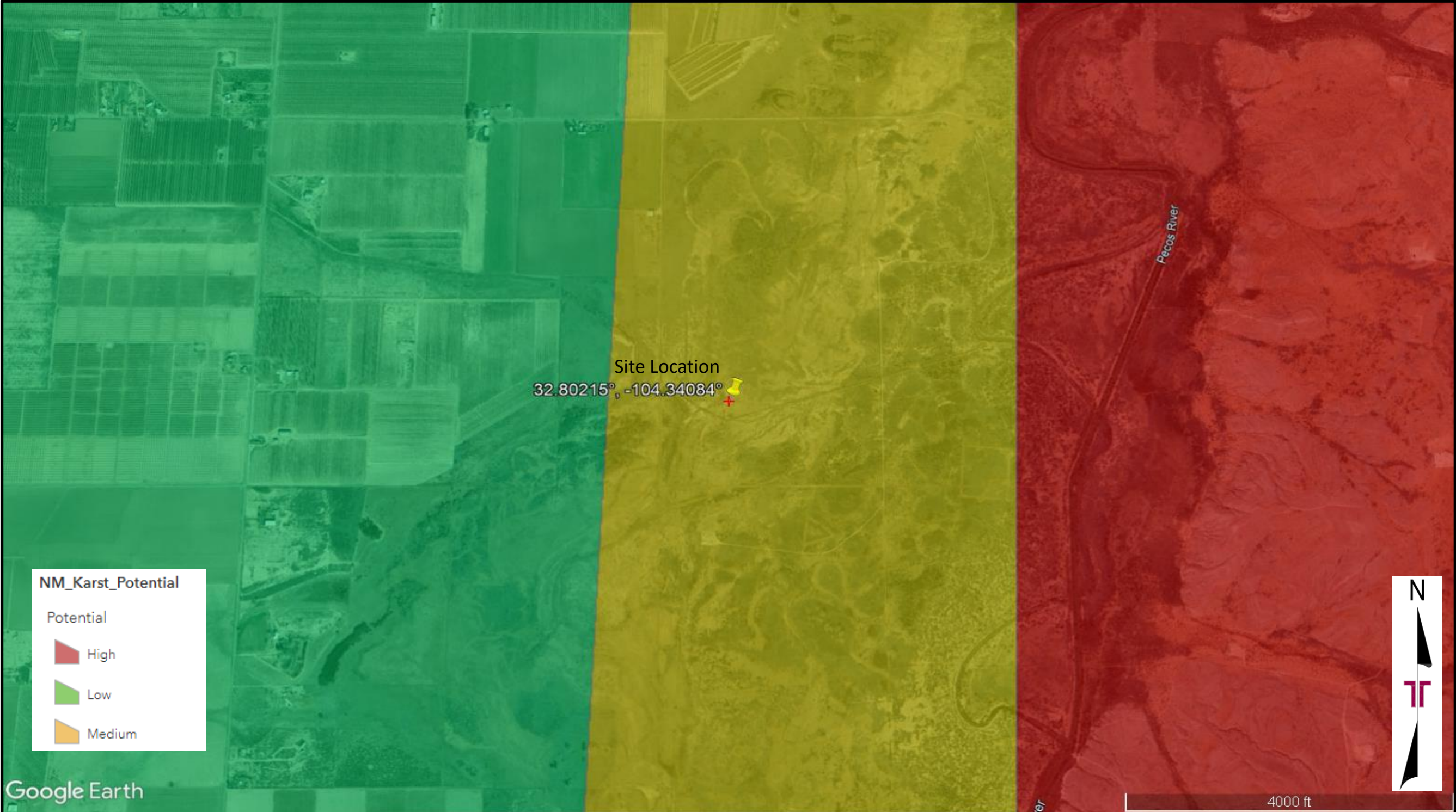


Project No.	AR227115	Exhibit 2 – Site Location Map	
Scale:	As Shown	Hnulik 6- Lateral #1	
Source:	Google Earth	32.80215°, -104.34084°	
Date:	2022	Eddy County, New Mexico	
<div><div>Terracon</div><div>Consulting Engineers & Scientists</div><div>5847 50th St. Lubbock, Texas 79424</div><div>PH. (806) 300-0104 FAX. (806) 797 0947</div></div>			





Project No. AR227115		Exhibit 4 NMOSE POD Location Map	
Scale:	As Shown		
Source:	Google Earth		
Date:	2022		
 Consulting Engineers & Scientists		Hnulik 6- Lateral #1	
		32.80215°, -104.34084°	
5847 50 th St. Lubbock, Texas 79424 PH. (806) 300-0104 FAX. (806) 797 0947		Eddy County, New Mexico	



Project No.	AR227115	Exhibit 5 Cave Karst Public UCP Map	
Scale:	As Shown	Hnulik 6- Lateral #1	
Source:	Google Earth	32.80215°, -104.34084°	
Date:	2022	Eddy County, New Mexico	
<div><div>Terracon</div><div>Consulting Engineers & Scientists</div><div>5847 50th St. Lubbock, Texas 79424</div><div>PH. (806) 300-0104 FAX. (806) 797 0947</div></div>			

APPENDIX B – TABLES, PROCEDURES, AND FIGURES

TABLE 2 SOIL SAMPLE ANALYTICAL RESULTS - BTEX ¹ , Chloride ² , and TPH ³								
Hnulik 6" Lateral #1 Terracon Project No. AR227115								
Sample I.D.	Sample Depth (ft. bgs)	Sample Type	Sample Date	BTEX (mg/kg)	Chloride (mg/kg)	TPH (8015M) (mg/kg)		
						GRO	DRO	EXT DRO
Background Samples								
BG-1	0.5'-1'	Comp	07/25/22	<SDLs	32000	<10.0	<10.0	<10.0
BG-1	2-3'	Comp	05/16/22	N/A	2240	N/A	N/A	N/A
BG-2	0.5'-1'	Comp	07/25/22	<SDLs	14400	<10.0	<10.0	<10.0
BG-3	0.5'-1'	Comp	07/25/22	<SDLs	23200	<10.0	<10.0	<10.0
BG-4	0.5'-1'	Comp	07/25/22	<SDLs	25600	<10.0	<10.0	<10.0
BG-5	0.5'-1'	Comp	07/25/22	<SDLs	3200	<10.0	<10.0	<10.0
BG-6	0.5'-1'	Comp	07/25/22	<SDLs	10300	<10.0	<10.0	<10.0
BG-7	0.5'-1'	Comp	07/25/22	<SDLs	4160	<10.0	<10.0	<10.0
BG-8	0.5'-1'	Comp	07/25/22	<SDLs	10100	<10.0	<10.0	<10.0
BG-9	0.5'-1'	Comp	07/25/22	<SDLs	31600	<10.0	<10.0	<10.0
NMOCD Reclamation Standards ⁴ (Applicable for Soils from the Surface to 4 ft. Below Grade Surface)				Benzene - 10 Toluene - N/A Ethylbenzene - N/A Total Xylenes - N/A Total BTEX - 50	600	N/A		
NMOCD Remediation and Delineation Standards ⁵ (Applicable for Soils at Depths Greater than 4 ft. Below Grade Surface)				Benzene - 10 Toluene - N/A Ethylbenzene - N/A Total Xylenes - N/A Total BTEX - 50	600	N/A		

1. BTEX = Benzene, toluene, ethylbenzene, total xylenes analyzed by EPA Method 8021B

2. Chloride = Chloride analyzed by EPA Method 300.

3. TPH = Total petroleum hydrocarbons analyzed by EPA Method 8015M (GRO/DRO/MRO)

4. New Mexico Administration Code (NMAC) Restoration, Reclamation, and Re-vegetation (19.15.29.13) New Mexico Administration Code (NMAC) – D (Reclamation of areas no longer in use) for soils extending to 4 ft. bgs

5. New Mexico Oil Conservation Division (NMOCD) Remediation and Delineation Standards are proposed in 19.15.29.12 NMAC - N, 8/14/2018

< = Constituent not detected above the indicated laboratory SDL

NA = Not Analyzed

N/A = Not Applicable

Bold and Highlight denotes concentrations that exceed the New Mexico Oil Conservation Division (NMOCD) Reclamation and/or Remediation and Delineation Standards

TABLE 3 WATER SAMPLE ANALYTICAL RESULTS - BTEX ¹ , Chloride ² , TDS, and TPH ³									
Hnulik 6" Lateral #1 Terracon Project No. AR227115									
Sample I.D.	Sample Depth (ft. bgs)	Sample Type	Sample Date	BTEX (mg/L)	Chloride (mg/L)	TDS (mg/L)	TPH (mg/L)		
							GRO	DRO	ORO
Initial Release Water Samples									
EX WATER	Excavation	Grab	05/16/22	NA	33700	103000	NA	NA	NA
River BG	River	Grab	05/16/22	NA	3300	8760	NA	NA	NA
WS1	Temp Well	Grab	08/24/22	NA	12100	45200	NA	NA	NA
Groundwater Remediation Standards ⁴ (Applicable for Groundwater less than 10,000ppm TDS)				Benzene - 0.005 Toluene - 1.0 Ethylbenzene - 0.7 Total Xylenes - 0.62 Total BTEX - N/A	250	≤10,000	N/A		

1. BTEX = Benzene, toluene, ethylbenzene, total xylenes analyzed by EPA Method 8020B

2. Chloride = Chloride analyzed by EPA Method 300.

3. TDS = Total Dissolved Solids analyzed by TDS 160.1

4. New Mexico Administration Code (NMAC) Environmental Protection Water Quality Ground and Surface Water Protection (20.6.2) New Mexico Administration Code (NMAC)

< = Constituent not detected above the indicated laboratory SDL

NA = Not Analyzed

N/A = Not Applicable

Bold and Highlight denotes concentrations that exceed the New Mexico Oil Conservation Division (NMOCD) Reclamation and/or Remediation and Delineation Standards.

APPENDIX C – PHOTOGRAPHIC LOG

Hnulik 6 – Lateral #1 ■ Eddy County, New Mexico
September 13, 2022 ■ Terracon Project No. AR227115

Terracon



PHOTO 1: View of area prior to Excavation from the East.



PHOTO 2: View of area prior Excavation from the East.

Responsive ■ Resourceful ■ Reliable

Hnulik 6 – Lateral #1 ■ Eddy County, New Mexico
September 13, 2022 ■ Terracon Project No. AR227115

Terracon



PHOTO 3: View of open excavation, and removal of water.



PHOTO 4: View of final Excavation, after trench dewatering and pipe repair.

Responsive ■ Resourceful ■ Reliable

APPENDIX D – ANALYTICAL REPORT AND CHAIN OF CUSTODY



PHONE (575) 393-2326 ° 101 E. MARLAND ° HOBBS, NM 88240

May 19, 2022

BRETT DENNIS

TERRACON CONSULTANTS

5827 50TH ST. SUITE 1

LUBBOCK, TX 79424

RE: HNULIK #1

Enclosed are the results of analyses for samples received by the laboratory on 05/17/22 9:30.

Cardinal Laboratories is accredited through Texas NELAP under certificate number T104704398-21-14. Accreditation applies to drinking water, non-potable water and solid and chemical materials. All accredited analytes are denoted by an asterisk (*). For a complete list of accredited analytes and matrices visit the TCEQ website at www.tceq.texas.gov/field/qa/lab_accred_certif.html.

Cardinal Laboratories is accredited through the State of Colorado Department of Public Health and Environment for:

Method EPA 552.2	Haloacetic Acids (HAA-5)
Method EPA 524.2	Total Trihalomethanes (TTHM)
Method EPA 524.4	Regulated VOCs (V1, V2, V3)

Accreditation applies to public drinking water matrices.

This report meets NELAP requirements and is made up of a cover page, analytical results, and a copy of the original chain-of-custody. If you have any questions concerning this report, please feel free to contact me.

Sincerely,

A handwritten signature in black ink that reads "Celey D. Keene". The signature is written in a cursive, flowing style.

Celey D. Keene

Lab Director/Quality Manager



PHONE (575) 393-2326 ° 101 E. MARLAND ° HOBBS, NM 88240

Analytical Results For:

TERRACON CONSULTANTS
 BRETT DENNIS
 5827 50TH ST. SUITE 1
 LUBBOCK TX, 79424
 Fax To:

Received: 05/17/2022
 Reported: 05/19/2022
 Project Name: HNULIK #1
 Project Number: AR227115
 Project Location: DURANGO MIDSTREAM

Sampling Date: 05/16/2022
 Sampling Type: Wastewater
 Sampling Condition: Cool & Intact
 Sample Received By: Tamara Oldaker

Sample ID: EX WATER (H222082-01)

Chloride, SM4500Cl-B		mg/L		Analyzed By: AC						
Analyte	Result	Reporting Limit	Analyzed	Method Blank	BS	% Recovery	True Value QC	RPD	Qualifier	
Chloride*	33700	4.00	05/18/2022	ND	100	100	100	3.92		
TDS 160.1		mg/L		Analyzed By: AC						
Analyte	Result	Reporting Limit	Analyzed	Method Blank	BS	% Recovery	True Value QC	RPD	Qualifier	
TDS*	103000	5.00	05/19/2022	ND	492	98.4	500	2.56		

Cardinal Laboratories

*=Accredited Analyte

PLEASE NOTE: Liability and Damages. Cardinal's liability and client's exclusive remedy for any claim arising, whether based in contract or tort, shall be limited to the amount paid by client for analyses. All claims, including those for negligence and any other cause whatsoever shall be deemed waived unless made in writing and received by Cardinal within thirty (30) days after completion of the applicable service. In no event shall Cardinal be liable for incidental or consequential damages, including, without limitation, business interruptions, loss of use, or loss of profits incurred by client, its subsidiaries, affiliates or successors arising out of or related to the performance of the services hereunder by Cardinal, regardless of whether such claim is based upon any of the above stated reasons or otherwise. Results relate only to the samples identified above. This report shall not be reproduced except in full with written approval of Cardinal Laboratories.

Celey D. Keene, Lab Director/Quality Manager



PHONE (575) 393-2326 ° 101 E. MARLAND ° HOBBS, NM 88240

Notes and Definitions

ND	Analyte NOT DETECTED at or above the reporting limit
RPD	Relative Percent Difference
**	Samples not received at proper temperature of 6°C or below.
***	Insufficient time to reach temperature.
-	Chloride by SM4500Cl-B does not require samples be received at or below 6°C Samples reported on an as received basis (wet) unless otherwise noted on report

Cardinal Laboratories

*=Accredited Analyte

PLEASE NOTE: Liability and Damages. Cardinal's liability and client's exclusive remedy for any claim arising, whether based in contract or tort, shall be limited to the amount paid by client for analyses. All claims, including those for negligence and any other cause whatsoever shall be deemed waived unless made in writing and received by Cardinal within thirty (30) days after completion of the applicable service. In no event shall Cardinal be liable for incidental or consequential damages, including, without limitation, business interruptions, loss of use, or loss of profits incurred by client, its subsidiaries, affiliates or successors arising out of or related to the performance of the services hereunder by Cardinal, regardless of whether such claim is based upon any of the above stated reasons or otherwise. Results relate only to the samples identified above. This report shall not be reproduced except in full with written approval of Cardinal Laboratories.

A handwritten signature in black ink, appearing to read "Celey D. Keene", written over a horizontal line.

Celey D. Keene, Lab Director/Quality Manager



CHAIN-OF-CUSTODY AND ANALYSIS REQUEST

101 East Marland, Hobbs, NM 88240
(575) 393-2326 FAX (575) 393-2476

[illegible]



PHONE (575) 393-2326 ° 101 E. MARLAND ° HOBBS, NM 88240

May 19, 2022

BRETT DENNIS

TERRACON CONSULTANTS

5827 50TH ST. SUITE 1

LUBBOCK, TX 79424

RE: HNULIK #1

Enclosed are the results of analyses for samples received by the laboratory on 05/17/22 9:30.

Cardinal Laboratories is accredited through Texas NELAP under certificate number T104704398-21-14. Accreditation applies to drinking water, non-potable water and solid and chemical materials. All accredited analytes are denoted by an asterisk (*). For a complete list of accredited analytes and matrices visit the TCEQ website at www.tceq.texas.gov/field/qa/lab_accred_certif.html.

Cardinal Laboratories is accredited through the State of Colorado Department of Public Health and Environment for:

Method EPA 552.2	Haloacetic Acids (HAA-5)
Method EPA 524.2	Total Trihalomethanes (TTHM)
Method EPA 524.4	Regulated VOCs (V1, V2, V3)

Accreditation applies to public drinking water matrices.

This report meets NELAP requirements and is made up of a cover page, analytical results, and a copy of the original chain-of-custody. If you have any questions concerning this report, please feel free to contact me.

Sincerely,

A handwritten signature in black ink that reads "Celey D. Keene".

Celey D. Keene

Lab Director/Quality Manager



PHONE (575) 393-2326 ° 101 E. MARLAND ° HOBBS, NM 88240

Analytical Results For:

TERRACON CONSULTANTS
 BRETT DENNIS
 5827 50TH ST. SUITE 1
 LUBBOCK TX, 79424
 Fax To:

Received: 05/17/2022
 Reported: 05/19/2022
 Project Name: HNULIK #1
 Project Number: AR227115
 Project Location: DURANGO MIDSTREAM

Sampling Date: 05/16/2022
 Sampling Type: Water
 Sampling Condition: Cool & Intact
 Sample Received By: Tamara Oldaker

Sample ID: RIVER BG (H222083-01)

Chloride, SM4500Cl-B		mg/L		Analyzed By: AC						
Analyte	Result	Reporting Limit	Analyzed	Method Blank	BS	% Recovery	True Value QC	RPD	Qualifier	
Chloride*	3300	4.00	05/18/2022	ND	104	104	100	0.00		
TDS 160.1		mg/L		Analyzed By: AC						
Analyte	Result	Reporting Limit	Analyzed	Method Blank	BS	% Recovery	True Value QC	RPD	Qualifier	
TDS*	8760	5.00	05/19/2022	ND	492	98.4	500	2.56		

Cardinal Laboratories

*=Accredited Analyte

PLEASE NOTE: Liability and Damages. Cardinal's liability and client's exclusive remedy for any claim arising, whether based in contract or tort, shall be limited to the amount paid by client for analyses. All claims, including those for negligence and any other cause whatsoever shall be deemed waived unless made in writing and received by Cardinal within thirty (30) days after completion of the applicable service. In no event shall Cardinal be liable for incidental or consequential damages, including, without limitation, business interruptions, loss of use, or loss of profits incurred by client, its subsidiaries, affiliates or successors arising out of or related to the performance of the services hereunder by Cardinal, regardless of whether such claim is based upon any of the above stated reasons or otherwise. Results relate only to the samples identified above. This report shall not be reproduced except in full with written approval of Cardinal Laboratories.

Celey D. Keene, Lab Director/Quality Manager



PHONE (575) 393-2326 ° 101 E. MARLAND ° HOBBS, NM 88240

Notes and Definitions

ND	Analyte NOT DETECTED at or above the reporting limit
RPD	Relative Percent Difference
**	Samples not received at proper temperature of 6°C or below.
***	Insufficient time to reach temperature.
-	Chloride by SM4500Cl-B does not require samples be received at or below 6°C Samples reported on an as received basis (wet) unless otherwise noted on report

Cardinal Laboratories

*=Accredited Analyte

PLEASE NOTE: Liability and Damages. Cardinal's liability and client's exclusive remedy for any claim arising, whether based in contract or tort, shall be limited to the amount paid by client for analyses. All claims, including those for negligence and any other cause whatsoever shall be deemed waived unless made in writing and received by Cardinal within thirty (30) days after completion of the applicable service. In no event shall Cardinal be liable for incidental or consequential damages, including, without limitation, business interruptions, loss of use, or loss of profits incurred by client, its subsidiaries, affiliates or successors arising out of or related to the performance of the services hereunder by Cardinal, regardless of whether such claim is based upon any of the above stated reasons or otherwise. Results relate only to the samples identified above. This report shall not be reproduced except in full with written approval of Cardinal Laboratories.

A handwritten signature in black ink, appearing to read "Celey D. Keene".

Celey D. Keene, Lab Director/Quality Manager



CHAIN-OF-CUSTODY AND ANALYSIS REQUEST

101 East Marland, Hobbs, NM 88240
(575) 393-2326 FAX (575) 393-2476

[illegible]



PHONE (575) 393-2326 ° 101 E. MARLAND ° HOBBS, NM 88240

July 28, 2022

JOSEPH GUESNIER

TERRACON CONSULTANTS

5827 50TH ST. SUITE 1

LUBBOCK, TX 79424

RE: HNULIK #1

Enclosed are the results of analyses for samples received by the laboratory on 07/25/22 16:58.

Cardinal Laboratories is accredited through Texas NELAP under certificate number T104704398-22-15. Accreditation applies to drinking water, non-potable water and solid and chemical materials. All accredited analytes are denoted by an asterisk (*). For a complete list of accredited analytes and matrices visit the TCEQ website at www.tceq.texas.gov/field/qa/lab_accred_certif.html.

Cardinal Laboratories is accredited through the State of Colorado Department of Public Health and Environment for:

Method EPA 552.2	Haloacetic Acids (HAA-5)
Method EPA 524.2	Total Trihalomethanes (TTHM)
Method EPA 524.4	Regulated VOCs (V1, V2, V3)

Accreditation applies to public drinking water matrices.

This report meets NELAP requirements and is made up of a cover page, analytical results, and a copy of the original chain-of-custody. If you have any questions concerning this report, please feel free to contact me.

Sincerely,

A handwritten signature in black ink that reads "Celey D. Keene". The signature is written in a cursive style with a large, stylized 'C' and 'K'.

Celey D. Keene

Lab Director/Quality Manager



PHONE (575) 393-2326 ° 101 E. MARLAND ° HOBBS, NM 88240

Analytical Results For:

TERRACON CONSULTANTS
 JOSEPH GUESNIER
 5827 50TH ST. SUITE 1
 LUBBOCK TX, 79424
 Fax To:

Received: 07/25/2022
 Reported: 07/28/2022
 Project Name: HNULIK #1
 Project Number: AR227115
 Project Location: DURANGO MIDSTREAM

Sampling Date: 07/25/2022
 Sampling Type: Soil
 Sampling Condition: Cool & Intact
 Sample Received By: Shalyn Rodriguez

Sample ID: BG - 1 (.5-1) (H223263-01)

BTEx 8021B		mg/kg		Analyzed By: JH					
Analyte	Result	Reporting Limit	Analyzed	Method Blank	BS	% Recovery	True Value QC	RPD	Qualifier
Benzene*	<0.050	0.050	07/27/2022	ND	1.96	97.9	2.00	0.981	
Toluene*	<0.050	0.050	07/27/2022	ND	2.18	109	2.00	4.85	
Ethylbenzene*	<0.050	0.050	07/27/2022	ND	2.08	104	2.00	2.29	
Total Xylenes*	<0.150	0.150	07/27/2022	ND	6.48	108	6.00	2.13	
Total BTEx	<0.300	0.300	07/27/2022	ND					

Surrogate: 4-Bromofluorobenzene (PID) 102 % 69.9-140

Chloride, SM4500Cl-B		mg/kg		Analyzed By: GM					
Analyte	Result	Reporting Limit	Analyzed	Method Blank	BS	% Recovery	True Value QC	RPD	Qualifier
Chloride	32000	16.0	07/28/2022	ND	400	100	400	3.92	

TPH 8015M		mg/kg		Analyzed By: MS					
Analyte	Result	Reporting Limit	Analyzed	Method Blank	BS	% Recovery	True Value QC	RPD	Qualifier
GRO C6-C10*	<10.0	10.0	07/27/2022	ND	188	93.8	200	8.11	
DRO >C10-C28*	<10.0	10.0	07/27/2022	ND	188	93.9	200	12.1	
EXT DRO >C28-C36	<10.0	10.0	07/27/2022	ND					

Surrogate: 1-Chlorooctane 59.7 % 43-149

Surrogate: 1-Chlorooctadecane 68.3 % 42.5-161

Cardinal Laboratories

*=Accredited Analyte

PLEASE NOTE: Liability and Damages. Cardinal's liability and client's exclusive remedy for any claim arising, whether based in contract or tort, shall be limited to the amount paid by client for analyses. All claims, including those for negligence and any other cause whatsoever shall be deemed waived unless made in writing and received by Cardinal within thirty (30) days after completion of the applicable service. In no event shall Cardinal be liable for incidental or consequential damages, including, without limitation, business interruptions, loss of use, or loss of profits incurred by client, its subsidiaries, affiliates or successors arising out of or related to the performance of the services hereunder by Cardinal, regardless of whether such claim is based upon any of the above stated reasons or otherwise. Results relate only to the samples identified above. This report shall not be reproduced except in full with written approval of Cardinal Laboratories.

Celey D. Keene, Lab Director/Quality Manager



PHONE (575) 393-2326 ° 101 E. MARLAND ° HOBBS, NM 88240

Analytical Results For:

TERRACON CONSULTANTS
 JOSEPH GUESNIER
 5827 50TH ST. SUITE 1
 LUBBOCK TX, 79424
 Fax To:

Received: 07/25/2022
 Reported: 07/28/2022
 Project Name: HNULIK #1
 Project Number: AR227115
 Project Location: DURANGO MIDSTREAM

Sampling Date: 07/25/2022
 Sampling Type: Soil
 Sampling Condition: Cool & Intact
 Sample Received By: Shalyn Rodriguez

Sample ID: BG - 2 (.5-1) (H223263-02)

BTX 8021B		mg/kg		Analyzed By: JH					
Analyte	Result	Reporting Limit	Analyzed	Method Blank	BS	% Recovery	True Value QC	RPD	Qualifier
Benzene*	<0.050	0.050	07/27/2022	ND	1.96	97.9	2.00	0.981	
Toluene*	<0.050	0.050	07/27/2022	ND	2.18	109	2.00	4.85	
Ethylbenzene*	<0.050	0.050	07/27/2022	ND	2.08	104	2.00	2.29	
Total Xylenes*	<0.150	0.150	07/27/2022	ND	6.48	108	6.00	2.13	
Total BTX	<0.300	0.300	07/27/2022	ND					

Surrogate: 4-Bromofluorobenzene (PID) 103 % 69.9-140

Chloride, SM4500CI-B		mg/kg		Analyzed By: GM					
Analyte	Result	Reporting Limit	Analyzed	Method Blank	BS	% Recovery	True Value QC	RPD	Qualifier
Chloride	14400	16.0	07/28/2022	ND	400	100	400	3.92	

TPH 8015M		mg/kg		Analyzed By: MS					
Analyte	Result	Reporting Limit	Analyzed	Method Blank	BS	% Recovery	True Value QC	RPD	Qualifier
GRO C6-C10*	<10.0	10.0	07/27/2022	ND	188	93.8	200	8.11	
DRO >C10-C28*	<10.0	10.0	07/27/2022	ND	188	93.9	200	12.1	
EXT DRO >C28-C36	<10.0	10.0	07/27/2022	ND					

Surrogate: 1-Chlorooctane 78.3 % 43-149

Surrogate: 1-Chlorooctadecane 88.5 % 42.5-161

Cardinal Laboratories

*=Accredited Analyte

PLEASE NOTE: Liability and Damages. Cardinal's liability and client's exclusive remedy for any claim arising, whether based in contract or tort, shall be limited to the amount paid by client for analyses. All claims, including those for negligence and any other cause whatsoever shall be deemed waived unless made in writing and received by Cardinal within thirty (30) days after completion of the applicable service. In no event shall Cardinal be liable for incidental or consequential damages, including, without limitation, business interruptions, loss of use, or loss of profits incurred by client, its subsidiaries, affiliates or successors arising out of or related to the performance of the services hereunder by Cardinal, regardless of whether such claim is based upon any of the above stated reasons or otherwise. Results relate only to the samples identified above. This report shall not be reproduced except in full with written approval of Cardinal Laboratories.

Celey D. Keene, Lab Director/Quality Manager



PHONE (575) 393-2326 ° 101 E. MARLAND ° HOBBS, NM 88240

Analytical Results For:

TERRACON CONSULTANTS
 JOSEPH GUESNIER
 5827 50TH ST. SUITE 1
 LUBBOCK TX, 79424
 Fax To:

Received: 07/25/2022
 Reported: 07/28/2022
 Project Name: HNULIK #1
 Project Number: AR227115
 Project Location: DURANGO MIDSTREAM

Sampling Date: 07/25/2022
 Sampling Type: Soil
 Sampling Condition: Cool & Intact
 Sample Received By: Shalyn Rodriguez

Sample ID: BG - 3 (.5-1) (H223263-03)

BTX 8021B		mg/kg		Analyzed By: JH					
Analyte	Result	Reporting Limit	Analyzed	Method Blank	BS	% Recovery	True Value QC	RPD	Qualifier
Benzene*	<0.050	0.050	07/27/2022	ND	1.96	97.9	2.00	0.981	
Toluene*	<0.050	0.050	07/27/2022	ND	2.18	109	2.00	4.85	
Ethylbenzene*	<0.050	0.050	07/27/2022	ND	2.08	104	2.00	2.29	
Total Xylenes*	<0.150	0.150	07/27/2022	ND	6.48	108	6.00	2.13	
Total BTX	<0.300	0.300	07/27/2022	ND					

Surrogate: 4-Bromofluorobenzene (PID) 104 % 69.9-140

Chloride, SM4500CI-B		mg/kg		Analyzed By: GM						
Analyte	Result	Reporting Limit	Analyzed	Method Blank	BS	% Recovery	True Value QC	RPD	Qualifier	
Chloride	23200	16.0	07/28/2022	ND	400	100	400	3.92		

TPH 8015M		mg/kg		Analyzed By: MS					
Analyte	Result	Reporting Limit	Analyzed	Method Blank	BS	% Recovery	True Value QC	RPD	Qualifier
GRO C6-C10*	<10.0	10.0	07/27/2022	ND	188	93.8	200	8.11	
DRO >C10-C28*	<10.0	10.0	07/27/2022	ND	188	93.9	200	12.1	
EXT DRO >C28-C36	<10.0	10.0	07/27/2022	ND					

Surrogate: 1-Chlorooctane 71.1 % 43-149

Surrogate: 1-Chlorooctadecane 80.0 % 42.5-161

Cardinal Laboratories

*=Accredited Analyte

PLEASE NOTE: Liability and Damages. Cardinal's liability and client's exclusive remedy for any claim arising, whether based in contract or tort, shall be limited to the amount paid by client for analyses. All claims, including those for negligence and any other cause whatsoever shall be deemed waived unless made in writing and received by Cardinal within thirty (30) days after completion of the applicable service. In no event shall Cardinal be liable for incidental or consequential damages, including, without limitation, business interruptions, loss of use, or loss of profits incurred by client, its subsidiaries, affiliates or successors arising out of or related to the performance of the services hereunder by Cardinal, regardless of whether such claim is based upon any of the above stated reasons or otherwise. Results relate only to the samples identified above. This report shall not be reproduced except in full with written approval of Cardinal Laboratories.

Celey D. Keene, Lab Director/Quality Manager



PHONE (575) 393-2326 ° 101 E. MARLAND ° HOBBS, NM 88240

Analytical Results For:

TERRACON CONSULTANTS
 JOSEPH GUESNIER
 5827 50TH ST. SUITE 1
 LUBBOCK TX, 79424
 Fax To:

Received: 07/25/2022
 Reported: 07/28/2022
 Project Name: HNULIK #1
 Project Number: AR227115
 Project Location: DURANGO MIDSTREAM

Sampling Date: 07/25/2022
 Sampling Type: Soil
 Sampling Condition: Cool & Intact
 Sample Received By: Shalyn Rodriguez

Sample ID: BG - 4 (.5-1) (H223263-04)

BTEx 8021B		mg/kg		Analyzed By: JH						
Analyte	Result	Reporting Limit	Analyzed	Method Blank	BS	% Recovery	True Value QC	RPD	Qualifier	
Benzene*	<0.050	0.050	07/27/2022	ND	1.96	97.9	2.00	0.981		
Toluene*	<0.050	0.050	07/27/2022	ND	2.18	109	2.00	4.85		
Ethylbenzene*	<0.050	0.050	07/27/2022	ND	2.08	104	2.00	2.29		
Total Xylenes*	<0.150	0.150	07/27/2022	ND	6.48	108	6.00	2.13		
Total BTEx	<0.300	0.300	07/27/2022	ND						

Surrogate: 4-Bromofluorobenzene (PID) 101 % 69.9-140

Chloride, SM4500CI-B		mg/kg		Analyzed By: GM						
Analyte	Result	Reporting Limit	Analyzed	Method Blank	BS	% Recovery	True Value QC	RPD	Qualifier	
Chloride	25600	16.0	07/28/2022	ND	400	100	400	3.92		

TPH 8015M		mg/kg		Analyzed By: MS					
Analyte	Result	Reporting Limit	Analyzed	Method Blank	BS	% Recovery	True Value QC	RPD	Qualifier
GRO C6-C10*	<10.0	10.0	07/27/2022	ND	188	93.8	200	8.11	
DRO >C10-C28*	<10.0	10.0	07/27/2022	ND	188	93.9	200	12.1	
EXT DRO >C28-C36	<10.0	10.0	07/27/2022	ND					

Surrogate: 1-Chlorooctane 60.4 % 43-149

Surrogate: 1-Chlorooctadecane 69.2 % 42.5-161

Cardinal Laboratories

*=Accredited Analyte

PLEASE NOTE: Liability and Damages. Cardinal's liability and client's exclusive remedy for any claim arising, whether based in contract or tort, shall be limited to the amount paid by client for analyses. All claims, including those for negligence and any other cause whatsoever shall be deemed waived unless made in writing and received by Cardinal within thirty (30) days after completion of the applicable service. In no event shall Cardinal be liable for incidental or consequential damages, including, without limitation, business interruptions, loss of use, or loss of profits incurred by client, its subsidiaries, affiliates or successors arising out of or related to the performance of the services hereunder by Cardinal, regardless of whether such claim is based upon any of the above stated reasons or otherwise. Results relate only to the samples identified above. This report shall not be reproduced except in full with written approval of Cardinal Laboratories.

Celey D. Keene, Lab Director/Quality Manager



PHONE (575) 393-2326 ° 101 E. MARLAND ° HOBBS, NM 88240

Analytical Results For:

TERRACON CONSULTANTS
 JOSEPH GUESNIER
 5827 50TH ST. SUITE 1
 LUBBOCK TX, 79424
 Fax To:

Received: 07/25/2022
 Reported: 07/28/2022
 Project Name: HNULIK #1
 Project Number: AR227115
 Project Location: DURANGO MIDSTREAM

Sampling Date: 07/25/2022
 Sampling Type: Soil
 Sampling Condition: Cool & Intact
 Sample Received By: Shalyn Rodriguez

Sample ID: BG - 5 (.5-1) (H223263-05)

BTX 8021B		mg/kg		Analyzed By: JH					
Analyte	Result	Reporting Limit	Analyzed	Method Blank	BS	% Recovery	True Value QC	RPD	Qualifier
Benzene*	<0.050	0.050	07/27/2022	ND	1.96	97.9	2.00	0.981	
Toluene*	<0.050	0.050	07/27/2022	ND	2.18	109	2.00	4.85	
Ethylbenzene*	<0.050	0.050	07/27/2022	ND	2.08	104	2.00	2.29	
Total Xylenes*	<0.150	0.150	07/27/2022	ND	6.48	108	6.00	2.13	
Total BTX	<0.300	0.300	07/27/2022	ND					

Surrogate: 4-Bromofluorobenzene (PID) 103 % 69.9-140

Chloride, SM4500CI-B		mg/kg		Analyzed By: GM						
Analyte	Result	Reporting Limit	Analyzed	Method Blank	BS	% Recovery	True Value QC	RPD	Qualifier	
Chloride	3200	16.0	07/28/2022	ND	400	100	400	3.92		

TPH 8015M		mg/kg		Analyzed By: MS					
Analyte	Result	Reporting Limit	Analyzed	Method Blank	BS	% Recovery	True Value QC	RPD	Qualifier
GRO C6-C10*	<10.0	10.0	07/27/2022	ND	188	93.8	200	8.11	
DRO >C10-C28*	<10.0	10.0	07/27/2022	ND	188	93.9	200	12.1	
EXT DRO >C28-C36	<10.0	10.0	07/27/2022	ND					

Surrogate: 1-Chlorooctane 54.4 % 43-149

Surrogate: 1-Chlorooctadecane 61.0 % 42.5-161

Cardinal Laboratories

*=Accredited Analyte

PLEASE NOTE: Liability and Damages. Cardinal's liability and client's exclusive remedy for any claim arising, whether based in contract or tort, shall be limited to the amount paid by client for analyses. All claims, including those for negligence and any other cause whatsoever shall be deemed waived unless made in writing and received by Cardinal within thirty (30) days after completion of the applicable service. In no event shall Cardinal be liable for incidental or consequential damages, including, without limitation, business interruptions, loss of use, or loss of profits incurred by client, its subsidiaries, affiliates or successors arising out of or related to the performance of the services hereunder by Cardinal, regardless of whether such claim is based upon any of the above stated reasons or otherwise. Results relate only to the samples identified above. This report shall not be reproduced except in full with written approval of Cardinal Laboratories.

Celey D. Keene, Lab Director/Quality Manager



PHONE (575) 393-2326 ° 101 E. MARLAND ° HOBBS, NM 88240

Analytical Results For:

TERRACON CONSULTANTS
 JOSEPH GUESNIER
 5827 50TH ST. SUITE 1
 LUBBOCK TX, 79424
 Fax To:

Received: 07/25/2022
 Reported: 07/28/2022
 Project Name: HNULIK #1
 Project Number: AR227115
 Project Location: DURANGO MIDSTREAM

Sampling Date: 07/25/2022
 Sampling Type: Soil
 Sampling Condition: Cool & Intact
 Sample Received By: Shalyn Rodriguez

Sample ID: BG - 6 (.5-1) (H223263-06)

BTEx 8021B		mg/kg		Analyzed By: JH						
Analyte	Result	Reporting Limit	Analyzed	Method Blank	BS	% Recovery	True Value QC	RPD	Qualifier	
Benzene*	<0.050	0.050	07/27/2022	ND	1.96	97.9	2.00	0.981		
Toluene*	<0.050	0.050	07/27/2022	ND	2.18	109	2.00	4.85		
Ethylbenzene*	<0.050	0.050	07/27/2022	ND	2.08	104	2.00	2.29		
Total Xylenes*	<0.150	0.150	07/27/2022	ND	6.48	108	6.00	2.13		
Total BTEx	<0.300	0.300	07/27/2022	ND						

Surrogate: 4-Bromofluorobenzene (PID) 104 % 69.9-140

Chloride, SM4500CI-B		mg/kg		Analyzed By: GM					
Analyte	Result	Reporting Limit	Analyzed	Method Blank	BS	% Recovery	True Value QC	RPD	Qualifier
Chloride	10300	16.0	07/28/2022	ND	400	100	400	3.92	

TPH 8015M		mg/kg		Analyzed By: MS					
Analyte	Result	Reporting Limit	Analyzed	Method Blank	BS	% Recovery	True Value QC	RPD	Qualifier
GRO C6-C10*	<10.0	10.0	07/27/2022	ND	178	88.8	200	5.53	
DRO >C10-C28*	<10.0	10.0	07/27/2022	ND	186	93.1	200	5.17	
EXT DRO >C28-C36	<10.0	10.0	07/27/2022	ND					

Surrogate: 1-Chlorooctane 62.0 % 43-149

Surrogate: 1-Chlorooctadecane 68.1 % 42.5-161

Cardinal Laboratories

*=Accredited Analyte

PLEASE NOTE: Liability and Damages. Cardinal's liability and client's exclusive remedy for any claim arising, whether based in contract or tort, shall be limited to the amount paid by client for analyses. All claims, including those for negligence and any other cause whatsoever shall be deemed waived unless made in writing and received by Cardinal within thirty (30) days after completion of the applicable service. In no event shall Cardinal be liable for incidental or consequential damages, including, without limitation, business interruptions, loss of use, or loss of profits incurred by client, its subsidiaries, affiliates or successors arising out of or related to the performance of the services hereunder by Cardinal, regardless of whether such claim is based upon any of the above stated reasons or otherwise. Results relate only to the samples identified above. This report shall not be reproduced except in full with written approval of Cardinal Laboratories.

Celey D. Keene, Lab Director/Quality Manager



PHONE (575) 393-2326 ° 101 E. MARLAND ° HOBBS, NM 88240

Analytical Results For:

TERRACON CONSULTANTS
 JOSEPH GUESNIER
 5827 50TH ST. SUITE 1
 LUBBOCK TX, 79424
 Fax To:

Received: 07/25/2022
 Reported: 07/28/2022
 Project Name: HNULIK #1
 Project Number: AR227115
 Project Location: DURANGO MIDSTREAM

Sampling Date: 07/25/2022
 Sampling Type: Soil
 Sampling Condition: Cool & Intact
 Sample Received By: Shalyn Rodriguez

Sample ID: BG - 7 (.5-1) (H223263-07)

BTX 8021B		mg/kg		Analyzed By: JH					
Analyte	Result	Reporting Limit	Analyzed	Method Blank	BS	% Recovery	True Value QC	RPD	Qualifier
Benzene*	<0.050	0.050	07/27/2022	ND	1.96	97.9	2.00	0.981	
Toluene*	<0.050	0.050	07/27/2022	ND	2.18	109	2.00	4.85	
Ethylbenzene*	<0.050	0.050	07/27/2022	ND	2.08	104	2.00	2.29	
Total Xylenes*	<0.150	0.150	07/27/2022	ND	6.48	108	6.00	2.13	
Total BTX	<0.300	0.300	07/27/2022	ND					

Surrogate: 4-Bromofluorobenzene (PID) 104 % 69.9-140

Chloride, SM4500CI-B		mg/kg		Analyzed By: GM					
Analyte	Result	Reporting Limit	Analyzed	Method Blank	BS	% Recovery	True Value QC	RPD	Qualifier
Chloride	4160	16.0	07/28/2022	ND	400	100	400	3.92	

TPH 8015M		mg/kg		Analyzed By: MS					
Analyte	Result	Reporting Limit	Analyzed	Method Blank	BS	% Recovery	True Value QC	RPD	Qualifier
GRO C6-C10*	<10.0	10.0	07/27/2022	ND	178	88.8	200	5.53	
DRO >C10-C28*	<10.0	10.0	07/27/2022	ND	186	93.1	200	5.17	
EXT DRO >C28-C36	<10.0	10.0	07/27/2022	ND					

Surrogate: 1-Chlorooctane 70.1 % 43-149

Surrogate: 1-Chlorooctadecane 74.7 % 42.5-161

Cardinal Laboratories

*=Accredited Analyte

PLEASE NOTE: Liability and Damages. Cardinal's liability and client's exclusive remedy for any claim arising, whether based in contract or tort, shall be limited to the amount paid by client for analyses. All claims, including those for negligence and any other cause whatsoever shall be deemed waived unless made in writing and received by Cardinal within thirty (30) days after completion of the applicable service. In no event shall Cardinal be liable for incidental or consequential damages, including, without limitation, business interruptions, loss of use, or loss of profits incurred by client, its subsidiaries, affiliates or successors arising out of or related to the performance of the services hereunder by Cardinal, regardless of whether such claim is based upon any of the above stated reasons or otherwise. Results relate only to the samples identified above. This report shall not be reproduced except in full with written approval of Cardinal Laboratories.

Celey D. Keene, Lab Director/Quality Manager



PHONE (575) 393-2326 ° 101 E. MARLAND ° HOBBS, NM 88240

Analytical Results For:

TERRACON CONSULTANTS
 JOSEPH GUESNIER
 5827 50TH ST. SUITE 1
 LUBBOCK TX, 79424
 Fax To:

Received: 07/25/2022
 Reported: 07/28/2022
 Project Name: HNULIK #1
 Project Number: AR227115
 Project Location: DURANGO MIDSTREAM

Sampling Date: 07/25/2022
 Sampling Type: Soil
 Sampling Condition: Cool & Intact
 Sample Received By: Shalyn Rodriguez

Sample ID: BG - 8 (.5-1) (H223263-08)

BTX 8021B		mg/kg		Analyzed By: JH					
Analyte	Result	Reporting Limit	Analyzed	Method Blank	BS	% Recovery	True Value QC	RPD	Qualifier
Benzene*	<0.050	0.050	07/27/2022	ND	1.96	97.9	2.00	0.981	
Toluene*	<0.050	0.050	07/27/2022	ND	2.18	109	2.00	4.85	
Ethylbenzene*	<0.050	0.050	07/27/2022	ND	2.08	104	2.00	2.29	
Total Xylenes*	<0.150	0.150	07/27/2022	ND	6.48	108	6.00	2.13	
Total BTX	<0.300	0.300	07/27/2022	ND					

Surrogate: 4-Bromofluorobenzene (PID) 104 % 69.9-140

Chloride, SM4500CI-B		mg/kg		Analyzed By: GM						
Analyte	Result	Reporting Limit	Analyzed	Method Blank	BS	% Recovery	True Value QC	RPD	Qualifier	
Chloride	10100	16.0	07/28/2022	ND	400	100	400	3.92		

TPH 8015M		mg/kg		Analyzed By: MS					
Analyte	Result	Reporting Limit	Analyzed	Method Blank	BS	% Recovery	True Value QC	RPD	Qualifier
GRO C6-C10*	<10.0	10.0	07/27/2022	ND	178	88.8	200	5.53	
DRO >C10-C28*	<10.0	10.0	07/27/2022	ND	186	93.1	200	5.17	
EXT DRO >C28-C36	<10.0	10.0	07/27/2022	ND					

Surrogate: 1-Chlorooctane 71.3 % 43-149

Surrogate: 1-Chlorooctadecane 77.0 % 42.5-161

Cardinal Laboratories

*=Accredited Analyte

PLEASE NOTE: Liability and Damages. Cardinal's liability and client's exclusive remedy for any claim arising, whether based in contract or tort, shall be limited to the amount paid by client for analyses. All claims, including those for negligence and any other cause whatsoever shall be deemed waived unless made in writing and received by Cardinal within thirty (30) days after completion of the applicable service. In no event shall Cardinal be liable for incidental or consequential damages, including, without limitation, business interruptions, loss of use, or loss of profits incurred by client, its subsidiaries, affiliates or successors arising out of or related to the performance of the services hereunder by Cardinal, regardless of whether such claim is based upon any of the above stated reasons or otherwise. Results relate only to the samples identified above. This report shall not be reproduced except in full with written approval of Cardinal Laboratories.

Celey D. Keene, Lab Director/Quality Manager



PHONE (575) 393-2326 ° 101 E. MARLAND ° HOBBS, NM 88240

Analytical Results For:

TERRACON CONSULTANTS
 JOSEPH GUESNIER
 5827 50TH ST. SUITE 1
 LUBBOCK TX, 79424
 Fax To:

Received: 07/25/2022
 Reported: 07/28/2022
 Project Name: HNULIK #1
 Project Number: AR227115
 Project Location: DURANGO MIDSTREAM

Sampling Date: 07/25/2022
 Sampling Type: Soil
 Sampling Condition: Cool & Intact
 Sample Received By: Shalyn Rodriguez

Sample ID: BG - 9 (.5-1) (H223263-09)

BTEx 8021B		mg/kg		Analyzed By: JH						
Analyte	Result	Reporting Limit	Analyzed	Method Blank	BS	% Recovery	True Value QC	RPD	Qualifier	
Benzene*	<0.050	0.050	07/27/2022	ND	1.96	97.9	2.00	0.981		
Toluene*	<0.050	0.050	07/27/2022	ND	2.18	109	2.00	4.85		
Ethylbenzene*	<0.050	0.050	07/27/2022	ND	2.08	104	2.00	2.29		
Total Xylenes*	<0.150	0.150	07/27/2022	ND	6.48	108	6.00	2.13		
Total BTEx	<0.300	0.300	07/27/2022	ND						

Surrogate: 4-Bromofluorobenzene (PID) 104 % 69.9-140

Chloride, SM4500CI-B		mg/kg		Analyzed By: GM						
Analyte	Result	Reporting Limit	Analyzed	Method Blank	BS	% Recovery	True Value QC	RPD	Qualifier	
Chloride	31600	16.0	07/28/2022	ND	400	100	400	3.92		

TPH 8015M		mg/kg		Analyzed By: MS					
Analyte	Result	Reporting Limit	Analyzed	Method Blank	BS	% Recovery	True Value QC	RPD	Qualifier
GRO C6-C10*	<10.0	10.0	07/27/2022	ND	178	88.8	200	5.53	
DRO >C10-C28*	<10.0	10.0	07/27/2022	ND	186	93.1	200	5.17	
EXT DRO >C28-C36	<10.0	10.0	07/27/2022	ND					

Surrogate: 1-Chlorooctane 64.8 % 43-149

Surrogate: 1-Chlorooctadecane 75.6 % 42.5-161

Cardinal Laboratories

*=Accredited Analyte

PLEASE NOTE: Liability and Damages. Cardinal's liability and client's exclusive remedy for any claim arising, whether based in contract or tort, shall be limited to the amount paid by client for analyses. All claims, including those for negligence and any other cause whatsoever shall be deemed waived unless made in writing and received by Cardinal within thirty (30) days after completion of the applicable service. In no event shall Cardinal be liable for incidental or consequential damages, including, without limitation, business interruptions, loss of use, or loss of profits incurred by client, its subsidiaries, affiliates or successors arising out of or related to the performance of the services hereunder by Cardinal, regardless of whether such claim is based upon any of the above stated reasons or otherwise. Results relate only to the samples identified above. This report shall not be reproduced except in full with written approval of Cardinal Laboratories.

Celey D. Keene, Lab Director/Quality Manager



PHONE (575) 393-2326 ° 101 E. MARLAND ° HOBBS, NM 88240

Analytical Results For:

TERRACON CONSULTANTS
 JOSEPH GUESNIER
 5827 50TH ST. SUITE 1
 LUBBOCK TX, 79424
 Fax To:

Received: 07/25/2022
 Reported: 07/28/2022
 Project Name: HNULIK #1
 Project Number: AR227115
 Project Location: DURANGO MIDSTREAM

Sampling Date: 07/25/2022
 Sampling Type: Soil
 Sampling Condition: Cool & Intact
 Sample Received By: Shalyn Rodriguez

Sample ID: BG - 10 (.5-1) (H223263-10)

BTX 8021B		mg/kg		Analyzed By: JH					
Analyte	Result	Reporting Limit	Analyzed	Method Blank	BS	% Recovery	True Value QC	RPD	Qualifier
Benzene*	<0.050	0.050	07/27/2022	ND	1.96	97.9	2.00	0.981	
Toluene*	<0.050	0.050	07/27/2022	ND	2.18	109	2.00	4.85	
Ethylbenzene*	<0.050	0.050	07/27/2022	ND	2.08	104	2.00	2.29	
Total Xylenes*	<0.150	0.150	07/27/2022	ND	6.48	108	6.00	2.13	
Total BTX	<0.300	0.300	07/27/2022	ND					

Surrogate: 4-Bromofluorobenzene (PID) 106 % 69.9-140

Chloride, SM4500CI-B		mg/kg		Analyzed By: GM						
Analyte	Result	Reporting Limit	Analyzed	Method Blank	BS	% Recovery	True Value QC	RPD	Qualifier	
Chloride	21800	16.0	07/28/2022	ND	400	100	400	3.92		

TPH 8015M		mg/kg		Analyzed By: MS					
Analyte	Result	Reporting Limit	Analyzed	Method Blank	BS	% Recovery	True Value QC	RPD	Qualifier
GRO C6-C10*	<10.0	10.0	07/27/2022	ND	178	88.8	200	5.53	
DRO >C10-C28*	<10.0	10.0	07/27/2022	ND	186	93.1	200	5.17	
EXT DRO >C28-C36	<10.0	10.0	07/27/2022	ND					

Surrogate: 1-Chlorooctane 80.7 % 43-149

Surrogate: 1-Chlorooctadecane 88.4 % 42.5-161

Cardinal Laboratories

*=Accredited Analyte

PLEASE NOTE: Liability and Damages. Cardinal's liability and client's exclusive remedy for any claim arising, whether based in contract or tort, shall be limited to the amount paid by client for analyses. All claims, including those for negligence and any other cause whatsoever shall be deemed waived unless made in writing and received by Cardinal within thirty (30) days after completion of the applicable service. In no event shall Cardinal be liable for incidental or consequential damages, including, without limitation, business interruptions, loss of use, or loss of profits incurred by client, its subsidiaries, affiliates or successors arising out of or related to the performance of the services hereunder by Cardinal, regardless of whether such claim is based upon any of the above stated reasons or otherwise. Results relate only to the samples identified above. This report shall not be reproduced except in full with written approval of Cardinal Laboratories.

Celey D. Keene, Lab Director/Quality Manager

PHONE (575) 393-2326 ° 101 E. MARLAND ° HOBBS, NM 88240

Notes and Definitions

ND	Analyte NOT DETECTED at or above the reporting limit
RPD	Relative Percent Difference
**	Samples not received at proper temperature of 6°C or below.
***	Insufficient time to reach temperature.
-	Chloride by SM4500Cl-B does not require samples be received at or below 6°C Samples reported on an as received basis (wet) unless otherwise noted on report

Cardinal Laboratories

*=Accredited Analyte

PLEASE NOTE: Liability and Damages. Cardinal's liability and client's exclusive remedy for any claim arising, whether based in contract or tort, shall be limited to the amount paid by client for analyses. All claims, including those for negligence and any other cause whatsoever shall be deemed waived unless made in writing and received by Cardinal within thirty (30) days after completion of the applicable service. In no event shall Cardinal be liable for incidental or consequential damages, including, without limitation, business interruptions, loss of use, or loss of profits incurred by client, its subsidiaries, affiliates or successors arising out of or related to the performance of the services hereunder by Cardinal, regardless of whether such claim is based upon any of the above stated reasons or otherwise. Results relate only to the samples identified above. This report shall not be reproduced except in full with written approval of Cardinal Laboratories.

A handwritten signature in black ink, appearing to read "C. D. Keene".

Celey D. Keene, Lab Director/Quality Manager



101 East Marland, Hobbs, NM 88240
(575) 393-2326 FAX (575) 393-2476

CHAIN-OF-CUSTODY AND ANALYSIS REQUEST

Company Name: TERRELL		P.O. #:		BILL TO												ANALYSIS REQUEST																																					
Project Manager: Barry Gutierrez		City: _____ State: _____ Zip: _____		Company: Barry																																																	
Address: _____		Attn: Amel		Address: _____																																																	
City: _____		Phone #: 806-544-9276 Fax #: _____		City: _____ State: _____ Zip: _____																																																	
Project #: _____		Project Owner: _____		City: _____ State: _____ Zip: _____																																																	
Project Location: _____		Phone #: _____ Fax #: _____		City: _____ State: _____ Zip: _____																																																	
Sample Name: _____		FOR LAB USE ONLY		Matrix		PRESERV		SAMPLING																																													
Lab I.D. _____		Sample I.D. _____		(G)RAB OR (C)OMP.		# CONTAINERS		GROUNDWATER		WASTEWATER		SOIL		OIL		SLUDGE		OTHER :		ACID/BASE:		ICE / COOL		OTHER :		DATE		TIME																									
1		86-1 (5-1)		G		1		X																		7-25-22		14:00		CL																							
2		86-2 (5-1)		G		1		X																		14:05		14:10		TPH EXT																							
3		86-3 (5-1)		G		1		X																		14:15		14:20		BTEX																							
4		86-4 (5-1)		G		1		X																		14:25		14:30																									
5		86-5 (5-1)		G		1		X																		14:35		14:40																									
6		86-6 (5-1)		G		1		X																		14:45		14:50																									
7		86-7 (5-1)		G		1		X																		14:55		15:00																									
8		86-8 (5-1)		G		1		X																		15:05		15:10																									
9		86-9 (5-1)		G		1		X																		15:15		15:20																									
10		86-10 (5-1)		G		1		X																		15:25		15:30																									

PLEASE NOTE: Liability and Damages. Cardinal's liability and client's exclusive remedy for any claim arising whether based in contract or tort, shall be limited to the amount paid by the client for the analyses. All claims including those for negligence and any other cause whatsoever shall be deemed waived unless made in writing and received by Cardinal within 30 days after completion of the applicable service. In no event shall Cardinal be liable for incidental or consequential damages, including without limitation, business interruptions, loss of use, or loss of profits incurred by client, its subsidiaries, affiliates or successors arising out of or related to the performance of services hereunder by Cardinal, regardless of whether such claim is based upon any of the above stated reasons or otherwise.

Relinquished By: _____ Date: **7-25-22** Time: **4:58** Received By: **Spodigun** Verbal Result: ☐ Yes ☐ No Add'l Phone #: _____
All Results are emailed. Please provide Email address: _____

Relinquished By: _____ Date: _____ Time: _____ Received By: _____

Delivered By: (Circle One) Observed Temp. °C **40.2** Sample Condition ☒ Cool ☐ Intact ☐ Yes ☐ No CHECKED BY: (initials) **SK** Turnaround Time: _____ Standard ☐ Bacteria (only) Sample Condition ☐ Cool ☐ Intact ☐ Yes ☐ No Observed Temp. °C _____
Sampler - UPS - Bus - Other: Corrected Temp. °C **34.2** ☐ Yes ☐ No ☐ No Corrected Temp. °C _____

† Cardinal cannot accept verbal changes. Please email changes to celey.kee@cardinallabsnm.com



PHONE (575) 393-2326 ° 101 E. MARLAND ° HOBBS, NM 88240

August 30, 2022

JOSEPH GUESNIER

TERRACON CONSULTANTS

5827 50TH ST. SUITE 1

LUBBOCK, TX 79424

RE: HUNLIK WELL

Enclosed are the results of analyses for samples received by the laboratory on 08/24/22 14:05.

Cardinal Laboratories is accredited through Texas NELAP under certificate number T104704398-22-15. Accreditation applies to drinking water, non-potable water and solid and chemical materials. All accredited analytes are denoted by an asterisk (*). For a complete list of accredited analytes and matrices visit the TCEQ website at www.tceq.texas.gov/field/qa/lab_accred_certif.html.

Cardinal Laboratories is accredited through the State of Colorado Department of Public Health and Environment for:

Method EPA 552.2	Haloacetic Acids (HAA-5)
Method EPA 524.2	Total Trihalomethanes (TTHM)
Method EPA 524.4	Regulated VOCs (V1, V2, V3)

Accreditation applies to public drinking water matrices.

This report meets NELAP requirements and is made up of a cover page, analytical results, and a copy of the original chain-of-custody. If you have any questions concerning this report, please feel free to contact me.

Sincerely,

A handwritten signature in black ink that reads "Celey D. Keene". The signature is written in a cursive style with a large, stylized 'C' and 'K'.

Celey D. Keene

Lab Director/Quality Manager



PHONE (575) 393-2326 ° 101 E. MARLAND ° HOBBS, NM 88240

Analytical Results For:

TERRACON CONSULTANTS
 JOSEPH GUESNIER
 5827 50TH ST. SUITE 1
 LUBBOCK TX, 79424
 Fax To:

Received: 08/24/2022
 Reported: 08/30/2022
 Project Name: HUNLIK WELL
 Project Number: DURANGO MIDSTREAM
 Project Location: 32.802086,-104339007

Sampling Date: 08/24/2022
 Sampling Type: Water
 Sampling Condition: Cool & Intact
 Sample Received By: Tamara Oldaker

Sample ID: WS1 (H223889-01)

Chloride, SM4500Cl-B		mg/L		Analyzed By: GM					
Analyte	Result	Reporting Limit	Analyzed	Method Blank	BS	% Recovery	True Value QC	RPD	Qualifier
Chloride*	12100	4.00	08/25/2022	ND	104	104	100	3.92	
TDS 160.1		mg/L		Analyzed By: AC					
Analyte	Result	Reporting Limit	Analyzed	Method Blank	BS	% Recovery	True Value QC	RPD	Qualifier
TDS*	45200	5.00	08/29/2022	ND	814	81.4	1000	1.93	

Cardinal Laboratories

*=Accredited Analyte

PLEASE NOTE: Liability and Damages. Cardinal's liability and client's exclusive remedy for any claim arising, whether based in contract or tort, shall be limited to the amount paid by client for analyses. All claims, including those for negligence and any other cause whatsoever shall be deemed waived unless made in writing and received by Cardinal within thirty (30) days after completion of the applicable service. In no event shall Cardinal be liable for incidental or consequential damages, including, without limitation, business interruptions, loss of use, or loss of profits incurred by client, its subsidiaries, affiliates or successors arising out of or related to the performance of the services hereunder by Cardinal, regardless of whether such claim is based upon any of the above stated reasons or otherwise. Results relate only to the samples identified above. This report shall not be reproduced except in full with written approval of Cardinal Laboratories.

Celey D. Keene, Lab Director/Quality Manager



PHONE (575) 393-2326 ° 101 E. MARLAND ° HOBBS, NM 88240

Notes and Definitions

ND	Analyte NOT DETECTED at or above the reporting limit
RPD	Relative Percent Difference
**	Samples not received at proper temperature of 6°C or below.
***	Insufficient time to reach temperature.
-	Chloride by SM4500Cl-B does not require samples be received at or below 6°C Samples reported on an as received basis (wet) unless otherwise noted on report

Cardinal Laboratories

*=Accredited Analyte

PLEASE NOTE: Liability and Damages. Cardinal's liability and client's exclusive remedy for any claim arising, whether based in contract or tort, shall be limited to the amount paid by client for analyses. All claims, including those for negligence and any other cause whatsoever shall be deemed waived unless made in writing and received by Cardinal within thirty (30) days after completion of the applicable service. In no event shall Cardinal be liable for incidental or consequential damages, including, without limitation, business interruptions, loss of use, or loss of profits incurred by client, its subsidiaries, affiliates or successors arising out of or related to the performance of the services hereunder by Cardinal, regardless of whether such claim is based upon any of the above stated reasons or otherwise. Results relate only to the samples identified above. This report shall not be reproduced except in full with written approval of Cardinal Laboratories.

A handwritten signature in cursive script, appearing to read "Celey D. Keene".

Celey D. Keene, Lab Director/Quality Manager



101 East Marland, Hobbs, NM 88240
(575) 393-2326 FAX (575) 393-2476

CHAIN-OF-CUSTODY AND ANALYSIS REQUEST

[illegible]

APPENDIX E – TERRACON STANDARD OF CARE, LIMITATION, AND RELIANCE

APPENDIX D – TERRACON STANDARD OF CARE, LIMITATION, AND RELIANCE

Standard of Care

Terracon's services were performed in a manner consistent with generally accepted practices of the profession undertaken in similar studies in the same geographical area during the same time. Terracon makes no warranties, either express or implied, regarding the findings, conclusions, or recommendations. Please note that Terracon does not warrant the work of laboratories, regulatory agencies, or other third parties supplying information used in the preparation of the report. These services were performed in accordance with the scope of work agreed with you, Durango Midstream LLC, as reflected in our proposal (PAR227115).

Additional Scope Limitations

The development of this Amended RAP is based upon information provided by the Client and Terracon's remediation and construction services line. Such information is subject to change over time. Certain indicators of the presence of hazardous substances, petroleum products, or other constituents may have been latent, inaccessible, unobservable, nondetectable, or not present during these services. We cannot represent that the site contains no hazardous substances, toxic materials, petroleum products, or other latent conditions beyond those by information provided by the Client. The data, interpretations, findings, and recommendations are based solely upon reformation executed within the scope of these services.

Reliance

This report has been prepared for the exclusive use of Durango Midstream LLC, and any authorization for use or reliance by any other party (except a governmental entity having jurisdiction over the site) is prohibited without the express written authorization of Durango Midstream LLC and Terracon. Any unauthorized distribution or reuse is at Durango Midstream LLC sole risk. Notwithstanding the foregoing, reliance by authorized parties will be subject to the terms, conditions, and limitations stated in the proposal and Durango Midstream LLC and Terracon's Master Services Agreement. The limitation of liability defined in the terms and conditions is the aggregate limit of Terracon's liability to Durango Midstream LLC and all relying parties unless otherwise agreed in writing.

District I
1625 N. French Dr., Hobbs, NM 88240
Phone:(575) 393-6161 Fax:(575) 393-0720
District II
811 S. First St., Artesia, NM 88210
Phone:(575) 748-1283 Fax:(575) 748-9720
District III
1000 Rio Brazos Rd., Aztec, NM 87410
Phone:(505) 334-6178 Fax:(505) 334-6170
District IV
1220 S. St Francis Dr., Santa Fe, NM 87505
Phone:(505) 476-3470 Fax:(505) 476-3462

State of New Mexico
Energy, Minerals and Natural Resources
Oil Conservation Division
1220 S. St Francis Dr.
Santa Fe, NM 87505

CONDITIONS

Action 154217

CONDITIONS

Operator: FRONTIER FIELD SERVICES, LLC 10077 Grogans Mill Rd. The Woodlands, TX 77380	OGRID: 221115
	Action Number: 154217
	Action Type: [C-141] Release Corrective Action (C-141)

CONDITIONS

Created By	Condition	Condition Date
michael.buchanan	This remediation plan is approved with the following conditions: Submit the EPA ProUCL calculations to demonstrate how a background chloride concentration of 22,389 mg/L was achieved. Complete sidewall samples of the excavation as well as base samples. OCD must approve background samples in the upper four (4) feet of the impacted area before closure is met and deemed complete.	3/27/2024