

Spill Volume(Bbls) Calculator*Inputs in blue, Outputs in red*

Length(Ft)	Width(Ft)	Depth(In)
90.000	42.000	0.750
Cubic Feet Impacted		236.250
Barrels		42.07
Soil Type		Lined Containment
Bbls Assuming 100% Saturation		42.07
Saturation	Fluid present with shovel/backhoe	
Estimated Barrels Released		42.10000

Instructions

1. Input spill measurements below. Length and width need to be input in feet and depth in inches.
2. Select a soil type from the drop down menu.
3. Select a saturation level from the drop down menu.

(For data gathering instructions see appendix tab)

Measurements

Length (ft)	90
Width (ft)	42
Depth (in)	0.750









Pima Environmental Services
5614 N. Lovington Highway
Hobbs, NM 88240
575-964-7740

March 5th, 2024

NMOCD District 2
811 S. First St
Artesia, NM, 88210

RE: Liner Inspection and Closure Report
Falabella 31 Fee #001H Battery
API No. N/A
GPS: Latitude 32.69749 Longitude -104.42780
UL- M, Section 31, Township 18S, Range 26E
NMOCD Reference No. NAPP2324038155

Spur Energy Partners (Spur) has contracted Pima Environmental Services, LLC (Pima) to perform a liner inspection and prepare this closure report for the release of produced water that happened at the Falabella 31 Fee #001H Battery (Falabella). August 28, 2023, the initial C-141 was formally submitted. The corresponding release received the designation Incident ID NAPP2324038155 from the New Mexico Oil Conservation Division (NMOCD).

Site Information and Site Characterization

The Falabella is located approximately 9.64 miles southwest of Artesia, NM. This spill site is in Unit M, Section 31, Township 18S, Range 26E, Latitude 32.69749 Longitude -104.42780, Eddy County, NM. A Location Map can be found in Figure 1.

Based on the well water data from the New Mexico Office of the State Engineer, the depth to the nearest groundwater in this vicinity measures 145 feet below grade surface (BGS), positioned roughly 1.20 miles away from Falabella, drilled on May 26, 2023. Conversely, as per the United States Geological Survey well water data, the nearest groundwater depth in this region is recorded at 210 feet BGS, situated approximately 1.12 miles away from the Falabella, with the last gauge conducted on January 15, 2015. For detailed references to water surveys and the precise locations of water wells, please refer to Appendix A, inclusive of the relevant maps. Notably, Falabella is situated within an area with a low potential for karst, as illustrated in Figure 3. Additionally, a comprehensive Topographic Map is available for reference in Figure 2.

Release Information

NAPP2324038155: On August 28, 2023, a 1/4-inch tester line and ball valve corroded, leading to the discharge of around 42 barrels of produced water into the lined containment. In response, Spur swiftly mobilized its workforce, effectively halting the leak and recovering about 40 barrels of produced water. The remaining 2 barrels of produced water were successfully reclaimed during subsequent remediation activities.

A Site Map can be found in Figure 4.

Site Assessment and Liner Inspection

From February 19 to February 23, 2024, the Pima personnel gathered at the Falabella site to execute remediation tasks within the enclosed containment zone, covering roughly 4,500 square feet around the oil and produced water tanks. Employing a power washing unit, the team diligently removed any remaining oil or residues from the exposed plastic liner. Furthermore, a vacuum truck was deployed to extract standing fluids, with the process repeated until all remnants of oil residue were thoroughly eliminated. Following this, a detailed inspection to look for tears and rips in the liner was conducted.

On February 23, 2024, Spur personnel submitted a notification for a liner inspection, adhering to the necessary 48-hour notice period. The details of the 48-hour notification can be referenced in Appendix C.

On February 28, 2024, Pima Environmental conducted a liner inspection at this location. We concluded that this liner and containment maintained its integrity and was able to retain the fluids. The liner inspection form and photographic documentation can be found in Appendix C.

Closure Request

After careful review, Pima requests that this incident NAPP2324038155 be closed. Spur has complied with the applicable closure requirements.

Should you have any questions or need additional information, please feel free to contact Sebastian Orozco at 619-721-4813 or sebastian@pimaoil.com.

Respectfully,

Sebastian Orozco

Sebastian Orozco
Project Manager
Pima Environmental Services, LLC

Attachments

Figures:

- 1- Location Map
- 2- Topographic Map
- 3- Karst Map
- 4- Site Map

Appendices:

- Appendix A- Referenced Water Surveys
- Appendix B- 48 Hour Notification
- Appendix C- Liner Inspection Form & Photographic Documentation



Figures:

1-Location Map

2-Topographic Map

3-Karst Map

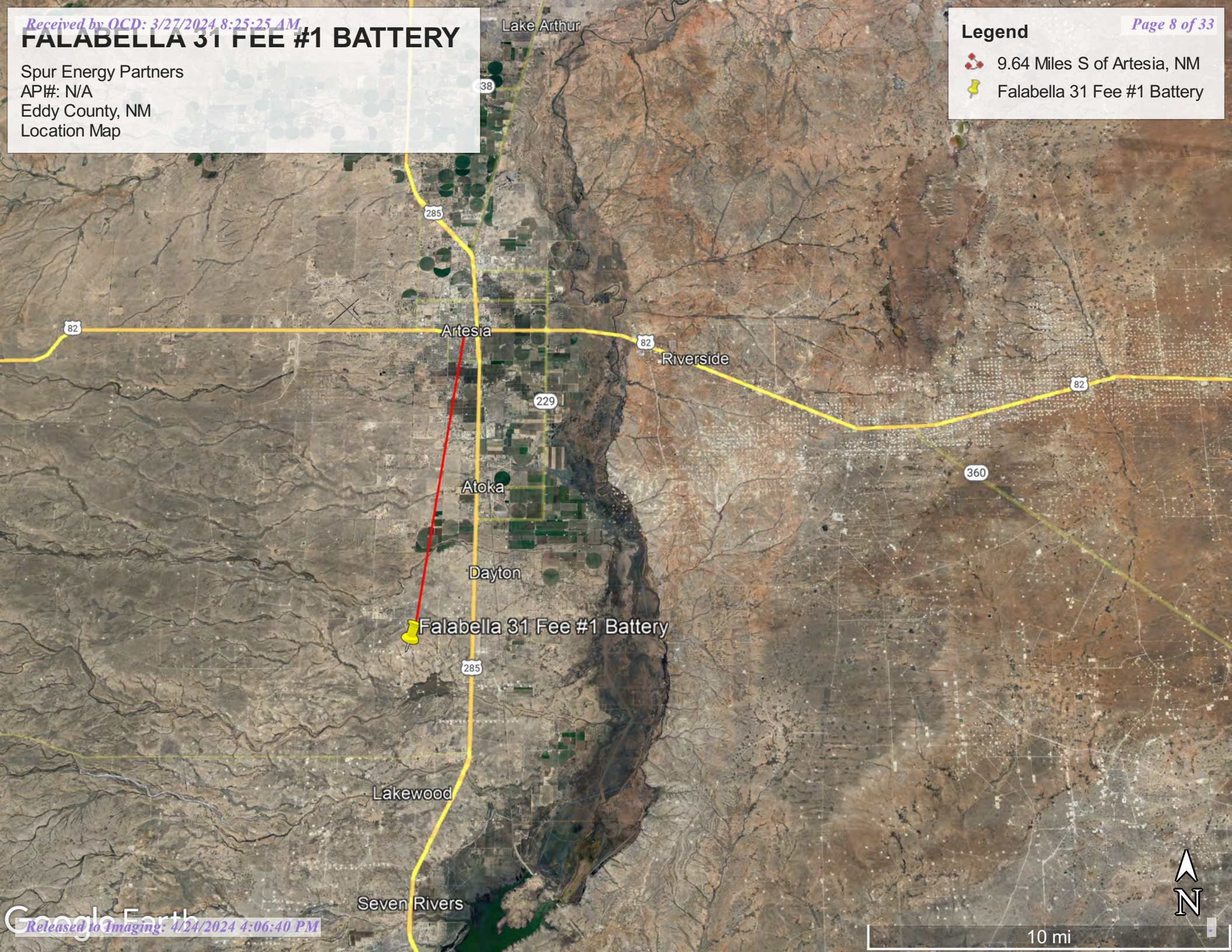
4-Site Map

FALABELLA 31 FEE #1 BATTERY

Spur Energy Partners
API#: N/A
Eddy County, NM
Location Map

Legend

- 9.64 Miles S of Artesia, NM
- Falabella 31 Fee #1 Battery

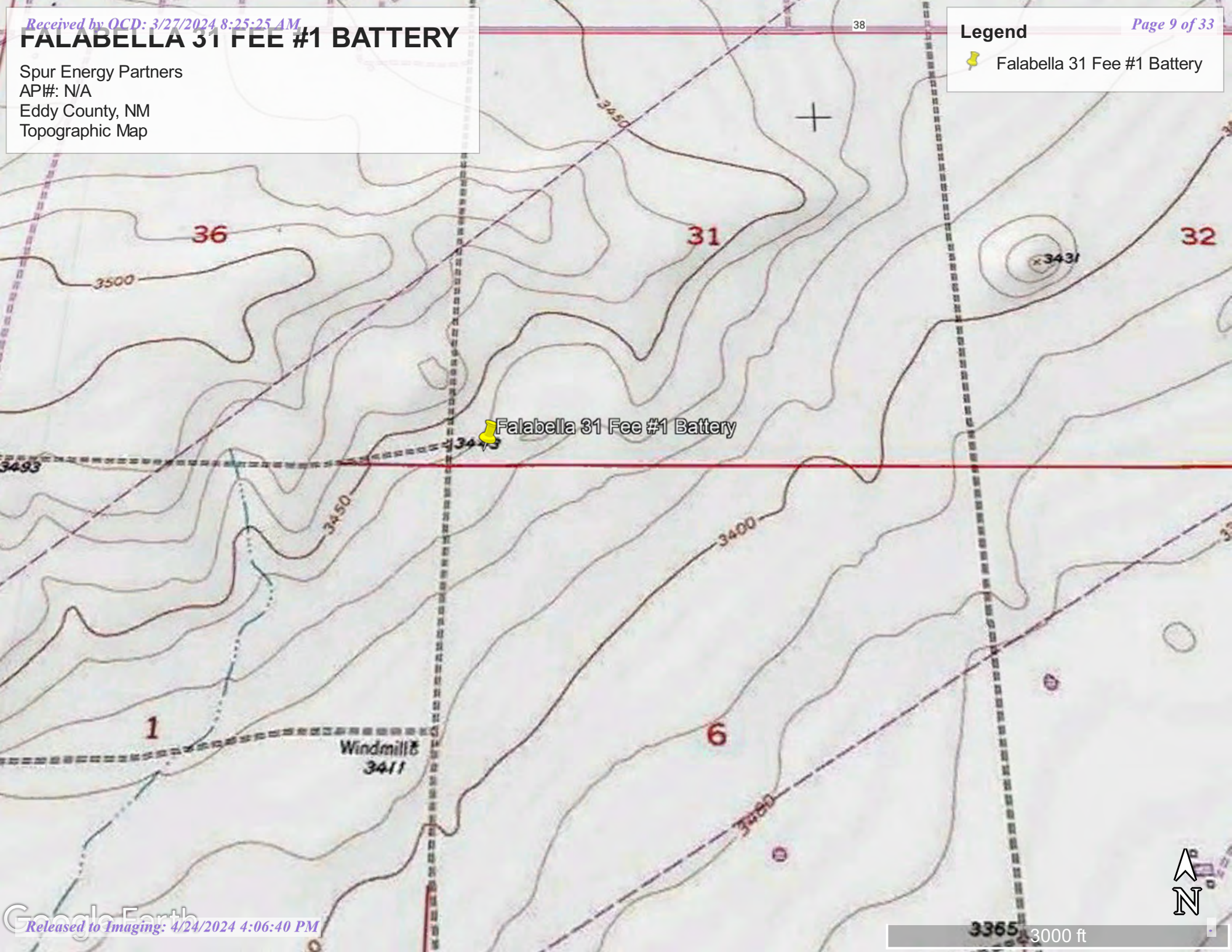


FALABELLA 31 FEE #1 BATTERY

Spur Energy Partners
API#: N/A
Eddy County, NM
Topographic Map

Legend




 Falabella 31 Fee #1 Battery

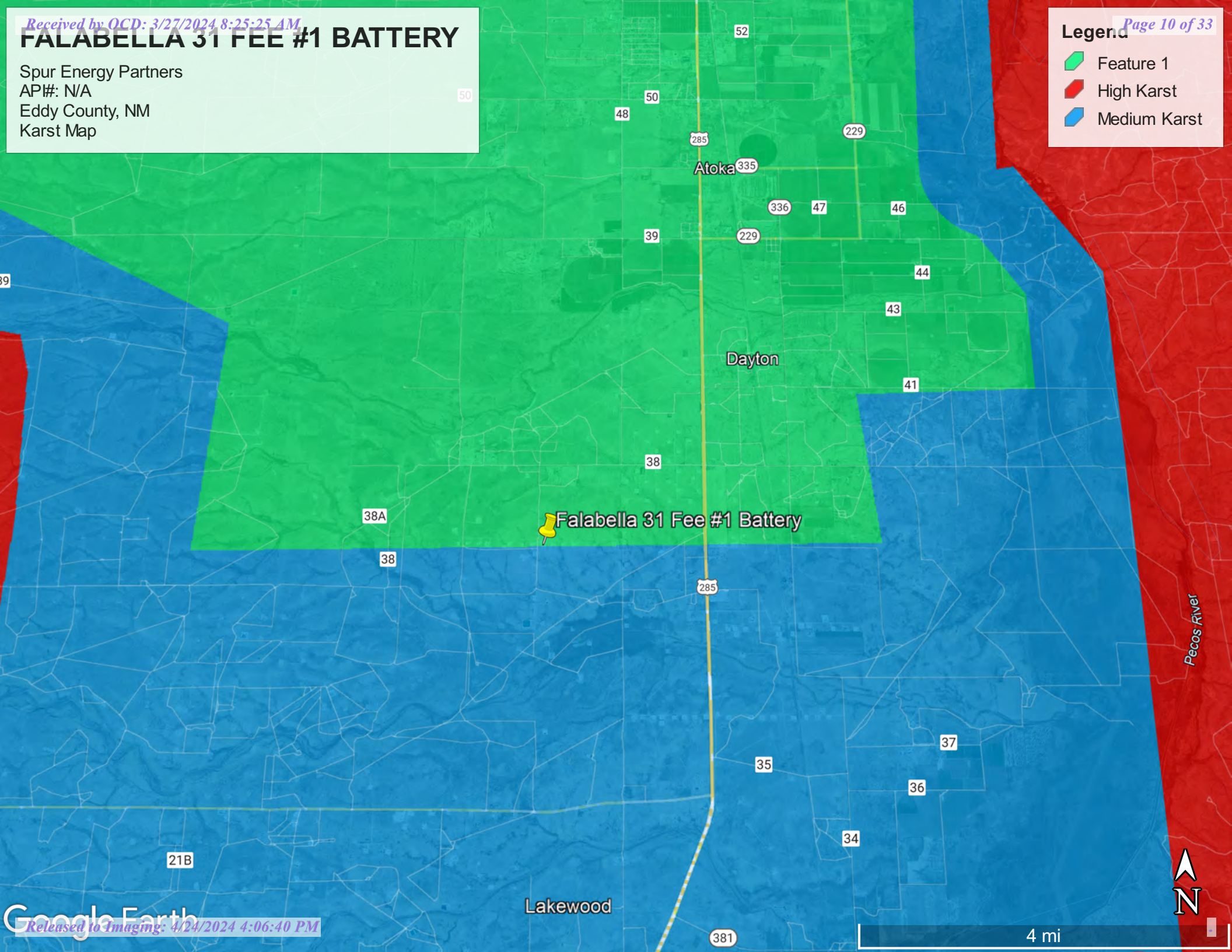


FALABELLA 31 FEE #1 BATTERY

Spur Energy Partners
API#: N/A
Eddy County, NM
Karst Map

Legend

-  Feature 1
-  High Karst
-  Medium Karst



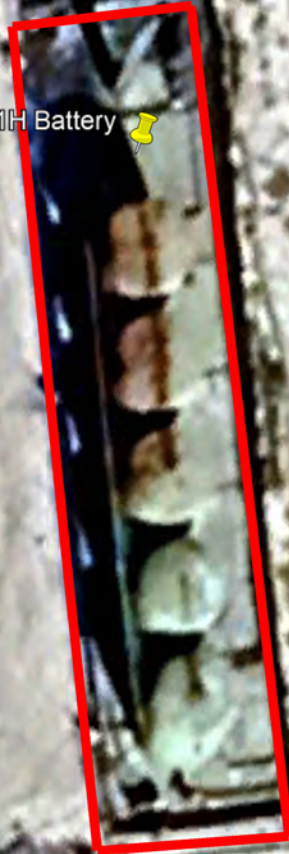
Falabella 31 Fee #001H Battery

Spur Energy
API#: N/A
Eddy County, NM
Site Map

Legend

- ⦿ Falabella 31 Fee #001H Battery
- ▮ Inspected Area 4,500 ft2

Falabella 31 Fee #001H Battery



Google Earth



100 ft



Appendix A

Water Surveys:

OSE

USGS

Surface Water Map

Wetlands Map



New Mexico Office of the State Engineer

Water Column/Average Depth to Water

(A CLW##### in the POD suffix indicates the POD has been replaced & no longer serves a water right file.)

(R=POD has been replaced,
O=orphaned,
C=the file is closed)

(quarters are 1=NW 2=NE 3=SW 4=SE)

(quarters are smallest to largest) (NAD83 UTM in meters)

(In feet)

POD Number	Code	POD Sub-basin	County	Q 64	Q 16	Q 4	Sec	Tws	Rng	X	Y	Distance	DepthWell	DepthWater	Water Column
RA 08999		RA	ED	4	2	1	31	18S	26E	554138	3619158*	1358	222	80	142
RA 07639		RA	ED		3	1	01	19S	25E	552049	3617250*	1712	260	172	88
RA 03975		RA	ED	3	1	3	36	18S	25E	551942	3618353*	1754	430	270	160
RA 03983		RA	CH		4	3	01	19S	25E	552457	3616444*	1869	375	100	275
RA 13308 POD1		RA	ED	2	2	2	31	18S	36E	554912	3619330	1920	274	145	129

Average Depth to Water: **153 feet**

Minimum Depth: **80 feet**

Maximum Depth: **270 feet**

Record Count: 5

UTMNAD83 Radius Search (in meters):

Easting (X): 553635.6

Northing (Y): 3617895.55

Radius: 2000

*UTM location was derived from PLSS - see Help

The data is furnished by the NMOSE/ISC and is accepted by the recipient with the expressed understanding that the OSE/ISC make no warranties, expressed or implied, concerning the accuracy, completeness, reliability, usability, or suitability for any particular purpose of the data.

8/30/23 9:01 AM

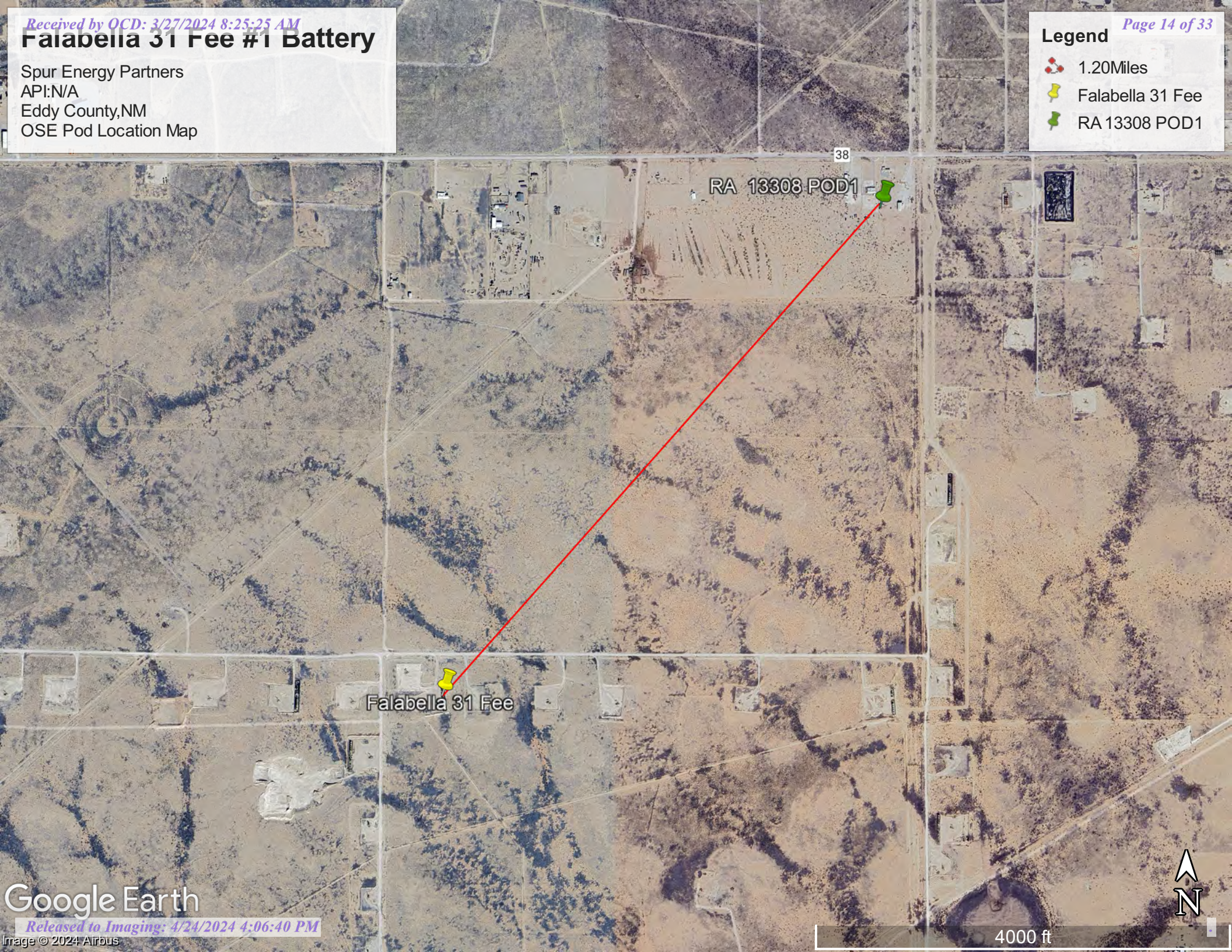
WATER COLUMN/ AVERAGE DEPTH TO WATER

Falabella 31 Fee #1 Battery

Spur Energy Partners
API:N/A
Eddy County,NM
OSE Pod Location Map

Legend

- 1.20Miles
- Falabella 31 Fee
- RA 13308 POD1





[USGS Home](#)
[Contact USGS](#)
[Search USGS](#)

National Water Information System: Web Interface

USGS Water Resources

Data Category:

Groundwater

Geographic Area:

United States

GO

Click to hide News Bulletins

- Explore the *NEW* [USGS National Water Dashboard](#) interactive map to access real-time water data from over 13,500 stations nationwide.
- [Full News](#) 

Groundwater levels for the Nation

 Important: [Next Generation Monitoring Location Page](#)

Search Results -- 1 sites found

site_no list =

- 324220104264001

Minimum number of levels = 1

[Save file of selected sites](#) to local disk for future upload

USGS 324220104264001 18S.25E.36.313223

Available data for this site

Groundwater: Field measurements

GO

Eddy County, New Mexico

Hydrologic Unit Code 13060011

Latitude 32°42'20", Longitude 104°26'40" NAD27

Land-surface elevation 3,483 feet above NAVD88

The depth of the well is 430 feet below land surface.

This well is completed in the Roswell Basin aquifer system (S400RSWLBS) national aquifer.

This well is completed in the San Andres Limestone (313SADR) local aquifer.

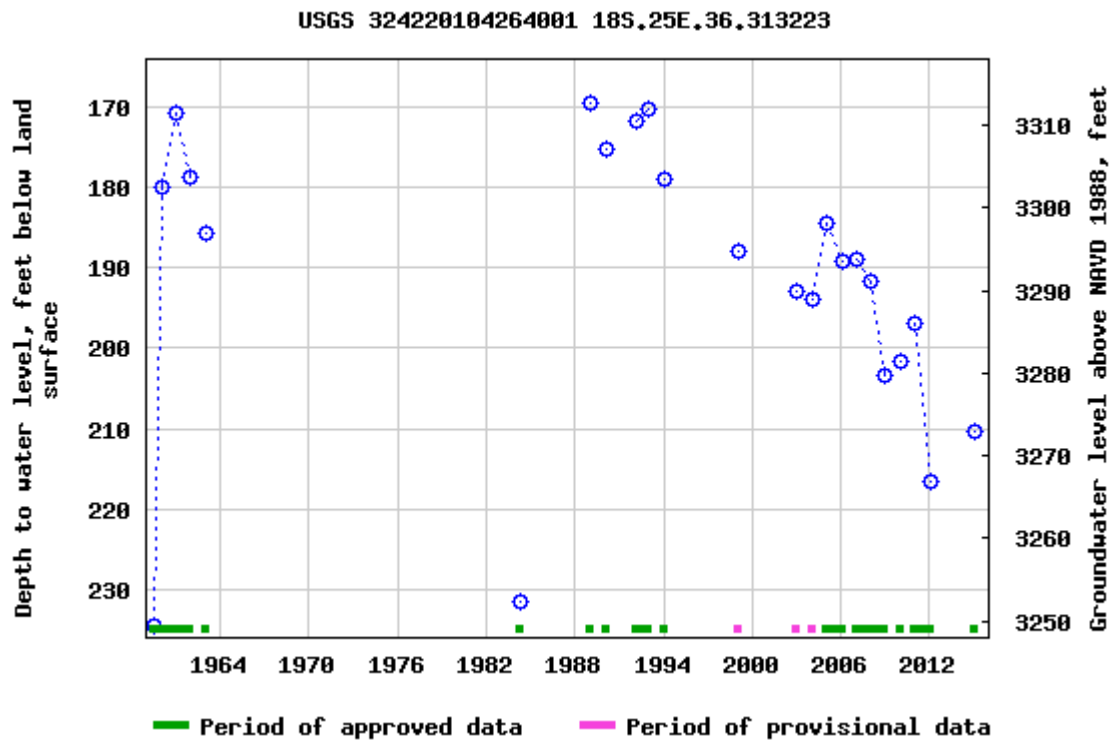
Output formats

[Table of data](#)

[Tab-separated data](#)

[Graph of data](#)

[Reselect period](#)



Breaks in the plot represent a gap of at least one year between field measurements.
[Download a presentation-quality graph](#)

[Questions or Comments](#)

[Automated retrievals](#)

[Help](#)

[Data Tips](#)

[Explanation of terms](#)

[Subscribe for system changes](#)

[News](#)

[Accessibility](#) [FOIA](#) [Privacy](#) [Policies and Notices](#)

[U.S. Department of the Interior](#) | [U.S. Geological Survey](#)

Title: Groundwater for USA: Water Levels

URL: <https://nwis.waterdata.usgs.gov/nwis/gwlevels?>



Page Contact Information: [USGS Water Data Support Team](#)

Page Last Modified: 2024-02-20 12:10:57 EST

0.68 0.57 nadww02

Falabella 31 Fee #1 Battery

Spur Energy Partners
API:N/A
Eddy County,NM
USGS Pod Location Map

38

Legend

- 1.12 Miles
- Falabella 31 Fee
- USGS 324220104264001

USGS 324220104264001

Falabella 31 Fee

Google Earth

Released to Imaging: 4/24/2024 4:06:40 PM

Image © 2024 Airbus



4000 ft

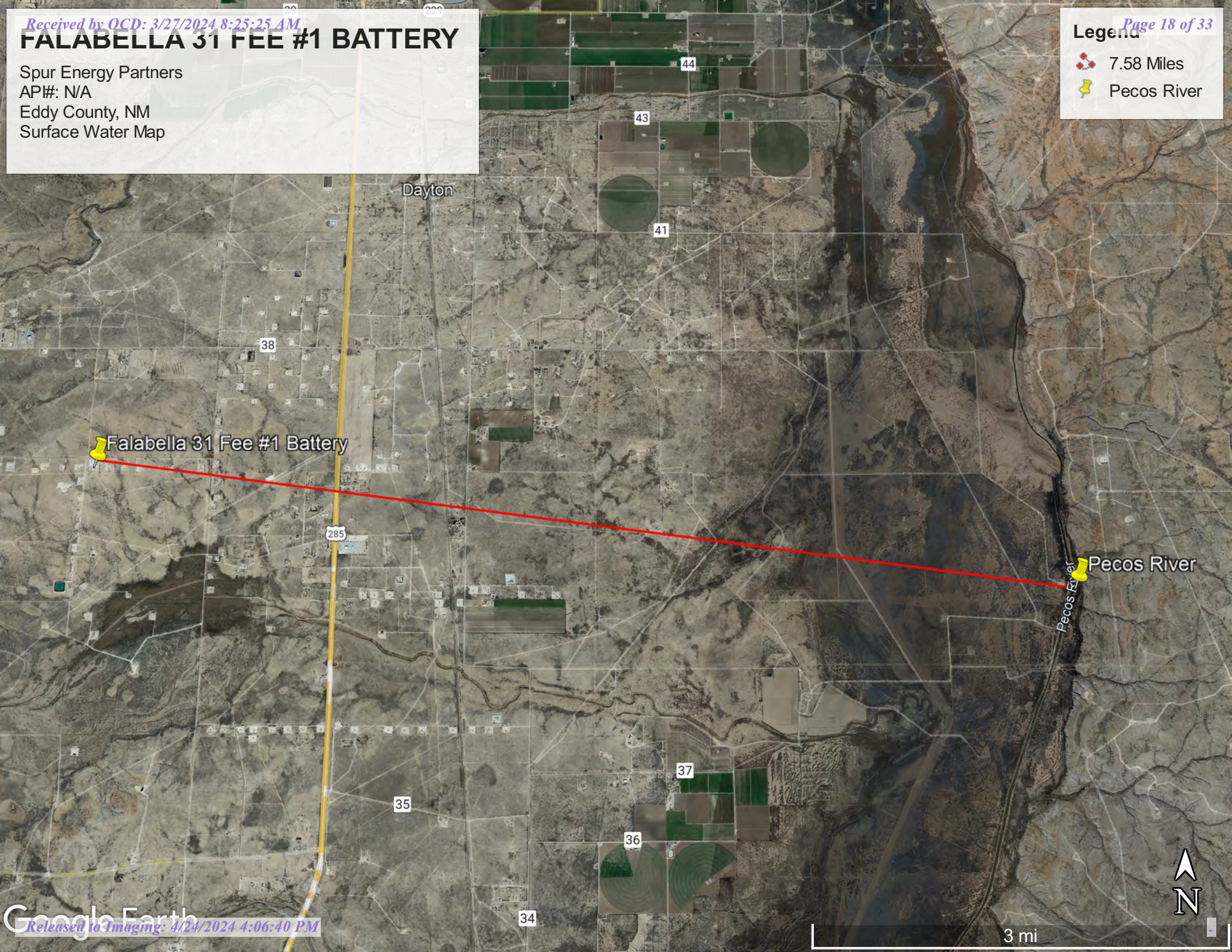


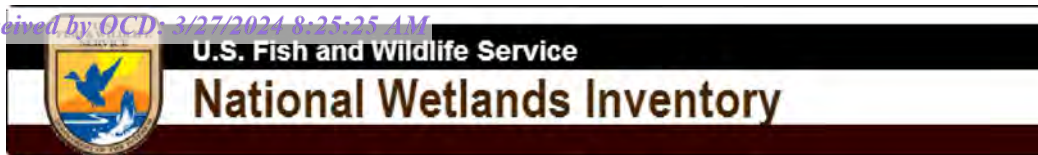
FALABELLA 31 FEE #1 BATTERY

Spur Energy Partners
API#: N/A
Eddy County, NM
Surface Water Map

Legend

-  7.58 Miles
-  Pecos River





Falabella 31 Fee #001H Battery



March 5, 2024

Wetlands

- Estuarine and Marine Deepwater
- Estuarine and Marine Wetland

- Freshwater Emergent Wetland
- Freshwater Forested/Shrub Wetland
- Freshwater Pond

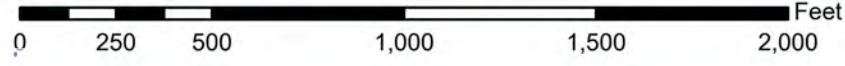
- Lake
- Other
- Riverine

This map is for general reference only. The US Fish and Wildlife Service is not responsible for the accuracy or currentness of the base data shown on this map. All wetlands related data should be used in accordance with the layer metadata found on the Wetlands Mapper web site.

National Flood Hazard Layer FIRMette



104°25'59"W 32°42'6"N



1:6,000

104°25'21"W 32°41'36"N

Basemap Imagery Source: USGS National Map 2023

Legend

SEE FIS REPORT FOR DETAILED LEGEND AND INDEX MAP FOR FIRM PANEL LAYOUT

SPECIAL FLOOD HAZARD AREAS		Without Base Flood Elevation (BFE) Zone A, V, A99
		With BFE or Depth Zone AE, AO, AH, VE, AR
		Regulatory Floodway
OTHER AREAS OF FLOOD HAZARD		0.2% Annual Chance Flood Hazard, Areas of 1% annual chance flood with average depth less than one foot or with drainage areas of less than one square mile Zone X
		Future Conditions 1% Annual Chance Flood Hazard Zone X
		Area with Reduced Flood Risk due to Levee. See Notes. Zone X
		Area with Flood Risk due to Levee Zone X
OTHER AREAS		NO SCREEN Area of Minimal Flood Hazard Zone X
		Effective LOMRs
GENERAL STRUCTURES		Area of Undetermined Flood Hazard Zone D
		Channel, Culvert, or Storm Sewer
OTHER FEATURES		Levee, Dike, or Floodwall
		20.2 Cross Sections with 1% Annual Chance Water Surface Elevation
		17.5 Cross Sections with 1% Annual Chance Water Surface Elevation
		Coastal Transect
		Base Flood Elevation Line (BFE)
		Limit of Study
		Jurisdiction Boundary
		Coastal Transect Baseline
		Profile Baseline
		Hydrographic Feature
MAP PANELS		Digital Data Available
		No Digital Data Available
		Unmapped

The pin displayed on the map is an approximate point selected by the user and does not represent an authoritative property location.

This map complies with FEMA's standards for the use of digital flood maps if it is not void as described below. The basemap shown complies with FEMA's basemap accuracy standards

The flood hazard information is derived directly from the authoritative NFHL web services provided by FEMA. This map was exported on 8/29/2023 at 10:58 AM and does not reflect changes or amendments subsequent to this date and time. The NFHL and effective information may change or become superseded by new data over time.

This map image is void if the one or more of the following map elements do not appear: basemap imagery, flood zone labels, legend, scale bar, map creation date, community identifiers, FIRM panel number, and FIRM effective date. Map images for unmapped and unmodernized areas cannot be used for regulatory purposes.

Released to Imaging: 4/24/2024 4:06:40 PM

Received by OCD: 3/28/2024 8:25:25 AM

Page 20 of 33



Appendix B

48- Hour Notification

Sebastian@pimaoil.com

From: OCDOnline@state.nm.us
Sent: Friday, February 23, 2024 10:47 AM
To: sebastian@pimaoil.com
Subject: The Oil Conservation Division (OCD) has accepted the application, Application ID: 316971

To whom it may concern (c/o Sebastian Orozco for Spur Energy Partners LLC),

The OCD has received the submitted *Notification for Liner Inspection for a Release* (C-141L), for incident ID (n#) nAPP2324038155.

The liner inspection is expected to take place:

When: 02/28/2024 @ 08:00

Where: M-31-18S-26E 0 FNL 0 FEL (32.69749,-104.42781)

Additional Information: Andrew Franco
806-200-0054

Additional Instructions: Travel south on US 285 S from Atoka, NM for 4 miles. Turn right onto W Kincaid Rd and continue west for 2.8 miles. Make a left onto an unnamed dirt road and continue south for 0.88 miles. Then, make a left onto another unnamed dirt road and continue east for 1 mile. Finally, make a right onto yet another unnamed dirt road and continue south for 0.09 miles.

An OCD representative may be available onsite at the date and time reported. In the absence or presence of an OCD representative, liner inspection pursuant to 19.15.29.11.A(5)(a) NMAC is required. Should there be a change in the scheduled date and time of the sampling event, then another notification should be resubmitted through OCD permitting as soon as possible.

- **Failure to notify the OCD of liner inspections including any changes in date/time per the requirements of 19.15.29.11.A(5)(a)(ii) NMAC, may result in the inspection not being accepted.**

If you have any questions regarding this application, or don't know why you have received this email, please contact us.

New Mexico Energy, Minerals and Natural Resources Department
1220 South St. Francis Drive
Santa Fe, NM 87505



Appendix C

Liner Inspection Form

Photographic Documentation



Pima Environmental Services, LLC

Liner Inspection Form

Company Name: Spur Energy

Site: Falabella 31 Fee #1 Battery

Lat/Long: 32.69749, -104.42781

NMOCD Incident ID
& Incident Date: NAPP2324038155 08/28/2023

2-Day Notification
Sent: via OCD Portal by Sebastian Orozco 02/23/2024

Inspection Date: 02/28/2024

Liner Type: Earthen w/liner Earthen no liner Polyester
 Steel w/poly liner Steel w/spray epoxy No Liner

Other: _____

Visualization	Yes	No	Comments
Is there a tear in the liner?		X	
Are there holes in the liner?		X	
Is the liner retaining any fluids?	X		The inspection images of the liner reveal residual fluid resulting from the remediation event involving power washing.
Does the liner have integrity to contain a leak?	X		

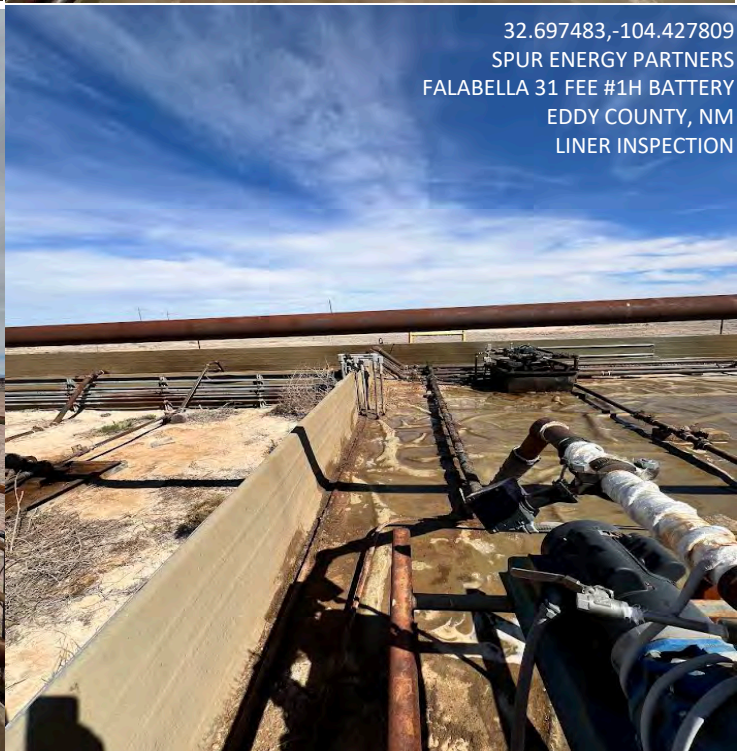
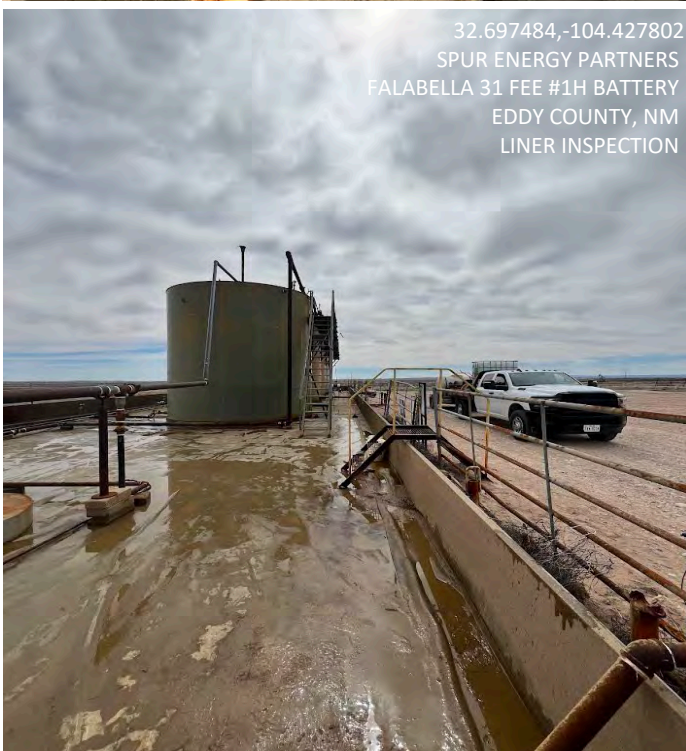
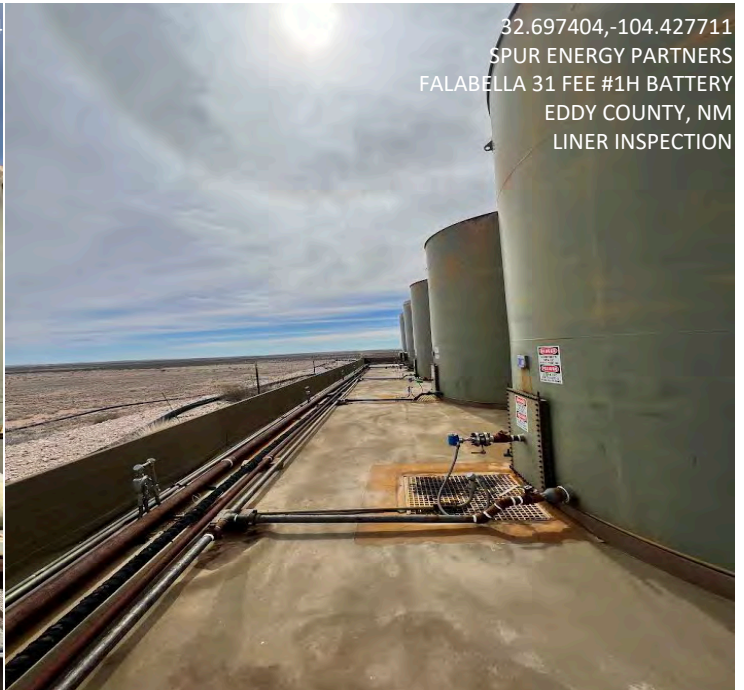
Comments: _____

Inspector Name: Andrew Franco Inspector Signature: Andrew Franco



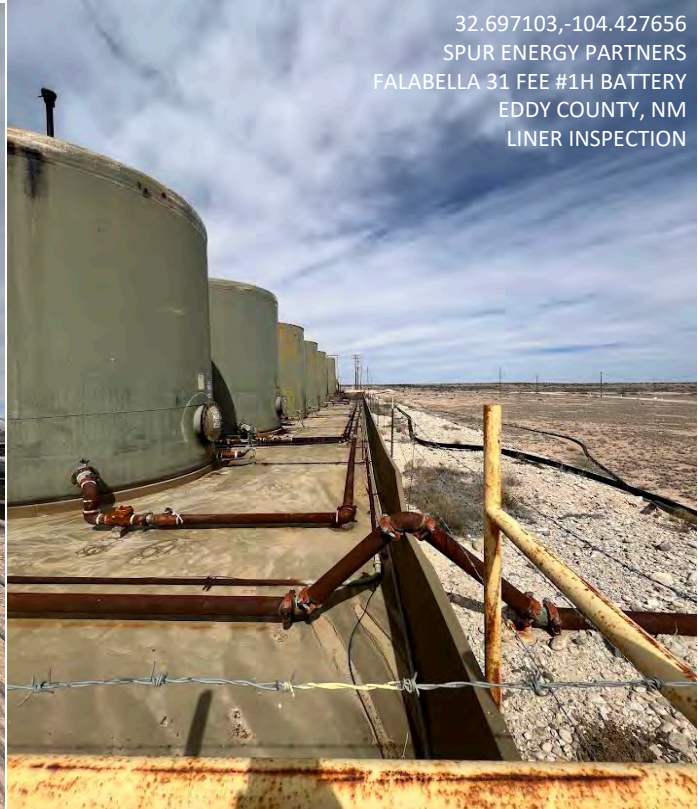
**SPUR ENERGY PARTNERS
FALABELLA 31 FEE #1 BATTERY
SITE PHOTOGRAPHS**

LINER INSPECTION-





32.697374,-104.427785
SPUR ENERGY PARTNERS
FALABELLA 31 FEE #1H BATTERY
EDDY COUNTY, NM
LINER INSPECTION



32.697103,-104.427656
SPUR ENERGY PARTNERS
FALABELLA 31 FEE #1H BATTERY
EDDY COUNTY, NM
LINER INSPECTION



32.697102,-104.427756
SPUR ENERGY PARTNERS
FALABELLA 31 FEE #1H BATTERY
EDDY COUNTY, NM
LINER INSPECTION



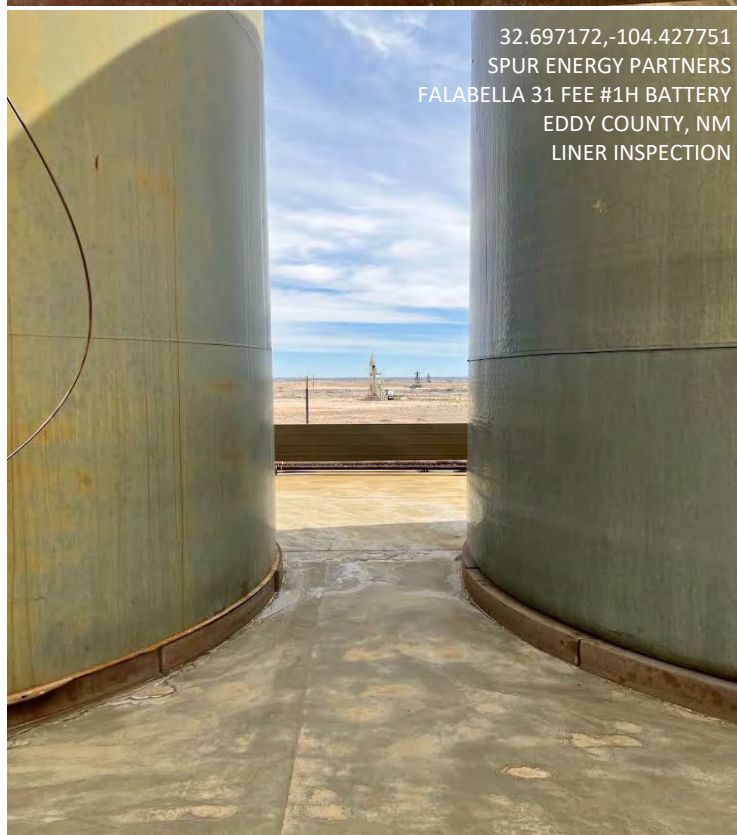
32.697111,-104.427646
SPUR ENERGY PARTNERS
FALABELLA 31 FEE #1H BATTERY
EDDY COUNTY, NM
LINER INSPECTION



32.697231,-104.427758
SPUR ENERGY PARTNERS
FALABELLA 31 FEE #1H BATTERY
EDDY COUNTY, NM
LINER INSPECTION



32.697287,-104.427760
SPUR ENERGY PARTNERS
FALABELLA 31 FEE #1H BATTERY
EDDY COUNTY, NM
LINER INSPECTION



32.697172,-104.427751
SPUR ENERGY PARTNERS
FALABELLA 31 FEE #1H BATTERY
EDDY COUNTY, NM
LINER INSPECTION

District I
1625 N. French Dr., Hobbs, NM 88240
Phone:(575) 393-6161 Fax:(575) 393-0720
District II
811 S. First St., Artesia, NM 88210
Phone:(575) 748-1283 Fax:(575) 748-9720
District III
1000 Rio Brazos Rd., Aztec, NM 87410
Phone:(505) 334-6178 Fax:(505) 334-6170
District IV
1220 S. St Francis Dr., Santa Fe, NM 87505
Phone:(505) 476-3470 Fax:(505) 476-3462

State of New Mexico
Energy, Minerals and Natural Resources
Oil Conservation Division
1220 S. St Francis Dr.
Santa Fe, NM 87505

QUESTIONS

Action 327152

QUESTIONS

Operator: Spur Energy Partners LLC 9655 Katy Freeway Houston, TX 77024	OGRID: 328947
	Action Number: 327152
	Action Type: [C-141] Remediation Closure Request C-141 (C-141-v-Closure)

QUESTIONS

Prerequisites	
Incident ID (n#)	nAPP2324038155
Incident Name	NAPP2324038155 FALABELLA 31 FEE #001H BATTERY @ 0
Incident Type	Produced Water Release
Incident Status	Remediation Closure Report Received

Location of Release Source	
Please answer all the questions in this group.	
Site Name	FALABELLA 31 FEE #001H BATTERY
Date Release Discovered	08/28/2023
Surface Owner	Private

Incident Details	
Please answer all the questions in this group.	
Incident Type	Produced Water Release
Did this release result in a fire or is the result of a fire	No
Did this release result in any injuries	No
Has this release reached or does it have a reasonable probability of reaching a watercourse	No
Has this release endangered or does it have a reasonable probability of endangering public health	No
Has this release substantially damaged or will it substantially damage property or the environment	No
Is this release of a volume that is or may with reasonable probability be detrimental to fresh water	No

Nature and Volume of Release	
Material(s) released, please answer all that apply below. Any calculations or specific justifications for the volumes provided should be attached to the follow-up C-141 submission.	
Crude Oil Released (bbls) Details	Not answered.
Produced Water Released (bbls) Details	Cause: Corrosion Dump Valve Produced Water Released: 42 BBL Recovered: 40 BBL Lost: 2 BBL.
Is the concentration of chloride in the produced water >10,000 mg/l	No
Condensate Released (bbls) Details	Not answered.
Natural Gas Vented (Mcf) Details	Not answered.
Natural Gas Flared (Mcf) Details	Not answered.
Other Released Details	Not answered.
Are there additional details for the questions above (i.e. any answer containing Other, Specify, Unknown, and/or Fire, or any negative lost amounts)	1/4 INCH TESTER LINE AND BALL VALVE CORRODED

District I

1625 N. French Dr., Hobbs, NM 88240
Phone:(575) 393-6161 Fax:(575) 393-0720

District II

811 S. First St., Artesia, NM 88210
Phone:(575) 748-1283 Fax:(575) 748-9720

District III

1000 Rio Brazos Rd., Aztec, NM 87410
Phone:(505) 334-6178 Fax:(505) 334-6170

District IV

1220 S. St Francis Dr., Santa Fe, NM 87505
Phone:(505) 476-3470 Fax:(505) 476-3462

State of New Mexico
Energy, Minerals and Natural Resources
Oil Conservation Division
1220 S. St Francis Dr.
Santa Fe, NM 87505

QUESTIONS, Page 2

Action 327152

QUESTIONS (continued)

Operator: Spur Energy Partners LLC 9655 Katy Freeway Houston, TX 77024	OGRID:	328947
	Action Number:	327152
	Action Type:	[C-141] Remediation Closure Request C-141 (C-141-v-Closure)

QUESTIONS

Nature and Volume of Release (continued)	
Is this a gas only submission (i.e. only significant Mcf values reported)	No, according to supplied volumes this does not appear to be a "gas only" report.
Was this a major release as defined by Subsection A of 19.15.29.7 NMAC	Yes
Reasons why this would be considered a submission for a notification of a major release	From paragraph A. "Major release" determine using: (1) an unauthorized release of a volume, excluding gases, of 25 barrels or more.
With the implementation of the 19.15.27 NMAC (05/25/2021), venting and/or flaring of natural gas (i.e. gas only) are to be submitted on the C-129 form.	

Initial Response

The responsible party must undertake the following actions immediately unless they could create a safety hazard that would result in injury.

The source of the release has been stopped	True
The impacted area has been secured to protect human health and the environment	True
Released materials have been contained via the use of berms or dikes, absorbent pads, or other containment devices	True
All free liquids and recoverable materials have been removed and managed appropriately	True
If all the actions described above have not been undertaken, explain why	N/A

Per Paragraph (4) of Subsection B of 19.15.29.8 NMAC the responsible party may commence remediation immediately after discovery of a release. If remediation has begun, please prepare and attach a narrative of actions to date in the follow-up C-141 submission. If remedial efforts have been successfully completed or if the release occurred within a lined containment area (see Subparagraph (a) of Paragraph (5) of Subsection A of 19.15.29.11 NMAC), please prepare and attach all information needed for closure evaluation in the follow-up C-141 submission.

I hereby certify that the information given above is true and complete to the best of my knowledge and understand that pursuant to OCD rules and regulations all operators are required to report and/or file certain release notifications and perform corrective actions for releases which may endanger public health or the environment. The acceptance of a C-141 report by the OCD does not relieve the operator of liability should their operations have failed to adequately investigate and remediate contamination that pose a threat to groundwater, surface water, human health or the environment. In addition, OCD acceptance of a C-141 report does not relieve the operator of responsibility for compliance with any other federal, state, or local laws and/or regulations.

I hereby agree and sign off to the above statement	Name: Katherine Purvis Title: EHS Coordinator Email: katherine.purvis@spurenergy.com Date: 03/27/2024
--	--

District I

1625 N. French Dr., Hobbs, NM 88240
Phone:(575) 393-6161 Fax:(575) 393-0720

District II

811 S. First St., Artesia, NM 88210
Phone:(575) 748-1283 Fax:(575) 748-9720

District III

1000 Rio Brazos Rd., Aztec, NM 87410
Phone:(505) 334-6178 Fax:(505) 334-6170

District IV

1220 S. St Francis Dr., Santa Fe, NM 87505
Phone:(505) 476-3470 Fax:(505) 476-3462

State of New Mexico
Energy, Minerals and Natural Resources
Oil Conservation Division
1220 S. St Francis Dr.
Santa Fe, NM 87505

QUESTIONS, Page 3

Action 327152

QUESTIONS (continued)

Operator: Spur Energy Partners LLC 9655 Katy Freeway Houston, TX 77024	OGRID:	328947
	Action Number:	327152
	Action Type:	[C-141] Remediation Closure Request C-141 (C-141-v-Closure)

QUESTIONS**Site Characterization**

Please answer all the questions in this group (only required when seeking remediation plan approval and beyond). This information must be provided to the appropriate district office no later than 90 days after the release discovery date.

What is the shallowest depth to groundwater beneath the area affected by the release in feet below ground surface (ft bgs)	Between 100 and 500 (ft.)
What method was used to determine the depth to ground water	U.S. Geological Survey
Did this release impact groundwater or surface water	No
What is the minimum distance, between the closest lateral extents of the release and the following surface areas:	
A continuously flowing watercourse or any other significant watercourse	Between 1 and 5 (mi.)
Any lakebed, sinkhole, or playa lake (measured from the ordinary high-water mark)	Between 1 and 5 (mi.)
An occupied permanent residence, school, hospital, institution, or church	Greater than 5 (mi.)
A spring or a private domestic fresh water well used by less than five households for domestic or stock watering purposes	Between ½ and 1 (mi.)
Any other fresh water well or spring	Between ½ and 1 (mi.)
Incorporated municipal boundaries or a defined municipal fresh water well field	Greater than 5 (mi.)
A wetland	Between ½ and 1 (mi.)
A subsurface mine	Between 1 and 5 (mi.)
An (non-karst) unstable area	Between 1 and 5 (mi.)
Categorize the risk of this well / site being in a karst geology	Low
A 100-year floodplain	Between 1 and 5 (mi.)
Did the release impact areas not on an exploration, development, production, or storage site	No

Remediation Plan

Please answer all the questions that apply or are indicated. This information must be provided to the appropriate district office no later than 90 days after the release discovery date.

Requesting a remediation plan approval with this submission	Yes
Attach a comprehensive report demonstrating the lateral and vertical extents of soil contamination associated with the release have been determined, pursuant to 19.15.29.11 NMAC and 19.15.29.13 NMAC.	
Have the lateral and vertical extents of contamination been fully delineated	Yes
Was this release entirely contained within a lined containment area	Yes
Per Subsection B of 19.15.29.11 NMAC unless the site characterization report includes completed efforts at remediation, the report must include a proposed remediation plan in accordance with 19.15.29.12 NMAC, which includes the anticipated timelines for beginning and completing the remediation.	
On what estimated date will the remediation commence	02/19/2024
On what date will (or did) the final sampling or liner inspection occur	02/28/2024
On what date will (or was) the remediation complete(d)	02/23/2028
What is the estimated surface area (in square feet) that will be remediated	4500
What is the estimated volume (in cubic yards) that will be remediated	0
These estimated dates and measurements are recognized to be the best guess or calculation at the time of submission and may (be) change(d) over time as more remediation efforts are completed.	
The OCD recognizes that proposed remediation measures may have to be minimally adjusted in accordance with the physical realities encountered during remediation. If the responsible party has any need to significantly deviate from the remediation plan proposed, then it should consult with the division to determine if another remediation plan submission is required.	

District I

1625 N. French Dr., Hobbs, NM 88240
Phone:(575) 393-6161 Fax:(575) 393-0720

District II

811 S. First St., Artesia, NM 88210
Phone:(575) 748-1283 Fax:(575) 748-9720

District III

1000 Rio Brazos Rd., Aztec, NM 87410
Phone:(505) 334-6178 Fax:(505) 334-6170

District IV

1220 S. St Francis Dr., Santa Fe, NM 87505
Phone:(505) 476-3470 Fax:(505) 476-3462

State of New Mexico
Energy, Minerals and Natural Resources
Oil Conservation Division
1220 S. St Francis Dr.
Santa Fe, NM 87505

QUESTIONS, Page 4

Action 327152

QUESTIONS (continued)

Operator: Spur Energy Partners LLC 9655 Katy Freeway Houston, TX 77024	OGRID:	328947
	Action Number:	327152
	Action Type:	[C-141] Remediation Closure Request C-141 (C-141-v-Closure)

QUESTIONS

Remediation Plan (continued)	
<i>Please answer all the questions that apply or are indicated. This information must be provided to the appropriate district office no later than 90 days after the release discovery date.</i>	
This remediation will (or is expected to) utilize the following processes to remediate / reduce contaminants:	
<i>(Select all answers below that apply.)</i>	
Is (or was) there affected material present needing to be removed	Yes
Is (or was) there a power wash of the lined containment area (to be) performed	Yes
OTHER (Non-listed remedial process)	No
<i>Per Subsection B of 19.15.29.11 NMAC unless the site characterization report includes completed efforts at remediation, the report must include a proposed remediation plan in accordance with 19.15.29.12 NMAC, which includes the anticipated timelines for beginning and completing the remediation.</i>	
I hereby certify that the information given above is true and complete to the best of my knowledge and understand that pursuant to OCD rules and regulations all operators are required to report and/or file certain release notifications and perform corrective actions for releases which may endanger public health or the environment. The acceptance of a C-141 report by the OCD does not relieve the operator of liability should their operations have failed to adequately investigate and remediate contamination that pose a threat to groundwater, surface water, human health or the environment. In addition, OCD acceptance of a C-141 report does not relieve the operator of responsibility for compliance with any other federal, state, or local laws and/or regulations.	
I hereby agree and sign off to the above statement	Name: Katherine Purvis Title: EHS Coordinator Email: katherine.purvis@spurenergy.com Date: 03/27/2024
<i>The OCD recognizes that proposed remediation measures may have to be minimally adjusted in accordance with the physical realities encountered during remediation. If the responsible party has any need to significantly deviate from the remediation plan proposed, then it should consult with the division to determine if another remediation plan submission is required.</i>	

District I

1625 N. French Dr., Hobbs, NM 88240
Phone:(575) 393-6161 Fax:(575) 393-0720

District II

811 S. First St., Artesia, NM 88210
Phone:(575) 748-1283 Fax:(575) 748-9720

District III

1000 Rio Brazos Rd., Aztec, NM 87410
Phone:(505) 334-6178 Fax:(505) 334-6170

District IV

1220 S. St Francis Dr., Santa Fe, NM 87505
Phone:(505) 476-3470 Fax:(505) 476-3462

State of New Mexico
Energy, Minerals and Natural Resources
Oil Conservation Division
1220 S. St Francis Dr.
Santa Fe, NM 87505

QUESTIONS, Page 6

Action 327152

QUESTIONS (continued)

Operator: Spur Energy Partners LLC 9655 Katy Freeway Houston, TX 77024	OGRID:	328947
	Action Number:	327152
	Action Type:	[C-141] Remediation Closure Request C-141 (C-141-v-Closure)

QUESTIONS

Liner Inspection Information	
Last liner inspection notification (C-141L) recorded	316971
Liner inspection date pursuant to Subparagraph (a) of Paragraph (5) of Subsection A of 19.15.29.11 NMAC	02/28/2024
Was all the impacted materials removed from the liner	Yes
What was the liner inspection surface area in square feet	4500

Remediation Closure Request

Only answer the questions in this group if seeking remediation closure for this release because all remediation steps have been completed.

Requesting a remediation closure approval with this submission	Yes
Have the lateral and vertical extents of contamination been fully delineated	Yes
Was this release entirely contained within a lined containment area	Yes
What was the total surface area (in square feet) remediated	4500
What was the total volume (cubic yards) remediated	0
Summarize any additional remediation activities not included by answers (above)	LINER INSPECTION REVEALED THE LINER HAS INTEGRITY TO HOLD LIQUIDS AND DOES NOT HAVE ANY BREACH ISSUES.

The responsible party must attach information demonstrating they have complied with all applicable closure requirements and any conditions or directives of the OCD. This demonstration should be in the form of a comprehensive report (in .pdf format) including a scaled site map, sampling diagrams, relevant field notes, photographs of any excavation prior to backfilling, laboratory data including chain of custody documents of final sampling, and a narrative of the remedial activities. Refer to 19.15.29.12 NMAC.

I hereby certify that the information given above is true and complete to the best of my knowledge and understand that pursuant to OCD rules and regulations all operators are required to report and/or file certain release notifications and perform corrective actions for releases which may endanger public health or the environment. The acceptance of a C-141 report by the OCD does not relieve the operator of liability should their operations have failed to adequately investigate and remediate contamination that pose a threat to groundwater, surface water, human health or the environment. In addition, OCD acceptance of a C-141 report does not relieve the operator of responsibility for compliance with any other federal, state, or local laws and/or regulations. The responsible party acknowledges they must substantially restore, reclaim, and re-vegetate the impacted surface area to the conditions that existed prior to the release or their final land use in accordance with 19.15.29.13 NMAC including notification to the OCD when reclamation and re-vegetation are complete.

I hereby agree and sign off to the above statement	Name: Katherine Purvis Title: EHS Coordinator Email: katherine.purvis@spurenergy.com Date: 03/27/2024
--	--

District I
1625 N. French Dr., Hobbs, NM 88240
Phone:(575) 393-6161 Fax:(575) 393-0720
District II
811 S. First St., Artesia, NM 88210
Phone:(575) 748-1283 Fax:(575) 748-9720
District III
1000 Rio Brazos Rd., Aztec, NM 87410
Phone:(505) 334-6178 Fax:(505) 334-6170
District IV
1220 S. St Francis Dr., Santa Fe, NM 87505
Phone:(505) 476-3470 Fax:(505) 476-3462

State of New Mexico
Energy, Minerals and Natural Resources
Oil Conservation Division
1220 S. St Francis Dr.
Santa Fe, NM 87505

CONDITIONS

Action 327152

CONDITIONS

Operator: Spur Energy Partners LLC 9655 Katy Freeway Houston, TX 77024	OGRID: 328947
	Action Number: 327152
	Action Type: [C-141] Remediation Closure Request C-141 (C-141-v-Closure)

CONDITIONS

Created By	Condition	Condition Date
scwells	None	4/24/2024