

SHETLAND 2 CTB 2

2/6/2024

OCD INCIDENT nAPP2403753706

Spills In Lined Containment	
Measurements Of Standing Fluid	
Length(Ft)	57
Width(Ft)	40
Depth(in.)	0.75
Total Capacity without tank displacements (bbls)	25.38
No. of 500 bbl Tanks In Standing Fluid	5
No. of Other Tanks In Standing Fluid	0
OD Of Other Tanks In Standing Fluid(feet)	
Total Volume of standing fluid accounting for tank displacement.	14.88



209 W McKay St
Carlsbad, New Mexico 88220
Tel. 432.701.2159
www.ntgenvironmental.com

March 25, 2024

Mike Bratcher
District Supervisor
Oil Conservation Division, District 2
811 S. First Street
Artesia, New Mexico 88210

**Re: Closure Report
Shetland 2 CTB 2
Devon Energy Production Company
Site Location: Unit A, S02, T26S, R31E
32.07662, -103.743695
Eddy County, New Mexico
Incident ID: nAPP2403753706**

Mr. Bratcher:

On behalf of Devon Energy Production Company (Devon), New Tech Global Environmental, LLC (NTGE) has prepared this closure report to document site assessment and remedial action activities at the Shetland 2 CTB 2 (Site). The Site is in Unit Letter A, Section 02, of Township 26 South and Range 31 East in Eddy County, New Mexico. The GPS coordinates for the release site are 32.07662° N latitude and 103.743695° W longitude. The site location with respect to the nearest town is shown in Figure 1 and the topography of the area is shown in Figure 2.

Background

Based on the initial C-141 obtained from the New Mexico Oil Conservation Division (NMOCD), the release, occurred on February 6th, 2024. The release was the result of equipment failure in a circulating line and all released fluids were contained within the lined secondary containment. The leak resulted in the release of approximately ten (10) barrels of produced water and five (5) bbls of crude oil of which ten (10) bbls of produced water and five (5) bbls of crude oil were recovered, respectively. The initial C-141 form is attached to this report.

Site Characterization

The site is located within a medium karst area. Based on a review of the New Mexico Office of State Engineers (NMSEO) and USGS databases, there are no known water sources within a ½-mile radius of the location. According to National Wetlands Inventory (NWI), there are few freshwater emergent wetlands within a ½-mile radius of the location. No other receptors (playas, waterways, lakebeds, or ordinance boundaries) are located within each specific boundary or distance from the Site. A copy of the site characterization information summary is attached to this report.

Regulatory Criteria

NTGE characterized the Site according to Table I, Closure Criteria for Soils Impacted by a Release, from the New Mexico Administrative Code (NMCA) Title 19, Chapter 15, Part 29, Section 12 (NMAC 19.15.29.12).

Mr. Mike Bratcher
March 25, 2024
Page 2 of 2

General Site Characterization and Groundwater:

Site Characterization	Average Groundwater Depth (ft)
Medium Karst	Unknown

Table 3.1 Closure Criteria for Soils Impacted by a Release (NMAC 19.15.29.12 & 19.15.29.13)

Regulatory Standard	Chloride	TPH (GRO+DRO+MRO)	GRO+DRO	BTEX	Benzene
19.15.23.12 Remediation and Closure Criteria for Soils Impacted by a Release	600 mg/kg	100 mg/kg	---	50 mg/kg	10 mg/kg
Notes: --- = not defined					

Liner Inspection

On March 22th, 2024, NTGE conducted site assessment activities to assess the integrity and state of the tank battery's secondary containment liner. Upon inspection it was noted that the liner was intact with no visible holes or breaches, and free of any standing fluids. A photographic log documenting the condition of the liner at the time of the inspection is attached.

Closing

Based on the initial response and subsequent site assessment activities, the Site is compliant, and no further actions are required. Devon formally requests a no further action designation for the Site (nAPP2403753706). If you have any questions regarding this report or need additional information, please contact us at 432-701-2159.

Sincerely,
NTG Environmental



Ethan Sessums
Project Manager

Attachments:

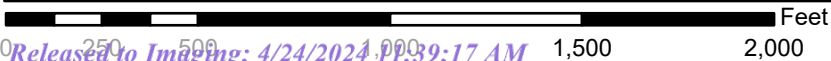
Site Characterization Information
Figures
Photographic Log

SITE CHARACTERIZATION INFORMATION

National Flood Hazard Layer FIRMMette



103°44'56"W 32°4'51"N



1:6,000

103°44'19"W 32°4'21"N

Released to Imaging: 4/24/2024 11:39:17 AM

Basemap Imagery Source: USGS National Map 2023

Legend

SEE FIS REPORT FOR DETAILED LEGEND AND INDEX MAP FOR FIRM PANEL LAYOUT

SPECIAL FLOOD HAZARD AREAS		Without Base Flood Elevation (BFE) Zone A, V, A99
		With BFE or Depth Zone AE, AO, AH, VE, AR
		Regulatory Floodway
OTHER AREAS OF FLOOD HAZARD		0.2% Annual Chance Flood Hazard, Areas of 1% annual chance flood with average depth less than one foot or with drainage areas of less than one square mile Zone X
		Future Conditions 1% Annual Chance Flood Hazard Zone X
		Area with Reduced Flood Risk due to Levee. See Notes. Zone X
		Area with Flood Risk due to Levee Zone D
OTHER AREAS		NO SCREEN Area of Minimal Flood Hazard Zone X
		Effective LOMRs
		Area of Undetermined Flood Hazard Zone D
GENERAL STRUCTURES		Channel, Culvert, or Storm Sewer
		Levee, Dike, or Floodwall
OTHER FEATURES		20.2 Cross Sections with 1% Annual Chance Water Surface Elevation
		17.5
		Coastal Transect
		Base Flood Elevation Line (BFE)
		Limit of Study
		Jurisdiction Boundary
		Coastal Transect Baseline
		Profile Baseline
MAP PANELS		Digital Data Available
		No Digital Data Available
		Unmapped



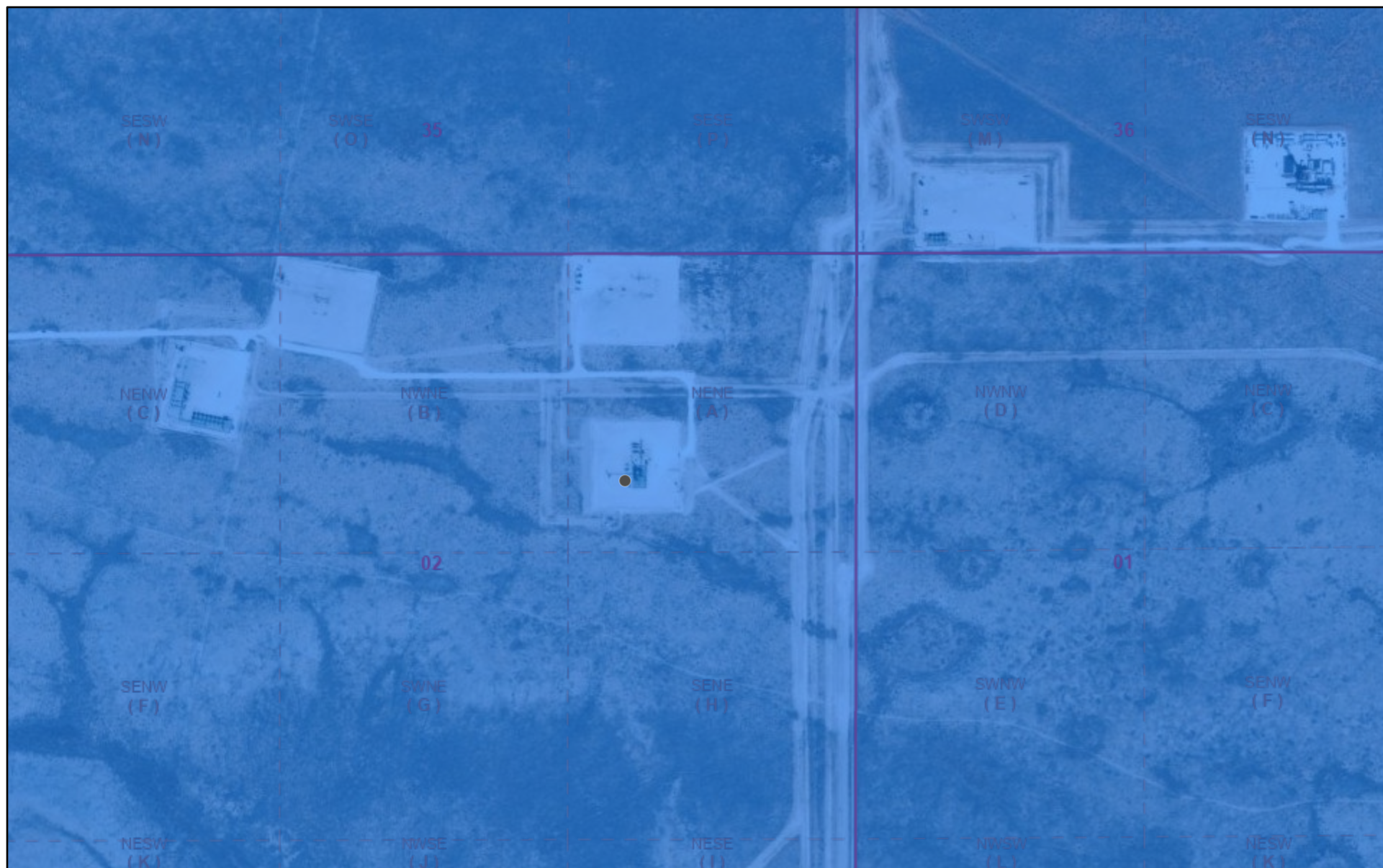
The pin displayed on the map is an approximate point selected by the user and does not represent an authoritative property location.

This map complies with FEMA's standards for the use of digital flood maps if it is not void as described below. The basemap shown complies with FEMA's basemap accuracy standards

The flood hazard information is derived directly from the authoritative NFHL web services provided by FEMA. This map was exported on 2/26/2024 at 11:21 AM and does not reflect changes or amendments subsequent to this date and time. The NFHL and effective information may change or become superseded by new data over time.

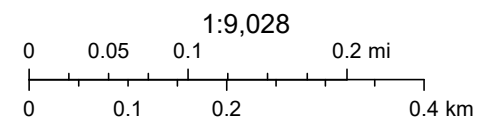
This map image is void if the one or more of the following map elements do not appear: basemap imagery, flood zone labels, legend, scale bar, map creation date, community identifiers, FIRM panel number, and FIRM effective date. Map images for unmapped and unmodernized areas cannot be used for regulatory purposes.

OCD Well Locations



2/26/2024, 9:24:48 AM

Karst Occurrence Potential PLSS Second Division
 Medium PLSS First Division



BLM, OCD, New Mexico Tech, USGS, OCD, Maxar, NM OSE, BLM

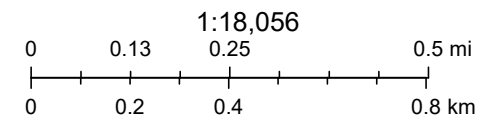
New Mexico Oil Conservation Division

OSE POD Location Map



2/26/2024, 9:39:08 AM

- Override 1
 - OSE District Boundary
 - New Mexico State Trust Lands
 - NHD Flowlines
 - Both Estates
 - Stream River
 - Active
 - Artesian Planning Area
- GIS WATERS PODs Water Right Regulations



Esri, HERE, IPC, Esri, HERE, Garmin, IPC, Maxar

Online web user


This is an unofficial map from the OSE's online application.

Significant Watercourse Map

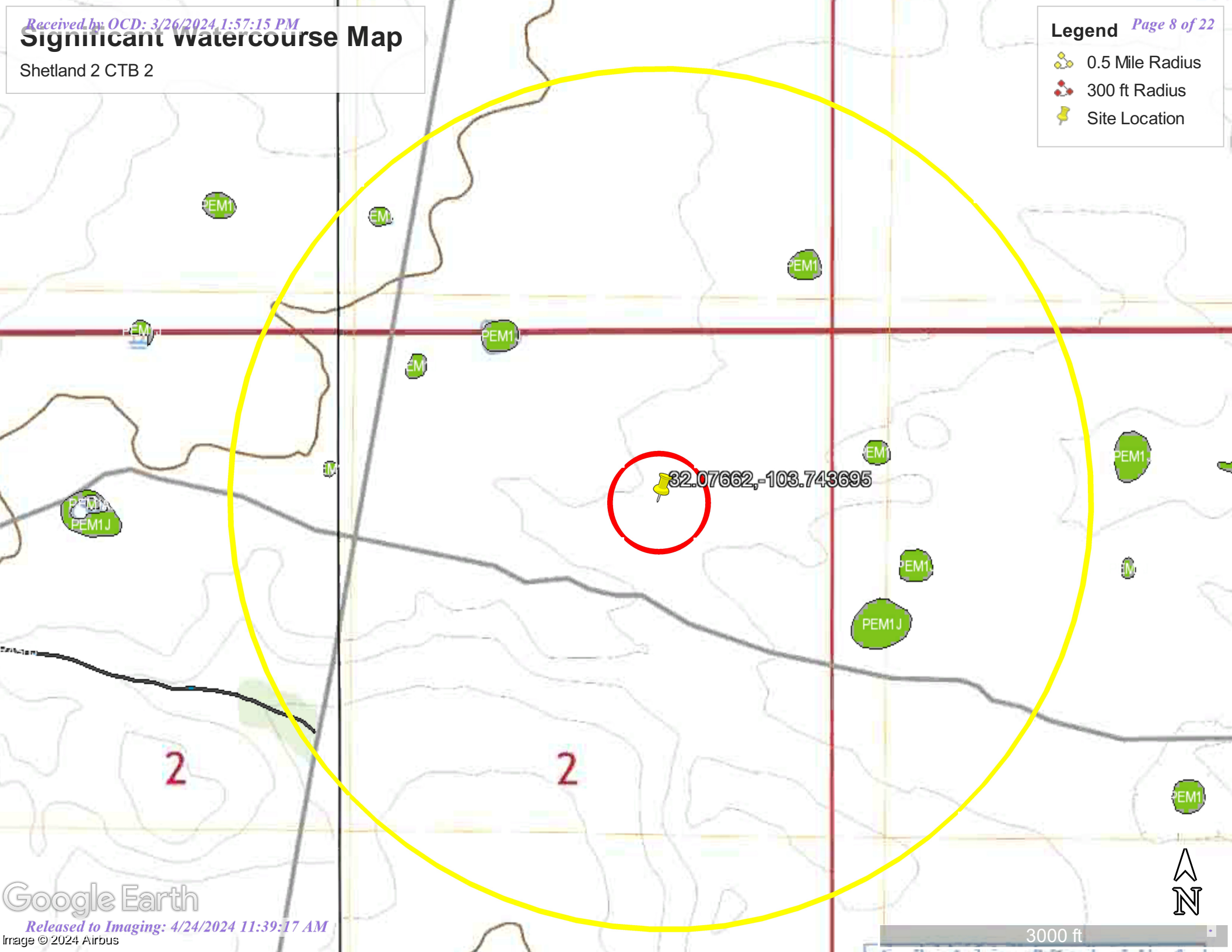
Shetland 2 CTB 2

Legend Page 8 of 22

 0.5 Mile Radius

 300 ft Radius

 Site Location



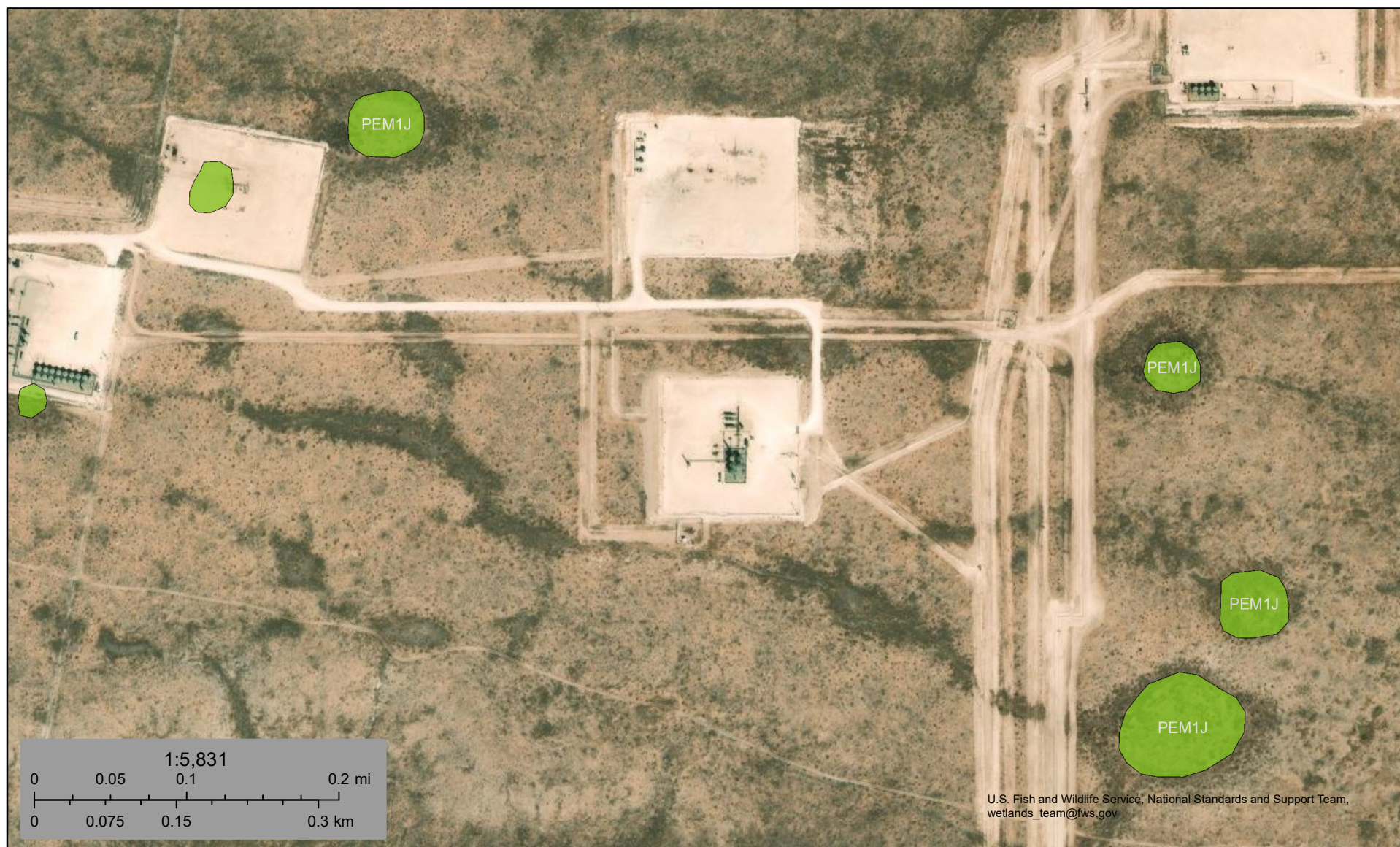
3000 ft



U.S. Fish and Wildlife Service

National Wetlands Inventory

Significant Watercourse



February 26, 2024

Wetlands

- Estuarine and Marine Deepwater
- Estuarine and Marine Wetland

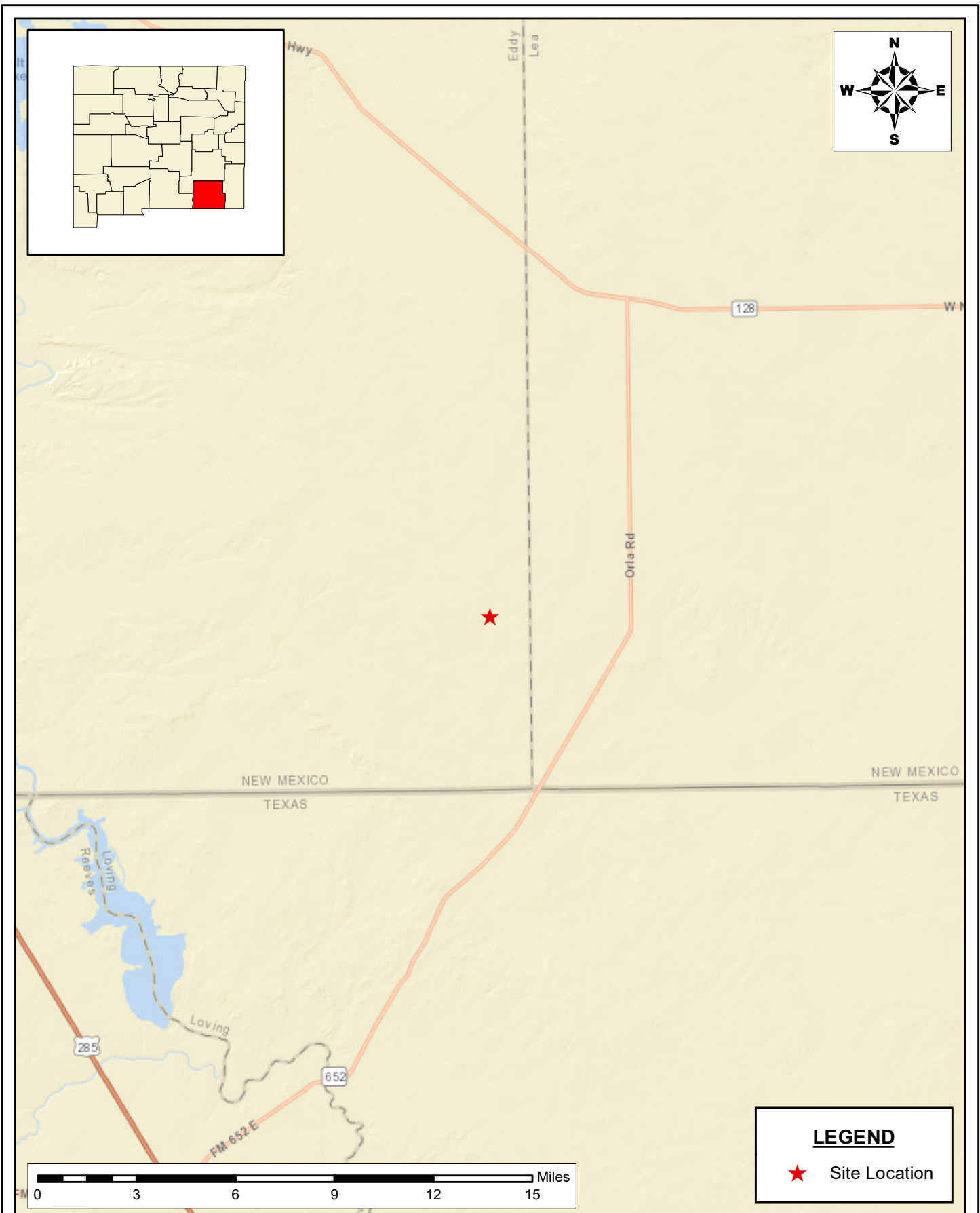
- Freshwater Emergent Wetland
- Freshwater Forested/Shrub Wetland
- Freshwater Pond

- Lake
- Other
- Riverine


This map is for general reference only. The US Fish and Wildlife Service is not responsible for the accuracy or currentness of the base data shown on this map. All wetlands related data should be used in accordance with the layer metadata found on the Wetlands Mapper web site.

FIGURES

Document Path: C:\Users\ntgegis\New Tech Global\NTGE - Documents\2024 PROJECTS\DEVON\NRSC\248395 - Shetland 2 CTB 2\7- Figures\GIS\Figure_1_SL.mxd



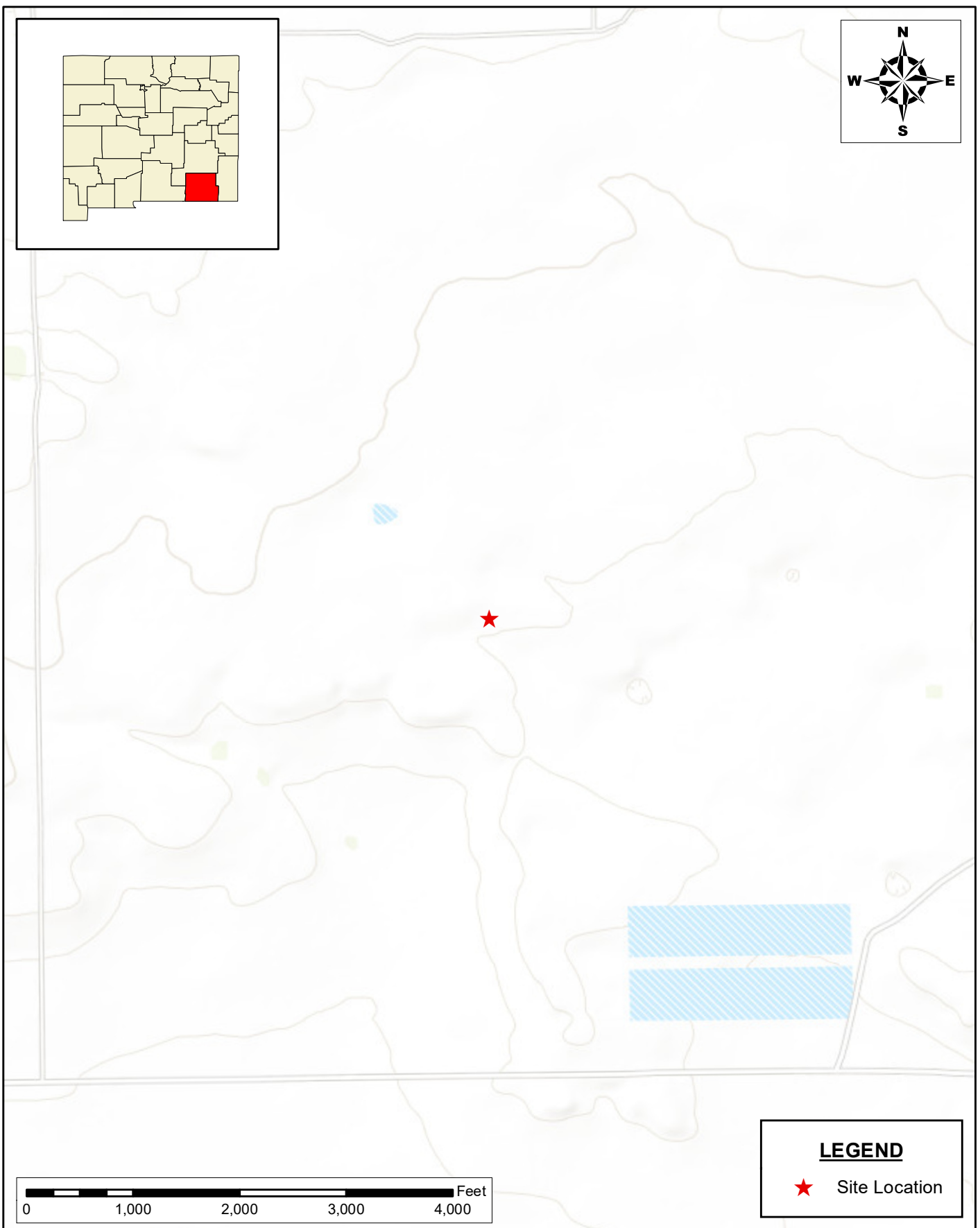
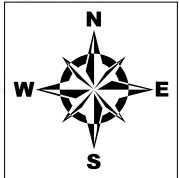
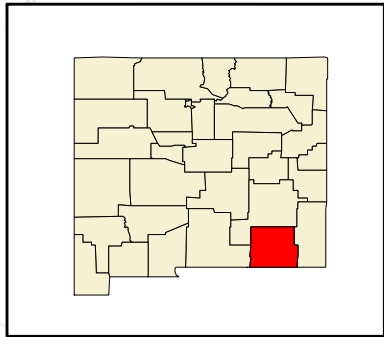
SITE LOCATION MAP CLOSURE REPORT SHETLAND 2 CTB 2 DEVON ENERGY PRODUCTION CORPORATION EDDY COUNTY, NEW MEXICO 32.07662,-103.743695		
SCALE: As Shown	Date: 2/26/2024	PROJECT #: 248395

 New Tech Global Environmental, LLC 911 Regional Park Drive Houston, Texas 77060 T - 281.872.9300 F - 281.872.4521 Web: www.ntgenvironmental.com


NOTES: 1. Base Image: ESRI Maps & Data 2013 2. Map Projection: NAD 1983
--

DRAWING NUMBER: FIGURE 1
SHEET NUMBER: 1 of 1

Document Path: C:\Users\ntgegis\New Tech Global\NTGE - Documents\2024 PROJECTS\DEVON\IRSC\248395 - Shetland 2 CTB 2\7- Figures\GIS\Figure_2_.mxd

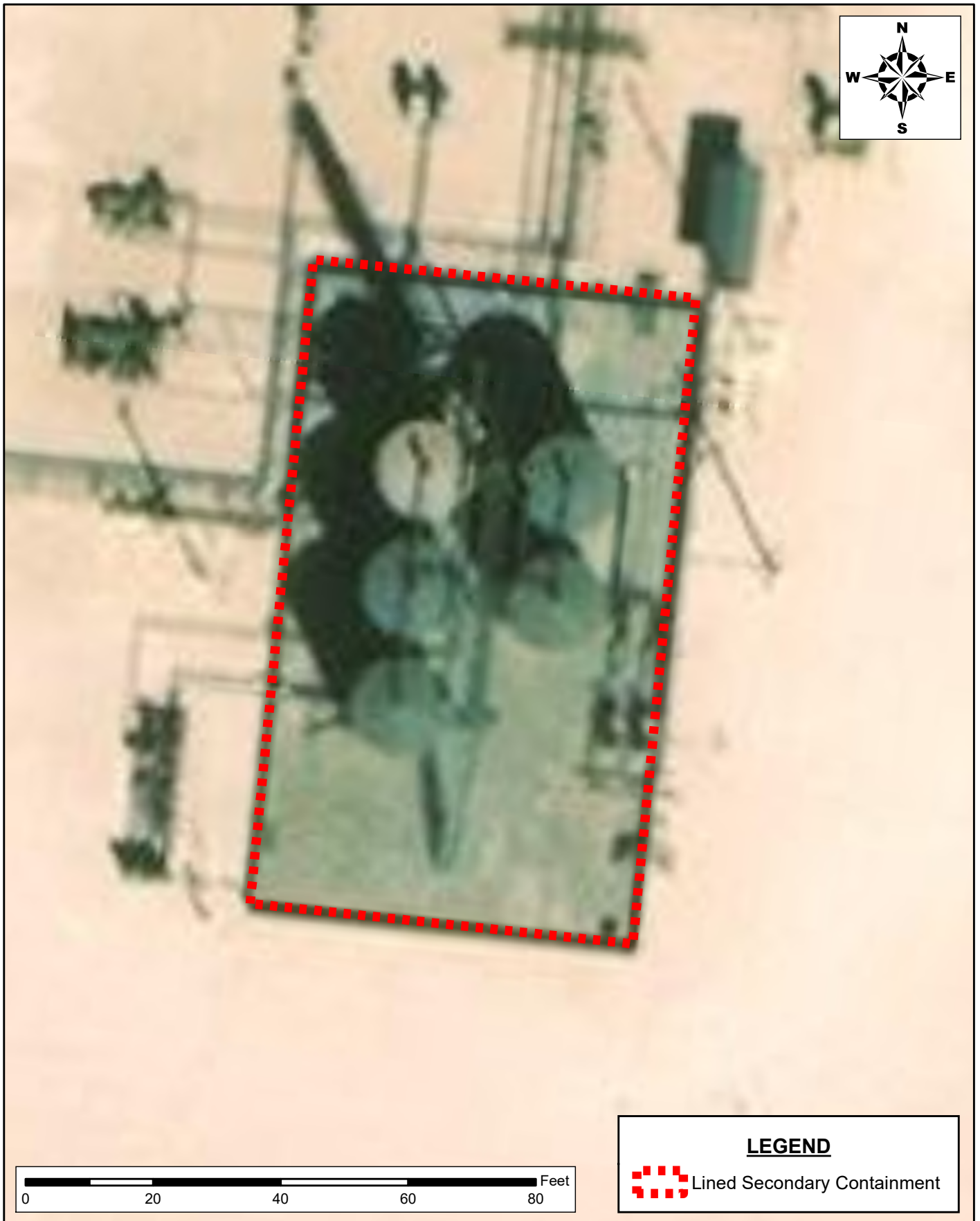


LEGEND

 Site Location

<div>TOPOGRAPHIC MAP CLOSURE REPORT SHETLAND 2 CTB 2 DEVON ENERGY PRODUCTION CORPORATION EDDY COUNTY, NEW MEXICO 32.07662,-103.743695</div>			<div> New Tech Global Environmental, LLC 911 Regional Park Drive Houston, Texas 77060 T - 281.872.9300 F - 281.872.4521 Web: www.ntgenvironmental.com</div>	<div>NOTES: 1. Base Image: ESRI Maps & Data 2013 2. Map Projection: NAD 1983</div>	DRAWING NUMBER:
					<div>FIGURE 2</div>
			SHEET NUMBER:		
			<div>1 of 1</div>		
SCALE: As Shown	Date: 2/26/2024	PROJECT #: 248395			

Document Path: C:\Users\ntg\gis\New Tech Global\NTGE - Documents\2024 PROJECTS\DEVON\RSC\248395 - Shetland 2 CTB 2\7- Figures\GIS\Figure_3_Liner.mxd



SECONDARY CONTAINMENT MAP
CLOSURE REPORT
DEVON ENERGY PRODUCITON
COMPANY SHETLAND 2 CTB 2
EDDY COUNTY, NEW MEXICO
32.07662, -103.743695



New Tech Global Environmental, LLC
911 Regional Park Drive
Houston, Texas 77060
T - 281.872.9300
F - 281.872.4521
Web: www.ntgenviroinmental.com

NOTES:

1. Base Image: ESRI Maps & Data 2017
2. Map Projection: NAD 1983

DRAWING NUMBER:

FIGURE 3

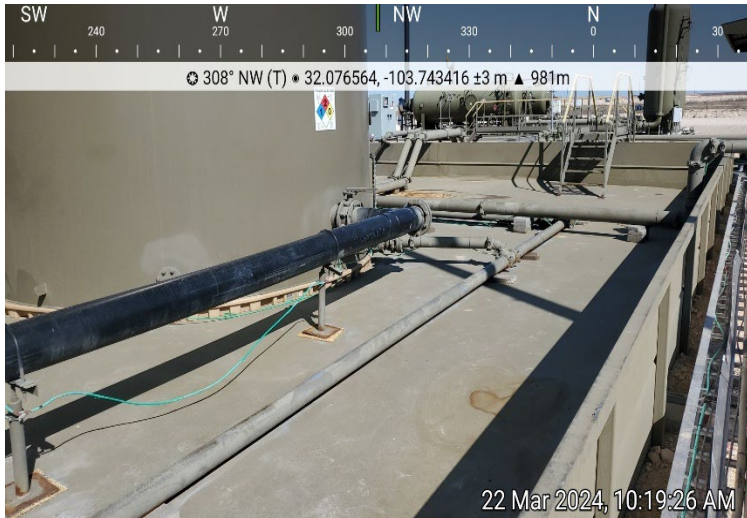
SHEET NUMBER:

1 of 1

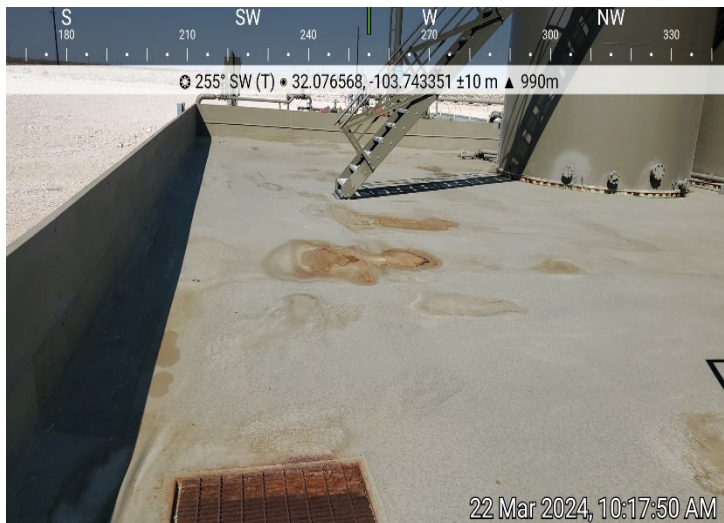
SCALE: AS SHOWN DATE: 03/19/2024 PROJECT #: 237334

PHOTOGRAPHIC LOG

PHOTOGRAPHIC LOG
Devon Energy Production Company
Shetland 2 CTB 2

Photograph No. 1**Facility:** Shetland 2 CTB 2**County:** Eddy County, New Mexico**Description:**
Area of Liner.**Photograph No. 2****Facility:** Shetland 2 CTB 2**County:** Eddy County, New Mexico**Description:**
Area of Liner.**Photograph No. 3****Facility:** Shetland 2 CTB 2**County:** Eddy County, New Mexico**Description:**
Area of Liner.

PHOTOGRAPHIC LOG
Devon Energy Production Company
Shetland 2 CTB 2

Photograph No. 4**Facility:** Shetland 2 CTB 2**County:** Eddy County, New Mexico**Description:**
Area of Liner.**Photograph No. 5****Facility:** Shetland 2 CTB 2**County:** Eddy County, New Mexico**Description:**
Area of Liner.**Photograph No. 6****Facility:** Shetland 2 CTB 2**County:** Eddy County, New Mexico**Description:**
Area of Liner.

District I
1625 N. French Dr., Hobbs, NM 88240
Phone:(575) 393-6161 Fax:(575) 393-0720
District II
811 S. First St., Artesia, NM 88210
Phone:(575) 748-1283 Fax:(575) 748-9720
District III
1000 Rio Brazos Rd., Aztec, NM 87410
Phone:(505) 334-6178 Fax:(505) 334-6170
District IV
1220 S. St Francis Dr., Santa Fe, NM 87505
Phone:(505) 476-3470 Fax:(505) 476-3462

State of New Mexico
Energy, Minerals and Natural Resources
Oil Conservation Division
1220 S. St Francis Dr.
Santa Fe, NM 87505

QUESTIONS

Action 326903

QUESTIONS

Operator: DEVON ENERGY PRODUCTION COMPANY, LP 333 West Sheridan Ave. Oklahoma City, OK 73102	OGRID:	6137
	Action Number:	326903
	Action Type:	[C-141] Remediation Closure Request C-141 (C-141-v-Closure)

QUESTIONS

Prerequisites	
Incident ID (n#)	nAPP2403753706
Incident Name	NAPP2403753706 SHETLAND 2 CTB 2 @ 0
Incident Type	Produced Water Release
Incident Status	Remediation Closure Report Received
Incident Facility	[fAPP2128035780] SHETLAND 2 CTB 2

Location of Release Source	
Please answer all the questions in this group.	
Site Name	SHETLAND 2 CTB 2
Date Release Discovered	02/06/2024
Surface Owner	State

Incident Details	
Please answer all the questions in this group.	
Incident Type	Produced Water Release
Did this release result in a fire or is the result of a fire	No
Did this release result in any injuries	No
Has this release reached or does it have a reasonable probability of reaching a watercourse	No
Has this release endangered or does it have a reasonable probability of endangering public health	No
Has this release substantially damaged or will it substantially damage property or the environment	No
Is this release of a volume that is or may with reasonable probability be detrimental to fresh water	No

Nature and Volume of Release	
Material(s) released, please answer all that apply below. Any calculations or specific justifications for the volumes provided should be attached to the follow-up C-141 submission.	
Crude Oil Released (bbls) Details	Cause: Equipment Failure Fitting Crude Oil Released: 5 BBL Recovered: 5 BBL Lost: 0 BBL.
Produced Water Released (bbls) Details	Cause: Equipment Failure Fitting Produced Water Released: 10 BBL Recovered: 10 BBL Lost: 0 BBL.
Is the concentration of chloride in the produced water >10,000 mg/l	No
Condensate Released (bbls) Details	Not answered.
Natural Gas Vented (Mcf) Details	Not answered.
Natural Gas Flared (Mcf) Details	Not answered.
Other Released Details	Not answered.
Are there additional details for the questions above (i.e. any answer containing Other, Specify, Unknown, and/or Fire, or any negative lost amounts)	Lease operator found a 4" VIC clamp had broken on the circulating line causing a spill. The circulating pump was turned off and valves were isolated to stop the leak.

District I

1625 N. French Dr., Hobbs, NM 88240
Phone:(575) 393-6161 Fax:(575) 393-0720

District II

811 S. First St., Artesia, NM 88210
Phone:(575) 748-1283 Fax:(575) 748-9720

District III

1000 Rio Brazos Rd., Aztec, NM 87410
Phone:(505) 334-6178 Fax:(505) 334-6170

District IV

1220 S. St Francis Dr., Santa Fe, NM 87505
Phone:(505) 476-3470 Fax:(505) 476-3462

State of New Mexico
Energy, Minerals and Natural Resources
Oil Conservation Division
1220 S. St Francis Dr.
Santa Fe, NM 87505

QUESTIONS, Page 2

Action 326903

QUESTIONS (continued)

Operator: DEVON ENERGY PRODUCTION COMPANY, LP 333 West Sheridan Ave. Oklahoma City, OK 73102	OGRID:	6137
	Action Number:	326903
	Action Type:	[C-141] Remediation Closure Request C-141 (C-141-v-Closure)

QUESTIONS

Nature and Volume of Release (continued)	
Is this a gas only submission (i.e. only significant Mcf values reported)	No, according to supplied volumes this does not appear to be a "gas only" report.
Was this a major release as defined by Subsection A of 19.15.29.7 NMAC	No
Reasons why this would be considered a submission for a notification of a major release	Unavailable.
With the implementation of the 19.15.27 NMAC (05/25/2021), venting and/or flaring of natural gas (i.e. gas only) are to be submitted on the C-129 form.	

Initial Response

The responsible party must undertake the following actions immediately unless they could create a safety hazard that would result in injury.

The source of the release has been stopped	True
The impacted area has been secured to protect human health and the environment	True
Released materials have been contained via the use of berms or dikes, absorbent pads, or other containment devices	True
All free liquids and recoverable materials have been removed and managed appropriately	True
If all the actions described above have not been undertaken, explain why	Not answered.

Per Paragraph (4) of Subsection B of 19.15.29.8 NMAC the responsible party may commence remediation immediately after discovery of a release. If remediation has begun, please prepare and attach a narrative of actions to date in the follow-up C-141 submission. If remedial efforts have been successfully completed or if the release occurred within a lined containment area (see Subparagraph (a) of Paragraph (5) of Subsection A of 19.15.29.11 NMAC), please prepare and attach all information needed for closure evaluation in the follow-up C-141 submission.

I hereby certify that the information given above is true and complete to the best of my knowledge and understand that pursuant to OCD rules and regulations all operators are required to report and/or file certain release notifications and perform corrective actions for releases which may endanger public health or the environment. The acceptance of a C-141 report by the OCD does not relieve the operator of liability should their operations have failed to adequately investigate and remediate contamination that pose a threat to groundwater, surface water, human health or the environment. In addition, OCD acceptance of a C-141 report does not relieve the operator of responsibility for compliance with any other federal, state, or local laws and/or regulations.

I hereby agree and sign off to the above statement	Name: Dale Woodall Title: EHS Professional Email: Dale.Woodall@dmv.com Date: 03/26/2024
--	--

District I

1625 N. French Dr., Hobbs, NM 88240
Phone:(575) 393-6161 Fax:(575) 393-0720

District II

811 S. First St., Artesia, NM 88210
Phone:(575) 748-1283 Fax:(575) 748-9720

District III

1000 Rio Brazos Rd., Aztec, NM 87410
Phone:(505) 334-6178 Fax:(505) 334-6170

District IV

1220 S. St Francis Dr., Santa Fe, NM 87505
Phone:(505) 476-3470 Fax:(505) 476-3462

State of New Mexico
Energy, Minerals and Natural Resources
Oil Conservation Division
1220 S. St Francis Dr.
Santa Fe, NM 87505

QUESTIONS, Page 3

Action 326903

QUESTIONS (continued)

Operator: DEVON ENERGY PRODUCTION COMPANY, LP 333 West Sheridan Ave. Oklahoma City, OK 73102	OGRID: 6137
	Action Number: 326903
	Action Type: [C-141] Remediation Closure Request C-141 (C-141-v-Closure)

QUESTIONS**Site Characterization**

Please answer all the questions in this group (only required when seeking remediation plan approval and beyond). This information must be provided to the appropriate district office no later than 90 days after the release discovery date.

What is the shallowest depth to groundwater beneath the area affected by the release in feet below ground surface (ft bgs)	Between 51 and 75 (ft.)
What method was used to determine the depth to ground water	NM OSE iWaters Database Search
Did this release impact groundwater or surface water	No
What is the minimum distance, between the closest lateral extents of the release and the following surface areas:	
A continuously flowing watercourse or any other significant watercourse	Between ½ and 1 (mi.)
Any lakebed, sinkhole, or playa lake (measured from the ordinary high-water mark)	Between 500 and 1000 (ft.)
An occupied permanent residence, school, hospital, institution, or church	Greater than 5 (mi.)
A spring or a private domestic fresh water well used by less than five households for domestic or stock watering purposes	Between ½ and 1 (mi.)
Any other fresh water well or spring	Between ½ and 1 (mi.)
Incorporated municipal boundaries or a defined municipal fresh water well field	Between ½ and 1 (mi.)
A wetland	Between 500 and 1000 (ft.)
A subsurface mine	Greater than 5 (mi.)
An (non-karst) unstable area	Greater than 5 (mi.)
Categorize the risk of this well / site being in a karst geology	Medium
A 100-year floodplain	Greater than 5 (mi.)
Did the release impact areas not on an exploration, development, production, or storage site	No

Remediation Plan

Please answer all the questions that apply or are indicated. This information must be provided to the appropriate district office no later than 90 days after the release discovery date.

Requesting a remediation plan approval with this submission	Yes
Attach a comprehensive report demonstrating the lateral and vertical extents of soil contamination associated with the release have been determined, pursuant to 19.15.29.11 NMAC and 19.15.29.13 NMAC.	
Have the lateral and vertical extents of contamination been fully delineated	Yes
Was this release entirely contained within a lined containment area	Yes
Per Subsection B of 19.15.29.11 NMAC unless the site characterization report includes completed efforts at remediation, the report must include a proposed remediation plan in accordance with 19.15.29.12 NMAC, which includes the anticipated timelines for beginning and completing the remediation.	
On what estimated date will the remediation commence	03/01/2024
On what date will (or did) the final sampling or liner inspection occur	03/22/2024
On what date will (or was) the remediation complete(d)	03/01/2024
What is the estimated surface area (in square feet) that will be remediated	0
What is the estimated volume (in cubic yards) that will be remediated	0
These estimated dates and measurements are recognized to be the best guess or calculation at the time of submission and may (be) change(d) over time as more remediation efforts are completed.	
The OCD recognizes that proposed remediation measures may have to be minimally adjusted in accordance with the physical realities encountered during remediation. If the responsible party has any need to significantly deviate from the remediation plan proposed, then it should consult with the division to determine if another remediation plan submission is required.	

District I
1625 N. French Dr., Hobbs, NM 88240
Phone:(575) 393-6161 Fax:(575) 393-0720

District II
811 S. First St., Artesia, NM 88210
Phone:(575) 748-1283 Fax:(575) 748-9720

District III
1000 Rio Brazos Rd., Aztec, NM 87410
Phone:(505) 334-6178 Fax:(505) 334-6170

District IV
1220 S. St Francis Dr., Santa Fe, NM 87505
Phone:(505) 476-3470 Fax:(505) 476-3462

State of New Mexico
Energy, Minerals and Natural Resources
Oil Conservation Division
1220 S. St Francis Dr.
Santa Fe, NM 87505

QUESTIONS, Page 4

Action 326903

QUESTIONS (continued)

Operator: DEVON ENERGY PRODUCTION COMPANY, LP 333 West Sheridan Ave. Oklahoma City, OK 73102	OGRID: 6137
	Action Number: 326903
	Action Type: [C-141] Remediation Closure Request C-141 (C-141-v-Closure)

QUESTIONS

Remediation Plan (continued)	
<i>Please answer all the questions that apply or are indicated. This information must be provided to the appropriate district office no later than 90 days after the release discovery date.</i>	
This remediation will (or is expected to) utilize the following processes to remediate / reduce contaminants:	
<i>(Select all answers below that apply.)</i>	
Is (or was) there affected material present needing to be removed	Yes
Is (or was) there a power wash of the lined containment area (to be) performed	Yes
OTHER (Non-listed remedial process)	No
<i>Per Subsection B of 19.15.29.11 NMAC unless the site characterization report includes completed efforts at remediation, the report must include a proposed remediation plan in accordance with 19.15.29.12 NMAC, which includes the anticipated timelines for beginning and completing the remediation.</i>	
I hereby certify that the information given above is true and complete to the best of my knowledge and understand that pursuant to OCD rules and regulations all operators are required to report and/or file certain release notifications and perform corrective actions for releases which may endanger public health or the environment. The acceptance of a C-141 report by the OCD does not relieve the operator of liability should their operations have failed to adequately investigate and remediate contamination that pose a threat to groundwater, surface water, human health or the environment. In addition, OCD acceptance of a C-141 report does not relieve the operator of responsibility for compliance with any other federal, state, or local laws and/or regulations.	
I hereby agree and sign off to the above statement	Name: Dale Woodall Title: EHS Professional Email: Dale.Woodall@dmr.com Date: 03/26/2024
<i>The OCD recognizes that proposed remediation measures may have to be minimally adjusted in accordance with the physical realities encountered during remediation. If the responsible party has any need to significantly deviate from the remediation plan proposed, then it should consult with the division to determine if another remediation plan submission is required.</i>	

District I

1625 N. French Dr., Hobbs, NM 88240
Phone:(575) 393-6161 Fax:(575) 393-0720

District II

811 S. First St., Artesia, NM 88210
Phone:(575) 748-1283 Fax:(575) 748-9720

District III

1000 Rio Brazos Rd., Aztec, NM 87410
Phone:(505) 334-6178 Fax:(505) 334-6170

District IV

1220 S. St Francis Dr., Santa Fe, NM 87505
Phone:(505) 476-3470 Fax:(505) 476-3462

State of New Mexico
Energy, Minerals and Natural Resources
Oil Conservation Division
1220 S. St Francis Dr.
Santa Fe, NM 87505

QUESTIONS, Page 6

Action 326903

QUESTIONS (continued)

Operator: DEVON ENERGY PRODUCTION COMPANY, LP 333 West Sheridan Ave. Oklahoma City, OK 73102	OGRID:	6137
	Action Number:	326903
	Action Type:	[C-141] Remediation Closure Request C-141 (C-141-v-Closure)

QUESTIONS

Liner Inspection Information	
Last liner inspection notification (C-141L) recorded	323757
Liner inspection date pursuant to Subparagraph (a) of Paragraph (5) of Subsection A of 19.15.29.11 NMAC	03/22/2024
Was all the impacted materials removed from the liner	Yes
What was the liner inspection surface area in square feet	6000

Remediation Closure Request

Only answer the questions in this group if seeking remediation closure for this release because all remediation steps have been completed.

Requesting a remediation closure approval with this submission	Yes
Have the lateral and vertical extents of contamination been fully delineated	Yes
Was this release entirely contained within a lined containment area	Yes
What was the total surface area (in square feet) remediated	0
What was the total volume (cubic yards) remediated	0
Summarize any additional remediation activities not included by answers (above)	see report

The responsible party must attach information demonstrating they have complied with all applicable closure requirements and any conditions or directives of the OCD. This demonstration should be in the form of a comprehensive report (in .pdf format) including a scaled site map, sampling diagrams, relevant field notes, photographs of any excavation prior to backfilling, laboratory data including chain of custody documents of final sampling, and a narrative of the remedial activities. Refer to 19.15.29.12 NMAC.

I hereby certify that the information given above is true and complete to the best of my knowledge and understand that pursuant to OCD rules and regulations all operators are required to report and/or file certain release notifications and perform corrective actions for releases which may endanger public health or the environment. The acceptance of a C-141 report by the OCD does not relieve the operator of liability should their operations have failed to adequately investigate and remediate contamination that pose a threat to groundwater, surface water, human health or the environment. In addition, OCD acceptance of a C-141 report does not relieve the operator of responsibility for compliance with any other federal, state, or local laws and/or regulations. The responsible party acknowledges they must substantially restore, reclaim, and re-vegetate the impacted surface area to the conditions that existed prior to the release or their final land use in accordance with 19.15.29.13 NMAC including notification to the OCD when reclamation and re-vegetation are complete.

I hereby agree and sign off to the above statement	Name: Dale Woodall Title: EHS Professional Email: Dale.Woodall@dmn.com Date: 03/26/2024
--	--

District I
1625 N. French Dr., Hobbs, NM 88240
Phone:(575) 393-6161 Fax:(575) 393-0720
District II
811 S. First St., Artesia, NM 88210
Phone:(575) 748-1283 Fax:(575) 748-9720
District III
1000 Rio Brazos Rd., Aztec, NM 87410
Phone:(505) 334-6178 Fax:(505) 334-6170
District IV
1220 S. St Francis Dr., Santa Fe, NM 87505
Phone:(505) 476-3470 Fax:(505) 476-3462

State of New Mexico
Energy, Minerals and Natural Resources
Oil Conservation Division
1220 S. St Francis Dr.
Santa Fe, NM 87505

CONDITIONS

Action 326903

CONDITIONS

Operator: DEVON ENERGY PRODUCTION COMPANY, LP 333 West Sheridan Ave. Oklahoma City, OK 73102	OGRID: 6137
	Action Number: 326903
	Action Type: [C-141] Remediation Closure Request C-141 (C-141-v-Closure)

CONDITIONS

Created By	Condition	Condition Date
scwells	None	4/24/2024