



Site Characterization Report and Remediation Workplan

July 16, 2024

**West Eumont Unit #407 Battery
Produced Water Release
Incident No. nAPP2316652967
Lea County, New Mexico**

Prepared For:

Forty Acres Energy, LLC
11757 Katy Freeway, Suite 725
Houston, Texas 77079

Prepared By:

Crain Environmental
2925 East 17th Street
Odessa, Texas 79761

A handwritten signature in blue ink that reads 'Cynthia K. Crain'.

Cynthia K. Crain, P.G.



Table of Contents

1.0	INTRODUCTION.....	1
2.0	BACKGROUND.....	1
3.0	NMOCD CLOSURE CRITERIA	1
3.1	Groundwater Evaluation	2
3.2	Surface Features and Other Development	2
3.3	Wetlands, Floodplain, and Karst Geology	3
3.4	Closure Criteria Currently Assumed Applicable to the Site	3
4.0	SITE ASSESSMENT/CHARACTERIZATION RESULTS	4
4.1	Site Map	4
4.2	Depth to Groundwater.....	4
4.3	Wellhead Protection Area	4
4.4	Distance to Nearest Significant Watercourse	4
4.5	Initial Delineation Activities	5
4.6	Laboratory Analytical Data Quality Assurance/Quality Control Results	5
5.0	PROPOSED REMEDIATION WORKPLAN	6
6.0	DISTRIBUTION.....	6

TABLES

Table 1: Summary of Soil Sample Analytical Results

FIGURES

Figure 1 – Site Location Map
Figure 2 – Soil Sample Analytical Results Map
Figure 3 – Wellhead Protection Area Map
Figure 4 – National Wetlands Inventory Map
Figure 5 – FEMA Floodplain Map
Figure 6 – Karst Potential Map

APPENDICES

Appendix A – Release Notification and Corrective Action Form (NMOCD Form C-141)
Appendix B – NMOCD Correspondence
Appendix C – Well Records and Logs
Appendix D – Laboratory Reports and Chain-of-Custody Documentation
Appendix E – Photographic Documentation



1.0 Introduction

Crain Environmental (CE), on behalf of Forty Acres Energy, LLC (FAE), has prepared this *Site Characterization Report and Remediation Workplan* for the produced water release at West Eumont Unit 407 Battery (Site), located approximately 13 miles northwest of Eunice and approximately 15 miles southwest of Hobbs, in Lea County, New Mexico. The global positioning system (GPS) coordinates for the release are 32.516528, -103.340494. The property surface rights are privately owned. Land use in the Site vicinity is primarily oil and gas production activity and cattle grazing. The location of the Site is depicted on Figure 1.

2.0 Background

On June 14, 2023, a release from a storage tank located at the West Eumont Unit 407 Battery was discovered. As a result of corrosion of the valve, approximately 25 barrels (bbls) of produced water were released. Immediately following the release, the area was secured, a vacuum truck was mobilized to the Site, and the tank was repaired. The released fluid covered a surface area of approximately 2,100 square feet. Approximately 25 bbl of fluid were recovered. The release point and the surface extent of the release are depicted on Figure 2.

A Notification of Release (NOR) was submitted to the New Mexico Oil Conservation Division (NMOCD) on June 15, 2023, and Incident #nAPP2316652967 was assigned. An Initial Form C-141 (Release Notification Report) was submitted on October 23, 2023. On April 17, 2024, a 90-day extension was approved for submittal of a Site Characterization Report and Remediation Workplan by July 16, 2024. Appendix A provides a copy of the C-141. Appendix B provides a copy of NMOCD correspondence.

This *Site Characterization Report and Remediation Workplan* is being submitted on the due date of July 16, 2024, in accordance with 19.15.29.11 New Mexico Administrative Code (NMAC).

3.0 NMOCD Closure Criteria

Cleanup standards for produced water spills are provided in 19.15.29 NMAC. The cleanup standards (described in the rule as "Closure Criteria") are based primarily on depth to groundwater but are also based on other criteria. Three different Closure Criteria are provided in the rule. The most stringent apply to sites where groundwater is found within 50 feet of the ground surface or if the release occurred within one of the following areas:

- Within 300 feet of any continuously flowing watercourse or any other significant watercourse.
- Within 200 feet of any lakebed, sinkhole or playa lake (measured from the ordinary highwater mark).
- Within 300 feet from an occupied permanent residence, school, hospital, institution or church.
- Within 500 feet of a spring or a private, domestic fresh water well used by less than five households for domestic or stock watering purposes.
- Within 1,000 feet of any fresh water well or spring.



- Within incorporated municipal boundaries or within a defined municipal fresh water well field covered under a municipal ordinance adopted pursuant to Section 3-27-3 NMSA 1978 as amended.
- Within 300 feet of a wetland.
- Within the area overlying a subsurface mine.
- Within an unstable area such as a karst formation.
- Within a 100-year floodplain.

CE reviewed available information to determine the Closure Criteria for the Site. The findings of this evaluation are summarized below.

3.1 Groundwater Evaluation

A review of the New Mexico Office of the State Engineer (NMOSE) records indicated there were no water wells located within 0.5 mile of the Site drilled within the last 25 years; however, FAE provided documentation that well (CP 1975 POD 1) was installed on August 24, 2023, to a depth of 160' below ground surface (bgs) and is located within 0.5 mile of the Site. Groundwater was not encountered in the well, and the well is listed in the table below. Figure 3 provides a 0.5-mile radius circle around the Site and shows the location of well CP-1975 POD 1. The well log is provided in Appendix C. Based on the available water well data, it is estimated that depth to groundwater at the Site is greater than 100 feet bgs.

Nearby Water Wells

Well ID	Location from Release Site	Year Installed	Use	Total Depth / Depth to Water (feet bgs)
CP 1975 POD 1	Approx. 929 feet to North	2023	N/A	160 / DRY

3.2 Surface Features and Other Development

CE reviewed recent aerial photographs, topographic maps, the NMOSE Point of Discharge (POD) GIS website, and information available from the Lea County, New Mexico Central Appraisal District website. As shown on Figure 1, the Site is **not** located:

- Within 300 feet of any continuously flowing watercourse or any other significant watercourse.
 - No continuously flowing watercourses (rivers, streams, arroyos, etc.) are apparent within 300 feet of the Site in the topographic map (Figure 1).
- Within 200 feet of any lakebed, sinkhole or playa lake (measured from the ordinary highwater mark).
 - The topographic map (Figure 1) indicates there is not a lakebed, sinkhole or playa lake located within 200 feet of the Site.
- Within 300 feet from an occupied permanent residence, school, hospital, institution or church.
 - The Site Location Map (Figure 1) and information available from the Lea County, New Mexico Central Appraisal District do not show or list any permanent residence, school, hospital, institution or church located within 300 feet of the Site.



- Within 500 feet of a spring or a private, domestic fresh water well used by less than five households for domestic or stock watering purposes.
 - No wells or springs located within 500 feet of the Site appear in any of the NMOSE records reviewed by CE.
- Within 1,000 feet of any fresh water well or spring.
 - No freshwater wells or springs located within 1,000 feet of the Site appear in any of the records reviewed by CE.
- Within incorporated municipal boundaries or within a defined municipal fresh water well field covered under a municipal ordinance adopted pursuant to Section 3-27-3 NMSA 1978 as amended.
 - Based on the property and other records review by CE, the Site is not located in incorporated municipal boundaries or within a defined municipal fresh water well field.
- Within the area overlying a subsurface mine.
 - Based on the property and other records reviewed by CE, the Site is not located within an area overlying a subsurface mine.

3.3 Wetlands, Floodplain, and Karst Geology

A review of the United States Fish and Wildlife Service (USFWS) wetlands map indicated the Site is not located within 300 feet of a wetland. The New Mexico Bureau of Land Management (BLM) karst potential map indicates the Site is located within a “low karst potential” area. Finally, review of the Federal Emergency Management Act (FEMA) floodplain map indicates the release at the Site is located outside of a 100-year floodplain. Figures 4, 5, and 6 depict the USFWS map, the FEMA floodplain map, and the karst potential map, respectively.

3.4 Closure Criteria Currently Assumed Applicable to the Site

At depths greater than 4' bgs, the Closure Criteria applicable to the Site will be based on the estimated depth to groundwater, which dictates the least stringent Closure Criteria typically associated with groundwater depths of greater than 100 feet bgs. From the surface to a depth of 4' bgs, the most stringent Closure Criteria will apply. A summary of the Closure Criteria is provided in the table below and in Table 1.



NMOCD Closure Criteria

Constituent of Concern		Closure Criteria Based on Depth to Groundwater (mg/kg)		
		≤ 50 feet bgs	51 feet to 100 feet bgs	> 100 feet bgs
Chloride (EPA 300)		600	10,000	20,000
TPH (EPA 8015M)	GRO + DRO + MRO	100	2,500	2,500
	GRO + DRO	NA	1,000	1,000
Total BTEX (EPA 8021 or 8260)		50	50	50
Benzene (EPA 8021 or 8260)		10	10	10

Notes: NA = not applicable
 bgs = below ground surface
 mg/kg = milligrams per kilogram
 GRO = gasoline range organics
 DRO = diesel range organics
 MRO = motor oil range organics
 TPH = total petroleum hydrocarbons
 BTEX = benzene, toluene, ethylbenzene, and total xylenes
 Green highlighted cells denote applicable Closure Criteria.

4.0 Site Assessment/Characterization Results

As per 19.15.29.11 NMAC, a Site Characterization Report will have the components described in Sections 4.1 through 4.5 of this document.

4.1 Site Map

As required by 19.15.29.11 NMAC, a scaled diagram showing significant Site infrastructure, sample point locations, and known subsurface features such as utilities is provided as Figure 2.

4.2 Depth to Groundwater

As discussed in Section 3.1, the exact depth to groundwater beneath the Site is unknown; however, a water well was drilled to the north (CP-1075) of the Site in 2023 to a depth of 160' bgs, and groundwater was not encountered. Depth to groundwater is estimated be greater than 100' bgs at the Site.

4.3 Wellhead Protection Area

The 0.5-mile wellhead protection area is shown on Figure 3. One water well was drilled within 0.5 mile of the Site in 2023, but the well was dry. There were no other water sources, springs, or other sources of freshwater extraction identified within 0.5-mile of the Site.

4.4 Distance to Nearest Significant Watercourse

The horizontal distance to the nearest significant watercourse as defined in Subsection P of 19.15.17.7 NMAC is greater than 0.5-mile from the Site.



4.5 Initial Delineation Activities

On January 24, 29, 30, and 31, and February 1 and 6, 2024, soil samples (DS-1 through DS-15) were collected by Terracon at 15 locations throughout the release area to determine the vertical and horizontal limits of the impact. Samples were collected from each location at a depth of 0.5' bgs, and a total depth of either 2.5', 4', or 5' bgs. Soil samples were placed in clean glass sample jars, properly labeled, immediately placed on ice and hand delivered to Cardinal Laboratories (Cardinal) in Hobbs, New Mexico under proper chain-of-custody control. All samples were analyzed for total petroleum hydrocarbons (TPH) by Environmental Protection Agency (EPA) SW-846 Method 8015 Modified, for benzene, toluene, ethylbenzene and xylenes (collectively referred to as BTEX) by EPA SW-846 Method 8021B, and for chlorides by Method SM4500Cl.

Table 1 provides a summary of the laboratory results, and sample locations are provided on Figure 2. The laboratory reports and chain-of-custody documentation are provided in Appendix D. Photographic documentation is provided in Appendix E.

Referring to Table 1, concentrations of BTEX were reported below the test method detection limits in all samples. Concentrations of TPH exceeded the Closure Criteria in 10 samples from 7 locations (DS-1, DS-2, DS-3, DS-9, DS-12, DS-13, and DS-14) at depths ranging from 2.5 to 5' bgs. Concentrations of chlorides exceeded the Closure Criteria in 3 samples at 2 sample locations (DS-10 and DS-12) at depths ranging from 2.5 to 4' bgs. Sample locations are shown on Figure 2.

Soils with TPH and chloride exceedances will be addressed in accordance with the Proposed Remediation Workplan discussed in Section 5.0.

4.6 Laboratory Analytical Data Quality Assurance/Quality Control Results

Data reported in Report Numbers H240326, H240408, H240426, H240439, H240496, and H240563 generated by Cardinal, was reviewed to ensure that reported analytical results met data quality objectives. It was determined by quality control data associated with analytical results that reported concentrations of target analytes are defensible and that measurement data reliability is within the expected limits of sampling and analytical error. All analytical results are usable for characterization of soil at the Site. The laboratory analytical results are provided as Appendix D.



5.0 Proposed Remediation Workplan

Benzene and BTEX concentrations were reported below the test method detection limits in all samples. Concentrations of TPH were reported above the Closure Criteria in 10 samples, and concentrations of chlorides were reported above the Closure Criteria in 3 samples, as listed on Table 1 and shown on Figure 2.

FAE proposes to excavate all impacted soil until confirmation samples collected from the bottom and sidewalls of the excavation report TPH and chloride concentrations below the NMOCD Closure Criteria. As initial BTEX concentrations were below the test method detection limits, each confirmation sample will be analyzed only for TPH and chlorides. Pursuant to 19.15.29.12(D) NMAC, confirmation samples will consist of five-point composite samples, and discrete grab samples will be collected from any wet or discolored areas. Samples collected by Terracon on January 24 through February 6, 2024, will be used to determine the necessary area of excavation. Sample that reported concentrations below the Closure Criteria will not be duplicated during collection of final confirmation samples. The excavated material will be transported under manifest to a NMOCD approved disposal facility.

Upon receipt of laboratory results that all TPH and chloride concentrations are below the Closure Criteria, the excavation will be backfilled to grade with non-impacted similar material obtained from a landowner pit. Pursuant to 19.15.29.13 NMAC, the impacted surface areas will be restored to pre-release conditions. Surface grading will be performed to near original conditions and contoured to prevent erosion and ponding, promote stability, and preserve storm water flow patterns.

FAE respectfully requests a remediation schedule of 90 days from the date of NMOCD approval of this Remediation Workplan to complete the proposed remediation activities and submit a *Remediation Summary and Closure Report* for NMOCD approval. The closure report will summarize remedial activities and confirmation sampling results, and will include the final Form C-141.

6.0 Distribution

Copy 1: Mike Bratcher
New Mexico Energy, Minerals, and Natural Resources Department
Oil Conservation Division, District 2
811 S. First Street
Artesia, New Mexico 88210

Copy 2: Ryan Swift
Forty Acres Energy, LLC
11757 Katy Freeway, Suite 725
Houston, Texas 77079



TABLE

TABLE 1
SUMMARY OF SOIL SAMPLE ANALYTICAL RESULTS
FORTY ACRES ENERGY, LLC
WEST EUMONT UNIT 407 BATTERY
NMOCD INCIDENT # nAPP2316652967

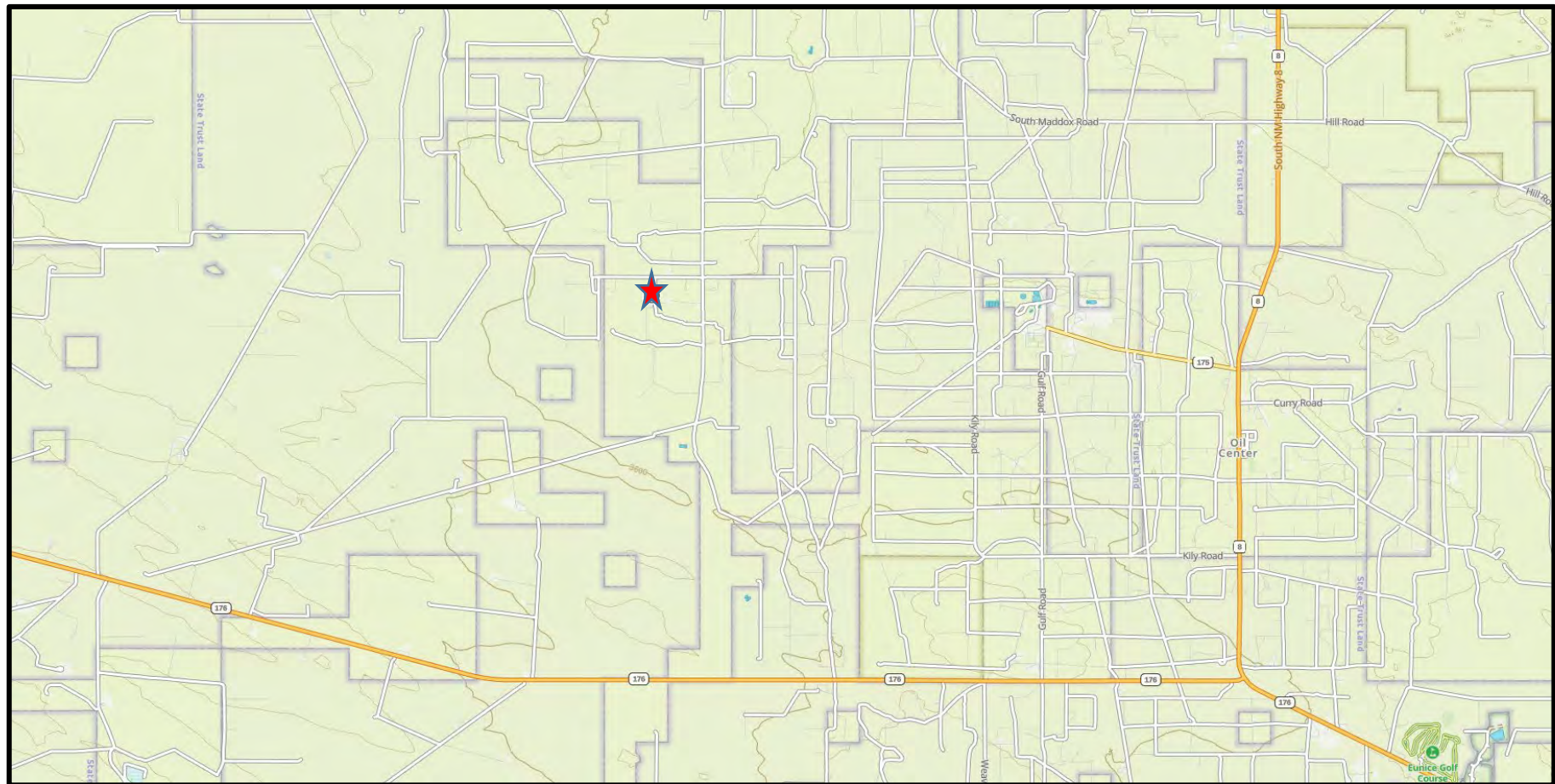
Sample ID	Sample Date	Sample Depth	Soil Status	TPH (GRO)	TPH (DRO)	TPH (MRO)	Total TPH	Benzene	Toluene	Ethylbenzene	Total Xylenes	Total BTEX	Chloride
				milligrams per kilogram (mg/kg)									
NMOCD Closure Criteria							100	10	-	-	-	50	600
NMOCD Closure Criteria (>4' bgs)				GRO + DRO = 1,000	-	-	2,500	10	-	-	-	50	20,000
DS-01 0.5'	01/24/24	0.5'	In Situ	<10.0	<10.0	<10.0	<10.0	<0.050	<0.050	<0.050	<0.150	<0.300	48.0
DS-01 5'	01/24/24	5'	In Situ	<10.0	2,930	1,100	4,030	<0.050	<0.050	<0.050	<0.150	<0.300	144
DS-02 0.5'	01/24/24	0.5'	In Situ	<10.0	237	208	445	<0.050	<0.050	<0.050	<0.150	<0.300	80.0
DS-02 5'	01/24/24	5'	In Situ	<10.0	<10.0	<10.0	<10.0	<0.050	<0.050	<0.050	<0.150	<0.300	480
DS-03 0.5'	01/24/24	0.5'	In Situ	<10.0	90.4	82.3	172.7	<0.050	<0.050	<0.050	<0.150	<0.300	32.0
DS-03 5'	01/24/24	5'	In Situ	<10.0	<10.0	<10.0	<10.0	<0.050	<0.050	<0.050	<0.150	<0.300	672
DS-04 0.5'	01/24/24	0.5'	In Situ	<10.0	<10.0	<10.0	<10.0	<0.050	<0.050	<0.050	<0.150	<0.300	48.0
DS-04 2.5'	01/29/24	2.5'	In Situ	<10.0	<10.0	<10.0	<10.0	<0.050	<0.050	<0.050	<0.150	<0.300	128
DS-05 0.5'	01/24/24	0.5'	In Situ	<10.0	<10.0	<10.0	<10.0	<0.050	<0.050	<0.050	<0.150	<0.300	64.0
DS-05 2.5'	01/24/24	2.5'	In Situ	<10.0	<10.0	<10.0	<10.0	<0.050	<0.050	<0.050	<0.150	<0.300	48.0
DS-06 0.5'	02/06/24	0.5'	In Situ	<10.0	<10.0	<10.0	<10.0	<0.050	<0.050	<0.050	<0.150	<0.300	32.0
DS-06 4'	02/06/24	4'	In Situ	<10.0	<10.0	<10.0	<10.0	<0.050	<0.050	<0.050	<0.150	<0.300	16.0
DS-07 0.5'	01/29/24	0.5'	In Situ	<10.0	<10.0	<10.0	<10.0	<0.050	<0.050	<0.050	<0.150	<0.300	16.0
DS-07 2.5'	01/29/24	2.5'	In Situ	<10.0	<10.0	<10.0	<10.0	<0.050	<0.050	<0.050	<0.150	<0.300	16.0
DS-07 5'	01/29/24	5'	In Situ	<10.0	<10.0	<10.0	<10.0	<0.050	<0.050	<0.050	<0.150	<0.300	96.0
DS-08 0.5'	02/06/24	0.5'	In Situ	<10.0	<10.0	<10.0	<10.0	<0.050	<0.050	<0.050	<0.150	<0.300	32.0
DS-08 4'	02/06/24	4'	In Situ	<10.0	<10.0	<10.0	<10.0	<0.050	<0.050	<0.050	<0.150	<0.300	32.0
DS-09 0.5'	01/29/24	0.5'	In Situ	<10.0	48.2	29.1	77.3	<0.050	<0.050	<0.050	<0.150	<0.300	96.0
DS-09 2.5'	01/29/24	2.5'	In Situ	<10.0	1,800	964	2,764	<0.050	<0.050	<0.050	<0.150	<0.300	288
DS-09 4'	01/29/24	4'	In Situ	<10.0	1,210	729	1,939	<0.050	<0.050	<0.050	<0.150	<0.300	400
DS-10 0.5'	01/29/24	0.5'	In Situ	<10.0	<10.0	<10.0	<10.0	<0.050	<0.050	<0.050	<0.150	<0.300	32.0
DS-10 2.5'	01/29/24	2.5'	In Situ	<10.0	<10.0	<10.0	<10.0	<0.050	<0.050	<0.050	<0.150	<0.300	336
DS-10 3.5'	01/31/24	3.5'	In Situ	<10.0	<10.0	<10.0	<10.0	<0.050	<0.050	<0.050	<0.150	<0.300	1,060
DS-11 0.5'	01/30/24	0.5'	In Situ	<10.0	<10.0	<10.0	<10.0	<0.050	<0.050	<0.050	<0.150	<0.300	32.0
DS-11 2'	01/30/24	2'	In Situ	<10.0	<10.0	<10.0	<10.0	<0.050	<0.050	<0.050	<0.150	<0.300	<16.0
DS-11 4'	01/30/24	4'	In Situ	<10.0	<10.0	<10.0	<10.0	<0.050	<0.050	<0.050	<0.150	<0.300	<16.0
DS-12 3.5'	01/31/24	3.5'	In Situ	<10.0	117	<10.0	117	<0.050	<0.050	<0.050	<0.150	<0.300	1,710
DS-12 4'	02/01/24	4'	In Situ	<10.0	112	15.6	127.6	<0.050	<0.050	<0.050	<0.150	<0.300	2,720
DS-12 5'	02/01/24	5'	In Situ	<10.0	<10.0	<10.0	<10.0	<0.050	<0.050	<0.050	<0.150	<0.300	1,810
DS-13 1.5'	02/01/24	1.5'	In Situ	11.0	2,710	1,190	3,911	<0.050	<0.050	<0.050	<0.150	<0.300	32.0
DS-13 2.5'	02/01/24	2.5'	In Situ	<10.0	1,880	555	2,435	<0.050	<0.050	<0.050	<0.150	<0.300	80.0
DS-13 5'	02/06/24	5'	In Situ	<10.0	<10.0	<10.0	<10.0	<0.050	<0.050	<0.050	<0.150	<0.300	192
DS-14 2.5'	02/01/24	2.5'	In Situ	<10.0	2,070	404	2,474	<0.050	<0.050	<0.050	<0.150	<0.300	32.0
DS-14 5'	02/06/24	5'	In Situ	<10.0	<10.0	<10.0	<10.0	<0.050	<0.050	<0.050	<0.150	<0.300	656
DS-15 0.5'	02/01/24	0.5'	In Situ	<10.0	53.8	10.7	64.5	<0.050	<0.050	<0.050	<0.150	<0.300	16.0



Notes:

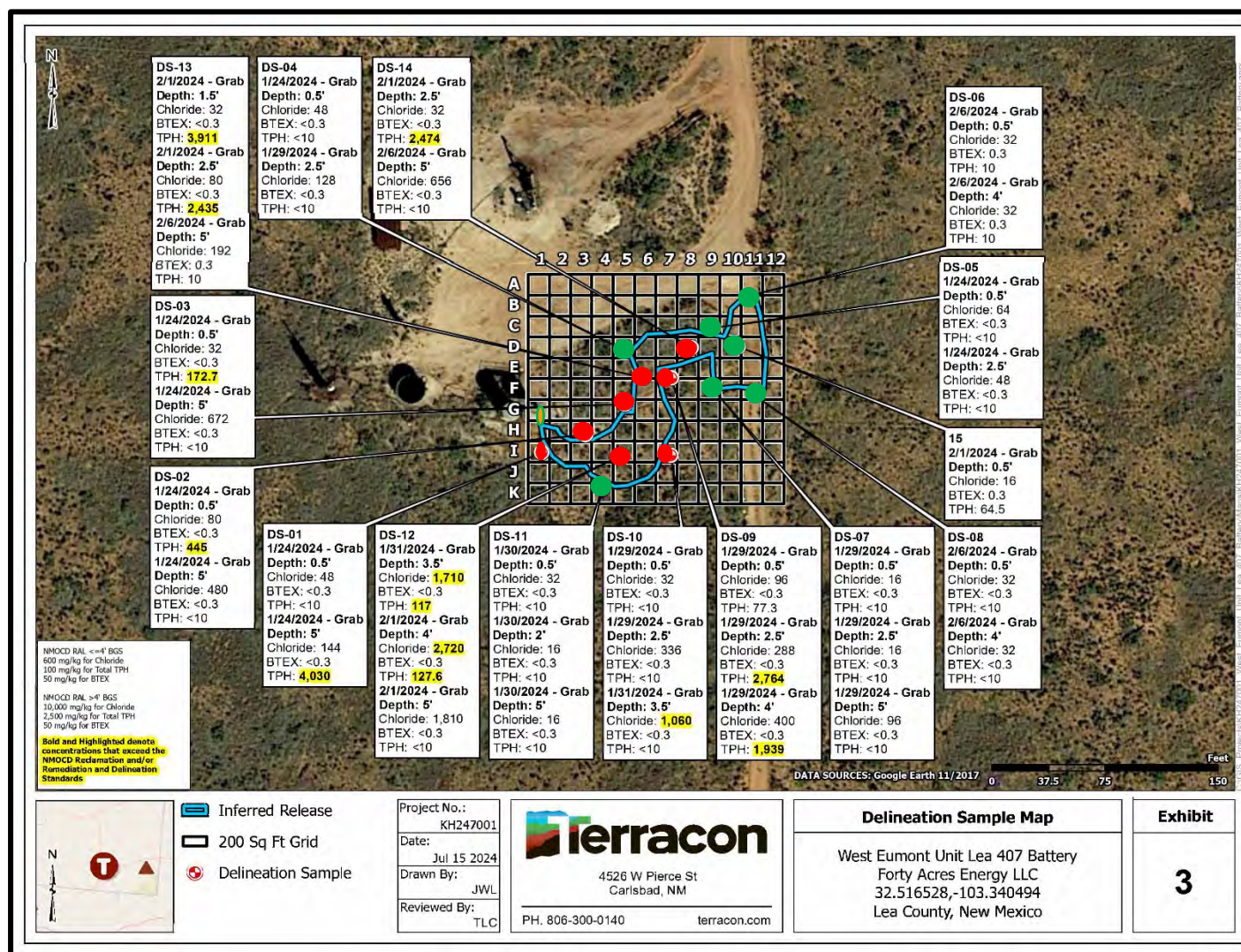
1. GRO: Gasoline Range Organics
2. DRO: Diesel Range Organics
3. MRO: Motor Oil Range Organics
4. -: No NMOCD Closure Criteria established.
6. Bold indicates the COC was above the appropriate laboratory method/sample detection limit.
7. < indicates the COC was below the appropriate laboratory method/sample detection limit.
8. Bold and yellow highlighting indicates the COC was above the appropriate NMOCD Closure Criteria.



FIGURES



LEGEND:  Site Location Base Map From GAIA GPS	Figure 1 Site Location Map Forty Acres Energy, LLC West Eumont Unit 407 Battery Lea County, New Mexico		
		Drafted by: CC Checked by: CC	
		Draft: July 15, 2024	
		GPS: 32.516528° -103.340494°	



LEGEND:

- Soil Sample Location With Chloride Concentration (mg/kg). No excavation Needed.
- Soil Sample Location With Chloride Concentration (mg/kg). Additional excavation Needed.
- Release Point
- Inferred Release Boundary
- Highlighting Indicates Concentration Above the Closure Criteria

Figure 2

Soil Sample Location Map

Forty Acres Energy, LLC
 West Eumont Unit 407 Battery
 Lea County, New Mexico

Drafted by: CC | Checked by: CC



Draft: July 15, 2024

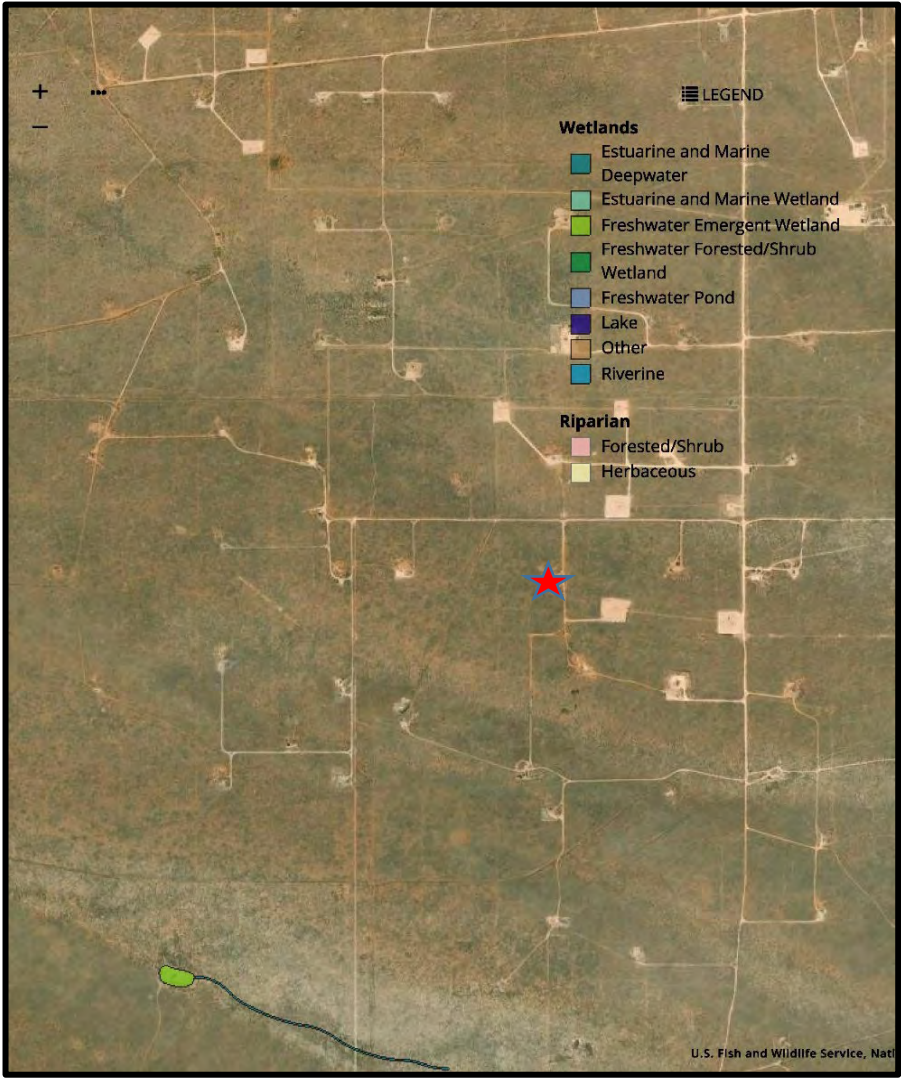
GPS: 32.516528° -103.340494°



Base Map From Google Earth Pro

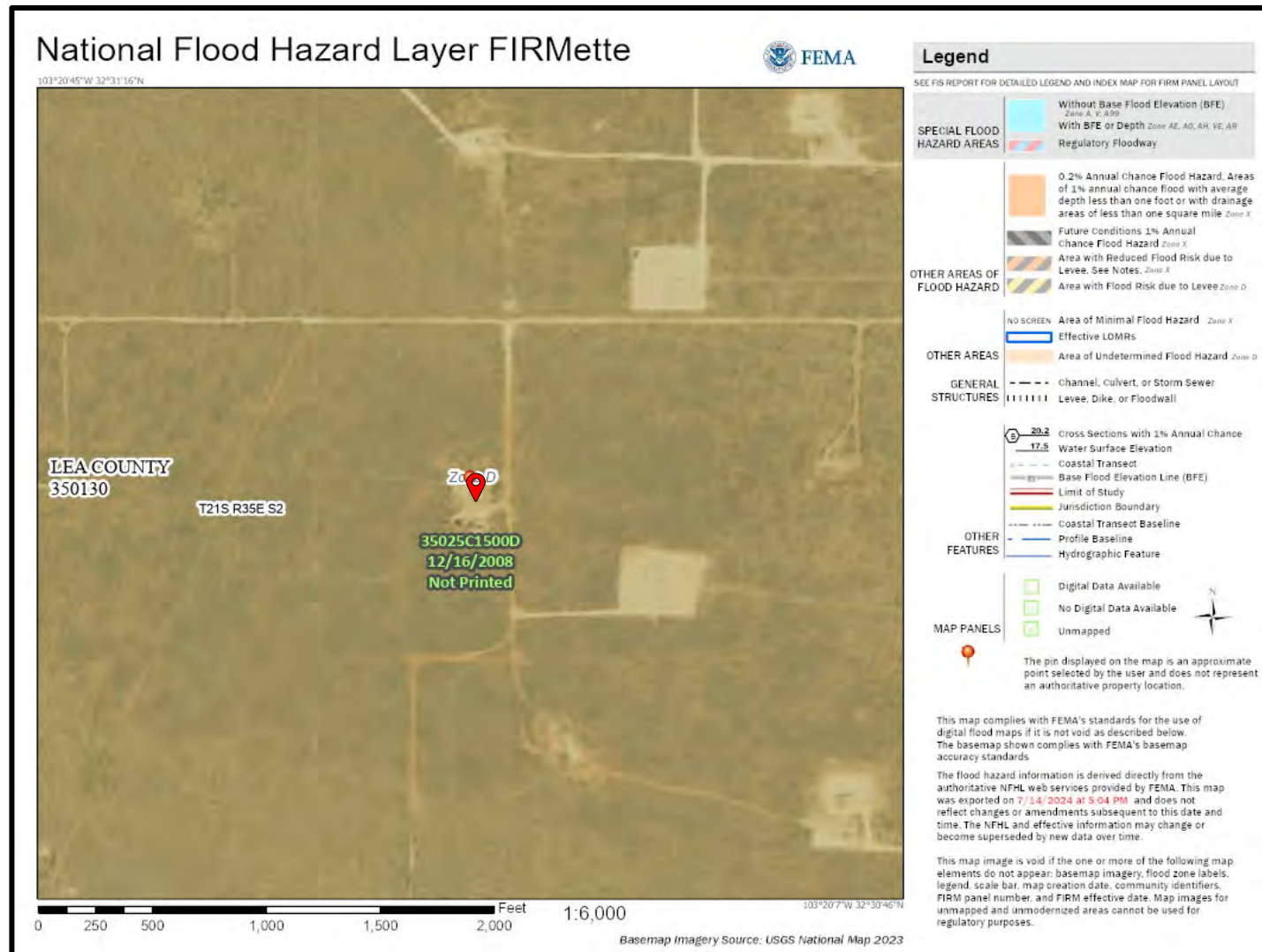




<div>LEGEND:</div> <div> Site and Well Location</div> <div>Base Map from Google Earth Pro</div>	<div>Figure 3</div> <div>Wellhead Protection Area Map</div> <div>Forty Acres Energy, LLC</div> <div>West Eumont Unit 407 Battery</div> <div>Lea County, New Mexico</div>		
		Drafted by: CC Checked by: CC	
		Draft: July 15, 2024	
		GPS: 32.516528° -103.340494°	



LEGEND:  Site Location Base Map From US Fish & Wildlife Service	Figure 4 National Wetlands Inventory Map Forty Acres Energy, LLC West Eumont Unit 407 Battery Lea County, New Mexico		
		Drafted by: CC Checked by: CC	
		Draft: July 15, 2024	
		GPS: 32.516528° -103.340494°	

**LEGEND:**

Site Location

Base Map From FEMA

Figure 5**FEMA Floodplain Map**

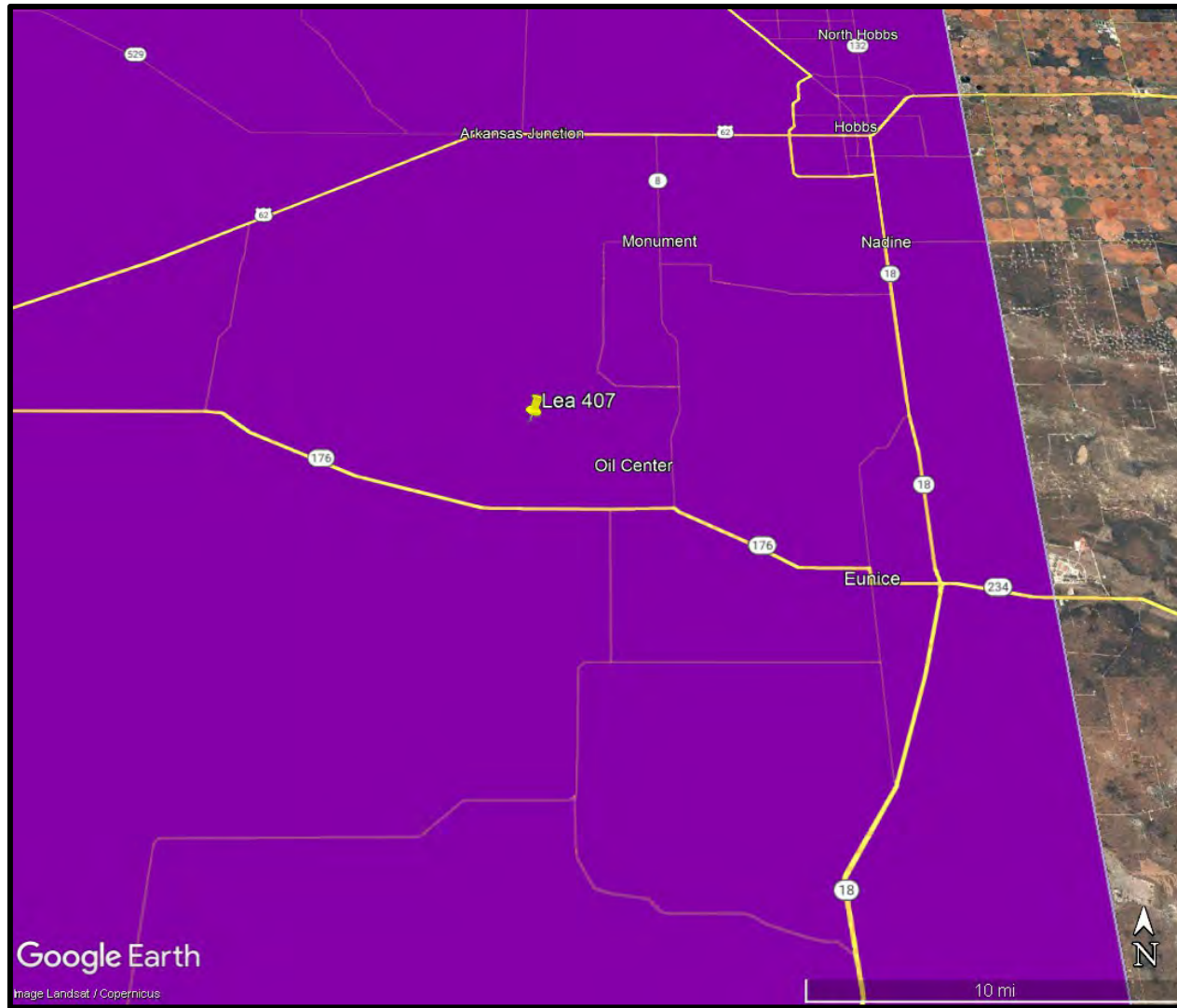
Forty Acres Energy, LLC
West Eumont Unit 407 Battery
Lea County, New Mexico


Drafted by: CC | Checked by: CC

Draft: July 15, 2024

GPS: 32.516528° -103.340494°





<p>LEGEND:</p> <div style="display: flex; align-items: center;"> <div style="width: 20px; height: 10px; background-color: purple; margin-right: 5px;"></div> <div>Low Karst Potential</div> </div> <div style="display: flex; align-items: center;"> <div style="width: 20px; height: 10px; background-color: pink; margin-right: 5px;"></div> <div>Medium Karst Potential</div> </div> <div style="display: flex; align-items: center;"> <div style="width: 20px; height: 10px; background-color: red; margin-right: 5px;"></div> <div>High Karst Potential</div> </div> <p>Base Map from Google Earth Pro</p>	<p align="center">Figure 6</p> <p align="center">Karst Potential Map</p> <p align="center">Forty Acres Energy, LLC West Eumont Unit 407 Battery Lea County, New Mexico</p>	<div>Drafted by: CC Checked by: CC</div> <div>Draft: July 15, 2024</div> <div>GPS: 32.516528° -103.340494°</div>	
--	--	--	---



**Appendix A: Release Notification and Corrective Action Form
(NMOCD Form C-141)**

District I
1625 N. French Dr., Hobbs, NM 88240
District II
811 S. First St., Artesia, NM 88210
District III
1000 Rio Brazos Road, Aztec, NM 87410
District IV
1220 S. St. Francis Dr., Santa Fe, NM 87505

State of New Mexico
Energy Minerals and Natural
Resources Department

Oil Conservation Division
1220 South St. Francis Dr.
Santa Fe, NM 87505

Form C-141
Revised August 24, 2018
Submit to appropriate OCD District office

Incident ID	NAPP2316652967
District RP	
Facility ID	
Application ID	

Release Notification

Responsible Party

Responsible Party	Forty Acres Energy	OGRID	371416
Contact Name	Alex Bolanos	Contact Telephone	832-689-3788
Contact email	alex@faenergyus.com	Incident # (assigned by OCD)	NAPP2316652967
Contact mailing address	11757 Katy FWY Suite 725, Houston, TX 77079		

Location of Release Source

Latitude 32.516528 Longitude -103.340494
(NAD 83 in decimal degrees to 5 decimal places)

Site Name	West Eumont Unit Lea 407 Battery	Site Type	Battery
Date Release Discovered	6/14/2023	API# (if applicable)	

Unit Letter	Section	Township	Range	County
C	02	21 S	35E	Lea

Surface Owner: ☐ State ☐ Federal ☐ Tribal ☒ Private (Name: Dale Cooper)

Nature and Volume of Release

Material(s) Released (Select all that apply and attach calculations or specific justification for the volumes provided below)

<input type="checkbox"/> Crude Oil	Volume Released (bbls)	Volume Recovered (bbls)
<input checked="" type="checkbox"/> Produced Water	Volume Released (bbls) 25 bbls	Volume Recovered (bbls) 25 bbls
	Is the concentration of dissolved chloride in the produced water >10,000 mg/l?	<input checked="" type="checkbox"/> Yes <input type="checkbox"/> No
<input type="checkbox"/> Condensate	Volume Released (bbls)	Volume Recovered (bbls)
<input type="checkbox"/> Natural Gas	Volume Released (Mcf)	Volume Recovered (Mcf)
<input type="checkbox"/> Other (describe)	Volume/Weight Released (provide units)	Volume/Weight Recovered (provide units)

Cause of Release

A hole was found in the bottom of a still oil tank.

Form C-141

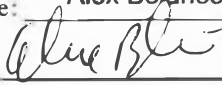
State of New Mexico
Oil Conservation Division

Page 2

Incident ID	NAPP2316652967
District RP	
Facility ID	
Application ID	

Was this a major release as defined by 19.15.29.7(A) NMAC? <input checked="" type="checkbox"/> Yes <input type="checkbox"/> No	If YES, for what reason(s) does the responsible party consider this a major release? The release was over 25 bbls of water, which was contained within the battery containment. Forty Acres has removed the water and soil from location.
If YES, was immediate notice given to the OCD? By whom? To whom? When and by what means (phone, email, etc)? Yes, Jame Martinez put a one call into Mike Bratsher on 6/14/2023.	

Initial Response*The responsible party must undertake the following actions immediately unless they could create a safety hazard that would result in injury*

<input checked="" type="checkbox"/> The source of the release has been stopped.	
<input checked="" type="checkbox"/> The impacted area has been secured to protect human health and the environment.	
<input checked="" type="checkbox"/> Released materials have been contained via the use of berms or dikes, absorbent pads, or other containment devices.	
<input checked="" type="checkbox"/> All free liquids and recoverable materials have been removed and managed appropriately.	
If all the actions described above have <u>not</u> been undertaken, explain why: 	
Per 19.15.29.8 B. (4) NMAC the responsible party may commence remediation immediately after discovery of a release. If remediation has begun, please attach a narrative of actions to date. If remedial efforts have been successfully completed or if the release occurred within a lined containment area (see 19.15.29.11(A)(5)(a) NMAC), please attach all information needed for closure evaluation.	
I hereby certify that the information given above is true and complete to the best of my knowledge and understand that pursuant to OCD rules and regulations all operators are required to report and/or file certain release notifications and perform corrective actions for releases which may endanger public health or the environment. The acceptance of a C-141 report by the OCD does not relieve the operator of liability should their operations have failed to adequately investigate and remediate contamination that pose a threat to groundwater, surface water, human health or the environment. In addition, OCD acceptance of a C-141 report does not relieve the operator of responsibility for compliance with any other federal, state, or local laws and/or regulations.	
Printed Name: <u>Alex Bojanos</u>	Title: <u>Regulatory & Production Analyst</u>
Signature: <u></u>	Date: <u>6/15/2023</u>
email: <u>alex@faenergyus.com</u>	Telephone: <u>832-689-3788</u>
<u>OCD Only</u>	
Received by: <u>Shelly Wells</u>	Date: <u>10/23/2023</u>

District I
1625 N. French Dr., Hobbs, NM 88240
Phone:(575) 393-6161 Fax:(575) 393-0720
District II
811 S. First St., Artesia, NM 88210
Phone:(575) 748-1283 Fax:(575) 748-9720
District III
1000 Rio Brazos Rd., Aztec, NM 87410
Phone:(505) 334-6178 Fax:(505) 334-6170
District IV
1220 S. St Francis Dr., Santa Fe, NM 87505
Phone:(505) 476-3470 Fax:(505) 476-3462

State of New Mexico
Energy, Minerals and Natural Resources
Oil Conservation Division
1220 S. St Francis Dr.
Santa Fe, NM 87505

CONDITIONS

Action 278261

CONDITIONS

Operator: FORTY ACRES ENERGY, LLC 11757 KATY FWY HOUSTON, TX 77079173	OGRID: 371416
	Action Number: 278261
	Action Type: [C-141] Release Corrective Action (C-141)

CONDITIONS

Created By	Condition	Condition Date
scwells	None	10/23/2023

Released Volume Calculation

Length	100 feet
Width	21 feet
Thickness	0.5 in

1,050 gal = 25 Est. Total Bbls Released

Volume = L*W*T

Total Released Volume =	1,050 gallons (US, dry)
	25 Bbls

Incident ID	nAPP2316652967
District RP	
Facility ID	
Application ID	

Site Assessment/Characterization

This information must be provided to the appropriate district office no later than 90 days after the release discovery date.

What is the shallowest depth to groundwater beneath the area affected by the release?	<u>>100</u> (ft bgs)
Did this release impact groundwater or surface water?	<input type="checkbox"/> Yes <input checked="" type="checkbox"/> No
Are the lateral extents of the release within 300 feet of a continuously flowing watercourse or any other significant watercourse?	<input type="checkbox"/> Yes <input checked="" type="checkbox"/> No
Are the lateral extents of the release within 200 feet of any lakebed, sinkhole, or playa lake (measured from the ordinary high-water mark)?	<input type="checkbox"/> Yes <input checked="" type="checkbox"/> No
Are the lateral extents of the release within 300 feet of an occupied permanent residence, school, hospital, institution, or church?	<input type="checkbox"/> Yes <input checked="" type="checkbox"/> No
Are the lateral extents of the release within 500 horizontal feet of a spring or a private domestic fresh water well used by less than five households for domestic or stock watering purposes?	<input type="checkbox"/> Yes <input checked="" type="checkbox"/> No
Are the lateral extents of the release within 1000 feet of any other fresh water well or spring?	<input type="checkbox"/> Yes <input checked="" type="checkbox"/> No
Are the lateral extents of the release within incorporated municipal boundaries or within a defined municipal fresh water well field?	<input type="checkbox"/> Yes <input checked="" type="checkbox"/> No
Are the lateral extents of the release within 300 feet of a wetland?	<input type="checkbox"/> Yes <input checked="" type="checkbox"/> No
Are the lateral extents of the release overlying a subsurface mine?	<input type="checkbox"/> Yes <input checked="" type="checkbox"/> No
Are the lateral extents of the release overlying an unstable area such as karst geology?	<input type="checkbox"/> Yes <input checked="" type="checkbox"/> No
Are the lateral extents of the release within a 100-year floodplain?	<input type="checkbox"/> Yes <input checked="" type="checkbox"/> No
Did the release impact areas not on an exploration, development, production, or storage site?	<input checked="" type="checkbox"/> Yes <input type="checkbox"/> No

Attach a comprehensive report (electronic submittals in .pdf format are preferred) demonstrating the lateral and vertical extents of soil contamination associated with the release have been determined. Refer to 19.15.29.11 NMAC for specifics.

Characterization Report Checklist: *Each of the following items must be included in the report.*

- ☒ Scaled site map showing impacted area, surface features, subsurface features, delineation points, and monitoring wells.
- ☒ Field data
- ☒ Data table of soil contaminant concentration data
- ☒ Depth to water determination
- ☒ Determination of water sources and significant watercourses within ½-mile of the lateral extents of the release
- ☒ Boring or excavation logs
- ☒ Photographs including date and GIS information
- ☒ Topographic/Aerial maps
- ☒ Laboratory data including chain of custody

If the site characterization report does not include completed efforts at remediation of the release, the report must include a proposed remediation plan. That plan must include the estimated volume of material to be remediated, the proposed remediation technique, proposed sampling plan and methods, anticipated timelines for beginning and completing the remediation. The closure criteria for a release are contained in Table 1 of 19.15.29.12 NMAC, however, use of the table is modified by site- and release-specific parameters.

State of New Mexico
Oil Conservation Division


Page 4

Incident ID	nAPP2316652967
District RP	
Facility ID	
Application ID	

I hereby certify that the information given above is true and complete to the best of my knowledge and understand that pursuant to OCD rules and regulations all operators are required to report and/or file certain release notifications and perform corrective actions for releases which may endanger public health or the environment. The acceptance of a C-141 report by the OCD does not relieve the operator of liability should their operations have failed to adequately investigate and remediate contamination that pose a threat to groundwater, surface water, human health or the environment. In addition, OCD acceptance of a C-141 report does not relieve the operator of responsibility for compliance with any other federal, state, or local laws and/or regulations.

Printed Name: Cindy Crain

Title: Agent for Forty Acres Energy, LLC

Signature: 

Date: 7/16/24

email: cindy.crain@gmail.com

Telephone: (575) 441-7244

OCD Only

Received by: _____

Date: _____

Incident ID	nAPP2316652967
District RP	
Facility ID	
Application ID	

Remediation Plan

Remediation Plan Checklist: *Each of the following items must be included in the plan.*

- ☒ Detailed description of proposed remediation technique
- ☒ Scaled sitemap with GPS coordinates showing delineation points
- ☒ Estimated volume of material to be remediated
- ☒ Closure criteria is to Table 1 specifications subject to 19.15.29.12(C)(4) NMAC
- ☒ Proposed schedule for remediation (note if remediation plan timeline is more than 90 days OCD approval is required)

Deferral Requests Only: *Each of the following items must be confirmed as part of any request for deferral of remediation.*

- ☐ Contamination must be in areas immediately under or around production equipment where remediation could cause a major facility deconstruction.
- ☐ Extents of contamination must be fully delineated.
- ☐ Contamination does not cause an imminent risk to human health, the environment, or groundwater.

I hereby certify that the information given above is true and complete to the best of my knowledge and understand that pursuant to OCD rules and regulations all operators are required to report and/or file certain release notifications and perform corrective actions for releases which may endanger public health or the environment. The acceptance of a C-141 report by the OCD does not relieve the operator of liability should their operations have failed to adequately investigate and remediate contamination that pose a threat to groundwater, surface water, human health or the environment. In addition, OCD acceptance of a C-141 report does not relieve the operator of responsibility for compliance with any other federal, state, or local laws and/or regulations.

Printed Name: Cindy CrainTitle: Agent for Forty Acres Energy, LLCSignature: Date: 7/16/24email: cindy.crain@gmail.comTelephone: (575) 441-7244**OCD Only**

Received by: _____ Date: _____

☐ Approved ☐ Approved with Attached Conditions of Approval ☐ Denied ☐ Deferral Approved

Signature: _____

Date: _____



Appendix B: NMOCD Correspondence

From: Velez, Nelson, EMNRD <Nelson.Velez@emnrd.nm.gov>
Sent: Wednesday, April 17, 2024 2:48 PM
To: Alex Bolanos <alex@faenergyus.com>
Cc: Bratcher, Michael, EMNRD <mike.bratcher@emnrd.nm.gov>
Subject: Re: [EXTERNAL] Forty Acres Energy C-141 Extension Request

Alex,

Thanks for the correspondence.

Your 90-day time extension request is approved. Remediation Due date updated to July 16, 2024.

Please keep a copy of this communication for inclusion within the appropriate report submittal.

The OCD requires a copy of all correspondence relative to remedial activities be included in all proposals and/or final closure reports. Correspondence required to be included in reports may include, but not limited to, notifications for liner inspections, sample events, spill/release/fire, and request for time extensions or variances.

Regards,

Nelson Velez • Environmental Specialist - Adv

Environmental Bureau | EMNRD - Oil Conservation Division

1000 Rio Brazos Road | Aztec, NM 87410

(505) 469-6146 | nelson.velez@emnrd.nm.gov

<http://www.emnrd.state.nm.us/OCD/>

From: Alex Bolanos <alex@faenergyus.com>
Sent: Tuesday, April 16, 2024 10:55 AM
To: Velez, Nelson, EMNRD <Nelson.Velez@emnrd.nm.gov>
Subject: [EXTERNAL] Forty Acres Energy C-141 Extension Request

CAUTION: This email originated outside of our organization. Exercise caution prior to clicking on links or opening attachments.

Nelson,

Forty Acres Energy, requests a 90-day extension for the following releases:

1. West Eumont Unit #115 – Inc No: nAPP2316654395
 - Finished sampling last week. Waiting on remediation plan.
2. WEU 114/115 Injection (115C) – Inc No: nAPP2319562381
 - Remediation workplan complete. Starting field work.
3. WEU Central Injection Facility– Inc No: nAPP2316651719
 - Terracon currently working on this location. Characterization Sample testing.
4. WEU Lea 407– Inc No: nAPP2316652967
 - Remediation plan done and going to do work next after 114/115.

If you have any questions or need additional information on these, please let me know.

Thanks, Nelson.

Alex Bolanos

(832) 689-3788



Appendix C: Well Records and Logs



WELL RECORD & LOG

OFFICE OF THE STATE ENGINEER

www.ose.state.nm.us

1. GENERAL AND WELL LOCATION	OSE POD NO. (WELL NO.) POD-1		WELL TAG ID NO. 213A19		OSE FILE NO(S). CP-1975			
	WELL OWNER NAME(S) Clay Tom Cooper				PHONE (OPTIONAL)			
	WELL OWNER MAILING ADDRESS Box 6				CITY Monument	STATE NM	ZIP 88265	
	WELL LOCATION (FROM GPS)	DEGREES LATITUDE	MINUTES 32	SECONDS 31	09.6	* ACCURACY REQUIRED: ONE TENTH OF A SECOND		
		LONGITUDE	103	20	24.7	* DATUM REQUIRED: WGS 84		
DESCRIPTION RELATING WELL LOCATION TO STREET ADDRESS AND COMMON LANDMARKS - PLSS (SECTION, TOWNSHIP, RANGE) WHERE AVAILABLE								
2. DRILLING & CASING INFORMATION	LICENSE NO. 1839		NAME OF LICENSED DRILLER Boyd Coffey			NAME OF WELL DRILLING COMPANY Coffey Drilling		
	DRILLING STARTED 8-24-2023		DRILLING ENDED 8-24-2023		DEPTH OF COMPLETED WELL (FT) 160	BORE HOLE DEPTH (FT) 160	DEPTH WATER FIRST ENCOUNTERED (FT) NA	
	COMPLETED WELL IS: <input type="checkbox"/> ARTESIAN <input checked="" type="checkbox"/> DRY HOLE <input type="checkbox"/> SHALLOW (UNCONFINED)					STATIC WATER LEVEL IN COMPLETED WELL (FT) NA		
	DRILLING FLUID: <input type="checkbox"/> AIR <input checked="" type="checkbox"/> MUD ADDITIVES - SPECIFY:							
	DRILLING METHOD: <input checked="" type="checkbox"/> ROTARY <input type="checkbox"/> HAMMER <input type="checkbox"/> CABLE TOOL <input type="checkbox"/> OTHER - SPECIFY:							
	DEPTH (feet bgl)		BORE HOLE DIAM. (inches)	CASING MATERIAL AND/OR GRADE (include each casing string, and note sections of screen)	CASING CONNECTION TYPE (add coupling diameter)	CASING INSIDE DIAM. (inches)	CASING WALL THICKNESS (inches)	SLOT SIZE (inches)
	FROM	TO						
	0	20	10	PVC	bell	5	sdr 21	
	20	100	8.75	PVC	bell	5	sdr 21	
	100	120	8.75	PVC	bell	5	sdr 21	0.020
120	160	8.75	PVC	bell	5	sdr 21		
3. ANNULAR MATERIAL	DEPTH (feet bgl)		BORE HOLE DIAM. (inches)	LIST ANNULAR SEAL MATERIAL AND GRAVEL PACK SIZE-RANGE BY INTERVAL	AMOUNT (cubic feet)	METHOD OF PLACEMENT		
	FROM	TO						
	0	20	10	3/8 Bentonite hole plug	8	Pour		
	20	160	8.75	3/8 pea gravel	38	Pour		

FOR OSE INTERNAL USE

WR-20 WELL RECORD & LOG (Version 04/30/19)

FILE NO.	POD NO.	TRN NO.
LOCATION	WELL TAG ID NO.	PAGE 1 OF 2

Released to Imaging: 7/23/2024 3:24:53 PM



Appendix D: Laboratory Reports and Chain-of-Custody Documentation



PHONE (575) 393-2326 ° 101 E. MARLAND ° HOBBS, NM 88240

January 29, 2024

JOSEPH GUESNIER

TERRACON CONSULTANTS

5827 50TH ST. SUITE 1

LUBBOCK, TX 79424

RE: WEU BATTERY

Enclosed are the results of analyses for samples received by the laboratory on 01/24/24 15:45.

Cardinal Laboratories is accredited through Texas NELAP under certificate number T104704398-23-16. Accreditation applies to drinking water, non-potable water and solid and chemical materials. All accredited analytes are denoted by an asterisk (*). For a complete list of accredited analytes and matrices visit the TCEQ website at www.tceq.texas.gov/field/qa/lab_accred_certif.html.

Cardinal Laboratories is accredited through the State of Colorado Department of Public Health and Environment for:

Method EPA 552.2	Haloacetic Acids (HAA-5)
Method EPA 524.2	Total Trihalomethanes (TTHM)
Method EPA 524.4	Regulated VOCs (V1, V2, V3)

Accreditation applies to public drinking water matrices.

This report meets NELAP requirements and is made up of a cover page, analytical results, and a copy of the original chain-of-custody. If you have any questions concerning this report, please feel free to contact me.

Sincerely,

A handwritten signature in black ink that reads "Celey D. Keene". The signature is written in a cursive, flowing style.

Celey D. Keene

Lab Director/Quality Manager



PHONE (575) 393-2326 ° 101 E. MARLAND ° HOBBS, NM 88240

Analytical Results For:

TERRACON CONSULTANTS
 JOSEPH GUESNIER
 5827 50TH ST. SUITE 1
 LUBBOCK TX, 79424
 Fax To:

Received: 01/24/2024
 Reported: 01/29/2024
 Project Name: WEU BATTERY
 Project Number: KH247001
 Project Location: FAE II OPERATING - LEA CO NM

Sampling Date: 01/23/2024
 Sampling Type: Soil
 Sampling Condition: ** (See Notes)
 Sample Received By: Dionica Hinojos

Sample ID: DS - 01 0.5' (H240326-01)

BTEx 8021B		mg/kg		Analyzed By: JH					
Analyte	Result	Reporting Limit	Analyzed	Method Blank	BS	% Recovery	True Value QC	RPD	Qualifier
Benzene*	<0.050	0.050	01/25/2024	ND	2.28	114	2.00	7.73	
Toluene*	<0.050	0.050	01/25/2024	ND	2.43	122	2.00	7.69	
Ethylbenzene*	<0.050	0.050	01/25/2024	ND	2.57	129	2.00	7.56	
Total Xylenes*	<0.150	0.150	01/25/2024	ND	7.79	130	6.00	7.68	
Total BTEX	<0.300	0.300	01/25/2024	ND					

Surrogate: 4-Bromofluorobenzene (PID) 108 % 71.5-134

Chloride, SM4500Cl-B		mg/kg		Analyzed By: CT					
Analyte	Result	Reporting Limit	Analyzed	Method Blank	BS	% Recovery	True Value QC	RPD	Qualifier
Chloride	48.0	16.0	01/25/2024	ND	416	104	400	8.00	

TPH 8015M		mg/kg		Analyzed By: MS					
Analyte	Result	Reporting Limit	Analyzed	Method Blank	BS	% Recovery	True Value QC	RPD	Qualifier
GRO C6-C10*	<10.0	10.0	01/25/2024	ND	193	96.4	200	3.81	
DRO >C10-C28*	<10.0	10.0	01/25/2024	ND	201	101	200	2.53	
EXT DRO >C28-C36	<10.0	10.0	01/25/2024	ND					

Surrogate: 1-Chlorooctane 118 % 48.2-134

Surrogate: 1-Chlorooctadecane 109 % 49.1-148

Cardinal Laboratories

*=Accredited Analyte

PLEASE NOTE: Liability and Damages. Cardinal's liability and client's exclusive remedy for any claim arising, whether based in contract or tort, shall be limited to the amount paid by client for analyses. All claims, including those for negligence and any other cause whatsoever shall be deemed waived unless made in writing and received by Cardinal within thirty (30) days after completion of the applicable service. In no event shall Cardinal be liable for incidental or consequential damages, including, without limitation, business interruptions, loss of use, or loss of profits incurred by client, its subsidiaries, affiliates or successors arising out of or related to the performance of the services hereunder by Cardinal, regardless of whether such claim is based upon any of the above stated reasons or otherwise. Results relate only to the samples identified above. This report shall not be reproduced except in full with written approval of Cardinal Laboratories.

Celey D. Keene, Lab Director/Quality Manager



PHONE (575) 393-2326 ° 101 E. MARLAND ° HOBBS, NM 88240

Analytical Results For:

TERRACON CONSULTANTS
 JOSEPH GUESNIER
 5827 50TH ST. SUITE 1
 LUBBOCK TX, 79424
 Fax To:

Received: 01/24/2024
 Reported: 01/29/2024
 Project Name: WEU BATTERY
 Project Number: KH247001
 Project Location: FAE II OPERATING - LEA CO NM

Sampling Date: 01/24/2024
 Sampling Type: Soil
 Sampling Condition: ** (See Notes)
 Sample Received By: Dionica Hinojos

Sample ID: DS - 01 5' (H240326-03)

BTX 8021B		mg/kg		Analyzed By: JH					
Analyte	Result	Reporting Limit	Analyzed	Method Blank	BS	% Recovery	True Value QC	RPD	Qualifier
Benzene*	<0.050	0.050	01/25/2024	ND	2.28	114	2.00	7.73	
Toluene*	<0.050	0.050	01/25/2024	ND	2.43	122	2.00	7.69	
Ethylbenzene*	<0.050	0.050	01/25/2024	ND	2.57	129	2.00	7.56	
Total Xylenes*	<0.150	0.150	01/25/2024	ND	7.79	130	6.00	7.68	
Total BTX	<0.300	0.300	01/25/2024	ND					

Surrogate: 4-Bromofluorobenzene (PID) 108 % 71.5-134

Chloride, SM4500Cl-B		mg/kg		Analyzed By: CT					
Analyte	Result	Reporting Limit	Analyzed	Method Blank	BS	% Recovery	True Value QC	RPD	Qualifier
Chloride	144	16.0	01/25/2024	ND	416	104	400	8.00	

TPH 8015M		mg/kg		Analyzed By: MS					
Analyte	Result	Reporting Limit	Analyzed	Method Blank	BS	% Recovery	True Value QC	RPD	Qualifier
GRO C6-C10*	<10.0	10.0	01/25/2024	ND	193	96.4	200	3.81	
DRO >C10-C28*	2930	10.0	01/25/2024	ND	201	101	200	2.53	
EXT DRO >C28-C36	1100	10.0	01/25/2024	ND					

Surrogate: 1-Chlorooctane 115 % 48.2-134

Surrogate: 1-Chlorooctadecane 139 % 49.1-148

Cardinal Laboratories

*=Accredited Analyte

PLEASE NOTE: Liability and Damages. Cardinal's liability and client's exclusive remedy for any claim arising, whether based in contract or tort, shall be limited to the amount paid by client for analyses. All claims, including those for negligence and any other cause whatsoever shall be deemed waived unless made in writing and received by Cardinal within thirty (30) days after completion of the applicable service. In no event shall Cardinal be liable for incidental or consequential damages, including, without limitation, business interruptions, loss of use, or loss of profits incurred by client, its subsidiaries, affiliates or successors arising out of or related to the performance of the services hereunder by Cardinal, regardless of whether such claim is based upon any of the above stated reasons or otherwise. Results relate only to the samples identified above. This report shall not be reproduced except in full with written approval of Cardinal Laboratories.

Celey D. Keene, Lab Director/Quality Manager



PHONE (575) 393-2326 ° 101 E. MARLAND ° HOBBS, NM 88240

Analytical Results For:

TERRACON CONSULTANTS
 JOSEPH GUESNIER
 5827 50TH ST. SUITE 1
 LUBBOCK TX, 79424
 Fax To:

Received: 01/24/2024
 Reported: 01/29/2024
 Project Name: WEU BATTERY
 Project Number: KH247001
 Project Location: FAE II OPERATING - LEA CO NM

Sampling Date: 01/24/2024
 Sampling Type: Soil
 Sampling Condition: ** (See Notes)
 Sample Received By: Dionica Hinojos

Sample ID: DS - 02 0.5' (H240326-04)

BTEx 8021B		mg/kg		Analyzed By: JH						
Analyte	Result	Reporting Limit	Analyzed	Method Blank	BS	% Recovery	True Value QC	RPD	Qualifier	
Benzene*	<0.050	0.050	01/25/2024	ND	2.28	114	2.00	7.73		
Toluene*	<0.050	0.050	01/25/2024	ND	2.43	122	2.00	7.69		
Ethylbenzene*	<0.050	0.050	01/25/2024	ND	2.57	129	2.00	7.56		
Total Xylenes*	<0.150	0.150	01/25/2024	ND	7.79	130	6.00	7.68		
Total BTEx	<0.300	0.300	01/25/2024	ND						

Surrogate: 4-Bromofluorobenzene (PID) 105 % 71.5-134

Chloride, SM4500Cl-B		mg/kg		Analyzed By: CT						
Analyte	Result	Reporting Limit	Analyzed	Method Blank	BS	% Recovery	True Value QC	RPD	Qualifier	
Chloride	80.0	16.0	01/25/2024	ND	416	104	400	8.00		

TPH 8015M		mg/kg		Analyzed By: MS					
Analyte	Result	Reporting Limit	Analyzed	Method Blank	BS	% Recovery	True Value QC	RPD	Qualifier
GRO C6-C10*	<10.0	10.0	01/25/2024	ND	186	92.9	200	13.3	
DRO >C10-C28*	237	10.0	01/25/2024	ND	184	92.1	200	12.8	QM-07
EXT DRO >C28-C36	208	10.0	01/25/2024	ND					

Surrogate: 1-Chlorooctane 94.9 % 48.2-134

Surrogate: 1-Chlorooctadecane 96.2 % 49.1-148

Cardinal Laboratories

*=Accredited Analyte

PLEASE NOTE: Liability and Damages. Cardinal's liability and client's exclusive remedy for any claim arising, whether based in contract or tort, shall be limited to the amount paid by client for analyses. All claims, including those for negligence and any other cause whatsoever shall be deemed waived unless made in writing and received by Cardinal within thirty (30) days after completion of the applicable service. In no event shall Cardinal be liable for incidental or consequential damages, including, without limitation, business interruptions, loss of use, or loss of profits incurred by client, its subsidiaries, affiliates or successors arising out of or related to the performance of the services hereunder by Cardinal, regardless of whether such claim is based upon any of the above stated reasons or otherwise. Results relate only to the samples identified above. This report shall not be reproduced except in full with written approval of Cardinal Laboratories.

Celey D. Keene, Lab Director/Quality Manager



PHONE (575) 393-2326 ° 101 E. MARLAND ° HOBBS, NM 88240

Analytical Results For:

TERRACON CONSULTANTS
 JOSEPH GUESNIER
 5827 50TH ST. SUITE 1
 LUBBOCK TX, 79424
 Fax To:

Received: 01/24/2024
 Reported: 01/29/2024
 Project Name: WEU BATTERY
 Project Number: KH247001
 Project Location: FAE II OPERATING - LEA CO NM

Sampling Date: 01/24/2024
 Sampling Type: Soil
 Sampling Condition: ** (See Notes)
 Sample Received By: Dionica Hinojos

Sample ID: DS - 02 5' (H240326-06)

BTX 8021B		mg/kg		Analyzed By: JH					
Analyte	Result	Reporting Limit	Analyzed	Method Blank	BS	% Recovery	True Value QC	RPD	Qualifier
Benzene*	<0.050	0.050	01/25/2024	ND	2.28	114	2.00	7.73	
Toluene*	<0.050	0.050	01/25/2024	ND	2.43	122	2.00	7.69	
Ethylbenzene*	<0.050	0.050	01/25/2024	ND	2.57	129	2.00	7.56	
Total Xylenes*	<0.150	0.150	01/25/2024	ND	7.79	130	6.00	7.68	
Total BTX	<0.300	0.300	01/25/2024	ND					

Surrogate: 4-Bromofluorobenzene (PID) 104 % 71.5-134

Chloride, SM4500Cl-B		mg/kg		Analyzed By: CT					
Analyte	Result	Reporting Limit	Analyzed	Method Blank	BS	% Recovery	True Value QC	RPD	Qualifier
Chloride	480	16.0	01/25/2024	ND	416	104	400	8.00	

TPH 8015M		mg/kg		Analyzed By: MS					
Analyte	Result	Reporting Limit	Analyzed	Method Blank	BS	% Recovery	True Value QC	RPD	Qualifier
GRO C6-C10*	<10.0	10.0	01/25/2024	ND	186	92.9	200	13.3	
DRO >C10-C28*	<10.0	10.0	01/25/2024	ND	184	92.1	200	12.8	
EXT DRO >C28-C36	<10.0	10.0	01/25/2024	ND					

Surrogate: 1-Chlorooctane 93.8 % 48.2-134

Surrogate: 1-Chlorooctadecane 89.9 % 49.1-148

Cardinal Laboratories

*=Accredited Analyte

PLEASE NOTE: Liability and Damages. Cardinal's liability and client's exclusive remedy for any claim arising, whether based in contract or tort, shall be limited to the amount paid by client for analyses. All claims, including those for negligence and any other cause whatsoever shall be deemed waived unless made in writing and received by Cardinal within thirty (30) days after completion of the applicable service. In no event shall Cardinal be liable for incidental or consequential damages, including, without limitation, business interruptions, loss of use, or loss of profits incurred by client, its subsidiaries, affiliates or successors arising out of or related to the performance of the services hereunder by Cardinal, regardless of whether such claim is based upon any of the above stated reasons or otherwise. Results relate only to the samples identified above. This report shall not be reproduced except in full with written approval of Cardinal Laboratories.

Celey D. Keene, Lab Director/Quality Manager



PHONE (575) 393-2326 ° 101 E. MARLAND ° HOBBS, NM 88240

Analytical Results For:

TERRACON CONSULTANTS
 JOSEPH GUESNIER
 5827 50TH ST. SUITE 1
 LUBBOCK TX, 79424
 Fax To:

Received: 01/24/2024
 Reported: 01/29/2024
 Project Name: WEU BATTERY
 Project Number: KH247001
 Project Location: FAE II OPERATING - LEA CO NM

Sampling Date: 01/24/2024
 Sampling Type: Soil
 Sampling Condition: ** (See Notes)
 Sample Received By: Dionica Hinojos

Sample ID: DS - 03 0.5' (H240326-07)

BTEx 8021B		mg/kg		Analyzed By: JH					
Analyte	Result	Reporting Limit	Analyzed	Method Blank	BS	% Recovery	True Value QC	RPD	Qualifier
Benzene*	<0.050	0.050	01/25/2024	ND	2.28	114	2.00	7.73	
Toluene*	<0.050	0.050	01/25/2024	ND	2.43	122	2.00	7.69	
Ethylbenzene*	<0.050	0.050	01/25/2024	ND	2.57	129	2.00	7.56	
Total Xylenes*	<0.150	0.150	01/25/2024	ND	7.79	130	6.00	7.68	
Total BTEX	<0.300	0.300	01/25/2024	ND					

Surrogate: 4-Bromofluorobenzene (PID) 108 % 71.5-134

Chloride, SM4500Cl-B		mg/kg		Analyzed By: CT					
Analyte	Result	Reporting Limit	Analyzed	Method Blank	BS	% Recovery	True Value QC	RPD	Qualifier
Chloride	32.0	16.0	01/25/2024	ND	416	104	400	8.00	

TPH 8015M	mg/kg		Analyzed By: MS						
Analyte	Result	Reporting Limit	Analyzed	Method Blank	BS	% Recovery	True Value QC	RPD	Qualifier
GRO C6-C10*	<10.0	10.0	01/25/2024	ND	186	92.9	200	13.3	
DRO >C10-C28*	90.4	10.0	01/25/2024	ND	184	92.1	200	12.8	
EXT DRO >C28-C36	82.3	10.0	01/25/2024	ND					

Surrogate: 1-Chlorooctane 103 % 48.2-134

Surrogate: 1-Chlorooctadecane 102 % 49.1-148

Cardinal Laboratories

*=Accredited Analyte

PLEASE NOTE: Liability and Damages. Cardinal's liability and client's exclusive remedy for any claim arising, whether based in contract or tort, shall be limited to the amount paid by client for analyses. All claims, including those for negligence and any other cause whatsoever shall be deemed waived unless made in writing and received by Cardinal within thirty (30) days after completion of the applicable service. In no event shall Cardinal be liable for incidental or consequential damages, including, without limitation, business interruptions, loss of use, or loss of profits incurred by client, its subsidiaries, affiliates or successors arising out of or related to the performance of the services hereunder by Cardinal, regardless of whether such claim is based upon any of the above stated reasons or otherwise. Results relate only to the samples identified above. This report shall not be reproduced except in full with written approval of Cardinal Laboratories.

Celey D. Keene, Lab Director/Quality Manager



PHONE (575) 393-2326 ° 101 E. MARLAND ° HOBBS, NM 88240

Analytical Results For:

TERRACON CONSULTANTS
 JOSEPH GUESNIER
 5827 50TH ST. SUITE 1
 LUBBOCK TX, 79424
 Fax To:

Received: 01/24/2024
 Reported: 01/29/2024
 Project Name: WEU BATTERY
 Project Number: KH247001
 Project Location: FAE II OPERATING - LEA CO NM

Sampling Date: 01/24/2024
 Sampling Type: Soil
 Sampling Condition: ** (See Notes)
 Sample Received By: Dionica Hinojos

Sample ID: DS - 03 5' (H240326-09)

BTX 8021B		mg/kg		Analyzed By: JH					
Analyte	Result	Reporting Limit	Analyzed	Method Blank	BS	% Recovery	True Value QC	RPD	Qualifier
Benzene*	<0.050	0.050	01/25/2024	ND	2.28	114	2.00	7.73	
Toluene*	<0.050	0.050	01/25/2024	ND	2.43	122	2.00	7.69	
Ethylbenzene*	<0.050	0.050	01/25/2024	ND	2.57	129	2.00	7.56	
Total Xylenes*	<0.150	0.150	01/25/2024	ND	7.79	130	6.00	7.68	
Total BTX	<0.300	0.300	01/25/2024	ND					

Surrogate: 4-Bromofluorobenzene (PID) 106 % 71.5-134

Chloride, SM4500Cl-B		mg/kg		Analyzed By: CT					
Analyte	Result	Reporting Limit	Analyzed	Method Blank	BS	% Recovery	True Value QC	RPD	Qualifier
Chloride	672	16.0	01/25/2024	ND	416	104	400	8.00	

TPH 8015M		mg/kg		Analyzed By: MS					
Analyte	Result	Reporting Limit	Analyzed	Method Blank	BS	% Recovery	True Value QC	RPD	Qualifier
GRO C6-C10*	<10.0	10.0	01/25/2024	ND	186	92.9	200	13.3	
DRO >C10-C28*	<10.0	10.0	01/25/2024	ND	184	92.1	200	12.8	
EXT DRO >C28-C36	<10.0	10.0	01/25/2024	ND					

Surrogate: 1-Chlorooctane 97.7 % 48.2-134

Surrogate: 1-Chlorooctadecane 92.6 % 49.1-148

Cardinal Laboratories

*=Accredited Analyte

PLEASE NOTE: Liability and Damages. Cardinal's liability and client's exclusive remedy for any claim arising, whether based in contract or tort, shall be limited to the amount paid by client for analyses. All claims, including those for negligence and any other cause whatsoever shall be deemed waived unless made in writing and received by Cardinal within thirty (30) days after completion of the applicable service. In no event shall Cardinal be liable for incidental or consequential damages, including, without limitation, business interruptions, loss of use, or loss of profits incurred by client, its subsidiaries, affiliates or successors arising out of or related to the performance of the services hereunder by Cardinal, regardless of whether such claim is based upon any of the above stated reasons or otherwise. Results relate only to the samples identified above. This report shall not be reproduced except in full with written approval of Cardinal Laboratories.

Celey D. Keene, Lab Director/Quality Manager



PHONE (575) 393-2326 ° 101 E. MARLAND ° HOBBS, NM 88240

Analytical Results For:

TERRACON CONSULTANTS
 JOSEPH GUESNIER
 5827 50TH ST. SUITE 1
 LUBBOCK TX, 79424
 Fax To:

Received: 01/24/2024
 Reported: 01/29/2024
 Project Name: WEU BATTERY
 Project Number: KH247001
 Project Location: FAE II OPERATING - LEA CO NM

Sampling Date: 01/24/2024
 Sampling Type: Soil
 Sampling Condition: ** (See Notes)
 Sample Received By: Dionica Hinojos

Sample ID: DS - 04 0.5' (H240326-10)

BTEx 8021B		mg/kg		Analyzed By: JH						
Analyte	Result	Reporting Limit	Analyzed	Method Blank	BS	% Recovery	True Value QC	RPD	Qualifier	
Benzene*	<0.050	0.050	01/25/2024	ND	2.28	114	2.00	7.73		
Toluene*	<0.050	0.050	01/25/2024	ND	2.43	122	2.00	7.69		
Ethylbenzene*	<0.050	0.050	01/25/2024	ND	2.57	129	2.00	7.56		
Total Xylenes*	<0.150	0.150	01/25/2024	ND	7.79	130	6.00	7.68		
Total BTEX	<0.300	0.300	01/25/2024	ND						

Surrogate: 4-Bromofluorobenzene (PID) 102 % 71.5-134

Chloride, SM4500Cl-B		mg/kg		Analyzed By: CT						
Analyte	Result	Reporting Limit	Analyzed	Method Blank	BS	% Recovery	True Value QC	RPD	Qualifier	
Chloride	48.0	16.0	01/25/2024	ND	416	104	400	8.00		

TPH 8015M		mg/kg		Analyzed By: MS					
Analyte	Result	Reporting Limit	Analyzed	Method Blank	BS	% Recovery	True Value QC	RPD	Qualifier
GRO C6-C10*	<10.0	10.0	01/25/2024	ND	186	92.9	200	13.3	
DRO >C10-C28*	<10.0	10.0	01/25/2024	ND	184	92.1	200	12.8	
EXT DRO >C28-C36	<10.0	10.0	01/25/2024	ND					

Surrogate: 1-Chlorooctane 99.6 % 48.2-134

Surrogate: 1-Chlorooctadecane 95.0 % 49.1-148

Cardinal Laboratories

*=Accredited Analyte

PLEASE NOTE: Liability and Damages. Cardinal's liability and client's exclusive remedy for any claim arising, whether based in contract or tort, shall be limited to the amount paid by client for analyses. All claims, including those for negligence and any other cause whatsoever shall be deemed waived unless made in writing and received by Cardinal within thirty (30) days after completion of the applicable service. In no event shall Cardinal be liable for incidental or consequential damages, including, without limitation, business interruptions, loss of use, or loss of profits incurred by client, its subsidiaries, affiliates or successors arising out of or related to the performance of the services hereunder by Cardinal, regardless of whether such claim is based upon any of the above stated reasons or otherwise. Results relate only to the samples identified above. This report shall not be reproduced except in full with written approval of Cardinal Laboratories.

Celey D. Keene, Lab Director/Quality Manager



PHONE (575) 393-2326 ° 101 E. MARLAND ° HOBBS, NM 88240

Analytical Results For:

TERRACON CONSULTANTS
 JOSEPH GUESNIER
 5827 50TH ST. SUITE 1
 LUBBOCK TX, 79424
 Fax To:

Received: 01/24/2024
 Reported: 01/29/2024
 Project Name: WEU BATTERY
 Project Number: KH247001
 Project Location: FAE II OPERATING - LEA CO NM

Sampling Date: 01/24/2024
 Sampling Type: Soil
 Sampling Condition: ** (See Notes)
 Sample Received By: Dionica Hinojos

Sample ID: DS - 05 0.5' (H240326-11)

BTX 8021B		mg/kg		Analyzed By: JH					
Analyte	Result	Reporting Limit	Analyzed	Method Blank	BS	% Recovery	True Value QC	RPD	Qualifier
Benzene*	<0.050	0.050	01/25/2024	ND	2.28	114	2.00	7.73	
Toluene*	<0.050	0.050	01/25/2024	ND	2.43	122	2.00	7.69	
Ethylbenzene*	<0.050	0.050	01/25/2024	ND	2.57	129	2.00	7.56	
Total Xylenes*	<0.150	0.150	01/25/2024	ND	7.79	130	6.00	7.68	
Total BTX	<0.300	0.300	01/25/2024	ND					

Surrogate: 4-Bromofluorobenzene (PID) 102 % 71.5-134

Chloride, SM4500Cl-B		mg/kg		Analyzed By: CT					
Analyte	Result	Reporting Limit	Analyzed	Method Blank	BS	% Recovery	True Value QC	RPD	Qualifier
Chloride	64.0	16.0	01/25/2024	ND	416	104	400	8.00	

TPH 8015M		mg/kg		Analyzed By: MS					
Analyte	Result	Reporting Limit	Analyzed	Method Blank	BS	% Recovery	True Value QC	RPD	Qualifier
GRO C6-C10*	<10.0	10.0	01/25/2024	ND	186	92.9	200	13.3	
DRO >C10-C28*	<10.0	10.0	01/25/2024	ND	184	92.1	200	12.8	
EXT DRO >C28-C36	<10.0	10.0	01/25/2024	ND					

Surrogate: 1-Chlorooctane 90.8 % 48.2-134

Surrogate: 1-Chlorooctadecane 87.3 % 49.1-148

Cardinal Laboratories

*=Accredited Analyte

PLEASE NOTE: Liability and Damages. Cardinal's liability and client's exclusive remedy for any claim arising, whether based in contract or tort, shall be limited to the amount paid by client for analyses. All claims, including those for negligence and any other cause whatsoever shall be deemed waived unless made in writing and received by Cardinal within thirty (30) days after completion of the applicable service. In no event shall Cardinal be liable for incidental or consequential damages, including, without limitation, business interruptions, loss of use, or loss of profits incurred by client, its subsidiaries, affiliates or successors arising out of or related to the performance of the services hereunder by Cardinal, regardless of whether such claim is based upon any of the above stated reasons or otherwise. Results relate only to the samples identified above. This report shall not be reproduced except in full with written approval of Cardinal Laboratories.

Celey D. Keene, Lab Director/Quality Manager



PHONE (575) 393-2326 ° 101 E. MARLAND ° HOBBS, NM 88240

Analytical Results For:

TERRACON CONSULTANTS
 JOSEPH GUESNIER
 5827 50TH ST. SUITE 1
 LUBBOCK TX, 79424
 Fax To:

Received: 01/24/2024
 Reported: 01/29/2024
 Project Name: WEU BATTERY
 Project Number: KH247001
 Project Location: FAE II OPERATING - LEA CO NM

Sampling Date: 01/24/2024
 Sampling Type: Soil
 Sampling Condition: ** (See Notes)
 Sample Received By: Dionica Hinojos

Sample ID: DS - 05 2.5' (H240326-12)

BTX 8021B		mg/kg		Analyzed By: JH					
Analyte	Result	Reporting Limit	Analyzed	Method Blank	BS	% Recovery	True Value QC	RPD	Qualifier
Benzene*	<0.050	0.050	01/25/2024	ND	2.28	114	2.00	7.73	
Toluene*	<0.050	0.050	01/25/2024	ND	2.43	122	2.00	7.69	
Ethylbenzene*	<0.050	0.050	01/25/2024	ND	2.57	129	2.00	7.56	
Total Xylenes*	<0.150	0.150	01/25/2024	ND	7.79	130	6.00	7.68	
Total BTX	<0.300	0.300	01/25/2024	ND					

Surrogate: 4-Bromofluorobenzene (PID) 103 % 71.5-134

Chloride, SM4500Cl-B		mg/kg		Analyzed By: CT					
Analyte	Result	Reporting Limit	Analyzed	Method Blank	BS	% Recovery	True Value QC	RPD	Qualifier
Chloride	48.0	16.0	01/25/2024	ND	416	104	400	8.00	

TPH 8015M		mg/kg		Analyzed By: MS					
Analyte	Result	Reporting Limit	Analyzed	Method Blank	BS	% Recovery	True Value QC	RPD	Qualifier
GRO C6-C10*	<10.0	10.0	01/25/2024	ND	186	92.9	200	13.3	
DRO >C10-C28*	<10.0	10.0	01/25/2024	ND	184	92.1	200	12.8	
EXT DRO >C28-C36	<10.0	10.0	01/25/2024	ND					

Surrogate: 1-Chlorooctane 98.2 % 48.2-134

Surrogate: 1-Chlorooctadecane 94.5 % 49.1-148

Cardinal Laboratories

*=Accredited Analyte

PLEASE NOTE: Liability and Damages. Cardinal's liability and client's exclusive remedy for any claim arising, whether based in contract or tort, shall be limited to the amount paid by client for analyses. All claims, including those for negligence and any other cause whatsoever shall be deemed waived unless made in writing and received by Cardinal within thirty (30) days after completion of the applicable service. In no event shall Cardinal be liable for incidental or consequential damages, including, without limitation, business interruptions, loss of use, or loss of profits incurred by client, its subsidiaries, affiliates or successors arising out of or related to the performance of the services hereunder by Cardinal, regardless of whether such claim is based upon any of the above stated reasons or otherwise. Results relate only to the samples identified above. This report shall not be reproduced except in full with written approval of Cardinal Laboratories.

Celey D. Keene, Lab Director/Quality Manager

PHONE (575) 393-2326 ° 101 E. MARLAND ° HOBBS, NM 88240

Notes and Definitions

QR-03	The RPD value for the sample duplicate or MS/MSD was outside of QC acceptance limits due to matrix interference. QC batch accepted based on LCS and/or LCSD recovery and/or RPD values.
QM-07	The spike recovery was outside acceptance limits for the MS and/or MSD. The batch was accepted based on acceptable LCS recovery.
BS-3	Blank spike recovery outside of lab established statistical limits, but still within method limits. Data is not adversely affected.
BS1	Blank spike recovery above laboratory acceptance criteria. Results for analyte potentially biased high.
ND	Analyte NOT DETECTED at or above the reporting limit
RPD	Relative Percent Difference
**	Samples not received at proper temperature of 6°C or below.
***	Insufficient time to reach temperature.
-	Chloride by SM4500Cl-B does not require samples be received at or below 6°C Samples reported on an as received basis (wet) unless otherwise noted on report

Cardinal Laboratories

*=Accredited Analyte

PLEASE NOTE: Liability and Damages. Cardinal's liability and client's exclusive remedy for any claim arising, whether based in contract or tort, shall be limited to the amount paid by client for analyses. All claims, including those for negligence and any other cause whatsoever shall be deemed waived unless made in writing and received by Cardinal within thirty (30) days after completion of the applicable service. In no event shall Cardinal be liable for incidental or consequential damages, including, without limitation, business interruptions, loss of use, or loss of profits incurred by client, its subsidiaries, affiliates or successors arising out of or related to the performance of the services hereunder by Cardinal, regardless of whether such claim is based upon any of the above stated reasons or otherwise. Results relate only to the samples identified above. This report shall not be reproduced except in full with written approval of Cardinal Laboratories.

A handwritten signature in black ink, appearing to read "Celey D. Keene", is written over a horizontal line.

Celey D. Keene, Lab Director/Quality Manager



PHONE (575) 393-2326 ° 101 E. MARLAND ° HOBBS, NM 88240

February 01, 2024

JOSEPH GUESNIER

TERRACON CONSULTANTS

5827 50TH ST. SUITE 1

LUBBOCK, TX 79424

RE: WEU BATTERY

Enclosed are the results of analyses for samples received by the laboratory on 01/30/24 9:42.

Cardinal Laboratories is accredited through Texas NELAP under certificate number T104704398-23-16. Accreditation applies to drinking water, non-potable water and solid and chemical materials. All accredited analytes are denoted by an asterisk (*). For a complete list of accredited analytes and matrices visit the TCEQ website at www.tceq.texas.gov/field/qa/lab_accred_certif.html.

Cardinal Laboratories is accredited through the State of Colorado Department of Public Health and Environment for:

Method EPA 552.2	Haloacetic Acids (HAA-5)
Method EPA 524.2	Total Trihalomethanes (TTHM)
Method EPA 524.4	Regulated VOCs (V1, V2, V3)

Accreditation applies to public drinking water matrices.

This report meets NELAP requirements and is made up of a cover page, analytical results, and a copy of the original chain-of-custody. If you have any questions concerning this report, please feel free to contact me.

Sincerely,

A handwritten signature in black ink that reads "Celey D. Keene". The signature is written in a cursive, flowing style.

Celey D. Keene

Lab Director/Quality Manager



PHONE (575) 393-2326 ° 101 E. MARLAND ° HOBBS, NM 88240

Analytical Results For:

TERRACON CONSULTANTS
 JOSEPH GUESNIER
 5827 50TH ST. SUITE 1
 LUBBOCK TX, 79424
 Fax To:

Received: 01/30/2024
 Reported: 02/01/2024
 Project Name: WEU BATTERY
 Project Number: KH247001
 Project Location: FAE II OPERATING - LEA CO NM

Sampling Date: 01/29/2024
 Sampling Type: Soil
 Sampling Condition: Cool & Intact
 Sample Received By: Shalyn Rodriguez

Sample ID: DS - 04 2.5' (H240408-01)

BTEx 8021B		mg/kg		Analyzed By: JH					
Analyte	Result	Reporting Limit	Analyzed	Method Blank	BS	% Recovery	True Value QC	RPD	Qualifier
Benzene*	<0.050	0.050	01/30/2024	ND	2.32	116	2.00	1.56	
Toluene*	<0.050	0.050	01/30/2024	ND	2.38	119	2.00	3.93	
Ethylbenzene*	<0.050	0.050	01/30/2024	ND	2.49	125	2.00	8.15	
Total Xylenes*	<0.150	0.150	01/30/2024	ND	7.42	124	6.00	8.68	
Total BTEX	<0.300	0.300	01/30/2024	ND					

Surrogate: 4-Bromofluorobenzene (PID) 95.2 % 71.5-134

Chloride, SM4500Cl-B		mg/kg		Analyzed By: AC						
Analyte	Result	Reporting Limit	Analyzed	Method Blank	BS	% Recovery	True Value QC	RPD	Qualifier	
Chloride	128	16.0	01/31/2024	ND	432	108	400	3.64		

TPH 8015M		mg/kg		Analyzed By: MS					
Analyte	Result	Reporting Limit	Analyzed	Method Blank	BS	% Recovery	True Value QC	RPD	Qualifier
GRO C6-C10*	<10.0	10.0	01/30/2024	ND	209	105	200	2.25	
DRO >C10-C28*	<10.0	10.0	01/30/2024	ND	203	102	200	3.45	
EXT DRO >C28-C36	<10.0	10.0	01/30/2024	ND					

Surrogate: 1-Chlorooctane 65.6 % 48.2-134

Surrogate: 1-Chlorooctadecane 59.5 % 49.1-148

Cardinal Laboratories

*=Accredited Analyte

PLEASE NOTE: Liability and Damages. Cardinal's liability and client's exclusive remedy for any claim arising, whether based in contract or tort, shall be limited to the amount paid by client for analyses. All claims, including those for negligence and any other cause whatsoever shall be deemed waived unless made in writing and received by Cardinal within thirty (30) days after completion of the applicable service. In no event shall Cardinal be liable for incidental or consequential damages, including, without limitation, business interruptions, loss of use, or loss of profits incurred by client, its subsidiaries, affiliates or successors arising out of or related to the performance of the services hereunder by Cardinal, regardless of whether such claim is based upon any of the above stated reasons or otherwise. Results relate only to the samples identified above. This report shall not be reproduced except in full with written approval of Cardinal Laboratories.

Celey D. Keene, Lab Director/Quality Manager



PHONE (575) 393-2326 ° 101 E. MARLAND ° HOBBS, NM 88240

Analytical Results For:

TERRACON CONSULTANTS
 JOSEPH GUESNIER
 5827 50TH ST. SUITE 1
 LUBBOCK TX, 79424
 Fax To:

Received: 01/30/2024
 Reported: 02/01/2024
 Project Name: WEU BATTERY
 Project Number: KH247001
 Project Location: FAE II OPERATING - LEA CO NM

Sampling Date: 01/29/2024
 Sampling Type: Soil
 Sampling Condition: Cool & Intact
 Sample Received By: Shalyn Rodriguez

Sample ID: DS - 07 0.5' (H240408-02)

BTX 8021B		mg/kg		Analyzed By: JH					
Analyte	Result	Reporting Limit	Analyzed	Method Blank	BS	% Recovery	True Value QC	RPD	Qualifier
Benzene*	<0.050	0.050	01/31/2024	ND	2.32	116	2.00	1.56	
Toluene*	<0.050	0.050	01/31/2024	ND	2.38	119	2.00	3.93	
Ethylbenzene*	<0.050	0.050	01/31/2024	ND	2.49	125	2.00	8.15	
Total Xylenes*	<0.150	0.150	01/31/2024	ND	7.42	124	6.00	8.68	
Total BTX	<0.300	0.300	01/31/2024	ND					

Surrogate: 4-Bromofluorobenzene (PID) 119 % 71.5-134

Chloride, SM4500Cl-B		mg/kg		Analyzed By: AC					
Analyte	Result	Reporting Limit	Analyzed	Method Blank	BS	% Recovery	True Value QC	RPD	Qualifier
Chloride	16.0	16.0	01/31/2024	ND	432	108	400	3.64	

TPH 8015M		mg/kg		Analyzed By: MS					
Analyte	Result	Reporting Limit	Analyzed	Method Blank	BS	% Recovery	True Value QC	RPD	Qualifier
GRO C6-C10*	<10.0	10.0	01/30/2024	ND	209	105	200	2.25	
DRO >C10-C28*	<10.0	10.0	01/30/2024	ND	203	102	200	3.45	
EXT DRO >C28-C36	<10.0	10.0	01/30/2024	ND					

Surrogate: 1-Chlorooctane 65.1 % 48.2-134

Surrogate: 1-Chlorooctadecane 59.2 % 49.1-148

Cardinal Laboratories

*=Accredited Analyte

PLEASE NOTE: Liability and Damages. Cardinal's liability and client's exclusive remedy for any claim arising, whether based in contract or tort, shall be limited to the amount paid by client for analyses. All claims, including those for negligence and any other cause whatsoever shall be deemed waived unless made in writing and received by Cardinal within thirty (30) days after completion of the applicable service. In no event shall Cardinal be liable for incidental or consequential damages, including, without limitation, business interruptions, loss of use, or loss of profits incurred by client, its subsidiaries, affiliates or successors arising out of or related to the performance of the services hereunder by Cardinal, regardless of whether such claim is based upon any of the above stated reasons or otherwise. Results relate only to the samples identified above. This report shall not be reproduced except in full with written approval of Cardinal Laboratories.

Celey D. Keene, Lab Director/Quality Manager



PHONE (575) 393-2326 ° 101 E. MARLAND ° HOBBS, NM 88240

Analytical Results For:

TERRACON CONSULTANTS
 JOSEPH GUESNIER
 5827 50TH ST. SUITE 1
 LUBBOCK TX, 79424
 Fax To:

Received: 01/30/2024
 Reported: 02/01/2024
 Project Name: WEU BATTERY
 Project Number: KH247001
 Project Location: FAE II OPERATING - LEA CO NM

Sampling Date: 01/29/2024
 Sampling Type: Soil
 Sampling Condition: Cool & Intact
 Sample Received By: Shalyn Rodriguez

Sample ID: DS - 07 2.5' (H240408-03)

BTEX 8021B		mg/kg		Analyzed By: JH					
Analyte	Result	Reporting Limit	Analyzed	Method Blank	BS	% Recovery	True Value QC	RPD	Qualifier
Benzene*	<0.050	0.050	01/31/2024	ND	2.32	116	2.00	1.56	
Toluene*	<0.050	0.050	01/31/2024	ND	2.38	119	2.00	3.93	
Ethylbenzene*	<0.050	0.050	01/31/2024	ND	2.49	125	2.00	8.15	
Total Xylenes*	<0.150	0.150	01/31/2024	ND	7.42	124	6.00	8.68	
Total BTEX	<0.300	0.300	01/31/2024	ND					

Surrogate: 4-Bromofluorobenzene (PID) 104 % 71.5-134

Chloride, SM4500Cl-B		mg/kg		Analyzed By: AC					
Analyte	Result	Reporting Limit	Analyzed	Method Blank	BS	% Recovery	True Value QC	RPD	Qualifier
Chloride	16.0	16.0	01/31/2024	ND	432	108	400	3.64	

TPH 8015M		mg/kg		Analyzed By: MS					
Analyte	Result	Reporting Limit	Analyzed	Method Blank	BS	% Recovery	True Value QC	RPD	Qualifier
GRO C6-C10*	<10.0	10.0	01/30/2024	ND	209	105	200	2.25	
DRO >C10-C28*	<10.0	10.0	01/30/2024	ND	203	102	200	3.45	
EXT DRO >C28-C36	<10.0	10.0	01/30/2024	ND					

Surrogate: 1-Chlorooctane 68.7 % 48.2-134

Surrogate: 1-Chlorooctadecane 63.4 % 49.1-148

Cardinal Laboratories

*=Accredited Analyte

PLEASE NOTE: Liability and Damages. Cardinal's liability and client's exclusive remedy for any claim arising, whether based in contract or tort, shall be limited to the amount paid by client for analyses. All claims, including those for negligence and any other cause whatsoever shall be deemed waived unless made in writing and received by Cardinal within thirty (30) days after completion of the applicable service. In no event shall Cardinal be liable for incidental or consequential damages, including, without limitation, business interruptions, loss of use, or loss of profits incurred by client, its subsidiaries, affiliates or successors arising out of or related to the performance of the services hereunder by Cardinal, regardless of whether such claim is based upon any of the above stated reasons or otherwise. Results relate only to the samples identified above. This report shall not be reproduced except in full with written approval of Cardinal Laboratories.

Celey D. Keene, Lab Director/Quality Manager



PHONE (575) 393-2326 ° 101 E. MARLAND ° HOBBS, NM 88240

Analytical Results For:

TERRACON CONSULTANTS
 JOSEPH GUESNIER
 5827 50TH ST. SUITE 1
 LUBBOCK TX, 79424
 Fax To:

Received: 01/30/2024
 Reported: 02/01/2024
 Project Name: WEU BATTERY
 Project Number: KH247001
 Project Location: FAE II OPERATING - LEA CO NM

Sampling Date: 01/29/2024
 Sampling Type: Soil
 Sampling Condition: Cool & Intact
 Sample Received By: Shalyn Rodriguez

Sample ID: DS - 07 5.0' (H240408-04)

BTEx 8021B		mg/kg		Analyzed By: JH						
Analyte	Result	Reporting Limit	Analyzed	Method Blank	BS	% Recovery	True Value QC	RPD	Qualifier	
Benzene*	<0.050	0.050	01/31/2024	ND	2.32	116	2.00	1.56		
Toluene*	<0.050	0.050	01/31/2024	ND	2.38	119	2.00	3.93		
Ethylbenzene*	<0.050	0.050	01/31/2024	ND	2.49	125	2.00	8.15		
Total Xylenes*	<0.150	0.150	01/31/2024	ND	7.42	124	6.00	8.68		
Total BTEX	<0.300	0.300	01/31/2024	ND						

Surrogate: 4-Bromofluorobenzene (PID) 103 % 71.5-134

Chloride, SM4500Cl-B		mg/kg		Analyzed By: AC						
Analyte	Result	Reporting Limit	Analyzed	Method Blank	BS	% Recovery	True Value QC	RPD	Qualifier	
Chloride	96.0	16.0	01/31/2024	ND	432	108	400	3.64		

TPH 8015M		mg/kg		Analyzed By: MS					
Analyte	Result	Reporting Limit	Analyzed	Method Blank	BS	% Recovery	True Value QC	RPD	Qualifier
GRO C6-C10*	<10.0	10.0	01/30/2024	ND	209	105	200	2.25	
DRO >C10-C28*	<10.0	10.0	01/30/2024	ND	203	102	200	3.45	
EXT DRO >C28-C36	<10.0	10.0	01/30/2024	ND					

Surrogate: 1-Chlorooctane 71.6 % 48.2-134

Surrogate: 1-Chlorooctadecane 65.5 % 49.1-148

Cardinal Laboratories

*=Accredited Analyte

PLEASE NOTE: Liability and Damages. Cardinal's liability and client's exclusive remedy for any claim arising, whether based in contract or tort, shall be limited to the amount paid by client for analyses. All claims, including those for negligence and any other cause whatsoever shall be deemed waived unless made in writing and received by Cardinal within thirty (30) days after completion of the applicable service. In no event shall Cardinal be liable for incidental or consequential damages, including, without limitation, business interruptions, loss of use, or loss of profits incurred by client, its subsidiaries, affiliates or successors arising out of or related to the performance of the services hereunder by Cardinal, regardless of whether such claim is based upon any of the above stated reasons or otherwise. Results relate only to the samples identified above. This report shall not be reproduced except in full with written approval of Cardinal Laboratories.

Celey D. Keene, Lab Director/Quality Manager



PHONE (575) 393-2326 ° 101 E. MARLAND ° HOBBS, NM 88240

Analytical Results For:

TERRACON CONSULTANTS
 JOSEPH GUESNIER
 5827 50TH ST. SUITE 1
 LUBBOCK TX, 79424
 Fax To:

Received: 01/30/2024
 Reported: 02/01/2024
 Project Name: WEU BATTERY
 Project Number: KH247001
 Project Location: FAE II OPERATING - LEA CO NM

Sampling Date: 01/29/2024
 Sampling Type: Soil
 Sampling Condition: Cool & Intact
 Sample Received By: Shalyn Rodriguez

Sample ID: DS - 09 0.5' (H240408-05)

BTEX 8021B		mg/kg		Analyzed By: JH					
Analyte	Result	Reporting Limit	Analyzed	Method Blank	BS	% Recovery	True Value QC	RPD	Qualifier
Benzene*	<0.050	0.050	01/31/2024	ND	2.32	116	2.00	1.56	
Toluene*	<0.050	0.050	01/31/2024	ND	2.38	119	2.00	3.93	
Ethylbenzene*	<0.050	0.050	01/31/2024	ND	2.49	125	2.00	8.15	
Total Xylenes*	<0.150	0.150	01/31/2024	ND	7.42	124	6.00	8.68	
Total BTEX	<0.300	0.300	01/31/2024	ND					

Surrogate: 4-Bromofluorobenzene (PID) 101 % 71.5-134

Chloride, SM4500Cl-B		mg/kg		Analyzed By: CT					
Analyte	Result	Reporting Limit	Analyzed	Method Blank	BS	% Recovery	True Value QC	RPD	Qualifier
Chloride	96.0	16.0	01/31/2024	ND	432	108	400	3.64	

TPH 8015M	mg/kg		Analyzed By: MS						
Analyte	Result	Reporting Limit	Analyzed	Method Blank	BS	% Recovery	True Value QC	RPD	Qualifier
GRO C6-C10*	<10.0	10.0	01/30/2024	ND	240	120	200	18.5	
DRO >C10-C28*	48.2	10.0	01/30/2024	ND	238	119	200	19.5	
EXT DRO >C28-C36	29.1	10.0	01/30/2024	ND					

Surrogate: 1-Chlorooctane 91.0 % 48.2-134

Surrogate: 1-Chlorooctadecane 89.4 % 49.1-148

Cardinal Laboratories

*=Accredited Analyte

PLEASE NOTE: Liability and Damages. Cardinal's liability and client's exclusive remedy for any claim arising, whether based in contract or tort, shall be limited to the amount paid by client for analyses. All claims, including those for negligence and any other cause whatsoever shall be deemed waived unless made in writing and received by Cardinal within thirty (30) days after completion of the applicable service. In no event shall Cardinal be liable for incidental or consequential damages, including, without limitation, business interruptions, loss of use, or loss of profits incurred by client, its subsidiaries, affiliates or successors arising out of or related to the performance of the services hereunder by Cardinal, regardless of whether such claim is based upon any of the above stated reasons or otherwise. Results relate only to the samples identified above. This report shall not be reproduced except in full with written approval of Cardinal Laboratories.

Celey D. Keene, Lab Director/Quality Manager



PHONE (575) 393-2326 ° 101 E. MARLAND ° HOBBS, NM 88240

Analytical Results For:

TERRACON CONSULTANTS
 JOSEPH GUESNIER
 5827 50TH ST. SUITE 1
 LUBBOCK TX, 79424
 Fax To:

Received: 01/30/2024
 Reported: 02/01/2024
 Project Name: WEU BATTERY
 Project Number: KH247001
 Project Location: FAE II OPERATING - LEA CO NM

Sampling Date: 01/29/2024
 Sampling Type: Soil
 Sampling Condition: Cool & Intact
 Sample Received By: Shalyn Rodriguez

Sample ID: DS - 09 2.5' (H240408-06)

BTEx 8021B		mg/kg		Analyzed By: JH					
Analyte	Result	Reporting Limit	Analyzed	Method Blank	BS	% Recovery	True Value QC	RPD	Qualifier
Benzene*	<0.050	0.050	01/31/2024	ND	2.32	116	2.00	1.56	
Toluene*	<0.050	0.050	01/31/2024	ND	2.38	119	2.00	3.93	
Ethylbenzene*	<0.050	0.050	01/31/2024	ND	2.49	125	2.00	8.15	
Total Xylenes*	<0.150	0.150	01/31/2024	ND	7.42	124	6.00	8.68	
Total BTEX	<0.300	0.300	01/31/2024	ND					

Surrogate: 4-Bromofluorobenzene (PID) 101 % 71.5-134

Chloride, SM4500Cl-B		mg/kg		Analyzed By: CT						
Analyte	Result	Reporting Limit	Analyzed	Method Blank	BS	% Recovery	True Value QC	RPD	Qualifier	
Chloride	288	16.0	01/31/2024	ND	432	108	400	3.64		

TPH 8015M		mg/kg		Analyzed By: MS				S-04	
Analyte	Result	Reporting Limit	Analyzed	Method Blank	BS	% Recovery	True Value QC	RPD	Qualifier
GRO C6-C10*	<10.0	10.0	01/30/2024	ND	240	120	200	18.5	
DRO >C10-C28*	1800	10.0	01/30/2024	ND	238	119	200	19.5	
EXT DRO >C28-C36	964	10.0	01/30/2024	ND					

Surrogate: 1-Chlorooctane 87.0 % 48.2-134

Surrogate: 1-Chlorooctadecane 168 % 49.1-148

Cardinal Laboratories

*=Accredited Analyte

PLEASE NOTE: Liability and Damages. Cardinal's liability and client's exclusive remedy for any claim arising, whether based in contract or tort, shall be limited to the amount paid by client for analyses. All claims, including those for negligence and any other cause whatsoever shall be deemed waived unless made in writing and received by Cardinal within thirty (30) days after completion of the applicable service. In no event shall Cardinal be liable for incidental or consequential damages, including, without limitation, business interruptions, loss of use, or loss of profits incurred by client, its subsidiaries, affiliates or successors arising out of or related to the performance of the services hereunder by Cardinal, regardless of whether such claim is based upon any of the above stated reasons or otherwise. Results relate only to the samples identified above. This report shall not be reproduced except in full with written approval of Cardinal Laboratories.

Celey D. Keene, Lab Director/Quality Manager



PHONE (575) 393-2326 ° 101 E. MARLAND ° HOBBS, NM 88240

Analytical Results For:

TERRACON CONSULTANTS
 JOSEPH GUESNIER
 5827 50TH ST. SUITE 1
 LUBBOCK TX, 79424
 Fax To:

Received: 01/30/2024
 Reported: 02/01/2024
 Project Name: WEU BATTERY
 Project Number: KH247001
 Project Location: FAE II OPERATING - LEA CO NM

Sampling Date: 01/29/2024
 Sampling Type: Soil
 Sampling Condition: Cool & Intact
 Sample Received By: Shalyn Rodriguez

Sample ID: DS - 09 4.0' (H240408-07)

BTEx 8021B		mg/kg		Analyzed By: JH					
Analyte	Result	Reporting Limit	Analyzed	Method Blank	BS	% Recovery	True Value QC	RPD	Qualifier
Benzene*	<0.050	0.050	01/31/2024	ND	2.32	116	2.00	1.56	
Toluene*	<0.050	0.050	01/31/2024	ND	2.38	119	2.00	3.93	
Ethylbenzene*	<0.050	0.050	01/31/2024	ND	2.49	125	2.00	8.15	
Total Xylenes*	<0.150	0.150	01/31/2024	ND	7.42	124	6.00	8.68	
Total BTEX	<0.300	0.300	01/31/2024	ND					

Surrogate: 4-Bromofluorobenzene (PID) 113 % 71.5-134

Chloride, SM4500Cl-B		mg/kg		Analyzed By: CT					
Analyte	Result	Reporting Limit	Analyzed	Method Blank	BS	% Recovery	True Value QC	RPD	Qualifier
Chloride	400	16.0	01/31/2024	ND	432	108	400	3.64	

TPH 8015M		mg/kg		Analyzed By: MS					
Analyte	Result	Reporting Limit	Analyzed	Method Blank	BS	% Recovery	True Value QC	RPD	Qualifier
GRO C6-C10*	<10.0	10.0	01/30/2024	ND	240	120	200	18.5	
DRO >C10-C28*	1210	10.0	01/30/2024	ND	238	119	200	19.5	
EXT DRO >C28-C36	729	10.0	01/30/2024	ND					

Surrogate: 1-Chlorooctane 87.6 % 48.2-134

Surrogate: 1-Chlorooctadecane 111 % 49.1-148

Cardinal Laboratories

*=Accredited Analyte

PLEASE NOTE: Liability and Damages. Cardinal's liability and client's exclusive remedy for any claim arising, whether based in contract or tort, shall be limited to the amount paid by client for analyses. All claims, including those for negligence and any other cause whatsoever shall be deemed waived unless made in writing and received by Cardinal within thirty (30) days after completion of the applicable service. In no event shall Cardinal be liable for incidental or consequential damages, including, without limitation, business interruptions, loss of use, or loss of profits incurred by client, its subsidiaries, affiliates or successors arising out of or related to the performance of the services hereunder by Cardinal, regardless of whether such claim is based upon any of the above stated reasons or otherwise. Results relate only to the samples identified above. This report shall not be reproduced except in full with written approval of Cardinal Laboratories.

Celey D. Keene, Lab Director/Quality Manager



PHONE (575) 393-2326 ° 101 E. MARLAND ° HOBBS, NM 88240

Analytical Results For:

TERRACON CONSULTANTS
 JOSEPH GUESNIER
 5827 50TH ST. SUITE 1
 LUBBOCK TX, 79424
 Fax To:

Received: 01/30/2024
 Reported: 02/01/2024
 Project Name: WEU BATTERY
 Project Number: KH247001
 Project Location: FAE II OPERATING - LEA CO NM

Sampling Date: 01/29/2024
 Sampling Type: Soil
 Sampling Condition: Cool & Intact
 Sample Received By: Shalyn Rodriguez

Sample ID: DS - 10 0.5' (H240408-08)

BTEx 8021B		mg/kg		Analyzed By: JH						
Analyte	Result	Reporting Limit	Analyzed	Method Blank	BS	% Recovery	True Value QC	RPD	Qualifier	
Benzene*	<0.050	0.050	01/31/2024	ND	2.32	116	2.00	1.56		
Toluene*	<0.050	0.050	01/31/2024	ND	2.38	119	2.00	3.93		
Ethylbenzene*	<0.050	0.050	01/31/2024	ND	2.49	125	2.00	8.15		
Total Xylenes*	<0.150	0.150	01/31/2024	ND	7.42	124	6.00	8.68		
Total BTEX	<0.300	0.300	01/31/2024	ND						

Surrogate: 4-Bromofluorobenzene (PID) 107 % 71.5-134

Chloride, SM4500Cl-B		mg/kg		Analyzed By: CT						
Analyte	Result	Reporting Limit	Analyzed	Method Blank	BS	% Recovery	True Value QC	RPD	Qualifier	
Chloride	32.0	16.0	01/31/2024	ND	432	108	400	3.64		

TPH 8015M		mg/kg		Analyzed By: MS					
Analyte	Result	Reporting Limit	Analyzed	Method Blank	BS	% Recovery	True Value QC	RPD	Qualifier
GRO C6-C10*	<10.0	10.0	01/30/2024	ND	240	120	200	18.5	
DRO >C10-C28*	<10.0	10.0	01/30/2024	ND	238	119	200	19.5	
EXT DRO >C28-C36	<10.0	10.0	01/30/2024	ND					

Surrogate: 1-Chlorooctane 88.2 % 48.2-134

Surrogate: 1-Chlorooctadecane 86.3 % 49.1-148

Cardinal Laboratories

*=Accredited Analyte

PLEASE NOTE: Liability and Damages. Cardinal's liability and client's exclusive remedy for any claim arising, whether based in contract or tort, shall be limited to the amount paid by client for analyses. All claims, including those for negligence and any other cause whatsoever shall be deemed waived unless made in writing and received by Cardinal within thirty (30) days after completion of the applicable service. In no event shall Cardinal be liable for incidental or consequential damages, including, without limitation, business interruptions, loss of use, or loss of profits incurred by client, its subsidiaries, affiliates or successors arising out of or related to the performance of the services hereunder by Cardinal, regardless of whether such claim is based upon any of the above stated reasons or otherwise. Results relate only to the samples identified above. This report shall not be reproduced except in full with written approval of Cardinal Laboratories.

Celey D. Keene, Lab Director/Quality Manager



PHONE (575) 393-2326 ° 101 E. MARLAND ° HOBBS, NM 88240

Analytical Results For:

TERRACON CONSULTANTS
 JOSEPH GUESNIER
 5827 50TH ST. SUITE 1
 LUBBOCK TX, 79424
 Fax To:

Received: 01/30/2024
 Reported: 02/01/2024
 Project Name: WEU BATTERY
 Project Number: KH247001
 Project Location: FAE II OPERATING - LEA CO NM

Sampling Date: 01/29/2024
 Sampling Type: Soil
 Sampling Condition: Cool & Intact
 Sample Received By: Shalyn Rodriguez

Sample ID: DS - 10 2.5' (H240408-09)

BTEx 8021B		mg/kg		Analyzed By: JH					
Analyte	Result	Reporting Limit	Analyzed	Method Blank	BS	% Recovery	True Value QC	RPD	Qualifier
Benzene*	<0.050	0.050	01/31/2024	ND	2.32	116	2.00	1.56	
Toluene*	<0.050	0.050	01/31/2024	ND	2.38	119	2.00	3.93	
Ethylbenzene*	<0.050	0.050	01/31/2024	ND	2.49	125	2.00	8.15	
Total Xylenes*	<0.150	0.150	01/31/2024	ND	7.42	124	6.00	8.68	
Total BTEX	<0.300	0.300	01/31/2024	ND					

Surrogate: 4-Bromofluorobenzene (PID) 116 % 71.5-134

Chloride, SM4500CI-B		mg/kg		Analyzed By: CT						
Analyte	Result	Reporting Limit	Analyzed	Method Blank	BS	% Recovery	True Value QC	RPD	Qualifier	
Chloride	336	16.0	01/31/2024	ND	432	108	400	3.64		

TPH 8015M		mg/kg		Analyzed By: MS					
Analyte	Result	Reporting Limit	Analyzed	Method Blank	BS	% Recovery	True Value QC	RPD	Qualifier
GRO C6-C10*	<10.0	10.0	01/30/2024	ND	240	120	200	18.5	
DRO >C10-C28*	<10.0	10.0	01/30/2024	ND	238	119	200	19.5	
EXT DRO >C28-C36	<10.0	10.0	01/30/2024	ND					

Surrogate: 1-Chlorooctane 112 % 48.2-134

Surrogate: 1-Chlorooctadecane 106 % 49.1-148

Cardinal Laboratories

*=Accredited Analyte

PLEASE NOTE: Liability and Damages. Cardinal's liability and client's exclusive remedy for any claim arising, whether based in contract or tort, shall be limited to the amount paid by client for analyses. All claims, including those for negligence and any other cause whatsoever shall be deemed waived unless made in writing and received by Cardinal within thirty (30) days after completion of the applicable service. In no event shall Cardinal be liable for incidental or consequential damages, including, without limitation, business interruptions, loss of use, or loss of profits incurred by client, its subsidiaries, affiliates or successors arising out of or related to the performance of the services hereunder by Cardinal, regardless of whether such claim is based upon any of the above stated reasons or otherwise. Results relate only to the samples identified above. This report shall not be reproduced except in full with written approval of Cardinal Laboratories.

Celey D. Keene, Lab Director/Quality Manager

PHONE (575) 393-2326 ° 101 E. MARLAND ° HOBBS, NM 88240

Notes and Definitions

S-05	The surrogate recovery is outside of lab established statistical control limits but still within method limits. Data is not adversely affected.
S-04	The surrogate recovery for this sample is outside of established control limits due to a sample matrix effect.
QR-04	The RPD for the BS/BSD was outside of historical limits.
BS-3	Blank spike recovery outside of lab established statistical limits, but still within method limits. Data is not adversely affected.
ND	Analyte NOT DETECTED at or above the reporting limit
RPD	Relative Percent Difference
**	Samples not received at proper temperature of 6°C or below.
***	Insufficient time to reach temperature.
-	Chloride by SM4500Cl-B does not require samples be received at or below 6°C Samples reported on an as received basis (wet) unless otherwise noted on report

Cardinal Laboratories

*=Accredited Analyte

PLEASE NOTE: Liability and Damages. Cardinal's liability and client's exclusive remedy for any claim arising, whether based in contract or tort, shall be limited to the amount paid by client for analyses. All claims, including those for negligence and any other cause whatsoever shall be deemed waived unless made in writing and received by Cardinal within thirty (30) days after completion of the applicable service. In no event shall Cardinal be liable for incidental or consequential damages, including, without limitation, business interruptions, loss of use, or loss of profits incurred by client, its subsidiaries, affiliates or successors arising out of or related to the performance of the services hereunder by Cardinal, regardless of whether such claim is based upon any of the above stated reasons or otherwise. Results relate only to the samples identified above. This report shall not be reproduced except in full with written approval of Cardinal Laboratories.

A handwritten signature in black ink, appearing to read "Celey D. Keene".

Celey D. Keene, Lab Director/Quality Manager



CHAIN-OF-CUSTODY AND ANALYSIS REQUEST

101 East Marland, Hobbs, NM 88240
(575) 393-2326 FAX (575) 393-2476

Company Name: Terracon

Project Manager: Joseph Guesnier

Address: 4518 W. Pierce Street

City: Carlsbad

Phone #: 8065077057

Project #: KH247001

Project Name: WEV Battery

Project Location: Lea

Sampler Name: Gus Sanchez

FOR LAB USE ONLY

BILL TO

ANALYSIS REQUEST

P.O. #:

Company: FAE II Operating LLC

Attn: Alex Bolanos

Address: 11757 Katy Fwy Suite 725

City: Houston

State: TX Zip: 77079

Phone #:

Fax #:

Lab I.D.

Sample I.D.

Lab I.D.	Sample I.D.	(G)RAB OR (C)OMP.	# CONTAINERS	MATRIX						PRESERV.		SAMPLING						
				GROUNDWATER	WASTEWATER	SOIL	OIL	SLUDGE	OTHER :	ACID/BASE:	ICE / COOL							
1	DS-04	2.5'	1	✓								DATE	TIME	Chloride (EPA Method 4500)				
2	DS-07	0.5'	1	✓								1-24-24	2:15	TPH Extended 8015				
3	DS-07	2.5'	1	✓								1-24-24	2:41	BTEX (EPA Method 8021B)				
4	DS-07	5.0'	1	✓								1-24-24	2:50					
5	DS-09	0.5'	1	✓								1-24-24	3:01					
6	DS-09	2.5'	1	✓								1-24-24	3:12					
7	DS-09	4.0'	1	✓								1-24-24	3:33					
8	DS-10	0.5'	1	✓								1-24-24	3:45					
9	DS-10	2.5'	1	✓								1-24-24	3:57					

PLEASE NOTE: Liability and Damages, Cardinal's liability and client's exclusive remedy for any claim arising whether based in contract or tort, shall be limited to the amount paid by the client for the analysis. All claims, including those for negligence and any other cause whatsoever shall be deemed waived unless made in writing and received by Cardinal within 30 days after completion of the applicable services. In no event shall Cardinal be liable for incidental or consequential damages, including without limitation, business interruptions, loss of use, or loss of profits incurred by client, its subsidiaries, affiliates or successors arising out of or related to the performance of services hereunder by Cardinal, regardless of whether such claim is based upon any of the above stated reasons or otherwise.

Relinquished By:

Date: 1-30-24

Time: 1:24 PM

Received By: Rodriquez

Relinquished By:

Date: 09-24

Time: 5:58 PM

Received By:

Rodriquez

REMARKS:

Gus Sanchez@Terracon.com; Travis Casey@Terracon.com; Joseph Guesnier@Terracon.com; Becky Sue Miller@Terracon.com;

Delivered By: (Circle One)

Observed Temp. °C

Sample Condition

Cool Intact

CHECKED BY: (Initials)

Sampler - UPS - Bus - Other:

Corrected Temp. °C

Cool Intact

CHECKED BY: (Initials)

FORM-006 R 3.2 10/07/21

† Cardinal cannot accept verbal changes. Please email changes to celey.keene@cardinallabsnm.com



PHONE (575) 393-2326 ° 101 E. MARLAND ° HOBBS, NM 88240

February 01, 2024

JOSEPH GUESNIER

TERRACON CONSULTANTS

5827 50TH ST. SUITE 1

LUBBOCK, TX 79424

RE: WEU BATTERY

Enclosed are the results of analyses for samples received by the laboratory on 01/30/24 16:03.

Cardinal Laboratories is accredited through Texas NELAP under certificate number T104704398-23-16. Accreditation applies to drinking water, non-potable water and solid and chemical materials. All accredited analytes are denoted by an asterisk (*). For a complete list of accredited analytes and matrices visit the TCEQ website at www.tceq.texas.gov/field/qa/lab_accred_certif.html.

Cardinal Laboratories is accredited through the State of Colorado Department of Public Health and Environment for:

Method EPA 552.2	Haloacetic Acids (HAA-5)
Method EPA 524.2	Total Trihalomethanes (TTHM)
Method EPA 524.4	Regulated VOCs (V1, V2, V3)

Accreditation applies to public drinking water matrices.

This report meets NELAP requirements and is made up of a cover page, analytical results, and a copy of the original chain-of-custody. If you have any questions concerning this report, please feel free to contact me.

Sincerely,

A handwritten signature in black ink that reads "Celey D. Keene". The signature is written in a cursive, flowing style.

Celey D. Keene

Lab Director/Quality Manager



PHONE (575) 393-2326 ° 101 E. MARLAND ° HOBBS, NM 88240

Analytical Results For:

TERRACON CONSULTANTS
 JOSEPH GUESNIER
 5827 50TH ST. SUITE 1
 LUBBOCK TX, 79424
 Fax To:

Received: 01/30/2024
 Reported: 02/01/2024
 Project Name: WEU BATTERY
 Project Number: KH247001
 Project Location: FAE II OPERATING - LEA CO NM

Sampling Date: 01/30/2024
 Sampling Type: Soil
 Sampling Condition: Cool & Intact
 Sample Received By: Shalyn Rodriguez

Sample ID: DS - 11 0.5' (H240426-01)

BTEX 8021B		mg/kg		Analyzed By: JH					
Analyte	Result	Reporting Limit	Analyzed	Method Blank	BS	% Recovery	True Value QC	RPD	Qualifier
Benzene*	<0.050	0.050	01/31/2024	ND	2.11	105	2.00	0.496	
Toluene*	<0.050	0.050	01/31/2024	ND	2.09	105	2.00	0.277	
Ethylbenzene*	<0.050	0.050	01/31/2024	ND	2.07	104	2.00	0.458	
Total Xylenes*	<0.150	0.150	01/31/2024	ND	6.07	101	6.00	0.494	
Total BTEX	<0.300	0.300	01/31/2024	ND					

Surrogate: 4-Bromofluorobenzene (PID) 98.0 % 71.5-134

Chloride, SM4500Cl-B		mg/kg		Analyzed By: CT					
Analyte	Result	Reporting Limit	Analyzed	Method Blank	BS	% Recovery	True Value QC	RPD	Qualifier
Chloride	32.0	16.0	01/31/2024	ND	432	108	400	7.14	

TPH 8015M		mg/kg		Analyzed By: MS					
Analyte	Result	Reporting Limit	Analyzed	Method Blank	BS	% Recovery	True Value QC	RPD	Qualifier
GRO C6-C10*	<10.0	10.0	01/31/2024	ND	185	92.6	200	0.794	
DRO >C10-C28*	<10.0	10.0	01/31/2024	ND	200	100	200	1.18	
EXT DRO >C28-C36	<10.0	10.0	01/31/2024	ND					

Surrogate: 1-Chlorooctane 84.4 % 48.2-134

Surrogate: 1-Chlorooctadecane 89.6 % 49.1-148

Cardinal Laboratories

*=Accredited Analyte

PLEASE NOTE: Liability and Damages. Cardinal's liability and client's exclusive remedy for any claim arising, whether based in contract or tort, shall be limited to the amount paid by client for analyses. All claims, including those for negligence and any other cause whatsoever shall be deemed waived unless made in writing and received by Cardinal within thirty (30) days after completion of the applicable service. In no event shall Cardinal be liable for incidental or consequential damages, including, without limitation, business interruptions, loss of use, or loss of profits incurred by client, its subsidiaries, affiliates or successors arising out of or related to the performance of the services hereunder by Cardinal, regardless of whether such claim is based upon any of the above stated reasons or otherwise. Results relate only to the samples identified above. This report shall not be reproduced except in full with written approval of Cardinal Laboratories.

Celey D. Keene, Lab Director/Quality Manager



PHONE (575) 393-2326 ° 101 E. MARLAND ° HOBBS, NM 88240

Analytical Results For:

TERRACON CONSULTANTS
 JOSEPH GUESNIER
 5827 50TH ST. SUITE 1
 LUBBOCK TX, 79424
 Fax To:

Received: 01/30/2024
 Reported: 02/01/2024
 Project Name: WEU BATTERY
 Project Number: KH247001
 Project Location: FAE II OPERATING - LEA CO NM

Sampling Date: 01/30/2024
 Sampling Type: Soil
 Sampling Condition: Cool & Intact
 Sample Received By: Shalyn Rodriguez

Sample ID: DS - 11 2' (H240426-02)

BTEX 8021B		mg/kg		Analyzed By: JH					
Analyte	Result	Reporting Limit	Analyzed	Method Blank	BS	% Recovery	True Value QC	RPD	Qualifier
Benzene*	<0.050	0.050	01/31/2024	ND	2.11	105	2.00	0.496	
Toluene*	<0.050	0.050	01/31/2024	ND	2.09	105	2.00	0.277	
Ethylbenzene*	<0.050	0.050	01/31/2024	ND	2.07	104	2.00	0.458	
Total Xylenes*	<0.150	0.150	01/31/2024	ND	6.07	101	6.00	0.494	
Total BTEX	<0.300	0.300	01/31/2024	ND					

Surrogate: 4-Bromofluorobenzene (PID) 97.9 % 71.5-134

Chloride, SM4500Cl-B		mg/kg		Analyzed By: CT						
Analyte	Result	Reporting Limit	Analyzed	Method Blank	BS	% Recovery	True Value QC	RPD	Qualifier	
Chloride	<16.0	16.0	01/31/2024	ND	432	108	400	7.14		

TPH 8015M		mg/kg		Analyzed By: MS					
Analyte	Result	Reporting Limit	Analyzed	Method Blank	BS	% Recovery	True Value QC	RPD	Qualifier
GRO C6-C10*	<10.0	10.0	01/31/2024	ND	185	92.6	200	0.794	
DRO >C10-C28*	<10.0	10.0	01/31/2024	ND	200	100	200	1.18	
EXT DRO >C28-C36	<10.0	10.0	01/31/2024	ND					

Surrogate: 1-Chlorooctane 83.7 % 48.2-134

Surrogate: 1-Chlorooctadecane 88.4 % 49.1-148

Cardinal Laboratories

*=Accredited Analyte

PLEASE NOTE: Liability and Damages. Cardinal's liability and client's exclusive remedy for any claim arising, whether based in contract or tort, shall be limited to the amount paid by client for analyses. All claims, including those for negligence and any other cause whatsoever shall be deemed waived unless made in writing and received by Cardinal within thirty (30) days after completion of the applicable service. In no event shall Cardinal be liable for incidental or consequential damages, including, without limitation, business interruptions, loss of use, or loss of profits incurred by client, its subsidiaries, affiliates or successors arising out of or related to the performance of the services hereunder by Cardinal, regardless of whether such claim is based upon any of the above stated reasons or otherwise. Results relate only to the samples identified above. This report shall not be reproduced except in full with written approval of Cardinal Laboratories.

Celey D. Keene, Lab Director/Quality Manager



PHONE (575) 393-2326 ° 101 E. MARLAND ° HOBBS, NM 88240

Analytical Results For:

TERRACON CONSULTANTS
 JOSEPH GUESNIER
 5827 50TH ST. SUITE 1
 LUBBOCK TX, 79424
 Fax To:

Received: 01/30/2024
 Reported: 02/01/2024
 Project Name: WEU BATTERY
 Project Number: KH247001
 Project Location: FAE II OPERATING - LEA CO NM

Sampling Date: 01/30/2024
 Sampling Type: Soil
 Sampling Condition: Cool & Intact
 Sample Received By: Shalyn Rodriguez

Sample ID: DS - 11 4' (H240426-03)

BTX 8021B			mg/kg		Analyzed By: JH				
Analyte	Result	Reporting Limit	Analyzed	Method Blank	BS	% Recovery	True Value QC	RPD	Qualifier
Benzene*	<0.050	0.050	01/31/2024	ND	2.11	105	2.00	0.496	
Toluene*	<0.050	0.050	01/31/2024	ND	2.09	105	2.00	0.277	
Ethylbenzene*	<0.050	0.050	01/31/2024	ND	2.07	104	2.00	0.458	
Total Xylenes*	<0.150	0.150	01/31/2024	ND	6.07	101	6.00	0.494	
Total BTX	<0.300	0.300	01/31/2024	ND					

Surrogate: 4-Bromofluorobenzene (PID) 98.4 % 71.5-134

Chloride, SM4500Cl-B		mg/kg		Analyzed By: CT					
Analyte	Result	Reporting Limit	Analyzed	Method Blank	BS	% Recovery	True Value QC	RPD	Qualifier
Chloride	<16.0	16.0	01/31/2024	ND	432	108	400	7.14	

TPH 8015M		mg/kg		Analyzed By: MS					
Analyte	Result	Reporting Limit	Analyzed	Method Blank	BS	% Recovery	True Value QC	RPD	Qualifier
GRO C6-C10*	<10.0	10.0	01/31/2024	ND	185	92.6	200	0.794	
DRO >C10-C28*	<10.0	10.0	01/31/2024	ND	200	100	200	1.18	
EXT DRO >C28-C36	<10.0	10.0	01/31/2024	ND					

Surrogate: 1-Chlorooctane 92.9 % 48.2-134

Surrogate: 1-Chlorooctadecane 99.3 % 49.1-148

Cardinal Laboratories

*=Accredited Analyte

PLEASE NOTE: Liability and Damages. Cardinal's liability and client's exclusive remedy for any claim arising, whether based in contract or tort, shall be limited to the amount paid by client for analyses. All claims, including those for negligence and any other cause whatsoever shall be deemed waived unless made in writing and received by Cardinal within thirty (30) days after completion of the applicable service. In no event shall Cardinal be liable for incidental or consequential damages, including, without limitation, business interruptions, loss of use, or loss of profits incurred by client, its subsidiaries, affiliates or successors arising out of or related to the performance of the services hereunder by Cardinal, regardless of whether such claim is based upon any of the above stated reasons or otherwise. Results relate only to the samples identified above. This report shall not be reproduced except in full with written approval of Cardinal Laboratories.

Celey D. Keene, Lab Director/Quality Manager



PHONE (575) 393-2326 ° 101 E. MARLAND ° HOBBS, NM 88240

Notes and Definitions

- ND Analyte NOT DETECTED at or above the reporting limit
- RPD Relative Percent Difference
- ** Samples not received at proper temperature of 6°C or below.
- *** Insufficient time to reach temperature.
- Chloride by SM4500Cl-B does not require samples be received at or below 6°C
Samples reported on an as received basis (wet) unless otherwise noted on report

Cardinal Laboratories

*=Accredited Analyte

PLEASE NOTE: Liability and Damages. Cardinal's liability and client's exclusive remedy for any claim arising, whether based in contract or tort, shall be limited to the amount paid by client for analyses. All claims, including those for negligence and any other cause whatsoever shall be deemed waived unless made in writing and received by Cardinal within thirty (30) days after completion of the applicable service. In no event shall Cardinal be liable for incidental or consequential damages, including, without limitation, business interruptions, loss of use, or loss of profits incurred by client, its subsidiaries, affiliates or successors arising out of or related to the performance of the services hereunder by Cardinal, regardless of whether such claim is based upon any of the above stated reasons or otherwise. Results relate only to the samples identified above. This report shall not be reproduced except in full with written approval of Cardinal Laboratories.

A handwritten signature in black ink, appearing to read "C. D. Keene".

Celey D. Keene, Lab Director/Quality Manager



CHAIN-OF-CUSTODY AND ANALYSIS REQUEST

101 East Marland, Hobbs, NM 88240
(575) 393-2326 FAX (575) 393-2476

Company Name: <u>Turaco</u>		P.O. #:		BILL TO										ANALYSIS REQUEST																											
Project Manager: <u>Joe Gaudin</u>		Company: <u>FAE II</u>																																							
Address: <u>4518 W. Pierce St.</u>		Attn: <u>Alex Balanos</u>																																							
City: <u>Carlsbad</u>		Address: <u>11757 Katy</u>																																							
State: <u>NM</u> Zip: <u>88220</u>		City: <u>Houston</u>																																							
Phone #:		State: <u>TX</u> Zip: <u>77029</u>																																							
Project #: <u>KH247001</u>		Project Owner:																																							
Project Location: <u>See</u>		Phone #:																																							
Sample Name: <u>Battery Mixture</u>		Fax #:																																							
FOR LAB USE ONLY																																									
Lab I.D.		Sample I.D.		(G)RAB OR (C)OMP.		# CONTAINERS		GROUNDWATER		WASTEWATER		SOIL		OIL		SLUDGE		OTHER :		ACID/BASE:		ICE / COOL		OTHER :		DATE		TIME													
1440424		05-11 0.5'		6		1														✓						1/30		2:00		chloride (EPA 450.500)											
2		05-11 2'		6		1																				2:10		2:40		TPH (8015)											
3		05-11 4'		6		1																				2:40				BTX (8021B)											
PLEASE NOTE: Liability and Damages. Cardinal's liability and client's exclusive remedy for any claim arising whether based in contract or tort, shall be limited to the amount paid by the client for the analysis. All claims, including those for negligence and any other cause whatsoever shall be deemed waived unless made in writing and received by Cardinal within 30 days after completion of the applicable service. In no event shall Cardinal be liable for incidental or consequential damages, including without limitation, business interruptions, loss of use, or loss of profits incurred by client, its subsidiaries, affiliates or successors arising out of or related to the performance of services hereunder by Cardinal, except to the extent that such damages are caused by the negligence of Cardinal.																																									
Relinquished By: <u>B. Miller</u>		Date: <u>7-30-24</u>		Received By: <u>Blockmiquely</u>		Date: <u>1003</u>		Time: <u>1003</u>		Received By: <u>Blockmiquely</u>		Date: <u>1003</u>		Time: <u>1003</u>		REMARKS:																									
Delivered By: (Circle One)		Observed Temp. °C: <u>23.2</u>		Sample Condition		Cool Intact		Yes <input checked="" type="checkbox"/> No <input type="checkbox"/>		CHECKED BY: (Initials)		Turaround Time: <u>#140</u>		Standard <u>Rush</u>		Bacteria (only)		Cool Intact		Yes <input type="checkbox"/> No <input type="checkbox"/>		Sample Condition		Cool Intact		Yes <input type="checkbox"/> No <input type="checkbox"/>		Observed Temp. °C		Corrected Temp. °C											
Sampler - UPS - Bus - Other:		Corrected Temp. °C		Sample Condition		Cool Intact		Yes <input type="checkbox"/> No <input type="checkbox"/>		CHECKED BY: (Initials)		Thermometer ID: <u>#140</u>		Correction Factor: <u>0°C</u>		Bacteria (only)		Cool Intact		Yes <input type="checkbox"/> No <input type="checkbox"/>		Sample Condition		Cool Intact		Yes <input type="checkbox"/> No <input type="checkbox"/>		Observed Temp. °C		Corrected Temp. °C											
FORM 000-R-3-0711723																																									

† Cardinal cannot accept verbal changes. Please email changes to caley.keene@cardinallabsnm.com



PHONE (575) 393-2326 ° 101 E. MARLAND ° HOBBS, NM 88240

February 05, 2024

JOSEPH GUESNIER

TERRACON CONSULTANTS

5827 50TH ST. SUITE 1

LUBBOCK, TX 79424

RE: WEU BATTERY

Enclosed are the results of analyses for samples received by the laboratory on 01/31/24 13:22.

Cardinal Laboratories is accredited through Texas NELAP under certificate number T104704398-23-16. Accreditation applies to drinking water, non-potable water and solid and chemical materials. All accredited analytes are denoted by an asterisk (*). For a complete list of accredited analytes and matrices visit the TCEQ website at www.tceq.texas.gov/field/qa/lab_accred_certif.html.

Cardinal Laboratories is accredited through the State of Colorado Department of Public Health and Environment for:

Method EPA 552.2	Haloacetic Acids (HAA-5)
Method EPA 524.2	Total Trihalomethanes (TTHM)
Method EPA 524.4	Regulated VOCs (V1, V2, V3)

Accreditation applies to public drinking water matrices.

This report meets NELAP requirements and is made up of a cover page, analytical results, and a copy of the original chain-of-custody. If you have any questions concerning this report, please feel free to contact me.

Sincerely,

A handwritten signature in black ink that reads "Mike Snyder". The signature is fluid and cursive, with the first name "Mike" and last name "Snyder" clearly distinguishable.

Mike Snyder For Celey D. Keene

Lab Director/Quality Manager



PHONE (575) 393-2326 ° 101 E. MARLAND ° HOBBS, NM 88240

Analytical Results For:

TERRACON CONSULTANTS
 JOSEPH GUESNIER
 5827 50TH ST. SUITE 1
 LUBBOCK TX, 79424
 Fax To:

Received: 01/31/2024
 Reported: 02/05/2024
 Project Name: WEU BATTERY
 Project Number: KH247001
 Project Location: FAE II OPERATING - LEA CO NM

Sampling Date: 01/31/2024
 Sampling Type: Soil
 Sampling Condition: Cool & Intact
 Sample Received By: Shalyn Rodriguez

Sample ID: DS-10 3.5' (H240439-01)

BTX 8021B		mg/kg		Analyzed By: JH					
Analyte	Result	Reporting Limit	Analyzed	Method Blank	BS	% Recovery	True Value QC	RPD	Qualifier
Benzene*	<0.050	0.050	01/31/2024	ND	2.26	113	2.00	9.03	
Toluene*	<0.050	0.050	01/31/2024	ND	2.41	120	2.00	15.0	
Ethylbenzene*	<0.050	0.050	01/31/2024	ND	2.58	129	2.00	16.8	
Total Xylenes*	<0.150	0.150	01/31/2024	ND	7.79	130	6.00	16.9	
Total BTX	<0.300	0.300	01/31/2024	ND					

Surrogate: 4-Bromofluorobenzene (PID) 105 % 71.5-134

Chloride, SM4500Cl-B		mg/kg		Analyzed By: CT					
Analyte	Result	Reporting Limit	Analyzed	Method Blank	BS	% Recovery	True Value QC	RPD	Qualifier
Chloride	1060	16.0	02/01/2024	ND	416	104	400	10.9	

TPH 8015M		mg/kg		Analyzed By: MS					
Analyte	Result	Reporting Limit	Analyzed	Method Blank	BS	% Recovery	True Value QC	RPD	Qualifier
GRO C6-C10*	<10.0	10.0	02/01/2024	ND	192	96.1	200	1.97	
DRO >C10-C28*	<10.0	10.0	02/01/2024	ND	222	111	200	5.16	
EXT DRO >C28-C36	<10.0	10.0	02/01/2024	ND					

Surrogate: 1-Chlorooctane 90.0 % 48.2-134

Surrogate: 1-Chlorooctadecane 86.1 % 49.1-148

Cardinal Laboratories

*=Accredited Analyte

PLEASE NOTE: Liability and Damages. Cardinal's liability and client's exclusive remedy for any claim arising, whether based in contract or tort, shall be limited to the amount paid by client for analyses. All claims, including those for negligence and any other cause whatsoever shall be deemed waived unless made in writing and received by Cardinal within thirty (30) days after completion of the applicable service. In no event shall Cardinal be liable for incidental or consequential damages, including, without limitation, business interruptions, loss of use, or loss of profits incurred by client, its subsidiaries, affiliates or successors arising out of or related to the performance of the services hereunder by Cardinal, regardless of whether such claim is based upon any of the above stated reasons or otherwise. Results relate only to the samples identified above. This report shall not be reproduced except in full with written approval of Cardinal Laboratories.

Mike Snyder For Celey D. Keene, Lab Director/Quality Manager



PHONE (575) 393-2326 ° 101 E. MARLAND ° HOBBS, NM 88240

Analytical Results For:

TERRACON CONSULTANTS
 JOSEPH GUESNIER
 5827 50TH ST. SUITE 1
 LUBBOCK TX, 79424
 Fax To:

Received: 01/31/2024
 Reported: 02/05/2024
 Project Name: WEU BATTERY
 Project Number: KH247001
 Project Location: FAE II OPERATING - LEA CO NM

Sampling Date: 01/31/2024
 Sampling Type: Soil
 Sampling Condition: Cool & Intact
 Sample Received By: Shalyn Rodriguez

Sample ID: DS-12 3.5' (H240439-02)

BTEx 8021B		mg/kg		Analyzed By: JH					
Analyte	Result	Reporting Limit	Analyzed	Method Blank	BS	% Recovery	True Value QC	RPD	Qualifier
Benzene*	<0.050	0.050	01/31/2024	ND	2.26	113	2.00	9.03	
Toluene*	<0.050	0.050	01/31/2024	ND	2.41	120	2.00	15.0	
Ethylbenzene*	<0.050	0.050	01/31/2024	ND	2.58	129	2.00	16.8	
Total Xylenes*	<0.150	0.150	01/31/2024	ND	7.79	130	6.00	16.9	
Total BTEX	<0.300	0.300	01/31/2024	ND					

Surrogate: 4-Bromofluorobenzene (PID) 118 % 71.5-134

Chloride, SM4500Cl-B		mg/kg		Analyzed By: CT					
Analyte	Result	Reporting Limit	Analyzed	Method Blank	BS	% Recovery	True Value QC	RPD	Qualifier
Chloride	1710	16.0	02/01/2024	ND	416	104	400	10.9	

TPH 8015M		mg/kg		Analyzed By: MS					
Analyte	Result	Reporting Limit	Analyzed	Method Blank	BS	% Recovery	True Value QC	RPD	Qualifier
GRO C6-C10*	<10.0	10.0	02/01/2024	ND	192	96.1	200	1.97	
DRO >C10-C28*	117	10.0	02/01/2024	ND	222	111	200	5.16	
EXT DRO >C28-C36	<10.0	10.0	02/01/2024	ND					

Surrogate: 1-Chlorooctane 92.0 % 48.2-134

Surrogate: 1-Chlorooctadecane 91.6 % 49.1-148

Cardinal Laboratories

*=Accredited Analyte

PLEASE NOTE: Liability and Damages. Cardinal's liability and client's exclusive remedy for any claim arising, whether based in contract or tort, shall be limited to the amount paid by client for analyses. All claims, including those for negligence and any other cause whatsoever shall be deemed waived unless made in writing and received by Cardinal within thirty (30) days after completion of the applicable service. In no event shall Cardinal be liable for incidental or consequential damages, including, without limitation, business interruptions, loss of use, or loss of profits incurred by client, its subsidiaries, affiliates or successors arising out of or related to the performance of the services hereunder by Cardinal, regardless of whether such claim is based upon any of the above stated reasons or otherwise. Results relate only to the samples identified above. This report shall not be reproduced except in full with written approval of Cardinal Laboratories.

Mike Snyder For Celey D. Keene, Lab Director/Quality Manager



PHONE (575) 393-2326 ° 101 E. MARLAND ° HOBBS, NM 88240

Notes and Definitions

QR-04	The RPD for the BS/BSD was outside of historical limits.
QR-03	The RPD value for the sample duplicate or MS/MSD was outside of QC acceptance limits due to matrix interference. QC batch accepted based on LCS and/or LCSD recovery and/or RPD values.
BS-3	Blank spike recovery outside of lab established statistical limits, but still within method limits. Data is not adversely affected.
BS1	Blank spike recovery above laboratory acceptance criteria. Results for analyte potentially biased high.
ND	Analyte NOT DETECTED at or above the reporting limit
RPD	Relative Percent Difference
**	Samples not received at proper temperature of 6°C or below.
***	Insufficient time to reach temperature.
-	Chloride by SM4500Cl-B does not require samples be received at or below 6°C Samples reported on an as received basis (wet) unless otherwise noted on report

Cardinal Laboratories

*=Accredited Analyte

PLEASE NOTE: Liability and Damages. Cardinal's liability and client's exclusive remedy for any claim arising, whether based in contract or tort, shall be limited to the amount paid by client for analyses. All claims, including those for negligence and any other cause whatsoever shall be deemed waived unless made in writing and received by Cardinal within thirty (30) days after completion of the applicable service. In no event shall Cardinal be liable for incidental or consequential damages, including, without limitation, business interruptions, loss of use, or loss of profits incurred by client, its subsidiaries, affiliates or successors arising out of or related to the performance of the services hereunder by Cardinal, regardless of whether such claim is based upon any of the above stated reasons or otherwise. Results relate only to the samples identified above. This report shall not be reproduced except in full with written approval of Cardinal Laboratories.

A handwritten signature in black ink, appearing to read "Mike Snyder", is written over a horizontal line.

Mike Snyder For Celey D. Keene, Lab Director/Quality Manager



101 East Marland, Hobbs, NM 88240
(575) 393-2326 FAX (575) 393-2476

CHAIN-OF-CUSTODY AND ANALYSIS REQUEST

Company Name: <u>Trucon</u>				BILL TO				ANALYSIS REQUEST							
Project Manager: <u>Joe Guzman</u>				P.O. #:											
Address: <u>4518 W Persa St</u>				Company: <u>FAE II</u>											
City: <u>Carlsbad</u>				Attn: <u>Alex Belanos</u>											
State: <u>NM</u> Zip: <u>88220</u>				Address: <u>11757 Katy</u>											
Phone #:				City: <u>Houston</u>											
Fax #:				State: <u>TX</u> Zip: <u>77079</u>											
Project #: <u>KH247001</u>				Project Owner:											
Project Name: <u>Well Battery</u>				Phone #:											
Project Location: <u>Lea</u>				Fax #:											
Sampler Name: <u>Bucky Miller</u>															
<small>FOR LAB USE ONLY</small>															
Lab I.D.		Sample I.D.		(G)RAB OR (C)OMP.		# CONTAINERS		MATRIX		PRESERV.		SAMPLING			
								<input type="checkbox"/> GROUNDWATER <input type="checkbox"/> WASTEWATER <input type="checkbox"/> SOIL <input type="checkbox"/> OIL <input type="checkbox"/> SLUDGE <input type="checkbox"/> OTHER :		<input type="checkbox"/> ACID/BASE: <input type="checkbox"/> ICE / COOL <input type="checkbox"/> OTHER :		DATE		TIME	
<u>1134043A</u>		<u>05-10 3.5'</u>		<u>01</u>		<u>1</u>		<u>X</u>		<u>X</u>		<u>1/31</u>		<u>11:50</u>	
<u>2</u>		<u>05-12 3.5'</u>		<u>01</u>		<u>1</u>		<u>X</u>		<u>X</u>		<u>12:00</u>		<u>X</u>	
<p>PLEASE NOTE: Liability and Damages. Cardinal's liability and client's exclusive remedy for any claim arising whether based in contract or tort, shall be limited to the amount paid by the client for the analyses. All claims, including those for negligence and any other cause whatsoever shall be deemed waived unless made in writing and received by Cardinal within 30 days after completion of the applicable service. In no event shall Cardinal be liable for incidental or consequential damages, including without limitation, business interruptions, loss of use, or loss of profits incurred by client, its subsidiaries, affiliates or successors arising out of or related to, the performance of services hereunder by Cardinal, regardless of whether such claim is based upon any of the above items, reasons or otherwise.</p>															
Relinquished By: <u>B Miller</u>				Date: <u>1-31-24</u> Received By: <u>Stocking</u>				Verbal Result: <input type="checkbox"/> Yes <input type="checkbox"/> No Add'l Phone #:							
Relinquished By:				Date:				Time:				REMARKS:			
Delivered By: (Circle One)				Observed Temp. °C				Sample Condition				CHECKED BY: (Initials)			
Sampler - UPS - Bus - Other:				Corrected Temp. °C				<input type="checkbox"/> Cool <input type="checkbox"/> Intact <input type="checkbox"/> Yes <input type="checkbox"/> No				<u>SK</u>			
Turnaround Time:				Standard <u>RUSH</u>				Bacteria (only) <input type="checkbox"/> Sample Condition				Observed Temp. °C			
								<input type="checkbox"/> Cool <input type="checkbox"/> Intact <input type="checkbox"/> Yes <input type="checkbox"/> No				Corrected Temp. °C			

† Cardinal cannot accept verbal changes. Please email changes to caley.keene@cardinallabsnm.com



PHONE (575) 393-2326 ° 101 E. MARLAND ° HOBBS, NM 88240

February 06, 2024

JOSEPH GUESNIER

TERRACON CONSULTANTS

5827 50TH ST. SUITE 1

LUBBOCK, TX 79424

RE: WEU BATTERY

Enclosed are the results of analyses for samples received by the laboratory on 02/01/24 16:02.

Cardinal Laboratories is accredited through Texas NELAP under certificate number T104704398-23-16. Accreditation applies to drinking water, non-potable water and solid and chemical materials. All accredited analytes are denoted by an asterisk (*). For a complete list of accredited analytes and matrices visit the TCEQ website at www.tceq.texas.gov/field/qa/lab_accred_certif.html.

Cardinal Laboratories is accredited through the State of Colorado Department of Public Health and Environment for:

Method EPA 552.2	Haloacetic Acids (HAA-5)
Method EPA 524.2	Total Trihalomethanes (TTHM)
Method EPA 524.4	Regulated VOCs (V1, V2, V3)

Accreditation applies to public drinking water matrices.

This report meets NELAP requirements and is made up of a cover page, analytical results, and a copy of the original chain-of-custody. If you have any questions concerning this report, please feel free to contact me.

Sincerely,

A handwritten signature in black ink that reads "Celey D. Keene". The signature is fluid and cursive, with the first name "Celey" and last name "Keene" clearly distinguishable.

Celey D. Keene

Lab Director/Quality Manager



PHONE (575) 393-2326 ° 101 E. MARLAND ° HOBBS, NM 88240

Analytical Results For:

TERRACON CONSULTANTS
 JOSEPH GUESNIER
 5827 50TH ST. SUITE 1
 LUBBOCK TX, 79424
 Fax To:

Received: 02/01/2024
 Reported: 02/06/2024
 Project Name: WEU BATTERY
 Project Number: KH247001
 Project Location: FAE II OPERATING - LEA CO NM

Sampling Date: 02/01/2024
 Sampling Type: Soil
 Sampling Condition: Cool & Intact
 Sample Received By: Shalyn Rodriguez

Sample ID: DS - 12 4' (H240496-01)

BTX 8021B		mg/kg		Analyzed By: JH					
Analyte	Result	Reporting Limit	Analyzed	Method Blank	BS	% Recovery	True Value QC	RPD	Qualifier
Benzene*	<0.050	0.050	02/03/2024	ND	2.23	112	2.00	2.70	
Toluene*	<0.050	0.050	02/03/2024	ND	2.21	110	2.00	4.52	
Ethylbenzene*	<0.050	0.050	02/03/2024	ND	2.31	115	2.00	5.74	
Total Xylenes*	<0.150	0.150	02/03/2024	ND	6.88	115	6.00	5.64	
Total BTX	<0.300	0.300	02/03/2024	ND					

Surrogate: 4-Bromofluorobenzene (PID) 107 % 71.5-134

Chloride, SM4500Cl-B		mg/kg		Analyzed By: AC					
Analyte	Result	Reporting Limit	Analyzed	Method Blank	BS	% Recovery	True Value QC	RPD	Qualifier
Chloride	2720	16.0	02/05/2024	ND	416	104	400	3.77	

TPH 8015M	mg/kg		Analyzed By: MS						
Analyte	Result	Reporting Limit	Analyzed	Method Blank	BS	% Recovery	True Value QC	RPD	Qualifier
GRO C6-C10*	<10.0	10.0	02/03/2024	ND	195	97.4	200	4.32	
DRO >C10-C28*	112	10.0	02/03/2024	ND	186	93.2	200	1.68	
EXT DRO >C28-C36	15.6	10.0	02/03/2024	ND					

Surrogate: 1-Chlorooctane 99.6 % 48.2-134

Surrogate: 1-Chlorooctadecane 99.5 % 49.1-148

Cardinal Laboratories

*=Accredited Analyte

PLEASE NOTE: Liability and Damages. Cardinal's liability and client's exclusive remedy for any claim arising, whether based in contract or tort, shall be limited to the amount paid by client for analyses. All claims, including those for negligence and any other cause whatsoever shall be deemed waived unless made in writing and received by Cardinal within thirty (30) days after completion of the applicable service. In no event shall Cardinal be liable for incidental or consequential damages, including, without limitation, business interruptions, loss of use, or loss of profits incurred by client, its subsidiaries, affiliates or successors arising out of or related to the performance of the services hereunder by Cardinal, regardless of whether such claim is based upon any of the above stated reasons or otherwise. Results relate only to the samples identified above. This report shall not be reproduced except in full with written approval of Cardinal Laboratories.

Celey D. Keene, Lab Director/Quality Manager



PHONE (575) 393-2326 ° 101 E. MARLAND ° HOBBS, NM 88240

Analytical Results For:

TERRACON CONSULTANTS
 JOSEPH GUESNIER
 5827 50TH ST. SUITE 1
 LUBBOCK TX, 79424
 Fax To:

Received: 02/01/2024
 Reported: 02/06/2024
 Project Name: WEU BATTERY
 Project Number: KH247001
 Project Location: FAE II OPERATING - LEA CO NM

Sampling Date: 02/01/2024
 Sampling Type: Soil
 Sampling Condition: Cool & Intact
 Sample Received By: Shalyn Rodriguez

Sample ID: DS - 12 5' (H240496-02)

BTEx 8021B		mg/kg		Analyzed By: JH					
Analyte	Result	Reporting Limit	Analyzed	Method Blank	BS	% Recovery	True Value QC	RPD	Qualifier
Benzene*	<0.050	0.050	02/03/2024	ND	2.23	112	2.00	2.70	
Toluene*	<0.050	0.050	02/03/2024	ND	2.21	110	2.00	4.52	
Ethylbenzene*	<0.050	0.050	02/03/2024	ND	2.31	115	2.00	5.74	
Total Xylenes*	<0.150	0.150	02/03/2024	ND	6.88	115	6.00	5.64	
Total BTEX	<0.300	0.300	02/03/2024	ND					

Surrogate: 4-Bromofluorobenzene (PID) 99.4 % 71.5-134

Chloride, SM4500Cl-B		mg/kg		Analyzed By: AC					
Analyte	Result	Reporting Limit	Analyzed	Method Blank	BS	% Recovery	True Value QC	RPD	Qualifier
Chloride	1810	16.0	02/05/2024	ND	416	104	400	3.77	

TPH 8015M		mg/kg		Analyzed By: MS					
Analyte	Result	Reporting Limit	Analyzed	Method Blank	BS	% Recovery	True Value QC	RPD	Qualifier
GRO C6-C10*	<10.0	10.0	02/03/2024	ND	195	97.4	200	4.32	
DRO >C10-C28*	<10.0	10.0	02/03/2024	ND	186	93.2	200	1.68	
EXT DRO >C28-C36	<10.0	10.0	02/03/2024	ND					

Surrogate: 1-Chlorooctane 111 % 48.2-134

Surrogate: 1-Chlorooctadecane 105 % 49.1-148

Cardinal Laboratories

*=Accredited Analyte

PLEASE NOTE: Liability and Damages. Cardinal's liability and client's exclusive remedy for any claim arising, whether based in contract or tort, shall be limited to the amount paid by client for analyses. All claims, including those for negligence and any other cause whatsoever shall be deemed waived unless made in writing and received by Cardinal within thirty (30) days after completion of the applicable service. In no event shall Cardinal be liable for incidental or consequential damages, including, without limitation, business interruptions, loss of use, or loss of profits incurred by client, its subsidiaries, affiliates or successors arising out of or related to the performance of the services hereunder by Cardinal, regardless of whether such claim is based upon any of the above stated reasons or otherwise. Results relate only to the samples identified above. This report shall not be reproduced except in full with written approval of Cardinal Laboratories.

Celey D. Keene, Lab Director/Quality Manager



PHONE (575) 393-2326 ° 101 E. MARLAND ° HOBBS, NM 88240

Analytical Results For:

TERRACON CONSULTANTS
 JOSEPH GUESNIER
 5827 50TH ST. SUITE 1
 LUBBOCK TX, 79424
 Fax To:

Received: 02/01/2024
 Reported: 02/06/2024
 Project Name: WEU BATTERY
 Project Number: KH247001
 Project Location: FAE II OPERATING - LEA CO NM

Sampling Date: 02/01/2024
 Sampling Type: Soil
 Sampling Condition: Cool & Intact
 Sample Received By: Shalyn Rodriguez

Sample ID: DS - 13 1.5' (H240496-03)

BTEx 8021B		mg/kg		Analyzed By: JH						
Analyte	Result	Reporting Limit	Analyzed	Method Blank	BS	% Recovery	True Value QC	RPD	Qualifier	
Benzene*	<0.050	0.050	02/03/2024	ND	2.23	112	2.00	2.70		
Toluene*	<0.050	0.050	02/03/2024	ND	2.21	110	2.00	4.52		
Ethylbenzene*	<0.050	0.050	02/03/2024	ND	2.31	115	2.00	5.74		
Total Xylenes*	<0.150	0.150	02/03/2024	ND	6.88	115	6.00	5.64		
Total BTEX	<0.300	0.300	02/03/2024	ND						

Surrogate: 4-Bromofluorobenzene (PID) 103 % 71.5-134

Chloride, SM4500Cl-B		mg/kg		Analyzed By: AC						
Analyte	Result	Reporting Limit	Analyzed	Method Blank	BS	% Recovery	True Value QC	RPD	Qualifier	
Chloride	32.0	16.0	02/05/2024	ND	416	104	400	3.77		

TPH 8015M		mg/kg		Analyzed By: MS				S-04	
Analyte	Result	Reporting Limit	Analyzed	Method Blank	BS	% Recovery	True Value QC	RPD	Qualifier
GRO C6-C10*	11.0	10.0	02/03/2024	ND	195	97.4	200	4.32	
DRO >C10-C28*	2710	10.0	02/03/2024	ND	186	93.2	200	1.68	
EXT DRO >C28-C36	1190	10.0	02/03/2024	ND					

Surrogate: 1-Chlorooctane 96.6 % 48.2-134

Surrogate: 1-Chlorooctadecane 182 % 49.1-148

Cardinal Laboratories

*=Accredited Analyte

PLEASE NOTE: Liability and Damages. Cardinal's liability and client's exclusive remedy for any claim arising, whether based in contract or tort, shall be limited to the amount paid by client for analyses. All claims, including those for negligence and any other cause whatsoever shall be deemed waived unless made in writing and received by Cardinal within thirty (30) days after completion of the applicable service. In no event shall Cardinal be liable for incidental or consequential damages, including, without limitation, business interruptions, loss of use, or loss of profits incurred by client, its subsidiaries, affiliates or successors arising out of or related to the performance of the services hereunder by Cardinal, regardless of whether such claim is based upon any of the above stated reasons or otherwise. Results relate only to the samples identified above. This report shall not be reproduced except in full with written approval of Cardinal Laboratories.

Celey D. Keene, Lab Director/Quality Manager



PHONE (575) 393-2326 ° 101 E. MARLAND ° HOBBS, NM 88240

Analytical Results For:

TERRACON CONSULTANTS
 JOSEPH GUESNIER
 5827 50TH ST. SUITE 1
 LUBBOCK TX, 79424
 Fax To:

Received: 02/01/2024
 Reported: 02/06/2024
 Project Name: WEU BATTERY
 Project Number: KH247001
 Project Location: FAE II OPERATING - LEA CO NM

Sampling Date: 02/01/2024
 Sampling Type: Soil
 Sampling Condition: Cool & Intact
 Sample Received By: Shalyn Rodriguez

Sample ID: DS - 13 2.5' (H240496-04)

BTEX 8021B		mg/kg		Analyzed By: JH						
Analyte	Result	Reporting Limit	Analyzed	Method Blank	BS	% Recovery	True Value QC	RPD	Qualifier	
Benzene*	<0.050	0.050	02/03/2024	ND	2.23	112	2.00	2.70		
Toluene*	<0.050	0.050	02/03/2024	ND	2.21	110	2.00	4.52		
Ethylbenzene*	<0.050	0.050	02/03/2024	ND	2.31	115	2.00	5.74		
Total Xylenes*	<0.150	0.150	02/03/2024	ND	6.88	115	6.00	5.64		
Total BTEX	<0.300	0.300	02/03/2024	ND						

Surrogate: 4-Bromofluorobenzene (PID) 109 % 71.5-134

Chloride, SM4500Cl-B		mg/kg		Analyzed By: AC						
Analyte	Result	Reporting Limit	Analyzed	Method Blank	BS	% Recovery	True Value QC	RPD	Qualifier	
Chloride	80.0	16.0	02/05/2024	ND	416	104	400	3.77		

TPH 8015M		mg/kg		Analyzed By: MS				S-04	
Analyte	Result	Reporting Limit	Analyzed	Method Blank	BS	% Recovery	True Value QC	RPD	Qualifier
GRO C6-C10*	<10.0	10.0	02/03/2024	ND	195	97.4	200	4.32	
DRO >C10-C28*	1880	10.0	02/03/2024	ND	186	93.2	200	1.68	
EXT DRO >C28-C36	555	10.0	02/03/2024	ND					

Surrogate: 1-Chlorooctane 102 % 48.2-134

Surrogate: 1-Chlorooctadecane 165 % 49.1-148

Cardinal Laboratories

*=Accredited Analyte

PLEASE NOTE: Liability and Damages. Cardinal's liability and client's exclusive remedy for any claim arising, whether based in contract or tort, shall be limited to the amount paid by client for analyses. All claims, including those for negligence and any other cause whatsoever shall be deemed waived unless made in writing and received by Cardinal within thirty (30) days after completion of the applicable service. In no event shall Cardinal be liable for incidental or consequential damages, including, without limitation, business interruptions, loss of use, or loss of profits incurred by client, its subsidiaries, affiliates or successors arising out of or related to the performance of the services hereunder by Cardinal, regardless of whether such claim is based upon any of the above stated reasons or otherwise. Results relate only to the samples identified above. This report shall not be reproduced except in full with written approval of Cardinal Laboratories.

Celey D. Keene, Lab Director/Quality Manager



PHONE (575) 393-2326 ° 101 E. MARLAND ° HOBBS, NM 88240

Analytical Results For:

TERRACON CONSULTANTS
 JOSEPH GUESNIER
 5827 50TH ST. SUITE 1
 LUBBOCK TX, 79424
 Fax To:

Received: 02/01/2024
 Reported: 02/06/2024
 Project Name: WEU BATTERY
 Project Number: KH247001
 Project Location: FAE II OPERATING - LEA CO NM

Sampling Date: 02/01/2024
 Sampling Type: Soil
 Sampling Condition: Cool & Intact
 Sample Received By: Shalyn Rodriguez

Sample ID: DS - 14 2.5' (H240496-05)

BTEX 8021B		mg/kg		Analyzed By: JH						
Analyte	Result	Reporting Limit	Analyzed	Method Blank	BS	% Recovery	True Value QC	RPD	Qualifier	
Benzene*	<0.050	0.050	02/03/2024	ND	2.23	112	2.00	2.70		
Toluene*	<0.050	0.050	02/03/2024	ND	2.21	110	2.00	4.52		
Ethylbenzene*	<0.050	0.050	02/03/2024	ND	2.31	115	2.00	5.74		
Total Xylenes*	<0.150	0.150	02/03/2024	ND	6.88	115	6.00	5.64		
Total BTEX	<0.300	0.300	02/03/2024	ND						

Surrogate: 4-Bromofluorobenzene (PID) 117 % 71.5-134

Chloride, SM4500Cl-B		mg/kg		Analyzed By: AC						
Analyte	Result	Reporting Limit	Analyzed	Method Blank	BS	% Recovery	True Value QC	RPD	Qualifier	
Chloride	32.0	16.0	02/05/2024	ND	416	104	400	3.77		

TPH 8015M		mg/kg		Analyzed By: MS				S-04	
Analyte	Result	Reporting Limit	Analyzed	Method Blank	BS	% Recovery	True Value QC	RPD	Qualifier
GRO C6-C10*	<10.0	10.0	02/04/2024	ND	195	97.4	200	4.32	
DRO >C10-C28*	2070	10.0	02/04/2024	ND	186	93.2	200	1.68	
EXT DRO >C28-C36	404	10.0	02/04/2024	ND					

Surrogate: 1-Chlorooctane 104 % 48.2-134

Surrogate: 1-Chlorooctadecane 172 % 49.1-148

Cardinal Laboratories

*=Accredited Analyte

PLEASE NOTE: Liability and Damages. Cardinal's liability and client's exclusive remedy for any claim arising, whether based in contract or tort, shall be limited to the amount paid by client for analyses. All claims, including those for negligence and any other cause whatsoever shall be deemed waived unless made in writing and received by Cardinal within thirty (30) days after completion of the applicable service. In no event shall Cardinal be liable for incidental or consequential damages, including, without limitation, business interruptions, loss of use, or loss of profits incurred by client, its subsidiaries, affiliates or successors arising out of or related to the performance of the services hereunder by Cardinal, regardless of whether such claim is based upon any of the above stated reasons or otherwise. Results relate only to the samples identified above. This report shall not be reproduced except in full with written approval of Cardinal Laboratories.

Celey D. Keene, Lab Director/Quality Manager



PHONE (575) 393-2326 ° 101 E. MARLAND ° HOBBS, NM 88240

Analytical Results For:

TERRACON CONSULTANTS
 JOSEPH GUESNIER
 5827 50TH ST. SUITE 1
 LUBBOCK TX, 79424
 Fax To:

Received: 02/01/2024
 Reported: 02/06/2024
 Project Name: WEU BATTERY
 Project Number: KH247001
 Project Location: FAE II OPERATING - LEA CO NM

Sampling Date: 02/01/2024
 Sampling Type: Soil
 Sampling Condition: Cool & Intact
 Sample Received By: Shalyn Rodriguez

Sample ID: DS - 15 0.5' (H240496-06)

BTEx 8021B		mg/kg		Analyzed By: JH					
Analyte	Result	Reporting Limit	Analyzed	Method Blank	BS	% Recovery	True Value QC	RPD	Qualifier
Benzene*	<0.050	0.050	02/03/2024	ND	2.23	112	2.00	2.70	
Toluene*	<0.050	0.050	02/03/2024	ND	2.21	110	2.00	4.52	
Ethylbenzene*	<0.050	0.050	02/03/2024	ND	2.31	115	2.00	5.74	
Total Xylenes*	<0.150	0.150	02/03/2024	ND	6.88	115	6.00	5.64	
Total BTEx	<0.300	0.300	02/03/2024	ND					

Surrogate: 4-Bromofluorobenzene (PID) 100 % 71.5-134

Chloride, SM4500Cl-B		mg/kg		Analyzed By: AC					
Analyte	Result	Reporting Limit	Analyzed	Method Blank	BS	% Recovery	True Value QC	RPD	Qualifier
Chloride	16.0	16.0	02/05/2024	ND	416	104	400	3.77	

TPH 8015M		mg/kg		Analyzed By: MS					
Analyte	Result	Reporting Limit	Analyzed	Method Blank	BS	% Recovery	True Value QC	RPD	Qualifier
GRO C6-C10*	<10.0	10.0	02/03/2024	ND	195	97.4	200	4.32	
DRO >C10-C28*	53.8	10.0	02/03/2024	ND	186	93.2	200	1.68	
EXT DRO >C28-C36	10.7	10.0	02/03/2024	ND					

Surrogate: 1-Chlorooctane 116 % 48.2-134

Surrogate: 1-Chlorooctadecane 115 % 49.1-148

Cardinal Laboratories

*=Accredited Analyte

PLEASE NOTE: Liability and Damages. Cardinal's liability and client's exclusive remedy for any claim arising, whether based in contract or tort, shall be limited to the amount paid by client for analyses. All claims, including those for negligence and any other cause whatsoever shall be deemed waived unless made in writing and received by Cardinal within thirty (30) days after completion of the applicable service. In no event shall Cardinal be liable for incidental or consequential damages, including, without limitation, business interruptions, loss of use, or loss of profits incurred by client, its subsidiaries, affiliates or successors arising out of or related to the performance of the services hereunder by Cardinal, regardless of whether such claim is based upon any of the above stated reasons or otherwise. Results relate only to the samples identified above. This report shall not be reproduced except in full with written approval of Cardinal Laboratories.

Celey D. Keene, Lab Director/Quality Manager



PHONE (575) 393-2326 • 101 E. MARLAND • HOBBS, NM 88240

Notes and Definitions

S-04	The surrogate recovery for this sample is outside of established control limits due to a sample matrix effect.
QM-07	The spike recovery was outside acceptance limits for the MS and/or MSD. The batch was accepted based on acceptable LCS recovery.
ND	Analyte NOT DETECTED at or above the reporting limit
RPD	Relative Percent Difference
**	Samples not received at proper temperature of 6°C or below.
***	Insufficient time to reach temperature.
-	Chloride by SM4500Cl-B does not require samples be received at or below 6°C Samples reported on an as received basis (wet) unless otherwise noted on report

Cardinal Laboratories

*=Accredited Analyte

PLEASE NOTE: Liability and Damages. Cardinal's liability and client's exclusive remedy for any claim arising, whether based in contract or tort, shall be limited to the amount paid by client for analyses. All claims, including those for negligence and any other cause whatsoever shall be deemed waived unless made in writing and received by Cardinal within thirty (30) days after completion of the applicable service. In no event shall Cardinal be liable for incidental or consequential damages, including, without limitation, business interruptions, loss of use, or loss of profits incurred by client, its subsidiaries, affiliates or successors arising out of or related to the performance of the services hereunder by Cardinal, regardless of whether such claim is based upon any of the above stated reasons or otherwise. Results relate only to the samples identified above. This report shall not be reproduced except in full with written approval of Cardinal Laboratories.

A handwritten signature in black ink, appearing to read "Celey D. Keene".

Celey D. Keene, Lab Director/Quality Manager



101 East Marland, Hobbs, NM 88240
(575) 393-2326 FAX (575) 393-2476

CHAIN-OF-CUSTODY AND ANALYSIS REQUEST

Company Name: <u>Peracore</u>		P.O. #:		BILL TO		ANALYSIS REQUEST	
Project Manager: <u>Joe Gunder</u>		Company: <u>FAE II</u>					
Address: <u>4518 W. Price St.</u>		Attn: <u>Alex Balanos</u>					
City: <u>Carlsbad</u> State: <u>NM</u> Zip: <u>88220</u>		Address: <u>11757 Katy</u>					
Phone #: <u>575 302 5747</u> Fax #:		City: <u>Houston</u>					
Project #: <u>KH247001</u> Project Owner:		State: <u>TX</u> Zip: <u>77079</u>					
Project Name: <u>NEW Battery</u>		Phone #:					
Project Location: <u>See Sampling</u>		Fax #:					
Sampler Name: <u>See Sampling</u>							
FOR LAB USE ONLY							
Lab I.D.	Sample I.D.	(G)RAB OR (C)OMP.	# CONTAINERS	MATRIX	PRESERV.	SAMPLING	
				GROUNDWATER			
				WASTEWATER			
				SOIL			
				OIL			
				SLUDGE			
				OTHER:			
				ACID/BASE:			
				ICE / COOL			
				OTHER:			
				DATE	TIME		
<u>H240496</u>	<u>DS-12 4'</u>	<u>G</u>	<u>1</u>	<u>2/1</u>	<u>11:03</u>	<u>clear</u>	
<u>1</u>	<u>DS-12 5'</u>	<u>G</u>	<u>1</u>	<u>2/1</u>	<u>11:41</u>	<u>BTEX (8021B)</u>	
<u>2</u>	<u>DS-13 1.5'</u>	<u>G</u>	<u>1</u>	<u>2/1</u>	<u>1:12</u>	<u>PPH (8015)</u>	
<u>3</u>	<u>DS-13 2.5'</u>	<u>G</u>	<u>1</u>	<u>2/1</u>	<u>2:44</u>		
<u>4</u>	<u>DS-14 0.5'</u>	<u>G</u>	<u>1</u>	<u>2/1</u>	<u>2:14</u>		
<u>5</u>	<u>DS-15 0.5'</u>	<u>G</u>	<u>1</u>	<u>2/1</u>	<u>2:45</u>		
<u>6</u>							
PLEASE NOTE: Liability and Damages. Cardinal's liability and client's exclusive remedy for any claim arising whether based in contract or tort, shall be limited to the amount paid by the client for the analyses. All claims including those for negligence and any other cause whatsoever shall be deemed waived unless made in writing and received by Cardinal within 30 days after completion of the applicable service. In no event shall Cardinal be liable for incidental or consequential damages, including without limitation, business interruptions, loss of use, or loss of profits incurred by client, its subsidiaries, affiliates or successors arising out of or related to the performance of services hereunder by Cardinal, regardless of whether such claim is based upon any of the above stated reasons or otherwise.							
Relinquished By: <u>B Miller</u>		Date: <u>2-1-24</u>		Received By: <u>Stockmayer</u>		REMARKS:	
Delivered By: (Circle One)		Observed Temp. °C		Sample Condition		CHECKED BY: <u>(initials)</u>	
Sampler - UPS - Bus - Other:		Corrected Temp. °C		Cool Intact <input type="checkbox"/> Yes <input checked="" type="checkbox"/> No		Turnaround Time: <u>Standard</u> <input checked="" type="checkbox"/> Rush <input type="checkbox"/>	
FORM 000-R-3-07-11-23				Thermometer ID #140		Bacteria (only) Sample Condition	
				Correction Factor 0°C		Cool Intact <input type="checkbox"/> Yes <input checked="" type="checkbox"/> No	
						Observed Temp. °C	
						Corrected Temp. °C	

† Cardinal cannot accept verbal changes. Please email changes to celey.keene@cardinallabsnm.com



PHONE (575) 393-2326 ° 101 E. MARLAND ° HOBBS, NM 88240

February 09, 2024

JOSEPH GUESNIER

TERRACON CONSULTANTS

5827 50TH ST. SUITE 1

LUBBOCK, TX 79424

RE: WEU BATTERY

Enclosed are the results of analyses for samples received by the laboratory on 02/06/24 16:47.

Cardinal Laboratories is accredited through Texas NELAP under certificate number T104704398-23-16. Accreditation applies to drinking water, non-potable water and solid and chemical materials. All accredited analytes are denoted by an asterisk (*). For a complete list of accredited analytes and matrices visit the TCEQ website at www.tceq.texas.gov/field/qa/lab_accred_certif.html.

Cardinal Laboratories is accredited through the State of Colorado Department of Public Health and Environment for:

Method EPA 552.2	Haloacetic Acids (HAA-5)
Method EPA 524.2	Total Trihalomethanes (TTHM)
Method EPA 524.4	Regulated VOCs (V1, V2, V3)

Accreditation applies to public drinking water matrices.

This report meets NELAP requirements and is made up of a cover page, analytical results, and a copy of the original chain-of-custody. If you have any questions concerning this report, please feel free to contact me.

Sincerely,

A handwritten signature in black ink that reads "Celey D. Keene". The signature is written in a cursive style with a large, stylized 'C' and 'K'.

Celey D. Keene

Lab Director/Quality Manager



PHONE (575) 393-2326 ° 101 E. MARLAND ° HOBBS, NM 88240

Analytical Results For:

TERRACON CONSULTANTS
 JOSEPH GUESNIER
 5827 50TH ST. SUITE 1
 LUBBOCK TX, 79424
 Fax To:

Received: 02/06/2024
 Reported: 02/09/2024
 Project Name: WEU BATTERY
 Project Number: KH247001
 Project Location: FAE II OPERATING - LEA CO NM

Sampling Date: 02/06/2024
 Sampling Type: Soil
 Sampling Condition: Cool & Intact
 Sample Received By: Shalyn Rodriguez

Sample ID: DS - 13 5' (H240563-01)

BTX 8021B		mg/kg		Analyzed By: JH					
Analyte	Result	Reporting Limit	Analyzed	Method Blank	BS	% Recovery	True Value QC	RPD	Qualifier
Benzene*	<0.050	0.050	02/07/2024	ND	1.93	96.5	2.00	8.00	
Toluene*	<0.050	0.050	02/07/2024	ND	1.95	97.6	2.00	7.62	
Ethylbenzene*	<0.050	0.050	02/07/2024	ND	1.93	96.6	2.00	7.92	
Total Xylenes*	<0.150	0.150	02/07/2024	ND	5.82	97.0	6.00	7.81	
Total BTX	<0.300	0.300	02/07/2024	ND					

Surrogate: 4-Bromofluorobenzene (PID) 104 % 71.5-134

Chloride, SM4500Cl-B		mg/kg		Analyzed By: CT						
Analyte	Result	Reporting Limit	Analyzed	Method Blank	BS	% Recovery	True Value QC	RPD	Qualifier	
Chloride	192	16.0	02/07/2024	ND	432	108	400	0.00		

TPH 8015M		mg/kg		Analyzed By: MS					
Analyte	Result	Reporting Limit	Analyzed	Method Blank	BS	% Recovery	True Value QC	RPD	Qualifier
GRO C6-C10*	<10.0	10.0	02/07/2024	ND	202	101	200	2.29	
DRO >C10-C28*	<10.0	10.0	02/07/2024	ND	196	97.8	200	3.53	
EXT DRO >C28-C36	<10.0	10.0	02/07/2024	ND					

Surrogate: 1-Chlorooctane 109 % 48.2-134

Surrogate: 1-Chlorooctadecane 115 % 49.1-148

Cardinal Laboratories

*=Accredited Analyte

PLEASE NOTE: Liability and Damages. Cardinal's liability and client's exclusive remedy for any claim arising, whether based in contract or tort, shall be limited to the amount paid by client for analyses. All claims, including those for negligence and any other cause whatsoever shall be deemed waived unless made in writing and received by Cardinal within thirty (30) days after completion of the applicable service. In no event shall Cardinal be liable for incidental or consequential damages, including, without limitation, business interruptions, loss of use, or loss of profits incurred by client, its subsidiaries, affiliates or successors arising out of or related to the performance of the services hereunder by Cardinal, regardless of whether such claim is based upon any of the above stated reasons or otherwise. Results relate only to the samples identified above. This report shall not be reproduced except in full with written approval of Cardinal Laboratories.

Celey D. Keene, Lab Director/Quality Manager



PHONE (575) 393-2326 ° 101 E. MARLAND ° HOBBS, NM 88240

Analytical Results For:

TERRACON CONSULTANTS
 JOSEPH GUESNIER
 5827 50TH ST. SUITE 1
 LUBBOCK TX, 79424
 Fax To:

Received: 02/06/2024
 Reported: 02/09/2024
 Project Name: WEU BATTERY
 Project Number: KH247001
 Project Location: FAE II OPERATING - LEA CO NM

Sampling Date: 02/06/2024
 Sampling Type: Soil
 Sampling Condition: Cool & Intact
 Sample Received By: Shalyn Rodriguez

Sample ID: DS - 14 5' (H240563-02)

BTEx 8021B		mg/kg		Analyzed By: JH						
Analyte	Result	Reporting Limit	Analyzed	Method Blank	BS	% Recovery	True Value QC	RPD	Qualifier	
Benzene*	<0.050	0.050	02/07/2024	ND	1.93	96.5	2.00	8.00		
Toluene*	<0.050	0.050	02/07/2024	ND	1.95	97.6	2.00	7.62		
Ethylbenzene*	<0.050	0.050	02/07/2024	ND	1.93	96.6	2.00	7.92		
Total Xylenes*	<0.150	0.150	02/07/2024	ND	5.82	97.0	6.00	7.81		
Total BTEx	<0.300	0.300	02/07/2024	ND						

Surrogate: 4-Bromofluorobenzene (PID) 104 % 71.5-134

Chloride, SM4500CI-B		mg/kg		Analyzed By: CT						
Analyte	Result	Reporting Limit	Analyzed	Method Blank	BS	% Recovery	True Value QC	RPD	Qualifier	
Chloride	656	16.0	02/07/2024	ND	432	108	400	0.00		

TPH 8015M		mg/kg		Analyzed By: MS					
Analyte	Result	Reporting Limit	Analyzed	Method Blank	BS	% Recovery	True Value QC	RPD	Qualifier
GRO C6-C10*	<10.0	10.0	02/07/2024	ND	202	101	200	2.29	
DRO >C10-C28*	<10.0	10.0	02/07/2024	ND	196	97.8	200	3.53	
EXT DRO >C28-C36	<10.0	10.0	02/07/2024	ND					

Surrogate: 1-Chlorooctane 98.9 % 48.2-134

Surrogate: 1-Chlorooctadecane 104 % 49.1-148

Cardinal Laboratories

*=Accredited Analyte

PLEASE NOTE: Liability and Damages. Cardinal's liability and client's exclusive remedy for any claim arising, whether based in contract or tort, shall be limited to the amount paid by client for analyses. All claims, including those for negligence and any other cause whatsoever shall be deemed waived unless made in writing and received by Cardinal within thirty (30) days after completion of the applicable service. In no event shall Cardinal be liable for incidental or consequential damages, including, without limitation, business interruptions, loss of use, or loss of profits incurred by client, its subsidiaries, affiliates or successors arising out of or related to the performance of the services hereunder by Cardinal, regardless of whether such claim is based upon any of the above stated reasons or otherwise. Results relate only to the samples identified above. This report shall not be reproduced except in full with written approval of Cardinal Laboratories.

Celey D. Keene, Lab Director/Quality Manager



PHONE (575) 393-2326 ° 101 E. MARLAND ° HOBBS, NM 88240

Analytical Results For:

TERRACON CONSULTANTS
 JOSEPH GUESNIER
 5827 50TH ST. SUITE 1
 LUBBOCK TX, 79424
 Fax To:

Received: 02/06/2024
 Reported: 02/09/2024
 Project Name: WEU BATTERY
 Project Number: KH247001
 Project Location: FAE II OPERATING - LEA CO NM

Sampling Date: 02/06/2024
 Sampling Type: Soil
 Sampling Condition: Cool & Intact
 Sample Received By: Shalyn Rodriguez

Sample ID: DS - 06 0.5' (H240563-03)

BTX 8021B		mg/kg		Analyzed By: JH					
Analyte	Result	Reporting Limit	Analyzed	Method Blank	BS	% Recovery	True Value QC	RPD	Qualifier
Benzene*	<0.050	0.050	02/07/2024	ND	1.93	96.5	2.00	8.00	
Toluene*	<0.050	0.050	02/07/2024	ND	1.95	97.6	2.00	7.62	
Ethylbenzene*	<0.050	0.050	02/07/2024	ND	1.93	96.6	2.00	7.92	
Total Xylenes*	<0.150	0.150	02/07/2024	ND	5.82	97.0	6.00	7.81	
Total BTX	<0.300	0.300	02/07/2024	ND					

Surrogate: 4-Bromofluorobenzene (PID) 105 % 71.5-134

Chloride, SM4500Cl-B		mg/kg		Analyzed By: CT					
Analyte	Result	Reporting Limit	Analyzed	Method Blank	BS	% Recovery	True Value QC	RPD	Qualifier
Chloride	32.0	16.0	02/07/2024	ND	432	108	400	0.00	

TPH 8015M		mg/kg		Analyzed By: MS					
Analyte	Result	Reporting Limit	Analyzed	Method Blank	BS	% Recovery	True Value QC	RPD	Qualifier
GRO C6-C10*	<10.0	10.0	02/07/2024	ND	199	99.6	200	2.08	
DRO >C10-C28*	<10.0	10.0	02/07/2024	ND	224	112	200	10.1	
EXT DRO >C28-C36	<10.0	10.0	02/07/2024	ND					

Surrogate: 1-Chlorooctane 97.5 % 48.2-134

Surrogate: 1-Chlorooctadecane 93.7 % 49.1-148

Cardinal Laboratories

*=Accredited Analyte

PLEASE NOTE: Liability and Damages. Cardinal's liability and client's exclusive remedy for any claim arising, whether based in contract or tort, shall be limited to the amount paid by client for analyses. All claims, including those for negligence and any other cause whatsoever shall be deemed waived unless made in writing and received by Cardinal within thirty (30) days after completion of the applicable service. In no event shall Cardinal be liable for incidental or consequential damages, including, without limitation, business interruptions, loss of use, or loss of profits incurred by client, its subsidiaries, affiliates or successors arising out of or related to the performance of the services hereunder by Cardinal, regardless of whether such claim is based upon any of the above stated reasons or otherwise. Results relate only to the samples identified above. This report shall not be reproduced except in full with written approval of Cardinal Laboratories.

Celey D. Keene, Lab Director/Quality Manager



PHONE (575) 393-2326 ° 101 E. MARLAND ° HOBBS, NM 88240

Analytical Results For:

TERRACON CONSULTANTS
 JOSEPH GUESNIER
 5827 50TH ST. SUITE 1
 LUBBOCK TX, 79424
 Fax To:

Received: 02/06/2024
 Reported: 02/09/2024
 Project Name: WEU BATTERY
 Project Number: KH247001
 Project Location: FAE II OPERATING - LEA CO NM

Sampling Date: 02/06/2024
 Sampling Type: Soil
 Sampling Condition: Cool & Intact
 Sample Received By: Shalyn Rodriguez

Sample ID: DS - 06 4' (H240563-05)

BTX 8021B		mg/kg		Analyzed By: JH					
Analyte	Result	Reporting Limit	Analyzed	Method Blank	BS	% Recovery	True Value QC	RPD	Qualifier
Benzene*	<0.050	0.050	02/07/2024	ND	1.93	96.5	2.00	8.00	
Toluene*	<0.050	0.050	02/07/2024	ND	1.95	97.6	2.00	7.62	
Ethylbenzene*	<0.050	0.050	02/07/2024	ND	1.93	96.6	2.00	7.92	
Total Xylenes*	<0.150	0.150	02/07/2024	ND	5.82	97.0	6.00	7.81	
Total BTX	<0.300	0.300	02/07/2024	ND					

Surrogate: 4-Bromofluorobenzene (PID) 103 % 71.5-134

Chloride, SM4500Cl-B		mg/kg		Analyzed By: HM					
Analyte	Result	Reporting Limit	Analyzed	Method Blank	BS	% Recovery	True Value QC	RPD	Qualifier
Chloride	16.0	16.0	02/07/2024	ND	432	108	400	0.00	

TPH 8015M		mg/kg		Analyzed By: MS					
Analyte	Result	Reporting Limit	Analyzed	Method Blank	BS	% Recovery	True Value QC	RPD	Qualifier
GRO C6-C10*	<10.0	10.0	02/07/2024	ND	199	99.6	200	2.08	
DRO >C10-C28*	<10.0	10.0	02/07/2024	ND	224	112	200	10.1	
EXT DRO >C28-C36	<10.0	10.0	02/07/2024	ND					

Surrogate: 1-Chlorooctane 102 % 48.2-134

Surrogate: 1-Chlorooctadecane 95.3 % 49.1-148

Cardinal Laboratories

*=Accredited Analyte

PLEASE NOTE: Liability and Damages. Cardinal's liability and client's exclusive remedy for any claim arising, whether based in contract or tort, shall be limited to the amount paid by client for analyses. All claims, including those for negligence and any other cause whatsoever shall be deemed waived unless made in writing and received by Cardinal within thirty (30) days after completion of the applicable service. In no event shall Cardinal be liable for incidental or consequential damages, including, without limitation, business interruptions, loss of use, or loss of profits incurred by client, its subsidiaries, affiliates or successors arising out of or related to the performance of the services hereunder by Cardinal, regardless of whether such claim is based upon any of the above stated reasons or otherwise. Results relate only to the samples identified above. This report shall not be reproduced except in full with written approval of Cardinal Laboratories.

Celey D. Keene, Lab Director/Quality Manager



PHONE (575) 393-2326 ° 101 E. MARLAND ° HOBBS, NM 88240

Analytical Results For:

TERRACON CONSULTANTS
 JOSEPH GUESNIER
 5827 50TH ST. SUITE 1
 LUBBOCK TX, 79424
 Fax To:

Received: 02/06/2024
 Reported: 02/09/2024
 Project Name: WEU BATTERY
 Project Number: KH247001
 Project Location: FAE II OPERATING - LEA CO NM

Sampling Date: 02/06/2024
 Sampling Type: Soil
 Sampling Condition: Cool & Intact
 Sample Received By: Shalyn Rodriguez

Sample ID: DS - 08 0.5' (H240563-06)

BTX 8021B		mg/kg		Analyzed By: JH					
Analyte	Result	Reporting Limit	Analyzed	Method Blank	BS	% Recovery	True Value QC	RPD	Qualifier
Benzene*	<0.050	0.050	02/07/2024	ND	1.93	96.5	2.00	8.00	
Toluene*	<0.050	0.050	02/07/2024	ND	1.95	97.6	2.00	7.62	
Ethylbenzene*	<0.050	0.050	02/07/2024	ND	1.93	96.6	2.00	7.92	
Total Xylenes*	<0.150	0.150	02/07/2024	ND	5.82	97.0	6.00	7.81	
Total BTX	<0.300	0.300	02/07/2024	ND					

Surrogate: 4-Bromofluorobenzene (PID) 104 % 71.5-134

Chloride, SM4500Cl-B		mg/kg		Analyzed By: HM					
Analyte	Result	Reporting Limit	Analyzed	Method Blank	BS	% Recovery	True Value QC	RPD	Qualifier
Chloride	32.0	16.0	02/07/2024	ND	432	108	400	0.00	

TPH 8015M		mg/kg		Analyzed By: MS					
Analyte	Result	Reporting Limit	Analyzed	Method Blank	BS	% Recovery	True Value QC	RPD	Qualifier
GRO C6-C10*	<10.0	10.0	02/07/2024	ND	199	99.6	200	2.08	
DRO >C10-C28*	<10.0	10.0	02/07/2024	ND	224	112	200	10.1	
EXT DRO >C28-C36	<10.0	10.0	02/07/2024	ND					

Surrogate: 1-Chlorooctane 93.7 % 48.2-134

Surrogate: 1-Chlorooctadecane 88.3 % 49.1-148

Cardinal Laboratories

*=Accredited Analyte

PLEASE NOTE: Liability and Damages. Cardinal's liability and client's exclusive remedy for any claim arising, whether based in contract or tort, shall be limited to the amount paid by client for analyses. All claims, including those for negligence and any other cause whatsoever shall be deemed waived unless made in writing and received by Cardinal within thirty (30) days after completion of the applicable service. In no event shall Cardinal be liable for incidental or consequential damages, including, without limitation, business interruptions, loss of use, or loss of profits incurred by client, its subsidiaries, affiliates or successors arising out of or related to the performance of the services hereunder by Cardinal, regardless of whether such claim is based upon any of the above stated reasons or otherwise. Results relate only to the samples identified above. This report shall not be reproduced except in full with written approval of Cardinal Laboratories.

Celey D. Keene, Lab Director/Quality Manager



PHONE (575) 393-2326 ° 101 E. MARLAND ° HOBBS, NM 88240

Analytical Results For:

TERRACON CONSULTANTS
 JOSEPH GUESNIER
 5827 50TH ST. SUITE 1
 LUBBOCK TX, 79424
 Fax To:

Received: 02/06/2024
 Reported: 02/09/2024
 Project Name: WEU BATTERY
 Project Number: KH247001
 Project Location: FAE II OPERATING - LEA CO NM

Sampling Date: 02/06/2024
 Sampling Type: Soil
 Sampling Condition: Cool & Intact
 Sample Received By: Shalyn Rodriguez

Sample ID: DS - 08 4' (H240563-08)

BTEx 8021B		mg/kg		Analyzed By: JH					
Analyte	Result	Reporting Limit	Analyzed	Method Blank	BS	% Recovery	True Value QC	RPD	Qualifier
Benzene*	<0.050	0.050	02/07/2024	ND	1.93	96.5	2.00	8.00	
Toluene*	<0.050	0.050	02/07/2024	ND	1.95	97.6	2.00	7.62	
Ethylbenzene*	<0.050	0.050	02/07/2024	ND	1.93	96.6	2.00	7.92	
Total Xylenes*	<0.150	0.150	02/07/2024	ND	5.82	97.0	6.00	7.81	
Total BTEX	<0.300	0.300	02/07/2024	ND					

Surrogate: 4-Bromofluorobenzene (PID) 105 % 71.5-134

Chloride, SM4500Cl-B		mg/kg		Analyzed By: HM					
Analyte	Result	Reporting Limit	Analyzed	Method Blank	BS	% Recovery	True Value QC	RPD	Qualifier
Chloride	32.0	16.0	02/07/2024	ND	432	108	400	0.00	

TPH 8015M		mg/kg		Analyzed By: MS					
Analyte	Result	Reporting Limit	Analyzed	Method Blank	BS	% Recovery	True Value QC	RPD	Qualifier
GRO C6-C10*	<10.0	10.0	02/07/2024	ND	199	99.6	200	2.08	
DRO >C10-C28*	<10.0	10.0	02/07/2024	ND	224	112	200	10.1	
EXT DRO >C28-C36	<10.0	10.0	02/07/2024	ND					

Surrogate: 1-Chlorooctane 95.7 % 48.2-134

Surrogate: 1-Chlorooctadecane 91.0 % 49.1-148

Cardinal Laboratories

*=Accredited Analyte

PLEASE NOTE: Liability and Damages. Cardinal's liability and client's exclusive remedy for any claim arising, whether based in contract or tort, shall be limited to the amount paid by client for analyses. All claims, including those for negligence and any other cause whatsoever shall be deemed waived unless made in writing and received by Cardinal within thirty (30) days after completion of the applicable service. In no event shall Cardinal be liable for incidental or consequential damages, including, without limitation, business interruptions, loss of use, or loss of profits incurred by client, its subsidiaries, affiliates or successors arising out of or related to the performance of the services hereunder by Cardinal, regardless of whether such claim is based upon any of the above stated reasons or otherwise. Results relate only to the samples identified above. This report shall not be reproduced except in full with written approval of Cardinal Laboratories.

Celey D. Keene, Lab Director/Quality Manager

PHONE (575) 393-2326 ° 101 E. MARLAND ° HOBBS, NM 88240

Notes and Definitions

ND	Analyte NOT DETECTED at or above the reporting limit
RPD	Relative Percent Difference
**	Samples not received at proper temperature of 6°C or below.
***	Insufficient time to reach temperature.
-	Chloride by SM4500Cl-B does not require samples be received at or below 6°C Samples reported on an as received basis (wet) unless otherwise noted on report

Cardinal Laboratories

*=Accredited Analyte

PLEASE NOTE: Liability and Damages. Cardinal's liability and client's exclusive remedy for any claim arising, whether based in contract or tort, shall be limited to the amount paid by client for analyses. All claims, including those for negligence and any other cause whatsoever shall be deemed waived unless made in writing and received by Cardinal within thirty (30) days after completion of the applicable service. In no event shall Cardinal be liable for incidental or consequential damages, including, without limitation, business interruptions, loss of use, or loss of profits incurred by client, its subsidiaries, affiliates or successors arising out of or related to the performance of the services hereunder by Cardinal, regardless of whether such claim is based upon any of the above stated reasons or otherwise. Results relate only to the samples identified above. This report shall not be reproduced except in full with written approval of Cardinal Laboratories.

A handwritten signature in black ink, appearing to read "Celey D. Keene", is written over a horizontal line.

Celey D. Keene, Lab Director/Quality Manager

BILL TO

ANALYSIS REQUEST

[illegible][illegible]

2. ID

85. P.

၁၁

+ Cardinal cannot accept verbal changes. Please email changes to celey.keene@cardinallabsnm.com



Appendix E: Photographic Documentation

APPENDIX E
PHOTOGRAPHIC DOCUMENTATION
WEST EUMONT UNIT 407 BATTERY



View of release area (6/14/23).



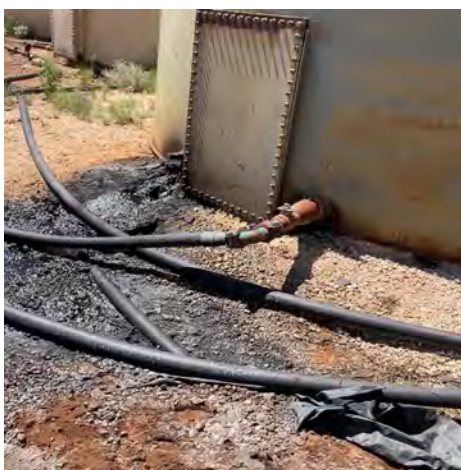
View of release area (6/14/23).



View of release area (6/14/23).



View of release area (6/14/23).



View of release area (6/14/23).



View of release point (6/14/23).

District I
1625 N. French Dr., Hobbs, NM 88240
Phone:(575) 393-6161 Fax:(575) 393-0720
District II
811 S. First St., Artesia, NM 88210
Phone:(575) 748-1283 Fax:(575) 748-9720
District III
1000 Rio Brazos Rd., Aztec, NM 87410
Phone:(505) 334-6178 Fax:(505) 334-6170
District IV
1220 S. St Francis Dr., Santa Fe, NM 87505
Phone:(505) 476-3470 Fax:(505) 476-3462

State of New Mexico
Energy, Minerals and Natural Resources
Oil Conservation Division
1220 S. St Francis Dr.
Santa Fe, NM 87505

QUESTIONS

Action 364538

QUESTIONS

Operator: FORTY ACRES ENERGY, LLC 11757 KATY FWY HOUSTON, TX 77079173	OGRID: 371416
	Action Number: 364538
	Action Type: [C-141] Site Char./Remediation Plan C-141 (C-141-v-Plan)

QUESTIONS

Prerequisites	
Incident ID (n#)	nAPP2316652967
Incident Name	NAPP2316652967 WEST EUMONT UNIT 407 BATTERY @ 0
Incident Type	Produced Water Release
Incident Status	Remediation Plan Received

Location of Release Source	
Please answer all the questions in this group.	
Site Name	WEST EUMONT UNIT 407 BATTERY
Date Release Discovered	06/14/2023
Surface Owner	Private

Incident Details	
Please answer all the questions in this group.	
Incident Type	Produced Water Release
Did this release result in a fire or is the result of a fire	No
Did this release result in any injuries	No
Has this release reached or does it have a reasonable probability of reaching a watercourse	No
Has this release endangered or does it have a reasonable probability of endangering public health	No
Has this release substantially damaged or will it substantially damage property or the environment	No
Is this release of a volume that is or may with reasonable probability be detrimental to fresh water	No

Nature and Volume of Release	
Material(s) released, please answer all that apply below. Any calculations or specific justifications for the volumes provided should be attached to the follow-up C-141 submission.	
Crude Oil Released (bbls) Details	Not answered.
Produced Water Released (bbls) Details	Cause: Corrosion Other (Specify) Produced Water Released: 25 BBL Recovered: 25 BBL Lost: 0 BBL.
Is the concentration of chloride in the produced water >10,000 mg/l	Yes
Condensate Released (bbls) Details	Not answered.
Natural Gas Vented (Mcf) Details	Not answered.
Natural Gas Flared (Mcf) Details	Not answered.
Other Released Details	Not answered.
Are there additional details for the questions above (i.e. any answer containing Other, Specify, Unknown, and/or Fire, or any negative lost amounts)	Not answered.

District I

1625 N. French Dr., Hobbs, NM 88240
Phone:(575) 393-6161 Fax:(575) 393-0720

District II

811 S. First St., Artesia, NM 88210
Phone:(575) 748-1283 Fax:(575) 748-9720

District III

1000 Rio Brazos Rd., Aztec, NM 87410
Phone:(505) 334-6178 Fax:(505) 334-6170

District IV

1220 S. St Francis Dr., Santa Fe, NM 87505
Phone:(505) 476-3470 Fax:(505) 476-3462

State of New Mexico
Energy, Minerals and Natural Resources
Oil Conservation Division
1220 S. St Francis Dr.
Santa Fe, NM 87505

QUESTIONS, Page 2

Action 364538

QUESTIONS (continued)

Operator: FORTY ACRES ENERGY, LLC 11757 KATY FWY HOUSTON, TX 77079173	OGRID:	371416
	Action Number:	364538
	Action Type:	[C-141] Site Char./Remediation Plan C-141 (C-141-v-Plan)

QUESTIONS

Nature and Volume of Release (continued)	
Is this a gas only submission (i.e. only significant Mcf values reported)	No, according to supplied volumes this does not appear to be a "gas only" report.
Was this a major release as defined by Subsection A of 19.15.29.7 NMAC	Yes
Reasons why this would be considered a submission for a notification of a major release	From paragraph A. "Major release" determine using: (1) an unauthorized release of a volume, excluding gases, of 25 barrels or more.
With the implementation of the 19.15.27 NMAC (05/25/2021), venting and/or flaring of natural gas (i.e. gas only) are to be submitted on the C-129 form.	

Initial Response

The responsible party must undertake the following actions immediately unless they could create a safety hazard that would result in injury.

The source of the release has been stopped	True
The impacted area has been secured to protect human health and the environment	True
Released materials have been contained via the use of berms or dikes, absorbent pads, or other containment devices	True
All free liquids and recoverable materials have been removed and managed appropriately	True
If all the actions described above have not been undertaken, explain why	Not answered.

Per Paragraph (4) of Subsection B of 19.15.29.8 NMAC the responsible party may commence remediation immediately after discovery of a release. If remediation has begun, please prepare and attach a narrative of actions to date in the follow-up C-141 submission. If remedial efforts have been successfully completed or if the release occurred within a lined containment area (see Subparagraph (a) of Paragraph (5) of Subsection A of 19.15.29.11 NMAC), please prepare and attach all information needed for closure evaluation in the follow-up C-141 submission.

I hereby certify that the information given above is true and complete to the best of my knowledge and understand that pursuant to OCD rules and regulations all operators are required to report and/or file certain release notifications and perform corrective actions for releases which may endanger public health or the environment. The acceptance of a C-141 report by the OCD does not relieve the operator of liability should their operations have failed to adequately investigate and remediate contamination that pose a threat to groundwater, surface water, human health or the environment. In addition, OCD acceptance of a C-141 report does not relieve the operator of responsibility for compliance with any other federal, state, or local laws and/or regulations.

I hereby agree and sign off to the above statement	Name: Cindy Crain Email: cindy.crain@gmail.com Date: 07/16/2024
--	---

District I

1625 N. French Dr., Hobbs, NM 88240
Phone:(575) 393-6161 Fax:(575) 393-0720

District II

811 S. First St., Artesia, NM 88210
Phone:(575) 748-1283 Fax:(575) 748-9720

District III

1000 Rio Brazos Rd., Aztec, NM 87410
Phone:(505) 334-6178 Fax:(505) 334-6170

District IV

1220 S. St Francis Dr., Santa Fe, NM 87505
Phone:(505) 476-3470 Fax:(505) 476-3462

State of New Mexico
Energy, Minerals and Natural Resources
Oil Conservation Division
1220 S. St Francis Dr.
Santa Fe, NM 87505

QUESTIONS, Page 3

Action 364538

QUESTIONS (continued)

Operator: FORTY ACRES ENERGY, LLC 11757 KATY FWY HOUSTON, TX 77079173	OGRID:
	371416
	Action Number:
	364538
Action Type:	
[C-141] Site Char./Remediation Plan C-141 (C-141-v-Plan)	

QUESTIONS**Site Characterization**

Please answer all the questions in this group (only required when seeking remediation plan approval and beyond). This information must be provided to the appropriate district office no later than 90 days after the release discovery date.

What is the shallowest depth to groundwater beneath the area affected by the release in feet below ground surface (ft bgs)	Between 100 and 500 (ft.)
What method was used to determine the depth to ground water	Attached Document
Did this release impact groundwater or surface water	No
What is the minimum distance, between the closest lateral extents of the release and the following surface areas:	
A continuously flowing watercourse or any other significant watercourse	Greater than 5 (mi.)
Any lakebed, sinkhole, or playa lake (measured from the ordinary high-water mark)	Greater than 5 (mi.)
An occupied permanent residence, school, hospital, institution, or church	Between 1 and 5 (mi.)
A spring or a private domestic fresh water well used by less than five households for domestic or stock watering purposes	Between 1 and 5 (mi.)
Any other fresh water well or spring	Greater than 5 (mi.)
Incorporated municipal boundaries or a defined municipal fresh water well field	Greater than 5 (mi.)
A wetland	Greater than 5 (mi.)
A subsurface mine	Greater than 5 (mi.)
An (non-karst) unstable area	Greater than 5 (mi.)
Categorize the risk of this well / site being in a karst geology	Low
A 100-year floodplain	Greater than 5 (mi.)
Did the release impact areas not on an exploration, development, production, or storage site	Yes

Remediation Plan

Please answer all the questions that apply or are indicated. This information must be provided to the appropriate district office no later than 90 days after the release discovery date.

Requesting a remediation plan approval with this submission	Yes
Attach a comprehensive report demonstrating the lateral and vertical extents of soil contamination associated with the release have been determined, pursuant to 19.15.29.11 NMAC and 19.15.29.13 NMAC.	
Have the lateral and vertical extents of contamination been fully delineated	Yes
Was this release entirely contained within a lined containment area	No

Soil Contamination Sampling: (Provide the highest observable value for each, in milligrams per kilograms.)

Chloride	(EPA 300.0 or SM4500 Cl B)	2720
TPH (GRO+DRO+MRO)	(EPA SW-846 Method 8015M)	4030
GRO+DRO	(EPA SW-846 Method 8015M)	2930
BTEX	(EPA SW-846 Method 8021B or 8260B)	0
Benzene	(EPA SW-846 Method 8021B or 8260B)	0

Per Subsection B of 19.15.29.11 NMAC unless the site characterization report includes completed efforts at remediation, the report must include a proposed remediation plan in accordance with 19.15.29.12 NMAC, which includes the anticipated timelines for beginning and completing the remediation.

On what estimated date will the remediation commence	09/16/2024
On what date will (or did) the final sampling or liner inspection occur	10/14/2024
On what date will (or was) the remediation complete(d)	11/18/2024
What is the estimated surface area (in square feet) that will be reclaimed	2100
What is the estimated volume (in cubic yards) that will be reclaimed	160
What is the estimated surface area (in square feet) that will be remediated	2100
What is the estimated volume (in cubic yards) that will be remediated	160

These estimated dates and measurements are recognized to be the best guess or calculation at the time of submission and may (be) change(d) over time as more remediation efforts are completed.

The OCD recognizes that proposed remediation measures may have to be minimally adjusted in accordance with the physical realities encountered during remediation. If the responsible party has any need to significantly deviate from the remediation plan proposed, then it should consult with the division to determine if another remediation plan submission is required.

District I

1625 N. French Dr., Hobbs, NM 88240
Phone:(575) 393-6161 Fax:(575) 393-0720

District II

811 S. First St., Artesia, NM 88210
Phone:(575) 748-1283 Fax:(575) 748-9720

District III

1000 Rio Brazos Rd., Aztec, NM 87410
Phone:(505) 334-6178 Fax:(505) 334-6170

District IV

1220 S. St Francis Dr., Santa Fe, NM 87505
Phone:(505) 476-3470 Fax:(505) 476-3462

State of New Mexico
Energy, Minerals and Natural Resources
Oil Conservation Division
1220 S. St Francis Dr.
Santa Fe, NM 87505

QUESTIONS, Page 4

Action 364538

QUESTIONS (continued)

Operator: FORTY ACRES ENERGY, LLC 11757 KATY FWY HOUSTON, TX 77079173	OGRID:	371416
	Action Number:	364538
	Action Type:	[C-141] Site Char./Remediation Plan C-141 (C-141-v-Plan)

QUESTIONS**Remediation Plan (continued)**

Please answer all the questions that apply or are indicated. This information must be provided to the appropriate district office no later than 90 days after the release discovery date.

This remediation will (or is expected to) utilize the following processes to remediate / reduce contaminants:

(Select all answers below that apply.)

(Ex Situ) Excavation and off-site disposal (i.e. dig and haul, hydrovac, etc.)	Yes
Which OCD approved facility will be used for off-site disposal	MONUMENT SITE #15 (TNM-94-58) [FAB0000000056]
OR which OCD approved well (API) will be used for off-site disposal	Not answered.
OR is the off-site disposal site, to be used, out-of-state	Not answered.
OR is the off-site disposal site, to be used, an NMED facility	Not answered.
(Ex Situ) Excavation and on-site remediation (i.e. On-Site Land Farms)	Not answered.
(In Situ) Soil Vapor Extraction	Not answered.
(In Situ) Chemical processing (i.e. Soil Shredding, Potassium Permanganate, etc.)	Not answered.
(In Situ) Biological processing (i.e. Microbes / Fertilizer, etc.)	Not answered.
(In Situ) Physical processing (i.e. Soil Washing, Gypsum, Disking, etc.)	Not answered.
Ground Water Abatement pursuant to 19.15.30 NMAC	Not answered.
OTHER (Non-listed remedial process)	Not answered.

Per Subsection B of 19.15.29.11 NMAC unless the site characterization report includes completed efforts at remediation, the report must include a proposed remediation plan in accordance with 19.15.29.12 NMAC, which includes the anticipated timelines for beginning and completing the remediation.

I hereby certify that the information given above is true and complete to the best of my knowledge and understand that pursuant to OCD rules and regulations all operators are required to report and/or file certain release notifications and perform corrective actions for releases which may endanger public health or the environment. The acceptance of a C-141 report by the OCD does not relieve the operator of liability should their operations have failed to adequately investigate and remediate contamination that pose a threat to groundwater, surface water, human health or the environment. In addition, OCD acceptance of a C-141 report does not relieve the operator of responsibility for compliance with any other federal, state, or local laws and/or regulations.

I hereby agree and sign off to the above statement	Name: Cindy Crain Email: cindy.crain@gmail.com Date: 07/16/2024
--	---

The OCD recognizes that proposed remediation measures may have to be minimally adjusted in accordance with the physical realities encountered during remediation. If the responsible party has any need to significantly deviate from the remediation plan proposed, then it should consult with the division to determine if another remediation plan submission is required.

District I
1625 N. French Dr., Hobbs, NM 88240
Phone:(575) 393-6161 Fax:(575) 393-0720
District II
811 S. First St., Artesia, NM 88210
Phone:(575) 748-1283 Fax:(575) 748-9720
District III
1000 Rio Brazos Rd., Aztec, NM 87410
Phone:(505) 334-6178 Fax:(505) 334-6170
District IV
1220 S. St Francis Dr., Santa Fe, NM 87505
Phone:(505) 476-3470 Fax:(505) 476-3462

State of New Mexico
Energy, Minerals and Natural Resources
Oil Conservation Division
1220 S. St Francis Dr.
Santa Fe, NM 87505

QUESTIONS, Page 5

Action 364538

QUESTIONS (continued)

Operator: FORTY ACRES ENERGY, LLC 11757 KATY FWY HOUSTON, TX 77079173	OGRID: 371416
	Action Number: 364538
	Action Type: [C-141] Site Char./Remediation Plan C-141 (C-141-v-Plan)

QUESTIONS

Deferral Requests Only	
<i>Only answer the questions in this group if seeking a deferral upon approval this submission. Each of the following items must be confirmed as part of any request for deferral of remediation.</i>	
Requesting a deferral of the remediation closure due date with the approval of this submission	No

District I
1625 N. French Dr., Hobbs, NM 88240
Phone:(575) 393-6161 Fax:(575) 393-0720
District II
811 S. First St., Artesia, NM 88210
Phone:(575) 748-1283 Fax:(575) 748-9720
District III
1000 Rio Brazos Rd., Aztec, NM 87410
Phone:(505) 334-6178 Fax:(505) 334-6170
District IV
1220 S. St Francis Dr., Santa Fe, NM 87505
Phone:(505) 476-3470 Fax:(505) 476-3462

State of New Mexico
Energy, Minerals and Natural Resources
Oil Conservation Division
1220 S. St Francis Dr.
Santa Fe, NM 87505

QUESTIONS, Page 6

Action 364538

QUESTIONS (continued)

Operator: FORTY ACRES ENERGY, LLC 11757 KATY FWY HOUSTON, TX 77079173	OGRID: 371416
	Action Number: 364538
	Action Type: [C-141] Site Char./Remediation Plan C-141 (C-141-v-Plan)

QUESTIONS

Sampling Event Information	
Last sampling notification (C-141N) recorded	{Unavailable.}

Remediation Closure Request	
Only answer the questions in this group if seeking remediation closure for this release because all remediation steps have been completed.	
Requesting a remediation closure approval with this submission	No

District I
1625 N. French Dr., Hobbs, NM 88240
Phone:(575) 393-6161 Fax:(575) 393-0720
District II
811 S. First St., Artesia, NM 88210
Phone:(575) 748-1283 Fax:(575) 748-9720
District III
1000 Rio Brazos Rd., Aztec, NM 87410
Phone:(505) 334-6178 Fax:(505) 334-6170
District IV
1220 S. St Francis Dr., Santa Fe, NM 87505
Phone:(505) 476-3470 Fax:(505) 476-3462

State of New Mexico
Energy, Minerals and Natural Resources
Oil Conservation Division
1220 S. St Francis Dr.
Santa Fe, NM 87505

CONDITIONS

Action 364538

CONDITIONS

Operator: FORTY ACRES ENERGY, LLC 11757 KATY FWY HOUSTON, TX 77079173	OGRID: 371416
	Action Number: 364538
	Action Type: [C-141] Site Char./Remediation Plan C-141 (C-141-v-Plan)

CONDITIONS

Created By	Condition	Condition Date
nvez	Remediation plan is approved as written. FAE has 90-days (October 22, 2024) to submit to OCD its appropriate or final remediation closure report.	7/23/2024