

JAYHAWK 6 CTB 2

6/1/2024

OCD INCIDENT nAPP2415524417

Area (square feet)		Depth(inches)
<u>702.469</u>		<u>1.000</u>
Cubic Feet of Soil Impacted		<u>58.539</u>
Barrels of Soil Impacted		<u>10.43</u>
Soil Type		Clay/Sand
Barrels of Oil Assuming 100% Saturation		<u>1.57</u>
Saturation	Fluid present when squeezed	
Estimated Barrels of Oil Released		0.78
Free Standing Fluid Only		
Area (square feet)		Depth(inches)
<u>702.469</u>		<u>0.500</u>
Standing fluid		<u>5.217</u>
<u>Total fluids spilled</u>		<u>6.783</u>



209 W. McKay Street
Carlsbad, New Mexico 88220
Tel. 432-701-2159
www.ntgenvironmental.com

August 7, 2024

Mike Bratcher
District Supervisor
Oil Conservation Division, District 2
811 S. First Street
Artesia, New Mexico 88210

Re: Site Characterization and Remediation Work Plan
Devon Energy Production Company
Jayhawk 6 CTB 2
Unit C, Section 6, Township 26S, Range 34E
Site Coordinates: 32.07629704, -103.51193
Lea County, New Mexico
Incident ID: nAPP2415524417

1. Introduction

On behalf of Devon Energy Production Company (Devon), New Tech Global Environmental, LLC (NTGE) has prepared this Site Characterization and Remediation Work Plan for submittal to the New Mexico Oil Conservation Division (NMCOD) District 2 Office in Artesia, New Mexico to document site assessment, remedial action activities, and sample analysis results for the release number: nAPP2415524417 – Jayhawk 6 CTB 2 (Site). The Site is in Unit Letter C, Section 6, of Township 26 South and Range 34 East in Lea County, New Mexico. The GPS coordinates for the release site are 32.07629704° N latitude and -103.51193° W longitude. The site location with respect to the nearest town is shown in Figure 1 and the topography of the area is shown in Figure 2.

2. Background

Based on the Release Notification C-141 Form, the release was discovered on June 1, 2024, where Devon discovered a leak on a separator dump line. Upon discovery, the Site was shut-in and repairs ensued. The spill resulted in a release of approximately seven (7) barrels (bbls) of produced water of which five (5) were recovered for an approximate net loss of two (2) bbls of produced water. The release area is shown in Figure 3. The Release Notification portions of Form C-141 for incident number nAPP2415524417 is attached to this report.

Creating a Better
Environment
For Oil & Gas
Operations

Mr. Mike Bratcher
August 7, 2024
Page 2 of 4

3. Groundwater and Site Characterization

Based on a review of the New Mexico Office of State Engineers and USGS databases, there is one water well within a ½-mile radius of the Site reportedly drilled to a depth of fifty-five (55) feet below ground surface with no water encountered. No other receptors (playas, wetlands, waterways, lakebeds, or ordinance boundaries) are located within each specific boundary or distance from the Site. According to the Karst Potential Map, the Site is located within a Low Karst area. The Site characterization documentation (Points of Diversion, Karst Potential, Significant Watercourse Map, Wetlands Map, and FEMA Map) are attached to the report.

NTGE characterized the Site according to Table I, Closure Criteria for Soils Impacted by a Release, from the New Mexico Administrative Code (NMCA) Title 19, Chapter 15, Part 29, Section 12 (NMAC 19.15.29.12).

General Site Characterization and Groundwater:

Site Characterization	Average Groundwater Depth (ft)
Low Karst	≥250

Table 3.1 Closure Criteria for Soils Impacted by a Release (NMAC 19.15.29.12 & 19.15.29.13)

Regulatory Standard	Chloride	TPH (GRO+DRO+MRO)	GRO+DRO	BTEX	Benzene
19.15.23.12 Remediation and Closure Criteria for Soils Impacted by a Release	20,000 mg/kg	2,500 mg/kg	1,000 mg/kg	50 mg/kg	10 mg/kg
19.15.23.13 Restoration, Reclamation, and Re-Vegetation	600 mg/kg	100 mg/kg	---	50 mg/kg	10 mg/kg
Notes: --- = not defined					

4. Initial Soil Delineation Assessment Summary and Findings

On June 11, 2024, NTGE conducted site assessment activities to assess the extent of impacts at the Site. Three (3) vertical sample points (V-1 through V-3) were installed within the release area, while ten (10) horizontal sample points (H-1 through H-10) were installed adjacent to the release area in order to characterize the impacts. Soil samples were collected at half-foot (0.5) to one (1) foot (ft) intervals from depths ranging from 0 to 2.5 ft bgs with a geotechnical hand auger. The hand auger was decontaminated with Alconox and deionized water between soil borings to prevent cross-contamination.

Soil samples were placed directly into laboratory provided sample containers, placed on ice, and transported under proper chain-of-custody protocol to Cardinal Laboratories in Hobbs, New Mexico for analysis of TPH (EPA method 8015 modified), BTEX (EPA Method 8021B), and chloride (Method SM4500Cl-B). The analytical results indicated that Chloride concentrations exceeded the NMOCD regulatory limits in the areas of V-1 through V-13 at various depths ranging

NTGE Project No.: 248769



Mr. Mike Bratcher
August 7, 2024
Page 3 of 4

from zero (0) to two and a half (2.5) ft bgs. Analytical results also identified that horizontal delineation sample H-4 and H-8 through H-10 exhibited presence of spill impacts due to elevated concentration of TPH at depths ranging from 0 to 0.5 ft bgs.

On July 12, 2024, NTGE returned to continue with the vertical and horizontal delineation assessment of the release. A total of three (3) test pits (TP-1 through TP-3) were installed within and adjacent to the release area and were collected at one (1) foot intervals at depths ranging from surface to five (5) ft bgs utilizing mechanical equipment. In addition, four (4) horizontal samples (H-4A, H-8A, H-9A and H-10A) were collected at a half foot interval and were delivered to Cardinal Laboratories in Hobbs, New Mexico for the analysis of BTEX, TPH, and chlorides. Analytical results indicated that all samples were below NMOCD regulatory criteria for the site, with the exception of TP-3 at zero (0) to six (6) inches below ground surface which had a total TPH concentration of 2,763 mg/kg.

Analytical results are included in Table 1, while soil boring locations are shown in Figure 3. The initial C-141, laboratory reports containing analytical methods and chain-of-custody documents are attached to the report.

5. Proposed Work Plan

After receiving and evaluating the soil boring data NTGE proposes to excavate the areas of V-1 and V-2 to a depth of three (3) ft bgs, and perform a six (6) inch surface scrape in the impacted area surrounding the horizontal separators and process flow lines to ensure that the impacted soil has been removed from the Site. Approximately 130 cubic yards of impacted material will be excavated and transported offsite for disposal at an NMOCD approved landfill. The proposed excavation map is shown in Figure 4.

Due to the presence of production equipment (i.e., separators and associated pipelines) in the vicinity of area V-3, excavation of soils is not feasible as the result of associated safety concerns in encroaching the infrastructure. NTGE proposes to address the remaining soil impacts at the time of facility decommissioning or in the event infrastructure modifications are made in the area that would alleviate safety concerns, whichever is sooner. The infrastructure in and around the excavation is shown in Figure 3 and Figure 4.

If you have any questions regarding this letter, please contact us at (432)-701-2159.

Sincerely,
NTG Environmental



Ethan Sessums
Project Manager

Mr. Mike Bratcher
August 7, 2024
Page 4 of 4

Attachments:

Tables
Figures
Site Characterization Documentation
Photographic Log
Laboratory Reports and Chain-of-Custody Documents

TABLES

Table 1
Summary of Soil Analytical Data - Delineation Samples
Jayhawk 6 CTB 2
Devon Energy Production Company
Lea County, New Mexico

Sample ID	Sample Date	Depth (ft bgs)	Benzene	Toluene	Ethylbenzene	Xylenes	BTEX	TPH					Chloride
								GRO (C6-C10)	DRO (C10-C28)	GRO + DRO (C6-C28)	MRO (C28-C35)	Total GRO/DRO/MRO (C6-C35)	
			(mg/kg)	(mg/kg)	(mg/kg)	(mg/kg)	(mg/kg)	(mg/kg)	(mg/kg)	(mg/kg)	(mg/kg)	(mg/kg)	(mg/kg)
			Table I Closure Criteria for Soil 51-100 feet Depth to Groundwater 19.15.29 NMAC										
10 mg/kg	---	---	---	50 mg/kg	---	---	1,000 mg/kg	---	2,500 mg/kg	20,000 mg/kg			
Vertical Delineation Samples													
V-1	6/11/2024	0-6"	<0.050	<0.050	<0.050	<0.150	<0.300	<10.0	<10.0	<10.0	<10.0	<10.0	5,840
	6/11/2024	1-1.5'	<0.050	<0.050	<0.050	<0.150	<0.300	<10.0	<10.0	<10.0	<10.0	<10.0	848
	6/11/2024	2-2.5'	<0.050	<0.050	<0.050	<0.150	<0.300	<10.0	<10.0	<10.0	<10.0	<10.0	2,640
V-2	6/11/2024	0-6"	<0.050	<0.050	<0.050	<0.150	<0.300	<10.0	<10.0	<10.0	<10.0	<10.0	8,900
	6/11/2024	1-1.5'	<0.050	<0.050	<0.050	<0.150	<0.300	<10.0	<10.0	<10.0	<10.0	<10.0	3,920
	6/11/2024	2-2.5'	<0.050	<0.050	<0.050	<0.150	<0.300	<10.0	<10.0	<10.0	<10.0	<10.0	2,080
V-3	6/11/2024	0-6"	<0.050	<0.050	<0.050	<0.150	<0.300	<10.0	<10.0	<10.0	<10.0	<10.0	6,080
	6/11/2024	1-1.5'	<0.050	<0.050	<0.050	<0.150	<0.300	<10.0	<10.0	<10.0	<10.0	<10.0	3,840
	6/11/2024	2-2.5'	<0.050	<0.050	<0.050	<0.150	<0.300	<10.0	<10.0	<10.0	<10.0	<10.0	592
TP-1	7/12/2024	3'	<0.050	<0.050	<0.050	<0.150	<0.300	<10.0	<10.0	<10.0	<10.0	<10.0	112
	7/12/2024	4'	<0.050	<0.050	<0.050	<0.150	<0.300	<10.0	<10.0	<10.0	<10.0	<10.0	176
	7/12/2024	5'	<0.050	<0.050	<0.050	<0.150	<0.300	<10.0	<10.0	<10.0	<10.0	<10.0	224
TP-2	7/12/2024	3'	<0.050	<0.050	<0.050	<0.150	<0.300	<10.0	<10.0	<10.0	<10.0	<10.0	64
	7/12/2024	4'	<0.050	<0.050	<0.050	<0.150	<0.300	<10.0	<10.0	<10.0	<10.0	<10.0	16
	7/12/2024	5'	<0.050	<0.050	<0.050	<0.150	<0.300	<10.0	<10.0	<10.0	<10.0	<10.0	48
TP-3	7/12/2024	0-6"	<0.050	<0.050	<0.050	<0.150	<0.300	<10.0	2,010	2,010	753	2,763	128
	7/12/2024	1'	<0.050	<0.050	<0.050	<0.150	<0.300	<10.0	432	432	56.5	488.5	80
	7/12/2024	2'	<0.050	<0.050	<0.050	<0.150	<0.300	<10.0	53.1	53.1	<10.0	53.1	80
	7/12/2024	3'	<0.050	<0.050	<0.050	<0.150	<0.300	<10.0	54.4	54.4	<10.0	54.4	48
Horizontal Delineation Samples													
H-1	6/11/2024	0-6"	<0.050	<0.050	<0.050	<0.150	<0.300	<10.0	<10.0	<10.0	<10.0	<10.0	48
H-2	6/11/2024	0-6"	<0.050	<0.050	<0.050	<0.150	<0.300	<10.0	<10.0	<10.0	<10.0	<10.0	16
H-3	6/11/2024	0-6"	<0.050	<0.050	<0.050	<0.150	<0.300	<10.0	<10.0	<10.0	<10.0	<10.0	48
H-4	6/11/2024	0-6"	<0.050	<0.050	<0.050	<0.150	<0.300	<10.0	229	229	63.5	292.5	32
H-4A	7/12/2024	0-6"	<0.050	<0.050	<0.050	<0.150	<0.300	<10.0	<10.0	<10.0	<10.0	<10.0	16
H-5	6/11/2024	0-6"	<0.050	<0.050	<0.050	<0.150	<0.300	<10.0	<10.0	<10.0	<10.0	<10.0	384
H-6	6/11/2024	0-6"	<0.050	<0.050	<0.050	<0.150	<0.300	<10.0	<10.0	<10.0	<10.0	<10.0	32
H-7	6/11/2024	0-6"	<0.050	<0.050	<0.050	<0.150	<0.300	<10.0	<10.0	<10.0	<10.0	<10.0	32
H-8	6/11/2024	0-6"	<0.050	<0.050	<0.050	<0.150	<0.300	<10.0	93.4	93.4	15.9	109.3	32
H-8A	7/12/2024	0-6"	<0.050	<0.050	<0.050	<0.150	<0.300	<10.0	<10.0	<10.0	<10.0	<10.0	32
H-9	6/11/2024	0-6"	<0.050	<0.050	<0.050	<0.150	<0.300	<10.0	123	123	32.1	155.1	16
H-9A	7/12/2024	0-6"	<0.050	<0.050	<0.050	<0.150	<0.300	<10.0	<10.0	<10.0	<10.0	<10.0	32
H-10	6/11/2024	0-6"	<0.050	<0.050	<0.050	<0.150	<0.300	<10.0	206	206	62.3	268.3	32
H-10A	7/12/2024	0-6"	<0.050	<0.050	<0.050	<0.150	<0.300	<10.0	<10.0	<10.0	<10.0	<10.0	16

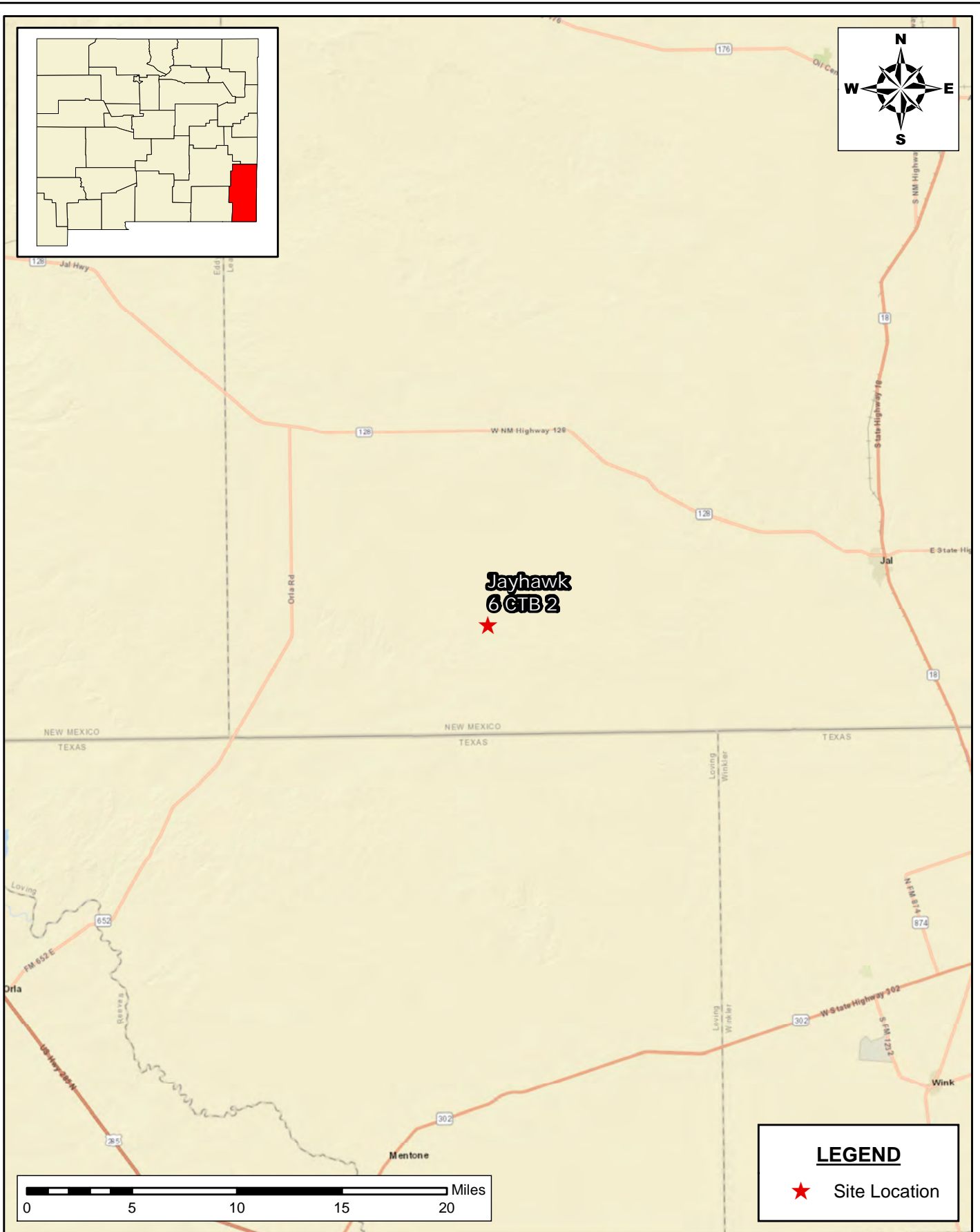
Notes:

- Values reported in mg/kg
- < = Value Less Than Reporting Limit (RL)
- Bold indicates Analyte Detected
- BTEX analyses by EPA Method SW 8021B
- TPH analyses by EPA Method SW 8015 Mod.
- GRO/DRO/MRO - Gasoline/Diesel/Motor Oil
- Yellow shaded cells indicate analytical samples that exceed the NMAC 19.15.29.12 Table I Closure Criteria for the site.
- Peach shaded cells indicate analytical samples that exceed the NMAC 19.15.29.13 Table I Closure Criteria for the site (Surface to 4 Feet Below Grade).
- Not Analyzed

SP-1 Sample Point Excavated

FIGURES

Document Path: C:\Users\ntg\gis\New Tech Global\NTGE - Documents\2024 PROJECTS\DEVONRSC\248769 - Jayhawk 6 CTB 2\7 - Figures\GIS\Figure_1_SL.mxd



SITE LOCATION MAP
SITE CHARACTERIZATION AND REMEDIAL
ACTION PLAN DEVON ENERGY PRODUCTION LLC
JAYHAWK 6 CTB 2
LEA COUNTY, NEW MEXICO

SCALE: As Shown Date: 6/3/2024 PROJECT #:248769

New Tech Global Environmental, LLC
911 Regional Park Drive
Houston, Texas 77060
T - 281.872.9300
F - 281.872.4521
Web: www.ntgenviroinmental.com



NOTES:

1. Base Image: ESRI Maps & Data 2013
2. Map Projection: NAD 1983

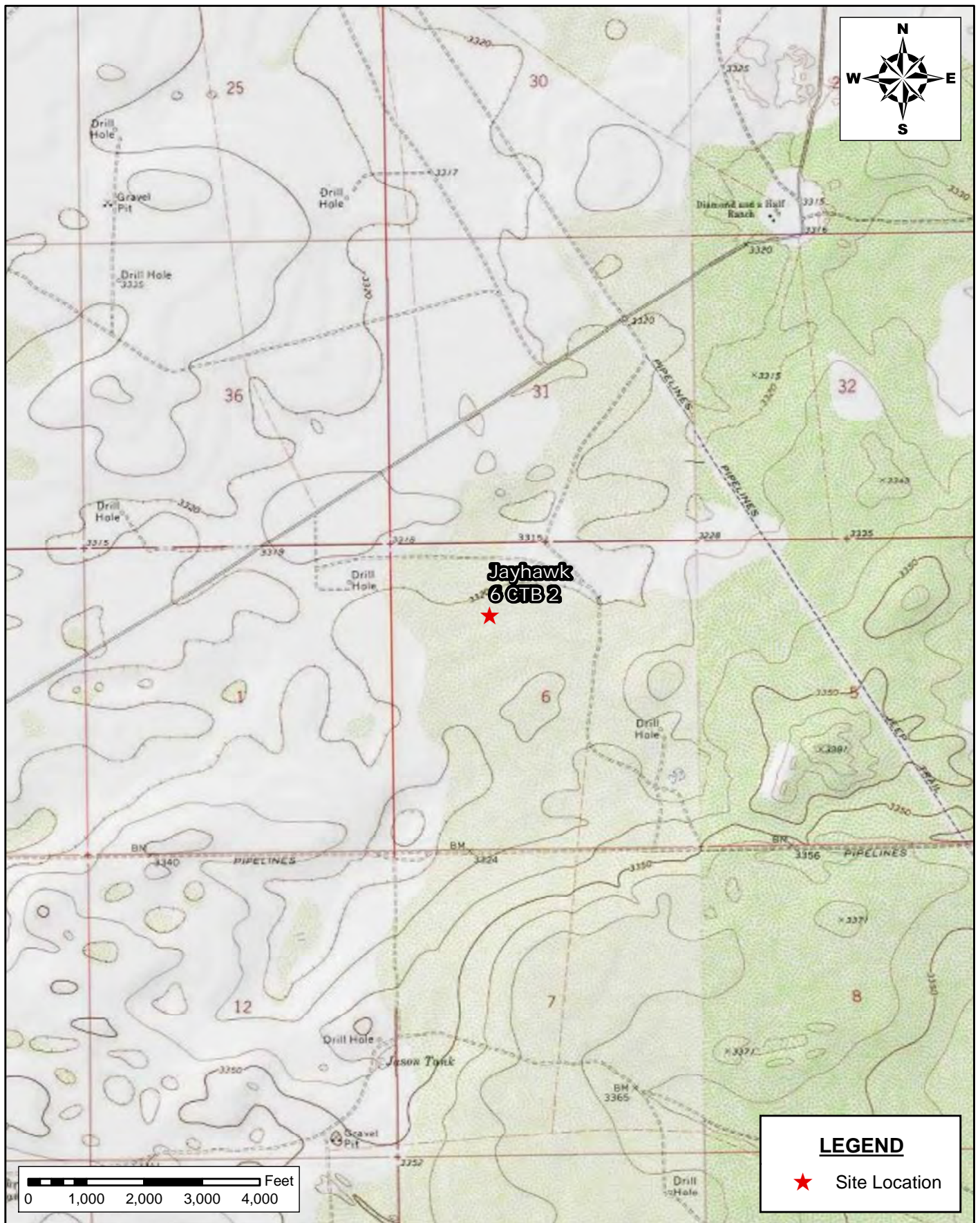
DRAWING NUMBER:

FIGURE 1

SHEET NUMBER:

1 of 1

Document Path: C:\Users\ntg\Documents\2024 PROJECTS\DEVONRSC\237624 - Chinoteague 8 CTB 2\7 - Figures\GIS\Figure_2_TM.mxd



TOPOGRAPHIC MAP
SITE CHARACTERIZATION AND REMEDIAL
ACTION PLAN DEVON ENERGY PRODUCTION LLC
 JAYHAWK 6 CTB 2
 LEA COUNTY, NEW MEXICO

SCALE: As Shown Date: 6/3/2024 PROJECT #: 248769



New Tech Global Environmental, LLC
 911 Regional Park Drive
 Houston, Texas 77060
 T - 281.872.9300
 F - 281.872.4521
 Web: www.ntgenvironmental.com

NOTES:

1. Base Image: ESRI Maps & Data 2013
2. Map Projection: NAD 1983

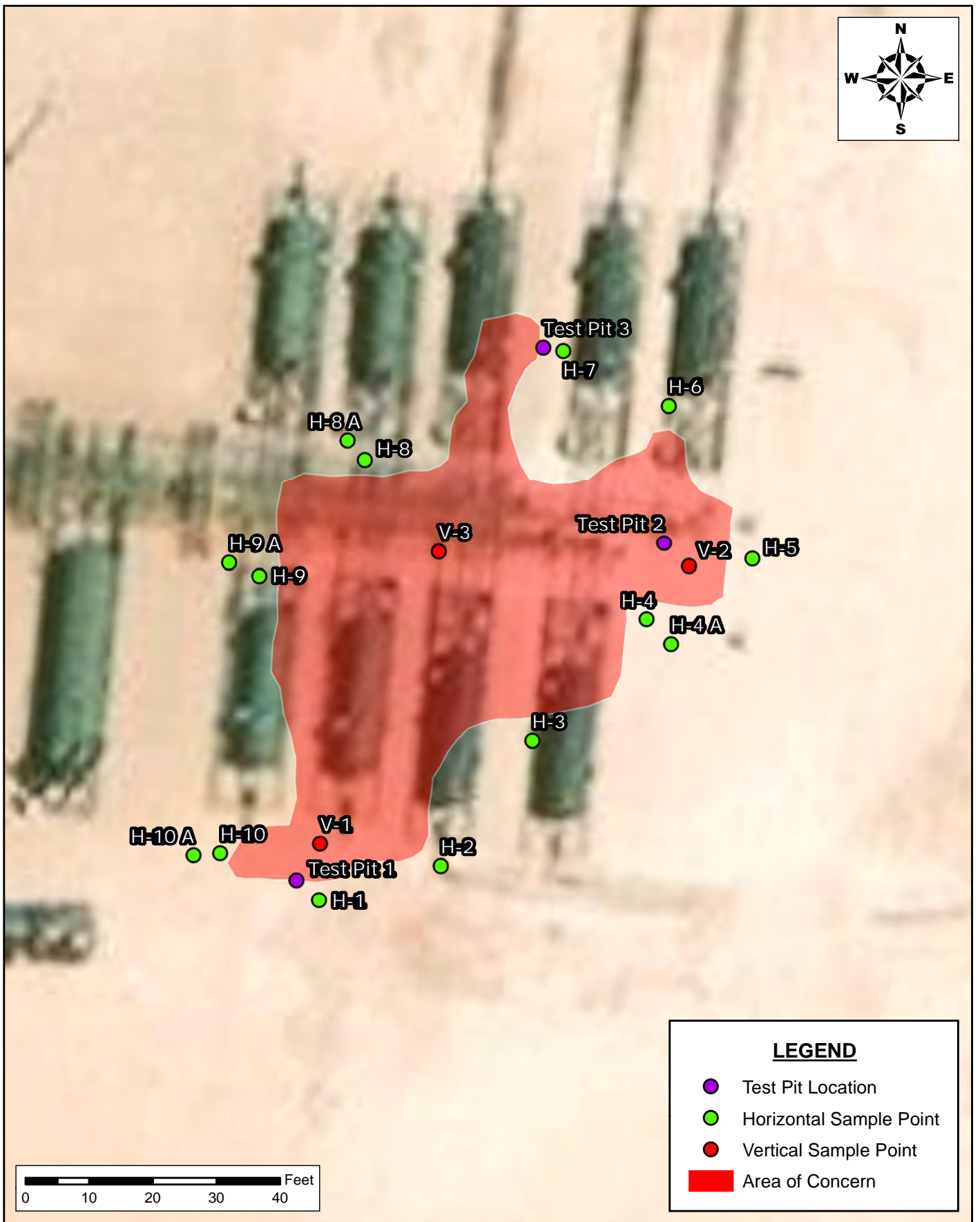
DRAWING NUMBER:

FIGURE 2

SHEET NUMBER:

1 of 1

Document Path: C:\Users\ntg\gis\New Tech Global\NTGE - Documents\2024 PROJECTS\DEVONRSC\248769 - Jayhawk 6 CTB 2\7 - Figures\GIS\Figure_3.mxd



LEGEND

- Test Pit Location
- Horizontal Sample Point
- Vertical Sample Point
- Area of Concern

INITIAL ASSESSMENT MAP
SITE CHARACTERIZATION AND REMEDIATION WORK PLAN
 DEVON ENERGY PRODUCTION COMPANY
 JAYHAWK 6 XTB 2
 LEA COUNTY, NEW MEXICO

SCALE: AS SHOWN DATE: 07/19/2024 PROJECT #: 248769



New Tech Global Environmental, LLC
 911 Regional Park Drive
 Houston, Texas 77060
 T - 281.872.9300
 F - 281.872.4521
 Web: www.ntgenviromental.com

NOTES:

1. Base Image: ESRI Maps & Data 2017
2. Map Projection: NAD 1983

DRAWING NUMBER:

FIGURE 3

SHEET NUMBER:

1 of 1



Proposed Excavation Map

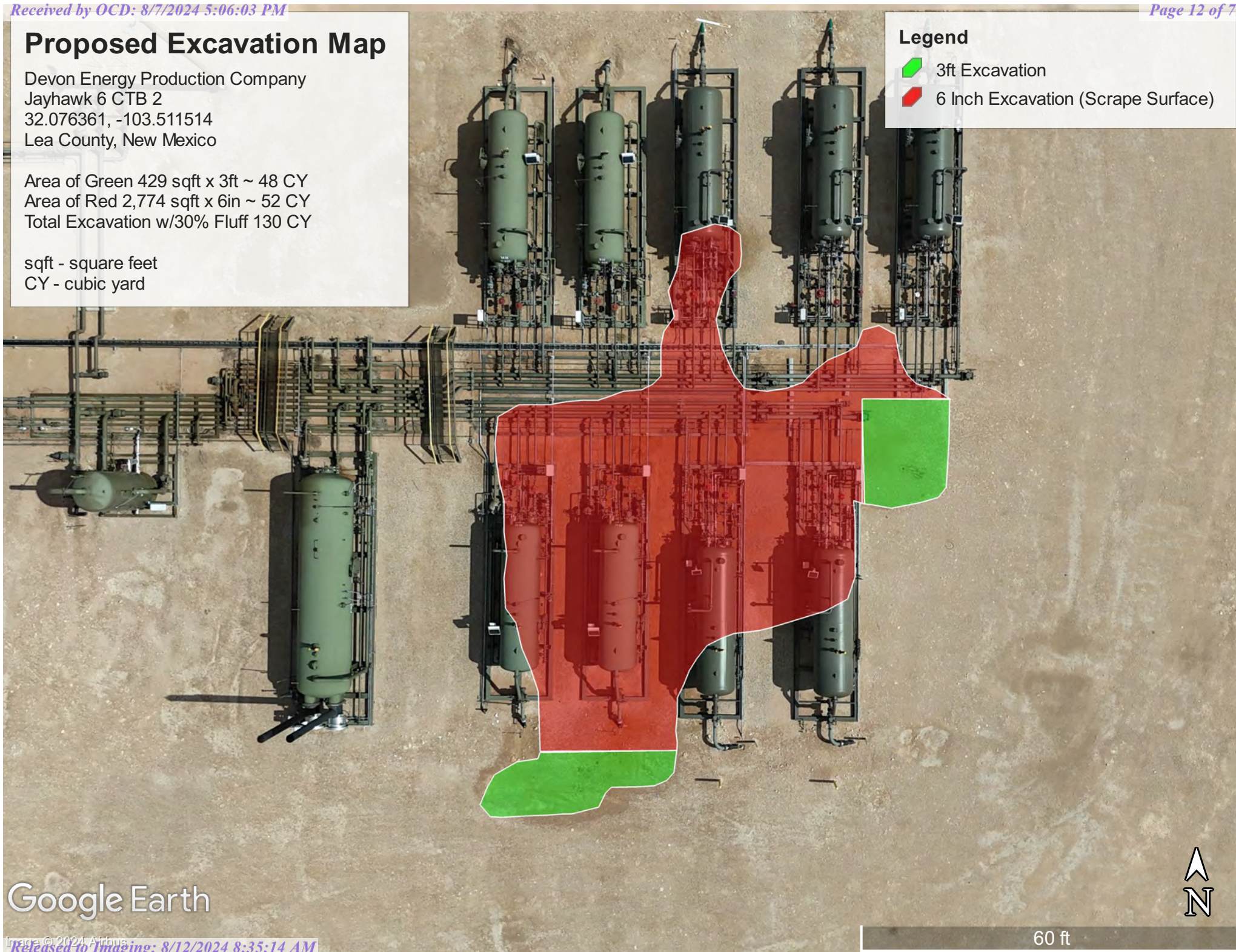
Devon Energy Production Company
Jayhawk 6 CTB 2
32.076361, -103.511514
Lea County, New Mexico

Area of Green 429 sqft x 3ft ~ 48 CY
Area of Red 2,774 sqft x 6in ~ 52 CY
Total Excavation w/30% Fluff 130 CY

sqft - square feet
CY - cubic yard

Legend

-  3ft Excavation
-  6 Inch Excavation (Scrape Surface)



Google Earth

PHOTOGRAPHIC LOG

PHOTOGRAPHIC LOG

Devon Energy Production Company
Jayhawk 6 CTB 2

Photograph No. 1

Facility: Jayhawk 6 CTB 2

County: Lea County, New Mexico

Description:
Area of Concern

**Photograph No. 2**

Facility: Jayhawk 6 CTB 2

County: Lea County, New Mexico

Description:
Area of Concern

**Photograph No. 3**

Facility: Jayhawk 6 CTB 2

County: Lea County, New Mexico

Description:
Area of Concern



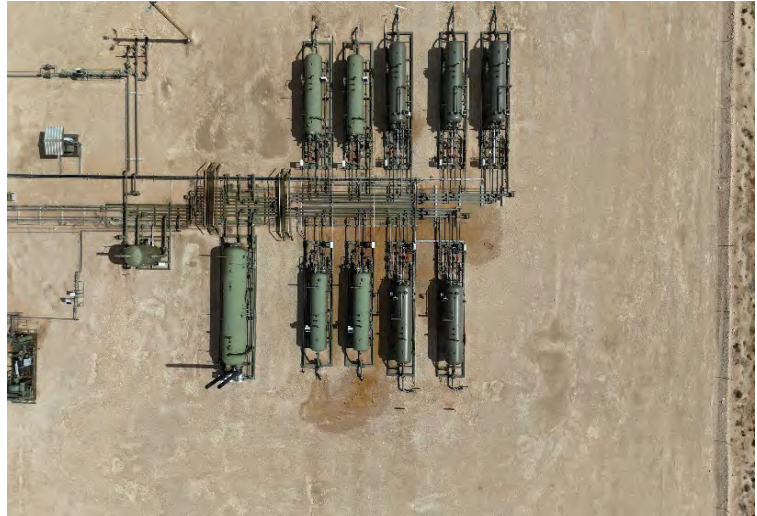
PHOTOGRAPHIC LOG
Devon Energy Production Company
Jayhawk 6 CTB 2

Photograph No. 4

Facility: Jayhawk 6 CTB 2

County: Lea County, New Mexico

Description:
Area of Concern From Drone

**Photograph No. 5**

Facility: Jayhawk 6 CTB 2

County: Lea County, New Mexico

Description:
Test Pit Location

**Photograph No. 6**

Facility: Jayhawk 6 CTB 2

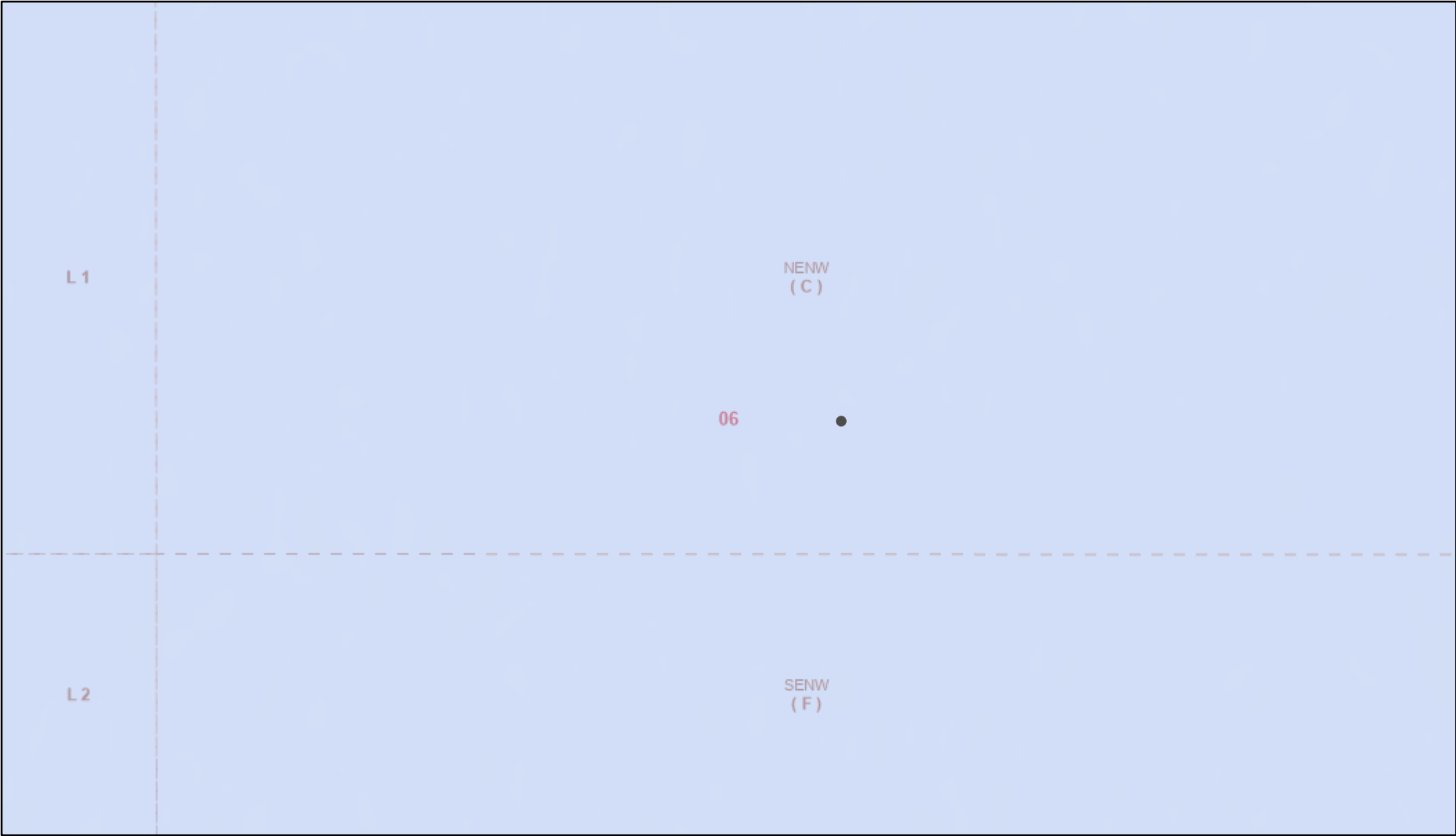
County: Lea County, New Mexico

Description:
Test Pit Location



SITE CHARACTERIZATION INFORMATION

Karst Potential Map



6/3/2024, 9:51:55 AM

Karst Occurrence Potential

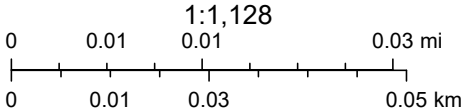
Low



PLSS Second Division



PLSS First Division



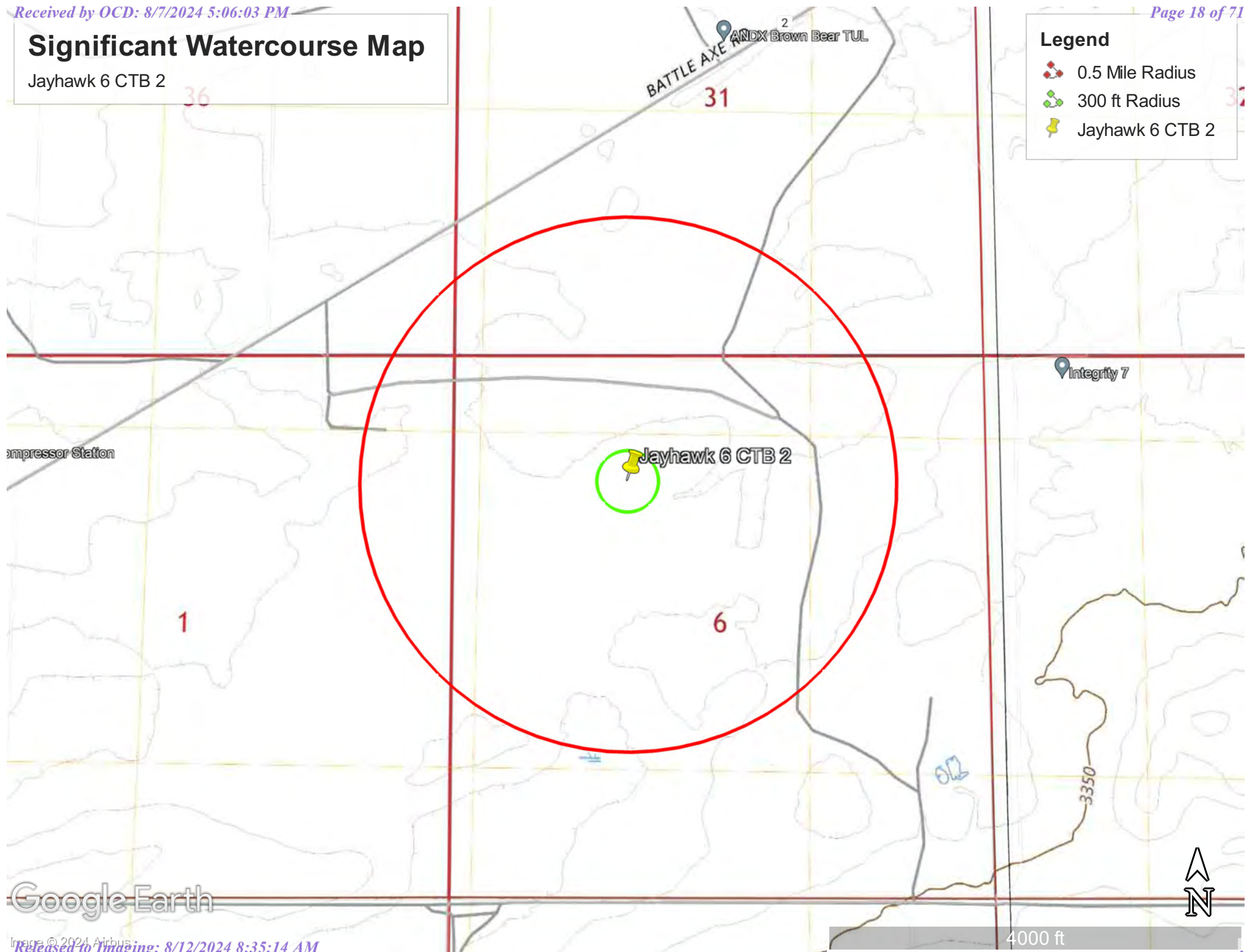
BLM, OCD, New Mexico Tech, Esri Community Maps Contributors, Texas Parks & Wildlife, © OpenStreetMap, Microsoft, CONANP, Esri, TomTom, Garmin, SafeGraph, GeoTechnologies, Inc, METI/NASA, USGS, EPA, NPS, US Census Bureau, USDA, USFWS, Oil Conservation Division of the New Mexico Energy,

Significant Watercourse Map

Jayhawk 6 CTB 2

Legend

- 0.5 Mile Radius
- 300 ft Radius
- Jayhawk 6 CTB 2



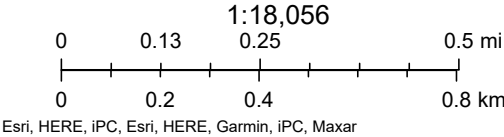
Google Earth

OSE POD Location Map



6/3/2024, 9:23:08 AM

- Override 1
- OSE District Boundary
- New Mexico State Trust Lands
- GIS WATERS PODs
- Water Right Regulations
- Both Estates
- Active
- Closure Area





New Mexico Office of the State Engineer

Point of Diversion Summary

(quarters are 1=NW 2=NE 3=SW 4=SE)
(quarters are smallest to largest) (NAD83 UTM in meters)

Well Tag	POD Number	Q64	Q16	Q4	Sec	Tws	Rng	X	Y
	C 03441 POD1	4	1	2	06	26S	34E	640971	3550039

Driller License: 1044 **Driller Company:** EADES WELL DRILLING & PUMP SERVICE
Driller Name: EADES, ALAN
Drill Start Date: 05/03/2010 **Drill Finish Date:** 05/03/2010 **Plug Date:**
Log File Date: 05/17/2010 **PCW Rcv Date:** **Source:** Shallow
Pump Type: SUBMER **Pipe Discharge Size:** **Estimated Yield:**
Casing Size: 6.17 **Depth Well:** 250 feet **Depth Water:**

Water Bearing Stratifications:

Top	Bottom	Description
0	1	Other/Unknown
1	25	Shale/Mudstone/Siltstone
25	37	Sandstone/Gravel/Conglomerate
37	85	Shale/Mudstone/Siltstone
85	108	Sandstone/Gravel/Conglomerate
108	128	Sandstone/Gravel/Conglomerate
128	189	Shale/Mudstone/Siltstone
189	249	Sandstone/Gravel/Conglomerate
249	250	Shale/Mudstone/Siltstone

Casing Perforations:

Top	Bottom
190	250

The data is furnished by the NMOS/ISC and is accepted by the recipient with the expressed understanding that the OS/ISC make no warranties, expressed or implied, concerning the accuracy, completeness, reliability, usability, or suitability for any particular purpose of the data.

6/3/24 8:41 AM

POINT OF DIVERSION SUMMARY

National Flood Hazard Layer FIRMette



103°31'2"W 32°4'50"N



1:6,000

103°30'24"W 32°4'19"N

Released to Imaging: 8/12/2024 8:35:14 AM

Basemap Imagery Source: USGS National Map 2023

Legend

SEE FIS REPORT FOR DETAILED LEGEND AND INDEX MAP FOR FIRM PANEL LAYOUT

SPECIAL FLOOD HAZARD AREAS		Without Base Flood Elevation (BFE) Zone A, V, A99
		With BFE or Depth Zone AE, AO, AH, VE, AR
		Regulatory Floodway
OTHER AREAS OF FLOOD HAZARD		0.2% Annual Chance Flood Hazard, Areas of 1% annual chance flood with average depth less than one foot or with drainage areas of less than one square mile Zone X
		Future Conditions 1% Annual Chance Flood Hazard Zone X
		Area with Reduced Flood Risk due to Levee. See Notes. Zone X
		Area with Flood Risk due to Levee Zone D
OTHER AREAS		NO SCREEN Area of Minimal Flood Hazard Zone X
		Effective LOMRs
		Area of Undetermined Flood Hazard Zone D
GENERAL STRUCTURES		Channel, Culvert, or Storm Sewer
		Levee, Dike, or Floodwall
OTHER FEATURES		20.2 Cross Sections with 1% Annual Chance Water Surface Elevation
		17.5 Cross Sections with 1% Annual Chance Water Surface Elevation
		Coastal Transect
		Base Flood Elevation Line (BFE)
		Limit of Study
		Jurisdiction Boundary
		Coastal Transect Baseline
MAP PANELS		Digital Data Available
		No Digital Data Available
		Unmapped

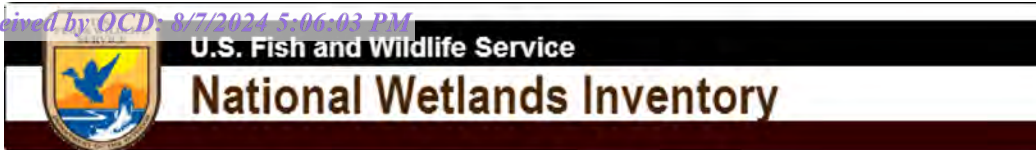


The pin displayed on the map is an approximate point selected by the user and does not represent an authoritative property location.

This map complies with FEMA's standards for the use of digital flood maps if it is not void as described below. The basemap shown complies with FEMA's basemap accuracy standards

The flood hazard information is derived directly from the authoritative NFHL web services provided by FEMA. This map was exported on 6/4/2024 at 10:02 AM and does not reflect changes or amendments subsequent to this date and time. The NFHL and effective information may change or become superseded by new data over time.

This map image is void if the one or more of the following map elements do not appear: basemap imagery, flood zone labels, legend, scale bar, map creation date, community identifiers, FIRM panel number, and FIRM effective date. Map images for unmapped and unmodernized areas cannot be used for regulatory purposes.



Wetlands Map



June 3, 2024

Wetlands

- Estuarine and Marine Deepwater
- Estuarine and Marine Wetland

- Freshwater Emergent Wetland
- Freshwater Forested/Shrub Wetland
- Freshwater Pond

- Lake
- Other
- Riverine

This map is for general reference only. The US Fish and Wildlife Service is not responsible for the accuracy or currentness of the base data shown on this map. All wetlands related data should be used in accordance with the layer metadata found on the Wetlands Mapper web site.

LABORATORY REPORTS AND CHAIN-OF-CUSTODY DOCUMENTS



PHONE (575) 393-2326 ° 101 E. MARLAND ° HOBBS, NM 88240

June 17, 2024

ETHAN SESSUMS

NTG ENVIRONMENTAL

701 TRADEWINDS BLVD. SUITE C

MIDLAND, TX 79706

RE: JAYHAWK 6 CTB 2

Enclosed are the results of analyses for samples received by the laboratory on 06/11/24 12:12.

Cardinal Laboratories is accredited through Texas NELAP under certificate number T104704398-23-16. Accreditation applies to drinking water, non-potable water and solid and chemical materials. All accredited analytes are denoted by an asterisk (*). For a complete list of accredited analytes and matrices visit the TCEQ website at www.tceq.texas.gov/field/qa/lab_accred_certif.html.

Cardinal Laboratories is accredited through the State of Colorado Department of Public Health and Environment for:

Method EPA 552.2	Haloacetic Acids (HAA-5)
Method EPA 524.2	Total Trihalomethanes (TTHM)
Method EPA 524.4	Regulated VOCs (V1, V2, V3)

Accreditation applies to public drinking water matrices.

This report meets NELAP requirements and is made up of a cover page, analytical results, and a copy of the original chain-of-custody. If you have any questions concerning this report, please feel free to contact me.

Sincerely,

A handwritten signature in black ink that reads "Celey D. Keene". The signature is written in a cursive style with a large, stylized 'C' and 'K'.

Celey D. Keene

Lab Director/Quality Manager



PHONE (575) 393-2326 ° 101 E. MARLAND ° HOBBS, NM 88240

Analytical Results For:

NTG ENVIRONMENTAL
 ETHAN SESSUMS
 701 TRADEWINDS BLVD. SUITE C
 MIDLAND TX, 79706
 Fax To:

Received: 06/11/2024
 Reported: 06/17/2024
 Project Name: JAYHAWK 6 CTB 2
 Project Number: 248769
 Project Location: DEVON LEA CO., NM

Sampling Date: 06/11/2024
 Sampling Type: Soil
 Sampling Condition: Cool & Intact
 Sample Received By: Tamara Oldaker

Sample ID: V - 1 (0-6") (H243376-01)

BTEX 8021B		mg/kg		Analyzed By: JH					
Analyte	Result	Reporting Limit	Analyzed	Method Blank	BS	% Recovery	True Value QC	RPD	Qualifier
Benzene*	<0.050	0.050	06/13/2024	ND	2.04	102	2.00	7.30	
Toluene*	<0.050	0.050	06/13/2024	ND	2.03	102	2.00	8.24	
Ethylbenzene*	<0.050	0.050	06/13/2024	ND	2.09	105	2.00	9.86	
Total Xylenes*	<0.150	0.150	06/13/2024	ND	6.09	101	6.00	9.82	
Total BTEX	<0.300	0.300	06/13/2024	ND					

Surrogate: 4-Bromofluorobenzene (PID) 89.7 % 71.5-134

Chloride, SM4500Cl-B		mg/kg		Analyzed By: AC					
Analyte	Result	Reporting Limit	Analyzed	Method Blank	BS	% Recovery	True Value QC	RPD	Qualifier
Chloride	5840	16.0	06/14/2024	ND	416	104	400	0.00	

TPH 8015M		mg/kg		Analyzed By: MS					
Analyte	Result	Reporting Limit	Analyzed	Method Blank	BS	% Recovery	True Value QC	RPD	Qualifier
GRO C6-C10*	<10.0	10.0	06/13/2024	ND	190	95.0	200	6.94	
DRO >C10-C28*	<10.0	10.0	06/13/2024	ND	186	92.8	200	1.63	
EXT DRO >C28-C36	<10.0	10.0	06/13/2024	ND					

Surrogate: 1-Chlorooctane 94.8 % 48.2-134

Surrogate: 1-Chlorooctadecane 94.6 % 49.1-148

Cardinal Laboratories

*=Accredited Analyte

PLEASE NOTE: Liability and Damages. Cardinal's liability and client's exclusive remedy for any claim arising, whether based in contract or tort, shall be limited to the amount paid by client for analyses. All claims, including those for negligence and any other cause whatsoever shall be deemed waived unless made in writing and received by Cardinal within thirty (30) days after completion of the applicable service. In no event shall Cardinal be liable for incidental or consequential damages, including, without limitation, business interruptions, loss of use, or loss of profits incurred by client, its subsidiaries, affiliates or successors arising out of or related to the performance of the services hereunder by Cardinal, regardless of whether such claim is based upon any of the above stated reasons or otherwise. Results relate only to the samples identified above. This report shall not be reproduced except in full with written approval of Cardinal Laboratories.

Celey D. Keene, Lab Director/Quality Manager



PHONE (575) 393-2326 ° 101 E. MARLAND ° HOBBS, NM 88240

Analytical Results For:

NTG ENVIRONMENTAL
 ETHAN SESSUMS
 701 TRADEWINDS BLVD. SUITE C
 MIDLAND TX, 79706
 Fax To:

Received: 06/11/2024
 Reported: 06/17/2024
 Project Name: JAYHAWK 6 CTB 2
 Project Number: 248769
 Project Location: DEVON LEA CO., NM

Sampling Date: 06/11/2024
 Sampling Type: Soil
 Sampling Condition: Cool & Intact
 Sample Received By: Tamara Oldaker

Sample ID: V - 1 (1-1.5') (H243376-02)

BTEx 8021B		mg/kg		Analyzed By: JH					
Analyte	Result	Reporting Limit	Analyzed	Method Blank	BS	% Recovery	True Value QC	RPD	Qualifier
Benzene*	<0.050	0.050	06/13/2024	ND	2.04	102	2.00	7.30	
Toluene*	<0.050	0.050	06/13/2024	ND	2.03	102	2.00	8.24	
Ethylbenzene*	<0.050	0.050	06/13/2024	ND	2.09	105	2.00	9.86	
Total Xylenes*	<0.150	0.150	06/13/2024	ND	6.09	101	6.00	9.82	
Total BTEX	<0.300	0.300	06/13/2024	ND					

Surrogate: 4-Bromofluorobenzene (PID) 90.8 % 71.5-134

Chloride, SM4500Cl-B		mg/kg		Analyzed By: AC					
Analyte	Result	Reporting Limit	Analyzed	Method Blank	BS	% Recovery	True Value QC	RPD	Qualifier
Chloride	848	16.0	06/14/2024	ND	416	104	400	0.00	

TPH 8015M		mg/kg		Analyzed By: MS					
Analyte	Result	Reporting Limit	Analyzed	Method Blank	BS	% Recovery	True Value QC	RPD	Qualifier
GRO C6-C10*	<10.0	10.0	06/13/2024	ND	190	95.0	200	6.94	
DRO >C10-C28*	<10.0	10.0	06/13/2024	ND	186	92.8	200	1.63	
EXT DRO >C28-C36	<10.0	10.0	06/13/2024	ND					

Surrogate: 1-Chlorooctane 95.2 % 48.2-134

Surrogate: 1-Chlorooctadecane 93.2 % 49.1-148

Cardinal Laboratories

*=Accredited Analyte

PLEASE NOTE: Liability and Damages. Cardinal's liability and client's exclusive remedy for any claim arising, whether based in contract or tort, shall be limited to the amount paid by client for analyses. All claims, including those for negligence and any other cause whatsoever shall be deemed waived unless made in writing and received by Cardinal within thirty (30) days after completion of the applicable service. In no event shall Cardinal be liable for incidental or consequential damages, including, without limitation, business interruptions, loss of use, or loss of profits incurred by client, its subsidiaries, affiliates or successors arising out of or related to the performance of the services hereunder by Cardinal, regardless of whether such claim is based upon any of the above stated reasons or otherwise. Results relate only to the samples identified above. This report shall not be reproduced except in full with written approval of Cardinal Laboratories.

Celey D. Keene, Lab Director/Quality Manager



PHONE (575) 393-2326 ° 101 E. MARLAND ° HOBBS, NM 88240

Analytical Results For:

NTG ENVIRONMENTAL
 ETHAN SESSUMS
 701 TRADEWINDS BLVD. SUITE C
 MIDLAND TX, 79706
 Fax To:

Received: 06/11/2024
 Reported: 06/17/2024
 Project Name: JAYHAWK 6 CTB 2
 Project Number: 248769
 Project Location: DEVON LEA CO., NM

Sampling Date: 06/11/2024
 Sampling Type: Soil
 Sampling Condition: Cool & Intact
 Sample Received By: Tamara Oldaker

Sample ID: V - 1 (2-2.5') (H243376-03)

BTEX 8021B		mg/kg		Analyzed By: JH					
Analyte	Result	Reporting Limit	Analyzed	Method Blank	BS	% Recovery	True Value QC	RPD	Qualifier
Benzene*	<0.050	0.050	06/13/2024	ND	2.04	102	2.00	7.30	
Toluene*	<0.050	0.050	06/13/2024	ND	2.03	102	2.00	8.24	
Ethylbenzene*	<0.050	0.050	06/13/2024	ND	2.09	105	2.00	9.86	
Total Xylenes*	<0.150	0.150	06/13/2024	ND	6.09	101	6.00	9.82	
Total BTEX	<0.300	0.300	06/13/2024	ND					

Surrogate: 4-Bromofluorobenzene (PID) 90.3 % 71.5-134

Chloride, SM4500CI-B		mg/kg		Analyzed By: AC						
Analyte	Result	Reporting Limit	Analyzed	Method Blank	BS	% Recovery	True Value QC	RPD	Qualifier	
Chloride	2640	16.0	06/14/2024	ND	416	104	400	0.00		

TPH 8015M		mg/kg		Analyzed By: MS					
Analyte	Result	Reporting Limit	Analyzed	Method Blank	BS	% Recovery	True Value QC	RPD	Qualifier
GRO C6-C10*	<10.0	10.0	06/13/2024	ND	190	95.0	200	6.94	
DRO >C10-C28*	<10.0	10.0	06/13/2024	ND	186	92.8	200	1.63	
EXT DRO >C28-C36	<10.0	10.0	06/13/2024	ND					

Surrogate: 1-Chlorooctane 99.4 % 48.2-134

Surrogate: 1-Chlorooctadecane 97.8 % 49.1-148

Cardinal Laboratories

*=Accredited Analyte

PLEASE NOTE: Liability and Damages. Cardinal's liability and client's exclusive remedy for any claim arising, whether based in contract or tort, shall be limited to the amount paid by client for analyses. All claims, including those for negligence and any other cause whatsoever shall be deemed waived unless made in writing and received by Cardinal within thirty (30) days after completion of the applicable service. In no event shall Cardinal be liable for incidental or consequential damages, including, without limitation, business interruptions, loss of use, or loss of profits incurred by client, its subsidiaries, affiliates or successors arising out of or related to the performance of the services hereunder by Cardinal, regardless of whether such claim is based upon any of the above stated reasons or otherwise. Results relate only to the samples identified above. This report shall not be reproduced except in full with written approval of Cardinal Laboratories.

Celey D. Keene, Lab Director/Quality Manager



PHONE (575) 393-2326 ° 101 E. MARLAND ° HOBBS, NM 88240

Analytical Results For:

NTG ENVIRONMENTAL
 ETHAN SESSUMS
 701 TRADEWINDS BLVD. SUITE C
 MIDLAND TX, 79706
 Fax To:

Received: 06/11/2024
 Reported: 06/17/2024
 Project Name: JAYHAWK 6 CTB 2
 Project Number: 248769
 Project Location: DEVON LEA CO., NM

Sampling Date: 06/11/2024
 Sampling Type: Soil
 Sampling Condition: Cool & Intact
 Sample Received By: Tamara Oldaker

Sample ID: V - 2 (0-6") (H243376-04)

BTEx 8021B		mg/kg		Analyzed By: JH					
Analyte	Result	Reporting Limit	Analyzed	Method Blank	BS	% Recovery	True Value QC	RPD	Qualifier
Benzene*	<0.050	0.050	06/13/2024	ND	2.04	102	2.00	2.32	QR-03
Toluene*	<0.050	0.050	06/13/2024	ND	1.99	99.4	2.00	0.424	QR-03
Ethylbenzene*	<0.050	0.050	06/13/2024	ND	1.97	98.6	2.00	0.667	QR-03
Total Xylenes*	<0.150	0.150	06/13/2024	ND	5.78	96.3	6.00	0.287	QR-03
Total BTEX	<0.300	0.300	06/13/2024	ND					

Surrogate: 4-Bromofluorobenzene (PID) 101 % 71.5-134

Chloride, SM4500Cl-B		mg/kg		Analyzed By: AC						
Analyte	Result	Reporting Limit	Analyzed	Method Blank	BS	% Recovery	True Value QC	RPD	Qualifier	
Chloride	8900	16.0	06/14/2024	ND	416	104	400	0.00		

TPH 8015M		mg/kg		Analyzed By: MS					
Analyte	Result	Reporting Limit	Analyzed	Method Blank	BS	% Recovery	True Value QC	RPD	Qualifier
GRO C6-C10*	<10.0	10.0	06/13/2024	ND	190	95.0	200	6.94	
DRO >C10-C28*	<10.0	10.0	06/13/2024	ND	186	92.8	200	1.63	
EXT DRO >C28-C36	<10.0	10.0	06/13/2024	ND					

Surrogate: 1-Chlorooctane 101 % 48.2-134

Surrogate: 1-Chlorooctadecane 99.3 % 49.1-148

Cardinal Laboratories

*=Accredited Analyte

PLEASE NOTE: Liability and Damages. Cardinal's liability and client's exclusive remedy for any claim arising, whether based in contract or tort, shall be limited to the amount paid by client for analyses. All claims, including those for negligence and any other cause whatsoever shall be deemed waived unless made in writing and received by Cardinal within thirty (30) days after completion of the applicable service. In no event shall Cardinal be liable for incidental or consequential damages, including, without limitation, business interruptions, loss of use, or loss of profits incurred by client, its subsidiaries, affiliates or successors arising out of or related to the performance of the services hereunder by Cardinal, regardless of whether such claim is based upon any of the above stated reasons or otherwise. Results relate only to the samples identified above. This report shall not be reproduced except in full with written approval of Cardinal Laboratories.

Celey D. Keene, Lab Director/Quality Manager



PHONE (575) 393-2326 ° 101 E. MARLAND ° HOBBS, NM 88240

Analytical Results For:

NTG ENVIRONMENTAL
 ETHAN SESSUMS
 701 TRADEWINDS BLVD. SUITE C
 MIDLAND TX, 79706
 Fax To:

Received: 06/11/2024
 Reported: 06/17/2024
 Project Name: JAYHAWK 6 CTB 2
 Project Number: 248769
 Project Location: DEVON LEA CO., NM

Sampling Date: 06/11/2024
 Sampling Type: Soil
 Sampling Condition: Cool & Intact
 Sample Received By: Tamara Oldaker

Sample ID: V - 2 (1-1.5') (H243376-05)

BTEx 8021B		mg/kg		Analyzed By: JH					
Analyte	Result	Reporting Limit	Analyzed	Method Blank	BS	% Recovery	True Value QC	RPD	Qualifier
Benzene*	<0.050	0.050	06/13/2024	ND	2.04	102	2.00	2.32	
Toluene*	<0.050	0.050	06/13/2024	ND	1.99	99.4	2.00	0.424	
Ethylbenzene*	<0.050	0.050	06/13/2024	ND	1.97	98.6	2.00	0.667	
Total Xylenes*	<0.150	0.150	06/13/2024	ND	5.78	96.3	6.00	0.287	
Total BTEx	<0.300	0.300	06/13/2024	ND					

Surrogate: 4-Bromofluorobenzene (PID) 99.3 % 71.5-134

Chloride, SM4500CI-B		mg/kg		Analyzed By: AC					
Analyte	Result	Reporting Limit	Analyzed	Method Blank	BS	% Recovery	True Value QC	RPD	Qualifier
Chloride	3920	16.0	06/14/2024	ND	416	104	400	0.00	

TPH 8015M		mg/kg		Analyzed By: MS					
Analyte	Result	Reporting Limit	Analyzed	Method Blank	BS	% Recovery	True Value QC	RPD	Qualifier
GRO C6-C10*	<10.0	10.0	06/13/2024	ND	190	95.0	200	6.94	
DRO >C10-C28*	<10.0	10.0	06/13/2024	ND	186	92.8	200	1.63	
EXT DRO >C28-C36	<10.0	10.0	06/13/2024	ND					

Surrogate: 1-Chlorooctane 98.0 % 48.2-134

Surrogate: 1-Chlorooctadecane 94.3 % 49.1-148

Cardinal Laboratories

*=Accredited Analyte

PLEASE NOTE: Liability and Damages. Cardinal's liability and client's exclusive remedy for any claim arising, whether based in contract or tort, shall be limited to the amount paid by client for analyses. All claims, including those for negligence and any other cause whatsoever shall be deemed waived unless made in writing and received by Cardinal within thirty (30) days after completion of the applicable service. In no event shall Cardinal be liable for incidental or consequential damages, including, without limitation, business interruptions, loss of use, or loss of profits incurred by client, its subsidiaries, affiliates or successors arising out of or related to the performance of the services hereunder by Cardinal, regardless of whether such claim is based upon any of the above stated reasons or otherwise. Results relate only to the samples identified above. This report shall not be reproduced except in full with written approval of Cardinal Laboratories.

Celey D. Keene, Lab Director/Quality Manager



PHONE (575) 393-2326 ° 101 E. MARLAND ° HOBBS, NM 88240

Analytical Results For:

NTG ENVIRONMENTAL
 ETHAN SESSUMS
 701 TRADEWINDS BLVD. SUITE C
 MIDLAND TX, 79706
 Fax To:

Received: 06/11/2024
 Reported: 06/17/2024
 Project Name: JAYHAWK 6 CTB 2
 Project Number: 248769
 Project Location: DEVON LEA CO., NM

Sampling Date: 06/11/2024
 Sampling Type: Soil
 Sampling Condition: Cool & Intact
 Sample Received By: Tamara Oldaker

Sample ID: V - 2 (2-2.5') (H243376-06)

BTEx 8021B		mg/kg		Analyzed By: JH					
Analyte	Result	Reporting Limit	Analyzed	Method Blank	BS	% Recovery	True Value QC	RPD	Qualifier
Benzene*	<0.050	0.050	06/13/2024	ND	2.04	102	2.00	2.32	
Toluene*	<0.050	0.050	06/13/2024	ND	1.99	99.4	2.00	0.424	
Ethylbenzene*	<0.050	0.050	06/13/2024	ND	1.97	98.6	2.00	0.667	
Total Xylenes*	<0.150	0.150	06/13/2024	ND	5.78	96.3	6.00	0.287	
Total BTEX	<0.300	0.300	06/13/2024	ND					

Surrogate: 4-Bromofluorobenzene (PID) 101 % 71.5-134

Chloride, SM4500Cl-B		mg/kg		Analyzed By: AC					
Analyte	Result	Reporting Limit	Analyzed	Method Blank	BS	% Recovery	True Value QC	RPD	Qualifier
Chloride	2080	16.0	06/14/2024	ND	416	104	400	0.00	

TPH 8015M		mg/kg		Analyzed By: MS					
Analyte	Result	Reporting Limit	Analyzed	Method Blank	BS	% Recovery	True Value QC	RPD	Qualifier
GRO C6-C10*	<10.0	10.0	06/13/2024	ND	190	95.0	200	6.94	
DRO >C10-C28*	<10.0	10.0	06/13/2024	ND	186	92.8	200	1.63	
EXT DRO >C28-C36	<10.0	10.0	06/13/2024	ND					

Surrogate: 1-Chlorooctane 94.0 % 48.2-134

Surrogate: 1-Chlorooctadecane 89.9 % 49.1-148

Cardinal Laboratories

*=Accredited Analyte

PLEASE NOTE: Liability and Damages. Cardinal's liability and client's exclusive remedy for any claim arising, whether based in contract or tort, shall be limited to the amount paid by client for analyses. All claims, including those for negligence and any other cause whatsoever shall be deemed waived unless made in writing and received by Cardinal within thirty (30) days after completion of the applicable service. In no event shall Cardinal be liable for incidental or consequential damages, including, without limitation, business interruptions, loss of use, or loss of profits incurred by client, its subsidiaries, affiliates or successors arising out of or related to the performance of the services hereunder by Cardinal, regardless of whether such claim is based upon any of the above stated reasons or otherwise. Results relate only to the samples identified above. This report shall not be reproduced except in full with written approval of Cardinal Laboratories.

Celey D. Keene, Lab Director/Quality Manager



PHONE (575) 393-2326 ° 101 E. MARLAND ° HOBBS, NM 88240

Analytical Results For:

NTG ENVIRONMENTAL
 ETHAN SESSUMS
 701 TRADEWINDS BLVD. SUITE C
 MIDLAND TX, 79706
 Fax To:

Received: 06/11/2024
 Reported: 06/17/2024
 Project Name: JAYHAWK 6 CTB 2
 Project Number: 248769
 Project Location: DEVON LEA CO., NM

Sampling Date: 06/11/2024
 Sampling Type: Soil
 Sampling Condition: Cool & Intact
 Sample Received By: Tamara Oldaker

Sample ID: V - 3 (0-6") (H243376-07)

BTEx 8021B		mg/kg		Analyzed By: JH						
Analyte	Result	Reporting Limit	Analyzed	Method Blank	BS	% Recovery	True Value QC	RPD	Qualifier	
Benzene*	<0.050	0.050	06/13/2024	ND	2.04	102	2.00	2.32		
Toluene*	<0.050	0.050	06/13/2024	ND	1.99	99.4	2.00	0.424		
Ethylbenzene*	<0.050	0.050	06/13/2024	ND	1.97	98.6	2.00	0.667		
Total Xylenes*	<0.150	0.150	06/13/2024	ND	5.78	96.3	6.00	0.287		
Total BTEx	<0.300	0.300	06/13/2024	ND						

Surrogate: 4-Bromofluorobenzene (PID) 98.9 % 71.5-134

Chloride, SM4500CI-B		mg/kg		Analyzed By: AC						
Analyte	Result	Reporting Limit	Analyzed	Method Blank	BS	% Recovery	True Value QC	RPD	Qualifier	
Chloride	6080	16.0	06/14/2024	ND	416	104	400	0.00	QM-07	

TPH 8015M		mg/kg		Analyzed By: MS					
Analyte	Result	Reporting Limit	Analyzed	Method Blank	BS	% Recovery	True Value QC	RPD	Qualifier
GRO C6-C10*	<10.0	10.0	06/13/2024	ND	190	95.0	200	6.94	
DRO >C10-C28*	<10.0	10.0	06/13/2024	ND	186	92.8	200	1.63	
EXT DRO >C28-C36	<10.0	10.0	06/13/2024	ND					

Surrogate: 1-Chlorooctane 87.5 % 48.2-134

Surrogate: 1-Chlorooctadecane 86.6 % 49.1-148

Cardinal Laboratories

*=Accredited Analyte

PLEASE NOTE: Liability and Damages. Cardinal's liability and client's exclusive remedy for any claim arising, whether based in contract or tort, shall be limited to the amount paid by client for analyses. All claims, including those for negligence and any other cause whatsoever shall be deemed waived unless made in writing and received by Cardinal within thirty (30) days after completion of the applicable service. In no event shall Cardinal be liable for incidental or consequential damages, including, without limitation, business interruptions, loss of use, or loss of profits incurred by client, its subsidiaries, affiliates or successors arising out of or related to the performance of the services hereunder by Cardinal, regardless of whether such claim is based upon any of the above stated reasons or otherwise. Results relate only to the samples identified above. This report shall not be reproduced except in full with written approval of Cardinal Laboratories.

Celey D. Keene, Lab Director/Quality Manager



PHONE (575) 393-2326 ° 101 E. MARLAND ° HOBBS, NM 88240

Analytical Results For:

NTG ENVIRONMENTAL
 ETHAN SESSUMS
 701 TRADEWINDS BLVD. SUITE C
 MIDLAND TX, 79706
 Fax To:

Received: 06/11/2024
 Reported: 06/17/2024
 Project Name: JAYHAWK 6 CTB 2
 Project Number: 248769
 Project Location: DEVON LEA CO., NM

Sampling Date: 06/11/2024
 Sampling Type: Soil
 Sampling Condition: Cool & Intact
 Sample Received By: Tamara Oldaker

Sample ID: V - 3 (1-1.5') (H243376-08)

BTEx 8021B		mg/kg		Analyzed By: JH						
Analyte	Result	Reporting Limit	Analyzed	Method Blank	BS	% Recovery	True Value QC	RPD	Qualifier	
Benzene*	<0.050	0.050	06/13/2024	ND	2.04	102	2.00	2.32		
Toluene*	<0.050	0.050	06/13/2024	ND	1.99	99.4	2.00	0.424		
Ethylbenzene*	<0.050	0.050	06/13/2024	ND	1.97	98.6	2.00	0.667		
Total Xylenes*	<0.150	0.150	06/13/2024	ND	5.78	96.3	6.00	0.287		
Total BTEx	<0.300	0.300	06/13/2024	ND						

Surrogate: 4-Bromofluorobenzene (PID) 99.9 % 71.5-134

Chloride, SM4500CI-B		mg/kg		Analyzed By: AC					
Analyte	Result	Reporting Limit	Analyzed	Method Blank	BS	% Recovery	True Value QC	RPD	Qualifier
Chloride	3840	16.0	06/14/2024	ND	416	104	400	0.00	

TPH 8015M		mg/kg		Analyzed By: MS					
Analyte	Result	Reporting Limit	Analyzed	Method Blank	BS	% Recovery	True Value QC	RPD	Qualifier
GRO C6-C10*	<10.0	10.0	06/13/2024	ND	190	95.0	200	6.94	
DRO >C10-C28*	<10.0	10.0	06/13/2024	ND	186	92.8	200	1.63	
EXT DRO >C28-C36	<10.0	10.0	06/13/2024	ND					

Surrogate: 1-Chlorooctane 93.5 % 48.2-134

Surrogate: 1-Chlorooctadecane 90.4 % 49.1-148

Cardinal Laboratories

*=Accredited Analyte

PLEASE NOTE: Liability and Damages. Cardinal's liability and client's exclusive remedy for any claim arising, whether based in contract or tort, shall be limited to the amount paid by client for analyses. All claims, including those for negligence and any other cause whatsoever shall be deemed waived unless made in writing and received by Cardinal within thirty (30) days after completion of the applicable service. In no event shall Cardinal be liable for incidental or consequential damages, including, without limitation, business interruptions, loss of use, or loss of profits incurred by client, its subsidiaries, affiliates or successors arising out of or related to the performance of the services hereunder by Cardinal, regardless of whether such claim is based upon any of the above stated reasons or otherwise. Results relate only to the samples identified above. This report shall not be reproduced except in full with written approval of Cardinal Laboratories.

Celey D. Keene, Lab Director/Quality Manager



PHONE (575) 393-2326 ° 101 E. MARLAND ° HOBBS, NM 88240

Analytical Results For:

NTG ENVIRONMENTAL
 ETHAN SESSUMS
 701 TRADEWINDS BLVD. SUITE C
 MIDLAND TX, 79706
 Fax To:

Received: 06/11/2024
 Reported: 06/17/2024
 Project Name: JAYHAWK 6 CTB 2
 Project Number: 248769
 Project Location: DEVON LEA CO., NM

Sampling Date: 06/11/2024
 Sampling Type: Soil
 Sampling Condition: Cool & Intact
 Sample Received By: Tamara Oldaker

Sample ID: V - 3 (2-2.5') (H243376-09)

BTEx 8021B		mg/kg		Analyzed By: JH						
Analyte	Result	Reporting Limit	Analyzed	Method Blank	BS	% Recovery	True Value QC	RPD	Qualifier	
Benzene*	<0.050	0.050	06/13/2024	ND	2.04	102	2.00	2.32		
Toluene*	<0.050	0.050	06/13/2024	ND	1.99	99.4	2.00	0.424		
Ethylbenzene*	<0.050	0.050	06/13/2024	ND	1.97	98.6	2.00	0.667		
Total Xylenes*	<0.150	0.150	06/13/2024	ND	5.78	96.3	6.00	0.287		
Total BTEx	<0.300	0.300	06/13/2024	ND						

Surrogate: 4-Bromofluorobenzene (PID) 98.4 % 71.5-134

Chloride, SM4500Cl-B		mg/kg		Analyzed By: AC					
Analyte	Result	Reporting Limit	Analyzed	Method Blank	BS	% Recovery	True Value QC	RPD	Qualifier
Chloride	592	16.0	06/14/2024	ND	416	104	400	0.00	

TPH 8015M		mg/kg		Analyzed By: MS					
Analyte	Result	Reporting Limit	Analyzed	Method Blank	BS	% Recovery	True Value QC	RPD	Qualifier
GRO C6-C10*	<10.0	10.0	06/13/2024	ND	190	95.0	200	6.94	
DRO >C10-C28*	<10.0	10.0	06/13/2024	ND	186	92.8	200	1.63	
EXT DRO >C28-C36	<10.0	10.0	06/13/2024	ND					

Surrogate: 1-Chlorooctane 87.6 % 48.2-134

Surrogate: 1-Chlorooctadecane 84.2 % 49.1-148

Cardinal Laboratories

*=Accredited Analyte

PLEASE NOTE: Liability and Damages. Cardinal's liability and client's exclusive remedy for any claim arising, whether based in contract or tort, shall be limited to the amount paid by client for analyses. All claims, including those for negligence and any other cause whatsoever shall be deemed waived unless made in writing and received by Cardinal within thirty (30) days after completion of the applicable service. In no event shall Cardinal be liable for incidental or consequential damages, including, without limitation, business interruptions, loss of use, or loss of profits incurred by client, its subsidiaries, affiliates or successors arising out of or related to the performance of the services hereunder by Cardinal, regardless of whether such claim is based upon any of the above stated reasons or otherwise. Results relate only to the samples identified above. This report shall not be reproduced except in full with written approval of Cardinal Laboratories.

Celey D. Keene, Lab Director/Quality Manager



PHONE (575) 393-2326 ° 101 E. MARLAND ° HOBBS, NM 88240

Analytical Results For:

NTG ENVIRONMENTAL
 ETHAN SESSUMS
 701 TRADEWINDS BLVD. SUITE C
 MIDLAND TX, 79706
 Fax To:

Received: 06/11/2024
 Reported: 06/17/2024
 Project Name: JAYHAWK 6 CTB 2
 Project Number: 248769
 Project Location: DEVON LEA CO., NM

Sampling Date: 06/11/2024
 Sampling Type: Soil
 Sampling Condition: Cool & Intact
 Sample Received By: Tamara Oldaker

Sample ID: H - 1 (0-6") (H243376-10)

BTEx 8021B		mg/kg		Analyzed By: JH					
Analyte	Result	Reporting Limit	Analyzed	Method Blank	BS	% Recovery	True Value QC	RPD	Qualifier
Benzene*	<0.050	0.050	06/13/2024	ND	2.04	102	2.00	2.32	
Toluene*	<0.050	0.050	06/13/2024	ND	1.99	99.4	2.00	0.424	
Ethylbenzene*	<0.050	0.050	06/13/2024	ND	1.97	98.6	2.00	0.667	
Total Xylenes*	<0.150	0.150	06/13/2024	ND	5.78	96.3	6.00	0.287	
Total BTEx	<0.300	0.300	06/13/2024	ND					

Surrogate: 4-Bromofluorobenzene (PID) 97.3 % 71.5-134

Chloride, SM4500CI-B		mg/kg		Analyzed By: AC					
Analyte	Result	Reporting Limit	Analyzed	Method Blank	BS	% Recovery	True Value QC	RPD	Qualifier
Chloride	48.0	16.0	06/14/2024	ND	416	104	400	0.00	

TPH 8015M		mg/kg		Analyzed By: MS					
Analyte	Result	Reporting Limit	Analyzed	Method Blank	BS	% Recovery	True Value QC	RPD	Qualifier
GRO C6-C10*	<10.0	10.0	06/13/2024	ND	190	95.0	200	6.94	
DRO >C10-C28*	<10.0	10.0	06/13/2024	ND	186	92.8	200	1.63	
EXT DRO >C28-C36	<10.0	10.0	06/13/2024	ND					

Surrogate: 1-Chlorooctane 81.7 % 48.2-134

Surrogate: 1-Chlorooctadecane 78.6 % 49.1-148

Cardinal Laboratories

*=Accredited Analyte

PLEASE NOTE: Liability and Damages. Cardinal's liability and client's exclusive remedy for any claim arising, whether based in contract or tort, shall be limited to the amount paid by client for analyses. All claims, including those for negligence and any other cause whatsoever shall be deemed waived unless made in writing and received by Cardinal within thirty (30) days after completion of the applicable service. In no event shall Cardinal be liable for incidental or consequential damages, including, without limitation, business interruptions, loss of use, or loss of profits incurred by client, its subsidiaries, affiliates or successors arising out of or related to the performance of the services hereunder by Cardinal, regardless of whether such claim is based upon any of the above stated reasons or otherwise. Results relate only to the samples identified above. This report shall not be reproduced except in full with written approval of Cardinal Laboratories.

Celey D. Keene, Lab Director/Quality Manager



PHONE (575) 393-2326 ° 101 E. MARLAND ° HOBBS, NM 88240

Analytical Results For:

NTG ENVIRONMENTAL
 ETHAN SESSUMS
 701 TRADEWINDS BLVD. SUITE C
 MIDLAND TX, 79706
 Fax To:

Received: 06/11/2024
 Reported: 06/17/2024
 Project Name: JAYHAWK 6 CTB 2
 Project Number: 248769
 Project Location: DEVON LEA CO., NM

Sampling Date: 06/11/2024
 Sampling Type: Soil
 Sampling Condition: Cool & Intact
 Sample Received By: Tamara Oldaker

Sample ID: H - 2 (0-6") (H243376-11)

BTEx 8021B		mg/kg		Analyzed By: JH						
Analyte	Result	Reporting Limit	Analyzed	Method Blank	BS	% Recovery	True Value QC	RPD	Qualifier	
Benzene*	<0.050	0.050	06/13/2024	ND	2.04	102	2.00	2.32		
Toluene*	<0.050	0.050	06/13/2024	ND	1.99	99.4	2.00	0.424		
Ethylbenzene*	<0.050	0.050	06/13/2024	ND	1.97	98.6	2.00	0.667		
Total Xylenes*	<0.150	0.150	06/13/2024	ND	5.78	96.3	6.00	0.287		
Total BTEx	<0.300	0.300	06/13/2024	ND						

Surrogate: 4-Bromofluorobenzene (PID) 99.2 % 71.5-134

Chloride, SM4500CI-B		mg/kg		Analyzed By: AC						
Analyte	Result	Reporting Limit	Analyzed	Method Blank	BS	% Recovery	True Value QC	RPD	Qualifier	
Chloride	16.0	16.0	06/14/2024	ND	416	104	400	0.00		

TPH 8015M		mg/kg		Analyzed By: MS					
Analyte	Result	Reporting Limit	Analyzed	Method Blank	BS	% Recovery	True Value QC	RPD	Qualifier
GRO C6-C10*	<10.0	10.0	06/13/2024	ND	190	95.0	200	6.94	
DRO >C10-C28*	<10.0	10.0	06/13/2024	ND	186	92.8	200	1.63	
EXT DRO >C28-C36	<10.0	10.0	06/13/2024	ND					

Surrogate: 1-Chlorooctane 93.3 % 48.2-134

Surrogate: 1-Chlorooctadecane 86.4 % 49.1-148

Cardinal Laboratories

*=Accredited Analyte

PLEASE NOTE: Liability and Damages. Cardinal's liability and client's exclusive remedy for any claim arising, whether based in contract or tort, shall be limited to the amount paid by client for analyses. All claims, including those for negligence and any other cause whatsoever shall be deemed waived unless made in writing and received by Cardinal within thirty (30) days after completion of the applicable service. In no event shall Cardinal be liable for incidental or consequential damages, including, without limitation, business interruptions, loss of use, or loss of profits incurred by client, its subsidiaries, affiliates or successors arising out of or related to the performance of the services hereunder by Cardinal, regardless of whether such claim is based upon any of the above stated reasons or otherwise. Results relate only to the samples identified above. This report shall not be reproduced except in full with written approval of Cardinal Laboratories.

Celey D. Keene, Lab Director/Quality Manager



PHONE (575) 393-2326 ° 101 E. MARLAND ° HOBBS, NM 88240

Analytical Results For:

NTG ENVIRONMENTAL
 ETHAN SESSUMS
 701 TRADEWINDS BLVD. SUITE C
 MIDLAND TX, 79706
 Fax To:

Received: 06/11/2024
 Reported: 06/17/2024
 Project Name: JAYHAWK 6 CTB 2
 Project Number: 248769
 Project Location: DEVON LEA CO., NM

Sampling Date: 06/11/2024
 Sampling Type: Soil
 Sampling Condition: Cool & Intact
 Sample Received By: Tamara Oldaker

Sample ID: H - 3 (0-6") (H243376-12)

BTEx 8021B		mg/kg		Analyzed By: JH					
Analyte	Result	Reporting Limit	Analyzed	Method Blank	BS	% Recovery	True Value QC	RPD	Qualifier
Benzene*	<0.050	0.050	06/13/2024	ND	2.04	102	2.00	2.32	
Toluene*	<0.050	0.050	06/13/2024	ND	1.99	99.4	2.00	0.424	
Ethylbenzene*	<0.050	0.050	06/13/2024	ND	1.97	98.6	2.00	0.667	
Total Xylenes*	<0.150	0.150	06/13/2024	ND	5.78	96.3	6.00	0.287	
Total BTEx	<0.300	0.300	06/13/2024	ND					

Surrogate: 4-Bromofluorobenzene (PID) 96.4 % 71.5-134

Chloride, SM4500CI-B		mg/kg		Analyzed By: AC						
Analyte	Result	Reporting Limit	Analyzed	Method Blank	BS	% Recovery	True Value QC	RPD	Qualifier	
Chloride	48.0	16.0	06/14/2024	ND	416	104	400	0.00		

TPH 8015M		mg/kg		Analyzed By: MS					
Analyte	Result	Reporting Limit	Analyzed	Method Blank	BS	% Recovery	True Value QC	RPD	Qualifier
GRO C6-C10*	<10.0	10.0	06/14/2024	ND	190	95.0	200	6.94	
DRO >C10-C28*	<10.0	10.0	06/14/2024	ND	186	92.8	200	1.63	
EXT DRO >C28-C36	<10.0	10.0	06/14/2024	ND					

Surrogate: 1-Chlorooctane 87.8 % 48.2-134

Surrogate: 1-Chlorooctadecane 79.9 % 49.1-148

Cardinal Laboratories

*=Accredited Analyte

PLEASE NOTE: Liability and Damages. Cardinal's liability and client's exclusive remedy for any claim arising, whether based in contract or tort, shall be limited to the amount paid by client for analyses. All claims, including those for negligence and any other cause whatsoever shall be deemed waived unless made in writing and received by Cardinal within thirty (30) days after completion of the applicable service. In no event shall Cardinal be liable for incidental or consequential damages, including, without limitation, business interruptions, loss of use, or loss of profits incurred by client, its subsidiaries, affiliates or successors arising out of or related to the performance of the services hereunder by Cardinal, regardless of whether such claim is based upon any of the above stated reasons or otherwise. Results relate only to the samples identified above. This report shall not be reproduced except in full with written approval of Cardinal Laboratories.

Celey D. Keene, Lab Director/Quality Manager



PHONE (575) 393-2326 ° 101 E. MARLAND ° HOBBS, NM 88240

Analytical Results For:

NTG ENVIRONMENTAL
 ETHAN SESSUMS
 701 TRADEWINDS BLVD. SUITE C
 MIDLAND TX, 79706
 Fax To:

Received: 06/11/2024
 Reported: 06/17/2024
 Project Name: JAYHAWK 6 CTB 2
 Project Number: 248769
 Project Location: DEVON LEA CO., NM

Sampling Date: 06/11/2024
 Sampling Type: Soil
 Sampling Condition: Cool & Intact
 Sample Received By: Tamara Oldaker

Sample ID: H - 4 (0-6") (H243376-13)

BTEx 8021B		mg/kg		Analyzed By: JH					
Analyte	Result	Reporting Limit	Analyzed	Method Blank	BS	% Recovery	True Value QC	RPD	Qualifier
Benzene*	<0.050	0.050	06/13/2024	ND	2.04	102	2.00	2.32	
Toluene*	<0.050	0.050	06/13/2024	ND	1.99	99.4	2.00	0.424	
Ethylbenzene*	<0.050	0.050	06/13/2024	ND	1.97	98.6	2.00	0.667	
Total Xylenes*	<0.150	0.150	06/13/2024	ND	5.78	96.3	6.00	0.287	
Total BTEX	<0.300	0.300	06/13/2024	ND					

Surrogate: 4-Bromofluorobenzene (PID) 97.0 % 71.5-134

Chloride, SM4500Cl-B		mg/kg		Analyzed By: AC						
Analyte	Result	Reporting Limit	Analyzed	Method Blank	BS	% Recovery	True Value QC	RPD	Qualifier	
Chloride	32.0	16.0	06/14/2024	ND	416	104	400	0.00		

TPH 8015M		mg/kg		Analyzed By: MS					
Analyte	Result	Reporting Limit	Analyzed	Method Blank	BS	% Recovery	True Value QC	RPD	Qualifier
GRO C6-C10*	<10.0	10.0	06/13/2024	ND	190	95.0	200	6.94	
DRO >C10-C28*	229	10.0	06/13/2024	ND	186	92.8	200	1.63	
EXT DRO >C28-C36	63.5	10.0	06/13/2024	ND					

Surrogate: 1-Chlorooctane 75.1 % 48.2-134

Surrogate: 1-Chlorooctadecane 76.5 % 49.1-148

Cardinal Laboratories

*=Accredited Analyte

PLEASE NOTE: Liability and Damages. Cardinal's liability and client's exclusive remedy for any claim arising, whether based in contract or tort, shall be limited to the amount paid by client for analyses. All claims, including those for negligence and any other cause whatsoever shall be deemed waived unless made in writing and received by Cardinal within thirty (30) days after completion of the applicable service. In no event shall Cardinal be liable for incidental or consequential damages, including, without limitation, business interruptions, loss of use, or loss of profits incurred by client, its subsidiaries, affiliates or successors arising out of or related to the performance of the services hereunder by Cardinal, regardless of whether such claim is based upon any of the above stated reasons or otherwise. Results relate only to the samples identified above. This report shall not be reproduced except in full with written approval of Cardinal Laboratories.

Celey D. Keene, Lab Director/Quality Manager



PHONE (575) 393-2326 ° 101 E. MARLAND ° HOBBS, NM 88240

Analytical Results For:

NTG ENVIRONMENTAL
 ETHAN SESSUMS
 701 TRADEWINDS BLVD. SUITE C
 MIDLAND TX, 79706
 Fax To:

Received: 06/11/2024
 Reported: 06/17/2024
 Project Name: JAYHAWK 6 CTB 2
 Project Number: 248769
 Project Location: DEVON LEA CO., NM

Sampling Date: 06/11/2024
 Sampling Type: Soil
 Sampling Condition: Cool & Intact
 Sample Received By: Tamara Oldaker

Sample ID: H - 5 (0-6") (H243376-14)

BTEx 8021B		mg/kg		Analyzed By: JH					
Analyte	Result	Reporting Limit	Analyzed	Method Blank	BS	% Recovery	True Value QC	RPD	Qualifier
Benzene*	<0.050	0.050	06/13/2024	ND	2.04	102	2.00	2.32	
Toluene*	<0.050	0.050	06/13/2024	ND	1.99	99.4	2.00	0.424	
Ethylbenzene*	<0.050	0.050	06/13/2024	ND	1.97	98.6	2.00	0.667	
Total Xylenes*	<0.150	0.150	06/13/2024	ND	5.78	96.3	6.00	0.287	
Total BTEX	<0.300	0.300	06/13/2024	ND					

Surrogate: 4-Bromofluorobenzene (PID) 96.8 % 71.5-134

Chloride, SM4500Cl-B		mg/kg		Analyzed By: AC					
Analyte	Result	Reporting Limit	Analyzed	Method Blank	BS	% Recovery	True Value QC	RPD	Qualifier
Chloride	384	16.0	06/14/2024	ND	416	104	400	0.00	

TPH 8015M		mg/kg		Analyzed By: MS					
Analyte	Result	Reporting Limit	Analyzed	Method Blank	BS	% Recovery	True Value QC	RPD	Qualifier
GRO C6-C10*	<10.0	10.0	06/13/2024	ND	190	95.0	200	6.94	
DRO >C10-C28*	<10.0	10.0	06/13/2024	ND	186	92.8	200	1.63	
EXT DRO >C28-C36	<10.0	10.0	06/13/2024	ND					

Surrogate: 1-Chlorooctane 61.7 % 48.2-134

Surrogate: 1-Chlorooctadecane 57.4 % 49.1-148

Cardinal Laboratories

*=Accredited Analyte

PLEASE NOTE: Liability and Damages. Cardinal's liability and client's exclusive remedy for any claim arising, whether based in contract or tort, shall be limited to the amount paid by client for analyses. All claims, including those for negligence and any other cause whatsoever shall be deemed waived unless made in writing and received by Cardinal within thirty (30) days after completion of the applicable service. In no event shall Cardinal be liable for incidental or consequential damages, including, without limitation, business interruptions, loss of use, or loss of profits incurred by client, its subsidiaries, affiliates or successors arising out of or related to the performance of the services hereunder by Cardinal, regardless of whether such claim is based upon any of the above stated reasons or otherwise. Results relate only to the samples identified above. This report shall not be reproduced except in full with written approval of Cardinal Laboratories.

Celey D. Keene, Lab Director/Quality Manager



PHONE (575) 393-2326 ° 101 E. MARLAND ° HOBBS, NM 88240

Analytical Results For:

NTG ENVIRONMENTAL
 ETHAN SESSUMS
 701 TRADEWINDS BLVD. SUITE C
 MIDLAND TX, 79706
 Fax To:

Received: 06/11/2024
 Reported: 06/17/2024
 Project Name: JAYHAWK 6 CTB 2
 Project Number: 248769
 Project Location: DEVON LEA CO., NM

Sampling Date: 06/11/2024
 Sampling Type: Soil
 Sampling Condition: Cool & Intact
 Sample Received By: Tamara Oldaker

Sample ID: H - 6 (0-6") (H243376-15)

BTEx 8021B		mg/kg		Analyzed By: JH					
Analyte	Result	Reporting Limit	Analyzed	Method Blank	BS	% Recovery	True Value QC	RPD	Qualifier
Benzene*	<0.050	0.050	06/13/2024	ND	2.04	102	2.00	2.32	
Toluene*	<0.050	0.050	06/13/2024	ND	1.99	99.4	2.00	0.424	
Ethylbenzene*	<0.050	0.050	06/13/2024	ND	1.97	98.6	2.00	0.667	
Total Xylenes*	<0.150	0.150	06/13/2024	ND	5.78	96.3	6.00	0.287	
Total BTEX	<0.300	0.300	06/13/2024	ND					

Surrogate: 4-Bromofluorobenzene (PID) 96.7 % 71.5-134

Chloride, SM4500Cl-B		mg/kg		Analyzed By: AC						
Analyte	Result	Reporting Limit	Analyzed	Method Blank	BS	% Recovery	True Value QC	RPD	Qualifier	
Chloride	32.0	16.0	06/14/2024	ND	416	104	400	0.00		

TPH 8015M		mg/kg		Analyzed By: MS					
Analyte	Result	Reporting Limit	Analyzed	Method Blank	BS	% Recovery	True Value QC	RPD	Qualifier
GRO C6-C10*	<10.0	10.0	06/13/2024	ND	190	95.0	200	6.94	
DRO >C10-C28*	<10.0	10.0	06/13/2024	ND	186	92.8	200	1.63	
EXT DRO >C28-C36	<10.0	10.0	06/13/2024	ND					

Surrogate: 1-Chlorooctane 73.4 % 48.2-134

Surrogate: 1-Chlorooctadecane 67.2 % 49.1-148

Cardinal Laboratories

*=Accredited Analyte

PLEASE NOTE: Liability and Damages. Cardinal's liability and client's exclusive remedy for any claim arising, whether based in contract or tort, shall be limited to the amount paid by client for analyses. All claims, including those for negligence and any other cause whatsoever shall be deemed waived unless made in writing and received by Cardinal within thirty (30) days after completion of the applicable service. In no event shall Cardinal be liable for incidental or consequential damages, including, without limitation, business interruptions, loss of use, or loss of profits incurred by client, its subsidiaries, affiliates or successors arising out of or related to the performance of the services hereunder by Cardinal, regardless of whether such claim is based upon any of the above stated reasons or otherwise. Results relate only to the samples identified above. This report shall not be reproduced except in full with written approval of Cardinal Laboratories.

Celey D. Keene, Lab Director/Quality Manager



PHONE (575) 393-2326 ° 101 E. MARLAND ° HOBBS, NM 88240

Analytical Results For:

NTG ENVIRONMENTAL
 ETHAN SESSUMS
 701 TRADEWINDS BLVD. SUITE C
 MIDLAND TX, 79706
 Fax To:

Received: 06/11/2024
 Reported: 06/17/2024
 Project Name: JAYHAWK 6 CTB 2
 Project Number: 248769
 Project Location: DEVON LEA CO., NM

Sampling Date: 06/11/2024
 Sampling Type: Soil
 Sampling Condition: Cool & Intact
 Sample Received By: Tamara Oldaker

Sample ID: H - 7 (0-6") (H243376-16)

BTEx 8021B		mg/kg		Analyzed By: JH					
Analyte	Result	Reporting Limit	Analyzed	Method Blank	BS	% Recovery	True Value QC	RPD	Qualifier
Benzene*	<0.050	0.050	06/13/2024	ND	2.04	102	2.00	2.32	
Toluene*	<0.050	0.050	06/13/2024	ND	1.99	99.4	2.00	0.424	
Ethylbenzene*	<0.050	0.050	06/13/2024	ND	1.97	98.6	2.00	0.667	
Total Xylenes*	<0.150	0.150	06/13/2024	ND	5.78	96.3	6.00	0.287	
Total BTEX	<0.300	0.300	06/13/2024	ND					

Surrogate: 4-Bromofluorobenzene (PID) 99.3 % 71.5-134

Chloride, SM4500Cl-B		mg/kg		Analyzed By: AC					
Analyte	Result	Reporting Limit	Analyzed	Method Blank	BS	% Recovery	True Value QC	RPD	Qualifier
Chloride	32.0	16.0	06/14/2024	ND	416	104	400	0.00	

TPH 8015M		mg/kg		Analyzed By: MS					
Analyte	Result	Reporting Limit	Analyzed	Method Blank	BS	% Recovery	True Value QC	RPD	Qualifier
GRO C6-C10*	<10.0	10.0	06/13/2024	ND	190	95.0	200	6.94	
DRO >C10-C28*	<10.0	10.0	06/13/2024	ND	186	92.8	200	1.63	
EXT DRO >C28-C36	<10.0	10.0	06/13/2024	ND					

Surrogate: 1-Chlorooctane 66.7 % 48.2-134

Surrogate: 1-Chlorooctadecane 61.1 % 49.1-148

Cardinal Laboratories

*=Accredited Analyte

PLEASE NOTE: Liability and Damages. Cardinal's liability and client's exclusive remedy for any claim arising, whether based in contract or tort, shall be limited to the amount paid by client for analyses. All claims, including those for negligence and any other cause whatsoever shall be deemed waived unless made in writing and received by Cardinal within thirty (30) days after completion of the applicable service. In no event shall Cardinal be liable for incidental or consequential damages, including, without limitation, business interruptions, loss of use, or loss of profits incurred by client, its subsidiaries, affiliates or successors arising out of or related to the performance of the services hereunder by Cardinal, regardless of whether such claim is based upon any of the above stated reasons or otherwise. Results relate only to the samples identified above. This report shall not be reproduced except in full with written approval of Cardinal Laboratories.

Celey D. Keene, Lab Director/Quality Manager



PHONE (575) 393-2326 ° 101 E. MARLAND ° HOBBS, NM 88240

Analytical Results For:

NTG ENVIRONMENTAL
 ETHAN SESSUMS
 701 TRADEWINDS BLVD. SUITE C
 MIDLAND TX, 79706
 Fax To:

Received: 06/11/2024
 Reported: 06/17/2024
 Project Name: JAYHAWK 6 CTB 2
 Project Number: 248769
 Project Location: DEVON LEA CO., NM

Sampling Date: 06/11/2024
 Sampling Type: Soil
 Sampling Condition: Cool & Intact
 Sample Received By: Tamara Oldaker

Sample ID: H - 8 (0-6") (H243376-17)

BTEx 8021B			mg/kg		Analyzed By: JH				
Analyte	Result	Reporting Limit	Analyzed	Method Blank	BS	% Recovery	True Value QC	RPD	Qualifier
Benzene*	<0.050	0.050	06/13/2024	ND	2.04	102	2.00	2.32	
Toluene*	<0.050	0.050	06/13/2024	ND	1.99	99.4	2.00	0.424	
Ethylbenzene*	<0.050	0.050	06/13/2024	ND	1.97	98.6	2.00	0.667	
Total Xylenes*	<0.150	0.150	06/13/2024	ND	5.78	96.3	6.00	0.287	
Total BTEX	<0.300	0.300	06/13/2024	ND					

Surrogate: 4-Bromofluorobenzene (PID) 99.0 % 71.5-134

Chloride, SM4500Cl-B		mg/kg		Analyzed By: AC					
Analyte	Result	Reporting Limit	Analyzed	Method Blank	BS	% Recovery	True Value QC	RPD	Qualifier
Chloride	32.0	16.0	06/14/2024	ND	416	104	400	0.00	

TPH 8015M		mg/kg		Analyzed By: MS					
Analyte	Result	Reporting Limit	Analyzed	Method Blank	BS	% Recovery	True Value QC	RPD	Qualifier
GRO C6-C10*	<10.0	10.0	06/13/2024	ND	190	95.0	200	6.94	
DRO >C10-C28*	93.4	10.0	06/13/2024	ND	186	92.8	200	1.63	
EXT DRO >C28-C36	15.9	10.0	06/13/2024	ND					

Surrogate: 1-Chlorooctane 88.8 % 48.2-134

Surrogate: 1-Chlorooctadecane 88.7 % 49.1-148

Cardinal Laboratories

*=Accredited Analyte

PLEASE NOTE: Liability and Damages. Cardinal's liability and client's exclusive remedy for any claim arising, whether based in contract or tort, shall be limited to the amount paid by client for analyses. All claims, including those for negligence and any other cause whatsoever shall be deemed waived unless made in writing and received by Cardinal within thirty (30) days after completion of the applicable service. In no event shall Cardinal be liable for incidental or consequential damages, including, without limitation, business interruptions, loss of use, or loss of profits incurred by client, its subsidiaries, affiliates or successors arising out of or related to the performance of the services hereunder by Cardinal, regardless of whether such claim is based upon any of the above stated reasons or otherwise. Results relate only to the samples identified above. This report shall not be reproduced except in full with written approval of Cardinal Laboratories.

Celey D. Keene, Lab Director/Quality Manager



PHONE (575) 393-2326 ° 101 E. MARLAND ° HOBBS, NM 88240

Analytical Results For:

NTG ENVIRONMENTAL
 ETHAN SESSUMS
 701 TRADEWINDS BLVD. SUITE C
 MIDLAND TX, 79706
 Fax To:

Received: 06/11/2024
 Reported: 06/17/2024
 Project Name: JAYHAWK 6 CTB 2
 Project Number: 248769
 Project Location: DEVON LEA CO., NM

Sampling Date: 06/11/2024
 Sampling Type: Soil
 Sampling Condition: Cool & Intact
 Sample Received By: Tamara Oldaker

Sample ID: H - 9 (0-6") (H243376-18)

BTX 8021B		mg/kg		Analyzed By: JH					
Analyte	Result	Reporting Limit	Analyzed	Method Blank	BS	% Recovery	True Value QC	RPD	Qualifier
Benzene*	<0.050	0.050	06/13/2024	ND	2.04	102	2.00	2.32	
Toluene*	<0.050	0.050	06/13/2024	ND	1.99	99.4	2.00	0.424	
Ethylbenzene*	<0.050	0.050	06/13/2024	ND	1.97	98.6	2.00	0.667	
Total Xylenes*	<0.150	0.150	06/13/2024	ND	5.78	96.3	6.00	0.287	
Total BTX	<0.300	0.300	06/13/2024	ND					

Surrogate: 4-Bromofluorobenzene (PID) 100 % 71.5-134

Chloride, SM4500Cl-B		mg/kg		Analyzed By: AC					
Analyte	Result	Reporting Limit	Analyzed	Method Blank	BS	% Recovery	True Value QC	RPD	Qualifier
Chloride	16.0	16.0	06/14/2024	ND	416	104	400	0.00	

TPH 8015M		mg/kg		Analyzed By: MS					
Analyte	Result	Reporting Limit	Analyzed	Method Blank	BS	% Recovery	True Value QC	RPD	Qualifier
GRO C6-C10*	<10.0	10.0	06/13/2024	ND	190	95.0	200	6.94	
DRO >C10-C28*	123	10.0	06/13/2024	ND	186	92.8	200	1.63	
EXT DRO >C28-C36	32.1	10.0	06/13/2024	ND					

Surrogate: 1-Chlorooctane 89.1 % 48.2-134

Surrogate: 1-Chlorooctadecane 91.9 % 49.1-148

Cardinal Laboratories

*=Accredited Analyte

PLEASE NOTE: Liability and Damages. Cardinal's liability and client's exclusive remedy for any claim arising, whether based in contract or tort, shall be limited to the amount paid by client for analyses. All claims, including those for negligence and any other cause whatsoever shall be deemed waived unless made in writing and received by Cardinal within thirty (30) days after completion of the applicable service. In no event shall Cardinal be liable for incidental or consequential damages, including, without limitation, business interruptions, loss of use, or loss of profits incurred by client, its subsidiaries, affiliates or successors arising out of or related to the performance of the services hereunder by Cardinal, regardless of whether such claim is based upon any of the above stated reasons or otherwise. Results relate only to the samples identified above. This report shall not be reproduced except in full with written approval of Cardinal Laboratories.

Celey D. Keene, Lab Director/Quality Manager



PHONE (575) 393-2326 ° 101 E. MARLAND ° HOBBS, NM 88240

Analytical Results For:

NTG ENVIRONMENTAL
 ETHAN SESSUMS
 701 TRADEWINDS BLVD. SUITE C
 MIDLAND TX, 79706
 Fax To:

Received: 06/11/2024
 Reported: 06/17/2024
 Project Name: JAYHAWK 6 CTB 2
 Project Number: 248769
 Project Location: DEVON LEA CO., NM

Sampling Date: 06/11/2024
 Sampling Type: Soil
 Sampling Condition: Cool & Intact
 Sample Received By: Tamara Oldaker

Sample ID: H - 10 (0-6") (H243376-19)

BTEx 8021B		mg/kg		Analyzed By: JH						
Analyte	Result	Reporting Limit	Analyzed	Method Blank	BS	% Recovery	True Value QC	RPD	Qualifier	
Benzene*	<0.050	0.050	06/13/2024	ND	2.04	102	2.00	2.32		
Toluene*	<0.050	0.050	06/13/2024	ND	1.99	99.4	2.00	0.424		
Ethylbenzene*	<0.050	0.050	06/13/2024	ND	1.97	98.6	2.00	0.667		
Total Xylenes*	<0.150	0.150	06/13/2024	ND	5.78	96.3	6.00	0.287		
Total BTEx	<0.300	0.300	06/13/2024	ND						

Surrogate: 4-Bromofluorobenzene (PID) 101 % 71.5-134

Chloride, SM4500CI-B		mg/kg		Analyzed By: AC						
Analyte	Result	Reporting Limit	Analyzed	Method Blank	BS	% Recovery	True Value QC	RPD	Qualifier	
Chloride	32.0	16.0	06/14/2024	ND	416	104	400	0.00		

TPH 8015M		mg/kg		Analyzed By: MS					
Analyte	Result	Reporting Limit	Analyzed	Method Blank	BS	% Recovery	True Value QC	RPD	Qualifier
GRO C6-C10*	<10.0	10.0	06/13/2024	ND	190	95.0	200	6.94	
DRO >C10-C28*	206	10.0	06/13/2024	ND	186	92.8	200	1.63	
EXT DRO >C28-C36	62.3	10.0	06/13/2024	ND					

Surrogate: 1-Chlorooctane 70.4 % 48.2-134

Surrogate: 1-Chlorooctadecane 70.1 % 49.1-148

Cardinal Laboratories

*=Accredited Analyte

PLEASE NOTE: Liability and Damages. Cardinal's liability and client's exclusive remedy for any claim arising, whether based in contract or tort, shall be limited to the amount paid by client for analyses. All claims, including those for negligence and any other cause whatsoever shall be deemed waived unless made in writing and received by Cardinal within thirty (30) days after completion of the applicable service. In no event shall Cardinal be liable for incidental or consequential damages, including, without limitation, business interruptions, loss of use, or loss of profits incurred by client, its subsidiaries, affiliates or successors arising out of or related to the performance of the services hereunder by Cardinal, regardless of whether such claim is based upon any of the above stated reasons or otherwise. Results relate only to the samples identified above. This report shall not be reproduced except in full with written approval of Cardinal Laboratories.

Celey D. Keene, Lab Director/Quality Manager



PHONE (575) 393-2326 ° 101 E. MARLAND ° HOBBS, NM 88240

Notes and Definitions

QR-03	The RPD value for the sample duplicate or MS/MSD was outside of QC acceptance limits due to matrix interference. QC batch accepted based on LCS and/or LCSD recovery and/or RPD values.
QM-07	The spike recovery was outside acceptance limits for the MS and/or MSD. The batch was accepted based on acceptable LCS recovery.
ND	Analyte NOT DETECTED at or above the reporting limit
RPD	Relative Percent Difference
**	Samples not received at proper temperature of 6°C or below.
***	Insufficient time to reach temperature.
-	Chloride by SM4500Cl-B does not require samples be received at or below 6°C Samples reported on an as received basis (wet) unless otherwise noted on report

Cardinal Laboratories

*=Accredited Analyte

PLEASE NOTE: Liability and Damages. Cardinal's liability and client's exclusive remedy for any claim arising, whether based in contract or tort, shall be limited to the amount paid by client for analyses. All claims, including those for negligence and any other cause whatsoever shall be deemed waived unless made in writing and received by Cardinal within thirty (30) days after completion of the applicable service. In no event shall Cardinal be liable for incidental or consequential damages, including, without limitation, business interruptions, loss of use, or loss of profits incurred by client, its subsidiaries, affiliates or successors arising out of or related to the performance of the services hereunder by Cardinal, regardless of whether such claim is based upon any of the above stated reasons or otherwise. Results relate only to the samples identified above. This report shall not be reproduced except in full with written approval of Cardinal Laboratories.

A handwritten signature in black ink, appearing to read "Celey D. Keene".

Celey D. Keene, Lab Director/Quality Manager



101 East Marland, Hobbs, NM 88240
(575) 393-2326 FAX (575) 393-2476

CHAIN-OF-CUSTODY AND ANALYSIS REQUEST

Company Name: <u>NTB Environmental</u>				BILL TO		ANALYSIS REQUEST																																	
Project Manager: <u>Ethan Sessions</u>				P.O. #: <u>21552959</u>																																			
Address: <u>209 W McKay Street</u>				Company: <u>Devon</u>																																			
City: <u>Carlsbad</u> State: <u>NM</u> Zip: <u>88220</u>				Attn: <u>Dale Woodall</u>																																			
Phone #: <u>(254) 266-5456</u> Fax #:				Address:																																			
Project #: <u>248769</u> Project Owner: <u>Devon</u>				City:																																			
Project Name: <u>Jayhawk 6 CTB 2</u>				State: Zip:																																			
Project Location: <u>Lea CO., NM</u>				Phone #:																																			
Sampler Name: <u>Clayton Turner</u>				Fax #:																																			
FOR LAB USE ONLY														MATRIX		PRESERV.		SAMPLING																					
Lab I.D.		Sample I.D.		(G)RAB OR (C)OMP.		# CONTAINERS		GROUNDWATER		WASTEWATER		SOIL		OIL		SLUDGE		OTHER:		ACID/BASE:		ICE / COOL		OTHER:		DATE		TIME											
<u>H233376</u>		<u>V-1</u>		<u>6</u>		<u>1</u>						<input checked="" type="checkbox"/>														<u>6/11/24</u>													
<u>1</u>		<u>(0-6")</u>																																					
<u>2</u>		<u>(1-1.5")</u>																																					
<u>3</u>		<u>(2-2.5")</u>																																					
<u>4</u>		<u>(0-6")</u>																																					
<u>5</u>		<u>(1-1.5")</u>																																					
<u>6</u>		<u>(2-2.5")</u>																																					
<u>7</u>		<u>(0-6")</u>																																					
<u>8</u>		<u>(1-1.5")</u>																																					
<u>9</u>		<u>(2-2.5")</u>																																					

PLEASE NOTE: Liability and Damages. Cardinal's liability and client's exclusive remedy for any claim arising whether based in contract or tort, shall be limited to the amount paid by the client for the analyses. All claims including those for negligence and any other cause whatsoever shall be deemed waived unless made in writing and received by Cardinal within 30 days after completion of the applicable service. In no event shall Cardinal be liable for incidental or consequential damages, including without limitation, business interruptions, loss of use, or loss of profits incurred by client, its subsidiaries, affiliates or successors arising out of or related to the performance of services hereunder by Cardinal, regardless of whether such claim is based upon any of the above stated reasons or otherwise.

Relinquished By: <u>[Signature]</u>		Date: <u>6/11/24</u>		Received By: <u>[Signature]</u>		Verbal Result: <input type="checkbox"/> Yes <input type="checkbox"/> No		Add'l Phone #:	
Relinquished By: <u>[Signature]</u>		Time: <u>12:12</u>		Received By: <u>[Signature]</u>		All Results are emailed. Please provide Email address:			
Delivered By: (Circle One)		Observed Temp. °C <u>1.9</u>		Sample Condition		CHECKED BY: (Initials) <u>TO</u>		Turnaround Time: <u>Standard</u>	
Sampler - UPS - Bus - Other:		Corrected Temp. °C		Cool <input checked="" type="checkbox"/> Intact <input checked="" type="checkbox"/>				Bacteria (only) Sample Condition	
				Yes <input type="checkbox"/> No <input type="checkbox"/>				Cool Intact Observed Temp. °C	
				No <input type="checkbox"/> Yes <input type="checkbox"/>				No <input type="checkbox"/> No <input type="checkbox"/> Corrected Temp. °C	
								Thermometer ID #140	
								Correction Factor 0°C	
								REMARKS:	

FORM-000 R 3.4 07/11/23

† Cardinal cannot accept verbal changes. Please email changes to celey.keene@cardinalnm.com



101 East Marland, Hobbs, NM 88240
(575) 393-2326 FAX (575) 393-2476

CHAIN-OF-CUSTODY AND ANALYSIS REQUEST

Company Name: NTR Environmental Project Manager: Ethen Sessums Address: 209 W McKay Street City: Carlsbad State: NM Zip: 88220 Phone #: (254) 266-5456 Fax #: Project #: 248769 Project Owner: Devon Project Name: Jayhawk 6 CTB 2 Project Location: Lea Co., NM Sampler Name: Clayton Tomas				BILL TO P.O. #: 21352959 Company: Devon Attn: Dale Woodall Address: City: State: Zip: Phone #: Fax #:		ANALYSIS REQUEST															
FOR LAB USE ONLY																					
Lab I.D.		Sample I.D.		(G)RAB OR (C)OMP.		# CONTAINERS		MATRIX		PRESERV.		SAMPLING									
				GROUNDWATER		WASTEWATER		SOIL		OIL		SLUDGE		OTHER		ACID/BASE		ICE / COOL		OTHER	
H243370		H-1 (0-6")		1		1		✓		✓		DATE		TIME		BTX		TPH		Chloride	
10		H-2																			
11		H-3																			
12		H-4																			
13		H-5																			
14		H-6																			
15		H-7																			
16		H-8																			
17		H-9																			
18		H-10																			
19																					

PLEASE NOTE: Liability and Damages. Cardinal's liability and client's exclusive remedy for any claim arising whether based in contract or tort, shall be limited to the amount paid by the client for the analyses. All claims including those for negligence and any other cause whatsoever shall be deemed waived unless made in writing and received by Cardinal within 30 days after completion of the applicable service. In no event shall Cardinal be liable for incidental or consequential damages, including without limitation, business interruptions, loss of use, or loss of profits incurred by client, its subsidiaries, affiliates or successors arising out of or related to the performance of services hereunder by Cardinal, regardless of whether such claim is based upon any of the above stated reasons or otherwise.

Relinquished By: <i>[Signature]</i>		Date: 6/11/24		Received By: <i>[Signature]</i>		Verbal Result: <input type="checkbox"/> Yes <input type="checkbox"/> No Add'l Phone #:	
Time: 12:05		Time:		Time:		All Results are emailed. Please provide Email address:	
Relinquished By:		Date:		Received By:		REMARKS:	
Time:		Time:		Time:		Time:	
Delivered By: (Circle One)		Observed Temp. °C 1.9		Sample Condition Cool Intact		CHECKED BY: (Initials) 90	
Sampler - UPS - Bus - Other:		Corrected Temp. °C		<input checked="" type="checkbox"/> Yes <input type="checkbox"/> No <input type="checkbox"/> Yes <input type="checkbox"/> No		Turnaround Time: Standard <input checked="" type="checkbox"/> Rush <input type="checkbox"/> Bacteria (only) Sample Condition Cool Intact Observed Temp. °C <input type="checkbox"/> Yes <input type="checkbox"/> No <input type="checkbox"/> Yes <input type="checkbox"/> No Corrected Temp. °C	
Thermometer ID #140		Correction Factor 0°C					

FORM-006-R 3.4 07/11/23

+ Cardinal cannot accept verbal changes. Please email: leah.keene@cardinallabsnm.com



PHONE (575) 393-2326 ° 101 E. MARLAND ° HOBBS, NM 88240

July 17, 2024

ETHAN SESSUMS

NTG ENVIRONMENTAL

701 TRADEWINDS BLVD. SUITE C

MIDLAND, TX 79706

RE: JAYHAWK 6 CTB 2

Enclosed are the results of analyses for samples received by the laboratory on 07/12/24 13:17.

Cardinal Laboratories is accredited through Texas NELAP under certificate number TX-C24-00112. Accreditation applies to drinking water, non-potable water and solid and chemical materials. All accredited analytes are denoted by an asterisk (*). For a complete list of accredited analytes and matrices visit the TCEQ website at www.tceq.texas.gov/field/qa/lab_accred_certif.html.

Cardinal Laboratories is accredited through the State of Colorado Department of Public Health and Environment for:

Method EPA 552.2	Haloacetic Acids (HAA-5)
Method EPA 524.2	Total Trihalomethanes (TTHM)
Method EPA 524.4	Regulated VOCs (V1, V2, V3)

Accreditation applies to public drinking water matrices.

This report meets NELAP requirements and is made up of a cover page, analytical results, and a copy of the original chain-of-custody. If you have any questions concerning this report, please feel free to contact me.

Sincerely,

A handwritten signature in black ink that reads "Celey D. Keene". The signature is fluid and cursive, with the first name "Celey" and last name "Keene" clearly distinguishable.

Celey D. Keene

Lab Director/Quality Manager



PHONE (575) 393-2326 ° 101 E. MARLAND ° HOBBS, NM 88240

Analytical Results For:

NTG ENVIRONMENTAL
 ETHAN SESSUMS
 701 TRADEWINDS BLVD. SUITE C
 MIDLAND TX, 79706
 Fax To:

Received: 07/12/2024
 Reported: 07/17/2024
 Project Name: JAYHAWK 6 CTB 2
 Project Number: 248769
 Project Location: DEVON LEA CO., NM

Sampling Date: 07/12/2024
 Sampling Type: Soil
 Sampling Condition: Cool & Intact
 Sample Received By: Shalyn Rodriguez

Sample ID: H-8A (0-6") (H244176-01)

BTEX 8021B		mg/kg		Analyzed By: JH					
Analyte	Result	Reporting Limit	Analyzed	Method Blank	BS	% Recovery	True Value QC	RPD	Qualifier
Benzene*	<0.050	0.050	07/15/2024	ND	2.04	102	2.00	1.59	
Toluene*	<0.050	0.050	07/15/2024	ND	2.04	102	2.00	6.58	
Ethylbenzene*	<0.050	0.050	07/15/2024	ND	2.15	107	2.00	8.49	
Total Xylenes*	<0.150	0.150	07/15/2024	ND	6.33	106	6.00	9.29	
Total BTEX	<0.300	0.300	07/15/2024	ND					

Surrogate: 4-Bromofluorobenzene (PID) 108 % 71.5-134

Chloride, SM4500Cl-B		mg/kg		Analyzed By: CT						
Analyte	Result	Reporting Limit	Analyzed	Method Blank	BS	% Recovery	True Value QC	RPD	Qualifier	
Chloride	32.0	16.0	07/15/2024	ND	416	104	400	0.00		

TPH 8015M		mg/kg		Analyzed By: MS					
Analyte	Result	Reporting Limit	Analyzed	Method Blank	BS	% Recovery	True Value QC	RPD	Qualifier
GRO C6-C10*	<10.0	10.0	07/15/2024	ND	208	104	200	2.61	
DRO >C10-C28*	<10.0	10.0	07/15/2024	ND	195	97.5	200	3.26	
EXT DRO >C28-C36	<10.0	10.0	07/15/2024	ND					

Surrogate: 1-Chlorooctane 89.8 % 48.2-134

Surrogate: 1-Chlorooctadecane 93.4 % 49.1-148

Cardinal Laboratories

*=Accredited Analyte

PLEASE NOTE: Liability and Damages. Cardinal's liability and client's exclusive remedy for any claim arising, whether based in contract or tort, shall be limited to the amount paid by client for analyses. All claims, including those for negligence and any other cause whatsoever shall be deemed waived unless made in writing and received by Cardinal within thirty (30) days after completion of the applicable service. In no event shall Cardinal be liable for incidental or consequential damages, including, without limitation, business interruptions, loss of use, or loss of profits incurred by client, its subsidiaries, affiliates or successors arising out of or related to the performance of the services hereunder by Cardinal, regardless of whether such claim is based upon any of the above stated reasons or otherwise. Results relate only to the samples identified above. This report shall not be reproduced except in full with written approval of Cardinal Laboratories.

Celey D. Keene, Lab Director/Quality Manager



PHONE (575) 393-2326 ° 101 E. MARLAND ° HOBBS, NM 88240

Analytical Results For:

NTG ENVIRONMENTAL
 ETHAN SESSUMS
 701 TRADEWINDS BLVD. SUITE C
 MIDLAND TX, 79706
 Fax To:

Received: 07/12/2024
 Reported: 07/17/2024
 Project Name: JAYHAWK 6 CTB 2
 Project Number: 248769
 Project Location: DEVON LEA CO., NM

Sampling Date: 07/12/2024
 Sampling Type: Soil
 Sampling Condition: Cool & Intact
 Sample Received By: Shalyn Rodriguez

Sample ID: H-9A (0-6") (H244176-02)

BTEx 8021B		mg/kg		Analyzed By: JH						
Analyte	Result	Reporting Limit	Analyzed	Method Blank	BS	% Recovery	True Value QC	RPD	Qualifier	
Benzene*	<0.050	0.050	07/15/2024	ND	2.04	102	2.00	1.59		
Toluene*	<0.050	0.050	07/15/2024	ND	2.04	102	2.00	6.58		
Ethylbenzene*	<0.050	0.050	07/15/2024	ND	2.15	107	2.00	8.49		
Total Xylenes*	<0.150	0.150	07/15/2024	ND	6.33	106	6.00	9.29		
Total BTEx	<0.300	0.300	07/15/2024	ND						

Surrogate: 4-Bromofluorobenzene (PID) 103 % 71.5-134

Chloride, SM4500CI-B		mg/kg		Analyzed By: CT						
Analyte	Result	Reporting Limit	Analyzed	Method Blank	BS	% Recovery	True Value QC	RPD	Qualifier	
Chloride	32.0	16.0	07/15/2024	ND	416	104	400	0.00		

TPH 8015M		mg/kg		Analyzed By: MS					
Analyte	Result	Reporting Limit	Analyzed	Method Blank	BS	% Recovery	True Value QC	RPD	Qualifier
GRO C6-C10*	<10.0	10.0	07/15/2024	ND	208	104	200	2.61	
DRO >C10-C28*	<10.0	10.0	07/15/2024	ND	195	97.5	200	3.26	
EXT DRO >C28-C36	<10.0	10.0	07/15/2024	ND					

Surrogate: 1-Chlorooctane 91.5 % 48.2-134

Surrogate: 1-Chlorooctadecane 96.5 % 49.1-148

Cardinal Laboratories

*=Accredited Analyte

PLEASE NOTE: Liability and Damages. Cardinal's liability and client's exclusive remedy for any claim arising, whether based in contract or tort, shall be limited to the amount paid by client for analyses. All claims, including those for negligence and any other cause whatsoever shall be deemed waived unless made in writing and received by Cardinal within thirty (30) days after completion of the applicable service. In no event shall Cardinal be liable for incidental or consequential damages, including, without limitation, business interruptions, loss of use, or loss of profits incurred by client, its subsidiaries, affiliates or successors arising out of or related to the performance of the services hereunder by Cardinal, regardless of whether such claim is based upon any of the above stated reasons or otherwise. Results relate only to the samples identified above. This report shall not be reproduced except in full with written approval of Cardinal Laboratories.

Celey D. Keene, Lab Director/Quality Manager



PHONE (575) 393-2326 ° 101 E. MARLAND ° HOBBS, NM 88240

Analytical Results For:

NTG ENVIRONMENTAL
 ETHAN SESSUMS
 701 TRADEWINDS BLVD. SUITE C
 MIDLAND TX, 79706
 Fax To:

Received: 07/12/2024
 Reported: 07/17/2024
 Project Name: JAYHAWK 6 CTB 2
 Project Number: 248769
 Project Location: DEVON LEA CO., NM

Sampling Date: 07/12/2024
 Sampling Type: Soil
 Sampling Condition: Cool & Intact
 Sample Received By: Shalyn Rodriguez

Sample ID: H-10A (0-6") (H244176-03)

BTX 8021B		mg/kg		Analyzed By: JH					
Analyte	Result	Reporting Limit	Analyzed	Method Blank	BS	% Recovery	True Value QC	RPD	Qualifier
Benzene*	<0.050	0.050	07/15/2024	ND	2.04	102	2.00	1.59	
Toluene*	<0.050	0.050	07/15/2024	ND	2.04	102	2.00	6.58	
Ethylbenzene*	<0.050	0.050	07/15/2024	ND	2.15	107	2.00	8.49	
Total Xylenes*	<0.150	0.150	07/15/2024	ND	6.33	106	6.00	9.29	
Total BTX	<0.300	0.300	07/15/2024	ND					

Surrogate: 4-Bromofluorobenzene (PID) 103 % 71.5-134

Chloride, SM4500Cl-B		mg/kg		Analyzed By: CT					
Analyte	Result	Reporting Limit	Analyzed	Method Blank	BS	% Recovery	True Value QC	RPD	Qualifier
Chloride	16.0	16.0	07/15/2024	ND	416	104	400	0.00	

TPH 8015M		mg/kg		Analyzed By: MS					
Analyte	Result	Reporting Limit	Analyzed	Method Blank	BS	% Recovery	True Value QC	RPD	Qualifier
GRO C6-C10*	<10.0	10.0	07/15/2024	ND	208	104	200	2.61	
DRO >C10-C28*	<10.0	10.0	07/15/2024	ND	195	97.5	200	3.26	
EXT DRO >C28-C36	<10.0	10.0	07/15/2024	ND					

Surrogate: 1-Chlorooctane 55.1 % 48.2-134

Surrogate: 1-Chlorooctadecane 53.4 % 49.1-148

Cardinal Laboratories

*=Accredited Analyte

PLEASE NOTE: Liability and Damages. Cardinal's liability and client's exclusive remedy for any claim arising, whether based in contract or tort, shall be limited to the amount paid by client for analyses. All claims, including those for negligence and any other cause whatsoever shall be deemed waived unless made in writing and received by Cardinal within thirty (30) days after completion of the applicable service. In no event shall Cardinal be liable for incidental or consequential damages, including, without limitation, business interruptions, loss of use, or loss of profits incurred by client, its subsidiaries, affiliates or successors arising out of or related to the performance of the services hereunder by Cardinal, regardless of whether such claim is based upon any of the above stated reasons or otherwise. Results relate only to the samples identified above. This report shall not be reproduced except in full with written approval of Cardinal Laboratories.

Celey D. Keene, Lab Director/Quality Manager



PHONE (575) 393-2326 ° 101 E. MARLAND ° HOBBS, NM 88240

Analytical Results For:

NTG ENVIRONMENTAL
 ETHAN SESSUMS
 701 TRADEWINDS BLVD. SUITE C
 MIDLAND TX, 79706
 Fax To:

Received: 07/12/2024
 Reported: 07/17/2024
 Project Name: JAYHAWK 6 CTB 2
 Project Number: 248769
 Project Location: DEVON LEA CO., NM

Sampling Date: 07/12/2024
 Sampling Type: Soil
 Sampling Condition: Cool & Intact
 Sample Received By: Shalyn Rodriguez

Sample ID: H-4A (0-6") (H244176-04)

BTEX 8021B		mg/kg		Analyzed By: JH						
Analyte	Result	Reporting Limit	Analyzed	Method Blank	BS	% Recovery	True Value QC	RPD	Qualifier	
Benzene*	<0.050	0.050	07/15/2024	ND	2.04	102	2.00	1.59		
Toluene*	<0.050	0.050	07/15/2024	ND	2.04	102	2.00	6.58		
Ethylbenzene*	<0.050	0.050	07/15/2024	ND	2.15	107	2.00	8.49		
Total Xylenes*	<0.150	0.150	07/15/2024	ND	6.33	106	6.00	9.29		
Total BTEX	<0.300	0.300	07/15/2024	ND						

Surrogate: 4-Bromofluorobenzene (PID) 105 % 71.5-134

Chloride, SM4500Cl-B		mg/kg		Analyzed By: CT						
Analyte	Result	Reporting Limit	Analyzed	Method Blank	BS	% Recovery	True Value QC	RPD	Qualifier	
Chloride	16.0	16.0	07/15/2024	ND	416	104	400	0.00		

TPH 8015M		mg/kg		Analyzed By: MS					
Analyte	Result	Reporting Limit	Analyzed	Method Blank	BS	% Recovery	True Value QC	RPD	Qualifier
GRO C6-C10*	<10.0	10.0	07/15/2024	ND	208	104	200	2.61	
DRO >C10-C28*	<10.0	10.0	07/15/2024	ND	195	97.5	200	3.26	
EXT DRO >C28-C36	<10.0	10.0	07/15/2024	ND					

Surrogate: 1-Chlorooctane 84.0 % 48.2-134

Surrogate: 1-Chlorooctadecane 83.2 % 49.1-148

Cardinal Laboratories

*=Accredited Analyte

PLEASE NOTE: Liability and Damages. Cardinal's liability and client's exclusive remedy for any claim arising, whether based in contract or tort, shall be limited to the amount paid by client for analyses. All claims, including those for negligence and any other cause whatsoever shall be deemed waived unless made in writing and received by Cardinal within thirty (30) days after completion of the applicable service. In no event shall Cardinal be liable for incidental or consequential damages, including, without limitation, business interruptions, loss of use, or loss of profits incurred by client, its subsidiaries, affiliates or successors arising out of or related to the performance of the services hereunder by Cardinal, regardless of whether such claim is based upon any of the above stated reasons or otherwise. Results relate only to the samples identified above. This report shall not be reproduced except in full with written approval of Cardinal Laboratories.

Celey D. Keene, Lab Director/Quality Manager



PHONE (575) 393-2326 ° 101 E. MARLAND ° HOBBS, NM 88240

Analytical Results For:

NTG ENVIRONMENTAL
 ETHAN SESSUMS
 701 TRADEWINDS BLVD. SUITE C
 MIDLAND TX, 79706
 Fax To:

Received: 07/12/2024
 Reported: 07/17/2024
 Project Name: JAYHAWK 6 CTB 2
 Project Number: 248769
 Project Location: DEVON LEA CO., NM

Sampling Date: 07/12/2024
 Sampling Type: Soil
 Sampling Condition: Cool & Intact
 Sample Received By: Shalyn Rodriguez

Sample ID: TP-1 (3') (H244176-05)

BTEX 8021B		mg/kg		Analyzed By: JH						
Analyte	Result	Reporting Limit	Analyzed	Method Blank	BS	% Recovery	True Value QC	RPD	Qualifier	
Benzene*	<0.050	0.050	07/15/2024	ND	2.04	102	2.00	1.59		
Toluene*	<0.050	0.050	07/15/2024	ND	2.04	102	2.00	6.58		
Ethylbenzene*	<0.050	0.050	07/15/2024	ND	2.15	107	2.00	8.49		
Total Xylenes*	<0.150	0.150	07/15/2024	ND	6.33	106	6.00	9.29		
Total BTEX	<0.300	0.300	07/15/2024	ND						

Surrogate: 4-Bromofluorobenzene (PID) 103 % 71.5-134

Chloride, SM4500CI-B		mg/kg		Analyzed By: CT					
Analyte	Result	Reporting Limit	Analyzed	Method Blank	BS	% Recovery	True Value QC	RPD	Qualifier
Chloride	112	16.0	07/15/2024	ND	416	104	400	0.00	

TPH 8015M		mg/kg		Analyzed By: MS					
Analyte	Result	Reporting Limit	Analyzed	Method Blank	BS	% Recovery	True Value QC	RPD	Qualifier
GRO C6-C10*	<10.0	10.0	07/15/2024	ND	208	104	200	2.61	
DRO >C10-C28*	<10.0	10.0	07/15/2024	ND	195	97.5	200	3.26	
EXT DRO >C28-C36	<10.0	10.0	07/15/2024	ND					

Surrogate: 1-Chlorooctane 94.5 % 48.2-134

Surrogate: 1-Chlorooctadecane 95.2 % 49.1-148

Cardinal Laboratories

*=Accredited Analyte

PLEASE NOTE: Liability and Damages. Cardinal's liability and client's exclusive remedy for any claim arising, whether based in contract or tort, shall be limited to the amount paid by client for analyses. All claims, including those for negligence and any other cause whatsoever shall be deemed waived unless made in writing and received by Cardinal within thirty (30) days after completion of the applicable service. In no event shall Cardinal be liable for incidental or consequential damages, including, without limitation, business interruptions, loss of use, or loss of profits incurred by client, its subsidiaries, affiliates or successors arising out of or related to the performance of the services hereunder by Cardinal, regardless of whether such claim is based upon any of the above stated reasons or otherwise. Results relate only to the samples identified above. This report shall not be reproduced except in full with written approval of Cardinal Laboratories.

Celey D. Keene, Lab Director/Quality Manager



PHONE (575) 393-2326 ° 101 E. MARLAND ° HOBBS, NM 88240

Analytical Results For:

NTG ENVIRONMENTAL
 ETHAN SESSUMS
 701 TRADEWINDS BLVD. SUITE C
 MIDLAND TX, 79706
 Fax To:

Received: 07/12/2024
 Reported: 07/17/2024
 Project Name: JAYHAWK 6 CTB 2
 Project Number: 248769
 Project Location: DEVON LEA CO., NM

Sampling Date: 07/12/2024
 Sampling Type: Soil
 Sampling Condition: Cool & Intact
 Sample Received By: Shalyn Rodriguez

Sample ID: TP-1 (4') (H244176-06)

BTEx 8021B		mg/kg		Analyzed By: JH						
Analyte	Result	Reporting Limit	Analyzed	Method Blank	BS	% Recovery	True Value QC	RPD	Qualifier	
Benzene*	<0.050	0.050	07/15/2024	ND	2.04	102	2.00	1.59		
Toluene*	<0.050	0.050	07/15/2024	ND	2.04	102	2.00	6.58		
Ethylbenzene*	<0.050	0.050	07/15/2024	ND	2.15	107	2.00	8.49		
Total Xylenes*	<0.150	0.150	07/15/2024	ND	6.33	106	6.00	9.29		
Total BTEx	<0.300	0.300	07/15/2024	ND						

Surrogate: 4-Bromofluorobenzene (PID) 103 % 71.5-134

Chloride, SM4500CI-B		mg/kg		Analyzed By: AC						
Analyte	Result	Reporting Limit	Analyzed	Method Blank	BS	% Recovery	True Value QC	RPD	Qualifier	
Chloride	176	16.0	07/15/2024	ND	432	108	400	3.77		

TPH 8015M		mg/kg		Analyzed By: MS					
Analyte	Result	Reporting Limit	Analyzed	Method Blank	BS	% Recovery	True Value QC	RPD	Qualifier
GRO C6-C10*	<10.0	10.0	07/15/2024	ND	208	104	200	2.61	
DRO >C10-C28*	<10.0	10.0	07/15/2024	ND	195	97.5	200	3.26	
EXT DRO >C28-C36	<10.0	10.0	07/15/2024	ND					

Surrogate: 1-Chlorooctane 90.0 % 48.2-134

Surrogate: 1-Chlorooctadecane 93.5 % 49.1-148

Cardinal Laboratories

*=Accredited Analyte

PLEASE NOTE: Liability and Damages. Cardinal's liability and client's exclusive remedy for any claim arising, whether based in contract or tort, shall be limited to the amount paid by client for analyses. All claims, including those for negligence and any other cause whatsoever shall be deemed waived unless made in writing and received by Cardinal within thirty (30) days after completion of the applicable service. In no event shall Cardinal be liable for incidental or consequential damages, including, without limitation, business interruptions, loss of use, or loss of profits incurred by client, its subsidiaries, affiliates or successors arising out of or related to the performance of the services hereunder by Cardinal, regardless of whether such claim is based upon any of the above stated reasons or otherwise. Results relate only to the samples identified above. This report shall not be reproduced except in full with written approval of Cardinal Laboratories.

Celey D. Keene, Lab Director/Quality Manager



PHONE (575) 393-2326 ° 101 E. MARLAND ° HOBBS, NM 88240

Analytical Results For:

NTG ENVIRONMENTAL
 ETHAN SESSUMS
 701 TRADEWINDS BLVD. SUITE C
 MIDLAND TX, 79706
 Fax To:

Received: 07/12/2024
 Reported: 07/17/2024
 Project Name: JAYHAWK 6 CTB 2
 Project Number: 248769
 Project Location: DEVON LEA CO., NM

Sampling Date: 07/12/2024
 Sampling Type: Soil
 Sampling Condition: Cool & Intact
 Sample Received By: Shalyn Rodriguez

Sample ID: TP-1 (5') (H244176-07)

BTEX 8021B		mg/kg		Analyzed By: JH						
Analyte	Result	Reporting Limit	Analyzed	Method Blank	BS	% Recovery	True Value QC	RPD	Qualifier	
Benzene*	<0.050	0.050	07/15/2024	ND	2.04	102	2.00	1.59		
Toluene*	<0.050	0.050	07/15/2024	ND	2.04	102	2.00	6.58		
Ethylbenzene*	<0.050	0.050	07/15/2024	ND	2.15	107	2.00	8.49		
Total Xylenes*	<0.150	0.150	07/15/2024	ND	6.33	106	6.00	9.29		
Total BTEX	<0.300	0.300	07/15/2024	ND						

Surrogate: 4-Bromofluorobenzene (PID) 103 % 71.5-134

Chloride, SM4500CI-B		mg/kg		Analyzed By: AC						
Analyte	Result	Reporting Limit	Analyzed	Method Blank	BS	% Recovery	True Value QC	RPD	Qualifier	
Chloride	224	16.0	07/15/2024	ND	432	108	400	3.77		

TPH 8015M		mg/kg		Analyzed By: MS					
Analyte	Result	Reporting Limit	Analyzed	Method Blank	BS	% Recovery	True Value QC	RPD	Qualifier
GRO C6-C10*	<10.0	10.0	07/15/2024	ND	208	104	200	2.61	
DRO >C10-C28*	<10.0	10.0	07/15/2024	ND	195	97.5	200	3.26	
EXT DRO >C28-C36	<10.0	10.0	07/15/2024	ND					

Surrogate: 1-Chlorooctane 92.7 % 48.2-134

Surrogate: 1-Chlorooctadecane 93.4 % 49.1-148

Cardinal Laboratories

*=Accredited Analyte

PLEASE NOTE: Liability and Damages. Cardinal's liability and client's exclusive remedy for any claim arising, whether based in contract or tort, shall be limited to the amount paid by client for analyses. All claims, including those for negligence and any other cause whatsoever shall be deemed waived unless made in writing and received by Cardinal within thirty (30) days after completion of the applicable service. In no event shall Cardinal be liable for incidental or consequential damages, including, without limitation, business interruptions, loss of use, or loss of profits incurred by client, its subsidiaries, affiliates or successors arising out of or related to the performance of the services hereunder by Cardinal, regardless of whether such claim is based upon any of the above stated reasons or otherwise. Results relate only to the samples identified above. This report shall not be reproduced except in full with written approval of Cardinal Laboratories.

Celey D. Keene, Lab Director/Quality Manager



PHONE (575) 393-2326 ° 101 E. MARLAND ° HOBBS, NM 88240

Analytical Results For:

NTG ENVIRONMENTAL
 ETHAN SESSUMS
 701 TRADEWINDS BLVD. SUITE C
 MIDLAND TX, 79706
 Fax To:

Received: 07/12/2024
 Reported: 07/17/2024
 Project Name: JAYHAWK 6 CTB 2
 Project Number: 248769
 Project Location: DEVON LEA CO., NM

Sampling Date: 07/12/2024
 Sampling Type: Soil
 Sampling Condition: Cool & Intact
 Sample Received By: Shalyn Rodriguez

Sample ID: TP-2 (3') (H244176-08)

BTEX 8021B		mg/kg		Analyzed By: JH						
Analyte	Result	Reporting Limit	Analyzed	Method Blank	BS	% Recovery	True Value QC	RPD	Qualifier	
Benzene*	<0.050	0.050	07/15/2024	ND	2.04	102	2.00	1.59		
Toluene*	<0.050	0.050	07/15/2024	ND	2.04	102	2.00	6.58		
Ethylbenzene*	<0.050	0.050	07/15/2024	ND	2.15	107	2.00	8.49		
Total Xylenes*	<0.150	0.150	07/15/2024	ND	6.33	106	6.00	9.29		
Total BTEX	<0.300	0.300	07/15/2024	ND						

Surrogate: 4-Bromofluorobenzene (PID) 103 % 71.5-134

Chloride, SM4500CI-B		mg/kg		Analyzed By: AC						
Analyte	Result	Reporting Limit	Analyzed	Method Blank	BS	% Recovery	True Value QC	RPD	Qualifier	
Chloride	64.0	16.0	07/15/2024	ND	432	108	400	3.77		

TPH 8015M		mg/kg		Analyzed By: MS					
Analyte	Result	Reporting Limit	Analyzed	Method Blank	BS	% Recovery	True Value QC	RPD	Qualifier
GRO C6-C10*	<10.0	10.0	07/15/2024	ND	208	104	200	2.61	
DRO >C10-C28*	<10.0	10.0	07/15/2024	ND	195	97.5	200	3.26	
EXT DRO >C28-C36	<10.0	10.0	07/15/2024	ND					

Surrogate: 1-Chlorooctane 91.5 % 48.2-134

Surrogate: 1-Chlorooctadecane 92.1 % 49.1-148

Cardinal Laboratories

*=Accredited Analyte

PLEASE NOTE: Liability and Damages. Cardinal's liability and client's exclusive remedy for any claim arising, whether based in contract or tort, shall be limited to the amount paid by client for analyses. All claims, including those for negligence and any other cause whatsoever shall be deemed waived unless made in writing and received by Cardinal within thirty (30) days after completion of the applicable service. In no event shall Cardinal be liable for incidental or consequential damages, including, without limitation, business interruptions, loss of use, or loss of profits incurred by client, its subsidiaries, affiliates or successors arising out of or related to the performance of the services hereunder by Cardinal, regardless of whether such claim is based upon any of the above stated reasons or otherwise. Results relate only to the samples identified above. This report shall not be reproduced except in full with written approval of Cardinal Laboratories.

Celey D. Keene, Lab Director/Quality Manager



PHONE (575) 393-2326 ° 101 E. MARLAND ° HOBBS, NM 88240

Analytical Results For:

NTG ENVIRONMENTAL
 ETHAN SESSUMS
 701 TRADEWINDS BLVD. SUITE C
 MIDLAND TX, 79706
 Fax To:

Received: 07/12/2024
 Reported: 07/17/2024
 Project Name: JAYHAWK 6 CTB 2
 Project Number: 248769
 Project Location: DEVON LEA CO., NM

Sampling Date: 07/12/2024
 Sampling Type: Soil
 Sampling Condition: Cool & Intact
 Sample Received By: Shalyn Rodriguez

Sample ID: TP-2 (4') (H244176-09)

BTEx 8021B		mg/kg		Analyzed By: JH					
Analyte	Result	Reporting Limit	Analyzed	Method Blank	BS	% Recovery	True Value QC	RPD	Qualifier
Benzene*	<0.050	0.050	07/15/2024	ND	2.04	102	2.00	1.59	
Toluene*	<0.050	0.050	07/15/2024	ND	2.04	102	2.00	6.58	
Ethylbenzene*	<0.050	0.050	07/15/2024	ND	2.15	107	2.00	8.49	
Total Xylenes*	<0.150	0.150	07/15/2024	ND	6.33	106	6.00	9.29	
Total BTEX	<0.300	0.300	07/15/2024	ND					

Surrogate: 4-Bromofluorobenzene (PID) 105 % 71.5-134

Chloride, SM4500Cl-B		mg/kg		Analyzed By: AC					
Analyte	Result	Reporting Limit	Analyzed	Method Blank	BS	% Recovery	True Value QC	RPD	Qualifier
Chloride	16.0	16.0	07/15/2024	ND	432	108	400	3.77	

TPH 8015M		mg/kg		Analyzed By: MS					
Analyte	Result	Reporting Limit	Analyzed	Method Blank	BS	% Recovery	True Value QC	RPD	Qualifier
GRO C6-C10*	<10.0	10.0	07/15/2024	ND	208	104	200	2.61	
DRO >C10-C28*	<10.0	10.0	07/15/2024	ND	195	97.5	200	3.26	
EXT DRO >C28-C36	<10.0	10.0	07/15/2024	ND					

Surrogate: 1-Chlorooctane 90.0 % 48.2-134

Surrogate: 1-Chlorooctadecane 92.4 % 49.1-148

Cardinal Laboratories

*=Accredited Analyte

PLEASE NOTE: Liability and Damages. Cardinal's liability and client's exclusive remedy for any claim arising, whether based in contract or tort, shall be limited to the amount paid by client for analyses. All claims, including those for negligence and any other cause whatsoever shall be deemed waived unless made in writing and received by Cardinal within thirty (30) days after completion of the applicable service. In no event shall Cardinal be liable for incidental or consequential damages, including, without limitation, business interruptions, loss of use, or loss of profits incurred by client, its subsidiaries, affiliates or successors arising out of or related to the performance of the services hereunder by Cardinal, regardless of whether such claim is based upon any of the above stated reasons or otherwise. Results relate only to the samples identified above. This report shall not be reproduced except in full with written approval of Cardinal Laboratories.

Celey D. Keene, Lab Director/Quality Manager



PHONE (575) 393-2326 ° 101 E. MARLAND ° HOBBS, NM 88240

Analytical Results For:

NTG ENVIRONMENTAL
 ETHAN SESSUMS
 701 TRADEWINDS BLVD. SUITE C
 MIDLAND TX, 79706
 Fax To:

Received: 07/12/2024
 Reported: 07/17/2024
 Project Name: JAYHAWK 6 CTB 2
 Project Number: 248769
 Project Location: DEVON LEA CO., NM

Sampling Date: 07/12/2024
 Sampling Type: Soil
 Sampling Condition: Cool & Intact
 Sample Received By: Shalyn Rodriguez

Sample ID: TP-2 (5') (H244176-10)

BTEx 8021B		mg/kg		Analyzed By: JH						
Analyte	Result	Reporting Limit	Analyzed	Method Blank	BS	% Recovery	True Value QC	RPD	Qualifier	
Benzene*	<0.050	0.050	07/15/2024	ND	2.04	102	2.00	1.59		
Toluene*	<0.050	0.050	07/15/2024	ND	2.04	102	2.00	6.58		
Ethylbenzene*	<0.050	0.050	07/15/2024	ND	2.15	107	2.00	8.49		
Total Xylenes*	<0.150	0.150	07/15/2024	ND	6.33	106	6.00	9.29		
Total BTEx	<0.300	0.300	07/15/2024	ND						

Surrogate: 4-Bromofluorobenzene (PID) 108 % 71.5-134

Chloride, SM4500CI-B		mg/kg		Analyzed By: AC						
Analyte	Result	Reporting Limit	Analyzed	Method Blank	BS	% Recovery	True Value QC	RPD	Qualifier	
Chloride	48.0	16.0	07/15/2024	ND	432	108	400	3.77		

TPH 8015M		mg/kg		Analyzed By: MS					
Analyte	Result	Reporting Limit	Analyzed	Method Blank	BS	% Recovery	True Value QC	RPD	Qualifier
GRO C6-C10*	<10.0	10.0	07/15/2024	ND	208	104	200	2.61	
DRO >C10-C28*	<10.0	10.0	07/15/2024	ND	195	97.5	200	3.26	
EXT DRO >C28-C36	<10.0	10.0	07/15/2024	ND					

Surrogate: 1-Chlorooctane 92.9 % 48.2-134

Surrogate: 1-Chlorooctadecane 93.7 % 49.1-148

Cardinal Laboratories

*=Accredited Analyte

PLEASE NOTE: Liability and Damages. Cardinal's liability and client's exclusive remedy for any claim arising, whether based in contract or tort, shall be limited to the amount paid by client for analyses. All claims, including those for negligence and any other cause whatsoever shall be deemed waived unless made in writing and received by Cardinal within thirty (30) days after completion of the applicable service. In no event shall Cardinal be liable for incidental or consequential damages, including, without limitation, business interruptions, loss of use, or loss of profits incurred by client, its subsidiaries, affiliates or successors arising out of or related to the performance of the services hereunder by Cardinal, regardless of whether such claim is based upon any of the above stated reasons or otherwise. Results relate only to the samples identified above. This report shall not be reproduced except in full with written approval of Cardinal Laboratories.

Celey D. Keene, Lab Director/Quality Manager



PHONE (575) 393-2326 ° 101 E. MARLAND ° HOBBS, NM 88240

Analytical Results For:

NTG ENVIRONMENTAL
 ETHAN SESSUMS
 701 TRADEWINDS BLVD. SUITE C
 MIDLAND TX, 79706
 Fax To:

Received: 07/12/2024
 Reported: 07/17/2024
 Project Name: JAYHAWK 6 CTB 2
 Project Number: 248769
 Project Location: DEVON LEA CO., NM

Sampling Date: 07/12/2024
 Sampling Type: Soil
 Sampling Condition: Cool & Intact
 Sample Received By: Shalyn Rodriguez

Sample ID: TP-3 (0-6") (H244176-11)

BTEX 8021B		mg/kg		Analyzed By: JH						
Analyte	Result	Reporting Limit	Analyzed	Method Blank	BS	% Recovery	True Value QC	RPD	Qualifier	
Benzene*	<0.050	0.050	07/15/2024	ND	2.04	102	2.00	1.59		
Toluene*	<0.050	0.050	07/15/2024	ND	2.04	102	2.00	6.58		
Ethylbenzene*	<0.050	0.050	07/15/2024	ND	2.15	107	2.00	8.49		
Total Xylenes*	<0.150	0.150	07/15/2024	ND	6.33	106	6.00	9.29		
Total BTEX	<0.300	0.300	07/15/2024	ND						

Surrogate: 4-Bromofluorobenzene (PID) 111 % 71.5-134

Chloride, SM4500Cl-B		mg/kg		Analyzed By: AC						
Analyte	Result	Reporting Limit	Analyzed	Method Blank	BS	% Recovery	True Value QC	RPD	Qualifier	
Chloride	128	16.0	07/15/2024	ND	432	108	400	3.77		

TPH 8015M		mg/kg		Analyzed By: MS				S-04	
Analyte	Result	Reporting Limit	Analyzed	Method Blank	BS	% Recovery	True Value QC	RPD	Qualifier
GRO C6-C10*	<10.0	10.0	07/15/2024	ND	208	104	200	2.61	
DRO >C10-C28*	2010	10.0	07/15/2024	ND	195	97.5	200	3.26	
EXT DRO >C28-C36	753	10.0	07/15/2024	ND					

Surrogate: 1-Chlorooctane 87.0 % 48.2-134

Surrogate: 1-Chlorooctadecane 159 % 49.1-148

Cardinal Laboratories

*=Accredited Analyte

PLEASE NOTE: Liability and Damages. Cardinal's liability and client's exclusive remedy for any claim arising, whether based in contract or tort, shall be limited to the amount paid by client for analyses. All claims, including those for negligence and any other cause whatsoever shall be deemed waived unless made in writing and received by Cardinal within thirty (30) days after completion of the applicable service. In no event shall Cardinal be liable for incidental or consequential damages, including, without limitation, business interruptions, loss of use, or loss of profits incurred by client, its subsidiaries, affiliates or successors arising out of or related to the performance of the services hereunder by Cardinal, regardless of whether such claim is based upon any of the above stated reasons or otherwise. Results relate only to the samples identified above. This report shall not be reproduced except in full with written approval of Cardinal Laboratories.

Celey D. Keene, Lab Director/Quality Manager



PHONE (575) 393-2326 ° 101 E. MARLAND ° HOBBS, NM 88240

Analytical Results For:

NTG ENVIRONMENTAL
 ETHAN SESSUMS
 701 TRADEWINDS BLVD. SUITE C
 MIDLAND TX, 79706
 Fax To:

Received: 07/12/2024
 Reported: 07/17/2024
 Project Name: JAYHAWK 6 CTB 2
 Project Number: 248769
 Project Location: DEVON LEA CO., NM

Sampling Date: 07/12/2024
 Sampling Type: Soil
 Sampling Condition: Cool & Intact
 Sample Received By: Shalyn Rodriguez

Sample ID: TP-3 (1') (H244176-12)

BTEx 8021B		mg/kg		Analyzed By: JH					
Analyte	Result	Reporting Limit	Analyzed	Method Blank	BS	% Recovery	True Value QC	RPD	Qualifier
Benzene*	<0.050	0.050	07/15/2024	ND	2.02	101	2.00	0.920	
Toluene*	<0.050	0.050	07/15/2024	ND	2.03	101	2.00	1.56	
Ethylbenzene*	<0.050	0.050	07/15/2024	ND	2.08	104	2.00	2.24	
Total Xylenes*	<0.150	0.150	07/15/2024	ND	6.11	102	6.00	2.12	
Total BTEX	<0.300	0.300	07/15/2024	ND					

Surrogate: 4-Bromofluorobenzene (PID) 103 % 71.5-134

Chloride, SM4500Cl-B		mg/kg		Analyzed By: AC						
Analyte	Result	Reporting Limit	Analyzed	Method Blank	BS	% Recovery	True Value QC	RPD	Qualifier	
Chloride	80.0	16.0	07/15/2024	ND	432	108	400	3.77		

TPH 8015M		mg/kg		Analyzed By: MS					
Analyte	Result	Reporting Limit	Analyzed	Method Blank	BS	% Recovery	True Value QC	RPD	Qualifier
GRO C6-C10*	<10.0	10.0	07/15/2024	ND	208	104	200	2.61	
DRO >C10-C28*	432	10.0	07/15/2024	ND	195	97.5	200	3.26	
EXT DRO >C28-C36	56.5	10.0	07/15/2024	ND					

Surrogate: 1-Chlorooctane 88.3 % 48.2-134

Surrogate: 1-Chlorooctadecane 103 % 49.1-148

Cardinal Laboratories

*=Accredited Analyte

PLEASE NOTE: Liability and Damages. Cardinal's liability and client's exclusive remedy for any claim arising, whether based in contract or tort, shall be limited to the amount paid by client for analyses. All claims, including those for negligence and any other cause whatsoever shall be deemed waived unless made in writing and received by Cardinal within thirty (30) days after completion of the applicable service. In no event shall Cardinal be liable for incidental or consequential damages, including, without limitation, business interruptions, loss of use, or loss of profits incurred by client, its subsidiaries, affiliates or successors arising out of or related to the performance of the services hereunder by Cardinal, regardless of whether such claim is based upon any of the above stated reasons or otherwise. Results relate only to the samples identified above. This report shall not be reproduced except in full with written approval of Cardinal Laboratories.

Celey D. Keene, Lab Director/Quality Manager



PHONE (575) 393-2326 ° 101 E. MARLAND ° HOBBS, NM 88240

Analytical Results For:

NTG ENVIRONMENTAL
 ETHAN SESSUMS
 701 TRADEWINDS BLVD. SUITE C
 MIDLAND TX, 79706
 Fax To:

Received: 07/12/2024
 Reported: 07/17/2024
 Project Name: JAYHAWK 6 CTB 2
 Project Number: 248769
 Project Location: DEVON LEA CO., NM

Sampling Date: 07/12/2024
 Sampling Type: Soil
 Sampling Condition: Cool & Intact
 Sample Received By: Shalyn Rodriguez

Sample ID: TP-3 (2') (H244176-13)

BTEx 8021B		mg/kg		Analyzed By: JH					
Analyte	Result	Reporting Limit	Analyzed	Method Blank	BS	% Recovery	True Value QC	RPD	Qualifier
Benzene*	<0.050	0.050	07/15/2024	ND	2.02	101	2.00	0.920	
Toluene*	<0.050	0.050	07/15/2024	ND	2.03	101	2.00	1.56	
Ethylbenzene*	<0.050	0.050	07/15/2024	ND	2.08	104	2.00	2.24	
Total Xylenes*	<0.150	0.150	07/15/2024	ND	6.11	102	6.00	2.12	
Total BTEX	<0.300	0.300	07/15/2024	ND					

Surrogate: 4-Bromofluorobenzene (PID) 103 % 71.5-134

Chloride, SM4500Cl-B		mg/kg		Analyzed By: AC						
Analyte	Result	Reporting Limit	Analyzed	Method Blank	BS	% Recovery	True Value QC	RPD	Qualifier	
Chloride	80.0	16.0	07/15/2024	ND	432	108	400	3.77		

TPH 8015M		mg/kg		Analyzed By: MS					
Analyte	Result	Reporting Limit	Analyzed	Method Blank	BS	% Recovery	True Value QC	RPD	Qualifier
GRO C6-C10*	<10.0	10.0	07/15/2024	ND	208	104	200	2.61	
DRO >C10-C28*	53.1	10.0	07/15/2024	ND	195	97.5	200	3.26	
EXT DRO >C28-C36	<10.0	10.0	07/15/2024	ND					

Surrogate: 1-Chlorooctane 87.6 % 48.2-134

Surrogate: 1-Chlorooctadecane 92.8 % 49.1-148

Cardinal Laboratories

*=Accredited Analyte

PLEASE NOTE: Liability and Damages. Cardinal's liability and client's exclusive remedy for any claim arising, whether based in contract or tort, shall be limited to the amount paid by client for analyses. All claims, including those for negligence and any other cause whatsoever shall be deemed waived unless made in writing and received by Cardinal within thirty (30) days after completion of the applicable service. In no event shall Cardinal be liable for incidental or consequential damages, including, without limitation, business interruptions, loss of use, or loss of profits incurred by client, its subsidiaries, affiliates or successors arising out of or related to the performance of the services hereunder by Cardinal, regardless of whether such claim is based upon any of the above stated reasons or otherwise. Results relate only to the samples identified above. This report shall not be reproduced except in full with written approval of Cardinal Laboratories.

Celey D. Keene, Lab Director/Quality Manager



PHONE (575) 393-2326 ° 101 E. MARLAND ° HOBBS, NM 88240

Analytical Results For:

NTG ENVIRONMENTAL
 ETHAN SESSUMS
 701 TRADEWINDS BLVD. SUITE C
 MIDLAND TX, 79706
 Fax To:

Received: 07/12/2024
 Reported: 07/17/2024
 Project Name: JAYHAWK 6 CTB 2
 Project Number: 248769
 Project Location: DEVON LEA CO., NM

Sampling Date: 07/12/2024
 Sampling Type: Soil
 Sampling Condition: Cool & Intact
 Sample Received By: Shalyn Rodriguez

Sample ID: TP-3 (3') (H244176-14)

BTEX 8021B		mg/kg		Analyzed By: JH					
Analyte	Result	Reporting Limit	Analyzed	Method Blank	BS	% Recovery	True Value QC	RPD	Qualifier
Benzene*	<0.050	0.050	07/15/2024	ND	2.02	101	2.00	0.920	
Toluene*	<0.050	0.050	07/15/2024	ND	2.03	101	2.00	1.56	
Ethylbenzene*	<0.050	0.050	07/15/2024	ND	2.08	104	2.00	2.24	
Total Xylenes*	<0.150	0.150	07/15/2024	ND	6.11	102	6.00	2.12	
Total BTEX	<0.300	0.300	07/15/2024	ND					

Surrogate: 4-Bromofluorobenzene (PID) 103 % 71.5-134

Chloride, SM4500Cl-B		mg/kg		Analyzed By: AC						
Analyte	Result	Reporting Limit	Analyzed	Method Blank	BS	% Recovery	True Value QC	RPD	Qualifier	
Chloride	48.0	16.0	07/15/2024	ND	432	108	400	3.77		

TPH 8015M		mg/kg		Analyzed By: MS					
Analyte	Result	Reporting Limit	Analyzed	Method Blank	BS	% Recovery	True Value QC	RPD	Qualifier
GRO C6-C10*	<10.0	10.0	07/15/2024	ND	208	104	200	2.61	
DRO >C10-C28*	54.4	10.0	07/15/2024	ND	195	97.5	200	3.26	
EXT DRO >C28-C36	<10.0	10.0	07/15/2024	ND					

Surrogate: 1-Chlorooctane 82.0 % 48.2-134

Surrogate: 1-Chlorooctadecane 86.4 % 49.1-148

Cardinal Laboratories

*=Accredited Analyte

PLEASE NOTE: Liability and Damages. Cardinal's liability and client's exclusive remedy for any claim arising, whether based in contract or tort, shall be limited to the amount paid by client for analyses. All claims, including those for negligence and any other cause whatsoever shall be deemed waived unless made in writing and received by Cardinal within thirty (30) days after completion of the applicable service. In no event shall Cardinal be liable for incidental or consequential damages, including, without limitation, business interruptions, loss of use, or loss of profits incurred by client, its subsidiaries, affiliates or successors arising out of or related to the performance of the services hereunder by Cardinal, regardless of whether such claim is based upon any of the above stated reasons or otherwise. Results relate only to the samples identified above. This report shall not be reproduced except in full with written approval of Cardinal Laboratories.

Celey D. Keene, Lab Director/Quality Manager



PHONE (575) 393-2326 ° 101 E. MARLAND ° HOBBS, NM 88240

Notes and Definitions

- S-04 The surrogate recovery for this sample is outside of established control limits due to a sample matrix effect.
- ND Analyte NOT DETECTED at or above the reporting limit
- RPD Relative Percent Difference
- ** Samples not received at proper temperature of 6°C or below.
- *** Insufficient time to reach temperature.
- Chloride by SM4500Cl-B does not require samples be received at or below 6°C
Samples reported on an as received basis (wet) unless otherwise noted on report

Cardinal Laboratories *=Accredited Analyte

PLEASE NOTE: Liability and Damages. Cardinal's liability and client's exclusive remedy for any claim arising, whether based in contract or tort, shall be limited to the amount paid by client for analyses. All claims, including those for negligence and any other cause whatsoever shall be deemed waived unless made in writing and received by Cardinal within thirty (30) days after completion of the applicable service. In no event shall Cardinal be liable for incidental or consequential damages, including, without limitation, business interruptions, loss of use, or loss of profits incurred by client, its subsidiaries, affiliates or successors arising out of or related to the performance of the services hereunder by Cardinal, regardless of whether such claim is based upon any of the above stated reasons or otherwise. Results relate only to the samples identified above. This report shall not be reproduced except in full with written approval of Cardinal Laboratories.

A handwritten signature in black ink, appearing to read "Celey D. Keene".

Celey D. Keene, Lab Director/Quality Manager



101 East Marland, Hobbs, NM 88240
(575) 393-2326 FAX (575) 393-2476

CHAIN-OF-CUSTODY AND ANALYSIS REQUEST

Company Name: NTG Environmental Project Manager: Ethan Sessums Address: 209 W McKay Street City: Carlsbad State: NM Zip: 88220 Phone #: (254) 266-5456 Fax #: Project #: 248769 Project Owner: Devon Project Name: Jayhawk 6 CTB 2 Project Location: Lea Co., NM Sampler Name: Jill Smiley				BILL TO P.O. #: 21352959 Company: Devon Attn: Dale Woodall Address: City: State: Zip: Phone #: Fax #:		ANALYSIS REQUEST															
FOR LAB USE ONLY Lab I.D. H244176 1 2 3 4 5 6 7 8 9 10		Sample I.D. H-8A (0-6") H-9A (0-6") H-10A (0-6") H-4A (0-6") TP-1 (3") TP-1 (4") TP-1 (5") TP-2 (3") TP-2 (4") TP-2 (5")		(G)RAB OR (C)OMP. 1 # CONTAINERS 1		MATRIX GROUNDWATER WASTEWATER SOIL OIL SLUDGE OTHER:		PRESERV. ACID/BASE: ICE / COOL OTHER:		SAMPLING DATE 7/2/24 TIME		BTEX TPH Chloride									

PLEASE NOTE: Liability and Damages. Cardinal's liability and client's exclusive remedy for any claim arising whether based in contract or tort, shall be limited to the amount paid by the client for the analyses. All claims including those for negligence and any other cause whatsoever shall be deemed waived unless made in writing and received by Cardinal within 30 days after completion of the applicable service. In no event shall Cardinal be liable for incidental or consequential damages, including without limitation, business interruptions, loss of use, or loss of profits incurred by client, its subsidiaries, affiliates or successors, arising out of or related to the performance of services hereunder by Cardinal, regardless of whether such claim is based on any of the above stated reasons or otherwise.

Relinquished By: <i>[Signature]</i> Date: 7/2/24 Time: 1:17		Received By: <i>[Signature]</i> Date: Time:		Verbal Result: <input type="checkbox"/> Yes <input type="checkbox"/> No Add'l Phone #: All Results are emailed. Please provide Email address:	
Relinquished By: <i>[Signature]</i> Date: Time:		Received By: <i>[Signature]</i> Date: Time:		REMARKS:	
Delivered By: (Circle One) Sampler - UPS - Bus - Other:		Observed Temp. °C 4.42 Corrected Temp. °C		Sample Condition Cool Intact <input type="checkbox"/> Yes <input type="checkbox"/> No	
Turnaround Time: Standard <input checked="" type="checkbox"/> Rush		Thermometer ID #140 Correction Factor 0°C		Bacteria (only) Sample Condition Cool Intact Observed Temp. °C <input type="checkbox"/> Yes <input type="checkbox"/> No <input type="checkbox"/> No <input type="checkbox"/> No Corrected Temp. °C	

FORM-000 R 3.4 07/11/23

† Cardinal cannot accept verbal changes. Please email changes to celey.keene@cardinallabsnm.com



101 East Marland, Hobbs, NM 88240
(575) 393-2326 FAX (575) 393-2476

CHAIN-OF-CUSTODY AND ANALYSIS REQUEST

Company Name: <u>NTG Environmental</u>				BILL TO				ANALYSIS REQUEST																		
Project Manager: <u>Ethan Sessums</u>				P.O. #: <u>21352959</u>																						
Address: <u>209 W McKay Street</u>				Company: <u>Devon</u>																						
City: <u>Carlsbad</u> State: <u>NM</u> Zip: <u>88220</u>				Attn: <u>Dale Woodall</u>																						
Phone #: <u>(284) 266-5456</u> Fax #:				Address:																						
Project #: <u>248769</u> Project Owner: <u>Devon</u>				City:																						
Project Name: <u>Jayhawk Le CTB 2</u>				State: Zip:																						
Project Location: <u>Lea Co. NM</u>				Phone #:																						
Sampler Name: <u>Jill Smiley</u>				Fax #:																						
FOR LAB USE ONLY				MATRIX		PRESERV.		SAMPLING																		
Lab I.D.	Sample I.D.	(G)RAB OR (C)OMP.	# CONTAINERS	GROUNDWATER	WASTEWATER	SOIL	OIL	SLUDGE	OTHER	ACID/BASE	ICE / COOL	OTHER	DATE	TIME												
<u>H244176</u>																										
<u>11</u>	<u>TP-3</u>	<u>(0-6")</u>	<u>1</u>			<u>✓</u>					<u>✓</u>		<u>7/12/24</u>		<u>BTEX</u>											
<u>12</u>	<u>TP-3</u>	<u>(1")</u>	<u>1</u>												<u>TPH</u>											
<u>13</u>	<u>TP-3</u>	<u>(2")</u>	<u>1</u>												<u>Chloride</u>											
<u>14</u>	<u>TP-3</u>	<u>(3")</u>	<u>1</u>																							

PLEASE NOTE: Liability and Damages. Cardinal's liability and client's exclusive remedy for any claim arising whether based in contract or tort, shall be limited to the amount paid by the client for the analyses. All claims including those for negligence and any other cause whatsoever shall be deemed waived unless made in writing and received by Cardinal within 30 days after completion of the applicable service. In no event shall Cardinal be liable for incidental or consequential damages, including without limitation, business interruptions, loss of use, or loss of profits incurred by client, its subsidiaries, affiliates or successors, arising out of or related to the performance of services hereunder by Cardinal, regardless of whether such claim is based on any of the above stated reasons or otherwise.

Relinquished By: <u>Jill Smiley</u>	Date: <u>7/12/24</u>	Received By: <u>S. Rodriguez</u>	Verbal Result: <input type="checkbox"/> Yes <input type="checkbox"/> No	Add'l Phone #:	
Time: <u>1:17</u>			All Results are emailed. Please provide Email address:		
Relinquished By:	Date:	Received By:	REMARKS:		
Time:					
Delivered By: (Circle One)	Observed Temp. °C <u>4.42</u>	Sample Condition	CHECKED BY: (Initials) <u>SR</u>	Turnaround Time: <u>Standard</u> <input checked="" type="checkbox"/> <u>Rush</u> <input type="checkbox"/>	Bacteria (only) Sample Condition
Sampler - UPS - Bus - Other:	Corrected Temp. °C	<input type="checkbox"/> Yes <input type="checkbox"/> No		Thermometer ID #140	Cool Intact Observed Temp. °C
		<input type="checkbox"/> No <input type="checkbox"/> No		Correction Factor 0°C	<input type="checkbox"/> Yes <input type="checkbox"/> No
					<input type="checkbox"/> No <input type="checkbox"/> No Corrected Temp. °C

FORM-008 R 3.4 07/11/23

† Cardinal cannot accept verbal changes. Please email changes to celey.keene@cardinallabsnm.com

District I
1625 N. French Dr., Hobbs, NM 88240
Phone:(575) 393-6161 Fax:(575) 393-0720
District II
811 S. First St., Artesia, NM 88210
Phone:(575) 748-1283 Fax:(575) 748-9720
District III
1000 Rio Brazos Rd., Aztec, NM 87410
Phone:(505) 334-6178 Fax:(505) 334-6170
District IV
1220 S. St Francis Dr., Santa Fe, NM 87505
Phone:(505) 476-3470 Fax:(505) 476-3462

State of New Mexico
Energy, Minerals and Natural Resources
Oil Conservation Division
1220 S. St Francis Dr.
Santa Fe, NM 87505

QUESTIONS

Action 371586

QUESTIONS

Operator: DEVON ENERGY PRODUCTION COMPANY, LP 333 West Sheridan Ave. Oklahoma City, OK 73102	OGRID: 6137
	Action Number: 371586
	Action Type: [C-141] Site Char./Remediation Plan C-141 (C-141-v-Plan)

QUESTIONS

Prerequisites	
Incident ID (n#)	nAPP2415524417
Incident Name	NAPP2415524417 JAYHAWK 6 CTB 2 @ 0
Incident Type	Produced Water Release
Incident Status	Remediation Plan Received
Incident Facility	[fAPP2130256531] JAYHAWK 6 CTB 2

Location of Release Source	
Please answer all the questions in this group.	
Site Name	JAYHAWK 6 CTB 2
Date Release Discovered	06/01/2024
Surface Owner	Federal

Incident Details	
Please answer all the questions in this group.	
Incident Type	Produced Water Release
Did this release result in a fire or is the result of a fire	No
Did this release result in any injuries	No
Has this release reached or does it have a reasonable probability of reaching a watercourse	No
Has this release endangered or does it have a reasonable probability of endangering public health	No
Has this release substantially damaged or will it substantially damage property or the environment	No
Is this release of a volume that is or may with reasonable probability be detrimental to fresh water	No

Nature and Volume of Release	
Material(s) released, please answer all that apply below. Any calculations or specific justifications for the volumes provided should be attached to the follow-up C-141 submission.	
Crude Oil Released (bbls) Details	Not answered.
Produced Water Released (bbls) Details	Cause: Equipment Failure Separator Produced Water Released: 7 BBL Recovered: 5 BBL Lost: 2 BBL.
Is the concentration of chloride in the produced water >10,000 mg/l	Yes
Condensate Released (bbls) Details	Not answered.
Natural Gas Vented (Mcf) Details	Not answered.
Natural Gas Flared (Mcf) Details	Not answered.
Other Released Details	Not answered.
Are there additional details for the questions above (i.e. any answer containing Other, Specify, Unknown, and/or Fire, or any negative lost amounts)	LO found a leak on a separator dump line. The leak was isolated and the well was shut in. 6.7 BBLS spilled onto pad. 5 BBLS recovered.

District I

1625 N. French Dr., Hobbs, NM 88240
Phone:(575) 393-6161 Fax:(575) 393-0720

District II

811 S. First St., Artesia, NM 88210
Phone:(575) 748-1283 Fax:(575) 748-9720

District III

1000 Rio Brazos Rd., Aztec, NM 87410
Phone:(505) 334-6178 Fax:(505) 334-6170

District IV

1220 S. St Francis Dr., Santa Fe, NM 87505
Phone:(505) 476-3470 Fax:(505) 476-3462

State of New Mexico
Energy, Minerals and Natural Resources
Oil Conservation Division
1220 S. St Francis Dr.
Santa Fe, NM 87505

QUESTIONS, Page 2

Action 371586

QUESTIONS (continued)

Operator: DEVON ENERGY PRODUCTION COMPANY, LP 333 West Sheridan Ave. Oklahoma City, OK 73102	OGRID:
	6137
	Action Number:
	371586
Action Type:	
[C-141] Site Char./Remediation Plan C-141 (C-141-v-Plan)	

QUESTIONS

Nature and Volume of Release (continued)	
Is this a gas only submission (i.e. only significant Mcf values reported)	No, according to supplied volumes this does not appear to be a "gas only" report.
Was this a major release as defined by Subsection A of 19.15.29.7 NMAC	No
Reasons why this would be considered a submission for a notification of a major release	Unavailable.
With the implementation of the 19.15.27 NMAC (05/25/2021), venting and/or flaring of natural gas (i.e. gas only) are to be submitted on the C-129 form.	

Initial Response

The responsible party must undertake the following actions immediately unless they could create a safety hazard that would result in injury.

The source of the release has been stopped	True
The impacted area has been secured to protect human health and the environment	True
Released materials have been contained via the use of berms or dikes, absorbent pads, or other containment devices	True
All free liquids and recoverable materials have been removed and managed appropriately	True
If all the actions described above have not been undertaken, explain why	Not answered.

Per Paragraph (4) of Subsection B of 19.15.29.8 NMAC the responsible party may commence remediation immediately after discovery of a release. If remediation has begun, please prepare and attach a narrative of actions to date in the follow-up C-141 submission. If remedial efforts have been successfully completed or if the release occurred within a lined containment area (see Subparagraph (a) of Paragraph (5) of Subsection A of 19.15.29.11 NMAC), please prepare and attach all information needed for closure evaluation in the follow-up C-141 submission.

I hereby certify that the information given above is true and complete to the best of my knowledge and understand that pursuant to OCD rules and regulations all operators are required to report and/or file certain release notifications and perform corrective actions for releases which may endanger public health or the environment. The acceptance of a C-141 report by the OCD does not relieve the operator of liability should their operations have failed to adequately investigate and remediate contamination that pose a threat to groundwater, surface water, human health or the environment. In addition, OCD acceptance of a C-141 report does not relieve the operator of responsibility for compliance with any other federal, state, or local laws and/or regulations.

I hereby agree and sign off to the above statement	Name: Dale Woodall Title: EHS Professional Email: Dale.Woodall@dnv.com Date: 08/07/2024
--	--

District I

1625 N. French Dr., Hobbs, NM 88240
Phone:(575) 393-6161 Fax:(575) 393-0720

District II

811 S. First St., Artesia, NM 88210
Phone:(575) 748-1283 Fax:(575) 748-9720

District III

1000 Rio Brazos Rd., Aztec, NM 87410
Phone:(505) 334-6178 Fax:(505) 334-6170

District IV

1220 S. St Francis Dr., Santa Fe, NM 87505
Phone:(505) 476-3470 Fax:(505) 476-3462

State of New Mexico
Energy, Minerals and Natural Resources
Oil Conservation Division
1220 S. St Francis Dr.
Santa Fe, NM 87505

QUESTIONS, Page 3

Action 371586

QUESTIONS (continued)

Operator: DEVON ENERGY PRODUCTION COMPANY, LP 333 West Sheridan Ave. Oklahoma City, OK 73102	OGRID: 6137
	Action Number: 371586
	Action Type: [C-141] Site Char./Remediation Plan C-141 (C-141-v-Plan)

QUESTIONS**Site Characterization**

Please answer all the questions in this group (only required when seeking remediation plan approval and beyond). This information must be provided to the appropriate district office no later than 90 days after the release discovery date.

What is the shallowest depth to groundwater beneath the area affected by the release in feet below ground surface (ft bgs)	Between 100 and 500 (ft.)
What method was used to determine the depth to ground water	NM OSE iWaters Database Search
Did this release impact groundwater or surface water	No
What is the minimum distance, between the closest lateral extents of the release and the following surface areas:	
A continuously flowing watercourse or any other significant watercourse	Between 1 and 5 (mi.)
Any lakebed, sinkhole, or playa lake (measured from the ordinary high-water mark)	Greater than 5 (mi.)
An occupied permanent residence, school, hospital, institution, or church	Greater than 5 (mi.)
A spring or a private domestic fresh water well used by less than five households for domestic or stock watering purposes	Greater than 5 (mi.)
Any other fresh water well or spring	Greater than 5 (mi.)
Incorporated municipal boundaries or a defined municipal fresh water well field	Greater than 5 (mi.)
A wetland	Greater than 5 (mi.)
A subsurface mine	Greater than 5 (mi.)
An (non-karst) unstable area	Greater than 5 (mi.)
Categorize the risk of this well / site being in a karst geology	Low
A 100-year floodplain	Between 1 and 5 (mi.)
Did the release impact areas not on an exploration, development, production, or storage site	No

Remediation Plan

Please answer all the questions that apply or are indicated. This information must be provided to the appropriate district office no later than 90 days after the release discovery date.

Requesting a remediation plan approval with this submission	Yes
Attach a comprehensive report demonstrating the lateral and vertical extents of soil contamination associated with the release have been determined, pursuant to 19.15.29.11 NMAC and 19.15.29.13 NMAC.	
Have the lateral and vertical extents of contamination been fully delineated	Yes
Was this release entirely contained within a lined containment area	No

Soil Contamination Sampling: (Provide the highest observable value for each, in milligrams per kilograms.)

Chloride	(EPA 300.0 or SM4500 Cl B)	8900
TPH (GRO+DRO+MRO)	(EPA SW-846 Method 8015M)	2763
GRO+DRO	(EPA SW-846 Method 8015M)	2010
BTEX	(EPA SW-846 Method 8021B or 8260B)	0
Benzene	(EPA SW-846 Method 8021B or 8260B)	0

Per Subsection B of 19.15.29.11 NMAC unless the site characterization report includes completed efforts at remediation, the report must include a proposed remediation plan in accordance with 19.15.29.12 NMAC, which includes the anticipated timelines for beginning and completing the remediation.

On what estimated date will the remediation commence	08/26/2024
On what date will (or did) the final sampling or liner inspection occur	09/16/2024
On what date will (or was) the remediation complete(d)	10/15/2024
What is the estimated surface area (in square feet) that will be reclaimed	2000
What is the estimated volume (in cubic yards) that will be reclaimed	130
What is the estimated surface area (in square feet) that will be remediated	2000
What is the estimated volume (in cubic yards) that will be remediated	130

These estimated dates and measurements are recognized to be the best guess or calculation at the time of submission and may (be) change(d) over time as more remediation efforts are completed.

The OCD recognizes that proposed remediation measures may have to be minimally adjusted in accordance with the physical realities encountered during remediation. If the responsible party has any need to significantly deviate from the remediation plan proposed, then it should consult with the division to determine if another remediation plan submission is required.

District I

1625 N. French Dr., Hobbs, NM 88240
Phone:(575) 393-6161 Fax:(575) 393-0720

District II

811 S. First St., Artesia, NM 88210
Phone:(575) 748-1283 Fax:(575) 748-9720

District III

1000 Rio Brazos Rd., Aztec, NM 87410
Phone:(505) 334-6178 Fax:(505) 334-6170

District IV

1220 S. St Francis Dr., Santa Fe, NM 87505
Phone:(505) 476-3470 Fax:(505) 476-3462

State of New Mexico
Energy, Minerals and Natural Resources
Oil Conservation Division
1220 S. St Francis Dr.
Santa Fe, NM 87505

QUESTIONS, Page 4

Action 371586

QUESTIONS (continued)

Operator: DEVON ENERGY PRODUCTION COMPANY, LP 333 West Sheridan Ave. Oklahoma City, OK 73102	OGRID:	6137
	Action Number:	371586
	Action Type:	[C-141] Site Char./Remediation Plan C-141 (C-141-v-Plan)

QUESTIONS

Remediation Plan (continued)	
<i>Please answer all the questions that apply or are indicated. This information must be provided to the appropriate district office no later than 90 days after the release discovery date.</i>	
This remediation will (or is expected to) utilize the following processes to remediate / reduce contaminants:	
<i>(Select all answers below that apply.)</i>	
(Ex Situ) Excavation and off-site disposal (i.e. dig and haul, hydrovac, etc.)	Yes
Which OCD approved facility will be used for off-site disposal	LEA LAND LANDFILL [fEEM0112342028]
OR which OCD approved well (API) will be used for off-site disposal	Not answered.
OR is the off-site disposal site, to be used, out-of-state	Not answered.
OR is the off-site disposal site, to be used, an NMED facility	Not answered.
(Ex Situ) Excavation and on-site remediation (i.e. On-Site Land Farms)	Not answered.
(In Situ) Soil Vapor Extraction	Not answered.
(In Situ) Chemical processing (i.e. Soil Shredding, Potassium Permanganate, etc.)	Not answered.
(In Situ) Biological processing (i.e. Microbes / Fertilizer, etc.)	Not answered.
(In Situ) Physical processing (i.e. Soil Washing, Gypsum, Disking, etc.)	Not answered.
Ground Water Abatement pursuant to 19.15.30 NMAC	Not answered.
OTHER (Non-listed remedial process)	Not answered.
<i>Per Subsection B of 19.15.29.11 NMAC unless the site characterization report includes completed efforts at remediation, the report must include a proposed remediation plan in accordance with 19.15.29.12 NMAC, which includes the anticipated timelines for beginning and completing the remediation.</i>	
I hereby certify that the information given above is true and complete to the best of my knowledge and understand that pursuant to OCD rules and regulations all operators are required to report and/or file certain release notifications and perform corrective actions for releases which may endanger public health or the environment. The acceptance of a C-141 report by the OCD does not relieve the operator of liability should their operations have failed to adequately investigate and remediate contamination that pose a threat to groundwater, surface water, human health or the environment. In addition, OCD acceptance of a C-141 report does not relieve the operator of responsibility for compliance with any other federal, state, or local laws and/or regulations.	
I hereby agree and sign off to the above statement	Name: Dale Woodall Title: EHS Professional Email: Dale.Woodall@dmn.com Date: 08/07/2024
<i>The OCD recognizes that proposed remediation measures may have to be minimally adjusted in accordance with the physical realities encountered during remediation. If the responsible party has any need to significantly deviate from the remediation plan proposed, then it should consult with the division to determine if another remediation plan submission is required.</i>	

District I
1625 N. French Dr., Hobbs, NM 88240
Phone:(575) 393-6161 Fax:(575) 393-0720
District II
811 S. First St., Artesia, NM 88210
Phone:(575) 748-1283 Fax:(575) 748-9720
District III
1000 Rio Brazos Rd., Aztec, NM 87410
Phone:(505) 334-6178 Fax:(505) 334-6170
District IV
1220 S. St Francis Dr., Santa Fe, NM 87505
Phone:(505) 476-3470 Fax:(505) 476-3462

State of New Mexico
Energy, Minerals and Natural Resources
Oil Conservation Division
1220 S. St Francis Dr.
Santa Fe, NM 87505

QUESTIONS, Page 5

Action 371586

QUESTIONS (continued)

Operator: DEVON ENERGY PRODUCTION COMPANY, LP 333 West Sheridan Ave. Oklahoma City, OK 73102	OGRID: 6137
	Action Number: 371586
	Action Type: [C-141] Site Char./Remediation Plan C-141 (C-141-v-Plan)

QUESTIONS

Deferral Requests Only	
<i>Only answer the questions in this group if seeking a deferral upon approval this submission. Each of the following items must be confirmed as part of any request for deferral of remediation.</i>	
Requesting a deferral of the remediation closure due date with the approval of this submission	No

District I
1625 N. French Dr., Hobbs, NM 88240
Phone:(575) 393-6161 Fax:(575) 393-0720
District II
811 S. First St., Artesia, NM 88210
Phone:(575) 748-1283 Fax:(575) 748-9720
District III
1000 Rio Brazos Rd., Aztec, NM 87410
Phone:(505) 334-6178 Fax:(505) 334-6170
District IV
1220 S. St Francis Dr., Santa Fe, NM 87505
Phone:(505) 476-3470 Fax:(505) 476-3462

State of New Mexico
Energy, Minerals and Natural Resources
Oil Conservation Division
1220 S. St Francis Dr.
Santa Fe, NM 87505

QUESTIONS, Page 6
Action 371586

QUESTIONS (continued)

Operator: DEVON ENERGY PRODUCTION COMPANY, LP 333 West Sheridan Ave. Oklahoma City, OK 73102	OGRID: 6137
	Action Number: 371586
	Action Type: [C-141] Site Char./Remediation Plan C-141 (C-141-v-Plan)

QUESTIONS

Sampling Event Information	
Last sampling notification (C-141N) recorded	{Unavailable.}

Remediation Closure Request	
Only answer the questions in this group if seeking remediation closure for this release because all remediation steps have been completed.	
Requesting a remediation closure approval with this submission	No

District I
1625 N. French Dr., Hobbs, NM 88240
Phone:(575) 393-6161 Fax:(575) 393-0720
District II
811 S. First St., Artesia, NM 88210
Phone:(575) 748-1283 Fax:(575) 748-9720
District III
1000 Rio Brazos Rd., Aztec, NM 87410
Phone:(505) 334-6178 Fax:(505) 334-6170
District IV
1220 S. St Francis Dr., Santa Fe, NM 87505
Phone:(505) 476-3470 Fax:(505) 476-3462

State of New Mexico
Energy, Minerals and Natural Resources
Oil Conservation Division
1220 S. St Francis Dr.
Santa Fe, NM 87505

CONDITIONS

Action 371586

CONDITIONS

Operator: DEVON ENERGY PRODUCTION COMPANY, LP 333 West Sheridan Ave. Oklahoma City, OK 73102	OGRID: 6137
	Action Number: 371586
	Action Type: [C-141] Site Char./Remediation Plan C-141 (C-141-v-Plan)

CONDITIONS

Created By	Condition	Condition Date
nvelez	The remediation plan is approved as written. Devon has 90-days (November 12, 2024) to submit to OCD its appropriate or final remediation closure report.	8/12/2024