



August 29, 2024

District Supervisor  
Oil Conservation Division, District 1  
811 South First Street  
Artesia, New Mexico 88210

**Re: Site Assessment Report and Closure Request  
Maverick Permian, LLC  
East Vacuum (GSA) Unit #006  
Unit Letter J, Section 33, Township 17 South, Range 35 East  
Lea County, New Mexico  
Incident ID# nSAP0335728707**

Dear Sir or Madam,

Tetra Tech, Inc. (Tetra Tech) was contracted by Maverick Permian, LLC (Maverick) to assess a release that reportedly occurred from a hole in the injection line associated with the East Vacuum (GSA) Unit #006. The release footprint is located in Public Land Survey System (PLSS) Unit Letter J, Section 33, Township 17 South, Range 35 East, in Lea County, New Mexico (Site) at coordinates 32.7913017°, -103.4584351° as shown in **Figure 1** and **Figure 2**.

## BACKGROUND

According to the State of New Mexico Oil Conservation Division (NMOCD) C-141 Initial Report, the release was discovered on December 23, 2003. The C-141 reports that the release occurred due to a hole in the injection line leading to a 75-barrel (bbl) spill of produced water off-pad. Approximately 74 bbl of produced water was reported recovered during the initial response. The NMOCD received the Initial C-141 on July 17, 2024, and subsequently assigned the release Incident ID nSAP0335728707. The C-141 submission narrative states the following:

*"HOLE IN INJ LINE."*

The initial C-141 Release notification form is unavailable from the NMOCD Permitting portal under incident nSAP0335728707.

## SITE CHARACTERIZATION

Tetra Tech performed a Site characterization that included the identification of sensitive receptors, a depth to groundwater determination, and assessment of site soils. Site Characterization data are included in **Attachment 1**.

### Site Characterization Summary

Shallowest depth to groundwater beneath the area affected by the release	Greater than 55 feet bgs
Method used to determine the depth to groundwater	Estimate
Did this release impact groundwater or surface water?	No
<b>The minimum distance between the closest lateral extents of the release and the following surface areas:</b>	
A continuously flowing watercourse or any other significant watercourse	Greater than 5 miles
Any lakebed, sinkhole, or playa lake	Between 1000 ft and ½ mi.
An occupied permanent residence, school, hospital, institution, or church	Greater than 5 miles.

**Tetra Tech, Inc.**

1500 CityWest Boulevard, Suite 1000, Houston, Texas 77042  
Tel +1.832.251.5160 | [tetratech.com/oga](http://tetratech.com/oga) | [tetratech.com](http://tetratech.com)

Site Assessment Report and Closure Request  
Maverick Permian, LLC  
East Vacuum (GSA) Unit #006  
Incident ID# nSAP0335728707

August 29, 2024

### Site Characterization Summary

A spring or private domestic freshwater well used by less than five households for domestic or stock watering purposes	Between 1 and 5 mi.
Any other freshwater well or spring	Between 1 and 5 mi.
Incorporated municipal boundaries or a defined municipal freshwater well field	Greater than 5 mi.
A wetland	Between 1000 ft and ½ mi.
A subsurface mine	Greater than 5 mi.
A (non-karst) unstable area	Greater than 5 mi.
Categorized risk of this well / site being in a karst geology	Low
A 100-year floodplain	Greater than 5 mi.
Did the release impact areas not on an exploration, development, production, or storage site?	No

### Receptors

Tetra Tech identified no watercourses, sinkholes, residences, schools, hospitals, institutions, churches, springs, private domestic water wells, playa lakes, wetlands, incorporated municipal boundaries, subsurface mines, or floodplains within the distances specified in 19.15.29 New Mexico Administrative Code (NMAC). According to the NMOCD Oil and Gas Map online, the Site is in an area of low karst potential.

### Depth to Groundwater

According to the New Mexico Office of State Engineers' (NMOSE) Reporting System, seven (7) water well records exist within ½ miles of the Site. Based on available information from the NMOSE, the shallowest depth to groundwater is estimated to be 50 feet below ground surface (bags) at the Site; however, available NMOSE groundwater data is greater than 25 years old.

### Soils

According to the United States Department of Agriculture (USDA) Natural Resources Conservation Service (NRCS), the Site is mapped as Kimbrough-Lea Complex, dry, 0 to 3 percent slopes.

- Gravelly Loam from 0 to 3 inches;
- Loam from 3 to 10 inches; and
- Cemented Material from 10 to 80 inches.

### REGULATORY FRAMEWORK

Based upon the release footprint location and in accordance with Subsection E of 19.15.29.12 NMAC, per 19.15.29.11 NMAC, the site characterization data was used to determine recommended remedial action levels (RRALs) for Benzene, Toluene, Ethylbenzene, and Xylenes (BTEX), Total Petroleum Hydrocarbons (TPH), and chloride in soil.

Site Assessment Report and Closure Request  
Maverick Permian, LLC  
East Vacuum (GSA) Unit #006  
Incident ID# nSAP0335728707

August 29, 2024

Based on the proven depth to water and distances to potential receptors, and in accordance with Table I of 19.15.29.12 NMAC, the following remediation RRALs for the Site are the default Reclamation Requirements for groundwater that cannot be sufficiently proven to be greater than 50 feet bgs:

#### Reclamation Requirements

Constituent	Remediation RRAL
Chloride	600 mg/kg
TPH (GRO+DRO+ORO)	100 mg/kg
BTEX	50 mg/kg
Benzene	10 mg/kg

## SITE ASSESSMENT

### Historic Aerial Review

Tetra Tech reviewed the site's available Google Earth historical aerial images, from before the recorded release date to the most currently available images, including images from 1996, 2002, 2005, 2009, 2011, 2012, 2014, 2017, 2017, 2019, and 2023.

The 2002 aerial image taken before the release shows the well pad with an apparent reserve pit scar off of the north side of the well pad. Bare areas of read-brown soil are visible along the flowlines approximately 250 feet to the west and 350 feet to the east-northeast of the release point of record. The subsequent 2005 aerial image taken after the release date does not show any features indicative of a release or remediation. A bare area along flowlines approximately 300 feet southeast of the release point on the east side of the lease road appears barer than the previous image, however, this correlates with unvegetated areas from earlier aerial images.

In 2009, a large area to the site's southwest was remediated. This location does appear to be related to available Incident IDs in the NMOCD ePermitting database or the NMOCD Oil and Gas Map and does not appear to coincide with incident nSAP0335728707. The apparently remediated area appears to have undergone revegetation as evidenced in subsequent aerial images. Aerial images did not show evidence of the nSAP0335728707 release on or surrounding the well pad. **Attachment 2** provides the reviewed historical aerial images of the Site.

### Sampling Notification

Based on the historical aerial review, the release age, and the initial C-141 release narrative, Maverick believes that the release Site may meet remediation closure standards during delineation activities and desires to use the delineation samples for remediation closure.

The New Mexico Energy, minerals, and Natural Resources Department (EMNRD) Notice: *Process Updates Re: Submission of Form C-141 Release Notification and Corrective Actions*, dated December 1, 2023, states the below under the Frequently Asked Questions VIII. Remediation Closure Sampling Notice & Liner Inspection Notices:

*"If a responsible party determines the release site may meet remediation closure standards during delineation activities and wish to use those samples for remediation closure, the responsible party must provide proper two (2) business day notice to the OCD pursuant to 19.15.29.12 NMAC."*

Site Assessment Report and Closure Request  
Maverick Permian, LLC  
East Vacuum (GSA) Unit #006  
Incident ID# nSAP0335728707

August 29, 2024

Therefore, on June 13, 2024, Tetra Tech submitted the Assessment Sampling C-141N Notification of Sampling Application to the NMOCD via permitting for sampling on June 15, 2024.

## Site Assessment Sampling Plan

To assess the historical incident at the Site, where no visible evidence in desktop aerial reviews or site inspections was evident associated with the incident, Tetra Tech developed a sampling plan to cover an 800-square-foot area around the release coordinates, including four (4) sampling locations with two soil samples collected from each location. The four sample locations were selected to ensure each sample represented a 200-square-foot area surrounding the reported release location at the given sampling depth.

## Site Assessment Sampling

On June 15, 2024, Tetra Tech personnel mobilized to the Site to conduct soil sampling to delineate the release extent and confirm the efficacy of the reported remediation activities conducted during the initial response. A total of 4 hand auger borings were installed to determine if impacts at the reported release location above Reclamation Requirements are present. Hand auger borings (BH-1 through BH-4) were installed at and surrounding the reported release location and advanced to depths of 2.5-feet bgs where hand auger refusal was encountered. Assessment sampling locations and depths were selected to confirm whether impacts at or near the reported release location are present. Soil Assessment boring locations are detailed in **Table 1** and depicted in **Figure 2**. Photographs collected during the Site assessment sampling are provided in **Attachment 3**.

Recently, Tetra Tech was advised that the NMOCD will require sample collection times to be documented on chain-of-custody documentation. Tetra Tech received this feedback from the NMOCD for the first time on August 5, 2024. Tetra Tech conducted this sampling before receiving feedback regarding sample time documentation, and therefore, sample times have not been recorded for submitted samples.

## Site Assessment Sampling Results

**Table 2** summarizes the results from the June 15, 2024, soil sampling event screened against Reclamation Requirements. The laboratory reported concentrations of BTEX, TPH, and chloride less than the Reclamation Requirements in samples BH-1, BH-2, BH-3, and BH-4. **Attachment 4** includes the laboratory analytical data package including chain-of-custody documentation.

Site Assessment Report and Closure Request  
Maverick Permian, LLC  
East Vacuum (GSA) Unit #006  
Incident ID# nSAP0335728707

August 29, 2024

## CONCLUSION

Based on the historical review and Site Assessment sampling, no BTEX, TPH, or chloride impacts from the historic release were identified at the Site. Based on the published soil profile identifying shallow low transmissivity lithified material encountered by Tetra Tech at approximately 2.5 feet bgs, it is unlikely that deeper impacts would be present that would not be present within the shallower higher permeability material at the Site. Therefore, No Site remediation is required, and Maverick requests closure of Incident nSAP0335728707. Reclamation and revegetation of the well pad will be conducted at the end of the life of the East Vacuum (GSA) Unit #006 well is complete. If you have any questions concerning the Site's remediation activities, please email Charles Terhune at [Chuck.Terhune@tetrattech.com](mailto:Chuck.Terhune@tetrattech.com) or by phone at (832) 252-2093.

Sincerely,



Chris Straub  
Project Manager  
Tetra Tech, Inc.



Charles H. Terhune IV, P.G.  
Program Manager  
Tetra Tech, Inc.

cc: Bryce Wagoner, Maverick Permian, LLC  
New Mexico State Land Office

Site Assessment Report and Closure Request  
Maverick Permian, LLC  
East Vacuum (GSA) Unit #006  
Incident ID# nSAP0335728707

August 29, 2024

## LIST OF ATTACHMENTS

### Figures

Figure 1 – Site Location Topographic Map

Figure 2 – Site Assessment Locations and Reported Release Location Map

### Tables

Table 1 – Soil Assessment Locations

Table 2 – Summary of Analytical Results – Soil Assessment Sampling

### Attachments

Attachment 1 – Site Characterization Data

Attachment 2 – Historical Aerial Images

Attachment 3 – Photographic Documentation

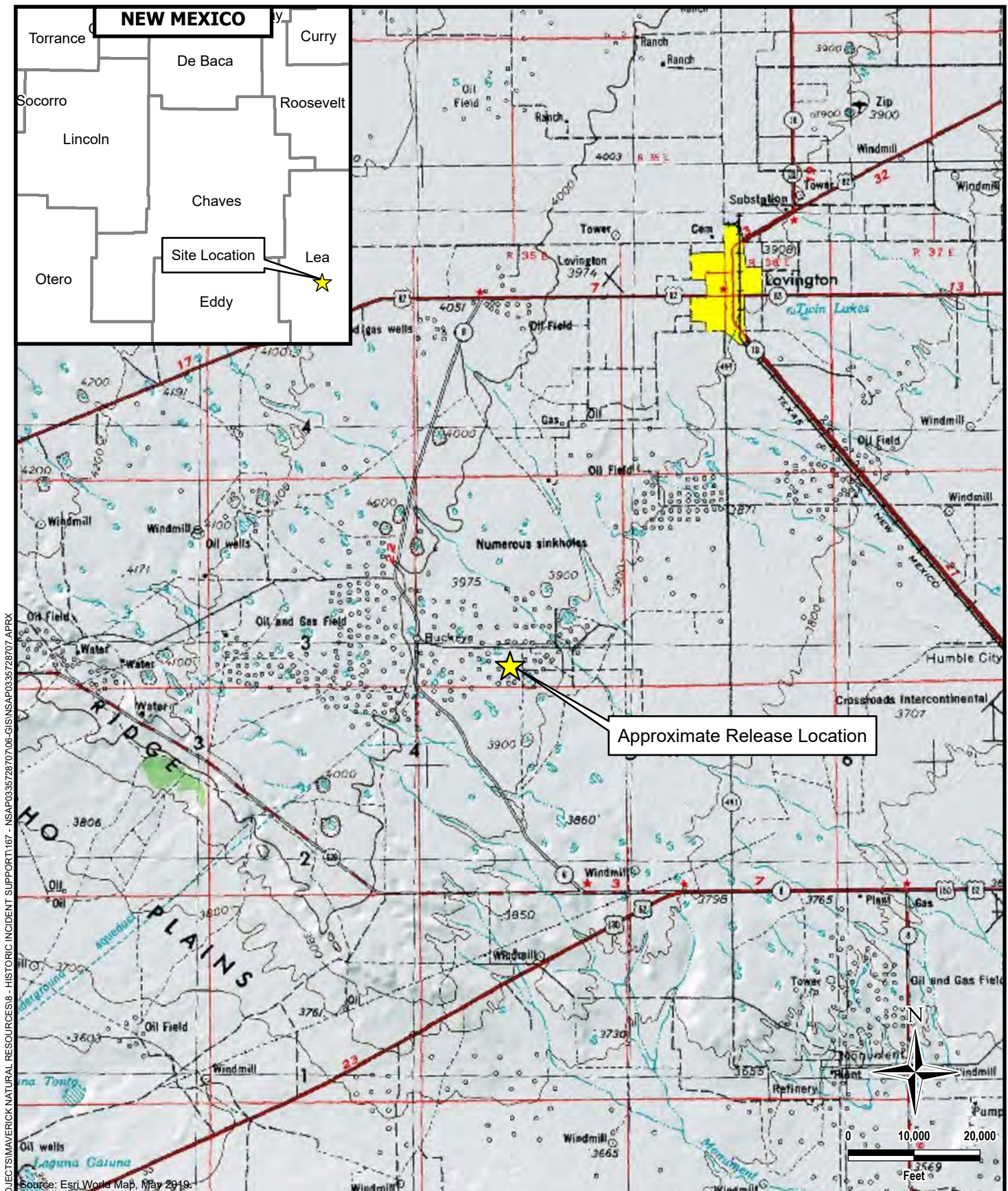
Attachment 4 – Laboratory Analytical Reports

Site Assessment Report and Closure Request  
Maverick Permian, LLC  
East Vacuum (GSA) Unit #006  
Incident ID# nSAP0335728707

August 29, 2024

## FIGURES





DOCUMENT PATH: S:\NEW PROJECTS\MAVERICK NATURAL RESOURCES\8 - HISTORIC INCIDENT SUPPORT\167 - NSAP0335728707\06-GIS\NSAP0335728707.APRX

**MAVERICK**  
NATURAL RESOURCES



## OVERVIEW MAP

nSAP0335728707  
EAST VACUUM (GSA) UNIT #006  
(32.791302°, -103.458435°)  
LEA COUNTY, NEW MEXICO

Figure No.

1

PROJECT NO.: 212C-MD-03514

DATE: 7/24/2024

DESIGNED BY: ACP



DOCUMENT PATH: S:\NEW PROJECTS\MAVERICK NATURAL RESOURCES\8 - HISTORIC INCIDENT SUPPORT\167 - NSAP0335728707\06-GIS\NSAP0335728707.APRX



<p><b>MAVERICK</b> NATURAL RESOURCES</p> <p><b>TETRA TECH</b></p>	<p><b>SITE DETAIL MAP</b></p> <p>nSAP0335728707</p> <p>EAST VACUUM (GSA) UNIT #006</p> <p>(32.791302°, -103.458435) LEA COUNTY, NEW MEXICO</p>	<p>Figure No. <b>2</b></p> <p>PROJECT NO.: 212C-MD-03514</p> <p>DATE: 7/25/2024</p> <p>DESIGNED BY: ACP</p>
---	--	---

Site Assessment Report and Closure Request  
Maverick Permian, LLC  
East Vacuum (GSA) Unit #006  
Incident ID# nSAP0335728707

August 29, 2024

## TABLES



**TABLE 1**  
**SOIL ASSESSMENT LOCATIONS**  
**INCIDENT ID NSAP0335728707**  
**MAVERICK PERMIAN, LLC**  
**EAST VACUUM (GSA) UNIT #006**  
**LEA COUNTY, NEW MEXICO**

Boring ID	Date	Latitude	Longitude
BH-01	6/15/2024	32.791293	-103.458429
BH-02	6/15/2024	32.791323	-103.458428
BH-03	6/15/2024	32.791276	-103.458455
BH-04	6/15/2024	32.791276	-103.458404

TABLE 2  
SUMMARY OF ANALYTICAL RESULTS  
SOIL ASSESSMENT SAMPLING - INCIDENT ID SAP0335728707  
MAVERICK PERMIAN, LLC  
EAST VACUUM (GSA) UNIT #006  
LEA COUNTY, NEW MEXICO

Sample ID	Sample Date	Sample Depth	Chloride <sup>1</sup>		BTEX <sup>2</sup>										TPH <sup>3</sup>							
					Benzene		Toluene		Ethylbenzene		Total Xylenes		Total BTEX		GRO		DRO		EXT DRO		Total TPH	
												C <sub>6</sub> - C <sub>10</sub>		> C <sub>10</sub> - C <sub>28</sub>		> C <sub>28</sub> - C <sub>36</sub>		(GRO+DRO+EXT DRO)				
		feet bgs	mg/kg	Q	mg/kg	Q	mg/kg	Q	mg/kg	Q	mg/kg	Q	mg/kg	Q	mg/kg	Q	mg/kg	Q	mg/kg	Q	mg/kg	
Reclamation Requirements (19.15.29 NMAC)			600		10								50		10						100	
BH - 1 (0-0.5')	6/15/2024	0 - 0.5	32		<0.050		<0.050		<0.050		<0.150		<0.300		<10.0		<10.0		<10.0		<30	
BH - 1 (2-2.5')	6/15/2024	2 - 2.5	<16		<0.050		<0.050		<0.050		<0.150		<0.300		<10.0		<10.0		<10.0		<30	
BH - 2 (0-0.5')	6/15/2024	0 - 0.5	80		<0.050		<0.050		<0.050		<0.150		<0.300		<10.0		<10.0		<10.0		<30	
BH - 2 (2-2.5')	6/15/2024	2 - 2.5	<16		<0.050		<0.050		<0.050		<0.150		<0.300		<10.0		<10.0		<10.0		<30	
BH - 3 (0-0.5')	6/15/2024	0 - 0.5	80		<0.050		<0.050		<0.050		<0.150		<0.300		<10.0		<10.0		<10.0		<30	
BH - 3 (2-2.5')	6/15/2024	2 - 2.5	<16		<0.050		<0.050		<0.050		<0.150		<0.300		<10.0		<10.0		<10.0		<30	
BH - 4 (0-0.5')	6/15/2024	0 - 0.5	64		<0.050		<0.050		<0.050		<0.150		<0.300		<10.0		<10.0		<10.0		<30	
BH - 4 (2-2.5')	6/15/2024	2 - 2.5	48		<0.050		<0.050		<0.050		<0.150		<0.300		<10.0		<10.0		<10.0		<30	

## NOTES:

bgs: Below ground surface

mg/kg: Milligrams per kilogram

TPH: Total Petroleum Hydrocarbons

GRO: Gasoline Range Organics

DRO: Diesel Range Organics

ORO: Oil Range Organics

1: Method SM4500Cl-B

2: Method 8021B

3: Method 8015M

**Bold and highlighted values indicate exceedance of Reclamation Requirements (19.15.29 NMAC).**

Site Assessment Report and Closure Request  
Maverick Permian, LLC  
East Vacuum (GSA) Unit #006  
Incident ID# nSAP0335728707

August 29, 2024

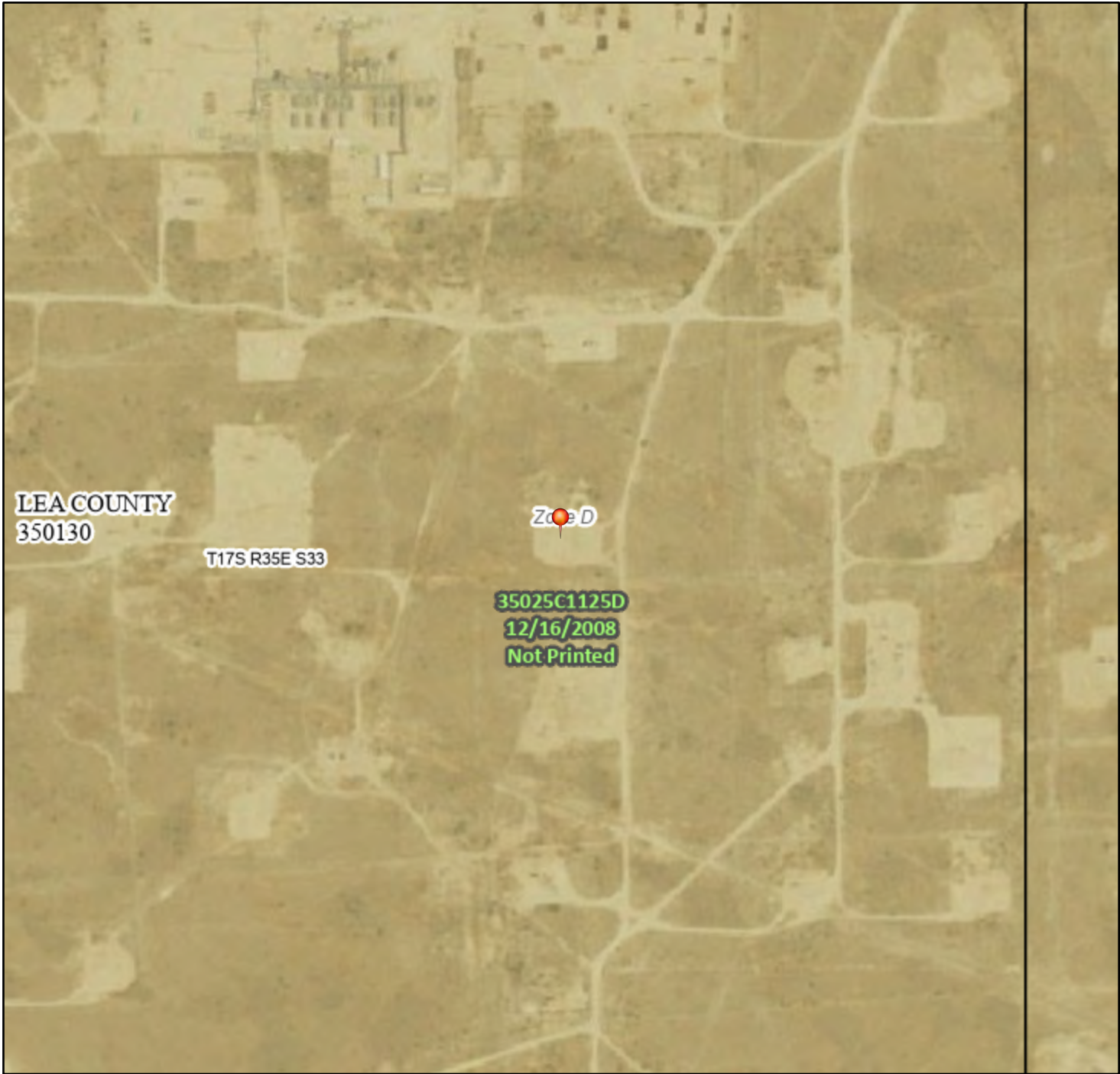
## **ATTACHMENT 1 – SITE CHARACTERIZATION DATA**



# National Flood Hazard Layer FIRMette



103°27'49"W 32°47'44"N



0 250 500 1,000 1,500 2,000 Feet

1:6,000

103°27'12"W 32°47'14"N

Released to Imaging: 10/3/2024 9:25:43 AM

Basemap Imagery Source: USGS National Map 2023

## Legend

SEE FIS REPORT FOR DETAILED LEGEND AND INDEX MAP FOR FIRM PANEL LAYOUT

SPECIAL FLOOD HAZARD AREAS		Without Base Flood Elevation (BFE) Zone A, V, A99
		With BFE or Depth Zone AE, AO, AH, VE, AR
		Regulatory Floodway
OTHER AREAS OF FLOOD HAZARD		0.2% Annual Chance Flood Hazard, Areas of 1% annual chance flood with average depth less than one foot or with drainage areas of less than one square mile Zone X
		Future Conditions 1% Annual Chance Flood Hazard Zone X
		Area with Reduced Flood Risk due to Levee. See Notes. Zone X
		Area with Flood Risk due to Levee Zone D
OTHER AREAS		NO SCREEN Area of Minimal Flood Hazard Zone X
		Effective LOMRs
		Area of Undetermined Flood Hazard Zone D
GENERAL STRUCTURES		Channel, Culvert, or Storm Sewer
		Levee, Dike, or Floodwall
OTHER FEATURES		20.2 Cross Sections with 1% Annual Chance Water Surface Elevation
		17.5 Cross Sections with 1% Annual Chance Water Surface Elevation
		Coastal Transect
		Base Flood Elevation Line (BFE)
		Limit of Study
		Jurisdiction Boundary
		Coastal Transect Baseline
		Profile Baseline
MAP PANELS		Digital Data Available
		No Digital Data Available
		Unmapped



The pin displayed on the map is an approximate point selected by the user and does not represent an authoritative property location.

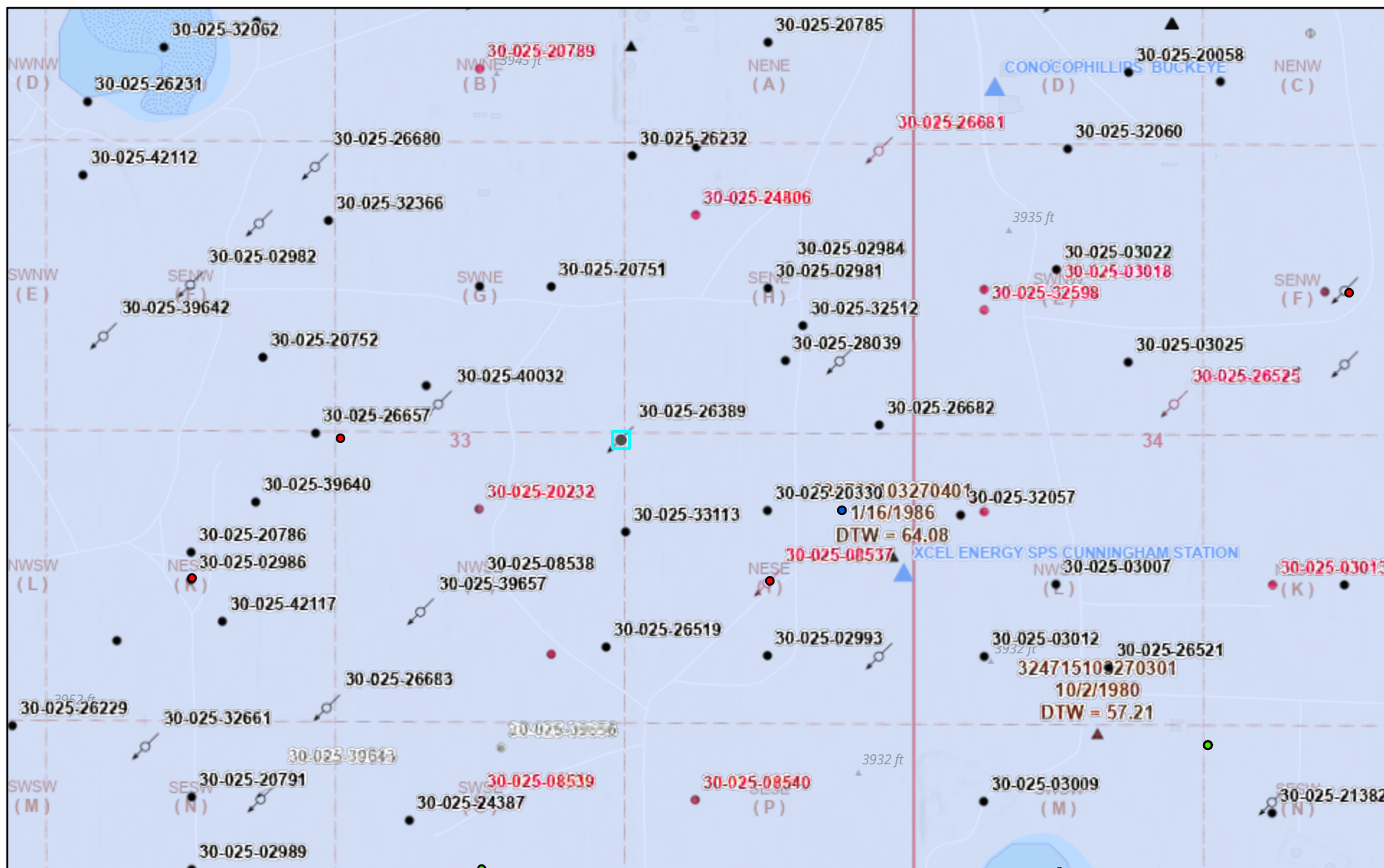


This map complies with FEMA's standards for the use of digital flood maps if it is not void as described below. The basemap shown complies with FEMA's basemap accuracy standards

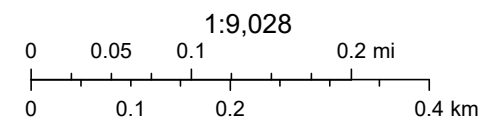
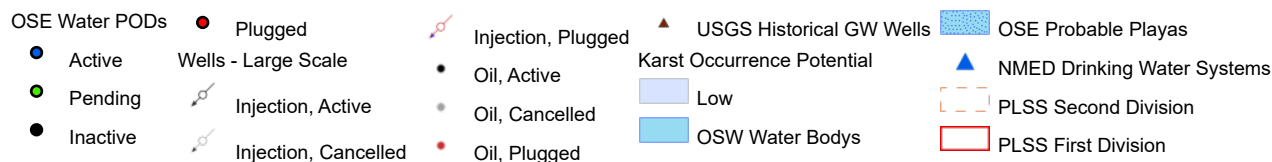
The flood hazard information is derived directly from the authoritative NFHL web services provided by FEMA. This map was exported on 7/3/2024 at 10:45 AM and does not reflect changes or amendments subsequent to this date and time. The NFHL and effective information may change or become superseded by new data over time.

This map image is void if the one or more of the following map elements do not appear: basemap imagery, flood zone labels, legend, scale bar, map creation date, community identifiers, FIRM panel number, and FIRM effective date. Map images for unmapped and unmodernized areas cannot be used for regulatory purposes.

## OCD Well Locations



7/3/2024, 9:28:33 AM



BLM, OCD, New Mexico Tech, Esri, NASA, NGA, USGS, FEMA, Oil Conservation Division of the New Mexico Energy, Minerals and Natural

New Mexico Oil Conservation Division

NM OCD Oil and Gas Map. <http://nm-ernrd.maps.arcgis.com/apps/webappviewer/index.html?id=4d017f2306164de29fd2fb9f8f35ca75>: New Mexico Oil Conservation Division



# New Mexico Office of the State Engineer

## Water Column/Average Depth to Water

(A CLW##### in the POD suffix indicates the POD has been replaced & no longer serves a water right file.)

(R=POD has been replaced, O=orphaned, C=the file is closed)

(quarters are 1=NW 2=NE 3=SW 4=SE)

(quarters are smallest to largest)

(NAD83 UTM in meters)

(In feet)

POD Number	POD Sub-Code	basin	County	Q 64	Q 16	Q 4	Sec	Tws	Rng	X	Y	Distance	Depth Well	Depth Water	Water Column
<a href="#">L 04633</a>	L	LE		2	4	33	17S	35E		644564	3629010*	216	130	65	65
<a href="#">L 05834</a>	R	L	LE	2	2	4	33	17S	35E	644663	3629109*	307	160	70	90
<a href="#">L 05834 POD5</a>	L	LE		2	2	4	33	17S	35E	644663	3629109*	307	234	65	169
<a href="#">L 04578</a>	L	LE					33	17S	35E	643962	3629198*	414	126	60	66
<a href="#">L 04880</a>	L	LE		2	3	33	17S	35E		643757	3629002*	604	145	90	55
<a href="#">L 04586</a>	L	LE		3	3	4	33	17S	35E	644065	3628502*	642	125	50	75
<a href="#">L 04618</a>	L	LE		3	3	34	17S	35E		644973	3628611*	770	128	55	73

Average Depth to Water: **65 feet**

Minimum Depth: **50 feet**

Maximum Depth: **90 feet**

Record Count: 7

### UTMNAD83 Radius Search (in meters):

**Easting (X):** 644357.629

**Northing (Y):** 3629074.134

**Radius:** 800

\*UTM location was derived from PLSS - see Help

The data is furnished by the NMOSE/ISC and is accepted by the recipient with the expressed understanding that the OSE/ISC make no warranties, expressed or implied, concerning the accuracy, completeness, reliability, usability, or suitability for any particular purpose of the data.

7/3/24 8:33 AM

Page 1 of 1

WATER COLUMN/ AVERAGE  
DEPTH TO WATER

Map Unit Description: Kimbrough-Lea complex, dry, 0 to 3 percent slopes---Lea County, New Mexico

---

## Lea County, New Mexico

### KU—Kimbrough-Lea complex, dry, 0 to 3 percent slopes

#### Map Unit Setting

*National map unit symbol:* 2tw46

*Elevation:* 2,500 to 4,800 feet

*Mean annual precipitation:* 14 to 16 inches

*Mean annual air temperature:* 57 to 63 degrees F

*Frost-free period:* 180 to 220 days

*Farmland classification:* Not prime farmland

#### Map Unit Composition

*Kimbrough and similar soils:* 45 percent

*Lea and similar soils:* 25 percent

*Minor components:* 30 percent

*Estimates are based on observations, descriptions, and transects of the mapunit.*

#### Description of Kimbrough

##### Setting

*Landform:* Playa rims, plains

*Down-slope shape:* Convex, linear

*Across-slope shape:* Concave, linear

*Parent material:* Loamy eolian deposits derived from sedimentary rock

##### Typical profile

*A - 0 to 3 inches:* gravelly loam

*Bw - 3 to 10 inches:* loam

*Bkkm1 - 10 to 16 inches:* cemented material

*Bkkm2 - 16 to 80 inches:* cemented material

##### Properties and qualities

*Slope:* 0 to 3 percent

*Depth to restrictive feature:* 4 to 18 inches to petrocalcic

*Drainage class:* Well drained

*Runoff class:* Very high

*Capacity of the most limiting layer to transmit water (Ksat):* Very low to moderately low (0.00 to 0.01 in/hr)

*Depth to water table:* More than 80 inches

*Frequency of flooding:* None

*Frequency of ponding:* None

*Calcium carbonate, maximum content:* 95 percent

*Maximum salinity:* Nonsaline to very slightly saline (0.0 to 2.0 mmhos/cm)

*Sodium adsorption ratio, maximum:* 1.0

*Available water supply, 0 to 60 inches:* Very low (about 1.4 inches)

##### Interpretive groups

*Land capability classification (irrigated):* None specified



Map Unit Description: Kimbrough-Lea complex, dry, 0 to 3 percent slopes---Lea County, New Mexico

---

*Land capability classification (nonirrigated): 7s*  
*Hydrologic Soil Group: D*  
*Ecological site: R077DY049TX - Very Shallow 12-17" PZ*  
*Hydric soil rating: No*

## Description of Lea

### Setting

*Landform: Plains*  
*Down-slope shape: Convex*  
*Across-slope shape: Linear*  
*Parent material: Calcareous, loamy eolian deposits from the blackwater draw formation of pleistocene age over indurated caliche of pliocene age*

### Typical profile

*A - 0 to 10 inches: loam*  
*Bk - 10 to 18 inches: loam*  
*Bkk - 18 to 26 inches: gravelly fine sandy loam*  
*Bkkm - 26 to 80 inches: cemented material*

### Properties and qualities

*Slope: 0 to 3 percent*  
*Depth to restrictive feature: 22 to 30 inches to petrocalcic*  
*Drainage class: Well drained*  
*Runoff class: High*  
*Capacity of the most limiting layer to transmit water (Ksat): Very low to moderately low (0.00 to 0.06 in/hr)*  
*Depth to water table: More than 80 inches*  
*Frequency of flooding: None*  
*Frequency of ponding: None*  
*Calcium carbonate, maximum content: 90 percent*  
*Maximum salinity: Nonsaline to very slightly saline (0.0 to 2.0 mmhos/cm)*  
*Sodium adsorption ratio, maximum: 3.0*  
*Available water supply, 0 to 60 inches: Very low (about 2.9 inches)*

### Interpretive groups

*Land capability classification (irrigated): None specified*  
*Land capability classification (nonirrigated): 7s*  
*Hydrologic Soil Group: D*  
*Ecological site: R077DY047TX - Sandy Loam 12-17" PZ*  
*Hydric soil rating: No*

## Minor Components

### Kenhill

*Percent of map unit: 12 percent*  
*Landform: Plains*  
*Down-slope shape: Linear*  
*Across-slope shape: Linear*  
*Ecological site: R077DY038TX - Clay Loam 12-17" PZ*  
*Hydric soil rating: No*



Map Unit Description: Kimbrough-Lea complex, dry, 0 to 3 percent slopes---Lea County, New Mexico

---

**Douro**

*Percent of map unit:* 12 percent

*Landform:* Plains

*Down-slope shape:* Linear

*Across-slope shape:* Linear

*Ecological site:* R077DY047TX - Sandy Loam 12-17" PZ

*Other vegetative classification:* Unnamed (G077DH000TX)

*Hydric soil rating:* No

**Spraberry**

*Percent of map unit:* 6 percent

*Landform:* Playa rims, plains

*Down-slope shape:* Convex, linear

*Across-slope shape:* Linear

*Ecological site:* R077DY049TX - Very Shallow 12-17" PZ

*Other vegetative classification:* Unnamed (G077DH000TX)

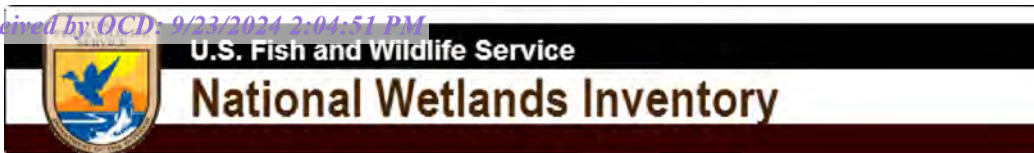
*Hydric soil rating:* No

## Data Source Information

Soil Survey Area: Lea County, New Mexico

Survey Area Data: Version 20, Sep 6, 2023





nSAP0335728707 Wetlands



July 3, 2024

**Wetlands**

- Estuarine and Marine Deepwater
- Estuarine and Marine Wetland

- Freshwater Emergent Wetland
- Freshwater Forested/Shrub Wetland
- Freshwater Pond

- Lake
- Other
- Riverine

This map is for general reference only. The US Fish and Wildlife Service is not responsible for the accuracy or currentness of the base data shown on this map. All wetlands related data should be used in accordance with the layer metadata found on the Wetlands Mapper web site.



Soil Map—Lea County, New Mexico



Natural Resources  
Conservation Service

Web Soil Survey  
National Cooperative Soil Survey

8/26/2024  
Page 1 of 3

## Soil Map—Lea County, New Mexico

## MAP LEGEND

## Area of Interest (AOI)

 Area of Interest (AOI)

## Soils

 Soil Map Unit Polygons

 Soil Map Unit Lines

 Soil Map Unit Points

## Special Point Features



Blowout



Borrow Pit



Clay Spot



Closed Depression



Gravel Pit



Gravelly Spot



Landfill



Lava Flow



Marsh or swamp



Mine or Quarry



Miscellaneous Water



Perennial Water



Rock Outcrop



Saline Spot



Sandy Spot



Severely Eroded Spot



Sinkhole



Slide or Slip



Sodic Spot



Spoil Area



Stony Spot



Very Stony Spot



Wet Spot



Other



Special Line Features

## Water Features



Streams and Canals

## Transportation



Rails



Interstate Highways



US Routes



Major Roads



Local Roads

## Background



Aerial Photography

## MAP INFORMATION

The soil surveys that comprise your AOI were mapped at 1:20,000.

Warning: Soil Map may not be valid at this scale.

Enlargement of maps beyond the scale of mapping can cause misunderstanding of the detail of mapping and accuracy of soil line placement. The maps do not show the small areas of contrasting soils that could have been shown at a more detailed scale.

Please rely on the bar scale on each map sheet for map measurements.

Source of Map: Natural Resources Conservation Service

Web Soil Survey URL:

Coordinate System: Web Mercator (EPSG:3857)

Maps from the Web Soil Survey are based on the Web Mercator projection, which preserves direction and shape but distorts distance and area. A projection that preserves area, such as the Albers equal-area conic projection, should be used if more accurate calculations of distance or area are required.

This product is generated from the USDA-NRCS certified data as of the version date(s) listed below.

Soil Survey Area: Lea County, New Mexico

Survey Area Data: Version 20, Sep 6, 2023

Soil map units are labeled (as space allows) for map scales 1:50,000 or larger.

Date(s) aerial images were photographed: Feb 7, 2020—May 12, 2020

The orthophoto or other base map on which the soil lines were compiled and digitized probably differs from the background imagery displayed on these maps. As a result, some minor shifting of map unit boundaries may be evident.



Map Unit Legend

Map Unit Symbol	Map Unit Name	Acres in AOI	Percent of AOI
KU	Kimbrough-Lea complex, dry, 0 to 3 percent slopes	5.7	100.0%
Totals for Area of Interest		5.7	100.0%



Site Assessment Report and Closure Request  
Maverick Permian, LLC  
East Vacuum (GSA) Unit #006  
Incident ID# nSAP0335728707

August 29, 2024

## **ATTACHMENT 2 – HISTORICAL AERIAL IMAGES**

**nSAP0335728707**

EAST VACUUM (GSA) UNIT #006  
Historical Aerial Image  
1996

**Legend**

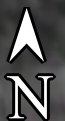
☆ nSAP0335728707 Release Location



nSAP0335728707 Release Location

Google Earth

Image U.S. Geological Survey



300 ft



**nSAP0335728707**

EAST VACUUM (GSA) UNIT #006  
Historical Aerial Image  
2002

**Legend**

☆ nSAP0335728707 Release Location

☆ nSAP0335728707 Release Location

Google Earth

Image © 2024 Maxar Technologies



300 ft



**nSAP0335728707**

EAST VACUUM (GSA) UNIT #006  
Historical Aerial Image  
2005

**Legend**

☆ nSAP0335728707 Release Location

☆ nSAP0335728707 Release Location

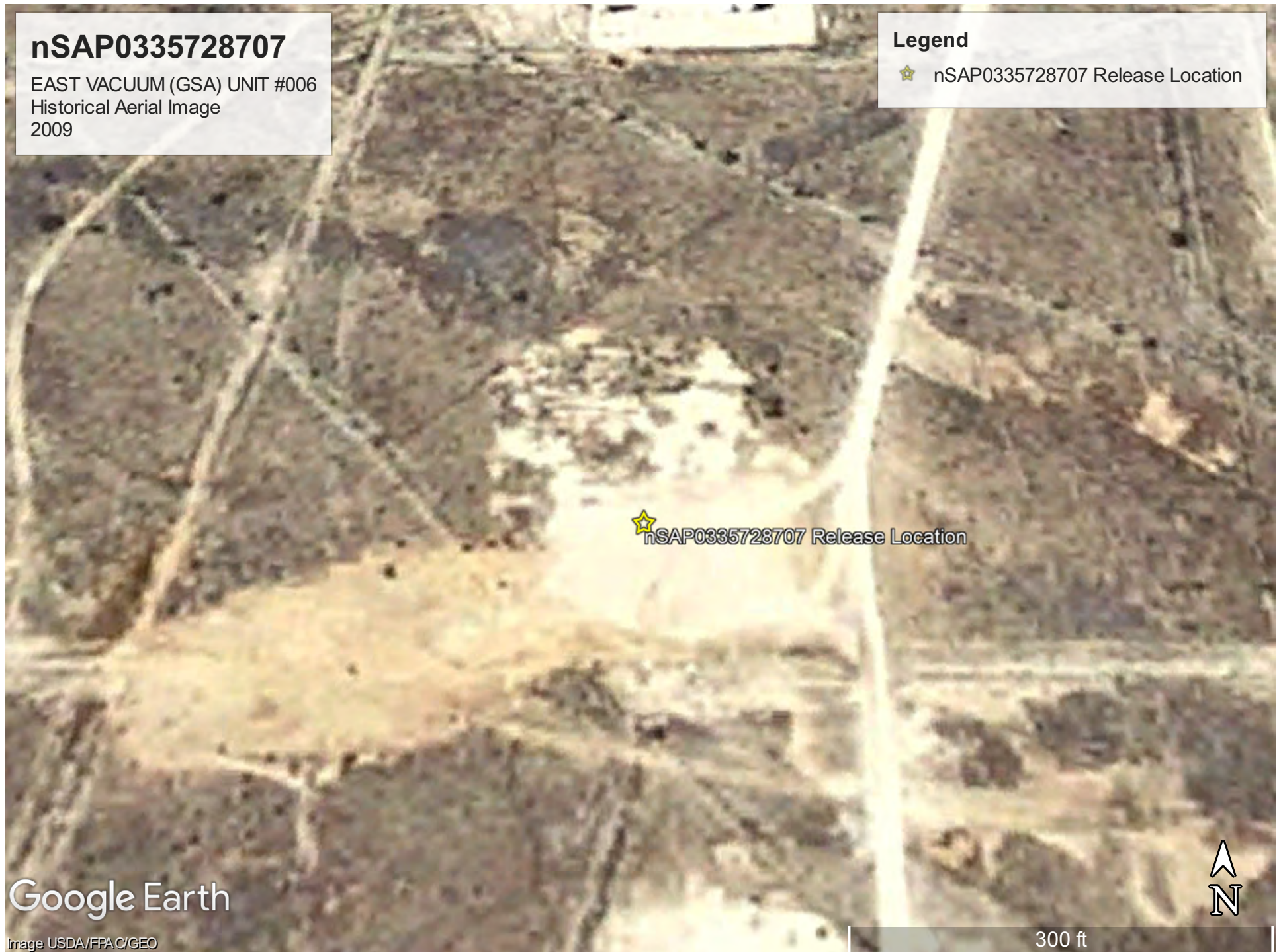
Google Earth

Image NMRGIS



300 ft







**nSAP0335728707**

EAST VACUUM (GSA) UNIT #006  
Historical Aerial Image  
2011

**Legend**

☆ nSAP0335728707 Release Location

☆ nSAP0335728707 Release Location

Google Earth

Image USDA/FPAC/GEO

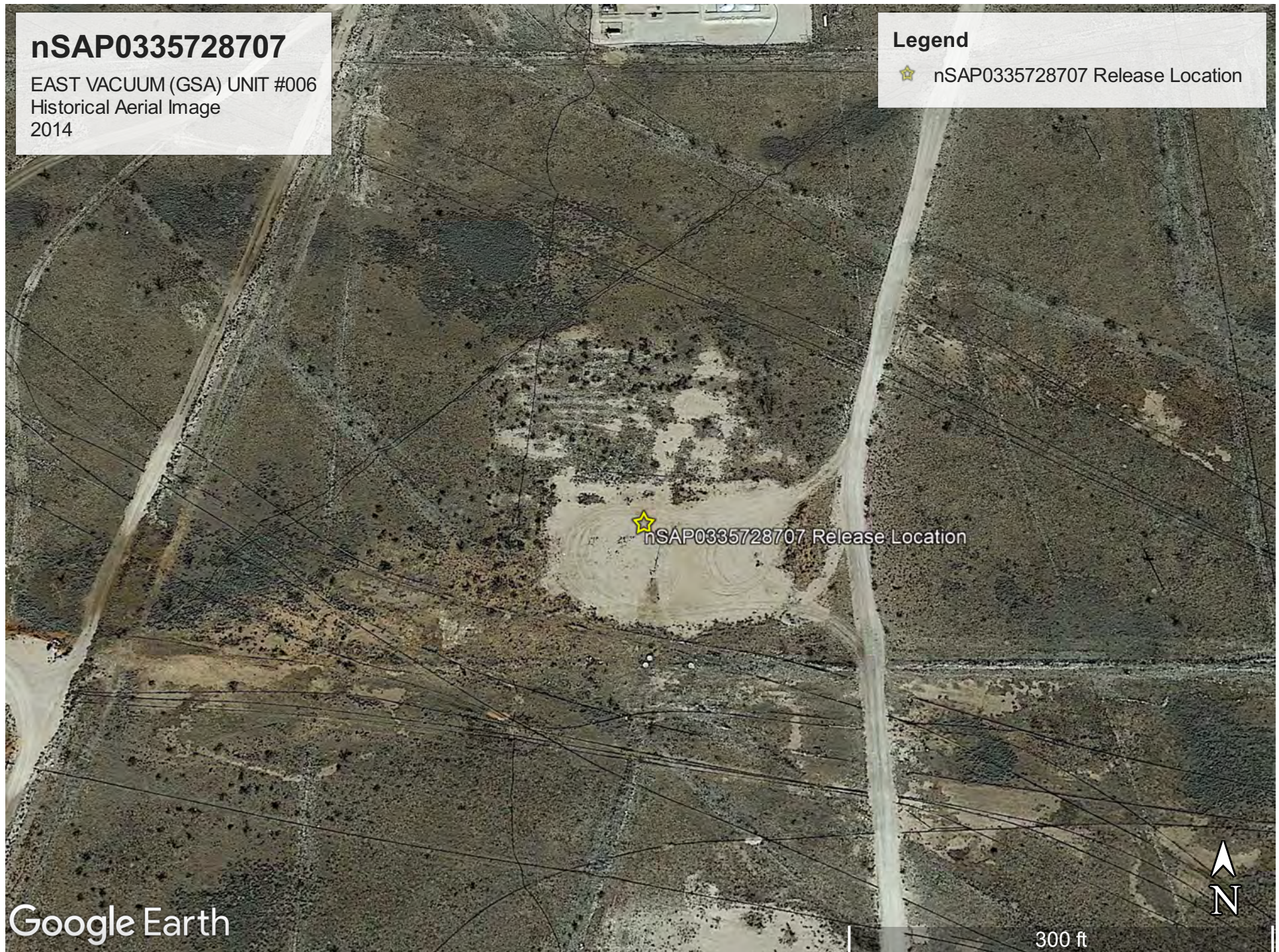


300 ft

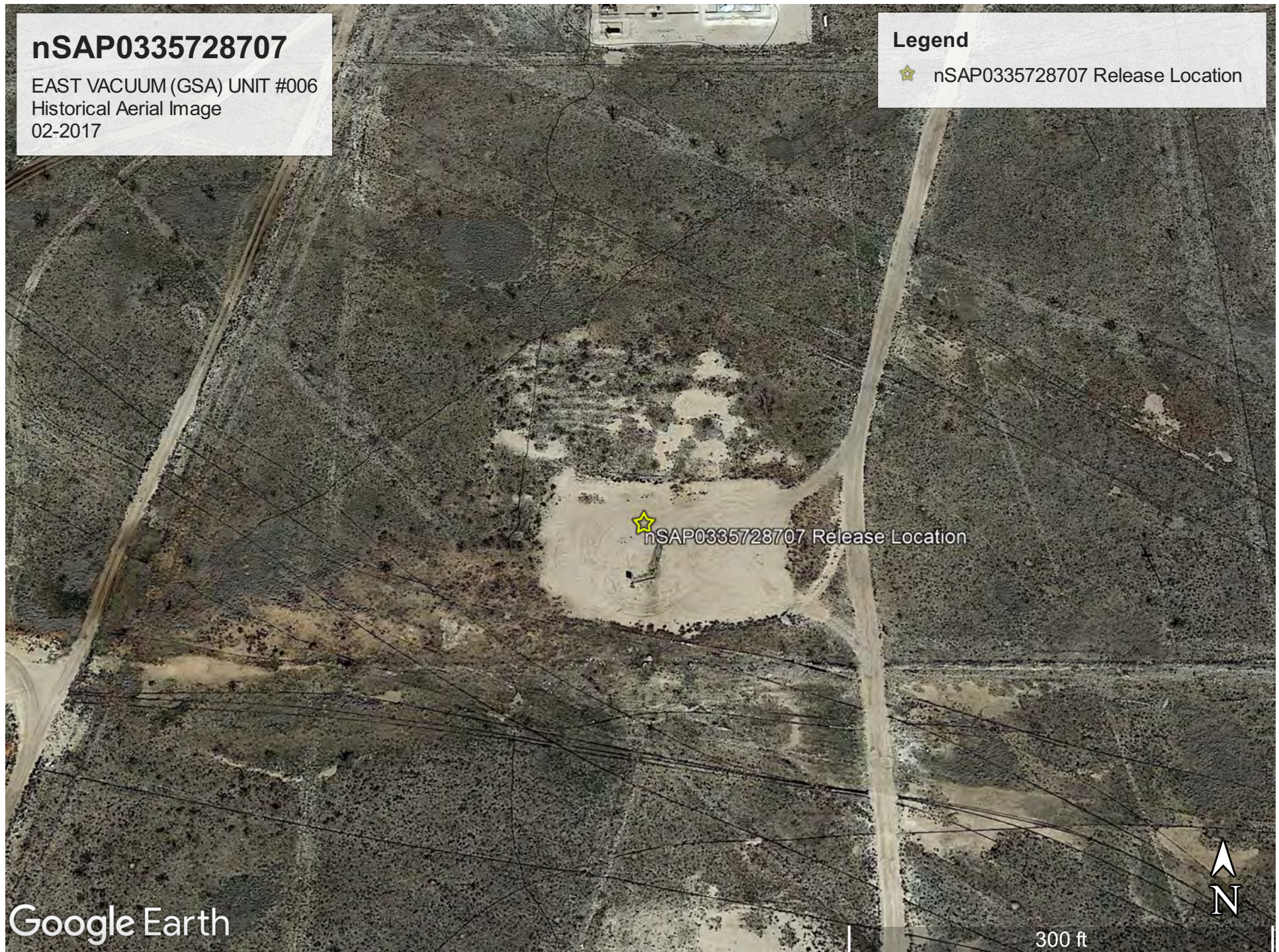




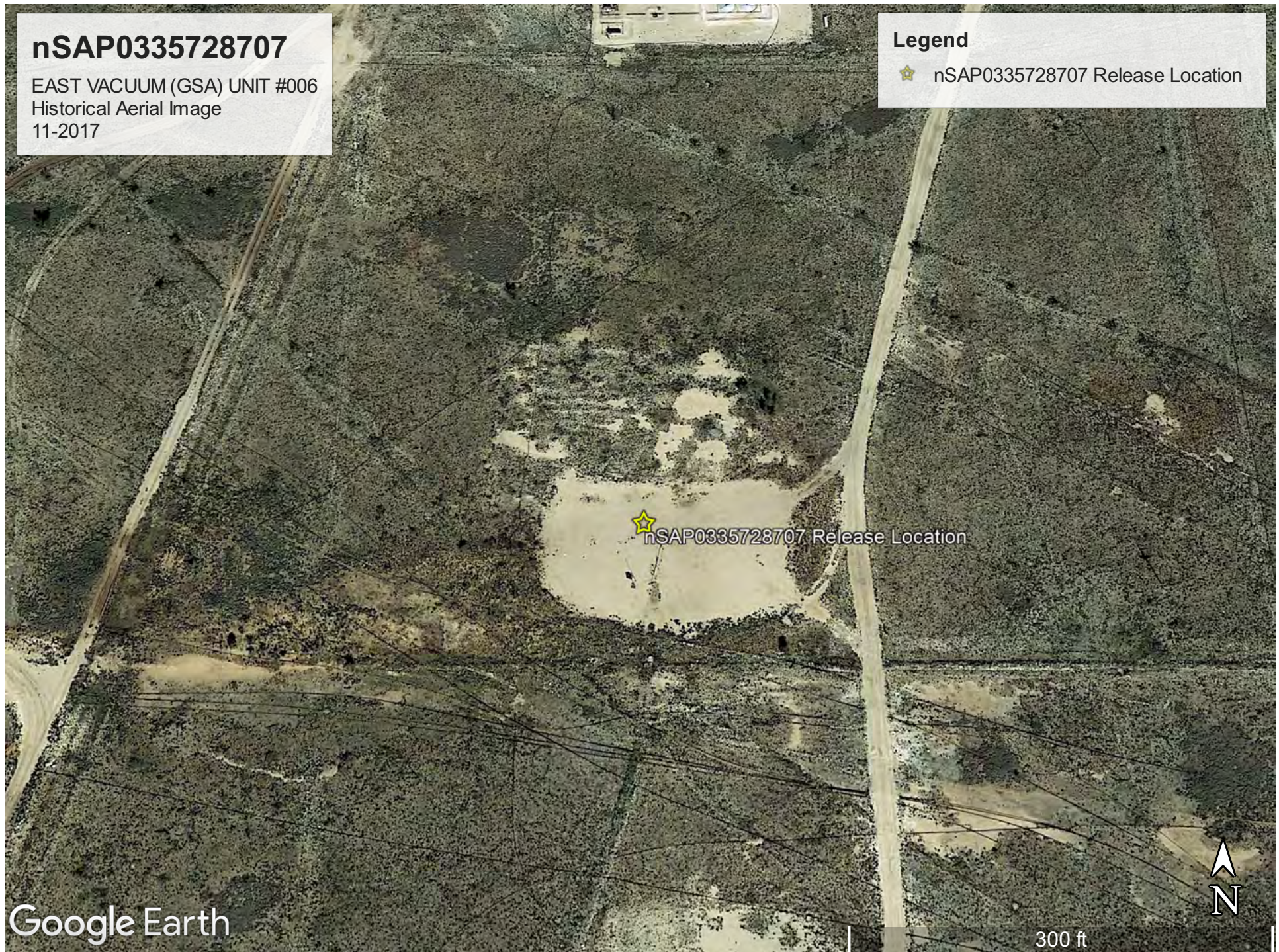




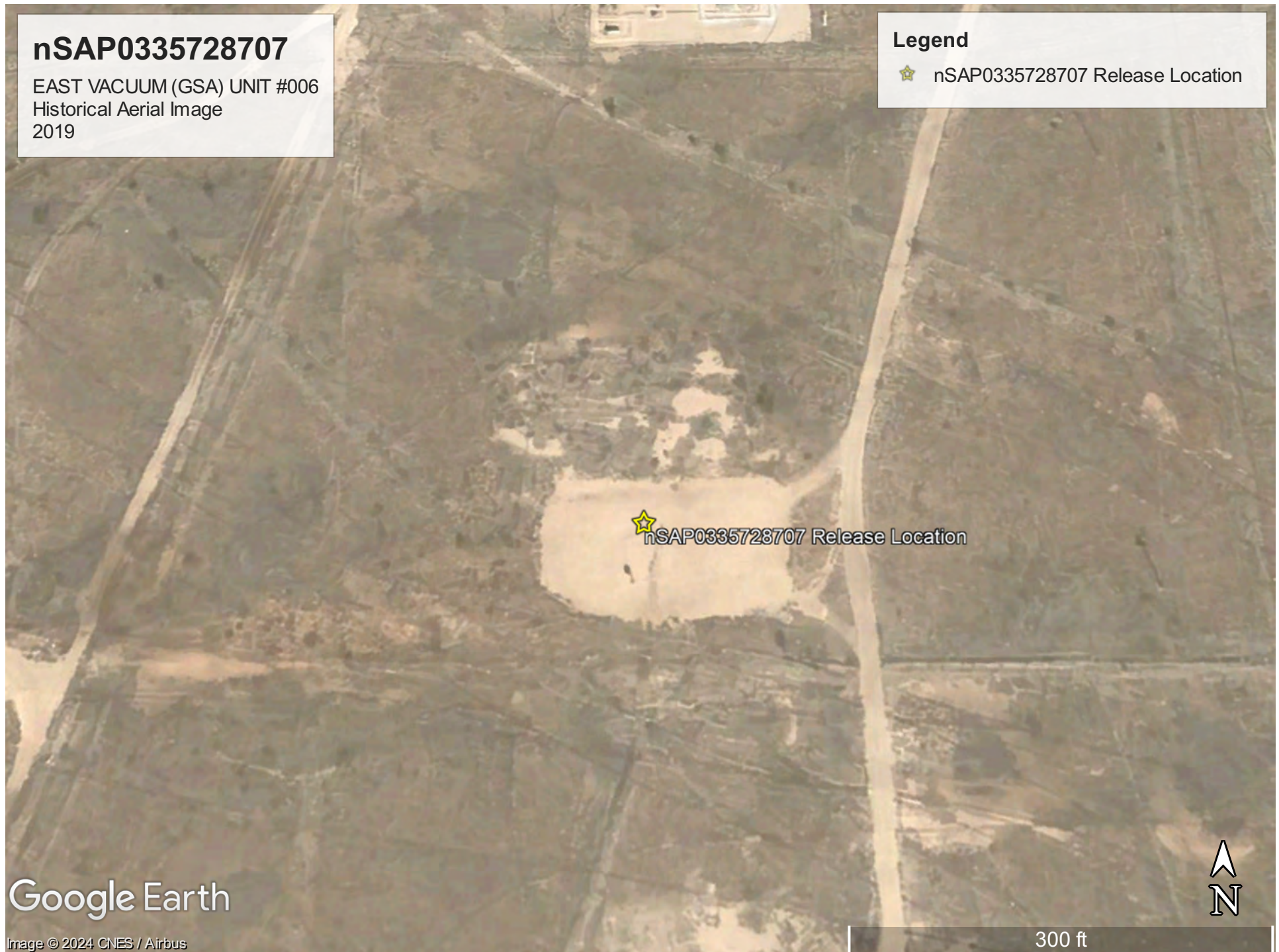




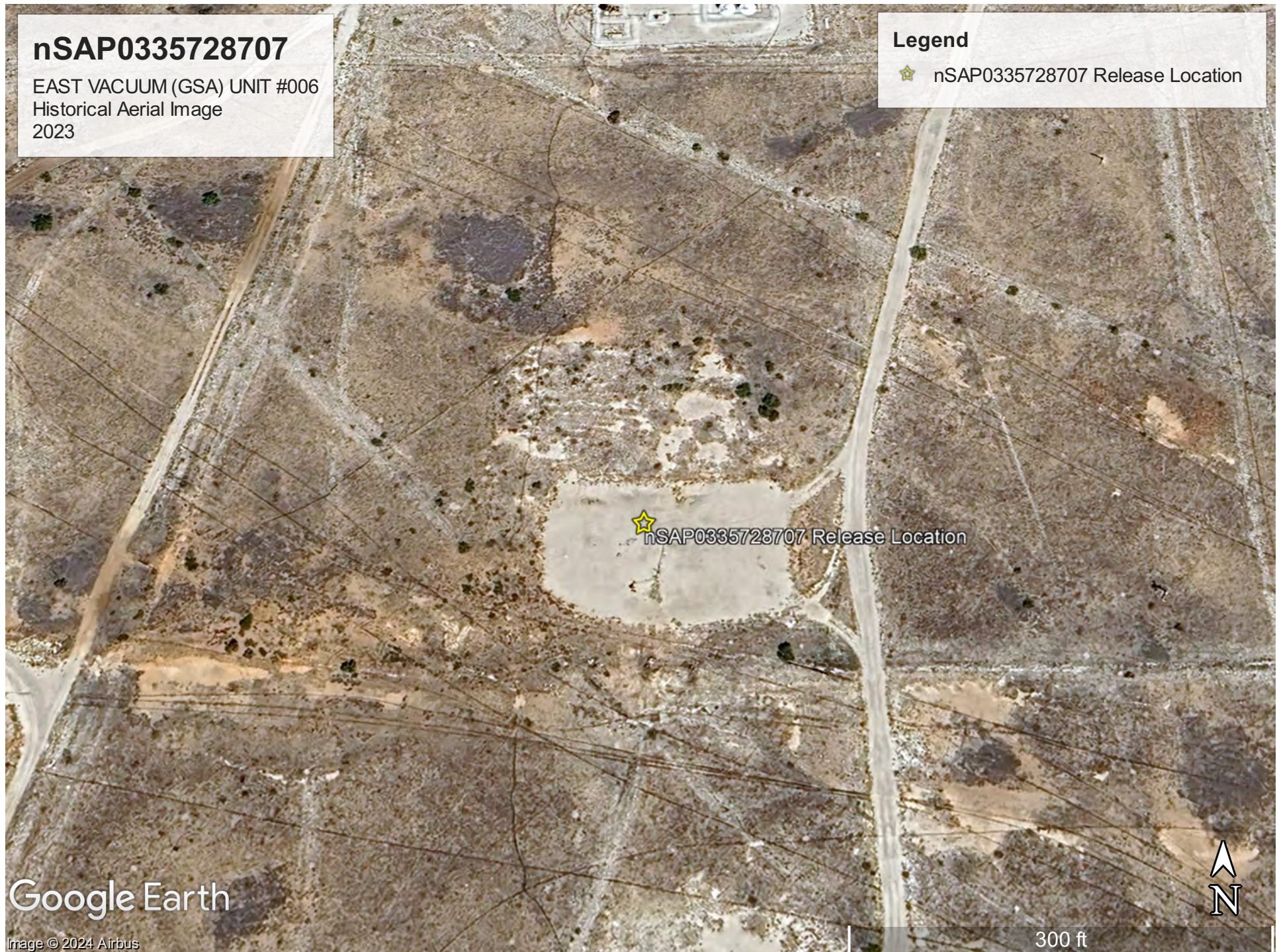














Site Assessment Report and Closure Request  
Maverick Permian, LLC  
East Vacuum (GSA) Unit #006  
Incident ID# nSAP0335728707

August 29, 2024


## **ATTACHMENT 3 – PHOTOGRAPHIC DOCUMENTATION**





☀ 267°W (T) ● 32°48'6"N, 103°28'30"W ±13ft ▲ 3969ft

**EAST VACUUM GRAYBURG-SAN ANDRES UNIT**

**MAVERICK** NATURAL RESOURCES  **Maverick Permian, LLC**  
(432) 309-7440

**TRACT 2913**

**SE SE SEC.29 - T17S-R35 E**

**LEA COUNTY, NEW MEXICO**

**006**

**EAST VACUUM (GSA) UNIT #006**

Maverick Permian  
18 Jun 2024 12:22:35





☀ 345°N (T) ● 32°48'6"N, 103°28'30"W ±13ft ▲ 3969ft



EAST VACUUM (GSA) UNIT #006

Maverick Permian  
18 Jun 2024, 12:22:22



Site Assessment Report and Closure Request  
Maverick Permian, LLC  
East Vacuum (GSA) Unit #006  
Incident ID# nSAP0335728707

August 29, 2024

## **ATTACHMENT 4 – LABORATORY ANALYTICAL DATA**



PHONE (575) 393-2326 ° 101 E. MARLAND ° HOBBS, NM 88240

June 21, 2024

CHUCK TERHUNE

TETRA TECH

901 WEST WALL STREET , STE 100

MIDLAND, TX 79701

RE: EAST VACUUM (GSA) UNIT #006

Enclosed are the results of analyses for samples received by the laboratory on 06/17/24 8:50.

Cardinal Laboratories is accredited through Texas NELAP under certificate number TX-C24-00112. Accreditation applies to drinking water, non-potable water and solid and chemical materials. All accredited analytes are denoted by an asterisk (\*). For a complete list of accredited analytes and matrices visit the TCEQ website at [www.tceq.texas.gov/field/qa/lab\\_accred\\_certif.html](http://www.tceq.texas.gov/field/qa/lab_accred_certif.html).

Cardinal Laboratories is accredited through the State of Colorado Department of Public Health and Environment for:

Method EPA 552.2	Haloacetic Acids (HAA-5)
Method EPA 524.2	Total Trihalomethanes (TTHM)
Method EPA 524.4	Regulated VOCs (V1, V2, V3)

Accreditation applies to public drinking water matrices.

This report meets NELAP requirements and is made up of a cover page, analytical results, and a copy of the original chain-of-custody. If you have any questions concerning this report, please feel free to contact me.

Sincerely,

A handwritten signature in black ink that reads "Celey D. Keene". The signature is written in a cursive, flowing style.

Celey D. Keene

Lab Director/Quality Manager



PHONE (575) 393-2326 ° 101 E. MARLAND ° HOBBS, NM 88240

**Analytical Results For:**

TETRA TECH  
 CHUCK TERHUNE  
 901 WEST WALL STREET , STE 100  
 MIDLAND TX, 79701  
 Fax To: (432) 682-3946

Received:	06/17/2024	Sampling Date:	06/15/2024
Reported:	06/21/2024	Sampling Type:	Soil
Project Name:	EAST VACUUM (GSA) UNIT #006	Sampling Condition:	Cool & Intact
Project Number:	nSAP0335728707	Sample Received By:	Alyssa Parras
Project Location:	LEA COUNTY		

**Sample ID: BH 1 (0-0.5') (H243497-01)**

BTX 8021B		mg/kg		Analyzed By: JH						
Analyte	Result	Reporting Limit	Analyzed	Method Blank	BS	% Recovery	True Value QC	RPD	Qualifier	
Benzene*	<0.050	0.050	06/20/2024	ND	1.94	96.8	2.00	2.62		
Toluene*	<0.050	0.050	06/20/2024	ND	2.06	103	2.00	4.34		
Ethylbenzene*	<0.050	0.050	06/20/2024	ND	2.13	106	2.00	6.72		
Total Xylenes*	<0.150	0.150	06/20/2024	ND	6.32	105	6.00	6.98		
Total BTX	<0.300	0.300	06/20/2024	ND						

Surrogate: 4-Bromofluorobenzene (PID) 121 % 71.5-134

Chloride, SM4500Cl-B		mg/kg		Analyzed By: HM						
Analyte	Result	Reporting Limit	Analyzed	Method Blank	BS	% Recovery	True Value QC	RPD	Qualifier	
Chloride	32.0	16.0	06/18/2024	ND	448	112	400	3.64		

TPH 8015M		mg/kg		Analyzed By: MS					
Analyte	Result	Reporting Limit	Analyzed	Method Blank	BS	% Recovery	True Value QC	RPD	Qualifier
GRO C6-C10*	<10.0	10.0	06/18/2024	ND	182	91.1	200	3.60	
DRO >C10-C28*	<10.0	10.0	06/18/2024	ND	207	104	200	2.73	
EXT DRO >C28-C36	<10.0	10.0	06/18/2024	ND					

Surrogate: 1-Chlorooctane 89.8 % 48.2-134

Surrogate: 1-Chlorooctadecane 91.7 % 49.1-148

Cardinal Laboratories

\*=Accredited Analyte

PLEASE NOTE: Liability and Damages. Cardinal's liability and client's exclusive remedy for any claim arising, whether based in contract or tort, shall be limited to the amount paid by client for analyses. All claims, including those for negligence and any other cause whatsoever shall be deemed waived unless made in writing and received by Cardinal within thirty (30) days after completion of the applicable service. In no event shall Cardinal be liable for incidental or consequential damages, including, without limitation, business interruptions, loss of use, or loss of profits incurred by client, its subsidiaries, affiliates or successors arising out of or related to the performance of the services hereunder by Cardinal, regardless of whether such claim is based upon any of the above stated reasons or otherwise. Results relate only to the samples identified above. This report shall not be reproduced except in full with written approval of Cardinal Laboratories.

Celey D. Keene, Lab Director/Quality Manager



PHONE (575) 393-2326 ° 101 E. MARLAND ° HOBBS, NM 88240

**Analytical Results For:**

TETRA TECH  
 CHUCK TERHUNE  
 901 WEST WALL STREET , STE 100  
 MIDLAND TX, 79701  
 Fax To: (432) 682-3946

Received:	06/17/2024	Sampling Date:	06/15/2024
Reported:	06/21/2024	Sampling Type:	Soil
Project Name:	EAST VACUUM (GSA) UNIT #006	Sampling Condition:	Cool & Intact
Project Number:	nSAP0335728707	Sample Received By:	Alyssa Parras
Project Location:	LEA COUNTY		

**Sample ID: BH 1 (2-2.5') (H243497-02)**

BTX 8021B		mg/kg		Analyzed By: JH					
Analyte	Result	Reporting Limit	Analyzed	Method Blank	BS	% Recovery	True Value QC	RPD	Qualifier
Benzene*	<0.050	0.050	06/20/2024	ND	1.94	96.8	2.00	2.62	
Toluene*	<0.050	0.050	06/20/2024	ND	2.06	103	2.00	4.34	
Ethylbenzene*	<0.050	0.050	06/20/2024	ND	2.13	106	2.00	6.72	
Total Xylenes*	<0.150	0.150	06/20/2024	ND	6.32	105	6.00	6.98	
Total BTX	<0.300	0.300	06/20/2024	ND					

Surrogate: 4-Bromofluorobenzene (PID) 108 % 71.5-134

Chloride, SM4500Cl-B		mg/kg		Analyzed By: HM					
Analyte	Result	Reporting Limit	Analyzed	Method Blank	BS	% Recovery	True Value QC	RPD	Qualifier
Chloride	<16.0	16.0	06/18/2024	ND	448	112	400	3.64	

TPH 8015M		mg/kg		Analyzed By: MS					
Analyte	Result	Reporting Limit	Analyzed	Method Blank	BS	% Recovery	True Value QC	RPD	Qualifier
GRO C6-C10*	<10.0	10.0	06/18/2024	ND	182	91.1	200	3.60	
DRO >C10-C28*	<10.0	10.0	06/18/2024	ND	207	104	200	2.73	
EXT DRO >C28-C36	<10.0	10.0	06/18/2024	ND					

Surrogate: 1-Chlorooctane 113 % 48.2-134

Surrogate: 1-Chlorooctadecane 110 % 49.1-148

Cardinal Laboratories

\*=Accredited Analyte

PLEASE NOTE: Liability and Damages. Cardinal's liability and client's exclusive remedy for any claim arising, whether based in contract or tort, shall be limited to the amount paid by client for analyses. All claims, including those for negligence and any other cause whatsoever shall be deemed waived unless made in writing and received by Cardinal within thirty (30) days after completion of the applicable service. In no event shall Cardinal be liable for incidental or consequential damages, including, without limitation, business interruptions, loss of use, or loss of profits incurred by client, its subsidiaries, affiliates or successors arising out of or related to the performance of the services hereunder by Cardinal, regardless of whether such claim is based upon any of the above stated reasons or otherwise. Results relate only to the samples identified above. This report shall not be reproduced except in full with written approval of Cardinal Laboratories.

Celey D. Keene, Lab Director/Quality Manager



PHONE (575) 393-2326 ° 101 E. MARLAND ° HOBBS, NM 88240

**Analytical Results For:**

TETRA TECH  
 CHUCK TERHUNE  
 901 WEST WALL STREET , STE 100  
 MIDLAND TX, 79701  
 Fax To: (432) 682-3946

Received:	06/17/2024	Sampling Date:	06/15/2024
Reported:	06/21/2024	Sampling Type:	Soil
Project Name:	EAST VACUUM (GSA) UNIT #006	Sampling Condition:	Cool & Intact
Project Number:	nSAP0335728707	Sample Received By:	Alyssa Parras
Project Location:	LEA COUNTY		

**Sample ID: BH 2 (0-0.5') (H243497-03)**

BTEx 8021B		mg/kg		Analyzed By: JH						
Analyte	Result	Reporting Limit	Analyzed	Method Blank	BS	% Recovery	True Value QC	RPD	Qualifier	
Benzene*	<0.050	0.050	06/20/2024	ND	1.94	96.8	2.00	2.62		
Toluene*	<0.050	0.050	06/20/2024	ND	2.06	103	2.00	4.34		
Ethylbenzene*	<0.050	0.050	06/20/2024	ND	2.13	106	2.00	6.72		
Total Xylenes*	<0.150	0.150	06/20/2024	ND	6.32	105	6.00	6.98		
Total BTEx	<0.300	0.300	06/20/2024	ND						

Surrogate: 4-Bromofluorobenzene (PID) 110 % 71.5-134

Chloride, SM4500CI-B		mg/kg		Analyzed By: HM						
Analyte	Result	Reporting Limit	Analyzed	Method Blank	BS	% Recovery	True Value QC	RPD	Qualifier	
Chloride	80.0	16.0	06/18/2024	ND	448	112	400	3.64		

TPH 8015M		mg/kg		Analyzed By: MS					
Analyte	Result	Reporting Limit	Analyzed	Method Blank	BS	% Recovery	True Value QC	RPD	Qualifier
GRO C6-C10*	<10.0	10.0	06/18/2024	ND	201	100	200	0.819	
DRO >C10-C28*	<10.0	10.0	06/18/2024	ND	210	105	200	3.28	
EXT DRO >C28-C36	<10.0	10.0	06/18/2024	ND					

Surrogate: 1-Chlorooctane 106 % 48.2-134

Surrogate: 1-Chlorooctadecane 99.2 % 49.1-148

Cardinal Laboratories

\*=Accredited Analyte

PLEASE NOTE: Liability and Damages. Cardinal's liability and client's exclusive remedy for any claim arising, whether based in contract or tort, shall be limited to the amount paid by client for analyses. All claims, including those for negligence and any other cause whatsoever shall be deemed waived unless made in writing and received by Cardinal within thirty (30) days after completion of the applicable service. In no event shall Cardinal be liable for incidental or consequential damages, including, without limitation, business interruptions, loss of use, or loss of profits incurred by client, its subsidiaries, affiliates or successors arising out of or related to the performance of the services hereunder by Cardinal, regardless of whether such claim is based upon any of the above stated reasons or otherwise. Results relate only to the samples identified above. This report shall not be reproduced except in full with written approval of Cardinal Laboratories.

Celey D. Keene, Lab Director/Quality Manager





PHONE (575) 393-2326 ° 101 E. MARLAND ° HOBBS, NM 88240

**Analytical Results For:**

TETRA TECH  
 CHUCK TERHUNE  
 901 WEST WALL STREET , STE 100  
 MIDLAND TX, 79701  
 Fax To: (432) 682-3946

Received:	06/17/2024	Sampling Date:	06/15/2024
Reported:	06/21/2024	Sampling Type:	Soil
Project Name:	EAST VACUUM (GSA) UNIT #006	Sampling Condition:	Cool & Intact
Project Number:	nSAP0335728707	Sample Received By:	Alyssa Parras
Project Location:	LEA COUNTY		

**Sample ID: BH 2 (2-2.5') (H243497-04)**

BTX 8021B		mg/kg		Analyzed By: JH					
Analyte	Result	Reporting Limit	Analyzed	Method Blank	BS	% Recovery	True Value QC	RPD	Qualifier
Benzene*	<0.050	0.050	06/20/2024	ND	1.94	96.8	2.00	2.62	
Toluene*	<0.050	0.050	06/20/2024	ND	2.06	103	2.00	4.34	
Ethylbenzene*	<0.050	0.050	06/20/2024	ND	2.13	106	2.00	6.72	
Total Xylenes*	<0.150	0.150	06/20/2024	ND	6.32	105	6.00	6.98	
Total BTX	<0.300	0.300	06/20/2024	ND					

Surrogate: 4-Bromofluorobenzene (PID) 114 % 71.5-134

Chloride, SM4500Cl-B		mg/kg		Analyzed By: HM					
Analyte	Result	Reporting Limit	Analyzed	Method Blank	BS	% Recovery	True Value QC	RPD	Qualifier
Chloride	<16.0	16.0	06/18/2024	ND	448	112	400	3.64	

TPH 8015M		mg/kg		Analyzed By: MS					
Analyte	Result	Reporting Limit	Analyzed	Method Blank	BS	% Recovery	True Value QC	RPD	Qualifier
GRO C6-C10*	<10.0	10.0	06/18/2024	ND	201	100	200	0.819	
DRO >C10-C28*	<10.0	10.0	06/18/2024	ND	210	105	200	3.28	
EXT DRO >C28-C36	<10.0	10.0	06/18/2024	ND					

Surrogate: 1-Chlorooctane 101 % 48.2-134

Surrogate: 1-Chlorooctadecane 94.9 % 49.1-148

Cardinal Laboratories

\*=Accredited Analyte

PLEASE NOTE: Liability and Damages. Cardinal's liability and client's exclusive remedy for any claim arising, whether based in contract or tort, shall be limited to the amount paid by client for analyses. All claims, including those for negligence and any other cause whatsoever shall be deemed waived unless made in writing and received by Cardinal within thirty (30) days after completion of the applicable service. In no event shall Cardinal be liable for incidental or consequential damages, including, without limitation, business interruptions, loss of use, or loss of profits incurred by client, its subsidiaries, affiliates or successors arising out of or related to the performance of the services hereunder by Cardinal, regardless of whether such claim is based upon any of the above stated reasons or otherwise. Results relate only to the samples identified above. This report shall not be reproduced except in full with written approval of Cardinal Laboratories.

Celey D. Keene, Lab Director/Quality Manager



PHONE (575) 393-2326 ° 101 E. MARLAND ° HOBBS, NM 88240

**Analytical Results For:**

TETRA TECH  
 CHUCK TERHUNE  
 901 WEST WALL STREET , STE 100  
 MIDLAND TX, 79701  
 Fax To: (432) 682-3946

Received:	06/17/2024	Sampling Date:	06/15/2024
Reported:	06/21/2024	Sampling Type:	Soil
Project Name:	EAST VACUUM (GSA) UNIT #006	Sampling Condition:	Cool & Intact
Project Number:	nSAP0335728707	Sample Received By:	Alyssa Parras
Project Location:	LEA COUNTY		

**Sample ID: BH 3 (0-0.5') (H243497-05)**

BTX 8021B		mg/kg		Analyzed By: JH					
Analyte	Result	Reporting Limit	Analyzed	Method Blank	BS	% Recovery	True Value QC	RPD	Qualifier
Benzene*	<0.050	0.050	06/20/2024	ND	1.94	96.8	2.00	2.62	
Toluene*	<0.050	0.050	06/20/2024	ND	2.06	103	2.00	4.34	
Ethylbenzene*	<0.050	0.050	06/20/2024	ND	2.13	106	2.00	6.72	
Total Xylenes*	<0.150	0.150	06/20/2024	ND	6.32	105	6.00	6.98	
Total BTX	<0.300	0.300	06/20/2024	ND					

Surrogate: 4-Bromofluorobenzene (PID) 110 % 71.5-134

Chloride, SM4500Cl-B		mg/kg		Analyzed By: HM					
Analyte	Result	Reporting Limit	Analyzed	Method Blank	BS	% Recovery	True Value QC	RPD	Qualifier
Chloride	80.0	16.0	06/18/2024	ND	448	112	400	3.64	

TPH 8015M		mg/kg		Analyzed By: MS					
Analyte	Result	Reporting Limit	Analyzed	Method Blank	BS	% Recovery	True Value QC	RPD	Qualifier
GRO C6-C10*	<10.0	10.0	06/18/2024	ND	201	100	200	0.819	
DRO >C10-C28*	<10.0	10.0	06/18/2024	ND	210	105	200	3.28	
EXT DRO >C28-C36	<10.0	10.0	06/18/2024	ND					

Surrogate: 1-Chlorooctane 81.6 % 48.2-134

Surrogate: 1-Chlorooctadecane 76.3 % 49.1-148

Cardinal Laboratories

\*=Accredited Analyte

PLEASE NOTE: Liability and Damages. Cardinal's liability and client's exclusive remedy for any claim arising, whether based in contract or tort, shall be limited to the amount paid by client for analyses. All claims, including those for negligence and any other cause whatsoever shall be deemed waived unless made in writing and received by Cardinal within thirty (30) days after completion of the applicable service. In no event shall Cardinal be liable for incidental or consequential damages, including, without limitation, business interruptions, loss of use, or loss of profits incurred by client, its subsidiaries, affiliates or successors arising out of or related to the performance of the services hereunder by Cardinal, regardless of whether such claim is based upon any of the above stated reasons or otherwise. Results relate only to the samples identified above. This report shall not be reproduced except in full with written approval of Cardinal Laboratories.

Celey D. Keene, Lab Director/Quality Manager



PHONE (575) 393-2326 ° 101 E. MARLAND ° HOBBS, NM 88240

**Analytical Results For:**

TETRA TECH  
 CHUCK TERHUNE  
 901 WEST WALL STREET , STE 100  
 MIDLAND TX, 79701  
 Fax To: (432) 682-3946

Received:	06/17/2024	Sampling Date:	06/15/2024
Reported:	06/21/2024	Sampling Type:	Soil
Project Name:	EAST VACUUM (GSA) UNIT #006	Sampling Condition:	Cool & Intact
Project Number:	nSAP0335728707	Sample Received By:	Alyssa Parras
Project Location:	LEA COUNTY		

**Sample ID: BH 3 (2-2.5') (H243497-06)**

BTX 8021B		mg/kg		Analyzed By: JH					
Analyte	Result	Reporting Limit	Analyzed	Method Blank	BS	% Recovery	True Value QC	RPD	Qualifier
Benzene*	<0.050	0.050	06/20/2024	ND	1.94	96.8	2.00	2.62	
Toluene*	<0.050	0.050	06/20/2024	ND	2.06	103	2.00	4.34	
Ethylbenzene*	<0.050	0.050	06/20/2024	ND	2.13	106	2.00	6.72	
Total Xylenes*	<0.150	0.150	06/20/2024	ND	6.32	105	6.00	6.98	
Total BTX	<0.300	0.300	06/20/2024	ND					

Surrogate: 4-Bromofluorobenzene (PID) 114 % 71.5-134

Chloride, SM4500Cl-B		mg/kg		Analyzed By: HM					
Analyte	Result	Reporting Limit	Analyzed	Method Blank	BS	% Recovery	True Value QC	RPD	Qualifier
Chloride	<16.0	16.0	06/18/2024	ND	448	112	400	3.64	

TPH 8015M		mg/kg		Analyzed By: MS					
Analyte	Result	Reporting Limit	Analyzed	Method Blank	BS	% Recovery	True Value QC	RPD	Qualifier
GRO C6-C10*	<10.0	10.0	06/18/2024	ND	201	100	200	0.819	
DRO >C10-C28*	<10.0	10.0	06/18/2024	ND	210	105	200	3.28	
EXT DRO >C28-C36	<10.0	10.0	06/18/2024	ND					

Surrogate: 1-Chlorooctane 98.2 % 48.2-134

Surrogate: 1-Chlorooctadecane 93.3 % 49.1-148

Cardinal Laboratories

\*=Accredited Analyte

PLEASE NOTE: Liability and Damages. Cardinal's liability and client's exclusive remedy for any claim arising, whether based in contract or tort, shall be limited to the amount paid by client for analyses. All claims, including those for negligence and any other cause whatsoever shall be deemed waived unless made in writing and received by Cardinal within thirty (30) days after completion of the applicable service. In no event shall Cardinal be liable for incidental or consequential damages, including, without limitation, business interruptions, loss of use, or loss of profits incurred by client, its subsidiaries, affiliates or successors arising out of or related to the performance of the services hereunder by Cardinal, regardless of whether such claim is based upon any of the above stated reasons or otherwise. Results relate only to the samples identified above. This report shall not be reproduced except in full with written approval of Cardinal Laboratories.

Celey D. Keene, Lab Director/Quality Manager



PHONE (575) 393-2326 ° 101 E. MARLAND ° HOBBS, NM 88240

**Analytical Results For:**

TETRA TECH  
 CHUCK TERHUNE  
 901 WEST WALL STREET , STE 100  
 MIDLAND TX, 79701  
 Fax To: (432) 682-3946

Received:	06/17/2024	Sampling Date:	06/15/2024
Reported:	06/21/2024	Sampling Type:	Soil
Project Name:	EAST VACUUM (GSA) UNIT #006	Sampling Condition:	Cool & Intact
Project Number:	nSAP0335728707	Sample Received By:	Alyssa Parras
Project Location:	LEA COUNTY		

**Sample ID: BH 4 (0-0.5') (H243497-07)**

BTEx 8021B		mg/kg		Analyzed By: JH						
Analyte	Result	Reporting Limit	Analyzed	Method Blank	BS	% Recovery	True Value QC	RPD	Qualifier	
Benzene*	<0.050	0.050	06/20/2024	ND	1.94	96.8	2.00	2.62		
Toluene*	<0.050	0.050	06/20/2024	ND	2.06	103	2.00	4.34		
Ethylbenzene*	<0.050	0.050	06/20/2024	ND	2.13	106	2.00	6.72		
Total Xylenes*	<0.150	0.150	06/20/2024	ND	6.32	105	6.00	6.98		
Total BTEx	<0.300	0.300	06/20/2024	ND						

Surrogate: 4-Bromofluorobenzene (PID) 114 % 71.5-134

Chloride, SM4500CI-B		mg/kg		Analyzed By: AC					
Analyte	Result	Reporting Limit	Analyzed	Method Blank	BS	% Recovery	True Value QC	RPD	Qualifier
Chloride	64.0	16.0	06/19/2024	ND	416	104	400	3.77	

TPH 8015M		mg/kg		Analyzed By: MS					
Analyte	Result	Reporting Limit	Analyzed	Method Blank	BS	% Recovery	True Value QC	RPD	Qualifier
GRO C6-C10*	<10.0	10.0	06/18/2024	ND	201	100	200	0.819	
DRO >C10-C28*	<10.0	10.0	06/18/2024	ND	210	105	200	3.28	
EXT DRO >C28-C36	<10.0	10.0	06/18/2024	ND					

Surrogate: 1-Chlorooctane 77.1 % 48.2-134

Surrogate: 1-Chlorooctadecane 69.4 % 49.1-148

Cardinal Laboratories

\*=Accredited Analyte

PLEASE NOTE: Liability and Damages. Cardinal's liability and client's exclusive remedy for any claim arising, whether based in contract or tort, shall be limited to the amount paid by client for analyses. All claims, including those for negligence and any other cause whatsoever shall be deemed waived unless made in writing and received by Cardinal within thirty (30) days after completion of the applicable service. In no event shall Cardinal be liable for incidental or consequential damages, including, without limitation, business interruptions, loss of use, or loss of profits incurred by client, its subsidiaries, affiliates or successors arising out of or related to the performance of the services hereunder by Cardinal, regardless of whether such claim is based upon any of the above stated reasons or otherwise. Results relate only to the samples identified above. This report shall not be reproduced except in full with written approval of Cardinal Laboratories.

Celey D. Keene, Lab Director/Quality Manager





PHONE (575) 393-2326 ° 101 E. MARLAND ° HOBBS, NM 88240

**Analytical Results For:**

TETRA TECH  
 CHUCK TERHUNE  
 901 WEST WALL STREET , STE 100  
 MIDLAND TX, 79701  
 Fax To: (432) 682-3946

Received:	06/17/2024	Sampling Date:	06/15/2024
Reported:	06/21/2024	Sampling Type:	Soil
Project Name:	EAST VACUUM (GSA) UNIT #006	Sampling Condition:	Cool & Intact
Project Number:	nSAP0335728707	Sample Received By:	Alyssa Parras
Project Location:	LEA COUNTY		

**Sample ID: BH 4 (2-2.5') (H243497-08)**

BTX 8021B		mg/kg		Analyzed By: JH					
Analyte	Result	Reporting Limit	Analyzed	Method Blank	BS	% Recovery	True Value QC	RPD	Qualifier
Benzene*	<0.050	0.050	06/20/2024	ND	1.94	96.8	2.00	2.62	
Toluene*	<0.050	0.050	06/20/2024	ND	2.06	103	2.00	4.34	
Ethylbenzene*	<0.050	0.050	06/20/2024	ND	2.13	106	2.00	6.72	
Total Xylenes*	<0.150	0.150	06/20/2024	ND	6.32	105	6.00	6.98	
Total BTX	<0.300	0.300	06/20/2024	ND					

Surrogate: 4-Bromofluorobenzene (PID) 111 % 71.5-134

Chloride, SM4500Cl-B		mg/kg		Analyzed By: AC					
Analyte	Result	Reporting Limit	Analyzed	Method Blank	BS	% Recovery	True Value QC	RPD	Qualifier
Chloride	48.0	16.0	06/19/2024	ND	416	104	400	3.77	

TPH 8015M		mg/kg		Analyzed By: MS					
Analyte	Result	Reporting Limit	Analyzed	Method Blank	BS	% Recovery	True Value QC	RPD	Qualifier
GRO C6-C10*	<10.0	10.0	06/18/2024	ND	201	100	200	0.819	
DRO >C10-C28*	<10.0	10.0	06/18/2024	ND	210	105	200	3.28	
EXT DRO >C28-C36	<10.0	10.0	06/18/2024	ND					

Surrogate: 1-Chlorooctane 79.6 % 48.2-134

Surrogate: 1-Chlorooctadecane 74.1 % 49.1-148

Cardinal Laboratories

\*=Accredited Analyte

PLEASE NOTE: Liability and Damages. Cardinal's liability and client's exclusive remedy for any claim arising, whether based in contract or tort, shall be limited to the amount paid by client for analyses. All claims, including those for negligence and any other cause whatsoever shall be deemed waived unless made in writing and received by Cardinal within thirty (30) days after completion of the applicable service. In no event shall Cardinal be liable for incidental or consequential damages, including, without limitation, business interruptions, loss of use, or loss of profits incurred by client, its subsidiaries, affiliates or successors arising out of or related to the performance of the services hereunder by Cardinal, regardless of whether such claim is based upon any of the above stated reasons or otherwise. Results relate only to the samples identified above. This report shall not be reproduced except in full with written approval of Cardinal Laboratories.

Celey D. Keene, Lab Director/Quality Manager



PHONE (575) 393-2326 ° 101 E. MARLAND ° HOBBS, NM 88240

Notes and Definitions

- ND Analyte NOT DETECTED at or above the reporting limit
- RPD Relative Percent Difference
- \*\* Samples not received at proper temperature of 6°C or below.
- \*\*\* Insufficient time to reach temperature.
- Chloride by SM4500Cl-B does not require samples be received at or below 6°C  
Samples reported on an as received basis (wet) unless otherwise noted on report

Cardinal Laboratories

\*=Accredited Analyte

PLEASE NOTE: Liability and Damages. Cardinal's liability and client's exclusive remedy for any claim arising, whether based in contract or tort, shall be limited to the amount paid by client for analyses. All claims, including those for negligence and any other cause whatsoever shall be deemed waived unless made in writing and received by Cardinal within thirty (30) days after completion of the applicable service. In no event shall Cardinal be liable for incidental or consequential damages, including, without limitation, business interruptions, loss of use, or loss of profits incurred by client, its subsidiaries, affiliates or successors arising out of or related to the performance of the services hereunder by Cardinal, regardless of whether such claim is based upon any of the above stated reasons or otherwise. Results relate only to the samples identified above. This report shall not be reproduced except in full with written approval of Cardinal Laboratories.

A handwritten signature in black ink, appearing to read "Celey D. Keene".

Celey D. Keene, Lab Director/Quality Manager



101 East Marland, Hobbs, NM 88240  
(575) 393-2326 FAX (575) 393-2476

# CHAIN-OF-CUSTODY AND ANALYSIS REQUEST

Page 11 of 11

Company Name: <u>Tetra Tech</u>		<b>BILL TO</b>		<b>ANALYSIS REQUEST</b>										
Project Manager:		P.O. #:		<div style="display: flex; flex-direction: column; align-items: center;"> <div style="writing-mode: vertical-rl; transform: rotate(180deg);">BTEx</div> <div style="writing-mode: vertical-rl; transform: rotate(180deg);">TPH (Doo/Gro/Lo)</div> <div style="writing-mode: vertical-rl; transform: rotate(180deg);">Chloride 4500</div> </div>										
Address:		Company: <u>Tetra Tech</u>												
City: <u>Midland</u> State: <u>NM</u> Zip:		Attn:												
Phone #: Fax #:		Address:												
Project #: <u>NSAP 033572870</u> Project Owner:		City:												
Project Name: <u>East Vacuum (East) unit #006</u>		State: Zip:												
Project Location: <u>Lea County</u>		Phone #:												
Sampler Name: <u>Gritha Sanchez</u>		Fax #:												
FOR LAB USE ONLY														
Lab I.D.	Sample I.D.	(GRAB OR (C)OMP.	# CONTAINERS	MATRIX			PRESERV.	SAMPLING						
				GROUNDWATER	WASTEWATER	SOIL	OIL	SLUDGE	OTHER:	ACID/BASE:	ICE / COOL	OTHER:	DATE	TIME
<u>H243497</u>	<u>1 BHI (0-0.5')</u>					<u>X</u>				<u>X</u>			<u>6.15</u>	
	<u>2 BHI (2-2.5')</u>													
	<u>3 BHI (0-0.5')</u>													
	<u>4 BHI (2-2.5')</u>													
	<u>5 BHI (0-0.5')</u>													
	<u>6 BHI (2-2.5')</u>													
	<u>7 BHI (0-0.5')</u>													
	<u>8 BHI (2-2.5')</u>													

PLEASE NOTE: Liability and Damages. Cardinal's liability and client's exclusive remedy for any claim arising whether based in contract or tort, shall be limited to the amount paid by the client for the analyses. All claims including those for negligence and any other cause whatsoever shall be deemed waived unless made in writing and received by Cardinal within 30 days after completion of the applicable service. In no event shall Cardinal be liable for incidental or consequential damages, including without limitation, business interruptions, loss of use, or loss of profits incurred by client, its subsidiaries, affiliates or successors arising out of or related to the performance of services hereunder by Cardinal, regardless of whether such claim is based upon any of the above stated reasons or otherwise.

Relinquished By:	Date:	Received By:	Verbal Result: <input type="checkbox"/> Yes <input type="checkbox"/> No	Add'l Phone #:
<u>Gritha Sanchez</u>	<u>6.17.24</u>	<u>A. Pano</u>	All Results are emailed. Please provide Email address:	
Relinquished By:	Date:	Received By:	REMARKS:	
Delivered By: (Circle One)	Observed Temp. °C	Sample Condition	CHECKED BY: (Initials)	Turnaround Time:
Sampler - UPS - Bus - Other:	<u>3.0</u>	Cool Intact <input type="checkbox"/> Yes <input type="checkbox"/> No	<u>AP</u>	Standard <input checked="" type="checkbox"/> Rush <input type="checkbox"/>
	Corrected Temp. °C	<input type="checkbox"/> Yes <input type="checkbox"/> No		Bacteria (only) Sample Condition
				Cool Intact <input type="checkbox"/> Yes <input type="checkbox"/> No
				Observed Temp. °C
				Corrected Temp. °C

† Cardinal cannot accept verbal changes. Please email changes to teley.ker@cardinal-labsnm.com

**District I**  
1625 N. French Dr., Hobbs, NM 88240  
Phone:(575) 393-6161 Fax:(575) 393-0720  
**District II**  
811 S. First St., Artesia, NM 88210  
Phone:(575) 748-1283 Fax:(575) 748-9720  
**District III**  
1000 Rio Brazos Rd., Aztec, NM 87410  
Phone:(505) 334-6178 Fax:(505) 334-6170  
**District IV**  
1220 S. St Francis Dr., Santa Fe, NM 87505  
Phone:(505) 476-3470 Fax:(505) 476-3462

**State of New Mexico**  
**Energy, Minerals and Natural Resources**  
**Oil Conservation Division**  
**1220 S. St Francis Dr.**  
**Santa Fe, NM 87505**

QUESTIONS  
  
Action 385891

QUESTIONS

Operator: Maverick Permian LLC 1000 Main Street, Suite 2900 Houston, TX 77002	OGRID:	331199
	Action Number:	385891
	Action Type:	[C-141] Remediation Closure Request C-141 (C-141-v-Closure)

QUESTIONS

Prerequisites	
Incident ID (n#)	nSAP0335728707
Incident Name	NSAP0335728707 EAST VACUUM (GSA) UNIT #006 @ 30-025-26389
Incident Type	Produced Water Release
Incident Status	Remediation Closure Report Received
Incident Well	[30-025-26389] EAST VACUUM (GSA) UNIT #006

Location of Release Source	
Please answer all the questions in this group.	
Site Name	EAST VACUUM (GSA) UNIT #006
Date Release Discovered	03/02/2003
Surface Owner	State

Incident Details	
Please answer all the questions in this group.	
Incident Type	Produced Water Release
Did this release result in a fire or is the result of a fire	No
Did this release result in any injuries	No
Has this release reached or does it have a reasonable probability of reaching a watercourse	No
Has this release endangered or does it have a reasonable probability of endangering public health	No
Has this release substantially damaged or will it substantially damage property or the environment	No
Is this release of a volume that is or may with reasonable probability be detrimental to fresh water	No

Nature and Volume of Release	
Material(s) released, please answer all that apply below. Any calculations or specific justifications for the volumes provided should be attached to the follow-up C-141 submission.	
Crude Oil Released (bbls) Details	Not answered.
Produced Water Released (bbls) Details	Cause:    Produced Water   Released: 75 BBL   Recovered: 74 BBL   Lost: 1 BBL.
Is the concentration of chloride in the produced water >10,000 mg/l	Yes
Condensate Released (bbls) Details	Not answered.
Natural Gas Vented (Mcf) Details	Not answered.
Natural Gas Flared (Mcf) Details	Not answered.
Other Released Details	Not answered.
Are there additional details for the questions above (i.e. any answer containing Other, Specify, Unknown, and/or Fire, or any negative lost amounts)	Not answered.



**District I**

1625 N. French Dr., Hobbs, NM 88240  
Phone:(575) 393-6161 Fax:(575) 393-0720

**District II**

811 S. First St., Artesia, NM 88210  
Phone:(575) 748-1283 Fax:(575) 748-9720

**District III**

1000 Rio Brazos Rd., Aztec, NM 87410  
Phone:(505) 334-6178 Fax:(505) 334-6170

**District IV**

1220 S. St Francis Dr., Santa Fe, NM 87505  
Phone:(505) 476-3470 Fax:(505) 476-3462

**State of New Mexico**  
**Energy, Minerals and Natural Resources**  
**Oil Conservation Division**  
**1220 S. St Francis Dr.**  
**Santa Fe, NM 87505**

QUESTIONS, Page 2

Action 385891

**QUESTIONS (continued)**

Operator: Maverick Permian LLC 1000 Main Street, Suite 2900 Houston, TX 77002	OGRID:	331199
	Action Number:	385891
	Action Type:	[C-141] Remediation Closure Request C-141 (C-141-v-Closure)

**QUESTIONS**

<b>Nature and Volume of Release (continued)</b>	
Is this a gas only submission (i.e. only significant Mcf values reported)	No, according to supplied volumes this does not appear to be a "gas only" report.
Was this a major release as defined by Subsection A of 19.15.29.7 NMAC	Yes
Reasons why this would be considered a submission for a notification of a major release	From paragraph A. "Major release" determine using: (1) an unauthorized release of a volume, excluding gases, of 25 barrels or more.
With the implementation of the 19.15.27 NMAC (05/25/2021), venting and/or flaring of natural gas (i.e. gas only) are to be submitted on the C-129 form.	

**Initial Response**

The responsible party must undertake the following actions immediately unless they could create a safety hazard that would result in injury.

The source of the release has been stopped	True
The impacted area has been secured to protect human health and the environment	True
Released materials have been contained via the use of berms or dikes, absorbent pads, or other containment devices	True
All free liquids and recoverable materials have been removed and managed appropriately	True
If all the actions described above have not been undertaken, explain why	Not answered.

Per Paragraph (4) of Subsection B of 19.15.29.8 NMAC the responsible party may commence remediation immediately after discovery of a release. If remediation has begun, please prepare and attach a narrative of actions to date in the follow-up C-141 submission. If remedial efforts have been successfully completed or if the release occurred within a lined containment area (see Subparagraph (a) of Paragraph (5) of Subsection A of 19.15.29.11 NMAC), please prepare and attach all information needed for closure evaluation in the follow-up C-141 submission.

I hereby certify that the information given above is true and complete to the best of my knowledge and understand that pursuant to OCD rules and regulations all operators are required to report and/or file certain release notifications and perform corrective actions for releases which may endanger public health or the environment. The acceptance of a C-141 report by the OCD does not relieve the operator of liability should their operations have failed to adequately investigate and remediate contamination that pose a threat to groundwater, surface water, human health or the environment. In addition, OCD acceptance of a C-141 report does not relieve the operator of responsibility for compliance with any other federal, state, or local laws and/or regulations.

I hereby agree and sign off to the above statement	Name: Chuck Terhune Title: Program Manager Email: chuck.terhune@tetrattech.com Date: 07/17/2024
--	--

**District I**

1625 N. French Dr., Hobbs, NM 88240  
Phone:(575) 393-6161 Fax:(575) 393-0720

**District II**

811 S. First St., Artesia, NM 88210  
Phone:(575) 748-1283 Fax:(575) 748-9720

**District III**

1000 Rio Brazos Rd., Aztec, NM 87410  
Phone:(505) 334-6178 Fax:(505) 334-6170

**District IV**

1220 S. St Francis Dr., Santa Fe, NM 87505  
Phone:(505) 476-3470 Fax:(505) 476-3462

**State of New Mexico**  
**Energy, Minerals and Natural Resources**  
**Oil Conservation Division**  
**1220 S. St Francis Dr.**  
**Santa Fe, NM 87505**

QUESTIONS, Page 3

Action 385891

**QUESTIONS (continued)**

Operator: Maverick Permian LLC 1000 Main Street, Suite 2900 Houston, TX 77002	OGRID:	331199
	Action Number:	385891
	Action Type:	[C-141] Remediation Closure Request C-141 (C-141-v-Closure)

**QUESTIONS****Site Characterization**

Please answer all the questions in this group (only required when seeking remediation plan approval and beyond). This information must be provided to the appropriate district office no later than 90 days after the release discovery date.

What is the shallowest depth to groundwater beneath the area affected by the release in feet below ground surface (ft bgs)	Between 51 and 75 (ft.)
What method was used to determine the depth to ground water	Estimate or Other
Did this release impact groundwater or surface water	No
<b>What is the minimum distance, between the closest lateral extents of the release and the following surface areas:</b>	
A continuously flowing watercourse or any other significant watercourse	Greater than 5 (mi.)
Any lakebed, sinkhole, or playa lake (measured from the ordinary high-water mark)	Between 1000 (ft.) and ½ (mi.)
An occupied permanent residence, school, hospital, institution, or church	Greater than 5 (mi.)
A spring or a private domestic fresh water well used by less than five households for domestic or stock watering purposes	Between 1 and 5 (mi.)
Any other fresh water well or spring	Between 1 and 5 (mi.)
Incorporated municipal boundaries or a defined municipal fresh water well field	Greater than 5 (mi.)
A wetland	Between 1000 (ft.) and ½ (mi.)
A subsurface mine	Greater than 5 (mi.)
An (non-karst) unstable area	Greater than 5 (mi.)
Categorize the risk of this well / site being in a karst geology	Low
A 100-year floodplain	Greater than 5 (mi.)
Did the release impact areas not on an exploration, development, production, or storage site	No

**Remediation Plan**

Please answer all the questions that apply or are indicated. This information must be provided to the appropriate district office no later than 90 days after the release discovery date.

Requesting a remediation plan approval with this submission	Yes
Attach a comprehensive report demonstrating the lateral and vertical extents of soil contamination associated with the release have been determined, pursuant to 19.15.29.11 NMAC and 19.15.29.13 NMAC.	
Have the lateral and vertical extents of contamination been fully delineated	Yes
Was this release entirely contained within a lined containment area	No

**Soil Contamination Sampling:** (Provide the highest observable value for each, in milligrams per kilograms.)

Chloride	(EPA 300.0 or SM4500 Cl B)	80
TPH (GRO+DRO+MRO)	(EPA SW-846 Method 8015M)	0
GRO+DRO	(EPA SW-846 Method 8015M)	0
BTEX	(EPA SW-846 Method 8021B or 8260B)	0
Benzene	(EPA SW-846 Method 8021B or 8260B)	0

Per Subsection B of 19.15.29.11 NMAC unless the site characterization report includes completed efforts at remediation, the report must include a proposed remediation plan in accordance with 19.15.29.12 NMAC, which includes the anticipated timelines for beginning and completing the remediation.

On what estimated date will the remediation commence	06/15/2024
On what date will (or did) the final sampling or liner inspection occur	06/15/2024
On what date will (or was) the remediation complete(d)	06/15/2024
What is the estimated surface area (in square feet) that will be reclaimed	0
What is the estimated volume (in cubic yards) that will be reclaimed	0
What is the estimated surface area (in square feet) that will be remediated	0
What is the estimated volume (in cubic yards) that will be remediated	0

These estimated dates and measurements are recognized to be the best guess or calculation at the time of submission and may (be) change(d) over time as more remediation efforts are completed.

The OCD recognizes that proposed remediation measures may have to be minimally adjusted in accordance with the physical realities encountered during remediation. If the responsible party has any need to significantly deviate from the remediation plan proposed, then it should consult with the division to determine if another remediation plan submission is required.

**District I**

1625 N. French Dr., Hobbs, NM 88240  
Phone:(575) 393-6161 Fax:(575) 393-0720

**District II**

811 S. First St., Artesia, NM 88210  
Phone:(575) 748-1283 Fax:(575) 748-9720

**District III**

1000 Rio Brazos Rd., Aztec, NM 87410  
Phone:(505) 334-6178 Fax:(505) 334-6170

**District IV**

1220 S. St Francis Dr., Santa Fe, NM 87505  
Phone:(505) 476-3470 Fax:(505) 476-3462

**State of New Mexico**  
**Energy, Minerals and Natural Resources**  
**Oil Conservation Division**  
**1220 S. St Francis Dr.**  
**Santa Fe, NM 87505**

QUESTIONS, Page 4

Action 385891

**QUESTIONS (continued)**

Operator: Maverick Permian LLC 1000 Main Street, Suite 2900 Houston, TX 77002	OGRID:	331199
	Action Number:	385891
	Action Type:	[C-141] Remediation Closure Request C-141 (C-141-v-Closure)

**QUESTIONS**

<b>Remediation Plan (continued)</b>	
<i>Please answer all the questions that apply or are indicated. This information must be provided to the appropriate district office no later than 90 days after the release discovery date.</i>	
<b>This remediation will (or is expected to) utilize the following processes to remediate / reduce contaminants:</b>	
<i>(Select all answers below that apply.)</i>	
(Ex Situ) Excavation and <b>off-site</b> disposal (i.e. dig and haul, hydrovac, etc.)	<i>Not answered.</i>
(Ex Situ) Excavation and <b>on-site</b> remediation (i.e. On-Site Land Farms)	<i>Not answered.</i>
(In Situ) Soil Vapor Extraction	<i>Not answered.</i>
(In Situ) Chemical processing (i.e. Soil Shredding, Potassium Permanganate, etc.)	<i>Not answered.</i>
(In Situ) Biological processing (i.e. Microbes / Fertilizer, etc.)	<i>Not answered.</i>
(In Situ) Physical processing (i.e. Soil Washing, Gypsum, Disking, etc.)	<i>Not answered.</i>
Ground Water Abatement pursuant to 19.15.30 NMAC	<i>Not answered.</i>
OTHER (Non-listed remedial process)	<b>Yes</b>
Other Non-listed Remedial Process. Please specify	No soil concentrations were found above reclamation requirements. No remediation is required.
<i>Per Subsection B of 19.15.29.11 NMAC unless the site characterization report includes completed efforts at remediation, the report must include a proposed remediation plan in accordance with 19.15.29.12 NMAC, which includes the anticipated timelines for beginning and completing the remediation.</i>	
I hereby certify that the information given above is true and complete to the best of my knowledge and understand that pursuant to OCD rules and regulations all operators are required to report and/or file certain release notifications and perform corrective actions for releases which may endanger public health or the environment. The acceptance of a C-141 report by the OCD does not relieve the operator of liability should their operations have failed to adequately investigate and remediate contamination that pose a threat to groundwater, surface water, human health or the environment. In addition, OCD acceptance of a C-141 report does not relieve the operator of responsibility for compliance with any other federal, state, or local laws and/or regulations.	
I hereby agree and sign off to the above statement	Name: Chuck Terhune Title: Program Manager Email: chuck.terhune@tetrattech.com Date: 09/23/2024
<i>The OCD recognizes that proposed remediation measures may have to be minimally adjusted in accordance with the physical realities encountered during remediation. If the responsible party has any need to significantly deviate from the remediation plan proposed, then it should consult with the division to determine if another remediation plan submission is required.</i>	

**District I**  
1625 N. French Dr., Hobbs, NM 88240  
Phone:(575) 393-6161 Fax:(575) 393-0720

**District II**  
811 S. First St., Artesia, NM 88210  
Phone:(575) 748-1283 Fax:(575) 748-9720

**District III**  
1000 Rio Brazos Rd., Aztec, NM 87410  
Phone:(505) 334-6178 Fax:(505) 334-6170

**District IV**  
1220 S. St Francis Dr., Santa Fe, NM 87505  
Phone:(505) 476-3470 Fax:(505) 476-3462

State of New Mexico  
Energy, Minerals and Natural Resources  
Oil Conservation Division  
1220 S. St Francis Dr.  
Santa Fe, NM 87505

QUESTIONS, Page 5

Action 385891

QUESTIONS (continued)

Operator: Maverick Permian LLC 1000 Main Street, Suite 2900 Houston, TX 77002	OGRID: 331199
	Action Number: 385891
	Action Type: [C-141] Remediation Closure Request C-141 (C-141-v-Closure)

QUESTIONS

Deferral Requests Only	
Only answer the questions in this group if seeking a deferral upon approval this submission. Each of the following items must be confirmed as part of any request for deferral of remediation.	
Requesting a deferral of the remediation closure due date with the approval of this submission	No



**District I**

1625 N. French Dr., Hobbs, NM 88240  
Phone:(575) 393-6161 Fax:(575) 393-0720

**District II**

811 S. First St., Artesia, NM 88210  
Phone:(575) 748-1283 Fax:(575) 748-9720

**District III**

1000 Rio Brazos Rd., Aztec, NM 87410  
Phone:(505) 334-6178 Fax:(505) 334-6170

**District IV**

1220 S. St Francis Dr., Santa Fe, NM 87505  
Phone:(505) 476-3470 Fax:(505) 476-3462

**State of New Mexico**  
**Energy, Minerals and Natural Resources**  
**Oil Conservation Division**  
**1220 S. St Francis Dr.**  
**Santa Fe, NM 87505**

QUESTIONS, Page 6

Action 385891

**QUESTIONS (continued)**

Operator: Maverick Permian LLC 1000 Main Street, Suite 2900 Houston, TX 77002	OGRID:	331199
	Action Number:	385891
	Action Type:	[C-141] Remediation Closure Request C-141 (C-141-v-Closure)

**QUESTIONS**

<b>Sampling Event Information</b>	
Last sampling notification (C-141N) recorded	353955
Sampling date pursuant to Subparagraph (a) of Paragraph (1) of Subsection D of 19.15.29.12 NMAC	06/15/2024
What was the (estimated) number of samples that were to be gathered	4
What was the sampling surface area in square feet	800

**Remediation Closure Request**

Only answer the questions in this group if seeking remediation closure for this release because all remediation steps have been completed.

Requesting a remediation closure approval with this submission	Yes
Have the lateral and vertical extents of contamination been fully delineated	Yes
Was this release entirely contained within a lined containment area	No
All areas reasonably needed for production or subsequent drilling operations have been stabilized, returned to the sites existing grade, and have a soil cover that prevents ponding of water, minimizing dust and erosion	Yes
What was the total surface area (in square feet) remediated	0
What was the total volume (cubic yards) remediated	0
All areas not reasonably needed for production or subsequent drilling operations have been reclaimed to contain a minimum of four feet of non-waste contain earthen material with concentrations less than 600 mg/kg chlorides, 100 mg/kg TPH, 50 mg/kg BTEX, and 10 mg/kg Benzene	Yes
What was the total surface area (in square feet) reclaimed	0
What was the total volume (in cubic yards) reclaimed	0
Summarize any additional remediation activities not included by answers (above)	No soil concentrations were found above reclamation requirements. No remediation is required.

The responsible party must attach information demonstrating they have complied with all applicable closure requirements and any conditions or directives of the OCD. This demonstration should be in the form of a comprehensive report (in .pdf format) including a scaled site map, sampling diagrams, relevant field notes, photographs of any excavation prior to backfilling, laboratory data including chain of custody documents of final sampling, and a narrative of the remedial activities. Refer to 19.15.29.12 NMAC.

I hereby certify that the information given above is true and complete to the best of my knowledge and understand that pursuant to OCD rules and regulations all operators are required to report and/or file certain release notifications and perform corrective actions for releases which may endanger public health or the environment. The acceptance of a C-141 report by the OCD does not relieve the operator of liability should their operations have failed to adequately investigate and remediate contamination that pose a threat to groundwater, surface water, human health or the environment. In addition, OCD acceptance of a C-141 report does not relieve the operator of responsibility for compliance with any other federal, state, or local laws and/or regulations. The responsible party acknowledges they must substantially restore, reclaim, and re-vegetate the impacted surface area to the conditions that existed prior to the release or their final land use in accordance with 19.15.29.13 NMAC including notification to the OCD when reclamation and re-vegetation are complete.

I hereby agree and sign off to the above statement	Name: Chuck Terhune Title: Program Manager Email: chuck.terhune@tetrattech.com Date: 09/23/2024
--	--

**District I**  
1625 N. French Dr., Hobbs, NM 88240  
Phone:(575) 393-6161 Fax:(575) 393-0720  
**District II**  
811 S. First St., Artesia, NM 88210  
Phone:(575) 748-1283 Fax:(575) 748-9720  
**District III**  
1000 Rio Brazos Rd., Aztec, NM 87410  
Phone:(505) 334-6178 Fax:(505) 334-6170  
**District IV**  
1220 S. St Francis Dr., Santa Fe, NM 87505  
Phone:(505) 476-3470 Fax:(505) 476-3462

**State of New Mexico**  
**Energy, Minerals and Natural Resources**  
**Oil Conservation Division**  
**1220 S. St Francis Dr.**  
**Santa Fe, NM 87505**

QUESTIONS, Page 7  
  
Action 385891

**QUESTIONS (continued)**

Operator:  Maverick Permian LLC 1000 Main Street, Suite 2900 Houston, TX 77002	OGRID:	331199
	Action Number:	385891
	Action Type:	
	[C-141] Remediation Closure Request C-141 (C-141-v-Closure)	

**QUESTIONS**

<b>Reclamation Report</b>	
Only answer the questions in this group if all reclamation steps have been completed.	
Requesting a reclamation approval with this submission	No

**District I**  
1625 N. French Dr., Hobbs, NM 88240  
Phone:(575) 393-6161 Fax:(575) 393-0720  
**District II**  
811 S. First St., Artesia, NM 88210  
Phone:(575) 748-1283 Fax:(575) 748-9720  
**District III**  
1000 Rio Brazos Rd., Aztec, NM 87410  
Phone:(505) 334-6178 Fax:(505) 334-6170  
**District IV**  
1220 S. St Francis Dr., Santa Fe, NM 87505  
Phone:(505) 476-3470 Fax:(505) 476-3462

State of New Mexico  
Energy, Minerals and Natural Resources  
Oil Conservation Division  
1220 S. St Francis Dr.  
Santa Fe, NM 87505

CONDITIONS  
  
Action 385891

CONDITIONS

Operator: Maverick Permian LLC 1000 Main Street, Suite 2900 Houston, TX 77002	OGRID:
	331199
	Action Number:
	385891
Action Type:	
[C-141] Remediation Closure Request C-141 (C-141-v-Closure)	

CONDITIONS

Created By	Condition	Condition Date
amaxwell	Remediation closure approved.	10/3/2024
amaxwell	A reclamation report will not be accepted until reclamation of the release area, including areas reasonably needed for production or drilling activities, is complete and meet the requirements of 19.15.29.13 NMAC. Areas not reasonably needed for production or drilling activities will still need to be reclaimed and revegetated as early as practicable.	10/3/2024
amaxwell	The reclamation report will need to include: Executive Summary of the reclamation activities; Scaled Site Map including sampling locations; Analytical results including, but not limited to, results showing that any remaining impacts meet the reclamation standards and results to prove the backfill is non-waste containing; At least one (1) representative 5-point composite sample will need to be collected from the backfill material that will be used for the reclamation of the top four feet of the excavation. OCD reserves the right to request additional sampling if needed; pictures of the backfilled areas showing that the area is back, as nearly as practical, to the original condition or the final land use and maintain those areas to control dust and minimize erosion to the extent practical; pictures of the top layer, which is either the background thickness of topsoil or one foot of suitable material to establish vegetation at the site, whichever is greater; and a revegetation plan.	10/3/2024