



September 13, 2024

District Supervisor
Oil Conservation Division, District 1
1625 North French Drive
Hobbs, New Mexico 88240

**Re: Reclamation Closure Report
ConocoPhillips
Super Cobra State Com #001H Flowline Release
Unit Letter P, Section 13, Township 19 South, Range 34 East
Lea County, New Mexico
Incident ID: nAPP2310336759**

Sir or Madam:

Tetra Tech, Inc. (Tetra Tech) was contacted by ConocoPhillips Company (ConocoPhillips) to assess a Heritage Concho (COG Operating Inc.) release that occurred from a flow line associated with the Super Cobra State Com 1H (API No. 30-025-41987). The release footprint is located in Public Land Survey System (PLSS) Unit Letter P, Section 13, Township 19 South, Range 34 East, in Lea County, New Mexico (Site). The approximate release point occurred at coordinates 32.656445°, -103.505552°, as shown on Figures 1 and 2.

BACKGROUND

According to the State of New Mexico Oil Conservation Division (NMOCD) C-141 Initial Report, the release was caused by a pin hole in a produced water polyethylene flow line on March 30, 2023. Approximately 8.31 barrels (bbls) of produced water were released, of which approximately 1 bbl was recovered with a vacuum truck. The release impacted approximately 622 square feet of pasture adjacent to a lease road on State Land, as indicated on Figure 3. The NMOCD received the initial C-141 on April 13, 2023, and subsequently assigned the release the Incident ID nAPP2310336759

LAND OWNERSHIP AND PERMITTING

The Site is located on land owned by the New Mexico State Land Office (NMSLO). The Site is located under Lease ID is VB18570001Concho Oil & Gas/COG Operating LLC. On behalf of ConocoPhillips, Tetra Tech contracted with SWCA Environmental Consultants (SWCA) to conduct an Archaeological Resources Management Section (ARMS) review for this inadvertent release. A literature and file search were conducted on May 3, 2023, using the State of New Mexico's New Mexico Cultural Resources Information System online database which included a review of known historic resources, including the built environment, Laboratory of Anthropology, and State/National Register listed properties. Other sources reviewed include the Bureau of Land Management (BLM) General Land Office (GLO) Records web site, <http://www.glorerecords.blm.gov>, which include land patent and general land office survey data. As this area was not settled by Spain, land grant records were not reviewed. The review was conducted for the Area of Potential Effect (APE) and 500 meters surrounding the APE. The land the proposed project is located on is part of the June 20, 1910: New Mexico Enabling Act (36 Stat. 557) patented on May 31, 1919.

The project area and surrounding 500 meters have been subject to fifteen (15) cultural resource surveys, five (5) of which are qualifying and three (3) previously recorded sites within the same review buffer (LA191696, LA 199334, and LA 202791), none of which fall within 100 feet of the proposed remediation area. The remediation area falls completely located on SLO-managed lands and is covered by three (3) qualifying surveys conducted within the last ten years (NMCRIS No. 134571, 141934, and 152694). SWCA

did not recommend further survey at this location. Alissa Healy, SWCA Archaeologist, submitted an ARMS letter to the NMSLO on behalf of Tetra Tech and ConocoPhillips on May 8, 2023. The redacted ARMS review letter is included in Appendix A and was submitted to NMSLO by SWCA.

REMEDIATION CLOSURE REPORT

Tetra Tech conducted assessment soil sampling at the Site on behalf of ConocoPhillips prior to remedial action. On May 31, 2023, Tetra Tech installed ten (10) hand auger borings (HA-1 through HA-10) in and around the reported release area to delineate the horizontal and vertical extent of the release. All of the borings were installed a depth of 1-foot bgs with the exception of HA-2, which was installed to a depth of 2.5 feet bgs. Tetra Tech returned to the Site on July 11, 2023, to install a trench (T-1) within the release extent to complete vertical delineation of the release. After mobilizing to the release site, however, field personnel determined that Plains All American Pipeline (Plains) was in the midst of installing a Right of Way (ROW) and subsurface pipeline directly over the NMOCD release footprint. Clearing and grubbing of the ROW had commenced prior to arrival of the Tetra Tech field personnel. This was an unforeseen turn of events and precipitated immediate action. Tetra Tech coordinated with Plains to momentarily cease further work on their pipeline installation project, however, so that the final assessment could be completed as permitted. The sampling locations are presented in Figure 4.

Analytical results from the assessment sampling activities are summarized in Table 1. Analytical results associated with sample locations HA-1, HA-2, HA-3, and T-1 exceeded the chloride RRAL of 600 mg/kg at soil intervals ranging from the surface to 6 feet bgs. All other analytical results were below the Site RRALs for all constituents.

On July 14, 2023, Tetra Tech personnel were onsite to remediate the release based on the results of the assessment sampling, including excavation, disposal and backfill. The extent of impacted soils was confirmed with field soil screening data and then excavated to 4 feet bgs throughout the release extent. The area of sample location T-1 was excavated to a depth of 6.5 feet bgs.

A Closure Report (Remediation Closure Report) dated August 29, 2023, was prepared by Tetra Tech on behalf of ConocoPhillips following completion of the remedial activities. The Remediation Closure Report provided the Site Characterization in accordance with 19.15.29.11 NMAC and described the remedial activities performed at the Site in accordance with 19.15.29.12 NMAC. Based on the collected analytical results, Tetra Tech excavated the release extent to a total depth of 4 feet bgs to remove impacted soils. Approximately one hundred and thirty-two (132) cubic yards of material were removed during the remedial activities.

The Remediation Closure Report was prepared by Tetra Tech on behalf of ConocoPhillips and submitted to the NMOCD on September 7, 2023. The remediation Closure Report was approved by the NMOCD on December 29, 2023. The Closure Report provided details regarding the reclamation; however, the incident status is listed as *Remediation Closure Report Approved, Pending submission of Reclamation Report from the operator*. As this incident occurred on State Trust Lands, a copy of the remediation Closure Report was submitted to the NMSLO for review. On September 11, 2023, the NMSLO approved the closure report via email. A copy of the regulatory correspondence is included in Appendix B.

2023 RECLAMATION ACTIVITIES

In accordance with 19.15.29.13 NMAC, all areas disturbed by the remediation have been reclaimed. Collected confirmation samples were placed into laboratory-provided sample containers, transferred under chain-of-custody, and analyzed within appropriate holding times by Cardinal. The soil samples were analyzed for TPH (GRO+DRO+MRO) by EPA Method 8015M, BTEX by EPA Method 8021B, and chlorides by SM4500CI-B. The analytical results were directly compared to the reclamation requirements and established Site RRALs to demonstrate compliance. All final confirmation soil samples (floor and sidewall) were below the reclamation limits for chloride, TPH, and BTEX. Excavated areas, depths and confirmation sample locations are indicated in Figure 5. The results of the July 2023 confirmation sampling events are summarized in Table 2.

Reclamation Closure Report
September 13, 2024

ConocoPhillips

Once acceptable confirmation sample results were received, the excavation was backfilled with clean material to pre-release grade. The soil cover included a top layer consisting of one foot of suitable material to establish vegetation at the site. The backfilled areas were seeded to aid in revegetation. Based on the soils at the Site, the NMSLO Sandy Loamy (SL) Sites Seed Mixture was used for seeding and planted in the amount specified in the pounds pure live seed (PLS) per acre.

2024 SITE INSPECTION AND RECLAMATION ACTIVITIES

Tetra Tech personnel conducted a visual Site inspection on August 15, 2024, to assess the revegetation progress and evaluate current site conditions. During the Site inspection activities, Tetra Tech personnel collected one (1) representative 5-point composite sample from the remediated area. In accordance with 19.15.29.12 NMAC, the reclaimed area contained a minimum of four feet of non-waste containing, uncontaminated, earthen material with chloride concentrations less than 600 mg/kg as analyzed by SM4500Cl-B. Soil backfill composite sampling results are summarized in Table 3. Copies of laboratory analysis and chain-of-custody documentation are included in Appendix C.

At the time of the visual Site inspection, uniform vegetative cover had not yet established in the reclaimed area. Site inspections will be performed annually to assess the revegetation progress and evaluate the site for the presence of primary or secondary noxious weeds. If noxious weeds are identified, the NMSLO will be contacted to determine an effective method for eradication. If the site does not show revegetation in the next growing season, the area will be reseeded as appropriate. Reclamation activities have been implemented in consultation with the NMSLO. Photographic documentation of the Site remediation and reclamation activities are presented in Appendix D.

CONCLUSION

Based on the results of the reclamation activities and confirmation sampling, ConocoPhillips respectfully requests approval of the reclamation associated with this incident. A final re-vegetation report will be submitted when uniform vegetative cover has been established that reflects a life-form ratio of plus or minus fifty percent of pre-disturbance levels and a total percent plant cover of at least seventy percent of pre-disturbance levels, excluding noxious weeds. If you have any questions concerning the reclamation activities performed at the Site, please call me at (512) 596-8201.

Sincerely,

Tetra Tech, Inc.



Lisbeth Chavira
Project Manager



Samantha K. Abbott, P.G.
Senior Project Manager

cc:
Mr. Jacob Laird, GPBU – ConocoPhillips

Reclamation Closure Report
September 13, 2024

ConocoPhillips

LIST OF ATTACHMENTS

Figures:

- Figure 1 – Overview Map
- Figure 2 – Topographic Map
- Figure 3 – Approximate Release Extent
- Figure 4 – Site Assessment Map
- Figure 5 – Remediation Extent and Confirmation Sampling

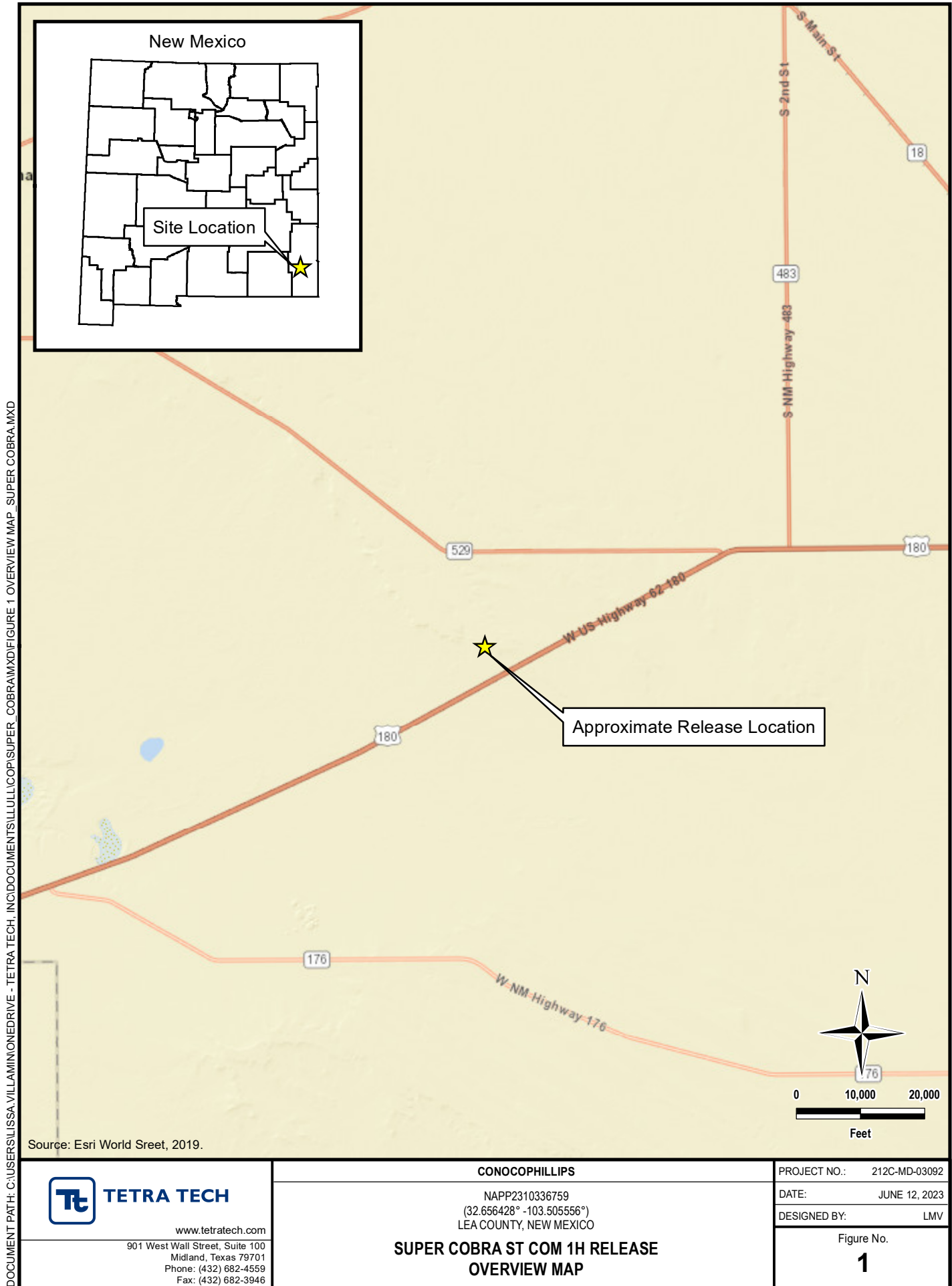
Tables:

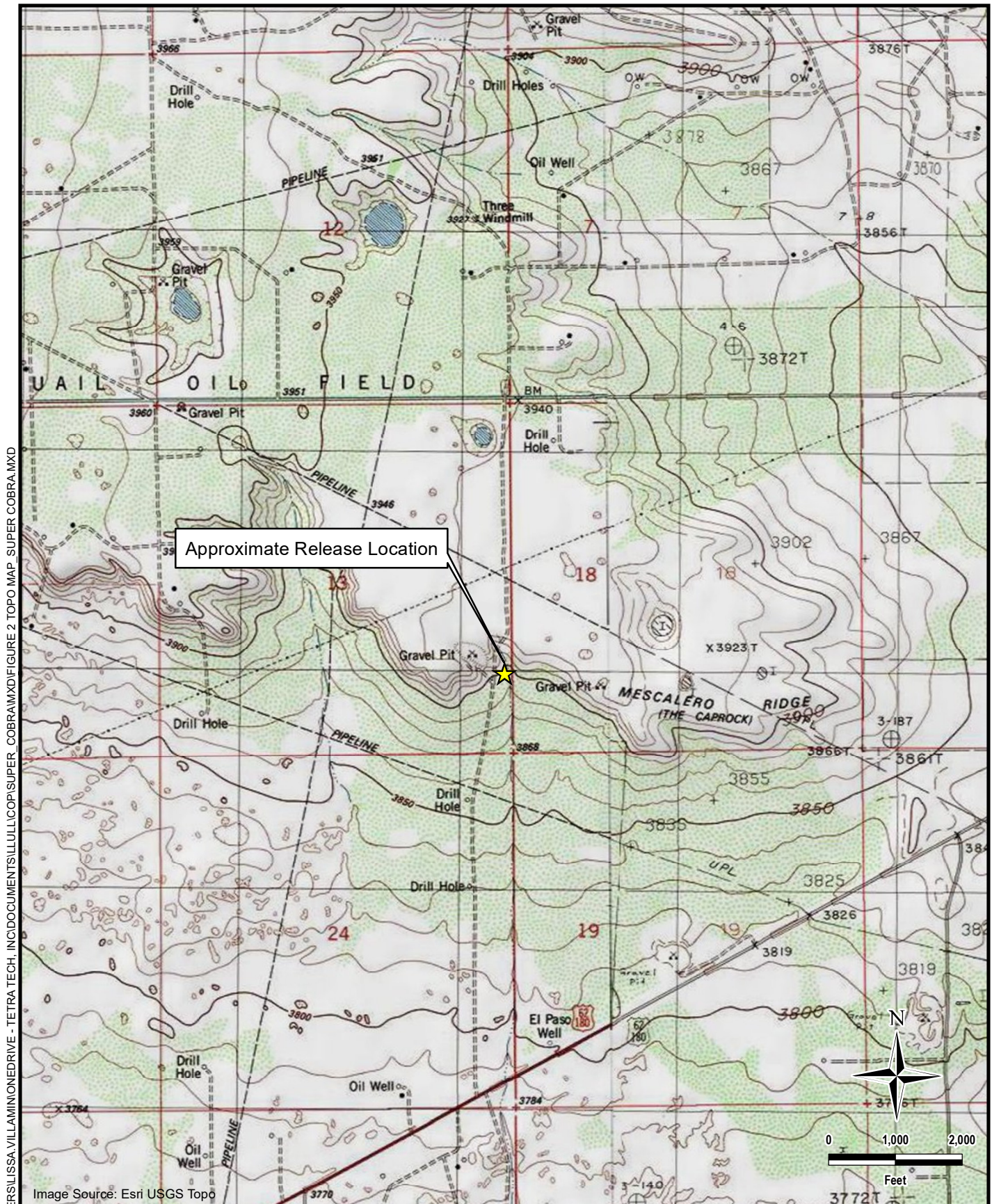
- Table 1 – Summary of Analytical Results – Soil Assessment
- Table 2 – Summary of Analytical Results – Soil Remediation
- Table 3 – Summary of Analytical Results – Soil Backfill

Appendices:

- Appendix A – ARMS Letter
- Appendix B - Regulatory Correspondence
- Appendix C – Laboratory Analytical Data
- Appendix D – Photographic Documentation

FIGURES





TETRA TECH

www.tetrattech.com

901 West Wall Street, Suite 100
Midland, Texas 79701
Phone: (432) 682-4559
Fax: (432) 682-3946

CONOCOPHILLIPS

NAPP2310336759
(32.656428° - 103.505556°)
LEA COUNTY, NEW MEXICO

**SUPER COBRA ST COM 1H RELEASE
TOPOGRAPHIC MAP**

PROJECT NO.: 212C-MD-0392

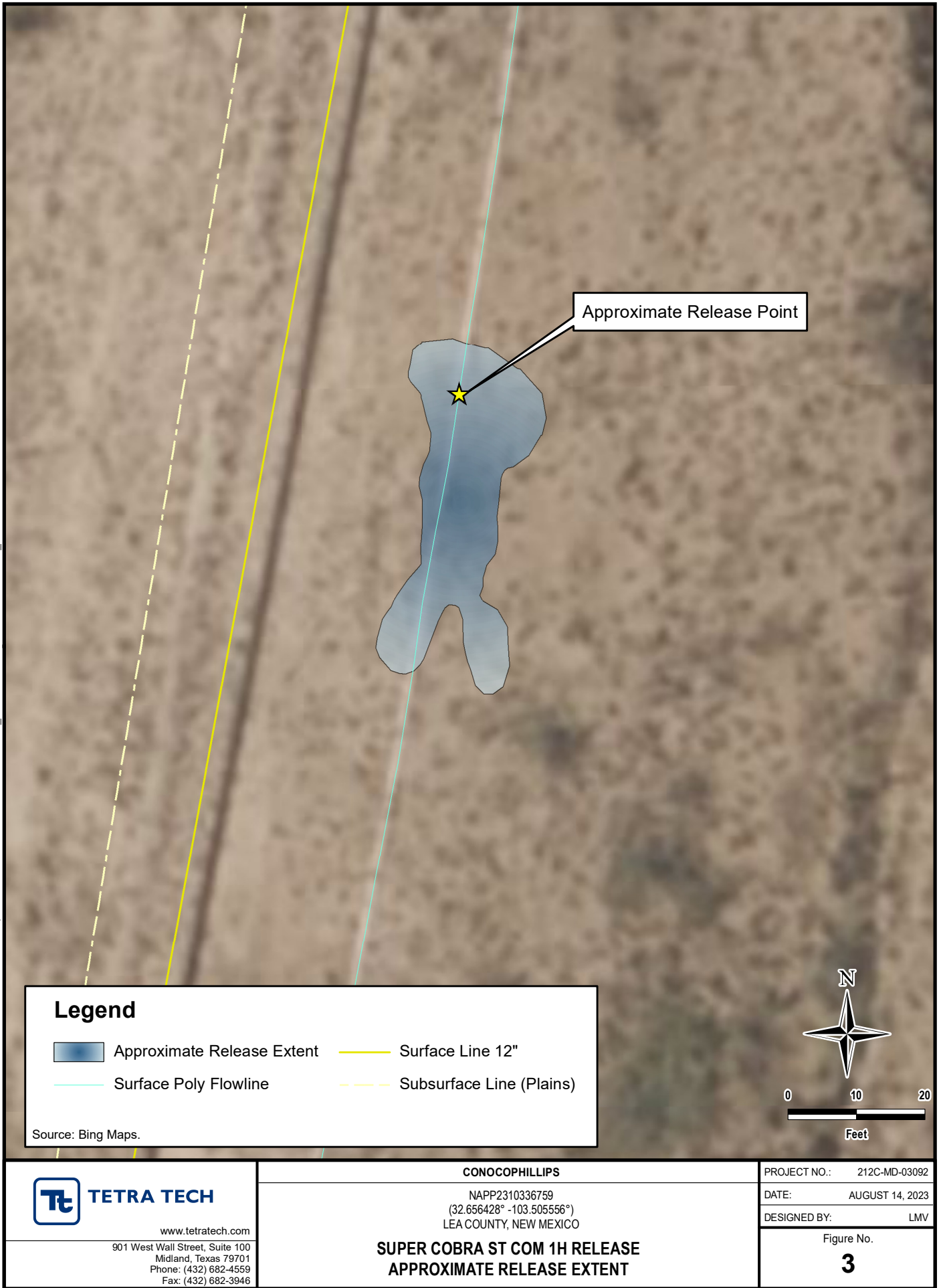
DATE: JUNE 12, 2023

DESIGNED BY: LMV

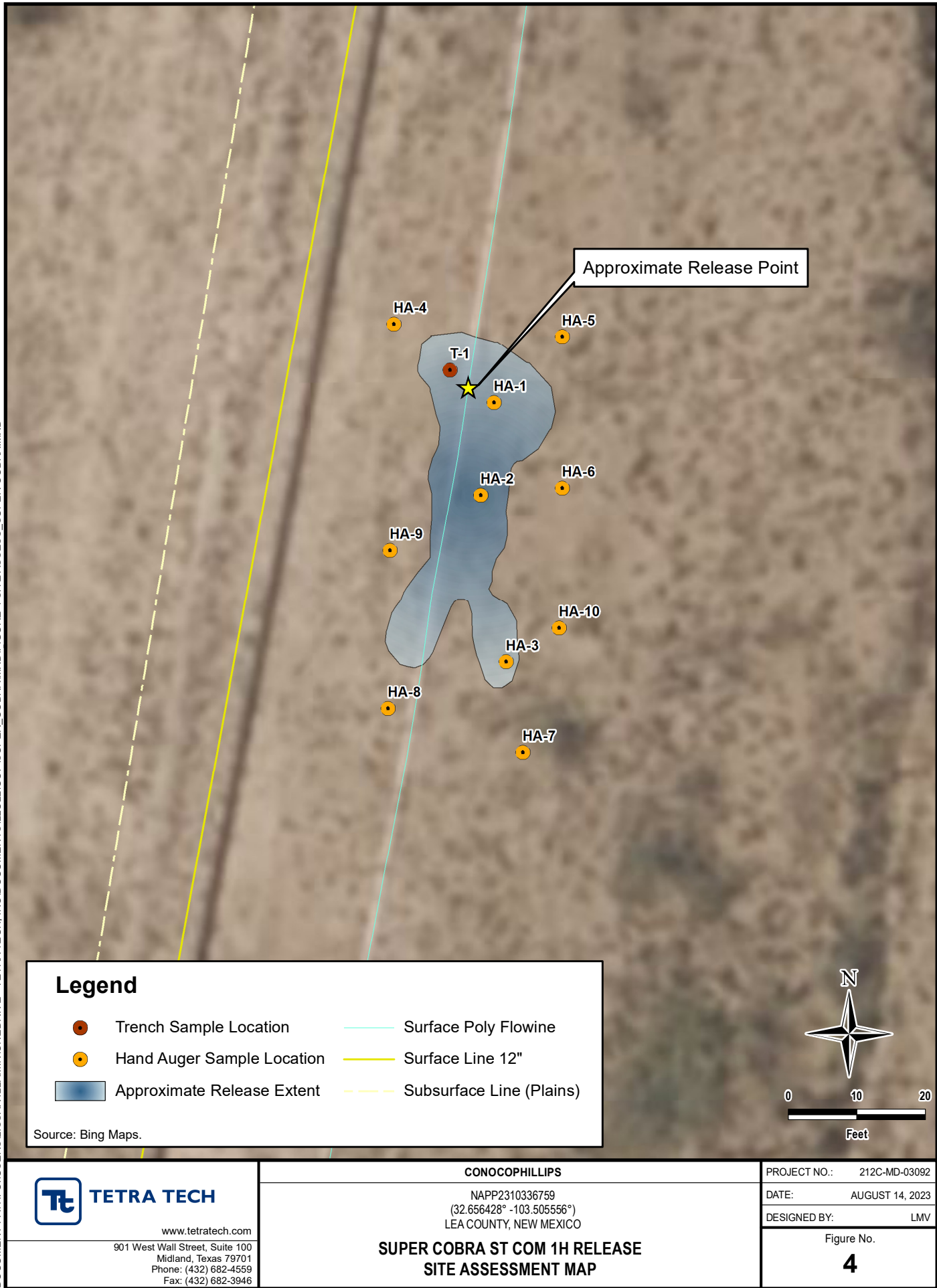
Figure No.

2

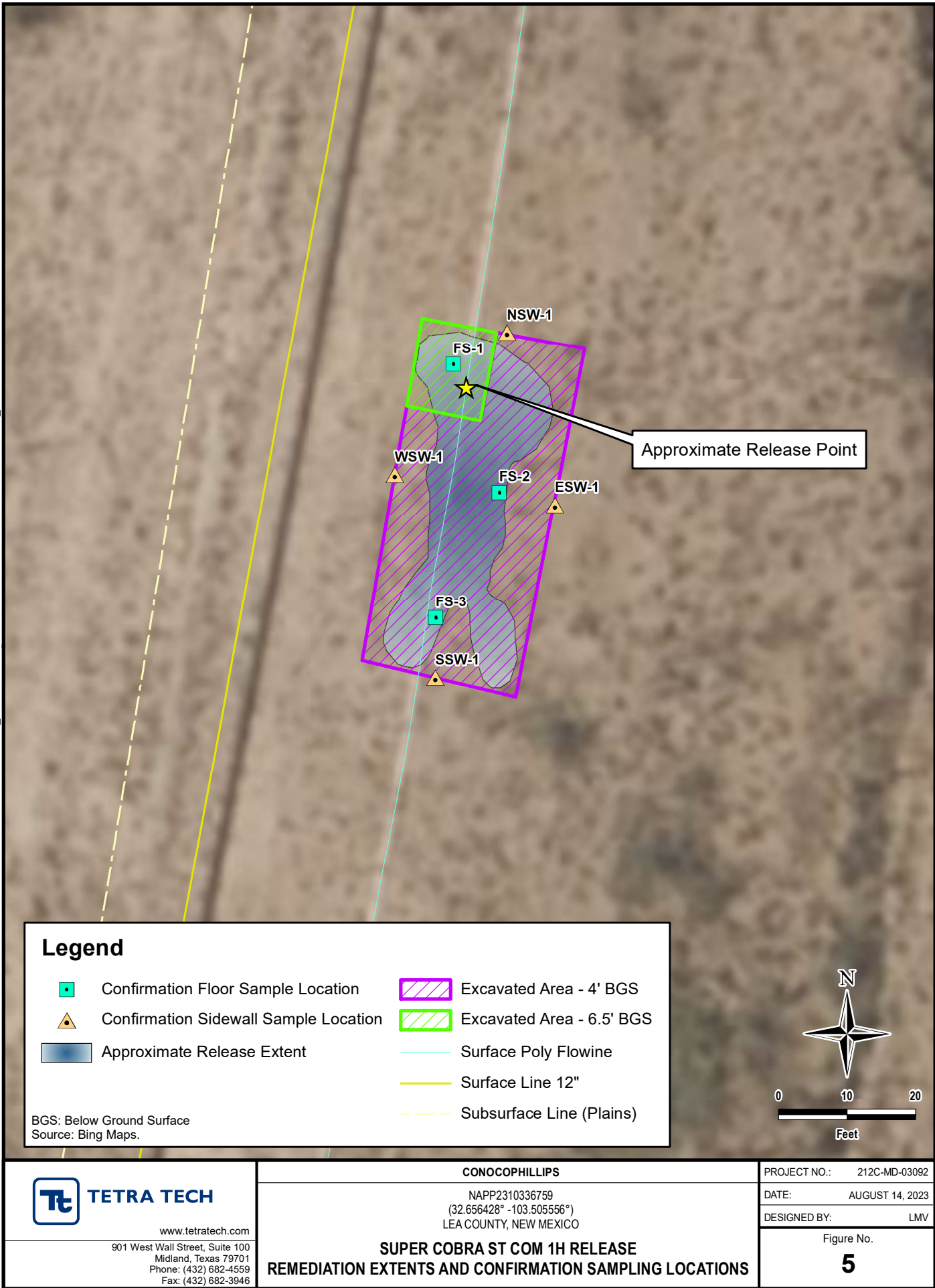
DOCUMENT PATH: C:\USERS\LISSA.VILLAMINIONEDRIVE - TETRA TECH, INC\DOCUMENTS\ILLU\COPI\SUPER_COBRAMXD\FIGURE 3 RELEASE_SUPER COBRA.MXD



DOCUMENT PATH: C:\USERS\LISSA.VILLAMONEDRIVE - TETRA TECH, INC\DOCUMENTS\ILLU\COPI\SUPER_COBRAMXD\FIGURE 4 SITE ASSESS - SUPER COBRA.MXD



DOCUMENT PATH: C:\USERS\ISSA.VILLAMONEDRIVE - TETRA TECH, INC\DOCUMENTS\ILLU\COPI\SUPER_COBRAMXD\FIGURE 5 REMEDIATION AND CONFIRMATION SUPER COBRAMXD



TABLES

TABLE 1
SUMMARY OF ANALYTICAL RESULTS
SOIL ASSESSMENT - NAPP2310336759
CONOCOPHILLIPS
SUPER COBRA STATE COM 1H RELEASE
LEA COUNTY, NM

Sample ID	Sample Date	Sample Depth	Field Screening Results		Chloride ¹		BTEX ²										TPH ³							
			Chloride	PID			Benzene		Toluene		Ethylbenzene		Total Xylenes		Total BTEX		GRO		DRO		EXT DRO		(GRO+DRO)	Total TPH (GRO+DRO+EXT DRO)
							C ₆ - C ₁₀	> C ₁₀ - C ₂₈	> C ₂₈ - C ₃₆	mg/kg	Q	mg/kg	Q	mg/kg	Q	mg/kg	Q	mg/kg	Q	mg/kg	Q	mg/kg		
		ft. bgs	ppm		mg/kg	Q	mg/kg	Q	mg/kg	Q	mg/kg	Q	mg/kg	Q	mg/kg	Q	mg/kg	Q	mg/kg	Q	mg/kg	Q	mg/kg	mg/kg
HA-1	5/31/2023	0-1	5270	-	5520		<0.050		<0.050		<0.050		<0.150		<0.300		<10.0		<10.0		<10.0		<10.0	-
HA-2	5/31/2023	0-1	8420	-	12000		<0.050		<0.050		<0.050		<0.150		<0.300		<10.0		<10.0		<10.0		<10.0	-
		2-2.5	8720	-	10000		<0.050		<0.050		<0.050		<0.150		<0.300		<10.0		<10.0		<10.0		<10.0	-
T-1	7/11/2023	3-4	-	-	20000		<0.050		<0.050		<0.050		<0.150		<0.300		<10.0		<10.0		<10.0		<10.0	-
		4-5	-	-	8000		<0.050		<0.050		<0.050		<0.150		<0.300		<10.0		<10.0		<10.0		<10.0	-
		5-6	-	-	2800		<0.050		<0.050		<0.050		<0.150		<0.300		<10.0		<10.0		<10.0		<10.0	-
		6-6.5	-	-	32		<0.050		<0.050		<0.050		<0.150		<0.300		<10.0		<10.0		<10.0		<10.0	-
HA-3	5/31/2023	0-1	7850	-	7860		<0.050		<0.050		<0.050		<0.150		<0.300		<10.0		<10.0		<10.0		<10.0	-
HA-4	5/31/2023	0-1	88	-	64		<0.050		<0.050		<0.050		<0.150		<0.300		<10.0		<10.0		<10.0		<10.0	-
HA-5	5/31/2023	0-1	54	-	32		<0.050		<0.050		<0.050		<0.150		<0.300		<10.0		<10.0		<10.0		<10.0	-
HA-6	5/31/2023	0-1	130	-	112		<0.050		<0.050		<0.050		<0.150		<0.300		<10.0		<10.0		<10.0		<10.0	-
HA-7	5/31/2023	0-1	159	-	96.0		<0.050		<0.050		<0.050		<0.150		<0.300		<10.0		<10.0		<10.0		<10.0	-
HA-8	5/31/2023	0-1	57	-	48.0		<0.050		<0.050		<0.050		<0.150		<0.300		<10.0		<10.0		<10.0		<10.0	-
HA-9	5/31/2023	0-1	68	-	32.0		<0.050		<0.050		<0.050		<0.150		<0.300		<10.0		<10.0		<10.0		<10.0	-
HA-10	5/31/2023	0-1	341	-	208		<0.050		<0.050		<0.050		<0.150		<0.300		<10.0		<10.0		<10.0		<10.0	-

NOTES:

- ft.

Feet
- bgs

Below ground surface
- mg/kg

Milligrams per kilogram
- TPH

Total Petroleum Hydrocarbons
- GRO

Gasoline range organics
- DRO

Diesel range organics
- 1

Method SM4500Cl-B
- 2

Method 8021B
- 3

Method 8015M

Bold and italicized values indicate exceedance of proposed Site RRALs and/or Reclamation Requirements.

Shaded rows indicate intervals that were excavated during remediation activities.

QUALIFIERS:

- QR-03

The RPD value for the sample duplicate or MS/MSD was outside of QC acceptance limits due to matrix interference. QC batch accepted based on LCS and/or LCSD recovery and/or RPD values.
- QM-07

The spike recovery was outside acceptance limits for the MS and/or MSD. The batch was accepted based on acceptable LCS recovery.

TABLE 2
SUMMARY OF ANALYTICAL RESULTS
SOIL REMEDIATION - nAPP2310336759
CONOCOPHILLIPS
SUPER COBRA STATE COM 001H
LEA COUNTY, NM

Sample ID	Sample Date	Sample Depth	Field Screening Results Chloride	Chloride ¹		BTEX ²										TPH ³							
						Benzene		Toluene		Ethylbenzene		Total Xylenes		Total BTEX		GRO		DRO		EXT DRO		Total TPH (GRO+DRO+EXT DRO)	
						mg/kg	Q	mg/kg	Q	mg/kg	Q	mg/kg	Q	mg/kg	Q	C ₆ - C ₁₀	Q	> C ₁₀ - C ₂₈	Q	> C ₂₈ - C ₃₆	Q	mg/kg	
NSW-1	7/14/2023	-	78.9	32.0		<0.050		<0.050		<0.050		<0.150		<0.300		<10.0		<10.0		<10.0		-	
SSW-1	7/14/2023	-	57.4	<16.0		<0.050		<0.050		<0.050		<0.150		<0.300		<10.0		<10.0		<10.0		-	
ESW-1	7/14/2023	-	69.2	<16.0		<0.050		<0.050		<0.050		<0.150		<0.300		<10.0		<10.0		<10.0		-	
WSW-1	7/14/2023	-	72.6	<16.0		<0.050		<0.050		<0.050		<0.150		<0.300		<10.0		<10.0		<10.0		-	
FS-1	7/14/2023	6.5	85.8	<16.0		<0.050		<0.050		<0.050		<0.150		<0.300		<10.0		<10.0		<10.0		-	
FS-2	7/14/2023	4	357	304		<0.050		<0.050		<0.050		<0.150		<0.300		<10.0		<10.0		<10.0		-	
FS-3	7/14/2023	4	301	240		<0.050		<0.050		<0.050		<0.150		<0.300		<10.0		<10.0		<10.0		-	

NOTES:
ft. Feet
bgs Below ground surface
mg/kg Milligrams per kilogram
TPH Total Petroleum Hydrocarbons
GRO Gasoline range organics
DRO Diesel range organics
1 Method SM4500Cl-B
2 Method 8021B
3 Method 8015M

TABLE 3
SUMMARY OF ANALYTICAL RESULTS
SOIL BACKFILL - nAPP2310336759
CONOCOPHILLIPS
SUPER COBRA STATE COM #001H RELEASE
LEA COUNTY, NM

Sample ID	Sample Date	Chloride ¹		BTEX ²										TPH ³							
				Benzene		Toluene		Ethylbenzene		Total Xylenes		Total BTEX		GRO		DRO		EXT DRO		Total TPH (GRO+DRO+EXT DRO)	
		C ₆ - C ₁₀												> C ₁₀ - C ₂₈		> C ₂₈ - C ₃₆					
		mg/kg	Q	mg/kg	Q	mg/kg	Q	mg/kg	Q	mg/kg	Q	mg/kg	Q	mg/kg	Q	mg/kg	Q	mg/kg	Q	mg/kg	
BACKFILL - COMPOSITE	8/15/2024	16		<0.050		<0.050		<0.050		<0.150		<0.300		<10.0		<10.0		<10.0		-	

- NOTES:
- ft. Feet
 - bgs Below ground surface
 - mg/kg Milligrams per kilogram
 - TPH Total Petroleum Hydrocarbons
 - GRO Gasoline range organics
 - DRO Diesel range organics
 - 1 Method SM4500Cl-B
 - 2 Method 8021B
 - 3 Method 8015M

APPENDIX A

ARMS Letter



Albuquerque Office
5647 Jefferson Street NE
Albuquerque, New Mexico 87109
Tel 505.254.1115 Fax 505.254.1116
www.swca.com

May 8, 2023

TO: David Eck or Lia Tsesmeli, Archaeologist, New Mexico State Land Office, Santa Fe, New Mexico

FROM: SWCA Environmental Consultants

SUBJECT: Completion of an Archaeological Resources Management Section (ARMS) Review for the ConocoPhillips Super Cobra State Com #001H Inadvertent Release Project on New Mexico State Land Office (SLO) lands in Lea County, NM

Company Ref No: 212C-MD-03092, Task No. 100

PROJECT DESCRIPTION:

Tetra Tech, Inc. has requested that SWCA Environmental Consultants (SWCA) conduct an Archaeological Resources Management Section (ARMS) review for an inadvertent release in Lea County, New Mexico. The proposed project is located on New Mexico State Trust Lands approximately 34.5 kilometers (21.4 miles) west of Hobbs, NM in T19S R34E, Section 13 (SW E½).

A literature and file search were conducted on May 3, 2023, using the State of New Mexico's New Mexico Cultural Resources Information System online database which included a review of known historic resources, including the built environment, Laboratory of Anthropology, and State/National Register listed properties. Other sources reviewed include the BLM GLO Records web site, <http://www.glorerecords.blm.gov>, which include land patent and general land office survey data. As this area was not settled by Spain, land grant records were not reviewed. The review was conducted for the Area of Potential Effect (APE) and 500 meters surrounding the APE. The land the proposed project is located on is part of the June 20, 1910: New Mexico Enabling Act (36 Stat. 557) patented on May 31, 1919.

Recommendation:

The project area and surrounding 500 meters have been subject to fifteen (15) cultural resource surveys, five (5) of which are qualifying and three (3) previously recorded sites within the same review buffer (LA191696, LA 199334, and LA 202791), none of which fall within 100 feet of the proposed remediation area. The remediation area falls completely located on SLO-managed lands and is covered by three (3) qualifying surveys conducted within the last ten years (NMCRIS No. 134571, 141934, and 152694). All work will be done within the previously surveyed area, and therefore, SWCA does not recommend further survey at this location. If cultural materials are identified during ground disturbing activities, work must stop and the SLO must be contacted.

Information regarding the findings can be found in Tables 1 and 2 in enclosure (1).

A handwritten signature in dark ink, appearing to read 'Alissa H. Healy', is written over a light blue horizontal line.

Archaeologist
Alissa Healy

Enclosure: (1) Review Results, (2) ARMS Map



Albuquerque Office
5647 Jefferson Street NE
Albuquerque, New Mexico 87109
Tel 505.254.1115 Fax 505.254.1116
www.swca.com

Archaeological Resources Management System (ARMS) Review Results

Table 1: Cultural sites within 500 meters (0.31 miles) of proposed project.

LA No.	Discovering NMCRI No.	Site Type/Cultural Affiliation and Age	Eligibility	Relationship to APE
191696	141048	Artifact scatter with features/Anglo (1846 AD – 1945 AD)	Unevaluated (2/19/2019 HPD Log No. 109882)	Outside
199334	No information on NMCRI	No information on NMCRI	No information on NMCRI	Outside
202791	152694	Artifact scatter with features/Mogollon (1100 AD – 1400 AD)	Not Determined	Outside

Table 2: Cultural surveys within 500 meters (0.31 miles) of proposed project.

NMCRI No.	Performing Organization	Date of Investigation	Acres Surveyed	Sites Visited
1175	NM State Highway & Transportation Dept	2/2/1982	178.1	2
7584	NM State University Cultural Resource Management Division	11/17/1983	123.56	0
1840	Agency for Conservation Archaeology Eastern New Mexico University	12/13/1983	96.96	1
49377	TRC, Inc.	5/30/1995	492.6	17
113177	Boone Archaeological Services, LLC	3/4/2009	54.9	1
124302	Lone Mountain Archaeological Services	3/30/2012	825.43	9
132233	Statistical Research, Inc.	7/8/2014	9528.07	79
134571	Statistical Research, Inc.	10/27/2015	45.13	0
137180	Boone Archaeological Consultants, LLC.	12/5/2016	32.77	0
141048	Lone Mountain Archaeological Services	4/23/2018	29148.32	247
141934	Tetra Tech, Inc.	11/5/2018	334	0
147954	Goshawk Environmental Consulting	5/5/2021	54.5	0



ENVIRONMENTAL CONSULTANTS

Sound Science. Creative Solutions.®

Albuquerque Office
5647 Jefferson Street NE
Albuquerque, New Mexico 87109
Tel 505.254.1115 Fax 505.254.1116
www.swca.com

NMCRIS No.	Performing Organization	Date of Investigation	Acres Surveyed	Sites Visited
148282	Boone Archaeological Consultants, LLC.	6/22/2021	17.35	1
152694	APAC	3/8/2023	0	6
152694	APAC	3/8/2023	0	6

*redacted

Figure 1. ARMS screenshot showing previous surveys (brown polygons), previously recorded sites (red polygons), and the proposed project area (blue triangle in upper right).

APPENDIX B

Regulatory Correspondence

District I
1625 N. French Dr., Hobbs, NM 88240
District II
811 S. First St., Artesia, NM 88210
District III
1000 Rio Brazos Road, Aztec, NM 87410
District IV
1220 S. St. Francis Dr., Santa Fe, NM 87505

State of New Mexico
Energy Minerals and Natural
Resources Department

Oil Conservation Division
1220 South St. Francis Dr.
Santa Fe, NM 87505

Form C-141
Revised August 24, 2018
Submit to appropriate OCD District office

Incident ID	NAPP2310336759
District RP	
Facility ID	fAPP2204042446
Application ID	

Release Notification

Responsible Party

Responsible Party	COG Operating, LLC	OGRID	229137
Contact Name	Jacob Laird	Contact Telephone	(575) 988-2043
Contact email	Jacob.Laird@ConocoPhillips.com	Incident # (assigned by OCD)	NAPP2310336759
Contact mailing address	600 West Illinois Avenue, Midland, Texas 79701		

Location of Release Source

Latitude 32.6564 Longitude -103.5056
(NAD 83 in decimal degrees to 5 decimal places)

Site Name	Super Cobra State Com 001H	Site Type	Flowline
Date Release Discovered	March 30, 2023	API# (if applicable)	

Unit Letter	Section	Township	Range	County
P	13	19S	34E	Lea

Surface Owner: ☒ State ☐ Federal ☐ Tribal ☐ Private (Name: _____)

Nature and Volume of Release

Material(s) Released (Select all that apply and attach calculations or specific justification for the volumes provided below)

<input type="checkbox"/> Crude Oil	Volume Released (bbls)	Volume Recovered (bbls)
<input checked="" type="checkbox"/> Produced Water	Volume Released (bbls) 8.3148	Volume Recovered (bbls) 1
	Is the concentration of dissolved chloride in the produced water >10,000 mg/l?	<input checked="" type="checkbox"/> Yes <input type="checkbox"/> No
<input type="checkbox"/> Condensate	Volume Released (bbls)	Volume Recovered (bbls)
<input type="checkbox"/> Natural Gas	Volume Released (Mcf)	Volume Recovered (Mcf)
<input type="checkbox"/> Other (describe)	Volume/Weight Released (provide units)	Volume/Weight Recovered (provide units)

Cause of Release

The release was caused by a pinhole developing in a flowline due to corrosion.
The release was off the pad. A vacuum truck was dispatched to remove all freestanding fluids.
Evaluation will be made of the site to determine if we may commence remediation immediately or delineate any possible impact from the release and we will present a remediation work plan to the NMOCD for approval prior to any significant remediation activities.


State of New Mexico
Oil Conservation Division

Incident ID	NAPP2310336759
District RP	
Facility ID	fAPP2204042446
Application ID	

Was this a major release as defined by 19.15.29.7(A) NMAC? <input type="checkbox"/> Yes <input checked="" type="checkbox"/> No	If YES, for what reason(s) does the responsible party consider this a major release?
If YES, was immediate notice given to the OCD? By whom? To whom? When and by what means (phone, email, etc)?	

Initial Response

The responsible party must undertake the following actions immediately unless they could create a safety hazard that would result in injury

<input checked="" type="checkbox"/> The source of the release has been stopped.	
<input checked="" type="checkbox"/> The impacted area has been secured to protect human health and the environment.	
<input checked="" type="checkbox"/> Released materials have been contained via the use of berms or dikes, absorbent pads, or other containment devices.	
<input checked="" type="checkbox"/> All free liquids and recoverable materials have been removed and managed appropriately.	
If all the actions described above have <u>not</u> been undertaken, explain why:	
Per 19.15.29.8 B. (4) NMAC the responsible party may commence remediation immediately after discovery of a release. If remediation has begun, please attach a narrative of actions to date. If remedial efforts have been successfully completed or if the release occurred within a lined containment area (see 19.15.29.11(A)(5)(a) NMAC), please attach all information needed for closure evaluation.	
I hereby certify that the information given above is true and complete to the best of my knowledge and understand that pursuant to OCD rules and regulations all operators are required to report and/or file certain release notifications and perform corrective actions for releases which may endanger public health or the environment. The acceptance of a C-141 report by the OCD does not relieve the operator of liability should their operations have failed to adequately investigate and remediate contamination that pose a threat to groundwater, surface water, human health or the environment. In addition, OCD acceptance of a C-141 report does not relieve the operator of responsibility for compliance with any other federal, state, or local laws and/or regulations.	
Printed Name	Brittany N. Esparza
Signature: 	Title: Environmental Technician
email: Brittany.Esparza@ConocoPhillips.com	Date: 4/13/2023
	Telephone: (432) 221-0398
<u>OCD Only</u>	
Received by: Jocelyn Harimon	Date: 04/13/2023

Convert irregular shape into a series of rectangles	Length (ft.)	Width (ft.)	Average Depth (in.)	On/Off Pad (dropdown)	Soil Spilled-Fluid Saturation (%)	Estimated volume of each area (bbl.)	NAP231033675 Total Estimated Volume of Spill (bbl.)
Rectangle A	10.0	18.0	6.0	Off-Pad ✓	15.02%	16.02	2.41
Rectangle B	13.0	16.0	6.0	Off-Pad ✓	15.02%	18.51	2.78
Rectangle C	13.0	18.0	6.0	Off-Pad ✓	15.02%	20.83	3.13
Rectangle D				✓		0.00	
Rectangle E				✓		0.00	
Rectangle F				✓		0.00	
Rectangle G				✓		0.00	
Rectangle H				✓		0.00	
Rectangle I				✓		0.00	
Total Subsurface Volume Released:							8.3148

Received by OCD: 9/7/2023 8:03:48 AM
Convert irregular shape into a series of rectangles

Released to Imaging: 12/29/2023 1:41:30 PM

Incident ID	NAPP2310336759
District RP	
Facility ID	fAPP2204042446
Application ID	

Site Assessment/Characterization

This information must be provided to the appropriate district office no later than 90 days after the release discovery date.

What is the shallowest depth to groundwater beneath the area affected by the release?	60 (ft bgs)
Did this release impact groundwater or surface water?	<input type="checkbox"/> Yes <input checked="" type="checkbox"/> No
Are the lateral extents of the release within 300 feet of a continuously flowing watercourse or any other significant watercourse?	<input checked="" type="checkbox"/> Yes <input type="checkbox"/> No
Are the lateral extents of the release within 200 feet of any lakebed, sinkhole, or playa lake (measured from the ordinary high-water mark)?	<input type="checkbox"/> Yes <input checked="" type="checkbox"/> No
Are the lateral extents of the release within 300 feet of an occupied permanent residence, school, hospital, institution, or church?	<input type="checkbox"/> Yes <input checked="" type="checkbox"/> No
Are the lateral extents of the release within 500 horizontal feet of a spring or a private domestic fresh water well used by less than five households for domestic or stock watering purposes?	<input type="checkbox"/> Yes <input checked="" type="checkbox"/> No
Are the lateral extents of the release within 1000 feet of any other fresh water well or spring?	<input type="checkbox"/> Yes <input checked="" type="checkbox"/> No
Are the lateral extents of the release within incorporated municipal boundaries or within a defined municipal fresh water well field?	<input type="checkbox"/> Yes <input checked="" type="checkbox"/> No
Are the lateral extents of the release within 300 feet of a wetland?	<input type="checkbox"/> Yes <input checked="" type="checkbox"/> No
Are the lateral extents of the release overlying a subsurface mine?	<input type="checkbox"/> Yes <input checked="" type="checkbox"/> No
Are the lateral extents of the release overlying an unstable area such as karst geology?	<input type="checkbox"/> Yes <input checked="" type="checkbox"/> No
Are the lateral extents of the release within a 100-year floodplain?	<input type="checkbox"/> Yes <input checked="" type="checkbox"/> No
Did the release impact areas not on an exploration, development, production, or storage site?	<input type="checkbox"/> Yes <input checked="" type="checkbox"/> No

Attach a comprehensive report (electronic submittals in .pdf format are preferred) demonstrating the lateral and vertical extents of soil contamination associated with the release have been determined. Refer to 19.15.29.11 NMAC for specifics.

Characterization Report Checklist: Each of the following items must be included in the report.
<input checked="" type="checkbox"/> Scaled site map showing impacted area, surface features, subsurface features, delineation points, and monitoring wells.
<input checked="" type="checkbox"/> Field data
<input checked="" type="checkbox"/> Data table of soil contaminant concentration data
<input checked="" type="checkbox"/> Depth to water determination
<input checked="" type="checkbox"/> Determination of water sources and significant watercourses within ½-mile of the lateral extents of the release
<input type="checkbox"/> Boring or excavation logs
<input checked="" type="checkbox"/> Photographs including date and GIS information
<input checked="" type="checkbox"/> Topographic/Aerial maps
<input checked="" type="checkbox"/> Laboratory data including chain of custody

If the site characterization report does not include completed efforts at remediation of the release, the report must include a proposed remediation plan. That plan must include the estimated volume of material to be remediated, the proposed remediation technique, proposed sampling plan and methods, anticipated timelines for beginning and completing the remediation. The closure criteria for a release are contained in Table 1 of 19.15.29.12 NMAC, however, use of the table is modified by site- and release-specific parameters.

State of New Mexico
Oil Conservation Division

Incident ID	NAPP2310336759
District RP	
Facility ID	fAPP2204042446
Application ID	

I hereby certify that the information given above is true and complete to the best of my knowledge and understand that pursuant to OCD rules and regulations all operators are required to report and/or file certain release notifications and perform corrective actions for releases which may endanger public health or the environment. The acceptance of a C-141 report by the OCD does not relieve the operator of liability should their operations have failed to adequately investigate and remediate contamination that pose a threat to groundwater, surface water, human health or the environment. In addition, OCD acceptance of a C-141 report does not relieve the operator of responsibility for compliance with any other federal, state, or local laws and/or regulations.

Printed Name: Jacob Laird Title: Environmental Engineer
Signature: *Jacob Laird* Date: 8/29/2023
email: jacob.laird@conocophillips.com Telephone: 575-703-5482

OCD Only

Received by: Shelly Wells Date: 9/7/2023

State of New Mexico
Oil Conservation Division

Incident ID	NAPP2310336759
District RP	
Facility ID	fAPP2204042446
Application ID	

Closure

The responsible party must attach information demonstrating they have complied with all applicable closure requirements and any conditions or directives of the OCD. This demonstration should be in the form of a comprehensive report (electronic submittals in .pdf format are preferred) including a scaled site map, sampling diagrams, relevant field notes, photographs of any excavation prior to backfilling, laboratory data including chain of custody documents of final sampling, and a narrative of the remedial activities. Refer to 19.15.29.12 NMAC.

Closure Report Attachment Checklist: *Each of the following items must be included in the closure report.*

- ☒ A scaled site and sampling diagram as described in 19.15.29.11 NMAC
- ☒ Photographs of the remediated site prior to backfill or photos of the liner integrity if applicable (Note: appropriate OCD District office must be notified 2 days prior to liner inspection)
- ☒ Laboratory analyses of final sampling (Note: appropriate OCD District office must be notified 2 days prior to final sampling)
- ☒ Description of remediation activities

I hereby certify that the information given above is true and complete to the best of my knowledge and understand that pursuant to OCD rules and regulations all operators are required to report and/or file certain release notifications and perform corrective actions for releases which may endanger public health or the environment. The acceptance of a C-141 report by the OCD does not relieve the operator of liability should their operations have failed to adequately investigate and remediate contamination that pose a threat to groundwater, surface water, human health or the environment. In addition, OCD acceptance of a C-141 report does not relieve the operator of responsibility for compliance with any other federal, state, or local laws and/or regulations. The responsible party acknowledges they must substantially restore, reclaim, and re-vegetate the impacted surface area to the conditions that existed prior to the release or their final land use in accordance with 19.15.29.13 NMAC including notification to the OCD when reclamation and re-vegetation are complete.

Printed Name: Jacob Laird Title: Environmental Engineer
Signature: *Jacob Laird* Date: 8/29/2023
email: jacob.laird@conocophillips.com Telephone: 575-703-5482

OCD Only

Received by: Shelly Wells Date: 9/7/2023

Closure approval by the OCD does not relieve the responsible party of liability should their operations have failed to adequately investigate and remediate contamination that poses a threat to groundwater, surface water, human health, or the environment nor does not relieve the responsible party of compliance with any other federal, state, or local laws and/or regulations.

Closure Approved by: *Nelson Velez* Date: 12/29/2023
Printed Name: Nelson Velez Title: Environmental Specialist - Adv

Chavira, Lisbeth

From: Knight, Tami C. <tknight@slo.state.nm.us>
Sent: Monday, September 11, 2023 3:50 PM
To: Esparza, Brittany
Cc: Laird, Jacob; Fejervary Morena, Gustavo A; Abbott, Sam; Llull, Christian; SLO Surface ECO
Subject: Closure Report Approved -Super Cobra State Com 001H (napp2310336759)-033023

⚠ CAUTION: This email originated from an external sender. Verify the source before opening links or attachments. **⚠**

Documentation of completed remediation was received from your office on September 7, 2023, regarding NMOCD Incident ID: NAPP2310336759. The NMSLO Environmental Compliance Office (ECO) has reviewed the records submitted regarding the subject release, and based on the information provided in the documents received from your office, ECO has determined that additional work is not required regarding the subject release. However, ECO does reserve the right to require additional work should information become available which indicates that a threat to the environment or public health exists.

If reported conditions change that result in potential impact to State Land surface, please call ECO at (575) 392-3697 or (505) 326-5716, or submit a written request to spills@slo.state.nm.us.

Thank you,

**Environmental Compliance Office***Surface Resources Division*

eco@slo.state.nm.us

nmstatelands.org

.....



CONFIDENTIALITY NOTICE - This e-mail transmission, including all documents, files, or previous e-mail messages attached hereto, may contain confidential and/or legally privileged information. If you are not the intended recipient, or a person responsible for delivering it to the intended recipient, you are hereby notified that you must not read this transmission and that any disclosure, copying, printing, distribution, or use of any of the information contained in and/or attached to this transmission is **STRICTLY PROHIBITED**. If you have received this transmission in error, please immediately notify the sender and delete the original transmission and its attachments without reading or saving in any manner. Thank you.

APPENDIX C

Laboratory Analytical Data



PHONE (575) 393-2326 ° 101 E. MARLAND ° HOBBS, NM 88240

August 21, 2024

LISBETH CHAVIRA

TETRA TECH

901 WEST WALL STREET , STE 100

MIDLAND, TX 79701

RE: SUPER COBRA STATE COM 1H

Enclosed are the results of analyses for samples received by the laboratory on 08/15/24 16:47.

Cardinal Laboratories is accredited through Texas NELAP under certificate number TX-C24-00112. Accreditation applies to drinking water, non-potable water and solid and chemical materials. All accredited analytes are denoted by an asterisk (*). For a complete list of accredited analytes and matrices visit the TCEQ website at www.tceq.texas.gov/field/qa/lab_accred_certif.html.

Cardinal Laboratories is accredited through the State of Colorado Department of Public Health and Environment for:

Method EPA 552.2	Haloacetic Acids (HAA-5)
Method EPA 524.2	Total Trihalomethanes (TTHM)
Method EPA 524.4	Regulated VOCs (V1, V2, V3)

Accreditation applies to public drinking water matrices.

This report meets NELAP requirements and is made up of a cover page, analytical results, and a copy of the original chain-of-custody. If you have any questions concerning this report, please feel free to contact me.

Sincerely,

A handwritten signature in black ink that reads "Celey D. Keene". The signature is written in a cursive style with a large, stylized 'C' and 'K'.

Celey D. Keene

Lab Director/Quality Manager



PHONE (575) 393-2326 ° 101 E. MARLAND ° HOBBS, NM 88240

Analytical Results For:

TETRA TECH
 LISBETH CHAVIRA
 901 WEST WALL STREET , STE 100
 MIDLAND TX, 79701
 Fax To: (432) 682-3946

Received:	08/15/2024	Sampling Date:	08/15/2024
Reported:	08/21/2024	Sampling Type:	Soil
Project Name:	SUPER COBRA STATE COM 1H	Sampling Condition:	Cool & Intact
Project Number:	212C-MD-03092	Sample Received By:	Alyssa Parras
Project Location:	COP - LEA CO NM		

Sample ID: BACKFILL - COMPOSITE (H244978-01)

BTEX 8021B		mg/kg		Analyzed By: JH					
Analyte	Result	Reporting Limit	Analyzed	Method Blank	BS	% Recovery	True Value QC	RPD	Qualifier
Benzene*	<0.050	0.050	08/19/2024	ND	2.25	112	2.00	3.22	
Toluene*	<0.050	0.050	08/19/2024	ND	2.05	103	2.00	0.896	
Ethylbenzene*	<0.050	0.050	08/19/2024	ND	1.97	98.5	2.00	0.800	
Total Xylenes*	<0.150	0.150	08/19/2024	ND	6.03	100	6.00	1.49	
Total BTEX	<0.300	0.300	08/19/2024	ND					

Surrogate: 4-Bromofluorobenzene (PID) 94.7 % 71.5-134

Chloride, SM4500Cl-B		mg/kg		Analyzed By: HM						
Analyte	Result	Reporting Limit	Analyzed	Method Blank	BS	% Recovery	True Value QC	RPD	Qualifier	
Chloride	16.0	16.0	08/19/2024	ND	432	108	400	3.64		

TPH 8015M		mg/kg		Analyzed By: MS					
Analyte	Result	Reporting Limit	Analyzed	Method Blank	BS	% Recovery	True Value QC	RPD	Qualifier
GRO C6-C10*	<10.0	10.0	08/19/2024	ND	213	106	200	1.31	
DRO >C10-C28*	<10.0	10.0	08/19/2024	ND	194	97.0	200	3.52	
EXT DRO >C28-C36	<10.0	10.0	08/19/2024	ND					

Surrogate: 1-Chlorooctane 65.3 % 48.2-134

Surrogate: 1-Chlorooctadecane 67.2 % 49.1-148

Cardinal Laboratories

*=Accredited Analyte

PLEASE NOTE: Liability and Damages. Cardinal's liability and client's exclusive remedy for any claim arising, whether based in contract or tort, shall be limited to the amount paid by client for analyses. All claims, including those for negligence and any other cause whatsoever shall be deemed waived unless made in writing and received by Cardinal within thirty (30) days after completion of the applicable service. In no event shall Cardinal be liable for incidental or consequential damages, including, without limitation, business interruptions, loss of use, or loss of profits incurred by client, its subsidiaries, affiliates or successors arising out of or related to the performance of the services hereunder by Cardinal, regardless of whether such claim is based upon any of the above stated reasons or otherwise. Results relate only to the samples identified above. This report shall not be reproduced except in full with written approval of Cardinal Laboratories.

Celey D. Keene, Lab Director/Quality Manager



PHONE (575) 393-2326 ° 101 E. MARLAND ° HOBBS, NM 88240

Notes and Definitions

ND	Analyte NOT DETECTED at or above the reporting limit
RPD	Relative Percent Difference
**	Samples not received at proper temperature of 6°C or below.
***	Insufficient time to reach temperature.
-	Chloride by SM4500Cl-B does not require samples be received at or below 6°C Samples reported on an as received basis (wet) unless otherwise noted on report

Cardinal Laboratories

*=Accredited Analyte

PLEASE NOTE: Liability and Damages. Cardinal's liability and client's exclusive remedy for any claim arising, whether based in contract or tort, shall be limited to the amount paid by client for analyses. All claims, including those for negligence and any other cause whatsoever shall be deemed waived unless made in writing and received by Cardinal within thirty (30) days after completion of the applicable service. In no event shall Cardinal be liable for incidental or consequential damages, including, without limitation, business interruptions, loss of use, or loss of profits incurred by client, its subsidiaries, affiliates or successors arising out of or related to the performance of the services hereunder by Cardinal, regardless of whether such claim is based upon any of the above stated reasons or otherwise. Results relate only to the samples identified above. This report shall not be reproduced except in full with written approval of Cardinal Laboratories.

A handwritten signature in black ink, appearing to read "Celey D. Keene".

Celey D. Keene, Lab Director/Quality Manager



101 East Marland, Hobbs, NM 88240
(575) 393-2326 FAX (575) 393-2476

CHAIN-OF-CUSTODY AND ANALYSIS REQUEST

[illegible]



PHONE (575) 393-2326 ° 101 E. MARLAND ° HOBBS, NM 88240

June 02, 2023

CHRISTIAN LLULL

TETRA TECH

901 WEST WALL STREET , STE 100

MIDLAND, TX 79701

RE: SUPER COBRA STATE COM 1H

Enclosed are the results of analyses for samples received by the laboratory on 05/31/23 12:32.

Cardinal Laboratories is accredited through Texas NELAP under certificate number T104704398-22-15. Accreditation applies to drinking water, non-potable water and solid and chemical materials. All accredited analytes are denoted by an asterisk (*). For a complete list of accredited analytes and matrices visit the TCEQ website at www.tceq.texas.gov/field/qa/lab_accred_certif.html.

Cardinal Laboratories is accredited through the State of Colorado Department of Public Health and Environment for:

Method EPA 552.2	Haloacetic Acids (HAA-5)
Method EPA 524.2	Total Trihalomethanes (TTHM)
Method EPA 524.4	Regulated VOCs (V1, V2, V3)

Accreditation applies to public drinking water matrices.

This report meets NELAP requirements and is made up of a cover page, analytical results, and a copy of the original chain-of-custody. If you have any questions concerning this report, please feel free to contact me.

Sincerely,

A handwritten signature in black ink that reads "Celey D. Keene". The signature is written in a cursive, flowing style.

Celey D. Keene

Lab Director/Quality Manager



PHONE (575) 393-2326 ° 101 E. MARLAND ° HOBBS, NM 88240

Analytical Results For:

TETRA TECH
 CHRISTIAN LLULL
 901 WEST WALL STREET , STE 100
 MIDLAND TX, 79701
 Fax To: (432) 682-3946

Received:	05/31/2023	Sampling Date:	05/31/2023
Reported:	06/02/2023	Sampling Type:	Soil
Project Name:	SUPER COBRA STATE COM 1H	Sampling Condition:	Cool & Intact
Project Number:	212C-MD-03092	Sample Received By:	Tamara Oldaker
Project Location:	COP - LEA CO NM		

Sample ID: HA - 1 (0-1') (H232763-01)

BTEX 8021B		mg/kg		Analyzed By: JH/					
Analyte	Result	Reporting Limit	Analyzed	Method Blank	BS	% Recovery	True Value QC	RPD	Qualifier
Benzene*	<0.050	0.050	06/01/2023	ND	2.10	105	2.00	5.18	
Toluene*	<0.050	0.050	06/01/2023	ND	2.13	106	2.00	9.13	
Ethylbenzene*	<0.050	0.050	06/01/2023	ND	2.22	111	2.00	9.16	
Total Xylenes*	<0.150	0.150	06/01/2023	ND	6.59	110	6.00	9.89	
Total BTEX	<0.300	0.300	06/01/2023	ND					

Surrogate: 4-Bromofluorobenzene (PID) 111 % 71.5-134

Chloride, SM4500Cl-B		mg/kg		Analyzed By: AC						
Analyte	Result	Reporting Limit	Analyzed	Method Blank	BS	% Recovery	True Value QC	RPD	Qualifier	
Chloride	5520	16.0	06/01/2023	ND	432	108	400	3.77		

TPH 8015M		mg/kg		Analyzed By: MS					
Analyte	Result	Reporting Limit	Analyzed	Method Blank	BS	% Recovery	True Value QC	RPD	Qualifier
GRO C6-C10*	<10.0	10.0	06/01/2023	ND	166	83.2	200	0.903	
DRO >C10-C28*	<10.0	10.0	06/01/2023	ND	183	91.3	200	0.677	
EXT DRO >C28-C36	<10.0	10.0	06/01/2023	ND					

Surrogate: 1-Chlorooctane 71.1 % 48.2-134

Surrogate: 1-Chlorooctadecane 75.2 % 49.1-148

Cardinal Laboratories

*=Accredited Analyte

PLEASE NOTE: Liability and Damages. Cardinal's liability and client's exclusive remedy for any claim arising, whether based in contract or tort, shall be limited to the amount paid by client for analyses. All claims, including those for negligence and any other cause whatsoever shall be deemed waived unless made in writing and received by Cardinal within thirty (30) days after completion of the applicable service. In no event shall Cardinal be liable for incidental or consequential damages, including, without limitation, business interruptions, loss of use, or loss of profits incurred by client, its subsidiaries, affiliates or successors arising out of or related to the performance of the services hereunder by Cardinal, regardless of whether such claim is based upon any of the above stated reasons or otherwise. Results relate only to the samples identified above. This report shall not be reproduced except in full with written approval of Cardinal Laboratories.

Celey D. Keene, Lab Director/Quality Manager



PHONE (575) 393-2326 ° 101 E. MARLAND ° HOBBS, NM 88240

Analytical Results For:

TETRA TECH
 CHRISTIAN LLULL
 901 WEST WALL STREET , STE 100
 MIDLAND TX, 79701
 Fax To: (432) 682-3946

Received:	05/31/2023	Sampling Date:	05/31/2023
Reported:	06/02/2023	Sampling Type:	Soil
Project Name:	SUPER COBRA STATE COM 1H	Sampling Condition:	Cool & Intact
Project Number:	212C-MD-03092	Sample Received By:	Tamara Oldaker
Project Location:	COP - LEA CO NM		

Sample ID: HA - 2 (0-1') (H232763-02)

BTEx 8021B		mg/kg		Analyzed By: MS						
Analyte	Result	Reporting Limit	Analyzed	Method Blank	BS	% Recovery	True Value QC	RPD	Qualifier	
Benzene*	<0.050	0.050	06/01/2023	ND	2.28	114	2.00	3.46		
Toluene*	<0.050	0.050	06/01/2023	ND	2.27	114	2.00	3.50		
Ethylbenzene*	<0.050	0.050	06/01/2023	ND	2.23	111	2.00	3.30		
Total Xylenes*	<0.150	0.150	06/01/2023	ND	6.81	113	6.00	3.54		
Total BTEX	<0.300	0.300	06/01/2023	ND						

Surrogate: 4-Bromofluorobenzene (PID) 103 % 71.5-134

Chloride, SM4500Cl-B		mg/kg		Analyzed By: AC						
Analyte	Result	Reporting Limit	Analyzed	Method Blank	BS	% Recovery	True Value QC	RPD	Qualifier	
Chloride	12000	16.0	06/01/2023	ND	432	108	400	3.77		

TPH 8015M		mg/kg		Analyzed By: MS						
Analyte	Result	Reporting Limit	Analyzed	Method Blank	BS	% Recovery	True Value QC	RPD	Qualifier	
GRO C6-C10*	<10.0	10.0	05/31/2023	ND	215	107	200	2.74		
DRO >C10-C28*	<10.0	10.0	05/31/2023	ND	216	108	200	4.55		
EXT DRO >C28-C36	<10.0	10.0	05/31/2023	ND						

Surrogate: 1-Chlorooctane 131 % 48.2-134

Surrogate: 1-Chlorooctadecane 129 % 49.1-148

Cardinal Laboratories

*=Accredited Analyte

PLEASE NOTE: Liability and Damages. Cardinal's liability and client's exclusive remedy for any claim arising, whether based in contract or tort, shall be limited to the amount paid by client for analyses. All claims, including those for negligence and any other cause whatsoever shall be deemed waived unless made in writing and received by Cardinal within thirty (30) days after completion of the applicable service. In no event shall Cardinal be liable for incidental or consequential damages, including, without limitation, business interruptions, loss of use, or loss of profits incurred by client, its subsidiaries, affiliates or successors arising out of or related to the performance of the services hereunder by Cardinal, regardless of whether such claim is based upon any of the above stated reasons or otherwise. Results relate only to the samples identified above. This report shall not be reproduced except in full with written approval of Cardinal Laboratories.

Celey D. Keene, Lab Director/Quality Manager



PHONE (575) 393-2326 ° 101 E. MARLAND ° HOBBS, NM 88240

Analytical Results For:

TETRA TECH
 CHRISTIAN LLULL
 901 WEST WALL STREET , STE 100
 MIDLAND TX, 79701
 Fax To: (432) 682-3946

Received:	05/31/2023	Sampling Date:	05/31/2023
Reported:	06/02/2023	Sampling Type:	Soil
Project Name:	SUPER COBRA STATE COM 1H	Sampling Condition:	Cool & Intact
Project Number:	212C-MD-03092	Sample Received By:	Tamara Oldaker
Project Location:	COP - LEA CO NM		

Sample ID: HA - 2 (2-2.5') (H232763-03)

BTEx 8021B		mg/kg		Analyzed By: MS						
Analyte	Result	Reporting Limit	Analyzed	Method Blank	BS	% Recovery	True Value QC	RPD	Qualifier	
Benzene*	<0.050	0.050	06/01/2023	ND	2.28	114	2.00	3.46		
Toluene*	<0.050	0.050	06/01/2023	ND	2.27	114	2.00	3.50		
Ethylbenzene*	<0.050	0.050	06/01/2023	ND	2.23	111	2.00	3.30		
Total Xylenes*	<0.150	0.150	06/01/2023	ND	6.81	113	6.00	3.54		
Total BTEX	<0.300	0.300	06/01/2023	ND						

Surrogate: 4-Bromofluorobenzene (PID) 102 % 71.5-134

Chloride, SM4500Cl-B		mg/kg		Analyzed By: AC						
Analyte	Result	Reporting Limit	Analyzed	Method Blank	BS	% Recovery	True Value QC	RPD	Qualifier	
Chloride	10000	16.0	06/01/2023	ND	432	108	400	3.77		

TPH 8015M		mg/kg		Analyzed By: MS					
Analyte	Result	Reporting Limit	Analyzed	Method Blank	BS	% Recovery	True Value QC	RPD	Qualifier
GRO C6-C10*	<10.0	10.0	05/31/2023	ND	215	107	200	2.74	
DRO >C10-C28*	<10.0	10.0	05/31/2023	ND	216	108	200	4.55	
EXT DRO >C28-C36	<10.0	10.0	05/31/2023	ND					

Surrogate: 1-Chlorooctane 130 % 48.2-134

Surrogate: 1-Chlorooctadecane 137 % 49.1-148

Cardinal Laboratories

*=Accredited Analyte

PLEASE NOTE: Liability and Damages. Cardinal's liability and client's exclusive remedy for any claim arising, whether based in contract or tort, shall be limited to the amount paid by client for analyses. All claims, including those for negligence and any other cause whatsoever shall be deemed waived unless made in writing and received by Cardinal within thirty (30) days after completion of the applicable service. In no event shall Cardinal be liable for incidental or consequential damages, including, without limitation, business interruptions, loss of use, or loss of profits incurred by client, its subsidiaries, affiliates or successors arising out of or related to the performance of the services hereunder by Cardinal, regardless of whether such claim is based upon any of the above stated reasons or otherwise. Results relate only to the samples identified above. This report shall not be reproduced except in full with written approval of Cardinal Laboratories.

Celey D. Keene, Lab Director/Quality Manager



PHONE (575) 393-2326 ° 101 E. MARLAND ° HOBBS, NM 88240

Analytical Results For:

TETRA TECH
 CHRISTIAN LLULL
 901 WEST WALL STREET , STE 100
 MIDLAND TX, 79701
 Fax To: (432) 682-3946

Received:	05/31/2023	Sampling Date:	05/31/2023
Reported:	06/02/2023	Sampling Type:	Soil
Project Name:	SUPER COBRA STATE COM 1H	Sampling Condition:	Cool & Intact
Project Number:	212C-MD-03092	Sample Received By:	Tamara Oldaker
Project Location:	COP - LEA CO NM		

Sample ID: HA - 3 (0-1') (H232763-04)

BTEX 8021B		mg/kg		Analyzed By: MS						
Analyte	Result	Reporting Limit	Analyzed	Method Blank	BS	% Recovery	True Value QC	RPD	Qualifier	
Benzene*	<0.050	0.050	06/01/2023	ND	2.28	114	2.00	3.46		
Toluene*	<0.050	0.050	06/01/2023	ND	2.27	114	2.00	3.50		
Ethylbenzene*	<0.050	0.050	06/01/2023	ND	2.23	111	2.00	3.30		
Total Xylenes*	<0.150	0.150	06/01/2023	ND	6.81	113	6.00	3.54		
Total BTEX	<0.300	0.300	06/01/2023	ND						

Surrogate: 4-Bromofluorobenzene (PID) 103 % 71.5-134

Chloride, SM4500CI-B		mg/kg		Analyzed By: AC						
Analyte	Result	Reporting Limit	Analyzed	Method Blank	BS	% Recovery	True Value QC	RPD	Qualifier	
Chloride	7860	16.0	06/01/2023	ND	432	108	400	3.77		

TPH 8015M		mg/kg		Analyzed By: MS					
Analyte	Result	Reporting Limit	Analyzed	Method Blank	BS	% Recovery	True Value QC	RPD	Qualifier
GRO C6-C10*	<10.0	10.0	05/31/2023	ND	215	107	200	2.74	
DRO >C10-C28*	<10.0	10.0	05/31/2023	ND	216	108	200	4.55	
EXT DRO >C28-C36	<10.0	10.0	05/31/2023	ND					

Surrogate: 1-Chlorooctane 120 % 48.2-134

Surrogate: 1-Chlorooctadecane 126 % 49.1-148

Cardinal Laboratories

*=Accredited Analyte

PLEASE NOTE: Liability and Damages. Cardinal's liability and client's exclusive remedy for any claim arising, whether based in contract or tort, shall be limited to the amount paid by client for analyses. All claims, including those for negligence and any other cause whatsoever shall be deemed waived unless made in writing and received by Cardinal within thirty (30) days after completion of the applicable service. In no event shall Cardinal be liable for incidental or consequential damages, including, without limitation, business interruptions, loss of use, or loss of profits incurred by client, its subsidiaries, affiliates or successors arising out of or related to the performance of the services hereunder by Cardinal, regardless of whether such claim is based upon any of the above stated reasons or otherwise. Results relate only to the samples identified above. This report shall not be reproduced except in full with written approval of Cardinal Laboratories.

Celey D. Keene, Lab Director/Quality Manager



PHONE (575) 393-2326 ° 101 E. MARLAND ° HOBBS, NM 88240

Analytical Results For:

TETRA TECH
 CHRISTIAN LLULL
 901 WEST WALL STREET , STE 100
 MIDLAND TX, 79701
 Fax To: (432) 682-3946

Received:	05/31/2023	Sampling Date:	05/31/2023
Reported:	06/02/2023	Sampling Type:	Soil
Project Name:	SUPER COBRA STATE COM 1H	Sampling Condition:	Cool & Intact
Project Number:	212C-MD-03092	Sample Received By:	Tamara Oldaker
Project Location:	COP - LEA CO NM		

Sample ID: HA - 4 (0-1') (H232763-05)

BTEx 8021B		mg/kg		Analyzed By: MS						
Analyte	Result	Reporting Limit	Analyzed	Method Blank	BS	% Recovery	True Value QC	RPD	Qualifier	
Benzene*	<0.050	0.050	06/01/2023	ND	2.28	114	2.00	3.46		
Toluene*	<0.050	0.050	06/01/2023	ND	2.27	114	2.00	3.50		
Ethylbenzene*	<0.050	0.050	06/01/2023	ND	2.23	111	2.00	3.30		
Total Xylenes*	<0.150	0.150	06/01/2023	ND	6.81	113	6.00	3.54		
Total BTEx	<0.300	0.300	06/01/2023	ND						

Surrogate: 4-Bromofluorobenzene (PID) 102 % 71.5-134

Chloride, SM4500CI-B		mg/kg		Analyzed By: AC						
Analyte	Result	Reporting Limit	Analyzed	Method Blank	BS	% Recovery	True Value QC	RPD	Qualifier	
Chloride	64.0	16.0	06/01/2023	ND	432	108	400	3.77		

TPH 8015M		mg/kg		Analyzed By: MS					
Analyte	Result	Reporting Limit	Analyzed	Method Blank	BS	% Recovery	True Value QC	RPD	Qualifier
GRO C6-C10*	<10.0	10.0	05/31/2023	ND	215	107	200	2.74	
DRO >C10-C28*	<10.0	10.0	05/31/2023	ND	216	108	200	4.55	
EXT DRO >C28-C36	<10.0	10.0	05/31/2023	ND					

Surrogate: 1-Chlorooctane 130 % 48.2-134

Surrogate: 1-Chlorooctadecane 134 % 49.1-148

Cardinal Laboratories

*=Accredited Analyte

PLEASE NOTE: Liability and Damages. Cardinal's liability and client's exclusive remedy for any claim arising, whether based in contract or tort, shall be limited to the amount paid by client for analyses. All claims, including those for negligence and any other cause whatsoever shall be deemed waived unless made in writing and received by Cardinal within thirty (30) days after completion of the applicable service. In no event shall Cardinal be liable for incidental or consequential damages, including, without limitation, business interruptions, loss of use, or loss of profits incurred by client, its subsidiaries, affiliates or successors arising out of or related to the performance of the services hereunder by Cardinal, regardless of whether such claim is based upon any of the above stated reasons or otherwise. Results relate only to the samples identified above. This report shall not be reproduced except in full with written approval of Cardinal Laboratories.

Celey D. Keene, Lab Director/Quality Manager



PHONE (575) 393-2326 ° 101 E. MARLAND ° HOBBS, NM 88240

Analytical Results For:

TETRA TECH
 CHRISTIAN LLULL
 901 WEST WALL STREET , STE 100
 MIDLAND TX, 79701
 Fax To: (432) 682-3946

Received:	05/31/2023	Sampling Date:	05/31/2023
Reported:	06/02/2023	Sampling Type:	Soil
Project Name:	SUPER COBRA STATE COM 1H	Sampling Condition:	Cool & Intact
Project Number:	212C-MD-03092	Sample Received By:	Tamara Oldaker
Project Location:	COP - LEA CO NM		

Sample ID: HA - 5 (0-1') (H232763-06)

BTEX 8021B		mg/kg		Analyzed By: MS					
Analyte	Result	Reporting Limit	Analyzed	Method Blank	BS	% Recovery	True Value QC	RPD	Qualifier
Benzene*	<0.050	0.050	06/01/2023	ND	2.26	113	2.00	2.51	
Toluene*	<0.050	0.050	06/01/2023	ND	2.25	113	2.00	2.60	
Ethylbenzene*	<0.050	0.050	06/01/2023	ND	2.21	110	2.00	3.09	
Total Xylenes*	<0.150	0.150	06/01/2023	ND	6.75	113	6.00	2.10	
Total BTEX	<0.300	0.300	06/01/2023	ND					

Surrogate: 4-Bromofluorobenzene (PID) 102 % 71.5-134

Chloride, SM4500Cl-B		mg/kg		Analyzed By: AC						
Analyte	Result	Reporting Limit	Analyzed	Method Blank	BS	% Recovery	True Value QC	RPD	Qualifier	
Chloride	32.0	16.0	06/01/2023	ND	432	108	400	3.77		

TPH 8015M		mg/kg		Analyzed By: MS					
Analyte	Result	Reporting Limit	Analyzed	Method Blank	BS	% Recovery	True Value QC	RPD	Qualifier
GRO C6-C10*	<10.0	10.0	05/31/2023	ND	215	107	200	2.74	
DRO >C10-C28*	<10.0	10.0	05/31/2023	ND	216	108	200	4.55	
EXT DRO >C28-C36	<10.0	10.0	05/31/2023	ND					

Surrogate: 1-Chlorooctane 122 % 48.2-134

Surrogate: 1-Chlorooctadecane 129 % 49.1-148

Cardinal Laboratories

*=Accredited Analyte

PLEASE NOTE: Liability and Damages. Cardinal's liability and client's exclusive remedy for any claim arising, whether based in contract or tort, shall be limited to the amount paid by client for analyses. All claims, including those for negligence and any other cause whatsoever shall be deemed waived unless made in writing and received by Cardinal within thirty (30) days after completion of the applicable service. In no event shall Cardinal be liable for incidental or consequential damages, including, without limitation, business interruptions, loss of use, or loss of profits incurred by client, its subsidiaries, affiliates or successors arising out of or related to the performance of the services hereunder by Cardinal, regardless of whether such claim is based upon any of the above stated reasons or otherwise. Results relate only to the samples identified above. This report shall not be reproduced except in full with written approval of Cardinal Laboratories.

Celey D. Keene, Lab Director/Quality Manager



PHONE (575) 393-2326 ° 101 E. MARLAND ° HOBBS, NM 88240

Analytical Results For:

TETRA TECH
 CHRISTIAN LLULL
 901 WEST WALL STREET , STE 100
 MIDLAND TX, 79701
 Fax To: (432) 682-3946

Received:	05/31/2023	Sampling Date:	05/31/2023
Reported:	06/02/2023	Sampling Type:	Soil
Project Name:	SUPER COBRA STATE COM 1H	Sampling Condition:	Cool & Intact
Project Number:	212C-MD-03092	Sample Received By:	Tamara Oldaker
Project Location:	COP - LEA CO NM		

Sample ID: HA - 6 (0-1') (H232763-07)

BTEx 8021B		mg/kg		Analyzed By: MS					
Analyte	Result	Reporting Limit	Analyzed	Method Blank	BS	% Recovery	True Value QC	RPD	Qualifier
Benzene*	<0.050	0.050	06/01/2023	ND	2.26	113	2.00	2.51	
Toluene*	<0.050	0.050	06/01/2023	ND	2.25	113	2.00	2.60	
Ethylbenzene*	<0.050	0.050	06/01/2023	ND	2.21	110	2.00	3.09	
Total Xylenes*	<0.150	0.150	06/01/2023	ND	6.75	113	6.00	2.10	
Total BTEX	<0.300	0.300	06/01/2023	ND					

Surrogate: 4-Bromofluorobenzene (PID) 104 % 71.5-134

Chloride, SM4500Cl-B		mg/kg		Analyzed By: AC					
Analyte	Result	Reporting Limit	Analyzed	Method Blank	BS	% Recovery	True Value QC	RPD	Qualifier
Chloride	112	16.0	06/01/2023	ND	432	108	400	3.77	

TPH 8015M		mg/kg		Analyzed By: MS					
Analyte	Result	Reporting Limit	Analyzed	Method Blank	BS	% Recovery	True Value QC	RPD	Qualifier
GRO C6-C10*	<10.0	10.0	05/31/2023	ND	215	107	200	2.74	
DRO >C10-C28*	<10.0	10.0	05/31/2023	ND	216	108	200	4.55	
EXT DRO >C28-C36	<10.0	10.0	05/31/2023	ND					

Surrogate: 1-Chlorooctane 103 % 48.2-134

Surrogate: 1-Chlorooctadecane 104 % 49.1-148

Cardinal Laboratories

*=Accredited Analyte

PLEASE NOTE: Liability and Damages. Cardinal's liability and client's exclusive remedy for any claim arising, whether based in contract or tort, shall be limited to the amount paid by client for analyses. All claims, including those for negligence and any other cause whatsoever shall be deemed waived unless made in writing and received by Cardinal within thirty (30) days after completion of the applicable service. In no event shall Cardinal be liable for incidental or consequential damages, including, without limitation, business interruptions, loss of use, or loss of profits incurred by client, its subsidiaries, affiliates or successors arising out of or related to the performance of the services hereunder by Cardinal, regardless of whether such claim is based upon any of the above stated reasons or otherwise. Results relate only to the samples identified above. This report shall not be reproduced except in full with written approval of Cardinal Laboratories.

Celey D. Keene, Lab Director/Quality Manager



PHONE (575) 393-2326 ° 101 E. MARLAND ° HOBBS, NM 88240

Analytical Results For:

TETRA TECH
 CHRISTIAN LLULL
 901 WEST WALL STREET , STE 100
 MIDLAND TX, 79701
 Fax To: (432) 682-3946

Received:	05/31/2023	Sampling Date:	05/31/2023
Reported:	06/02/2023	Sampling Type:	Soil
Project Name:	SUPER COBRA STATE COM 1H	Sampling Condition:	Cool & Intact
Project Number:	212C-MD-03092	Sample Received By:	Tamara Oldaker
Project Location:	COP - LEA CO NM		

Sample ID: HA - 7 (0-1') (H232763-08)

BTEx 8021B		mg/kg		Analyzed By: MS					
Analyte	Result	Reporting Limit	Analyzed	Method Blank	BS	% Recovery	True Value QC	RPD	Qualifier
Benzene*	<0.050	0.050	06/01/2023	ND	2.26	113	2.00	2.51	
Toluene*	<0.050	0.050	06/01/2023	ND	2.25	113	2.00	2.60	
Ethylbenzene*	<0.050	0.050	06/01/2023	ND	2.21	110	2.00	3.09	
Total Xylenes*	<0.150	0.150	06/01/2023	ND	6.75	113	6.00	2.10	
Total BTEx	<0.300	0.300	06/01/2023	ND					

Surrogate: 4-Bromofluorobenzene (PID) 102 % 71.5-134

Chloride, SM4500CI-B		mg/kg		Analyzed By: AC						
Analyte	Result	Reporting Limit	Analyzed	Method Blank	BS	% Recovery	True Value QC	RPD	Qualifier	
Chloride	96.0	16.0	06/01/2023	ND	432	108	400	3.77		

TPH 8015M		mg/kg		Analyzed By: MS					
Analyte	Result	Reporting Limit	Analyzed	Method Blank	BS	% Recovery	True Value QC	RPD	Qualifier
GRO C6-C10*	<10.0	10.0	05/31/2023	ND	215	107	200	2.74	
DRO >C10-C28*	<10.0	10.0	05/31/2023	ND	216	108	200	4.55	
EXT DRO >C28-C36	<10.0	10.0	05/31/2023	ND					

Surrogate: 1-Chlorooctane 85.5 % 48.2-134

Surrogate: 1-Chlorooctadecane 90.1 % 49.1-148

Cardinal Laboratories

*=Accredited Analyte

PLEASE NOTE: Liability and Damages. Cardinal's liability and client's exclusive remedy for any claim arising, whether based in contract or tort, shall be limited to the amount paid by client for analyses. All claims, including those for negligence and any other cause whatsoever shall be deemed waived unless made in writing and received by Cardinal within thirty (30) days after completion of the applicable service. In no event shall Cardinal be liable for incidental or consequential damages, including, without limitation, business interruptions, loss of use, or loss of profits incurred by client, its subsidiaries, affiliates or successors arising out of or related to the performance of the services hereunder by Cardinal, regardless of whether such claim is based upon any of the above stated reasons or otherwise. Results relate only to the samples identified above. This report shall not be reproduced except in full with written approval of Cardinal Laboratories.

Celey D. Keene, Lab Director/Quality Manager



PHONE (575) 393-2326 ° 101 E. MARLAND ° HOBBS, NM 88240

Analytical Results For:

TETRA TECH
 CHRISTIAN LLULL
 901 WEST WALL STREET , STE 100
 MIDLAND TX, 79701
 Fax To: (432) 682-3946

Received:	05/31/2023	Sampling Date:	05/31/2023
Reported:	06/02/2023	Sampling Type:	Soil
Project Name:	SUPER COBRA STATE COM 1H	Sampling Condition:	Cool & Intact
Project Number:	212C-MD-03092	Sample Received By:	Tamara Oldaker
Project Location:	COP - LEA CO NM		

Sample ID: HA - 8 (0-1') (H232763-09)

BTEx 8021B		mg/kg		Analyzed By: MS						
Analyte	Result	Reporting Limit	Analyzed	Method Blank	BS	% Recovery	True Value QC	RPD	Qualifier	
Benzene*	<0.050	0.050	06/01/2023	ND	2.26	113	2.00	2.51		
Toluene*	<0.050	0.050	06/01/2023	ND	2.25	113	2.00	2.60		
Ethylbenzene*	<0.050	0.050	06/01/2023	ND	2.21	110	2.00	3.09		
Total Xylenes*	<0.150	0.150	06/01/2023	ND	6.75	113	6.00	2.10		
Total BTEX	<0.300	0.300	06/01/2023	ND						

Surrogate: 4-Bromofluorobenzene (PID) 103 % 71.5-134

Chloride, SM4500Cl-B		mg/kg		Analyzed By: AC						
Analyte	Result	Reporting Limit	Analyzed	Method Blank	BS	% Recovery	True Value QC	RPD	Qualifier	
Chloride	48.0	16.0	06/01/2023	ND	432	108	400	3.77		

TPH 8015M		mg/kg		Analyzed By: MS					
Analyte	Result	Reporting Limit	Analyzed	Method Blank	BS	% Recovery	True Value QC	RPD	Qualifier
GRO C6-C10*	<10.0	10.0	05/31/2023	ND	215	107	200	2.74	
DRO >C10-C28*	<10.0	10.0	05/31/2023	ND	216	108	200	4.55	
EXT DRO >C28-C36	<10.0	10.0	05/31/2023	ND					

Surrogate: 1-Chlorooctane 104 % 48.2-134

Surrogate: 1-Chlorooctadecane 105 % 49.1-148

Cardinal Laboratories

*=Accredited Analyte

PLEASE NOTE: Liability and Damages. Cardinal's liability and client's exclusive remedy for any claim arising, whether based in contract or tort, shall be limited to the amount paid by client for analyses. All claims, including those for negligence and any other cause whatsoever shall be deemed waived unless made in writing and received by Cardinal within thirty (30) days after completion of the applicable service. In no event shall Cardinal be liable for incidental or consequential damages, including, without limitation, business interruptions, loss of use, or loss of profits incurred by client, its subsidiaries, affiliates or successors arising out of or related to the performance of the services hereunder by Cardinal, regardless of whether such claim is based upon any of the above stated reasons or otherwise. Results relate only to the samples identified above. This report shall not be reproduced except in full with written approval of Cardinal Laboratories.

Celey D. Keene, Lab Director/Quality Manager



PHONE (575) 393-2326 ° 101 E. MARLAND ° HOBBS, NM 88240

Analytical Results For:

TETRA TECH
 CHRISTIAN LLULL
 901 WEST WALL STREET , STE 100
 MIDLAND TX, 79701
 Fax To: (432) 682-3946

Received:	05/31/2023	Sampling Date:	05/31/2023
Reported:	06/02/2023	Sampling Type:	Soil
Project Name:	SUPER COBRA STATE COM 1H	Sampling Condition:	Cool & Intact
Project Number:	212C-MD-03092	Sample Received By:	Tamara Oldaker
Project Location:	COP - LEA CO NM		

Sample ID: HA - 9 (0-1') (H232763-10)

BTEx 8021B		mg/kg		Analyzed By: MS					
Analyte	Result	Reporting Limit	Analyzed	Method Blank	BS	% Recovery	True Value QC	RPD	Qualifier
Benzene*	<0.050	0.050	06/01/2023	ND	2.26	113	2.00	2.51	
Toluene*	<0.050	0.050	06/01/2023	ND	2.25	113	2.00	2.60	
Ethylbenzene*	<0.050	0.050	06/01/2023	ND	2.21	110	2.00	3.09	
Total Xylenes*	<0.150	0.150	06/01/2023	ND	6.75	113	6.00	2.10	
Total BTEx	<0.300	0.300	06/01/2023	ND					

Surrogate: 4-Bromofluorobenzene (PID) 102 % 71.5-134

Chloride, SM4500CI-B		mg/kg		Analyzed By: AC						
Analyte	Result	Reporting Limit	Analyzed	Method Blank	BS	% Recovery	True Value QC	RPD	Qualifier	
Chloride	32.0	16.0	06/01/2023	ND	432	108	400	3.77		

TPH 8015M		mg/kg		Analyzed By: MS					
Analyte	Result	Reporting Limit	Analyzed	Method Blank	BS	% Recovery	True Value QC	RPD	Qualifier
GRO C6-C10*	<10.0	10.0	05/31/2023	ND	215	107	200	2.74	
DRO >C10-C28*	<10.0	10.0	05/31/2023	ND	216	108	200	4.55	
EXT DRO >C28-C36	<10.0	10.0	05/31/2023	ND					

Surrogate: 1-Chlorooctane 115 % 48.2-134

Surrogate: 1-Chlorooctadecane 119 % 49.1-148

Cardinal Laboratories

*=Accredited Analyte

PLEASE NOTE: Liability and Damages. Cardinal's liability and client's exclusive remedy for any claim arising, whether based in contract or tort, shall be limited to the amount paid by client for analyses. All claims, including those for negligence and any other cause whatsoever shall be deemed waived unless made in writing and received by Cardinal within thirty (30) days after completion of the applicable service. In no event shall Cardinal be liable for incidental or consequential damages, including, without limitation, business interruptions, loss of use, or loss of profits incurred by client, its subsidiaries, affiliates or successors arising out of or related to the performance of the services hereunder by Cardinal, regardless of whether such claim is based upon any of the above stated reasons or otherwise. Results relate only to the samples identified above. This report shall not be reproduced except in full with written approval of Cardinal Laboratories.

Celey D. Keene, Lab Director/Quality Manager



PHONE (575) 393-2326 ° 101 E. MARLAND ° HOBBS, NM 88240

Analytical Results For:

TETRA TECH
 CHRISTIAN LLULL
 901 WEST WALL STREET , STE 100
 MIDLAND TX, 79701
 Fax To: (432) 682-3946

Received:	05/31/2023	Sampling Date:	05/31/2023
Reported:	06/02/2023	Sampling Type:	Soil
Project Name:	SUPER COBRA STATE COM 1H	Sampling Condition:	Cool & Intact
Project Number:	212C-MD-03092	Sample Received By:	Tamara Oldaker
Project Location:	COP - LEA CO NM		

Sample ID: HA - 10 (0-1') (H232763-11)

BTEx 8021B		mg/kg		Analyzed By: MS					
Analyte	Result	Reporting Limit	Analyzed	Method Blank	BS	% Recovery	True Value QC	RPD	Qualifier
Benzene*	<0.050	0.050	06/01/2023	ND	2.26	113	2.00	2.51	
Toluene*	<0.050	0.050	06/01/2023	ND	2.25	113	2.00	2.60	
Ethylbenzene*	<0.050	0.050	06/01/2023	ND	2.21	110	2.00	3.09	
Total Xylenes*	<0.150	0.150	06/01/2023	ND	6.75	113	6.00	2.10	
Total BTEX	<0.300	0.300	06/01/2023	ND					

Surrogate: 4-Bromofluorobenzene (PID) 102 % 71.5-134

Chloride, SM4500Cl-B		mg/kg		Analyzed By: AC						
Analyte	Result	Reporting Limit	Analyzed	Method Blank	BS	% Recovery	True Value QC	RPD	Qualifier	
Chloride	208	16.0	06/01/2023	ND	432	108	400	3.77		

TPH 8015M		mg/kg		Analyzed By: MS					
Analyte	Result	Reporting Limit	Analyzed	Method Blank	BS	% Recovery	True Value QC	RPD	Qualifier
GRO C6-C10*	<10.0	10.0	06/01/2023	ND	215	107	200	2.74	
DRO >C10-C28*	<10.0	10.0	06/01/2023	ND	216	108	200	4.55	
EXT DRO >C28-C36	<10.0	10.0	06/01/2023	ND					

Surrogate: 1-Chlorooctane 129 % 48.2-134

Surrogate: 1-Chlorooctadecane 132 % 49.1-148

Cardinal Laboratories

*=Accredited Analyte

PLEASE NOTE: Liability and Damages. Cardinal's liability and client's exclusive remedy for any claim arising, whether based in contract or tort, shall be limited to the amount paid by client for analyses. All claims, including those for negligence and any other cause whatsoever shall be deemed waived unless made in writing and received by Cardinal within thirty (30) days after completion of the applicable service. In no event shall Cardinal be liable for incidental or consequential damages, including, without limitation, business interruptions, loss of use, or loss of profits incurred by client, its subsidiaries, affiliates or successors arising out of or related to the performance of the services hereunder by Cardinal, regardless of whether such claim is based upon any of the above stated reasons or otherwise. Results relate only to the samples identified above. This report shall not be reproduced except in full with written approval of Cardinal Laboratories.

Celey D. Keene, Lab Director/Quality Manager

PHONE (575) 393-2326 • 101 E. MARLAND • HOBBS, NM 88240

Notes and Definitions

S-04	The surrogate recovery for this sample is outside of established control limits due to a sample matrix effect.
QR-03	The RPD value for the sample duplicate or MS/MSD was outside of QC acceptance limits due to matrix interference. QC batch accepted based on LCS and/or LCSD recovery and/or RPD values.
QM-07	The spike recovery was outside acceptance limits for the MS and/or MSD. The batch was accepted based on acceptable LCS recovery.
ND	Analyte NOT DETECTED at or above the reporting limit
RPD	Relative Percent Difference
**	Samples not received at proper temperature of 6°C or below.
***	Insufficient time to reach temperature.
-	Chloride by SM4500Cl-B does not require samples be received at or below 6°C Samples reported on an as received basis (wet) unless otherwise noted on report

Cardinal Laboratories

*=Accredited Analyte

PLEASE NOTE: Liability and Damages. Cardinal's liability and client's exclusive remedy for any claim arising, whether based in contract or tort, shall be limited to the amount paid by client for analyses. All claims, including those for negligence and any other cause whatsoever shall be deemed waived unless made in writing and received by Cardinal within thirty (30) days after completion of the applicable service. In no event shall Cardinal be liable for incidental or consequential damages, including, without limitation, business interruptions, loss of use, or loss of profits incurred by client, its subsidiaries, affiliates or successors arising out of or related to the performance of the services hereunder by Cardinal, regardless of whether such claim is based upon any of the above stated reasons or otherwise. Results relate only to the samples identified above. This report shall not be reproduced except in full with written approval of Cardinal Laboratories.

A handwritten signature in black ink, appearing to read "Celey D. Keene".

Celey D. Keene, Lab Director/Quality Manager



101 East Marland, Hobbs, NM 88240
(575) 393-2326 FAX (575) 393-2476

CHAIN-OF-CUSTODY AND ANALYSIS REQUEST

Company Name: Tetra Tech Project Manager: Christopher Hall Address: City: State: Zip: Phone #: Fax #:		P.O. #: Company: Tetra Tech Attn: Christopher Hall Address: email City: State: Zip: Phone #: Fax #:	
Project #: 212-MD-03092 Project Name: Super Lobra State Cor 1H Project Location: Lee County, NM Sample Name: Lobra BAKED FOR LAB USE ONLY		Project Owner: Concord Mills City: State: Zip: Phone #: Fax #:	
Lab I.D. Sample I.D.		BILL TO	
HE337163 1 HA-1 (CO-1) 2 HA-2 (CO-1) 3 HA-2 (CO-2.25) 4 HA-3 (CO-1) 5 HA-4 (CO-1) 6 HA-5 (CO-1) 7 HA-6 (CO-1) 8 HA-7 (CO-1) 9 HA-8 (CO-1) 10 HA-9 (CO-1)		ANALYSIS REQUEST	
RELEASE NOTE: Liability and Damages. Cardholder's liability and clients exclusive remedy for any claim arising whether based in contract or tort, shall be limited to the amount paid by the client for the analysis. In no event shall Cardinal be liable for negligence and any other cause whatsoever shall be deemed waived unless made in writing and received by Cardinal within 30 days after completion of the applicable analysis or successor arising out of or related to the performance of services hereunder by Cardinal, regardless of whether such claim is based upon any of the above stated reasons or otherwise.		DATE TIME	
Delivered By: (Circle One) ampier - UPS - Bus - Other: FORM-006 R 3-0771622		Observed Temp. °C: 3.9 Corrected Temp. °C: 3.3 Sample Condition: Cool Intact: <input checked="" type="checkbox"/> Yes <input type="checkbox"/> No No <input type="checkbox"/> Yes <input type="checkbox"/> No CHECKED BY: (Initials) TD	
Relinquished By: Date: 5/15/13 Time: 1:33 Received By: Christopher Hall Date: 5/15/13 Time: 1:33		Turnaround Time: Standard <input checked="" type="checkbox"/> Rush <input type="checkbox"/> Thermometer ID #113 Correction Factor -0.8°C Bacteria (only) Sample Condition Cool Intact: <input type="checkbox"/> Yes <input type="checkbox"/> No Observed Temp. °C Corrected Temp. °C	
REMARKS: All Results are emailed. Please provide Email address. Christopher Hall@tetratech.com		Verbal Result: <input type="checkbox"/> Yes <input checked="" type="checkbox"/> No <input type="checkbox"/> Add'l Phone #: Add'l Phone #:	

CHAIN-OF-CUSTODY AND ANALYSIS REQUEST

2/2



PHONE (575) 393-2326 ° 101 E. MARLAND ° HOBBS, NM 88240

July 12, 2023

CHRISTIAN LLULL

TETRA TECH

901 WEST WALL STREET , STE 100

MIDLAND, TX 79701

RE: SUPER COBRA STATE COM 1H

Enclosed are the results of analyses for samples received by the laboratory on 07/11/23 14:42.

Cardinal Laboratories is accredited through Texas NELAP under certificate number T104704398-22-15. Accreditation applies to drinking water, non-potable water and solid and chemical materials. All accredited analytes are denoted by an asterisk (*). For a complete list of accredited analytes and matrices visit the TCEQ website at www.tceq.texas.gov/field/qa/lab_accred_certif.html.

Cardinal Laboratories is accredited through the State of Colorado Department of Public Health and Environment for:

Method EPA 552.2	Haloacetic Acids (HAA-5)
Method EPA 524.2	Total Trihalomethanes (TTHM)
Method EPA 524.4	Regulated VOCs (V1, V2, V3)

Accreditation applies to public drinking water matrices.

This report meets NELAP requirements and is made up of a cover page, analytical results, and a copy of the original chain-of-custody. If you have any questions concerning this report, please feel free to contact me.

Sincerely,

A handwritten signature in black ink that reads "Celey D. Keene". The signature is written in a cursive style with a large, stylized 'C' and 'K'.

Celey D. Keene

Lab Director/Quality Manager



PHONE (575) 393-2326 ° 101 E. MARLAND ° HOBBS, NM 88240

Analytical Results For:

TETRA TECH
 CHRISTIAN LLULL
 901 WEST WALL STREET , STE 100
 MIDLAND TX, 79701
 Fax To: (432) 682-3946

Received:	07/11/2023	Sampling Date:	07/11/2023
Reported:	07/12/2023	Sampling Type:	Soil
Project Name:	SUPER COBRA STATE COM 1H	Sampling Condition:	Cool & Intact
Project Number:	212C-MD-03092	Sample Received By:	Tamara Oldaker
Project Location:	COP - LEA CO NM		

Sample ID: T - 1 (3'-4') (H233528-01)

BTX 8021B			mg/kg							
			Analyzed By: MS							
Analyte	Result	Reporting Limit	Analyzed	Method Blank	BS	% Recovery	True Value QC	RPD	Qualifier	
Benzene*	<0.050	0.050	07/11/2023	ND	1.86	93.0	2.00	1.06		
Toluene*	<0.050	0.050	07/11/2023	ND	1.84	91.9	2.00	0.771		
Ethylbenzene*	<0.050	0.050	07/11/2023	ND	1.83	91.5	2.00	0.496		
Total Xylenes*	<0.150	0.150	07/11/2023	ND	5.61	93.5	6.00	0.395		
Total BTX	<0.300	0.300	07/11/2023	ND						

Surrogate: 4-Bromofluorobenzene (PID) 106 % 71.5-134

Chloride, SM4500Cl-B			mg/kg							
			Analyzed By: AC							
Analyte	Result	Reporting Limit	Analyzed	Method Blank	BS	% Recovery	True Value QC	RPD	Qualifier	
Chloride	20000	16.0	07/12/2023	ND	416	104	400	3.77		

TPH 8015M			mg/kg							
			Analyzed By: MS							
Analyte	Result	Reporting Limit	Analyzed	Method Blank	BS	% Recovery	True Value QC	RPD	Qualifier	
GRO C6-C10*	<10.0	10.0	07/12/2023	ND	190	95.2	200	7.73		
DRO >C10-C28*	<10.0	10.0	07/12/2023	ND	204	102	200	15.8		
EXT DRO >C28-C36	<10.0	10.0	07/12/2023	ND						

Surrogate: 1-Chlorooctane 109 % 48.2-134

Surrogate: 1-Chlorooctadecane 131 % 49.1-148

Cardinal Laboratories

*=Accredited Analyte

PLEASE NOTE: Liability and Damages. Cardinal's liability and client's exclusive remedy for any claim arising, whether based in contract or tort, shall be limited to the amount paid by client for analyses. All claims, including those for negligence and any other cause whatsoever shall be deemed waived unless made in writing and received by Cardinal within thirty (30) days after completion of the applicable service. In no event shall Cardinal be liable for incidental or consequential damages, including, without limitation, business interruptions, loss of use, or loss of profits incurred by client, its subsidiaries, affiliates or successors arising out of or related to the performance of the services hereunder by Cardinal, regardless of whether such claim is based upon any of the above stated reasons or otherwise. Results relate only to the samples identified above. This report shall not be reproduced except in full with written approval of Cardinal Laboratories.

Celey D. Keene, Lab Director/Quality Manager



PHONE (575) 393-2326 ° 101 E. MARLAND ° HOBBS, NM 88240

Analytical Results For:

TETRA TECH
 CHRISTIAN LLULL
 901 WEST WALL STREET , STE 100
 MIDLAND TX, 79701
 Fax To: (432) 682-3946

Received:	07/11/2023	Sampling Date:	07/11/2023
Reported:	07/12/2023	Sampling Type:	Soil
Project Name:	SUPER COBRA STATE COM 1H	Sampling Condition:	Cool & Intact
Project Number:	212C-MD-03092	Sample Received By:	Tamara Oldaker
Project Location:	COP - LEA CO NM		

Sample ID: T - 1 (4'-5') (H233528-02)

BTEx 8021B		mg/kg		Analyzed By: MS						
Analyte	Result	Reporting Limit	Analyzed	Method Blank	BS	% Recovery	True Value QC	RPD	Qualifier	
Benzene*	<0.050	0.050	07/12/2023	ND	1.86	93.0	2.00	1.06		
Toluene*	<0.050	0.050	07/12/2023	ND	1.84	91.9	2.00	0.771		
Ethylbenzene*	<0.050	0.050	07/12/2023	ND	1.83	91.5	2.00	0.496		
Total Xylenes*	<0.150	0.150	07/12/2023	ND	5.61	93.5	6.00	0.395		
Total BTEX	<0.300	0.300	07/12/2023	ND						

Surrogate: 4-Bromofluorobenzene (PID) 106 % 71.5-134

Chloride, SM4500Cl-B		mg/kg		Analyzed By: AC						
Analyte	Result	Reporting Limit	Analyzed	Method Blank	BS	% Recovery	True Value QC	RPD	Qualifier	
Chloride	8000	16.0	07/12/2023	ND	416	104	400	3.77		

TPH 8015M		mg/kg		Analyzed By: MS					
Analyte	Result	Reporting Limit	Analyzed	Method Blank	BS	% Recovery	True Value QC	RPD	Qualifier
GRO C6-C10*	<10.0	10.0	07/12/2023	ND	190	95.2	200	7.73	
DRO >C10-C28*	<10.0	10.0	07/12/2023	ND	204	102	200	15.8	
EXT DRO >C28-C36	<10.0	10.0	07/12/2023	ND					

Surrogate: 1-Chlorooctane 112 % 48.2-134

Surrogate: 1-Chlorooctadecane 136 % 49.1-148

Cardinal Laboratories

*=Accredited Analyte

PLEASE NOTE: Liability and Damages. Cardinal's liability and client's exclusive remedy for any claim arising, whether based in contract or tort, shall be limited to the amount paid by client for analyses. All claims, including those for negligence and any other cause whatsoever shall be deemed waived unless made in writing and received by Cardinal within thirty (30) days after completion of the applicable service. In no event shall Cardinal be liable for incidental or consequential damages, including, without limitation, business interruptions, loss of use, or loss of profits incurred by client, its subsidiaries, affiliates or successors arising out of or related to the performance of the services hereunder by Cardinal, regardless of whether such claim is based upon any of the above stated reasons or otherwise. Results relate only to the samples identified above. This report shall not be reproduced except in full with written approval of Cardinal Laboratories.

Celey D. Keene, Lab Director/Quality Manager



PHONE (575) 393-2326 ° 101 E. MARLAND ° HOBBS, NM 88240

Analytical Results For:

TETRA TECH
 CHRISTIAN LLULL
 901 WEST WALL STREET , STE 100
 MIDLAND TX, 79701
 Fax To: (432) 682-3946

Received:	07/11/2023	Sampling Date:	07/11/2023
Reported:	07/12/2023	Sampling Type:	Soil
Project Name:	SUPER COBRA STATE COM 1H	Sampling Condition:	Cool & Intact
Project Number:	212C-MD-03092	Sample Received By:	Tamara Oldaker
Project Location:	COP - LEA CO NM		

Sample ID: T - 1 (5'-6') (H233528-03)

BTEx 8021B		mg/kg		Analyzed By: MS						
Analyte	Result	Reporting Limit	Analyzed	Method Blank	BS	% Recovery	True Value QC	RPD	Qualifier	
Benzene*	<0.050	0.050	07/12/2023	ND	1.86	93.0	2.00	1.06		
Toluene*	<0.050	0.050	07/12/2023	ND	1.84	91.9	2.00	0.771		
Ethylbenzene*	<0.050	0.050	07/12/2023	ND	1.83	91.5	2.00	0.496		
Total Xylenes*	<0.150	0.150	07/12/2023	ND	5.61	93.5	6.00	0.395		
Total BTEX	<0.300	0.300	07/12/2023	ND						

Surrogate: 4-Bromofluorobenzene (PID) 107 % 71.5-134

Chloride, SM4500Cl-B		mg/kg		Analyzed By: AC						
Analyte	Result	Reporting Limit	Analyzed	Method Blank	BS	% Recovery	True Value QC	RPD	Qualifier	
Chloride	2800	16.0	07/12/2023	ND	416	104	400	3.77		

TPH 8015M		mg/kg		Analyzed By: MS					
Analyte	Result	Reporting Limit	Analyzed	Method Blank	BS	% Recovery	True Value QC	RPD	Qualifier
GRO C6-C10*	<10.0	10.0	07/12/2023	ND	190	95.2	200	7.73	
DRO >C10-C28*	<10.0	10.0	07/12/2023	ND	204	102	200	15.8	
EXT DRO >C28-C36	<10.0	10.0	07/12/2023	ND					

Surrogate: 1-Chlorooctane 104 % 48.2-134

Surrogate: 1-Chlorooctadecane 127 % 49.1-148

Cardinal Laboratories

*=Accredited Analyte

PLEASE NOTE: Liability and Damages. Cardinal's liability and client's exclusive remedy for any claim arising, whether based in contract or tort, shall be limited to the amount paid by client for analyses. All claims, including those for negligence and any other cause whatsoever shall be deemed waived unless made in writing and received by Cardinal within thirty (30) days after completion of the applicable service. In no event shall Cardinal be liable for incidental or consequential damages, including, without limitation, business interruptions, loss of use, or loss of profits incurred by client, its subsidiaries, affiliates or successors arising out of or related to the performance of the services hereunder by Cardinal, regardless of whether such claim is based upon any of the above stated reasons or otherwise. Results relate only to the samples identified above. This report shall not be reproduced except in full with written approval of Cardinal Laboratories.

Celey D. Keene, Lab Director/Quality Manager



PHONE (575) 393-2326 ° 101 E. MARLAND ° HOBBS, NM 88240

Analytical Results For:

TETRA TECH
 CHRISTIAN LLULL
 901 WEST WALL STREET , STE 100
 MIDLAND TX, 79701
 Fax To: (432) 682-3946

Received:	07/11/2023	Sampling Date:	07/11/2023
Reported:	07/12/2023	Sampling Type:	Soil
Project Name:	SUPER COBRA STATE COM 1H	Sampling Condition:	Cool & Intact
Project Number:	212C-MD-03092	Sample Received By:	Tamara Oldaker
Project Location:	COP - LEA CO NM		

Sample ID: T - 1 (6'-6.5') (H233528-04)

BTEx 8021B		mg/kg		Analyzed By: MS						
Analyte	Result	Reporting Limit	Analyzed	Method Blank	BS	% Recovery	True Value QC	RPD	Qualifier	
Benzene*	<0.050	0.050	07/12/2023	ND	1.86	93.0	2.00	1.06		
Toluene*	<0.050	0.050	07/12/2023	ND	1.84	91.9	2.00	0.771		
Ethylbenzene*	<0.050	0.050	07/12/2023	ND	1.83	91.5	2.00	0.496		
Total Xylenes*	<0.150	0.150	07/12/2023	ND	5.61	93.5	6.00	0.395		
Total BTEx	<0.300	0.300	07/12/2023	ND						

Surrogate: 4-Bromofluorobenzene (PID) 105 % 71.5-134

Chloride, SM4500Cl-B		mg/kg		Analyzed By: AC					
Analyte	Result	Reporting Limit	Analyzed	Method Blank	BS	% Recovery	True Value QC	RPD	Qualifier
Chloride	32.0	16.0	07/12/2023	ND	416	104	400	3.77	

TPH 8015M		mg/kg		Analyzed By: MS					
Analyte	Result	Reporting Limit	Analyzed	Method Blank	BS	% Recovery	True Value QC	RPD	Qualifier
GRO C6-C10*	<10.0	10.0	07/12/2023	ND	190	95.2	200	7.73	
DRO >C10-C28*	<10.0	10.0	07/12/2023	ND	204	102	200	15.8	
EXT DRO >C28-C36	<10.0	10.0	07/12/2023	ND					

Surrogate: 1-Chlorooctane 91.5 % 48.2-134

Surrogate: 1-Chlorooctadecane 106 % 49.1-148

Cardinal Laboratories

*=Accredited Analyte

PLEASE NOTE: Liability and Damages. Cardinal's liability and client's exclusive remedy for any claim arising, whether based in contract or tort, shall be limited to the amount paid by client for analyses. All claims, including those for negligence and any other cause whatsoever shall be deemed waived unless made in writing and received by Cardinal within thirty (30) days after completion of the applicable service. In no event shall Cardinal be liable for incidental or consequential damages, including, without limitation, business interruptions, loss of use, or loss of profits incurred by client, its subsidiaries, affiliates or successors arising out of or related to the performance of the services hereunder by Cardinal, regardless of whether such claim is based upon any of the above stated reasons or otherwise. Results relate only to the samples identified above. This report shall not be reproduced except in full with written approval of Cardinal Laboratories.

Celey D. Keene, Lab Director/Quality Manager



PHONE (575) 393-2326 ° 101 E. MARLAND ° HOBBS, NM 88240

Notes and Definitions

- ND Analyte NOT DETECTED at or above the reporting limit
- RPD Relative Percent Difference
- ** Samples not received at proper temperature of 6°C or below.
- *** Insufficient time to reach temperature.
- Chloride by SM4500Cl-B does not require samples be received at or below 6°C
Samples reported on an as received basis (wet) unless otherwise noted on report

Cardinal Laboratories

*=Accredited Analyte

PLEASE NOTE: Liability and Damages. Cardinal's liability and client's exclusive remedy for any claim arising, whether based in contract or tort, shall be limited to the amount paid by client for analyses. All claims, including those for negligence and any other cause whatsoever shall be deemed waived unless made in writing and received by Cardinal within thirty (30) days after completion of the applicable service. In no event shall Cardinal be liable for incidental or consequential damages, including, without limitation, business interruptions, loss of use, or loss of profits incurred by client, its subsidiaries, affiliates or successors arising out of or related to the performance of the services hereunder by Cardinal, regardless of whether such claim is based upon any of the above stated reasons or otherwise. Results relate only to the samples identified above. This report shall not be reproduced except in full with written approval of Cardinal Laboratories.

A handwritten signature in black ink, appearing to read "Celey D. Keene".

Celey D. Keene, Lab Director/Quality Manager



Company Name: Tetra Tech

BILL TO

ANALYSIS REQUEST

FORM-006 R 3.2 10/07/21

† Cardinal cannot accept verbal changes. Please email changes to celey.keene@cardinallabsnm.com



PHONE (575) 393-2326 ° 101 E. MARLAND ° HOBBS, NM 88240

July 17, 2023

CHRISTIAN LLULL

TETRA TECH

901 WEST WALL STREET , STE 100

MIDLAND, TX 79701

RE: SUPER COBRA STATE COM 1H

Enclosed are the results of analyses for samples received by the laboratory on 07/14/23 14:45.

Cardinal Laboratories is accredited through Texas NELAP under certificate number T104704398-22-15. Accreditation applies to drinking water, non-potable water and solid and chemical materials. All accredited analytes are denoted by an asterisk (*). For a complete list of accredited analytes and matrices visit the TCEQ website at www.tceq.texas.gov/field/qa/lab_accred_certif.html.

Cardinal Laboratories is accredited through the State of Colorado Department of Public Health and Environment for:

Method EPA 552.2	Haloacetic Acids (HAA-5)
Method EPA 524.2	Total Trihalomethanes (TTHM)
Method EPA 524.4	Regulated VOCs (V1, V2, V3)

Accreditation applies to public drinking water matrices.

This report meets NELAP requirements and is made up of a cover page, analytical results, and a copy of the original chain-of-custody. If you have any questions concerning this report, please feel free to contact me.

Sincerely,

A handwritten signature in black ink that reads "Celey D. Keene". The signature is written in a cursive, flowing style.

Celey D. Keene

Lab Director/Quality Manager



PHONE (575) 393-2326 ° 101 E. MARLAND ° HOBBS, NM 88240

Analytical Results For:

TETRA TECH
 CHRISTIAN LLULL
 901 WEST WALL STREET , STE 100
 MIDLAND TX, 79701
 Fax To: (432) 682-3946

Received:	07/14/2023	Sampling Date:	07/14/2023
Reported:	07/17/2023	Sampling Type:	Soil
Project Name:	SUPER COBRA STATE COM 1H	Sampling Condition:	Cool & Intact
Project Number:	212C-MD-03092	Sample Received By:	Tamara Oldaker
Project Location:	COP - LEA CO NM		

Sample ID: NSW - 1 (H233645-01)

BTEx 8021B		mg/kg		Analyzed By: MS					
Analyte	Result	Reporting Limit	Analyzed	Method Blank	BS	% Recovery	True Value QC	RPD	Qualifier
Benzene*	<0.050	0.050	07/15/2023	ND	2.02	101	2.00	0.399	
Toluene*	<0.050	0.050	07/15/2023	ND	1.98	98.8	2.00	0.184	
Ethylbenzene*	<0.050	0.050	07/15/2023	ND	1.89	94.6	2.00	1.21	
Total Xylenes*	<0.150	0.150	07/15/2023	ND	5.71	95.2	6.00	2.09	
Total BTEX	<0.300	0.300	07/15/2023	ND					

Surrogate: 4-Bromofluorobenzene (PID) 105 % 71.5-134

Chloride, SM4500Cl-B		mg/kg		Analyzed By: AC						
Analyte	Result	Reporting Limit	Analyzed	Method Blank	BS	% Recovery	True Value QC	RPD	Qualifier	
Chloride	32.0	16.0	07/15/2023	ND	416	104	400	3.77		

TPH 8015M		mg/kg		Analyzed By: MS					
Analyte	Result	Reporting Limit	Analyzed	Method Blank	BS	% Recovery	True Value QC	RPD	Qualifier
GRO C6-C10*	<10.0	10.0	07/15/2023	ND	197	98.5	200	4.59	
DRO >C10-C28*	<10.0	10.0	07/15/2023	ND	200	100	200	2.15	
EXT DRO >C28-C36	<10.0	10.0	07/15/2023	ND					

Surrogate: 1-Chlorooctane 104 % 48.2-134

Surrogate: 1-Chlorooctadecane 114 % 49.1-148

Cardinal Laboratories

*=Accredited Analyte

PLEASE NOTE: Liability and Damages. Cardinal's liability and client's exclusive remedy for any claim arising, whether based in contract or tort, shall be limited to the amount paid by client for analyses. All claims, including those for negligence and any other cause whatsoever shall be deemed waived unless made in writing and received by Cardinal within thirty (30) days after completion of the applicable service. In no event shall Cardinal be liable for incidental or consequential damages, including, without limitation, business interruptions, loss of use, or loss of profits incurred by client, its subsidiaries, affiliates or successors arising out of or related to the performance of the services hereunder by Cardinal, regardless of whether such claim is based upon any of the above stated reasons or otherwise. Results relate only to the samples identified above. This report shall not be reproduced except in full with written approval of Cardinal Laboratories.

Celey D. Keene, Lab Director/Quality Manager



PHONE (575) 393-2326 ° 101 E. MARLAND ° HOBBS, NM 88240

Analytical Results For:

TETRA TECH
 CHRISTIAN LLULL
 901 WEST WALL STREET , STE 100
 MIDLAND TX, 79701
 Fax To: (432) 682-3946

Received:	07/14/2023	Sampling Date:	07/14/2023
Reported:	07/17/2023	Sampling Type:	Soil
Project Name:	SUPER COBRA STATE COM 1H	Sampling Condition:	Cool & Intact
Project Number:	212C-MD-03092	Sample Received By:	Tamara Oldaker
Project Location:	COP - LEA CO NM		

Sample ID: SSW - 1 (H233645-02)

BTEx 8021B		mg/kg		Analyzed By: MS						
Analyte	Result	Reporting Limit	Analyzed	Method Blank	BS	% Recovery	True Value QC	RPD	Qualifier	
Benzene*	<0.050	0.050	07/15/2023	ND	2.02	101	2.00	0.399		
Toluene*	<0.050	0.050	07/15/2023	ND	1.98	98.8	2.00	0.184		
Ethylbenzene*	<0.050	0.050	07/15/2023	ND	1.89	94.6	2.00	1.21		
Total Xylenes*	<0.150	0.150	07/15/2023	ND	5.71	95.2	6.00	2.09		
Total BTEX	<0.300	0.300	07/15/2023	ND						

Surrogate: 4-Bromofluorobenzene (PID) 98.4 % 71.5-134

Chloride, SM4500Cl-B		mg/kg		Analyzed By: AC						
Analyte	Result	Reporting Limit	Analyzed	Method Blank	BS	% Recovery	True Value QC	RPD	Qualifier	
Chloride	<16.0	16.0	07/17/2023	ND	416	104	400	0.00		

TPH 8015M		mg/kg		Analyzed By: MS					
Analyte	Result	Reporting Limit	Analyzed	Method Blank	BS	% Recovery	True Value QC	RPD	Qualifier
GRO C6-C10*	<10.0	10.0	07/15/2023	ND	197	98.5	200	4.59	
DRO >C10-C28*	<10.0	10.0	07/15/2023	ND	200	100	200	2.15	
EXT DRO >C28-C36	<10.0	10.0	07/15/2023	ND					

Surrogate: 1-Chlorooctane 103 % 48.2-134

Surrogate: 1-Chlorooctadecane 114 % 49.1-148

Cardinal Laboratories

*=Accredited Analyte

PLEASE NOTE: Liability and Damages. Cardinal's liability and client's exclusive remedy for any claim arising, whether based in contract or tort, shall be limited to the amount paid by client for analyses. All claims, including those for negligence and any other cause whatsoever shall be deemed waived unless made in writing and received by Cardinal within thirty (30) days after completion of the applicable service. In no event shall Cardinal be liable for incidental or consequential damages, including, without limitation, business interruptions, loss of use, or loss of profits incurred by client, its subsidiaries, affiliates or successors arising out of or related to the performance of the services hereunder by Cardinal, regardless of whether such claim is based upon any of the above stated reasons or otherwise. Results relate only to the samples identified above. This report shall not be reproduced except in full with written approval of Cardinal Laboratories.

Celey D. Keene, Lab Director/Quality Manager



PHONE (575) 393-2326 ° 101 E. MARLAND ° HOBBS, NM 88240

Analytical Results For:

TETRA TECH
 CHRISTIAN LLULL
 901 WEST WALL STREET , STE 100
 MIDLAND TX, 79701
 Fax To: (432) 682-3946

Received:	07/14/2023	Sampling Date:	07/14/2023
Reported:	07/17/2023	Sampling Type:	Soil
Project Name:	SUPER COBRA STATE COM 1H	Sampling Condition:	Cool & Intact
Project Number:	212C-MD-03092	Sample Received By:	Tamara Oldaker
Project Location:	COP - LEA CO NM		

Sample ID: ESW - 1 (H233645-03)

BTEx 8021B		mg/kg		Analyzed By: MS						
Analyte	Result	Reporting Limit	Analyzed	Method Blank	BS	% Recovery	True Value QC	RPD	Qualifier	
Benzene*	<0.050	0.050	07/15/2023	ND	2.02	101	2.00	0.399		
Toluene*	<0.050	0.050	07/15/2023	ND	1.98	98.8	2.00	0.184		
Ethylbenzene*	<0.050	0.050	07/15/2023	ND	1.89	94.6	2.00	1.21		
Total Xylenes*	<0.150	0.150	07/15/2023	ND	5.71	95.2	6.00	2.09		
Total BTEX	<0.300	0.300	07/15/2023	ND						

Surrogate: 4-Bromofluorobenzene (PID) 103 % 71.5-134

Chloride, SM4500Cl-B		mg/kg		Analyzed By: AC						
Analyte	Result	Reporting Limit	Analyzed	Method Blank	BS	% Recovery	True Value QC	RPD	Qualifier	
Chloride	<16.0	16.0	07/17/2023	ND	416	104	400	0.00		

TPH 8015M		mg/kg		Analyzed By: MS					
Analyte	Result	Reporting Limit	Analyzed	Method Blank	BS	% Recovery	True Value QC	RPD	Qualifier
GRO C6-C10*	<10.0	10.0	07/15/2023	ND	197	98.5	200	4.59	
DRO >C10-C28*	<10.0	10.0	07/15/2023	ND	200	100	200	2.15	
EXT DRO >C28-C36	<10.0	10.0	07/15/2023	ND					

Surrogate: 1-Chlorooctane 118 % 48.2-134

Surrogate: 1-Chlorooctadecane 130 % 49.1-148

Cardinal Laboratories

*=Accredited Analyte

PLEASE NOTE: Liability and Damages. Cardinal's liability and client's exclusive remedy for any claim arising, whether based in contract or tort, shall be limited to the amount paid by client for analyses. All claims, including those for negligence and any other cause whatsoever shall be deemed waived unless made in writing and received by Cardinal within thirty (30) days after completion of the applicable service. In no event shall Cardinal be liable for incidental or consequential damages, including, without limitation, business interruptions, loss of use, or loss of profits incurred by client, its subsidiaries, affiliates or successors arising out of or related to the performance of the services hereunder by Cardinal, regardless of whether such claim is based upon any of the above stated reasons or otherwise. Results relate only to the samples identified above. This report shall not be reproduced except in full with written approval of Cardinal Laboratories.

Celey D. Keene, Lab Director/Quality Manager



PHONE (575) 393-2326 ° 101 E. MARLAND ° HOBBS, NM 88240

Analytical Results For:

TETRA TECH
 CHRISTIAN LLULL
 901 WEST WALL STREET , STE 100
 MIDLAND TX, 79701
 Fax To: (432) 682-3946

Received:	07/14/2023	Sampling Date:	07/14/2023
Reported:	07/17/2023	Sampling Type:	Soil
Project Name:	SUPER COBRA STATE COM 1H	Sampling Condition:	Cool & Intact
Project Number:	212C-MD-03092	Sample Received By:	Tamara Oldaker
Project Location:	COP - LEA CO NM		

Sample ID: WSW - 1 (H233645-04)

BTEx 8021B		mg/kg		Analyzed By: MS						
Analyte	Result	Reporting Limit	Analyzed	Method Blank	BS	% Recovery	True Value QC	RPD	Qualifier	
Benzene*	<0.050	0.050	07/15/2023	ND	2.02	101	2.00	0.399		
Toluene*	<0.050	0.050	07/15/2023	ND	1.98	98.8	2.00	0.184		
Ethylbenzene*	<0.050	0.050	07/15/2023	ND	1.89	94.6	2.00	1.21		
Total Xylenes*	<0.150	0.150	07/15/2023	ND	5.71	95.2	6.00	2.09		
Total BTEx	<0.300	0.300	07/15/2023	ND						

Surrogate: 4-Bromofluorobenzene (PID) 104 % 71.5-134

Chloride, SM4500CI-B		mg/kg		Analyzed By: AC						
Analyte	Result	Reporting Limit	Analyzed	Method Blank	BS	% Recovery	True Value QC	RPD	Qualifier	
Chloride	<16.0	16.0	07/17/2023	ND	416	104	400	0.00		

TPH 8015M		mg/kg		Analyzed By: MS					
Analyte	Result	Reporting Limit	Analyzed	Method Blank	BS	% Recovery	True Value QC	RPD	Qualifier
GRO C6-C10*	<10.0	10.0	07/15/2023	ND	197	98.5	200	4.59	
DRO >C10-C28*	<10.0	10.0	07/15/2023	ND	200	100	200	2.15	
EXT DRO >C28-C36	<10.0	10.0	07/15/2023	ND					

Surrogate: 1-Chlorooctane 94.3 % 48.2-134

Surrogate: 1-Chlorooctadecane 103 % 49.1-148

Cardinal Laboratories

*=Accredited Analyte

PLEASE NOTE: Liability and Damages. Cardinal's liability and client's exclusive remedy for any claim arising, whether based in contract or tort, shall be limited to the amount paid by client for analyses. All claims, including those for negligence and any other cause whatsoever shall be deemed waived unless made in writing and received by Cardinal within thirty (30) days after completion of the applicable service. In no event shall Cardinal be liable for incidental or consequential damages, including, without limitation, business interruptions, loss of use, or loss of profits incurred by client, its subsidiaries, affiliates or successors arising out of or related to the performance of the services hereunder by Cardinal, regardless of whether such claim is based upon any of the above stated reasons or otherwise. Results relate only to the samples identified above. This report shall not be reproduced except in full with written approval of Cardinal Laboratories.

Celey D. Keene, Lab Director/Quality Manager



PHONE (575) 393-2326 ° 101 E. MARLAND ° HOBBS, NM 88240

Analytical Results For:

TETRA TECH
 CHRISTIAN LLULL
 901 WEST WALL STREET , STE 100
 MIDLAND TX, 79701
 Fax To: (432) 682-3946

Received:	07/14/2023	Sampling Date:	07/14/2023
Reported:	07/17/2023	Sampling Type:	Soil
Project Name:	SUPER COBRA STATE COM 1H	Sampling Condition:	Cool & Intact
Project Number:	212C-MD-03092	Sample Received By:	Tamara Oldaker
Project Location:	COP - LEA CO NM		

Sample ID: FS - 1 (H233645-05)

BTEx 8021B		mg/kg		Analyzed By: MS					
Analyte	Result	Reporting Limit	Analyzed	Method Blank	BS	% Recovery	True Value QC	RPD	Qualifier
Benzene*	<0.050	0.050	07/15/2023	ND	2.02	101	2.00	0.399	
Toluene*	<0.050	0.050	07/15/2023	ND	1.98	98.8	2.00	0.184	
Ethylbenzene*	<0.050	0.050	07/15/2023	ND	1.89	94.6	2.00	1.21	
Total Xylenes*	<0.150	0.150	07/15/2023	ND	5.71	95.2	6.00	2.09	
Total BTEX	<0.300	0.300	07/15/2023	ND					

Surrogate: 4-Bromofluorobenzene (PID) 105 % 71.5-134

Chloride, SM4500Cl-B		mg/kg		Analyzed By: AC						
Analyte	Result	Reporting Limit	Analyzed	Method Blank	BS	% Recovery	True Value QC	RPD	Qualifier	
Chloride	<16.0	16.0	07/17/2023	ND	416	104	400	0.00		

TPH 8015M		mg/kg		Analyzed By: MS					
Analyte	Result	Reporting Limit	Analyzed	Method Blank	BS	% Recovery	True Value QC	RPD	Qualifier
GRO C6-C10*	<10.0	10.0	07/15/2023	ND	197	98.5	200	4.59	
DRO >C10-C28*	<10.0	10.0	07/15/2023	ND	200	100	200	2.15	
EXT DRO >C28-C36	<10.0	10.0	07/15/2023	ND					

Surrogate: 1-Chlorooctane 74.1 % 48.2-134

Surrogate: 1-Chlorooctadecane 82.8 % 49.1-148

Cardinal Laboratories

*=Accredited Analyte

PLEASE NOTE: Liability and Damages. Cardinal's liability and client's exclusive remedy for any claim arising, whether based in contract or tort, shall be limited to the amount paid by client for analyses. All claims, including those for negligence and any other cause whatsoever shall be deemed waived unless made in writing and received by Cardinal within thirty (30) days after completion of the applicable service. In no event shall Cardinal be liable for incidental or consequential damages, including, without limitation, business interruptions, loss of use, or loss of profits incurred by client, its subsidiaries, affiliates or successors arising out of or related to the performance of the services hereunder by Cardinal, regardless of whether such claim is based upon any of the above stated reasons or otherwise. Results relate only to the samples identified above. This report shall not be reproduced except in full with written approval of Cardinal Laboratories.

Celey D. Keene, Lab Director/Quality Manager



PHONE (575) 393-2326 ° 101 E. MARLAND ° HOBBS, NM 88240

Analytical Results For:

TETRA TECH
 CHRISTIAN LLULL
 901 WEST WALL STREET , STE 100
 MIDLAND TX, 79701
 Fax To: (432) 682-3946

Received:	07/14/2023	Sampling Date:	07/14/2023
Reported:	07/17/2023	Sampling Type:	Soil
Project Name:	SUPER COBRA STATE COM 1H	Sampling Condition:	Cool & Intact
Project Number:	212C-MD-03092	Sample Received By:	Tamara Oldaker
Project Location:	COP - LEA CO NM		

Sample ID: FS - 2 (H233645-06)

BTEx 8021B		mg/kg		Analyzed By: MS						
Analyte	Result	Reporting Limit	Analyzed	Method Blank	BS	% Recovery	True Value QC	RPD	Qualifier	
Benzene*	<0.050	0.050	07/15/2023	ND	2.02	101	2.00	0.399		
Toluene*	<0.050	0.050	07/15/2023	ND	1.98	98.8	2.00	0.184		
Ethylbenzene*	<0.050	0.050	07/15/2023	ND	1.89	94.6	2.00	1.21		
Total Xylenes*	<0.150	0.150	07/15/2023	ND	5.71	95.2	6.00	2.09		
Total BTEX	<0.300	0.300	07/15/2023	ND						

Surrogate: 4-Bromofluorobenzene (PID) 104 % 71.5-134

Chloride, SM4500Cl-B		mg/kg		Analyzed By: AC						
Analyte	Result	Reporting Limit	Analyzed	Method Blank	BS	% Recovery	True Value QC	RPD	Qualifier	
Chloride	304	16.0	07/17/2023	ND	416	104	400	0.00		

TPH 8015M		mg/kg		Analyzed By: MS						
Analyte	Result	Reporting Limit	Analyzed	Method Blank	BS	% Recovery	True Value QC	RPD	Qualifier	
GRO C6-C10*	<10.0	10.0	07/15/2023	ND	197	98.5	200	4.59		
DRO >C10-C28*	<10.0	10.0	07/15/2023	ND	200	100	200	2.15		
EXT DRO >C28-C36	<10.0	10.0	07/15/2023	ND						

Surrogate: 1-Chlorooctane 86.1 % 48.2-134

Surrogate: 1-Chlorooctadecane 95.1 % 49.1-148

Cardinal Laboratories

*=Accredited Analyte

PLEASE NOTE: Liability and Damages. Cardinal's liability and client's exclusive remedy for any claim arising, whether based in contract or tort, shall be limited to the amount paid by client for analyses. All claims, including those for negligence and any other cause whatsoever shall be deemed waived unless made in writing and received by Cardinal within thirty (30) days after completion of the applicable service. In no event shall Cardinal be liable for incidental or consequential damages, including, without limitation, business interruptions, loss of use, or loss of profits incurred by client, its subsidiaries, affiliates or successors arising out of or related to the performance of the services hereunder by Cardinal, regardless of whether such claim is based upon any of the above stated reasons or otherwise. Results relate only to the samples identified above. This report shall not be reproduced except in full with written approval of Cardinal Laboratories.

Celey D. Keene, Lab Director/Quality Manager



PHONE (575) 393-2326 ° 101 E. MARLAND ° HOBBS, NM 88240

Analytical Results For:

TETRA TECH
 CHRISTIAN LLULL
 901 WEST WALL STREET , STE 100
 MIDLAND TX, 79701
 Fax To: (432) 682-3946

Received:	07/14/2023	Sampling Date:	07/14/2023
Reported:	07/17/2023	Sampling Type:	Soil
Project Name:	SUPER COBRA STATE COM 1H	Sampling Condition:	Cool & Intact
Project Number:	212C-MD-03092	Sample Received By:	Tamara Oldaker
Project Location:	COP - LEA CO NM		

Sample ID: FS - 3 (H233645-07)

BTEx 8021B		mg/kg		Analyzed By: MS					
Analyte	Result	Reporting Limit	Analyzed	Method Blank	BS	% Recovery	True Value QC	RPD	Qualifier
Benzene*	<0.050	0.050	07/15/2023	ND	2.02	101	2.00	0.399	
Toluene*	<0.050	0.050	07/15/2023	ND	1.98	98.8	2.00	0.184	
Ethylbenzene*	<0.050	0.050	07/15/2023	ND	1.89	94.6	2.00	1.21	
Total Xylenes*	<0.150	0.150	07/15/2023	ND	5.71	95.2	6.00	2.09	
Total BTEX	<0.300	0.300	07/15/2023	ND					

Surrogate: 4-Bromofluorobenzene (PID) 104 % 71.5-134

Chloride, SM4500Cl-B		mg/kg		Analyzed By: AC						
Analyte	Result	Reporting Limit	Analyzed	Method Blank	BS	% Recovery	True Value QC	RPD	Qualifier	
Chloride	240	16.0	07/17/2023	ND	416	104	400	0.00		

TPH 8015M		mg/kg		Analyzed By: MS					
Analyte	Result	Reporting Limit	Analyzed	Method Blank	BS	% Recovery	True Value QC	RPD	Qualifier
GRO C6-C10*	<10.0	10.0	07/15/2023	ND	197	98.5	200	4.59	
DRO >C10-C28*	<10.0	10.0	07/15/2023	ND	200	100	200	2.15	
EXT DRO >C28-C36	<10.0	10.0	07/15/2023	ND					

Surrogate: 1-Chlorooctane 97.5 % 48.2-134

Surrogate: 1-Chlorooctadecane 107 % 49.1-148

Cardinal Laboratories

*=Accredited Analyte

PLEASE NOTE: Liability and Damages. Cardinal's liability and client's exclusive remedy for any claim arising, whether based in contract or tort, shall be limited to the amount paid by client for analyses. All claims, including those for negligence and any other cause whatsoever shall be deemed waived unless made in writing and received by Cardinal within thirty (30) days after completion of the applicable service. In no event shall Cardinal be liable for incidental or consequential damages, including, without limitation, business interruptions, loss of use, or loss of profits incurred by client, its subsidiaries, affiliates or successors arising out of or related to the performance of the services hereunder by Cardinal, regardless of whether such claim is based upon any of the above stated reasons or otherwise. Results relate only to the samples identified above. This report shall not be reproduced except in full with written approval of Cardinal Laboratories.

Celey D. Keene, Lab Director/Quality Manager



PHONE (575) 393-2326 ° 101 E. MARLAND ° HOBBS, NM 88240

Notes and Definitions

ND	Analyte NOT DETECTED at or above the reporting limit
RPD	Relative Percent Difference
**	Samples not received at proper temperature of 6°C or below.
***	Insufficient time to reach temperature.
-	Chloride by SM4500Cl-B does not require samples be received at or below 6°C Samples reported on an as received basis (wet) unless otherwise noted on report

Cardinal Laboratories

*=Accredited Analyte

PLEASE NOTE: Liability and Damages. Cardinal's liability and client's exclusive remedy for any claim arising, whether based in contract or tort, shall be limited to the amount paid by client for analyses. All claims, including those for negligence and any other cause whatsoever shall be deemed waived unless made in writing and received by Cardinal within thirty (30) days after completion of the applicable service. In no event shall Cardinal be liable for incidental or consequential damages, including, without limitation, business interruptions, loss of use, or loss of profits incurred by client, its subsidiaries, affiliates or successors arising out of or related to the performance of the services hereunder by Cardinal, regardless of whether such claim is based upon any of the above stated reasons or otherwise. Results relate only to the samples identified above. This report shall not be reproduced except in full with written approval of Cardinal Laboratories.

A handwritten signature in black ink, appearing to read "Celey D. Keene".

Celey D. Keene, Lab Director/Quality Manager



CHAIN-OF-CUSTODY AND ANALYSIS REQUEST

Company Name: Tetra Tech

Project Manager: Christian Llull

Address: 8911 Capital o Texas Hwy, Suite 2310

City: Austin

Phone #: (512)555-0190

Project #: 212C-MD-03092

Project Name: Super Cobra State Com 1H

Project Location: Lea County, New Mexico

Sampler Name: Colton Bickerstaff

Lab I.D.

State: TX

Fax #: 212C-MD-03092

Project Owner: ConocoPhillips

City:

State:

Phone #:

Fax #:

P.O. #:

Company: Tetra Tech

Attn: Christian Llull

Address: EMAIL

City:

State:

Phone #:

Fax #:

Sample I.D.

1 NSW-1

2 SSW-1

3 ESW-1

4 WSW-1

5 FS-1

6 FS-2

7 FS-3

(G)RAB OR (C)OMP.

CONTAINERS

GROUNDWATER

WASTEWATER

SOIL

OIL

SLUDGE

OTHER :

ACID/BASE:

ICE / COOL

OTHER :

DATE

TIME

TPH 8015M

BTEX 8021B

Chloride SM4500Cl-B

Received By: *Christian Llull*

Time: 7/14/23

Relinquished By: Colton Bickerstaff

Time:

Delivered By: (Circle One) *Bus*

Corrected Temp. °C

Sample Condition

Cool intact

Checked By: *CE*

Turnaround Time: Standard

Rush YES 24 hr. \$1000 FAX

Thermometer ID #113

Correction Factor -0.5°C

Backfill (only) Sample - addition

Cool intact

Observed Temp. °C

Yes

No

Corrected Temp. °C

Yes

No

Verbal Result: ☐ Yes ☐ No

Add'l Phone #:

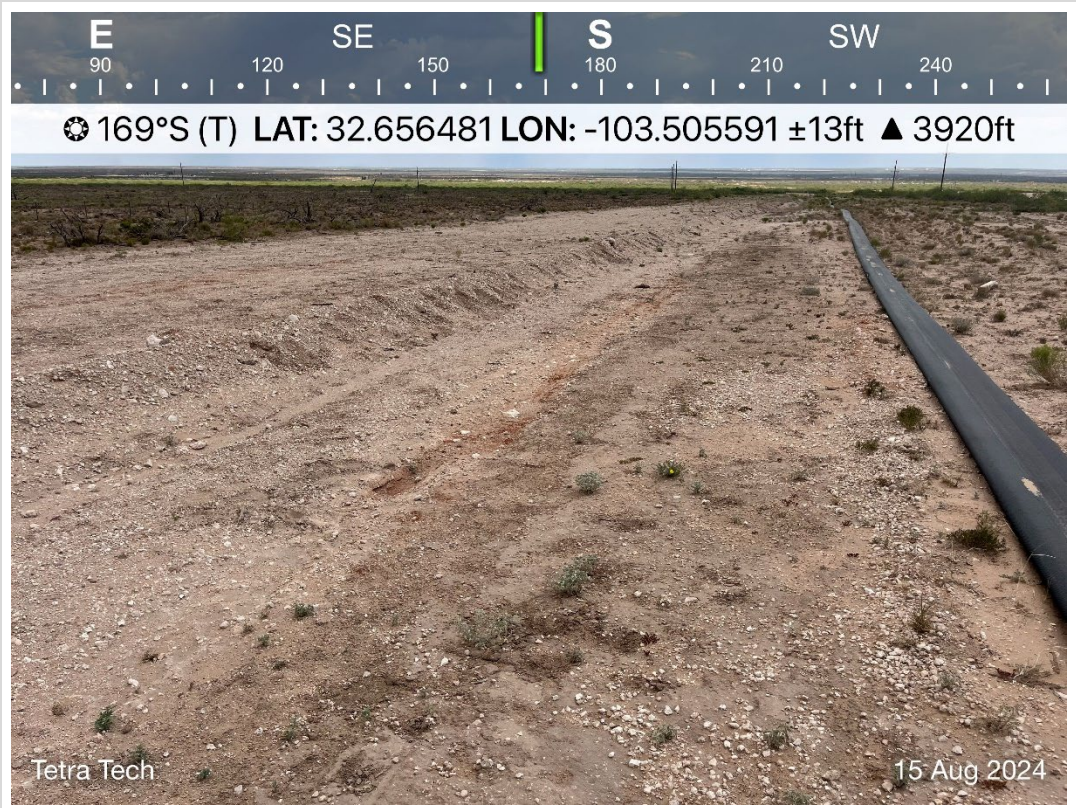
REMARKS:

† Cardinal cannot accept verbal changes. Please email changes to celej.keene@cardinallabsnm.com

FORM-006 R 3.2 10/07/21

APPENDIX D

Photographic Documentation



TETRA TECH, INC. PROJECT NO. 212C-MD-03092	DESCRIPTION	View south. View of remediated area. Vegetation observed.	1
	SITE NAME	Super Cobra State Com #0011H Flowline Release	8/15/2024



TETRA TECH, INC. PROJECT NO. 212C-MD-03092	DESCRIPTION	View northeast. Vegetation observed.	2
	SITE NAME	Super Cobra State Com #0011H Flowline Release	8/15/2024



TETRA TECH, INC. PROJECT NO. 212C-MD-03092	DESCRIPTION	View north. View of remediated area.	3
	SITE NAME	Super Cobra State Com #0011H Flowline Release	8/15/2024



TETRA TECH, INC. PROJECT NO. 212C-MD-03092	DESCRIPTION	View north. Vegetation observed.	4
	SITE NAME	Super Cobra State Com #0011H Flowline Release	8/15/2024



TETRA TECH, INC. PROJECT NO. 212C-MD-03092	DESCRIPTION	View north. View of remediated area.	5
	SITE NAME	Super Cobra State Com #0011H Flowline Release	8/15/2024



TETRA TECH, INC. PROJECT NO. 212C-MD-03092	DESCRIPTION	View south. View of remediated area.	6
	SITE NAME	Super Cobra State Com #0011H Flowline Release	8/15/2024

District I
1625 N. French Dr., Hobbs, NM 88240
Phone:(575) 393-6161 Fax:(575) 393-0720
District II
811 S. First St., Artesia, NM 88210
Phone:(575) 748-1283 Fax:(575) 748-9720
District III
1000 Rio Brazos Rd., Aztec, NM 87410
Phone:(505) 334-6178 Fax:(505) 334-6170
District IV
1220 S. St Francis Dr., Santa Fe, NM 87505
Phone:(505) 476-3470 Fax:(505) 476-3462

State of New Mexico
Energy, Minerals and Natural Resources
Oil Conservation Division
1220 S. St Francis Dr.
Santa Fe, NM 87505

QUESTIONS

Action 387288

QUESTIONS

Operator: COG OPERATING LLC 600 W Illinois Ave Midland, TX 79701	OGRID: 229137
	Action Number: 387288
	Action Type: [C-141] Reclamation Report C-141 (C-141-v-Reclamation)

QUESTIONS

Prerequisites	
Incident ID (n#)	nAPP2310336759
Incident Name	NAPP2310336759 SUPER COBRA STATE COM 001H @ 0
Incident Type	Produced Water Release
Incident Status	Reclamation Report Received
Incident Facility	[fAPP2204042446] SUPER COBRA ST COM 1H BATTERY

Location of Release Source	
Please answer all the questions in this group.	
Site Name	SUPER COBRA STATE COM 001H
Date Release Discovered	03/30/2023
Surface Owner	State

Incident Details	
Please answer all the questions in this group.	
Incident Type	Produced Water Release
Did this release result in a fire or is the result of a fire	No
Did this release result in any injuries	No
Has this release reached or does it have a reasonable probability of reaching a watercourse	No
Has this release endangered or does it have a reasonable probability of endangering public health	No
Has this release substantially damaged or will it substantially damage property or the environment	No
Is this release of a volume that is or may with reasonable probability be detrimental to fresh water	No

Nature and Volume of Release	
Material(s) released, please answer all that apply below. Any calculations or specific justifications for the volumes provided should be attached to the follow-up C-141 submission.	
Crude Oil Released (bbls) Details	Not answered.
Produced Water Released (bbls) Details	Cause: Corrosion Flow Line - Production Produced Water Released: 8 BBL Recovered: 1 BBL Lost: 7 BBL.
Is the concentration of chloride in the produced water >10,000 mg/l	Yes
Condensate Released (bbls) Details	Not answered.
Natural Gas Vented (Mcf) Details	Not answered.
Natural Gas Flared (Mcf) Details	Not answered.
Other Released Details	Not answered.
Are there additional details for the questions above (i.e. any answer containing Other, Specify, Unknown, and/or Fire, or any negative lost amounts)	Not answered.

District I

1625 N. French Dr., Hobbs, NM 88240
Phone:(575) 393-6161 Fax:(575) 393-0720

District II

811 S. First St., Artesia, NM 88210
Phone:(575) 748-1283 Fax:(575) 748-9720

District III

1000 Rio Brazos Rd., Aztec, NM 87410
Phone:(505) 334-6178 Fax:(505) 334-6170

District IV

1220 S. St Francis Dr., Santa Fe, NM 87505
Phone:(505) 476-3470 Fax:(505) 476-3462

State of New Mexico
Energy, Minerals and Natural Resources
Oil Conservation Division
1220 S. St Francis Dr.
Santa Fe, NM 87505

QUESTIONS, Page 2

Action 387288

QUESTIONS (continued)

Operator: COG OPERATING LLC 600 W Illinois Ave Midland, TX 79701	OGRID:
	229137
	Action Number:
	387288
Action Type:	
[C-141] Reclamation Report C-141 (C-141-v-Reclamation)	

QUESTIONS

Nature and Volume of Release (continued)	
Is this a gas only submission (i.e. only significant Mcf values reported)	No, according to supplied volumes this does not appear to be a "gas only" report.
Was this a major release as defined by Subsection A of 19.15.29.7 NMAC	No
Reasons why this would be considered a submission for a notification of a major release	Unavailable.
With the implementation of the 19.15.27 NMAC (05/25/2021), venting and/or flaring of natural gas (i.e. gas only) are to be submitted on the C-129 form.	

Initial Response

The responsible party must undertake the following actions immediately unless they could create a safety hazard that would result in injury.

The source of the release has been stopped	True
The impacted area has been secured to protect human health and the environment	True
Released materials have been contained via the use of berms or dikes, absorbent pads, or other containment devices	True
All free liquids and recoverable materials have been removed and managed appropriately	True
If all the actions described above have not been undertaken, explain why	Not answered.

Per Paragraph (4) of Subsection B of 19.15.29.8 NMAC the responsible party may commence remediation immediately after discovery of a release. If remediation has begun, please prepare and attach a narrative of actions to date in the follow-up C-141 submission. If remedial efforts have been successfully completed or if the release occurred within a lined containment area (see Subparagraph (a) of Paragraph (5) of Subsection A of 19.15.29.11 NMAC), please prepare and attach all information needed for closure evaluation in the follow-up C-141 submission.

I hereby certify that the information given above is true and complete to the best of my knowledge and understand that pursuant to OCD rules and regulations all operators are required to report and/or file certain release notifications and perform corrective actions for releases which may endanger public health or the environment. The acceptance of a C-141 report by the OCD does not relieve the operator of liability should their operations have failed to adequately investigate and remediate contamination that pose a threat to groundwater, surface water, human health or the environment. In addition, OCD acceptance of a C-141 report does not relieve the operator of responsibility for compliance with any other federal, state, or local laws and/or regulations.

I hereby agree and sign off to the above statement	Name: Brittany Esparza Title: Environmental Technician Email: brittany.Esparza@ConocoPhillips.com Date: 09/26/2024
--	---

District I

1625 N. French Dr., Hobbs, NM 88240
Phone:(575) 393-6161 Fax:(575) 393-0720

District II

811 S. First St., Artesia, NM 88210
Phone:(575) 748-1283 Fax:(575) 748-9720

District III

1000 Rio Brazos Rd., Aztec, NM 87410
Phone:(505) 334-6178 Fax:(505) 334-6170

District IV

1220 S. St Francis Dr., Santa Fe, NM 87505
Phone:(505) 476-3470 Fax:(505) 476-3462

State of New Mexico
Energy, Minerals and Natural Resources
Oil Conservation Division
1220 S. St Francis Dr.
Santa Fe, NM 87505

QUESTIONS, Page 3

Action 387288

QUESTIONS (continued)

Operator: COG OPERATING LLC 600 W Illinois Ave Midland, TX 79701	OGRID:
	229137
	Action Number:
	387288
Action Type:	
[C-141] Reclamation Report C-141 (C-141-v-Reclamation)	

QUESTIONS**Site Characterization**

Please answer all the questions in this group (only required when seeking remediation plan approval and beyond). This information must be provided to the appropriate district office no later than 90 days after the release discovery date.

What is the shallowest depth to groundwater beneath the area affected by the release in feet below ground surface (ft bgs)	Between 51 and 75 (ft.)
What method was used to determine the depth to ground water	NM OSE iWaters Database Search
Did this release impact groundwater or surface water	No
What is the minimum distance, between the closest lateral extents of the release and the following surface areas:	
A continuously flowing watercourse or any other significant watercourse	Between 1 and 100 (ft.)
Any lakebed, sinkhole, or playa lake (measured from the ordinary high-water mark)	Between 1 and 5 (mi.)
An occupied permanent residence, school, hospital, institution, or church	Greater than 5 (mi.)
A spring or a private domestic fresh water well used by less than five households for domestic or stock watering purposes	Greater than 5 (mi.)
Any other fresh water well or spring	Greater than 5 (mi.)
Incorporated municipal boundaries or a defined municipal fresh water well field	Greater than 5 (mi.)
A wetland	Between 1 and 5 (mi.)
A subsurface mine	Greater than 5 (mi.)
An (non-karst) unstable area	Greater than 5 (mi.)
Categorize the risk of this well / site being in a karst geology	None
A 100-year floodplain	Greater than 5 (mi.)
Did the release impact areas not on an exploration, development, production, or storage site	No

Remediation Plan

Please answer all the questions that apply or are indicated. This information must be provided to the appropriate district office no later than 90 days after the release discovery date.

Requesting a remediation plan approval with this submission	Yes
Attach a comprehensive report demonstrating the lateral and vertical extents of soil contamination associated with the release have been determined, pursuant to 19.15.29.11 NMAC and 19.15.29.13 NMAC.	
Have the lateral and vertical extents of contamination been fully delineated	Yes
Was this release entirely contained within a lined containment area	No

Soil Contamination Sampling: (Provide the highest observable value for each, in milligrams per kilograms.)

Chloride	(EPA 300.0 or SM4500 Cl B)	20000
TPH (GRO+DRO+MRO)	(EPA SW-846 Method 8015M)	0
GRO+DRO	(EPA SW-846 Method 8015M)	0
BTEX	(EPA SW-846 Method 8021B or 8260B)	0
Benzene	(EPA SW-846 Method 8021B or 8260B)	0

Per Subsection B of 19.15.29.11 NMAC unless the site characterization report includes completed efforts at remediation, the report must include a proposed remediation plan in accordance with 19.15.29.12 NMAC, which includes the anticipated timelines for beginning and completing the remediation.

On what estimated date will the remediation commence	07/14/2023
On what date will (or did) the final sampling or liner inspection occur	07/14/2023
On what date will (or was) the remediation complete(d)	07/20/2023
What is the estimated surface area (in square feet) that will be reclaimed	1207
What is the estimated volume (in cubic yards) that will be reclaimed	132
What is the estimated surface area (in square feet) that will be remediated	1207
What is the estimated volume (in cubic yards) that will be remediated	132

These estimated dates and measurements are recognized to be the best guess or calculation at the time of submission and may (be) change(d) over time as more remediation efforts are completed.

The OCD recognizes that proposed remediation measures may have to be minimally adjusted in accordance with the physical realities encountered during remediation. If the responsible party has any need to significantly deviate from the remediation plan proposed, then it should consult with the division to determine if another remediation plan submission is required.

District I

1625 N. French Dr., Hobbs, NM 88240
Phone:(575) 393-6161 Fax:(575) 393-0720

District II

811 S. First St., Artesia, NM 88210
Phone:(575) 748-1283 Fax:(575) 748-9720

District III

1000 Rio Brazos Rd., Aztec, NM 87410
Phone:(505) 334-6178 Fax:(505) 334-6170

District IV

1220 S. St Francis Dr., Santa Fe, NM 87505
Phone:(505) 476-3470 Fax:(505) 476-3462

State of New Mexico
Energy, Minerals and Natural Resources
Oil Conservation Division
1220 S. St Francis Dr.
Santa Fe, NM 87505

QUESTIONS, Page 4

Action 387288

QUESTIONS (continued)

Operator: COG OPERATING LLC 600 W Illinois Ave Midland, TX 79701	OGRID:	229137
	Action Number:	387288
	Action Type:	[C-141] Reclamation Report C-141 (C-141-v-Reclamation)

QUESTIONS**Remediation Plan (continued)**

Please answer all the questions that apply or are indicated. This information must be provided to the appropriate district office no later than 90 days after the release discovery date.

This remediation will (or is expected to) utilize the following processes to remediate / reduce contaminants:

(Select all answers below that apply.)

(Ex Situ) Excavation and off-site disposal (i.e. dig and haul, hydrovac, etc.)	Yes
Which OCD approved facility will be used for off-site disposal	SUPER COBRA ST COM 1H BATTERY [fAPP2204042446]
OR which OCD approved well (API) will be used for off-site disposal	Not answered.
OR is the off-site disposal site, to be used, out-of-state	Not answered.
OR is the off-site disposal site, to be used, an NMED facility	Not answered.
(Ex Situ) Excavation and on-site remediation (i.e. On-Site Land Farms)	No
(In Situ) Soil Vapor Extraction	Not answered.
(In Situ) Chemical processing (i.e. Soil Shredding, Potassium Permanganate, etc.)	Not answered.
(In Situ) Biological processing (i.e. Microbes / Fertilizer, etc.)	Not answered.
(In Situ) Physical processing (i.e. Soil Washing, Gypsum, Disking, etc.)	Not answered.
Ground Water Abatement pursuant to 19.15.30 NMAC	Not answered.
OTHER (Non-listed remedial process)	Not answered.

Per Subsection B of 19.15.29.11 NMAC unless the site characterization report includes completed efforts at remediation, the report must include a proposed remediation plan in accordance with 19.15.29.12 NMAC, which includes the anticipated timelines for beginning and completing the remediation.

I hereby certify that the information given above is true and complete to the best of my knowledge and understand that pursuant to OCD rules and regulations all operators are required to report and/or file certain release notifications and perform corrective actions for releases which may endanger public health or the environment. The acceptance of a C-141 report by the OCD does not relieve the operator of liability should their operations have failed to adequately investigate and remediate contamination that pose a threat to groundwater, surface water, human health or the environment. In addition, OCD acceptance of a C-141 report does not relieve the operator of responsibility for compliance with any other federal, state, or local laws and/or regulations.

I hereby agree and sign off to the above statement	Name: Brittany Esparza Title: Environmental Technician Email: brittany.Esparza@ConocoPhillips.com Date: 09/26/2024
--	---

The OCD recognizes that proposed remediation measures may have to be minimally adjusted in accordance with the physical realities encountered during remediation. If the responsible party has any need to significantly deviate from the remediation plan proposed, then it should consult with the division to determine if another remediation plan submission is required.

District I
1625 N. French Dr., Hobbs, NM 88240
Phone:(575) 393-6161 Fax:(575) 393-0720
District II
811 S. First St., Artesia, NM 88210
Phone:(575) 748-1283 Fax:(575) 748-9720
District III
1000 Rio Brazos Rd., Aztec, NM 87410
Phone:(505) 334-6178 Fax:(505) 334-6170
District IV
1220 S. St Francis Dr., Santa Fe, NM 87505
Phone:(505) 476-3470 Fax:(505) 476-3462

State of New Mexico
Energy, Minerals and Natural Resources
Oil Conservation Division
1220 S. St Francis Dr.
Santa Fe, NM 87505

QUESTIONS, Page 5

Action 387288

QUESTIONS (continued)

Operator: COG OPERATING LLC 600 W Illinois Ave Midland, TX 79701	OGRID:
	229137
	Action Number:
	387288
Action Type:	
[C-141] Reclamation Report C-141 (C-141-v-Reclamation)	

QUESTIONS

Deferral Requests Only	
Only answer the questions in this group if seeking a deferral upon approval this submission. Each of the following items must be confirmed as part of any request for deferral of remediation.	
Requesting a deferral of the remediation closure due date with the approval of this submission	No

District I

1625 N. French Dr., Hobbs, NM 88240
Phone:(575) 393-6161 Fax:(575) 393-0720

District II

811 S. First St., Artesia, NM 88210
Phone:(575) 748-1283 Fax:(575) 748-9720

District III

1000 Rio Brazos Rd., Aztec, NM 87410
Phone:(505) 334-6178 Fax:(505) 334-6170

District IV

1220 S. St Francis Dr., Santa Fe, NM 87505
Phone:(505) 476-3470 Fax:(505) 476-3462

State of New Mexico
Energy, Minerals and Natural Resources
Oil Conservation Division
1220 S. St Francis Dr.
Santa Fe, NM 87505

QUESTIONS, Page 6

Action 387288

QUESTIONS (continued)

Operator: COG OPERATING LLC 600 W Illinois Ave Midland, TX 79701	OGRID:
	229137
	Action Number:
	387288
Action Type:	
[C-141] Reclamation Report C-141 (C-141-v-Reclamation)	

QUESTIONS

Sampling Event Information	
Last sampling notification (C-141N) recorded	387301
Sampling date pursuant to Subparagraph (a) of Paragraph (1) of Subsection D of 19.15.29.12 NMAC	07/01/2023
What was the (estimated) number of samples that were to be gathered	60
What was the sampling surface area in square feet	1207

Remediation Closure Request

Only answer the questions in this group if seeking remediation closure for this release because all remediation steps have been completed.

Requesting a remediation closure approval with this submission	Yes
Have the lateral and vertical extents of contamination been fully delineated	Yes
Was this release entirely contained within a lined containment area	No
All areas reasonably needed for production or subsequent drilling operations have been stabilized, returned to the sites existing grade, and have a soil cover that prevents ponding of water, minimizing dust and erosion	Yes
What was the total surface area (in square feet) remediated	1207
What was the total volume (cubic yards) remediated	132
All areas not reasonably needed for production or subsequent drilling operations have been reclaimed to contain a minimum of four feet of non-waste contain earthen material with concentrations less than 600 mg/kg chlorides, 100 mg/kg TPH, 50 mg/kg BTEX, and 10 mg/kg Benzene	Yes
What was the total surface area (in square feet) reclaimed	1207
What was the total volume (in cubic yards) reclaimed	132
Summarize any additional remediation activities not included by answers (above)	NA

The responsible party must attach information demonstrating they have complied with all applicable closure requirements and any conditions or directives of the OCD. This demonstration should be in the form of a comprehensive report (in .pdf format) including a scaled site map, sampling diagrams, relevant field notes, photographs of any excavation prior to backfilling, laboratory data including chain of custody documents of final sampling, and a narrative of the remedial activities. Refer to 19.15.29.12 NMAC.

I hereby certify that the information given above is true and complete to the best of my knowledge and understand that pursuant to OCD rules and regulations all operators are required to report and/or file certain release notifications and perform corrective actions for releases which may endanger public health or the environment. The acceptance of a C-141 report by the OCD does not relieve the operator of liability should their operations have failed to adequately investigate and remediate contamination that pose a threat to groundwater, surface water, human health or the environment. In addition, OCD acceptance of a C-141 report does not relieve the operator of responsibility for compliance with any other federal, state, or local laws and/or regulations. The responsible party acknowledges they must substantially restore, reclaim, and re-vegetate the impacted surface area to the conditions that existed prior to the release or their final land use in accordance with 19.15.29.13 NMAC including notification to the OCD when reclamation and re-vegetation are complete.

I hereby agree and sign off to the above statement	Name: Brittany Esparza Title: Environmental Technician Email: brittany.Esparza@ConocoPhillips.com Date: 09/26/2024
--	---

District I

1625 N. French Dr., Hobbs, NM 88240
Phone:(575) 393-6161 Fax:(575) 393-0720

District II

811 S. First St., Artesia, NM 88210
Phone:(575) 748-1283 Fax:(575) 748-9720

District III

1000 Rio Brazos Rd., Aztec, NM 87410
Phone:(505) 334-6178 Fax:(505) 334-6170

District IV

1220 S. St Francis Dr., Santa Fe, NM 87505
Phone:(505) 476-3470 Fax:(505) 476-3462

State of New Mexico
Energy, Minerals and Natural Resources
Oil Conservation Division
1220 S. St Francis Dr.
Santa Fe, NM 87505

QUESTIONS, Page 7

Action 387288

QUESTIONS (continued)

Operator: COG OPERATING LLC 600 W Illinois Ave Midland, TX 79701	OGRID:	229137
	Action Number:	387288
	Action Type:	[C-141] Reclamation Report C-141 (C-141-v-Reclamation)

QUESTIONS**Reclamation Report**

Only answer the questions in this group if all reclamation steps have been completed.

Requesting a reclamation approval with this submission	Yes
What was the total reclamation surface area (in square feet) for this site	1207
What was the total volume of replacement material (in cubic yards) for this site	132

Per Paragraph (1) of Subsection D of 19.15.29.13 NMAC the reclamation must contain a minimum of four feet of non-waste containing, uncontaminated, earthen material with chloride concentrations less than 600 mg/kg as analyzed by EPA Method 300.0, or other test methods approved by the division. The soil cover must include a top layer, which is either the background thickness of topsoil or one foot of suitable material to establish vegetation at the site, whichever is greater.

Is the soil top layer complete and is it suitable material to establish vegetation	Yes
On what (estimated) date will (or was) the reseedling commence(d)	07/20/2023

Summarize any additional reclamation activities not included by answers (above)	NA
---	----

The responsible party must attach information demonstrating they have complied with all applicable reclamation requirements and any conditions or directives of the OCD. This demonstration should be in the form of attachments (in .pdf format) including a scaled site map, any proposed reseedling plans or relevant field notes, photographs of reclaimed area, and a narrative of the reclamation activities. Refer to 19.15.29.13 NMAC.

I hereby certify that the information given above is true and complete to the best of my knowledge and understand that pursuant to OCD rules and regulations all operators are required to report and/or file certain release notifications and perform corrective actions for releases which may endanger public health or the environment. The acceptance of a C-141 report by the OCD does not relieve the operator of liability should their operations have failed to adequately investigate and remediate contamination that pose a threat to groundwater, surface water, human health or the environment. In addition, OCD acceptance of a C-141 report does not relieve the operator of responsibility for compliance with any other federal, state, or local laws and/or regulations. The responsible party acknowledges they must substantially restore, reclaim, and re-vegetate the impacted surface area to the conditions that existed prior to the release or their final land use in accordance with 19.15.29.13 NMAC including notification to the OCD when reclamation and re-vegetation are complete.

I hereby agree and sign off to the above statement	Name: Brittany Esparza Title: Environmental Technician Email: brittany.Esparza@ConocoPhillips.com Date: 09/26/2024
--	---

District I
1625 N. French Dr., Hobbs, NM 88240
Phone:(575) 393-6161 Fax:(575) 393-0720
District II
811 S. First St., Artesia, NM 88210
Phone:(575) 748-1283 Fax:(575) 748-9720
District III
1000 Rio Brazos Rd., Aztec, NM 87410
Phone:(505) 334-6178 Fax:(505) 334-6170
District IV
1220 S. St Francis Dr., Santa Fe, NM 87505
Phone:(505) 476-3470 Fax:(505) 476-3462

State of New Mexico
Energy, Minerals and Natural Resources
Oil Conservation Division
1220 S. St Francis Dr.
Santa Fe, NM 87505

QUESTIONS, Page 8

Action 387288

QUESTIONS (continued)

Operator: COG OPERATING LLC 600 W Illinois Ave Midland, TX 79701	OGRID:
	229137
	Action Number:
	387288
Action Type:	
[C-141] Reclamation Report C-141 (C-141-v-Reclamation)	

QUESTIONS

Revegetation Report	
<i>Only answer the questions in this group if all surface restoration, reclamation and re-vegetation obligations have been satisfied.</i>	
Requesting a restoration complete approval with this submission	No
<i>Per Paragraph (4) of Subsection (D) of 19.15.29.13 NMAC for any major or minor release containing liquids, the responsible party must notify the division when reclamation and re-vegetation are complete.</i>	

District I
1625 N. French Dr., Hobbs, NM 88240
Phone:(575) 393-6161 Fax:(575) 393-0720
District II
811 S. First St., Artesia, NM 88210
Phone:(575) 748-1283 Fax:(575) 748-9720
District III
1000 Rio Brazos Rd., Aztec, NM 87410
Phone:(505) 334-6178 Fax:(505) 334-6170
District IV
1220 S. St Francis Dr., Santa Fe, NM 87505
Phone:(505) 476-3470 Fax:(505) 476-3462

State of New Mexico
Energy, Minerals and Natural Resources
Oil Conservation Division
1220 S. St Francis Dr.
Santa Fe, NM 87505

CONDITIONS

Action 387288

CONDITIONS

Operator: COG OPERATING LLC 600 W Illinois Ave Midland, TX 79701	OGRID: 229137
	Action Number: 387288
	Action Type: [C-141] Reclamation Report C-141 (C-141-v-Reclamation)

CONDITIONS

Created By	Condition	Condition Date
scott.rodgers	All revegetation activities will need to be documented and included in the revegetation report. The revegetation report will need to include: An executive summary of the revegetation activities including: Seed mix, Method of seeding, dates of when the release area was reseeded, information pertinent to inspections, information about any amendments added to the soil, information on how the vegetative cover established meets the life-form ratio of plus or minus fifty percent of pre-disturbance levels and a total percent plant cover of at least seventy percent of pre-disturbance levels, excluding noxious weeds per 19.15.29.13 D.(3) NMAC, and any additional information; a scaled Site Map including area that was revegetated in square feet; and pictures of the revegetated areas during reseeding activities, inspections, and final pictures when revegetation is achieved.	10/23/2024