



Remediation Summary and Closure Request

**FAE II Operating, LLC
Arnott Ramsay NCT-B Battery
Lea County, New Mexico
Unit Letter "K", Section 32, Township 25 South, Range 37 East
Latitude 32.086317 North, Longitude 103.186565 West
NMOCD Incident # nAPP2304957943**

Prepared For:

FAE II Operating, LLC
11757 Katy Freeway, Suite 725
Houston, TX 77079

Prepared By:

Hungry Horse, LLC
4024 Plains Hwy
Lovington, NM 88260
Office: (575) 393-3386

August 2024

Bradley Wells

Bradley Wells
Project Manager
bwells@hungry-horse.com

Daniel Dominguez

Daniel Dominguez
Environmental Manager
ddominguez@hungry-horse.com

Table Of Contents

Background	1
NMOCD Site Classification	1
Delineation and Remediation Activities	2
Sampling Procedure and Identification	3
Restoration, Reclamation, and Re-Vegetation	3
Closure Request	3
Limitations	3
Distribution	4

Figures

- Figure 1 – Topographic Map
- Figure 2 – OSE POD Locations Map
- Figure 3 – USGS Well Locations Map
- Figure 4 – Delineation Sample Map
- Figure 5 – Excavation Sample Map

Tables

- Table 1 – Summary of Soil Sample Laboratory Analytical Results

Attachments

- Attachment I – Karst, Wetland, and Soil Maps
- Attachment II – NMOCD Correspondence
- Attachment III – Site Photographs
- Attachment IV – Field Data
- Attachment V – Depth to Groundwater
- Attachment VI – Laboratory Analytical Reports



HUNGRY HORSE, LLC

The following *Remediation Summary and Closure Request* serves as a condensed update on field activities undertaken at the afore referenced Site.

Background:

The site is located in Unit Letter K (NE/SW), Section 32, Township 25 South, Range 37 East, approximately one mile South of Jal, in Lea County, New Mexico. The site is located on New Mexico State Trust Land. Topographic Map, OSE POD Locations Map, and USGS Well Locations Map are included as Figure 1, Figure 2, and Figure 3, respectively.

The release occurred on an active flowline; Latitude 32.086317 North, Longitude 103.186565 West. The Initial NMOCD Form C-141 indicated that on February 15, 2022 approximately 20 bbls of crude oil and 40 bbls of produced water were released due to a gasket leak on the heater treater. Approximately 54 bbls of fluid were recovered. Submitted Notice of Release and Form C-141 are available on the NMOCD Imaging System.

NMOCD Site Classification:

A search of the New Mexico Office of the State Engineer (NMOSE) and United States Geological Survey (USGS) groundwater databases was completed in an effort to determine the horizontal distance to known water sources within a half mile radius of the Release Site. Approximate depth to groundwater was determined using maintained and published water well data. Karst mapping indicates the site is located in an Erosional Karst designated area. Karst and Wetland Maps are provided as Attachment I. Depth to groundwater information is provided as Attachment V and the results are depicted on Figures 2 & 3.

No wells were located within a half mile of the release area. Also, as the release occurred within an Erosional Karst designated area, the site was remediated according to the strictest NMOCD Closure Criteria. Utilizing this information, the NMOCD Closure Criteria for the Site were determined as follows:

Depth to Groundwater	Constituent	Method	Limit
50'-100'	Chloride	EPA 300.0 or SM4500 CLB	600 mg/kg
	TPH (GRO + DRO + MRO)	EPA SW-846 Method 8015M Ext	100 mg/kg
	GRO + DRO	EPA SW-846 Method 8015M Ext	NA
	BTEX	EPA SW-846 Methods 8021B or 8260B	50 mg/kg
	Benzene	EPA SW-846 Methods 8021B or 8260B	10 mg/kg

A United States Department of Agriculture (USDA) Web Soil Survey was completed to determine soil types in the area of reclamation. Web Soil Survey indicates the area is located in the Pyote and Maljamar fine sands comprised of fine sand soils with 0 to 3 percent slopes. As the release occurred within an active tank battery, no seeding will be required. Karst, Wetland, and Soil Maps are provided as Attachment I.



Delineation and Remediation Activities:

On February 15, 2024, Hungry Horse conducted an initial site assessment consisting of photographing and mapping the release area. On February 20, 2024, delineation sampling was conducted via hand auger. Surface samples were collected with a small hand-held shovel, cleaned off between collection of each sample. During sampling, hand augered test bores were advanced throughout the affected area in an effort to determine the vertical extent of contamination. These sample locations are identified by SP designation. In addition, hand augered sample bores were advanced along the outside edges of the affected area in an effort to determine the horizontal extent of contamination. These sample locations are identified by HZ designation. During the advancement of the hand augered sample bores, soil samples were collected from the surface and at one-foot intervals, field screened for the presence of chloride concentrations utilizing a Hach Quantab® chloride test kit until field screening indicated chloride contaminant concentrations were below NMOCD Closure Criteria.

Based on field observations and field test data noted above and provided in Attachment IV, twelve representative soil samples were selected for laboratory analysis. Delineation soil samples SP1 through SP3, and HZ1 through HZ4, were submitted to the laboratory for analysis of BTEX, TPH, and chloride. Laboratory analytical results indicated contaminant concentrations were below the NMOCD Closure Criteria in each of the submitted samples, with the exception of SP1, SP2, and SP3 at Surface, which exhibited TPH and chloride concentrations in excess of NMOCD Closure Criteria.

From June 27 – July 19, 2024, the release area was excavated to an approximate depth of four feet bgs. A hydro-excavator was initially utilized to expose buried lines. When the lines had been exposed, a backhoe finished the excavation. Excavated contaminated soil was temporarily stockpiled onsite, within the excavation, before transport to an NMOCD approved disposal facility. Hydro-excavated material was immediately transported to a disposal facility.

On July 24, 2024, Hungry Horse LLC notified NMOCD that thirteen closure samples would be collected on July 29, 2024. Correspondence is provided as Attachment II.

On July 29, 2024, thirteen five-point composite confirmation soil samples were collected from the excavation floor and sidewalls, with each sample representing no more than 200 square feet. Soil samples FL1 through FL6, and SW1 through SW7, were submitted to the laboratory for analysis of BTEX, TPH, and chloride. Laboratory analytical results indicated contaminant concentrations were below the NMOCD Closure Criteria in each of the submitted samples.

The excavated area measured approximately nine hundred forty-four square feet. During remediation activities approximately 150 cubic yards of impacted soil were excavated and hauled to an NMOCD approved disposal facility.

A Delineation Sample Map and Excavation Sample Map are provided as Figure 4 and Figure 5, respectively. A Summary of Soil Sample Laboratory Analytical Results is provided as Table 1 and Laboratory Analytical Reports are provided as Attachment VI.



Sampling Procedure and Identification:

During confirmation sampling, five-point composite soil samples were collected from the floor of the excavation, each collected sample representing an area no greater than 200 square feet. These sample locations are identified by FL designation. Five-point composite soil samples were also collected from the sidewalls of the excavation, with each collected sample representing an area no greater than 200 square feet. These sample locations are identified by SW designation.

Excavation sidewall samples SW1 through SW7 were collected as five-point composite samples collected from the sidewalls of the excavation, from the excavation surface to the excavation floor. Excavation Sample Map, provided as Figure 5, depicts sidewall sample boundaries.

Restoration, Reclamation, and Re-Vegetation:

Based upon laboratory analytical results from confirmation soil samples, the excavation was backfilled with locally sourced, clean, non-impacted caliche. The area was contoured to achieve erosion control. As the release occurred within a tank battery, no seeding will be required.

Closure Request:

Remediation activities were conducted in accordance with applicable NMOCD Regulations. Soil affected above the NMOCD Closure Criteria has been excavated and hauled to an NMOCD approved facility for disposal. Laboratory analytical results from composite confirmation samples indicate concentrations of BTEX, TPH, and chloride are below the NMOCD Closure Criteria.

Based on laboratory analytical results, FAE II Operating, LLC respectfully requests closure of the Arnott Ramsay NCT-B Battery location, nAPP2304957943.

Limitations:

Hungry Horse, LLC, has prepared this *Remediation Summary and Closure Request* to the best of its ability. No other warranty, expressed or implied, is made or intended. Hungry Horse has examined and relied upon documents referenced in the report and on oral statements made by certain individuals. Hungry Horse has not conducted an independent examination of the facts contained in referenced materials and statements. Hungry Horse has presumed the genuineness of these documents and statements and that the information provided therein is true and accurate. Hungry Horse notes that the facts and conditions referenced in this report may change over time, and the conclusions and recommendations set forth herein are applicable only to the facts and conditions as described at the time of this report.



Distribution:

FAE II Operating, LLC

11757 Katy Freeway, Suite 725
Houston, TX 77079

New Mexico Energy, Minerals and Natural Resources Department

Oil Conservation Division, District 2
811 S. First St.
Artesia, NM 88210

New Mexico State Land Office

602 N. Canal. Suite B
Carlsbad, NM 88220

Fulfer Ranch, LLC

PO Box 1224
Jal, NM 88252

Figures

**Figure 1**

Topographic Map
 FAE II Operating, LLC
 Arnott Ramsay NCT-B Battery
 GPS: 32.086317, -103.186565
 Lea County

Legend:

- Arnott Ramsay NCT-B Battery Location

Drafted: dd
 Checked: bw
 Date: 2/20/24



**Figure 2**

OSE POD Locations Map
 FAE II Operating, LLC
 Arnott Ramsay NCT-B Battery
 GPS: 32.086317, -103.186565
 Lea County

Legend:

- Arnott Ramsay NCT-B Battery Location
- Active OSE Water Well

Drafted: dd
 Checked: bw
 Date: 2/20/24



**Figure 3**

USGS Well Locations Map
FAE II Operating, LLC
Arnott Ramsay NCT-B Battery
GPS: 32.086317, -103.186565
Lea County

Legend:

- Arnott Ramsay NCT-B Battery Location

Drafted: dd
Checked: bw
Date: 2/20/24



**Figure 4**

Delineation Sample Map
FAE II Operating, LLC
Arnott Ramsay NCT-B Battery
GPS: 32.086317, -103.186565
Lea County

Legend:

- Release Area
 SP1 Delineation Sample Location

Drafted: dd
Checked: bw
Date: 2/20/24



**Figure 5**

Excavation Sample Map
 FAE II Operating, LLC
 Arnott Ramsay NCT-B Battery
 GPS: 32.086317, -103.186565
 Lea County

Legend:

- Excavated Area
- Composite Confirmation Sample 200 Square Foot Area
- FL1 Composite Confirmation Sample Location
- SW1 Composite Confirmation Sidewall Sample Location
- Sidewall Sample Boundary

Drafted: dd
 Checked: bw
 Date: 7/26/24



Table

TABLE 1
Summary of Soil Sample Laboratory Analytical Results
FAE II Operating, LLC
Arnott Ramsay NCT-B Battery
NMOCD Ref. #: nAPP2304957943

Sample ID	Date	Depth (ft)	Soil Status	Benzene (mg/kg)	BTEX (mg/kg)	GRO C ₆ -C ₁₀ (mg/kg)	DRO C ₁₀ -C ₂₈ (mg/kg)	GRO + DRO C ₆ -C ₂₈ (mg/kg)	ORO C ₂₈ -C ₃₆ (mg/kg)	TPH C ₆ -C ₃₆ (mg/kg)	Chloride (mg/kg)
SP1	2/20/24	Surf	Excavated	<0.050	<0.300	64.5	23,000	23,065	6060	29,125	1,090
	2/20/24	4	In-Situ	<0.050	<0.300	<10.0	<10.0	<20.0	<10.0	<30.0	560
SP2	2/20/24	Surf	Excavated	<0.050	<0.300	<50.0	2,420	2,420	1,500	3,920	4,000
SP3	2/20/24	Surf	Excavated	<0.050	<0.300	<50.0	23,700	23,700	6,700	30,400	1,280
HZ1	2/20/24	Surf	In-Situ	<0.050	<0.300	<10.0	<10.0	<20.0	<10.0	<30.0	32.0
	2/20/24	1	In-Situ	<0.050	<0.300	<10.0	<10.0	<20.0	<10.0	<30.0	16.0
HZ2	2/20/24	Surf	In-Situ	<0.050	<0.300	<10.0	<10.0	<20.0	<10.0	<30.0	<16.0
	2/20/24	1	In-Situ	<0.050	<0.300	<10.0	<10.0	<20.0	<10.0	<30.0	<16.0
HZ3	2/20/24	Surf	In-Situ	<0.050	<0.300	<10.0	<10.0	<20.0	<10.0	<30.0	<16.0
	2/20/24	1	In-Situ	<0.050	<0.300	<10.0	<10.0	<20.0	<10.0	<30.0	32.0
HZ4	2/20/24	Surf	In-Situ	<0.050	<0.300	<10.0	<10.0	<20.0	<10.0	<30.0	16.0
	2/20/24	1	In-Situ	<0.050	<0.300	<10.0	<10.0	<20.0	<10.0	<30.0	16.0
NMOCD Closure Criteria				10	50	-	-	N/A	-	100	600
FL1	7/29/24	4	In-Situ	<0.050	<0.300	<10.0	<10.0	<20.0	<10.0	<30.0	32.0
FL2	7/29/24	4	In-Situ	<0.050	<0.300	<10.0	<10.0	<20.0	<10.0	<30.0	32.0
FL3	7/29/24	4	In-Situ	<0.050	<0.300	<10.0	<10.0	<20.0	<10.0	<30.0	16.0
FL4	7/29/24	4	In-Situ	<0.050	<0.300	<10.0	<10.0	<20.0	<10.0	<30.0	16.0
FL5	7/29/24	4	In-Situ	<0.050	<0.300	<10.0	<10.0	<20.0	<10.0	<30.0	<16.0
FL6	7/29/24	4	In-Situ	<0.050	<0.300	<10.0	<10.0	<20.0	<10.0	<30.0	32.0
SW1	7/29/24	0-4	In-Situ	<0.050	<0.300	<10.0	<10.0	<20.0	<10.0	<30.0	16.0
SW2	7/29/24	0-4	In-Situ	<0.050	<0.300	<10.0	<10.0	<20.0	<10.0	<30.0	16.0
SW3	7/29/24	0-4	In-Situ	<0.050	<0.300	<10.0	<10.0	<20.0	<10.0	<30.0	<16.0
SW4	7/29/24	0-4	In-Situ	<0.050	<0.300	<10.0	<10.0	<20.0	<10.0	<30.0	<16.0
SW5	7/29/24	0-4	In-Situ	<0.050	<0.300	<10.0	<10.0	<20.0	<10.0	<30.0	<16.0
SW6	7/29/24	0-4	In-Situ	<0.050	<0.300	<10.0	<10.0	<20.0	<10.0	<30.0	<16.0
SW7	7/29/24	0-4	In-Situ	<0.050	<0.300	<10.0	<10.0	<20.0	<10.0	<30.0	<16.0
NMOCD Closure Criteria				10	50	-	-	N/A	-	100	600

NOTES:

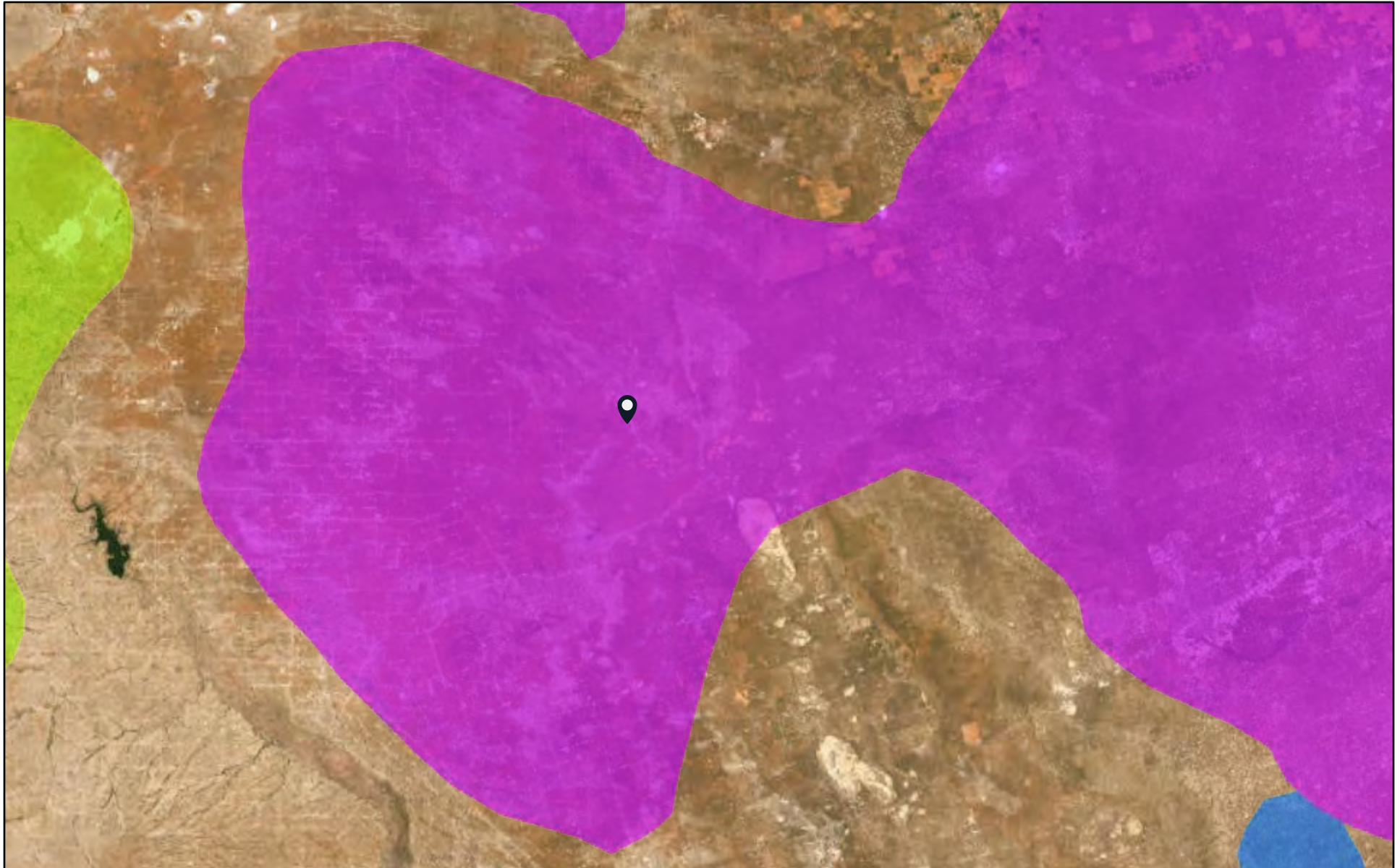
- = Sample not analyzed for that constituent.

Bold text denotes a concentration that exceeds the NMOCD Closure Criteria

Attachment I

Karst, Wetland, and Soil Maps

Arnott Ramsay NCT-B Battery



6/25/2024

Karst Type

- Carbonate
- Erosional
- Gypsum



Volcanic

World Imagery

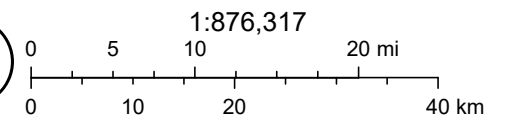
Low Resolution 15m Imagery

High Resolution 60cm Imagery

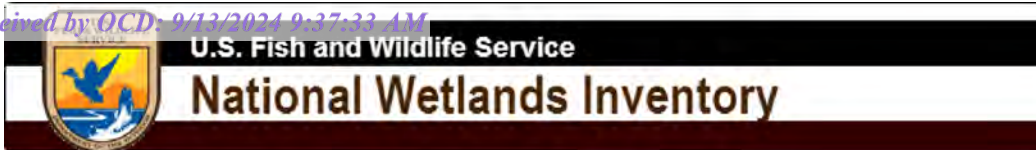
High Resolution 30cm Imagery

Citations

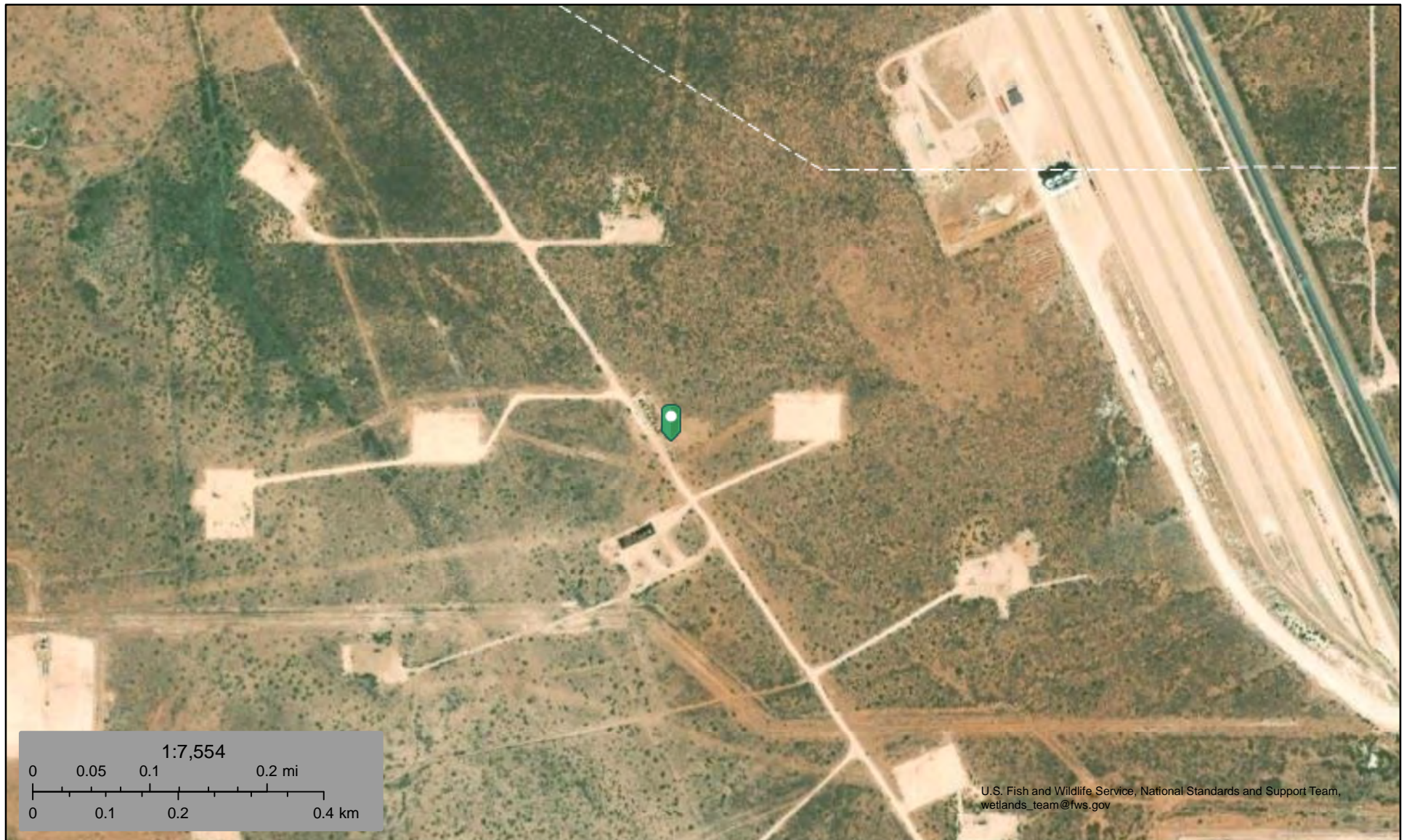
150m Resolution Metadata



U.S. Geological Survey Open-File Report 2004-1352, Caves and Karst in the U.S. National Park Service, AGI Karst Map of the US., Earthstar Geographics








Arnett Ramsay NCT-B Battery






June 25, 2024

Wetlands

-  Estuarine and Marine Deepwater
-  Estuarine and Marine Wetland

-  Freshwater Emergent Wetland
-  Freshwater Forested/Shrub Wetland
-  Freshwater Pond

-  Lake
-  Other
-  Riverine

This map is for general reference only. The US Fish and Wildlife Service is not responsible for the accuracy or currentness of the base data shown on this map. All wetlands related data should be used in accordance with the layer metadata found on the Wetlands Mapper web site.

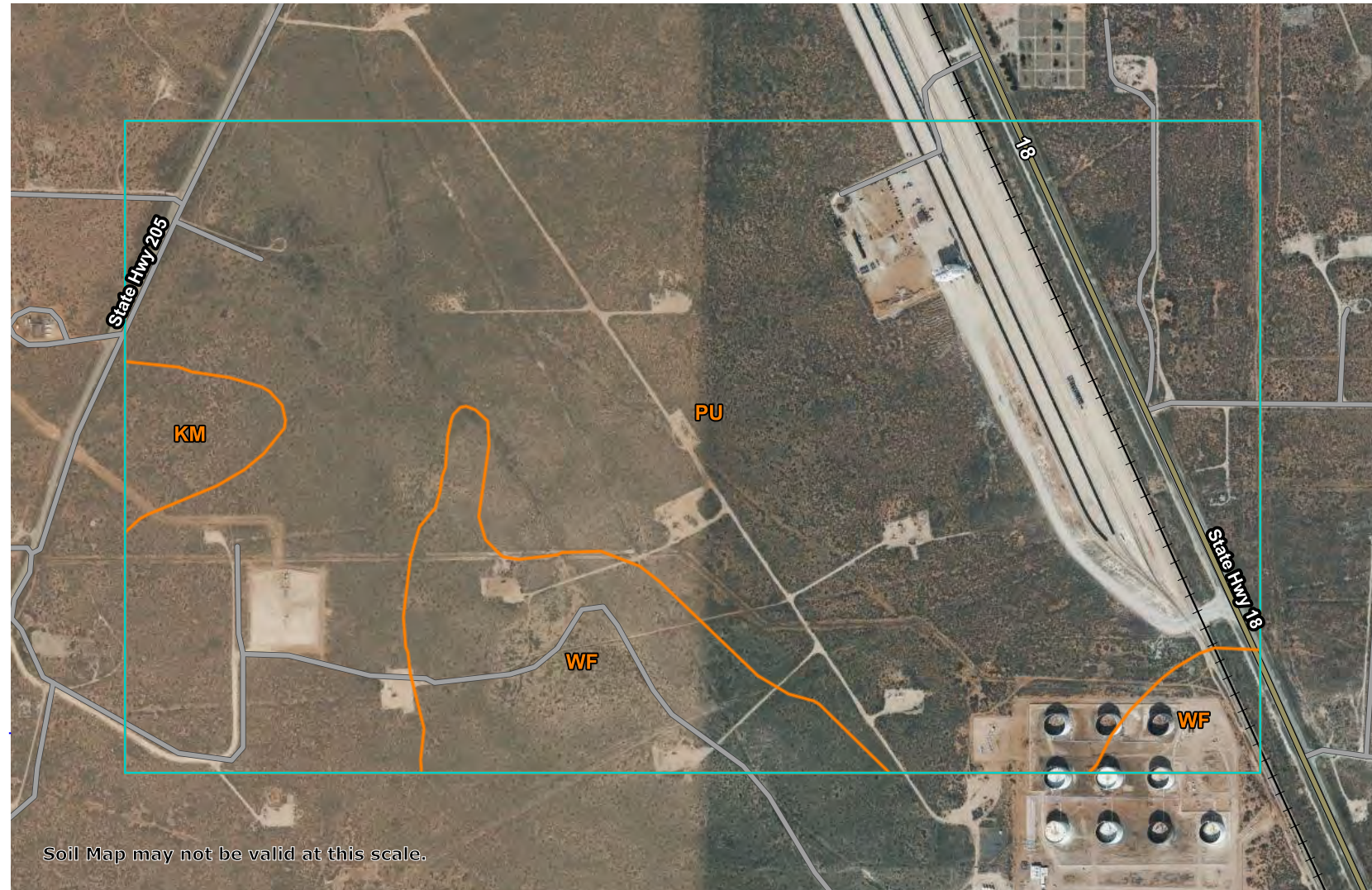
Soil Map—Lea County, New Mexico
(Arnett Ramsay NCT-B Battery)

103° 11' 58" W

103° 10' 25" W

32° 5' 35" N

32° 5' 35" N

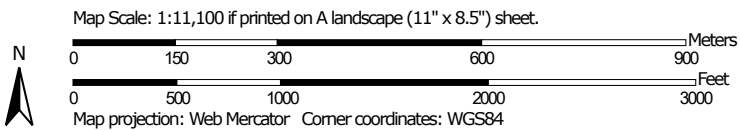


32° 4' 44" N

32° 4' 44" N

103° 11' 58" W

103° 10' 25" W



Natural Resources
Conservation Service

Web Soil Survey
National Cooperative Soil Survey

6/25/2024
Page 1 of 3

Soil Map—Lea County, New Mexico
(Arnett Ramsay NCT-B Battery)

MAP LEGEND

Area of Interest (AOI)

 Area of Interest (AOI)

Soils

 Soil Map Unit Polygons

 Soil Map Unit Lines

 Soil Map Unit Points

Special Point Features



Blowout



Borrow Pit



Clay Spot



Closed Depression



Gravel Pit



Gravelly Spot



Landfill



Lava Flow



Marsh or swamp



Mine or Quarry



Miscellaneous Water



Perennial Water



Rock Outcrop



Saline Spot



Sandy Spot



Severely Eroded Spot



Sinkhole



Slide or Slip



Sodic Spot



Spoil Area



Stony Spot



Very Stony Spot



Wet Spot



Other



Special Line Features

Water Features



Streams and Canals

Transportation



Rails



Interstate Highways



US Routes



Major Roads



Local Roads

Background



Aerial Photography

MAP INFORMATION

The soil surveys that comprise your AOI were mapped at 1:20,000.

Warning: Soil Map may not be valid at this scale.

Enlargement of maps beyond the scale of mapping can cause misunderstanding of the detail of mapping and accuracy of soil line placement. The maps do not show the small areas of contrasting soils that could have been shown at a more detailed scale.

Please rely on the bar scale on each map sheet for map measurements.

Source of Map: Natural Resources Conservation Service

Web Soil Survey URL:

Coordinate System: Web Mercator (EPSG:3857)

Maps from the Web Soil Survey are based on the Web Mercator projection, which preserves direction and shape but distorts distance and area. A projection that preserves area, such as the Albers equal-area conic projection, should be used if more accurate calculations of distance or area are required.

This product is generated from the USDA-NRCS certified data as of the version date(s) listed below.

Soil Survey Area: Lea County, New Mexico

Survey Area Data: Version 20, Sep 6, 2023

Soil map units are labeled (as space allows) for map scales 1:50,000 or larger.

Date(s) aerial images were photographed: Jan 18, 2020—May 12, 2020

The orthophoto or other base map on which the soil lines were compiled and digitized probably differs from the background imagery displayed on these maps. As a result, some minor shifting of map unit boundaries may be evident.



Natural Resources
Conservation Service

Web Soil Survey
National Cooperative Soil Survey

6/25/2024
Page 2 of 3

Map Unit Legend

Map Unit Symbol	Map Unit Name	Acres in AOI	Percent of AOI
KM	Kermit soils and Dune land, 0 to 12 percent slopes	13.8	2.4%
PU	Pyote and Maljamar fine sands	485.8	84.5%
WF	Wink fine sand	75.5	13.1%
Totals for Area of Interest		575.2	100.0%

Lea County, New Mexico

PU—Pyote and Maljamar fine sands

Map Unit Setting

National map unit symbol: dmqq

Elevation: 3,000 to 3,900 feet

Mean annual precipitation: 10 to 12 inches

Mean annual air temperature: 60 to 62 degrees F

Frost-free period: 190 to 205 days

Farmland classification: Not prime farmland

Map Unit Composition

Pyote and similar soils: 46 percent

Maljamar and similar soils: 44 percent

Minor components: 10 percent

Estimates are based on observations, descriptions, and transects of the mapunit.

Description of Pyote

Setting

Landform: Plains

Landform position (three-dimensional): Rise

Down-slope shape: Linear

Across-slope shape: Linear

Parent material: Sandy eolian deposits derived from sedimentary rock

Typical profile

A - 0 to 30 inches: fine sand

Bt - 30 to 60 inches: fine sandy loam

Properties and qualities

Slope: 0 to 3 percent

Depth to restrictive feature: More than 80 inches

Drainage class: Well drained

Runoff class: Negligible

Capacity of the most limiting layer to transmit water (Ksat): High
(2.00 to 6.00 in/hr)

Depth to water table: More than 80 inches

Frequency of flooding: None

Frequency of ponding: None

Calcium carbonate, maximum content: 5 percent

Gypsum, maximum content: 1 percent

Maximum salinity: Nonsaline to very slightly saline (0.0 to 2.0 mmhos/cm)

Sodium adsorption ratio, maximum: 2.0

Available water supply, 0 to 60 inches: Low (about 5.1 inches)

Interpretive groups

Land capability classification (irrigated): 6e

Map Unit Description: Pyote and Maljamar fine sands---Lea County, New Mexico

Arnott Ramsay NCT-B Battery

Land capability classification (nonirrigated): 7s
Hydrologic Soil Group: A
Ecological site: R070BD003NM - Loamy Sand
Hydric soil rating: No

Description of Maljamar

Setting

Landform: Plains
Landform position (three-dimensional): Rise
Down-slope shape: Linear
Across-slope shape: Linear
Parent material: Sandy eolian deposits derived from sedimentary rock

Typical profile

A - 0 to 24 inches: fine sand
Bt - 24 to 50 inches: sandy clay loam
Bkm - 50 to 60 inches: cemented material

Properties and qualities

Slope: 0 to 3 percent
Depth to restrictive feature: 40 to 60 inches to petrocalcic
Drainage class: Well drained
Runoff class: Very low
Capacity of the most limiting layer to transmit water (Ksat): Very low to moderately low (0.00 to 0.06 in/hr)
Depth to water table: More than 80 inches
Frequency of flooding: None
Frequency of ponding: None
Calcium carbonate, maximum content: 5 percent
Gypsum, maximum content: 1 percent
Maximum salinity: Nonsaline to very slightly saline (0.0 to 2.0 mmhos/cm)
Sodium adsorption ratio, maximum: 2.0
Available water supply, 0 to 60 inches: Low (about 5.6 inches)

Interpretive groups

Land capability classification (irrigated): 6e
Land capability classification (nonirrigated): 7e
Hydrologic Soil Group: B
Ecological site: R070BD003NM - Loamy Sand
Hydric soil rating: No

Minor Components

Kermit

Percent of map unit: 10 percent
Ecological site: R070BC022NM - Sandhills

Map Unit Description: Pyote and Maljamar fine sands---Lea County, New Mexico

Arnott Ramsay NCT-B Battery

Hydric soil rating: No

Data Source Information

Soil Survey Area: Lea County, New Mexico

Survey Area Data: Version 20, Sep 6, 2023

Attachment II

NMOCD Correspondence

District I
1625 N. French Dr., Hobbs, NM 88240
Phone:(575) 393-6161 Fax:(575) 393-0720

District II
811 S. First St., Artesia, NM 88210
Phone:(575) 748-1283 Fax:(575) 748-9720

District III
1000 Rio Brazos Rd., Aztec, NM 87410
Phone:(505) 334-6178 Fax:(505) 334-6170

District IV
1220 S. St Francis Dr., Santa Fe, NM 87505
Phone:(505) 476-3470 Fax:(505) 476-3462

State of New Mexico

Energy, Minerals and Natural Resources

Oil Conservation Division

1220 S. St Francis Dr.

Santa Fe, NM 87505

QUESTIONS

Action 366928

QUESTIONS

Operator: FAE II Operating LLC 11757 Katy Freeway, Suite 725 Houston, TX 77079	OGRID: 329326
	Action Number: 366928
	Action Type: [NOTIFY] Notification Of Sampling (C-141N)

QUESTIONS

Prerequisites	
Incident ID (n#)	nAPP2304957943
Incident Name	NAPP2304957943 ARNOTT RAMSAY NCT-B BATTERY @ 0
Incident Type	Oil Release
Incident Status	Initial C-141 Received

Location of Release Source	
Site Name	ARNOTT RAMSAY NCT-B BATTERY
Date Release Discovered	02/15/2023
Surface Owner	State

Sampling Event General Information	
Please answer all the questions in this group.	
What is the sampling surface area in square feet	944
What is the estimated number of samples that will be gathered	13
Sampling date pursuant to Subparagraph (a) of Paragraph (1) of Subsection D of 19.15.29.12 NMAC	07/29/2024
Time sampling will commence	08:00 AM
Please provide any information necessary for observers to contact samplers	Jerry Heidelberg (575) 390-3639 will be collecting 13 total samples; 6 floor samples & 7 sidewall samples
Please provide any information necessary for navigation to sampling site	GPS Coordinates: 32.086314, -103.186570

District I
1625 N. French Dr., Hobbs, NM 88240
Phone:(575) 393-6161 Fax:(575) 393-0720
District II
811 S. First St., Artesia, NM 88210
Phone:(575) 748-1283 Fax:(575) 748-9720
District III
1000 Rio Brazos Rd., Aztec, NM 87410
Phone:(505) 334-6178 Fax:(505) 334-6170
District IV
1220 S. St Francis Dr., Santa Fe, NM 87505
Phone:(505) 476-3470 Fax:(505) 476-3462

State of New Mexico
Energy, Minerals and Natural Resources
Oil Conservation Division
1220 S. St Francis Dr.
Santa Fe, NM 87505

CONDITIONS

Action 366928

CONDITIONS

Operator: FAE II Operating LLC 11757 Katy Freeway, Suite 725 Houston, TX 77079	OGRID: 329326
	Action Number: 366928
	Action Type: [NOTIFY] Notification Of Sampling (C-141N)

CONDITIONS

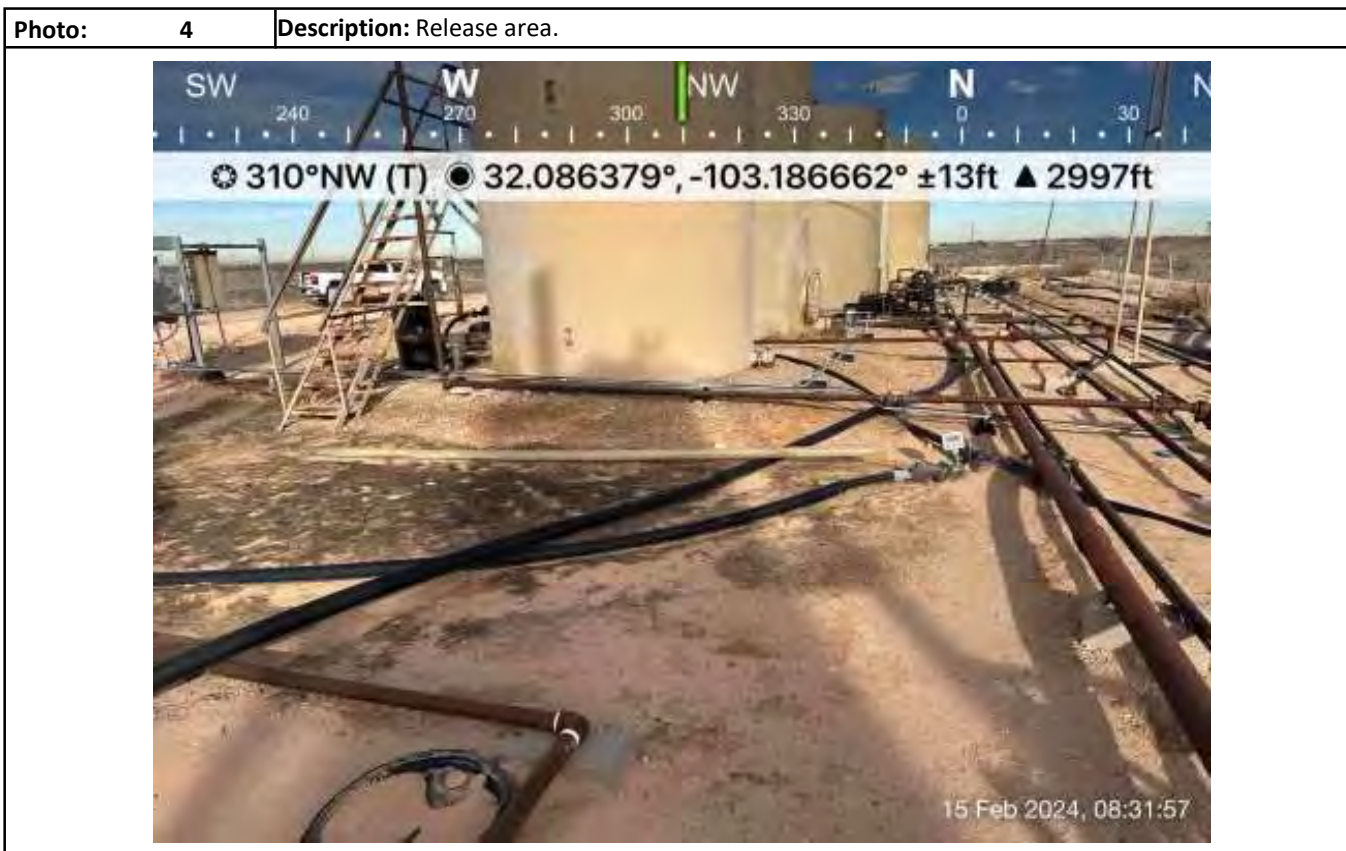
Created By	Condition	Condition Date
alexbolanos	Failure to notify the OCD of sampling events including any changes in date/time per the requirements of 19.15.29.12.D.(1).(a) NMAC, may result in the remediation closure samples not being accepted.	7/24/2024

Attachment III Site Photographs

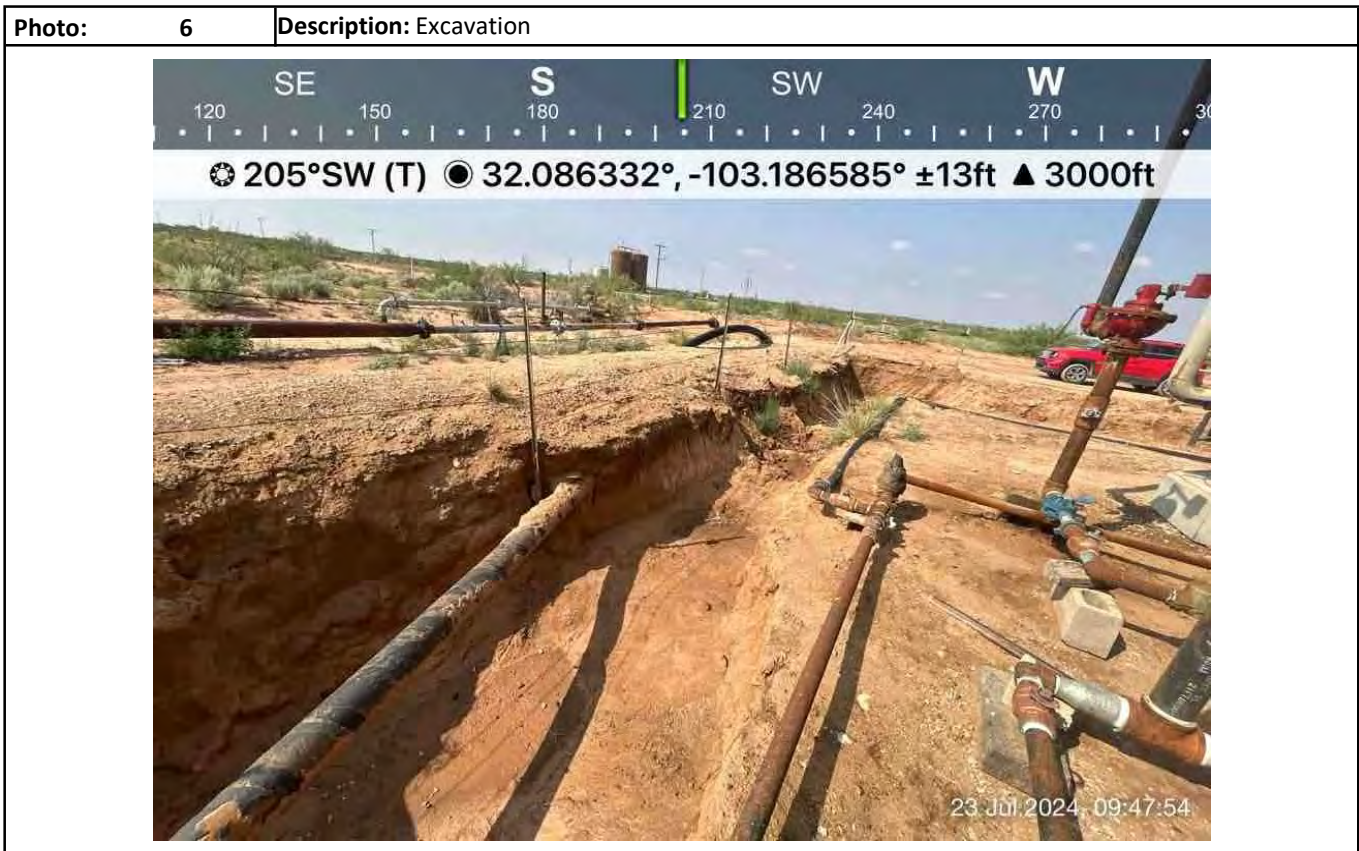
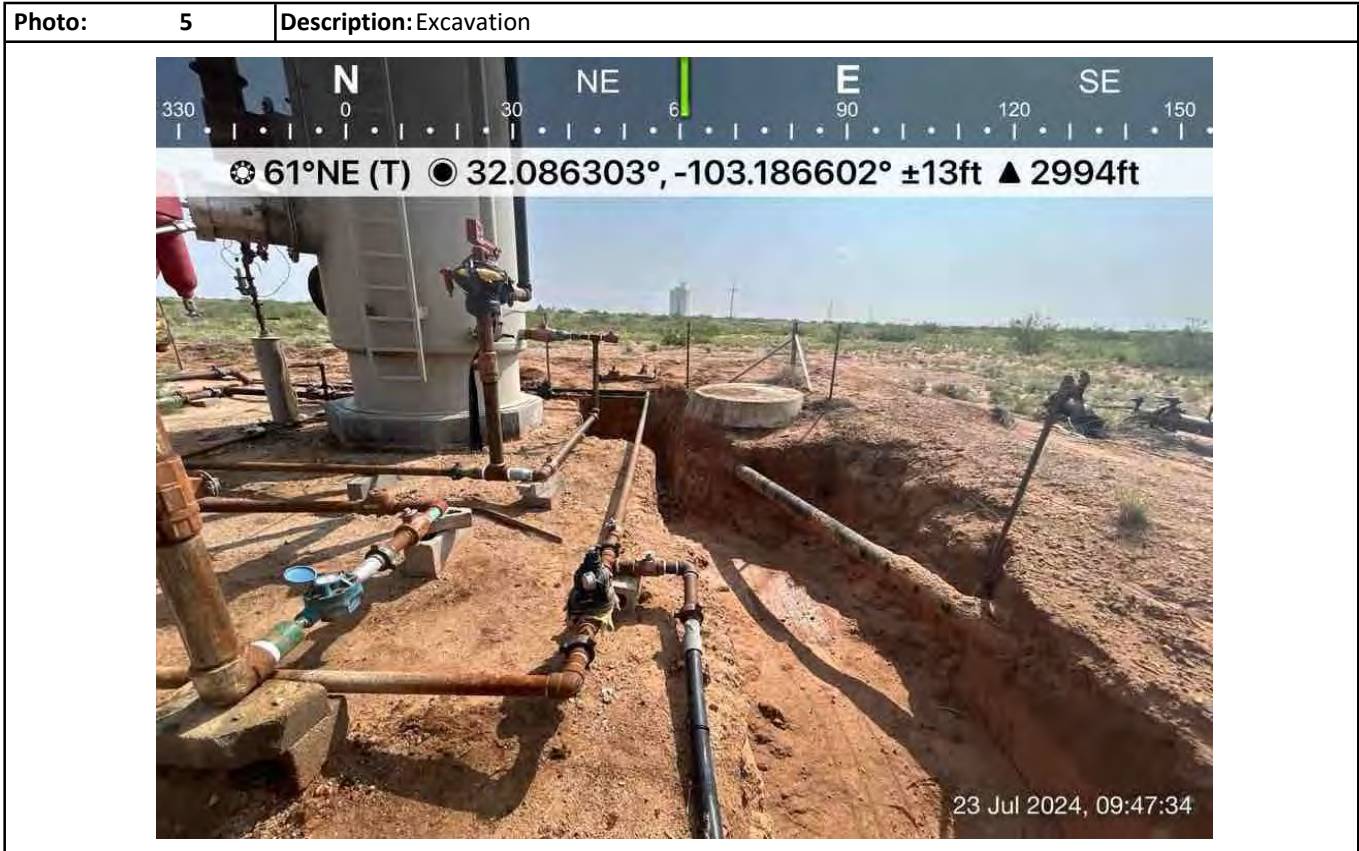
Photographs



Photographs



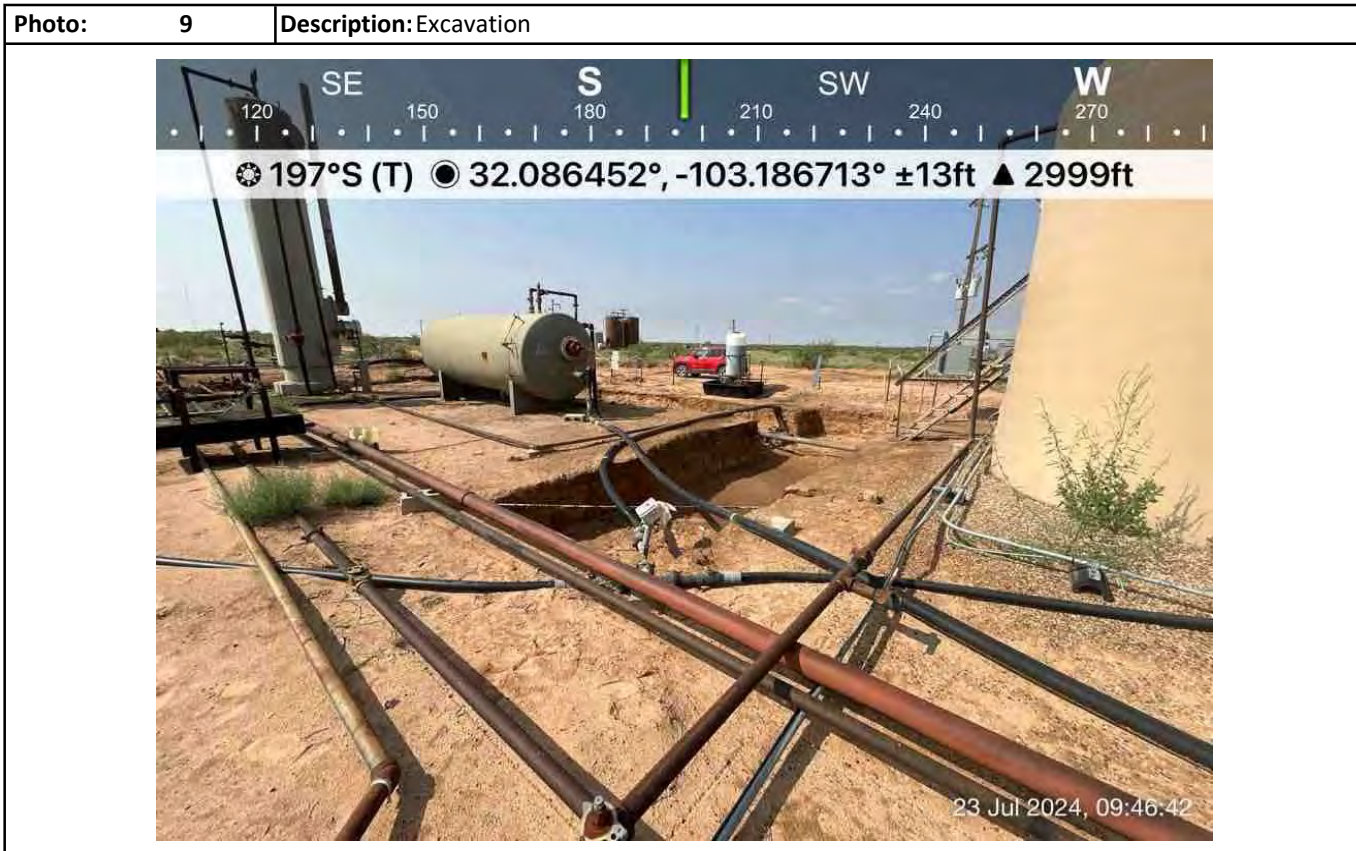
Photographs



Photographs



Photographs



Photographs



Photographs



Photographs



Photographs



Attachment IV

Field Data

Sampler: Jerry Heidelberg

Stockpile = Stockpile #1

Attachment V

Depth to Groundwater



New Mexico Office of the State Engineer
Wells with Well Log Information

No wells found.

UTMNAD83 Radius Search (in meters):

Easting (X): 671140.54 Northing (Y): 3551442.25 Radius: 805

The data is furnished by the NMOSE/ISC and is accepted by the recipient with the expressed understanding that the OSE/ISC make no warranties, expressed or implied, concerning the accuracy, completeness, reliability, usability, or suitability for particular purpose of the data.

Attachment VI

Laboratory Analytical Reports



PHONE (575) 393-2326 ° 101 E. MARLAND ° HOBBS, NM 88240

February 27, 2024

DANIEL DOMINGUEZ

Hungry Horse Environmental

P.O. Box 1058

Hobbs, NM 88240

RE: ARNOTT RAMSAY NCT - B BATTERY

Enclosed are the results of analyses for samples received by the laboratory on 02/21/24 15:37.

Cardinal Laboratories is accredited through Texas NELAP under certificate number T104704398-23-16. Accreditation applies to drinking water, non-potable water and solid and chemical materials. All accredited analytes are denoted by an asterisk (*). For a complete list of accredited analytes and matrices visit the TCEQ website at www.tceq.texas.gov/field/qa/lab_accred_certif.html.

Cardinal Laboratories is accredited through the State of Colorado Department of Public Health and Environment for:

Method EPA 552.2	Haloacetic Acids (HAA-5)
Method EPA 524.2	Total Trihalomethanes (TTHM)
Method EPA 524.4	Regulated VOCs (V1, V2, V3)

Accreditation applies to public drinking water matrices.

This report meets NELAP requirements and is made up of a cover page, analytical results, and a copy of the original chain-of-custody. If you have any questions concerning this report, please feel free to contact me.

Sincerely,

A handwritten signature in black ink that reads "Celey D. Keene". The signature is written in a cursive style with a large, stylized 'C' and 'K'.

Celey D. Keene

Lab Director/Quality Manager



PHONE (575) 393-2326 ° 101 E. MARLAND ° HOBBS, NM 88240

Analytical Results For:

Hungry Horse Environmental
 DANIEL DOMINGUEZ
 P.O. Box 1058
 Hobbs NM, 88240
 Fax To: (505) 391-4585

Received:	02/21/2024	Sampling Date:	02/20/2024
Reported:	02/27/2024	Sampling Type:	Soil
Project Name:	ARNOTT RAMSAY NCT - B BATTERY	Sampling Condition:	Cool & Intact
Project Number:	FAE II OPERATING	Sample Received By:	Shalyn Rodriguez
Project Location:	UL/K SEC 32 T25S - R37E		

Sample ID: HZ 1 - SURF (H240863-01)

BTEX 8021B			mg/kg		Analyzed By: JH				
Analyte	Result	Reporting Limit	Analyzed	Method Blank	BS	% Recovery	True Value QC	RPD	Qualifier
Benzene*	<0.050	0.050	02/25/2024	ND	2.15	107	2.00	2.07	
Toluene*	<0.050	0.050	02/25/2024	ND	2.12	106	2.00	2.11	
Ethylbenzene*	<0.050	0.050	02/25/2024	ND	2.09	104	2.00	1.83	
Total Xylenes*	<0.150	0.150	02/25/2024	ND	6.10	102	6.00	1.71	
Total BTEX	<0.300	0.300	02/25/2024	ND					

Surrogate: 4-Bromofluorobenzene (PID) 96.8 % 71.5-134

Chloride, SM4500Cl-B			mg/kg		Analyzed By: HM				
Analyte	Result	Reporting Limit	Analyzed	Method Blank	BS	% Recovery	True Value QC	RPD	Qualifier
Chloride	32.0	16.0	02/26/2024	ND	464	116	400	0.00	

TPH 8015M			mg/kg		Analyzed By: MS				
Analyte	Result	Reporting Limit	Analyzed	Method Blank	BS	% Recovery	True Value QC	RPD	Qualifier
GRO C6-C10*	<10.0	10.0	02/23/2024	ND	187	93.7	200	0.474	
DRO >C10-C28*	<10.0	10.0	02/23/2024	ND	181	90.4	200	1.67	
EXT DRO >C28-C36	<10.0	10.0	02/23/2024	ND					

Surrogate: 1-Chlorooctane 94.2 % 48.2-134

Surrogate: 1-Chlorooctadecane 88.2 % 49.1-148

Cardinal Laboratories

*=Accredited Analyte

PLEASE NOTE: Liability and Damages. Cardinal's liability and client's exclusive remedy for any claim arising, whether based in contract or tort, shall be limited to the amount paid by client for analyses. All claims, including those for negligence and any other cause whatsoever shall be deemed waived unless made in writing and received by Cardinal within thirty (30) days after completion of the applicable service. In no event shall Cardinal be liable for incidental or consequential damages, including, without limitation, business interruptions, loss of use, or loss of profits incurred by client, its subsidiaries, affiliates or successors arising out of or related to the performance of the services hereunder by Cardinal, regardless of whether such claim is based upon any of the above stated reasons or otherwise. Results relate only to the samples identified above. This report shall not be reproduced except in full with written approval of Cardinal Laboratories.

Celey D. Keene, Lab Director/Quality Manager



PHONE (575) 393-2326 ° 101 E. MARLAND ° HOBBS, NM 88240

Analytical Results For:

Hungry Horse Environmental
 DANIEL DOMINGUEZ
 P.O. Box 1058
 Hobbs NM, 88240
 Fax To: (505) 391-4585

Received: 02/21/2024
 Reported: 02/27/2024
 Project Name: ARNOTT RAMSAY NCT - B BATTERY
 Project Number: FAE II OPERATING
 Project Location: UL/K SEC 32 T25S - R37E

Sampling Date: 02/20/2024
 Sampling Type: Soil
 Sampling Condition: Cool & Intact
 Sample Received By: Shalyn Rodriguez

Sample ID: HZ 1 - 1' (H240863-02)

BTEX 8021B		mg/kg		Analyzed By: JH						
Analyte	Result	Reporting Limit	Analyzed	Method Blank	BS	% Recovery	True Value QC	RPD	Qualifier	
Benzene*	<0.050	0.050	02/25/2024	ND	2.15	107	2.00	2.07		
Toluene*	<0.050	0.050	02/25/2024	ND	2.12	106	2.00	2.11		
Ethylbenzene*	<0.050	0.050	02/25/2024	ND	2.09	104	2.00	1.83		
Total Xylenes*	<0.150	0.150	02/25/2024	ND	6.10	102	6.00	1.71		
Total BTEX	<0.300	0.300	02/25/2024	ND						

Surrogate: 4-Bromofluorobenzene (PID) 96.9 % 71.5-134

Chloride, SM4500Cl-B		mg/kg		Analyzed By: HM						
Analyte	Result	Reporting Limit	Analyzed	Method Blank	BS	% Recovery	True Value QC	RPD	Qualifier	
Chloride	16.0	16.0	02/26/2024	ND	464	116	400	0.00		

TPH 8015M		mg/kg		Analyzed By: MS					
Analyte	Result	Reporting Limit	Analyzed	Method Blank	BS	% Recovery	True Value QC	RPD	Qualifier
GRO C6-C10*	<10.0	10.0	02/23/2024	ND	187	93.7	200	0.474	
DRO >C10-C28*	<10.0	10.0	02/23/2024	ND	181	90.4	200	1.67	
EXT DRO >C28-C36	<10.0	10.0	02/23/2024	ND					

Surrogate: 1-Chlorooctane 88.9 % 48.2-134

Surrogate: 1-Chlorooctadecane 82.4 % 49.1-148

Cardinal Laboratories

*=Accredited Analyte

PLEASE NOTE: Liability and Damages. Cardinal's liability and client's exclusive remedy for any claim arising, whether based in contract or tort, shall be limited to the amount paid by client for analyses. All claims, including those for negligence and any other cause whatsoever shall be deemed waived unless made in writing and received by Cardinal within thirty (30) days after completion of the applicable service. In no event shall Cardinal be liable for incidental or consequential damages, including, without limitation, business interruptions, loss of use, or loss of profits incurred by client, its subsidiaries, affiliates or successors arising out of or related to the performance of the services hereunder by Cardinal, regardless of whether such claim is based upon any of the above stated reasons or otherwise. Results relate only to the samples identified above. This report shall not be reproduced except in full with written approval of Cardinal Laboratories.

Celey D. Keene, Lab Director/Quality Manager



PHONE (575) 393-2326 ° 101 E. MARLAND ° HOBBS, NM 88240

Analytical Results For:

Hungry Horse Environmental
 DANIEL DOMINGUEZ
 P.O. Box 1058
 Hobbs NM, 88240
 Fax To: (505) 391-4585

Received: 02/21/2024
 Reported: 02/27/2024
 Project Name: ARNOTT RAMSAY NCT - B BATTERY
 Project Number: FAE II OPERATING
 Project Location: UL/K SEC 32 T25S - R37E

Sampling Date: 02/20/2024
 Sampling Type: Soil
 Sampling Condition: Cool & Intact
 Sample Received By: Shalyn Rodriguez

Sample ID: HZ 2 - SURF (H240863-03)

BTX 8021B		mg/kg		Analyzed By: JH						
Analyte	Result	Reporting Limit	Analyzed	Method Blank	BS	% Recovery	True Value QC	RPD	Qualifier	
Benzene*	<0.050	0.050	02/25/2024	ND	2.15	107	2.00	2.07		
Toluene*	<0.050	0.050	02/25/2024	ND	2.12	106	2.00	2.11		
Ethylbenzene*	<0.050	0.050	02/25/2024	ND	2.09	104	2.00	1.83		
Total Xylenes*	<0.150	0.150	02/25/2024	ND	6.10	102	6.00	1.71		
Total BTX	<0.300	0.300	02/25/2024	ND						

Surrogate: 4-Bromofluorobenzene (PID) 96.9 % 71.5-134

Chloride, SM4500CI-B		mg/kg		Analyzed By: HM						
Analyte	Result	Reporting Limit	Analyzed	Method Blank	BS	% Recovery	True Value QC	RPD	Qualifier	
Chloride	<16.0	16.0	02/26/2024	ND	464	116	400	0.00		

TPH 8015M		mg/kg		Analyzed By: MS					
Analyte	Result	Reporting Limit	Analyzed	Method Blank	BS	% Recovery	True Value QC	RPD	Qualifier
GRO C6-C10*	<10.0	10.0	02/23/2024	ND	187	93.7	200	0.474	
DRO >C10-C28*	<10.0	10.0	02/23/2024	ND	181	90.4	200	1.67	
EXT DRO >C28-C36	<10.0	10.0	02/23/2024	ND					

Surrogate: 1-Chlorooctane 90.8 % 48.2-134

Surrogate: 1-Chlorooctadecane 84.7 % 49.1-148

Cardinal Laboratories

*=Accredited Analyte

PLEASE NOTE: Liability and Damages. Cardinal's liability and client's exclusive remedy for any claim arising, whether based in contract or tort, shall be limited to the amount paid by client for analyses. All claims, including those for negligence and any other cause whatsoever shall be deemed waived unless made in writing and received by Cardinal within thirty (30) days after completion of the applicable service. In no event shall Cardinal be liable for incidental or consequential damages, including, without limitation, business interruptions, loss of use, or loss of profits incurred by client, its subsidiaries, affiliates or successors arising out of or related to the performance of the services hereunder by Cardinal, regardless of whether such claim is based upon any of the above stated reasons or otherwise. Results relate only to the samples identified above. This report shall not be reproduced except in full with written approval of Cardinal Laboratories.

Celey D. Keene, Lab Director/Quality Manager



PHONE (575) 393-2326 ° 101 E. MARLAND ° HOBBS, NM 88240

Analytical Results For:

Hungry Horse Environmental
 DANIEL DOMINGUEZ
 P.O. Box 1058
 Hobbs NM, 88240
 Fax To: (505) 391-4585

Received: 02/21/2024
 Reported: 02/27/2024
 Project Name: ARNOTT RAMSAY NCT - B BATTERY
 Project Number: FAE II OPERATING
 Project Location: UL/K SEC 32 T25S - R37E

Sampling Date: 02/20/2024
 Sampling Type: Soil
 Sampling Condition: Cool & Intact
 Sample Received By: Shalyn Rodriguez

Sample ID: HZ 2 - 1' (H240863-04)

BTEX 8021B		mg/kg		Analyzed By: JH						
Analyte	Result	Reporting Limit	Analyzed	Method Blank	BS	% Recovery	True Value QC	RPD	Qualifier	
Benzene*	<0.050	0.050	02/25/2024	ND	2.15	107	2.00	2.07		
Toluene*	<0.050	0.050	02/25/2024	ND	2.12	106	2.00	2.11		
Ethylbenzene*	<0.050	0.050	02/25/2024	ND	2.09	104	2.00	1.83		
Total Xylenes*	<0.150	0.150	02/25/2024	ND	6.10	102	6.00	1.71		
Total BTEX	<0.300	0.300	02/25/2024	ND						

Surrogate: 4-Bromofluorobenzene (PID) 97.0 % 71.5-134

Chloride, SM4500Cl-B		mg/kg		Analyzed By: HM						
Analyte	Result	Reporting Limit	Analyzed	Method Blank	BS	% Recovery	True Value QC	RPD	Qualifier	
Chloride	<16.0	16.0	02/26/2024	ND	464	116	400	0.00		

TPH 8015M		mg/kg		Analyzed By: MS					
Analyte	Result	Reporting Limit	Analyzed	Method Blank	BS	% Recovery	True Value QC	RPD	Qualifier
GRO C6-C10*	<10.0	10.0	02/23/2024	ND	187	93.7	200	0.474	
DRO >C10-C28*	<10.0	10.0	02/23/2024	ND	181	90.4	200	1.67	
EXT DRO >C28-C36	<10.0	10.0	02/23/2024	ND					

Surrogate: 1-Chlorooctane 97.8 % 48.2-134

Surrogate: 1-Chlorooctadecane 89.8 % 49.1-148

Cardinal Laboratories

*=Accredited Analyte

PLEASE NOTE: Liability and Damages. Cardinal's liability and client's exclusive remedy for any claim arising, whether based in contract or tort, shall be limited to the amount paid by client for analyses. All claims, including those for negligence and any other cause whatsoever shall be deemed waived unless made in writing and received by Cardinal within thirty (30) days after completion of the applicable service. In no event shall Cardinal be liable for incidental or consequential damages, including, without limitation, business interruptions, loss of use, or loss of profits incurred by client, its subsidiaries, affiliates or successors arising out of or related to the performance of the services hereunder by Cardinal, regardless of whether such claim is based upon any of the above stated reasons or otherwise. Results relate only to the samples identified above. This report shall not be reproduced except in full with written approval of Cardinal Laboratories.

Celey D. Keene, Lab Director/Quality Manager



PHONE (575) 393-2326 ° 101 E. MARLAND ° HOBBS, NM 88240

Analytical Results For:

Hungry Horse Environmental
 DANIEL DOMINGUEZ
 P.O. Box 1058
 Hobbs NM, 88240
 Fax To: (505) 391-4585

Received: 02/21/2024
 Reported: 02/27/2024
 Project Name: ARNOTT RAMSAY NCT - B BATTERY
 Project Number: FAE II OPERATING
 Project Location: UL/K SEC 32 T25S - R37E

Sampling Date: 02/20/2024
 Sampling Type: Soil
 Sampling Condition: Cool & Intact
 Sample Received By: Shalyn Rodriguez

Sample ID: HZ 3 - SURF (H240863-05)

BTEx 8021B		mg/kg		Analyzed By: JH					
Analyte	Result	Reporting Limit	Analyzed	Method Blank	BS	% Recovery	True Value QC	RPD	Qualifier
Benzene*	<0.050	0.050	02/25/2024	ND	2.15	107	2.00	2.07	
Toluene*	<0.050	0.050	02/25/2024	ND	2.12	106	2.00	2.11	
Ethylbenzene*	<0.050	0.050	02/25/2024	ND	2.09	104	2.00	1.83	
Total Xylenes*	<0.150	0.150	02/25/2024	ND	6.10	102	6.00	1.71	
Total BTEX	<0.300	0.300	02/25/2024	ND					

Surrogate: 4-Bromofluorobenzene (PID) 97.3 % 71.5-134

Chloride, SM4500Cl-B		mg/kg		Analyzed By: AC					
Analyte	Result	Reporting Limit	Analyzed	Method Blank	BS	% Recovery	True Value QC	RPD	Qualifier
Chloride	<16.0	16.0	02/26/2024	ND	448	112	400	0.00	

TPH 8015M		mg/kg		Analyzed By: MS					
Analyte	Result	Reporting Limit	Analyzed	Method Blank	BS	% Recovery	True Value QC	RPD	Qualifier
GRO C6-C10*	<10.0	10.0	02/23/2024	ND	187	93.7	200	0.474	
DRO >C10-C28*	<10.0	10.0	02/23/2024	ND	181	90.4	200	1.67	
EXT DRO >C28-C36	<10.0	10.0	02/23/2024	ND					

Surrogate: 1-Chlorooctane 91.4 % 48.2-134

Surrogate: 1-Chlorooctadecane 84.4 % 49.1-148

Cardinal Laboratories

*=Accredited Analyte

PLEASE NOTE: Liability and Damages. Cardinal's liability and client's exclusive remedy for any claim arising, whether based in contract or tort, shall be limited to the amount paid by client for analyses. All claims, including those for negligence and any other cause whatsoever shall be deemed waived unless made in writing and received by Cardinal within thirty (30) days after completion of the applicable service. In no event shall Cardinal be liable for incidental or consequential damages, including, without limitation, business interruptions, loss of use, or loss of profits incurred by client, its subsidiaries, affiliates or successors arising out of or related to the performance of the services hereunder by Cardinal, regardless of whether such claim is based upon any of the above stated reasons or otherwise. Results relate only to the samples identified above. This report shall not be reproduced except in full with written approval of Cardinal Laboratories.

Celey D. Keene, Lab Director/Quality Manager



PHONE (575) 393-2326 ° 101 E. MARLAND ° HOBBS, NM 88240

Analytical Results For:

Hungry Horse Environmental
 DANIEL DOMINGUEZ
 P.O. Box 1058
 Hobbs NM, 88240
 Fax To: (505) 391-4585

Received: 02/21/2024
 Reported: 02/27/2024
 Project Name: ARNOTT RAMSAY NCT - B BATTERY
 Project Number: FAE II OPERATING
 Project Location: UL/K SEC 32 T25S - R37E

Sampling Date: 02/20/2024
 Sampling Type: Soil
 Sampling Condition: Cool & Intact
 Sample Received By: Shalyn Rodriguez

Sample ID: HZ 3 - 1' (H240863-06)

BTEx 8021B		mg/kg		Analyzed By: JH					
Analyte	Result	Reporting Limit	Analyzed	Method Blank	BS	% Recovery	True Value QC	RPD	Qualifier
Benzene*	<0.050	0.050	02/24/2024	ND	2.17	108	2.00	3.39	
Toluene*	<0.050	0.050	02/24/2024	ND	2.10	105	2.00	10.4	QR-03
Ethylbenzene*	<0.050	0.050	02/24/2024	ND	2.13	106	2.00	12.2	QR-03
Total Xylenes*	<0.150	0.150	02/24/2024	ND	6.29	105	6.00	12.7	QR-03
Total BTEX	<0.300	0.300	02/24/2024	ND					

Surrogate: 4-Bromofluorobenzene (PID) 104 % 71.5-134

Chloride, SM4500Cl-B		mg/kg		Analyzed By: AC						
Analyte	Result	Reporting Limit	Analyzed	Method Blank	BS	% Recovery	True Value QC	RPD	Qualifier	
Chloride	32.0	16.0	02/26/2024	ND	448	112	400	0.00		

TPH 8015M		mg/kg		Analyzed By: MS					
Analyte	Result	Reporting Limit	Analyzed	Method Blank	BS	% Recovery	True Value QC	RPD	Qualifier
GRO C6-C10*	<10.0	10.0	02/23/2024	ND	187	93.7	200	0.474	
DRO >C10-C28*	<10.0	10.0	02/23/2024	ND	181	90.4	200	1.67	
EXT DRO >C28-C36	<10.0	10.0	02/23/2024	ND					

Surrogate: 1-Chlorooctane 94.4 % 48.2-134

Surrogate: 1-Chlorooctadecane 86.9 % 49.1-148

Cardinal Laboratories

*=Accredited Analyte

PLEASE NOTE: Liability and Damages. Cardinal's liability and client's exclusive remedy for any claim arising, whether based in contract or tort, shall be limited to the amount paid by client for analyses. All claims, including those for negligence and any other cause whatsoever shall be deemed waived unless made in writing and received by Cardinal within thirty (30) days after completion of the applicable service. In no event shall Cardinal be liable for incidental or consequential damages, including, without limitation, business interruptions, loss of use, or loss of profits incurred by client, its subsidiaries, affiliates or successors arising out of or related to the performance of the services hereunder by Cardinal, regardless of whether such claim is based upon any of the above stated reasons or otherwise. Results relate only to the samples identified above. This report shall not be reproduced except in full with written approval of Cardinal Laboratories.

Celey D. Keene, Lab Director/Quality Manager



PHONE (575) 393-2326 ° 101 E. MARLAND ° HOBBS, NM 88240

Analytical Results For:

Hungry Horse Environmental
 DANIEL DOMINGUEZ
 P.O. Box 1058
 Hobbs NM, 88240
 Fax To: (505) 391-4585

Received: 02/21/2024
 Reported: 02/27/2024
 Project Name: ARNOTT RAMSAY NCT - B BATTERY
 Project Number: FAE II OPERATING
 Project Location: UL/K SEC 32 T25S - R37E

Sampling Date: 02/20/2024
 Sampling Type: Soil
 Sampling Condition: Cool & Intact
 Sample Received By: Shalyn Rodriguez

Sample ID: HZ 4 - SURF (H240863-07)

BTEx 8021B		mg/kg		Analyzed By: JH					
Analyte	Result	Reporting Limit	Analyzed	Method Blank	BS	% Recovery	True Value QC	RPD	Qualifier
Benzene*	<0.050	0.050	02/24/2024	ND	2.17	108	2.00	3.39	
Toluene*	<0.050	0.050	02/24/2024	ND	2.10	105	2.00	10.4	
Ethylbenzene*	<0.050	0.050	02/24/2024	ND	2.13	106	2.00	12.2	
Total Xylenes*	<0.150	0.150	02/24/2024	ND	6.29	105	6.00	12.7	
Total BTEx	<0.300	0.300	02/24/2024	ND					

Surrogate: 4-Bromofluorobenzene (PID) 106 % 71.5-134

Chloride, SM4500Cl-B		mg/kg		Analyzed By: AC						
Analyte	Result	Reporting Limit	Analyzed	Method Blank	BS	% Recovery	True Value QC	RPD	Qualifier	
Chloride	16.0	16.0	02/26/2024	ND	448	112	400	0.00		

TPH 8015M		mg/kg		Analyzed By: MS					
Analyte	Result	Reporting Limit	Analyzed	Method Blank	BS	% Recovery	True Value QC	RPD	Qualifier
GRO C6-C10*	<10.0	10.0	02/23/2024	ND	187	93.7	200	0.474	
DRO >C10-C28*	<10.0	10.0	02/23/2024	ND	181	90.4	200	1.67	
EXT DRO >C28-C36	<10.0	10.0	02/23/2024	ND					

Surrogate: 1-Chlorooctane 81.8 % 48.2-134

Surrogate: 1-Chlorooctadecane 74.2 % 49.1-148

Cardinal Laboratories

*=Accredited Analyte

PLEASE NOTE: Liability and Damages. Cardinal's liability and client's exclusive remedy for any claim arising, whether based in contract or tort, shall be limited to the amount paid by client for analyses. All claims, including those for negligence and any other cause whatsoever shall be deemed waived unless made in writing and received by Cardinal within thirty (30) days after completion of the applicable service. In no event shall Cardinal be liable for incidental or consequential damages, including, without limitation, business interruptions, loss of use, or loss of profits incurred by client, its subsidiaries, affiliates or successors arising out of or related to the performance of the services hereunder by Cardinal, regardless of whether such claim is based upon any of the above stated reasons or otherwise. Results relate only to the samples identified above. This report shall not be reproduced except in full with written approval of Cardinal Laboratories.

Celey D. Keene, Lab Director/Quality Manager



PHONE (575) 393-2326 ° 101 E. MARLAND ° HOBBS, NM 88240

Analytical Results For:

Hungry Horse Environmental
 DANIEL DOMINGUEZ
 P.O. Box 1058
 Hobbs NM, 88240
 Fax To: (505) 391-4585

Received: 02/21/2024
 Reported: 02/27/2024
 Project Name: ARNOTT RAMSAY NCT - B BATTERY
 Project Number: FAE II OPERATING
 Project Location: UL/K SEC 32 T25S - R37E

Sampling Date: 02/20/2024
 Sampling Type: Soil
 Sampling Condition: Cool & Intact
 Sample Received By: Shalyn Rodriguez

Sample ID: HZ 4 - 1' (H240863-08)

BTEx 8021B		mg/kg		Analyzed By: JH						
Analyte	Result	Reporting Limit	Analyzed	Method Blank	BS	% Recovery	True Value QC	RPD	Qualifier	
Benzene*	<0.050	0.050	02/24/2024	ND	2.17	108	2.00	3.39		
Toluene*	<0.050	0.050	02/24/2024	ND	2.10	105	2.00	10.4		
Ethylbenzene*	<0.050	0.050	02/24/2024	ND	2.13	106	2.00	12.2		
Total Xylenes*	<0.150	0.150	02/24/2024	ND	6.29	105	6.00	12.7		
Total BTEX	<0.300	0.300	02/24/2024	ND						

Surrogate: 4-Bromofluorobenzene (PID) 103 % 71.5-134

Chloride, SM4500Cl-B		mg/kg		Analyzed By: AC						
Analyte	Result	Reporting Limit	Analyzed	Method Blank	BS	% Recovery	True Value QC	RPD	Qualifier	
Chloride	16.0	16.0	02/26/2024	ND	448	112	400	0.00		

TPH 8015M		mg/kg		Analyzed By: MS					
Analyte	Result	Reporting Limit	Analyzed	Method Blank	BS	% Recovery	True Value QC	RPD	Qualifier
GRO C6-C10*	<10.0	10.0	02/23/2024	ND	187	93.7	200	0.474	
DRO >C10-C28*	<10.0	10.0	02/23/2024	ND	181	90.4	200	1.67	
EXT DRO >C28-C36	<10.0	10.0	02/23/2024	ND					

Surrogate: 1-Chlorooctane 95.0 % 48.2-134

Surrogate: 1-Chlorooctadecane 87.4 % 49.1-148

Cardinal Laboratories

*=Accredited Analyte

PLEASE NOTE: Liability and Damages. Cardinal's liability and client's exclusive remedy for any claim arising, whether based in contract or tort, shall be limited to the amount paid by client for analyses. All claims, including those for negligence and any other cause whatsoever shall be deemed waived unless made in writing and received by Cardinal within thirty (30) days after completion of the applicable service. In no event shall Cardinal be liable for incidental or consequential damages, including, without limitation, business interruptions, loss of use, or loss of profits incurred by client, its subsidiaries, affiliates or successors arising out of or related to the performance of the services hereunder by Cardinal, regardless of whether such claim is based upon any of the above stated reasons or otherwise. Results relate only to the samples identified above. This report shall not be reproduced except in full with written approval of Cardinal Laboratories.

Celey D. Keene, Lab Director/Quality Manager



PHONE (575) 393-2326 ° 101 E. MARLAND ° HOBBS, NM 88240

Analytical Results For:

Hungry Horse Environmental
 DANIEL DOMINGUEZ
 P.O. Box 1058
 Hobbs NM, 88240
 Fax To: (505) 391-4585

Received: 02/21/2024
 Reported: 02/27/2024
 Project Name: ARNOTT RAMSAY NCT - B BATTERY
 Project Number: FAE II OPERATING
 Project Location: UL/K SEC 32 T25S - R37E

Sampling Date: 02/20/2024
 Sampling Type: Soil
 Sampling Condition: Cool & Intact
 Sample Received By: Shalyn Rodriguez

Sample ID: SP 1 - SURF (H240863-09)

BTEx 8021B		mg/kg	Analyzed By: JH					S-04	
Analyte	Result	Reporting Limit	Analyzed	Method Blank	BS	% Recovery	True Value QC	RPD	Qualifier
Benzene*	<0.050	0.050	02/24/2024	ND	2.17	108	2.00	3.39	
Toluene*	<0.050	0.050	02/24/2024	ND	2.10	105	2.00	10.4	
Ethylbenzene*	<0.050	0.050	02/24/2024	ND	2.13	106	2.00	12.2	GC-NC
Total Xylenes*	<0.150	0.150	02/24/2024	ND	6.29	105	6.00	12.7	
Total BTEX	<0.300	0.300	02/24/2024	ND					

Surrogate: 4-Bromofluorobenzene (PID) 155 % 71.5-134

Chloride, SM4500Cl-B		mg/kg	Analyzed By: AC						
Analyte	Result	Reporting Limit	Analyzed	Method Blank	BS	% Recovery	True Value QC	RPD	Qualifier
Chloride	1090	16.0	02/26/2024	ND	448	112	400	0.00	

TPH 8015M		mg/kg	Analyzed By: MS					S-06	
Analyte	Result	Reporting Limit	Analyzed	Method Blank	BS	% Recovery	True Value QC	RPD	Qualifier
GRO C6-C10*	64.5	50.0	02/24/2024	ND	187	93.7	200	0.474	
DRO >C10-C28*	23000	50.0	02/24/2024	ND	181	90.4	200	1.67	
EXT DRO >C28-C36	6060	50.0	02/24/2024	ND					

Surrogate: 1-Chlorooctane 99.8 % 48.2-134

Surrogate: 1-Chlorooctadecane 351 % 49.1-148

Cardinal Laboratories

*=Accredited Analyte

PLEASE NOTE: Liability and Damages. Cardinal's liability and client's exclusive remedy for any claim arising, whether based in contract or tort, shall be limited to the amount paid by client for analyses. All claims, including those for negligence and any other cause whatsoever shall be deemed waived unless made in writing and received by Cardinal within thirty (30) days after completion of the applicable service. In no event shall Cardinal be liable for incidental or consequential damages, including, without limitation, business interruptions, loss of use, or loss of profits incurred by client, its subsidiaries, affiliates or successors arising out of or related to the performance of the services hereunder by Cardinal, regardless of whether such claim is based upon any of the above stated reasons or otherwise. Results relate only to the samples identified above. This report shall not be reproduced except in full with written approval of Cardinal Laboratories.

Celey D. Keene, Lab Director/Quality Manager



PHONE (575) 393-2326 ° 101 E. MARLAND ° HOBBS, NM 88240

Analytical Results For:

Hungry Horse Environmental
 DANIEL DOMINGUEZ
 P.O. Box 1058
 Hobbs NM, 88240
 Fax To: (505) 391-4585

Received: 02/21/2024
 Reported: 02/27/2024
 Project Name: ARNOTT RAMSAY NCT - B BATTERY
 Project Number: FAE II OPERATING
 Project Location: UL/K SEC 32 T25S - R37E

Sampling Date: 02/20/2024
 Sampling Type: Soil
 Sampling Condition: Cool & Intact
 Sample Received By: Shalyn Rodriguez

Sample ID: SP 1 - 4' (H240863-10)

BTEx 8021B		mg/kg		Analyzed By: JH						
Analyte	Result	Reporting Limit	Analyzed	Method Blank	BS	% Recovery	True Value QC	RPD	Qualifier	
Benzene*	<0.050	0.050	02/24/2024	ND	2.17	108	2.00	3.39		
Toluene*	<0.050	0.050	02/24/2024	ND	2.10	105	2.00	10.4		
Ethylbenzene*	<0.050	0.050	02/24/2024	ND	2.13	106	2.00	12.2		
Total Xylenes*	<0.150	0.150	02/24/2024	ND	6.29	105	6.00	12.7		
Total BTEx	<0.300	0.300	02/24/2024	ND						

Surrogate: 4-Bromofluorobenzene (PID) 109 % 71.5-134

Chloride, SM4500CI-B		mg/kg		Analyzed By: AC						
Analyte	Result	Reporting Limit	Analyzed	Method Blank	BS	% Recovery	True Value QC	RPD	Qualifier	
Chloride	560	16.0	02/26/2024	ND	448	112	400	0.00		

TPH 8015M		mg/kg		Analyzed By: MS					
Analyte	Result	Reporting Limit	Analyzed	Method Blank	BS	% Recovery	True Value QC	RPD	Qualifier
GRO C6-C10*	<10.0	10.0	02/23/2024	ND	187	93.7	200	0.474	
DRO >C10-C28*	<10.0	10.0	02/23/2024	ND	181	90.4	200	1.67	
EXT DRO >C28-C36	<10.0	10.0	02/23/2024	ND					

Surrogate: 1-Chlorooctane 93.2 % 48.2-134

Surrogate: 1-Chlorooctadecane 85.8 % 49.1-148

Cardinal Laboratories

*=Accredited Analyte

PLEASE NOTE: Liability and Damages. Cardinal's liability and client's exclusive remedy for any claim arising, whether based in contract or tort, shall be limited to the amount paid by client for analyses. All claims, including those for negligence and any other cause whatsoever shall be deemed waived unless made in writing and received by Cardinal within thirty (30) days after completion of the applicable service. In no event shall Cardinal be liable for incidental or consequential damages, including, without limitation, business interruptions, loss of use, or loss of profits incurred by client, its subsidiaries, affiliates or successors arising out of or related to the performance of the services hereunder by Cardinal, regardless of whether such claim is based upon any of the above stated reasons or otherwise. Results relate only to the samples identified above. This report shall not be reproduced except in full with written approval of Cardinal Laboratories.

Celey D. Keene, Lab Director/Quality Manager



PHONE (575) 393-2326 ° 101 E. MARLAND ° HOBBS, NM 88240

Analytical Results For:

Hungry Horse Environmental
 DANIEL DOMINGUEZ
 P.O. Box 1058
 Hobbs NM, 88240
 Fax To: (505) 391-4585

Received:	02/21/2024	Sampling Date:	02/20/2024
Reported:	02/27/2024	Sampling Type:	Soil
Project Name:	ARNOTT RAMSAY NCT - B BATTERY	Sampling Condition:	Cool & Intact
Project Number:	FAE II OPERATING	Sample Received By:	Shalyn Rodriguez
Project Location:	UL/K SEC 32 T25S - R37E		

Sample ID: SP 2 - SURF (H240863-11)

BTEX 8021B		mg/kg		Analyzed By: JH						
Analyte	Result	Reporting Limit	Analyzed	Method Blank	BS	% Recovery	True Value QC	RPD	Qualifier	
Benzene*	<0.050	0.050	02/24/2024	ND	2.17	108	2.00	3.39		
Toluene*	<0.050	0.050	02/24/2024	ND	2.10	105	2.00	10.4		
Ethylbenzene*	<0.050	0.050	02/24/2024	ND	2.13	106	2.00	12.2		
Total Xylenes*	<0.150	0.150	02/24/2024	ND	6.29	105	6.00	12.7		
Total BTEX	<0.300	0.300	02/24/2024	ND						

Surrogate: 4-Bromofluorobenzene (PID) 105 % 71.5-134

Chloride, SM4500Cl-B		mg/kg		Analyzed By: AC						
Analyte	Result	Reporting Limit	Analyzed	Method Blank	BS	% Recovery	True Value QC	RPD	Qualifier	
Chloride	4000	16.0	02/26/2024	ND	448	112	400	0.00		

TPH 8015M		mg/kg		Analyzed By: MS					
Analyte	Result	Reporting Limit	Analyzed	Method Blank	BS	% Recovery	True Value QC	RPD	Qualifier
GRO C6-C10*	<50.0	50.0	02/24/2024	ND	187	93.7	200	0.474	
DRO >C10-C28*	2420	50.0	02/24/2024	ND	181	90.4	200	1.67	
EXT DRO >C28-C36	1500	50.0	02/24/2024	ND					

Surrogate: 1-Chlorooctane 89.6 % 48.2-134

Surrogate: 1-Chlorooctadecane 135 % 49.1-148

Cardinal Laboratories

*=Accredited Analyte

PLEASE NOTE: Liability and Damages. Cardinal's liability and client's exclusive remedy for any claim arising, whether based in contract or tort, shall be limited to the amount paid by client for analyses. All claims, including those for negligence and any other cause whatsoever shall be deemed waived unless made in writing and received by Cardinal within thirty (30) days after completion of the applicable service. In no event shall Cardinal be liable for incidental or consequential damages, including, without limitation, business interruptions, loss of use, or loss of profits incurred by client, its subsidiaries, affiliates or successors arising out of or related to the performance of the services hereunder by Cardinal, regardless of whether such claim is based upon any of the above stated reasons or otherwise. Results relate only to the samples identified above. This report shall not be reproduced except in full with written approval of Cardinal Laboratories.

Celey D. Keene, Lab Director/Quality Manager



PHONE (575) 393-2326 ° 101 E. MARLAND ° HOBBS, NM 88240

Analytical Results For:

Hungry Horse Environmental
 DANIEL DOMINGUEZ
 P.O. Box 1058
 Hobbs NM, 88240
 Fax To: (505) 391-4585

Received:	02/21/2024	Sampling Date:	02/20/2024
Reported:	02/27/2024	Sampling Type:	Soil
Project Name:	ARNOTT RAMSAY NCT - B BATTERY	Sampling Condition:	Cool & Intact
Project Number:	FAE II OPERATING	Sample Received By:	Shalyn Rodriguez
Project Location:	UL/K SEC 32 T25S - R37E		

Sample ID: SP 3 - SURF (H240863-12)

BTEx 8021B		mg/kg		Analyzed By: JH					
Analyte	Result	Reporting Limit	Analyzed	Method Blank	BS	% Recovery	True Value QC	RPD	Qualifier
Benzene*	<0.050	0.050	02/24/2024	ND	2.17	108	2.00	3.39	
Toluene*	<0.050	0.050	02/24/2024	ND	2.10	105	2.00	10.4	
Ethylbenzene*	<0.050	0.050	02/24/2024	ND	2.13	106	2.00	12.2	
Total Xylenes*	<0.150	0.150	02/24/2024	ND	6.29	105	6.00	12.7	
Total BTEX	<0.300	0.300	02/24/2024	ND					

Surrogate: 4-Bromofluorobenzene (PID) 116 % 71.5-134

Chloride, SM4500Cl-B		mg/kg		Analyzed By: AC						
Analyte	Result	Reporting Limit	Analyzed	Method Blank	BS	% Recovery	True Value QC	RPD	Qualifier	
Chloride	1280	16.0	02/26/2024	ND	448	112	400	0.00		

TPH 8015M	mg/kg		Analyzed By: ms					S-06	
Analyte	Result	Reporting Limit	Analyzed	Method Blank	BS	% Recovery	True Value QC	RPD	Qualifier
GRO C6-C10*	<50.0	50.0	02/24/2024	ND	194	96.8	200	0.356	
DRO >C10-C28*	23700	50.0	02/24/2024	ND	208	104	200	2.10	QM-07
EXT DRO >C28-C36	6700	50.0	02/24/2024	ND					

Surrogate: 1-Chlorooctane 98.9 % 48.2-134

Surrogate: 1-Chlorooctadecane 421 % 49.1-148

Cardinal Laboratories

*=Accredited Analyte

PLEASE NOTE: Liability and Damages. Cardinal's liability and client's exclusive remedy for any claim arising, whether based in contract or tort, shall be limited to the amount paid by client for analyses. All claims, including those for negligence and any other cause whatsoever shall be deemed waived unless made in writing and received by Cardinal within thirty (30) days after completion of the applicable service. In no event shall Cardinal be liable for incidental or consequential damages, including, without limitation, business interruptions, loss of use, or loss of profits incurred by client, its subsidiaries, affiliates or successors arising out of or related to the performance of the services hereunder by Cardinal, regardless of whether such claim is based upon any of the above stated reasons or otherwise. Results relate only to the samples identified above. This report shall not be reproduced except in full with written approval of Cardinal Laboratories.

Celey D. Keene, Lab Director/Quality Manager



PHONE (575) 393-2326 • 101 E. MARLAND • HOBBS, NM 88240

Notes and Definitions

S-06	The recovery of this surrogate is outside control limits due to sample dilution required from high analyte concentration and/or matrix interference's.
S-04	The surrogate recovery for this sample is outside of established control limits due to a sample matrix effect.
QR-03	The RPD value for the sample duplicate or MS/MSD was outside of QC acceptance limits due to matrix interference. QC batch accepted based on LCS and/or LCSD recovery and/or RPD values.
QM-07	The spike recovery was outside acceptance limits for the MS and/or MSD. The batch was accepted based on acceptable LCS recovery.
GC-NC	8260 confirmation analysis was performed; initial GC results were not supported by GC/MS analysis and are reported as ND.
ND	Analyte NOT DETECTED at or above the reporting limit
RPD	Relative Percent Difference
**	Samples not received at proper temperature of 6°C or below.
***	Insufficient time to reach temperature.
-	Chloride by SM4500Cl-B does not require samples be received at or below 6°C Samples reported on an as received basis (wet) unless otherwise noted on report

Cardinal Laboratories

*=Accredited Analyte

PLEASE NOTE: Liability and Damages. Cardinal's liability and client's exclusive remedy for any claim arising, whether based in contract or tort, shall be limited to the amount paid by client for analyses. All claims, including those for negligence and any other cause whatsoever shall be deemed waived unless made in writing and received by Cardinal within thirty (30) days after completion of the applicable service. In no event shall Cardinal be liable for incidental or consequential damages, including, without limitation, business interruptions, loss of use, or loss of profits incurred by client, its subsidiaries, affiliates or successors arising out of or related to the performance of the services hereunder by Cardinal, regardless of whether such claim is based upon any of the above stated reasons or otherwise. Results relate only to the samples identified above. This report shall not be reproduced except in full with written approval of Cardinal Laboratories.

A handwritten signature in black ink, appearing to read "Celey D. Keene", is written over a horizontal line.

Celey D. Keene, Lab Director/Quality Manager



101 East Marland, Hobbs, NM 88240
(575) 393-2326 FAX (575) 393-2476

CHAIN-OF-CUSTODY AND ANALYSIS REQUEST

Page 15 of 16

Company Name: Hungry Horse LLC		BILL TO		ANALYSIS REQUEST																			
Project Manager: Daniel Dominguez		P.O. #:																					
Address: PO Box 1058		Company: FAE II Operating, LLC																					
City: Hobbs	State: NM	Zip: 88241	Attn: Tyler Van Howe																				
Phone #: 575 393-3386	Fax #:	Address: 11757 Katy FWY Suite 725																					
Project #:	Project Owner: FAE II Operating, LLC		City: Houston																				
Project Name: Arnott Ramsay NCT-B Battery	State: TX		Zip: 77079																				
Project Location: UL/ K Sec 32 T25S - R37E	Phone #: 806-282-7334																						
Sampler Name: Jerry Heidelberg	Fax #:																						
FOR LAB USE ONLY		MATRIX		PRESERV.	SAMPLING																		
Lab I.D.	Sample I.D.	GRAB OR (C)OMP.	# CONTAINERS	GROUNDWATER	WASTEWATER	SOIL	OIL	SLUDGE	OTHER	ACID/BASE	ICE / COOL	OTHER	DATE	TIME	Chloride	TPH	BTEX 8021						
4240803																							
1	HZ1-Surf	G	1			X					X		2/20/24		X	X	X						
2	HZ1-1'	G	1			X					X		2/20/24		X	X	X						
3	HZ2-Surf	G	1			X					X		2/20/24		X	X	X						
4	HZ2-1'	G	1			X					X		2/20/24		X	X	X						
5	HZ3-Surf	G	1			X					X		2/20/24		X	X	X						
6	HZ3-1'	G	1			X					X		2/20/24		X	X	X						
7	HZ4-Surf	G	1			X					X		2/20/24		X	X	X						
8	HZ4-1'	G	1			X					X		2/20/24		X	X	X						
PLEASE NOTE: Liability and Damages. Cardinal's liability and client's exclusive remedy for any claim arising whether based in contract or tort, shall be limited to the amount paid by the client for the analyses. All claims including those for negligence and any other cause whatsoever shall be deemed waived unless made in writing and received by Cardinal within 30 days after completion of the applicable service. In no event shall Cardinal be liable for incidental or consequential damages, including without limitation, business interruptions, loss of use, or loss of profits incurred by client, its subsidiaries, affiliates or successors arising out of or related to the performance of services hereunder by Cardinal, regardless of whether such claim is based upon any of the above stated reasons or otherwise.																							
Relinquished By:		Date: 2/21/24		Received By:		Phone Result: <input type="checkbox"/> Yes <input type="checkbox"/> No		Add'l Phone #:															
		Time: 1537				Fax Result: <input type="checkbox"/> Yes <input type="checkbox"/> No		Add'l Fax #:															
Relinquished By:		Date:		Received By:		REMARKS:																	
		Time:				Email results to: pm@hungry-horse.com																	
Delivered By: (Circle One)						tyler@faenergyus.com																	
Sampler - UPS - Bus - Other:		0-12 #140		Sample Condition		CHECKED BY:																	
				Cool Intact		(Initials)																	
				<input type="checkbox"/> Yes <input checked="" type="checkbox"/> No		882																	

† Cardinal cannot accept verbal changes. Please fax written changes to 575-393-2476



101 East Marland, Hobbs, NM 88240
(575) 393-2326 FAX (575) 393-2476

CHAIN-OF-CUSTODY AND ANALYSIS REQUEST

[illegible]

† Cardinal cannot accept verbal changes. Please fax written changes to 575-393-2476



PHONE (575) 393-2326 ° 101 E. MARLAND ° HOBBS, NM 88240

August 01, 2024

DANIEL DOMINGUEZ

Hungry Horse Environmental

P.O. Box 1058

Hobbs, NM 88240

RE: ARNOTT RAMSAY NCT - B BATTERY

Enclosed are the results of analyses for samples received by the laboratory on 07/29/24 14:08.

Cardinal Laboratories is accredited through Texas NELAP under certificate number TX-C24-00112. Accreditation applies to drinking water, non-potable water and solid and chemical materials. All accredited analytes are denoted by an asterisk (*). For a complete list of accredited analytes and matrices visit the TCEQ website at www.tceq.texas.gov/field/qa/lab_accred_certif.html.

Cardinal Laboratories is accredited through the State of Colorado Department of Public Health and Environment for:

Method EPA 552.2	Haloacetic Acids (HAA-5)
Method EPA 524.2	Total Trihalomethanes (TTHM)
Method EPA 524.4	Regulated VOCs (V1, V2, V3)

Accreditation applies to public drinking water matrices.

This report meets NELAP requirements and is made up of a cover page, analytical results, and a copy of the original chain-of-custody. If you have any questions concerning this report, please feel free to contact me.

Sincerely,

A handwritten signature in black ink that reads "Celey D. Keene". The signature is fluid and cursive, with the first name "Celey" and last name "Keene" clearly distinguishable.

Celey D. Keene

Lab Director/Quality Manager



PHONE (575) 393-2326 ° 101 E. MARLAND ° HOBBS, NM 88240

Analytical Results For:

Hungry Horse Environmental
 DANIEL DOMINGUEZ
 P.O. Box 1058
 Hobbs NM, 88240
 Fax To: (505) 391-4585

Received:	07/29/2024	Sampling Date:	07/29/2024
Reported:	08/01/2024	Sampling Type:	Soil
Project Name:	ARNOTT RAMSAY NCT - B BATTERY	Sampling Condition:	Cool & Intact
Project Number:	FAE II OPERATING	Sample Received By:	Alyssa Parras
Project Location:	UL/K SEC 32 T25S - R37E		

Sample ID: FL 1 (H244493-01)

BTEX 8021B			mg/kg		Analyzed By: JH				
Analyte	Result	Reporting Limit	Analyzed	Method Blank	BS	% Recovery	True Value QC	RPD	Qualifier
Benzene*	<0.050	0.050	07/30/2024	ND	1.95	97.6	2.00	0.00390	
Toluene*	<0.050	0.050	07/30/2024	ND	1.94	96.9	2.00	0.261	
Ethylbenzene*	<0.050	0.050	07/30/2024	ND	1.98	99.0	2.00	0.0548	
Total Xylenes*	<0.150	0.150	07/30/2024	ND	5.86	97.7	6.00	0.230	
Total BTEX	<0.300	0.300	07/30/2024	ND					

Surrogate: 4-Bromofluorobenzene (PID) 98.8 % 71.5-134

Chloride, SM4500Cl-B			mg/kg		Analyzed By: AC				
Analyte	Result	Reporting Limit	Analyzed	Method Blank	BS	% Recovery	True Value QC	RPD	Qualifier
Chloride	32.0	16.0	07/30/2024	ND	432	108	400	3.64	

TPH 8015M			mg/kg		Analyzed By: MS				
Analyte	Result	Reporting Limit	Analyzed	Method Blank	BS	% Recovery	True Value QC	RPD	Qualifier
GRO C6-C10*	<10.0	10.0	07/30/2024	ND	190	94.8	200	2.57	
DRO >C10-C28*	<10.0	10.0	07/30/2024	ND	185	92.6	200	2.21	
EXT DRO >C28-C36	<10.0	10.0	07/30/2024	ND					

Surrogate: 1-Chlorooctane 117 % 48.2-134

Surrogate: 1-Chlorooctadecane 121 % 49.1-148

Cardinal Laboratories

*=Accredited Analyte

PLEASE NOTE: Liability and Damages. Cardinal's liability and client's exclusive remedy for any claim arising, whether based in contract or tort, shall be limited to the amount paid by client for analyses. All claims, including those for negligence and any other cause whatsoever shall be deemed waived unless made in writing and received by Cardinal within thirty (30) days after completion of the applicable service. In no event shall Cardinal be liable for incidental or consequential damages, including, without limitation, business interruptions, loss of use, or loss of profits incurred by client, its subsidiaries, affiliates or successors arising out of or related to the performance of the services hereunder by Cardinal, regardless of whether such claim is based upon any of the above stated reasons or otherwise. Results relate only to the samples identified above. This report shall not be reproduced except in full with written approval of Cardinal Laboratories.

Celey D. Keene, Lab Director/Quality Manager



PHONE (575) 393-2326 ° 101 E. MARLAND ° HOBBS, NM 88240

Analytical Results For:

Hungry Horse Environmental
 DANIEL DOMINGUEZ
 P.O. Box 1058
 Hobbs NM, 88240
 Fax To: (505) 391-4585

Received: 07/29/2024
 Reported: 08/01/2024
 Project Name: ARNOTT RAMSAY NCT - B BATTERY
 Project Number: FAE II OPERATING
 Project Location: UL/K SEC 32 T25S - R37E

Sampling Date: 07/29/2024
 Sampling Type: Soil
 Sampling Condition: Cool & Intact
 Sample Received By: Alyssa Parras

Sample ID: FL 2 (H244493-02)

BTEx 8021B			mg/kg		Analyzed By: JH				
Analyte	Result	Reporting Limit	Analyzed	Method Blank	BS	% Recovery	True Value QC	RPD	Qualifier
Benzene*	<0.050	0.050	07/30/2024	ND	1.95	97.6	2.00	0.00390	
Toluene*	<0.050	0.050	07/30/2024	ND	1.94	96.9	2.00	0.261	
Ethylbenzene*	<0.050	0.050	07/30/2024	ND	1.98	99.0	2.00	0.0548	
Total Xylenes*	<0.150	0.150	07/30/2024	ND	5.86	97.7	6.00	0.230	
Total BTEX	<0.300	0.300	07/30/2024	ND					

Surrogate: 4-Bromofluorobenzene (PID) 99.6 % 71.5-134

Chloride, SM4500Cl-B			mg/kg		Analyzed By: AC				
Analyte	Result	Reporting Limit	Analyzed	Method Blank	BS	% Recovery	True Value QC	RPD	Qualifier
Chloride	32.0	16.0	07/30/2024	ND	432	108	400	3.64	

TPH 8015M			mg/kg		Analyzed By: MS				
Analyte	Result	Reporting Limit	Analyzed	Method Blank	BS	% Recovery	True Value QC	RPD	Qualifier
GRO C6-C10*	<10.0	10.0	07/30/2024	ND	190	94.8	200	2.57	
DRO >C10-C28*	<10.0	10.0	07/30/2024	ND	185	92.6	200	2.21	
EXT DRO >C28-C36	<10.0	10.0	07/30/2024	ND					

Surrogate: 1-Chlorooctane 126 % 48.2-134

Surrogate: 1-Chlorooctadecane 128 % 49.1-148

Cardinal Laboratories

*=Accredited Analyte

PLEASE NOTE: Liability and Damages. Cardinal's liability and client's exclusive remedy for any claim arising, whether based in contract or tort, shall be limited to the amount paid by client for analyses. All claims, including those for negligence and any other cause whatsoever shall be deemed waived unless made in writing and received by Cardinal within thirty (30) days after completion of the applicable service. In no event shall Cardinal be liable for incidental or consequential damages, including, without limitation, business interruptions, loss of use, or loss of profits incurred by client, its subsidiaries, affiliates or successors arising out of or related to the performance of the services hereunder by Cardinal, regardless of whether such claim is based upon any of the above stated reasons or otherwise. Results relate only to the samples identified above. This report shall not be reproduced except in full with written approval of Cardinal Laboratories.

Celey D. Keene, Lab Director/Quality Manager



PHONE (575) 393-2326 ° 101 E. MARLAND ° HOBBS, NM 88240

Analytical Results For:

Hungry Horse Environmental
 DANIEL DOMINGUEZ
 P.O. Box 1058
 Hobbs NM, 88240
 Fax To: (505) 391-4585

Received: 07/29/2024
 Reported: 08/01/2024
 Project Name: ARNOTT RAMSAY NCT - B BATTERY
 Project Number: FAE II OPERATING
 Project Location: UL/K SEC 32 T25S - R37E

Sampling Date: 07/29/2024
 Sampling Type: Soil
 Sampling Condition: Cool & Intact
 Sample Received By: Alyssa Parras

Sample ID: FL 3 (H244493-03)

BTEx 8021B			mg/kg		Analyzed By: JH				
Analyte	Result	Reporting Limit	Analyzed	Method Blank	BS	% Recovery	True Value QC	RPD	Qualifier
Benzene*	<0.050	0.050	07/30/2024	ND	1.95	97.6	2.00	0.00390	
Toluene*	<0.050	0.050	07/30/2024	ND	1.94	96.9	2.00	0.261	
Ethylbenzene*	<0.050	0.050	07/30/2024	ND	1.98	99.0	2.00	0.0548	
Total Xylenes*	<0.150	0.150	07/30/2024	ND	5.86	97.7	6.00	0.230	
Total BTEX	<0.300	0.300	07/30/2024	ND					

Surrogate: 4-Bromofluorobenzene (PID) 99.7 % 71.5-134

Chloride, SM4500Cl-B			mg/kg		Analyzed By: AC				
Analyte	Result	Reporting Limit	Analyzed	Method Blank	BS	% Recovery	True Value QC	RPD	Qualifier
Chloride	16.0	16.0	07/30/2024	ND	432	108	400	3.64	

TPH 8015M			mg/kg		Analyzed By: MS				
Analyte	Result	Reporting Limit	Analyzed	Method Blank	BS	% Recovery	True Value QC	RPD	Qualifier
GRO C6-C10*	<10.0	10.0	07/30/2024	ND	190	94.8	200	2.57	
DRO >C10-C28*	<10.0	10.0	07/30/2024	ND	185	92.6	200	2.21	
EXT DRO >C28-C36	<10.0	10.0	07/30/2024	ND					

Surrogate: 1-Chlorooctane 114 % 48.2-134

Surrogate: 1-Chlorooctadecane 118 % 49.1-148

Cardinal Laboratories

*=Accredited Analyte

PLEASE NOTE: Liability and Damages. Cardinal's liability and client's exclusive remedy for any claim arising, whether based in contract or tort, shall be limited to the amount paid by client for analyses. All claims, including those for negligence and any other cause whatsoever shall be deemed waived unless made in writing and received by Cardinal within thirty (30) days after completion of the applicable service. In no event shall Cardinal be liable for incidental or consequential damages, including, without limitation, business interruptions, loss of use, or loss of profits incurred by client, its subsidiaries, affiliates or successors arising out of or related to the performance of the services hereunder by Cardinal, regardless of whether such claim is based upon any of the above stated reasons or otherwise. Results relate only to the samples identified above. This report shall not be reproduced except in full with written approval of Cardinal Laboratories.

Celey D. Keene, Lab Director/Quality Manager



PHONE (575) 393-2326 ° 101 E. MARLAND ° HOBBS, NM 88240

Analytical Results For:

Hungry Horse Environmental
 DANIEL DOMINGUEZ
 P.O. Box 1058
 Hobbs NM, 88240
 Fax To: (505) 391-4585

Received: 07/29/2024
 Reported: 08/01/2024
 Project Name: ARNOTT RAMSAY NCT - B BATTERY
 Project Number: FAE II OPERATING
 Project Location: UL/K SEC 32 T25S - R37E

Sampling Date: 07/29/2024
 Sampling Type: Soil
 Sampling Condition: Cool & Intact
 Sample Received By: Alyssa Parras

Sample ID: FL 4 (H244493-04)

BTEx 8021B			mg/kg		Analyzed By: JH				
Analyte	Result	Reporting Limit	Analyzed	Method Blank	BS	% Recovery	True Value QC	RPD	Qualifier
Benzene*	<0.050	0.050	07/30/2024	ND	1.95	97.6	2.00	0.00390	
Toluene*	<0.050	0.050	07/30/2024	ND	1.94	96.9	2.00	0.261	
Ethylbenzene*	<0.050	0.050	07/30/2024	ND	1.98	99.0	2.00	0.0548	
Total Xylenes*	<0.150	0.150	07/30/2024	ND	5.86	97.7	6.00	0.230	
Total BTEX	<0.300	0.300	07/30/2024	ND					

Surrogate: 4-Bromofluorobenzene (PID) 98.5 % 71.5-134

Chloride, SM4500Cl-B			mg/kg		Analyzed By: AC				
Analyte	Result	Reporting Limit	Analyzed	Method Blank	BS	% Recovery	True Value QC	RPD	Qualifier
Chloride	16.0	16.0	07/30/2024	ND	432	108	400	3.64	

TPH 8015M			mg/kg		Analyzed By: MS				
Analyte	Result	Reporting Limit	Analyzed	Method Blank	BS	% Recovery	True Value QC	RPD	Qualifier
GRO C6-C10*	<10.0	10.0	07/30/2024	ND	190	94.8	200	2.57	
DRO >C10-C28*	<10.0	10.0	07/30/2024	ND	185	92.6	200	2.21	
EXT DRO >C28-C36	<10.0	10.0	07/30/2024	ND					

Surrogate: 1-Chlorooctane 126 % 48.2-134

Surrogate: 1-Chlorooctadecane 132 % 49.1-148

Cardinal Laboratories

*=Accredited Analyte

PLEASE NOTE: Liability and Damages. Cardinal's liability and client's exclusive remedy for any claim arising, whether based in contract or tort, shall be limited to the amount paid by client for analyses. All claims, including those for negligence and any other cause whatsoever shall be deemed waived unless made in writing and received by Cardinal within thirty (30) days after completion of the applicable service. In no event shall Cardinal be liable for incidental or consequential damages, including, without limitation, business interruptions, loss of use, or loss of profits incurred by client, its subsidiaries, affiliates or successors arising out of or related to the performance of the services hereunder by Cardinal, regardless of whether such claim is based upon any of the above stated reasons or otherwise. Results relate only to the samples identified above. This report shall not be reproduced except in full with written approval of Cardinal Laboratories.

Celey D. Keene, Lab Director/Quality Manager



PHONE (575) 393-2326 ° 101 E. MARLAND ° HOBBS, NM 88240

Analytical Results For:

Hungry Horse Environmental
 DANIEL DOMINGUEZ
 P.O. Box 1058
 Hobbs NM, 88240
 Fax To: (505) 391-4585

Received: 07/29/2024
 Reported: 08/01/2024
 Project Name: ARNOTT RAMSAY NCT - B BATTERY
 Project Number: FAE II OPERATING
 Project Location: UL/K SEC 32 T25S - R37E

Sampling Date: 07/29/2024
 Sampling Type: Soil
 Sampling Condition: Cool & Intact
 Sample Received By: Alyssa Parras

Sample ID: FL 5 (H244493-05)

BTEx 8021B		mg/kg		Analyzed By: JH					
Analyte	Result	Reporting Limit	Analyzed	Method Blank	BS	% Recovery	True Value QC	RPD	Qualifier
Benzene*	<0.050	0.050	07/30/2024	ND	1.95	97.6	2.00	0.00390	
Toluene*	<0.050	0.050	07/30/2024	ND	1.94	96.9	2.00	0.261	
Ethylbenzene*	<0.050	0.050	07/30/2024	ND	1.98	99.0	2.00	0.0548	
Total Xylenes*	<0.150	0.150	07/30/2024	ND	5.86	97.7	6.00	0.230	
Total BTEX	<0.300	0.300	07/30/2024	ND					

Surrogate: 4-Bromofluorobenzene (PID) 98.7 % 71.5-134

Chloride, SM4500Cl-B		mg/kg		Analyzed By: AC					
Analyte	Result	Reporting Limit	Analyzed	Method Blank	BS	% Recovery	True Value QC	RPD	Qualifier
Chloride	<16.0	16.0	07/30/2024	ND	432	108	400	3.64	

TPH 8015M		mg/kg		Analyzed By: MS					
Analyte	Result	Reporting Limit	Analyzed	Method Blank	BS	% Recovery	True Value QC	RPD	Qualifier
GRO C6-C10*	<10.0	10.0	07/30/2024	ND	190	94.8	200	2.57	
DRO >C10-C28*	<10.0	10.0	07/30/2024	ND	185	92.6	200	2.21	
EXT DRO >C28-C36	<10.0	10.0	07/30/2024	ND					

Surrogate: 1-Chlorooctane 120 % 48.2-134

Surrogate: 1-Chlorooctadecane 123 % 49.1-148

Cardinal Laboratories

*=Accredited Analyte

PLEASE NOTE: Liability and Damages. Cardinal's liability and client's exclusive remedy for any claim arising, whether based in contract or tort, shall be limited to the amount paid by client for analyses. All claims, including those for negligence and any other cause whatsoever shall be deemed waived unless made in writing and received by Cardinal within thirty (30) days after completion of the applicable service. In no event shall Cardinal be liable for incidental or consequential damages, including, without limitation, business interruptions, loss of use, or loss of profits incurred by client, its subsidiaries, affiliates or successors arising out of or related to the performance of the services hereunder by Cardinal, regardless of whether such claim is based upon any of the above stated reasons or otherwise. Results relate only to the samples identified above. This report shall not be reproduced except in full with written approval of Cardinal Laboratories.

Celey D. Keene, Lab Director/Quality Manager



PHONE (575) 393-2326 ° 101 E. MARLAND ° HOBBS, NM 88240

Analytical Results For:

Hungry Horse Environmental
 DANIEL DOMINGUEZ
 P.O. Box 1058
 Hobbs NM, 88240
 Fax To: (505) 391-4585

Received: 07/29/2024
 Reported: 08/01/2024
 Project Name: ARNOTT RAMSAY NCT - B BATTERY
 Project Number: FAE II OPERATING
 Project Location: UL/K SEC 32 T25S - R37E

Sampling Date: 07/29/2024
 Sampling Type: Soil
 Sampling Condition: Cool & Intact
 Sample Received By: Alyssa Parras

Sample ID: FL 6 (H244493-06)

BTEx 8021B		mg/kg		Analyzed By: JH					
Analyte	Result	Reporting Limit	Analyzed	Method Blank	BS	% Recovery	True Value QC	RPD	Qualifier
Benzene*	<0.050	0.050	07/30/2024	ND	1.95	97.6	2.00	0.00390	
Toluene*	<0.050	0.050	07/30/2024	ND	1.94	96.9	2.00	0.261	
Ethylbenzene*	<0.050	0.050	07/30/2024	ND	1.98	99.0	2.00	0.0548	
Total Xylenes*	<0.150	0.150	07/30/2024	ND	5.86	97.7	6.00	0.230	
Total BTEX	<0.300	0.300	07/30/2024	ND					

Surrogate: 4-Bromofluorobenzene (PID) 100 % 71.5-134

Chloride, SM4500Cl-B		mg/kg		Analyzed By: AC					
Analyte	Result	Reporting Limit	Analyzed	Method Blank	BS	% Recovery	True Value QC	RPD	Qualifier
Chloride	32.0	16.0	07/30/2024	ND	432	108	400	3.64	

TPH 8015M		mg/kg		Analyzed By: MS					
Analyte	Result	Reporting Limit	Analyzed	Method Blank	BS	% Recovery	True Value QC	RPD	Qualifier
GRO C6-C10*	<10.0	10.0	07/30/2024	ND	190	94.8	200	2.57	
DRO >C10-C28*	<10.0	10.0	07/30/2024	ND	185	92.6	200	2.21	
EXT DRO >C28-C36	<10.0	10.0	07/30/2024	ND					

Surrogate: 1-Chlorooctane 123 % 48.2-134

Surrogate: 1-Chlorooctadecane 128 % 49.1-148

Cardinal Laboratories

*=Accredited Analyte

PLEASE NOTE: Liability and Damages. Cardinal's liability and client's exclusive remedy for any claim arising, whether based in contract or tort, shall be limited to the amount paid by client for analyses. All claims, including those for negligence and any other cause whatsoever shall be deemed waived unless made in writing and received by Cardinal within thirty (30) days after completion of the applicable service. In no event shall Cardinal be liable for incidental or consequential damages, including, without limitation, business interruptions, loss of use, or loss of profits incurred by client, its subsidiaries, affiliates or successors arising out of or related to the performance of the services hereunder by Cardinal, regardless of whether such claim is based upon any of the above stated reasons or otherwise. Results relate only to the samples identified above. This report shall not be reproduced except in full with written approval of Cardinal Laboratories.

Celey D. Keene, Lab Director/Quality Manager



PHONE (575) 393-2326 ° 101 E. MARLAND ° HOBBS, NM 88240

Analytical Results For:

Hungry Horse Environmental
 DANIEL DOMINGUEZ
 P.O. Box 1058
 Hobbs NM, 88240
 Fax To: (505) 391-4585

Received:	07/29/2024	Sampling Date:	07/29/2024
Reported:	08/01/2024	Sampling Type:	Soil
Project Name:	ARNOTT RAMSAY NCT - B BATTERY	Sampling Condition:	Cool & Intact
Project Number:	FAE II OPERATING	Sample Received By:	Alyssa Parras
Project Location:	UL/K SEC 32 T25S - R37E		

Sample ID: SW 1 (H244493-07)

BTEx 8021B		mg/kg		Analyzed By: JH					
Analyte	Result	Reporting Limit	Analyzed	Method Blank	BS	% Recovery	True Value QC	RPD	Qualifier
Benzene*	<0.050	0.050	07/30/2024	ND	1.95	97.6	2.00	0.00390	
Toluene*	<0.050	0.050	07/30/2024	ND	1.94	96.9	2.00	0.261	
Ethylbenzene*	<0.050	0.050	07/30/2024	ND	1.98	99.0	2.00	0.0548	
Total Xylenes*	<0.150	0.150	07/30/2024	ND	5.86	97.7	6.00	0.230	
Total BTEX	<0.300	0.300	07/30/2024	ND					

Surrogate: 4-Bromofluorobenzene (PID) 99.0 % 71.5-134

Chloride, SM4500Cl-B		mg/kg		Analyzed By: AC					
Analyte	Result	Reporting Limit	Analyzed	Method Blank	BS	% Recovery	True Value QC	RPD	Qualifier
Chloride	16.0	16.0	07/30/2024	ND	432	108	400	3.64	

TPH 8015M		mg/kg		Analyzed By: MS					
Analyte	Result	Reporting Limit	Analyzed	Method Blank	BS	% Recovery	True Value QC	RPD	Qualifier
GRO C6-C10*	<10.0	10.0	07/30/2024	ND	190	94.8	200	2.57	
DRO >C10-C28*	<10.0	10.0	07/30/2024	ND	185	92.6	200	2.21	
EXT DRO >C28-C36	<10.0	10.0	07/30/2024	ND					

Surrogate: 1-Chlorooctane 132 % 48.2-134

Surrogate: 1-Chlorooctadecane 138 % 49.1-148

Cardinal Laboratories

*=Accredited Analyte

PLEASE NOTE: Liability and Damages. Cardinal's liability and client's exclusive remedy for any claim arising, whether based in contract or tort, shall be limited to the amount paid by client for analyses. All claims, including those for negligence and any other cause whatsoever shall be deemed waived unless made in writing and received by Cardinal within thirty (30) days after completion of the applicable service. In no event shall Cardinal be liable for incidental or consequential damages, including, without limitation, business interruptions, loss of use, or loss of profits incurred by client, its subsidiaries, affiliates or successors arising out of or related to the performance of the services hereunder by Cardinal, regardless of whether such claim is based upon any of the above stated reasons or otherwise. Results relate only to the samples identified above. This report shall not be reproduced except in full with written approval of Cardinal Laboratories.

Celey D. Keene, Lab Director/Quality Manager



PHONE (575) 393-2326 ° 101 E. MARLAND ° HOBBS, NM 88240

Analytical Results For:

Hungry Horse Environmental
 DANIEL DOMINGUEZ
 P.O. Box 1058
 Hobbs NM, 88240
 Fax To: (505) 391-4585

Received: 07/29/2024
 Reported: 08/01/2024
 Project Name: ARNOTT RAMSAY NCT - B BATTERY
 Project Number: FAE II OPERATING
 Project Location: UL/K SEC 32 T25S - R37E

Sampling Date: 07/29/2024
 Sampling Type: Soil
 Sampling Condition: Cool & Intact
 Sample Received By: Alyssa Parras

Sample ID: SW 2 (H244493-08)

BTEx 8021B		mg/kg		Analyzed By: JH					
Analyte	Result	Reporting Limit	Analyzed	Method Blank	BS	% Recovery	True Value QC	RPD	Qualifier
Benzene*	<0.050	0.050	07/30/2024	ND	1.95	97.6	2.00	0.00390	
Toluene*	<0.050	0.050	07/30/2024	ND	1.94	96.9	2.00	0.261	
Ethylbenzene*	<0.050	0.050	07/30/2024	ND	1.98	99.0	2.00	0.0548	
Total Xylenes*	<0.150	0.150	07/30/2024	ND	5.86	97.7	6.00	0.230	
Total BTEX	<0.300	0.300	07/30/2024	ND					

Surrogate: 4-Bromofluorobenzene (PID) 97.0 % 71.5-134

Chloride, SM4500Cl-B		mg/kg		Analyzed By: AC					
Analyte	Result	Reporting Limit	Analyzed	Method Blank	BS	% Recovery	True Value QC	RPD	Qualifier
Chloride	16.0	16.0	07/30/2024	ND	432	108	400	3.64	

TPH 8015M		mg/kg		Analyzed By: MS					
Analyte	Result	Reporting Limit	Analyzed	Method Blank	BS	% Recovery	True Value QC	RPD	Qualifier
GRO C6-C10*	<10.0	10.0	07/30/2024	ND	190	94.8	200	2.57	
DRO >C10-C28*	<10.0	10.0	07/30/2024	ND	185	92.6	200	2.21	
EXT DRO >C28-C36	<10.0	10.0	07/30/2024	ND					

Surrogate: 1-Chlorooctane 119 % 48.2-134

Surrogate: 1-Chlorooctadecane 122 % 49.1-148

Cardinal Laboratories

*=Accredited Analyte

PLEASE NOTE: Liability and Damages. Cardinal's liability and client's exclusive remedy for any claim arising, whether based in contract or tort, shall be limited to the amount paid by client for analyses. All claims, including those for negligence and any other cause whatsoever shall be deemed waived unless made in writing and received by Cardinal within thirty (30) days after completion of the applicable service. In no event shall Cardinal be liable for incidental or consequential damages, including, without limitation, business interruptions, loss of use, or loss of profits incurred by client, its subsidiaries, affiliates or successors arising out of or related to the performance of the services hereunder by Cardinal, regardless of whether such claim is based upon any of the above stated reasons or otherwise. Results relate only to the samples identified above. This report shall not be reproduced except in full with written approval of Cardinal Laboratories.

Celey D. Keene, Lab Director/Quality Manager



PHONE (575) 393-2326 ° 101 E. MARLAND ° HOBBS, NM 88240

Analytical Results For:

Hungry Horse Environmental
 DANIEL DOMINGUEZ
 P.O. Box 1058
 Hobbs NM, 88240
 Fax To: (505) 391-4585

Received: 07/29/2024
 Reported: 08/01/2024
 Project Name: ARNOTT RAMSAY NCT - B BATTERY
 Project Number: FAE II OPERATING
 Project Location: UL/K SEC 32 T25S - R37E

Sampling Date: 07/29/2024
 Sampling Type: Soil
 Sampling Condition: Cool & Intact
 Sample Received By: Alyssa Parras

Sample ID: SW 3 (H244493-09)

BTEx 8021B		mg/kg		Analyzed By: JH					
Analyte	Result	Reporting Limit	Analyzed	Method Blank	BS	% Recovery	True Value QC	RPD	Qualifier
Benzene*	<0.050	0.050	07/30/2024	ND	1.95	97.6	2.00	0.00390	
Toluene*	<0.050	0.050	07/30/2024	ND	1.94	96.9	2.00	0.261	
Ethylbenzene*	<0.050	0.050	07/30/2024	ND	1.98	99.0	2.00	0.0548	
Total Xylenes*	<0.150	0.150	07/30/2024	ND	5.86	97.7	6.00	0.230	
Total BTEX	<0.300	0.300	07/30/2024	ND					

Surrogate: 4-Bromofluorobenzene (PID) 98.2 % 71.5-134

Chloride, SM4500Cl-B		mg/kg		Analyzed By: AC					
Analyte	Result	Reporting Limit	Analyzed	Method Blank	BS	% Recovery	True Value QC	RPD	Qualifier
Chloride	<16.0	16.0	07/30/2024	ND	432	108	400	3.64	

TPH 8015M		mg/kg		Analyzed By: MS					
Analyte	Result	Reporting Limit	Analyzed	Method Blank	BS	% Recovery	True Value QC	RPD	Qualifier
GRO C6-C10*	<10.0	10.0	07/30/2024	ND	190	94.8	200	2.57	
DRO >C10-C28*	<10.0	10.0	07/30/2024	ND	185	92.6	200	2.21	
EXT DRO >C28-C36	<10.0	10.0	07/30/2024	ND					

Surrogate: 1-Chlorooctane 130 % 48.2-134

Surrogate: 1-Chlorooctadecane 134 % 49.1-148

Cardinal Laboratories

*=Accredited Analyte

PLEASE NOTE: Liability and Damages. Cardinal's liability and client's exclusive remedy for any claim arising, whether based in contract or tort, shall be limited to the amount paid by client for analyses. All claims, including those for negligence and any other cause whatsoever shall be deemed waived unless made in writing and received by Cardinal within thirty (30) days after completion of the applicable service. In no event shall Cardinal be liable for incidental or consequential damages, including, without limitation, business interruptions, loss of use, or loss of profits incurred by client, its subsidiaries, affiliates or successors arising out of or related to the performance of the services hereunder by Cardinal, regardless of whether such claim is based upon any of the above stated reasons or otherwise. Results relate only to the samples identified above. This report shall not be reproduced except in full with written approval of Cardinal Laboratories.

Celey D. Keene, Lab Director/Quality Manager



PHONE (575) 393-2326 ° 101 E. MARLAND ° HOBBS, NM 88240

Analytical Results For:

Hungry Horse Environmental
 DANIEL DOMINGUEZ
 P.O. Box 1058
 Hobbs NM, 88240
 Fax To: (505) 391-4585

Received: 07/29/2024
 Reported: 08/01/2024
 Project Name: ARNOTT RAMSAY NCT - B BATTERY
 Project Number: FAE II OPERATING
 Project Location: UL/K SEC 32 T25S - R37E

Sampling Date: 07/29/2024
 Sampling Type: Soil
 Sampling Condition: Cool & Intact
 Sample Received By: Alyssa Parras

Sample ID: SW 4 (H244493-10)

BTEX 8021B		mg/kg		Analyzed By: JH					
Analyte	Result	Reporting Limit	Analyzed	Method Blank	BS	% Recovery	True Value QC	RPD	Qualifier
Benzene*	<0.050	0.050	07/30/2024	ND	2.08	104	2.00	1.66	
Toluene*	<0.050	0.050	07/30/2024	ND	2.19	109	2.00	2.39	
Ethylbenzene*	<0.050	0.050	07/30/2024	ND	2.27	113	2.00	2.23	
Total Xylenes*	<0.150	0.150	07/30/2024	ND	6.94	116	6.00	2.46	
Total BTEX	<0.300	0.300	07/30/2024	ND					

Surrogate: 4-Bromofluorobenzene (PID) 110 % 71.5-134

Chloride, SM4500Cl-B		mg/kg		Analyzed By: AC						
Analyte	Result	Reporting Limit	Analyzed	Method Blank	BS	% Recovery	True Value QC	RPD	Qualifier	
Chloride	<16.0	16.0	07/30/2024	ND	432	108	400	3.64		

TPH 8015M		mg/kg		Analyzed By: MS					
Analyte	Result	Reporting Limit	Analyzed	Method Blank	BS	% Recovery	True Value QC	RPD	Qualifier
GRO C6-C10*	<10.0	10.0	07/30/2024	ND	190	94.8	200	2.57	
DRO >C10-C28*	<10.0	10.0	07/30/2024	ND	185	92.6	200	2.21	
EXT DRO >C28-C36	<10.0	10.0	07/30/2024	ND					

Surrogate: 1-Chlorooctane 133 % 48.2-134

Surrogate: 1-Chlorooctadecane 134 % 49.1-148

Cardinal Laboratories

*=Accredited Analyte

PLEASE NOTE: Liability and Damages. Cardinal's liability and client's exclusive remedy for any claim arising, whether based in contract or tort, shall be limited to the amount paid by client for analyses. All claims, including those for negligence and any other cause whatsoever shall be deemed waived unless made in writing and received by Cardinal within thirty (30) days after completion of the applicable service. In no event shall Cardinal be liable for incidental or consequential damages, including, without limitation, business interruptions, loss of use, or loss of profits incurred by client, its subsidiaries, affiliates or successors arising out of or related to the performance of the services hereunder by Cardinal, regardless of whether such claim is based upon any of the above stated reasons or otherwise. Results relate only to the samples identified above. This report shall not be reproduced except in full with written approval of Cardinal Laboratories.

Celey D. Keene, Lab Director/Quality Manager



PHONE (575) 393-2326 ° 101 E. MARLAND ° HOBBS, NM 88240

Analytical Results For:

Hungry Horse Environmental
 DANIEL DOMINGUEZ
 P.O. Box 1058
 Hobbs NM, 88240
 Fax To: (505) 391-4585

Received:	07/29/2024	Sampling Date:	07/29/2024
Reported:	08/01/2024	Sampling Type:	Soil
Project Name:	ARNOTT RAMSAY NCT - B BATTERY	Sampling Condition:	Cool & Intact
Project Number:	FAE II OPERATING	Sample Received By:	Alyssa Parras
Project Location:	UL/K SEC 32 T25S - R37E		

Sample ID: SW 5 (H244493-11)

BTEx 8021B		mg/kg		Analyzed By: JH						
Analyte	Result	Reporting Limit	Analyzed	Method Blank	BS	% Recovery	True Value QC	RPD	Qualifier	
Benzene*	<0.050	0.050	07/30/2024	ND	2.08	104	2.00	1.66		
Toluene*	<0.050	0.050	07/30/2024	ND	2.19	109	2.00	2.39		
Ethylbenzene*	<0.050	0.050	07/30/2024	ND	2.27	113	2.00	2.23		
Total Xylenes*	<0.150	0.150	07/30/2024	ND	6.94	116	6.00	2.46		
Total BTEx	<0.300	0.300	07/30/2024	ND						

Surrogate: 4-Bromofluorobenzene (PID) 109 % 71.5-134

Chloride, SM4500CI-B		mg/kg		Analyzed By: AC						
Analyte	Result	Reporting Limit	Analyzed	Method Blank	BS	% Recovery	True Value QC	RPD	Qualifier	
Chloride	<16.0	16.0	07/30/2024	ND	432	108	400	3.64		

TPH 8015M		mg/kg		Analyzed By: MS					
Analyte	Result	Reporting Limit	Analyzed	Method Blank	BS	% Recovery	True Value QC	RPD	Qualifier
GRO C6-C10*	<10.0	10.0	07/30/2024	ND	190	94.8	200	2.57	
DRO >C10-C28*	<10.0	10.0	07/30/2024	ND	185	92.6	200	2.21	
EXT DRO >C28-C36	<10.0	10.0	07/30/2024	ND					

Surrogate: 1-Chlorooctane 124 % 48.2-134

Surrogate: 1-Chlorooctadecane 129 % 49.1-148

Cardinal Laboratories

*=Accredited Analyte

PLEASE NOTE: Liability and Damages. Cardinal's liability and client's exclusive remedy for any claim arising, whether based in contract or tort, shall be limited to the amount paid by client for analyses. All claims, including those for negligence and any other cause whatsoever shall be deemed waived unless made in writing and received by Cardinal within thirty (30) days after completion of the applicable service. In no event shall Cardinal be liable for incidental or consequential damages, including, without limitation, business interruptions, loss of use, or loss of profits incurred by client, its subsidiaries, affiliates or successors arising out of or related to the performance of the services hereunder by Cardinal, regardless of whether such claim is based upon any of the above stated reasons or otherwise. Results relate only to the samples identified above. This report shall not be reproduced except in full with written approval of Cardinal Laboratories.

Celey D. Keene, Lab Director/Quality Manager



PHONE (575) 393-2326 ° 101 E. MARLAND ° HOBBS, NM 88240

Analytical Results For:

Hungry Horse Environmental
 DANIEL DOMINGUEZ
 P.O. Box 1058
 Hobbs NM, 88240
 Fax To: (505) 391-4585

Received: 07/29/2024
 Reported: 08/01/2024
 Project Name: ARNOTT RAMSAY NCT - B BATTERY
 Project Number: FAE II OPERATING
 Project Location: UL/K SEC 32 T25S - R37E

Sampling Date: 07/29/2024
 Sampling Type: Soil
 Sampling Condition: Cool & Intact
 Sample Received By: Alyssa Parras

Sample ID: SW 6 (H244493-12)

BTEX 8021B		mg/kg		Analyzed By: JH						
Analyte	Result	Reporting Limit	Analyzed	Method Blank	BS	% Recovery	True Value QC	RPD	Qualifier	
Benzene*	<0.050	0.050	07/30/2024	ND	2.08	104	2.00	1.66		
Toluene*	<0.050	0.050	07/30/2024	ND	2.19	109	2.00	2.39		
Ethylbenzene*	<0.050	0.050	07/30/2024	ND	2.27	113	2.00	2.23		
Total Xylenes*	<0.150	0.150	07/30/2024	ND	6.94	116	6.00	2.46		
Total BTEX	<0.300	0.300	07/30/2024	ND						

Surrogate: 4-Bromofluorobenzene (PID) 110 % 71.5-134

Chloride, SM4500Cl-B		mg/kg		Analyzed By: AC						
Analyte	Result	Reporting Limit	Analyzed	Method Blank	BS	% Recovery	True Value QC	RPD	Qualifier	
Chloride	<16.0	16.0	07/30/2024	ND	432	108	400	3.64		

TPH 8015M		mg/kg		Analyzed By: MS					
Analyte	Result	Reporting Limit	Analyzed	Method Blank	BS	% Recovery	True Value QC	RPD	Qualifier
GRO C6-C10*	<10.0	10.0	07/30/2024	ND	190	94.8	200	2.57	
DRO >C10-C28*	<10.0	10.0	07/30/2024	ND	185	92.6	200	2.21	
EXT DRO >C28-C36	<10.0	10.0	07/30/2024	ND					

Surrogate: 1-Chlorooctane 121 % 48.2-134

Surrogate: 1-Chlorooctadecane 128 % 49.1-148

Cardinal Laboratories

*=Accredited Analyte

PLEASE NOTE: Liability and Damages. Cardinal's liability and client's exclusive remedy for any claim arising, whether based in contract or tort, shall be limited to the amount paid by client for analyses. All claims, including those for negligence and any other cause whatsoever shall be deemed waived unless made in writing and received by Cardinal within thirty (30) days after completion of the applicable service. In no event shall Cardinal be liable for incidental or consequential damages, including, without limitation, business interruptions, loss of use, or loss of profits incurred by client, its subsidiaries, affiliates or successors arising out of or related to the performance of the services hereunder by Cardinal, regardless of whether such claim is based upon any of the above stated reasons or otherwise. Results relate only to the samples identified above. This report shall not be reproduced except in full with written approval of Cardinal Laboratories.

Celey D. Keene, Lab Director/Quality Manager



PHONE (575) 393-2326 ° 101 E. MARLAND ° HOBBS, NM 88240

Analytical Results For:

Hungry Horse Environmental
 DANIEL DOMINGUEZ
 P.O. Box 1058
 Hobbs NM, 88240
 Fax To: (505) 391-4585

Received: 07/29/2024
 Reported: 08/01/2024
 Project Name: ARNOTT RAMSAY NCT - B BATTERY
 Project Number: FAE II OPERATING
 Project Location: UL/K SEC 32 T25S - R37E

Sampling Date: 07/29/2024
 Sampling Type: Soil
 Sampling Condition: Cool & Intact
 Sample Received By: Alyssa Parras

Sample ID: SW 7 (H244493-13)

BTEx 8021B		mg/kg		Analyzed By: JH					
Analyte	Result	Reporting Limit	Analyzed	Method Blank	BS	% Recovery	True Value QC	RPD	Qualifier
Benzene*	<0.050	0.050	07/30/2024	ND	2.08	104	2.00	1.66	
Toluene*	<0.050	0.050	07/30/2024	ND	2.19	109	2.00	2.39	
Ethylbenzene*	<0.050	0.050	07/30/2024	ND	2.27	113	2.00	2.23	
Total Xylenes*	<0.150	0.150	07/30/2024	ND	6.94	116	6.00	2.46	
Total BTEX	<0.300	0.300	07/30/2024	ND					

Surrogate: 4-Bromofluorobenzene (PID) 111 % 71.5-134

Chloride, SM4500Cl-B		mg/kg		Analyzed By: AC					
Analyte	Result	Reporting Limit	Analyzed	Method Blank	BS	% Recovery	True Value QC	RPD	Qualifier
Chloride	<16.0	16.0	07/30/2024	ND	432	108	400	3.64	

TPH 8015M		mg/kg		Analyzed By: MS					
Analyte	Result	Reporting Limit	Analyzed	Method Blank	BS	% Recovery	True Value QC	RPD	Qualifier
GRO C6-C10*	<10.0	10.0	07/30/2024	ND	190	94.8	200	2.57	
DRO >C10-C28*	<10.0	10.0	07/30/2024	ND	185	92.6	200	2.21	
EXT DRO >C28-C36	<10.0	10.0	07/30/2024	ND					

Surrogate: 1-Chlorooctane 130 % 48.2-134

Surrogate: 1-Chlorooctadecane 134 % 49.1-148

Cardinal Laboratories

*=Accredited Analyte

PLEASE NOTE: Liability and Damages. Cardinal's liability and client's exclusive remedy for any claim arising, whether based in contract or tort, shall be limited to the amount paid by client for analyses. All claims, including those for negligence and any other cause whatsoever shall be deemed waived unless made in writing and received by Cardinal within thirty (30) days after completion of the applicable service. In no event shall Cardinal be liable for incidental or consequential damages, including, without limitation, business interruptions, loss of use, or loss of profits incurred by client, its subsidiaries, affiliates or successors arising out of or related to the performance of the services hereunder by Cardinal, regardless of whether such claim is based upon any of the above stated reasons or otherwise. Results relate only to the samples identified above. This report shall not be reproduced except in full with written approval of Cardinal Laboratories.

Celey D. Keene, Lab Director/Quality Manager



PHONE (575) 393-2326 ° 101 E. MARLAND ° HOBBS, NM 88240

Notes and Definitions

- S-04 The surrogate recovery for this sample is outside of established control limits due to a sample matrix effect.
- ND Analyte NOT DETECTED at or above the reporting limit
- RPD Relative Percent Difference
- ** Samples not received at proper temperature of 6°C or below.
- *** Insufficient time to reach temperature.
- Chloride by SM4500Cl-B does not require samples be received at or below 6°C
Samples reported on an as received basis (wet) unless otherwise noted on report

Cardinal Laboratories

*=Accredited Analyte

PLEASE NOTE: Liability and Damages. Cardinal's liability and client's exclusive remedy for any claim arising, whether based in contract or tort, shall be limited to the amount paid by client for analyses. All claims, including those for negligence and any other cause whatsoever shall be deemed waived unless made in writing and received by Cardinal within thirty (30) days after completion of the applicable service. In no event shall Cardinal be liable for incidental or consequential damages, including, without limitation, business interruptions, loss of use, or loss of profits incurred by client, its subsidiaries, affiliates or successors arising out of or related to the performance of the services hereunder by Cardinal, regardless of whether such claim is based upon any of the above stated reasons or otherwise. Results relate only to the samples identified above. This report shall not be reproduced except in full with written approval of Cardinal Laboratories.

A handwritten signature in black ink, appearing to read "Celey D. Keene".

Celey D. Keene, Lab Director/Quality Manager



101 East Marland, Hobbs, NM 88240
(575) 393-2326 FAX (575) 393-2476

CHAIN-OF-CUSTODY AND ANALYSIS REQUEST

Company Name: Hungry Horse LLC				BILL TO				ANALYSIS REQUEST																			
Project Manager: Daniel Dominguez				P.O. #:																							
Address: PO Box 1058				Company: FAE II Operating, LLC																							
City: Hobbs	State: NM			Zip: 88241			Attn: Tyler Van Howe																				
Phone #: 575 393-3386		Fax #:		Address: 11757 Katy FWY Suite 725																							
Project #:		Project Owner: FAE II Operating, LLC		City: Houston																							
Project Name: Arnott Ramsay NCT-B Battery				State: TX				Zip: 77079																			
Project Location: UL/ K Sec 32 T2S5 - R37E				Phone #: 806-282-7334																							
Sampler Name: Jerry Heidelberg				Fax #:																							
FOR LAB USE ONLY				MATRIX					PRESERV.		SAMPLING																
Lab I.D.	Sample I.D.	(G)RAB OR (C)OMP.	# CONTAINERS	GROUNDWATER	WASTEWATER	SOIL	OIL	SLUDGE	OTHER :	ACID/BASE:	ICE / COOL	OTHER :	DATE	TIME	Chloride	TPH	BTEX 8021										
H204493 1	FL1	C	1		X					X			7/29/24		X	X	X										
2	FL2	C	1		X					X			7/29/24		X	X	X										
3	FL3	C	1		X					X			7/29/24		X	X	X										
4	FL4	C	1		X					X			7/29/24		X	X	X										
5	FL5	C	1		X					X			7/29/24		X	X	X										
6	FL6	C	1		X					X			7/29/24		X	X	X										
7	SW1	C	1		X					X			7/29/24		X	X	X										
8	SW2	C	1		X					X			7/29/24		X	X	X										
9	SW3	C	1		X					X			7/29/24		X	X	X										
10	SW4	C	1		X					X			7/29/24		X	X	X										

PLEASE NOTE: Liability and Damages. Cardinal's liability and client's exclusive remedy for any claim arising whether based in contract or tort, shall be limited to the amount paid by the client for the analyses. All claims including those for negligence and any other cause whatsoever shall be deemed waived unless made in writing and received by Cardinal within 30 days after completion of the applicable service. In no event shall Cardinal be liable for incidental or consequential damages, including without limitation, business interruptions, loss of use, or loss of profits incurred by client, its subsidiaries, affiliates or successors arising out of or related to the performance of services hereunder by Cardinal, regardless of whether such claim is based upon any of the above stated reasons or otherwise.

Relinquished By:		Date:		Received By:		Phone Result:		Add'l Phone #:	
		Time:				Fax Result:		Add'l Fax #:	
		Date:				REMARKS:			
		Time:							
Delivered By: (Circle One) Sample Condition CHECKED BY: Sampler - UPS - Bus - Other: Cool Intact (Initials) Yes No Yes No YFP					Email results to: pm@hungry-horse.com tyler@faenergyus.com				

† Cardinal cannot accept verbal changes. Please fax written changes to 575-393-2476



101 East Marland, Hobbs, NM 88240
(575) 393-2326 FAX (575) 393-2476

CHAIN-OF-CUSTODY AND ANALYSIS REQUEST

[illegible]

† Cardinal cannot accept verbal changes. Please fax written changes to 575-393-2476

Sante Fe Main Office
Phone: (505) 476-3441

General Information
Phone: (505) 629-6116

Online Phone Directory
<https://www.emnrd.nm.gov/ocd/contact-us>

State of New Mexico

Energy, Minerals and Natural Resources

Oil Conservation Division

1220 S. St Francis Dr.

Santa Fe, NM 87505

QUESTIONS

Action 382776

QUESTIONS

Operator: FAE II Operating LLC 11757 Katy Freeway, Suite 725 Houston, TX 77079	OGRID: 329326
	Action Number: 382776
	Action Type: [C-141] Remediation Closure Request C-141 (C-141-v-Closure)

QUESTIONS

Prerequisites	
Incident ID (n#)	nAPP2304957943
Incident Name	NAPP2304957943 ARNOTT RAMSAY NCT-B BATTERY @ 0
Incident Type	Oil Release
Incident Status	Remediation Closure Report Received

Location of Release Source	
Please answer all the questions in this group.	
Site Name	ARNOTT RAMSAY NCT-B BATTERY
Date Release Discovered	02/15/2023
Surface Owner	State

Incident Details	
Please answer all the questions in this group.	
Incident Type	Oil Release
Did this release result in a fire or is the result of a fire	No
Did this release result in any injuries	No
Has this release reached or does it have a reasonable probability of reaching a watercourse	No
Has this release endangered or does it have a reasonable probability of endangering public health	No
Has this release substantially damaged or will it substantially damage property or the environment	No
Is this release of a volume that is or may with reasonable probability be detrimental to fresh water	No

Nature and Volume of Release	
Material(s) released, please answer all that apply below. Any calculations or specific justifications for the volumes provided should be attached to the follow-up C-141 submission.	
Crude Oil Released (bbls) Details	Cause: Equipment Failure Treating Tower Crude Oil Released: 20 BBL Recovered: 18 BBL Lost: 2 BBL.
Produced Water Released (bbls) Details	Cause: Equipment Failure Treating Tower Produced Water Released: 40 BBL Recovered: 36 BBL Lost: 4 BBL.
Is the concentration of chloride in the produced water >10,000 mg/l	No
Condensate Released (bbls) Details	Not answered.
Natural Gas Vented (Mcf) Details	Not answered.
Natural Gas Flared (Mcf) Details	Not answered.
Other Released Details	Not answered.
Are there additional details for the questions above (i.e. any answer containing Other, Specify, Unknown, and/or Fire, or any negative lost amounts)	Not answered.

Sante Fe Main Office
Phone: (505) 476-3441

General Information
Phone: (505) 629-6116

Online Phone Directory
<https://www.emnrd.nm.gov/ocd/contact-us>

State of New Mexico
Energy, Minerals and Natural Resources
Oil Conservation Division
1220 S. St Francis Dr.
Santa Fe, NM 87505

QUESTIONS, Page 2

Action 382776

QUESTIONS (continued)

Operator: FAE II Operating LLC 11757 Katy Freeway, Suite 725 Houston, TX 77079	OGRID: 329326
	Action Number: 382776
	Action Type: [C-141] Remediation Closure Request C-141 (C-141-v-Closure)

QUESTIONS

Nature and Volume of Release (continued)	
Is this a gas only submission (i.e. only significant Mcf values reported)	No, according to supplied volumes this does not appear to be a "gas only" report.
Was this a major release as defined by Subsection A of 19.15.29.7 NMAC	Yes
Reasons why this would be considered a submission for a notification of a major release	From paragraph A. "Major release" determine using: (1) an unauthorized release of a volume, excluding gases, of 25 barrels or more.
With the implementation of the 19.15.27 NMAC (05/25/2021), venting and/or flaring of natural gas (i.e. gas only) are to be submitted on the C-129 form.	

Initial Response

The responsible party must undertake the following actions immediately unless they could create a safety hazard that would result in injury.

The source of the release has been stopped	True
The impacted area has been secured to protect human health and the environment	True
Released materials have been contained via the use of berms or dikes, absorbent pads, or other containment devices	True
All free liquids and recoverable materials have been removed and managed appropriately	True
If all the actions described above have not been undertaken, explain why	Not answered.

Per Paragraph (4) of Subsection B of 19.15.29.8 NMAC the responsible party may commence remediation immediately after discovery of a release. If remediation has begun, please prepare and attach a narrative of actions to date in the follow-up C-141 submission. If remedial efforts have been successfully completed or if the release occurred within a lined containment area (see Subparagraph (a) of Paragraph (5) of Subsection A of 19.15.29.11 NMAC), please prepare and attach all information needed for closure evaluation in the follow-up C-141 submission.

I hereby certify that the information given above is true and complete to the best of my knowledge and understand that pursuant to OCD rules and regulations all operators are required to report and/or file certain release notifications and perform corrective actions for releases which may endanger public health or the environment. The acceptance of a C-141 report by the OCD does not relieve the operator of liability should their operations have failed to adequately investigate and remediate contamination that pose a threat to groundwater, surface water, human health or the environment. In addition, OCD acceptance of a C-141 report does not relieve the operator of responsibility for compliance with any other federal, state, or local laws and/or regulations.

I hereby agree and sign off to the above statement	Name: Alexis Bolanos Title: Production & Regulatory Analyst Email: alex@faenergyus.com Date: 09/13/2024
--	--

Sante Fe Main Office
Phone: (505) 476-3441

General Information
Phone: (505) 629-6116

Online Phone Directory
<https://www.emnrd.nm.gov/ocd/contact-us>

State of New Mexico
Energy, Minerals and Natural Resources
Oil Conservation Division
1220 S. St Francis Dr.
Santa Fe, NM 87505

QUESTIONS, Page 3

Action 382776

QUESTIONS (continued)

Operator: FAE II Operating LLC 11757 Katy Freeway, Suite 725 Houston, TX 77079	OGRID: 329326
	Action Number: 382776
	Action Type: [C-141] Remediation Closure Request C-141 (C-141-v-Closure)

QUESTIONS

Site Characterization	
<i>Please answer all the questions in this group (only required when seeking remediation plan approval and beyond). This information must be provided to the appropriate district office no later than 90 days after the release discovery date.</i>	
What is the shallowest depth to groundwater beneath the area affected by the release in feet below ground surface (ft bgs)	Between 26 and 50 (ft.)
What method was used to determine the depth to ground water	NM OSE iWaters Database Search
Did this release impact groundwater or surface water	No
What is the minimum distance, between the closest lateral extents of the release and the following surface areas:	
A continuously flowing watercourse or any other significant watercourse	Greater than 5 (mi.)
Any lakebed, sinkhole, or playa lake (measured from the ordinary high-water mark)	Greater than 5 (mi.)
An occupied permanent residence, school, hospital, institution, or church	Between 1 and 5 (mi.)
A spring or a private domestic fresh water well used by less than five households for domestic or stock watering purposes	Between 1 and 5 (mi.)
Any other fresh water well or spring	Between 1 and 5 (mi.)
Incorporated municipal boundaries or a defined municipal fresh water well field	Between ½ and 1 (mi.)
A wetland	Greater than 5 (mi.)
A subsurface mine	Greater than 5 (mi.)
An (non-karst) unstable area	Greater than 5 (mi.)
Categorize the risk of this well / site being in a karst geology	Low
A 100-year floodplain	Between 1 and 5 (mi.)
Did the release impact areas not on an exploration, development, production, or storage site	No

Remediation Plan	
<i>Please answer all the questions that apply or are indicated. This information must be provided to the appropriate district office no later than 90 days after the release discovery date.</i>	
Requesting a remediation plan approval with this submission	Yes
<i>Attach a comprehensive report demonstrating the lateral and vertical extents of soil contamination associated with the release have been determined, pursuant to 19.15.29.11 NMAC and 19.15.29.13 NMAC.</i>	
Have the lateral and vertical extents of contamination been fully delineated	Yes
Was this release entirely contained within a lined containment area	No
Soil Contamination Sampling: (Provide the highest observable value for each, in milligrams per kilograms.)	
Chloride (EPA 300.0 or SM4500 Cl B)	4000
TPH (GRO+DRO+MRO) (EPA SW-846 Method 8015M)	30400
GRO+DRO (EPA SW-846 Method 8015M)	23700
BTEX (EPA SW-846 Method 8021B or 8260B)	0
Benzene (EPA SW-846 Method 8021B or 8260B)	0
<i>Per Subsection B of 19.15.29.11 NMAC unless the site characterization report includes completed efforts at remediation, the report must include a proposed remediation plan in accordance with 19.15.29.12 NMAC, which includes the anticipated timelines for beginning and completing the remediation.</i>	
On what estimated date will the remediation commence	06/27/2024
On what date will (or did) the final sampling or liner inspection occur	07/29/2024
On what date will (or was) the remediation complete(d)	08/20/2024
What is the estimated surface area (in square feet) that will be reclaimed	0
What is the estimated volume (in cubic yards) that will be reclaimed	0
What is the estimated surface area (in square feet) that will be remediated	944
What is the estimated volume (in cubic yards) that will be remediated	150
<i>These estimated dates and measurements are recognized to be the best guess or calculation at the time of submission and may (be) change(d) over time as more remediation efforts are completed.</i>	
<i>The OCD recognizes that proposed remediation measures may have to be minimally adjusted in accordance with the physical realities encountered during remediation. If the responsible party has any need to significantly deviate from the remediation plan proposed, then it should consult with the division to determine if another remediation plan submission is required.</i>	

Sante Fe Main Office
Phone: (505) 476-3441

General Information
Phone: (505) 629-6116

Online Phone Directory
<https://www.emnrd.nm.gov/ocd/contact-us>

State of New Mexico
Energy, Minerals and Natural Resources
Oil Conservation Division
1220 S. St Francis Dr.
Santa Fe, NM 87505

QUESTIONS, Page 4

Action 382776

QUESTIONS (continued)

Operator: FAE II Operating LLC 11757 Katy Freeway, Suite 725 Houston, TX 77079	OGRID: 329326
	Action Number: 382776
	Action Type: [C-141] Remediation Closure Request C-141 (C-141-v-Closure)

QUESTIONS

Remediation Plan (continued)	
<i>Please answer all the questions that apply or are indicated. This information must be provided to the appropriate district office no later than 90 days after the release discovery date.</i>	
This remediation will (or is expected to) utilize the following processes to remediate / reduce contaminants:	
(Select all answers below that apply.)	
(Ex Situ) Excavation and off-site disposal (i.e. dig and haul, hydrovac, etc.)	Yes
Which OCD approved facility will be used for off-site disposal	R360 ARTESIA LLC LANDFARM [FEEM0112340644]
OR which OCD approved well (API) will be used for off-site disposal	Not answered.
OR is the off-site disposal site, to be used, out-of-state	Not answered.
OR is the off-site disposal site, to be used, an NMED facility	Not answered.
(Ex Situ) Excavation and on-site remediation (i.e. On-Site Land Farms)	Not answered.
(In Situ) Soil Vapor Extraction	Not answered.
(In Situ) Chemical processing (i.e. Soil Shredding, Potassium Permanganate, etc.)	Not answered.
(In Situ) Biological processing (i.e. Microbes / Fertilizer, etc.)	Not answered.
(In Situ) Physical processing (i.e. Soil Washing, Gypsum, Disking, etc.)	Not answered.
Ground Water Abatement pursuant to 19.15.30 NMAC	Not answered.
OTHER (Non-listed remedial process)	Not answered.
<i>Per Subsection B of 19.15.29.11 NMAC unless the site characterization report includes completed efforts at remediation, the report must include a proposed remediation plan in accordance with 19.15.29.12 NMAC, which includes the anticipated timelines for beginning and completing the remediation.</i>	
I hereby certify that the information given above is true and complete to the best of my knowledge and understand that pursuant to OCD rules and regulations all operators are required to report and/or file certain release notifications and perform corrective actions for releases which may endanger public health or the environment. The acceptance of a C-141 report by the OCD does not relieve the operator of liability should their operations have failed to adequately investigate and remediate contamination that pose a threat to groundwater, surface water, human health or the environment. In addition, OCD acceptance of a C-141 report does not relieve the operator of responsibility for compliance with any other federal, state, or local laws and/or regulations.	
I hereby agree and sign off to the above statement	Name: Alexis Bolanos Title: Production & Regulatory Analyst Email: alex@faenergyus.com Date: 09/13/2024
<i>The OCD recognizes that proposed remediation measures may have to be minimally adjusted in accordance with the physical realities encountered during remediation. If the responsible party has any need to significantly deviate from the remediation plan proposed, then it should consult with the division to determine if another remediation plan submission is required.</i>	

Sante Fe Main Office
Phone: (505) 476-3441

General Information
Phone: (505) 629-6116

Online Phone Directory
<https://www.emnrd.nm.gov/ocd/contact-us>

State of New Mexico
Energy, Minerals and Natural Resources
Oil Conservation Division
1220 S. St Francis Dr.
Santa Fe, NM 87505

QUESTIONS, Page 5

Action 382776

QUESTIONS (continued)

Operator: FAE II Operating LLC 11757 Katy Freeway, Suite 725 Houston, TX 77079	OGRID: 329326
	Action Number: 382776
	Action Type: [C-141] Remediation Closure Request C-141 (C-141-v-Closure)

QUESTIONS

Deferral Requests Only	
Only answer the questions in this group if seeking a deferral upon approval this submission. Each of the following items must be confirmed as part of any request for deferral of remediation.	
Requesting a deferral of the remediation closure due date with the approval of this submission	No

Sante Fe Main Office
Phone: (505) 476-3441

General Information
Phone: (505) 629-6116

Online Phone Directory
<https://www.emnrd.nm.gov/ocd/contact-us>

State of New Mexico
Energy, Minerals and Natural Resources
Oil Conservation Division
1220 S. St Francis Dr.
Santa Fe, NM 87505

QUESTIONS, Page 6

Action 382776

QUESTIONS (continued)

Operator: FAE II Operating LLC 11757 Katy Freeway, Suite 725 Houston, TX 77079	OGRID: 329326
	Action Number: 382776
	Action Type: [C-141] Remediation Closure Request C-141 (C-141-v-Closure)

QUESTIONS

Sampling Event Information	
Last sampling notification (C-141N) recorded	366928
Sampling date pursuant to Subparagraph (a) of Paragraph (1) of Subsection D of 19.15.29.12 NMAC	07/29/2024
What was the (estimated) number of samples that were to be gathered	13
What was the sampling surface area in square feet	944

Remediation Closure Request

Only answer the questions in this group if seeking remediation closure for this release because all remediation steps have been completed.

Requesting a remediation closure approval with this submission	Yes
Have the lateral and vertical extents of contamination been fully delineated	Yes
Was this release entirely contained within a lined containment area	No
All areas reasonably needed for production or subsequent drilling operations have been stabilized, returned to the sites existing grade, and have a soil cover that prevents ponding of water, minimizing dust and erosion	Yes
What was the total surface area (in square feet) remediated	944
What was the total volume (cubic yards) remediated	150
All areas not reasonably needed for production or subsequent drilling operations have been reclaimed to contain a minimum of four feet of non-waste contain earthen material with concentrations less than 600 mg/kg chlorides, 100 mg/kg TPH, 50 mg/kg BTEX, and 10 mg/kg Benzene	Yes
What was the total surface area (in square feet) reclaimed	0
What was the total volume (in cubic yards) reclaimed	0
Summarize any additional remediation activities not included by answers (above)	Remediation activities were conducted in accordance with applicable NMOCD Regulations. Soil affected above the NMOCD Closure Criteria has been excavated and hauled to an NMOCD approved facility for disposal. Laboratory analytical results from composite confirmation samples indicate concentrations of BTEX, TPH, and chlorides are below the NMOCD Closure Criteria.

The responsible party must attach information demonstrating they have complied with all applicable closure requirements and any conditions or directives of the OCD. This demonstration should be in the form of a comprehensive report (in .pdf format) including a scaled site map, sampling diagrams, relevant field notes, photographs of any excavation prior to backfilling, laboratory data including chain of custody documents of final sampling, and a narrative of the remedial activities. Refer to 19.15.29.12 NMAC.

I hereby certify that the information given above is true and complete to the best of my knowledge and understand that pursuant to OCD rules and regulations all operators are required to report and/or file certain release notifications and perform corrective actions for releases which may endanger public health or the environment. The acceptance of a C-141 report by the OCD does not relieve the operator of liability should their operations have failed to adequately investigate and remediate contamination that pose a threat to groundwater, surface water, human health or the environment. In addition, OCD acceptance of a C-141 report does not relieve the operator of responsibility for compliance with any other federal, state, or local laws and/or regulations. The responsible party acknowledges they must substantially restore, reclaim, and re-vegetate the impacted surface area to the conditions that existed prior to the release or their final land use in accordance with 19.15.29.13 NMAC including notification to the OCD when reclamation and re-vegetation are complete.

I hereby agree and sign off to the above statement	Name: Alexis Bolanos Title: Production & Regulatory Analyst Email: alex@faenergyus.com Date: 09/13/2024
--	--

Sante Fe Main Office
Phone: (505) 476-3441

General Information
Phone: (505) 629-6116

Online Phone Directory
<https://www.emnrd.nm.gov/ocd/contact-us>

State of New Mexico
Energy, Minerals and Natural Resources
Oil Conservation Division
1220 S. St Francis Dr.
Santa Fe, NM 87505

QUESTIONS, Page 7

Action 382776

QUESTIONS (continued)

Operator: FAE II Operating LLC 11757 Katy Freeway, Suite 725 Houston, TX 77079	OGRID: 329326
	Action Number: 382776
	Action Type: [C-141] Remediation Closure Request C-141 (C-141-v-Closure)

QUESTIONS

Reclamation Report	
Only answer the questions in this group if all reclamation steps have been completed.	
Requesting a reclamation approval with this submission	No

Sante Fe Main Office
Phone: (505) 476-3441

General Information
Phone: (505) 629-6116

Online Phone Directory
<https://www.emnrd.nm.gov/ocd/contact-us>

State of New Mexico
Energy, Minerals and Natural Resources
Oil Conservation Division
1220 S. St Francis Dr.
Santa Fe, NM 87505

CONDITIONS

Action 382776

CONDITIONS

Operator: FAE II Operating LLC 11757 Katy Freeway, Suite 725 Houston, TX 77079	OGRID: 329326
	Action Number: 382776
	Action Type: [C-141] Remediation Closure Request C-141 (C-141-v-Closure)

CONDITIONS

Created By	Condition	Condition Date
nvez	None	11/14/2024