

REMEDIATION & RECLAMATION PLAN

FRANKLIN MOUNTAIN ENERGY 3, LLC

CONDOR STATE #002

LEA COUNTY, NEW MEXICO

PREPARED FOR:

New Mexico State Land Office
310 Old Santa Fe Trail
Santa Fe, NM 87501

PREPARED BY:



1718 SOUTH CHEYENNE AVENUE
TULSA, OKLAHOMA 74119
PHONE (918) 382-7581 & FAX (918) 382-7582

NOVEMBER 21, 2024

Table of Contents

1. Introduction	4
1.1 Site Location.....	4
1.2 Site History.....	4
1.3 Site Characteristics	4
1.4 Groundwater Depth Determination.....	5
2. Initial Site Characterization and Remediation.....	6
2.1 Initial Site Characterization	6
2.2 Remediation and Additional Site Sampling.....	6
3. Remediation Plan.....	8
3.1 Equipment Removal	8
3.2 Soil Characterization, Delineation, and Excavation.....	8
4. Reclamation Plan	9
4.1 Soil Preparation	9
4.2 Site Revegetation.....	9
4.3 Schedule of Implementation.....	10

List of Tables

Table 1 – Depth to Water Data.....	5
Table 2 – Initial Site Characterization Sample Results	6
Table 3 – Remediation Sample Results.....	7
Table 4 – Reclamation Schedule	10

List of Appendices

Appendix A – Figures

Appendix B – Photo Log

Appendix C – Laboratory Reports

Acronyms

ALL	ALL Consulting, LLC	NMDA	New Mexico Department of Agriculture
AST	Aboveground Storage Tanks	NMOCD	New Mexico Oil Conservation Division
bbls	Barrels	NMSLO	New Mexico State Land Office
bgs	Below Ground Surface	NWI	National Wetland Inventory
BLM	Bureau of Land Management	PID	Photoionization Dectector
BTEX	Benzene, Toluene, Ethylbenzene, and Xylenes	SAR	Sodium Adsorption Ratio
CPP	Cultural Properties Protection	SVU	South Vacuum Unit
mg/kg	Milligrams per kilogram	TA	Temporary Abandonment
MDL	Method Detection Limit	TPH	Total Petroleum Hydrocarbons
NMAC	New Mexico Administrative Code	USDA	U.S. Department of Agriculture
NMOSE	New Mexico Office of the State Engineer	USGS	U.S. Geological Survey

1. Introduction

1.1 Site Location

The Condor State #002 reclamation site is located in central Lea County, New Mexico, approximately 20 miles west of the city of Hobbs. The facility lies to the east of an abandoned runway, approximately 1.5 miles north of Highway 529. Latitude and longitude coordinates for the facility are 32.71975°N, -103.52143°W. A map showing the relative location of the Condor State #002 is presented in **Appendix A, Figure 1**.

The facility consists of a well pad and access road with a total area to be reclaimed of 105,500 square feet (2.4 acres). Land surrounding the facility includes vacant rangeland as well as oil and gas sites. A site layout map for the facility is presented in **Appendix A, Figure 2**.

1.2 Site History

The site history for the facility was based on a review of New Mexico Oil Conservation Division (NMOCD) records. The spud date for the well was August 19, 2011, and the well was plugged on September 13, 2024. A produced water release was reported at the facility on February 3, 2024; however, no closure report was submitted. The release was the result of a valve failure and approximately 112 combined barrels of produced water and oil were released within secondary containment. All fluids were captured and the aggregate material above the liner was removed. Following aggregate removal, the liner was cleaned and inspected. Following the inspection, it was determined that all released materials were recovered. Photographs from the spill response are included in **Appendix B**. At the request of NMOCD all results from delineation and confirmation sampling at the facility will be provided to NMOCD in the remediation closure report.

Based on a legal demand from the New Mexico State Land Office (NMSLO), an initial site investigation was performed by ALL Consulting, LLC (ALL) on November 13, 2023.

Based on results from the November 2023 field investigation and at the request of NMSLO, additional sampling was conducted at the facility during remediation. Sampling results for both field exercises are presented in **Section 2** of this plan. Photographs from the site investigation are presented in **Appendix B**.

1.3 Site Characteristics

The Condor State #002 is located within the Southern High Plains physiographic province of New Mexico, north of the Mescalero Ridge. Based on a review of the National Wetland Inventory (NWI) data, the facility is not located within or adjacent to any wetlands or continuously flowing watercourses. A playa is located directly east of the facility. The distance to the playa is 1,025 feet as measured from the interpreted ordinary high-water mark to the closest edge of the well pad. A review of the topographic relief within the

vicinity indicated that the site lies within a generally flat plain, which regionally drains to the east and southeast. A topographic map is presented in **Appendix A - Figure 3**.

To determine if the site lies within a biologically sensitive area, the Bureau of Land Management (BLM) database mapping tool was reviewed to assess Areas of Critical Environmental Concern, BLM National Conservation Lands, and Special Status Plant and Wildlife Habitat Areas. The facility was not located within any of these specified boundaries and is not considered to be within a biologically sensitive area.

The U.S. Department of Agriculture (USDA) Web Soil Survey indicated that the soil type throughout the site area consists of the Kimbrough-Lea complex with 0 to 3 percent slopes. This soil type consists of a gravelly loam, underlain by loam derived from eolian deposits. The gravelly loam grades downward to a loam, which is then underlain by a cemented hardpan at approximately 10 to 16 inches. This soil type is characterized as “coarse” by NMSLO.

The Geologic Map of New Mexico shows that the primary geologic formation underlying the site is the Late Tertiary Ogallala Formation. The Ogallala consists of alluvial sediments, ranging from coarse gravels to silt and clay, that were deposited on top of the Triassic erosion surface. Due to the irregularity of the underlying Triassic rocks, thickness of the Ogallala is highly variable within Lea County and can range from 100 to 250 feet.

1.4 Groundwater Depth Determination

Within the site area, the Ogallala formation is the uppermost water-bearing unit, with a saturated thickness ranging from 25 to 175 feet. Depth to groundwater for the facility was determined to be greater than 50 feet, based on the closest three (3) water well records as documented in the New Mexico Energy, Minerals, and Natural Resources Department online GIS tool.

Depths to water for the closest wells are presented in **Table 1** below.

Table 1 - Depth to Water Data

Source	Depth to Water (feet)	Distance and Direction
USGS 324304103311201	94.87	740-feet SE
USGS 324256103310801	97.16	1,620-feet SE
POD 12926	117	4,400-feet NE

2. Initial Site Characterization and Remediation

2.1 Initial Site Characterization

ALL conducted a site visit and collected soil samples on November 13, 2023. During the investigation, a pedestrian survey was conducted, and soil samples were collected from four (4) predetermined locations that were approved by the New Mexico State Land Office (NMSLO) prior to fieldwork. All samples were collected from 1-foot depth, and analyzed for Benzene, Toluene, Ethylbenzene, and Xylenes (BTEX); Total Petroleum Hydrocarbons (TPH); and Chloride. Neither BTEX, nor TPH were detected in any of the four (4) samples; however, Chloride was detected above 600 mg/kg in three (3) samples. Sample results are shown in **Table 2** below and 2023 sample locations are shown in **Appendix A - Figure 4**.

Table 2 - Initial Site Characterization Sample Results

November 13, 2023			
Sample ID	Total BTEX	Chloride	TPH (GRO, DRO, ORO C6-C36)
	(mg/kg)	(mg/kg)	(mg/kg)
CS2 - SS01	ND	640	ND
CS2 - SS02	ND	1,800	ND
CS2 - SS03	ND	480	ND
CS2 - SS04	ND	2,800	ND
Bold and highlighted results exceed applicable regulatory screening levels for reclamation.			

2.2 Remediation and Additional Site Sampling

Based on results from the November 2023 field investigation and at the request of NMSLO, the immediate areas surrounding the previous sample locations CS2-SS01, CS2-SS02, and CS2-SS04 were excavated and sampled in February and March of 2024. Excavations were completed to the depth of bedrock (1.5 to 2-feet) and confirmation samples were collected as 5-point composites from the walls and base of each excavation. Additional sampling along the northeast side of the facility was also requested by NMSLO based on an aerial photograph from January 2024. Samples CS2-SS06 and CS2-SS07 were collected northeast of the pad boundary from depths of 1-foot below ground surface (bgs). The additional samples were submitted for analysis of BTEX, Chloride, and TPH. Sample results were non-detect for BTEX and TPH; however, Chloride was detected in both sample results at 5,040 mg/kg (CS2-SS06) and 3,680 mg/kg (CS2-SS07). Based on these results, both areas were excavated to the depth of bedrock. At the completion of excavation, one (1) 5-point composite sample was collected from each of the excavated areas from the walls and base and submitted for analysis of Chloride, TPH, and BTEX.

Neither TPH nor BTEX were detected in any of the composite samples. However, Chloride was detected in each of the composite samples with results ranging from 144 to 5,800 mg/kg. Based on these results, excavation was conducted on March 1, 2024, for all sample locations, except for CS2-CS01, which had an initial Chloride result of 144 mg/kg. Again, composite samples were collected and submitted for laboratory analysis following excavation. Chloride was detected in each of the composite samples and ranged from 64 to 1,380 mg/kg with all sample results shown in **Table 3** below and laboratory reports are included in **Appendix C**.

Table 3 - Remediation Sample Results

Sampling Date	Sample ID	Total BTEX	Chloride	TPH (GRO, DRO, ORO C6-C36)
		(mg/kg)	(mg/kg)	(mg/kg)
2/29/2024	CS2-CS01	ND	144	ND
	CS2-CS02	ND	704	ND
	CS2-CS04	ND	5,800	ND
	CS2-SS06	ND	5,040	ND
	CS2-SS07	ND	3,680	ND
3/1/2024	CS2-CS02-02	ND	528	ND
	CS2-CS04-02	ND	1,380	ND
	CS2-CS06	ND	64	ND
	CS2-CS07	ND	128	ND
Bold and highlighted results exceed applicable regulatory screening levels for reclamation.				

A sample location map is presented in **Appendix A - Figure 5**.

3. Remediation Plan

3.1 Equipment Removal

Following plugging, a welded marker with well identification information was set in concrete at the site of the wellhead. As of the submittal of this plan, the last remaining surface equipment and debris are being removed from the facility and tanks/flowlines have been abandoned per applicable NMSLO rules.

3.2 Soil Characterization, Delineation, and Excavation

Following complete removal of all equipment from the facility, additional characterization samples will be collected surrounding the well head and in the former location of the tank battery. Characterization samples will be collected from a depth of 1-foot bgs and submitted for analysis of BTEX, TPH, and Chloride. Sample locations are presented in **Appendix A - Figure 5**.

Exceedances for Chloride were identified from soil samples previously collected at the facility, with five (5) soil samples exceeding the regulatory threshold of 600 mg/kg in the upper four (4) feet of soil. This impacted soil will be excavated and removed from the site for regulated disposal. Identified areas of contamination will be further delineated during excavation. Following delineation and excavation, composite samples will be collected and analyzed for BTEX, TPH, and Chloride, to confirm that the underlying soils comply with the NMAC closure criteria. Confirmation samples will be collected at a rate of one (1) 5-point composite sample per 200 square feet of soil. If any remaining, non-compliant material is present it will be removed for regulated disposal, and subsequent confirmation samples will be collected.

All sampling and excavation are planned for previously disturbed areas and no work is expected to be completed in undisturbed areas. If such work is deemed necessary at a later time, an archaeological survey will be performed to comply with the NMSLO Cultural Properties Protection (CPP) rule.

4. Reclamation Plan

4.1 Soil Preparation

The areas subject to reclamation include all disturbed areas, the well pad, and the access road. In addition, the eroded area to the northeast of the well pad will be reclaimed by returning the area to its original grade and reseeding. A site reclamation figure is presented in **Appendix A - Figure 6**.

Following equipment and debris removal, initial soil preparation for the facility will include removing caliche surfaces, then scarifying/cross-ripping the well pad and access road to a depth of 18 inches. The surface will then be tilled or disced to prepare a proper seedbed. During tilling, the site soil will be amended with clean soil as needed to infill excavated areas. During soil preparation, the original landform will be restored, as best as possible, for all unvegetated areas. All flowlines associated with the facility will be removed prior to any earthwork.

4.2 Site Revegetation

The prepared soils within the site will be seeded with a seed mix purchased from a New Mexico Department of Agriculture (NMDA) licensed dealer. Soil at the Condor State #002 is characterized as "coarse" by NMSLO and the corresponding seed mix will be used. Seed species will include:

- Sand Bluestem
- Sideoats Grama
- Blue Grama
- Little Bluestem
- Sand Dropseed
- Plains Bristlegrass

Following seeding operations, the seed tags will be made available to the NMSLO, along with a copy of the materials certification. The seed mixture will be applied by drill-seeding at the rates recommended in the NMSLO Revegetation Guidelines Handbook for Southeastern New Mexico. The seeded area will be mulched and/or irrigated if deemed necessary and monitored to verify germination. Following germination, the vegetation at the site will be monitored for successful establishment on an annual basis for a period of three (3) years. Noxious weeds will be monitored in spring and fall during the same three (3) year period. Following revegetation, posts and signage will be staked at the end of the former access roads to prevent trespassing.

4.3 Schedule of Implementation

The preliminary implementation schedule is presented below. The schedule will be amended as necessary pending approval from NMSLO. Revegetation at the facility is tentatively planned for the time period prior to the summer monsoon season, as recommended by the NMSLO Revegetation Guidelines Handbook for Southeastern New Mexico.

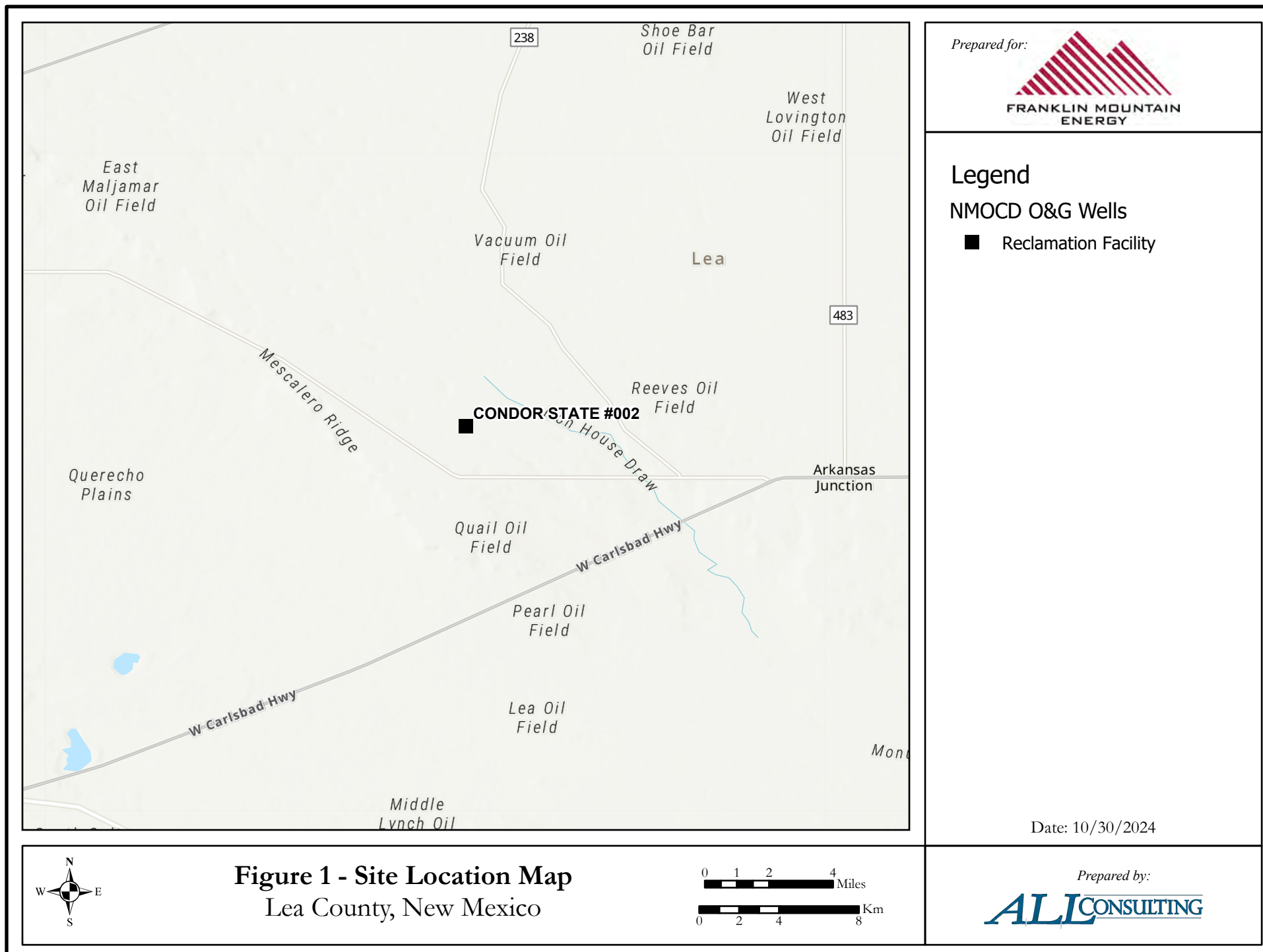
Table 4 - Reclamation Schedule

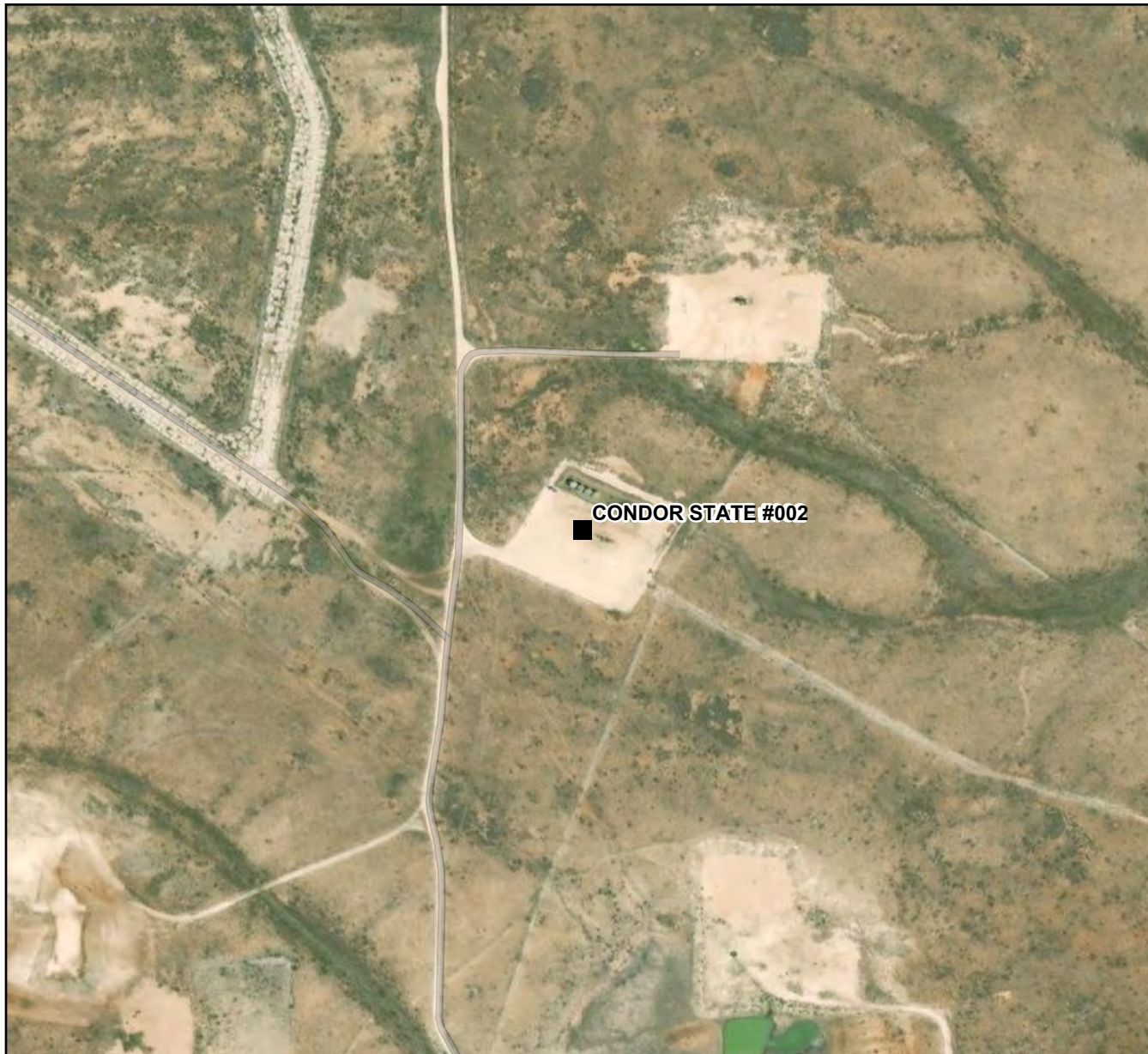
Activity	Planned Start
Equipment Removal	October - November 2024
Delineation/Excavation/Soil Preparation	December 2024 - April 2025
Revegetation*	May 2025 - June 2025

*Vegetation will be monitored for a three (3) year period.

Appendix A

Figures 1-6





Prepared for:



Legend

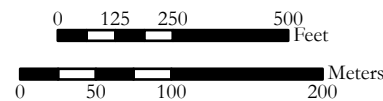
NMOCD O&G Wells

■ Reclamation Facility

Date: 10/30/2024

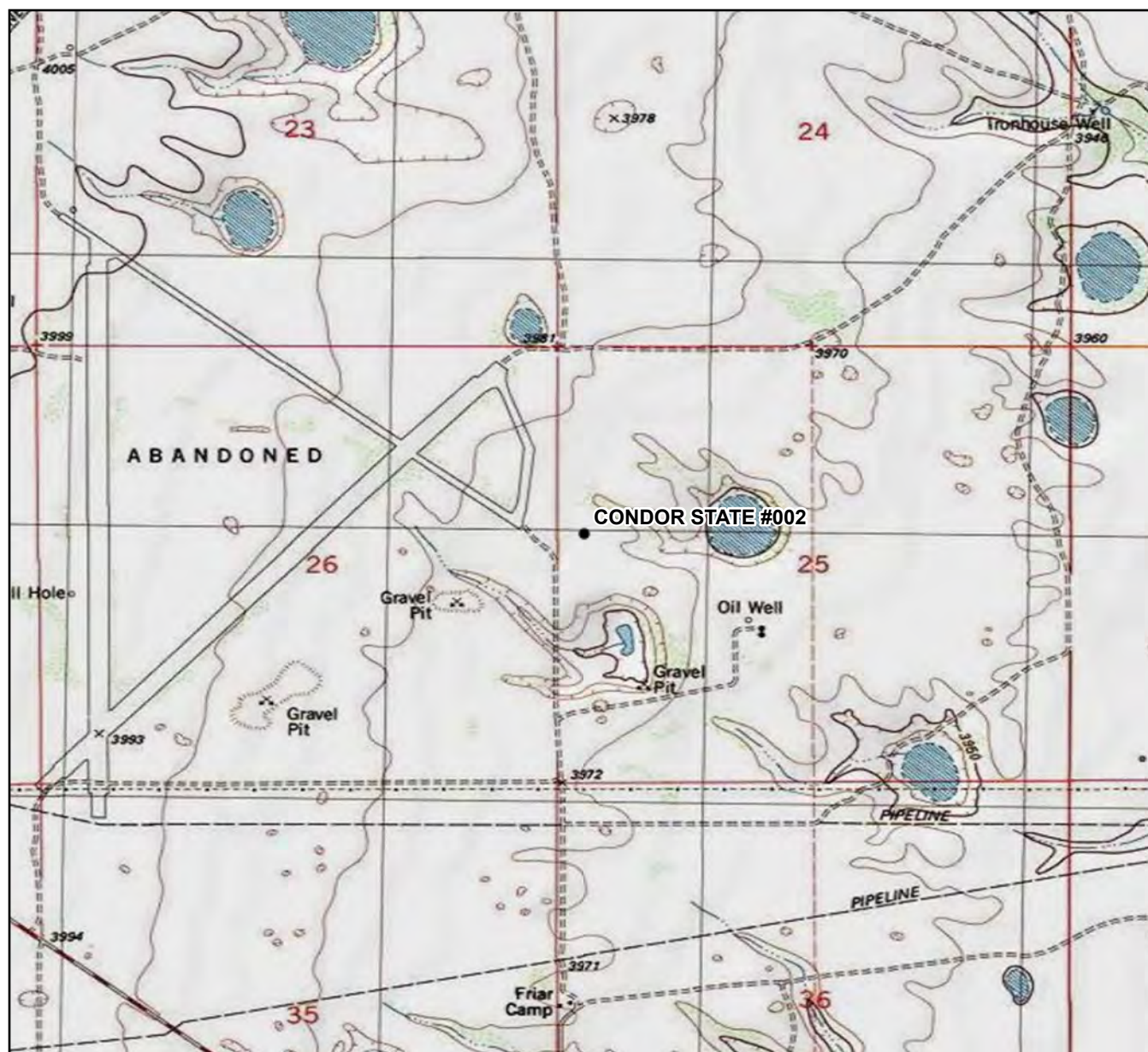


Figure 2 - Site Layout Map
Lea County, New Mexico



Prepared by:

ALLCONSULTING



Prepared for:



Legend

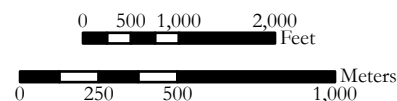
NMOCD O&G Wells

- Oil, Active

Date: 9/17/2024



Figure 3 - Topographic Map
Lea County, New Mexico



Prepared by:

ALLCONSULTING



Prepared for:



Legend

2023 Sample Locations

Exceedances

- None (4)
- Chloride (5)
- TPH (0)
- Chloride and TPH (0)

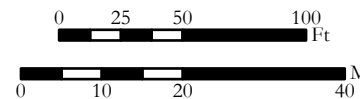
Date: 11/20/2024



Figure 4 - 2023 Sample Locations Map

Condor State #002

Lea County, New Mexico



Prepared by:

ALL CONSULTING



Prepared for:

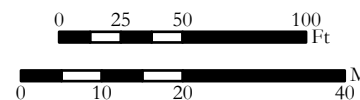
**Legend****Sample Locations****Exceedances**

- None (1)
- Chloride (3)
- TPH (0)
- Chloride and TPH (0)
- Characterization Samples (to be collected following equipment removal) (5)
- ▨ Excavated Area (4)

Date: 11/21/2024



Figure 5 - Sample Locations Map
Condor State #002
Lea County, New Mexico



Prepared by:


ALLCONSULTING



Prepared for:



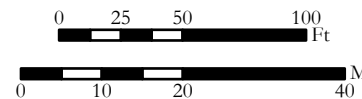
Legend

 Reclamation Area (2.4 acres)

Date: 11/21/2024



Figure 6 - Reclamation Area Map
Condor State #002
Lea County, New Mexico



Prepared by:

ALLCONSULTING

Appendix B

Photographs

November 13, 2023



- Photo 1: Condor State #002 – Well head with gravel.



- Photo 2: Condor State #002 – Close view of dark-colored gravel.



- Photo 3: Condor State #002 – Close view of dark-colored gravel. No staining noted.

November 13, 2023



- Photo 4: Condor State #002 – Tank battery berm looking southeast.



- Photo 5: Condor State #002 – Tank battery berm looking northwest.



- Photo 6: Condor State #002 – Looking north from eastern corner of facility. No drainage issues noted.

February 3, 2024



- Photo 7: Leaking dump valve inside secondary containment.
Discovered on 2-3-2024.



- Photo 8: Approximately 112 barrels – 36 barrels of oil and 76 barrels of produced water – maintained within secondary containment.



- Photo 9: Free liquid actively being recovered from secondary containment.

February 3, 2024



- Photo 10: Impacted soil and gravel removed from secondary containment.



- Photo 11: Secondary containment liner exposed for cleaning and inspection.



- Photo 12: Secondary containment liner pressure washed and vacuumed, prior to being refilled with gravel.

Appendix C
Laboratory Reports
(Contains Additional Soil Samples from Non-Project Sites)



PHONE (575) 393-2326 ° 101 E. MARLAND ° HOBBS, NM 88240

November 17, 2023

SCOTT MEIER

ALL CONSULTING, LLC

1718 S. CHEYENNE AVE.

TULSA, OK 74119

RE: FME

Enclosed are the results of analyses for samples received by the laboratory on 11/14/23 7:50.

Cardinal Laboratories is accredited through Texas NELAP under certificate number T104704398-22-15. Accreditation applies to drinking water, non-potable water and solid and chemical materials. All accredited analytes are denoted by an asterisk (*). For a complete list of accredited analytes and matrices visit the TCEQ website at www.tceq.texas.gov/field/qa/lab_accred_certif.html.

Cardinal Laboratories is accredited through the State of Colorado Department of Public Health and Environment for:

Method EPA 552.2	Haloacetic Acids (HAA-5)
Method EPA 524.2	Total Trihalomethanes (TTHM)
Method EPA 524.4	Regulated VOCs (V1, V2, V3)

Accreditation applies to public drinking water matrices.

This report meets NELAP requirements and is made up of a cover page, analytical results, and a copy of the original chain-of-custody. If you have any questions concerning this report, please feel free to contact me.

Sincerely,

A handwritten signature in black ink that reads "Celey D. Keene". The signature is written in a cursive style with a large, stylized 'C' at the beginning.

Celey D. Keene

Lab Director/Quality Manager



PHONE (575) 393-2326 ° 101 E. MARLAND ° HOBBS, NM 88240

Analytical Results For:

ALL CONSULTING, LLC
 SCOTT MEIER
 1718 S. CHEYENNE AVE.
 TULSA OK, 74119
 Fax To: NA

Received: 11/14/2023
 Reported: 11/17/2023
 Project Name: FME
 Project Number: 1893
 Project Location: NM

Sampling Date: 11/13/2023
 Sampling Type: Soil
 Sampling Condition: Cool & Intact
 Sample Received By: Shari Cisneros

Sample ID: IH 1H - SS01 (H236210-01)

BTEx 8021B		mg/kg		Analyzed By: JH/					
Analyte	Result	Reporting Limit	Analyzed	Method Blank	BS	% Recovery	True Value QC	RPD	Qualifier
Benzene*	<0.050	0.050	11/15/2023	ND	1.88	94.2	2.00	0.560	
Toluene*	<0.050	0.050	11/15/2023	ND	2.03	101	2.00	0.857	
Ethylbenzene*	<0.050	0.050	11/15/2023	ND	2.04	102	2.00	0.596	
Total Xylenes*	<0.150	0.150	11/15/2023	ND	6.20	103	6.00	0.542	
Total BTEX	<0.300	0.300	11/15/2023	ND					

Surrogate: 4-Bromofluorobenzene (PID) 112 % 71.5-134

Chloride, SM4500Cl-B		mg/kg		Analyzed By: HM						
Analyte	Result	Reporting Limit	Analyzed	Method Blank	BS	% Recovery	True Value QC	RPD	Qualifier	
Chloride	64.0	16.0	11/14/2023	ND	432	108	400	0.00		

TPH 8015M		mg/kg		Analyzed By: MS					
Analyte	Result	Reporting Limit	Analyzed	Method Blank	BS	% Recovery	True Value QC	RPD	Qualifier
GRO C6-C10*	<10.0	10.0	11/15/2023	ND	187	93.5	200	3.09	
DRO >C10-C28*	<10.0	10.0	11/15/2023	ND	208	104	200	1.03	
EXT DRO >C28-C36	<10.0	10.0	11/15/2023	ND					

Surrogate: 1-Chlorooctane 77.0 % 48.2-134

Surrogate: 1-Chlorooctadecane 77.6 % 49.1-148

Cardinal Laboratories

*=Accredited Analyte

PLEASE NOTE: Liability and Damages. Cardinal's liability and client's exclusive remedy for any claim arising, whether based in contract or tort, shall be limited to the amount paid by client for analyses. All claims, including those for negligence and any other cause whatsoever shall be deemed waived unless made in writing and received by Cardinal within thirty (30) days after completion of the applicable service. In no event shall Cardinal be liable for incidental or consequential damages, including, without limitation, business interruptions, loss of use, or loss of profits incurred by client, its subsidiaries, affiliates or successors arising out of or related to the performance of the services hereunder by Cardinal, regardless of whether such claim is based upon any of the above stated reasons or otherwise. Results relate only to the samples identified above. This report shall not be reproduced except in full with written approval of Cardinal Laboratories.

Celey D. Keene, Lab Director/Quality Manager



PHONE (575) 393-2326 ° 101 E. MARLAND ° HOBBS, NM 88240

Analytical Results For:

ALL CONSULTING, LLC
 SCOTT MEIER
 1718 S. CHEYENNE AVE.
 TULSA OK, 74119
 Fax To: NA

Received: 11/14/2023
 Reported: 11/17/2023
 Project Name: FME
 Project Number: 1893
 Project Location: NM

Sampling Date: 11/13/2023
 Sampling Type: Soil
 Sampling Condition: Cool & Intact
 Sample Received By: Shari Cisneros

Sample ID: IH 1H - SS02 (H236210-02)

BTEx 8021B		mg/kg		Analyzed By: JH						
Analyte	Result	Reporting Limit	Analyzed	Method Blank	BS	% Recovery	True Value QC	RPD	Qualifier	
Benzene*	<0.050	0.050	11/14/2023	ND	1.85	92.5	2.00	7.65		
Toluene*	<0.050	0.050	11/14/2023	ND	1.96	98.1	2.00	10.3		
Ethylbenzene*	<0.050	0.050	11/14/2023	ND	1.98	98.8	2.00	12.2		
Total Xylenes*	<0.150	0.150	11/14/2023	ND	6.02	100	6.00	13.5		
Total BTEX	<0.300	0.300	11/14/2023	ND						

Surrogate: 4-Bromofluorobenzene (PID) 102 % 71.5-134

Chloride, SM4500CI-B		mg/kg		Analyzed By: HM						
Analyte	Result	Reporting Limit	Analyzed	Method Blank	BS	% Recovery	True Value QC	RPD	Qualifier	
Chloride	592	16.0	11/14/2023	ND	432	108	400	0.00		

TPH 8015M		mg/kg		Analyzed By: MS					
Analyte	Result	Reporting Limit	Analyzed	Method Blank	BS	% Recovery	True Value QC	RPD	Qualifier
GRO C6-C10*	<10.0	10.0	11/15/2023	ND	187	93.5	200	3.09	
DRO >C10-C28*	<10.0	10.0	11/15/2023	ND	208	104	200	1.03	
EXT DRO >C28-C36	<10.0	10.0	11/15/2023	ND					

Surrogate: 1-Chlorooctane 82.3 % 48.2-134

Surrogate: 1-Chlorooctadecane 83.0 % 49.1-148

Cardinal Laboratories

*=Accredited Analyte

PLEASE NOTE: Liability and Damages. Cardinal's liability and client's exclusive remedy for any claim arising, whether based in contract or tort, shall be limited to the amount paid by client for analyses. All claims, including those for negligence and any other cause whatsoever shall be deemed waived unless made in writing and received by Cardinal within thirty (30) days after completion of the applicable service. In no event shall Cardinal be liable for incidental or consequential damages, including, without limitation, business interruptions, loss of use, or loss of profits incurred by client, its subsidiaries, affiliates or successors arising out of or related to the performance of the services hereunder by Cardinal, regardless of whether such claim is based upon any of the above stated reasons or otherwise. Results relate only to the samples identified above. This report shall not be reproduced except in full with written approval of Cardinal Laboratories.

Celey D. Keene, Lab Director/Quality Manager



PHONE (575) 393-2326 ° 101 E. MARLAND ° HOBBS, NM 88240

Analytical Results For:

ALL CONSULTING, LLC
 SCOTT MEIER
 1718 S. CHEYENNE AVE.
 TULSA OK, 74119
 Fax To: NA

Received: 11/14/2023
 Reported: 11/17/2023
 Project Name: FME
 Project Number: 1893
 Project Location: NM

Sampling Date: 11/13/2023
 Sampling Type: Soil
 Sampling Condition: Cool & Intact
 Sample Received By: Shari Cisneros

Sample ID: IH 1H - SS03 (H236210-03)

BTEx 8021B		mg/kg		Analyzed By: JH						
Analyte	Result	Reporting Limit	Analyzed	Method Blank	BS	% Recovery	True Value QC	RPD	Qualifier	
Benzene*	<0.050	0.050	11/14/2023	ND	1.85	92.5	2.00	7.65		
Toluene*	<0.050	0.050	11/14/2023	ND	1.96	98.1	2.00	10.3		
Ethylbenzene*	<0.050	0.050	11/14/2023	ND	1.98	98.8	2.00	12.2		
Total Xylenes*	<0.150	0.150	11/14/2023	ND	6.02	100	6.00	13.5		
Total BTEX	<0.300	0.300	11/14/2023	ND						

Surrogate: 4-Bromofluorobenzene (PID) 104 % 71.5-134

Chloride, SM4500Cl-B		mg/kg		Analyzed By: HM						
Analyte	Result	Reporting Limit	Analyzed	Method Blank	BS	% Recovery	True Value QC	RPD	Qualifier	
Chloride	192	16.0	11/14/2023	ND	432	108	400	0.00		

TPH 8015M		mg/kg		Analyzed By: MS					
Analyte	Result	Reporting Limit	Analyzed	Method Blank	BS	% Recovery	True Value QC	RPD	Qualifier
GRO C6-C10*	<10.0	10.0	11/15/2023	ND	187	93.5	200	3.09	
DRO >C10-C28*	<10.0	10.0	11/15/2023	ND	208	104	200	1.03	
EXT DRO >C28-C36	<10.0	10.0	11/15/2023	ND					

Surrogate: 1-Chlorooctane 80.0 % 48.2-134

Surrogate: 1-Chlorooctadecane 77.3 % 49.1-148

Cardinal Laboratories

*=Accredited Analyte

PLEASE NOTE: Liability and Damages. Cardinal's liability and client's exclusive remedy for any claim arising, whether based in contract or tort, shall be limited to the amount paid by client for analyses. All claims, including those for negligence and any other cause whatsoever shall be deemed waived unless made in writing and received by Cardinal within thirty (30) days after completion of the applicable service. In no event shall Cardinal be liable for incidental or consequential damages, including, without limitation, business interruptions, loss of use, or loss of profits incurred by client, its subsidiaries, affiliates or successors arising out of or related to the performance of the services hereunder by Cardinal, regardless of whether such claim is based upon any of the above stated reasons or otherwise. Results relate only to the samples identified above. This report shall not be reproduced except in full with written approval of Cardinal Laboratories.

Celey D. Keene, Lab Director/Quality Manager



PHONE (575) 393-2326 ° 101 E. MARLAND ° HOBBS, NM 88240

Analytical Results For:

ALL CONSULTING, LLC
 SCOTT MEIER
 1718 S. CHEYENNE AVE.
 TULSA OK, 74119
 Fax To: NA

Received: 11/14/2023
 Reported: 11/17/2023
 Project Name: FME
 Project Number: 1893
 Project Location: NM

Sampling Date: 11/13/2023
 Sampling Type: Soil
 Sampling Condition: Cool & Intact
 Sample Received By: Shari Cisneros

Sample ID: IH 1H - SS04 (H236210-04)

BTEx 8021B		mg/kg		Analyzed By: JH					
Analyte	Result	Reporting Limit	Analyzed	Method Blank	BS	% Recovery	True Value QC	RPD	Qualifier
Benzene*	<0.050	0.050	11/14/2023	ND	1.85	92.5	2.00	7.65	
Toluene*	<0.050	0.050	11/14/2023	ND	1.96	98.1	2.00	10.3	
Ethylbenzene*	<0.050	0.050	11/14/2023	ND	1.98	98.8	2.00	12.2	
Total Xylenes*	<0.150	0.150	11/14/2023	ND	6.02	100	6.00	13.5	
Total BTEX	<0.300	0.300	11/14/2023	ND					

Surrogate: 4-Bromofluorobenzene (PID) 104 % 71.5-134

Chloride, SM4500Cl-B		mg/kg		Analyzed By: HM					
Analyte	Result	Reporting Limit	Analyzed	Method Blank	BS	% Recovery	True Value QC	RPD	Qualifier
Chloride	32.0	16.0	11/14/2023	ND	432	108	400	0.00	

TPH 8015M		mg/kg		Analyzed By: MS					
Analyte	Result	Reporting Limit	Analyzed	Method Blank	BS	% Recovery	True Value QC	RPD	Qualifier
GRO C6-C10*	<10.0	10.0	11/15/2023	ND	187	93.5	200	3.09	
DRO >C10-C28*	<10.0	10.0	11/15/2023	ND	208	104	200	1.03	
EXT DRO >C28-C36	<10.0	10.0	11/15/2023	ND					

Surrogate: 1-Chlorooctane 55.2 % 48.2-134

Surrogate: 1-Chlorooctadecane 52.0 % 49.1-148

Cardinal Laboratories

*=Accredited Analyte

PLEASE NOTE: Liability and Damages. Cardinal's liability and client's exclusive remedy for any claim arising, whether based in contract or tort, shall be limited to the amount paid by client for analyses. All claims, including those for negligence and any other cause whatsoever shall be deemed waived unless made in writing and received by Cardinal within thirty (30) days after completion of the applicable service. In no event shall Cardinal be liable for incidental or consequential damages, including, without limitation, business interruptions, loss of use, or loss of profits incurred by client, its subsidiaries, affiliates or successors arising out of or related to the performance of the services hereunder by Cardinal, regardless of whether such claim is based upon any of the above stated reasons or otherwise. Results relate only to the samples identified above. This report shall not be reproduced except in full with written approval of Cardinal Laboratories.

Celey D. Keene, Lab Director/Quality Manager



PHONE (575) 393-2326 ° 101 E. MARLAND ° HOBBS, NM 88240

Analytical Results For:

ALL CONSULTING, LLC
 SCOTT MEIER
 1718 S. CHEYENNE AVE.
 TULSA OK, 74119
 Fax To: NA

Received: 11/14/2023
 Reported: 11/17/2023
 Project Name: FME
 Project Number: 1893
 Project Location: NM

Sampling Date: 11/13/2023
 Sampling Type: Soil
 Sampling Condition: Cool & Intact
 Sample Received By: Shari Cisneros

Sample ID: IH 1H - SS05 (H236210-05)

BTEx 8021B		mg/kg		Analyzed By: JH						
Analyte	Result	Reporting Limit	Analyzed	Method Blank	BS	% Recovery	True Value QC	RPD	Qualifier	
Benzene*	<0.050	0.050	11/14/2023	ND	1.85	92.5	2.00	7.65		
Toluene*	<0.050	0.050	11/14/2023	ND	1.96	98.1	2.00	10.3		
Ethylbenzene*	<0.050	0.050	11/14/2023	ND	1.98	98.8	2.00	12.2		
Total Xylenes*	<0.150	0.150	11/14/2023	ND	6.02	100	6.00	13.5		
Total BTEX	<0.300	0.300	11/14/2023	ND						

Surrogate: 4-Bromofluorobenzene (PID) 113 % 71.5-134

Chloride, SM4500Cl-B		mg/kg		Analyzed By: AC						
Analyte	Result	Reporting Limit	Analyzed	Method Blank	BS	% Recovery	True Value QC	RPD	Qualifier	
Chloride	48.0	16.0	11/15/2023	ND	432	108	400	0.00		

TPH 8015M		mg/kg		Analyzed By: MS					
Analyte	Result	Reporting Limit	Analyzed	Method Blank	BS	% Recovery	True Value QC	RPD	Qualifier
GRO C6-C10*	<10.0	10.0	11/15/2023	ND	187	93.5	200	3.09	
DRO >C10-C28*	<10.0	10.0	11/15/2023	ND	208	104	200	1.03	
EXT DRO >C28-C36	<10.0	10.0	11/15/2023	ND					

Surrogate: 1-Chlorooctane 71.1 % 48.2-134

Surrogate: 1-Chlorooctadecane 69.1 % 49.1-148

Cardinal Laboratories

*=Accredited Analyte

PLEASE NOTE: Liability and Damages. Cardinal's liability and client's exclusive remedy for any claim arising, whether based in contract or tort, shall be limited to the amount paid by client for analyses. All claims, including those for negligence and any other cause whatsoever shall be deemed waived unless made in writing and received by Cardinal within thirty (30) days after completion of the applicable service. In no event shall Cardinal be liable for incidental or consequential damages, including, without limitation, business interruptions, loss of use, or loss of profits incurred by client, its subsidiaries, affiliates or successors arising out of or related to the performance of the services hereunder by Cardinal, regardless of whether such claim is based upon any of the above stated reasons or otherwise. Results relate only to the samples identified above. This report shall not be reproduced except in full with written approval of Cardinal Laboratories.

Celey D. Keene, Lab Director/Quality Manager



PHONE (575) 393-2326 ° 101 E. MARLAND ° HOBBS, NM 88240

Analytical Results For:

ALL CONSULTING, LLC
 SCOTT MEIER
 1718 S. CHEYENNE AVE.
 TULSA OK, 74119
 Fax To: NA

Received: 11/14/2023
 Reported: 11/17/2023
 Project Name: FME
 Project Number: 1893
 Project Location: NM

Sampling Date: 11/13/2023
 Sampling Type: Soil
 Sampling Condition: Cool & Intact
 Sample Received By: Shari Cisneros

Sample ID: IH 3H - SS01 (H236210-06)

BTEx 8021B		mg/kg		Analyzed By: JH						
Analyte	Result	Reporting Limit	Analyzed	Method Blank	BS	% Recovery	True Value QC	RPD	Qualifier	
Benzene*	<0.050	0.050	11/14/2023	ND	1.85	92.5	2.00	7.65		
Toluene*	<0.050	0.050	11/14/2023	ND	1.96	98.1	2.00	10.3		
Ethylbenzene*	<0.050	0.050	11/14/2023	ND	1.98	98.8	2.00	12.2		
Total Xylenes*	<0.150	0.150	11/14/2023	ND	6.02	100	6.00	13.5		
Total BTEX	<0.300	0.300	11/14/2023	ND						

Surrogate: 4-Bromofluorobenzene (PID) 116 % 71.5-134

Chloride, SM4500Cl-B		mg/kg		Analyzed By: AC						
Analyte	Result	Reporting Limit	Analyzed	Method Blank	BS	% Recovery	True Value QC	RPD	Qualifier	
Chloride	112	16.0	11/15/2023	ND	432	108	400	0.00		

TPH 8015M		mg/kg		Analyzed By: MS					
Analyte	Result	Reporting Limit	Analyzed	Method Blank	BS	% Recovery	True Value QC	RPD	Qualifier
GRO C6-C10*	<10.0	10.0	11/15/2023	ND	187	93.5	200	3.09	
DRO >C10-C28*	<10.0	10.0	11/15/2023	ND	208	104	200	1.03	
EXT DRO >C28-C36	<10.0	10.0	11/15/2023	ND					

Surrogate: 1-Chlorooctane 66.2 % 48.2-134

Surrogate: 1-Chlorooctadecane 64.7 % 49.1-148

Cardinal Laboratories

*=Accredited Analyte

PLEASE NOTE: Liability and Damages. Cardinal's liability and client's exclusive remedy for any claim arising, whether based in contract or tort, shall be limited to the amount paid by client for analyses. All claims, including those for negligence and any other cause whatsoever shall be deemed waived unless made in writing and received by Cardinal within thirty (30) days after completion of the applicable service. In no event shall Cardinal be liable for incidental or consequential damages, including, without limitation, business interruptions, loss of use, or loss of profits incurred by client, its subsidiaries, affiliates or successors arising out of or related to the performance of the services hereunder by Cardinal, regardless of whether such claim is based upon any of the above stated reasons or otherwise. Results relate only to the samples identified above. This report shall not be reproduced except in full with written approval of Cardinal Laboratories.

Celey D. Keene, Lab Director/Quality Manager



PHONE (575) 393-2326 ° 101 E. MARLAND ° HOBBS, NM 88240

Analytical Results For:

ALL CONSULTING, LLC
 SCOTT MEIER
 1718 S. CHEYENNE AVE.
 TULSA OK, 74119
 Fax To: NA

Received: 11/14/2023
 Reported: 11/17/2023
 Project Name: FME
 Project Number: 1893
 Project Location: NM

Sampling Date: 11/13/2023
 Sampling Type: Soil
 Sampling Condition: Cool & Intact
 Sample Received By: Shari Cisneros

Sample ID: IH 3H - SS02 (H236210-07)

BTEx 8021B		mg/kg		Analyzed By: JH					
Analyte	Result	Reporting Limit	Analyzed	Method Blank	BS	% Recovery	True Value QC	RPD	Qualifier
Benzene*	<0.050	0.050	11/14/2023	ND	1.85	92.5	2.00	7.65	
Toluene*	<0.050	0.050	11/14/2023	ND	1.96	98.1	2.00	10.3	
Ethylbenzene*	<0.050	0.050	11/14/2023	ND	1.98	98.8	2.00	12.2	
Total Xylenes*	<0.150	0.150	11/14/2023	ND	6.02	100	6.00	13.5	
Total BTEX	<0.300	0.300	11/14/2023	ND					

Surrogate: 4-Bromofluorobenzene (PID) 118 % 71.5-134

Chloride, SM4500Cl-B		mg/kg		Analyzed By: AC					
Analyte	Result	Reporting Limit	Analyzed	Method Blank	BS	% Recovery	True Value QC	RPD	Qualifier
Chloride	64.0	16.0	11/15/2023	ND	432	108	400	0.00	

TPH 8015M		mg/kg		Analyzed By: MS					
Analyte	Result	Reporting Limit	Analyzed	Method Blank	BS	% Recovery	True Value QC	RPD	Qualifier
GRO C6-C10*	<10.0	10.0	11/15/2023	ND	187	93.5	200	3.09	
DRO >C10-C28*	<10.0	10.0	11/15/2023	ND	208	104	200	1.03	
EXT DRO >C28-C36	<10.0	10.0	11/15/2023	ND					

Surrogate: 1-Chlorooctane 75.7 % 48.2-134

Surrogate: 1-Chlorooctadecane 70.6 % 49.1-148

Cardinal Laboratories

*=Accredited Analyte

PLEASE NOTE: Liability and Damages. Cardinal's liability and client's exclusive remedy for any claim arising, whether based in contract or tort, shall be limited to the amount paid by client for analyses. All claims, including those for negligence and any other cause whatsoever shall be deemed waived unless made in writing and received by Cardinal within thirty (30) days after completion of the applicable service. In no event shall Cardinal be liable for incidental or consequential damages, including, without limitation, business interruptions, loss of use, or loss of profits incurred by client, its subsidiaries, affiliates or successors arising out of or related to the performance of the services hereunder by Cardinal, regardless of whether such claim is based upon any of the above stated reasons or otherwise. Results relate only to the samples identified above. This report shall not be reproduced except in full with written approval of Cardinal Laboratories.

Celey D. Keene, Lab Director/Quality Manager



PHONE (575) 393-2326 ° 101 E. MARLAND ° HOBBS, NM 88240

Analytical Results For:

ALL CONSULTING, LLC
 SCOTT MEIER
 1718 S. CHEYENNE AVE.
 TULSA OK, 74119
 Fax To: NA

Received: 11/14/2023
 Reported: 11/17/2023
 Project Name: FME
 Project Number: 1893
 Project Location: NM

Sampling Date: 11/13/2023
 Sampling Type: Soil
 Sampling Condition: Cool & Intact
 Sample Received By: Shari Cisneros

Sample ID: IH 3H - SS03 (H236210-08)

BTEx 8021B		mg/kg		Analyzed By: JH						
Analyte	Result	Reporting Limit	Analyzed	Method Blank	BS	% Recovery	True Value QC	RPD	Qualifier	
Benzene*	<0.050	0.050	11/14/2023	ND	1.85	92.5	2.00	7.65		
Toluene*	<0.050	0.050	11/14/2023	ND	1.96	98.1	2.00	10.3		
Ethylbenzene*	<0.050	0.050	11/14/2023	ND	1.98	98.8	2.00	12.2		
Total Xylenes*	<0.150	0.150	11/14/2023	ND	6.02	100	6.00	13.5		
Total BTEX	<0.300	0.300	11/14/2023	ND						

Surrogate: 4-Bromofluorobenzene (PID) 116 % 71.5-134

Chloride, SM4500Cl-B		mg/kg		Analyzed By: AC						
Analyte	Result	Reporting Limit	Analyzed	Method Blank	BS	% Recovery	True Value QC	RPD	Qualifier	
Chloride	2760	16.0	11/15/2023	ND	432	108	400	0.00		

TPH 8015M		mg/kg		Analyzed By: MS					
Analyte	Result	Reporting Limit	Analyzed	Method Blank	BS	% Recovery	True Value QC	RPD	Qualifier
GRO C6-C10*	<10.0	10.0	11/15/2023	ND	187	93.5	200	3.09	
DRO >C10-C28*	<10.0	10.0	11/15/2023	ND	208	104	200	1.03	
EXT DRO >C28-C36	<10.0	10.0	11/15/2023	ND					

Surrogate: 1-Chlorooctane 81.2 % 48.2-134

Surrogate: 1-Chlorooctadecane 78.0 % 49.1-148

Cardinal Laboratories

*=Accredited Analyte

PLEASE NOTE: Liability and Damages. Cardinal's liability and client's exclusive remedy for any claim arising, whether based in contract or tort, shall be limited to the amount paid by client for analyses. All claims, including those for negligence and any other cause whatsoever shall be deemed waived unless made in writing and received by Cardinal within thirty (30) days after completion of the applicable service. In no event shall Cardinal be liable for incidental or consequential damages, including, without limitation, business interruptions, loss of use, or loss of profits incurred by client, its subsidiaries, affiliates or successors arising out of or related to the performance of the services hereunder by Cardinal, regardless of whether such claim is based upon any of the above stated reasons or otherwise. Results relate only to the samples identified above. This report shall not be reproduced except in full with written approval of Cardinal Laboratories.

Celey D. Keene, Lab Director/Quality Manager



PHONE (575) 393-2326 ° 101 E. MARLAND ° HOBBS, NM 88240

Analytical Results For:

ALL CONSULTING, LLC
 SCOTT MEIER
 1718 S. CHEYENNE AVE.
 TULSA OK, 74119
 Fax To: NA

Received: 11/14/2023
 Reported: 11/17/2023
 Project Name: FME
 Project Number: 1893
 Project Location: NM

Sampling Date: 11/13/2023
 Sampling Type: Soil
 Sampling Condition: Cool & Intact
 Sample Received By: Shari Cisneros

Sample ID: IH 3H - SS04 (H236210-09)

BTEx 8021B		mg/kg		Analyzed By: JH						
Analyte	Result	Reporting Limit	Analyzed	Method Blank	BS	% Recovery	True Value QC	RPD	Qualifier	
Benzene*	<0.050	0.050	11/14/2023	ND	1.85	92.5	2.00	7.65		
Toluene*	<0.050	0.050	11/14/2023	ND	1.96	98.1	2.00	10.3		
Ethylbenzene*	<0.050	0.050	11/14/2023	ND	1.98	98.8	2.00	12.2		
Total Xylenes*	<0.150	0.150	11/14/2023	ND	6.02	100	6.00	13.5		
Total BTEX	<0.300	0.300	11/14/2023	ND						

Surrogate: 4-Bromofluorobenzene (PID) 117 % 71.5-134

Chloride, SM4500Cl-B		mg/kg		Analyzed By: AC						
Analyte	Result	Reporting Limit	Analyzed	Method Blank	BS	% Recovery	True Value QC	RPD	Qualifier	
Chloride	192	16.0	11/15/2023	ND	432	108	400	0.00		

TPH 8015M		mg/kg		Analyzed By: MS					
Analyte	Result	Reporting Limit	Analyzed	Method Blank	BS	% Recovery	True Value QC	RPD	Qualifier
GRO C6-C10*	<10.0	10.0	11/14/2023	ND	195	97.6	200	4.04	
DRO >C10-C28*	<10.0	10.0	11/14/2023	ND	200	100	200	0.868	
EXT DRO >C28-C36	<10.0	10.0	11/14/2023	ND					

Surrogate: 1-Chlorooctane 74.8 % 48.2-134

Surrogate: 1-Chlorooctadecane 85.1 % 49.1-148

Cardinal Laboratories

*=Accredited Analyte

PLEASE NOTE: Liability and Damages. Cardinal's liability and client's exclusive remedy for any claim arising, whether based in contract or tort, shall be limited to the amount paid by client for analyses. All claims, including those for negligence and any other cause whatsoever shall be deemed waived unless made in writing and received by Cardinal within thirty (30) days after completion of the applicable service. In no event shall Cardinal be liable for incidental or consequential damages, including, without limitation, business interruptions, loss of use, or loss of profits incurred by client, its subsidiaries, affiliates or successors arising out of or related to the performance of the services hereunder by Cardinal, regardless of whether such claim is based upon any of the above stated reasons or otherwise. Results relate only to the samples identified above. This report shall not be reproduced except in full with written approval of Cardinal Laboratories.

Celey D. Keene, Lab Director/Quality Manager



PHONE (575) 393-2326 ° 101 E. MARLAND ° HOBBS, NM 88240

Analytical Results For:

ALL CONSULTING, LLC
 SCOTT MEIER
 1718 S. CHEYENNE AVE.
 TULSA OK, 74119
 Fax To: NA

Received: 11/14/2023
 Reported: 11/17/2023
 Project Name: FME
 Project Number: 1893
 Project Location: NM

Sampling Date: 11/13/2023
 Sampling Type: Soil
 Sampling Condition: Cool & Intact
 Sample Received By: Shari Cisneros

Sample ID: CS3 - SS01 (H236210-10)

BTEx 8021B			mg/kg		Analyzed By: JH				
Analyte	Result	Reporting Limit	Analyzed	Method Blank	BS	% Recovery	True Value QC	RPD	Qualifier
Benzene*	<0.050	0.050	11/14/2023	ND	1.85	92.5	2.00	7.65	
Toluene*	<0.050	0.050	11/14/2023	ND	1.96	98.1	2.00	10.3	
Ethylbenzene*	<0.050	0.050	11/14/2023	ND	1.98	98.8	2.00	12.2	
Total Xylenes*	<0.150	0.150	11/14/2023	ND	6.02	100	6.00	13.5	
Total BTEX	<0.300	0.300	11/14/2023	ND					

Surrogate: 4-Bromofluorobenzene (PID) 116 % 71.5-134

Chloride, SM4500Cl-B		mg/kg		Analyzed By: AC					
Analyte	Result	Reporting Limit	Analyzed	Method Blank	BS	% Recovery	True Value QC	RPD	Qualifier
Chloride	3400	16.0	11/15/2023	ND	432	108	400	0.00	

TPH 8015M		mg/kg		Analyzed By: MS					
Analyte	Result	Reporting Limit	Analyzed	Method Blank	BS	% Recovery	True Value QC	RPD	Qualifier
GRO C6-C10*	<10.0	10.0	11/14/2023	ND	195	97.6	200	4.04	
DRO >C10-C28*	<10.0	10.0	11/14/2023	ND	200	100	200	0.868	
EXT DRO >C28-C36	<10.0	10.0	11/14/2023	ND					

Surrogate: 1-Chlorooctane 85.5 % 48.2-134

Surrogate: 1-Chlorooctadecane 96.9 % 49.1-148

Cardinal Laboratories

*=Accredited Analyte

PLEASE NOTE: Liability and Damages. Cardinal's liability and client's exclusive remedy for any claim arising, whether based in contract or tort, shall be limited to the amount paid by client for analyses. All claims, including those for negligence and any other cause whatsoever shall be deemed waived unless made in writing and received by Cardinal within thirty (30) days after completion of the applicable service. In no event shall Cardinal be liable for incidental or consequential damages, including, without limitation, business interruptions, loss of use, or loss of profits incurred by client, its subsidiaries, affiliates or successors arising out of or related to the performance of the services hereunder by Cardinal, regardless of whether such claim is based upon any of the above stated reasons or otherwise. Results relate only to the samples identified above. This report shall not be reproduced except in full with written approval of Cardinal Laboratories.

Celey D. Keene, Lab Director/Quality Manager



PHONE (575) 393-2326 ° 101 E. MARLAND ° HOBBS, NM 88240

Analytical Results For:

ALL CONSULTING, LLC
 SCOTT MEIER
 1718 S. CHEYENNE AVE.
 TULSA OK, 74119
 Fax To: NA

Received: 11/14/2023
 Reported: 11/17/2023
 Project Name: FME
 Project Number: 1893
 Project Location: NM

Sampling Date: 11/13/2023
 Sampling Type: Soil
 Sampling Condition: Cool & Intact
 Sample Received By: Shari Cisneros

Sample ID: CS3 - SS03 (H236210-11)

BTEx 8021B		mg/kg		Analyzed By: JH					
Analyte	Result	Reporting Limit	Analyzed	Method Blank	BS	% Recovery	True Value QC	RPD	Qualifier
Benzene*	<0.050	0.050	11/14/2023	ND	1.85	92.5	2.00	7.65	
Toluene*	<0.050	0.050	11/14/2023	ND	1.96	98.1	2.00	10.3	
Ethylbenzene*	<0.050	0.050	11/14/2023	ND	1.98	98.8	2.00	12.2	
Total Xylenes*	<0.150	0.150	11/14/2023	ND	6.02	100	6.00	13.5	
Total BTEX	<0.300	0.300	11/14/2023	ND					

Surrogate: 4-Bromofluorobenzene (PID) 116 % 71.5-134

Chloride, SM4500Cl-B		mg/kg		Analyzed By: AC					
Analyte	Result	Reporting Limit	Analyzed	Method Blank	BS	% Recovery	True Value QC	RPD	Qualifier
Chloride	2440	16.0	11/15/2023	ND	432	108	400	0.00	

TPH 8015M		mg/kg		Analyzed By: MS					
Analyte	Result	Reporting Limit	Analyzed	Method Blank	BS	% Recovery	True Value QC	RPD	Qualifier
GRO C6-C10*	<10.0	10.0	11/14/2023	ND	195	97.6	200	4.04	
DRO >C10-C28*	<10.0	10.0	11/14/2023	ND	200	100	200	0.868	
EXT DRO >C28-C36	<10.0	10.0	11/14/2023	ND					

Surrogate: 1-Chlorooctane 87.7 % 48.2-134

Surrogate: 1-Chlorooctadecane 101 % 49.1-148

Cardinal Laboratories

*=Accredited Analyte

PLEASE NOTE: Liability and Damages. Cardinal's liability and client's exclusive remedy for any claim arising, whether based in contract or tort, shall be limited to the amount paid by client for analyses. All claims, including those for negligence and any other cause whatsoever shall be deemed waived unless made in writing and received by Cardinal within thirty (30) days after completion of the applicable service. In no event shall Cardinal be liable for incidental or consequential damages, including, without limitation, business interruptions, loss of use, or loss of profits incurred by client, its subsidiaries, affiliates or successors arising out of or related to the performance of the services hereunder by Cardinal, regardless of whether such claim is based upon any of the above stated reasons or otherwise. Results relate only to the samples identified above. This report shall not be reproduced except in full with written approval of Cardinal Laboratories.

Celey D. Keene, Lab Director/Quality Manager



PHONE (575) 393-2326 ° 101 E. MARLAND ° HOBBS, NM 88240

Analytical Results For:

ALL CONSULTING, LLC
 SCOTT MEIER
 1718 S. CHEYENNE AVE.
 TULSA OK, 74119
 Fax To: NA

Received: 11/14/2023
 Reported: 11/17/2023
 Project Name: FME
 Project Number: 1893
 Project Location: NM

Sampling Date: 11/13/2023
 Sampling Type: Soil
 Sampling Condition: Cool & Intact
 Sample Received By: Shari Cisneros

Sample ID: CS3 - SS04 (H236210-12)

BTEx 8021B			mg/kg		Analyzed By: JH					
Analyte	Result	Reporting Limit	Analyzed	Method Blank	BS	% Recovery	True Value QC	RPD	Qualifier	
Benzene*	<0.050	0.050	11/14/2023	ND	1.85	92.5	2.00	7.65		
Toluene*	<0.050	0.050	11/14/2023	ND	1.96	98.1	2.00	10.3		
Ethylbenzene*	<0.050	0.050	11/14/2023	ND	1.98	98.8	2.00	12.2		
Total Xylenes*	<0.150	0.150	11/14/2023	ND	6.02	100	6.00	13.5		
Total BTEX	<0.300	0.300	11/14/2023	ND						

Surrogate: 4-Bromofluorobenzene (PID) 119 % 71.5-134

Chloride, SM4500Cl-B		mg/kg		Analyzed By: AC					
Analyte	Result	Reporting Limit	Analyzed	Method Blank	BS	% Recovery	True Value QC	RPD	Qualifier
Chloride	880	16.0	11/15/2023	ND	432	108	400	0.00	

TPH 8015M		mg/kg		Analyzed By: MS					
Analyte	Result	Reporting Limit	Analyzed	Method Blank	BS	% Recovery	True Value QC	RPD	Qualifier
GRO C6-C10*	<10.0	10.0	11/14/2023	ND	195	97.6	200	4.04	
DRO >C10-C28*	<10.0	10.0	11/14/2023	ND	200	100	200	0.868	
EXT DRO >C28-C36	<10.0	10.0	11/14/2023	ND					

Surrogate: 1-Chlorooctane 76.2 % 48.2-134

Surrogate: 1-Chlorooctadecane 87.2 % 49.1-148

Cardinal Laboratories

*=Accredited Analyte

PLEASE NOTE: Liability and Damages. Cardinal's liability and client's exclusive remedy for any claim arising, whether based in contract or tort, shall be limited to the amount paid by client for analyses. All claims, including those for negligence and any other cause whatsoever shall be deemed waived unless made in writing and received by Cardinal within thirty (30) days after completion of the applicable service. In no event shall Cardinal be liable for incidental or consequential damages, including, without limitation, business interruptions, loss of use, or loss of profits incurred by client, its subsidiaries, affiliates or successors arising out of or related to the performance of the services hereunder by Cardinal, regardless of whether such claim is based upon any of the above stated reasons or otherwise. Results relate only to the samples identified above. This report shall not be reproduced except in full with written approval of Cardinal Laboratories.

Celey D. Keene, Lab Director/Quality Manager



PHONE (575) 393-2326 ° 101 E. MARLAND ° HOBBS, NM 88240

Analytical Results For:

ALL CONSULTING, LLC
 SCOTT MEIER
 1718 S. CHEYENNE AVE.
 TULSA OK, 74119
 Fax To: NA

Received: 11/14/2023
 Reported: 11/17/2023
 Project Name: FME
 Project Number: 1893
 Project Location: NM

Sampling Date: 11/13/2023
 Sampling Type: Soil
 Sampling Condition: Cool & Intact
 Sample Received By: Shari Cisneros

Sample ID: CS3 - SS05 (H236210-13)

BTEx 8021B		mg/kg		Analyzed By: JH					
Analyte	Result	Reporting Limit	Analyzed	Method Blank	BS	% Recovery	True Value QC	RPD	Qualifier
Benzene*	<0.050	0.050	11/14/2023	ND	1.85	92.5	2.00	7.65	
Toluene*	<0.050	0.050	11/14/2023	ND	1.96	98.1	2.00	10.3	
Ethylbenzene*	<0.050	0.050	11/14/2023	ND	1.98	98.8	2.00	12.2	
Total Xylenes*	<0.150	0.150	11/14/2023	ND	6.02	100	6.00	13.5	
Total BTEX	<0.300	0.300	11/14/2023	ND					

Surrogate: 4-Bromofluorobenzene (PID) 115 % 71.5-134

Chloride, SM4500Cl-B		mg/kg		Analyzed By: AC					
Analyte	Result	Reporting Limit	Analyzed	Method Blank	BS	% Recovery	True Value QC	RPD	Qualifier
Chloride	48.0	16.0	11/15/2023	ND	432	108	400	0.00	

TPH 8015M		mg/kg		Analyzed By: MS					
Analyte	Result	Reporting Limit	Analyzed	Method Blank	BS	% Recovery	True Value QC	RPD	Qualifier
GRO C6-C10*	<10.0	10.0	11/15/2023	ND	195	97.6	200	4.04	
DRO >C10-C28*	894	10.0	11/15/2023	ND	200	100	200	0.868	
EXT DRO >C28-C36	583	10.0	11/15/2023	ND					

Surrogate: 1-Chlorooctane 93.4 % 48.2-134

Surrogate: 1-Chlorooctadecane 145 % 49.1-148

Cardinal Laboratories

*=Accredited Analyte

PLEASE NOTE: Liability and Damages. Cardinal's liability and client's exclusive remedy for any claim arising, whether based in contract or tort, shall be limited to the amount paid by client for analyses. All claims, including those for negligence and any other cause whatsoever shall be deemed waived unless made in writing and received by Cardinal within thirty (30) days after completion of the applicable service. In no event shall Cardinal be liable for incidental or consequential damages, including, without limitation, business interruptions, loss of use, or loss of profits incurred by client, its subsidiaries, affiliates or successors arising out of or related to the performance of the services hereunder by Cardinal, regardless of whether such claim is based upon any of the above stated reasons or otherwise. Results relate only to the samples identified above. This report shall not be reproduced except in full with written approval of Cardinal Laboratories.

Celey D. Keene, Lab Director/Quality Manager



PHONE (575) 393-2326 ° 101 E. MARLAND ° HOBBS, NM 88240

Analytical Results For:

ALL CONSULTING, LLC
 SCOTT MEIER
 1718 S. CHEYENNE AVE.
 TULSA OK, 74119
 Fax To: NA

Received: 11/14/2023
 Reported: 11/17/2023
 Project Name: FME
 Project Number: 1893
 Project Location: NM

Sampling Date: 11/13/2023
 Sampling Type: Soil
 Sampling Condition: Cool & Intact
 Sample Received By: Shari Cisneros

Sample ID: CS3 - SS07 (H236210-14)

BTEx 8021B		mg/kg		Analyzed By: JH						
Analyte	Result	Reporting Limit	Analyzed	Method Blank	BS	% Recovery	True Value QC	RPD	Qualifier	
Benzene*	<0.050	0.050	11/14/2023	ND	1.85	92.5	2.00	7.65		
Toluene*	<0.050	0.050	11/14/2023	ND	1.96	98.1	2.00	10.3		
Ethylbenzene*	<0.050	0.050	11/14/2023	ND	1.98	98.8	2.00	12.2		
Total Xylenes*	<0.150	0.150	11/14/2023	ND	6.02	100	6.00	13.5		
Total BTEX	<0.300	0.300	11/14/2023	ND						

Surrogate: 4-Bromofluorobenzene (PID) 116 % 71.5-134

Chloride, SM4500Cl-B		mg/kg		Analyzed By: AC						
Analyte	Result	Reporting Limit	Analyzed	Method Blank	BS	% Recovery	True Value QC	RPD	Qualifier	
Chloride	272	16.0	11/15/2023	ND	432	108	400	0.00		

TPH 8015M		mg/kg		Analyzed By: MS					
Analyte	Result	Reporting Limit	Analyzed	Method Blank	BS	% Recovery	True Value QC	RPD	Qualifier
GRO C6-C10*	<10.0	10.0	11/14/2023	ND	195	97.6	200	4.04	
DRO >C10-C28*	<10.0	10.0	11/14/2023	ND	200	100	200	0.868	
EXT DRO >C28-C36	<10.0	10.0	11/14/2023	ND					

Surrogate: 1-Chlorooctane 85.2 % 48.2-134

Surrogate: 1-Chlorooctadecane 96.2 % 49.1-148

Cardinal Laboratories

*=Accredited Analyte

PLEASE NOTE: Liability and Damages. Cardinal's liability and client's exclusive remedy for any claim arising, whether based in contract or tort, shall be limited to the amount paid by client for analyses. All claims, including those for negligence and any other cause whatsoever shall be deemed waived unless made in writing and received by Cardinal within thirty (30) days after completion of the applicable service. In no event shall Cardinal be liable for incidental or consequential damages, including, without limitation, business interruptions, loss of use, or loss of profits incurred by client, its subsidiaries, affiliates or successors arising out of or related to the performance of the services hereunder by Cardinal, regardless of whether such claim is based upon any of the above stated reasons or otherwise. Results relate only to the samples identified above. This report shall not be reproduced except in full with written approval of Cardinal Laboratories.

Celey D. Keene, Lab Director/Quality Manager



PHONE (575) 393-2326 ° 101 E. MARLAND ° HOBBS, NM 88240

Analytical Results For:

ALL CONSULTING, LLC
 SCOTT MEIER
 1718 S. CHEYENNE AVE.
 TULSA OK, 74119
 Fax To: NA

Received: 11/14/2023
 Reported: 11/17/2023
 Project Name: FME
 Project Number: 1893
 Project Location: NM

Sampling Date: 11/13/2023
 Sampling Type: Soil
 Sampling Condition: Cool & Intact
 Sample Received By: Shari Cisneros

Sample ID: CS3 - SS08 (H236210-15)

BTEx 8021B		mg/kg		Analyzed By: JH						
Analyte	Result	Reporting Limit	Analyzed	Method Blank	BS	% Recovery	True Value QC	RPD	Qualifier	
Benzene*	<0.050	0.050	11/14/2023	ND	1.85	92.5	2.00	7.65		
Toluene*	<0.050	0.050	11/14/2023	ND	1.96	98.1	2.00	10.3		
Ethylbenzene*	<0.050	0.050	11/14/2023	ND	1.98	98.8	2.00	12.2		
Total Xylenes*	<0.150	0.150	11/14/2023	ND	6.02	100	6.00	13.5		
Total BTEX	<0.300	0.300	11/14/2023	ND						

Surrogate: 4-Bromofluorobenzene (PID) 118 % 71.5-134

Chloride, SM4500Cl-B		mg/kg		Analyzed By: AC						
Analyte	Result	Reporting Limit	Analyzed	Method Blank	BS	% Recovery	True Value QC	RPD	Qualifier	
Chloride	224	16.0	11/15/2023	ND	432	108	400	0.00		

TPH 8015M		mg/kg		Analyzed By: MS					
Analyte	Result	Reporting Limit	Analyzed	Method Blank	BS	% Recovery	True Value QC	RPD	Qualifier
GRO C6-C10*	<10.0	10.0	11/14/2023	ND	195	97.6	200	4.04	
DRO >C10-C28*	<10.0	10.0	11/14/2023	ND	200	100	200	0.868	
EXT DRO >C28-C36	<10.0	10.0	11/14/2023	ND					

Surrogate: 1-Chlorooctane 85.3 % 48.2-134

Surrogate: 1-Chlorooctadecane 95.6 % 49.1-148

Cardinal Laboratories

*=Accredited Analyte

PLEASE NOTE: Liability and Damages. Cardinal's liability and client's exclusive remedy for any claim arising, whether based in contract or tort, shall be limited to the amount paid by client for analyses. All claims, including those for negligence and any other cause whatsoever shall be deemed waived unless made in writing and received by Cardinal within thirty (30) days after completion of the applicable service. In no event shall Cardinal be liable for incidental or consequential damages, including, without limitation, business interruptions, loss of use, or loss of profits incurred by client, its subsidiaries, affiliates or successors arising out of or related to the performance of the services hereunder by Cardinal, regardless of whether such claim is based upon any of the above stated reasons or otherwise. Results relate only to the samples identified above. This report shall not be reproduced except in full with written approval of Cardinal Laboratories.

Celey D. Keene, Lab Director/Quality Manager



PHONE (575) 393-2326 ° 101 E. MARLAND ° HOBBS, NM 88240

Analytical Results For:

ALL CONSULTING, LLC
 SCOTT MEIER
 1718 S. CHEYENNE AVE.
 TULSA OK, 74119
 Fax To: NA

Received: 11/14/2023
 Reported: 11/17/2023
 Project Name: FME
 Project Number: 1893
 Project Location: NM

Sampling Date: 11/13/2023
 Sampling Type: Soil
 Sampling Condition: Cool & Intact
 Sample Received By: Shari Cisneros

Sample ID: CS2 - SS01 (H236210-16)

BTEx 8021B		mg/kg		Analyzed By: JH					
Analyte	Result	Reporting Limit	Analyzed	Method Blank	BS	% Recovery	True Value QC	RPD	Qualifier
Benzene*	<0.050	0.050	11/14/2023	ND	1.85	92.5	2.00	7.65	
Toluene*	<0.050	0.050	11/14/2023	ND	1.96	98.1	2.00	10.3	
Ethylbenzene*	<0.050	0.050	11/14/2023	ND	1.98	98.8	2.00	12.2	
Total Xylenes*	<0.150	0.150	11/14/2023	ND	6.02	100	6.00	13.5	
Total BTEX	<0.300	0.300	11/14/2023	ND					

Surrogate: 4-Bromofluorobenzene (PID) 116 % 71.5-134

Chloride, SM4500Cl-B		mg/kg		Analyzed By: AC					
Analyte	Result	Reporting Limit	Analyzed	Method Blank	BS	% Recovery	True Value QC	RPD	Qualifier
Chloride	640	16.0	11/15/2023	ND	432	108	400	0.00	

TPH 8015M		mg/kg		Analyzed By: MS					
Analyte	Result	Reporting Limit	Analyzed	Method Blank	BS	% Recovery	True Value QC	RPD	Qualifier
GRO C6-C10*	<10.0	10.0	11/14/2023	ND	195	97.6	200	4.04	
DRO >C10-C28*	<10.0	10.0	11/14/2023	ND	200	100	200	0.868	
EXT DRO >C28-C36	<10.0	10.0	11/14/2023	ND					

Surrogate: 1-Chlorooctane 86.6 % 48.2-134

Surrogate: 1-Chlorooctadecane 99.4 % 49.1-148

Cardinal Laboratories

*=Accredited Analyte

PLEASE NOTE: Liability and Damages. Cardinal's liability and client's exclusive remedy for any claim arising, whether based in contract or tort, shall be limited to the amount paid by client for analyses. All claims, including those for negligence and any other cause whatsoever shall be deemed waived unless made in writing and received by Cardinal within thirty (30) days after completion of the applicable service. In no event shall Cardinal be liable for incidental or consequential damages, including, without limitation, business interruptions, loss of use, or loss of profits incurred by client, its subsidiaries, affiliates or successors arising out of or related to the performance of the services hereunder by Cardinal, regardless of whether such claim is based upon any of the above stated reasons or otherwise. Results relate only to the samples identified above. This report shall not be reproduced except in full with written approval of Cardinal Laboratories.

Celey D. Keene, Lab Director/Quality Manager



PHONE (575) 393-2326 ° 101 E. MARLAND ° HOBBS, NM 88240

Analytical Results For:

ALL CONSULTING, LLC
 SCOTT MEIER
 1718 S. CHEYENNE AVE.
 TULSA OK, 74119
 Fax To: NA

Received: 11/14/2023
 Reported: 11/17/2023
 Project Name: FME
 Project Number: 1893
 Project Location: NM

Sampling Date: 11/13/2023
 Sampling Type: Soil
 Sampling Condition: Cool & Intact
 Sample Received By: Shari Cisneros

Sample ID: CS2 - SS02 (H236210-17)

BTEx 8021B		mg/kg		Analyzed By: JH						
Analyte	Result	Reporting Limit	Analyzed	Method Blank	BS	% Recovery	True Value QC	RPD	Qualifier	
Benzene*	<0.050	0.050	11/15/2023	ND	2.08	104	2.00	9.98		
Toluene*	<0.050	0.050	11/15/2023	ND	2.23	112	2.00	7.88		
Ethylbenzene*	<0.050	0.050	11/15/2023	ND	2.45	123	2.00	9.56		
Total Xylenes*	<0.150	0.150	11/15/2023	ND	7.41	123	6.00	9.26		
Total BTEX	<0.300	0.300	11/15/2023	ND						

Surrogate: 4-Bromofluorobenzene (PID) 111 % 71.5-134

Chloride, SM4500Cl-B		mg/kg		Analyzed By: AC						
Analyte	Result	Reporting Limit	Analyzed	Method Blank	BS	% Recovery	True Value QC	RPD	Qualifier	
Chloride	1800	16.0	11/15/2023	ND	432	108	400	0.00		

TPH 8015M		mg/kg		Analyzed By: MS					
Analyte	Result	Reporting Limit	Analyzed	Method Blank	BS	% Recovery	True Value QC	RPD	Qualifier
GRO C6-C10*	<10.0	10.0	11/14/2023	ND	195	97.6	200	4.04	
DRO >C10-C28*	<10.0	10.0	11/14/2023	ND	200	100	200	0.868	
EXT DRO >C28-C36	<10.0	10.0	11/14/2023	ND					

Surrogate: 1-Chlorooctane 89.0 % 48.2-134

Surrogate: 1-Chlorooctadecane 102 % 49.1-148

Cardinal Laboratories

*=Accredited Analyte

PLEASE NOTE: Liability and Damages. Cardinal's liability and client's exclusive remedy for any claim arising, whether based in contract or tort, shall be limited to the amount paid by client for analyses. All claims, including those for negligence and any other cause whatsoever shall be deemed waived unless made in writing and received by Cardinal within thirty (30) days after completion of the applicable service. In no event shall Cardinal be liable for incidental or consequential damages, including, without limitation, business interruptions, loss of use, or loss of profits incurred by client, its subsidiaries, affiliates or successors arising out of or related to the performance of the services hereunder by Cardinal, regardless of whether such claim is based upon any of the above stated reasons or otherwise. Results relate only to the samples identified above. This report shall not be reproduced except in full with written approval of Cardinal Laboratories.

Celey D. Keene, Lab Director/Quality Manager



PHONE (575) 393-2326 ° 101 E. MARLAND ° HOBBS, NM 88240

Analytical Results For:

ALL CONSULTING, LLC
 SCOTT MEIER
 1718 S. CHEYENNE AVE.
 TULSA OK, 74119
 Fax To: NA

Received: 11/14/2023
 Reported: 11/17/2023
 Project Name: FME
 Project Number: 1893
 Project Location: NM

Sampling Date: 11/13/2023
 Sampling Type: Soil
 Sampling Condition: Cool & Intact
 Sample Received By: Shari Cisneros

Sample ID: CS2 - SS03 (H236210-18)

BTEx 8021B		mg/kg		Analyzed By: JH					
Analyte	Result	Reporting Limit	Analyzed	Method Blank	BS	% Recovery	True Value QC	RPD	Qualifier
Benzene*	<0.050	0.050	11/15/2023	ND	2.08	104	2.00	9.98	
Toluene*	<0.050	0.050	11/15/2023	ND	2.23	112	2.00	7.88	
Ethylbenzene*	<0.050	0.050	11/15/2023	ND	2.45	123	2.00	9.56	
Total Xylenes*	<0.150	0.150	11/15/2023	ND	7.41	123	6.00	9.26	
Total BTEX	<0.300	0.300	11/15/2023	ND					

Surrogate: 4-Bromofluorobenzene (PID) 105 % 71.5-134

Chloride, SM4500Cl-B		mg/kg		Analyzed By: AC					
Analyte	Result	Reporting Limit	Analyzed	Method Blank	BS	% Recovery	True Value QC	RPD	Qualifier
Chloride	480	16.0	11/15/2023	ND	432	108	400	0.00	

TPH 8015M		mg/kg		Analyzed By: MS					
Analyte	Result	Reporting Limit	Analyzed	Method Blank	BS	% Recovery	True Value QC	RPD	Qualifier
GRO C6-C10*	<10.0	10.0	11/14/2023	ND	195	97.6	200	4.04	
DRO >C10-C28*	<10.0	10.0	11/14/2023	ND	200	100	200	0.868	
EXT DRO >C28-C36	<10.0	10.0	11/14/2023	ND					

Surrogate: 1-Chlorooctane 80.0 % 48.2-134

Surrogate: 1-Chlorooctadecane 90.9 % 49.1-148

Cardinal Laboratories

*=Accredited Analyte

PLEASE NOTE: Liability and Damages. Cardinal's liability and client's exclusive remedy for any claim arising, whether based in contract or tort, shall be limited to the amount paid by client for analyses. All claims, including those for negligence and any other cause whatsoever shall be deemed waived unless made in writing and received by Cardinal within thirty (30) days after completion of the applicable service. In no event shall Cardinal be liable for incidental or consequential damages, including, without limitation, business interruptions, loss of use, or loss of profits incurred by client, its subsidiaries, affiliates or successors arising out of or related to the performance of the services hereunder by Cardinal, regardless of whether such claim is based upon any of the above stated reasons or otherwise. Results relate only to the samples identified above. This report shall not be reproduced except in full with written approval of Cardinal Laboratories.

Celey D. Keene, Lab Director/Quality Manager



PHONE (575) 393-2326 ° 101 E. MARLAND ° HOBBS, NM 88240

Analytical Results For:

ALL CONSULTING, LLC
 SCOTT MEIER
 1718 S. CHEYENNE AVE.
 TULSA OK, 74119
 Fax To: NA

Received: 11/14/2023
 Reported: 11/17/2023
 Project Name: FME
 Project Number: 1893
 Project Location: NM

Sampling Date: 11/13/2023
 Sampling Type: Soil
 Sampling Condition: Cool & Intact
 Sample Received By: Shari Cisneros

Sample ID: CS2 - SS04 (H236210-19)

BTEx 8021B		mg/kg		Analyzed By: JH					
Analyte	Result	Reporting Limit	Analyzed	Method Blank	BS	% Recovery	True Value QC	RPD	Qualifier
Benzene*	<0.050	0.050	11/15/2023	ND	2.08	104	2.00	9.98	
Toluene*	<0.050	0.050	11/15/2023	ND	2.23	112	2.00	7.88	
Ethylbenzene*	<0.050	0.050	11/15/2023	ND	2.45	123	2.00	9.56	
Total Xylenes*	<0.150	0.150	11/15/2023	ND	7.41	123	6.00	9.26	
Total BTEX	<0.300	0.300	11/15/2023	ND					

Surrogate: 4-Bromofluorobenzene (PID) 116 % 71.5-134

Chloride, SM4500Cl-B		mg/kg		Analyzed By: AC					
Analyte	Result	Reporting Limit	Analyzed	Method Blank	BS	% Recovery	True Value QC	RPD	Qualifier
Chloride	2800	16.0	11/15/2023	ND	432	108	400	0.00	

TPH 8015M		mg/kg		Analyzed By: MS					
Analyte	Result	Reporting Limit	Analyzed	Method Blank	BS	% Recovery	True Value QC	RPD	Qualifier
GRO C6-C10*	<10.0	10.0	11/15/2023	ND	195	97.6	200	4.04	
DRO >C10-C28*	<10.0	10.0	11/15/2023	ND	200	100	200	0.868	
EXT DRO >C28-C36	<10.0	10.0	11/15/2023	ND					

Surrogate: 1-Chlorooctane 81.2 % 48.2-134

Surrogate: 1-Chlorooctadecane 93.5 % 49.1-148

Cardinal Laboratories

*=Accredited Analyte

PLEASE NOTE: Liability and Damages. Cardinal's liability and client's exclusive remedy for any claim arising, whether based in contract or tort, shall be limited to the amount paid by client for analyses. All claims, including those for negligence and any other cause whatsoever shall be deemed waived unless made in writing and received by Cardinal within thirty (30) days after completion of the applicable service. In no event shall Cardinal be liable for incidental or consequential damages, including, without limitation, business interruptions, loss of use, or loss of profits incurred by client, its subsidiaries, affiliates or successors arising out of or related to the performance of the services hereunder by Cardinal, regardless of whether such claim is based upon any of the above stated reasons or otherwise. Results relate only to the samples identified above. This report shall not be reproduced except in full with written approval of Cardinal Laboratories.

Celey D. Keene, Lab Director/Quality Manager



PHONE (575) 393-2326 ° 101 E. MARLAND ° HOBBS, NM 88240

Analytical Results For:

ALL CONSULTING, LLC
 SCOTT MEIER
 1718 S. CHEYENNE AVE.
 TULSA OK, 74119
 Fax To: NA

Received: 11/14/2023
 Reported: 11/17/2023
 Project Name: FME
 Project Number: 1893
 Project Location: NM

Sampling Date: 11/13/2023
 Sampling Type: Soil
 Sampling Condition: Cool & Intact
 Sample Received By: Shari Cisneros

Sample ID: SVU 261 -SS01 (H236210-20)

BTEx 8021B		mg/kg		Analyzed By: JH					
Analyte	Result	Reporting Limit	Analyzed	Method Blank	BS	% Recovery	True Value QC	RPD	Qualifier
Benzene*	<0.050	0.050	11/15/2023	ND	2.08	104	2.00	9.98	
Toluene*	<0.050	0.050	11/15/2023	ND	2.23	112	2.00	7.88	
Ethylbenzene*	<0.050	0.050	11/15/2023	ND	2.45	123	2.00	9.56	
Total Xylenes*	<0.150	0.150	11/15/2023	ND	7.41	123	6.00	9.26	
Total BTEX	<0.300	0.300	11/15/2023	ND					

Surrogate: 4-Bromofluorobenzene (PID) 115 % 71.5-134

Chloride, SM4500CI-B		mg/kg		Analyzed By: AC						
Analyte	Result	Reporting Limit	Analyzed	Method Blank	BS	% Recovery	True Value QC	RPD	Qualifier	
Chloride	32.0	16.0	11/15/2023	ND	432	108	400	0.00		

TPH 8015M		mg/kg		Analyzed By: MS					
Analyte	Result	Reporting Limit	Analyzed	Method Blank	BS	% Recovery	True Value QC	RPD	Qualifier
GRO C6-C10*	<10.0	10.0	11/15/2023	ND	195	97.6	200	4.04	
DRO >C10-C28*	<10.0	10.0	11/15/2023	ND	200	100	200	0.868	
EXT DRO >C28-C36	<10.0	10.0	11/15/2023	ND					

Surrogate: 1-Chlorooctane 96.1 % 48.2-134

Surrogate: 1-Chlorooctadecane 109 % 49.1-148

Cardinal Laboratories

*=Accredited Analyte

PLEASE NOTE: Liability and Damages. Cardinal's liability and client's exclusive remedy for any claim arising, whether based in contract or tort, shall be limited to the amount paid by client for analyses. All claims, including those for negligence and any other cause whatsoever shall be deemed waived unless made in writing and received by Cardinal within thirty (30) days after completion of the applicable service. In no event shall Cardinal be liable for incidental or consequential damages, including, without limitation, business interruptions, loss of use, or loss of profits incurred by client, its subsidiaries, affiliates or successors arising out of or related to the performance of the services hereunder by Cardinal, regardless of whether such claim is based upon any of the above stated reasons or otherwise. Results relate only to the samples identified above. This report shall not be reproduced except in full with written approval of Cardinal Laboratories.

Celey D. Keene, Lab Director/Quality Manager



PHONE (575) 393-2326 ° 101 E. MARLAND ° HOBBS, NM 88240

Analytical Results For:

ALL CONSULTING, LLC
 SCOTT MEIER
 1718 S. CHEYENNE AVE.
 TULSA OK, 74119
 Fax To: NA

Received: 11/14/2023
 Reported: 11/17/2023
 Project Name: FME
 Project Number: 1893
 Project Location: NM

Sampling Date: 11/13/2023
 Sampling Type: Soil
 Sampling Condition: Cool & Intact
 Sample Received By: Shari Cisneros

Sample ID: SVU 261 -SS02 (H236210-21)

BTX 8021B		mg/kg		Analyzed By: JH					
Analyte	Result	Reporting Limit	Analyzed	Method Blank	BS	% Recovery	True Value QC	RPD	Qualifier
Benzene*	<0.050	0.050	11/15/2023	ND	2.08	104	2.00	9.98	
Toluene*	<0.050	0.050	11/15/2023	ND	2.23	112	2.00	7.88	
Ethylbenzene*	<0.050	0.050	11/15/2023	ND	2.45	123	2.00	9.56	
Total Xylenes*	<0.150	0.150	11/15/2023	ND	7.41	123	6.00	9.26	
Total BTX	<0.300	0.300	11/15/2023	ND					

Surrogate: 4-Bromofluorobenzene (PID) 111 % 71.5-134

Chloride, SM4500Cl-B		mg/kg		Analyzed By: AC					
Analyte	Result	Reporting Limit	Analyzed	Method Blank	BS	% Recovery	True Value QC	RPD	Qualifier
Chloride	128	16.0	11/15/2023	ND	432	108	400	0.00	

TPH 8015M		mg/kg		Analyzed By: MS					
Analyte	Result	Reporting Limit	Analyzed	Method Blank	BS	% Recovery	True Value QC	RPD	Qualifier
GRO C6-C10*	<10.0	10.0	11/15/2023	ND	195	97.6	200	4.04	
DRO >C10-C28*	11.3	10.0	11/15/2023	ND	200	100	200	0.868	
EXT DRO >C28-C36	<10.0	10.0	11/15/2023	ND					

Surrogate: 1-Chlorooctane 69.1 % 48.2-134

Surrogate: 1-Chlorooctadecane 79.0 % 49.1-148

Cardinal Laboratories

*=Accredited Analyte

PLEASE NOTE: Liability and Damages. Cardinal's liability and client's exclusive remedy for any claim arising, whether based in contract or tort, shall be limited to the amount paid by client for analyses. All claims, including those for negligence and any other cause whatsoever shall be deemed waived unless made in writing and received by Cardinal within thirty (30) days after completion of the applicable service. In no event shall Cardinal be liable for incidental or consequential damages, including, without limitation, business interruptions, loss of use, or loss of profits incurred by client, its subsidiaries, affiliates or successors arising out of or related to the performance of the services hereunder by Cardinal, regardless of whether such claim is based upon any of the above stated reasons or otherwise. Results relate only to the samples identified above. This report shall not be reproduced except in full with written approval of Cardinal Laboratories.

Celey D. Keene, Lab Director/Quality Manager



PHONE (575) 393-2326 ° 101 E. MARLAND ° HOBBS, NM 88240

Analytical Results For:

ALL CONSULTING, LLC
 SCOTT MEIER
 1718 S. CHEYENNE AVE.
 TULSA OK, 74119
 Fax To: NA

Received: 11/14/2023
 Reported: 11/17/2023
 Project Name: FME
 Project Number: 1893
 Project Location: NM

Sampling Date: 11/13/2023
 Sampling Type: Soil
 Sampling Condition: Cool & Intact
 Sample Received By: Shari Cisneros

Sample ID: SVU 261 -SS03 (H236210-22)

BTEx 8021B		mg/kg		Analyzed By: JH					
Analyte	Result	Reporting Limit	Analyzed	Method Blank	BS	% Recovery	True Value QC	RPD	Qualifier
Benzene*	<0.050	0.050	11/15/2023	ND	2.08	104	2.00	9.98	
Toluene*	<0.050	0.050	11/15/2023	ND	2.23	112	2.00	7.88	
Ethylbenzene*	<0.050	0.050	11/15/2023	ND	2.45	123	2.00	9.56	
Total Xylenes*	<0.150	0.150	11/15/2023	ND	7.41	123	6.00	9.26	
Total BTEX	<0.300	0.300	11/15/2023	ND					

Surrogate: 4-Bromofluorobenzene (PID) 111 % 71.5-134

Chloride, SM4500Cl-B		mg/kg		Analyzed By: AC					
Analyte	Result	Reporting Limit	Analyzed	Method Blank	BS	% Recovery	True Value QC	RPD	Qualifier
Chloride	1040	16.0	11/15/2023	ND	432	108	400	0.00	

TPH 8015M		mg/kg		Analyzed By: MS					
Analyte	Result	Reporting Limit	Analyzed	Method Blank	BS	% Recovery	True Value QC	RPD	Qualifier
GRO C6-C10*	<10.0	10.0	11/15/2023	ND	195	97.6	200	4.04	
DRO >C10-C28*	27.5	10.0	11/15/2023	ND	200	100	200	0.868	
EXT DRO >C28-C36	<10.0	10.0	11/15/2023	ND					

Surrogate: 1-Chlorooctane 83.0 % 48.2-134

Surrogate: 1-Chlorooctadecane 97.9 % 49.1-148

Cardinal Laboratories

*=Accredited Analyte

PLEASE NOTE: Liability and Damages. Cardinal's liability and client's exclusive remedy for any claim arising, whether based in contract or tort, shall be limited to the amount paid by client for analyses. All claims, including those for negligence and any other cause whatsoever shall be deemed waived unless made in writing and received by Cardinal within thirty (30) days after completion of the applicable service. In no event shall Cardinal be liable for incidental or consequential damages, including, without limitation, business interruptions, loss of use, or loss of profits incurred by client, its subsidiaries, affiliates or successors arising out of or related to the performance of the services hereunder by Cardinal, regardless of whether such claim is based upon any of the above stated reasons or otherwise. Results relate only to the samples identified above. This report shall not be reproduced except in full with written approval of Cardinal Laboratories.

Celey D. Keene, Lab Director/Quality Manager



PHONE (575) 393-2326 ° 101 E. MARLAND ° HOBBS, NM 88240

Analytical Results For:

ALL CONSULTING, LLC
 SCOTT MEIER
 1718 S. CHEYENNE AVE.
 TULSA OK, 74119
 Fax To: NA

Received: 11/14/2023
 Reported: 11/17/2023
 Project Name: FME
 Project Number: 1893
 Project Location: NM

Sampling Date: 11/13/2023
 Sampling Type: Soil
 Sampling Condition: Cool & Intact
 Sample Received By: Shari Cisneros

Sample ID: SVU 261 -SS04 (H236210-23)

BTEx 8021B		mg/kg		Analyzed By: JH						
Analyte	Result	Reporting Limit	Analyzed	Method Blank	BS	% Recovery	True Value QC	RPD	Qualifier	
Benzene*	<0.050	0.050	11/15/2023	ND	2.08	104	2.00	9.98		
Toluene*	<0.050	0.050	11/15/2023	ND	2.23	112	2.00	7.88		
Ethylbenzene*	<0.050	0.050	11/15/2023	ND	2.45	123	2.00	9.56		
Total Xylenes*	<0.150	0.150	11/15/2023	ND	7.41	123	6.00	9.26		
Total BTEX	<0.300	0.300	11/15/2023	ND						

Surrogate: 4-Bromofluorobenzene (PID) 99.8 % 71.5-134

Chloride, SM4500Cl-B		mg/kg		Analyzed By: AC						
Analyte	Result	Reporting Limit	Analyzed	Method Blank	BS	% Recovery	True Value QC	RPD	Qualifier	
Chloride	3080	16.0	11/15/2023	ND	432	108	400	0.00		

TPH 8015M		mg/kg		Analyzed By: MS					
Analyte	Result	Reporting Limit	Analyzed	Method Blank	BS	% Recovery	True Value QC	RPD	Qualifier
GRO C6-C10*	<10.0	10.0	11/15/2023	ND	195	97.6	200	4.04	
DRO >C10-C28*	<10.0	10.0	11/15/2023	ND	200	100	200	0.868	
EXT DRO >C28-C36	<10.0	10.0	11/15/2023	ND					

Surrogate: 1-Chlorooctane 82.7 % 48.2-134

Surrogate: 1-Chlorooctadecane 96.1 % 49.1-148

Cardinal Laboratories

*=Accredited Analyte

PLEASE NOTE: Liability and Damages. Cardinal's liability and client's exclusive remedy for any claim arising, whether based in contract or tort, shall be limited to the amount paid by client for analyses. All claims, including those for negligence and any other cause whatsoever shall be deemed waived unless made in writing and received by Cardinal within thirty (30) days after completion of the applicable service. In no event shall Cardinal be liable for incidental or consequential damages, including, without limitation, business interruptions, loss of use, or loss of profits incurred by client, its subsidiaries, affiliates or successors arising out of or related to the performance of the services hereunder by Cardinal, regardless of whether such claim is based upon any of the above stated reasons or otherwise. Results relate only to the samples identified above. This report shall not be reproduced except in full with written approval of Cardinal Laboratories.

Celey D. Keene, Lab Director/Quality Manager



PHONE (575) 393-2326 ° 101 E. MARLAND ° HOBBS, NM 88240

Analytical Results For:

ALL CONSULTING, LLC
 SCOTT MEIER
 1718 S. CHEYENNE AVE.
 TULSA OK, 74119
 Fax To: NA

Received: 11/14/2023
 Reported: 11/17/2023
 Project Name: FME
 Project Number: 1893
 Project Location: NM

Sampling Date: 11/13/2023
 Sampling Type: Soil
 Sampling Condition: Cool & Intact
 Sample Received By: Shari Cisneros

Sample ID: SVU 261 -SS05 (H236210-24)

BTEx 8021B		mg/kg		Analyzed By: JH					
Analyte	Result	Reporting Limit	Analyzed	Method Blank	BS	% Recovery	True Value QC	RPD	Qualifier
Benzene*	<0.050	0.050	11/15/2023	ND	2.08	104	2.00	9.98	
Toluene*	<0.050	0.050	11/15/2023	ND	2.23	112	2.00	7.88	
Ethylbenzene*	<0.050	0.050	11/15/2023	ND	2.45	123	2.00	9.56	
Total Xylenes*	<0.150	0.150	11/15/2023	ND	7.41	123	6.00	9.26	
Total BTEX	<0.300	0.300	11/15/2023	ND					

Surrogate: 4-Bromofluorobenzene (PID) 116 % 71.5-134

Chloride, SM4500Cl-B		mg/kg		Analyzed By: AC					
Analyte	Result	Reporting Limit	Analyzed	Method Blank	BS	% Recovery	True Value QC	RPD	Qualifier
Chloride	592	16.0	11/15/2023	ND	432	108	400	0.00	

TPH 8015M		mg/kg		Analyzed By: MS					
Analyte	Result	Reporting Limit	Analyzed	Method Blank	BS	% Recovery	True Value QC	RPD	Qualifier
GRO C6-C10*	<10.0	10.0	11/15/2023	ND	195	97.6	200	4.04	
DRO >C10-C28*	<10.0	10.0	11/15/2023	ND	200	100	200	0.868	
EXT DRO >C28-C36	<10.0	10.0	11/15/2023	ND					

Surrogate: 1-Chlorooctane 83.6 % 48.2-134

Surrogate: 1-Chlorooctadecane 98.0 % 49.1-148

Cardinal Laboratories

*=Accredited Analyte

PLEASE NOTE: Liability and Damages. Cardinal's liability and client's exclusive remedy for any claim arising, whether based in contract or tort, shall be limited to the amount paid by client for analyses. All claims, including those for negligence and any other cause whatsoever shall be deemed waived unless made in writing and received by Cardinal within thirty (30) days after completion of the applicable service. In no event shall Cardinal be liable for incidental or consequential damages, including, without limitation, business interruptions, loss of use, or loss of profits incurred by client, its subsidiaries, affiliates or successors arising out of or related to the performance of the services hereunder by Cardinal, regardless of whether such claim is based upon any of the above stated reasons or otherwise. Results relate only to the samples identified above. This report shall not be reproduced except in full with written approval of Cardinal Laboratories.

Celey D. Keene, Lab Director/Quality Manager



PHONE (575) 393-2326 ° 101 E. MARLAND ° HOBBS, NM 88240

Analytical Results For:

ALL CONSULTING, LLC
 SCOTT MEIER
 1718 S. CHEYENNE AVE.
 TULSA OK, 74119
 Fax To: NA

Received: 11/14/2023
 Reported: 11/17/2023
 Project Name: FME
 Project Number: 1893
 Project Location: NM

Sampling Date: 11/13/2023
 Sampling Type: Soil
 Sampling Condition: Cool & Intact
 Sample Received By: Shari Cisneros

Sample ID: SVU 261 -SS06 (H236210-25)

BTEx 8021B		mg/kg		Analyzed By: JH						
Analyte	Result	Reporting Limit	Analyzed	Method Blank	BS	% Recovery	True Value QC	RPD	Qualifier	
Benzene*	<0.050	0.050	11/15/2023	ND	2.08	104	2.00	9.98		
Toluene*	<0.050	0.050	11/15/2023	ND	2.23	112	2.00	7.88		
Ethylbenzene*	<0.050	0.050	11/15/2023	ND	2.45	123	2.00	9.56		
Total Xylenes*	<0.150	0.150	11/15/2023	ND	7.41	123	6.00	9.26		
Total BTEX	<0.300	0.300	11/15/2023	ND						

Surrogate: 4-Bromofluorobenzene (PID) 119 % 71.5-134

Chloride, SM4500Cl-B		mg/kg		Analyzed By: HM						
Analyte	Result	Reporting Limit	Analyzed	Method Blank	BS	% Recovery	True Value QC	RPD	Qualifier	
Chloride	3480	16.0	11/15/2023	ND	432	108	400	3.64	QM-07	

TPH 8015M		mg/kg		Analyzed By: MS					
Analyte	Result	Reporting Limit	Analyzed	Method Blank	BS	% Recovery	True Value QC	RPD	Qualifier
GRO C6-C10*	42.5	10.0	11/15/2023	ND	195	97.6	200	4.04	
DRO >C10-C28*	3090	10.0	11/15/2023	ND	200	100	200	0.868	
EXT DRO >C28-C36	584	10.0	11/15/2023	ND					

Surrogate: 1-Chlorooctane 102 % 48.2-134

Surrogate: 1-Chlorooctadecane 106 % 49.1-148

Cardinal Laboratories

*=Accredited Analyte

PLEASE NOTE: Liability and Damages. Cardinal's liability and client's exclusive remedy for any claim arising, whether based in contract or tort, shall be limited to the amount paid by client for analyses. All claims, including those for negligence and any other cause whatsoever shall be deemed waived unless made in writing and received by Cardinal within thirty (30) days after completion of the applicable service. In no event shall Cardinal be liable for incidental or consequential damages, including, without limitation, business interruptions, loss of use, or loss of profits incurred by client, its subsidiaries, affiliates or successors arising out of or related to the performance of the services hereunder by Cardinal, regardless of whether such claim is based upon any of the above stated reasons or otherwise. Results relate only to the samples identified above. This report shall not be reproduced except in full with written approval of Cardinal Laboratories.

Celey D. Keene, Lab Director/Quality Manager



PHONE (575) 393-2326 ° 101 E. MARLAND ° HOBBS, NM 88240

Analytical Results For:

ALL CONSULTING, LLC
 SCOTT MEIER
 1718 S. CHEYENNE AVE.
 TULSA OK, 74119
 Fax To: NA

Received: 11/14/2023
 Reported: 11/17/2023
 Project Name: FME
 Project Number: 1893
 Project Location: NM

Sampling Date: 11/13/2023
 Sampling Type: Soil
 Sampling Condition: Cool & Intact
 Sample Received By: Shari Cisneros

Sample ID: SVU 261 -SS07 (H236210-26)

BTEx 8021B		mg/kg		Analyzed By: JH					
Analyte	Result	Reporting Limit	Analyzed	Method Blank	BS	% Recovery	True Value QC	RPD	Qualifier
Benzene*	<0.050	0.050	11/15/2023	ND	2.08	104	2.00	9.98	
Toluene*	<0.050	0.050	11/15/2023	ND	2.23	112	2.00	7.88	
Ethylbenzene*	<0.050	0.050	11/15/2023	ND	2.45	123	2.00	9.56	
Total Xylenes*	<0.150	0.150	11/15/2023	ND	7.41	123	6.00	9.26	
Total BTEX	<0.300	0.300	11/15/2023	ND					

Surrogate: 4-Bromofluorobenzene (PID) 103 % 71.5-134

Chloride, SM4500Cl-B		mg/kg		Analyzed By: HM						
Analyte	Result	Reporting Limit	Analyzed	Method Blank	BS	% Recovery	True Value QC	RPD	Qualifier	
Chloride	400	16.0	11/15/2023	ND	432	108	400	3.64		

TPH 8015M		mg/kg		Analyzed By: MS					
Analyte	Result	Reporting Limit	Analyzed	Method Blank	BS	% Recovery	True Value QC	RPD	Qualifier
GRO C6-C10*	<10.0	10.0	11/15/2023	ND	195	97.6	200	4.04	
DRO >C10-C28*	11.7	10.0	11/15/2023	ND	200	100	200	0.868	
EXT DRO >C28-C36	<10.0	10.0	11/15/2023	ND					

Surrogate: 1-Chlorooctane 75.8 % 48.2-134

Surrogate: 1-Chlorooctadecane 88.8 % 49.1-148

Cardinal Laboratories

*=Accredited Analyte

PLEASE NOTE: Liability and Damages. Cardinal's liability and client's exclusive remedy for any claim arising, whether based in contract or tort, shall be limited to the amount paid by client for analyses. All claims, including those for negligence and any other cause whatsoever shall be deemed waived unless made in writing and received by Cardinal within thirty (30) days after completion of the applicable service. In no event shall Cardinal be liable for incidental or consequential damages, including, without limitation, business interruptions, loss of use, or loss of profits incurred by client, its subsidiaries, affiliates or successors arising out of or related to the performance of the services hereunder by Cardinal, regardless of whether such claim is based upon any of the above stated reasons or otherwise. Results relate only to the samples identified above. This report shall not be reproduced except in full with written approval of Cardinal Laboratories.

Celey D. Keene, Lab Director/Quality Manager



PHONE (575) 393-2326 ° 101 E. MARLAND ° HOBBS, NM 88240

Analytical Results For:

ALL CONSULTING, LLC
 SCOTT MEIER
 1718 S. CHEYENNE AVE.
 TULSA OK, 74119
 Fax To: NA

Received: 11/14/2023
 Reported: 11/17/2023
 Project Name: FME
 Project Number: 1893
 Project Location: NM

Sampling Date: 11/13/2023
 Sampling Type: Soil
 Sampling Condition: Cool & Intact
 Sample Received By: Shari Cisneros

Sample ID: SVU 353 -SS01 (H236210-27)

BTEx 8021B		mg/kg		Analyzed By: JH						
Analyte	Result	Reporting Limit	Analyzed	Method Blank	BS	% Recovery	True Value QC	RPD	Qualifier	
Benzene*	<0.050	0.050	11/15/2023	ND	2.08	104	2.00	9.98		
Toluene*	<0.050	0.050	11/15/2023	ND	2.23	112	2.00	7.88		
Ethylbenzene*	<0.050	0.050	11/15/2023	ND	2.45	123	2.00	9.56		
Total Xylenes*	<0.150	0.150	11/15/2023	ND	7.41	123	6.00	9.26		
Total BTEX	<0.300	0.300	11/15/2023	ND						

Surrogate: 4-Bromofluorobenzene (PID) 110 % 71.5-134

Chloride, SM4500Cl-B		mg/kg		Analyzed By: HM						
Analyte	Result	Reporting Limit	Analyzed	Method Blank	BS	% Recovery	True Value QC	RPD	Qualifier	
Chloride	560	16.0	11/15/2023	ND	432	108	400	3.64		

TPH 8015M		mg/kg		Analyzed By: MS					
Analyte	Result	Reporting Limit	Analyzed	Method Blank	BS	% Recovery	True Value QC	RPD	Qualifier
GRO C6-C10*	<10.0	10.0	11/15/2023	ND	195	97.6	200	4.04	
DRO >C10-C28*	20.9	10.0	11/15/2023	ND	200	100	200	0.868	
EXT DRO >C28-C36	<10.0	10.0	11/15/2023	ND					

Surrogate: 1-Chlorooctane 79.9 % 48.2-134

Surrogate: 1-Chlorooctadecane 93.7 % 49.1-148

Cardinal Laboratories

*=Accredited Analyte

PLEASE NOTE: Liability and Damages. Cardinal's liability and client's exclusive remedy for any claim arising, whether based in contract or tort, shall be limited to the amount paid by client for analyses. All claims, including those for negligence and any other cause whatsoever shall be deemed waived unless made in writing and received by Cardinal within thirty (30) days after completion of the applicable service. In no event shall Cardinal be liable for incidental or consequential damages, including, without limitation, business interruptions, loss of use, or loss of profits incurred by client, its subsidiaries, affiliates or successors arising out of or related to the performance of the services hereunder by Cardinal, regardless of whether such claim is based upon any of the above stated reasons or otherwise. Results relate only to the samples identified above. This report shall not be reproduced except in full with written approval of Cardinal Laboratories.

Celey D. Keene, Lab Director/Quality Manager



PHONE (575) 393-2326 ° 101 E. MARLAND ° HOBBS, NM 88240

Analytical Results For:

ALL CONSULTING, LLC
 SCOTT MEIER
 1718 S. CHEYENNE AVE.
 TULSA OK, 74119
 Fax To: NA

Received: 11/14/2023
 Reported: 11/17/2023
 Project Name: FME
 Project Number: 1893
 Project Location: NM

Sampling Date: 11/13/2023
 Sampling Type: Soil
 Sampling Condition: Cool & Intact
 Sample Received By: Shari Cisneros

Sample ID: SVU 353 -SS02 (H236210-28)

BTEx 8021B		mg/kg		Analyzed By: JH					
Analyte	Result	Reporting Limit	Analyzed	Method Blank	BS	% Recovery	True Value QC	RPD	Qualifier
Benzene*	<0.050	0.050	11/15/2023	ND	2.08	104	2.00	9.98	
Toluene*	<0.050	0.050	11/15/2023	ND	2.23	112	2.00	7.88	
Ethylbenzene*	<0.050	0.050	11/15/2023	ND	2.45	123	2.00	9.56	
Total Xylenes*	<0.150	0.150	11/15/2023	ND	7.41	123	6.00	9.26	
Total BTEX	<0.300	0.300	11/15/2023	ND					

Surrogate: 4-Bromofluorobenzene (PID) 120 % 71.5-134

Chloride, SM4500Cl-B		mg/kg		Analyzed By: HM					
Analyte	Result	Reporting Limit	Analyzed	Method Blank	BS	% Recovery	True Value QC	RPD	Qualifier
Chloride	2880	16.0	11/15/2023	ND	432	108	400	3.64	

TPH 8015M		mg/kg		Analyzed By: MS					
Analyte	Result	Reporting Limit	Analyzed	Method Blank	BS	% Recovery	True Value QC	RPD	Qualifier
GRO C6-C10*	<10.0	10.0	11/15/2023	ND	195	97.6	200	4.04	
DRO >C10-C28*	<10.0	10.0	11/15/2023	ND	200	100	200	0.868	
EXT DRO >C28-C36	<10.0	10.0	11/15/2023	ND					

Surrogate: 1-Chlorooctane 87.1 % 48.2-134

Surrogate: 1-Chlorooctadecane 101 % 49.1-148

Cardinal Laboratories

*=Accredited Analyte

PLEASE NOTE: Liability and Damages. Cardinal's liability and client's exclusive remedy for any claim arising, whether based in contract or tort, shall be limited to the amount paid by client for analyses. All claims, including those for negligence and any other cause whatsoever shall be deemed waived unless made in writing and received by Cardinal within thirty (30) days after completion of the applicable service. In no event shall Cardinal be liable for incidental or consequential damages, including, without limitation, business interruptions, loss of use, or loss of profits incurred by client, its subsidiaries, affiliates or successors arising out of or related to the performance of the services hereunder by Cardinal, regardless of whether such claim is based upon any of the above stated reasons or otherwise. Results relate only to the samples identified above. This report shall not be reproduced except in full with written approval of Cardinal Laboratories.

Celey D. Keene, Lab Director/Quality Manager



PHONE (575) 393-2326 ° 101 E. MARLAND ° HOBBS, NM 88240

Analytical Results For:

ALL CONSULTING, LLC
 SCOTT MEIER
 1718 S. CHEYENNE AVE.
 TULSA OK, 74119
 Fax To: NA

Received: 11/14/2023
 Reported: 11/17/2023
 Project Name: FME
 Project Number: 1893
 Project Location: NM

Sampling Date: 11/13/2023
 Sampling Type: Soil
 Sampling Condition: Cool & Intact
 Sample Received By: Shari Cisneros

Sample ID: SVU 353 -SS03 (H236210-29)

BTEx 8021B		mg/kg		Analyzed By: JH					
Analyte	Result	Reporting Limit	Analyzed	Method Blank	BS	% Recovery	True Value QC	RPD	Qualifier
Benzene*	<0.050	0.050	11/15/2023	ND	2.08	104	2.00	9.98	
Toluene*	<0.050	0.050	11/15/2023	ND	2.23	112	2.00	7.88	
Ethylbenzene*	<0.050	0.050	11/15/2023	ND	2.45	123	2.00	9.56	
Total Xylenes*	<0.150	0.150	11/15/2023	ND	7.41	123	6.00	9.26	
Total BTEX	<0.300	0.300	11/15/2023	ND					

Surrogate: 4-Bromofluorobenzene (PID) 103 % 71.5-134

Chloride, SM4500CI-B		mg/kg		Analyzed By: HM						
Analyte	Result	Reporting Limit	Analyzed	Method Blank	BS	% Recovery	True Value QC	RPD	Qualifier	
Chloride	3480	16.0	11/15/2023	ND	432	108	400	3.64		

TPH 8015M		mg/kg		Analyzed By: MS					
Analyte	Result	Reporting Limit	Analyzed	Method Blank	BS	% Recovery	True Value QC	RPD	Qualifier
GRO C6-C10*	<10.0	10.0	11/15/2023	ND	200	99.8	200	3.63	
DRO >C10-C28*	<10.0	10.0	11/15/2023	ND	203	101	200	2.06	
EXT DRO >C28-C36	<10.0	10.0	11/15/2023	ND					

Surrogate: 1-Chlorooctane 80.4 % 48.2-134

Surrogate: 1-Chlorooctadecane 78.4 % 49.1-148

Cardinal Laboratories

*=Accredited Analyte

PLEASE NOTE: Liability and Damages. Cardinal's liability and client's exclusive remedy for any claim arising, whether based in contract or tort, shall be limited to the amount paid by client for analyses. All claims, including those for negligence and any other cause whatsoever shall be deemed waived unless made in writing and received by Cardinal within thirty (30) days after completion of the applicable service. In no event shall Cardinal be liable for incidental or consequential damages, including, without limitation, business interruptions, loss of use, or loss of profits incurred by client, its subsidiaries, affiliates or successors arising out of or related to the performance of the services hereunder by Cardinal, regardless of whether such claim is based upon any of the above stated reasons or otherwise. Results relate only to the samples identified above. This report shall not be reproduced except in full with written approval of Cardinal Laboratories.

Celey D. Keene, Lab Director/Quality Manager



PHONE (575) 393-2326 ° 101 E. MARLAND ° HOBBS, NM 88240

Notes and Definitions

QR-03	The RPD value for the sample duplicate or MS/MSD was outside of QC acceptance limits due to matrix interference. QC batch accepted based on LCS and/or LCSD recovery and/or RPD values.
QM-07	The spike recovery was outside acceptance limits for the MS and/or MSD. The batch was accepted based on acceptable LCS recovery.
ND	Analyte NOT DETECTED at or above the reporting limit
RPD	Relative Percent Difference
**	Samples not received at proper temperature of 6°C or below.
***	Insufficient time to reach temperature.
-	Chloride by SM4500Cl-B does not require samples be received at or below 6°C Samples reported on an as received basis (wet) unless otherwise noted on report

Cardinal Laboratories

*=Accredited Analyte

PLEASE NOTE: Liability and Damages. Cardinal's liability and client's exclusive remedy for any claim arising, whether based in contract or tort, shall be limited to the amount paid by client for analyses. All claims, including those for negligence and any other cause whatsoever shall be deemed waived unless made in writing and received by Cardinal within thirty (30) days after completion of the applicable service. In no event shall Cardinal be liable for incidental or consequential damages, including, without limitation, business interruptions, loss of use, or loss of profits incurred by client, its subsidiaries, affiliates or successors arising out of or related to the performance of the services hereunder by Cardinal, regardless of whether such claim is based upon any of the above stated reasons or otherwise. Results relate only to the samples identified above. This report shall not be reproduced except in full with written approval of Cardinal Laboratories.

A handwritten signature in black ink, appearing to read "Celey D. Keene".

Celey D. Keene, Lab Director/Quality Manager



101 East Marland, Hobbs, NM 88240
(575) 393-2326 FAX (575) 393-2476

CHAIN-OF-CUSTODY AND ANALYSIS REQUEST

Company Name: <u>ALL Consulting</u>		BILL TO		ANALYSIS REQUEST									
Project Manager: <u>Scott Meier</u>		P.O. #:											
Address:		Company:											
City:		Attn:											
Phone #: <u>870-378-4644</u>		Address:											
State: Zip:		City:											
Fax #: Project Owner:		State: Zip:											
Project #: <u>1893</u>		Phone #:											
Project Name: <u>WMA SLO Reclamation *</u>		Fax #:											
Project Location: <u>FME</u>													
Sampler Name:													

FOR LAB USE ONLY		GRAB OR (C)OMP.	# CONTAINERS	MATRIX						PRESERV.		SAMPLING		DATE	TIME	TPH	BTEX	Chloride
Lab I.D.	Sample I.D.			GROUNDWATER	WASTEWATER	SOIL	OIL	SLUDGE	OTHER	ACID/BASE	ICE / COOL	OTHER						
20	SVU 261-SS01	G	1											11-13	1340	✓	✓	✓
21	SVU 261-SS02	G	1												1343	✓	✓	✓
22	SVU 261-SS03	G	1												1346	✓	✓	✓
23	SVU 261-SS04	G	1												1350	✓	✓	✓
24	SVU 261-SS05	G	1												1354	✓	✓	✓
25	SVU 261-SS06	G	1												1357	✓	✓	✓
26	SVU 261-SS07	G	1												1400	✓	✓	✓
27	SVU 353-SS01	G	1												1425	✓	✓	✓
28	SVU 353-SS02	G	1												1428	✓	✓	✓
29	SVU 353-SS03	G	1												1432	✓	✓	✓

PLEASE NOTE: Liability and Damages. Cardinal's liability and client's exclusive remedy for any claim arising whether based in contract or tort, shall be limited to the amount paid by the client for the analyses. All claims including those for negligence and any other cause whatsoever shall be deemed waived unless made in writing and received by Cardinal within 30 days after completion of the applicable service. In no event shall Cardinal be liable for incidental or consequential damages, including without limitation, business interruptions, loss of use, or loss of profits incurred by client, its subsidiaries, affiliates or successors arising out of or related to the performance of services hereunder by Cardinal, regardless of whether such claim is based upon any of the above stated reasons or otherwise.

Relinquished By: <u>Scott Meier</u>	Date: <u>11-14-23</u>	Received By: <u>Shan Cisneros</u>	Verbal Result: <input type="checkbox"/> Yes <input type="checkbox"/> No Add'l Phone #:
Relinquished By:	Date: <u>7:50</u>	Received By:	All Results are emailed. Please provide Email address:
Delivered By: (Circle One)	Observed Temp. °C <u>0.2</u>	Sample Condition	REMARKS:
Sampler - UPS - Bus - Other:	Corrected Temp. °C	Cool Intact <input checked="" type="checkbox"/> Yes <input type="checkbox"/> No <input type="checkbox"/> No <input type="checkbox"/> No	Turnaround Time: <input checked="" type="checkbox"/> Standard <input type="checkbox"/> Rush
FORM-000 R 3.4 07/11/23		CHECKED BY: (Initials) <u>SC</u>	Thermometer ID #140 Correction Factor 0°C
			Bacteria (only) Sample Condition Cool Intact <input type="checkbox"/> Yes <input type="checkbox"/> No <input type="checkbox"/> No <input type="checkbox"/> No
			Observed Temp. °C Corrected Temp. °C

† Cardinal cannot accept verbal changes. Please email changes to celey.keene@cardinallabsnm.com



PHONE (575) 393-2326 ° 101 E. MARLAND ° HOBBS, NM 88240

March 01, 2024

SCOTT MEIER

ALL CONSULTING, LLC

1718 S. CHEYENNE AVE.

TULSA, OK 74119

RE: FME REMEDIATION

Enclosed are the results of analyses for samples received by the laboratory on 02/29/24 9:30.

Cardinal Laboratories is accredited through Texas NELAP under certificate number T104704398-23-16. Accreditation applies to drinking water, non-potable water and solid and chemical materials. All accredited analytes are denoted by an asterisk (*). For a complete list of accredited analytes and matrices visit the TCEQ website at www.tceq.texas.gov/field/qa/lab_accred_certif.html.

Cardinal Laboratories is accredited through the State of Colorado Department of Public Health and Environment for:

Method EPA 552.2	Haloacetic Acids (HAA-5)
Method EPA 524.2	Total Trihalomethanes (TTHM)
Method EPA 524.4	Regulated VOCs (V1, V2, V3)

Accreditation applies to public drinking water matrices.

This report meets NELAP requirements and is made up of a cover page, analytical results, and a copy of the original chain-of-custody. If you have any questions concerning this report, please feel free to contact me.

Sincerely,

A handwritten signature in black ink that reads "Celey D. Keene". The signature is written in a cursive, flowing style.

Celey D. Keene

Lab Director/Quality Manager



PHONE (575) 393-2326 ° 101 E. MARLAND ° HOBBS, NM 88240

Analytical Results For:

ALL CONSULTING, LLC
 SCOTT MEIER
 1718 S. CHEYENNE AVE.
 TULSA OK, 74119
 Fax To: NA

Received: 02/29/2024
 Reported: 03/01/2024
 Project Name: FME REMEDIATION
 Project Number: NONE GIVEN
 Project Location: NONE GIVEN

Sampling Date: 02/28/2024
 Sampling Type: Soil
 Sampling Condition: Cool & Intact
 Sample Received By: Shalyn Rodriguez

Sample ID: CS 2 - CS 01 (H241004-01)

Chloride, SM4500Cl-B		mg/kg		Analyzed By: HM					
Analyte	Result	Reporting Limit	Analyzed	Method Blank	BS	% Recovery	True Value QC	RPD	Qualifier
Chloride	144	16.0	02/29/2024	ND	416	104	400	10.9	
TPH 8015M		mg/kg		Analyzed By: MS					
Analyte	Result	Reporting Limit	Analyzed	Method Blank	BS	% Recovery	True Value QC	RPD	Qualifier
GRO C6-C10*	<10.0	10.0	02/29/2024	ND	200	100	200	0.751	
DRO >C10-C28*	<10.0	10.0	02/29/2024	ND	199	99.4	200	7.82	
EXT DRO >C28-C36	<10.0	10.0	02/29/2024	ND					
Surrogate: 1-Chlorooctane		101 %	48.2-134						
Surrogate: 1-Chlorooctadecane		93.7 %	49.1-148						

Sample ID: CS 2 - CS 02 (H241004-02)

Chloride, SM4500Cl-B		mg/kg		Analyzed By: HM					
Analyte	Result	Reporting Limit	Analyzed	Method Blank	BS	% Recovery	True Value QC	RPD	Qualifier
Chloride	704	16.0	02/29/2024	ND	416	104	400	10.9	
TPH 8015M		mg/kg		Analyzed By: MS					
Analyte	Result	Reporting Limit	Analyzed	Method Blank	BS	% Recovery	True Value QC	RPD	Qualifier
GRO C6-C10*	<10.0	10.0	02/29/2024	ND	200	100	200	0.751	
DRO >C10-C28*	<10.0	10.0	02/29/2024	ND	199	99.4	200	7.82	
EXT DRO >C28-C36	<10.0	10.0	02/29/2024	ND					
Surrogate: 1-Chlorooctane		101 %	48.2-134						
Surrogate: 1-Chlorooctadecane		92.6 %	49.1-148						

Cardinal Laboratories

*=Accredited Analyte

PLEASE NOTE: Liability and Damages. Cardinal's liability and client's exclusive remedy for any claim arising, whether based in contract or tort, shall be limited to the amount paid by client for analyses. All claims, including those for negligence and any other cause whatsoever shall be deemed waived unless made in writing and received by Cardinal within thirty (30) days after completion of the applicable service. In no event shall Cardinal be liable for incidental or consequential damages, including, without limitation, business interruptions, loss of use, or loss of profits incurred by client, its subsidiaries, affiliates or successors arising out of or related to the performance of the services hereunder by Cardinal, regardless of whether such claim is based upon any of the above stated reasons or otherwise. Results relate only to the samples identified above. This report shall not be reproduced except in full with written approval of Cardinal Laboratories.

Celey D. Keene, Lab Director/Quality Manager



PHONE (575) 393-2326 ° 101 E. MARLAND ° HOBBS, NM 88240

Analytical Results For:

ALL CONSULTING, LLC
 SCOTT MEIER
 1718 S. CHEYENNE AVE.
 TULSA OK, 74119
 Fax To: NA

Received: 02/29/2024
 Reported: 03/01/2024
 Project Name: FME REMEDIATION
 Project Number: NONE GIVEN
 Project Location: NONE GIVEN

Sampling Date: 02/28/2024
 Sampling Type: Soil
 Sampling Condition: Cool & Intact
 Sample Received By: Shalyn Rodriguez

Sample ID: CS 2 - CS 04 (H241004-03)

Chloride, SM4500Cl-B		mg/kg		Analyzed By: HM					
Analyte	Result	Reporting Limit	Analyzed	Method Blank	BS	% Recovery	True Value QC	RPD	Qualifier
Chloride	5800	16.0	02/29/2024	ND	416	104	400	10.9	
TPH 8015M		mg/kg		Analyzed By: MS					
Analyte	Result	Reporting Limit	Analyzed	Method Blank	BS	% Recovery	True Value QC	RPD	Qualifier
GRO C6-C10*	<10.0	10.0	02/29/2024	ND	200	100	200	0.751	
DRO >C10-C28*	<10.0	10.0	02/29/2024	ND	199	99.4	200	7.82	
EXT DRO >C28-C36	<10.0	10.0	02/29/2024	ND					
Surrogate: 1-Chlorooctane	89.1 %	48.2-134							
Surrogate: 1-Chlorooctadecane	81.1 %	49.1-148							

Sample ID: SVU 261 - CS 06 (H241004-04)

Chloride, SM4500Cl-B		mg/kg		Analyzed By: HM					
Analyte	Result	Reporting Limit	Analyzed	Method Blank	BS	% Recovery	True Value QC	RPD	Qualifier
Chloride	4160	16.0	02/29/2024	ND	416	104	400	10.9	
TPH 8015M		mg/kg		Analyzed By: MS					
Analyte	Result	Reporting Limit	Analyzed	Method Blank	BS	% Recovery	True Value QC	RPD	Qualifier
GRO C6-C10*	<10.0	10.0	02/29/2024	ND	200	100	200	0.751	
DRO >C10-C28*	698	10.0	02/29/2024	ND	199	99.4	200	7.82	
EXT DRO >C28-C36	175	10.0	02/29/2024	ND					
Surrogate: 1-Chlorooctane	68.7 %	48.2-134							
Surrogate: 1-Chlorooctadecane	70.8 %	49.1-148							

Cardinal Laboratories

*=Accredited Analyte

PLEASE NOTE: Liability and Damages. Cardinal's liability and client's exclusive remedy for any claim arising, whether based in contract or tort, shall be limited to the amount paid by client for analyses. All claims, including those for negligence and any other cause whatsoever shall be deemed waived unless made in writing and received by Cardinal within thirty (30) days after completion of the applicable service. In no event shall Cardinal be liable for incidental or consequential damages, including, without limitation, business interruptions, loss of use, or loss of profits incurred by client, its subsidiaries, affiliates or successors arising out of or related to the performance of the services hereunder by Cardinal, regardless of whether such claim is based upon any of the above stated reasons or otherwise. Results relate only to the samples identified above. This report shall not be reproduced except in full with written approval of Cardinal Laboratories.

Celey D. Keene, Lab Director/Quality Manager



PHONE (575) 393-2326 ° 101 E. MARLAND ° HOBBS, NM 88240

Analytical Results For:

ALL CONSULTING, LLC
 SCOTT MEIER
 1718 S. CHEYENNE AVE.
 TULSA OK, 74119
 Fax To: NA

Received: 02/29/2024
 Reported: 03/01/2024
 Project Name: FME REMEDIATION
 Project Number: NONE GIVEN
 Project Location: NONE GIVEN

Sampling Date: 02/28/2024
 Sampling Type: Soil
 Sampling Condition: Cool & Intact
 Sample Received By: Shalyn Rodriguez

Sample ID: SVU 261 - CS 08 (H241004-05)

Chloride, SM4500Cl-B		mg/kg	Analyzed By: HM							
Analyte	Result	Reporting Limit	Analyzed	Method Blank	BS	% Recovery	True Value QC	RPD	Qualifier	
Chloride	4240	16.0	02/29/2024	ND	416	104	400	10.9		
TPH 8015M		mg/kg	Analyzed By: MS							
Analyte	Result	Reporting Limit	Analyzed	Method Blank	BS	% Recovery	True Value QC	RPD	Qualifier	
GRO C6-C10*	27.2	10.0	02/29/2024	ND	200	100	200	0.751		
DRO >C10-C28*	1780	10.0	02/29/2024	ND	199	99.4	200	7.82		
EXT DRO >C28-C36	510	10.0	02/29/2024	ND						
Surrogate: 1-Chlorooctane	99.0 %	48.2-134								
Surrogate: 1-Chlorooctadecane	102 %	49.1-148								

Sample ID: IH 3H - CS 03 (H241004-06)

Chloride, SM4500Cl-B		mg/kg	Analyzed By: HM							
Analyte	Result	Reporting Limit	Analyzed	Method Blank	BS	% Recovery	True Value QC	RPD	Qualifier	
Chloride	3440	16.0	02/29/2024	ND	416	104	400	10.9		
TPH 8015M		mg/kg	Analyzed By: MS							
Analyte	Result	Reporting Limit	Analyzed	Method Blank	BS	% Recovery	True Value QC	RPD	Qualifier	
GRO C6-C10*	<10.0	10.0	02/29/2024	ND	200	100	200	0.751		
DRO >C10-C28*	473	10.0	02/29/2024	ND	199	99.4	200	7.82		
EXT DRO >C28-C36	209	10.0	02/29/2024	ND						
Surrogate: 1-Chlorooctane	98.2 %	48.2-134								
Surrogate: 1-Chlorooctadecane	107 %	49.1-148								

Cardinal Laboratories

*=Accredited Analyte

PLEASE NOTE: Liability and Damages. Cardinal's liability and client's exclusive remedy for any claim arising, whether based in contract or tort, shall be limited to the amount paid by client for analyses. All claims, including those for negligence and any other cause whatsoever shall be deemed waived unless made in writing and received by Cardinal within thirty (30) days after completion of the applicable service. In no event shall Cardinal be liable for incidental or consequential damages, including, without limitation, business interruptions, loss of use, or loss of profits incurred by client, its subsidiaries, affiliates or successors arising out of or related to the performance of the services hereunder by Cardinal, regardless of whether such claim is based upon any of the above stated reasons or otherwise. Results relate only to the samples identified above. This report shall not be reproduced except in full with written approval of Cardinal Laboratories.

Celey D. Keene, Lab Director/Quality Manager



PHONE (575) 393-2326 ° 101 E. MARLAND ° HOBBS, NM 88240

Analytical Results For:

ALL CONSULTING, LLC
 SCOTT MEIER
 1718 S. CHEYENNE AVE.
 TULSA OK, 74119
 Fax To: NA

Received: 02/29/2024
 Reported: 03/01/2024
 Project Name: FME REMEDIATION
 Project Number: NONE GIVEN
 Project Location: NONE GIVEN

Sampling Date: 02/29/2024
 Sampling Type: Soil
 Sampling Condition: Cool & Intact
 Sample Received By: Shalyn Rodriguez

Sample ID: SVU 261 - SS 09 (H241004-07)

BTEX 8021B		mg/kg		Analyzed By: JH					
Analyte	Result	Reporting Limit	Analyzed	Method Blank	BS	% Recovery	True Value QC	RPD	Qualifier
Benzene*	<0.050	0.050	02/29/2024	ND	2.25	113	2.00	2.82	
Toluene*	<0.050	0.050	02/29/2024	ND	2.23	112	2.00	2.25	
Ethylbenzene*	<0.050	0.050	02/29/2024	ND	2.20	110	2.00	2.02	
Total Xylenes*	<0.150	0.150	02/29/2024	ND	6.64	111	6.00	1.99	
Total BTEX	<0.300	0.300	02/29/2024	ND					

Surrogate: 4-Bromofluorobenzene (PID) 103 % 71.5-134

Chloride, SM4500Cl-B		mg/kg		Analyzed By: HM					
Analyte	Result	Reporting Limit	Analyzed	Method Blank	BS	% Recovery	True Value QC	RPD	Qualifier
Chloride	48.0	16.0	02/29/2024	ND	416	104	400	10.9	

TPH 8015M		mg/kg		Analyzed By: MS					
Analyte	Result	Reporting Limit	Analyzed	Method Blank	BS	% Recovery	True Value QC	RPD	Qualifier
GRO C6-C10*	<10.0	10.0	02/29/2024	ND	187	93.7	200	1.70	
DRO >C10-C28*	<10.0	10.0	02/29/2024	ND	199	99.5	200	1.37	
EXT DRO >C28-C36	26.4	10.0	02/29/2024	ND					

Surrogate: 1-Chlorooctane 93.4 % 48.2-134

Surrogate: 1-Chlorooctadecane 109 % 49.1-148

Cardinal Laboratories

*=Accredited Analyte

PLEASE NOTE: Liability and Damages. Cardinal's liability and client's exclusive remedy for any claim arising, whether based in contract or tort, shall be limited to the amount paid by client for analyses. All claims, including those for negligence and any other cause whatsoever shall be deemed waived unless made in writing and received by Cardinal within thirty (30) days after completion of the applicable service. In no event shall Cardinal be liable for incidental or consequential damages, including, without limitation, business interruptions, loss of use, or loss of profits incurred by client, its subsidiaries, affiliates or successors arising out of or related to the performance of the services hereunder by Cardinal, regardless of whether such claim is based upon any of the above stated reasons or otherwise. Results relate only to the samples identified above. This report shall not be reproduced except in full with written approval of Cardinal Laboratories.

Celey D. Keene, Lab Director/Quality Manager



PHONE (575) 393-2326 ° 101 E. MARLAND ° HOBBS, NM 88240

Analytical Results For:

ALL CONSULTING, LLC
 SCOTT MEIER
 1718 S. CHEYENNE AVE.
 TULSA OK, 74119
 Fax To: NA

Received: 02/29/2024
 Reported: 03/01/2024
 Project Name: FME REMEDIATION
 Project Number: NONE GIVEN
 Project Location: NONE GIVEN

Sampling Date: 02/29/2024
 Sampling Type: Soil
 Sampling Condition: Cool & Intact
 Sample Received By: Shalyn Rodriguez

Sample ID: SVU 261 - SS 10 (H241004-08)

BTEx 8021B		mg/kg		Analyzed By: JH					
Analyte	Result	Reporting Limit	Analyzed	Method Blank	BS	% Recovery	True Value QC	RPD	Qualifier
Benzene*	<0.050	0.050	02/29/2024	ND	2.25	113	2.00	2.82	
Toluene*	<0.050	0.050	02/29/2024	ND	2.23	112	2.00	2.25	
Ethylbenzene*	<0.050	0.050	02/29/2024	ND	2.20	110	2.00	2.02	
Total Xylenes*	<0.150	0.150	02/29/2024	ND	6.64	111	6.00	1.99	
Total BTEX	<0.300	0.300	02/29/2024	ND					

Surrogate: 4-Bromofluorobenzene (PID) 103 % 71.5-134

Chloride, SM4500Cl-B		mg/kg		Analyzed By: HM					
Analyte	Result	Reporting Limit	Analyzed	Method Blank	BS	% Recovery	True Value QC	RPD	Qualifier
Chloride	32.0	16.0	02/29/2024	ND	416	104	400	10.9	

TPH 8015M		mg/kg		Analyzed By: MS					
Analyte	Result	Reporting Limit	Analyzed	Method Blank	BS	% Recovery	True Value QC	RPD	Qualifier
GRO C6-C10*	<10.0	10.0	02/29/2024	ND	187	93.7	200	1.70	
DRO >C10-C28*	<10.0	10.0	02/29/2024	ND	199	99.5	200	1.37	
EXT DRO >C28-C36	<10.0	10.0	02/29/2024	ND					

Surrogate: 1-Chlorooctane 110 % 48.2-134

Surrogate: 1-Chlorooctadecane 130 % 49.1-148

Cardinal Laboratories

*=Accredited Analyte

PLEASE NOTE: Liability and Damages. Cardinal's liability and client's exclusive remedy for any claim arising, whether based in contract or tort, shall be limited to the amount paid by client for analyses. All claims, including those for negligence and any other cause whatsoever shall be deemed waived unless made in writing and received by Cardinal within thirty (30) days after completion of the applicable service. In no event shall Cardinal be liable for incidental or consequential damages, including, without limitation, business interruptions, loss of use, or loss of profits incurred by client, its subsidiaries, affiliates or successors arising out of or related to the performance of the services hereunder by Cardinal, regardless of whether such claim is based upon any of the above stated reasons or otherwise. Results relate only to the samples identified above. This report shall not be reproduced except in full with written approval of Cardinal Laboratories.

Celey D. Keene, Lab Director/Quality Manager



PHONE (575) 393-2326 ° 101 E. MARLAND ° HOBBS, NM 88240

Analytical Results For:

ALL CONSULTING, LLC
 SCOTT MEIER
 1718 S. CHEYENNE AVE.
 TULSA OK, 74119
 Fax To: NA

Received: 02/29/2024
 Reported: 03/01/2024
 Project Name: FME REMEDIATION
 Project Number: NONE GIVEN
 Project Location: NONE GIVEN

Sampling Date: 02/29/2024
 Sampling Type: Soil
 Sampling Condition: Cool & Intact
 Sample Received By: Shalyn Rodriguez

Sample ID: CS 2 - SS 06 (H241004-09)

BTEX 8021B		mg/kg		Analyzed By: JH						
Analyte	Result	Reporting Limit	Analyzed	Method Blank	BS	% Recovery	True Value QC	RPD	Qualifier	
Benzene*	<0.050	0.050	02/29/2024	ND	2.25	113	2.00	2.82		
Toluene*	<0.050	0.050	02/29/2024	ND	2.23	112	2.00	2.25		
Ethylbenzene*	<0.050	0.050	02/29/2024	ND	2.20	110	2.00	2.02		
Total Xylenes*	<0.150	0.150	02/29/2024	ND	6.64	111	6.00	1.99		
Total BTEX	<0.300	0.300	02/29/2024	ND						

Surrogate: 4-Bromofluorobenzene (PID) 104 % 71.5-134

Chloride, SM4500Cl-B		mg/kg		Analyzed By: AC						
Analyte	Result	Reporting Limit	Analyzed	Method Blank	BS	% Recovery	True Value QC	RPD	Qualifier	
Chloride	5040	16.0	02/29/2024	ND	416	104	400	3.92	QM-07	

TPH 8015M		mg/kg		Analyzed By: MS					
Analyte	Result	Reporting Limit	Analyzed	Method Blank	BS	% Recovery	True Value QC	RPD	Qualifier
GRO C6-C10*	<10.0	10.0	02/29/2024	ND	187	93.7	200	1.70	
DRO >C10-C28*	<10.0	10.0	02/29/2024	ND	199	99.5	200	1.37	
EXT DRO >C28-C36	<10.0	10.0	02/29/2024	ND					

Surrogate: 1-Chlorooctane 121 % 48.2-134

Surrogate: 1-Chlorooctadecane 145 % 49.1-148

Cardinal Laboratories

*=Accredited Analyte

PLEASE NOTE: Liability and Damages. Cardinal's liability and client's exclusive remedy for any claim arising, whether based in contract or tort, shall be limited to the amount paid by client for analyses. All claims, including those for negligence and any other cause whatsoever shall be deemed waived unless made in writing and received by Cardinal within thirty (30) days after completion of the applicable service. In no event shall Cardinal be liable for incidental or consequential damages, including, without limitation, business interruptions, loss of use, or loss of profits incurred by client, its subsidiaries, affiliates or successors arising out of or related to the performance of the services hereunder by Cardinal, regardless of whether such claim is based upon any of the above stated reasons or otherwise. Results relate only to the samples identified above. This report shall not be reproduced except in full with written approval of Cardinal Laboratories.

Celey D. Keene, Lab Director/Quality Manager



PHONE (575) 393-2326 ° 101 E. MARLAND ° HOBBS, NM 88240

Analytical Results For:

ALL CONSULTING, LLC
 SCOTT MEIER
 1718 S. CHEYENNE AVE.
 TULSA OK, 74119
 Fax To: NA

Received: 02/29/2024
 Reported: 03/01/2024
 Project Name: FME REMEDIATION
 Project Number: NONE GIVEN
 Project Location: NONE GIVEN

Sampling Date: 02/29/2024
 Sampling Type: Soil
 Sampling Condition: Cool & Intact
 Sample Received By: Shalyn Rodriguez

Sample ID: CS 2 - SS 07 (H241004-10)

BTEx 8021B		mg/kg		Analyzed By: JH						
Analyte	Result	Reporting Limit	Analyzed	Method Blank	BS	% Recovery	True Value QC	RPD	Qualifier	
Benzene*	<0.050	0.050	02/29/2024	ND	2.25	113	2.00	2.82		
Toluene*	<0.050	0.050	02/29/2024	ND	2.23	112	2.00	2.25		
Ethylbenzene*	<0.050	0.050	02/29/2024	ND	2.20	110	2.00	2.02		
Total Xylenes*	<0.150	0.150	02/29/2024	ND	6.64	111	6.00	1.99		
Total BTEx	<0.300	0.300	02/29/2024	ND						

Surrogate: 4-Bromofluorobenzene (PID) 103 % 71.5-134

Chloride, SM4500CI-B		mg/kg		Analyzed By: AC						
Analyte	Result	Reporting Limit	Analyzed	Method Blank	BS	% Recovery	True Value QC	RPD	Qualifier	
Chloride	3680	16.0	02/29/2024	ND	416	104	400	3.92		

TPH 8015M		mg/kg		Analyzed By: MS					
Analyte	Result	Reporting Limit	Analyzed	Method Blank	BS	% Recovery	True Value QC	RPD	Qualifier
GRO C6-C10*	<10.0	10.0	02/29/2024	ND	187	93.7	200	1.70	
DRO >C10-C28*	<10.0	10.0	02/29/2024	ND	199	99.5	200	1.37	
EXT DRO >C28-C36	<10.0	10.0	02/29/2024	ND					

Surrogate: 1-Chlorooctane 105 % 48.2-134

Surrogate: 1-Chlorooctadecane 125 % 49.1-148

Cardinal Laboratories

*=Accredited Analyte

PLEASE NOTE: Liability and Damages. Cardinal's liability and client's exclusive remedy for any claim arising, whether based in contract or tort, shall be limited to the amount paid by client for analyses. All claims, including those for negligence and any other cause whatsoever shall be deemed waived unless made in writing and received by Cardinal within thirty (30) days after completion of the applicable service. In no event shall Cardinal be liable for incidental or consequential damages, including, without limitation, business interruptions, loss of use, or loss of profits incurred by client, its subsidiaries, affiliates or successors arising out of or related to the performance of the services hereunder by Cardinal, regardless of whether such claim is based upon any of the above stated reasons or otherwise. Results relate only to the samples identified above. This report shall not be reproduced except in full with written approval of Cardinal Laboratories.

Celey D. Keene, Lab Director/Quality Manager



PHONE (575) 393-2326 ° 101 E. MARLAND ° HOBBS, NM 88240

Notes and Definitions

- QM-07 The spike recovery was outside acceptance limits for the MS and/or MSD. The batch was accepted based on acceptable LCS recovery.
- ND Analyte NOT DETECTED at or above the reporting limit
- RPD Relative Percent Difference
- ** Samples not received at proper temperature of 6°C or below.
- *** Insufficient time to reach temperature.
- Chloride by SM4500Cl-B does not require samples be received at or below 6°C
- Samples reported on an as received basis (wet) unless otherwise noted on report

Cardinal Laboratories

*=Accredited Analyte

PLEASE NOTE: Liability and Damages. Cardinal's liability and client's exclusive remedy for any claim arising, whether based in contract or tort, shall be limited to the amount paid by client for analyses. All claims, including those for negligence and any other cause whatsoever shall be deemed waived unless made in writing and received by Cardinal within thirty (30) days after completion of the applicable service. In no event shall Cardinal be liable for incidental or consequential damages, including, without limitation, business interruptions, loss of use, or loss of profits incurred by client, its subsidiaries, affiliates or successors arising out of or related to the performance of the services hereunder by Cardinal, regardless of whether such claim is based upon any of the above stated reasons or otherwise. Results relate only to the samples identified above. This report shall not be reproduced except in full with written approval of Cardinal Laboratories.

A handwritten signature in black ink, appearing to read "C. D. Keene", written over a horizontal line.

Celey D. Keene, Lab Director/Quality Manager



101 East Marland, Hobbs, NM 88240
(575) 393-2326 FAX (575) 393-2476

CHAIN-OF-CUSTODY AND ANALYSIS REQUEST

[illegible]



PHONE (575) 393-2326 ° 101 E. MARLAND ° HOBBS, NM 88240

March 04, 2024

SCOTT MEIER

ALL CONSULTING, LLC

1718 S. CHEYENNE AVE.

TULSA, OK 74119

RE: FME RECLAMATION

Enclosed are the results of analyses for samples received by the laboratory on 03/01/24 15:15.

Cardinal Laboratories is accredited through Texas NELAP under certificate number T104704398-23-16. Accreditation applies to drinking water, non-potable water and solid and chemical materials. All accredited analytes are denoted by an asterisk (*). For a complete list of accredited analytes and matrices visit the TCEQ website at www.tceq.texas.gov/field/qa/lab_accred_certif.html.

Cardinal Laboratories is accredited through the State of Colorado Department of Public Health and Environment for:

Method EPA 552.2	Haloacetic Acids (HAA-5)
Method EPA 524.2	Total Trihalomethanes (TTHM)
Method EPA 524.4	Regulated VOCs (V1, V2, V3)

Accreditation applies to public drinking water matrices.

This report meets NELAP requirements and is made up of a cover page, analytical results, and a copy of the original chain-of-custody. If you have any questions concerning this report, please feel free to contact me.

Sincerely,

A handwritten signature in black ink that reads "Celey D. Keene". The signature is written in a cursive style with a large, stylized 'C' and 'K'.

Celey D. Keene

Lab Director/Quality Manager



PHONE (575) 393-2326 ° 101 E. MARLAND ° HOBBS, NM 88240

Analytical Results For:

ALL CONSULTING, LLC
 SCOTT MEIER
 1718 S. CHEYENNE AVE.
 TULSA OK, 74119
 Fax To: NA

Received: 03/01/2024
 Reported: 03/04/2024
 Project Name: FME RECLAMATION
 Project Number: NONE GIVEN
 Project Location: NONE GIVEN

Sampling Date: 03/01/2024
 Sampling Type: Soil
 Sampling Condition: Cool & Intact
 Sample Received By: Dionica Hinojos

Sample ID: SVU 261 - CS06 - 02 (H241041-01)

BTEX 8021B		mg/kg		Analyzed By: JH					
Analyte	Result	Reporting Limit	Analyzed	Method Blank	BS	% Recovery	True Value QC	RPD	Qualifier
Benzene*	<0.050	0.050	03/01/2024	ND	2.02	101	2.00	7.29	
Toluene*	<0.050	0.050	03/01/2024	ND	2.09	104	2.00	5.84	
Ethylbenzene*	<0.050	0.050	03/01/2024	ND	2.04	102	2.00	5.09	
Total Xylenes*	<0.150	0.150	03/01/2024	ND	6.19	103	6.00	4.73	
Total BTEX	<0.300	0.300	03/01/2024	ND					

Surrogate: 4-Bromofluorobenzene (PID) 111 % 71.5-134

Chloride, SM4500Cl-B		mg/kg		Analyzed By: AC					
Analyte	Result	Reporting Limit	Analyzed	Method Blank	BS	% Recovery	True Value QC	RPD	Qualifier
Chloride	1200	16.0	03/04/2024	ND	416	104	400	3.77	QM-07

TPH 8015M		mg/kg		Analyzed By: MS					
Analyte	Result	Reporting Limit	Analyzed	Method Blank	BS	% Recovery	True Value QC	RPD	Qualifier
GRO C6-C10*	<10.0	10.0	03/01/2024	ND	185	92.7	200	3.29	
DRO >C10-C28*	56.0	10.0	03/01/2024	ND	198	99.0	200	6.16	
EXT DRO >C28-C36	10.5	10.0	03/01/2024	ND					

Surrogate: 1-Chlorooctane 102 % 48.2-134

Surrogate: 1-Chlorooctadecane 122 % 49.1-148

Cardinal Laboratories

*=Accredited Analyte

PLEASE NOTE: Liability and Damages. Cardinal's liability and client's exclusive remedy for any claim arising, whether based in contract or tort, shall be limited to the amount paid by client for analyses. All claims, including those for negligence and any other cause whatsoever shall be deemed waived unless made in writing and received by Cardinal within thirty (30) days after completion of the applicable service. In no event shall Cardinal be liable for incidental or consequential damages, including, without limitation, business interruptions, loss of use, or loss of profits incurred by client, its subsidiaries, affiliates or successors arising out of or related to the performance of the services hereunder by Cardinal, regardless of whether such claim is based upon any of the above stated reasons or otherwise. Results relate only to the samples identified above. This report shall not be reproduced except in full with written approval of Cardinal Laboratories.

Celey D. Keene, Lab Director/Quality Manager



PHONE (575) 393-2326 ° 101 E. MARLAND ° HOBBS, NM 88240

Analytical Results For:

ALL CONSULTING, LLC
 SCOTT MEIER
 1718 S. CHEYENNE AVE.
 TULSA OK, 74119
 Fax To: NA

Received: 03/01/2024
 Reported: 03/04/2024
 Project Name: FME RECLAMATION
 Project Number: NONE GIVEN
 Project Location: NONE GIVEN

Sampling Date: 03/01/2024
 Sampling Type: Soil
 Sampling Condition: Cool & Intact
 Sample Received By: Dionica Hinojos

Sample ID: IH3H - CS03-02 (H241041-02)

BTEx 8021B		mg/kg		Analyzed By: JH						
Analyte	Result	Reporting Limit	Analyzed	Method Blank	BS	% Recovery	True Value QC	RPD	Qualifier	
Benzene*	<0.050	0.050	03/01/2024	ND	2.02	101	2.00	7.29		
Toluene*	<0.050	0.050	03/01/2024	ND	2.09	104	2.00	5.84		
Ethylbenzene*	<0.050	0.050	03/01/2024	ND	2.04	102	2.00	5.09		
Total Xylenes*	<0.150	0.150	03/01/2024	ND	6.19	103	6.00	4.73		
Total BTEX	<0.300	0.300	03/01/2024	ND						

Surrogate: 4-Bromofluorobenzene (PID) 115 % 71.5-134

Chloride, SM4500Cl-B		mg/kg		Analyzed By: AC						
Analyte	Result	Reporting Limit	Analyzed	Method Blank	BS	% Recovery	True Value QC	RPD	Qualifier	
Chloride	3280	16.0	03/04/2024	ND	416	104	400	3.77		

TPH 8015M		mg/kg		Analyzed By: MS					
Analyte	Result	Reporting Limit	Analyzed	Method Blank	BS	% Recovery	True Value QC	RPD	Qualifier
GRO C6-C10*	<10.0	10.0	03/01/2024	ND	185	92.7	200	3.29	
DRO >C10-C28*	717	10.0	03/01/2024	ND	198	99.0	200	6.16	
EXT DRO >C28-C36	246	10.0	03/01/2024	ND					

Surrogate: 1-Chlorooctane 102 % 48.2-134

Surrogate: 1-Chlorooctadecane 130 % 49.1-148

Cardinal Laboratories

*=Accredited Analyte

PLEASE NOTE: Liability and Damages. Cardinal's liability and client's exclusive remedy for any claim arising, whether based in contract or tort, shall be limited to the amount paid by client for analyses. All claims, including those for negligence and any other cause whatsoever shall be deemed waived unless made in writing and received by Cardinal within thirty (30) days after completion of the applicable service. In no event shall Cardinal be liable for incidental or consequential damages, including, without limitation, business interruptions, loss of use, or loss of profits incurred by client, its subsidiaries, affiliates or successors arising out of or related to the performance of the services hereunder by Cardinal, regardless of whether such claim is based upon any of the above stated reasons or otherwise. Results relate only to the samples identified above. This report shall not be reproduced except in full with written approval of Cardinal Laboratories.

Celey D. Keene, Lab Director/Quality Manager



PHONE (575) 393-2326 ° 101 E. MARLAND ° HOBBS, NM 88240

Analytical Results For:

ALL CONSULTING, LLC
 SCOTT MEIER
 1718 S. CHEYENNE AVE.
 TULSA OK, 74119
 Fax To: NA

Received: 03/01/2024
 Reported: 03/04/2024
 Project Name: FME RECLAMATION
 Project Number: NONE GIVEN
 Project Location: NONE GIVEN

Sampling Date: 03/01/2024
 Sampling Type: Soil
 Sampling Condition: Cool & Intact
 Sample Received By: Dionica Hinojos

Sample ID: CS2 - CS04-02 (H241041-03)

BTX 8021B		mg/kg		Analyzed By: JH					
Analyte	Result	Reporting Limit	Analyzed	Method Blank	BS	% Recovery	True Value QC	RPD	Qualifier
Benzene*	<0.050	0.050	03/01/2024	ND	2.02	101	2.00	7.29	
Toluene*	<0.050	0.050	03/01/2024	ND	2.09	104	2.00	5.84	
Ethylbenzene*	<0.050	0.050	03/01/2024	ND	2.04	102	2.00	5.09	
Total Xylenes*	<0.150	0.150	03/01/2024	ND	6.19	103	6.00	4.73	
Total BTX	<0.300	0.300	03/01/2024	ND					

Surrogate: 4-Bromofluorobenzene (PID) 113 % 71.5-134

Chloride, SM4500Cl-B		mg/kg		Analyzed By: AC					
Analyte	Result	Reporting Limit	Analyzed	Method Blank	BS	% Recovery	True Value QC	RPD	Qualifier
Chloride	1380	16.0	03/04/2024	ND	416	104	400	3.77	

TPH 8015M		mg/kg		Analyzed By: MS					
Analyte	Result	Reporting Limit	Analyzed	Method Blank	BS	% Recovery	True Value QC	RPD	Qualifier
GRO C6-C10*	<10.0	10.0	03/01/2024	ND	185	92.7	200	3.29	
DRO >C10-C28*	<10.0	10.0	03/01/2024	ND	198	99.0	200	6.16	
EXT DRO >C28-C36	<10.0	10.0	03/01/2024	ND					

Surrogate: 1-Chlorooctane 106 % 48.2-134

Surrogate: 1-Chlorooctadecane 121 % 49.1-148

Cardinal Laboratories

*=Accredited Analyte

PLEASE NOTE: Liability and Damages. Cardinal's liability and client's exclusive remedy for any claim arising, whether based in contract or tort, shall be limited to the amount paid by client for analyses. All claims, including those for negligence and any other cause whatsoever shall be deemed waived unless made in writing and received by Cardinal within thirty (30) days after completion of the applicable service. In no event shall Cardinal be liable for incidental or consequential damages, including, without limitation, business interruptions, loss of use, or loss of profits incurred by client, its subsidiaries, affiliates or successors arising out of or related to the performance of the services hereunder by Cardinal, regardless of whether such claim is based upon any of the above stated reasons or otherwise. Results relate only to the samples identified above. This report shall not be reproduced except in full with written approval of Cardinal Laboratories.

Celey D. Keene, Lab Director/Quality Manager



PHONE (575) 393-2326 ° 101 E. MARLAND ° HOBBS, NM 88240

Analytical Results For:

ALL CONSULTING, LLC
 SCOTT MEIER
 1718 S. CHEYENNE AVE.
 TULSA OK, 74119
 Fax To: NA

Received: 03/01/2024
 Reported: 03/04/2024
 Project Name: FME RECLAMATION
 Project Number: NONE GIVEN
 Project Location: NONE GIVEN

Sampling Date: 03/01/2024
 Sampling Type: Soil
 Sampling Condition: Cool & Intact
 Sample Received By: Dionica Hinojos

Sample ID: CS2 - CS02-02 (H241041-04)

BTEx 8021B		mg/kg		Analyzed By: JH					
Analyte	Result	Reporting Limit	Analyzed	Method Blank	BS	% Recovery	True Value QC	RPD	Qualifier
Benzene*	<0.050	0.050	03/01/2024	ND	2.22	111	2.00	3.47	
Toluene*	<0.050	0.050	03/01/2024	ND	2.18	109	2.00	3.54	
Ethylbenzene*	<0.050	0.050	03/01/2024	ND	2.12	106	2.00	3.46	
Total Xylenes*	<0.150	0.150	03/01/2024	ND	6.19	103	6.00	3.62	
Total BTEX	<0.300	0.300	03/01/2024	ND					

Surrogate: 4-Bromofluorobenzene (PID) 96.3 % 71.5-134

Chloride, SM4500Cl-B		mg/kg		Analyzed By: AC					
Analyte	Result	Reporting Limit	Analyzed	Method Blank	BS	% Recovery	True Value QC	RPD	Qualifier
Chloride	528	16.0	03/04/2024	ND	416	104	400	3.77	

TPH 8015M		mg/kg		Analyzed By: MS					
Analyte	Result	Reporting Limit	Analyzed	Method Blank	BS	% Recovery	True Value QC	RPD	Qualifier
GRO C6-C10*	<10.0	10.0	03/02/2024	ND	185	92.7	200	3.29	
DRO >C10-C28*	<10.0	10.0	03/02/2024	ND	198	99.0	200	6.16	
EXT DRO >C28-C36	<10.0	10.0	03/02/2024	ND					

Surrogate: 1-Chlorooctane 101 % 48.2-134

Surrogate: 1-Chlorooctadecane 115 % 49.1-148

Cardinal Laboratories

*=Accredited Analyte

PLEASE NOTE: Liability and Damages. Cardinal's liability and client's exclusive remedy for any claim arising, whether based in contract or tort, shall be limited to the amount paid by client for analyses. All claims, including those for negligence and any other cause whatsoever shall be deemed waived unless made in writing and received by Cardinal within thirty (30) days after completion of the applicable service. In no event shall Cardinal be liable for incidental or consequential damages, including, without limitation, business interruptions, loss of use, or loss of profits incurred by client, its subsidiaries, affiliates or successors arising out of or related to the performance of the services hereunder by Cardinal, regardless of whether such claim is based upon any of the above stated reasons or otherwise. Results relate only to the samples identified above. This report shall not be reproduced except in full with written approval of Cardinal Laboratories.

Celey D. Keene, Lab Director/Quality Manager



PHONE (575) 393-2326 ° 101 E. MARLAND ° HOBBS, NM 88240

Analytical Results For:

ALL CONSULTING, LLC
 SCOTT MEIER
 1718 S. CHEYENNE AVE.
 TULSA OK, 74119
 Fax To: NA

Received: 03/01/2024
 Reported: 03/04/2024
 Project Name: FME RECLAMATION
 Project Number: NONE GIVEN
 Project Location: NONE GIVEN

Sampling Date: 03/01/2024
 Sampling Type: Soil
 Sampling Condition: Cool & Intact
 Sample Received By: Dionica Hinojos

Sample ID: CS2 - CS06 (H241041-05)

Chloride, SM4500Cl-B		mg/kg		Analyzed By: AC					
Analyte	Result	Reporting Limit	Analyzed	Method Blank	BS	% Recovery	True Value QC	RPD	Qualifier
Chloride	64.0	16.0	03/04/2024	ND	416	104	400	3.77	
TPH 8015M		mg/kg		Analyzed By: MS					
Analyte	Result	Reporting Limit	Analyzed	Method Blank	BS	% Recovery	True Value QC	RPD	Qualifier
GRO C6-C10*	<10.0	10.0	03/02/2024	ND	185	92.7	200	3.29	
DRO >C10-C28*	<10.0	10.0	03/02/2024	ND	198	99.0	200	6.16	
EXT DRO >C28-C36	<10.0	10.0	03/02/2024	ND					
Surrogate: 1-Chlorooctane	107 %	48.2-134							
Surrogate: 1-Chlorooctadecane	121 %	49.1-148							

Sample ID: CS2 - CS07 (H241041-06)

Chloride, SM4500Cl-B		mg/kg		Analyzed By: AC					
Analyte	Result	Reporting Limit	Analyzed	Method Blank	BS	% Recovery	True Value QC	RPD	Qualifier
Chloride	128	16.0	03/04/2024	ND	416	104	400	3.77	
TPH 8015M		mg/kg		Analyzed By: MS					
Analyte	Result	Reporting Limit	Analyzed	Method Blank	BS	% Recovery	True Value QC	RPD	Qualifier
GRO C6-C10*	<10.0	10.0	03/02/2024	ND	185	92.7	200	3.29	
DRO >C10-C28*	<10.0	10.0	03/02/2024	ND	198	99.0	200	6.16	
EXT DRO >C28-C36	<10.0	10.0	03/02/2024	ND					
Surrogate: 1-Chlorooctane	112 %	48.2-134							
Surrogate: 1-Chlorooctadecane	128 %	49.1-148							

Cardinal Laboratories

*=Accredited Analyte

PLEASE NOTE: Liability and Damages. Cardinal's liability and client's exclusive remedy for any claim arising, whether based in contract or tort, shall be limited to the amount paid by client for analyses. All claims, including those for negligence and any other cause whatsoever shall be deemed waived unless made in writing and received by Cardinal within thirty (30) days after completion of the applicable service. In no event shall Cardinal be liable for incidental or consequential damages, including, without limitation, business interruptions, loss of use, or loss of profits incurred by client, its subsidiaries, affiliates or successors arising out of or related to the performance of the services hereunder by Cardinal, regardless of whether such claim is based upon any of the above stated reasons or otherwise. Results relate only to the samples identified above. This report shall not be reproduced except in full with written approval of Cardinal Laboratories.

Celey D. Keene, Lab Director/Quality Manager



PHONE (575) 393-2326 ° 101 E. MARLAND ° HOBBS, NM 88240

Notes and Definitions

- QM-07 The spike recovery was outside acceptance limits for the MS and/or MSD. The batch was accepted based on acceptable LCS recovery.
- ND Analyte NOT DETECTED at or above the reporting limit
- RPD Relative Percent Difference
- ** Samples not received at proper temperature of 6°C or below.
- *** Insufficient time to reach temperature.
- Chloride by SM4500Cl-B does not require samples be received at or below 6°C
- Samples reported on an as received basis (wet) unless otherwise noted on report

Cardinal Laboratories

*=Accredited Analyte

PLEASE NOTE: Liability and Damages. Cardinal's liability and client's exclusive remedy for any claim arising, whether based in contract or tort, shall be limited to the amount paid by client for analyses. All claims, including those for negligence and any other cause whatsoever shall be deemed waived unless made in writing and received by Cardinal within thirty (30) days after completion of the applicable service. In no event shall Cardinal be liable for incidental or consequential damages, including, without limitation, business interruptions, loss of use, or loss of profits incurred by client, its subsidiaries, affiliates or successors arising out of or related to the performance of the services hereunder by Cardinal, regardless of whether such claim is based upon any of the above stated reasons or otherwise. Results relate only to the samples identified above. This report shall not be reproduced except in full with written approval of Cardinal Laboratories.

Coley D. Keene

Coley D. Keene, Lab Director/Quality Manager

101 East Marland, Hobbs, NM 88240
(575) 393-2326 FAX (575) 393-2476

Company Name: ACL Consulting		BILL TO		ANALYSIS REQUEST																					
Project Manager: Scott Meier		P.O. #:																							
Address:		Company:																							
City: State: Zip:		Attn:																							
Phone #: Fax #:		Address:																							
Project #: Project Owner:		City:																							
Project Name: FME Reclamation		State: Zip:																							
Project Location:		Phone #:																							
Sampler Name:		Fax #:																							
FOR LAB USE ONLY				MATRIX		PRESERV.		SAMPLING																	
Lab I.D.	Sample I.D.	(G)RAB OR (C)OMP.	# CONTAINERS	GROUNDWATER	WASTEWATER	SOIL	OIL	SLUDGE	OTHER:	ACID/BASE:	CE/COOL	OTHER:	DATE	TIME											
#241041	SVU261-C506-02	C	1			✓				✓	✓		3-1-24	1200	✓	✓	✓								
	SVU261-C508-02N	C	1			✓				✓				1215	✓	✓	✓	SM							
	SVU261-C508-02C	C	1			✓				✓				1220	✓	✓	✓	SM							
	SVU261-C508-02S	C	1			✓				✓				1230	✓	✓	✓	SM							
2	IH3H-C503-02	C	1			✓				✓			3-1-24	1330	✓	✓	✓	SM							
3	C52-C504-02	C	1			✓				✓				1400	✓	✓	✓								
4	C52-C502-02	C	1			✓				✓				1415	✓	✓	✓								
5	C52-C506	C	1			✓				✓				1425	✓	✓	✓								
6	C52-C507	C	1			✓				✓				1435	✓	✓									
PLEASE NOTE: Liability and Damages. Cardinal's liability and client's exclusive remedy for any claim arising whether based in contract or tort, shall be limited to the amount paid by the client for the analyses. All claims, including those for material damage, shall be limited to the amount paid by the client for the analyses.																									

PLEASE NOTE: Liability and Damages. Cardinal's liability and client's exclusive remedy for any claim arising whether based in contract or tort, shall be limited to the amount paid by the client for the analyses. All claims including those for negligence and any other cause whatsoever shall be deemed waived unless made in writing and received by Cardinal within 30 days after completion of the applicable service. In no event shall Cardinal be liable for incidental or consequential damages, including without limitation, business interruptions, loss of use, or loss of profits incurred by client, its subsidiaries, affiliates or successors arising out of or related to the performance of services hereunder by Cardinal, regardless of whether such claim is based upon any of the above stated reasons or otherwise.

Relinquished By: <i>Scott Meier</i>		Date: <i>3-1-24</i>	Received By: <i>[Signature]</i>		Verbal Result: <input type="checkbox"/> Yes <input type="checkbox"/> No Add'l Phone #:	
Relinquished By:		Time: <i>1515</i>	Received By:		All Results are emailed. Please provide Email address: <i>Smeier@all-16.com</i>	
		Date:			REMARKS:	
		Time:				
Delivered By: (Circle One)		Observed Temp. °C <i>-0.1</i>	Sample Condition	CHECKED BY: (Initials) <i>[Signature]</i>	Turnaround Time: Standard <input type="checkbox"/> Rush <input checked="" type="checkbox"/>	
Sampler - UPS - Bus - Other:		Corrected Temp. °C	<input checked="" type="checkbox"/> Cool <input checked="" type="checkbox"/> Intact <input type="checkbox"/> Yes <input type="checkbox"/> Yes <input type="checkbox"/> No <input type="checkbox"/> No	Thermometer ID #140 Correction Factor 0°C	Bacteria (only) Sample Condition <input type="checkbox"/> Cool <input type="checkbox"/> Intact Observed Temp. °C <input type="checkbox"/> Yes <input type="checkbox"/> Yes <input type="checkbox"/> No <input type="checkbox"/> No Corrected Temp. °C	

FORM-006 R 3.4 07/11/23

† Cardinal cannot accept verbal changes. Please email changes to celey.keene@cardinallabsnm.com

Sante Fe Main Office
Phone: (505) 476-3441

General Information
Phone: (505) 629-6116

Online Phone Directory
<https://www.emnrd.nm.gov/ocd/contact-us>

State of New Mexico
Energy, Minerals and Natural Resources
Oil Conservation Division
1220 S. St Francis Dr.
Santa Fe, NM 87505

QUESTIONS

Action 407762

QUESTIONS

Operator: Franklin Mountain Energy 3, LLC 44 Cook Street Denver, CO 80206	OGRID: 331595
	Action Number: 407762
	Action Type: [C-141] Site Char./Remediation Plan C-141 (C-141-v-Plan)

QUESTIONS

Prerequisites	
Incident ID (n#)	nAPP2403444329
Incident Name	NAPP2403444329 CONDOR STATE 2 @ 30-025-40217
Incident Type	Produced Water Release
Incident Status	Remediation Plan Received
Incident Well	[30-025-40217] CONDOR STATE #002

Location of Release Source	
Please answer all the questions in this group.	
Site Name	Condor State 2
Date Release Discovered	02/03/2024
Surface Owner	State

Incident Details	
Please answer all the questions in this group.	
Incident Type	Produced Water Release
Did this release result in a fire or is the result of a fire	No
Did this release result in any injuries	No
Has this release reached or does it have a reasonable probability of reaching a watercourse	No
Has this release endangered or does it have a reasonable probability of endangering public health	No
Has this release substantially damaged or will it substantially damage property or the environment	No
Is this release of a volume that is or may with reasonable probability be detrimental to fresh water	No

Nature and Volume of Release	
Material(s) released, please answer all that apply below. Any calculations or specific justifications for the volumes provided should be attached to the follow-up C-141 submission.	
Crude Oil Released (bbls) Details	Cause: Equipment Failure Valve Crude Oil Released: 36 BBL Recovered: 36 BBL Lost: 0 BBL.
Produced Water Released (bbls) Details	Cause: Equipment Failure Valve Produced Water Released: 76 BBL Recovered: 76 BBL Lost: 0 BBL.
Is the concentration of chloride in the produced water >10,000 mg/l	No
Condensate Released (bbls) Details	Not answered.
Natural Gas Vented (Mcf) Details	Not answered.
Natural Gas Flared (Mcf) Details	Not answered.
Other Released Details	Not answered.
Are there additional details for the questions above (i.e. any answer containing Other, Specify, Unknown, and/or Fire, or any negative lost amounts)	Release occurred inside of fully lined containment. No produced water or oil impacted the surface.

Sante Fe Main Office
Phone: (505) 476-3441

General Information
Phone: (505) 629-6116

Online Phone Directory
<https://www.emnrd.nm.gov/ocd/contact-us>

State of New Mexico
Energy, Minerals and Natural Resources
Oil Conservation Division
1220 S. St Francis Dr.
Santa Fe, NM 87505

QUESTIONS, Page 2

Action 407762

QUESTIONS (continued)

Operator: Franklin Mountain Energy 3, LLC 44 Cook Street Denver, CO 80206	OGRID: 331595
	Action Number: 407762
	Action Type: [C-141] Site Char./Remediation Plan C-141 (C-141-v-Plan)

QUESTIONS

Nature and Volume of Release (continued)	
Is this a gas only submission (i.e. only significant Mcf values reported)	No, according to supplied volumes this does not appear to be a "gas only" report.
Was this a major release as defined by Subsection A of 19.15.29.7 NMAC	Yes
Reasons why this would be considered a submission for a notification of a major release	From paragraph A. "Major release" determine using: (1) an unauthorized release of a volume, excluding gases, of 25 barrels or more.
With the implementation of the 19.15.27 NMAC (05/25/2021), venting and/or flaring of natural gas (i.e. gas only) are to be submitted on the C-129 form.	

Initial Response

The responsible party must undertake the following actions immediately unless they could create a safety hazard that would result in injury.

The source of the release has been stopped	True
The impacted area has been secured to protect human health and the environment	True
Released materials have been contained via the use of berms or dikes, absorbent pads, or other containment devices	True
All free liquids and recoverable materials have been removed and managed appropriately	True
If all the actions described above have not been undertaken, explain why	Not answered.

Per Paragraph (4) of Subsection B of 19.15.29.8 NMAC the responsible party may commence remediation immediately after discovery of a release. If remediation has begun, please prepare and attach a narrative of actions to date in the follow-up C-141 submission. If remedial efforts have been successfully completed or if the release occurred within a lined containment area (see Subparagraph (a) of Paragraph (5) of Subsection A of 19.15.29.11 NMAC), please prepare and attach all information needed for closure evaluation in the follow-up C-141 submission.

I hereby certify that the information given above is true and complete to the best of my knowledge and understand that pursuant to OCD rules and regulations all operators are required to report and/or file certain release notifications and perform corrective actions for releases which may endanger public health or the environment. The acceptance of a C-141 report by the OCD does not relieve the operator of liability should their operations have failed to adequately investigate and remediate contamination that pose a threat to groundwater, surface water, human health or the environment. In addition, OCD acceptance of a C-141 report does not relieve the operator of responsibility for compliance with any other federal, state, or local laws and/or regulations.

I hereby agree and sign off to the above statement	Name: Rachael Overbey Title: Project Manager Email: roverbey@fmellc.com Date: 02/07/2024
--	---

Sante Fe Main Office
Phone: (505) 476-3441

General Information
Phone: (505) 629-6116

Online Phone Directory
<https://www.emnrd.nm.gov/ocd/contact-us>

State of New Mexico
Energy, Minerals and Natural Resources
Oil Conservation Division
1220 S. St Francis Dr.
Santa Fe, NM 87505

QUESTIONS, Page 3

Action 407762

QUESTIONS (continued)

Operator: Franklin Mountain Energy 3, LLC 44 Cook Street Denver, CO 80206	OGRID: 331595
	Action Number: 407762
	Action Type: [C-141] Site Char./Remediation Plan C-141 (C-141-v-Plan)

QUESTIONS

Site Characterization	
<i>Please answer all the questions in this group (only required when seeking remediation plan approval and beyond). This information must be provided to the appropriate district office no later than 90 days after the release discovery date.</i>	
What is the shallowest depth to groundwater beneath the area affected by the release in feet below ground surface (ft bgs)	Between 75 and 100 (ft.)
What method was used to determine the depth to ground water	U.S. Geological Survey
Did this release impact groundwater or surface water	No
What is the minimum distance, between the closest lateral extents of the release and the following surface areas:	
A continuously flowing watercourse or any other significant watercourse	Between 1 and 5 (mi.)
Any lakebed, sinkhole, or playa lake (measured from the ordinary high-water mark)	Between 1000 (ft.) and ½ (mi.)
An occupied permanent residence, school, hospital, institution, or church	Between 1 and 5 (mi.)
A spring or a private domestic fresh water well used by less than five households for domestic or stock watering purposes	Between 1 and 5 (mi.)
Any other fresh water well or spring	Between 500 and 1000 (ft.)
Incorporated municipal boundaries or a defined municipal fresh water well field	Between 1 and 5 (mi.)
A wetland	Between 1 and 5 (mi.)
A subsurface mine	Between 1 and 5 (mi.)
An (non-karst) unstable area	Between 1 and 5 (mi.)
Categorize the risk of this well / site being in a karst geology	None
A 100-year floodplain	Between 1 and 5 (mi.)
Did the release impact areas not on an exploration, development, production, or storage site	No

Remediation Plan	
<i>Please answer all the questions that apply or are indicated. This information must be provided to the appropriate district office no later than 90 days after the release discovery date.</i>	
Requesting a remediation plan approval with this submission	Yes
<i>Attach a comprehensive report demonstrating the lateral and vertical extents of soil contamination associated with the release have been determined, pursuant to 19.15.29.11 NMAC and 19.15.29.13 NMAC.</i>	
Have the lateral and vertical extents of contamination been fully delineated	Yes
Was this release entirely contained within a lined containment area	Yes
<i>Per Subsection B of 19.15.29.11 NMAC unless the site characterization report includes completed efforts at remediation, the report must include a proposed remediation plan in accordance with 19.15.29.12 NMAC, which includes the anticipated timelines for beginning and completing the remediation.</i>	
On what estimated date will the remediation commence	12/16/2024
On what date will (or did) the final sampling or liner inspection occur	01/31/2025
On what date will (or was) the remediation complete(d)	01/31/2025
What is the estimated surface area (in square feet) that will be remediated	1000
What is the estimated volume (in cubic yards) that will be remediated	100
<i>These estimated dates and measurements are recognized to be the best guess or calculation at the time of submission and may (be) change(d) over time as more remediation efforts are completed.</i>	
<i>The OCD recognizes that proposed remediation measures may have to be minimally adjusted in accordance with the physical realities encountered during remediation. If the responsible party has any need to significantly deviate from the remediation plan proposed, then it should consult with the division to determine if another remediation plan submission is required.</i>	

Sante Fe Main Office
Phone: (505) 476-3441

General Information
Phone: (505) 629-6116

Online Phone Directory
<https://www.emnrd.nm.gov/ocd/contact-us>

State of New Mexico
Energy, Minerals and Natural Resources
Oil Conservation Division
1220 S. St Francis Dr.
Santa Fe, NM 87505

QUESTIONS, Page 4

Action 407762

QUESTIONS (continued)

Operator: Franklin Mountain Energy 3, LLC 44 Cook Street Denver, CO 80206	OGRID: 331595
	Action Number: 407762
	Action Type: [C-141] Site Char./Remediation Plan C-141 (C-141-v-Plan)

QUESTIONS

Remediation Plan (continued)	
<i>Please answer all the questions that apply or are indicated. This information must be provided to the appropriate district office no later than 90 days after the release discovery date.</i>	
This remediation will (or is expected to) utilize the following processes to remediate / reduce contaminants:	
<i>(Select all answers below that apply.)</i>	
Is (or was) there affected material present needing to be removed	Yes
Is (or was) there a power wash of the lined containment area (to be) performed	Yes
OTHER (Non-listed remedial process)	No
<i>Per Subsection B of 19.15.29.11 NMAC unless the site characterization report includes completed efforts at remediation, the report must include a proposed remediation plan in accordance with 19.15.29.12 NMAC, which includes the anticipated timelines for beginning and completing the remediation.</i>	
I hereby certify that the information given above is true and complete to the best of my knowledge and understand that pursuant to OCD rules and regulations all operators are required to report and/or file certain release notifications and perform corrective actions for releases which may endanger public health or the environment. The acceptance of a C-141 report by the OCD does not relieve the operator of liability should their operations have failed to adequately investigate and remediate contamination that pose a threat to groundwater, surface water, human health or the environment. In addition, OCD acceptance of a C-141 report does not relieve the operator of responsibility for compliance with any other federal, state, or local laws and/or regulations.	
I hereby agree and sign off to the above statement	Name: Greg Jones Title: Environmental Compliance Specialist Email: gjones@fmelc.com Date: 12/02/2024
<i>The OCD recognizes that proposed remediation measures may have to be minimally adjusted in accordance with the physical realities encountered during remediation. If the responsible party has any need to significantly deviate from the remediation plan proposed, then it should consult with the division to determine if another remediation plan submission is required.</i>	

Sante Fe Main Office
Phone: (505) 476-3441

General Information
Phone: (505) 629-6116

Online Phone Directory
<https://www.emnrd.nm.gov/ocd/contact-us>

State of New Mexico
Energy, Minerals and Natural Resources
Oil Conservation Division
1220 S. St Francis Dr.
Santa Fe, NM 87505

QUESTIONS, Page 6

Action 407762

QUESTIONS (continued)

Operator: Franklin Mountain Energy 3, LLC 44 Cook Street Denver, CO 80206	OGRID: 331595
	Action Number: 407762
	Action Type: [C-141] Site Char./Remediation Plan C-141 (C-141-v-Plan)

QUESTIONS

Liner Inspection Information	
Last liner inspection notification (C-141L) recorded	{Unavailable.}
Was all the impacted materials removed from the liner	Unavailable.

Remediation Closure Request	
Only answer the questions in this group if seeking remediation closure for this release because all remediation steps have been completed.	
Requesting a remediation closure approval with this submission	No

Sante Fe Main Office
Phone: (505) 476-3441

General Information
Phone: (505) 629-6116

Online Phone Directory
<https://www.emnrd.nm.gov/ocd/contact-us>

State of New Mexico

Energy, Minerals and Natural Resources

Oil Conservation Division

1220 S. St Francis Dr.

Santa Fe, NM 87505

CONDITIONS

Action 407762

CONDITIONS

Operator: Franklin Mountain Energy 3, LLC 44 Cook Street Denver, CO 80206	OGRID: 331595
	Action Number: 407762
	Action Type: [C-141] Site Char./Remediation Plan C-141 (C-141-v-Plan)

CONDITIONS

Created By	Condition	Condition Date
nvez	Remediation plan is approved with the following conditions; 1. The depth to groundwater has not been adequately determined. When nearby wells are used to determine depth to groundwater, the wells should be no further than ½ mile away from the site, and data should be no more than 25 years old, and well construction information should be provided in the submission. The responsible party may choose to remediate to the most stringent levels listed in Table 1 of 19.15.29 NMAC in lieu of drilling to determine the depth to groundwater. 2. Must provide supporting documentation (e.g. maps) for provisions 19.15.29.12C (4b thru 4h) NMAC in the final remediation closure report. 3. All remedial activities must meet 19.15.29.12 and 19.15.29.13 NMAC. 4. Franklin Management Energy has 90-days (September 23, 2024) to submit to OCD its appropriate or final remediation closure report.	12/24/2024