



SITE INFORMATION

Closure Report
SD 15 FEDERAL P418 #010H (12.04.2024)
Incident #: NAPP2433943235
Lea County, New Mexico
Unit O Sec 15 T26S R32E
32.037188°, -103.662344°

Fire Caused by a Possible Methane Release
Point of Release: Gas Lift Line
Release Date: 12/04/2024
Volume Released: Unknown
Volume Recovered: None, Fire Burned All Gases

CARMONA RESOURCES



Prepared for:
Chevron U.S.A., Inc.
6301 Deauville Blvd
Midland, Texas 79706

Prepared by:
Carmona Resources, LLC
310 West Wall Street
Suite 500
Midland, Texas 79701



TABLE OF CONTENTS

1.0 SITE INFORMATION AND BACKGROUND

2.0 SITE CHARACTERIZATION AND GROUNDWATER

3.0 NMAC REGULATORY CRITERIA

4.0 SITE ASSESSMENT ACTIVITIES

5.0 CONCLUSIONS & VARIANCES

FIGURES

FIGURE 1 OVERVIEW FIGURE 2 TOPOGRAPHIC

FIGURE 3 SAMPLE LOCATION

APPENDICES

APPENDIX A TABLES

APPENDIX B PHOTOS

APPENDIX C NMOCD CORRESPONDENCE

APPENDIX D SITE CHARACTERIZATION AND GROUNDWATER

APPENDIX E LABORATORY REPORTS

January 28, 2025

Mike Bratcher
District Supervisor
Oil Conservation Division, District 2
811 S. First Street
Artesia, New Mexico 88210

Re: Closure Report
SD 15 FEDERAL P418 #010H (12.04.2024)
Chevron U.S.A., Inc.
Site Location: Unit O, S15, T26S, R32E
(Lat 32.037188°, Long -103.662344°)
Lea County, New Mexico

Mr. Bratcher:

On behalf of Chevron U.S.A., Inc. (Chevron), Carmona Resources, LLC has prepared this letter to document site assessment activities for the SD 15 Federal P418 #010H release. The site is located at 32.037188°, -103.662344° within Unit O, S15, T26S, R32E, in Lea County, New Mexico (Figures 1 and 2).

1.0 Site Information and Background

Based on the initial C-141 obtained from the New Mexico Oil Conservation Division (NMOCD), the fire was discovered on December 4, 2024, caused by equipment failure. It is undetermined if methanol was released during this fire. Out of caution, this was reported to the NMOCD and the soil in the direct vicinity of the fire will be sampled, per NMOCD request, shown in Figure 3. The Notification of Release is attached in Appendix C.

2.0 Site Characterization and Groundwater

The site is located within a medium karst area. Based on a review of the New Mexico Office of State Engineers and USGS databases, no known water sources are within a 0.50-mile radius of the location. The closest groundwater determination bore is approximately 0.31 miles north of the site in S15, T26S, R32E and was drilled in 2022. The well was drilled to a depth of 115' feet below the ground surface (ft bgs). The presence of groundwater was not encountered. A copy of the associated well log is attached in Appendix D.

3.0 NMAC Regulatory Criteria

Per the NMOCD regulatory criteria established in 19.15.29.12 NMAC, the following criteria were utilized in assessing the site.

- Benzene: 10 milligrams per kilogram (mg/kg).
- Benzene, toluene, ethylbenzene, and total xylenes (BTEX): 50 mg/kg.
- TPH: 100 mg/kg (GRO + DRO + MRO).
- Chloride: 600 mg/kg.



4.0 Site Assessment Activities

Initial Assessment

On January 22, 2025, Carmona Resources, LLC performed site assessment activities to evaluate possible soil impacts stemming from the release. Before collecting site assessment samples, the NMOCD division office was notified via NMOCD portal on January 21, 2025, per Subsection D of 19.15.29.12 NMAC. A sample variance request was sent to the NMOCD and approved on January 21, 2025, due to field staff being available in the area. See Appendix C. After discussions with the NMOCD, one (1) five-point composite surface sample was collected in the area of the fire to confirm that no contamination impacted the soils as a result of the fire. See Figure 3 for the sample location. For chemical analysis, the soil sample was collected and placed directly into a laboratory-provided sample container, stored on ice, and transported under the proper chain-of-custody protocol to Cardinal Labs in Hobbs, NM. The samples were analyzed for total petroleum hydrocarbons (TPH) by EPA method 8015, modified benzene, toluene, ethylbenzene, and xylenes (BTEX) by EPA Method 8021B, and Chloride by EPA method 4500. The laboratory reports, including analytical methods, results, and chain-of-custody documents, are attached in Appendix E.

5.0 Conclusion and Variances

Based on the assessment results and the analytical data, no further actions are required at the site. Chevron formally requests the closure of the spill. Additionally, Chevron requests a variance to 19.15.29.13 NMAC for this specific spill incident due to no contamination being present onsite. Chevron is requesting this incident to be closed for all aspects of 19.15.29.12 & 13. The entire area will be reclaimed and revegetated during normal P/A activities per NMAC 19.15.29.13. If you have any questions regarding this report or need additional information, please contact us at 432-813-1992.

Sincerely,

Carmona Resources, LLC

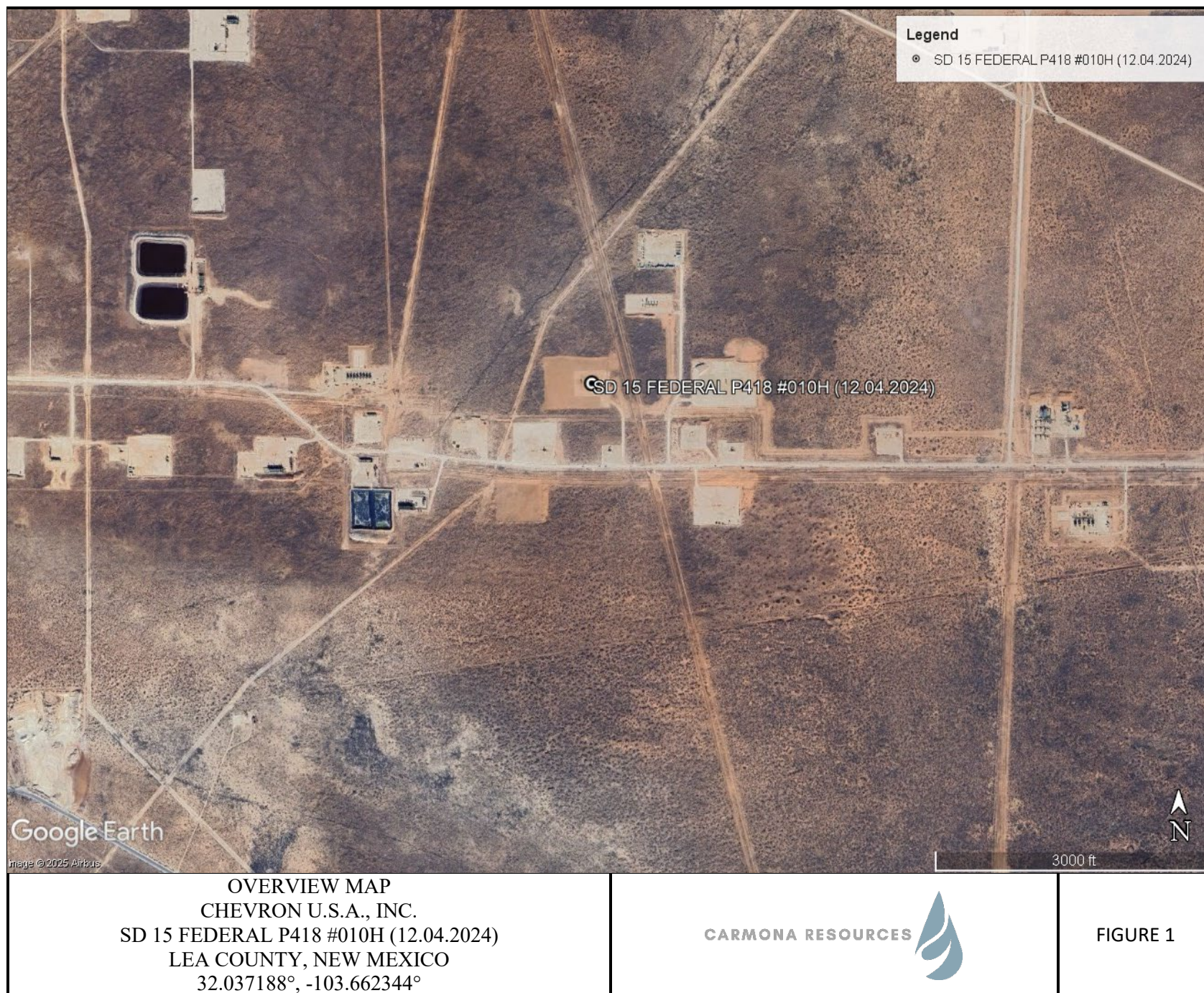
Ashton Thielke
Environmental Manager

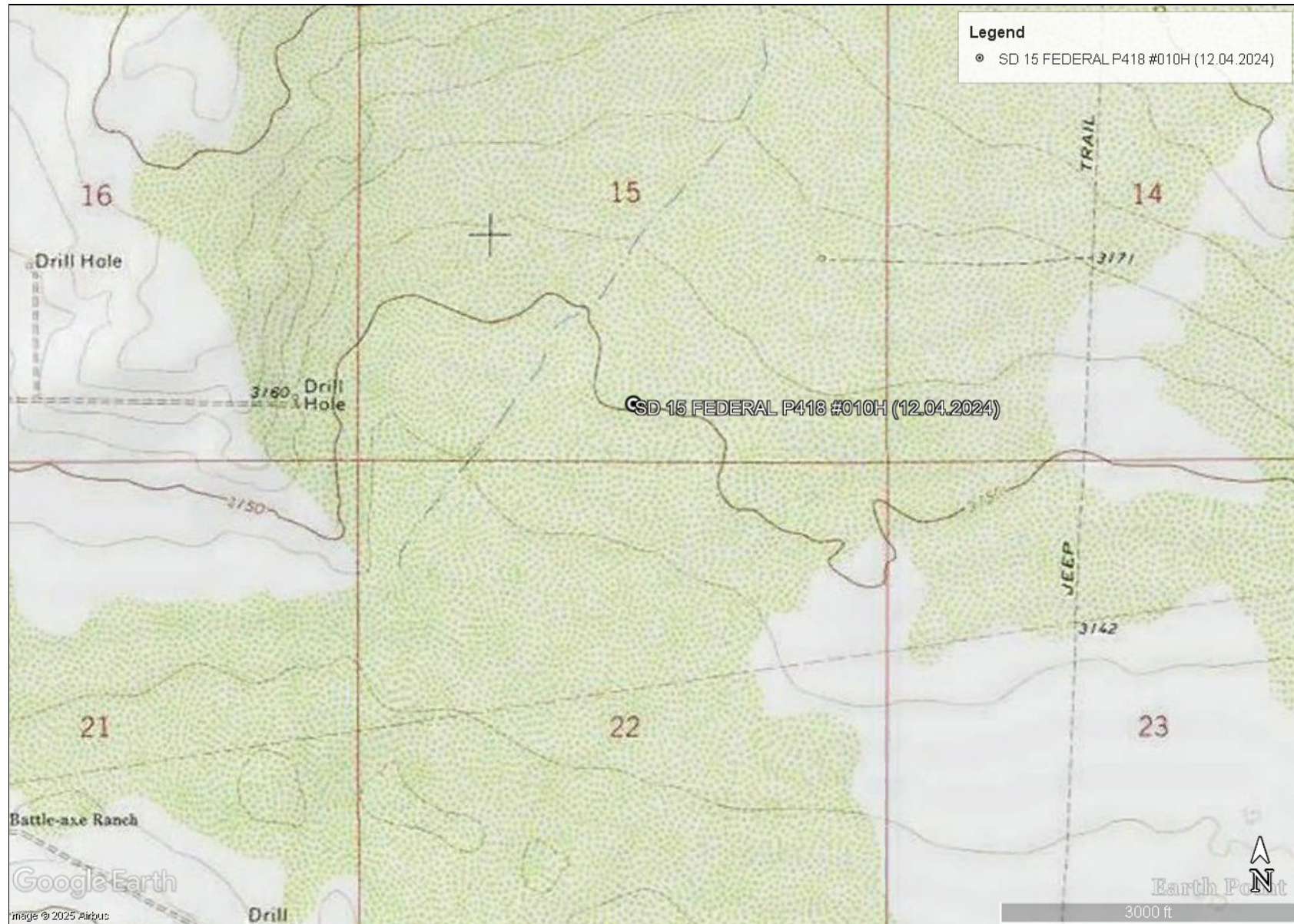
Gilbert Priego
Project Manager

FIGURES

CARMONA RESOURCES







TOPOGRAPHIC MAP
CHEVRON U.S.A., INC.
SD 15 FEDERAL P418 #010H (12.04.2024)
LEA COUNTY, NEW MEXICO
32.037188°, -103.662344°

CARMONA RESOURCES



FIGURE 2



SAMPLE LOCATION MAP
CHEVRON U.S.A., INC.
SD 15 FEDERAL P418 #010H (12.04.2024)
LEA COUNTY, NEW MEXICO
32.037188°, -103.662344°

CARMONA RESOURCES



FIGURE 3

APPENDIX A

CARMONA RESOURCES



Table 1
Chevron
SD 15 FEDERAL P418 #010H (12.04.2024)
Lea County, New Mexico

Sample ID	Date	Depth (ft)	TPH (mg/kg)				Benzene (mg/kg)	Toluene (mg/kg)	Ethlybenzene (mg/kg)	Xylene (mg/kg)	Total BTEX (mg/kg)	Chloride (mg/kg)
			GRO	DRO	MRO	Total						
S-1	1/22/2025	0-1.0'	<10.0	<10.0	<10.0	<10.0	<0.050	<0.050	<0.050	<0.150	<0.300	64.0
<i>Regulatory Criteria^A</i>							100 mg/kg	10 mg/kg			50 mg/kg	600 mg/kg

(-) Not Analyzed

^A – Table 1 - 19.15.29 NMAC

mg/kg - milligram per kilogram

TPH - Total Petroleum Hydrocarbons

ft - feet

(S) - Sample Point

APPENDIX B

CARMONA RESOURCES



PHOTOGRAPHIC LOG

Chevron U.S.A., Inc.

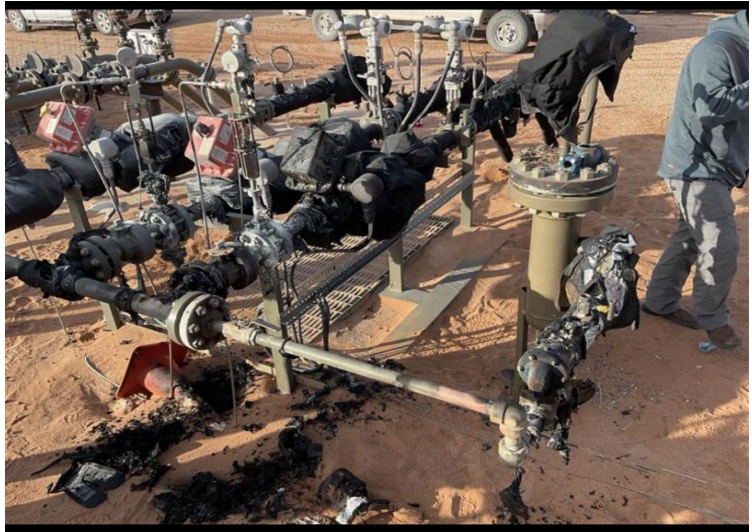
Photograph No. 1

Facility: SD 15 FEDERAL P418 #010H
(12.04.2024)

County: Lea County, New Mexico

Description:

View of the burned up gas lift line and protective insulation wrapped on the ground.



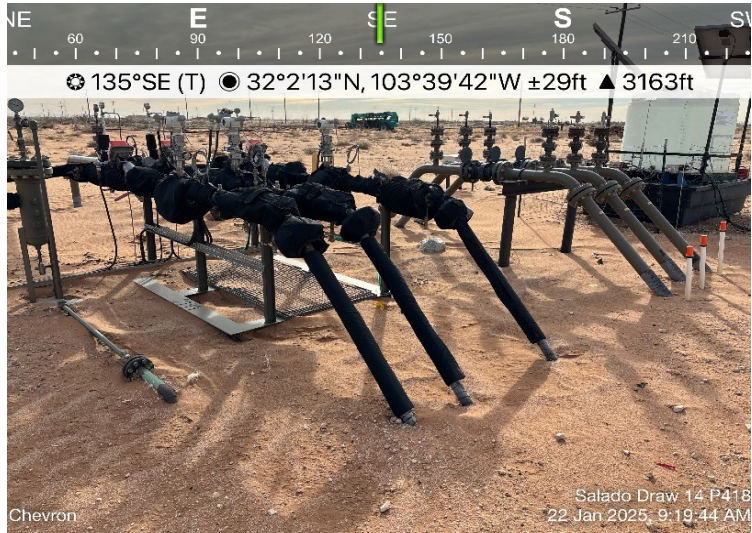
Photograph No. 2

Facility: SD 15 FEDERAL P418 #010H
(12.04.2024)

County: Lea County, New Mexico

Description:

View Southeast, area of reinsulated gas lift line.



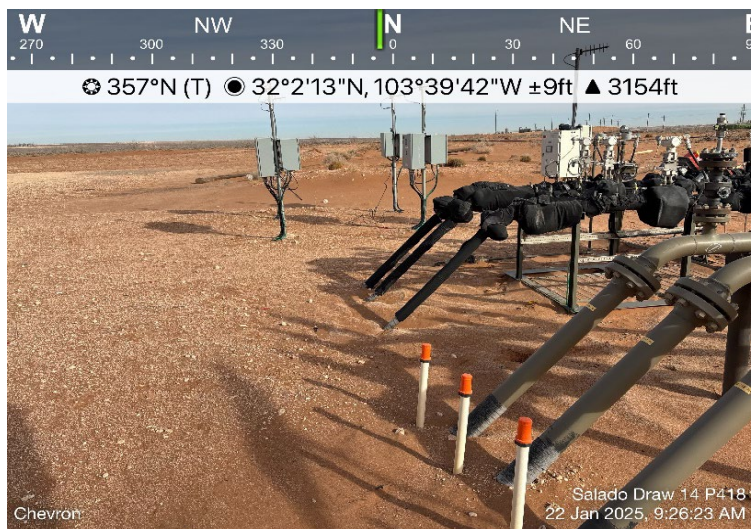
Photograph No. 3

Facility: SD 15 FEDERAL P418 #010H
(12.04.2024)

County: Lea County, New Mexico

Description:

View North, area of reinsulated gas lift line.



APPENDIX C

CARMONA RESOURCES



Sante Fe Main Office
Phone: (505) 476-3441

General Information
Phone: (505) 629-6116

Online Phone Directory
<https://www.emnrd.nm.gov/ocd/contact-us>

State of New Mexico
Energy, Minerals and Natural Resources
Oil Conservation Division
1220 S. St Francis Dr.
Santa Fe, NM 87505

QUESTIONS

Action 408516

QUESTIONS

Operator: CHEVRON U S A INC 6301 Deauville Blvd Midland, TX 79706	OGRID: 4323
	Action Number: 408516
	Action Type: [NOTIFY] Notification Of Release (NOR)

QUESTIONS

Location of Release Source <i>Please answer all the questions in this group.</i>	
Site Name	SD 15 FEDERAL P418 #010H
Date Release Discovered	12/04/2024
Surface Owner	Federal

Incident Details <i>Please answer all the questions in this group.</i>	
Incident Type	Fire
Did this release result in a fire or is the result of a fire	Yes
Did this release result in any injuries	No
Has this release reached or does it have a reasonable probability of reaching a watercourse	No
Has this release endangered or does it have a reasonable probability of endangering public health	No
Has this release substantially damaged or will it substantially damage property or the environment	No
Is this release of a volume that is or may with reasonable probability be detrimental to fresh water	No

Nature and Volume of Release <i>Material(s) released, please answer all that apply below. Any calculations or specific justifications for the volumes provided should be attached to the follow-up C-141 submission.</i>	
Crude Oil Released (bbls) Details	Not answered.
Produced Water Released (bbls) Details	Not answered.
Is the concentration of chloride in the produced water >10,000 mg/l	Not answered.
Condensate Released (bbls) Details	Not answered.
Natural Gas Vented (Mcf) Details	Not answered.
Natural Gas Flared (Mcf) Details	Not answered.
Other Released Details	Cause: Equipment Failure Well Chemical (Specify) Released: 0 GAL (Unknown Released Amount) Recovered: 0 GAL Lost: 0 GAL.
Are there additional details for the questions above (i.e. any answer containing Other, Specify, Unknown, and/or Fire, or any negative lost amounts)	A fire was discovered on the gas lift line at pad 418. It is undetermined at this point if methanol was associated with this fire. We are reporting this event out of an abundance of caution,

Sante Fe Main Office
Phone: (505) 476-3441

General Information
Phone: (505) 629-6116

Online Phone Directory
<https://www.emnrd.nm.gov/ocd/contact-us>

State of New Mexico
Energy, Minerals and Natural Resources
Oil Conservation Division
1220 S. St Francis Dr.
Santa Fe, NM 87505

QUESTIONS, Page 2

Action 408516

QUESTIONS (continued)

Operator: CHEVRON U S A INC 6301 Deauville Blvd Midland, TX 79706	OGRID: 4323
	Action Number: 408516
	Action Type: [NOTIFY] Notification Of Release (NOR)

QUESTIONS

Nature and Volume of Release (continued)	
Is this a gas only submission (i.e. only significant Mcf values reported)	No, according to supplied volumes this does not appear to be a "gas only" report.
Was this a major release as defined by Subsection A of 19.15.29.7 NMAC	Yes
Reasons why this would be considered a submission for a notification of a major release	From paragraph A. "Major release" determine using: (1) an unauthorized release of a volume, excluding gases, of 25 barrels or more; (2) an unauthorized release of a volume that: (a) results in a fire or is the result of a fire.
With the implementation of the 19.15.27 NMAC (05/25/2021), venting and/or flaring of natural gas (i.e. gas only) are to be submitted on the C-129 form.	

Initial Response

The responsible party must undertake the following actions immediately unless they could create a safety hazard that would result in injury.

The source of the release has been stopped	True
The impacted area has been secured to protect human health and the environment	True
Released materials have been contained via the use of berms or dikes, absorbent pads, or other containment devices	True
All free liquids and recoverable materials have been removed and managed appropriately	True
If all the actions described above have not been undertaken, explain why	Not answered.

Per Paragraph 4 of Subsection B of 19.15.29.8 NMAC the responsible party may commence remediation immediately after discovery of a release. If remediation has begun, please prepare and attach a narrative of actions to date in the follow-up C-141 submission. If remedial efforts have been successfully completed or if the release occurred within a lined containment area (see 19.15.29.11(A)(5)(a) NMAC), please prepare and attach all information needed for closure evaluation in the follow-up C-141 submission.

Sante Fe Main Office
Phone: (505) 476-3441

General Information
Phone: (505) 629-6116

Online Phone Directory
<https://www.emnrd.nm.gov/ocd/contact-us>

State of New Mexico
Energy, Minerals and Natural Resources
Oil Conservation Division
1220 S. St Francis Dr.
Santa Fe, NM 87505

ACKNOWLEDGMENTS

Action 408516

ACKNOWLEDGMENTS

Operator: CHEVRON U S A INC 6301 Deauville Blvd Midland, TX 79706	OGRID: 4323
	Action Number: 408516
	Action Type: [NOTIFY] Notification Of Release (NOR)

ACKNOWLEDGMENTS

<input checked="" type="checkbox"/>	I acknowledge that I am authorized to submit notification of a release on behalf of my operator.
<input checked="" type="checkbox"/>	I acknowledge that upon submitting this application, I will be creating a new incident file (assigned to my operator) to track the notification(s) and corrective action(s) for a release, pursuant to NMAC 19.15.29.
<input checked="" type="checkbox"/>	I acknowledge that creating a new incident file will require my operator to file subsequent submission(s) of form "C-141, Application for administrative approval of a release notification and corrective action", pursuant to NMAC 19.15.29.
<input checked="" type="checkbox"/>	I hereby certify that the information given above is true and complete to the best of my knowledge and understand that pursuant to OCD rules and regulations all operators are required to report and/or file certain release notifications and perform corrective actions for releases which may endanger public health or the environment.
<input checked="" type="checkbox"/>	I acknowledge the fact that the acceptance of a C-141 report by the OCD does not relieve the operator of liability should their operations have failed to adequately investigate and remediate contamination that pose a threat to groundwater, surface water, human health or the environment.
<input checked="" type="checkbox"/>	I acknowledge the fact that, in addition, OCD acceptance of a C-141 report does not relieve the operator of responsibility for compliance with any other federal, state, or local laws and/or regulations.

Sante Fe Main Office
Phone: (505) 476-3441

General Information
Phone: (505) 629-6116

Online Phone Directory
<https://www.emnrd.nm.gov/ocd/contact-us>

State of New Mexico

Energy, Minerals and Natural Resources

Oil Conservation Division

1220 S. St Francis Dr.

Santa Fe, NM 87505

CONDITIONS

Action 408516

CONDITIONS

Operator: CHEVRON U S A INC 6301 Deauville Blvd Midland, TX 79706	OGRID: 4323
	Action Number: 408516
	Action Type: [NOTIFY] Notification Of Release (NOR)

CONDITIONS

Created By	Condition	Condition Date
branes	When submitting future reports regarding this release, please submit the calculations used or specific justification for the volumes reported on the initial C-141.	12/4/2024

Ashton Thielke

From: Hall, Brittany, EMNRD <Brittany.Hall@emnrd.nm.gov>
Sent: Tuesday, January 21, 2025 2:05 PM
To: Ashton Thielke
Cc: Ranes, Bayley
Subject: RE: [EXTERNAL] RE: NAPP2433943235 - SD 15 FEDERAL P418 #010H (12.04.2024) - Sampling Variance (19.15.29.12.D.1A)

Ashton,

The variance request is approved.

Please include a copy of this email chain in the next submittal.

Thank you,

Brittany Hall ● Environmental Specialist
Environmental Bureau Projects Group
EMNRD - Oil Conservation Division
1000 Rio Brazos Road | Aztec, NM 87110
505.517.5333 | Brittany.Hall@emnrd.nm.gov
<http://www.emnrd.nm.gov/oecd/>

Effective 12/1/2024: OCD has updated guidance on karst potential occurrence zones. This notice can be found at: <https://www.emnrd.nm.gov/oecd/oecd-announcements-and-notifications/> under “2024 OCD ANNOUNCEMENTS AND NOTIFICATIONS”.

The Digital C-141 guidance documents can be found at <https://www.emnrd.nm.gov/oecd/oecd-announcements-and-notifications/> or <https://www.emnrd.nm.gov/oecd/oecd-forms/>.

From: Ashton Thielke <ThielkeA@carmonaresources.com>
Sent: Tuesday, January 21, 2025 12:10 PM
To: Hall, Brittany, EMNRD <Brittany.Hall@emnrd.nm.gov>
Cc: Ranes, Bayley <bayleyranes@chevron.com>
Subject: [EXTERNAL] RE: NAPP2433943235 - SD 15 FEDERAL P418 #010H (12.04.2024) - Sampling Variance (19.15.29.12.D.1A)

CAUTION: This email originated outside of our organization. Exercise caution prior to clicking on links or opening attachments.

Correction

Wednesday, January 22, 2025 @ 12:00 (mst).

From: Ashton Thielke
Sent: Tuesday, January 21, 2025 1:07 PM
To: Brittany.Hall@emnrd.nm.gov
Cc: Ranes, Bayley <bayleyranes@chevron.com>
Subject: NAPP2433943235 - SD 15 FEDERAL P418 #010H (12.04.2024) - Sampling Variance (19.15.29.12.D.1A)

Good afternoon Brittany,

On behalf of Chevron USA, we are requesting a variance to NMAC 19.15.29.12.D.1A (2 day sampling notification) I have field staff in the area tomorrow that can easily sample and photo document the area.

A C-141N will be placed to reflect sampling to occur tomorrow, Wednesday January 23, 2025 @12:00 (mst).

Please let me know if have any questions!

Thanks!

Ashton Thielke
Environmental Manager
310 West Wall Street, Suite 500
Midland TX, 79701
M: 432-813-8988 C: 281-753-5659
ThielkeA@carmonaresources.com
[Environmental Consulting Firm - Carmona Resources](#)



Sante Fe Main Office
Phone: (505) 476-3441

General Information
Phone: (505) 629-6116

Online Phone Directory
<https://www.emnrd.nm.gov/ocd/contact-us>

State of New Mexico
Energy, Minerals and Natural Resources
Oil Conservation Division
1220 S. St Francis Dr.
Santa Fe, NM 87505

QUESTIONS

Action 422806

QUESTIONS

Operator: CHEVRON U S A INC 6301 Deauville Blvd Midland, TX 79706	OGRID: 4323
	Action Number: 422806
	Action Type: [NOTIFY] Notification Of Sampling (C-141N)

QUESTIONS

Prerequisites	
Incident ID (n#)	nAPP2433943235
Incident Name	NAPP2433943235 SD 15 FEDERAL P418 #010H @ 30-025-46729
Incident Type	Fire
Incident Status	Initial C-141 Received
Incident Well	[30-025-46729] SD 15 FEDERAL P418 #010H

Location of Release Source	
Site Name	SD 15 FEDERAL P418 #010H
Date Release Discovered	12/04/2024
Surface Owner	Federal

Sampling Event General Information	
<i>Please answer all the questions in this group.</i>	
What is the sampling surface area in square feet	125
What is the estimated number of samples that will be gathered	1
Sampling date pursuant to Subparagraph (a) of Paragraph (1) of Subsection D of 19.15.29.12 NMAC	01/22/2024
Time sampling will commence	12:00 PM
 Warning: Notification can not be less than two business days prior to conducting final sampling. 	
Please provide any information necessary for observers to contact samplers	Carmona Resources – 432-813-8988
Please provide any information necessary for navigation to sampling site	(32.037188,-103.662344) Carmona Resources will be onsite on January 22, 2025 to assess the recent fire.

Sante Fe Main Office
Phone: (505) 476-3441

General Information
Phone: (505) 629-6116

Online Phone Directory
<https://www.emnrd.nm.gov/ocd/contact-us>

State of New Mexico
Energy, Minerals and Natural Resources
Oil Conservation Division
1220 S. St Francis Dr.
Santa Fe, NM 87505

CONDITIONS

Action 422806

CONDITIONS

Operator: CHEVRON U S A INC 6301 Deauville Blvd Midland, TX 79706	OGRID: 4323
	Action Number: 422806
	Action Type: [NOTIFY] Notification Of Sampling (C-141N)

CONDITIONS

Created By	Condition	Condition Date
branes	Failure to notify the OCD of sampling events including any changes in date/time per the requirements of 19.15.29.12.D.(1).(a) NMAC, may result in the remediation closure samples not being accepted.	1/21/2025

APPENDIX D

CARMONA RESOURCES

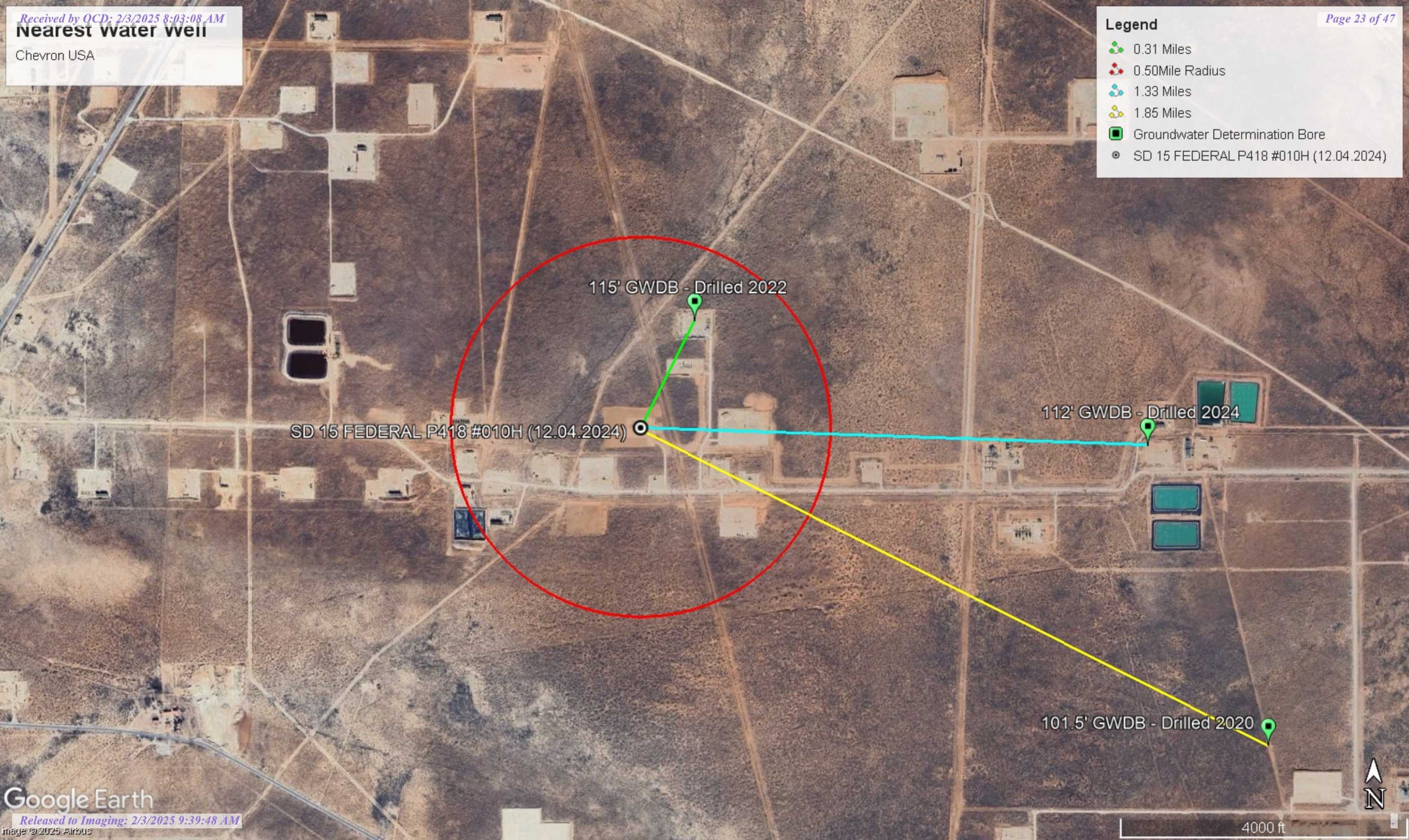


Nearest water well

Chevron USA

Legend

- 0.31 Miles
- 0.50 Mile Radius
- 1.33 Miles
- 1.85 Miles
- Groundwater Determination Bore
- SD 15 FEDERAL P418 #010H (12.04.2024)



SD 15 FEDERAL P418 #010H (12.04.2024)

115' GWDB - Drilled 2022

112' GWDB - Drilled 2024

101.5' GWDB - Drilled 2020



Medium Karst

Chevron USA

Legend

- Medium
- SD 15 FEDERAL P418 #010H (12.04.2024)

SD 15 FEDERAL P418 #010H (12.04.2024)





New Mexico Office of the State Engineer

Water Column/Average Depth to Water

(A CLW##### in the POD suffix indicates the POD has been replaced & no longer serves a water right file.)

(R=POD has been replaced, O=orphaned, C=the file is closed)

(quarters are smallest to largest)

(meters)

(In feet)

POD Number	Code	Sub basin	County	Q64	Q16	Q4	Sec	Tws	Range	X	Y	Map	Distance	Well Depth	Depth Water	Water Column
C 04880 POD1		CUB	LE	SW	SE	SE	14	26S	32E	628447.5	3545287.3		2146	112		
C 02271	R	CUB	LE		NE	SW	21	26S	32E	624449.0	3544111.0 *		2222	150	125	25
C 03595 POD1		CUB	LE	SE	NE	SW	21	26S	32E	624422.6	3544045.9		2281	280	180	100
C 02271 POD2		CUB	LE	SW	NE	SW	21	26S	32E	624348.0	3544010.0 *		2363	270	250	20
C 02323		C	LE	SW	NE	SW	21	26S	32E	624348.0	3544010.0 *		2363	405	405	0
C 03537 POD1		CUB	LE	SW	NE	SW	21	26S	32E	624250.4	3543985.6		2457	850		
C 04549 POD1		CUB	LE	NW	NW	NW	11	26S	32E	627111.4	3548316.9		3085	0	0	0
C 04485 POD1		CUB	LE	SE	NW	NW	12	26S	32E	629038.9	3548125.2		3905	55		

Average Depth to Water: 192 feet

Minimum Depth: 0 feet

Maximum Depth: 405 feet

Record Count: 8

UTM Filters (in meters):

Easting: 626302.00
Northing: 3545339.00
Radius: 4000

* UTM location was derived from PLSS - see Help

The data is furnished by the NMOSE/ISC and is accepted by the recipient with the expressed understanding that the OSE/ISC make no warranties, expressed or implied, concerning the accuracy, completeness, reliability, usability, or suitability for any particular purpose of the data.

BORING RECORD

GEOLOGIC UNIT	DEPTH	Start: 12:39 Finish: 14:32 DESCRIPTION LITHOLOGIC	DESCRIPTION USCS	GRAPHIC LOG	PID READING									SAMPLE			REMARKS		
					PPM X _____									NUMBER	PID READING	RECOVERY	DEPTH	BACKGROUND PID READING	
					2	4	6	8	10	12	14	16	18						
	0	Caliche, 5YR 8/1, White, Fill	Caliche																
	5	Silty Sand, 5YR 5/6, Yellowish Red, Very Fine Grained Quartz, Poorly Sorted, Grain Imbedded with Caliche below 5', White, 5YR 8/1, Quartz Sand, Medium to Coarse Grade	SM																
	10																		
	15																		
	20	Sand, 7.5YR 5/6, Strong Brown, Very Fine Grained Quartz Sand, Rounded, Poorly Sorted Reddish Brown, 5YR 5/4, Yellowish Red, 5YR 5/6, below 20', Dry	SW												2		20	12:47	
	25																		
	30	Thin Caliche Beds Below 25', Indurated, 5YR 7/0, Pink, Moderately Hard																	
	35	Sandstone Harder Below 30', Hard at 35'-40', Fine to Very Fine Grained Quartz Sand, Very Well Cemented	Sand Stone																
	40	Shale (Red Bed), 2.5YR 4/6, Red, Very Fine Grained, Poorly Sorted, Weakly Cemented, Dry													3		40	13:19	
	45																		
	50																		
	55	Below 50' Interbedded with Thin Sandstone Beds, Moderately Hard, Dry	Shale												4		60	13:39	
	60																		
	65																		



ONE CONTINUOUS AUGER SAMPLER



WATER TABLE (TIME OF BORING)



STANDARD PENETRATION TEST



LABORATORY TEST LOCATION



UNDISTURBED SAMPLE



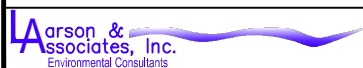
+ PENETROMETER (TONS/ SQ. FT)



WATER TABLE (24 HRS)



NR NO RECOVERY

JOB NUMBER : Chevron/ 20-0107-23HOLE DIAMETER : 5"LOCATION : Malestorm 15-1 SWD 103°39'35.87"N, 32°2'28.43"WLAI GEOLOGIST : M. LarsonDRILLING CONTRACTOR : Scarborough DrillingDRILLING METHOD : Air Rotary

DRILL DATE :

10/12/2022

BORING NUMBER :

BH-1

BORING RECORD

GEOLOGIC UNIT	DEPTH	Start: 12:39 Finish: 14:32 DESCRIPTION LITHOLOGIC	DESCRIPTION USCS	GRAPHIC LOG	PID READING										SAMPLE				REMARKS		
					PPM X _____										NUMBER	PID READING	RECOVERY	DEPTH	BACKGROUND PID READING SOIL : _____ PPM SOIL : _____ PPM		
					2	4	6	8	10	12	14	16	18								
	70	Sandstone, 2.5YR 5/9, Reddish Brown, Very Fine Grained Quartz Sand, Poorly Sorted, Soft to Moderate, Well Cemented	Sand Stone																		
	75																				
	80	Shale (Red Bed), 2.5YR 4/6 to 5/6, Red to Reddish Brown, Silty, Very Fine Grained Quartz Sand, Dry	Shale													5			80	13:56	
	85																				
	90																				
	95																				
	100																				
	105		Shale																		
	110																				
	115	TD: 115'																			
	120																				
	125																				
	130																				

☐ ONE CONTINUOUS AUGER SAMPLER

☐ STANDARD PENETRATION TEST

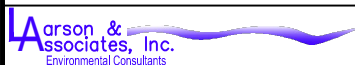
☐ UNDISTURBED SAMPLE

☐ WATER TABLE (24 HRS)

☐ WATER TABLE (TIME OF BORING)

☐ LABORATORY TEST LOCATION

☐ PENETROMETER (TONS/ SQ. FT)

☐ NR NO RECOVERY
JOB NUMBER : Chevron/ 20-0107-23HOLE DIAMETER : 5"LOCATION : Malestorm 15-1 SWD 103°39'35.87"N, 32°2'28.43"WLAI GEOLOGIST : M. LarsonDRILLING CONTRACTOR : Scarborough DrillingDRILLING METHOD : Air RotaryDRILL DATE :
10/12/2022BORING NUMBER :
BH-1

BORING RECORD

GEOLOGIC UNIT	DEPTH	Start: 10:35 MDT Finish: 15:15 DESCRIPTION LITHOLOGIC	DESCRIPTION USCS	GRAPHIC LOG	PID READING										SAMPLE			REMARKS	
					PPM X _____										NUMBER	PID READING	RECOVERY DEPTH	BACKGROUND PID READING SOIL : _____ PPM SOIL : _____ PPM	
					2	4	6	8	10	12	14	16	18						
	0	Silty Sand, 5YR 5/4, Reddish Brown, Very Fine Grained Quartz Sand, Poorly Sorted, Dry	ML																
	5														1		7		
	10	Caliche, 2.5YR 8/3, Pink, Very Fine Grained, Poorly Sorted, Dry															10		
	15		Caliche														15		
	20																20		
	25														2		25		
	30	Silty Sand, 5YR 5/4, Reddish Brown, Fine Grained Quartz Sand with Caliche Clasts (~10mm), Poorly Sorted	ML												3		30		
	35	Caliche, 2.5YR 8/3, Pink, Very Fine Grained, Poorly Sorted with Subangular Clasts (~10mm)	Caliche														35		
	40														4		39		
	45	Silty Sand, 5YR 6/4, Light Reddish Brown, Very Fine Grained Quartz Sand, Poorly Sorted with Subangular Caliche Clasts (~10mm)															45		
	50		ML														50		
	55																55		
	60																60		

	ONE CONTINUOUS AUGER SAMPLER		WATER TABLE (TIME OF BORING)
	STANDARD PENETRATION TEST		LABORATORY TEST LOCATION
	UNDISTURBED SAMPLE		PENETROMETER (TONS/ SQ. FT)
	WATER TABLE (24 HRS)		NR NO RECOVERY

 Larson & Associates, Inc. Environmental Consultants	DRILL DATE :	BORING NUMBER :	JOB NUMBER : <u>Chevron/ 19-0180-01</u>
	<u>04-14-2020</u>	<u>SB-01</u>	HOLE DIAMETER : <u>2"</u>
			LOCATION : <u>Salado Draw 24 CTB</u>
			<u>32.0250583° , -103.6342389°</u>
			LAI GEOLOGIST : <u>E. Chavez</u>
			DRILLING CONTRACTOR : <u>Scarborough</u>
			DRILLING METHOD : <u>Air Rotary</u>

BORING RECORD

GEOLOGIC UNIT	DEPTH	Start: 10:35 MDT Finish: 15:15 DESCRIPTION LITHOLOGIC	DESCRIPTION USCS	GRAPHIC LOG	PID READING										SAMPLE			REMARKS				
					PPM X _____										NUMBER	PID READING	RECOVERY	DEPTH	BACKGROUND PID READING			
					2	4	6	8	10	12	14	16	18	SOIL : _____ PPM						SOIL : _____ PPM		
	65	Silty Sand, 5YR 5/6, Yellowish Red, Very Fine Grained, Poorly Sorted with Subangular Caliche and Black Chert Clasts (~0.5mm)	ML												5			66				
	70																			70		
	75																				75	
	80																				80	
	85																				85	
	90	Silty Sand, 5YR 4/6, Yellowish Red, Fine Grained, Poorly Sorted with Subangular Caliche (~2mm)	ML															90				
	95																			95		
	100																			100		
	101.5																6			101.5		
	105																			105		
		TD:101.5' Dry After 72 Hours																				



ONE CONTINUOUS AUGER SAMPLER



WATER TABLE (TIME OF BORING)



STANDARD PENETRATION TEST



LABORATORY TEST LOCATION



UNDISTURBED SAMPLE



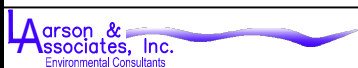
PENETROMETER (TONS/ SQ. FT)



WATER TABLE (24 HRS)



NR NO RECOVERY

JOB NUMBER : Chevron/ 19-0180-01HOLE DIAMETER : 2"LOCATION : Salado Draw 24 CTB
32.0250583°, -103.6342389°LAI GEOLOGIST : E. ChavezDRILLING CONTRACTOR : ScarboroughDRILLING METHOD : Air Rotary

DRILL DATE :

04-14-2020

BORING NUMBER :

SB-01



WELL RECORD & LOG

OFFICE OF THE STATE ENGINEER

www.ose.state.nm.us

1. GENERAL AND WELL LOCATION	OSE POD NO. (WELL NO.) Pod 1			WELL TAG ID NO.			OSE FILE NO(S). C-4880			
	WELL OWNER NAME(S) Chevron USA Inc. (Agent-H&R Enterprises, LLC/James Hawley)						PHONE (OPTIONAL)			
	WELL OWNER MAILING ADDRESS PO 3641						CITY STATE ZIP Hobbs NM 88241			
	WELL LOCATION (FROM GPS)	DEGREES		MINUTES		SECONDS		* ACCURACY REQUIRED: ONE TENTH OF A SECOND * DATUM REQUIRED: WGS 84		
		LATITUDE		02		11.3 N				
	LONGITUDE		103		38 22.7 W					
DESCRIPTION RELATING WELL LOCATION TO STREET ADDRESS AND COMMON LANDMARKS – PLSS (SECTION, TOWNSHIP, RANGE) WHERE AVAILABLE										
2. DRILLING & CASING INFORMATION	LICENSE NO. WD-1862		NAME OF LICENSED DRILLER James Hawley				NAME OF WELL DRILLING COMPANY H&R Enterprises, LLC			
	DRILLING STARTED 9-24-24		DRILLING ENDED 9-24-24		DEPTH OF COMPLETED WELL (FT) 112'		BORE HOLE DEPTH (FT) 112'		DEPTH WATER FIRST ENCOUNTERED (FT) N/A	
	COMPLETED WELL IS: <input type="checkbox"/> ARTESIAN *add Centralizer info below <input checked="" type="checkbox"/> DRY HOLE <input type="checkbox"/> SHALLOW (UNCONFINED)						STATIC WATER LEVEL IN COMPLETED WELL (FT) N/A		DATE STATIC MEASURED 9-27-24	
	DRILLING FLUID: <input checked="" type="checkbox"/> AIR <input type="checkbox"/> MUD ADDITIVES – SPECIFY:									
	DRILLING METHOD: <input checked="" type="checkbox"/> ROTARY <input type="checkbox"/> HAMMER <input type="checkbox"/> CABLE TOOL <input type="checkbox"/> OTHER – SPECIFY:								CHECK HERE IF PITLESS ADAPTER IS INSTALLED <input type="checkbox"/>	
	DEPTH (feet bgl)		BORE HOLE DIAM (inches)	CASING MATERIAL AND/OR GRADE (include each casing string, and note sections of screen)		CASING CONNECTION TYPE (add coupling diameter)		CASING INSIDE DIAM. (inches)	CASING WALL THICKNESS (inches)	SLOT SIZE (inches)
	FROM	TO								
	0'	112'	6"	No Casing left in hole						
3. ANNULAR MATERIAL	DEPTH (feet bgl)		BORE HOLE DIAM. (inches)	LIST ANNULAR SEAL MATERIAL AND GRAVEL PACK SIZE-RANGE BY INTERVAL *(if using Centralizers for Artesian wells- indicate the spacing below)			AMOUNT (cubic feet)	METHOD OF PLACEMENT		
	FROM	TO								
				N/A						

FOR OSE INTERNAL USE

WR-20 WELL RECORD & LOG (Version 09/22/2022)

FILE NO.		POD NO.	TRN NO.
LOCATION		WELL TAG ID NO.	PAGE 1 OF 2

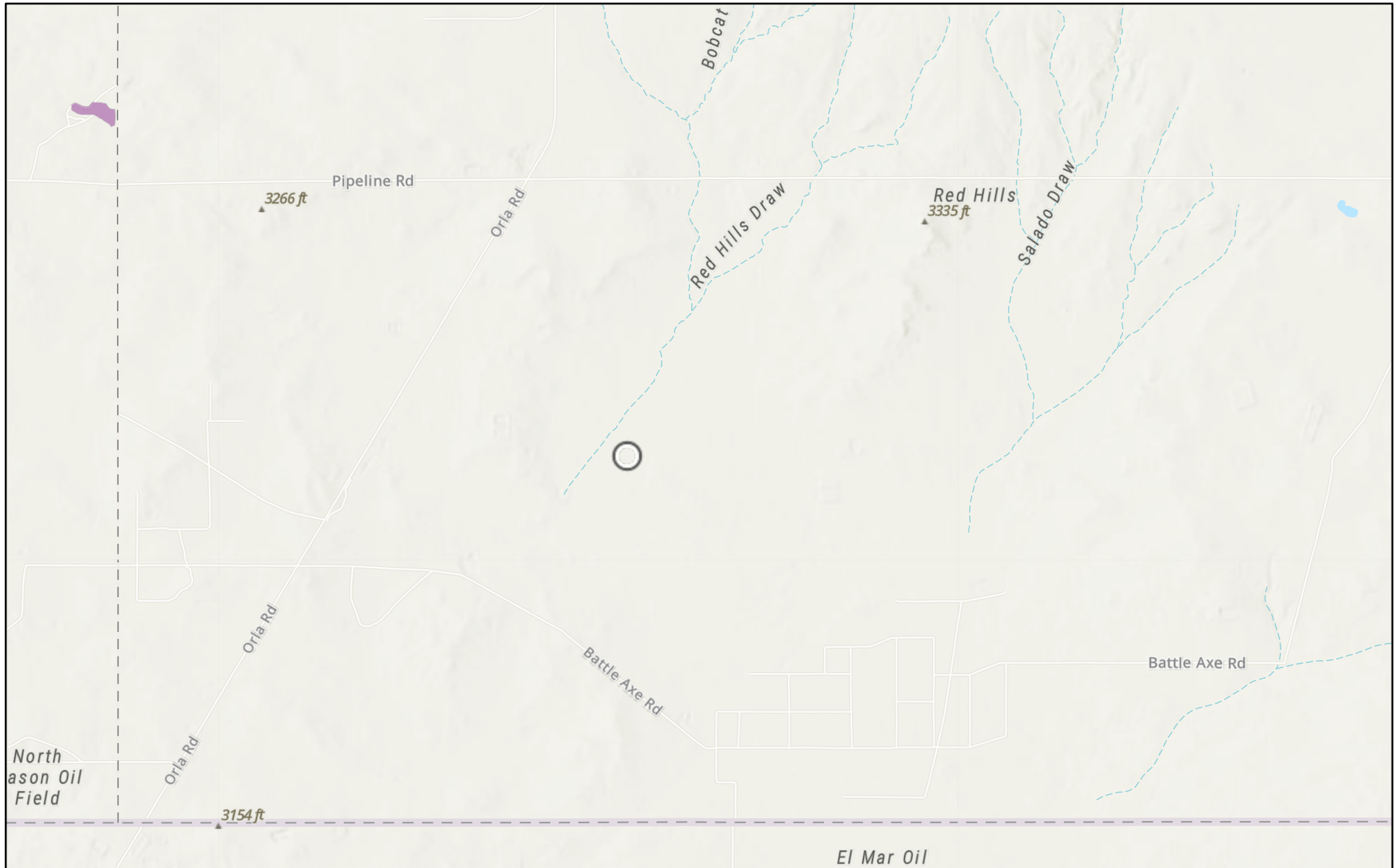
DEPTH (feet bgl)	THICKNESS (feet)		COLOR AND TYPE OF MATERIAL ENCOUNTERED - INCLUDE WATER-BEARING CAVITIES OR FRACTURE ZONES (attach supplemental sheets to fully describe all units)	WATER BEARING? (YES / NO)	ESTIMATED YIELD FOR WATER-BEARING ZONES (gpm)
	FROM	TO			
0'	25'	25'	Red Sand	Y ✓ N	
25'	60'	35'	Reddish Brown Sandy Clay	Y ✓ N	
60"	65"	5'	Pinkish Tan Sandy Clay	Y ✓ N	
65'	70'	5'	Yellow Sandy Clay	Y ✓ N	
70'	80'	10'	Reddish Brown Sandy Clay	Y ✓ N	
80'	85'	5'	Pinkish Tan Sandy Clay	Y ✓ N	
85'	112'	27"	Dark Red Sandy Clay	Y ✓ N	
				Y N	
				Y N	
				Y N	
				Y N	
				Y N	
				Y N	
				Y N	
				Y N	
				Y N	
				Y N	
				Y N	
				Y N	
				Y N	
				Y N	
				Y N	
METHOD USED TO ESTIMATE YIELD OF WATER-BEARING STRATA: <input type="checkbox"/> PUMP <input type="checkbox"/> AIR LIFT <input type="checkbox"/> BAILER <input type="checkbox"/> OTHER – SPECIFY: N/A				TOTAL ESTIMATED WELL YIELD (gpm): 0.00	

WELL TEST	TEST RESULTS - ATTACH A COPY OF DATA COLLECTED DURING WELL TESTING, INCLUDING DISCHARGE METHOD, START TIME, END TIME, AND A TABLE SHOWING DISCHARGE AND DRAWDOWN OVER THE TESTING PERIOD.
MISCELLANEOUS INFORMATION:	Bore was gauged for water on 9-27-24, well bore was dry. Temporary well casing was removed. Borehole was backfilled to 10' BGS with drill cuttings, then hydrated Bentonite chips were poured from 10' BGS to surface.
PRINT NAME(S) OF DRILL RIG SUPERVISOR(S) THAT PROVIDED ONSITE SUPERVISION OF WELL CONSTRUCTION OTHER THAN LICENSEE: Nathan Smelcer	

SIGNATURE	THE UNDERSIGNED HEREBY CERTIFIES THAT, TO THE BEST OF HIS OR HER KNOWLEDGE AND BELIEF, THE FOREGOING IS A TRUE AND CORRECT RECORD OF THE ABOVE DESCRIBED HOLE AND THAT HE OR SHE WILL FILE THIS WELL RECORD WITH THE STATE ENGINEER AND THE PERMIT HOLDER WITHIN 30 DAYS AFTER COMPLETION OF WELL DRILLING:
	James Hawley
SIGNATURE OF DRILLER / PRINT SIGNEE NAME	
DATE	

FOR OSE INTERNAL USE		WR-20 WELL RECORD & LOG (Version 09/22/2022)	
FILE NO.	POD NO.	TRN NO.	
LOCATION		WELL TAG ID NO	PAGE 2 OF 2

SD 15 FEDERAL P418 #010H (12.04.2024)

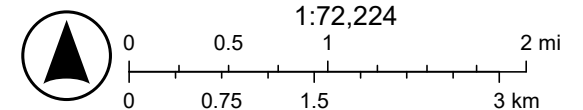


1/22/2025

USA Flood Hazard Areas

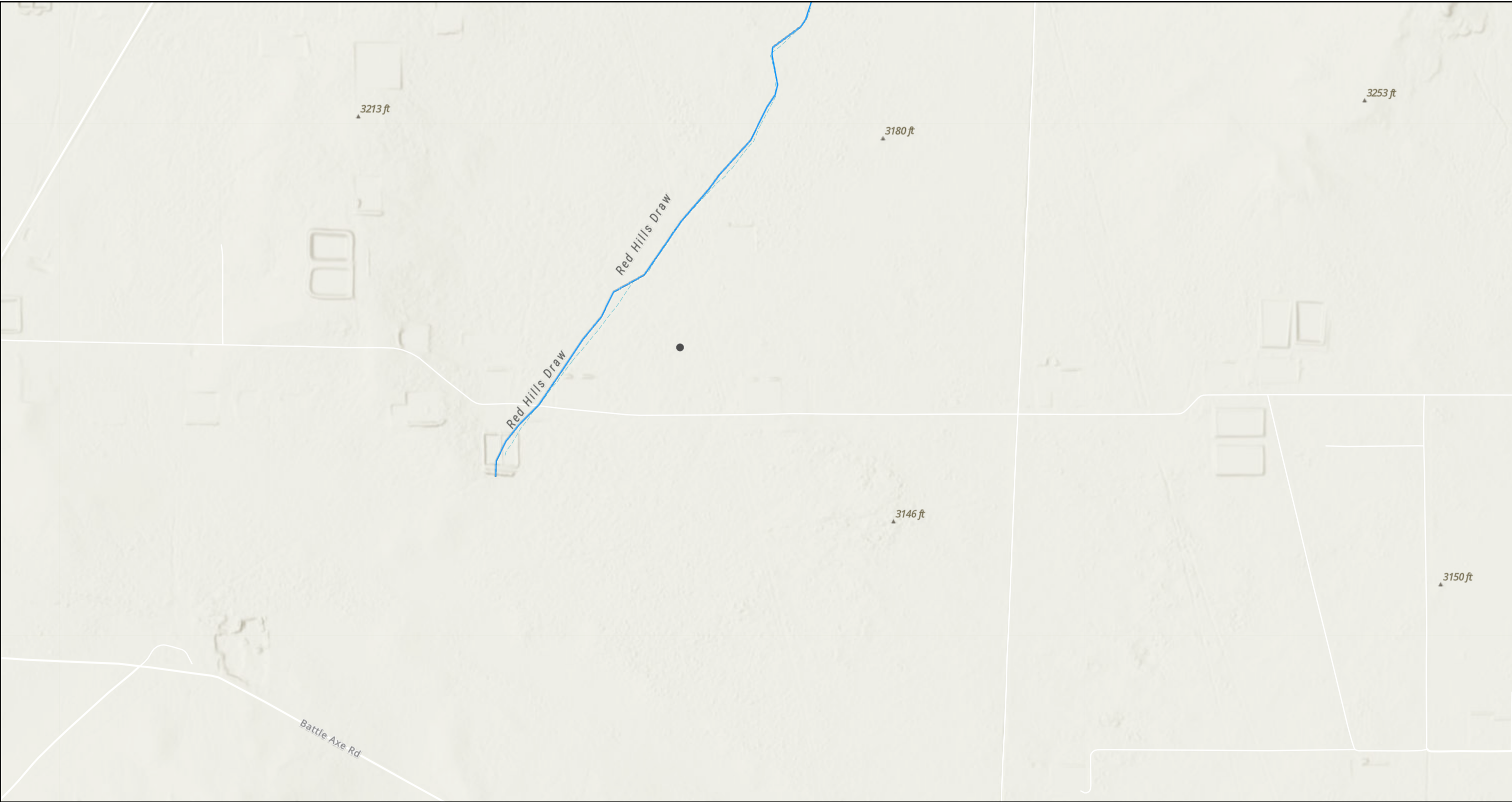
1% Annual Chance Flood Hazard

World Hillshade



Texas Parks & Wildlife, CONANP, Esri, TomTom, Garmin, SafeGraph, GeoTechnologies, Inc, METI/NASA, USGS, EPA, NPS, USDA, USFWS, Esri,

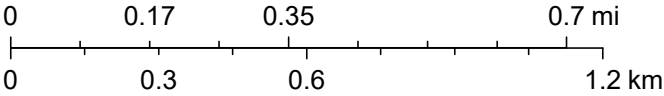
SD 15 FEDERAL P418 #010H (12.04.2024)



1/22/2025, 9:03:07 AM

— OSE Streams

1:18,056



Esri, NASA, NGA, USGS, FEMA, Esri Community Maps Contributors, Texas Parks & Wildlife, CONANP, Esri, TomTom, Garmin, SafeGraph, GeoTechnologies, Inc, METI/NASA, USGS, EPA, NPS, US Census Bureau, USDA, USFWS, NM OSE

APPENDIX E

CARMONA RESOURCES





PHONE (575) 393-2326 ° 101 E. MARLAND ° HOBBS, NM 88240

January 23, 2025

ASHTON THIELKE

CARMONA RESOURCES

310 W WALL ST, SUITE 500

MIDLAND, TX 79701

RE: SD 15 FEDERAL P418 #010H

Enclosed are the results of analyses for samples received by the laboratory on 01/22/25 11:27.

Cardinal Laboratories is accredited through Texas NELAP under certificate number TX-C24-00112. Accreditation applies to drinking water, non-potable water and solid and chemical materials. All accredited analytes are denoted by an asterisk (*). For a complete list of accredited analytes and matrices visit the TCEQ website at www.tceq.texas.gov/field/qa/lab_accred_certif.html.

Cardinal Laboratories is accredited through the State of Colorado Department of Public Health and Environment for:

Method EPA 552.2	Haloacetic Acids (HAA-5)
Method EPA 524.2	Total Trihalomethanes (TTHM)
Method EPA 524.4	Regulated VOCs (V1, V2, V3)

Accreditation applies to public drinking water matrices.

This report meets NELAP requirements and is made up of a cover page, analytical results, and a copy of the original chain-of-custody. If you have any questions concerning this report, please feel free to contact me.

Sincerely,

A handwritten signature in black ink that reads "Celey D. Keene". The signature is written in a cursive, flowing style.

Celey D. Keene

Lab Director/Quality Manager



PHONE (575) 393-2326 ° 101 E. MARLAND ° HOBBS, NM 88240

Analytical Results For:

CARMONA RESOURCES
 ASHTON THIELKE
 310 W WALL ST, SUITE 500
 MIDLAND TX, 79701
 Fax To:

Received: 01/22/2025
 Reported: 01/23/2025
 Project Name: SD 15 FEDERAL P418 #010H
 Project Number: 2633
 Project Location: LEA CO, NM

Sampling Date: 01/22/2025
 Sampling Type: Soil
 Sampling Condition: Cool & Intact
 Sample Received By: Tamara Oldaker

Sample ID: S - 1 (0-1') (H250375-01)

BTX 8021B		mg/kg		Analyzed By: JH					
Analyte	Result	Reporting Limit	Analyzed	Method Blank	BS	% Recovery	True Value QC	RPD	Qualifier
Benzene*	<0.050	0.050	01/22/2025	ND	1.97	98.4	2.00	9.07	
Toluene*	<0.050	0.050	01/22/2025	ND	1.94	97.2	2.00	8.76	
Ethylbenzene*	<0.050	0.050	01/22/2025	ND	2.01	100	2.00	7.20	
Total Xylenes*	<0.150	0.150	01/22/2025	ND	6.11	102	6.00	6.12	
Total BTX	<0.300	0.300	01/22/2025	ND					

Surrogate: 4-Bromofluorobenzene (PID) 120 % 71.5-134

Chloride, SM4500Cl-B		mg/kg		Analyzed By: KV						
Analyte	Result	Reporting Limit	Analyzed	Method Blank	BS	% Recovery	True Value QC	RPD	Qualifier	
Chloride	64.0	16.0	01/22/2025	ND	432	108	400	0.00		

TPH 8015M		mg/kg		Analyzed By: MS					
Analyte	Result	Reporting Limit	Analyzed	Method Blank	BS	% Recovery	True Value QC	RPD	Qualifier
GRO C6-C10*	<10.0	10.0	01/23/2025	ND	235	117	200	1.29	
DRO >C10-C28*	<10.0	10.0	01/23/2025	ND	224	112	200	2.79	
EXT DRO >C28-C36	<10.0	10.0	01/23/2025	ND					

Surrogate: 1-Chlorooctane 81.3 % 48.2-134

Surrogate: 1-Chlorooctadecane 75.8 % 49.1-148

Cardinal Laboratories

*=Accredited Analyte

PLEASE NOTE: Liability and Damages. Cardinal's liability and client's exclusive remedy for any claim arising, whether based in contract or tort, shall be limited to the amount paid by client for analyses. All claims, including those for negligence and any other cause whatsoever shall be deemed waived unless made in writing and received by Cardinal within thirty (30) days after completion of the applicable service. In no event shall Cardinal be liable for incidental or consequential damages, including, without limitation, business interruptions, loss of use, or loss of profits incurred by client, its subsidiaries, affiliates or successors arising out of or related to the performance of the services hereunder by Cardinal, regardless of whether such claim is based upon any of the above stated reasons or otherwise. Results relate only to the samples identified above. This report shall not be reproduced except in full with written approval of Cardinal Laboratories.

Celey D. Keene, Lab Director/Quality Manager



PHONE (575) 393-2326 ° 101 E. MARLAND ° HOBBS, NM 88240

Notes and Definitions

ND	Analyte NOT DETECTED at or above the reporting limit
RPD	Relative Percent Difference
**	Samples not received at proper temperature of 6°C or below.
***	Insufficient time to reach temperature.
-	Chloride by SM4500Cl-B does not require samples be received at or below 6°C Samples reported on an as received basis (wet) unless otherwise noted on report

Cardinal Laboratories

*=Accredited Analyte

PLEASE NOTE: Liability and Damages. Cardinal's liability and client's exclusive remedy for any claim arising, whether based in contract or tort, shall be limited to the amount paid by client for analyses. All claims, including those for negligence and any other cause whatsoever shall be deemed waived unless made in writing and received by Cardinal within thirty (30) days after completion of the applicable service. In no event shall Cardinal be liable for incidental or consequential damages, including, without limitation, business interruptions, loss of use, or loss of profits incurred by client, its subsidiaries, affiliates or successors arising out of or related to the performance of the services hereunder by Cardinal, regardless of whether such claim is based upon any of the above stated reasons or otherwise. Results relate only to the samples identified above. This report shall not be reproduced except in full with written approval of Cardinal Laboratories.

A handwritten signature in black ink, appearing to read "Celey D. Keene".

Celey D. Keene, Lab Director/Quality Manager

Chain of Custody

Work Order No: 4250375

Page 1 of 1

Project Manager:	Ashton Thielke	Bill to: (if different)	Carmona Resources
Company Name:	Carmona Resources	Company Name:	
Address:	310 West Wall Ste. 500	Address:	
City, State ZIP:	Midland, TX 79701	City, State ZIP:	
Phone:	432-813-8988	Email:	ThielkeA@Carmonaresources.com

Work Order Comments

Program: UST/PST ☐ PRP ☐ Brownfields ☐ RRC ☐ upfund ☐

State of Project:

Reporting Level II ☐ Level III ☐ PST/UST ☐ TRRP ☐ Level IV ☐

Deliverables: EDD ☐ ADAPT ☐ Other:

Project Name:	SD 15 FEDERAL P418 #010H	Turn Around													Preservative Codes														
Project Number:	2633	<input type="checkbox"/> Routine	<input checked="" type="checkbox"/> Rush																										
Project Location	Lea Co, NM	Due Date:	24 Hour																										
Sampler's Name:	KR	TAT starts the day received by the lab, if received by 4:30pm																											
PO #:																													
SAMPLE RECEIPT		Temp Blank:	Yes No	Wet Ice:	Yes No																								
Received Intact:	(X) Yes No	Thermometer ID:	#140																										
Cooler Custody Seals:	Yes No N/A	Correction Factor:	-0.0°C																										
Sample Custody Seals:	Yes No N/A	Temperature Reading:	5.5°C																										
Total Containers:		Corrected Temperature:	4.9°C																										
Parameters												Pres.	Code	ANALYSIS REQUEST												Preservative Codes			
BTEX 8021B																													
PHE 8015M (GRO + DRO + MRO)																													
Chloride 4500																													
HOLD																													
NaHSO ₄ , NABIS																								None; NO					
Na ₂ S ₂ O ₃ ; NaSO ₃																								Cool: Cool MeOH: Me					
Zn Acetate+NaOH: Zn																								HCL: HC HNO ₃ : HN					
NaOH+Ascorbic Acid: SAPC																								H ₂ SO ₄ : H ₂ NaOH: Na					
																								H ₃ PO ₄ : HP					

[illegible]

Please send results to cmoehring@carmonaresources.com and mcarmona@carmonaresources.com

Relinquished by: (Signature)	Received by: (Signature)	Date/Time	Relinquished by: (Signature)	Received by: (Signature)	Date/Time
1 <i>Wm. Lopez</i>	<i>[Signature]</i>	<i>1-22-25 / 11:21</i>	2		
3			4		
5			6		

Sante Fe Main Office
Phone: (505) 476-3441

General Information
Phone: (505) 629-6116

Online Phone Directory
<https://www.emnrd.nm.gov/ocd/contact-us>

State of New Mexico
Energy, Minerals and Natural Resources
Oil Conservation Division
1220 S. St Francis Dr.
Santa Fe, NM 87505

QUESTIONS

Action 427415

QUESTIONS

Operator: CHEVRON U S A INC 6301 Deauville Blvd Midland, TX 79706	OGRID: 4323
	Action Number: 427415
	Action Type: [C-141] Revegetation Report C-141 (C-141-v-Revegetation)

QUESTIONS

Prerequisites	
Incident ID (n#)	nAPP2433943235
Incident Name	NAPP2433943235 SD 15 FEDERAL P418 #010H @ 30-025-46729
Incident Type	Fire
Incident Status	Re-vegetation Report Received
Incident Well	[30-025-46729] SD 15 FEDERAL P418 #010H

Location of Release Source	
<i>Please answer all the questions in this group.</i>	
Site Name	SD 15 FEDERAL P418 #010H
Date Release Discovered	12/04/2024
Surface Owner	Federal

Incident Details	
<i>Please answer all the questions in this group.</i>	
Incident Type	Fire
Did this release result in a fire or is the result of a fire	Yes
Did this release result in any injuries	No
Has this release reached or does it have a reasonable probability of reaching a watercourse	No
Has this release endangered or does it have a reasonable probability of endangering public health	No
Has this release substantially damaged or will it substantially damage property or the environment	No
Is this release of a volume that is or may with reasonable probability be detrimental to fresh water	No

Nature and Volume of Release	
<i>Material(s) released, please answer all that apply below. Any calculations or specific justifications for the volumes provided should be attached to the follow-up C-141 submission.</i>	
Crude Oil Released (bbls) Details	Not answered.
Produced Water Released (bbls) Details	Not answered.
Is the concentration of chloride in the produced water >10,000 mg/l	No
Condensate Released (bbls) Details	Not answered.
Natural Gas Vented (Mcf) Details	Not answered.
Natural Gas Flared (Mcf) Details	Not answered.
Other Released Details	Cause: Equipment Failure Well Chemical (Specify) Released: 0 GAL (Unknown Released Amount) Recovered: 0 GAL Lost: 0 GAL.
Are there additional details for the questions above (i.e. any answer containing Other, Specify, Unknown, and/or Fire, or any negative lost amounts)	A fire was discovered on the gas lift line at pad 418. It is undetermined at this point if methanol was associated with this fire. We are reporting this event out of an abundance of caution,

Sante Fe Main Office
Phone: (505) 476-3441

General Information
Phone: (505) 629-6116

Online Phone Directory
<https://www.emnrd.nm.gov/ocd/contact-us>

State of New Mexico
Energy, Minerals and Natural Resources
Oil Conservation Division
1220 S. St Francis Dr.
Santa Fe, NM 87505

QUESTIONS, Page 2

Action 427415

QUESTIONS (continued)

Operator: CHEVRON U S A INC 6301 Deauville Blvd Midland, TX 79706	OGRID: 4323
	Action Number: 427415
	Action Type: [C-141] Revegetation Report C-141 (C-141-v-Revegetation)

QUESTIONS

Nature and Volume of Release (continued)	
Is this a gas only submission (i.e. only significant Mcf values reported)	No, according to supplied volumes this does not appear to be a "gas only" report.
Was this a major release as defined by Subsection A of 19.15.29.7 NMAC	Yes
Reasons why this would be considered a submission for a notification of a major release	From paragraph A. "Major release" determine using: (1) an unauthorized release of a volume, excluding gases, of 25 barrels or more; (2) an unauthorized release of a volume that: (a) results in a fire or is the result of a fire.
With the implementation of the 19.15.27 NMAC (05/25/2021), venting and/or flaring of natural gas (i.e. gas only) are to be submitted on the C-129 form.	

Initial Response

The responsible party must undertake the following actions immediately unless they could create a safety hazard that would result in injury.

The source of the release has been stopped	True
The impacted area has been secured to protect human health and the environment	True
Released materials have been contained via the use of berms or dikes, absorbent pads, or other containment devices	True
All free liquids and recoverable materials have been removed and managed appropriately	True
If all the actions described above have not been undertaken, explain why	Not answered.

Per Paragraph (4) of Subsection B of 19.15.29.8 NMAC the responsible party may commence remediation immediately after discovery of a release. If remediation has begun, please prepare and attach a narrative of actions to date in the follow-up C-141 submission. If remedial efforts have been successfully completed or if the release occurred within a lined containment area (see Subparagraph (a) of Paragraph (5) of Subsection A of 19.15.29.11 NMAC), please prepare and attach all information needed for closure evaluation in the follow-up C-141 submission.

I hereby certify that the information given above is true and complete to the best of my knowledge and understand that pursuant to OCD rules and regulations all operators are required to report and/or file certain release notifications and perform corrective actions for releases which may endanger public health or the environment. The acceptance of a C-141 report by the OCD does not relieve the operator of liability should their operations have failed to adequately investigate and remediate contamination that pose a threat to groundwater, surface water, human health or the environment. In addition, OCD acceptance of a C-141 report does not relieve the operator of responsibility for compliance with any other federal, state, or local laws and/or regulations.

I hereby agree and sign off to the above statement	Name: Bayley Ranes Title: Environmental Specialist Email: Bayleyranes@chevron.com Date: 02/03/2025
--	---

Sante Fe Main Office
Phone: (505) 476-3441

General Information
Phone: (505) 629-6116

Online Phone Directory
<https://www.emnrd.nm.gov/ocd/contact-us>

State of New Mexico
Energy, Minerals and Natural Resources
Oil Conservation Division
1220 S. St Francis Dr.
Santa Fe, NM 87505

QUESTIONS, Page 3

Action 427415

QUESTIONS (continued)

Operator: CHEVRON U S A INC 6301 Deauville Blvd Midland, TX 79706	OGRID: 4323
	Action Number: 427415
	Action Type: [C-141] Revegetation Report C-141 (C-141-v-Revegetation)

QUESTIONS

Site Characterization	
<i>Please answer all the questions in this group (only required when seeking remediation plan approval and beyond). This information must be provided to the appropriate district office no later than 90 days after the release discovery date.</i>	
What is the shallowest depth to groundwater beneath the area affected by the release in feet below ground surface (ft bgs)	Between 100 and 500 (ft.)
What method was used to determine the depth to ground water	Direct Measurement
Did this release impact groundwater or surface water	No
What is the minimum distance, between the closest lateral extents of the release and the following surface areas:	
A continuously flowing watercourse or any other significant watercourse	Between 1 and 5 (mi.)
Any lakebed, sinkhole, or playa lake (measured from the ordinary high-water mark)	Between 1 and 5 (mi.)
An occupied permanent residence, school, hospital, institution, or church	Between 1 and 5 (mi.)
A spring or a private domestic fresh water well used by less than five households for domestic or stock watering purposes	Between 1 and 5 (mi.)
Any other fresh water well or spring	Between 1 and 5 (mi.)
Incorporated municipal boundaries or a defined municipal fresh water well field	Greater than 5 (mi.)
A wetland	Between 1 and 5 (mi.)
A subsurface mine	Greater than 5 (mi.)
An (non-karst) unstable area	Between 1 and 5 (mi.)
Categorize the risk of this well / site being in a karst geology	Medium
A 100-year floodplain	Between 1 and 5 (mi.)
Did the release impact areas not on an exploration, development, production, or storage site	Yes

Remediation Plan	
<i>Please answer all the questions that apply or are indicated. This information must be provided to the appropriate district office no later than 90 days after the release discovery date.</i>	
Requesting a remediation plan approval with this submission	Yes
<i>Attach a comprehensive report demonstrating the lateral and vertical extents of soil contamination associated with the release have been determined, pursuant to 19.15.29.11 NMAC and 19.15.29.13 NMAC.</i>	
Have the lateral and vertical extents of contamination been fully delineated	Yes
Was this release entirely contained within a lined containment area	No
Soil Contamination Sampling: (Provide the highest observable value for each, in milligrams per kilograms.)	
Chloride (EPA 300.0 or SM4500 Cl B)	64
TPH (GRO+DRO+MRO) (EPA SW-846 Method 8015M)	0
GRO+DRO (EPA SW-846 Method 8015M)	0
BTEX (EPA SW-846 Method 8021B or 8260B)	0
Benzene (EPA SW-846 Method 8021B or 8260B)	0
<i>Per Subsection B of 19.15.29.11 NMAC unless the site characterization report includes completed efforts at remediation, the report must include a proposed remediation plan in accordance with 19.15.29.12 NMAC, which includes the anticipated timelines for beginning and completing the remediation.</i>	
On what estimated date will the remediation commence	12/04/2024
On what date will (or did) the final sampling or liner inspection occur	01/22/2025
On what date will (or was) the remediation complete(d)	12/04/2024
What is the estimated surface area (in square feet) that will be reclaimed	0
What is the estimated volume (in cubic yards) that will be reclaimed	0
What is the estimated surface area (in square feet) that will be remediated	0
What is the estimated volume (in cubic yards) that will be remediated	0
<i>These estimated dates and measurements are recognized to be the best guess or calculation at the time of submission and may (be) change(d) over time as more remediation efforts are completed.</i>	
<i>The OCD recognizes that proposed remediation measures may have to be minimally adjusted in accordance with the physical realities encountered during remediation. If the responsible party has any need to significantly deviate from the remediation plan proposed, then it should consult with the division to determine if another remediation plan submission is required.</i>	

Sante Fe Main Office
Phone: (505) 476-3441

General Information
Phone: (505) 629-6116

Online Phone Directory
<https://www.emnrd.nm.gov/ocd/contact-us>

State of New Mexico
Energy, Minerals and Natural Resources
Oil Conservation Division
1220 S. St Francis Dr.
Santa Fe, NM 87505

QUESTIONS, Page 4

Action 427415

QUESTIONS (continued)

Operator: CHEVRON U S A INC 6301 Deauville Blvd Midland, TX 79706	OGRID: 4323
	Action Number: 427415
	Action Type: [C-141] Revegetation Report C-141 (C-141-v-Revegetation)

QUESTIONS

Remediation Plan (continued)	
<i>Please answer all the questions that apply or are indicated. This information must be provided to the appropriate district office no later than 90 days after the release discovery date.</i>	
This remediation will (or is expected to) utilize the following processes to remediate / reduce contaminants:	
<i>(Select all answers below that apply.)</i>	
(Ex Situ) Excavation and off-site disposal (i.e. dig and haul, hydrovac, etc.)	No
(Ex Situ) Excavation and on-site remediation (i.e. On-Site Land Farms)	Not answered.
(In Situ) Soil Vapor Extraction	Not answered.
(In Situ) Chemical processing (i.e. Soil Shredding, Potassium Permanganate, etc.)	Not answered.
(In Situ) Biological processing (i.e. Microbes / Fertilizer, etc.)	Not answered.
(In Situ) Physical processing (i.e. Soil Washing, Gypsum, Disking, etc.)	Not answered.
Ground Water Abatement pursuant to 19.15.30 NMAC	Not answered.
OTHER (Non-listed remedial process)	Yes
Other Non-listed Remedial Process. Please specify	Out of caution, this was reported to the NMOCD and the soil in the direct vicinity of the fire were sampled, per NMOCD request. The fire was determined to have no impact on the soils below the elevated equipment.
<i>Per Subsection B of 19.15.29.11 NMAC unless the site characterization report includes completed efforts at remediation, the report must include a proposed remediation plan in accordance with 19.15.29.12 NMAC, which includes the anticipated timelines for beginning and completing the remediation.</i>	
I hereby certify that the information given above is true and complete to the best of my knowledge and understand that pursuant to OCD rules and regulations all operators are required to report and/or file certain release notifications and perform corrective actions for releases which may endanger public health or the environment. The acceptance of a C-141 report by the OCD does not relieve the operator of liability should their operations have failed to adequately investigate and remediate contamination that pose a threat to groundwater, surface water, human health or the environment. In addition, OCD acceptance of a C-141 report does not relieve the operator of responsibility for compliance with any other federal, state, or local laws and/or regulations.	
I hereby agree and sign off to the above statement	Name: Bayley Ranes Title: Environmental Specialist Email: Bayleyranes@chevron.com Date: 02/03/2025
<i>The OCD recognizes that proposed remediation measures may have to be minimally adjusted in accordance with the physical realities encountered during remediation. If the responsible party has any need to significantly deviate from the remediation plan proposed, then it should consult with the division to determine if another remediation plan submission is required.</i>	

Sante Fe Main Office
Phone: (505) 476-3441

General Information
Phone: (505) 629-6116

Online Phone Directory
<https://www.emnrd.nm.gov/ocd/contact-us>

State of New Mexico
Energy, Minerals and Natural Resources
Oil Conservation Division
1220 S. St Francis Dr.
Santa Fe, NM 87505

QUESTIONS, Page 5

Action 427415

QUESTIONS (continued)

Operator: CHEVRON U S A INC 6301 Deauville Blvd Midland, TX 79706	OGRID: 4323
	Action Number: 427415
	Action Type: [C-141] Revegetation Report C-141 (C-141-v-Revegetation)

QUESTIONS

Deferral Requests Only	
Only answer the questions in this group if seeking a deferral upon approval this submission. Each of the following items must be confirmed as part of any request for deferral of remediation.	
Requesting a deferral of the remediation closure due date with the approval of this submission	No

Sante Fe Main Office
Phone: (505) 476-3441

General Information
Phone: (505) 629-6116

Online Phone Directory
<https://www.emnrd.nm.gov/ocd/contact-us>

State of New Mexico
Energy, Minerals and Natural Resources
Oil Conservation Division
1220 S. St Francis Dr.
Santa Fe, NM 87505

QUESTIONS, Page 6

Action 427415

QUESTIONS (continued)

Operator: CHEVRON U S A INC 6301 Deauville Blvd Midland, TX 79706	OGRID: 4323
	Action Number: 427415
	Action Type: [C-141] Revegetation Report C-141 (C-141-v-Revegetation)

QUESTIONS

Sampling Event Information	
Last sampling notification (C-141N) recorded	422806
Sampling date pursuant to Subparagraph (a) of Paragraph (1) of Subsection D of 19.15.29.12 NMAC	01/22/2024
What was the (estimated) number of samples that were to be gathered	1
What was the sampling surface area in square feet	125

Remediation Closure Request

Only answer the questions in this group if seeking remediation closure for this release because all remediation steps have been completed.

Requesting a remediation closure approval with this submission	Yes
Have the lateral and vertical extents of contamination been fully delineated	Yes
Was this release entirely contained within a lined containment area	No
All areas reasonably needed for production or subsequent drilling operations have been stabilized, returned to the sites existing grade, and have a soil cover that prevents ponding of water, minimizing dust and erosion	Yes
What was the total surface area (in square feet) remediated	0
What was the total volume (cubic yards) remediated	0
All areas not reasonably needed for production or subsequent drilling operations have been reclaimed to contain a minimum of four feet of non-waste contain earthen material with concentrations less than 600 mg/kg chlorides, 100 mg/kg TPH, 50 mg/kg BTEX, and 10 mg/kg Benzene	Yes
What was the total surface area (in square feet) reclaimed	0
What was the total volume (in cubic yards) reclaimed	0
Summarize any additional remediation activities not included by answers (above)	"Out of caution, this was reported to the NMOCD and the soil in the direct vicinity of the fire were sampled, per NMOCD request. The fire was determined to have no impact on the soils below the elevated equipment. We are requesting full site closure and a variance to the reclamation & revegetation portion of the NMAC 19.15.29.13 as there was no impact to the soils below this equipment. Furthermore, per normal oilfield operation, this site will be reclaimed and vegetated during P/A activities.

The responsible party must attach information demonstrating they have complied with all applicable closure requirements and any conditions or directives of the OCD. This demonstration should be in the form of a comprehensive report (in .pdf format) including a scaled site map, sampling diagrams, relevant field notes, photographs of any excavation prior to backfilling, laboratory data including chain of custody documents of final sampling, and a narrative of the remedial activities. Refer to 19.15.29.12 NMAC.

I hereby certify that the information given above is true and complete to the best of my knowledge and understand that pursuant to OCD rules and regulations all operators are required to report and/or file certain release notifications and perform corrective actions for releases which may endanger public health or the environment. The acceptance of a C-141 report by the OCD does not relieve the operator of liability should their operations have failed to adequately investigate and remediate contamination that pose a threat to groundwater, surface water, human health or the environment. In addition, OCD acceptance of a C-141 report does not relieve the operator of responsibility for compliance with any other federal, state, or local laws and/or regulations. The responsible party acknowledges they must substantially restore, reclaim, and re-vegetate the impacted surface area to the conditions that existed prior to the release or their final land use in accordance with 19.15.29.13 NMAC including notification to the OCD when reclamation and re-vegetation are complete.

I hereby agree and sign off to the above statement	Name: Bayley Ranes Title: Environmental Specialist Email: Bayleyranes@chevron.com Date: 02/03/2025
--	---

Sante Fe Main Office
Phone: (505) 476-3441

General Information
Phone: (505) 629-6116

Online Phone Directory
<https://www.emnrd.nm.gov/ocd/contact-us>

State of New Mexico
Energy, Minerals and Natural Resources
Oil Conservation Division
1220 S. St Francis Dr.
Santa Fe, NM 87505

QUESTIONS, Page 7

Action 427415

QUESTIONS (continued)

Operator: CHEVRON U S A INC 6301 Deauville Blvd Midland, TX 79706	OGRID:
	4323
	Action Number: 427415
Action Type: [C-141] Revegetation Report C-141 (C-141-v-Revegetation)	

QUESTIONS

Reclamation Report	
<i>Only answer the questions in this group if all reclamation steps have been completed.</i>	
Requesting a reclamation approval with this submission	Yes
What was the total reclamation surface area (in square feet) for this site	0
What was the total volume of replacement material (in cubic yards) for this site	0
<i>Per Paragraph (1) of Subsection D of 19.15.29.13 NMAC the reclamation must contain a minimum of four feet of non-waste containing, uncontaminated, earthen material with chloride concentrations less than 600 mg/kg as analyzed by EPA Method 300.0, or other test methods approved by the division. The soil cover must include a top layer, which is either the background thickness of topsoil or one foot of suitable material to establish vegetation at the site, whichever is greater.</i>	
Is the soil top layer complete and is it suitable material to establish vegetation	Yes
On what (estimated) date will (or was) the reseeding commence(d)	01/22/2025
Summarize any additional reclamation activities not included by answers (above)	Out of caution, this was reported to the NMOCD and the soil in the direct vicinity of the fire were sampled, per NMOCD request. The fire was determined to have no impact on the soils below the elevated equipment. We are requesting full site closure and a variance to the reclamation & revegetation portion of the NMAC 19.15.29.13 as there was no impact to the soils below this equipment. Furthermore, per normal oilfield operation, this site will be reclaimed and vegetated during P/A activities.
<i>The responsible party must attach information demonstrating they have complied with all applicable reclamation requirements and any conditions or directives of the OCD. This demonstration should be in the form of attachments (in .pdf format) including a scaled site map, any proposed reseeding plans or relevant field notes, photographs of reclaimed area, and a narrative of the reclamation activities. Refer to 19.15.29.13 NMAC.</i>	
I hereby certify that the information given above is true and complete to the best of my knowledge and understand that pursuant to OCD rules and regulations all operators are required to report and/or file certain release notifications and perform corrective actions for releases which may endanger public health or the environment. The acceptance of a C-141 report by the OCD does not relieve the operator of liability should their operations have failed to adequately investigate and remediate contamination that pose a threat to groundwater, surface water, human health or the environment. In addition, OCD acceptance of a C-141 report does not relieve the operator of responsibility for compliance with any other federal, state, or local laws and/or regulations. The responsible party acknowledges they must substantially restore, reclaim, and re-vegetate the impacted surface area to the conditions that existed prior to the release or their final land use in accordance with 19.15.29.13 NMAC including notification to the OCD when reclamation and re-vegetation are complete.	
I hereby agree and sign off to the above statement	Name: Bayley Ranes Title: Environmental Specialist Email: Bayleyranes@chevron.com Date: 02/03/2025

Sante Fe Main Office
Phone: (505) 476-3441

General Information
Phone: (505) 629-6116

Online Phone Directory
<https://www.emnrd.nm.gov/ocd/contact-us>

State of New Mexico
Energy, Minerals and Natural Resources
Oil Conservation Division
1220 S. St Francis Dr.
Santa Fe, NM 87505

QUESTIONS, Page 8

Action 427415

QUESTIONS (continued)

Operator: CHEVRON U S A INC 6301 Deauville Blvd Midland, TX 79706	OGRID:
	4323
	Action Number:
	427415
	Action Type:
	[C-141] Revegetation Report C-141 (C-141-v-Revegetation)

QUESTIONS

Revegetation Report	
<i>Only answer the questions in this group if all surface restoration, reclamation and re-vegetation obligations have been satisfied.</i>	
Requesting a restoration complete approval with this submission	Yes
What was the total revegetation surface area (in square feet) for this site	0
<i>Per Paragraph (2) of Subsection D of 19.15.29.13 NMAC the responsible party must reseed disturbed area in the first favorable growing season following closure of the site.</i>	
On what date did the reseeding commence	01/22/2025
On what date was the vegetative cover inspected	01/23/2025
What was the life form ratio compared to pre-disturbance levels	99
What was the total percent plant cover compared to pre-disturbance levels	99
Summarize any additional revegetation activities not included by answers (above)	Out of caution, this was reported to the NMOCD and the soil in the direct vicinity of the fire were sampled, per NMOCD request. The fire was determined to have no impact on the soils below the elevated equipment. We are requesting full site closure and a variance to the reclamation & revegetation portion of the NMAC 19.15.29.13 as there was no impact to the soils below this equipment. Furthermore, per normal oilfield operation, this site will be reclaimed and vegetated during P/A activities.
<i>The responsible party must attach information demonstrating they have complied with all applicable re-vegetation requirements and any conditions or directives of the OCD. This demonstration should be in the form of attachments (in .pdf format) including a scaled site map, any life form ratio and percent plant cover sampling diagrams or other relevant field notes, photographs of re-vegetated areas, and a narrative of the re-vegetation activities. Refer to 19.15.29.13 NMAC.</i>	
I hereby certify that the information given above is true and complete to the best of my knowledge and understand that pursuant to OCD rules and regulations all operators are required to report and/or file certain release notifications and perform corrective actions for releases which may endanger public health or the environment. The acceptance of a C-141 report by the OCD does not relieve the operator of liability should their operations have failed to adequately investigate and remediate contamination that pose a threat to groundwater, surface water, human health or the environment. In addition, OCD acceptance of a C-141 report does not relieve the operator of responsibility for compliance with any other federal, state, or local laws and/or regulations. The responsible party acknowledges they must substantially restore, reclaim, and re-vegetate the impacted surface area to the conditions that existed prior to the release or their final land use in accordance with 19.15.29.13 NMAC including notification to the OCD when reclamation and re-vegetation are complete.	
I hereby agree and sign off to the above statement	Name: Bayley Ranes Title: Environmental Specialist Email: Bayleyranes@chevron.com Date: 02/03/2025
<i>Per Paragraph (4) of Subsection (D) of 19.15.29.13 NMAC for any major or minor release containing liquids, the responsible party must notify the division when reclamation and re-vegetation are complete.</i>	

Sante Fe Main Office
Phone: (505) 476-3441

General Information
Phone: (505) 629-6116

Online Phone Directory
<https://www.emnrd.nm.gov/ocd/contact-us>

State of New Mexico
Energy, Minerals and Natural Resources
Oil Conservation Division
1220 S. St Francis Dr.
Santa Fe, NM 87505

CONDITIONS

Action 427415

CONDITIONS

Operator: CHEVRON U S A INC 6301 Deauville Blvd Midland, TX 79706	OGRID: 4323
	Action Number: 427415
	Action Type: [C-141] Revegetation Report C-141 (C-141-v-Revegetation)

CONDITIONS

Created By	Condition	Condition Date
bhall	Remediation closure approved. The variance from 19.15.29.13 NMAC for reclamation and revegetation is also approved as samples show that the fire did not impact the soils.	2/3/2025