



## SITE INFORMATION

---

**Closure Report**  
**Irwin 13 Federal Com CTB**  
**Incident ID: nAPP2434729375**  
**Eddy County, New Mexico**  
**Unit A Sec 13 T19S R30E**  
**32.65666°, -103.91809°**

**Point of Release:**  
**Pump failed resulting in a release**  
**Release Date: 12.11.2024**  
**Volume Released: 8 Barrels of Produced Water**  
**Volume Recovered: 5 Barrels of Produced Water**

**CARMONA RESOURCES**



**Prepared for:**  
**Cimarex Energy Co.**  
**6001 Deauville Blvd.**  
**Suite 300N**  
**Midland, Texas 79706**

**Prepared by:**  
**Carmona Resources, LLC**  
**310 West Wall Street**  
**Suite 500**  
**Midland, Texas 79701**



## TABLE OF CONTENTS

---

### 1.0 SITE INFORMATION AND BACKGROUND

### 2.0 SITE CHARACTERIZATION AND GROUNDWATER

### 3.0 NMAC REGULATORY CRITERIA

### 4.0 REMEDIATION ACTIVITIES

### 5.0 LINER INSPECTION ACTIVITIES

### 6.0 CONCLUSIONS

#### FIGURES

FIGURE 1	OVERVIEW	FIGURE 2	TOPOGRAPHIC
FIGURE 3	RELEASE OVERVIEW	FIGURE 4	EXCAVATION
FIGURE 5	SECONDARY CONTAINMENT		

#### APPENDICES

APPENDIX A	TABLES
APPENDIX B	PHOTOS
APPENDIX C	INITIAL AND FINAL C-141/NMOCD CORRESPONDENCE
APPENDIX D	SITE CHARACTERIZATION AND GROUNDWATER
APPENDIX E	LABORATORY REPORTS
APPENDIX F	LINER INSPECTION



February 5, 2025

New Mexico Oil Conservation Division  
1220 South St, Francis Drive  
Santa Fe, New Mexico 87505

**Re: Closure Report**  
**Irwin 13 Federal Com CTB**  
**Incident ID: nAPP2434729375**  
**Cimarex Energy Co.**  
**Site Location: Unit A, S13, T19S, R30E**  
**(Lat 32.65666°, Long -103.91809°)**  
**Eddy County, New Mexico**

To whom it may concern:

On behalf of Cimarex Energy Co. (Cimarex), Carmona Resources, LLC has prepared this letter to document site activities for the Irwin 13 Federal Com CTB spill. The site is located at 32.65666°, -103.91809° within Unit A, S13, T19S, R33E, in Eddy County, New Mexico (Figures 1 and 2).

### **1.0 Site Information and Background**

Based on the initial C-141 obtained from the New Mexico Oil Conservation Division (NMOCD), the leak was discovered on December 11, 2024, caused by a pump failing resulting in a release. It resulted in approximately eight (8) barrels of produced water, and five (5) barrels of produced water were recovered. The impacted area was located on pad. The initial C-141 form is attached in Appendix C.

### **2.0 Site Characterization and Groundwater**

The site is located within a high karst area. Based on a review of the New Mexico Office of State Engineers and USGS databases, one known water source is within a 0.50-mile radius of the location. The nearest identified well is approximately 0.41 miles Southeast of the site in S19, T19S, R31E and was drilled in 1998. The well has a reported depth to groundwater of 180 feet below the ground surface (ft bgs). A copy of the associated Summary Report is attached in Appendix D.

### **3.0 NMAC Regulatory Criteria**

Per the NMOCD regulatory criteria established in 19.15.29.12 NMAC, the following criteria were utilized in assessing the site.

- Benzene: 10 milligrams per kilogram (mg/kg).
- Benzene, toluene, ethylbenzene, and total xylenes (BTEX): 50 mg/kg.
- TPH: 100 mg/kg (GRO + DRO + MRO).
- Chloride: 600 mg/kg.

### **4.0 Remediation Activities**

Carmona Resources personnel were onsite to supervise the remediation activities, collect confirmation samples, and document backfill activities. Before collecting composite confirmation samples, the NMOCD division office was notified via NMOCD portal on January 17, 2025, per Subsection D of 19.15.29.12 NMAC. See Appendix C. The area of CS-1 through CS-2 was hydro-excavated to a depth of 4.0' bgs. A total of two (2) confirmation floor samples (CS-1 through CS-2) and six (6) sidewall samples (SW-1 through SW-6) were collected every 200 square feet to ensure the proper removal of the



contaminated soils. For chemical analysis, the soil samples were collected and placed directly into laboratory-provided sample containers, stored on ice, and transported under the proper chain-of-custody protocol to Cardinal Laboratories in Hobbs, New Mexico. The samples were analyzed for TPH analysis by EPA method 8015 modified, BTEX by EPA Method 8021B, and chloride by EPA Method 4500. Copies of laboratory analysis and chain-of-custody documentation are included in Appendix E. The excavation depths and confirmation sample locations are shown in Figure 4.

All final samples were below regulatory requirements for TPH, BTEX, and chloride. Refer to Table 1.

Once the remediation activities were completed, the excavated areas were backfilled with clean material to surface grade. Backfill material was collected from the Fred Beard backfill pit located at 32.161928, -104.316363. A composite backfill sample was collected at the backfill pit before being utilized and was analyzed for TPH analysis by EPA method 8015 modified, BTEX by EPA Method 8021B, and chloride by EPA Method 4500. Copies of laboratory analysis and chain-of-custody documentation are included in Appendix E. See Table 1.

Approximately 209 square feet and 30 cubic yards of material were excavated and transported offsite for proper disposal at Lea Land Landfill.

### **5.0 Liner Inspection Activities**

Before conducting the liner inspection, a crew was onsite to remove all freestanding fluids within the containment of the lined containment. Once the liner was cleaned of freestanding fluids, the NMOCD division office was notified via NMOCD portal on January 28, 2025, per Subsection D of 19.15.29.12 NMAC. See Appendix C for the NMOCD correspondence prior to performing the liner inspection. On January 30, 2025, Cimarex personnel conducted liner inspection activities to assess the liner's integrity within area and determined the liner was intact with no integrity issues. Refer to the Photolog in Appendix F and Figure 6 for details. Appendix F also contains a Liner Integrity Certification.

### **6.0 Conclusions**

Based on the assessment results and the analytical data, no further actions are required at the site. The final C-141 is attached, and Cimarex formally requests the closure of the spill. If you have any questions regarding this report or need additional information, don't hesitate to contact us at 432-813-1992.

Sincerely,

**Carmona Resources, LLC**

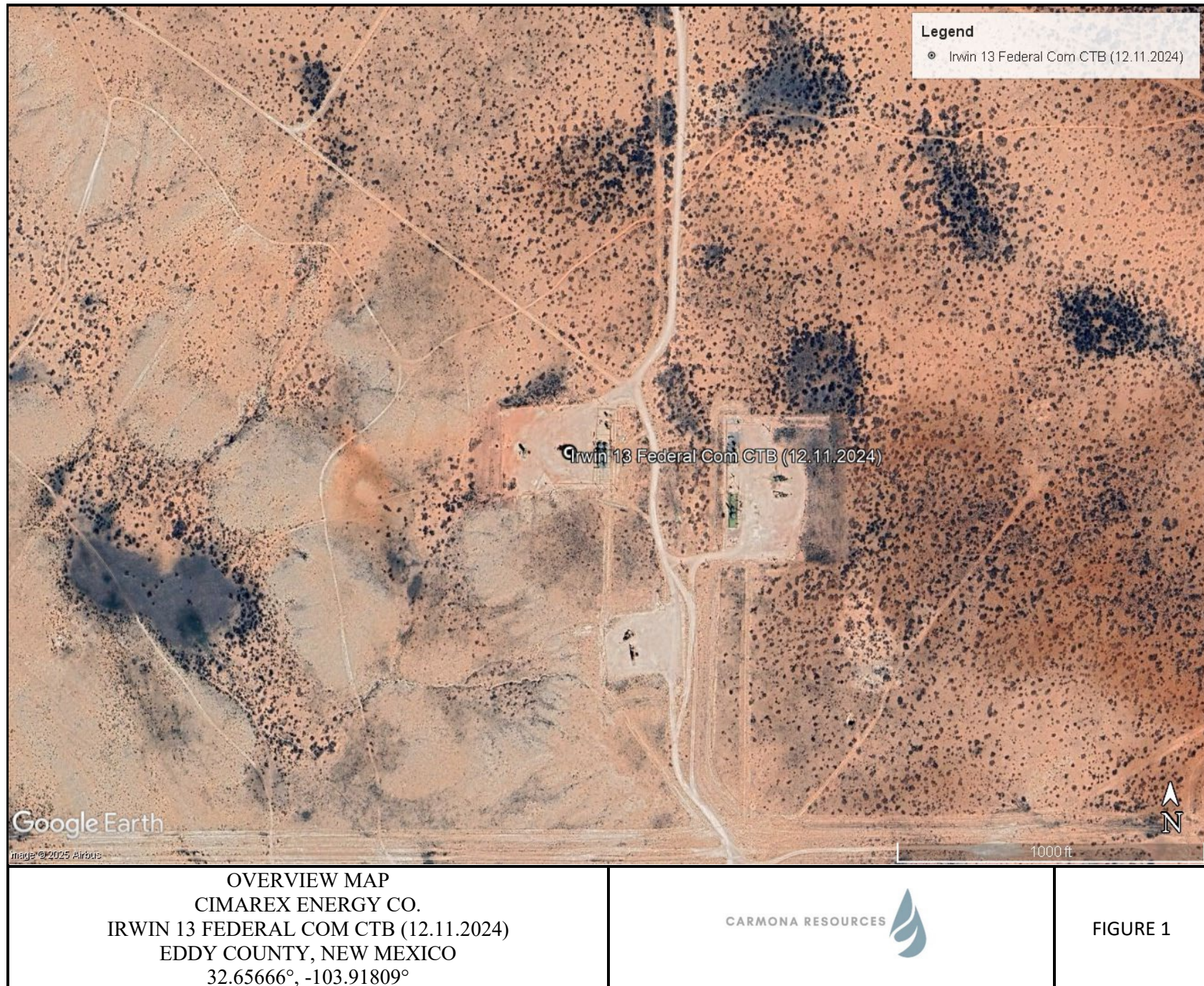
Ashton Thielke  
Environmental Manager

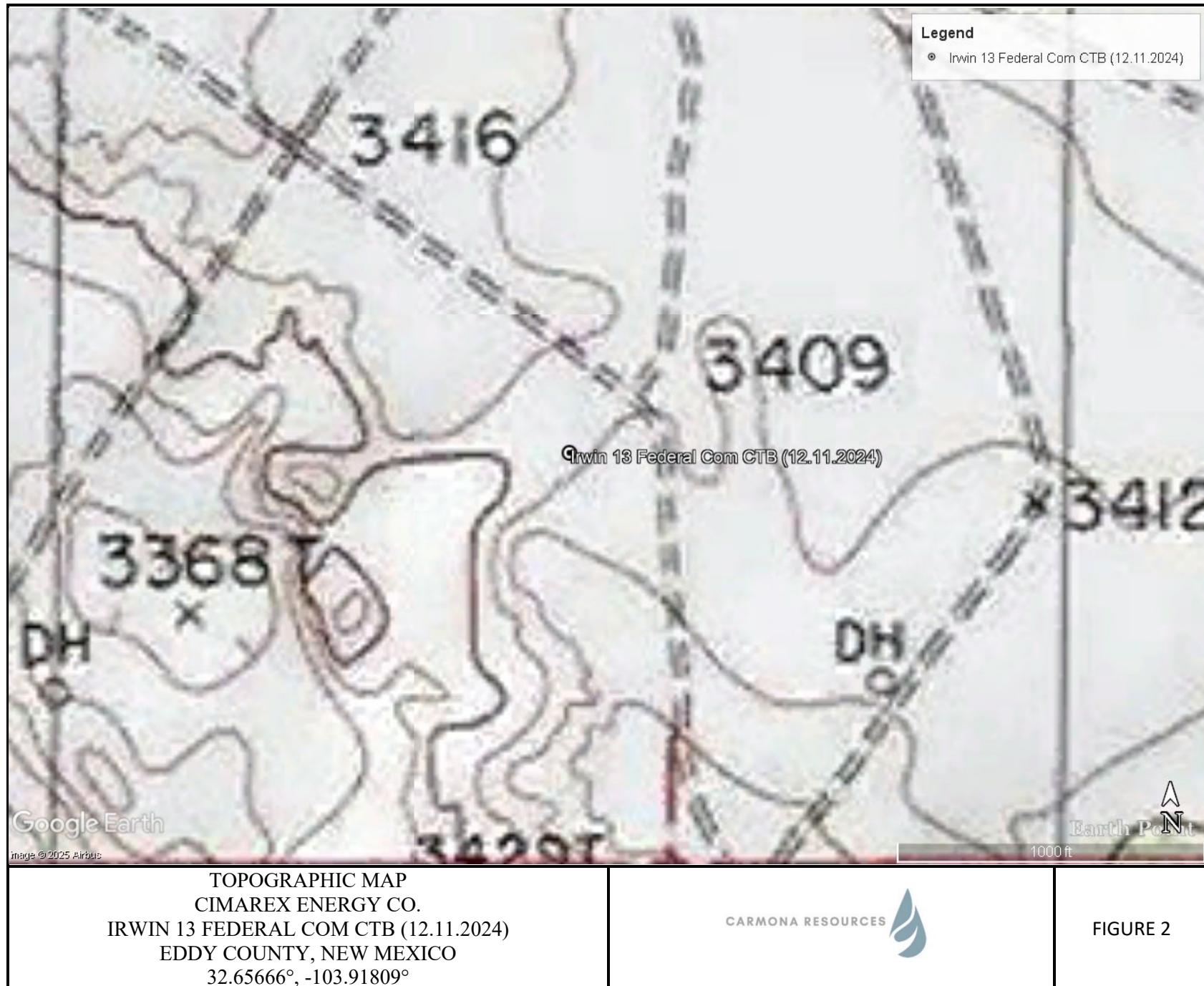
Gilbert Priego  
Sr. Project Manager

## FIGURES

CARMONA RESOURCES













## APPENDIX A

CARMONA RESOURCES



**Table 1**  
**Cimarex**  
**Irwin 13 Federal Com CTB (12.11.2024)**  
**Eddy County, New Mexico**

Sample ID	Date	Depth (ft)	TPH (mg/kg)				Benzene (mg/kg)	Toluene (mg/kg)	Ethlybenzene (mg/kg)	Xylene (mg/kg)	Total BTEX (mg/kg)	Chloride (mg/kg)
			GRO	DRO	MRO	Total						
<b>CS-1</b>	1/27/2025	4.0'	<10.0	<10.0	<10.0	<10.0	<0.050	<0.050	<0.050	<0.150	<0.300	32.0
<b>CS-2</b>	1/27/2025	4.0'	<10.0	<10.0	<10.0	<10.0	<0.050	<0.050	<0.050	<0.150	<0.300	48.0
<b>SW-1</b>	1/27/2025	4.0'	<10.0	<10.0	<10.0	<10.0	<0.050	<0.050	<0.050	<0.150	<0.300	32.0
<b>SW-2</b>	1/27/2025	4.0'	<10.0	<10.0	<10.0	<10.0	<0.050	<0.050	<0.050	<0.150	<0.300	32.0
<b>SW-3</b>	1/27/2025	4.0'	<10.0	<10.0	<10.0	<10.0	<0.050	<0.050	<0.050	<0.150	<0.300	48.0
<b>SW-4</b>	1/27/2025	4.0'	<10.0	<10.0	<10.0	<10.0	<0.050	<0.050	<0.050	<0.150	<0.300	32.0
<b>SW-5</b>	1/27/2025	4.0'	<10.0	<10.0	<10.0	<10.0	<0.050	<0.050	<0.050	<0.150	<0.300	32.0
<b>SW-6</b>	1/27/2025	4.0'	<10.0	<10.0	<10.0	<10.0	<0.050	<0.050	<0.050	<0.150	<0.300	32.0
<b>FRED BEARD PIT</b>	1/28/2025	-	<10.0	<10.0	<10.0	<10.0	<0.050	<0.050	<0.050	<0.150	<0.300	128
<b>Regulatory Criteria<sup>A</sup></b>						100 mg/kg	10 mg/kg				50 mg/kg	600 mg/kg

(-) Not Analyzed

<sup>A</sup> – Table 1 - 19.15.29 NMAC

mg/kg - milligram per kilogram

TPH - Total Petroleum Hydrocarbons

ft - feet

(CS) Confirmation Sample

(SW) SideWall Sample

## APPENDIX B

CARMONA RESOURCES



# PHOTOGRAPHIC LOG

Cimarex Energy Co.

## Photograph No. 1

**Facility:** Irwin 13 Federal Com CTB  
(12.11.2024)

**County:** Eddy County, New Mexico

**Description:**

View Southeast, area of CS-1 and CS-2.



## Photograph No. 2

**Facility:** Irwin 13 Federal Com CTB  
(12.11.2024)

**County:** Eddy County, New Mexico

**Description:**

View North, area of CS-1 and CS-2.



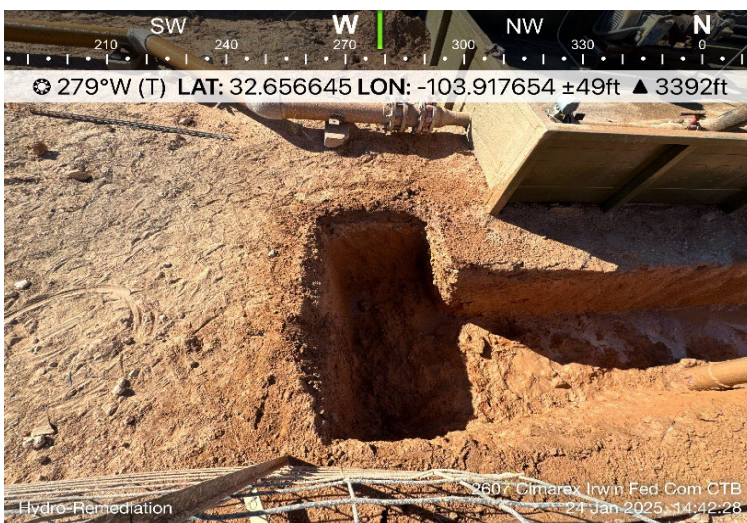
## Photograph No. 3

**Facility:** Irwin 13 Federal Com CTB  
(12.11.2024)

**County:** Eddy County, New Mexico

**Description:**

View West, area of CS-2.



# PHOTOGRAPHIC LOG

Cimarex Energy Co.

## Photograph No. 4

**Facility:** Irwin 13 Federal Com CTB  
(12.11.2024)

**County:** Eddy County, New Mexico

**Description:**

View South, backfilled area.



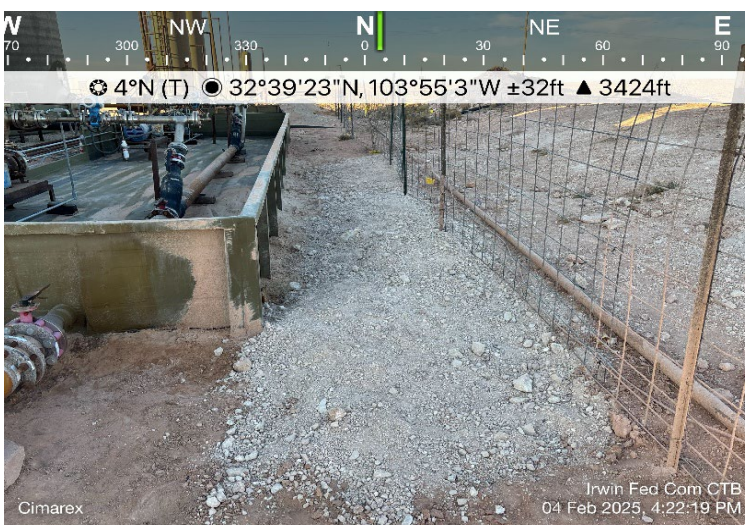
## Photograph No. 5

**Facility:** Irwin 13 Federal Com CTB  
(12.11.2024)

**County:** Eddy County, New Mexico

**Description:**

View North, backfilled area.



## APPENDIX C

CARMONA RESOURCES



Sante Fe Main Office  
Phone: (505) 476-3441

General Information  
Phone: (505) 629-6116

Online Phone Directory  
<https://www.emnrd.nm.gov/ocd/contact-us>

State of New Mexico  
Energy, Minerals and Natural Resources  
Oil Conservation Division  
1220 S. St Francis Dr.  
Santa Fe, NM 87505

QUESTIONS

Action 410903

QUESTIONS

Operator: CIMAREX ENERGY CO. 6001 Deauville Blvd Midland, TX 79706	OGRID: 215099
	Action Number: 410903
	Action Type: [NOTIFY] Notification Of Release (NOR)

QUESTIONS

<b>Location of Release Source</b> <i>Please answer all the questions in this group.</i>	
Site Name	Irwin 13 Federal
Date Release Discovered	12/11/2024
Surface Owner	Federal

<b>Incident Details</b> <i>Please answer all the questions in this group.</i>	
Incident Type	Produced Water Release
Did this release result in a fire or is the result of a fire	No
Did this release result in any injuries	No
Has this release reached or does it have a reasonable probability of reaching a watercourse	No
Has this release endangered or does it have a reasonable probability of endangering public health	No
Has this release substantially damaged or will it substantially damage property or the environment	No
Is this release of a volume that is or may with reasonable probability be detrimental to fresh water	No

<b>Nature and Volume of Release</b> <i>Material(s) released, please answer all that apply below. Any calculations or specific justifications for the volumes provided should be attached to the follow-up C-141 submission.</i>	
Crude Oil Released (bbls) Details	Not answered.
Produced Water Released (bbls) Details	Cause: Equipment Failure   Pump   Produced Water   Released: 8 BBL   Recovered: 5 BBL   Lost: 3 BBL.
Is the concentration of chloride in the produced water >10,000 mg/l	No
Condensate Released (bbls) Details	Not answered.
Natural Gas Vented (Mcf) Details	Not answered.
Natural Gas Flared (Mcf) Details	Not answered.
Other Released Details	Not answered.
Are there additional details for the questions above (i.e. any answer containing Other, Specify, Unknown, and/or Fire, or any negative lost amounts)	Not answered.

Sante Fe Main Office  
Phone: (505) 476-3441

General Information  
Phone: (505) 629-6116

Online Phone Directory  
<https://www.emnrd.nm.gov/ocd/contact-us>

**State of New Mexico**  
**Energy, Minerals and Natural Resources**  
**Oil Conservation Division**  
**1220 S. St Francis Dr.**  
**Santa Fe, NM 87505**

QUESTIONS, Page 2

Action 410903

**QUESTIONS (continued)**

Operator: CIMAREX ENERGY CO. 6001 Deauville Blvd Midland, TX 79706	OGRID: 215099
	Action Number: 410903
	Action Type: [NOTIFY] Notification Of Release (NOR)

**QUESTIONS**

<b>Nature and Volume of Release (continued)</b>	
Is this a gas only submission (i.e. only significant Mcf values reported)	No, according to supplied volumes this does not appear to be a "gas only" report.
Was this a major release as defined by Subsection A of 19.15.29.7 NMAC	No
Reasons why this would be considered a submission for a notification of a major release	Unavailable.
With the implementation of the 19.15.27 NMAC (05/25/2021), venting and/or flaring of natural gas (i.e. gas only) are to be submitted on the C-129 form.	

**Initial Response**

The responsible party must undertake the following actions immediately unless they could create a safety hazard that would result in injury.

The source of the release has been stopped	True
The impacted area has been secured to protect human health and the environment	True
Released materials have been contained via the use of berms or dikes, absorbent pads, or other containment devices	True
All free liquids and recoverable materials have been removed and managed appropriately	True
If all the actions described above have not been undertaken, explain why	na

Per Paragraph 4 of Subsection B of 19.15.29.8 NMAC the responsible party may commence remediation immediately after discovery of a release. If remediation has begun, please prepare and attach a narrative of actions to date in the follow-up C-141 submission. If remedial efforts have been successfully completed or if the release occurred within a lined containment area (see 19.15.29.11(A)(5)(a) NMAC), please prepare and attach all information needed for closure evaluation in the follow-up C-141 submission.

Sante Fe Main Office  
Phone: (505) 476-3441

General Information  
Phone: (505) 629-6116

Online Phone Directory  
<https://www.emnrd.nm.gov/ocd/contact-us>

**State of New Mexico**  
**Energy, Minerals and Natural Resources**  
**Oil Conservation Division**  
**1220 S. St Francis Dr.**  
**Santa Fe, NM 87505**

ACKNOWLEDGMENTS

Action 410903

**ACKNOWLEDGMENTS**

Operator: CIMAREX ENERGY CO. 6001 Deauville Blvd Midland, TX 79706	OGRID: 215099
	Action Number: 410903
	Action Type: [NOTIFY] Notification Of Release (NOR)

**ACKNOWLEDGMENTS**

<input checked="" type="checkbox"/>	I acknowledge that I am authorized to submit notification of a release on behalf of my operator.
<input checked="" type="checkbox"/>	I acknowledge that upon submitting this application, I will be creating a new incident file (assigned to my operator) to track the notification(s) and corrective action(s) for a release, pursuant to NMAC 19.15.29.
<input checked="" type="checkbox"/>	I acknowledge that creating a new incident file will require my operator to file subsequent submission(s) of form "C-141, Application for administrative approval of a release notification and corrective action", pursuant to NMAC 19.15.29.
<input checked="" type="checkbox"/>	I hereby certify that the information given above is true and complete to the best of my knowledge and understand that pursuant to OCD rules and regulations all operators are required to report and/or file certain release notifications and perform corrective actions for releases which may endanger public health or the environment.
<input checked="" type="checkbox"/>	I acknowledge the fact that the acceptance of a C-141 report by the OCD does not relieve the operator of liability should their operations have failed to adequately investigate and remediate contamination that pose a threat to groundwater, surface water, human health or the environment.
<input checked="" type="checkbox"/>	I acknowledge the fact that, in addition, OCD acceptance of a C-141 report does not relieve the operator of responsibility for compliance with any other federal, state, or local laws and/or regulations.

Sante Fe Main Office  
Phone: (505) 476-3441

General Information  
Phone: (505) 629-6116

Online Phone Directory  
<https://www.emnrd.nm.gov/ocd/contact-us>

State of New Mexico  
Energy, Minerals and Natural Resources  
Oil Conservation Division  
1220 S. St Francis Dr.  
Santa Fe, NM 87505

CONDITIONS

Action 410903

CONDITIONS

Operator:  CIMAREX ENERGY CO. 6001 Deauville Blvd Midland, TX 79706	OGRID:  215099
	Action Number:  410903
	Action Type:  [NOTIFY] Notification Of Release (NOR)

CONDITIONS

Created By	Condition	Condition Date
nrose	When submitting future reports regarding this release, please submit the calculations used or specific justification for the volumes reported on the initial C-141.	12/12/2024



CIMAREX ENERGY  
IRWIN 13 FEDERAL COM CTB  
EDDY, NM

7:41 5G 62

< Spill Calculator - Lite Version

Rectangle or Square Shape Spill

L(Ft)	W(Ft)	D(In)
27	5	1

Tank Size (Ft)	Tank Count
Tank OD	Tank Count

If you need to account for tank displacement, input Tank OD and Tank count, otherwise leave these empty.

Spill Before Disp (Bbls):	2.00
Tank Displacement Vol (Bbls):	0.00
Total Spill Bbls:	2.00
Total Spill Gals:	84.15

ExperimentalApps.com

7:41 5G 62

< Spill Calculator - Lite Version

Rectangle or Square Shape Spill

L(Ft)	W(Ft)	D(In)
24	9	2

Tank Size (Ft)	Tank Count
Tank OD	Tank Count

If you need to account for tank displacement, input Tank OD and Tank count, otherwise leave these empty.

Spill Before Disp (Bbls):	6.41
Tank Displacement Vol (Bbls):	0.00
Total Spill Bbls:	6.41
Total Spill Gals:	269.28

ExperimentalApps.com



CIMAREX ENERGY  
IRWIN 13 FEDERAL COM CTB  
EDDY, NM



Sante Fe Main Office  
Phone: (505) 476-3441

General Information  
Phone: (505) 629-6116

Online Phone Directory  
<https://www.emnrd.nm.gov/ocd/contact-us>

State of New Mexico  
Energy, Minerals and Natural Resources  
Oil Conservation Division  
1220 S. St Francis Dr.  
Santa Fe, NM 87505

QUESTIONS

Action 411284

QUESTIONS

Operator: CIMAREX ENERGY CO. 6001 Deauville Blvd Midland, TX 79706	OGRID: 215099
	Action Number: 411284
	Action Type: [C-141] Initial C-141 (C-141-v-Initial)

QUESTIONS

<b>Prerequisites</b>	
Incident ID (n#)	nAPP2434729375
Incident Name	NAPP2434729375 IRWIN 13 FEDERAL @ 0
Incident Type	Produced Water Release
Incident Status	Initial C-141 Received

<b>Location of Release Source</b>	
<i>Please answer all the questions in this group.</i>	
Site Name	Irwin 13 Federal
Date Release Discovered	12/11/2024
Surface Owner	Federal

<b>Incident Details</b>	
<i>Please answer all the questions in this group.</i>	
Incident Type	Produced Water Release
Did this release result in a fire or is the result of a fire	No
Did this release result in any injuries	No
Has this release reached or does it have a reasonable probability of reaching a watercourse	No
Has this release endangered or does it have a reasonable probability of endangering public health	No
Has this release substantially damaged or will it substantially damage property or the environment	No
Is this release of a volume that is or may with reasonable probability be detrimental to fresh water	No

<b>Nature and Volume of Release</b>	
<i>Material(s) released, please answer all that apply below. Any calculations or specific justifications for the volumes provided should be attached to the follow-up C-141 submission.</i>	
Crude Oil Released (bbls) Details	Not answered.
Produced Water Released (bbls) Details	Cause: Equipment Failure   Pump   Produced Water   Released: 8 BBL   Recovered: 5 BBL   Lost: 3 BBL.
Is the concentration of chloride in the produced water >10,000 mg/l	No
Condensate Released (bbls) Details	Not answered.
Natural Gas Vented (Mcf) Details	Not answered.
Natural Gas Flared (Mcf) Details	Not answered.
Other Released Details	Not answered.
Are there additional details for the questions above (i.e. any answer containing Other, Specify, Unknown, and/or Fire, or any negative lost amounts)	Not answered.

Sante Fe Main Office  
Phone: (505) 476-3441

General Information  
Phone: (505) 629-6116

Online Phone Directory  
<https://www.emnrd.nm.gov/ocd/contact-us>

**State of New Mexico**  
**Energy, Minerals and Natural Resources**  
**Oil Conservation Division**  
**1220 S. St Francis Dr.**  
**Santa Fe, NM 87505**

QUESTIONS, Page 2

Action 411284

**QUESTIONS (continued)**

Operator: CIMAREX ENERGY CO. 6001 Deauville Blvd Midland, TX 79706	OGRID: 215099
	Action Number: 411284
	Action Type: [C-141] Initial C-141 (C-141-v-Initial)

**QUESTIONS**

<b>Nature and Volume of Release (continued)</b>	
Is this a gas only submission (i.e. only significant Mcf values reported)	No, according to supplied volumes this does not appear to be a "gas only" report.
Was this a major release as defined by Subsection A of 19.15.29.7 NMAC	No
Reasons why this would be considered a submission for a notification of a major release	Unavailable.
With the implementation of the 19.15.27 NMAC (05/25/2021), venting and/or flaring of natural gas (i.e. gas only) are to be submitted on the C-129 form.	

**Initial Response**

The responsible party must undertake the following actions immediately unless they could create a safety hazard that would result in injury.

The source of the release has been stopped	True
The impacted area has been secured to protect human health and the environment	True
Released materials have been contained via the use of berms or dikes, absorbent pads, or other containment devices	True
All free liquids and recoverable materials have been removed and managed appropriately	True
If all the actions described above have not been undertaken, explain why	na

Per Paragraph (4) of Subsection B of 19.15.29.8 NMAC the responsible party may commence remediation immediately after discovery of a release. If remediation has begun, please prepare and attach a narrative of actions to date in the follow-up C-141 submission. If remedial efforts have been successfully completed or if the release occurred within a lined containment area (see Subparagraph (a) of Paragraph (5) of Subsection A of 19.15.29.11 NMAC), please prepare and attach all information needed for closure evaluation in the follow-up C-141 submission.

I hereby certify that the information given above is true and complete to the best of my knowledge and understand that pursuant to OCD rules and regulations all operators are required to report and/or file certain release notifications and perform corrective actions for releases which may endanger public health or the environment. The acceptance of a C-141 report by the OCD does not relieve the operator of liability should their operations have failed to adequately investigate and remediate contamination that pose a threat to groundwater, surface water, human health or the environment. In addition, OCD acceptance of a C-141 report does not relieve the operator of responsibility for compliance with any other federal, state, or local laws and/or regulations.

I hereby agree and sign off to the above statement	Name: Nathaniel Rose Title: EHS Specialists Email: nathaniel.rose@coterra.com Date: 12/12/2024
--	---

Sante Fe Main Office  
Phone: (505) 476-3441

General Information  
Phone: (505) 629-6116

Online Phone Directory  
<https://www.emnrd.nm.gov/ocd/contact-us>

**State of New Mexico**  
**Energy, Minerals and Natural Resources**  
**Oil Conservation Division**  
**1220 S. St Francis Dr.**  
**Santa Fe, NM 87505**

QUESTIONS, Page 3

Action 411284

**QUESTIONS (continued)**

Operator: CIMAREX ENERGY CO. 6001 Deauville Blvd Midland, TX 79706	OGRID: 215099
	Action Number: 411284
	Action Type: [C-141] Initial C-141 (C-141-v-Initial)

**QUESTIONS**

<b>Site Characterization</b>	
<i>Please answer all the questions in this group (only required when seeking remediation plan approval and beyond). This information must be provided to the appropriate district office no later than 90 days after the release discovery date.</i>	
What is the shallowest depth to groundwater beneath the area affected by the release in feet below ground surface (ft bgs)	Not answered.
What method was used to determine the depth to ground water	Not answered.
Did this release impact groundwater or surface water	Not answered.
<b>What is the minimum distance, between the closest lateral extents of the release and the following surface areas:</b>	
A continuously flowing watercourse or any other significant watercourse	Not answered.
Any lakebed, sinkhole, or playa lake (measured from the ordinary high-water mark)	Not answered.
An occupied permanent residence, school, hospital, institution, or church	Not answered.
A spring or a private domestic fresh water well used by less than five households for domestic or stock watering purposes	Not answered.
Any other fresh water well or spring	Not answered.
Incorporated municipal boundaries or a defined municipal fresh water well field	Not answered.
A wetland	Not answered.
A subsurface mine	Not answered.
An (non-karst) unstable area	Not answered.
Categorize the risk of this well / site being in a karst geology	Not answered.
A 100-year floodplain	Not answered.
Did the release impact areas not on an exploration, development, production, or storage site	Not answered.

<b>Remediation Plan</b>	
<i>Please answer all the questions that apply or are indicated. This information must be provided to the appropriate district office no later than 90 days after the release discovery date.</i>	
Requesting a remediation plan approval with this submission	No
<i>The OCD recognizes that proposed remediation measures may have to be minimally adjusted in accordance with the physical realities encountered during remediation. If the responsible party has any need to significantly deviate from the remediation plan proposed, then it should consult with the division to determine if another remediation plan submission is required.</i>	

Sante Fe Main Office  
Phone: (505) 476-3441

General Information  
Phone: (505) 629-6116

Online Phone Directory  
<https://www.emnrd.nm.gov/ocd/contact-us>

State of New Mexico  
Energy, Minerals and Natural Resources  
Oil Conservation Division  
1220 S. St Francis Dr.  
Santa Fe, NM 87505

CONDITIONS

Action 411284

CONDITIONS

Operator: CIMAREX ENERGY CO. 6001 Deauville Blvd Midland, TX 79706	OGRID: 215099
	Action Number: 411284
	Action Type: [C-141] Initial C-141 (C-141-v-Initial)

CONDITIONS

Created By	Condition	Condition Date
scott.rodgers	None	12/12/2024

Sante Fe Main Office  
Phone: (505) 476-3441

General Information  
Phone: (505) 629-6116

Online Phone Directory  
<https://www.emnrd.nm.gov/ocd/contact-us>

State of New Mexico  
Energy, Minerals and Natural Resources  
Oil Conservation Division  
1220 S. St Francis Dr.  
Santa Fe, NM 87505

QUESTIONS

Action 421917

QUESTIONS

Operator: CIMAREX ENERGY CO. 6001 Deauville Blvd Midland, TX 79706	OGRID: 215099
	Action Number: 421917
	Action Type: [NOTIFY] Notification Of Sampling (C-141N)

QUESTIONS

Prerequisites	
Incident ID (n#)	nAPP2434729375
Incident Name	NAPP2434729375 IRWIN 13 FEDERAL @ 0
Incident Type	Produced Water Release
Incident Status	Initial C-141 Approved
Incident Facility	[fAPP2202782856] IRWIN 13 FEDERAL

Location of Release Source	
Site Name	IRWIN 13 FEDERAL
Date Release Discovered	12/11/2024
Surface Owner	Federal

Sampling Event General Information	
Please answer all the questions in this group.	
What is the sampling surface area in square feet	206
What is the estimated number of samples that will be gathered	6
Sampling date pursuant to Subparagraph (a) of Paragraph (1) of Subsection D of 19.15.29.12 NMAC	01/22/2025
Time sampling will commence	10:00 AM
Please provide any information necessary for observers to contact samplers	Carmona Resources 432-813-8988
Please provide any information necessary for navigation to sampling site	same

Sante Fe Main Office  
Phone: (505) 476-3441

General Information  
Phone: (505) 629-6116

Online Phone Directory  
<https://www.emnrd.nm.gov/ocd/contact-us>

State of New Mexico  
Energy, Minerals and Natural Resources  
Oil Conservation Division  
1220 S. St Francis Dr.  
Santa Fe, NM 87505

CONDITIONS

Action 421917

CONDITIONS

Operator: CIMAREX ENERGY CO. 6001 Deauville Blvd Midland, TX 79706	OGRID: 215099
	Action Number: 421917
	Action Type: [NOTIFY] Notification Of Sampling (C-141N)

CONDITIONS

Created By	Condition	Condition Date
nrose	Failure to notify the OCD of sampling events including any changes in date/time per the requirements of 19.15.29.12.D.(1).(a) NMAC, may result in the remediation closure samples not being accepted.	1/17/2025

Sante Fe Main Office  
Phone: (505) 476-3441

General Information  
Phone: (505) 629-6116

Online Phone Directory  
<https://www.emnrd.nm.gov/ocd/contact-us>

State of New Mexico  
Energy, Minerals and Natural Resources  
Oil Conservation Division  
1220 S. St Francis Dr.  
Santa Fe, NM 87505

QUESTIONS

Action 425744

QUESTIONS

Operator: CIMAREX ENERGY CO. 6001 Deauville Blvd Midland, TX 79706	OGRID: 215099
	Action Number: 425744
	Action Type: [NOTIFY] Notification Of Liner Inspection (C-141L)

QUESTIONS

Prerequisites	
Incident ID (n#)	nAPP2434729375
Incident Name	NAPP2434729375 IRWIN 13 FEDERAL @ 0
Incident Type	Produced Water Release
Incident Status	Initial C-141 Approved
Incident Facility	[fAPP2202782856] IRWIN 13 FEDERAL

Location of Release Source	
Site Name	IRWIN 13 FEDERAL
Date Release Discovered	12/11/2024
Surface Owner	Federal

Liner Inspection Event Information	
Please answer all the questions in this group.	
What is the liner inspection surface area in square feet	485
Have all the impacted materials been removed from the liner	Yes
Liner inspection date pursuant to Subparagraph (a) of Paragraph (5) of Subsection A of 19.15.29.11 NMAC	01/30/2025
Time liner inspection will commence	08:00 AM
Please provide any information necessary for observers to liner inspection	na
Please provide any information necessary for navigation to liner inspection site	na

Sante Fe Main Office  
Phone: (505) 476-3441

General Information  
Phone: (505) 629-6116

Online Phone Directory  
<https://www.emnrd.nm.gov/oed/contact-us>

State of New Mexico  
Energy, Minerals and Natural Resources  
Oil Conservation Division  
1220 S. St Francis Dr.  
Santa Fe, NM 87505

CONDITIONS

Action 425744

CONDITIONS

Operator: CIMAREX ENERGY CO. 6001 Deauville Blvd Midland, TX 79706	OGRID: 215099
	Action Number: 425744
	Action Type: [NOTIFY] Notification Of Liner Inspection (C-141L)

CONDITIONS

Created By	Condition	Condition Date
nrose	Failure to notify the OCD of liner inspections including any changes in date/time per the requirements of 19.15.29.11.A(5)(a)(ii) NMAC, may result in the inspection not being accepted.	1/28/2025

## APPENDIX D

CARMONA RESOURCES

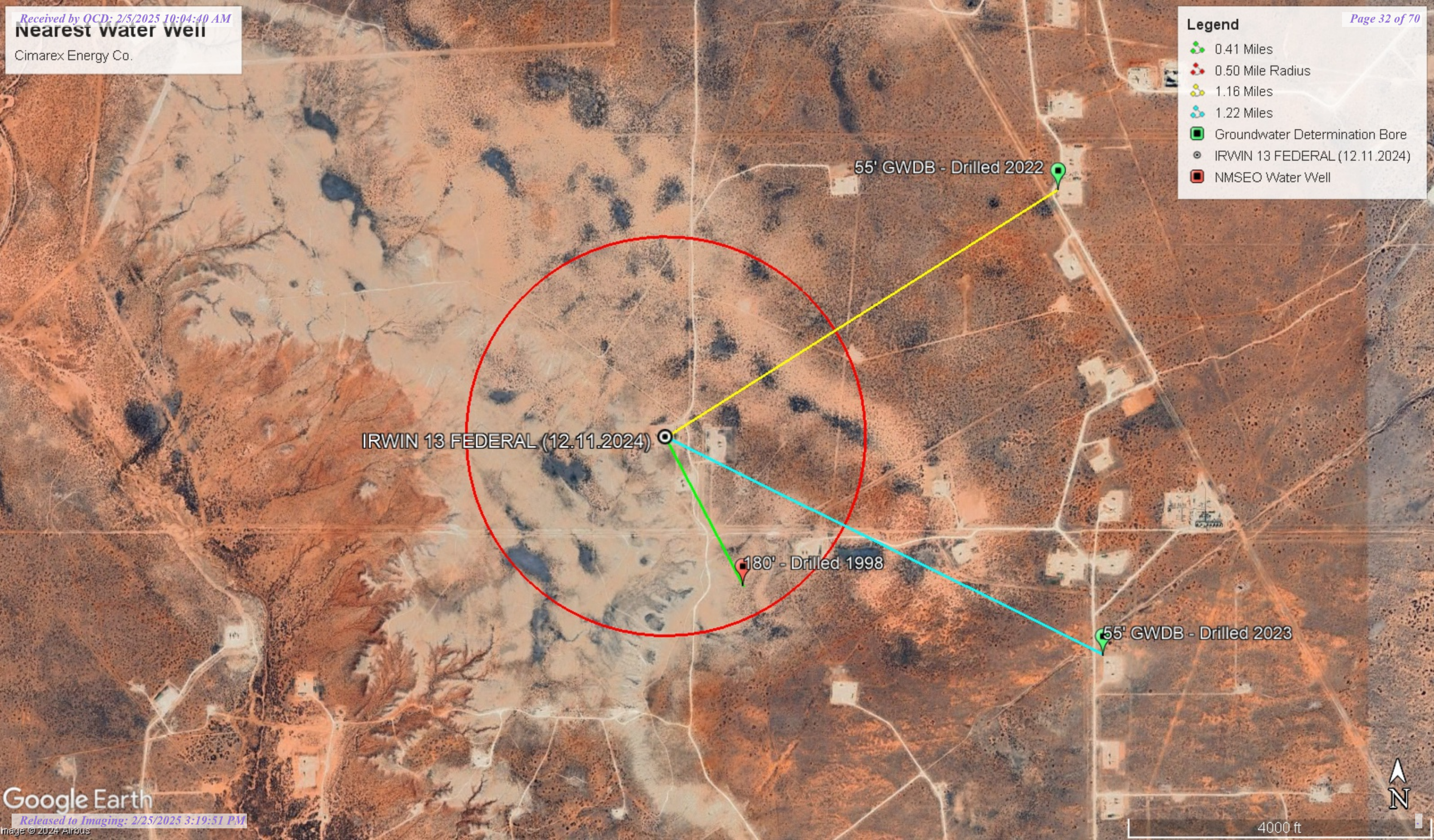


**Nearest water well**

Cimarex Energy Co.

**Legend**

- 0.41 Miles
- 0.50 Mile Radius
- 1.16 Miles
- 1.22 Miles
- Groundwater Determination Bore
- IRWIN 13 FEDERAL (12.11.2024)
- NMSEO Water Well



IRWIN 13 FEDERAL (12.11.2024)

55' GWDB - Drilled 2022

180' - Drilled 1998

55' GWDB - Drilled 2023



High Karst

Cimarex Energy Co.

Legend

- High
- IRWIN 13 FEDERAL (12.11.2024)
- Low
- Medium

IRWIN 13 FEDERAL (12.11.2024)





New Mexico Office of the State Engineer

Water Column/Average Depth to Water

(A CLW##### in the POD suffix indicates the POD has been replaced & no longer serves a water right file.)

(R=POD has been replaced, O=orphaned, C=the file is closed)

(quarters are smallest to largest)

(meters)

(In feet)

POD Number	Code	Sub basin	County	Q64	Q16	Q4	Sec	Tws	Range	X	Y	Map	Distance	Well Depth	Depth Water	Water Column
<a href="#">CP 00873 POD1</a>		CP	LE		NW	NW	19	19S	31E	601772.0	3613147.0 *		672	340	180	160
<a href="#">CP 00357 POD1</a>		CP	ED	SE	SE	NW	24	19S	30E	600667.0	3612631.0 *		1364	630		
<a href="#">CP 00357 POD2</a>		CP	ED	SE	SW	NW	24	19S	30E	600265.0	3612627.0 *		1633	630		
<a href="#">CP 01907 POD1</a>		CP	ED	SE	NE	NE	18	19S	31E	603017.2	3614737.1		1848			
<a href="#">CP 01943 POD1</a>		CP	ED	NW	SW	NW	20	19S	31E	603217.4	3612883.9		1956	55		
<a href="#">CP 00722 POD2</a>		CP	ED	NE	NW	NW	25	19S	30E	600276.0	3611620.0 *		2429	350	65	285
<a href="#">CP 01985 POD1</a>		CP	ED	NE	SE	NE	17	19S	31E	604666.5	3614438.3		3282	55		
<a href="#">CP 00822 POD1</a>		CP	LE		SE	SE	15	19S	30E	598148.0	3613516.0 *		3318	90		
<a href="#">CP 00647 POD1</a>	O	CP	ED	SE	NE	NE	15	19S	30E	598235.0	3614621.0 *		3341	200	92	108
<a href="#">CP 01941 POD1</a>		CP	ED	SW	NE	NE	29	19S	31E	604524.2	3611512.8		3790	55	54	1

Average Depth to Water: 97 feet

Minimum Depth: 54 feet

Maximum Depth: 180 feet

Record Count: 10

UTM Filters (in meters):

Easting: 601459.00

Northing: 3613742.00

Radius: 4000

\* UTM location was derived from PLSS - see Help

The data is furnished by the NMOSE/ISC and is accepted by the recipient with the expressed understanding that the OSE/ISC make no warranties, expressed or implied, concerning the accuracy, completeness, reliability, usability, or suitability for any particular purpose of the data.

## STATE ENGINEER OFFICE

## WELL RECORD

## Section 1. GENERAL INFORMATION

(A) Owner of well Santa Fe Energy Owner's Well No. \_\_\_\_\_  
Street or Post Office Address c/o Glenn's Water Well Service, Inc.  
City and State P.O. Box 692 Tatum, New Mexico 88267

Well was drilled under Permit No. CP-00873 and is located in the:

a. \_\_\_\_\_  $\frac{1}{4}$  \_\_\_\_\_  $\frac{1}{4}$  NW  $\frac{1}{4}$  NE  $\frac{1}{4}$  of Section 33 Township 21-S. Range 33-E. N.M.P.M.

b. Tract No. \_\_\_\_\_ of Map No. \_\_\_\_\_ of the \_\_\_\_\_

c. Lot No. \_\_\_\_\_ of Block No. \_\_\_\_\_ of the \_\_\_\_\_  
Subdivision, recorded in \_\_\_\_\_ County.

d. X= \_\_\_\_\_ feet, Y= \_\_\_\_\_ feet, N.M. Coordinate System \_\_\_\_\_ Zone in  
the \_\_\_\_\_ Grant.

(B) Drilling Contractor Glenn's Water Well Service License No. WD-421

Address P.O. Box 692 Tatum, New Mexico 88267

Drilling Began 1/2/98 Completed 1/5/98 Type tools rotary Size of hole 7 7/8 in.

Elevation of land surface or \_\_\_\_\_ at well is \_\_\_\_\_ ft. Total depth of well 340 ft.

Completed well is ☒ shallow ☐ artesian. Depth to water upon completion of well 180 ft.

## Section 2. PRINCIPAL WATER-BEARING STRATA

Depth in Feet		Thickness in Feet	Description of Water-Bearing Formation	Estimated Yield (gallons per minute)
From	To			
240	320	80	red shale with stringer of sand	50

## Section 3. RECORD OF CASING

Diameter (inches)	Pounds per foot	Threads per in.	Depth in Feet		Length (feet)	Type of Shoe	Perforations	
			Top	Bottom			From	To
8 5/8	.188		0	24	24	none	none	
6 5/8	.188		0	340			226	340

## Section 4. RECORD OF MUDDING AND CEMENTING

Depth in Feet		Hole Diameter	Sacks of Mud	Cubic Feet of Cement	Method of Placement
From	To				

## Section 5. PLUGGING RECORD

Plugging Contractor \_\_\_\_\_

Address \_\_\_\_\_

Plugging Method \_\_\_\_\_

Date Well Plugged \_\_\_\_\_

Plugging approved by: \_\_\_\_\_

State Engineer Representative

No.	Depth in Feet		Cubic Feet of Cement
	Top	Bottom	
1			
2			
3			
4			

## FOR USE OF STATE ENGINEER ONLY

Date Received 01/15/98

Quad \_\_\_\_\_ FWL \_\_\_\_\_ FSL \_\_\_\_\_

File No. CP-00873 Use OWD Location No. 21-33-33-21

## Section 6. LOG OF HOLE

[illegible]

## Section 7. REMARKS AND ADDITIONAL INFORMATION

The undersigned hereby certifies that, to the best of his knowledge and belief, the foregoing is a true and correct record of the above described hole.

Cosby Helm  
Driller

**INSTRUCTIONS:** This form should be executed in triplicate, preferably typewritten, and submitted to the appropriate district office of the State Engineer. All sections, except Section 5, shall be answered as completely and accurately as possible when any well is drilled, repaired or deepened. When this form is used as a plugging record, only Section 1(a) and Section 5 need be completed.



# WELL RECORD & LOG

**OFFICE OF THE STATE ENGINEER**

**www.ose.state.nm.us**

[illegible]

FOR OSE INTERNAL USE

WR-20 WELL RECORD &amp; LOG (Version 01/28/2022)


FOR USE INTERNAL USE		WK-20 WELL RECORD & LOG (VERSION 01/26/2022)	
FILE NO.	CP-1907-POD1 TW-1	POD NO.	1
LOCATION		TRN NO.	726167
19.31.18.427		WELL TAG ID NO.	—
		PAGE 1 OF 2	

4. HYDROGEOLOGIC LOG OF WELL	DEPTH (feet bgl)		THICKNESS (feet)	COLOR AND TYPE OF MATERIAL ENCOUNTERED - INCLUDE WATER-BEARING CAVITIES OR FRACTURE ZONES (attach supplemental sheets to fully describe all units)	WATER BEARING? (YES / NO)	ESTIMATED YIELD FOR WATER- BEARING ZONES (gpm)
	FROM	TO				
	0	29	29	Sand, Medium/ Fine grained, poorly graded, Light brown	Y    ✓ N	
	29	44	15	Sand, Medium/ Fine grained, poorly graded, with caliche Light brown / white	Y    ✓ N	
	44	55	11	Sand, Medium/ Fine grained, poorly graded, Light brown	Y    ✓ N	
					Y    N	
					Y    N	
					Y    N	
					Y    N	
					Y    N	
					Y    N	
					Y    N	
					Y    N	
					Y    N	
					Y    N	
					Y    N	
					Y    N	
					Y    N	
					Y    N	
					Y    N	
					Y    N	
					Y    N	
					Y    N	
					Y    N	
					Y    N	
METHOD USED TO ESTIMATE YIELD OF WATER-BEARING STRATA: <input type="checkbox"/> PUMP <input type="checkbox"/> AIR LIFT <input type="checkbox"/> BAILER <input type="checkbox"/> OTHER - SPECIFY:					TOTAL ESTIMATED WELL YIELD (gpm):    0.00	

5. TEST; RIG SUPERVISION	WELL TEST	TEST RESULTS - ATTACH A COPY OF DATA COLLECTED DURING WELL TESTING, INCLUDING DISCHARGE METHOD, START TIME, END TIME, AND A TABLE SHOWING DISCHARGE AND DRAWDOWN OVER THE TESTING PERIOD.
	MISCELLANEOUS INFORMATION: Temporary well material removed and soil boring backfilled using drill cuttings from total depth to ten feet below ground surface(bgs), then hydrated bentonite chips ten feet bgs to surface.	
	<p style="text-align: right;">OSE DIT AUG 11 2022 PM 3:11</p> PRINT NAME(S) OF DRILL RIG SUPERVISOR(S) THAT PROVIDED ONSITE SUPERVISION OF WELL CONSTRUCTION OTHER THAN LICENSEE: Shane Eldridge, Cameron Pruitt	

6. SIGNATURE	THE UNDERSIGNED HEREBY CERTIFIES THAT, TO THE BEST OF HIS OR HER KNOWLEDGE AND BELIEF, THE FOREGOING IS A TRUE AND CORRECT RECORD OF THE ABOVE DESCRIBED HOLE AND THAT HE OR SHE WILL FILE THIS WELL RECORD WITH THE STATE ENGINEER AND THE PERMIT HOLDER WITHIN 30 DAYS AFTER COMPLETION OF WELL DRILLING:	
	 SIGNATURE OF DRILLER / PRINT SIGNEE NAME	Jackie D. Atkins 8/4/2022 DATE

FOR OSE INTERNAL USE

WR-20 WELL RECORD &amp; LOG (Version 01/28/2022)

FILE NO. <u>CP-1907-P001 TW-1</u>	POD NO. <u>1</u>	TRN NO. <u>726167</u>
LOCATION <u>19.31.18.422</u>	WELL TAG ID NO. <u>                    </u>	PAGE 2 OF 2



# WELL RECORD & LOG

OFFICE OF THE STATE ENGINEER

[www.ose.state.nm.us](http://www.ose.state.nm.us)

OSE OFF APR 27 2023 4:26

1. GENERAL AND WELL LOCATION	OSE POD NO. (WELL NO.) POD 1 (TW-1)		WELL TAG ID NO. N/A		OSE FILE NO(S). CP-1943			
	WELL OWNER NAME(S) Devon Energy				PHONE (OPTIONAL) 575-748-1838			
	WELL OWNER MAILING ADDRESS 6488 7 Rivers Hwy				CITY Artesia	STATE NM	ZIP 88210	
	WELL LOCATION (FROM GPS)	DEGREES LATITUDE 32	MINUTES 38	SECONDS 55.52 N	* ACCURACY REQUIRED: ONE TENTH OF A SECOND			
		LONGITUDE 103	53	58.0 W	* DATUM REQUIRED: WGS 84			
DESCRIPTION RELATING WELL LOCATION TO STREET ADDRESS AND COMMON LANDMARKS - PLSS (SECTION, TOWNSHIP, RANGE) WHERE AVAILABLE NW SW NW Sec.20 T19S R31E NMPM								
2. DRILLING & CASING INFORMATION	LICENSE NO. 1249		NAME OF LICENSED DRILLER Jackie D. Atkins			NAME OF WELL DRILLING COMPANY Atkins Engineering Associates, Inc.		
	DRILLING STARTED 4/6/2023	DRILLING ENDED 4/9/2023	DEPTH OF COMPLETED WELL (FT) Temporary Well Material		BORE HOLE DEPTH (FT) ±55	DEPTH WATER FIRST ENCOUNTERED (FT) N/A		
	COMPLETED WELL IS: <input type="checkbox"/> ARTESIAN <input checked="" type="checkbox"/> DRY HOLE <input type="checkbox"/> SHALLOW (UNCONFINED)				STATIC WATER LEVEL IN COMPLETED WELL (FT) N/A	DATE STATIC MEASURED 4/18/23		
	DRILLING FLUID: <input type="checkbox"/> AIR <input type="checkbox"/> MUD ADDITIVES - SPECIFY:							
	DRILLING METHOD: <input type="checkbox"/> ROTARY <input type="checkbox"/> HAMMER <input type="checkbox"/> CABLE TOOL <input checked="" type="checkbox"/> OTHER - SPECIFY: Hollow Stem Auger					CHECK HERE IF PITLESS ADAPTER IS INSTALLED <input type="checkbox"/>		
	DEPTH (feet bgl) FROM TO		BORE HOLE DIAM (inches)	CASING MATERIAL AND/OR GRADE (include each casing string, and note sections of screen)	CASING CONNECTION TYPE (add coupling diameter)	CASING INSIDE DIAM. (inches)	CASING WALL THICKNESS (inches)	SLOT SIZE (inches)
	0	55	±6.25	Soil Boring	--	--	--	--
3. ANNULAR MATERIAL	DEPTH (feet bgl) FROM TO		BORE HOLE DIAM. (inches)	LIST ANNULAR SEAL MATERIAL AND GRAVEL PACK SIZE-RANGE BY INTERVAL		AMOUNT (cubic feet)	METHOD OF PLACEMENT	
				N/A				

FOR OSE INTERNAL USE

WR-20 WELL RECORD & LOG (Version 01/28/2022)


FILE NO. CP-1943	POD NO. 1	TRN NO. 7410394
LOCATION 19S. 31E. 20 1 31	WELL TAG ID NO. MA	PAGE 1 OF 2

4. HYDROGEOLOGIC LOG OF WELL	DEPTH (feet bgl)		THICKNESS (feet)	COLOR AND TYPE OF MATERIAL ENCOUNTERED - INCLUDE WATER-BEARING CAVITIES OR FRACTURE ZONES (attach supplemental sheets to fully describe all units)	WATER BEARING? (YES / NO)	ESTIMATED YIELD FOR WATER- BEARING ZONES (gpm)
	FROM	TO				
	0	4	4	Sand, fine-grained, poorly graded, unconsolidated Brown	Y ✓ N	
	4	25	21	Caliche, with very fine- grained sand, Tan off white	Y ✓ N	
	25	50	25	Sand, fine-grained, poorly graded, consolidated, Brown	Y ✓ N	
	50	55	5	Sand, fine-grained, poorly graded, unconsolidated, Tan	Y ✓ N	
					Y N	
					Y N	
					Y N	
					Y N	
					Y N	
					Y N	
					Y N	
					Y N	
					Y N	
					Y N	
					Y N	
					Y N	
					Y N	
					Y N	
					Y N	
					Y N	
					Y N	
METHOD USED TO ESTIMATE YIELD OF WATER-BEARING STRATA:					TOTAL ESTIMATED WELL YIELD (gpm):	
<input type="checkbox"/> PUMP <input type="checkbox"/> AIR LIFT <input type="checkbox"/> BAILER <input type="checkbox"/> OTHER - SPECIFY:					0.00	

5. TEST; RIG SUPERVISION	WELL TEST	TEST RESULTS - ATTACH A COPY OF DATA COLLECTED DURING WELL TESTING, INCLUDING DISCHARGE METHOD, START TIME, END TIME, AND A TABLE SHOWING DISCHARGE AND DRAWDOWN OVER THE TESTING PERIOD.
	MISCELLANEOUS INFORMATION: Temporary well material removed and soil boring backfilled using drill cuttings from total depth to ten feet below ground surface(bgs), then hydrated bentonite chips ten feet bgs to surface. 5 Rigel 20 Fed Com 2H <div style="text-align: right;">OGE DTI APR 27 2023 PM 3:25</div>	
	PRINT NAME(S) OF DRILL RIG SUPERVISOR(S) THAT PROVIDED ONSITE SUPERVISION OF WELL CONSTRUCTION OTHER THAN LICENSEE: Shane Eldridge, Cameron Pruitt	

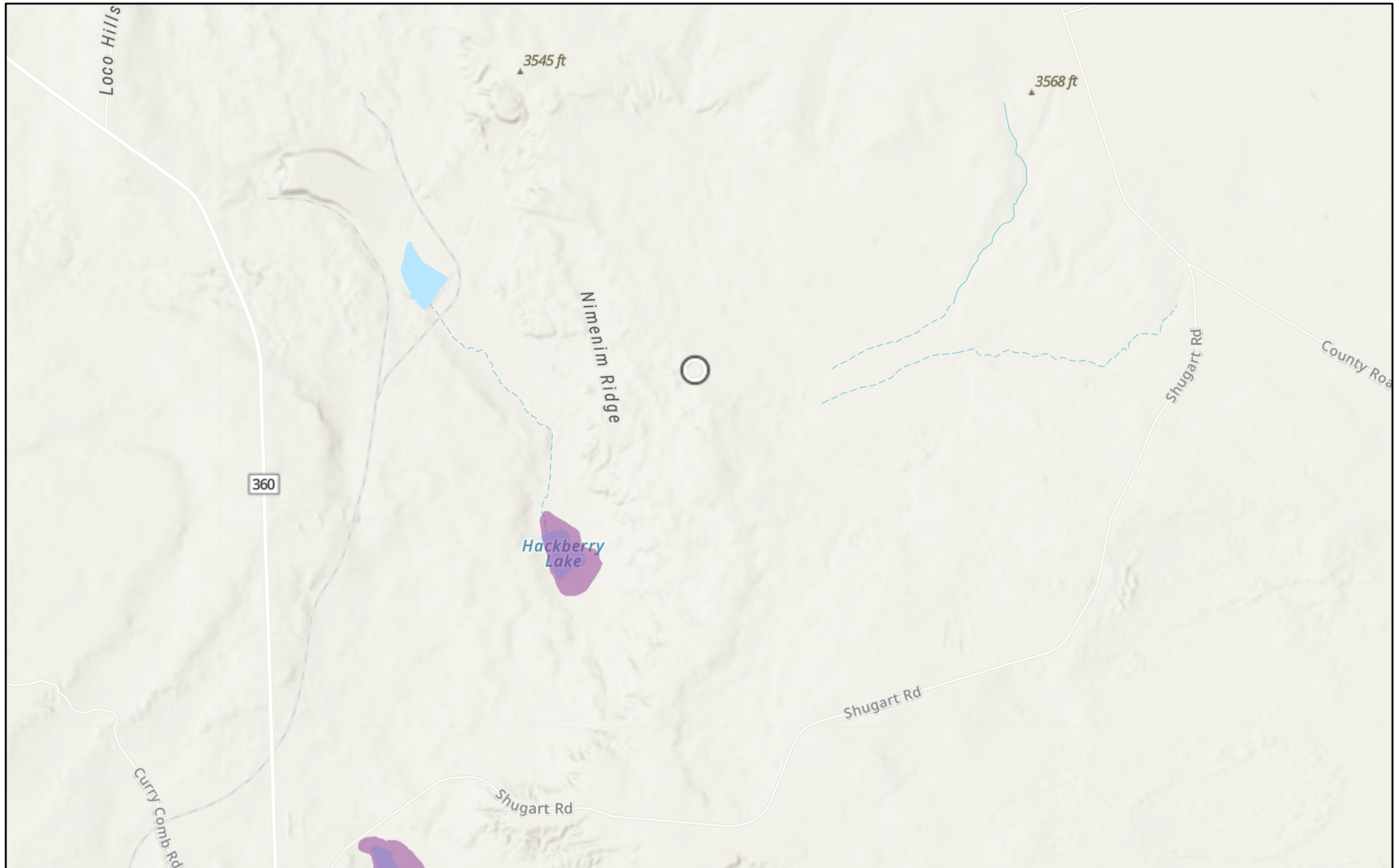
6. SIGNATURE	THE UNDERSIGNED HEREBY CERTIFIES THAT, TO THE BEST OF HIS OR HER KNOWLEDGE AND BELIEF, THE FOREGOING IS A TRUE AND CORRECT RECORD OF THE ABOVE DESCRIBED HOLE AND THAT HE OR SHE WILL FILE THIS WELL RECORD WITH THE STATE ENGINEER AND THE PERMIT HOLDER WITHIN 30 DAYS AFTER COMPLETION OF WELL DRILLING:	
 SIGNATURE OF DRILLER / PRINT SIGNEE NAME	Jackie D. Atkins DATE	4/26/23

FOR OSE INTERNAL USE

WR-20 WELL RECORD &amp; LOG (Version 01/28/2022)

FILE NO. CP- 1943	POD NO. 1	TRN NO. 740394
LOCATION 195-31E-20 131	WELL TAG ID NO. M4	PAGE 2 OF 2

# IRWIN 13 FEDERAL (12.11.2024)

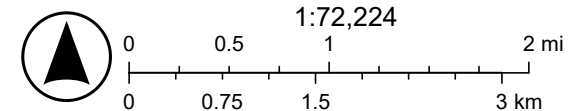


12/19/2024

USA Flood Hazard Areas

 1% Annual Chance Flood Hazard

World Hillshade



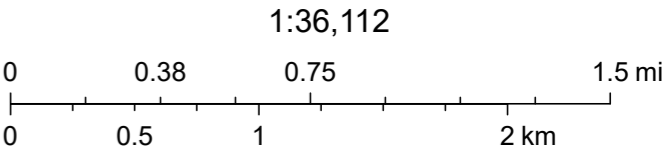
Texas Parks & Wildlife, CONANP, Esri, TomTom, Garmin, SafeGraph, GeoTechnologies, Inc, METI/NASA, USGS, EPA, NPS, USDA, USFWS, Esri,

# IRWIN 13 FEDERAL (12.11.2024)



12/19/2024, 9:40:24 AM

- OSW Water Bodys
- OSE Streams



Esri, NASA, NGA, USGS, FEMA, Texas Parks & Wildlife, CONANP, Esri, TomTom, Garmin, SafeGraph, GeoTechnologies, Inc, METI/NASA, USGS, EPA, NPS, US Census Bureau, USDA, USFWS, NM OSE

## APPENDIX E

CARMONA RESOURCES





PHONE (575) 393-2326 ° 101 E. MARLAND ° HOBBS, NM 88240

---

January 28, 2025

ASHTON THIELKE

CARMONA RESOURCES

310 W WALL ST, SUITE 500

MIDLAND, TX 79701

RE: IRWIN 13 FEDERAL COM CTB

Enclosed are the results of analyses for samples received by the laboratory on 01/27/25 10:18.

Cardinal Laboratories is accredited through Texas NELAP under certificate number TX-C24-00112. Accreditation applies to drinking water, non-potable water and solid and chemical materials. All accredited analytes are denoted by an asterisk (\*). For a complete list of accredited analytes and matrices visit the TCEQ website at [www.tceq.texas.gov/field/qa/lab\\_accred\\_certif.html](http://www.tceq.texas.gov/field/qa/lab_accred_certif.html).

Cardinal Laboratories is accredited through the State of Colorado Department of Public Health and Environment for:

Method EPA 552.2	Haloacetic Acids (HAA-5)
Method EPA 524.2	Total Trihalomethanes (TTHM)
Method EPA 524.4	Regulated VOCs (V1, V2, V3)

Accreditation applies to public drinking water matrices.

This report meets NELAP requirements and is made up of a cover page, analytical results, and a copy of the original chain-of-custody. If you have any questions concerning this report, please feel free to contact me.

Sincerely,

A handwritten signature in black ink that reads "Celey D. Keene". The signature is written in a cursive style with a large, stylized 'C' and 'K'.

Celey D. Keene

Lab Director/Quality Manager



PHONE (575) 393-2326 ° 101 E. MARLAND ° HOBBS, NM 88240

**Analytical Results For:**

CARMONA RESOURCES  
 ASHTON THIELKE  
 310 W WALL ST, SUITE 500  
 MIDLAND TX, 79701  
 Fax To:

Received: 01/27/2025  
 Reported: 01/28/2025  
 Project Name: IRWIN 13 FEDERAL COM CTB  
 Project Number: 2607 ( 12.11.2024 )  
 Project Location: CIMAREX - EDDY CO NM

Sampling Date: 01/27/2025  
 Sampling Type: Soil  
 Sampling Condition: Cool & Intact  
 Sample Received By: Tamara Oldaker

**Sample ID: CS - 1 ( 4.0' ) (H250457-01)**

BTX 8021B		mg/kg		Analyzed By: JH					
Analyte	Result	Reporting Limit	Analyzed	Method Blank	BS	% Recovery	True Value QC	RPD	Qualifier
Benzene*	<0.050	0.050	01/27/2025	ND	2.12	106	2.00	0.750	
Toluene*	<0.050	0.050	01/27/2025	ND	2.28	114	2.00	2.19	
Ethylbenzene*	<0.050	0.050	01/27/2025	ND	2.52	126	2.00	3.13	
Total Xylenes*	<0.150	0.150	01/27/2025	ND	7.76	129	6.00	2.61	
Total BTX	<0.300	0.300	01/27/2025	ND					

Surrogate: 4-Bromofluorobenzene (PID) 128 % 71.5-134

Chloride, SM4500Cl-B		mg/kg		Analyzed By: CT						
Analyte	Result	Reporting Limit	Analyzed	Method Blank	BS	% Recovery	True Value QC	RPD	Qualifier	
Chloride	32.0	16.0	01/28/2025	ND	448	112	400	7.41		

TPH 8015M		mg/kg		Analyzed By: MS					
Analyte	Result	Reporting Limit	Analyzed	Method Blank	BS	% Recovery	True Value QC	RPD	Qualifier
GRO C6-C10*	<10.0	10.0	01/27/2025	ND	200	99.9	200	2.23	
DRO >C10-C28*	<10.0	10.0	01/27/2025	ND	194	97.1	200	2.58	
EXT DRO >C28-C36	<10.0	10.0	01/27/2025	ND					

Surrogate: 1-Chlorooctane 113 % 48.2-134

Surrogate: 1-Chlorooctadecane 111 % 49.1-148

Cardinal Laboratories

\*=Accredited Analyte

PLEASE NOTE: Liability and Damages. Cardinal's liability and client's exclusive remedy for any claim arising, whether based in contract or tort, shall be limited to the amount paid by client for analyses. All claims, including those for negligence and any other cause whatsoever shall be deemed waived unless made in writing and received by Cardinal within thirty (30) days after completion of the applicable service. In no event shall Cardinal be liable for incidental or consequential damages, including, without limitation, business interruptions, loss of use, or loss of profits incurred by client, its subsidiaries, affiliates or successors arising out of or related to the performance of the services hereunder by Cardinal, regardless of whether such claim is based upon any of the above stated reasons or otherwise. Results relate only to the samples identified above. This report shall not be reproduced except in full with written approval of Cardinal Laboratories.

Celey D. Keene, Lab Director/Quality Manager



PHONE (575) 393-2326 ° 101 E. MARLAND ° HOBBS, NM 88240

**Analytical Results For:**

CARMONA RESOURCES  
 ASHTON THIELKE  
 310 W WALL ST, SUITE 500  
 MIDLAND TX, 79701  
 Fax To:

Received: 01/27/2025  
 Reported: 01/28/2025  
 Project Name: IRWIN 13 FEDERAL COM CTB  
 Project Number: 2607 ( 12.11.2024 )  
 Project Location: CIMAREX - EDDY CO NM

Sampling Date: 01/27/2025  
 Sampling Type: Soil  
 Sampling Condition: Cool & Intact  
 Sample Received By: Tamara Oldaker

**Sample ID: CS - 2 ( 4.0' ) (H250457-02)**

BTEx 8021B		mg/kg		Analyzed By: JH						
Analyte	Result	Reporting Limit	Analyzed	Method Blank	BS	% Recovery	True Value QC	RPD	Qualifier	
Benzene*	<0.050	0.050	01/27/2025	ND	2.12	106	2.00	0.750		
Toluene*	<0.050	0.050	01/27/2025	ND	2.28	114	2.00	2.19		
Ethylbenzene*	<0.050	0.050	01/27/2025	ND	2.52	126	2.00	3.13		
Total Xylenes*	<0.150	0.150	01/27/2025	ND	7.76	129	6.00	2.61		
Total BTEX	<0.300	0.300	01/27/2025	ND						

Surrogate: 4-Bromofluorobenzene (PID) 123 % 71.5-134

Chloride, SM4500CI-B		mg/kg		Analyzed By: CT						
Analyte	Result	Reporting Limit	Analyzed	Method Blank	BS	% Recovery	True Value QC	RPD	Qualifier	
Chloride	48.0	16.0	01/28/2025	ND	448	112	400	7.41		

TPH 8015M		mg/kg		Analyzed By: MS					
Analyte	Result	Reporting Limit	Analyzed	Method Blank	BS	% Recovery	True Value QC	RPD	Qualifier
GRO C6-C10*	<10.0	10.0	01/27/2025	ND	200	99.9	200	2.23	
DRO >C10-C28*	<10.0	10.0	01/27/2025	ND	194	97.1	200	2.58	
EXT DRO >C28-C36	<10.0	10.0	01/27/2025	ND					

Surrogate: 1-Chlorooctane 115 % 48.2-134

Surrogate: 1-Chlorooctadecane 115 % 49.1-148

Cardinal Laboratories

\*=Accredited Analyte

PLEASE NOTE: Liability and Damages. Cardinal's liability and client's exclusive remedy for any claim arising, whether based in contract or tort, shall be limited to the amount paid by client for analyses. All claims, including those for negligence and any other cause whatsoever shall be deemed waived unless made in writing and received by Cardinal within thirty (30) days after completion of the applicable service. In no event shall Cardinal be liable for incidental or consequential damages, including, without limitation, business interruptions, loss of use, or loss of profits incurred by client, its subsidiaries, affiliates or successors arising out of or related to the performance of the services hereunder by Cardinal, regardless of whether such claim is based upon any of the above stated reasons or otherwise. Results relate only to the samples identified above. This report shall not be reproduced except in full with written approval of Cardinal Laboratories.

Celey D. Keene, Lab Director/Quality Manager



PHONE (575) 393-2326 ° 101 E. MARLAND ° HOBBS, NM 88240

**Analytical Results For:**

CARMONA RESOURCES  
 ASHTON THIELKE  
 310 W WALL ST, SUITE 500  
 MIDLAND TX, 79701  
 Fax To:

Received: 01/27/2025  
 Reported: 01/28/2025  
 Project Name: IRWIN 13 FEDERAL COM CTB  
 Project Number: 2607 ( 12.11.2024 )  
 Project Location: CIMAREX - EDDY CO NM

Sampling Date: 01/27/2025  
 Sampling Type: Soil  
 Sampling Condition: Cool & Intact  
 Sample Received By: Tamara Oldaker

**Sample ID: SW - 1 ( 4.0' ) (H250457-03)**

BTEx 8021B		mg/kg		Analyzed By: JH					
Analyte	Result	Reporting Limit	Analyzed	Method Blank	BS	% Recovery	True Value QC	RPD	Qualifier
Benzene*	<0.050	0.050	01/27/2025	ND	2.12	106	2.00	0.750	
Toluene*	<0.050	0.050	01/27/2025	ND	2.28	114	2.00	2.19	
Ethylbenzene*	<0.050	0.050	01/27/2025	ND	2.52	126	2.00	3.13	
Total Xylenes*	<0.150	0.150	01/27/2025	ND	7.76	129	6.00	2.61	
Total BTEX	<0.300	0.300	01/27/2025	ND					

Surrogate: 4-Bromofluorobenzene (PID) 123 % 71.5-134

Chloride, SM4500CI-B		mg/kg		Analyzed By: CT					
Analyte	Result	Reporting Limit	Analyzed	Method Blank	BS	% Recovery	True Value QC	RPD	Qualifier
Chloride	32.0	16.0	01/28/2025	ND	448	112	400	7.41	

TPH 8015M		mg/kg		Analyzed By: MS					
Analyte	Result	Reporting Limit	Analyzed	Method Blank	BS	% Recovery	True Value QC	RPD	Qualifier
GRO C6-C10*	<10.0	10.0	01/27/2025	ND	200	99.9	200	2.23	
DRO >C10-C28*	<10.0	10.0	01/27/2025	ND	194	97.1	200	2.58	
EXT DRO >C28-C36	<10.0	10.0	01/27/2025	ND					

Surrogate: 1-Chlorooctane 110 % 48.2-134

Surrogate: 1-Chlorooctadecane 110 % 49.1-148

Cardinal Laboratories

\*=Accredited Analyte

PLEASE NOTE: Liability and Damages. Cardinal's liability and client's exclusive remedy for any claim arising, whether based in contract or tort, shall be limited to the amount paid by client for analyses. All claims, including those for negligence and any other cause whatsoever shall be deemed waived unless made in writing and received by Cardinal within thirty (30) days after completion of the applicable service. In no event shall Cardinal be liable for incidental or consequential damages, including, without limitation, business interruptions, loss of use, or loss of profits incurred by client, its subsidiaries, affiliates or successors arising out of or related to the performance of the services hereunder by Cardinal, regardless of whether such claim is based upon any of the above stated reasons or otherwise. Results relate only to the samples identified above. This report shall not be reproduced except in full with written approval of Cardinal Laboratories.

Celey D. Keene, Lab Director/Quality Manager



PHONE (575) 393-2326 ° 101 E. MARLAND ° HOBBS, NM 88240

**Analytical Results For:**

CARMONA RESOURCES  
 ASHTON THIELKE  
 310 W WALL ST, SUITE 500  
 MIDLAND TX, 79701  
 Fax To:

Received: 01/27/2025  
 Reported: 01/28/2025  
 Project Name: IRWIN 13 FEDERAL COM CTB  
 Project Number: 2607 ( 12.11.2024 )  
 Project Location: CIMAREX - EDDY CO NM

Sampling Date: 01/27/2025  
 Sampling Type: Soil  
 Sampling Condition: Cool & Intact  
 Sample Received By: Tamara Oldaker

**Sample ID: SW - 2 ( 4.0' ) (H250457-04)**

BTEx 8021B		mg/kg		Analyzed By: JH					
Analyte	Result	Reporting Limit	Analyzed	Method Blank	BS	% Recovery	True Value QC	RPD	Qualifier
Benzene*	<0.050	0.050	01/27/2025	ND	2.12	106	2.00	0.750	
Toluene*	<0.050	0.050	01/27/2025	ND	2.28	114	2.00	2.19	
Ethylbenzene*	<0.050	0.050	01/27/2025	ND	2.52	126	2.00	3.13	
Total Xylenes*	<0.150	0.150	01/27/2025	ND	7.76	129	6.00	2.61	
Total BTEX	<0.300	0.300	01/27/2025	ND					

Surrogate: 4-Bromofluorobenzene (PID) 118 % 71.5-134

Chloride, SM4500Cl-B		mg/kg		Analyzed By: CT						
Analyte	Result	Reporting Limit	Analyzed	Method Blank	BS	% Recovery	True Value QC	RPD	Qualifier	
Chloride	32.0	16.0	01/28/2025	ND	448	112	400	7.41		

TPH 8015M		mg/kg		Analyzed By: MS					
Analyte	Result	Reporting Limit	Analyzed	Method Blank	BS	% Recovery	True Value QC	RPD	Qualifier
GRO C6-C10*	<10.0	10.0	01/27/2025	ND	200	99.9	200	2.23	
DRO >C10-C28*	<10.0	10.0	01/27/2025	ND	194	97.1	200	2.58	
EXT DRO >C28-C36	<10.0	10.0	01/27/2025	ND					

Surrogate: 1-Chlorooctane 116 % 48.2-134

Surrogate: 1-Chlorooctadecane 115 % 49.1-148

Cardinal Laboratories

\*=Accredited Analyte

PLEASE NOTE: Liability and Damages. Cardinal's liability and client's exclusive remedy for any claim arising, whether based in contract or tort, shall be limited to the amount paid by client for analyses. All claims, including those for negligence and any other cause whatsoever shall be deemed waived unless made in writing and received by Cardinal within thirty (30) days after completion of the applicable service. In no event shall Cardinal be liable for incidental or consequential damages, including, without limitation, business interruptions, loss of use, or loss of profits incurred by client, its subsidiaries, affiliates or successors arising out of or related to the performance of the services hereunder by Cardinal, regardless of whether such claim is based upon any of the above stated reasons or otherwise. Results relate only to the samples identified above. This report shall not be reproduced except in full with written approval of Cardinal Laboratories.

Celey D. Keene, Lab Director/Quality Manager



PHONE (575) 393-2326 ° 101 E. MARLAND ° HOBBS, NM 88240

**Analytical Results For:**

CARMONA RESOURCES  
 ASHTON THIELKE  
 310 W WALL ST, SUITE 500  
 MIDLAND TX, 79701  
 Fax To:

Received: 01/27/2025  
 Reported: 01/28/2025  
 Project Name: IRWIN 13 FEDERAL COM CTB  
 Project Number: 2607 ( 12.11.2024 )  
 Project Location: CIMAREX - EDDY CO NM

Sampling Date: 01/27/2025  
 Sampling Type: Soil  
 Sampling Condition: Cool & Intact  
 Sample Received By: Tamara Oldaker

**Sample ID: SW - 3 ( 4.0' ) (H250457-05)**

BTEx 8021B		mg/kg		Analyzed By: JH					
Analyte	Result	Reporting Limit	Analyzed	Method Blank	BS	% Recovery	True Value QC	RPD	Qualifier
Benzene*	<0.050	0.050	01/27/2025	ND	2.12	106	2.00	0.750	
Toluene*	<0.050	0.050	01/27/2025	ND	2.28	114	2.00	2.19	
Ethylbenzene*	<0.050	0.050	01/27/2025	ND	2.52	126	2.00	3.13	
Total Xylenes*	<0.150	0.150	01/27/2025	ND	7.76	129	6.00	2.61	
Total BTEX	<0.300	0.300	01/27/2025	ND					

Surrogate: 4-Bromofluorobenzene (PID) 124 % 71.5-134

Chloride, SM4500Cl-B		mg/kg		Analyzed By: CT					
Analyte	Result	Reporting Limit	Analyzed	Method Blank	BS	% Recovery	True Value QC	RPD	Qualifier
Chloride	48.0	16.0	01/28/2025	ND	448	112	400	7.41	

TPH 8015M		mg/kg		Analyzed By: MS					
Analyte	Result	Reporting Limit	Analyzed	Method Blank	BS	% Recovery	True Value QC	RPD	Qualifier
GRO C6-C10*	<10.0	10.0	01/27/2025	ND	200	99.9	200	2.23	
DRO >C10-C28*	<10.0	10.0	01/27/2025	ND	194	97.1	200	2.58	
EXT DRO >C28-C36	<10.0	10.0	01/27/2025	ND					

Surrogate: 1-Chlorooctane 111 % 48.2-134

Surrogate: 1-Chlorooctadecane 110 % 49.1-148

Cardinal Laboratories

\*=Accredited Analyte

PLEASE NOTE: Liability and Damages. Cardinal's liability and client's exclusive remedy for any claim arising, whether based in contract or tort, shall be limited to the amount paid by client for analyses. All claims, including those for negligence and any other cause whatsoever shall be deemed waived unless made in writing and received by Cardinal within thirty (30) days after completion of the applicable service. In no event shall Cardinal be liable for incidental or consequential damages, including, without limitation, business interruptions, loss of use, or loss of profits incurred by client, its subsidiaries, affiliates or successors arising out of or related to the performance of the services hereunder by Cardinal, regardless of whether such claim is based upon any of the above stated reasons or otherwise. Results relate only to the samples identified above. This report shall not be reproduced except in full with written approval of Cardinal Laboratories.

Celey D. Keene, Lab Director/Quality Manager



PHONE (575) 393-2326 ° 101 E. MARLAND ° HOBBS, NM 88240

**Analytical Results For:**

CARMONA RESOURCES  
 ASHTON THIELKE  
 310 W WALL ST, SUITE 500  
 MIDLAND TX, 79701  
 Fax To:

Received: 01/27/2025  
 Reported: 01/28/2025  
 Project Name: IRWIN 13 FEDERAL COM CTB  
 Project Number: 2607 ( 12.11.2024 )  
 Project Location: CIMAREX - EDDY CO NM

Sampling Date: 01/27/2025  
 Sampling Type: Soil  
 Sampling Condition: Cool & Intact  
 Sample Received By: Tamara Oldaker

**Sample ID: SW - 4 ( 4.0' ) (H250457-06)**

BTEx 8021B		mg/kg		Analyzed By: JH						
Analyte	Result	Reporting Limit	Analyzed	Method Blank	BS	% Recovery	True Value QC	RPD	Qualifier	
Benzene*	<0.050	0.050	01/27/2025	ND	1.99	99.4	2.00	3.27		
Toluene*	<0.050	0.050	01/27/2025	ND	2.06	103	2.00	3.27		
Ethylbenzene*	<0.050	0.050	01/27/2025	ND	1.96	97.8	2.00	3.02		
Total Xylenes*	<0.150	0.150	01/27/2025	ND	5.72	95.3	6.00	3.26		
Total BTEX	<0.300	0.300	01/27/2025	ND						

Surrogate: 4-Bromofluorobenzene (PID) 95.4 % 71.5-134

Chloride, SM4500Cl-B		mg/kg		Analyzed By: CT						
Analyte	Result	Reporting Limit	Analyzed	Method Blank	BS	% Recovery	True Value QC	RPD	Qualifier	
Chloride	32.0	16.0	01/28/2025	ND	448	112	400	7.41		

TPH 8015M		mg/kg		Analyzed By: MS					
Analyte	Result	Reporting Limit	Analyzed	Method Blank	BS	% Recovery	True Value QC	RPD	Qualifier
GRO C6-C10*	<10.0	10.0	01/27/2025	ND	200	99.9	200	2.23	
DRO >C10-C28*	<10.0	10.0	01/27/2025	ND	194	97.1	200	2.58	
EXT DRO >C28-C36	<10.0	10.0	01/27/2025	ND					

Surrogate: 1-Chlorooctane 112 % 48.2-134

Surrogate: 1-Chlorooctadecane 111 % 49.1-148

Cardinal Laboratories

\*=Accredited Analyte

PLEASE NOTE: Liability and Damages. Cardinal's liability and client's exclusive remedy for any claim arising, whether based in contract or tort, shall be limited to the amount paid by client for analyses. All claims, including those for negligence and any other cause whatsoever shall be deemed waived unless made in writing and received by Cardinal within thirty (30) days after completion of the applicable service. In no event shall Cardinal be liable for incidental or consequential damages, including, without limitation, business interruptions, loss of use, or loss of profits incurred by client, its subsidiaries, affiliates or successors arising out of or related to the performance of the services hereunder by Cardinal, regardless of whether such claim is based upon any of the above stated reasons or otherwise. Results relate only to the samples identified above. This report shall not be reproduced except in full with written approval of Cardinal Laboratories.

Celey D. Keene, Lab Director/Quality Manager



PHONE (575) 393-2326 ° 101 E. MARLAND ° HOBBS, NM 88240

**Analytical Results For:**

CARMONA RESOURCES  
 ASHTON THIELKE  
 310 W WALL ST, SUITE 500  
 MIDLAND TX, 79701  
 Fax To:

Received: 01/27/2025  
 Reported: 01/28/2025  
 Project Name: IRWIN 13 FEDERAL COM CTB  
 Project Number: 2607 ( 12.11.2024 )  
 Project Location: CIMAREX - EDDY CO NM

Sampling Date: 01/27/2025  
 Sampling Type: Soil  
 Sampling Condition: Cool & Intact  
 Sample Received By: Tamara Oldaker

**Sample ID: SW - 5 ( 4.0' ) (H250457-07)**

BTEx 8021B		mg/kg		Analyzed By: JH						
Analyte	Result	Reporting Limit	Analyzed	Method Blank	BS	% Recovery	True Value QC	RPD	Qualifier	
Benzene*	<0.050	0.050	01/27/2025	ND	1.99	99.4	2.00	3.27		
Toluene*	<0.050	0.050	01/27/2025	ND	2.06	103	2.00	3.27		
Ethylbenzene*	<0.050	0.050	01/27/2025	ND	1.96	97.8	2.00	3.02		
Total Xylenes*	<0.150	0.150	01/27/2025	ND	5.72	95.3	6.00	3.26		
Total BTEX	<0.300	0.300	01/27/2025	ND						

Surrogate: 4-Bromofluorobenzene (PID) 95.1 % 71.5-134

Chloride, SM4500Cl-B		mg/kg		Analyzed By: CT						
Analyte	Result	Reporting Limit	Analyzed	Method Blank	BS	% Recovery	True Value QC	RPD	Qualifier	
Chloride	32.0	16.0	01/28/2025	ND	448	112	400	7.41		

TPH 8015M		mg/kg		Analyzed By: MS					
Analyte	Result	Reporting Limit	Analyzed	Method Blank	BS	% Recovery	True Value QC	RPD	Qualifier
GRO C6-C10*	<10.0	10.0	01/27/2025	ND	200	99.9	200	2.23	
DRO >C10-C28*	<10.0	10.0	01/27/2025	ND	194	97.1	200	2.58	
EXT DRO >C28-C36	<10.0	10.0	01/27/2025	ND					

Surrogate: 1-Chlorooctane 106 % 48.2-134

Surrogate: 1-Chlorooctadecane 105 % 49.1-148

Cardinal Laboratories

\*=Accredited Analyte

PLEASE NOTE: Liability and Damages. Cardinal's liability and client's exclusive remedy for any claim arising, whether based in contract or tort, shall be limited to the amount paid by client for analyses. All claims, including those for negligence and any other cause whatsoever shall be deemed waived unless made in writing and received by Cardinal within thirty (30) days after completion of the applicable service. In no event shall Cardinal be liable for incidental or consequential damages, including, without limitation, business interruptions, loss of use, or loss of profits incurred by client, its subsidiaries, affiliates or successors arising out of or related to the performance of the services hereunder by Cardinal, regardless of whether such claim is based upon any of the above stated reasons or otherwise. Results relate only to the samples identified above. This report shall not be reproduced except in full with written approval of Cardinal Laboratories.

Celey D. Keene, Lab Director/Quality Manager



PHONE (575) 393-2326 ° 101 E. MARLAND ° HOBBS, NM 88240

**Analytical Results For:**

CARMONA RESOURCES  
 ASHTON THIELKE  
 310 W WALL ST, SUITE 500  
 MIDLAND TX, 79701  
 Fax To:

Received: 01/27/2025  
 Reported: 01/28/2025  
 Project Name: IRWIN 13 FEDERAL COM CTB  
 Project Number: 2607 ( 12.11.2024 )  
 Project Location: CIMAREX - EDDY CO NM

Sampling Date: 01/27/2025  
 Sampling Type: Soil  
 Sampling Condition: Cool & Intact  
 Sample Received By: Tamara Oldaker

**Sample ID: SW - 6 ( 4.0' ) (H250457-08)**

BTEx 8021B		mg/kg		Analyzed By: JH					
Analyte	Result	Reporting Limit	Analyzed	Method Blank	BS	% Recovery	True Value QC	RPD	Qualifier
Benzene*	<0.050	0.050	01/27/2025	ND	1.99	99.4	2.00	3.27	
Toluene*	<0.050	0.050	01/27/2025	ND	2.06	103	2.00	3.27	
Ethylbenzene*	<0.050	0.050	01/27/2025	ND	1.96	97.8	2.00	3.02	
Total Xylenes*	<0.150	0.150	01/27/2025	ND	5.72	95.3	6.00	3.26	
Total BTEX	<0.300	0.300	01/27/2025	ND					

Surrogate: 4-Bromofluorobenzene (PID) 94.1 % 71.5-134

Chloride, SM4500Cl-B		mg/kg		Analyzed By: CT					
Analyte	Result	Reporting Limit	Analyzed	Method Blank	BS	% Recovery	True Value QC	RPD	Qualifier
Chloride	32.0	16.0	01/28/2025	ND	448	112	400	7.41	

TPH 8015M		mg/kg		Analyzed By: MS					
Analyte	Result	Reporting Limit	Analyzed	Method Blank	BS	% Recovery	True Value QC	RPD	Qualifier
GRO C6-C10*	<10.0	10.0	01/27/2025	ND	200	99.9	200	2.23	
DRO >C10-C28*	<10.0	10.0	01/27/2025	ND	194	97.1	200	2.58	
EXT DRO >C28-C36	<10.0	10.0	01/27/2025	ND					

Surrogate: 1-Chlorooctane 110 % 48.2-134

Surrogate: 1-Chlorooctadecane 110 % 49.1-148

Cardinal Laboratories

\*=Accredited Analyte

PLEASE NOTE: Liability and Damages. Cardinal's liability and client's exclusive remedy for any claim arising, whether based in contract or tort, shall be limited to the amount paid by client for analyses. All claims, including those for negligence and any other cause whatsoever shall be deemed waived unless made in writing and received by Cardinal within thirty (30) days after completion of the applicable service. In no event shall Cardinal be liable for incidental or consequential damages, including, without limitation, business interruptions, loss of use, or loss of profits incurred by client, its subsidiaries, affiliates or successors arising out of or related to the performance of the services hereunder by Cardinal, regardless of whether such claim is based upon any of the above stated reasons or otherwise. Results relate only to the samples identified above. This report shall not be reproduced except in full with written approval of Cardinal Laboratories.

Celey D. Keene, Lab Director/Quality Manager

PHONE (575) 393-2326 • 101 E. MARLAND • HOBBS, NM 88240

---

### Notes and Definitions

QM-07	The spike recovery was outside acceptance limits for the MS and/or MSD. The batch was accepted based on acceptable LCS recovery.
BS-3	Blank spike recovery outside of lab established statistical limits, but still within method limits. Data is not adversely affected.
ND	Analyte NOT DETECTED at or above the reporting limit
RPD	Relative Percent Difference
**	Samples not received at proper temperature of 6°C or below.
***	Insufficient time to reach temperature.
-	Chloride by SM4500Cl-B does not require samples be received at or below 6°C Samples reported on an as received basis (wet) unless otherwise noted on report

---

Cardinal Laboratories

\*=Accredited Analyte

PLEASE NOTE: Liability and Damages. Cardinal's liability and client's exclusive remedy for any claim arising, whether based in contract or tort, shall be limited to the amount paid by client for analyses. All claims, including those for negligence and any other cause whatsoever shall be deemed waived unless made in writing and received by Cardinal within thirty (30) days after completion of the applicable service. In no event shall Cardinal be liable for incidental or consequential damages, including, without limitation, business interruptions, loss of use, or loss of profits incurred by client, its subsidiaries, affiliates or successors arising out of or related to the performance of the services hereunder by Cardinal, regardless of whether such claim is based upon any of the above stated reasons or otherwise. Results relate only to the samples identified above. This report shall not be reproduced except in full with written approval of Cardinal Laboratories.

A handwritten signature in black ink, appearing to read "C. D. Keene", is written over a horizontal line.

Celey D. Keene, Lab Director/Quality Manager

Chain of Custody

Work Order No: H250457

Page 1 of 1

Project Manager:	Ashion Thielke	Bill to: (if different)	Laci Luig
Company Name:	Carmona Resources	Company Name:	Cimarex Energy
Address:	310 W Wall St Ste 500	Address:	600 N Mainfield St, Suite 600
City, State ZIP:	Midland, TX 79701	City, State ZIP:	Midland, TX 79701
Phone:	432-813-8988	Email:	laci.luig@colerra.com & nathaniel.rose@colerra.com

<b>Work Order Comments</b> Program: <input type="checkbox"/> UST/ST <input type="checkbox"/> PRP <input type="checkbox"/> Brownfields <input type="checkbox"/> RRC <input type="checkbox"/> Superfund State of Project: _____ Reporting Level: <input type="checkbox"/> Level II <input type="checkbox"/> Level III <input type="checkbox"/> ST/UST <input type="checkbox"/> RRP <input type="checkbox"/> Level IV Deliverables: EDD <input type="checkbox"/> ADAPT <input type="checkbox"/> Other: _____	
---	--

Project Name:		Irwin 13 Federal Com CTB (12.11.2024)		Turn Around		<input type="checkbox"/> Routine <input checked="" type="checkbox"/> Rush		Due Date: 24 Hour		Pres. Code		ANALYSIS REQUEST												Preservative Codes			
Project Number:		2607																						None: NO			
Project Location:		Eddy Co, NM																						DI Water: H <sub>2</sub> O			
Sampler's Name:		Cade																						Cool: Cool			
PO #:																								HCL: HC			
<b>SAMPLE RECEIPT</b> Received Intact: <input checked="" type="checkbox"/> Yes <input checked="" type="checkbox"/> No Cooler Custody Seals: <input checked="" type="checkbox"/> Yes <input checked="" type="checkbox"/> No Sample Custody Seals: <input checked="" type="checkbox"/> Yes <input checked="" type="checkbox"/> No Total Containers: _____		Temp Blank:		<input checked="" type="checkbox"/> Yes <input checked="" type="checkbox"/> No		Thermometer ID:		#140		Wet Ice:		Yes <input checked="" type="checkbox"/> No <input checked="" type="checkbox"/>														H <sub>2</sub> SO <sub>4</sub> : H <sub>2</sub>	
		Correction Factor:		N/A		Temperature Reading:		4.12																		H <sub>3</sub> PO <sub>4</sub> : HP	
		Corrected Temperature:		3.52																		NaHSO <sub>4</sub> : NABIS					
																						Na <sub>2</sub> S <sub>2</sub> O <sub>3</sub> : NaSO <sub>3</sub>					
																						Zn Acetate+NaOH: Zn					
																										NaOH+Ascorbic Acid: SAPC	
Sample Identification		Date		Time		Soil		Water		Grab/Comp		# of Cont														Sample Comments	
CS-1 (4.0')		1/27/2025				X				Comp		1		X													
CS-2 (4.0')		1/27/2025				X				Comp		1		X													
SW-1 (4.0')		1/27/2025				X				Comp		1		X													
SW-2 (4.0')		1/27/2025				X				Comp		1		X													
SW-3 (4.0')		1/27/2025				X				Comp		1		X													
SW-4 (4.0')		1/27/2025				X				Comp		1		X													
SW-5 (4.0')		1/27/2025				X				Comp		1		X													
SW-6 (4.0')		1/27/2025				X				Comp		1		X													

Comments:

Relinquished by: (Signature)		Date/Time		Received by: (Signature)		Date/Time	
<u>[Signature]</u>		<u>1-27-25 1018</u>		<u>[Signature]</u>			



PHONE (575) 393-2326 ° 101 E. MARLAND ° HOBBS, NM 88240

---

January 29, 2025

ASHTON THIELKE

CARMONA RESOURCES

310 W WALL ST, SUITE 500

MIDLAND, TX 79701

RE: IRWIN 13 FEDERAL COM CTB

Enclosed are the results of analyses for samples received by the laboratory on 01/28/25 15:39.

Cardinal Laboratories is accredited through Texas NELAP under certificate number TX-C24-00112. Accreditation applies to drinking water, non-potable water and solid and chemical materials. All accredited analytes are denoted by an asterisk (\*). For a complete list of accredited analytes and matrices visit the TCEQ website at [www.tceq.texas.gov/field/qa/lab\\_accred\\_certif.html](http://www.tceq.texas.gov/field/qa/lab_accred_certif.html).

Cardinal Laboratories is accredited through the State of Colorado Department of Public Health and Environment for:

Method EPA 552.2	Haloacetic Acids (HAA-5)
Method EPA 524.2	Total Trihalomethanes (TTHM)
Method EPA 524.4	Regulated VOCs (V1, V2, V3)

Accreditation applies to public drinking water matrices.

This report meets NELAP requirements and is made up of a cover page, analytical results, and a copy of the original chain-of-custody. If you have any questions concerning this report, please feel free to contact me.

Sincerely,

A handwritten signature in black ink that reads "Celey D. Keene". The signature is written in a cursive style with a large, stylized 'C' and 'K'.

Celey D. Keene

Lab Director/Quality Manager



PHONE (575) 393-2326 ° 101 E. MARLAND ° HOBBS, NM 88240

**Analytical Results For:**

CARMONA RESOURCES  
 ASHTON THIELKE  
 310 W WALL ST, SUITE 500  
 MIDLAND TX, 79701  
 Fax To:

Received: 01/28/2025  
 Reported: 01/29/2025  
 Project Name: IRWIN 13 FEDERAL COM CTB  
 Project Number: 2607 ( 12.11.2024 )  
 Project Location: CIMAREX - EDDY CO NM

Sampling Date: 01/28/2025  
 Sampling Type: Soil  
 Sampling Condition: Cool & Intact  
 Sample Received By: Tamara Oldaker

**Sample ID: FRED BEARD PIT SAMPLE (H250501-01)**

BTX 8021B		mg/kg		Analyzed By: JH					
Analyte	Result	Reporting Limit	Analyzed	Method Blank	BS	% Recovery	True Value QC	RPD	Qualifier
Benzene*	<0.050	0.050	01/28/2025	ND	2.05	103	2.00	0.495	
Toluene*	<0.050	0.050	01/28/2025	ND	2.14	107	2.00	0.457	
Ethylbenzene*	<0.050	0.050	01/28/2025	ND	2.07	104	2.00	0.612	
Total Xylenes*	<0.150	0.150	01/28/2025	ND	6.07	101	6.00	0.523	
Total BTX	<0.300	0.300	01/28/2025	ND					

Surrogate: 4-Bromofluorobenzene (PID) 94.4 % 71.5-134

Chloride, SM4500Cl-B		mg/kg		Analyzed By: HM						
Analyte	Result	Reporting Limit	Analyzed	Method Blank	BS	% Recovery	True Value QC	RPD	Qualifier	
Chloride	128	16.0	01/29/2025	ND	416	104	400	3.77		

TPH 8015M		mg/kg		Analyzed By: MS					
Analyte	Result	Reporting Limit	Analyzed	Method Blank	BS	% Recovery	True Value QC	RPD	Qualifier
GRO C6-C10*	<10.0	10.0	01/28/2025	ND	218	109	200	2.61	
DRO >C10-C28*	<10.0	10.0	01/28/2025	ND	212	106	200	6.04	
EXT DRO >C28-C36	<10.0	10.0	01/28/2025	ND					

Surrogate: 1-Chlorooctane 98.0 % 48.2-134

Surrogate: 1-Chlorooctadecane 95.8 % 49.1-148

Cardinal Laboratories

\*=Accredited Analyte

PLEASE NOTE: Liability and Damages. Cardinal's liability and client's exclusive remedy for any claim arising, whether based in contract or tort, shall be limited to the amount paid by client for analyses. All claims, including those for negligence and any other cause whatsoever shall be deemed waived unless made in writing and received by Cardinal within thirty (30) days after completion of the applicable service. In no event shall Cardinal be liable for incidental or consequential damages, including, without limitation, business interruptions, loss of use, or loss of profits incurred by client, its subsidiaries, affiliates or successors arising out of or related to the performance of the services hereunder by Cardinal, regardless of whether such claim is based upon any of the above stated reasons or otherwise. Results relate only to the samples identified above. This report shall not be reproduced except in full with written approval of Cardinal Laboratories.

Celey D. Keene, Lab Director/Quality Manager



---

PHONE (575) 393-2326 ° 101 E. MARLAND ° HOBBS, NM 88240

---

### Notes and Definitions

ND	Analyte NOT DETECTED at or above the reporting limit
RPD	Relative Percent Difference
**	Samples not received at proper temperature of 6°C or below.
***	Insufficient time to reach temperature.
-	Chloride by SM4500Cl-B does not require samples be received at or below 6°C Samples reported on an as received basis (wet) unless otherwise noted on report

---

Cardinal Laboratories

\*=Accredited Analyte

PLEASE NOTE: Liability and Damages. Cardinal's liability and client's exclusive remedy for any claim arising, whether based in contract or tort, shall be limited to the amount paid by client for analyses. All claims, including those for negligence and any other cause whatsoever shall be deemed waived unless made in writing and received by Cardinal within thirty (30) days after completion of the applicable service. In no event shall Cardinal be liable for incidental or consequential damages, including, without limitation, business interruptions, loss of use, or loss of profits incurred by client, its subsidiaries, affiliates or successors arising out of or related to the performance of the services hereunder by Cardinal, regardless of whether such claim is based upon any of the above stated reasons or otherwise. Results relate only to the samples identified above. This report shall not be reproduced except in full with written approval of Cardinal Laboratories.

A handwritten signature in black ink, appearing to read "Celey D. Keene", is written over a horizontal line.

---

Celey D. Keene, Lab Director/Quality Manager

Work Order No: 1-250501

Work Order Comments	
<b>Program:</b> UST/PT <input type="checkbox"/> PRR <input type="checkbox"/> Brownfields <input type="checkbox"/> JRC <input type="checkbox"/> Superfund <input type="checkbox"/> <b>State of Project:</b> Reporting Level II <input type="checkbox"/> Level III <input type="checkbox"/> ST/UST <input type="checkbox"/> RRP <input type="checkbox"/> Level IV <input type="checkbox"/> Deliverables: EDD <input type="checkbox"/> ADAPT <input type="checkbox"/> Other:	

[illegible]

## APPENDIX F

CARMONA RESOURCES





# Liner Integrity Certification

The following serves to verify that the affected liner has been inspected and found to be in serviceable condition in accordance with 19.15.29.11 A.(5)(a)(i-ii) of the New Mexico Administrative Code.

Facility ID: fAPP2202782856

Date: 1/30/2025

Incident ID(s): nAPP2434729375

- ☒ Responsible Party has visually inspected the liner.
- ☒ Liner remains intact and was able to contain the leak in question.
- ☒ At least two business days' notice was given to the appropriate division district office before conducting the liner inspection.
- ☒ Photographs illustrating liner integrity are included.

## PHOTOGRAPHIC LOG

Cimarex Energy Co.

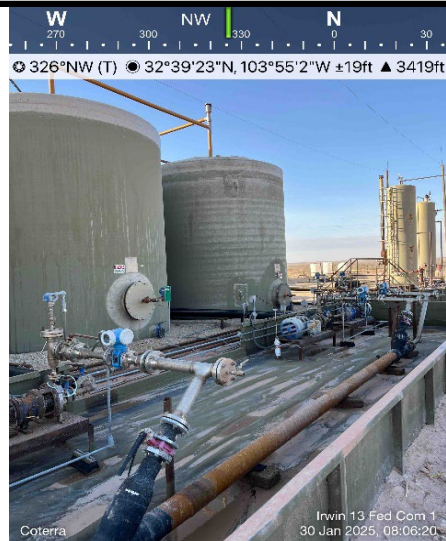
## Photograph No. 1

**Facility:** Irwin 13 Federal Com CTB  
(12.11.2024)

**County:** Eddy County, New Mexico

**Description:**

View Northwest of lined containment.



## Photograph No. 2

**Facility:** Irwin 13 Federal Com CTB  
(12.11.2024)

**County:** Eddy County, New Mexico

**Description:**

View West of lined containment.



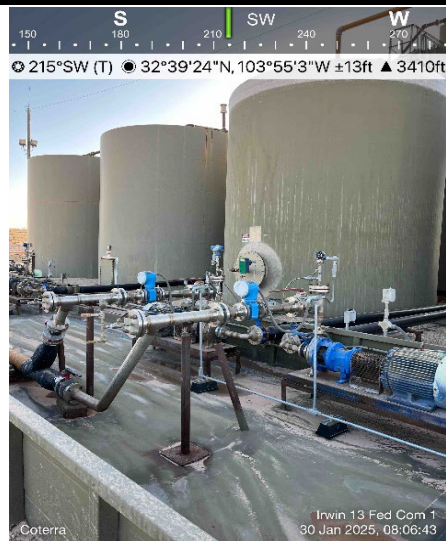
## Photograph No. 3

**Facility:** Irwin 13 Federal Com CTB  
(12.11.2024)

**County:** Eddy County, New Mexico

**Description:**

View Southwest of lined containment.



## PHOTOGRAPHIC LOG

Cimarex Energy Co.

## Photograph No. 4

**Facility:** Irwin 13 Federal Com CTB  
(12.11.2024)

**County:** Eddy County, New Mexico

**Description:**

View South of lined containment.



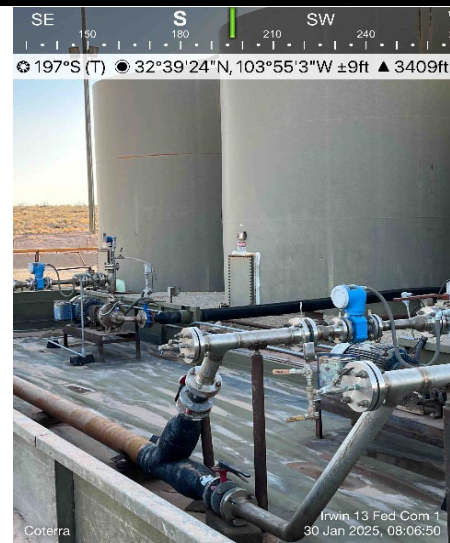
## Photograph No. 5

**Facility:** Irwin 13 Federal Com CTB  
(12.11.2024)

**County:** Eddy County, New Mexico

**Description:**

View South of lined containment.



Sante Fe Main Office  
Phone: (505) 476-3441

General Information  
Phone: (505) 629-6116

Online Phone Directory  
<https://www.emnrd.nm.gov/ocd/contact-us>

State of New Mexico  
Energy, Minerals and Natural Resources  
Oil Conservation Division  
1220 S. St Francis Dr.  
Santa Fe, NM 87505

QUESTIONS

Action 428517

QUESTIONS

Operator: CIMAREX ENERGY CO. 6001 Deauville Blvd Midland, TX 79706	OGRID: 215099
	Action Number: 428517
	Action Type: [C-141] Remediation Closure Request C-141 (C-141-v-Closure)

QUESTIONS

<b>Prerequisites</b>	
Incident ID (n#)	nAPP2434729375
Incident Name	NAPP2434729375 IRWIN 13 FEDERAL @ 0
Incident Type	Produced Water Release
Incident Status	Remediation Closure Report Received
Incident Facility	[fAPP2202782856] IRWIN 13 FEDERAL

<b>Location of Release Source</b>	
Please answer all the questions in this group.	
Site Name	IRWIN 13 FEDERAL
Date Release Discovered	12/11/2024
Surface Owner	Federal

<b>Incident Details</b>	
Please answer all the questions in this group.	
Incident Type	Produced Water Release
Did this release result in a fire or is the result of a fire	No
Did this release result in any injuries	No
Has this release reached or does it have a reasonable probability of reaching a watercourse	No
Has this release endangered or does it have a reasonable probability of endangering public health	No
Has this release substantially damaged or will it substantially damage property or the environment	No
Is this release of a volume that is or may with reasonable probability be detrimental to fresh water	No

<b>Nature and Volume of Release</b>	
Material(s) released, please answer all that apply below. Any calculations or specific justifications for the volumes provided should be attached to the follow-up C-141 submission.	
Crude Oil Released (bbls) Details	Not answered.
Produced Water Released (bbls) Details	Cause: Equipment Failure   Pump   Produced Water   Released: 8 BBL   Recovered: 5 BBL   Lost: 3 BBL.
Is the concentration of chloride in the produced water >10,000 mg/l	No
Condensate Released (bbls) Details	Not answered.
Natural Gas Vented (Mcf) Details	Not answered.
Natural Gas Flared (Mcf) Details	Not answered.
Other Released Details	Not answered.
Are there additional details for the questions above (i.e. any answer containing Other, Specify, Unknown, and/or Fire, or any negative lost amounts)	Not answered.

Sante Fe Main Office  
Phone: (505) 476-3441

General Information  
Phone: (505) 629-6116

Online Phone Directory  
<https://www.emnrd.nm.gov/ocd/contact-us>

**State of New Mexico**  
**Energy, Minerals and Natural Resources**  
**Oil Conservation Division**  
**1220 S. St Francis Dr.**  
**Santa Fe, NM 87505**

QUESTIONS, Page 2

Action 428517

**QUESTIONS (continued)**

Operator: CIMAREX ENERGY CO. 6001 Deauville Blvd Midland, TX 79706	OGRID: 215099
	Action Number: 428517
	Action Type: [C-141] Remediation Closure Request C-141 (C-141-v-Closure)

**QUESTIONS**

<b>Nature and Volume of Release (continued)</b>	
Is this a gas only submission (i.e. only significant Mcf values reported)	No, according to supplied volumes this does not appear to be a "gas only" report.
Was this a major release as defined by Subsection A of 19.15.29.7 NMAC	No
Reasons why this would be considered a submission for a notification of a major release	Unavailable.
With the implementation of the 19.15.27 NMAC (05/25/2021), venting and/or flaring of natural gas (i.e. gas only) are to be submitted on the C-129 form.	

**Initial Response**

The responsible party must undertake the following actions immediately unless they could create a safety hazard that would result in injury.

The source of the release has been stopped	True
The impacted area has been secured to protect human health and the environment	True
Released materials have been contained via the use of berms or dikes, absorbent pads, or other containment devices	True
All free liquids and recoverable materials have been removed and managed appropriately	True
If all the actions described above have not been undertaken, explain why	na

Per Paragraph (4) of Subsection B of 19.15.29.8 NMAC the responsible party may commence remediation immediately after discovery of a release. If remediation has begun, please prepare and attach a narrative of actions to date in the follow-up C-141 submission. If remedial efforts have been successfully completed or if the release occurred within a lined containment area (see Subparagraph (a) of Paragraph (5) of Subsection A of 19.15.29.11 NMAC), please prepare and attach all information needed for closure evaluation in the follow-up C-141 submission.

I hereby certify that the information given above is true and complete to the best of my knowledge and understand that pursuant to OCD rules and regulations all operators are required to report and/or file certain release notifications and perform corrective actions for releases which may endanger public health or the environment. The acceptance of a C-141 report by the OCD does not relieve the operator of liability should their operations have failed to adequately investigate and remediate contamination that pose a threat to groundwater, surface water, human health or the environment. In addition, OCD acceptance of a C-141 report does not relieve the operator of responsibility for compliance with any other federal, state, or local laws and/or regulations.

I hereby agree and sign off to the above statement	Name: Ashton Thielke Title: EHS Specialist Email: Ashton.Thielke@coterra.com Date: 02/05/2025
--	--

Sante Fe Main Office  
Phone: (505) 476-3441

General Information  
Phone: (505) 629-6116

Online Phone Directory  
<https://www.emnrd.nm.gov/ocd/contact-us>

**State of New Mexico**  
**Energy, Minerals and Natural Resources**  
**Oil Conservation Division**  
**1220 S. St Francis Dr.**  
**Santa Fe, NM 87505**

QUESTIONS, Page 3

Action 428517

**QUESTIONS (continued)**

Operator: CIMAREX ENERGY CO. 6001 Deauville Blvd Midland, TX 79706	OGRID:
	215099
	Action Number: 428517
	Action Type: [C-141] Remediation Closure Request C-141 (C-141-v-Closure)

**QUESTIONS**

<b>Site Characterization</b>	
<i>Please answer all the questions in this group (only required when seeking remediation plan approval and beyond). This information must be provided to the appropriate district office no later than 90 days after the release discovery date.</i>	
What is the shallowest depth to groundwater beneath the area affected by the release in feet below ground surface (ft bgs)	Between 51 and 75 (ft.)
What method was used to determine the depth to ground water	Direct Measurement
Did this release impact groundwater or surface water	No
<b>What is the minimum distance, between the closest lateral extents of the release and the following surface areas:</b>	
A continuously flowing watercourse or any other significant watercourse	Greater than 5 (mi.)
Any lakebed, sinkhole, or playa lake (measured from the ordinary high-water mark)	Between 1 and 5 (mi.)
An occupied permanent residence, school, hospital, institution, or church	Between 1 and 5 (mi.)
A spring or a private domestic fresh water well used by less than five households for domestic or stock watering purposes	Between 1 and 5 (mi.)
Any other fresh water well or spring	Between 1 and 5 (mi.)
Incorporated municipal boundaries or a defined municipal fresh water well field	Greater than 5 (mi.)
A wetland	Between 1 and 5 (mi.)
A subsurface mine	Between 1 and 5 (mi.)
An (non-karst) unstable area	Zero feet, overlying, or within area
Categorize the risk of this well / site being in a karst geology	High
A 100-year floodplain	Between 1 and 5 (mi.)
Did the release impact areas not on an exploration, development, production, or storage site	No

<b>Remediation Plan</b>	
<i>Please answer all the questions that apply or are indicated. This information must be provided to the appropriate district office no later than 90 days after the release discovery date.</i>	
Requesting a remediation plan approval with this submission	Yes
<i>Attach a comprehensive report demonstrating the lateral and vertical extents of soil contamination associated with the release have been determined, pursuant to 19.15.29.11 NMAC and 19.15.29.13 NMAC.</i>	
Have the lateral and vertical extents of contamination been fully delineated	Yes
Was this release entirely contained within a lined containment area	No
<b>Soil Contamination Sampling:</b> (Provide the highest observable value for each, in milligrams per kilograms.)	
Chloride (EPA 300.0 or SM4500 Cl B)	128
TPH (GRO+DRO+MRO) (EPA SW-846 Method 8015M)	0
GRO+DRO (EPA SW-846 Method 8015M)	0
BTEX (EPA SW-846 Method 8021B or 8260B)	0
Benzene (EPA SW-846 Method 8021B or 8260B)	0
<i>Per Subsection B of 19.15.29.11 NMAC unless the site characterization report includes completed efforts at remediation, the report must include a proposed remediation plan in accordance with 19.15.29.12 NMAC, which includes the anticipated timelines for beginning and completing the remediation.</i>	
On what estimated date will the remediation commence	01/17/2025
On what date will (or did) the final sampling or liner inspection occur	01/27/2025
On what date will (or was) the remediation complete(d)	01/31/2025
What is the estimated surface area (in square feet) that will be reclaimed	209
What is the estimated volume (in cubic yards) that will be reclaimed	0
What is the estimated surface area (in square feet) that will be remediated	209
What is the estimated volume (in cubic yards) that will be remediated	30
<i>These estimated dates and measurements are recognized to be the best guess or calculation at the time of submission and may (be) change(d) over time as more remediation efforts are completed.</i>	
<i>The OCD recognizes that proposed remediation measures may have to be minimally adjusted in accordance with the physical realities encountered during remediation. If the responsible party has any need to significantly deviate from the remediation plan proposed, then it should consult with the division to determine if another remediation plan submission is required.</i>	

Sante Fe Main Office  
Phone: (505) 476-3441

General Information  
Phone: (505) 629-6116

Online Phone Directory  
<https://www.emnrd.nm.gov/ocd/contact-us>

**State of New Mexico**  
**Energy, Minerals and Natural Resources**  
**Oil Conservation Division**  
**1220 S. St Francis Dr.**  
**Santa Fe, NM 87505**

QUESTIONS, Page 4

Action 428517

**QUESTIONS (continued)**

Operator: CIMAREX ENERGY CO. 6001 Deauville Blvd Midland, TX 79706	OGRID: 215099
	Action Number: 428517
	Action Type: [C-141] Remediation Closure Request C-141 (C-141-v-Closure)

**QUESTIONS**

<b>Remediation Plan (continued)</b>	
<i>Please answer all the questions that apply or are indicated. This information must be provided to the appropriate district office no later than 90 days after the release discovery date.</i>	
<b>This remediation will (or is expected to) utilize the following processes to remediate / reduce contaminants:</b>	
<i>(Select all answers below that apply.)</i>	
(Ex Situ) Excavation and <b>off-site</b> disposal (i.e. dig and haul, hydrovac, etc.)	Yes
Which OCD approved facility will be used for <b>off-site</b> disposal	LEA LAND LANDFILL [fEEM0112342028]
<b>OR</b> which OCD approved well (API) will be used for <b>off-site</b> disposal	Not answered.
<b>OR</b> is the <b>off-site</b> disposal site, to be used, out-of-state	Not answered.
<b>OR</b> is the <b>off-site</b> disposal site, to be used, an NMED facility	Not answered.
(Ex Situ) Excavation and <b>on-site</b> remediation (i.e. On-Site Land Farms)	Not answered.
(In Situ) Soil Vapor Extraction	Not answered.
(In Situ) Chemical processing (i.e. Soil Shredding, Potassium Permanganate, etc.)	Not answered.
(In Situ) Biological processing (i.e. Microbes / Fertilizer, etc.)	Not answered.
(In Situ) Physical processing (i.e. Soil Washing, Gypsum, Disking, etc.)	Not answered.
Ground Water Abatement pursuant to 19.15.30 NMAC	Not answered.
OTHER (Non-listed remedial process)	Not answered.
<i>Per Subsection B of 19.15.29.11 NMAC unless the site characterization report includes completed efforts at remediation, the report must include a proposed remediation plan in accordance with 19.15.29.12 NMAC, which includes the anticipated timelines for beginning and completing the remediation.</i>	
I hereby certify that the information given above is true and complete to the best of my knowledge and understand that pursuant to OCD rules and regulations all operators are required to report and/or file certain release notifications and perform corrective actions for releases which may endanger public health or the environment. The acceptance of a C-141 report by the OCD does not relieve the operator of liability should their operations have failed to adequately investigate and remediate contamination that pose a threat to groundwater, surface water, human health or the environment. In addition, OCD acceptance of a C-141 report does not relieve the operator of responsibility for compliance with any other federal, state, or local laws and/or regulations.	
I hereby agree and sign off to the above statement	Name: Ashton Thielke Title: EHS Specialist Email: Ashton.Thielke@coterra.com Date: 02/05/2025
<i>The OCD recognizes that proposed remediation measures may have to be minimally adjusted in accordance with the physical realities encountered during remediation. If the responsible party has any need to significantly deviate from the remediation plan proposed, then it should consult with the division to determine if another remediation plan submission is required.</i>	

Sante Fe Main Office  
Phone: (505) 476-3441

General Information  
Phone: (505) 629-6116

Online Phone Directory  
<https://www.emnrd.nm.gov/ocd/contact-us>

State of New Mexico  
Energy, Minerals and Natural Resources  
Oil Conservation Division  
1220 S. St Francis Dr.  
Santa Fe, NM 87505

QUESTIONS, Page 5

Action 428517

QUESTIONS (continued)

Operator:  CIMAREX ENERGY CO. 6001 Deauville Blvd Midland, TX 79706	OGRID:  215099
	Action Number:  428517
	Action Type:  [C-141] Remediation Closure Request C-141 (C-141-v-Closure)

QUESTIONS

Deferral Requests Only	
Only answer the questions in this group if seeking a deferral upon approval this submission. Each of the following items must be confirmed as part of any request for deferral of remediation.	
Requesting a deferral of the remediation closure due date with the approval of this submission	No

Sante Fe Main Office  
Phone: (505) 476-3441

General Information  
Phone: (505) 629-6116

Online Phone Directory  
<https://www.emnrd.nm.gov/ocd/contact-us>

**State of New Mexico**  
**Energy, Minerals and Natural Resources**  
**Oil Conservation Division**  
**1220 S. St Francis Dr.**  
**Santa Fe, NM 87505**

QUESTIONS, Page 6

Action 428517

**QUESTIONS (continued)**

Operator: CIMAREX ENERGY CO. 6001 Deauville Blvd Midland, TX 79706	OGRID: 215099
	Action Number: 428517
	Action Type: [C-141] Remediation Closure Request C-141 (C-141-v-Closure)

**QUESTIONS**

Sampling Event Information	
Last sampling notification (C-141N) recorded	421917
Sampling date pursuant to Subparagraph (a) of Paragraph (1) of Subsection D of 19.15.29.12 NMAC	01/22/2025
What was the (estimated) number of samples that were to be gathered	6
What was the sampling surface area in square feet	206

Remediation Closure Request	
<i>Only answer the questions in this group if seeking remediation closure for this release because all remediation steps have been completed.</i>	
Requesting a remediation closure approval with this submission	Yes
Have the lateral and vertical extents of contamination been fully delineated	Yes
Was this release entirely contained within a lined containment area	No
All areas reasonably needed for production or subsequent drilling operations have been stabilized, returned to the sites existing grade, and have a soil cover that prevents ponding of water, minimizing dust and erosion	Yes
What was the total surface area (in square feet) remediated	209
What was the total volume (cubic yards) remediated	30
All areas not reasonably needed for production or subsequent drilling operations have been reclaimed to contain a minimum of four feet of non-waste contain earthen material with concentrations less than 600 mg/kg chlorides, 100 mg/kg TPH, 50 mg/kg BTEX, and 10 mg/kg Benzene	Yes
What was the total surface area (in square feet) reclaimed	0
What was the total volume (in cubic yards) reclaimed	0
Summarize any additional remediation activities not included by answers (above)	All stained/impacted area was hydroexcavated to a depth of 4.0' at which point composite confirmation samples were collected to ensure all contamination was removed from the site.
<i>The responsible party must attach information demonstrating they have complied with all applicable closure requirements and any conditions or directives of the OCD. This demonstration should be in the form of a comprehensive report (in .pdf format) including a scaled site map, sampling diagrams, relevant field notes, photographs of any excavation prior to backfilling, laboratory data including chain of custody documents of final sampling, and a narrative of the remedial activities. Refer to 19.15.29.12 NMAC.</i>	
I hereby certify that the information given above is true and complete to the best of my knowledge and understand that pursuant to OCD rules and regulations all operators are required to report and/or file certain release notifications and perform corrective actions for releases which may endanger public health or the environment. The acceptance of a C-141 report by the OCD does not relieve the operator of liability should their operations have failed to adequately investigate and remediate contamination that pose a threat to groundwater, surface water, human health or the environment. In addition, OCD acceptance of a C-141 report does not relieve the operator of responsibility for compliance with any other federal, state, or local laws and/or regulations. The responsible party acknowledges they must substantially restore, reclaim, and re-vegetate the impacted surface area to the conditions that existed prior to the release or their final land use in accordance with 19.15.29.13 NMAC including notification to the OCD when reclamation and re-vegetation are complete.	
I hereby agree and sign off to the above statement	Name: Ashton Thielke Title: EHS Specialist Email: Ashton.Thielke@coterra.com Date: 02/05/2025

Sante Fe Main Office  
Phone: (505) 476-3441

General Information  
Phone: (505) 629-6116

Online Phone Directory  
<https://www.emnrd.nm.gov/ocd/contact-us>

State of New Mexico  
Energy, Minerals and Natural Resources  
Oil Conservation Division  
1220 S. St Francis Dr.  
Santa Fe, NM 87505

QUESTIONS, Page 7

Action 428517

QUESTIONS (continued)

Operator:  CIMAREX ENERGY CO. 6001 Deauville Blvd Midland, TX 79706	OGRID:  215099
	Action Number:  428517
	Action Type:  [C-141] Remediation Closure Request C-141 (C-141-v-Closure)

QUESTIONS

Reclamation Report	
Only answer the questions in this group if all reclamation steps have been completed.	
Requesting a reclamation approval with this submission	No

Sante Fe Main Office  
Phone: (505) 476-3441

General Information  
Phone: (505) 629-6116

Online Phone Directory  
<https://www.emnrd.nm.gov/ocd/contact-us>

State of New Mexico  
Energy, Minerals and Natural Resources  
Oil Conservation Division  
1220 S. St Francis Dr.  
Santa Fe, NM 87505

CONDITIONS

Action 428517

CONDITIONS

Operator: CIMAREX ENERGY CO. 6001 Deauville Blvd Midland, TX 79706	OGRID: 215099
	Action Number: 428517
	Action Type: [C-141] Remediation Closure Request C-141 (C-141-v-Closure)

CONDITIONS

Created By	Condition	Condition Date
scott.rodgers	This Remediation Closure Report is approved. Areas reasonably needed for production or subsequent drilling operations will need to be reclaimed and revegetated as soon as they are no longer reasonably needed. A report for reclamation and revegetation will need to be submitted and approved prior to this incident receiving the final status of "Restoration Complete".	2/25/2025