



## CLOSURE REPORT

Property:

**Benelli CTB**

**Unit D, S8, T25S, R28E  
32.149652° N, 104.116548° W  
Eddy County, New Mexico  
NMOCD Incident ID: nAPP2320749536**

February 27, 2025  
Ensolum Project No. 03B1417155

Prepared for:

**Oxy USA, Inc.  
PO Box 4324  
Houston, Texas 77210**

**Attn: Wade Dittrich**

Prepared by:

---

Tabitha Guadian  
Staff Geologist

---

Beaux Jennings  
Associate Principal

**TABLE OF CONTENTS**

<b>1.0</b>	<b>INTRODUCTION.....</b>	<b>1</b>
1.1	Site Description and Background.....	1
1.2	Project Objective .....	1
<b>2.0</b>	<b>CLOSURE CRITERIA.....</b>	<b>1</b>
<b>3.0</b>	<b>SOIL REMEDIATION ACTIVITIES .....</b>	<b>3</b>
<b>4.0</b>	<b>SOIL SAMPLING PROGRAM .....</b>	<b>4</b>
<b>5.0</b>	<b>SOIL LABORATORY ANALYTICAL METHODS.....</b>	<b>4</b>
<b>6.0</b>	<b>DATA EVALUATION .....</b>	<b>5</b>
<b>7.0</b>	<b>RECLAMATION AND RE-VEGETATION .....</b>	<b>5</b>
<b>8.0</b>	<b>FINDINGS AND RECOMMENDATIONS.....</b>	<b>6</b>
<b>9.0</b>	<b>STANDARDS OF CARE, LIMITATIONS, AND RELIANCE .....</b>	<b>7</b>
9.1	Standard of Care .....	7
9.2	Limitations .....	7
9.3	Reliance.....	7

**APPENDICES**

- Appendix A: Figures**
- Appendix B: Supporting Documentation**
- Appendix C: Photographic Documentation**
- Appendix D: Table**
- Appendix E: Laboratory Data Sheets & Chain-of-Custody Documentation**

**CLOSURE REPORT**

**Benelli CTB**  
**Unit D, S8, T25S, R28E**  
**32.149652° N, 104.116548° W**  
**Eddy County, New Mexico**  
**NMOCD Incident ID: nAPP2320749536**

**Ensolum Project No. 03B1417155**

**1.0 INTRODUCTION****1.1 Site Description and Background**

<b>Operator:</b>	Oxy USA, Inc. (Oxy)
<b>Site Name:</b>	Benelli CTB
<b>Location:</b>	Unit D, Section 8, Township 25 South, Range 28 East 32.149652° N, 104.116548° W Eddy County, New Mexico
<b>Property:</b>	Private Land
<b>Regulatory:</b>	New Mexico Energy, Minerals and Natural Resources Department (EMNRD) Oil Conservation Division (OCD)

On July 19, 2023, Oxy had a release of crude oil and produced water at the Site due to an electrical pole catching on fire and causing a flow line to rupture. The flow line was isolated, depressurized, locked, and tagged out. Approximately 1 barrel (bbl) of crude oil and 1 bbl of produced water released onto the ground surface, with no product recovered. Oxy verbally notified the New Mexico EMNRD OCD via email and subsequently reported the release to the New Mexico EMNRD OCD online portal notification of release (NOR) form on July 26, 2023. The release was assigned Incident Number nAPP2320749536.

The **Topographic Map** depicting the location of the Site is included as **Figure 1**, the **Site Vicinity Map** is included as **Figure 2**, the **Site Map** is included as **Figure 3**, and the **Closure Criteria Map** is included as **Figure 4** in **Appendix A**.

**1.2 Project Objective**

The primary objective of the closure activities was to reduce chemicals of concern (COC) concentrations in the on-Site soil to be in compliance with the applicable New Mexico EMNRD OCD closure criteria concentrations.

**2.0 CLOSURE CRITERIA**

The Site is subject to regulatory oversight by the New Mexico EMNRD OCD. In order to address activities related to exempt oil and gas releases, the New Mexico EMNRD OCD references New Mexico Administrative Code (NMAC) 19.15.29 *Releases*, which establishes investigation and abatement action requirements for sites subject to reporting and/or corrective action. Ensolum,

LLC (Ensolum) utilized information provided by Oxy, the general Site characteristics, and information available from the New Mexico Office of the State Engineer (OSE) and the New Mexico EMNRD OCD Imaging database to determine the appropriate closure criteria for the Site. Supporting documentation and figures associated with the following bullets are provided in **Appendix B** and included as **Figure 4** in **Appendix A**.

- Two exploratory water wells (United States Geological Survey (USGS) 320920104065801 and USGS 320920104065701) were identified approximately 0.42 miles north of the Site on the OSE Water Rights Reporting System (WRRS) database. The last recorded data from USGS 320920104065801 was from October 9, 1987, with a recorded depth to water of 14.93 feet below ground surface (bgs) and no recorded total depth, and the last recorded data from USGS 320920104065701 was from December 6, 1948, with a recorded depth to water of 59.35 feet bgs and no recorded total depth.
  - Since the data from both of these wells were over 25 years old, the data was not able to be utilized in defining the closure criteria for the Site.
- The Site is not located within 300 feet of a New Mexico ENMRD OCD-defined continuously flowing watercourse or significant watercourse.
- The Site is not located within 200 feet of a lakebed, sinkhole, or playa lake.
- The Site is not located within 300 feet from a permanent residence, school, hospital, institution, or church.
- According to the OSE WRSS database, there are no private, domestic freshwater wells used by less than five households for domestic or stock water purposes identified within 500 feet of the Site.
- According to the OSE WRSS database, there are no freshwater wells identified within 1,000 feet of the Site.
- The Site is not located within incorporated municipal boundaries or within a defined municipal freshwater well field covered under a municipal ordinance adopted pursuant to New Mexico Statute Annotated (NMSA) 1978, Section 3-27-3.
- The Site is not located within 300 feet of a wetland.
- Based on information identified on the New Mexico Mining and Minerals Division's Geographical Information System (GIS), Maps, and Mine Data database, the Site is not located within an area overlying a subsurface mine.
- Based on the Karst Occurrence Potential (.kmz) provided by the BLM, the Site is located within a stable area, also referred to as medium karst potential.
  - This release occurred in 2023 prior to the New Mexico EMNRD OCD Public Notice update for *Karst Potential Occurrence Zones*, effective December 1, 2024. This notice classified "Medium Karst" as an unstable area, and Sites that overlay it would need to be remediated to the most stringent closure criteria found in Table I of 19.15.29 NMAC. This classification can be updated at the discretion of the New Mexico EMNRD OCD and/or if a karst survey is completed by a karst expert on



the Bureau of Land Management (BLM) Carlsbad Field Office Approved Third-Party Cave/Karst Contractors list.

- The Site is not located within a 100-year floodplain.

Based on the identified siting criteria, cleanup goals for soils remaining in place at the Site include:

CLOSURE CRITERIA FOR SOILS IMPACTED BY A RELEASE			
Minimum depth below any point within horizontal boundary of the release to groundwater less than 10,000 mg/l TDS	Constituent	Method	Limit
≤ 50 feet	Chloride	EPA 300.0 or SM4500 Cl B	600 mg/kg
	TPH (GRO+DRO+MRO)	EPA SW-846 Method 8015M	100 mg/kg
	BTEX	EPA SW-846 Method 8021B or 8260B	50 mg/kg
	Benzene	EPA SW-846 Method 8021B or 8260B	10 mg/kg

### 3.0 SOIL REMEDIATION ACTIVITIES

On July 19, 2023, Oxy had a release of crude oil and produced water at the Site due to an electrical pole catching on fire and causing a flow line to rupture. The flow line was isolated, depressurized, locked, and tagged out. Approximately 1 bbl of crude oil and 1 bbl of produced water released onto the ground surface, with no product recovered.

On February 21, 2024, the project was transferred to Ensolum to begin remediation of the release.

On May 1, 2024, subsequent to initial excavation activities, Ensolum arrived on-Site to collect 17 composite soil samples from the excavation floor (FS-01 through FS-17) and four composite soil samples from the excavation sidewalls (SW-01 through SW-04). The excavation floor samples were collected at a depth of 2 feet bgs, and the excavation sidewall samples were collected at a depth of 0-2 feet bgs. Based on laboratory analytical data, additional excavation and/or remediation was necessary.

On August 20, 2024, subsequent to the completion of additional excavation activities, Ensolum arrived on-Site to collect two composite soil samples from the excavation floor (FS-12 and FS-15) at a depth of 3 feet bgs and 4 feet bgs, respectively. Additionally, one sidewall soil sample (SW-15) was collected at a depth of 0-4 feet bgs in the vicinity of the excavation floor sample FS-15. Based on laboratory analytical data, additional excavation and/or remediation was necessary.

On September 9, 2024, subsequent to the completion of additional excavation activities, Ensolum arrived on-Site to collect eight composite soil samples from the excavation floor (FS-03 through FS-08, FS-10, and FS-11) at depths ranging from 2.5 to 7 feet bgs, and five composite soil samples from four excavation sidewall locations (SW-01, SW-02, SW-05, and SW-06) at depths ranging from 2-2.5 feet bgs, 0-2 feet bgs, 2-7 feet bgs, 0-2.5 feet bgs, and 0-4 feet bgs.

respectively. Based on laboratory analytical data, no additional excavation activities or remediation activities were necessary.

The composite soil samples were analyzed for benzene, toluene, ethylbenzene, and total xylenes (BTEX), total petroleum hydrocarbons (TPH), gasoline range organics (GRO), diesel range organics (DRO), motor oil/lube oil range organics (MRO), and chloride in accordance with the New Mexico EMNRD OCD Closure Criteria for Soils Impacted by a Release (NMOCD Closure Criteria).

The final excavation area measured approximately 89 feet long and 74 feet wide at the maximum extents, with a depth ranging from 2-7 feet bgs.

The lithology encountered during the completion of closure activities consisted of the Reagan-Upton association, 0 to 9 percent slopes (RE) with loam from surface to at least 60 inches bgs.

The excavation measured approximately 3,452 square feet in areal extent. A total of 422 cubic yards (cy) of impacted soil was removed during the excavation activities. The impacted soil was transported and properly disposed of at the Lea Land Facility located in Hobbs, New Mexico. After completion of confirmation sampling, the backfill of the excavation was completed utilizing material from the Cedar Canyon Pit and recontoured to match pre-existing conditions. A BLM-approved seed mixture will be sown into the surface area of the backfill for re-vegetation per the below reclamation and revegetation plan.

**Figure 3** is a Site Map that identifies approximate soil sample locations and depicts the approximate dimensions of the impacted soil and excavation extent with respect to the release (**Appendix A**). Photographic documentation of the field activities is included in **Appendix C**.

#### 4.0 SOIL SAMPLING PROGRAM

Ensolum's soil sampling program from May 1, 2024, through September 9, 2024, included the collection of a total of 27 composite soil samples from 17 locations from the excavation floor (FS-01 through FS-17) and 10 composite soil samples from seven locations from the excavation sidewalls (SW-01 through SW-06 and SW-15) for laboratory analysis. Additionally, one composite soil sample was collected from the backfill material (Cedar Canyon Pit) used at the Site on October 28, 2024.

The soil samples were collected and placed in laboratory-prepared glassware, labeled/sealed using laboratory-supplied labels and custody seals, and stored on ice in a cooler. The samples were relinquished to Cardinal Laboratories in Hobbs, New Mexico, under proper chain-of-custody procedures.

#### 5.0 SOIL LABORATORY ANALYTICAL METHODS

The composite soil samples were analyzed for BTEX utilizing the United States Environmental Protection Agency (EPA) SW-846 Method 8021B, TPH GRO/DRO/MRO following EPA SW-846 Method 8015M/D, and chloride utilizing Method SM4500CI-B.

Laboratory analytical results are summarized in **Table 1** and **Table 2** in **Appendix D**. The executed chain-of-custody forms and laboratory data sheets are provided in **Appendix E**.

## 6.0 DATA EVALUATION

Ensolum compared the benzene, total BTEX, TPH-GRO/DRO/MRO, and chloride concentrations to laboratory sample detection limits (SDLs) associated with the soils remaining in place at the Site to the applicable NMOCD Closure Criteria.

- Laboratory analytical results indicated benzene concentrations for the soils remaining in place at the Site, and the backfill material are below the laboratory SDLs or the applicable NMOCD Closure Criteria of 10 milligrams per kilogram (mg/kg).
- Laboratory analytical results indicated that total BTEX concentrations for the soils remaining in place at the Site and the backfill material are below the laboratory SDLs or the applicable NMOCD Closure Criteria of 50 mg/kg.
- Laboratory analytical results indicated combined TPH-GRO/DRO/MRO concentrations for the soils remaining in place at the Site and the backfill material are below the laboratory SDLs and/or the applicable NMOCD Closure Criteria of 100 mg/kg for depth to groundwater ≤50 feet.
- Laboratory analytical results indicated chloride concentrations for the soils remaining in place at the Site, and the backfill material are below the laboratory SDLs and/or the applicable NMOCD Closure Criteria of 600 mg/kg for depth to groundwater ≤50 feet.

Laboratory analytical results are summarized in **Table 1** and **Table 2** in **Appendix D**.

## 7.0 RECLAMATION AND RE-VEGETATION

The release occurred off-pad, and as such, a reclamation requirement of 600 mg/kg chloride and 100 mg/kg TPH was applied to the top 4 feet of the off-pad area in the Vegetative Zone that was impacted by the release per 19.15.29.13.D (1) NMAC for the top 4 feet of areas that will be reclaimed following remediation. The following Reclamation Plan addresses the reclamation of the off-pad area. The soil in the vicinity of the release includes RE loam from surface to at least 60 inches bgs.

- The excavation was backfilled with locally sourced topsoil from the Cedar Canyon Pit and recontoured to match the surrounding grade;
- The backfilled areas will be seeded utilizing a weed-free seed mix designed by the BLM to meet reclamation standards for this region, which is Pecos District BLM Seed Mix for Loamy, SD-3 Ecological Site/Loamy CP-2/Gyp Upland CP-2;
- The seed mixture will be distributed with one of the following methods: push broadcaster seed spreader/tractor-operated broadcast seed spreader/drill seeding/other means;
- Application of the seed mixture will be at a coverage of either 10 pounds of seeds per acre of reclaimed pasture with distribution by a drilling method or 20 pounds of seeds per acre of reclaimed pasture with distribution by a broadcast method, whichever was more applicable;
- Erosion control management will potentially include:

- The placement of waddles in areas with a propensity for high runoff rates;
- Straw cover if high winds are anticipated to support moisture retention and limit wind from blowing seeds away before they have had time to germinate; and/or
- Other erosional control best management practices (BMP) as necessary to support timely and healthy regrowth of vegetation in disturbed areas;
- Seeding is anticipated to be completed in the spring/summer when temperatures and precipitation are most conducive for vegetation growth. In general, seeding should occur approximately one month after the last frost in the Spring up until approximately one month prior to the first fall frost. NMSLO has recognized the optimal time to seed is between July and early September, which will be adhered to for this Site; and
- Annual inspections (at a minimum) will take place on the location until revegetation is consistent with local natural vegetation density. The Site will be inspected the following Spring/Fall to assess the success of regrowth. If necessary, an additional application of the BLM-approved pure live seed mixture will be applied as well as any needed BMPs will be installed to support growth and limit erosion.

## 8.0 FINDINGS AND RECOMMENDATIONS

- On July 19, 2023, Oxy had a release of crude oil and produced water at the Site due to an electrical pole catching on fire and causing a flow line to rupture. The flow line was isolated, depressurized, locked, and tagged out. Approximately 1 bbl of crude oil and 1 bbl of produced water released onto the ground surface, with no product recovered.
- Ensolum's soil sampling program from May 1, 2024, through September 9, 2024, included the collection of a total of 27 composite soil samples from 17 locations from the excavation floor (FS-01 through FS-17) and 10 composite soil samples from seven locations from the excavation sidewalls (SW-01 through SW-06 and SW-15) for laboratory analysis. Additionally, one composite soil sample was collected from the backfill material (Cedar Canyon Pit) used at the Site on October 28, 2024.
- The primary objective of the closure activities was to reduce COC concentrations in the on-Site soil to be in compliance with applicable NMOCD Closure Criteria for Soils Impacted by a Release using the New Mexico EMNRD OCD's NMAC 19.15.29 Releases as guidance.
- The final excavation area measured approximately 89 feet long and 74 feet wide at the maximum extents, with a depth ranging from 2-7 feet bgs.
- Based on laboratory analytical results, the final composite soil samples collected from the excavation floor and sidewalls and the backfill material did not exhibit benzene, total BTEX, TPH GRO/DRO/MRO, or chloride concentrations above the applicable NMOCD Closure Criteria.
- After confirmation sampling was completed, the backfill of the excavation was completed utilizing material purchased locally from the Cedar Canyon Pit, which was then re-contoured to match pre-existing conditions. Once complete, a BLM-approved

seed mixture will be sown into the surface of the backfill for re-vegetation per the above-stated Reclamation Plan.

**Based on field observations and laboratory analytical results, no additional investigation or corrective action appears warranted at this time.**

## **9.0 STANDARDS OF CARE, LIMITATIONS, AND RELIANCE**

### **9.1 Standard of Care**

Ensolum's services were performed in accordance with standards customarily provided by a firm rendering the same or similar services in the area during the same time period. Ensolum makes no warranties, express or implied, as to the services performed hereunder. Additionally, Ensolum does not warrant the work of third parties supplying information used in the report (e.g., laboratories, regulatory agencies, or other third parties). This scope of services was performed in accordance with the scope of work agreed with the client, as detailed in our proposal.

### **9.2 Limitations**

Findings, conclusions, and recommendations resulting from these services are based upon information derived from the on-site activities and other services performed under this scope of work, and it should be noted that this information is subject to change over time. Certain indicators of the presence of hazardous substances, petroleum products, or other constituents may have been latent, inaccessible, unobservable, or not present during these services, and Ensolum cannot represent that the Site contains no hazardous substances, toxic materials, petroleum products, or other latent conditions beyond those identified during the investigation. Environmental conditions in other areas or portions of the Site may vary from those encountered at actual sample locations. Ensolum's findings and recommendations are based solely upon data available to Ensolum at the time of these services.

### **9.3 Reliance**

This report has been prepared for the exclusive use of Oxy USA, Inc., and any authorization for use or reliance by any other party (except a governmental entity having jurisdiction over the Site) is prohibited without the express written authorization of Oxy USA, Inc. and Ensolum. Any unauthorized distribution or reuse is at the client's sole risk. Notwithstanding the foregoing, reliance by authorized parties will be subject to the terms, conditions, and limitations stated in the Closure Report and Ensolum's Master Services Agreement. The limitation of liability defined in the agreement is the aggregate limit of Ensolum's liability to the client.

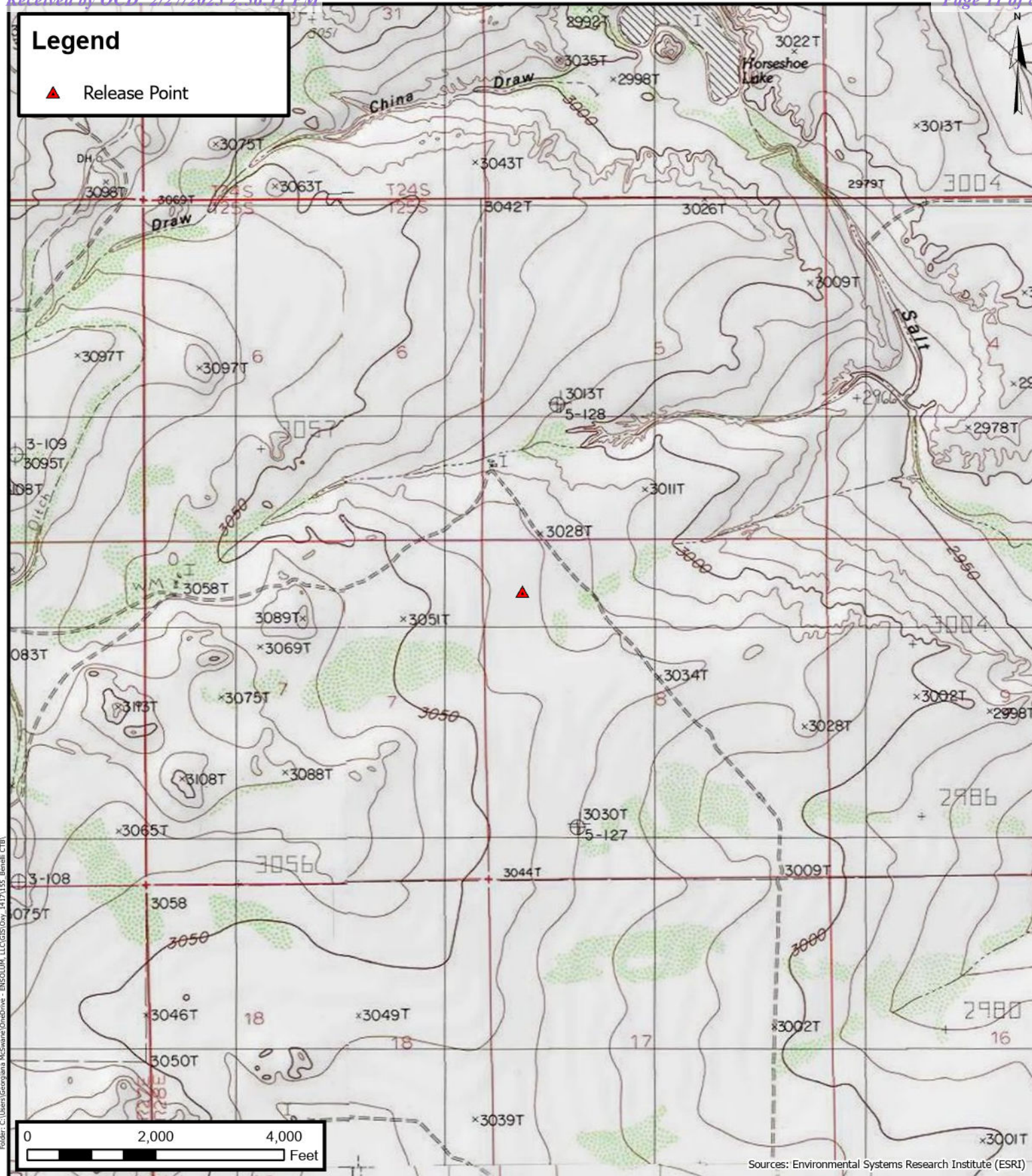


## APPENDIX A

### Figures

---





## Topographic Map

Oxy USA Inc.  
Benelli CTB  
32.149652° N, 104.116548° W  
Eddy County, New Mexico

PROJECT NUMBER: 03B1417155

**FIGURE**

**1**



**Legend** Release Point**Site Vicinity Map**

Oxy USA Inc.

Benelli CTB

32.149652° N, 104.116548° W

Eddy County, New Mexico

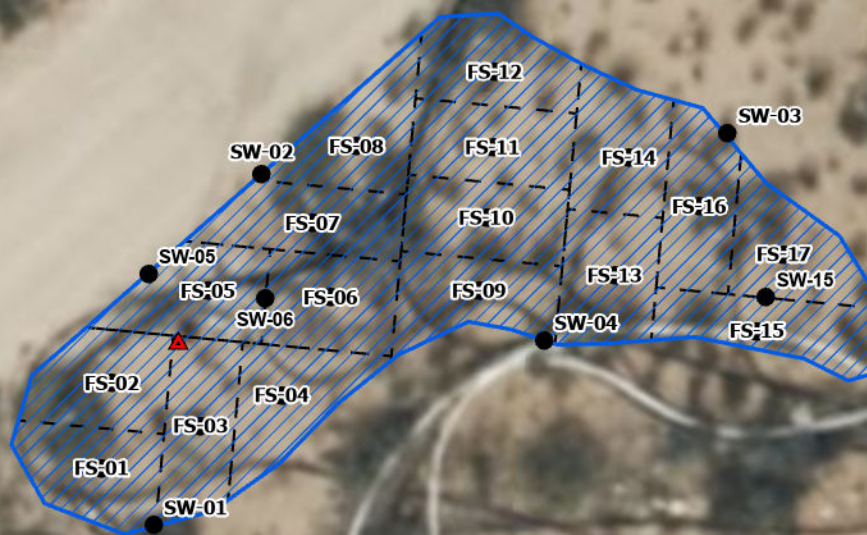
PROJECT NUMBER: 03B1417155

**FIGURE****2**



## Legend

- ▲ Release Point
- Composite Soil Sample Location
- Excavation Extent
- - - Composite Soil Sample Boundary



0 25 50  
Feet

Sources: Environmental Systems Research Institute (ESRI)



## Site Map

Oxy USA Inc.  
Benelli CTB  
32.149652° N, 104.116548° W  
Eddy County, New Mexico

PROJECT NUMBER: 03B1417155

FIGURE

3





## Closure Criteria Map

Oxy USA Inc.  
Benelli CTB  
32.149652° N, 104.116548° W  
Eddy County, New Mexico

PROJECT NUMBER: 03B1417155

**FIGURE**

**4**



## APPENDIX B

### Supporting Documentation

---

## Beaux Jennings

---

**From:** Dittrich, John W <Wade\_Dittrich@oxy.com>  
**Sent:** Wednesday, February 21, 2024 3:00 PM  
**To:** Beaux Jennings  
**Subject:** FW: Initial Notification

[ \*\*EXTERNAL EMAIL\*\* ]

---

**From:** Dittrich, John W  
**Sent:** Wednesday, July 26, 2023 3:00 PM  
**To:** OCD.Enviro@emnrd.nm.gov  
**Cc:** Cliff Brunson <cbrunson@bbcinternational.com>; Kathy Sweeney <kathys@bbcinternational.com>; 'Jennifer Gilkey' <jgilkey@bbcinternational.com>  
**Subject:** Initial Notification

All,

This is to inform you that Oxy Permian had a **Reportable** release in **Eddy County** at the **Benelli CTB** on 7/19/2023.

- **Release Location:** Legal -8-25S-28E
- **Release Volume:** 1 bbl of Oil and 1 bbl of Produced Water.
- **Recovered:** 0 bbl recovered
- **Cause of Release:** Electric pole caught fire and caught other flowlines on fire spilling oil and water mixed.
- **Approximate Area impacted by release:** 20' x 30' (measurements are subject to change with GPS tracking)
- **GPS Coordinates:** 32.1488823 -104.1162967-Leak GPS

Please let me know if you have any questions.

**Wade Dittrich**  
**Environmental Advisor**  
**New Mexico**  
575-390-2828 cell  
[Wade\\_Dittrich@Oxy.com](mailto:Wade_Dittrich@Oxy.com)

Map Unit Description: Reagan-Upton association, 0 to 9 percent slopes---Eddy Area, New Mexico

---

## Eddy Area, New Mexico

### RE—Reagan-Upton association, 0 to 9 percent slopes

#### Map Unit Setting

*National map unit symbol:* 1w5d

*Elevation:* 1,100 to 5,400 feet

*Mean annual precipitation:* 6 to 14 inches

*Mean annual air temperature:* 60 to 64 degrees F

*Frost-free period:* 180 to 240 days

*Farmland classification:* Farmland of statewide importance

#### Map Unit Composition

*Reagan and similar soils:* 70 percent

*Upton and similar soils:* 25 percent

*Minor components:* 5 percent

*Estimates are based on observations, descriptions, and transects of the mapunit.*

#### Description of Reagan

##### Setting

*Landform:* Fan remnants, alluvial fans

*Landform position (three-dimensional):* Rise

*Down-slope shape:* Convex, linear

*Across-slope shape:* Linear

*Parent material:* Alluvium and/or eolian deposits

##### Typical profile

*H1 - 0 to 8 inches:* loam

*H2 - 8 to 60 inches:* loam

##### Properties and qualities

*Slope:* 0 to 3 percent

*Depth to restrictive feature:* More than 80 inches

*Drainage class:* Well drained

*Runoff class:* Low

*Capacity of the most limiting layer to transmit water*

*(Ksat):* Moderately high to high (0.60 to 2.00 in/hr)

*Depth to water table:* More than 80 inches

*Frequency of flooding:* None

*Frequency of ponding:* None

*Calcium carbonate, maximum content:* 40 percent

*Maximum salinity:* Very slightly saline to moderately saline (2.0 to 8.0 mmhos/cm)

*Sodium adsorption ratio, maximum:* 1.0

*Available water supply, 0 to 60 inches:* Moderate (about 8.2 inches)

##### Interpretive groups

*Land capability classification (irrigated):* 2e

*Land capability classification (nonirrigated):* 6e



Map Unit Description: Reagan-Upton association, 0 to 9 percent slopes---Eddy Area, New Mexico

---

*Hydrologic Soil Group:* B  
*Ecological site:* R042CY153NM - Loamy  
*Hydric soil rating:* No

### Description of Upton

#### Setting

*Landform:* Ridges, fans  
*Landform position (three-dimensional):* Side slope, rise  
*Down-slope shape:* Convex  
*Across-slope shape:* Convex  
*Parent material:* Residuum weathered from limestone

#### Typical profile

*H1 - 0 to 9 inches:* gravelly loam  
*H2 - 9 to 13 inches:* gravelly loam  
*H3 - 13 to 21 inches:* cemented  
*H4 - 21 to 60 inches:* very gravelly loam

#### Properties and qualities

*Slope:* 0 to 9 percent  
*Depth to restrictive feature:* 7 to 20 inches to petrocalcic  
*Drainage class:* Well drained  
*Runoff class:* High  
*Capacity of the most limiting layer to transmit water (Ksat):* Low to moderately high (0.01 to 0.60 in/hr)  
*Depth to water table:* More than 80 inches  
*Frequency of flooding:* None  
*Frequency of ponding:* None  
*Calcium carbonate, maximum content:* 75 percent  
*Maximum salinity:* Nonsaline to very slightly saline (0.0 to 2.0 mmhos/cm)  
*Sodium adsorption ratio, maximum:* 1.0  
*Available water supply, 0 to 60 inches:* Very low (about 1.4 inches)

#### Interpretive groups

*Land capability classification (irrigated):* None specified  
*Land capability classification (nonirrigated):* 7s  
*Hydrologic Soil Group:* D  
*Ecological site:* R042CY159NM - Shallow Loamy  
*Hydric soil rating:* No

### Minor Components

#### Atoka

*Percent of map unit:* 3 percent  
*Ecological site:* R070BC007NM - Loamy  
*Hydric soil rating:* No

#### Pima

*Percent of map unit:* 2 percent  
*Ecological site:* R070BC017NM - Bottomland

Map Unit Description: Reagan-Upton association, 0 to 9 percent slopes---Eddy Area, New Mexico

---

*Hydric soil rating:* No

## Data Source Information

Soil Survey Area: Eddy Area, New Mexico  
Survey Area Data: Version 20, Sep 3, 2024

PECOS DISTRICT, BLM  
SEED MIX FOR

The following Soils or Soil Association may represent these ecological sites:

Alama silt loam, dry, 0-3% Slope, Atoka, Bigetty-Pecos, Harkey fine sandy loam, Holloman, Holloman-Gypsum Land, Hollomex loam, 1-9% slope, dry, Largo loams, Milner loam, 0-2% slope, dry, Reagan loam, Reakor, Reakor-Bigetty, Reakor-Tencee, Reeves loam, 0-2% slope, dry, Russler, Shanta, Upton-Reakor

Loamy, SD-3 Ecological Site  
Loamy CP-2  
Gyp Upland CP-2

April 4, 2006

<u>Common Name and Preferred Variety</u>	<u>Scientific Name</u>	<u>Pounds of Pure Live Seed Per Acre</u>
Blue grama,	( <i>Bouteloua gracilis</i> )	4.0
Sideoats grama,	( <i>Bouteloua curtipendula</i> )	1.0
Sand dropseed	( <i>Sporobolus cryptandrus</i> )	0.5
Vine mesquite	( <i>Panicum obtusum</i> )	1.0
Plains bristlegrass	( <i>Setaria macrostachya</i> )	1.0
Indian blanketflower	( <i>Gaillardia aristata</i> )	0.5
Desert or Scarlet Globemallow	( <i>Sphaeralcea ambigua</i> ) or ( <i>S. coccinea</i> )	1.0
Annual sunflower	( <i>Helianthus annuus</i> )	0.75
TOTAL POUNDS PURE LIVE SEED (pls) PER ACRE		9.75
Certified Weed Free Seed		

If one species is not available, increase ALL others proportionately.  
Use No Less than 4 species, including one forb.

No less than 9.75 pounds pls per acre shall be applied

APPROVED: /s/ Douglas J. Burger  
District Manager, Pecos District





## APPENDIX C

### Photographic Documentation

---

Project: Benelli CTB  
Entity: Oxy USA, Inc  
Incident ID: nAPP2320749536



View of Benelli Central Tank Battery sign, facing southeast (February 28, 2024).



View of release extent prior to remediation activities, facing south (February 28, 2024).



Project: Benelli CTB  
Entity: Oxy USA, Inc  
Incident ID: nAPP2320749536



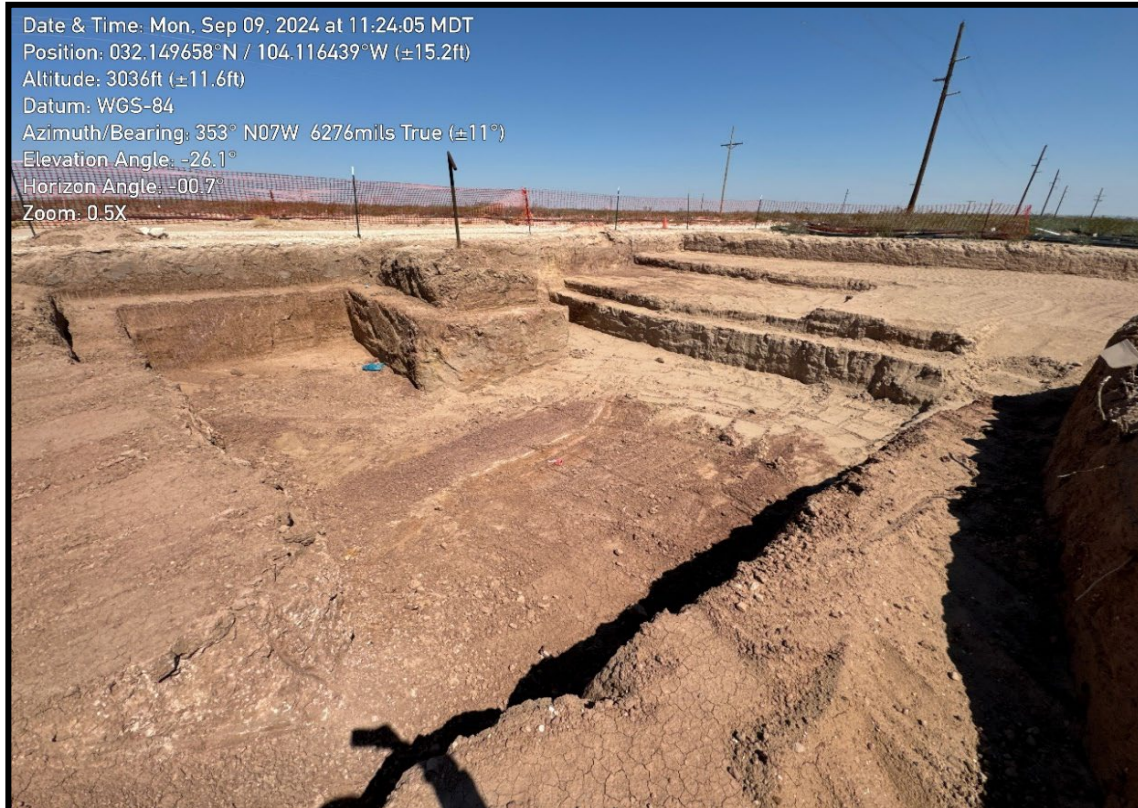
View of excavation extent during remediation activities, facing southwest (August 19, 2024).



View of excavation extent during remediation activities, facing northwest (August 20, 2024).



Project: Benelli CTB  
Entity: Oxy USA, Inc  
Incident ID: nAPP2320749536



View of excavation extent during remediation activities, facing northwest (September 09, 2024).



View of excavation extent during remediation activities, facing northwest (September 09, 2024).



Project: Benelli CTB  
Entity: Oxy USA, Inc  
Incident ID: nAPP2320749536



View of excavation extent post backfill activities, facing southwest (October 28, 2024).



View of excavation extent post backfill activities, facing northeast (October 28, 2024).



## APPENDIX D

### Table

---

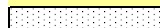
**TABLE 1**  
**SOIL SAMPLE ANALYTICAL RESULTS**  
 Benelli CTB  
 Oxy USA, Inc.  
 Eddy County, New Mexico  
 Ensolum Project No. 03B1417155

Sample Designation	Date	Depth (feet bgs)	Benzene (mg/kg)	Toluene (mg/kg)	Ethylbenzene (mg/kg)	Total Xylenes (mg/kg)	Total BTEX (mg/kg)	TPH GRO (mg/kg)	TPH DRO (mg/kg)	TPH MRO (mg/kg)	Total TPH (GRO+DRO+MRO) (mg/kg)	Chloride (mg/kg)
<b>New Mexico Oil Conservation Division Closure Criteria for Soils Impacted by a Release (≤ 50 feet)</b>			<b>10</b>	<b>NE</b>	<b>NE</b>	<b>NE</b>	<b>50</b>	<b>NE</b>	<b>NE</b>	<b>NE</b>	<b>100</b>	<b>600</b>
<b>Composite Floor Soil Sample Analytical Results</b>												
FS-01	05/01/2024	2	<0.050	<0.050	<0.050	<0.150	<0.300	<10.0	<b>21.9</b>	<10.0	<b>21.9</b>	<b>128</b>
FS-02	05/01/2024	2	<0.050	<0.050	<0.050	<0.150	<0.300	<10.0	<10.0	<10.0	<10.0	<b>464</b>
FS-03	05/01/2024	2	<0.050	<0.050	<0.050	<0.150	<0.300	<10.0	<10.0	<10.0	<10.0	<b>704</b>
	09/09/2024	2.5	NS					NS				<b>112</b>
FS-04	05/01/2024	2	<0.050	<0.050	<0.050	<0.150	<0.300	<10.0	<10.0	<10.0	<10.0	<b>1,060</b>
	09/09/2024	2.5	NS					NS				<b>32.0</b>
FS-05	05/01/2024	2	<0.050	<0.050	<0.050	<0.150	<0.300	<10.0	<10.0	<10.0	<10.0	<b>2,120</b>
	09/09/2024	3	NS					NS				<b>208</b>
FS-06	05/01/2024	2	<0.050	<0.050	<0.050	<0.150	<0.300	<10.0	<10.0	<10.0	<10.0	<b>2,360</b>
	09/09/2024	6	NS					NS				<b>160</b>
FS-07	05/01/2024	2	<0.050	<0.050	<0.050	<0.150	<0.300	<10.0	<10.0	<10.0	<10.0	<b>2,240</b>
	09/09/2024	7	NS					NS				<b>32.0</b>
FS-08	05/01/2024	2	<0.050	<0.050	<0.050	<0.150	<0.300	<10.0	<10.0	<10.0	<10.0	<b>832</b>
	09/09/2024	7	NS					NS				<b>16.0</b>
FS-09	05/01/2024	2	<0.050	<0.050	<0.050	<0.150	<0.300	<10.0	<10.0	<10.0	<10.0	<b>384</b>
FS-10	05/01/2024	2	<0.050	<0.050	<0.050	<0.150	<0.300	<10.0	<10.0	<10.0	<10.0	<b>1,490</b>
	09/09/2024	4	NS					NS				<b>48.0</b>
FS-11	05/01/2024	2	<0.050	<0.050	<0.050	<0.150	<0.300	<10.0	<10.0	<10.0	<10.0	<b>944</b>
	09/09/2024	4	NS					NS				<b>96.0</b>
FS-12	05/01/2024	2	<0.050	<0.050	<0.050	<0.150	<0.300	<10.0	<10.0	<10.0	<10.0	<b>784</b>
	08/20/2024	3	NS					NS				<b>272</b>
FS-13	05/01/2024	2	<0.050	<0.050	<0.050	<0.150	<0.300	<10.0	<10.0	<10.0	<10.0	<b>592</b>
FS-14	05/01/2024	2	<0.050	<0.050	<0.050	<0.150	<0.300	<10.0	<10.0	<10.0	<10.0	<b>528</b>
FS-15	05/01/2024	2	<0.050	<0.050	<0.050	<0.150	<0.300	<10.0	<10.0	<10.0	<10.0	<b>1,140</b>
	08/20/2024	4	NS					NS				<b>32.0</b>
FS-16	05/01/2024	2	<0.050	<0.050	<0.050	<0.150	<0.300	<10.0	<10.0	<10.0	<10.0	<b>448</b>
FS-17	05/01/2024	2	<0.050	<0.050	<0.050	<0.150	<0.300	<10.0	<10.0	<10.0	<10.0	<b>192</b>

**TABLE 1**  
**SOIL SAMPLE ANALYTICAL RESULTS**  
 Benelli CTB  
 Oxy USA, Inc.  
 Eddy County, New Mexico  
 Ensolum Project No. 03B1417155

Sample Designation	Date	Depth (feet bgs)	Benzene (mg/kg)	Toluene (mg/kg)	Ethylbenzene (mg/kg)	Total Xylenes (mg/kg)	Total BTEX (mg/kg)	TPH GRO (mg/kg)	TPH DRO (mg/kg)	TPH MRO (mg/kg)	Total TPH (GRO+DRO+MRO) (mg/kg)	Chloride (mg/kg)
New Mexico Oil Conservation Division Closure Criteria for Soils Impacted by a Release (≤ 50 feet)			10	NE	NE	NE	50	NE	NE	NE	100	600
Composite Sidewall Soil Sample Analytical Results												
SW-01	05/01/2024	0 - 2	<0.050	<0.050	<0.050	<0.150	<0.300	<10.0	<10.0	<10.0	<10.0	272
	09/09/2024	2 - 2.5	<0.050	<0.050	<0.050	<0.150	<0.300	<10.0	<10.0	<10.0	<10.0	16.0
SW-02	05/01/2024	0 - 2	<0.050	<0.050	<0.050	<0.150	<0.300	<10.0	<10.0	<10.0	<10.0	1,150
	09/09/2024	0 - 2	NS					NS				16.0
	09/09/2024	2 - 7	<0.050	<0.050	<0.050	<0.150	<0.300	<10.0	<10.0	<10.0	<10.0	16.0
SW-03	05/01/2024	0 - 2	<0.050	<0.050	<0.050	<0.150	<0.300	<10.0	<10.0	<10.0	<10.0	144
SW-04	05/01/2024	0 - 2	<0.050	<0.050	<0.050	<0.150	<0.300	<10.0	<10.0	<10.0	<10.0	112
SW-05	09/09/2024	0 - 2.5	<0.050	<0.050	<0.050	<0.150	<0.300	<10.0	<10.0	<10.0	<10.0	16.0
SW-06	09/09/2024	0 - 4	<0.050	<0.050	<0.050	<0.150	<0.300	<10.0	<10.0	<10.0	<10.0	16.0
SW-15	08/20/2024	0 - 4	<0.050	<0.050	<0.050	<0.150	<0.300	<10.0	<10.0	<10.0	<10.0	32.0

Concentrations in **bold** and yellow exceed the New Mexico Oil Conservation Division Closure Criteria for Soils Impacted by a Release (≤ 50 feet)

 Additional Excavation and/or Re-Sample

bgs: below ground surface

mg/kg: milligrams per kilogram

NE: Not Established

NS: Not Sampled

BTEX: Benzene, Toluene, Ethylbenzene, and Xylenes

GRO: Gasoline Range Organics

DRO: Diesel Range Organics

MRO: Motor Oil/Lube Oil Range Organics

TPH: Total Petroleum Hydrocarbon





**TABLE 2**  
**BACKFILL SOIL SAMPLE ANALYTICAL RESULTS**  
 Cedar Canyon Pit  
 Oxy USA, Inc.  
 Eddy County, New Mexico  
 Ensolum Project No. NA

Sample Designation	Date	Depth (feet bgs)	Benzene (mg/kg)	Toluene (mg/kg)	Ethylbenzene (mg/kg)	Total Xylenes (mg/kg)	Total BTEX (mg/kg)	TPH GRO (mg/kg)	TPH DRO (mg/kg)	TPH MRO (mg/kg)	Total TPH (GRO+DRO+MRO) (mg/kg)	Chloride (mg/kg)
New Mexico Oil Conservation Division Closure Criteria for Soils Impacted by a Release (≤ 50 feet)			10	NE	NE	NE	50	NE	NE	NE	100	600
Composite Background Soil Sample Analytical Result												
Cedar Canyon Pit	10/28/2024	NA	<0.050	<0.050	<0.050	<0.150	<0.300	<10.0	<10.0	<10.0	<10.0	<16.0

bgs: below ground surface

mg/kg: milligrams per kilogram

NA: Not Applicable

NE: Not Established

BTEX: Benzene, Toluene, Ethylbenzene, and Xylenes

GRO: Gasoline Range Organics

DRO: Diesel Range Organics

MRO: Motor Oil/Lube Oil Range Organics

TPH: Total Petroleum Hydrocarbon



## APPENDIX E

### Laboratory Analytical Reports & Chain-of-Custody Documentation

---



PHONE (575) 393-2326 ° 101 E. MARLAND ° HOBBS, NM 88240

---

May 07, 2024

BEAUX JENNINGS  
ENSOLUM, LLC  
705 W WADLEY AVE.  
MIDLAND, TX 79705

RE: BENELLI CTB

Enclosed are the results of analyses for samples received by the laboratory on 05/01/24 13:59.

Cardinal Laboratories is accredited through Texas NELAP under certificate number T104704398-23-16. Accreditation applies to drinking water, non-potable water and solid and chemical materials. All accredited analytes are denoted by an asterisk (\*). For a complete list of accredited analytes and matrices visit the TCEQ website at [www.tceq.texas.gov/field/qa/lab\\_accred\\_certif.html](http://www.tceq.texas.gov/field/qa/lab_accred_certif.html).

Cardinal Laboratories is accredited through the State of Colorado Department of Public Health and Environment for:

Method EPA 552.2	Haloacetic Acids (HAA-5)
Method EPA 524.2	Total Trihalomethanes (TTHM)
Method EPA 524.4	Regulated VOCs (V1, V2, V3)

Accreditation applies to public drinking water matrices.

This report meets NELAP requirements and is made up of a cover page, analytical results, and a copy of the original chain-of-custody. If you have any questions concerning this report, please feel free to contact me.

Sincerely,

A handwritten signature in black ink that reads "Coley D. Keene". The signature is written in a cursive style with a large, stylized 'C' and 'K'.

Celey D. Keene  
Lab Director/Quality Manager



PHONE (575) 393-2326 ° 101 E. MARLAND ° HOBBS, NM 88240

**Analytical Results For:**

ENSOLUM, LLC  
 BEAUX JENNINGS  
 705 W WADLEY AVE.  
 MIDLAND TX, 79705  
 Fax To:

Received: 05/01/2024  
 Reported: 05/07/2024  
 Project Name: BENELLI CTB  
 Project Number: 03B1417155  
 Project Location: OXY - EDDY CO., NM

Sampling Date: 05/01/2024  
 Sampling Type: Soil  
 Sampling Condition: Cool & Intact  
 Sample Received By: Shalyn Rodriguez

**Sample ID: FS - 01 2' (H242336-01)**

BTX 8021B		mg/kg		Analyzed By: JH					
Analyte	Result	Reporting Limit	Analyzed	Method Blank	BS	% Recovery	True Value QC	RPD	Qualifier
Benzene*	<0.050	0.050	05/03/2024	ND	2.08	104	2.00	1.45	
Toluene*	<0.050	0.050	05/03/2024	ND	2.03	101	2.00	1.95	
Ethylbenzene*	<0.050	0.050	05/03/2024	ND	1.98	99.2	2.00	1.81	
Total Xylenes*	<0.150	0.150	05/03/2024	ND	5.82	96.9	6.00	1.64	
Total BTX	<0.300	0.300	05/03/2024	ND					

Surrogate: 4-Bromofluorobenzene (PID) 91.5 % 71.5-134

Chloride, SM4500Cl-B		mg/kg		Analyzed By: AC						
Analyte	Result	Reporting Limit	Analyzed	Method Blank	BS	% Recovery	True Value QC	RPD	Qualifier	
Chloride	128	16.0	05/04/2024	ND	416	104	400	7.41		

TPH 8015M		mg/kg		Analyzed By: MS					
Analyte	Result	Reporting Limit	Analyzed	Method Blank	BS	% Recovery	True Value QC	RPD	Qualifier
GRO C6-C10*	<10.0	10.0	05/03/2024	ND	209	104	200	3.73	
DRO >C10-C28*	21.9	10.0	05/03/2024	ND	202	101	200	6.89	
EXT DRO >C28-C36	<10.0	10.0	05/03/2024	ND					

Surrogate: 1-Chlorooctane 97.0 % 48.2-134

Surrogate: 1-Chlorooctadecane 82.3 % 49.1-148

Cardinal Laboratories

\*=Accredited Analyte

PLEASE NOTE: Liability and Damages. Cardinal's liability and client's exclusive remedy for any claim arising, whether based in contract or tort, shall be limited to the amount paid by client for analyses. All claims, including those for negligence and any other cause whatsoever shall be deemed waived unless made in writing and received by Cardinal within thirty (30) days after completion of the applicable service. In no event shall Cardinal be liable for incidental or consequential damages, including, without limitation, business interruptions, loss of use, or loss of profits incurred by client, its subsidiaries, affiliates or successors arising out of or related to the performance of the services hereunder by Cardinal, regardless of whether such claim is based upon any of the above stated reasons or otherwise. Results relate only to the samples identified above. This report shall not be reproduced except in full with written approval of Cardinal Laboratories.

Celey D. Keene, Lab Director/Quality Manager



PHONE (575) 393-2326 ° 101 E. MARLAND ° HOBBS, NM 88240

**Analytical Results For:**

ENSOLUM, LLC  
 BEAUX JENNINGS  
 705 W WADLEY AVE.  
 MIDLAND TX, 79705  
 Fax To:

Received: 05/01/2024  
 Reported: 05/07/2024  
 Project Name: BENELLI CTB  
 Project Number: 03B1417155  
 Project Location: OXY - EDDY CO., NM

Sampling Date: 05/01/2024  
 Sampling Type: Soil  
 Sampling Condition: Cool & Intact  
 Sample Received By: Shalyn Rodriguez

**Sample ID: FS - 02 2' (H242336-02)**

BTEx 8021B		mg/kg		Analyzed By: JH					
Analyte	Result	Reporting Limit	Analyzed	Method Blank	BS	% Recovery	True Value QC	RPD	Qualifier
Benzene*	<0.050	0.050	05/03/2024	ND	2.08	104	2.00	1.45	
Toluene*	<0.050	0.050	05/03/2024	ND	2.03	101	2.00	1.95	
Ethylbenzene*	<0.050	0.050	05/03/2024	ND	1.98	99.2	2.00	1.81	
Total Xylenes*	<0.150	0.150	05/03/2024	ND	5.82	96.9	6.00	1.64	
Total BTEX	<0.300	0.300	05/03/2024	ND					

Surrogate: 4-Bromofluorobenzene (PID) 88.3 % 71.5-134

Chloride, SM4500Cl-B		mg/kg		Analyzed By: AC						
Analyte	Result	Reporting Limit	Analyzed	Method Blank	BS	% Recovery	True Value QC	RPD	Qualifier	
Chloride	464	16.0	05/04/2024	ND	416	104	400	7.41		

TPH 8015M		mg/kg		Analyzed By: MS					
Analyte	Result	Reporting Limit	Analyzed	Method Blank	BS	% Recovery	True Value QC	RPD	Qualifier
GRO C6-C10*	<10.0	10.0	05/03/2024	ND	209	104	200	3.73	
DRO >C10-C28*	<10.0	10.0	05/03/2024	ND	202	101	200	6.89	
EXT DRO >C28-C36	<10.0	10.0	05/03/2024	ND					

Surrogate: 1-Chlorooctane 98.9 % 48.2-134

Surrogate: 1-Chlorooctadecane 88.7 % 49.1-148

Cardinal Laboratories

\*=Accredited Analyte

PLEASE NOTE: Liability and Damages. Cardinal's liability and client's exclusive remedy for any claim arising, whether based in contract or tort, shall be limited to the amount paid by client for analyses. All claims, including those for negligence and any other cause whatsoever shall be deemed waived unless made in writing and received by Cardinal within thirty (30) days after completion of the applicable service. In no event shall Cardinal be liable for incidental or consequential damages, including, without limitation, business interruptions, loss of use, or loss of profits incurred by client, its subsidiaries, affiliates or successors arising out of or related to the performance of the services hereunder by Cardinal, regardless of whether such claim is based upon any of the above stated reasons or otherwise. Results relate only to the samples identified above. This report shall not be reproduced except in full with written approval of Cardinal Laboratories.

Celey D. Keene, Lab Director/Quality Manager



PHONE (575) 393-2326 ° 101 E. MARLAND ° HOBBS, NM 88240

**Analytical Results For:**

ENSOLUM, LLC  
 BEAUX JENNINGS  
 705 W WADLEY AVE.  
 MIDLAND TX, 79705  
 Fax To:

Received: 05/01/2024  
 Reported: 05/07/2024  
 Project Name: BENELLI CTB  
 Project Number: 03B1417155  
 Project Location: OXY - EDDY CO., NM

Sampling Date: 05/01/2024  
 Sampling Type: Soil  
 Sampling Condition: Cool & Intact  
 Sample Received By: Shalyn Rodriguez

**Sample ID: FS - 03 2' (H242336-03)**

BTEx 8021B		mg/kg		Analyzed By: JH					
Analyte	Result	Reporting Limit	Analyzed	Method Blank	BS	% Recovery	True Value QC	RPD	Qualifier
Benzene*	<0.050	0.050	05/03/2024	ND	2.08	104	2.00	1.45	
Toluene*	<0.050	0.050	05/03/2024	ND	2.03	101	2.00	1.95	
Ethylbenzene*	<0.050	0.050	05/03/2024	ND	1.98	99.2	2.00	1.81	
Total Xylenes*	<0.150	0.150	05/03/2024	ND	5.82	96.9	6.00	1.64	
Total BTEX	<0.300	0.300	05/03/2024	ND					

Surrogate: 4-Bromofluorobenzene (PID) 90.5 % 71.5-134

Chloride, SM4500Cl-B		mg/kg		Analyzed By: AC						
Analyte	Result	Reporting Limit	Analyzed	Method Blank	BS	% Recovery	True Value QC	RPD	Qualifier	
Chloride	704	16.0	05/04/2024	ND	416	104	400	7.41		

TPH 8015M		mg/kg		Analyzed By: MS					
Analyte	Result	Reporting Limit	Analyzed	Method Blank	BS	% Recovery	True Value QC	RPD	Qualifier
GRO C6-C10*	<10.0	10.0	05/03/2024	ND	209	104	200	3.73	
DRO >C10-C28*	<10.0	10.0	05/03/2024	ND	202	101	200	6.89	
EXT DRO >C28-C36	<10.0	10.0	05/03/2024	ND					

Surrogate: 1-Chlorooctane 99.6 % 48.2-134

Surrogate: 1-Chlorooctadecane 88.5 % 49.1-148

Cardinal Laboratories

\*=Accredited Analyte

PLEASE NOTE: Liability and Damages. Cardinal's liability and client's exclusive remedy for any claim arising, whether based in contract or tort, shall be limited to the amount paid by client for analyses. All claims, including those for negligence and any other cause whatsoever shall be deemed waived unless made in writing and received by Cardinal within thirty (30) days after completion of the applicable service. In no event shall Cardinal be liable for incidental or consequential damages, including, without limitation, business interruptions, loss of use, or loss of profits incurred by client, its subsidiaries, affiliates or successors arising out of or related to the performance of the services hereunder by Cardinal, regardless of whether such claim is based upon any of the above stated reasons or otherwise. Results relate only to the samples identified above. This report shall not be reproduced except in full with written approval of Cardinal Laboratories.

Celey D. Keene, Lab Director/Quality Manager



PHONE (575) 393-2326 ° 101 E. MARLAND ° HOBBS, NM 88240

**Analytical Results For:**

ENSOLUM, LLC  
 BEAUX JENNINGS  
 705 W WADLEY AVE.  
 MIDLAND TX, 79705  
 Fax To:

Received: 05/01/2024  
 Reported: 05/07/2024  
 Project Name: BENELLI CTB  
 Project Number: 03B1417155  
 Project Location: OXY - EDDY CO., NM

Sampling Date: 05/01/2024  
 Sampling Type: Soil  
 Sampling Condition: Cool & Intact  
 Sample Received By: Shalyn Rodriguez

**Sample ID: FS - 04 2' (H242336-04)**

BTEx 8021B		mg/kg		Analyzed By: JH						
Analyte	Result	Reporting Limit	Analyzed	Method Blank	BS	% Recovery	True Value QC	RPD	Qualifier	
Benzene*	<0.050	0.050	05/03/2024	ND	2.08	104	2.00	1.45		
Toluene*	<0.050	0.050	05/03/2024	ND	2.03	101	2.00	1.95		
Ethylbenzene*	<0.050	0.050	05/03/2024	ND	1.98	99.2	2.00	1.81		
Total Xylenes*	<0.150	0.150	05/03/2024	ND	5.82	96.9	6.00	1.64		
Total BTEX	<0.300	0.300	05/03/2024	ND						

Surrogate: 4-Bromofluorobenzene (PID) 89.9 % 71.5-134

Chloride, SM4500Cl-B		mg/kg		Analyzed By: AC					
Analyte	Result	Reporting Limit	Analyzed	Method Blank	BS	% Recovery	True Value QC	RPD	Qualifier
Chloride	1060	16.0	05/04/2024	ND	416	104	400	7.41	

TPH 8015M		mg/kg		Analyzed By: MS					
Analyte	Result	Reporting Limit	Analyzed	Method Blank	BS	% Recovery	True Value QC	RPD	Qualifier
GRO C6-C10*	<10.0	10.0	05/03/2024	ND	209	104	200	3.73	
DRO >C10-C28*	<10.0	10.0	05/03/2024	ND	202	101	200	6.89	
EXT DRO >C28-C36	<10.0	10.0	05/03/2024	ND					

Surrogate: 1-Chlorooctane 93.4 % 48.2-134

Surrogate: 1-Chlorooctadecane 80.2 % 49.1-148

Cardinal Laboratories

\*=Accredited Analyte

PLEASE NOTE: Liability and Damages. Cardinal's liability and client's exclusive remedy for any claim arising, whether based in contract or tort, shall be limited to the amount paid by client for analyses. All claims, including those for negligence and any other cause whatsoever shall be deemed waived unless made in writing and received by Cardinal within thirty (30) days after completion of the applicable service. In no event shall Cardinal be liable for incidental or consequential damages, including, without limitation, business interruptions, loss of use, or loss of profits incurred by client, its subsidiaries, affiliates or successors arising out of or related to the performance of the services hereunder by Cardinal, regardless of whether such claim is based upon any of the above stated reasons or otherwise. Results relate only to the samples identified above. This report shall not be reproduced except in full with written approval of Cardinal Laboratories.

Celey D. Keene, Lab Director/Quality Manager



PHONE (575) 393-2326 ° 101 E. MARLAND ° HOBBS, NM 88240

**Analytical Results For:**

ENSOLUM, LLC  
 BEAUX JENNINGS  
 705 W WADLEY AVE.  
 MIDLAND TX, 79705  
 Fax To:

Received: 05/01/2024  
 Reported: 05/07/2024  
 Project Name: BENELLI CTB  
 Project Number: 03B1417155  
 Project Location: OXY - EDDY CO., NM

Sampling Date: 05/01/2024  
 Sampling Type: Soil  
 Sampling Condition: Cool & Intact  
 Sample Received By: Shalyn Rodriguez

**Sample ID: FS - 05 2' (H242336-05)**

BTEx 8021B		mg/kg		Analyzed By: JH					
Analyte	Result	Reporting Limit	Analyzed	Method Blank	BS	% Recovery	True Value QC	RPD	Qualifier
Benzene*	<0.050	0.050	05/03/2024	ND	2.08	104	2.00	1.45	
Toluene*	<0.050	0.050	05/03/2024	ND	2.03	101	2.00	1.95	
Ethylbenzene*	<0.050	0.050	05/03/2024	ND	1.98	99.2	2.00	1.81	
Total Xylenes*	<0.150	0.150	05/03/2024	ND	5.82	96.9	6.00	1.64	
Total BTEX	<0.300	0.300	05/03/2024	ND					

Surrogate: 4-Bromofluorobenzene (PID) 91.3 % 71.5-134

Chloride, SM4500Cl-B		mg/kg		Analyzed By: AC					
Analyte	Result	Reporting Limit	Analyzed	Method Blank	BS	% Recovery	True Value QC	RPD	Qualifier
Chloride	2120	16.0	05/04/2024	ND	416	104	400	7.41	

TPH 8015M		mg/kg		Analyzed By: MS					
Analyte	Result	Reporting Limit	Analyzed	Method Blank	BS	% Recovery	True Value QC	RPD	Qualifier
GRO C6-C10*	<10.0	10.0	05/03/2024	ND	209	104	200	3.73	
DRO >C10-C28*	<10.0	10.0	05/03/2024	ND	202	101	200	6.89	
EXT DRO >C28-C36	<10.0	10.0	05/03/2024	ND					

Surrogate: 1-Chlorooctane 94.7 % 48.2-134

Surrogate: 1-Chlorooctadecane 79.1 % 49.1-148

Cardinal Laboratories

\*=Accredited Analyte

PLEASE NOTE: Liability and Damages. Cardinal's liability and client's exclusive remedy for any claim arising, whether based in contract or tort, shall be limited to the amount paid by client for analyses. All claims, including those for negligence and any other cause whatsoever shall be deemed waived unless made in writing and received by Cardinal within thirty (30) days after completion of the applicable service. In no event shall Cardinal be liable for incidental or consequential damages, including, without limitation, business interruptions, loss of use, or loss of profits incurred by client, its subsidiaries, affiliates or successors arising out of or related to the performance of the services hereunder by Cardinal, regardless of whether such claim is based upon any of the above stated reasons or otherwise. Results relate only to the samples identified above. This report shall not be reproduced except in full with written approval of Cardinal Laboratories.

Celey D. Keene, Lab Director/Quality Manager





PHONE (575) 393-2326 ° 101 E. MARLAND ° HOBBS, NM 88240

**Analytical Results For:**

ENSOLUM, LLC  
 BEAUX JENNINGS  
 705 W WADLEY AVE.  
 MIDLAND TX, 79705  
 Fax To:

Received: 05/01/2024  
 Reported: 05/07/2024  
 Project Name: BENELLI CTB  
 Project Number: 03B1417155  
 Project Location: OXY - EDDY CO., NM

Sampling Date: 05/01/2024  
 Sampling Type: Soil  
 Sampling Condition: Cool & Intact  
 Sample Received By: Shalyn Rodriguez

**Sample ID: FS - 06 2' (H242336-06)**

BTEx 8021B		mg/kg		Analyzed By: JH					
Analyte	Result	Reporting Limit	Analyzed	Method Blank	BS	% Recovery	True Value QC	RPD	Qualifier
Benzene*	<0.050	0.050	05/03/2024	ND	2.08	104	2.00	1.45	
Toluene*	<0.050	0.050	05/03/2024	ND	2.03	101	2.00	1.95	
Ethylbenzene*	<0.050	0.050	05/03/2024	ND	1.98	99.2	2.00	1.81	
Total Xylenes*	<0.150	0.150	05/03/2024	ND	5.82	96.9	6.00	1.64	
Total BTEX	<0.300	0.300	05/03/2024	ND					

Surrogate: 4-Bromofluorobenzene (PID) 89.4 % 71.5-134

Chloride, SM4500Cl-B		mg/kg		Analyzed By: AC						
Analyte	Result	Reporting Limit	Analyzed	Method Blank	BS	% Recovery	True Value QC	RPD	Qualifier	
Chloride	2360	16.0	05/04/2024	ND	416	104	400	7.41		

TPH 8015M		mg/kg		Analyzed By: MS					
Analyte	Result	Reporting Limit	Analyzed	Method Blank	BS	% Recovery	True Value QC	RPD	Qualifier
GRO C6-C10*	<10.0	10.0	05/03/2024	ND	209	104	200	3.73	
DRO >C10-C28*	<10.0	10.0	05/03/2024	ND	202	101	200	6.89	
EXT DRO >C28-C36	<10.0	10.0	05/03/2024	ND					

Surrogate: 1-Chlorooctane 88.5 % 48.2-134

Surrogate: 1-Chlorooctadecane 76.1 % 49.1-148

Cardinal Laboratories

\*=Accredited Analyte

PLEASE NOTE: Liability and Damages. Cardinal's liability and client's exclusive remedy for any claim arising, whether based in contract or tort, shall be limited to the amount paid by client for analyses. All claims, including those for negligence and any other cause whatsoever shall be deemed waived unless made in writing and received by Cardinal within thirty (30) days after completion of the applicable service. In no event shall Cardinal be liable for incidental or consequential damages, including, without limitation, business interruptions, loss of use, or loss of profits incurred by client, its subsidiaries, affiliates or successors arising out of or related to the performance of the services hereunder by Cardinal, regardless of whether such claim is based upon any of the above stated reasons or otherwise. Results relate only to the samples identified above. This report shall not be reproduced except in full with written approval of Cardinal Laboratories.

Celey D. Keene, Lab Director/Quality Manager



PHONE (575) 393-2326 ° 101 E. MARLAND ° HOBBS, NM 88240

**Analytical Results For:**

ENSOLUM, LLC  
 BEAUX JENNINGS  
 705 W WADLEY AVE.  
 MIDLAND TX, 79705  
 Fax To:

Received: 05/01/2024  
 Reported: 05/07/2024  
 Project Name: BENELLI CTB  
 Project Number: 03B1417155  
 Project Location: OXY - EDDY CO., NM

Sampling Date: 05/01/2024  
 Sampling Type: Soil  
 Sampling Condition: Cool & Intact  
 Sample Received By: Shalyn Rodriguez

**Sample ID: FS - 07 2' (H242336-07)**

BTEx 8021B		mg/kg		Analyzed By: JH					
Analyte	Result	Reporting Limit	Analyzed	Method Blank	BS	% Recovery	True Value QC	RPD	Qualifier
Benzene*	<0.050	0.050	05/03/2024	ND	2.08	104	2.00	1.45	
Toluene*	<0.050	0.050	05/03/2024	ND	2.03	101	2.00	1.95	
Ethylbenzene*	<0.050	0.050	05/03/2024	ND	1.98	99.2	2.00	1.81	
Total Xylenes*	<0.150	0.150	05/03/2024	ND	5.82	96.9	6.00	1.64	
Total BTEX	<0.300	0.300	05/03/2024	ND					

Surrogate: 4-Bromofluorobenzene (PID) 90.1 % 71.5-134

Chloride, SM4500Cl-B		mg/kg		Analyzed By: AC						
Analyte	Result	Reporting Limit	Analyzed	Method Blank	BS	% Recovery	True Value QC	RPD	Qualifier	
Chloride	2240	16.0	05/04/2024	ND	416	104	400	7.41		

TPH 8015M		mg/kg		Analyzed By: MS					
Analyte	Result	Reporting Limit	Analyzed	Method Blank	BS	% Recovery	True Value QC	RPD	Qualifier
GRO C6-C10*	<10.0	10.0	05/03/2024	ND	209	104	200	3.73	
DRO >C10-C28*	<10.0	10.0	05/03/2024	ND	202	101	200	6.89	
EXT DRO >C28-C36	<10.0	10.0	05/03/2024	ND					

Surrogate: 1-Chlorooctane 98.4 % 48.2-134

Surrogate: 1-Chlorooctadecane 85.8 % 49.1-148

Cardinal Laboratories

\*=Accredited Analyte

PLEASE NOTE: Liability and Damages. Cardinal's liability and client's exclusive remedy for any claim arising, whether based in contract or tort, shall be limited to the amount paid by client for analyses. All claims, including those for negligence and any other cause whatsoever shall be deemed waived unless made in writing and received by Cardinal within thirty (30) days after completion of the applicable service. In no event shall Cardinal be liable for incidental or consequential damages, including, without limitation, business interruptions, loss of use, or loss of profits incurred by client, its subsidiaries, affiliates or successors arising out of or related to the performance of the services hereunder by Cardinal, regardless of whether such claim is based upon any of the above stated reasons or otherwise. Results relate only to the samples identified above. This report shall not be reproduced except in full with written approval of Cardinal Laboratories.

Celey D. Keene, Lab Director/Quality Manager



PHONE (575) 393-2326 ° 101 E. MARLAND ° HOBBS, NM 88240

**Analytical Results For:**

ENSOLUM, LLC  
 BEAUX JENNINGS  
 705 W WADLEY AVE.  
 MIDLAND TX, 79705  
 Fax To:

Received: 05/01/2024  
 Reported: 05/07/2024  
 Project Name: BENELLI CTB  
 Project Number: 03B1417155  
 Project Location: OXY - EDDY CO., NM

Sampling Date: 05/01/2024  
 Sampling Type: Soil  
 Sampling Condition: Cool & Intact  
 Sample Received By: Shalyn Rodriguez

**Sample ID: FS - 08 2' (H242336-08)**

BTEx 8021B		mg/kg		Analyzed By: JH					
Analyte	Result	Reporting Limit	Analyzed	Method Blank	BS	% Recovery	True Value QC	RPD	Qualifier
Benzene*	<0.050	0.050	05/03/2024	ND	2.08	104	2.00	1.45	
Toluene*	<0.050	0.050	05/03/2024	ND	2.03	101	2.00	1.95	
Ethylbenzene*	<0.050	0.050	05/03/2024	ND	1.98	99.2	2.00	1.81	
Total Xylenes*	<0.150	0.150	05/03/2024	ND	5.82	96.9	6.00	1.64	
Total BTEX	<0.300	0.300	05/03/2024	ND					

Surrogate: 4-Bromofluorobenzene (PID) 90.6 % 71.5-134

Chloride, SM4500Cl-B		mg/kg		Analyzed By: AC					
Analyte	Result	Reporting Limit	Analyzed	Method Blank	BS	% Recovery	True Value QC	RPD	Qualifier
Chloride	832	16.0	05/04/2024	ND	416	104	400	7.41	

TPH 8015M		mg/kg		Analyzed By: MS					
Analyte	Result	Reporting Limit	Analyzed	Method Blank	BS	% Recovery	True Value QC	RPD	Qualifier
GRO C6-C10*	<10.0	10.0	05/03/2024	ND	209	104	200	3.73	
DRO >C10-C28*	<10.0	10.0	05/03/2024	ND	202	101	200	6.89	
EXT DRO >C28-C36	<10.0	10.0	05/03/2024	ND					

Surrogate: 1-Chlorooctane 95.9 % 48.2-134

Surrogate: 1-Chlorooctadecane 82.9 % 49.1-148

Cardinal Laboratories

\*=Accredited Analyte

PLEASE NOTE: Liability and Damages. Cardinal's liability and client's exclusive remedy for any claim arising, whether based in contract or tort, shall be limited to the amount paid by client for analyses. All claims, including those for negligence and any other cause whatsoever shall be deemed waived unless made in writing and received by Cardinal within thirty (30) days after completion of the applicable service. In no event shall Cardinal be liable for incidental or consequential damages, including, without limitation, business interruptions, loss of use, or loss of profits incurred by client, its subsidiaries, affiliates or successors arising out of or related to the performance of the services hereunder by Cardinal, regardless of whether such claim is based upon any of the above stated reasons or otherwise. Results relate only to the samples identified above. This report shall not be reproduced except in full with written approval of Cardinal Laboratories.

Celey D. Keene, Lab Director/Quality Manager



PHONE (575) 393-2326 ° 101 E. MARLAND ° HOBBS, NM 88240

**Analytical Results For:**

ENSOLUM, LLC  
 BEAUX JENNINGS  
 705 W WADLEY AVE.  
 MIDLAND TX, 79705  
 Fax To:

Received: 05/01/2024  
 Reported: 05/07/2024  
 Project Name: BENELLI CTB  
 Project Number: 03B1417155  
 Project Location: OXY - EDDY CO., NM

Sampling Date: 05/01/2024  
 Sampling Type: Soil  
 Sampling Condition: Cool & Intact  
 Sample Received By: Shalyn Rodriguez

**Sample ID: FS - 09 2' (H242336-09)**

BTEx 8021B		mg/kg		Analyzed By: JH					
Analyte	Result	Reporting Limit	Analyzed	Method Blank	BS	% Recovery	True Value QC	RPD	Qualifier
Benzene*	<0.050	0.050	05/03/2024	ND	2.08	104	2.00	1.45	
Toluene*	<0.050	0.050	05/03/2024	ND	2.03	101	2.00	1.95	
Ethylbenzene*	<0.050	0.050	05/03/2024	ND	1.98	99.2	2.00	1.81	
Total Xylenes*	<0.150	0.150	05/03/2024	ND	5.82	96.9	6.00	1.64	
Total BTEX	<0.300	0.300	05/03/2024	ND					

Surrogate: 4-Bromofluorobenzene (PID) 90.7 % 71.5-134

Chloride, SM4500Cl-B		mg/kg		Analyzed By: AC					
Analyte	Result	Reporting Limit	Analyzed	Method Blank	BS	% Recovery	True Value QC	RPD	Qualifier
Chloride	384	16.0	05/04/2024	ND	416	104	400	7.41	

TPH 8015M		mg/kg		Analyzed By: MS					
Analyte	Result	Reporting Limit	Analyzed	Method Blank	BS	% Recovery	True Value QC	RPD	Qualifier
GRO C6-C10*	<10.0	10.0	05/03/2024	ND	209	104	200	3.73	
DRO >C10-C28*	<10.0	10.0	05/03/2024	ND	202	101	200	6.89	
EXT DRO >C28-C36	<10.0	10.0	05/03/2024	ND					

Surrogate: 1-Chlorooctane 93.5 % 48.2-134

Surrogate: 1-Chlorooctadecane 81.5 % 49.1-148

Cardinal Laboratories

\*=Accredited Analyte

PLEASE NOTE: Liability and Damages. Cardinal's liability and client's exclusive remedy for any claim arising, whether based in contract or tort, shall be limited to the amount paid by client for analyses. All claims, including those for negligence and any other cause whatsoever shall be deemed waived unless made in writing and received by Cardinal within thirty (30) days after completion of the applicable service. In no event shall Cardinal be liable for incidental or consequential damages, including, without limitation, business interruptions, loss of use, or loss of profits incurred by client, its subsidiaries, affiliates or successors arising out of or related to the performance of the services hereunder by Cardinal, regardless of whether such claim is based upon any of the above stated reasons or otherwise. Results relate only to the samples identified above. This report shall not be reproduced except in full with written approval of Cardinal Laboratories.

Celey D. Keene, Lab Director/Quality Manager



PHONE (575) 393-2326 ° 101 E. MARLAND ° HOBBS, NM 88240

**Analytical Results For:**

ENSOLUM, LLC  
 BEAUX JENNINGS  
 705 W WADLEY AVE.  
 MIDLAND TX, 79705  
 Fax To:

Received: 05/01/2024  
 Reported: 05/07/2024  
 Project Name: BENELLI CTB  
 Project Number: 03B1417155  
 Project Location: OXY - EDDY CO., NM

Sampling Date: 05/01/2024  
 Sampling Type: Soil  
 Sampling Condition: Cool & Intact  
 Sample Received By: Shalyn Rodriguez

**Sample ID: FS - 10 2' (H242336-10)**

BTEx 8021B		mg/kg		Analyzed By: JH					
Analyte	Result	Reporting Limit	Analyzed	Method Blank	BS	% Recovery	True Value QC	RPD	Qualifier
Benzene*	<0.050	0.050	05/03/2024	ND	2.08	104	2.00	1.45	
Toluene*	<0.050	0.050	05/03/2024	ND	2.03	101	2.00	1.95	
Ethylbenzene*	<0.050	0.050	05/03/2024	ND	1.98	99.2	2.00	1.81	
Total Xylenes*	<0.150	0.150	05/03/2024	ND	5.82	96.9	6.00	1.64	
Total BTEX	<0.300	0.300	05/03/2024	ND					

Surrogate: 4-Bromofluorobenzene (PID) 91.5 % 71.5-134

Chloride, SM4500Cl-B		mg/kg		Analyzed By: AC						
Analyte	Result	Reporting Limit	Analyzed	Method Blank	BS	% Recovery	True Value QC	RPD	Qualifier	
Chloride	1490	16.0	05/04/2024	ND	416	104	400	7.41		

TPH 8015M		mg/kg		Analyzed By: MS					
Analyte	Result	Reporting Limit	Analyzed	Method Blank	BS	% Recovery	True Value QC	RPD	Qualifier
GRO C6-C10*	<10.0	10.0	05/03/2024	ND	209	104	200	3.73	
DRO >C10-C28*	<10.0	10.0	05/03/2024	ND	202	101	200	6.89	
EXT DRO >C28-C36	<10.0	10.0	05/03/2024	ND					

Surrogate: 1-Chlorooctane 89.6 % 48.2-134

Surrogate: 1-Chlorooctadecane 75.1 % 49.1-148

Cardinal Laboratories

\*=Accredited Analyte

PLEASE NOTE: Liability and Damages. Cardinal's liability and client's exclusive remedy for any claim arising, whether based in contract or tort, shall be limited to the amount paid by client for analyses. All claims, including those for negligence and any other cause whatsoever shall be deemed waived unless made in writing and received by Cardinal within thirty (30) days after completion of the applicable service. In no event shall Cardinal be liable for incidental or consequential damages, including, without limitation, business interruptions, loss of use, or loss of profits incurred by client, its subsidiaries, affiliates or successors arising out of or related to the performance of the services hereunder by Cardinal, regardless of whether such claim is based upon any of the above stated reasons or otherwise. Results relate only to the samples identified above. This report shall not be reproduced except in full with written approval of Cardinal Laboratories.

Celey D. Keene, Lab Director/Quality Manager





PHONE (575) 393-2326 ° 101 E. MARLAND ° HOBBS, NM 88240

**Analytical Results For:**

ENSOLUM, LLC  
 BEAUX JENNINGS  
 705 W WADLEY AVE.  
 MIDLAND TX, 79705  
 Fax To:

Received: 05/01/2024  
 Reported: 05/07/2024  
 Project Name: BENELLI CTB  
 Project Number: 03B1417155  
 Project Location: OXY - EDDY CO., NM

Sampling Date: 05/01/2024  
 Sampling Type: Soil  
 Sampling Condition: Cool & Intact  
 Sample Received By: Shalyn Rodriguez

**Sample ID: FS - 11 2' (H242336-11)**

BTX 8021B		mg/kg		Analyzed By: JH					
Analyte	Result	Reporting Limit	Analyzed	Method Blank	BS	% Recovery	True Value QC	RPD	Qualifier
Benzene*	<0.050	0.050	05/03/2024	ND	2.08	104	2.00	1.45	
Toluene*	<0.050	0.050	05/03/2024	ND	2.03	101	2.00	1.95	
Ethylbenzene*	<0.050	0.050	05/03/2024	ND	1.98	99.2	2.00	1.81	
Total Xylenes*	<0.150	0.150	05/03/2024	ND	5.82	96.9	6.00	1.64	
Total BTX	<0.300	0.300	05/03/2024	ND					

Surrogate: 4-Bromofluorobenzene (PID) 91.5 % 71.5-134

Chloride, SM4500CI-B		mg/kg		Analyzed By: AC						
Analyte	Result	Reporting Limit	Analyzed	Method Blank	BS	% Recovery	True Value QC	RPD	Qualifier	
Chloride	944	16.0	05/04/2024	ND	416	104	400	7.41		

TPH 8015M		mg/kg		Analyzed By: MS					
Analyte	Result	Reporting Limit	Analyzed	Method Blank	BS	% Recovery	True Value QC	RPD	Qualifier
GRO C6-C10*	<10.0	10.0	05/03/2024	ND	209	104	200	3.73	
DRO >C10-C28*	<10.0	10.0	05/03/2024	ND	202	101	200	6.89	
EXT DRO >C28-C36	<10.0	10.0	05/03/2024	ND					

Surrogate: 1-Chlorooctane 91.2 % 48.2-134

Surrogate: 1-Chlorooctadecane 77.7 % 49.1-148

Cardinal Laboratories

\*=Accredited Analyte

PLEASE NOTE: Liability and Damages. Cardinal's liability and client's exclusive remedy for any claim arising, whether based in contract or tort, shall be limited to the amount paid by client for analyses. All claims, including those for negligence and any other cause whatsoever shall be deemed waived unless made in writing and received by Cardinal within thirty (30) days after completion of the applicable service. In no event shall Cardinal be liable for incidental or consequential damages, including, without limitation, business interruptions, loss of use, or loss of profits incurred by client, its subsidiaries, affiliates or successors arising out of or related to the performance of the services hereunder by Cardinal, regardless of whether such claim is based upon any of the above stated reasons or otherwise. Results relate only to the samples identified above. This report shall not be reproduced except in full with written approval of Cardinal Laboratories.

Celey D. Keene, Lab Director/Quality Manager



PHONE (575) 393-2326 ° 101 E. MARLAND ° HOBBS, NM 88240

**Analytical Results For:**

ENSOLUM, LLC  
 BEAUX JENNINGS  
 705 W WADLEY AVE.  
 MIDLAND TX, 79705  
 Fax To:

Received: 05/01/2024  
 Reported: 05/07/2024  
 Project Name: BENELLI CTB  
 Project Number: 03B1417155  
 Project Location: OXY - EDDY CO., NM

Sampling Date: 05/01/2024  
 Sampling Type: Soil  
 Sampling Condition: Cool & Intact  
 Sample Received By: Shalyn Rodriguez

**Sample ID: FS - 12 2' (H242336-12)**

BTEx 8021B			mg/kg		Analyzed By: JH				
Analyte	Result	Reporting Limit	Analyzed	Method Blank	BS	% Recovery	True Value QC	RPD	Qualifier
Benzene*	<0.050	0.050	05/03/2024	ND	2.08	104	2.00	1.45	
Toluene*	<0.050	0.050	05/03/2024	ND	2.03	101	2.00	1.95	
Ethylbenzene*	<0.050	0.050	05/03/2024	ND	1.98	99.2	2.00	1.81	
Total Xylenes*	<0.150	0.150	05/03/2024	ND	5.82	96.9	6.00	1.64	
Total BTEX	<0.300	0.300	05/03/2024	ND					

Surrogate: 4-Bromofluorobenzene (PID) 91.3 % 71.5-134

Chloride, SM4500Cl-B		mg/kg		Analyzed By: AC					
Analyte	Result	Reporting Limit	Analyzed	Method Blank	BS	% Recovery	True Value QC	RPD	Qualifier
Chloride	784	16.0	05/04/2024	ND	416	104	400	7.41	

TPH 8015M		mg/kg		Analyzed By: MS					
Analyte	Result	Reporting Limit	Analyzed	Method Blank	BS	% Recovery	True Value QC	RPD	Qualifier
GRO C6-C10*	<10.0	10.0	05/03/2024	ND	209	104	200	3.73	
DRO >C10-C28*	<10.0	10.0	05/03/2024	ND	202	101	200	6.89	
EXT DRO >C28-C36	<10.0	10.0	05/03/2024	ND					

Surrogate: 1-Chlorooctane 98.1 % 48.2-134

Surrogate: 1-Chlorooctadecane 86.3 % 49.1-148

Cardinal Laboratories

\*=Accredited Analyte

PLEASE NOTE: Liability and Damages. Cardinal's liability and client's exclusive remedy for any claim arising, whether based in contract or tort, shall be limited to the amount paid by client for analyses. All claims, including those for negligence and any other cause whatsoever shall be deemed waived unless made in writing and received by Cardinal within thirty (30) days after completion of the applicable service. In no event shall Cardinal be liable for incidental or consequential damages, including, without limitation, business interruptions, loss of use, or loss of profits incurred by client, its subsidiaries, affiliates or successors arising out of or related to the performance of the services hereunder by Cardinal, regardless of whether such claim is based upon any of the above stated reasons or otherwise. Results relate only to the samples identified above. This report shall not be reproduced except in full with written approval of Cardinal Laboratories.

Celey D. Keene, Lab Director/Quality Manager



PHONE (575) 393-2326 ° 101 E. MARLAND ° HOBBS, NM 88240

**Analytical Results For:**

ENSOLUM, LLC  
 BEAUX JENNINGS  
 705 W WADLEY AVE.  
 MIDLAND TX, 79705  
 Fax To:

Received: 05/01/2024  
 Reported: 05/07/2024  
 Project Name: BENELLI CTB  
 Project Number: 03B1417155  
 Project Location: OXY - EDDY CO., NM

Sampling Date: 05/01/2024  
 Sampling Type: Soil  
 Sampling Condition: Cool & Intact  
 Sample Received By: Shalyn Rodriguez

**Sample ID: FS - 13 2' (H242336-13)**

BTEx 8021B		mg/kg		Analyzed By: JH						
Analyte	Result	Reporting Limit	Analyzed	Method Blank	BS	% Recovery	True Value QC	RPD	Qualifier	
Benzene*	<0.050	0.050	05/03/2024	ND	1.95	97.3	2.00	6.25		
Toluene*	<0.050	0.050	05/03/2024	ND	1.92	96.1	2.00	6.86		
Ethylbenzene*	<0.050	0.050	05/03/2024	ND	1.90	94.9	2.00	6.78		
Total Xylenes*	<0.150	0.150	05/03/2024	ND	5.56	92.7	6.00	6.88		
Total BTEX	<0.300	0.300	05/03/2024	ND						

Surrogate: 4-Bromofluorobenzene (PID) 90.1 % 71.5-134

Chloride, SM4500Cl-B		mg/kg		Analyzed By: AC						
Analyte	Result	Reporting Limit	Analyzed	Method Blank	BS	% Recovery	True Value QC	RPD	Qualifier	
Chloride	592	16.0	05/04/2024	ND	416	104	400	7.41		

TPH 8015M		mg/kg		Analyzed By: MS					
Analyte	Result	Reporting Limit	Analyzed	Method Blank	BS	% Recovery	True Value QC	RPD	Qualifier
GRO C6-C10*	<10.0	10.0	05/03/2024	ND	209	104	200	3.73	
DRO >C10-C28*	<10.0	10.0	05/03/2024	ND	202	101	200	6.89	
EXT DRO >C28-C36	<10.0	10.0	05/03/2024	ND					

Surrogate: 1-Chlorooctane 97.7 % 48.2-134

Surrogate: 1-Chlorooctadecane 84.0 % 49.1-148

Cardinal Laboratories

\*=Accredited Analyte

PLEASE NOTE: Liability and Damages. Cardinal's liability and client's exclusive remedy for any claim arising, whether based in contract or tort, shall be limited to the amount paid by client for analyses. All claims, including those for negligence and any other cause whatsoever shall be deemed waived unless made in writing and received by Cardinal within thirty (30) days after completion of the applicable service. In no event shall Cardinal be liable for incidental or consequential damages, including, without limitation, business interruptions, loss of use, or loss of profits incurred by client, its subsidiaries, affiliates or successors arising out of or related to the performance of the services hereunder by Cardinal, regardless of whether such claim is based upon any of the above stated reasons or otherwise. Results relate only to the samples identified above. This report shall not be reproduced except in full with written approval of Cardinal Laboratories.

Celey D. Keene, Lab Director/Quality Manager



PHONE (575) 393-2326 ° 101 E. MARLAND ° HOBBS, NM 88240

**Analytical Results For:**

ENSOLUM, LLC  
 BEAUX JENNINGS  
 705 W WADLEY AVE.  
 MIDLAND TX, 79705  
 Fax To:

Received: 05/01/2024  
 Reported: 05/07/2024  
 Project Name: BENELLI CTB  
 Project Number: 03B1417155  
 Project Location: OXY - EDDY CO., NM

Sampling Date: 05/01/2024  
 Sampling Type: Soil  
 Sampling Condition: Cool & Intact  
 Sample Received By: Shalyn Rodriguez

**Sample ID: FS - 14 2' (H242336-14)**

BTEx 8021B		mg/kg		Analyzed By: JH						
Analyte	Result	Reporting Limit	Analyzed	Method Blank	BS	% Recovery	True Value QC	RPD	Qualifier	
Benzene*	<0.050	0.050	05/03/2024	ND	1.95	97.3	2.00	6.25		
Toluene*	<0.050	0.050	05/03/2024	ND	1.92	96.1	2.00	6.86		
Ethylbenzene*	<0.050	0.050	05/03/2024	ND	1.90	94.9	2.00	6.78		
Total Xylenes*	<0.150	0.150	05/03/2024	ND	5.56	92.7	6.00	6.88		
Total BTEX	<0.300	0.300	05/03/2024	ND						

Surrogate: 4-Bromofluorobenzene (PID) 92.7 % 71.5-134

Chloride, SM4500Cl-B		mg/kg		Analyzed By: HM						
Analyte	Result	Reporting Limit	Analyzed	Method Blank	BS	% Recovery	True Value QC	RPD	Qualifier	
Chloride	528	16.0	05/06/2024	ND	432	108	400	0.00		

TPH 8015M		mg/kg		Analyzed By: MS					
Analyte	Result	Reporting Limit	Analyzed	Method Blank	BS	% Recovery	True Value QC	RPD	Qualifier
GRO C6-C10*	<10.0	10.0	05/03/2024	ND	209	104	200	3.73	
DRO >C10-C28*	<10.0	10.0	05/03/2024	ND	202	101	200	6.89	
EXT DRO >C28-C36	<10.0	10.0	05/03/2024	ND					

Surrogate: 1-Chlorooctane 101 % 48.2-134

Surrogate: 1-Chlorooctadecane 90.0 % 49.1-148

Cardinal Laboratories

\*=Accredited Analyte

PLEASE NOTE: Liability and Damages. Cardinal's liability and client's exclusive remedy for any claim arising, whether based in contract or tort, shall be limited to the amount paid by client for analyses. All claims, including those for negligence and any other cause whatsoever shall be deemed waived unless made in writing and received by Cardinal within thirty (30) days after completion of the applicable service. In no event shall Cardinal be liable for incidental or consequential damages, including, without limitation, business interruptions, loss of use, or loss of profits incurred by client, its subsidiaries, affiliates or successors arising out of or related to the performance of the services hereunder by Cardinal, regardless of whether such claim is based upon any of the above stated reasons or otherwise. Results relate only to the samples identified above. This report shall not be reproduced except in full with written approval of Cardinal Laboratories.

Celey D. Keene, Lab Director/Quality Manager





PHONE (575) 393-2326 ° 101 E. MARLAND ° HOBBS, NM 88240

**Analytical Results For:**

ENSOLUM, LLC  
 BEAUX JENNINGS  
 705 W WADLEY AVE.  
 MIDLAND TX, 79705  
 Fax To:

Received: 05/01/2024  
 Reported: 05/07/2024  
 Project Name: BENELLI CTB  
 Project Number: 03B1417155  
 Project Location: OXY - EDDY CO., NM

Sampling Date: 05/01/2024  
 Sampling Type: Soil  
 Sampling Condition: Cool & Intact  
 Sample Received By: Shalyn Rodriguez

**Sample ID: FS - 15 2' (H242336-15)**

BTEX 8021B		mg/kg		Analyzed By: JH					
Analyte	Result	Reporting Limit	Analyzed	Method Blank	BS	% Recovery	True Value QC	RPD	Qualifier
Benzene*	<0.050	0.050	05/03/2024	ND	1.95	97.3	2.00	6.25	
Toluene*	<0.050	0.050	05/03/2024	ND	1.92	96.1	2.00	6.86	
Ethylbenzene*	<0.050	0.050	05/03/2024	ND	1.90	94.9	2.00	6.78	
Total Xylenes*	<0.150	0.150	05/03/2024	ND	5.56	92.7	6.00	6.88	
Total BTEX	<0.300	0.300	05/03/2024	ND					

Surrogate: 4-Bromofluorobenzene (PID) 91.1 % 71.5-134

Chloride, SM4500Cl-B		mg/kg		Analyzed By: HM					
Analyte	Result	Reporting Limit	Analyzed	Method Blank	BS	% Recovery	True Value QC	RPD	Qualifier
Chloride	1140	16.0	05/06/2024	ND	432	108	400	0.00	

TPH 8015M		mg/kg		Analyzed By: MS					
Analyte	Result	Reporting Limit	Analyzed	Method Blank	BS	% Recovery	True Value QC	RPD	Qualifier
GRO C6-C10*	<10.0	10.0	05/03/2024	ND	209	104	200	3.73	
DRO >C10-C28*	<10.0	10.0	05/03/2024	ND	202	101	200	6.89	
EXT DRO >C28-C36	<10.0	10.0	05/03/2024	ND					

Surrogate: 1-Chlorooctane 99.9 % 48.2-134

Surrogate: 1-Chlorooctadecane 88.6 % 49.1-148

Cardinal Laboratories

\*=Accredited Analyte

PLEASE NOTE: Liability and Damages. Cardinal's liability and client's exclusive remedy for any claim arising, whether based in contract or tort, shall be limited to the amount paid by client for analyses. All claims, including those for negligence and any other cause whatsoever shall be deemed waived unless made in writing and received by Cardinal within thirty (30) days after completion of the applicable service. In no event shall Cardinal be liable for incidental or consequential damages, including, without limitation, business interruptions, loss of use, or loss of profits incurred by client, its subsidiaries, affiliates or successors arising out of or related to the performance of the services hereunder by Cardinal, regardless of whether such claim is based upon any of the above stated reasons or otherwise. Results relate only to the samples identified above. This report shall not be reproduced except in full with written approval of Cardinal Laboratories.

Celey D. Keene, Lab Director/Quality Manager



PHONE (575) 393-2326 ° 101 E. MARLAND ° HOBBS, NM 88240

**Analytical Results For:**

ENSOLUM, LLC  
 BEAUX JENNINGS  
 705 W WADLEY AVE.  
 MIDLAND TX, 79705  
 Fax To:

Received: 05/01/2024  
 Reported: 05/07/2024  
 Project Name: BENELLI CTB  
 Project Number: 03B1417155  
 Project Location: OXY - EDDY CO., NM

Sampling Date: 05/01/2024  
 Sampling Type: Soil  
 Sampling Condition: Cool & Intact  
 Sample Received By: Shalyn Rodriguez

**Sample ID: FS - 16 2' (H242336-16)**

BTEx 8021B		mg/kg		Analyzed By: JH						
Analyte	Result	Reporting Limit	Analyzed	Method Blank	BS	% Recovery	True Value QC	RPD	Qualifier	
Benzene*	<0.050	0.050	05/03/2024	ND	1.95	97.3	2.00	6.25		
Toluene*	<0.050	0.050	05/03/2024	ND	1.92	96.1	2.00	6.86		
Ethylbenzene*	<0.050	0.050	05/03/2024	ND	1.90	94.9	2.00	6.78		
Total Xylenes*	<0.150	0.150	05/03/2024	ND	5.56	92.7	6.00	6.88		
Total BTEX	<0.300	0.300	05/03/2024	ND						

Surrogate: 4-Bromofluorobenzene (PID) 92.0 % 71.5-134

Chloride, SM4500Cl-B		mg/kg		Analyzed By: HM						
Analyte	Result	Reporting Limit	Analyzed	Method Blank	BS	% Recovery	True Value QC	RPD	Qualifier	
Chloride	448	16.0	05/06/2024	ND	432	108	400	0.00		

TPH 8015M		mg/kg		Analyzed By: MS					
Analyte	Result	Reporting Limit	Analyzed	Method Blank	BS	% Recovery	True Value QC	RPD	Qualifier
GRO C6-C10*	<10.0	10.0	05/03/2024	ND	209	104	200	3.73	
DRO >C10-C28*	<10.0	10.0	05/03/2024	ND	202	101	200	6.89	
EXT DRO >C28-C36	<10.0	10.0	05/03/2024	ND					

Surrogate: 1-Chlorooctane 98.0 % 48.2-134

Surrogate: 1-Chlorooctadecane 86.2 % 49.1-148

Cardinal Laboratories

\*=Accredited Analyte

PLEASE NOTE: Liability and Damages. Cardinal's liability and client's exclusive remedy for any claim arising, whether based in contract or tort, shall be limited to the amount paid by client for analyses. All claims, including those for negligence and any other cause whatsoever shall be deemed waived unless made in writing and received by Cardinal within thirty (30) days after completion of the applicable service. In no event shall Cardinal be liable for incidental or consequential damages, including, without limitation, business interruptions, loss of use, or loss of profits incurred by client, its subsidiaries, affiliates or successors arising out of or related to the performance of the services hereunder by Cardinal, regardless of whether such claim is based upon any of the above stated reasons or otherwise. Results relate only to the samples identified above. This report shall not be reproduced except in full with written approval of Cardinal Laboratories.

Celey D. Keene, Lab Director/Quality Manager



PHONE (575) 393-2326 ° 101 E. MARLAND ° HOBBS, NM 88240

**Analytical Results For:**

ENSOLUM, LLC  
 BEAUX JENNINGS  
 705 W WADLEY AVE.  
 MIDLAND TX, 79705  
 Fax To:

Received: 05/01/2024  
 Reported: 05/07/2024  
 Project Name: BENELLI CTB  
 Project Number: 03B1417155  
 Project Location: OXY - EDDY CO., NM

Sampling Date: 05/01/2024  
 Sampling Type: Soil  
 Sampling Condition: Cool & Intact  
 Sample Received By: Shalyn Rodriguez

**Sample ID: FS - 17 2' (H242336-17)**

BTEx 8021B		mg/kg		Analyzed By: JH					
Analyte	Result	Reporting Limit	Analyzed	Method Blank	BS	% Recovery	True Value QC	RPD	Qualifier
Benzene*	<0.050	0.050	05/03/2024	ND	1.95	97.3	2.00	6.25	
Toluene*	<0.050	0.050	05/03/2024	ND	1.92	96.1	2.00	6.86	
Ethylbenzene*	<0.050	0.050	05/03/2024	ND	1.90	94.9	2.00	6.78	
Total Xylenes*	<0.150	0.150	05/03/2024	ND	5.56	92.7	6.00	6.88	
Total BTEX	<0.300	0.300	05/03/2024	ND					

Surrogate: 4-Bromofluorobenzene (PID) 90.2 % 71.5-134

Chloride, SM4500Cl-B		mg/kg		Analyzed By: HM					
Analyte	Result	Reporting Limit	Analyzed	Method Blank	BS	% Recovery	True Value QC	RPD	Qualifier
Chloride	192	16.0	05/06/2024	ND	432	108	400	0.00	

TPH 8015M		mg/kg		Analyzed By: MS					
Analyte	Result	Reporting Limit	Analyzed	Method Blank	BS	% Recovery	True Value QC	RPD	Qualifier
GRO C6-C10*	<10.0	10.0	05/03/2024	ND	209	104	200	3.73	
DRO >C10-C28*	<10.0	10.0	05/03/2024	ND	202	101	200	6.89	
EXT DRO >C28-C36	<10.0	10.0	05/03/2024	ND					

Surrogate: 1-Chlorooctane 86.2 % 48.2-134

Surrogate: 1-Chlorooctadecane 72.9 % 49.1-148

Cardinal Laboratories

\*=Accredited Analyte

PLEASE NOTE: Liability and Damages. Cardinal's liability and client's exclusive remedy for any claim arising, whether based in contract or tort, shall be limited to the amount paid by client for analyses. All claims, including those for negligence and any other cause whatsoever shall be deemed waived unless made in writing and received by Cardinal within thirty (30) days after completion of the applicable service. In no event shall Cardinal be liable for incidental or consequential damages, including, without limitation, business interruptions, loss of use, or loss of profits incurred by client, its subsidiaries, affiliates or successors arising out of or related to the performance of the services hereunder by Cardinal, regardless of whether such claim is based upon any of the above stated reasons or otherwise. Results relate only to the samples identified above. This report shall not be reproduced except in full with written approval of Cardinal Laboratories.

Celey D. Keene, Lab Director/Quality Manager



PHONE (575) 393-2326 ° 101 E. MARLAND ° HOBBS, NM 88240

**Analytical Results For:**

ENSOLUM, LLC  
 BEAUX JENNINGS  
 705 W WADLEY AVE.  
 MIDLAND TX, 79705  
 Fax To:

Received: 05/01/2024  
 Reported: 05/07/2024  
 Project Name: BENELLI CTB  
 Project Number: 03B1417155  
 Project Location: OXY - EDDY CO., NM

Sampling Date: 05/01/2024  
 Sampling Type: Soil  
 Sampling Condition: Cool & Intact  
 Sample Received By: Shalyn Rodriguez

**Sample ID: SW - 01 0-2' (H242336-18)**

BTEX 8021B		mg/kg		Analyzed By: JH					
Analyte	Result	Reporting Limit	Analyzed	Method Blank	BS	% Recovery	True Value QC	RPD	Qualifier
Benzene*	<0.050	0.050	05/04/2024	ND	1.95	97.3	2.00	6.25	
Toluene*	<0.050	0.050	05/04/2024	ND	1.92	96.1	2.00	6.86	
Ethylbenzene*	<0.050	0.050	05/04/2024	ND	1.90	94.9	2.00	6.78	
Total Xylenes*	<0.150	0.150	05/04/2024	ND	5.56	92.7	6.00	6.88	
Total BTEX	<0.300	0.300	05/04/2024	ND					

Surrogate: 4-Bromofluorobenzene (PID) 90.7 % 71.5-134

Chloride, SM4500Cl-B		mg/kg		Analyzed By: HM					
Analyte	Result	Reporting Limit	Analyzed	Method Blank	BS	% Recovery	True Value QC	RPD	Qualifier
Chloride	272	16.0	05/06/2024	ND	432	108	400	0.00	

TPH 8015M		mg/kg		Analyzed By: MS					
Analyte	Result	Reporting Limit	Analyzed	Method Blank	BS	% Recovery	True Value QC	RPD	Qualifier
GRO C6-C10*	<10.0	10.0	05/03/2024	ND	209	104	200	3.73	
DRO >C10-C28*	<10.0	10.0	05/03/2024	ND	202	101	200	6.89	
EXT DRO >C28-C36	<10.0	10.0	05/03/2024	ND					

Surrogate: 1-Chlorooctane 79.9 % 48.2-134

Surrogate: 1-Chlorooctadecane 70.5 % 49.1-148

Cardinal Laboratories

\*=Accredited Analyte

PLEASE NOTE: Liability and Damages. Cardinal's liability and client's exclusive remedy for any claim arising, whether based in contract or tort, shall be limited to the amount paid by client for analyses. All claims, including those for negligence and any other cause whatsoever shall be deemed waived unless made in writing and received by Cardinal within thirty (30) days after completion of the applicable service. In no event shall Cardinal be liable for incidental or consequential damages, including, without limitation, business interruptions, loss of use, or loss of profits incurred by client, its subsidiaries, affiliates or successors arising out of or related to the performance of the services hereunder by Cardinal, regardless of whether such claim is based upon any of the above stated reasons or otherwise. Results relate only to the samples identified above. This report shall not be reproduced except in full with written approval of Cardinal Laboratories.

Celey D. Keene, Lab Director/Quality Manager





PHONE (575) 393-2326 ° 101 E. MARLAND ° HOBBS, NM 88240

**Analytical Results For:**

ENSOLUM, LLC  
 BEAUX JENNINGS  
 705 W WADLEY AVE.  
 MIDLAND TX, 79705  
 Fax To:

Received: 05/01/2024  
 Reported: 05/07/2024  
 Project Name: BENELLI CTB  
 Project Number: 03B1417155  
 Project Location: OXY - EDDY CO., NM

Sampling Date: 05/01/2024  
 Sampling Type: Soil  
 Sampling Condition: Cool & Intact  
 Sample Received By: Shalyn Rodriguez

**Sample ID: SW - 02 0-2' (H242336-19)**

BTEx 8021B		mg/kg		Analyzed By: JH						
Analyte	Result	Reporting Limit	Analyzed	Method Blank	BS	% Recovery	True Value QC	RPD	Qualifier	
Benzene*	<0.050	0.050	05/04/2024	ND	1.95	97.3	2.00	6.25		
Toluene*	<0.050	0.050	05/04/2024	ND	1.92	96.1	2.00	6.86		
Ethylbenzene*	<0.050	0.050	05/04/2024	ND	1.90	94.9	2.00	6.78		
Total Xylenes*	<0.150	0.150	05/04/2024	ND	5.56	92.7	6.00	6.88		
Total BTEX	<0.300	0.300	05/04/2024	ND						

Surrogate: 4-Bromofluorobenzene (PID) 91.6 % 71.5-134

Chloride, SM4500Cl-B		mg/kg		Analyzed By: HM						
Analyte	Result	Reporting Limit	Analyzed	Method Blank	BS	% Recovery	True Value QC	RPD	Qualifier	
Chloride	1150	16.0	05/06/2024	ND	432	108	400	0.00		

TPH 8015M		mg/kg		Analyzed By: MS					
Analyte	Result	Reporting Limit	Analyzed	Method Blank	BS	% Recovery	True Value QC	RPD	Qualifier
GRO C6-C10*	<10.0	10.0	05/03/2024	ND	209	104	200	3.73	
DRO >C10-C28*	<10.0	10.0	05/03/2024	ND	202	101	200	6.89	
EXT DRO >C28-C36	<10.0	10.0	05/03/2024	ND					

Surrogate: 1-Chlorooctane 101 % 48.2-134

Surrogate: 1-Chlorooctadecane 88.7 % 49.1-148

Cardinal Laboratories

\*=Accredited Analyte

PLEASE NOTE: Liability and Damages. Cardinal's liability and client's exclusive remedy for any claim arising, whether based in contract or tort, shall be limited to the amount paid by client for analyses. All claims, including those for negligence and any other cause whatsoever shall be deemed waived unless made in writing and received by Cardinal within thirty (30) days after completion of the applicable service. In no event shall Cardinal be liable for incidental or consequential damages, including, without limitation, business interruptions, loss of use, or loss of profits incurred by client, its subsidiaries, affiliates or successors arising out of or related to the performance of the services hereunder by Cardinal, regardless of whether such claim is based upon any of the above stated reasons or otherwise. Results relate only to the samples identified above. This report shall not be reproduced except in full with written approval of Cardinal Laboratories.

Celey D. Keene, Lab Director/Quality Manager



PHONE (575) 393-2326 ° 101 E. MARLAND ° HOBBS, NM 88240

**Analytical Results For:**

ENSOLUM, LLC  
 BEAUX JENNINGS  
 705 W WADLEY AVE.  
 MIDLAND TX, 79705  
 Fax To:

Received: 05/01/2024  
 Reported: 05/07/2024  
 Project Name: BENELLI CTB  
 Project Number: 03B1417155  
 Project Location: OXY - EDDY CO., NM

Sampling Date: 05/01/2024  
 Sampling Type: Soil  
 Sampling Condition: Cool & Intact  
 Sample Received By: Shalyn Rodriguez

**Sample ID: SW - 03 0-2' (H242336-20)**

BTEx 8021B		mg/kg		Analyzed By: JH						
Analyte	Result	Reporting Limit	Analyzed	Method Blank	BS	% Recovery	True Value QC	RPD	Qualifier	
Benzene*	<0.050	0.050	05/04/2024	ND	1.95	97.3	2.00	6.25		
Toluene*	<0.050	0.050	05/04/2024	ND	1.92	96.1	2.00	6.86		
Ethylbenzene*	<0.050	0.050	05/04/2024	ND	1.90	94.9	2.00	6.78		
Total Xylenes*	<0.150	0.150	05/04/2024	ND	5.56	92.7	6.00	6.88		
Total BTEX	<0.300	0.300	05/04/2024	ND						

Surrogate: 4-Bromofluorobenzene (PID) 91.9 % 71.5-134

Chloride, SM4500Cl-B		mg/kg		Analyzed By: HM						
Analyte	Result	Reporting Limit	Analyzed	Method Blank	BS	% Recovery	True Value QC	RPD	Qualifier	
Chloride	144	16.0	05/06/2024	ND	432	108	400	0.00		

TPH 8015M		mg/kg		Analyzed By: MS					
Analyte	Result	Reporting Limit	Analyzed	Method Blank	BS	% Recovery	True Value QC	RPD	Qualifier
GRO C6-C10*	<10.0	10.0	05/03/2024	ND	201	101	200	2.11	
DRO >C10-C28*	<10.0	10.0	05/03/2024	ND	195	97.6	200	0.916	
EXT DRO >C28-C36	<10.0	10.0	05/03/2024	ND					

Surrogate: 1-Chlorooctane 70.9 % 48.2-134

Surrogate: 1-Chlorooctadecane 83.1 % 49.1-148

Cardinal Laboratories

\*=Accredited Analyte

PLEASE NOTE: Liability and Damages. Cardinal's liability and client's exclusive remedy for any claim arising, whether based in contract or tort, shall be limited to the amount paid by client for analyses. All claims, including those for negligence and any other cause whatsoever shall be deemed waived unless made in writing and received by Cardinal within thirty (30) days after completion of the applicable service. In no event shall Cardinal be liable for incidental or consequential damages, including, without limitation, business interruptions, loss of use, or loss of profits incurred by client, its subsidiaries, affiliates or successors arising out of or related to the performance of the services hereunder by Cardinal, regardless of whether such claim is based upon any of the above stated reasons or otherwise. Results relate only to the samples identified above. This report shall not be reproduced except in full with written approval of Cardinal Laboratories.

Celey D. Keene, Lab Director/Quality Manager



PHONE (575) 393-2326 ° 101 E. MARLAND ° HOBBS, NM 88240

**Analytical Results For:**

ENSOLUM, LLC  
 BEAUX JENNINGS  
 705 W WADLEY AVE.  
 MIDLAND TX, 79705  
 Fax To:

Received: 05/01/2024  
 Reported: 05/07/2024  
 Project Name: BENELLI CTB  
 Project Number: 03B1417155  
 Project Location: OXY - EDDY CO., NM

Sampling Date: 05/01/2024  
 Sampling Type: Soil  
 Sampling Condition: Cool & Intact  
 Sample Received By: Shalyn Rodriguez

**Sample ID: SW - 04 0-2' (H242336-21)**

BTEX 8021B		mg/kg		Analyzed By: JH					
Analyte	Result	Reporting Limit	Analyzed	Method Blank	BS	% Recovery	True Value QC	RPD	Qualifier
Benzene*	<0.050	0.050	05/04/2024	ND	1.95	97.3	2.00	6.25	
Toluene*	<0.050	0.050	05/04/2024	ND	1.92	96.1	2.00	6.86	
Ethylbenzene*	<0.050	0.050	05/04/2024	ND	1.90	94.9	2.00	6.78	
Total Xylenes*	<0.150	0.150	05/04/2024	ND	5.56	92.7	6.00	6.88	
Total BTEX	<0.300	0.300	05/04/2024	ND					

Surrogate: 4-Bromofluorobenzene (PID) 91.9 % 71.5-134

Chloride, SM4500Cl-B		mg/kg		Analyzed By: HM					
Analyte	Result	Reporting Limit	Analyzed	Method Blank	BS	% Recovery	True Value QC	RPD	Qualifier
Chloride	112	16.0	05/06/2024	ND	432	108	400	0.00	

TPH 8015M		mg/kg		Analyzed By: MS					
Analyte	Result	Reporting Limit	Analyzed	Method Blank	BS	% Recovery	True Value QC	RPD	Qualifier
GRO C6-C10*	<10.0	10.0	05/03/2024	ND	201	101	200	2.11	
DRO >C10-C28*	<10.0	10.0	05/03/2024	ND	195	97.6	200	0.916	
EXT DRO >C28-C36	<10.0	10.0	05/03/2024	ND					

Surrogate: 1-Chlorooctane 89.3 % 48.2-134

Surrogate: 1-Chlorooctadecane 105 % 49.1-148

Cardinal Laboratories

\*=Accredited Analyte

PLEASE NOTE: Liability and Damages. Cardinal's liability and client's exclusive remedy for any claim arising, whether based in contract or tort, shall be limited to the amount paid by client for analyses. All claims, including those for negligence and any other cause whatsoever shall be deemed waived unless made in writing and received by Cardinal within thirty (30) days after completion of the applicable service. In no event shall Cardinal be liable for incidental or consequential damages, including, without limitation, business interruptions, loss of use, or loss of profits incurred by client, its subsidiaries, affiliates or successors arising out of or related to the performance of the services hereunder by Cardinal, regardless of whether such claim is based upon any of the above stated reasons or otherwise. Results relate only to the samples identified above. This report shall not be reproduced except in full with written approval of Cardinal Laboratories.

Celey D. Keene, Lab Director/Quality Manager

PHONE (575) 393-2326 ° 101 E. MARLAND ° HOBBS, NM 88240

---

### Notes and Definitions

ND	Analyte NOT DETECTED at or above the reporting limit
RPD	Relative Percent Difference
**	Samples not received at proper temperature of 6°C or below.
***	Insufficient time to reach temperature.
-	Chloride by SM4500Cl-B does not require samples be received at or below 6°C Samples reported on an as received basis (wet) unless otherwise noted on report

---

Cardinal Laboratories

\*=Accredited Analyte

PLEASE NOTE: Liability and Damages. Cardinal's liability and client's exclusive remedy for any claim arising, whether based in contract or tort, shall be limited to the amount paid by client for analyses. All claims, including those for negligence and any other cause whatsoever shall be deemed waived unless made in writing and received by Cardinal within thirty (30) days after completion of the applicable service. In no event shall Cardinal be liable for incidental or consequential damages, including, without limitation, business interruptions, loss of use, or loss of profits incurred by client, its subsidiaries, affiliates or successors arising out of or related to the performance of the services hereunder by Cardinal, regardless of whether such claim is based upon any of the above stated reasons or otherwise. Results relate only to the samples identified above. This report shall not be reproduced except in full with written approval of Cardinal Laboratories.

A handwritten signature in black ink, appearing to read "Celey D. Keene".

---

Celey D. Keene, Lab Director/Quality Manager





## CHAIN-OF-CUSTODY AND ANALYSIS REQUEST

Page 24 of 26





## CHAIN-OF-CUSTODY AND ANALYSIS REQUEST

Page 25 of 26





**101 East Marland, Hobbs, NM 88240**  
**(575) 393-2326 FAX (575) 393-2476**

# CHAIN-OF-CUSTODY AND ANALYSIS REQUEST

[illegible]



PHONE (575) 393-2326 ° 101 E. MARLAND ° HOBBS, NM 88240

---

August 26, 2024

KELLY LOWERY

ENSOLUM, LLC

705 W WADLEY AVE.

MIDLAND, TX 79705

RE: BENELLI CTB

Enclosed are the results of analyses for samples received by the laboratory on 08/21/24 13:00.

Cardinal Laboratories is accredited through Texas NELAP under certificate number TX-C24-00112. Accreditation applies to drinking water, non-potable water and solid and chemical materials. All accredited analytes are denoted by an asterisk (\*). For a complete list of accredited analytes and matrices visit the TCEQ website at [www.tceq.texas.gov/field/qa/lab\\_accred\\_certif.html](http://www.tceq.texas.gov/field/qa/lab_accred_certif.html).

Cardinal Laboratories is accredited through the State of Colorado Department of Public Health and Environment for:

Method EPA 552.2	Haloacetic Acids (HAA-5)
Method EPA 524.2	Total Trihalomethanes (TTHM)
Method EPA 524.4	Regulated VOCs (V1, V2, V3)

Accreditation applies to public drinking water matrices.

This report meets NELAP requirements and is made up of a cover page, analytical results, and a copy of the original chain-of-custody. If you have any questions concerning this report, please feel free to contact me.

Sincerely,

A handwritten signature in black ink that reads "Mike Snyder". The signature is fluid and cursive, with the first name "Mike" and last name "Snyder" clearly distinguishable.

Mike Snyder For Celey D. Keene

Lab Director/Quality Manager



PHONE (575) 393-2326 ° 101 E. MARLAND ° HOBBS, NM 88240

**Analytical Results For:**

ENSOLUM, LLC  
 KELLY LOWERY  
 705 W WADLEY AVE.  
 MIDLAND TX, 79705  
 Fax To:

Received: 08/21/2024  
 Reported: 08/26/2024  
 Project Name: BENELLI CTB  
 Project Number: 03B1417155  
 Project Location: OXY - EDDY CO., NM

Sampling Date: 08/20/2024  
 Sampling Type: Soil  
 Sampling Condition: Cool & Intact  
 Sample Received By: Tamara Oldaker

**Sample ID: FS 15 4' (H245090-01)**

Chloride, SM4500CI-B			mg/kg		Analyzed By: HM				
Analyte	Result	Reporting Limit	Analyzed	Method Blank	BS	% Recovery	True Value QC	RPD	Qualifier
Chloride	32.0	16.0	08/22/2024	ND	432	108	400	3.64	

**Sample ID: FS 12 3' (H245090-02)**

Chloride, SM4500CI-B			mg/kg		Analyzed By: CT				
Analyte	Result	Reporting Limit	Analyzed	Method Blank	BS	% Recovery	True Value QC	RPD	Qualifier
Chloride	272	16.0	08/23/2024	ND	416	104	400	7.41	

**Sample ID: SW - 15 0-4' (H245090-03)**

BTEX 8021B			mg/kg		Analyzed By: JH				
Analyte	Result	Reporting Limit	Analyzed	Method Blank	BS	% Recovery	True Value QC	RPD	Qualifier
Benzene*	<0.050	0.050	08/22/2024	ND	2.05	103	2.00	0.670	
Toluene*	<0.050	0.050	08/22/2024	ND	2.11	105	2.00	2.28	
Ethylbenzene*	<0.050	0.050	08/22/2024	ND	2.13	107	2.00	3.14	
Total Xylenes*	<0.150	0.150	08/22/2024	ND	6.62	110	6.00	2.84	
Total BTEX	<0.300	0.300	08/22/2024	ND					

Surrogate: 4-Bromofluorobenzene (PID) 114 % 71.5-134

Chloride, SM4500CI-B			mg/kg		Analyzed By: CT				
Analyte	Result	Reporting Limit	Analyzed	Method Blank	BS	% Recovery	True Value QC	RPD	Qualifier
Chloride	32.0	16.0	08/23/2024	ND	416	104	400	7.41	

TPH 8015M			mg/kg		Analyzed By: MS				
Analyte	Result	Reporting Limit	Analyzed	Method Blank	BS	% Recovery	True Value QC	RPD	Qualifier

Cardinal Laboratories

\*=Accredited Analyte

PLEASE NOTE: Liability and Damages. Cardinal's liability and client's exclusive remedy for any claim arising, whether based in contract or tort, shall be limited to the amount paid by client for analyses. All claims, including those for negligence and any other cause whatsoever shall be deemed waived unless made in writing and received by Cardinal within thirty (30) days after completion of the applicable service. In no event shall Cardinal be liable for incidental or consequential damages, including, without limitation, business interruptions, loss of use, or loss of profits incurred by client, its subsidiaries, affiliates or successors arising out of or related to the performance of the services hereunder by Cardinal, regardless of whether such claim is based upon any of the above stated reasons or otherwise. Results relate only to the samples identified above. This report shall not be reproduced except in full with written approval of Cardinal Laboratories.

Mike Snyder For Celey D. Keene, Lab Director/Quality Manager





PHONE (575) 393-2326 ° 101 E. MARLAND ° HOBBS, NM 88240

**Analytical Results For:**

ENSOLUM, LLC  
 KELLY LOWERY  
 705 W WADLEY AVE.  
 MIDLAND TX, 79705  
 Fax To:

Received: 08/21/2024  
 Reported: 08/26/2024  
 Project Name: BENELLI CTB  
 Project Number: 03B1417155  
 Project Location: OXY - EDDY CO., NM

Sampling Date: 08/20/2024  
 Sampling Type: Soil  
 Sampling Condition: Cool & Intact  
 Sample Received By: Tamara Oldaker

**Sample ID: SW - 15 0-4' (H245090-03)**

TPH 8015M		mg/kg		Analyzed By: MS					
Analyte	Result	Reporting Limit	Analyzed	Method Blank	BS	% Recovery	True Value QC	RPD	Qualifier
GRO C6-C10*	<10.0	10.0	08/22/2024	ND	219	109	200	3.39	
DRO >C10-C28*	<10.0	10.0	08/22/2024	ND	213	107	200	4.22	
EXT DRO >C28-C36	<10.0	10.0	08/22/2024	ND					
Surrogate: 1-Chlorooctane	71.2 %	48.2-134							
Surrogate: 1-Chlorooctadecane	84.6 %	49.1-148							

Cardinal Laboratories

\*=Accredited Analyte

PLEASE NOTE: Liability and Damages. Cardinal's liability and client's exclusive remedy for any claim arising, whether based in contract or tort, shall be limited to the amount paid by client for analyses. All claims, including those for negligence and any other cause whatsoever shall be deemed waived unless made in writing and received by Cardinal within thirty (30) days after completion of the applicable service. In no event shall Cardinal be liable for incidental or consequential damages, including, without limitation, business interruptions, loss of use, or loss of profits incurred by client, its subsidiaries, affiliates or successors arising out of or related to the performance of the services hereunder by Cardinal, regardless of whether such claim is based upon any of the above stated reasons or otherwise. Results relate only to the samples identified above. This report shall not be reproduced except in full with written approval of Cardinal Laboratories.

Mike Snyder For Celey D. Keene, Lab Director/Quality Manager

PHONE (575) 393-2326 ° 101 E. MARLAND ° HOBBS, NM 88240

---

### Notes and Definitions

ND	Analyte NOT DETECTED at or above the reporting limit
RPD	Relative Percent Difference
**	Samples not received at proper temperature of 6°C or below.
***	Insufficient time to reach temperature.
-	Chloride by SM4500Cl-B does not require samples be received at or below 6°C Samples reported on an as received basis (wet) unless otherwise noted on report

---

Cardinal Laboratories

\*=Accredited Analyte

PLEASE NOTE: Liability and Damages. Cardinal's liability and client's exclusive remedy for any claim arising, whether based in contract or tort, shall be limited to the amount paid by client for analyses. All claims, including those for negligence and any other cause whatsoever shall be deemed waived unless made in writing and received by Cardinal within thirty (30) days after completion of the applicable service. In no event shall Cardinal be liable for incidental or consequential damages, including, without limitation, business interruptions, loss of use, or loss of profits incurred by client, its subsidiaries, affiliates or successors arising out of or related to the performance of the services hereunder by Cardinal, regardless of whether such claim is based upon any of the above stated reasons or otherwise. Results relate only to the samples identified above. This report shall not be reproduced except in full with written approval of Cardinal Laboratories.

A handwritten signature in black ink, appearing to read "Mike Snyder", is written over a horizontal line.

Mike Snyder For Celey D. Keene, Lab Director/Quality Manager



101 East Marland, Hobbs, NM 88240  
(575) 393-2326 FAX (575) 393-2476

## CHAIN-OF-CUSTODY AND ANALYSIS REQUEST

[illegible]



PHONE (575) 393-2326 ° 101 E. MARLAND ° HOBBS, NM 88240

---

September 12, 2024

KELLY LOWERY  
ENSOLUM, LLC  
705 W WADLEY AVE.  
MIDLAND, TX 79705

RE: BENELLI CTB

Enclosed are the results of analyses for samples received by the laboratory on 09/09/24 15:16.

Cardinal Laboratories is accredited through Texas NELAP under certificate number TX-C24-00112. Accreditation applies to drinking water, non-potable water and solid and chemical materials. All accredited analytes are denoted by an asterisk (\*). For a complete list of accredited analytes and matrices visit the TCEQ website at [www.tceq.texas.gov/field/qa/lab\\_accred\\_certif.html](http://www.tceq.texas.gov/field/qa/lab_accred_certif.html).

Cardinal Laboratories is accredited through the State of Colorado Department of Public Health and Environment for:

Method EPA 552.2	Haloacetic Acids (HAA-5)
Method EPA 524.2	Total Trihalomethanes (TTHM)
Method EPA 524.4	Regulated VOCs (V1, V2, V3)

Accreditation applies to public drinking water matrices.

This report meets NELAP requirements and is made up of a cover page, analytical results, and a copy of the original chain-of-custody. If you have any questions concerning this report, please feel free to contact me.

Sincerely,

A handwritten signature in black ink that reads "Celey D. Keene".

Celey D. Keene  
Lab Director/Quality Manager



PHONE (575) 393-2326 ° 101 E. MARLAND ° HOBBS, NM 88240

**Analytical Results For:**

ENSOLUM, LLC  
 KELLY LOWERY  
 705 W WADLEY AVE.  
 MIDLAND TX, 79705  
 Fax To:

Received: 09/09/2024  
 Reported: 09/12/2024  
 Project Name: BENELLI CTB  
 Project Number: 03B1417155  
 Project Location: OXY - EDDY CO., NM

Sampling Date: 09/09/2024  
 Sampling Type: Soil  
 Sampling Condition: Cool & Intact  
 Sample Received By: Alyssa Parras

**Sample ID: FS - 03 2.5 (H245438-01)**

Chloride, SM4500CI-B		mg/kg	Analyzed By: CT						
Analyte	Result	Reporting Limit	Analyzed	Method Blank	BS	% Recovery	True Value QC	RPD	Qualifier
Chloride	112	16.0	09/10/2024	ND	400	100	400	0.00	

**Sample ID: FS - 04 2.5 (H245438-02)**

Chloride, SM4500CI-B		mg/kg	Analyzed By: CT						
Analyte	Result	Reporting Limit	Analyzed	Method Blank	BS	% Recovery	True Value QC	RPD	Qualifier
Chloride	32.0	16.0	09/10/2024	ND	400	100	400	0.00	

**Sample ID: FS - 05 3 (H245438-03)**

Chloride, SM4500CI-B		mg/kg	Analyzed By: CT						
Analyte	Result	Reporting Limit	Analyzed	Method Blank	BS	% Recovery	True Value QC	RPD	Qualifier
Chloride	208	16.0	09/10/2024	ND	400	100	400	0.00	

**Sample ID: FS - 06 6 (H245438-04)**

Chloride, SM4500CI-B		mg/kg	Analyzed By: CT						
Analyte	Result	Reporting Limit	Analyzed	Method Blank	BS	% Recovery	True Value QC	RPD	Qualifier
Chloride	160	16.0	09/10/2024	ND	400	100	400	0.00	

Cardinal Laboratories

\*=Accredited Analyte

PLEASE NOTE: Liability and Damages. Cardinal's liability and client's exclusive remedy for any claim arising, whether based in contract or tort, shall be limited to the amount paid by client for analyses. All claims, including those for negligence and any other cause whatsoever shall be deemed waived unless made in writing and received by Cardinal within thirty (30) days after completion of the applicable service. In no event shall Cardinal be liable for incidental or consequential damages, including, without limitation, business interruptions, loss of use, or loss of profits incurred by client, its subsidiaries, affiliates or successors arising out of or related to the performance of the services hereunder by Cardinal, regardless of whether such claim is based upon any of the above stated reasons or otherwise. Results relate only to the samples identified above. This report shall not be reproduced except in full with written approval of Cardinal Laboratories.

Celey D. Keene, Lab Director/Quality Manager





PHONE (575) 393-2326 ° 101 E. MARLAND ° HOBBS, NM 88240

**Analytical Results For:**

ENSOLUM, LLC  
 KELLY LOWERY  
 705 W WADLEY AVE.  
 MIDLAND TX, 79705  
 Fax To:

Received: 09/09/2024  
 Reported: 09/12/2024  
 Project Name: BENELLI CTB  
 Project Number: 03B1417155  
 Project Location: OXY - EDDY CO., NM

Sampling Date: 09/09/2024  
 Sampling Type: Soil  
 Sampling Condition: Cool & Intact  
 Sample Received By: Alyssa Parras

**Sample ID: FS - 07 7 (H245438-05)**

Chloride, SM4500Cl-B		mg/kg		Analyzed By: CT					
Analyte	Result	Reporting Limit	Analyzed	Method Blank	BS	% Recovery	True Value QC	RPD	Qualifier
Chloride	32.0	16.0	09/10/2024	ND	400	100	400	0.00	

**Sample ID: FS - 08 7 (H245438-06)**

Chloride, SM4500Cl-B		mg/kg		Analyzed By: CT					
Analyte	Result	Reporting Limit	Analyzed	Method Blank	BS	% Recovery	True Value QC	RPD	Qualifier
Chloride	16.0	16.0	09/10/2024	ND	400	100	400	0.00	

**Sample ID: FS - 10 4 (H245438-07)**

Chloride, SM4500Cl-B		mg/kg		Analyzed By: CT					
Analyte	Result	Reporting Limit	Analyzed	Method Blank	BS	% Recovery	True Value QC	RPD	Qualifier
Chloride	48.0	16.0	09/10/2024	ND	400	100	400	0.00	

**Sample ID: FS - 11 4 (H245438-08)**

Chloride, SM4500Cl-B		mg/kg		Analyzed By: HM					
Analyte	Result	Reporting Limit	Analyzed	Method Blank	BS	% Recovery	True Value QC	RPD	Qualifier
Chloride	96.0	16.0	09/10/2024	ND	416	104	400	10.9	

Cardinal Laboratories

\*=Accredited Analyte

PLEASE NOTE: Liability and Damages. Cardinal's liability and client's exclusive remedy for any claim arising, whether based in contract or tort, shall be limited to the amount paid by client for analyses. All claims, including those for negligence and any other cause whatsoever shall be deemed waived unless made in writing and received by Cardinal within thirty (30) days after completion of the applicable service. In no event shall Cardinal be liable for incidental or consequential damages, including, without limitation, business interruptions, loss of use, or loss of profits incurred by client, its subsidiaries, affiliates or successors arising out of or related to the performance of the services hereunder by Cardinal, regardless of whether such claim is based upon any of the above stated reasons or otherwise. Results relate only to the samples identified above. This report shall not be reproduced except in full with written approval of Cardinal Laboratories.

Celey D. Keene, Lab Director/Quality Manager



PHONE (575) 393-2326 ° 101 E. MARLAND ° HOBBS, NM 88240

**Analytical Results For:**

ENSOLUM, LLC  
 KELLY LOWERY  
 705 W WADLEY AVE.  
 MIDLAND TX, 79705  
 Fax To:

Received: 09/09/2024  
 Reported: 09/12/2024  
 Project Name: BENELLI CTB  
 Project Number: 03B1417155  
 Project Location: OXY - EDDY CO., NM

Sampling Date: 09/09/2024  
 Sampling Type: Soil  
 Sampling Condition: Cool & Intact  
 Sample Received By: Alyssa Parras

**Sample ID: SW - 01 2-2.5 (H245438-09)**

BTEx 8021B		mg/kg		Analyzed By: JH					
Analyte	Result	Reporting Limit	Analyzed	Method Blank	BS	% Recovery	True Value QC	RPD	Qualifier
Benzene*	<0.050	0.050	09/11/2024	ND	1.85	92.4	2.00	6.91	
Toluene*	<0.050	0.050	09/11/2024	ND	2.07	103	2.00	3.77	
Ethylbenzene*	<0.050	0.050	09/11/2024	ND	2.21	111	2.00	3.29	
Total Xylenes*	<0.150	0.150	09/11/2024	ND	6.80	113	6.00	2.44	
Total BTEX	<0.300	0.300	09/11/2024	ND					

Surrogate: 4-Bromofluorobenzene (PID) 134 % 71.5-134

Chloride, SM4500Cl-B		mg/kg		Analyzed By: HM					
Analyte	Result	Reporting Limit	Analyzed	Method Blank	BS	% Recovery	True Value QC	RPD	Qualifier
Chloride	16.0	16.0	09/10/2024	ND	416	104	400	10.9	

TPH 8015M		mg/kg		Analyzed By: MS					
Analyte	Result	Reporting Limit	Analyzed	Method Blank	BS	% Recovery	True Value QC	RPD	Qualifier
GRO C6-C10*	<10.0	10.0	09/10/2024	ND	211	106	200	2.29	
DRO >C10-C28*	<10.0	10.0	09/10/2024	ND	201	100	200	2.37	
EXT DRO >C28-C36	<10.0	10.0	09/10/2024	ND					

Surrogate: 1-Chlorooctane 81.9 % 48.2-134

Surrogate: 1-Chlorooctadecane 81.9 % 49.1-148

Cardinal Laboratories

\*=Accredited Analyte

PLEASE NOTE: Liability and Damages. Cardinal's liability and client's exclusive remedy for any claim arising, whether based in contract or tort, shall be limited to the amount paid by client for analyses. All claims, including those for negligence and any other cause whatsoever shall be deemed waived unless made in writing and received by Cardinal within thirty (30) days after completion of the applicable service. In no event shall Cardinal be liable for incidental or consequential damages, including, without limitation, business interruptions, loss of use, or loss of profits incurred by client, its subsidiaries, affiliates or successors arising out of or related to the performance of the services hereunder by Cardinal, regardless of whether such claim is based upon any of the above stated reasons or otherwise. Results relate only to the samples identified above. This report shall not be reproduced except in full with written approval of Cardinal Laboratories.

Celey D. Keene, Lab Director/Quality Manager



PHONE (575) 393-2326 ° 101 E. MARLAND ° HOBBS, NM 88240

**Analytical Results For:**

ENSOLUM, LLC  
KELLY LOWERY  
705 W WADLEY AVE.  
MIDLAND TX, 79705  
Fax To:

Received: 09/09/2024  
Reported: 09/12/2024  
Project Name: BENELLI CTB  
Project Number: 03B1417155  
Project Location: OXY - EDDY CO., NM

Sampling Date: 09/09/2024  
Sampling Type: Soil  
Sampling Condition: Cool & Intact  
Sample Received By: Alyssa Parras

**Sample ID: SW - 02 0-2 (H245438-10)**

Chloride, SM4500Cl-B		mg/kg		Analyzed By: HM						
Analyte	Result	Reporting Limit	Analyzed	Method Blank	BS	% Recovery	True Value QC	RPD	Qualifier	
Chloride	16.0	16.0	09/10/2024	ND	416	104	400	10.9		

Cardinal Laboratories

\*=Accredited Analyte

PLEASE NOTE: Liability and Damages. Cardinal's liability and client's exclusive remedy for any claim arising, whether based in contract or tort, shall be limited to the amount paid by client for analyses. All claims, including those for negligence and any other cause whatsoever shall be deemed waived unless made in writing and received by Cardinal within thirty (30) days after completion of the applicable service. In no event shall Cardinal be liable for incidental or consequential damages, including, without limitation, business interruptions, loss of use, or loss of profits incurred by client, its subsidiaries, affiliates or successors arising out of or related to the performance of the services hereunder by Cardinal, regardless of whether such claim is based upon any of the above stated reasons or otherwise. Results relate only to the samples identified above. This report shall not be reproduced except in full with written approval of Cardinal Laboratories.

A handwritten signature in black ink, appearing to read "Celey D. Keene".

Celey D. Keene, Lab Director/Quality Manager



PHONE (575) 393-2326 ° 101 E. MARLAND ° HOBBS, NM 88240

**Analytical Results For:**

ENSOLUM, LLC  
 KELLY LOWERY  
 705 W WADLEY AVE.  
 MIDLAND TX, 79705  
 Fax To:

Received: 09/09/2024  
 Reported: 09/12/2024  
 Project Name: BENELLI CTB  
 Project Number: 03B1417155  
 Project Location: OXY - EDDY CO., NM

Sampling Date: 09/09/2024  
 Sampling Type: Soil  
 Sampling Condition: Cool & Intact  
 Sample Received By: Alyssa Parras

**Sample ID: SW - 05 0-2.5 (H245438-11)**

BTEx 8021B		mg/kg		Analyzed By: JH					
Analyte	Result	Reporting Limit	Analyzed	Method Blank	BS	% Recovery	True Value QC	RPD	Qualifier
Benzene*	<0.050	0.050	09/10/2024	ND	1.72	85.8	2.00	5.43	
Toluene*	<0.050	0.050	09/10/2024	ND	1.64	82.2	2.00	7.31	
Ethylbenzene*	<0.050	0.050	09/10/2024	ND	1.65	82.5	2.00	7.95	
Total Xylenes*	<0.150	0.150	09/10/2024	ND	4.91	81.8	6.00	8.18	
Total BTEX	<0.300	0.300	09/10/2024	ND					

Surrogate: 4-Bromofluorobenzene (PID) 101 % 71.5-134

Chloride, SM4500Cl-B		mg/kg		Analyzed By: HM					
Analyte	Result	Reporting Limit	Analyzed	Method Blank	BS	% Recovery	True Value QC	RPD	Qualifier
Chloride	16.0	16.0	09/10/2024	ND	416	104	400	10.9	

TPH 8015M		mg/kg		Analyzed By: MS					
Analyte	Result	Reporting Limit	Analyzed	Method Blank	BS	% Recovery	True Value QC	RPD	Qualifier
GRO C6-C10*	<10.0	10.0	09/10/2024	ND	211	106	200	2.29	
DRO >C10-C28*	<10.0	10.0	09/10/2024	ND	201	100	200	2.37	
EXT DRO >C28-C36	<10.0	10.0	09/10/2024	ND					

Surrogate: 1-Chlorooctane 72.6 % 48.2-134

Surrogate: 1-Chlorooctadecane 73.5 % 49.1-148

Cardinal Laboratories

\*=Accredited Analyte

PLEASE NOTE: Liability and Damages. Cardinal's liability and client's exclusive remedy for any claim arising, whether based in contract or tort, shall be limited to the amount paid by client for analyses. All claims, including those for negligence and any other cause whatsoever shall be deemed waived unless made in writing and received by Cardinal within thirty (30) days after completion of the applicable service. In no event shall Cardinal be liable for incidental or consequential damages, including, without limitation, business interruptions, loss of use, or loss of profits incurred by client, its subsidiaries, affiliates or successors arising out of or related to the performance of the services hereunder by Cardinal, regardless of whether such claim is based upon any of the above stated reasons or otherwise. Results relate only to the samples identified above. This report shall not be reproduced except in full with written approval of Cardinal Laboratories.

Celey D. Keene, Lab Director/Quality Manager



PHONE (575) 393-2326 ° 101 E. MARLAND ° HOBBS, NM 88240

**Analytical Results For:**

ENSOLUM, LLC  
 KELLY LOWERY  
 705 W WADLEY AVE.  
 MIDLAND TX, 79705  
 Fax To:

Received: 09/09/2024  
 Reported: 09/12/2024  
 Project Name: BENELLI CTB  
 Project Number: 03B1417155  
 Project Location: OXY - EDDY CO., NM

Sampling Date: 09/09/2024  
 Sampling Type: Soil  
 Sampling Condition: Cool & Intact  
 Sample Received By: Alyssa Parras

**Sample ID: SW - 06 0-4 (H245438-12)**

BTEx 8021B		mg/kg		Analyzed By: JH						
Analyte	Result	Reporting Limit	Analyzed	Method Blank	BS	% Recovery	True Value QC	RPD	Qualifier	
Benzene*	<0.050	0.050	09/10/2024	ND	1.72	85.8	2.00	5.43		
Toluene*	<0.050	0.050	09/10/2024	ND	1.64	82.2	2.00	7.31		
Ethylbenzene*	<0.050	0.050	09/10/2024	ND	1.65	82.5	2.00	7.95		
Total Xylenes*	<0.150	0.150	09/10/2024	ND	4.91	81.8	6.00	8.18		
Total BTEX	<0.300	0.300	09/10/2024	ND						

Surrogate: 4-Bromofluorobenzene (PID) 99.8 % 71.5-134

Chloride, SM4500Cl-B		mg/kg		Analyzed By: HM						
Analyte	Result	Reporting Limit	Analyzed	Method Blank	BS	% Recovery	True Value QC	RPD	Qualifier	
Chloride	16.0	16.0	09/10/2024	ND	416	104	400	10.9		

TPH 8015M		mg/kg		Analyzed By: MS					
Analyte	Result	Reporting Limit	Analyzed	Method Blank	BS	% Recovery	True Value QC	RPD	Qualifier
GRO C6-C10*	<10.0	10.0	09/10/2024	ND	211	106	200	2.29	
DRO >C10-C28*	<10.0	10.0	09/10/2024	ND	201	100	200	2.37	
EXT DRO >C28-C36	<10.0	10.0	09/10/2024	ND					

Surrogate: 1-Chlorooctane 83.9 % 48.2-134

Surrogate: 1-Chlorooctadecane 85.3 % 49.1-148

Cardinal Laboratories

\*=Accredited Analyte

PLEASE NOTE: Liability and Damages. Cardinal's liability and client's exclusive remedy for any claim arising, whether based in contract or tort, shall be limited to the amount paid by client for analyses. All claims, including those for negligence and any other cause whatsoever shall be deemed waived unless made in writing and received by Cardinal within thirty (30) days after completion of the applicable service. In no event shall Cardinal be liable for incidental or consequential damages, including, without limitation, business interruptions, loss of use, or loss of profits incurred by client, its subsidiaries, affiliates or successors arising out of or related to the performance of the services hereunder by Cardinal, regardless of whether such claim is based upon any of the above stated reasons or otherwise. Results relate only to the samples identified above. This report shall not be reproduced except in full with written approval of Cardinal Laboratories.

Celey D. Keene, Lab Director/Quality Manager





PHONE (575) 393-2326 ° 101 E. MARLAND ° HOBBS, NM 88240

**Analytical Results For:**

ENSOLUM, LLC  
 KELLY LOWERY  
 705 W WADLEY AVE.  
 MIDLAND TX, 79705  
 Fax To:

Received: 09/09/2024  
 Reported: 09/12/2024  
 Project Name: BENELLI CTB  
 Project Number: 03B1417155  
 Project Location: OXY - EDDY CO., NM

Sampling Date: 09/09/2024  
 Sampling Type: Soil  
 Sampling Condition: Cool & Intact  
 Sample Received By: Alyssa Parras

**Sample ID: SW - 02 2-7 (H245438-13)**

BTEx 8021B		mg/kg		Analyzed By: JH						
Analyte	Result	Reporting Limit	Analyzed	Method Blank	BS	% Recovery	True Value QC	RPD	Qualifier	
Benzene*	<0.050	0.050	09/10/2024	ND	1.72	85.8	2.00	5.43		
Toluene*	<0.050	0.050	09/10/2024	ND	1.64	82.2	2.00	7.31		
Ethylbenzene*	<0.050	0.050	09/10/2024	ND	1.65	82.5	2.00	7.95		
Total Xylenes*	<0.150	0.150	09/10/2024	ND	4.91	81.8	6.00	8.18		
Total BTEX	<0.300	0.300	09/10/2024	ND						

Surrogate: 4-Bromofluorobenzene (PID) 101 % 71.5-134

Chloride, SM4500Cl-B		mg/kg		Analyzed By: HM						
Analyte	Result	Reporting Limit	Analyzed	Method Blank	BS	% Recovery	True Value QC	RPD	Qualifier	
Chloride	16.0	16.0	09/10/2024	ND	416	104	400	10.9		

TPH 8015M		mg/kg		Analyzed By: MS					
Analyte	Result	Reporting Limit	Analyzed	Method Blank	BS	% Recovery	True Value QC	RPD	Qualifier
GRO C6-C10*	<10.0	10.0	09/10/2024	ND	211	106	200	2.29	
DRO >C10-C28*	<10.0	10.0	09/10/2024	ND	201	100	200	2.37	
EXT DRO >C28-C36	<10.0	10.0	09/10/2024	ND					

Surrogate: 1-Chlorooctane 83.9 % 48.2-134

Surrogate: 1-Chlorooctadecane 85.2 % 49.1-148

Cardinal Laboratories

\*=Accredited Analyte

PLEASE NOTE: Liability and Damages. Cardinal's liability and client's exclusive remedy for any claim arising, whether based in contract or tort, shall be limited to the amount paid by client for analyses. All claims, including those for negligence and any other cause whatsoever shall be deemed waived unless made in writing and received by Cardinal within thirty (30) days after completion of the applicable service. In no event shall Cardinal be liable for incidental or consequential damages, including, without limitation, business interruptions, loss of use, or loss of profits incurred by client, its subsidiaries, affiliates or successors arising out of or related to the performance of the services hereunder by Cardinal, regardless of whether such claim is based upon any of the above stated reasons or otherwise. Results relate only to the samples identified above. This report shall not be reproduced except in full with written approval of Cardinal Laboratories.

Celey D. Keene, Lab Director/Quality Manager



---

PHONE (575) 393-2326 • 101 E. MARLAND • HOBBS, NM 88240

---

### Notes and Definitions

S-04	The surrogate recovery for this sample is outside of established control limits due to a sample matrix effect.
BS-3	Blank spike recovery outside of lab established statistical limits, but still within method limits. Data is not adversely affected.
ND	Analyte NOT DETECTED at or above the reporting limit
RPD	Relative Percent Difference
**	Samples not received at proper temperature of 6°C or below.
***	Insufficient time to reach temperature.
-	Chloride by SM4500Cl-B does not require samples be received at or below 6°C Samples reported on an as received basis (wet) unless otherwise noted on report

---

Cardinal Laboratories

\*=Accredited Analyte

PLEASE NOTE: Liability and Damages. Cardinal's liability and client's exclusive remedy for any claim arising, whether based in contract or tort, shall be limited to the amount paid by client for analyses. All claims, including those for negligence and any other cause whatsoever shall be deemed waived unless made in writing and received by Cardinal within thirty (30) days after completion of the applicable service. In no event shall Cardinal be liable for incidental or consequential damages, including, without limitation, business interruptions, loss of use, or loss of profits incurred by client, its subsidiaries, affiliates or successors arising out of or related to the performance of the services hereunder by Cardinal, regardless of whether such claim is based upon any of the above stated reasons or otherwise. Results relate only to the samples identified above. This report shall not be reproduced except in full with written approval of Cardinal Laboratories.

A handwritten signature in black ink, appearing to read "Celey D. Keene".

---

Celey D. Keene, Lab Director/Quality Manager



101 East Marland, Hobbs, NM 88240  
(575) 393-2326 FAX (575) 393-2476

CHAIN-OF-CUSTODY AND ANALYSIS REQUEST

112

Company Name: Ensolum, LLC

Project Manager: Kelly Lowery

Address: 601 N. Marland St. STE 400

City: Midland State: TX Zip: 79701

Phone #: 214-733-3145 Fax #:

Project #: 038417155 Project Owner:

Project Name: Benelli CTB

Project Location: Eddy County

Sampler Name: Tabitha Guadiana

BILL TO

P.O. #:

Company: Oxy USA, Inc.

Attn: Wade Dittich

Address:

City:

State: Zip:

Phone #: 575-390-2828

Fax #:

ANALYSIS REQUEST

Lab I.D.	Sample I.D.	Sample Depth (feet)	(G)RAB OR (C)OMP.	# CONTAINERS	MATRIX						DATE	TIME	Chlorides	BTEx	TPH
					GROUNDWATER	WASTEWATER	SOIL	OIL	SLUDGE	OTHER :					
1245038	FS-03	2.5	C	1											
2	FS-04	2.5	C	1											
3	FS-05	3	C	1											
4	FS-06	6	C	1											
5	FS-07	7	C	1											
6	FS-08	7	C	1											
7	FS-10	4	C	1											
8	FS-11	4	C	1											
9	SM-01	2-2.5	C	1											
10	SM-02	0-2	C	1											

PLEASE NOTE: Liability and Damages. Cardinal's liability and clients exclusive remedy for any claim arising whether related in contract or tort, shall be limited to the amount paid by the client for the analyses. All claims including those for negligence and any other cause whatsoever shall be deemed waived unless made in writing and received by Cardinal within 30 days after completion of the applicable service. In no event shall Cardinal be liable for incidental or consequential damages, including without limitation, business interruptions, loss of use, or loss of profits incurred by client, its subsidiaries, affiliates or successors arising out of or related to the performance of services rendered by Cardinal, regardless of whether such claim is based upon any of the above stated reasons or otherwise.

Relinquished By: Date: 9/17/14 Received By: Date: 9/17/14

Relinquished By: Date: 9/17/14 Received By: Date: 9/17/14

Delivered By: (Circle One)	Observed Temp. °C	Sample Condition	CHECKED BY: (Initials)	Turnaround Time:	Standard	Bacteria (only)	Sample Condition
Sampler - UPS - Bus - Other:	0-7°C	Cool Intact	AP	Thermometer ID #13	Rush	<input type="checkbox"/> Bacteria (only)	Observed Temp. °C
	0-1°C	Yes <input type="checkbox"/> No <input type="checkbox"/>		Correction Factor -0.5°C	-0.10°C	<input type="checkbox"/> Cool Intact	Corrected Temp. °C

† Cardinal cannot accept verbal changes. Please email changes to celey.keene@cardinallabsnm.com





### CHAIN-OF-CUSTODY AND ANALYSIS REQUEST

212

† Cardinal cannot accept verbal changes. Please email changes to [celey.keene@cardinallabsnm.com](mailto:celey.keene@cardinallabsnm.com)



PHONE (575) 393-2326 ° 101 E. MARLAND ° HOBBS, NM 88240

---

October 31, 2024

KELLY LOWERY

ENSOLUM, LLC

705 W WADLEY AVE.

MIDLAND, TX 79705

RE: CEDAR CANYON PIT

Enclosed are the results of analyses for samples received by the laboratory on 10/28/24 14:53.

Cardinal Laboratories is accredited through Texas NELAP under certificate number TX-C24-00112. Accreditation applies to drinking water, non-potable water and solid and chemical materials. All accredited analytes are denoted by an asterisk (\*). For a complete list of accredited analytes and matrices visit the TCEQ website at [www.tceq.texas.gov/field/qa/lab\\_accred\\_certif.html](http://www.tceq.texas.gov/field/qa/lab_accred_certif.html).

Cardinal Laboratories is accredited through the State of Colorado Department of Public Health and Environment for:

Method EPA 552.2	Haloacetic Acids (HAA-5)
Method EPA 524.2	Total Trihalomethanes (TTHM)
Method EPA 524.4	Regulated VOCs (V1, V2, V3)

Accreditation applies to public drinking water matrices.

This report meets NELAP requirements and is made up of a cover page, analytical results, and a copy of the original chain-of-custody. If you have any questions concerning this report, please feel free to contact me.

Sincerely,

A handwritten signature in black ink that reads "Celey D. Keene". The signature is written in a cursive, flowing style.

Celey D. Keene

Lab Director/Quality Manager





PHONE (575) 393-2326 ° 101 E. MARLAND ° HOBBS, NM 88240

**Analytical Results For:**

ENSOLUM, LLC  
 KELLY LOWERY  
 705 W WADLEY AVE.  
 MIDLAND TX, 79705  
 Fax To:

Received: 10/28/2024  
 Reported: 10/31/2024  
 Project Name: CEDAR CANYON PIT  
 Project Number: 03B1417155  
 Project Location: OXY - EDDY CO.

Sampling Date: 10/28/2024  
 Sampling Type: Soil  
 Sampling Condition: Cool & Intact  
 Sample Received By: Alyssa Parras

**Sample ID: CEDAR CANYON PIT (H246545-01)**

BTEX 8021B		mg/kg		Analyzed By: JH					
Analyte	Result	Reporting Limit	Analyzed	Method Blank	BS	% Recovery	True Value QC	RPD	Qualifier
Benzene*	<0.050	0.050	10/29/2024	ND	2.20	110	2.00	1.27	
Toluene*	<0.050	0.050	10/29/2024	ND	2.14	107	2.00	1.16	
Ethylbenzene*	<0.050	0.050	10/29/2024	ND	2.18	109	2.00	1.31	
Total Xylenes*	<0.150	0.150	10/29/2024	ND	6.50	108	6.00	1.88	
Total BTEX	<0.300	0.300	10/29/2024	ND					

Surrogate: 4-Bromofluorobenzene (PID) 99.3 % 71.5-134

Chloride, SM4500Cl-B		mg/kg		Analyzed By: AC					
Analyte	Result	Reporting Limit	Analyzed	Method Blank	BS	% Recovery	True Value QC	RPD	Qualifier
Chloride	<16.0	16.0	10/29/2024	ND	416	104	400	3.92	

TPH 8015M		mg/kg		Analyzed By: MS					
Analyte	Result	Reporting Limit	Analyzed	Method Blank	BS	% Recovery	True Value QC	RPD	Qualifier
GRO C6-C10*	<10.0	10.0	10/29/2024	ND	221	111	200	0.408	
DRO >C10-C28*	<10.0	10.0	10/29/2024	ND	223	111	200	0.139	
EXT DRO >C28-C36	<10.0	10.0	10/29/2024	ND					

Surrogate: 1-Chlorooctane 95.5 % 48.2-134

Surrogate: 1-Chlorooctadecane 84.0 % 49.1-148

Cardinal Laboratories

\*=Accredited Analyte

PLEASE NOTE: Liability and Damages. Cardinal's liability and client's exclusive remedy for any claim arising, whether based in contract or tort, shall be limited to the amount paid by client for analyses. All claims, including those for negligence and any other cause whatsoever shall be deemed waived unless made in writing and received by Cardinal within thirty (30) days after completion of the applicable service. In no event shall Cardinal be liable for incidental or consequential damages, including, without limitation, business interruptions, loss of use, or loss of profits incurred by client, its subsidiaries, affiliates or successors arising out of or related to the performance of the services hereunder by Cardinal, regardless of whether such claim is based upon any of the above stated reasons or otherwise. Results relate only to the samples identified above. This report shall not be reproduced except in full with written approval of Cardinal Laboratories.

Celey D. Keene, Lab Director/Quality Manager



---

PHONE (575) 393-2326 ° 101 E. MARLAND ° HOBBS, NM 88240

---

### Notes and Definitions

QM-07	The spike recovery was outside acceptance limits for the MS and/or MSD. The batch was accepted based on acceptable LCS recovery.
ND	Analyte NOT DETECTED at or above the reporting limit
RPD	Relative Percent Difference
**	Samples not received at proper temperature of 6°C or below.
***	Insufficient time to reach temperature.
-	Chloride by SM4500Cl-B does not require samples be received at or below 6°C Samples reported on an as received basis (wet) unless otherwise noted on report

---

Cardinal Laboratories

\*=Accredited Analyte

PLEASE NOTE: Liability and Damages. Cardinal's liability and client's exclusive remedy for any claim arising, whether based in contract or tort, shall be limited to the amount paid by client for analyses. All claims, including those for negligence and any other cause whatsoever shall be deemed waived unless made in writing and received by Cardinal within thirty (30) days after completion of the applicable service. In no event shall Cardinal be liable for incidental or consequential damages, including, without limitation, business interruptions, loss of use, or loss of profits incurred by client, its subsidiaries, affiliates or successors arising out of or related to the performance of the services hereunder by Cardinal, regardless of whether such claim is based upon any of the above stated reasons or otherwise. Results relate only to the samples identified above. This report shall not be reproduced except in full with written approval of Cardinal Laboratories.

A handwritten signature in cursive script, appearing to read "C. D. Keene", written in black ink.

---

Celey D. Keene, Lab Director/Quality Manager



Sante Fe Main Office  
Phone: (505) 476-3441

General Information  
Phone: (505) 629-6116

Online Phone Directory  
<https://www.emnrd.nm.gov/ocd/contact-us>

**State of New Mexico**  
**Energy, Minerals and Natural Resources**  
**Oil Conservation Division**  
**1220 S. St Francis Dr.**  
**Santa Fe, NM 87505**

QUESTIONS

Action 436880

**QUESTIONS**

Operator: OXY USA INC P.O. Box 4294 Houston, TX 772104294	OGRID: 16696
	Action Number: 436880
	Action Type: [C-141] Remediation Closure Request C-141 (C-141-v-Closure)

**QUESTIONS**

Prerequisites	
Incident ID (n#)	nAPP2320749536
Incident Name	NAPP2320749536 BENELLI CTB 10707151 CRIT 1 @ 0
Incident Type	Fire
Incident Status	Remediation Closure Report Received

**Location of Release Source**

Please answer all the questions in this group.

Site Name	BENELLI CTB 10707151 CRIT 1
Date Release Discovered	07/19/2023
Surface Owner	Private

**Incident Details**

Please answer all the questions in this group.

Incident Type	Fire
Did this release result in a fire or is the result of a fire	Yes
Did this release result in any injuries	No
Has this release reached or does it have a reasonable probability of reaching a watercourse	No
Has this release endangered or does it have a reasonable probability of endangering public health	No
Has this release substantially damaged or will it substantially damage property or the environment	No
Is this release of a volume that is or may with reasonable probability be detrimental to fresh water	No

**Nature and Volume of Release**

Material(s) released, please answer all that apply below. Any calculations or specific justifications for the volumes provided should be attached to the follow-up C-141 submission.

Crude Oil Released (bbls) Details	Cause: Fire   Flow Line - Production   Crude Oil   Released: 1 BBL   Recovered: 0 BBL   Lost: 1 BBL.
Produced Water Released (bbls) Details	Cause: Fire   Flow Line - Production   Produced Water   Released: 1 BBL   Recovered: 0 BBL   Lost: 1 BBL.
Is the concentration of chloride in the produced water >10,000 mg/l	Yes
Condensate Released (bbls) Details	Not answered.
Natural Gas Vented (Mcf) Details	Not answered.
Natural Gas Flared (Mcf) Details	Not answered.
Other Released Details	Not answered.
Are there additional details for the questions above (i.e. any answer containing Other, Specify, Unknown, and/or Fire, or any negative lost amounts)	Not answered.

Sante Fe Main Office  
Phone: (505) 476-3441

General Information  
Phone: (505) 629-6116

Online Phone Directory  
<https://www.emnrd.nm.gov/ocd/contact-us>

**State of New Mexico**  
**Energy, Minerals and Natural Resources**  
**Oil Conservation Division**  
**1220 S. St Francis Dr.**  
**Santa Fe, NM 87505**

QUESTIONS, Page 2

Action 436880

**QUESTIONS (continued)**

Operator: OXY USA INC P.O. Box 4294 Houston, TX 772104294	OGRID: 16696
	Action Number: 436880
	Action Type: [C-141] Remediation Closure Request C-141 (C-141-v-Closure)

**QUESTIONS**

<b>Nature and Volume of Release (continued)</b>	
Is this a gas only submission (i.e. only significant Mcf values reported)	<b>More info needed to determine if this will be treated as a "gas only" report.</b>
Was this a major release as defined by Subsection A of 19.15.29.7 NMAC	<b>Yes</b>
Reasons why this would be considered a submission for a notification of a major release	<b>From paragraph A. "Major release" determine using: (2) an unauthorized release of a volume that: (a) results in a fire or is the result of a fire.</b>
<i>With the implementation of the 19.15.27 NMAC (05/25/2021), venting and/or flaring of natural gas (i.e. gas only) are to be submitted on the C-129 form.</i>	

**Initial Response**

*The responsible party must undertake the following actions immediately unless they could create a safety hazard that would result in injury.*

The source of the release has been stopped	<b>True</b>
The impacted area has been secured to protect human health and the environment	<b>True</b>
Released materials have been contained via the use of berms or dikes, absorbent pads, or other containment devices	<b>True</b>
All free liquids and recoverable materials have been removed and managed appropriately	<b>True</b>
If all the actions described above have not been undertaken, explain why	<b>Not answered.</b>

*Per Paragraph (4) of Subsection B of 19.15.29.8 NMAC the responsible party may commence remediation immediately after discovery of a release. If remediation has begun, please prepare and attach a narrative of actions to date in the follow-up C-141 submission. If remedial efforts have been successfully completed or if the release occurred within a lined containment area (see Subparagraph (a) of Paragraph (5) of Subsection A of 19.15.29.11 NMAC), please prepare and attach all information needed for closure evaluation in the follow-up C-141 submission.*

I hereby certify that the information given above is true and complete to the best of my knowledge and understand that pursuant to OCD rules and regulations all operators are required to report and/or file certain release notifications and perform corrective actions for releases which may endanger public health or the environment. The acceptance of a C-141 report by the OCD does not relieve the operator of liability should their operations have failed to adequately investigate and remediate contamination that pose a threat to groundwater, surface water, human health or the environment. In addition, OCD acceptance of a C-141 report does not relieve the operator of responsibility for compliance with any other federal, state, or local laws and/or regulations.

I hereby agree and sign off to the above statement	<b>Name: Wade Dittrich</b> <b>Title: Environmental Coordinator</b> <b>Email: wade_dittrich@oxy.com</b> <b>Date: 02/27/2025</b>
--	---



Sante Fe Main Office  
Phone: (505) 476-3441

General Information  
Phone: (505) 629-6116

Online Phone Directory  
<https://www.emnrd.nm.gov/ocd/contact-us>

**State of New Mexico**  
**Energy, Minerals and Natural Resources**  
**Oil Conservation Division**  
**1220 S. St Francis Dr.**  
**Santa Fe, NM 87505**

QUESTIONS, Page 3

Action 436880

**QUESTIONS (continued)**

Operator: OXY USA INC P.O. Box 4294 Houston, TX 772104294	OGRID: 16696
	Action Number: 436880
	Action Type: [C-141] Remediation Closure Request C-141 (C-141-v-Closure)

**QUESTIONS**

<b>Site Characterization</b>	
<i>Please answer all the questions in this group (only required when seeking remediation plan approval and beyond). This information must be provided to the appropriate district office no later than 90 days after the release discovery date.</i>	
What is the shallowest depth to groundwater beneath the area affected by the release in feet below ground surface (ft bgs)	Less than or equal 25 (ft.)
What method was used to determine the depth to ground water	NM OSE iWaters Database Search
Did this release impact groundwater or surface water	No
<b>What is the minimum distance, between the closest lateral extents of the release and the following surface areas:</b>	
A continuously flowing watercourse or any other significant watercourse	Between 1 and 5 (mi.)
Any lakebed, sinkhole, or playa lake (measured from the ordinary high-water mark)	Between 1 and 5 (mi.)
An occupied permanent residence, school, hospital, institution, or church	Between 1 and 5 (mi.)
A spring or a private domestic fresh water well used by less than five households for domestic or stock watering purposes	Between 1 and 5 (mi.)
Any other fresh water well or spring	Between 1 and 5 (mi.)
Incorporated municipal boundaries or a defined municipal fresh water well field	Between 1 and 5 (mi.)
A wetland	Between 1000 (ft.) and ½ (mi.)
A subsurface mine	Greater than 5 (mi.)
An (non-karst) unstable area	Zero feet, overlying, or within area
Categorize the risk of this well / site being in a karst geology	Medium
A 100-year floodplain	Between 1 and 5 (mi.)
Did the release impact areas not on an exploration, development, production, or storage site	Yes

<b>Remediation Plan</b>	
<i>Please answer all the questions that apply or are indicated. This information must be provided to the appropriate district office no later than 90 days after the release discovery date.</i>	
Requesting a remediation plan approval with this submission	Yes
<i>Attach a comprehensive report demonstrating the lateral and vertical extents of soil contamination associated with the release have been determined, pursuant to 19.15.29.11 NMAC and 19.15.29.13 NMAC.</i>	
Have the lateral and vertical extents of contamination been fully delineated	Yes
Was this release entirely contained within a lined containment area	No
<b>Soil Contamination Sampling:</b> (Provide the highest observable value for each, in milligrams per kilograms.)	
Chloride (EPA 300.0 or SM4500 Cl B)	2360
TPH (GRO+DRO+MRO) (EPA SW-846 Method 8015M)	21.9
GRO+DRO (EPA SW-846 Method 8015M)	21.9
BTEX (EPA SW-846 Method 8021B or 8260B)	0
Benzene (EPA SW-846 Method 8021B or 8260B)	0
<i>Per Subsection B of 19.15.29.11 NMAC unless the site characterization report includes completed efforts at remediation, the report must include a proposed remediation plan in accordance with 19.15.29.12 NMAC, which includes the anticipated timelines for beginning and completing the remediation.</i>	
On what estimated date will the remediation commence	05/01/2024
On what date will (or did) the final sampling or liner inspection occur	09/09/2024
On what date will (or was) the remediation complete(d)	09/09/2024
What is the estimated surface area (in square feet) that will be reclaimed	3452
What is the estimated volume (in cubic yards) that will be reclaimed	422
What is the estimated surface area (in square feet) that will be remediated	3452
What is the estimated volume (in cubic yards) that will be remediated	422
<i>These estimated dates and measurements are recognized to be the best guess or calculation at the time of submission and may (be) change(d) over time as more remediation efforts are completed.</i>	
<i>The OCD recognizes that proposed remediation measures may have to be minimally adjusted in accordance with the physical realities encountered during remediation. If the responsible party has any need to significantly deviate from the remediation plan proposed, then it should consult with the division to determine if another remediation plan submission is required.</i>	

Sante Fe Main Office  
Phone: (505) 476-3441

General Information  
Phone: (505) 629-6116

Online Phone Directory  
<https://www.emnrd.nm.gov/ocd/contact-us>

**State of New Mexico**  
**Energy, Minerals and Natural Resources**  
**Oil Conservation Division**  
**1220 S. St Francis Dr.**  
**Santa Fe, NM 87505**

QUESTIONS, Page 4

Action 436880

**QUESTIONS (continued)**

Operator: OXY USA INC P.O. Box 4294 Houston, TX 772104294	OGRID:
	16696
	Action Number:
	436880
	Action Type:
	[C-141] Remediation Closure Request C-141 (C-141-v-Closure)

**QUESTIONS**

<b>Remediation Plan (continued)</b>	
<i>Please answer all the questions that apply or are indicated. This information must be provided to the appropriate district office no later than 90 days after the release discovery date.</i>	
<b>This remediation will (or is expected to) utilize the following processes to remediate / reduce contaminants:</b>	
<i>(Select all answers below that apply.)</i>	
(Ex Situ) Excavation and <b>off-site</b> disposal (i.e. dig and haul, hydrovac, etc.)	Yes
Which OCD approved facility will be used for <b>off-site</b> disposal	LEA LAND LANDFILL [fEEM0112342028]
<b>OR</b> which OCD approved well (API) will be used for <b>off-site</b> disposal	Not answered.
<b>OR</b> is the <b>off-site</b> disposal site, to be used, out-of-state	Not answered.
<b>OR</b> is the <b>off-site</b> disposal site, to be used, an NMED facility	Not answered.
(Ex Situ) Excavation and <b>on-site</b> remediation (i.e. On-Site Land Farms)	Not answered.
(In Situ) Soil Vapor Extraction	Not answered.
(In Situ) Chemical processing (i.e. Soil Shredding, Potassium Permanganate, etc.)	Not answered.
(In Situ) Biological processing (i.e. Microbes / Fertilizer, etc.)	Not answered.
(In Situ) Physical processing (i.e. Soil Washing, Gypsum, Disking, etc.)	Not answered.
Ground Water Abatement pursuant to 19.15.30 NMAC	Not answered.
OTHER (Non-listed remedial process)	Not answered.
<i>Per Subsection B of 19.15.29.11 NMAC unless the site characterization report includes completed efforts at remediation, the report must include a proposed remediation plan in accordance with 19.15.29.12 NMAC, which includes the anticipated timelines for beginning and completing the remediation.</i>	
I hereby certify that the information given above is true and complete to the best of my knowledge and understand that pursuant to OCD rules and regulations all operators are required to report and/or file certain release notifications and perform corrective actions for releases which may endanger public health or the environment. The acceptance of a C-141 report by the OCD does not relieve the operator of liability should their operations have failed to adequately investigate and remediate contamination that pose a threat to groundwater, surface water, human health or the environment. In addition, OCD acceptance of a C-141 report does not relieve the operator of responsibility for compliance with any other federal, state, or local laws and/or regulations.	
I hereby agree and sign off to the above statement	Name: Wade Dittrich Title: Environmental Coordinator Email: <a href="mailto:wade_dittrich@oxy.com">wade_dittrich@oxy.com</a> Date: 02/27/2025
<i>The OCD recognizes that proposed remediation measures may have to be minimally adjusted in accordance with the physical realities encountered during remediation. If the responsible party has any need to significantly deviate from the remediation plan proposed, then it should consult with the division to determine if another remediation plan submission is required.</i>	

Sante Fe Main Office  
Phone: (505) 476-3441

General Information  
Phone: (505) 629-6116

Online Phone Directory  
<https://www.emnrd.nm.gov/ocd/contact-us>

State of New Mexico  
Energy, Minerals and Natural Resources  
Oil Conservation Division  
1220 S. St Francis Dr.  
Santa Fe, NM 87505

QUESTIONS, Page 5  
  
Action 436880

QUESTIONS (continued)

Operator:  OXY USA INC P.O. Box 4294 Houston, TX 772104294	OGRID:  16696
	Action Number:  436880
	Action Type:  [C-141] Remediation Closure Request C-141 (C-141-v-Closure)

QUESTIONS

Deferral Requests Only	
Only answer the questions in this group if seeking a deferral upon approval this submission. Each of the following items must be confirmed as part of any request for deferral of remediation.	
Requesting a deferral of the remediation closure due date with the approval of this submission	No

Sante Fe Main Office  
Phone: (505) 476-3441

General Information  
Phone: (505) 629-6116

Online Phone Directory  
<https://www.emnrd.nm.gov/ocd/contact-us>

**State of New Mexico**  
**Energy, Minerals and Natural Resources**  
**Oil Conservation Division**  
**1220 S. St Francis Dr.**  
**Santa Fe, NM 87505**

QUESTIONS, Page 6

Action 436880

**QUESTIONS (continued)**

Operator: OXY USA INC P.O. Box 4294 Houston, TX 772104294	OGRID: 16696
	Action Number: 436880
	Action Type: [C-141] Remediation Closure Request C-141 (C-141-v-Closure)

**QUESTIONS**

Sampling Event Information	
Last sampling notification (C-141N) recorded	380865
Sampling date pursuant to Subparagraph (a) of Paragraph (1) of Subsection D of 19.15.29.12 NMAC	09/09/2024
What was the (estimated) number of samples that were to be gathered	15
What was the sampling surface area in square feet	3000

Remediation Closure Request	
<i>Only answer the questions in this group if seeking remediation closure for this release because all remediation steps have been completed.</i>	
Requesting a remediation closure approval with this submission	Yes
Have the lateral and vertical extents of contamination been fully delineated	Yes
Was this release entirely contained within a lined containment area	No
All areas reasonably needed for production or subsequent drilling operations have been stabilized, returned to the sites existing grade, and have a soil cover that prevents ponding of water, minimizing dust and erosion	Yes
What was the total surface area (in square feet) remediated	3452
What was the total volume (cubic yards) remediated	422
All areas not reasonably needed for production or subsequent drilling operations have been reclaimed to contain a minimum of four feet of non-waste contain earthen material with concentrations less than 600 mg/kg chlorides, 100 mg/kg TPH, 50 mg/kg BTEX, and 10 mg/kg Benzene	Yes
What was the total surface area (in square feet) reclaimed	3452
What was the total volume (in cubic yards) reclaimed	422
Summarize any additional remediation activities not included by answers (above)	NA
<i>The responsible party must attach information demonstrating they have complied with all applicable closure requirements and any conditions or directives of the OCD. This demonstration should be in the form of a comprehensive report (in .pdf format) including a scaled site map, sampling diagrams, relevant field notes, photographs of any excavation prior to backfilling, laboratory data including chain of custody documents of final sampling, and a narrative of the remedial activities. Refer to 19.15.29.12 NMAC.</i>	
I hereby certify that the information given above is true and complete to the best of my knowledge and understand that pursuant to OCD rules and regulations all operators are required to report and/or file certain release notifications and perform corrective actions for releases which may endanger public health or the environment. The acceptance of a C-141 report by the OCD does not relieve the operator of liability should their operations have failed to adequately investigate and remediate contamination that pose a threat to groundwater, surface water, human health or the environment. In addition, OCD acceptance of a C-141 report does not relieve the operator of responsibility for compliance with any other federal, state, or local laws and/or regulations. The responsible party acknowledges they must substantially restore, reclaim, and re-vegetate the impacted surface area to the conditions that existed prior to the release or their final land use in accordance with 19.15.29.13 NMAC including notification to the OCD when reclamation and re-vegetation are complete.	
I hereby agree and sign off to the above statement	Name: Wade Dittrich Title: Environmental Coordinator Email: <a href="mailto:wade_dittrich@oxy.com">wade_dittrich@oxy.com</a> Date: 02/27/2025

Sante Fe Main Office  
Phone: (505) 476-3441

General Information  
Phone: (505) 629-6116

Online Phone Directory  
<https://www.emnrd.nm.gov/ocd/contact-us>

State of New Mexico  
Energy, Minerals and Natural Resources  
Oil Conservation Division  
1220 S. St Francis Dr.  
Santa Fe, NM 87505

QUESTIONS, Page 7

Action 436880

QUESTIONS (continued)

Operator: OXY USA INC P.O. Box 4294 Houston, TX 772104294	OGRID: 16696
	Action Number: 436880
	Action Type: [C-141] Remediation Closure Request C-141 (C-141-v-Closure)

QUESTIONS

Reclamation Report	
Only answer the questions in this group if all reclamation steps have been completed.	
Requesting a reclamation approval with this submission	No



Sante Fe Main Office  
Phone: (505) 476-3441

General Information  
Phone: (505) 629-6116

Online Phone Directory  
<https://www.emnrd.nm.gov/ocd/contact-us>

State of New Mexico  
Energy, Minerals and Natural Resources  
Oil Conservation Division  
1220 S. St Francis Dr.  
Santa Fe, NM 87505

CONDITIONS

Action 436880

CONDITIONS

Operator: OXY USA INC P.O. Box 4294 Houston, TX 772104294	OGRID: 16696
	Action Number: 436880
	Action Type: [C-141] Remediation Closure Request C-141 (C-141-v-Closure)

CONDITIONS

Created By	Condition	Condition Date
rhamlet	We have received your Remediation Closure Report for Incident #NAPP2320749536 BENELLI CTB 10707151 CRIT 1, thank you. This Remediation Closure Report is approved.	3/3/2025