



## CLOSURE REPORT

Property:

**Speak Easy Federal Unit #002H**

**Unit L, S01, T22S, R32E**

**API: 30-025-40306**

**32.4184703° N, 103.635481° W**

**Lea County, New Mexico**

**NMOCD Incident ID: nAPP2416233211**

December 26, 2024

Ensolum Project No. 03B1417189

Prepared for:

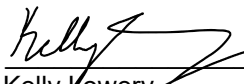
**Oxy USA, Inc.**

**PO Box 4324**

**Houston, Texas 77210**

**Attn: Wade Dittrich**

Prepared by:

  
Kelly Lowery  
Project Geologist

  
Heather Holthaus  
Senior Project Manager

TABLE OF CONTENTS

1.0 INTRODUCTION.....1

1.1 Site Description and Background.....1

1.2 Project Objective .....1

2.0 CLOSURE CRITERIA.....1

3.0 SOIL REMEDIATION ACTIVITIES .....3

4.0 SOIL SAMPLING PROGRAM .....4

5.0 SOIL LABORATORY ANALYTICAL METHODS.....4

6.0 DATA EVALUATION .....4

7.0 RECLAMATION AND RE-VEGETATION .....5

8.0 FINDINGS AND RECOMMENDATION .....5

9.0 STANDARDS OF CARE, LIMITATIONS, AND RELIANCE .....5

9.1 Standard of Care .....5

9.2 Limitations .....6

9.3 Reliance.....6

APPENDICES

- Appendix A: Figures
- Appendix B: Supporting Documentation
- Appendix C: Photographic Documentation
- Appendix D: Tables
- Appendix E: Laboratory Data Sheets & Chain-of-Custody Documentation



**CLOSURE REPORT****Speak Easy Federal Unit #002H**

**Unit L, S01, T22S, R32E**  
**API: 30-025-40306**  
**32.4184703° N, 103.635481° W**  
**Lea County, New Mexico**  
**NMOCD Incident ID: nAPP2416233211**

**Ensolum Project No. 03B1417189**

**1.0 INTRODUCTION****1.1 Site Description and Background**

<b>Operator:</b>	Oxy USA, Inc. (Oxy)
<b>Site Name:</b>	Speak Easy Federal Unit #002H
<b>Location:</b>	Unit L, Section 01, Township 22 South, Range 32 East American Petroleum Institution (API): 30-025-40306 32.4184703° N, 103.635481° W Lea County, New Mexico
<b>Property:</b>	Federal land managed by the Bureau of Land Management (BLM)
<b>Regulatory:</b>	New Mexico Energy, Minerals and Natural Resources Department (EMNRD) Oil Conservation Division (OCD)

On June 6, 2024, Oxy had a release of produced oil and produced water at the Site due to a leak on a 1/4-inch nipple on the wellhead. Approximately 10 barrels (bbls) of produced oil and 5 bbls of produced water were released onto the ground surface. The well was shut in for repairs, and a vacuum truck was immediately deployed to the Site to recover the remaining standing fluid, with 10 bbls of produced oil and 5 bbls of produced water recovered. Oxy subsequently reported the release to the New Mexico EMNRD OCD via a report through the online notice of release (NOR) form on June 10, 2024. The release was assigned Incident Number nAPP2416233211.

The **Topographic Map** depicting the location of the Site is included as **Figure 1**, and the **Site Vicinity Map** is included as **Figure 2** in **Appendix A**.

**1.2 Project Objective**

The primary objective of the closure activities was to reduce chemicals of concern (COC) concentrations in the on-Site soil to be in compliance with the applicable New Mexico EMNRD OCD closure criteria concentrations.

**2.0 CLOSURE CRITERIA**

The Site is subject to regulatory oversight by the New Mexico EMNRD OCD. In order to address activities related to exempt oil and gas releases, the New Mexico EMNRD OCD references New Mexico Administrative Code (NMAC) 19.15.29 *Releases*, which establishes investigation and abatement action requirements for sites subject to reporting and/or corrective action. Ensolum, LLC (Ensolum) utilized information provided by Oxy, the general Site characteristics, and information available from the New Mexico Office of the State Engineer (OSE) and the New Mexico EMNRD OCD Imaging database to



determine the appropriate closure criteria for the Site. Supporting documentation and figures associated with the following bullets are provided in **Appendix B**, and included as **Figure 4** in **Appendix A**.

- No exploratory water wells were identified within a 0.5-mile radius of the Site on the OSE Water Rights Reporting System (WRRS) database. However, there is one well record reported within 0.6-mile to the northwest of the Site (C-04566-POD1) that was installed in 2021 to a depth of 105 feet below ground surface (bgs) as a temporary well, with no groundwater encountered.
- The Site is not located within 300 feet of a New Mexico ENMRD OCD-defined continuously flowing watercourse or significant watercourse.
- The Site is not located within 200 feet of a lakebed, sinkhole, or playa lake.
- The Site is not located within 300 feet of a permanent residence, school, hospital, institution, or church.
- According to the OSE WRSS database, there are no private, domestic freshwater wells used by less than five households for domestic or stock water purposes identified within 500 feet of the Site.
- According to the OSE WRSS database, no freshwater wells have been identified within 1,000 feet of the Site.
- The Site is not located within incorporated municipal boundaries or within a defined municipal freshwater well field covered under a municipal ordinance adopted pursuant to New Mexico Statute Annotated (NMSA) 1978, Section 3-27-3.
- The Site is not located within 300 feet of a wetland.
- Based on information identified on the New Mexico Mining and Minerals Division's Geographical Information System (GIS), Maps, and Mine Data database, the Site is not located within an area overlying a subsurface mine.
- Based on the Karst Occurrence Potential (.kmz) provided by the BLM, the Site is located within a stable area, also referred to as low karst potential.
- The Site is not located within a 100-year floodplain.

Due to the regional depth to groundwater being greater than 100 feet bgs, a request for a Closure Criteria Variance to reflect groundwater >100 feet as shown in Table 1 of 19.15.29.12 NMAC for on-pad (Non-Vegetative Zone) remediation, and for any off-pad (Vegetative Zone) remediation of soils greater than 4 feet bgs was requested. The NMOCD approved the variance request on June 12, 2024. Based on the identified siting criteria, cleanup goals for soils remaining in place at the Site include:

CLOSURE CRITERIA FOR SOILS IMPACTED BY A RELEASE (VEGETATIVE ZONE)			
Minimum depth below any point within horizontal boundary of the release to groundwater less than 10,000 mg/l TDS	Constituent	Method	Limit
≤50 feet	Chloride	EPA 300.0 or SM4500 Cl B	600 mg/kg
	TPH (GRO+DRO+MRO)	EPA SW-846 Method 8015M	100 mg/kg
	BTEX	EPA SW-846 Method 8021B or 8260B	50 mg/kg
	Benzene	EPA SW-846 Method 8021B or 8260B	10 mg/kg



CLOSURE CRITERIA FOR SOILS IMPACTED BY A RELEASE (NON-VEGETATIVE ZONE)			
Minimum depth below any point within horizontal boundary of the release to groundwater less than 10,000 mg/l TDS	Constituent	Method	Limit
>100 feet	Chloride	EPA 300.0 or SM4500 Cl B	20,000 mg/kg
	TPH (GRO+DRO+MRO)	EPA SW-846 Method 8015M	2,500 mg/kg
	TPH (GRO+DRO)	EPA SW-846 Method 8015M	1,000 mg/kg
	BTEX	EPA SW-846 Method 8021B or 8260B	50 mg/kg
	Benzene	EPA SW-846 Method 8021B or 8260B	10 mg/kg

### 3.0 SOIL REMEDIATION ACTIVITIES

On June 6, 2024, Oxy had a release of produced oil and produced water at the Site due to a leak on a 1/4-inch nipple on the wellhead. Approximately 10 bbls of produced oil and 5 bbls of produced water were released onto the ground surface. The well was shut in for repairs, and a vacuum truck was immediately deployed to the Site to recover the remaining standing fluid, with 10 bbls of produced oil and 5 bbls of produced water recovered.

On September 5, 2024, subsequent to excavation activities, Ensolum arrived on-Site to collect 25 composite soil samples from the excavation floor (FS01 through FS25) at depths ranging from 1 to 2 feet bgs, and five composite soil samples from the excavation sidewalls (SW01 through SW05) at depths ranging from 0-1 and 0-2 feet bgs. Based on laboratory analytical data, no additional excavation and/or remediation was required.

The composite soil samples were analyzed for benzene, toluene, ethylbenzene, and total xylenes (BTEX), total petroleum hydrocarbons (TPH), gasoline range organics (GRO), diesel range organics (DRO), motor oil/lube oil range organics (MRO), and chlorides in accordance with the New Mexico EMNRD OCD Closure Criteria for Soils Impacted by a Release (NMOCD Closure Criteria).

The final excavation area was irregular shaped, with the main portion measuring approximately 70 feet long and 60 feet wide at the maximum extents, with two 'legs' of the excavation measuring approximately 10 feet wide and 80 feet long at the maximum extents, with a depth of approximately 1 to 2 feet bgs.

The excavation measured approximately 5,000 square feet in arial extent. A total of approximately 344 cubic yards (cy) of soil were excavated from the Site and hauled off for proper disposal at the Lea Land Facility located in Hobbs, New Mexico. After confirmation sampling was completed, the backfill of the exaction was completed utilizing material purchased locally from the Lea Land Facility (Lea Land Caliche Pit) and re-contoured to match pre-existing conditions.

**Figure 3** is a map that identifies approximate soil sample locations and depicts the approximate dimensions of the impacted soil and excavation extent with respect to the release (**Appendix A**). Photographic documentation of the field activities is included in **Appendix C**.

#### 4.0 SOIL SAMPLING PROGRAM

Ensolum's soil sampling program on September 5, 2024 included the collection of a total of 25 composite soil samples from the excavation floor (FS01 through FS25) and five composite soil samples from the excavation sidewalls (SW01 through SW05). The soil samples were collected at depths ranging from 0 to 2 feet bgs. Additionally, one composite soil sample was collected from the backfill material prior to use at the Site (Lea Land Caliche Pit) on September 13, 2024.

The composite soil samples were collected and placed in laboratory-prepared glassware, labeled/sealed using laboratory-supplied labels and custody seals, and stored on ice in a cooler. The samples were relinquished to Cardinal Laboratories in Hobbs, New Mexico, under proper chain-of-custody procedures.

#### 5.0 SOIL LABORATORY ANALYTICAL METHODS

The composite soil samples were analyzed for BTEX following the United States Environmental Protection Agency (EPA) SW-846 Method 8021B, TPH GRO/DRO/MRO following EPA SW-846 Method 8015M/D, and chloride using SM4500Cl-B.

Laboratory analytical results are summarized in **Table 1**, **Table 2** and **Table 3** in **Appendix D**. The executed chain-of-custody forms and laboratory data sheets are provided in **Appendix E**.

#### 6.0 DATA EVALUATION

Ensolum compared the benzene, total BTEX, TPH-GRO/DRO/MRO, and chloride concentrations to laboratory sample detection limits (SDLs) associated with the soils remaining in place at the Site to the applicable NMOCD Closure Criteria. The final composite soil samples collected from the Non-Vegetative Zone were compared to the NMOCD Closure Criteria for Soils Impacted by a Release (Non-Vegetative Zone), while the final composite soil samples collected from the Vegetative Zones were compared to the NMOCD Closure Criteria for Soils Impacted by a Release (Vegetative Zone).

- Laboratory analytical results indicated benzene concentrations for the soils remaining in place at the Site, and the backfill material did not exceed the laboratory SDLs or the applicable NMOCD Closure Criteria of 10 milligrams per kilogram (mg/kg).
- Laboratory analytical results indicated that total BTEX concentrations for the soils remaining in place at the Site and the backfill material did not exceed the laboratory SDLs or the applicable NMOCD Closure Criteria of 50 mg/kg.
- Laboratory analytical results indicated that combined TPH-GRO/DRO concentrations for the soils remaining in place at the Site in the Non-Vegetative Zone did not exceed the laboratory SDLs and/or the applicable NMOCD Closure Criteria of 1,000 mg/kg for depth to groundwater >100 feet.
- Laboratory analytical results indicated that combined TPH-GRO/DRO/MRO concentrations for the soils remaining in place at the Site in the Non-Vegetative Zone did not exceed the laboratory SDLs and/or the applicable NMOCD Closure Criteria of 2,500 mg/kg for depth to groundwater >100 feet.
- Laboratory analytical results indicated chloride concentrations for the soils remaining in place at the Site in the Non-Vegetative Zone did not exceed the laboratory SDLs and/or the applicable NMOCD Closure Criteria of 20,000 mg/kg for depth to groundwater >100 feet.
- Laboratory analytical results indicated that combined TPH-GRO/DRO/MRO concentrations for the soils remaining in place at the Site in the Vegetative Zone and the backfill material did not exceed the laboratory SDLs and/or the applicable NMOCD Closure Criteria of 100 mg/kg for depth to groundwater ≤50 feet.
- Laboratory analytical results indicated that chloride concentrations for the soils remaining in place at the Site in the Vegetative Zone and the backfill material did not exceed the laboratory



SDLs and/or the applicable NMOCD Closure Criteria 600 mg/kg for depth to groundwater  $\leq 50$  feet.

Laboratory analytical results are summarized in **Table 1**, **Table 2**, and **Table 3** in **Appendix D**.

## 7.0 RECLAMATION AND RE-VEGETATION

Subsequent to the results of the final confirmation soil sampling, the identified impacted soils were removed and taken off-Site for proper disposal. A composite soil sample was collected from the backfill material prior to use at the Site. The excavated area was backfilled with clean fill material and then contoured to the original surrounding grade. Since the release area was on an active well pad in an area reasonably needed for production operations or for subsequent drilling operations, no reclamation or re-vegetation was required at this time per 19.15.29.13 NMAC.

## 8.0 FINDINGS AND RECOMMENDATION

- On June 6, 2024, Oxy had a release of produced oil and produced water at the Site due to a leak on a 1/4-inch nipple on the wellhead. Approximately 10 bbls of produced oil and 5 bbls of produced water were released onto the ground surface. The well was shut in for repairs, and a vacuum truck was immediately deployed to the Site to recover the remaining standing fluid, with 10 bbls of produced oil and 5 bbls of produced water recovered.
- Ensolum's soil sampling program on September 5, 2024, included the collection of a total of 25 composite soil samples from the excavation floor (FS01 through FS25) and five composite soil samples from the excavation sidewalls (SW01 through SW05). The soil samples were collected at depths ranging from 0 to 2 feet bgs.
- The primary objective of the closure activities was to reduce COC concentrations in the on-Site soil to be in compliance with applicable NMOCD Closure Criteria for Soils Impacted by a Release using the New Mexico EMNRD OCD's NMAC 19.15.29 *Releases* as guidance.
- The final excavation area was irregular shaped, with the main portion measuring approximately 70 feet long and 60 feet wide at the maximum extents, with two 'legs' of the excavation measuring approximately 10 feet wide and 80 feet long at the maximum extents, with a depth of approximately 1 to 2 feet bgs.
- Based on laboratory analytical results, the final composite soil samples within the impacted area and the backfill material did not exhibit benzene, total BTEX, TPH GRO/DRO/MRO, or chloride concentrations above the applicable NMOCD Closure Criteria.
- After completion of confirmation sampling, the backfill of the excavation was completed utilizing material purchased locally from the Lea Land Facility (Lea Land Caliche Pit) and recontoured to match pre-existing conditions.

**Based on field observations and laboratory analytical results, no additional investigation or corrective action appears warranted at this time.**

## 9.0 STANDARDS OF CARE, LIMITATIONS, AND RELIANCE

### 9.1 Standard of Care

Ensolum's services were performed in accordance with standards customarily provided by a firm rendering the same or similar services in the area during the same time period. Ensolum makes no warranties, express or implied, as to the services performed hereunder. Additionally, Ensolum does not warrant the work of third parties supplying information used in the report (e.g., laboratories, regulatory agencies, or other third parties). This scope of services was performed in accordance with the scope of work agreed with the client, as detailed in our proposal.



## 9.2 Limitations

Findings, conclusions, and recommendations resulting from these services are based upon information derived from the on-site activities and other services performed under this scope of work and it should be noted that this information is subject to change over time. Certain indicators of the presence of hazardous substances, petroleum products, or other constituents may have been latent, inaccessible, unobservable, or not present during these services, and Ensolum cannot represent that the Site contains no hazardous substances, toxic materials, petroleum products, or other latent conditions beyond those identified during the investigation. Environmental conditions in other areas or portions of the Site may vary from those encountered at actual sample locations. Ensolum's findings and recommendations are based solely upon data available to Ensolum at the time of these services.

## 9.3 Reliance

This report has been prepared for the exclusive use of Oxy USA Inc., and any authorization for use or reliance by any other party (except a governmental entity having jurisdiction over the Site) is prohibited without the express written authorization of Oxy USA Inc. and Ensolum. Any unauthorized distribution or reuse is at the client's sole risk. Notwithstanding the foregoing, reliance by authorized parties will be subject to the terms, conditions, and limitations stated in the Closure Report and Ensolum's Master Services Agreement. The limitation of liability defined in the agreement is the aggregate limit of Ensolum's liability to the client.

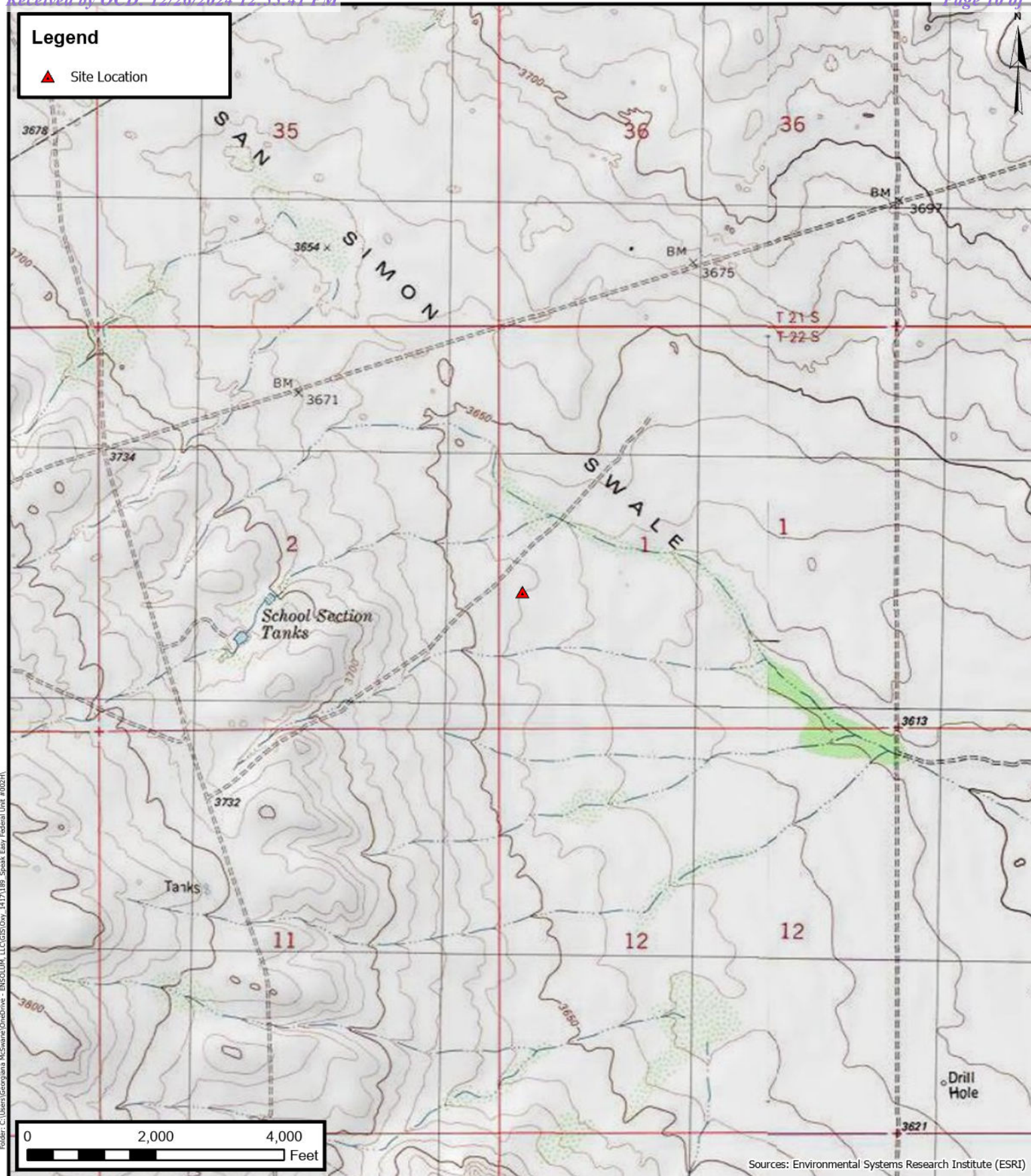


## APPENDIX A

### Figures

---





## Topographic Map

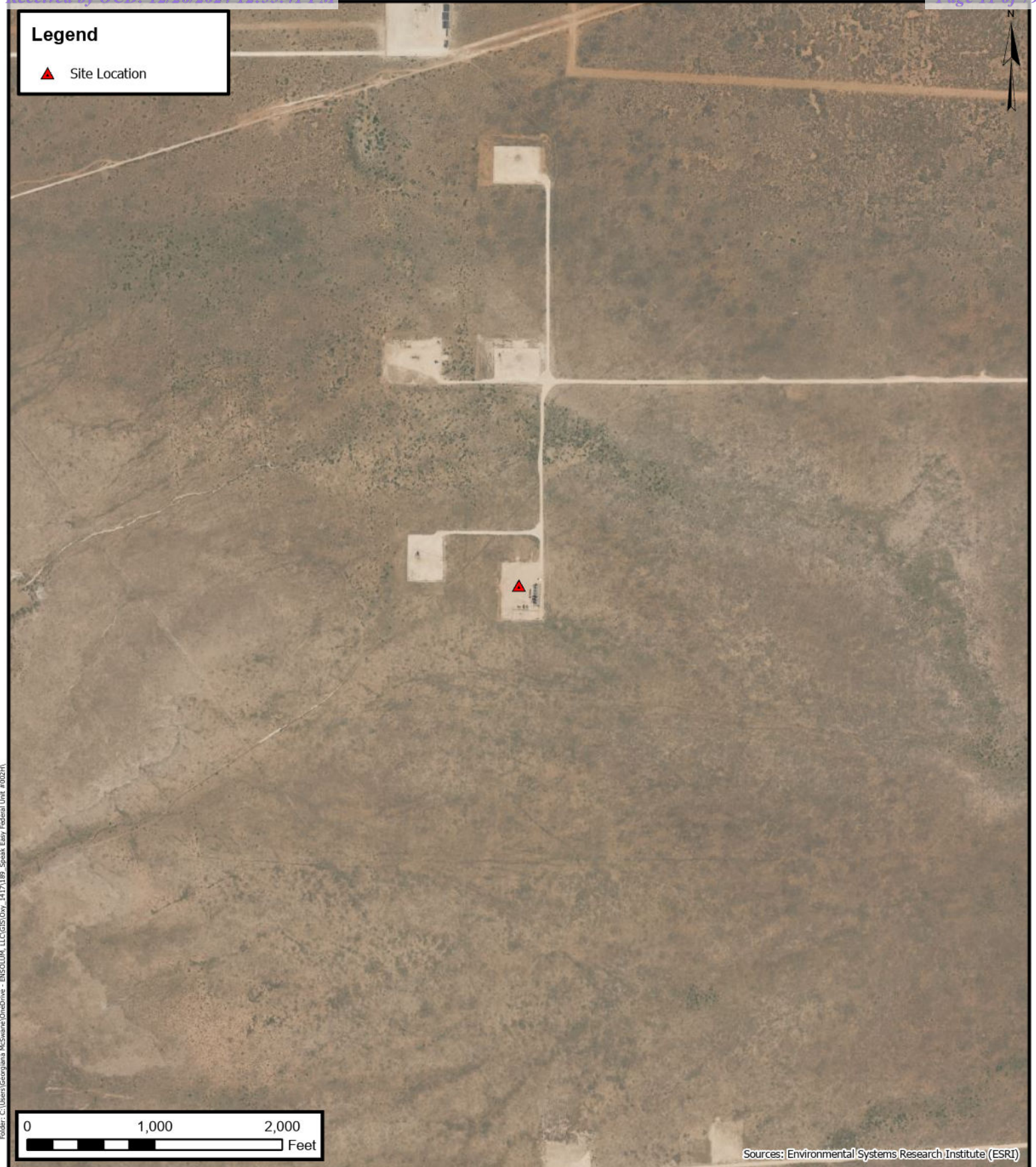
Oxy USA Inc.  
Speak Easy Federal Unit #002H  
32.4184703° N, 103.635481° W  
Lea County, New Mexico

PROJECT NUMBER: 03B1417189

**FIGURE**

**1**





## Site Vicinity Map

Oxy USA Inc.  
 Speak Easy Federal Unit #002H  
 32.4184703° N, 103.635481° W  
 Lea County, New Mexico

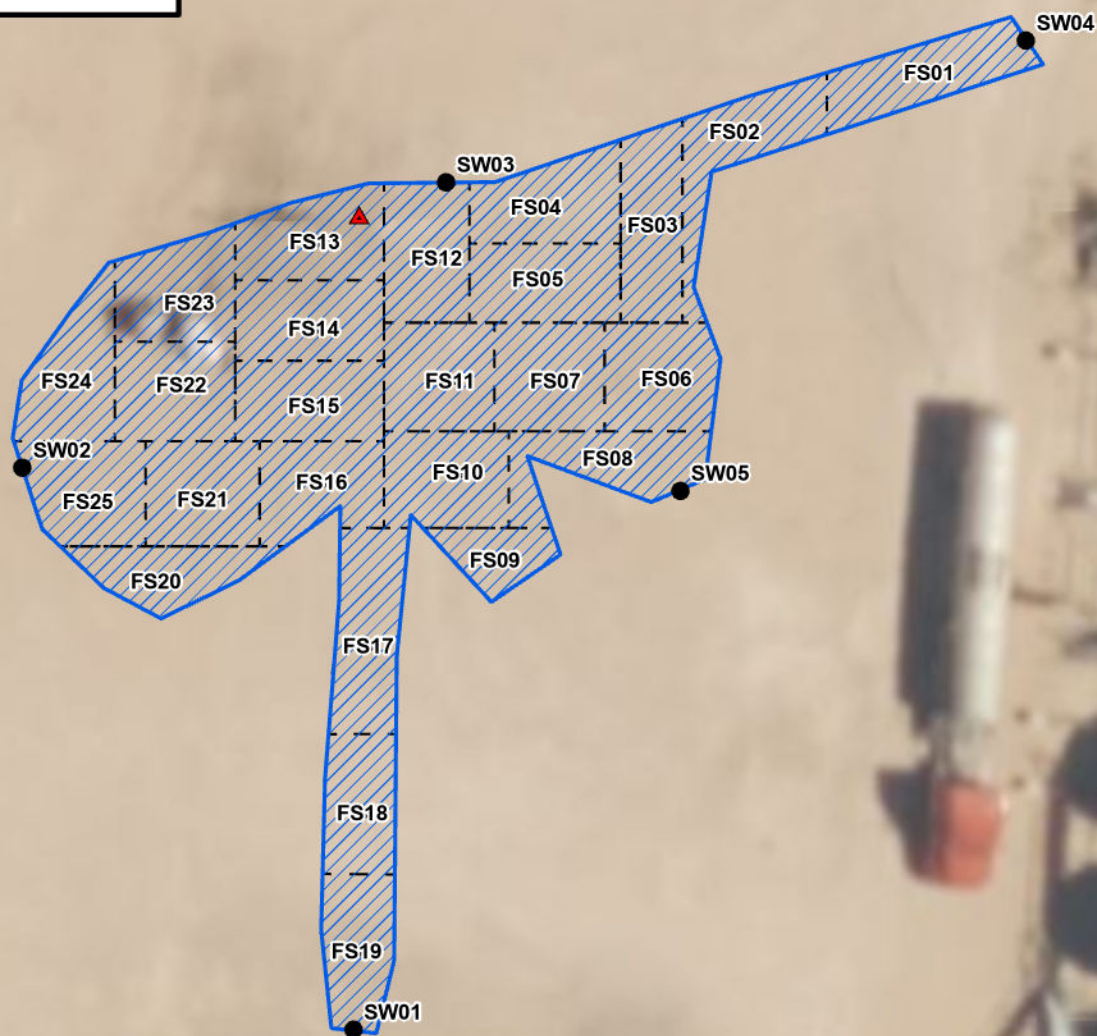
PROJECT NUMBER: 03B1417189

**FIGURE**  
**2**



## Legend

- ▲ Release Point
- Composite Sidewall Soil Sample Location
- Excavation Extent
- - - Composite Soil Sample
- - - Grid Boundary



0 25 50  
Feet

Sources: Environmental Systems Research Institute (ESRI)



## Site Map

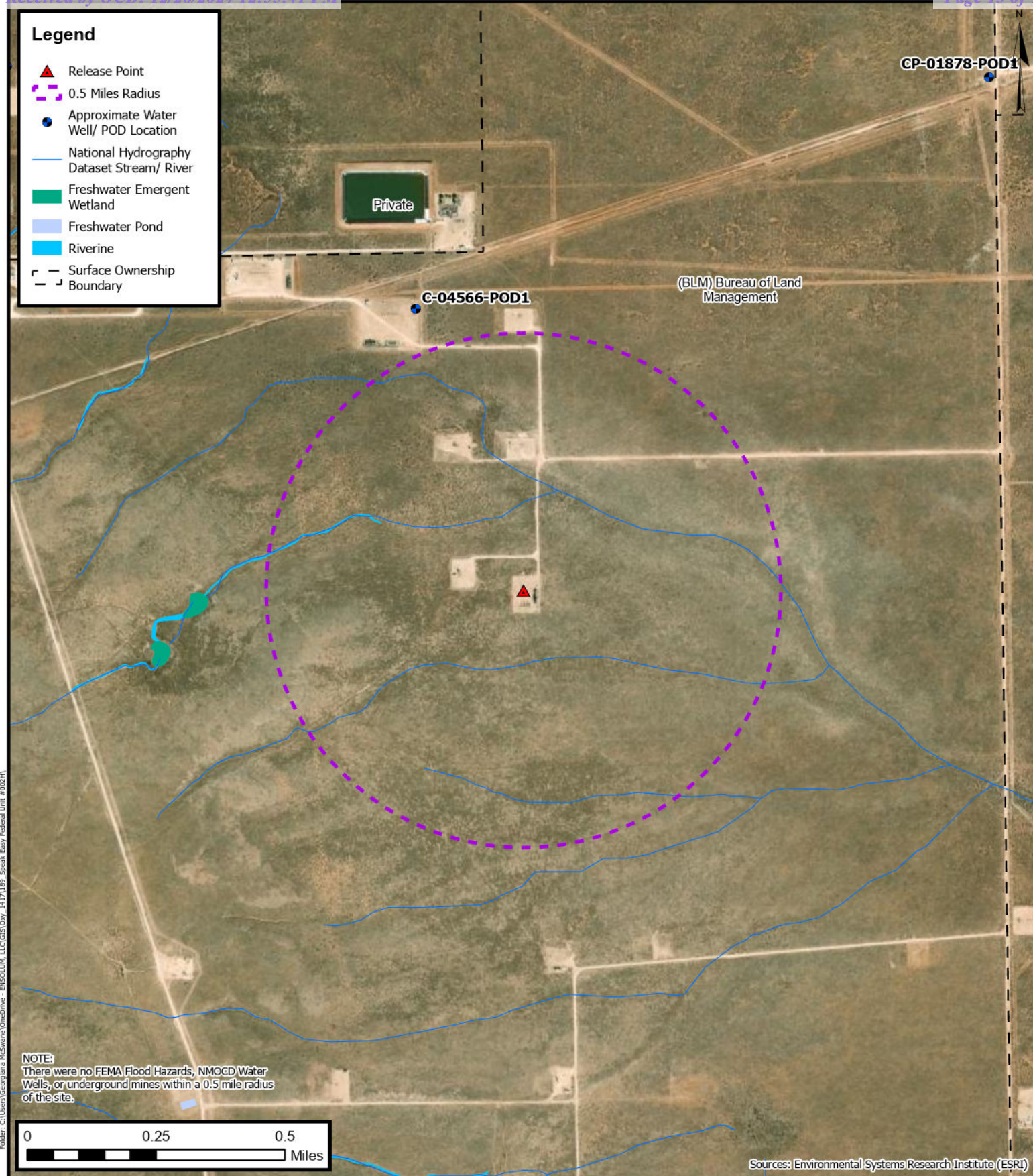
Oxy USA Inc.  
Speak Easy Federal Unit #002H  
32.4184703° N, 103.635481° W  
Lea County, New Mexico

PROJECT NUMBER: 03B1417189

**FIGURE**

**3**





## Closure Criteria Map

Oxy USA Inc.  
Speak Easy Federal Unit #002H  
32.4184703° N, 103.635481° W  
Lea County, New Mexico

PROJECT NUMBER: 03B1417189

FIGURE

4



## APPENDIX B

### Supporting Documentation

---

**Kelly Lowery**

---

**From:** Rodgers, Scott, EMNRD <Scott.Rodgers@emnrd.nm.gov>  
**Sent:** Tuesday, September 3, 2024 3:26 PM  
**To:** Kelly Lowery; Velez, Nelson, EMNRD  
**Cc:** Dittrich, John W; Pierce, Tyson (Legacy Safety & Consulting LLC); Beaux Jennings  
**Subject:** RE: [EXTERNAL] Extension Request: Speak Easy Federal Unit #002H (Incident ID: nAPP2416233211)

[\*\*EXTERNAL EMAIL\*\*]

Your time extension request is approved. Remediation Due date has been updated to December 4, 2024 within the incident page. Ensure that the site characterization/assessment report has been completed and is provided within the final closure report.

Please keep a copy of this communication for inclusion within the appropriate reporting documentation.

The OCD requires a copy of all correspondence related to remedial activities be included in all proposals, weekly/monthly/quarterly/semi-annual/annual, or final closure reports. Correspondence reporting requirements may include, but not limited to, time extension requests, sample event notifications, and variance requests.

If you have any questions, please contact me via email at your convenience.

Thank you.

Regards,  
Scott

**Scott Rodgers** • Environmental Specialist – Adv.  
Environmental Bureau  
EMNRD - Oil Conservation Division  
8801 Horizon Blvd. NE, Suite 260 | Albuquerque, NM 87113  
505.469.1830 | [scott.rodgers@emnrd.nm.gov](mailto:scott.rodgers@emnrd.nm.gov)  
<http://www.emnrd.nm.gov/oed>



---

**From:** Kelly Lowery <klowery@ensolum.com>  
**Sent:** Tuesday, September 3, 2024 10:47 AM  
**To:** Enviro, OCD, EMNRD <OCD.Enviro@emnrd.nm.gov>  
**Cc:** Dittrich, John W <Wade\_Dittrich@oxy.com>; Pierce, Tyson (Legacy Safety & Consulting LLC) <tyson\_pierce@oxy.com>; Beaux Jennings <bjenings@ensolum.com>  
**Subject:** [EXTERNAL] Extension Request: Speak Easy Federal Unit #002H (Incident ID: nAPP2416233211)

CAUTION: This email originated outside of our organization. Exercise caution prior to clicking on links or opening attachments.

Good afternoon,

On behalf of Oxy USA, Inc, Ensolum, LLC would like to request a 90-day extension for the Speak Easy Federal Unit #002H (Incident ID: nAPP2416233211). Excavation activities are currently on-going at the Site but have been delayed due to scheduling challenges with personnel and contractors. We ask that you please approve this extension request for future sampling and subsequent reporting. Please let us know if you have any questions.

Thank you,



**Kelly Lowery, GIT**

Project Geologist

214-733-3165

**Ensolum, LLC**





**Kelly Lowery**

---

**From:** Buchanan, Michael, EMNRD <Michael.Buchanan@emnrd.nm.gov>  
**Sent:** Tuesday, September 3, 2024 3:25 PM  
**To:** Kelly Lowery  
**Cc:** Dittrich, John W; Pierce, Tyson (Legacy Safety & Consulting LLC); Beaux Jennings; Bratcher, Michael, EMNRD; Velez, Nelson, EMNRD  
**Subject:** RE: [EXTERNAL] Extension Request: Speak Easy Federal Unit #002H (Incident ID: nAPP2416233211)

[ \*\*EXTERNAL EMAIL\*\* ]

Good afternoon,

The extension request for an additional ninety (90) days to submit the remediation closure report for Speak Easy Federal Unit #002H (Incident ID: nAPP2416233211) is approved. The new due date to submit your remediation closure report to the OCD is December 04, 2024. Please include a copy of this and all notifications in the remedial and/or closure reports to ensure the notifications are documented in the project file.

Kind regards,

---

**From:** Buchanan, Michael, EMNRD **On Behalf Of** Enviro, OCD, EMNRD  
**Sent:** Tuesday, September 3, 2024 2:06 PM  
**To:** 'Kelly Lowery' <klowery@ensolum.com>; Enviro, OCD, EMNRD <OCD.Enviro@emnrd.nm.gov>  
**Cc:** Dittrich, John W <Wade\_Dittrich@oxy.com>; Pierce, Tyson (Legacy Safety & Consulting LLC) <tyson\_pierce@oxy.com>; Beaux Jennings <bjennings@ensolum.com>; Bratcher, Michael, EMNRD <mike.bratcher@emnrd.nm.gov>; Rodgers, Scott, EMNRD <Scott.Rodgers@emnrd.nm.gov>; Velez, Nelson, EMNRD <Nelson.Velez@emnrd.nm.gov>  
**Subject:** RE: [EXTERNAL] Extension Request: Speak Easy Federal Unit #002H (Incident ID: nAPP2416233211)

Good afternoon,

The extension request for an additional ninety (90) days to submit the remediation closure report for Speak Easy Federal Unit #002H (Incident ID: nAPP2416233211) is approved. The new due date to submit your remediation closure report to the OCD is December 04, 2024. Please include a copy of this and all notifications in the remedial and/or closure reports to ensure the notifications are documented in the project file.

Kind regards,

---

**From:** Kelly Lowery <klowery@ensolum.com>  
**Sent:** Tuesday, September 3, 2024 10:47 AM  
**To:** Enviro, OCD, EMNRD <OCD.Enviro@emnrd.nm.gov>  
**Cc:** Dittrich, John W <Wade\_Dittrich@oxy.com>; Pierce, Tyson (Legacy Safety & Consulting LLC) <tyson\_pierce@oxy.com>; Beaux Jennings <bjennings@ensolum.com>  
**Subject:** [EXTERNAL] Extension Request: Speak Easy Federal Unit #002H (Incident ID: nAPP2416233211)

CAUTION: This email originated outside of our organization. Exercise caution prior to clicking on links or opening attachments.

Good afternoon,

On behalf of Oxy USA, Inc, Ensolum, LLC would like to request a 90-day extension for the Speak Easy Federal Unit #002H (Incident ID: nAPP2416233211). Excavation activities are currently on-going at the Site but have been delayed due to scheduling challenges with personnel and contractors. We ask that you please approve this extension request for future sampling and subsequent reporting. Please let us know if you have any questions.

Thank you,



**Kelly Lowery, GIT**

Project Geologist

214-733-3165

**Ensolum, LLC**





# WELL RECORD & LOG

OFFICE OF THE STATE ENGINEER

[www.ose.state.nm.us](http://www.ose.state.nm.us)

1. GENERAL AND WELL LOCATION	OSE POD NO. (WELL NO.) POD1 (TW-1)		WELL TAG ID NO. n/a		OSE FILE NO(S). C-4566			
	WELL OWNER NAME(S) Advanced Energy Partners				PHONE (OPTIONAL) 832.672.4700			
	WELL OWNER MAILING ADDRESS 11490 Westheimer Rd. Suite 950				CITY Houston	STATE TX	ZIP 77077	
	WELL LOCATION (FROM GPS)	DEGREES 32		MINUTES 25	SECONDS 35.34	N		
		LONGITUDE 103		38	21.54	W		
* ACCURACY REQUIRED: ONE TENTH OF A SECOND * DATUM REQUIRED: WGS 84								
DESCRIPTION RELATING WELL LOCATION TO STREET ADDRESS AND COMMON LANDMARKS - PLSS (SECTION, TOWNSHIP, RANGE) WHERE AVAILABLE NE Lot 1 Sec. 02 T22S R32E, NMPM								
2. DRILLING & CASING INFORMATION	LICENSE NO. 1249		NAME OF LICENSED DRILLER Jackie D. Atkins			NAME OF WELL DRILLING COMPANY Atkins Engineering Associates, Inc.		
	DRILLING STARTED 09/22/21		DRILLING ENDED 09/22/21		DEPTH OF COMPLETED WELL (FT) temporary well material	BORE HOLE DEPTH (FT) 105	DEPTH WATER FIRST ENCOUNTERED (FT) n/a	
	COMPLETED WELL IS: <input type="checkbox"/> ARTESIAN <input checked="" type="checkbox"/> DRY HOLE <input type="checkbox"/> SHALLOW (UNCONFINED)					STATIC WATER LEVEL IN COMPLETED WELL (FT) n/a		
	DRILLING FLUID: <input type="checkbox"/> AIR <input type="checkbox"/> MUD ADDITIVES - SPECIFY:							
	DRILLING METHOD: <input type="checkbox"/> ROTARY <input type="checkbox"/> HAMMER <input type="checkbox"/> CABLE TOOL <input checked="" type="checkbox"/> OTHER - SPECIFY: Hollow Stem Auger							
	DEPTH (feet bgl)		BORE HOLE DIAM (inches)	CASING MATERIAL AND/OR GRADE (include each casing string, and note sections of screen)	CASING CONNECTION TYPE (add coupling diameter)	CASING INSIDE DIAM. (inches)	CASING WALL THICKNESS (inches)	SLOT SIZE (inches)
	FROM	TO						
	0	105	±6.5	Boring- HSA	-	-	-	-
3. ANNULAR MATERIAL	DEPTH (feet bgl)		BORE HOLE DIAM. (inches)	LIST ANNULAR SEAL MATERIAL AND GRAVEL PACK SIZE-RANGE BY INTERVAL	AMOUNT (cubic feet)	METHOD OF PLACEMENT		
	FROM	TO						

FOR OSE INTERNAL USE

WR-20 WELL RECORD &amp; LOG (Version 06/30/17)

FILE NO.	C-4566	POD NO.	1	TRN NO.	703674
LOCATION	Mon 22S.32E.2.221			WELL TAG ID NO.	


PAGE 1 OF 2

4. HYDROGEOLOGIC LOG OF WELL	DEPTH (feet bgl)		THICKNESS (feet)	COLOR AND TYPE OF MATERIAL ENCOUNTERED - INCLUDE WATER-BEARING CAVITIES OR FRACTURE ZONES (attach supplemental sheets to fully describe all units)	WATER BEARING? (YES / NO)	ESTIMATED YIELD FOR WATER- BEARING ZONES (gpm)
	FROM	TO				
	0	14	14	Sand, Fine-grained, poorly graded, Brownish Red Dry	Y ✓ N	
	14	24	10	Sand, Fine-grained, poorly graded, with gravel 0.25" Tan Dry	Y ✓ N	
	24	54	20	Sand, Fine-grained, poorly graded, Tan Red Dry	Y ✓ N	
	54	59	5	Sand, Fine-grained, poorly graded, caliche, Tan, Dry	Y ✓ N	
	59	105	46	Sand, Fine-grained, poorly graded, caliche, Red Brown, Dry	Y ✓ N	
					Y N	
					Y N	
					Y N	
					Y N	
					Y N	
					Y N	
					Y N	
					Y N	
					Y N	
					Y N	
					Y N	
					Y N	
					Y N	
					Y N	
					Y N	
					Y N	
					Y N	
					Y N	
METHOD USED TO ESTIMATE YIELD OF WATER-BEARING STRATA: <input type="checkbox"/> PUMP <input type="checkbox"/> AIR LIFT <input type="checkbox"/> BAILER <input type="checkbox"/> OTHER - SPECIFY:					TOTAL ESTIMATED WELL YIELD (gpm): 0.00	

5. TEST; RIG SUPERVISION	WELL TEST	TEST RESULTS - ATTACH A COPY OF DATA COLLECTED DURING WELL TESTING, INCLUDING DISCHARGE METHOD, START TIME, END TIME, AND A TABLE SHOWING DISCHARGE AND DRAWDOWN OVER THE TESTING PERIOD.
	MISCELLANEOUS INFORMATION: Temporary well materials removed and the soil boring backfilled using drill cuttings from total depth to ten feet below ground surface, then hydrated bentonite chips from ten feet below ground surface to surface.	
	PRINT NAME(S) OF DRILL RIG SUPERVISOR(S) THAT PROVIDED ONSITE SUPERVISION OF WELL CONSTRUCTION OTHER THAN LICENSEE: Shane Eldridge, Carmelo Trevino, Cameron Pruitt	

6. SIGNATURE	THE UNDERSIGNED HEREBY CERTIFIES THAT, TO THE BEST OF HIS OR HER KNOWLEDGE AND BELIEF, THE FOREGOING IS A TRUE AND CORRECT RECORD OF THE ABOVE DESCRIBED HOLE AND THAT HE OR SHE WILL FILE THIS WELL RECORD WITH THE STATE ENGINEER AND THE PERMIT HOLDER WITHIN 30 DAYS AFTER COMPLETION OF WELL DRILLING:	
	 Jackie D. Atkins	10-21-2021 DATE

SIGNATURE OF DRILLER / PRINT SIGNEE NAME

FOR USE INTERNAL USE

WR-20 WELL RECORD &amp; LOG (Version 06/30/2017)

FILE NO. <b>C-4544</b>	POD NO. <b>1</b>	TRN NO. <b>703674</b>
LOCATION	WELL TAG ID NO.	PAGE 2 OF 2



**Kelly Lowery**

---

**From:** Velez, Nelson, EMNRD <Nelson.Velez@emnrd.nm.gov>  
**Sent:** Wednesday, June 12, 2024 3:19 PM  
**To:** Kelly Lowery  
**Cc:** Wade Dittrich; Tyson Pierce; Beaux Jennings; Bratcher, Michael, EMNRD  
**Subject:** Re: [EXTERNAL] DTW Closure Criteria Variance: Speak Easy Federal Unit #002H (Incident ID: nAPP2416233211)

[ \*\*EXTERNAL EMAIL\*\* ]

Good afternoon Kelly,

Thanks for the correspondence. Your variance request to apply groundwater > 100 feet is approved.

Please keep a copy of this communication for inclusion within the appropriate report submittal.

The OCD requires a copy of all correspondence relative to remedial activities be included in all proposals and/or final closure reports. Correspondence required to be included in reports may include, but not limited to, notifications for liner inspections, sample events, spill/release/fire, and request for time extensions or variances.

Have a safe and productive day!

Regards,

**Nelson Velez** • Environmental Specialist - Adv  
Environmental Bureau | EMNRD - Oil Conservation Division  
1000 Rio Brazos Road | Aztec, NM 87410  
(505) 469-6146 | [nelson.velez@emnrd.nm.gov](mailto:nelson.velez@emnrd.nm.gov)  
<http://www.emnrd.nm.gov/oed>



---

**From:** Wells, Shelly, EMNRD <Shelly.Wells@emnrd.nm.gov>  
**Sent:** Wednesday, June 12, 2024 1:08 PM  
**To:** Velez, Nelson, EMNRD <Nelson.Velez@emnrd.nm.gov>  
**Cc:** Bratcher, Michael, EMNRD <mike.bratcher@emnrd.nm.gov>  
**Subject:** FW: [EXTERNAL] DTW Closure Criteria Variance: Speak Easy Federal Unit #002H (Incident ID: nAPP2416233211)

**From:** Kelly Lowery <klowery@ensolum.com>  
**Sent:** Wednesday, June 12, 2024 12:36 PM  
**To:** Enviro, OCD, EMNRD <OCD.Enviro@emnrd.nm.gov>  
**Cc:** Dittrich, John W <Wade\_Dittrich@oxy.com>; Pierce, Tyson (Legacy Safety & Consulting LLC) <tyson\_pierce@oxy.com>; Beaux Jennings <bjennings@ensolum.com>  
**Subject:** [EXTERNAL] DTW Closure Criteria Variance: Speak Easy Federal Unit #002H (Incident ID: nAPP2416233211)

**CAUTION:** This email originated outside of our organization. Exercise caution prior to clicking on links or opening attachments.

Good afternoon,

On behalf of Oxy USA, Inc, Ensolum, LLC would like to request a Closure Criteria Variance for the Speak Easy Federal Unit #002H (Incident ID: nAPP2416233211), hereinafter referred to as the "Site", for the following: DTW at the Site.

Speak Easy Federal Unit #002H (Incident ID: nAPP2416233211)

- A stuffing box malfunctioned resulting in approximately 10 barrels of oil to be released and 5 barrels of produced water to be released, with all of the release remaining on-pad. Oxy immediately recovered 10 barrels of the oil and 5 barrels of the produced water. The Site will be vertically and laterally delineated per NMAC 19.15.29.

Attached is groundwater research from the surrounding area of the release Site. The closest NMOSE well indicates depth to groundwater greater than 105 feet bgs. The nearest borehole (C-04566-POD1) with depth to groundwater data is located 0.6 miles northwest of the Site and has a recorded total depth of the well at 105 feet bgs with no groundwater encountered from September 22, 2021.

Based on the above statements regarding DTW at the Site being greater than 105 feet bgs, Ensolum requests a Closure Criteria Variance to reflect groundwater >100 feet as shown in Table 1 of 19.15.29.12 NMAC for on-pad remediation, and for any off-pad remediation greater than 4 feet bgs.

Please let me know if you have any questions,



**Kelly Lowery, GIT**  
Project Geologist  
214-733-3165  
**Ensolum, LLC**  
in f 

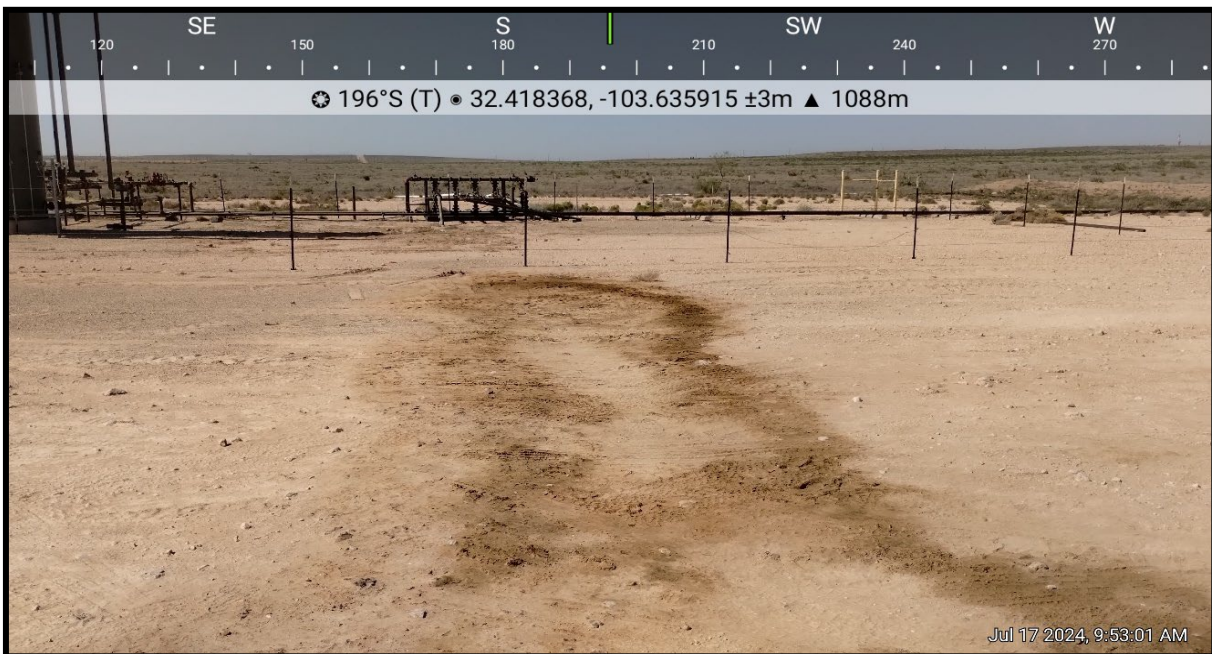


## APPENDIX C

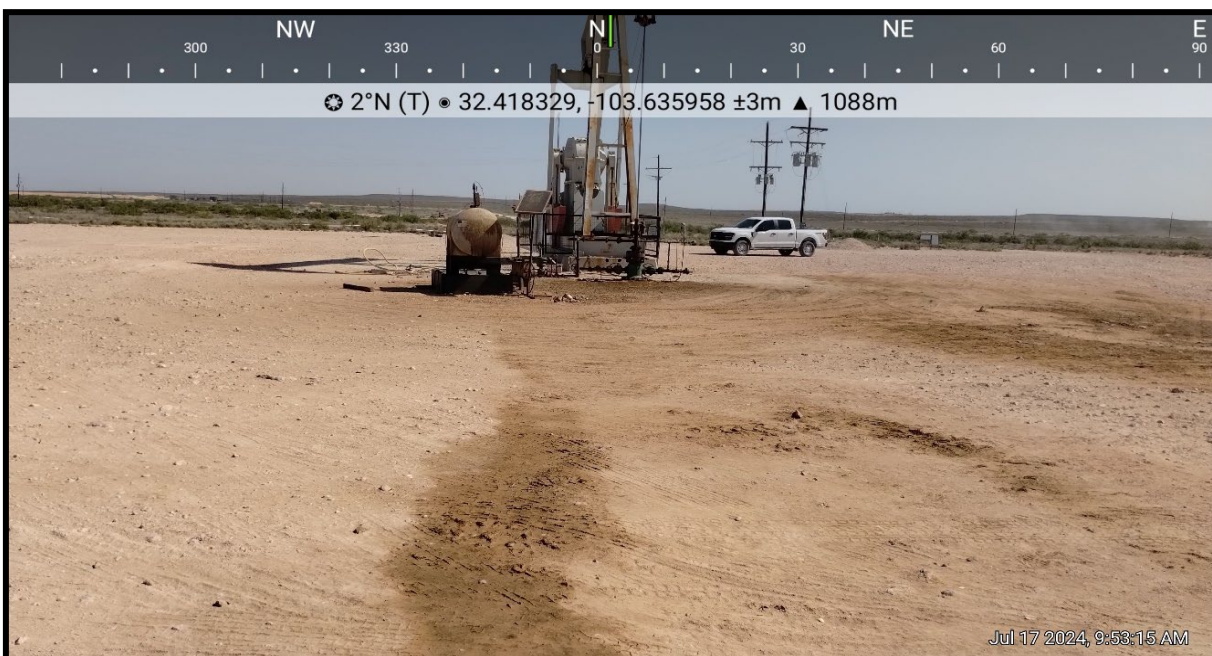
### Photographic Documentation

---

Project: Speak Easy Federal Unit #002H  
Entity: Oxy USA, Inc.  
Incident ID: nAPP2416233211



View of initial release impact area, facing south (07/17/24).



View of initial release impact area, facing north (07/17/24).



Project: Speak Easy Federal Unit #002H  
Entity: Oxy USA, Inc.  
Incident ID: nAPP2416233211



View of excavation extent during remediation activities, facing south (09/05/24).



View of excavation extent during remediation activities, facing southeast (09/05/24).



Project: Speak Easy Federal Unit #002H  
Entity: Oxy USA, Inc.  
Incident ID: nAPP2416233211



View of excavation extent subsequent to backfill activities, facing west (10/28/24).



View of excavation extent subsequent to backfill activities, facing west (10/28/24).

Project: Speak Easy Federal Unit #002H  
Entity: Oxy USA, Inc.  
Incident ID: nAPP2416233211



View of excavation extent subsequent to backfill activities, facing north (10/28/24).



View of excavation extent subsequent to backfill activities, facing east (10/28/24).



## APPENDIX D

Table(s)

---





**TABLE 1**  
**EXCAVATION FLOOR SAMPLE ANALYTICAL RESULTS**  
 Speak Easy Federal Unit #002H  
 Oxy USA, Inc.  
 Lea County, New Mexico  
 Ensolum Project No. 03B1417189

Sample Designation	Date	Depth (feet bgs)	Benzene (mg/kg)	Toluene (mg/kg)	Ethylbenzene (mg/kg)	Total Xylenes (mg/kg)	Total BTEX (mg/kg)	TPH GRO (mg/kg)	TPH DRO (mg/kg)	TPH MRO (mg/kg)	Total TPH (GRO+DRO+MRO) (mg/kg)	Chloride (mg/kg)
<b>New Mexico Oil Conservation Division Closure Criteria for Soils Impacted by a Release (&gt;100 feet)</b>			<b>10</b>	<b>NE</b>	<b>NE</b>	<b>NE</b>	<b>50</b>	<b>1,000</b>		<b>NE</b>	<b>2,500</b>	<b>20,000</b>
<b>Composite Floor Sample Analytical Results</b>												
FS01	09/05/2024	1	<0.050	<0.050	<0.050	<0.150	<0.300	<10.0		<10.0	<10.0	<b>48.0</b>
FS02	09/05/2024	1	<0.050	<0.050	<0.050	<0.150	<0.300	<10.0		<10.0	<10.0	<b>80.0</b>
FS03	09/05/2024	2	<0.050	<0.050	<0.050	<0.150	<0.300	<10.0		<10.0	<10.0	<b>448</b>
FS04	09/05/2024	1	<0.050	<0.050	<0.050	<0.150	<0.300	<10.0		<10.0	<10.0	<b>624</b>
FS05	09/05/2024	2	<0.050	<0.050	<0.050	<0.150	<0.300	<10.0		<10.0	<10.0	<b>256</b>
FS06	09/05/2024	2	<0.050	<0.050	<0.050	<0.150	<0.300	<10.0		<10.0	<10.0	<b>272</b>
FS07	09/05/2024	2	<0.050	<0.050	<0.050	<0.150	<0.300	<10.0		<10.0	<10.0	<b>288</b>
FS08	09/05/2024	2	<0.050	<0.050	<0.050	<0.150	<0.300	<10.0		<10.0	<10.0	<b>368</b>
FS09	09/05/2024	1.5	<0.050	<0.050	<0.050	<0.150	<0.300	<10.0		<10.0	<10.0	<b>320</b>
FS10	09/05/2024	2	<0.050	<0.050	<0.050	<0.150	<0.300	<10.0		<10.0	<10.0	<b>240</b>
FS11	09/05/2024	2	<0.050	<0.050	<0.050	<0.150	<0.300	<10.0		<10.0	<10.0	<b>256</b>
FS12	09/05/2024	2	<0.050	<0.050	<0.050	<0.150	<0.300	<10.0		<10.0	<10.0	<b>464</b>
FS13	09/05/2024	2	<0.050	<0.050	<0.050	<0.150	<0.300	<10.0		<10.0	<10.0	<b>288</b>
FS14	09/05/2024	2	<0.050	<0.050	<0.050	<0.150	<0.300	<10.0		<10.0	<10.0	<b>384</b>
FS15	09/05/2024	2	<0.050	<0.050	<0.050	<0.150	<0.300	<10.0		<10.0	<10.0	<b>496</b>
FS16	09/05/2024	2	<0.050	<0.050	<0.050	<0.150	<0.300	<10.0		<10.0	<10.0	<b>208</b>
FS17	09/05/2024	2	<0.050	<0.050	<0.050	<0.150	<0.300	<10.0		<10.0	<10.0	<b>1,020</b>
FS18	09/05/2024	2	<0.050	<0.050	<0.050	<0.150	<0.300	<10.0		<10.0	<10.0	<b>640</b>
FS19	09/05/2024	2	<0.050	<0.050	<0.050	<0.150	<0.300	<10.0		<10.0	<10.0	<b>240</b>
FS20	09/05/2024	2	<0.050	<0.050	<0.050	<0.150	<0.300	<b>16.3</b>		<10.0	<b>16.3</b>	<b>144</b>
FS21	09/05/2024	2	<0.050	<0.050	<0.050	<0.150	<0.300	<b>42.0</b>		<10.0	<b>42.0</b>	<b>480</b>
FS22	09/05/2024	2	<0.050	<0.050	<0.050	<0.150	<0.300	<b>25.5</b>		<10.0	<b>25.5</b>	<b>304</b>
FS23	09/05/2024	2	<0.050	<0.050	<0.050	<0.150	<0.300	<10.0		<10.0	<10.0	<b>384</b>
FS24	09/05/2024	2	<0.050	<0.050	<0.050	<0.150	<0.300	<b>45.4</b>		<10.0	<b>45.4</b>	<b>432</b>
FS25	09/05/2024	2	<0.050	<0.050	<0.050	<0.150	<0.300	<10.0		<10.0	<10.0	<b>432</b>

bgs: below ground surface

mg/kg: milligrams per kilogram

NE: Not Established

BTEX: Benzene, Toluene, Ethylbenzene, and Xylenes

GRO: Gasoline Range Organics

DRO: Diesel Range Organics

MRO: Motor Oil/Lube Oil Range Organics

TPH: Total Petroleum Hydrocarbon



**TABLE 2**  
**EXCAVATION SIDEWALL SAMPLE ANALYTICAL RESULTS**  
 Speak Easy Federal Unit #002H  
 Oxy USA, Inc.  
 Lea County, New Mexico  
 Ensolum Project No. 03B1417189

Sample Designation	Date	Depth (feet bgs)	Benzene (mg/kg)	Toluene (mg/kg)	Ethylbenzene (mg/kg)	Total Xylenes (mg/kg)	Total BTEX (mg/kg)	TPH GRO (mg/kg)	TPH DRO (mg/kg)	TPH MRO (mg/kg)	Total TPH (GRO+DRO+MRO) (mg/kg)	Chloride (mg/kg)
New Mexico Oil Conservation Division Closure Criteria for Soils Impacted by a Release (≤ 50 feet)			10	NE	NE	NE	50	NE	NE	NE	100	600
Composite Sidewall Sample Analytical Results												
SW01	09/05/2024	0 - 2	<0.050	<0.050	<0.050	<0.150	<0.300	<10.0	<10.0	<10.0	<10.0	80.0
SW02	09/05/2024	0 - 2	<0.050	<0.050	<0.050	<0.150	<0.300	<10.0	<10.0	<10.0	<10.0	176
SW03	09/05/2024	0 - 2	<0.050	<0.050	<0.050	<0.150	<0.300	<10.0	<10.0	<10.0	<10.0	240
SW04	09/05/2024	0 - 1	<0.050	<0.050	<0.050	<0.150	<0.300	<10.0	<10.0	<10.0	<10.0	48.0
SW05	09/05/2024	0 - 2	<0.050	<0.050	<0.050	<0.150	<0.300	<10.0	<10.0	<10.0	<10.0	256

bgs: below ground surface

mg/kg: milligrams per kilogram

NE: Not Established

BTEX: Benzene, Toluene, Ethylbenzene, and Xylenes

GRO: Gasoline Range Organics

DRO: Diesel Range Organics

MRO: Motor Oil/Lube Oil Range Organics

TPH: Total Petroleum Hydrocarbon



**TABLE 3**  
**BACKFILL SOIL SAMPLE ANALYTICAL RESULTS**  
 Lea Land Caliche Pit  
 Oxy USA, Inc.  
 Eddy County, New Mexico  
 Ensolum Project No. NA

Sample Designation	Date	Depth (feet bgs)	Benzene (mg/kg)	Toluene (mg/kg)	Ethylbenzene (mg/kg)	Total Xylenes (mg/kg)	Total BTEX (mg/kg)	TPH GRO (mg/kg)	TPH DRO (mg/kg)	TPH MRO (mg/kg)	Total TPH (GRO+DRO+MRO) (mg/kg)	Chloride (mg/kg)
New Mexico Oil Conservation Division Closure Criteria for Soils Impacted by a Release (≤ 50 feet)			10	NE	NE	NE	50	NE	NE	NE	100	600
Composite Background Soil Sample Analytical Result												
Lea Land Caliche Pit	09/13/2024	NA	<0.050	<0.050	<0.050	<0.150	<0.300	<10.0	98.6	<10.0	98.6	560

bgs: below ground surface

mg/kg: milligrams per kilogram

NA: Not Applicable

NE: Not Established

BTEX: Benzene, Toluene, Ethylbenzene, and Xylenes

GRO: Gasoline Range Organics

DRO: Diesel Range Organics

MRO: Motor Oil/Lube Oil Range Organics

TPH: Total Petroleum Hydrocarbon



## APPENDIX E

### Laboratory Analytical Reports & Chain-of-Custody Documentation

---



PHONE (575) 393-2326 ° 101 E. MARLAND ° HOBBS, NM 88240

September 10, 2024

KELLY LOWERY

ENSOLUM, LLC

705 W WADLEY AVE.

MIDLAND, TX 79705

RE: SPEAK EASY FEDERAL UNIT #002H

Enclosed are the results of analyses for samples received by the laboratory on 09/05/24 14:15.

Cardinal Laboratories is accredited through Texas NELAP under certificate number TX-C24-00112. Accreditation applies to drinking water, non-potable water and solid and chemical materials. All accredited analytes are denoted by an asterisk (\*). For a complete list of accredited analytes and matrices visit the TCEQ website at [www.tceq.texas.gov/field/qa/lab\\_accred\\_certif.html](http://www.tceq.texas.gov/field/qa/lab_accred_certif.html).

Cardinal Laboratories is accredited through the State of Colorado Department of Public Health and Environment for:

Method EPA 552.2	Haloacetic Acids (HAA-5)
Method EPA 524.2	Total Trihalomethanes (TTHM)
Method EPA 524.4	Regulated VOCs (V1, V2, V3)

Accreditation applies to public drinking water matrices.

This report meets NELAP requirements and is made up of a cover page, analytical results, and a copy of the original chain-of-custody. If you have any questions concerning this report, please feel free to contact me.

Sincerely,

A handwritten signature in black ink that reads "Celey D. Keene". The signature is written in a cursive style with a large, stylized 'C' at the beginning.

Celey D. Keene

Lab Director/Quality Manager



PHONE (575) 393-2326 ° 101 E. MARLAND ° HOBBS, NM 88240

**Analytical Results For:**

ENSOLUM, LLC  
 KELLY LOWERY  
 705 W WADLEY AVE.  
 MIDLAND TX, 79705  
 Fax To:

Received: 09/05/2024  
 Reported: 09/10/2024  
 Project Name: SPEAK EASY FEDERAL UNIT #002H  
 Project Number: 03B1417189  
 Project Location: OXY - LEA COUNTY, NM

Sampling Date: 09/05/2024  
 Sampling Type: Soil  
 Sampling Condition: Cool & Intact  
 Sample Received By: Shalyn Rodriguez

**Sample ID: FS 01 1' (H245387-01)**

BTX 8021B		mg/kg		Analyzed By: JH				S-04	
Analyte	Result	Reporting Limit	Analyzed	Method Blank	BS	% Recovery	True Value QC	RPD	Qualifier
Benzene*	<0.050	0.050	09/07/2024	ND	2.08	104	2.00	0.475	
Toluene*	<0.050	0.050	09/07/2024	ND	2.17	109	2.00	2.25	
Ethylbenzene*	<0.050	0.050	09/07/2024	ND	2.31	116	2.00	3.03	
Total Xylenes*	<0.150	0.150	09/07/2024	ND	7.14	119	6.00	4.70	
Total BTX	<0.300	0.300	09/07/2024	ND					

Surrogate: 4-Bromofluorobenzene (PID) 142 % 71.5-134

Chloride, SM4500Cl-B			mg/kg					Analyzed By: HM	
Analyte	Result	Reporting Limit	Analyzed	Method Blank	BS	% Recovery	True Value QC	RPD	Qualifier
Chloride	48.0	16.0	09/09/2024	ND	416	104	400	0.00	

TPH 8015M			mg/kg					Analyzed By: MS	
Analyte	Result	Reporting Limit	Analyzed	Method Blank	BS	% Recovery	True Value QC	RPD	Qualifier
GRO C6-C10*	<10.0	10.0	09/06/2024	ND	224	112	200	0.853	
DRO >C10-C28*	<10.0	10.0	09/06/2024	ND	220	110	200	0.520	
EXT DRO >C28-C36	<10.0	10.0	09/06/2024	ND					

Surrogate: 1-Chlorooctane 90.2 % 48.2-134

Surrogate: 1-Chlorooctadecane 112 % 49.1-148

Cardinal Laboratories

\*=Accredited Analyte

PLEASE NOTE: Liability and Damages. Cardinal's liability and client's exclusive remedy for any claim arising, whether based in contract or tort, shall be limited to the amount paid by client for analyses. All claims, including those for negligence and any other cause whatsoever shall be deemed waived unless made in writing and received by Cardinal within thirty (30) days after completion of the applicable service. In no event shall Cardinal be liable for incidental or consequential damages, including, without limitation, business interruptions, loss of use, or loss of profits incurred by client, its subsidiaries, affiliates or successors arising out of or related to the performance of the services hereunder by Cardinal, regardless of whether such claim is based upon any of the above stated reasons or otherwise. Results relate only to the samples identified above. This report shall not be reproduced except in full with written approval of Cardinal Laboratories.

Celey D. Keene, Lab Director/Quality Manager



PHONE (575) 393-2326 ° 101 E. MARLAND ° HOBBS, NM 88240

**Analytical Results For:**

ENSOLUM, LLC  
 KELLY LOWERY  
 705 W WADLEY AVE.  
 MIDLAND TX, 79705  
 Fax To:

Received: 09/05/2024  
 Reported: 09/10/2024  
 Project Name: SPEAK EASY FEDERAL UNIT #002H  
 Project Number: 03B1417189  
 Project Location: OXY - LEA COUNTY, NM

Sampling Date: 09/05/2024  
 Sampling Type: Soil  
 Sampling Condition: Cool & Intact  
 Sample Received By: Shalyn Rodriguez

**Sample ID: FS 02 1' (H245387-02)**

BTEx 8021B		mg/kg	Analyzed By: JH					S-04	
Analyte	Result	Reporting Limit	Analyzed	Method Blank	BS	% Recovery	True Value QC	RPD	Qualifier
Benzene*	<0.050	0.050	09/07/2024	ND	2.08	104	2.00	0.475	
Toluene*	<0.050	0.050	09/07/2024	ND	2.17	109	2.00	2.25	
Ethylbenzene*	<0.050	0.050	09/07/2024	ND	2.31	116	2.00	3.03	
Total Xylenes*	<0.150	0.150	09/07/2024	ND	7.14	119	6.00	4.70	
Total BTEX	<0.300	0.300	09/07/2024	ND					

Surrogate: 4-Bromofluorobenzene (PID) 146 % 71.5-134

Chloride, SM4500Cl-B		mg/kg	Analyzed By: CT						
Analyte	Result	Reporting Limit	Analyzed	Method Blank	BS	% Recovery	True Value QC	RPD	Qualifier
Chloride	80.0	16.0	09/09/2024	ND	416	104	400	0.00	

TPH 8015M		mg/kg	Analyzed By: MS						
Analyte	Result	Reporting Limit	Analyzed	Method Blank	BS	% Recovery	True Value QC	RPD	Qualifier
GRO C6-C10*	<10.0	10.0	09/06/2024	ND	224	112	200	0.853	
DRO >C10-C28*	<10.0	10.0	09/06/2024	ND	220	110	200	0.520	
EXT DRO >C28-C36	<10.0	10.0	09/06/2024	ND					

Surrogate: 1-Chlorooctane 94.2 % 48.2-134

Surrogate: 1-Chlorooctadecane 116 % 49.1-148

Cardinal Laboratories

\*=Accredited Analyte

PLEASE NOTE: Liability and Damages. Cardinal's liability and client's exclusive remedy for any claim arising, whether based in contract or tort, shall be limited to the amount paid by client for analyses. All claims, including those for negligence and any other cause whatsoever shall be deemed waived unless made in writing and received by Cardinal within thirty (30) days after completion of the applicable service. In no event shall Cardinal be liable for incidental or consequential damages, including, without limitation, business interruptions, loss of use, or loss of profits incurred by client, its subsidiaries, affiliates or successors arising out of or related to the performance of the services hereunder by Cardinal, regardless of whether such claim is based upon any of the above stated reasons or otherwise. Results relate only to the samples identified above. This report shall not be reproduced except in full with written approval of Cardinal Laboratories.

Celey D. Keene, Lab Director/Quality Manager



PHONE (575) 393-2326 ° 101 E. MARLAND ° HOBBS, NM 88240

**Analytical Results For:**

ENSOLUM, LLC  
 KELLY LOWERY  
 705 W WADLEY AVE.  
 MIDLAND TX, 79705  
 Fax To:

Received: 09/05/2024  
 Reported: 09/10/2024  
 Project Name: SPEAK EASY FEDERAL UNIT #002H  
 Project Number: 03B1417189  
 Project Location: OXY - LEA COUNTY, NM

Sampling Date: 09/05/2024  
 Sampling Type: Soil  
 Sampling Condition: Cool & Intact  
 Sample Received By: Shalyn Rodriguez

**Sample ID: FS 03 2' (H245387-03)**

BTEX 8021B		mg/kg		Analyzed By: JH						
Analyte	Result	Reporting Limit	Analyzed	Method Blank	BS	% Recovery	True Value QC	RPD	Qualifier	
Benzene*	<0.050	0.050	09/07/2024	ND	2.08	104	2.00	0.475		
Toluene*	<0.050	0.050	09/07/2024	ND	2.17	109	2.00	2.25		
Ethylbenzene*	<0.050	0.050	09/07/2024	ND	2.31	116	2.00	3.03		
Total Xylenes*	<0.150	0.150	09/07/2024	ND	7.14	119	6.00	4.70		
Total BTEX	<0.300	0.300	09/07/2024	ND						

Surrogate: 4-Bromofluorobenzene (PID) 127 % 71.5-134

Chloride, SM4500CI-B		mg/kg		Analyzed By: CT						
Analyte	Result	Reporting Limit	Analyzed	Method Blank	BS	% Recovery	True Value QC	RPD	Qualifier	
Chloride	448	16.0	09/09/2024	ND	416	104	400	0.00		

TPH 8015M		mg/kg		Analyzed By: MS					
Analyte	Result	Reporting Limit	Analyzed	Method Blank	BS	% Recovery	True Value QC	RPD	Qualifier
GRO C6-C10*	<10.0	10.0	09/06/2024	ND	224	112	200	0.853	
DRO >C10-C28*	<10.0	10.0	09/06/2024	ND	220	110	200	0.520	
EXT DRO >C28-C36	<10.0	10.0	09/06/2024	ND					

Surrogate: 1-Chlorooctane 91.8 % 48.2-134

Surrogate: 1-Chlorooctadecane 113 % 49.1-148

Cardinal Laboratories

\*=Accredited Analyte

PLEASE NOTE: Liability and Damages. Cardinal's liability and client's exclusive remedy for any claim arising, whether based in contract or tort, shall be limited to the amount paid by client for analyses. All claims, including those for negligence and any other cause whatsoever shall be deemed waived unless made in writing and received by Cardinal within thirty (30) days after completion of the applicable service. In no event shall Cardinal be liable for incidental or consequential damages, including, without limitation, business interruptions, loss of use, or loss of profits incurred by client, its subsidiaries, affiliates or successors arising out of or related to the performance of the services hereunder by Cardinal, regardless of whether such claim is based upon any of the above stated reasons or otherwise. Results relate only to the samples identified above. This report shall not be reproduced except in full with written approval of Cardinal Laboratories.

Celey D. Keene, Lab Director/Quality Manager





PHONE (575) 393-2326 ° 101 E. MARLAND ° HOBBS, NM 88240

**Analytical Results For:**

ENSOLUM, LLC  
 KELLY LOWERY  
 705 W WADLEY AVE.  
 MIDLAND TX, 79705  
 Fax To:

Received: 09/05/2024  
 Reported: 09/10/2024  
 Project Name: SPEAK EASY FEDERAL UNIT #002H  
 Project Number: 03B1417189  
 Project Location: OXY - LEA COUNTY, NM

Sampling Date: 09/05/2024  
 Sampling Type: Soil  
 Sampling Condition: Cool & Intact  
 Sample Received By: Shalyn Rodriguez

**Sample ID: FS 04 1' (H245387-04)**

BTEx 8021B		mg/kg	Analyzed By: JH					S-04	
Analyte	Result	Reporting Limit	Analyzed	Method Blank	BS	% Recovery	True Value QC	RPD	Qualifier
Benzene*	<0.050	0.050	09/07/2024	ND	2.08	104	2.00	0.475	
Toluene*	<0.050	0.050	09/07/2024	ND	2.17	109	2.00	2.25	
Ethylbenzene*	<0.050	0.050	09/07/2024	ND	2.31	116	2.00	3.03	
Total Xylenes*	<0.150	0.150	09/07/2024	ND	7.14	119	6.00	4.70	
Total BTEX	<0.300	0.300	09/07/2024	ND					

Surrogate: 4-Bromofluorobenzene (PID) 144 % 71.5-134

Chloride, SM4500Cl-B		mg/kg	Analyzed By: CT						
Analyte	Result	Reporting Limit	Analyzed	Method Blank	BS	% Recovery	True Value QC	RPD	Qualifier
Chloride	624	16.0	09/09/2024	ND	416	104	400	0.00	

TPH 8015M		mg/kg	Analyzed By: MS						
Analyte	Result	Reporting Limit	Analyzed	Method Blank	BS	% Recovery	True Value QC	RPD	Qualifier
GRO C6-C10*	<10.0	10.0	09/06/2024	ND	224	112	200	0.853	
DRO >C10-C28*	<10.0	10.0	09/06/2024	ND	220	110	200	0.520	
EXT DRO >C28-C36	<10.0	10.0	09/06/2024	ND					

Surrogate: 1-Chlorooctane 95.2 % 48.2-134

Surrogate: 1-Chlorooctadecane 117 % 49.1-148

Cardinal Laboratories

\*=Accredited Analyte

PLEASE NOTE: Liability and Damages. Cardinal's liability and client's exclusive remedy for any claim arising, whether based in contract or tort, shall be limited to the amount paid by client for analyses. All claims, including those for negligence and any other cause whatsoever shall be deemed waived unless made in writing and received by Cardinal within thirty (30) days after completion of the applicable service. In no event shall Cardinal be liable for incidental or consequential damages, including, without limitation, business interruptions, loss of use, or loss of profits incurred by client, its subsidiaries, affiliates or successors arising out of or related to the performance of the services hereunder by Cardinal, regardless of whether such claim is based upon any of the above stated reasons or otherwise. Results relate only to the samples identified above. This report shall not be reproduced except in full with written approval of Cardinal Laboratories.

Celey D. Keene, Lab Director/Quality Manager



PHONE (575) 393-2326 ° 101 E. MARLAND ° HOBBS, NM 88240

**Analytical Results For:**

ENSOLUM, LLC  
 KELLY LOWERY  
 705 W WADLEY AVE.  
 MIDLAND TX, 79705  
 Fax To:

Received: 09/05/2024  
 Reported: 09/10/2024  
 Project Name: SPEAK EASY FEDERAL UNIT #002H  
 Project Number: 03B1417189  
 Project Location: OXY - LEA COUNTY, NM

Sampling Date: 09/05/2024  
 Sampling Type: Soil  
 Sampling Condition: Cool & Intact  
 Sample Received By: Shalyn Rodriguez

**Sample ID: FS 05 2' (H245387-05)**

BTX 8021B		mg/kg		Analyzed By: JH				S-04	
Analyte	Result	Reporting Limit	Analyzed	Method Blank	BS	% Recovery	True Value QC	RPD	Qualifier
Benzene*	<0.050	0.050	09/07/2024	ND	2.08	104	2.00	0.475	
Toluene*	<0.050	0.050	09/07/2024	ND	2.17	109	2.00	2.25	
Ethylbenzene*	<0.050	0.050	09/07/2024	ND	2.31	116	2.00	3.03	
Total Xylenes*	<0.150	0.150	09/07/2024	ND	7.14	119	6.00	4.70	
Total BTX	<0.300	0.300	09/07/2024	ND					

Surrogate: 4-Bromofluorobenzene (PID) 147 % 71.5-134

Chloride, SM4500CI-B		mg/kg		Analyzed By: CT					
Analyte	Result	Reporting Limit	Analyzed	Method Blank	BS	% Recovery	True Value QC	RPD	Qualifier
Chloride	256	16.0	09/09/2024	ND	416	104	400	0.00	

TPH 8015M		mg/kg		Analyzed By: MS					
Analyte	Result	Reporting Limit	Analyzed	Method Blank	BS	% Recovery	True Value QC	RPD	Qualifier
GRO C6-C10*	<10.0	10.0	09/06/2024	ND	224	112	200	0.853	
DRO >C10-C28*	<10.0	10.0	09/06/2024	ND	220	110	200	0.520	
EXT DRO >C28-C36	<10.0	10.0	09/06/2024	ND					

Surrogate: 1-Chlorooctane 103 % 48.2-134

Surrogate: 1-Chlorooctadecane 125 % 49.1-148

Cardinal Laboratories

\*=Accredited Analyte

PLEASE NOTE: Liability and Damages. Cardinal's liability and client's exclusive remedy for any claim arising, whether based in contract or tort, shall be limited to the amount paid by client for analyses. All claims, including those for negligence and any other cause whatsoever shall be deemed waived unless made in writing and received by Cardinal within thirty (30) days after completion of the applicable service. In no event shall Cardinal be liable for incidental or consequential damages, including, without limitation, business interruptions, loss of use, or loss of profits incurred by client, its subsidiaries, affiliates or successors arising out of or related to the performance of the services hereunder by Cardinal, regardless of whether such claim is based upon any of the above stated reasons or otherwise. Results relate only to the samples identified above. This report shall not be reproduced except in full with written approval of Cardinal Laboratories.

Celey D. Keene, Lab Director/Quality Manager



PHONE (575) 393-2326 ° 101 E. MARLAND ° HOBBS, NM 88240

**Analytical Results For:**

ENSOLUM, LLC  
 KELLY LOWERY  
 705 W WADLEY AVE.  
 MIDLAND TX, 79705  
 Fax To:

Received: 09/05/2024  
 Reported: 09/10/2024  
 Project Name: SPEAK EASY FEDERAL UNIT #002H  
 Project Number: 03B1417189  
 Project Location: OXY - LEA COUNTY, NM

Sampling Date: 09/05/2024  
 Sampling Type: Soil  
 Sampling Condition: Cool & Intact  
 Sample Received By: Shalyn Rodriguez

**Sample ID: FS 06 2' (H245387-06)**

BTEx 8021B		mg/kg	Analyzed By: JH					S-04	
Analyte	Result	Reporting Limit	Analyzed	Method Blank	BS	% Recovery	True Value QC	RPD	Qualifier
Benzene*	<0.050	0.050	09/07/2024	ND	2.08	104	2.00	0.475	
Toluene*	<0.050	0.050	09/07/2024	ND	2.17	109	2.00	2.25	
Ethylbenzene*	<0.050	0.050	09/07/2024	ND	2.31	116	2.00	3.03	
Total Xylenes*	<0.150	0.150	09/07/2024	ND	7.14	119	6.00	4.70	
Total BTEX	<0.300	0.300	09/07/2024	ND					

Surrogate: 4-Bromofluorobenzene (PID) 138 % 71.5-134

Chloride, SM4500Cl-B		mg/kg	Analyzed By: CT						
Analyte	Result	Reporting Limit	Analyzed	Method Blank	BS	% Recovery	True Value QC	RPD	Qualifier
Chloride	272	16.0	09/09/2024	ND	416	104	400	0.00	

TPH 8015M		mg/kg	Analyzed By: MS						
Analyte	Result	Reporting Limit	Analyzed	Method Blank	BS	% Recovery	True Value QC	RPD	Qualifier
GRO C6-C10*	<10.0	10.0	09/06/2024	ND	224	112	200	0.853	
DRO >C10-C28*	<10.0	10.0	09/06/2024	ND	220	110	200	0.520	
EXT DRO >C28-C36	<10.0	10.0	09/06/2024	ND					

Surrogate: 1-Chlorooctane 93.9 % 48.2-134

Surrogate: 1-Chlorooctadecane 114 % 49.1-148

Cardinal Laboratories

\*=Accredited Analyte

PLEASE NOTE: Liability and Damages. Cardinal's liability and client's exclusive remedy for any claim arising, whether based in contract or tort, shall be limited to the amount paid by client for analyses. All claims, including those for negligence and any other cause whatsoever shall be deemed waived unless made in writing and received by Cardinal within thirty (30) days after completion of the applicable service. In no event shall Cardinal be liable for incidental or consequential damages, including, without limitation, business interruptions, loss of use, or loss of profits incurred by client, its subsidiaries, affiliates or successors arising out of or related to the performance of the services hereunder by Cardinal, regardless of whether such claim is based upon any of the above stated reasons or otherwise. Results relate only to the samples identified above. This report shall not be reproduced except in full with written approval of Cardinal Laboratories.

Celey D. Keene, Lab Director/Quality Manager



PHONE (575) 393-2326 ° 101 E. MARLAND ° HOBBS, NM 88240

**Analytical Results For:**

ENSOLUM, LLC  
 KELLY LOWERY  
 705 W WADLEY AVE.  
 MIDLAND TX, 79705  
 Fax To:

Received: 09/05/2024  
 Reported: 09/10/2024  
 Project Name: SPEAK EASY FEDERAL UNIT #002H  
 Project Number: 03B1417189  
 Project Location: OXY - LEA COUNTY, NM

Sampling Date: 09/05/2024  
 Sampling Type: Soil  
 Sampling Condition: Cool & Intact  
 Sample Received By: Shalyn Rodriguez

**Sample ID: FS 07 2' (H245387-07)**

BTEx 8021B		mg/kg	Analyzed By: JH					S-04	
Analyte	Result	Reporting Limit	Analyzed	Method Blank	BS	% Recovery	True Value QC	RPD	Qualifier
Benzene*	<0.050	0.050	09/07/2024	ND	2.08	104	2.00	0.475	
Toluene*	<0.050	0.050	09/07/2024	ND	2.17	109	2.00	2.25	
Ethylbenzene*	<0.050	0.050	09/07/2024	ND	2.31	116	2.00	3.03	
Total Xylenes*	<0.150	0.150	09/07/2024	ND	7.14	119	6.00	4.70	
Total BTEX	<0.300	0.300	09/07/2024	ND					

Surrogate: 4-Bromofluorobenzene (PID) 149 % 71.5-134

Chloride, SM4500Cl-B		mg/kg	Analyzed By: CT						
Analyte	Result	Reporting Limit	Analyzed	Method Blank	BS	% Recovery	True Value QC	RPD	Qualifier
Chloride	288	16.0	09/09/2024	ND	416	104	400	0.00	

TPH 8015M		mg/kg	Analyzed By: MS						
Analyte	Result	Reporting Limit	Analyzed	Method Blank	BS	% Recovery	True Value QC	RPD	Qualifier
GRO C6-C10*	<10.0	10.0	09/06/2024	ND	224	112	200	0.853	
DRO >C10-C28*	<10.0	10.0	09/06/2024	ND	220	110	200	0.520	
EXT DRO >C28-C36	<10.0	10.0	09/06/2024	ND					

Surrogate: 1-Chlorooctane 99.7 % 48.2-134

Surrogate: 1-Chlorooctadecane 121 % 49.1-148

Cardinal Laboratories

\*=Accredited Analyte

PLEASE NOTE: Liability and Damages. Cardinal's liability and client's exclusive remedy for any claim arising, whether based in contract or tort, shall be limited to the amount paid by client for analyses. All claims, including those for negligence and any other cause whatsoever shall be deemed waived unless made in writing and received by Cardinal within thirty (30) days after completion of the applicable service. In no event shall Cardinal be liable for incidental or consequential damages, including, without limitation, business interruptions, loss of use, or loss of profits incurred by client, its subsidiaries, affiliates or successors arising out of or related to the performance of the services hereunder by Cardinal, regardless of whether such claim is based upon any of the above stated reasons or otherwise. Results relate only to the samples identified above. This report shall not be reproduced except in full with written approval of Cardinal Laboratories.

Celey D. Keene, Lab Director/Quality Manager



PHONE (575) 393-2326 ° 101 E. MARLAND ° HOBBS, NM 88240

**Analytical Results For:**

ENSOLUM, LLC  
 KELLY LOWERY  
 705 W WADLEY AVE.  
 MIDLAND TX, 79705  
 Fax To:

Received: 09/05/2024  
 Reported: 09/10/2024  
 Project Name: SPEAK EASY FEDERAL UNIT #002H  
 Project Number: 03B1417189  
 Project Location: OXY - LEA COUNTY, NM

Sampling Date: 09/05/2024  
 Sampling Type: Soil  
 Sampling Condition: Cool & Intact  
 Sample Received By: Shalyn Rodriguez

**Sample ID: FS 08 2' (H245387-08)**

BTEX 8021B		mg/kg		Analyzed By: JH						
Analyte	Result	Reporting Limit	Analyzed	Method Blank	BS	% Recovery	True Value QC	RPD	Qualifier	
Benzene*	<0.050	0.050	09/07/2024	ND	2.08	104	2.00	0.475		
Toluene*	<0.050	0.050	09/07/2024	ND	2.17	109	2.00	2.25		
Ethylbenzene*	<0.050	0.050	09/07/2024	ND	2.31	116	2.00	3.03		
Total Xylenes*	<0.150	0.150	09/07/2024	ND	7.14	119	6.00	4.70		
Total BTEX	<0.300	0.300	09/07/2024	ND						

Surrogate: 4-Bromofluorobenzene (PID) 126 % 71.5-134

Chloride, SM4500Cl-B		mg/kg		Analyzed By: CT						
Analyte	Result	Reporting Limit	Analyzed	Method Blank	BS	% Recovery	True Value QC	RPD	Qualifier	
Chloride	368	16.0	09/09/2024	ND	416	104	400	0.00		

TPH 8015M		mg/kg		Analyzed By: MS					
Analyte	Result	Reporting Limit	Analyzed	Method Blank	BS	% Recovery	True Value QC	RPD	Qualifier
GRO C6-C10*	<10.0	10.0	09/06/2024	ND	224	112	200	0.853	
DRO >C10-C28*	<10.0	10.0	09/06/2024	ND	220	110	200	0.520	
EXT DRO >C28-C36	<10.0	10.0	09/06/2024	ND					

Surrogate: 1-Chlorooctane 105 % 48.2-134

Surrogate: 1-Chlorooctadecane 129 % 49.1-148

Cardinal Laboratories

\*=Accredited Analyte

PLEASE NOTE: Liability and Damages. Cardinal's liability and client's exclusive remedy for any claim arising, whether based in contract or tort, shall be limited to the amount paid by client for analyses. All claims, including those for negligence and any other cause whatsoever shall be deemed waived unless made in writing and received by Cardinal within thirty (30) days after completion of the applicable service. In no event shall Cardinal be liable for incidental or consequential damages, including, without limitation, business interruptions, loss of use, or loss of profits incurred by client, its subsidiaries, affiliates or successors arising out of or related to the performance of the services hereunder by Cardinal, regardless of whether such claim is based upon any of the above stated reasons or otherwise. Results relate only to the samples identified above. This report shall not be reproduced except in full with written approval of Cardinal Laboratories.

Celey D. Keene, Lab Director/Quality Manager





PHONE (575) 393-2326 ° 101 E. MARLAND ° HOBBS, NM 88240

**Analytical Results For:**

ENSOLUM, LLC  
 KELLY LOWERY  
 705 W WADLEY AVE.  
 MIDLAND TX, 79705  
 Fax To:

Received: 09/05/2024  
 Reported: 09/10/2024  
 Project Name: SPEAK EASY FEDERAL UNIT #002H  
 Project Number: 03B1417189  
 Project Location: OXY - LEA COUNTY, NM

Sampling Date: 09/05/2024  
 Sampling Type: Soil  
 Sampling Condition: Cool & Intact  
 Sample Received By: Shalyn Rodriguez

**Sample ID: FS 09 1.5' (H245387-09)**

BTEx 8021B		mg/kg		Analyzed By: JH						
Analyte	Result	Reporting Limit	Analyzed	Method Blank	BS	% Recovery	True Value QC	RPD	Qualifier	
Benzene*	<0.050	0.050	09/07/2024	ND	2.08	104	2.00	0.475		
Toluene*	<0.050	0.050	09/07/2024	ND	2.17	109	2.00	2.25		
Ethylbenzene*	<0.050	0.050	09/07/2024	ND	2.31	116	2.00	3.03		
Total Xylenes*	<0.150	0.150	09/07/2024	ND	7.14	119	6.00	4.70		
Total BTEx	<0.300	0.300	09/07/2024	ND						

Surrogate: 4-Bromofluorobenzene (PID) 126 % 71.5-134

Chloride, SM4500CI-B		mg/kg		Analyzed By: CT						
Analyte	Result	Reporting Limit	Analyzed	Method Blank	BS	% Recovery	True Value QC	RPD	Qualifier	
Chloride	320	16.0	09/09/2024	ND	416	104	400	0.00		

TPH 8015M		mg/kg		Analyzed By: MS					
Analyte	Result	Reporting Limit	Analyzed	Method Blank	BS	% Recovery	True Value QC	RPD	Qualifier
GRO C6-C10*	<10.0	10.0	09/06/2024	ND	224	112	200	0.853	
DRO >C10-C28*	<10.0	10.0	09/06/2024	ND	220	110	200	0.520	
EXT DRO >C28-C36	<10.0	10.0	09/06/2024	ND					

Surrogate: 1-Chlorooctane 103 % 48.2-134

Surrogate: 1-Chlorooctadecane 126 % 49.1-148

Cardinal Laboratories

\*=Accredited Analyte

PLEASE NOTE: Liability and Damages. Cardinal's liability and client's exclusive remedy for any claim arising, whether based in contract or tort, shall be limited to the amount paid by client for analyses. All claims, including those for negligence and any other cause whatsoever shall be deemed waived unless made in writing and received by Cardinal within thirty (30) days after completion of the applicable service. In no event shall Cardinal be liable for incidental or consequential damages, including, without limitation, business interruptions, loss of use, or loss of profits incurred by client, its subsidiaries, affiliates or successors arising out of or related to the performance of the services hereunder by Cardinal, regardless of whether such claim is based upon any of the above stated reasons or otherwise. Results relate only to the samples identified above. This report shall not be reproduced except in full with written approval of Cardinal Laboratories.

Celey D. Keene, Lab Director/Quality Manager



PHONE (575) 393-2326 ° 101 E. MARLAND ° HOBBS, NM 88240

**Analytical Results For:**

ENSOLUM, LLC  
 KELLY LOWERY  
 705 W WADLEY AVE.  
 MIDLAND TX, 79705  
 Fax To:

Received: 09/05/2024  
 Reported: 09/10/2024  
 Project Name: SPEAK EASY FEDERAL UNIT #002H  
 Project Number: 03B1417189  
 Project Location: OXY - LEA COUNTY, NM

Sampling Date: 09/05/2024  
 Sampling Type: Soil  
 Sampling Condition: Cool & Intact  
 Sample Received By: Shalyn Rodriguez

**Sample ID: FS 10 2' (H245387-10)**

BTEx 8021B		mg/kg		Analyzed By: JH						
Analyte	Result	Reporting Limit	Analyzed	Method Blank	BS	% Recovery	True Value QC	RPD	Qualifier	
Benzene*	<0.050	0.050	09/07/2024	ND	2.08	104	2.00	0.475		
Toluene*	<0.050	0.050	09/07/2024	ND	2.17	109	2.00	2.25		
Ethylbenzene*	<0.050	0.050	09/07/2024	ND	2.31	116	2.00	3.03		
Total Xylenes*	<0.150	0.150	09/07/2024	ND	7.14	119	6.00	4.70		
Total BTEx	<0.300	0.300	09/07/2024	ND						

Surrogate: 4-Bromofluorobenzene (PID) 132 % 71.5-134

Chloride, SM4500CI-B		mg/kg		Analyzed By: CT						
Analyte	Result	Reporting Limit	Analyzed	Method Blank	BS	% Recovery	True Value QC	RPD	Qualifier	
Chloride	240	16.0	09/09/2024	ND	416	104	400	0.00		

TPH 8015M		mg/kg		Analyzed By: MS					
Analyte	Result	Reporting Limit	Analyzed	Method Blank	BS	% Recovery	True Value QC	RPD	Qualifier
GRO C6-C10*	<10.0	10.0	09/06/2024	ND	224	112	200	0.853	
DRO >C10-C28*	<10.0	10.0	09/06/2024	ND	220	110	200	0.520	
EXT DRO >C28-C36	<10.0	10.0	09/06/2024	ND					

Surrogate: 1-Chlorooctane 94.2 % 48.2-134

Surrogate: 1-Chlorooctadecane 115 % 49.1-148

Cardinal Laboratories

\*=Accredited Analyte

PLEASE NOTE: Liability and Damages. Cardinal's liability and client's exclusive remedy for any claim arising, whether based in contract or tort, shall be limited to the amount paid by client for analyses. All claims, including those for negligence and any other cause whatsoever shall be deemed waived unless made in writing and received by Cardinal within thirty (30) days after completion of the applicable service. In no event shall Cardinal be liable for incidental or consequential damages, including, without limitation, business interruptions, loss of use, or loss of profits incurred by client, its subsidiaries, affiliates or successors arising out of or related to the performance of the services hereunder by Cardinal, regardless of whether such claim is based upon any of the above stated reasons or otherwise. Results relate only to the samples identified above. This report shall not be reproduced except in full with written approval of Cardinal Laboratories.

Celey D. Keene, Lab Director/Quality Manager



PHONE (575) 393-2326 ° 101 E. MARLAND ° HOBBS, NM 88240

**Analytical Results For:**

ENSOLUM, LLC  
 KELLY LOWERY  
 705 W WADLEY AVE.  
 MIDLAND TX, 79705  
 Fax To:

Received: 09/05/2024  
 Reported: 09/10/2024  
 Project Name: SPEAK EASY FEDERAL UNIT #002H  
 Project Number: 03B1417189  
 Project Location: OXY - LEA COUNTY, NM

Sampling Date: 09/05/2024  
 Sampling Type: Soil  
 Sampling Condition: Cool & Intact  
 Sample Received By: Shalyn Rodriguez

**Sample ID: FS 11 2' (H245387-11)**

BTEX 8021B		mg/kg		Analyzed By: JH						
Analyte	Result	Reporting Limit	Analyzed	Method Blank	BS	% Recovery	True Value QC	RPD	Qualifier	
Benzene*	<0.050	0.050	09/07/2024	ND	2.08	104	2.00	0.475		
Toluene*	<0.050	0.050	09/07/2024	ND	2.17	109	2.00	2.25		
Ethylbenzene*	<0.050	0.050	09/07/2024	ND	2.31	116	2.00	3.03		
Total Xylenes*	<0.150	0.150	09/07/2024	ND	7.14	119	6.00	4.70		
Total BTEX	<0.300	0.300	09/07/2024	ND						

Surrogate: 4-Bromofluorobenzene (PID) 131 % 71.5-134

Chloride, SM4500CI-B		mg/kg		Analyzed By: CT						
Analyte	Result	Reporting Limit	Analyzed	Method Blank	BS	% Recovery	True Value QC	RPD	Qualifier	
Chloride	256	16.0	09/09/2024	ND	416	104	400	0.00		

TPH 8015M		mg/kg		Analyzed By: MS					
Analyte	Result	Reporting Limit	Analyzed	Method Blank	BS	% Recovery	True Value QC	RPD	Qualifier
GRO C6-C10*	<10.0	10.0	09/06/2024	ND	224	112	200	0.853	
DRO >C10-C28*	<10.0	10.0	09/06/2024	ND	220	110	200	0.520	
EXT DRO >C28-C36	<10.0	10.0	09/06/2024	ND					

Surrogate: 1-Chlorooctane 82.3 % 48.2-134

Surrogate: 1-Chlorooctadecane 99.7 % 49.1-148

Cardinal Laboratories

\*=Accredited Analyte

PLEASE NOTE: Liability and Damages. Cardinal's liability and client's exclusive remedy for any claim arising, whether based in contract or tort, shall be limited to the amount paid by client for analyses. All claims, including those for negligence and any other cause whatsoever shall be deemed waived unless made in writing and received by Cardinal within thirty (30) days after completion of the applicable service. In no event shall Cardinal be liable for incidental or consequential damages, including, without limitation, business interruptions, loss of use, or loss of profits incurred by client, its subsidiaries, affiliates or successors arising out of or related to the performance of the services hereunder by Cardinal, regardless of whether such claim is based upon any of the above stated reasons or otherwise. Results relate only to the samples identified above. This report shall not be reproduced except in full with written approval of Cardinal Laboratories.

Celey D. Keene, Lab Director/Quality Manager



PHONE (575) 393-2326 ° 101 E. MARLAND ° HOBBS, NM 88240

**Analytical Results For:**

ENSOLUM, LLC  
 KELLY LOWERY  
 705 W WADLEY AVE.  
 MIDLAND TX, 79705  
 Fax To:

Received: 09/05/2024  
 Reported: 09/10/2024  
 Project Name: SPEAK EASY FEDERAL UNIT #002H  
 Project Number: 03B1417189  
 Project Location: OXY - LEA COUNTY, NM

Sampling Date: 09/05/2024  
 Sampling Type: Soil  
 Sampling Condition: Cool & Intact  
 Sample Received By: Shalyn Rodriguez

**Sample ID: FS 12 2' (H245387-12)**

BTEX 8021B		mg/kg		Analyzed By: JH						
Analyte	Result	Reporting Limit	Analyzed	Method Blank	BS	% Recovery	True Value QC	RPD	Qualifier	
Benzene*	<0.050	0.050	09/07/2024	ND	2.08	104	2.00	0.475		
Toluene*	<0.050	0.050	09/07/2024	ND	2.17	109	2.00	2.25		
Ethylbenzene*	<0.050	0.050	09/07/2024	ND	2.31	116	2.00	3.03		
Total Xylenes*	<0.150	0.150	09/07/2024	ND	7.14	119	6.00	4.70		
Total BTEX	<0.300	0.300	09/07/2024	ND						

Surrogate: 4-Bromofluorobenzene (PID) 132 % 71.5-134

Chloride, SM4500Cl-B		mg/kg		Analyzed By: CT						
Analyte	Result	Reporting Limit	Analyzed	Method Blank	BS	% Recovery	True Value QC	RPD	Qualifier	
Chloride	464	16.0	09/09/2024	ND	416	104	400	0.00		

TPH 8015M		mg/kg		Analyzed By: MS					
Analyte	Result	Reporting Limit	Analyzed	Method Blank	BS	% Recovery	True Value QC	RPD	Qualifier
GRO C6-C10*	<10.0	10.0	09/06/2024	ND	224	112	200	0.853	
DRO >C10-C28*	<10.0	10.0	09/06/2024	ND	220	110	200	0.520	
EXT DRO >C28-C36	<10.0	10.0	09/06/2024	ND					

Surrogate: 1-Chlorooctane 89.4 % 48.2-134

Surrogate: 1-Chlorooctadecane 110 % 49.1-148

Cardinal Laboratories

\*=Accredited Analyte

PLEASE NOTE: Liability and Damages. Cardinal's liability and client's exclusive remedy for any claim arising, whether based in contract or tort, shall be limited to the amount paid by client for analyses. All claims, including those for negligence and any other cause whatsoever shall be deemed waived unless made in writing and received by Cardinal within thirty (30) days after completion of the applicable service. In no event shall Cardinal be liable for incidental or consequential damages, including, without limitation, business interruptions, loss of use, or loss of profits incurred by client, its subsidiaries, affiliates or successors arising out of or related to the performance of the services hereunder by Cardinal, regardless of whether such claim is based upon any of the above stated reasons or otherwise. Results relate only to the samples identified above. This report shall not be reproduced except in full with written approval of Cardinal Laboratories.

Celey D. Keene, Lab Director/Quality Manager





PHONE (575) 393-2326 ° 101 E. MARLAND ° HOBBS, NM 88240

**Analytical Results For:**

ENSOLUM, LLC  
 KELLY LOWERY  
 705 W WADLEY AVE.  
 MIDLAND TX, 79705  
 Fax To:

Received: 09/05/2024  
 Reported: 09/10/2024  
 Project Name: SPEAK EASY FEDERAL UNIT #002H  
 Project Number: 03B1417189  
 Project Location: OXY - LEA COUNTY, NM

Sampling Date: 09/05/2024  
 Sampling Type: Soil  
 Sampling Condition: Cool & Intact  
 Sample Received By: Shalyn Rodriguez

**Sample ID: FS 13 2' (H245387-13)**

BTEx 8021B		mg/kg		Analyzed By: JH				S-04	
Analyte	Result	Reporting Limit	Analyzed	Method Blank	BS	% Recovery	True Value QC	RPD	Qualifier
Benzene*	<0.050	0.050	09/07/2024	ND	2.08	104	2.00	0.475	
Toluene*	<0.050	0.050	09/07/2024	ND	2.17	109	2.00	2.25	
Ethylbenzene*	<0.050	0.050	09/07/2024	ND	2.31	116	2.00	3.03	
Total Xylenes*	<0.150	0.150	09/07/2024	ND	7.14	119	6.00	4.70	
Total BTEX	<0.300	0.300	09/07/2024	ND					

Surrogate: 4-Bromofluorobenzene (PID) 137 % 71.5-134

Chloride, SM4500Cl-B			mg/kg					Analyzed By: CT	
Analyte	Result	Reporting Limit	Analyzed	Method Blank	BS	% Recovery	True Value QC	RPD	Qualifier
Chloride	288	16.0	09/09/2024	ND	416	104	400	0.00	

TPH 8015M			mg/kg					Analyzed By: MS	
Analyte	Result	Reporting Limit	Analyzed	Method Blank	BS	% Recovery	True Value QC	RPD	Qualifier
GRO C6-C10*	<10.0	10.0	09/06/2024	ND	224	112	200	0.853	
DRO >C10-C28*	<10.0	10.0	09/06/2024	ND	220	110	200	0.520	
EXT DRO >C28-C36	<10.0	10.0	09/06/2024	ND					

Surrogate: 1-Chlorooctane 82.2 % 48.2-134

Surrogate: 1-Chlorooctadecane 98.9 % 49.1-148

Cardinal Laboratories

\*=Accredited Analyte

PLEASE NOTE: Liability and Damages. Cardinal's liability and client's exclusive remedy for any claim arising, whether based in contract or tort, shall be limited to the amount paid by client for analyses. All claims, including those for negligence and any other cause whatsoever shall be deemed waived unless made in writing and received by Cardinal within thirty (30) days after completion of the applicable service. In no event shall Cardinal be liable for incidental or consequential damages, including, without limitation, business interruptions, loss of use, or loss of profits incurred by client, its subsidiaries, affiliates or successors arising out of or related to the performance of the services hereunder by Cardinal, regardless of whether such claim is based upon any of the above stated reasons or otherwise. Results relate only to the samples identified above. This report shall not be reproduced except in full with written approval of Cardinal Laboratories.

Celey D. Keene, Lab Director/Quality Manager



PHONE (575) 393-2326 ° 101 E. MARLAND ° HOBBS, NM 88240

**Analytical Results For:**

ENSOLUM, LLC  
 KELLY LOWERY  
 705 W WADLEY AVE.  
 MIDLAND TX, 79705  
 Fax To:

Received: 09/05/2024  
 Reported: 09/10/2024  
 Project Name: SPEAK EASY FEDERAL UNIT #002H  
 Project Number: 03B1417189  
 Project Location: OXY - LEA COUNTY, NM

Sampling Date: 09/05/2024  
 Sampling Type: Soil  
 Sampling Condition: Cool & Intact  
 Sample Received By: Shalyn Rodriguez

**Sample ID: FS 14 2' (H245387-14)**

BTEX 8021B		mg/kg		Analyzed By: JH						
Analyte	Result	Reporting Limit	Analyzed	Method Blank	BS	% Recovery	True Value QC	RPD	Qualifier	
Benzene*	<0.050	0.050	09/07/2024	ND	2.08	104	2.00	0.475		
Toluene*	<0.050	0.050	09/07/2024	ND	2.17	109	2.00	2.25		
Ethylbenzene*	<0.050	0.050	09/07/2024	ND	2.31	116	2.00	3.03		
Total Xylenes*	<0.150	0.150	09/07/2024	ND	7.14	119	6.00	4.70		
Total BTEX	<0.300	0.300	09/07/2024	ND						

Surrogate: 4-Bromofluorobenzene (PID) 128 % 71.5-134

Chloride, SM4500Cl-B		mg/kg		Analyzed By: CT						
Analyte	Result	Reporting Limit	Analyzed	Method Blank	BS	% Recovery	True Value QC	RPD	Qualifier	
Chloride	384	16.0	09/09/2024	ND	416	104	400	0.00		

TPH 8015M		mg/kg		Analyzed By: MS					
Analyte	Result	Reporting Limit	Analyzed	Method Blank	BS	% Recovery	True Value QC	RPD	Qualifier
GRO C6-C10*	<10.0	10.0	09/06/2024	ND	224	112	200	0.853	
DRO >C10-C28*	<10.0	10.0	09/06/2024	ND	220	110	200	0.520	
EXT DRO >C28-C36	<10.0	10.0	09/06/2024	ND					

Surrogate: 1-Chlorooctane 92.2 % 48.2-134

Surrogate: 1-Chlorooctadecane 112 % 49.1-148

Cardinal Laboratories

\*=Accredited Analyte

PLEASE NOTE: Liability and Damages. Cardinal's liability and client's exclusive remedy for any claim arising, whether based in contract or tort, shall be limited to the amount paid by client for analyses. All claims, including those for negligence and any other cause whatsoever shall be deemed waived unless made in writing and received by Cardinal within thirty (30) days after completion of the applicable service. In no event shall Cardinal be liable for incidental or consequential damages, including, without limitation, business interruptions, loss of use, or loss of profits incurred by client, its subsidiaries, affiliates or successors arising out of or related to the performance of the services hereunder by Cardinal, regardless of whether such claim is based upon any of the above stated reasons or otherwise. Results relate only to the samples identified above. This report shall not be reproduced except in full with written approval of Cardinal Laboratories.

Celey D. Keene, Lab Director/Quality Manager



PHONE (575) 393-2326 ° 101 E. MARLAND ° HOBBS, NM 88240

**Analytical Results For:**

ENSOLUM, LLC  
 KELLY LOWERY  
 705 W WADLEY AVE.  
 MIDLAND TX, 79705  
 Fax To:

Received: 09/05/2024  
 Reported: 09/10/2024  
 Project Name: SPEAK EASY FEDERAL UNIT #002H  
 Project Number: 03B1417189  
 Project Location: OXY - LEA COUNTY, NM

Sampling Date: 09/05/2024  
 Sampling Type: Soil  
 Sampling Condition: Cool & Intact  
 Sample Received By: Shalyn Rodriguez

**Sample ID: FS 15 2' (H245387-15)**

BTEX 8021B		mg/kg		Analyzed By: JH						
Analyte	Result	Reporting Limit	Analyzed	Method Blank	BS	% Recovery	True Value QC	RPD	Qualifier	
Benzene*	<0.050	0.050	09/07/2024	ND	2.08	104	2.00	0.475		
Toluene*	<0.050	0.050	09/07/2024	ND	2.17	109	2.00	2.25		
Ethylbenzene*	<0.050	0.050	09/07/2024	ND	2.31	116	2.00	3.03		
Total Xylenes*	<0.150	0.150	09/07/2024	ND	7.14	119	6.00	4.70		
Total BTEX	<0.300	0.300	09/07/2024	ND						

Surrogate: 4-Bromofluorobenzene (PID) 131 % 71.5-134

Chloride, SM4500Cl-B		mg/kg		Analyzed By: CT						
Analyte	Result	Reporting Limit	Analyzed	Method Blank	BS	% Recovery	True Value QC	RPD	Qualifier	
Chloride	496	16.0	09/09/2024	ND	416	104	400	0.00		

TPH 8015M		mg/kg		Analyzed By: MS					
Analyte	Result	Reporting Limit	Analyzed	Method Blank	BS	% Recovery	True Value QC	RPD	Qualifier
GRO C6-C10*	<10.0	10.0	09/06/2024	ND	224	112	200	0.853	
DRO >C10-C28*	<10.0	10.0	09/06/2024	ND	220	110	200	0.520	
EXT DRO >C28-C36	<10.0	10.0	09/06/2024	ND					

Surrogate: 1-Chlorooctane 90.2 % 48.2-134

Surrogate: 1-Chlorooctadecane 109 % 49.1-148

Cardinal Laboratories

\*=Accredited Analyte

PLEASE NOTE: Liability and Damages. Cardinal's liability and client's exclusive remedy for any claim arising, whether based in contract or tort, shall be limited to the amount paid by client for analyses. All claims, including those for negligence and any other cause whatsoever shall be deemed waived unless made in writing and received by Cardinal within thirty (30) days after completion of the applicable service. In no event shall Cardinal be liable for incidental or consequential damages, including, without limitation, business interruptions, loss of use, or loss of profits incurred by client, its subsidiaries, affiliates or successors arising out of or related to the performance of the services hereunder by Cardinal, regardless of whether such claim is based upon any of the above stated reasons or otherwise. Results relate only to the samples identified above. This report shall not be reproduced except in full with written approval of Cardinal Laboratories.

Celey D. Keene, Lab Director/Quality Manager



PHONE (575) 393-2326 ° 101 E. MARLAND ° HOBBS, NM 88240

**Analytical Results For:**

ENSOLUM, LLC  
 KELLY LOWERY  
 705 W WADLEY AVE.  
 MIDLAND TX, 79705  
 Fax To:

Received: 09/05/2024  
 Reported: 09/10/2024  
 Project Name: SPEAK EASY FEDERAL UNIT #002H  
 Project Number: 03B1417189  
 Project Location: OXY - LEA COUNTY, NM

Sampling Date: 09/05/2024  
 Sampling Type: Soil  
 Sampling Condition: Cool & Intact  
 Sample Received By: Shalyn Rodriguez

**Sample ID: FS 16 2' (H245387-16)**

BTEx 8021B		mg/kg		Analyzed By: JH						
Analyte	Result	Reporting Limit	Analyzed	Method Blank	BS	% Recovery	True Value QC	RPD	Qualifier	
Benzene*	<0.050	0.050	09/06/2024	ND	2.07	103	2.00	4.01		
Toluene*	<0.050	0.050	09/06/2024	ND	2.13	107	2.00	5.73		
Ethylbenzene*	<0.050	0.050	09/06/2024	ND	2.16	108	2.00	6.98		
Total Xylenes*	<0.150	0.150	09/06/2024	ND	6.61	110	6.00	6.72		
Total BTEX	<0.300	0.300	09/06/2024	ND						

Surrogate: 4-Bromofluorobenzene (PID) 103 % 71.5-134

Chloride, SM4500Cl-B		mg/kg		Analyzed By: CT						
Analyte	Result	Reporting Limit	Analyzed	Method Blank	BS	% Recovery	True Value QC	RPD	Qualifier	
Chloride	208	16.0	09/09/2024	ND	416	104	400	0.00		

TPH 8015M		mg/kg		Analyzed By: MS					
Analyte	Result	Reporting Limit	Analyzed	Method Blank	BS	% Recovery	True Value QC	RPD	Qualifier
GRO C6-C10*	<10.0	10.0	09/06/2024	ND	224	112	200	0.853	
DRO >C10-C28*	<10.0	10.0	09/06/2024	ND	220	110	200	0.520	
EXT DRO >C28-C36	<10.0	10.0	09/06/2024	ND					

Surrogate: 1-Chlorooctane 91.0 % 48.2-134

Surrogate: 1-Chlorooctadecane 112 % 49.1-148

Cardinal Laboratories

\*=Accredited Analyte

PLEASE NOTE: Liability and Damages. Cardinal's liability and client's exclusive remedy for any claim arising, whether based in contract or tort, shall be limited to the amount paid by client for analyses. All claims, including those for negligence and any other cause whatsoever shall be deemed waived unless made in writing and received by Cardinal within thirty (30) days after completion of the applicable service. In no event shall Cardinal be liable for incidental or consequential damages, including, without limitation, business interruptions, loss of use, or loss of profits incurred by client, its subsidiaries, affiliates or successors arising out of or related to the performance of the services hereunder by Cardinal, regardless of whether such claim is based upon any of the above stated reasons or otherwise. Results relate only to the samples identified above. This report shall not be reproduced except in full with written approval of Cardinal Laboratories.

Celey D. Keene, Lab Director/Quality Manager





PHONE (575) 393-2326 ° 101 E. MARLAND ° HOBBS, NM 88240

**Analytical Results For:**

ENSOLUM, LLC  
 KELLY LOWERY  
 705 W WADLEY AVE.  
 MIDLAND TX, 79705  
 Fax To:

Received: 09/05/2024  
 Reported: 09/10/2024  
 Project Name: SPEAK EASY FEDERAL UNIT #002H  
 Project Number: 03B1417189  
 Project Location: OXY - LEA COUNTY, NM

Sampling Date: 09/05/2024  
 Sampling Type: Soil  
 Sampling Condition: Cool & Intact  
 Sample Received By: Shalyn Rodriguez

**Sample ID: FS 17 2' (H245387-17)**

BTEx 8021B		mg/kg		Analyzed By: JH						
Analyte	Result	Reporting Limit	Analyzed	Method Blank	BS	% Recovery	True Value QC	RPD	Qualifier	
Benzene*	<0.050	0.050	09/06/2024	ND	2.07	103	2.00	4.01		
Toluene*	<0.050	0.050	09/06/2024	ND	2.13	107	2.00	5.73		
Ethylbenzene*	<0.050	0.050	09/06/2024	ND	2.16	108	2.00	6.98		
Total Xylenes*	<0.150	0.150	09/06/2024	ND	6.61	110	6.00	6.72		
Total BTEX	<0.300	0.300	09/06/2024	ND						

Surrogate: 4-Bromofluorobenzene (PID) 101 % 71.5-134

Chloride, SM4500Cl-B		mg/kg		Analyzed By: CT						
Analyte	Result	Reporting Limit	Analyzed	Method Blank	BS	% Recovery	True Value QC	RPD	Qualifier	
Chloride	1020	16.0	09/09/2024	ND	416	104	400	0.00		

TPH 8015M		mg/kg		Analyzed By: MS					
Analyte	Result	Reporting Limit	Analyzed	Method Blank	BS	% Recovery	True Value QC	RPD	Qualifier
GRO C6-C10*	<10.0	10.0	09/06/2024	ND	224	112	200	0.853	
DRO >C10-C28*	<10.0	10.0	09/06/2024	ND	220	110	200	0.520	
EXT DRO >C28-C36	<10.0	10.0	09/06/2024	ND					

Surrogate: 1-Chlorooctane 84.4 % 48.2-134

Surrogate: 1-Chlorooctadecane 102 % 49.1-148

Cardinal Laboratories

\*=Accredited Analyte

PLEASE NOTE: Liability and Damages. Cardinal's liability and client's exclusive remedy for any claim arising, whether based in contract or tort, shall be limited to the amount paid by client for analyses. All claims, including those for negligence and any other cause whatsoever shall be deemed waived unless made in writing and received by Cardinal within thirty (30) days after completion of the applicable service. In no event shall Cardinal be liable for incidental or consequential damages, including, without limitation, business interruptions, loss of use, or loss of profits incurred by client, its subsidiaries, affiliates or successors arising out of or related to the performance of the services hereunder by Cardinal, regardless of whether such claim is based upon any of the above stated reasons or otherwise. Results relate only to the samples identified above. This report shall not be reproduced except in full with written approval of Cardinal Laboratories.

Celey D. Keene, Lab Director/Quality Manager



PHONE (575) 393-2326 ° 101 E. MARLAND ° HOBBS, NM 88240

**Analytical Results For:**

ENSOLUM, LLC  
 KELLY LOWERY  
 705 W WADLEY AVE.  
 MIDLAND TX, 79705  
 Fax To:

Received: 09/05/2024  
 Reported: 09/10/2024  
 Project Name: SPEAK EASY FEDERAL UNIT #002H  
 Project Number: 03B1417189  
 Project Location: OXY - LEA COUNTY, NM

Sampling Date: 09/05/2024  
 Sampling Type: Soil  
 Sampling Condition: Cool & Intact  
 Sample Received By: Shalyn Rodriguez

**Sample ID: FS 18 2' (H245387-18)**

BTEx 8021B		mg/kg		Analyzed By: JH					
Analyte	Result	Reporting Limit	Analyzed	Method Blank	BS	% Recovery	True Value QC	RPD	Qualifier
Benzene*	<0.050	0.050	09/06/2024	ND	2.07	103	2.00	4.01	
Toluene*	<0.050	0.050	09/06/2024	ND	2.13	107	2.00	5.73	
Ethylbenzene*	<0.050	0.050	09/06/2024	ND	2.16	108	2.00	6.98	
Total Xylenes*	<0.150	0.150	09/06/2024	ND	6.61	110	6.00	6.72	
Total BTEX	<0.300	0.300	09/06/2024	ND					

Surrogate: 4-Bromofluorobenzene (PID) 103 % 71.5-134

Chloride, SM4500Cl-B		mg/kg		Analyzed By: CT						
Analyte	Result	Reporting Limit	Analyzed	Method Blank	BS	% Recovery	True Value QC	RPD	Qualifier	
Chloride	640	16.0	09/09/2024	ND	416	104	400	0.00		

TPH 8015M		mg/kg		Analyzed By: MS					
Analyte	Result	Reporting Limit	Analyzed	Method Blank	BS	% Recovery	True Value QC	RPD	Qualifier
GRO C6-C10*	<10.0	10.0	09/06/2024	ND	224	112	200	0.853	
DRO >C10-C28*	<10.0	10.0	09/06/2024	ND	220	110	200	0.520	
EXT DRO >C28-C36	<10.0	10.0	09/06/2024	ND					

Surrogate: 1-Chlorooctane 86.8 % 48.2-134

Surrogate: 1-Chlorooctadecane 105 % 49.1-148

Cardinal Laboratories

\*=Accredited Analyte

PLEASE NOTE: Liability and Damages. Cardinal's liability and client's exclusive remedy for any claim arising, whether based in contract or tort, shall be limited to the amount paid by client for analyses. All claims, including those for negligence and any other cause whatsoever shall be deemed waived unless made in writing and received by Cardinal within thirty (30) days after completion of the applicable service. In no event shall Cardinal be liable for incidental or consequential damages, including, without limitation, business interruptions, loss of use, or loss of profits incurred by client, its subsidiaries, affiliates or successors arising out of or related to the performance of the services hereunder by Cardinal, regardless of whether such claim is based upon any of the above stated reasons or otherwise. Results relate only to the samples identified above. This report shall not be reproduced except in full with written approval of Cardinal Laboratories.

Celey D. Keene, Lab Director/Quality Manager



PHONE (575) 393-2326 ° 101 E. MARLAND ° HOBBS, NM 88240

**Analytical Results For:**

ENSOLUM, LLC  
 KELLY LOWERY  
 705 W WADLEY AVE.  
 MIDLAND TX, 79705  
 Fax To:

Received: 09/05/2024  
 Reported: 09/10/2024  
 Project Name: SPEAK EASY FEDERAL UNIT #002H  
 Project Number: 03B1417189  
 Project Location: OXY - LEA COUNTY, NM

Sampling Date: 09/05/2024  
 Sampling Type: Soil  
 Sampling Condition: Cool & Intact  
 Sample Received By: Shalyn Rodriguez

**Sample ID: FS 19 2' (H245387-19)**

BTEx 8021B		mg/kg		Analyzed By: JH						
Analyte	Result	Reporting Limit	Analyzed	Method Blank	BS	% Recovery	True Value QC	RPD	Qualifier	
Benzene*	<0.050	0.050	09/06/2024	ND	2.07	103	2.00	4.01		
Toluene*	<0.050	0.050	09/06/2024	ND	2.13	107	2.00	5.73		
Ethylbenzene*	<0.050	0.050	09/06/2024	ND	2.16	108	2.00	6.98		
Total Xylenes*	<0.150	0.150	09/06/2024	ND	6.61	110	6.00	6.72		
Total BTEX	<0.300	0.300	09/06/2024	ND						

Surrogate: 4-Bromofluorobenzene (PID) 104 % 71.5-134

Chloride, SM4500Cl-B		mg/kg		Analyzed By: CT						
Analyte	Result	Reporting Limit	Analyzed	Method Blank	BS	% Recovery	True Value QC	RPD	Qualifier	
Chloride	240	16.0	09/09/2024	ND	416	104	400	0.00		

TPH 8015M		mg/kg		Analyzed By: MS					
Analyte	Result	Reporting Limit	Analyzed	Method Blank	BS	% Recovery	True Value QC	RPD	Qualifier
GRO C6-C10*	<10.0	10.0	09/06/2024	ND	205	102	200	3.17	
DRO >C10-C28*	<10.0	10.0	09/06/2024	ND	206	103	200	0.108	
EXT DRO >C28-C36	<10.0	10.0	09/06/2024	ND					

Surrogate: 1-Chlorooctane 81.9 % 48.2-134

Surrogate: 1-Chlorooctadecane 98.4 % 49.1-148

Cardinal Laboratories

\*=Accredited Analyte

PLEASE NOTE: Liability and Damages. Cardinal's liability and client's exclusive remedy for any claim arising, whether based in contract or tort, shall be limited to the amount paid by client for analyses. All claims, including those for negligence and any other cause whatsoever shall be deemed waived unless made in writing and received by Cardinal within thirty (30) days after completion of the applicable service. In no event shall Cardinal be liable for incidental or consequential damages, including, without limitation, business interruptions, loss of use, or loss of profits incurred by client, its subsidiaries, affiliates or successors arising out of or related to the performance of the services hereunder by Cardinal, regardless of whether such claim is based upon any of the above stated reasons or otherwise. Results relate only to the samples identified above. This report shall not be reproduced except in full with written approval of Cardinal Laboratories.

Celey D. Keene, Lab Director/Quality Manager



PHONE (575) 393-2326 ° 101 E. MARLAND ° HOBBS, NM 88240

**Analytical Results For:**

ENSOLUM, LLC  
 KELLY LOWERY  
 705 W WADLEY AVE.  
 MIDLAND TX, 79705  
 Fax To:

Received: 09/05/2024  
 Reported: 09/10/2024  
 Project Name: SPEAK EASY FEDERAL UNIT #002H  
 Project Number: 03B1417189  
 Project Location: OXY - LEA COUNTY, NM

Sampling Date: 09/05/2024  
 Sampling Type: Soil  
 Sampling Condition: Cool & Intact  
 Sample Received By: Shalyn Rodriguez

**Sample ID: FS 20 2' (H245387-20)**

BTEx 8021B		mg/kg		Analyzed By: JH						
Analyte	Result	Reporting Limit	Analyzed	Method Blank	BS	% Recovery	True Value QC	RPD	Qualifier	
Benzene*	<0.050	0.050	09/06/2024	ND	2.07	103	2.00	4.01		
Toluene*	<0.050	0.050	09/06/2024	ND	2.13	107	2.00	5.73		
Ethylbenzene*	<0.050	0.050	09/06/2024	ND	2.16	108	2.00	6.98		
Total Xylenes*	<0.150	0.150	09/06/2024	ND	6.61	110	6.00	6.72		
Total BTEx	<0.300	0.300	09/06/2024	ND						

Surrogate: 4-Bromofluorobenzene (PID) 104 % 71.5-134

Chloride, SM4500CI-B		mg/kg		Analyzed By: CT						
Analyte	Result	Reporting Limit	Analyzed	Method Blank	BS	% Recovery	True Value QC	RPD	Qualifier	
Chloride	144	16.0	09/09/2024	ND	416	104	400	0.00		

TPH 8015M		mg/kg		Analyzed By: MS					
Analyte	Result	Reporting Limit	Analyzed	Method Blank	BS	% Recovery	True Value QC	RPD	Qualifier
GRO C6-C10*	<10.0	10.0	09/07/2024	ND	205	102	200	3.17	
DRO >C10-C28*	16.3	10.0	09/07/2024	ND	206	103	200	0.108	
EXT DRO >C28-C36	<10.0	10.0	09/07/2024	ND					

Surrogate: 1-Chlorooctane 91.5 % 48.2-134

Surrogate: 1-Chlorooctadecane 111 % 49.1-148

Cardinal Laboratories

\*=Accredited Analyte

PLEASE NOTE: Liability and Damages. Cardinal's liability and client's exclusive remedy for any claim arising, whether based in contract or tort, shall be limited to the amount paid by client for analyses. All claims, including those for negligence and any other cause whatsoever shall be deemed waived unless made in writing and received by Cardinal within thirty (30) days after completion of the applicable service. In no event shall Cardinal be liable for incidental or consequential damages, including, without limitation, business interruptions, loss of use, or loss of profits incurred by client, its subsidiaries, affiliates or successors arising out of or related to the performance of the services hereunder by Cardinal, regardless of whether such claim is based upon any of the above stated reasons or otherwise. Results relate only to the samples identified above. This report shall not be reproduced except in full with written approval of Cardinal Laboratories.

Celey D. Keene, Lab Director/Quality Manager





PHONE (575) 393-2326 ° 101 E. MARLAND ° HOBBS, NM 88240

**Analytical Results For:**

ENSOLUM, LLC  
 KELLY LOWERY  
 705 W WADLEY AVE.  
 MIDLAND TX, 79705  
 Fax To:

Received: 09/05/2024  
 Reported: 09/10/2024  
 Project Name: SPEAK EASY FEDERAL UNIT #002H  
 Project Number: 03B1417189  
 Project Location: OXY - LEA COUNTY, NM

Sampling Date: 09/05/2024  
 Sampling Type: Soil  
 Sampling Condition: Cool & Intact  
 Sample Received By: Shalyn Rodriguez

**Sample ID: FS 21 2' (H245387-21)**

BTEx 8021B		mg/kg		Analyzed By: JH						
Analyte	Result	Reporting Limit	Analyzed	Method Blank	BS	% Recovery	True Value QC	RPD	Qualifier	
Benzene*	<0.050	0.050	09/06/2024	ND	2.07	103	2.00	4.01		
Toluene*	<0.050	0.050	09/06/2024	ND	2.13	107	2.00	5.73		
Ethylbenzene*	<0.050	0.050	09/06/2024	ND	2.16	108	2.00	6.98		
Total Xylenes*	<0.150	0.150	09/06/2024	ND	6.61	110	6.00	6.72		
Total BTEx	<0.300	0.300	09/06/2024	ND						

Surrogate: 4-Bromofluorobenzene (PID) 102 % 71.5-134

Chloride, SM4500CI-B		mg/kg		Analyzed By: CT						
Analyte	Result	Reporting Limit	Analyzed	Method Blank	BS	% Recovery	True Value QC	RPD	Qualifier	
Chloride	480	16.0	09/09/2024	ND	416	104	400	0.00		

TPH 8015M		mg/kg		Analyzed By: MS					
Analyte	Result	Reporting Limit	Analyzed	Method Blank	BS	% Recovery	True Value QC	RPD	Qualifier
GRO C6-C10*	<10.0	10.0	09/07/2024	ND	205	102	200	3.17	
DRO >C10-C28*	42.0	10.0	09/07/2024	ND	206	103	200	0.108	
EXT DRO >C28-C36	<10.0	10.0	09/07/2024	ND					

Surrogate: 1-Chlorooctane 88.9 % 48.2-134

Surrogate: 1-Chlorooctadecane 109 % 49.1-148

Cardinal Laboratories

\*=Accredited Analyte

PLEASE NOTE: Liability and Damages. Cardinal's liability and client's exclusive remedy for any claim arising, whether based in contract or tort, shall be limited to the amount paid by client for analyses. All claims, including those for negligence and any other cause whatsoever shall be deemed waived unless made in writing and received by Cardinal within thirty (30) days after completion of the applicable service. In no event shall Cardinal be liable for incidental or consequential damages, including, without limitation, business interruptions, loss of use, or loss of profits incurred by client, its subsidiaries, affiliates or successors arising out of or related to the performance of the services hereunder by Cardinal, regardless of whether such claim is based upon any of the above stated reasons or otherwise. Results relate only to the samples identified above. This report shall not be reproduced except in full with written approval of Cardinal Laboratories.

Celey D. Keene, Lab Director/Quality Manager



PHONE (575) 393-2326 ° 101 E. MARLAND ° HOBBS, NM 88240

**Analytical Results For:**

ENSOLUM, LLC  
 KELLY LOWERY  
 705 W WADLEY AVE.  
 MIDLAND TX, 79705  
 Fax To:

Received: 09/05/2024  
 Reported: 09/10/2024  
 Project Name: SPEAK EASY FEDERAL UNIT #002H  
 Project Number: 03B1417189  
 Project Location: OXY - LEA COUNTY, NM

Sampling Date: 09/05/2024  
 Sampling Type: Soil  
 Sampling Condition: Cool & Intact  
 Sample Received By: Shalyn Rodriguez

**Sample ID: FS 22 2' (H245387-22)**

BTEx 8021B		mg/kg		Analyzed By: JH					
Analyte	Result	Reporting Limit	Analyzed	Method Blank	BS	% Recovery	True Value QC	RPD	Qualifier
Benzene*	<0.050	0.050	09/06/2024	ND	2.07	103	2.00	4.01	
Toluene*	<0.050	0.050	09/06/2024	ND	2.13	107	2.00	5.73	
Ethylbenzene*	<0.050	0.050	09/06/2024	ND	2.16	108	2.00	6.98	
Total Xylenes*	<0.150	0.150	09/06/2024	ND	6.61	110	6.00	6.72	
Total BTEX	<0.300	0.300	09/06/2024	ND					

Surrogate: 4-Bromofluorobenzene (PID) 100 % 71.5-134

Chloride, SM4500Cl-B		mg/kg		Analyzed By: HM					
Analyte	Result	Reporting Limit	Analyzed	Method Blank	BS	% Recovery	True Value QC	RPD	Qualifier
Chloride	304	16.0	09/09/2024	ND	400	100	400	11.3	

TPH 8015M		mg/kg		Analyzed By: MS					
Analyte	Result	Reporting Limit	Analyzed	Method Blank	BS	% Recovery	True Value QC	RPD	Qualifier
GRO C6-C10*	<10.0	10.0	09/07/2024	ND	205	102	200	3.17	
DRO >C10-C28*	25.5	10.0	09/07/2024	ND	206	103	200	0.108	
EXT DRO >C28-C36	<10.0	10.0	09/07/2024	ND					

Surrogate: 1-Chlorooctane 100 % 48.2-134

Surrogate: 1-Chlorooctadecane 122 % 49.1-148

Cardinal Laboratories

\*=Accredited Analyte

PLEASE NOTE: Liability and Damages. Cardinal's liability and client's exclusive remedy for any claim arising, whether based in contract or tort, shall be limited to the amount paid by client for analyses. All claims, including those for negligence and any other cause whatsoever shall be deemed waived unless made in writing and received by Cardinal within thirty (30) days after completion of the applicable service. In no event shall Cardinal be liable for incidental or consequential damages, including, without limitation, business interruptions, loss of use, or loss of profits incurred by client, its subsidiaries, affiliates or successors arising out of or related to the performance of the services hereunder by Cardinal, regardless of whether such claim is based upon any of the above stated reasons or otherwise. Results relate only to the samples identified above. This report shall not be reproduced except in full with written approval of Cardinal Laboratories.

Celey D. Keene, Lab Director/Quality Manager



PHONE (575) 393-2326 ° 101 E. MARLAND ° HOBBS, NM 88240

**Analytical Results For:**

ENSOLUM, LLC  
 KELLY LOWERY  
 705 W WADLEY AVE.  
 MIDLAND TX, 79705  
 Fax To:

Received: 09/05/2024  
 Reported: 09/10/2024  
 Project Name: SPEAK EASY FEDERAL UNIT #002H  
 Project Number: 03B1417189  
 Project Location: OXY - LEA COUNTY, NM

Sampling Date: 09/05/2024  
 Sampling Type: Soil  
 Sampling Condition: Cool & Intact  
 Sample Received By: Shalyn Rodriguez

**Sample ID: FS 23 2' (H245387-23)**

BTEx 8021B		mg/kg		Analyzed By: JH						
Analyte	Result	Reporting Limit	Analyzed	Method Blank	BS	% Recovery	True Value QC	RPD	Qualifier	
Benzene*	<0.050	0.050	09/06/2024	ND	2.07	103	2.00	4.01		
Toluene*	<0.050	0.050	09/06/2024	ND	2.13	107	2.00	5.73		
Ethylbenzene*	<0.050	0.050	09/06/2024	ND	2.16	108	2.00	6.98		
Total Xylenes*	<0.150	0.150	09/06/2024	ND	6.61	110	6.00	6.72		
Total BTEX	<0.300	0.300	09/06/2024	ND						

Surrogate: 4-Bromofluorobenzene (PID) 102 % 71.5-134

Chloride, SM4500Cl-B		mg/kg		Analyzed By: HM						
Analyte	Result	Reporting Limit	Analyzed	Method Blank	BS	% Recovery	True Value QC	RPD	Qualifier	
Chloride	384	16.0	09/09/2024	ND	400	100	400	11.3		

TPH 8015M		mg/kg		Analyzed By: MS					
Analyte	Result	Reporting Limit	Analyzed	Method Blank	BS	% Recovery	True Value QC	RPD	Qualifier
GRO C6-C10*	<10.0	10.0	09/06/2024	ND	205	102	200	3.17	
DRO >C10-C28*	<10.0	10.0	09/06/2024	ND	206	103	200	0.108	
EXT DRO >C28-C36	<10.0	10.0	09/06/2024	ND					

Surrogate: 1-Chlorooctane 88.6 % 48.2-134

Surrogate: 1-Chlorooctadecane 107 % 49.1-148

Cardinal Laboratories

\*=Accredited Analyte

PLEASE NOTE: Liability and Damages. Cardinal's liability and client's exclusive remedy for any claim arising, whether based in contract or tort, shall be limited to the amount paid by client for analyses. All claims, including those for negligence and any other cause whatsoever shall be deemed waived unless made in writing and received by Cardinal within thirty (30) days after completion of the applicable service. In no event shall Cardinal be liable for incidental or consequential damages, including, without limitation, business interruptions, loss of use, or loss of profits incurred by client, its subsidiaries, affiliates or successors arising out of or related to the performance of the services hereunder by Cardinal, regardless of whether such claim is based upon any of the above stated reasons or otherwise. Results relate only to the samples identified above. This report shall not be reproduced except in full with written approval of Cardinal Laboratories.

Celey D. Keene, Lab Director/Quality Manager



PHONE (575) 393-2326 ° 101 E. MARLAND ° HOBBS, NM 88240

**Analytical Results For:**

ENSOLUM, LLC  
 KELLY LOWERY  
 705 W WADLEY AVE.  
 MIDLAND TX, 79705  
 Fax To:

Received: 09/05/2024  
 Reported: 09/10/2024  
 Project Name: SPEAK EASY FEDERAL UNIT #002H  
 Project Number: 03B1417189  
 Project Location: OXY - LEA COUNTY, NM

Sampling Date: 09/05/2024  
 Sampling Type: Soil  
 Sampling Condition: Cool & Intact  
 Sample Received By: Shalyn Rodriguez

**Sample ID: FS 24 2' (H245387-24)**

BTEx 8021B		mg/kg		Analyzed By: JH						
Analyte	Result	Reporting Limit	Analyzed	Method Blank	BS	% Recovery	True Value QC	RPD	Qualifier	
Benzene*	<0.050	0.050	09/06/2024	ND	2.07	103	2.00	4.01		
Toluene*	<0.050	0.050	09/06/2024	ND	2.13	107	2.00	5.73		
Ethylbenzene*	<0.050	0.050	09/06/2024	ND	2.16	108	2.00	6.98		
Total Xylenes*	<0.150	0.150	09/06/2024	ND	6.61	110	6.00	6.72		
Total BTEX	<0.300	0.300	09/06/2024	ND						

Surrogate: 4-Bromofluorobenzene (PID) 101 % 71.5-134

Chloride, SM4500Cl-B		mg/kg		Analyzed By: HM					
Analyte	Result	Reporting Limit	Analyzed	Method Blank	BS	% Recovery	True Value QC	RPD	Qualifier
Chloride	432	16.0	09/09/2024	ND	400	100	400	11.3	

TPH 8015M		mg/kg		Analyzed By: MS					
Analyte	Result	Reporting Limit	Analyzed	Method Blank	BS	% Recovery	True Value QC	RPD	Qualifier
GRO C6-C10*	<10.0	10.0	09/07/2024	ND	205	102	200	3.17	
DRO >C10-C28*	45.4	10.0	09/07/2024	ND	206	103	200	0.108	
EXT DRO >C28-C36	<10.0	10.0	09/07/2024	ND					

Surrogate: 1-Chlorooctane 100 % 48.2-134

Surrogate: 1-Chlorooctadecane 128 % 49.1-148

Cardinal Laboratories

\*=Accredited Analyte

PLEASE NOTE: Liability and Damages. Cardinal's liability and client's exclusive remedy for any claim arising, whether based in contract or tort, shall be limited to the amount paid by client for analyses. All claims, including those for negligence and any other cause whatsoever shall be deemed waived unless made in writing and received by Cardinal within thirty (30) days after completion of the applicable service. In no event shall Cardinal be liable for incidental or consequential damages, including, without limitation, business interruptions, loss of use, or loss of profits incurred by client, its subsidiaries, affiliates or successors arising out of or related to the performance of the services hereunder by Cardinal, regardless of whether such claim is based upon any of the above stated reasons or otherwise. Results relate only to the samples identified above. This report shall not be reproduced except in full with written approval of Cardinal Laboratories.

Celey D. Keene, Lab Director/Quality Manager



PHONE (575) 393-2326 ° 101 E. MARLAND ° HOBBS, NM 88240

**Analytical Results For:**

ENSOLUM, LLC  
 KELLY LOWERY  
 705 W WADLEY AVE.  
 MIDLAND TX, 79705  
 Fax To:

Received: 09/05/2024  
 Reported: 09/10/2024  
 Project Name: SPEAK EASY FEDERAL UNIT #002H  
 Project Number: 03B1417189  
 Project Location: OXY - LEA COUNTY, NM

Sampling Date: 09/05/2024  
 Sampling Type: Soil  
 Sampling Condition: Cool & Intact  
 Sample Received By: Shalyn Rodriguez

**Sample ID: FS 25 2' (H245387-25)**

BTEx 8021B		mg/kg		Analyzed By: JH						
Analyte	Result	Reporting Limit	Analyzed	Method Blank	BS	% Recovery	True Value QC	RPD	Qualifier	
Benzene*	<0.050	0.050	09/06/2024	ND	2.07	103	2.00	4.01		
Toluene*	<0.050	0.050	09/06/2024	ND	2.13	107	2.00	5.73		
Ethylbenzene*	<0.050	0.050	09/06/2024	ND	2.16	108	2.00	6.98		
Total Xylenes*	<0.150	0.150	09/06/2024	ND	6.61	110	6.00	6.72		
Total BTEx	<0.300	0.300	09/06/2024	ND						

Surrogate: 4-Bromofluorobenzene (PID) 102 % 71.5-134

Chloride, SM4500CI-B		mg/kg		Analyzed By: HM						
Analyte	Result	Reporting Limit	Analyzed	Method Blank	BS	% Recovery	True Value QC	RPD	Qualifier	
Chloride	432	16.0	09/09/2024	ND	400	100	400	11.3		

TPH 8015M		mg/kg		Analyzed By: MS					
Analyte	Result	Reporting Limit	Analyzed	Method Blank	BS	% Recovery	True Value QC	RPD	Qualifier
GRO C6-C10*	<10.0	10.0	09/06/2024	ND	205	102	200	3.17	
DRO >C10-C28*	<10.0	10.0	09/06/2024	ND	206	103	200	0.108	
EXT DRO >C28-C36	<10.0	10.0	09/06/2024	ND					

Surrogate: 1-Chlorooctane 89.8 % 48.2-134

Surrogate: 1-Chlorooctadecane 109 % 49.1-148

Cardinal Laboratories

\*=Accredited Analyte

PLEASE NOTE: Liability and Damages. Cardinal's liability and client's exclusive remedy for any claim arising, whether based in contract or tort, shall be limited to the amount paid by client for analyses. All claims, including those for negligence and any other cause whatsoever shall be deemed waived unless made in writing and received by Cardinal within thirty (30) days after completion of the applicable service. In no event shall Cardinal be liable for incidental or consequential damages, including, without limitation, business interruptions, loss of use, or loss of profits incurred by client, its subsidiaries, affiliates or successors arising out of or related to the performance of the services hereunder by Cardinal, regardless of whether such claim is based upon any of the above stated reasons or otherwise. Results relate only to the samples identified above. This report shall not be reproduced except in full with written approval of Cardinal Laboratories.

Celey D. Keene, Lab Director/Quality Manager





PHONE (575) 393-2326 ° 101 E. MARLAND ° HOBBS, NM 88240

**Analytical Results For:**

ENSOLUM, LLC  
 KELLY LOWERY  
 705 W WADLEY AVE.  
 MIDLAND TX, 79705  
 Fax To:

Received: 09/05/2024  
 Reported: 09/10/2024  
 Project Name: SPEAK EASY FEDERAL UNIT #002H  
 Project Number: 03B1417189  
 Project Location: OXY - LEA COUNTY, NM

Sampling Date: 09/05/2024  
 Sampling Type: Soil  
 Sampling Condition: Cool & Intact  
 Sample Received By: Shalyn Rodriguez

**Sample ID: SW 01 0-2' (H245387-26)**

BTEx 8021B		mg/kg		Analyzed By: JH					
Analyte	Result	Reporting Limit	Analyzed	Method Blank	BS	% Recovery	True Value QC	RPD	Qualifier
Benzene*	<0.050	0.050	09/06/2024	ND	2.07	103	2.00	4.01	
Toluene*	<0.050	0.050	09/06/2024	ND	2.13	107	2.00	5.73	
Ethylbenzene*	<0.050	0.050	09/06/2024	ND	2.16	108	2.00	6.98	
Total Xylenes*	<0.150	0.150	09/06/2024	ND	6.61	110	6.00	6.72	
Total BTEX	<0.300	0.300	09/06/2024	ND					

Surrogate: 4-Bromofluorobenzene (PID) 99.8 % 71.5-134

Chloride, SM4500Cl-B		mg/kg		Analyzed By: HM					
Analyte	Result	Reporting Limit	Analyzed	Method Blank	BS	% Recovery	True Value QC	RPD	Qualifier
Chloride	80.0	16.0	09/09/2024	ND	400	100	400	11.3	

TPH 8015M		mg/kg		Analyzed By: MS					
Analyte	Result	Reporting Limit	Analyzed	Method Blank	BS	% Recovery	True Value QC	RPD	Qualifier
GRO C6-C10*	<10.0	10.0	09/06/2024	ND	205	102	200	3.17	
DRO >C10-C28*	<10.0	10.0	09/06/2024	ND	206	103	200	0.108	
EXT DRO >C28-C36	<10.0	10.0	09/06/2024	ND					

Surrogate: 1-Chlorooctane 84.6 % 48.2-134

Surrogate: 1-Chlorooctadecane 103 % 49.1-148

Cardinal Laboratories

\*=Accredited Analyte

PLEASE NOTE: Liability and Damages. Cardinal's liability and client's exclusive remedy for any claim arising, whether based in contract or tort, shall be limited to the amount paid by client for analyses. All claims, including those for negligence and any other cause whatsoever shall be deemed waived unless made in writing and received by Cardinal within thirty (30) days after completion of the applicable service. In no event shall Cardinal be liable for incidental or consequential damages, including, without limitation, business interruptions, loss of use, or loss of profits incurred by client, its subsidiaries, affiliates or successors arising out of or related to the performance of the services hereunder by Cardinal, regardless of whether such claim is based upon any of the above stated reasons or otherwise. Results relate only to the samples identified above. This report shall not be reproduced except in full with written approval of Cardinal Laboratories.

Celey D. Keene, Lab Director/Quality Manager



PHONE (575) 393-2326 ° 101 E. MARLAND ° HOBBS, NM 88240

**Analytical Results For:**

ENSOLUM, LLC  
 KELLY LOWERY  
 705 W WADLEY AVE.  
 MIDLAND TX, 79705  
 Fax To:

Received: 09/05/2024  
 Reported: 09/10/2024  
 Project Name: SPEAK EASY FEDERAL UNIT #002H  
 Project Number: 03B1417189  
 Project Location: OXY - LEA COUNTY, NM

Sampling Date: 09/05/2024  
 Sampling Type: Soil  
 Sampling Condition: Cool & Intact  
 Sample Received By: Shalyn Rodriguez

**Sample ID: SW 02 0-2' (H245387-27)**

BTEx 8021B		mg/kg		Analyzed By: JH						
Analyte	Result	Reporting Limit	Analyzed	Method Blank	BS	% Recovery	True Value QC	RPD	Qualifier	
Benzene*	<0.050	0.050	09/06/2024	ND	2.07	103	2.00	4.01		
Toluene*	<0.050	0.050	09/06/2024	ND	2.13	107	2.00	5.73		
Ethylbenzene*	<0.050	0.050	09/06/2024	ND	2.16	108	2.00	6.98		
Total Xylenes*	<0.150	0.150	09/06/2024	ND	6.61	110	6.00	6.72		
Total BTEX	<0.300	0.300	09/06/2024	ND						

Surrogate: 4-Bromofluorobenzene (PID) 101 % 71.5-134

Chloride, SM4500Cl-B		mg/kg		Analyzed By: HM						
Analyte	Result	Reporting Limit	Analyzed	Method Blank	BS	% Recovery	True Value QC	RPD	Qualifier	
Chloride	176	16.0	09/09/2024	ND	400	100	400	11.3		

TPH 8015M		mg/kg		Analyzed By: MS					
Analyte	Result	Reporting Limit	Analyzed	Method Blank	BS	% Recovery	True Value QC	RPD	Qualifier
GRO C6-C10*	<10.0	10.0	09/06/2024	ND	205	102	200	3.17	
DRO >C10-C28*	<10.0	10.0	09/06/2024	ND	206	103	200	0.108	
EXT DRO >C28-C36	<10.0	10.0	09/06/2024	ND					

Surrogate: 1-Chlorooctane 79.5 % 48.2-134

Surrogate: 1-Chlorooctadecane 96.1 % 49.1-148

Cardinal Laboratories

\*=Accredited Analyte

PLEASE NOTE: Liability and Damages. Cardinal's liability and client's exclusive remedy for any claim arising, whether based in contract or tort, shall be limited to the amount paid by client for analyses. All claims, including those for negligence and any other cause whatsoever shall be deemed waived unless made in writing and received by Cardinal within thirty (30) days after completion of the applicable service. In no event shall Cardinal be liable for incidental or consequential damages, including, without limitation, business interruptions, loss of use, or loss of profits incurred by client, its subsidiaries, affiliates or successors arising out of or related to the performance of the services hereunder by Cardinal, regardless of whether such claim is based upon any of the above stated reasons or otherwise. Results relate only to the samples identified above. This report shall not be reproduced except in full with written approval of Cardinal Laboratories.

Celey D. Keene, Lab Director/Quality Manager



PHONE (575) 393-2326 ° 101 E. MARLAND ° HOBBS, NM 88240

**Analytical Results For:**

ENSOLUM, LLC  
 KELLY LOWERY  
 705 W WADLEY AVE.  
 MIDLAND TX, 79705  
 Fax To:

Received: 09/05/2024  
 Reported: 09/10/2024  
 Project Name: SPEAK EASY FEDERAL UNIT #002H  
 Project Number: 03B1417189  
 Project Location: OXY - LEA COUNTY, NM

Sampling Date: 09/05/2024  
 Sampling Type: Soil  
 Sampling Condition: Cool & Intact  
 Sample Received By: Shalyn Rodriguez

**Sample ID: SW 03 0-2' (H245387-28)**

BTEX 8021B		mg/kg		Analyzed By: JH					
Analyte	Result	Reporting Limit	Analyzed	Method Blank	BS	% Recovery	True Value QC	RPD	Qualifier
Benzene*	<0.050	0.050	09/07/2024	ND	2.07	103	2.00	4.01	
Toluene*	<0.050	0.050	09/07/2024	ND	2.13	107	2.00	5.73	
Ethylbenzene*	<0.050	0.050	09/07/2024	ND	2.16	108	2.00	6.98	
Total Xylenes*	<0.150	0.150	09/07/2024	ND	6.61	110	6.00	6.72	
Total BTEX	<0.300	0.300	09/07/2024	ND					

Surrogate: 4-Bromofluorobenzene (PID) 101 % 71.5-134

Chloride, SM4500Cl-B		mg/kg		Analyzed By: HM					
Analyte	Result	Reporting Limit	Analyzed	Method Blank	BS	% Recovery	True Value QC	RPD	Qualifier
Chloride	240	16.0	09/09/2024	ND	400	100	400	11.3	

TPH 8015M		mg/kg		Analyzed By: MS					
Analyte	Result	Reporting Limit	Analyzed	Method Blank	BS	% Recovery	True Value QC	RPD	Qualifier
GRO C6-C10*	<10.0	10.0	09/06/2024	ND	205	102	200	3.17	
DRO >C10-C28*	<10.0	10.0	09/06/2024	ND	206	103	200	0.108	
EXT DRO >C28-C36	<10.0	10.0	09/06/2024	ND					

Surrogate: 1-Chlorooctane 92.9 % 48.2-134

Surrogate: 1-Chlorooctadecane 112 % 49.1-148

Cardinal Laboratories

\*=Accredited Analyte

PLEASE NOTE: Liability and Damages. Cardinal's liability and client's exclusive remedy for any claim arising, whether based in contract or tort, shall be limited to the amount paid by client for analyses. All claims, including those for negligence and any other cause whatsoever shall be deemed waived unless made in writing and received by Cardinal within thirty (30) days after completion of the applicable service. In no event shall Cardinal be liable for incidental or consequential damages, including, without limitation, business interruptions, loss of use, or loss of profits incurred by client, its subsidiaries, affiliates or successors arising out of or related to the performance of the services hereunder by Cardinal, regardless of whether such claim is based upon any of the above stated reasons or otherwise. Results relate only to the samples identified above. This report shall not be reproduced except in full with written approval of Cardinal Laboratories.

Celey D. Keene, Lab Director/Quality Manager



PHONE (575) 393-2326 ° 101 E. MARLAND ° HOBBS, NM 88240

**Analytical Results For:**

ENSOLUM, LLC  
 KELLY LOWERY  
 705 W WADLEY AVE.  
 MIDLAND TX, 79705  
 Fax To:

Received: 09/05/2024  
 Reported: 09/10/2024  
 Project Name: SPEAK EASY FEDERAL UNIT #002H  
 Project Number: 03B1417189  
 Project Location: OXY - LEA COUNTY, NM

Sampling Date: 09/05/2024  
 Sampling Type: Soil  
 Sampling Condition: Cool & Intact  
 Sample Received By: Shalyn Rodriguez

**Sample ID: SW 04 0-1' (H245387-29)**

BTEX 8021B		mg/kg		Analyzed By: JH						
Analyte	Result	Reporting Limit	Analyzed	Method Blank	BS	% Recovery	True Value QC	RPD	Qualifier	
Benzene*	<0.050	0.050	09/07/2024	ND	2.07	103	2.00	4.01		
Toluene*	<0.050	0.050	09/07/2024	ND	2.13	107	2.00	5.73		
Ethylbenzene*	<0.050	0.050	09/07/2024	ND	2.16	108	2.00	6.98		
Total Xylenes*	<0.150	0.150	09/07/2024	ND	6.61	110	6.00	6.72		
Total BTEX	<0.300	0.300	09/07/2024	ND						

Surrogate: 4-Bromofluorobenzene (PID) 102 % 71.5-134

Chloride, SM4500Cl-B		mg/kg		Analyzed By: HM						
Analyte	Result	Reporting Limit	Analyzed	Method Blank	BS	% Recovery	True Value QC	RPD	Qualifier	
Chloride	48.0	16.0	09/09/2024	ND	400	100	400	11.3		

TPH 8015M		mg/kg		Analyzed By: MS					
Analyte	Result	Reporting Limit	Analyzed	Method Blank	BS	% Recovery	True Value QC	RPD	Qualifier
GRO C6-C10*	<10.0	10.0	09/06/2024	ND	205	102	200	3.17	
DRO >C10-C28*	<10.0	10.0	09/06/2024	ND	206	103	200	0.108	
EXT DRO >C28-C36	<10.0	10.0	09/06/2024	ND					

Surrogate: 1-Chlorooctane 87.4 % 48.2-134

Surrogate: 1-Chlorooctadecane 105 % 49.1-148

Cardinal Laboratories

\*=Accredited Analyte

PLEASE NOTE: Liability and Damages. Cardinal's liability and client's exclusive remedy for any claim arising, whether based in contract or tort, shall be limited to the amount paid by client for analyses. All claims, including those for negligence and any other cause whatsoever shall be deemed waived unless made in writing and received by Cardinal within thirty (30) days after completion of the applicable service. In no event shall Cardinal be liable for incidental or consequential damages, including, without limitation, business interruptions, loss of use, or loss of profits incurred by client, its subsidiaries, affiliates or successors arising out of or related to the performance of the services hereunder by Cardinal, regardless of whether such claim is based upon any of the above stated reasons or otherwise. Results relate only to the samples identified above. This report shall not be reproduced except in full with written approval of Cardinal Laboratories.

Celey D. Keene, Lab Director/Quality Manager



PHONE (575) 393-2326 ° 101 E. MARLAND ° HOBBS, NM 88240

**Analytical Results For:**

ENSOLUM, LLC  
 KELLY LOWERY  
 705 W WADLEY AVE.  
 MIDLAND TX, 79705  
 Fax To:

Received: 09/05/2024  
 Reported: 09/10/2024  
 Project Name: SPEAK EASY FEDERAL UNIT #002H  
 Project Number: 03B1417189  
 Project Location: OXY - LEA COUNTY, NM

Sampling Date: 09/05/2024  
 Sampling Type: Soil  
 Sampling Condition: Cool & Intact  
 Sample Received By: Shalyn Rodriguez

**Sample ID: SW 05 0-2' (H245387-30)**

BTEx 8021B		mg/kg		Analyzed By: JH						
Analyte	Result	Reporting Limit	Analyzed	Method Blank	BS	% Recovery	True Value QC	RPD	Qualifier	
Benzene*	<0.050	0.050	09/07/2024	ND	2.07	103	2.00	4.01		
Toluene*	<0.050	0.050	09/07/2024	ND	2.13	107	2.00	5.73		
Ethylbenzene*	<0.050	0.050	09/07/2024	ND	2.16	108	2.00	6.98		
Total Xylenes*	<0.150	0.150	09/07/2024	ND	6.61	110	6.00	6.72		
Total BTEx	<0.300	0.300	09/07/2024	ND						

Surrogate: 4-Bromofluorobenzene (PID) 102 % 71.5-134

Chloride, SM4500CI-B		mg/kg		Analyzed By: HM					
Analyte	Result	Reporting Limit	Analyzed	Method Blank	BS	% Recovery	True Value QC	RPD	Qualifier
Chloride	256	16.0	09/09/2024	ND	400	100	400	11.3	

TPH 8015M		mg/kg		Analyzed By: MS					
Analyte	Result	Reporting Limit	Analyzed	Method Blank	BS	% Recovery	True Value QC	RPD	Qualifier
GRO C6-C10*	<10.0	10.0	09/06/2024	ND	205	102	200	3.17	
DRO >C10-C28*	<10.0	10.0	09/06/2024	ND	206	103	200	0.108	
EXT DRO >C28-C36	<10.0	10.0	09/06/2024	ND					

Surrogate: 1-Chlorooctane 79.7 % 48.2-134

Surrogate: 1-Chlorooctadecane 96.1 % 49.1-148

Cardinal Laboratories

\*=Accredited Analyte

PLEASE NOTE: Liability and Damages. Cardinal's liability and client's exclusive remedy for any claim arising, whether based in contract or tort, shall be limited to the amount paid by client for analyses. All claims, including those for negligence and any other cause whatsoever shall be deemed waived unless made in writing and received by Cardinal within thirty (30) days after completion of the applicable service. In no event shall Cardinal be liable for incidental or consequential damages, including, without limitation, business interruptions, loss of use, or loss of profits incurred by client, its subsidiaries, affiliates or successors arising out of or related to the performance of the services hereunder by Cardinal, regardless of whether such claim is based upon any of the above stated reasons or otherwise. Results relate only to the samples identified above. This report shall not be reproduced except in full with written approval of Cardinal Laboratories.

Celey D. Keene, Lab Director/Quality Manager



PHONE (575) 393-2326 ° 101 E. MARLAND ° HOBBS, NM 88240

---

### Notes and Definitions

S-04	The surrogate recovery for this sample is outside of established control limits due to a sample matrix effect.
QM-07	The spike recovery was outside acceptance limits for the MS and/or MSD. The batch was accepted based on acceptable LCS recovery.
ND	Analyte NOT DETECTED at or above the reporting limit
RPD	Relative Percent Difference
**	Samples not received at proper temperature of 6°C or below.
***	Insufficient time to reach temperature.
-	Chloride by SM4500Cl-B does not require samples be received at or below 6°C Samples reported on an as received basis (wet) unless otherwise noted on report

---

Cardinal Laboratories

\*=Accredited Analyte

PLEASE NOTE: Liability and Damages. Cardinal's liability and client's exclusive remedy for any claim arising, whether based in contract or tort, shall be limited to the amount paid by client for analyses. All claims, including those for negligence and any other cause whatsoever shall be deemed waived unless made in writing and received by Cardinal within thirty (30) days after completion of the applicable service. In no event shall Cardinal be liable for incidental or consequential damages, including, without limitation, business interruptions, loss of use, or loss of profits incurred by client, its subsidiaries, affiliates or successors arising out of or related to the performance of the services hereunder by Cardinal, regardless of whether such claim is based upon any of the above stated reasons or otherwise. Results relate only to the samples identified above. This report shall not be reproduced except in full with written approval of Cardinal Laboratories.

A handwritten signature in black ink, appearing to read "Celey D. Keene".

---

Celey D. Keene, Lab Director/Quality Manager



101 East Marland, Hobbs, NM 88240  
(575) 393-2326 FAX (575) 393-2476

# CHAIN-OF-CUSTODY AND ANALYSIS REQUEST

1/3

BILL TO										ANALYSIS REQUEST									
Company Name: Ensolum, LLC										P.O. #:									
Project Manager: Beaux Jennings / Kelly Lowery										Company: Oxy USA, Inc.									
Address: 601 N. Marienfeld St. STE 400										Attn: Wade Dittrich									
City: Midland State: TX Zip: 79701										Address:									
Phone #: 210-219-8858 Fax #:										City:									
Project #: 03B1417189 Project Owner:										State: Zip:									
Project Name: Speak Easy Federal Unit #002H										Phone #: 575-390-2828									
Project Location: Lea County										Fax #:									
Sampler Name: Tabitha Guardian																			
Lab I.D.	Sample I.D.	Sample Depth (feet)	(G/RAB OR (C)OMP.	# CONTAINERS	GROUNDWATER	WASTEWATER	SOIL	OIL	SLUDGE	OTHER :	PRESERV.	ACID/BASE:	ICE / COOL	OTHER :	DATE	TIME	TPH 8015M	BTEX 8021B	Chloride 4500
H245387	FS01	1'	C	1			X				✓				9/5/24	1006	X	X	X
2	FS02	1'	C	1												1008			
3	FS03	2'	C	1												1010			
4	FS04	1'	C	1												1012			
5	FS05	2'	C	1												1014			
6	FS06	2'	C	1												1016			
7	FS07	2'	C	1												1018			
8	FS08	2'	C	1												1020			
9	FS09	1.5'	C	1												1022			
10	FS10	2'	C	1												1024	X	X	X

PLEASE NOTE: Liability and Damages. Cardinal's liability and client's exclusive remedy for any claim arising whether based in contract or tort, shall be limited to the amount paid by the client for the analyses. All claims including those for negligence and any other cause whatsoever shall be deemed waived unless made in writing and received by Cardinal within 30 days after completion of the applicable service. In no event shall Cardinal be liable for incidental or consequential damages, including without limitation, business interruptions, loss of use, or loss of profits incurred by client, its subsidiaries, affiliates or successors arising out of or related to the performance of services hereunder by Cardinal, regardless of whether such claim is based upon any of the above stated reasons or otherwise.

Relinquished By:		Date: 9/5/24	Received By: S. Rodriguez		Verbal Result: <input type="checkbox"/> Yes <input checked="" type="checkbox"/> No Add'l Phone #:	
Time: 1:15		Time: 1:15		All Results are emailed. Please provide Email address:		
Relinquished By: [Signature]		Received By: [Signature]		Bjennings@ensolum.com + Klowery@ensolum		
Date:		Date:		REMARKS:		
Time:		Time:		Turnaround Time: Standard <input checked="" type="checkbox"/> Rush <input type="checkbox"/>		
Delivered By: (Circle One)		Observed Temp. °C 2.5	Sample Condition Cool <input checked="" type="checkbox"/> Intact <input type="checkbox"/>	CHECKED BY: (Initials) SK	Thermometer ID #113	Bacteria (only) Sample Condition Cool <input checked="" type="checkbox"/> Intact <input type="checkbox"/>
Sampler - UPS - Bus - Other:		Corrected Temp. °C 1.9	<input type="checkbox"/> Yes <input checked="" type="checkbox"/> No		Correction Factor -0.5°C	<input type="checkbox"/> Yes <input checked="" type="checkbox"/> No Observed Temp. °C
						Corrected Temp. °C

† Cardinal cannot accept verbal changes. Please email changes to celey.keene@cardinallabsnm.com



101 East Marland, Hobbs, NM 88240  
(575) 393-2326 FAX (575) 393-2476

# CHAIN-OF-CUSTODY AND ANALYSIS REQUEST

2/3

BILL TO										ANALYSIS REQUEST																				
Company Name: Ensolum, LLC										P.O. #:																				
Project Manager: Beaux Jennings / Kelly Lowery										Company: Oxy USA, Inc.																				
Address: 601 N. Marienfeld St. STE 400										Attn: Wade Dittrich																				
City: Midland State: TX Zip: 79701										Address:																				
Phone #: 210-219-8858 Fax #:										City:																				
Project #: 03B1417189 Project Owner:										State: Zip:																				
Project Name: Speak Easy Federal Unit #00214										Phone #: 575-390-2828																				
Project Location: Lea County										Fax #:																				
Sampler Name: Tabitha Guadian																														
FOR LAB USE ONLY																														
Lab I.D.	Sample I.D.	Sample Depth (feet)	(GRAB OR (C)OMP.	# CONTAINERS	MATRIX					PRESERV.		SAMPLING																		
					GROUNDWATER	WASTEWATER	SOIL	OIL	SLUDGE	OTHER :	ACID/BASE:	ICE / COOL	OTHER :	DATE	TIME	TPH	BTEX	Chloride												
H245387	FS11	2	C	1			X					X		7/15/24	1026	X	X	X												
11	FS12	2	C	1											1028															
12	FS13	2	C	1											1030															
13	FS14	2													1032															
14	FS15	2													1034															
15	FS16	2													1036															
16	FS17	2													1038															
17	FS18	2													1040															
18	FS19	2													1042															
19	FS20	2													1044															
20																														

PLEASE NOTE: Liability and Damages. Cardinal's liability and client's exclusive remedy for any claim arising whether based in contract or tort, shall be limited to the amount paid by the client for the analyses. All claims including those for negligence and any other cause whatsoever shall be deemed waived unless made in writing and received by Cardinal within 30 days after completion of the applicable service. In no event shall Cardinal be liable for incidental or consequential damages, including without limitation, business interruptions, loss of use, or loss of profits incurred by client, its subsidiaries, affiliates or successors arising out of or related to the performance of services hereunder by Cardinal, regardless of whether such claim is based upon any of the above stated reasons or otherwise.

Relinquished By:		Date: 9/15/24	Received By: S. Rodriquez		Verbal Result: <input type="checkbox"/> Yes <input type="checkbox"/> No Add'l Phone #:	
Time: 1415				All Results are emailed. Please provide Email address:		
Relinquished By:		Date:	Received By:		B. Jennings@ensolum.com & K. Lowery@ensolum.com	
Time:				REMARKS:		
Delivered By: (Circle One)		Observed Temp. °C: 2.52	Sample Condition: Cool <input checked="" type="checkbox"/> Intact <input type="checkbox"/>		Turnaround Time: Standard <input checked="" type="checkbox"/> Rush <input type="checkbox"/>	
Sampler - UPS - Bus - Other:		Corrected Temp. °C: 1.92	Checked By: S. Rodriquez		Thermometer ID: #443 -0.6	
					Bacteria (only) Sample Condition: Cool <input type="checkbox"/> Intact <input type="checkbox"/> Observed Temp. °C: <input type="checkbox"/> Yes <input type="checkbox"/> No <input type="checkbox"/> No Corrected Temp. °C:	

† Cardinal cannot accept verbal changes. Please email changes to celey.keene@cardinallabsnm.com





101 East Marland, Hobbs, NM 88240  
(575) 393-2326 FAX (575) 393-2476

# CHAIN-OF-CUSTODY AND ANALYSIS REQUEST

3/3

BILL TO				ANALYSIS REQUEST																							
Company Name: Ensolum, LLC				P.O. #:																							
Project Manager: Beaux Jennings / Kelly Lowery				Company: Oxy USA, Inc.																							
Address: 601 N. Marienfeld St. STE 400				Attn: Wade Dittrich																							
City: Midland State: TX Zip: 79701				Address:																							
Phone #: 210-219-8858 Fax #:				City:																							
Project #: 03B1417189 Project Owner:				State: Zip:																							
Project Name: Speak Easy Federal Unit #002H				Phone #: 575-390-2828																							
Project Location: Lea County				Fax #:																							
Sampler Name: Tabitha Guadian																											
Lab I.D.	Sample I.D.	Sample Depth (feet)	(G)RAB OR (C)OMP.	MATRIX	PRESERV.	SAMPLING																					
			# CONTAINERS	GROUNDWATER	WASTEWATER	SOIL	OIL	SLUDGE	OTHER:	ACID/BASE:	ICE / COOL	OTHER:	DATE	TIME													
H245387																											
21	FS21	2'	1			X					X		9/5/24	1046	X	X	X										
22	FS22	2'												1048													
23	FS23	2'												1050													
24	FS24	2'												1052													
25	FS25	2'												1054													
26	SW01	0-2												1056													
27	SW02	0-2												1058													
28	SW03	0-2												1100													
29	SW04	0-1												1102													
30	SW05	0-2												1104													

PLEASE NOTE: Liability and Damages. Cardinal's liability and client's exclusive remedy for any claim arising whether based in contract or tort, shall be limited to the amount paid by the client for the analyses. All claims including those for negligence and any other cause whatsoever shall be deemed waived unless made in writing and received by Cardinal within 30 days after completion of the applicable service. In no event shall Cardinal be liable for incidental or consequential damages, including without limitation, business interruptions, loss of use, or loss of profits incurred by client, its subsidiaries, affiliates or successors arising out of or related to the performance of services hereunder by Cardinal, regardless of whether such claim is based upon any of the above stated reasons or otherwise.

Relinquished By: <i>[Signature]</i>		Date: 9/5/24	Received By: <i>[Signature]</i>	Verbal Result: <input type="checkbox"/> Yes <input checked="" type="checkbox"/> No	Add'l Phone #:
Relinquished By: <i>[Signature]</i>		Time: 1415	Received By: <i>[Signature]</i>	All Results are emailed. Please provide Email address:	
Delivered By: (Circle One)		Observed Temp. °C: 2.5	Sample Condition: Cool <input checked="" type="checkbox"/> Intact <input type="checkbox"/>	Bacteria (only) Sample Condition: Cool <input checked="" type="checkbox"/> Intact <input type="checkbox"/>	
Sampler - UPS - Bus - Other:		Corrected Temp. °C: 1.92	Checked By: <i>[Signature]</i>	Thermometer ID #113	
				Correction Factor: -0.5°C	
				Turnaround Time: Standard <input checked="" type="checkbox"/> Rush <input type="checkbox"/>	
				Observed Temp. °C: <i>140</i>	
				Corrected Temp. °C: <i>-0.6</i>	

† Cardinal cannot accept verbal changes. Please email changes to celey.keene@cardinallabsnm.com



PHONE (575) 393-2326 ° 101 E. MARLAND ° HOBBS, NM 88240

September 19, 2024

BEAUX JENNINGS  
ENSOLUM, LLC  
705 W WADLEY AVE.  
MIDLAND, TX 79705

RE: LEA LAND CALICHE PIT

Enclosed are the results of analyses for samples received by the laboratory on 09/16/24 14:00.

Cardinal Laboratories is accredited through Texas NELAP under certificate number TX-C24-00112. Accreditation applies to drinking water, non-potable water and solid and chemical materials. All accredited analytes are denoted by an asterisk (\*). For a complete list of accredited analytes and matrices visit the TCEQ website at [www.tceq.texas.gov/field/qa/lab\\_accred\\_certif.html](http://www.tceq.texas.gov/field/qa/lab_accred_certif.html).

Cardinal Laboratories is accredited through the State of Colorado Department of Public Health and Environment for:

Method EPA 552.2	Haloacetic Acids (HAA-5)
Method EPA 524.2	Total Trihalomethanes (TTHM)
Method EPA 524.4	Regulated VOCs (V1, V2, V3)

Accreditation applies to public drinking water matrices.

This report meets NELAP requirements and is made up of a cover page, analytical results, and a copy of the original chain-of-custody. If you have any questions concerning this report, please feel free to contact me.

Sincerely,

A handwritten signature in black ink that reads "Celey D. Keene". The signature is written in a cursive, flowing style.

Celey D. Keene  
Lab Director/Quality Manager





PHONE (575) 393-2326 ° 101 E. MARLAND ° HOBBS, NM 88240

**Analytical Results For:**

ENSOLUM, LLC  
 BEAUX JENNINGS  
 705 W WADLEY AVE.  
 MIDLAND TX, 79705  
 Fax To:

Received: 09/16/2024  
 Reported: 09/19/2024  
 Project Name: LEA LAND CALICHE PIT  
 Project Number: 03B1417160  
 Project Location: OXY

Sampling Date: 09/13/2024  
 Sampling Type: Soil  
 Sampling Condition: Cool & Intact  
 Sample Received By: Tamara Oldaker

**Sample ID: LEA LAND CALICHE PIT 0.5' (H245619-01)**

BTEX 8021B		mg/kg		Analyzed By: JH					
Analyte	Result	Reporting Limit	Analyzed	Method Blank	BS	% Recovery	True Value QC	RPD	Qualifier
Benzene*	<0.050	0.050	09/17/2024	ND	2.04	102	2.00	2.40	
Toluene*	<0.050	0.050	09/17/2024	ND	1.91	95.7	2.00	2.59	
Ethylbenzene*	<0.050	0.050	09/17/2024	ND	1.93	96.4	2.00	2.47	
Total Xylenes*	<0.150	0.150	09/17/2024	ND	5.72	95.4	6.00	2.68	
Total BTEX	<0.300	0.300	09/17/2024	ND					

Surrogate: 4-Bromofluorobenzene (PID) 93.3 % 71.5-134

Chloride, SM4500Cl-B		mg/kg		Analyzed By: HM						
Analyte	Result	Reporting Limit	Analyzed	Method Blank	BS	% Recovery	True Value QC	RPD	Qualifier	
Chloride	560	16.0	09/17/2024	ND	416	104	400	0.00		

TPH 8015M		mg/kg		Analyzed By: MS					
Analyte	Result	Reporting Limit	Analyzed	Method Blank	BS	% Recovery	True Value QC	RPD	Qualifier
GRO C6-C10*	<10.0	10.0	09/17/2024	ND	204	102	200	0.238	
DRO >C10-C28*	98.6	10.0	09/17/2024	ND	202	101	200	5.70	
EXT DRO >C28-C36	<10.0	10.0	09/17/2024	ND					

Surrogate: 1-Chlorooctane 70.9 % 48.2-134

Surrogate: 1-Chlorooctadecane 81.3 % 49.1-148

Cardinal Laboratories

\*=Accredited Analyte

PLEASE NOTE: Liability and Damages. Cardinal's liability and client's exclusive remedy for any claim arising, whether based in contract or tort, shall be limited to the amount paid by client for analyses. All claims, including those for negligence and any other cause whatsoever shall be deemed waived unless made in writing and received by Cardinal within thirty (30) days after completion of the applicable service. In no event shall Cardinal be liable for incidental or consequential damages, including, without limitation, business interruptions, loss of use, or loss of profits incurred by client, its subsidiaries, affiliates or successors arising out of or related to the performance of the services hereunder by Cardinal, regardless of whether such claim is based upon any of the above stated reasons or otherwise. Results relate only to the samples identified above. This report shall not be reproduced except in full with written approval of Cardinal Laboratories.

Celey D. Keene, Lab Director/Quality Manager

PHONE (575) 393-2326 ° 101 E. MARLAND ° HOBBS, NM 88240

---

### Notes and Definitions

ND	Analyte NOT DETECTED at or above the reporting limit
RPD	Relative Percent Difference
**	Samples not received at proper temperature of 6°C or below.
***	Insufficient time to reach temperature.
-	Chloride by SM4500Cl-B does not require samples be received at or below 6°C Samples reported on an as received basis (wet) unless otherwise noted on report

---

Cardinal Laboratories

\*=Accredited Analyte

PLEASE NOTE: Liability and Damages. Cardinal's liability and client's exclusive remedy for any claim arising, whether based in contract or tort, shall be limited to the amount paid by client for analyses. All claims, including those for negligence and any other cause whatsoever shall be deemed waived unless made in writing and received by Cardinal within thirty (30) days after completion of the applicable service. In no event shall Cardinal be liable for incidental or consequential damages, including, without limitation, business interruptions, loss of use, or loss of profits incurred by client, its subsidiaries, affiliates or successors arising out of or related to the performance of the services hereunder by Cardinal, regardless of whether such claim is based upon any of the above stated reasons or otherwise. Results relate only to the samples identified above. This report shall not be reproduced except in full with written approval of Cardinal Laboratories.

A handwritten signature in black ink, appearing to read "Celey D. Keene".

---

Celey D. Keene, Lab Director/Quality Manager



# CHAIN-OF-CUSTODY AND ANALYSIS REQUEST

101 East Marland, Hobbs, NM 88240  
(575) 393-2326 FAX (575) 393-2476

Company Name: Ensolum, LLC										BILL TO		ANALYSIS REQUEST																
Project Manager: Beaux Jennings										P.O. #:		<div style="display: flex; flex-direction: column; align-items: center;"> <div>BTEX 8021B</div> <div>TPH 8015M</div> <div>Chloride 4500</div> <div>Hold</div> </div>																
Address: 601 N. Marienfeld St. STE 400										Company: OXY USA																		
City: Midland State: TX Zip: 79701										Attn: Wade Dittrich																		
Phone #: (210)219-8858 Email: bjennings@ensolum.com										Address:																		
Project #: 03B1417160 Project Owner:										City:																		
Project Name: Lea Land Caliche Pit										State: Zip:																		
Project Location:										Phone #:																		
Sampler Name: Kaoru Shimada										Email:																		
Lab I.D.	Sample I.D.	Sample Depth (feet)	(G)RAB OR (C)OMP.	# CONTAINERS	MATRIX					PRESERV.	SAMPLING																	
					GROUNDWATER	WASTEWATER	SOIL	OIL	SLUDGE	OTHER:	ACID/BASE:	ICE / COOL	OTHER:	DATE	TIME													
H245619	Lea Land Caliche Pit	0.5	C	1			X					X		9-13-24	1041	X	X	X										
<div style="font-size: 4em; opacity: 0.5;">NOT TESTED</div>																												

PLEASE NOTE: Liability and Damages: Cardinal's liability and client's exclusive remedy for any claim arising whether based in contract or tort, shall be limited to the amount paid by the client for the analyses. All claims, including those for negligence and any other cause whatsoever shall be deemed waived unless made in writing and received by Cardinal within 30 days after completion of the applicable service. In no event shall Cardinal be liable for incidental or consequential damages, including without limitation, business interruptions, loss of use, or loss of profits incurred by client, its subsidiaries, affiliates or successors arising out of or related to the performance of services hereunder by Cardinal, regardless of whether such claim is based upon any of the above stated persons or otherwise.

Relinquished By:	Date: 9-16-24	Received By:	Verbal Result: <input type="checkbox"/> Yes <input checked="" type="checkbox"/> No	Add'l Phone #:
Kaoru Shimada	Time: 1400	Kaoru Shimada	All Results are emailed. Please provide Email address: bjennings@ensolum.com, klowery@ensolum.com	
Relinquished By:	Date:	Received By:	REMARKS: Paykey/AFE/NonAFE:	
	Time:			
Delivered By: (Circle One) Sampler - UPS - Bus - Other:	Observed Temp. °C Corrected Temp. °C	Sample Condition Cool Intact <input checked="" type="checkbox"/> Yes <input type="checkbox"/> No <input type="checkbox"/> No <input type="checkbox"/> No	CHECKED BY: (Initials) 20.	Turnaround Time: Standard <input checked="" type="checkbox"/> Bacteria (only) Sample Condition
	6.3 5.7			Rush <input type="checkbox"/> Cool Intact Observed Temp. °C
				Thermometer ID #140
				Correction Factor -0.6°C
				<input type="checkbox"/> Yes <input type="checkbox"/> No <input type="checkbox"/> Yes <input type="checkbox"/> No Corrected Temp. °C

FORM-006 R 3.2 10/07/21

† Cardinal cannot accept verbal changes. Please email changes to celey.keene@cardinallabsnm.com

Sante Fe Main Office  
Phone: (505) 476-3441

General Information  
Phone: (505) 629-6116

Online Phone Directory  
<https://www.emnrd.nm.gov/ocd/contact-us>

State of New Mexico  
Energy, Minerals and Natural Resources  
Oil Conservation Division  
1220 S. St Francis Dr.  
Santa Fe, NM 87505

QUESTIONS

Action 415170

QUESTIONS

Operator: OXY USA INC P.O. Box 4294 Houston, TX 772104294	OGRID: 16696
	Action Number: 415170
	Action Type: [C-141] Remediation Closure Request C-141 (C-141-v-Closure)

QUESTIONS

Prerequisites	
Incident ID (n#)	nAPP2416233211
Incident Name	NAPP2416233211 SPEAK EASY FEDERAL UNIT #002H @ 30-025-40306
Incident Type	Oil Release
Incident Status	Remediation Closure Report Received
Incident Well	[30-025-40306] SPEAK EASY FEDERAL COM #002H

Location of Release Source	
Please answer all the questions in this group.	
Site Name	SPEAK EASY FEDERAL UNIT #002H
Date Release Discovered	06/06/2024
Surface Owner	Federal

Incident Details	
Please answer all the questions in this group.	
Incident Type	Oil Release
Did this release result in a fire or is the result of a fire	No
Did this release result in any injuries	No
Has this release reached or does it have a reasonable probability of reaching a watercourse	No
Has this release endangered or does it have a reasonable probability of endangering public health	No
Has this release substantially damaged or will it substantially damage property or the environment	No
Is this release of a volume that is or may with reasonable probability be detrimental to fresh water	No

Nature and Volume of Release	
Material(s) released, please answer all that apply below. Any calculations or specific justifications for the volumes provided should be attached to the follow-up C-141 submission.	
Crude Oil Released (bbls) Details	Cause: Equipment Failure   Producing Well   Crude Oil   Released: 10 BBL   Recovered: 10 BBL   Lost: 0 BBL.
Produced Water Released (bbls) Details	Cause: Equipment Failure   Producing Well   Produced Water   Released: 5 BBL   Recovered: 5 BBL   Lost: 0 BBL.
Is the concentration of chloride in the produced water >10,000 mg/l	No
Condensate Released (bbls) Details	Not answered.
Natural Gas Vented (Mcf) Details	Not answered.
Natural Gas Flared (Mcf) Details	Not answered.
Other Released Details	Not answered.
Are there additional details for the questions above (i.e. any answer containing Other, Specify, Unknown, and/or Fire, or any negative lost amounts)	Not answered.

Sante Fe Main Office  
Phone: (505) 476-3441

General Information  
Phone: (505) 629-6116

Online Phone Directory  
<https://www.emnrd.nm.gov/ocd/contact-us>

**State of New Mexico**  
**Energy, Minerals and Natural Resources**  
**Oil Conservation Division**  
**1220 S. St Francis Dr.**  
**Santa Fe, NM 87505**

QUESTIONS, Page 2

Action 415170

**QUESTIONS (continued)**

Operator: OXY USA INC P.O. Box 4294 Houston, TX 772104294	OGRID: 16696
	Action Number: 415170
	Action Type: [C-141] Remediation Closure Request C-141 (C-141-v-Closure)

**QUESTIONS**

Nature and Volume of Release (continued)	
Is this a gas only submission (i.e. only significant Mcf values reported)	No, according to supplied volumes this does not appear to be a "gas only" report.
Was this a major release as defined by Subsection A of 19.15.29.7 NMAC	No
Reasons why this would be considered a submission for a notification of a major release	Unavailable.
With the implementation of the 19.15.27 NMAC (05/25/2021), venting and/or flaring of natural gas (i.e. gas only) are to be submitted on the C-129 form.	

**Initial Response**

The responsible party must undertake the following actions immediately unless they could create a safety hazard that would result in injury.

The source of the release has been stopped	True
The impacted area has been secured to protect human health and the environment	True
Released materials have been contained via the use of berms or dikes, absorbent pads, or other containment devices	True
All free liquids and recoverable materials have been removed and managed appropriately	True
If all the actions described above have not been undertaken, explain why	Not answered.

Per Paragraph (4) of Subsection B of 19.15.29.8 NMAC the responsible party may commence remediation immediately after discovery of a release. If remediation has begun, please prepare and attach a narrative of actions to date in the follow-up C-141 submission. If remedial efforts have been successfully completed or if the release occurred within a lined containment area (see Subparagraph (a) of Paragraph (5) of Subsection A of 19.15.29.11 NMAC), please prepare and attach all information needed for closure evaluation in the follow-up C-141 submission.

I hereby certify that the information given above is true and complete to the best of my knowledge and understand that pursuant to OCD rules and regulations all operators are required to report and/or file certain release notifications and perform corrective actions for releases which may endanger public health or the environment. The acceptance of a C-141 report by the OCD does not relieve the operator of liability should their operations have failed to adequately investigate and remediate contamination that pose a threat to groundwater, surface water, human health or the environment. In addition, OCD acceptance of a C-141 report does not relieve the operator of responsibility for compliance with any other federal, state, or local laws and/or regulations.

I hereby agree and sign off to the above statement	Name: Wade Dittrich Title: Environmental Coordinator Email: wade_dittrich@oxy.com Date: 12/26/2024
--	---



Sante Fe Main Office  
Phone: (505) 476-3441

General Information  
Phone: (505) 629-6116

Online Phone Directory  
<https://www.emnrd.nm.gov/ocd/contact-us>

**State of New Mexico**  
**Energy, Minerals and Natural Resources**  
**Oil Conservation Division**  
**1220 S. St Francis Dr.**  
**Santa Fe, NM 87505**

QUESTIONS, Page 3

Action 415170

**QUESTIONS (continued)**

Operator: OXY USA INC P.O. Box 4294 Houston, TX 772104294	OGRID: 16696
	Action Number: 415170
	Action Type: [C-141] Remediation Closure Request C-141 (C-141-v-Closure)

**QUESTIONS****Site Characterization**

Please answer all the questions in this group (only required when seeking remediation plan approval and beyond). This information must be provided to the appropriate district office no later than 90 days after the release discovery date.

What is the shallowest depth to groundwater beneath the area affected by the release in feet below ground surface (ft bgs)	Between 100 and 500 (ft.)
What method was used to determine the depth to ground water	NM OSE iWaters Database Search
Did this release impact groundwater or surface water	No
<b>What is the minimum distance, between the closest lateral extents of the release and the following surface areas:</b>	
A continuously flowing watercourse or any other significant watercourse	Greater than 5 (mi.)
Any lakebed, sinkhole, or playa lake (measured from the ordinary high-water mark)	Greater than 5 (mi.)
An occupied permanent residence, school, hospital, institution, or church	Greater than 5 (mi.)
A spring or a private domestic fresh water well used by less than five households for domestic or stock watering purposes	Between 1 and 5 (mi.)
Any other fresh water well or spring	Between 1 and 5 (mi.)
Incorporated municipal boundaries or a defined municipal fresh water well field	Greater than 5 (mi.)
A wetland	Between ½ and 1 (mi.)
A subsurface mine	Greater than 5 (mi.)
An (non-karst) unstable area	Greater than 5 (mi.)
Categorize the risk of this well / site being in a karst geology	Low
A 100-year floodplain	Greater than 5 (mi.)
Did the release impact areas not on an exploration, development, production, or storage site	No

**Remediation Plan**

Please answer all the questions that apply or are indicated. This information must be provided to the appropriate district office no later than 90 days after the release discovery date.

Requesting a remediation plan approval with this submission	Yes
<i>Attach a comprehensive report demonstrating the lateral and vertical extents of soil contamination associated with the release have been determined, pursuant to 19.15.29.11 NMAC and 19.15.29.13 NMAC.</i>	
Have the lateral and vertical extents of contamination been fully delineated	Yes
Was this release entirely contained within a lined containment area	No

**Soil Contamination Sampling:** (Provide the highest observable value for each, in milligrams per kilograms.)

Chloride (EPA 300.0 or SM4500 Cl B)	1020
TPH (GRO+DRO+MRO) (EPA SW-846 Method 8015M)	45.4
GRO+DRO (EPA SW-846 Method 8015M)	45.4
BTEX (EPA SW-846 Method 8021B or 8260B)	0
Benzene (EPA SW-846 Method 8021B or 8260B)	0

Per Subsection B of 19.15.29.11 NMAC unless the site characterization report includes completed efforts at remediation, the report must include a proposed remediation plan in accordance with 19.15.29.12 NMAC, which includes the anticipated timelines for beginning and completing the remediation.

On what estimated date will the remediation commence	06/06/2024
On what date will (or did) the final sampling or liner inspection occur	09/05/2024
On what date will (or was) the remediation complete(d)	09/05/2024
What is the estimated surface area (in square feet) that will be reclaimed	5000
What is the estimated volume (in cubic yards) that will be reclaimed	344
What is the estimated surface area (in square feet) that will be remediated	5000
What is the estimated volume (in cubic yards) that will be remediated	344

These estimated dates and measurements are recognized to be the best guess or calculation at the time of submission and may (be) change(d) over time as more remediation efforts are completed.

The OCD recognizes that proposed remediation measures may have to be minimally adjusted in accordance with the physical realities encountered during remediation. If the responsible party has any need to significantly deviate from the remediation plan proposed, then it should consult with the division to determine if another remediation plan submission is required.

Sante Fe Main Office  
Phone: (505) 476-3441

General Information  
Phone: (505) 629-6116

Online Phone Directory  
<https://www.emnrd.nm.gov/ocd/contact-us>

**State of New Mexico**  
**Energy, Minerals and Natural Resources**  
**Oil Conservation Division**  
**1220 S. St Francis Dr.**  
**Santa Fe, NM 87505**

QUESTIONS, Page 4

Action 415170

**QUESTIONS (continued)**

Operator: OXY USA INC P.O. Box 4294 Houston, TX 772104294	OGRID:
	16696
	Action Number:
	415170
Action Type:	
[C-141] Remediation Closure Request C-141 (C-141-v-Closure)	

**QUESTIONS**

<b>Remediation Plan (continued)</b>	
<i>Please answer all the questions that apply or are indicated. This information must be provided to the appropriate district office no later than 90 days after the release discovery date.</i>	
<b>This remediation will (or is expected to) utilize the following processes to remediate / reduce contaminants:</b>	
(Select all answers below that apply.)	
(Ex Situ) Excavation and <b>off-site</b> disposal (i.e. dig and haul, hydrovac, etc.)	Yes
Which OCD approved facility will be used for <b>off-site</b> disposal	LEA LAND LANDFILL [fEEM0112342028]
<b>OR</b> which OCD approved well (API) will be used for <b>off-site</b> disposal	Not answered.
<b>OR</b> is the <b>off-site</b> disposal site, to be used, out-of-state	Not answered.
<b>OR</b> is the <b>off-site</b> disposal site, to be used, an NMED facility	Not answered.
(Ex Situ) Excavation and <b>on-site</b> remediation (i.e. On-Site Land Farms)	Not answered.
(In Situ) Soil Vapor Extraction	Not answered.
(In Situ) Chemical processing (i.e. Soil Shredding, Potassium Permanganate, etc.)	Not answered.
(In Situ) Biological processing (i.e. Microbes / Fertilizer, etc.)	Not answered.
(In Situ) Physical processing (i.e. Soil Washing, Gypsum, Disking, etc.)	Not answered.
Ground Water Abatement pursuant to 19.15.30 NMAC	Not answered.
OTHER (Non-listed remedial process)	Not answered.
<i>Per Subsection B of 19.15.29.11 NMAC unless the site characterization report includes completed efforts at remediation, the report must include a proposed remediation plan in accordance with 19.15.29.12 NMAC, which includes the anticipated timelines for beginning and completing the remediation.</i>	
I hereby certify that the information given above is true and complete to the best of my knowledge and understand that pursuant to OCD rules and regulations all operators are required to report and/or file certain release notifications and perform corrective actions for releases which may endanger public health or the environment. The acceptance of a C-141 report by the OCD does not relieve the operator of liability should their operations have failed to adequately investigate and remediate contamination that pose a threat to groundwater, surface water, human health or the environment. In addition, OCD acceptance of a C-141 report does not relieve the operator of responsibility for compliance with any other federal, state, or local laws and/or regulations.	
I hereby agree and sign off to the above statement	Name: Wade Dittrich Title: Environmental Coordinator Email: <a href="mailto:wade_dittrich@oxy.com">wade_dittrich@oxy.com</a> Date: 12/26/2024
<i>The OCD recognizes that proposed remediation measures may have to be minimally adjusted in accordance with the physical realities encountered during remediation. If the responsible party has any need to significantly deviate from the remediation plan proposed, then it should consult with the division to determine if another remediation plan submission is required.</i>	

Sante Fe Main Office  
Phone: (505) 476-3441

General Information  
Phone: (505) 629-6116

Online Phone Directory  
<https://www.emnrd.nm.gov/ocd/contact-us>

State of New Mexico  
Energy, Minerals and Natural Resources  
Oil Conservation Division  
1220 S. St Francis Dr.  
Santa Fe, NM 87505

QUESTIONS, Page 5

Action 415170

QUESTIONS (continued)

Operator: OXY USA INC P.O. Box 4294 Houston, TX 772104294	OGRID: 16696
	Action Number: 415170
	Action Type: [C-141] Remediation Closure Request C-141 (C-141-v-Closure)

QUESTIONS

Deferral Requests Only	
Only answer the questions in this group if seeking a deferral upon approval this submission. Each of the following items must be confirmed as part of any request for deferral of remediation.	
Requesting a deferral of the remediation closure due date with the approval of this submission	No

Sante Fe Main Office  
Phone: (505) 476-3441

General Information  
Phone: (505) 629-6116

Online Phone Directory  
<https://www.emnrd.nm.gov/ocd/contact-us>

**State of New Mexico**  
**Energy, Minerals and Natural Resources**  
**Oil Conservation Division**  
**1220 S. St Francis Dr.**  
**Santa Fe, NM 87505**

QUESTIONS, Page 6

Action 415170

**QUESTIONS (continued)**

Operator: OXY USA INC P.O. Box 4294 Houston, TX 772104294	OGRID: 16696
	Action Number: 415170
	Action Type: [C-141] Remediation Closure Request C-141 (C-141-v-Closure)

**QUESTIONS**

Sampling Event Information	
Last sampling notification (C-141N) recorded	379977
Sampling date pursuant to Subparagraph (a) of Paragraph (1) of Subsection D of 19.15.29.12 NMAC	09/05/2024
What was the (estimated) number of samples that were to be gathered	30
What was the sampling surface area in square feet	6000

**Remediation Closure Request**

*Only answer the questions in this group if seeking remediation closure for this release because all remediation steps have been completed.*

Requesting a remediation closure approval with this submission	Yes
Have the lateral and vertical extents of contamination been fully delineated	Yes
Was this release entirely contained within a lined containment area	No
All areas reasonably needed for production or subsequent drilling operations have been stabilized, returned to the sites existing grade, and have a soil cover that prevents ponding of water, minimizing dust and erosion	Yes
What was the total surface area (in square feet) remediated	5000
What was the total volume (cubic yards) remediated	344
All areas not reasonably needed for production or subsequent drilling operations have been reclaimed to contain a minimum of four feet of non-waste contain earthen material with concentrations less than 600 mg/kg chlorides, 100 mg/kg TPH, 50 mg/kg BTEX, and 10 mg/kg Benzene	Yes
What was the total surface area (in square feet) reclaimed	5000
What was the total volume (in cubic yards) reclaimed	344
Summarize any additional remediation activities not included by answers (above)	NA

*The responsible party must attach information demonstrating they have complied with all applicable closure requirements and any conditions or directives of the OCD. This demonstration should be in the form of a comprehensive report (in .pdf format) including a scaled site map, sampling diagrams, relevant field notes, photographs of any excavation prior to backfilling, laboratory data including chain of custody documents of final sampling, and a narrative of the remedial activities. Refer to 19.15.29.12 NMAC.*

I hereby certify that the information given above is true and complete to the best of my knowledge and understand that pursuant to OCD rules and regulations all operators are required to report and/or file certain release notifications and perform corrective actions for releases which may endanger public health or the environment. The acceptance of a C-141 report by the OCD does not relieve the operator of liability should their operations have failed to adequately investigate and remediate contamination that pose a threat to groundwater, surface water, human health or the environment. In addition, OCD acceptance of a C-141 report does not relieve the operator of responsibility for compliance with any other federal, state, or local laws and/or regulations. The responsible party acknowledges they must substantially restore, reclaim, and re-vegetate the impacted surface area to the conditions that existed prior to the release or their final land use in accordance with 19.15.29.13 NMAC including notification to the OCD when reclamation and re-vegetation are complete.

I hereby agree and sign off to the above statement	Name: Wade Dittrich Title: Environmental Coordinator Email: <a href="mailto:wade_dittrich@oxy.com">wade_dittrich@oxy.com</a> Date: 12/26/2024
--	--

Sante Fe Main Office  
Phone: (505) 476-3441

General Information  
Phone: (505) 629-6116

Online Phone Directory  
<https://www.emnrd.nm.gov/ocd/contact-us>

State of New Mexico  
Energy, Minerals and Natural Resources  
Oil Conservation Division  
1220 S. St Francis Dr.  
Santa Fe, NM 87505

QUESTIONS, Page 7

Action 415170

QUESTIONS (continued)

Operator: OXY USA INC P.O. Box 4294 Houston, TX 772104294	OGRID: 16696
	Action Number: 415170
	Action Type: [C-141] Remediation Closure Request C-141 (C-141-v-Closure)

QUESTIONS

Reclamation Report	
Only answer the questions in this group if all reclamation steps have been completed.	
Requesting a reclamation approval with this submission	No

Sante Fe Main Office  
Phone: (505) 476-3441

General Information  
Phone: (505) 629-6116

Online Phone Directory  
<https://www.emnrd.nm.gov/ocd/contact-us>

State of New Mexico  
Energy, Minerals and Natural Resources  
Oil Conservation Division  
1220 S. St Francis Dr.  
Santa Fe, NM 87505

CONDITIONS

Action 415170

CONDITIONS

Operator: OXY USA INC P.O. Box 4294 Houston, TX 772104294	OGRID: 16696
	Action Number: 415170
	Action Type: [C-141] Remediation Closure Request C-141 (C-141-v-Closure)

CONDITIONS

Created By	Condition	Condition Date
nvez	Remediation has met 19.15.29 NMAC requirements. Soil impacts exceeding the reclamation standards have been left in place and are required to meet 19.15.29.13D (1) NMAC once the site is no longer reasonably needed for production or subsequent drilling ops.	3/20/2025