

From: [Hamlet, Robert, EMNRD](#)
To: [Feather, David](#)
Cc: [Dunaway, Robert](#); [Bratcher, Michael, EMNRD](#); [Wells, Shelly, EMNRD](#)
Subject: [EXTERNAL] (Extension Approval) nAPP2420029251 Enterprise Products
Date: Thursday, October 10, 2024 9:33:43 AM
Attachments: [image002.jpg](#)
[image003.png](#)

[Use caution with links/attachments]

RE: Incident #NAPP2420029251

David,

OCD Permitting has been revamped recently and automatically defaults to 90 days for a Remediation Closure Report Extension, which this appears to be. An extension to **January 8th, 2025** is approved. Please include this e-mail correspondence in the remediation and/or closure report.

Robert Hamlet • Environmental Specialist - Advanced

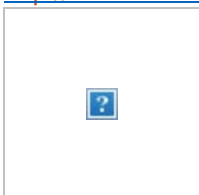
Environmental Bureau

EMNRD - Oil Conservation Division

506 W. Texas Ave. | Artesia, NM 88210

575.909.0302 | robert.hamlet@state.nm.us

<http://www.emnrd.state.nm.us/OCD/>



From: Wells, Shelly, EMNRD <Shelly.Wells@emnrd.nm.gov>
Sent: Wednesday, October 9, 2024 1:53 PM
To: Hamlet, Robert, EMNRD <Robert.Hamlet@emnrd.nm.gov>
Cc: Bratcher, Michael, EMNRD <mike.bratcher@emnrd.nm.gov>
Subject: FW: [EXTERNAL] Extension Request nAPP2420029251 Enterprise Products

From: Feather, David <DFeather@eprod.com>
Sent: Wednesday, October 9, 2024 1:31 PM
To: Enviro, OCD, EMNRD <OCD.Enviro@emnrd.nm.gov>
Cc: Dunaway, Robert <rhunaway@eprod.com>
Subject: [EXTERNAL] Extension Request nAPP2420029251 Enterprise Products

You don't often get email from dfeather@eprod.com. [Learn why this is important](#)

CAUTION: This email originated outside of our organization. Exercise caution prior to clicking on links or opening attachments.

To whom it may concern:

Enterprise is requesting a 7 day extension from October 15, 2024 until October 22, 2024 to allow for administrative review and completion of the remediation recently completed at the site for the final C141. Your consideration is appreciated.

Thank you,

David Feather

Senior Environmental Scientist
303 W Wall St, Midland TX 79701
Office: (432)681-8951 | Cell: (432)222-8597
dfeather@eprod.com



This message (including any attachments) is confidential and intended for a specific individual and purpose. If you are not the intended recipient, please notify the sender immediately and delete this message.



CLOSURE REPORT

Property:

Mewborne Stage Fright

**Unit P, S18, T21S, R26E
32.473185° N, 104.324258° W
Eddy County, New Mexico
NMOCD Incident ID: nAPP2420029251**

October 30, 2024
Ensolum Project No. 03B1226338

Prepared for:

**Enterprise Field Services, LLC
PO Box 4324
Houston, TX 77210
Attn: Robert Dunaway**

Prepared by:

Kelly Lowery, GIT

Project Manager

Heather Holthaus
Senior Project Manager

TABLE OF CONTENTS

1.0	INTRODUCTION	1
1.1	Executive Summary	1
1.2	Site Description and Background	2
1.3	Project Objective	2
2.0	CLOSURE CRITERIA	2
3.0	SOIL REMEDIATION ACTIVITIES	4
4.0	SOIL SAMPLING PROGRAM	4
5.0	SOIL LABORATORY ANALYTICAL METHODS	5
6.0	DATA EVALUATION	5
7.0	RECLAMATION AND RE-VEGETATION	5
8.0	FINDINGS AND RECOMMENDATION	6
9.0	STANDARDS OF CARE, LIMITATIONS, AND RELIANCE	7
9.1	Standard of Care	7
9.2	Limitations	7
9.3	Reliance	8

APPENDICES

Appendix A:	Figures
Appendix B:	Supporting Documentation
Appendix C:	Photographic Documentation
Appendix D:	Table
Appendix E:	Laboratory Data Sheets & Chain-of-Custody Documentation

Enterprise Field Services, LLC
Closure Report
Mewborne Stage Fright

October 30, 2024

Page 1

Mewborne Stage Fright

Unit P, S18, T21S, R26E
32.473185° N, 104.324258° W
Eddy County, New Mexico
NMOCD Incident ID: nAPP2420029251

Ensolum Project No. 03B1226338

1.0 INTRODUCTION

1.1 Executive Summary

- On July 17, 2024, dry vegetation caught fire as a result of a mist and radiant flare heat at the Mewborne Stage Fright, hereinafter referred to as the "Site." Approximately 34 thousand cubic feet (mcf) of natural gas was released and lost during the fire, with no liquids released. Enterprise Field Services, LLC (Enterprise) reported the release to the New Mexico Energy, Minerals, and Natural Resources Department (EMNRD) Oil Conservation District (OCD) via a report through the online notice of release (NOR) form on July 18, 2024. The release was subsequently assigned Incident Number nAPP2420029251.
- On August 20, 2024, Enterprise prepared and submitted a Closure Report to the New Mexico EMNRD OCD.
- On September 11, 2024, the New Mexico EMNRD OCD rejected the Closure Report. Steps were subsequently taken by Enterprise to address the requirements needed for closure.
- On September 23, 2024, subsequent to the completion of initial scraping activities, Ensolum, LLC (Ensolum) collected a total of six composite soil samples from the areas impacted by the flare fire (CS01 through CS06) at a depth of 0.25 feet below ground surface (bgs). Additionally, a total of six grab confirmation lateral delineation soil samples (DS01 through DS06) were collected from locations approximately one to two feet outside of the area impacted by the flare fire at a depth of 0.25 feet bgs.
- The final scraped impact area extent measured approximately 45 feet long and 28 feet wide. The depth of the scraped impact area measured approximately 0.25 feet bgs.
- Based on the laboratory analytical results, the composite and confirmation soil samples collected did not exhibit benzene, total benzene, toluene, ethylbenzene, and xylene (BTEX), total petroleum hydrocarbons (TPH), gasoline range organics (GRO), diesel range organics (DRO), motor oil range organics (MRO) or chloride concentrations above the applicable New Mexico EMNRD OCD Closure Criteria for Soils Impacted by a Release (NMOCD Closure Criteria).
- Subsequent to the results of the confirmation soil sampling, the scraped soils were removed and taken off-Site for proper disposal. The scraped impacted area will be



recontoured to the original surrounding grade and then reseeded with a New Mexico State Land Office (NMSLO)-approved seed mixture to promote re-vegetation.

Based on field observations and laboratory analytical results, no additional investigation or corrective action appears warranted at this time.

1.2 Site Description and Background

Operator:	Enterprise Field Services, LLC (Enterprise)
Site Name:	Mewborne Stage Fright
Location*:	Unit P, Section 18, Township 21 South, Range 26 East 32.473185° N, 104.324258° W Eddy County, New Mexico
Property:	New Mexico State Land Office (NMSLO)
Regulatory:	New Mexico Energy, Minerals and Natural Resources Department (EMNRD) Oil Conservation Division (OCD)

* - Public Land Survey System (PLSS) Location and Global Positioning System (GPS) coordinates updated to reflect accurate release location pursuant to submission of the New Mexico EMNRD OCD online NOR.

The **Topographic Map** depicting the location of the Site is included as **Figure 1**, and the **Site Vicinity Map** is included as **Figure 2** in **Appendix A**.

1.3 Project Objective

The primary objective of the closure activities was to reduce constituent of concern (COC) concentrations in the on-site soils to below the applicable New Mexico EMNRD OCD closure criteria concentrations.

2.0 CLOSURE CRITERIA

The Site is subject to regulatory oversight by the New Mexico EMNRD OCD. In order to address activities related to exempt oil and gas releases, the New Mexico EMNRD OCD references New Mexico Administrative Code (NMAC) 19.15.29 Releases, which establishes investigation and abatement action requirements for sites subject to reporting and/or corrective action. Ensolum, LLC (Ensolum) utilized information provided by Enterprise, the general site characteristics, and information available from the New Mexico Office of the State Engineer (OSE) and the New Mexico EMNRD OCD Imaging database to determine the appropriate closure criteria for the Site. The gas portion of this release constitutes venting that occurred during an emergency or a malfunction, as authorized by the New Mexico OCD regulations at NMAC 19.15.28.8.A and B(1). This release, therefore, is not prohibited by NMAC 19.15.29.8.A.

Supporting documentation and figures associated with the following bullets are provided in **Appendix B**.



No exploratory water wells were identified within a 0.5-mile radius of the Site on the OSE Water Rights Reporting System (WRRS) database.

- The Site is not located within 300 feet of a New Mexico ENMRD OCD-defined continuously flowing watercourse or significant watercourse.
- The Site is not located within 200 feet of a lakebed, sinkhole, or playa lake.
- The Site is not located within 300 feet of a permanent residence, school, hospital, institution, or church.
- According to the OSE WRSS database, there are no private, domestic freshwater wells used by less than five households for domestic or stock water purposes identified within 500 feet of the Site.
- According to the OSE WRSS database there are no freshwater wells identified within 1,000 feet of the Site. However, there are three water well records, C01736, C04440, and C01191, located 0.54 to 0.65 miles northeast of the Site, with reported depths to groundwater of 175 to 200 feet below ground surface (bgs).
- The Site is not located within incorporated municipal boundaries or within a defined municipal freshwater well field covered under a municipal ordinance adopted pursuant to NMSA 1978, Section 3-27-3.
- The Site is not located within 300 feet of a wetland.
- Based on information identified on the New Mexico Mining and Minerals Division’s GIS, Maps, and Mine Data database, the Site is not located within an area overlying a subsurface mine.
- Based on the Karst Occurrence Potential (.kmz) provided by the Bureau of Land Management (BLM), the Site is located within a relatively unstable area, also referred to as high karst.
- The Site is not located within a 100-year floodplain.

Based on the identified siting criteria, cleanup goals for soils remaining in place at the Site include:

CLOSURE CRITERIA FOR SOILS IMPACTED BY A RELEASE			
Minimum depth below any point within horizontal boundary of the release to groundwater less than 10,000 mg/l TDS	Constituent	Method	Limit
≤ 50 feet	Chloride	EPA 300.0 or SM4500 Cl B	600 mg/kg



	TPH (GRO+DRO+MRO)	EPA SW-846 Method 8015M	100 mg/kg
	BTEX	EPA SW-846 Method 8021B or 8260B	50 mg/kg
	Benzene	EPA SW-846 Method 8021B or 8260B	10 mg/kg

3.0 SOIL REMEDIATION ACTIVITIES

On July 17, 2024, dry vegetation caught fire as a result of a mist and radiant flare heat at the Mewborne Stage Fright. Approximately 34 mcf of natural gas were released and lost during the fire, with no liquids released.

On August 20, 2024, Enterprise prepared and submitted a Closure Report to the New Mexico EMNRD OCD.

On September 11, 2024, the New Mexico EMNRD OCD rejected the Closure Report. Steps were subsequently taken by Enterprise to address the requirements needed for closure.

On September 23, 2024, subsequent to the completion of initial scraping activities, Ensolum, LLC (Ensolum) collected a total of six composite soil samples from the areas impacted by the flare fire (CS01 through CS06) at a depth of 0.25 feet below ground surface (bgs). Additionally, a total of six grab confirmation lateral delineation soil samples (DS01 through DS06) were collected from locations approximately one to two feet outside of the area impacted by the flare fire at a depth of 0.25 feet bgs.

Based on the laboratory analytical data, no additional remediation activities were necessary. The area impacted by the flare fire was scraped once more for good housekeeping measures.

The final scraped impact area extent measured approximately 45 feet long and 28 feet wide. The depth of the scraped impact area measured approximately 0.25 feet bgs.

The composite and confirmation soil samples were analyzed for total benzene, benzene, BTEX, TPH GRO/DRO/MRO, and chloride in accordance with the applicable NMOCD Closure Criteria.

A total of approximately 10 cubic yards of fire-stained soils were removed from the Site and transported to the Lea Land, LLC facility in Carlsbad, New Mexico. The scraped impacted area will be recontoured to the original surrounding grade, and a NMSLO-approved seed mixture will be sown into the surface area of the backfill for re-vegetation.

Figure 3 is a map that identifies approximate soil sample locations and depicts the approximate dimensions of the impacted areas with respect to Site boundaries (**Appendix A**). Photographic documentation of the field activities is included in **Appendix C**.

4.0 SOIL SAMPLING PROGRAM

Ensolum's soil sampling program on September 23, 2024, included the collection of a total of six composite soil samples from the areas impacted by the flare fire (CS01 through CS06) and six



confirmation delineation soil samples from collected from locations approximately one to two feet outside of the area impacted by the flare fire (DS01 through DS06) for laboratory analysis.

The composite and confirmation soil samples were collected and placed in laboratory-prepared glassware, labeled/sealed using laboratory-supplied labels and custody seals, and stored on ice in a cooler. The samples were relinquished to Cardinal Laboratories in Hobbs, New Mexico, under proper chain-of-custody procedures.

5.0 SOIL LABORATORY ANALYTICAL METHODS

The composite and confirmation soil samples were analyzed for BTEX using Environmental Protection Agency (EPA) SW-846 Method 8021B, TPH GRO/DRO/MRO using EPA SW-846 Method 8015M, and chloride using EPA Method SM4500Cl-B.

Laboratory analytical results are summarized in **Table 1** in **Appendix D**. The executed chain-of-custody forms and laboratory data sheets are provided in **Appendix E**.

6.0 DATA EVALUATION

Ensolum compared the total benzene, BTEX, TPH GRO/DRO/MRO, and chloride concentrations or laboratory sample detection limits (SDLs) associated with the composite soil samples (CS01 through CS06) and the confirmation delineation soil samples (DS01 through DS06) to the NMOCD Closure Criteria.

- Laboratory analytical results indicate total benzene concentrations for the composite soil samples collected from the area impacted by the flare fire, and the confirmation delineation samples outside of the impacted area are below the laboratory SDLs and the NMOCD Closure Criteria of 10 milligrams per kilogram (mg/kg).
- Laboratory analytical results indicate that total BTEX concentrations for the composite soil samples collected from the area impacted by the flare fire and the confirmation delineation samples outside of the impacted area are below the laboratory SDLs and the NMOCD Closure Criteria of 50 mg/kg.
- Laboratory analytical results indicate combined TPH GRO/DRO/MRO concentrations for the composite soil samples collected from the area impacted by the flare fire and the confirmation delineation samples outside of the impacted area are below the laboratory SDLs and the applicable NMOCD Closure Criteria of 100 mg/kg for depth to groundwater ≤50 feet.
- Laboratory analytical results indicate chloride concentrations for the composite soil samples collected from the area impacted by the flare fire and the confirmation delineation samples outside of the impacted area do not exceed the laboratory SDLS and/or NMOCD Closure Criteria of 600 mg/kg for depth to groundwater ≤50 feet.

Laboratory analytical results are summarized in **Table 1** in **Appendix D**.

7.0 RECLAMATION AND RE-VEGETATION

The release and fire occurred off the pad, and as such, a reclamation requirement of 600 mg/kg chloride and 100 mg/kg TPH was applied to the top 4 feet of the vegetative zone that was



impacted by the release per 19.15.29.13.D (1) NMAC. The soil in the vicinity of the release includes silty loam and silty clay loam. The following Reclamation Plan addresses reclamation of the vegetative zone:

- The area impacted by the flare fire will be recontoured to pre-existing conditions;
- The recontoured areas will be seeded utilizing a weed-free seed mix designed by the NMSLO to meet reclamation standards for this region, which will be NMSLO Seed Mix Clay (C);
- The seed mixture will be distributed with one of the following methods: push broadcaster seed spreader/tractor-operated broadcast seed spreader/drill seeding / other means;
- Application of the seed mixture will be at a coverage of either 10 pounds of seeds per acre of reclaimed pasture with distribution by a drilling method or 20 pounds of seeds per acre of reclaimed pasture with distribution by a broadcast method, whichever was more applicable;
- Erosion control management will potentially include:
 - The placement of waddles in areas with a propensity for high run-off rates;
 - Straw cover if high winds are anticipated to support moisture retention and limit wind from blowing seeds away before they have had time to germinate; and/or
 - Other erosional control best management practices (BMP) as necessary to support timely and healthy regrowth of vegetation in disturbed areas.
- Seeding will be completed during spring/summer, when temperatures and precipitation are most conducive for vegetation growth. In general, seeding should occur approximately one month after the last frost in the Spring up until approximately one month prior to the first fall frost.

Annual inspections (at a minimum) will take place on the location until revegetation is consistent with local natural vegetation density. The Site will be inspected the following Spring/Fall to assess the success of regrowth. If necessary, an additional application of the NMSLO-approved pure live seed mixture will be applied as well as any needed BMPs will be installed to support growth and limit erosion.

8.0 FINDINGS AND RECOMMENDATION

On July 17, 2024, dry vegetation caught fire as a result of a mist and radiant flare heat at the Mewborne Stage Fright. Approximately 34 mcf of natural gas was released and lost during the fire, with no liquids released.

On August 20, 2024, Enterprise prepared and submitted a Closure Report to the New Mexico EMNRD OCD.



Enterprise Field Services, LLC
Closure Report
Mewborne Stage Fright

October 30, 2024

Page 7

On September 11, 2024, the New Mexico EMNRD OCD rejected the Closure Report. Steps were subsequently taken by Enterprise to address the requirements needed for closure.

On September 23, 2024, subsequent to the completion of initial scraping activities, Ensolum collected a total of six composite soil samples from the areas impacted by the flare fire (CS01 through CS06) at a depth of 0.25 feet bgs. Additionally, a total of six grab confirmation lateral delineation soil samples (DS01 through DS06) were collected from locations approximately one to two feet outside of the area impacted by the flare fire at a depth of 0.25 feet bgs.

Based on the laboratory analytical data, no additional remediation activities were necessary. The area impacted by the flare fire was scraped once more for good housekeeping measures.

The final scraped impact area extent measured approximately 45 feet long and 28 feet wide. The depth of the scraped impact area measured approximately 0.25 feet bgs.

Based on the laboratory analytical results, the composite and confirmation soil samples collected did not exhibit benzene, total BTEX, TPH GRO/DRO/MRO, or chloride concentrations above the applicable NMOCD Closure Criteria.

Subsequent to the results of the confirmation soil sampling, the scraped soils were removed and taken off-Site for proper disposal. The scraped impacted area will be recontoured to the original surrounding grade and then reseeded with an NMSLO-approved seed mixture to promote re-vegetation per the above-stated Reclamation Plan.

9.0 STANDARDS OF CARE, LIMITATIONS, AND RELIANCE

9.1 Standard of Care

Ensolum's services were performed in accordance with standards customarily provided by a firm rendering the same or similar services in the area during the same time period. Ensolum makes no warranties, express or implied, as to the services performed hereunder. Additionally, Ensolum does not warrant the work of third parties supplying information used in the report (e.g. laboratories, regulatory agencies, or other third parties). This scope of services was performed in accordance with the scope of work agreed with the client, as detailed in our proposal.

9.2 Limitations

Findings, conclusions, and recommendations resulting from these services are based upon information derived from the on-site activities and other services performed under this scope of work and it should be noted that this information is subject to change over time. Certain indicators of the presence of hazardous substances, petroleum products, or other constituents may have been latent, inaccessible, unobservable, or not present during these services, and Ensolum cannot represent that the Site contains no hazardous substances, toxic materials, petroleum products, or other latent conditions beyond those identified during the investigation. Environmental conditions at other areas or portions of the Site may vary from those encountered at actual sample locations. Ensolum's findings and recommendations are based solely upon data available to Ensolum at the time of these services.



Enterprise Field Services, LLC
Closure Report
Mewborne Stage Fright

October 30, 2024

Page 8

9.3 Reliance

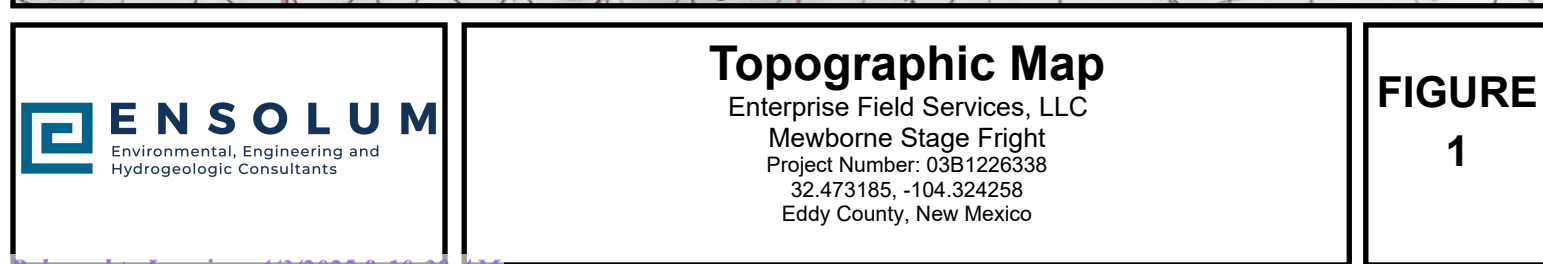
This report has been prepared for the exclusive use of Enterprise Field Services, LLC, and any authorization for use or reliance by any other party (except a governmental entity having jurisdiction over the Site) is prohibited without the express written authorization Enterprise Field Services, LLC and Ensolum. Any unauthorized distribution or reuse is at the client's sole risk. Notwithstanding the foregoing, reliance by authorized parties will be subject to the terms, conditions and limitations stated in the Closure Report, and Ensolum's Master Services Agreement. The limitation of liability defined in the agreement is the aggregate limit of Ensolum's liability to the client.





APPENDIX A

Figures





Site Vicinity Map

Enterprise Field Services, LLC
Mewborne Stage Fright
Project Number: 03B1226338
32.473185, -104.324258
Eddy County, New Mexico

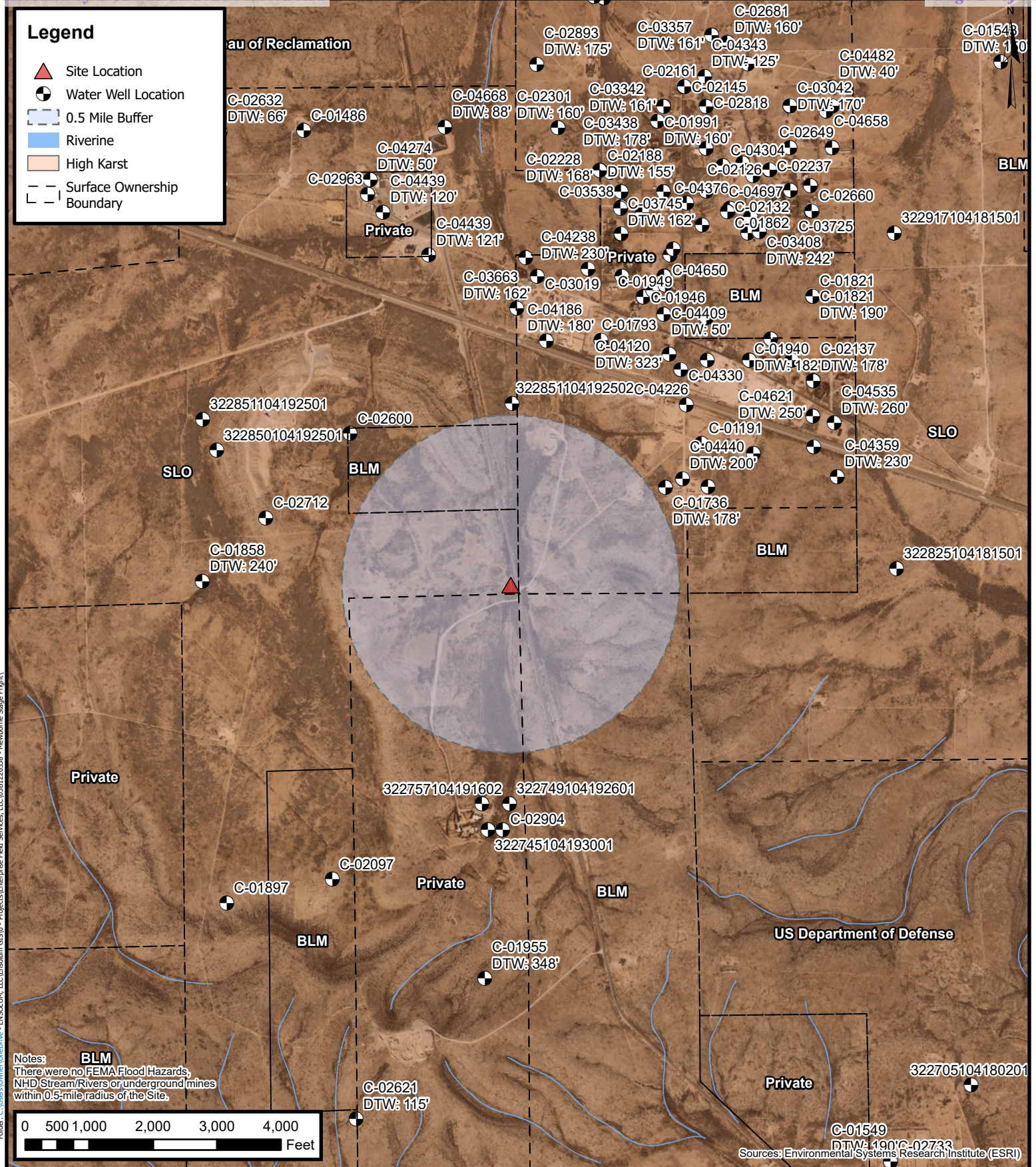
FIGURE

2



Site Map
Enterprise Field Services, LLC
Mewborne Stage Fright
Project Number: 03B1226338
32.473185, -104.324258
Eddy County, New Mexico

FIGURE
3



Closure Criteria Map

Enterprise Field Services, LLC
Mewborne Stage Fright
Project Number: 03B1226338
32.473185, -104.324258
Eddy County, New Mexico

FIGURE

4





APPENDIX B

Supporting Documentation

Kelly Lowery

From: Feather, David <DFeather@eprod.com>
Sent: Thursday, October 17, 2024 12:06 PM
To: Kelly Lowery
Subject: FW: (Extension Approval) nAPP2420029251 Enterprise Products

[**EXTERNAL EMAIL**]

From: Hamlet, Robert, EMNRD <Robert.Hamlet@emnrd.nm.gov>
Sent: Thursday, October 10, 2024 9:33 AM
To: Feather, David <DFeather@eprod.com>
Cc: Dunaway, Robert <rhodunaway@eprod.com>; Bratcher, Michael, EMNRD <mike.bratcher@emnrd.nm.gov>; Wells, Shelly, EMNRD <Shelly.Wells@emnrd.nm.gov>
Subject: [EXTERNAL] (Extension Approval) nAPP2420029251 Enterprise Products

[Use caution with links/attachments]

RE: Incident #NAPP2420029251

David,

OCD Permitting has been revamped recently and automatically defaults to 90 days for a Remediation Closure Report Extension, which this appears to be. An extension to **January 8th, 2025** is approved. Please include this e-mail correspondence in the remediation and/or closure report.

Robert Hamlet • Environmental Specialist - Advanced
Environmental Bureau
EMNRD - Oil Conservation Division
506 W. Texas Ave. | Artesia, NM 88210
575.909.0302 | robert.hamlet@state.nm.us
<http://www.emnrd.state.nm.us/OCD/>



From: Wells, Shelly, EMNRD <Shelly.Wells@emnrd.nm.gov>
Sent: Wednesday, October 9, 2024 1:53 PM
To: Hamlet, Robert, EMNRD <Robert.Hamlet@emnrd.nm.gov>
Cc: Bratcher, Michael, EMNRD <mike.bratcher@emnrd.nm.gov>
Subject: FW: [EXTERNAL] Extension Request nAPP2420029251 Enterprise Products

From: Feather, David <DFeather@eprod.com>
Sent: Wednesday, October 9, 2024 1:31 PM
To: Enviro, OCD, EMNRD <OCD.Enviro@emnrd.nm.gov>
Cc: Dunaway, Robert <rhodunaway@eprod.com>
Subject: [EXTERNAL] Extension Request nAPP2420029251 Enterprise Products

You don't often get email from dfeather@eprod.com. [Learn why this is important](#)

CAUTION: This email originated outside of our organization. Exercise caution prior to clicking on links or opening attachments.

To whom it may concern:

Enterprise is requesting a 7 day extension from October 15, 2024 until October 22, 2024 to allow for administrative review and completion of the remediation recently completed at the site for the final C141. Your consideration is appreciated.

Thank you,

David Feather
Senior Environmental Scientist
303 W Wall St, Midland TX 79701
Office: (432)681-8951 | Cell: (432)222-8597
dfeather@eprod.com



This message (including any attachments) is confidential and intended for a specific individual and purpose. If you are not the intended recipient, please notify the sender immediately and delete this message.

Kelly Lowery

From: Hamlet, Robert, EMNRD <Robert.Hamlet@emnrd.nm.gov>
Sent: Monday, September 30, 2024 9:03 AM
To: Feather, David
Cc: Kelly Lowery; Dunaway, Robert; Bratcher, Michael, EMNRD
Subject: RE: [EXTERNAL] Update to nAPP2420029251 GPS location

[**EXTERNAL EMAIL**]

The coordinates have been updated in OCD Permitting. Thanks

Robert Hamlet • Environmental Specialist - Advanced
Environmental Bureau
EMNRD - Oil Conservation Division
506 W. Texas Ave. | Artesia, NM 88210
575.909.0302 | robert.hamlet@state.nm.us
<http://www.emnrd.state.nm.us/OCD/>



From: Feather, David <DFeather@eprod.com>
Sent: Thursday, September 26, 2024 2:19 PM
To: Hamlet, Robert, EMNRD <Robert.Hamlet@emnrd.nm.gov>
Cc: Kelly Lowery <klowery@ensolum.com>; Dunaway, Robert <rhodunaway@eprod.com>
Subject: [EXTERNAL] Update to nAPP2420029251 GPS location

CAUTION: This email originated outside of our organization. Exercise caution prior to clicking on links or opening attachments.

Mr. Hamlet,

Enterprise initially notified that the release occurred at 32.46181,-104.31506, during cleanup it was noted by the consulting agency that the actual location of the fire is 32.473185,-104.324258. Please update the information accordingly. If you have any questions please give me a call.

Thank you,

David Feather
Senior Environmental Scientist
303 W Wall St, Midland TX 79701
Office: (432)681-8951 | Cell: (432)222-8597
dfeather@eprod.com



This message (including any attachments) is confidential and intended for a specific individual and purpose. If you are not the intended recipient, please notify the sender immediately and delete this message.

Kelly Lowery

From: Feather, David <DFeather@eprod.com>
Sent: Thursday, September 26, 2024 3:28 PM
To: bgriffin@slo.state.nm.us; spills@slo.state.nm.us
Cc: Dunaway, Robert; Mendez, Brenda
Subject: C-141 Notification Mewbourne Stage Fright
Attachments: NAPP2420029251.pdf

[**EXTERNAL EMAIL**]

To whom it may concern:

Enterprise initially notified NMOCDD of a small fire caused by flare radiant heat at the location of 32.46181,-104.31506, no fluids were released to the ground during this release event. During cleanup and sampling efforts the consultant noted the location to actually be 32.473185,-104.324258 that is on State Land. Enterprise is notifying you as required by the state. Please let me know if you have additional questions.

Thank you,

David Feather

Senior Environmental Scientist

303 W Wall St, Midland TX 79701

Office: (432)681-8951 | Cell: (432)222-8597

dfeather@eprod.com



This message (including any attachments) is confidential and intended for a specific individual and purpose. If you are not the intended recipient, please notify the sender immediately and delete this message.

SLO Seed Mix

SM Series

1 REVEGETATION PLANS

The following Revegetation Plans were developed for revegetation of sites in southeastern New Mexico. To determine which revegetation plan is appropriate follow procedures in the section titled Determining the Revegetation Plan.

Revegetation Plans contain seed mixtures, as well as seed bed preparation and planting requirements. The detailed instructions for seedbed preparation and planting can be found in the section Revegetation Techniques.

Table 3 - Revegetation Plans, Codes, and Soil Types for Southeastern New Mexico

REVEGETATION PLANS	CODE	SOIL TEXTURES
Clay	C	Clay, Silty Clay, Stony Silty Clay, Clay Loam, Silty Clay Loam (including saline and sodic Clay soils)
Loam	L	Silty Loam, Cobbly Silt Loam, Stony Silt Loam, Silt, Loam, Sandy, Clay Loam
Sandy Loam	SL	Very Fine Sandy Loam, Fine Sandy Loam, Cobbly Fine Sandy Loam, Sandy Loam, Cobbly Sandy Loam, Gravelly Fine Sandy Loam, Very Gravelly Fine Sand Loam, Stony Fine Sandy Loam, Stony Sandy Loam
Shallow	SH	Rocky Loam, Cobbly Loam
Course	CS	Gravelly Loam, very Gravelly Loam, Gravelly Sandy Loam, Very Gravelly Sandy Loam, Stony Loam, Stony Sandy Loam
Sandy	S	Loamy Fine Sand, Loam Sand, Very Gravelly Loamy Fine Sand
Blow Sand	BS	Fine Sand, Sand, Coarse Sand
Mountain Meadow	MM	Clay, Loam
Mountain Upland	MU	Clay Loam, Loam



NMSLO Seed Mix**Clay (C)****CLAY (C) SITES SEED MIXTURE:**

COMMON NAME	VARIETY	APPLICATION RATE (PLS/Acre)	DRILL BOX
<u>Grasses:</u>			
Vine mesquite	VNS, Southern	2.5	S
Alkali sacaton	VNS, Southern	2.0	S
Tobosa grass	VNS	2.0	F
Blue grama	Hachita, Lovington	1.0	D
<u>Forbs:</u>			
Prairie coneflower	VNS, Southern	1.0	D
Blue flax	Appar	1.0	D
Scarlet globemallow	VNS, Southern	1.0	D
<u>Shrubs:</u>			
Fourwing saltbush	VNS, Southern	2.0	D
Douglas rabbitbrush	VNS, Southern	1.5	F
Total PLS/acre		14.0	

S = Small seed drill box, D = Standard seed drill box, F = Fluffy seed drill box

VNS, Southern – No Variety Stated, seed should be from a southern latitude collection of this species.

- Double above seed rates for broadcast or hydroseeding.
- If vine mesquite is not available, substitute Alamo switchgrass or galleta.
- If a species is not available, provide a suggested substitute to the New Mexico Land Office for approval. Increasing all other species proportionately may be acceptable.





APPENDIX C

Photographic Documentation



View of the extent of the impact prior to remediation activities, facing north (July 17, 2024).



View of the extent of the impact prior to remediation activities, facing west (July 17, 2024).

Date & Time: Mon, Sep 23, 2024 at 13:29:24 MDT
Position: 032.473175°N / 104.324187°W (± 10.4 ft)
Altitude: 3302ft (± 7.9 ft)
Datum: WGS-84
Azimuth/Bearing: 092° S88E 1636mils True ($\pm 11^\circ$)
Elevation Angle: -16.4°
Horizon Angle: -02.5°
Zoom: 0.5X



View of the impacted area during sampling activities, facing southeast (September 23, 2024).

Date & Time: Mon, Sep 23, 2024 at 13:29:41 MDT
Position: 032.473098°N / 104.324180°W (± 14.9 ft)
Altitude: 3305ft (± 11.9 ft)
Datum: WGS-84
Azimuth/Bearing: 108° S72E 1920mils True ($\pm 11^\circ$)
Elevation Angle: -15.8°
Horizon Angle: -03.7°
Zoom: 0.5X



View of the impacted area during sampling activities, facing southeast (September 23, 2024).



View of scraped impacted area, facing north (October 9, 2024).



APPENDIX D

Table



TABLE 1
SOIL SAMPLE ANALYTICAL RESULTS
 Mewborne Stage Fright
 Enterprise Field Services, LLC
 Eddy County, New Mexico
 Ensolum Project No. 03B1226338

Sample Designation	Date	Depth (feet bgs)	Benzene (mg/kg)	Toluene (mg/kg)	Ethylbenzene (mg/kg)	Total Xylenes (mg/kg)	Total BTEX (mg/kg)	TPH GRO (mg/kg)	TPH DRO (mg/kg)	TPH MRO (mg/kg)	Total TPH (GRO+DRO+MRO) (mg/kg)	Chloride (mg/kg)
New Mexico Oil Conservation Division Closure Criteria for Soils Impacted by a Release (≤ 50 feet)			10	NE	NE	NE	50	NE	NE	NE	100	600
Composite Impact Extent Soil Sample Analytical Results												
CS01	09/23/2024	0.25	<0.050	<0.050	<0.050	<0.150	<0.300	<10.0	<10.0	<10.0	<10.0	<16.0
CS02	09/23/2024	0.25	<0.050	<0.050	<0.050	<0.150	<0.300	<10.0	<10.0	<10.0	<10.0	<16.0
CS03	09/23/2024	0.25	<0.050	<0.050	<0.050	<0.150	<0.300	<10.0	<10.0	<10.0	<10.0	<16.0
CS04	09/23/2024	0.25	<0.050	<0.050	<0.050	<0.150	<0.300	<10.0	<10.0	<10.0	<10.0	<16.0
CS05	09/23/2024	0.25	<0.050	<0.050	<0.050	<0.150	<0.300	<10.0	<10.0	<10.0	<10.0	<16.0
CS06	09/23/2024	0.25	<0.050	<0.050	<0.050	<0.150	<0.300	<10.0	<10.0	<10.0	<10.0	<16.0
Confirmation Lateral Delineation Soil Sample Analytical Results												
DS01	09/23/2024	0.25	<0.050	<0.050	<0.050	<0.150	<0.300	<10.0	<10.0	<10.0	<10.0	32.0
DS02	09/23/2024	0.25	<0.050	<0.050	<0.050	<0.150	<0.300	<10.0	<10.0	<10.0	<10.0	32.0
DS03	09/23/2024	0.25	<0.050	<0.050	<0.050	<0.150	<0.300	<10.0	<10.0	<10.0	<10.0	<16.0
DS04	09/23/2024	0.25	<0.050	<0.050	<0.050	<0.150	<0.300	<10.0	<10.0	<10.0	<10.0	16.0
DS05	09/23/2024	0.25	<0.050	<0.050	<0.050	<0.150	<0.300	<10.0	<10.0	<10.0	<10.0	<16.0
DS06	09/23/2024	0.25	<0.050	<0.050	<0.050	<0.150	<0.300	<10.0	<10.0	<10.0	<10.0	<16.0

bgs: below ground surface

mg/kg: milligrams per kilogram

NE: Not Established

BTEX: Benzene, Toluene, Ethylbenzene, and Xylenes

GRO: Gasoline Range Organics

DRO: Diesel Range Organics

MRO: Motor Oil/Lube Oil Range Organics

TPH: Total Petroleum Hydrocarbon



APPENDIX E

Laboratory Analytical Reports & Chain-of-Custody Documentation



PHONE (575) 393-2326 ° 101 E. MARLAND ° HOBBS, NM 88240

September 26, 2024

KELLY LOWERY

ENSOLUM, LLC

705 W WADLEY AVE.

MIDLAND, TX 79705

RE: MEWBORNE STAGE FRIGHT

Enclosed are the results of analyses for samples received by the laboratory on 09/23/24 15:58.

Cardinal Laboratories is accredited through Texas NELAP under certificate number TX-C24-00112. Accreditation applies to drinking water, non-potable water and solid and chemical materials. All accredited analytes are denoted by an asterisk (*). For a complete list of accredited analytes and matrices visit the TCEQ website at www.tceq.texas.gov/field/qa/lab_accred_certif.html.

Cardinal Laboratories is accredited through the State of Colorado Department of Public Health and Environment for:

Method EPA 552.2	Haloacetic Acids (HAA-5)
Method EPA 524.2	Total Trihalomethanes (TTHM)
Method EPA 524.4	Regulated VOCs (V1, V2, V3)

Accreditation applies to public drinking water matrices.

This report meets NELAP requirements and is made up of a cover page, analytical results, and a copy of the original chain-of-custody. If you have any questions concerning this report, please feel free to contact me.

Sincerely,

A handwritten signature in black ink that reads "Celey D. Keene". The signature is written in a cursive, flowing style.

Celey D. Keene

Lab Director/Quality Manager



PHONE (575) 393-2326 ° 101 E. MARLAND ° HOBBS, NM 88240

Analytical Results For:

ENSOLUM, LLC
 KELLY LOWERY
 705 W WADLEY AVE.
 MIDLAND TX, 79705
 Fax To:

Received: 09/23/2024
 Reported: 09/26/2024
 Project Name: MEWBORNE STAGE FRIGHT
 Project Number: 03B1226338
 Project Location: EDDY CO

Sampling Date: 09/23/2024
 Sampling Type: Soil
 Sampling Condition: Cool & Intact
 Sample Received By: Alyssa Parras

Sample ID: CS 01 0.25' (H245767-01)

BTX 8021B		mg/kg		Analyzed By: JH					
Analyte	Result	Reporting Limit	Analyzed	Method Blank	BS	% Recovery	True Value QC	RPD	Qualifier
Benzene*	<0.050	0.050	09/25/2024	ND	1.90	95.0	2.00	3.36	
Toluene*	<0.050	0.050	09/25/2024	ND	1.88	94.0	2.00	3.82	
Ethylbenzene*	<0.050	0.050	09/25/2024	ND	1.96	97.9	2.00	3.51	
Total Xylenes*	<0.150	0.150	09/25/2024	ND	5.86	97.7	6.00	3.29	
Total BTX	<0.300	0.300	09/25/2024	ND					

Surrogate: 4-Bromofluorobenzene (PID) 101 % 71.5-134

Chloride, SM4500Cl-B		mg/kg		Analyzed By: AC						
Analyte	Result	Reporting Limit	Analyzed	Method Blank	BS	% Recovery	True Value QC	RPD	Qualifier	
Chloride	<16.0	16.0	09/25/2024	ND	432	108	400	0.00		

TPH 8015M		mg/kg		Analyzed By: MS					
Analyte	Result	Reporting Limit	Analyzed	Method Blank	BS	% Recovery	True Value QC	RPD	Qualifier
GRO C6-C10*	<10.0	10.0	09/25/2024	ND	205	103	200	1.26	
DRO >C10-C28*	<10.0	10.0	09/25/2024	ND	199	99.4	200	3.85	
EXT DRO >C28-C36	<10.0	10.0	09/25/2024	ND					

Surrogate: 1-Chlorooctane 97.5 % 48.2-134

Surrogate: 1-Chlorooctadecane 83.3 % 49.1-148

Cardinal Laboratories

*=Accredited Analyte

PLEASE NOTE: Liability and Damages. Cardinal's liability and client's exclusive remedy for any claim arising, whether based in contract or tort, shall be limited to the amount paid by client for analyses. All claims, including those for negligence and any other cause whatsoever shall be deemed waived unless made in writing and received by Cardinal within thirty (30) days after completion of the applicable service. In no event shall Cardinal be liable for incidental or consequential damages, including, without limitation, business interruptions, loss of use, or loss of profits incurred by client, its subsidiaries, affiliates or successors arising out of or related to the performance of the services hereunder by Cardinal, regardless of whether such claim is based upon any of the above stated reasons or otherwise. Results relate only to the samples identified above. This report shall not be reproduced except in full with written approval of Cardinal Laboratories.

Celey D. Keene, Lab Director/Quality Manager



PHONE (575) 393-2326 ° 101 E. MARLAND ° HOBBS, NM 88240

Analytical Results For:

ENSOLUM, LLC
 KELLY LOWERY
 705 W WADLEY AVE.
 MIDLAND TX, 79705
 Fax To:

Received: 09/23/2024
 Reported: 09/26/2024
 Project Name: MEWBORNE STAGE FRIGHT
 Project Number: 03B1226338
 Project Location: EDDY CO

Sampling Date: 09/23/2024
 Sampling Type: Soil
 Sampling Condition: Cool & Intact
 Sample Received By: Alyssa Parras

Sample ID: CS 02 0.25' (H245767-02)

BTEx 8021B		mg/kg		Analyzed By: JH						
Analyte	Result	Reporting Limit	Analyzed	Method Blank	BS	% Recovery	True Value QC	RPD	Qualifier	
Benzene*	<0.050	0.050	09/25/2024	ND	1.90	95.0	2.00	3.36		
Toluene*	<0.050	0.050	09/25/2024	ND	1.88	94.0	2.00	3.82		
Ethylbenzene*	<0.050	0.050	09/25/2024	ND	1.96	97.9	2.00	3.51		
Total Xylenes*	<0.150	0.150	09/25/2024	ND	5.86	97.7	6.00	3.29		
Total BTEX	<0.300	0.300	09/25/2024	ND						

Surrogate: 4-Bromofluorobenzene (PID) 99.8 % 71.5-134

Chloride, SM4500Cl-B		mg/kg		Analyzed By: AC						
Analyte	Result	Reporting Limit	Analyzed	Method Blank	BS	% Recovery	True Value QC	RPD	Qualifier	
Chloride	<16.0	16.0	09/25/2024	ND	432	108	400	0.00		

TPH 8015M		mg/kg		Analyzed By: MS					
Analyte	Result	Reporting Limit	Analyzed	Method Blank	BS	% Recovery	True Value QC	RPD	Qualifier
GRO C6-C10*	<10.0	10.0	09/25/2024	ND	196	97.9	200	0.335	
DRO >C10-C28*	<10.0	10.0	09/25/2024	ND	201	100	200	3.29	
EXT DRO >C28-C36	<10.0	10.0	09/25/2024	ND					

Surrogate: 1-Chlorooctane 75.2 % 48.2-134

Surrogate: 1-Chlorooctadecane 80.3 % 49.1-148

Cardinal Laboratories

*=Accredited Analyte

PLEASE NOTE: Liability and Damages. Cardinal's liability and client's exclusive remedy for any claim arising, whether based in contract or tort, shall be limited to the amount paid by client for analyses. All claims, including those for negligence and any other cause whatsoever shall be deemed waived unless made in writing and received by Cardinal within thirty (30) days after completion of the applicable service. In no event shall Cardinal be liable for incidental or consequential damages, including, without limitation, business interruptions, loss of use, or loss of profits incurred by client, its subsidiaries, affiliates or successors arising out of or related to the performance of the services hereunder by Cardinal, regardless of whether such claim is based upon any of the above stated reasons or otherwise. Results relate only to the samples identified above. This report shall not be reproduced except in full with written approval of Cardinal Laboratories.

Celey D. Keene, Lab Director/Quality Manager



PHONE (575) 393-2326 ° 101 E. MARLAND ° HOBBS, NM 88240

Analytical Results For:

ENSOLUM, LLC
 KELLY LOWERY
 705 W WADLEY AVE.
 MIDLAND TX, 79705
 Fax To:

Received: 09/23/2024
 Reported: 09/26/2024
 Project Name: MEWBORNE STAGE FRIGHT
 Project Number: 03B1226338
 Project Location: EDDY CO

Sampling Date: 09/23/2024
 Sampling Type: Soil
 Sampling Condition: Cool & Intact
 Sample Received By: Alyssa Parras

Sample ID: CS 03 0.25' (H245767-03)

BTEx 8021B		mg/kg		Analyzed By: JH						
Analyte	Result	Reporting Limit	Analyzed	Method Blank	BS	% Recovery	True Value QC	RPD	Qualifier	
Benzene*	<0.050	0.050	09/25/2024	ND	1.90	95.0	2.00	3.36		
Toluene*	<0.050	0.050	09/25/2024	ND	1.88	94.0	2.00	3.82		
Ethylbenzene*	<0.050	0.050	09/25/2024	ND	1.96	97.9	2.00	3.51		
Total Xylenes*	<0.150	0.150	09/25/2024	ND	5.86	97.7	6.00	3.29		
Total BTEX	<0.300	0.300	09/25/2024	ND						

Surrogate: 4-Bromofluorobenzene (PID) 99.0 % 71.5-134

Chloride, SM4500Cl-B		mg/kg		Analyzed By: AC						
Analyte	Result	Reporting Limit	Analyzed	Method Blank	BS	% Recovery	True Value QC	RPD	Qualifier	
Chloride	<16.0	16.0	09/25/2024	ND	432	108	400	0.00		

TPH 8015M		mg/kg		Analyzed By: MS					
Analyte	Result	Reporting Limit	Analyzed	Method Blank	BS	% Recovery	True Value QC	RPD	Qualifier
GRO C6-C10*	<10.0	10.0	09/25/2024	ND	196	97.9	200	0.335	
DRO >C10-C28*	<10.0	10.0	09/25/2024	ND	201	100	200	3.29	
EXT DRO >C28-C36	<10.0	10.0	09/25/2024	ND					

Surrogate: 1-Chlorooctane 78.5 % 48.2-134

Surrogate: 1-Chlorooctadecane 83.9 % 49.1-148

Cardinal Laboratories

*=Accredited Analyte

PLEASE NOTE: Liability and Damages. Cardinal's liability and client's exclusive remedy for any claim arising, whether based in contract or tort, shall be limited to the amount paid by client for analyses. All claims, including those for negligence and any other cause whatsoever shall be deemed waived unless made in writing and received by Cardinal within thirty (30) days after completion of the applicable service. In no event shall Cardinal be liable for incidental or consequential damages, including, without limitation, business interruptions, loss of use, or loss of profits incurred by client, its subsidiaries, affiliates or successors arising out of or related to the performance of the services hereunder by Cardinal, regardless of whether such claim is based upon any of the above stated reasons or otherwise. Results relate only to the samples identified above. This report shall not be reproduced except in full with written approval of Cardinal Laboratories.

Celey D. Keene, Lab Director/Quality Manager



PHONE (575) 393-2326 ° 101 E. MARLAND ° HOBBS, NM 88240

Analytical Results For:

ENSOLUM, LLC
 KELLY LOWERY
 705 W WADLEY AVE.
 MIDLAND TX, 79705
 Fax To:

Received: 09/23/2024
 Reported: 09/26/2024
 Project Name: MEWBORNE STAGE FRIGHT
 Project Number: 03B1226338
 Project Location: EDDY CO

Sampling Date: 09/23/2024
 Sampling Type: Soil
 Sampling Condition: Cool & Intact
 Sample Received By: Alyssa Parras

Sample ID: CS 04 0.25' (H245767-04)

BTEx 8021B		mg/kg		Analyzed By: JH					
Analyte	Result	Reporting Limit	Analyzed	Method Blank	BS	% Recovery	True Value QC	RPD	Qualifier
Benzene*	<0.050	0.050	09/25/2024	ND	1.90	95.0	2.00	3.36	
Toluene*	<0.050	0.050	09/25/2024	ND	1.88	94.0	2.00	3.82	
Ethylbenzene*	<0.050	0.050	09/25/2024	ND	1.96	97.9	2.00	3.51	
Total Xylenes*	<0.150	0.150	09/25/2024	ND	5.86	97.7	6.00	3.29	
Total BTEX	<0.300	0.300	09/25/2024	ND					

Surrogate: 4-Bromofluorobenzene (PID) 100 % 71.5-134

Chloride, SM4500Cl-B		mg/kg		Analyzed By: AC					
Analyte	Result	Reporting Limit	Analyzed	Method Blank	BS	% Recovery	True Value QC	RPD	Qualifier
Chloride	<16.0	16.0	09/25/2024	ND	432	108	400	0.00	

TPH 8015M		mg/kg		Analyzed By: MS					
Analyte	Result	Reporting Limit	Analyzed	Method Blank	BS	% Recovery	True Value QC	RPD	Qualifier
GRO C6-C10*	<10.0	10.0	09/25/2024	ND	196	97.9	200	0.335	
DRO >C10-C28*	<10.0	10.0	09/25/2024	ND	201	100	200	3.29	
EXT DRO >C28-C36	<10.0	10.0	09/25/2024	ND					

Surrogate: 1-Chlorooctane 68.8 % 48.2-134

Surrogate: 1-Chlorooctadecane 73.6 % 49.1-148

Cardinal Laboratories

*=Accredited Analyte

PLEASE NOTE: Liability and Damages. Cardinal's liability and client's exclusive remedy for any claim arising, whether based in contract or tort, shall be limited to the amount paid by client for analyses. All claims, including those for negligence and any other cause whatsoever shall be deemed waived unless made in writing and received by Cardinal within thirty (30) days after completion of the applicable service. In no event shall Cardinal be liable for incidental or consequential damages, including, without limitation, business interruptions, loss of use, or loss of profits incurred by client, its subsidiaries, affiliates or successors arising out of or related to the performance of the services hereunder by Cardinal, regardless of whether such claim is based upon any of the above stated reasons or otherwise. Results relate only to the samples identified above. This report shall not be reproduced except in full with written approval of Cardinal Laboratories.

Celey D. Keene, Lab Director/Quality Manager



PHONE (575) 393-2326 ° 101 E. MARLAND ° HOBBS, NM 88240

Analytical Results For:

ENSOLUM, LLC
 KELLY LOWERY
 705 W WADLEY AVE.
 MIDLAND TX, 79705
 Fax To:

Received: 09/23/2024
 Reported: 09/26/2024
 Project Name: MEWBORNE STAGE FRIGHT
 Project Number: 03B1226338
 Project Location: EDDY CO

Sampling Date: 09/23/2024
 Sampling Type: Soil
 Sampling Condition: Cool & Intact
 Sample Received By: Alyssa Parras

Sample ID: CS 05 0.25' (H245767-05)

BTEx 8021B		mg/kg		Analyzed By: JH						
Analyte	Result	Reporting Limit	Analyzed	Method Blank	BS	% Recovery	True Value QC	RPD	Qualifier	
Benzene*	<0.050	0.050	09/25/2024	ND	1.90	95.0	2.00	3.36		
Toluene*	<0.050	0.050	09/25/2024	ND	1.88	94.0	2.00	3.82		
Ethylbenzene*	<0.050	0.050	09/25/2024	ND	1.96	97.9	2.00	3.51		
Total Xylenes*	<0.150	0.150	09/25/2024	ND	5.86	97.7	6.00	3.29		
Total BTEX	<0.300	0.300	09/25/2024	ND						

Surrogate: 4-Bromofluorobenzene (PID) 101 % 71.5-134

Chloride, SM4500Cl-B		mg/kg		Analyzed By: AC						
Analyte	Result	Reporting Limit	Analyzed	Method Blank	BS	% Recovery	True Value QC	RPD	Qualifier	
Chloride	<16.0	16.0	09/25/2024	ND	432	108	400	0.00		

TPH 8015M		mg/kg		Analyzed By: MS					
Analyte	Result	Reporting Limit	Analyzed	Method Blank	BS	% Recovery	True Value QC	RPD	Qualifier
GRO C6-C10*	<10.0	10.0	09/25/2024	ND	196	97.9	200	0.335	
DRO >C10-C28*	<10.0	10.0	09/25/2024	ND	201	100	200	3.29	
EXT DRO >C28-C36	<10.0	10.0	09/25/2024	ND					

Surrogate: 1-Chlorooctane 80.0 % 48.2-134

Surrogate: 1-Chlorooctadecane 86.4 % 49.1-148

Cardinal Laboratories

*=Accredited Analyte

PLEASE NOTE: Liability and Damages. Cardinal's liability and client's exclusive remedy for any claim arising, whether based in contract or tort, shall be limited to the amount paid by client for analyses. All claims, including those for negligence and any other cause whatsoever shall be deemed waived unless made in writing and received by Cardinal within thirty (30) days after completion of the applicable service. In no event shall Cardinal be liable for incidental or consequential damages, including, without limitation, business interruptions, loss of use, or loss of profits incurred by client, its subsidiaries, affiliates or successors arising out of or related to the performance of the services hereunder by Cardinal, regardless of whether such claim is based upon any of the above stated reasons or otherwise. Results relate only to the samples identified above. This report shall not be reproduced except in full with written approval of Cardinal Laboratories.

Celey D. Keene, Lab Director/Quality Manager



PHONE (575) 393-2326 ° 101 E. MARLAND ° HOBBS, NM 88240

Analytical Results For:

ENSOLUM, LLC
 KELLY LOWERY
 705 W WADLEY AVE.
 MIDLAND TX, 79705
 Fax To:

Received:	09/23/2024	Sampling Date:	09/23/2024
Reported:	09/26/2024	Sampling Type:	Soil
Project Name:	MEWBORNE STAGE FRIGHT	Sampling Condition:	Cool & Intact
Project Number:	03B1226338	Sample Received By:	Alyssa Parras
Project Location:	EDDY CO		

Sample ID: CS 06 0.25' (H245767-06)

BTEX 8021B		mg/kg		Analyzed By: JH						
Analyte	Result	Reporting Limit	Analyzed	Method Blank	BS	% Recovery	True Value QC	RPD	Qualifier	
Benzene*	<0.050	0.050	09/25/2024	ND	1.90	95.0	2.00	3.36		
Toluene*	<0.050	0.050	09/25/2024	ND	1.88	94.0	2.00	3.82		
Ethylbenzene*	<0.050	0.050	09/25/2024	ND	1.96	97.9	2.00	3.51		
Total Xylenes*	<0.150	0.150	09/25/2024	ND	5.86	97.7	6.00	3.29		
Total BTEX	<0.300	0.300	09/25/2024	ND						

Surrogate: 4-Bromofluorobenzene (PID) 100 % 71.5-134

Chloride, SM4500Cl-B		mg/kg		Analyzed By: AC						
Analyte	Result	Reporting Limit	Analyzed	Method Blank	BS	% Recovery	True Value QC	RPD	Qualifier	
Chloride	<16.0	16.0	09/25/2024	ND	432	108	400	0.00		

TPH 8015M		mg/kg		Analyzed By: MS					
Analyte	Result	Reporting Limit	Analyzed	Method Blank	BS	% Recovery	True Value QC	RPD	Qualifier
GRO C6-C10*	<10.0	10.0	09/25/2024	ND	196	97.9	200	0.335	
DRO >C10-C28*	<10.0	10.0	09/25/2024	ND	201	100	200	3.29	
EXT DRO >C28-C36	<10.0	10.0	09/25/2024	ND					

Surrogate: 1-Chlorooctane 83.4 % 48.2-134

Surrogate: 1-Chlorooctadecane 88.7 % 49.1-148

Cardinal Laboratories

*=Accredited Analyte

PLEASE NOTE: Liability and Damages. Cardinal's liability and client's exclusive remedy for any claim arising, whether based in contract or tort, shall be limited to the amount paid by client for analyses. All claims, including those for negligence and any other cause whatsoever shall be deemed waived unless made in writing and received by Cardinal within thirty (30) days after completion of the applicable service. In no event shall Cardinal be liable for incidental or consequential damages, including, without limitation, business interruptions, loss of use, or loss of profits incurred by client, its subsidiaries, affiliates or successors arising out of or related to the performance of the services hereunder by Cardinal, regardless of whether such claim is based upon any of the above stated reasons or otherwise. Results relate only to the samples identified above. This report shall not be reproduced except in full with written approval of Cardinal Laboratories.

Celey D. Keene, Lab Director/Quality Manager



PHONE (575) 393-2326 ° 101 E. MARLAND ° HOBBS, NM 88240

Analytical Results For:

ENSOLUM, LLC
 KELLY LOWERY
 705 W WADLEY AVE.
 MIDLAND TX, 79705
 Fax To:

Received: 09/23/2024
 Reported: 09/26/2024
 Project Name: MEWBORNE STAGE FRIGHT
 Project Number: 03B1226338
 Project Location: EDDY CO

Sampling Date: 09/23/2024
 Sampling Type: Soil
 Sampling Condition: Cool & Intact
 Sample Received By: Alyssa Parras

Sample ID: DS 01 0.25' (H245767-07)

BTEx 8021B		mg/kg		Analyzed By: JH						
Analyte	Result	Reporting Limit	Analyzed	Method Blank	BS	% Recovery	True Value QC	RPD	Qualifier	
Benzene*	<0.050	0.050	09/25/2024	ND	1.90	95.0	2.00	3.36		
Toluene*	<0.050	0.050	09/25/2024	ND	1.88	94.0	2.00	3.82		
Ethylbenzene*	<0.050	0.050	09/25/2024	ND	1.96	97.9	2.00	3.51		
Total Xylenes*	<0.150	0.150	09/25/2024	ND	5.86	97.7	6.00	3.29		
Total BTEX	<0.300	0.300	09/25/2024	ND						

Surrogate: 4-Bromofluorobenzene (PID) 99.1 % 71.5-134

Chloride, SM4500Cl-B		mg/kg		Analyzed By: AC						
Analyte	Result	Reporting Limit	Analyzed	Method Blank	BS	% Recovery	True Value QC	RPD	Qualifier	
Chloride	32.0	16.0	09/25/2024	ND	432	108	400	0.00		

TPH 8015M		mg/kg		Analyzed By: MS					
Analyte	Result	Reporting Limit	Analyzed	Method Blank	BS	% Recovery	True Value QC	RPD	Qualifier
GRO C6-C10*	<10.0	10.0	09/25/2024	ND	196	97.9	200	0.335	
DRO >C10-C28*	<10.0	10.0	09/25/2024	ND	201	100	200	3.29	
EXT DRO >C28-C36	<10.0	10.0	09/25/2024	ND					

Surrogate: 1-Chlorooctane 81.2 % 48.2-134

Surrogate: 1-Chlorooctadecane 87.3 % 49.1-148

Cardinal Laboratories

*=Accredited Analyte

PLEASE NOTE: Liability and Damages. Cardinal's liability and client's exclusive remedy for any claim arising, whether based in contract or tort, shall be limited to the amount paid by client for analyses. All claims, including those for negligence and any other cause whatsoever shall be deemed waived unless made in writing and received by Cardinal within thirty (30) days after completion of the applicable service. In no event shall Cardinal be liable for incidental or consequential damages, including, without limitation, business interruptions, loss of use, or loss of profits incurred by client, its subsidiaries, affiliates or successors arising out of or related to the performance of the services hereunder by Cardinal, regardless of whether such claim is based upon any of the above stated reasons or otherwise. Results relate only to the samples identified above. This report shall not be reproduced except in full with written approval of Cardinal Laboratories.

Celey D. Keene, Lab Director/Quality Manager



PHONE (575) 393-2326 ° 101 E. MARLAND ° HOBBS, NM 88240

Analytical Results For:

ENSOLUM, LLC
 KELLY LOWERY
 705 W WADLEY AVE.
 MIDLAND TX, 79705
 Fax To:

Received: 09/23/2024
 Reported: 09/26/2024
 Project Name: MEWBORNE STAGE FRIGHT
 Project Number: 03B1226338
 Project Location: EDDY CO

Sampling Date: 09/23/2024
 Sampling Type: Soil
 Sampling Condition: Cool & Intact
 Sample Received By: Alyssa Parras

Sample ID: DS 02 0.25' (H245767-08)

BTEx 8021B		mg/kg		Analyzed By: JH						
Analyte	Result	Reporting Limit	Analyzed	Method Blank	BS	% Recovery	True Value QC	RPD	Qualifier	
Benzene*	<0.050	0.050	09/25/2024	ND	1.90	95.0	2.00	3.36		
Toluene*	<0.050	0.050	09/25/2024	ND	1.88	94.0	2.00	3.82		
Ethylbenzene*	<0.050	0.050	09/25/2024	ND	1.96	97.9	2.00	3.51		
Total Xylenes*	<0.150	0.150	09/25/2024	ND	5.86	97.7	6.00	3.29		
Total BTEX	<0.300	0.300	09/25/2024	ND						

Surrogate: 4-Bromofluorobenzene (PID) 99.6 % 71.5-134

Chloride, SM4500Cl-B		mg/kg		Analyzed By: AC						
Analyte	Result	Reporting Limit	Analyzed	Method Blank	BS	% Recovery	True Value QC	RPD	Qualifier	
Chloride	32.0	16.0	09/25/2024	ND	432	108	400	0.00		

TPH 8015M		mg/kg		Analyzed By: MS					
Analyte	Result	Reporting Limit	Analyzed	Method Blank	BS	% Recovery	True Value QC	RPD	Qualifier
GRO C6-C10*	<10.0	10.0	09/25/2024	ND	196	97.9	200	0.335	
DRO >C10-C28*	<10.0	10.0	09/25/2024	ND	201	100	200	3.29	
EXT DRO >C28-C36	<10.0	10.0	09/25/2024	ND					

Surrogate: 1-Chlorooctane 84.0 % 48.2-134

Surrogate: 1-Chlorooctadecane 91.0 % 49.1-148

Cardinal Laboratories

*=Accredited Analyte

PLEASE NOTE: Liability and Damages. Cardinal's liability and client's exclusive remedy for any claim arising, whether based in contract or tort, shall be limited to the amount paid by client for analyses. All claims, including those for negligence and any other cause whatsoever shall be deemed waived unless made in writing and received by Cardinal within thirty (30) days after completion of the applicable service. In no event shall Cardinal be liable for incidental or consequential damages, including, without limitation, business interruptions, loss of use, or loss of profits incurred by client, its subsidiaries, affiliates or successors arising out of or related to the performance of the services hereunder by Cardinal, regardless of whether such claim is based upon any of the above stated reasons or otherwise. Results relate only to the samples identified above. This report shall not be reproduced except in full with written approval of Cardinal Laboratories.

Celey D. Keene, Lab Director/Quality Manager



PHONE (575) 393-2326 ° 101 E. MARLAND ° HOBBS, NM 88240

Analytical Results For:

ENSOLUM, LLC
 KELLY LOWERY
 705 W WADLEY AVE.
 MIDLAND TX, 79705
 Fax To:

Received: 09/23/2024
 Reported: 09/26/2024
 Project Name: MEWBORNE STAGE FRIGHT
 Project Number: 03B1226338
 Project Location: EDDY CO

Sampling Date: 09/23/2024
 Sampling Type: Soil
 Sampling Condition: Cool & Intact
 Sample Received By: Alyssa Parras

Sample ID: DS 03 0.25' (H245767-09)

BTEX 8021B		mg/kg		Analyzed By: JH						
Analyte	Result	Reporting Limit	Analyzed	Method Blank	BS	% Recovery	True Value QC	RPD	Qualifier	
Benzene*	<0.050	0.050	09/25/2024	ND	1.90	95.0	2.00	3.36		
Toluene*	<0.050	0.050	09/25/2024	ND	1.88	94.0	2.00	3.82		
Ethylbenzene*	<0.050	0.050	09/25/2024	ND	1.96	97.9	2.00	3.51		
Total Xylenes*	<0.150	0.150	09/25/2024	ND	5.86	97.7	6.00	3.29		
Total BTEX	<0.300	0.300	09/25/2024	ND						

Surrogate: 4-Bromofluorobenzene (PID) 99.4 % 71.5-134

Chloride, SM4500CI-B		mg/kg		Analyzed By: AC						
Analyte	Result	Reporting Limit	Analyzed	Method Blank	BS	% Recovery	True Value QC	RPD	Qualifier	
Chloride	<16.0	16.0	09/25/2024	ND	432	108	400	0.00		

TPH 8015M		mg/kg		Analyzed By: MS					
Analyte	Result	Reporting Limit	Analyzed	Method Blank	BS	% Recovery	True Value QC	RPD	Qualifier
GRO C6-C10*	<10.0	10.0	09/25/2024	ND	196	97.9	200	0.335	
DRO >C10-C28*	<10.0	10.0	09/25/2024	ND	201	100	200	3.29	
EXT DRO >C28-C36	<10.0	10.0	09/25/2024	ND					

Surrogate: 1-Chlorooctane 63.2 % 48.2-134

Surrogate: 1-Chlorooctadecane 68.7 % 49.1-148

Cardinal Laboratories

*=Accredited Analyte

PLEASE NOTE: Liability and Damages. Cardinal's liability and client's exclusive remedy for any claim arising, whether based in contract or tort, shall be limited to the amount paid by client for analyses. All claims, including those for negligence and any other cause whatsoever shall be deemed waived unless made in writing and received by Cardinal within thirty (30) days after completion of the applicable service. In no event shall Cardinal be liable for incidental or consequential damages, including, without limitation, business interruptions, loss of use, or loss of profits incurred by client, its subsidiaries, affiliates or successors arising out of or related to the performance of the services hereunder by Cardinal, regardless of whether such claim is based upon any of the above stated reasons or otherwise. Results relate only to the samples identified above. This report shall not be reproduced except in full with written approval of Cardinal Laboratories.

Celey D. Keene, Lab Director/Quality Manager



PHONE (575) 393-2326 ° 101 E. MARLAND ° HOBBS, NM 88240

Analytical Results For:

ENSOLUM, LLC
 KELLY LOWERY
 705 W WADLEY AVE.
 MIDLAND TX, 79705
 Fax To:

Received: 09/23/2024
 Reported: 09/26/2024
 Project Name: MEWBORNE STAGE FRIGHT
 Project Number: 03B1226338
 Project Location: EDDY CO

Sampling Date: 09/23/2024
 Sampling Type: Soil
 Sampling Condition: Cool & Intact
 Sample Received By: Alyssa Parras

Sample ID: DS 04 0.25' (H245767-10)

BTEx 8021B		mg/kg		Analyzed By: JH					
Analyte	Result	Reporting Limit	Analyzed	Method Blank	BS	% Recovery	True Value QC	RPD	Qualifier
Benzene*	<0.050	0.050	09/25/2024	ND	1.90	95.0	2.00	3.36	
Toluene*	<0.050	0.050	09/25/2024	ND	1.88	94.0	2.00	3.82	
Ethylbenzene*	<0.050	0.050	09/25/2024	ND	1.96	97.9	2.00	3.51	
Total Xylenes*	<0.150	0.150	09/25/2024	ND	5.86	97.7	6.00	3.29	
Total BTEX	<0.300	0.300	09/25/2024	ND					

Surrogate: 4-Bromofluorobenzene (PID) 101 % 71.5-134

Chloride, SM4500Cl-B		mg/kg		Analyzed By: AC						
Analyte	Result	Reporting Limit	Analyzed	Method Blank	BS	% Recovery	True Value QC	RPD	Qualifier	
Chloride	16.0	16.0	09/25/2024	ND	432	108	400	0.00		

TPH 8015M		mg/kg		Analyzed By: MS					
Analyte	Result	Reporting Limit	Analyzed	Method Blank	BS	% Recovery	True Value QC	RPD	Qualifier
GRO C6-C10*	<10.0	10.0	09/25/2024	ND	196	97.9	200	0.335	
DRO >C10-C28*	<10.0	10.0	09/25/2024	ND	201	100	200	3.29	
EXT DRO >C28-C36	<10.0	10.0	09/25/2024	ND					

Surrogate: 1-Chlorooctane 86.6 % 48.2-134

Surrogate: 1-Chlorooctadecane 94.5 % 49.1-148

Cardinal Laboratories

*=Accredited Analyte

PLEASE NOTE: Liability and Damages. Cardinal's liability and client's exclusive remedy for any claim arising, whether based in contract or tort, shall be limited to the amount paid by client for analyses. All claims, including those for negligence and any other cause whatsoever shall be deemed waived unless made in writing and received by Cardinal within thirty (30) days after completion of the applicable service. In no event shall Cardinal be liable for incidental or consequential damages, including, without limitation, business interruptions, loss of use, or loss of profits incurred by client, its subsidiaries, affiliates or successors arising out of or related to the performance of the services hereunder by Cardinal, regardless of whether such claim is based upon any of the above stated reasons or otherwise. Results relate only to the samples identified above. This report shall not be reproduced except in full with written approval of Cardinal Laboratories.

Celey D. Keene, Lab Director/Quality Manager



PHONE (575) 393-2326 ° 101 E. MARLAND ° HOBBS, NM 88240

Analytical Results For:

ENSOLUM, LLC
 KELLY LOWERY
 705 W WADLEY AVE.
 MIDLAND TX, 79705
 Fax To:

Received: 09/23/2024
 Reported: 09/26/2024
 Project Name: MEWBORNE STAGE FRIGHT
 Project Number: 03B1226338
 Project Location: EDDY CO

Sampling Date: 09/23/2024
 Sampling Type: Soil
 Sampling Condition: Cool & Intact
 Sample Received By: Alyssa Parras

Sample ID: DS 05 0.25' (H245767-11)

BTEX 8021B		mg/kg		Analyzed By: JH						
Analyte	Result	Reporting Limit	Analyzed	Method Blank	BS	% Recovery	True Value QC	RPD	Qualifier	
Benzene*	<0.050	0.050	09/25/2024	ND	1.90	95.0	2.00	3.36		
Toluene*	<0.050	0.050	09/25/2024	ND	1.88	94.0	2.00	3.82		
Ethylbenzene*	<0.050	0.050	09/25/2024	ND	1.96	97.9	2.00	3.51		
Total Xylenes*	<0.150	0.150	09/25/2024	ND	5.86	97.7	6.00	3.29		
Total BTEX	<0.300	0.300	09/25/2024	ND						

Surrogate: 4-Bromofluorobenzene (PID) 98.9 % 71.5-134

Chloride, SM4500CI-B		mg/kg		Analyzed By: AC						
Analyte	Result	Reporting Limit	Analyzed	Method Blank	BS	% Recovery	True Value QC	RPD	Qualifier	
Chloride	<16.0	16.0	09/25/2024	ND	432	108	400	0.00		

TPH 8015M		mg/kg		Analyzed By: MS					
Analyte	Result	Reporting Limit	Analyzed	Method Blank	BS	% Recovery	True Value QC	RPD	Qualifier
GRO C6-C10*	<10.0	10.0	09/25/2024	ND	196	97.9	200	0.335	
DRO >C10-C28*	<10.0	10.0	09/25/2024	ND	201	100	200	3.29	
EXT DRO >C28-C36	<10.0	10.0	09/25/2024	ND					

Surrogate: 1-Chlorooctane 78.3 % 48.2-134

Surrogate: 1-Chlorooctadecane 84.5 % 49.1-148

Cardinal Laboratories

*=Accredited Analyte

PLEASE NOTE: Liability and Damages. Cardinal's liability and client's exclusive remedy for any claim arising, whether based in contract or tort, shall be limited to the amount paid by client for analyses. All claims, including those for negligence and any other cause whatsoever shall be deemed waived unless made in writing and received by Cardinal within thirty (30) days after completion of the applicable service. In no event shall Cardinal be liable for incidental or consequential damages, including, without limitation, business interruptions, loss of use, or loss of profits incurred by client, its subsidiaries, affiliates or successors arising out of or related to the performance of the services hereunder by Cardinal, regardless of whether such claim is based upon any of the above stated reasons or otherwise. Results relate only to the samples identified above. This report shall not be reproduced except in full with written approval of Cardinal Laboratories.

Celey D. Keene, Lab Director/Quality Manager



PHONE (575) 393-2326 ° 101 E. MARLAND ° HOBBS, NM 88240

Analytical Results For:

ENSOLUM, LLC
 KELLY LOWERY
 705 W WADLEY AVE.
 MIDLAND TX, 79705
 Fax To:

Received: 09/23/2024
 Reported: 09/26/2024
 Project Name: MEWBORNE STAGE FRIGHT
 Project Number: 03B1226338
 Project Location: EDDY CO

Sampling Date: 09/23/2024
 Sampling Type: Soil
 Sampling Condition: Cool & Intact
 Sample Received By: Alyssa Parras

Sample ID: DS 06 0.25' (H245767-12)

BTEX 8021B		mg/kg		Analyzed By: JH						
Analyte	Result	Reporting Limit	Analyzed	Method Blank	BS	% Recovery	True Value QC	RPD	Qualifier	
Benzene*	<0.050	0.050	09/25/2024	ND	1.90	95.0	2.00	3.36		
Toluene*	<0.050	0.050	09/25/2024	ND	1.88	94.0	2.00	3.82		
Ethylbenzene*	<0.050	0.050	09/25/2024	ND	1.96	97.9	2.00	3.51		
Total Xylenes*	<0.150	0.150	09/25/2024	ND	5.86	97.7	6.00	3.29		
Total BTEX	<0.300	0.300	09/25/2024	ND						

Surrogate: 4-Bromofluorobenzene (PID) 98.4 % 71.5-134

Chloride, SM4500CI-B		mg/kg		Analyzed By: AC						
Analyte	Result	Reporting Limit	Analyzed	Method Blank	BS	% Recovery	True Value QC	RPD	Qualifier	
Chloride	<16.0	16.0	09/25/2024	ND	432	108	400	0.00		

TPH 8015M		mg/kg		Analyzed By: MS					
Analyte	Result	Reporting Limit	Analyzed	Method Blank	BS	% Recovery	True Value QC	RPD	Qualifier
GRO C6-C10*	<10.0	10.0	09/25/2024	ND	196	97.9	200	0.335	
DRO >C10-C28*	<10.0	10.0	09/25/2024	ND	201	100	200	3.29	
EXT DRO >C28-C36	<10.0	10.0	09/25/2024	ND					

Surrogate: 1-Chlorooctane 83.8 % 48.2-134

Surrogate: 1-Chlorooctadecane 91.0 % 49.1-148

Cardinal Laboratories

*=Accredited Analyte

PLEASE NOTE: Liability and Damages. Cardinal's liability and client's exclusive remedy for any claim arising, whether based in contract or tort, shall be limited to the amount paid by client for analyses. All claims, including those for negligence and any other cause whatsoever shall be deemed waived unless made in writing and received by Cardinal within thirty (30) days after completion of the applicable service. In no event shall Cardinal be liable for incidental or consequential damages, including, without limitation, business interruptions, loss of use, or loss of profits incurred by client, its subsidiaries, affiliates or successors arising out of or related to the performance of the services hereunder by Cardinal, regardless of whether such claim is based upon any of the above stated reasons or otherwise. Results relate only to the samples identified above. This report shall not be reproduced except in full with written approval of Cardinal Laboratories.

Celey D. Keene, Lab Director/Quality Manager



PHONE (575) 393-2326 ° 101 E. MARLAND ° HOBBS, NM 88240

Notes and Definitions

ND	Analyte NOT DETECTED at or above the reporting limit
RPD	Relative Percent Difference
**	Samples not received at proper temperature of 6°C or below.
***	Insufficient time to reach temperature.
-	Chloride by SM4500Cl-B does not require samples be received at or below 6°C Samples reported on an as received basis (wet) unless otherwise noted on report

Cardinal Laboratories

*=Accredited Analyte

PLEASE NOTE: Liability and Damages. Cardinal's liability and client's exclusive remedy for any claim arising, whether based in contract or tort, shall be limited to the amount paid by client for analyses. All claims, including those for negligence and any other cause whatsoever shall be deemed waived unless made in writing and received by Cardinal within thirty (30) days after completion of the applicable service. In no event shall Cardinal be liable for incidental or consequential damages, including, without limitation, business interruptions, loss of use, or loss of profits incurred by client, its subsidiaries, affiliates or successors arising out of or related to the performance of the services hereunder by Cardinal, regardless of whether such claim is based upon any of the above stated reasons or otherwise. Results relate only to the samples identified above. This report shall not be reproduced except in full with written approval of Cardinal Laboratories.

A handwritten signature in black ink, appearing to read "C. D. Keene", written over a horizontal line.

Celey D. Keene, Lab Director/Quality Manager



101 East Marland, Hobbs, NM 88240
(575) 393-2326 FAX (575) 393-2476

CHAIN-OF-CUSTODY AND ANALYSIS REQUEST

112

BILL TO

ANALYSIS REQUEST

Company Name: Ensolum, LLC

Project Manager: Beaux Jennings Kelly Lowery

Address: 601 N Marlenfeld Street, Suite 400

City: Midland State: TX Zip: 79701

Phone #: 210-219-8858

Project #: 03B1226338 Project Owner:

Project Name: Newburne Stage Frisht

Project Location: Eddy County

Sampler Name: Tawitha Guadian

FOR LAB USE ONLY

Lab I.D. Sample I.D.

Depth (feet)

H45707

CS01

CS02

CS03

CS04

CS05

CS06

DS01

DS02

DS03

DS04

0.25'

0.25'

(G)RAB OR (C)OMP.

C

C

C

C

C

C

C

C

C

C

CONTAINERS

1

GROUNDWATER

WASTEWATER

SOIL

OIL

SLUDGE

OTHER :

ACID/BASE:

ICE / COOL

OTHER :

DATE

9/23/24

TIME

1330

TPH 805M

BTEX 802LB

Chloride 4500

Relinquished By:

Date: 9/13/24 Received By:

Time: 1558

Date: 9/13/24 Received By:

Time: 1558

Date: 9/13/24 Received By:

Time: 1558

Date: 9/13/24 Received By:

Time: 1558

Date: 9/13/24 Received By:

Time: 1558

Date: 9/13/24 Received By:

Time: 1558

Date: 9/13/24 Received By:

Relinquished By:

Date: 9/13/24 Received By:

Turnaround Time:

Standard Rush 3 Day

Bacteria (only) Sample Condition

Corrected Temp. °C

Corrected Temp. °C

Corrected Temp. °C



101 East Marland, Hobbs, NM 88240
(575) 393-2326 FAX (575) 393-2476

CHAIN-OF-CUSTODY AND ANALYSIS REQUEST

2/2

[illegible]

Sante Fe Main Office
Phone: (505) 476-3441

General Information
Phone: (505) 629-6116

Online Phone Directory
<https://www.emnrd.nm.gov/ocd/contact-us>

State of New Mexico
Energy, Minerals and Natural Resources
Oil Conservation Division
1220 S. St Francis Dr.
Santa Fe, NM 87505

QUESTIONS

Action 410645

QUESTIONS

Operator: Enterprise Field Services, LLC PO Box 4324 Houston, TX 77210	OGRID: 241602
	Action Number: 410645
	Action Type: [C-141] Remediation Closure Request C-141 (C-141-v-Closure)

QUESTIONS

Prerequisites	
Incident ID (n#)	nAPP2420029251
Incident Name	NAPP2420029251 MEWBOURNE STAGE FRIGHT @ 0
Incident Type	Fire
Incident Status	Remediation Closure Report Received
Incident Facility	[fAPP2122928745] Enterprise Carlsbad GS

Location of Release Source <i>Please answer all the questions in this group.</i>	
Site Name	MEWBOURNE STAGE FRIGHT
Date Release Discovered	07/17/2024
Surface Owner	Federal

Incident Details <i>Please answer all the questions in this group.</i>	
Incident Type	Fire
Did this release result in a fire or is the result of a fire	Yes
Did this release result in any injuries	No
Has this release reached or does it have a reasonable probability of reaching a watercourse	No
Has this release endangered or does it have a reasonable probability of endangering public health	No
Has this release substantially damaged or will it substantially damage property or the environment	No
Is this release of a volume that is or may with reasonable probability be detrimental to fresh water	No

Nature and Volume of Release <i>Material(s) released, please answer all that apply below. Any calculations or specific justifications for the volumes provided should be attached to the follow-up C-141 submission.</i>	
Crude Oil Released (bbls) Details	Not answered.
Produced Water Released (bbls) Details	Not answered.
Is the concentration of chloride in the produced water >10,000 mg/l	No
Condensate Released (bbls) Details	Not answered.
Natural Gas Vented (Mcf) Details	Not answered.
Natural Gas Flared (Mcf) Details	Not answered.
Other Released Details	Cause: Other (Specify) Released: 0 (Unknown Released Amount) Recovered: 0 Lost: 0
Are there additional details for the questions above (i.e. any answer containing Other, Specify, Unknown, and/or Fire, or any negative lost amounts)	Fire caused by mist from flare catching dry vegetation on fire. Fire began at approximately 12:35 and was completely contained and extinguished by 13:05.

Sante Fe Main Office
Phone: (505) 476-3441

General Information
Phone: (505) 629-6116

Online Phone Directory
<https://www.emnrd.nm.gov/ocd/contact-us>

State of New Mexico
Energy, Minerals and Natural Resources
Oil Conservation Division
1220 S. St Francis Dr.
Santa Fe, NM 87505

QUESTIONS, Page 2

Action 410645

QUESTIONS (continued)

Operator: Enterprise Field Services, LLC PO Box 4324 Houston, TX 77210	OGRID: 241602
	Action Number: 410645
	Action Type: [C-141] Remediation Closure Request C-141 (C-141-v-Closure)

QUESTIONS

Nature and Volume of Release (continued)	
Is this a gas only submission (i.e. only significant Mcf values reported)	More info needed to determine if this will be treated as a "gas only" report.
Was this a major release as defined by Subsection A of 19.15.29.7 NMAC	Yes
Reasons why this would be considered a submission for a notification of a major release	From paragraph A. "Major release" determine using: (2) an unauthorized release of a volume that: (a) results in a fire or is the result of a fire.
With the implementation of the 19.15.27 NMAC (05/25/2021), venting and/or flaring of natural gas (i.e. gas only) are to be submitted on the C-129 form.	

Initial Response

The responsible party must undertake the following actions immediately unless they could create a safety hazard that would result in injury.

The source of the release has been stopped	True
The impacted area has been secured to protect human health and the environment	True
Released materials have been contained via the use of berms or dikes, absorbent pads, or other containment devices	True
All free liquids and recoverable materials have been removed and managed appropriately	True
If all the actions described above have not been undertaken, explain why	Not answered.

Per Paragraph (4) of Subsection B of 19.15.29.8 NMAC the responsible party may commence remediation immediately after discovery of a release. If remediation has begun, please prepare and attach a narrative of actions to date in the follow-up C-141 submission. If remedial efforts have been successfully completed or if the release occurred within a lined containment area (see Subparagraph (a) of Paragraph (5) of Subsection A of 19.15.29.11 NMAC), please prepare and attach all information needed for closure evaluation in the follow-up C-141 submission.

I hereby certify that the information given above is true and complete to the best of my knowledge and understand that pursuant to OCD rules and regulations all operators are required to report and/or file certain release notifications and perform corrective actions for releases which may endanger public health or the environment. The acceptance of a C-141 report by the OCD does not relieve the operator of liability should their operations have failed to adequately investigate and remediate contamination that pose a threat to groundwater, surface water, human health or the environment. In addition, OCD acceptance of a C-141 report does not relieve the operator of responsibility for compliance with any other federal, state, or local laws and/or regulations.

I hereby agree and sign off to the above statement	Name: David Feather Title: Contractor Email: dfeather@eprod.com Date: 07/23/2024
--	---

Sante Fe Main Office
Phone: (505) 476-3441

General Information
Phone: (505) 629-6116

Online Phone Directory
<https://www.emnrd.nm.gov/ocd/contact-us>

State of New Mexico
Energy, Minerals and Natural Resources
Oil Conservation Division
1220 S. St Francis Dr.
Santa Fe, NM 87505

QUESTIONS, Page 3

Action 410645

QUESTIONS (continued)

Operator: Enterprise Field Services, LLC PO Box 4324 Houston, TX 77210	OGRID: 241602
	Action Number: 410645
	Action Type: [C-141] Remediation Closure Request C-141 (C-141-v-Closure)

QUESTIONS

Site Characterization	
<i>Please answer all the questions in this group (only required when seeking remediation plan approval and beyond). This information must be provided to the appropriate district office no later than 90 days after the release discovery date.</i>	
What is the shallowest depth to groundwater beneath the area affected by the release in feet below ground surface (ft bgs)	Between 100 and 500 (ft.)
What method was used to determine the depth to ground water	NM OSE iWaters Database Search
Did this release impact groundwater or surface water	No
What is the minimum distance, between the closest lateral extents of the release and the following surface areas:	
A continuously flowing watercourse or any other significant watercourse	Between 1 and 5 (mi.)
Any lakebed, sinkhole, or playa lake (measured from the ordinary high-water mark)	Greater than 5 (mi.)
An occupied permanent residence, school, hospital, institution, or church	Between ½ and 1 (mi.)
A spring or a private domestic fresh water well used by less than five households for domestic or stock watering purposes	Between ½ and 1 (mi.)
Any other fresh water well or spring	Between ½ and 1 (mi.)
Incorporated municipal boundaries or a defined municipal fresh water well field	Between 1 and 5 (mi.)
A wetland	Between 300 and 500 (ft.)
A subsurface mine	Greater than 5 (mi.)
An (non-karst) unstable area	Zero feet, overlying, or within area
Categorize the risk of this well / site being in a karst geology	High
A 100-year floodplain	Between 1 and 5 (mi.)
Did the release impact areas not on an exploration, development, production, or storage site	Yes

Remediation Plan	
<i>Please answer all the questions that apply or are indicated. This information must be provided to the appropriate district office no later than 90 days after the release discovery date.</i>	
Requesting a remediation plan approval with this submission	Yes
<i>Attach a comprehensive report demonstrating the lateral and vertical extents of soil contamination associated with the release have been determined, pursuant to 19.15.29.11 NMAC and 19.15.29.13 NMAC.</i>	
Have the lateral and vertical extents of contamination been fully delineated	Yes
Was this release entirely contained within a lined containment area	No
Soil Contamination Sampling: (Provide the highest observable value for each, in milligrams per kilograms.)	
Chloride (EPA 300.0 or SM4500 Cl B)	32
TPH (GRO+DRO+MRO) (EPA SW-846 Method 8015M)	0
GRO+DRO (EPA SW-846 Method 8015M)	0
BTEX (EPA SW-846 Method 8021B or 8260B)	0
Benzene (EPA SW-846 Method 8021B or 8260B)	0
<i>Per Subsection B of 19.15.29.11 NMAC unless the site characterization report includes completed efforts at remediation, the report must include a proposed remediation plan in accordance with 19.15.29.12 NMAC, which includes the anticipated timelines for beginning and completing the remediation.</i>	
On what estimated date will the remediation commence	07/17/2024
On what date will (or did) the final sampling or liner inspection occur	09/23/2024
On what date will (or was) the remediation complete(d)	09/23/2024
What is the estimated surface area (in square feet) that will be reclaimed	1101
What is the estimated volume (in cubic yards) that will be reclaimed	10
What is the estimated surface area (in square feet) that will be remediated	1101
What is the estimated volume (in cubic yards) that will be remediated	10
<i>These estimated dates and measurements are recognized to be the best guess or calculation at the time of submission and may (be) change(d) over time as more remediation efforts are completed.</i>	
<i>The OCD recognizes that proposed remediation measures may have to be minimally adjusted in accordance with the physical realities encountered during remediation. If the responsible party has any need to significantly deviate from the remediation plan proposed, then it should consult with the division to determine if another remediation plan submission is required.</i>	

Sante Fe Main Office
Phone: (505) 476-3441

General Information
Phone: (505) 629-6116

Online Phone Directory
<https://www.emnrd.nm.gov/ocd/contact-us>

State of New Mexico
Energy, Minerals and Natural Resources
Oil Conservation Division
1220 S. St Francis Dr.
Santa Fe, NM 87505

QUESTIONS, Page 4

Action 410645

QUESTIONS (continued)

Operator: Enterprise Field Services, LLC PO Box 4324 Houston, TX 77210	OGRID: 241602
	Action Number: 410645
	Action Type: [C-141] Remediation Closure Request C-141 (C-141-v-Closure)

QUESTIONS

Remediation Plan (continued)	
<i>Please answer all the questions that apply or are indicated. This information must be provided to the appropriate district office no later than 90 days after the release discovery date.</i>	
This remediation will (or is expected to) utilize the following processes to remediate / reduce contaminants:	
<i>(Select all answers below that apply.)</i>	
(Ex Situ) Excavation and off-site disposal (i.e. dig and haul, hydrovac, etc.)	Yes
Which OCD approved facility will be used for off-site disposal	LEA LAND LANDFILL [fEEM0112342028]
OR which OCD approved well (API) will be used for off-site disposal	Not answered.
OR is the off-site disposal site, to be used, out-of-state	Not answered.
OR is the off-site disposal site, to be used, an NMED facility	Not answered.
(Ex Situ) Excavation and on-site remediation (i.e. On-Site Land Farms)	Not answered.
(In Situ) Soil Vapor Extraction	Not answered.
(In Situ) Chemical processing (i.e. Soil Shredding, Potassium Permanganate, etc.)	Not answered.
(In Situ) Biological processing (i.e. Microbes / Fertilizer, etc.)	Not answered.
(In Situ) Physical processing (i.e. Soil Washing, Gypsum, Disking, etc.)	Not answered.
Ground Water Abatement pursuant to 19.15.30 NMAC	Not answered.
OTHER (Non-listed remedial process)	Not answered.
<i>Per Subsection B of 19.15.29.11 NMAC unless the site characterization report includes completed efforts at remediation, the report must include a proposed remediation plan in accordance with 19.15.29.12 NMAC, which includes the anticipated timelines for beginning and completing the remediation.</i>	
I hereby certify that the information given above is true and complete to the best of my knowledge and understand that pursuant to OCD rules and regulations all operators are required to report and/or file certain release notifications and perform corrective actions for releases which may endanger public health or the environment. The acceptance of a C-141 report by the OCD does not relieve the operator of liability should their operations have failed to adequately investigate and remediate contamination that pose a threat to groundwater, surface water, human health or the environment. In addition, OCD acceptance of a C-141 report does not relieve the operator of responsibility for compliance with any other federal, state, or local laws and/or regulations.	
I hereby agree and sign off to the above statement	Name: David Feather Title: Contractor Email: dfeather@eprod.com Date: 12/11/2024
<i>The OCD recognizes that proposed remediation measures may have to be minimally adjusted in accordance with the physical realities encountered during remediation. If the responsible party has any need to significantly deviate from the remediation plan proposed, then it should consult with the division to determine if another remediation plan submission is required.</i>	

Sante Fe Main Office
Phone: (505) 476-3441

General Information
Phone: (505) 629-6116

Online Phone Directory
<https://www.emnrd.nm.gov/ocd/contact-us>

State of New Mexico
Energy, Minerals and Natural Resources
Oil Conservation Division
1220 S. St Francis Dr.
Santa Fe, NM 87505

QUESTIONS, Page 5

Action 410645

QUESTIONS (continued)

Operator: Enterprise Field Services, LLC PO Box 4324 Houston, TX 77210	OGRID: 241602
	Action Number: 410645
	Action Type: [C-141] Remediation Closure Request C-141 (C-141-v-Closure)

QUESTIONS

Deferral Requests Only	
Only answer the questions in this group if seeking a deferral upon approval this submission. Each of the following items must be confirmed as part of any request for deferral of remediation.	
Requesting a deferral of the remediation closure due date with the approval of this submission	No

Sante Fe Main Office
Phone: (505) 476-3441

General Information
Phone: (505) 629-6116

Online Phone Directory
<https://www.emnrd.nm.gov/ocd/contact-us>

State of New Mexico
Energy, Minerals and Natural Resources
Oil Conservation Division
1220 S. St Francis Dr.
Santa Fe, NM 87505

QUESTIONS, Page 6

Action 410645

QUESTIONS (continued)

Operator: Enterprise Field Services, LLC PO Box 4324 Houston, TX 77210	OGRID: 241602
	Action Number: 410645
	Action Type: [C-141] Remediation Closure Request C-141 (C-141-v-Closure)

QUESTIONS

Sampling Event Information	
Last sampling notification (C-141N) recorded	385168
Sampling date pursuant to Subparagraph (a) of Paragraph (1) of Subsection D of 19.15.29.12 NMAC	09/23/2024
What was the (estimated) number of samples that were to be gathered	6
What was the sampling surface area in square feet	1200

Remediation Closure Request

Only answer the questions in this group if seeking remediation closure for this release because all remediation steps have been completed.

Requesting a remediation closure approval with this submission	Yes
Have the lateral and vertical extents of contamination been fully delineated	Yes
Was this release entirely contained within a lined containment area	No
All areas reasonably needed for production or subsequent drilling operations have been stabilized, returned to the sites existing grade, and have a soil cover that prevents ponding of water, minimizing dust and erosion	Yes
What was the total surface area (in square feet) remediated	1101
What was the total volume (cubic yards) remediated	10
All areas not reasonably needed for production or subsequent drilling operations have been reclaimed to contain a minimum of four feet of non-waste contain earthen material with concentrations less than 600 mg/kg chlorides, 100 mg/kg TPH, 50 mg/kg BTEX, and 10 mg/kg Benzene	Yes
What was the total surface area (in square feet) reclaimed	1101
What was the total volume (in cubic yards) reclaimed	10
Summarize any additional remediation activities not included by answers (above)	N/A

The responsible party must attach information demonstrating they have complied with all applicable closure requirements and any conditions or directives of the OCD. This demonstration should be in the form of a comprehensive report (in .pdf format) including a scaled site map, sampling diagrams, relevant field notes, photographs of any excavation prior to backfilling, laboratory data including chain of custody documents of final sampling, and a narrative of the remedial activities. Refer to 19.15.29.12 NMAC.

I hereby certify that the information given above is true and complete to the best of my knowledge and understand that pursuant to OCD rules and regulations all operators are required to report and/or file certain release notifications and perform corrective actions for releases which may endanger public health or the environment. The acceptance of a C-141 report by the OCD does not relieve the operator of liability should their operations have failed to adequately investigate and remediate contamination that pose a threat to groundwater, surface water, human health or the environment. In addition, OCD acceptance of a C-141 report does not relieve the operator of responsibility for compliance with any other federal, state, or local laws and/or regulations. The responsible party acknowledges they must substantially restore, reclaim, and re-vegetate the impacted surface area to the conditions that existed prior to the release or their final land use in accordance with 19.15.29.13 NMAC including notification to the OCD when reclamation and re-vegetation are complete.

I hereby agree and sign off to the above statement	Name: David Feather Title: Contractor Email: dfeather@eprod.com Date: 12/11/2024
--	---

Sante Fe Main Office
Phone: (505) 476-3441

General Information
Phone: (505) 629-6116

Online Phone Directory
<https://www.emnrd.nm.gov/ocd/contact-us>

State of New Mexico
Energy, Minerals and Natural Resources
Oil Conservation Division
1220 S. St Francis Dr.
Santa Fe, NM 87505

QUESTIONS, Page 7

Action 410645

QUESTIONS (continued)

Operator: Enterprise Field Services, LLC PO Box 4324 Houston, TX 77210	OGRID: 241602
	Action Number: 410645
	Action Type: [C-141] Remediation Closure Request C-141 (C-141-v-Closure)

QUESTIONS

Reclamation Report	
Only answer the questions in this group if all reclamation steps have been completed.	
Requesting a reclamation approval with this submission	No

Sante Fe Main Office
Phone: (505) 476-3441

General Information
Phone: (505) 629-6116

Online Phone Directory
<https://www.emnrd.nm.gov/ocd/contact-us>

State of New Mexico
Energy, Minerals and Natural Resources
Oil Conservation Division
1220 S. St Francis Dr.
Santa Fe, NM 87505

CONDITIONS

Action 410645

CONDITIONS

Operator: Enterprise Field Services, LLC PO Box 4324 Houston, TX 77210	OGRID: 241602
	Action Number: 410645
	Action Type: [C-141] Remediation Closure Request C-141 (C-141-v-Closure)

CONDITIONS

Created By	Condition	Condition Date
rhamlet	We have received your Remediation Closure Report for Incident #NAPP2420029251 MEWBOURNE STAGE FRIGHT, thank you. This Remediation Closure Report is approved.	4/3/2025