

Spill Volume(Bbls) Calculator		
<i>Inputs in blue, Outputs in red</i>		
Length(Ft)	Width(Ft)	Depth(In)
<u>70.000</u>	<u>50.000</u>	<u>1.000</u>
Cubic Feet Impacted		<u>291.667</u>
Barrels		<u>51.94</u>
Soil Type		Clay/Sand
Bbls Assuming 100% Saturation		<u>7.79</u>
Saturation	Fluid present with shovel/backhoe	
Estimated Barrels Released		7.80000

Instructions
1. Input spill measurements below. Length and width need to be input in feet and depth in inches.
2. Select a soil type from the drop down menu.
3. Select a saturation level from the drop down menu.
(For data gathering instructions see appendix tab)

Measurements	
Length (ft)	70
Width (ft)	50
Depth (in)	1.000









Red Lake 32 State #002H Battery

Incident ID NRM2034247342

PREPARED BY:
PIMA ENVIRONMENTAL SERVICES, LLC

PREPARED FOR:
Spur Energy

Site Assessment, Remediation, and Closure Report

April 2, 2025



Pima Environmental Services
5614 N. Lovington Highway
Hobbs, NM 88240
575-964-7740

FACILITY NAME	Red Lake 32 State 002H
DATE OF RELEASE	11/23/2020
INCIDENT NO.	NRM2034247342
Site Characterization	
DTGW What is the shallowest DTGW beneath the area affected by the release in ft below ground surface (ft bgs)	Between 50' and 75'
GW Depth Determination What method was used to determine the DTGW?	USGS
Ground or Surface Water Impacted Did this release impact GW or Surface Water?	No
What is the min. distance between the closest lateral extents of the release and the following surface areas?	
Distance to Watercourse A continuously flowing watercourse or any other significant watercourse?	1-5 mi.
Distance to Lakebed Any lakebed, sinkhole, or playa lake (measured from the ordinary high-water mark)?	> 5 mi.
Distance to Public An occupied permanent residence, school, hospital, institution, or church?	Between 1 mi. and 5 mi.
Distance to Private A spring or a private domestic FW well used by less than five households for domestic or stock watering purposes?	Between 1 mi. and 5 mi.
Distance to Fresh Water Any other FW well spring?	Between 1 mi. and 5 mi.
Within Municipal Boundaries Incorporated municipal boundaries or a defined municipal FW well field?	Between 1 mi. and 5 mi.
Distance to Wetland A wetland?	Between 1 and 100 ft.
Overlying Subsurface Mine A subsurface mine?	> 5 mi.
Overlying (Non-Karst) Unstable Area An (non-karst) unstable area?	Between 1 and 100 ft.
Risk of Karst Geology Categorize the risk of this well/site being in a karst geology?	High
Distance to or Within 100 yr Floodplain A 100-year floodplain?	1-5 mi
Areas NOT Other Site Did the release impact areas not on exploration, development, production, or storage site?	No
Remediation Plan	
Have the lateral and vertical extents of contamination been fully delineated?	Yes
Lined Containment Area Only Was this release entirely contained within a lined containment area?	No
Soil Containment Sampling	(EPA 300.00 or SM4500 Cl B?)
Chloride Constituent Chloride (mg/kg)	5,600
	(EPA SW-846 Method 8015M)?
TPH (GRO+DRO+MRO) Constituent TPH (mg/kg)	11,278

	(EPA SW-846 Method 8015M)?
GRO + DRO Constituent GRO-DRO (mg/kg)	9,208
	(EPA SW-846 Method 8021B or 8260B)?
BTEX Constituent BTEX (mg/kg)	19.9
	(EPA SW-846 Method 8021B or 8260B)?
Benzene Constituent Benzene (mg/kg)	0
Per Subsection B of 19.15.29.11 NMAC unless the site characterization report includes completed efforts at remediation, the report must include a proposed remediation plan in accordance with 19.15.29 NMAC, which includes the anticipated timelines for beginning and completing the remediation.	
Start of Remediation On what estimated date will remediation commence?	3/10/2025
Start of Sampling or Liner Inspection On what date will (or did) the final sampling or liner inspection occur?	3/18/2025
Finish of Remediation On what date will (or was) the remediation complete(d)?	3/28/2025
Surface Area (sq ft) To Be Reclaimed What is the estimated surface area (in sq ft) that will be reclaimed?	0
Surface Area (sq ft) To Be Remediated What is the estimated surface area (in sq ft) that will be remediated?	500
Volume (cu yd) To Be Remediated What is the estimated volume (in cubic yds) that will be remediated?	15
Remediation Plan (Cont.) Please answer all that apply	
Ex Situ Excavation Off-Site (Ex Situ) Excavation and off-site disposal (i.e. dig and haul, hydrovac, etc)?	Yes
Ex Situ Excavation On-Site (Ex Situ) Excavation and on-site remediation (i.e. On-Site Land Farms)?	No
In Situ Soil Vapor Extraction (SVE)?	No
In Situ Chemical Processing (In Situ) Chemical processing (i.e. Soil Shredding, Potassium Permanganate, etc.)?	No
In Situ Biological Processing (In Situ) Biological processing (i.e. Microbes/Fertilizer, etc.)?	No
In Situ Physical Processing (In Situ) Physical processing (i.e. Soil Washing, Gypsum, Disking, etc.)?	No
In Situ Ground Water Abatement GW Abatement pursuant to 19.15.30 NMAC?	No
Remediation Other Other (Non-listed remedial process)?	No
Deferral Request Only	
Requesting a deferral of the remediation closure due date with the approval of this submission	No
Remediation Closure Request (Only answer the questions in this group if seeking remediation closure for this release because all remediation steps have been completed)	
Requesting a remediation closure approval with this submission?	Yes
Have the lateral and vertical extents of contamination been fully delineated?	Yes
Was this release entirely contained within a lined containment area?	No
Restored Areas For Production Use All areas reasonably needed for production or subsequent drilling operations have been stabilized, returned to the sites existing grade, and have a soil cover that prevents ponding of water, minimizing dust and erosion?	Yes

Total Surface Area (sq ft) Remediated What was the total surface area (sq ft) remediated?	500
Total Volume (cu yd) Remediated What was the total volume (cubic yards) remediated?	15
Reclaimed to Condition Prior Release All areas not reasonably needed for production or subsequent drilling operations have been reclaimed to contain a minimum of four ft of non-waste contain earthen material with concentrations less than 600 mg/kg chlorides, 100 mg/kg TPH, 50 mg/kg BTEX and 10 mg/kg Benzene?	Yes
Total Surface Area (sq ft) Reclaimed What was the total surface area (in sq ft) reclaimed?	0
Remediation Summary Summarize any additional remediation activities not included by answers (above).	The Red Lake 32 State #002H Battery project involved full delineation of the impacted area, a remediation event, and backfilling to restore the natural contour. All confirmation samples met NMOCD closure criteria, and no further remediation is required.



Pima Environmental Services, LLC
5614 N. Lovington Hwy.
Hobbs, NM 88240
575-964-7740

April 2, 2025

NMOCD District 2
811 S. First St
Artesia, NM, 88210

RE: Site Assessment, Remediation, and Closure Report
Red Lake 32 State #002H Battery
API No. 30-015-44948
GPS: Latitude 32.784483 Longitude -104.292631
UL- P, Section 32, Township 17S, Range 27E
NMOCD Reference No. NRM2034247342

Spur Energy Partners (Spur) has contracted Pima Environmental Services, LLC (Pima) to perform a site assessment, remediation, and write this closure report for the release of produced water that happened on the Red Lake 32 State #002H (Red Lake). An initial C-141 was submitted on November 25, 2020. This incident was assigned Incident ID NRM2034247342, by the New Mexico Oil Conservation Division (NMOCD).

Site Characterization

The Red Lake is located approximately 3.11 miles southwest of Riverside, NM. This spill site is in Unit P, Section 32, Township 17S, Range 27E, Latitude 32.784483 Longitude -104.292631, Eddy County, NM. A Location Map can be found in Figure 1.

According to the New Mexico Bureau of Geology and Mineral Resources, the geological classification of the area includes the Artesian Group from the Guadalupian, as detailed in Appendix B. The predominant soil type in this region is the Gypsum land, characterized by 2 percent slopes, as identified in the United States Department of Agriculture Natural Resources Conservation Service soil survey (Appendix B). The drainage courses in this area are classified as well-drained. Additionally, the geological assessment indicates a high potential for karst geology near Red Lake (see Figure 3). The nearest significant watercourse is Brantley Lake, located approximately 14.76 miles to the southwest (Appendix A).

Based on the well water data from the New Mexico Office of the State Engineer, the depth to the nearest groundwater in this vicinity measures 101 feet below grade surface (BGS), positioned roughly 0.68 miles away from the Red Lake, drilled on March 29, 2023. Conversely, as per the United States Geological Survey well water data, the nearest groundwater depth in this region is recorded at 84.54 feet BGS, situated approximately 0.51 miles away from the Red Lake, with the last gauge conducted on January 21, 2015. For detailed references to water surveys and the precise locations of water wells, please refer to Appendix A, inclusive of the relevant maps.

Table 1 NMAC and Closure Criteria 19.15.29

Depth to Groundwater (Appendix A)	Constituent & Limits				
	Chlorides	Total TPH	GRO+DRO	BTEX	Benzene
<50' (High Karst)	600 mg/kg	100 mg/kg		50 mg/kg	10 mg/kg
51-100'	10,000 mg/kg	2,500 mg/kg	1,000 mg/kg	50 mg/kg	10 mg/kg
>100'	20,000 mg/kg	2,500 mg/kg	1,000 mg/kg	50 mg/kg	10 mg/kg

Reference Figure 2 for a Topographic map.

Release Information

NRM2034247342: On November 25, 2020, the reported cause of the release was a leak identified on the suction side of the water transfer pump at the poly transition. The fluid was released within an unlined containment area.

A Site Map can be found in Figure 4.

Site Assessment and Soil Sampling Results

On February 14, 2025, Pima Environmental Services mobilized personnel to the site to conduct delineation activities. Sampling was carried out within the earthen berm containment area surrounding the release point. Five bottom samples (S1–S5) were collected at a depth of 0.5 feet below ground surface (bgs) to assess vertical impact, while five sidewall samples (SW1–SW5) were obtained from the outermost extent of the release to evaluate horizontal impact. Results from this sampling event are summarized in the accompanying data table, with the full laboratory report provided in Appendix E.

2-14-25 Soil Sample Results

NMOCD Table 1 Closure Criteria 19.15.29 NMAC (Depth to Groundwater is <50'								
Spur Energy - Red Lake 32 State #002H Battery								
Date: 2-14-25		NM Approved Laboratory Results						
Sample ID	Depth (BGS)	BTEX mg/kg	Benzene mg/kg	GRO mg/kg	DRO mg/kg	MRO mg/kg	Total TPH mg/kg	Cl mg/kg
S1	0.5'	<0.300	<0.050	<10.0	<10.0	<10.0	<30.0	464
S2	0.5'	<0.300	<0.050	<10.0	<10.0	<10.0	<30.0	96
S3	0.5'	<0.300	<0.050	<10.0	<10.0	<10.0	<30.0	5600
S4	0.5'	<0.300	<0.050	<10.0	<10.0	<10.0	<30.0	208
S5	0.5'	<0.300	<0.050	<10.0	<10.0	<10.0	<30.0	176
SW1	0-5'	<0.300	<0.050	<10.0	<10.0	<10.0	<30.0	464
SW2	0-5'	<0.300	<0.050	<10.0	<10.0	<10.0	<30.0	1680
SW3	0-5'	19.9	<0.050	388	8820	2050	11277.9	688
SW4	0-5'	<0.300	<0.050	<10.0	<10.0	<10.0	<30.0	688
SW5	0-5'	<0.300	<0.050	<10.0	<10.0	<10.0	<30.0	16

ND- Analyte Not Detected

Remediation Activities

Between March 10 and March 28, 2025, Pima Environmental deployed a hand-shoveling crew to excavate the area overlapping soil samples S3, SW2, SW3, and SW4. The section associated with sample S3 was excavated to a depth of 2 feet below ground surface (bgs). Sidewall sample SW2 was extended 5.5 feet, SW3 was extended 4 feet, and SW4 was extended approximately 6 feet. The area corresponding to sample SW2 was located adjacent to the engineered berm, which was also excavated to a depth of approximately six inches. The total excavation area covered roughly 500 square feet and resulted in the removal of an estimated 15 cubic yards of contaminated soil. All impacted material was securely transported to Lea Land, a disposal facility approved by the New Mexico Oil Conservation Division (NMOCD).

On March 14, 2025, Spur Energy proactively submitted a 48-hour sampling notification as part of the preliminary preparations leading up to the final confirmation sampling event. This precautionary step was taken with the expectation that all sampling results would fall below the closure criteria established by the New Mexico Oil Conservation Division (NMOCD). Should the results confirm compliance, the plan is to move forward with the closure process. For additional details, the 48-hour notification can be referenced in Appendix C.

On March 18, 2025, a Pima field technician conducted a confirmation sampling event at the Red Lake site. A total of five bottom samples (CS1–CS5) were collected from the base of the excavation at a depth of 2 feet below ground surface (bgs). In addition, six sidewall samples (CSW1–CSW6) were collected, representing the full vertical extent of the excavation sidewalls—from the bottom to the surface. Each soil sample was composed of a five-point composite to ensure representative results.

The 2-foot excavation area to the north measured approximately 270 square feet. From this area, three bottom samples (CS1–CS3) were collected, along with three sidewall samples (CSW3–CSW5) from a 50-foot perimeter. The western excavation overlapped the existing earthen berm, which was removed, and extended 5.5 feet, covering an area of approximately 180 square feet. Two bottom

samples (CS4–CS5) were collected from this section, and three sidewall samples (CSW1, CSW2, and CSW6) were obtained from the 74-foot sidewall perimeter, collected at a depth of 0.5 feet. The results from this sampling event are summarized in the accompanying data table. A detailed confirmation sampling map is provided in Figure 5.

03-18-25 Confirmation Soil Sample Results

NMOCD Table 1 Closure Criteria 19.15.29 NMAC (Depth to Groundwater is <50')								
Spur Energy RED LAKE 32 STATE 002H								
Date: 3-18-25		NM Approved Laboratory Results						
Sample ID	Depth (BGS)	BTEX mg/kg	Benzene mg/kg	GRO mg/kg	DRO mg/kg	MRO mg/kg	Total TPH mg/kg	Cl mg/kg
CS1	2'	<0.300	<0.050	<10.0	<10.0	<10.0	<30.0	16
CS2	2'	<0.300	<0.050	<10.0	<10.0	<10.0	<30.0	<16.0
CS3	2'	<0.300	<0.050	<10.0	<10.0	<10.0	<30.0	<16.0
CS4	0.5'	<0.300	<0.050	<10.0	<10.0	<10.0	<30.0	<16.0
CS5	0.5'	<0.300	<0.050	<10.0	<10.0	<10.0	<30.0	<16.0
CSW1	0-0.5'	<0.300	<0.050	<10.0	<10.0	<10.0	<30.0	<16.0
CSW2	0-0.5'	<0.300	<0.050	<10.0	<10.0	<10.0	<30.0	<16.0
CSW3	0-2'	<0.300	<0.050	<10.0	<10.0	<10.0	<30.0	16
CSW4	0-2"	<0.300	<0.050	<10.0	<10.0	<10.0	<30.0	16
CSW5	0-2"	<0.300	<0.050	<10.0	<10.0	<10.0	<30.0	16
CSW6	0-0.5"	<0.300	<0.050	<10.0	<10.0	<10.0	<30.0	<16.0

ND- Analyte Not Detected

Each soil sample was a 5-point composite derived from the excavated area, specifically representing an area not exceeding 200 square feet of the open excavation. A total of eleven (11) samples were collected for laboratory analysis for total chloride using EPA Method 300.0; benzene, toluene, ethylbenzene and total xylenes (BTEX) using EPA Method 8021B; and motor, diesel, and gasoline range organics (MRO, DRO, & GRO) by EPA Method 8015D. All samples were placed into laboratory supplied glassware, labeled, and maintained on ice until delivery to Cardinal Laboratories in Hobbs, New Mexico (Appendix E).

Upon confirmation that all soil samples met the closure standards set by the New Mexico Oil Conservation Division (NMOCD), clean backfill material was brought in and utilized to restore the excavated area, returning it to its original state.

Closure Request

After careful review, Pima requests that this incident, NRM2034247342, be closed. Spur Energy has complied with the applicable closure requirements set forth in rule 19.15.19.12 NMAC.

For questions or additional information, please feel free to contact:

Spur Energy – Katherine Purvis at 575-441-8619 or katherine.purvis@spurenergy.com

Pima Environmental Services – Sebastian Orozco at 619-721-4813 or Sebastian@pimaoil.com.

Attachments

Figures:

- 1- Location Map
- 2- Topographic Map
- 3- Karst Map
- 4- Initial Site Map
- 5- Confirmation Site Map

Appendices:

- Appendix A – Referenced Water Surveys
- Appendix B – Soil Survey and Geological Map
- Appendix C – 48 Hour Notification
- Appendix D – Photographic Documentation
- Appendix E – Laboratory Reports

Figures:

Figure 1- Location Map

Figure 2- Topographic Map

Figure 3- Karst Map



Figure 4- Initial Site Map

Figure 5- Confirmation Site Map

RED LAKE 32 STATE #002H BATTERY

Spur Energy
API: 30-015-44948
Eddy County, NM
NRM2034247342
Location Map

Legend

-  3.11 Miles SW of Riverside
-  RED LAKE 32 STATE #002H BATTERY



Google Earth

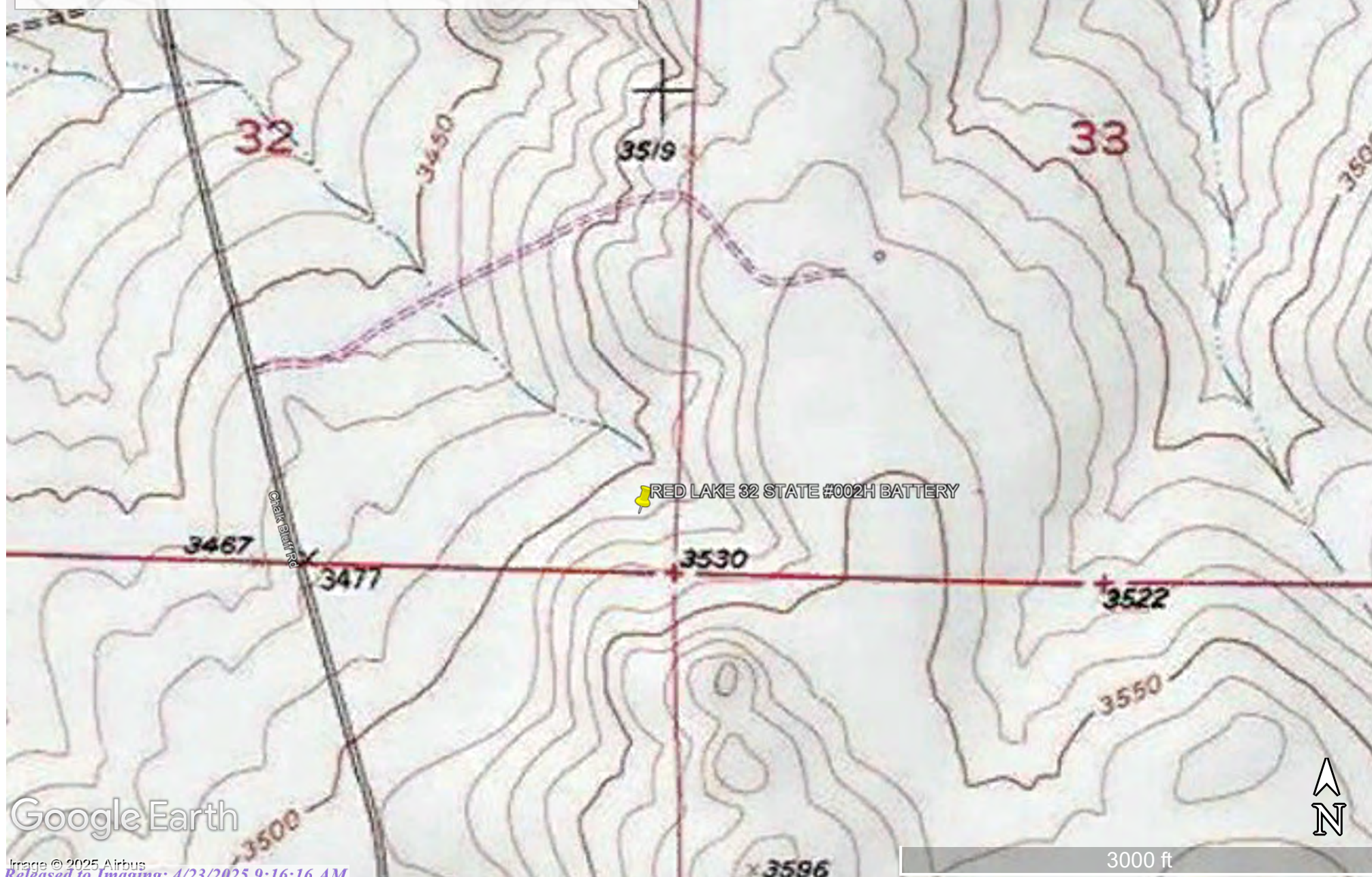
Image © 2025 Airbus

RED LAKE 32 STATE #002H BATTERY

Spur Energy
API: 30-015-44948
Eddy County, NM
NRM2034247342
Topographic Map

Legend





 RED LAKE 32 STATE #002H BATTERY

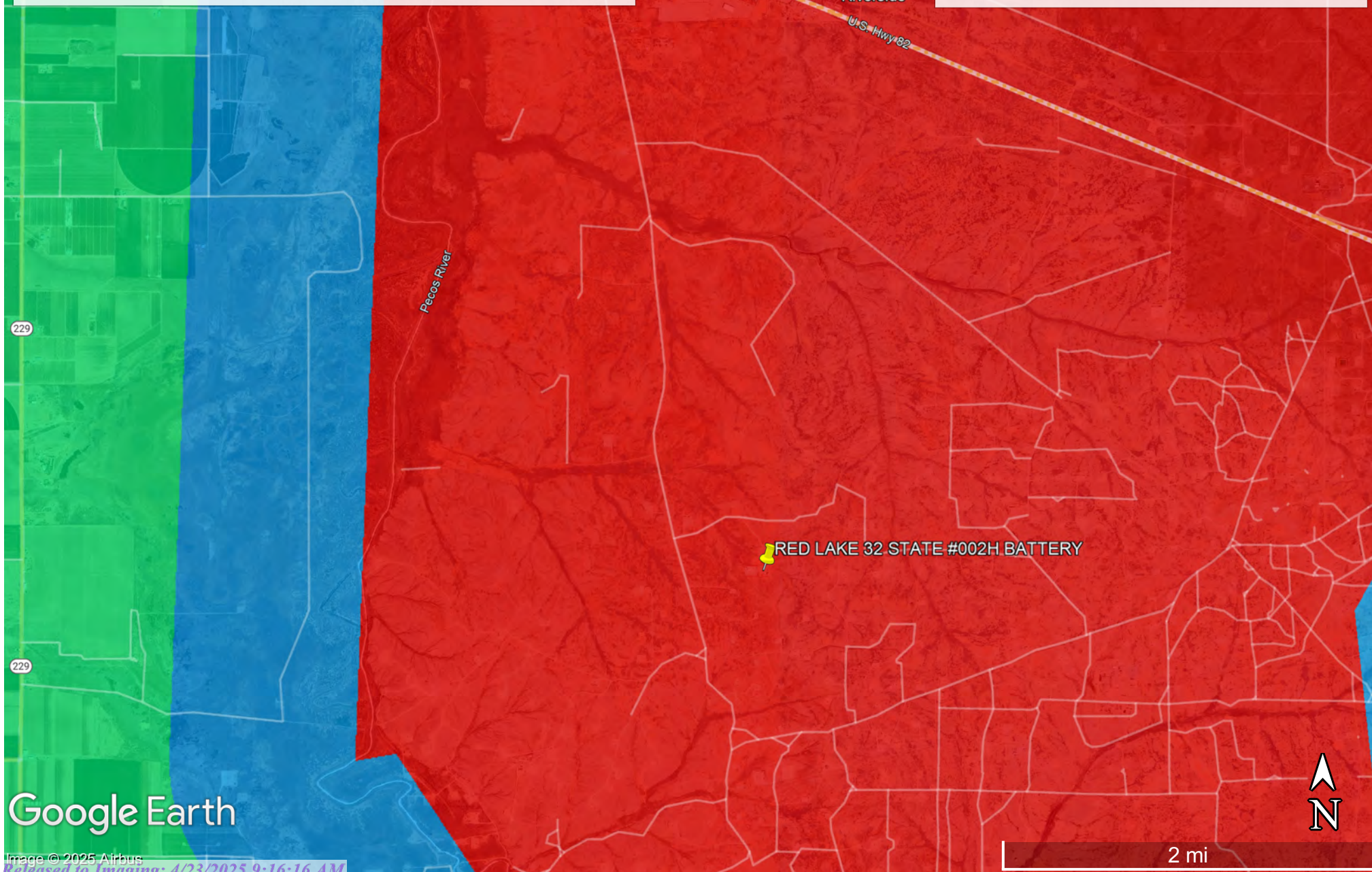


RED LAKE 32 STATE #002H BATTERY

Spur Energy
API: 30-015-44948
Eddy County, NM
NRM2034247342
Karst Map

Legend

-  High Karst
-  Low Karst
-  Medium Karst
-  RED LAKE 32 STATE #002H BATTERY



Google Earth

Image © 2025 Airbus





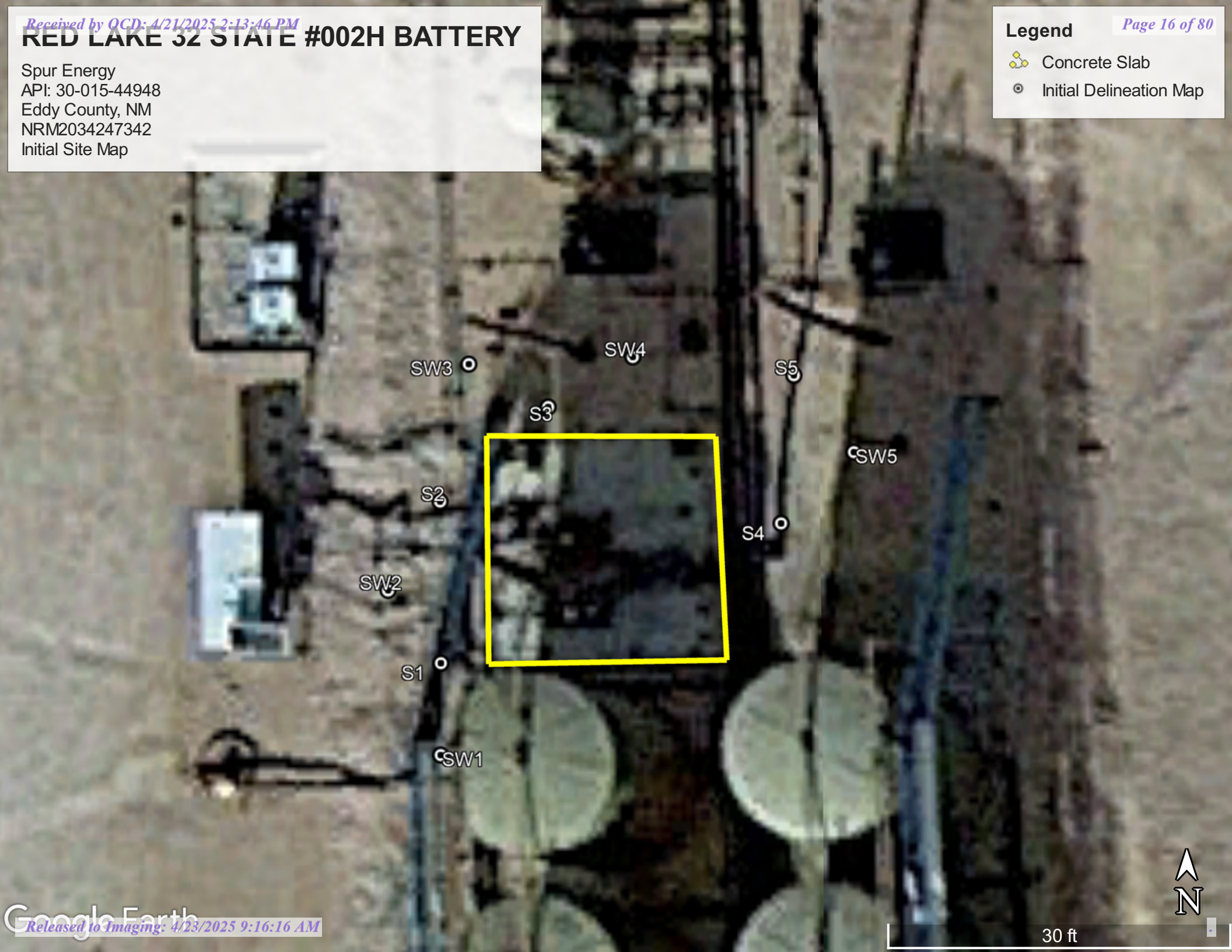
2 mi

RED LAKE 32 STATE #002H BATTERY

Spur Energy
API: 30-015-44948
Eddy County, NM
NRM2034247342
Initial Site Map

Legend






-  Concrete Slab
-  Initial Delineation Map

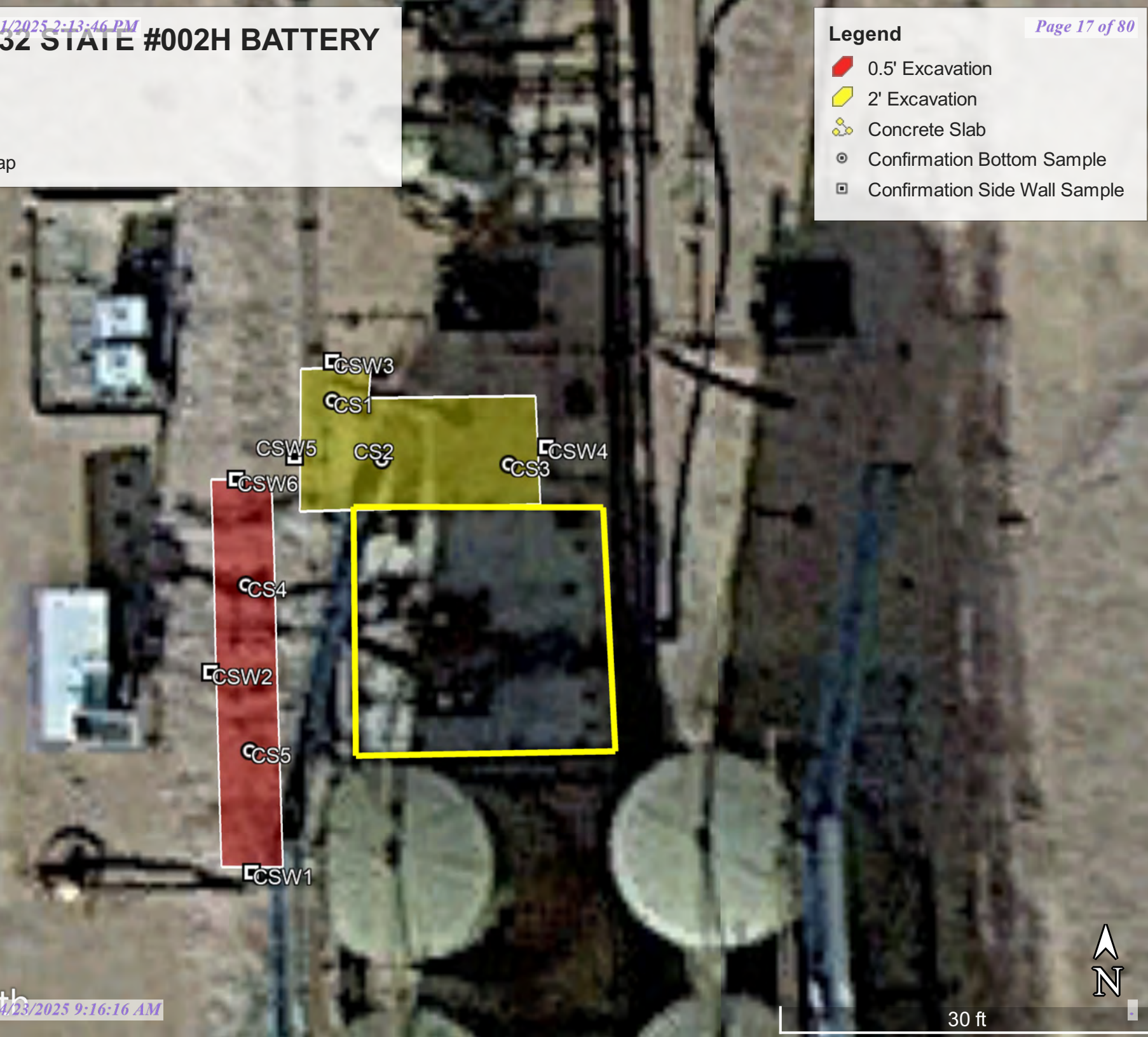


RED LAKE 32 STATE #002H BATTERY

Spur Energy
API: 30-015-44948
Eddy County, NM
NRM2034247342
Confirmation Site Map

Legend

-  0.5' Excavation
-  2' Excavation
-  Concrete Slab
-  Confirmation Bottom Sample
-  Confirmation Side Wall Sample



Appendix A

Water Surveys:


- OSE
- USGS
- Surface Water Map

Point of Diversion Summary

quarters are 1=NW 2=NE 3=SW 4=SE

quarters are smallest to largest

NAD83 UTM in meters

Well Tag	POD Nbr	Q64	Q16	Q4	Sec	Tws	Rng	X	Y	Map
NA	RA 13283 POD1	NE	SW	NW	33	17S	27E	566598.6	3628656.5	

* UTM location was derived from PLSS - see Help

Driller License:

1249

Driller Company:

ATKINS ENGINEERING ASSOC. INC.

Driller Name:

JACKIE ATKINS

Drill Start Date:

2023-03-29

Drill Finish Date:

2023-03-29

Plug Date:

2023-04-03

Log File Date:

2023-06-15

PCW Rcv Date:

Source:

Pump Type:

Pipe Discharge Size:

Estimated Yield:

Casing Size:

Depth Well:

101

Depth Water:

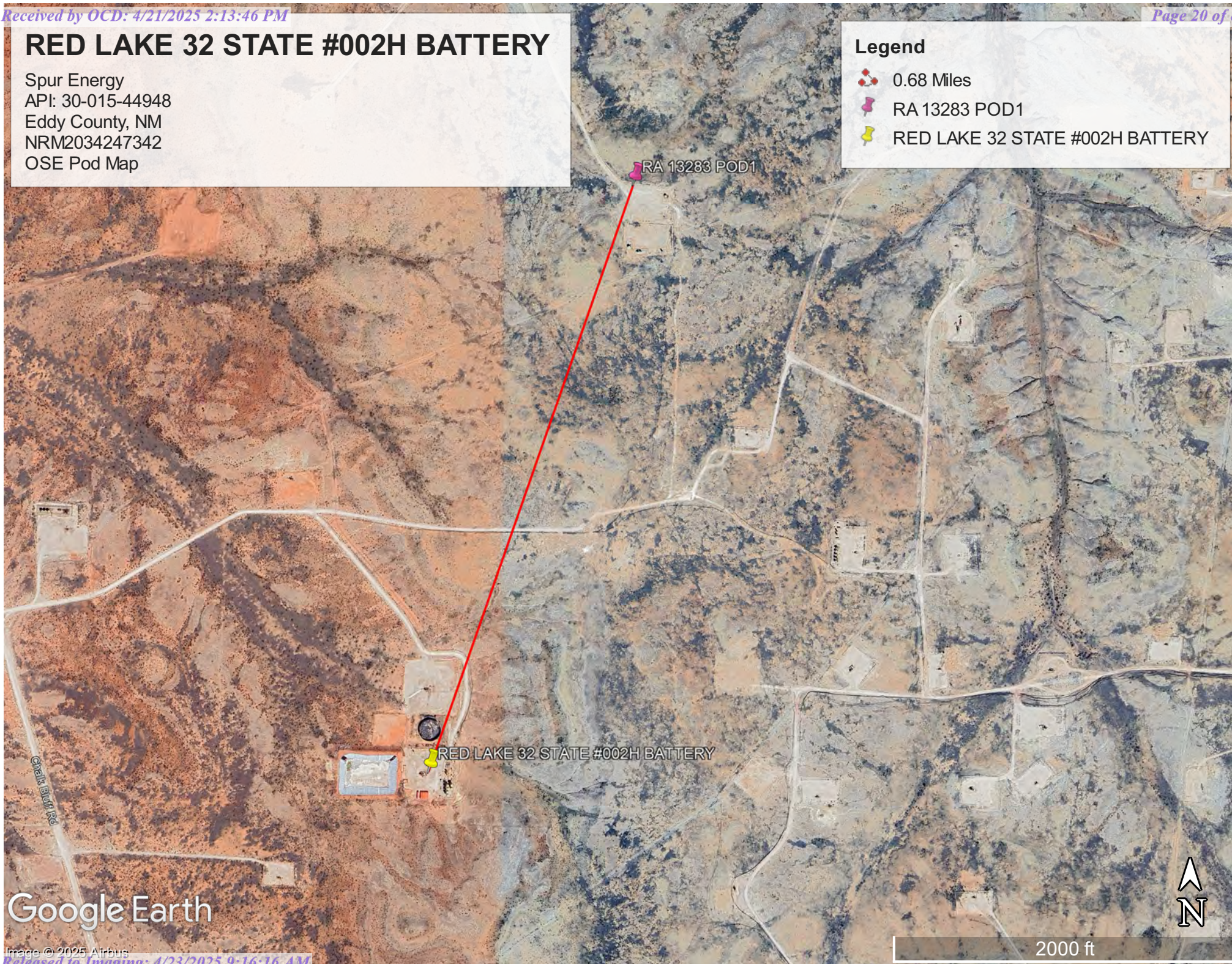
The data is furnished by the NMOSE/ISC and is accepted by the recipient with the expressed understanding that the OSE/ISC make no warranties, expressed or implied, concerning the accuracy, completeness, reliability, usability, or suitability for any particular purpose of the data.

RED LAKE 32 STATE #002H BATTERY

Spur Energy
API: 30-015-44948
Eddy County, NM
NRM2034247342
OSE Pod Map

Legend

- 0.68 Miles
- RA 13283 POD1
- RED LAKE 32 STATE #002H BATTERY



Google Earth

Image © 2025 Airbus



[USGS Home](#)
[Contact USGS](#)
[Search USGS](#)

National Water Information System: Web Interface

USGS Water Resources

Data Category:

Groundwater

Geographic Area:

United States

GO

Click to hide News Bulletins

- Explore the *NEW* [USGS National Water Dashboard](#) interactive map to access real-time water data from over 13,500 stations nationwide.

Groundwater levels for the Nation

 Important: [Next Generation Monitoring Location Page](#)

Search Results -- 1 sites found

site_no list =

- 324715104180201

Minimum number of levels = 1

[Save file of selected sites](#) to local disk for future upload

USGS 324715104180201 17S.27E.32.32000

Available data for this site

Groundwater: Field measurements

GO

Eddy County, New Mexico

Hydrologic Unit Code 13060007

Latitude 32°47'15", Longitude 104°18'02" NAD27

Land-surface elevation 3,454 feet above NAVD88

The depth of the well is 400 feet below land surface.

This well is completed in the Roswell Basin aquifer system (S400RSWLBS) national aquifer.

This well is completed in the San Andres Limestone (313SADR) local aquifer.

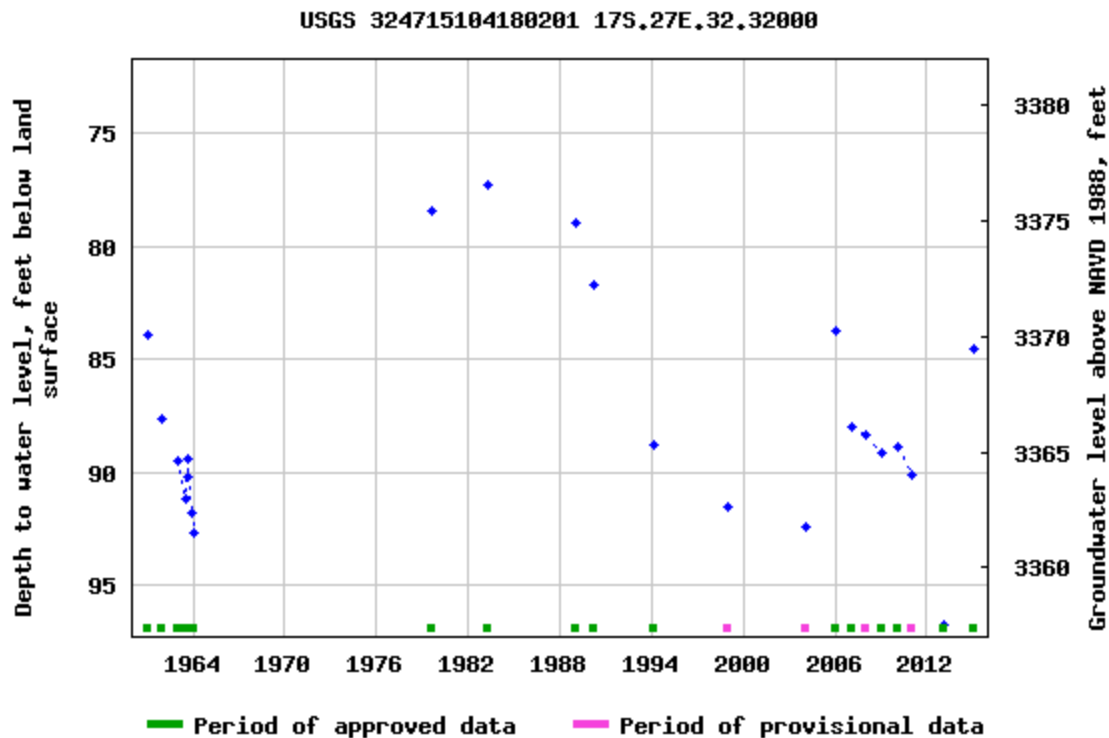
Output formats

[Table of data](#)

[Tab-separated data](#)

[Graph of data](#)

[Reselect period](#)



Breaks in the plot represent a gap of at least one year between field measurements.

[Download a presentation-quality graph](#)

[Questions or Comments](#)

[Help](#)

[Data Tips](#)

[Explanation of terms](#)

[Subscribe for system changes](#)

[Accessibility](#)

[FOIA](#)

[Privacy](#)

[Policies and Notices](#)

[U.S. Department of the Interior](#) | [U.S. Geological Survey](#)

Title: Groundwater for USA: Water Levels

URL: <https://nwis.waterdata.usgs.gov/nwis/gwlevels?>

Page Contact Information: [USGS Water Data Support Team](#)

Page Last Modified: 2025-02-11 11:00:03 EST

0.74 0.59 nadww01



RED LAKE 32 STATE #002H BATTERY

Spur Energy
API: 30-015-44948
Eddy County, NM
NRM2034247342
USGS Map

Legend

- 0.51 Miles
- RED LAKE 32 STATE #002H BATTERY
- USGS 324715104180201

USGS 324715104180201

RED LAKE 32 STATE #002H BATTERY

Chalk Butte Rd

Chalk Butte Rd

Google Earth

Image © 2025 Airbus

Released to Imaging: 4/23/2025 9:16:16 AM






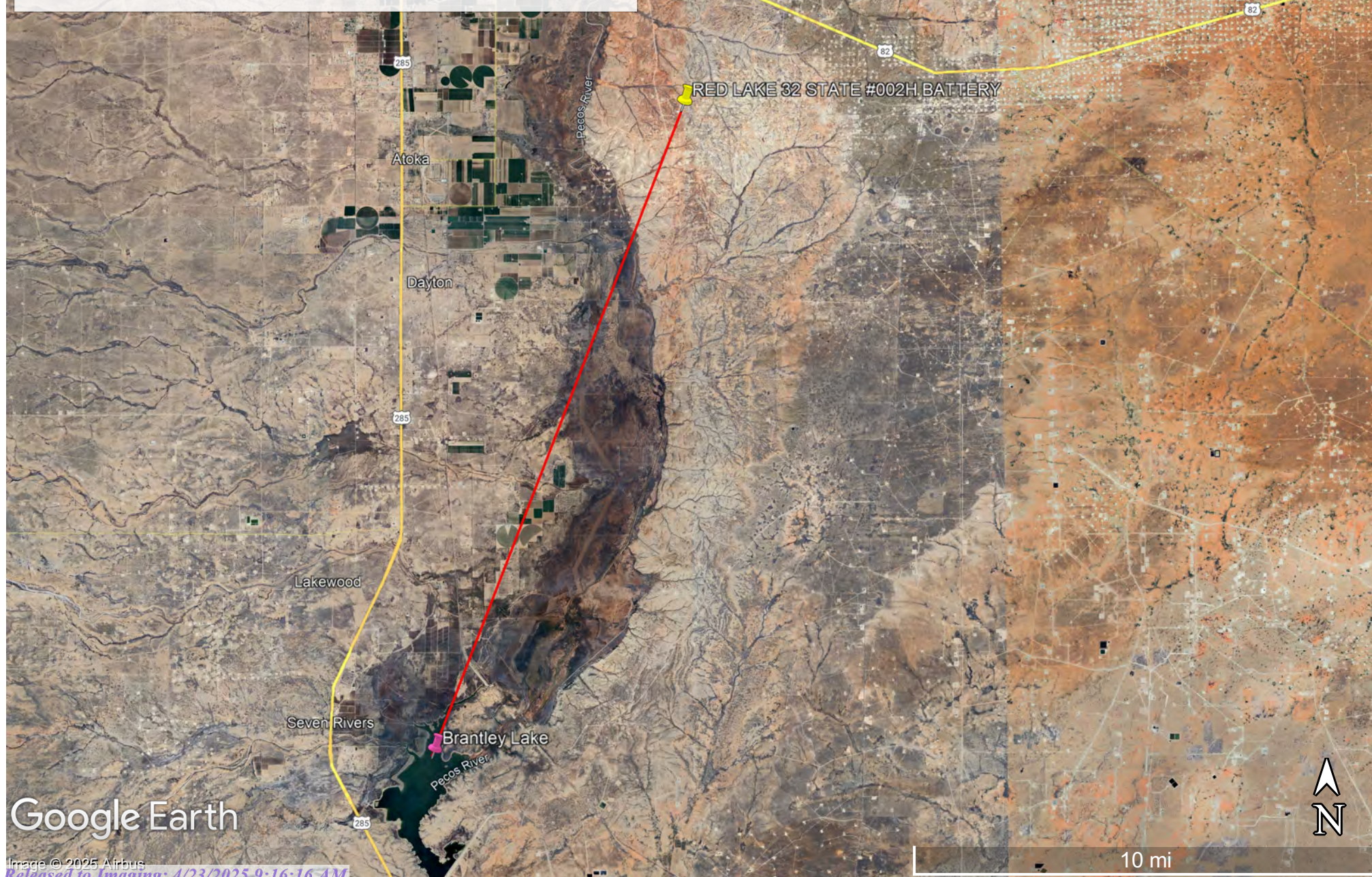
1000 ft

RED LAKE 32 STATE #002H BATTERY

Spur Energy
API: 30-015-44948
Eddy County, NM
NRM2034247342
Surface Water Map

Legend

-  14.76 Miles
-  Brantley Lake
-  RED LAKE 32 STATE #002H BATTERY



Appendix B

- Soil Survey & Soil Maps
- Geological Data
- FEMA Flood Map
- Wetlands Map

Map Unit Description: Gypsum land---Eddy Area, New Mexico

Eddy Area, New Mexico

GA—Gypsum land

Map Unit Setting

National map unit symbol: 1w4f

Elevation: 1,250 to 5,000 feet

Mean annual precipitation: 10 to 25 inches

Mean annual air temperature: 57 to 66 degrees F

Frost-free period: 190 to 225 days

Farmland classification: Not prime farmland

Map Unit Composition

Gypsum land: 98 percent

Minor components: 2 percent

Estimates are based on observations, descriptions, and transects of the mapunit.

Description of Gypsum Land

Setting

Landform: Ridges, plains, hills

Landform position (two-dimensional): Shoulder, backslope, footslope, toeslope

Landform position (three-dimensional): Side slope, head slope, nose slope, crest

Down-slope shape: Convex

Across-slope shape: Linear

Parent material: Residuum weathered from gypsum

Interpretive groups

Land capability classification (irrigated): None specified

Land capability classification (nonirrigated): 8s

Hydric soil rating: No

Minor Components

Reeves

Percent of map unit: 1 percent

Ecological site: R070BC033NM - Salty Bottomland

Hydric soil rating: No

Cottonwood

Percent of map unit: 1 percent

Ecological site: R070BC033NM - Salty Bottomland

Hydric soil rating: No

Data Source Information

Soil Survey Area: Eddy Area, New Mexico

Survey Area Data: Version 20, Sep 3, 2024



Soil Map—Eddy Area, New Mexico



Natural Resources
Conservation Service

Web Soil Survey
National Cooperative Soil Survey

2/11/2025
Page 1 of 3

Soil Map—Eddy Area, New Mexico

MAP LEGEND

Area of Interest (AOI)

 Area of Interest (AOI)

Soils

 Soil Map Unit Polygons

 Soil Map Unit Lines

 Soil Map Unit Points

Special Point Features



Blowout



Borrow Pit



Clay Spot



Closed Depression



Gravel Pit



Gravelly Spot



Landfill



Lava Flow



Marsh or swamp



Mine or Quarry



Miscellaneous Water



Perennial Water



Rock Outcrop



Saline Spot



Sandy Spot



Severely Eroded Spot



Sinkhole



Slide or Slip



Sodic Spot



Spoil Area



Stony Spot



Very Stony Spot



Wet Spot



Other



Special Line Features

Water Features



Streams and Canals

Transportation



Rails



Interstate Highways



US Routes



Major Roads



Local Roads

Background



Aerial Photography

MAP INFORMATION

The soil surveys that comprise your AOI were mapped at 1:20,000.

Warning: Soil Map may not be valid at this scale.

Enlargement of maps beyond the scale of mapping can cause misunderstanding of the detail of mapping and accuracy of soil line placement. The maps do not show the small areas of contrasting soils that could have been shown at a more detailed scale.

Please rely on the bar scale on each map sheet for map measurements.

Source of Map: Natural Resources Conservation Service

Web Soil Survey URL:

Coordinate System: Web Mercator (EPSG:3857)

Maps from the Web Soil Survey are based on the Web Mercator projection, which preserves direction and shape but distorts distance and area. A projection that preserves area, such as the Albers equal-area conic projection, should be used if more accurate calculations of distance or area are required.

This product is generated from the USDA-NRCS certified data as of the version date(s) listed below.

Soil Survey Area: Eddy Area, New Mexico

Survey Area Data: Version 20, Sep 3, 2024

Soil map units are labeled (as space allows) for map scales 1:50,000 or larger.

Date(s) aerial images were photographed: Nov 12, 2022—Dec 2, 2022

The orthophoto or other base map on which the soil lines were compiled and digitized probably differs from the background imagery displayed on these maps. As a result, some minor shifting of map unit boundaries may be evident.

Map Unit Legend

Map Unit Symbol	Map Unit Name	Acres in AOI	Percent of AOI
GA	Gypsum land	6.7	100.0%
Totals for Area of Interest		6.7	100.0%

(<https://www.usgs.gov/>)

Mineral Resources (<https://www.usgs.gov/energy-and-minerals/mineral-resources-program>)

/ Online Spatial Data (/) / Geology (/geology/) / by state (/geology/state/)

/ New Mexico (/geology/state/state.php?state=NM)

Artesia Group

XML (/geology/state/xml/NMPat;0)

JSON (/geology/state/json/NMPat;0)

Shapefile (/geology/state/unit-shape.php?unit=NMPat;0)

Shelf facies forming broad south-southeast trending outcrop from Glorieta to Artesia area; includes Tansill, Yates, Seven Rivers, Queen and Grayburg Formations (Guadalupian). May locally include Moenkopi Formation (Triassic) at top.

State	New Mexico (/geology/state/state.php?state=NM)		
Name	Artesia Group		
Geologic age	Guadalupian		
Lithologic constituents	Major		
	Sedimentary > Carbonate > Dolostone	(Bed)	no lith description on map - description from GEOLEX
	Sedimentary > Chemical > Evaporite > Anhydrite	(Bed)	no lith description on map - description from GEOLEX
	Sedimentary > Clastic > Mixed-clastic	(Bed)	no lith description on map - description from GEOLEX - siltstone, sandstone, shale in various amounts

References

Green, G.N., Jones, G.E., and Anderson, O.J., 1997, The Digital Geologic Map of New Mexico in ARC/INFO Format: U.S. Geological Survey Open-File Report 97-0052, 9 p., scale 1:500,000.

<https://pubs.er.usgs.gov/publication/ofr9752>

(<https://pubs.er.usgs.gov/publication/ofr9752>)

USGS Geologic Names lexicon found at:

<http://ngmdb.usgs.gov/Geolex/>

<https://ngmdb.usgs.gov/Geolex/search>

(<https://ngmdb.usgs.gov/Geolex/search>)

NGMDB product

NGMDB product page for 22974

(https://ngmdb.usgs.gov/Prodesc/proddesc_22974.htm)

Counties

Chaves (/geology/state/fips-unit.php?code=f35005) - DeBaca (/geology/state/fips-unit.php?code=f35011) - Eddy (/geology/state/fips-unit.php?code=f35015) - Guadalupe (/geology/state/fips-unit.php?code=f35019) - Lincoln (/geology/state/fips-unit.php?code=f35027) - Otero (/geology/state/fips-unit.php?code=f35035) - San Miguel (/geology/state/fips-unit.php?code=f35047) - Santa Fe (/geology/state/fips-unit.php?code=f35049) - Sierra (/geology/state/fips-unit.php?code=f35051) - Socorro (/geology/state/fips-unit.php?code=f35053) - Torrance (/geology/state/fips-unit.php?code=f35057)

DOI Privacy Policy (<https://www.doi.gov/privacy>) | Legal (https://www.usgs.gov/laws/policies_notices.html) |

Accessibility (<https://www2.usgs.gov/laws/accessibility.html>) | Site Map (<https://www.usgs.gov/sitemap.html>) |

Contact USGS (<https://answers.usgs.gov/>)

U.S. Department of the Interior (<https://www.doi.gov/>) | DOI Inspector General (<https://www.doiig.gov/>) |



White House (<https://www.whitehouse.gov/>) | E-gov (<https://www.whitehouse.gov/omb/management/egov/>) |

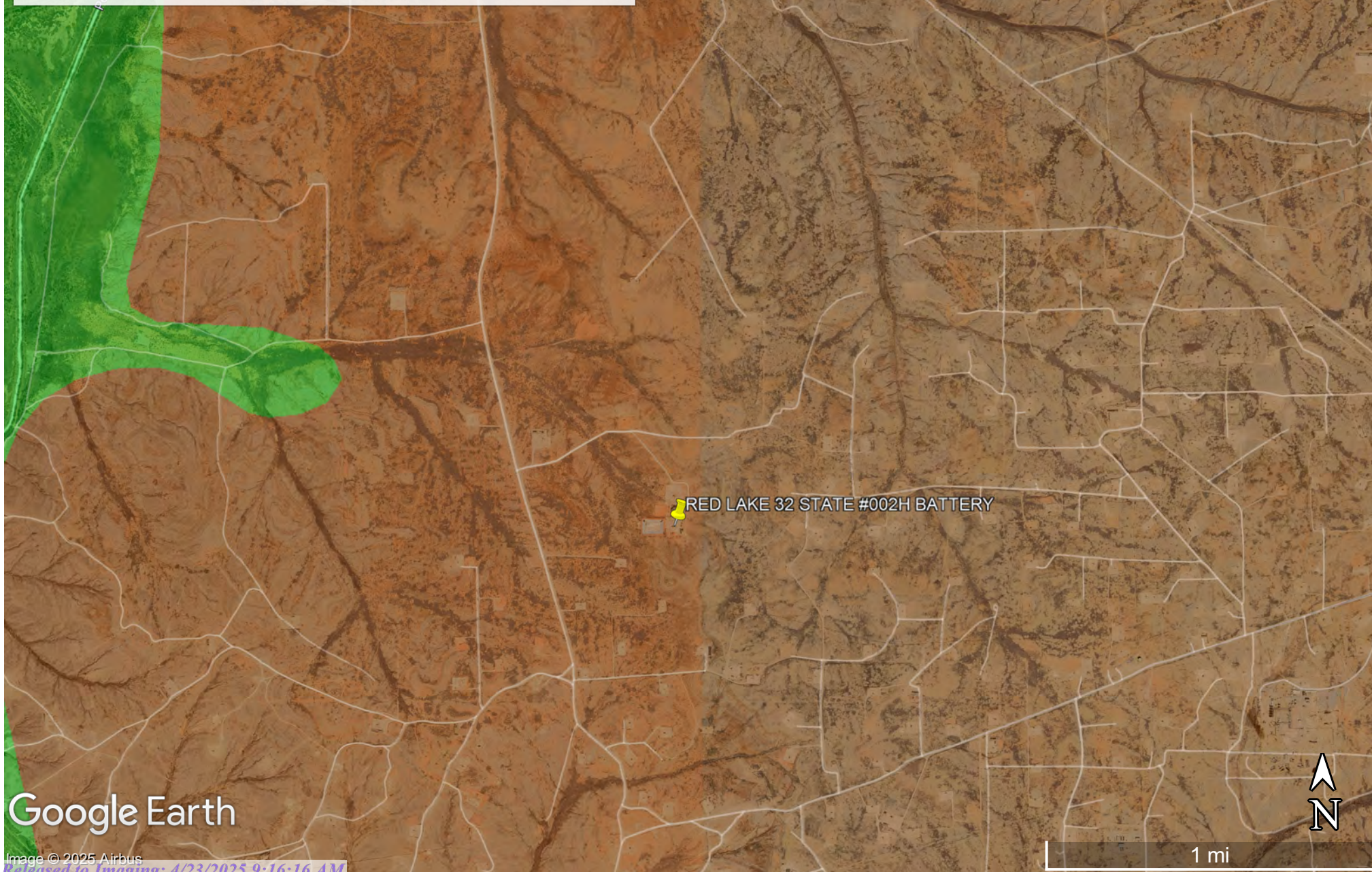
No Fear Act (<https://www.doi.gov/pmb/eeo/no-fear-act>) | FOIA (<https://www2.usgs.gov/foia>)

RED LAKE 32 STATE #002H BATTERY

Spur Energy
API: 30-015-44948
Eddy County, NM
NRM2034247342
Geological Map

Legend

-  Alluvium
-  Artesia Group
-  RED LAKE 32 STATE #002H BATTERY



Google Earth

National Flood Hazard Layer FIRMette



104°17'52"W 32°47'19"N



0 250 500 1,000 1,500 2,000 Feet

1:6,000

104°17'15"W 32°46'49"N

Released to Imaging: 4/23/2025 9:16:16 AM

Basemap Imagery Source: USGS National Map 2023

Legend

SEE FIS REPORT FOR DETAILED LEGEND AND INDEX MAP FOR FIRM PANEL LAYOUT

SPECIAL FLOOD HAZARD AREAS		Without Base Flood Elevation (BFE) Zone A, V, A99
		With BFE or Depth Zone AE, AO, AH, VE, AR
		Regulatory Floodway
OTHER AREAS OF FLOOD HAZARD		0.2% Annual Chance Flood Hazard, Areas of 1% annual chance flood with average depth less than one foot or with drainage areas of less than one square mile Zone X
		Future Conditions 1% Annual Chance Flood Hazard Zone X
		Area with Reduced Flood Risk due to Levee. See Notes. Zone X
		Area with Flood Risk due to Levee Zone D
OTHER AREAS		NO SCREEN Area of Minimal Flood Hazard Zone X
		Effective LOMRs
		Area of Undetermined Flood Hazard Zone D
GENERAL STRUCTURES		Channel, Culvert, or Storm Sewer
		Levee, Dike, or Floodwall
OTHER FEATURES		20.2 Cross Sections with 1% Annual Chance Water Surface Elevation
		17.5
		Coastal Transect
		Base Flood Elevation Line (BFE)
		Limit of Study
		Jurisdiction Boundary
		Coastal Transect Baseline
MAP PANELS		Digital Data Available
		No Digital Data Available
		Unmapped



The pin displayed on the map is an approximate point selected by the user and does not represent an authoritative property location.

This map complies with FEMA's standards for the use of digital flood maps if it is not void as described below. The basemap shown complies with FEMA's basemap accuracy standards

The flood hazard information is derived directly from the authoritative NFHL web services provided by FEMA. This map was exported on 2/11/2025 at 2:49 PM and does not reflect changes or amendments subsequent to this date and time. The NFHL and effective information may change or become superseded by new data over time.

This map image is void if the one or more of the following map elements do not appear: basemap imagery, flood zone labels, legend, scale bar, map creation date, community identifiers, FIRM panel number, and FIRM effective date. Map images for unmapped and unmodernized areas cannot be used for regulatory purposes.



Wetlands Map



February 11, 2025

Wetlands

- Estuarine and Marine Deepwater
- Estuarine and Marine Wetland

- Freshwater Emergent Wetland
- Freshwater Forested/Shrub Wetland
- Freshwater Pond

- Lake
- Other
- Riverine

This map is for general reference only. The US Fish and Wildlife Service is not responsible for the accuracy or currentness of the base data shown on this map. All wetlands related data should be used in accordance with the layer metadata found on the Wetlands Mapper web site.

Appendix C

○ 48-Hour Notification

Sebastian@pimaoil.com

From: OCDOnline@state.nm.us
Sent: Tuesday, February 11, 2025 5:27 PM
To: sebastian@pimaoil.com
Subject: The Oil Conservation Division (OCD) has accepted the application, Application ID: 430972

To whom it may concern (c/o Sebastian Orozco for Spur Energy Partners LLC),

The OCD has received the submitted *Notification for (Final) Sampling of a Release* (C-141N), for incident ID (n#) nRM2034247342.

The sampling event is expected to take place:

When: 02/14/2025 @ 08:00

Where: P-32-17S-27E 0 FNL 0 FEL (32.784483,-104.292631)

Additional Information: Andrew Franco
806-200-0054

Additional Instructions: 32.784483,-104.292631

An OCD representative may be available onsite at the date and time reported. In the absence or presence of an OCD representative, sampling pursuant to 19.15.29.12.D NMAC is required. Sampling must be performed following an approved sampling plan or pursuant to 19.15.29.12.D.(1).(c) NMAC. Should there be a change in the scheduled date and time of the sampling event, then another notification should be resubmitted through OCD permitting as soon as possible.

- **Failure to notify the OCD of sampling events including any changes in date/time per the requirements of 19.15.29.12.D.(1).(a) NMAC, may result in the remediation closure samples not being accepted.**

If you have any questions regarding this application, or don't know why you have received this email, please contact us.

New Mexico Energy, Minerals and Natural Resources Department
1220 South St. Francis Drive
Santa Fe, NM 87505

Sebastian@pimaoil.com

From: OCDOnline@state.nm.us
Sent: Friday, March 14, 2025 12:17 PM
To: sebastian@pimaoil.com
Subject: The Oil Conservation Division (OCD) has accepted the application, Application ID: 442624

To whom it may concern (c/o Sebastian Orozco for Spur Energy Partners LLC),

The OCD has received the submitted *Notification for (Final) Sampling of a Release* (C-141N), for incident ID (n#) nRM2034247342.

The sampling event is expected to take place:

When: 03/18/2025 @ 12:30

Where: P-32-17S-27E 0 FNL 0 FEL (32.784483,-104.292631)

Additional Information: Marisa Loya
575-416-0639

Additional Instructions: 32.784427°-104.292267°

An OCD representative may be available onsite at the date and time reported. In the absence or presence of an OCD representative, sampling pursuant to 19.15.29.12.D NMAC is required. Sampling must be performed following an approved sampling plan or pursuant to 19.15.29.12.D.(1).(c) NMAC. Should there be a change in the scheduled date and time of the sampling event, then another notification should be resubmitted through OCD permitting as soon as possible.

- **Failure to notify the OCD of sampling events including any changes in date/time per the requirements of 19.15.29.12.D.(1).(a) NMAC, may result in the remediation closure samples not being accepted.**

If you have any questions regarding this application, or don't know why you have received this email, please contact us.

New Mexico Energy, Minerals and Natural Resources Department
1220 South St. Francis Drive
Santa Fe, NM 87505



Appendix D

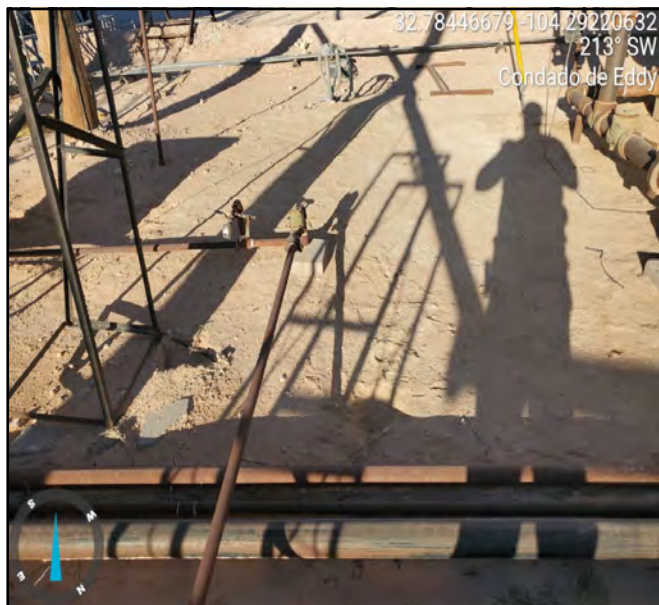
○ Photographic Documentation



PHOTOGRAPHIC DOCUMENTATION

SITE NAME: Red Lake 32 State 002H

Pre- excavation :



Photograph taken before excavation facing southwest.



Photograph taken before excavation facing south.



Photograph taken before excavation facing northeast.



Photograph taken before excavation facing east.

PHOTOGRAPHIC DOCUMENTATION

SITE NAME: Red Lake 32 State 002H

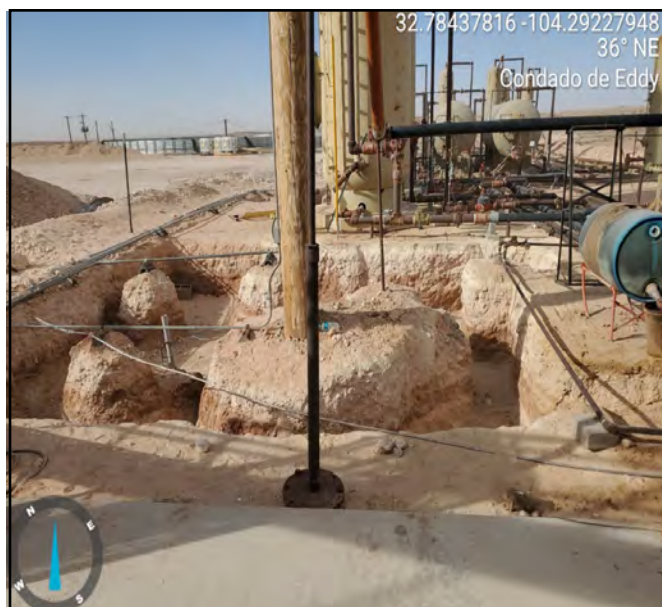
Excavation :



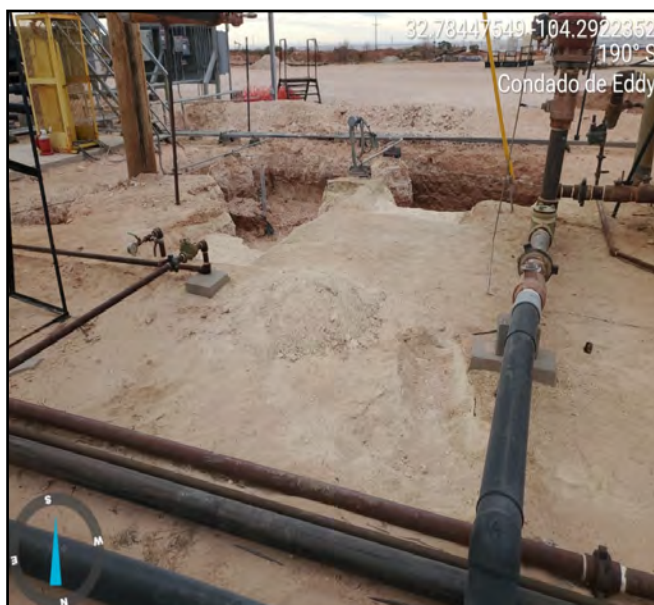
Photograph taken during the excavation process, facing southeast.



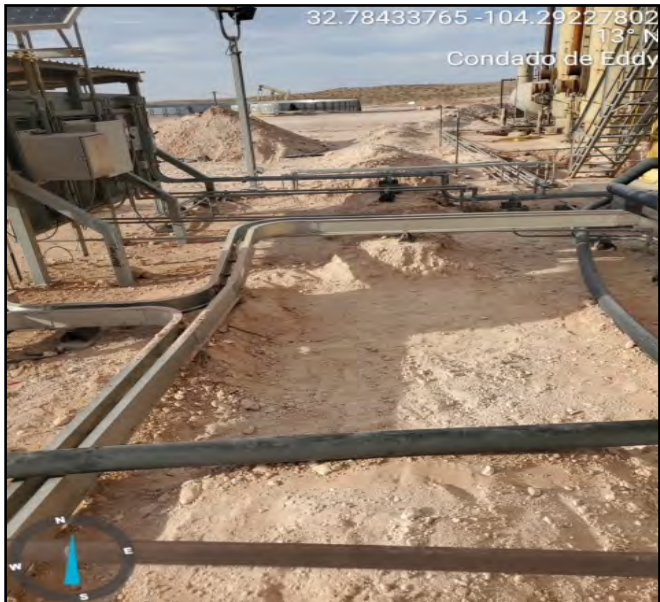
Photograph taken during the excavation process, facing south.



Photograph taken during the excavation process, facing northeast.



Photograph taken during the excavation process, facing south.



Photograph taken during the excavation process, facing north.



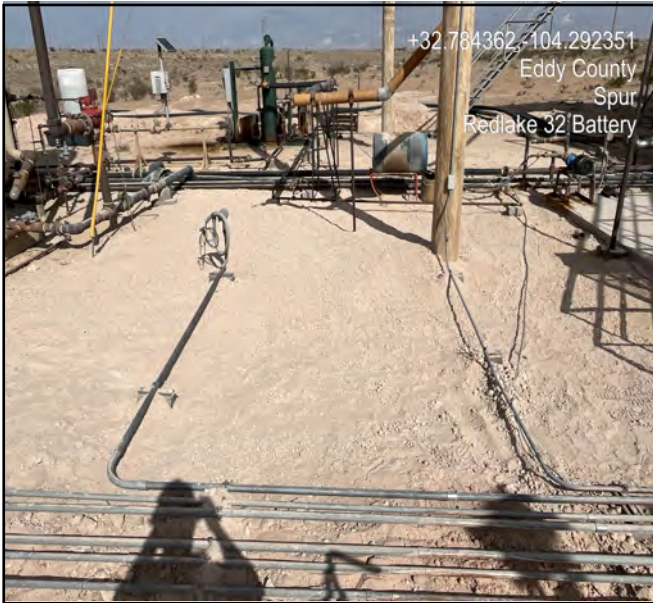
Photograph taken during the excavation process, facing southeast.



PHOTOGRAPHIC DOCUMENTATION

SITE NAME: Red Lake 32 State 002H

Post Excavation :



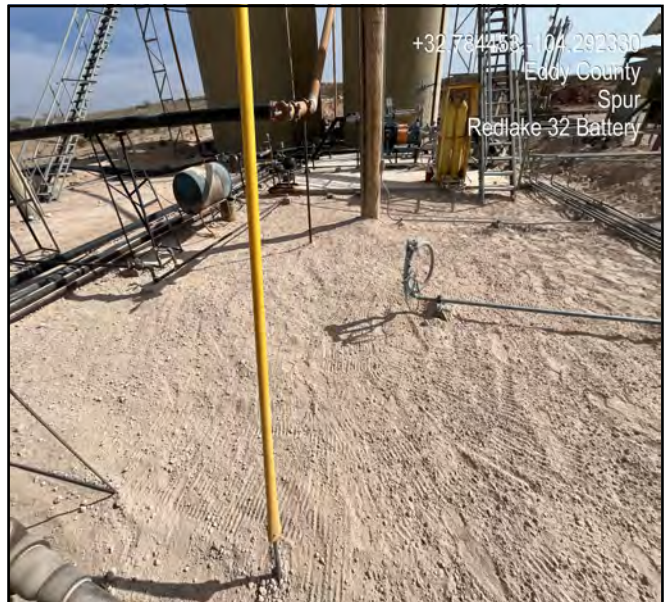
Photograph taken post excavation.



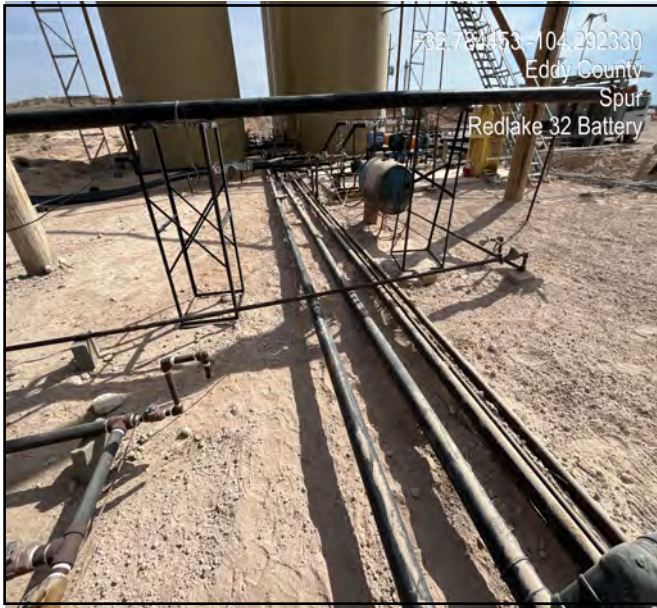
Photograph taken post excavation.



Photograph taken post excavation.



Photograph taken post excavation.



Photograph taken during the excavation process.



Photograph taken during the excavation process.

Appendix E

○ Laboratory Reports



PHONE (575) 393-2326 ° 101 E. MARLAND ° HOBBS, NM 88240

February 19, 2025

SEBASTIAN OROZCO

PIMA ENVIROMENTAL

1601 N TURNER STE. 500

HOBBS, NM 88240

RE: RED LAKE 32 STATE 002H

Enclosed are the results of analyses for samples received by the laboratory on 02/18/25 15:29.

Cardinal Laboratories is accredited through Texas NELAP under certificate number TX-C24-00112. Accreditation applies to drinking water, non-potable water and solid and chemical materials. All accredited analytes are denoted by an asterisk (*). For a complete list of accredited analytes and matrices visit the TCEQ website at www.tceq.texas.gov/field/qa/lab_accred_certif.html.

Cardinal Laboratories is accredited through the State of Colorado Department of Public Health and Environment for:

Method EPA 552.2	Haloacetic Acids (HAA-5)
Method EPA 524.2	Total Trihalomethanes (TTHM)
Method EPA 524.4	Regulated VOCs (V1, V2, V3)

Accreditation applies to public drinking water matrices.

This report meets NELAP requirements and is made up of a cover page, analytical results, and a copy of the original chain-of-custody. If you have any questions concerning this report, please feel free to contact me.

Sincerely,

A handwritten signature in black ink that reads "Celey D. Keene". The signature is fluid and cursive, with the first name "Celey" and last name "Keene" clearly legible.

Celey D. Keene

Lab Director/Quality Manager



PHONE (575) 393-2326 ° 101 E. MARLAND ° HOBBS, NM 88240

Analytical Results For:

PIMA ENVIROMENTAL
 SEBASTIAN OROZCO
 1601 N TURNER STE. 500
 HOBBS NM, 88240
 Fax To:

Received: 02/18/2025
 Reported: 02/19/2025
 Project Name: RED LAKE 32 STATE 002H
 Project Number: 6-381
 Project Location: SPUR - EDDY CO NM

Sampling Date: 02/14/2025
 Sampling Type: Soil
 Sampling Condition: Cool & Intact
 Sample Received By: Shalyn Rodriguez

Sample ID: S 1 (H250970-01)

BTX 8021B		mg/kg		Analyzed By: JH					
Analyte	Result	Reporting Limit	Analyzed	Method Blank	BS	% Recovery	True Value QC	RPD	Qualifier
Benzene*	<0.050	0.050	02/19/2025	ND	1.99	99.5	2.00	1.17	
Toluene*	<0.050	0.050	02/19/2025	ND	2.11	105	2.00	1.20	
Ethylbenzene*	<0.050	0.050	02/19/2025	ND	2.08	104	2.00	0.829	
Total Xylenes*	<0.150	0.150	02/19/2025	ND	6.14	102	6.00	0.837	
Total BTX	<0.300	0.300	02/19/2025	ND					

Surrogate: 4-Bromofluorobenzene (PID) 101 % 71.5-134

Chloride, SM4500Cl-B		mg/kg		Analyzed By: AC						
Analyte	Result	Reporting Limit	Analyzed	Method Blank	BS	% Recovery	True Value QC	RPD	Qualifier	
Chloride	464	16.0	02/19/2025	ND	400	100	400	3.92		

TPH 8015M		mg/kg		Analyzed By: MS					
Analyte	Result	Reporting Limit	Analyzed	Method Blank	BS	% Recovery	True Value QC	RPD	Qualifier
GRO C6-C10*	<10.0	10.0	02/19/2025	ND	204	102	200	2.10	
DRO >C10-C28*	<10.0	10.0	02/19/2025	ND	204	102	200	2.60	
EXT DRO >C28-C36	<10.0	10.0	02/19/2025	ND					

Surrogate: 1-Chlorooctane 69.9 % 48.2-134

Surrogate: 1-Chlorooctadecane 70.2 % 49.1-148

Cardinal Laboratories

*=Accredited Analyte

PLEASE NOTE: Liability and Damages. Cardinal's liability and client's exclusive remedy for any claim arising, whether based in contract or tort, shall be limited to the amount paid by client for analyses. All claims, including those for negligence and any other cause whatsoever shall be deemed waived unless made in writing and received by Cardinal within thirty (30) days after completion of the applicable service. In no event shall Cardinal be liable for incidental or consequential damages, including, without limitation, business interruptions, loss of use, or loss of profits incurred by client, its subsidiaries, affiliates or successors arising out of or related to the performance of the services hereunder by Cardinal, regardless of whether such claim is based upon any of the above stated reasons or otherwise. Results relate only to the samples identified above. This report shall not be reproduced except in full with written approval of Cardinal Laboratories.

Celey D. Keene, Lab Director/Quality Manager



PHONE (575) 393-2326 ° 101 E. MARLAND ° HOBBS, NM 88240

Analytical Results For:

PIMA ENVIROMENTAL
SEBASTIAN OROZCO
1601 N TURNER STE. 500
HOBBS NM, 88240
Fax To:

Received: 02/18/2025
Reported: 02/19/2025
Project Name: RED LAKE 32 STATE 002H
Project Number: 6-381
Project Location: SPUR - EDDY CO NM

Sampling Date: 02/14/2025
Sampling Type: Soil
Sampling Condition: Cool & Intact
Sample Received By: Shalyn Rodriguez

Sample ID: S 2 (H250970-02)

BTX 8021B		mg/kg		Analyzed By: JH					
Analyte	Result	Reporting Limit	Analyzed	Method Blank	BS	% Recovery	True Value QC	RPD	Qualifier
Benzene*	<0.050	0.050	02/19/2025	ND	1.99	99.5	2.00	1.17	
Toluene*	<0.050	0.050	02/19/2025	ND	2.11	105	2.00	1.20	
Ethylbenzene*	<0.050	0.050	02/19/2025	ND	2.08	104	2.00	0.829	
Total Xylenes*	<0.150	0.150	02/19/2025	ND	6.14	102	6.00	0.837	
Total BTX	<0.300	0.300	02/19/2025	ND					

Surrogate: 4-Bromofluorobenzene (PID) 102 % 71.5-134

Chloride, SM4500CI-B		mg/kg		Analyzed By: AC					
Analyte	Result	Reporting Limit	Analyzed	Method Blank	BS	% Recovery	True Value QC	RPD	Qualifier
Chloride	96.0	16.0	02/19/2025	ND	400	100	400	3.92	

TPH 8015M		mg/kg		Analyzed By: MS					
Analyte	Result	Reporting Limit	Analyzed	Method Blank	BS	% Recovery	True Value QC	RPD	Qualifier
GRO C6-C10*	<10.0	10.0	02/19/2025	ND	204	102	200	2.10	
DRO >C10-C28*	<10.0	10.0	02/19/2025	ND	204	102	200	2.60	
EXT DRO >C28-C36	<10.0	10.0	02/19/2025	ND					

Surrogate: 1-Chlorooctane 82.6 % 48.2-134

Surrogate: 1-Chlorooctadecane 84.8 % 49.1-148

Cardinal Laboratories

*=Accredited Analyte

PLEASE NOTE: Liability and Damages. Cardinal's liability and client's exclusive remedy for any claim arising, whether based in contract or tort, shall be limited to the amount paid by client for analyses. All claims, including those for negligence and any other cause whatsoever shall be deemed waived unless made in writing and received by Cardinal within thirty (30) days after completion of the applicable service. In no event shall Cardinal be liable for incidental or consequential damages, including, without limitation, business interruptions, loss of use, or loss of profits incurred by client, its subsidiaries, affiliates or successors arising out of or related to the performance of the services hereunder by Cardinal, regardless of whether such claim is based upon any of the above stated reasons or otherwise. Results relate only to the samples identified above. This report shall not be reproduced except in full with written approval of Cardinal Laboratories.

Celey D. Keene, Lab Director/Quality Manager



PHONE (575) 393-2326 ° 101 E. MARLAND ° HOBBS, NM 88240

Analytical Results For:

PIMA ENVIROMENTAL
 SEBASTIAN OROZCO
 1601 N TURNER STE. 500
 HOBBS NM, 88240
 Fax To:

Received: 02/18/2025
 Reported: 02/19/2025
 Project Name: RED LAKE 32 STATE 002H
 Project Number: 6-381
 Project Location: SPUR - EDDY CO NM

Sampling Date: 02/14/2025
 Sampling Type: Soil
 Sampling Condition: Cool & Intact
 Sample Received By: Shalyn Rodriguez

Sample ID: S 3 (H250970-03)

BTEx 8021B		mg/kg		Analyzed By: JH						
Analyte	Result	Reporting Limit	Analyzed	Method Blank	BS	% Recovery	True Value QC	RPD	Qualifier	
Benzene*	<0.050	0.050	02/19/2025	ND	1.99	99.5	2.00	1.17		
Toluene*	<0.050	0.050	02/19/2025	ND	2.11	105	2.00	1.20		
Ethylbenzene*	<0.050	0.050	02/19/2025	ND	2.08	104	2.00	0.829		
Total Xylenes*	<0.150	0.150	02/19/2025	ND	6.14	102	6.00	0.837		
Total BTEX	<0.300	0.300	02/19/2025	ND						

Surrogate: 4-Bromofluorobenzene (PID) 102 % 71.5-134

Chloride, SM4500Cl-B		mg/kg		Analyzed By: AC						
Analyte	Result	Reporting Limit	Analyzed	Method Blank	BS	% Recovery	True Value QC	RPD	Qualifier	
Chloride	5600	16.0	02/19/2025	ND	400	100	400	3.92		

TPH 8015M		mg/kg		Analyzed By: MS					
Analyte	Result	Reporting Limit	Analyzed	Method Blank	BS	% Recovery	True Value QC	RPD	Qualifier
GRO C6-C10*	<10.0	10.0	02/19/2025	ND	204	102	200	2.10	
DRO >C10-C28*	<10.0	10.0	02/19/2025	ND	204	102	200	2.60	
EXT DRO >C28-C36	<10.0	10.0	02/19/2025	ND					

Surrogate: 1-Chlorooctane 77.2 % 48.2-134

Surrogate: 1-Chlorooctadecane 78.0 % 49.1-148

Cardinal Laboratories

*=Accredited Analyte

PLEASE NOTE: Liability and Damages. Cardinal's liability and client's exclusive remedy for any claim arising, whether based in contract or tort, shall be limited to the amount paid by client for analyses. All claims, including those for negligence and any other cause whatsoever shall be deemed waived unless made in writing and received by Cardinal within thirty (30) days after completion of the applicable service. In no event shall Cardinal be liable for incidental or consequential damages, including, without limitation, business interruptions, loss of use, or loss of profits incurred by client, its subsidiaries, affiliates or successors arising out of or related to the performance of the services hereunder by Cardinal, regardless of whether such claim is based upon any of the above stated reasons or otherwise. Results relate only to the samples identified above. This report shall not be reproduced except in full with written approval of Cardinal Laboratories.

Celey D. Keene, Lab Director/Quality Manager



PHONE (575) 393-2326 ° 101 E. MARLAND ° HOBBS, NM 88240

Analytical Results For:

PIMA ENVIROMENTAL
 SEBASTIAN OROZCO
 1601 N TURNER STE. 500
 HOBBS NM, 88240
 Fax To:

Received: 02/18/2025
 Reported: 02/19/2025
 Project Name: RED LAKE 32 STATE 002H
 Project Number: 6-381
 Project Location: SPUR - EDDY CO NM

Sampling Date: 02/14/2025
 Sampling Type: Soil
 Sampling Condition: Cool & Intact
 Sample Received By: Shalyn Rodriguez

Sample ID: S 4 (H250970-04)

BTEx 8021B		mg/kg		Analyzed By: JH						
Analyte	Result	Reporting Limit	Analyzed	Method Blank	BS	% Recovery	True Value QC	RPD	Qualifier	
Benzene*	<0.050	0.050	02/19/2025	ND	1.99	99.5	2.00	1.17		
Toluene*	<0.050	0.050	02/19/2025	ND	2.11	105	2.00	1.20		
Ethylbenzene*	<0.050	0.050	02/19/2025	ND	2.08	104	2.00	0.829		
Total Xylenes*	<0.150	0.150	02/19/2025	ND	6.14	102	6.00	0.837		
Total BTEX	<0.300	0.300	02/19/2025	ND						

Surrogate: 4-Bromofluorobenzene (PID) 101 % 71.5-134

Chloride, SM4500Cl-B		mg/kg		Analyzed By: AC						
Analyte	Result	Reporting Limit	Analyzed	Method Blank	BS	% Recovery	True Value QC	RPD	Qualifier	
Chloride	208	16.0	02/19/2025	ND	400	100	400	3.92		

TPH 8015M		mg/kg		Analyzed By: MS					
Analyte	Result	Reporting Limit	Analyzed	Method Blank	BS	% Recovery	True Value QC	RPD	Qualifier
GRO C6-C10*	<10.0	10.0	02/19/2025	ND	204	102	200	2.10	
DRO >C10-C28*	<10.0	10.0	02/19/2025	ND	204	102	200	2.60	
EXT DRO >C28-C36	<10.0	10.0	02/19/2025	ND					

Surrogate: 1-Chlorooctane 74.3 % 48.2-134

Surrogate: 1-Chlorooctadecane 77.2 % 49.1-148

Cardinal Laboratories

*=Accredited Analyte

PLEASE NOTE: Liability and Damages. Cardinal's liability and client's exclusive remedy for any claim arising, whether based in contract or tort, shall be limited to the amount paid by client for analyses. All claims, including those for negligence and any other cause whatsoever shall be deemed waived unless made in writing and received by Cardinal within thirty (30) days after completion of the applicable service. In no event shall Cardinal be liable for incidental or consequential damages, including, without limitation, business interruptions, loss of use, or loss of profits incurred by client, its subsidiaries, affiliates or successors arising out of or related to the performance of the services hereunder by Cardinal, regardless of whether such claim is based upon any of the above stated reasons or otherwise. Results relate only to the samples identified above. This report shall not be reproduced except in full with written approval of Cardinal Laboratories.

Celey D. Keene, Lab Director/Quality Manager



PHONE (575) 393-2326 ° 101 E. MARLAND ° HOBBS, NM 88240

Analytical Results For:

PIMA ENVIROMENTAL
 SEBASTIAN OROZCO
 1601 N TURNER STE. 500
 HOBBS NM, 88240
 Fax To:

Received: 02/18/2025
 Reported: 02/19/2025
 Project Name: RED LAKE 32 STATE 002H
 Project Number: 6-381
 Project Location: SPUR - EDDY CO NM

Sampling Date: 02/14/2025
 Sampling Type: Soil
 Sampling Condition: Cool & Intact
 Sample Received By: Shalyn Rodriguez

Sample ID: S 5 (H250970-05)

BTEx 8021B		mg/kg		Analyzed By: JH					
Analyte	Result	Reporting Limit	Analyzed	Method Blank	BS	% Recovery	True Value QC	RPD	Qualifier
Benzene*	<0.050	0.050	02/19/2025	ND	1.99	99.5	2.00	1.17	
Toluene*	<0.050	0.050	02/19/2025	ND	2.11	105	2.00	1.20	
Ethylbenzene*	<0.050	0.050	02/19/2025	ND	2.08	104	2.00	0.829	
Total Xylenes*	<0.150	0.150	02/19/2025	ND	6.14	102	6.00	0.837	
Total BTEX	<0.300	0.300	02/19/2025	ND					

Surrogate: 4-Bromofluorobenzene (PID) 101 % 71.5-134

Chloride, SM4500Cl-B		mg/kg		Analyzed By: AC					
Analyte	Result	Reporting Limit	Analyzed	Method Blank	BS	% Recovery	True Value QC	RPD	Qualifier
Chloride	176	16.0	02/19/2025	ND	400	100	400	3.92	

TPH 8015M		mg/kg		Analyzed By: MS					
Analyte	Result	Reporting Limit	Analyzed	Method Blank	BS	% Recovery	True Value QC	RPD	Qualifier
GRO C6-C10*	<10.0	10.0	02/19/2025	ND	204	102	200	2.10	
DRO >C10-C28*	<10.0	10.0	02/19/2025	ND	204	102	200	2.60	
EXT DRO >C28-C36	<10.0	10.0	02/19/2025	ND					

Surrogate: 1-Chlorooctane 80.7 % 48.2-134

Surrogate: 1-Chlorooctadecane 82.4 % 49.1-148

Cardinal Laboratories

*=Accredited Analyte

PLEASE NOTE: Liability and Damages. Cardinal's liability and client's exclusive remedy for any claim arising, whether based in contract or tort, shall be limited to the amount paid by client for analyses. All claims, including those for negligence and any other cause whatsoever shall be deemed waived unless made in writing and received by Cardinal within thirty (30) days after completion of the applicable service. In no event shall Cardinal be liable for incidental or consequential damages, including, without limitation, business interruptions, loss of use, or loss of profits incurred by client, its subsidiaries, affiliates or successors arising out of or related to the performance of the services hereunder by Cardinal, regardless of whether such claim is based upon any of the above stated reasons or otherwise. Results relate only to the samples identified above. This report shall not be reproduced except in full with written approval of Cardinal Laboratories.

Celey D. Keene, Lab Director/Quality Manager



PHONE (575) 393-2326 ° 101 E. MARLAND ° HOBBS, NM 88240

Analytical Results For:

PIMA ENVIROMENTAL
 SEBASTIAN OROZCO
 1601 N TURNER STE. 500
 HOBBS NM, 88240
 Fax To:

Received: 02/18/2025
 Reported: 02/19/2025
 Project Name: RED LAKE 32 STATE 002H
 Project Number: 6-381
 Project Location: SPUR - EDDY CO NM

Sampling Date: 02/14/2025
 Sampling Type: Soil
 Sampling Condition: Cool & Intact
 Sample Received By: Shalyn Rodriguez

Sample ID: SW 1 (H250970-06)

BTEx 8021B		mg/kg		Analyzed By: JH						
Analyte	Result	Reporting Limit	Analyzed	Method Blank	BS	% Recovery	True Value QC	RPD	Qualifier	
Benzene*	<0.050	0.050	02/19/2025	ND	1.99	99.5	2.00	1.17		
Toluene*	<0.050	0.050	02/19/2025	ND	2.11	105	2.00	1.20		
Ethylbenzene*	<0.050	0.050	02/19/2025	ND	2.08	104	2.00	0.829		
Total Xylenes*	<0.150	0.150	02/19/2025	ND	6.14	102	6.00	0.837		
Total BTEx	<0.300	0.300	02/19/2025	ND						

Surrogate: 4-Bromofluorobenzene (PID) 99.9 % 71.5-134

Chloride, SM4500CI-B		mg/kg		Analyzed By: AC					
Analyte	Result	Reporting Limit	Analyzed	Method Blank	BS	% Recovery	True Value QC	RPD	Qualifier
Chloride	464	16.0	02/19/2025	ND	400	100	400	3.92	

TPH 8015M		mg/kg		Analyzed By: MS					
Analyte	Result	Reporting Limit	Analyzed	Method Blank	BS	% Recovery	True Value QC	RPD	Qualifier
GRO C6-C10*	<10.0	10.0	02/19/2025	ND	204	102	200	2.10	
DRO >C10-C28*	<10.0	10.0	02/19/2025	ND	204	102	200	2.60	
EXT DRO >C28-C36	<10.0	10.0	02/19/2025	ND					

Surrogate: 1-Chlorooctane 76.1 % 48.2-134

Surrogate: 1-Chlorooctadecane 77.9 % 49.1-148

Cardinal Laboratories

*=Accredited Analyte

PLEASE NOTE: Liability and Damages. Cardinal's liability and client's exclusive remedy for any claim arising, whether based in contract or tort, shall be limited to the amount paid by client for analyses. All claims, including those for negligence and any other cause whatsoever shall be deemed waived unless made in writing and received by Cardinal within thirty (30) days after completion of the applicable service. In no event shall Cardinal be liable for incidental or consequential damages, including, without limitation, business interruptions, loss of use, or loss of profits incurred by client, its subsidiaries, affiliates or successors arising out of or related to the performance of the services hereunder by Cardinal, regardless of whether such claim is based upon any of the above stated reasons or otherwise. Results relate only to the samples identified above. This report shall not be reproduced except in full with written approval of Cardinal Laboratories.

Celey D. Keene, Lab Director/Quality Manager



PHONE (575) 393-2326 ° 101 E. MARLAND ° HOBBS, NM 88240

Analytical Results For:

PIMA ENVIROMENTAL
 SEBASTIAN OROZCO
 1601 N TURNER STE. 500
 HOBBS NM, 88240
 Fax To:

Received: 02/18/2025
 Reported: 02/19/2025
 Project Name: RED LAKE 32 STATE 002H
 Project Number: 6-381
 Project Location: SPUR - EDDY CO NM

Sampling Date: 02/14/2025
 Sampling Type: Soil
 Sampling Condition: Cool & Intact
 Sample Received By: Shalyn Rodriguez

Sample ID: SW 2 (H250970-07)

BTEx 8021B		mg/kg		Analyzed By: JH						
Analyte	Result	Reporting Limit	Analyzed	Method Blank	BS	% Recovery	True Value QC	RPD	Qualifier	
Benzene*	<0.050	0.050	02/19/2025	ND	1.99	99.5	2.00	1.17		
Toluene*	<0.050	0.050	02/19/2025	ND	2.11	105	2.00	1.20		
Ethylbenzene*	<0.050	0.050	02/19/2025	ND	2.08	104	2.00	0.829		
Total Xylenes*	<0.150	0.150	02/19/2025	ND	6.14	102	6.00	0.837		
Total BTEx	<0.300	0.300	02/19/2025	ND						

Surrogate: 4-Bromofluorobenzene (PID) 99.8 % 71.5-134

Chloride, SM4500CI-B		mg/kg		Analyzed By: AC					
Analyte	Result	Reporting Limit	Analyzed	Method Blank	BS	% Recovery	True Value QC	RPD	Qualifier
Chloride	1680	16.0	02/19/2025	ND	400	100	400	3.92	

TPH 8015M		mg/kg		Analyzed By: MS					
Analyte	Result	Reporting Limit	Analyzed	Method Blank	BS	% Recovery	True Value QC	RPD	Qualifier
GRO C6-C10*	<10.0	10.0	02/19/2025	ND	204	102	200	2.10	
DRO >C10-C28*	<10.0	10.0	02/19/2025	ND	204	102	200	2.60	
EXT DRO >C28-C36	<10.0	10.0	02/19/2025	ND					

Surrogate: 1-Chlorooctane 75.0 % 48.2-134

Surrogate: 1-Chlorooctadecane 75.6 % 49.1-148

Cardinal Laboratories

*=Accredited Analyte

PLEASE NOTE: Liability and Damages. Cardinal's liability and client's exclusive remedy for any claim arising, whether based in contract or tort, shall be limited to the amount paid by client for analyses. All claims, including those for negligence and any other cause whatsoever shall be deemed waived unless made in writing and received by Cardinal within thirty (30) days after completion of the applicable service. In no event shall Cardinal be liable for incidental or consequential damages, including, without limitation, business interruptions, loss of use, or loss of profits incurred by client, its subsidiaries, affiliates or successors arising out of or related to the performance of the services hereunder by Cardinal, regardless of whether such claim is based upon any of the above stated reasons or otherwise. Results relate only to the samples identified above. This report shall not be reproduced except in full with written approval of Cardinal Laboratories.

Celey D. Keene, Lab Director/Quality Manager



PHONE (575) 393-2326 ° 101 E. MARLAND ° HOBBS, NM 88240

Analytical Results For:

PIMA ENVIROMENTAL
 SEBASTIAN OROZCO
 1601 N TURNER STE. 500
 HOBBS NM, 88240
 Fax To:

Received: 02/18/2025
 Reported: 02/19/2025
 Project Name: RED LAKE 32 STATE 002H
 Project Number: 6-381
 Project Location: SPUR - EDDY CO NM

Sampling Date: 02/14/2025
 Sampling Type: Soil
 Sampling Condition: Cool & Intact
 Sample Received By: Shalyn Rodriguez

Sample ID: SW 3 (H250970-08)

BTX 8021B		mg/kg	Analyzed By: JH					S-04	
Analyte	Result	Reporting Limit	Analyzed	Method Blank	BS	% Recovery	True Value QC	RPD	Qualifier
Benzene*	<0.050	0.050	02/19/2025	ND	1.99	99.5	2.00	1.17	
Toluene*	0.558	0.050	02/19/2025	ND	2.11	105	2.00	1.20	
Ethylbenzene*	5.57	0.050	02/19/2025	ND	2.08	104	2.00	0.829	
Total Xylenes*	13.7	0.150	02/19/2025	ND	6.14	102	6.00	0.837	
Total BTX	19.9	0.300	02/19/2025	ND					

Surrogate: 4-Bromofluorobenzene (PID) 212 % 71.5-134

Chloride, SM4500CI-B		mg/kg	Analyzed By: AC						
Analyte	Result	Reporting Limit	Analyzed	Method Blank	BS	% Recovery	True Value QC	RPD	Qualifier
Chloride	688	16.0	02/19/2025	ND	400	100	400	3.92	

TPH 8015M		mg/kg	Analyzed By: MS					S-06	
Analyte	Result	Reporting Limit	Analyzed	Method Blank	BS	% Recovery	True Value QC	RPD	Qualifier
GRO C6-C10*	388	100	02/19/2025	ND	204	102	200	2.10	
DRO >C10-C28*	8820	100	02/19/2025	ND	204	102	200	2.60	
EXT DRO >C28-C36	2050	100	02/19/2025	ND					

Surrogate: 1-Chlorooctane 127 % 48.2-134

Surrogate: 1-Chlorooctadecane 165 % 49.1-148

Cardinal Laboratories

*=Accredited Analyte

PLEASE NOTE: Liability and Damages. Cardinal's liability and client's exclusive remedy for any claim arising, whether based in contract or tort, shall be limited to the amount paid by client for analyses. All claims, including those for negligence and any other cause whatsoever shall be deemed waived unless made in writing and received by Cardinal within thirty (30) days after completion of the applicable service. In no event shall Cardinal be liable for incidental or consequential damages, including, without limitation, business interruptions, loss of use, or loss of profits incurred by client, its subsidiaries, affiliates or successors arising out of or related to the performance of the services hereunder by Cardinal, regardless of whether such claim is based upon any of the above stated reasons or otherwise. Results relate only to the samples identified above. This report shall not be reproduced except in full with written approval of Cardinal Laboratories.

Celey D. Keene, Lab Director/Quality Manager



PHONE (575) 393-2326 ° 101 E. MARLAND ° HOBBS, NM 88240

Analytical Results For:

PIMA ENVIROMENTAL
 SEBASTIAN OROZCO
 1601 N TURNER STE. 500
 HOBBS NM, 88240
 Fax To:

Received: 02/18/2025
 Reported: 02/19/2025
 Project Name: RED LAKE 32 STATE 002H
 Project Number: 6-381
 Project Location: SPUR - EDDY CO NM

Sampling Date: 02/14/2025
 Sampling Type: Soil
 Sampling Condition: Cool & Intact
 Sample Received By: Shalyn Rodriguez

Sample ID: SW 4 (H250970-09)

BTEx 8021B		mg/kg		Analyzed By: JH						
Analyte	Result	Reporting Limit	Analyzed	Method Blank	BS	% Recovery	True Value QC	RPD	Qualifier	
Benzene*	<0.050	0.050	02/19/2025	ND	1.99	99.5	2.00	1.17		
Toluene*	<0.050	0.050	02/19/2025	ND	2.11	105	2.00	1.20		
Ethylbenzene*	<0.050	0.050	02/19/2025	ND	2.08	104	2.00	0.829		
Total Xylenes*	<0.150	0.150	02/19/2025	ND	6.14	102	6.00	0.837		
Total BTEX	<0.300	0.300	02/19/2025	ND						

Surrogate: 4-Bromofluorobenzene (PID) 101 % 71.5-134

Chloride, SM4500Cl-B		mg/kg		Analyzed By: HM						
Analyte	Result	Reporting Limit	Analyzed	Method Blank	BS	% Recovery	True Value QC	RPD	Qualifier	
Chloride	688	16.0	02/19/2025	ND	448	112	400	3.64	QM-07	

TPH 8015M		mg/kg		Analyzed By: MS					
Analyte	Result	Reporting Limit	Analyzed	Method Blank	BS	% Recovery	True Value QC	RPD	Qualifier
GRO C6-C10*	<10.0	10.0	02/19/2025	ND	204	102	200	2.10	
DRO >C10-C28*	<10.0	10.0	02/19/2025	ND	204	102	200	2.60	
EXT DRO >C28-C36	<10.0	10.0	02/19/2025	ND					

Surrogate: 1-Chlorooctane 69.3 % 48.2-134

Surrogate: 1-Chlorooctadecane 72.7 % 49.1-148

Cardinal Laboratories

*=Accredited Analyte

PLEASE NOTE: Liability and Damages. Cardinal's liability and client's exclusive remedy for any claim arising, whether based in contract or tort, shall be limited to the amount paid by client for analyses. All claims, including those for negligence and any other cause whatsoever shall be deemed waived unless made in writing and received by Cardinal within thirty (30) days after completion of the applicable service. In no event shall Cardinal be liable for incidental or consequential damages, including, without limitation, business interruptions, loss of use, or loss of profits incurred by client, its subsidiaries, affiliates or successors arising out of or related to the performance of the services hereunder by Cardinal, regardless of whether such claim is based upon any of the above stated reasons or otherwise. Results relate only to the samples identified above. This report shall not be reproduced except in full with written approval of Cardinal Laboratories.

Celey D. Keene, Lab Director/Quality Manager



PHONE (575) 393-2326 ° 101 E. MARLAND ° HOBBS, NM 88240

Analytical Results For:

PIMA ENVIROMENTAL
 SEBASTIAN OROZCO
 1601 N TURNER STE. 500
 HOBBS NM, 88240
 Fax To:

Received: 02/18/2025
 Reported: 02/19/2025
 Project Name: RED LAKE 32 STATE 002H
 Project Number: 6-381
 Project Location: SPUR - EDDY CO NM

Sampling Date: 02/14/2025
 Sampling Type: Soil
 Sampling Condition: Cool & Intact
 Sample Received By: Shalyn Rodriguez

Sample ID: SW 5 (H250970-10)

BTEx 8021B		mg/kg		Analyzed By: JH						
Analyte	Result	Reporting Limit	Analyzed	Method Blank	BS	% Recovery	True Value QC	RPD	Qualifier	
Benzene*	<0.050	0.050	02/19/2025	ND	1.99	99.5	2.00	1.17		
Toluene*	<0.050	0.050	02/19/2025	ND	2.11	105	2.00	1.20		
Ethylbenzene*	<0.050	0.050	02/19/2025	ND	2.08	104	2.00	0.829		
Total Xylenes*	<0.150	0.150	02/19/2025	ND	6.14	102	6.00	0.837		
Total BTEX	<0.300	0.300	02/19/2025	ND						

Surrogate: 4-Bromofluorobenzene (PID) 100 % 71.5-134

Chloride, SM4500CI-B		mg/kg		Analyzed By: HM						
Analyte	Result	Reporting Limit	Analyzed	Method Blank	BS	% Recovery	True Value QC	RPD	Qualifier	
Chloride	16.0	16.0	02/19/2025	ND	448	112	400	3.64		

TPH 8015M		mg/kg		Analyzed By: MS					
Analyte	Result	Reporting Limit	Analyzed	Method Blank	BS	% Recovery	True Value QC	RPD	Qualifier
GRO C6-C10*	<10.0	10.0	02/19/2025	ND	204	102	200	2.10	
DRO >C10-C28*	<10.0	10.0	02/19/2025	ND	204	102	200	2.60	
EXT DRO >C28-C36	<10.0	10.0	02/19/2025	ND					

Surrogate: 1-Chlorooctane 79.6 % 48.2-134

Surrogate: 1-Chlorooctadecane 82.0 % 49.1-148

Cardinal Laboratories

*=Accredited Analyte

PLEASE NOTE: Liability and Damages. Cardinal's liability and client's exclusive remedy for any claim arising, whether based in contract or tort, shall be limited to the amount paid by client for analyses. All claims, including those for negligence and any other cause whatsoever shall be deemed waived unless made in writing and received by Cardinal within thirty (30) days after completion of the applicable service. In no event shall Cardinal be liable for incidental or consequential damages, including, without limitation, business interruptions, loss of use, or loss of profits incurred by client, its subsidiaries, affiliates or successors arising out of or related to the performance of the services hereunder by Cardinal, regardless of whether such claim is based upon any of the above stated reasons or otherwise. Results relate only to the samples identified above. This report shall not be reproduced except in full with written approval of Cardinal Laboratories.

Celey D. Keene, Lab Director/Quality Manager

PHONE (575) 393-2326 ° 101 E. MARLAND ° HOBBS, NM 88240

Notes and Definitions

S-06	The recovery of this surrogate is outside control limits due to sample dilution required from high analyte concentration and/or matrix interference's.
S-04	The surrogate recovery for this sample is outside of established control limits due to a sample matrix effect.
QM-07	The spike recovery was outside acceptance limits for the MS and/or MSD. The batch was accepted based on acceptable LCS recovery.
ND	Analyte NOT DETECTED at or above the reporting limit
RPD	Relative Percent Difference
**	Samples not received at proper temperature of 6°C or below.
***	Insufficient time to reach temperature.
-	Chloride by SM4500Cl-B does not require samples be received at or below 6°C Samples reported on an as received basis (wet) unless otherwise noted on report

Cardinal Laboratories

*=Accredited Analyte

PLEASE NOTE: Liability and Damages. Cardinal's liability and client's exclusive remedy for any claim arising, whether based in contract or tort, shall be limited to the amount paid by client for analyses. All claims, including those for negligence and any other cause whatsoever shall be deemed waived unless made in writing and received by Cardinal within thirty (30) days after completion of the applicable service. In no event shall Cardinal be liable for incidental or consequential damages, including, without limitation, business interruptions, loss of use, or loss of profits incurred by client, its subsidiaries, affiliates or successors arising out of or related to the performance of the services hereunder by Cardinal, regardless of whether such claim is based upon any of the above stated reasons or otherwise. Results relate only to the samples identified above. This report shall not be reproduced except in full with written approval of Cardinal Laboratories.

A handwritten signature in black ink, appearing to read "Celey D. Keene".

Celey D. Keene, Lab Director/Quality Manager



CHAIN-OF-CUSTODY AND ANALYSIS REQUEST

101 East Marland, Hobbs, NM 88240
(575) 393-2326 FAX (575) 393-2476

Company Name: <u>Spur Energy Co. Pima Environmental</u>		BILL TO	
Project Manager: <u>Sebastian Orrego</u>		P.O. #:	
Address: <u>5614 North Lovington Hwy</u>		Company:	
City: <u>Hobbs</u>		Attn:	
State: <u>NM</u> Zip: <u>88240</u>		Address:	
Phone #: <u>(619) 721-4813</u> Fax #:		City:	
Project #: <u>6-381</u> Project Owner: <u>SPUR</u>		State:	
Project Name: <u>Red Lake 32 State 002 #</u>		Zip:	
Project Location: <u>Eddy County</u>		Phone #:	
Sampler Name: <u>Andrew France</u>		Fax #:	
FOR LAB USE ONLY		MATRIX	
		PRESERV	
		SAMPLING	

Lab I.D.	Sample I.D.	(G)RAB OR (C)OMP.	# CONTAINERS	GROUNDWATER	WASTEWATER	SOIL	OIL	SLUDGE	OTHER :	ACID/BASE:	ICE / COOL	OTHER :	DATE	TIME	ANALYSIS REQUEST
<u>H250970</u>	<u>S1</u>												<u>2/14/25</u>	<u>8:00</u>	<u>BTEX</u>
	<u>S2</u>													<u>8:16</u>	<u>CHLORIDES</u>
	<u>S3</u>													<u>8:21</u>	<u>TPH</u>
	<u>S4</u>													<u>8:23</u>	
	<u>S5</u>													<u>8:26</u>	
	<u>SW1</u>													<u>8:30</u>	
	<u>SW2</u>													<u>8:35</u>	
	<u>SW3</u>													<u>8:39</u>	
	<u>SW4</u>													<u>8:42</u>	
	<u>SW5</u>													<u>8:47</u>	

PLEASE NOTE: Liability and Damages. Cardinal's liability and clients' exclusive remedy for any claim arising whether based in contract or tort, shall be limited to the amount paid by the client for the analysis. All claims, including those for negligence and any other cause whatsoever shall be deemed waived unless made in writing and received by Cardinal within 30 days after completion of the applicable service. In no event shall Cardinal be liable for incidental or consequential damages, including without limitation, business interruptions, loss of use, or loss of profits incurred by client, its subsidiaries, affiliates or successors arising out of or related to the performance of services hereunder by Cardinal, regardless of whether such claim is based upon any of the above stated theories or otherwise.

Relinquished By: <u>Karinne France</u>	Date: <u>2-18-25</u>	Received By: <u>Sebastian Orrego</u>	Date: <u>2-18-25</u>
Relinquished By: <u>Karinne France</u>	Date: <u>2-18-25</u>	Received By: <u>Sebastian Orrego</u>	Date: <u>2-18-25</u>

Delivered By: (Circle One) <u>-8:00/ect 0-3:</u>	Sample Condition	CHECKED BY: <u>SC</u>
Sampler - UPS - Bus - Other: <u>-7-7-#140</u>	Cool <input checked="" type="checkbox"/> Intact <input checked="" type="checkbox"/>	(Initials)
	Yes <input checked="" type="checkbox"/> No <input checked="" type="checkbox"/>	

Phone Result: ☐ Yes ☐ No Add'l Phone #:
Fax Result: ☐ Yes ☐ No Add'l Fax #:
REMARKS:
Billing# 7010-7410
Sebastian Orrego Pima oil.com
lab@Pimaoil.com



PHONE (575) 393-2326 ° 101 E. MARLAND ° HOBBS, NM 88240

March 25, 2025

SEBASTIAN OROZCO

PIMA ENVIROMENTAL

1601 N TURNER STE. 500

HOBBS, NM 88240

RE: RED LAKE 32 STATE 002H

Enclosed are the results of analyses for samples received by the laboratory on 03/19/25 16:13.

Cardinal Laboratories is accredited through Texas NELAP under certificate number TX-C24-00112. Accreditation applies to drinking water, non-potable water and solid and chemical materials. All accredited analytes are denoted by an asterisk (*). For a complete list of accredited analytes and matrices visit the TCEQ website at www.tceq.texas.gov/field/qa/lab_accred_certif.html.

Cardinal Laboratories is accredited through the State of Colorado Department of Public Health and Environment for:

Method EPA 552.2	Haloacetic Acids (HAA-5)
Method EPA 524.2	Total Trihalomethanes (TTHM)
Method EPA 524.4	Regulated VOCs (V1, V2, V3)

Accreditation applies to public drinking water matrices.

This report meets NELAP requirements and is made up of a cover page, analytical results, and a copy of the original chain-of-custody. If you have any questions concerning this report, please feel free to contact me.

Sincerely,

A handwritten signature in black ink that reads "Celey D. Keene". The signature is written in a cursive, flowing style.

Celey D. Keene

Lab Director/Quality Manager



PHONE (575) 393-2326 ° 101 E. MARLAND ° HOBBS, NM 88240

Analytical Results For:

PIMA ENVIROMENTAL
SEBASTIAN OROZCO
1601 N TURNER STE. 500
HOBBS NM, 88240
Fax To:

Received: 03/19/2025
Reported: 03/25/2025
Project Name: RED LAKE 32 STATE 002H
Project Number: 6-381
Project Location: SPUR - EDDY CO NM

Sampling Date: 03/18/2025
Sampling Type: Soil
Sampling Condition: Cool & Intact
Sample Received By: Alyssa Parras

Sample ID: CS 1 (H251633-01)

BTX 8021B		mg/kg		Analyzed By: JH					
Analyte	Result	Reporting Limit	Analyzed	Method Blank	BS	% Recovery	True Value QC	RPD	Qualifier
Benzene*	<0.050	0.050	03/21/2025	ND	2.14	107	2.00	0.371	
Toluene*	<0.050	0.050	03/21/2025	ND	2.16	108	2.00	0.830	
Ethylbenzene*	<0.050	0.050	03/21/2025	ND	2.15	107	2.00	1.27	
Total Xylenes*	<0.150	0.150	03/21/2025	ND	6.40	107	6.00	0.772	
Total BTX	<0.300	0.300	03/21/2025	ND					

Surrogate: 4-Bromofluorobenzene (PID) 104 % 71.5-134

Chloride, SM4500Cl-B		mg/kg		Analyzed By: HM						
Analyte	Result	Reporting Limit	Analyzed	Method Blank	BS	% Recovery	True Value QC	RPD	Qualifier	
Chloride	16.0	16.0	03/20/2025	ND	432	108	400	11.8		

TPH 8015M		mg/kg		Analyzed By: MS					
Analyte	Result	Reporting Limit	Analyzed	Method Blank	BS	% Recovery	True Value QC	RPD	Qualifier
GRO C6-C10*	<10.0	10.0	03/21/2025	ND	195	97.4	200	4.22	
DRO >C10-C28*	<10.0	10.0	03/21/2025	ND	188	94.0	200	4.52	
EXT DRO >C28-C36	<10.0	10.0	03/21/2025	ND					

Surrogate: 1-Chlorooctane 81.3 % 44.4-145

Surrogate: 1-Chlorooctadecane 72.5 % 40.6-153

Cardinal Laboratories

*=Accredited Analyte

PLEASE NOTE: Liability and Damages. Cardinal's liability and client's exclusive remedy for any claim arising, whether based in contract or tort, shall be limited to the amount paid by client for analyses. All claims, including those for negligence and any other cause whatsoever shall be deemed waived unless made in writing and received by Cardinal within thirty (30) days after completion of the applicable service. In no event shall Cardinal be liable for incidental or consequential damages, including, without limitation, business interruptions, loss of use, or loss of profits incurred by client, its subsidiaries, affiliates or successors arising out of or related to the performance of the services hereunder by Cardinal, regardless of whether such claim is based upon any of the above stated reasons or otherwise. Results relate only to the samples identified above. This report shall not be reproduced except in full with written approval of Cardinal Laboratories.

Celey D. Keene, Lab Director/Quality Manager



PHONE (575) 393-2326 ° 101 E. MARLAND ° HOBBS, NM 88240

Analytical Results For:

PIMA ENVIROMENTAL
SEBASTIAN OROZCO
1601 N TURNER STE. 500
HOBBS NM, 88240
Fax To:

Received: 03/19/2025
Reported: 03/25/2025
Project Name: RED LAKE 32 STATE 002H
Project Number: 6-381
Project Location: SPUR - EDDY CO NM

Sampling Date: 03/18/2025
Sampling Type: Soil
Sampling Condition: Cool & Intact
Sample Received By: Alyssa Parras

Sample ID: CS 2 (H251633-02)

BTX 8021B		mg/kg		Analyzed By: JH					
Analyte	Result	Reporting Limit	Analyzed	Method Blank	BS	% Recovery	True Value QC	RPD	Qualifier
Benzene*	<0.050	0.050	03/21/2025	ND	2.14	107	2.00	0.371	
Toluene*	<0.050	0.050	03/21/2025	ND	2.16	108	2.00	0.830	
Ethylbenzene*	<0.050	0.050	03/21/2025	ND	2.15	107	2.00	1.27	
Total Xylenes*	<0.150	0.150	03/21/2025	ND	6.40	107	6.00	0.772	
Total BTX	<0.300	0.300	03/21/2025	ND					

Surrogate: 4-Bromofluorobenzene (PID) 105 % 71.5-134

Chloride, SM4500CI-B		mg/kg		Analyzed By: HM						
Analyte	Result	Reporting Limit	Analyzed	Method Blank	BS	% Recovery	True Value QC	RPD	Qualifier	
Chloride	<16.0	16.0	03/20/2025	ND	432	108	400	11.8		

TPH 8015M		mg/kg		Analyzed By: MS					
Analyte	Result	Reporting Limit	Analyzed	Method Blank	BS	% Recovery	True Value QC	RPD	Qualifier
GRO C6-C10*	<10.0	10.0	03/21/2025	ND	195	97.4	200	4.22	
DRO >C10-C28*	<10.0	10.0	03/21/2025	ND	188	94.0	200	4.52	
EXT DRO >C28-C36	<10.0	10.0	03/21/2025	ND					

Surrogate: 1-Chlorooctane 80.8 % 44.4-145

Surrogate: 1-Chlorooctadecane 74.2 % 40.6-153

Cardinal Laboratories

*=Accredited Analyte

PLEASE NOTE: Liability and Damages. Cardinal's liability and client's exclusive remedy for any claim arising, whether based in contract or tort, shall be limited to the amount paid by client for analyses. All claims, including those for negligence and any other cause whatsoever shall be deemed waived unless made in writing and received by Cardinal within thirty (30) days after completion of the applicable service. In no event shall Cardinal be liable for incidental or consequential damages, including, without limitation, business interruptions, loss of use, or loss of profits incurred by client, its subsidiaries, affiliates or successors arising out of or related to the performance of the services hereunder by Cardinal, regardless of whether such claim is based upon any of the above stated reasons or otherwise. Results relate only to the samples identified above. This report shall not be reproduced except in full with written approval of Cardinal Laboratories.

Celey D. Keene, Lab Director/Quality Manager



PHONE (575) 393-2326 ° 101 E. MARLAND ° HOBBS, NM 88240

Analytical Results For:

PIMA ENVIROMENTAL
 SEBASTIAN OROZCO
 1601 N TURNER STE. 500
 HOBBS NM, 88240
 Fax To:

Received: 03/19/2025
 Reported: 03/25/2025
 Project Name: RED LAKE 32 STATE 002H
 Project Number: 6-381
 Project Location: SPUR - EDDY CO NM

Sampling Date: 03/18/2025
 Sampling Type: Soil
 Sampling Condition: Cool & Intact
 Sample Received By: Alyssa Parras

Sample ID: CS 3 (H251633-03)

BTX 8021B		mg/kg		Analyzed By: JH					
Analyte	Result	Reporting Limit	Analyzed	Method Blank	BS	% Recovery	True Value QC	RPD	Qualifier
Benzene*	<0.050	0.050	03/21/2025	ND	2.14	107	2.00	0.371	
Toluene*	<0.050	0.050	03/21/2025	ND	2.16	108	2.00	0.830	
Ethylbenzene*	<0.050	0.050	03/21/2025	ND	2.15	107	2.00	1.27	
Total Xylenes*	<0.150	0.150	03/21/2025	ND	6.40	107	6.00	0.772	
Total BTX	<0.300	0.300	03/21/2025	ND					

Surrogate: 4-Bromofluorobenzene (PID) 106 % 71.5-134

Chloride, SM4500CI-B		mg/kg		Analyzed By: HM						
Analyte	Result	Reporting Limit	Analyzed	Method Blank	BS	% Recovery	True Value QC	RPD	Qualifier	
Chloride	<16.0	16.0	03/20/2025	ND	432	108	400	11.8		

TPH 8015M		mg/kg		Analyzed By: MS					
Analyte	Result	Reporting Limit	Analyzed	Method Blank	BS	% Recovery	True Value QC	RPD	Qualifier
GRO C6-C10*	<10.0	10.0	03/21/2025	ND	195	97.4	200	4.22	
DRO >C10-C28*	<10.0	10.0	03/21/2025	ND	188	94.0	200	4.52	
EXT DRO >C28-C36	<10.0	10.0	03/21/2025	ND					

Surrogate: 1-Chlorooctane 78.9 % 44.4-145

Surrogate: 1-Chlorooctadecane 72.4 % 40.6-153

Cardinal Laboratories

*=Accredited Analyte

PLEASE NOTE: Liability and Damages. Cardinal's liability and client's exclusive remedy for any claim arising, whether based in contract or tort, shall be limited to the amount paid by client for analyses. All claims, including those for negligence and any other cause whatsoever shall be deemed waived unless made in writing and received by Cardinal within thirty (30) days after completion of the applicable service. In no event shall Cardinal be liable for incidental or consequential damages, including, without limitation, business interruptions, loss of use, or loss of profits incurred by client, its subsidiaries, affiliates or successors arising out of or related to the performance of the services hereunder by Cardinal, regardless of whether such claim is based upon any of the above stated reasons or otherwise. Results relate only to the samples identified above. This report shall not be reproduced except in full with written approval of Cardinal Laboratories.

Celey D. Keene, Lab Director/Quality Manager



PHONE (575) 393-2326 ° 101 E. MARLAND ° HOBBS, NM 88240

Analytical Results For:

PIMA ENVIROMENTAL
SEBASTIAN OROZCO
1601 N TURNER STE. 500
HOBBS NM, 88240
Fax To:

Received: 03/19/2025
Reported: 03/25/2025
Project Name: RED LAKE 32 STATE 002H
Project Number: 6-381
Project Location: SPUR - EDDY CO NM

Sampling Date: 03/18/2025
Sampling Type: Soil
Sampling Condition: Cool & Intact
Sample Received By: Alyssa Parras

Sample ID: CS 4 (H251633-04)

BTEx 8021B		mg/kg		Analyzed By: JH						
Analyte	Result	Reporting Limit	Analyzed	Method Blank	BS	% Recovery	True Value QC	RPD	Qualifier	
Benzene*	<0.050	0.050	03/21/2025	ND	2.14	107	2.00	0.371		
Toluene*	<0.050	0.050	03/21/2025	ND	2.16	108	2.00	0.830		
Ethylbenzene*	<0.050	0.050	03/21/2025	ND	2.15	107	2.00	1.27		
Total Xylenes*	<0.150	0.150	03/21/2025	ND	6.40	107	6.00	0.772		
Total BTEx	<0.300	0.300	03/21/2025	ND						

Surrogate: 4-Bromofluorobenzene (PID) 106 % 71.5-134

Chloride, SM4500CI-B		mg/kg		Analyzed By: HM						
Analyte	Result	Reporting Limit	Analyzed	Method Blank	BS	% Recovery	True Value QC	RPD	Qualifier	
Chloride	<16.0	16.0	03/20/2025	ND	432	108	400	11.8		

TPH 8015M		mg/kg		Analyzed By: MS					
Analyte	Result	Reporting Limit	Analyzed	Method Blank	BS	% Recovery	True Value QC	RPD	Qualifier
GRO C6-C10*	<10.0	10.0	03/21/2025	ND	195	97.4	200	4.22	
DRO >C10-C28*	<10.0	10.0	03/21/2025	ND	188	94.0	200	4.52	
EXT DRO >C28-C36	<10.0	10.0	03/21/2025	ND					

Surrogate: 1-Chlorooctane 81.6 % 44.4-145

Surrogate: 1-Chlorooctadecane 74.3 % 40.6-153

Cardinal Laboratories

*=Accredited Analyte

PLEASE NOTE: Liability and Damages. Cardinal's liability and client's exclusive remedy for any claim arising, whether based in contract or tort, shall be limited to the amount paid by client for analyses. All claims, including those for negligence and any other cause whatsoever shall be deemed waived unless made in writing and received by Cardinal within thirty (30) days after completion of the applicable service. In no event shall Cardinal be liable for incidental or consequential damages, including, without limitation, business interruptions, loss of use, or loss of profits incurred by client, its subsidiaries, affiliates or successors arising out of or related to the performance of the services hereunder by Cardinal, regardless of whether such claim is based upon any of the above stated reasons or otherwise. Results relate only to the samples identified above. This report shall not be reproduced except in full with written approval of Cardinal Laboratories.

Celey D. Keene, Lab Director/Quality Manager



PHONE (575) 393-2326 ° 101 E. MARLAND ° HOBBS, NM 88240

Analytical Results For:

PIMA ENVIROMENTAL
SEBASTIAN OROZCO
1601 N TURNER STE. 500
HOBBS NM, 88240
Fax To:

Received: 03/19/2025
Reported: 03/25/2025
Project Name: RED LAKE 32 STATE 002H
Project Number: 6-381
Project Location: SPUR - EDDY CO NM

Sampling Date: 03/18/2025
Sampling Type: Soil
Sampling Condition: Cool & Intact
Sample Received By: Alyssa Parras

Sample ID: CS 5 (H251633-05)

BTX 8021B		mg/kg		Analyzed By: JH					
Analyte	Result	Reporting Limit	Analyzed	Method Blank	BS	% Recovery	True Value QC	RPD	Qualifier
Benzene*	<0.050	0.050	03/21/2025	ND	2.18	109	2.00	0.881	
Toluene*	<0.050	0.050	03/21/2025	ND	2.22	111	2.00	0.800	
Ethylbenzene*	<0.050	0.050	03/21/2025	ND	2.14	107	2.00	0.567	
Total Xylenes*	<0.150	0.150	03/21/2025	ND	6.29	105	6.00	0.430	
Total BTX	<0.300	0.300	03/21/2025	ND					

Surrogate: 4-Bromofluorobenzene (PID) 100 % 71.5-134

Chloride, SM4500CI-B		mg/kg		Analyzed By: HM						
Analyte	Result	Reporting Limit	Analyzed	Method Blank	BS	% Recovery	True Value QC	RPD	Qualifier	
Chloride	<16.0	16.0	03/20/2025	ND	432	108	400	11.8		

TPH 8015M		mg/kg		Analyzed By: MS					
Analyte	Result	Reporting Limit	Analyzed	Method Blank	BS	% Recovery	True Value QC	RPD	Qualifier
GRO C6-C10*	<10.0	10.0	03/21/2025	ND	195	97.4	200	4.22	
DRO >C10-C28*	<10.0	10.0	03/21/2025	ND	188	94.0	200	4.52	
EXT DRO >C28-C36	<10.0	10.0	03/21/2025	ND					

Surrogate: 1-Chlorooctane 83.7 % 44.4-145

Surrogate: 1-Chlorooctadecane 77.6 % 40.6-153

Cardinal Laboratories

*=Accredited Analyte

PLEASE NOTE: Liability and Damages. Cardinal's liability and client's exclusive remedy for any claim arising, whether based in contract or tort, shall be limited to the amount paid by client for analyses. All claims, including those for negligence and any other cause whatsoever shall be deemed waived unless made in writing and received by Cardinal within thirty (30) days after completion of the applicable service. In no event shall Cardinal be liable for incidental or consequential damages, including, without limitation, business interruptions, loss of use, or loss of profits incurred by client, its subsidiaries, affiliates or successors arising out of or related to the performance of the services hereunder by Cardinal, regardless of whether such claim is based upon any of the above stated reasons or otherwise. Results relate only to the samples identified above. This report shall not be reproduced except in full with written approval of Cardinal Laboratories.

Celey D. Keene, Lab Director/Quality Manager



PHONE (575) 393-2326 ° 101 E. MARLAND ° HOBBS, NM 88240

Analytical Results For:

PIMA ENVIROMENTAL
 SEBASTIAN OROZCO
 1601 N TURNER STE. 500
 HOBBS NM, 88240
 Fax To:

Received: 03/19/2025
 Reported: 03/25/2025
 Project Name: RED LAKE 32 STATE 002H
 Project Number: 6-381
 Project Location: SPUR - EDDY CO NM

Sampling Date: 03/18/2025
 Sampling Type: Soil
 Sampling Condition: Cool & Intact
 Sample Received By: Alyssa Parras

Sample ID: CSW 1 (H251633-06)

BTEx 8021B		mg/kg		Analyzed By: JH						
Analyte	Result	Reporting Limit	Analyzed	Method Blank	BS	% Recovery	True Value QC	RPD	Qualifier	
Benzene*	<0.050	0.050	03/21/2025	ND	2.18	109	2.00	0.881		
Toluene*	<0.050	0.050	03/21/2025	ND	2.22	111	2.00	0.800		
Ethylbenzene*	<0.050	0.050	03/21/2025	ND	2.14	107	2.00	0.567		
Total Xylenes*	<0.150	0.150	03/21/2025	ND	6.29	105	6.00	0.430		
Total BTEX	<0.300	0.300	03/21/2025	ND						

Surrogate: 4-Bromofluorobenzene (PID) 100 % 71.5-134

Chloride, SM4500Cl-B		mg/kg		Analyzed By: HM						
Analyte	Result	Reporting Limit	Analyzed	Method Blank	BS	% Recovery	True Value QC	RPD	Qualifier	
Chloride	<16.0	16.0	03/20/2025	ND	432	108	400	11.8		

TPH 8015M		mg/kg		Analyzed By: MS					
Analyte	Result	Reporting Limit	Analyzed	Method Blank	BS	% Recovery	True Value QC	RPD	Qualifier
GRO C6-C10*	<10.0	10.0	03/21/2025	ND	218	109	200	0.132	
DRO >C10-C28*	<10.0	10.0	03/21/2025	ND	208	104	200	0.287	
EXT DRO >C28-C36	<10.0	10.0	03/21/2025	ND					

Surrogate: 1-Chlorooctane 95.1 % 44.4-145

Surrogate: 1-Chlorooctadecane 90.1 % 40.6-153

Cardinal Laboratories

*=Accredited Analyte

PLEASE NOTE: Liability and Damages. Cardinal's liability and client's exclusive remedy for any claim arising, whether based in contract or tort, shall be limited to the amount paid by client for analyses. All claims, including those for negligence and any other cause whatsoever shall be deemed waived unless made in writing and received by Cardinal within thirty (30) days after completion of the applicable service. In no event shall Cardinal be liable for incidental or consequential damages, including, without limitation, business interruptions, loss of use, or loss of profits incurred by client, its subsidiaries, affiliates or successors arising out of or related to the performance of the services hereunder by Cardinal, regardless of whether such claim is based upon any of the above stated reasons or otherwise. Results relate only to the samples identified above. This report shall not be reproduced except in full with written approval of Cardinal Laboratories.

Celey D. Keene, Lab Director/Quality Manager



PHONE (575) 393-2326 ° 101 E. MARLAND ° HOBBS, NM 88240

Analytical Results For:

PIMA ENVIROMENTAL
 SEBASTIAN OROZCO
 1601 N TURNER STE. 500
 HOBBS NM, 88240
 Fax To:

Received: 03/19/2025
 Reported: 03/25/2025
 Project Name: RED LAKE 32 STATE 002H
 Project Number: 6-381
 Project Location: SPUR - EDDY CO NM

Sampling Date: 03/18/2025
 Sampling Type: Soil
 Sampling Condition: Cool & Intact
 Sample Received By: Alyssa Parras

Sample ID: CSW 2 (H251633-07)

BTEx 8021B		mg/kg		Analyzed By: JH						
Analyte	Result	Reporting Limit	Analyzed	Method Blank	BS	% Recovery	True Value QC	RPD	Qualifier	
Benzene*	<0.050	0.050	03/21/2025	ND	2.18	109	2.00	0.881		
Toluene*	<0.050	0.050	03/21/2025	ND	2.22	111	2.00	0.800		
Ethylbenzene*	<0.050	0.050	03/21/2025	ND	2.14	107	2.00	0.567		
Total Xylenes*	<0.150	0.150	03/21/2025	ND	6.29	105	6.00	0.430		
Total BTEX	<0.300	0.300	03/21/2025	ND						

Surrogate: 4-Bromofluorobenzene (PID) 102 % 71.5-134

Chloride, SM4500Cl-B		mg/kg		Analyzed By: HM						
Analyte	Result	Reporting Limit	Analyzed	Method Blank	BS	% Recovery	True Value QC	RPD	Qualifier	
Chloride	<16.0	16.0	03/20/2025	ND	432	108	400	11.8		

TPH 8015M		mg/kg		Analyzed By: MS					
Analyte	Result	Reporting Limit	Analyzed	Method Blank	BS	% Recovery	True Value QC	RPD	Qualifier
GRO C6-C10*	<10.0	10.0	03/21/2025	ND	218	109	200	0.132	
DRO >C10-C28*	<10.0	10.0	03/21/2025	ND	208	104	200	0.287	
EXT DRO >C28-C36	<10.0	10.0	03/21/2025	ND					

Surrogate: 1-Chlorooctane 97.9 % 44.4-145

Surrogate: 1-Chlorooctadecane 92.5 % 40.6-153

Cardinal Laboratories

*=Accredited Analyte

PLEASE NOTE: Liability and Damages. Cardinal's liability and client's exclusive remedy for any claim arising, whether based in contract or tort, shall be limited to the amount paid by client for analyses. All claims, including those for negligence and any other cause whatsoever shall be deemed waived unless made in writing and received by Cardinal within thirty (30) days after completion of the applicable service. In no event shall Cardinal be liable for incidental or consequential damages, including, without limitation, business interruptions, loss of use, or loss of profits incurred by client, its subsidiaries, affiliates or successors arising out of or related to the performance of the services hereunder by Cardinal, regardless of whether such claim is based upon any of the above stated reasons or otherwise. Results relate only to the samples identified above. This report shall not be reproduced except in full with written approval of Cardinal Laboratories.

Celey D. Keene, Lab Director/Quality Manager



PHONE (575) 393-2326 ° 101 E. MARLAND ° HOBBS, NM 88240

Analytical Results For:

PIMA ENVIROMENTAL
 SEBASTIAN OROZCO
 1601 N TURNER STE. 500
 HOBBS NM, 88240
 Fax To:

Received: 03/19/2025
 Reported: 03/25/2025
 Project Name: RED LAKE 32 STATE 002H
 Project Number: 6-381
 Project Location: SPUR - EDDY CO NM

Sampling Date: 03/18/2025
 Sampling Type: Soil
 Sampling Condition: Cool & Intact
 Sample Received By: Alyssa Parras

Sample ID: CSW 3 (H251633-08)

BTEx 8021B		mg/kg		Analyzed By: JH					
Analyte	Result	Reporting Limit	Analyzed	Method Blank	BS	% Recovery	True Value QC	RPD	Qualifier
Benzene*	<0.050	0.050	03/21/2025	ND	2.18	109	2.00	0.881	
Toluene*	<0.050	0.050	03/21/2025	ND	2.22	111	2.00	0.800	
Ethylbenzene*	<0.050	0.050	03/21/2025	ND	2.14	107	2.00	0.567	
Total Xylenes*	<0.150	0.150	03/21/2025	ND	6.29	105	6.00	0.430	
Total BTEx	<0.300	0.300	03/21/2025	ND					

Surrogate: 4-Bromofluorobenzene (PID) 101 % 71.5-134

Chloride, SM4500Cl-B		mg/kg		Analyzed By: CT						
Analyte	Result	Reporting Limit	Analyzed	Method Blank	BS	% Recovery	True Value QC	RPD	Qualifier	
Chloride	16.0	16.0	03/21/2025	ND	432	108	400	3.77		

TPH 8015M		mg/kg		Analyzed By: MS					
Analyte	Result	Reporting Limit	Analyzed	Method Blank	BS	% Recovery	True Value QC	RPD	Qualifier
GRO C6-C10*	<10.0	10.0	03/21/2025	ND	218	109	200	0.132	
DRO >C10-C28*	<10.0	10.0	03/21/2025	ND	208	104	200	0.287	
EXT DRO >C28-C36	<10.0	10.0	03/21/2025	ND					

Surrogate: 1-Chlorooctane 101 % 44.4-145

Surrogate: 1-Chlorooctadecane 97.2 % 40.6-153

Cardinal Laboratories

*=Accredited Analyte

PLEASE NOTE: Liability and Damages. Cardinal's liability and client's exclusive remedy for any claim arising, whether based in contract or tort, shall be limited to the amount paid by client for analyses. All claims, including those for negligence and any other cause whatsoever shall be deemed waived unless made in writing and received by Cardinal within thirty (30) days after completion of the applicable service. In no event shall Cardinal be liable for incidental or consequential damages, including, without limitation, business interruptions, loss of use, or loss of profits incurred by client, its subsidiaries, affiliates or successors arising out of or related to the performance of the services hereunder by Cardinal, regardless of whether such claim is based upon any of the above stated reasons or otherwise. Results relate only to the samples identified above. This report shall not be reproduced except in full with written approval of Cardinal Laboratories.

Celey D. Keene, Lab Director/Quality Manager



PHONE (575) 393-2326 ° 101 E. MARLAND ° HOBBS, NM 88240

Analytical Results For:

PIMA ENVIROMENTAL
SEBASTIAN OROZCO
1601 N TURNER STE. 500
HOBBS NM, 88240
Fax To:

Received: 03/19/2025
Reported: 03/25/2025
Project Name: RED LAKE 32 STATE 002H
Project Number: 6-381
Project Location: SPUR - EDDY CO NM

Sampling Date: 03/18/2025
Sampling Type: Soil
Sampling Condition: Cool & Intact
Sample Received By: Alyssa Parras

Sample ID: CSW 4 (H251633-09)

BTEx 8021B		mg/kg		Analyzed By: JH					
Analyte	Result	Reporting Limit	Analyzed	Method Blank	BS	% Recovery	True Value QC	RPD	Qualifier
Benzene*	<0.050	0.050	03/21/2025	ND	2.18	109	2.00	0.881	
Toluene*	<0.050	0.050	03/21/2025	ND	2.22	111	2.00	0.800	
Ethylbenzene*	<0.050	0.050	03/21/2025	ND	2.14	107	2.00	0.567	
Total Xylenes*	<0.150	0.150	03/21/2025	ND	6.29	105	6.00	0.430	
Total BTEx	<0.300	0.300	03/21/2025	ND					

Surrogate: 4-Bromofluorobenzene (PID) 101 % 71.5-134

Chloride, SM4500Cl-B		mg/kg		Analyzed By: CT						
Analyte	Result	Reporting Limit	Analyzed	Method Blank	BS	% Recovery	True Value QC	RPD	Qualifier	
Chloride	16.0	16.0	03/21/2025	ND	432	108	400	3.77		

TPH 8015M		mg/kg		Analyzed By: MS					
Analyte	Result	Reporting Limit	Analyzed	Method Blank	BS	% Recovery	True Value QC	RPD	Qualifier
GRO C6-C10*	<10.0	10.0	03/21/2025	ND	218	109	200	0.132	
DRO >C10-C28*	<10.0	10.0	03/21/2025	ND	208	104	200	0.287	
EXT DRO >C28-C36	<10.0	10.0	03/21/2025	ND					

Surrogate: 1-Chlorooctane 100 % 44.4-145

Surrogate: 1-Chlorooctadecane 98.5 % 40.6-153

Cardinal Laboratories

*=Accredited Analyte

PLEASE NOTE: Liability and Damages. Cardinal's liability and client's exclusive remedy for any claim arising, whether based in contract or tort, shall be limited to the amount paid by client for analyses. All claims, including those for negligence and any other cause whatsoever shall be deemed waived unless made in writing and received by Cardinal within thirty (30) days after completion of the applicable service. In no event shall Cardinal be liable for incidental or consequential damages, including, without limitation, business interruptions, loss of use, or loss of profits incurred by client, its subsidiaries, affiliates or successors arising out of or related to the performance of the services hereunder by Cardinal, regardless of whether such claim is based upon any of the above stated reasons or otherwise. Results relate only to the samples identified above. This report shall not be reproduced except in full with written approval of Cardinal Laboratories.

Celey D. Keene, Lab Director/Quality Manager



PHONE (575) 393-2326 ° 101 E. MARLAND ° HOBBS, NM 88240

Analytical Results For:

PIMA ENVIROMENTAL
 SEBASTIAN OROZCO
 1601 N TURNER STE. 500
 HOBBS NM, 88240
 Fax To:

Received: 03/19/2025
 Reported: 03/25/2025
 Project Name: RED LAKE 32 STATE 002H
 Project Number: 6-381
 Project Location: SPUR - EDDY CO NM

Sampling Date: 03/18/2025
 Sampling Type: Soil
 Sampling Condition: Cool & Intact
 Sample Received By: Alyssa Parras

Sample ID: CSW 5 (H251633-10)

BTEx 8021B		mg/kg		Analyzed By: JH					
Analyte	Result	Reporting Limit	Analyzed	Method Blank	BS	% Recovery	True Value QC	RPD	Qualifier
Benzene*	<0.050	0.050	03/21/2025	ND	2.18	109	2.00	0.881	
Toluene*	<0.050	0.050	03/21/2025	ND	2.22	111	2.00	0.800	
Ethylbenzene*	<0.050	0.050	03/21/2025	ND	2.14	107	2.00	0.567	
Total Xylenes*	<0.150	0.150	03/21/2025	ND	6.29	105	6.00	0.430	
Total BTEX	<0.300	0.300	03/21/2025	ND					

Surrogate: 4-Bromofluorobenzene (PID) 100 % 71.5-134

Chloride, SM4500Cl-B		mg/kg		Analyzed By: CT						
Analyte	Result	Reporting Limit	Analyzed	Method Blank	BS	% Recovery	True Value QC	RPD	Qualifier	
Chloride	16.0	16.0	03/21/2025	ND	432	108	400	3.77		

TPH 8015M		mg/kg		Analyzed By: MS					
Analyte	Result	Reporting Limit	Analyzed	Method Blank	BS	% Recovery	True Value QC	RPD	Qualifier
GRO C6-C10*	<10.0	10.0	03/21/2025	ND	218	109	200	0.132	
DRO >C10-C28*	<10.0	10.0	03/21/2025	ND	208	104	200	0.287	
EXT DRO >C28-C36	<10.0	10.0	03/21/2025	ND					

Surrogate: 1-Chlorooctane 102 % 44.4-145

Surrogate: 1-Chlorooctadecane 101 % 40.6-153

Cardinal Laboratories

*=Accredited Analyte

PLEASE NOTE: Liability and Damages. Cardinal's liability and client's exclusive remedy for any claim arising, whether based in contract or tort, shall be limited to the amount paid by client for analyses. All claims, including those for negligence and any other cause whatsoever shall be deemed waived unless made in writing and received by Cardinal within thirty (30) days after completion of the applicable service. In no event shall Cardinal be liable for incidental or consequential damages, including, without limitation, business interruptions, loss of use, or loss of profits incurred by client, its subsidiaries, affiliates or successors arising out of or related to the performance of the services hereunder by Cardinal, regardless of whether such claim is based upon any of the above stated reasons or otherwise. Results relate only to the samples identified above. This report shall not be reproduced except in full with written approval of Cardinal Laboratories.

Celey D. Keene, Lab Director/Quality Manager



PHONE (575) 393-2326 ° 101 E. MARLAND ° HOBBS, NM 88240

Analytical Results For:

PIMA ENVIROMENTAL
 SEBASTIAN OROZCO
 1601 N TURNER STE. 500
 HOBBS NM, 88240
 Fax To:

Received: 03/19/2025
 Reported: 03/25/2025
 Project Name: RED LAKE 32 STATE 002H
 Project Number: 6-381
 Project Location: SPUR - EDDY CO NM

Sampling Date: 03/18/2025
 Sampling Type: Soil
 Sampling Condition: Cool & Intact
 Sample Received By: Alyssa Parras

Sample ID: CSW 6 (H251633-11)

BTEx 8021B		mg/kg		Analyzed By: JH					
Analyte	Result	Reporting Limit	Analyzed	Method Blank	BS	% Recovery	True Value QC	RPD	Qualifier
Benzene*	<0.050	0.050	03/21/2025	ND	2.18	109	2.00	0.881	
Toluene*	<0.050	0.050	03/21/2025	ND	2.22	111	2.00	0.800	
Ethylbenzene*	<0.050	0.050	03/21/2025	ND	2.14	107	2.00	0.567	
Total Xylenes*	<0.150	0.150	03/21/2025	ND	6.29	105	6.00	0.430	
Total BTEx	<0.300	0.300	03/21/2025	ND					

Surrogate: 4-Bromofluorobenzene (PID) 99.8 % 71.5-134

Chloride, SM4500CI-B		mg/kg		Analyzed By: CT						
Analyte	Result	Reporting Limit	Analyzed	Method Blank	BS	% Recovery	True Value QC	RPD	Qualifier	
Chloride	<16.0	16.0	03/21/2025	ND	432	108	400	3.77		

TPH 8015M		mg/kg		Analyzed By: MS					
Analyte	Result	Reporting Limit	Analyzed	Method Blank	BS	% Recovery	True Value QC	RPD	Qualifier
GRO C6-C10*	<10.0	10.0	03/21/2025	ND	218	109	200	0.132	
DRO >C10-C28*	<10.0	10.0	03/21/2025	ND	208	104	200	0.287	
EXT DRO >C28-C36	<10.0	10.0	03/21/2025	ND					

Surrogate: 1-Chlorooctane 101 % 44.4-145

Surrogate: 1-Chlorooctadecane 98.3 % 40.6-153

Cardinal Laboratories

*=Accredited Analyte

PLEASE NOTE: Liability and Damages. Cardinal's liability and client's exclusive remedy for any claim arising, whether based in contract or tort, shall be limited to the amount paid by client for analyses. All claims, including those for negligence and any other cause whatsoever shall be deemed waived unless made in writing and received by Cardinal within thirty (30) days after completion of the applicable service. In no event shall Cardinal be liable for incidental or consequential damages, including, without limitation, business interruptions, loss of use, or loss of profits incurred by client, its subsidiaries, affiliates or successors arising out of or related to the performance of the services hereunder by Cardinal, regardless of whether such claim is based upon any of the above stated reasons or otherwise. Results relate only to the samples identified above. This report shall not be reproduced except in full with written approval of Cardinal Laboratories.

Celey D. Keene, Lab Director/Quality Manager



PHONE (575) 393-2326 ° 101 E. MARLAND ° HOBBS, NM 88240

Notes and Definitions

ND	Analyte NOT DETECTED at or above the reporting limit
RPD	Relative Percent Difference
**	Samples not received at proper temperature of 6°C or below.
***	Insufficient time to reach temperature.
-	Chloride by SM4500Cl-B does not require samples be received at or below 6°C Samples reported on an as received basis (wet) unless otherwise noted on report

Cardinal Laboratories

*=Accredited Analyte

PLEASE NOTE: Liability and Damages. Cardinal's liability and client's exclusive remedy for any claim arising, whether based in contract or tort, shall be limited to the amount paid by client for analyses. All claims, including those for negligence and any other cause whatsoever shall be deemed waived unless made in writing and received by Cardinal within thirty (30) days after completion of the applicable service. In no event shall Cardinal be liable for incidental or consequential damages, including, without limitation, business interruptions, loss of use, or loss of profits incurred by client, its subsidiaries, affiliates or successors arising out of or related to the performance of the services hereunder by Cardinal, regardless of whether such claim is based upon any of the above stated reasons or otherwise. Results relate only to the samples identified above. This report shall not be reproduced except in full with written approval of Cardinal Laboratories.

A handwritten signature in black ink, appearing to read "Celey D. Keene".

Celey D. Keene, Lab Director/Quality Manager



CHAIN-OF-CUSTODY AND ANALYSIS REQUEST

101 East Marland, Hobbs, NM 88240
(575) 393-2326 FAX (575) 393-2476

[illegible]

Sante Fe Main Office
Phone: (505) 476-3441

General Information
Phone: (505) 629-6116

Online Phone Directory
<https://www.emnrd.nm.gov/ocd/contact-us>

State of New Mexico
Energy, Minerals and Natural Resources
Oil Conservation Division
1220 S. St Francis Dr.
Santa Fe, NM 87505

QUESTIONS

Action 453925

QUESTIONS

Operator: Spur Energy Partners LLC 9655 Katy Freeway Houston, TX 77024	OGRID: 328947
	Action Number: 453925
	Action Type: [C-141] Remediation Closure Request C-141 (C-141-v-Closure)

QUESTIONS

Prerequisites	
Incident ID (n#)	nRM2034247342
Incident Name	NRM2034247342 RED LAKE 32 STATE #002H BATTERY @ 30-015-44948
Incident Type	Produced Water Release
Incident Status	Remediation Closure Report Received
Incident Well	[30-015-44948] RED LAKE 32 STATE #002H

Location of Release Source	
<i>Please answer all the questions in this group.</i>	
Site Name	RED LAKE 32 STATE #002H BATTERY
Date Release Discovered	11/23/2020
Surface Owner	State

Incident Details	
<i>Please answer all the questions in this group.</i>	
Incident Type	Produced Water Release
Did this release result in a fire or is the result of a fire	No
Did this release result in any injuries	No
Has this release reached or does it have a reasonable probability of reaching a watercourse	No
Has this release endangered or does it have a reasonable probability of endangering public health	No
Has this release substantially damaged or will it substantially damage property or the environment	No
Is this release of a volume that is or may with reasonable probability be detrimental to fresh water	No

Nature and Volume of Release	
<i>Material(s) released, please answer all that apply below. Any calculations or specific justifications for the volumes provided should be attached to the follow-up C-141 submission.</i>	
Crude Oil Released (bbls) Details	Not answered.
Produced Water Released (bbls) Details	Cause: Other Pump Produced Water Released: 8 BBL Recovered: 5 BBL Lost: 3 BBL.
Is the concentration of chloride in the produced water >10,000 mg/l	Yes
Condensate Released (bbls) Details	Not answered.
Natural Gas Vented (Mcf) Details	Not answered.
Natural Gas Flared (Mcf) Details	Not answered.
Other Released Details	Not answered.
Are there additional details for the questions above (i.e. any answer containing Other, Specify, Unknown, and/or Fire, or any negative lost amounts)	Not answered.

Sante Fe Main Office
Phone: (505) 476-3441

General Information
Phone: (505) 629-6116

Online Phone Directory
<https://www.emnrd.nm.gov/ocd/contact-us>

State of New Mexico
Energy, Minerals and Natural Resources
Oil Conservation Division
1220 S. St Francis Dr.
Santa Fe, NM 87505

QUESTIONS, Page 2

Action 453925

QUESTIONS (continued)

Operator: Spur Energy Partners LLC 9655 Katy Freeway Houston, TX 77024	OGRID: 328947
	Action Number: 453925
	Action Type: [C-141] Remediation Closure Request C-141 (C-141-v-Closure)

QUESTIONS

Nature and Volume of Release (continued)	
Is this a gas only submission (i.e. only significant Mcf values reported)	No, according to supplied volumes this does not appear to be a "gas only" report.
Was this a major release as defined by Subsection A of 19.15.29.7 NMAC	No
Reasons why this would be considered a submission for a notification of a major release	<i>Unavailable.</i>
<i>With the implementation of the 19.15.27 NMAC (05/25/2021), venting and/or flaring of natural gas (i.e. gas only) are to be submitted on the C-129 form.</i>	

Initial Response

The responsible party must undertake the following actions immediately unless they could create a safety hazard that would result in injury.

The source of the release has been stopped	True
The impacted area has been secured to protect human health and the environment	True
Released materials have been contained via the use of berms or dikes, absorbent pads, or other containment devices	True
All free liquids and recoverable materials have been removed and managed appropriately	True
If all the actions described above have not been undertaken, explain why	n/a

Per Paragraph (4) of Subsection B of 19.15.29.8 NMAC the responsible party may commence remediation immediately after discovery of a release. If remediation has begun, please prepare and attach a narrative of actions to date in the follow-up C-141 submission. If remedial efforts have been successfully completed or if the release occurred within a lined containment area (see Subparagraph (a) of Paragraph (5) of Subsection A of 19.15.29.11 NMAC), please prepare and attach all information needed for closure evaluation in the follow-up C-141 submission.

I hereby certify that the information given above is true and complete to the best of my knowledge and understand that pursuant to OCD rules and regulations all operators are required to report and/or file certain release notifications and perform corrective actions for releases which may endanger public health or the environment. The acceptance of a C-141 report by the OCD does not relieve the operator of liability should their operations have failed to adequately investigate and remediate contamination that pose a threat to groundwater, surface water, human health or the environment. In addition, OCD acceptance of a C-141 report does not relieve the operator of responsibility for compliance with any other federal, state, or local laws and/or regulations.

I hereby agree and sign off to the above statement	Name: Katherine Purvis Title: EHS Coordinator Email: katherine.purvis@spurenergy.com Date: 04/21/2025
--	---

Sante Fe Main Office
Phone: (505) 476-3441

General Information
Phone: (505) 629-6116

Online Phone Directory
<https://www.emnrd.nm.gov/ocd/contact-us>

State of New Mexico
Energy, Minerals and Natural Resources
Oil Conservation Division
1220 S. St Francis Dr.
Santa Fe, NM 87505

QUESTIONS, Page 3

Action 453925

QUESTIONS (continued)

Operator: Spur Energy Partners LLC 9655 Katy Freeway Houston, TX 77024	OGRID:
	328947
	Action Number:
	453925
Action Type:	
[C-141] Remediation Closure Request C-141 (C-141-v-Closure)	

QUESTIONS

Site Characterization	
<i>Please answer all the questions in this group (only required when seeking remediation plan approval and beyond). This information must be provided to the appropriate district office no later than 90 days after the release discovery date.</i>	
What is the shallowest depth to groundwater beneath the area affected by the release in feet below ground surface (ft bgs)	Between 51 and 75 (ft.)
What method was used to determine the depth to ground water	U.S. Geological Survey
Did this release impact groundwater or surface water	No
What is the minimum distance, between the closest lateral extents of the release and the following surface areas:	
A continuously flowing watercourse or any other significant watercourse	Between 1 and 5 (mi.)
Any lakebed, sinkhole, or playa lake (measured from the ordinary high-water mark)	Greater than 5 (mi.)
An occupied permanent residence, school, hospital, institution, or church	Between 1 and 5 (mi.)
A spring or a private domestic fresh water well used by less than five households for domestic or stock watering purposes	Between 1 and 5 (mi.)
Any other fresh water well or spring	Between 1 and 5 (mi.)
Incorporated municipal boundaries or a defined municipal fresh water well field	Between 1 and 5 (mi.)
A wetland	Between 1 and 100 (ft.)
A subsurface mine	Greater than 5 (mi.)
An (non-karst) unstable area	Between 1 and 100 (ft.)
Categorize the risk of this well / site being in a karst geology	High
A 100-year floodplain	Between 1 and 5 (mi.)
Did the release impact areas not on an exploration, development, production, or storage site	No

Remediation Plan	
<i>Please answer all the questions that apply or are indicated. This information must be provided to the appropriate district office no later than 90 days after the release discovery date.</i>	
Requesting a remediation plan approval with this submission	Yes
<i>Attach a comprehensive report demonstrating the lateral and vertical extents of soil contamination associated with the release have been determined, pursuant to 19.15.29.11 NMAC and 19.15.29.13 NMAC.</i>	
Have the lateral and vertical extents of contamination been fully delineated	Yes
Was this release entirely contained within a lined containment area	No
Soil Contamination Sampling: (Provide the highest observable value for each, in milligrams per kilograms.)	
Chloride (EPA 300.0 or SM4500 Cl B)	5600
TPH (GRO+DRO+MRO) (EPA SW-846 Method 8015M)	11278
GRO+DRO (EPA SW-846 Method 8015M)	9208
BTEX (EPA SW-846 Method 8021B or 8260B)	19.9
Benzene (EPA SW-846 Method 8021B or 8260B)	0
<i>Per Subsection B of 19.15.29.11 NMAC unless the site characterization report includes completed efforts at remediation, the report must include a proposed remediation plan in accordance with 19.15.29.12 NMAC, which includes the anticipated timelines for beginning and completing the remediation.</i>	
On what estimated date will the remediation commence	03/10/2025
On what date will (or did) the final sampling or liner inspection occur	03/18/2025
On what date will (or was) the remediation complete(d)	03/28/2025
What is the estimated surface area (in square feet) that will be reclaimed	0
What is the estimated volume (in cubic yards) that will be reclaimed	0
What is the estimated surface area (in square feet) that will be remediated	500
What is the estimated volume (in cubic yards) that will be remediated	15
<i>These estimated dates and measurements are recognized to be the best guess or calculation at the time of submission and may (be) change(d) over time as more remediation efforts are completed.</i>	
<i>The OCD recognizes that proposed remediation measures may have to be minimally adjusted in accordance with the physical realities encountered during remediation. If the responsible party has any need to significantly deviate from the remediation plan proposed, then it should consult with the division to determine if another remediation plan submission is required.</i>	

Sante Fe Main Office
Phone: (505) 476-3441

General Information
Phone: (505) 629-6116

Online Phone Directory
<https://www.emnrd.nm.gov/ocd/contact-us>

State of New Mexico
Energy, Minerals and Natural Resources
Oil Conservation Division
1220 S. St Francis Dr.
Santa Fe, NM 87505

QUESTIONS, Page 4

Action 453925

QUESTIONS (continued)

Operator: Spur Energy Partners LLC 9655 Katy Freeway Houston, TX 77024	OGRID:
	328947
	Action Number:
	453925
Action Type:	
[C-141] Remediation Closure Request C-141 (C-141-v-Closure)	

QUESTIONS

Remediation Plan (continued)	
<i>Please answer all the questions that apply or are indicated. This information must be provided to the appropriate district office no later than 90 days after the release discovery date.</i>	
This remediation will (or is expected to) utilize the following processes to remediate / reduce contaminants:	
<i>(Select all answers below that apply.)</i>	
(Ex Situ) Excavation and off-site disposal (i.e. dig and haul, hydrovac, etc.)	Yes
Which OCD approved facility will be used for off-site disposal	LEA LAND LANDFILL [fEEM0112342028]
OR which OCD approved well (API) will be used for off-site disposal	Not answered.
OR is the off-site disposal site, to be used, out-of-state	Not answered.
OR is the off-site disposal site, to be used, an NMED facility	Not answered.
(Ex Situ) Excavation and on-site remediation (i.e. On-Site Land Farms)	Not answered.
(In Situ) Soil Vapor Extraction	Not answered.
(In Situ) Chemical processing (i.e. Soil Shredding, Potassium Permanganate, etc.)	Not answered.
(In Situ) Biological processing (i.e. Microbes / Fertilizer, etc.)	Not answered.
(In Situ) Physical processing (i.e. Soil Washing, Gypsum, Disking, etc.)	Not answered.
Ground Water Abatement pursuant to 19.15.30 NMAC	Not answered.
OTHER (Non-listed remedial process)	Not answered.
<i>Per Subsection B of 19.15.29.11 NMAC unless the site characterization report includes completed efforts at remediation, the report must include a proposed remediation plan in accordance with 19.15.29.12 NMAC, which includes the anticipated timelines for beginning and completing the remediation.</i>	
I hereby certify that the information given above is true and complete to the best of my knowledge and understand that pursuant to OCD rules and regulations all operators are required to report and/or file certain release notifications and perform corrective actions for releases which may endanger public health or the environment. The acceptance of a C-141 report by the OCD does not relieve the operator of liability should their operations have failed to adequately investigate and remediate contamination that pose a threat to groundwater, surface water, human health or the environment. In addition, OCD acceptance of a C-141 report does not relieve the operator of responsibility for compliance with any other federal, state, or local laws and/or regulations.	
I hereby agree and sign off to the above statement	Name: Katherine Purvis Title: EHS Coordinator Email: katherine.purvis@spurenergy.com Date: 04/21/2025
<i>The OCD recognizes that proposed remediation measures may have to be minimally adjusted in accordance with the physical realities encountered during remediation. If the responsible party has any need to significantly deviate from the remediation plan proposed, then it should consult with the division to determine if another remediation plan submission is required.</i>	

Sante Fe Main Office
Phone: (505) 476-3441

General Information
Phone: (505) 629-6116

Online Phone Directory
<https://www.emnrd.nm.gov/ocd/contact-us>

State of New Mexico
Energy, Minerals and Natural Resources
Oil Conservation Division
1220 S. St Francis Dr.
Santa Fe, NM 87505

QUESTIONS, Page 5

Action 453925

QUESTIONS (continued)

Operator: Spur Energy Partners LLC 9655 Katy Freeway Houston, TX 77024	OGRID: 328947
	Action Number: 453925
	Action Type: [C-141] Remediation Closure Request C-141 (C-141-v-Closure)

QUESTIONS

Deferral Requests Only	
Only answer the questions in this group if seeking a deferral upon approval this submission. Each of the following items must be confirmed as part of any request for deferral of remediation.	
Requesting a deferral of the remediation closure due date with the approval of this submission	No

Sante Fe Main Office
Phone: (505) 476-3441

General Information
Phone: (505) 629-6116

Online Phone Directory
<https://www.emnrd.nm.gov/ocd/contact-us>

State of New Mexico
Energy, Minerals and Natural Resources
Oil Conservation Division
1220 S. St Francis Dr.
Santa Fe, NM 87505

QUESTIONS, Page 6

Action 453925

QUESTIONS (continued)

Operator: Spur Energy Partners LLC 9655 Katy Freeway Houston, TX 77024	OGRID: 328947
	Action Number: 453925
	Action Type: [C-141] Remediation Closure Request C-141 (C-141-v-Closure)

QUESTIONS

Sampling Event Information	
Last sampling notification (C-141N) recorded	442624
Sampling date pursuant to Subparagraph (a) of Paragraph (1) of Subsection D of 19.15.29.12 NMAC	03/18/2025
What was the (estimated) number of samples that were to be gathered	10
What was the sampling surface area in square feet	650

Remediation Closure Request	
<i>Only answer the questions in this group if seeking remediation closure for this release because all remediation steps have been completed.</i>	
Requesting a remediation closure approval with this submission	Yes
Have the lateral and vertical extents of contamination been fully delineated	Yes
Was this release entirely contained within a lined containment area	No
All areas reasonably needed for production or subsequent drilling operations have been stabilized, returned to the sites existing grade, and have a soil cover that prevents ponding of water, minimizing dust and erosion	Yes
What was the total surface area (in square feet) remediated	500
What was the total volume (cubic yards) remediated	15
All areas not reasonably needed for production or subsequent drilling operations have been reclaimed to contain a minimum of four feet of non-waste contain earthen material with concentrations less than 600 mg/kg chlorides, 100 mg/kg TPH, 50 mg/kg BTEX, and 10 mg/kg Benzene	Yes
What was the total surface area (in square feet) reclaimed	0
What was the total volume (in cubic yards) reclaimed	0
Summarize any additional remediation activities not included by answers (above)	The Red Lake 32 State #002H Battery project involved full delineation of the impacted area, a remediation event, and backfilling to restore the natural contour. All confirmation samples met NMOCD closure criteria, and no further remediation is required.
<i>The responsible party must attach information demonstrating they have complied with all applicable closure requirements and any conditions or directives of the OCD. This demonstration should be in the form of a comprehensive report (in .pdf format) including a scaled site map, sampling diagrams, relevant field notes, photographs of any excavation prior to backfilling, laboratory data including chain of custody documents of final sampling, and a narrative of the remedial activities. Refer to 19.15.29.12 NMAC.</i>	
I hereby certify that the information given above is true and complete to the best of my knowledge and understand that pursuant to OCD rules and regulations all operators are required to report and/or file certain release notifications and perform corrective actions for releases which may endanger public health or the environment. The acceptance of a C-141 report by the OCD does not relieve the operator of liability should their operations have failed to adequately investigate and remediate contamination that pose a threat to groundwater, surface water, human health or the environment. In addition, OCD acceptance of a C-141 report does not relieve the operator of responsibility for compliance with any other federal, state, or local laws and/or regulations. The responsible party acknowledges they must substantially restore, reclaim, and re-vegetate the impacted surface area to the conditions that existed prior to the release or their final land use in accordance with 19.15.29.13 NMAC including notification to the OCD when reclamation and re-vegetation are complete.	
I hereby agree and sign off to the above statement	Name: Katherine Purvis Title: EHS Coordinator Email: katherine.purvis@spurenergy.com Date: 04/21/2025

Sante Fe Main Office
Phone: (505) 476-3441

General Information
Phone: (505) 629-6116

Online Phone Directory
<https://www.emnrd.nm.gov/ocd/contact-us>

State of New Mexico
Energy, Minerals and Natural Resources
Oil Conservation Division
1220 S. St Francis Dr.
Santa Fe, NM 87505

QUESTIONS, Page 7

Action 453925

QUESTIONS (continued)

Operator: Spur Energy Partners LLC 9655 Katy Freeway Houston, TX 77024	OGRID: 328947
	Action Number: 453925
	Action Type: [C-141] Remediation Closure Request C-141 (C-141-v-Closure)

QUESTIONS

Reclamation Report	
Only answer the questions in this group if all reclamation steps have been completed.	
Requesting a reclamation approval with this submission	No

Sante Fe Main Office
Phone: (505) 476-3441

General Information
Phone: (505) 629-6116

Online Phone Directory
<https://www.emnrd.nm.gov/ocd/contact-us>

State of New Mexico
Energy, Minerals and Natural Resources
Oil Conservation Division
1220 S. St Francis Dr.
Santa Fe, NM 87505

CONDITIONS

Action 453925

CONDITIONS

Operator: Spur Energy Partners LLC 9655 Katy Freeway Houston, TX 77024	OGRID: 328947
	Action Number: 453925
	Action Type: [C-141] Remediation Closure Request C-141 (C-141-v-Closure)

CONDITIONS

Created By	Condition	Condition Date
rhamlet	We have received your Remediation Closure Report for Incident #NRM2034247342 RED LAKE 32 STATE #002H BATTERY, thank you. This Remediation Closure Report is approved.	4/23/2025